

1 **Improvement in Delivery of Ischemic Stroke Treatments but Stagnation of Clinical**
2 **Outcomes in Young Adults in South Korea**

3
4 Jonguk Kim, MD¹, Jun Yup Kim, MD¹, Jihoon Kang MD, PhD¹, Beom Joon Kim, MD, PhD¹,
5 Moon-Ku Han, MD, PhD¹, Jeong-Yoon Lee, MD¹, Tai Hwan Park, MD, PhD², Ji Sung Lee,
6 PhD³, Keon-Joo Lee, MD⁴, Joon-Tae Kim, MD, PhD⁵, Kang-Ho Choi, MD, PhD⁵, Jong-Moo
7 Park, MD, PhD⁶, Kyusik Kang, MD, PhD⁷, Soo Joo Lee, MD, PhD⁸, Jae Guk Kim, MD⁸, Jae-
8 Kwan Cha, MD, PhD⁹, Dae-Hyun Kim, MD, PhD⁹, Kyungbok Lee, MD, PhD¹⁰, Jun Lee,
9 MD, PhD¹¹, Keun-Sik Hong, MD, PhD¹², Yong-Jin Cho, MD, PhD¹², Hong-Kyun Park, MD¹²,
10 Byung-Chul Lee, MD, PhD¹³, Kyung-Ho Yu, MD, PhD¹³, Mi-Sun Oh, MD¹³, Dong-Eog Kim,
11 MD, PhD¹⁴, Wi-Sun Ryu, MD, PhD¹⁴, Jay Chol Choi, MD, PhD¹⁵, Jee-Hyun Kwon, MD,
12 PhD¹⁶, Wook-Joo Kim, MD¹⁶, Dong-Ick Shin, MD, PhD¹⁷, Kyu Sun Yum, MD¹⁷, Sung Il
13 Sohn, MD, PhD¹⁸, Jeong-ho Hong, MD, PhD¹⁸, Sang-Hwa Lee, MD, PhD¹⁹, Juneyoung Lee,
14 PhD²⁰, Philip B. Gorelick, MD MPH²¹ and Hee-Joon Bae, MD, PhD¹

15
16 ¹Department of Neurology, Seoul National University Bundang Hospital, Seongnam, Korea

17 ²Department of Neurology, Seoul Medical Center, Seoul, Korea

18 ³Clinical Research Center, Asan Medical Center, Seoul, Korea

19 ⁴Department of Neurology, Korea University Guro Hospital, Seoul, Korea

20 ⁵Department of Neurology, Chonnam National University Hospital, Gwangju, Korea

21 ⁶Department of Neurology, Uijeongbu Eulji Medical Center, Eulji University, Uijeongbu,
22 Korea

23 ⁷Department of Neurology, Nowon Eulji Medical Center, Eulji University School of
24 Medicine, Seoul, Korea

25 ⁸Department of Neurology, Eulji University Hospital, Daejeon, Korea

26 ⁹Department of Neurology, Dong-A University Hospital, Busan, Korea

27 ¹⁰Department of Neurology, Soonchunhyang University Hospital, Seoul, Korea

28 ¹¹Department of Neurology, Yeungnam University Medical Center, Daegu, Korea

29 ¹²Department of Neurology, Inje University Ilsan Paik Hospital, Goyang, Korea

30 ¹³Department of Neurology, Hallym University Sacred Heart Hospital, Anyang, Korea

31 ¹⁴Department of Neurology, Dongguk University Ilsan Hospital, Goyang, Korea

32 ¹⁵Department of Neurology, Jeju National University Hospital, Jeju, Korea

33 ¹⁶Department of Neurology, Ulsan University Hospital, Ulsan, Korea

34 ¹⁷Department of Neurology, Chungbuk National University & Hospital, Cheongju, Korea

35 ¹⁸Department of Neurology, Keimyung University Dongsan Hospital, Daegu, Korea

36 ¹⁹Department of Neurology, Hallym University Chuncheon Sacred Heart Hospital,

37 Chuncheon, Korea

38 ²⁰Department of Biostatistics, Korea University, Seoul, Korea

39 ²¹Davee Department of Neurology, Northwestern University Feinberg School of Medicine,

40 Chicago, Illinois, USA

41

42 **Corresponding author:** Hee-Joon Bae, braindocbae@gmail.com, 82, Gumi-ro 173,

43 Bundang-gu, Seongnam-si, Gyeonggi-do 13620, Korea.

44 **Short title:** Secular Trends in Young Adult Stroke

45 Word count: 6483

46

47

48 **Abstract**

49 **Background**

50 There is limited information on the delivery of acute stroke therapies and secondary
51 preventive measures and clinical outcomes over time in young adults with acute ischemic
52 stroke (AIS). This study investigated whether advances in these treatments improved
53 outcomes in this population.

54 **Methods**

55 Using a prospective multicenter stroke registry in Korea, young adults (aged 18–50 years)
56 with AIS hospitalized between 2008 and 2019 were identified. The observation period was
57 divided into four epochs: 2008–2010, 2011–2013, 2014–2016, and 2017–2019. Secular
58 trends for patient characteristics, treatments, and outcomes were analyzed.

59 **Results**

60 A total of 7,050 eligible patients (mean age 43.1; men 71.9%) were registered. The mean age
61 decreased from 43.6 to 42.9 years ($P_{\text{trend}}=0.01$). Current smoking decreased, whereas obesity
62 increased. Other risk factors remained unchanged. Intravenous thrombolysis and mechanical
63 thrombectomy rates increased over time from 2008–2010 to 2017–2019 (9.5% to 13.8% and
64 3.2% to 9.2%, respectively; P_{trend} 's <0.01). Door-to-needle time improved ($P_{\text{trend}}<.001$), but
65 onset-to-door and door-to-puncture time remained constant. Secondary prevention including
66 the administration of dual antiplatelets for noncardioembolic minor stroke (26.7% to 47.0%),
67 direct oral anticoagulants for atrial fibrillation (0.0% to 56.2%), and statins for large artery
68 atherosclerosis (76.1% to 95.3%) increased (P_{trend} 's <0.01). Outcome data were available from
69 2011. One-year mortality (2.5% in 2011–2013 and 2.3% in 2017–2019) and 3-month

70 modified Rankin scale scores 0–1 (68.3% to 69.1%) and 0–2 (87.6% to 86.2%) remained
71 unchanged. The one-year stroke recurrence rate increased (4.1% to 5.5%, $P_{\text{trend}}=0.04$),
72 although the difference was not significant after adjusting for sex and age.

73 **Conclusion**

74 Improvements in the delivery of acute stroke treatments did not necessarily lead to better
75 outcomes in young adults with AIS over the past decade, indicating a need for further
76 progress.

77

78

79 **Introduction**

80 Young adults, commonly defined as individuals aged 18 to 50, constitute 10–15% of
81 the acute ischemic stroke (AIS) population.¹ Despite a reduction in the incidence of ischemic
82 stroke in high-income countries, there has been a worrisome increase among young adults,
83 particularly in developed countries.² Additionally, healthcare costs for young adults with
84 stroke are approximately 1.6 times higher than for older patients.³ Therefore, improving
85 outcomes in young adults with stroke is important, especially given the potential
86 socioeconomic impact due to their longer life expectancy.

87 However, there have been concerns that young adults with ischemic stroke may not
88 receive optimal treatment. Young patients were more likely to be unaware of risk factors
89 prior to experiencing ischemic stroke,⁴ to present at the hospital later after stroke onset,⁵ and
90 to receive thrombolysis later.⁶ Another issue is the lack of specific treatment guidelines for
91 young patients, despite the differing risk factors and causes compared to older patients.^{7,8}

92 Over the past 15 years, substantial advancements have been made in acute
93 reperfusion therapy and secondary preventive treatment for ischemic stroke.^{9–12} However, the
94 real-world impact of these advancements on clinical outcomes, particularly in young patients,
95 has not been thoroughly explored for more recent period since the early 2010s. While stroke
96 in young adults is gaining increasing attention, data regarding the impact of recent treatment
97 advances on this population remain limited. Prior investigations have often been constrained
98 by cross-sectional designs,^{13,14} small sample sizes,^{15,16} or timing that predated the
99 introduction of more advanced treatments.^{13,16,17}

100 In this study, we aim to fill these gaps by examining trends in the application of
101 advanced treatments and the subsequent clinical outcomes for young stroke patients from
102 2011 to 2019 using data from a multicenter stroke registry in South Korea.

103

104 **Methods**

105 **Study Population**

106 This retrospective analysis was based on data from a prospective, multicenter stroke
107 registry - the Clinical Research Collaboration for Stroke in Korea-National Institutes of
108 Health (CRCS-K-NIH) registry. The CRCS-K-NIH is a web-based registry implemented in
109 2008 to register patients with acute stroke or transient ischemic attack admitted to the 17
110 participating stroke centers in South Korea. Detailed information on the CRCS-K-NIH
111 registry is provided elsewhere.^{18,19} The following inclusion criteria applied: age 18–50 years
112 at presentation, diagnosis of AIS defined as the presence of ischemic symptoms for over 24 h
113 or a relevant ischemic lesion on diffusion-weighted MRI, arrival within seven days from
114 when the stroke symptoms were recognized by the patient (first abnormal time [FAT]), and
115 hospitalization between April 2008 and December 2019.

116

117 **Ethics Statement**

118 The local institutional review boards (IRBs) of all participating centers of the CRCS-
119 K-NIH registry approved the collection of clinical data to ‘monitor and improve the quality
120 and outcomes of stroke care.’ Given the de-identified nature of the data and the minimal risk
121 to the participants, the necessity for informed consent was waived. Furthermore, approval to
122 use the registry database was secured from all necessary IRBs (B-2112-728-102).

123

124 **Data Collection**

125 Information on demographics, risk factors, blood pressure, laboratory data,
126 premorbid disability (modified Rankin scale [mRS]), initial National Institute of Health
127 Stroke Scale (NIHSS), stroke subtype according to the Trial of Org 10172 in Acute Stroke
128 Treatment (TOAST) criteria with some modifications,²⁰ FAT, last known well time (LKW),
129 diagnostic evaluations, reperfusion therapies, door-to-needle time (DNT), door-to-puncture
130 time (DPT), and discharge medications were obtained from the registry database. Risk factors
131 were dichotomized into two categories: "newly diagnosed" and "previously known or aware,"
132 and the "aware" category was further divided into "on medication" and "not on medication"
133 based on the treatment status.

134 As part of a program aimed at monitoring and improving the quality of stroke care
135 and outcomes, functional outcomes, and occurrence of clinical events, including recurrent
136 stroke and death, were prospectively captured at discharge, 3 months, and 1 year after the
137 index stroke through a structured telephone interview conducted by experienced nurse
138 coordinators or a direct interview by treating physicians at outpatient clinics according to
139 predetermined protocols.

140 Functional outcomes were evaluated using the mRS and were divided into two
141 categories: mRS scores of 0–1 vs. 2–6 and 0–2 vs. 3–6, or treated as an ordinal variable. We
142 also analyzed the occurrence of clinical events, including the time from index stroke onset to
143 recurrent stroke and to death, respectively. Regarding these time-to-event data, patients were
144 censored if they were lost to follow-up or at 1.5 years from the onset of stroke. The
145 operational definitions of all variables are listed in Table S1.

146

147 **Statistics**

148 We described demographics, risk factors, stroke characteristics, diagnostic
149 evaluations, and treatments across four epochs: 2008–2010, 2011–2013, 2014–2016, and
150 2017–2019. For trend analyses, the ANOVA linear contrast test was applied to continuous
151 variables, and the Cochran–Armitage test was applied to categorical variables. The Mantel–
152 Haenszel chi-square test was used to treat the 3-month mRS as an ordinal variable. The
153 Kaplan–Meier product limit method was implemented to estimate mortality and cumulative
154 incidence of recurrent strokes, which were subsequently compared across the epochs using a
155 log-rank linear contrast test. Among the 63 variables used in the study, 20 variables were
156 found to have one or more missing values, resulting in an overall missing rate of 0.49%.
157 These missing values were removed pairwise during the tabulation and analysis.

158 Stroke outcomes were analyzed with and without adjustment. Variables for
159 adjustment were predetermined as follows: sex and age for all outcome (Model 1), sex, age,
160 and initial NIHSS score for 3-month mRS score and mortality, and sex, age, stroke risk
161 factors, and stroke subtypes for recurrent stroke (Model 2). For trend analyses in
162 multivariable models, a linear contrast test was applied to binary outcomes in logistic
163 regression models, to survival outcomes in Cox proportional hazard models, and to the whole
164 scale of 3-month mRS scores in an ordinal logistic regression model. Secular trends were
165 analyzed according to age (18–30, 31–40, and 41–50 years) and sex subgroups and presented
166 if needed. Furthermore, secular trends in treatments and outcomes were demonstrated in
167 subgroups of potential contributing factors.

168 A two-tailed p -value of <0.05 was considered statistically significant. All analyses
169 were performed using SAS version 9.4 (SAS Institute Inc., Cary, NC, USA) and R software
170 version 4.0.2 (R Foundation for Statistical Computing, Vienna, Austria).

171

172 **Data Availability**

173 The data used in this study may be made available upon request to the corresponding author.

174

175 **Results**

176 **Demographics, Risk Factors, and Subtypes of Ischemic Stroke (Table 1)**

177 Of 70,567 patients (age 68.3 ± 13.0 years; men 58.5%) registered with AIS between
178 2008 and 2019, 7,050 participants aged 18–50 (10.0%) were selected. Over the 12 years, the
179 proportion of men decreased slightly from 74% to 71% ($p_{\text{trend}}=0.10$), but it remained more
180 than twice that of women. The mean age decreased in both sexes, although this change was
181 statistically significant only in women. The decrease in mean age in women was attributable
182 to an increase in the proportion of women aged 18–30 (Figure 1).

183 Regarding traditional vascular risk factors, we observed significant trends in smoking
184 and obesity. Current smoking decreased by 13.5% in men but increased by 2.5% in women.
185 Obesity (body mass index ≥ 30 kg/m²) more than doubled in men (5.2% in 2008-10 to 13.1%
186 in 2017-19). The increase was somewhat less dramatic in women (5.4% to 9.2%). However,
187 no significant trends were observed regarding hypertension, diabetes mellitus, and
188 hyperlipidemia. Awareness and treatment rates of hypertension, diabetes, and hyperlipidemia
189 before the index stroke remained unchanged except for increased awareness of
190 hyperlipidemia.

191 Regarding ischemic stroke subtypes, large artery atherothrombosis (LAA) was the
192 most common etiology, followed by small vessel occlusion (SVO) or undetermined etiology
193 (UDE; depending on the epoch). Notably, other determined etiology (ODE) increased by

194 9.0%, but LAA, SVO, and cardioembolic stroke (CES) decreased by 2.5%, 5.1%, and 4.3%,
195 respectively. Among ODEs, arterial dissection was the most common, followed by intrinsic
196 diseases of the arterial wall, such as Moyamoya disease and fibromuscular dysplasia (Table
197 S2). Arterial dissection significantly increased in both men and women by 4.7% and 5.1%,
198 respectively. The proportion of UDEs remained unchanged throughout the study period.
199

200 **Clinical Presentation and Treatments (Tables 2)**

201 Over the 12 years, the onset-to-door time (ODT) remained unchanged; the median
202 FAT-to-door ranged between 8.0 and 9.4h, and the median LKW-to-door between 11.1 and
203 12.5h. Overall, the proportion of patients hospitalized within 3.5h from LKW was 27.5%.
204 However, initial stroke severity decreased significantly, with a reduction in the mean NIHSS
205 score and the proportion of severe strokes (NIHSS score 16–42) by 0.8 points and 1.9%,
206 respectively.

207 The IVT rate increased by 3.8% between the first two epochs but plateaued afterward.
208 The DNT followed a similar pattern. The overall increase in IVT rate may be attributed to the
209 rise in IVT rate in patients arriving between 3.0 and 4.5 hours from the LKW (from 5.8% in
210 2008–2010 to 21.1% in 2017–2019) and in those with severe stroke (from 27.9% to 47.3%;
211 Tables S3 and S4). However, it should be noted that the IVT rate remained low in patients
212 arriving after 4.5 h from the LKW and in those with mild stroke (2.4% and 5.0% in 2017–
213 2019, respectively).

214 Over the 12 years, the MT rate almost tripled (from 3.2% to 9.2%), but the DPT did
215 not improve. The increase in the MT rate was evident in patients arriving within 6 hours or
216 between 6 and 12 hours of symptom onset and in those with moderate (NIHSS score 5–15) or
217 severe stroke (Tables S3 and S4). However, it should be noted that the MT rates in patients

218 arriving after 12 hours and in those with mild stroke remained low (2.1% and 1.9% in 2017–
219 2019, respectively).

220 Regarding secondary preventive treatments, the overall use of DAPT and DAPT in
221 mild noncardioembolic stroke increased by 20.3% and 22.2%, respectively. The overall use
222 of statins and the use of statins in LAA also increased by 19.7% and 19.2%, respectively.
223 However, the overall use of anticoagulants and anticoagulants in atrial fibrillation decreased
224 by 7.2% and 6.4%, respectively. Among types of anticoagulants in patients with atrial
225 fibrillation, DOAC surpassed warfarin in the last epoch. Reimbursement for DOAC use in
226 patients with atrial fibrillation was introduced by the Korean government in mid-2015. It
227 should be mentioned that in ODEs, the use of anticoagulants decreased by 29.7%, and the use
228 of DAPT increased by 20.3% (Table S5).

229 The clinical presentation and treatment trends did not change noticeably in subgroup
230 analyses according to age group (not presented here) and sex (Table S6).

231

232 **Clinical Outcomes (Table 3)**

233 We obtained information on clinical outcomes from 6,057 patients registered since
234 2011. The median follow-up duration was 367 days (interquartile range, 356-381 days). Out
235 of these patients, 5861 (97.9%) had follow-up information post-discharge on time-to-event
236 data, and 5809 (95.9%) had 3-month mRS scores. No significant difference was observed
237 between patients with and without 3-month scores, except for a 1-point lower initial NIHSS
238 median score, a higher prevalence of hypertension, and increased use of discharge statin
239 among the former group (Table S8).

240 In-hospital death, the proportions of 3-month mRS scores 0–1 and mRS scores 0–2,
241 and mortality did not exhibit significant trends before and after adjusting for age, sex, and

242 initial NIHSS score. However, ordinal logistic regression revealed a significant increasing
243 trend across the whole range of 3-month mRS scores after adjustments (common odds ratio,
244 1.18; 95% confidence interval, 1.04–1.33).

245 Further analyses were conducted to identify factors contributing to the lack of
246 improvement in functional outcomes despite improvement in treatments. The proportion of
247 mRS scores 0–1 increased in patients who underwent MT and those with severe strokes (from
248 33.7% to 47.8% and from 13.2% to 25.0%, respectively; Tables S9 and S10). However, the
249 proportion of mRS scores 0–2 and the mortality did not demonstrate significant
250 improvements in these subgroups.

251 The one-year cumulative incidence of recurrent stroke demonstrated a minor increase
252 from 4.13% in 2011–2013 to 5.47% in 2017–2019 ($p=0.04$). However, this trend became
253 non-significant in both a minimal model adjusting for age and sex and in the model adjusting
254 for sex, age, stroke risk factors, and stroke subtypes. As post-hoc analysis, pairwise
255 comparisons were made between the three epochs. Notably, the increase in stroke recurrence
256 between 2014-16 and 2017-19 remained significant after Bonferroni adjustment ($p=0.01$).
257 However, the increase between 2011-13 and 2014-16, or 2011-13 and 2017-19 was no longer
258 significant ($p=0.90$ and $p=0.12$, respectively).

259 Figure 2 demonstrates the incidence of recurrent stroke according to the index stroke
260 subtypes. The increase in the stroke recurrence rate was observed in CES, ODE and UDE. In
261 subgroup analysis of ischemic stroke subtype, the cumulative incidence of recurrent stroke
262 increased significantly only in CES and UDE ($p_{\text{trend}}=0.02$ and $p_{\text{trend}}=0.03$, respectively,
263 Table S11). Notably, in the CES group, patients who took warfarin had a lower recurrence
264 rate than those who did not (Figure S1, $p=0.14$ on a log-rank test). In the ODE group, there

265 was no difference in stroke recurrence between patients who took warfarin and those who did
266 not (Figure S2).

267

268 **Discussion**

269 In our nationwide cohort of young adults with AIS, parameters regarding advanced
270 treatments such as IVT and MT rates, DNT, and secondary preventive treatments, including
271 DAPT for mild noncardioembolic stroke, DOAC for atrial fibrillation, and statin for LAA,
272 improved over the 12 years. However, the 3-month mRS score, 1-year mortality, and 1-year
273 stroke recurrence rate did not improve. The stroke recurrence rate even increased in the last
274 epoch, which was attributed to increased recurrence in patients with CES, ODE, or UDE.

275 In our study, the functional outcomes at 3 months post-AIS in young adults did not
276 improve and even showed signs of worsening after adjusting for age, sex, and initial stroke
277 severity. The proportion of mRS scores 0–2 was 84% in our study, which aligns with the
278 percentages reported from the late 1990s to mid 2010s in studies of young patients with
279 ischemic stroke (84–94%).^{13,14,16} Interestingly, some countries have observed improvement in
280 functional outcomes over the last two decades in the ischemic stroke population across all
281 ages.^{11,21–23} Increased proportions of 3-month mRS scores 0–2 were reported in China (from
282 37% in 2002 to 71% in 2016) and Spain (from 49% in 2008 to 55% in 2016).^{21,22} The Riks-
283 Stroke registry and Get With The Guideline Stroke data also demonstrated improving trend in
284 discharge to home as a surrogate measure of functional outcome.^{11,23}

285 The unchanged trend in functional outcomes despite the enhanced provision of
286 treatments may be attributed to a ceiling effect; the majority of young patients were already
287 functionally independent in the early epoch (3-month mRS scores 0–2, 83.5% in 2011–2013).

288 On the other hand, the IVT rate and DNT have not shown significant improvement between
289 2011-2013 and 2017-2019 (13.3% vs. 13.8% and 40 min vs. 39 min, respectively). This
290 indicates that patients who could potentially benefit from IVT may not receive optimal
291 treatment, as the hospital arrival time from the onset of stroke (ODT) has remained relatively
292 stagnant. In addition, even though the MT rate has doubled, the number of patients benefiting
293 from this therapy is still limited, accounting for less than 10% of AIS patients even in 2017-
294 19.

295 Thus, more emphasis should be placed on areas that would benefit a larger
296 population, such as enhancing awareness and treatment of risk factors. This may have a more
297 substantial impact on improving outcomes than merely extending the reach of reperfusion
298 therapy. It is worth noting that only half of our study subjects with known hypertension or
299 diabetes were received medication before their index stroke. Recent studies have underscored
300 that vascular risk factors in young adults are often undertreated, partly because the current
301 treatment thresholds for these risk factors may underestimate the actual risk of stroke in this
302 younger population.²

303 We demonstrated that the stroke recurrence rate among young patients did not
304 decrease and was even highest in the last epoch. This finding contrasts the decreasing trend
305 observed among young adults with AIS in Sweden¹⁶ and the AIS population across all ages in
306 the United States before the early 2010s.²⁵ The apparent increase in stroke recurrence in the
307 last epoch might be influenced by a low number of events and potential changes in the study
308 population characteristics over time. Further studies in other populations are needed to
309 ascertain if this trend may be replicated.

310 In an attempt to discern potential factors contributing to the highest stroke recurrence
311 rate in the most recent epoch, we scrutinized changes in risk factors, stroke subtypes, and

312 preventive treatments across all epochs. Over the 12 years, we identified three significant
313 changes: a doubling in the prevalence of obesity, an increase in ODE among ischemic stroke
314 subtypes, and a decrease in the use of warfarin (Tables 1, 2, and Table S5). The increase in
315 obesity in young adults is consistent with trends seen in several developed countries,
316 including the United States and South Korea.^{25–27} However, it is worth noting that the
317 increase in the prevalence of obesity in young stroke patients was slightly steeper than that
318 found in the general population of young adults according to data from the Korean National
319 Health Insurance Service (from 4.0% to 8.5% between 2009 and 2019).²⁵

320 The changes in the usage patterns of antithrombotic therapies might have played a
321 role in the stagnant trend in stroke recurrence rates among young patients. We observed a
322 decline in the use of warfarin among patients with CES, ODE, and UDE, with a reduction of -
323 24.3%, -17.8%, and -7.3%, respectively, between 2011-13 and 2017-19. Interestingly, these
324 are the same three subtypes that exhibited increased stroke recurrence in the most recent
325 epoch (Figure 2, Table S5, and Table S11). Additionally, a lower recurrence rate was found
326 in CES patients on warfarin than those on other antithrombotic therapies (Figure S1).
327 Guidelines specific to young patients with CES and no atrial fibrillation, ODE, or UDE are
328 not well-established.⁸ In some patients with congenital or valvular heart disease, warfarin
329 may be superior to antiplatelets or DOACs by blocking several coagulation pathways
330 simultaneously.²⁸ Further research is warranted to verify the recent increase in stroke
331 recurrence in young adults and the influence of warfarin use.

332 Over the 12 years, the mean age of young patients with AIS decreased, which was
333 attributed to an increase in the proportion of the youngest group (women, 18–30 years)
334 (Figure 1B). A recent systematic review reported that the risk of stroke was higher in young
335 women (15–35 years) than in young men.²⁹ However, despite the increasing trend in the

336 proportion of women in our study, there were more men. A preponderance of young male
337 patients with stroke has been reported in other studies from Asian countries.³⁰

338 This study has several limitations. Firstly, most participating hospitals in our registry
339 are either university hospitals or regional stroke centers, which may not necessarily represent
340 the entirety of acute stroke care hospitals in South Korea. However, it is noteworthy that the
341 demographics and baseline characteristics in our study do not significantly deviate from a
342 previous study that relied on national claims data,³¹ which includes 98–99% of the total
343 Korean population. Secondly, there was an increase in the number of hospitals participating
344 in our registry throughout the study period. This could have potential implications for secular
345 trend analysis and should be considered when interpreting our results as certain factors (e.g.,
346 socioeconomic status) could change over time. Thirdly, given the retrospective nature of our
347 data collection and the descriptive study design, we could not establish causal relationship
348 between treatments and outcomes. Fourthly, we could not determine the causal relationship
349 between treatments and outcomes due to the retrospective nature of data collection and the
350 descriptive study design. Fifthly, since we started to collect outcome data in 2011, we could
351 only analyze the trends in outcomes during the last three epochs. Our findings of an increase
352 in stroke recurrence in the last epoch could be due to chance; however, this finding may
353 warrant further studies with a more extended observation period. Lastly, our study was based
354 on a nationwide stroke registry in South Korea. Therefore, the generalizability of our findings
355 to other countries and ethnicities is limited.

356 In summary, clinical outcomes of young adults with AIS in South Korea did not
357 improve between 2011 and 2019 despite increased delivery of AIS and recurrent preventive
358 treatments. Potential areas of improvement to close the clinical gap include early detection
359 and treatment of traditional risk factors, expanded implementation of reperfusion therapy,

360 reduction in delays in the administration of reperfusion therapy, and establishment of optimal
361 antithrombotic strategies in young patients with CES, ODE, and UDE.

362

363 **Sources of Funding:**

364 This study was supported in part by the Korea Centers for Disease Control and Prevention
365 (no. 2020ER620200f).

366 **Disclosures:**

367 H-J Bae reports grants from Astrazeneca, Bayer Korea, Bristol Myers Squibb Korea, Dong-A
368 ST, Jeil Pharmaceutical Co., Ltd., Samjin Pharm, Takeda Pharmaceuticals Korea Co., Ltd.,
369 and Yuhan Corporation, roles as a principal investigator or co-investigator of clinical trials
370 sponsored by Bayer, Bristol Myers Squibb, GNT Pharma, Korean Drug Co., Ltd., Shinpoong
371 Pharm. Co., Ltd., and person fees from Amgen Korea, Bayer, Daiichi Sankyo, JW
372 Pharmaceutical, Hanmi Pharmaceutical Co., Ltd., Otsuka Korea, SK chemicals, and Viatrix
373 Korea, outside the submitted work.

374 **References**

- 375 1. Béjot Y, Daubail B, Jacquin A, Durier J, Osseby G-V, Rouaud O, Giroud M. Trends in the
376 incidence of ischaemic stroke in young adults between 1985 and 2011: the Dijon Stroke
377 Registry. *J Neurology Neurosurg Psychiatry*. 2014;85:509.
- 378 2. Scott CA, Li L, Rothwell PM. Diverging Temporal Trends in Stroke Incidence in Younger
379 vs Older People. *Jama Neurol*. 2022;79.
- 380 3. Khan SU, Khan MZ, Khan MU, Khan MS, Mamas MA, Rashid M, Blankstein R, Virani
381 SS, Johansen MC, Shapiro MD, et al. Clinical and Economic Burden of Stroke Among
382 Young, Midlife, and Older Adults in the United States, 2002-2017. *Mayo Clin Proc*
383 *Innovations Qual Outcomes*. 2021;
- 384 4. Sung S, Lai EC, Wu DP, Hsieh C. Previously undiagnosed risk factors and medication
385 nonadherence are prevalent in young adults with first-ever stroke. *Pharmacoepidem Dr S*.
386 2017;26:1458–1464.
- 387 5. Leung LY, Caplan LR. Factors Associated with Delay in Presentation to the Hospital for
388 Young Adults with Ischemic Stroke. *Cerebrovasc Dis*. 2016;42:10–14.
- 389 6. Dodds JA, Xian Y, Sheng S, Fonarow GC, Bhatt DL, Matsouaka R, Schwamm LH,
390 Peterson ED, Smith EE. Thrombolysis in young adults with stroke: Findings from Get With
391 The Guidelines–Stroke. *Neurology*. 2019;92:e2784–e2792.
- 392 7. Ekker MS, Boot EM, Singhal AB, Tan KS, Debette S, Tuladhar AM, Leeuw F-E de.
393 Epidemiology, aetiology, and management of ischaemic stroke in young adults. *Lancet*
394 *Neurology*. 2018;17:790–801.
- 395 8. Powers WJ, Rabinstein AA, Ackerson T, Adeoye OM, Bambakidis NC, Becker K, Biller J,
396 Brown M, Demaerschalk BM, Hoh B, et al. Guidelines for the Early Management of Patients
397 With Acute Ischemic Stroke: 2019 Update to the 2018 Guidelines for the Early Management
398 of Acute Ischemic Stroke: A Guideline for Healthcare Professionals From the American
399 Heart Association/American Stroke Association. *Stroke*. 2019;50:e344–e418.
- 400 9. Toyoda K, Yoshimura S, Nakai M, Koga M, Sasahara Y, Sonoda K, Kamiyama K,
401 Yazawa Y, Kawada S, Sasaki M, et al. Twenty-Year Change in Severity and Outcome of
402 Ischemic and Hemorrhagic Strokes. *Jama Neurol*. 2022;79:1–9.
- 403 10. Lee M, Wu Y-L, Ovbiagele B. Trends in Incident and Recurrent Rates of First-Ever
404 Ischemic Stroke in Taiwan between 2000 and 2011. *J Stroke*. 2015;18:60–65.
- 405 11. Appelros P, Jonsson F, Åsberg S, Asplund K, Glader E-L, Åsberg KH, Norrving B,
406 Stegmayr B, Terént A, Collaboration R-S. Trends in Stroke Treatment and Outcome between
407 1995 and 2010: Observations from Riks-Stroke, the Swedish Stroke Register. *Cerebrovasc*
408 *Dis*. 2014;37:22–29.

- 409 12. Modig K, Talbäck M, Ziegler L, Ahlbom A. Temporal trends in incidence, recurrence and
410 prevalence of stroke in an era of ageing populations, a longitudinal study of the total Swedish
411 population. *BMC Geriatr.* 2019;19:31.
- 412 13. Neau J-P, Ingrand P, Mouille-Brachet C, Rosier M-P, Couderq C, Alvarez A, Gil R.
413 Functional Recovery and Social Outcome after Cerebral Infarction in Young Adults.
414 *Cerebrovasc Dis.* 1998;8:296–302.
- 415 14. Simonetti BG, Mono M-L, Huynh-Do U, Michel P, Odier C, Sztajzel R, Lyrer P, Engelter
416 ST, Bonati L, Gensicke H, et al. Risk factors, aetiology and outcome of ischaemic stroke in
417 young adults: the Swiss Young Stroke Study (SYSS). *J Neurol.* 2015;262:2025–2032.
- 418 15. Synhaeve NE, Arntz RM, Maaijwee NAM, Rutten-Jacobs LCA, Schoonderwaldt HC,
419 Dorresteijn LDA, Kort PLM de, Dijk EJ van, Leeuw F-E de. Poor Long-Term Functional
420 Outcome After Stroke Among Adults Aged 18 to 50 Years. *Stroke.* 2014;45:1157–1160.
- 421 16. Varona JF, Bermejo F, Guerra JM, Molina JA. Long-term prognosis of ischemic stroke in
422 young adults. *J Neurol.* 2004;251:1507–1514.
- 423 17. Giang KW, Björck L, Ståhl CH, Nielsen S, Sandström TZ, Jern C, Torén K, Rosengren A.
424 Trends in risk of recurrence after the first ischemic stroke in adults younger than 55 years of
425 age in Sweden. *Int J Stroke.* 2015;11:52–61.
- 426 18. Park TH, Lee J-K, Park M-S, Park S-S, Hong K-S, Ryu W-S, Kim D-E, Park MS, Choi
427 K-H, Kim J-T, et al. Neurological Deterioration in Patients with Acute Ischemic Stroke or
428 Transient Ischemic Attack. *Neurology.* 2020;95:10.1212/WNL.0000000000010603.
- 429 19. Bae H-J, Kim JY, Kang J, Kim BJ, Han M-K, Choi K-H, Kim J-T, Park M-S, Cho K-H,
430 Kim BK, et al. David G. Sherman Lecture Award: 15-Year Experience of the Nationwide
431 Multicenter Stroke Registry in Korea. *Stroke.* 2022;1011161STROKEAHA122039212.
- 432 20. Ko Y, Lee S, Chung J-W, Han M-K, Park J-M, Kang K, Park TH, Park S-S, Cho Y-J,
433 Hong K-S, et al. MRI-based Algorithm for Acute Ischemic Stroke Subtype Classification. *J*
434 *Stroke.* 2014;16:161–172.
- 435 21. Rodríguez-Castro E, López-Dequit I, Santamaría-Cadavid M, Arias-Rivas S, Rodríguez-
436 Yáñez M, Pumar JM, Hervella P, López-Arias E, Silva-Candal A da, Estany A, et al. Trends
437 in stroke outcomes in the last ten years in a European tertiary hospital. *Bmc Neurol.*
438 2018;18:164.
- 439 22. Liu J, Zheng L, Cheng Y, Zhang S, Wu B, Wang D, Zhang S, Tao W, Wu S, Liu M.
440 Trends in Outcomes of Patients With Ischemic Stroke Treated Between 2002 and 2016.
441 *Circulation Cardiovasc Qual Outcomes.* 2019;12:e005610.
- 442 23. Song S, Fonarow GC, Olson DM, Liang L, Schulte PJ, Hernandez AF, Peterson ED,
443 Reeves MJ, Smith EE, Schwamm LH, et al. Association of Get With The Guidelines-Stroke

- 444 Program Participation and Clinical Outcomes for Medicare Beneficiaries With Ischemic
445 Stroke. *Stroke*. 2018;47:1294–1302.
- 446 24. Sozener CB, Lisabeth LD, Shafie-Khorassani F, Kim S, Zahuranec DB, Brown DL,
447 Skolarus LE, Burke JF, Kerber KA, Meurer WJ, et al. Trends in Stroke Recurrence in
448 Mexican Americans and Non-Hispanic Whites. *Stroke*. 2020;51:2428–2434.
- 449 25. Nam GE, Kim Y-H, Han K, Jung J-H, Rhee E-J, Lee W-Y, Obesity OFS of the KS for the
450 S of. Obesity Fact Sheet in Korea, 2020: Prevalence of Obesity by Obesity Class from 2009
451 to 2018. *J. Obes. Metab. Syndr.* 2021;30:141–148.
- 452 26. George MG, Tong X, Kuklina EV, Labarthe DR. Trends in stroke hospitalizations and
453 associated risk factors among children and young adults, 1995–2008. *Ann Neurol*.
454 2011;70:713–721.
- 455 27. Ellison-Barnes A, Johnson S, Gudzone K. Trends in Obesity Prevalence Among Adults
456 Aged 18 Through 25 Years, 1976-2018. *JAMA*. 2021;326:2073–2074.
- 457 28. Bhatt AB, Foster E, Kuehl K, Alpert J, Brabeck S, Crumb S, Davidson WR, Earing MG,
458 Ghoshhajra BB, Karamlou T, et al. Congenital Heart Disease in the Older Adult. *Circulation*.
459 2015;131:1884–1931.
- 460 29. Leppert MH, Burke JF, Lisabeth LD, Madsen TE, Kleindorfer DO, Sillau S, Schwamm
461 LH, Daugherty SL, Bradley CJ, Ho PM, et al. Systematic Review of Sex Differences in
462 Ischemic Strokes Among Young Adults: Are Young Women Disproportionately at Risk?
463 *Stroke*. 53:319–327.
- 464 30. Jacob MA, Ekker MS, Allach Y, Cai M, Aarnio K, Arauz A, Arnold M, Bae H-J, Bando
465 L, Barboza MA, et al. Global Differences in Risk Factors, Etiology, and Outcome of
466 Ischemic Stroke in Young Adults—A Worldwide Meta-analysis. *Neurology*. 2022;98:e573–
467 e588.
- 468 31. Kim JY, Kang K, Kang J, Koo J, Kim D-H, Kim BJ, Kim W-J, Kim E-G, Kim JG, Kim
469 J-M, et al. Executive Summary of Stroke Statistics in Korea 2018: A Report from the
470 Epidemiology Research Council of the Korean Stroke Society. *J Stroke*. 2018;21:42–59.
- 471
- 472
- 473
- 474

475 **Tables**

476 **Table 1** Secular Trends in Demographics, Risk Factors, and Subtypes of Ischemic Stroke

Variables		2008–2010 (n=993)	2011–2013 (n=1753)	2014–2016 (n=2055)	2017–2019 (n=2249)	p for trend*
Men		73.7%	72.4%	71.0%	71.3%	0.10
Mean age (SD), years	All	43.6 (6.1)	43.2 (6.6)	43.1 (6.4)	42.9 (6.9)	0.009
	Men	43.7 (5.9)	43.5 (6.4)	43.3 (6.3)	43.3 (6.4)	0.14
	Women	43.5 (6.6)	42.3 (7.0)	42.6 (6.8)	42.0 (7.8)	0.02
Risk factors						
Current smoking	All	53.1%	50.5%	47.6%	42.8%	<0.001
	Men	68.2%	65.3%	62.5%	54.7%	<0.001
	Women	10.7%	11.8%	10.9%	13.2%	0.32
Obesity (BMI ≥30 kg/m ²)	All	5.2%	7.2%	10.5%	12.0%	<0.001
	Men	5.2%	7.1%	10.6%	13.1%	<0.001
	Women	5.4%	7.7%	10.1%	9.2%	0.053
Hypertension	All	43.2%	43.7%	40.6%	43.4%	0.77
	Men	47.0%	46.9%	43.9%	47.4%	0.99
	Women	32.6%	35.2%	32.4%	33.3%	0.83
	Aware [†]	81.4%	76.9%	80.8%	78.4%	0.69
	On medication [‡]	60.7%	63.7%	54.6%	63.7%	0.85
Diabetes mellitus	All	20.8%	20.0%	19.8%	20.9%	0.81
	Men	22.1%	20.7%	21.4%	22.4%	0.56
	Women	17.2%	18.2%	16.0%	17.1%	0.70
	Aware [†]	72.9%	74.6%	74.4%	73.2%	0.91
	On medication [‡]	72.8%	72.5%	68.3%	72.1%	0.73
Hyperlipidemia	All	25.2%	28.8%	25.9%	27.0%	0.91
	Men	26.6%	31.5%	28.6%	30.0%	0.48
	Women	21.1%	21.5%	19.2%	19.7%	0.43
	Aware [†]	35.6%	38.9%	48.1%	51.3%	<0.001
	On medication [‡]	60.7%	62.8%	53.1%	64.1%	0.66
Atrial fibrillation	All	6.0%	5.0%	4.9%	4.3%	0.04
	Men	5.2%	4.3%	5.2%	4.3%	0.61
	Women	8.4%	6.8%	4.0%	4.2%	0.003
	Aware [†]	61.7%	47.1%	50.0%	42.7%	0.0496
	On medication [‡]	32.4%	34.2%	40.0%	43.9%	0.24
Ischemic stroke subtypes						
Large artery atherosclerosis	All	30.8%	33.5%	30.4%	28.3%	0.008
	Men	32.5%	35.0%	31.6%	30.0%	0.03
	Women	26.1%	29.6%	27.4%	24.0%	0.17
Small vessel occlusion	All	26.8%	22.9%	22.1%	21.7%	0.004
	Men	28.3%	25.2%	24.2%	22.9%	0.01
	Women	22.6%	16.8%	16.8%	18.8%	0.48
Cardioembolic stroke	All	14.0%	11.0%	11.2%	9.7%	0.001
	Men	12.8%	9.3%	10.4%	9.2%	0.05
	Women	17.2%	15.5%	13.3%	10.9%	0.01
Other determined etiology	All	8.6%	10.4%	12.9%	17.6%	<0.001

	Men	7.9%	9.4%	10.4%	16.0%	<0.001
	Women	10.3%	13.0%	19.2%	21.6%	<0.001
Undetermined etiology	All	19.8%	22.3%	23.4%	22.6%	0.11
	Men	18.5%	21.1%	23.2%	21.9%	0.07
	Women	23.7%	25.1%	23.3%	24.8%	0.90

477 Values are percentages unless indicated otherwise.

478 * p for trend by Cochran-Armitage trend test for categorical and by ANOVA linear contrast test for continuous
479 variables.

480 † Proportion of preexisting risk factors among all patients diagnosed with the risk factor during index stroke
481 admission.

482 ‡ Proportion of patients who had been prescribed medicine for the risk factor among those diagnosed with the
483 risk factor before index stroke.

484 BMI, body mass index.

485

486 **Table 2** Secular Trends in Clinical Presentation and Treatments

Variables	2008–2010 (n=993)	2011–2013 (n=1753)	2014–2016 (n=2055)	2017–2019 (n=2249)	<i>p</i> for trend*
Onset-to-door time					
Median FAT-to-door (IQR), h	8.4 (1.9–29.5)	8.2 (2.4–33.5)	9.4 (2.1–33.6)	8.0 (2.0–31.6)	0.66
Median LKW-to-door (IQR), h	11.7 (2.8–32.7)	11.1 (3.0–37.1)	12.5 (3.1–38.7)	11.4 (2.8–34.6)	0.62
LKW-to-door within 3.5h	27.7%	27.8%	26.5%	28.1%	0.92
Stroke severity					
Mean initial NIHSS score (SD)	4.8±5.5	4.2±5.3	4.2±5.1	4.0±4.9	<0.001
Median initial NIHSS score (IQR)	3 (1–6)	2 (1–5)	2 (1–5)	2 (1–5)	<0.001
Mild stroke (≤4)	64.9%	71.0%	70.7%	69.8%	0.06
Moderate stroke (5–15)	28.3%	23.4%	24.0%	25.3%	0.39
Severe stroke (16–42)	6.8%	5.6%	5.4%	4.9%	0.03
Reperfusion therapy					
IVT rate	9.5%	13.3%	14.0%	13.8%	0.004
Median DNT (IQR), min	58 (43–83)	40 (31–54)	37 (26.8–49)	39 (29–55.8)	<0.001
DNT ≤60 min	56.2%	84.2%	86.3%	81.5%	<0.001
MT rate	3.2%	5.3%	7.5%	9.2%	<0.001
Median DPT (IQR), min	113 (88–146)	110 (92–137)	115.5 (87.3–158.5)	106 (85–153.3)	0.84
DPT ≤90 min	26.1%	23.5%	31.2%	30.9%	0.28
Discharge medications					
Dual antiplatelet therapy	26.7%	24.8%	32.8%	47.0%	<0.001
In noncardioembolic minor stroke	28.6%	25.0%	35.2%	50.8%	<0.001
Anticoagulation	15.8%	13.1%	9.6%	8.6%	<0.001
Warfarin	15.2%	11.6%	6.8%	4.3%	<0.001
DOAC	0.0%	0.2%	2.3%	3.8%	<0.001
Anticoagulation in AF	78.3%	78.2%	71.0%	71.9%	0.22
Warfarin in AF	75.0%	72.4%	41.0%	14.6%	<0.001
DOAC in AF	0.0%	4.6%	30.0%	56.2%	<0.001
Statin	71.5%	79.9%	86.9%	91.2%	<0.001
Among LAA	76.1%	86.2%	89.8%	95.3%	<0.001

487 Values are percentages unless indicated otherwise.

488 * *p* for trend by Cochran–Armitage trend test for categorical and ANOVA linear contrast test for continuous

489 variables.

490 AF, atrial fibrillation; DNT, door-to-needle time; DOAC, direct oral anticoagulant; DPT, door-to-puncture time;

491 FAT, first abnormal time; IVT, intravenous thrombolysis; LAA, large artery atherosclerosis; LKW, last known

492 well time; MT, mechanical thrombectomy; National Institute of Health Stroke Scale.

493 **Table 3 Secular Trends in Clinical Outcomes of Ischemic Stroke**

Variables	2011–2013 (n=1753)	2014–2016 (n=2055)	2017–2019 (n=2249)	p for trend*		
				Unadjusted	Model 1 [†]	Model 2 [‡]
In-hospital death	0.90%	1.50%	1.00%	0.71	0.23	-
3-month mRS score [§]				0.41	0.16	.007
0	39.9%	37.1%	35.9%			
1	27.3%	30.7%	32.7%			
2	16.3%	16.4%	14.5%			
3	8.5%	8.1%	8.7%			
4	4.0%	3.9%	4.1%			
5	2.0%	1.5%	2.0%			
6	2.0%	2.3%	2.2%			
Mean (SD)	2.23 (1.42)	2.25 (1.40)	2.27 (1.42)			
Median (IQR)	2 (1–3)	2 (1–3)	2 (1–3)			
3-month mRS scores 0–1	67.2%	67.8%	68.6%	0.37	0.40	0.22
3-month mRS scores 0–2	83.5%	84.2%	83.0%	0.64	0.65	0.63
Mortality				0.50	0.57	0.83
30 days	1.59 (0.99–2.18)	1.83 (1.25–2.41)	1.44 (0.94–1.93)			
90 days	1.95 (1.29–2.61)	2.13 (1.50–2.76)	1.89 (1.33–2.46)			
365 days	2.52 (1.77–3.28)	2.93 (2.19–3.68)	2.32 (1.69–2.95)			
Cumulative incidence of recurrent strokes				0.04	0.08	0.10
30 days	2.00 (1.33–2.66)	1.59 (1.04–2.14)	2.53 (1.88–3.19)			
90 days	3.34 (2.48–4.21)	2.16 (1.52–2.79)	4.11 (3.28–4.94)			
365 days	4.13 (3.17–5.09)	3.70 (2.86–4.55)	5.47 (4.51–6.44)			

494 Values are percentages unless indicated otherwise.

495 * Unadjusted p-values by Mantel–Haenszel chi-square test for 3-month mRS scores, Cochran–Armitage trend test for categorical, ANOVA linear contrast test for continuous
496 variables, and log-rank linear contrast test for survival outcomes, and adjusted p-values by ordinal logistic regression for 3-month mRS score, linear contrast test of logistic
497 regression models for in-hospital death, 3-month mRS scores 0–1 and 0–2, and linear contrast test for Cox proportional hazard models for mortality and recurrent stroke.

498 [†]Model 1 was adjusted for sex and age.

- 499 ‡ Model 2 additionally adjusted initial NIHSS for 3-month mRS and mortality, and risk factor and subtype for recurrent stroke.
- 500 §95.9% of patients had 3-month mRS scores
- 501 ||Pairwise comparison was only significant between 2014-16 and 2017-19 with Bonferroni adjustment, p=0.01.
- 502 mRS, modified Rankin scale; NIHSS, National Institute of Health Stroke Scale

503 **Figure Legends**

504 **Figure 1** Trends in Mean Age Between 2008 and 2019

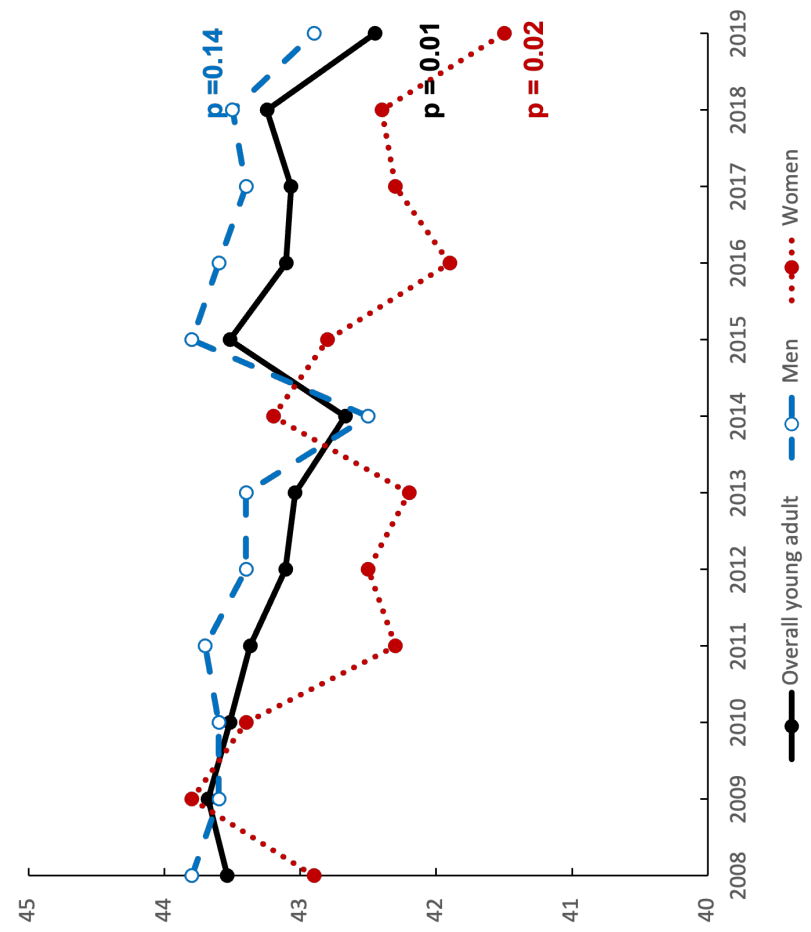
505 (A) Mean age according to sex and calendar year, (B) secular changes in age group
506 proportions in women, and (C) secular changes in age group proportions in men.

507

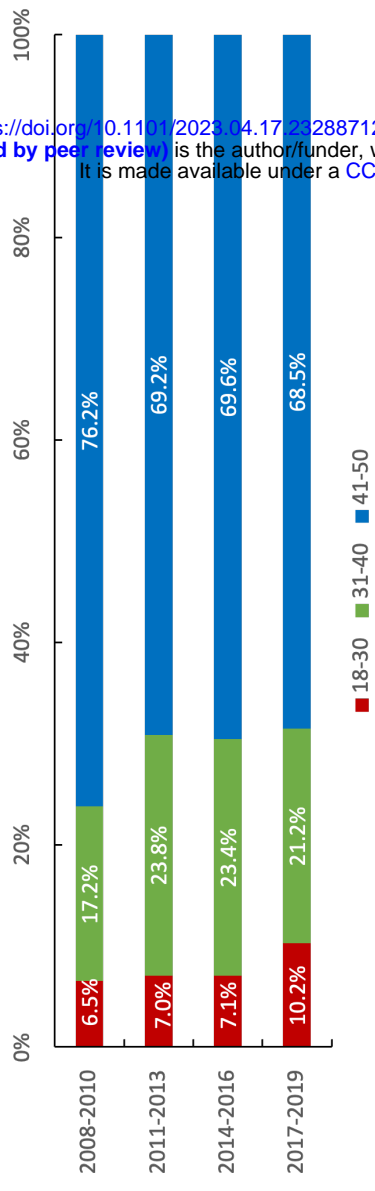
508 **Figure 2** Stroke Recurrence According to Epochs and Stroke Subtypes

509 Stroke recurrence in (A) overall, (B) large artery atherosclerosis, (C) small vessel occlusion,
510 (D) cardioembolic stroke, (E) other determined etiology, and (F) undetermined etiology.

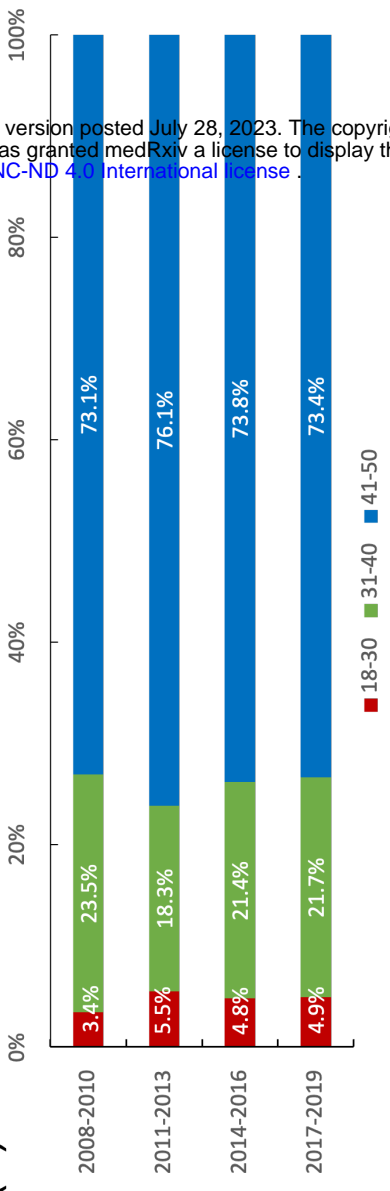
(A) Mean Age of Young Adults with Ischemic Stroke

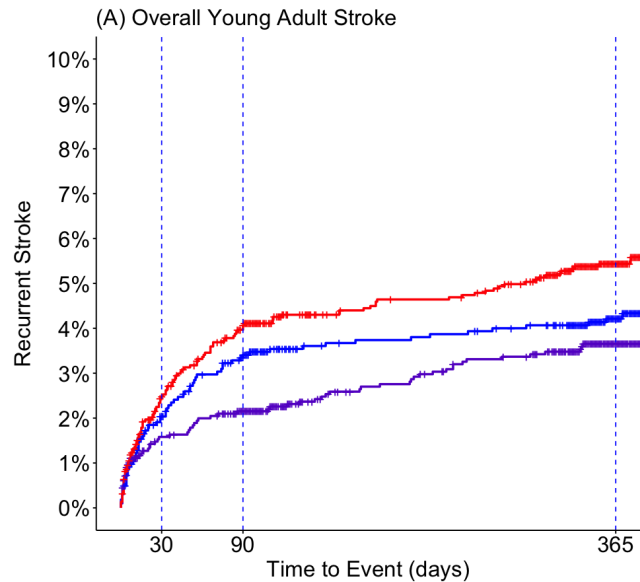


(B) Age Subgroup in Women



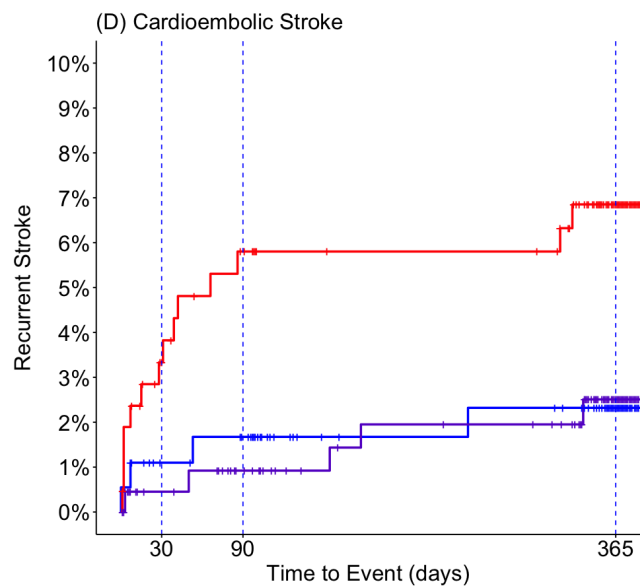
(C) Age Subgroup in Men





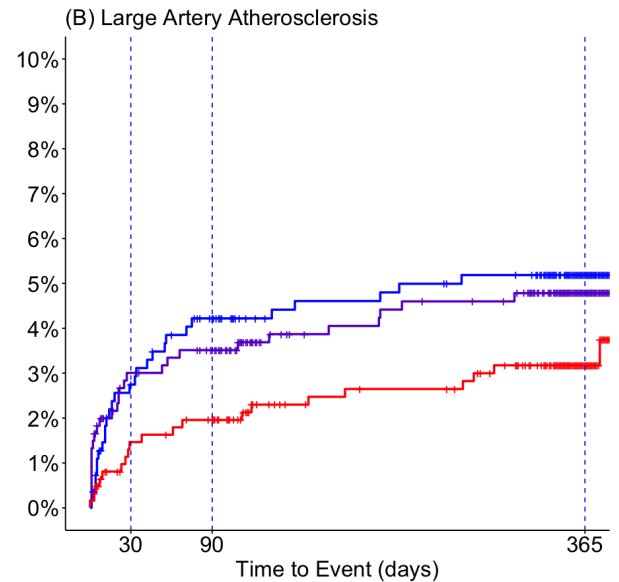
Number at risk

Epoch	0	30	60	90	120	150	180	210	240	270	300	330	360
2011-13	1631	1572	1551	1533	1480	1465	1461	1461	1459	1456	1452	1441	1218
2014-16	1980	1900	1890	1865	1798	1762	1753	1752	1743	1737	1734	1700	1383
2017-19	2198	2104	2076	2051	1987	1967	1960	1955	1955	1948	1937	1891	1525



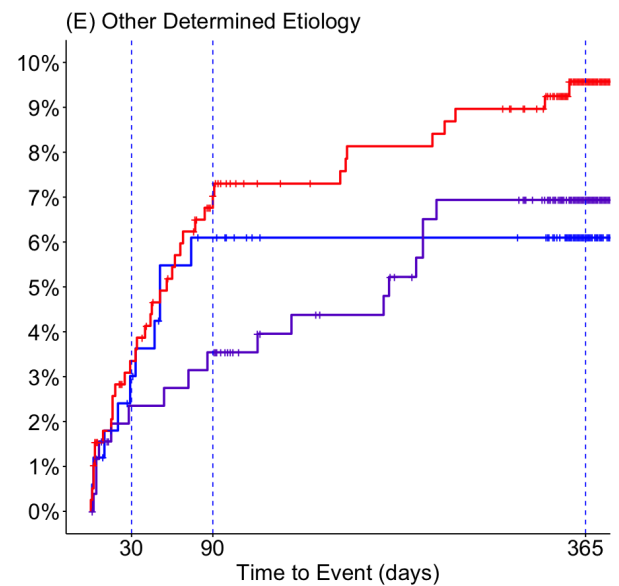
Number at risk

Epoch	0	30	60	90	120	150	180	210	240	270	300	330	360
2011-13	182	173	171	169	158	153	152	152	151	151	149	131	
2014-16	224	213	211	202	195	193	190	190	189	189	189	185	148
2017-19	212	198	192	189	184	184	183	183	183	183	183	179	144



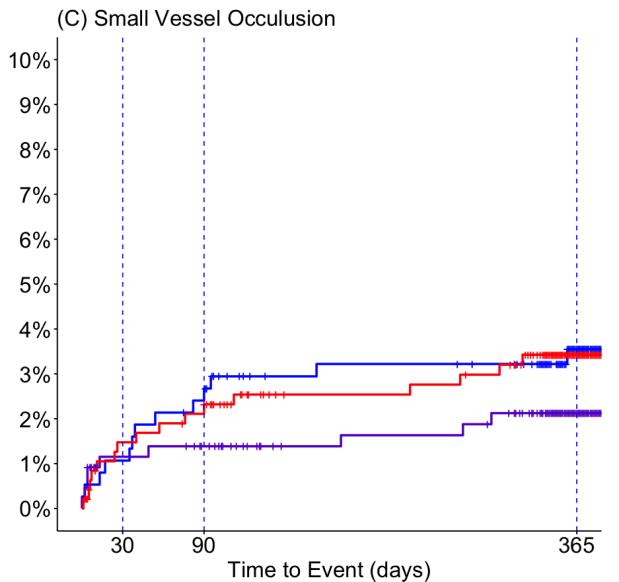
Number at risk

Epoch	0	30	60	90	120	150	180	210	240	270	300	330	360
2011-13	550	529	521	513	500	496	495	495	493	491	490	487	422
2014-16	602	574	571	566	541	528	526	526	523	522	521	511	430
2017-19	619	601	599	595	569	561	559	557	557	555	548	538	440



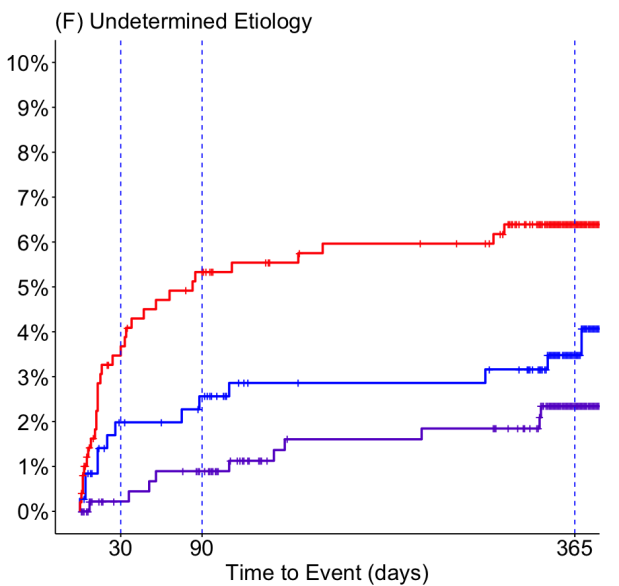
Number at risk

Epoch	0	30	60	90	120	150	180	210	240	270	300	330	360
2011-13	167	159	153	151	144	143	143	143	143	143	143	142	116
2014-16	258	246	245	243	233	228	226	226	221	217	217	212	167
2017-19	391	371	360	348	337	335	334	331	331	328	328	322	240



Number at risk

Epoch	0	30	60	90	120	150	180	210	240	270	300	330	360
2011-13	375	370	366	364	353	351	350	350	350	350	348	345	281
2014-16	435	423	422	417	408	401	401	400	400	400	398	390	318
2017-19	479	466	464	462	447	440	440	440	440	439	437	428	360



Number at risk

Epoch	0	30	60	90	120	150	180	210	240	270	300	330	360
2011-13	357	341	340	336	325	322	321	321	321	321	320	318	268
2014-16	461	444	441	437	421	412	410	410	410	409	409	402	320
2017-19	497	468	461	457	450	447	444	444	444	443	441	424	341

medRxiv preprint doi: <https://doi.org/10.1101/2023.04.17.23288272>; this version posted July 28, 2023. The copyright holder for this preprint (which was not certified by peer review) is the author/funder. All rights reserved. No reuse allowed without permission. It is made available under aCC-BY-NC-ND 4.0 International license.

1-13
 14-16
 17-19