

1           **Risk of new-onset Long Covid following reinfection with SARS-CoV-2:**  
2   **community-based cohort study**

3  
4 Matthew L. Bosworth, <sup>1</sup> Senior Statistician

5 Boran Shenhuy, <sup>2</sup> Senior Statistician

6 A. Sarah Walker, <sup>3,4</sup> Professor of Medical Statistics and Epidemiology

7 Vahé Nafilyan, <sup>1,5</sup> Lead Statistician

8 Nisreen A. Alwan, <sup>6,7,8</sup> Professor of Public Health

9 Margaret E. O'Hara, <sup>9</sup> Founding Trustee

10 Daniel Ayoubkhani, <sup>10,1</sup> Principal Statistician

11 <sup>1</sup> Data & Analysis for Social Care and Health Division, Office for National Statistics, Newport, UK

12 <sup>2</sup> Methodology and Quality Directorate, Office for National Statistics, Newport, UK

13 <sup>3</sup> National Institute for Health Research Health Protection Research Unit in Healthcare Associated  
14 Infections and Antimicrobial Resistance, University of Oxford, Oxford, UK

15 <sup>4</sup> Nuffield Department of Medicine, University of Oxford, Oxford, UK

16 <sup>5</sup> Faculty of Public Health, Environment and Society, London School of Hygiene & Tropical Medicine,  
17 London, UK

18 <sup>6</sup> School of Primary Care, Population Sciences and Medical Education, Faculty of Medicine, University  
19 of Southampton, UK

20 <sup>7</sup> NIHR Southampton Biomedical Research Centre, University of Southampton and University Hospital  
21 Southampton NHS Foundation Trust, Southampton, UK

22 <sup>8</sup> NIHR Applied Research Collaboration (ARC) Wessex, Southampton, UK

23 <sup>9</sup> Long Covid Support, Registered Charity, London, UK

24 <sup>10</sup> Leicester Real World Evidence Unit, Diabetes Research Centre, University of Leicester, Leicester,  
25 UK

26  
27 **Corresponding author**

28 Name: Mr Daniel Ayoubkhani

29 Address: Leicester Diabetes Centre, Leicester General Hospital, Gwendolen Road,  
30 Leicester, UK, LE5 4PW

31 Phone: +44 1633 455825

32 Email: da283@leicester.ac.uk

33  
34 **Article type:** Major Article

35 **Running title:** New-onset Long Covid after reinfection

36 **Keywords:** COVID-19, Coronavirus, Long Covid, Post-COVID Condition,  
37 Reinfection

38 **Word count:** 3,269

39 **Abstract word count:** 250

40 **Abstract**

41 Background: Little is known about the risk of Long Covid following reinfection with  
42 SARS-CoV-2. We estimated the likelihood of new-onset, self-reported Long Covid  
43 after a second SARS-CoV-2 infection, and compared to a first infection.

44 Methods: We included UK COVID-19 Infection Survey participants who tested  
45 positive for SARS-CoV-2 between 1 November 2021 and 8 October 2022. The  
46 primary outcome was self-reported Long Covid 12 to 20 weeks after each infection.  
47 Separate analyses were performed for those <16 years and ≥16 years. We  
48 estimated adjusted odds ratios (aORs) for new-onset Long Covid using logistic  
49 regression, comparing second to first infections, controlling for socio-demographic  
50 characteristics and calendar date of infection, plus vaccination status in those ≥16  
51 years.

52 Results: Overall, Long Covid was reported by those ≥16 years after 4.0% and 2.4%  
53 of first and second infections, respectively; the corresponding estimates among  
54 those <16 years were 1.0% and 0.6%. The aOR for Long Covid after second  
55 compared to first infections was 0.72 (95% confidence interval: 0.63–0.81) for those  
56 ≥16 years and 0.93 (0.57–1.53) for those <16 years.

57 Conclusions: The risk of new-onset Long Covid after a second SARS-CoV-2  
58 infection is lower than that after a first infection for those ≥16 years, though there is  
59 no evidence of a difference in risk for those <16 years. However, there remains  
60 some risk of new-onset Long Covid after a second infection, with around 1 in 40 of  
61 those ≥16 years and 1 in 165 of those <16 years reporting Long Covid after a second  
62 infection.

## 63 **Introduction**

64 Long Covid describes symptoms such as fatigue, breathlessness, pain, and  
65 cognitive impairment that persist for months or years after a SARS-CoV-2 infection.  
66 As of 2 January 2023, 2 million people in the United Kingdom (3.1% of the  
67 population) were estimated to be experiencing Long Covid, with 1.5 million of these  
68 reporting limitations to their daily activities [1]. SARS-CoV-2 reinfection rates  
69 increased rapidly following the emergence of the Omicron variant and remain high.  
70 More than 90% of reinfections occurred during the period when the Omicron variants  
71 were dominant; as of 23 November 2022, the estimated rate of reinfection was 40.6  
72 per 100,000 participant days at risk, compared with 11.5 as of 13 December 2021  
73 (before Omicron was the dominant variant) [2]. However, there is limited evidence  
74 regarding the risk of new-onset Long Covid following SARS-CoV-2 reinfection.

75 Descriptive data from a survey administered by Long Covid patient support groups in  
76 the UK suggest that most respondents with Long Covid (89%) developed it after their  
77 first SARS-CoV-2 infection [3]. However, this finding is not generalisable to the whole  
78 population as the data were collected from social media support groups for people  
79 with Long Covid (i.e., a highly self-selecting group). Another study using data from  
80 electronic health records suggests that SARS-CoV-2 reinfection increases the risk of  
81 post-acute sequelae such as death and organ-specific impairment up to six months  
82 post-infection [4]. However, the study sample of US military veterans is unlikely to be  
83 representative of the broader population, and the study did not assess common Long  
84 Covid symptoms.

85 We therefore investigated the risk of new-onset Long Covid following a second  
86 SARS-CoV-2 infection and how this compares with first infections, using data from a  
87 large community-based sample selected at random from the UK population.

## 88 **Methods**

### 89 *Study data and design*

90 The main data source for this analysis was the UK COVID-19 Infection Survey (CIS,  
91 ISRCTN21086382, [https://www.ndm.ox.ac.uk/COVID-19/COVID-19-infection-](https://www.ndm.ox.ac.uk/COVID-19/COVID-19-infection-survey/protocol-and-information-sheets)  
92 [survey/protocol-and-information-sheets](https://www.ndm.ox.ac.uk/COVID-19/COVID-19-infection-survey/protocol-and-information-sheets)), run by the Office for National Statistics  
93 (ONS) and comprising a sample of over half a million participants randomly selected  
94 from the UK community population (excluding communal establishments such as  
95 hospitals, care homes, halls of residence, and prisons).

96 Ethical approval was obtained from the South Central Berkshire B Research Ethics  
97 Committee (20/SC/0195). At enrolment, participants aged  $\geq 16$  years provided written  
98 consent, including for optional weekly follow-up assessments for one month followed  
99 by at least 12 monthly assessments for the majority of participants. Parents and  
100 carers provided consent on behalf of those aged 2-15 years, while those aged 10-15  
101 years also provided written assent.

102 At each follow-up assessment, all participants answered a survey questionnaire  
103 including questions on confirmed/suspected SARS-CoV-2 infections and Long Covid  
104 symptoms, and provided a nose-and-throat swab for polymerase chain reaction  
105 (PCR) testing.

106 CIS data for participants in England were linked to Pillar 1 (swab testing for SARS-  
107 CoV-2 in UK Health Security Agency laboratories and NHS hospitals for those with a  
108 clinical need, and health and care workers) and Pillar 2 (swab testing for SARS-CoV-  
109 2 in the wider population, through commercial partnerships, either processed in a  
110 laboratory or more rapidly via lateral flow device tests) SARS-CoV-2 test results [5].  
111 To classify COVID-19 vaccination status and timing for participants in England, we  
112 used CIS responses linked to National Immunisation Management System (NIMS)  
113 records, with the latter being used when data conflicted. Vaccination information for  
114 participants in Wales, Scotland, and Northern Ireland was obtained from CIS  
115 responses alone.

116 We included CIS participants who tested positive for SARS-CoV-2 using PCR tests  
117 obtained from national testing programmes (participants in England) or during CIS  
118 follow-up (all participants), and self-reported positive swab tests (PCR or lateral flow  
119 tests) taken outside of the CIS. Among these participants, we identified first and  
120 second infections meeting the inclusion criteria (**Figure 1**); for more details see the  
121 Supplementary Methods.

122 We then excluded any infections occurring before 1 November 2021. This date was  
123 chosen to ensure a reasonable degree of overlap in the calendar date of infection  
124 between first and second infection episodes; the fifth percentile of the calendar date  
125 distribution was 6 December 2020 for first infections but 13 November 2021 for  
126 second infections among those  $\geq 16$  years; and 10 December 2020 and 20 October  
127 2021, respectively, among those  $< 16$  years (**Supplementary Figure 1**).

### 128 *Exposure*

129 The exposure was a second versus a first SARS-CoV-2 infection, defined by  
130 adapting previous methods used for producing official statistics relating to SARS-  
131 CoV-2 surveillance in the UK [6, 7]. For more information, see the Supplementary  
132 Methods.

### 133 *Outcome*

134 The primary outcome was new-onset Long Covid of any severity according to the  
135 survey question: “Would you describe yourself as having Long Covid, that is, you are  
136 still experiencing symptoms more than 4 weeks after you first had COVID-19, that  
137 are not explained by something else?” Participants who responded positively to this  
138 question were then also asked about the extent to which their symptoms limited their  
139 ability to undertake daily activities (a lot, a little, or not at all), and the presence or  
140 absence of 21 individual symptoms attributed to Long Covid (the most commonly  
141 reported when the survey question was developed [8-10]). The secondary outcome  
142 was activity limiting Long Covid (no Long Covid or Long Covid without activity  
143 limitation versus activity limited a little or a lot by Long Covid).

144 We considered participants’ first response to these questions 12 to 20 weeks after  
145 the date of the first positive swab in each infection episode (the index date).

### 146 *Covariates*

147 Covariates included socio-demographic characteristics (age, sex, white or non-white  
148 ethnicity, area deprivation quintile group, and self-reported pre-existing health  
149 conditions), vaccination status, mode of response to the survey at follow-up for Long  
150 Covid (digital or face-to-face interview), calendar date of infection (to account for  
151 changes in dominant SARS-CoV-2 variant in circulation and other temporal effects),  
152 and the number of days from the index date for each infection episode to follow-up  
153 for Long Covid.

### 154 *Statistical methods*

155 Separate analyses were conducted for those  $\geq 16$  years and  $< 16$  years. We  
156 compared study participants’ socio-demographic characteristics at the first and  
157 second infection using means for continuous variables and proportions for  
158 categorical variables, with absolute standardized differences  $\geq 10\%$  indicating a large  
159 imbalance between infection episodes [11].

160 We calculated the crude percentage of participants reporting Long Covid 12 to 20  
161 weeks after each infection episode to estimate the absolute risk of new-onset Long  
162 Covid. We also calculated the prevalence of a range of Long Covid symptoms as the  
163 percentage of those  $\geq 16$  years who reported having Long Covid after each infection.  
164 This was not possible for participants  $< 16$  years due to small sample sizes.

165 Adjusted odds ratios (aORs) for Long Covid 12 to 20 weeks post-infection were  
166 estimated from binary logistic regression models, comparing second infection  
167 episodes to first infection episodes (reference group). For those  $\geq 16$  years, models  
168 were adjusted for all the covariates outlined above. The models for those  $< 16$  years  
169 were adjusted for age, sex, calendar date of infection, and the number of days from  
170 the index date to Long Covid follow-up due to an insufficient number of events for

171 some levels of the other covariates. We did not adjust for COVID-19 vaccination  
172 status in those <16 years because of the high correlation with age and underlying  
173 health status; children aged <5 years are not eligible for vaccination in the UK, and  
174 uptake has been low among those aged 5 to 11 years (just 5.2% of the population of  
175 England in this age group had received two doses of a COVID-19 vaccine by 8  
176 October 2022 [12]). All variables were defined at the index date of each infection  
177 episode except mode of response, which was defined at the date of the response to  
178 the Long Covid question.

179 Continuous variables (age, follow-up time, and calendar date of infection) were  
180 modelled as restricted cubic splines, with boundary knots at the 10<sup>th</sup> and 90<sup>th</sup>  
181 percentiles and an internal knot at the median of the distributions. We tested one to  
182 five knots and selected one internal knot as this minimised the Bayesian Information  
183 Criterion for the models.

184 As it is possible that the impact of reinfection on the development of new-onset Long  
185 Covid varies across different sub-populations, for the primary outcome, we used  
186 likelihood ratio tests to test for effect modification of the association between  
187 reinfection and new-onset Long Covid, by interacting reinfection with each of the  
188 covariates included in the models.

189 All statistical analyses were performed using R version 3.6 software.

## 190 Results

### 191 *Description of the study sample*

192 After applying the study inclusion and exclusion criteria (**Figure 1**), the analysis  
193 included 126,108 first infections (110,844 in those  $\geq 16$  years, 15,264 in those  $< 16$   
194 years) and 14,539 second infections (11,244  $\geq 16$  years, 3,295  $< 16$  years) occurring  
195 between 1 November 2021 and 8 October 2022 (**Table 1**). Median follow-up time  
196 from the start of infection to Long Covid response was 102 days (IQR: 92–112) for  
197 those  $\geq 16$  years and 101 days (92–111) for those  $< 16$  years.

198 40.3% of those  $\geq 16$  years in the first infection episode group had received two or  
199 more doses of a COVID-19 vaccine 90 to 179 days before infection. In the second  
200 infection episode group, 35.9% had received at least two doses of a COVID-19  
201 vaccine 180–269 days before infection. Most of those  $< 16$  years were unvaccinated  
202 in both the first (74.2%) and second (70.1%) infection episode groups.

203 Among those  $\geq 16$  years, the mean age was higher for first infection episodes (53.9  
204 years, SD: 16.6 years) than second infection episodes (47.3 years, SD: 15.9 years)  
205 and a larger percentage reported having a pre-existing health condition at the first  
206 infection episode (17.4%) than the second infection episode (13.4%).

### 207 *Long Covid in those $\geq 16$ years*

208 Long Covid of any severity was reported by 4,381 of those  $\geq 16$  years after a first  
209 infection (prevalence 4.0%; 95% CI 3.8%–4.1%) and 274 (2.4%; 2.2%–2.7%)  
210 following a second infection. Activity limiting Long Covid was reported by 3,103 of  
211 those  $\geq 16$  years (2.8%; 2.7%–2.9%) after a first infection, compared with 180 (1.6%;  
212 1.4%–1.9%) after a second infection.

213 The most common symptoms among those  $\geq 16$  years with Long Covid were fatigue  
214 (61.6% after a first infection, 57.7% after a second infection); shortness of breath  
215 (33.7% and 30.7%, respectively); muscle ache (26.7% and 28.5%, respectively), and  
216 difficulty concentrating (26.1% and 34.7%, respectively) (**Figure 2**). The prevalence  
217 of neuropsychological symptoms (such as difficulty concentrating, memory loss or  
218 confusion, and worry or anxiety) was numerically higher following a second infection.  
219 However, small numbers prevented formal statistical testing.

220 The aOR of reporting Long Covid after a second infection compared to a first  
221 infection was 0.72 (95% CI 0.63–0.81) for Long Covid of any severity and 0.66  
222 (0.57–0.77) for activity limiting Long Covid (**Figure 3**). There was no evidence for  
223 effect modification of the association between reinfection and new-onset Long Covid  
224 of any severity by age ( $p=0.35$ ), sex ( $p=0.17$ ), ethnicity ( $p=0.98$ ), area deprivation  
225 ( $p=0.89$ ), pre-existing health status ( $p=0.14$ ), vaccination status ( $p=0.15$ ), or calendar  
226 date of infection ( $p=0.29$ ).

### 227 *Long Covid in those $< 16$ years*

228 Long Covid of any severity was reported by 160 of those  $< 16$  years after a first  
229 infection (1.0%; 0.9%–1.2%) and 20 (0.6%; 0.4%–0.9%) following a second  
230 infection. Activity limiting Long Covid was reported by 87 of those  $< 16$  years (0.6%;



231 0.5%–0.7%) after a first infection, compared with 12 (0.4%; 0.2%–0.6%) after a  
232 second infection.

233 The aOR of reporting Long Covid after a second infection compared to a first  
234 infection was 0.93 (95% CI 0.57–1.53) for Long Covid of any severity and 0.95  
235 (0.50–1.78) for activity limiting Long Covid (**Figure 3**). There was no evidence for  
236 effect modification of the association between reinfection and new-onset Long Covid  
237 of any severity by age ( $p=0.78$ ) or sex ( $p=0.85$ ). The interaction with calendar date of  
238 infection was statistically significant ( $p=0.006$ ). However, wide confidence intervals  
239 meant there was a high degree of uncertainty around this finding, and the results  
240 should be interpreted with caution (**Supplementary Figure 2**).



## 241 **Discussion**

### 242 *Summary of main findings*

243 Relative to a first SARS-CoV-2 infection, the odds of new-onset Long Covid of any  
244 severity or activity limiting Long Covid were 28% and 34% lower, respectively,  
245 following a second infection in those  $\geq 16$  years, even after adjusting for vaccination  
246 status and other potential confounders. This finding may partly be the result of some  
247 degree of protection against Long Covid being conferred by prior infection (assuming  
248 persistent symptoms were not present after the first infection), coupled with  
249 survivorship effects. That is, people with a greater predisposition to Long Covid (for  
250 example, females or those with certain underlying health conditions [13])  
251 experiencing persistent symptoms following a first infection, and therefore not being  
252 in the sample eligible to experience new-onset Long Covid following a second  
253 infection.

254 In those  $< 16$  years, the crude prevalence of new-onset Long Covid was lower  
255 following a second infection compared with a first infection, but this difference was  
256 not statistically significant after controlling for confounders. However, confidence  
257 intervals were wide, reflecting the smaller sample, and compatible with similar  
258 reductions to those seen in those  $\geq 16$  years.

### 259 *Comparison with other studies*

260 Research into the risk of Long Covid following reinfection with SARS-CoV-2 is  
261 scarce. Our findings are consistent with descriptive data from self-selecting  
262 respondents collected by Long Covid patient support groups, which suggest that the  
263 majority of respondents who have Long Covid developed it after their first infection  
264 [3]. However, most participants were unvaccinated when they were first infected, and  
265 being vaccinated is associated with a reduced risk of developing Long Covid  
266 following SARS-CoV-2 infection [14-16]. In addition, reinfections became more  
267 common following the emergence of the Omicron variant [2], and the risk of Long  
268 Covid has previously been shown to be lower for infections compatible with the  
269 Omicron variants compared with the Delta variant [17, 18]. Importantly, our analysis  
270 of a randomly selected community-based cohort shows that the risk of new-onset  
271 Long Covid in those  $\geq 16$  years is lower following a second infection even after  
272 adjusting for vaccination status and calendar date of infection (as a proxy for the  
273 dominant SARS-CoV-2 variant in circulation at any given time). However, it is  
274 important to note that the population prevalence of Long Covid in the UK has  
275 remained relatively stable since the emergence of the Omicron variant due to higher  
276 infection rates compared with earlier periods in the pandemic [1].

277 Although the risk of new-onset Long Covid in those  $\geq 16$  years was lower after a  
278 second SARS-CoV-2 infection than a first infection, the absolute risk is not  
279 negligible; 2.4%, that is around one in 40, of those  $\geq 16$  years who did not report  
280 Long Covid after their first infection went on to do so after a second infection. Other  
281 evidence suggests that SARS-CoV-2 reinfection increases risk of post-acute, multi-  
282 organ sequelae up to six months after reinfection, compared with a single infection  
283 [4]. Our study extends these findings by examining the relationship between

284 reinfection and common Long Covid symptoms. We found that most symptoms  
285 reported by those  $\geq 16$  years with new-onset Long Covid after a second infection  
286 were reported at similar levels of prevalence by participants with Long Covid after a  
287 first infection. However, there was some descriptive evidence that the prevalence of  
288 neuropsychological symptoms (such as difficulty concentrating, memory loss or  
289 confusion, and worry or anxiety) was higher among participants reporting new-onset  
290 Long Covid after a second infection, compared with those who reported it after a first  
291 infection.

292 The aim of our study was to estimate the risk of new-onset Long Covid after  
293 reinfection, rather than the incremental risk conferred by reinfection in addition to that  
294 from the primary infection. Several studies have shown that previous infection with  
295 SARS-CoV-2 is associated with reduced risk of severe disease and hospital  
296 admission following reinfection, with the strongest association in those with hybrid  
297 immunity from vaccination and prior infection [19-21]. Since the pathophysiology of  
298 Long Covid is poorly understood [22], future research should investigate the  
299 biological mechanisms underlying the association between previous immunity and  
300 the reduction in risk of developing Long Covid observed in this study. This could  
301 improve understanding of the pathogenesis of Long Covid and potentially improve  
302 therapeutics.

### 303 *Strengths and limitations*

304 The main strength of the analysis is the use of data from CIS, comprising  
305 approximately half a million people randomly sampled from private households to  
306 minimise selection bias. CIS participants are routinely tested for SARS-CoV-2, so  
307 our study sample included initially asymptomatic as well symptomatic infections. We  
308 adjusted for a wide range of factors that may be related to both the risk of reinfection  
309 [2] and developing Long Covid [13, 15]. However, the observational nature of the  
310 study means that unmeasured confounding may remain, and thus causality cannot  
311 be inferred. In particular, we were only able to adjust for age, sex, calendar date, and  
312 follow-up time in the analysis of those  $< 16$  years due to limited sample sizes.

313 The routine testing in CIS also means that we can more completely ascertain  
314 infection history compared with using results from national testing programmes or  
315 self-report alone. We exploited multiple sources of information, including genetic  
316 sequencing, S-gene target positivity, and Ct values to distinguish as much as  
317 possible between persistent PCR positivity and new infections. However, one  
318 limitation is that inevitably some short infections and/or reinfections may have been  
319 missed.

320 We excluded participants who were reinfected less than 12 weeks after their first  
321 infection or before they had responded to the Long Covid question 12 to 20 weeks  
322 after their first infection. Although only a small number of participants ( $n=3,542$ , 1.2%  
323 of the original sample of first infections) were excluded for this reason, this could  
324 introduce bias if a shorter duration of first infection is related to the risk of Long  
325 Covid. Consequently, the results may not be generalisable to people who are  
326 reinfected with short intervals between their first and second infection.

327 Another limitation is that Long Covid status was self-reported, so outcome  
328 misclassification is possible. Some participants may have been experiencing  
329 symptoms because of a health condition unrelated to COVID-19, while others who  
330 did have Long Covid may not have described themselves as such (for example, due  
331 to the perceived stigma associated with the condition [23]). Conversely, self-  
332 recognition of Long Covid (participants' perception of the change in their own health  
333 compared with pre-infection) may be more reliable than electronic health records in  
334 some respects, for example due to differences in healthcare-seeking behaviours  
335 between socio-demographic groups and Long Covid diagnoses being under-  
336 recorded in primary care [24].

337 This analysis only includes infections occurring between 1 November 2021 and 8  
338 October 2022. The Omicron COVID-19 variant was first identified in the UK on 27  
339 November 2021 [25] and quickly became the main variant in circulation. Most first  
340 and second infections in our sample are therefore Omicron infections, and it is  
341 unclear whether our findings are representative of infections with other SARS-CoV-2  
342 variants.

### 343 *Conclusions*

344 The risk of new-onset Long Covid after a second SARS-CoV-2 infection is lower than  
345 that after a first infection for those  $\geq 16$  years even after adjusting for vaccination  
346 status and variant (using calendar date as a proxy). Although there was no statistical  
347 evidence of a difference in risk between first and second infections for those  $< 16$   
348 years, there was a large degree of uncertainty around the point estimate, suggesting  
349 this finding could be a consequence of lower power in this smaller subgroup. Despite  
350 our finding that reinfection carries a lower risk of new-onset Long Covid than a first  
351 infection in those  $\geq 16$  years, there remains some risk of new-onset Long Covid,  
352 following around one in forty second infections among those  $\geq 16$  years. Further  
353 research is required to understand whether the risk of Long Covid is reduced with  
354 each subsequent infection. This is essential to model the expected future burden of  
355 Long Covid on the population.

356 **Notes**

357 *Author contributions*

358 MLB, DA, and BS conceptualised and designed the study. MLB and BS prepared the  
359 study data and performed the statistical analysis. All authors contributed to  
360 interpretation of the results. MLB and DA were responsible for the first draft of the  
361 manuscript. All authors contributed to critical revision of the manuscript and  
362 approved the final manuscript.

363 *Patient involvement*

364 MEO and NAA have lived experience of Long Covid.

365 *Data availability*

366 De-identified study data are available to accredited researchers in the ONS Secure  
367 Research Service under part 5, chapter 5 of the Digital Economy Act 2017. For  
368 further information about accreditation, contact [research.support@ons.gov.uk](mailto:research.support@ons.gov.uk) or  
369 visit:

370 [https://www.ons.gov.uk/aboutus/whatwedo/statistics/requestingstatistics/approvedre](https://www.ons.gov.uk/aboutus/whatwedo/statistics/requestingstatistics/approvedresearcherscheme)  
371 [searcherscheme](https://www.ons.gov.uk/aboutus/whatwedo/statistics/requestingstatistics/approvedresearcherscheme).

372 *Disclaimer*

373 The views expressed are those of the authors and are not necessarily those of the  
374 National Health Service, the National Institute for Health Research (NIHR), the  
375 Department of Health and Social Care, or the UK Health Security Agency. For the  
376 purpose of open access, the authors have applied a Creative Commons Attribution  
377 (CC BY) licence to any Author Accepted Manuscript version arising.

378 *Financial support*

379 The CIS is funded by the Department of Health and Social Care with in-kind support  
380 from the Welsh Government, the Department of Health on behalf of the Northern  
381 Ireland Government, and the Scottish Government. There was no dedicated funding  
382 for this study of CIS data.

383 *Acknowledgements*

384 DA is supported by the National Institute for Health Research (NIHR) Applied  
385 Research Collaboration East Midlands (ARC EM). ASW is supported by the NIHR  
386 Health Protection Research Unit in Healthcare Associated Infections and  
387 Antimicrobial Resistance (NIHR200915), a partnership between the UK Health  
388 Security Agency (UKHSA) and the University of Oxford. ASW is also supported by  
389 the NIHR Oxford Biomedical Research Centre and is an NIHR Senior Investigator.  
390 NAA is a co-investigator on the NIHR-funded STIMULATE-ICP and HI-COVE studies  
391 and has contributed in an advisory capacity to WHO and the EU Commission's  
392 Expert Panel on effective ways of investing in health meetings in relation to post-  
393 COVID-19 condition.

394 *Potential conflicts of interest*

395 All authors have submitted the ICMJE Form for Disclosure of Potential Conflicts of  
396 Interest and declare: no support from any organisation for the submitted work; and  
397 no financial relationships with any organisations that might have an interest in the  
398 submitted work in the previous three years. MEO has received Patient Involvement  
399 honorarium for speaking at a Long Covid Physio International Forum panel  
400 discussion. NAA is a co-investigator on the NIHR-supported research on Long Covid  
401 (STIMULATE-ICP and HI-COVE studies), a Long Covid Kids Charity Champion, a  
402 Long Covid Support Charity Advisor, and has contributed in an advisory capacity to  
403 WHO and EU Commission's Expert Panel on effective ways of investing in health  
404 meetings in relation to post-COVID-19 condition.

## 405 References

- 406 [1] Office for National Statistics. Prevalence of ongoing symptoms following  
407 coronavirus (COVID-19) infection in the UK: 2 February 2023. Available at:  
408 <https://www.ons.gov.uk/peoplepopulationandcommunity/healthandsocialcare/conditionsanddiseases/bulletins/prevalenceofongoingsymptomsfollowingcoronaviruscovid19infectionintheuk/2february2023>. Accessed 02 February 2023.  
410
- 411 [2] Office for National Statistics. Coronavirus (COVID-19) Infection Survey,  
412 characteristics of people testing positive for COVID-19, UK: 16 November 2022.  
413 Available at:  
414 <https://www.ons.gov.uk/peoplepopulationandcommunity/healthandsocialcare/conditionsanddiseases/bulletins/coronaviruscovid19infectionsurveycharacteristicsofpeopletestingpositiveforcovid19uk/16november2022>. Accessed 01 February 2023.  
416
- 417 [3] Long Covid Support and Long Covid Kids. How do Covid reinfections affect Long  
418 Covid? Results from an internet survey of people with Long Covid. August 2022.  
419 Available at:  
420 [https://www.longcovid.org/images/Documents/Reinfections\\_in\\_Long\\_Covid\\_Survey\\_Report\\_by\\_Long\\_Covid\\_Support\\_and\\_Long\\_Covid\\_Kids\\_080922.pdf](https://www.longcovid.org/images/Documents/Reinfections_in_Long_Covid_Survey_Report_by_Long_Covid_Support_and_Long_Covid_Kids_080922.pdf) Accessed 01  
421 February 2023.  
422
- 423 [4] Bowe B, Xie Y, Al-Aly Z. Acute and postacute sequelae associated with SARS-  
424 CoV-2 reinfection. *Nat Med*, **2022**; 28: 2398-405.
- 425 [5] UK Health Security Agency. NHS Test and Trace Statistics (England):  
426 methodology. 18 May 2022. Available at:  
427 <https://www.gov.uk/government/publications/nhs-test-and-trace-statistics-england-methodology/nhs-test-and-trace-statistics-england-methodology>. Accessed 01  
428 February 2023.  
429
- 430 [6] Pritchard E, Matthews PC, Stoesser N, et al. Impact of vaccination on new SARS-  
431 CoV-2 infections in the United Kingdom. *Nat Med*, **2021**; 27: 1370-8.
- 432 [7] Office for National Statistics. Coronavirus (COVID-19) Infection Survey,  
433 characteristics of people testing positive for COVID-19, UK: 19 October 2022.  
434 Available at:  
435 <https://www.ons.gov.uk/peoplepopulationandcommunity/healthandsocialcare/conditionsanddiseases/bulletins/coronaviruscovid19infectionsurveycharacteristicsofpeopletestingpositiveforcovid19uk/19october2022#measuring-the-data> Accessed 01  
436 February 2023.  
437
- 438 [8] Davis HE, Assaf GS, McCorkell L, et al. Characterizing long COVID in an  
439 international cohort: 7 months of symptoms and their impact. *EClinicalMedicine*,  
440 **2021**; 38: 101019.  
441
- 442 [9] Michelen M, Manoharan L, Elkheir N, et al. Characterising long COVID: a living  
443 systematic review. *BMJ Glob Health*, **2021**; 6: e005427.
- 444 [10] Ziauddeen N, Gurdasani D, O'Hara ME, et al. Characteristics and impact of  
445 Long Covid: Findings from an online survey. *PLoS One*, **2022**; 17: e0264331.



- 446 [11] Austin PC. An introduction to propensity score methods for reducing the effects  
447 of confounding in observational studies. *Multivariate Behav Res*, **2011**; 46: 399-424.
- 448 [12] UK Government. Coronavirus (COVID-19) in the UK. 2023. Available at:  
449 <https://www.coronavirus.data.gov.uk> Accessed 29 March 2023.
- 450 [13] Thompson EJ, Williams DM, Walker AJ, et al. Long COVID burden and risk  
451 factors in 10 UK longitudinal studies and electronic health records. *Nat Commun*,  
452 **2022**; 13:3528.
- 453 [14] Ayoubkhani D, Bosworth ML, King S, et al. Risk of Long COVID in people  
454 infected with Severe Acute Respiratory Syndrome Coronavirus 2 after 2 doses of a  
455 Coronavirus Disease 2019 vaccine: community-based, matched cohort study. *Open*  
456 *Forum Infect Dis*, **2022**; 9: ofac464.
- 457 [15] Antonelli M, Penfold RS, Merino J, et al. Risk factors and disease profile of post-  
458 vaccination SARS-CoV-2 infection in UK users of the COVID Symptom Study app: a  
459 prospective, community-based, nested, case-control study. *Lancet Infect Dis*, **2022**;  
460 22: 43-55.
- 461 [16] Watanabe A, Iwagami M, Yasuhara J, et al. Protective effect of COVID-19  
462 vaccination against long COVID syndrome: A systematic review and meta-analysis.  
463 *Vaccine*, **2023**; 41: 1783-90.
- 464 [17] Office for National Statistics. Self-reported long COVID after infection with the  
465 Omicron variant in the UK: 18 July 2022. Available at:  
466 [https://www.ons.gov.uk/peoplepopulationandcommunity/healthandsocialcare/conditio](https://www.ons.gov.uk/peoplepopulationandcommunity/healthandsocialcare/conditionsanddiseases/bulletins/selfreportedlongcovidafterinfectionwiththeomicronvariant/18july2022)  
467 [nsanddiseases/bulletins/selfreportedlongcovidafterinfectionwiththeomicronvariant/18j](https://www.ons.gov.uk/peoplepopulationandcommunity/healthandsocialcare/conditionsanddiseases/bulletins/selfreportedlongcovidafterinfectionwiththeomicronvariant/18july2022)  
468 [uly2022](https://www.ons.gov.uk/peoplepopulationandcommunity/healthandsocialcare/conditionsanddiseases/bulletins/selfreportedlongcovidafterinfectionwiththeomicronvariant/18july2022). Accessed 01 February 2023.
- 469 [18] Antonelli M, Pujol JC, Spector TD, et al. Risk of long COVID associated with  
470 delta versus omicron variants of SARS-CoV-2. *Lancet*, **2022**; 399: 2263-64.
- 471 [19] COVID-19 Forecasting Team. Past SARS-CoV-2 infection protection against  
472 reinfection: a systematic review and meta-analysis. *Lancet*, **2023**; 401: 833-42.
- 473 [20] Bobrovitz N, Ware H, Ma X, et al. Protective effectiveness of previous SARS-  
474 CoV-2 infection and hybrid immunity against the omicron variant and severe disease:  
475 a systematic review and meta-regression. *Lancet Infect Dis*, **2023**; DOI:  
476 [https://doi.org/10.1016/S1473-3099\(22\)00801-5](https://doi.org/10.1016/S1473-3099(22)00801-5)
- 477 [21] Deng J, Ma Y, Liu Q, et al. Severity and outcomes of SARS-COV-2 reinfection  
478 compared with primary infection: a systematic review and meta-analysis. *Int J*  
479 *Environ Res Public Health*, **2023**; 20: 3335.
- 480 [22] Iwasaki A, Putrino D. Why we need a deeper understanding of the  
481 pathophysiology of long COVID. *Lancet Infect Dis*, **2023**; 23: 393-5.
- 482 [23] Pantelic M, Ziauddeen N, Boyes M, et al. Long Covid stigma: estimating burden  
483 and validating scale in a UK-based sample. *PLoS ONE*, **2022**; 17: e0277317.



484 [24] Walker AJ, MacKenna B, Inglesby P, et al. Clinical coding of long COVID in  
485 English primary care: a federated analysis of 58 million patient records *in situ* using  
486 OpenSAFELY. Br J Gen Pract, **2021**; 71: e806-14.

487 [25] Department of Health and Social Care. First UK cases of Omicron variant  
488 identified. 27 November 2021. Available at:  
489 <https://www.gov.uk/government/news/first-uk-cases-of-omicron-variant-identified>  
490 Accessed 07 March 2023.

**Table 1** Characteristics of study participants

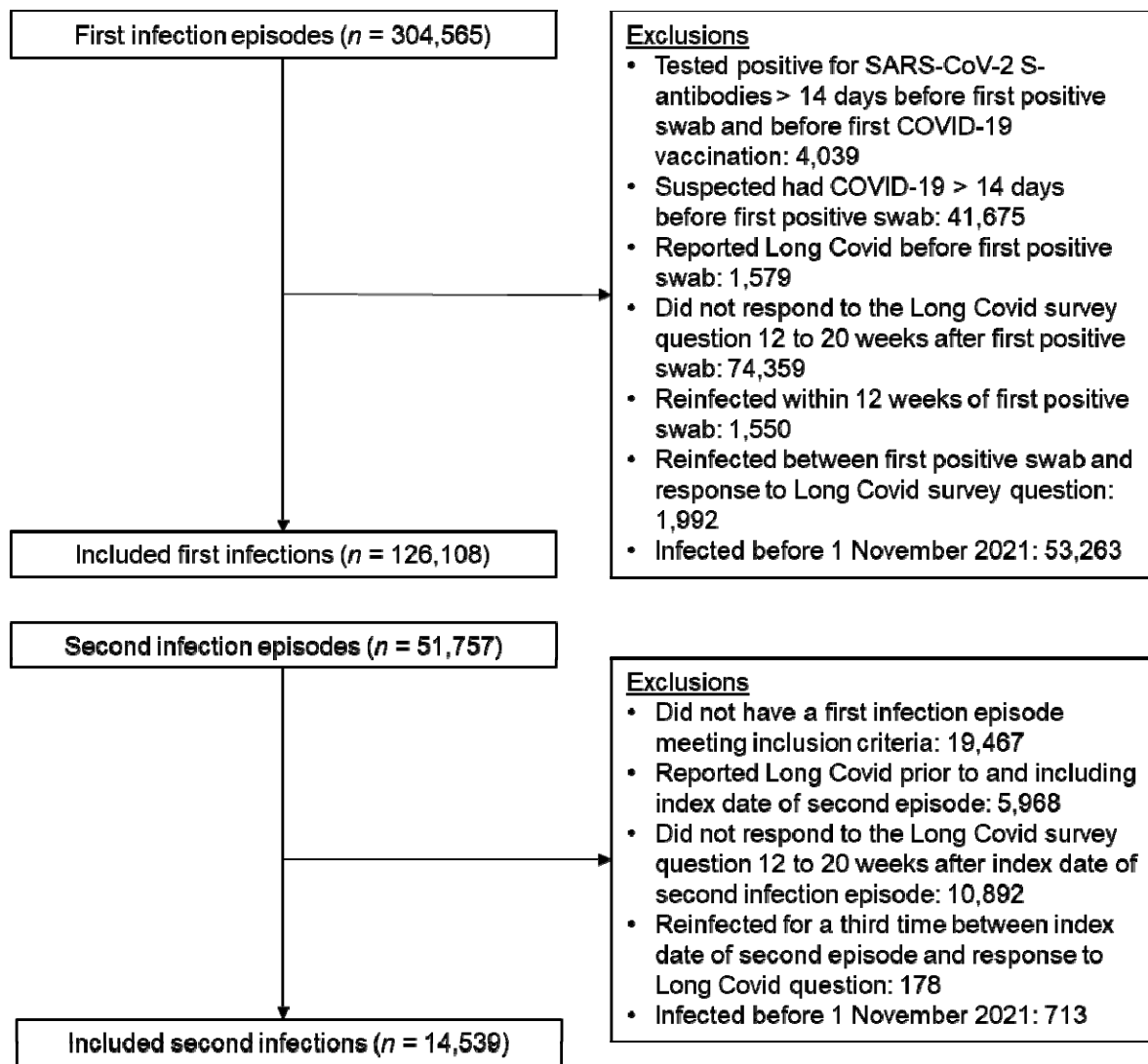
Characteristic <sup>1</sup>	≥16 years at infection			<16 years at infection		
	First infection (n = 110,844)	Second infection (n = 11,244)	Absolute standardised difference (%)	First infection (n = 15,264)	Second infection (n = 3,295)	Absolute standardised difference (%)
Age, years (mean, SD)	53.9 (16.6)	47.3 (15.9)	40.8	9.8 (3.4)	10.5 (3.0)	22.1
Calendar time of infection, number of days since 1 November 2021 (mean, SD)	144.8 (81.8)	189.8 (84.8)	54.0	91.8 (64.1)	165.5 (82.8)	99.5
Number of days from index date to Long Covid follow-up (mean, SD)	103.1 (13.2)	103.1 (12.9)	0.3	102.8 (13.4)	103.2 (13.1)	3.5
Sex (n, %)						
Female	60,572 (54.6)	6,431 (57.2)	5.1	7,484 (49.0)	1,613 (49.0)	0.2
Male	50,272 (45.4)	4,813 (42.8)		7,780 (51.0)	1,682 (51.0)	
Ethnic group (n, %)						
White	104,073 (93.9)	10,253 (91.1)	10.3	13,295 (87.1)	2,836 (86.1)	3.0
Non-white	6,771 (6.1)	991 (8.8)		1,969 (12.9)	459 (13.9)	
Area deprivation quintile group (n, %)						
1 (most deprived)	10,481 (9.5)	1,261 (11.2)	10.7	1,546 (10.1)	388 (11.8)	4.9
2	17,178 (15.5)	2,023 (18.0)		2,312 (15.1)	532 (16.1)	
3	22,983 (20.7)	2,303 (20.5)		3,095 (20.3)	638 (19.4)	
4	27,810 (25.1)	2,644 (23.5)		3,760 (24.6)	776 (23.6)	
5 (least deprived)	32,392 (29.2)	3,013 (26.8)		4,551 (29.8)	961 (29.2)	
Self-reported, pre-existing health conditions (n, %) <sup>2</sup>						
No	91,573 (82.6)	9,742 (86.6)	11.2	14,291 (93.6)	3,065 (93.0)	2.4
Yes	19,271 (17.4)	1,502 (13.4)		973 (6.4)	230 (7.0)	
Mode of response to survey (n, %)						
Face-to-face	66,987 (60.4)	4,297 (38.2)	45.6	13,165 (86.2)	1,783 (54.1)	75.0
Digital	43,857 (39.6)	6,947 (61.8)		2,099 (13.8)	1,512 (45.9)	
Vaccination status (n, %) <sup>3</sup>						
Unvaccinated	1,545 (1.4)	384 (3.4)	54.7	11,327 (74.2)	2,309 (70.1)	20.0
One dose ≥ 14 days previously	1,197 (1.1)	195 (1.7)		2,561 (16.8)	490 (14.9)	
Two/booster dose ≥ 14 to 89 days previously	28,644 (25.8)	1,998 (17.8)		632 (4.1)	182 (5.5)	
Two/booster dose ≥ 90 to 179 days previously	44,634 (40.3)	3,271 (29.1)		532 (3.5)	230 (7.0)	
Two/booster dose ≥ 180 to 269 days previously	28,362 (25.6)	4,035 (35.9)				
Two/booster dose ≥ 270 days previously	6,462 (5.8)	1,361 (12.1)		212 (1.4)	84 (2.5)	

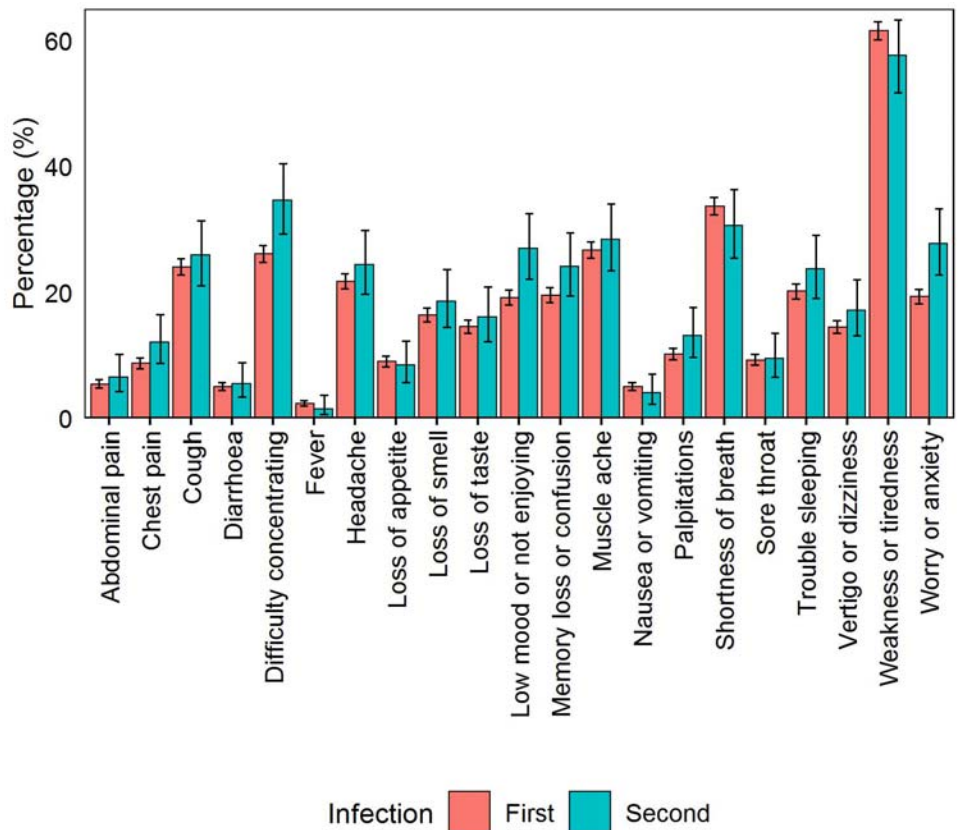
<sup>1</sup> All characteristics (except mode of response) were defined at index date for each infection episode.

<sup>2</sup> Obtained from the survey question “Do you have any physical or mental health conditions or illnesses lasting or expected to last 12 months or more, excluding any long-lasting COVID-19 symptoms?”

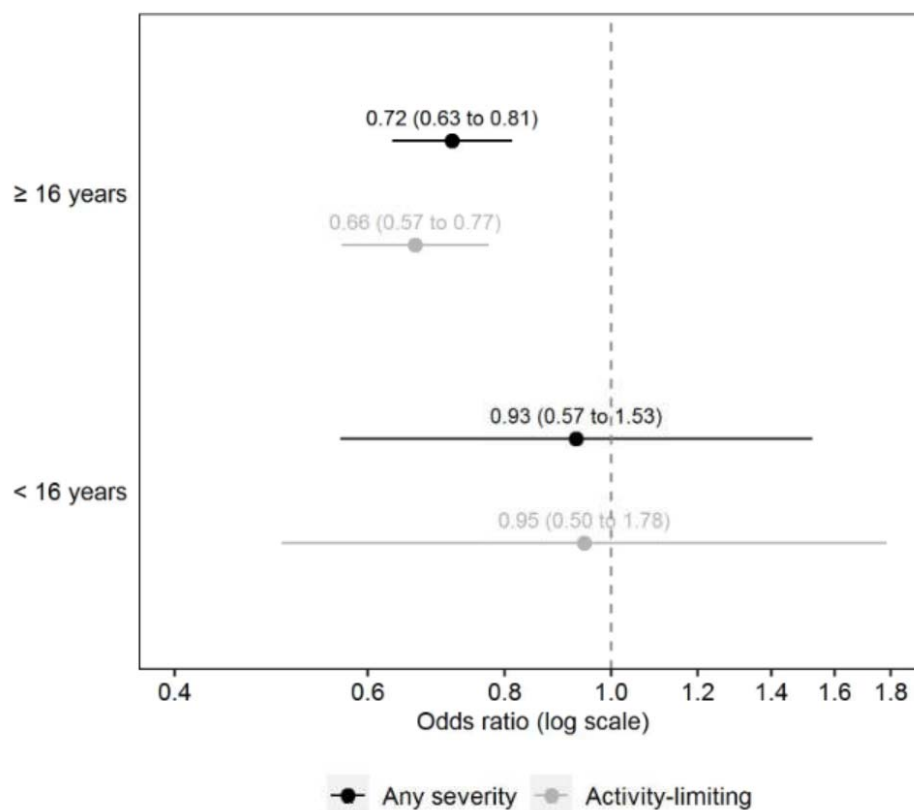
<sup>3</sup> Counts have been aggregated for those <16 years in the two/booster dose  $\geq 180$  to 269 days previously and  $\geq 270$  days previously due to small sample sizes. Standardised differences were calculated on the raw counts.

**Figure 1: Study participant flow diagram**





**Figure 2.** Prevalence of Long Covid symptoms among those  $\geq 16$  years who reported having Long Covid after a first or second SARS-CoV-2 infection.



**Figure 3.** Adjusted odds ratios for Long Covid 12 to 20 weeks after a second SARS-CoV-2 infection compared with a first infection (reference group). Odds ratios for those  $\geq 16$  years are adjusted for socio-demographic characteristics (age, sex, white or non-white ethnicity, area deprivation quintile group, and self-reported health status), vaccination status, time from infection to follow-up for Long Covid, calendar date of infection (as a proxy for the dominant SARS-CoV-2 variant in circulation), and mode of response to the survey. Odds ratios for those  $< 16$  years are adjusted for age, sex, time from infection to follow-up for Long Covid, and calendar date of infection. Confidence intervals are at the 95% level.

## **Supplementary Materials**

### **Supplementary Methods**

#### *Inclusion & exclusion criteria*

To identify first SARS-CoV-2 infection episodes, we excluded participants who reported suspected COVID-19 or tested positive for S-antibodies (in the study or elsewhere, ignoring blood tests taken after first COVID-19 vaccination) >2 weeks before their first positive swab; reported Long Covid symptoms at any time before their first positive swab; did not respond to the survey question on Long Covid 12 to 20 weeks after their first positive swab; or were reinfected within 12 weeks of their first positive swab or before their first response to the Long Covid question 12 to 20 weeks after their first positive swab (since, if these participants experienced Long Covid, it is uncertain whether their symptoms were attributable to the first or second infection).

To identify second SARS-CoV-2 infection episodes, we excluded participants with a second episode who did not have a first infection episode meeting the above criteria; reported Long Covid prior to (and including) the start of their second episode; did not respond to the Long Covid question 12 to 20 weeks after the start of their second episode; or were reinfected again before their first response to the Long Covid question 12 to 20 weeks after the start of their second episode.

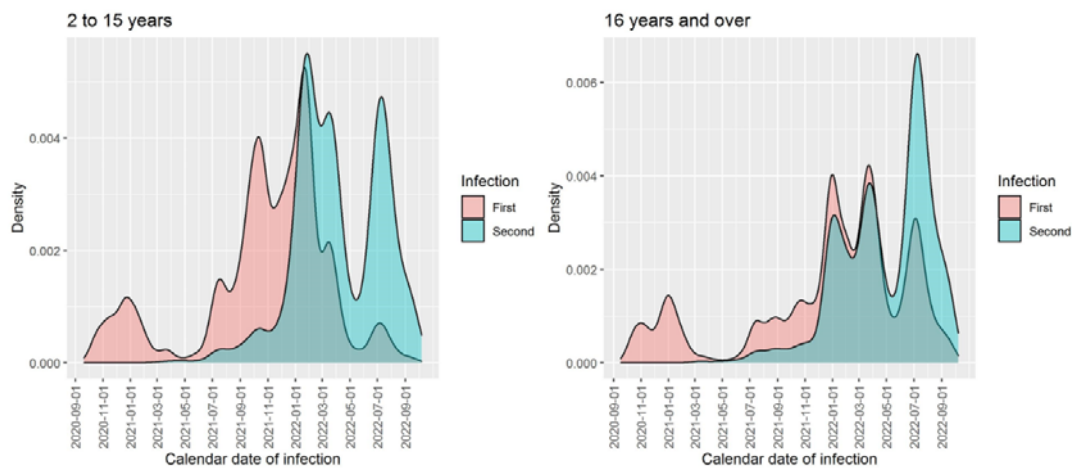
#### *Exposure definition*

Positive swab test results from any source were grouped into infection episodes to allow for long duration of PCR positivity in some individuals, incorporating information from genetic sequencing, S-gene target positivity and cycle threshold (Ct) values, together with negative PCR test results from CIS only. We defined a new infection episode as a new swab positive occurring >120 days after an index positive with the preceding test being negative, or >90 days with the preceding two consecutive tests being negative (one negative after 20 December 2021 when Omicron variants dominated given higher reinfection rates with Omicron), or >60 days with the three preceding consecutive tests being negative, or after 4 preceding consecutive negative test results at any time.

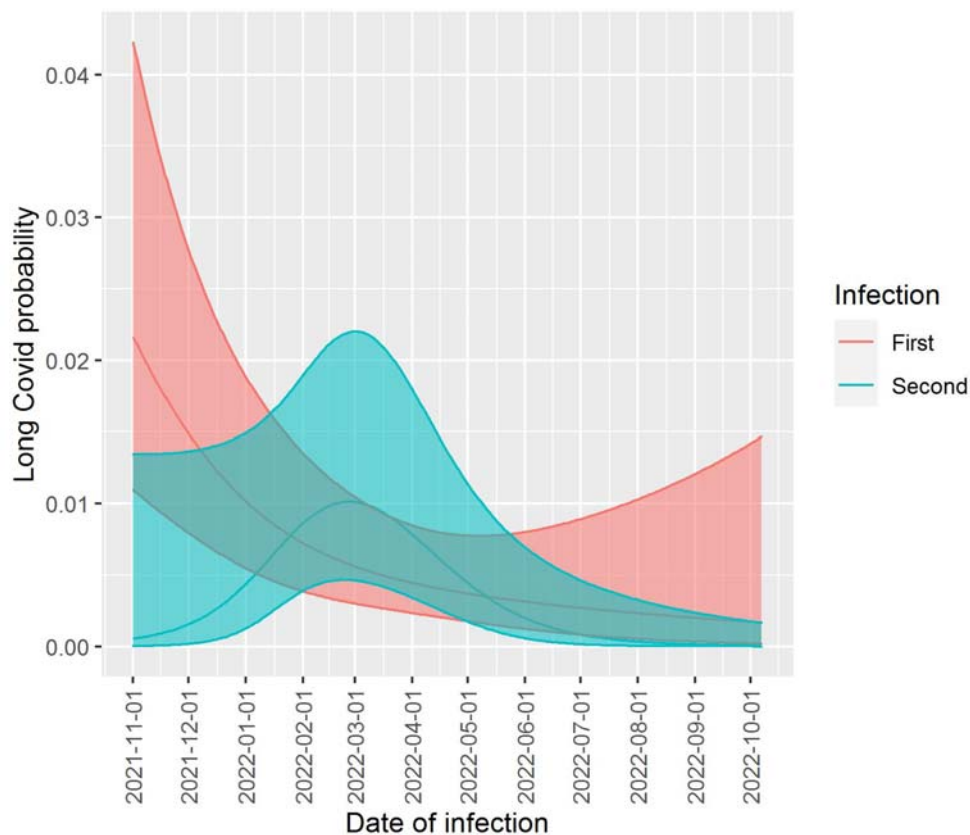
We further split these infection episodes if they contained multiple sequences from different genetic lineages (e.g., BA.5 and BA.2), or had incompatible S-gene target positivity with Ct<30 (e.g., S-gene positive and S-gene negative, both with Ct<30), or had large decreases in Ct within a set of positive tests grouped together, or low Ct long after the first positive within an episode (both indicative of a new infection rather than ongoing PCR positivity). We also split infection episodes where a new lateral flow device positive was recorded 27 days or more after the start of an infection episode, or 19 days or more after a previous positive PCR or lateral flow test, since this again indicates high viral load and actively replicating virus (more likely associated with a new infection).



**Supplementary Figure 1.** Density plots of calendar date of infection, stratified by infection episode and age group.



**Supplementary Figure 2.** Estimated marginal probability of Long Covid by calendar date of infection in those <16 years.<sup>1</sup>



<sup>1</sup> Estimates were calculated using the emmeans package, adjusting for age, sex, and time from infection to follow-up for Long Covid. Shaded areas are 95% confidence intervals.