

1 **Metformin associates with improved myocardial perfusion reserve and**
2 **survival in patients with Type 2 Diabetes Mellitus**

3
4 **Brief title: Metformin associates with improved survival in T2DM**

5
6 Noor Sharrack MBChB¹, Kristopher D Knott PhD^{2, 3}, Gaurav S Gulsin PhD⁴, Tushar Kotecha
7 PhD^{3,5}, Louise AE Brown PhD¹, Jian L Yeo MBChB⁴, Aldostefano Porcari MD^{5,6}, Robert D
8 Adam MD^{2,3,7}, Sharmaine Thirunavukarasu MBChB¹, Amrit Chowdhary MBBS¹, Eylem
9 Levelt MBBS DPhil¹, James C Moon MD^{2,3}, Gerry P McCann MD⁴, Marianna Fontana
10 PhD^{3,5}, Peter Kellman PhD⁸, Theresa Munyombwe PhD^{1,9}, Christopher Gale PhD^{9,10,11},
11 David L Buckley PhD¹, John P Greenwood PhD¹, Peter P Swoboda PhD¹, Sven Plein PhD¹

12
13 **Institutions**

- 14
15 1. Biomedical Imaging Science Department, Leeds Institute of Cardiovascular and Metabolic
16 Medicine, University of Leeds, Leeds, United Kingdom
17 2. Barts Heart Centre, St Bartholomew's Hospital, London, United Kingdom
18 3. University College London (UCL) Institute of Cardiovascular Science, London, United
19 Kingdom
20 4. Department of Cardiovascular Sciences, University of Leicester and the NIHR Leicester
21 Cardiovascular Biomedical Research Centre, Glenfield Hospital, University Hospitals of
22 Leicester NHS Trust, Leicester, United Kingdom
23 5. National Amyloidosis Centre, Division of Medicine, Royal Free Campus, University College
24 London, London, United Kingdom
25 6. Centre for Diagnosis and Treatment of Cardiomyopathies, Cardiovascular Department,
26 Azienda Sanitaria Universitaria Giuliano-Isontina (ASUGI), University of Trieste, Trieste,
27 Italy
28 7. Carol Davila University of Medicine and Pharmacy, Bucharest, Romania
29 8. National Heart, Lung, and Blood Institute, National Institutes of Health, Department of
30 Health and Human Services, Bethesda, Maryland, United States of America
31 9. Leeds Institute of Cardiovascular and Metabolic Medicine, University of Leeds, Leeds,
32 United Kingdom
33 10. Leeds Institute for Data Analytics, University of Leeds, Leeds, United Kingdom
34 11. Department of Cardiology, Leeds Teaching Hosptislas NHS Trust, Leeds, UK

35
36 **Address for Correspondence:**

37

38 Professor Sven Plein

39 Leeds Institute of Cardiovascular and Metabolic Medicine

40 University of Leeds

41 Leeds

42 LS2 9JT

43 United Kingdom

44 Tel +44 113 39 22650

45 Email: s.plein@leeds.ac.uk

46

47 Twitter handle: @Sven_plein

48

49 A multicentre study from the United Kingdom shows that in patients with Type 2 Diabetes Mellitus,

50 metformin associates with improved myocardial perfusion reserve (MPR) and survival.

51

52

53 ***Word count 3117***

54

55 **Abstract**

56

57 **Background**

58 Metformin is an antihyperglycemic agent frequently used in the treatment of Type 2 Diabetes
59 Mellitus (T2DM). Patients with T2DM are at increased risk of cardiovascular diseases,
60 including coronary artery disease (CAD), silent myocardial infarction (MI) and coronary
61 microvascular dysfunction (CMD), all of which can be detected and quantified using
62 Cardiovascular Magnetic Resonance (CMR). We explored the association between
63 metformin use, stress Myocardial Blood Flow (MBF), Myocardial Perfusion Reserve (MPR),
64 survival and major adverse cardiovascular and cerebrovascular events (MACCE; a composite
65 of all-cause death, MI, stroke, heart failure hospitalisation and coronary revascularisation) in
66 patients with T2DM.

67

68 **Methods**

69 A multi-centre study of patients with T2DM, and a cohort of healthy controls underwent
70 quantitative myocardial perfusion CMR. Global MBF and MPR were derived using an
71 automatic artificial intelligence-supported process. Multivariable regression analysis and cox
72 proportional hazard models quantified associations between metformin use, MBF, MPR, all-
73 cause death and MACCE.

74

75 **Results**

76 Analysis included 572 patients with T2DM (68% prescribed metformin) with median follow-
77 up 851 days (interquartile range 935-765). Metformin use was associated with an increase in
78 MPR of 0.12 [0.08-0.40], $P=0.004$. There was a total of 82 (14.3%) first MACCE in all
79 T2DM patients including a total of 25 (4.4%) deaths. Although the number of first MACCE
80 events was similar for patients prescribed metformin (53 (14%)) compared to those who were
81 not (29 (15.8%) ($P=0.73$)), there was a total of 9 deaths (2.3%) in patients prescribed
82 metformin compared to 16 (8.7%) in patients who were not, adjusted hazard ratio 0.29 [95%
83 CI 0.12-0.73] $P=0.009$.

84

85 **Conclusion**

86 In patients with T2DM, metformin use is associated with higher MPR and improved survival.

87

88 Clinical Perspective

89

90 Patients with Type 2 Diabetes Mellitus (T2DM) are at increased risk of cardiovascular
91 disease. Cardiovascular Magnetic Resonance (CMR) can be used to detect and quantify
92 absolute stress myocardial blood flow (MBF) and myocardial perfusion reserve (MPR), both
93 of which are objective measures of coronary microvascular function. Metformin is frequently
94 used in the treatment of T2DM. We investigated the association between metformin use,
95 CMR-derived stress MBF, MPR and clinical outcomes in patients with T2DM.

96

97 In a longitudinal cohort study of patients with T2DM, metformin use was associated with
98 higher MPR as a marker of microvascular function, and improved survival after adjusting for
99 certain confounding parameters.

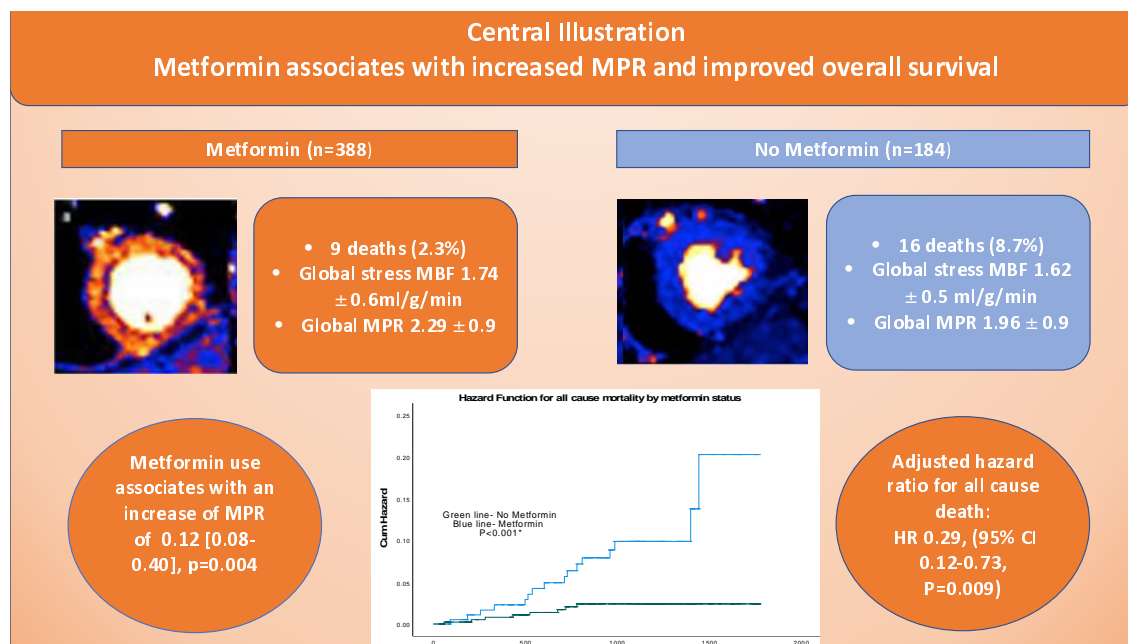
100

101 Further prospective studies are needed to confirm the association between metformin use and
102 improved MPR and reduced mortality, as well as to clarify the mechanisms responsible and
103 quantify the dose these associated outcomes are observed.

104

105 Central illustration

106



107

108 Key words: Type 2 Diabetes Mellitus (T2DM), Myocardial Perfusion Reserve (MPR), stress
109 Myocardial Blood Flow (MBF), metformin, endothelial function, major adverse
110 cardiovascular and cerebrovascular events (MACCE).

111

112 **Abbreviations**

113

114	CAD	Coronary Artery Disease
115	CMD	Coronary Microvascular Dysfunction
116	CMR	Cardiovascular Magnetic Resonance
117	T2DM	Type 2 Diabetes Mellitus
118	LV	Left Ventricle
119	LVEF	Left Ventricular Ejection Fraction
120	MI	Myocardial Infarction
121	MACCE	Major Adverse Cardiovascular and Cerebrovascular Events
122	MBF	Myocardial Blood Flow
123	MPR	Myocardial Perfusion Reserve

124

125

126

127

128

129

130

131

132

133

134

135

136

137

138

139

140

141

142 **Introduction**

143

144 Cardiovascular disease is the commonest cause of death in patients with Type 2 Diabetes
145 Mellitus (T2DM)¹. T2DM is associated with an increased risk of epicardial coronary artery
146 disease (CAD), silent myocardial infarction (MI) and coronary microvascular dysfunction
147 (CMD)²⁻⁴.

148

149 Metformin is the most widely used antihyperglycemic agent worldwide and is first-line in
150 most recommendations for the treatment of patients with T2DM⁵⁻⁸. As well as its glucose
151 lowering and weight loss benefits), it was also shown to be associated with a 39% lower risk
152 of myocardial infarction compared to conventional therapy in the United Kingdom
153 Prospective Diabetes (UKPDS) Study⁹. In a more recent study, metformin use was
154 associated with a nearly 40% reduction in cardiovascular mortality when compared to
155 sulfonylurea monotherapy¹⁰.

156

157 Metformin may improve endothelial function as well as reducing insulin resistance in patients
158 with T2DM^{11, 12}. In non-diabetic women with chest pain and angiographically normal
159 coronary arteries, metformin was shown to improve coronary microvascular function and
160 decrease MI incidence¹³. In the retrospective Prevention of REStenosis with Tranilast and its
161 Outcomes (PRESTO) trial, the use of metformin in diabetic patients undergoing coronary
162 intervention decreased the risk of death and MI (relative risk reduction of 79%) compared to
163 patients treated with a sulfonylurea or insulin¹⁴. Nevertheless, the mechanism of benefit of
164 metformin is not clear and warrants further investigation, since meta-analyses of intensive
165 versus normal glucose control have shown minimal benefit on cardiovascular outcomes¹⁵.

166

167 CMR allows simultaneous assessment of cardiac function, detection of MI, regional
168 ischaemia suggesting epicardial CAD and, with quantitative perfusion analysis, absolute
169 measures of myocardial blood flow (MBF) for the assessment of coronary microvascular
170 dysfunction. Previous studies have shown that patients with T2DM have reduced global
171 myocardial perfusion reserve (MPR) and stress MBF, independent of significant flow
172 limiting epicardial CAD, suggestive of CMD^{16, 17}. We aimed to test the hypothesis that
173 metformin use in patients with T2DM is associated with improved stress MBF and MPR and
174 is associated with improved survival and reduced major adverse cardiovascular and

175 cerebrovascular events (MACCE; a composite of all-cause mortality, MI, stroke, heart failure
176 hospitalisation and coronary revascularisation).

177

178 **Methods**

179

180 **Participants**

181

182 Patients aged 18 years or older, with a diagnosis of T2DM, undergoing quantitative stress
183 perfusion CMR, were recruited from four United Kingdom centres (St Bartholomew's
184 Hospital, Barts Heart Centre, London; Glenfield Hospital, University Hospitals of Leicester
185 NHS Trust, Leicester; Leeds Teaching Hospitals NHS Foundation Trust, Leeds and the Royal
186 Free Hospital, Royal Free London NHS Foundation Trust, London) between September
187 2016 and May 2021. Diagnosis of T2DM was based on a HbA1c >48mmol/l or a known
188 diagnosis of T2DM. Exclusion criteria included contraindications to adenosine, gadolinium-
189 based contrast or MRI.

190

191 All participants had received quantitative myocardial perfusion stress CMR for clinical or
192 research indications. Those with sub-optimal image quality, mistriggering or other artefacts
193 were excluded.

194

195 **Controls**

196

197 We recruited 52 age- and sex-matched, healthy controls with no past medical history of
198 cardiac disease or major risk factors from two cardiac centres (Leeds Teaching Hospitals and
199 Glenfield Hospital) between September 2016 and May 2021. Exclusion criteria included a
200 known past medical history of hypertension, hypercholesterolaemia, diabetes mellitus (DM),
201 smoking, previous CAD or revascularisation or perfusion defect on stress CMR,
202 contraindications to adenosine, gadolinium-based contrast or MRI and subsequent evidence
203 of abnormal late gadolinium enhancement (LGE) on CMR.

204

205

206 **Clinical Outcomes**

207

208 Patient co-morbidities and clinical outcomes were collated from electronic patient records
209 and the National Health Service (NHS) Spine Portal through deterministic linkage using each
210 patient's unique NHS identification number. Co-morbidities recorded included hypertension,
211 dyslipidaemia, atrial fibrillation, CAD, coronary revascularisation (percutaneous coronary
212 intervention (PCI) or coronary artery bypass graft (CABG) surgery, MI, stroke or transient
213 ischaemic attack (TIA) and cancer. All patients had provided written, informed consent and
214 had more than one year of follow-up data available.

215

216 The joint primary outcomes were all-cause mortality and MACCE (a composite of all-cause
217 mortality, MI, stroke, heart failure hospitalisation and coronary revascularisation). Where
218 patients had more than one MACCE, the first event was used for analysis.

219

220

221 **Cardiovascular Magnetic Resonance imaging**

222

223 CMR scans were performed on 1.5T (Magnetom Aera, Siemens Healthcare, Erlangen,
224 Germany) or 3T (Prisma, Siemens Healthcare, Erlangen, Germany) scanners with a standard
225 protocol consisting of localisers, short-axis and long-axis cine imaging, perfusion imaging
226 and late gadolinium enhancement (LGE) imaging. 169 (30%) patients were scanned on 1.5T
227 and 403 (70%) patients were scanned on 3T. All healthy controls were scanned on 3T.
228 Perfusion imaging on 1.5T scanners used a steady state free precession (SSFP) pulse
229 sequence and on 3T scanners a fast single-shot gradient echo (FLASH) pulse sequence. All
230 participants were instructed to abstain from caffeine for 24 hours before the study. For
231 perfusion imaging, adenosine was infused for a minimum of 3 minutes, at a rate of 140
232 micrograms/kg/min and increased up to a maximum of 210 micrograms/kg/min if there was
233 insufficient haemodynamic response (heart rate increase less than 10bpm) or there was no
234 symptomatic response, in line with standard clinical practice guidelines¹⁸. Images were
235 acquired during free breathing over at least 60 dynamics to allow for any patients with poor
236 ventricular function and consequent slow contrast uptake. A minimum interval duration of
237 ten minutes was kept between stress and subsequent rest perfusion acquisitions. Participants'
238 blood pressures and heart rates were recorded at regular intervals during adenosine infusion.
239 For each perfusion acquisition, an intravenous bolus of (0.05-0.75mmol/kg) gadobutrol
240 (Gadovist, Leverkusen, Germany) or gadoterate meglumine (Dotarem, Guerbet, Paris,
241 France) was administered at 4-5ml/s. Perfusion mapping was performed in three short axis

242 sections, using a dual sequence technique combining a low-resolution arterial input function
243 acquisition and a higher resolution myocardial perfusion acquisition as previously described
244 by Kellman et. al¹⁹.

245

246 **Image Analysis**

247

248 Image analysis was undertaken by experienced operators at the site core lab. Those with poor
249 image quality were excluded. Measurement of cardiac volume parameters and the presence of
250 LGE were made using cvi42 software (Circle Cardiovascular Imaging, Calgary, Canada).
251 Left ventricular systolic and diastolic volume, ejection fraction, and the presence and
252 distribution (ischaemic or non-ischaemic) of LGE were recorded. Non-ischaemic LGE refers
253 to late gadolinium enhancement in a mid-myocardial or subepicardial pattern, as opposed to
254 ischaemic LGE, which is subendocardial. Rest and stress perfusion maps were generated
255 inline by an automatic artificial intelligence-supported process whereby myocardial blood
256 flow is quantified for each pixel of the myocardium in ml/g/min. By averaging all pixel
257 values in the 3 slices, global MBF and global MPR (ratio of stress to rest MBF) were
258 derived¹⁹. Automatically derived perfusion maps were reviewed by experienced observers to
259 exclude data affected by gating and motion correction artefact and partial voluming affects.

260

261 **Statistical Analysis**

262

263 Statistical analysis was performed using SPSS (IBM SPSS Statistics, version 27.0).
264 Normality was assessed through the Shapiro-Wilk test and variance was assessed by the
265 Leven's test for equality of variance. Continuous variables are presented as mean±SD.
266 Categorical variables are presented as absolute values and percentages. Means were
267 compared using the appropriate test, student *t* test for continuous variables and chi-squared
268 (χ^2) test for categorical variables. A *P* value of <0.05 was considered statistically significant.
269 Multivariable linear regression analysis, adjusting for age, sex, left ventricular ejection
270 fraction (LVEF), left ventricular mass (LV mass), left ventricular end diastolic volume
271 (LVEDV), hypertension, evidence of previous PCI, CABG surgery, MI, body surface area
272 (BSA) and ethnicity was undertaken to seek association between metformin, stress MBF and
273 MPR. Cox proportional hazard models adjusting for comorbidities and CMR parameters
274 sought associations between stress MBF and MPR with all-cause mortality and MACCE. For
275 the all-cause mortality model, we adjusted for age and LVEF (only two predictors using the

276 10 events per parameter rule of thumb) and for the MACCE model we adjusted for 8
277 parameters including age, LVEF, sex, LVEDV, LV mass, stress MBF, MPR and
278 hypertension. Kaplan-Meier curves represented hazard curves. Patient data was categorised
279 depending on whether the patient was prescribed metformin at the time of the CMR scan.

280

281 **Results**

282

283 *Patient group*

284

285 A total of 572 patients with T2DM were included with a median follow-up of 851 days (IQR
286 935-765) days.

287

288 **Patient characteristics**

289

290 Patient characteristics are shown in table 1 and are presented according to whether subjects
291 were prescribed metformin at the time of their CMR. Their mean age was 65 ± 10 years and
292 their mean HbA1c was 59 ± 16 mmol/mol. 25% of all patients (n=142) had known CAD with
293 previous MI, PCI or CABG surgery. 68% of all patients (n=388) were prescribed metformin.
294 Metformin positive and Metformin negative groups were well-matched for age and sex.
295 Patients prescribed metformin were more likely to have had previous PCI, MI or CABG
296 surgery (28% vs 19%, $P=0.027$) compared to those not prescribed metformin. They were
297 also more likely to be of Asian ethnicity (32% vs 22%, $p=0.01$), suffer from
298 hypercholesterolaemia (62% vs 54%, $P=0.044$) and have peripheral vascular disease (10% vs
299 4%, $P=0.016$). Patients who were prescribed metformin had higher mean HbA1c levels than
300 those not prescribed metformin (60 ± 16 mmol/mol vs 56 ± 15 mmol/mol, respectively,
301 $P=0.022$). However, patients not prescribed metformin had a higher prevalence of atrial
302 fibrillation (21% vs 10%, $P<0.001$), previous stroke or transient ischaemic attack (10% vs
303 4%, $P=0.008$) and history of current smoking (25% vs 22%, $p<0.001$) compared to the non-
304 metformin cohort.

305

306 Patients prescribed metformin were more likely to be on antiplatelet medication, statins,
307 gliclazide, sodium glucose cotransporter 2 (SGLT-2) inhibitors, glucagon-like peptide 1
308 (GLP-1) agonists and calcium channel blockers (CCBs) (table 2). However, patients not

309 prescribed metformin, were more likely to be on mineralocorticoid receptor antagonists
310 (MRAs), diuretics or anticoagulants.

311

312 *Healthy control group*

313

314 Subjects in the healthy control group were not taking any medication. The mean age was
315 64 ± 6 years and 65% of them were of male sex.

316

317 **CMR analysis**

318

319 *Patient group*

320

321 169 (29.5%) of patients were scanned on 1.5T scanners and 403 (70.5%) were scanned on 3T
322 scanners. The mean ejection fraction of diabetic patients was $57\pm 15\%$ (table 3). 164 (29%)
323 had evidence of ischaemic scar on LGE indicating previous MI (table 3). Mean global stress
324 MBF in all patients was 1.70 ± 0.6 ml/g/min and mean MPR was 2.20 ± 0.90 (table 3).

325

326 Patients prescribed metformin had significantly higher ejection fractions ($59\pm 14\%$ vs $53\pm 18\%$,
327 $P<0.001$), stress MBF (1.74 ± 0.6 ml/g/min vs 1.62 ± 0.5 ml/g/min, $P=0.019$), MPR (2.29 ± 0.9
328 vs 1.96 ± 0.9 , $P<0.001$) as well as significantly lower EDV and LV mass. There was no
329 significant difference in the degree of scar burden between the two groups.

330

331 *Healthy control group*

332

333 All healthy volunteers were scanned on 3T scanners. The average stress MBF of the healthy
334 control group was 2.05 ± 0.4 ml/g/min and average MPR was 3.40 ± 0.7 .

335

336 **Multivariable regression analysis**

337

338 Multivariable linear regression was carried out to ascertain the extent to which metformin use
339 is associated with stress MBF and MPR. The model was adjusted for factors known to be
340 associated with differences in stress MBF and MPR including age, sex, LVEF, LV mass,
341 LVEDV, hypertension, evidence of previous PCI, CABG surgery, MI, body surface area
342 (BSA) and ethnicity as well as for medications including CCBs, nitrates, SGLT-2 inhibitors,

343 GLP-1 agonists and gliclazide. Adjusted stress MBF and MPR values are reported in table 3.
344 For stress MBF, the regression coefficient for metformin had a value of 0.05 ([0.04-0.17],
345 $P=0.21$). This suggests that metformin use was associated with an increase of stress MBF by
346 0.05ml/g/min, although this did not meet statistical significance. For MPR, the regression
347 coefficient for metformin had a value of 0.12 ([0.08-0.40], $P=0.004$). This suggests that the
348 use of metformin is associated with an increase in MPR of 0.12, with statistical significance.

349

350 **Clinical outcomes**

351

352 There were 82 first MACCE (14.3%) including a total of 27 (4.7%) deaths, 15 (2.6%) MIs,
353 18 (3.1%) strokes, 20 (3.5%) heart failure hospitalisations and 43 (7.5%) episodes of
354 coronary revascularisation.

355

356 Table 4 shows first MACCE events by metformin status. Although there was no significant
357 difference in first MACCE rates between the two groups, there was a significant reduction in
358 number of deaths in the metformin group (9 (2.3%) vs 16 (8.7%), $P<0.001$). There was also
359 a significantly lower incidence of stroke in the metformin group (8 (2.1%) vs 10 (5.4%),
360 $P=0.031$).

361

362 Metformin was significantly associated with a reduction in all-cause mortality (figure 1).
363 After adjusting for age and LVEF, the adjusted hazard ratio for all-cause mortality was 0.29
364 ([0.12-0.73], $P=0.009$ (table 5)). However, metformin use was not associated with reduced
365 first MACCE rate after adjusting for age, LVEF, sex, LVEDV, LV mass, stress MBF, MPR
366 and hypertension with an adjusted HR of 0.92 ([0.56-1.50], $P=0.73$) (table 5).

367

368

369 **Discussion**

370

371 We sought to test the hypothesis that metformin use in patients with T2DM is associated with
372 improved coronary microvascular function, improved survival and a reduction in MACCE .

373

374 The key findings in this study are that metformin use is associated with (1) improved MPR as
375 a marker of CMD and (2) an improvement in all-cause mortality after adjusting for important
376 parameters.

377

378 **Association between metformin and MPR**

379

380 To the authors knowledge, this is the first clinical study that has demonstrated an association
381 between metformin use and improved coronary microvascular function in patients with
382 T2DM. Obesity, insulin resistance, and endothelial dysfunction closely co-exist throughout
383 the natural history of T2DM²⁰. Endothelial dysfunction is considered an important event in
384 the development of microvascular complications in diabetes and is well recognised in patients
385 with T2DM. Insulin resistance itself may be central to the pathogenesis of endothelial
386 dysfunction. Patients with T2DM have been shown to have reduced MPR as manifestations
387 of CMD caused by endothelial dysfunction^{16, 17}. Metformin has been shown to improve
388 endothelial function²¹. A previous study conducted in 16 asymptomatic patients recently
389 diagnosed with T2DM using Positron Emission Tomography (PET), looked at the effect of
390 metformin treatment alone or with a combination of glimepiride/metformin on coronary
391 endothelial function²². It showed that at baseline, the response of T2DM patients to cold
392 pressor test was reduced compared to controls, demonstrating endothelial dysfunction.
393 Following treatment with a combination of metformin/glimepiride, myocardial flow reserve
394 (MFR) and response to cold pressor testing MBF (% delta MBF) improved. Another study
395 conducted in patients with T2DM showed an improvement in endothelium-dependent
396 vasodilatation after administering metformin, assessed through forearm plethysmography.
397 This change was also accompanied by a reduction of insulin resistance¹¹. A study in rats who
398 were fed a high fat diet showed an improvement in MPR after administering a 4-week
399 treatment of metformin²³. This study also showed that metformin treatment led to a robust
400 adenosine-induced increase in myocardial perfusion (+81%). The authors postulated that
401 metformin improved cardiac perfusion by restoring balance between vasoconstrictor and
402 vasodilator effects of modest insulin resistance. We postulate that an improvement in
403 endothelial function through the use of metformin in patients with T2DM, improves MPR.
404 We speculate that this effect was not seen with stress MBF on multivariable regression
405 analysis since MPR is a better measure of endothelial dysfunction²⁴.

406

407 **Metformin and improved survival**

408

409 Our data confirm previous reports that metformin is associated with improved overall
410 survival. Despite having worse cardiovascular profiles, patients on metformin had higher

411 ejection fractions compared to patients not prescribed metformin. We speculate that this may
412 be secondary to more intense risk factor modification and drug treatment effects, for example
413 with SGLT-2 inhibitors and GLP-1 agonists, although we cannot establish the cause from this
414 study alone. The United Kingdom Prospective Diabetes Study (UKPDS) showed that
415 metformin use reduced diabetes-related mortality by 42% (P=0.017), all-cause mortality by
416 36% (P=0.011), MI by 39% (P=0.01) and any diabetes related endpoint by 32% (P=0.002)⁹.
417 In a recent systematic review, looking at 40 studies, metformin was shown to reduce
418 cardiovascular mortality, all-cause mortality and cardiovascular events in CAD patients²⁵.
419 However, for MI and CAD patients without T2DM, metformin had no effect of reducing the
420 incidence of cardiovascular events. In our study, metformin was not associated with an
421 improvement in first MACCE rate. This is not surprising since patients prescribed metformin
422 had higher cardiovascular risk compared to patients not prescribed metformin. In patients
423 prescribed metformin there was also an increased prevalence of peripheral vascular disease
424 and hypercholesterolaemia. The association between metformin use and improved survival is
425 unclear; further research needs to be undertaken in this field. Recently, additional benefits of
426 metformin have been reported including potential effects on cancer^{26, 27}, cardiovascular
427 disease¹³, liver disease²⁸, obesity²⁹, neurodegenerative disease³⁰ and renal disease³¹.

428

429 **Improving mitochondrial function**

430

431 T2DM is a metabolic disorder characterised by mitochondrial dysfunction and oxidative
432 stress³². By increasing nitric oxide (NO) bioavailability, limiting interstitial fibrosis, reducing
433 the deposition of advanced glycation end products (AGEs), and inhibiting myocardial cell
434 apoptosis, metformin has been shown to reduce cardiac remodelling and hypertrophy, thereby
435 preserving left ventricular systolic and diastolic function^{33, 34}. Although we did not directly
436 measure mitochondrial function in our study, these mechanisms may explain why patients
437 taking metformin had higher ejection fractions, lower LVEDV and LV mass.

438

439 **Limitations**

440

441 Several limitations should be acknowledged in this study. First, the study carries all the
442 inherent limitations of an observational study and since subjects were non-randomised, the
443 associations between metformin and improved survival and MPR found cannot imply
444 causation and may be secondary to one or more confounders. One should also consider the

445 potential for bias in the estimated coefficients due to the relatively small number of events
446 and large number of co-variates. There is also the possibility that sicker patients may not have
447 been prescribed metformin, leading to selection bias although this is unlikely to be the case in
448 our cohort, since the patients prescribed metformin had more cardiovascular morbidity
449 (increased prevalence of MI, PCI and CABG surgery, peripheral vascular disease and
450 hypercholesterolaemia). It may also be plausible that patients prescribed metformin were
451 better managed for conventional cardiovascular risk factors, due to the fact these patients tend
452 to be higher risk patients. Furthermore, since events were documented using electronic
453 patients records from different hospitals, there is a chance that events may have been missed.
454 Patients on metformin in the current study were more likely to be on other medications such
455 as gliclazides, nitrates, SGLT-2 inhibitors, GLP-1 agonists, and CCBs. Therefore, the
456 improvement in MPR observed may have been mediated by one or more combination drug
457 effects although we have adjusted for these in our multivariable linear regression analysis
458 models and there is no evidence in the literature that these medications affect MPR.
459 Furthermore, information on the duration of diabetes and the length of treatment with
460 metformin was not collected in all patients. Despite these limitations, this is an indication
461 that further research in this area, preferably in the form of a double blind, randomised
462 prospective placebo-controlled clinical trial, would be able to address some of the points
463 above.

464

465

466 **Conclusion**

467

468 In patients with T2DM, we show that metformin use was associated with higher MPR, as a
469 marker of microvascular function, and is associated with improved overall survival.

470

471 ***Acknowledgements***

472

473 The authors thank the clinical staff of the CMR department, and the National Institute of
474 Health Research nurses based at Leeds General Infirmary.

475

476 ***Funding***

477

478 This study was supported directly and indirectly from the National Institute for
479 Health Research Biomedical Research Centres at University College London Hospitals and
480 Barts Health National Health Service Trusts. Recruitment in Leicester was funded through
481 BHF Clinical Research Training Fellowship (G. Gulsin; FS/16/47/32190) and a NIHR
482 Research Professorship (G. McCann; RP-2017-08-ST2-007). Leeds studies were funded by
483 British Heart Foundation with ethical approval from 17/YH/0300, 18/YH/0168 and
484 18/YH/01900. This research is supported by the National Institute for Health Research
485 (NIHR), through the Local Clinical Research Networks and the NIHR Leeds and Leicester
486 Clinical Research Facilities. SP is supported by a British Heart Foundation Chair
487 (CH/16/2/32089). EL acknowledges support from the Wellcome Trust (221690/Z/20/Z).
488 RDA received funding from the Romanian Society of Cardiology (Research Grant No.
489 95/01.09.2020).

490

491 ***Disclosures***

492

493 The authors declare that they have no competing interests. There are no disclosures with
494 industry.

495

496 ***Author contributions***

497

498 Study concepts/study design or data acquisition or data analysis/interpretation NS, KK, GSG,
499 TK, LAEB, JLY, AP, RDA, ST, AC, EL, JM, GPM, MF, PK, JPG, PPS, SP; manuscript
500 drafting or manuscript revision for important intellectual content: NS, SP, PPS,
501 JPG,GPM,CG; approval of final version of submitted manuscript, all authors; agrees to
502 ensure any questions related to the work are appropriately resolved, all authors; statistical
503 analysis: NS, GSG, SP,TM,CG; and manuscript editing: NS,SP,JPG,GPM,CG.

504

505 ***Ethics approval and consent to participate***

506

507 All the patients provided written informed consent for their inclusion and approval was
508 provided by the respective local ethics committees from each site and conducted in
509 accordance with the Declaration of Helsinki.

510 Leeds data was obtained with ethical approval obtained by Leeds Research Ethics Committee
511 (REC), Leeds, United Kingdom, reference 17/YH/0300, 18/YH/0168 and 18/YH/01900.
512 Barts data used ethical approval from East of England, Cambridge Central Research Ethics
513 Committee, United Kingdom, REC 14/EE/0007. Royal Free data was provided by the
514 University College London/University College London Hospital Joint Committees on the
515 Ethics of Human Research for recruitment at Royal Free Hospital (REC reference
516 07/H0715/101), United Kingdom. Leicester data ethical approval was provided by the UK
517 Health Research Authority Research Ethics Committee (reference 17/WM/0192).

518 ***Consent for publication***

519

520 Consent for publication was obtained from all authors.

521

522 ***Availability of data and materials***

523

524 The datasets used and analysed during the current study are available from the corresponding
525 author on reasonable request.

526

527 **References**

528

- 529 1. Joseph JJ, Deedwania P, Acharya T, Aguilar D, Bhatt DL, Chyun DA, Di Palo KE,
530 Golden SH, Sperling LS, American Heart Association Diabetes Committee of the Council on
531 L, Cardiometabolic H, Council on Arteriosclerosis T, Vascular B, Council on Clinical C and
532 Council on H. Comprehensive Management of Cardiovascular Risk Factors for Adults With
533 Type 2 Diabetes: A Scientific Statement From the American Heart Association. *Circulation*.
534 2022;145:e722-e759.
- 535 2. Cosentino F, Grant PJ, Aboyans V, Bailey CJ, Ceriello A, Delgado V, Federici M,
536 Filippatos G, Grobbee DE, Hansen TB, Huikuri HV, Johansson I, Juni P, Lettino M, Marx N,
537 Mellbin LG, Ostgren CJ, Rocca B, Roffi M, Sattar N, Seferovic PM, Sousa-Uva M, Valensi
538 P, Wheeler DC and Group ESCSD. 2019 ESC Guidelines on diabetes, pre-diabetes, and
539 cardiovascular diseases developed in collaboration with the EASD. *Eur Heart J*.
540 2020;41:255-323.
- 541 3. Kannel WB and McGee DL. Diabetes and glucose tolerance as risk factors for
542 cardiovascular disease: the Framingham study. *Diabetes Care*. 1979;2:120-6.
- 543 4. Stamler J, Vaccaro O, Neaton JD and Wentworth D. Diabetes, other risk factors, and
544 12-yr cardiovascular mortality for men screened in the Multiple Risk Factor Intervention
545 Trial. *Diabetes Care*. 1993;16:434-44.
- 546 5. Buse JB, Wexler DJ, Tsapas A, Rossing P, Mingrone G, Mathieu C, D'Alessio DA
547 and Davies MJ. 2019 Update to: Management of Hyperglycemia in Type 2 Diabetes, 2018. A
548 Consensus Report by the American Diabetes Association (ADA) and the European
549 Association for the Study of Diabetes (EASD). *Diabetes Care*. 2020;43:487-493.
- 550 6. *Type 2 diabetes in adults: management* London; 2015.
- 551 7. International Diabetes Federation Guideline Development G. Global guideline for
552 type 2 diabetes. *Diabetes Res Clin Pract*. 2014;104:1-52.
- 553 8. Garber AJ, Abrahamson MJ, Barzilay JI, Blonde L, Bloomgarden ZT, Bush MA,
554 Dagogo-Jack S, DeFronzo RA, Einhorn D, Fonseca VA, Garber JR, Garvey WT, Grunberger
555 G, Handelsman Y, Hirsch IB, Jellinger PS, McGill JB, Mechanick JI, Rosenblit PD and
556 Umpierrez GE. Consensus Statement by the American Association of Clinical
557 Endocrinologists and American College of Endocrinology on the Comprehensive Type 2
558 Diabetes Management Algorithm - 2017 Executive Summary. *Endocr Pract*. 2017;23:207-
559 238.
- 560 9. Effect of intensive blood-glucose control with metformin on complications in
561 overweight patients with type 2 diabetes (UKPDS 34). UK Prospective Diabetes Study
562 (UKPDS) Group. *Lancet*. 1998;352:854-65.
- 563 10. Johnson JA, Majumdar SR, Simpson SH and Toth EL. Decreased mortality associated
564 with the use of metformin compared with sulfonylurea monotherapy in type 2 diabetes.
565 *Diabetes Care*. 2002;25:2244-8.
- 566 11. Mather KJ, Verma S and Anderson TJ. Improved endothelial function with metformin
567 in type 2 diabetes mellitus. *J Am Coll Cardiol*. 2001;37:1344-50.
- 568 12. Vitale C, Mercurio G, Cornoldi A, Fini M, Volterrani M and Rosano GM. Metformin
569 improves endothelial function in patients with metabolic syndrome. *J Intern Med*.
570 2005;258:250-6.
- 571 13. Jadhav S, Ferrell W, Greer IA, Petrie JR, Cobbe SM and Sattar N. Effects of
572 metformin on microvascular function and exercise tolerance in women with angina and
573 normal coronary arteries: a randomized, double-blind, placebo-controlled study. *J Am Coll*
574 *Cardiol*. 2006;48:956-63.

- 575 14. Kao J, Tobis J, McClelland RL, Heaton MR, Davis BR, Holmes DR, Jr., Currier JW,
576 Investigators in the Prevention of Restenosis With T and Its Outcomes T. Relation of
577 metformin treatment to clinical events in diabetic patients undergoing percutaneous
578 intervention. *Am J Cardiol.* 2004;93:1347-50, A5.
- 579 15. Ray KK, Seshasai SR, Wijesuriya S, Sivakumaran R, Nethercott S, Preiss D, Erqou S
580 and Sattar N. Effect of intensive control of glucose on cardiovascular outcomes and death in
581 patients with diabetes mellitus: a meta-analysis of randomised controlled trials. *Lancet.*
582 2009;373:1765-72.
- 583 16. Levelt E, Piechnik SK, Liu A, Wijesurendra RS, Mahmood M, Ariga R, Francis JM,
584 Greiser A, Clarke K, Neubauer S, Ferreira VM and Karamitsos TD. Adenosine stress CMR
585 T1-mapping detects early microvascular dysfunction in patients with type 2 diabetes mellitus
586 without obstructive coronary artery disease. *J Cardiovasc Magn Reson.* 2017;19:81.
- 587 17. Larghat AM, Swoboda PP, Biglands JD, Kearney MT, Greenwood JP and Plein S.
588 The microvascular effects of insulin resistance and diabetes on cardiac structure, function,
589 and perfusion: a cardiovascular magnetic resonance study. *Eur Heart J Cardiovasc Imaging.*
590 2014;15:1368-76.
- 591 18. Kramer CM, Barkhausen J, Bucciarelli-Ducci C, Flamm SD, Kim RJ and Nagel E.
592 Standardized cardiovascular magnetic resonance imaging (CMR) protocols: 2020 update. *J*
593 *Cardiovasc Magn Reson.* 2020;22:17.
- 594 19. Kellman P, Hansen MS, Nielles-Vallespin S, Nickander J, Themudo R, Ugander M
595 and Xue H. Myocardial perfusion cardiovascular magnetic resonance: optimized dual
596 sequence and reconstruction for quantification. *J Cardiovasc Magn Reson.* 2017;19:43.
- 597 20. Caballero AE. Endothelial dysfunction in obesity and insulin resistance: a road to
598 diabetes and heart disease. *Obes Res.* 2003;11:1278-89.
- 599 21. Kirpichnikov D, McFarlane SI and Sowers JR. Metformin: an update. *Ann Intern*
600 *Med.* 2002;137:25-33.
- 601 22. Alexanderson-Rosas E, de Jesus Martinez A, Ochoa-Lopez JM, Calleja-Torres R,
602 Sierra-Fernandez C, Inarra-Talboy F, Meave-Gonzalez A, Alexanderson-Rosas G and
603 Gonzalez-Canudas J. [Effects of the combined treatment with Metformin/Glimepiride on
604 endothelial function of patients with type 2 diabetes mellitus. A positron emission
605 tomography (PET) evaluation study]. *Arch Cardiol Mex.* 2009;79:249-56.
- 606 23. van Haare J, Kooi ME, van Teeffelen JW, Vink H, Slenter J, Cobelens H, Strijkers
607 GJ, Koehn D, Post MJ and van Bilsen M. Metformin and sulodexide restore cardiac
608 microvascular perfusion capacity in diet-induced obese rats. *Cardiovasc Diabetol.*
609 2017;16:47.
- 610 24. Rahman H, Scannell CM, Demir OM, Ryan M, McConkey H, Ellis H, Masci PG,
611 Perera D and Chiribiri A. High-Resolution Cardiac Magnetic Resonance Imaging Techniques
612 for the Identification of Coronary Microvascular Dysfunction. *JACC Cardiovasc Imaging.*
613 2021;14:978-986.
- 614 25. Han Y, Xie H, Liu Y, Gao P, Yang X and Shen Z. Effect of metformin on all-cause
615 and cardiovascular mortality in patients with coronary artery diseases: a systematic review
616 and an updated meta-analysis. *Cardiovasc Diabetol.* 2019;18:96.
- 617 26. Gandini S, Puntoni M, Heckman-Stoddard BM, Dunn BK, Ford L, DeCensi A and
618 Szabo E. Metformin and cancer risk and mortality: a systematic review and meta-analysis
619 taking into account biases and confounders. *Cancer Prev Res (Phila).* 2014;7:867-85.
- 620 27. Morales DR and Morris AD. Metformin in cancer treatment and prevention. *Annu Rev*
621 *Med.* 2015;66:17-29.
- 622 28. Bhat A, Sebastiani G and Bhat M. Systematic review: Preventive and therapeutic
623 applications of metformin in liver disease. *World J Hepatol.* 2015;7:1652-9.

- 624 29. Breining P, Jensen JB, Sundelin EI, Gormsen LC, Jakobsen S, Busk M, Rolighed L,
625 Bross P, Fernandez-Guerra P, Markussen LK, Rasmussen NE, Hansen JB, Pedersen SB,
626 Richelsen B and Jessen N. Metformin targets brown adipose tissue in vivo and reduces
627 oxygen consumption in vitro. *Diabetes Obes Metab.* 2018;20:2264-2273.
- 628 30. Patrone C, Eriksson O and Lindholm D. Diabetes drugs and neurological disorders:
629 new views and therapeutic possibilities. *Lancet Diabetes Endocrinol.* 2014;2:256-62.
- 630 31. Neven E, Vervaet B, Brand K, Gottwald-Hostalek U, Opdebeeck B, De Mare A,
631 Verhulst A, Lalau JD, Kamel S, De Broe ME and D'Haese PC. Metformin prevents the
632 development of severe chronic kidney disease and its associated mineral and bone disorder.
633 *Kidney Int.* 2018;94:102-113.
- 634 32. Chen Q, Thompson J, Hu Y and Lesnefsky EJ. Chronic metformin treatment
635 decreases cardiac injury during ischemia-reperfusion by attenuating endoplasmic reticulum
636 stress with improved mitochondrial function. *Aging (Albany NY).* 2021;13:7828-7845.
- 637 33. Dziubak A, Wojcicka G, Wojtak A and Beltowski J. Metabolic Effects of Metformin
638 in the Failing Heart. *Int J Mol Sci.* 2018;19.
- 639 34. Gundewar S, Calvert JW, Jha S, Toedt-Pingel I, Ji SY, Nunez D, Ramachandran A,
640 Anaya-Cisneros M, Tian R and Lefer DJ. Activation of AMP-activated protein kinase by
641 metformin improves left ventricular function and survival in heart failure. *Circ Res.*
642 2009;104:403-11.
- 643
644
645
646
647
648
649
650
651
652
653
654
655
656
657
658
659
660
661
662
663
664
665
666
667
668
669
670
671
672
673

674
675

Demographics	Metformin (n= 388)	No metformin (n=184)	P value
Age (years)	64 ±10	66 ±11	0.057
Male sex	252 (65)	125 (68)	0.482
White	222 (57)	122 (66)	0.038*
Asian	125 (32)	40 (22)	0.010*
Black	20 (5)	10 (5)	0.888
Other	20 (5)	12 (7)	0.506
BSA (m²)	1.98±0.2	1.97± 0.3	0.942
Previous PCI/CABG/MI	107 (28)	35 (19)	0.027*
Current Smoker	83 (22)	46 (25)	<0.001*
HTN	222 (58)	106 (58)	0.926
High cholesterol	241 (62)	98 (54)	0.044*
Previous stroke/TIA	16 (4)	18 (10)	0.008*
AF	39 (10)	39 (21)	<0.001*
PVD	37 (10)	7 (4)	0.016*
HbA1C (mmol/mol)	60±16	56± 15	0.022*
Cholesterol (mmol/l)	4.4±1.4	4.8±1.4	0.074

676
677
678
679
680
681
682

Table 1: Patient demographics by metformin status. P value is considered significant at the <0.05 and indicated by. Continuous variables are presented as mean ± SD. Dichotomous variables are presented as number (%). BSA: Body Surface Area, PCI: Percutaneous Coronary Intervention, CABG: Coronary Artery Bypass Graft surgery, MI: Myocardial Infarction, HTN: Hypertension, TI: Transient Ischaemic Attack, AF: Atrial Fibrillation, PVD: Peripheral Vascular Disease.*

683

Medication	Metformin (n=388)	No Metformin (n=184)	P value
Aspirin/ other antiplatelet	254 (65)	89 (48)	<0.001*
DOAC/ Warfarin	41 (11)	34 (18)	0.012*
Statin	332 (86)	122 (66)	<0.001*
Beta blocker	209 (54)	114 (62)	0.086
ACE/ARB/Entresto	266 (69)	134 (72)	0.478
MRA	29 (8)	35 (19)	<0.001*
Diuretics	87 (22)	68 (37)	<0.001*
CCB	116 (30)	40 (22)	0.034*
Nitrates	54 (14)	21 (11)	0.382
Insulin	53 (14)	33 (18)	0.199
Gliclazide	94 (23)	17 (9)	<0.001*
SGLT-2	44 (11)	9 (5)	0.037*
GLP-1	61 (16)	15 (8)	0.011*
Gliptin	25 (6)	5 (3)	0.059

684

685 *Table 2: Patient medication divided by metformin status. P value is considered significant at the*
 686 *<0.05 level and indicated by*. Dichotomous variables are presented as number (%). DOAC: Direct*
 687 *Oral AntiCoagulant; ACE: Angiotensin Converting Enzyme Inhibitor; ARB: Angiotensin Receptor*
 688 *Blocker; MRA: Mineralocorticoid Receptor Antagonist; CCB: Calcium Channel Blocker; SGLT-2:*
 689 *Sodium Glucose Cotransporter-2 inhibitor; GLP-1: Glucago-Like Peptide 1 agonist.*

690

691
692
693

CMR Parameter	Metformin (n=388)	No metformin (n=184)	P value
LVEF (%)	59±14	53 ±18	<0.001*
LVEDV (ml)	149±50	174±71	<0.001*
LV mass (g)	117±34	127± 39	0.002*
Global Stress MBF (ml/g/min)	1.74±0.6	1.62±0.5	0.019*
Adjusted global stress MBF** (ml/g/min)	1.74±0.03	1.67±0.04	<0.0001*
MPR	2.29±0.9	1.96±0.9	<0.001*
Adjusted MPR**	2.27±0.04	2.03±0.07	<0.0001*
LGE ischaemic	115 (30)	49 (27)	0.502
LGE non-ischaemic	89 (23)	50 (27)	0.502
No LGE	183 (47)	84 (46)	0.502
1.5T scanner	127 (33)	42 (23)	0.015*
3T scanner	261 (67)	142 (77)	0.015*

694
695
696
697
698
699
700
701
702
703

Table 3: CMR parameters based on metformin status. P value is considered significant at the <0.05 level and indicated by. Continuous variables are presented as mean ± SD. Dichotomous variables are presented as number (%). **Adjusted for age, sex, LVEF, LV mass, LVEDV, hypertension, evidence of previous PCI, CABG, MI, BSA, ethnicity, CCB, nitrates, SGLT-2 inhibitors, GLP-1 agonists and gliclazide. MBF: Myocardial Blood Flow; MPR: Myocardial Perfusion Reserve; LV: Left Ventricle; LVEF: Left Ventricular Ejection Fraction; LVEDV: Left Ventricular End-Diastolic Volume; LGE: Late Gadolinium Enhancement, PCI: Percutaneous Coronary Intervention, CABG: Coronary Artery Bypass Graft surgery, MI: Myocardial Infarction, BSA: Body Surface Area, CCB:*

704 *Calcium Channel Blocker; SGLT-2: Sodium glucose co-transporter 2 inhibitor; GLP-1-Glucagon like*
705 *peptide agonist.*
706

707
708
709
710

Event	Metformin (n=388)	No Metformin (n=184)	P value	All patients (n=572)
MACCE**	53 (13.7)	29 (15.8)	0.503	82 (14)
Death	9 (2.3)	16 (8.7)	<0.001*	25 (4)
MI	12 (3.1)	3 (1.6)	0.307	15 (2.6)
Stroke	8 (2.1)	10 (5.4)	0.031*	18 (3.1)
Heart Failure hospitalisation	12 (3.1)	8 (4.3)	0.445	20 (3.5)
Coronary revascularisation	29 (7.5)	14 (7.6)	0.955	43 (7.5)

711
712
713
714
715
716
717
718
719
720
721
722
723
724
725
726
727
728
729
730
731
732
733
734
735
736

Table 4: MACCE events by metformin status. P value is considered significant at the <0.05 level and indicated by. Data represented as number of events with percentage in brackets.** First MACCE.*

737
738
739

	Death	MACCE
Unadjusted		
Hazard ratio (Metformin)	0.22 [0.10-0.52], P<0.001*	0.87 [0.55-1.37], P=0.55
Adjusted		
Hazard ratio (Metformin)	0.29 [0.12-0.73], P=0.009*	0.92 [0.56-1.50], P=0.73

740
741
742
743
744
745
746
747
748
749

Table 5: Cox proportional hazard models. Death model was adjusted for age and LVEF. MACCE model was adjusted for age, sex, LVEF, LVEDV, LV mass, stress MBF, MPR, hypertension. Square brackets represent 95% confidence intervals. P value considered significant at <0.05 level and indicated by.*

LVEF: Left Ventricular Ejection Fraction; LVEDV: Left Ventricular End Diastolic Volume; MBF: Myocardial Blood Flow; MPR: Myocardial Perfusion Reserve; MACCE: Major Adverse Cardiovascular and Cerebrovascular Event; HTN: Hypertension.

750 **Figure legends**

751

752

753 *Central illustration: Metformin in patients with Type 2 Diabetes Mellitus (T2DM) associates*
754 *with increased myocardial perfusion reserve (MPR) and is independently associated with*
755 *increased overall survival. MBF: Myocardial Blood Flow; HR: Hazard Ratio; CI: 95%*
756 *Confidence Intervals*

757

758

759

760 *Figure 1: Kaplan-Meier hazard curves for all-cause mortality by metformin status. P value*
761 *is considered significant at <0.05. Hazard curves are represented as blue line for no*
762 *metformin and green line for metformin.*

763

764

765

766

767

768

769

770

771

772

773

774

775

776

777

778

779

780

781

782

783

784

785

786

787

788

789

790

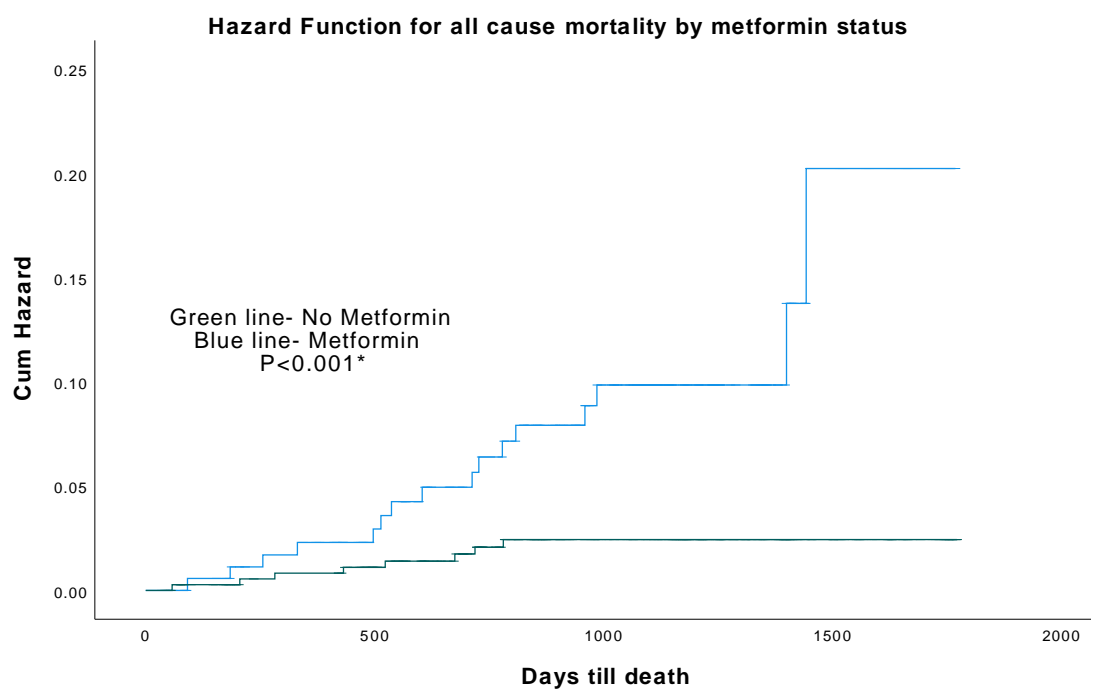
791

792

793

794

795
796
797
798
799
800
801
802
803
804
805
806
807
808
809
810
811
812
813
814
815
816
817
818
819
820
821



Number at risk

Metformin	362	277	143	33
No metformin	172	131	57	7

Figure 1: Kaplan-Meier hazard curves for all-cause mortality by metformin status. P value is considered significant at <0.05. Hazard curves are represented as blue line for no metformin and green line for metformin.