

# 1     **Severity of Prior COVID-19 Infection is Associated with Postoperative** 2     **Outcomes Following Major Inpatient Surgery**

3     Nathaniel B. Verhagen<sup>1</sup>, Gopika SenthilKumar<sup>1,2</sup>, Taylor Jaraczewski<sup>1</sup>, Nicolas K.  
4     Koerber<sup>1</sup>, Jennifer R. Merrill<sup>1</sup>, Madelyn A. Flitcroft<sup>1</sup>, Aniko Szabo<sup>3</sup>, Anjishnu Banerjee<sup>3</sup>,  
5     Xin Yang<sup>4</sup>, Bradley W. Taylor<sup>4</sup>, Carlos E. Figueroa Castro<sup>5</sup>, Tina W.F. Yen<sup>1</sup>, Callisia N.  
6     Clarke<sup>1</sup>, Kathryn Lauer<sup>6</sup>, Kurt J. Pfeifer<sup>7</sup>, Jon C. Gould<sup>8</sup>, Anai N. Kothari<sup>1,4</sup>; on behalf of  
7     the N3C Consortium

8     <sup>1</sup>Department of Surgery, Division of Surgical Oncology, Medical College of Wisconsin,  
9     Milwaukee, WI

10    <sup>2</sup>Department of Physiology and Anesthesiology, Medical College of Wisconsin,  
11    Milwaukee, WI

12    <sup>3</sup>Department of Biostatistics, Medical College of Wisconsin, Milwaukee, WI

13    <sup>4</sup>Clinical and Translational Science Institute of Southeastern Wisconsin, Medical College  
14    of Wisconsin, Milwaukee, WI

15    <sup>5</sup>Department of Medicine, Division of Infectious Diseases, Medical College of Wisconsin,  
16    Milwaukee, WI

17    <sup>6</sup>Department of Anesthesiology, Medical College of Wisconsin, Milwaukee, WI

18    <sup>7</sup>Department of Medicine, Section of Perioperative & Consultative Medicine, Medical  
19    College of Wisconsin, Milwaukee, WI

20    <sup>8</sup>Department of Surgery, Division of Minimally Invasive and GI Surgery, Medical College  
21    of Wisconsin, Milwaukee, WI  
22

## 23 24     **Corresponding Author:**

25     Anai N. Kothari, MD MS FSSO  
26     Medical College of Wisconsin  
27     Division of Surgical Oncology  
28     8701 W Watertown Plank Road  
29     Milwaukee, Wisconsin 53226, USA  
30     (414)955-1443  
31     [akothari@mcw.edu](mailto:akothari@mcw.edu)

32 **ABSTRACT**

33 **Objective:** To determine the association between severity of prior history of SARS-  
34 CoV-2 infection and postoperative outcomes following major elective inpatient surgery.

35 **Summary Background Data:** Surgical guidelines instituted early in the COVID-19  
36 pandemic recommended delay in surgery up to 8 weeks following an acute SARS-CoV-  
37 2 infection. Given that surgical delay can lead to worse medical outcomes, it is unclear if  
38 continuation of such stringent policies is necessary and beneficial for all patients,  
39 especially those recovering from asymptomatic or mildly symptomatic COVID-19.

40 **Methods:** Utilizing the National Covid Cohort Collaborative (N3C), we assessed  
41 postoperative outcomes for adults with and without a history of COVID-19 who  
42 underwent major elective inpatient surgery between January 2020 and February 2023.  
43 COVID-19 severity and time from SARS-CoV-2 infection to surgery were each used as  
44 independent variables in multivariable logistic regression models.

45 **Results:** This study included 387,030 patients, of which 37,354 (9.7%) had a diagnosis  
46 of preoperative COVID-19. History of COVID-19 was found to be an independent risk  
47 factor for adverse postoperative outcomes even after a 12-week delay for patients with  
48 moderate and severe SARS-CoV-2 infection. Patients with mild COVID-19 did not have  
49 an increased risk of adverse postoperative outcomes at any time point. Vaccination  
50 decreased the odds of mortality and other complications.

51 **Conclusions:** Impact of COVID-19 on postoperative outcomes is dependent on  
52 severity of illness, with only moderate and severe disease leading to higher risk of  
53 adverse outcomes. Existing wait time policies should be updated to include  
54 consideration of COVID-19 disease severity and vaccination status.

## 55 INTRODUCTION

56 As of February 2023, over 100 million cases of SARS-CoV-2 infections have been  
57 reported in the US<sup>1</sup>. Among those with prior infection, 15–20% will require elective  
58 surgery<sup>2</sup>. Prior history of COVID-19 infection is associated with adverse postoperative  
59 outcomes and complications<sup>3-6</sup>, and this risk can persist up to eight weeks after  
60 infection<sup>5</sup>. Accordingly, early in the pandemic, several groups recommended a delay in  
61 surgery for 7–8 weeks following a COVID-19 infection<sup>5,7</sup>.

62 While these guidelines attempted to mitigate the risk of COVID-19 by delaying surgery,  
63 as the pandemic transitions to an endemic phase, there is a paucity of data to guide the  
64 de-implementation of these policies. This is especially important when also considering  
65 that delaying care can worsen both short- and long-term health outcomes<sup>8</sup>. In addition,  
66 delayed surgical care can lead to prolonged poor quality of life including chronic pain,  
67 impaired mobility, and inability to work.

68 The severity of a SARS-CoV-2 infection can vary widely from mild flu-like symptoms or  
69 no symptoms to systemic disease requiring hospitalization and even critical care. Most  
70 current guidelines for managing COVID-19 in the perioperative setting are not stratified  
71 by disease severity; however, there appears to be a relationship between severity of  
72 infection and postoperative outcomes<sup>8</sup>. Prior studies also show that compared to those  
73 with asymptomatic or mild disease, postoperative intensive care unit stay is higher  
74 among those with severe COVID-19 who require hospitalization<sup>9</sup>. This suggests that  
75 including severity of SARS-CoV-2 infection in surgical wait time guidelines may facilitate  
76 more personalized patient recommendations and prevent unnecessary delays to

77 surgery for those with less severe infections. In addition, since disease severity can be  
78 lowered through vaccination<sup>2</sup>, and as of February 2023, over 269 million people in the  
79 US received at least 1 dose of COVID-19 vaccine<sup>1</sup>, the impact of preoperative  
80 vaccination among patients who present with COVID-19 prior to requiring surgery must  
81 be taken into consideration.

82 The primary objective of this study was to measure the association between the severity  
83 of SARS-CoV-2 infection prior to major elective surgery and postoperative adverse  
84 outcomes. Secondary objectives included investigating how severity should be  
85 considered in surgical wait time guidelines and the influence of vaccination on  
86 postoperative outcomes.

## 87 **METHODS**

88 Electronic health record data from the National COVID Cohort Collaborative (N3C), the  
89 largest multi-site centralized data source of COVID-19 patients in the United States,  
90 was retrospectively analyzed using the N3C Data Enclave. PCORnet, TriNetX, OMOP,  
91 and ACT are the primary data sources that contribute to N3C. A detailed description of  
92 the N3C's rationale, design, infrastructure, and deployment has been previously  
93 reported. Patients 18 years and older who underwent major inpatient surgery between  
94 January 2020 and February 2023 were included, and the surgical procedures were  
95 selected based on prior literature assessing the role of COVID-19 on surgical  
96 outcomes<sup>5</sup>. The following were included: hip arthroplasty, knee arthroplasty,  
97 laminectomy, spinal arthrodesis, craniectomy, aortic aneurysm repair, lung excision,

98 coronary artery bypass graft, esophagectomy, mastectomy, prostatectomy, colectomy,  
99 gastrectomy, hepatectomy, and pancreatectomy (Supplemental Table 1).

100 Patient characteristics (sex, age, race and ethnicity, Charlson Comorbidity Index)<sup>11</sup>,  
101 were identified using the N3C's Shared Knowledge Store patient fact table. Standard  
102 SNOMED codes from the Observational Health Data Science and Informatics' (OHDSI)  
103 ATLAS tool were used to identify elective inpatient procedures and patients'  
104 comorbidities (Supplemental Table 1,2). Exclusion criteria included undergoing natural  
105 orifice, percutaneous, endoscopic, diagnostic (unless open surgery), or transplant  
106 procedures. For patients with multiple surgeries, the first surgery after SARS-CoV-2  
107 infection was used.

108 COVID-19 positivity was defined as having a positive lab measurement (PCR or  
109 antigen) or a positive COVID-19 diagnosis (ICD10-CM code U07.1) any time before  
110 surgery. Patients with COVID-19 within 24 hours of surgery were excluded. The severity  
111 of a patient's COVID-19 was determined using the World Health Organization's (WHO)  
112 Clinical Progression Scale (CPS)<sup>11</sup>. Patient-specific severity was obtained from the N3C  
113 Knowledge Store and derived from critical visits associated with COVID positivity. Mild  
114 severity was defined as having outpatient visit only (WHO Severity 1–3). Moderate  
115 severity was defined as requiring hospitalization without pulmonary support (WHO  
116 Severity 4–6). Severe disease was defined as needing hospitalization with  
117 extracorporeal membrane oxygenation (ECMO or invasive ventilation, WHO Severity 7–  
118 9)<sup>12</sup>. The N3C Knowledge Store was used to determine the vaccination status of  
119 patients. Fully vaccinated patients were defined as having either received a single dose  
120 of the viral vector vaccine or two doses of mRNA vaccine at least 14 days before their

121 first SARS-CoV-2 infection. Patients who received only one dose of the mRNA vaccine  
122 or were vaccinated after a COVID-19 diagnosis were not considered fully vaccinated.

123 The primary outcome of the study was a 30-day composite adverse postoperative event  
124 and included the following: mortality, unplanned readmission, acute myocardial  
125 infarction, cardiac arrhythmia, deep vein thrombosis, pneumonia, pulmonary embolism,  
126 renal failure, respiratory failure, sepsis, and urinary tract infection. Each individual 30-  
127 day complication included in the composite outcome was also separately evaluated.  
128 Outcomes were constructed using SNOMED codes and concepts associated with  
129 chronic conditions or directly caused by COVID-19 were excluded (Supplemental Table  
130 3).

131 Unadjusted baseline characteristics and comparisons between patients with and without  
132 prior COVID-19 were analyzed using standard descriptive statistics. Adjusted analyses  
133 were performed using multivariable logistic regression models. Separate models were fit  
134 for each outcome with covariates that included age, sex, race and ethnicity, Charlson  
135 Comorbidity Index (CCI), and relative surgical risk. Relative surgical risk is a computed  
136 feature based on the expected median length of stay for a given procedure. Additional  
137 logistic regression models were fit to measure the association between 30-day  
138 postoperative adverse outcomes and (1) time between SARS-CoV-2 infection and  
139 surgery, (2) disease severity, and (3) vaccination status. Within each disease severity  
140 group, the risk of 30-day postoperative adverse outcomes as a factor of time between  
141 infection and surgery was analyzed. All analysis were conducted using the N3C Data  
142 Enclave using the tidyverse, ggplot2, gtsummary, splines, and broom R packages.

## 143 RESULTS

144 387,030 patients were included in the study and 37,354 (9.7%) had a preoperative  
145 diagnosis of COVID-19. Table 1 details baseline patient demographics and  
146 characteristics in those with and without a history of COVID-19.

### 147 *History of COVID-19 and 30-day postoperative adverse outcomes*

148 On unadjusted analysis, rate of 30-day postoperative adverse events was greater in  
149 patients with a history of COVID-19 than those without (22.7% vs. 21.5%,  $P<0.001$ ,  
150 Table 1). Additionally, the rates of 30-day mortality (1.8% vs. 1.4%), postoperative  
151 pulmonary embolism (1.4% vs. 1.2%;  $P=0.008$ ), renal failure (6.9% vs. 6.4%;  $P<0.001$ ),  
152 sepsis (3.2% vs. 2.9%;  $P=0.007$ ), and composite non-fatal event (22% vs. 21%;  
153  $P<0.001$ ) were all significantly greater in patients with a history of COVID-19 (Table 1).  
154 Following adjustment for age, sex, race, ethnicity, smoking status, comorbid disease,  
155 and relative risk of surgery, patients with a history of COVID-19 had greater odds of 30-  
156 day composite adverse postoperative events (aOR 1.09 [1.06–1.12]; Figure 1).

### 157 *Association of time between SARS-CoV-2 infection and surgery and 30-day* 158 *postoperative adverse outcomes*

159 Patients were stratified based on timing of surgery relative to SARS-CoV-2 infection.  
160 Groups included 0–4 weeks ( $N=7,425$ , 19.9%), 4–8 weeks ( $N=3,936$ , 10.5%), 8–12  
161 weeks ( $N=2,604$ , 7.0%) and 12+ weeks ( $N=23,389$ , 62.6%). Patients who underwent  
162 surgery 0–4 weeks after COVID-19 had overall higher rates of postoperative adverse  
163 events, including mortality (3.3% vs. 1.4%;  $P<0.001$ ) and any non-fatal complications

164 (26% vs. 21%,  $P < 0.001$ ), when compared to patients without COVID-19 (Supplemental  
165 Table 4). On adjusted analysis (Figure 2, Supplemental Table 5), patients who  
166 underwent surgery within 4 weeks of SARS-CoV-2 infection had increased odds of 30-  
167 day postoperative composite adverse event (aOR 1.27 [1.20–1.35]), mortality (aOR  
168 2.34 [2.05–2.67]), deep vein thrombosis (aOR 1.33 [1.12–1.57]), pneumonia (aOR 1.60  
169 [1.43–1.79]), pulmonary embolism (aOR 1.44 [1.20–1.70]), renal failure (aOR 1.28  
170 [1.17–1.39]), respiratory failure (aOR 1.53 [1.40–1.66]), and sepsis (aOR 1.52 [1.36–  
171 1.69]). The odds of composite adverse postoperative outcome returned to baseline at  
172 12 weeks following infection (aOR 1.01 [0.98–1.05] at 12+ weeks).

173 *Association of severity of SARS-CoV-2 infection and 30-day postoperative adverse*  
174 *outcomes*

175 Patients were next stratified based on the severity of their SARS-CoV-2 infection prior to  
176 surgery, and 31,677 (84.8%), 5,009 (13.4%), and 655 (1.8%) patients had mild,  
177 moderate, and severe disease, respectively. Incidence of adverse 30-day postoperative  
178 outcomes increased with severity across all measured outcomes (Supplemental Table  
179 6), and patients with severe disease had the highest rate of mortality (14% vs. 1.4%),  
180 any non-fatal complication (60% vs. 21%), and hospital readmission (18% vs. 11%)  
181 when compared to patients without COVID-19 history ( $P < 0.001$  all). After adjusting for  
182 patient demographics, risk of surgery, and comorbidities, patients with moderate and  
183 severe disease had higher odds for all assessed adverse events except for pulmonary  
184 embolism for moderate COVID-19 (aOR 1.19 [0.96–1.45]) and hospital readmission for  
185 severe COVID-19 (aOR 1.20 [0.98–1.46]) (Figure 3, Supplemental Table 7).



186 *The interplay between timing of surgery and COVID-19 disease severity in influencing*  
187 *risk for 30-day composite postoperative complications*

188 For each COVID-19 severity group (mild, moderate, severe), the adjusted odds of  
189 having a composite adverse postoperative event were measured (Figure 4). Patients  
190 with mild COVID-19 infections did not demonstrate an increased risk, regardless of the  
191 time between infection and surgery. Patients with moderate disease were observed to  
192 have increased risk for composite adverse events at 0–4 weeks (aOR 1.84 [1.61–2.10])  
193 that persisted beyond 12 weeks between COVID-19 and surgery (aOR 1.36 [1.25–  
194 1.48]) when compared to patients without prior history of COVID-19. The magnitude of  
195 risk was greater for patients with severe disease, with highest odds for an adverse  
196 event occurring if surgery was performed within 4 weeks of SARS-CoV-2 infection (aOR  
197 8.41 [6.42–11.1]). This risk did decrease with time, though it remained elevated when  
198 compared to patients who did not have prior COVID-19 (aOR 2.22 [1.66–2.95] at 12+  
199 weeks).

200 *Preoperative vaccination and 30-day postoperative adverse outcomes*

201 In patients with COVID-19 prior to surgery, vaccination significantly decreased rates of  
202 pneumonia (2.3% vs. 3.0%;  $P=0.003$ ), respiratory failure (4.2% vs. 5.6%;  $P<0.001$ ), and  
203 sepsis (2.7% vs. 3.3%;  $P<0.05$ ) (Supplemental Table 8). After adjustment for patient  
204 demographics, comorbidities, and relative risk of surgery, vaccination was associated  
205 with decreased odds of mortality (aOR 0.76 [0.59–0.95]), pneumonia (aOR 0.73 [0.60–  
206 0.88]), respiratory failure (aOR 0.72 [0.62–0.83]), and sepsis (aOR 0.79 [0.66–0.94])  
207 (Figure 5).

## 208 **DISCUSSION**

209 In this study, we aimed to understand how the severity of a SARS-CoV-2 infection prior  
210 to major elective inpatient surgery influences postoperative outcomes using the N3C  
211 Data Enclave—a harmonized electronic health data platform comprising over 70  
212 institutions and more than 18,000,000 patients<sup>10</sup>. Our findings demonstrate that a prior  
213 history of COVID-19 is an independent risk factor for adverse surgical outcomes, and  
214 the risk remains elevated for 12 weeks after a SARS-CoV-2 infection; however, this is  
215 dependent on the severity of COVID-19. Patients with mild disease (not requiring  
216 hospitalization) did not have an elevated risk of adverse outcomes regardless of the  
217 timing of surgery. Those with moderate and severe disease had persistently elevated  
218 surgical risk that lasted 12+ weeks after an acute infection.

219 The results of this study are consistent with prior work examining surgical outcomes in  
220 patients with a history of SARS-CoV-2 infection conducted early in the pandemic. The  
221 COVIDSurg Collaborative, a multinational collaborative that aimed to explore the impact  
222 of COVID-19 in surgical patients and services, published the first population-level study  
223 assessing surgical outcomes following a SARS-CoV-2 infection. They found an  
224 increased risk of surgical mortality that lasted for 7 weeks following an acute infection<sup>7</sup>.  
225 Another large-scale study by Deng and colleagues confirmed these findings in a United  
226 States population and advocated for a wait time of 8 weeks from the time of a SARS-  
227 CoV-2 infection before proceeding with elective surgery<sup>5</sup>. In response to these data  
228 (and other similar findings from single institution series), expert guidelines suggested  
229 delaying elective surgery 7 weeks while weighing the time-sensitivity of the  
230 intervention<sup>13</sup>. These studies and guidelines were crucial given the novel situation

231 perioperative providers were faced with early in the COVID-19 pandemic as an  
232 increasing number of patients with prior SARS-CoV-2 infection required elective  
233 surgery.

234 Still, several gaps remain in the evidence base for guiding the management of this  
235 patient population which are now addressed by this study. We re-demonstrate the risk  
236 for adverse 30-day composite postoperative outcomes remains elevated for 8 weeks  
237 after a SARS-CoV-2 infection; however, when stratified by severity, this risk only is  
238 present in those recovered from moderate and severe infections (anyone who required  
239 hospitalization). Those with mild disease were not at increased risk of composite  
240 adverse outcomes even when undergoing surgery within 4 weeks of an acute infection  
241 which is consistent with prior work<sup>8</sup>. We also provide a more detailed measurement of  
242 the association across a spectrum of specific postoperative complications. For example,  
243 patients with mild disease had no increased odds for all assessed adverse events,  
244 moderate disease showed elevated risk for all assessed complications, while those with  
245 severe disease had increased odds of all assessed complications with a magnitude of  
246 effect multiple-fold greater. This study also provides evidence that vaccination can  
247 reduce the risk of adverse postoperative events in patients with a prior history of  
248 COVID-19.

249 The data presented in this study include patients who underwent surgery prior to March  
250 2023 and thus reflects the current environment as the pandemic shifts to an endemic  
251 phase. As a comparison, data collected for the COVIDSurg study was in October of  
252 2020, and the Deng et al. study of patients in the United States included surgeries  
253 performed until June of 2021. Equipped with the updated data presented in this study,

254 we propose the following guidance for managing patients prior to inpatient elective  
255 surgery. First, all patients who are planned to undergo surgery should be assessed for  
256 their history of COVID-19, including detailed information regarding the severity of their  
257 infection. Those with a prior history should be classified as having either  
258 asymptomatic/mild disease or moderate/severe disease. After this determination is  
259 made, patients with asymptomatic/mild disease should have their surgery delayed at  
260 least 5 days from the time of positive test to ensure they do not develop progressive  
261 symptoms that increase the severity of illness. If they remain asymptomatic/mild after  
262 this wait time, our data supports the safety of proceeding with elective surgery.  
263 However, if the patient has moderate/severe disease or develops moderate/severe  
264 disease, then consideration should be made for delaying surgery while also considering  
265 the risk/benefit ratio of potential harms related to a prolonged delay in circumstances of  
266 time-sensitive surgical indications. Since we do not observe a return to baseline risk  
267 even beyond 12 weeks in patients with moderate/severe disease, no standard time for  
268 delay can be recommended. Instead, we advocate for early engagement with  
269 perioperative medicine teams and/or dedicated long COVID clinics to identify strategies  
270 for optimal risk reduction and provide objective assessment of physiologic recovery prior  
271 to proceeding with surgery. At our institution, all patients with a history of  
272 moderate/severe disease are recommended to be referred to preoperative clinic for  
273 assessment prior to procedure to assess for recovery and help collaboratively  
274 determine the optimal timing for surgery. Developing and applying machine  
275 learning/artificial intelligence tools using the N3C Data Enclave are active areas of work

276 in our group to help provide more specific guidance for patients with a history of  
277 moderate or severe SARS-CoV-2 infection.

278 There are several limitations to our study that must be carefully considered when  
279 interpreting the results. The use of electronic health record data within N3C Data  
280 Enclave may introduce biases that are well-described in prior studies<sup>14</sup>. Methods  
281 specific to N3C can help manage several of these through rigorous data  
282 standardization, a highly engaged user community, and a centralized platform for  
283 handling all data-related tasks including extraction, processing, and analyses. Another  
284 source of bias is the selection of patients to undergo surgery after recovering from a  
285 prior COVID-19 infection. Detailed information on preoperative evaluation, indications,  
286 and rationale for proceeding with surgery prior to 7 weeks in patients with prior COVID-  
287 19 is not available. Additionally, we were unable to directly measure the association  
288 between SARS-CoV-2 variants and outcomes—though, this likely is indirectly  
289 accounted for in analyses that include severity. Despite these potential shortcomings,  
290 leveraging the largest COVID-19-specific national data provides a unique opportunity to  
291 help guide the management of patients with previous SARS-CoV-2 infections  
292 undergoing elective surgery.

293 In conclusion, prior COVID-19 infection is a risk factor for adverse postoperative  
294 outcomes following major inpatient elective surgery. The magnitude and duration of this  
295 risk is dependent on the severity of COVID-19 infection and is reduced in vaccinated  
296 patients. As the pandemic transitions to an endemic phase, the results of this study  
297 emphasize a one-sized-fits-all approach to risk stratification in this patient population

298 can lead to unnecessary surgical delays, and consensus guidelines should be updated  
299 to include consideration of COVID-19 disease severity and vaccination status.

300

301

302

303

304

305

306

307

308

309

## 310 REFERENCES

- 311 1. Johns Hopkins Coronavirus Resource Center. [https://coronavirus.jhu.edu/us-](https://coronavirus.jhu.edu/us-map)  
312 [map](https://coronavirus.jhu.edu/us-map). Accessed.
- 313 2. El-Boghdady K, Cook TM, Goodacre T, et al. SARS-CoV-2 infection, COVID-19  
314 and timing of elective surgery: A multidisciplinary consensus statement on behalf  
315 of the Association of Anaesthetists, the Centre for Peri-operative Care, the  
316 Federation of Surgical Specialty Associations, the Royal College of Anaesthetists  
317 and the Royal College of Surgeons of England. *Anaesthesia*. 2021;76(7):940-  
318 946.
- 319 3. Collaborative CO. Outcomes and Their State-level Variation in Patients  
320 Undergoing Surgery With Perioperative SARS-CoV-2 Infection in the USA: A  
321 Prospective Multicenter Study. *Ann Surg*. 2022;275(2):247-251.
- 322 4. Collaborative CO. Mortality and pulmonary complications in patients undergoing  
323 surgery with perioperative SARS-CoV-2 infection: an international cohort study.  
324 *Lancet*. 2020;396(10243):27-38.
- 325 5. Deng JZ, Chan JS, Potter AL, et al. The Risk of Postoperative Complications  
326 After Major Elective Surgery in Active or Resolved COVID-19 in the United  
327 States. *Ann Surg*. 2022;275(2):242-246.
- 328 6. Verhagen NB, Koerber NK, Szabo A, et al. Vaccination Against SARS-CoV-2  
329 Decreases Risk of Adverse Events in Patients who Develop COVID-19 Following  
330 Cancer Surgery. *Ann Surg Oncol*. 2022:1-4.
- 331 7. Collaborative CO, GlobalSurg C. Timing of surgery following SARS-CoV-2  
332 infection: an international prospective cohort study. *Anaesthesia*. 2021;76(6):748-  
333 758.
- 334 8. SenthilKumar G, Verhagen NB, Sheriff SA, et al. Preoperative SARS-CoV-2  
335 Infection Increases Risk of Early Postoperative Cardiovascular Complications  
336 Following Non-Cardiac Surgery. *American Journal of Physiology - Heart and*  
337 *Circulatory Physiology*. 2023;Accepted. In Press.
- 338 9. Al Ani A, Tahtamoni R, Mohammad Y, Al-Ayoubi F, Haider N, Al-Mashhadi A.  
339 Impacts of severity of Covid-19 infection on the morbidity and mortality of surgical  
340 patients. *Ann Med Surg (Lond)*. 2022;79:103910.
- 341 10. Haendel MA, Chute CG, Bennett TD, et al. The National COVID Cohort  
342 Collaborative (N3C): Rationale, design, infrastructure, and deployment. *J Am*  
343 *Med Inform Assoc*. 2021;28(3):427-443.
- 344 11. Characterisation WHOWGotC, Management of C-i. A minimal common outcome  
345 measure set for COVID-19 clinical research. *Lancet Infect Dis*. 2020;20(8):e192-  
346 e197.
- 347 12. Bennett TD, Moffitt RA, Hajagos JG, et al. Clinical Characterization and  
348 Prediction of Clinical Severity of SARS-CoV-2 Infection Among US Adults Using  
349 Data From the US National COVID Cohort Collaborative. *JAMA Netw Open*.  
350 2021;4(7):e2116901.
- 351 13. ASA and APSF Joint Statement on Elective Surgery/Procedures and Anesthesia  
352 for Patients after COVID-19 Infection. 2022. [https://www.asahq.org/about-](https://www.asahq.org/about-asa/newsroom/news-releases/2022/02/asa-and-apsf-joint-statement-on-elective-surgery-procedures-and-anesthesia-for-patients-after-covid-19-infection)  
353 [asa/newsroom/news-releases/2022/02/asa-and-apsf-joint-statement-on-elective-](https://www.asahq.org/about-asa/newsroom/news-releases/2022/02/asa-and-apsf-joint-statement-on-elective-surgery-procedures-and-anesthesia-for-patients-after-covid-19-infection)  
354 [surgery-procedures-and-anesthesia-for-patients-after-covid-19-infection](https://www.asahq.org/about-asa/newsroom/news-releases/2022/02/asa-and-apsf-joint-statement-on-elective-surgery-procedures-and-anesthesia-for-patients-after-covid-19-infection).

- 355 14. Verheij RA, Curcin V, Delaney BC, McGilchrist MM. Possible Sources of Bias in  
356 Primary Care Electronic Health Record Data Use and Reuse. *J Med Internet*  
357 *Res.* 2018;20(5):e185.  
358



359 **TABLES AND FIGURES**

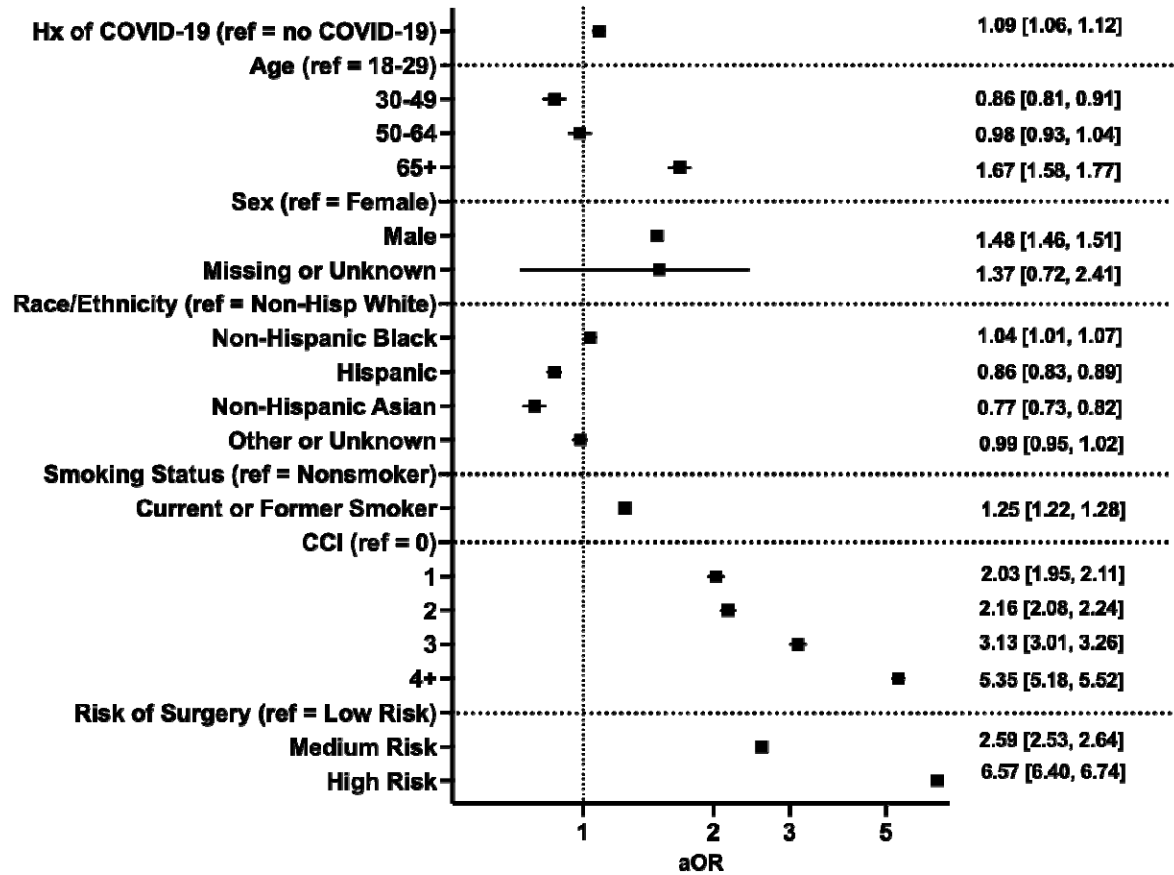
360 **Table 1. Patient characteristics and 30-day postoperative adverse outcomes in**  
 361 **patients with and without preoperative COVID-19**  
 362

Characteristics	No Hx of COVID-19 (N = 349,676), No. (%)	Hx of COVID-19 (N = 37,354), No. (%)	P value
<b>Patient Characteristics</b>			
Age, years			
<b>Median, (Q1-Q3)</b>	63 (52, 72)	61 (49, 70)	<0.001
<b>18-29</b>	15166 (4.3%)	1625 (4.4%)	<0.001
<b>30-49</b>	60828 (17%)	7734 (21%)	
<b>50-64</b>	111160 (32%)	12838 (34%)	
<b>65+</b>	162522 (46%)	15157 (41%)	
Sex			<0.001
<b>Female</b>	190052 (54%)	‡20952 (≈56%)	
<b>Male</b>	159505 (46%)	‡16399 (≈44%)	
<b>Missing or Unknown</b>	119 (<0.1%)	20 or fewer	
Race and Ethnicity			<0.001
<b>Non-Hispanic White</b>	257334 (74%)	25833 (69%)	
<b>Non-Hispanic Black</b>	42740 (12%)	4867 (13%)	
<b>Non-Hispanic Asian</b>	8395 (2.4%)	810 (2.2%)	
<b>Hispanic</b>	21325 (6.1%)	3625 (9.1%)	
<b>Other or Unknown</b>	19930 (5.7%)	2403 (6.4%)	
Smoking Status			<0.001
<b>Nonsmoker</b>	304141 (86%)	33151 (89%)	
<b>Current or Former Smoker</b>	47716 (14%)	4203 (11%)	
Charlson Comorbidity Index (CCI)			<0.001
<b>0</b>	72432 (21%)	6772 (18%)	
<b>1</b>	42341 (12%)	4412 (12%)	
<b>2</b>	63704 (18%)	6343 (17%)	
<b>3</b>	38900 (11%)	4275 (11%)	
<b>4+</b>	132299 (38%)	15552 (42%)	
Comorbidities			
<b>CKD</b>	22374 (6.4%)	3862 (10%)	<0.001
<b>CHF</b>	20816 (6.0%)	3454 (9.2%)	<0.001
<b>COPD</b>	21089 (6.0%)	3134 (8.4%)	<0.001
<b>Coronary Artery Disease</b>	39221 (11%)	5852 (16%)	<0.001
<b>Depression</b>	35956 (10%)	5875 (16%)	<0.001
<b>Diabetes</b>	41584 (12%)	7144 (19%)	<0.001
<b>GERD</b>	58830 (17%)	9432 (25%)	<0.001

<b>Hypertension</b>	100981 (29%)	14669 (39%)	<0.001
<b>Liver Disease</b>	5730 (1.6%)	977 (2.6%)	<0.001
<b>Obesity</b>	51446 (15%)	8920 (24%)	<0.001
Relative Risk of Surgery			0.058
<b>Low Risk</b>	134385 (38%)	14364 (38%)	
<b>Medium Risk</b>	166702 (48%)	17642 (47%)	
<b>High Risk</b>	48589 (14%)	5348 (14%)	
Vaccine Status			<0.001
<b>Fully Vaccinated</b>	48441 (14%)	5381 (14%)	
<b>Non-Fully Vaccinated</b>	301235 (86%)	31973 (86%)	
<b>30-day postoperative adverse outcomes</b>			
Composite Adverse Event	75075 (21.5%)	8493 (22.7%)	<0.001
Mortality	4791 (1.4%)	666 (1.8%)	<0.001
Hospital Readmission	38175 (11%)	4248 (11%)	0.008
Any Non-Fatal Complication	73555 (21%)	8257 (22%)	<0.001
Acute Myocardial Infarction	9089 (2.6%)	1020 (2.7%)	0.13
Cardiac Arrhythmia	34326 (9.8%)	3752 (10%)	0.16
Deep Vein Thrombosis	4648 (1.3%)	532 (1.4%)	0.13
Pneumonia	9623 (2.8%)	1093 (2.9%)	0.053
Pulmonary Embolism	4296 (1.2%)	519 (1.4%)	0.008
Renal Failure	22488 (6.4%)	2592 (6.9%)	<0.001
Respiratory Failure	18862 (5.4%)	2017 (5.4%)	0.97
Sepsis	10244 (2.9%)	1188 (3.2%)	0.007
Urinary Tract Infection	9662 (2.8%)	1045 (2.8%)	0.71

363 ‡ To comply with N3C policy, counts below 20 are displayed as <20 and additional  
364 values were skewed by up to 5 in order to render it impossible to back-calculate  
365 precise counts in the 'Missing or Unknown' category. Hx: history; CKD: chronic  
366 kidney disease; CHF: congestive heart failure; COPD: chronic obstructive  
367 pulmonary disease; GERD: gastroesophageal reflux disease.  
368  
369  
370

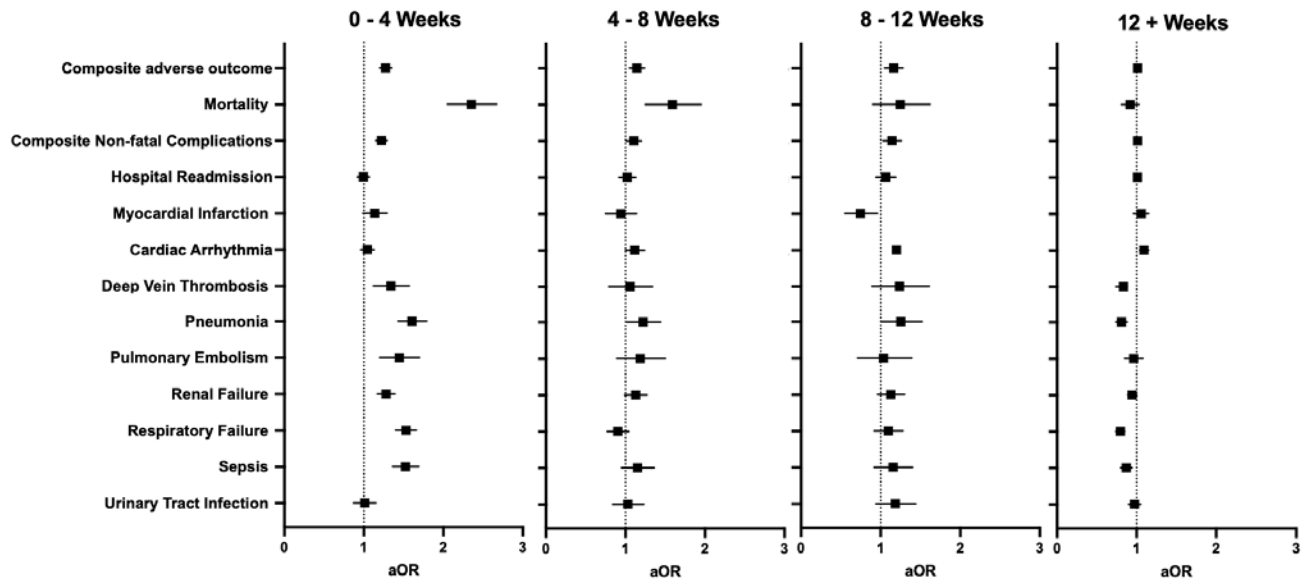
371 **Figure 1.** Multivariable regression assessing the association between prior history of  
 372 COVID-19 and composite 30-day postoperative adverse event. Hx: history; CCI:  
 373 Charlson Comorbidity Index; aOR: adjusted odds ratio (with 95% confidence interval).  
 374



375  
 376

377

378 **Figure 2.** Multivariable regression assessing the association between timing of infection  
379 relative to surgery and 30-day postoperative adverse events. All models adjusted for  
380 age, sex, race and ethnicity, smoking status, comorbid disease, and relative risk of  
381 surgery. aOR: adjusted odds ratio (with 95% confidence interval).  
382



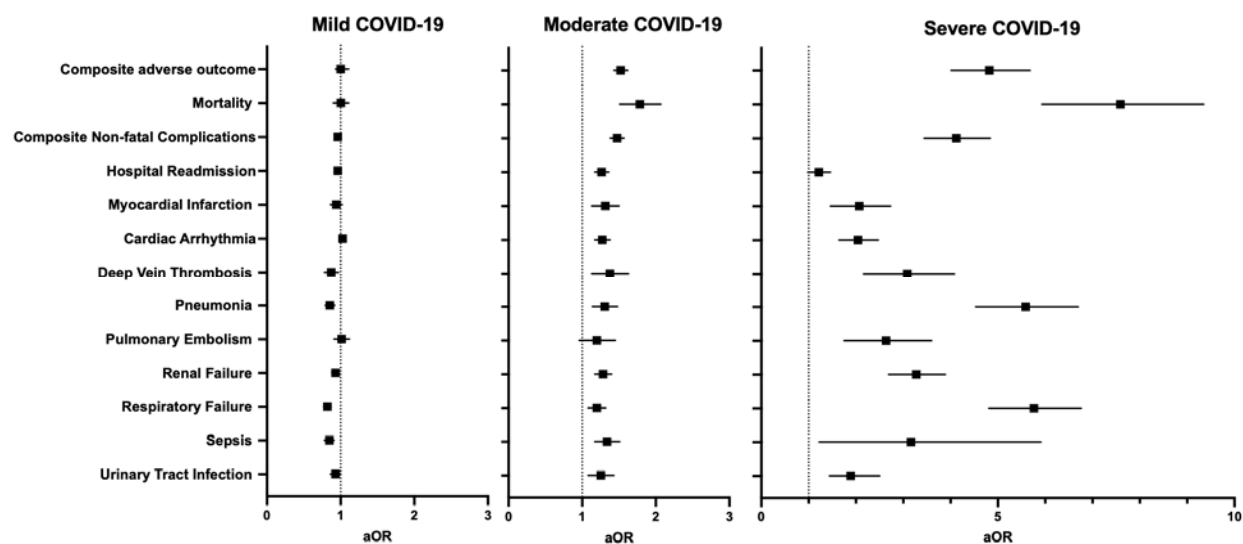
383

384

385

386

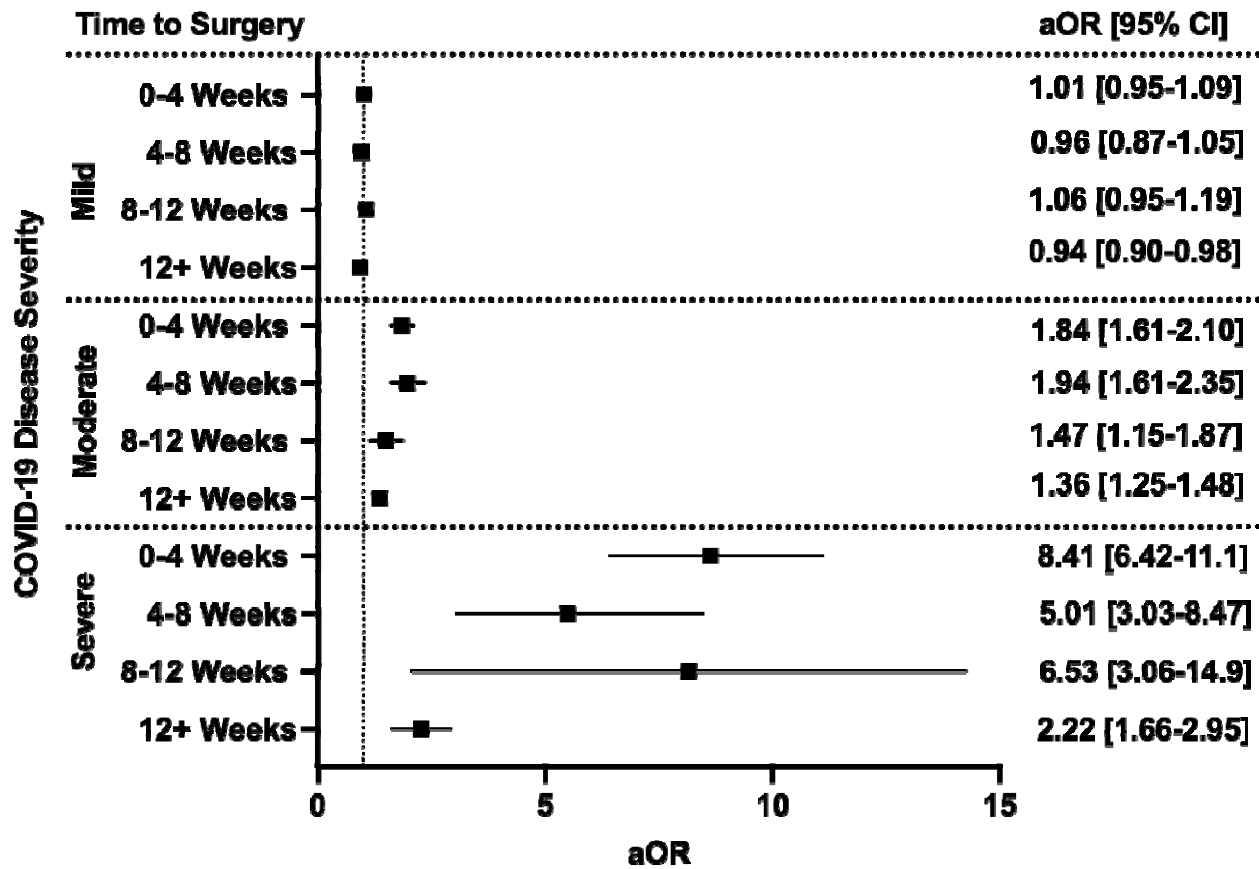
387 **Figure 3.** Multivariable regression assessing the association between COVID-19  
388 disease severity and 30-day postoperative adverse outcomes. All models adjusted for  
389 age, sex, race and ethnicity, smoking status, comorbid disease, and relative risk of  
390 surgery. aOR: adjusted odds ratio (with 95% confidence interval).  
391



392

393

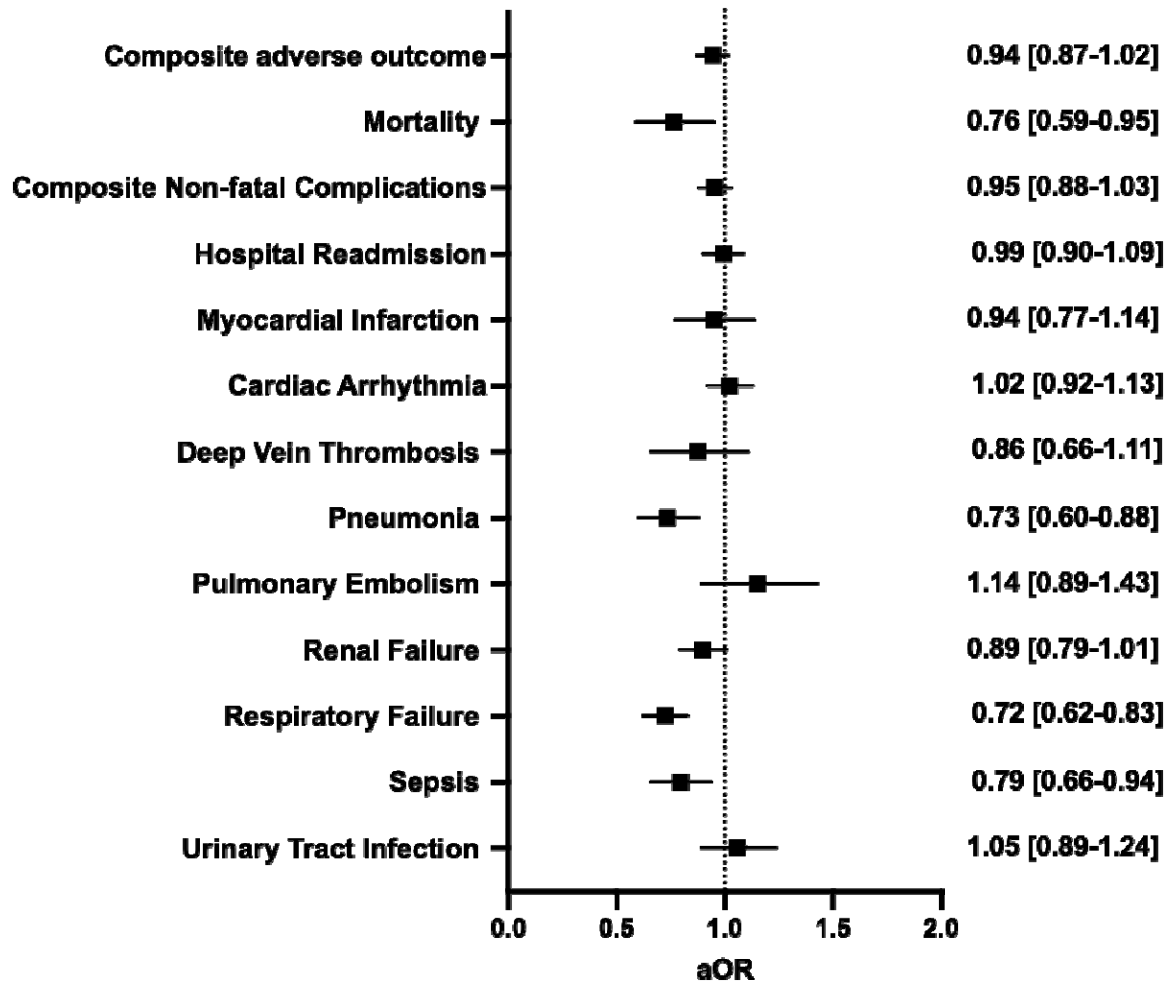
394 **Figure 4.** The interplay between timing of surgery and COVID-19 disease severity in  
 395 influencing odds of composite 30-day postoperative adverse events. All models  
 396 adjusted for age, sex, race and ethnicity, smoking status, Charlson Comorbidity Index,  
 397 and relative risk of surgery. aOR: adjusted odds ratio (with 95% confidence interval).  
 398



399

400

401 **Figure 5.** Multivariable regression assessing the association between full vaccination in  
402 patients with a history of COVID-19 and 30-day postoperative adverse events. All  
403 models adjusted for age, sex, race and ethnicity, smoking status, Charlson Comorbidity  
404 Index, and relative risk of surgery. aOR: adjusted odds ratio (with 95% confidence  
405 interval).  
406



407  
408  
409  
410

411 **SUPPLEMENTARY DATA**

412

413 **Supplemental Table 1: Surgical Procedures and associated risk**

414

<b>Procedure Name</b>	<b>Surgery N=387,030 (%)</b>	<b>SNOMED Code</b>
Low Risk		
<b>Hip Arthroplasty</b>	5480 (1.4%)	52734007
<b>Knee Arthroplasty</b>	6034 (1.6%)	609588000
<b>Laminectomy</b>	44462 (11%)	387731002
<b>Mastectomy</b>	75714 (20%)	69031006
<b>Prostatectomy</b>	17059 (4.4%)	90470006
Medium Risk		
<b>Aortic Aneurysm Repair</b>	4881 (1.3%)	233370007
<b>Colectomy</b>	46059 (12%)	23968004
<b>Craniectomy</b>	29201 (7.5%)	36910002
<b>Gastrectomy</b>	7903 (2.0%)	53442002
<b>Lung Excision</b>	17353 (4.5%)	119746007
<b>Spinal Arthrodesis</b>	78947 (20%)	55705006
High Risk		
<b>Coronary Artery Bypass Graft</b>	37492 (9.7%)	232717009
<b>Esophagectomy</b>	1538 (0.4%)	45900003
<b>Hepatectomy</b>	8495 (2.2%)	107963000
<b>Pancreatectomy</b>	6412 (1.7%)	33149006

415

416

417



418 **Supplemental Table 2: Patient comorbidities**

419

<b>Preoperative Comorbidities</b>	<b>SNOMED Codes</b>
Chronic Kidney Disease	709044004
Chronic Obstructive Pulmonary Disease	13645005
Coronary Artery Disease	53741008
Depression	370143000
Diabetes	73211009
Gastroesophageal Reflux Disease	235595009
Heart Failure	84114007
Hypertension	59621000
Liver Disease	328383001
Obesity	414916001

420

421

422 **Supplemental Table 3: Postoperative Complications**

423

<b>Postoperative Complications</b>	<b>SNOMED Codes</b>
Acute Myocardial Infarction	57054005
Cardiac Arrhythmia	698247007
Deep Vein Thrombosis	128053003
Pneumonia	233604007
Pulmonary Embolism	59282003
Renal Failure	42399005
Respiratory Failure	409622000
Sepsis	91302008
Urinary Tract Infection	68566005

424

425

426

427 **Supplemental Table 4. Comparison of 30-day postoperative adverse events based**  
 428 **on surgical timing relative to COVID-19**  
 429

Outcomes	No History of COVID-19 (N = 352,947)	0–4 Weeks Post-COVID-19 (N = 7,425)	4–8 Weeks Post-COVID-19 (N = 3,936)	8–12 Weeks Post COVID-19 (N = 2,604)	12+ Weeks Post COVID-19 (N = 23,389)	P value
Mortality	4791 (1.4%)	246 (3.3%)	83 (2.1%)	47 (1.8%)	290 (1.2%)	<0.001
LOS	2 (0, 6)	4 (1, 8)	2 (0, 6)	3 (0, 6)	2 (0, 5)	<0.001
Hospital Readmission	38175 (11%)	848 (11%)	458 (12%)	318 (12%)	2622 (11%)	0.057
Any Non-Fatal Complication	73555 (21%)	1914 (26%)	890 (23%)	625 (24%)	4828 (21%)	<0.001
Acute Myocardial Infarction	9089 (2.6%)	271 (3.6%)	100 (2.5%)	57 (2.2%)	592 (2.5%)	<0.001
Cardiac Arrhythmia	34326 (9.8%)	803 (11%)	409 (10%)	286 (11%)	2254 (9.6%)	0.006
Deep Vein Thrombosis	4648 (1.3%)	142 (1.9%)	57 (1.4%)	46 (1.8%)	287 (1.2%)	<0.001
Pneumonia	9623 (2.8%)	348 (4.7%)	131 (3.3%)	95 (3.6%)	519 (2.2%)	<0.001
Pulmonary Embolism	4296 (1.2%)	137 (1.8%)	58 (1.5%)	35 (1.3%)	289 (1.2%)	<0.001
Renal Failure	22488 (6.4%)	654 (8.8%)	288 (7.3%)	204 (7.8%)	1446 (6.2%)	<0.001
Respiratory Failure	18862 (5.4%)	655 (8.8%)	197 (5.0%)	164 (6.3%)	1001 (4.3%)	<0.001
Sepsis	10244 (2.9%)	346 (4.7%)	134 (3.4%)	95 (3.6%)	613 (2.6%)	<0.001
Urinary Tract Infection	9662 (2.8%)	208 (2.8%)	110 (2.8%)	88 (3.4%)	639 (2.7%)	0.43

430  
431

432 **Supplemental Table 5.** Multivariable regression assessing the impact of timing of  
 433 infection relative to surgery on risk on composite and specific 30-day postoperative  
 434 adverse outcomes. All models adjusted for age, sex, race and ethnicity, smoking status,  
 435 and relative risk of surgery.  
 436

	<b>0–4 weeks (N = 7,425)</b>		<b>4–8 weeks (N = 3,936)</b>		<b>8–12 weeks (N = 2,604)</b>		<b>12+ Weeks (N = 23,389)</b>	
<b>Composite 30-day postoperative outcome</b>	1.27	[1.20-1.35]	1.14	[1.05-1.24]	1.16	[1.05-1.28]	1.01	[0.98-1.05]
<b>Mortality</b>	2.34	[2.05-2.67]	1.57	[1.25-1.95]	1.22	[0.90-1.62]	0.92	[0.81-1.03]
<b>Composite Non-fatal Complications</b>	1.22	[1.15-1.29]	1.10	[1.01-1.20]	1.14	[1.03-1.26]	1.01	[0.98-1.05]
<b>Hospital Readmission</b>	0.99	[0.92-1.07]	1.02	[0.92-1.13]	1.06	[0.94-1.19]	1.01	[0.97-1.05]
<b>Myocardial Infarction</b>	1.13	[0.99-1.29]	0.93	[0.75-1.14]	0.73	[0.55-0.96]	1.06	[0.96-1.15]
<b>Cardiac Arrhythmia</b>	1.04	[0.96-1.13]	1.11	[1.00-1.24]	1.15	[1.00-1.31]	1.09	[1.04-1.15]
<b>Deep Vein Thrombosis</b>	1.33	[1.12-1.57]	1.04	[0.79-1.34]	1.21	[0.89-1.61]	0.88	[0.78-0.99]
<b>Pneumonia</b>	1.60	[1.43-1.79]	1.21	[1.01-1.44]	1.24	[1.00-1.52]	0.81	[0.74-0.88]
<b>Pulmonary Embolism</b>	1.44	[1.20-1.70]	1.17	[0.89-1.50]	1.01	[0.71-1.39]	0.96	[0.85-1.08]
<b>Renal Failure</b>	1.28	[1.17-1.39]	1.13	[0.99-1.27]	1.12	[0.96-1.30]	0.94	[0.89-1.00]
<b>Respiratory Failure</b>	1.53	[1.40-1.66]	0.90	[0.77-1.04]	1.09	[0.92-1.28]	0.80	[0.74-0.85]
<b>Sepsis</b>	1.52	[1.36-1.69]	1.14	[0.95-1.36]	1.15	[0.92-1.40]	0.87	[0.80-0.94]
<b>Urinary Tract Infection</b>	1.01	[0.87-1.15]	1.02	[0.84-1.23]	1.17	[0.94-1.44]	0.97	[0.90-1.05]

437  
 438

439 **Supplemental Table 6. Comparison of specific 30-day postoperative adverse**  
 440 **events based on COVID-19 Severity.**  
 441

Postoperative Complications	No History of COVID-19 (N = 351,857)	Mild Outpatient WHO Severity 1–3 (N = 31,677)	Moderate Hospitalized without invasive ventilation WHO Severity 4–6 (N= 5,009)	Severe Hospitalized with invasive ventilation or ECMO WHO Severity 7–9 (N= 655)	P value
Mortality	4791 (1.4%)	403 (1.3%)	169 (3.4%)	94 (14%)	<0.001
LOS	2 (0, 6)	2 (0, 5)	4 (1, 9)	12 (4, 29)	<0.001
Hospital Readmission	38175 (11%)	3293 (10%)	832 (17%)	121 (18%)	<0.001
Any Non-Fatal Complication	73555 (21%)	6110 (19%)	1746 (35%)	396 (60%)	<0.001
Acute Myocardial Infarction	9089 (2.6%)	723 (2.3%)	243 (4.9%)	53 (8.1%)	<0.001
Cardiac Arrhythmia	34326 (9.8%)	2856 (9.0%)	751 (15%)	142 (22%)	<0.001
Deep Vein Thrombosis	4648 (1.3%)	364 (1.1%)	126 (2.5%)	42 (6.4%)	<0.001
Pneumonia	9623 (2.8%)	704 (2.2%)	249 (5.0%)	138 (21%)	<0.001
Pulmonary Embolism	4296 (1.2%)	388 (1.2%)	99 (2.0%)	32 (4.9%)	<0.001
Renal Failure	22488 (6.4%)	1822 (5.8%)	588 (12%)	180 (27%)	<0.001
Respiratory Failure	18862 (5.4%)	1338 (4.2%)	448 (8.9%)	228 (35%)	<0.001
Sepsis	10244 (2.9%)	764 (2.4%)	271 (5.4%)	151 (23%)	<0.001
Urinary Tract Infection	9662 (2.8%)	791 (2.5%)	214 (4.3%)	39 (6.0%)	<0.001

442

443 **Supplemental Table 7.** Multivariable regression assessing the impact of COVID-19  
 444 disease severity on composite and specific 30-day postoperative adverse outcomes. All  
 445 models adjusted for age, sex, race and ethnicity, smoking status, and relative risk of  
 446 surgery.  
 447

	<b>Mild (N = 31,677)</b>	<b>Moderate (N = 5,009)</b>	<b>Severe (N = 655)</b>
<b>Composite 30-day postoperative outcome</b>	0.96 [0.93-1.00]	1.52 [1.43-1.62]	4.76 [4.01-5.68]
<b>Mortality</b>	1.00 [0.90-1.11]	1.77 [1.51-2.07]	7.49 [5.93-9.35]
<b>Composite Non-fatal Complications</b>	0.96 [0.93-0.99]	1.47 [1.38-1.57]	4.08 [3.44-4.84]
<b>Hospital Readmission</b>	0.96 [0.92-1.00]	1.26 [1.17-1.36]	1.20 [0.98-1.46]
<b>Myocardial Infarction</b>	0.94 [0.86-1.02]	1.31 [1.13-1.50]	2.02 [1.46-2.73]
<b>Cardiac Arrhythmia</b>	1.03 [0.98-1.07]	1.27 [1.17-1.38]	2.02 [1.64-2.47]
<b>Deep Vein Thrombosis</b>	0.87 [0.78-0.97]	1.37 [1.13-1.63]	3.01 [2.16-4.08]
<b>Pneumonia</b>	0.85 [0.79-0.92]	1.30 [1.14-1.48]	5.53 [4.53-6.70]
<b>Pulmonary Embolism</b>	1.01 [0.91-1.12]	1.19 [0.96-1.45]	2.56 [1.75-3.60]
<b>Renal Failure</b>	0.93 [0.88-0.98]	1.28 [1.17-1.40]	3.24 [2.69-3.89]
<b>Respiratory Failure</b>	0.82 [0.77-0.87]	1.20 [1.08-1.32]	5.71 [4.81-6.76]
<b>Sepsis</b>	0.85 [0.78-0.91]	1.33 [1.17-1.51]	5.91 [4.88-7.12]
<b>Urinary Tract Infection</b>	0.93 [0.86-1.00]	1.25 [1.08-1.43]	1.72 [1.22-2.36]

448

449

450

451 **Supplemental Table 8.** Comparison of specific 30-day postoperative adverse events  
452 based on vaccination in patients with COVID-19.

<b>Postoperative Complications</b>	<b>Non-Fully Vaccinated (N = 31,973), No. (%)</b>	<b>Fully Vaccinated (N = 5,381), No. (%)</b>	<b>P value</b>
<b>Mortality</b>	585 (1.8%)	81 (1.5%)	0.11
<b>LOS</b>	2 (0, 6)	3 (0, 6)	0.014
<b>Hospital Readmission</b>	3644 (11%)	604 (11%)	0.73
<b>Any Non-Fatal Complication</b>	7072 (22%)	1185 (22%)	0.89
<b>Acute Myocardial Infarction</b>	892 (2.8%)	128 (2.4%)	0.10
<b>Cardiac Arrhythmia</b>	3172 (9.9%)	580 (11%)	0.056
<b>Deep Vein Thrombosis</b>	465 (1.5%)	67 (1.2%)	0.26
<b>Pneumonia</b>	970 (3.0%)	123 (2.3%)	0.003
<b>Pulmonary Embolism</b>	434 (1.4%)	85 (1.6%)	0.22
<b>Renal Failure</b>	2245 (7.0%)	347 (6.4%)	0.13
<b>Respiratory Failure</b>	1792 (5.6%)	225 (4.2%)	<0.001
<b>Sepsis</b>	1042 (3.3%)	146 (2.7%)	0.039
<b>Urinary Tract Infection</b>	873 (2.7%)	172 (3.2%)	0.061

453

454

455

456

457 **DISCLAIMER**

458 The N3C Publication committee confirmed that this manuscript (MSID: 1004.67) is in  
459 accordance with N3C data use and attribution policies; however, the content is solely the  
460 responsibility of the authors and does not necessarily represent the official views of the NIH.  
461 Authorship was determined using ICMJE recommendations.

462  
463 **ACKNOWLEDGEMENT**

464 The analyses described in this publication were conducted under the DUR RP-A39709 and IRB  
465 #PRO00042159 with data or tools accessed through the NCATS N3C Data Enclave  
466 [covid.cd2h.org/enclave](https://covid.cd2h.org/enclave) and supported by CD2H - The National COVID Cohort Collaborative  
467 (N3C) IDeA CTR Collaboration 3U24TR002306-04S2 NCATS U24 TR002306. The project  
468 described was supported by the National Center for Advancing Translational Sciences, National  
469 Institutes of Health, Award Number UL1 TR001436 and 3UL1TR001436-08S3. Additional  
470 funding support provided by Advancing a Healthier Wisconsin Endowment. This research was  
471 possible because of the patients whose information is included within the data from participating  
472 organizations ([covid.cd2h.org/dtas](https://covid.cd2h.org/dtas)) and the organizations and scientists ([covid.cd2h.org/duas](https://covid.cd2h.org/duas))  
473 who have contributed to the on-going development of this community resource  
474 (<https://doi.org/10.1093/jamia/ocaa196>).

475  
476 We gratefully acknowledge the following core contributors to N3C:

477 Adam B. Wilcox, Adam M. Lee, Alexis Graves, Alfred (Jerrod) Anzalone, Amin Manna, Amit  
478 Saha, Amy Olex, Andrea Zhou, Andrew E. Williams, Andrew Southerland, Andrew T. Girvin,  
479 Anita Walden, Anjali A. Sharathkumar, Benjamin Amor, Benjamin Bates, Brian Hendricks,  
480 Brijesh Patel, Caleb Alexander, Carolyn Bramante, Cavin Ward-Caviness, Charisse Madlock-  
481 Brown, Christine Suver, Christopher Chute, Christopher Dillon, Chunlei Wu, Clare Schmitt, Cliff  
482 Takemoto, Dan Housman, Davera Gabriel, David A. Eichmann, Diego Mazzotti, Don Brown,  
483 Eilis Boudreau, Elaine Hill, Elizabeth Zampino, Emily Carlson Marti, Emily R. Pfaff, Evan  
484 French, Farrukh M Koraisly, Federico Mariona, Fred Prior, George Sokos, Greg Martin, Harold  
485 Lehmann, Heidi Spratt, Hemalkumar Mehta, Hongfang Liu, Hythem Sidky, J.W. Awori Hayanga,  
486 Jami Pincavitch, Jaylyn Clark, Jeremy Richard Harper, Jessica Islam, Jin Ge, Joel Gagnier, Joel  
487 H. Saltz, Joel Saltz, Johanna Loomba, John Buse, Jomol Mathew, Joni L. Rutter, Julie A.  
488 McMurry, Justin Guinney, Justin Starren, Karen Crowley, Katie Rebecca Bradwell, Kellie M.  
489 Walters, Ken Wilkins, Kenneth R. Gersing, Kenrick Dwain Cato, Kimberly Murray, Kristin  
490 Kostka, Lavance Northington, Lee Allan Pyles, Leonie Misquitta, Lesley Cottrell, Lili Portilla,  
491 Mariam Deacy, Mark M. Bissell, Marshall Clark, Mary Emmett, Mary Morrison Saltz, Matvey B.  
492 Palchuk, Melissa A. Haendel, Meredith Adams, Meredith Temple-O'Connor, Michael G. Kurilla,  
493 Michele Morris, Nabeel Qureshi, Nasia Safdar, Nicole Garbarini, Noha Sharafeldin, Ofer Sadan,  
494 Patricia A. Francis, Penny Wung Burgoon, Peter Robinson, Philip R.O. Payne, Rafael Fuentes,  
495 Randeep Jawa, Rebecca Erwin-Cohen, Rena Patel, Richard A. Moffitt, Richard L. Zhu, Rishi  
496 Kamaleswaran, Robert Hurley, Robert T. Miller, Saiju Pyarajan, Sam G. Michael, Samuel  
497 Bozette, Sandeep Mallipattu, Satyanarayana Vedula, Scott Chapman, Shawn T. O'Neil, Soko  
498 Setoguchi, Stephanie S. Hong, Steve Johnson, Tellen D. Bennett, Tiffany Callahan, Umit  
499 Topaloglu, Usman Sheikh, Valery Gordon, Vignesh Subbian, Warren A. Kibbe, Wendy  
500 Hernandez, Will Beasley, Will Cooper, William Hillegass, Xiaohan Tanner Zhang. Details of  
501 contributions available at [covid.cd2h.org/core-contributors](https://covid.cd2h.org/core-contributors)

502  
503 The following institutions whose data is released or pending:

504 Available: Advocate Health Care Network — UL1TR002389: The Institute for Translational  
505 Medicine (ITM) • Boston University Medical Campus — UL1TR001430: Boston University  
506 Clinical and Translational Science Institute • Brown University — U54GM115677: Advance  
507 Clinical Translational Research (Advance-CTR) • Carilion Clinic — UL1TR003015: iTHRIV



508 Integrated Translational health Research Institute of Virginia • Charleston Area Medical Center  
509 — U54GM104942: West Virginia Clinical and Translational Science Institute (WVCTSI) •  
510 Children's Hospital Colorado — UL1TR002535: Colorado Clinical and Translational Sciences  
511 Institute • Columbia University Irving Medical Center — UL1TR001873: Irving Institute for  
512 Clinical and Translational Research • Duke University — UL1TR002553: Duke Clinical and  
513 Translational Science Institute • George Washington Children's Research Institute —  
514 UL1TR001876: Clinical and Translational Science Institute at Children's National (CTSA-CN) •  
515 George Washington University — UL1TR001876: Clinical and Translational Science Institute at  
516 Children's National (CTSA-CN) • Indiana University School of Medicine — UL1TR002529:  
517 Indiana Clinical and Translational Science Institute • Johns Hopkins University —  
518 UL1TR003098: Johns Hopkins Institute for Clinical and Translational Research • Loyola  
519 Medicine — Loyola University Medical Center • Loyola University Medical Center —  
520 UL1TR002389: The Institute for Translational Medicine (ITM) • Maine Medical Center —  
521 U54GM115516: Northern New England Clinical & Translational Research (NNE-CTR) Network •  
522 Massachusetts General Brigham — UL1TR002541: Harvard Catalyst • Mayo Clinic Rochester  
523 — UL1TR002377: Mayo Clinic Center for Clinical and Translational Science (CCaTS) • Medical  
524 University of South Carolina — UL1TR001450: South Carolina Clinical & Translational  
525 Research Institute (SCTR) • Montefiore Medical Center — UL1TR002556: Institute for Clinical  
526 and Translational Research at Einstein and Montefiore • Nemours — U54GM104941: Delaware  
527 CTR ACCEL Program • NorthShore University HealthSystem — UL1TR002389: The Institute for  
528 Translational Medicine (ITM) • Northwestern University at Chicago — UL1TR001422:  
529 Northwestern University Clinical and Translational Science Institute (NUCATS) • OCHIN — INV-  
530 018455: Bill and Melinda Gates Foundation grant to Sage Bionetworks • Oregon Health &  
531 Science University — UL1TR002369: Oregon Clinical and Translational Research Institute •  
532 Penn State Health Milton S. Hershey Medical Center — UL1TR002014: Penn State Clinical and  
533 Translational Science Institute • Rush University Medical Center — UL1TR002389: The Institute  
534 for Translational Medicine (ITM) • Rutgers, The State University of New Jersey —  
535 UL1TR003017: New Jersey Alliance for Clinical and Translational Science • Stony Brook  
536 University — U24TR002306 • The Ohio State University — UL1TR002733: Center for Clinical  
537 and Translational Science • The State University of New York at Buffalo — UL1TR001412:  
538 Clinical and Translational Science Institute • The University of Chicago — UL1TR002389: The  
539 Institute for Translational Medicine (ITM) • The University of Iowa — UL1TR002537: Institute for  
540 Clinical and Translational Science • The University of Miami Leonard M. Miller School of  
541 Medicine — UL1TR002736: University of Miami Clinical and Translational Science Institute •  
542 The University of Michigan at Ann Arbor — UL1TR002240: Michigan Institute for Clinical and  
543 Health Research • The University of Texas Health Science Center at Houston —  
544 UL1TR003167: Center for Clinical and Translational Sciences (CCTS) • The University of Texas  
545 Medical Branch at Galveston — UL1TR001439: The Institute for Translational Sciences • The  
546 University of Utah — UL1TR002538: Uhealth Center for Clinical and Translational Science •  
547 Tufts Medical Center — UL1TR002544: Tufts Clinical and Translational Science Institute •  
548 Tulane University — UL1TR003096: Center for Clinical and Translational Science • University  
549 Medical Center New Orleans — U54GM104940: Louisiana Clinical and Translational Science  
550 (LA CaTS) Center • University of Alabama at Birmingham — UL1TR003096: Center for Clinical  
551 and Translational Science • University of Arkansas for Medical Sciences — UL1TR003107:  
552 UAMS Translational Research Institute • University of Cincinnati — UL1TR001425: Center for  
553 Clinical and Translational Science and Training • University of Colorado Denver, Anschutz  
554 Medical Campus — UL1TR002535: Colorado Clinical and Translational Sciences Institute •  
555 University of Illinois at Chicago — UL1TR002003: UIC Center for Clinical and Translational  
556 Science • University of Kansas Medical Center — UL1TR002366: Frontiers: University of  
557 Kansas Clinical and Translational Science Institute • University of Kentucky — UL1TR001998:  
558 UK Center for Clinical and Translational Science • University of Massachusetts Medical School

559 Worcester — UL1TR001453: The UMass Center for Clinical and Translational Science  
560 (UMCCTS) • University of Minnesota — UL1TR002494: Clinical and Translational Science  
561 Institute • University of Mississippi Medical Center — U54GM115428: Mississippi Center for  
562 Clinical and Translational Research (CCTR) • University of Nebraska Medical Center —  
563 U54GM115458: Great Plains IDEA-Clinical & Translational Research • University of North  
564 Carolina at Chapel Hill — UL1TR002489: North Carolina Translational and Clinical Science  
565 Institute • University of Oklahoma Health Sciences Center — U54GM104938: Oklahoma Clinical  
566 and Translational Science Institute (OCTSI) • University of Rochester — UL1TR002001: UR  
567 Clinical & Translational Science Institute • University of Southern California — UL1TR001855:  
568 The Southern California Clinical and Translational Science Institute (SC CTSI) • University of  
569 Vermont — U54GM115516: Northern New England Clinical & Translational Research (NNE-  
570 CTR) Network • University of Virginia — UL1TR003015: iTHRIV Integrated Translational health  
571 Research Institute of Virginia • University of Washington — UL1TR002319: Institute of  
572 Translational Health Sciences • University of Wisconsin-Madison — UL1TR002373: UW  
573 Institute for Clinical and Translational Research • Vanderbilt University Medical Center —  
574 UL1TR002243: Vanderbilt Institute for Clinical and Translational Research • Virginia  
575 Commonwealth University — UL1TR002649: C. Kenneth and Dianne Wright Center for Clinical  
576 and Translational Research • Wake Forest University Health Sciences — UL1TR001420: Wake  
577 Forest Clinical and Translational Science Institute • Washington University in St. Louis —  
578 UL1TR002345: Institute of Clinical and Translational Sciences • Weill Medical College of Cornell  
579 University — UL1TR002384: Weill Cornell Medicine Clinical and Translational Science Center •  
580 West Virginia University — U54GM104942: West Virginia Clinical and Translational Science  
581 Institute (WVCTSI)  
582 Submitted: Icahn School of Medicine at Mount Sinai — UL1TR001433: ConduITS Institute for  
583 Translational Sciences • The University of Texas Health Science Center at Tyler —  
584 UL1TR003167: Center for Clinical and Translational Sciences (CCTS) • University of California,  
585 Davis — UL1TR001860: UC Davis Health Clinical and Translational Science Center • University  
586 of California, Irvine — UL1TR001414: The UC Irvine Institute for Clinical and Translational  
587 Science (ICTS) • University of California, Los Angeles — UL1TR001881: UCLA Clinical  
588 Translational Science Institute • University of California, San Diego — UL1TR001442: Altman  
589 Clinical and Translational Research Institute • University of California, San Francisco —  
590 UL1TR001872: UCSF Clinical and Translational Science Institute  
591 Pending: Arkansas Children's Hospital — UL1TR003107: UAMS Translational Research  
592 Institute • Baylor College of Medicine — None (Voluntary) • Children's Hospital of Philadelphia  
593 — UL1TR001878: Institute for Translational Medicine and Therapeutics • Cincinnati Children's  
594 Hospital Medical Center — UL1TR001425: Center for Clinical and Translational Science and  
595 Training • Emory University — UL1TR002378: Georgia Clinical and Translational Science  
596 Alliance • HonorHealth — None (Voluntary) • Loyola University Chicago — UL1TR002389: The  
597 Institute for Translational Medicine (ITM) • Medical College of Wisconsin — UL1TR001436:  
598 Clinical and Translational Science Institute of Southeast Wisconsin • MedStar Health Research  
599 Institute — UL1TR001409: The Georgetown-Howard Universities Center for Clinical and  
600 Translational Science (GHUCCTS) • MetroHealth — None (Voluntary) • Montana State  
601 University — U54GM115371: American Indian/Alaska Native CTR • NYU Langone Medical  
602 Center — UL1TR001445: Langone Health's Clinical and Translational Science Institute •  
603 Ochsner Medical Center — U54GM104940: Louisiana Clinical and Translational Science (LA  
604 CaTS) Center • Regenstrief Institute — UL1TR002529: Indiana Clinical and Translational  
605 Science Institute • Sanford Research — None (Voluntary) • Stanford University —  
606 UL1TR003142: Spectrum: The Stanford Center for Clinical and Translational Research and  
607 Education • The Rockefeller University — UL1TR001866: Center for Clinical and Translational  
608 Science • The Scripps Research Institute — UL1TR002550: Scripps Research Translational  
609 Institute • University of Florida — UL1TR001427: UF Clinical and Translational Science Institute

610 • University of New Mexico Health Sciences Center — UL1TR001449: University of New Mexico  
611 Clinical and Translational Science Center • University of Texas Health Science Center at San  
612 Antonio — UL1TR002645: Institute for Integration of Medicine and Science • Yale New Haven  
613 Hospital — UL1TR001863: Yale Center for Clinical Investigation  
614