

Long-term outcomes of COVID-19 infection in children and young people: a systematic review and meta-analysis

Authors:

Helen Twohig PhD, School of Medicine, Keele University, Staffordshire, UK, ST5 5BG

Ram Bajpai PhD, School of Medicine, Keele University, Staffordshire, UK, ST5 5BG

Nadia Corp PhD, School of Medicine, Keele University, Staffordshire, UK, ST5 5BG

Alice Faux-Nightingale MPhil, School of Medicine, Keele University, Staffordshire, UK, ST5 5BG

Christian Mallen PhD, School of Medicine, Keele University, Staffordshire, UK, ST5 5BG

Toni Robinson MBChB, School of Medicine, Keele University, Staffordshire, UK, ST5 5BG

Glenys Somayajula MBChB, School of Medicine, Keele University, Staffordshire, UK, ST5 5BG

Danielle Van der Windt PhD, School of Medicine, Keele University, Staffordshire, UK, ST5 5BG

Victoria Welsh PhD, School of Medicine, Keele University, Staffordshire, UK, ST5 5BG

Claire Burton PhD, School of Medicine, Keele University, Staffordshire, UK, ST5 5BG

Corresponding author:

Alice Faux-Nightingale

School of Medicine, Keele University, Staffordshire, UK, ST5 5BG

a.faux-nightingale@keele.ac.uk; 01782 733937

Long-term outcomes of COVID-19 infection in children and young people: a systematic review and meta-analysis

H Twohig, R Bajpai, N Corp, A Faux-Nightingale, CD Mallen, T Robinson, G Somayajula, D Van der Windt, V Welsh, C Burton

Summary

Background Children and young people (CYP) may experience prolonged symptoms following COVID-19, commonly termed 'Long-COVID'. The nature of this in CYP is unclear, as are the sequelae of acute COVID-19. We aimed to systematically synthesise evidence of the long-term outcomes of COVID-19 in CYP.

Methods 13 databases were searched until January 2022. Inclusion criteria: Observational studies reporting outcomes occurring four-weeks or more after COVID-19 in children <18 years old. Exclusion criteria: Outcomes of Paediatric Inflammatory Multisystem Syndrome. Title, abstract and full text screening were conducted independently by two reviewers. Data extraction and risk of bias assessment was by one reviewer with independent verification. Critical appraisal tools appropriate for study type were employed. Results were narratively synthesised with meta-analysis to generate summary estimates of risk of prolonged symptoms in CYP.

Findings 94 studies were included. 66 recruited from hospital settings, 8 recruited solely from community settings. >100 symptoms were reported, the most common being fatigue, headache and cognitive symptoms. Summary estimates of risk of prolonged symptoms were higher for hospital samples (31.2%, 95% CI 20.3% to 43.2%) than for community samples (4.6%, 95% CI 3.4% to 5.8). Sequelae including stroke, type-1 diabetes, Guillan-Barre syndrome, and persistent radiological or blood test abnormalities have been reported in CYP following COVID-19. Most studies reporting these are case reports / case series and quality of evidence is low.

Interpretation Prolonged symptoms following COVID-19 in children are variable and multi-system. Rates in community samples are lower than hospital. There is limited data on other sequelae in CYP. Heterogeneity in diagnosis of COVID-19, symptom classification, assessment method and duration of follow-up made synthesis less secure.

Funding HT, CB and GS have National Institute for Health and Care Research fellowships. RB, CM and VW are supported by the NIHR West Midlands Applied Research Collaboration. CM is supported by the NIHR School for Primary Care Research

Research in context panel

Evidence before this study

At the time of writing and to the best of our knowledge, the protocol for this systematic review was a novel endeavour to summarise the longer-term effects of COVID-19 in children and young people (CYP). At least three systematic reviews have since been published, summarising the symptom profile and prevalence of Long-COVID in CYP, but prevalence estimates vary widely and the evidence base remains uncertain. In addition, there is very limited information on other sequelae of COVID-19 in this population group.

We searched thirteen electronic databases (MEDLINE, EMBASE, AMED, HMIC, CINAHLPlus, PsycINFO, Web of Science (Science Citation and Social Science Citation indices), ASSIA, WHO COVID-

19: Global literature on coronavirus disease, Cochrane COVID-19 study register, ProQuest Coronavirus research database, NDLTD and OpenGrey) up to January 2022 for any empirical study including search terms pertaining to longer term symptoms of COVID-19 in CYP (<18 years old). The quality of the studies was mixed. Results were analysed narratively for each objective, and random effects meta-analyses conducted to estimate risk of prolonged symptoms in CYP who have had COVID-19.

Added value of this study

This review adds to the evidence of the heterogeneity of prolonged symptoms following COVID-19 in CYP but importantly, stratifies risk of this by recruitment setting. We also synthesise evidence on broader sequelae of the acute infection in this CYP and longer-term effects in CYP with pre-existing conditions, which have not been considered in previous reviews. We purposefully included case studies and case series, to capture emerging patterns of outcomes, which may well be important in a novel condition with a rapidly increasing volume of publications. To our knowledge, this systematic review and meta-analysis is the most comprehensive to date.

Implications of all the available evidence

This review adds to the evidence that a substantial proportion of CYP do experience effects of COVID-19 that last longer than four-weeks, with the most frequently reported prolonged symptoms being fatigue, headache and cognitive symptoms. The proportion of CYP developing prolonged symptoms in children recruited from community setting was low, although this may translate to a large number of affected CYP at population level. There is a paucity of controlled studies and this limits confidence that prolonged symptoms are attributable to COVID-19. Sequelae including stroke, type-1 diabetes, Guillan-Barre syndrome, and persistent radiological or blood test abnormalities have been reported in CYP following COVID-19 but most studies reporting these are case reports / case series and quality of evidence is low.

To develop treatment plans and interventions for affected CYP, further studies are needed to better characterise this condition and understand its impact on the lives of CYP and their families and communities. These should ideally recruit from community settings, include population-based control groups and consider using standardised definitions and outcome measures where possible.

Introduction

Acute SARS-CoV-2 infection (COVID-19) in children and young people (CYP) typically presents as a mild illness resulting in fewer hospitalisations, complications, or deaths than in adults¹. Fever and cough are the most common symptoms, with other symptoms including rhinorrhoea, sore throat, headache, fatigue/myalgia and gastrointestinal symptoms occurring in less than 10-20%.²

It became clear early in the pandemic that some people experience prolonged symptoms following COVID-19^{3,4}. Definitions of this condition vary within the literature^{5,6} although the patient derived term⁷, Long-COVID, is well-established. The National Institute for Health and Care Excellence (NICE) use the clinical case definitions of ongoing symptomatic (or post-acute) Covid-19 (5-12 weeks after onset) and post-Covid-19 syndrome (symptoms lasting 12 weeks or more)⁸ but acknowledge that

'Long-COVID' is commonly used to encompass both. Research into Long-COVID has predominantly focused on adults and there is limited literature on the condition in CYP^{9,10}.

Three reviews have reported clinical presentation and prevalence of Long-COVID in CYP^{11,12,13}, though their findings range from no difference in persistent symptoms between cases and control groups¹¹, to a higher risk of some persistent symptoms in cases compared to controls¹², and a narrative synthesis finding that prevalence estimates and symptom burden varied widely¹³. Reported 'prevalence' in these reviews refers to risk of prolonged symptoms in children who had COVID-19, rather than population prevalence.

Studies in adult post-COVID populations have demonstrated risks of complications including cardiovascular events, strokes and venous thrombosis¹⁴⁻¹⁷ with risks of more severe COVID-19 and complications in people with underlying chronic conditions.¹⁸ These areas have not been well studied in CYP.

Identifying the most common symptoms and sequelae that CYP experience following COVID-19 and estimating their frequency will help clinicians to recognise these complications and implement personalised management. Such information is also necessary to inform development and commissioning of appropriate services. We aimed to synthesise knowledge of longer-term effects of SARS-CoV-2 infection on CYP. Specific objectives were to identify; 1) patterns of symptoms lasting longer than four-weeks 2) risk of developing prolonged symptoms, 3) other sequelae of the infection (including clinical effects and persistent radiological and pathological findings) and 4) risk of longer-term effects in children with pre-existing long-term conditions.

Methods

This systematic review is registered with PROSPERO ([Registration number CRD42020226624](#)) and is reported in accordance with Preferred Reporting Items for Systematic Review and Meta-analyses (PRISMA) 2020 guidelines¹⁹ (Table S1). We included studies published between December 2019 and January 2022 that reported outcomes at four-weeks or beyond in children aged 0 to 18 years old who had had COVID-19 (positive antigen test, or clinical diagnosis of COVID-19). Pre-prints were included if they were published in a peer-reviewed journal before November 1st, 2022.

Studies were excluded where duration of symptoms was unclear, or less than four-weeks, although studies reporting development of new chronic morbidities secondary to COVID-19 infection were included despite short follow-up duration (e.g. diabetes mellitus, stroke sequelae). Studies including adults were excluded unless data pertaining to children were separately presented. Studies solely reporting data on children affected by Paediatric Inflammatory Multisystem Syndrome Temporally Associated with SARS-CoV-2 (PIMS-TS) were excluded, given the unique nature of this rare and severe complication. Primary research of any design, any setting and in any language was included. Secondary evidence, conference abstracts and trial protocols were excluded.

We searched 13 electronic databases (MEDLINE, EMBASE, AMED, HMIC, CINAHLPlus, PsycINFO, Web of Science (Science Citation and Social Science Citation indices), ASSIA, WHO COVID-19: Global literature on coronavirus disease, Cochrane COVID-19 study register, ProQuest Coronavirus research

database, NDLTD and OpenGrey) and reference lists of existing systematic reviews. Searches utilised text word searching in the title, abstract and keywords, along with database subject headings, combining terms for paediatrics AND COVID-19 AND long-term (Table S2). Search terms were adapted for each database platform.

Searches were run by NC, on 31st December 2021. Results were imported into Endnote X9 (reference management software, Clarivate Analytics, available at <https://endnote.com/>) where duplicates were removed. Remaining, unique references were uploaded to Covidence systematic review software (Veritas Health Innovation, Melbourne, Australia. Available at www.covidence.org) to manage the screening process.

Title and abstract followed by full text screening were conducted independently by two reviewers (from CB, HT, VW, GS, TR). Discordance was resolved by team discussion (CB, NC, HT, VW, GS, TR). Main reasons for exclusion during the full text stage were recorded.

Data extraction and risk of bias assessment was by one reviewer, independently checked and validated by a second. We extracted the following data: author; year of publication; setting (country of origin, specific details of community, healthcare setting); study type; study aim; funding; age of participants (range, mean, SD); sex (counts and proportions); number of participants; COVID-19 exposure: definition (including symptom description, antigen test status); details of any comparator group; description of any covariates (e.g. demographic information); potential prognostic factors; outcome measure(s): which have been measured, how have they been measured; follow-up time points; measures of association where relevant.

Risk of bias was assessed using the relevant CASP checklist (<https://casp-uk.net/casp-tools-checklists/>) for cohort studies and the Joanna Briggs Institute critical appraisal tool (<https://jbi.global/critical-appraisal-tools>) for case studies and case series. Results of the checklists were used to categorise studies as high, moderate, or low risk of bias.

Studies were grouped into those that reported symptoms lasting more than four-weeks (objectives 1 and 2), those reporting sequelae of the acute infection persisting for more than four-weeks (including clinical diagnoses and persisting pathological or radiological abnormalities in asymptomatic children) (objective 3), and those reporting prolonged symptoms in children with pre-existing long-term conditions (objective 4).

A narrative synthesis was carried out for all groups of studies²⁰. For objective 1, where it was possible to discern numbers of children affected by a particular symptom, symptoms were grouped into clinical categories and an infographic was developed to present findings in a clinically meaningful way.

Studies which reported the proportion of children with COVID-19 who experienced prolonged symptoms (objective 2) were included in a meta-analysis to generate summary estimates of the risk of prolonged symptoms in CYP who have had COVID-19. Risk was calculated using the numerator as the number of participants with symptoms lasting longer than four-weeks and the denominator as the total number of participants. The analysis was stratified by recruitment setting (hospital or community) and further by duration of prolonged symptoms (beyond four or twelve weeks).

Individual study prevalence (risk of prolonged symptoms) was pooled using inverse variance DerSimonian and Laird method to fit the random effects model, selected due to the methodological variability across studies. Heterogeneity was summarised using the estimate of between study variance (t^2), and the proportion of variability in effect estimates due to between study heterogeneity was summarised using I^2 . A 95% prediction interval for the random-effects model was calculated if at least three studies were available in a meta-analysis²¹. Where comparator group data were available, we calculated pooled odds ratio (OR) and 95% CIs using the same methodology.

Publication bias was assessed by visual inspection of a funnel plot if ten or more studies were available for a given outcome. Asymmetry in the publication bias was tested by Egger's method ($p < 0.1$ was considered as an indication of publication bias)²². Meta-analysis and subgroup analysis were performed using Stata v17.0 (Stata-Corp, College Station, Texas, USA). A p -value < 0.05 was considered statistically significant for overall and subgroup effects.

Role of the funding source

The study funder had no role in study design, data collection, data analysis, data interpretation, or writing of the report.

Results

The study selection process is described in Figure 1. 94 studies were included in the review²³⁻¹¹⁶. Characteristics of included studies are summarised in Table 1. Details of all included studies are in supplementary data (S2).

Included studies came from 47 different countries although the majority were from Europe (43)^{24,28-32,34,36,39,40,44,49,50,52,53,55,58-60,68,74,75,77-79,81,82,84,88-91,94-96,98,103,104,107,113,114}, and the USA (26)^{33,35,37,41-43,45-48,57,61,63,67,69-71,76,83,86,93,99,109-112}. Articles were translated from Norwegian, Russian, and Mandarin. 38 were case reports^{23,33,36,41,43,47,48,51,52,55,57,60-62,64,66-70,72,78,80,85-87,89,92,98-101,107,108,110,112}. Of those that were not case reports, most were cohort studies (26)^{23,24,33,36,41,43,47,48,51,52,55,57,60-62,64-70,72,78,80,85-87,89,92,98-101,107,108,110,112}. Most studies recruited from hospital or secondary care settings, eight recruited solely from community settings^{38,81,82,90,91,94,107,114}.

Most studies only included participants who had had a positive antigen test for Sars-CoV-2, although 16 studies included participants where diagnosis was either clinical or by self-report^{31,35,42,70,73,74,75,80,81,83,98,102,106,113,115,116}. The longest duration of follow up was 10-13 months⁷⁹. 36 studies were judged to have low risk of bias^{23,27,28,32,33,36,38,41,46,48,51,52,55,58,59,64-66,69,71,73,76,78,81,83,85-87,89,94,98,100,109,110,112,114}, with 19 studies in the high-risk group.^{25,30,35,39,47,53,54,57,62,75,77,79,80,92,99,102,105,111,115} Of 26 cohort studies^{26,29,30,37,39,40,44,50,53,54,56,63,76,81,82,88,90,91,94-97,103,104,114}, 17 were judged as moderate risk of bias^{26,29,37,40,44,50,56,63,82,88,90,91,95-97,103,104}. The commonest bias risks were the identification and handling of potential confounding factors, and lack of generalisability, often due to small sample size. The four cohort studies deemed low risk were large, matched cohorts^{37,81,94,114}. Of 25 case series^{25,27,28,31,32,34,35,42,46,59,71,73-75,77,79,83,93,102,106,109,111,113,115,116}, a third were high^{25,35,75,77,79,102,111,116}, a third moderate^{31,34,42,74,93,106,113,115} and a third low risk of bias^{27,28,32,46,59,71,73,83,109}; Lack of detail on completeness of inclusion and the clinical setting / demographics of participants were the commonest bias risks.

1) Patterns of symptoms lasting longer than four weeks

Where symptoms of COVID-19 continued for more than four-weeks, more than 100 symptoms affecting multiple body systems were reported (Figure 2). Fatigue was reported in the highest number of studies (478 participants out of 1192 with prolonged symptoms in 23 studies), followed by headache (192/1121/18) and cognitive symptoms (248/949/15). After constitutional and neurological symptoms, the most affected systems were respiratory, ear, nose and throat, and musculoskeletal.

2) Risk of developing prolonged symptoms

17 studies^{26,30,32,53,56,74,79,81,82,88,91,94,95,97,103,104,114} (Table 2) reported numbers of participants with prolonged symptoms from a defined population of participants with COVID-19 and were included in a meta-analysis. 11 of these recruited from hospital settings^{26,30,32,53,56,79,88,95,97,103,104} and six recruited from the community^{74,81,82,91,94,114}. 14 were cohort studies^{26,30,53,56,81,82,88,91,94,95,97,103,104,114}, and three were longitudinal case series^{32,74,78} (all three case series contained at least 70 participants).

Summary estimates of risk of prolonged symptoms were higher hospital samples (33.9%, 95% CI 21.5% to 47.4%) than in community samples (5.1%, 95% CI 3.6% to 7.0%) (Figure 3). Studies were stratified by those reporting symptoms beyond 12 weeks and those reporting symptoms between 4 and 12 weeks. Studies with longer follow-up reported higher rates of prolonged symptoms (27%, 95% CI 13.3% to 43.2%) than those with short follow-up (14.6%, 95% CI 8.1% to 22.6%) (Figure 4). In these subgroup analyses, the estimate of between study heterogeneity (τ^2) varied from 0.111 (community population) to 0.224 (duration beyond 12 weeks).

Five studies reported comparator data^{81,82,94,95,114}. Four were set in the community and controls were sero-negative or had no evidence of past infection^{81,82,94,114}. One recruited from a post-acute hospital clinic (participants included those hospitalised and not-hospitalised for the acute illness) and the control group comprised children with other viral illnesses⁹⁵. In the community studies, the estimated summary OR of prolonged symptoms in the COVID-19 positive group compared to the non-COVID group was 2.4 (95% CI 1.2 to 4.7) (Figure 5), indicating higher likelihood of prolonged symptoms in CYP with COVID-19 compared those without COVID-19. This result is subject to substantial between-study heterogeneity (τ^2 0.372, I^2 82%, $P < 0.001$). We assessed publication bias for risk of prolonged symptoms in the studies recruiting from hospital (the community group contained <10 studies). Funnel plot asymmetry showed potential small-study effects on funnel plot (Supplementary data, S4) although this was not statistically significant ($\beta = 5.4$, $t = 1.36$, $P = 0.206$).

Two cohort studies^{39,90} reported group level findings rather than individual numbers of participants affected and thus were not included in the meta-analysis. Clavenna,³⁹ a matched cohort study deemed high risk of bias, reported that the prevalence of symptoms over six months of follow up was similar in those who had had COVID-19 and those who had not. Petersen⁹⁰, deemed moderate risk of bias, reported that children were less likely than adults to experience prolonged symptoms after COVID-19.

3) Sequelae of SARS-CoV-2 infection (including clinical effects and persistent radiological and pathological findings)

17 studies (two cohort studies^{29,37}, four case series^{71,102,106,109}, one cross-sectional study³⁸ and 10 case studies^{24,47,61,64,65,80,86,87,98,100}) described clinical sequelae of COVID-19 occurring after, or lasting more than, four-weeks from the acute infection. One large, matched cohort study (predominantly adults but included 2673 matched pairs of children), deemed at moderate risk of bias³⁷, observed all new conditions presenting one to four months after COVID-19 and reported that children who had had COVID-19 were not more likely to develop new conditions than controls.

Stroke was reported as an outcome in four studies: one case series⁷¹, three single case studies^{65,98,100}. The case series, assessed as low risk of bias, observed three cases of acute ischaemic strokes, and four cases of haemorrhagic stroke amongst 1695 children hospitalised due to COVID-19.

The association between new-onset diabetes and COVID-19 was considered in five studies. Two looked at populations of children presenting to hospital with type-1 diabetes (Trieu¹⁰⁹, n=576; Boboc²⁹, n=147) for evidence of co-existent SARS-CoV-2 infection. Both studies were considered as low risk of bias and found nine cases of COVID-19 in 433 new cases of type-1 diabetes¹⁰⁹, and one case of COVID-19 in 290 new onset type-2 diabetes combined¹⁰⁹. One case series (Thakur & Rai¹⁰⁶, n=2), and two case studies^{86,87} also described new cases of new onset type-1 diabetes with recent COVID-19.

Steroid-dependant autoimmune haemolytic anaemia was reported in one case from 397 children with confirmed SARS-CoV-2 infection³⁸. Other sequelae reported in case series or case studies include acute pancreatitis with pseudocyst formation¹⁰², Guillain-Barre syndrome (3 case studies^{24,64,80}, acute psychosis⁶¹ (one 17-year-old), and concurrent rheumatic fever⁴⁷ (one case study).

Ten studies reported laboratory or radiological abnormalities that persisted for more than four-weeks from COVID-19 infection despite symptom resolution^{44,57,58,66,68,78,92,99,105,115}. Two cohort studies reported persistent abnormal lung imaging in children previously hospitalised with COVID-19 (22 cases in Tang¹⁰⁵, n=46, high risk of bias; and ten in Denina⁴⁴, n=25, moderate risk of bias). A case series (n=14) also reported persisting chest CT abnormalities in seven children¹¹⁵. Retinal vasculature abnormalities were found in children who had COVID-19 in a case-control study (cases=63) deemed low risk of bias⁵⁸. Six case studies reported other abnormal blood or imaging findings persisting beyond four-weeks, including leucopaenia^{68,92,99}, idiopathic thrombocytopenia⁶⁸, raised inflammatory markers⁴⁴, right coronary artery dilatation on echocardiogram⁵⁷, and residual spinal MRI changes after clinically resolved Guillan-Barre syndrome associated with COVID-19⁶⁶.

4) Effects in children with pre-existing conditions

16 studies (including nine case studies) described the effects of COVID-19 in children with specified underlying conditions and reported prolonged symptoms or complications in at least some of the participants^{23,27,28,33,42,48,51,59,60,62,67,72,76,89,110,113}. The underlying conditions were predominantly associated with immunodeficiency, either due to the primary condition or its treatment.

Only three of these studies were cohorts or large case series. Madhusoodhan⁷⁶ was a multi-centre study including 98 children with malignancies who tested positive for Sars-CoV-2. Reported range of symptoms was up to 52 days (median 10) and range of duration of in-patient care for the acute

illness was up to 65 days (median 12). Kamdar⁶³ followed 109 children with haematological-oncological conditions who had COVID-19 and reported only one child with a late complication, although duration of symptoms for most participants was not reported. Conway⁴² was a case series of 225 heart transplant candidates or recipients who had COVID-19, in which seven had on-going symptoms at 30 days.

Other studies in this category were small case series or case reports. Most described prolonged COVID-19 illness complicated by the underlying condition or its treatment^{27,33,48,67,72,89,110,113}. Some described complications that were thought to be due to COVID-19 such as myocarditis occurring two months after COVID-19 in a child with renal failure⁶⁰, right atrial thrombus in a child with acute lymphoblastic leukaemia (ALL)²³ and immune thrombocytopenic purpura occurring 22 days after COVID-19 in a child with ALL⁵¹. Others described an effect of COVID-19 on the underlying condition e.g. three children with flares of juvenile idiopathic arthritis occurring or lasting more than four weeks after COVID-19⁵⁹.

Discussion

This review describes the spectrum of reported outcomes beyond four-weeks in children who have had COVID-19. The most reported prolonged symptoms were fatigue, headache and cognitive difficulties. Summary estimates of risk of prolonged symptoms were higher in studies recruiting from hospital settings (31.2%, 95% CI 20.3% to 43.2%) than community settings (4.6%, 95% CI 3.4% to 5.8%). Children who had had COVID-19 were more likely (OR 2.96) to experience prolonged symptoms than those who had not. Sequelae including stroke, type-1 diabetes, Guillan-Barre syndrome, and persistent radiological or blood test abnormalities have been reported in CYP following COVID-19 but most studies reporting these are case reports / case series and quality of evidence is low.

Like previous reviews, we found that where COVID-19 symptoms persist for more than four-weeks in children, they are multisystemic and vary widely between individuals. In alignment with our findings, two previous systematic reviews of persistent symptoms of COVID-19 in CYP^{11,12} also found constitutional and neurological symptoms to be amongst the most reported. This is analogous to studies of adults with Long-COVID where systematic reviews^{117,118} have found general malaise, fatigue, sleep disturbance and concentration impairment to be commonly reported. In adult populations however, breathlessness and altered sense of smell are often higher up the ranking of symptom frequency^{14,117,118,119}.

Most studies in the meta-analysis of prolonged symptom prevalence included children recruited from hospital settings. However, stratification by setting showed that risk of prolonged symptoms was higher in studies of children recruited from hospital settings than in studies recruiting from community settings. This is important, given most children with COVID-19 have mild illness and do not require hospitalisation. There have been large community studies published since the search window for this review, which may go some way to redressing this balance. These include the CLoCK study, a matched cohort study of post-COVID-19 condition among children and adolescents 11 to 17 years of age that recruited participants using the British national testing database¹⁰ and a further

matched cohort study from Germany¹⁴ which used routine health care data to report outcomes at least three months after COVID-19.

Rates of prolonged symptoms in the studies included in the meta-analysis was higher in studies that reported outcomes beyond 12 weeks than in those that reported symptoms at four-weeks. This is to be interpreted with caution as the numbers in the studies with longer follow-up were smaller and there was only one study in this group which recruited from a community setting. Whilst the NICE and United States Centres for Disease Control and Prevention (CDC) definitions of post-COVID conditions encompass symptoms continuing or occurring more than four-weeks after acute infection, the World Health Organisation (WHO) has recently published a consensus definition of Post COVID-19 condition in children and adolescents, which refers to “individuals with a history of confirmed or probable SARS-CoV-2 infection, experiencing symptoms lasting at least 2 months which initially occurred within 3 months of acute COVID-19”¹²⁰. This review highlights that the evidence base for characterising and understanding symptoms over this duration in CYP is sparse.

Only five studies included a comparator group. Given the broader effects of the pandemic and associated social restrictions on children’s health, high quality matched studies are critically important to understanding effects directly attributable to Sars-CoV-2 infection. From this review’s limited data, the likelihood of having symptoms lasting more than four-weeks is higher in children who have had COVID-19 than in those that have not. Of note, both large community studies mentioned above included a control group. The CLoCK study’s¹⁰ first follow-up data showed that children with a positive test were significantly more likely to report multiple symptoms at three months than controls, and Roessler¹⁴ found increased rates of physical and mental health conditions in cases than controls, with highest incident rate ratios for malaise, fatigue/exhaustion and cough.

Children with medical complexity and certain underlying conditions have been shown to be at higher risk of severe COVID-19¹²¹. The studies in this review that focussed on children with specific conditions did not demonstrate high numbers of children experiencing long-term effects. However, there were only three cohorts / case series in this group and they were not designed to study long-term outcomes, hence firm conclusions cannot be drawn.

Our review is unique in that, alongside pattern and risk of prolonged symptoms, we have synthesised evidence on other sequelae of COVID-19 in CYP. The most common conditions reported to have developed in temporal association with COVID-19 were neurological conditions, including stroke and Guillain-Barre syndrome, and type-1 diabetes. In adults, COVID-19 infection has been associated with a range of long-term conditions / complications including new onset diabetes^{122, 123} venous thromboembolism¹⁴, neurological complications including stroke^{124,125} and cardiovascular disease¹²⁶. The extent to which CYP are affected by similar sequelae is less well characterised. One recent report using US CDC data¹²¹ did identify increased risk of acute pulmonary embolism (adjusted hazard ratio = 2.01), myocarditis and cardiomyopathy (1.99), venous thromboembolic event (1.87), acute and unspecified renal failure (1.32), and type-1 diabetes (1.23) in under 18s, but this needs further confirmation.

Synthesis of persisting radiological and pathological findings following COVID-19 in CYP is also novel. A systematic review of long-term effects of COVID-19 in adults looked at persistently abnormal clinical investigations in hospitalised patients and found lasting changes in lung function and

structure¹¹⁸ but previous reviews in paediatric populations have not considered this. The frequency, clinical significance and duration of these persisting abnormalities remains unknown and warrants further exploration.

The main limitation of this study was the time taken to complete the work set against the rapid increase in the number of studies being published. Most studies were from high income countries. Heterogeneity in diagnosis of COVID-19, classification of symptoms and the method and duration of follow up all made synthesis less secure. Risk of attribution bias in symptom reporting and low numbers of studies with control groups also limits the ability to draw firm conclusions. Assessment of publication bias was only possible in studies recruiting from hospital settings, and analysis showed potential small study effects in this group. Few studies reported results stratified by age and there was no data on differences in patterns or prevalence of symptoms in different ethnicities, both of which need consideration in developing age and culturally appropriate resources and services.

This review adds to the evidence that some CYP experience effects of COVID-19 that last longer than four-weeks, and describes the most common prolonged symptoms, risk of prolonged symptoms and broader sequelae of the acute infection. It also highlights gaps in the evidence. To develop treatment plans for affected CYP and to plan appropriate services to support them, further studies are needed to better characterise this condition. These should ideally recruit from community settings, include population-based control groups and use standardised definitions and outcome measures where possible.

Contributors

CB, VW, HT and NC developed the protocol and NC carried out the searches.

CB, VW, HT, GS, TS and AF did the screening and data extraction and have accessed and verified the data.

RB did the statistical analysis.

All authors contributed to the writing of the manuscript.

Declarations of interest

We declare no competing interests.

Data sharing

Full extracted data and risk of bias assessment results will be available on request.

Acknowledgements

There was no grant funding specifically for this review, but authors are supported by the funding streams previously stated. We wish to acknowledge our translators, Anthony Burton and Dahai Yu.

References

1. Li B, Zhang S, Zhang R, et al. Epidemiological and clinical characteristics of COVID-19 in children: a systematic review and meta-analysis. *Frontiers in pediatrics* 2020; 8: 709.
2. Viner RM, Ward JL, Hudson LD, Ashe M, Patel SV, Hargreaves D, Whittaker E. Systematic review of reviews of symptoms and signs of COVID-19 in children and adolescents. *Archives of disease in childhood*. 2021 Aug 1;106(8):802-7.

3. Carfi A, Bernabei R, Landi F. Persistent symptoms in patients after acute COVID-19. *Jama*. 2020 Aug 11;324(6):603-5.
4. Tenforde MW, Kim SS, Lindsell CJ, Billig Rose E, Shapiro NI, Files DC, Gibbs KW, Erickson HL, Steingrub JS, Smithline HA, Gong MN. Symptom duration and risk factors for delayed return to usual health among outpatients with COVID-19 in a multistate health care systems network—United States, March–June 2020. *Morbidity and mortality weekly report*. 2020 Jul 31;69(30):993-8.
5. Greenhalgh T, Knight M, Buxton M, Husain L. Management of post-acute covid-19 in primary care. *bmj*. 2020 Aug 11;370.
6. Shah W, Hillman T, Playford ED, Hishmeh L. Managing the long term effects of covid-19: summary of NICE, SIGN, and RCGP rapid guideline. *bmj*. 2021 Jan 22;372.
7. Callard F, Perego E. How and why patients made Long Covid. *Social science & medicine*. 2021 Jan 1;268:113426.
8. National Institute for Health and Care Excellence, Royal College of General Practitioners, Healthcare Improvement Scotland SIGN. COVID-19 rapid guideline: managing the long term effects of COVID-19. 2020. www.nice.org.uk/guidance/ng188. Accessed: XXXX
9. Fainardi V, Meoli A, Chiopris G, Motta M, Skenderaj K, Grandinetti R, Bergomi A, Antodaro F, Zona S, Esposito S. Long COVID in children and adolescents. *Life*. 2022 Feb 14;12(2):285.
10. Stephenson T, Pereira SM, Shafran R, De Stavola BL, Rojas N, McOwat K, Simmons R, Zavala M, O'mahoney L, Chalder T, Crawley E. Physical and mental health 3 months after SARS-CoV-2 infection (long COVID) among adolescents in England (CLOck): a national matched cohort study. *The Lancet Child & Adolescent Health*. 2022 Apr 1;6(4):230-9.
11. Behnood SA, Shafran R, Bennett SD, Zhang AX, O'Mahoney LL, Stephenson TJ, Ladhani SN, De Stavola BL, Viner RM, Swann OV. Persistent symptoms following SARS-CoV-2 infection amongst children and young people: a meta-analysis of controlled and uncontrolled studies. *Journal of Infection*. 2022 Feb 1;84(2):158-70.
12. Lopez-Leon S, Wegman-Ostrosky T, Ayuzo del Valle NC, Perelman C, Sepulveda R, Rebolledo PA, Cuapio A, Villapol S. Long-COVID in children and adolescents: A systematic review and meta-analyses. *Scientific Reports*. 2022 Jun 23;12(1):9950.
13. Pellegrino R, Chiappini E, Licari A, Galli L, Marseglia GL. Prevalence and clinical presentation of long COVID in children: a systematic review. *European journal of pediatrics*. 2022 Dec;181(12):3995-4009.
14. Roessler M, Tesch F, Batram M, Jacob J, Loser F, Weidinger O, Wende D, Vivirito A, Toepfner N, Ehm F, Seifert M. Post-COVID-19-associated morbidity in children, adolescents, and adults: A matched cohort study including more than 157,000 individuals with COVID-19 in Germany. *PLoS medicine*. 2022 Nov 10;19(11):e1004122.
15. Nannoni S, de Groot R, Bell S, Markus HS. Stroke in COVID-19: a systematic review and meta-analysis. *International Journal of Stroke*. 2021 Feb;16(2):137-49.
16. Taherifard E, Taherifard E. Neurological complications of COVID-19: a systematic review. *Neurological research*. 2020 Nov 1;42(11):905-12.
17. Hessami A, Shamshirian A, Heydari K, Pourali F, Alizadeh-Navaei R, Moosazadeh M, Abrotan S, Shojaie L, Sedighi S, Shamshirian D, Rezaei N. Cardiovascular diseases burden in COVID-19: Systematic review and meta-analysis. *The American journal of emergency medicine*. 2021 Aug 1;46:382-91.
18. Centers for Disease Control and Prevention. Underlying Medical Conditions. <https://www.cdc.gov/coronavirus/2019-ncov/hcp/clinical-care/underlyingconditions.html> Accessed. 03/03/2023
19. Page MJ, McKenzie JE, Bossuyt PM, Boutron I, Hoffmann TC, Mulrow CD, et al. The PRISMA 2020 statement: an updated guideline for reporting systematic reviews. *BMJ* 2021;372:n71. doi: 10.1136/bmj.n71
20. Popay J, Roberts H, Sowden A, Petticrew M, Arai L, Rodgers M, Britten N, Roen K, Duffy S. Guidance on the conduct of narrative synthesis in systematic reviews. A product from the ESRC methods programme Version. 2006 Apr 1;1(1):b92.

21. IntHout J, Ioannidis JP, Rovers MM, Goeman JJ. Plea for routinely presenting prediction intervals in meta-analysis. *BMJ Open*. 2016 Jul 12;6(7):e010247. doi: 10.1136/bmjopen-2015-010247. PMID: 27406637; PMCID: PMC4947751.
22. Sterne J A C, Sutton A J, Ioannidis J P A, Terrin N, Jones D R, Lau J et al. Recommendations for examining and interpreting funnel plot asymmetry in meta-analyses of randomised controlled trials *BMJ* 2011; 343 :d4002 doi:10.1136/bmj.d4002
23. Aghaei Moghadam, E., Mahmoudi, S., Safari Sharari, A., Afsharipour, M., Gorji, M., Navaeian, A., Ghamari, A. and Mamishi, S. (2021). Giant intracardiac thrombosis in an infant with leukaemia and prolonged COVID-19 viral RNA shedding: a case report. *Thromb J*, **19**(1): 31. doi: 10.1186/s12959-021-00285-8
24. Akçay, N., Menetoğlu, M. E., Bektaş, G. and Şevketoğlu, E. (2021). Axonal Guillain-Barre syndrome associated with SARS-CoV-2 infection in a child. *Journal of Medical Virology*. doi: 10.1002/jmv.27018
25. Alshengeti, A., Alahmadi, H., Barnawi, A., Alfuraydi, N., Alawfi, A., Al-Ahmadi, A., Sheikh, M., Almaghthawi, A., Alnakhli, Z., Rasheed, R., Ibrahim, A., Sobhi, A., Al Shahrani, D. and Kordy, F. (2021). Epidemiology, clinical features, and outcomes of coronavirus disease among children in Al-Madinah, Saudi Arabia: A retrospective study. *International Journal of Pediatrics and Adolescent Medicine*. doi: 10.1016/j.ijpam.2021.11.001
26. Asadi-Pooya AA, Nemati M, Nemati H. 'Long COVID': Symptom persistence in children hospitalised for COVID-19. *Journal of Paediatrics and Child Health*. 2022 Oct;58(10):1836-40.
27. Barhoom, D., Mohseni, R., Hamidieh, A. A., Mohammadpour, M., Sharifzadeh, M., Navaeian, A., Taebi, S. and Behfar, M. (2021). Clinical Effects of COVID-19 on Hematopoietic Stem Cell Transplant Outcomes in Pediatric Patients. *Exp. Clin. Transplant.*, **19**(5): 501-507. doi: 10.6002/ect.2020.0518
28. Berteloot, L., Berthaud, R., Temmam, S., Lozach, C., Zanelli, E., Blanc, T., Heloury, Y., Capito, C., Chardot, C., Sarnacki, S., Garcelon, N., Lacaille, F., Charbit, M., Pastural, M., Rabant, M., Boddaert, N., Leruez-Ville, M., Eloit, M., Sermet-Gaudelus, I., Dehoux, L. and Boyer, O. (2020). Arterial abnormalities identified in kidneys transplanted into children during the COVID-19 pandemic. *Am J Transplant*, **21**: 21. doi: <https://dx.doi.org/10.1111/ajt.16464>
29. Boboc, A. A., Novac, C. N., Ilie, M. T., Ieşanu, M. I., Galoş, F., Bălgrădean, M., Berghea, E. C. and Ionescu, M. D. (2021). The Impact of SARS-CoV-2 Pandemic on the New Cases of T1DM in Children. A Single-Centre Cohort Study. *J Pers Med*, **11**(6). doi: 10.3390/jpm11060551
30. Bossley, C., Kavaliunaite, E., Harman, K., Cook, J., Ruiz, G. and Gupta, A. (2021). Post-Acute COVID-19 Outcomes In Children Requiring Hospitalisation (preprint).
31. Brackel, C. L. H., Lap, C. R., Buddingh, E. P., van Houten, M. A., van der Sande, L., Langereis, E. J., Bannier, M., Pijnenburg, M. W. H., Hashimoto, S. and Terheggen-Lagro, S. W. J. (2021). Pediatric long-COVID: An overlooked phenomenon? *Pediatr Pulmonol*, **08**: 08. doi: 10.1002/ppul.25521
32. Buonsenso D, Munblit D, De Rose C, Sinatti D, Ricchiuto A, Carfi A, Valentini P. Preliminary evidence on long COVID in children. *Acta Paediatrica* (Oslo, Norway: 1992). 2021 Jul;110(7):2208.
33. Bush, R., Johns, F., Acharya, R. and Upadhyay, K. (2020). Mild COVID-19 in a pediatric renal transplant recipient. *Am J Transplant*, **20**(10): 2942-2945. doi: <https://dx.doi.org/10.1111/ajt.16003>
34. Calitri, C., Fantone, F., Benetti, S., Lupica, M. M., Ignaccolo, M. G., Banino, E., Viano, A., Pace, M., Castella, A., Gaido, F., Garofalo, F. and AsITorinoTre Study Group Paediatric, C. (2021). Long-term clinical and serological follow-up of paediatric patients infected by SARS-CoV-2. *Infez Med*, **29**(2): 216-223. doi:
35. Castelo-Soccio, L., Lara-Corrales, I., Paller, A. S., Bean, E., Rangu, S., Oboite, M., Flohr, C., Ahmad, R. C., Calberg, V., Gilliam, A., Pope, E., Reynolds, S., Sibbald, C., Shin, H. T., Berger, E., Schaffer, J., Siegel, M. P. and Cordero, K. M. (2021). Acral Changes in pediatric patients during COVID 19 pandemic: Registry report from the COVID 19 response task force of the society of pediatric dermatology (SPD) and pediatric dermatology research alliance (PeDRA). *Pediatr Dermatol*, **20**: 20. doi: <https://dx.doi.org/10.1111/pde.14566>
36. Cecchini, M. P., Brozzetti, L., Cardobi, N., Sacchetto, L., Gibellini, D., Montemezzi, S., Cheli, M., Manganotti, P., Monaco, S. and Zanusso, G. (2021). Persistent chemosensory dysfunction in a young

- patient with mild COVID-19 with partial recovery 15 months after the onset. *Neurological Sciences*. doi: 10.1007/s10072-021-05635-y
37. Chevinsky, J. R., Tao, G., Lavery, A. M., Kukielka, E. A., Click, E. S., Malec, D., Kompaniyets, L., Bruce, B. B., Yusuf, H., Goodman, A. B., Dixon, M. G., Nakao, J. H., Datta, S. D., Mac Kenzie, W. R., Kadri, S., Saydah, S., Giovanni, J. E. and Gundlapalli, A. V. (2021). Late conditions diagnosed 1-4 months following an initial COVID-19 encounter: a matched cohort study using inpatient and outpatient administrative data - United States, March 1-June 30, 2020. *Clin Infect Dis*, **28**: 28. doi: 10.1093/cid/ciab338
 38. Chua, G. T., Wong, J. S. C., Lam, I., Ho, P. P. K., Chan, W. H., Yau, F. Y. S., Rosa Duque, J. S., Ho, A. C. C., Siu, K. K., Cheung, T. W. Y., Lam, D. S. Y., Chan, V. C. M., Lee, K. P., Tsui, K. W., Wong, T. W., Yau, M. M., Yau, T. Y., Chan, K. C. C., Yu, M. W. L., Chow, C. K., Chiu, W. K., Chan, K. C., Wong, W. H. S., Ho, M. H. K., Tso, W. W. Y., Tung, K. T. S., Wong, C. S., Kwok, J., Leung, W. H., Yam, J. C., Wong, I. C. K., Tam, P. K. H., Chan, G. C. F., Chow, C. B., To, K. K. W., Lau, Y. L., Yuen, K. Y., Ip, P. and Kwan, M. Y. W. (2021). Clinical Characteristics and Transmission of COVID-19 in Children and Youths During 3 Waves of Outbreaks in Hong Kong. *JAMA netw*, **4**(5): e218824. doi: 10.1001/jamanetworkopen.2021.8824
 39. Clavenna, A., Francesco, C. D., Maio, L. D., Mauri, L., Narducci, M., Schiro, R. and Bonati, M. (2021). Risk of Sequelae of COVID-19 in Children Cared for by Primary Care Pediatricians. *Indian Pediatr*, **29**: 29. doi: 10.1186/s13052-021-01065-w
 40. Clemente, V., Tripiciano, C., Moras, P., Deriu, D., Di Giuseppe, M., Piscitelli, A. L., Cammerata, M., De Ioris, M. A., Calò Carducci, F. I., Bernardi, S., Campana, A., D'Argenio, P. and Rossi, P. (2021). Post-discharge telephonic follow-up of pediatric patients affected by SARS-CoV2 infection in a single Italian pediatric COVID center: a safe and feasible way to monitor children after hospitalization. *Ital J Pediatr*, **47**(1): 119. doi: 10.1186/s13052-021-01065-w
 41. Collins, R. A., Ray, N., Ratheal, K. and Colon, A. (2022). Severe post-COVID-19 costochondritis in children. *Baylor Univ Med Cent Proc*, **35**(1): 56-57. doi: 10.1080/08998280.2021.1973274
 42. Conway, J., Auerbach, S. R., Richmond, M. E., Sharp, B., Pahl, E., Feingold, B., Azeka, E., Dryer, W. J., Cantor, R. S., Kirklin, J. K. and Pediatric Heart Transplant Society, I. (2021). Early report from the Pediatric Heart Transplant Society on COVID-19 infections in pediatric heart transplant candidates and recipients. *J Heart Lung Transplant*, **19**: 19. doi: 10.1016/j.healun.2021.11.003
 43. Das, B. B. (2021). SARS-CoV-2 Myocarditis in a High School Athlete after COVID-19 and Its Implications for Clearance for Sports. *Children (Basel)*, **8**(6): 21. doi: 10.3390/children8060427
 44. Denina, M., Pruccoli, G., Scolfaro, C., Mignone, F., Zoppo, M., Giraudo, I., Silvestro, E., Bertolotti, L., Rosati, S., Ramenghi, U. and Garazzino, S. (2020). Sequelae of COVID-19 in Hospitalized Children: A 4-Months Follow-Up. *Pediatr Infect Dis J*, **39**(12): e458-e459. doi: <https://dx.doi.org/10.1097/INF.0000000000002937>
 45. Denny, V., Shah, N., Petro, K., Choksey, K., DeSantis, E., Hintz, M., Rethi, S., Sanchez, S., Sylla, B., Chiu, S., Gagliardo, C., Kairam, N., Nwaobasi-Iwuh, E. and Di Pentima, M. C. (2021). Impact of outpatient SARS-CoV-2 infections in minority children. *Medicine (Baltimore)*, **100**(8): e24895. doi: <https://dx.doi.org/10.1097/MD.00000000000024895>
 46. Derespina, K. R., Kaushik, S., Plichta, A., Conway, E. E., Jr., Bercow, A., Choi, J., Eisenberg, R., Gillen, J., Sen, A. I., Hennigan, C. M., Zerihun, L. M., Doymaz, S., Keenaghan, M. A., Jarrin, S., Oulds, F., Gupta, M., Pierre, L., Grageda, M., Ushay, H. M., Nadkarni, V. M., Agus, M. S. D. and Medar, S. S. (2020). Clinical Manifestations and Outcomes of Critically Ill Children and Adolescents with Coronavirus Disease 2019 in New York City. *J Pediatr*, **226**: 55-63.e52. doi: 10.1016/j.jpeds.2020.07.039
 47. DeVette, C. I., Ali, C. S., Hahn, D. W. and DeLeon, S. D. (2021). Acute Rheumatic Fever in a COVID-19-Positive Pediatric Patient. *Case Rep Pediatr*, **2021**: 6655330. doi: 10.1155/2021/6655330
 48. DeVine, M. N., Maxwell, S., Haynes, A. S., MacBrayne, C. E. and Boguniewicz, J. (2020). Management of an Immunocompromised Pediatric Patient With Multiple Hospitalizations for Symptomatic COVID-19. *J Pediatr Hematol Oncol*, **23**: 23. doi: <https://dx.doi.org/10.1097/MPH.0000000000002014>
 49. Di Sante, G., Danilo, B., Cristina De, R., Piero, V., Francesco, R., Maurizio, S. and Michela, S. (2021). Immune profile of children with post-acute sequelae of SARS-CoV-2 infection (Long Covid).
 50. Dolezalova, K., Tukova, J. and Pohunek, P. (2021). Respiratory Consequences of Pediatric Post-COVID Syndrome: Case Series. *Authorea Preprints*. doi:

51. Dongre, A., Jameel, P. Z., Deshmukh, M. and Bhandarkar, S. (2021). Immune thrombocytopenic purpura secondary to SARS-CoV-2 infection in a child with acute lymphoblastic leukaemia: a case report and review of literature. *BMJ Case Rep*, **14**(11). doi: 10.1136/bcr-2021-245869
52. Erdizci, P., Akyil, M., Bayram, S., Kaya, O., Evman, S. and Baysungur, V. (2021). Simultaneous Bilateral Spontaneous Pneumothorax with COVID-19 Pneumonia. *Respiratory case reports*, **10**(3): 212-215. doi: 10.5505/respircase.2021.27879
53. Erol N, Alpinar A, Erol C, Sari E, Alkan K. Intriguing new faces of Covid-19: persisting clinical symptoms and cardiac effects in children. *Cardiology in the Young*. 2022 Jul;32(7):1085-91.
54. Esmaeilzadeh, h., Dashti, A. S., Mortazavi, N., Fatemian, F. and Vali, M. (2021). Persistent cough and asthma-like symptoms post COVID-19 hospitalization in children (pre-print).
55. Ferreira, E. F., Portugal, D., Silva, N., Peixoto, C., Matos, C., Pereira, I. and Prates, L. (2022). Rehabilitation of peripheral facial palsy associated with COVID-19 in a child: A case report. *Ann Phys Rehabil Med*, **65**(1): 101600. doi: 10.1016/j.rehab.2021.101600
56. Fink, T. T., Marques, H. H. S., Gualano, B., Lindoso, L., Bain, V., Astley, C., Martins, F., Matheus, D., Matsuo, O. M., Suguita, P., Trindade, V., Paula, C. S. Y., Farhat, S. C. L., Palmeira, P., Leal, G. N., Suzuki, L., Odone Filho, V., Carneiro-Sampaio, M., Duarte, A. J. S., Antonangelo, L., Batisttella, L. R., Polanczyk, G. V., Pereira, R. M. R., Carvalho, C. R. R., Buchpiguel, C. A., Xavier, A. C. L., Seelaender, M., Silva, C. A., Pereira, M. F. B., Group, H.-F. P. P.-C.-S., Sallum, A. M. E., Brentani, A. V. M., Neto, A. J. S., Ihara, A., Santos, A. R., Canton, A. P. M., Watanabe, A., Santos, A. C. D., Pastorino, A. C., Franco, B., Caruzo, B., Ceneviva, C., Martins, C., Prado, D., Abellan, D. M., Benatti, F. B., Smaria, F., Goncalves, F. T., Penteado, F. D., Castro, G. S. F., Goncalves, G. S., Roschel, H., Disi, I. R., Marques, I. G., Castro, I. A., Buscatti, I. M., Faiad, J. Z., Fiamoncini, J., Rodrigues, J. C., Carneiro, J. D. A., Paz, J. A., Ferreira, J. C., Ferreira, J. C. O., Silva, K. R., Bastos, K. L. M., Kozu, K., Cristofani, L. M., Souza, L. V. B., Campos, L. M. A., Silva Filho, L., Sapienza, M. T., Lima, M. S., Garanito, M. P., Santos, M. F. A., Dorna, M. B., Aikawa, N. E., Litvinov, N., Sakita, N. K., Gaiolla, P. V. V., Pasqualucci, P., Toma, R. K., Correa-Silva, S., Sieczkowska, S. M., Imamura, M., Forsait, S., Santos, V. A. and Zheng, Y. (2021). Persistent symptoms and decreased health-related quality of life after symptomatic pediatric COVID-19: A prospective study in a Latin American tertiary hospital. *Clinics*, **76**: e3511. doi: 10.6061/clinics/2021/e3511
57. Gerber, N., Flynn, P. A. and Holzer, R. J. (2021). Coronary Artery Dilation in an Asymptomatic Pediatric Patient with COVID19 Antibodies. *Pediatr Cardiol*, **42**(2): 460-462. doi: <https://dx.doi.org/10.1007/s00246-021-02566-5>
58. Guemes-Villahoz, N., Burgos-Blasco, B., Perez-Garcia, P., Fernandez-Vigo, J. I., Morales-Fernandez, L., Donate-Lopez, J., Ramos-Amador, J. T. and Garcia-Feijoo, J. (2021). Retinal and peripapillary vessel density increase in recovered COVID-19 children by optical coherence tomography angiography. *J Aapos*, **20**: 20. doi: 10.1016/j.jaapos.2021.06.004
59. Hugle, B., Krumrey-Langkammerer, M. and Haas, J. P. (2021). Infection with SARS-CoV-2 causes flares in patients with juvenile idiopathic arthritis in remission or inactive disease on medication. *Pediatr*, **19**(1): 163. doi: 10.1186/s12969-021-00653-8
60. Ionescu, M. D., Balgradean, M., Cirstoveanu, C. G., Balgradean, I., Popa, L. I., Pavelescu, C., Capitanescu, A., Berghea, E. C. and Filip, C. (2021). Myopericarditis Associated with COVID-19 in a Pediatric Patient with Kidney Failure Receiving Hemodialysis. *Pathogens*, **10**(4): 17. doi: 10.3390/pathogens10040486
61. Javed, S. and Shad, M. U. (2021). COVID-Related Psychosis in Adolescents: A Case-Based Review. *Prim Care Companion CNS Disord*, **23**(6): 16. doi: 10.4088/PCC.21nr03107
62. Kahwagi, J., Diagne, R., Fall, M., Basse, A., Ndiaye, M. and Diop, A. G. (2020). Post infectious encephalitis at Covid19: About one pediatric observation and review of the literature. *Rev Neurol (Paris)*, **16**: 16. doi: <https://dx.doi.org/10.1016/j.neurol.2020.09.001>
63. Kamdar, K. Y., Kim, T. O., Doherty, E. E., Pfeiffer, T. M., Qasim, S. L., Suell, M. N., Yates, A. M. and Blaney, S. M. (2021). COVID-19 outcomes in a large pediatric hematology-oncology center in Houston, Texas. *Pediatr Hematol Oncol*, **38**(8): 695-706. doi: 10.1080/08880018.2021.1924327
64. Khalifa, M., Zakaria, F., Ragab, Y., Saad, A., Bamaga, A., Emad, Y. and Rasker, J. J. (2020). Guillain-Barré Syndrome Associated With Severe Acute Respiratory Syndrome Coronavirus 2 Detection and

- Coronavirus Disease 2019 in a Child. *J Pediatric Infect Dis Soc*, **9**(4): 510-513. doi: <https://doi.org/10.1093/jpids/piaa086>
65. Khera, D., Didel, S., Mittal, A., Tiwari, S. and Garg, P. (2021). Intracerebral Haemorrhage in an Adolescent With COVID-19 With Acute Kidney Injury: Is the Virus to Blame? *Cureus*, **13**(3): 5-5. doi:
 66. Khera, D., Didel, S., Panda, S., Tiwari, S. and Singh, K. (2021). Concurrent Longitudinally Extensive Transverse Myelitis and Guillain-Barré Syndrome in a Child Secondary to COVID-19 Infection: A Severe Neuroimmunologic Complication of COVID-19. *Pediatr Infect Dis J*, **40**(6): e236-e239. doi: [10.1097/inf.00000000000003124](https://doi.org/10.1097/inf.00000000000003124)
 67. Koh, W., Malik, P., Whitehead, J., Morales, D. and Hayes, D. (2021). Successful use of veno-venous extracorporeal membrane oxygenation for acute chest syndrome in a child with sickle cell disease and SARS-CoV-2 (preprint).
 68. Kossiva, L., Thirios, A., Panagouli, E., Panos, A., Lampidi, S., Bacopoulou, F., Tsolia, M. and Tsitsika, A. (2021). A Case of COVID-19-Related Thrombocytopenia and Leukopenia in an Adolescent with Mild Symptoms. *Children (Basel)*, **8**(6). doi: [10.3390/children8060509](https://doi.org/10.3390/children8060509)
 69. Kumar, V. H. S., Prasath, A. B. C. K. P. O., Ostwald, C. M., Meyer, T. S., Clementi, C. F., Maciejewski, R., Wilby, M. T., Reynolds, A. M., Hpa, N. J. and Yu, K. O. A. (2021). Respiratory Failure in an Extremely Premature Neonate with COVID-19. *Children*, **8**(6): 477-477. doi:
 70. Landzberg, D. R., Bery, E., Chico, S., Koh, S. and Weissman, B. (2021). Wernicke Encephalopathy From Olfactory Dysfunction After COVID-19 Infection. *Neurolog*, **26**(6): 274-275. doi: [10.1097/NRL.0000000000000359](https://doi.org/10.1097/NRL.0000000000000359)
 71. LaRovere, K. L., Riggs, B. J., Poussaint, T. Y., Young, C. C., Newhams, M. M., Maamari, M., Walker, T. C., Singh, A. R., Dapul, H., Hobbs, C. V., McLaughlin, G. E., Son, M. B. F., Maddux, A. B., Clouser, K. N., Rowan, C. M., McGuire, J. K., Fitzgerald, J. C., Gertz, S. J., Shein, S. L., Munoz, A. C., Thomas, N. J., Irby, K., Levy, E. R., Staat, M. A., Tenforde, M. W., Feldstein, L. R., Halasa, N. B., Giuliano, J. S., Jr., Hall, M. W., Kong, M., Carroll, C. L., Schuster, J. E., Doymaz, S., Loftis, L. L., Tarquinio, K. M., Babbitt, C. J., Nofziger, R. A., Kleinman, L. C., Keenaghan, M. A., Cvijanovich, N. Z., Spinella, P. C., Hume, J. R., Wellnitz, K., Mack, E. H., Michelson, K. N., Flori, H. R., Patel, M. M., Randolph, A. G. and Overcoming, C.-I. (2021). Neurologic Involvement in Children and Adolescents Hospitalized in the United States for COVID-19 or Multisystem Inflammatory Syndrome. *JAMA Neurol*, **05**: 05. doi: <https://dx.doi.org/10.1001/jamaneurol.2021.0504>
 72. Leclercq, C., Toutain, F., Baleyrier, F., L'Huillier, A. G., Wagner, N., Lironi, C., Calza, A. M., Ansari, M. and Blanchard-Rohner, G. (2021). Pediatric Acute B-Cell Lymphoblastic Leukemia Developing Following Recent SARS-CoV-2 Infection. *J Pediatr Hematol Oncol*, **43**(8): e1177-e1180. doi: [10.1097/mpb.0000000000002064](https://doi.org/10.1097/mpb.0000000000002064)
 73. Lindan, C. E., Mankad, K., Ram, D., Kocielek, L. K., Silvera, V. M., Boddaert, N., Stivaros, S. M. and Palasis, S. (2021). Neuroimaging manifestations in children with SARS-CoV-2 infection: a multinational, multicentre collaborative study. *Lancet Child Adolesc Health*, **5**(3): 167-177. doi: [10.1016/s2352-4642\(20\)30362-x](https://doi.org/10.1016/s2352-4642(20)30362-x)
 74. Lopez, J., Grasa, C., Calvo, C. and Garcia Lopez-Hortelano, M. (2021). Long-term symptoms of COVID-19 in children. *Acta Paediatr*, **20**: 20. doi: <https://dx.doi.org/10.1111/apa.15849>
 75. Ludvigsson, J. F. (2020). Case report and systematic review suggest that children may experience similar long-term effects to adults after clinical COVID-19. *Acta Paediatr*, **17**: 17. doi: <https://dx.doi.org/10.1111/apa.15673>
 76. Madhusoodhan, P. P., Pierro, J., Musante, J., Kothari, P., Gampel, B., Appel, B., Levy, A., Tal, A., Hogan, L., Sharma, A., Feinberg, S., Kahn, A., Pinchinat, A., Bhatla, T., Glasser, C. L., Satwani, P., Raetz, E. A., Onel, K. and Carroll, W. L. (2020). Characterization of COVID-19 disease in pediatric oncology patients: The New York-New Jersey regional experience. *Pediatric Blood & Cancer*. doi: <http://dx.doi.org/10.1002/pbc.28843>
 77. Matecki, P., Faltin, K., Mania, A., Mazur-Melewska, K., Cwalińska, A., Zawadzka, A., Bukowska, A., Lisowska, K., Graniczna, K. and Figlerowicz, M. (2021). Effects and Safety of Convalescent Plasma Administration in a Group of Polish Pediatric Patients with COVID-19: A Case Series. *Life*, **11**(3): 247. doi:

78. Manzo, M. L., Galati, C., Gallo, C., Santangelo, G., Marino, A., Guccione, F., Pitino, R. and Raieli, V. (2021). ADEM post-Sars-CoV-2 infection in a pediatric patient with Fisher-Evans syndrome. *Neurol Sci*, **12**: 12. doi: [10.1007/s10072-021-05311-1](https://doi.org/10.1007/s10072-021-05311-1)
79. Matteudi T, Luciani L, Fabre A, Minodier P, Boucekine M, Bosdure E, Dubus JC, Colson P, Chabrol B, Morand A. Clinical characteristics of paediatric COVID-19 patients followed for up to 13 months. *Acta Paediatrica* (Oslo, Norway: 1992). 2021 Dec;110(12):3331.
80. Mezzeoui, S., Aftissi, F., Aabdi, M., Bkiyar, H. and Housni, B. (2021). Guillan barre syndrome in post Covid-19 infection in children. *Ann Med Surg (Lond)*: 102524. doi: [10.1016/j.amsu.2021.102524](https://doi.org/10.1016/j.amsu.2021.102524)
81. Miller F, Nguyen DV, Navaratnam AM, Shrotri M, Kovar J, Hayward AC, Fragaszy E, Aldridge RW, Hardelid P; VirusWatch Collaborative. (2022). Prevalence and Characteristics of Persistent Symptoms in Children During the COVID-19 Pandemic: Evidence From a Household Cohort Study in England and Wales. *Pediatr Infect Dis J*. 41(12):979-984. doi: [10.1097/INF.0000000000003715](https://doi.org/10.1097/INF.0000000000003715)
82. Molteni E, Sudre CH, Canas LS, Bhopal SS, Hughes RC, Antonelli M, Murray B, Kläser K, Kerfoot E, Chen L, Deng J. Illness duration and symptom profile in symptomatic UK school-aged children tested for SARS-CoV-2. *The Lancet Child & Adolescent Health*. 2021 Oct 1;5(10):708-18.
83. Morrow, A. K., Ng, R., Vargas, G., Jashar, D. T., Henning, E., Stinson, N. and Malone, L. A. (2021). Postacute/Long COVID in Pediatrics: Development of a Multidisciplinary Rehabilitation Clinic and Preliminary Case Series. *Am J Phys Med Rehabil*, **100**(12): 1140-1147. doi: [10.1097/PHM.0000000000001896](https://doi.org/10.1097/PHM.0000000000001896)
84. Namazova-Baranova, L. S., Karkashadze, G. A., Zelenkova, I. V., Baranov, A. A., Vishneva, E. A., Kaytukova, E. V., Rusinova, D. S., Sergienko, N. S., Nesterova, Y. V., Gubanova, S. G., Gankovskiy, V. A., Gogberashvili, T. Y., Konstantinidi, T. A., Bushueva, D. A., Rykunova, A. I., Gordeeva, O. B., Shirdanina, E. V., Lamasova, A. D., Leonova, E. V., Pankova, A. R. and Dubonosova, E. Y. (2020). Non-randomized comparative study of olfaction in post-COVID-19 children. Intermediary results. [Russian]. *Pediatricheskaya Farmakologiya*, **17**(6): 502-507. doi: <http://dx.doi.org/10.15690/PF.V17I6.2201>
85. Ng, S. M. (2020). Prolonged dermatological manifestation 4 weeks following recovery of COVID-19 in a child. *BMJ case reports*, **13**(8). doi: [10.1136/bcr-2020-237056](https://doi.org/10.1136/bcr-2020-237056)
86. Nielsen-Saines, K., Li, E., Olivera, A. M., Martin-Blais, R. and Bulut, Y. (2021). Case Report: Insulin-Dependent Diabetes Mellitus and Diabetic Keto-Acidosis in a Child With COVID-19. *Front*, **9**: 628810. doi: <https://dx.doi.org/10.3389/fped.2021.628810>
87. Ordooei, M., Behniafard, N., Soheilipour, F. and Akbarian, E. (2021). New onset of diabetes in a child infected with COVID-19: a case report. *J Diabetes Metab Disord*, **20**(2): 2129-2132. doi: [10.1007/s40200-021-00900-5](https://doi.org/10.1007/s40200-021-00900-5)
88. Osmanov, I. M., Spiridonova, E., Bobkova, P., Gamirova, A., Shikhaleva, A., Andreeva, M., Blyuss, O., El-Taravi, Y., DunnGalvin, A., Comberlati, P., Peroni, D.G., Apfelbacher, C., Genuneit, J., Mazankova, L., Miroshina, A., Chistyakova, E., Samitova, E., Borzakova, S., Bonderenko, E., Korsunskiy, A. A., Konova, I., Hanson, S. W., Carson, G., Sigfrid, L., Scott, J. T., Greenhawt, M., Whittaker, E. A., Garralda, E., Swann, O. V., Buonsenso, D., Nicholls, D. E., Simpson, F., Jones, C., Semple, M. G., Warner, J. O., Vos, T., Olliaro, P., Munblit, D., and the Sechenov StopCOVID Research Team. Risk factors for long covid in previously hospitalised children using the ISARIC Global follow-up protocol: A prospective cohort study. *European Respiratory Journal*. 2022, 59 (2) 2101341; DOI: [10.1183/13993003.01341-2021](https://doi.org/10.1183/13993003.01341-2021)
89. Pereira, N. M. D., Heath, P. T., Doerholt, K., Almario-Hernandez, A. F., Gilmour, C. and Drysdale, S. B. (2021). SARS-CoV-2 Infection in an Adolescent With X-linked Agammaglobulinemia. *Pediatr Infect Dis J*, **40**(12): e472-e474. doi: [10.1097/inf.0000000000003360](https://doi.org/10.1097/inf.0000000000003360)
90. Petersen, M. S., Kristiansen, M. F., Hanusson, K. D., Danielsen, M. E., Steig, B. á., Gaini, S., Strøm, M. and Weihe, P. (2021). Long COVID in the Faroe Islands: A Longitudinal Study Among Nonhospitalized Patients. *Clinical Infectious Diseases*, **73**(11): e4058-e4063. doi: [10.1093/cid/ciaa1792](https://doi.org/10.1093/cid/ciaa1792)
91. Powell, A. A., Amin-Chowdhury, Z., Mensah, A., Ramsay, M. E., Saliba, V. and Ladhani, S. N. (2021). Severe Acute Respiratory Syndrome Coronavirus 2 Infections in Primary School Age Children After Partial Reopening of Schools in England. *Pediatr Infect Dis J*, **40**(6): e243-e245. doi: [10.1097/INF.0000000000003120](https://doi.org/10.1097/INF.0000000000003120)

92. Qiu, L., Jiao, R., Zhang, A., Chen, X., Ning, Q., Fang, F., Zeng, F., Tian, N., Zhang, Y., Huang, Y., Sun, Z., Dhuromsingh, M., Li, H., Li, Y., Xu, R., Chen, Y. and Luo, X. (2020). A Case of Critically Ill Infant of Coronavirus Disease 2019 With Persistent Reduction of T Lymphocytes. *Pediatr Infect Dis J*, **39**(7): e87-e90. doi: 10.1097/inf.0000000000002720
93. Reiff, D. D., Mannion, M. L., Samuy, N., Scalici, P. and Cron, R. Q. (2021). Distinguishing active pediatric COVID-19 pneumonia from MIS-C. *Pediatr*, **19**(1): 21. doi: <https://dx.doi.org/10.1186/s12969-021-00508-2>
94. Radtke T, Ulyte A, Puhan MA, Kriemler S. Long-term symptoms after SARS-CoV-2 infection in children and adolescents. *Jama*. 2021 Sep 7;326(9):869-71.
95. Roge, I., Smane, L., Kivite-Urtane, A., Pucuka, Z., Racko, I., Klavina, L. and Pavare, J. (2021). Comparison of Persistent Symptoms After COVID-19 and Other Non-SARS-CoV-2 Infections in Children. *Front*, **9**: 752385. doi: 10.3389/fped.2021.752385
96. Rusetsky Y, Meytel I, Mokoyan Z, Fisenko A, Babayan A, Malyavina U. Smell status in children infected with SARS-CoV-2. *The Laryngoscope*. 2021 Aug;131(8):E2475-80.
97. Say, D., Crawford, N., McNab, S., Wurzel, D., Steer, A. and Tosif, S. (2021). Post-acute COVID-19 outcomes in children with mild and asymptomatic disease. *Lancet Child Adolesc Health*, **5**(6): e22-e23. doi: 10.1016/S2352-4642(21)00124-3
98. Scala, M. R., Spennato, P., Cicala, D., Piccolo, V., Varone, A. and Cinalli, G. (2021). Malignant cerebral infarction associated with COVID-19 in a child. *Childs Nerv Syst*, **26**: 26. doi: 10.1007/s00381-021-05273-x
99. Shah SA, Carter HP. New-onset nephrotic syndrome in a child associated with COVID-19 infection. *Frontiers in Pediatrics*. 2020 Aug 20;8:471.
100. Shree, N., Kommalur, A., M, L., Kariyappa, M., Devadas, S., Kumble, D., Sajjan, S. V., Rangegowda, R. K. and Patel, A. S. (2021). Acute Ischemic Stroke in a Young Child and Its Association with SARS-CoV-2 Infection. *Journal of Pediatric Neurology*. doi: 10.1055/s-0041-1736601
101. Sinaei, R., Pezeshki, S., Parvaresh, S., Shiari, R., Hassas Yeganeh, M., Bazargan, N. and Gharaei, N. (2021). Post SARS-CoV-2 infection reactive arthritis: a brief report of two pediatric cases. *Pediatr*, **19**(1): 89. doi: 10.1186/s12969-021-00555-9
102. Slae, M., Wilschanski, M., Sanjines, E., Abu-El-Haija, M. and Sellers, Z. M. (2021). International Survey on Severe Acute Respiratory Syndrome Coronavirus 2 and Acute Pancreatitis Co-occurrence in Children. *Pancreas*, **50**(9): 1305-1309. doi: 10.1097/MPA.0000000000001923
103. Smane, L., Stars, I., Pucuka, Z., Roge, I. and Pavare, J. (2020). Persistent clinical features in paediatric patients after SARS-CoV-2 virological recovery: A retrospective population-based cohort study from a single centre in Latvia. *BMJ Paediatrics Open*, **4**(1). doi: <http://dx.doi.org/10.1136/bmjpo-2020-000905>
104. Sterky, E., Olsson-Akefeldt, S., Hertting, O., Herlenius, E., Alfvén, T., Ryd Rinder, M., Rhedin, S. and Hildenwall, H. (2021). Persistent symptoms in Swedish children after hospitalisation due to COVID-19. *Acta Paediatr*, **22**: 22. doi: 10.1111/apa.15999
105. Tang, F., Luo, W., Wang, X., Li, H., Hong, M., Shao, J. and Song, Q. (2021). Clinical features and follow-up of pediatric patients hospitalized for COVID-19. *Pediatric Pulmonology*. doi: 10.1002/ppul.25407
106. Thakur, N. and Rai, N. (2021). Diabetic ketoacidosis in children induced by coronavirus disease (COVID-19) DKA post covid 19 in children. *Clin Exp Pediatr*, **30**: 30. doi: 10.3345/cep.2021.00941
107. Thede, C. (2021). Chinese herbal medicine in the therapy of post-covid syndromes in adults, children and adolescents. [German]. *Chinesische Medizin*, **36**(3): 113-125. doi: 10.1007/s00052-021-00023-3
108. Tomar, L. R., Shah, D. J., Agarwal, U., Batra, A. and Anand, I. (2021). Acute Post-Infectious Cerebellar Ataxia Due to COVID-19. *Movement Disorders Clinical Practice*, **8**(4): 610-612. doi: 10.1002/mdc3.13208
109. Trieu, C., Sunil, B., Ashraf, A. P., Cooper, J., Yarbrough, A., Pinninti, S. and Boppana, S. (2021). SARS-CoV-2 infection in hospitalized children with type 1 and type 2 diabetes. *Journal of clinical & translational endocrinology*, **26**: 100271-100271. doi:
110. Truong, T. T., Ryutov, A., Pandey, U., Yee, R., Goldberg, L., Bhojwani, D., Aguayo-Hiraldo, P., Pinsky, B. A., Pekosz, A., Shen, L., Boyd, S. D., Wirz, O. F., Roltgen, K., Bootwalla, M., Maglinte, D. T., Ostrow, D., Ruble, D., Han, J. H., Biegel, J. A., Sc, M. M., Huang, C., Sahoo, M. K., Pannaraj, P. S., O'Gorman, M.,

- Judkins, A. R., Gai, X. and Bard, J. D. (2021). Persistent SARS-CoV-2 infection and increasing viral variants in children and young adults with impaired humoral immunity. *medRxiv*, **02**: 02. doi: <https://dx.doi.org/10.1101/2021.02.27.21252099>
111. Venn, A. M. R., Schmidt, J. M. and Mullan, P. C. (2020). A case series of pediatric croup with COVID-19. *Am J Emerg Med*, **15**: 15. doi: <https://dx.doi.org/10.1016/j.ajem.2020.09.034>
112. Vu, K. C., Heresi, G. P. and Chang, M. L. (2021). SARS-CoV-2 and Streptococcus pneumoniae Coinfection in a Previously Healthy Child. *Case Rep Pediatr*, **2021**: 8907944. doi: [10.1155/2021/8907944](https://doi.org/10.1155/2021/8907944)
113. Welzel, T., Samba, S. D., Klein, R., van den Anker, J. N. and Kuemmerle-Deschner, J. B. (2021). COVID-19 in Autoinflammatory Diseases with Immunosuppressive Treatment. *J*, **10**(4): 05. doi: <https://dx.doi.org/10.3390/jcm10040605>
114. Zavala, M., Ireland, G., Amin-Chowdhury, Z., Ramsay, M. E. and Ladhani, S. N. (2021). Acute and persistent symptoms in children with PCR-confirmed SARS-CoV-2 infection compared to test-negative children in England: active, prospective, national surveillance. *Clin Infect Dis*, **29**: 29. doi: [10.1093/cid/ciab991](https://doi.org/10.1093/cid/ciab991)
115. Zhang, C., Huang, L., Tang, X., Zhang, Y. and Zhou, X. (2021). Pulmonary sequelae of pediatric patients after discharge for COVID-19: An observational study. *Pediatr Pulmonol*, **09**: 09. doi: <https://dx.doi.org/10.1002/ppul.25239>
116. Zhvania, M., Kvezereli-Kopadze, M., Kutubidze, T., Kapanadze, N., Gordeladze, M., Iakobashvili, A. and Nakhutsrishvili, E. (2021). Covid-19 and Children: Complications and Late Outcomes. *Georgian Med*(313): 124-127. doi: <https://doi.org/10.1002/ppul.25239>
117. Michelen M, Manoharan L, Elkheir N, Cheng V, Dagens A, Hastie C, O'Hara M, Suett J, Dahmash D, Bugaeva P, Rigby I. Characterising long COVID: a living systematic review. *BMJ global health*. 2021 Sep 1;6(9):e005427.
118. O'Mahoney LL, Routen A, Gillies C, Ekezie W, Welford A, Zhang A, Karamchandani U, Simms-Williams N, Cassambai S, Ardavani A, Wilkinson TJ. The prevalence and long-term health effects of Long Covid among hospitalised and non-hospitalised populations: A systematic review and meta-analysis. *EClinicalMedicine*. 2023 Jan 1;55:101762.
119. Lund LC, Hallas J, Nielsen H, Koch A, Mogensen SH, Brun NC, Christiansen CF, Thomsen RW, Pottegård A. Post-acute effects of SARS-CoV-2 infection in individuals not requiring hospital admission: a Danish population-based cohort study. *The Lancet Infectious Diseases*. 2021 Oct 1;21(10):1373-82.
120. World Health Organization. A clinical case definition for post COVID-19 condition in children and adolescents by expert consensus. [Internet]. 2023 [cited 14 March 2023] Available from: <https://www.who.int/publications/i/item/WHO-2019-nCoV-Post-COVID-19-condition-CA-Clinical-case-definition-2023-1>
121. Kompaniyets L, Agathis NT, Nelson JM, et al. Underlying Medical Conditions Associated With Severe COVID-19 Illness Among Children. *JAMA Netw Open*. 2021;4(6):e2111182. doi:10.1001/jamanetworkopen.2021.11182
122. Al-Aly Z, Xie Y, Bowe B. High-dimensional characterization of post-acute sequelae of COVID-19. *Nature* 2021;594:259–64. [10.1038/s41586-021-03553-9](https://doi.org/10.1038/s41586-021-03553-9)
123. Sathish T, Kapoor N, Cao Y, Tapp RJ, Zimmet P. Proportion of newly diagnosed diabetes in COVID-19 patients: a systematic review and meta-analysis. *Diabetes, obesity & metabolism*. 2021 Mar;23(3):870.
124. Nannoni S, de Groot R, Bell S, Markus HS. Stroke in COVID-19: a systematic review and meta-analysis. *International Journal of Stroke*. 2021 Feb;16(2):137-49.
125. Taherifard E, Taherifard E. Neurological complications of COVID-19: a systematic review. *Neurological research*. 2020 Nov 1;42(11):905-12.
126. Hessami A, Shamshirian A, Heydari K, Pourali F, Alizadeh-Navaei R, Moosazadeh M, Abrotan S, Shojaie L, Sedighi S, Shamshirian D, Rezaei N. Cardiovascular diseases burden in COVID-19: Systematic review and meta-analysis. *The American journal of emergency medicine*. 2021 Aug 1;46:382-91.

Table 1: Summary of study characteristics

Geographical region	<i>n</i>
Africa	2
Asia	20
Europe	43
North America	26
Oceania	1
South America	1
Multi-continental	1
Minimum follow up period after assessment (or mean if not stated)	
1-2 months 28-57 days	50
2-3 months 58-83 days	13
3 to 6 months 84- 167 days	16
6 months to 1 year 178- 364 Days	10
1 year or more	2
Not clear	3
Study design	
Case Control	3
Cohort	26
Crosssectional	2
Case Series	25
Case Report/Study	38
Methods for identifying CYP with COVID-19 infection	
Antigen test (PCR/Lateral Flow)	68
Antibody test	7
Clinical Diagnosis	3
Antigen OR Antibody test	2
Antigen test OR Clinical Diagnosis	7
Clinical Diagnosis AND another criteria	5
Self report OR Antigen test OR Antibody test	1
Not known	1
Recruitment population	
Hospitalised during acute illness	51
Not hospitalised but secondary care recruitment	15
Mixed Hospitalised/ non hospitalised	19
Community	8
Not stated/ Unclear	1
Comparison Group	
Yes	9
No	83
Total Participants	
1 participant	38
2-10 participants	10
11-50 participants	15
51-100 participants	13
101-500 participants	14

	Over 500 participants						4
Risk of bias	Cross-sectional	Case control	Cohort	Case series	Case report	Total	
Low	0	1	4	9	21	36	
Medium	1	2	17	8	11	39	
High	1	0	5	8	6	19	

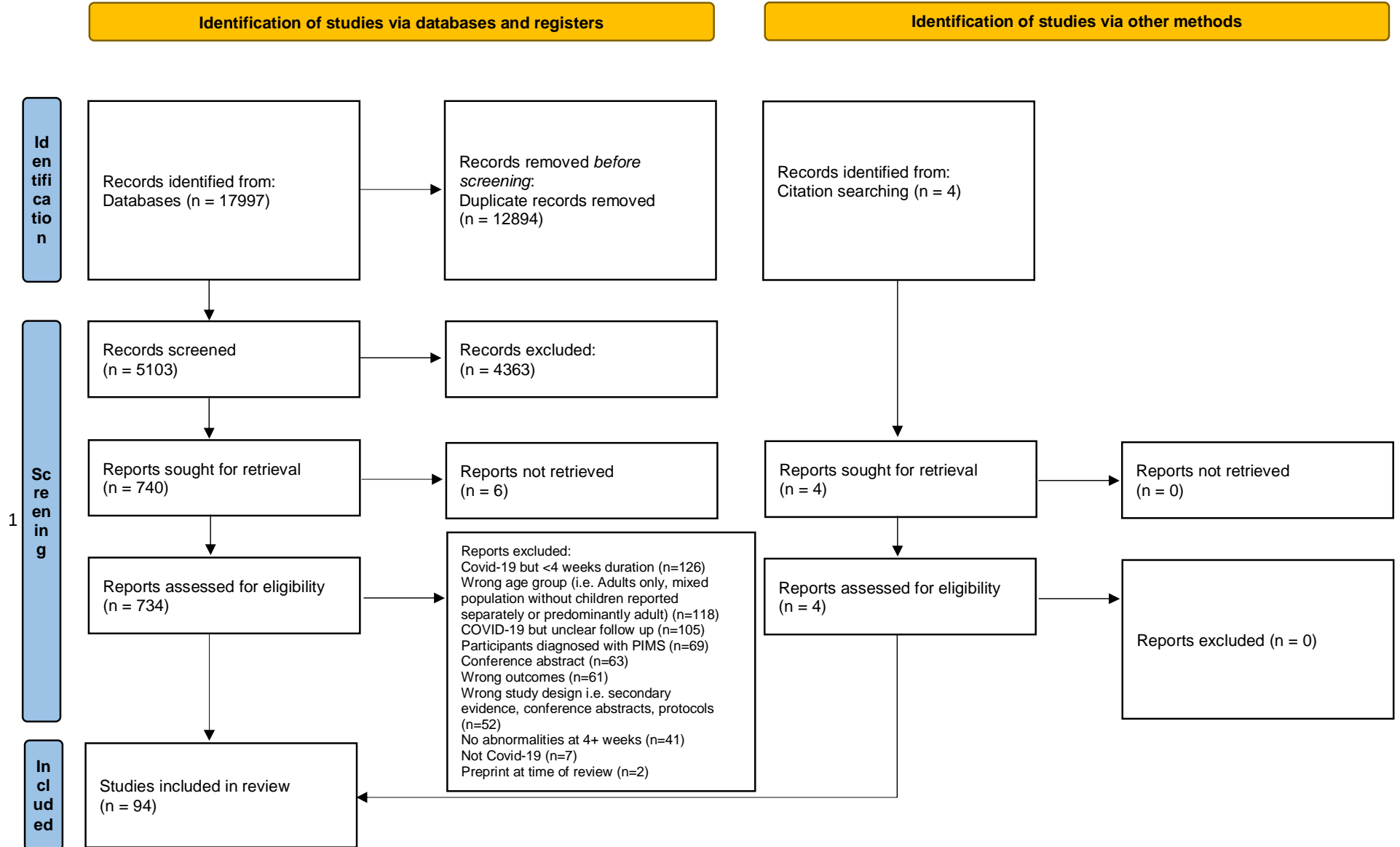
Table 2: Studies included in the quantitative synthesis

Author	Setting	Duration of prolonged symptoms	Cases			Controls		
			Definition of n	Definition of N	n/N	Definition of n	Definition of N	n/N
Molteni et al. (2021)	Community	Beyond 4 weeks	Seropositive and calculable illness duration and at least 1 persisting symptom	Matched control group 1:1	77/1734	Seronegative and calculable illness duration and at least 1 persisting symptom	Matched control group 1:1	15/1734
Miller et al. (2022)	Community	Beyond 4 weeks	At least 1 persisting symptom and evidence of past or present covid infection	All participants with evidence of past or present COVID infection	43/1062	Persisting symptoms but no evidence of past or present COVID infection	All participants with no evidence of past or present COVID infection	86/3970
Radtko et al. (2021)	Community	Beyond 4 weeks	Seropositive with prolonged symptoms	All seropositive participants	10/109	Seronegative with prolonged symptoms	All seronegative participants	121/1246
		Beyond 12 weeks			4/109			28/1246
Roge et al. (2021)	Hospital	Beyond 12 weeks	Seropositive with at least 1 persisting symptom	All seropositive participants	152/236	Other viral illness with at least one persisting symptom	All participants in with other viral illness	32/142
Zavala et al. (2021)	Community	Beyond 4 weeks	Seropositive with prolonged symptoms	All seropositive participants	24/472	Seronegative with prolonged symptoms	Seronegative without prolonged symptoms	6/387
Asadi-Pooya et al. (2021)	Hospital	Beyond 12 weeks	Seropositive with prolonged symptoms	Total participants	26/58			
Bossley et al. (2021)	Hospital	Beyond 4 weeks	At least 1 persisting symptom and previous admission with covid	Total children admitted and followed up	11/71			
Buonsenso et al. (2021)	Hospital	Beyond 4 weeks	Seropositive with prolonged symptoms	Total participants	75/129			
Erol et al. (2021)	Hospital	Beyond 4 weeks	Seropositive with prolonged symptoms	Total participants	45/121			
Fink et al. (2021)	Hospital	Beyond 4 weeks	Seropositive with prolonged symptoms	Total participants	23/53			
		Beyond 12 weeks			12/53			
Osmanov et al. (2021)	Hospital	Beyond 12 weeks	Seropositive with prolonged symptoms	Total participants	128/518			
Matteudi et al. (2021)	Hospital	Beyond 12 weeks	Seropositive with prolonged symptoms	Total participants	23/137			

López et al. (2021)	Community	Beyond 4 weeks	Presumed COVID illness with persistent symptoms at follow up	Total participants	8/72			
Powell et al. (2021)	Community	Beyond 4 weeks	Seropositive with prolonged symptoms	All seropositive participants	7/259			
Say et al. (2021)	Hospital	Beyond 4 weeks	Seropositive with prolonged symptoms	Total participants	12/151			
Smame et al. (2020)	Hospital	Beyond 12 weeks	Seropositive with prolonged symptoms	Total participants	9/30			
Sterky et al. (2021)	Hospital	Beyond 12 weeks	Seropositive with prolonged symptoms	Total participants	12/55			

*hospital includes studies of admitted patients and mixed in-patient / outpatient recruitment

PRISMA 2020 flow diagram for new systematic reviews which included searches of databases, registers and other sources



PRISMA 2020 flow diagram for new systematic reviews which included searches of databases, registers and other sources

From: Page MJ, McKenzie JE, Bossuyt PM, Boutron I, Hoffmann TC, Mulrow CD, et al. The PRISMA 2020 statement: an updated guideline for reporting systematic reviews. *BMJ* 2021;372:n71. doi: 10.1136/bmj.n71. For more information, visit: <http://www.prisma-statement.org/>

10 most commonly reported Long-COVID symptoms**

Asthenia/Weakness/Fatigue
(478/1192/23)

Headache
(192/1121/18)

Cognitive difficulties
(248/949/15)

Smell/taste problems
(176/971/13)

Cough
(124/992/13)

Muscle aches/pains/Myalgia
(81/931/13)

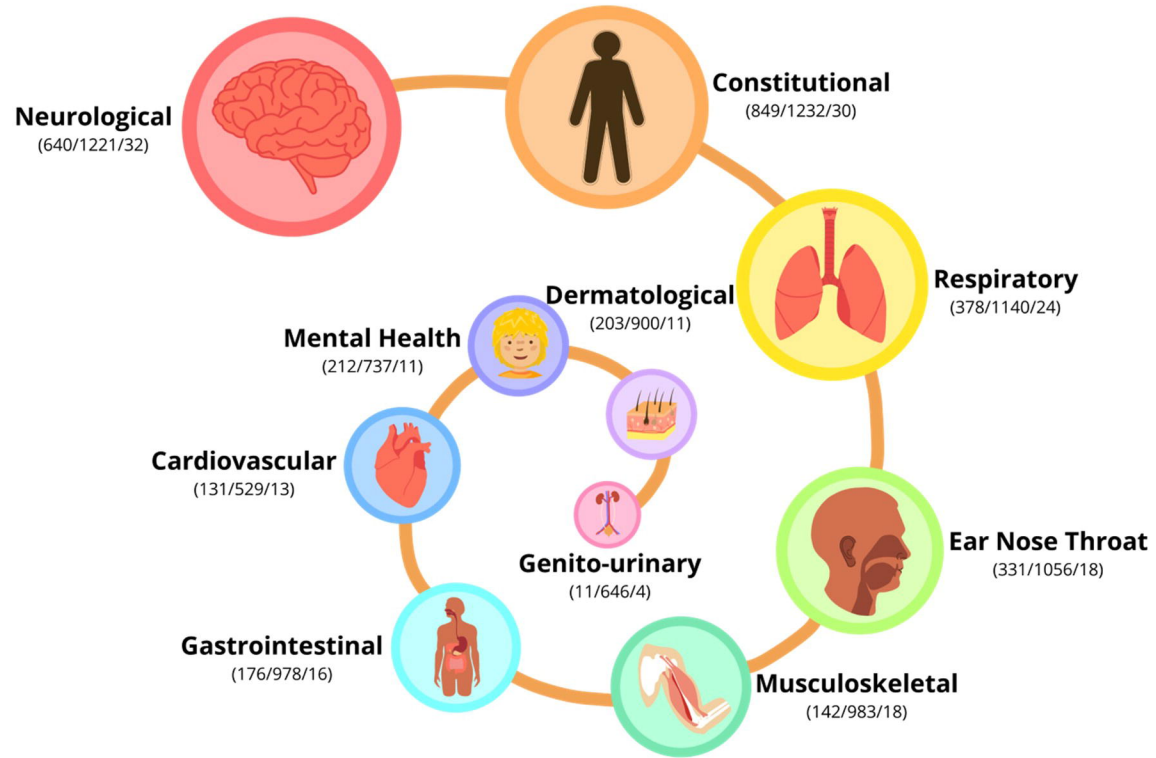
Fever/Increased temperature
(63/854/12)

Shortness of breath
(178/902/11)

Chest pain
(80/324/11)

Sleep disturbance
(136/672/10)

Most common systems affected by Long-COVID



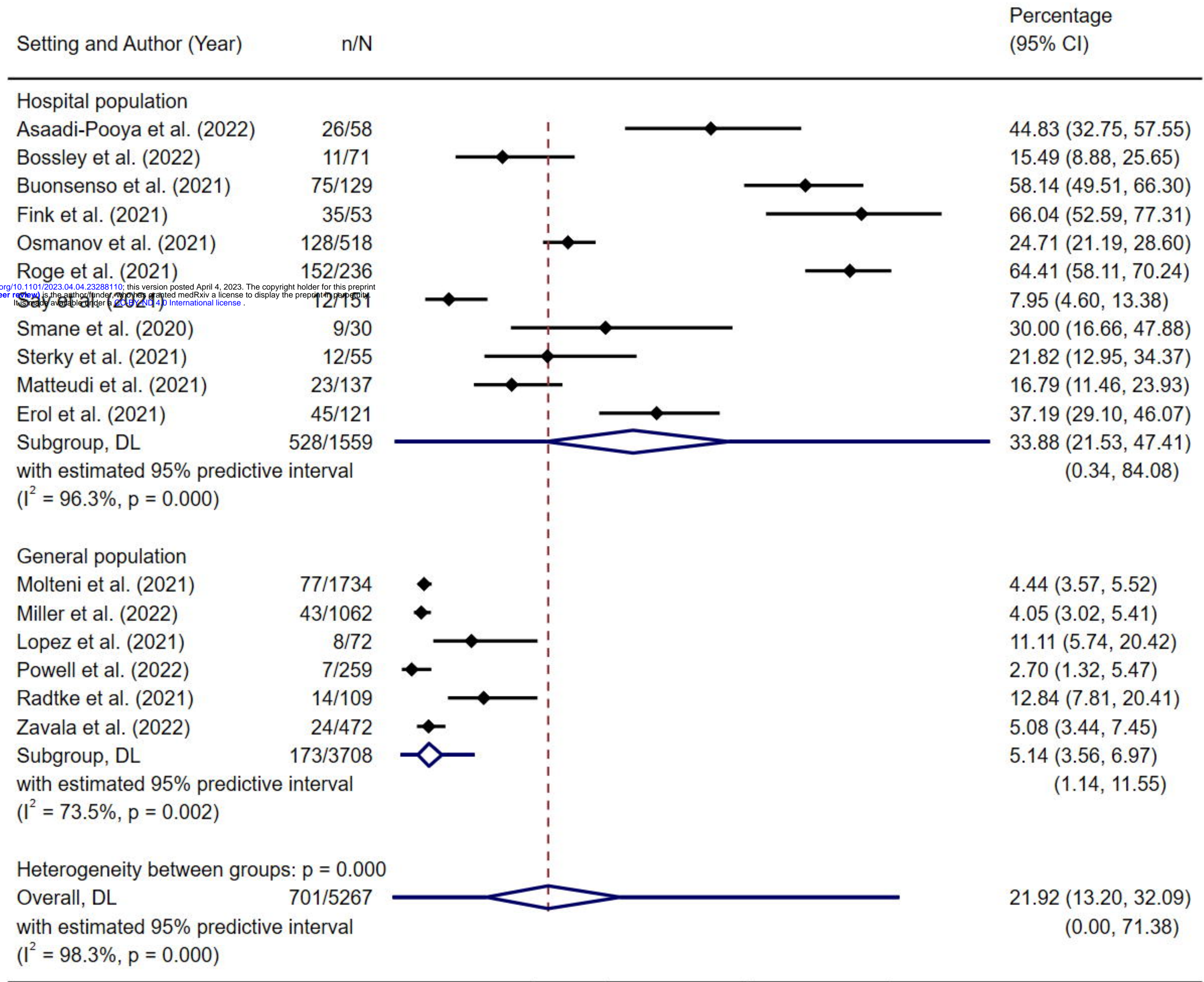
Persistent symptoms by system

Neurological (640/1221/32)	Constitutional (849/1232/30)	Respiratory (378/1140/24)	EarNoseThroat (331/1056/18)	Musculoskeletal (142/983/18)
Headache (192/1121/18)	Asthenia/Weakness/Fatigue (478/1192/23)	Cough (124/992/13)	Smell/Taste problems (176/992/13)	Muscle aches/pains/Myalgia (81/931/13)
Cognitive difficulties (248/949/15)	Fever/Increased temperature (63/854/12)	Shortness of breath (178/902/11)	Sore throat (30/709/4)	Joint pain/swelling/Arthralgia (41/753/8)
Weakness/Asthenia (91/861/8)	Sleep disturbance (136/672/10)	Wheezing/Noisy breathing (32/193/3)	Difficulty swallowing/dysphagia (6/638/4)	Back pain (2/477/2)
Gastrointestinal (176/978/16)	Cardiovascular (131/529/13)	Mental Health (212/1056/18)	Dermatological (203/900/11)	Genito-urinary (11/646/4)
Abdominal pain (64/737/10)	Chest pain (80/324/11)	Emotional lability (87/637/3)	Rashes (21/547/5)	Menstrual disturbance (5/152/1)
Diarrhoea (43/855/7)	Tachycardia (19/106/3)	Depression (22/489/3)	Dermatological symptoms (21/148/3)	Delayed bladder emptying (3/13/1)
Gastrointestinal (32/229/4)	Cardiovascular symptoms (14/98/2)	Anxiety/Panic disorder (34/480/2)	Hives (7/549/2)	Urinary incontinence (2/472/1)

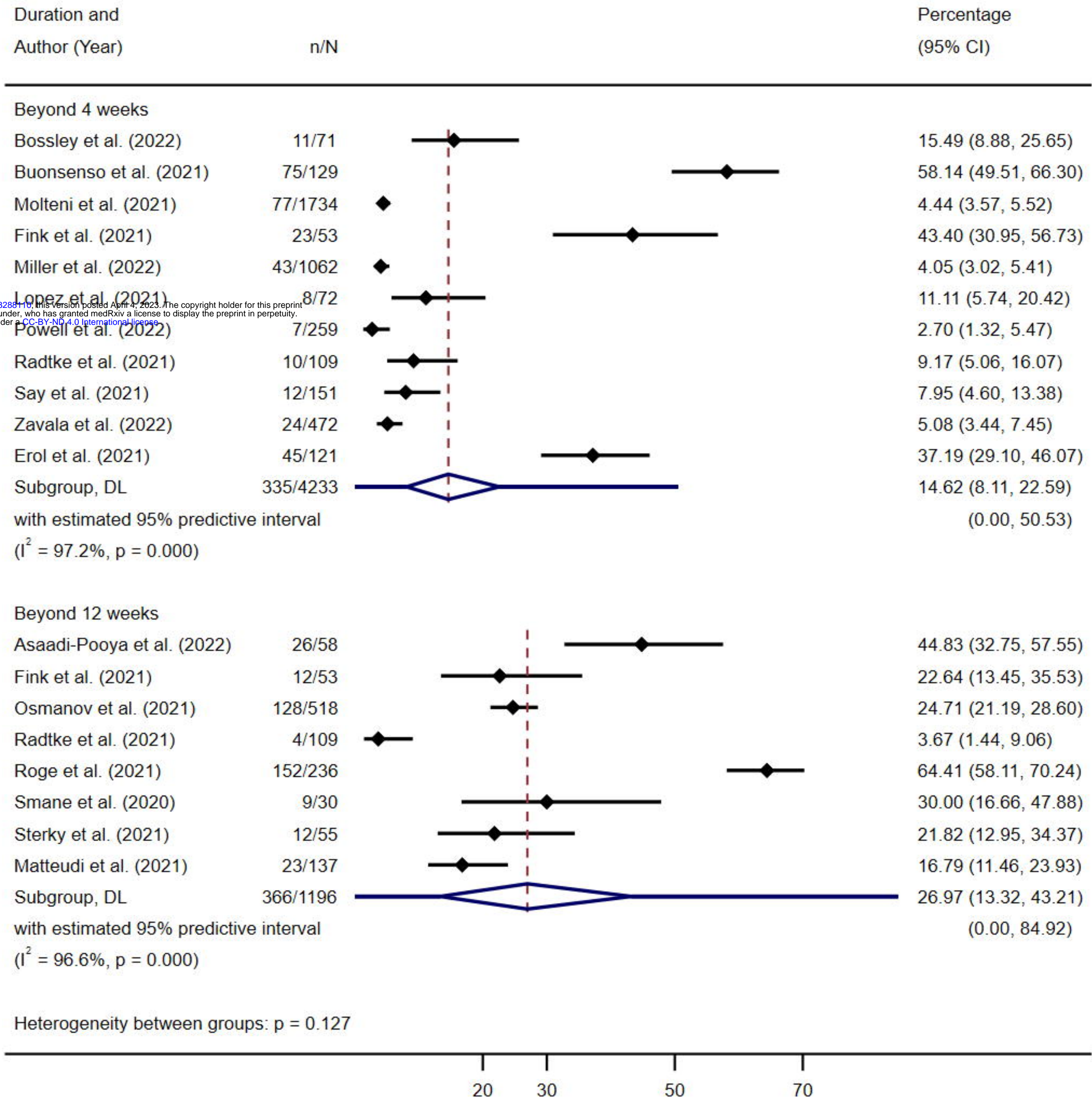
*symptoms presented as: number of people reported with symptom/total number of participants in papers which reported symptom/number of papers symptom reported in

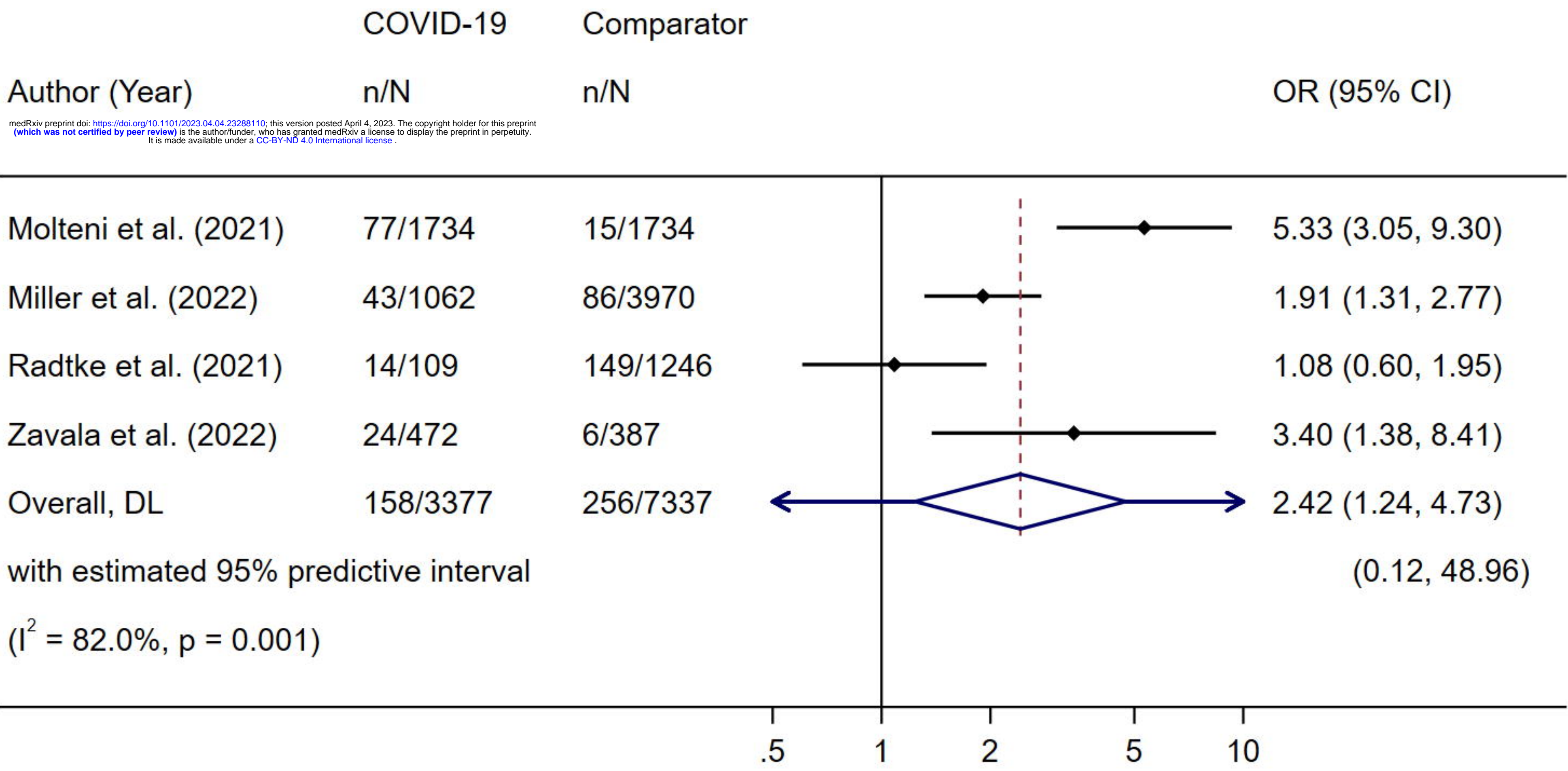
**defined as symptoms reported in the greatest number of papers

medRxiv preprint doi: <https://doi.org/10.1101/2023.04.04.23288110>; this version posted April 4, 2023. The copyright holder for this preprint (which was not certified by peer review) is the author/funder, who has granted medRxiv a license to display the preprint in perpetuity. It is made available under a CC-BY-ND 4.0 International license.



medRxiv preprint doi: <https://doi.org/10.1101/2023.04.04.23288110>; this version posted April 4, 2023. The copyright holder for this preprint (which was not certified by peer review) is the author/funder, who has granted medRxiv a license to display the preprint in perpetuity. It is made available under a [CC-BY-ND 4.0 International license](https://creativecommons.org/licenses/by-nd/4.0/).





medRxiv preprint doi: <https://doi.org/10.1101/2023.04.04.23288110>; this version posted April 4, 2023. The copyright holder for this preprint (which was not certified by peer review) is the author/funder, who has granted medRxiv a license to display the preprint in perpetuity. It is made available under a [CC-BY-ND 4.0 International license](https://creativecommons.org/licenses/by-nd/4.0/).