

## **HRD-One: CLINICAL VALIDATION AND PERFORMANCE ASSESSMENT.**

### **Comparison between Myriad's myChoice®, SOPHiA GENETICS® SOPHiA Homologous Recombination Solution and AmoyDx® HRD Focus Panel**

#### **ABSTRACT:**

Homologous Recombination Repair (HRR) testing has become increasingly important in clinical genomic labs due to the use of poly-ADP-ribose polymerase (PARP) inhibitor therapy for epithelial ovarian, fallopian tube, or peritoneum cancer. While sequencing and copy number variation analysis can identify patients with a pathogenic mutation in BRCA1 or BRCA2 who can benefit from PARPi therapy, there are also patients who may benefit but do not have these mutations. To address this, our lab has developed a test called HRD-One, in partnership with SOPHiA GENETICS, that can detect sequence variants in genes involved in HRR, as well as genomic scars that indicate Homologous Recombination Deficiency (HRD), which may be present even when a pathogenic variant is not detected. We tested 59 high-grade serous epithelial ovarian cancer samples using HRD-One and found that it had an overall categorical concordance of 94.74% with Myriad's myChoice® score, which is a commercial HRD test. 12 out of 13 samples that carried a pathogenic or likely pathogenic variant in BRCA1/2 also had a positive HRD-One score, and 9 samples in which a pathogenic variant in BRCA1/2 was not identified had a positive score in both HRD-One and myChoice®. Of the samples that passed quality control, we observed an average of 1.62 points variation between replicates on a scale from -25.0 to +25.0. We also found that low-confidence results were associated with a low DNA input and the age of FFPE blocks, while the estimated tumor percentage in the block, NGS library yield, and score of genomic instability did not have a significant association. We determined that blocks older than 3 years or with a DNA input of less than 25ng are not reliable for producing high-quality results. Finally, we validated the HRD-One test with SOPHiA Homologous Recombination Solution (Library Prep kit II) and correlated it to myChoice®, and found that the AmoyDx® HRD Focus Panel had the same sensitivity but a higher number of false positive samples and therefore lower specificity. Overall, we have shown that HRD-One can provide a reproducible and concordant score for inferring HRD, and an HRD-One score of 2.0 or greater predicts HRD and correlates to Myriad's myChoice® score of 42 in high-grade serous epithelial ovarian cancers samples that meet our minimum quality criteria.

#### **AUTHORS:**

Guarisch-Sousa, Rodrigo<sup>1</sup>; Kroll, José Eduardo<sup>1</sup>; Bonaldi, Adriano<sup>1</sup>; Pierry, Paulo Marques<sup>1</sup>; de Almeida, Luiz Gustavo<sup>1</sup>; Souza, Camila Alves<sup>1</sup>; Silva, Juliana Santos<sup>1</sup>; Villela, Darine<sup>1</sup>; Meliso, Fabiana Marcelino<sup>1</sup>; Milanezi, Maria Fernanda Grillo<sup>1</sup>; Scapulatempo Neto, Cristovam<sup>1</sup>; Yamamoto, Guilherme Lopes<sup>1,2,3</sup>

#### **INSTITUTIONS:**

1 Dasa Genômica, Genômica, São Paulo, SP, Brasil

2 Instituto da Criança, Faculdade de Medicina, Universidade de São Paulo, São Paulo, SP, Brasil

3 Centro de Pesquisas Sobre o Genoma Humano e Células Tronco, Instituto de Biociências, Universidade de São Paulo, São Paulo, SP, Brasil

#### **INTRODUCTION**

Homologous Recombination Repair (HRR) represents an important repair pathway of potentially lethal DNA double strand breaks; its deficiency sets off a phenotype of tumor cells that leads to the accumulation of genetic damage. However, when a second deficiency in DNA replication/repairing caused by the lack or inhibition of poly-ADP-ribose polymerase (PARP) is present, instead of benefiting cancer cells, a mechanism of synthetic lethality can be achieved in which only cells that lack HRR die when PARP is also inhibited. With the advent of PARP inhibitor therapy for epithelial ovarian, fallopian tube or peritoneum cancer, testing of HRR aberrations as a biomarker of response to therapy was brought to the routine workflow of genomic laboratories. Several mechanisms can cause Homologous Recombination Deficiency (HRD), such as mutations of genes involved in the HRR pathway, specially *BRCA1* and *BRCA2*, methylation of gene promoters, and other unknown mechanisms. The most utilized method for determining the presence of HRD is to sequence known HRR genes and look for deleterious mutations. Another method is to look for the effect (or phenotype) of loss of HRR function by quantifying the degree of genomic aberrations or scars in the genome; this is also called “genomic instability”. Whole Genome Sequencing (WGS) coupled with specialized algorithms trained to recognize patterns characteristic of genomic instability can be used to quantify HRD aberrations. Here we present the clinical validation of HRD-One, an HRD test based on low-pass WGS (lpWGS) data combined with targeted sequencing of HRR genes on tumor samples, and its correlation with a commercial test used for HRD assessment.

## MATERIALS AND METHODS

### Tumor Samples

Fifty-nine high-grade serous epithelial ovarian cancers samples were retrieved from pathology archives of a private diagnostic laboratory in Brazil. Histological sections of 10µm from formalin-fixed paraffin-embedded (FFPE) tumor samples were obtained, and a hematoxylin and eosin-stained slide was reviewed by pathologists to select and mark a representative tumor area for macrodissection and DNA extraction. The percentage of neoplastic cells in the total amount of tissue section and in the marked area were described for all samples. The 59 samples were also sent to a reference laboratory for homologous recombination deficiency assessment, for validation purposes. Other 21 FFPE carcinoma samples from distinct primary sites, including ovary, prostate, breast, pancreas, were added to the validation as controls for the evaluation of reproducibility and repeatability, but no known HRD status is available for these cases. This initial validation was performed with SOPHiA Homologous Recombination Solution DNA Library Prep kit II (LPiI).

Thirty-two of the initial 59 samples, plus another 12 different high-grade serous epithelial ovarian cancers samples that underwent myChoice® testing were used to validate concordance of AmoyDx® HRD Focus Panel with both myChoice® and HRD-One SOPHiA DNA Library Prep kit II.

Some samples differ between comparisons due to insufficient sample/DNA quantity to perform all assays with the same exact samples.

### DNA extraction and quality control

The regions of highest tumor cell density, previously marked by a pathologist, were scraped from five to eight slides for each sample. DNA was extracted using Maxwell<sup>®</sup> RSC DNA FFPE kit (Promega) and quantified using two methods: Qubit<sup>™</sup> dsDNA High Sensitivity (Thermo Fisher Scientific) and/or Real-Time quantitative PCR, using the TaqMan<sup>™</sup> Fast Advanced Master Mix (Thermo Fisher Scientific) and the TaqMan<sup>®</sup> Copy Number Assays (Thermo Fisher Scientific). The functional concentration was determined based on a standard curve generated by serial dilutions of the Control DNA CEPH 1347-02 (Thermo Fisher Scientific), with concentration values ranging from 50 ng/μL to 0,04 ng/μL. gDNA integrity was assessed using the Genomic DNA ScreenTape in a TapeStation equipment (Agilent Technologies).

### **Library preparation using SOPHiA HRS Library Prep kit II**

For the initial validation with 59 samples, library preparation was performed using the SOPHiA DNA Library Prep kit II (SOPHiA GENETICS) according to SOPHiA Homologous Recombination Solution protocol (version PM\_T1\_T2\_T3\_5.1.96\_r1en, November 2019). DNA inputs ranged from 3.9 to 150 ng according to the functional concentration measured by Real-Time PCR. The fragmentation time was adjusted based on the degradation level of sample. After fragmentation, SU-adapters ligation and PCR amplification for the addition of Unique Dual Indexes were performed. The number of PCR cycles varied based on the total input DNA, as specified in the original protocol. Libraries were quantified using Qubit<sup>™</sup> dsDNA High Sensitivity Assay kit (Thermo Fisher Scientific), and capillary electrophoresis was performed to analyze fragments size distribution using a D1000 ScreenTape (Agilent Technologies).

### **-Low-pass Whole Genome Sequencing (lpWGS)**

In HRD-One (SOPHiA LPII) validation, the complete analysis of genomic instability involves both genome sequencing at a low depth (approximately 1x to 3x coverage) and evaluation of the presence of pathogenic variants in the genes present in the panel. lpWGS was performed in both NextSeq 550 and NovaSeq 6000 platforms (Illumina Inc) using a NextSeq Mid Output Reagent kit (300 cycles in a Paired-End 2x151 cycles run) and a NovaSeq S1 Reagent kit v1.5 (200 cycles in a Paired 2x101 cycles run), respectively. Based on each library concentration and their average fragment size, library molarity was calculated using the following formula:

$$\text{Library molarity} = \frac{\text{Library concentration (ng/μL)} \times 10^6}{\text{Average size (bp)} \times 649,5}$$

Twelve individual libraries were pooled together at equimolar amounts for the NextSeq run, while 24 or 25 were pooled for each NovaSeq S1 flow cell run. The pooled loading concentration was 1,4 pM and 2,4 nM for NextSeq and NovaSeq, respectively. A spike-in of 1% PhiX V3 control (Illumina Inc) was included in each pool. The dilutions and denaturation of the pools were performed according to standard Illumina protocols. In summary, a total of four lpWGS runs were performed: 1 in NextSeq (12 samples) and 3 in NovaSeq (24, 25 and 25 samples), totalizing 80 unique samples, 59 of which had a Genomic Instability Score (GIS) also known. Inter-run and intra-run samples were included for reproducibility and repeatability analysis.

### **-Homologous recombination repair (HRR) genes panel capture and sequencing**

The HRS gene panel (SOPHiA Homologous Recombination Solution LP11) is an assay based in Next Generation Sequencing (NGS) that evaluates the detection of single nucleotide variants (SNVs), small insertions and deletions (InDels) and copy number variation (CNVs) of the following genes: *ATM*, *BARD1*, *BRCA1*, *BRCA2*, *BRIP1*, *CDK12*, *CHEK1*, *CHEK2*, *FANCL*, *PALB2*, *PPP2R2A*, *RAD51B*, *RAD51C*, *RAD51D*, *RAD54L* and *TP53*. The target region includes the coding regions (CDS) and the splicing sites of the 16 genes. The HRS panel has been previously validated in our laboratory on the MiSeq platform (Illumina Inc) using 13 unique FFPE samples, which included two SOPHiA GENETICS references (SG063 and SG060). Briefly, individual libraries with distinct indexes prepared for the lpWGS were combined in pools of 8 samples, with an input of 200 ng per library. Blocking oligo xGen Universal Blockers – TS Mix (SOPHiA GENETICS) and Human Cot DNA (SOPHiA GENETICS) were added to each pool before the complete lyophilization in a vacuum concentrator. Dried pools were resuspended and hybridized with HRS panel probes in a thermal cycler at 65°C for 4 hours. Following incubation, hybridized targets were captured using streptavidin beads in a 45-minute incubation at 65°C. After several washes steps to remove unbound DNA molecules, captured fragments were eluted and PCR-amplified. Concentration and fragment size distribution were assessed using both Qubit HS and D1000 ScreenTape. HRS panel sequencing was performed in a MiSeq platform using a MiSeq Reagent kit V3 (600 cycles in a Paired-End 2x 151 cycles run). The molarity of the post-capture library pools was calculated using the same formula described above for the lpWGS. The pooled loading concentration was 14 pM and included an 1% spike-in of PhiX V3 control. The dilutions and denaturation of the pools were performed according to standard Illumina protocols. For HRS gene panel, minimal Limit of Detection (LOD) for point mutations and deletions was 5%, and the minimal depth of coverage was 500x (96.05% sensitivity and 99.99% specificity). For the evaluation of homologous recombination deficiency in ovarian cancers, only pathogenic or likely pathogenic variants in *BRCA1* and *BRCA2* genes are relevant with current literature data. Therefore, only variants on these two genes were considered in this study.

### **-Genomic Integrity Index (GII) score calculation**

The primary sequencing output was demultiplexed by bcl2fastq v2.20.0.422 (with default parameters), reads were processed to trim adapters and low-quality base calls and mapped to the human genome (hg19). Sequencing depth was computed and normalized to calculate a genome-wide coverage profile. A deep learning algorithm (convolutional neural network) developed by SOPHiA GENETICS was trained based on data from TCGA database (The Cancer Genome Atlas Program, National Cancer Institute, NIH) (PMID: 27135926). This algorithm takes as input a bitmap-like matrix that reflects the WGS coverage profile and outputs a scalar value named as DLD (Deep Learning-Derived) Genomic Integrity Index (GII) score that, in this document, is referred to as DLD or GII score and reflects the damage to genomic integrity of the sample. Samples with scores above a specific threshold indicate a GII positive status and are therefore unable to repair double strand breaks. Samples below that threshold indicate a GII negative status for which PARPi therapy would not be recommended. The DLD score has a non-strict range of about -30 up to +30, for reporting GII scores we have capped both extremities to – 25.0 and + 25.0 since samples below or above such scores are definitely negative or positive, respectively.

## Library preparation using AmoyDx® HRD Focus Panel and sequencing

For the 44 samples of the AmoyDx® HRD Focus Panel validation, library preparation was performed using the protocol version B1.2 (March 2021). Briefly, DNA inputs ranged from 50 to 100 ng were pre-denatured and the probes hybridized to the target regions of the *BRCA1* and *BRCA2*. Then, an extension and ligation step of the probes were performed, treated with exonuclease for the digestion of non-hybridized probes and free single- and double-stranded DNAs in the solution. Next, the linked probes were amplified by PCR and the product was finally purified. The libraries were quantified in the Qubit™ before and after the purification step in order to verify material losses. A total of 100 ng of each library were pooled together and the final concentration was measured on Qubit™. Library molarity was calculated using the following formula:

$$\text{Library molarity} = \frac{\text{Library concentration (ng/}\mu\text{L)}}{\text{Average size (bp)} \times 268} \times 10^6$$

The pooled loading concentration was 1,2 nM for NovaSeq 6000 platform using a NovaSeq SP Reagents kits v1.5 (300 cycles) in a Paired-end 2x150 cycles run. A spike-in of 1% PhiX V3 control (Illumina Inc) was included.

The AmoyDx® HRD Focus Panel determines a patient's HRD status by detecting SNVs and InDels in whole coding regions and intron/exon boundaries of the *BRCA1* and *BRCA2* and determining a genomic scar score (GSS) by ANDAS System (AmoyDx®).

## RESULTS

### HRD-One VALIDATION (SOPHiA LPII vs myChoice®)

#### Description of validation samples

Table 1 contains a brief description of samples used on this validation as well as the main clinical characteristics of each one, such as: cancer site, estimated tumor content (ETC) and DNA input, which is an important quality parameter directly impacting the feasibility of preparing DNA libraries used for NGS sequencing.

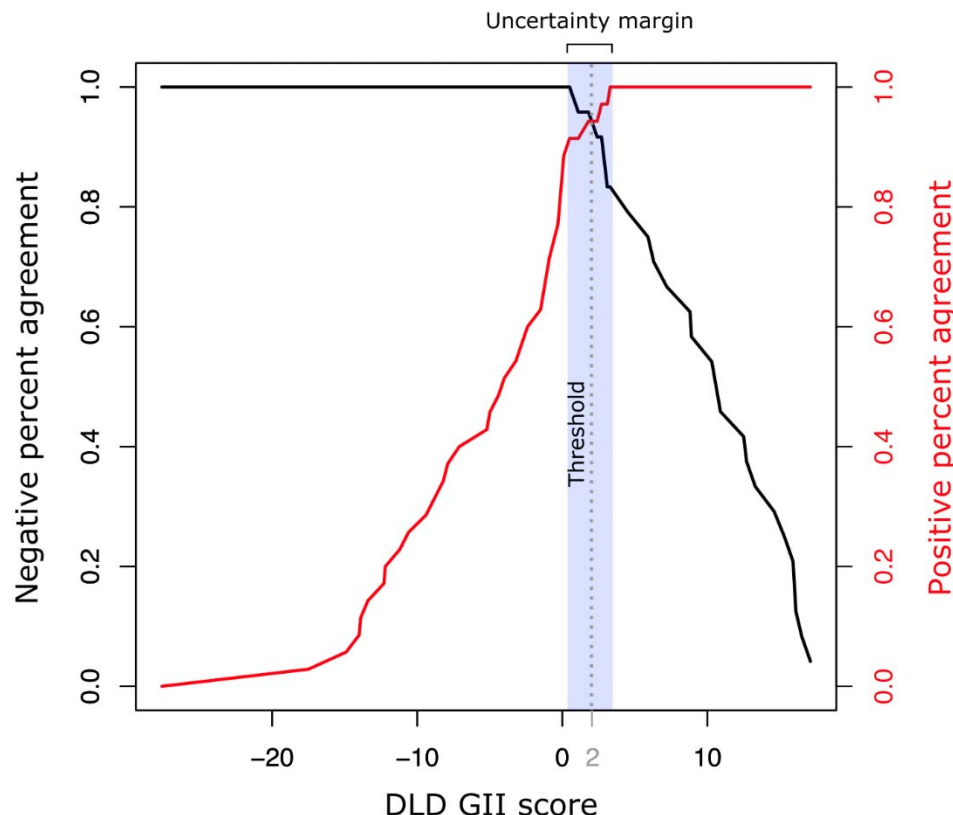


**Table 1.** Description of samples used to validate HRD-One test (SOPHiA LPII).

Sample	Run	Cancer site	Estimated tumor content (%)	DNA input (ng)	Sample	Run	Cancer site	Estimated tumor content (%)	DNA input (ng)
1	1	Ovary	80	150	31	3	Ovary	85	100
2	2	Ovary	50	150	32	3	Peritoneum	90	50
3	2	Ovary	60	150	33	3	Ovary	90	50
4	2	Ovary	70	150	10	3	Ovary	90	100
5	2	Ovary	70	150	34	3	Ovary	95	100
6	2	Peritoneum	75	150	35	3	Fallopian tube	98	25
7	2	Peritoneum	80	150	36	4	Ovary	20	25
1	2	Ovary	80	150	37	4	Peritoneum	20	50
8	2	Ovary	90	150	38	4	Ovary	20	100
9	2	Ovary	90	150	39	4	Ovary	20	100
10	2	Ovary	90	150	40	4	Ovary	30	100
10	2	Ovary	90	150	41	4	Ovary	40	25
11	2	Ovary	98	150	42	4	Ovary	40	100
12	3	Ovary	30	100	43	4	Peritoneum	50	50
13	3	Ovary	40	100	44	4	Ovary	50	100
14	3	Ovary	40	100	45	4	Ovary	60	3.9
15	3	Ovary	50	50	46	4	Peritoneum	60	100
16	3	Peritoneum	50	100	47	4	Ovary/Peritoneum	60	100
17	3	Ovary	60	25	48	4	Ovary	60	100
18	3	Ovary	60	100	49	4	Ovary	60	100
19	3	Ovary	60	100	50	4	Fallopian tube	70	50
20	3	Ovary	60	100	51	4	Ovary	70	50
21	3	Ovary	70	100	21	4	Ovary	70	100
22	3	Peritoneum	70	100	52	4	Ovary	80	19.2
23	3	Fallopian tube	70	100	53	4	Ovary	80	50
24	3	Ovary	80	100	54	4	Ovary	80	100
25	3	Ovary	80	100	55	4	Ovary	80	100
26	3	Fallopian tube	80	100	56	4	Ovary	80	100
27	3	Ovary	80	100	57	4	Ovary	90	100
28	3	Ovary	80	100	58	4	Ovary	90	100
29	3	Ovary	80	100	59	4	Ovary	90	100
30	3	Ovary	80	100					

### Discrimination of positive/negative samples

In order to maximize the discrimination power of positive/negative samples, we performed an evaluation of different thresholds to find which value maximizes specificity between positive and negative groups. Based on correlation with Myriad's myChoice® test, this theoretical threshold was computed to be 2.0, where samples with higher values shall be classified as positive and samples with lower values as negative. Noteworthy, a narrow uncertainty margin between 0.2 and 3.2 was observed, in which discrimination between classes is less clear (Figure 1).



**Figure 1.** Threshold analysis based on the specificity equilibrium between the positive and negative groups.

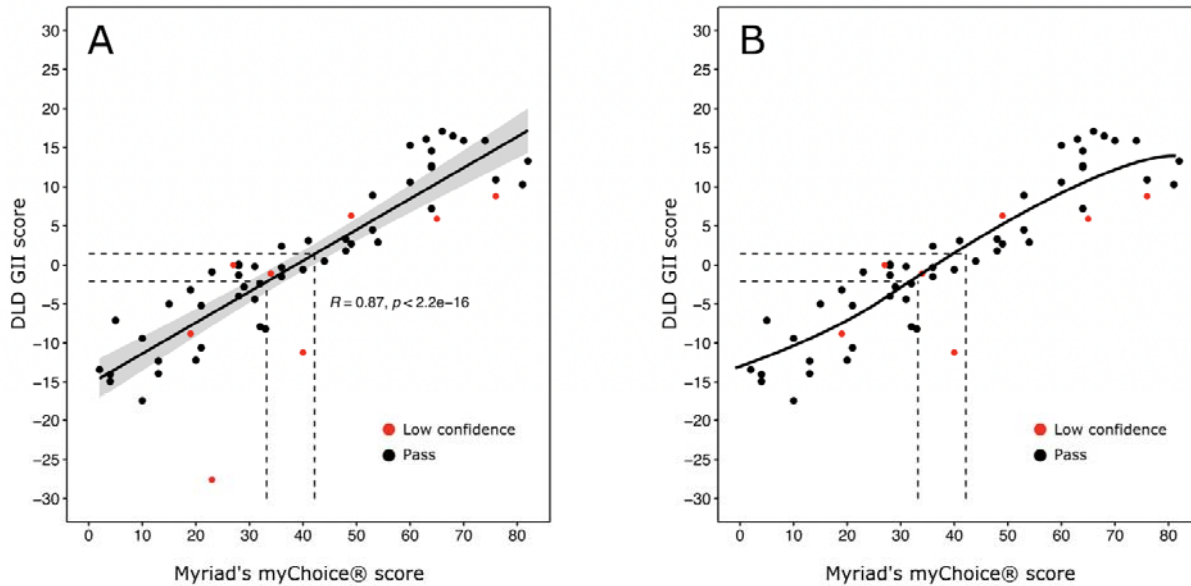
### Correlation between methodologies for genomic instability/integrity detection

An overall strong correlation between known genomic instability scores (myChoice® GIS) and DLD GII scores (SOPHiA Homologous Recombination Solution GII) was observed ( $R=0.87$ ,  $p\text{-value}=2.2\times 10^{-16}$ ; Figure 2A). Noteworthy, samples which deviate most from the central trend line are samples flagged as low-confidence during quality-control steps (Figure 2A). For these samples, low tumor content, low DNA input, high level of DNA degradation or weak genomic integrity signal, which impairs signal-to-noise ratio used in the algorithm, are the likely causes of bigger deviations. Considering a threshold of 2.0 to discriminate between positive and negative samples, a concordance of 94.74% with Myriad's myChoice® test was observed on this cohort ( $p\text{-value}=1.72\times 10^{-12}$ , Fisher's exact test; Figure 2C). The analytical sensitivity of the test was 95.7%, the analytical specificity was 94.1%, the positive predictive value (PPV) was 91.7% and the negative predictive value (NPV) was 97% (also when compared with the available HRD commercial test).

Three ovarian tumor samples showed categorical discordances between the commercial test and HRD-One (Figure 2D). Two samples with negative status and one with positive status, based on Myriad's myChoice® test, turned out to be the opposite status by HRD-One, with borderline scores. Considering that reported genomic instability scores from Myriad's myChoice® were 36, 41 and 44 for these 3 samples, close to the established threshold for the current standard test (42),

and the uncertainty margin predicted for HRD-One (between 0.2 and 3.2), extra caution is expected when counselling patients with such borderline results.

Both linear and polynomial regressions presented very good correlations (Figure 2A and 2B). Due to the facts that: a) scores below 30 (-3.0) are clearly negative and above 50 (+5.5) are clearly positive; b) the order 3 polynomial regression is almost linear between 30 and 50 and has a slightly better fit than the linear regression; c) the DLD GI score seems to cap at both extremities; we have opted to establish a correlation table utilizing the polynomial regression (Table 2).



C

		HRD-ONE status	
		+	-
Myriad's myChoice® status	+	22	1
	-	2	32

D

Cancer site	Myriad's myChoice® (status)	HRD-ONE	
		DLD GII score	HRD-ONE score (status)
Ovary	44 (+)	0.5	0.5 (-)
Ovary	36 (-)	2.4	2.5 (+)
Ovary	41 (-)	3.1	3.0 (+)

**Figure 2.** A) A strong Pearson correlation was observed between known GI score and Deep Learning-derived (DLD) GII scores (all samples and replicates); B) Polynomial regression (order 3) of unique samples excluding the outlier; C) Contingency table of positive/negative samples



showing concordance between known GII status and HRD-One status; D) Detailed information on the 3 samples with categorical divergencies between known status and HRD-One status.

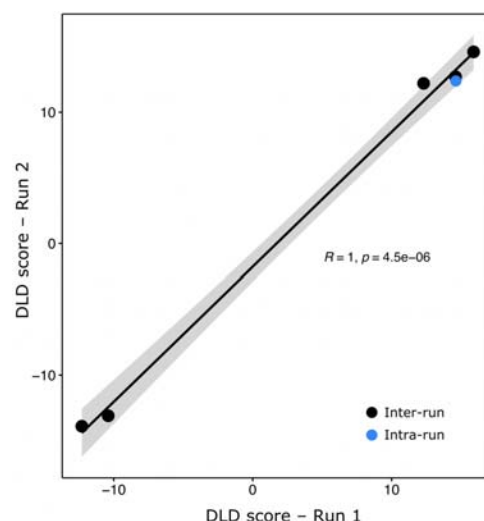
Table 2. Correlation between HRD-One score and commercial test score

HRD-ONE	-3	-2.5	-2	-1.5	-1.5	-1	-0.5	0	0.5	1	1	1.5	2	2.5	3	3.5	3.5	4	4.5	5	5.5
Myriad's myChoice®	30	31	32	33	34	35	36	37	38	39	40	41	42	43	44	45	46	47	48	49	50

### Reproducibility and robustness of GII scores

A controlled experimental variability is expected for any clinical experiment. As a multi-step process, NGS-based tests are especially subject to such variations that can arise from extraction, library preparation and/or NGS sequencing, which consists of non-deterministic processes. Even before, extracting DNA from somatic specimens relies on a biopsy process of a heterogeneous population of cells.

To assess the reproducibility of DLD GII score, six samples were sequenced as replicas. Of those, five samples were sequenced across different sequencing batches and one within the same batch. A very high correlation was observed either within or between sequencing batches for all samples tested, reassuring the reproducibility and robustness of GII scores across multiple experiments ( $R=1.0$ ;  $p\text{-value} < 4.5 \times 10^{-6}$ ; Figure 3). The mean variability observed between replicas was  $1.62 \pm 0.88$ . Due to this level of variability and the sake of facilitating interpretation of clinical results, we opted for using scores rounded to half a point to represent the final HRD-One GII score (Table 2).



**Figure 3.** Pearson correlation between DLD GII scores for inter and intra-run replicas.

### Correlation between HRR and HRD-One score

Among the 59 unique samples 13 presented a pathogenic or likely pathogenic variant in either *BRCA1* or *BRCA2* (22%); and only 1 of the 13 HRR positive samples had a negative HRD score (7,7%), which was also concordant between HRD-One (score -5.0) and Myriad's myChoice®

(score 15). These data are in accordance with similar experiments in the literature and confirms first that some of the HRR positive samples might present a negative HRD GII score and second that the HRD-one test concordance with HRR pathogenic mutations was the exact same as the concordance between Myriad's myChoice® score and HRR pathogenic mutations. HRD-One scores in the 12 samples that are HRR positive ranged from 2.0 to 17.1 (average 9.9), Myriad's myChoice® scores ranged from 48 to 82 (average 63).

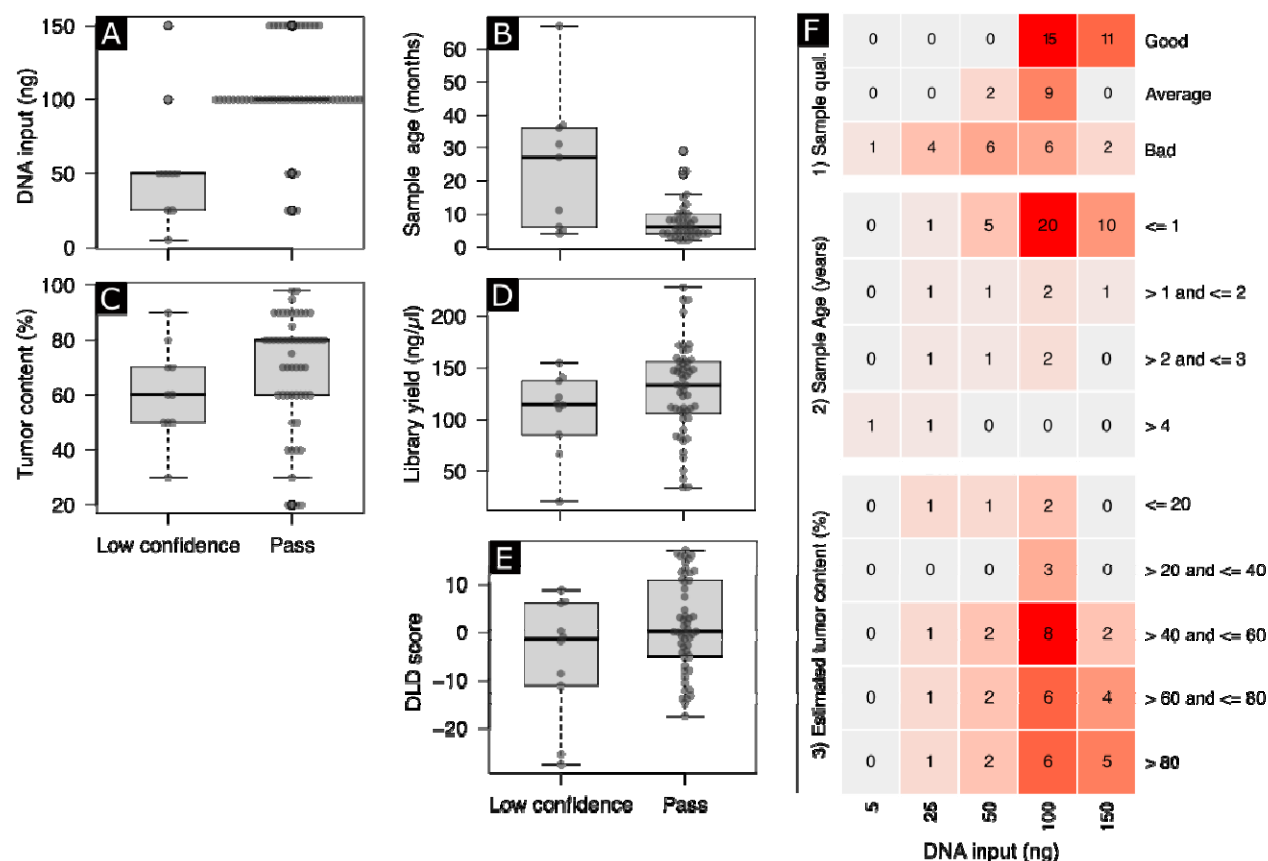
### **Pre analytical variables associated with low confidence experiments**

Especially when dealing with challenging materials such as FFPE samples, pre-analytical steps are important to ensure a reliable analytical result. We sought to investigate a set of parameters and how they associate with low-confidence warnings indicated by the algorithm.

Within our dataset, we observed significant differences between pass and low-confidence cases for DNA input ( $p\text{-value}=4.6\times 10^{-3}$ ; Figure 4A) and age of FFPE blocks ( $p\text{-value}=3.9\times 10^{-2}$ ; Figure 4B). All other pre-analytical variables tested of estimated tumor content ( $p\text{-value}=0.2242$ ; Figure 4C) and library yield ( $p\text{-value}=0.1403$ ; Figure 4D) did not show significant differences between the two classes. Importantly, we could not observe an association between DLD GII scores and low-confidence flags ( $p\text{-value}=0.1353$ ; Figure 4E), reenforcing that no clear bias towards positive or negative cases is expected regarding quality matters.

Samples with lower ETC, especially less than 30%, are expected to fail on a higher rate due to a lower signal for the algorithm to calculate genomic integrity (Figure 4C).

Finally, we sought on evaluating the association between DNA input, the isolated most significant pre-sequencing parameter, with sample quality, age of FFPE blocks and ETC. Samples with good gDNA profile tend to yield more while samples with average or poor show a less clear pattern. Similarly, FFPE blocks with less than 1 year tend to yield good amounts of input DNA, blocks between 1 and 3 years show a less clear trend, while blocks with more than 4 years old usually have a hindered extraction. In our validation, we were able to extract more than 100 ng of functional DNA from most of FFPE blocks and set a DNA input of 100 ng per reaction, whenever possible to proceed with library preparation for NGS (Figure 4F). Older samples and samples on the lower end of input DNA (3.9 to 50 ng) have been shown to produce low confidence results, we have therefore adopted 50 ng as the minimum recommended input to proceed with HRD testing. It is possible that low DNA yield is a consequence of age and/or DNA degradation and therefore an indirect measure of these factors.



**Figure 4.** Association between low confidence experiments and major pre-sequencing parameters. Significant association was observed for A) DNA input and B) age of FFPE blocks, while no significant association was observed for C) estimated tumor content, D) library yield and E) DLD GI scores. F) Association between DNA input, the isolated most significant pre-sequencing parameter, with sample quality, age of FFPE blocks and estimated tumor content.

### Samples with inconclusive results

In our validation set, we only had two samples with inconclusive results on Myriad's myChoice® test, these two samples were also flagged as low confidence by the DLD algorithm. Noteworthy, these two samples had the lowest input DNA among all samples in our validation set (Table 3).

**Table 3.** The two samples with inconclusive results from benchmark commercial test were also marked as low confidence within our validation set. The likely cause is the hindered capacity of extracting enough DNA input for library preparation.

Sample	Cancer site	Estimated tumor content	DNA input (ng)	Sample quality	Library yield (ng/μL)	Myriad's myChoice® status	HRD-ONE	
							QA status	DLD GI score
1	Ovary	60	3.9	bad	66.8	inconclusive	low confidence	-2
2	Ovary	80	19.2	bad	154.8	inconclusive	low confidence	-25.4

## AmoyDx® HRD Focus Panel VALIDATION (AmoyDx® HRD Focus Panel vs SOPHiA LPII and myChoice®)

### Description of validation samples

Table 4 contains a brief description of the extra samples used on this validation as well as the main clinical characteristics of each one, such as: cancer site, estimated tumor content (ETC) and DNA input, which is an important quality parameter directly impacting the feasibility of preparing DNA libraries used for NGS sequencing. A total of 44 samples, 32 from initial validation (samples: 3, 4, 5, 7, 8, 9, 10, 11, 16, 20, 21, 22, 23, 24, 29, 30, 31, 32, 33, 34, 35, 38, 44, 45, 46, 49, 53, 54, 55, 56, 58 and 59) plus 12 novel samples (60-71) were included.

Of important note 7 out of 44 samples failed quality control in AmoyDx® HRD Focus Panel (samples: 7, 22, 29, 35, 54, 69 and 71). This proportion is only a bit higher than 7/59 low confidence samples in SOPHiA LPII, but the failed category would result in a necessity for repetition or, in case of lack of enough input material, failed test.

**Table 4.** Description of extra samples used to validate AmoyDx® HRD Focus Panel.

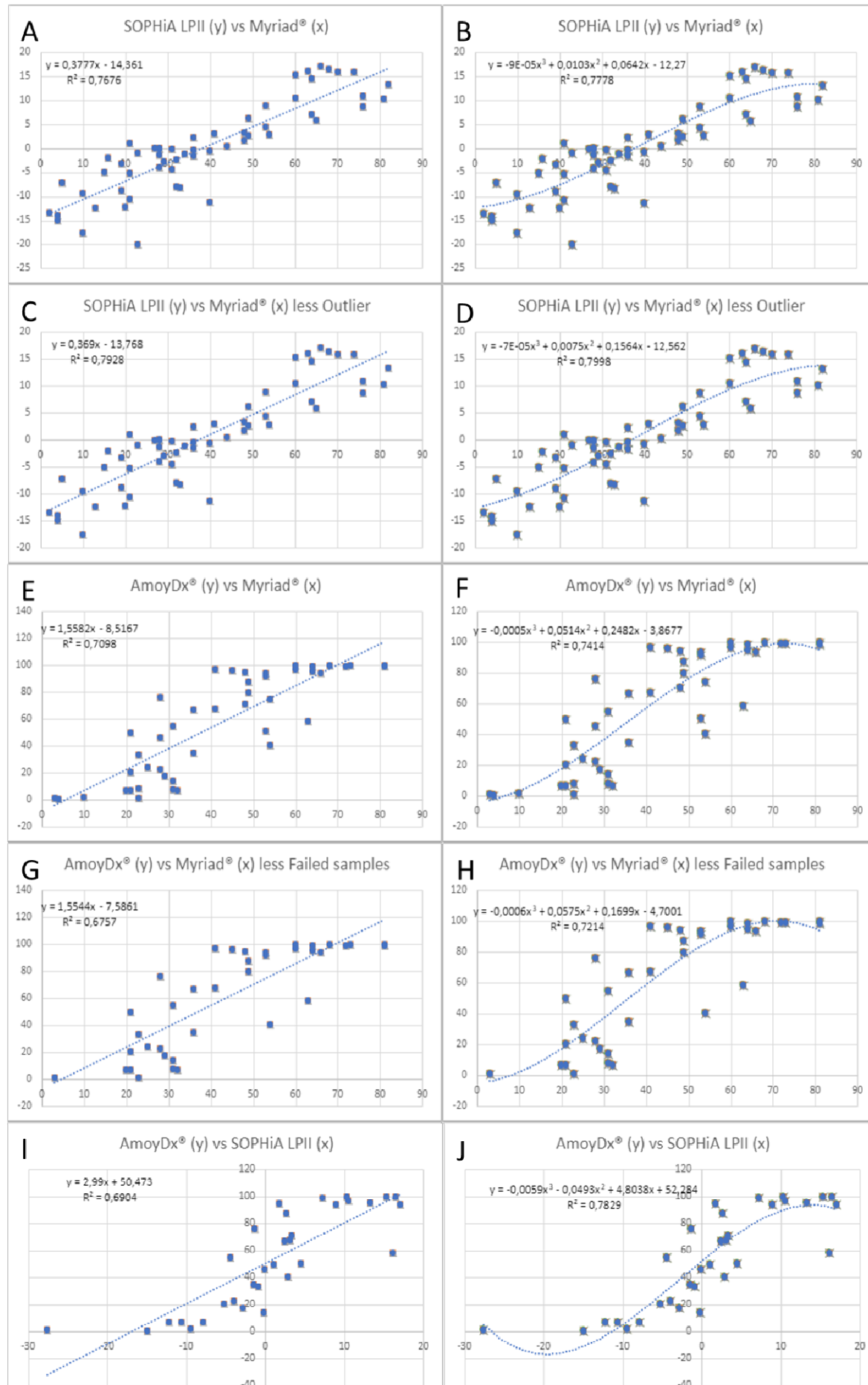
Sample	Run	Cancer Site	Estimated Tumor content (%)	DNA Input (ng)
60	5	Ovary	80%	100ng
61	5	Ovary	80%	100ng
62	5	Ovary	60%	100ng
63	5	Ovary	NA	100ng
64	5	Ovary	NA	100ng
65	5	Ovary	80%	100ng
66	5	Ovary	80%	100ng
67	5	Ovary	80%	100ng
68	5	Ovary	30%	100ng
69	5	Ovary	NA	100ng
70	5	Ovary	70%	100ng
71	5	Ovary	70%	100ng

### Correlation between methodologies for genomic instability/integrity detection

Even though there was a strong correlation between known genomic instability scores (myChoice® GIS) and GSS (AmoyDx® Genomic Scars Score), the correlation observed for AmoyDx® test was lower than the observed for SOPHiA LPII (Figure 5 A-J). Considering the proposed threshold of 50 to discriminate between positive and negative samples, a concordance of 86.36% with Myriad's myChoice® test was observed on this cohort (p-value=  $1.47 \times 10^{-7}$ , Fisher's exact test; Figure 6A). The analytical sensitivity of the test was 100%, the analytical specificity was 73.9%, the positive predictive value (PPV) was 77.8% and the negative predictive value (NPV) was 100% (also when compared with Myriad's myChoice®).

Four ovarian tumor samples, one fallopian tube and one peritoneum showed categorical discordances between Myriad's myChoice® test and AmoyDx® HRD Focus Panel (Figure 6B). All samples with negative status based on Myriad's myChoice® test, turned out to be the opposite status by AmoyDx® HRD Focus Panel, only one of them with borderline score. Interestingly AmoyDx® solution does not show the same linearity near the threshold of 42 (from Myriad's myChoice®) as SOPHiA LPII solution does, which makes counseling near threshold more of a challenge. Moreover, two out of the three discordant samples between SOPHiA LPII (positive) and Myriad's myChoice® (negative) were concordant positive between SOPHiA LPII and AmoyDx®, serving again as caution when counselling samples with borderline results (Figure 6B).





**Figure 5.** A and B) Linear and polynomial regression (order 3) of unique samples between Myriad's myChoice® and SOPHiA Homologous Recombination Solution, note polynomial regression  $R^2$  of 0.78;  
C and D) Linear and polynomial regression (order 3) of unique samples excluding the outlier between Myriad's myChoice® and SOPHiA Homologous Recombination Solution, note polynomial regression  $R^2$  of 0.80;  
E and F) Linear and polynomial regression (order 3) of unique samples between Myriad's myChoice® and AmoyDx® HRD Focus Panel, note that polynomial regression  $R^2$  of 0.74 is lower than the previous two;  
G and H) Linear and polynomial regression (order 3) of unique samples excluding failed quality samples between Myriad's myChoice® and AmoyDx® HRD Focus Panel, note that even removing failed samples the polynomial regression  $R^2$  of 0.72 is lower than all others;  
I and J) Linear and polynomial regression (order 3) of unique samples between and AmoyDx® HRD Focus Panel and SOPHiA Homologous Recombination Solution, note that, even though AmoyDx® solution has lower correlation with Myriad's myChoice®, it has high correlation (polynomial regression  $R^2$  of 0.78) with SOPHiA GENETICS® solution, possibly due to similarities in the calculation methods.

		AmoyDx® HRD Focus Panel status	
		+	-
<b>A</b>	<b>Myriad's myChoice® status</b>	+	<b>21</b>
		-	<b>6</b>

<b>B</b>	<b>Sample#</b>	<b>Cancer site</b>	<b>Myriad's myChoice® score (status)</b>	<b>DLD GII (SOPHiA LPII) score (status)</b>	<b>AmoyDx® HRD Focus Panel GS score (status)</b>
	<b>30</b>	<b>Ovary</b>	<b>31 (-)</b>	<b>-4,4 (-)</b>	<b>55 (+)</b>
	<b>32</b>	<b>Fallopian tube</b>	<b>28 (-)</b>	<b>-1,3 (-)</b>	<b>76,3 (+)</b>
	<b>44</b>	<b>Ovary</b>	<b>41 (-)</b>	<b>3,1 (+)</b>	<b>68 (+)</b>
	<b>49</b>	<b>Peritoneum</b>	<b>21 (-)</b>	<b>1,1 (-)</b>	<b>50,1 (+)</b>
	<b>56</b>	<b>Ovary</b>	<b>36 (-)</b>	<b>2,4 (+)</b>	<b>67,2 (+)</b>
	<b>68</b>	<b>Ovary</b>	<b>41 (-)</b>	<b>NA</b>	<b>97,1 (+)</b>

**Figure 6.** A) Contingency table of positive/negative samples showing concordance between Myriad's myChoice and AmoyDx® solution. Note excess of false positives with complete sensitivity.  
B) Detailed information on the 6 samples with categorical divergencies between Myriad's myChoice and AmoyDx® solution (with additional information of SOPHiA LPII GII, when available).

## DISCUSSION

The results presented here show the power and robustness of HRD-One considering its ability to correctly discriminate positive and negative samples with regard to their HRD status. Using a validation set of 59 ovarian samples, an overall categorical concordance between Myriad's myChoice® and HRD-One of 94.74% was observed. The analytical sensitivity of the test was estimated at 95.7%, specificity of 94.1%, PPV of 91.7% and NPV of 97%.

Our study also demonstrated the importance of controlling the pre-analytical conditions of tumor tissue samples and how critical it is to the success of HRD testing. Inappropriate tissue handling (delayed fixation and over-fixation, poor quality of the paraffin wax and inadequate melting temperature) may modify the quality of the sample, impacting on molecular test results. We also anticipate that tumor samples previously submitted to neoadjuvant chemotherapy are more suitable to result in unsatisfactory genomic instability analysis. For molecular somatic HRD tests, representative tumor area selection and assessment of the percentage of neoplastic cells, necrosis and inflammatory component is important. A minimum of 30% tumor component is recommended to guarantee the detection of a variant through molecular techniques. For some cancers with HRD this can be difficult to achieve due to abundant inflammatory cell infiltrates. Limitations for the analysis should always be stated in the report. It is recommended that molecular laboratories and pathology departments maintain quality standards within both pre-analytical and analytical steps. Noteworthy, as showed in our results, age of FFPE blocks, sample quality and estimated tumor content are pre-analytical variables associated with the feasibility of extracting DNA input from FFPE blocks. When insufficient amounts of DNA input are used during library preparation steps, there is an increased chance of low confidence / inconclusive results to be obtained for the sample being tested.

If taken into consideration, both the uncertainty margin from the DLD GII score (0.2-3.2) and the average replica difference margin ( $1.62 \pm 0.88$ ) scores between 0 and +3.5 should be interpreted with due caution. Novel studies have suggested that even a lower threshold of 33 (equivalent to -1.5) showed improved survival after platinum monotherapy in high-grade serous ovarian cancer<sup>4</sup>. The threshold of 42 (+2.0) was established in a single study and further studies, that correlate not only *BRCA1/2* and genomic scars but also more data on treatment outcomes with PARPi, are needed to better understand for which patients and tumors PARPi is beneficial. With the current data we conclude and advise that for high-grade serous epithelial ovarian cancers an HRD-score of +2.0 (equivalent to 42 in myChoice®) should be used, with the cautionary recommendation that scores from +0.5 to +1.5 might be considered positive in tests performed at different dates or laboratories. In summary we have presented that our HRD-One score had more than 94% concordance with the current available commercial test and that if the 1.62-point variance margin would be taken into consideration the three samples that were discordant would fall into the uncertainty margin and all 59 samples could be classified as concordant. Therefore, we consider HRD-One a reliable alternative for HRD testing on ovarian samples where HRD status is expected to assist on the clinical management of patients. Moreover, even though AmoyDx® HRD Focus Panel has a high sensitivity to detect HRD status, in our validation it presented an excessive number of samples that failed quality control (7/44), excessive 'false positive' results

(when compared to the other two solutions – 5/44) and lower linear or polynomial correlation with the other scores, which makes it, at the tested version, less optimal than the other solutions.

**Ethics committee approval: CAAE - 55810222.0.0000.5455**

## References

1. Bartl, T., Paspalj, V. & Grimm, C. Homologous recombination deficiency in epithelial ovarian cancer. *memo* **13**, 367–370 (2020). <https://doi.org/10.1007/s12254-020-00606-z>
2. Nik-Zainal S, Davies H, Staaf J, et al. Landscape of somatic mutations in 560 breast cancer whole-genome sequences. *Nature*. 2016 Jun 2;534(7605):47-54. doi: 10.1038/nature17676. Epub 2016 May 2. Erratum in: *Nature*. 2019 Feb;566(7742):E1. PMID: 27135926; PMCID: PMC4910866. <https://doi.org/10.1038/nature17676>
3. Miller RE et al. ESMO recommendations on predictive biomarker testing for homologous recombination deficiency and PARP inhibitor benefit in ovarian cancer. *Annals of Oncology* Vol 31 (12): 1606-1622, 2020. doi: <https://doi.org/10.1016/j.annonc.2020.08.2102>
4. Stronach EA, Paul J, Timms KM, Hughes E, Brown K, Neff C, Perry M, Gutin A, El-Bahrawy M, Steel JH, Liu X, Lewsley LA, Siddiqui N, Gabra H, Lanchbury JS, Brown R. Biomarker Assessment of HR Deficiency, Tumor BRCA1/2 Mutations, and CCNE1 Copy Number in Ovarian Cancer: Associations with Clinical Outcome Following Platinum Monotherapy. *Mol Cancer Res*. 2018 Jul;16(7):1103-1111. doi: 10.1158/1541-7786.MCR-18-0034. Epub 2018 May 3. PMID: 29724815