

1 *Article*

2 **Genetic study of psoriasis highlights its close link with**
3 **socio-economic status and affective symptoms**

4 Anni Heikkilä¹, Eeva Sliz¹, Laura Huilaja², FinnGen³, Estonian Biobank Research Team⁴,
5 Kadri Reis⁴, Priit Palta^{4,5}, Abdelrahman G. Elnahas⁴, Anu Reigo⁴, Tõnu Esko⁴, Triin Laisk⁴,
6 Maris Teder-Laving⁴, Kaisa Tasanen², Johannes Kettunen¹

7 ¹ Systems epidemiology, Research Unit of Population Health, Faculty of Medicine, and Biocenter
8 Oulu, University of Oulu, Oulu, Finland

9 ² Department of Dermatology, Research Unit of Clinical Medicine, Medical Research Center Oulu,
10 Oulu, and University Hospital and University of Oulu, Oulu, Finland

11 ³ A list of FinnGen authors and their affiliations available in the supplements

12 ⁴ Institute of Genomics, University of Tartu, Tartu, Estonia

13 ⁵ Institute for Molecular Medicine Finland (FIMM), HiLIFE, University of Helsinki

14

15 Abstract

16 Psoriasis is an inflammatory skin disease with an estimated heritability of around 70 %.
17 Previous genome-wide association studies (GWASs) have detected several risk loci for
18 psoriasis. To further improve the understanding of the genetic risk factors impacting the
19 disease, we conducted a discovery GWAS in FinnGen and a subsequent replication and
20 meta-analysis with data from the Estonian Biobank and the UK biobank; the study sample
21 included 925 649 individuals (22 659 cases and 902 990 controls), the largest sample for
22 psoriasis yet. In addition, we conducted downstream analyses to find out more about
23 psoriasis' cross-trait genetic correlations and causal relationships. We report 8 novel risk
24 loci, most of which harbor genes related to nuclear factor kappa-light-chain-enhancer of
25 activated B-cells-signaling pathway and overall immunity. Genetic correlations highlight the
26 relationship between psoriasis and smoking, higher body weight, and lower education
27 level. Additionally, we report novel causal relationships between psoriasis and mood
28 symptoms, as well as two-directioned causal relationship between psoriasis and lower
29 education level. Our results provide new knowledge on psoriasis risk factors, which may
30 be useful in the development of future treatment strategies.

31 Introduction

32 Psoriasis is a chronic autoinflammatory disease typically manifesting as sharply
33 demarcated erythematous scaling plaques on the skin. The exact symptoms depend on
34 the subtype of the disease, the most common being psoriasis vulgaris, which affects
35 around 90 % of the psoriasis patients¹. Both genetic and environmental factors play a role
36 in psoriasis pathogenesis. Heritability has been estimated to be around 70 % in twin
37 studies². Known risk loci include the human leukocyte antigen (HLA) region, especially
38 HLA-C³. Additionally, for example many nuclear factor kappa-light-chain-enhancer of
39 activated B-cells (NF- κ B)-⁴ and interleukin (IL)-23/IL-27-signaling pathway-related genes⁵
40 have been associated with psoriasis. Known epidemiological risk factors affecting
41 psoriasis risk include smoking⁶, obesity⁷, and stress⁸, among others. Psoriasis also has
42 multiple comorbidities⁹, including cardiovascular diseases, other inflammatory diseases,
43 and psychiatric disorders¹⁰.

44 The aim of this study was to find new risk loci for psoriasis. To do this, we analyzed
45 genome-wide data of over 900 000 people from Finland (FinnGen), Estonia (The Estonian
46 Biobank), and United Kingdom (UK Biobank). We further utilized the newly generated

47 genome-wide results to evaluate genetic correlations and causal inferences between
48 psoriasis and other traits.

49 **Materials and methods**

50 *Study populations*

51 **FinnGen** (www.finngen.fi/en) is a Finnish collaboration project that several public and
52 private partners are taking part in. The aim of the project is to collect 500 000 samples of
53 genotype data combined with health record data from Finnish registries. We used FinnGen
54 data freeze 7, in which there were 6 995 cases diagnosed with psoriasis (one or more
55 diagnoses with International Classification of Diseases (ICD)-10 codes L40.0-L40.9) and
56 299 128 controls.

57 FinnGen participants provided written informed consent for biobank research, based on
58 the Finnish Biobank Act. More detailed description of the consents, ethics committees and
59 study approvals are presented in the **Supplementary Note**.

60 **Estonian Biobank** (EstBB) is a population-based biobank at the Institute of Genomics,
61 University of Tartu. The current cohort size is 200,000 individuals (aged ≥ 18), reflecting
62 the age, sex and geographical distribution of the adult Estonian population. Estonian
63 samples represent 83%, Russians 14%, and other ethnicities 3% of all participants. All
64 subjects have been recruited by general practitioners (GP), physicians in hospitals and
65 during promotional events. The EstBB database is linked with national registries (such as
66 Cancer Registry and Causes of Death Registry), hospital databases, and the database of
67 the national health insurance fund, which holds treatment and procedure service bills.
68 Diseases and health problems are recorded as ICD-10 codes and prescribed medicine
69 according to the ATC classification. These health data are continuously updated through
70 periodical linking to national electronic databases and registries. All participants were
71 genotyped with genome-wide chip arrays and further imputed with a population-specific
72 imputation panel consisting of 2,244 high-coverage (30x) whole genome sequenced
73 individuals and 16,271,975 high-quality variants¹¹. Association analysis was conducted
74 with SAIGE¹² mixed models with age, sex and 10 PCs used as covariates.

75

76 Here, individuals with psoriasis were identified using the ICD-10 codes including L40.

77 EstBB GWAS analysis is supported by Personal research funding: Team grant PRG1291.

78 Computations were performed in the High Performance Computing Center, University of
79 Tartu.

80 **UK Biobank** (UKBB)¹³ is a large biobank project launched in United Kingdom, with 40 to
81 69 years old adults as participants. The phenotypes were identified with registry data and
82 questionnaires. The project is aiming to follow up participants for at least 30 years. The
83 PanUKBB (<https://pan.ukbb.broadinstitute.org/>) project performed a pan-ancestry genetic
84 analysis for 500 000 UKBB samples. We used the subset of European ancestry for this
85 analysis, which consisted of 2 868 psoriasis cases and 417 663 controls.

86 *Genotyping, imputation, and quality control*

87 In FinnGen, the samples were genotyped using Illumina and Affymetrix arrays (Illumina
88 Inc., San Diego and Thermo Fischer Scientific, Santa Clara, CA, USA). Sample quality
89 control (QC) was performed to exclude individuals with genotype missingness of over 5 %,
90 ambiguous gender, excess heterozygosity (± 4 SDs), and non-Finnish ancestry.
91 Additionally, variants with low Hardy-Weinberg equilibrium ($p < 1 * 10^{-6}$), over 2 %
92 missingness or minor allele count under 3 %, were excluded from analysis in variant QC.
93 Prephasing was done using Eagle 2.3.5. Imputation was performed with Beagle 4.1., with
94 Finnish population specific SISu v3 reference panel. In post-imputation QC, variants with
95 imputation info < 0.6 were excluded from further analyses.

96 *GWAS and meta-analysis*

97 Psoriasis GWAS in FinnGen was performed using regenie¹⁴ software. The association
98 model was adjusted for age, sex, the first 10 genetic principal components, and
99 genotyping batch.

100 For meta-analysis, EstBB and UKBB summary statistics were lifted from hg19 to hg38
101 build. A Python-based software was used for inverse-variance weighted meta-analysis
102 (available at https://github.com/FINNGEN/META_ANALYSIS/). Cochran's Q-test was
103 performed to estimate heterogeneity.

104 *Characterization of association signals*

105 The association was considered novel, if there were no previous psoriasis associations
106 reported in a ± 0.5 MB window from the lead variant. In the novel loci, all genes in a ± 0.5
107 MB window from the lead variant were annotated. GenBank¹⁵ and UniProt¹⁶ were used to
108 obtain information about each gene. Additionally, broad literature research was conducted
109 on genes of interest. Based on this attained knowledge about the biological functions and

110 relevance of the genes, we aimed to find the gene most likely to have a role in the
111 pathogenesis of psoriasis. Further, to perform functional gene mapping and gene-based
112 association and enrichment tests, we run Functional Mapping and Annotation of Genome-
113 Wide Association Studies (FUMA)¹⁷ analysis for the psoriasis summary statistics.
114 Additionally, the Genotype-Tissue Expression (GTEx)¹⁸ data was checked to study the
115 tissue expression of the genes of interest and to identify potential associations between
116 psoriasis lead variants and altered gene expression.

117 To estimate the SNP-based heritability and genomic inflation factor, we used the linkage
118 disequilibrium score (LDSC) pipeline tool¹⁹.

119 *Genetic correlations*

120 We further applied LDSC regression to estimate genetic correlations between psoriasis
121 and other phenotypes. We tested the correlations of psoriasis with 772 phenotypes
122 available in the in-house LDSC analysis pipeline. The major histocompatibility complex
123 was excluded from the analysis, as suggested by developers of the method²⁰.

124 *Mendelian randomization*

125 We used “TwoSampleMR” R library^{21,22} to conduct bi-directional two-sample Mendelian
126 randomization between psoriasis and a selection of traits found to be genetically correlated
127 with psoriasis. To avoid sample overlap, we used FinnGen summary data to extract
128 genetic instruments for psoriasis. For other traits, we used mostly UKBB-based data
129 provided by the Medical Research Council Integrative Epidemiology Unit (MRC IEU)
130 database and implemented in the TwoSampleMR. LD clumping was performed with
131 “clump_data” function and its default values, i.e., $r^2=0.001$, a clumping window of 10 kb,
132 and European population reference. We considered the inverse-variance weighted (IVW)
133 method as the primary analysis. Egger intercepts were used to evaluate horizontal
134 pleiotropy. Additionally, we tested heterogeneity with Cochran's Q test (“mr_heterogeneity”)
135 and performed leave-one-out analysis (“mr_leaveoneout”). A causal effect was deemed
136 significant if MR Egger estimates obtained in the sensitivity analyses were in a matching
137 direction with the IVW-estimates and false-discovery rate (FDR)-corrected p-value was
138 less than 0.05.

139 Results

140 *Four novel psoriasis loci discovered in FinnGen*

141 In the discovery GWAS conducted in FinnGen in 306 123 individuals (**Figure 1A**,
142 **Supplementary Table S1**), we found 38 genome-wide significant loci, 4 of which were
143 novel (**Figure 2; Table 1**): the associations at 2q32.3, 5q35.3, 7p22.1, and 16p12.1 had
144 not been associated with psoriasis in prior studies. The lead variant at 2q32.3,
145 rs77509633, is an intergenic variant near solute carrier family 39 member 10 (*SLC39A10*;
146 also known as *ZIP10*). The ZIP10 zinc carrier protein coded by this gene has been found
147 to express abnormally in patients with atopic dermatitis²³. ZIP10 is also indicated to have
148 a role in humoral immunity²⁴. The novel association at 5q35.3, with a lead variant
149 rs13153019, locates near fibroblast growth factor receptor 4 (*FGFR4*). It acts as a receptor
150 for fibroblast growth factor 19 (*FGF19*), which has been found to regulate the proliferation
151 of keratinocytes in psoriasis skin²⁵. The study also found that the inhibition of *FGFR4*
152 attenuates the effect of *FGF19* on keratinocytes. The novel association at 7p22.1, with a
153 lead variant rs748670681, is near ring finger protein 216 (*RNF216*), which is known to
154 participate in the regulation of the NF- κ B signaling pathway²⁶. At 16p12.1, the lead variant
155 rs144651842 is a missense variant in interleukin 4 receptor (*IL4R*), which acts as a
156 receptor for interleukins 4 and 13, both of which have been associated with psoriasis in
157 earlier GWASs^{5,27}.

158 The novel loci detected in the discovery GWAS mostly appeared to be specific to the
159 Finnish population (**Table 1; Supplementary Figure S1**). The associations near *RNF216*
160 and *IL4R* replicated on a nominal level in EstBB (respective p-values of the lead variants in
161 the three populations: rs748670681 FinnGen 1.53×10^{-20} , EstBB 0.0074, variant not
162 available in UKBB; rs144651842 FinnGen 2.19×10^{-11} , EstBB 0.00049, variant not
163 available in UKBB) whereas the associations near *SLC39A10* and *FGFR4* reached
164 significance in FinnGen only (respective p-values of the lead variants in the three
165 populations: rs77509633 FinnGen 1.93×10^{-8} , EstBB 0.064, UKBB 0.365; rs13153019
166 FinnGen 4.36×10^{-9} , EstBB 0.143, UKBB 0.186). The association signals near *RNF216*
167 and *IL4R* were driven by variants enriched in the Finnish population with respective
168 Finnish enrichment values of 114.849 and 119.053 calculated as ratios of the Finnish
169 allele frequency and the non-Finnish-non-Estonian European allele frequency (**Table 1**).

170 *Meta-analysis discovers additional four novel psoriasis loci*

171 In the meta-analysis of FinnGen, EstBB and UKBB, totalling up to 925 649 individuals in
172 the study (**Figure 1B, Supplementary Table S2**), we found altogether 57 loci associated
173 with psoriasis; of these, four loci were not reported in previous studies nor detected in the
174 discovery GWAS (**Figure 3; Table 1**). These included the associations at 3p12.3, 8q24.12,
175 12q24.13, and 19p13.11. In addition, the associations at 7p22.1 near *RNF216* and
176 16p12.1 near *ILR4* attained genome-wide significance in the meta-analysis.

177 At 3p12.3, the lead variant rs540696640 is located in the intron area of roundabout
178 homolog 1 (*ROBO1*). It is part of the Slit/Robo signaling pathway, which is known to affect
179 various processes including cell migration, organogenesis and angiogenesis^{28,29}. At
180 8q24.12, the lead variant rs13264172 is in the intron area of collectin family member 10
181 (*COLEC10*) encoding collectin liver 1 (CL-L1), which belongs to the collectin family.
182 Collectins detect pathogens, so even though CL-L1's function is not apparent yet, it's
183 probable that it has a role in innate immunity³⁰. Serum levels of CL-L1 and collectin kidney
184 1 (CL-K1), another collectin family member often forming a complex with CL-L1, have
185 been found to be lower in patients suffering from an autoimmune disease, systemic lupus
186 erythematosus³¹. At 12q24.13, the gene nearest to the lead variant rs11066283 is
187 ribosomal protein L6 (*RPL6*), but it has no apparent biological role in psoriasis
188 pathogenesis. A nearby TRAF-type zinc finger domain containing protein 1 (*TRAFD1*),
189 also known as *FLN29*, has a function that is strongly related to innate immunity and NF- κ B
190 pathway³², as it has been suggested to negatively regulate Toll-like receptor (TLR) and
191 retinoic acid-inducible gene I (RIG-I)-like pathways³³ and, thus, appears as a more likely
192 candidate to drive the psoriasis association in this locus. At 19p13.11, the lead variant
193 rs1560117 locates near leucine-rich repeat containing 25 (*LRRC25*), which has a role in
194 the inhibition of the NF- κ B signaling pathway by promoting degradation of p65/RelA, one
195 of NF- κ Bs transcription factors³⁴.

196 Of the novel loci showing genome-wide significant association with psoriasis in meta-
197 analysis, only *RNF216* locus showed nominally significant heterogeneity (p-value for
198 heterogeneity measured with Cochran's Q test [p-het]=0.0034; **Table 1**). This suggest that
199 the results were highly matching across the study populations, as also indicated by the
200 matching odds ratios (**Supplementary Figure S1**).

201 *Psoriasis loci are enriched for inflammation-related genes*

202 Using the psoriasis GWAS results from the meta-analysis, we performed a Multi-marker
203 Analysis of GenoMic Annotation (MAGMA) enrichment analysis³⁵ as implemented in
204 FUMA¹⁷. Psoriasis loci were significantly enriched for 20 inflammation-related gene sets
205 (**Supplementary Figure S2**), including 'gene ontology (GO) cellular component (cc):
206 major histocompatibility complex (mhc) protein complex' ($p = 1.45 * 10^{-10}$), 'GO biological
207 process (bp): cytokine-mediated signaling pathway' ($p = 1.49 * 10^{-8}$), 'GO bp: regulation of
208 defense response' ($p = 3.68 * 10^{-8}$), and 'GO bp: positive regulation of immune system
209 process' ($p = 1.40 * 10^{-7}$).

210 *LDSC*

211 Altogether 319 genetic correlations (r_g) tested with LDSC pipeline were found significant
212 after FDR correction. Psoriasis was genetically correlated with many anthropometric traits
213 (e.g., whole body fat mass [$r_g=0.20$, $p=6.89 * 10^{-12}$], body fat percentage [$r_g=0.20$, $p=1.39 * 10^{-11}$],
214 smoking (e.g., current tobacco smoking [$r_g=0.29$, $p=3.43 * 10^{-13}$]), level of
215 education (e.g., years of schooling [$r_g=-0.25$, $p=8.32 * 10^{-15}$], qualifications: A levels/AS
216 levels or equivalent [$r_g=-0.26$, $p=6.58 * 10^{-13}$], qualifications: college or university degree
217 [$r_g=-0.25$, $p=2.57 * 10^{-12}$]), other diseases (e.g., type 2 diabetes [$r_g=0.27$, $p=7.23 * 10^{-10}$],
218 major depressive disorder [$r_g=0.32$, $p=1.30 * 10^{-5}$) or mood (e.g., miserableness [$r_g=0.19$,
219 $p=2.08 * 10^{-7}$], frequency of tiredness/lethargy in last 2 weeks [$r_g=0.20$, $p=2.86 * 10^{-7}$])
220 (**Figure 4**). Additionally, correlations include many nuclear magnetic resonance (NMR)-
221 based metabolic measures (e.g., ratio of linoleic acid to total fatty acids [$r_g=-0.27$, $p=3.71 * 10^{-7}$],
222 ratio of polyunsaturated fatty acids to total fatty acids [$r_g=-0.22$, $p=5.30 * 10^{-7}$] and
223 ratio of polyunsaturated fatty acids to monounsaturated fatty acids [$r_g=-0.19$, $p=1.06 * 10^{-5}$]),
224 financial difficulties (e.g., 'illness, injury, bereavement, stress in last 2 years: financial
225 difficulties' [$r_g=0.26$, $p=1.08 * 10^{-7}$], financial situation satisfaction ($r_g=0.29$, $p=8.96 * 10^{-7}$),
226 'illness, injury, bereavement, stress in last 2 years: Serious illness, injury or assault to
227 yourself' ($r_g=0.29$, $p=7.05 * 10^{-6}$) or low age at giving birth (age at first live birth [$r_g=-0.24$,
228 $p=7.44 * 10^{-9}$], age at last live birth [$r_g=-0.22$, $p=3.39 * 10^{-6}$]) (**Supplementary Table S3**).

229

230 *MR*

231 We tested 99 phenotypes for causality, based on the key traits of LDSC regression results.
232 List of tested traits and studies used along with descriptions of certain traits are available

233 in **Supplementary Table S4**. After FDR-correction and removing traits showing significant
234 pleiotropy, differing direction of causal estimates using IVW and MR Egger methods, or if
235 the result was based on only a few SNPs, we detected altogether 9 phenotypes that are
236 causal to psoriasis and 18 that psoriasis is causal to (**Figure 5, Supplementary Table S5-**
237 **6**). Results suggest that following traits are causal to psoriasis: Years of schooling ($p=6.12$
238 $\times 10^{-10}$), Body mass index (BMI) (4.51×10^{-9}), Whole body fat mass (4.41×10^{-7}),
239 Qualifications: College or University degree (2.68×10^{-5}), Frequency of tiredness/ lethargy
240 in last 2 weeks (1.37×10^{-4}), Inflammatory bowel disease (4.19×10^{-4}), Qualifications: None
241 of the above (1.08×10^{-3}), Triglycerides (3.17×10^{-3}) and Sleeplessness/insomnia ($4.35 \times$
242 10^{-3}). In the opposite direction, we found psoriasis to be causal to Neuroticism ($1.53 \times 10^{-$
243 4), Frequency of depressed mood in last 2 weeks (1.19×10^{-4}), Suffer from 'nerves' ($2.02 \times$
244 10^{-4}), Creatinine (enzymatic) in urine (2.41×10^{-4}), Sodium in urine (1.71×10^{-3}), Diagnoses
245 - main ICD10: K57 Diverticular disease of intestine (1.94×10^{-3}), Qualifications: Other
246 professional qualifications eg: nursing, teaching (2.74×10^{-3}), Qualifications: None of the
247 above (3.03×10^{-3}), Age completed full time education (3.38×10^{-3}), Loneliness & isolation
248 (3.25×10^{-3}), Fed-up feelings (3.65×10^{-3}), Qualifications: College or university degree
249 (4.24×10^{-3}), Diagnoses - main ICD10: R10 Abdominal and pelvic pain (5.41×10^{-3}),
250 Sensitivity / hurt feelings (5.30×10^{-3}), Diagnoses - main ICD10: K80 Cholelithiasis ($5.73 \times$
251 10^{-3}), Neuroticism score (6.98×10^{-3}), Apolipoprotein A-I (7.64×10^{-3}) and Qualifications: A
252 levels/AS levels (8.29×10^{-3}).

253

254 Discussion

255 In this study, we discovered 8 novel psoriasis risk loci and replicated multiple previously
256 reported loci. Based on careful manual curation, we suggest a potential biologically
257 relevant candidate gene driving the associations at each novel locus. These genes encode
258 proteins involved in either processes in the psoriatic skin or in the regulation of immune
259 system. In addition, we report significant genetic correlations between psoriasis and 319
260 other traits. We further tested some of the correlated traits for causality and report
261 evidence of causal relationship between psoriasis and mood-related symptoms and low
262 education level.

263 One of the most prominent psoriasis pathogenesis features is hyperproliferation of
264 keratinocytes¹, the primary cell type found on epidermis. *FGFR4* is a fibroblast growth

265 factor receptor, that is expressed mainly on lungs (**Supplementary Figure S3**). It acts as
266 a receptor for fibroblast growth factor 19 (FGF19). It has been found to activate Wnt/ β -
267 catenin pathway²⁵. Through this pathway, high levels of FGF19 lead to elevated beta
268 catenin binding with TCF4, which in turn leads to keratinocyte proliferation. *FGFR4*s role
269 was also confirmed, as its inhibition removed FGF19's promotional effect on pathway and
270 keratinocyte proliferation. Thus, *FGFR4* has a significant role in process leading to one of
271 the most significant characteristics of psoriatic skin.

272 Another known feature of psoriatic skin is excessive angiogenesis²⁹, the formation of new
273 blood vessels. This process is linked with the proliferation of keratinocytes in psoriasis, as
274 many angiogenic factors, like vascular endothelial growth factor (VEGF)³⁶ are upregulated
275 by interleukins activated in psoriasis^{29,37}. *ROBO1*, a roundabout homolog, has the highest
276 expression level in fibroblasts, vagina, cervix, and skin (**Supplementary Figure S4**). It
277 acts as a part of the Slit/Robo signaling pathway, which is included in a wide range of
278 biological functions, including neuronal axon guidance, inflammatory cell chemotaxis and
279 angiogenesis²⁸. Angiogenesis activity has been found to be promoted through pathway
280 including *ROBO1* and *VEGFR2*, VEGF receptor³⁸. Thus, the found association with
281 psoriasis could be linked *ROBO1*'s role in angiogenesis.

282 The rest of the candidate genes appear to be associated with immune system. The role of
283 immunity in psoriasis is also highlighted by the FUMA gene set enrichment results
284 (**Supplementary Figure S1**). The suggested roles of immune system related candidate
285 genes are various. *SLC39A10*, coding zinc transporter ZIP10, expresses mostly in brain
286 and thyroid (**Supplementary Figure S5**). It has been found modulate B-cell antigen
287 receptor signal transduction²⁴, and thus, adaptive immune response. Additionally, there's
288 evidence of ZIP10 expression in skin being higher in patients with atopic dermatitis,
289 another inflammatory cutaneous disorder²³. *COLEC10*, coding CL-L1, is a pattern
290 recognition molecule and a member of the collectin family, expressing mainly in liver
291 (**Supplementary Figure S6**). It is often found in circulation in complex with another
292 collectin, *COLEC11* (CL-K1). Many collectins act in pathogen detection³⁰, and *COLEC10* is
293 also suggested to have a role in immune system. For example, its low serum level
294 associates with infections in children³⁹ and autoimmune disease systemic lupus
295 erythematosus³¹. Additionally, *COLEC10* may affect skin immune homeostasis, as it might
296 have a role in neural crest cell migration and therefore possibly affect melanocyte
297 production³⁰. *IL4R* is a receptor for interleukins 4 and 13²⁷. Both are cytokines secreted by

298 white blood cells and have functions concerning especially immune reaction of allergens or
299 pathogens⁴⁰. Additionally, both IL4 and IL13 are important in pathogenesis of atopic
300 dermatitis⁴¹. The gene coding interleukin 4 has been previously found to associate with
301 psoriasis in GWAS⁵, and the molecule has long been a target of medical treatments⁴²,
302 making its receptor a probable association. *IL4R* expresses most notably in lungs and
303 blood (**Supplementary Figure S7**).

304 Candidate genes *LRRC25*, *TRAFD1* and *RNF216* function on the nuclear factor kappa-
305 light-chain-enhancer of B cells (NF- κ B) signaling pathway, which is known to have a major
306 influence on psoriasis pathogenesis⁴. The NF- κ B protein complex is known for its role in
307 immune system responses. It controls for example DNA transcription, cytokine production
308 and cell survival. Psoriatic skin contains greater levels of active NF- κ B transcription factor
309 than non-psoriatic skin^{4,43}, and it takes part in psoriasis pathogenesis by altering
310 keratinocyte and immune cell behavior. Thus, genes involved in this pathway could also
311 have an association with psoriasis. *LRRC25*, is a leucine-rich repeat containing molecule
312 expressing in blood (**Supplementary Figure S8**). Leucine-rich repeat containing
313 molecules are typically involved in immune responses⁴⁴, as is *LRRC25*, that has been
314 found to inhibit NF- κ B action through promoting autophagic degradation of p65/RelA, one
315 of NF- κ B's subunits³⁴. This happens through LRR subunit interacting with Rel homology
316 domain in p65/RelA and *LRRC25* enhancing the interaction between p65/RelA and p62, a
317 cargo receptor. *TRAFD1* (also known as *FLN29*) is a negative feedback regulator gene
318 involved in immune response³², mainly expressing in lymphocytes (**Supplementary**
319 **Figure S9**). It inhibits toll-like receptor (TLR) 4 signaling and thereby also NF- κ B^{32,33}. TLRs
320 are pathogen detectors and affect NF- κ B action through several pathways⁴. TLR4, for
321 example, detects and lipopolysaccharides found on the surface of bacteria⁴⁵, which
322 induces immune signaling and NF- κ B activation. *RNF216* also has a role in TLR signaling.
323 It acts as a E3 ubiquitin ligase for TLR4 and TLR9⁴⁶. Ubiquitination is a process for
324 marking proteins for degradation. Therefore, *RNF216* controls the levels of TLR4 and
325 TLR9, through which it affects NF- κ B signaling^{26,46}. The gene shows highest expression in
326 testis (**Supplementary Figure S10**).

327 We report that altogether 319 phenotypes genetically correlated with psoriasis. These
328 include multiple traits related to physical activity, anthropometry, other diseases, level of
329 education, mood, pain, smoking, medication and blood metabolites. Out of the top traits,

330 many, such as traits related to higher disease prevalence⁴⁷, smoking⁴⁸, high BMI⁴⁹, lower
331 level of education, and having children at a younger age⁵⁰ are associated with lower socio-
332 economic status, which has previously been suggested to lead to worse psoriasis
333 symptoms⁵¹. Many of the phenotypes showing significant genetic correlation fit well with
334 previous knowledge about psoriasis' comorbidities. For example, we found multiple mood-
335 related traits and for example major depressive disorder to be genetically correlated with
336 psoriasis, and many mood disorders are known to be comorbid to psoriasis⁵².

337 We report 27 causal relationships between psoriasis and other traits. Especially high BMI
338 and body fat mass show significant causal effect to psoriasis. This is in line with previous
339 knowledge about psoriasis risk factors and two previous MR studies^{53,54} reporting causality
340 between psoriasis and BMI. Additionally, our results confirm the previously detected⁵⁵
341 causal relationship between inflammatory bowel disease (IBD) and psoriasis.

342 To the opposite direction, our results suggest psoriasis being causal to multiple mood-
343 related symptoms, such as neuroticism, frequency of depressed mood or suffering from
344 'nerves'. These results may suggest that psoriasis worsens certain mood-related
345 symptoms, which may explain its known correlation with different psychiatric disorders.
346 Multiple affective disorders have been previously associated with psoriasis in
347 epidemiological settings, for example depression and anxiety are more common in
348 psoriasis patients⁵⁶. Common mechanisms have been detected between affective
349 disorders and psoriasis; for example, the same pro-inflammatory cytokines levels are
350 increased⁵⁷ and hypothalamic-pituitary-adrenal (HPA) axis is dysregulated⁵⁸ in both
351 depression and psoriasis. Our results suggest that psoriasis may be causal to symptoms
352 that may partly explain the high prevalence of psychiatric disorders in psoriasis patients,
353 as these symptoms may be signs of multiple different psychiatric disorders. For example,
354 both neuroticism⁵⁹ and loneliness⁶⁰ are associated with risk of mood and anxiety disorders.
355 Additionally, we found multiple diagnoses psoriasis is causal to: diverticular disease of
356 intestine, abdominal and pelvic pain and cholelithiasis. There is some previous evidence
357 possibly suggesting a connection between diverticular disease of intestine and
358 cholelithiasis with psoriasis: risk for developing diverticulitis may be a bit greater for
359 psoriasis patients⁶¹, and incidence of gallstones has been found to be associated with
360 psoriasis and psoriatic arthritis, independent of obesity⁶². Such evidence was not found for
361 abdominal and pelvic pain, perhaps suggesting its correlation being linked to one or
362 multiple other diagnoses as a symptom.

363 Previous work has shown the epidemiological association between lower socio-economic
364 status and worse psoriasis symptoms⁵¹. Here, our results show that education-related
365 traits form a noticeable amount of significant causal relationships to both directions. Thus,
366 these results seem to suggest a complex relationship between psoriasis and lower
367 education level without a definite direction for causality.

368 *Limitations*

369 The study populations differed in the recognition of psoriasis in patients. The sample
370 prevalence of psoriasis was 6,9 % in EstBB, 2,3 % in FinnGen and 0,69 % in UKBB.
371 Possible non-identified psoriasis patients as controls may decrease statistical power to
372 detect associated loci, and the differences in psoriasis prevalence might increase the
373 heterogeneity in results. Additionally, the positive predictive value for psoriasis is 88.0 % in
374 Finnish biobank registries⁶³ meaning uncertain psoriasis cases may influence the accuracy
375 of results. Some of the novel loci found in the discovery GWAS appeared to be specific to
376 the Finnish population and thus the replication of these loci in further studies would be of
377 high value. We did not consider psoriasis subtypes in our analysis. Subtypes have been
378 previously suggested to have slightly different genetic backgrounds¹. Thus, the analysis of
379 the subtypes could have shed light on the exact associations and differences between
380 subgroups, that now may remain uncharacterized. Considering MR results, it should be
381 noted that we detected significant heterogeneity in multiple significant traits
382 (**Supplementary Table S5-6**), and results should be interpreted with care.

383 *Conclusion*

384 To conclude, we found 8 novel psoriasis risk loci, and, overall, the present genome-wide
385 analyses emphasized the role of immune-regulating genes in the pathogenesis of
386 psoriasis. The results of the genetic correlations provided genetic evidence for the close
387 link between psoriasis and socio-economic status. With Mendelian randomization we
388 found evidence of causal relationships between obesity and psoriasis, psoriasis and mood
389 symptoms, and complex causal relationships between psoriasis and low education level.
390 Our findings deepen understanding of psoriasis and may be useful in treatment
391 development.

392 *Acknowledgements*

393 We want to acknowledge the participants and investigators of FinnGen study. Following
394 biobanks are acknowledged for delivering biobank samples to FinnGen: Auria Biobank

395 (www.auria.fi/biopankki), THL Biobank (www.thl.fi/biobank), Helsinki Biobank
396 (www.helsinginbiopankki.fi), Biobank Borealis of Northern Finland
397 (<https://www.ppsHP.fi/Tutkimus-ja-opetus/Biopankki/Pages/Biobank-Borealis-briefly-in->
398 [English.aspx](https://www.ppsHP.fi/Tutkimus-ja-opetus/Biopankki/Pages/Biobank-Borealis-briefly-in-English.aspx)), Finnish Clinical Biobank Tampere ([www.tays.fi/en-](http://www.tays.fi/en-US/Research_and_development/Finnish_Clinical_Biobank_Tampere)
399 [US/Research_and_development/Finnish_Clinical_Biobank_Tampere](http://www.tays.fi/en-US/Research_and_development/Finnish_Clinical_Biobank_Tampere)), Biobank of Eastern
400 Finland (www.ita-suomenbiopankki.fi/en), Central Finland Biobank ([www.ksshP.fi/fi-](http://www.ksshP.fi/fi-FI/Potilaalle/Biopankki)
401 [FI/Potilaalle/Biopankki](http://www.ksshP.fi/fi-FI/Potilaalle/Biopankki)), Finnish Red Cross Blood Service Biobank
402 (www.veripalvelu.fi/verenluovutus/biopankkitoiminta), Terveystalo Biobank
403 (www.terveystalo.com/fi/Yritystietoa/Terveystalo-Biopankki/Biopankki/) and Arctic Biobank
404 ([https://www.oulu.fi/en/university/faculties-and-units/faculty-medicine/northern-finland-birth-](https://www.oulu.fi/en/university/faculties-and-units/faculty-medicine/northern-finland-birth-cohorts-and-arctic-biobank)
405 [cohorts-and-arctic-biobank](https://www.oulu.fi/en/university/faculties-and-units/faculty-medicine/northern-finland-birth-cohorts-and-arctic-biobank)). All Finnish Biobanks are members of BBMRI.fi infrastructure
406 (www.bbmri.fi). Finnish Biobank Cooperative -FINBB (<https://finbb.fi/>) is the coordinator of
407 BBMRI-ERIC operations in Finland.

408 Estonian Biobank Research Team members: Andres Metspalu, Mari Nelis, Lili Milani,
409 Reedik Mägi & Tõnu Esko

410 Data availability

411 Summary statistics will be made available through the NHGRI-EBI GWAS Catalog with
412 GCSTxxxxxxx upon publication. The Finnish biobank data can be accessed through the
413 Fingenious® services (<https://site.fingenious.fi/en/>) managed by FINBB.

414 Funding

415 ES was funded by Academy of Finland (338229) and Orion Research Foundation. JK was
416 funded by Sigrid Juselius foundation.

417 Estonian Biobank research was supported by Estonian Research Council grant PRG1291.

418 The FinnGen project is funded by two grants from Business Finland (HUS 4685/31/2016
419 and UH 4386/31/2016) and the following industry partners: AbbVie Inc., AstraZeneca UK
420 Ltd, Biogen MA Inc., Bristol Myers Squibb (and Celgene Corporation & Celgene
421 International Il Sàrl), Genentech Inc., Merck Sharp & Dohme LCC, Pfizer Inc.,
422 GlaxoSmithKline Intellectual Property Development Ltd., Sanofi US Services Inc., Maze
423 Therapeutics Inc., Janssen Biotech Inc, Novartis AG, and Boehringer Ingelheim
424 International GmbH.

425 Competing interests

426 Dr. Huilaja has received educational grants from Takeda, Janssen-Cilag, Novartis, AbbVie
427 and LEO Pharma, honoraria from Lilly, Sanofi, Novartis, Abbvie, LeoPharma, Boehringer
428 Ingelheim and OrionPharma for consulting and/or speaking, and is an investigator for
429 Abbvie, Takeda and Amgen. KT has received educational grants from Novartis and
430 honoraria from Abbvie, Leo Pharma, Novartis, Sanofi Genzyme, Janssen-Cilag, Bristol-
431 Myers Squibb and UCB Pharma for consulting and/or speaking.

432 References

- 433 1. Rendon, A. & Schäkel, K. Psoriasis Pathogenesis and Treatment. *Int J Mol Sci* **20**,
434 1475 (2019).
- 435 2. Lønnberg, A. S. *et al.* Heritability of psoriasis in a large twin sample. *British Journal*
436 *of Dermatology* **169**, 412–416 (2013).
- 437 3. Nair, R. P. *et al.* Sequence and Haplotype Analysis Supports HLA-C as the Psoriasis
438 Susceptibility 1 Gene. *The American Journal of Human Genetics* **78**, 827–851
439 (2006).
- 440 4. Goldminz, A. M., Au, S. C., Kim, N., Gottlieb, A. B. & Lizzul, P. F. NF-κB: An
441 essential transcription factor in psoriasis. *J Dermatol Sci* **69**, 89–94 (2013).
- 442 5. Nair, R. P. *et al.* Genome-wide scan reveals association of psoriasis with IL-23 and
443 NF-κB pathways. *Nat Genet* **41**, 199–204 (2009).
- 444 6. Armstrong, A. W., Harskamp, C. T., Dhillon, J. S. & Armstrong, E. J. Psoriasis and
445 smoking: a systematic review and meta-analysis. *British Journal of Dermatology*
446 **170**, 304–314 (2014).
- 447 7. Jensen, P. & Skov, L. Psoriasis and Obesity. *Dermatology* **232**, 633–639 (2016).
- 448 8. Rousset, L. & Halioua, B. Stress and psoriasis. *Int J Dermatol* **57**, 1165–1172
449 (2018).
- 450 9. Gao, J., Shen, X., Ko, R., Huang, C. & Shen, C. Cognitive Process of Psoriasis and
451 Its Comorbidities: From Epidemiology to Genetics. *Front Genet* **12**, (2021).
- 452 10. Ferreira, B. I. R. C., Abreu, J. L. P. D. C., Reis, J. P. G. dos & Figueiredo, A. M. D.
453 C. Psoriasis and Associated Psychiatric Disorders: A Systematic Review on
454 Etiopathogenesis and Clinical Correlation. *J Clin Aesthet Dermatol* **9**, 36–43 (2016).
- 455 11. Mitt, M. *et al.* Improved imputation accuracy of rare and low-frequency variants using
456 population-specific high-coverage WGS-based imputation reference panel.
457 *European Journal of Human Genetics* **25**, 869–876 (2017).
- 458 12. Zhou, W. *et al.* Efficiently controlling for case-control imbalance and sample
459 relatedness in large-scale genetic association studies. *Nat Genet* **50**, 1335–1341
460 (2018).

- 461 13. Sudlow, C. *et al.* UK Biobank: An Open Access Resource for Identifying the Causes
462 of a Wide Range of Complex Diseases of Middle and Old Age. *PLoS Med* **12**,
463 e1001779 (2015).
- 464 14. Mbatchou, J. *et al.* Computationally efficient whole-genome regression for
465 quantitative and binary traits. *Nat Genet* **53**, (2021).
- 466 15. Clark, K., Karsch-Mizrachi, I., Lipman, D. J., Ostell, J. & Sayers, E. W. GenBank.
467 *Nucleic Acids Res* **44**, (2016).
- 468 16. Bateman, A. *et al.* UniProt: the universal protein knowledgebase in 2021. *Nucleic*
469 *Acids Res* **49**, (2021).
- 470 17. Watanabe, K., Taskesen, E., van Bochoven, A. & Posthuma, D. Functional mapping
471 and annotation of genetic associations with FUMA. *Nat Commun* **8**, (2017).
- 472 18. Lonsdale, J. *et al.* The Genotype-Tissue Expression (GTEx) project. *Nat Genet* **45**,
473 580–585 (2013).
- 474 19. Bulik-Sullivan, B. *et al.* LD score regression distinguishes confounding from
475 polygenicity in genome-wide association studies. *Nat Genet* **47**, 291–295 (2015).
- 476 20. Zheng, J. *et al.* LD Hub: A centralized database and web interface to perform LD
477 score regression that maximizes the potential of summary level GWAS data for SNP
478 heritability and genetic correlation analysis. *Bioinformatics* **33**, 272–279 (2017).
- 479 21. Hemani, G., Tilling, K. & Davey Smith, G. Orienting the causal relationship between
480 imprecisely measured traits using GWAS summary data. *PLoS Genet* **13**, e1007081
481 (2017).
- 482 22. Hemani, G. *et al.* The MR-Base platform supports systematic causal inference
483 across the human phenome. *Elife* **7**, (2018).
- 484 23. Nakajima, K. *et al.* Possible involvement of zinc transporter ZIP10 in atopic
485 dermatitis. *J Dermatol* **47**, (2020).
- 486 24. Hojyo, S. *et al.* Zinc transporter SLC39A10/ZIP10 controls humoral immunity by
487 modulating B-cell receptor signal strength. *Proceedings of the National Academy of*
488 *Sciences* **111**, 11786–11791 (2014).
- 489 25. Yu, X., Yan, N., Li, Z., Hua, Y. & Chen, W. FGF19 sustains the high proliferative
490 ability of keratinocytes in psoriasis through the regulation of Wnt/ GSK -
491 $3\beta/\beta$ -catenin signalling via FGFR 4. *Clin Exp Pharmacol Physiol* **46**,
492 761–769 (2019).
- 493 26. Xu, C. *et al.* Regulation of autophagy by E3 ubiquitin ligase RNF216 through BECN1
494 ubiquitination. *Autophagy* **10**, 2239–2250 (2014).
- 495 27. Hahn, M. & Ghoreschi, K. The role of IL-4 in psoriasis. *Expert Rev Clin Immunol* **13**,
496 171–173 (2017).
- 497 28. Tong, M., Jun, T., Nie, Y., Hao, J. & Fan, D. The Role of the Slit/Robo Signaling
498 Pathway. *J Cancer* **10**, 2694–2705 (2019).

- 499 29. Heidenreich, R., Röcken, M. & Ghoreschi, K. Angiogenesis drives psoriasis
500 pathogenesis. *Int J Exp Pathol* **90**, 232–248 (2009).
- 501 30. Wang, T., Li, K., Xiao, S. & Xia, Y. A Plausible Role for Collectins in Skin Immune
502 Homeostasis. *Front Immunol* **12**, (2021).
- 503 31. Troldborg, A. *et al.* Collectin liver 1 and collectin kidney 1 and other complement-
504 associated pattern recognition molecules in systemic lupus erythematosus. *Clin Exp*
505 *Immunol* **182**, 132–138 (2015).
- 506 32. Mashima, R. *et al.* FLN29, a Novel Interferon- and LPS-inducible Gene Acting as a
507 Negative Regulator of Toll-like Receptor Signaling. *Journal of Biological Chemistry*
508 **280**, 41289–41297 (2005).
- 509 33. Sanada, T. *et al.* FLN29 Deficiency Reveals Its Negative Regulatory Role in the Toll-
510 like Receptor (TLR) and Retinoic Acid-inducible Gene I (RIG-I)-like Helicase
511 Signaling Pathway. *Journal of Biological Chemistry* **283**, 33858–33864 (2008).
- 512 34. Feng, Y. *et al.* LRRC25 Functions as an Inhibitor of NF- κ B Signaling Pathway by
513 Promoting p65/RelA for Autophagic Degradation. *Sci Rep* **7**, 13448 (2017).
- 514 35. de Leeuw, C. A., Mooij, J. M., Heskes, T. & Posthuma, D. MAGMA: Generalized
515 Gene-Set Analysis of GWAS Data. *PLoS Comput Biol* **11**, e1004219 (2015).
- 516 36. Nofal, A., Al-Makhzangy, I., Attwa, E., Nassar, A. & Abdalmoati, A. Vascular
517 endothelial growth factor in psoriasis: an indicator of disease severity and control.
518 *Journal of the European Academy of Dermatology and Venereology* **23**, 803–806
519 (2009).
- 520 37. Midde, H. S. *et al.* Interleukin-9 serves as a key link between systemic inflammation
521 and angiogenesis in psoriasis. *Clin Exp Dermatol* **46**, 50–57 (2021).
- 522 38. Li, S. *et al.* Slit2 Promotes Angiogenic Activity Via the Robo1-VEGFR2-ERK1/2
523 Pathway in Both In Vivo and In Vitro Studies. *Invest Ophthalmol Vis Sci* **56**, 5210–
524 5217 (2015).
- 525 39. Ingels, C. *et al.* The pattern recognition molecule collectin-L1 in critically ill children.
526 *Pediatr Res* **80**, 237–243 (2016).
- 527 40. Junttila, I. S. Tuning the Cytokine Responses: An Update on Interleukin (IL)-4 and
528 IL-13 Receptor Complexes. *Front Immunol* **9**, 888 (2018).
- 529 41. Matsunaga, M. C. & Yamauchi, P. S. IL-4 and IL-13 Inhibition in Atopic Dermatitis. *J*
530 *Drugs Dermatol* **15**, 925–9 (2016).
- 531 42. Ghoreschi, K. *et al.* Interleukin-4 therapy of psoriasis induces Th2 responses and
532 improves human autoimmune disease. *Nat Med* **9**, 40–46 (2003).
- 533 43. Lizzul, P. F. *et al.* Differential expression of phosphorylated NF- κ B/RelA in normal
534 and psoriatic epidermis and downregulation of NF- κ B in response to treatment with
535 etanercept. *Journal of Investigative Dermatology* **124**, 1275–1283 (2005).
- 536 44. Ng, A. & Xavier, R. J. Leucine-rich repeat (LRR) proteins: Integrators of pattern
537 recognition and signaling in immunity. *Autophagy* **7**, 1082–1084 (2011).

- 538 45. Lu, Y.-C., Yeh, W.-C. & Ohashi, P. S. LPS/TLR4 signal transduction pathway.
539 *Cytokine* **42**, 145–151 (2008).
- 540 46. Chuang, T.-H. & Ulevitch, R. J. Triad3A, an E3 ubiquitin-protein ligase regulating
541 Toll-like receptors. *Nat Immunol* **5**, 495–502 (2004).
- 542 47. Dalstra, J. *et al.* Socioeconomic differences in the prevalence of common chronic
543 diseases: an overview of eight European countries. *International Epidemiological*
544 *Association International Journal of Epidemiology* **34**, 316–326 (2005).
- 545 48. Hiscock, R., Bauld, L., Amos, A., Fidler, J. A. & Munafò, M. Socioeconomic status
546 and smoking: a review. *Ann N Y Acad Sci* **1248**, 107–23 (2012).
- 547 49. Morgenstern, M., Sargent, J. D. & Hanewinkel, R. Relation Between Socioeconomic
548 Status and Body Mass Index. *Arch Pediatr Adolesc Med* **163**, 731–8 (2009).
- 549 50. van Roode, T., Sharples, K., Dickson, N. & Paul, C. Life-Course Relationship
550 between Socioeconomic Circumstances and Timing of First Birth in a Birth Cohort.
551 *PLoS One* **12**, 170170 (2017).
- 552 51. Mahé, E. *et al.* Socioeconomic Inequalities and Severity of Plaque Psoriasis at a
553 First Consultation in Dermatology Centers. *Acta Dermato Venereologica* **97**, 632–
554 638 (2017).
- 555 52. Huilaja, L., Tiri, H., Jokelainen, J., Timonen, M. & Tasanen, K. Patients with
556 Hidradenitis Suppurativa Have a High Psychiatric Disease Burden: A Finnish
557 Nationwide Registry Study. *Journal of Investigative Dermatology* **138**, 46–51 (2018).
- 558 53. Budu-Aggrey, A. *et al.* Evidence of a causal relationship between body mass index
559 and psoriasis: A mendelian randomization study. *PLoS Med* **16**, e1002739 (2019).
- 560 54. Ogawa, K. *et al.* A Transethnic Mendelian Randomization Study Identifies Causality
561 of Obesity on Risk of Psoriasis. *Journal of Investigative Dermatology* **139**, 1397–
562 1400 (2019).
- 563 55. Freuer, D., Linseisen, J. & Meisinger, C. Association Between Inflammatory Bowel
564 Disease and Both Psoriasis and Psoriatic Arthritis. *JAMA Dermatol* (2022)
565 doi:10.1001/jamadermatol.2022.3682.
- 566 56. Dalgard, F. J. *et al.* The Psychological Burden of Skin Diseases: A Cross-Sectional
567 Multicenter Study among Dermatological Out-Patients in 13 European Countries.
568 *Journal of Investigative Dermatology* **135**, 984–991 (2015).
- 569 57. Ayasse, M. T., Buddenkotte, J., Alam, M. & Steinhoff, M. Role of neuroimmune
570 circuits and pruritus in psoriasis. *Exp Dermatol* **29**, 414–426 (2020).
- 571 58. Evers, A. W. M. *et al.* How stress gets under the skin: cortisol and stress reactivity in
572 psoriasis. *British Journal of Dermatology* **163**, 986–991 (2010).
- 573 59. Widiger, T. A. & Oltmanns, J. R. Neuroticism is a fundamental domain of personality
574 with enormous public health implications. *World Psychiatry* **16**, 144–145 (2017).
- 575 60. Mann, F. *et al.* Loneliness and the onset of new mental health problems in the
576 general population. *Soc Psychiatry Psychiatr Epidemiol* **57**, 2161–2178 (2022).

- 577 61. Lee, E. B., Amin, M., Duan, L., Egeberg, A. & Wu, J. J. Risk for appendicitis,
578 cholecystitis, or diverticulitis in patients with psoriasis. *Cutis* **103**, 175-179;E1;E2
579 (2019).
- 580 62. Tong, L. X. *et al.* Personal history of gallstones and risk of incident psoriasis and
581 psoriatic arthritis in U.S. women. *British Journal of Dermatology* **172**, 1316–1322
582 (2015).
- 583 63. Haverinen, S. *et al.* Validation of Psoriasis Diagnoses Recorded in Finnish Biobanks.
584 *Acta Dermato Venereologica* **100**, adv00297 (2020).
- 585

586
587

Table 1. Novel psoriasis risk loci in the discovery GWAS (FinnGen) and meta-analysis.
Associations significant in both discovery GWAS and meta-analysis (in loci 7p22.1 and 16p12.1) are underlined.

locus	chr:pos	rsid	ref	alt	gene	fin enr.	cohort	OR	95 % CI	p	af alt	p-het
2q32.3	2:195206980	rs77509633	T	C	<i>SLC39A10</i>	0.644	FinnGen	0.72	0.64-0.81	1.93E-08**	0.0262	
							EstBB	0.92	0.84-1	0.064	0.0296	
							UKBB	1.07	0.92-1.24	0.365		
							meta	0.88	0.83-0.94	6.01E-05*	0.0275	5.25E-05
3p12.3	3:79183649	rs540696640	T	C	<i>ROBO1</i>	0.052	FinnGen	1.91	1.2-3.04	0.0064*	0.001	
							EstBB	1.91	1.42-2.57	2.03E-05*	0.0021	
							UKBB	1.67	1.14-2.44	0.0082*		
							meta	1.83	1.49-2.26	1.35E-08**	0.0014	0.850
5q35.3	5:177355217	rs13153019	T	C	<i>RGS14 (FGFR4)</i>	1.028	FinnGen	1.12	1.08-1.16	4.36E-09**	0.2723	
							EstBB	1.02	0.99-1.06	0.143	0.2344	
							UKBB	1.04	0.98-1.11	0.186		
							meta	1.06	1.04-1.08	3.81E-07*	0.2574	0.0019
<u>7p22.1</u>	<u>7:5397122</u>	<u>rs748670681</u>	<u>C</u>	<u>I</u>	<u><i>TNRC18 (RNF216)</i></u>	<u>114.849</u>	FinnGen	1.47	1.36-1.6	1.53E-20**	<u>0.0359</u>	
							EstBB	1.18	1.05-1.34	0.0074*	<u>0.0125</u>	
							UKBB	NA	NA	NA		
							meta	1.38	1.29-1.47	3.13E-20**	0.0267	0.0034
8q24.12	8:119000622	rs13264172	T	A	<i>COLEC10</i>	0.988	FinnGen	0.92	0.89-0.95	2.23E-06*	0.5309	
							EstBB	0.95	0.93-0.98	3.55E-04*	0.5279	
							UKBB	0.98	0.93-1.04	0.519	0.5297	
							meta	0.95	0.93-0.96	2.46E-08**		0.108
12q24.13	12:112402962	rs11066283	A	G	<i>RPL6 (TRAFD1)</i>	0.88	FinnGen	1.08	1.04-1.12	1.34E-05*	0.379	
							EstBB	1.05	1.02-1.08	7.17E-04*	0.4053	
							UKBB	1.08	1.02-1.14	0.006*		
							meta	1.06	1.04-1.08	1.97E-09**	0.2944	0.379
<u>16p12.1</u>	<u>16:27344903</u>	<u>rs144651842</u>	<u>G</u>	<u>A</u>	<u><i>IL4R</i></u>	<u>119.053</u>	FinnGen	1.23	1.16-1.3	2.19E-11**	<u>0.078</u>	
							EstBB	1.17	1.07-1.27	4.90E-04*	<u>0.0254</u>	
							UKBB	NA	NA	NA		
							meta	1.21	1.15-1.27	7.21E-14**	0.0573	0.334
19p13.11	19:18402122	rs1560117	C	T	<i>LRRC25</i>	1.124	FinnGen	1.06	1.02-1.09	0.0013*	0.5344	
							EstBB	1.05	1.02-1.08	3.16E-04*	0.4935	
							UKBB	1.1	1.04-1.16	3.92E-04*		
							meta	1.06	1.04-1.08	6.05E-09**	0.5183	0.342

588 Ref, reference allele; alt, alternative allele (effect allele); fin enr., Finnish enrichment of lead variant; af alt, alternative allele
589 frequency; OR, odds ratio; CI, confidence interval; p, p-value; p-het, heterogeneity p-value for meta-analysis; EstBB, Estonian
590 BioBank; UKBB, UK Biobank.

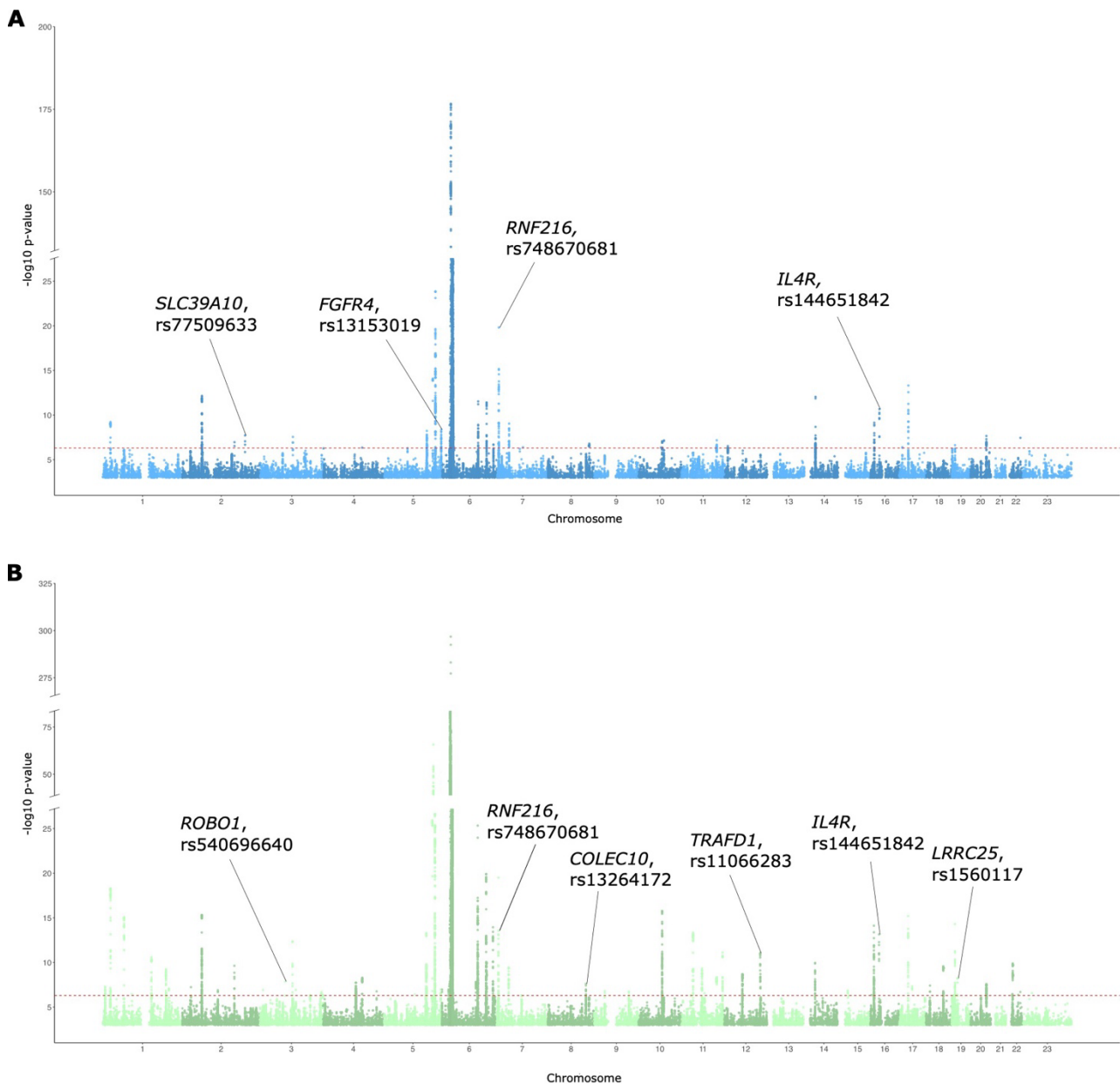
591 The column 'gene' reports the nearest gene and, when different from the nearest gene, a biologically relevant candidate gene in
592 brackets. Genes: *SLC39A10*, solute carrier family 39 member 10; *ROBO1*, roundabout homolog 1; *RGS14*, regulator of G protein
593 signaling 14; *FGFR4*, fibroblast growth factor receptor 4; *TNRC18*, trinucleotide repeat-containing 18; *RNF216*, ring finger protein
594 216; *COLEC10*, collectin family member 10; *RPL6*, ribosomal protein L6; *TRAFD1*, TRAF-type zinc finger domain containing protein
595 1; *IL4R*, interleukin 4 receptor; *LRRC25*, leucine rich repeat containing 25.

596 af_alt values for meta are weighted means of FinnGen and EstBB frequencies, as UKBB allele frequencies were not available.

597 *Nominally significant associations: $p < 0.05$

598 **Genome-wide significant associations: $p < 5E-08$

599



600

601 **Figure 1A-B.** Manhattan plots of A) FinnGen-based discovery
602 GWAS and B) FinnGen, EstBB (Estonian BioBank) and UKBB (UK
603 Biobank) meta-analysis GWAS.

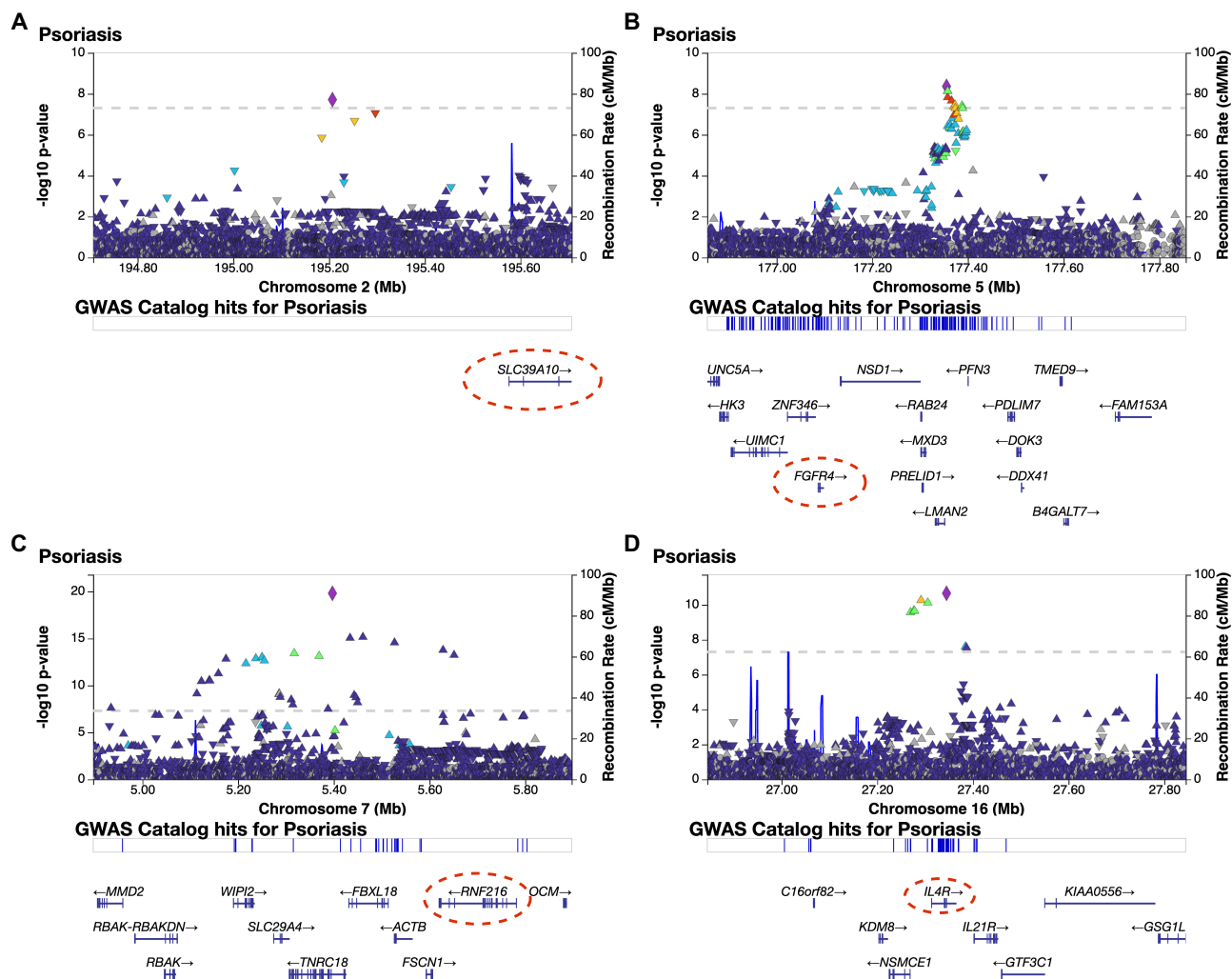
604 Candidate genes and rs-numbers for novel lead variants are marked in each plot. Y-axis
605 represents the $-\log_{10}$ p-value. The genome-wide significance threshold is marked with
606 dashed horizontal line.

607

608

609

610



611

612 **Figure 2A-D.** Regional association plots (LocusZooms) of the
 613 discovery GWAS (FinnGen-only) novel risk loci (± 0.5 MB around
 614 lead variant) at: A) 2q32.3, B) 5q35.3, C) 7p22.1, D) 16p12.1.
 615 Candidate genes are circled in the figures with red dashed line.

616

617

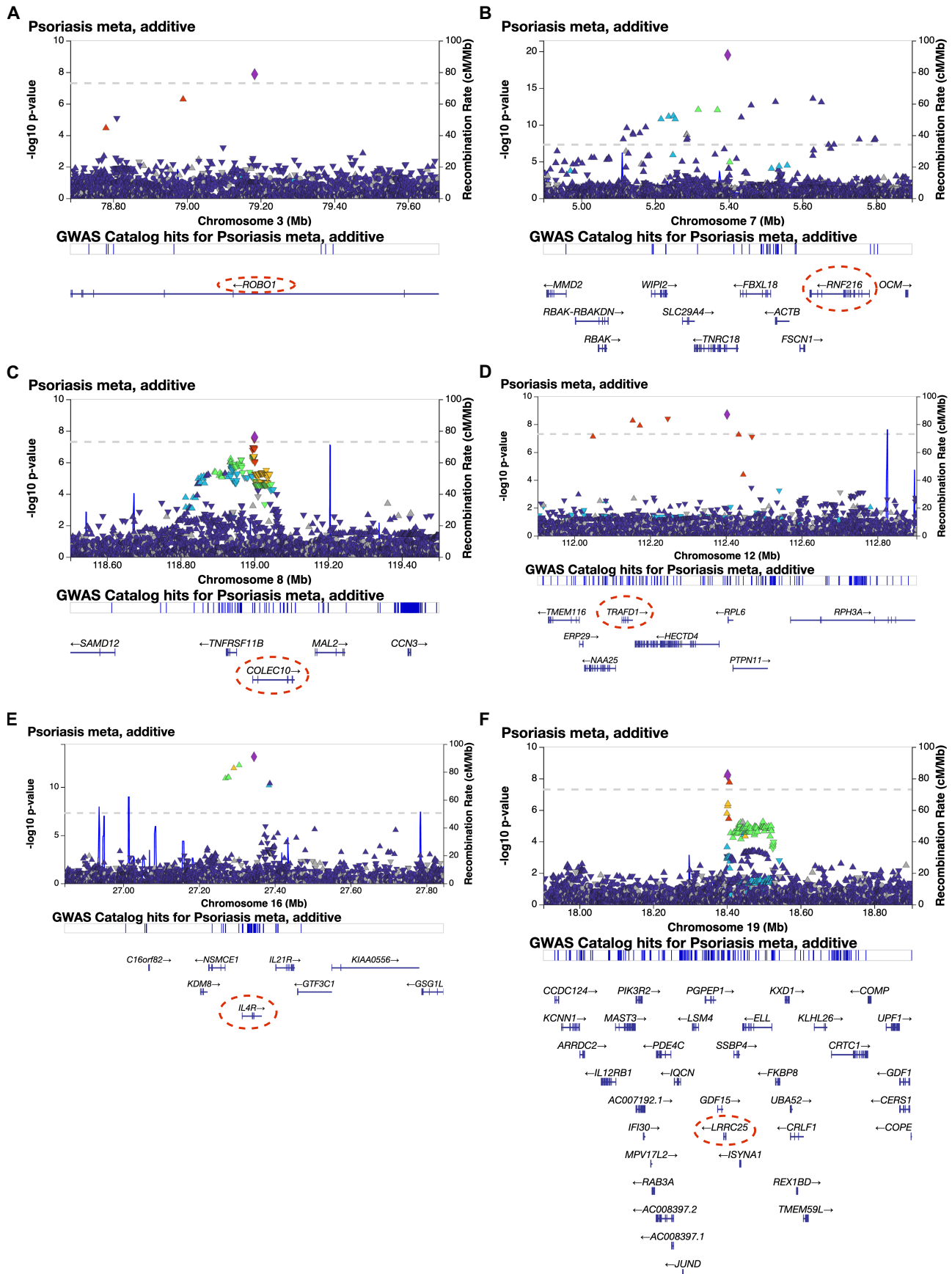
618

619

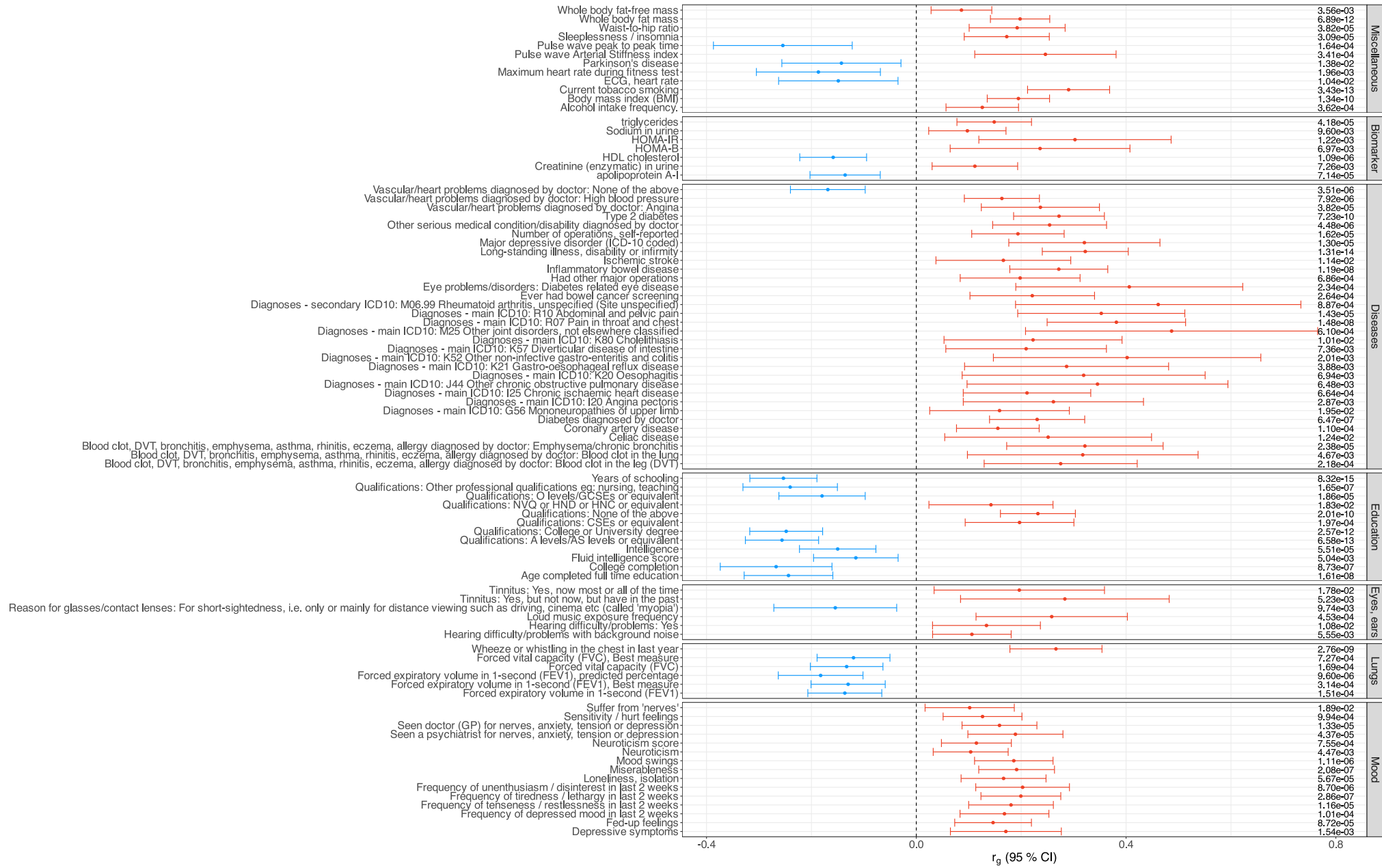
620

621

622



624 **Figure 3A-F.** Regional association plots (LocusZooms) of meta-
625 analysis (FinnGen, Estonian Biobank (EstBB) and UK Biobank
626 (UKBB) novel risk loci (± 0.5 MB around lead variant) at: A) 3p12.3,
627 B) 7p22.1, C) 8q24.12, D) 12q24.13, E) 16p12.1, F) 19p13.11.
628 Candidate genes are circled in the figures with red dashed line.



630 **Figure 4. Forest plot of genetic correlations with psoriasis selected**
631 **for Mendelian randomization analysis.**

632 Plot contains 99 out of total 319 significant associations (**Supplementary Table S3**). Traits
633 (on the left side of the plot) are sorted by category (right side of the plot). Genetic
634 correlation (r_g) is indicated with a dot and the whiskers show 95 % confidence interval. P-
635 value of each correlation is listed on the right side of the plot. Trait names are as in the
636 LDSC pipeline output, but some category names have been shortened or modified (full
637 original results available in supplements).

638

639

640

641

642

643

644

645

646

647

648

649

650

651

652

653

654

655

656

657

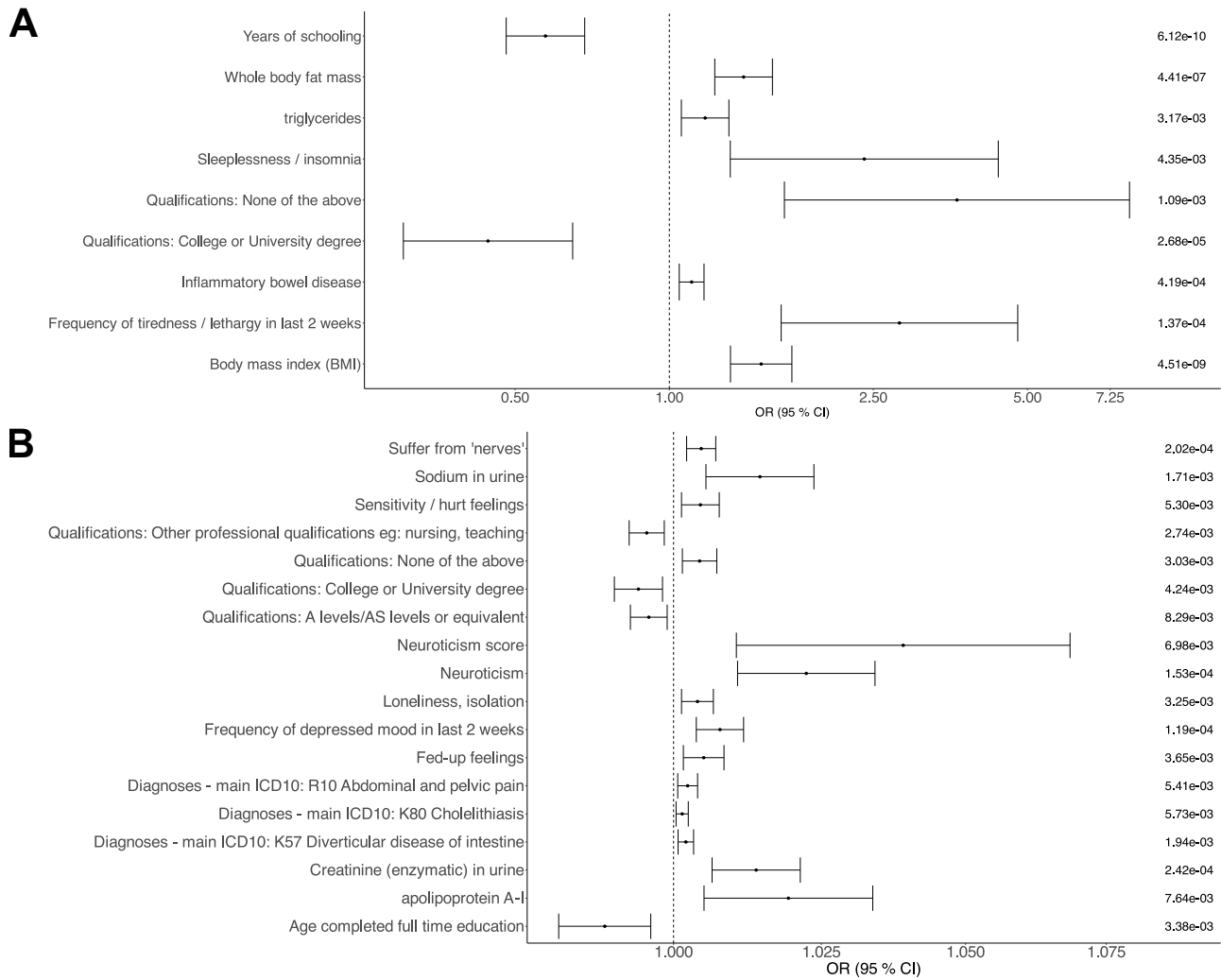
658

659

660

661

662



663

664

665 **Figure 5A-B. Forest plot of significant causal relationships between**
 666 **psoriasis and other traits.**

667 Mendelian randomization IVW estimates on significant causal relationships. Directions of
 668 causality: A) exposure to psoriasis, B) psoriasis to outcome. Odds ratios and 95 %
 669 confidence intervals on the x-axis, trait names on left side of the y-axis and p-values on the
 670 right side of the plot.