

Short title here

1

<b>Title</b>	Whole blood DNA methylation changes are associated with anti-TNF drug concentration in patients with Crohn's disease
<b>Authors</b>	Simeng Lin <sup>1,2*</sup> , Eilis Hannon <sup>3*</sup> , Mark Reppell <sup>4</sup> , Jeffrey F. Waring <sup>4</sup> , Nizar Smaoui <sup>4</sup> , Valerie Pivorunas <sup>4</sup> , Heath Guay <sup>4</sup> , Neil Chanchlani <sup>1,2</sup> , Claire Bewshea <sup>2</sup> , Benjamin Y H Bai <sup>5,6</sup> , Nicholas A Kennedy <sup>1,2</sup> , James R Goodhand <sup>1,2</sup> , Jonathan Mill <sup>3*</sup> , Tariq Ahmad <sup>1,2*</sup> , PANTS Consortium *denotes shared authorship
<b>Affiliations</b>	<sup>1</sup> Gastroenterology, Royal Devon University Healthcare NHS Foundation Trust, Exeter, UK <sup>2</sup> Exeter Inflammatory Bowel Disease and Pharmacogenetics Research Group, University of Exeter, Exeter, UK <sup>3</sup> University of Exeter Medical School, Faculty of Health and Life Sciences, University of Exeter, Exeter, UK <sup>4</sup> AbbVie Inc., Chicago, IL, USA; <sup>5</sup> Genomics of Inflammation and Immunity Group, Wellcome Sanger Institute, Hinxton, UK; <sup>6</sup> Postgraduate School of Life Sciences, University of Cambridge, Cambridge, UK
<b>Address for correspondence</b>	Tariq Ahmad, Exeter Inflammatory Bowel Disease and Pharmacogenetics Research Group, RILD building, Barrack Road, Exeter. EX2 5DW, UK, tariq.ahmad1@nhs.net
<b>Key words</b>	DNA methylation, Epigenetics, Anti-TNF, Crohn's disease, IBD
<b>Running title</b>	DNA methylation changes associated with anti-TNF drug concentration
<b>Word count</b>	6,777

2

3

4

1

5 **Abstract**

6 **Background and Aims**

7 Anti-TNF treatment failure in patients with inflammatory bowel disease (IBD) is common and  
8 frequently related to low drug concentrations.

9 In order to identify patients who may benefit from dose optimisation at the outset of anti-TNF  
10 therapy, we sought to define epigenetic biomarkers in whole blood at baseline associated with anti-  
11 TNF drug concentrations at week 14.

12

13 **Methods**

14 DNA methylation from 1,104 whole blood samples from the Personalised Anti-TNF Therapy in  
15 Crohn's disease (PANTS) study were assessed using the Illumina EPIC Beadchip at baseline, weeks 14,  
16 30 and 54. We compared DNA methylation profiles in anti-TNF-treated patients who experienced  
17 primary non-response at week 14 and were not in remission at week 30 or 54 (infliximab n = 99,  
18 adalimumab n = 94) with patients who responded at week 14 and were in remission at week 30 or  
19 54 (infliximab n = 99, adalimumab n = 93).

20

21 **Results**

22 Overall, between baseline and week 14, we observed 4,999 differentially methylated probes (DMPs)  
23 annotated to 2376 genes following anti-TNF treatment. Pathway analysis identified 108 significant  
24 gene ontology terms enriched in biological processes related to immune system processes and  
25 responses.

26 Epigenome-wide association (EWAS) analysis identified 323 DMPs annotated to 210 genes at  
27 baseline associated with higher anti-TNF drug concentrations at week 14. Of these, 125 DMPs

Short title here

28 demonstrated shared associations with other common traits (proportion of shared CpGs compared  
29 to DMPs) including body mass index (23.2%), followed by CRP (11.5%), smoking (7.4%), alcohol  
30 consumption per day (7.1%) and IBD type (6.8%). EWAS of primary non-response to anti-TNF  
31 identified 20 DMPs that were associated with both anti-TNF drug concentration and primary non-  
32 response to anti-TNF with a strong correlation of the coefficients (Spearman's  $\rho = -0.94$ ,  $p < 0.001$ ).

### 33 **Conclusion**

34 Baseline DNA methylation profiles may be used as a predictor for anti-TNF drug concentration at  
35 week 14 to identify patients who may benefit from dose optimisation at the outset of anti-TNF  
36 therapy.

37 **Introduction**

38 Anti-TNF therapies remain the most effective treatment to induce and maintain remission in  
39 patients with Crohn's disease<sup>1,2</sup>. Successful treatment leads to mucosal healing, reduced surgeries,  
40 and improvements in quality of life<sup>3</sup>. Unfortunately, anti-TNF treatment failure is common, with a  
41 quarter of patients experiencing primary non-response, and one-third of initial responders losing  
42 response by the end of the first year<sup>4</sup>.

43 In the Personalised Anti-TNF Therapy in Crohn's Disease study (PANTS), whilst loss of response was  
44 associated with the formation of anti-drug antibodies that were predicted by carriage of the HLA-  
45 DQA1\*05 haplotype and mitigated by concomitant immunomodulator use, the only modifiable  
46 factor associated with primary non-response at week 14 was low anti-TNF drug concentration<sup>5,6</sup>.

47 In this regard early dose optimisation reportedly improves anti-TNF response rates<sup>7,8</sup>. Whilst the  
48 biology of non-response is complex, an ability to predict primary non-response may inform  
49 treatment choice and identify individuals who may benefit from dose optimisation during induction  
50 therapy.

51 Heterogeneity of response to anti-TNF therapies has led to a drive to understand the molecular  
52 mechanisms underlying treatment failure in anti-TNF therapy. Increased mucosal expression of  
53 oncostatin M (*OSM*)<sup>9,10</sup> and triggering receptor expressed on myeloid cells (*TREM-1*)<sup>11,12</sup> have been  
54 identified as potential biomarkers predicting non-response to anti-TNF treatment. Drawing  
55 conclusions across studies is difficult, however, due to differences in study design, improvements in  
56 experimental and computational methods through time and critically, confounding by cellular  
57 heterogeneity with contradictory results between whole blood and intestinal biopsies<sup>13</sup>. Clinical  
58 translation of tissue biomarkers has also further been limited by accessibility and processing costs<sup>14</sup>.

59 DNA methylation, an epigenetic modification to DNA, can influence gene expression via disruption of  
60 transcription factor binding and recruitment of methyl-binding proteins that initiate chromatin  
61 compaction and gene silencing<sup>15,16</sup>. Despite being traditionally regarded as a mechanism of  
62 transcriptional repression, DNA methylation is actually associated with both increased and  
63 decreased gene expression<sup>17</sup>, and other genomic functions including alternative splicing and  
64 promoter usage<sup>18</sup>. DNA methylation can be influenced by both genetic<sup>19</sup> and environmental  
65 factors<sup>20</sup>, changing with age<sup>21</sup> and exposures such as cigarette smoking<sup>22</sup>. The development of  
66 standardised assays for quantifying DNA methylation across the genome at single-base resolution in  
67 large numbers of samples has enabled researchers to perform epigenome-wide association studies  
68 (EWAS) aimed at identifying methylomic variation associated with exposures and traits<sup>23</sup>. EWAS  
69 analyses are inherently more complex to design and interpret than genetic association studies; the  
70 dynamic nature of epigenetic processes means that a range of potentially important confounding  
71 factors (including tissue or cell type, age, sex, and lifestyle exposures) need to be considered in  
72 between-group comparisons<sup>24</sup>.

73 Previous studies of DNA methylation using whole blood or individual purified cell types have  
74 identified differentially methylated positions (DMPs) between patients with active and inactive IBD  
75 and healthy controls<sup>25,26</sup>. Pharmacoeugenomics is the application of epigenetics to understand  
76 interindividual differences in the response to therapeutic drugs<sup>27</sup>. DNA methylation sites from whole  
77 blood have been identified as effective biomarkers predicting treatment response to methotrexate  
78 and anti-TNF in patients with rheumatoid arthritis<sup>28,29</sup>.

79 In this study we used a powerful intra-individual study design to identify changes in DNA  
80 methylation associated with anti-TNF drug treatment, profiling 385 patients at baseline and weeks  
81 14, 30 and 54 post treatment initiation. In order to identify patients who may benefit from dose

82 optimisation at the outset of anti-TNF therapy, we also sought to define epigenetic biomarkers in  
83 whole blood at baseline associated with anti-TNF drug concentrations at week 14. We identify  
84 widespread differences in DNA methylation induced by anti-TNF drug treatment and show that  
85 baseline DNA methylation profiles can predict anti-TNF drug concentration at week 14.

86

## 87 **Methods**

### 88 **Study design**

89 The PANTS study is a UK wide, multicentre, prospective observational cohort reporting the  
90 treatment failure rates of the anti-TNF drugs infliximab (originator, Remicade [Merck Sharp &  
91 Dohme, Hertfordshire, UK] and biosimilar, CTP13 [Celltrion, Incheon, South Korea]), and adalimumab  
92 (Humira [AbbVie, Cambridge, MA]) in 1610 anti-TNF-naïve patients with Crohn's disease.

93 (Supplementary Table 1)

94 Patients were recruited between February 2013 and June 2016 at the time of first anti-TNF exposure  
95 and studied for 12 months or until drug withdrawal. Eligible patients were aged  $\geq 6$  years with  
96 objective evidence of active luminal Crohn's disease involving the colon and/or small intestine.

97 Exclusion criteria included prior exposure to, or contraindications for the use of, anti-TNF therapy.

98 The choice of anti-TNF was at the discretion of the treating physician and prescribed according to  
99 the licensed dosing schedule. Study visits were scheduled at first dose, week 14, and at weeks 30

100 and 54. Additional visits were planned for infliximab-treated patients at each infusion and for both  
101 groups at treatment failure or exit.

102 Treatment failure endpoints were primary non-response at week 14, non-remission at week 54, and  
103 adverse events leading to drug withdrawal.

104 We used composite endpoints using the Harvey Bradshaw Index (HBI) in adults and the short  
105 paediatric Crohn's disease activity index (sPCDAI) in children, corticosteroid use, and CRP to define  
106 primary non-response (Supplementary Figure 1). Remission was defined as CRP of  $\leq 3$  mg/L and HBI  
107 of  $\leq 4$  points (sPCDAI  $\leq 15$  in children), without corticosteroid therapy or exit for treatment failure.

108 Variables recorded at baseline were patient demographics (age, sex, ethnicity, comorbidities, height  
109 and weight and smoking status) and IBD phenotype and its treatments (age at diagnosis, disease  
110 duration, Montreal classification, prior medical and drug history, and previous Crohn's disease-  
111 related surgeries). At every visit, disease activity score, weight, current therapy and adverse  
112 events were recorded.

113 Blood and stool samples were collected at each visit and processed through the central laboratory at  
114 the Royal Devon & Exeter NHS Foundation Trust (<https://www.exeterlaboratory.com/>) for  
115 haemoglobin, white cell count, platelets, serum albumin, CRP, anti-TNF drug and anti-drug antibody  
116 concentrations, and faecal calprotectin, respectively.

#### 117 **DNA methylation processing**

118 Genomic DNA was extracted from peripheral whole blood using the Qiagen Qiasymphony DNA DSP  
119 midi kit (Qiagen, Ca, USA). Following sodium bisulfite conversion with the Zymo Research EZ-DNA  
120 Methylation kit (Zymo Research, CA USA), DNA methylation was quantified across the genome using  
121 the Illumina Infinium HumanMethylationEPIC (EPIC) BeadChip (Illumina Inc, CA, USA). To negate any  
122 methodological batch effects, individuals were randomised across experimental batches and  
123 samples from the same individual were processed together across all experimental stages.

#### 124 **Data pre-processing and quality control checks**

Short title here

125 Raw Illumina EPIC data were imported into R (version 3.6.0) using the *bigmelon* package (v1.12.0)<sup>30</sup>.  
126 Quality control (QC) checks were performed using the *bigmelon* (v1.12.0)<sup>30</sup> and *minfi* (v1.32.0)<sup>31</sup> R  
127 packages. They included the following steps: we first removed samples by 1) checking median  
128 methylated and unmethylated signal intensities and excluding samples with low intensities (<500) (3  
129 samples excluded), 2) assessing bisulphite conversion efficacy of each sample and excluding samples  
130 with a conversion rate < 80% (9 samples excluded), 3) using the 59 single nucleotide polymorphism  
131 (SNP) probes present on the EPIC array to confirm all matched samples from the same individual  
132 were genetically identical and to check for sample switches or duplications (12 samples excluded), 4)  
133 comparing intensity values from probes located on the X and Y chromosomes to autosomes to  
134 identify sex mismatches (10 samples excluded), 5) visually inspecting the first six principal  
135 components and excluding outliers (none identified), 6) using the *pfilter* function in the *bigmelon*  
136 (v1.12.0) package to exclude samples where >1% of probes had a detection p-value >0.05 (none  
137 identified). We subsequently removed probes by 7) using the *pfilter* function in the *bigmelon*  
138 (v1.12.0) package to exclude probes with a bead count <3 or 1% of samples with a detection p-value  
139 > 0.05 (8313 probes) and 8) removal of cross-hybridising probes and those containing a SNP (73,239  
140 probes). Following QC, quantile normalisation was carried out and 784,105 probes were taken  
141 forwards for analysis after exclusion of probes on the Y chromosome.

#### 142 ***Sample size and statistical methods***

143 Sample size calculations from the whole PANTS cohort have been reported previously<sup>5</sup>. For this  
144 analysis, we selected whole blood samples from a subset of 385 participants treated with infliximab  
145 and adalimumab aged >16 years, with a baseline CRP  $\geq 4$  mg/L and/or calprotectin >100  $\mu\text{g/g}$  who  
146 experienced primary non-response at week 14 and non-remission at week 30 or 54 (n = 99 and 94,  
147 respectively), and an equal number of participants as a comparator group who were classified with



148 primary response at week 14 and subsequent remission (n = 99 and 93, respectively) for DNA  
149 methylation profiling.

150 Statistical analyses were undertaken in R 4.1.3 (R Foundation for Statistical Computing, Vienna,  
151 Austria). We included patients with missing clinical variables in analyses for which they had the  
152 necessary data and have specified the sample size for each variable. Continuous data are reported as  
153 median and interquartile range, and discrete data as numbers and percentages. Fisher's exact and  
154 Mann-Whitney U tests were used to identify differences in baseline characteristics between  
155 infliximab-treated and adalimumab-treated patients. Comparative tests were two-tailed and p value  
156 < 0.05 were considered significant unless otherwise stated.

157 DNA methylation was analysed using beta values, the ratio of methylated intensity to the overall  
158 intensity at each CpG site, which represents the proportion methylation at each site. Because they  
159 influence methylation, *a priori*, we sought to define DNA methylation changes through the course of  
160 the study due to ageing, cigarette smoking and cell composition. Smoking scores were calculated  
161 using a weighted sum approach based on previously published smoking-associated methylation  
162 probes<sup>32</sup>. Epigenetic age was predicted using 353 CpG sites as described by Horvath<sup>21</sup>. Individual cell  
163 proportions of CD4+T cells, CD8+T cells, B cells, granulocytes, and monocytes in each whole blood  
164 sample were estimated using the Houseman reference-based algorithm implemented with functions  
165 in *minfi* (v1.32.0)<sup>31</sup> package. Linear mixed effects models, including time on anti-TNF (study visits in  
166 weeks) as a fixed effect and modelling individual participants with a random intercept, were used to  
167 determine if epigenetic age, smoking behaviour or cell composition were associated with anti-TNF  
168 treatment.

169 EWAS analyses of anti-TNF treatment, anti-TNF drug concentration and primary non-response were  
170 conducted using linear mixed effects models in this within-subject study, where anti-TNF type and

Short title here

171 cell proportions were adjusted for as fixed effects while a random effect (random intercept) was  
172 used to capture the individual level effects. Study visits in weeks, reflecting the duration of anti-TNF  
173 treatment, was included as an interaction term in the model. Patients treated with infliximab and  
174 adalimumab were analysed together to increase the power to detect shared effects. An empirically-  
175 derived p value  $< 9 \times 10^{-8}$  was considered significant to control for multiple testing<sup>33</sup>. Pathway  
176 analysis with annotations to Gene Ontology (GO) terms was performed using the *gometh ()* function  
177 in *missMethyl* (v1.28.0)<sup>34</sup> package, which controls for bias arising due to multiple genes being  
178 annotated to a single CpG, and multiple CpGs annotated to a single gene. DMPs were searched in  
179 the EWAS catalog<sup>35</sup> (<http://www.ewascatalog.org/>, assessed on 15/12/2022) to look for  
180 associations with other common traits. A false discovery rate (FDR) of  $< 0.05$  was considered  
181 significant for pathway analysis and associations in the EWAS catalog. We sought overlapping DMPs  
182 associated with drug levels and primary non-response and correlation of coefficients was  
183 determined using Spearman's test.

#### 184 ***Ethical and role of the funding source***

185 The sponsor of the study was the Royal Devon and Exeter NHS Foundation Trust. The South West  
186 Research Ethics committee approved the study (REC Reference: 12/SW/0323) in January 2013. The  
187 funders of this study had no role in study design, data collection, data analysis, data interpretation,  
188 or writing of the report. The corresponding author had full access to all the data in the study and had  
189 final responsibility for the decision to submit for publication.

190

191 **Results**

192 **Summary of PANTS DNA methylation dataset**

193 DNA methylation was quantified across the genome in 1,104 whole blood DNA samples from 385  
194 individuals across four study visits (baseline, week 14, week 30, week 54) from the PANTS cohort.  
195 Following a standard quality control pipeline (see Methods), our final dataset included 784,105 DNA  
196 methylation sites quantified in 1,062 samples from 385 participants (Supplementary Figure 1). 87  
197 participants provided samples at all four study visits and the median number of samples per  
198 participant was 3 (interquartile range [IQR] 2 – 3) (Supplementary Table 2).

199 Overall, 51.7% (199/385) of participants were female, with a median age of 35.7 years (IQR 26.3 -  
200 50.3). 21.2% (81/382) of participants were current smokers and 30.6% (117/382) were former  
201 smokers. The median disease duration was 2.2 years [IQR 0.6 - 9.6] and 50.9% (196/385) and 35.3%  
202 (136/385) of participants were treated with a concomitant immunomodulator and steroids at  
203 baseline, respectively. In total, 51.4% (198/385) of participants were treated with infliximab and  
204 48.6% (187/385) with adalimumab (Table 1). Median infliximab (3.30 mg/L vs 8.09 mg/L,  $p < 0.001$ )  
205 and adalimumab (7.70 mg/L vs. 13.35 mg/L,  $p < 0.001$ ) drug concentrations at week 14 were lower in  
206 patients who experienced primary non-response, as previously observed in the wider cohort<sup>5</sup>.  
207 (Supplementary Figure 2).

208 **Anti-TNF treatment is associated with altered blood cell proportions using measures derived from**  
209 **DNA methylation data**

210 A number of robust statistical classifiers have been developed to derive estimates of environmental  
211 exposures such as tobacco smoking<sup>32</sup>, biological age<sup>21</sup> and the proportion of different blood cell  
212 types<sup>36</sup> from whole blood DNA methylation data.

Short title here

213 As expected, current and former tobacco smokers had a higher DNA methylation-derived smoking  
214 score at baseline (former smokers 0.2 [IQR -2.0 - 4.1],  $p < 0.001$  and current smokers 6.6 [IQR 3.3 -  
215 9.5],  $p < 0.001$ ) when compared to never smokers (-2.3 [IQR -3.8 - -1.0]). Over the duration of the  
216 study, DNA methylation smoking score increased (effect size per week 0.019,  $p < 0.001$ ). When  
217 compared to current smokers, the trajectory of DNA methylation smoking score changed  
218 significantly in former (effect size per week -0.010,  $p = 0.003$ ), but not current smokers (effect size  
219 per week -0.004,  $p = 0.262$ ) (Supplementary Figure 3) When stratified by response to anti-TNF  
220 treatment, following anti-TNF treatment, there was no difference in the trajectory of smoking scores  
221 of current smokers (effect size per week - 0.006,  $p = 0.433$ ) or former smokers (effect size per week -  
222 0.0001,  $p = 0.986$ ) between those who experienced primary non-response compared to those who  
223 did not.

224 The epigenetic age of participants measured using the Horvath multi-tissue clock was highly  
225 correlated with chronological age of participants at study entry ( $r = 0.95$ ,  $p < 0.001$ ). Over the course  
226 of the study following anti-TNF treatment, epigenetic age changed with time (effect size per week  
227 0.002,  $p < 0.001$ ). When stratified by response to anti-TNF treatment, however, there was no  
228 difference in the trajectory of change in epigenetic age (effect size per week 0.003,  $p = 0.71$ ).  
229 (Supplementary Figure 4)

230 To understand the immune cell changes following anti-TNF treatment, cell proportion estimates  
231 were derived from DNA methylation data. Over time, following anti-TNF treatment, there was a  
232 significant increase in the derived proportions of CD4 T cells (effect size per week 0.0013,  $p < 0.001$ ),  
233 CD8 T cells (effect size per week 0.0005,  $p < 0.001$ ), B cells (effect size per week 0.0004,  $p < 0.001$ )  
234 and NK cells (effect size per week 0.0001,  $p = 0.015$ ). (Figure 1) In contrast, the proportion of  
235 monocytes (effect size per week -0.0001,  $p = 0.025$ ) and granulocytes (effect size per week -0.0023,  
236  $p < 0.001$ ) decreased significantly. In patients who experienced primary non-response, the increase

237 in proportion of B cells (effect size per week -0.0002,  $p < 0.001$ ) and CD4 T cells (effect size per week  
238 -0.0004,  $p = 0.048$ ) were less marked over time when compared to those who responded. There was  
239 no difference in the change of proportion of granulocytes (effect size per week 0.0002,  $p = 0.571$ ).

#### 240 **Changes in biological processes of the immune pathways occur following anti-TNF treatment**

241 Across all patients, 4,999 DMPs ( $p < 9 \times 10^{-8}$ ) annotated to 2,376 unique genes were associated with  
242 anti-TNF treatment (infliximab or adalimumab) regardless of response (Table 2, Figure 2). These  
243 DMPs were significantly enriched for sites becoming hypomethylated over time (63.5%  
244 [3,176/4,999],  $p < 0.001$ ). Of treatment-associated DMPs annotated to genes ( $n = 3,504$  [70.1%]), the  
245 majority were located in the gene body (67.1% [2,351/3,504]) (Supplementary Figure 5) representing  
246 a significant enrichment compared to the background distribution of probes on the EPIC array  
247 (67.1% vs 29.5%,  $p < 0.001$ ). The top-ranked DMP associated with anti-TNF treatment was  
248 cg11047325 annotated to the *SOCS3* gene, involved in the negative regulation of the JAK-STAT  
249 pathway and thought to play a role in modulating the outcome of infections and autoimmune  
250 diseases<sup>37</sup> (effect size per week 0.0008,  $p = 1.91 \times 10^{-41}$ ).

251 Gene ontology (GO) analysis of genes annotated to treatment-associated DMPs identified 108  
252 significant biological pathways (Supplementary Table 3) further implicating the immune response  
253 (immune system process (GO: 0002376, FDR  $< 0.001$ ), immune response (GO: 0006955, FDR  $<$   
254 0.001), and immune system development (GO:0002520, FDR  $< 0.001$ )) alongside pathways related to  
255 blood cell differentiation (haematopoietic or lymphoid organ development (GO:0048534, FDR  $<$   
256 0.001) and haemopoiesis (GO: 0030097, FDR  $< 0.001$ )) (Supplementary Figure 6).

#### 257 **DNA methylation in infliximab and adalimumab treated patients**

258 Next, we performed an epigenome-wide association study (EWAS) to identify any DMPs associated  
259 with anti-TNF treatment type. Overall, there were no significant DMPs at baseline between anti-TNF  
260 naïve Crohn's disease patients who were subsequently treated with infliximab or adalimumab.  
261 Irrespective of primary non-response status, we observed 13 DMPs annotated to 9 genes with  
262 significantly different trajectories following treatment with infliximab compared to adalimumab. The  
263 top-ranked DMPs between treatments included cg03446165 [annotated to *MMP25*] (effect size per  
264 week -0.0004,  $p = 6.78 \times 10^{-10}$ ), cg12229367 (effect size per week -0.0003,  $p = 1.54 \times 10^{-9}$ ) and  
265 cg04790662 [annotated to *PAG1*] (effect size per week -0.0005,  $p = 2.82 \times 10^{-9}$ ). (Supplementary  
266 Table 4)

267 **DNA methylation differences at baseline are associated with anti-TNF drug concentration**  
268 **following treatment**

269 We sought to determine if DNA methylation difference at baseline prior to the start of anti-TNF  
270 treatment were associated with anti-TNF drug concentrations at week 14. We identified 323 DMPs  
271 annotated to 210 genes at baseline associated with anti-TNF drug concentrations at week 14 (Table  
272 3, Figure 3). The top ranked DMP was cg23320029 annotated to the *TNFK* gene (effect size 0.0555,  $p$   
273 =  $4.62 \times 10^{-15}$ ), encoding the TRAF2 and NCK-interacting kinase, a key regulator in the Wnt signalling  
274 pathway implicated in the modulation of immune response during inflammation<sup>38</sup>. GO analysis of  
275 genes annotated to DMPs associated with anti-TNF drug concentration at week 14, however, did not  
276 identify any FDR (FDR < 0.05) significant pathways.

277 We intersected the list of DMPs predicting anti-TNF drug concentration following treatment with the  
278 EWAS catalog<sup>35</sup> to identify overlaps with DNA methylation differences associated with other traits  
279 and diseases, finding that 125 (38.7%) DMPs have been previously associated with other common  
280 traits (Supplementary Table 5). The most common shared association (proportion of shared CpGs

281 compared to DMPs) was with an EWAS of body mass index (23.2%), followed by CRP (11.5%),  
282 smoking (7.4%), alcohol consumption per day (7.1%) and IBD type (6.8%). The associations with  
283 these common traits all had an opposite direction of effect to anti-TNF drug concentration in our  
284 cohort; CpG sites associated with a higher BMI and increased CRP were associated with lower anti-  
285 TNF drug concentrations, in keeping with the known associations with anti-TNF drug concentration  
286 and treatment outcomes<sup>5</sup>.

287 To understand if there was a relationship between anti-TNF drug concentration at week 14 and anti-  
288 TNF treatment response, we performed an EWAS of primary non-response to anti-TNF, and  
289 identified 48 DMPs annotated to 36 genes at baseline. Of these, 20 DMPs were associated with both  
290 anti-TNF drug concentration and primary non-response to anti-TNF (Supplementary Table 6). These  
291 DMPs include cg27216853 [*CYS1*] (effect size to drug concentration -0.0371 vs effect size to primary  
292 non-response 0.0245), cg23606775 [*CLSTN1*] (-0.0220 vs 0.0133) and cg18138532 [*UPF2*] (-0.0273 vs  
293 0.0157). Overall, there was a strong correlation of the coefficients (Spearman's rho = -0.94, p <  
294 0.001) (Figure 4), suggesting a relationship between DMPs associated with lower anti-TNF drug  
295 concentration and primary non-response.

### 296 **Longitudinal changes in DNA methylation differ in patients with primary non-response to anti-TNF** 297 **treatment**

298 Following anti-TNF treatment, intra-individual changes in DNA methylation was significantly  
299 different between those who experienced primary non-response to anti-TNF compared to those  
300 who did not at 5 DMPs. These sites were cg07839457 [annotated to *NLRC5*] (effect size per week -  
301 0.0007, p =  $1.92 \times 10^{-13}$ ), cg11047325 [annotated to *SOC53*] (-0.0007, p =  $3.70 \times 10^{-11}$ ), cg15022400  
302 [annotated to *TRIM69*] (-0.0003, p =  $3.39 \times 10^{-9}$ ), cg25867318 [annotated to *STAT3*] (-0.0004, p =  
303  $6.06 \times 10^{-8}$ ) and cg08950751 [annotated to *AIP*] (-0.0003, p =  $6.82 \times 10^{-8}$ ) (Supplementary Table 7).

304 The top ranked DMP following anti-TNF treatment cg11047325 annotated to *SOCS3* involved in  
305 regulation of the JAK-STAT pathway was again identified.

## 306 **Discussion**

### 307 *Key results*

308 In whole blood, we observed almost 5,000 DMPs annotated to >2,000 genes that are associated with  
309 anti-TNF therapy, with the genes annotated to these sites being enriched for biological processes  
310 related to immune system processes. 323 DMPs annotated to 210 genes were associated with anti-  
311 TNF drug concentration at week 14 and we observed an overlap between differentially methylated  
312 probes associated with drug concentrations and primary non-response.

### 313 *Interpretation*

314 It is perhaps unsurprising, that treatment with the anti-TNF monoclonal antibodies infliximab and  
315 adalimumab led to a significant number of differentially methylated probes across multiple genes  
316 that were enriched in immune system pathways. Overall, however, only 13 DMPs were found when  
317 comparing infliximab- and adalimumab-treated patients, suggesting that there is an anti-TNF  
318 treatment class effect and that both drugs exert a similar effect upon levels of DNA methylation. A  
319 similar conclusion was made from a study of patients with rheumatoid arthritis treated with several  
320 different anti-TNFs including adalimumab, certolizumab, etanercept, golimumab and infliximab, with  
321 no DMPs were identified between different anti-TNF subtypes<sup>39</sup>.

322 The immune cell changes and intracellular signalling pathways in peripheral blood and intestinal  
323 tissue following treatment with anti-TNF in patients with IBD is still unclear<sup>40</sup>. Unlike a previous study  
324 of 14 patients with IBD<sup>41</sup>, following anti-TNF treatment, we did not observe a change in derived  
325 granulocyte proportions between non-responders and responders, but noted differences in B cells



326 and CD4 T cells. Derived cell proportions at baseline were, however, not useful as a biomarker of  
327 anti-TNF non-response.

328 About a third (38.7%) of the DMPs associated with low drug concentrations were linked to other  
329 common traits including body mass index, smoking, and CRP that in the PANTS cohort were  
330 associated with drug concentration and anti-TNF treatment failure<sup>5</sup>. It is plausible that these DMPs  
331 could be used as blood biomarkers independent of clinical traits to predict inter-individual variability  
332 in anti-TNF drug concentration, allowing early effective anti-TNF dose prescribing. Our findings that  
333 the DMPs were enriched in gene bodies may suggest a more complex mechanism apart from gene  
334 transcription in their role underlying anti-TNF treatment response. The role of gene body  
335 methylation is still widely debated, and while they have been associated with the regulation of gene  
336 expression, they have a more complex role in suppressing aberrant gene transcription and regulating  
337 alternative splicing<sup>42</sup>. With the advancement of single-cell sequencing technologies, the study of  
338 specific cell types in both disease specific intestinal tissue<sup>43</sup> and peripheral whole blood<sup>44</sup> perhaps  
339 based on our data focussing on the role of B- and CD4<sup>+</sup> T cells, may provide further insights into the  
340 molecular mechanisms underlying anti-TNF treatment failure.

341 Whilst there was a strong correlation of effect between DMPs associated with lower drug  
342 concentration at week 14 and primary non-response, the modest effect sizes mean that these  
343 markers are unlikely to be useful as a diagnostic predictor of primary non-response in individual  
344 patients. Why primary non-response is so difficult to predict in patients with IBD is unclear. Few of  
345 the so-called precision medicine biomarkers to facilitate the right drug, to the right patient, at the  
346 right time have been replicated or translated to clinical care. There are a number of possible reasons  
347 for this. Firstly, the challenges of defining primary non-response in the absence of endoscopic  
348 outcome data. In the PANTS study, we used a pragmatic composite outcome closely linked to  
349 routine clinical care that included patient symptoms assessed using a validated severity scores and

350 serum CRP. However, there is poor concordance between symptoms and biomarkers and mucosal  
351 inflammation. Patients with Crohn's disease may also complain of symptoms suggestive of active  
352 disease because of overlapping irritable bowel syndrome, bile acid malabsorption and or small  
353 intestinal overgrowth. Further interpretation of potential markers across studies is challenging due  
354 to differences in study design, inclusion criteria, improvements in experimental and computational  
355 methods over time, and critically confounding by sampling of different tissues and cellular  
356 heterogeneity. These challenges may explain why we were unable to replicate here the previous  
357 associations with oncostatin M (*OSM*)<sup>9,10</sup> and triggering receptor expressed on myeloid cells (*TREM-*  
358 *1*)<sup>11,12</sup> identified as potential biomarkers predicting non-response to anti-TNF treatment. Our data  
359 argues against the presence of a single epigenetic biomarker in whole blood with clinical utility.

360 Our observations that higher DNA methylation epigenetic smoking score and smoking status, and  
361 epigenetic age of participants and chronological age were highly positively correlated internally  
362 validates our DNA methylation processing and quality control methods supporting subsequent  
363 findings against clinical outcomes. Interestingly, increase in smoking score was observed in all groups  
364 regardless of smoking status over time, but was significantly less in former smokers compared to  
365 never smokers. Prior longitudinal studies of DNA methylation changes following smoking cessation  
366 have reported conflicting results<sup>37,38</sup>, although varying follow-up times and the study of different  
367 populations makes it difficult to compare across studies. Whether the DNA methylation changes  
368 following smoking cessation have an impact on anti-TNF drug concentration or outcomes in patients  
369 with Crohn's disease requires further investigation.

#### 370 *Limitations and generalisability*

371 We acknowledge some important limitations of our work. First, our outcome data could be  
372 strengthened with endoscopic outcomes. However, we observed a significant association between

Short title here

373 clinical outcomes at week 14 and week 54 and faecal calprotectin, which has been shown to closely  
374 correlate with endoscopic findings. Second, we measured DNA methylation from whole blood which  
375 is likely to be confounded by differences in individual cell proportions. Although we included derived  
376 cell proportions as a covariate in our statistical models, this is unlikely to fully control for cellular  
377 changes which may be better controlled for by expanded panels of blood cell types or single-cell  
378 analyses. Whether similar changes also occur in the target tissues in the small and large intestine is  
379 unknown. Third, our findings should be validated in an independent cohort prior to translation into  
380 clinical practice.

381 The PANTS study recruited patients from across the UK, and we believe our findings will be  
382 generalisable to patients with Crohn's disease treated with an anti-TNF across other western  
383 populations. Further work is required to determine if these findings are found in other non-western  
384 populations, and indeed in other populations of patients with IBD such as those with ulcerative  
385 colitis, and in non-IBD patients treated with an anti-TNF.

### 386 **Conclusion**

387 Baseline DNA methylation profiles may be used as a predictor for anti-TNF drug concentration at  
388 week 14 to identify patients who may benefit from dose optimisation at the outset of anti-TNF  
389 therapy.

390

391 **Acknowledgements**

392 S.L. is supported by a Wellcome GW4-CAT fellowship (222850/Z/21/Z). N.C. acknowledges support  
393 from Crohn's and Colitis UK. This study was supported by the National Institute for Health and Care  
394 Research (NIHR) Exeter Biomedical Research Centre. The views expressed are those of the author(s)  
395 and not necessarily those of the NIHR or the Department of Health and Social Care. The authors  
396 would like to acknowledge James Butler for facilitating this collaboration and Samantha Lent, Justin  
397 Wade Davis, Elina Regan, Stephen Abel, Elizabeth Asque and Areej Ammar in the preparation of this  
398 manuscript. We also acknowledge John Kirkwood and Anna Barnes from the NIHR Clinical Research  
399 Facility for their support with sample preparation, and the study coordinators of the Exeter IBD  
400 Research Group, Marian Parkinson and Helen Gardner-Thorpe for their ongoing administrative  
401 support to the study.

402 **Funding**

403 PANTS is an investigator-led study funded by CORE (renamed Guts UK in 2018), the research charity  
404 of the British Society of Gastroenterology, and by unrestricted educational grants from AbbVie Inc,  
405 USA, Merck Sharp & Dohme Ltd, UK, NAPP Pharmaceuticals Ltd, UK, Pfizer Ltd, USA, Celltrion  
406 Healthcare, South Korea, and Cure Crohn's Colitis (Scottish IBD Charity). DNA methylation processing  
407 was supported through a sponsored research agreement with AbbVie Inc. The drug and anti-drug  
408 antibody assays were provided at reduced cost by Immundiagnostik AG. Laboratory tests were  
409 undertaken by the Exeter Blood Sciences Laboratory at the Royal Devon & Exeter National Health  
410 Service Trust (<https://www.exeterlaboratory.com>). The sponsor of the PANTS study is the Royal  
411 Devon and Exeter National Health Service Foundation Trust. None of the listed funders had a role in  
412 the design and conduct of the study; collection, management, analysis, and interpretation of the  
413 data; preparation, review, and decision to submit the manuscript for publication.

414 **Conflict of Interest**

415 Simeng Lin reports non-financial support from Pfizer outside the submitted work. Mark Reppell,  
416 Jeffrey F Waring, Valerie Pivorunas, Nizar Smaoui, Heath Guay are employees of AbbVie and may  
417 own stock/options. Nicholas A. Kennedy reports grants from F. Hoffmann-La Roche AG, grants from  
418 Biogen Inc, grants from Celltrion Healthcare, grants from Galapagos NV and non-financial support  
419 from Immundiagnostik; grants and non-financial support from AbbVie, grants and personal fees from  
420 Celltrion, personal fees and non-financial support from Janssen, personal fees from Takeda, and  
421 personal fees and non-financial support from Dr Falk, outside the submitted work. James R.  
422 Goodhand reports grants from F. Hoffmann-La Roche AG, grants from Biogen Inc, grants from  
423 Celltrion Healthcare, grants from Galapagos NV and non-financial support from Immundiagnostik  
424 outside the conduct of the study. Tariq Ahmad reports grants and non-financial support from F.  
425 Hoffmann-La Roche AG, grants from Biogen Inc, grants from Celltrion Healthcare, grants from  
426 Galapagos NV and non-financial support from Immundiagnostik; personal fees from Biogen inc,  
427 grants and personal fees from Celltrion Healthcare, personal fees and non-financial support from  
428 Immundiagnostik, personal fees from Takeda, personal fees from ARENA, personal fees from Gilead,  
429 personal fees from Adcock Ingram Healthcare, personal fees from Pfizer, personal fees from  
430 Genentech and non-financial support from Tillotts, outside the submitted work. Eilis Hannon, Claire  
431 Bewshea, Neil Chanchlani and Jonathan Mill declare no competing interests.

432

433 **Author Contributions**

434 NAK, JRG, TA participated in the conception and design of this study. CB was the project manager  
435 and coordinated patient recruitment. SL, EH, NS, JFW, VP, HG, CB, NC, BB, NAK, JRG, JM, TA were  
436 involved in the acquisition, analysis or interpretation of data. Data analysis was done by SL and EH.  
437 Drafting of the manuscript was done by SL, EH, NS, JFW, VP, HG, NC, BB, NAK, JRG, JM, TA. TA

438 obtained the funding for the study. All the authors contributed to the critical review and final  
439 approval of the manuscript. JM and TA have verified the underlying data.

440

441 **Data availability statement**

442 Individual participant de-identified data that underlie the results reported in this article will be  
443 available immediately after publication for a period of 5 years. The data will be made available to  
444 investigators whose proposed use of the data has been approved by an independent review  
445 committee. Analyses will be restricted to the aims in the approved proposal. Proposals should be  
446 directed to [tariq.ahmad1@nhs.net](mailto:tariq.ahmad1@nhs.net). To gain access data requestors will need to sign a data access  
447 agreement.

448 **References**

- 449 1. Singh S, Murad MH, Fumery M, Sedano R, Jairath V, Panaccione R, et al. Comparative efficacy  
450 and safety of biologic therapies for moderate-to-severe Crohn's disease: a systematic review  
451 and network meta-analysis. *Lancet Gastroenterol Hepatol*. 2021 Dec 1;6(12):1002–14.
- 452 2. Barberio B, Gracie DJ, Black CJ, Ford AC. Efficacy of biological therapies and small molecules in  
453 induction and maintenance of remission in luminal Crohn's disease: systematic review and  
454 network meta-analysis. *Gut* [Internet]. 2022 Jul 30 [cited 2022 Sep 8];0:gutjnl-2022-328052.  
455 Available from: <https://gut.bmj.com/content/early/2022/07/29/gutjnl-2022-328052>
- 456 3. Mao EJ, Hazlewood GS, Kaplan GG, Peyrin-Biroulet L, Ananthakrishnan AN. Systematic review  
457 with meta-analysis: comparative efficacy of immunosuppressants and biologics for reducing  
458 hospitalisation and surgery in Crohn's disease and ulcerative colitis. *Aliment Pharmacol Ther*  
459 [Internet]. 2017 Jan 1 [cited 2022 Sep 9];45(1):3–13. Available from:  
460 <https://pubmed.ncbi.nlm.nih.gov/27862107/>
- 461 4. Papamichael K, Gils A, Rutgeerts P, Levesque BG, Vermeire S, Sandborn WJ, et al. Role for  
462 therapeutic drug monitoring during induction therapy with TNF antagonists in IBD: evolution  
463 in the definition and management of primary nonresponse. *Inflamm Bowel Dis* [Internet].  
464 2015 Jan;21(1):182–97. Available from: <http://www.ncbi.nlm.nih.gov/pubmed/25222660>
- 465 5. Kennedy NA, Heap GA, Green HD, Hamilton B, Bewshea C, Walker GJ, et al. Predictors of anti-  
466 TNF treatment failure in anti-TNF-naive patients with active luminal Crohn's disease: a  
467 prospective, multicentre, cohort study. *Lancet Gastroenterol Hepatol*. 2019;1253(19):1–13.
- 468 6. Sazonovs A, Kennedy NA, Moutsianas L, Heap GA, Rice DL, Reppell M, et al. HLA-DQA1\*05  
469 Carriage Associated With Development of Anti-Drug Antibodies to Infliximab and  
470 Adalimumab in Patients With Crohn's Disease. *Gastroenterology* [Internet]. 2020;158(1):189–  
471 99. Available from: <http://www.ncbi.nlm.nih.gov/pubmed/31600487>

- 472 7. Dubinsky MC, Mendiola ML, Phan BL, Moran HR, Tse SS, Mould DR. Dashboard-Driven  
473 Accelerated Infliximab Induction Dosing Increases Infliximab Durability and Reduces  
474 Immunogenicity. *Inflamm Bowel Dis* [Internet]. 2022 Sep 1 [cited 2022 Dec 20];28(9):1375–  
475 85. Available from: <https://pubmed.ncbi.nlm.nih.gov/34978325/>
- 476 8. Lawrence S, Faytrouni F, Harris RE, Irvine M, Carrion E, Scott G, et al. Optimized Infliximab  
477 Induction Predicts Better Long-Term Clinical and Biomarker Outcomes Compared to Standard  
478 Induction Dosing. *J Pediatr Gastroenterol Nutr* [Internet]. 2022 Nov 1 [cited 2022 Dec  
479 20];75(5):601–7. Available from: <https://pubmed.ncbi.nlm.nih.gov/36048178/>
- 480 9. West NR, Hegazy AN, Owens BMJ, Bullers SJ, Linggi B, Buonocore S, et al. Oncostatin M drives  
481 intestinal inflammation and predicts response to tumor necrosis factor-neutralizing therapy  
482 in patients with inflammatory bowel disease. *Nat Med* [Internet]. 2017 [cited 2022 Sep  
483 9];23(5):579–89. Available from: <https://pubmed.ncbi.nlm.nih.gov/28368383/>
- 484 10. Verstockt S, Verstockt B, MacHiels K, Vancamelbeke M, Ferrante M, Cleyne I, et al.  
485 Oncostatin M Is a Biomarker of Diagnosis, Worse Disease Prognosis, and Therapeutic  
486 Nonresponse in Inflammatory Bowel Disease. *Inflamm Bowel Dis* [Internet]. 2021 Oct 1 [cited  
487 2022 Sep 9];27(10):1564–75. Available from: <https://pubmed.ncbi.nlm.nih.gov/33624092/>
- 488 11. Gaujoux R, Starosvetsky E, Maimon N, Vallania F, Bar-Yoseph H, Pressman S, et al. Cell-  
489 centred meta-analysis reveals baseline predictors of anti-TNF $\alpha$  non-response in biopsy and  
490 blood of patients with IBD. *Gut* [Internet]. 2019 Apr 1 [cited 2022 Sep 9];68(4):604–14.  
491 Available from: <https://gut.bmj.com/content/68/4/604>
- 492 12. Verstockt B, Verstockt S, Dehairs J, Ballet V, Blevi H, Wollants WJ, et al. Low TREM1  
493 expression in whole blood predicts anti-TNF response in inflammatory bowel disease.  
494 *EBioMedicine* [Internet]. 2019 Feb 1 [cited 2022 Sep 9];40:733. Available from:  
495 [/pmc/articles/PMC6413341/](https://pmc/articles/PMC6413341/)



Short title here

- 496 13. Sudhakar P, Alsoud D, Wellens J, Verstockt S, Arnauts K, Verstockt B, et al. Tailoring Multi-  
497 omics to Inflammatory Bowel Diseases: All for One and One for All. *J Crohn's Colitis* [Internet].  
498 2022 Aug 30 [cited 2022 Dec 20];16(8):1306–20. Available from:  
499 <https://academic.oup.com/ecco-jcc/article/16/8/1306/6527686>
- 500 14. Verstockt B, Noor NM, Marigorta UM, Pavlidis P, Deepak P, Ungaro RC, et al. Results of the  
501 Seventh Scientific Workshop of ECCO: Precision Medicine in IBD—Disease Outcome and  
502 Response to Therapy. *J Crohn's Colitis* [Internet]. 2021 Sep 25 [cited 2022 Dec  
503 19];15(9):1431–42. Available from: [https://academic.oup.com/ecco-](https://academic.oup.com/ecco-jcc/article/15/9/1431/6175314)  
504 [jcc/article/15/9/1431/6175314](https://academic.oup.com/ecco-jcc/article/15/9/1431/6175314)
- 505 15. Dor Y, Cedar H. Principles of DNA methylation and their implications for biology and  
506 medicine. *Lancet*. 2018 Sep 1;392(10149):777–86.
- 507 16. Schübeler D. Function and information content of DNA methylation. *Nat* 2015 5177534  
508 [Internet]. 2015 Jan 14 [cited 2023 Feb 1];517(7534):321–6. Available from:  
509 <https://www.nature.com/articles/nature14192>
- 510 17. Wan J, Oliver VF, Wang G, Zhu H, Zack DJ, Merbs SL, et al. Characterization of tissue-specific  
511 differential DNA methylation suggests distinct modes of positive and negative gene  
512 expression regulation. *BMC Genomics* [Internet]. 2015 Feb 5 [cited 2023 Feb 1];16(1):1–11.  
513 Available from: [https://bmcbgenomics.biomedcentral.com/articles/10.1186/s12864-015-](https://bmcbgenomics.biomedcentral.com/articles/10.1186/s12864-015-1271-4)  
514 [1271-4](https://bmcbgenomics.biomedcentral.com/articles/10.1186/s12864-015-1271-4)
- 515 18. de Mendoza A, Nguyen TV, Ford E, Poppe D, Buckberry S, Pflueger J, et al. Large-scale  
516 manipulation of promoter DNA methylation reveals context-specific transcriptional responses  
517 and stability. *Genome Biol* [Internet]. 2022 Dec 1 [cited 2023 Feb 1];23(1):1–31. Available  
518 from: <https://genomebiology.biomedcentral.com/articles/10.1186/s13059-022-02728-5>
- 519 19. Villicaña S, Bell JT. Genetic impacts on DNA methylation: research findings and future

Short title here

- 520 perspectives. *Genome Biol* 2021 22:1 [Internet]. 2021 Apr 30 [cited 2023 Feb 1];22(1):1–35.
- 521 Available from: [https://genomebiology.biomedcentral.com/articles/10.1186/s13059-021-](https://genomebiology.biomedcentral.com/articles/10.1186/s13059-021-02347-6)
- 522 [02347-6](https://genomebiology.biomedcentral.com/articles/10.1186/s13059-021-02347-6)
- 523 20. Hannon E, Knox O, Sugden K, Burrage J, Wong CCY, Belsky DW, et al. Characterizing genetic
- 524 and environmental influences on variable DNA methylation using monozygotic and dizygotic
- 525 twins. *PLOS Genet* [Internet]. 2018 Aug 1 [cited 2022 Sep 9];14(8):e1007544. Available from:
- 526 <https://journals.plos.org/plosgenetics/article?id=10.1371/journal.pgen.1007544>
- 527 21. Horvath S. DNA methylation age of human tissues and cell types. *Genome Biol* [Internet].
- 528 2013 Oct 21 [cited 2022 Sep 8];14(10):1–20. Available from:
- 529 <https://genomebiology.biomedcentral.com/articles/10.1186/gb-2013-14-10-r115>
- 530 22. Parkes GC, Whelan K, Lindsay JO. Smoking in inflammatory bowel disease: Impact on disease
- 531 course and insights into the aetiology of its effect. *J Crohn's Colitis* [Internet]. 2014 Aug 1
- 532 [cited 2022 Sep 30];8(8):717–25. Available from: [https://academic.oup.com/ecco-](https://academic.oup.com/ecco-jcc/article/8/8/717/530121)
- 533 [jcc/article/8/8/717/530121](https://academic.oup.com/ecco-jcc/article/8/8/717/530121)
- 534 23. Rakyan VK, Down TA, Balding DJ, Beck S. Epigenome-Wide Association Studies for common
- 535 human diseases. *Nat Rev Genet* [Internet]. 2011 Aug [cited 2023 Feb 1];12(8):529. Available
- 536 from: [/pmc/articles/PMC3508712/](https://pubmed.ncbi.nlm.nih.gov/21511412/)
- 537 24. Birney E, Smith GD, Grealley JM. Epigenome-wide Association Studies and the Interpretation of
- 538 Disease -Omics. *PLOS Genet* [Internet]. 2016 Jun 1 [cited 2023 Feb 1];12(6):e1006105.
- 539 Available from:
- 540 <https://journals.plos.org/plosgenetics/article?id=10.1371/journal.pgen.1006105>
- 541 25. McDermott E, Ryan EJ, Tosetto M, Gibson D, Burrage J, Keegan D, et al. DNA Methylation
- 542 Profiling in Inflammatory Bowel Disease Provides New Insights into Disease Pathogenesis. *J*
- 543 *Crohns Colitis* [Internet]. 2016 Jan 1 [cited 2022 Sep 8];10(1):77–86. Available from:

Short title here

- 544 <https://pubmed.ncbi.nlm.nih.gov/26419460/>
- 545 26. Sominen HK, Venkateswaran S, Kilaru V, Marigorta UM, Mo A, Okou DT, et al. Blood-Derived  
546 DNA Methylation Signatures of Crohn's Disease and Severity of Intestinal Inflammation.  
547 Gastroenterology [Internet]. 2019 Jun 1 [cited 2022 Sep 8];156(8):2254-2265.e3. Available  
548 from: <https://pubmed.ncbi.nlm.nih.gov/30779925/>
- 549 27. Fisel P, Schaeffeler E, Schwab M. DNA Methylation of ADME Genes. Clin Pharmacol Ther  
550 [Internet]. 2016 May 1 [cited 2022 Dec 20];99(5):512–27. Available from:  
551 <https://onlinelibrary.wiley.com/doi/full/10.1002/cpt.343>
- 552 28. Nair N, Plant D, Plant D, Verstappen SM, Verstappen SM, Isaacs JD, et al. Differential DNA  
553 methylation correlates with response to methotrexate in rheumatoid arthritis. Rheumatology  
554 (Oxford) [Internet]. 2020 Jun 1 [cited 2022 Sep 9];59(6):1364–71. Available from:  
555 <https://pubmed.ncbi.nlm.nih.gov/31598719/>
- 556 29. Plant D, Webster A, Nair N, Oliver J, Smith SL, Eyre S, et al. Differential Methylation as a  
557 Biomarker of Response to Etanercept in Patients with Rheumatoid Arthritis. Arthritis  
558 Rheumatol [Internet]. 2016 Jun 1 [cited 2022 Sep 9];68(6):1353–60. Available from:  
559 <https://onlinelibrary.wiley.com/doi/full/10.1002/art.39590>
- 560 30. Gorrie-Stone TJ, Smart MC, Saffari A, Malki K, Hannon E, Burrage J, et al. Bigmelon: tools for  
561 analysing large DNA methylation datasets. Bioinformatics [Internet]. 2019 Mar 15 [cited 2022  
562 Sep 8];35(6):981–6. Available from:  
563 <https://academic.oup.com/bioinformatics/article/35/6/981/5078475>
- 564 31. Aryee MJ, Jaffe AE, Corrada-Bravo H, Ladd-Acosta C, Feinberg AP, Hansen KD, et al. Minfi: a  
565 flexible and comprehensive Bioconductor package for the analysis of Infinium DNA  
566 methylation microarrays. Bioinformatics [Internet]. 2014 May 15 [cited 2022 Sep  
567 8];30(10):1363–9. Available from: <https://pubmed.ncbi.nlm.nih.gov/24478339/>

- 568 32. Elliott HR, Tillin T, McArdle WL, Ho K, Duggirala A, Frayling TM, et al. Differences in smoking  
569 associated DNA methylation patterns in South Asians and Europeans. *Clin Epigenetics*  
570 [Internet]. 2014 Feb 3 [cited 2022 Sep 8];6(1):1–10. Available from:  
571 <https://clinicalepigeneticsjournal.biomedcentral.com/articles/10.1186/1868-7083-6-4>
- 572 33. Mansell G, Gorrie-Stone TJ, Bao Y, Kumari M, Schalkwyk LS, Mill J, et al. Guidance for DNA  
573 methylation studies: statistical insights from the Illumina EPIC array. *BMC Genomics*  
574 [Internet]. 2019 May 14 [cited 2022 Sep 8];20(1). Available from:  
575 [/pmc/articles/PMC6518823/](https://pubmed.ncbi.nlm.nih.gov/34011111/)
- 576 34. Phipson B, Maksimovic J, Oshlack A. missMethyl: an R package for analyzing data from  
577 Illumina’s HumanMethylation450 platform. *Bioinformatics* [Internet]. 2016 Jan 15 [cited 2022  
578 Sep 8];32(2):286–8. Available from:  
579 <https://academic.oup.com/bioinformatics/article/32/2/286/1744111>
- 580 35. Battram T, Yousefi P, Crawford G, Prince C, Sheikhal Babaei M, Sharp G, et al. The EWAS  
581 Catalog: a database of epigenome-wide association studies. *Wellcome Open Res* 2022 741  
582 [Internet]. 2022 May 31 [cited 2022 Sep 8];7:41. Available from:  
583 <https://wellcomeopenresearch.org/articles/7-41>
- 584 36. Houseman EA, Accomando WP, Koestler DC, Christensen BC, Marsit CJ, Nelson HH, et al. DNA  
585 methylation arrays as surrogate measures of cell mixture distribution. *BMC Bioinformatics*  
586 [Internet]. 2012 May 8 [cited 2023 Feb 1];13(1):1–16. Available from:  
587 <https://bmcbioinformatics.biomedcentral.com/articles/10.1186/1471-2105-13-86>
- 588 37. Carow B, Rottenberg ME. SOCS3, a major regulator of infection and inflammation. *Front*  
589 *Immunol*. 2014 Feb 19;5(FEB):58.
- 590 38. Jridi I, Canté-Barrett K, Pike-Overzet K, Staal FJT. Inflammation and Wnt Signaling: Target for  
591 Immunomodulatory Therapy? *Front Cell Dev Biol*. 2021 Feb 4;8:1854.

Short title here

- 592 39. Julià A, Gómez A, López-Lasanta M, Blanco F, Erra A, Fernández-Nebro A, et al. Longitudinal  
593 analysis of blood DNA methylation identifies mechanisms of response to tumor necrosis  
594 factor inhibitor therapy in rheumatoid arthritis. *eBioMedicine* [Internet]. 2022 Jun 1 [cited  
595 2022 Sep 30];80. Available from:  
596 <http://www.thelancet.com/article/S2352396422002341/fulltext>
- 597 40. Levin AD, Wildenberg ME, van den Brink GR. Mechanism of Action of Anti-TNF Therapy in  
598 Inflammatory Bowel Disease. *J Crohn's Colitis* [Internet]. 2016 Aug 1 [cited 2022 Dec  
599 22];10(8):989–97. Available from: [https://academic.oup.com/ecco-](https://academic.oup.com/ecco-jcc/article/10/8/989/2392174)  
600 [jcc/article/10/8/989/2392174](https://academic.oup.com/ecco-jcc/article/10/8/989/2392174)
- 601 41. Mishra N, Aden K, Blase JI, Baran N, Bordoni D, Tran F, et al. Longitudinal multi-omics analysis  
602 identifies early blood-based predictors of anti-TNF therapy response in inflammatory bowel  
603 disease. *Genome Med* [Internet]. 2022 Dec 1 [cited 2022 Dec 22];14(1):1–20. Available from:  
604 <https://genomemedicine.biomedcentral.com/articles/10.1186/s13073-022-01112-z>
- 605 42. Wang Q, Xiong F, Wu G, Liu W, Chen J, Wang B, et al. Gene body methylation in cancer:  
606 molecular mechanisms and clinical applications. *Clin Epigenetics* 2022 141 [Internet]. 2022  
607 Nov 28 [cited 2022 Dec 23];14(1):1–14. Available from:  
608 <https://clinicalepigeneticsjournal.biomedcentral.com/articles/10.1186/s13148-022-01382-9>
- 609 43. Martin JC, Chang C, Boschetti G, Ungaro R, Giri M, Grout JA, et al. Single-Cell Analysis of  
610 Crohn's Disease Lesions Identifies a Pathogenic Cellular Module Associated with Resistance to  
611 Anti-TNF Therapy. *Cell* [Internet]. 2019 Sep 5 [cited 2022 Dec 22];178(6):1493-1508.e20.  
612 Available from: <http://www.cell.com/article/S0092867419308967/fulltext>
- 613 44. Peres RS, Thomas T, Friedrich M, Pohin M, Pearson C, Ferreira RC, et al. Anti-TNF-induced IL-  
614 27 modulates regulatory T cell responses in patients with IBD that respond to therapy.  
615 *bioRxiv* [Internet]. 2022 Nov 21 [cited 2022 Dec 22];2022.11.21.517257. Available from:

Short title here

616 <https://www.biorxiv.org/content/10.1101/2022.11.21.517257v1>

617

618

619 **Figure Legends**

620 Figure 1: Change in derived cell proportions following treatment with anti-TNF. Predicted derived  
621 cell proportions over time estimated from the regression analysis is represented in solid blue lines,  
622 and observed cell proportions in faded lines. P value represents the change in individual cell  
623 proportions over time.

624

625 Figure 2: Manhattan plot of CpG sites associated with change over time following anti-TNF drug  
626 exposure regardless of treatment outcome. The top 10 differentially methylated probes with  
627 annotations are labelled in the plot. The grey horizontal line represents the significant p value  
628 threshold of  $9 \times 10^{-8}$ .

629

630 Figure 3: Manhattan plot of CpG sites at baseline associated with anti-TNF drug concentration at  
631 week 14. The top 10 CpG sites with their associated gene annotations are labelled in brackets. The  
632 grey horizontal line represents the significant p value threshold of  $9 \times 10^{-8}$ .

633

634 Figure 4: Coefficients of DMPs associated with anti-TNF drug concentration at week 14 and primary  
635 non-response. Coefficients represent the beta values of each CpG from linear mixed effects model to  
636 each outcome. Spearman's rho correlation of the coefficients calculated for those that were  
637 associated with both anti-TNF drug concentration and primary non-response, and the remaining that  
638 were only significant to anti-TNF drug concentration. Abbreviations: PNR = primary non-response.

Short title here

Variable	Level	adalimumab	infliximab	Overall	p
n		187	198	385	
Age at first dose		37.19 (26.56 - 51.15)	35.25 (25.57 - 49.49)	35.69 (26.34 - 50.26)	0.466
Sex	Female	47.06% (88/187)	56.06% (111/198)	51.69% (199/385)	0.083
	Male	52.94% (99/187)	43.94% (87/198)	48.31% (186/385)	
Ethnicity	White	94.12% (176/187)	94.95% (188/198)	94.55% (364/385)	0.933
	South Asian	2.14% (4/187)	2.02% (4/198)	2.08% (8/385)	
	Other	3.74% (7/187)	3.03% (6/198)	3.38% (13/385)	
Smoking history	Current	17.20% (32/186)	25.00% (49/196)	21.20% (81/382)	0.163
	Ex	33.33% (62/186)	28.06% (55/196)	30.63% (117/382)	
	Never	49.46% (92/186)	46.94% (92/196)	48.17% (184/382)	
Disease duration		2.80 (0.61 - 9.53)	2.08 (0.53 - 9.52)	2.17 (0.56 - 9.53)	0.483
Montreal location classification	L1	31.52% (58/184)	29.44% (58/197)	30.45% (116/381)	0.956
	L2	25.54% (47/184)	26.90% (53/197)	26.25% (100/381)	
	L3	42.39% (78/184)	43.15% (85/197)	42.78% (163/381)	
	L4	0.54% (1/184)	0.51% (1/197)	0.52% (2/381)	
Montreal behaviour classification	B1	59.24% (109/184)	63.96% (126/197)	61.68% (235/381)	0.035
	B2	35.33% (65/184)	25.38% (50/197)	30.18% (115/381)	
	B3	5.43% (10/184)	10.66% (21/197)	8.14% (31/381)	
Immunomodulator use at baseline	TRUE	52.94% (99/187)	48.99% (97/198)	50.91% (196/385)	0.476
Steroid use at baseline	TRUE	29.41% (55/187)	40.91% (81/198)	35.32% (136/385)	0.019
C-reactive protein (mg/L)		8.00 (4.00 - 19.50)	12.00 (5.00 - 32.00)	10.00 (5.00 - 24.00)	0.013
HBI score		5.00 (3.00 - 8.00)	6.00 (3.00 - 9.50)	5.00 (3.00 - 9.00)	0.256
Faecal calprotectin (ug/g)		307.00 (159.50 - 599.00)	481.00 (251.00 - 881.50)	365.00 (188.00 - 726.00)	0.001
Haemoglobin (g/L)		129.50 (120.00 - 140.00)	125.00 (112.00 - 135.00)	128.00 (116.00 - 137.00)	0.002
White cell count (x 10 <sup>9</sup> cells per L)		7.90 (6.20 - 10.20)	8.56 (6.60 - 10.70)	8.23 (6.40 - 10.40)	0.166

639

640

641

**Table 1: Characteristics at baseline of participants stratified by type of anti-TNF**



Short title here

CpG	chr	pos	Relation to Island	Gene name	Gene group	Coefficient (per week)	P value
cg11047325	17	76354934	Island	SOCS3	Body	0.0008	1.91E-41
cg17501210	6	166970252	OpenSea	RPS6KA2	Body	0.0007	1.40E-38
cg19748455	17	76274856	OpenSea	LOC100996291	TSS1500	0.0008	2.55E-37
cg00840791	19	16453259	OpenSea			0.0011	1.02E-35
cg12992827	3	101901234	OpenSea			0.0010	2.23E-33
cg04051206	17	17750855	OpenSea	TOM1L2	3'UTR	0.0005	4.19E-31
cg03546163	6	35654363	N_Shore	FKBP5	5'UTR	0.0012	4.87E-31
cg01526748	3	191930926	OpenSea	FGF12	Body	-0.0005	1.97E-30
cg13074526	17	76274743	OpenSea	LOC100996291	TSS200	0.0008	2.32E-30
cg18608055	19	1130866	OpenSea	SBNO2	Body	0.0008	4.57E-30

642

643

**Table 2: Top 10 differentially methylated probes associated with anti-TNF treatment over time**

Short title here

CpG	chr	pos	Relation to Island	Gene name	Gene group	Coefficient (per week)	P value
cg23320029	3	171004750	OpenSea	TNIK	Body	0.0555	4.62E-15
cg16500036	7	68983906	OpenSea			-0.0409	1.61E-14
cg18513344	3	195531298	OpenSea	MUC4	Body	0.0299	4.90E-14
cg21635197	6	135405808	OpenSea			0.0389	8.71E-13
cg22870160	1	231830793	OpenSea	DISC1	Body	-0.0376	1.23E-12
cg03403209	16	29666641	OpenSea			-0.0247	1.51E-12
cg07856599	1	227151843	OpenSea	ADCK3	Body	-0.0411	6.82E-12
cg01950011	8	37396511	OpenSea			-0.0213	8.00E-12
cg27216853	2	10205672	OpenSea	CYS1	Body	-0.0371	8.79E-12
cg02011576	3	38060265	OpenSea	PLCD1	Body	-0.0387	8.82E-12

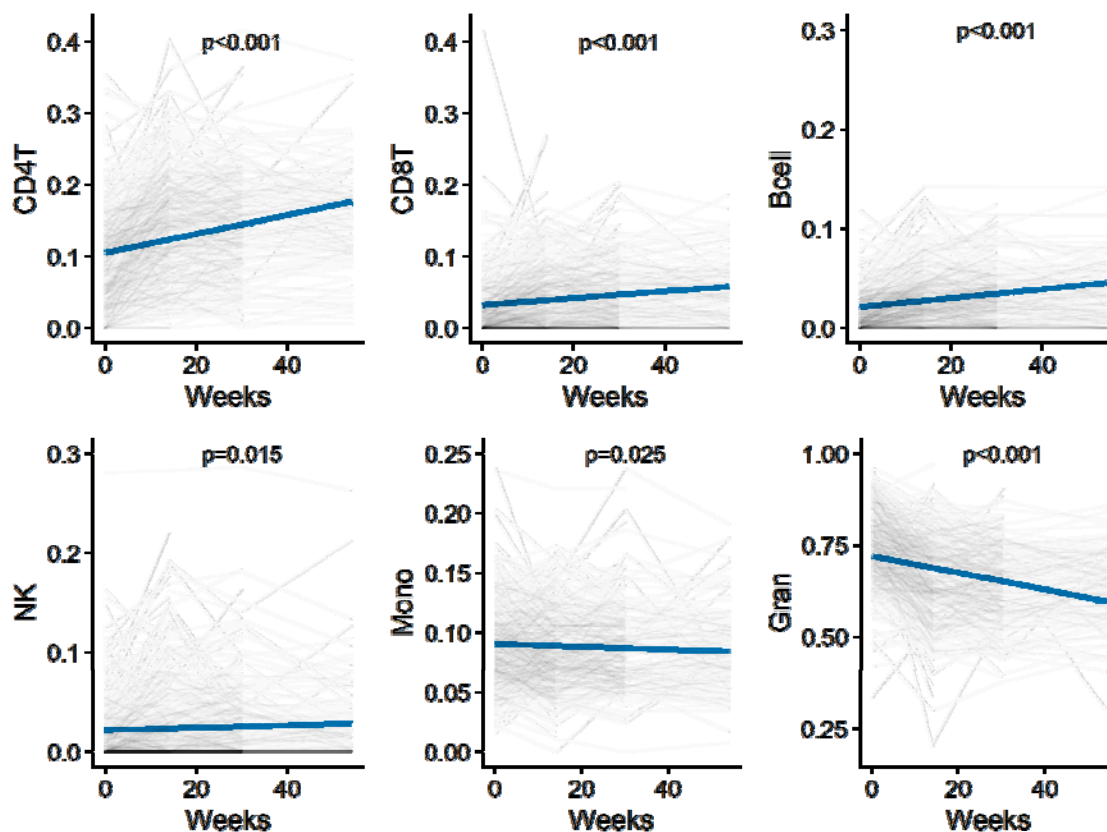
644

645

646

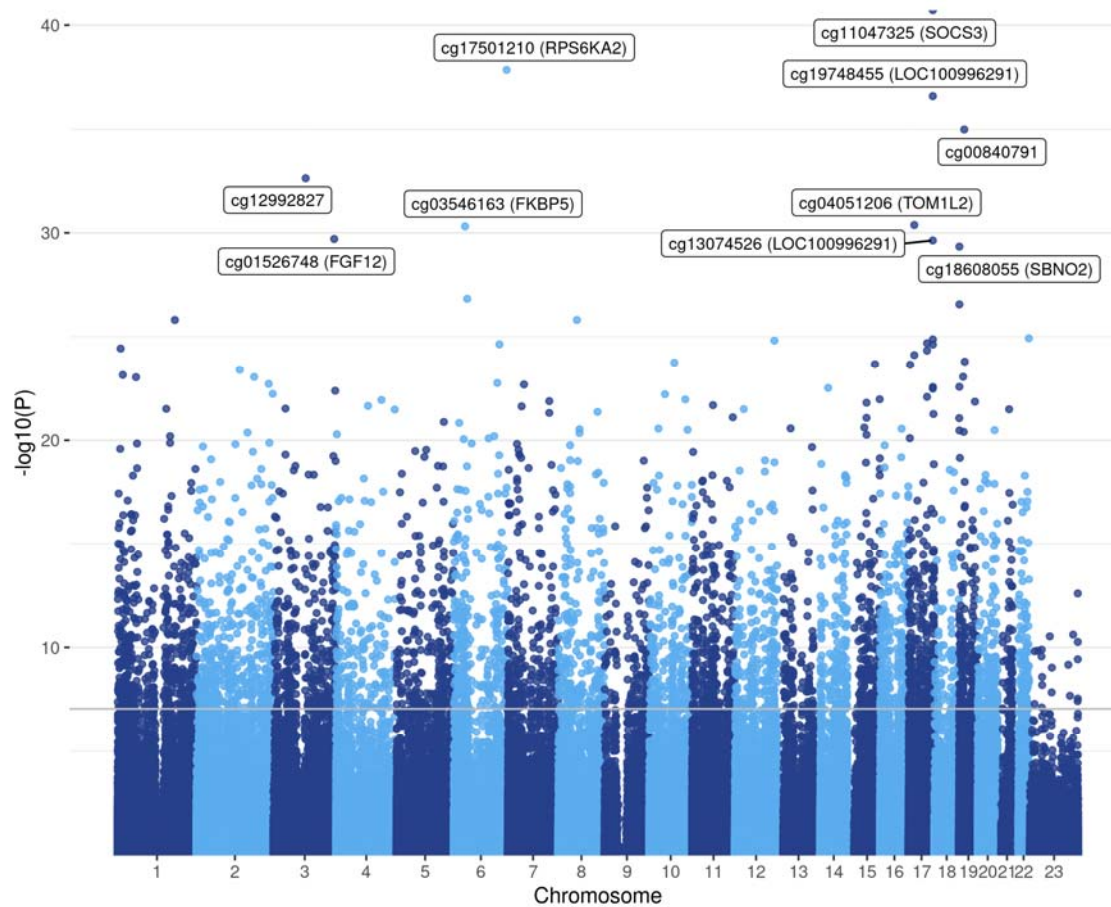
**Table 3: Top 10 differentially methylated probes at baseline associated with anti-TNF drug concentration at week 14**

Short title here



647  
648 Figure 1: Change in derived cell proportions following treatment with anti-TNF. Predicted derived  
649 cell proportions over time estimated from the regression analysis is represented in solid blue lines,  
650 and observed cell proportions in faded lines. P value represents the change in individual cell  
651 proportions over time.  
652

Short title here



653

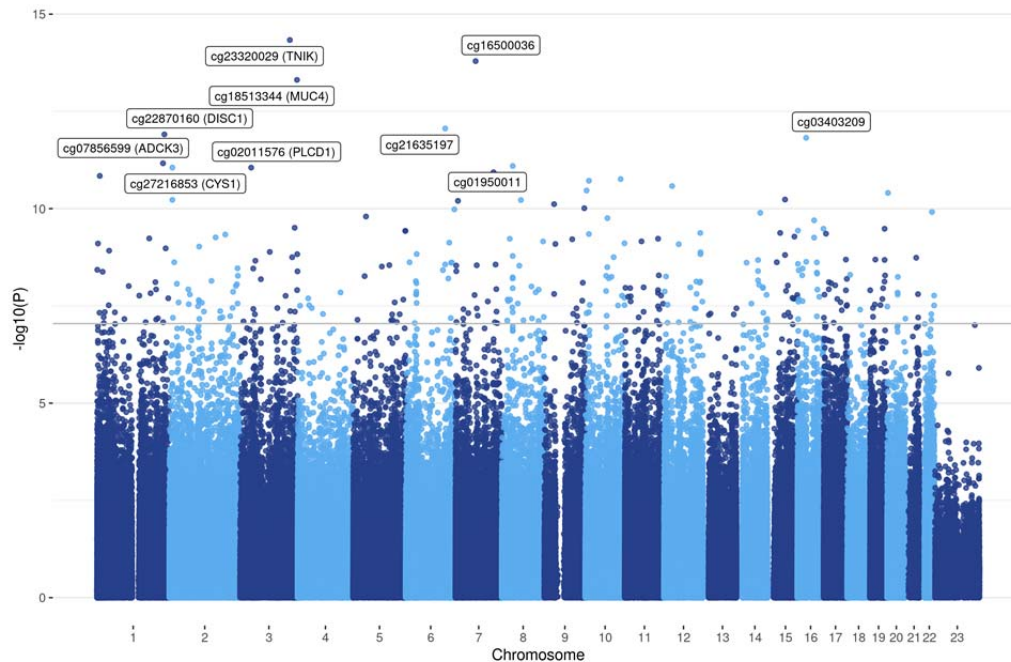
654 Figure 2: Manhattan plot of CpG sites associated with change over time following anti-TNF drug

655 exposure regardless of treatment outcome. The top 10 differentially methylated probes with

656 annotations are labelled in the plot. The grey horizontal line represents the significant p value

657 threshold of  $9 \times 10^{-8}$ .

Short title here



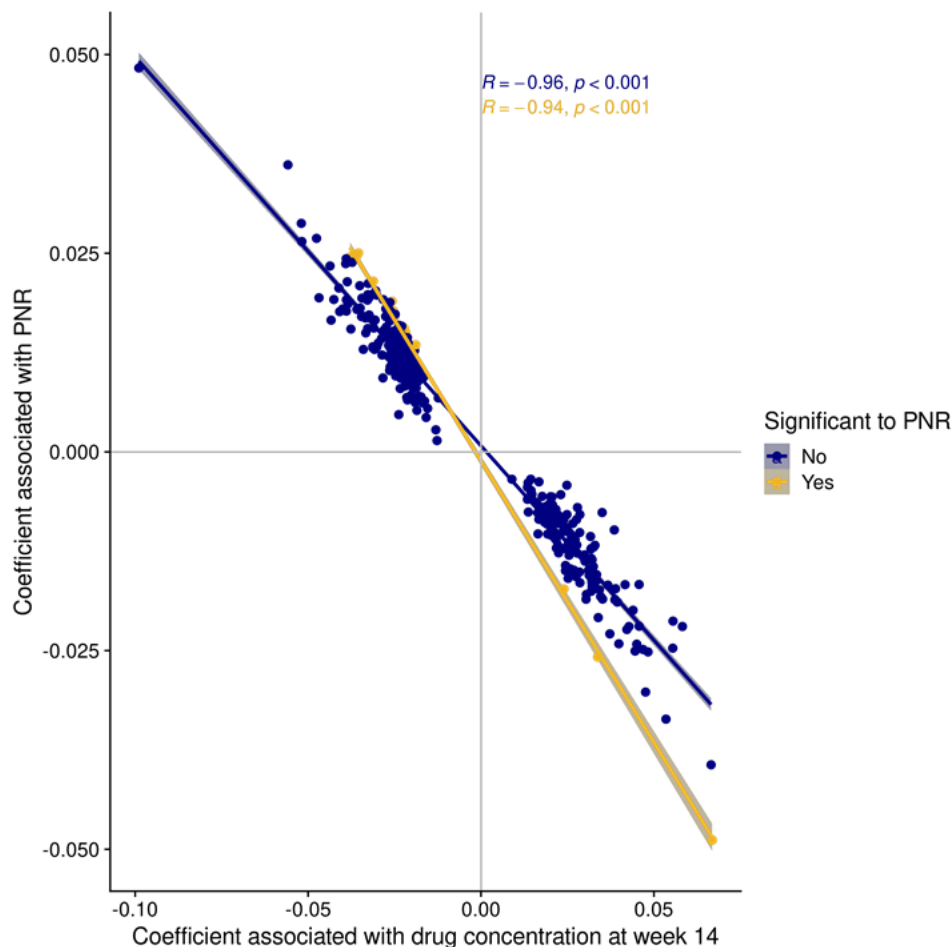
658

659 Figure 3: Manhattan plot of CpG sites at baseline associated with anti-TNF drug concentration at

660 week 14. The top 10 CpG sites with their associated gene annotations are labelled in brackets. The

661 grey horizontal line represents the significant p value threshold of  $9 \times 10^{-8}$ .

Short title here



662

663 Figure 4: Coefficients of DMPs associated with anti-TNF drug concentration at week 14 and primary  
664 non-response. Coefficients represent the beta values of each CpG from linear mixed effects model to  
665 each outcome. Spearman's rho correlation of the coefficients calculated for those that were  
666 associated with both anti-TNF drug concentration and primary non-response, and the remaining that  
667 were only significant to anti-TNF drug concentration. Abbreviations: PNR = primary non-response.