

1 **Causal associations between female reproductive behaviors and**
2 **psychiatric disorders: a lifecourse Mendelian randomization study**

3 Yifan Yu^{1,2□}, MS; Lei Hou^{1,2□}, MS; Yutong Wu^{1,2}, MS; Yuanyuan Yu^{1,2}, PhD;
4 Xinhui Liu^{1,2}, MS; Sijia Wu^{1,2}, MS; Yina He^{1,2}, MS; Yilei Ge^{1,2}, MS; Yun Wei^{1,2}, MS;
5 Fengtong Qian^{1,2}, MS; Qingxin Luo^{1,2}, MS; Yue Feng^{1,2}, MS; Xiaojing Cheng³, MS;
6 Tiangui Yu^{3*}, PhD; Hongkai Li^{1,2*}, PhD; Fuzhong Xue^{1,2,3*}, PhD;

7

8 **Author affiliations:**

- 9 1. Department of Epidemiology and Health Statistics, School of Public Health,
10 Cheeloo College of Medicine, Shandong University, Jinan, People's Republic of
11 China
- 12 2. Institute for Medical Dataology, Cheeloo College of Medicine, Shandong
13 University, Jinan, People's Republic of China
- 14 3. Qilu Hospital, Cheeloo College of Medicine, Shandong University, Jinan, People's
15 Republic of China
- 16 4. Shandong Mental Health Center, Jinan, People's Republic of China

17

18 *** Corresponding author:**

- 19 1. Fuzhong Xue, E-mail: xuefzh@sdu.edu.cn, Telephone: 13906405997,
20 Address: School of public health, Shandong University, 44 Wenhua
21 West Road, Jinan, Shandong province, China
- 22 2. Hongkai Li, E-mail: lihongkaiyouxiang@163.com, Telephone: 18310601363,
23 Address: School of public health, Shandong University, 44 Wenhua West Road,
24 Jinan, Shandong province, China
- 25 3. Tiangui Yu, E-mail: sdyutg@163.com,
26 Address: Shandong Mental Health Center, Jinan, Shandong province, China

27

28 □ These authors contributed equally to this work.

29 * These authors also contributed equally to this work.

30 word count: 3616

31

32 **Abstract**

33 **Background:** The timings of reproductive life events have been examined to be
34 associated with various psychiatric disorders. However, studies have not considered
35 the causal pathways from reproductive behaviors to different psychiatric disorders.
36 This study aimed to investigate the nature of the relationships between five
37 reproductive behaviors and twelve psychiatric disorders.

38 **Methods:** Firstly, we calculated genetic correlations between reproductive factors and
39 psychiatric disorders. Then two-sample Mendelian randomization (MR) was
40 conducted to estimate the causal associations among five reproductive behaviors, and
41 these reproductive behaviors on twelve psychiatric disorders, using genome-wide
42 association study (GWAS) summary data from genetic consortia. Multivariable MR
43 was then applied to evaluate the direct effect of reproductive behaviors on these
44 psychiatric disorders whilst accounting for other reproductive factors at different life
45 periods.

46 **Results:** Univariable MR analyses provide evidences that age at menarche, age at first
47 sexual intercourse and age at first birth have effects on one (depression), seven
48 (anxiety disorder, ADHD, bipolar disorder, bipolar disorder II, depression, PTSD and
49 schizophrenia) and three psychiatric disorders (ADHD, depression and PTSD) (based
50 on $p < 7.14 \times 10^{-4}$), respectively. However, after performing multivariable MR,
51 only age at first sexual intercourse has direct effects on six psychiatric disorders
52 (Depression, Attention deficit or hyperactivity disorder, Bipolar disorder,
53 Posttraumatic stress disorder, Anxiety disorders and Anorexia Nervosa) when
54 accounting for other reproductive behaviors with significant effects in univariable
55 analyses.

56 **Conclusion:** Our findings suggest that reproductive behaviors predominantly exert
57 their detrimental effects on psychiatric disorders and age at first sexual intercourse has
58 direct effects on psychiatric disorders.

59

60 **Key words:** reproductive behaviors, psychiatric disorders, genetic correlation,
61 mendelian randomization

62

63 **1 Background**

64 Psychiatric disorders have become the major contributors to overall morbidity and
65 disability across the globe [1]. Approximately 30% of individuals suffer from
66 psychiatric disorders across the lifespan [2] and the causes of psychiatric disorders
67 may be different at different stages of life. Since psychiatric disorder is one of the
68 leading cause of disease burdens, it is necessary to identify potential risk factors for
69 further prevention [3].

70 Female reproductive behaviors, including age at menarche, age at first sexual
71 intercourse, age at first birth, age at last birth and age at menopause, have important
72 implications in reproductive health and evolutionary fitness. Some of these
73 reproductive behaviors have been identified as risk factors for various psychiatric
74 disorders [4-6], such as depression, schizophrenia [7] and bipolar disorders [8].
75 Taking depression as an example, multiple studies in the past decade have examined
76 the association between age of menarche and risk of depression in adolescent girls
77 and adulthood [9-13]. For instance, a mendelian randomization analysis showed early
78 menarche is associated with higher levels of depressive symptoms at 14 years old [11].
79 Other studies have implicated early age at first sexual intercourse and early age at first
80 birth were risk factors of depression [14-17]. A recent study used the National
81 Longitudinal Study of Adolescent Health dataset to show earlier age of first coitus
82 was associated with depressive symptoms [14].

83 However, the potential role of a woman's reproductive behaviors in the causal
84 pathways between reproductive behaviors and psychiatric disorders from the
85 perspective of the whole life-course remains unclear. Whether an individual can
86 reverse the impact of age of early reproductive behaviors (such as menarche) on
87 psychiatric disorders through lifestyle modifications is unclear, particularly as those
88 who had smaller age at menarche tend to have smaller ages at other reproductive
89 behaviors than normal people [18-22]. For example, a meta-analysis study showed
90 that early menarche increases the risk of premature and early menopause by 80% [20].
91 This makes it challenging to distinguish whether reproductive behaviors in early life
92 have independent and lasting effects on psychiatric disorders, or whether its effects
93 are completely mediated by other reproductive behaviors in later years. If the latter is
94 the case, then it is possible to avoid the potential adverse consequences of earlier

95 reproductive behaviors by attaining a different reproductive lifestyle in the later years.

96 Mendelian randomization (MR) is an approach that can deal with these
97 challenges by using genetic variants as instrumental variables (IV) to infer causality
98 among correlated traits. A valid IV must satisfy the following three assumptions: 1)
99 Relevance: IV is robustly related to the exposure; 2) Exchangeability: IV is
100 independent of any confounders of the exposure and outcome relationship; and 3)
101 Exclusion restriction: IV affects the outcome only through the exposure [23]. The
102 advantage of MR is that it could eliminate the impact of confounding and reverse
103 causality compared with traditional regression analysis [24-25]. In addition,
104 multivariable MR is recently developed to determine whether an exposure affects the
105 outcome under the condition of other exposures [26] which makes it possible to
106 explore the causal pathways between the psychiatric disorder and reproductive
107 behaviors.

108 In this MR study, we evaluated causal relationships between the five
109 reproductive behaviors based on their temporal order, and explored whether
110 genetically predicted reproductive behaviors have effects on twelve psychiatric
111 disorders, using genome-wide association studies (GWAS) summary data of
112 reproductive behaviors and psychiatric disorders on large sample populations that are
113 publicly available. For psychiatric disorders with strong evidence of genetically
114 predicted effects with multiple reproductive behaviors, we applied multivariable MR
115 to examine evidences of direct or indirect effects by accounting for reproductive
116 behaviors with significant effects.

117 **2 Methods**

118 **2.1 Data sources**

119 *Reproductive factors*

120 The reproductive factors investigated in this study includes age at menarche (AAM),
121 age at first sexual intercourse (AFS), age at first birth (AFB), age at last birth (ALB)
122 and age at menopause (ANM). GWAS summary statistics for age of menarche [27]
123 and menopause [28] were from ReproGen consortium, including 252,000 and 201,323
124 participants respectively. For AFS and AFB, we used the summary statistics from the
125 GWAS meta-analysis of 36 cohorts by Day *et al.* [29] study, including 542,901 and
126 418,758 individuals respectively. GWAS summary statistics for ALB were from UK

127 Biobank cohort [30] with the sample size of 170,248. These reproductive factors were
128 restricted in European ancestry. Details for datasets are listed in Table 1. We selected
129 SNPs at a GWAS threshold of statistical significance with $p < 5 \times 10^{-8}$ and linkage
130 disequilibrium (LD) $r^2 < 0.001(10000kb)$. The F-statistics of all reproductive
131 factors were larger than 10 (Table 2), which means that these IVs strongly predict the
132 traits [23]. Thus, it is sufficient to generate a strong genetic instrument based on the
133 selected SNPs.

134 *Psychiatric disorders*

135 The GWAS summary data for psychiatric disorders were retrieved from the
136 Psychiatric Genomes Consortium (PGC). We chose 12 related psychiatric disorders as
137 the outcome, including anxiety disorders (33,640 cases/43,456 controls) [31],
138 anorexia nervosa (14,477 samples) [32], attention deficit or hyperactivity disorder
139 (4,945 cases/16,246 controls) [33], autism spectrum disorder (18,382 cases/27,969
140 controls) [34], bipolar disorder (41,917 cases/371,549 controls) and two BD subtypes:
141 bipolar I disorder (25,060 cases/449,978 controls) and bipolar II disorder (6,781
142 cases/364,075 controls) [35], major depressive disorder (170,756 cases/329,443
143 controls) [36], obsessive compulsive disorder (2,688 cases/7,037 controls) [37],
144 posttraumatic stress disorder (23,185 cases/151,309 controls) [38], schizophrenia
145 (67,280 cases/86,912 controls) [39] and Tourette syndrome (55,386 cases/77,258
146 controls) [40]. Details for datasets are listed in Table 1. Ethical review and informed
147 consent had been obtained in all of the original studies.

148 **2.2 Statistical analyses**

149 *Genetic Correlation*

150 We used high-definition likelihood (HDL) inference for genetic correlation analysis.
151 Compared with LD score regression (LDSC), HDL makes full use of the information
152 of the variance-covariance matrix of the Z-score in GWAS summary statistics [41].
153 The reference panel used in HDL is 1000 Genomes phase 3 European reference panel.

154 *Univariable MR*

155 To access the causal associations between reproductive factors and psychiatric
156 disorders, we used “TwosampleMR” R package for MR analysis [42,43]. The inverse
157 variance weighted (IVW) method [23,44] was conducted as our primary MR method
158 to access the causal associations of reproductive behaviors in pairs, along with

159 reproductive behaviors and psychiatric disorders. We applied a conservative
160 Bonferroni correction (i.e. $p < 0.05/70 = 7.14 \times 10^{-4}$) as a strong evidence and a
161 nominal threshold (i.e. $p < 0.05$) as a weak evidence of causal relationship. We
162 supplemented MR-Egger regression [45], weighted median [46], weighted mode [47],
163 MR-robust adjusted profile score (MR-RAPS) [48] and MR-Mix methods [49] as our
164 sensitivity MR analyses, which make different assumptions based on different
165 effectiveness of the SNPs. The results from multiple methods of MR are helpful to
166 evaluate the robustness of our MR estimations. The intercept of MR-Egger regression
167 shows the average pleiotropic effect among all used SNPs under the InSIDE
168 (Instrument Strength Independent of Direct Effect) assumption and a non-zero
169 intercept means there exists directional pleiotropy. Additionally, we used applied
170 MR-PRESSO (Mendelian Randomization Pleiotropy RESidual Sum and Outlier) [50]
171 to identify and remove potential outliers. Egger's test is used for pleiotropy test.
172 Heterogeneity tests include two methods: IVW and MR-Egger.

173 ***Multivariable MR***

174 Multivariable MR based on IVW method was subsequently applied in a two-sample
175 setting. This statistical method is suitable for considering the genetically predicted
176 effects of multiple risk factors (e.g. age at menarche and age at menopause) on an
177 outcome (e.g. depression) simultaneously. This enables us to estimate the direct
178 effects of a reproductive behavior in early life (i.e. the effect of age at menarche after
179 accounting for age at menopause) and indirect effects (i.e. the effect mediated by age
180 at menopause) on a psychiatric disorder. We applied this model using all genetic
181 variants for the reproductive factors, which have nominal significant ($p < 0.05$)
182 causal effects on outcomes, after undertaking linkage disequilibrium clumping based
183 on $r^2 < 0.001$ to ensure independence of our instruments. The statistical analyses of
184 multivariable MR were performed using R package "MVMR" [51].

185 **3 Results**

186 **3.1 Genetic Correlation**

187 Among all the genetic correlation analyses between reproductive factors and
188 psychiatric disorders, there were 26 pairs of traits had significant genetic correlations
189 (r_g range: $|0.07 - 0.69|$) under a conservative Bonferroni correction ($p <$
190 $0.05/60 = 8.33 \times 10^{-4}$) and another 9 pairs of traits had nominal significant genetic

191 correlations under $p < 0.05$. Results are shown in Figure 1. Age of first sexual
192 intercourse had the highest genetic correlations with all psychiatric disorders except
193 autism spectrum disorder and Tourette syndrome, while age at menarche only had
194 strong evidence of genetic correlation with depression. Among all psychiatric
195 disorders, depression had evidence of genetic correlation with all reproductive factors
196 (a weak evidence with menopause and strong evidence with other four traits), while
197 there was null genetic correlation between Tourette syndrome and reproductive
198 factors.

199 [Please insert Figure 1 here]

200 **3.2 Causal relationships among reproductive factors**

201 ***Univariable MR***

202 Results of univariable MR among reproductive factors are shown in Figure 2. The
203 results of IVW method suggested that negative genetic correlation reflected causal
204 effects of 190 SNPs determined later age at menarche (1 SD increase) on later AFS
205 ($b = 0.07$; 95% confidence interval (CI) = 0.05,0.10), AFB ($b = 0.17$; CI =
206 0.09,0.25), ALB ($b = 0.05$; CI = 0.02,0.07) and ANM ($b = 0.14$; CI = 0.03,0.24)
207 under Bonferroni-adjusted level of significance ($p < 7.14 \times 10^{-4}$). Results revealed
208 that 194 SNPs determined later age at first sexual intercourse (1 SD increase) might
209 lead to later AFB ($b = 2.11$; CI = 1.96,2.27), ALB ($b = 0.43$; CI = 0.37,0.48) and
210 ANM ($b = 0.49$; CI = 0.19,0.79). For later age at first birth, its one SD increase led
211 to later ALB ($b = 0.19$; CI = 0.17,0.20) and ANM ($b = 0.15$; CI = 0.05,0.26), using
212 65 SNPs as IVs. In addition, 6 SNPs determined age at last birth had no evidence of
213 causal effect to ANM. These results were supported by weighted median, MR-RAPS
214 methods (Figure S1) and MR PRESSO (Figure S2), suggesting the results were robust.
215 In the results of ME PRESSO, we didn't present the situation that outlier was not
216 found. All the information of IVs were listed in Table S1. Egger's test did not provide
217 evidence that horizontal pleiotropy was driving these effects (Table S2). There is no
218 heterogeneity in the Wald Ratio of all IVs (Table S3).

219 [Please insert Figure 2 here]

220 ***Multivariable MR***

221 Results of multivariable MR were shown in Figure 3. Results suggested that only AFS
222 had significant causal effect on AFB ($b = 2.11$; CI = 1.93,2.29), while AAM had no

223 direct effects on AFB. After adjusting for AAM and AFS, AFB had significant direct
224 effect on ALB ($b = 0.19$; $CI = 0.17, 0.27$). We also found only AAM had positive
225 causal effect on ANM ($b = 0.11$; $CI = 0.01, 0.21$), while AFS and AFB had no direct
226 effects on ANM.

227 [Please insert Figure 3 here]

228 **3.3 Causal relationships between reproductive factors and psychiatric disorders**

229 *Age at menarche*

230 MR findings (Figure 2) from the primary analysis suggested that the negative genetic
231 correlation reflects a causal relationship between later age at menarche (1 SD increase)
232 and lower risk of depression ($OR = 0.96$; $CI = 0.93, 0.98$) under Bonferroni-adjusted
233 level of significance ($p < 7.14 \times 10^{-4}$). Results of weighted median and MR-RAPS
234 methods were consistent with this result (Figure S3). Egger's test did not provide
235 evidence that horizontal pleiotropy (Table S4). Heterogeneity existed in the Wald
236 Ratio of age at menarche and ADHD (Table S5). After removing outliers, MR
237 PRESSO revealed that the later age at menarche reduced the risk of the ADHD
238 ($OR = 0.84$; $CI = 0.72, 0.98$) (Figure S4).

239 *Age at first sexual intercourse*

240 Results revealed that later age at first sexual intercourse (1 SD increase) may lead to
241 lower risk of anxiety disorder ($OR = 0.46$; $CI = 0.33, 0.64$), lower risk of ADHD
242 ($OR = 0.17$; $CI = 0.12, 0.25$), bipolar disorder ($OR = 0.66$; $CI = 0.55, 0.79$), bipolar
243 II disorder ($OR = 0.58$; $CI = 0.43, 0.79$), depression ($OR = 0.67$; $CI = 0.62, 0.74$),
244 posttraumatic stress disorder ($OR = 0.57$; $CI = 0.47, 0.69$) and schizophrenia
245 ($OR = 0.54$; $CI = 0.43, 0.69$). Although heterogeneity existed in several relationships
246 (Table S5), these causal results were consistent with the results of weighted median,
247 MR-RAPS methods (Figure S5) and MR PRESSO (Figure S6). Egger's test did not
248 provide evidence that horizontal pleiotropy (Table S4).

249 *Age at first birth*

250 We found that later age at first birth (1 SD increase) may lead to lower risk of ADHD
251 ($OR = 0.69$; $CI = 0.60, 0.79$), depression ($OR = 0.87$; $CI = 0.84, 0.90$) and
252 posttraumatic stress disorder ($OR = 0.85$; $CI = 0.79, 0.92$). Results of weighted
253 median and MR-RAPS methods were consistent with these results (Figure S7).
254 Egger's test did not provide evidence that horizontal pleiotropy (Table S4). There

255 existed heterogeneity in the Wald Ratio of age at first birth and Bipolar disorder
256 (Table S5). After removing outliers, MR PRESSO revealed that the later age at first
257 birth reduced the risk of the Bipolar disorder (OR = 0.89; CI = 0.82,0.96) (Figure S8).

258 ***Age at last birth***

259 MR results suggested that age at last birth had no evidence of causal effect to
260 psychiatric disorders at Bonferroni-adjusted level of significance, but only nominal
261 significant of later age at last birth (1 SD increase) lead to lower risk of depression
262 ($p = 0.003$; OR = 0.65). Although heterogeneity existed in several relationships
263 (Table S5), these causal results were consistent with the results of weighted median,
264 MR-RAPS methods (Figure S9) and MR PRESSO (Figure S10). Egger's test did not
265 provide evidence that horizontal pleiotropy (Table S4).

266 ***Age at menopause***

267 There was no evidence of causal effect of age at menopause on psychiatric disorders
268 at Bonferroni-adjusted level of significance, but only nominal significant of later age
269 at menopause (1 SD increase) lead to higher risk of anorexia nervosa
270 ($p = 0.02$; OR = 1.04) and anxiety disorders ($p = 0.02$; OR = 1.04). Results of
271 weighted median and MR-RAPS methods were consistent with these results (Figure
272 S11). Egger's test did not provide evidence that horizontal pleiotropy (Table S4).
273 There existed heterogeneity in the Wald Ratio of age at menopause and Bipolar
274 disorder (Table S5). After removing outliers, MR PRESSO revealed that the later age
275 at menopause increased the risk of the Bipolar disorder (OR = 1.017; CI =
276 1.002,1.033) (Figure S12).

277 ***Multivariable MR***

278 We used multivariable MR to evaluate the direct effects of multiple reproductive
279 factors on the psychiatric disorders, resulted in the majority of effect estimates
280 identified in the previous univariable analysis attenuating to include the null upon
281 adjustment for other reproductive factors that had significant causal effect to the
282 outcome ($p < 0.05$). Results were shown in Figure 4.

283 [Please insert Figure 4 here]

284 We found that only AFS had significant causal effect to depression (OR =
285 0.75; CI = 0.67,0.85), while AAM, AFB and ALB had no direct effects to depression;
286 only AFS had significant causal effect to PTSD (OR = 0.61; CI = 0.43,0.85), while
287 AFB had no direct effect; only AFS had significant causal effect to ADHD (OR =

288 0.21; CI = 0.10,0.41), while AAM and AFB had no direct effects; only ANM had
289 significant causal effect to anxiety disorders (OR = 1.04; CI = 1.00,1.08), while AFS
290 and AFB had no direct effects; AFS and ANM both had significant direct effects to
291 anorexia nervosa (OR = 2.00; CI = 1.38,2.90 for AFS and OR = 1.04; CI =
292 1.00,1.07 for ANM); neither reproductive factor had significant causal effect to
293 bipolar II disorder.

294 This indicates that evidence of the total effects between AAM and ADHD and
295 depression detected in the univariable analysis may due to the long-term effects of the
296 earlier reproductive behavior across the life course (i.e. not just age at menarche). The
297 evidence of the effect between AFS and anxiety disorder is likely totally mediated by
298 ANM. The evidence of the effects between AFB and depression, PTSD, ADHD and
299 anxiety disorder were likely confounded by AFS, suggesting there was no causal
300 relations between AFB and these psychiatric disorders. The evidence of the effects
301 between ALB and depression, ADHD and anxiety disorder were likely also
302 confounded by AFS, suggesting there was no causal relations between AFB and these
303 psychiatric disorders. Figure 5 is the causal graph that shows where we found
304 evidence of an effect between reproductive behaviors and psychiatric disorders.

305 [Please insert Figure 5 here]

306 **4 Discussion**

307 We present evidence suggesting causal effects of several female reproductive
308 behaviors on other reproductive traits. On the other hand, we show that later age of
309 reproductive behaviors across the life course decreases the risk of psychiatric
310 disorders, while later age at menopause increases the risk of anorexia nervosa and
311 anxiety disorders. However, these effects estimation attenuated once accounting for
312 other reproductive behaviors of different stages of life. On the one hand, these effects
313 may be explained by the sustained impact of earlier sexual maturity in childhood and
314 thus tend to remain so into adulthood. On the other hand, impact of common cause
315 (i.e. reproductive factor during early life) is also important, and it has causal effects to
316 both reproductive factors during adulthood and psychiatric disorders.

317 We corroborate the direct effects of age at menarche on AFS and age at
318 menopause in previous studies [18,19,52,53], while showing the effects of age at
319 menarche on AFB and ALB are totally mediated by AFS and AFB, respectively. Our

320 study also supports positive causal links between AFS and AFB, AFB and ALB
321 [21,53,54]. We show that earlier reproductive behaviors including age at menarche,
322 AFS and AFB have effects on subsequent reproductive events through two main
323 pathways: (i) the directed path from age at menarche to age at menopause; (ii) the
324 pathway from age at menarche to ALB through AFS and AFB. Our findings suggest
325 that for reproductive behaviors except age at menopause, an earlier reproductive
326 behavior only have direct causal effect on the next reproductive behavior following
327 the temporal order; and the age at menopause only affected by age at menarche. These
328 findings oppose previous MR studies that supported causal effects between AFS and
329 age at menopause or AFB and age at menopause [53,55-59].

330 For the causal relations between reproductive behaviors and psychiatric disorders,
331 our study supports evidence for the earlier of age of reproductive behaviors in early
332 life are causal factors in the rising risks of psychiatric disorders in previous studies
333 [4-17]. However, the none effects of age at menarche, AFB and ALB after accounting
334 for AFS using multivariable MR suggest that the effect of age at menarche on
335 depression is totally mediated by AFS and the effects of AFB and ALB on psychiatric
336 disorders are confounded by AFS. Our findings show that AFS is a direct risk factor
337 on the pathway from reproductive behaviors to multiple psychiatric disorders, which
338 has sustained impact on both reproductive behaviors and psychiatric disorders. The
339 multivariable MR estimates for reproductive behaviors illustrate the importance of
340 using a lifecourse MR approach to separate the effects of reproductive behaviors at
341 separate stages in the life course [60-62].

342 One explanation for why earlier reproductive behaviors lead to earlier
343 subsequent reproductive behaviors and psychiatric disorders is the life history theory.
344 The core idea of this theory is to allocate limited resources between reproductive
345 efforts and human growth, which can be divided into ‘fast’ and ‘slow’ life history
346 strategies [63,64]. A ‘fast’ life history strategy makes more direct efforts to reproduce,
347 such as earlier sexual intercourse which may lead to an earlier age of first birth, while
348 people with a ‘slow’ life history strategy have later puberty and make a greater
349 investment in a smaller number of offspring [63,64]. This theory is also supported by
350 our study by showing that the women with an earlier age at menarche would have an
351 earlier age at first sexual intercourse and earlier age at first birth [65]. On the other
352 hand, women with a ‘fast’ life history may experience earlier age at menopause

353 because of the huge resources on reproductive efforts in early life and the
354 completeness of reproduction at a younger age [66,67], which is also supported by
355 our results that earlier age at menarche leads to earlier age at menopause and earlier
356 AFB leads to earlier ALB. Besides the age of reproductive behavior, life history
357 theory can also explain the association between reproductive behaviors and
358 psychiatric disorders. Life history theory explains the difference between ‘fast’ and
359 ‘slow’ strategy as an adaptive response to an individual’s developmental environments
360 and adverse childhood experiences have been shown to associate with earlier AFS,
361 which has been identified as a risk factor for depression symptoms [68-70]. The ‘fast’
362 strategy in modern environments of earlier AFS is associated with teenage pregnancy
363 and risk behaviors like violence, criminality, and substance abuse because of the little
364 knowledge of reproductive health and these risk behaviors have been shown to be risk
365 factors of multiple psychiatric disorders [71-73]. Our findings suggest that for
366 preventing psychiatric disorders, it is important to control the age of first sexual
367 intercourse rather than other reproductive behaviors like age at menarche by
368 increasing sex education and parental monitoring.

369 Our research has various strengths and limitations. Firstly, we used data from
370 large meta-analyzed sample of PGC consortia and ReproGen consortium, whose
371 sample size is larger than any other studies before. On the other hand, the MR
372 framework allowed us to avoid the effects of unmeasured confounders and reverse
373 causation compared to more traditional epidemiology approaches [74] and the
374 sensitive analysis of MR allowed us to evaluate the strong assumptions of MR.
375 Furthermore, we used multivariable MR to investigate the causal pathways from five
376 reproductive behaviors to twelve psychiatric disorders, which shows whether women
377 with earlier menarche and first sexual intercourse could reduce the risk of psychiatric
378 disorders by attaining a normal sexual lifestyle in later life. Conversely, one of the
379 main limitations of our study is that all participants were of European descent.
380 Therefore, it is not clear whether our findings are applicable to other ethnicities or
381 populations of different ages, and further study needs to be discussed using samples
382 from other ancestry groups or age groups [75-78]. In addition, the GWAS of the age
383 of reproductive behaviors were derived from recall data with the possibility of recall
384 bias, especially for reproductive behaviors during early life such as age at menarche
385 and age at first sexual intercourse [75,76]. Another limitation of our study is that the

386 ages of some important reproductive events are not included in our study such as the
387 age of some reproductive diseases or the age at abortion.

388 **5 Conclusion**

389 In conclusion, our present lifecourse Mendelian randomization study provided
390 evidence of causal relationships between five reproductive behaviors and twelve
391 psychiatric disorders. In particular, we find strong evidence of the effects of
392 reproductive behaviors on psychiatric disorders, and the importance of implementing
393 preventative policies to control the age at first sexual intercourse in young age and its
394 subsequent influence on the rising numbers of psychiatric disorders. This will help
395 ease healthcare burdens and potentially improve the quality of life for individuals
396 living with psychiatric disorders.

397

398

399 **Declarations**

400 **Acknowledgement**

401 We want to acknowledge the participants and investigators of the UK Biobank,
402 MRC-IEU, ReproGen, PGC and MR base consortium.

403 **Conflict of interest disclosure**

404 The authors declared no potential conflicts of interest with respect to the research,
405 authorship and/or publication of this article.

406 **Funding statement**

407 HL was supported by the National Natural Science Foundation of China (Grant
408 82003557) and Shandong Province Key R&D Program Project (2021SFGC0504). FX
409 was supported by the National Natural Science Foundation of China (Grant
410 82173625).

411 **Data availability statement**

412 All the GWAS summary data are publicly available. GWAS summary data for
413 reproductive behaviors can be download at MR base (<https://www.mrbase.org/>).
414 GWAS summary data for psychiatric disorders can be download at PGC consortium
415 (<https://pgc.unc.edu/>).

416 **Ethics approval and patient consent statement**

417 Ethical approval was not sought, because this study involved analysis of publicly
418 available summary-level data from GWASs, and no individual-level data were used.

419 **Author contributions**

420 FX, HL and TY conceived the study. YW, YY and SW contributed to data collection.
421 YY, XL, YH, YG and YW contributed to the data analysis and sensitivity analyses.
422 LH, FQ, QL and YF contributed to results collation and plot figures. YY, LH, XC, TY,
423 HL and FX wrote and modified the manuscript. All authors reviewed and approved
424 the final manuscript.

425

426

427 **Reference**

- 428 [1] Baingana F, Al’Absi M, Becker A, Pringle B. Global research challenges and
429 opportunities for mental health and substance-use disorders. *Nature*.
430 2015;527(7578):S172–7.
- 431 [2] Kessler R, Demler O, Frank R, Olfson M, Pincus H, Walters E, et al. Prevalence
432 and treatment of mental disorders, 1990 to 2003. *N Engl J Med*.
433 2005;352(24):2515–23.
- 434 [3] Vigo D, Thornicroft G, Atun R. Estimating the true global burden of mental
435 illness. *Lancet Psychiatry*. 2016;3(2):171–8.
- 436 [4] Ni G, Amare AT, Zhou X, Mills N, Gratten J, Lee SH. The genetic relationship
437 between female reproductive traits and six psychiatric disorders. *Sci Rep*. 2019
438 Aug 19;9(1):12041. doi: 10.1038/s41598-019-48403-x. PMID: 31427629;
439 PMCID: PMC6700195.
- 440 [5] Cai J, Wei Z, Chen M, He L, Wang H, Li M, Peng Y. Socioeconomic status,
441 individual behaviors and risk for mental disorders: A Mendelian randomization
442 study. *Eur Psychiatry*. 2022 Apr 18;65(1):e28. doi: 10.1192/j.eurpsy.2022.18.
443 PMID: 35431011; PMCID: PMC9158396.
- 444 [6] Ohi K, Kuramitsu A, Fujikane D, Takai K, Sugiyama S, Shioiri T. Shared genetic
445 basis between reproductive behaviors and anxiety-related disorders. *Mol*
446 *Psychiatry*. 2022 Jun 24. doi: 10.1038/s41380-022-01667-8. Epub ahead of print.
447 PMID: 35750798.
- 448 [7] Lawn RB, Sallis HM, Taylor AE, Wootton RE, Smith GD, Davies NM, Hemani G,
449 Fraser A, Penton-Voak IS, Munafò MR. Schizophrenia risk and reproductive
450 success: a Mendelian randomization study. *R Soc Open Sci*. 2019 Mar
451 6;6(3):181049. doi: 10.1098/rsos.181049. PMID: 31031992; PMCID:
452 PMC6458425.
- 453 [8] Yazici E, Bursalioglu FS, Aydin N, Yazici AB. Menarche, puberty and psychiatric
454 disorders. *Gynecol Endocrinol*. 2013 Dec;29(12):1055-8. doi:
455 10.3109/09513590.2013.829447. Epub 2013 Aug 23. PMID: 23968160.
- 456 [9] Chan YM, Feld A, Jonsdottir-Lewis E. Effects of the Timing of Sex-Steroid
457 Exposure in Adolescence on Adult Health Outcomes. *J Clin Endocrinol Metab*.
458 2019 Oct 1;104(10):4578-4586. doi: 10.1210/jc.2019-00569. PMID: 31194243;

- 459 PMCID: PMC6736212.
- 460 [10]Shen Y, Varma DS, Zheng Y, Boc J, Hu H. Age at menarche and depression:
461 results from the NHANES 2005-2016. *PeerJ*. 2019 Jun 13;7:e7150. doi:
462 10.7717/peerj.7150. PMID: 31223544; PMCID: PMC6571127.
- 463 [11]Sequeira ME, Lewis SJ, Bonilla C, Smith GD, Joinson C. Association of timing
464 of menarche with depressive symptoms and depression in adolescence:
465 Mendelian randomisation study. *Br J Psychiatry*. 2017 Jan;210(1):39-46. doi:
466 10.1192/bjp.bp.115.168617. Epub 2016 Aug 4. PMID: 27491534; PMCID:
467 PMC5209630.
- 468 [12]Mendle J, Ryan RM, McKone KMP. Age at Menarche, Depression, and
469 Antisocial Behavior in Adulthood. *Pediatrics*. 2018 Jan;141(1):e20171703. doi:
470 10.1542/peds.2017-1703. PMID: 29279324; PMCID: PMC5744273.
- 471 [13]Opoliner A, Carwile JL, Blacker D, Fitzmaurice GM, Austin SB. Early and late
472 menarche and risk of depressive symptoms in young adulthood. *Arch Womens
473 Ment Health*. 2014 Dec;17(6):511-8. doi: 10.1007/s00737-014-0435-6. Epub
474 2014 Jul 22. PMID: 25048175; PMCID: PMC4742523.
- 475 [14]Jamieson LK, Wade TJ. Early age of first sexual intercourse and depressive
476 symptomatology among adolescents. *J Sex Res*. 2011 Sep;48(5):450-60. doi:
477 10.1080/00224499.2010.509892. Epub 2011 May 24. PMID: 20845208.
- 478 [15]Lara LAS, Abdo CHN. Age at Time of Initial Sexual Intercourse and Health of
479 Adolescent Girls. *J Pediatr Adolesc Gynecol*. 2016 Oct;29(5):417-423. doi:
480 10.1016/j.jpag.2015.11.012. Epub 2015 Dec 2. PMID: 26655691.
- 481 [16]Mirowsky J, Ross CE. Depression, parenthood, and age at first birth. *Soc Sci
482 Med*. 2002 Apr;54(8):1281-98. doi: 10.1016/s0277-9536(01)00096-x. PMID:
483 11989963.
- 484 [17]Carlson DL. Explaining the curvilinear relationship between age at first birth and
485 depression among women. *Soc Sci Med*. 2011 Feb;72(4):494-503. doi:
486 10.1016/j.socscimed.2010.12.001. Epub 2010 Dec 15. PMID: 21216058.
- 487 [18]Hardy R, Kuh D. Reproductive characteristics and the age at inception of the
488 perimenopause in a British National Cohort. *Am J Epidemiol*. 1999 Apr
489 1;149(7):612-20. doi: 10.1093/oxfordjournals.aje.a009861. PMID: 10192308.
- 490 [19]Henderson KD, Bernstein L, Henderson B, Kolonel L, Pike MC. Predictors of the
491 timing of natural menopause in the Multiethnic Cohort Study. *Am J Epidemiol*.

- 492 2008 Jun 1;167(11):1287-94. doi: 10.1093/aje/kwn046. Epub 2008 Mar 21.
493 PMID: 18359953.
- 494 [20]Mishra GD, Pandeya N, Dobson AJ, Chung HF, Anderson D, Kuh D, Sandin S,
495 Giles GG, Bruinsma F, Hayashi K, Lee JS, Mizunuma H, Cade JE, Burley V,
496 Greenwood DC, Goodman A, Simonsen MK, Adami HO, Demakakos P,
497 Weiderpass E. Early menarche, nulliparity and the risk for premature and early
498 natural menopause. *Hum Reprod.* 2017 Mar 1;32(3):679-686. doi:
499 10.1093/humrep/dew350. PMID: 28119483; PMCID: PMC5850221.
- 500 [21]Sandler DP, Wilcox AJ, Horney LF. Age at menarche and subsequent
501 reproductive events. *Am J Epidemiol.* 1984 May;119(5):765-74. doi:
502 10.1093/oxfordjournals.aje.a113797. PMID: 6720673.
- 503 [22]Marino JL, Skinner SR, Doherty DA, Rosenthal SL, Cooper Robbins SC, Cannon
504 J, Hickey M. Age at menarche and age at first sexual intercourse: a prospective
505 cohort study. *Pediatrics.* 2013 Dec;132(6):1028-36. doi: 10.1542/peds.2012-3634.
506 Epub 2013 Nov 11. PMID: 24218473.
- 507 [23]Burgess S, Small DS, Thompson SG. A review of instrumental variable
508 estimators for Mendelian randomization. *Stat Methods Med Res.* 2017
509 Oct;26(5):2333-2355. doi: 10.1177/0962280215597579. Epub 2015 Aug 17.
510 PMID: 26282889; PMCID: PMC5642006.
- 511 [24]Smith GD, Ebrahim S. 'Mendelian randomization': can genetic epidemiology
512 contribute to understanding environmental determinants of disease? *Int J*
513 *Epidemiol.* 2003 Feb;32(1):1-22. doi: 10.1093/ije/dyg070. PMID: 12689998.
- 514 [25]Davey Smith G, Hemani G. Mendelian randomization: genetic anchors for causal
515 inference in epidemiological studies. *Hum Mol Genet.* 2014 Sep
516 15;23(R1):R89-98. doi: 10.1093/hmg/ddu328. Epub 2014 Jul 4. PMID: 25064373;
517 PMCID: PMC4170722.
- 518 [26]Burgess S, Thompson SG. Multivariable Mendelian randomization: the use of
519 pleiotropic genetic variants to estimate causal effects. *Am J Epidemiol.* 2015 Feb
520 15;181(4):251-60. doi: 10.1093/aje/kwu283. Epub 2015 Jan 27. PMID: 25632051;
521 PMCID: PMC4325677.
- 522 [27]Day FR, Thompson DJ, et al. Genomic analyses identify hundreds of variants
523 associated with age at menarche and support a role for puberty timing in cancer
524 risk. *Nat Genet.* 2017 Jun;49(6):834-841. doi: 10.1038/ng.3841. Epub 2017 Apr

- 525 24. PMID: 28436984; PMCID: PMC5841952.
- 526 [28]Ruth KS, Day FR, et al. Genetic insights into biological mechanisms governing
527 human ovarian ageing. *Nature*. 2021 Aug;596(7872):393-397. doi:
528 10.1038/s41586-021-03779-7. Epub 2021 Aug 4. PMID: 34349265; PMCID:
529 PMC7611832.
- 530 [29]Mills MC, Tropf FC, et al. Identification of 371 genetic variants for age at first
531 sex and birth linked to externalising behaviour. *Nat Hum Behav*. 2021
532 Dec;5(12):1717-1730. doi: 10.1038/s41562-021-01135-3. Epub 2021 Jul 1.
533 Erratum in: *Nat Hum Behav*. 2021 Jul 28;: PMID: 34211149; PMCID:
534 PMC7612120.
- 535 [30]Sudlow C, Gallacher J, et al. UK biobank: an open access resource for identifying
536 the causes of a wide range of complex diseases of middle and old age. *PLoS Med*.
537 2015 Mar 31;12(3):e1001779. doi: 10.1371/journal.pmed.1001779. PMID:
538 25826379; PMCID: PMC4380465.
- 539 [31]Forstner AJ, Awasthi S, Wolf C, et al. Genome-wide association study of panic
540 disorder reveals genetic overlap with neuroticism and depression. *Mol Psychiatry*.
541 2021 Aug;26(8):4179-4190. doi: 10.1038/s41380-019-0590-2. Epub 2019 Nov 11.
542 PMID: 31712720.
- 543 [32]Duncan L, Yilmaz Z, et al. Significant Locus and Metabolic Genetic Correlations
544 Revealed in Genome-Wide Association Study of Anorexia Nervosa. *Am J*
545 *Psychiatry*. 2017 Sep 1;174(9):850-858. doi: 10.1176/appi.ajp.2017.16121402.
546 Epub 2017 May 12. PMID: 28494655; PMCID: PMC5581217.
- 547 [33]Demontis, D., Walters, R.K., Martin, J. et al. Discovery of the first genome-wide
548 significant risk loci for attention deficit/hyperactivity disorder. *Nat Genet* 51,
549 63–75 (2019).
- 550 [34]Grove J, Ripke S, et al. Identification of common genetic risk variants for autism
551 spectrum disorder. *Nat Genet*. 2019 Mar;51(3):431-444. doi:
552 10.1038/s41588-019-0344-8. Epub 2019 Feb 25. PMID: 30804558; PMCID:
553 PMC6454898.
- 554 [35]Mullins N, Forstner AJ, et al. Genome-wide association study of more than
555 40,000 bipolar disorder cases provides new insights into the underlying biology.
556 *Nat Genet*. 2021 Jun;53(6):817-829. doi: 10.1038/s41588-021-00857-4. Epub
557 2021 May 17. PMID: 34002096; PMCID: PMC8192451.

- 558 [36]Howard DM, Adams MJ, et al. Genome-wide meta-analysis of depression
559 identifies 102 independent variants and highlights the importance of the
560 prefrontal brain regions. *Nat Neurosci.* 2019 Mar;22(3):343-352. doi:
561 10.1038/s41593-018-0326-7. Epub 2019 Feb 4. PMID: 30718901; PMCID:
562 PMC6522363.
- 563 [37]International Obsessive Compulsive Disorder Foundation Genetics Collaborative
564 (IOCDF-GC) and OCD Collaborative Genetics Association Studies (OC GAS).
565 Revealing the complex genetic architecture of obsessive-compulsive disorder
566 using meta-analysis. *Mol Psychiatry.* 2018 May;23(5):1181-1188. doi:
567 10.1038/mp.2017.154. Epub 2017 Aug 1. PMID: 28761083; PMCID:
568 PMC6660151.
- 569 [38]Nievergelt CM, Maihofer AX, et al. International meta-analysis of PTSD
570 genome-wide association studies identifies sex- and ancestry-specific genetic risk
571 loci. *Nat Commun.* 2019 Oct 8;10(1):4558. doi: 10.1038/s41467-019-12576-w.
572 PMID: 31594949; PMCID: PMC6783435.
- 573 [39]Trubetskoy V, Pardiñas AF, et al. Mapping genomic loci implicates genes and
574 synaptic biology in schizophrenia. *Nature.* 2022 Apr;604(7906):502-508. doi:
575 10.1038/s41586-022-04434-5. Epub 2022 Apr 8. PMID: 35396580; PMCID:
576 PMC9392466.
- 577 [40]Yu D, Sul JH, Tsetsos F, et al. Interrogating the Genetic Determinants of
578 Tourette's Syndrome and Other Tic Disorders Through Genome-Wide Association
579 Studies. *Am J Psychiatry.* 2019 Mar 1;176(3):217-227. doi:
580 10.1176/appi.ajp.2018.18070857. PMID: 30818990; PMCID: PMC6677250.
- 581 [41]Ning Z, Pawitan Y, Shen X. High-definition likelihood inference of genetic
582 correlations across human complex traits. *Nat Genet.* 2020 Aug;52(8):859-864.
583 doi: 10.1038/s41588-020-0653-y. Epub 2020 Jun 29. PMID: 32601477.
- 584 [42]Hemani G, Zheng J, et al. The MR-Base platform supports systematic causal
585 inference across the human phenome. *eLife.* 2018;7:e34408. doi:
586 10.7554/eLife.34408.
- 587 [43]Hemani G, Tilling K, Davey Smith G. Orienting the causal relationship between
588 imprecisely measured traits using GWAS summary data. *PLOS Genetics.* 2017;
589 13(11): e1007081. <https://doi.org/10.1371/journal.pgen.1007081>
- 590 [44]Hou L, Li H, Si S, Yu Y, Sun X, Liu X, et al. Exploring the causal pathway from

- 591 bilirubin to CVD and diabetes in the UK biobank cohort study: observational
592 findings and Mendelian randomization studies. *Atherosclerosis* 2021;320:112-21.
- 593 [45]Bowden J, Davey Smith G, Burgess S. Mendelian randomization with invalid
594 instruments: effect estimation and bias detection through Egger regression. *Int J*
595 *Epidemiol.* 2015 Apr;44(2):512-25. doi: 10.1093/ije/dyv080. Epub 2015 Jun 6.
596 PMID: 26050253; PMCID: PMC4469799.
- 597 [46]Bowden J, Davey Smith G, Haycock PC, Burgess S. Consistent Estimation in
598 Mendelian Randomization with Some Invalid Instruments Using a Weighted
599 Median Estimator. *Genet Epidemiol.* 2016 May;40(4):304-14. doi:
600 10.1002/gepi.21965. Epub 2016 Apr 7. PMID: 27061298; PMCID:
601 PMC4849733.
- 602 [47]Hartwig FP, Davey Smith G, Bowden J. Robust inference in summary data
603 Mendelian randomization via the zero modal pleiotropy assumption. *Int J*
604 *Epidemiol.* 2017 Dec 1;46(6):1985-1998. doi: 10.1093/ije/dyx102. PMID:
605 29040600; PMCID: PMC5837715.
- 606 [48]Zhao Q , Wang J , Hemani G , et al. Statistical inference in two-sample
607 summary-data Mendelian randomization using robust adjusted profile score. *The*
608 *Annals of Statistics*, 2018, 48(3).
- 609 [49]Qi G, Chatterjee N. Mendelian randomization analysis using mixture models for
610 robust and efficient estimation of causal effects. *Nat Commun.* 2019 Apr
611 26;10(1):1941. doi: 10.1038/s41467-019-09432-2. PMID: 31028273; PMCID:
612 PMC6486646.
- 613 [50]Verbanck M, Chen CY, Neale B, Do R. Detection of widespread horizontal
614 pleiotropy in causal relationships inferred from Mendelian randomization
615 between complex traits and diseases. *Nat Genet.* 2018 May;50(5):693-698. doi:
616 10.1038/s41588-018-0099-7. Epub 2018 Apr 23. Erratum in: *Nat Genet.* 2018
617 Aug;50(8):1196. PMID: 29686387; PMCID: PMC6083837.
- 618 [51]Sanderson E, Spiller W, Bowden J. Testing and correcting for weak and
619 pleiotropic instruments in two-sample multivariable Mendelian randomization.
620 *Stat Med.* 2021 Nov 10;40(25):5434-5452. doi: 10.1002/sim.9133. Epub 2021
621 Aug 2. PMID: 34338327; PMCID: PMC9479726.
- 622 [52]Udry JR. Age at menarche, at first intercourse, and at first pregnancy. *J Biosoc*
623 *Sci.* 1979 Oct;11(4):433-41. doi: 10.1017/s0021932000012517. PMID: 511871.

- 624 [53]Prince C, Sharp GC, Howe LD, Fraser A, Richmond RC. The relationships
625 between women's reproductive factors: a Mendelian randomisation analysis.
626 BMC Med. 2022 Mar 24;20(1):103. doi: 10.1186/s12916-022-02293-5. PMID:
627 35321746; PMCID: PMC8944090.
- 628 [54]Lawn RB, Sallis HM, et al. The effects of age at menarche and first sexual
629 intercourse on reproductive and behavioural outcomes: A Mendelian
630 randomization study. PLoS One. 2020 Jun 15;15(6):e0234488. doi:
631 10.1371/journal.pone.0234488. PMID: 32542040; PMCID: PMC7295202.
- 632 [55]van Keep PA, Brand PC, Lehert P. Factors affecting the age at menopause. J
633 Biosoc Sci Suppl. 1979;(6):37-55. doi: 10.1017/s0021932000024299. PMID:
634 293326.
- 635 [56]Boulet MJ, Oddens BJ, Lehert P, Vemer HM, Visser A. Climacteric and
636 menopause in seven south-east Asian countries. Maturitas. 2008
637 Sep-Oct;61(1-2):34-53. doi: 10.1016/j.maturitas.2008.09.008. PMID: 19434878.
- 638 [57]van Noord PA, Dubas JS, Dorland M, Boersma H, te Velde E. Age at natural
639 menopause in a population-based screening cohort: the role of menarche,
640 fecundity, and lifestyle factors. Fertil Steril. 1997 Jul;68(1):95-102. doi:
641 10.1016/s0015-0282(97)81482-3. PMID: 9207591.
- 642 [58]Kato I, Toniolo P, Akhmedkhanov A, Koenig KL, Shore R, Zeleniuch-Jacquotte A.
643 Prospective study of factors influencing the onset of natural menopause. J Clin
644 Epidemiol. 1998 Dec;51(12):1271-6. doi: 10.1016/s0895-4356(98)00119-x.
645 PMID: 10086819.
- 646 [59]Nagel G, Altenburg HP, Nieters A, Boffetta P, Linseisen J. Reproductive and
647 dietary determinants of the age at menopause in EPIC-Heidelberg. Maturitas.
648 2005 Nov-Dec;52(3-4):337-47. doi: 10.1016/j.maturitas.2005.05.013. Epub 2005
649 Jul 11. PMID: 16011884.
- 650 [60]Richardson TG, Mykkänen J, Pahkala K, Ala-Korpela M, Bell JA, Taylor K,
651 Viikari J, Lehtimäki T, Raitakari O, Davey Smith G. Evaluating the direct effects
652 of childhood adiposity on adult systemic metabolism: a multivariable Mendelian
653 randomization analysis. Int J Epidemiol. 2021 Nov 10;50(5):1580-1592. doi:
654 10.1093/ije/dyab051. PMID: 33783488; PMCID: PMC8580280.
- 655 [61]Richardson TG, Crouch DJM, Power GM, Morales-Berstein F, Hazelwood E,
656 Fang S, Cho Y, Inshaw JRJ, Robertson CC, Sidore C, Cucca F, Rich SS, Todd JA,

- 657 Davey Smith G. Childhood body size directly increases type 1 diabetes risk based
658 on a lifecourse Mendelian randomization approach. *Nat Commun.* 2022 Apr
659 28;13(1):2337. doi: 10.1038/s41467-022-29932-y. PMID: 35484151; PMCID:
660 PMC9051135.
- 661 [62]Sanderson E, Richardson TG, Morris TT, Tilling K, Davey Smith G. Estimation
662 of causal effects of a time-varying exposure at multiple time points through
663 multivariable mendelian randomization. *PLoS Genet.* 2022 Jul
664 18;18(7):e1010290. doi: 10.1371/journal.pgen.1010290. PMID: 35849575;
665 PMCID: PMC9348730.
- 666 [63]Ellis BJ, Bjorklund DF. Beyond mental health: an evolutionary analysis of
667 development under risky and supportive environmental conditions: an
668 introduction to the special section. *Dev Psychol.* 2012 May;48(3):591-7. doi:
669 10.1037/a0027651. PMID: 22545847.
- 670 [64]Ellis BJ. Timing of pubertal maturation in girls: an integrated life history
671 approach. *Psychol Bull.* 2004 Nov;130(6):920-58. doi:
672 10.1037/0033-2909.130.6.920. PMID: 15535743.
- 673 [65]Figueredo A J , G Vásquez, Brumbach B H , et al. The K-Factor: Individual
674 differences in life history strategy. *Personality and Individual Differences*, 39(8),
675 1349-1360[J]. *Personality and Individual Differences*, 2005, 39(8):1349-1360.
- 676 [66]Belsky J, Steinberg L, Draper P. Childhood experience, interpersonal
677 development, and reproductive strategy: and evolutionary theory of socialization.
678 *Child Dev.* 1991 Aug;62(4):647-70. doi: 10.1111/j.1467-8624.1991.tb01558.x.
679 PMID: 1935336.
- 680 [67]James J, Ellis BJ, Schlomer GL, Garber J. Sex-specific pathways to early puberty,
681 sexual debut, and sexual risk taking: tests of an integrated
682 evolutionary-developmental model. *Dev Psychol.* 2012 May;48(3):687-702. doi:
683 10.1037/a0026427. Epub 2012 Jan 23. PMID: 22268605.
- 684 [68]Stephenson R, Simon C, Finneran C. Community factors shaping early age at first
685 sex among adolescents in Burkina Faso, Ghana, Malawi, and Uganda. *J Health
686 Popul Nutr.* 2014 Jun;32(2):161-75. PMID: 25076654; PMCID: PMC4216953.
- 687 [69]Tilahun M, Ayele G. Factors associated with age at first sexual initiation among
688 youths in Gamo Gofa, south west Ethiopia: a cross sectional study. *BMC Public
689 Health.* 2013 Jul 2;13:622. doi: 10.1186/1471-2458-13-622. PMID: 23819567;

- 690 PMCID: PMC3729496.
- 691 [70]Hugo TD, Maier VT, Jansen K, Rodrigues CE, Cruzeiro AL, Ores Lda C,
692 Pinheiro RT, Silva R, Souza LD. Fatores associados à idade da primeira relação
693 sexual em jovens: estudo de base populacional [Factors associated with age at
694 first intercourse: a population-based study]. *Cad Saude Publica*. 2011
695 Nov;27(11):2207-14. Portuguese. doi: 10.1590/s0102-311x2011001100014.
696 PMID: 22124498.
- 697 [71]Magnus MC, Anderson EL, Howe LD, Joinson CJ, Penton-Voak IS, Fraser A.
698 Childhood psychosocial adversity and female reproductive timing: a cohort study
699 of the ALSPAC mothers. *J Epidemiol Community Health*. 2018 Jan;72(1):34-40.
700 doi: 10.1136/jech-2017-209488. Epub 2017 Nov 9. PMID: 29122994; PMCID:
701 PMC5753025.
- 702 [72]Simpson JA, Griskevicius V, Kuo SI, Sung S, Collins WA. Evolution, stress, and
703 sensitive periods: the influence of unpredictability in early versus late childhood
704 on sex and risky behavior. *Dev Psychol*. 2012 May;48(3):674-86. doi:
705 10.1037/a0027293. Epub 2012 Feb 13. PMID: 22329381.
- 706 [73]Hawes ZC, Wellings K, Stephenson J. First heterosexual intercourse in the United
707 kingdom: a review of the literature. *J Sex Res*. 2010 Mar;47(2):137-52. doi:
708 10.1080/00224490903509399. PMID: 20358457.
- 709 [74]Burgess S, Swanson SA, Labrecque JA. Are Mendelian randomization
710 investigations immune from bias due to reverse causation? *Eur J Epidemiol*. 2021
711 Mar;36(3):253-257. doi: 10.1007/s10654-021-00726-8. Epub 2021 Feb 21. PMID:
712 33611685; PMCID: PMC8032609.
- 713 [75]Cooper R, Blell M, Hardy R, Black S, Pollard TM, Wadsworth ME, Pearce MS,
714 Kuh D. Validity of age at menarche self-reported in adulthood. *J Epidemiol*
715 *Community Health*. 2006 Nov;60(11):993-7. doi: 10.1136/jech.2005.043182.
716 Erratum in: *J Epidemiol Community Health*. 2007 Feb;61(2):175. PMID:
717 17053289; PMCID: PMC2465480.
- 718 [76]Graham CA, Catania JA, Brand R, Duong T, Canchola JA. Recalling sexual
719 behavior: a methodological analysis of memory recall bias via interview using the
720 diary as the gold standard. *J Sex Res*. 2003 Nov;40(4):325-32. doi:
721 10.1080/00224490209552198. PMID: 14735406.
- 722 [77]Births by parents' characteristics, England and Wales. In. Office for National

723 Statistics: www.ons.gov.uk; 2019.

724 [78]Forman MR, Mangini LD, Thelus-Jean R, Hayward MD. Life-course origins of
725 the ages at menarche and menopause. *Adolesc Health Med Ther*. 2013 Jan
726 18;4:1-21. doi: 10.2147/AHMT.S15946. PMID: 24600293; PMCID:
727 PMC3912848.

728

729 **Table 1.** Datasets

| Traits | Consortium | Sample size (cases/controls) | Year | Pubmed ID |
|---|------------|---------------------------------|------|--------------|
| menarche | ReproGen | 252000 | 2014 | 28436984 |
| Age at first sexual intercourse | - | 397338 | 2021 | 34211149 |
| Age at first birth | - | 542901 | 2021 | 34211149 |
| Age at last live birth | MRC-IEU | 170248 | 2018 | - |
| menopause | ReproGen | 201323 | 2015 | 34349265 |
| Autism spectrum disorder | PGC | 46351(18382/27969) | 2017 | 30804558 |
| Depression | PGC | 500199(170756/329443) | 2019 | 30718901 |
| Attention deficit or hyperactivity disorder | PGC | 21191(4945/16246) | 2018 | 29325848 |
| Obsessive compulsive disorder | PGC | 9725(2688/7037) | 2017 | 28761083 |
| Schizophrenia | PGC | 130644(53386/77258) | 2022 | 35396580 |
| Bipolar disorder (all) | PGC | 413466(41917/371549) | 2021 | 34002096 |
| Bipolar disorder (I) | PGC | 64802(25060/449978) | 2021 | 34002096 |
| Bipolar disorder (II) | PGC | 22560(6781/364075) | 2021 | 34002096 |
| Posttraumatic stress disorder | PGC | 174659(23212/151447) | 2019 | 31594949 |
| Anxiety disorders | PGC | 77096(33640/43456) | 2016 | 26754954 |
| Anorexia Nervosa | PGC | 14477(3495/10982) | 2017 | 28494655 |
| Tourette syndrome | PGC | 14307(4819/9488) | 2018 | 30818990 |

730

731 **Table 2.** F statistics of IVs for exposures

| Exposure | nSNPs | F statistics |
|---------------------------------|-------|--------------|
| menarche | 190 | 67.549 |
| menopause | 198 | 111.759 |
| Age at first sexual intercourse | 194 | 46.822 |
| Age at first birth | 65 | 38.556 |
| Age at last live birth | 6 | 130.993 |

732

733

734 **Figure legends**

735 **Figure 1.** Genetic correlations between reproductive factors and psychiatric disorders.

736 **Figure 2.** Univariable MR between reproductive factors and psychiatric disorders.

737 **Figure 3.** Multivariable MR among reproductive factors.

738 **Figure 4.** Multivariable MR between reproductive factors and psychiatric disorders.

739 **Figure 5.** Causal relationships between reproductive factors and psychiatric disorders.

740 The dashed lines represent the significant results in univariable MR but null

741 significant results in multivariable MR or nominal significant results in univariable

742 MR. The solid lines represent the significant results in both univariable and

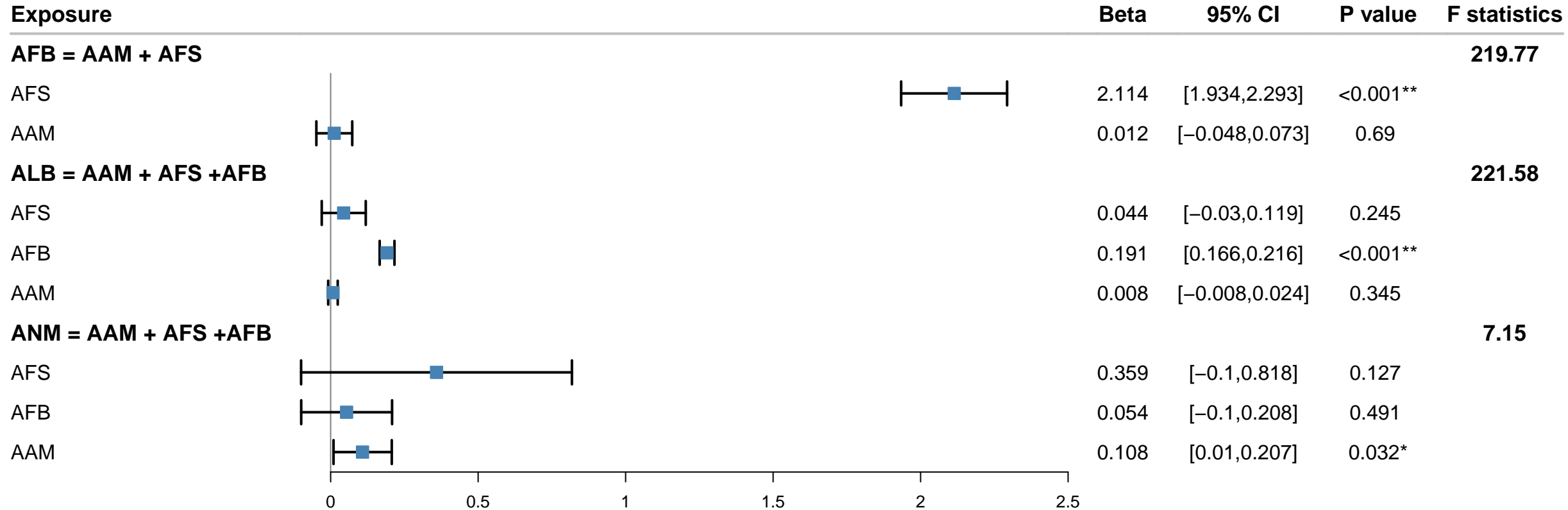
743 multivariable MR. The green lines represent the negative effects. The yellow and blue

744 lines represent the positive effects. Psychiatric disorders with red color represent the

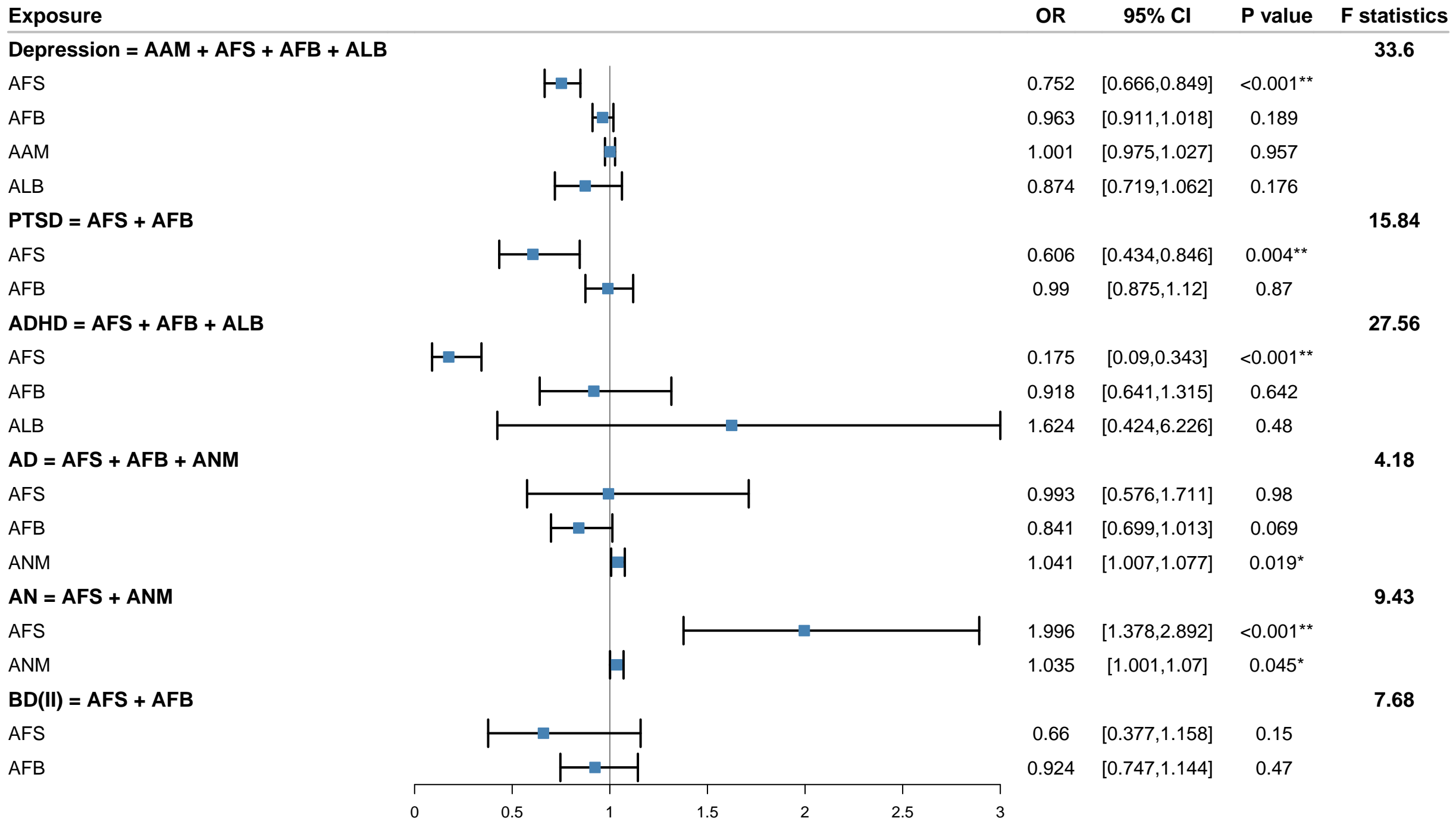
745 diseases considered in multivariable MR analysis.

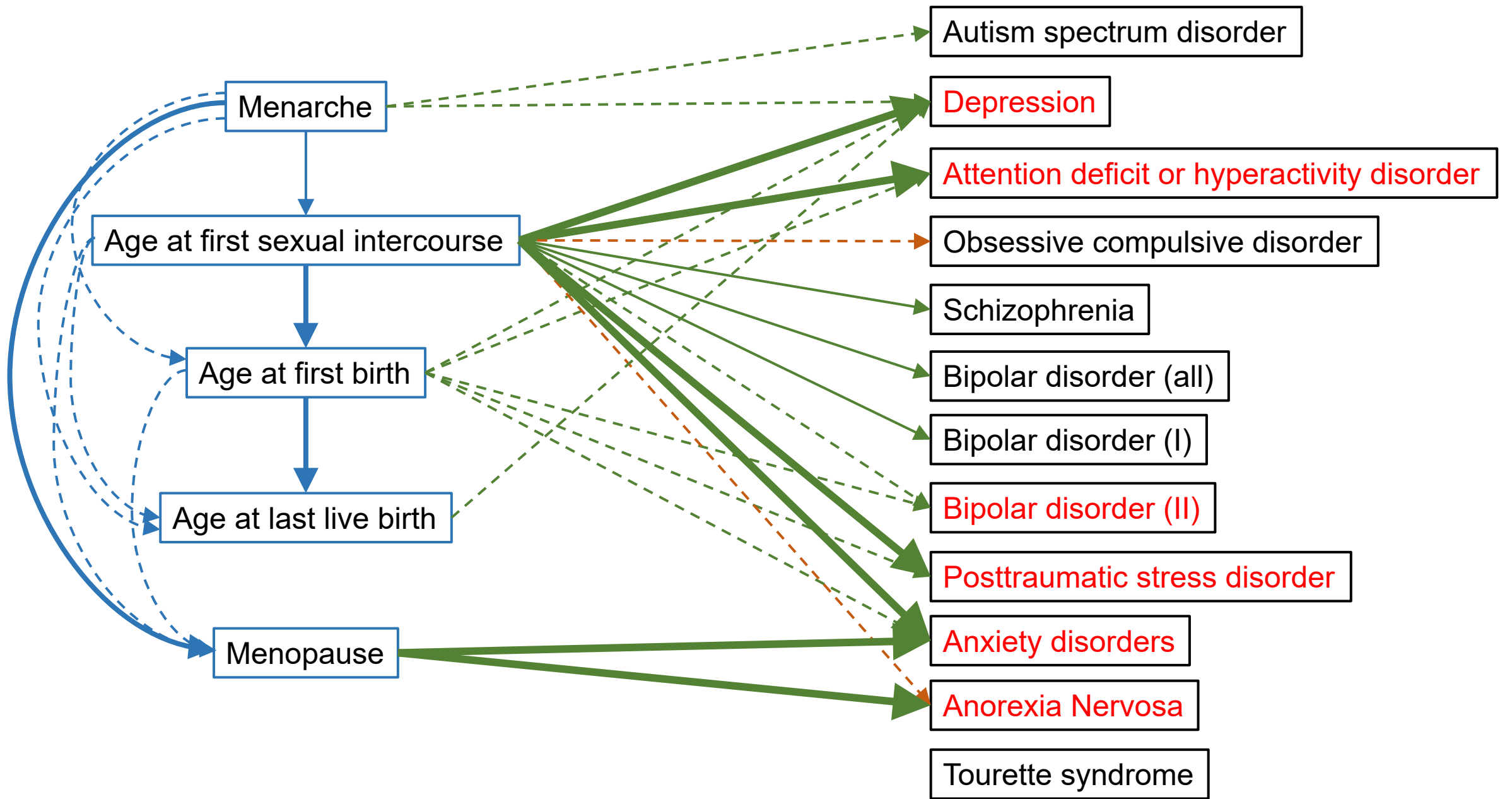
746

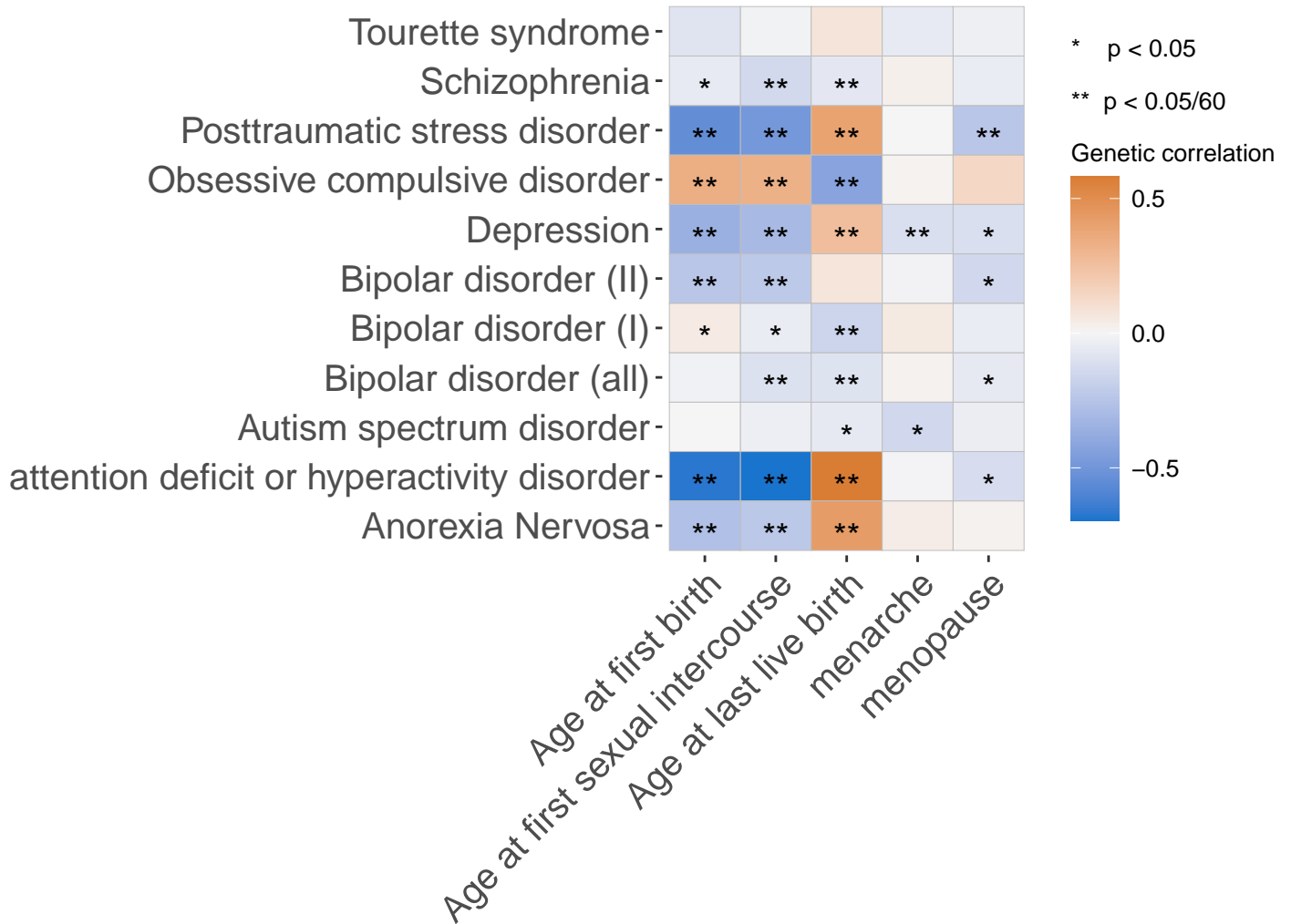
Multivariable MR



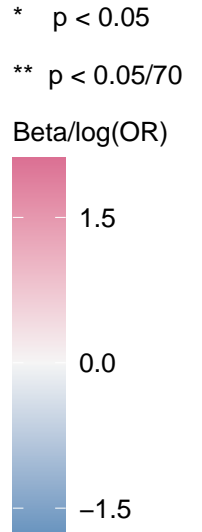
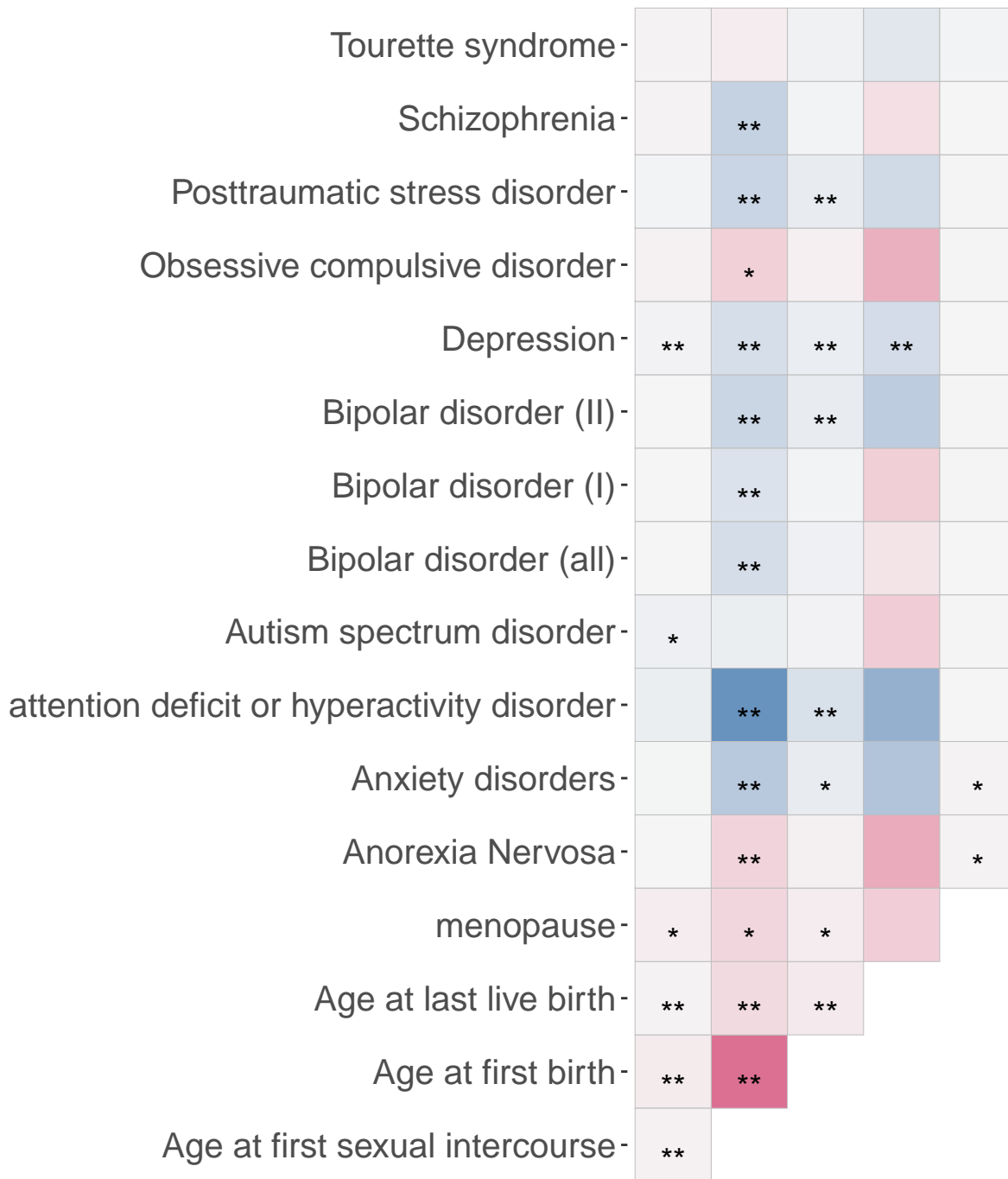
Multivariable MR







Outcome



Exposure