

1 **Off-Label Dosing of Direct Oral Anticoagulants Among Inpatients with Atrial Fibrillation**

2
3 Amneet Sandhu, MD, MSc^{1,2}; Lisa A. Kaltenbach, MS⁴; Karen Chiswell, PhD⁴; Vijay Shimoga, BS⁶;
4 Carmel Ashur, MD²; Abby Pribish, MD²; Gregg C. Fonarow, MD⁵; Jonathan P. Piccini Sr, MD^{3,4}; P.
5 Michael Ho, MD, PhD^{1,2}; Paul D. Varosy, MD^{1,2}; Paul L. Hess, MD, MHS^{1,2}

6
7 1 Denver VA Medical Center, Section of Cardiology

8 2 University of Colorado, Division of Cardiology

9 3 Duke University Hospital

10 4 Duke Clinical Research Institute

11 5 University of California Los Angeles, Division of Cardiology

12 6 University of Colorado, School of Medicine

13
14 Key Words: anticoagulation, atrial fibrillation, off-label, underdosing, overdosing

15
16 Word Count (total manuscript excluding title page): 4121

17
18 Address for Correspondence:

19 Amneet Sandhu, MD, MSc

20 F2-171

21 1700 N Wheeling St

22 Aurora, CO 80045

23 Phone: 720-723-8461

24 Fax: 720-723-7839

25 Email: amneet.sandhu@cuanschutz.edu

26
27 Sources of Funding:

28 The Get With The Guidelines[®]-AFIB (GWTG-AFIB) program is provided by the American Heart
29 Association. GWTG-AFIB is sponsored, in part, by BMS Pfizer, Tylenol and Philips Image Guided
30 Therapy.

31
32
33
34
35
36
37
38
39
40
41
42
43
44

45 **ABSTRACT**

46 **Introduction:**

47 Among patients hospitalized for atrial fibrillation (AF), the frequency of off-label direct oral
48 anticoagulant (DOAC) dosing, associated factors, hospital-level variation, and temporal trends
49 in contemporary clinical practice are unknown.

50

51 **Methods:**

52 Using the Get With The Guidelines® Atrial Fibrillation (GWTG-AF) registry, patients admitted
53 from January 1st, 2014 to March 31st, 2020, and discharged on DOAC therapy were stratified
54 according to receipt of underdosing, overdosing, or recommended dosing. Factors associated
55 with off-label dosing were identified using logistic regression. Hospital-level variation and
56 temporal trends were assessed.

57

58 **Results:**

59 Of 22,470 patients prescribed a DOAC at discharge from hospitalization for AF (66% apixaban,
60 29% rivaroxaban, 5% dabigatran), underdosing occurred among 2006 (8.9%), overdosing among
61 511 (2.3%), and recommended dosing among 19953 (88.8%). Patient-related factors associated
62 with off-label DOAC use included age (underdosing: OR 1.06 per 1-year increase [95% CI 1.06-
63 1.07] and overdosing: OR 1.07 per 1-year increase [1.06-1.09]), dialysis dependence
64 (underdosing: OR 5.50 [3.76-8.05] and overdosing: OR 5.47 [2.74-10.88]), female sex
65 (overdosing: OR 0.79 [0.63-0.99]) and weight (overdosing: OR 0.96 per 1-Kg increase [0.95-
66 1.00]). Across hospitals, the adjusted median odds ratio for off-label DOAC use was 1.45 [95%
67 CI 1.34-1.65] (underdosing: 1.52 [1.39-1.76] and overdosing: 1.32 [1.20-1.84]), indicating
68 significant hospital-level variation. Hospital characteristics associated with underdosing
69 included West vs. Northeast location (OR: 1.55 [1.04-2.31]), rural vs. urban setting (OR: 0.48
70 [0.28-0.83]), and number of beds (<200 vs. 500+, OR: 1.95 [1.29-2.95]). Recommended dosing
71 significantly increased over time (81.9% in 2014 to 90.9% in 2020, $p < 0.0001$ for trend) with a
72 corresponding decline in underdosing (14.4% in 2014 to 6.6% in 2020, $p < 0.0001$ for trend) and
73 overdosing (3.8% in 2014 to 2.5% in 2020, $p = 0.001$ for trend).

74

75 **Conclusion:**

76 One of 10 patients hospitalized for atrial fibrillation is discharged on off-label dosing of DOAC
77 with significant variation across hospitals. While the proportion of patients receiving
78 recommended dosing has significantly improved over time, opportunities to improve DOAC
79 dosing persist.

80

81

82

83

84

85

86

87

88

89 **INTRODUCTION**

90 Appropriately dosed direct oral anticoagulants (DOACs) reduce the risk of stroke and
91 systemic embolism among select patients with atrial fibrillation (AF).¹⁻³ The Food and Drug
92 Administration (FDA) specified dosing derived from pivotal phase III trials¹⁻³ based on factors
93 inclusive of age, weight, kidney function, and concomitant medication use. Unfortunately, use
94 of DOACs at doses not studied in the pivotal trials or recommended in FDA-labeling has been
95 significant, affecting up to 12-20% of patients.⁴⁻⁷ Off-label DOAC dosing for AF has been
96 observed in the outpatient setting and is associated with increased risk of cardiovascular
97 hospitalization and all-cause mortality.^{5,6} Meta-analyses have also shown an increased bleeding
98 risk with DOAC overdosing and higher stroke risk with DOAC underdosing.⁸

99 The degree to which off-label DOAC dosing occurs in patients hospitalized for AF is
100 unknown. Hospitalizations often are associated with significant changes in health critical to
101 prescription of an optimal DOAC dose, including weight, kidney function, and concurrent
102 medication use. Temporal trends in off-label DOAC use and how use of these agents varies
103 between hospitals is not known. Accordingly, using data from the Get With The Guidelines®-
104 Atrial Fibrillation (GWTG-AFIB) registry, we sought to characterize (1) off-label DOAC dosing
105 rates at discharge among patients requiring hospitalization for AF, (2) patient- and facility-level
106 factors associated with off-label DOAC dosing and (3) temporal changes in the proportion of
107 patients treated with off-label DOAC dosing.

108

109 **METHODS**

110 Data Source

111 The data used were collected by the American Heart Association’s Get With The
112 Guidelines®-AFib registry. GWTG-AFIB registry was launched in 2013 as a prospective, national,
113 observational initiative tracking hospital encounters for atrial fibrillation. The program and data
114 elements of the GWTG-AFIB registry have been previously described.⁹ IQVIA (Parsippany, New
115 Jersey) serves as the data collection and coordination center. A key objective of the GWTG
116 program is to highlight national and institutional-level opportunities for quality improvement.
117 Each participating hospital received either human research approval to enroll cases without
118 individual patient consent under the common rule, or a waiver of authorization and exemption
119 from subsequent review by their institutional review board. The Duke Clinical Research Institute
120 (Durham, NC) serves as the data analysis center and has an agreement to analyze the aggregate
121 deidentified data for research purposes. The Institutional Review Board at Duke University
122 Health approved this study. Participating sites were required to adhere to local regulatory and
123 privacy procedures and obtain Institutional Review Board approval if needed. Institutional
124 review board approval was granted to analyze limited data for research purposes.

125

126 Study Population

127 The study population included patients who required hospital care for management of
128 atrial fibrillation or atrial flutter and were discharged on a DOAC (apixaban, rivaroxaban or
129 dabigatran between January 1st, 2014 and March 31st, 2020). Patient records that were (1)
130 missing key demographic variables or medical history including age, sex, weight or history of
131 atrial fibrillation, (2) missing discharge anticoagulant, dose, or frequency, (3) missing serum
132 creatinine data at the time of discharge, (4) contraindications to DOAC or anticoagulant use or

133 (5) document special circumstances (transition to comfort care or discharged against medical
134 advice) or had missing destination after discharge were excluded (**Supplemental Figure 1**).

135

136 Study Definition

137 The designation of “off-label” was defined as deviation from dosing specified by FDA
138 package inserts and used in the seminal DOAC trials.¹⁻³ They are based on age, weight, kidney
139 function at discharge, and comorbid conditions such as need for dialysis (**Supplemental Table**
140 **1**).¹⁰⁻¹² Recommended dosing of dabigatran varies by creatinine clearance (CrCl >30 ml/min =
141 150mg orally twice daily and CrCl 15-30 ml/min = 75 mg orally twice daily). For apixaban,
142 recommended dosing is 5 mg twice daily. In the presence of any 2 of 3 factors comprised of
143 age ≥80 years, weight ≤60 kg and a serum creatinine of ≥1.5 mg/dL, recommended dosing is
144 2.5mg orally twice daily. Recommended rivaroxaban dosing varies by creatinine clearance (>50
145 ml/min = 20mg orally once daily, 15-50 ml/min = 15mg orally once daily, and <15 ml/min = not
146 recommended).

147

148 Statistical Analysis

149 Patient characteristics were stratified by discharge DOAC dose characterized as
150 underdosing, recommended dosing, or overdosing. Categorical variables were recorded as
151 counts (percentages) and continuous variables reported as a median (Q1, Q3). Assessments of
152 between-group differences were performed using Pearson χ^2 or Fisher’s exact test as
153 appropriate for the former and Kruskal-Wallis tests for the latter. In sensitivity analyses, rates
154 of off-label dosing were assessed among patients with newly diagnosed AF, those were
155 admitted on DOAC and discharged with a different prescription, and according to weight (≤ 60
156 kg, 60-120 kg, ≥120 kg or body mass index >40 Kg/m²).

157 To assess patient- and hospital-level factors associated with off-label dosing, overdosing
158 was compared with recommended dosing and underdosing was compared with recommended
159 dosing. In each case, a logistic regression model with stepwise selection was fitted using a
160 significance of 0.10 to enter and remain in the model. Candidate variables were selected based
161 on prior literature^{5,6} and clinical judgment which included demographics (age, sex, race and
162 ethnicity), conditions affecting prior health (such as coronary artery disease, prior stroke or TIA,
163 diabetes, hypertension, COPD, OSA, prior myocardial infarction, prior PCI, thyroid disease, prior
164 hemorrhage, PVD, dialysis, liver disease, heart failure), other patient characteristics (such as left
165 ventricular ejection fraction and history of other arrhythmias, smoking, insurance status), and
166 hospital characteristics (region, academic, bedsize, rural). After variable selection, a random
167 intercept for hospital to account for within hospital clustering was added. We assessed whether
168 patient- or hospital-level factors play a larger role in inappropriate dosing using reference effect
169 measures¹³, which compare patients in clusters at specified percentiles of the random effect of
170 the distribution to patients with the same values for all measured covariates in a reference
171 cluster. To make comparisons of site variability, variables were scaled such that odds ratios are
172 comparable across variables. Whereas binary variables were dichotomized as in their original
173 form, continuous variables were divided by 2*standard deviation (SD).

174 To characterize variation across hospitals, the percentage of patients with off-label
175 dosing out of the total number of patients eligible for DOAC dosing was calculated for each
176 hospital. Hospitals with <30 admissions in the study population were excluded. Hospital-level

177 variation use was then graphically displayed using a caterpillar plot. To account for variation in
178 the number of patients per site, a hierarchical logistic regression model with random intercepts
179 for site was fitted. The model was then used to test whether variance components for site
180 were greater than zero and to calculate the median odds ratio (MOR) between sites. The MOR
181 can be interpreted as the median increase in odds of off-label dosing when an individual moves
182 from a lower to a higher-risk hospital. It provides an estimate of the effect size of the hospital
183 variation on the outcome of off-label DOAC dosing. A MOR >1.2 represents significant clinical
184 variation.¹⁴

185 To describe temporal trends in percentage off-label DOAC dosing, the percentage of
186 patients with off-label dosing was calculated by calendar quarter beginning in 2014. Trends in
187 percentage of recommended dosing, underdosing, and overdosing over time was graphically
188 displayed. To assess temporal trend significance, unadjusted and adjusted logistic regression
189 models with random intercepts for site were fitted for overdosing versus recommended dosing
190 and underdosing versus recommended dosing. The final clinical variables of the models
191 described as well as random intercepts for site and time in quarters were included. The effect
192 of quarterly trends of off-label DOAC dosing was estimated using odds ratios (95% confidence
193 intervals).

194

195 RESULTS

196 Among 22,470 patients discharged after a hospital encounter for AF, 2006 (8.9%)
197 received a DOAC that was lower than the recommended dose, 19953 (88.8%) received a DOAC
198 at recommended dosing, and 511 (2.3%) received a DOAC that was higher than the
199 recommended dose. **Figure 1** displays underdosing, overdosing, and recommended dosing by
200 DOAC type and overall.

201 **Table 1** displays patient-level data for the overall cohort and stratified by underdosed,
202 recommended dosing and overdosed. In the overall population, the mean age was 70.1 +/- 12.1
203 years old, 48.1% were female, and the mean body mass index was 31.2 +/- 7.9 Kg/m². The
204 mean CHADS2Vasc score was 3.76 +/- 1.75, 42.0% had paroxysmal AF and 37.6% had chronic
205 kidney disease resulting in an eGFR <60 ml/min while 0.7% were on hemodialysis. Relative to
206 those discharged on DOAC dosing consistent with FDA labeling, patients who received
207 underdosed DOACs were older (77.0 +/- 11.2 years vs. 69.1 +/- 11.9), more commonly on
208 dialysis (2.7% vs. 0.5%), more frequently had a prior hemorrhage (4.7% vs. 2.6%), and more
209 frequently received care at hospitals located in non-rural settings (4.8% vs. 4.4%) or with less
210 than 500 beds (43.4% vs. 33.8%). Relative to FDA-labeled use of DOACs on discharge, those
211 who received overdosed DOACs were older (80.6 +/- 7.8 years vs 69.1 +/- 11.9), more
212 frequently women (66.3% vs. 46.6%), usually had a lower body mass index (25.1 +/- 5.8 vs. 31.5
213 +/- 5.8), and more frequently were on dialysis (2.4% vs. 0.5%). In sensitivity analyses of rates of
214 lower than recommended dose, recommended, and higher than recommended dose by new AF
215 diagnosis, change in DOAC type (ie. from apixaban to rivaroxaban) during hospitalization or
216 patient weight, findings were comparable to the primary analysis.

217 **Figures 2** displays factors associated with overdosing and underdosing relative to
218 recommended dosing as well as measures of variation across hospitals. In multivariable
219 modeling, higher rates of underdosing were associated with patient-level factors such as older
220 age, dialysis dependence, and prior hemorrhage and hospital-level factors such as Western and

221 urban location as well as servicing relatively few beds. Across hospitals, the reference effect
222 measure for random site variation of receipt of underdosed DOAC at discharge (90th percentile
223 in comparison to median hospital) was OR 1.75 (95% CI 1.54-2.00). Higher rates of overdosing
224 were associated with patient-level factors such as older age and dialysis dependence. Hospital-
225 level factors were not significantly contributory. Across hospitals, the reference effect measure
226 for random site variation of receipt of an overdosed DOAC at discharge (90th percentile in
227 comparison to median hospital) was OR 1.46 (95% CI 1.29-1.65).

228 Across participating sites, the median observed percent of off-label DOAC use was
229 10.9% (IQR 6.8 – 15.9%). **Figure 3** displays hospital-level variation in the rate of off-label DOAC
230 use in addition to hospital-level variation in rates of underdosing and overdosing. The overall
231 adjusted MOR for off-label DOAC use across hospitals was 1.45 (95% CI 1.34-1.65) [REM or
232 random effects model range 0.47-2.14], indicating significant variation across sites. The
233 adjusted MOR for underdosing was 1.52 (95% CI 1.39-1.76) [REM range 0.42-2.36] and
234 overdosing 1.32 (1.20-1.84) [REM range 0.56-1.78]. **Table 2** shows that in random effects
235 models, while patient factors contributed more to variability than facility-level factors, facility-
236 level factors were nonetheless significantly contributory to both underdosing and overdosing.
237 **Figure 4** shows temporal trends in the rates of recommended dosing, underdosing, and
238 overdosing of DOACs. There was a significant increase in recommended dosing from 81.9% in
239 2014 to 90.9% in 2020, $p < 0.0001$ for trend. There was a significant decline in those receiving
240 underdosing (14.4% in 2014 to 6.6% in 2020, $p < 0.0001$ for trend) and overdosing (3.8% in 2014
241 to 2.5% in 2020, $p = 0.001$ for trend) dosing over the study period.

242 243 **DISCUSSION**

244 In this nationwide analysis of more than 22,000 patients hospitalized for care of atrial
245 fibrillation and discharged on DOACs, there are three key findings. First, 1 of 10 patients
246 hospitalized for AF receive under or overdosed DOACs. Second, significant hospital-level
247 variation exists with regards to use of off-label DOAC dose, with the greatest opportunity for
248 future improvement in hospitals that are Western, urban, or of comparatively small size. Third,
249 over the study period, rates of recommended DOAC dosing increased and off-label use
250 decreased. These results characterize favorable national trends in DOAC use while identifying
251 continued opportunities to improve safe and appropriate DOAC dosing at hospital discharge.

252 Prior work has analyzed rates of off-label DOAC dose in ambulatory outpatients (9.4%
253 are underdosed, 3.4% overdosed and 87% per recommendation) correlating adverse
254 cardiovascular or bleeding events in those who received off-label dosing.⁶ Our work extends
255 that of prior analyses by focusing on patients hospitalized with AF and reveals rates of off-label
256 use (8.9% underdosed, 2.3% overdosed) similar to that seen among outpatients.^{6,15}
257 Encouragingly, rates of recommended dosing remain relatively high and are comparable to
258 prior, smaller analyses in patients with atrial fibrillation warranting long-term anticoagulation.¹⁶
259 Consistent with prior, smaller studies, we found that several patient characteristics are more
260 common in those treated with an off-label dose, including older age, weight, and dialysis
261 dependence.^{6,17} The DOACs studied (apixaban, rivaroxaban and dabigatran) account for the
262 majority of DOAC use in the United States.^{18,19} Broadly, these data provide opportunities to
263 address this quality gap, focusing on patient profiles at-risk for off-label DOACs dose, risk of
264 over or underdosing based on type of DOAC utilized. These profiles may prove useful both at

265 the time of hospital discharge as well as during post-hospitalization follow-up clinical
266 encounters.

267 Significant hospital-level variation of off-label DOACs use exists after accounting for
268 measured variables. This finding suggests unmeasured aspects of site-level care may account
269 for a significant proportion of hospital-variation. Such aspects may include variability in
270 formalized structure surrounding quality improvement such as that recommended for
271 dedicated AF Centers of Excellence.²⁰ In this context, system-level quality improvement efforts
272 may prove fruitful, primarily focusing on reducing rates of underdosing. This may be achieved
273 with the the development of team-based, integrated clinical care pathways developed by
274 relevant stakeholders, including pharmacy, nursing, hospital medicine, and cardiology. Key
275 components may include the establishment of pre-discharge medication review processes,
276 enhanced clinical decision support with automated dosing checks accounting for key
277 comorbidities, medications, and up-to-date laboratory values embedded in the electronic
278 medical record, and close outpatient follow-up attentive to the importance of appropriate
279 DOAC dosing.

280 Nationwide improvement in rates of recommended DOAC use and decline in the use of
281 off-label use suggest there may already be some level of recognition of the importance of
282 appropriately-dosed anticoagulation. Nonetheless, the presence of a significant, persistent gap
283 and heterogeneity in performance across hospitals underscores the need for continued,
284 focused mitigation efforts. Endeavors may include not only system-level quality improvement
285 programs described above but also benchmarking of DOAC dosing and the development of
286 performance measures. Benchmarking such as that provided by quality improvement registries
287 like GWTG-AF is likely an effective feedback mechanism to stimulate improvement. In addition,
288 establishment of provider- and facility-level AF performance measures related to appropriate
289 AF dosing may also prove to be an effective a feedback mechanism and policy incentive for
290 continued quality improvement.

291 Limitations of our work include analysis of hospitals participating in the GWTG-AF
292 Registry, which may select for hospitals choosing to be involved with quality improvement
293 work. Though missing data was the major contributor to patient exclusion, the primary sample
294 size of >20,000 patients allow for meaningful analyses and represents a much greater sample in
295 comparison to other works evaluating off-label dosing. Factors considered by clinicians such as
296 frailty may influence DOAC dosing and and yet are not captured in the GWTG-AF registry. The
297 intent of our work was to evaluate rates of and factors associated with recommended and off-
298 label DOAC dose in those hospitalized for atrial fibrillation, and as such whether off-label DOAC
299 dosing persisted after discharge was not evaluated. However, this study represents (1) the
300 largest work, to date, analyzing contemporary DOAC dosing and (2) the first to evaluate
301 patients hospitalized for AF and discharged on DOAC therapy.

302

303 **CONCLUSIONS**

304 One in 10 patients hospitalized for AF are discharged on off-label doses of DOAC, with
305 significant variation across hospitals. Over time, rates of underdosing and overdosing declined
306 while the rate of recommended DOAC dosing increased. Owing to persistently elevated rates of
307 off-label DOAC dosing, quality-improvement efforts should be considered.

308

309 REFERENCES

310

- 311 1. Patel MR, Mahaffey KW, Garg J, Pan G, Singer DE, Hacke W, Breithardt G, Halperin JL,
312 Hankey GJ, Piccini JP, et al. Rivaroxaban versus warfarin in nonvalvular atrial fibrillation.
313 *N Engl J Med*. 2011;365:883-891. doi: 10.1056/NEJMoa1009638
- 314 2. Connolly SJ, Ezekowitz MD, Yusuf S, Eikelboom J, Oldgren J, Parekh A, Pogue J, Reilly PA,
315 Themeles E, Varrone J, et al. Dabigatran versus warfarin in patients with atrial
316 fibrillation. *N Engl J Med*. 2009;361:1139-1151. doi: 10.1056/NEJMoa0905561
- 317 3. Granger CB, Alexander JH, McMurray JJ, Lopes RD, Hylek EM, Hanna M, Al-Khalidi HR,
318 Ansell J, Atar D, Avezum A, et al. Apixaban versus warfarin in patients with atrial
319 fibrillation. *N Engl J Med*. 2011;365:981-992. doi: 10.1056/NEJMoa1107039
- 320 4. Brokmeier H, Kido K. Off-label Use for Direct Oral Anticoagulants: Valvular Atrial
321 Fibrillation, Heart Failure, Left Ventricular Thrombus, Superficial Vein Thrombosis,
322 Pulmonary Hypertension-a Systematic Review. *Ann Pharmacother*. 2021;55:995-1009.
323 doi: 10.1177/1060028020970618
- 324 5. Zhang XL, Zhang XW, Wang TY, Wang HW, Chen Z, Xu B, Xu W. Off-Label Under- and
325 Overdosing of Direct Oral Anticoagulants in Patients With Atrial Fibrillation: A Meta-
326 Analysis. *Circ Cardiovasc Qual Outcomes*. 2021;14:e007971. doi:
327 10.1161/CIRCOUTCOMES.121.007971
- 328 6. Steinberg BA, Shrader P, Thomas L, Ansell J, Fonarow GC, Gersh BJ, Kowey PR, Mahaffey
329 KW, Naccarelli G, Reiffel J, et al. Off-Label Dosing of Non-Vitamin K Antagonist Oral
330 Anticoagulants and Adverse Outcomes: The ORBIT-AF II Registry. *J Am Coll Cardiol*.
331 2016;68:2597-2604. doi: 10.1016/j.jacc.2016.09.966
- 332 7. Sugrue A, Sanborn D, Amin M, Farwati M, Sridhar H, Ahmed A, Mehta R, Siontis KC,
333 Mulpuru SK, Deshmukh AJ, et al. Inappropriate Dosing of Direct Oral Anticoagulants in
334 Patients with Atrial Fibrillation. *Am J Cardiol*. 2021;144:52-59. doi:
335 10.1016/j.amjcard.2020.12.062
- 336 8. Santos J, Antonio N, Rocha M, Fortuna A. Impact of direct oral anticoagulant off-label
337 doses on clinical outcomes of atrial fibrillation patients: A systematic review. *Br J Clin*
338 *Pharmacol*. 2020;86:533-547. doi: 10.1111/bcp.14127
- 339 9. Lewis WR, Piccini JP, Turakhia MP, Curtis AB, Fang M, Suter RE, Page RL, 2nd, Fonarow
340 GC. Get With The Guidelines AFIB: novel quality improvement registry for hospitalized
341 patients with atrial fibrillation. *Circ Cardiovasc Qual Outcomes*. 2014;7:770-777. doi:
342 10.1161/CIRCOUTCOMES.114.001263
- 343 10. FDA Package Insert: Dabigatran.
344 https://www.accessdata.fda.gov/drugsatfda_docs/label/2015/022512s028lbl.pdf.
- 345 11. FDA Package Insert: Rivaroxaban.
346 https://www.accessdata.fda.gov/drugsatfda_docs/label/2021/215859s000lbl.pdf.
- 347 12. FDA Package Insert: Apixaban.
348 https://www.accessdata.fda.gov/drugsatfda_docs/label/2012/202155s000lbl.pdf.
- 349 13. Glorioso TJ, Grunwald GK, Ho PM, Maddox TM. Reference effect measures for
350 quantifying, comparing and visualizing variation from random and fixed effects in non-
351 normal multilevel models, with applications to site variation in medical procedure use
352 and outcomes. *BMC Med Res Methodol*. 2018;18:74. doi: 10.1186/s12874-018-0517-7

- 353 14. Chan PS, Maddox TM, Tang F, Spinler S, Spertus JA. Practice-level variation in warfarin
354 use among outpatients with atrial fibrillation (from the NCDR PINNACLE program). *Am J*
355 *Cardiol.* 2011;108:1136-1140. doi: 10.1016/j.amjcard.2011.06.017
- 356 15. Dawson T, DeCamillo D, Kong X, Shensky B, Kaatz S, Krol GD, Ali M, Haymart B, Froehlich
357 JB, Barnes GD. Correcting Inappropriate Prescribing of Direct Oral Anticoagulants: A
358 Population Health Approach. *J Am Heart Assoc.* 2020;9:e016949. doi:
359 10.1161/JAHA.120.016949
- 360 16. Luo N, Xu H, Jneid H, Fonarow GC, Lopes RD, Piccini JP, Curtis AB, Russo AM, Lewis WR,
361 Matsouaka RA, et al. Use of Oral Anticoagulation in Eligible Patients Discharged With
362 Heart Failure and Atrial Fibrillation. *Circ Heart Fail.* 2018;11:e005356. doi:
363 10.1161/CIRCHEARTFAILURE.118.005356
- 364 17. Rose AJ, Lee JS, Berlowitz DR, Liu W, Mitra A, Yu H. Guideline-discordant dosing of
365 direct-acting oral anticoagulants in the veterans health administration. *BMC Health Serv*
366 *Res.* 2021;21:1351. doi: 10.1186/s12913-021-07397-x
- 367 18. Colacci M, Tseng EK, Sacks CA, Fralick M. Oral Anticoagulant Utilization in the United
368 States and United Kingdom. *J Gen Intern Med.* 2020;35:2505-2507. doi:
369 10.1007/s11606-020-05904-0
- 370 19. Marzec LN, Wang J, Shah ND, Chan PS, Ting HH, Gosch KL, Hsu JC, Maddox TM. Influence
371 of Direct Oral Anticoagulants on Rates of Oral Anticoagulation for Atrial Fibrillation. *J Am*
372 *Coll Cardiol.* 2017;69:2475-2484. doi: 10.1016/j.jacc.2017.03.540
- 373 20. Piccini JP, Sr., Allred J, Bunch TJ, Deering TF, Di Biase L, Hussein AA, Lewis WR, Mittal S,
374 Natale A, Osorio J, et al. Rationale, considerations, and goals for atrial fibrillation centers
375 of excellence: A Heart Rhythm Society perspective. *Heart Rhythm.* 2020;17:1804-1832.
376 doi: 10.1016/j.hrthm.2020.04.033

377
378
379
380
381
382
383
384
385
386
387
388
389
390
391
392
393
394
395
396

397 **TABLES AND FIGURES**

398

399 **Tables**

400 Table 1: Summary of DOAC information, patient-level and hospital characteristics stratified by
401 underdosed, recommended dose, overdosed and the overall cohort.

402

403 Table 2. Contribution to Hospital-Level Variation by Groups of Factors: All Factors, Patient-Level
404 Factors, and Hospital-Level Factors

405

406

407 **Figures**

408 Figure 1: Rates of DOAC dosing at discharge in those hospitalized for atrial fibrillation, stratified
409 by recommended dosing, underdosed or overdosed (percentages displayed).

410

411 Figure 2: Factors associated with off-label dosing (Panel A: Underdosing and Panel B:
412 Overdosing).

413

414 Figure 3: Facility-level variation in the rate of off-label DOAC use (Panel A), overdosing (Panel B)
415 and underdosing (panel C) at discharge

416

417 Figure 4: Trends, from 2014-2020, in the rates of recommended, under and overdosing of
418 DOACs.

419

420

421 **Appendix**

422 Supplemental Table 1: Baseline dosing recommendation and dosing adjustments for commonly
423 prescribed DOACs in the United States.

424

425 Supplemental Figure 1: Attrition plot deriving the primary cohort of interest.

426

427

428

429

430

431

432

433

434

435

436

437

438

439

440

441 **Table 1:** Summary of DOAC information, patient-level and hospital characteristics stratified by
 442 underdosed, recommended dose, overdosed and the overall cohort.

Variable	Overall (N=22470)	Underdosed (N=2006)	Recommended (N=19953)	Overdosed (N=511)	P-value+
Demographics					
Age, Mean (years) +/- STD	70.1 +/- 12.1	76.9 +/- 11.2	69.1 +/- 11.9	80.6 +/- 7.8	<.0001
Sex, Female (%)	10818 (48.1%)	1184 (59.0%)	9295 (46.6%)	339 (66.3%)	<.0001
BMI, Mean +/- STD	31.2 +/- 7.9	29.7 +/- 7.0	31.5 +/- 7.9	25.1 +/- 5.8	<.0001
Race/Ethnicity					
White, N (%)	18530 (82.5%)	1591 (79.3%)	16516 (82.8%)	423 (82.8%)	<.0001
Black, N (%)	1398 (6.2%)	106 (5.3%)	1268 (6.4%)	24 (4.7%)	
Asian, N (%)	286 (1.3%)	35 (1.7%)	246 (1.2%)	5 (0.9%)	
Other, N (%)	739 (3.3%)	73 (3.6%)	650 (3.3%)	16 (3.1%)	
Insurance					
Missing, N (%)	216 (1.0%)	11 (0.6%)	201 (1.0%)	4 (0.8%)	<.0001
Private/HMO/Other, N (%)	9397 (41.8%)	668 (33.3%)	8584 (43.0%)	145 (28.4%)	
Medicaid, N (%)	2219 (9.9%)	198 (9.9%)	1974 (9.9%)	47 (9.2%)	
Medicare, N(%)	5260 (23.4%)	557 (27.8%)	4556 (22.8%)	147 (28.8%)	
Medicare - Private/HMO/Other, N (%)	4894 (21.8%)	544 (27.1%)	4184 (21.0%)	166 (32.5%)	
No Insurance, N (%)	484 (2.2%)	28 (1.4%)	454 (2.3%)	2 (0.4%)	
Comorbid Conditions					
Anemia, N (%)	2095 (9.3%)	283 (14.1%)	1747 (8.8%)	65 (12.7%)	<.0001
COPD, N (%)	3698 (16.5%)	406 (20.2%)	3175 (15.9%)	117 (22.9%)	<.0001
Coronary Artery Disease, N (%)	6319 (28.1%)	703 (35.0%)	5440 (27.3%)	176 (34.4%)	<.0001
CRT-D, N (%)	307 (1.4%)	30 (1.5%)	267 (1.3%)	10 (2.0%)	0.4298
CRT-P, N(%)	57 (0.3%)	4 (0.2%)	49 (0.3%)	4 (0.8%)	0.0513
Prior Stroke or TIA, N (%)	2795 (12.4%)	320 (16.0%)	2399 (12.0%)	76 (14.9%)	<.0001
Diabetes, N (%)	6524 (29.0%)	647 (32.3%)	5750 (28.8%)	127 (24.9%)	0.0006
Dialysis, N (%)	158 (0.7%)	54 (2.7%)	92 (0.5%)	12 (2.4%)	<.0001
Heart Failure, N (%)	6570 (29.2%)	670 (33.4%)	5724 (28.7%)	176 (34.4%)	<.0001
Hypertension, N (%)	17744 (79.0%)	1663 (83.0%)	15666 (78.5%)	415 (81.2%)	<.0001
ICD Only, N (%)	723 (3.2%)	71 (3.5%)	639 (3.2%)	13 (2.5%)	0.4902
Left Ventricular Hypertrophy, N (%)	312 (1.4%)	23 (1.2%)	280 (1.4%)	9 (1.8%)	0.4946
Liver Disease, N (%)	220 (1.0%)	22 (1.1%)	193 (1.0%)	5 (1.0%)	0.8543
Mechanical Prosthetic Heart Valve, N (%)	82 (0.4%)	12 (0.6%)	68 (0.3%)	2 (0.4%)	0.1891
Mitral Stenosis, N (%)	103 (0.5%)	5 (0.3%)	95 (0.5%)	3 (0.6%)	0.3253
Obstructive Sleep Apnea, N (%)	4523 (20.1%)	265 (13.2%)	4200 (21.1%)	58 (11.4%)	<.0001
Pacemaker, N (%)	1597 (7.1%)	194 (9.7%)	1338 (6.7%)	65 (12.7%)	<.0001
Peripheral Vascular Disease, N (%)	1327 (5.9%)	163 (8.1%)	1108 (5.6%)	56 (11.0%)	<.0001
Prior Hemorrhage, N (%)	627 (2.8%)	94 (4.7%)	518 (2.6%)	15 (2.9%)	<.0001
Prior MI, N (%)	2236 (10.0%)	243 (12.1%)	1945 (9.8%)	48 (9.4%)	0.0031
Prior PCI, N (%)	2793 (12.4%)	320 (16.0%)	2394 (12.0%)	79 (15.5%)	<.0001
Rheumatic Heart Disease, N (%)	43 (0.2%)	7 (0.4%)	36 (0.2%)	0 (0%)	0.1562
Sinus Node Dysfunction, N (%)	939 (4.2%)	114 (5.7%)	786 (3.9%)	39 (7.6%)	<.0001
Smoker, N (%)	2257 (10.0%)	159 (7.9%)	2065 (10.4%)	33 (6.5%)	<.0001
Thyroid Disease, N (%)	4206 (18.3%)	487 (24.3%)	3595 (18.0%)	124 (24.3%)	<.0001

443
 444
 445
 446

447 **Table 1 (Continued)**

Atrial Fibrillation Type					
First Detected Atrial Fibrillation, N (%)	4664 (20.8%)	465 (23.2%)	4102 (20.6%)	97 (19.0%)	<0.0001
Paroxysmal Atrial Fibrillation, N (%)	9445 (42.0%)	832 (41.2%)	8388(42.0%)	225 (44.0%)	
Persistent Atrial Fibrillation, N (%)	5011 (22.3%)	290 (14.5%)	4629 (23.2%)	92 (18.0%)	
Permanent or long standing Persistent Atrial Fibrillation, N (%)	1217 (5.4%)	147 (7.3%)	1026 (5.1%)	44 (8.6%)	
Unable to Determine, N (%)	2132 (9.5%)	272 (13.6%)	1807 (9.1%)	53 (10.4%)	
Cardiomyopathy Type					
Ischemic, N (%)	785 (3.5%)	88 (4.4%)	677 (3.4%)	20 (3.9%)	<.0001
Non-Ischemic, N (%)	1458 (6.5%)	71 (3.52%)	1364 (6.8%)	23 (4.5%)	
Both, N (%)	23 (0.1%)	0 (0%)	22 (0.1%)	1 (0.2%)	
Missing, N (%)	793 (3.5%)	55 (2.7%)	721 (3.6%)	17 (3.3%)	
Other Risk Factors					
CHADS2Vasc Score, Mean +/- STD	3.76 +/- 1.75	4.59 +/- 1.6	3.65 +/- 1.74	4.81 +/- 1.41	<.0001
ORBIT Score, Mean +/- STD	1.93 +/- 1.53	2.74 +/- 1.47	1.82 +/- 1.5	2.90 +/- 1.39	<.0001
CKD with eGFR < 60 ml/min, N (%)	8456 (37.6%)	1149 (57.3%)	6950 (34.8%)	357 (69.9%)	<.0001
Prior Major Bleeding, N (%)	2146 (9.6%)	304 (15.2%)	1781 (8.9%)	61 (11.9%)	<.0001
Prior AF Ablation Procedure, N (%)	2797 (12.5%)	155 (7.7%)	2590 (13.0%)	52 (10.2%)	<.0001
Admission Creatinine Clearance (Cockcroft Gault, Mean (ml/min) +/- STD)	86.39 +/- 46	61.69 +/- 35.45	90.01 +/- 46.12	42.82 +/- 16.33	<.0001
Discharge Creatinine Clearance (Cockcroft Gault, Mean (ml/min) +/- STD)	90.6 +/- 47.43	65.7 +/- 35.13	94.38 +/- 47.6	40.88 +/- 12.18	<.0001
Anti-arrhythmic Medication Use Prior to Admission, N (%)	4445 (19.8%)	355 (17.7%)	3990 (20.0%)	100 (19.6%)	0.0473
Hospital Characteristics					
Academic / Teaching Hospital, N (%)	18355 (81.7%)	1541 (76.8%)	16406 (82.2%)	408 (79.8%)	<.0001
Teaching Status Missing, N (%)	984 (4.4%)	109 (5.4%)	841 (4.2%)	34 (6.7%)	
Rural Location, N (%)	1073 (4.8%)	88 (4.4%)	952 (4.8%)	33 (6.5%)	0.1204
Location Missing, N (%)	985 (4.4%)	109 (5.4%)	841 (4.2%)	34 (6.7%)	
Adult Cardiac Electrophysiology Hospital, N (%)	2044 (9.1%)	229 (11.4%)	1746 (8.8%)	69 (13.5%)	<.0001
Missing, N (%)	3031 (13.5%)	379 (18.9%)	2541 (12.7%)	111 (21.7%)	
Bed Size, Missing, N (%)	984 (4.4%)	109 (5.4%)	841 (4.2%)	34 (6.7%)	<.0001
25-49 Hospital Beds, N (%)	24 (0.1%)	2 (0.1%)	20 (0.1%)	2 (0.4%)	
50-99 Hospital Beds, N (%)	500 (2.2%)	39 (1.9%)	445 (2.2%)	16 (3.1%)	
100-199 Hospital Beds , N (%)	2289 (10.2%)	318 (15.9%)	1901 (9.5%)	70 (13.7%)	
200-299 Hospital Beds, N (%)	1969 (8.8%)	218 (10.9%)	1691 (8.5%)	60 (11.7%)	
300-399 Hospital Beds, N (%)	3143 (14.0%)	261 (13.0%)	2810 (14.1%)	72 (14.1%)	
400-499 Hospital Beds, N (%)	4064 (18.1%)	381 (19.0%)	3601 (18.1%)	82 (16.1%)	
500+ Hospital Beds, N (%)	9497 (42.3%)	678 (33.8%)	8644 (43.3%)	175 (34.3%)	
Hospital Location, Missing, N (%)	30 (0.1%)	4 (0.2%)	26 (0.1%)	0 (0%)	<.0001
Northeast, N (%)	6529 (29.1%)	423 (21.1%)	5974 (29.9%)	132 (25.8%)	
Midwest, N (%)	3478 (15.5%)	225 (11.2%)	3197 (16.0%)	56 (11.0%)	
South, N (%)	9402 (41.8%)	997 (49.7%)	8156 (40.9%)	249 (48.7%)	
West, N (%)	3031 (13.5%)	357 (17.8%)	2600 (13.0%)	74 (14.5%)	

448
449 STD = standard deviation; COPD = chronic obstructive pulmonary disease; CRT-P = cardiac
450 resynchronization therapy – pacemaker; CRT-D = cardiac resynchronization therapy –
451 defibrillator; PCI = percutaneous coronary intervention; MI = myocardial infarction; ICD =
452 implantable-cardioverter defibrillator; AF = atrial fibrillation; HMO = health maintenance
453 organization

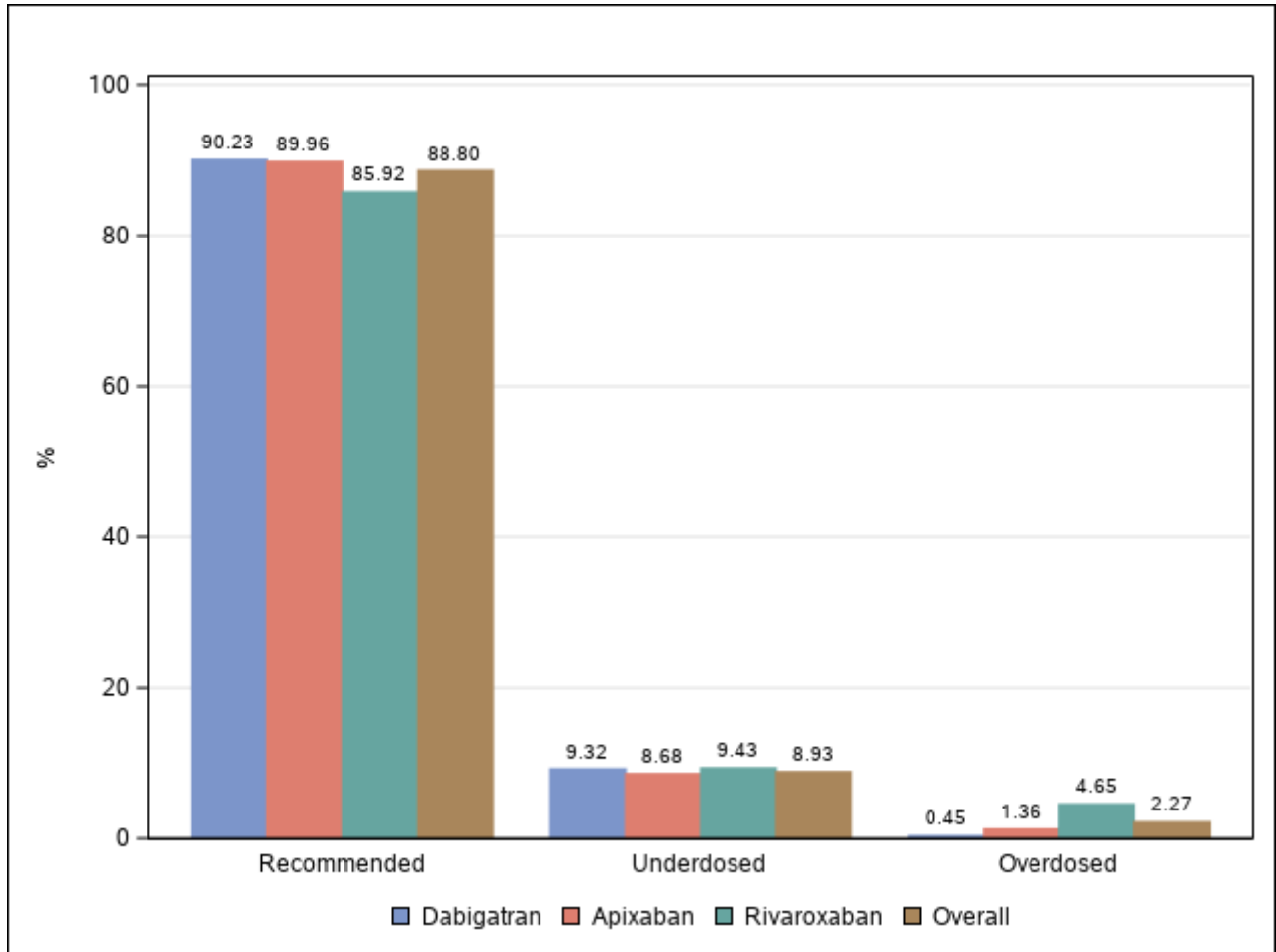
454 **Table 2:** Contribution to Hospital-Level Variation by Groups of Factors: All Factors, Patient-Level
 455 Factors, and Hospital-Level Factors
 456

		Reference Effect Measures* ranges and percentiles		
Outcome	Variables	Range	10th	90th
Underdosed	All factors	[0.147, 5.496]	0.289	3.224
	Patient factors	[0.172, 4.325]	0.328	2.826
	Hospital factors	[0.669, 2.159]	0.77	1.698
Overdosed	All factors	[0.017, 13.797]	0.082	6.606
	Patient factors	[0.017, 12.794]	0.085	6.34
	Hospital factors	[0.630, 1.187]	0.63	1.187

*Compares patients clustered within hospitals at specified percentiles of random effect distributions to similar patients in a reference, median hospital. Wider ranges indicate larger contributions to overall variation in outcome from variables.

457
 458
 459

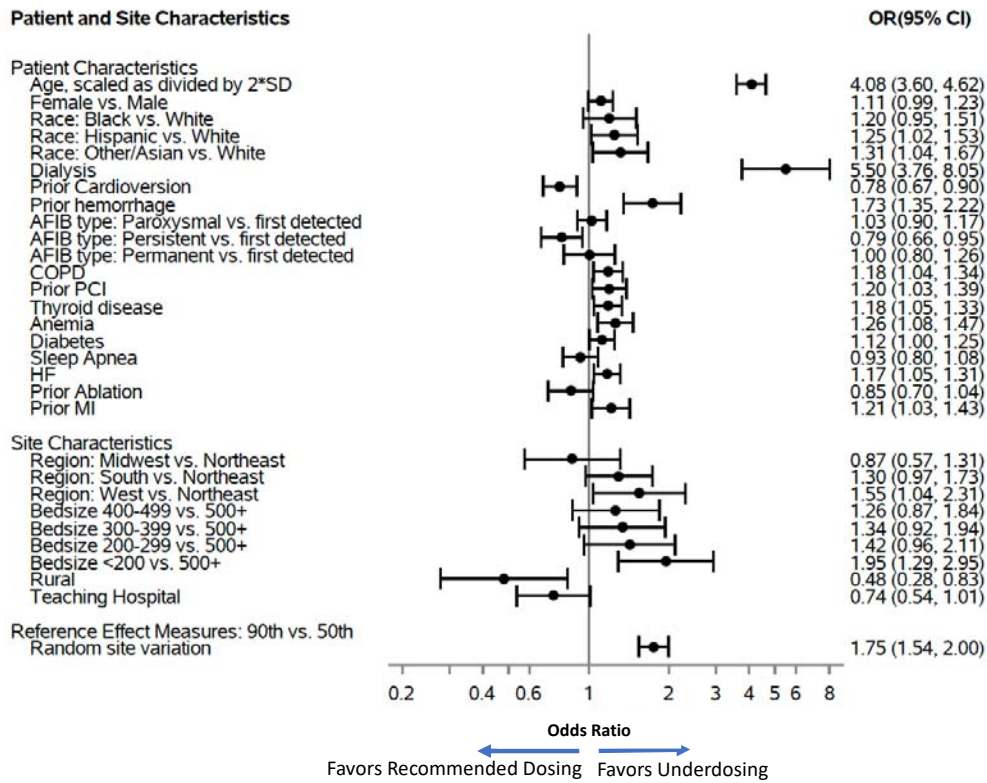
460 **Figure 1:** Rates of DOAC dosing at discharge in those hospitalized for atrial fibrillation, stratified
461 by recommended dosing, underdosed or overdosed (percentages displayed).



462
463
464
465
466
467
468
469
470
471
472
473
474
475
476
477

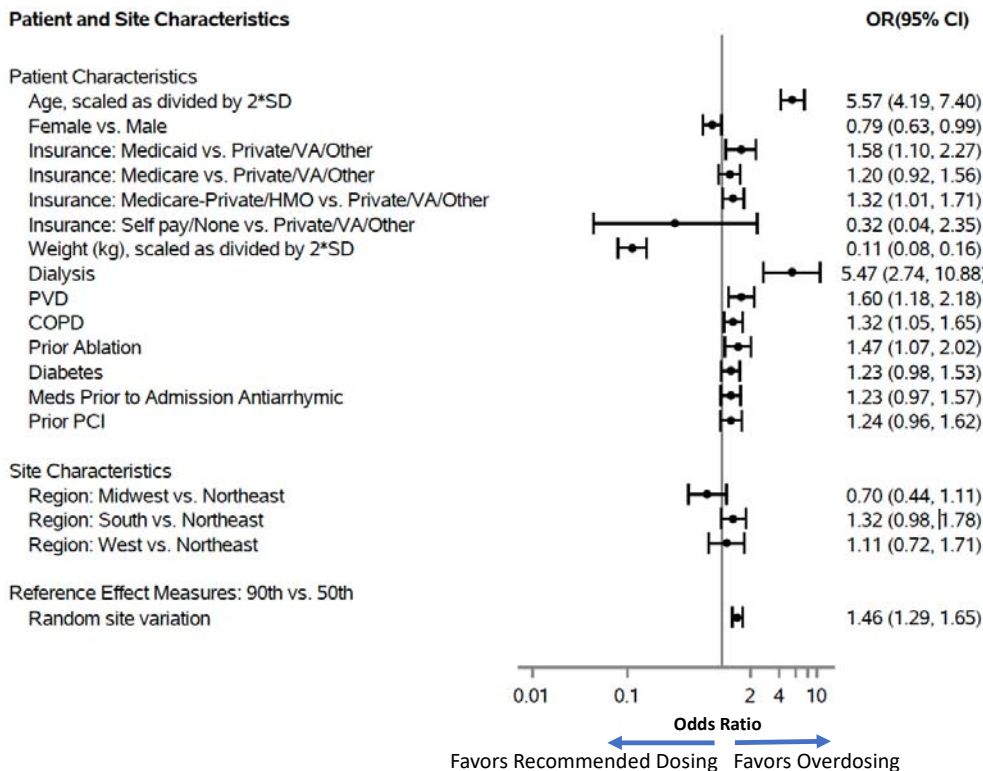
478 **Figure 2:** Factors associated with off-label dosing.

479 **Panel A.** Factors associated with DOAC underdosing versus recommended dosing.



480

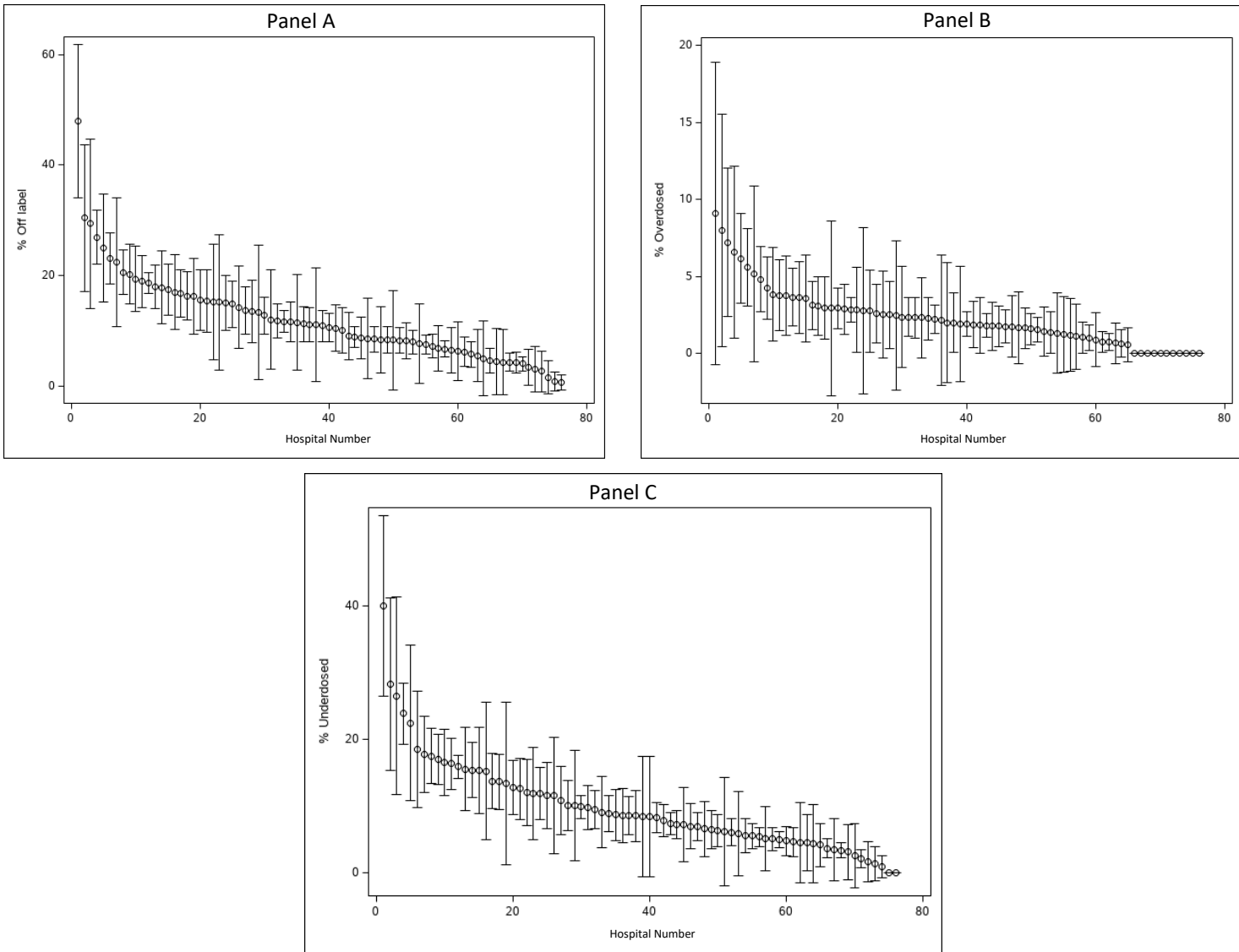
481 **Panel B.** Factors associated with DOAC overdosing versus recommended dosing.



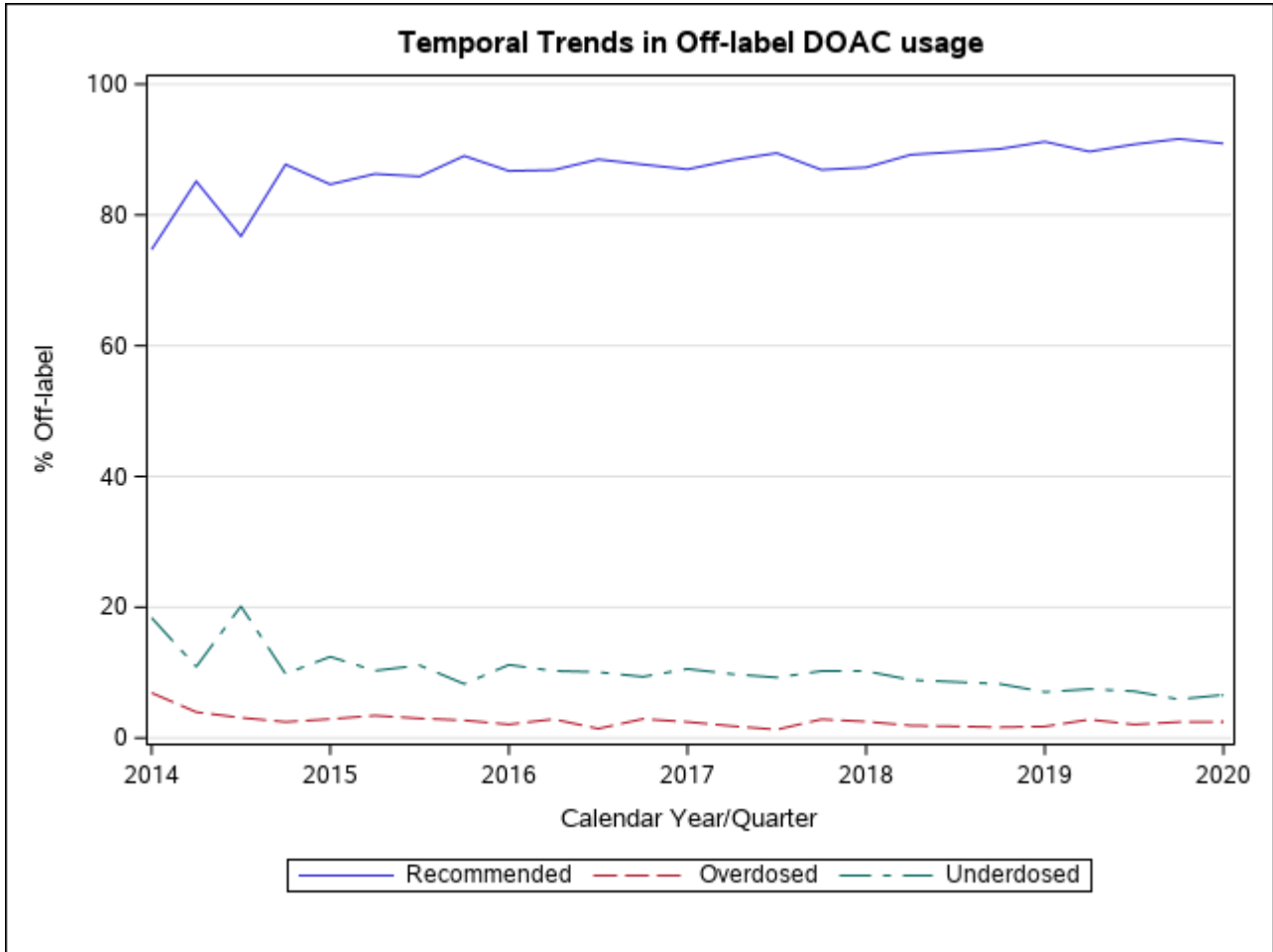
482

483 **Figure 3:** Hospital-level variation in the rate of off-label DOAC use (panel A), overdosing (panel
484 B) and underdosing (panel C) at discharge.

485
486
487
488
489
490
491
492
493
494
495
496
497
498
499
500
501
502
503
504
505
506



507 **Figure 4:** Trends, from 2014-2020, in the rates of recommended dosing, underdosing, and
508 overdosing of DOACs.
509



510
511
512
513
514
515
516
517
518
519
520
521
522
523
524
525

526
527
528
529

Appendix

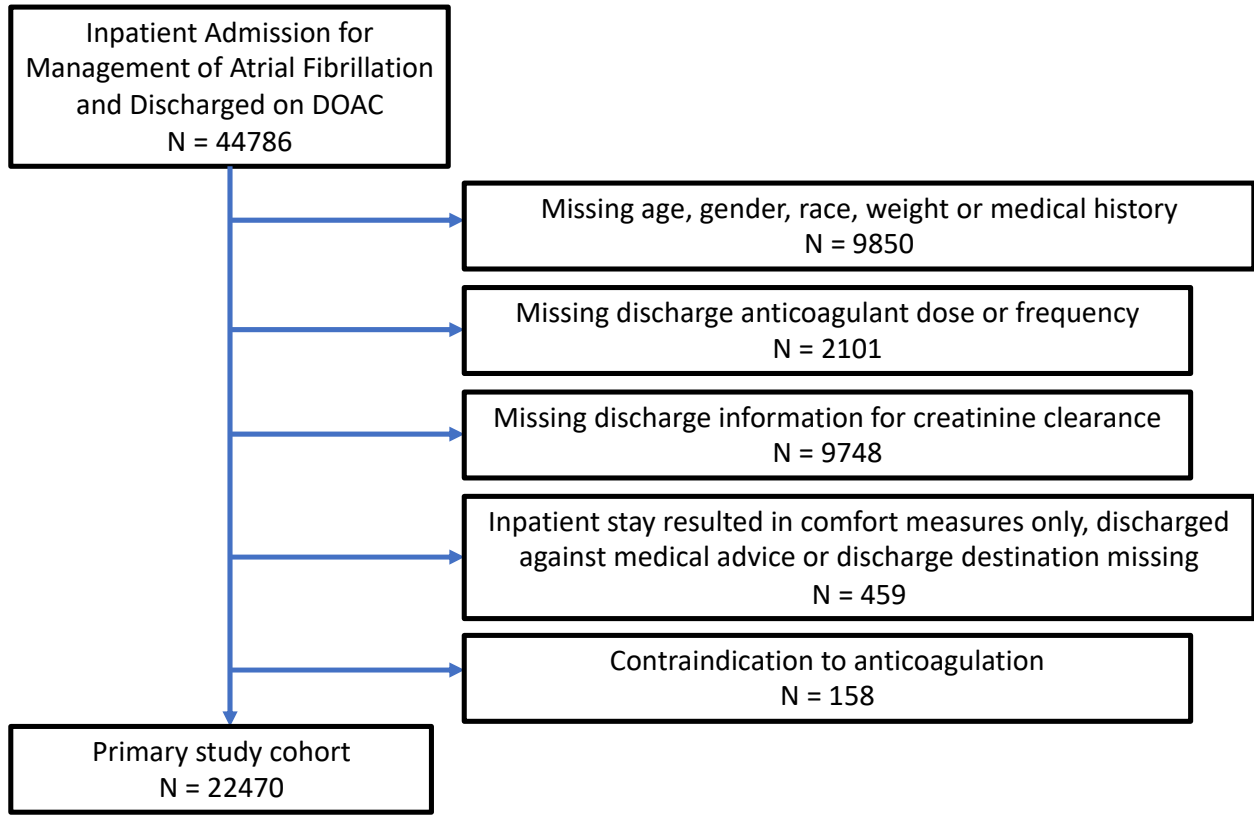
Supplemental Figure 1: Baseline dosing recommendation and dosing adjustments for commonly prescribed DOACs in the United States.

	Baseline Dosing Recommendation	Dosing Adjustments
Dabigatran	150mg PO BID for CrCl >30 ml/min	<ol style="list-style-type: none">1. CrCl 30-50 ml/min = if receiving concomitant dronedarone, reduce to 75mg PO BID2. 15-30 ml/min = 75mg PO BID unless on dronedarone, then avoid concurrent use3. CrCl <15 ml/min = Not Recommended
Apixaban	5mg PO BID	<ol style="list-style-type: none">1. 2.5mg PO BID recommended if any 2 of 3 factors present: age \geq80 years old, weight \leq60 kg or Creatinine \geq1.5 mg/dL2. If on dialysis: 5mg PO BID, reduce to 2.5mg BID if age \geq80 years or weight \leq60 Kg
Rivaroxaban	20mg PO qDay for CrCl >50 ml/min	<ol style="list-style-type: none">1. CrCl 15-50 ml/min = 15mg PO qDay2. CrCl <15 ml/min = Not Recommended

530
531
532
533
534
535
536
537
538
539
540
541
542
543
544
545
546
547
548
549
550
551

552 Supplemental Figure 1: Attrition plot deriving the primary cohort of interest.

553



554