

Molecular Neuropathology and Cerebrospinal Fluid Diagnostic Biomarkers of SARS-Cov2 Infection in Central Nervous System– A Scoping Review Protocol

Victor Meza Kyaruzi ^{1,2*}, Emmanuel Mduma³, Arsene Daniel Nyalundja ^{4,5}, Soham Bandyopadhyay ⁶, Larrey Kasereka Kamabu ⁷, Bydaa Atron ⁸, Mugenyi Nathan ⁹, Jeremiah Oluwatomi Itodo Daniel ¹⁰, Zobidah Yousif Elamin ¹¹, Boniphace Barnabas Marwa ¹², Rajab Msemo ¹², Ahmed Naeem ¹³, Tumusifu Manegabe Jean de Dieu¹⁴, Tarun Suvari Kumar ¹⁵, Ngepgou Beckline Tazoah¹⁶, Ugwoke Franklin Chiazio¹⁷, Samuel Oreoluwa David ¹⁸, Yves Jacket Nsavyimana¹⁹, Constansia Anselim Bureta ²⁰, Nicephorus Rutabasibwa ²⁰, Laurent Lemeru Mchome ²⁰, Emnet Tesfaye Shimber ²¹, Abenezer Tirsit ²², Sayoki Mfinanga ²³, Getaw Worku Hassen ²⁴, Osama Abdellaziz ²⁵, Amos Mwakigonja ²⁶

1. Department of Surgery , Muhimbili University of Health and Allied Sciences, Dar es salaam , Tanzania
2. Research Department , WINNERS Foundation , Yaounde , Cameroon
3. Rabininsia Memorial Hospital, Dar es salaam, Tanzania.
4. Faculty of Medicine, Université Catholique de Bukavu, South Kivu, Democratic Republic of Congo
5. Center for Tropical Diseases and Global Health, Université Catholique de Bukavu, South Kivu, Democratic Republic of Congo
6. Oxford University Global Surgery Group, University of Oxford , UK
7. Department of Surgery, Neurosurgery, College of Medicine, Makerere University, Uganda
8. Faculty of Medicine, Sivas Cumhuriyet University, Sivas, Türkiye
9. Faculty of Medicine, Mbarara University of Science and Technology, Mbarara, Uganda
10. College of Health Sciences, Obafemi Awolowo University, Ile-Ife, Osun, Nigeria.
11. Department of histopathology and cytology , Omdrman Islamic University , Khartoum , Sudan
12. Department of Orthopedics , Traumatology and Neurosurgery, Muhimbili University of Health and Allied Science , Dar es salaam , Tanzania
13. Al-Azhar University , Faculty of Medicine for Men in Assyut, Egypt
14. Surgery Department, School of Medicine , Catholic University of Bukavu, Bukavu , DR Congo
15. Rungaraya Medical College, Kakinada, India
16. Faculty of Health sciences, university of Buea, Cameroon.
17. Faculty of Medicine, University of Calabar, Calabar Nigeria
18. College of Health Science , Obafemi Awolowo University , Ile-Ife, Nigeria
19. Faculty of Medicine, University of Burundi, Bujumbura, Burundi
20. Department of Neurosurgery , Muhimbili Orthopedic Institute
21. Department of Critical Care and Emergency Medicine, Hawassa University, Ethiopia

22. Department of Neurosurgery , Addis Ababa University , Addis Ababa , Ethiopia
23. Chief Research Scientist, National Institute of Medical Research, Dar es salaam, Tanzania
24. Department of Emergency Medicine, New York Medical College, New York, USA
25. Department of Neurosurgery, Faculty of Medicine, Alexandria University, Alexandria , Egypt
26. Department of Pathology, School of Medicine, Muhimbili University of Health and Allied Sciences

Correspondence to:

Dr Victor Meza Kyaruzi

Email: dr.kyaruzi@gmail.com

Mobile: +25557791177

ORCID-0000-0002-9566-8462

ABSTRACT

Introduction

Despite the broad spectrum of neurological symptomatic manifestation in COVID19 patients, the brain tissue susceptibility and permissiveness to SARS-Cov2 infection is yet uncertain. This critical appraisal aims at bridging the gap by consolidating the body of evidence for meticulous evaluation of molecular neuropathological pathways and CSF diagnostic signatures of SARS-Cov2 infection in the central nervous system (CNS) that will underpin further strategic approach for neuroprotection and treatment of neurological COVID19

Methods and Analysis

We have developed the protocol of this review according to the provisions of Joanna Briggs Institute Reviewer's Manual for Evidence Synthesis ,2015 and Arksey and O Malley's Methodological Framework ,2005. The articles for this review will be sourced from several electronic databases including EMBASE, PubMed, Scopus, Web of Science (WOS), Cochrane, Crossref Metadata and Semantic scholar. Herein we generated the search strategy using the medical subject headings [MeSH Terms] , term in all field bibliography at all permutations in conjunctions with boolean operators

Ethical Clearance and Dissemination plan

Herein the review will not involve the human participants henceforth the ethical clearance approval is not applicable .We will disseminate the final findings of this review to scientific conferences at local and international level. The manuscript for final findings will be published on reputable journal of neuroscience.

Keywords: Molecular, Neuropathology, CSF biomarkers, SARS-Cov2

INTRODUCTION

The classical pathogenic pathway of SARS-Cov2 infection has been elucidated in the respiratory system where viral host tropism is prominently elaborated by expression and upregulation of angiotensin converting enzyme 2 (ACE2) receptors on the apical membrane of respiratory epithelium (1,2). However the wide distribution of ACE2 receptors across multiple organs including the heart, kidneys, gastrointestinal ,pancreas and severe complications such as ischaemic stroke , haemorrhagic encephalopathy and posterior reversible encephalopathy syndrome with epileptic seizures have been reported in more than one-third of the COVID19 hospitalized patients (3,4).

Despite the broad spectrum of neurological symptomatic manifestation, the neuropathological pathway is yet uncertain, the brain tissue susceptibility and permissiveness to SARS-Cov2 has not been elucidated. Whether the pathophysiology and constellation of symptoms is concealed within the direct viral neuroinvasion or systemic viremia and inflammatory response syndrome is still indeterminate (5).

The idiosyncratic mechanisms of how the virus and cytokines invade and penetrate the brain blood barrier (BBB) surrounding the brain tissue is undefined. However both preclinical and human studies have described some hypothetical neuroinvasion pathways such as retrograde axonal transportation from peripheral nervous system to the central nervous system , transcribrial route , ocular surface and haematogenous route .Several cell surface receptors such as ACE2, transmembrane protease serine 2 (TMPRSS2) and P2X7 have been identified as the culprit of SARS-Cov2 neuropathogenesis (6,7).

Severity of neuronal damage and neuroinflammation may be detected by the level of biomarker concentration in both serum and CSF fluid, however the sensitivity and specificity of these biomarkers is still debatable. Elevated levels of neurofilament light chain protein (NfL) and glial fibrillary acidic protein (GFAP) delineate the ongoing acute neuronal injury and astrocytic damage respectively in adjunct with detection of other biomarkers such as T tau and viral RNA. Despite of their diagnostic assays significant concentration variation for encephalitis , encephalopathy and acute disseminated encephalomyelitis (ADEM) has been elaborated (8–11).

To our knowledge this critical appraisal will bridge the gap by consolidating the body of evidence for meticulous evaluation of molecular neuropathological pathways and CSF diagnostic signatures of SARS-Cov2 infection in the central nervous system (CNS) that will underpin further strategic approach for neuroprotection and treatment of neurological COVID19.

Review objectives

Primary objective

To determine the molecular neuropathological pathways of SARS-Cov2 infection in CNS

Secondary objectives

1. To describe the neuropathological manifestation of SARS-Cov2 infection in CNS
2. To determine the types and accuracy of CSF diagnostic biomarkers of SARS-Cov2 infection in CNS

METHODS AND ANALYSIS

We have developed the protocol of this review according to the provisions of Joanna Briggs Institute Reviewer's Manual for Evidence Synthesis ,2015 and Arksey and O Malley's Methodological Framework ,2005 (12,13) . A scope review is considered suitable for the fitness of our study design because of outstanding paucity for strong evidence to unfold the uncertainty about the context and concepts of molecular neurophthophysiology and CSF diagnostic signatures of SARS-Cov2 infection in CNS.

Herein the methodology approach for this protocol is adopted according to the five stages of Arksey and O'Malley's Framework

Stage 1. Identifying the research question

The research question in our protocol has been described in alignment with the Participants, Concept and Context (PCC) strategy.

Participants

All human subjects at any age diagnosed with COVID19 and presenting with neurological manifestation will be evaluated in this review

Concept

We will evaluate the molecular neuropathological pathways and CSF diagnostic biomarkers of SARS-Cov2 infection in CNS.

Context

In this review we will critically appraise all existing primary sources of evidence in the broad context of neuropathogenesis of COVID19 evaluating more on the theories of molecular susceptibility and permissiveness of SARS-Cov2 tropism in the brain and spinal cord parenchyma. The type of surface receptors expressed and upregulated for viral neuroinvasion ,

molecular pathways involved in axonal injury and astrocytic damage , the cellular metabolic and inflammatory response following the neuroinvasion of the virus in CNS tissue .The types and diagnostic accuracy of CSF biomarkers of SARS-Cov2 infection in CNS.

Stage 2: Identifying relevant studies

Information source and search strategy

Information source

The articles for this review will be sourced from several electronic databases including EMBASE, PubMed, Scopus, Web of Science (WOS), Cochrane, Crossref Metadata and Semantic scholar.

Search strategy

Herein we generated the search strategy using the medical subject headings [MeSH Terms] , term in all field bibliography at all permutations in conjunctions with boolean operators such as AND or OR.

Neuropathology [MeSH terms] OR Molecular Neuropathology [MeSH Terms] AND CSF diagnostic biomarkers [MeSH Terms] AND COVID19 OR SARS-Cov2. The results from PubMed electronic database are presented in **table 1** on appendix section.

Eligibility criteria

The eligibility criteria was constructed based on the PCC strategy as the operation blueprint to guide the reviewers for appropriate article selection

Participants: Human subjects at any age

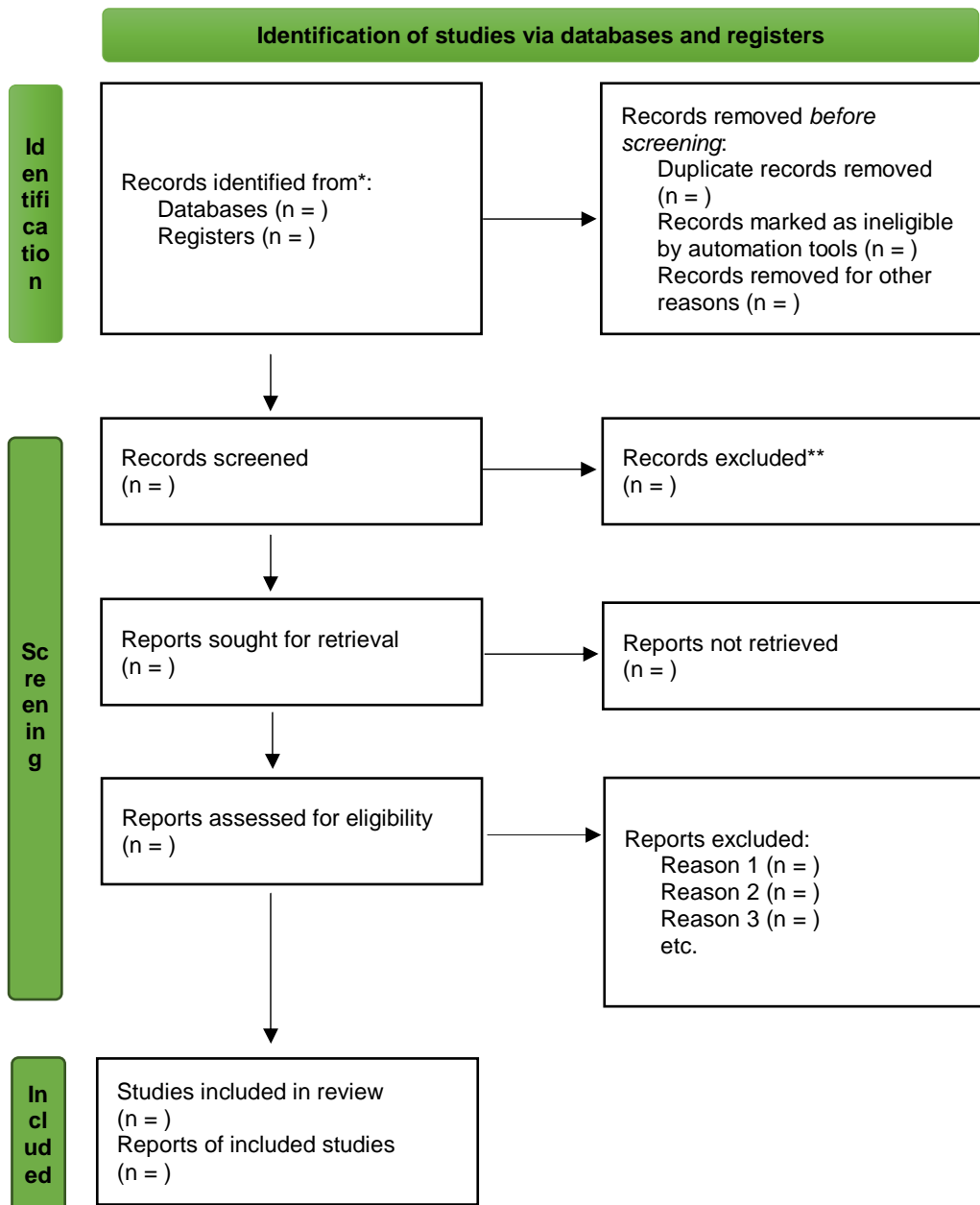
Concept: All articles reporting on molecular neuropathological pathways or CSF diagnostic biomarkers of SARS-Cov2 infection in CNS will be included.

Context: Articles reporting on molecular neuropathogenesis theories entailing molecular susceptibility, permissiveness and invasion of the SARS-Cov2/COVID19 in the CNS parenchyma. The type of surface receptors such as ACE2, TMPRSS2, P2X7 which are implicated in the pathogenesis of CNS SARS-Cov2 infections and symptom manifestations. The types of molecular pathways implicated for axonal injury and astrocytic cellular damage, associated metabolic derangements and systemic inflammatory response as the culprits of viral neuroinvasion to CNS tissue.

All articles reporting on types , sensitivity and specificity of CSF diagnostic biomarkers of SARS-Cov2 infection in CNS such as neurofilament light chain protein (NfL) , glial fibrillary acidic protein (GFAP) , T tau , P tau and Viral RNA.

Stage 3: Study selection

Two reviewers VMK and EM will upload the sourced articles to Covidence software and independently screen the articles based on eligibility criteria. The screening process will be blinded and achieved in two stages, phase 1 will comprise of screening the abstracts and phase 2 will be achieved by screening of full text any conflict encountered upon screening will be resolved by consensus between the parties or adjudication by a third reviewer ADN. All results will be presented using the Preferred Reporting Items for Systematic Reviews and Meta-analysis for flow diagram for screening process shown in **figure 1**.



Preferred Reporting Items for Systematic Reviews and Meta-analysis for flow diagram for screening process shown in figure 1

Stage 4: Charting the data

The data items from selected articles will be extracted using the Cochrane Effective Practice and Organization of Care (EPOC) data collection form for systematic review (14). The reliability and validity of this tool will preliminarily tested on 10 randomly selected articles , the consistency acceptability will be determined using the Cronbach’s alpha and Kudar Richardson, the threshold value for acceptability will be optimized at $\geq 0.7(15)$. The data item to be extracted are enumerated in the **table 2** below

Table 2: Items to be extracted
Original article information <ul style="list-style-type: none">a) First Authorb) Year of publicationc) Country of origind) Aimse) Sample size (n) Study population and sample size Methods
Outcomes purporting the PCC question <ul style="list-style-type: none">a) Participants : Human subjects , sex , age , patients infected with COVID19b) Concept: Types of molecular neuropathological pathways , types of CSF diagnostic biomarkersc) Context : Types of receptors such as ACE2 , TMPRSS2 , P2X7 and other cellular transduction pathways .The specific CSF diagnostic biomarkers for axonal injury , astrocytic cellar damage or viral neuroinvasion such neurofilament light chain protein (NfL) , glial fibrillary acidic protein (GFAP) , T tau , P tau and Viral RNA.

Stage 5: Collating, summarizing and reporting of results

All extracted data will be presented on matrix tables, variables such as first author, year of publication, sample size, measurements of central tendency and dispersion, molecular pathway, receptors and CSF biomarkers will be outlined. The result findings will be summarized in sections in order to generate the specific and comprehensive deductions.

Risk of Bias (ROB) assessment

The ROB will be evaluate using the ROB tool Version 2 for RCT studies (16) and Risk of Bias in Non-randomized Studies of Interventions (ROBINS-I) for NRSI designs and the overall ROB will be rated as low risk , moderate risk , serious risk and critical risk(17) .

Strength of body of evidence

We will evaluate the strength and external applicability of the evidence findings of this review using the Grading of Recommendation, Assessment , Development and Evaluation (GRADE) protocol .The quality levels of evidence will be classified as high , moderate , low and very low level of evidence (LOE) according to the GRADE provisions(18,19).

Ethical consideration and Dissemination

Herein the review will not involve the human participants henceforth the ethical clearance approval is not applicable .We will disseminate the final findings of this review to scientific conferences at local and international level.The manuscript for final findings will be published to reputable journal of neuroscience.

DECLARATION

Contribution of Authors

Victor Meza Kyaruzi and Emmanuel Mduma prepared the full text of this protocol and all other authors reviewed and contributed their expert opinions.

Concept and Context: All authors

Drafting of Manuscript: Victor Meza Kyaruzi, Emmanuel Mduma and Daniel Nyalundja

Literature Search: Victor Meza Kyaruzi and Emmanuel Mduma

Critical revision of the manuscript for intellectual content: All authors

Supervision: Prof Abenezer Tirsit , Prof Sayoki Mfinanga , Prof Getaw Worku Hassen , Prof Osama S Abdelaziz and Prof Amos Mwakigonja.

Disclosure of Interest

All authors declares to have no competing interests

Funding

No funding source

REFERENCES

1. Blume C, Jackson CL, Spalluto CM, Legebeke J, Nazlamova L, Conforti F, et al. A novel ACE2 isoform is expressed in human respiratory epithelia and is upregulated in response to interferons and RNA respiratory virus infection. *Nat Genet* [Internet]. 2021;53(2):205–14. Available from: <http://dx.doi.org/10.1038/s41588-020-00759-x>
2. Ren X, Glende J, Al-Falah M, de Vries V, Schwegmann-Wessels C, Qu X, et al. Analysis of ACE2 in polarized epithelial cells: Surface expression and function as receptor for severe acute respiratory syndrome-associated coronavirus. *J Gen Virol*. 2006;87(6):1691–5.
3. Matschke J, Lütgehetmann M, Hagel C, Sperhake JP, Schröder AS, Edler C, et al. Neuropathology of patients with COVID-19 in Germany: a post-mortem case series. *Brain*. 2021;144(10):2819–29.
4. Dunai C, Collie C, Michael BD. Immune-Mediated Mechanisms of COVID-19 Neuropathology. *Brain*. 2022;145(5):1–7.
5. Brains AC-, Colombo D, Falasca L, Marchioni L, Tammaro A, Adenike G, et al. Neuropathology and Inflammatory Cell Characterization in 10 Autoptic COVID-19 Brains. *Brain*. 2021;144(10):2819–29.
6. Elisa D, Ágatha R, Glaser OT, Andrejew R, Dieckmann L, Baranova J, et al. Hyperactivation of P2X7 receptors as a culprit of COVID-19 neuropathology. *Mol Psychiatry* [Internet]. 2021;1044–59. Available from: <http://dx.doi.org/10.1038/s41380-020-00965-3>
7. Silva J, Patricio F, Patricio-Martínez A, Santos-López G, Cedillo L, Tizabi Y, et al. Neuropathological Aspects of SARS-CoV-2 Infection: Significance for Both Alzheimer's and Parkinson's Disease. *Front Neurosci*. 2022;16(May):1–15.
8. Virhammar J, Nääs A, Fällmar D, Cunningham JL, Klang A, Ashton NJ, et al. Biomarkers for central nervous system injury in cerebrospinal fluid are elevated in COVID-19 and associated with neurological symptoms and disease severity. *Eur J Neurol*. 2021;28(10):3324–31.
9. Guasp M, Muñoz-Sánchez G, Martínez-Hernández E, Santana D, Carbayo Á, Naranjo L, et al. CSF Biomarkers in COVID-19 Associated Encephalopathy and Encephalitis Predict

- Long-Term Outcome. *Front Immunol.* 2022;13(April):1–10.
10. Edén A, Kanberg N, Gostner J, Fuchs D, Hagberg L, Andersson LM, et al. CSF Biomarkers in Patients With COVID-19 and Neurologic Symptoms: A Case Series. *Neurology.* 2021;96(2):e294–300.
 11. Paterson RW, Benjamin LA, Mehta PR, Brown RL, Athauda D, Ashton NJ, et al. Serum and cerebrospinal fluid biomarker profiles in acute SARS-CoV-2-associated neurological syndromes. *Brain Commun.* 2021;3(3):1–11.
 12. Institute TJB. The Joanna Briggs Institute Reviewers ' Manual 2015 Methodology for JBI Scoping Reviews. 2015;
 13. Malley O. Scoping studies: towards a methodological framework. 2005;4549.
 14. Information G. Data collection form Randomised trials and non-randomised trials. 2017;
 15. Sarmah HK, Bora Hazarika B. Determination of Reliability and Validity measures of a questionnaire. *Indian J Educ Inf Manag [Internet].* 2012;5081(11):2277–5374. Available from: www.iseeadyar.org/ijid.htm
 16. Sterne JAC, Savović J, Page MJ, Elbers RG, Blencowe NS, Boutron I, et al. RoB 2[□]: a revised tool for assessing risk of bias in randomised trials as an essential component of a. 2019;1–8.
 17. Walpita Y, Nurmatov U. ROBINS-I[□]: A novel and promising tool for risk of bias assessment of nonrandomized studies of interventions *Continued Medical Education* ROBINS-I[□]: A novel and promising tool for risk of bias assessment of non- randomized studies of interventions. 2020;(November).
 18. Aguayo-Albasini JL, Flores-Pastor B, Soria-Aledo V. GRADE System: Classification of Quality of Evidence and Strength of Recommendation. *Cirugía Española (English Ed.* 2014;92(2):82–8.
 19. Andrews JC, Schünemann HJ, Oxman AD, Pottie K, Meerpohl JJ, Coello PA, et al. GRADE guidelines: 15. Going from evidence to recommendation - Determinants of a recommendation's direction and strength. *J Clin Epidemiol.* 2013;66(7):726–35.

APPENDIX

Table 1: PubMed Search Strategy

[Advanced Search Results - PubMed \(nih.gov\)](https://pubmed.ncbi.nlm.nih.gov/advanced/)

Search	Query
#6	<p>Search: #1 OR #2 AND #3 AND #4 OR #5 (("neuropathology"[MeSH Terms] OR (("molecular"[All Fields] OR "moleculars"[All Fields]) AND "neuropathology"[MeSH Terms])) AND (("CSF"[All Fields] AND ("diagnosis"[MeSH Terms] OR "diagnosis"[All Fields] OR "diagnostic"[All Fields] OR "diagnostical"[All Fields] OR "diagnostically"[All Fields] OR "diagnostics"[All Fields])) AND "biomarkers"[MeSH Terms]) AND "covid 19"[MeSH Terms]) OR "SARS-Cov2"[All Fields]</p> <p>Translations Neuropathology[MeSH Terms]: "neuropathology"[MeSH Terms] Molecular: "molecular"[All Fields] OR "moleculars"[All Fields] Neuropathology[MeSH Terms]: "neuropathology"[MeSH Terms] Diagnostic: "diagnosis"[MeSH Terms] OR "diagnosis"[All Fields] OR "diagnostic"[All Fields] OR "diagnostical"[All Fields] OR "diagnostically"[All Fields] OR "diagnostics"[All Fields] biomarkers[MeSH Terms]: "biomarkers"[MeSH Terms] COVID19[MeSH Terms]: "covid-19"[MeSH Terms]</p>
#5	<p>Search: SARS-Cov2 "SARS-Cov2"[All Fields]</p>
#4	<p>Search: COVID19[MeSH Terms] "covid 19"[MeSH Terms]</p> <p>Translations COVID19[MeSH Terms]: "covid-19"[MeSH Terms]</p>
#3	<p>Search: CSF Diagnostic biomarkers[MeSH Terms] ("CSF"[All Fields] AND ("diagnosis"[MeSH Terms] OR "diagnosis"[All Fields] OR "diagnostic"[All Fields] OR "diagnostical"[All Fields] OR "diagnostically"[All Fields]</p>

Search	Query
	<p>OR "diagnostics"[All Fields])) AND "biomarkers"[MeSH Terms]</p> <p>Translations</p> <p>Diagnostic: "diagnosis"[MeSH Terms] OR "diagnosis"[All Fields] OR "diagnostic"[All Fields] OR "diagnostical"[All Fields] OR "diagnostically"[All Fields] OR "diagnostics"[All Fields]</p> <p>biomarkers[MeSH Terms]: "biomarkers"[MeSH Terms]</p>
#2	<p>Search: Molecular Neuropathology[MeSH Terms]</p> <p>("molecular"[All Fields] OR "moleculars"[All Fields]) AND "neuropathology"[MeSH Terms]</p> <p>Translations</p> <p>Molecular: "molecular"[All Fields] OR "moleculars"[All Fields]</p> <p>Neuropathology[MeSH Terms]: "neuropathology"[MeSH Terms]</p>
#1	<p>Search: Neuropathology[MeSH Terms]</p> <p>"neuropathology"[MeSH Terms]</p> <p>Translations</p> <p>Neuropathology[MeSH Terms]: "neuropathology"[MeSH Terms]</p>