

1 **Effect of experimental hookworm infection on insulin resistance in people at risk of**  
2 **Type 2 Diabetes: a randomized, placebo-controlled trial**

3

4 **Authors and affiliations**

5 Doris R. Pierce<sup>1</sup>, Malcolm McDonald<sup>1</sup>, Lea Merone<sup>2</sup> Luke Becker<sup>1</sup>, Fintan Thompson<sup>1,3</sup>,  
6 Chris Lewis<sup>2</sup>, Matthew A. Field<sup>1,4,5</sup>, Tony Rahman<sup>6</sup>, John Croese<sup>1</sup>, Alex Loukas<sup>1</sup>, Robyn  
7 McDermott<sup>1,3</sup>, Paul R. Giacomin<sup>1</sup>

8

9 <sup>1</sup>Centre for Molecular Therapeutics, Australian Institute of Tropical Health and Medicine,  
10 James Cook University, Cairns, QLD, Australia

11 <sup>2</sup>College of Health Sciences, James Cook University, Cairns, QLD, Australia

12 <sup>3</sup>University of South Australia, Adelaide, SA, Australia

13 <sup>4</sup>College of Public Health, Medical & Vet Sciences, James Cook University, Cairns, QLD,  
14 Australia

15 <sup>5</sup>Immunogenomics Laboratory, Garvan Institute of Medical Research, Darlinghurst, NSW,  
16 Australia

17 <sup>6</sup>The Department of Gastroenterology and Hepatology, The Prince Charles Hospital,  
18 Brisbane, QLD, Australia

19 **\*Correspondence:** Paul Giacomin, James Cook University, Cairns Campus

20 AITHM Building E5, 16-88 McGregor Road, Smithfield, QLD, Australia 4878

21 ph: +61-7-42321868, [paul.giacomin@jcu.edu.au](mailto:paul.giacomin@jcu.edu.au)

22

23 **ABSTRACT**

24 The reduced prevalence of insulin resistance and type 2 diabetes (T2D) in countries with  
25 endemic parasitic worm infections suggests a protective role for worms against metabolic  
26 disorders, however clinical evidence has been non-existent. This 2-year randomized  
27 controlled trial of hookworm infection in 40 people at risk of T2D involved treatment with  
28 either 20 or 40 *Necator americanus* third-stage larvae (L3) or Placebo. Primary outcome  
29 was safety, with homeostatic model assessment of insulin resistance (HOMA-IR), fasting  
30 blood glucose (FBG), and body mass being the key metabolic outcomes. Adverse events  
31 were more frequent in hookworm-treated participants, where 44% experienced transient  
32 gastrointestinal symptoms. FBG and HOMA-IR were significantly lowered in both  
33 hookworm-treated groups at 1-year, and body mass was significantly lowered after L3-20  
34 treatment at 2-years. Overall, hookworm infection was well tolerated in people at risk of T2D,  
35 and were associated with improved insulin resistance, warranting further exploration of the  
36 benefits of hookworms on metabolic health.

37

38 Metabolic syndrome (MetS) represents a collection of related metabolic conditions, including  
39 dysregulated lipid homeostasis, hypertension, insulin resistance, and abdominal obesity,  
40 that increase the likelihood of developing chronic diseases such as type 2 diabetes mellitus  
41 (T2D) and cardiovascular disease<sup>1</sup>. T2D is a complex illness associated with hyperglycemia;  
42 long-term and costly medical care is usually required to prevent complications. The  
43 prevalence of T2D is increasing globally, with more than half a billion adults already  
44 diagnosed<sup>2</sup>; hence there is a pressing need to develop new preventative approaches to limit  
45 the burden of T2D on individuals and health systems.

46  
47 The soaring global prevalence of T2D is undoubtedly related to lifestyle factors such as an  
48 energy-dense diet and a sedentary lifestyle. In this context, the detrimental role of systemic,  
49 low-grade inflammation in promoting insulin resistance is well-established<sup>3</sup>. In lean adipose  
50 tissue, there exists an anti-inflammatory environment, including regulatory T cells,  
51 eosinophils, and alternatively activated macrophages that are stimulated by Type 2  
52 cytokines such as interleukin (IL)-4, IL-5, and IL-13. Conversely, in obesity there is a pro-  
53 inflammatory milieu involving Type 1 cytokines such as IFN $\gamma$  and TNF, classically-activated  
54 macrophages<sup>4</sup>, and a dysregulated gut microbiome<sup>5</sup>. This biased Type-1 immune response  
55 aggravates insulin resistance through stress-activated kinases that target intermediates in  
56 the insulin-signaling pathway<sup>6</sup>. It follows that maintaining the systemic and adipose-specific  
57 inflammatory balance in favor of a Type 2 or regulatory immune response is a rational  
58 approach to limiting the inflammatory cascade and preventing the ensuing insulin resistance  
59 seen in metabolic disease.

60  
61 Parasitic helminths (worms) co-evolved with humans and remain endemic in regions of the  
62 world with less metabolic and inflammatory diseases<sup>7-10</sup>. Helminth infections are associated  
63 with Type 2 immune responses such as eosinophilia, elevated IL-4, -5 and -13, Type-2

64 innate lymphoid cell responses, and modulation of the gut microbiome<sup>11</sup>. Emerging  
65 evidence supports the hypothesis that eradicating worms from industrialized regions may  
66 have partly contributed to the increased prevalence of immune-mediated diseases such as  
67 T2D<sup>8,12</sup>. For example, human epidemiological studies suggest that the presence of helminth  
68 infections is associated with lessened inflammatory responses and improved glucose  
69 homeostasis<sup>12 13 10</sup>, and two systematic reviews and meta-analyses concluded that adults  
70 with previous or current worm infection typically enjoy improved metabolic function<sup>14 15</sup>.  
71 While cross-sectional studies support the idea of a protective role for worms in metabolic  
72 disease, they did not establish causality.

73

74 Recent deworming studies provided some causative evidence. The removal of worms from  
75 previously-infected individuals was associated with increased insulin resistance (elevated  
76 homeostatic model assessment for insulin resistance, HOMA-IR)<sup>16</sup>, elevated serum insulin  
77 and glucagon<sup>17</sup>, enhanced hyperglycaemia and risk of metabolic disease<sup>18</sup>, and worsened  
78 blood lipid profiles<sup>19</sup>. Experimental mouse studies corroborate findings from human studies,  
79 where infection with various worm species caused improvements in metabolic indices, Type  
80 2 immune responses, and alterations to the gut microbiome<sup>20 21-24</sup>. However, to date, there  
81 have been no studies in humans testing whether a controlled helminth infection is safe, can  
82 improve metabolic health, and potentially prevent progression to T2D.

83

84 Previously, we and others have established the safety of infecting human volunteers with  
85 low doses of hookworms in various inflammatory diseases<sup>25-27</sup>. While none of these studies  
86 investigated metabolic health outcomes, it is well reported that hookworms elicit Type 2 and  
87 regulatory immune responses<sup>26</sup> and changes in the microbiome<sup>28</sup> that may be beneficial in  
88 the context of T2D. The primary aim of this randomized, double-blinded, placebo-controlled  
89 Phase 1b clinical trial was to establish the safety, tolerability, and potential metabolic

90 benefits of experimental infection with infective third-stage larvae (L3) of the human  
91 hookworm *Necator americanus* in otherwise healthy adults at risk of developing metabolic  
92 syndrome and T2D. Based on previous animal and deworming studies, we hypothesized  
93 that hookworm infection would be safe and improve the primary metabolic outcome for the  
94 study, HOMA-IR, which assesses longitudinal changes in insulin sensitivity that correlate  
95 well with estimates derived via the euglycaemic clamp <sup>29</sup>.

96

## 97 RESULTS

### 98 Study population

99 We conducted a 2-year Phase Ib randomised, double-blinded, placebo-controlled trial of  
 100 experimental hookworm infection (either 20 or 40 infective third-stage larvae, L3) in  
 101 otherwise healthy people at risk of T2D (**Figure 1A**). Recruiting progressed between  
 102 January 2018 and June 2020, with 85 potential participants meeting screening criteria, of  
 103 which 41 met the inclusion/exclusion criteria to proceed to randomization (4 short of the  
 104 recruitment target). Forty-four participants were excluded due to not having elevated  
 105 baseline HOMA-IR (n=27), not responding to communication (n=11) or excluded  
 106 medications or medical conditions (n=6) (**Figure 1B**). One participant who qualified for the  
 107 study dropped out prior to their baseline visit. Forty participants were randomised and  
 108 constituted the intention-to-treat (ITT) population (**Table 1**). Thirteen participants were  
 109 allocated to receive Placebo treatment, 14 to receive a dose of 20 hookworm larvae (L3-20)  
 110 and 13 to receive a dose of 40 hookworm larvae (L3-40). (**Figure 1B**). The majority of  
 111 participants (85%) were of Caucasian descent. Baseline age and HOMA-IR were higher in  
 112 the L3-20 group. One participant who was randomized into the Placebo group  
 113 unintentionally received an L3-20 treatment due to a labelling error. This participant was  
 114 included in the Placebo group for the ITT analysis but in the L3-20 group for per-protocol  
 115 analyses.

116 **Table 1: Intention to Treat Baseline Characteristics for all Randomised Participants (n=40)**

	Allocation			117
	Placebo (n= 13)	L3-20 (n= 14)	L3-40 (n= 13)	
Median age (range), years	35 (27-50)	43 (30-45)	36 (27-49)	118
Female, n (%)	10 (75%)	10 (73%)	10 (77%)	
Body mass, median (IQR), kg	106 (90-121)	104 (89-126)	102 (90-130)	119
Height, median (IQR), cm	168 (162-176)	164 (158-174)	168 (165-178)	
BMI, median (IQR), kg/m <sup>2</sup>	37 (33-41)	38 (33-46)	36 (32-41)	
Waist Circumference, median (IQR), cm	111 (102-122)	111 (103-116)	111(105-123)	120
HOMA-IR, median (IQR), units	2.2 (2.0-2.8)	3.0 (2.3-3.5)	2.4 (2.0-3.2)	121

122

## 123 **Adverse events (AEs)**

124 The study's primary outcome was the safety and tolerability of hookworm treatment, defined  
125 by the frequency and severity of AEs. A total of 20 AEs and no serious AEs were reported  
126 (**Table 2**). As expected, gastrointestinal (GI) adverse events occurred in the L3-20 and L3-  
127 40 treatment groups (**Table 2**), consistent with the worms arriving in the gut and attaching  
128 to the intestinal wall. These AEs were experienced by 44% of hookworm-treated participants  
129 and included bloating, nausea, vomiting, constipation, diarrhoea, epigastric upset, hungry  
130 feeling, stomach cramps and abdominal pain, which were typically mild-moderate and  
131 resolved without medical intervention. One GI-related symptom (5%) was recorded as  
132 severe, and three warranted early removal of the participants from the study (1 in the L3-20  
133 group, 2 in the L3-40 group) and provision of deworming medication. Two of these  
134 individuals recovered promptly after deworming, while symptoms in one participant  
135 persisted, indicating their symptoms may have been unrelated to hookworm. No GI-related  
136 AEs occurred in the Placebo group. No participant developed anaemia (**Supplementary**  
137 **Figure 1**), the primary clinical effect of moderate to heavy hookworm infection. AEs deemed  
138 unrelated to worm infection were reported across all groups and included one case each of  
139 concussion, laryngitis, appendicectomy, gynaecological procedure, salmonella infection  
140 acquired overseas, breast cancer diagnosis, erythema, and dermatitis. The chi-square test  
141 for trend revealed a significant linear trend for AEs,  $\chi^2 (1, N = 40) = 3.846, p = 0.049$  with  
142 more AEs occurring in the hookworm treatment groups compared to the Placebo group, as  
143 anticipated based on studies in other patient populations <sup>30</sup>.

144

145

146

147

148

149 **Table 2. Summary of the number of adverse events (AE) and proportions of participants experiencing**  
150 **at least one AE, classified by AE type and symptom severity**

	Total Number AEs (Proportion with >1 AE)						
	Placebo (n=13)	L3-20 (n=14)		L3-40 (n=13)		Combined hookworm (n=27)	
<b>Any AE</b>	3 (15%)	9 (50%)		8 (46%)		17 (48%)	
<b>Unrelated</b>	3 (15%)	4 (21%)		1 (8%)		5 (19%)	
<b>Hookworm-related (GI)</b>	0	5 (36%)		7 (54%)		12 (44%)	
	<b>Severity of GI symptoms:</b>	Mild	1	Mild	2	Mild	3
		Moderate	4	Moderate	4	Moderate	8
		Severe	0	Severe	1	Severe	1

151



## 152 **Study Progression and well-being**

153 Rates of trial completion and participant mood and well-being were secondary safety  
154 outcomes. The CONSORT Flow Diagram (**Figure 1B**) and Kaplan-Meier curve (**Figure 1C**)  
155 detail study progression. Early dropouts (0-6 months) included the 3 participants with GI  
156 symptoms and one participant in the L3-20 group that was removed from the study at 3  
157 months due to an unrelated cancer diagnosis (**Figure 1B**). Reasons for early terminations  
158 later in the study included 4 participants moving away (Placebo n=2, L3-20 n=1, L3-40 n=1),  
159 1 for undisclosed personal reasons (L3-20), 3 for failure to respond to communication or  
160 testing exhaustion (Placebo n=2, L3-40 n=1), and 4 for starting medication (L3-20, n=1) or  
161 undergoing gastric sleeve surgery (Placebo n=1, L3-20 n=2) that could interfere with the  
162 trial outcomes. Four participants (Placebo n=1, L3-20 n= 1, L3-40 n=1) missed one  
163 evaluation visit each but completed the remaining evaluation visits. Twenty-four of the 40  
164 randomised participants completed the trial, including 8 (62%) in the Placebo, 7 in the L3-  
165 20 (50%), and 9 in the L3-40 group (69%). The difference in study completion between  
166 groups was not significant (**Figure 1C**, Log-rank test for trend,  $p=0.832$ ). Monitoring of  
167 participant mood and depressive state via the Patient Health Questionnaire-9 (PHQ-9)  
168 questionnaire revealed that median scores in the Placebo group remained relatively stable  
169 throughout (**Table 3**). There was a trend for reduced median PHQ-9 scores (suggestive of  
170 improved mood) compared to baseline in both hookworm treatment groups at all evaluation  
171 visits; however, Mixed-effects model analyses and Kruskal-Wallis tests did not detect any  
172 significant differences over time or between groups, even when the active hookworm  
173 treatment groups were combined (Mann-Whitney test) (**Table 3**).

174

175 **Table 3. Patient Health Questionnaire scores in each treatment group**

	Patient Health Questionnaire (PHQ)-9 scores, Median and IQR (n)					176
	Baseline	6 months	12 months	18 months	24 months	
<b>Placebo</b>	7 4-14 (n = 12)	5 3-8 (n = 12)	6 1-13 (n = 9)	6 3-9 (n = 8)	9 2-16 (n = 7)	177
<b>L3-20</b>	8 2-11 (n = 13)	4 2-7 (n = 12)	4 2-7 (n = 11)	3 1-9 (n = 11)	3 1-6 (n = 8)	178
<b>L3-40</b>	10 5-12 (n = 11)	9 3-12 (n = 11)	5 3-8 (n = 10)	6.5 2-10 (n = 8)	4 2-9 (n = 9)	179
<b>Combined Hookworm</b>	8 3-12 (n = 24)	5 2-11 (n = 23)	4 2-7 (n = 21)	6 1-9 (n = 19)	4 2-8 (n = 17)	

181

182 **Analysis of potential confounding variables: diet and exercise habits**

183 Participants completed regular questionnaires to record any changes in diet and exercise  
 184 habits that could confound results. Analysis of the diet questionnaire (PREDIMED) revealed  
 185 no significant inter-cohort differences or longitudinal changes in PREDIMED score in any  
 186 treatment group (**Supplementary Figure 2A**). Similarly, analysis of the exercise habits of  
 187 participants by quantifying their median numbers of metabolic equivalent of tasks (METs)  
 188 per week revealed no significant changes within groups from baseline and no significant  
 189 differences in median absolute METs/week or changes in METs/week between groups at  
 190 any time point (**Supplementary Figure 2B**).

191

192 **Evaluation of hookworm establishment**

193 Hookworm infection is associated with the presence of hookworm eggs in stool and  
 194 peripheral blood eosinophilia. As expected, eosinophil counts remained stable in the  
 195 Placebo cohort (**Figure 2A**), and faecal samples were negative for hookworm ova (**Figure**  
 196 **2C**). In both the L3-20 and L3-40 groups, eosinophil counts were significantly elevated from  
 197 baseline by 6 months (L3-20  $p = 0.047$ , L3-40  $p = 0.002$ , Tukey's posthoc test) (**Figure 2A**).  
 198 Of the 28 hookworm-treated participants, five faecal samples were unavailable for qPCR  
 199 testing due to early dropout or inability to deliver a faecal sample. Twenty-one of the 23

200 participants (91%) tested positive for *N. americanus* ova (**Figure 2C**), and the two  
201 participants that tested negative still displayed robust increases in eosinophil counts (**Figure**  
202 **2B**).

203

#### 204 **Primary metabolic outcome: Insulin resistance (HOMA-IR)**

205 We undertook a per-protocol analysis of metabolic outcome measures to account for the  
206 Placebo participant who received hookworm treatment in error. Data collected from the 4  
207 participants described in the Study Progression section who, at 18 or 24 months, were  
208 retrospectively discovered to have undertaken gastric sleeve surgery or began taking  
209 metformin were excluded from the analysis. Data from one L3-20 participant whose insulin  
210 (47 mU/L), glucose (12.4 mmol/L) and HOMA-IR (26 units) values at 6 months were well  
211 beyond normal ranges and inconsistent with fasting were also excluded.

212

213 The trial's primary metabolic outcome was the effect of hookworm treatment versus placebo  
214 on insulin resistance, as assessed by changes in HOMA-IR. Median HOMA-IR values in the  
215 Placebo group fluctuated between improved and worsened from the baseline value of 2.2  
216 [2.0-2.6], reaching a maximum of 2.9 [1.8-4.2] at 12 months, corresponding to a median  
217 increase of 0.8 units [-0.7 to 2.3] (**Table 4** and **Figure 3A**). In contrast, median HOMA-IR  
218 value in the L3-20 group was significantly lowered from the baseline value of 3.0 [2.3-3.6]  
219 to as low as 1.6 [0.9-3.0] at 18 months ( $p=0.028$  Tukey's post-hoc test). Median change in  
220 HOMA-IR values in the L3-20 group was significantly different from Placebo at 12 months  
221 ( $p=0.039$ , Kruskal Wallis), with a reduction of 1.1 units [-1.5 to -0.5] from the baseline value.  
222 Similar trends toward lowered HOMA-IR values were observed in the L3-40 group at 6  
223 months (-0.5 units [-1.2 to 0.2]) and 12 months (-0.4 units [-1.4 to 0.9]); however, these  
224 changes were not statistically different from Placebo at any evaluation visit. Since  
225 significance tests depend greatly on sample size, and numbers in all groups were low, we

226 calculated the effect sizes of treatment versus control to measure the treatment effect  
227 independent of participant numbers. Effect sizes for HOMA-IR changes in the L3-20 versus  
228 Placebo group were medium at 6 months ( $d=0.76$ ) and large at 12 months ( $d=1.24$ ), 18  
229 months ( $d=1.01$ ) and 2 years ( $d=1.03$ ). For the L3-40 group, effect sizes were moderate at  
230 6 months ( $d=0.55$ ) and 12 months ( $d=0.75$ ) and negligible at 18 months ( $d=0.25$ ) and 2  
231 years ( $d=-0.15$ ) (**Supplementary Table 1**).

232

**Table 4. Absolute values and changes in HOMA-IR, fasting blood glucose and insulin in each treatment group**

<b>HOMA-IR (units), Median and IQR (n)</b>									
	<b>baseline</b>	<b>6 months</b>	<b>Δ6 mo.</b>	<b>12 months</b>	<b>Δ12 mo.</b>	<b>18 months</b>	<b>Δ18 mo.</b>	<b>24 months</b>	<b>Δ24 mo.</b>
<b>Placebo</b>	2.2 2.0-2.6 (n = 12)	2.6 2.1-3.1 (n = 12)	-0.2 -0.6 to 1.0	2.9 1.8-4.2 (n = 9)	+0.8 -0.7 to 2.3	2.0 1.6-3.8 (n = 8)	-0.2 -0.9 to 2.3	2.0 1.4-2.7 (n = 6)	-0.3 -0.8 to 0.6
<b>L3-20</b>	3.0 2.3-3.5 (n = 13)	2.3 1.5-3.2 (n = 11)	-0.6 1.9 to -0.1	1.8 1.7-2.5 (n = 11)	<b>-1.1*</b> -1.5 to -0.5	<b>1.6 #</b> 0.9-3.0 (n = 8)	-1.5 -1.8 to -0.1	2.1 1.5-2.3 (n = 7)	-0.8 -1.3 to -0.4
<b>L3-40</b>	2.4 2.1-3.0 (n = 11)	2.1 1.8-2.6 (n = 11)	-0.5 -1.2 to 0.2	2.4 1.7-3.2 (n = 10)	-0.4 -1.4 to 0.9	2.5 1.9-3.1 (n = 8)	-0.3 -0.4 to 0.4	1.5 1.0-4.8 (n = 9)	-0.5 -1.2 to 1.1
<b>Fasting blood glucose (mmol/L), Median and IQR (n)</b>									
<b>Placebo</b>	4.8 4.5-5.1 (n = 12)	5.0 4.0-5.3 (n = 12)	0.0 -0.5 to 0.5	4.8 4.4-5.4 (n = 9)	+0.3 -0.4 to 0.8	4.6 4.2-5.3 (n = 8)	-0.1 -0.7 to 0.6	4.0 3.1-5.1 (n = 6)	-0.8 -1.9 to 0.6
<b>L3-20</b>	5.2 4.7-5.6 (n = 13)	<b>4.5 #</b> 4.0-5.1 (n = 11)	-0.7 -1.0 to -0.3	4.2 3.6-5.6 (n = 11)	-0.9 -1.1 to 0.6	4.5 4.2-4.7 (n = 8)	-0.5 -1.0 to 0.1	4.7 3.9-4.8 (n = 7)	-0.6 -1.2 to -0.4
<b>L3-40</b>	5.3 4.9-5.4 (n = 11)	<b>4.3 #</b> 4.0-5.3 (n = 11)	<b>-0.7 *</b> -1.0 to -0.6	<b>4.1#</b> 3.7-4.9 (n = 10)	<b>-1.0 *</b> -1.4 to -0.7	4.5 4.1-5.1 (n = 8)	-0.4 -1.2 to 0.0	<b>4.3 #</b> 4.0-4.9 (n = 9)	-0.6 -1.1 to -0.4
<b>Fasting blood insulin (mmol/L), Median and IQR (n)</b>									
<b>Placebo</b>	11 9-12 (n = 12)	12 10-15 (n = 12)	+1 -2 to 4	12 8-19 (n = 9)	+2 -3 to 10	11 8-16 (n = 8)	0 -3 to 8	11 10-14 (n = 6)	+1 -1 to 2
<b>L3-20</b>	13 12-16 (n = 13)	10 7-14 (n = 11)	-2 -7 to 1	10 9-14 (n = 11)	<b>-4 *</b> -5 to -3	<b>9 #</b> 5-14 (n = 8)	-5 -7 to -1	10 7-12 (n = 7)	-3 -4 to 1
<b>L3-40</b>	10 9-13 (n = 11)	10 9-15 (n = 11)	-1 -3 to 2	12 9-18 (n = 10)	+1 -4 to 6	12 10-17 (n = 8)	+2 -1 to 3	8 6-22 (n = 9)	-1 -5 to 8

# Significantly different to baseline. \*Significantly different to Placebo

8

Supplementary Table 1. HOMA-IR change effect sizes at each evaluation visit

9

	Placebo	L3-20	L3-20 vs Placebo	L3-40	L3-40 vs Placebo
<b>6 months</b>	0.18 ± 1.13 <i>n</i> = 12	-0.74 ± 1.29 <i>n</i> = 11	<i>d</i> = 0.76 <sup>M</sup>	-0.42 ± 1.05 <i>n</i> = 11	<i>d</i> = 0.55 <sup>M</sup>
<b>12 months</b>	0.99 ± 2.0 <i>n</i> = 9	-0.91 ± 0.85 <i>n</i> = 11	<i>d</i> = 1.24 <sup>L</sup>	-0.26 ± 1.26 <i>n</i> = 10	<i>d</i> = 0.75 <sup>M</sup>
<b>18 months</b>	0.79 ± 2.47 <i>n</i> = 8	-1.09 ± 0.88 <i>n</i> = 8	<i>d</i> = 1.01 <sup>L</sup>	0.29 ± 1.31 <i>n</i> = 8	<i>d</i> = 0.25 <sup>S</sup>
<b>24 months</b>	-0.13 ± 0.77 <i>n</i> = 6	-1.13 ± 1.14 <i>n</i> = 7	<i>d</i> = 1.03 <sup>L</sup>	-0.04 ± 1.79 <i>n</i> = 9	<i>d</i> = -0.15

M, medium effect size; L, large effect size; S, small effect size.

2

3

4

5

6

7

258 **Metabolic outcomes: Fasting blood glucose, insulin and glycated haemoglobin**

259 Median FBG levels (mmol/L) in the Placebo group were stable throughout and did not  
260 significantly deviate from their starting values ( $p=0.132$ , Mixed-effects model analysis)  
261 (**Table 4 and Figure 3B**). In contrast, median FBG levels were significantly reduced from  
262 baseline levels after 6 months in both the L3-20 (baseline: 5.2 [4.7-5.6] to 6 months: 4.5  
263 [4.0-5.1];  $p=0.045$ ) and L3-40 groups (baseline: 5.3 [4.9-5.4] to 6 months: 4.3 [4.0-5.3];  
264  $p=0.016$ ). Similar significant reductions in FBG were seen in the L3-40 group at 12 months  
265 ( $p= 0.007$ ) and 2 years ( $p=0.015$ ) compared to baseline; however reductions in the L3-20  
266 group were not statistically significant at any other time point (12 months  $p=0.184$ , 18  
267 months  $p=0.069$ , 2 years  $p=0.052$ ). Median changes in FBG levels in the L3-20 treatment  
268 group were not significantly different to Placebo at any time point, but changes in the L3-40  
269 group were significantly different to Placebo at 6 months (-0.7 in L3-40 compared to 0.0 in  
270 Placebo;  $p=0.027$ ) and 12 months (-1.0 in L3-40 compared to +0.3 in Placebo;  $p=0.024$ ).

271

272 Fasting insulin levels (mU/L) were stable in the Placebo group throughout the study, ranging  
273 from a baseline of 11 [9-12] to a maximum of 12 [10-15] at 6 months (**Table 4 and Figure**  
274 **3C**). There were no longitudinal changes in insulin levels in the L3-40 group at any time  
275 point and no significant differences compared to Placebo. Insulin levels in the L3-20 group  
276 were consistently lowered from the baseline level of 13 [12-16] to a minimum of 9 [5-14] at  
277 18 months ( $p=0.043$  compared to baseline), with reductions from baseline values reaching  
278 statistical significance compared to Placebo at 12 months (-4.0 in L3-20 compared to +2.0  
279 in placebo;  $p=0.02$ ).

280

281 Levels of glycated haemoglobin (HbA1cIFCC, mmol/mol) displayed an upward trend at all  
282 evaluation visits compared to baseline in the Placebo group, ranging from a baseline value

283 of 32 [30-33] mmol/mol to a maximum of 35 [33-37] at 2 years (**Supplementary Table 2**).

284 Values in the L3-20 group were stable near the baseline value of 33 [30-35] throughout,

285 while values in the L3-40 group experienced similar upward trends to the Placebo group,

286 with values significantly higher than baseline at 18 months ( $p=0.027$ ).



7

**Supplementary Table 2. Absolute values and changes in glycated haemoglobin (HbA1c/IFCC) in each treatment group**

8

9

0

1

2

3

4

5

<b>HbA1c IFCC (mmol/mol), Median and IQR (n)</b>									
	<b>baseline</b>	<b>6 months</b>	<b>Δ6 mo.</b>	<b>12 months</b>	<b>Δ12 mo.</b>	<b>18 months</b>	<b>Δ18 mo.</b>	<b>24 months</b>	<b>Δ24 mo.</b>
<b>Placebo</b>	32	34	+1	34	+2	33	+3	35	+4
	30-33 (n = 12)	30-36 (n = 12)	0 to 3	30-37 (n = 9)	0 to 4	30-36 (n = 8)	0 to 4	33-37 (n = 6)	1 to 5
<b>L3-20</b>	33	32	0	32	0	33	+1	33	+2
	31-35 (n = 13)	30-34 (n = 11)	-1 to 1	31-35 (n = 11)	-1 to 1	32-36 (n = 8)	0 to 2	32-37 (n = 7)	1 to 4
<b>L3-40</b>	32	31	+1	33	+3	<b>34 #</b>	+4	32	+2
	29-34 (n = 11)	30-35 (n = 11)	0 to 3	32-35 (n = 10)	1 to 4	33-37 (n = 8)	2 to 7	31-37 (n = 9)	2 to 5

# Significantly different to baseline

## 296 **Secondary metabolic outcomes: Body mass and blood lipid profile**

297 Median body mass and Body Mass Index (BMI) in the Placebo group remained stable  
298 throughout (**Table 5, Figure 4 and Supplementary Figure 3**). While there were no  
299 statistically significant differences in body mass or BMI in the L3-20 or L3-40 groups  
300 compared to Placebo (**Table 5**), body mass and BMI in the L3-20 group tended to be lower  
301 than their baseline values at all evaluation visits, with significant reductions in body mass  
302 and BMI in the L3-20 group at 18 months ( $p=0.019$  for body mass,  $p=0.028$  for BMI) and 2  
303 years ( $p=0.031$  for body mass and  $p=0.032$  BMI). This corresponded to a median reduction  
304 in body mass of approximately 5kg at both time points in the L3-20 group (**Table 5 and**  
305 **Figure 4**) and a reduction in BMI of 2.2 units and 2.4 units at 18 months and 2 years,  
306 respectively (**Table 5 and Supplementary Figure 2**). No significant longitudinal changes in  
307 body mass or BMI were evident in the L3-40 group.

308

309 Analysis of blood lipid profile revealed that median levels of total cholesterol, triglycerides,  
310 high-density lipoprotein, low-density lipoprotein and total cholesterol/HDL ratio remained  
311 relatively stable in the Placebo group at all time points, with only a statistically significant  
312 reduction in LDL ( $p=0.009$ ) and total cholesterol at 18 months ( $p=0.037$ ) (**Supplementary**  
313 **Tables 3 and 4**). In both the L3-20 and L3-40 groups, there were no longitudinal changes  
314 in any of these parameters compared to baseline and no significant differences compared  
315 to Placebo other than elevated LDL ( $p=0.019$ ) and total cholesterol ( $p=0.038$ ) at 18 months  
316 in the L3-40 group compared to Placebo (**Supplementary Tables 3 and 4**).

**Table 5. Body mass and Body Mass Index (BMI) absolute values and changes in each treatment group**

Body mass (kg), Median and IQR (n)									
	baseline	6 months	Δ6 mo.	12 months	Δ12 mo.	18 months	Δ18 mo.	24 months	Δ24 mo.
<b>Placebo</b>	105	107	+2	99	0	105	-1	106	+2
	89-115 (n = 12)	91-115 (n = 12)	-4 to 4	90-113 (n = 8)	-4 to 4	89-119 (n = 8)	-8 to 9	91-118 (n = 6)	-4 to 5
<b>L3-20</b>	103	101	-3	104	-1	<b>93 #</b>	-5	<b>93 #</b>	-5
	86-131 (n = 13)	82-134 (n = 12)	-3 to 1	90-133 (n = 11)	-5 to 1	76-120 (n = 8)	-12 to -3	77-124 (n = 7)	-10 to -1
<b>L3-40</b>	102	102	-1	106	+1	109	+2	108	+4
	90-131 (n = 11)	86-130 (n = 11)	-2 to 1	91-129 (n = 10)	-2 to 6	100-136 (n = 8)	-1 to 8	94-133 (n = 9)	-2 to 6
BMI (kg/m <sup>2</sup> ), Median and IQR (n)									
<b>Placebo</b>	37	37	+0.7	36	+0.1	39	-0.3	38	+0.8
	33-40 (n = 12)	33-41 (n = 12)	-1.2 to 1.2	31-41 (n = 8)	-1.5 to 1.5	32-41 (n = 8)	-3.0 to 3.2	32-40 (n = 6)	-1.9 to 1.7
<b>L3-20</b>	37	37	-0.5	39	-0.2	<b>35 #</b>	-2.2	<b>33 #</b>	-2.4
	33-46 (n = 13)	32-49 (n = 12)	-1.3 to 1.5	34-44 (n = 11)	-1.3 to 0.1	31-41 (n = 8)	-4.2 to -1	30-41 (n = 7)	-2.7 to -0.5
<b>L3-40</b>	36	36	-0.1	35	+0.3	39	+0.6	38	+0.9
	33-40 (n = 11)	31-40 (n = 11)	-0.7 to 0.5	33-39 (n = 10)	-0.8 to 2.3	34-40 (n = 8)	-0.2 to 2.3	33-41 (n = 9)	-0.7 to 2.1

# Significantly different to baseline. \*Significantly different to Placebo

**Supplementary Table 3. Absolute values and changes in serum cholesterol, high-density lipoprotein (HDL) and cholesterol/HDL ratio in each treatment group**

<b>Total cholesterol (mmol/L), Median and IQR (n)</b>									
	<b>baseline</b>	<b>6 months</b>	<b>Δ6 mo.</b>	<b>12 months</b>	<b>Δ12 mo.</b>	<b>18 months</b>	<b>Δ18 mo.</b>	<b>24 months</b>	<b>Δ24 mo.</b>
<b>Placebo</b>	5.4	4.9	-0.4	4.8	-0.4	4.9	<b>-0.6 #</b>	5.0	-0.2
	4.9-6.3 (n = 12)	4.4-6.0 (n = 12)	-0.7 to 0.0	4.4-5.4 (n = 9)	-0.6 to -0.1	4.3-5.8 (n = 8)	-1.1 to -0.1	4.5-5.3 (n = 6)	-0.6 to 0.1
<b>L3-20</b>	5.2	5.1	-0.3	5.0	-0.2	5.1	-0.2	4.9	-0.2
	4.6-6.3 (n = 13)	3.9-5.9 (n = 12)	-0.6 to -0.2	4.2-5.6 (n = 11)	-0.7 to 0.5	4.5-5.7 (n = 10)	-0.4 to 0.4	3.9-6.8 (n = 18)	-0.5 to 0.6
<b>L3-40</b>	5.4	6.0	+0.7	5.6	+0.2	5.7	<b>+0.4 *</b>	5.3	-0.1
	4.9-5.5 (n = 11)	4.9-6.3 (n = 11)	-0.2 to 0.9	4.8-5.7 (n = 10)	-0.2 to 0.3	4.6-6.1 (n = 8)	-0.2 to 0.6	4.3-5.8 (n = 9)	-0.8 to 0.6
<b>HDL (mmol/L), Median and IQR (n)</b>									
<b>Placebo</b>	1.2	1.1	-0.1	1.2	0.0	1.2	-0.1	1.2	0.0
	1.1-1.4 (n = 12)	1.0-1.3 (n = 12)	-0.1 to 0.0	1.1-1.3 (n = 9)	0.0 to 0.1	1.1-1.6 (n = 8)	-0.2 to 0.2	1.0-1.7 (n = 6)	-0.3 to 0.2
<b>L3-20</b>	1.2	1.3	-0.1	1.1	0.0	1.2	-0.2	1.1	+0.1
	1.0-1.5 (n = 13)	1.0-1.4 (n = 12)	-0.2 to -0.1	1.0-1.4 (n = 11)	-0.1 to 0.0	1.0-1.3 (n = 10)	-0.2 to 0.0	1.0-1.7 (n = 8)	-0.1 to 0.2
<b>L3-40</b>	1.3	1.3	0.0	1.3	0.0	1.2	-0.1	1.1	-0.1
	1.1-1.5 (n = 11)	1.1-1.5 (n = 11)	-0.2 to 0.2	1.1-1.3 (n = 10)	-0.1 to 0.1	1.1-1.3 (n = 8)	-0.2 to -0.1	1.0-1.4 (n = 9)	-0.3 to 0.0
<b>Total cholesterol/HDL ratio, Median and IQR (n)</b>									
<b>Placebo</b>	4.4	4.0	-0.1	4.0	-0.4	3.9	-0.2	3.9	+0.1
	3.8-5.2 (n = 12)	3.8-4.9 (n = 12)	-0.3 to 0.3	3.5 to 4.3 (n = 9)	-0.6 to -0.2	3.3-4.6 (n = 8)	-0.7 to 0.3	3.3-5.1 (n = 6)	-0.6 to 0.6
<b>L3-20</b>	4.1	4.2	+0.2	4.2	-0.1	4.3	+0.3	4.2	-0.2
	3.8-4.9 (n = 13)	3.7-4.9 (n = 12)	0.0 to 0.3	3.7-5.3 (n = 11)	-0.2 to 0.5	3.6-5.6 (n = 10)	-0.3 to 1.1	3.3-5.0 (n = 8)	-0.6 to 0.4
<b>L3-40</b>	4.0	4.4	+0.5	4.5	+0.1	4.8	+0.5	4.3	+0.2
	3.7-4.9 (n = 11)	4.0-4.7 (n = 11)	-0.2 to 0.8	3.9-5.1 (n = 10)	-0.4 to 0.8	4.1-5.0 (n = 8)	0.0 to 0.9	4.0-5.4 (n = 9)	-0.1 to 0.7

347

# Significantly different to baseline. \*Significantly different to Placebo

Supplementary Table 4. Absolute values and changes in serum Triglyceride and Low-Density Lipoprotein (LDL) levels in each treatment group

Triglycerides (mmol/L), Median and IQR (n)									
	baseline	6 months	Δ6 mo.	12 months	Δ12 mo.	18 months	Δ18 mo.	24 months	Δ24 mo.
<b>Placebo</b>	1.4 0.9-2.0 (n = 12)	1.4 1.0-2.0 (n = 12)	+0.2 -0.4 to 0.6	1.3 0.9-1.6 (n = 9)	0.0 -0.2 to 0.3	1.4 1.0-1.9 (n = 8)	+0.3 -0.2 to 0.5	1.8 1.4-2.9 (n = 6)	+0.7 0.4 to 1.4
<b>L3-20</b>	1.3 0.9-1.8 (n = 13)	1.3 0.8-1.7 (n = 12)	-0.2 -0.3 to 0.2	1.2 1.0-1.5 (n = 11)	-0.1 -0.4 to 0.2	1.4 0.8-2.5 (n = 10)	0.0 -0.2 to 0.8	1.1 0.9-1.9 (n = 8)	+0.1 -0.3 to 0.3
<b>L3-40</b>	1.4 0.8-2.0 (n = 11)	1.3 1.0-2.7 (n = 11)	-0.2 -0.4 to 0.9	1.8 1.0-2.6 (n = 10)	+0.1 -0.4 to 0.6	1.7 1.1-1.9 (n = 8)	-0.1 -0.2 to 0.7	1.3 0.9-2.1 (n = 9)	+0.1 -0.3 to 0.3
LDL (mmol/L), Median and IQR (n)									
<b>Placebo</b>	3.5 3.0-4.4 (n = 12)	3.1 2.6-3.9 (n = 12)	-0.2 -0.7 to 0.0	2.9 2.6-3.4 (n = 9)	-0.3 -0.8 to -0.1	<b>2.9#</b> 2.5-3.5 (n = 8)	-0.6 -0.8 to -0.3	2.7 2.6-3.2 (n = 6)	-0.6 -0.7 to 0.2
<b>L3-20</b>	3.3 2.9-4.3 (n = 13)	3.4 2.5-3.8 (n = 12)	-0.4 -0.6 to 0.0	3.2 2.7-3.7 (n = 11)	-0.1 -0.6 to 0.6	3.1 2.6-3.9 (n = 10)	-0.3 -0.5 to 0.5	3.1 2.1-4.1 (n = 8)	-0.2 -0.4 to 0.3
<b>L3-40</b>	3.4 2.6-3.6 (n = 11)	3.4 3.0-4.0 (n = 11)	+0.3 -0.3 to 1.3	3.2 3.0-3.8 (n = 10)	+0.2 -0.3 to 0.4	3.8 2.9-4.0 (n = 8)	<b>+0.5*</b> 0.0 to 0.6	3.1 2.7-3.7 (n = 9)	+0.1 -0.5 to 0.5

303

# Significantly different to baseline. \*Significantly different to Placebo

## 368 **DISCUSSION**

369 Over recent decades, helminth infection has emerged as a potential approach for treating  
370 allergic and autoimmune disorders, as well as metabolic disorders such as MetS and  
371 T2D<sup>15,21,27</sup>. Until now, a potential supportive role for worms in metabolic health has relied on  
372 animal studies and human cross-sectional or deworming studies that could not infer  
373 causality. The present study provides the first reported controlled-trial clinical evidence for  
374 the beneficial effect of helminth infection in metabolic disease. Infection with low doses of  
375 hookworms caused significantly reduced measures of glucose homeostasis (lowered  
376 HOMA-IR and fasting blood glucose) compared to pre-infection and Placebo treatment,  
377 which was associated with modest body mass reductions. Diet and physical activity changes  
378 could not explain these improvements. While the study was relatively small and needs to be  
379 validated by larger follow-up studies, the results provide critical proof of principle that  
380 hookworms and/or the biological changes they invoke in their human hosts are a safe and  
381 potentially beneficial intervention for improving determinants of metabolic health and  
382 preventing the development of T2D.

383

384 The primary outcome of this Phase Ib study was to determine the safety and tolerability of  
385 hookworm infection in people at risk of developing T2D. While hookworm infection was  
386 associated with a higher incidence of gastrointestinal AEs, these were anticipated during  
387 the time that hookworms established in the gut<sup>30</sup> and were typically mid-moderate and  
388 resolving. Three of the 28 hookworm-treated participants displayed GI symptoms that  
389 warranted deworming, and symptoms resolved promptly in two. The third did not improve  
390 after deworming, suggesting their symptoms were unrelated to hookworm infection. Overall,  
391 the safety profile of hookworm treatment in people at risk of T2D is similar to that in other  
392 diseases <sup>30</sup>.

393

394 In the current study, hookworm infection was associated with improved insulin resistance,  
395 consistent with previous mouse or natural human helminth infection studies<sup>7,21,31</sup>. Lowered  
396 HOMA-IR was most apparent in the group that received 20 hookworms and was most  
397 pronounced at 18 months, with a reduction in median HOMA-IR from 3.0 units at baseline  
398 (consistent with pre-diabetic insulin resistance) to 1.6 units at 18 months (a healthy level).  
399 The large Cohen's *d* effect sizes in the L3-20 group highlight the statistical and clinical  
400 significance of this sustained improvement in metabolic health. Interestingly, the  
401 improvements in HOMA-IR in the group that received 40 worms were less dramatic, despite  
402 similar trends in reduced HOMA-IR at 6 and 12 months. Both the L3-20 and L3-40 groups  
403 showed similar reductions in fasting blood glucose compared to Placebo throughout the  
404 study, but only the L3-20 group displayed sustained reductions in insulin. By the later stages  
405 of the study, all results from the L3-40 group were comparable to Placebo, indicating that a  
406 higher worm dose did not yield superior improvements in insulin resistance. This is  
407 somewhat counter-intuitive, but larger clinical trials are required to clarify the optimal dose  
408 of hookworms. One factor that may partially explain why participants in the L3-20 cohort  
409 responded better to treatment was that pre-trial median age and HOMA-IR were higher;  
410 hence there was greater potential for improvements. Future clinical trials designed to  
411 demonstrate efficacy should stratify participants based on high and low baseline HOMA-IR.

412  
413 In conversations with potential participants during recruitment and screening, it was evident  
414 that a powerful motivator to enrol was the prospect of body mass reductions, as documented  
415 in mouse<sup>20-22,24</sup> or natural human helminth infection studies<sup>7,24,31,32</sup>. We noted modest  
416 reductions in body mass and BMI in the L3-20 group; however, body mass reductions were  
417 not consistent for all hookworm-treated participants, possibly due to the relatively low worm  
418 burdens compared to those seen in animal studies or natural infections. This caused  
419 disappointment for some people, who then elected to pursue gastric sleeve surgery despite

420 improvements in HOMA-IR. Most participants were less concerned and continued with  
421 unabated enthusiasm. Bar one, all hookworm-treated participants that completed the study  
422 opted to retain their worms, and the sole person who dewormed did so in preparation for a  
423 medical procedure.

424

425 Interestingly, hookworm infection did not improve blood lipid profiles in contrast to what may  
426 have been expected based on previous studies<sup>9,10,13,24,32</sup>. A potential explanation could lie  
427 in the different helminth species used in the current trial. Previous studies noting improved  
428 blood lipid markers included cross-sectional and deworming studies of infections with  
429 multiple soil-transmitted helminths<sup>32</sup> and previous and current schistosomiasis<sup>9,10,13,24</sup> but  
430 not hookworm infection alone. Results from a 2019 systematic review and meta-analysis  
431 suggested that different helminth species may have different efficacy in altering lipid and  
432 glucose homeostasis<sup>15</sup>. The authors postulated that the liver-specific residence of  
433 *Schistosoma spp.* compared to intestinal helminths could facilitate greater metabolic  
434 improvements in schistosomiasis. Future helminth challenge studies such as ours that  
435 instead use single-sex infections with schistosome parasites<sup>33</sup> may validate this hypothesis.

436

437 The study had several limitations, with the major shortcoming being the small sample sizes  
438 that limited our ability to make firm conclusions. This was further curbed by the long duration  
439 of the study and attrition of participants in all groups after the 12-month time point. Since  
440 T2D takes many years to manifest, future studies will need to follow up with participants for  
441 longer periods. Ideally, this would be combined with repeated doses of hookworms to  
442 maintain a chronic infection and monitoring of the associated immune response. Such  
443 studies could include a deworming arm to determine if an active hookworm infection is  
444 required for longer-term benefits and could use HbA1c IFCC as a longer-term primary  
445 outcome measure of improved glycaemic control.



446 Further, participant selection bias limited the generalizability of our findings. Most  
447 participants were of Caucasian descent, and it is unclear if different populations, such as  
448 people of Asian descent or Australian First Nations people, who disproportionately suffer  
449 from MetS and T2D <sup>34</sup>, would experience similar improvements. Lastly, within the scope of  
450 this study, we could not attain a mechanistic understanding of how and why hookworm  
451 infection caused improvements in insulin resistance. Type 2 immune responses and  
452 eosinophils are known to influence metabolism<sup>20,35</sup>, so it remains plausible that they  
453 contributed to stimulating this pathway. Better understanding of the beneficial biological  
454 effects of hookworms in the context of MetS may identify novel therapeutic strategies that  
455 could mimic the actions of the live hookworm (e. g. immune-modifying or microbiome  
456 therapies) or may pinpoint factors that are excreted/secreted by hookworms that could be  
457 produced as novel biologic therapies <sup>36</sup>.

458

459 In conclusion, the hygiene hypothesis<sup>8,12</sup> provides a persuasive explanation for the  
460 increasing prevalence of inflammatory and metabolic disorders in populations with a low  
461 prevalence of helminth infections. The present study is the first to demonstrate that  
462 experimental infection with low hookworm doses is safe and leads to clinically significant  
463 improvements in glucose homeostasis in people at risk of MetS and T2D. Results from this  
464 proof of concept study will inform the further development of novel preventative interventions  
465 in humans at risk of T2D.

## 466 **METHODS**

### 467 **Study design and regulatory approvals**

468 Between January 2018 and April 2022, we conducted a 2-year Phase Ib randomised,  
469 double-blinded, placebo-controlled trial of experimental hookworm infection (either 20 or 40  
470 infective third-stage larvae, L3) in otherwise healthy people at risk of T2D. The study  
471 included two clinical sites in Queensland, Australia (James Cook University Cairns and  
472 Townsville campuses). The study designated C26 was approved on April 19<sup>th</sup> 2017 by the  
473 Human Research Ethics Committee of James Cook University. The trial was registered with  
474 the Australian New Zealand Clinical Trials Registry (ACTRN12617000818336). The clinical  
475 study protocol was published in 2019 <sup>37</sup>.

476

### 477 **Participants and sample collection**

478 Inclusion criteria: Otherwise healthy males and females aged 18-50 years with central  
479 obesity (waist circumference > 90cm for women and >102cm for men) and increased insulin  
480 resistance as assessed via abnormal HOMA-IR > 2.12 or at least two other features of  
481 metabolic syndrome determined at screening (blood pressure > 135/85 mmHg, dyslipidaemia  
482 or abnormal liver function tests). Exclusion criteria, in brief, included pregnancy, established  
483 chronic disease, historical or current substance abuse, major allergies, known  
484 immunodeficiency disorder, unstable asthma or taking medications likely to interfere with  
485 study outcomes. Blood samples were taken at each 6-monthly visit into serum separator  
486 tubes for serum analyses or heparin-coated tubes for complete blood count analysis  
487 (Beckton Dickinson). Participants were asked to provide fresh faecal samples at each study  
488 visit, which were frozen at -80°C for future analysis of the presence of hookworm eggs by  
489 qPCR.

490

## 491 **Randomization and masking**

492 An initial recruitment target of 54 participants allowed for a dropout rate of 20%, leaving a  
493 desired recruitment target of 45 volunteers (15 in each treatment group) to participate in the  
494 trial. Volunteers who met the eligibility criteria and had given informed consent were  
495 randomly allocated on a 1:1:1 ratio according to a computer-generated sequence to one of  
496 the three study arms: Placebo, 20x *N. americanus* L3 (L3-20) or 40x L3 (L3-40). Participants  
497 and investigators were blinded to the treatment, other than the assigned producer of the  
498 inocula (co-author L.B.).

499

## 500 **Preparation and administration of treatments**

501 The inocula were prepared freshly as previously described<sup>38</sup>. Hookworm ova were collected  
502 from two volunteer donors, initially infected in 2013 or 2018 with 5 *N. americanus* L3 from a  
503 line donated by Professor David Pritchard (University of Nottingham). Visibly motile L3 were  
504 individually selected for inclusion in the inocula, contained within 300 µl of de-ionised water.  
505 Placebo inocula comprised 300 µl of de-ionised water containing approximately 2 µl of  
506 Tabasco® sauce. The inoculation procedure involved dispensing the solution onto a non-  
507 absorbent dressing pad placed onto the participant's forearm. Two doses of inocula were  
508 administered eight weeks apart, with L3-20 and L3-40 participants receiving 10x or 20x L3  
509 on each occasion (**Figure 1A**). Hookworm infection status was monitored at baseline and  
510 six months using qPCR on 1g of thawed and homogenised faecal samples, as described  
511 previously<sup>39</sup>.

512

## 513 **Outcome measures**

514 Safety assessments were conducted at each designated visit (**Figure 1A**) to identify adverse  
515 events (AEs) and serious AEs and their suspected causality. Complete blood counts and

516 metabolic indices (glucose, insulin, HbA1c, liver function tests and lipids) were measured in  
517 serum samples at an accredited Australian clinical pathology laboratory. HOMA-IR was  
518 calculated by multiplying fasting blood glucose (mmol/L) by insulin (mU/L) values and  
519 dividing by 22.5<sup>29</sup>. Blood pressure was monitored using automated blood pressure devices.  
520 Height was measured using either a wall-mounted measuring tape or a stadiometer. Waist  
521 circumference was measured using a flexible measuring tape. Body mass was recorded  
522 using digital scales with a maximum capacity of 250kg. Body mass index (BMI) was  
523 calculated by dividing mass in kg by height in meters squared.

524

### 525 **Diet, physical activity, mood and depressive state monitoring**

526 The 14-item self-administered Prevención con Dieta Mediterránea (PREDIMED) diet  
527 questionnaire was used to monitor changes in participants' diets throughout the trial <sup>40</sup>.  
528 Using a scorecard, participants recorded their weekly physical activity, including type,  
529 duration, frequency, and intensity, which were combined into a single metric<sup>41</sup>, the metabolic  
530 equivalent of task (MET) per week (***MET x duration x frequency = METs/week***). To track  
531 changes in mood and depressive state, we used the validated Patient Health Questionnaire  
532 (PHQ)-9 <sup>42</sup>.

533

### 534 **Statistical analyses**

535 The chi-square test for trend was used to determine differences in the safety of hookworm  
536 infection, assessed by the proportions of AEs between each group. The Kaplan-Meier model  
537 was used to compare progression through the study, with associations between groups  
538 assessed using the Log-rank test statistic. Standard descriptive statistics were performed  
539 on all characteristics at baseline and each of the four evaluation visits (categorical variables:  
540 absolute and relative frequencies; numerical variables: mean and 95% confidence intervals

541 or median and interquartile range, dependent on data distribution). Normality testing  
542 indicated that most data were not normally distributed. Thus, Kruskal-Wallis with Dunn's  
543 multiple comparisons tests were used to detect inter-cohort differences in absolute values  
544 and changes or Mann-Whitney tests where hookworm groups were combined (PHQ-9). For  
545 significant results in tests with posthoc analyses, the adjusted  $p$ -value is reported. For test  
546 results stated as not significant,  $p$  was  $> 0.05$ . To calculate effect sizes (Cohen's  $d$ ) for  
547 HOMA-IR changes, the following equation was used:

548  $d = M_1 - M_2 / \delta_{\text{pooled}}$  ( $\delta_{\text{pooled}}$ , pooled standard deviation) with  $\delta_{\text{pooled}} = \sqrt{[(\delta_1^2 + \delta_2^2)/2]}$   
549 (<http://www.bwgriffin.com/gsu/courses/edur9131/content/EffectSizeBecker.pdf>).

550 A research team member and an independent monitor reviewed data from each participant  
551 to identify and address missing information. To account for missing data, this study followed  
552 the method prescribed in Jakobsen et al.<sup>43</sup>. Specifically, as missing data exceeded 40%, no  
553 imputation was undertaken, and results were interpreted in the context of this limitation. The  
554 mixed-effects model (which allows missing values) with Tukey's multiple comparisons tests  
555 was applied for longitudinal analyses with missing values. Statistical analyses were  
556 performed in GraphPad Prism 9.0.

557

## 558 **Role of the funding source**

559 The funders had no role in the design or conduct of the study

560

561 **ACKNOWLEDGEMENTS**

562 The work was funded by the Far North QLD Hospital Foundation (PG, RM, AL), Australian  
563 Institute of Tropical Health and Medicine (RM, PG, AL), Australian National Health and  
564 Medical research Council (NHMRC) Senior Principal Research Fellowship (AL), Program  
565 Grant (AL), Advance Queensland Fellowship (PG) and an Australian Research Training  
566 Program Stipend (DP). Funders had no role in the design or conduct of the study. We also  
567 thank Rebecca Traub, Sze Fui Hii and Patsy Zendajas (University of Melbourne) for  
568 assistance with hookworm qPCR assays, Sally McDonald, Lynne Reid, Melissa Piontek,  
569 Tyler Gilstrom, Melissa Campbell and Geraldine Buitrago for assistance with clinical trial  
570 operations.

571 **AUTHOR CONTRIBUTIONS**

572 Conceptualization: RM, AL, TR, JC, and PG. Data analysis: DP, FT, RM, PG. Funding: DP,  
573 AL, RM, PG, MF. Investigation: DP, MM, LM, LB, CL, AL, RM, PG. Methodology: DP, MM,  
574 LB, JC, AL, RM, PG, MF. Project administration: DP, MM, LM, FT, CL, RM, PG. Writing –  
575 original draft. DP and PG. Writing – review & editing: All authors

576

577 **DECLARATION OF INTERESTS**

578 P.R.G and A.L are founders and shareholders of Macrobiome Therapeutics, which is  
579 developing hookworm-derived proteins as drugs for treating inflammatory conditions.

580



## 581 REFERENCES

- 582 1 Despres, J. P. *et al.* Abdominal obesity and the metabolic syndrome: Contribution to  
583 global cardiometabolic risk. *Arterioscler. Thromb. Vasc. Biol.* **28**, 1039-1049 (2008).  
584 <https://doi.org/10.1161/ATVBAHA.107.159228>
- 585 2 International Diabetes Federation. *IDF Diabetes Atlas 10th Edition 2021*,  
586 <<https://diabetesatlas.org/>> (2022).
- 587 3 Xu, H. *et al.* Chronic inflammation in fat plays a crucial role in the development of  
588 obesity-related insulin resistance. *J. Clin. Invest.* **112**, 1821-1830 (2003).  
589 <https://doi.org/10.1172/JCI19451>
- 590 4 Hotamisligil, G. S. Inflammation and metabolic disorders. *Nature* **444**, 860 (2006).
- 591 5 Qin, J. *et al.* A metagenome-wide association study of gut microbiota in type 2  
592 diabetes. *Nature* **490**, 55-60 (2012). <https://doi.org/10.1038/nature11450>
- 593 6 Wellen, K. E. & Hotamisligil, G. S. Inflammation, stress, and diabetes. *J. Clin. Invest.*  
594 **115**, 1111-1119 (2005). <https://doi.org/10.1172/JCI200525102>
- 595 7 Wiria, A. E. *et al.* Infection with soil-transmitted helminths is associated with increased  
596 insulin sensitivity. *PLoS One* **10**, e0127746 (2015).  
597 <https://doi.org/10.1371/journal.pone.0127746>
- 598 8 Yazdanbakhsh, M., Kremsner, P. G. & van Ree, R. Allergy, parasites, and the  
599 hygiene hypothesis. *Science* **296**, 490-494 (2002).  
600 <https://doi.org/10.1126/science.296.5567.490>
- 601 9 Shen, S. W. *et al.* The potential long-term effect of previous schistosome infection  
602 reduces the risk of metabolic syndrome among Chinese men. *Parasite Immunol.* **37**,  
603 333-339 (2015). <https://doi.org/10.1111/pim.12187>
- 604 10 Wolde, M. *et al.* Inverse Associations of *Schistosoma mansoni* Infection and  
605 Metabolic Syndromes in Humans: A Cross-Sectional Study in Northeast Ethiopia.

- 606 *Microbiology Insights* **12**, 1178636119849934 (2019).  
607 <https://doi.org/10.1177/1178636119849934>
- 608 11 Loke, P. n., Lee, S. C. & Oyesola, O. O. Effects of helminths on the human immune  
609 response and the microbiome. *Mucosal Immunol.* (2022).  
610 <https://doi.org/10.1038/s41385-022-00532-9>
- 611 12 de Ruiter, K. *et al.* Helminths, hygiene hypothesis and type 2 diabetes. *Parasite*  
612 *Immunol.* **39**, e12404 (2017). <https://doi.org/doi:10.1111/pim.12404>
- 613 13 Mohamed, S. M. A., Saber, T., Taha, A. A., Roshdy, H. S. & Shahien, N. E. Relation  
614 between Schistosome Past Infection and Metabolic Syndrome. *J. Egypt. Soc.*  
615 *Parasitol.* **47**, 137-143 (2017).
- 616 14 Tracey, E. F., McDermott, R. A. & McDonald, M. I. Do worms protect against the  
617 metabolic syndrome? A systematic review and meta-analysis. *Diabetes Res. Clin.*  
618 *Pract.* **120**, 209-220 (2016). <https://doi.org/10.1016/j.diabres.2016.08.014>
- 619 15 Rennie, C., Fernandez, R., Donnelly, S. & McGrath, K. C. The impact of helminth  
620 infection on the incidence of metabolic syndrome: A systematic review and meta-  
621 analysis. *Front. Endocrinol. (Lausanne)* **12**, 728396 (2021).  
622 <https://doi.org/10.3389/fendo.2021.728396>
- 623 16 Tahapary, D. L. *et al.* Effect of anthelmintic treatment on insulin resistance: A cluster-  
624 randomized, placebo-controlled trial in Indonesia. *Clin. Infect. Dis.* **65**, 764-771  
625 (2017). <https://doi.org/10.1093/cid/cix416>
- 626 17 Rajamanickam, A. *et al.* Metabolic consequences of concomitant *Strongyloides*  
627 *stercoralis* infection in Type 2 diabetes mellitus. *Clin. Infect. Dis.* (2018).  
628 <https://doi.org/10.1093/cid/ciy935>
- 629 18 Muthukumar, R. *et al.* Effects of *Opisthorchis viverrini* infection on glucose and lipid  
630 profiles in human hosts: A cross-sectional and prospective follow-up study from  
631 Thailand. *Parasitol. Int.*, 102000 (2019). <https://doi.org/10.1016/j.parint.2019.102000>

- 632 19 Sanya, R. E. *et al.* The effect of helminth infections and their treatment on metabolic  
633 outcomes: Results of a cluster-randomised trial. *Clin. Infect. Dis.* (2019).  
634 <https://doi.org/10.1093/cid/ciz859>
- 635 20 Wu, D. *et al.* Eosinophils sustain adipose alternatively activated macrophages  
636 associated with glucose homeostasis. *Science* **332**, 243-247 (2011).  
637 <https://doi.org/10.1126/science.1201475>
- 638 21 Hussaarts, L. *et al.* Chronic helminth infection and helminth-derived egg antigens  
639 promote adipose tissue M2 macrophages and improve insulin sensitivity in obese  
640 mice. *FASEB J.* **29**, 3027-3039 (2015). <https://doi.org/10.1096/fj.14-266239>
- 641 22 Yang, Z. *et al.* Parasitic nematode-induced modulation of body weight and associated  
642 metabolic dysfunction in mouse models of obesity. *Infect. Immun.* **81**, 1905-1914  
643 (2013). <https://doi.org/10.1128/IAI.00053-13>
- 644 23 Morimoto, M., Azuma, N., Kadowaki, H., Abe, T. & Suto, Y. Regulation of type 2  
645 diabetes by helminth-induced Th2 immune response. *J. Vet. Med. Sci.* **78**, 1855-1864  
646 (2017). <https://doi.org/10.1292/jvms.16-0183>
- 647 24 Duan, Q. *et al.* Population based and animal study on the effects of *Schistosoma*  
648 *japonicum* infection in the regulation of host glucose homeostasis. *Acta Trop.* **180**,  
649 33-41 (2018). <https://doi.org/10.1016/j.actatropica.2018.01.002>
- 650 25 Croese, J. *et al.* Randomized, placebo controlled trial of experimental hookworm  
651 infection for improving gluten tolerance in celiac disease. *Clinical and Translational*  
652 *Gastroenterology* **11**, e00274 (2020).  
653 <https://doi.org/10.14309/ctg.0000000000000274>
- 654 26 Croese, J. *et al.* Experimental hookworm infection and gluten microchallenge  
655 promote tolerance in celiac disease. *J. Allergy Clin. Immunol.* **135**, 508-516 (2015).  
656 <https://doi.org/10.1016/j.jaci.2014.07.022>

- 657 27 Tanasescu, R. *et al.* Hookworm Treatment for Relapsing Multiple Sclerosis: A  
658 Randomized Double-Blinded Placebo-Controlled Trial. *JAMA Neurol* (2020).  
659 <https://doi.org/10.1001/jamaneurol.2020.1118>
- 660 28 Cantacessi, C. *et al.* Impact of experimental hookworm infection on the human gut  
661 microbiota. *The Journal of Infectious Diseases* **210**, 1431-1434 (2014).  
662 <https://doi.org/10.1093/infdis/jiu256>
- 663 29 Wallace, T. M., Levy, J. C. & Matthews, D. R. Use and abuse of HOMA modeling.  
664 *Diabetes Care* **27**, 1487-1495 (2004). <https://doi.org/10.2337/diacare.27.6.1487>
- 665 30 Chapman, P. R. *et al.* Vaccination of human participants with attenuated *Necator*  
666 *americanus* hookworm larvae and human challenge in Australia: a dose-finding study  
667 and randomised, placebo-controlled, phase 1 trial. *Lancet Infect. Dis.* (2021).  
668 [https://doi.org/10.1016/S1473-3099\(21\)00153-5](https://doi.org/10.1016/S1473-3099(21)00153-5)
- 669 31 Chen, Y. *et al.* Association of previous schistosome infection with diabetes and  
670 metabolic syndrome: A cross-sectional study in rural China. *J. Clin. Endocrinol.*  
671 *Metab.* **98**, E283-E287 (2013). <https://doi.org/10.1210/jc.2012-2517>
- 672 32 Wiria, A. E. *et al.* Relationship between carotid intima media thickness and helminth  
673 infections on Flores Island, Indonesia. *PLoS One* **8**, e54855 (2013).  
674 <https://doi.org/10.1371/journal.pone.0054855>
- 675 33 Langenberg, M. C. C. *et al.* A controlled human *Schistosoma mansoni* infection model  
676 to advance novel drugs, vaccines and diagnostics. *Nat. Med.* **26**, 326-332 (2020).  
677 <https://doi.org/10.1038/s41591-020-0759-x>
- 678 34 Diabetes Australia. *Aboriginal and Torres Strait Islander People*,  
679 [https://www.diabetesaustralia.com.au/living-with-diabetes/aboriginal-and-torres-](https://www.diabetesaustralia.com.au/living-with-diabetes/aboriginal-and-torres-strait-islanders/)  
680 [strait-islanders/](https://www.diabetesaustralia.com.au/living-with-diabetes/aboriginal-and-torres-strait-islanders/)> (n.d.).

- 681 35 Moyat, M., Coakley, G. & Harris, N. L. The interplay of type 2 immunity, helminth  
682 infection and the microbiota in regulating metabolism. *Clinical & Translational*  
683 *Immunology* **8**, e01089 (2019). [https://doi.org:10.1002/cti2.1089](https://doi.org/10.1002/cti2.1089)
- 684 36 Ryan, S. M., Eichenberger, R. M., Ruscher, R., Giacomini, P. R. & Loukas, A.  
685 Harnessing helminth-driven immunoregulation in the search for novel therapeutic  
686 modalities. *PLoS Pathog* **16**, e1008508 (2020).  
687 [https://doi.org:10.1371/journal.ppat.1008508](https://doi.org/10.1371/journal.ppat.1008508)
- 688 37 Pierce, D. *et al.* Safety and tolerability of experimental hookworm infection in humans  
689 with metabolic disease: study protocol for a phase 1b randomised controlled clinical  
690 trial. *BMC Endocr. Disord.* **19**, 136 (2019). [https://doi.org:10.1186/s12902-019-0461-](https://doi.org/10.1186/s12902-019-0461-5)  
691 [5](https://doi.org/10.1186/s12902-019-0461-5)
- 692 38 Chapman, P. R. *et al.* The production of *Necator americanus* larvae for use in  
693 experimental human infection. *Parasites & Vectors* **15**, 242 (2022).  
694 [https://doi.org:10.1186/s13071-022-05371-y](https://doi.org/10.1186/s13071-022-05371-y)
- 695 39 Hii, S. F. *et al.* Development and evaluation of a multiplex quantitative real-time  
696 polymerase chain reaction for hookworm species in human stool. *Am. J. Trop. Med.*  
697 *Hyg.* **99**, 1186-1193 (2018). [https://doi.org:10.4269/ajtmh.18-0276](https://doi.org/10.4269/ajtmh.18-0276)
- 698 40 Martínez-González, M. A. *et al.* A 14-Item Mediterranean diet assessment tool and  
699 obesity indexes among high-risk subjects: The PREDIMED trial. *PLoS One* **7**, e43134  
700 (2012). [https://doi.org:10.1371/journal.pone.0043134](https://doi.org/10.1371/journal.pone.0043134)
- 701 41 Ainsworth, B. E. *et al.* *The Compendium of Physical Activities Tracking Guide*,  
702 <https://sites.google.com/site/compendiumofphysicalactivities/> (2011).
- 703 42 Levis, B., Benedetti, A., Thombs, B. D. & Collaboration, D. E. S. D. Accuracy of  
704 Patient Health Questionnaire-9 (PHQ-9) for screening to detect major depression:  
705 individual participant data meta-analysis. *BMJ* **365**, l1476 (2019).  
706 [https://doi.org:10.1136/bmj.l1476](https://doi.org/10.1136/bmj.l1476)

707 43 Jakobsen, J. C., Gluud, C., Wetterslev, J. & Winkel, P. When and how should multiple  
708 imputation be used for handling missing data in randomised clinical trials - a practical  
709 guide with flowcharts. *BMC Med. Res. Methodol.* **17**, 162 (2017).  
710 [https://doi.org:10.1186/s12874-017-0442-1](https://doi.org/10.1186/s12874-017-0442-1)

711

712

## 713 **FIGURE LEGENDS**

714 **Figure 1. Study time line, CONSORT flow diagram and study progression. (A)** After  
715 screening and informed consent, participants were allocated to receive either placebo (chilli  
716 pepper solution) or a total of 20 (L3-20) or 40 (L3-40) *N. americanus* hookworm larvae  
717 delivered to the skin over 2 occasions, at month 0 and month 2. Participants underwent  
718 evaluation visits every 6 months, where physical and vitals exams were undertaken, adverse  
719 events were reviewed, and biological samples and questionnaires were collected for  
720 analysis of safety, pathology, well-being, diet and exercise habits. **(B)** CONSORT chart  
721 showing flow of patients through the clinical trial, and reasons for early termination. **(C)**  
722 Kaplan Meier analysis of rates of trial continuation (%) in each group during the 2-year study.

723

724 **Figure 2. Evaluation of establishment of hookworm infections. (A)** Peripheral blood  
725 eosinophil counts (median  $\pm$  IQR) at each evaluation visit, shaded area indicates normal  
726 range. **(B)** Heat map displaying eosinophil counts the 6 month visit (peak eosinophilia) in  
727 each participant and correlation with the **(C)** detection of hookworm eggs in feces by qPCR  
728 (Hookworm patency). Some samples were unable for analysis due to dropping out prior to  
729 the 6-month visit.

730

731 **Figure 3. Effect of experimental hookworm infection on insulin resistance (HOMA-IR),**  
732 **fasting blood glucose and insulin.** Changes in the **(A)** Homeostatic model assessment of  
733 insulin resistance (HOMA-IR, units), **(B)** Fasting blood glucose and **(C)** fasting blood insulin  
734 levels from baseline values at each 6-monthly evaluation visit. Violin plots display each  
735 individual data point, median and IQR. Dotted vertical line indicates baseline levels (0  
736 change). \*Significant difference to placebo, # Significant difference to baseline value.

737

738 **Figure 4. Impact of experimental hookworm infection on body mass.** Changes in  
739 participant's body mass (kg) from baseline values at each 6-monthly evaluation visit. Violin  
740 plots display each individual data point, median and IQR. Dotted vertical line indicates  
741 baseline levels (0 change). # Significant difference to baseline value.

742

743 **Supplementary Figure 1. Hookworm infection was not associated with anemia.** Blood  
744 hemoglobin concentration at each evaluation visit (median and IQR), shaded area indicates  
745 combined normal range for males and females.

746

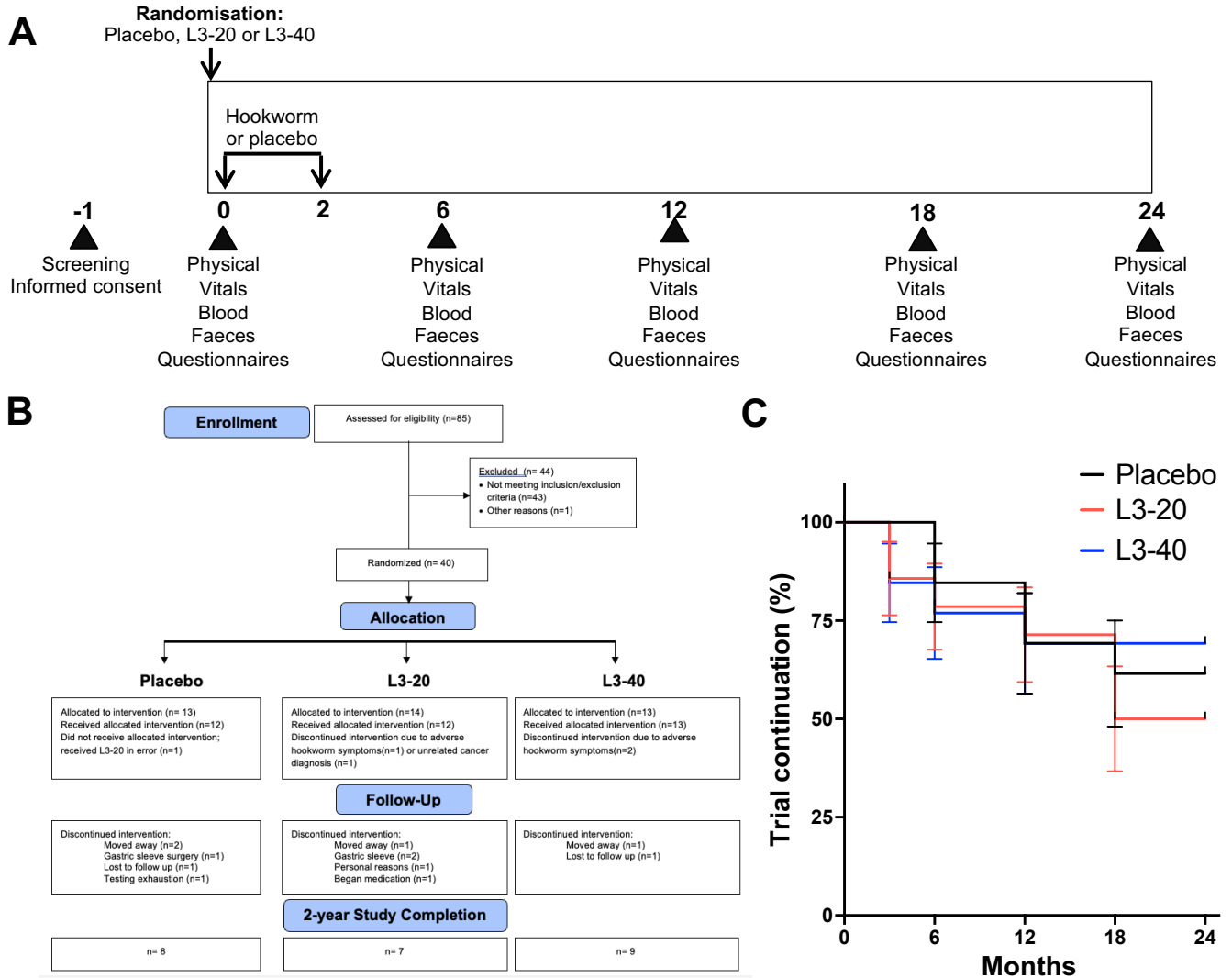
747 **Supplementary Figure 2. Diet (PREDIMED score) and Physical Activity remained**  
748 **relatively stable in all groups throughout the study. (A)** PREDIMED total scores in each  
749 treatment group at each evaluation visit (median and IQR). **(B)** Physical activity (Metabolic  
750 Equivalents of task, METs) per week assessed at each evaluation visit (median and IQR).

751

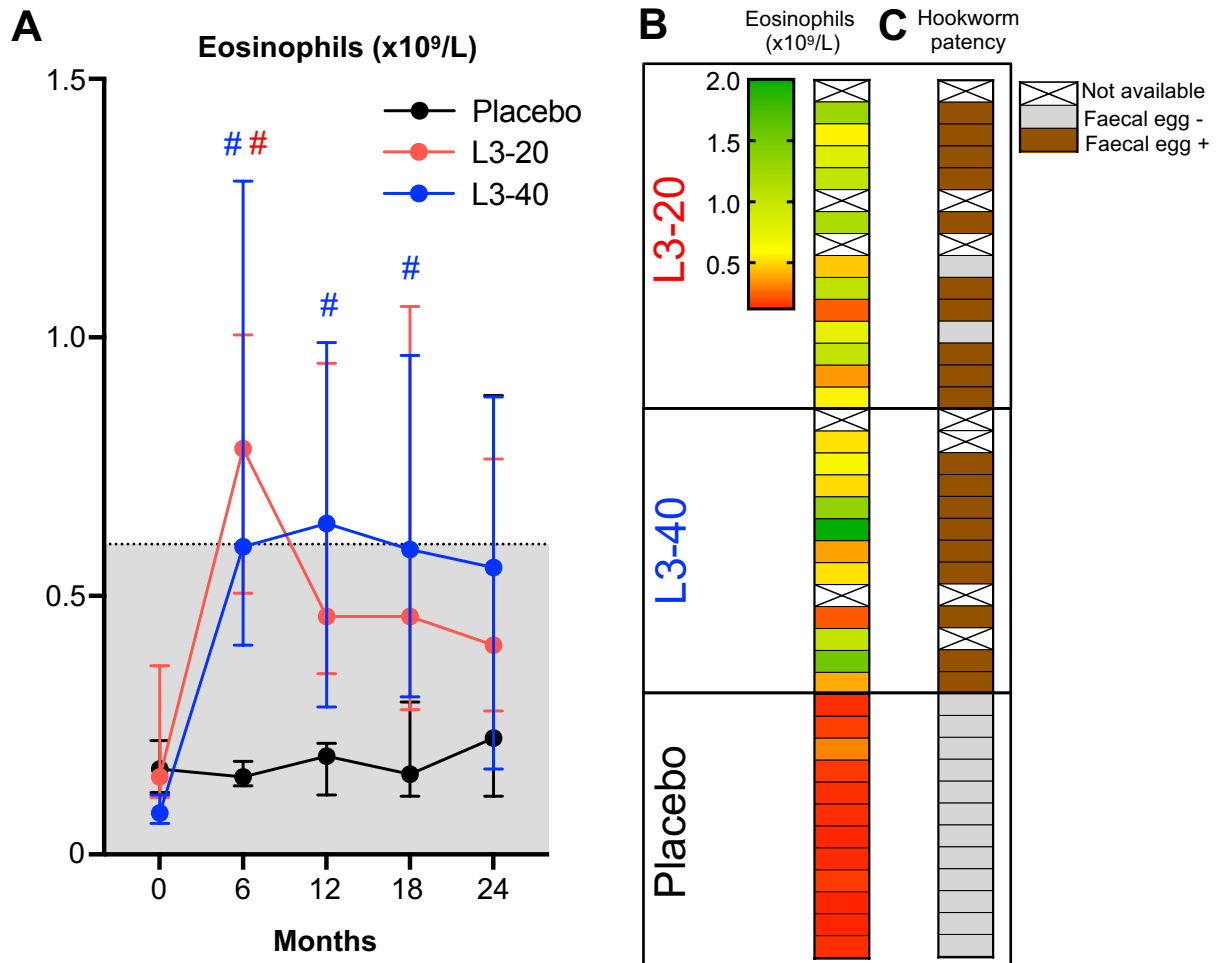
752 **Supplementary Figure 3. Impact of experimental hookworm infection on body mass**  
753 **index (BMI).** Changes in participant's body mass index (kg/m<sup>2</sup>) from baseline values at each  
754 6-monthly evaluation visit. Violin plots display each individual data point, median and IQR.  
755 Dotted vertical line indicates baseline levels (0 change). # Significant difference to baseline  
756 value.



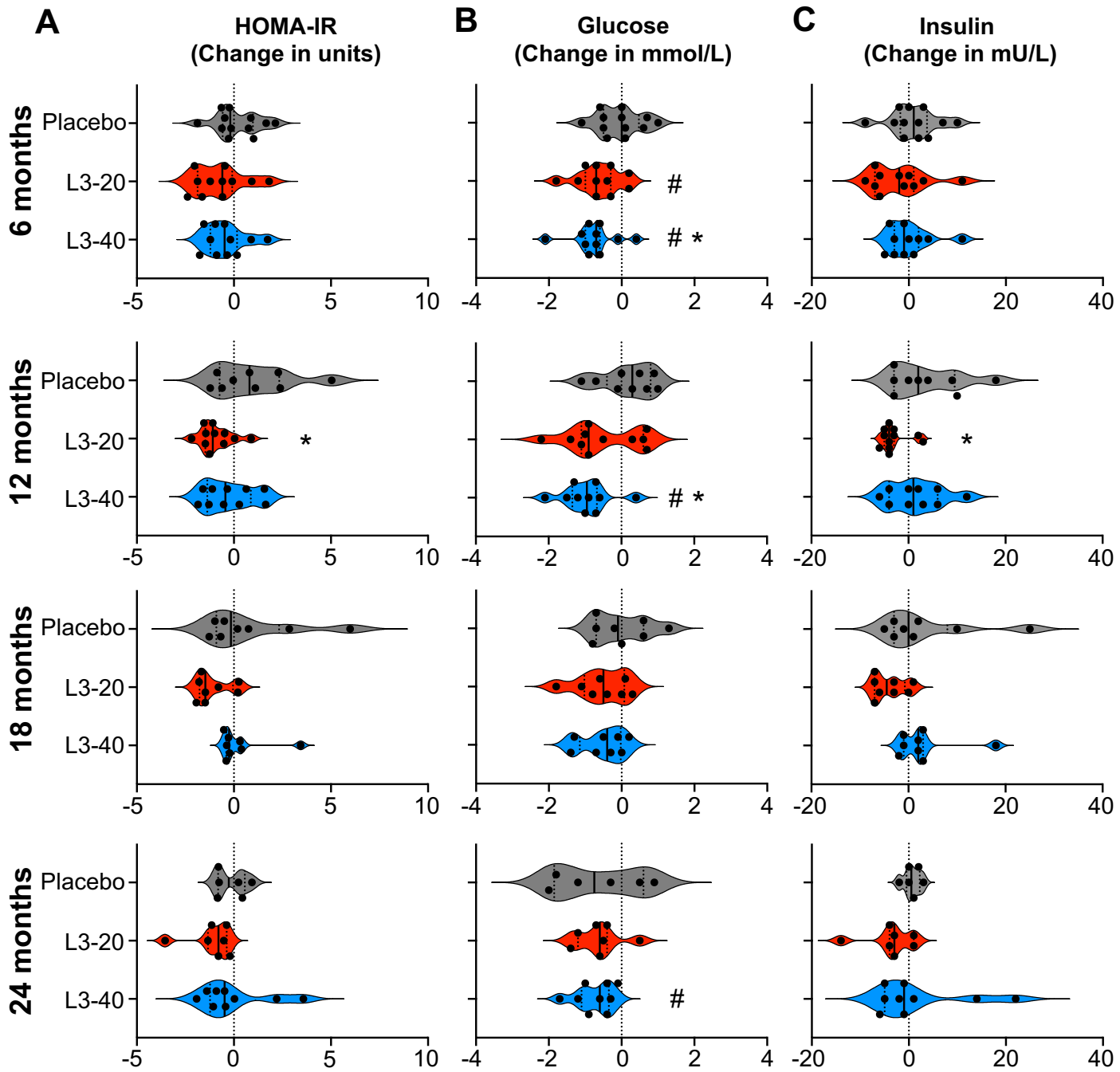
# FIGURE 1



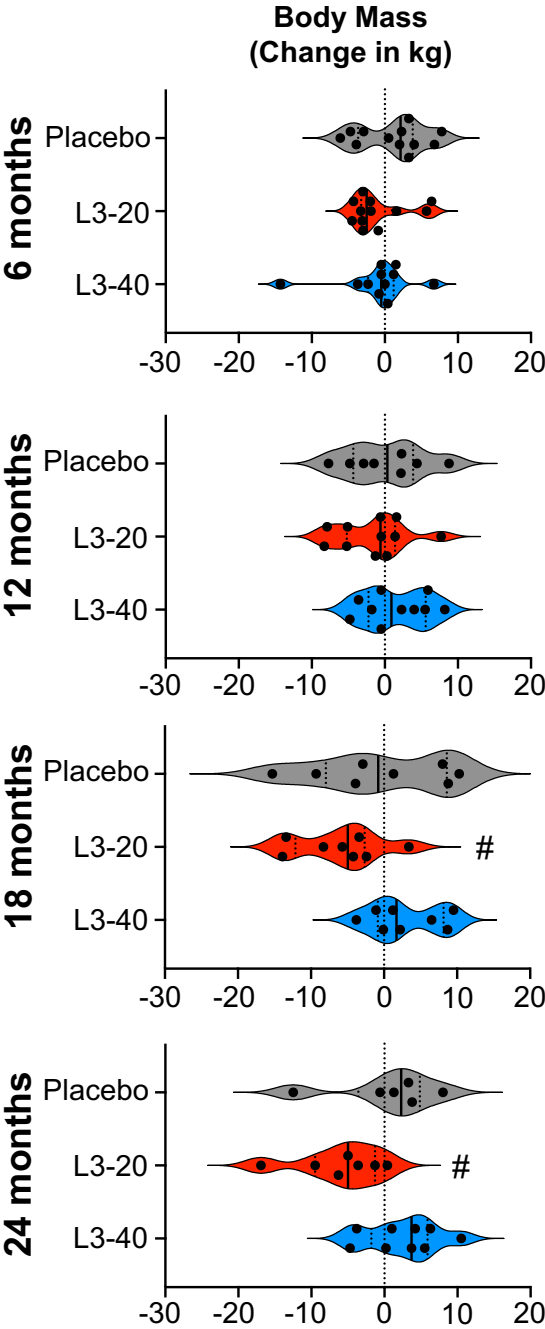
**FIGURE 2**



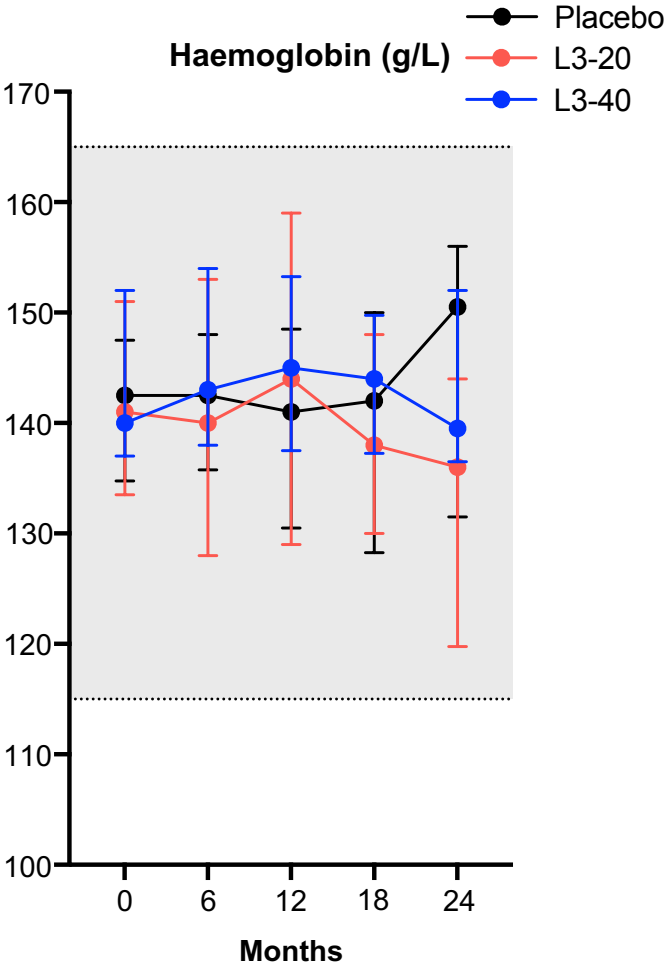
**FIGURE 3**



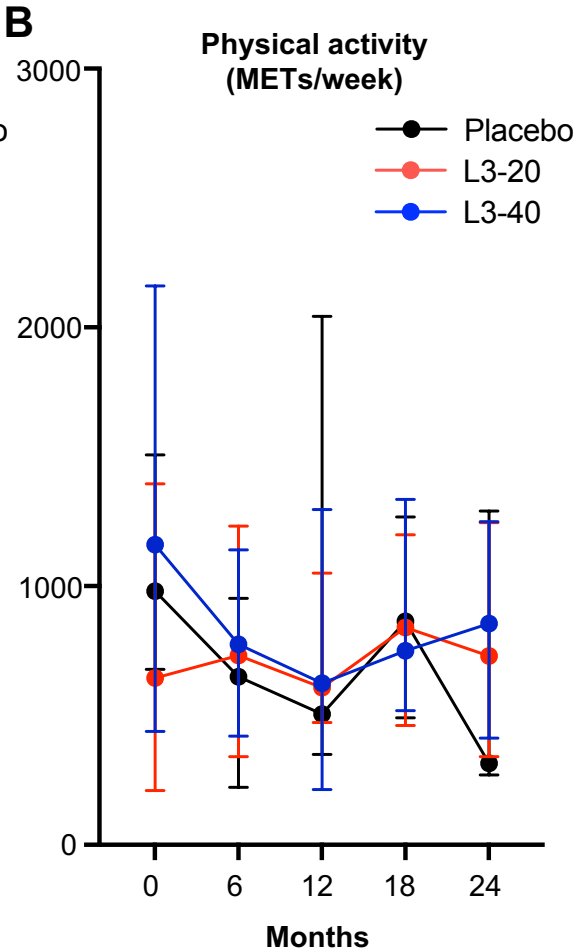
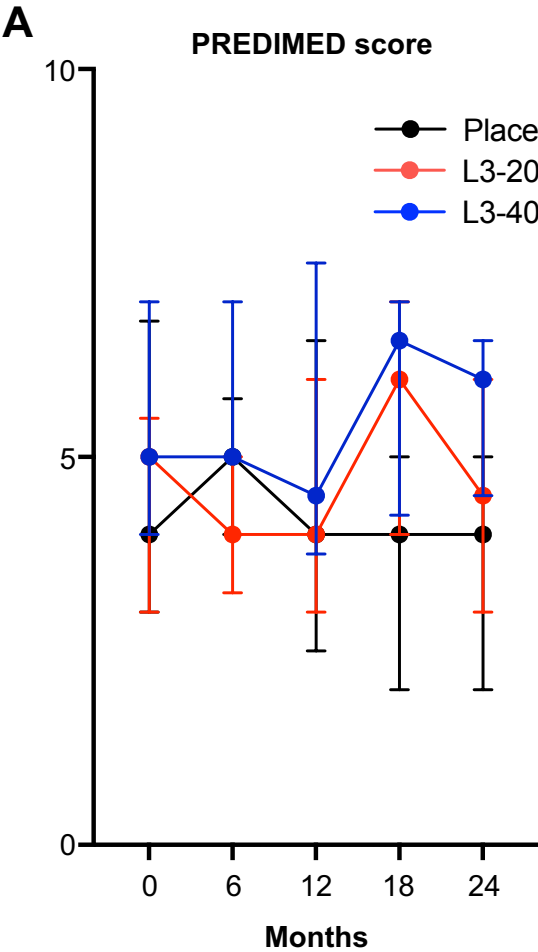
**FIGURE 4**



# SUPPLEMENTARY FIGURE 1



# SUPPLEMENTARY FIGURE 2



# SUPPLEMENTARY FIGURE 3

