

1 Title: Identifying potential risk genes and pathways for
2 neuropsychiatric and substance use disorders using intermediate
3 molecular mediator information
4

5 Huseyin Gedik^a, Tan Hoang Nguyen^b, Roseann E. Peterson^{c,d},
6 Christos Chatzinakos^{e,f}, Brien P. Riley^b, Vladimir I.
7 Vladimirov^g, Silviu-Alin Bacanu^b

8
9 ^a Integrative Life Sciences, Virginia Institute of Psychiatric and Behavioral Genetics, Virginia
10 Commonwealth University, Richmond, VA, USA

11 ^b Department of Psychiatry, Virginia Institute for Psychiatric and Behavioral Genetics, Virginia
12 Commonwealth University, Richmond, VA, USA

13 ^c Institute for Genomics in Health, SUNY Downstate Health Sciences University, Brooklyn, NY, USA

14 ^d Department of Psychiatry and Behavioral Sciences, SUNY Downstate Health Sciences University,
15 Brooklyn, NY, USA

16 ^e Stanley Center for Psychiatric Research, Broad Institute of MIT and Harvard, Cambridge, MA, USA

17 ^f Department of Psychiatry, McLean Hospital, Harvard Medical School, Belmont, MA, USA

18 ^g Department of Psychiatry, College of Medicine-Phoenix, University of Arizona, Phoenix, AZ, USA

19 Short Title: Identifying potential causal genes and pathways

20 Corresponding Author:

21 Full name: Huseyin Gedik

22 Department: Integrative Life Sciences

23 Virginia Commonwealth University

24 800 E Leigh Street

25 Richmond, VA, 23219, United States

26 Email: gedikh@vcu.edu

27
28 Keywords: eQTL, pQTL, mQTL, Mendelian randomization, Alcohol Use Disorder, Bipolar
29 Disorder, Schizophrenia

30
31
32
33
34
35
36
37
38
39
40
41
42
43
44
45
46
47
48
49
50
51
52
53
54
55
56
57
58
59

Abstract

Neuropsychiatric and substance use disorders (NPSUD) have a complex etiology that includes environmental and polygenic risk factors with significant cross-trait r_G . Genome Wide Association Studies (GWAS) of NPSUD yield numerous association signals. However, for most of these regions, we do not yet have a firm understanding of either the specific risk variants or the effects of these variants. Post-GWAS methods allow researchers to use GWAS summary statistics and functional genomics data to infer the likely molecular mediators (transcript, protein and methylation abundances) for the effect of variants on disorders. One group of post-GWAS approaches is commonly referred to as transcriptome/proteome/methylome wide association studies, which are abbreviated as T/P/MWAS (or collectively as XWAS). Since these approaches use biological mediators, the multiple testing burden is reduced to the number of genes (~20,000) instead of millions GWAS SNPs leading to increased signal detection. In this work, our aim is to uncover likely risk genes for NPSUD by performing XWAS analyses in two tissues – blood and brain. Firstly, XWAS using the Summary-data based Mendelian Randomization (SMR), which takes GWAS summary statistics, reference xQTL data and a reference LD panel as inputs, was conducted to identify putative causal risk genes. Second, given the large comorbidities among NPSUD and the shared cis-xQTLs between blood and brain, we improved XWAS signal detection in NPSUD for underpowered analyses by performing joint concordance analyses between XWAS results i) across the two tissues and ii) across NPSUD. All XWAS signals i) were adjusted for HEIDI (non-causality) p-values and ii) used to test for pathway enrichment. The results suggest that there were widely shared gene/protein signals within the Major Histocompatibility (MHC) region on chromosome 6 (*BTN3A2* and *C4A*) and elsewhere in the genome (*RERE*, *FURIN*, *ZDHHC5* and *NEK4*). The identification of putative molecular genes and pathways underlying risk may offer new targets for therapeutic development. Some of our analyses' more immediate actionable signals might relate to vitamins, i.e., i) in *KYAT3* (a part of the kynurenine pathway with vitamin B₆ as a cofactor) for post-traumatic stress disorder and ii) omega-3 and vitamin D pathways for bipolar disorder.

60 **1. Introduction**

61
62 Genome-wide association studies (GWAS) have identified numerous loci associated with
63 neuropsychiatric and substance use disorders (NPSUD), supporting the high polygenicity of
64 NPSUD. Furthermore, NPSUD's risk loci have not been fully discovered (Owen and Williams,
65 2021). For instance, the largest GWAS for schizophrenia (SCZ) found 287 independent loci and
66 estimates that the common variants explain only 24% of the phenotypic variance (Trubetskoy et
67 al., 2022). Similarly, other NPSUD GWAS yield large numbers of genome-wide significant
68 signals (Howard et al., 2019; Nievergelt et al., 2019; Sanchez-Roige et al., 2019; Mullins et al.,
69 2021) capturing a statistically significant but small proportion of the phenotypic variance. Since
70 most genome-wide significant signals reside in non-protein coding genomic regions (Edwards et
71 al., 2013), the interpretation of these GWAS findings are not straightforward. Performing post-
72 GWAS analyses, that infer associations between genes or molecular pathways and traits, could
73 significantly advance our understanding of these GWAS signals.

74
75 Associated variants are thought to influence risk through altered gene regulation, for example, via
76 epigenetic changes, yielding changes in RNA levels or protein abundance. Molecular quantitative
77 loci mapping studies empirically support this assumption. They found that expression quantitative
78 trait loci (eQTL) (Ongen et al., 2017), protein QTL (pQTL) (Robins et al., 2021) and methylation
79 QTL (mQTL) (Hannon et al., 2016) colocalize with disease-associated loci. However, while there
80 are many well-powered GWAS scans in NPSUD (Pardiñas et al., 2018; Demontis et al., 2019;
81 Grove et al., 2019; Howard et al., 2019; Nievergelt et al., 2019; Watson et al., 2019; Johnson et
82 al., 2020; Polimanti et al., 2020; Mullins et al., 2021; Trubetskoy et al., 2022), none of these studies
83 directly assayed the transcriptome, proteome or methylome for their cohorts.

84
85 However, researchers found ways around this assessment limitation in GWAS cohorts. They
86 formed large reference molecular e/p/mQTL (henceforth denoted as xQTL) datasets readily
87 available for blood and brain (Sun et al., 2018; van der Wijst et al., 2020; Ferkingstad et al., 2021;
88 Vösa et al., 2021; Yang et al., 2021a; Zhang et al., 2021). Researchers have developed methods to
89 integrate these molecular xQTL data and GWAS summary statistics to impute the association
90 between phenotypes and molecular mediators (transcriptome, proteome and methylome). Such
91 analyses are widely referred to as transcriptome-wide association studies (TWAS), proteome-wide

92 association studies (P WAS) and methylome-wide association studies (M WAS) (Gamazon et al.,
93 2015; Gusev et al., 2016; Zhu et al., 2016; Barbeira et al., 2018, 2019; Hu et al., 2019; Nagpal et
94 al., 2019; Bae et al., 2021) – henceforth collectively referred to as X WAS. Moreover, since they
95 directly model relevant biological mediators, these approaches could identify putatively causal
96 genes but they fail to eliminate pleiotropy (Wainberg et al., 2019). Until recently, X WAS analyses
97 of NPSUD were mostly T WAS (Zhu et al., 2016; Niu et al., 2019; Hammerschlag et al., 2020;
98 Kapoor et al., 2021). However, P WAS is also increasing in number with the expanding pQTL
99 reference data in brain (Wingo et al., 2021, 2022). Besides eQTL and pQTL, mQTL has also been
100 investigated as a risk factor (Perzel Mandell et al., 2021; Shen et al., 2022). Recently, M WAS also
101 yielded significant genes for NPSUD (Sugawara et al., 2018; Aberg et al., 2020; Howard et al.,
102 2022).

103
104 Changes in gross anatomical and cell type specific phenotypes have been observed for NPSUD
105 and associated risk alleles via *in vitro* and postmortem studies (Brennand et al., 2012; Schrode et
106 al., 2019; Zhang et al., 2020). Functional genomic profiles differ by cell type (Marstrand and
107 Storey, 2014; Buenrostro et al., 2015) and cell type composition differs across brain regions (Wang
108 et al., 2018). In addition, different neuronal cell types have different functional profiles and
109 different distributions across regions (Kelley et al., 2018). Genetic variants contributing to the
110 heritability of certain NPSUD were enriched in cis-regulatory elements that are specific to
111 GABAergic and glutamatergic neurons (Sanchez-Priego et al., 2022). Thus, integrating cell type
112 specific xQTL with GWAS findings is very promising. However, due to expense and other factors,
113 sample sizes for functional profiles in specific cell types across brain regions are still small
114 (Spaethling et al., 2017; Bryois et al., 2022) and limited in detection power. Consequently, most
115 functional genomics data available to support xQTL mapping studies come from bulk brain tissue
116 (Consortium, 2020) rather than single cell (Bryois et al., 2022) or sorted cell types (Aygün et al.,
117 2021), and despite their limited cellular resolution, the use of bulk tissue and meta-analysis across
118 tissues are currently still more powerful.

119
120 To conduct X WAS, two common approaches, T WAS (Gusev et al., 2016) and PrediXcan
121 (Gamazon et al., 2015) have been used, with both requiring pre-computing of SNP weights from
122 xQTL data sets. To avoid LD confounding, these X WAS tools also require a subsequent fine

123 mapping step – e.g., TWAS-FOCUS (Mancuso et al., 2019). In contrast, Mendelian
124 Randomization (MR) based methods (Zhu et al., 2016; Yuan et al., 2020; Zhou et al., 2020) do not
125 need the pre-computation of SNP weights and test for inference in a two-step regression
126 framework. Among MR based XWAS methods, summary data-based Mendelian Randomization
127 (SMR) is among the most commonly used method (Zhu et al., 2016). It has the advantage of
128 providing users with a heterogeneity in independent test (HEIDI) to filter out non-causal loci that
129 may be just in linkage with causal signals.

130
131 There is widespread comorbidity among NPSUD (Plana-Ripoll et al., 2019). This is in part due to
132 shared genetic risk factors (Lee et al., 2019), e.g., as detected by genetic correlation (r_G) in cross-
133 trait analyses (THE BRAINSTORM CONSORTIUM et al., 2018). Consequently, it is possible
134 that there could be many shared XWAS signals among NPSUD. This supports the joint analysis
135 of NPSUD to potentially increase detection power, especially for underpowered disorders (Turley
136 et al., 2018; Gleason et al., 2020; Taraszka et al., 2022). Additionally, there is significant
137 concordance of cis-eQTL and cis-mQTL effects between blood and brain (Qi et al., 2018) and
138 more than 70% of pQTL are shared between blood and brain (Yang et al., 2021a). Moreover, the
139 direction of effect across most tissues for shared eQTLs is the same (THE GTEX CONSORTIUM
140 et al., 2015). Consequently, given the high comorbidities between traits and xQTL concordance
141 between tissues, a joint analysis of the XWAS results from all traits and tissues would likely help
142 to uncover novel signals, especially for relatively underpowered NPSUD and tissues (e.g., brain).

143
144 In this study, SMR was used to perform blood and brain XWAS of NPSUD to identify potential
145 molecular mediators among major psychiatric disorders. To increase signal detection in
146 underpowered disorders and tissue (brain), comorbidities among NPSUD and tissue xQTL
147 concordances were leveraged in the joint trait/tissue concordance analysis. Subsequent analyses of
148 XWAS signals were used to identify putative risk loci and pathways, shedding light on the etiology
149 of NPSUD.

150

151

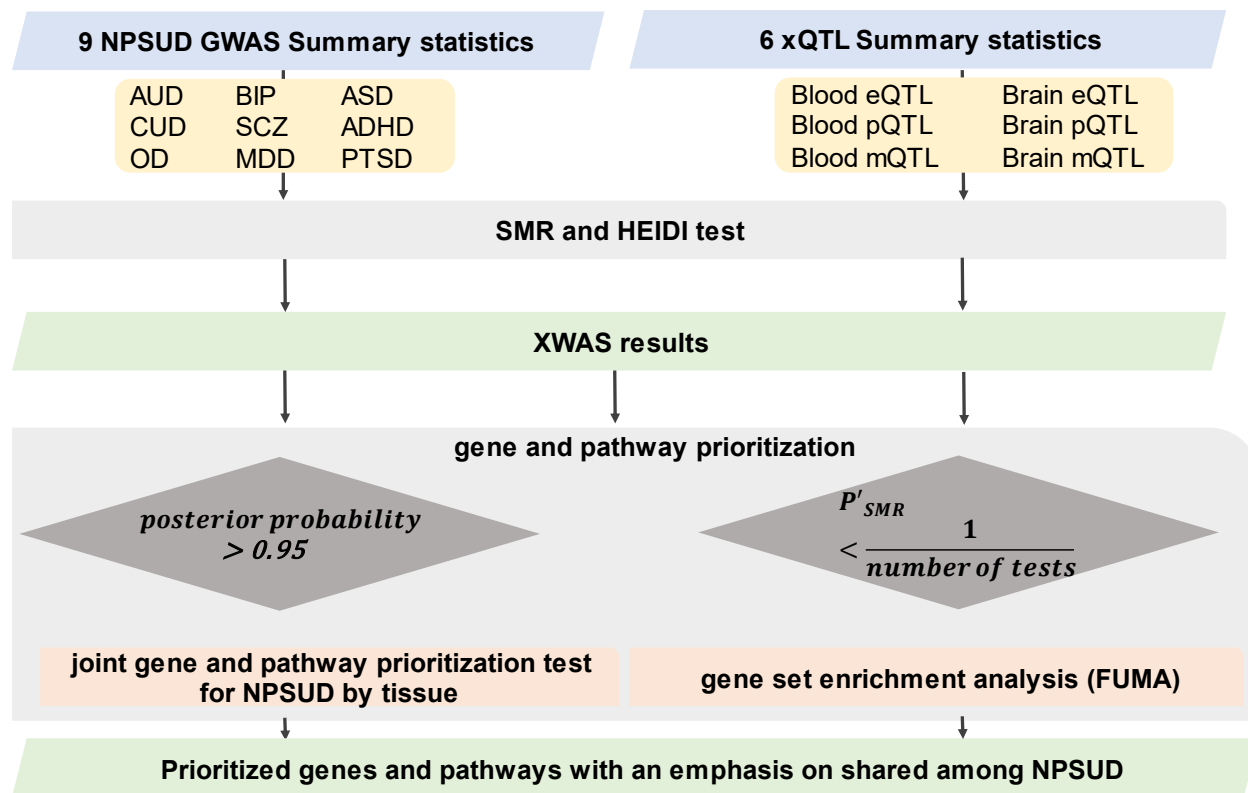
152 **2. Materials and Methods**

153 *2.1 Statistical Method*

154 We performed univariate XWAS analyses for nine NPSUD [Attention Deficit and Hyperactivity
155 Disorder (ADHD), Autism Spectrum Disorder (ASD), Alcohol Use Disorder (AUD), Bipolar
156 Disorder (BIP), Cannabis Use Disorder (CUD), Major Depressive Disorder (MDD), Opioid
157 Use/Dependence Disorder (OD), Post-Traumatic Stress Disorder (PTSD) and Schizophrenia
158 (SCZ)] (Table 1) for three paradigms (TWAS, PWAS and MWAS) and two tissues (blood and
159 brain). For this purpose, we used SMR (v.1.03) (Zhu et al., 2016) to infer the association between
160 the transcriptome/proteome/methylome and NPSUD. We performed SMR analysis for GWAS of
161 NPSUD (Table 1) using external xQTL reference data sets (Table 2). To prioritize genes and
162 perform pathway analyses, we adjusted probe (RNA/protein/CpG) SMR p-value (P_{SMR}) for HEIDI
163 test p-value (P_{HEIDI}), by combining the two p-values into a single one by requiring that i) P_{SMR} is
164 not penalized when P_{HEIDI} is above 0.01 and ii) P_{SMR} was penalized by the amount P_{HEIDI} falls
165 below 0.01. Consequently, we adjusted P_{SMR} to $P'_{SMR} = \frac{P_{SMR}}{\min(\frac{P_{HEIDI}}{0.01}, 1)}$. We used this approach
166 instead of filtering by $P_{HEIDI} < 0.01$ because a misalignment between the GWAS cohort
167 population and the European LD reference panel used by SMR might yield very low P_{HEIDI} , e.g.,
168 the well-known C4A in our SCZ TWAS ($P_{HEIDI} = 5.94 \times 10^{-4}$) Subsequently, to extend the
169 inference to pathways, we performed a gene set enrichment analysis for suggestive ($P'_{SMR} <$
170 $\frac{1}{\text{number of probes}}$) signals (Figure 1).

171 172 *2.2 Parameters for SMR-based XWAS analyses*

173 SMR analyses was performed for only cis-xQTLs (SNPs with p-value $< 5 \times 10^{-8}$ within 2 Mbp of
174 the probe). We also used the default maximum (20) and minimum (3) number of xQTLs selected
175 for the HEIDI test. We set the significance threshold as $< 1.57 \times 10^{-3}$ for xQTL p-values and the
176 mismatch of minimum allele frequency among input files as $< 15\%$. For HEIDI test, SNPs with
177 LD > 0.9 and < 0.05 with top associated xQTL SNP were pruned. In case-control studies, we log-
178 transformed the odds ratio as suggested by the SMR analysis guidelines
179 (<https://yanglab.westlake.edu.cn/software/smr/#SMR&HEIDIanalysis>, accessed on August 3,
180 2022).



181
 182 **Figure 1.** Flowchart of SMR XWAS analyses paired in both blood and brain tissues. To penalize
 183 for heterogeneity (non-causality), we employed an adjusted probe p-value [$P'_{SMR} =$
 184 $P_{SMR}/\min(P_{HEIDI}/0.01,1)$]. For gene set enrichment analysis, we used the suggestive signals
 185 (expected to occur once per scan by chance). Primo method was used to conduct multi-trait
 186 analysis and Functional Mapping and Annotation (FUMA) was used for gene set enrichment
 187 analysis.

189 2.3. Neuropsychiatric and substance use disorders GWAS

190 All summary statistics except for AUD (Table 1) were downloaded from the Psychiatric Genomics
 191 Consortium (PGC web portal (<https://www.med.unc.edu/pgc/download-results/>), accessed on
 192 December 15 2023). For AUD GWAS summary statistics, we had access to the data granted
 193 through NIH from the Million Veteran Program (MVP) (dbGaP Study
 194 Accession: phs001672.v6.p1). For SMR analysis, GWAS summary statistics were processed into
 195 the SMR-ready file format. The positions for all variants and genes in the input files (LD reference
 196 panel, GWAS summary statistics, and xQTL summary statistics files) for the SMR analysis are
 197 based on the GRCh37/hg19 reference genome.

198
 199 **Table 1.** Summary statistics of eight major PGC GWAS and MVP AUD GWAS.

200

Neuro Psychiatric and substance use disorders	GWAS significant markers*/total markers	Study	Number of cases and controls / ancestry
Attention deficit and hyperactivity disorder (ADHD)	317 / 8,094,095	(Demontis et al., 2019)	19,099 - 34,194 / EUR
Autism spectrum disorder (ASD)	93 / 7,822,833	(Grove et al., 2019)	18,381 - 27,969 / EUR
Alcohol use disorder (AUD)	588 / 6,895,251	(Kranzler et al., 2019)	34,658 - 167,346 / EUR
Bipolar disorder (BIP)	3,205 / 7,608,184	(Mullins et al., 2021)	41,917 - 371,549** / EUR
Cannabis use disorder (CUD)	29 / 7,735,104	(Johnson et al., 2020)	17,193 - 357,987 / EUR
Major depressive disorder (MDD)	4,625 / 7,286,335	(Howard et al., 2019)	411,965 - 1,285,068 / EUR
Opioid use/dependence disorder (OD)	0 / 4,571,339	(Polimanti et al., 2020)	4,503 - 32,500 / EUR
Post-traumatic stress disorder (PTSD)	3,434 / 3,875,929	(Nievergelt et al., 2019)	30,000 - 170,000 / EUR
Schizophrenia (SCZ)	22,344 / 7,585,077	(Trubetskoy et al., 2022)	33,640 - 43,456 / mostly EUR

* Unpruned (based on LD) variants with

** Case group includes bipolar or unipolar and control groups include individuals without any such diagnosis.

EUR: European

201

202 *2.4. Molecular xQTL reference data sets*

203 For our analyses, to get the highest signal detection, we selected the largest publicly available
204 blood and brain xQTL datasets (Table 2). When pQTL summary statistics from reference data
205 were not available (blood and brain pQTL) in the SMR-required input binary file format (i.e.,
206 .besd), we processed them into this .besd format. Below, we provided some of the most relevant
207 details for these data sets. (A list of URLs for each data set is available in Supplementary Table 1,
208 and for more details, please see the extended summary information in the Supplementary material)
209

210 *2.4.1 eQTL reference datasets*

211 For TWAS, we obtained the blood eQTL data from eQTLGen (Vösa et al., 2021) and brain eQTL
212 from BrainMeta v2 (Qi et al., 2022) (Table 2). eQTLgen consortium meta-analyzed 31,684
213 samples from 37 different study cohorts. Genotyping and gene expression levels were assayed
214 mainly from whole blood (34 out of 37) and part peripheral blood mononuclear cells (3 out of 37).
215 Most cohorts (25 out of 37) were population-based. The following eQTLGen studies included
216 individuals of non-European ancestry (e.g., the Singapore Systems Immunology cohort - n = 115;
217 Morocco – n = 175; Bangladeshi Vitamin E and Selenium Trial – n = 1,404). eQTLgen inferred
218 cis-eQTL effects for 16,987 expression Genes (eGenes). BrainMeta (version 2) is a meta-analysis
219 of brain eQTL mapping studies from seven independent cohorts (Qi et al., 2022). The study
220 consists of 2,443 unrelated individuals of European ancestry. BrainMeta v2 detected 1,962,114
221 eQTL SNPs for 16,744 eGenes.

222

223 *2.4.2 pQTL reference datasets*

224 For PWAS, we used the blood pQTL data from deCODE (Ferkingstad et al., 2021) and brain pQTL
225 from Wingo et al. (Wingo et al., 2022) (Table.2). The deCODE proteome study consisted of 35,559
226 individuals from Iceland. Blood plasma samples were assayed for 4,907 probes [Slow Off-
227 rate Modified Aptamer Scan (SOMAScan) (Gold et al., 2010, 2012) assay version 4 aptamers],
228 which correspond to 4,719 unique proteins.

229

230 The brain pQTL study sampled three regions of the brain: prefrontal cortex, dorsolateral prefrontal
231 cortex and parahippocampal gyrus (Wingo et al., 2022) in 722 samples. It used isobaric tandem
232 mass tag method to assay proteins and 9,363 of them met the quality control criteria. While the

233 sample size of brain pQTL reference data is relatively small, this was the largest publicly available
 234 such study at the time of completion for the analyses.

235

236 2.4.3 mQTL reference datasets

237 For MWAS analyses, we used the blood (McRae et al., 2018; Wu et al., 2018) and brain mQTL
 238 data sets (Qi et al., 2018) (Table.2), which are publicly available for download from SMR web
 239 portal (<https://yanglab.westlake.edu.cn/software/smr/#DataResource>, accessed on January 28
 240 2023). The mQTL data for the brain is a meta-analysis of the mQTL mapping results from three
 241 major studies (Hannon et al., 2016; Jaffe et al., 2016; Ng et al., 2017). The methylation assay used
 242 in these studies was the Illumina Infinium Human Methylation 450K array. We used the annotation
 243 file provided by the manufacturer to map the CpG probe ids (with “cg” prefix) to the HUGO gene
 244 nomenclature committee (HGNC) gene symbol.

245

246 **Table 2.** Reference xQTL molecular datasets used for XWAS studies.

Study	Tissue	Sample size	Publication	Genotype	Probe assay	Number of probes in SMR analysis
<u>reference eQTL data</u>						
eQTLGen	peripheral blood	31,684	(Vösa et al., 2021)	SNP array	Expression Array and RNA-seq	19,250
BrainMeta v2*	Brain cortex	2,865 (effective sample size: 2,443)	(Qi et al., 2022)	SNP array/WGS	Expression Array and RNA-seq	16,744
<u>reference pQTL data</u>						
deCODE**	Blood plasma	35,559	(Ferkingstad et al., 2021)	SNP array/	SOMAscan	4,773

WGS						
ROS/MAP-	dPFC+	366+70/15	(Wingo et	WGS	TMT	9,346
Banner-	FC/	1/ 135	al., 2022)		isobaric	
MSBB	dPFC/				labeling MS	
	PG					

<u>reference mQTL data</u>						
Blood	Peripheral	1,980	(McRae et	SNP	Illumina	94,338
mQTL***	blood		al., 2018;	array	Human	
			Wu et al.,		Methylation	
			2018)		450 array	
Brain	dPFC/	1,160	(Qi et al.,	SNP	Illumina	436,077
mQTL****	Fetal brain		2018)	array	Human	
					Methylation	
					450 array	

SOMAScan: Slow Off-Rate Modified Aptamer scan, **WGS:** Whole genome sequencing, **ROS:** Religious Orders Study, **MAP:** Rush Memory and Aging Project, **MSBB:** Mount Sinai NIH Neurobiobank, **dPFC:** dorsolateral prefrontal cortex, **FC:** Frontal Cortex, **PG:** parahippocampal gyrus, **TMT:** Tandem Mass Tag, **MS:** Mass Spectrometry

* This data is a meta-analysis of the GTEx brain, CMC, and ROS/MAP by using MeCS (Qi et al., 2018).

** One group of participants is from deCODE and the second group is from the Icelandic Cancer Project.

*** Meta-analysis of mQTL data from two independent cohorts: Brisbane System Genetics (BSGS) and Lothian Birth Cohorts (LBC).

**** Meta-analysis of mQTL data from three independent cohorts [Hanon et al., Jaffe et al. and ROS/MAP (Hannon et al., 2016; Jaffe et al., 2016; Ng et al., 2017)] by MeCS

247

248 2.5. Gene set enrichment analysis

249 Our aim is to uncover pathways that are associated with NPSUD. For this purpose, we tested for
 250 pathway enrichment in XWAS signals. We performed two separate Functional Mapping and
 251 Annotation (FUMA) (v1.41) (Watanabe et al., 2017) pathway analyses using genes with
 252 suggestive signals from: i) TWAS and PWAS combined and ii) MWAS only. We included genes
 253 with suggestive adjusted p-values (λ) in query gene lists for FUMA analyses assumed a possible
 254 universe of 54,619 coding and non-coding genes (protein coding, long non-coding RNA, non-
 255 coding RNA and processed transcripts). Due to the complexity of the MHC region, we chose the

256 option for excluding genes from this region in FUMA analyses. To adjust for multiple testing, we
257 assessed pathway significance using the False Discovery Rate (FDR) procedure (q -value < 0.05)
258 (Benjamini and Hochberg, 1995).

259

260 *2.6 Joint NPSUD concordance analysis of TWAS and MWAS gene signals*

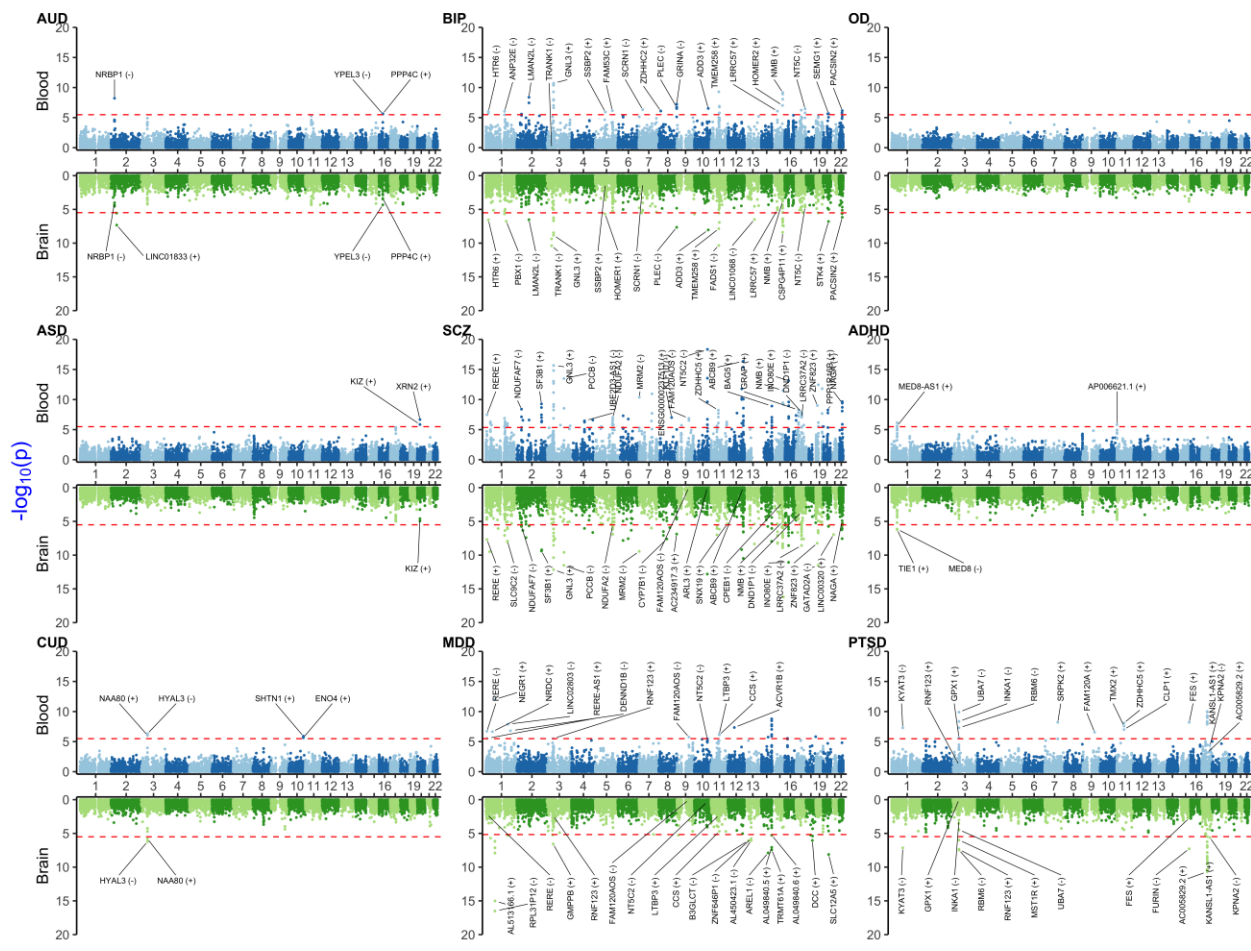
261 To increase the statistical power for the prioritization of genes in underpowered NPSUD and
262 tissues (such as brain), we used a multi-trait and multi-tissue approach. Therefore, we conducted
263 a joint trait concordance analysis using Primo (R package for Integrative Multi-Omics association
264 analysis) (Gleason et al., 2020) within the more powerful XWAS paradigms (TWAS and MWAS).
265 We did not jointly analyze PWAS because brain results were too sparse. We used Primo because
266 it was designed to jointly analyze summary statistics from multiple studies while adjusting for the
267 correlation between datasets (e.g., due to sample overlapping). Gene-level adjusted p -values from
268 SMR analyses were used as input for the joint trait and tissue concordance analyses. If a gene had
269 multiple p -values then the Cauchy method (Liu et al., 2019) was used to combine these p -values
270 to have one p -value for the gene. Because Primo requires the estimated proportion of statistics
271 (alt_props) coming from the alternative distribution, we exhaustively tested different values for
272 this parameter. We also estimated it directly from the data using a mixture of two distributions.
273 This parameter was critical because more significant results were identified when larger values of
274 alt_probs were used. We finally decided to set alt_probs= 10^{-3} which was also suggested in the
275 Primo paper (Gleason et al., 2020). For prioritization purposes, we considered genes with posterior
276 probabilities (PP) > 0.95 as significant.

277

278 Besides increasing signal detection in the brain, the joint analysis might open the avenue for further
279 investigations. For instance, blood and brain concordant signals might be further studied to be used
280 as proxies for the brain pathology of NPSUD. It is possible that such blood markers might also
281 have an impact on the diagnosis/prognosis of NPSUD, i.e., concordant XWAS signals might have
282 translational implications.

283

284 **Results**



285
 286 **Figure 2.** Miami plot [Manhattan blood (above)-brain (below) bi-plot] of TWAS adjusted p-values
 287 (P'_{SMR}) for investigated neuropsychiatric and substance use disorders. The upper part of the plot
 288 is for the blood and the lower part is for the brain. The red horizontal line denotes Bonferroni
 289 significance threshold. For visualization, we labeled the signals by their affiliated HUGO gene
 290 name and the direction of the SMR effect estimate on the trait shown in parentheses. **AUD:**
 291 Alcohol Use Disorder **BIP:** Bipolar Disorder **OD:** Opioid Dependence/Use Disorder **ASD:** Autism
 292 Spectrum Disorder **SCZ:** Schizophrenia **ADHD:** Attention Deficit and Hyperactivity Disorder
 293 **CUD:** Cannabis Use Disorder **MDD:** Major Depression **PTSD:** Post-traumatic stress disorder.
 294

295 In this section, we provide a selection of the common and shared XWAS results. Due to the strong
 296 signals in MHC region making the visualization of other findings difficult, we omitted this region
 297 from the plots of results coming from univariate TWAS and PWAS analyses (Figure 1 and 2).
 298 Details on MHC signals for these two paradigms were provided in Supplementary Figures 1 and
 299 2. All univariate XWAS results collated by paradigm are available in Supplementary data files.

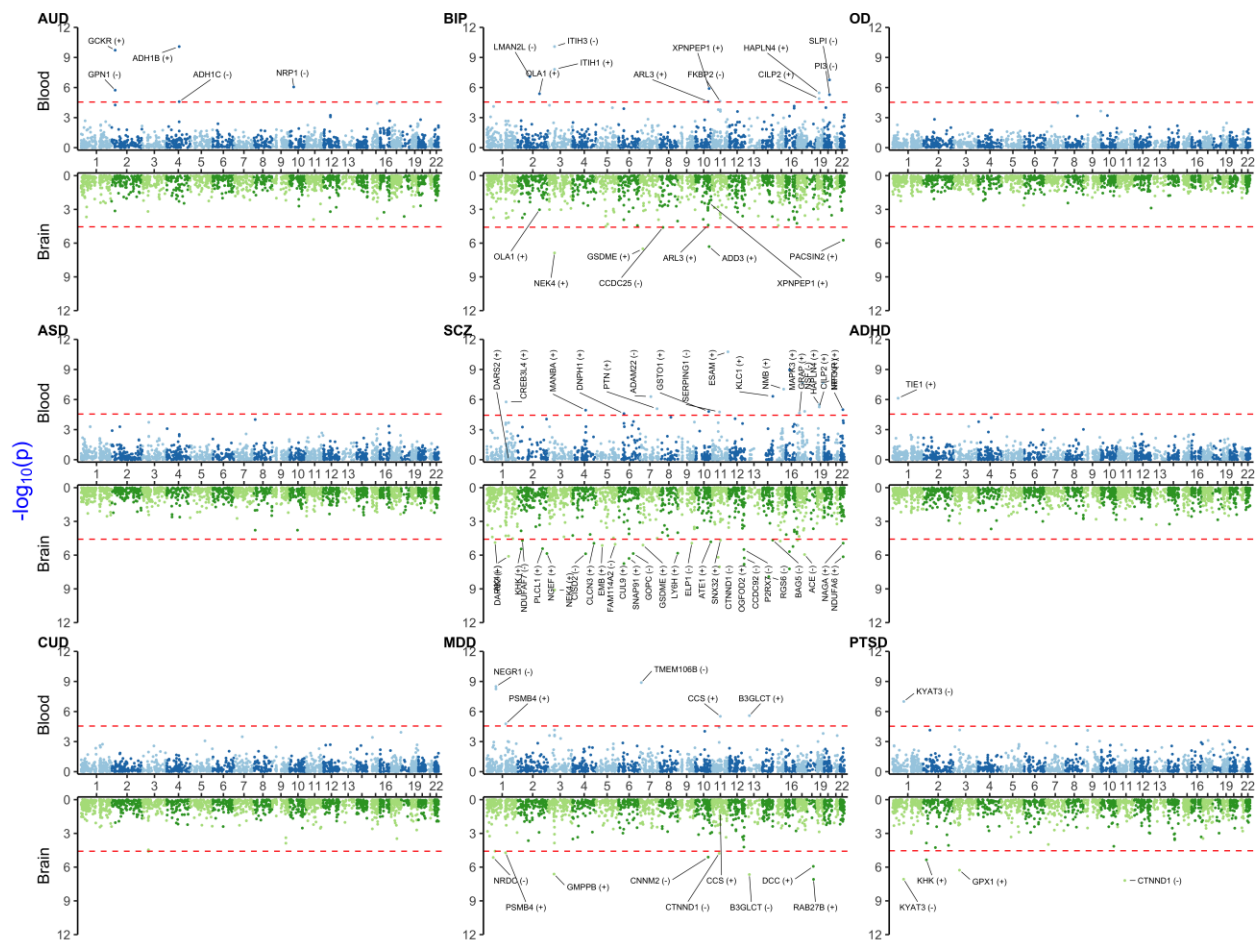
300
 301
 302 **TWAS results**

303 Blood and brain TWAS for BIP, SCZ and MDD yielded the highest number of significant TWAS
304 signals (Figure 2 and Supplementary Figure 1). These disorders share many common signals,
305 especially in the Major Histocompatibility Complex (MHC) region on chromosome 6 (25-35
306 Mbps), e.g., *BTN3A2* and *C4A*, which were concordant (i.e., significant and with the same sign for
307 effect size) between blood and brain. Other shared signals between three disorders were *ATF6B*,
308 *C4A*, *FLOT1*, *IER3*, *LINC00243*, *TRIM10*, *TUBB*, *TNXA*, *ZNF602P* and *ZSCAN12P1*, in blood
309 and, *OR2B8P*, *ZKSCAN8P1* and *ZSCAN16-AS1* in brain.

310
311 Among substance use disorders (SUD), AUD showed significant signals in blood (*NRBP1*, *PPP4C*
312 and *YPEL3*) and brain (*LINC01833*). For CUD, *HYAL3* and *NAA80* on chromosome 3 were
313 significant signals and with concordant direction of effect between blood and brain. CUD also had
314 significant blood-only signals on chromosome 10 in *ENO4* and *SHTN1*. However, robust signals
315 were not detected for OD.

316
317 For ADHD, there were three significant signals from blood (*ALI39289.1*, *AP006621.1* and *MED8-*
318 *AS1*) and two from brain (*MED8* and *TIE1*). For ASD, there were two significant signals on
319 chromosome 22 (*KIZ* and *XRN2*), with *KIZ* also being suggestive in brain. We observed signals
320 for PTSD on chromosome 17, some of which had concordant direction of effect between blood
321 and brain (e.g., *AC005829.23* and *KANSL1-AS1*). PTSD results also yielded a blood-brain
322 concordant signal for *KYAT3*.

323



324

325 **Figure 3.** Miami plot [Manhattan blood(above)-brain (below) bi-plot] of PWAS adjusted p-values
 326 (P'_{SMR}) for investigated neuropsychiatric and substance use disorders. For details and background
 327 see Figure 2 legend.
 328

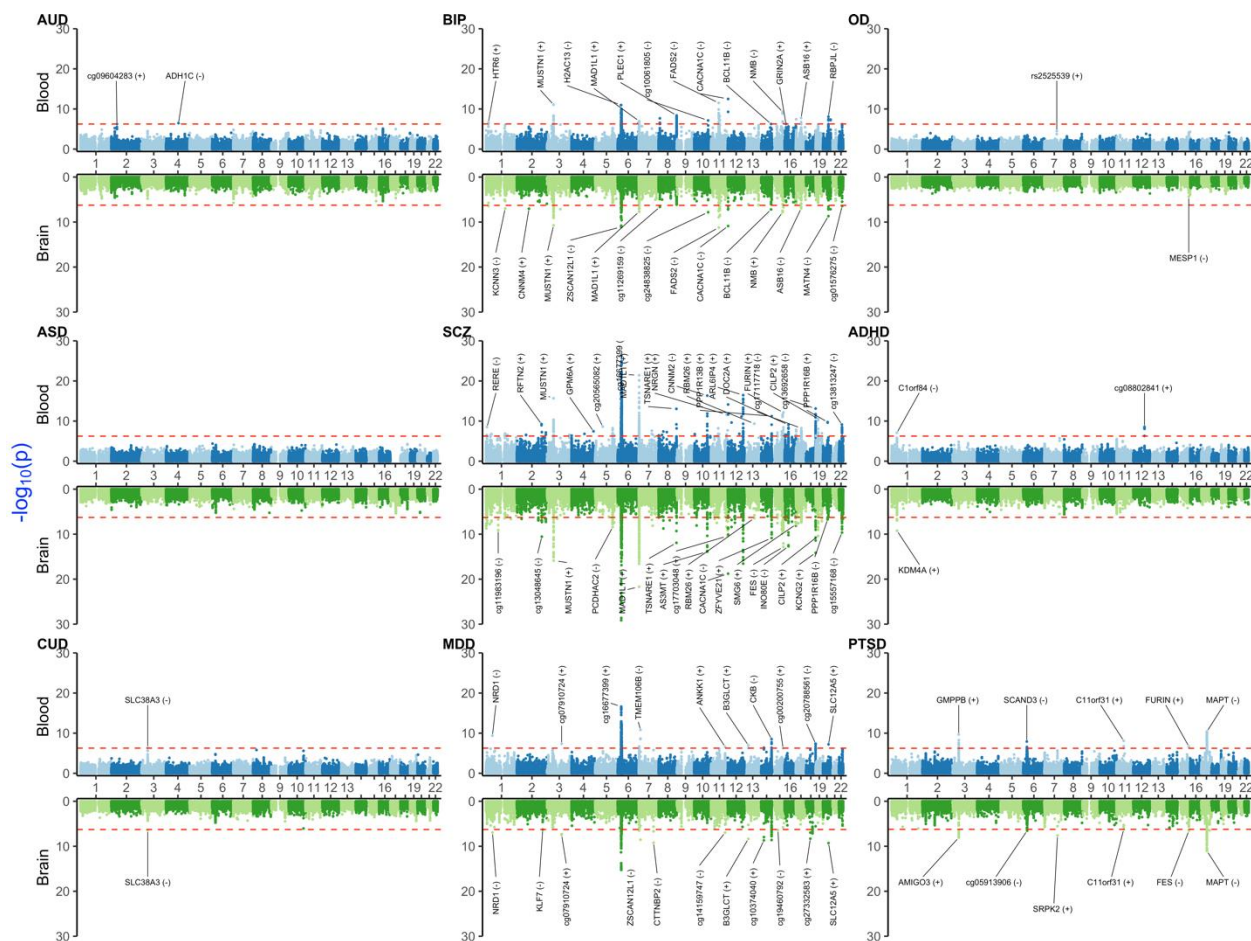
329 PWAS results

330 When compared to TWAS, there was a lower number of PWAS significant signals (Figure 3 and
 331 Supplementary Figure 2). This is expected because PWAS had a lower number of probes tested
 332 and lower sample for reference panels, especially for brain tissue. For instance, we did not identify
 333 any significant blood or brain PWAS signals for OD, ASD or CUD. Similar to TWAS - BIP, SCZ
 334 and MDD yielded common signals in MHC regions for blood (*BTN3A3*, *BTN3A1* and *MICB* - see
 335 also Supplementary Figure 2 for more details). *NEK4* was a brain only signal shared between SCZ
 336 and BIP.

337

338 For PTSD, significant brain signals were in *KYAT3* (detected also in TWAS), *KHK*, *GPX1*, *MICB*
 339 and *CTNND1* (that is also common signal between SCZ and MDD). Among these, only *KYAT3*

340 was blood-brain concordant for the direction of effect. Some notable disease specific signals were
 341 for *ADHIC* and *ADH1B* in AUD blood and *TIE1* in ADHD blood PWAS (which was also
 342 significant in ADHD brain TWAS).
 343



344 **Figure 4.** Miami plot [Manhattan blood (above)-brain (below) bi-plot] of Mwas adjusted p-
 345 values (P'_{SMR}) for investigated NPSUD. For details and background, see Figure 2 legend.
 346
 347
 348

349 **Mwas results**

350 Notably, biologically significant signals were detected, e.g., *ADHIC* for AUD in blood. Similar to
 351 TWAS and PWAS, we found that BIP, SCZ and MDD had more significant signals than the
 352 remaining disorders (Figure 4 and Supplementary Files). Again, the largest blood-brain concordant
 353 signals that were common between BIP, SCZ and MDD were in the MHC region, such as,
 354 *ZSCAN12L1*, *BTN3A2*, *H2AC13*, *ZNF389* for brain and *VARS2*, *TUBB*, *TRIM27*, *TRIM31*,

355 *DPCRI, TRIM15, DDR1, GTF2H4, TRIM40, H2AC13, TRIM26, PBX2, HIST1H4D, SFTA2,*
356 *BTN3A2, HCG9, HLA-B* and *MSH5* for blood.

357

358 As in PWAS, there were no significant signals for OD or ASD. For CUD, *SLC38A3* was a blood-
359 brain concordant signal. ADHD yielded two significant signals on chromosome 1 (*C1orf84* in
360 blood and *KDM4A* in brain). For PTSD, there were significant signals for *GMPPB, SCAND3,*
361 *C11orf31, FURIN* and *MAPT* in blood. Among these, *MAPT* and *C11orf31* were also concordant
362 between blood and brain. Other leading PTSD brain signals were *AMIGO3, cg05913906* and *FES.*

363

364 **Gene set enrichment analysis results**

365 In this section, we highlighted some of the more interesting signals from FUMA gene set
366 enrichment. More detailed results can be found in Supplementary Figures 3-33 and in
367 Supplementary Tables 2 and 3. Consistent with most other XWAS results, there were no
368 significant findings for OD and CUD. As expected, i) SCZ yielded the highest number of signals
369 (due to its larger sample size in GWAS) and ii) alcohol metabolism pathways showed significant
370 enrichments for AUD. For BIP, the combined TWAS and PWAS prioritized genes were
371 significantly enriched in non-genomic actions of the 1,25 dihydroxyvitamin D3 gene set (*PLCB3,*
372 *PRKCB, PRKCA* and *CD40*) (q-value = 3.81×10^{-2}) (Supplementary Figure 10). Another BIP signal
373 was GWAS catalog gene enrichment for plasma omega-3 polyunsaturated fatty acid levels (alpha-
374 linolenic acid) (*MYRF, TMEM258* and *FADS1*) (q-value = 1.00×10^{-3}) (Supplementary Figure 12).
375 For the same disorder, GO_HYALURONAN_METABOLIC_PROCESS (*ITIH1, ITIH3* and
376 *ITIH4*) (q-value = 5.67×10^{-3}) was the most significant Gene Ontology (GO) terms in the Biological
377 Process category (Supplementary Figure 13). For more details, refer to Supplementary Tables 2
378 and 3. Peptidase related GO terms were shared signals between BIP, MDD and SCZ
379 (Supplementary Figures 34-35). Also, neuron related pathways (GO_SYNAPSE_PART,
380 GO_PRESYNAPSE and GO_POST_SYNANSE) were significant enrichment for MDD
381 (Supplementary Figures 34 and 35).

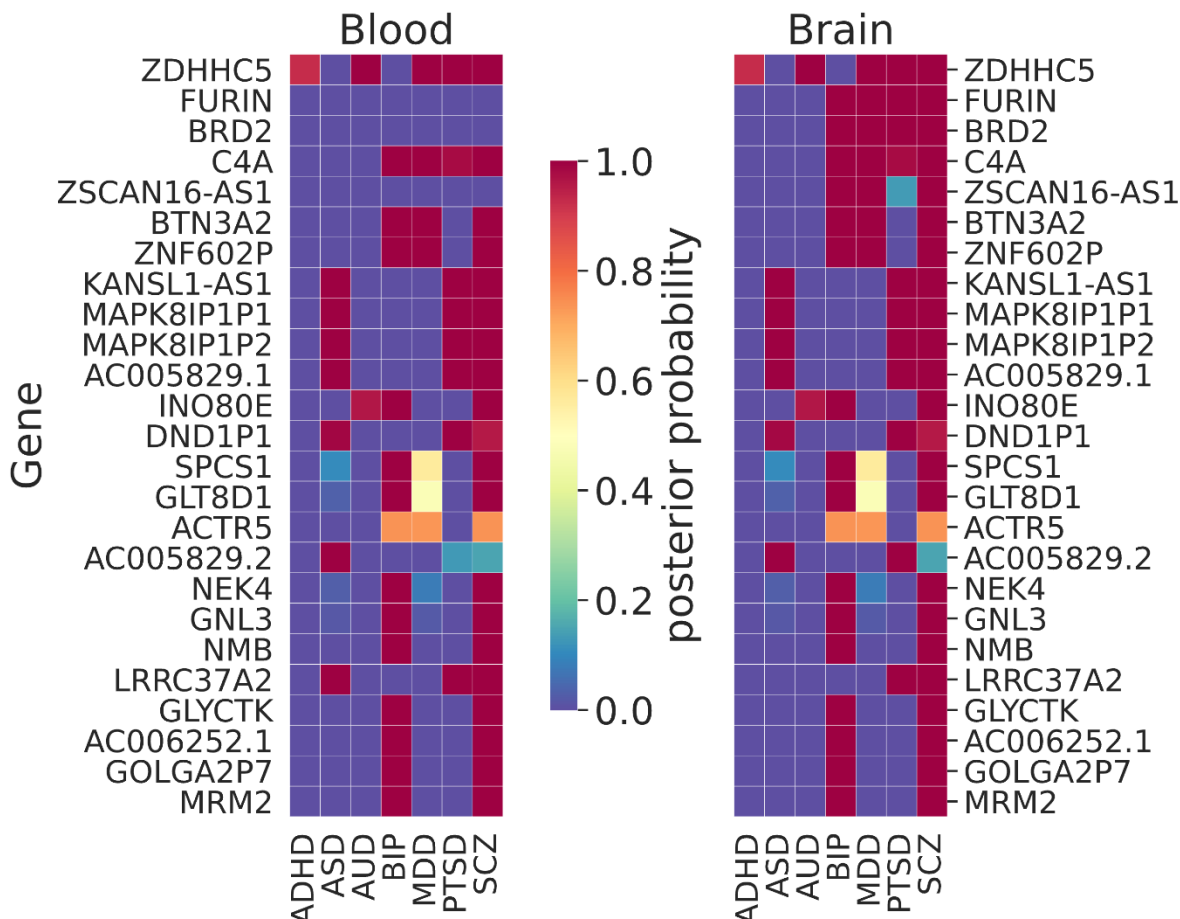
382

383 In the MWAS only analysis, again SCZ yielded the most signals. Metabolism of alpha-linolenic
384 acid (omega-3) was one of the significant gene sets for BIP blood MWAS (*FADS2, FADS1* and
385 *MIR1908*) (q-value = 3.24×10^{-4}) (Supplementary Figure 33). BIP and SCZ shared a signal for

386 cation ion transport related gene sets (GO_CATION_TRANSPORT and
 387 GO_DIVALENT_INORGANIC_CATION_TRANSPORT) (Supplementary Figure 37). See
 388 Supplementary Tables 4 and 5 for details.

389

390 **Joint analysis for both i) NPSUD and ii) blood and brain**



391 **Figure 5.** Results of the joint trait concordance analysis for TWAS. The top twenty-five genes are
 392 shown as ranked by the sum of the posterior probabilities (PPs) within brain tissue for disorders:
 393 Attention deficit and hyperactivity disorder (ADHD), Autism spectrum disorder (ASD), Alcohol
 394 use disorder (AUD), Bi-polar disorder (BIP), Major depressive disorder (MDD), Post-traumatic
 395 stress disorder (PTSD) and Schizophrenia (SCZ).
 396
 397

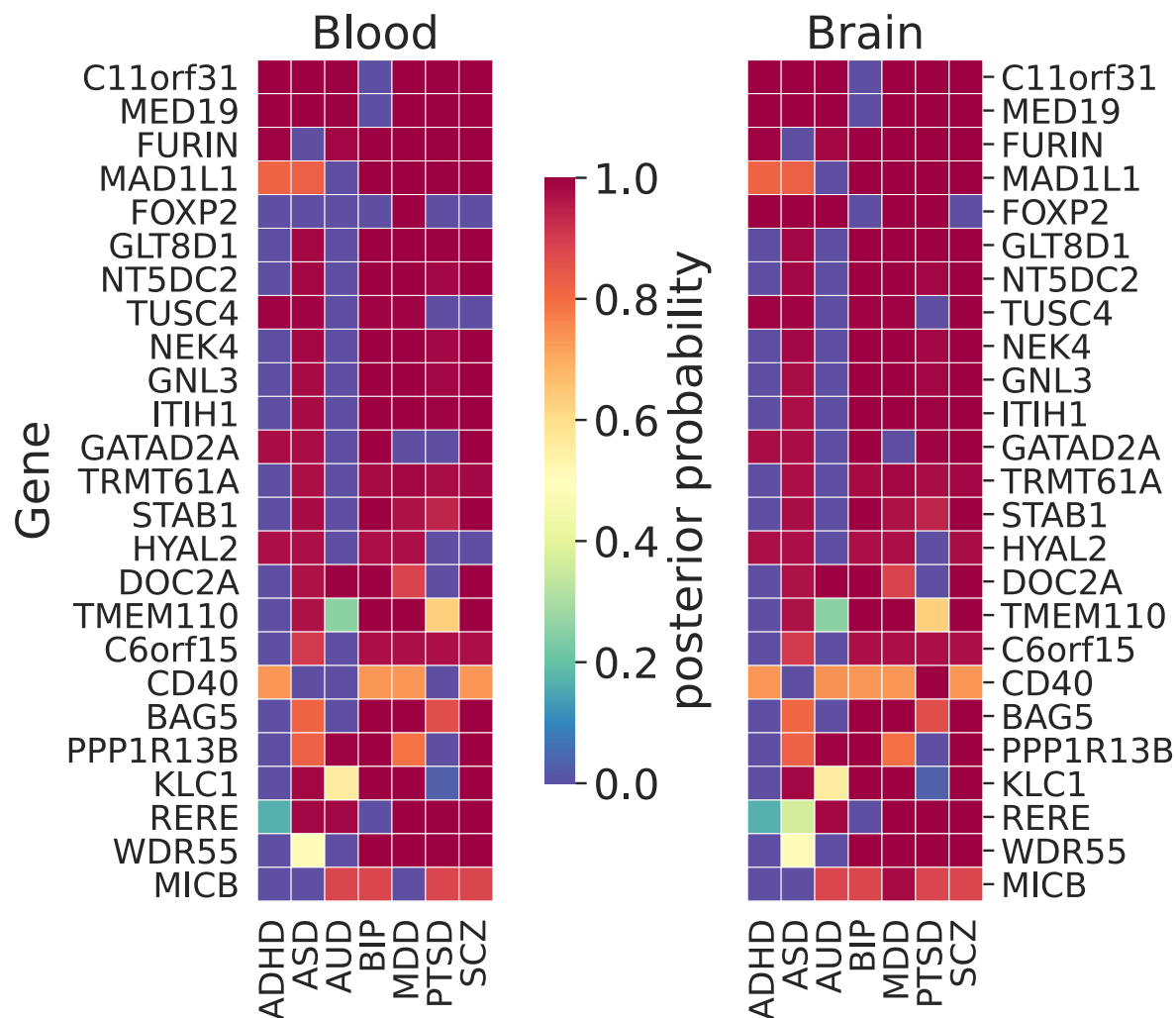
398 TWAS/MWAS results were jointly analyzed for seven NPSUD (Figure 5), excluding the
 399 underpowered OD and CUD due to poor distributions of XWAS p-values vs Primo PPs.

400 We observed gene signals (PP>0.95) that are shared between many NPSUD and between blood
 401 and brain (Figure 5). *ZDHHC5* was the most shared signal between blood and brain and five

402 NPSUD (ADHD, AUD, MDD, PTSD and SCZ). There is a cluster of genes that is also shared only
403 between ASD, PTSD and SCZ, e.g., *LRRC37A2*, *KANSL1-AS1*, *MAPK8IP1P1*, *MAPK8IP1P2* and
404 *AC005829.1*. BIP and SCZ also share a number of signals (*NEK4*, *GNL3*, *NMB*, *GLYCTK*,
405 *AC006252.1* and *GOLGA2P7*).

406 However, there were also disease specific genes, e.g., i) *AP006621.3* and *PIDDI* for ADHD, ii)
407 *ADD3*, *LMAN2L* and *PLEC* for BIP, iii) *KYAT3* and *PLEKHMI* for PTSD, iv) *PCCB* and
408 *GATAD2A* for SCZ and v) *LINC02803* for MDD. (Detailed in Supplementary Table 6)

409
410 While often there were very similar pattern of shared TWAS signals between blood and brain,
411 there were also brain specific signals. For instance, *BRD2*, *FURIN* and *ZSCAN16-AS1* were such
412 brain only signals that are shared among many disorders. [Note that *FURIN* was successfully
413 tested, via CRISPR/Cas9 experiment on isogenic human induced pluripotent cell, for the allelic
414 effect on its gene expression of the SNP with the largest SCZ signal in the region (Schrode et al.,
415 2019).] There were also both disease and brain specific signals, e.g., *FTCDNLI* for SCZ observed
416 only in brain. For more disease/tissue specific signals, please see also Supplementary Table 6.



417
 418 **Figure 6.** Results of joint trait concordance analysis for MWAS. The top twenty-five genes
 419 (excluding probes not mapped to a gene name as per Illumina annotation) are shown and ranked
 420 by sum of brain PPs for all disorders.

421
 422 For MWAS, we often observed the same pattern of shared signals between blood and brain.
 423 Among the largest signals (ranked by the sum of PP in brain), *C11orf31*, *MED19* and *FURIN* were
 424 shared among ADHD, AUD, BIP, MDD, PTSD and SCZ (Figure 6). *GATAD2A* stood out as
 425 shared brain specific signal among ADHD, ASD, BIP, PTSD and SCZ. *RERE* was shared among
 426 AUD, MDD, PTSD and SCZ, which was one of the eGenes for a cis-eQTL associated with SCZ
 427 that showed allele specific effect via the chromatin interaction (Zhang et al., 2020). For more
 428 details about results, see Supplementary Table 7.

429 **Discussion**

430 To provide biological context to GWAS findings, we performed XWAS analyses using the SMR
431 was performed. These analyses uncovered putative risk genes by inferring the association between
432 the transcriptome/proteome/methylome and NPSUD. We subsequently identified molecular
433 pathways associated with NPSUD via gene set enrichment analyses of genes that yielded XWAS
434 suggestive signals. To improve signal detection power for underpowered traits and brain tissue,
435 we also performed a joint concordance analysis of all traits and tissues within the two adequately
436 powered XWAS paradigms (TWAS and MWAS) were performed. The results of this work suggest
437 possible components of the treatment regimen for certain NPSUD, e.g., the possible implication
438 of vitamins (B₆ and D) and omega-3 pathways for some of these disorders.

439
440 Our analyses replicated biologically relevant and previous significant findings. Among the
441 biologically relevant ones, we note that the common signal in AUD between blood PWAS and
442 MWAS was *ADH1C*, which codes for alcohol dehydrogenase enzyme that metabolizes the
443 alcohol. It was also implicated as a significant loci in various GWAS of alcohol related phenotypes
444 (Gelernter et al., 2014; Clarke et al., 2017; Kranzler et al., 2019). We also replicated findings from
445 Dall’Aglia et al. (Dall’Aglia et al., 2021), in which *NEGR1* was found to be a signal for MDD as
446 it was the second most significant gene in our MDD blood TWAS. Similar to our TWAS results,
447 *BTN3A2* and *RPL31P12* were significant findings in a previous MDD brain TWAS from Yang et
448 al. (Yang et al., 2021b).

449
450 In our joint TWAS concordance analyses, *ZDHHC5* was the shared signal between all NPSUD
451 except for ASD and BIP (Figure 5). This gene was previously found to be a shared blood TWAS
452 signal between MDD and SCZ (Reay and Cairns, 2020). In the same paper, some of our other
453 XWAS signals shared between BIP and SCZ (e.g., *NEK4*, *GNL3* and *NMB*) were also reported as
454 shared TWAS signals in blood. Another shared signal between SCZ, BIP and AUD was *INO80E*
455 which was previously indicated as one of the top ten shared signals between SCZ and AUD
456 (Johnson et al., 2021). A common blood-brain MWAS signal for AUD, MDD, PTSD and SCZ
457 from the Primo joint analyses was *RERE*. It was one of the eGenes for a cis-eQTL showing allele
458 specific effect via the chromatin interaction (Zhang et al., 2020). The same gene was also

459 implicated as a significant gene in SMR analysis in the recent PGC SCZ GWAS (Trubetskoy et
460 al., 2022).

461
462 We compared our joint trait concordance analysis findings for SCZ (brain TWAS+MWAS or brain
463 TWAS only) with PGC3 SCZ GWAS findings. There were common genes identified as significant
464 ($PP > 0.95$) in our brain tissue results (TWAS+MWAS) and those found in the list of significant
465 replication and discovery loci (see Supplementary Table 8) in PGC3 SCZ GWAS, such as,
466 *BTN3A2*, *FURIN*, *GATAD2A*, *GNL3*, *INO80E*, *KANSL1-AS1* and *NEK4*. However, we found
467 significant signals for *AC005829.1*, *BRD2*, *C11orf31*, *C6orf15*, *DND1P1*, *MAPK8IP1P1* and
468 *ZNF602P*, which were not found as significant in the above PGC3 SCZ gene list. There are also
469 common genes between our brain tissue TWAS results (from the joint analysis) and the list of
470 genes in PGC SCZ that were prioritized based on the SMR analysis only. Those genes are *INO80E*,
471 *GATAD2A*, *PCCB* and *FURIN*. However, our brain results include significant findings that were
472 not identified in PGC3 SCZ, such as *BRD2*, *GNL3*, *KANSL1-AS1*, *NEK4* and *ZDHHC5*. (For
473 details see Supplementary Table 8)

474
475 The MHC region is a well-known region associated with some of the NPSUD, e.g., SCZ (Corvin
476 and Morris, 2014). Our joint XWAS analyses strongly support this assertion for SCZ, BIP, PTSD
477 and MDD. For instance, *BTN3A2* was the leading TWAS signal for BIP, MDD and SCZ. Also,
478 *C4A*, thought to be implicated in synaptic pruning (Sekar et al., 2016), was a shared brain TWAS
479 signal for BIP, MDD, PTSD and SCZ (Figure 5). Similarly, *MICB* was shared between AUD, BIP,
480 MDD, PTSD and SCZ in brain MWAS (Figure 6). Its possible involvement in NPSUD was also
481 supported by empirical transcriptomic evidence. Research showed that *MICB* is part of a molecular
482 network interacting with the differentially expressed genes in Brodmann's area 9 region of
483 individuals with MDD (Scarr et al., 2019).

484
485 Beside many common signals between NPSUD, there are also some that are disease specific. For
486 PTSD, we observed specific signals for TWAS/PWAS in a cluster of genes on chromosome 17
487 and *KYAT3* on chromosome 1. *KYAT3* was the strongest signal for PTSD brain PWAS. It was
488 reported as a TWAS signal for reexperiencing a PTSD symptom cluster (Pathak et al., 2022). A

489 GWAS on social anxiety also found SNP that is downstream of *KYAT3* to be significant (Stein et
490 al., 2017).

491
492 AUD specific TWAS signals were on chromosome 2 for *NRBP1* and *SNX17*. A meta-analysis of
493 Alcohol Use Disorders Identification Test (AUDIT) showed that index SNP for *GCKR* overlap
494 also with the *SNX17* (Sanchez-Roige et al., 2019). This same gene was also found significant (p-
495 value = 1.18×10^{-6} ; brain caudate basal ganglia) in TWAS of substance use disorder (Hatoum et al.,
496 2022). For ADHD, *TIE1* (chromosome 1) is a TWAS/PWAS signal that was not found in other
497 NPSUD. This gene is coding for tyrosine kinase and it was found as significant in PTSD TWAS
498 (Liao et al., 2019) and ADHD TWAS (Chen et al., 2022). For CUD, we also identified concordant
499 blood-brain TWAS signals on chromosome 3, e.g., *HYAL3* and *NAA80*. In another TWAS analysis
500 using the same CUD GWAS (Table 1), they also found *HYAL3* was found to be significant
501 (Johnson et al., 2020). Previously, expression of *NAA80* in brain (anterior cingulate cortex) was
502 associated with the genome-wide significant variant rs2777888 in meta-analyzed European
503 ancestry PTSD GWAS (Gelernter et al., 2019).

504
505 Since blood and brain cis-xQTL were known to overlap, this was used to improve the discovery
506 power for brain XWAS analyses through the joint analysis of both tissues. The joint analyses found
507 many candidate risk genes that are concordant in direction of effect for both tissues. The blood
508 XWAS of these concordant genes might be useful for future development of NPSUD multivariate
509 blood biomarkers that might be used for diagnosis, prognosis and possible treatment of these
510 disorders.

511
512 Supplements such as vitamins and omega-3 have been tested (with varying success rates) as
513 treatment for NPSUD (Firth et al., 2019). Previous investigations in blood indicated that the
514 deficiency (Anglin et al., 2013) and supplementation (Sarris et al., 2016) of vitamin D might
515 increase/decrease the risk for MDD. Other studies did not find any effect of vitamin D
516 supplementation on MDD (Marsh et al., 2017) and depression in older adults (Okereke et al.,
517 2020). A most recent GWAS of polyunsaturated and monounsaturated fatty acids showed a
518 significant gene set enrichment of GWAS catalog genes in Bipolar I and II (Francis et al., 2022).
519 Omega-3 was also found to likely lower MDD risk (Mocking et al., 2016). It is not clear if these

520 non-genetic/non-MR studies did eliminate most confounders. However, most confounders are
521 eliminated by using mendelian randomization methods, such as SMR that was used in this work.

522
523 While we did not uncover any vitamin associated pathway or gene signal for MDD, our analyses
524 indicated link between such supplements and other NPSUD. For instance, BIP TWAS and PWAS
525 prioritized genes showed significant gene set enrichment for the vitamin D3 pathway
526 (Supplementary Figure 10). For BIP, we also found significant gene set enrichment in omega-3
527 associated gene sets in combined T/PWAS (Supplementary Figure 11) and MWAS only
528 (Supplementary Figure 36) FUMA analyses. *KYAT3* signal found in PTSD T/PWAS suggests a
529 possible etiological role of vitamin B₆ in this disease. Based on these findings, more clinical
530 research evidence is needed to test these molecules as a secondary component of the treatment
531 regimen: i) vitamin D and omega-3 modest supplementation for BIP and ii) vitamin B₆ (or B
532 complex) for PTSD.

533
534 The importance of this study is five-fold. First, this is the most powerful XWAS study of NPSUD
535 because we integrated the largest available xQTL reference data and NPSUD GWAS. Second, we
536 extended these most powerful gene-level XWAS inferences to pathway level, which suggested
537 some novel avenues for treatment. Third, we further increased the detection power for
538 underpowered trait and tissues via multi-trait multi-tissue joint analyses. Fourth, the joint analyses
539 uncovered blood-brain concordant XWAS signal that, in the future, might form the basis for the
540 development of (multivariate) blood biomarkers for diagnosis/prognosis. Fifth, these joint analyses
541 are the first formal attempt to uncover common signals for multiple disorders and those specific to
542 a single one.

543
544 **Limitations of the study**

- 545 1. Although we applied the HEIDI test, it is not likely that SMR completely eliminates the
546 horizontal pleiotropy. For instance, a SNP might be xQTL for multiple genes, which
547 violates the assumption that the SNP effect on the trait is mediated only through the tested
548 gene. However, we believe that gene set/pathway inferences are likely to mitigate the
549 confounding effect of this phenomenon from gene-level analysis.

- 550 2. While Primo can adjust for the correlations between multiple different studies, it does not
551 correct for the correlation between genes (e.g., which can happen due to the linkage
552 disequilibrium of variants). Thus, future studies need to validate the identified genes.
- 553 3. Reference brain pQTL has lower sample sizes than the blood pQTL data. This resulted in
554 fewer significant signals for brain PWAS.
- 555 4. Some reference xQTL data (e.g., brain proteome) are enriched in individuals with certain
556 neurological disorders.
- 557 5. We used 1000 Genome phase 3 as a reference LD panel that might not be an exact match
558 for the LD patterns from the GWAS cohort. By adjusting P_{SMR} , we eliminated the inflation
559 of P_{HEIDI} , signals due to any cohort-panel LD mismatch.
- 560 6. Due to extended and irregular LD patterns, findings in certain regions (e.g., MHC) should
561 be interpreted with care.
- 562 7. Since we only included xQTL reference data obtained from bulk tissue, any cell type
563 specific information was not presented in our findings.

564

565 **Data availability statement**

566 All publicly available data used in this study were listed in Supplementary Table 1. All the data
567 generated in this study will be open to public when the manuscript is published.

568

569 **Authors' Contributions**

570 HG completed the XWAS analysis and data visualization. THN conducted the joint trait analysis.
571 CC contributed GWAS data. VIV, BPR and SAB supervised the study design. All authors
572 contributed to the preparation of the manuscript.

573

574 **Funding**

575 Research in this work was funded by AA022537 (Huseyin Gedik, Brian P. Riley, and Silviu-Alin
576 Bacanu), R01MH118239 and R01DA052453 (Vladimir I. Vladimirov and Silviu-Alin Bacanu).

577

578 **Conflict of Interest**

579 Authors do have any conflict of interest to report.

580

581 **References**

582

- 583 Aberg, K. A., Dean, B., Shabalina, A. A., Chan, R. F., Han, L. K. M., Zhao, M., et al. (2020).
584 Methylome-wide association findings for major depressive disorder overlap in blood and
585 brain and replicate in independent brain samples. *Mol Psychiatry* 25, 1344–1354. doi:
586 10.1038/s41380-018-0247-6.
- 587 Anglin, R. E. S., Samaan, Z., Walter, S. D., and McDonald, S. D. (2013). Vitamin D deficiency
588 and depression in adults: systematic review and meta-analysis. *The British Journal of*
589 *Psychiatry* 202, 100–107. doi: 10.1192/bjp.bp.111.106666.
- 590 Aygün, N., Elwell, A. L., Liang, D., Lafferty, M. J., Cheek, K. E., Courtney, K. P., et al. (2021).
591 Brain-trait-associated variants impact cell-type-specific gene regulation during
592 neurogenesis. *The American Journal of Human Genetics* 108, 1647–1668. doi:
593 10.1016/j.ajhg.2021.07.011.
- 594 Bae, Y. E., Wu, L., and Wu, C. (2021). InTACT: An adaptive and powerful framework for joint-
595 tissue transcriptome-wide association studies. *Genet Epidemiol*. doi: 10.1002/gepi.22425.
- 596 Barbeira, A. N., Dickinson, S. P., Bonazzola, R., Zheng, J., Wheeler, H. E., Torres, J. M., et al.
597 (2018). Exploring the phenotypic consequences of tissue specific gene expression
598 variation inferred from GWAS summary statistics. *Nat Commun* 9, 1825. doi:
599 10.1038/s41467-018-03621-1.
- 600 Barbeira, A. N., Pividori, M., Zheng, J., Wheeler, H. E., Nicolae, D. L., and Im, H. K. (2019).
601 Integrating predicted transcriptome from multiple tissues improves association detection.
602 *PLOS Genetics* 15, e1007889. doi: 10.1371/journal.pgen.1007889.
- 603 Benjamini, Y., and Hochberg, Y. (1995). Controlling the False Discovery Rate: A Practical and
604 Powerful Approach to Multiple Testing. *Journal of the Royal Statistical Society: Series B*
605 *(Methodological)* 57, 289–300. doi: 10.1111/j.2517-6161.1995.tb02031.x.
- 606 Brennand, K., Simone, A., Tran, N., and Gage, F. (2012). Modeling psychiatric disorders at the
607 cellular and network levels. *Mol Psychiatry* 17, 1239–1253. doi: 10.1038/mp.2012.20.
- 608 Bryois, J., Calini, D., Macnair, W., Foo, L., Urich, E., Ortmann, W., et al. (2022). Cell-type-
609 specific cis-eQTLs in eight human brain cell types identify novel risk genes for
610 psychiatric and neurological disorders. *Nat Neurosci* 25, 1104–1112. doi:
611 10.1038/s41593-022-01128-z.
- 612 Buenrostro, J. D., Wu, B., Litzenburger, U. M., Ruff, D., Gonzales, M. L., Snyder, M. P., et al.
613 (2015). Single-cell chromatin accessibility reveals principles of regulatory variation.
614 *Nature* 523, 486–490. doi: 10.1038/nature14590.
- 615 Chen, X., Yao, T., Cai, J., Zhang, Q., Li, S., Li, H., et al. (2022). A novel cis-regulatory variant
616 modulating TIE1 expression associated with attention deficit hyperactivity disorder in
617 Han Chinese children. *Journal of Affective Disorders* 300, 179–188. doi:
618 10.1016/j.jad.2021.12.066.

- 619 Clarke, T.-K., Adams, M. J., Davies, G., Howard, D. M., Hall, L. S., Padmanabhan, S., et al.
620 (2017). Genome-wide association study of alcohol consumption and genetic overlap with
621 other health-related traits in UK Biobank (N=112 117). *Mol Psychiatry* 22, 1376–1384.
622 doi: 10.1038/mp.2017.153.
- 623 Consortium, T. Gte. (2020). The GTEx Consortium atlas of genetic regulatory effects across
624 human tissues. *Science*. Available at:
625 <http://www.science.org/doi/abs/10.1126/science.aaz1776> [Accessed September 6, 2021].
- 626 Corvin, A., and Morris, D. W. (2014). Genome-wide Association Studies: Findings at the Major
627 Histocompatibility Complex Locus in Psychosis. *Biological Psychiatry* 75, 276–283. doi:
628 10.1016/j.biopsych.2013.09.018.
- 629 Dall’Aglia, L., Lewis, C. M., and Pain, O. (2021). Delineating the Genetic Component of Gene
630 Expression in Major Depression. *Biological Psychiatry* 89, 627–636. doi:
631 10.1016/j.biopsych.2020.09.010.
- 632 Demontis, D., Walters, R. K., Martin, J., Mattheisen, M., Als, T. D., Agerbo, E., et al. (2019).
633 Discovery of the first genome-wide significant risk loci for attention deficit/hyperactivity
634 disorder. *Nat Genet* 51, 63–75. doi: 10.1038/s41588-018-0269-7.
- 635 Edwards, S. L., Beesley, J., French, J. D., and Dunning, A. M. (2013). Beyond GWASs:
636 Illuminating the Dark Road from Association to Function. *The American Journal of*
637 *Human Genetics* 93, 779–797. doi: 10.1016/j.ajhg.2013.10.012.
- 638 Ferkingstad, E., Sulem, P., Atlason, B. A., Sveinbjornsson, G., Magnusson, M. I., Styrismiddottir,
639 E. L., et al. (2021). Large-scale integration of the plasma proteome with genetics and
640 disease. *Nature Genetics* 53, 1712–1721. doi: 10.1038/s41588-021-00978-w.
- 641 Firth, J., Teasdale, S. B., Allott, K., Siskind, D., Marx, W., Cotter, J., et al. (2019). The efficacy
642 and safety of nutrient supplements in the treatment of mental disorders: a meta-review of
643 meta-analyses of randomized controlled trials. *World Psychiatry* 18, 308–324. doi:
644 10.1002/wps.20672.
- 645 Francis, M., Sun, Y., Xu, H., Brenna, J. T., and Ye, K. (2022). Fifty-one novel and replicated
646 GWAS loci for polyunsaturated and monounsaturated fatty acids in 124,024 Europeans.
647 2022.05.27.22275343. doi: 10.1101/2022.05.27.22275343.
- 648 Gamazon, E. R., Wheeler, H. E., Shah, K. P., Mozaffari, S. V., Aquino-Michaels, K., Carroll, R.
649 J., et al. (2015). A gene-based association method for mapping traits using reference
650 transcriptome data. *Nat Genet* 47, 1091–1098. doi: 10.1038/ng.3367.
- 651 Gelernter, J., Kranzler, H. R., Sherva, R., Almasy, L., Koesterer, R., Smith, A. H., et al. (2014).
652 Genome-wide association study of alcohol dependence: significant findings in African-
653 and European-Americans including novel risk loci. *Mol Psychiatry* 19, 41–49. doi:
654 10.1038/mp.2013.145.

- 655 Gelernter, J., Sun, N., Polimanti, R., Pietrzak, R., Levey, D. F., Bryois, J., et al. (2019). Genome-
656 wide association study of post-traumatic stress disorder reexperiencing symptoms in
657 >165,000 US veterans. *Nat Neurosci* 22, 1394–1401. doi: 10.1038/s41593-019-0447-7.
- 658 Gleason, K. J., Yang, F., Pierce, B. L., He, X., and Chen, L. S. (2020). Primo: integration of
659 multiple GWAS and omics QTL summary statistics for elucidation of molecular
660 mechanisms of trait-associated SNPs and detection of pleiotropy in complex traits.
661 *Genome Biol* 21, 1–24. doi: 10.1186/s13059-020-02125-w.
- 662 Gold, L., Ayers, D., Bertino, J., Bock, C., Bock, A., Brody, E. N., et al. (2010). Aptamer-Based
663 Multiplexed Proteomic Technology for Biomarker Discovery. *PLOS ONE* 5, e15004. doi:
664 10.1371/journal.pone.0015004.
- 665 Gold, L., Walker, J. J., Wilcox, S. K., and Williams, S. (2012). Advances in human proteomics at
666 high scale with the SOMAscan proteomics platform. *New Biotechnology* 29, 543–549.
667 doi: 10.1016/j.nbt.2011.11.016.
- 668 Grove, J., Ripke, S., Als, T. D., Mattheisen, M., Walters, R. K., Won, H., et al. (2019).
669 Identification of common genetic risk variants for autism spectrum disorder. *Nat Genet*
670 51, 431–444. doi: 10.1038/s41588-019-0344-8.
- 671 Gusev, A., Ko, A., Shi, H., Bhatia, G., Chung, W., Penninx, B. W. J. H., et al. (2016). Integrative
672 approaches for large-scale transcriptome-wide association studies. *Nat Genet* 48, 245–
673 252. doi: 10.1038/ng.3506.
- 674 Hammerschlag, A. R., Byrne, E. M., Agbessi, M., Ahsan, H., Alves, I., Andiappan, A., et al.
675 (2020). Refining Attention-Deficit/Hyperactivity Disorder and Autism Spectrum
676 Disorder Genetic Loci by Integrating Summary Data From Genome-wide Association,
677 Gene Expression, and DNA Methylation Studies. *Biological Psychiatry* 88, 470–479. doi:
678 10.1016/j.biopsych.2020.05.002.
- 679 Hannon, E., Dempster, E., Viana, J., Burrage, J., Smith, A. R., Macdonald, R., et al. (2016). An
680 integrated genetic-epigenetic analysis of schizophrenia: evidence for co-localization of
681 genetic associations and differential DNA methylation. *Genome Biology* 17, 176. doi:
682 10.1186/s13059-016-1041-x.
- 683 Hatoum, A. S., Colbert, S. M. C., Johnson, E. C., Huggett, S. B., Deak, J. D., Pathak, G., et al.
684 (2022). Multivariate genome-wide association meta-analysis of over 1 million subjects
685 identifies loci underlying multiple substance use disorders. *medRxiv*,
686 2022.01.06.22268753. doi: 10.1101/2022.01.06.22268753.
- 687 Howard, D. M., Adams, M. J., Clarke, T.-K., Hafferty, J. D., Gibson, J., Shirali, M., et al. (2019).
688 Genome-wide meta-analysis of depression identifies 102 independent variants and
689 highlights the importance of the prefrontal brain regions. *Nat Neurosci* 22, 343–352. doi:
690 10.1038/s41593-018-0326-7.

- 691 Howard, D. M., Pain, O., Arathimos, R., Barbu, M. C., Amador, C., Walker, R. M., et al. (2022).
692 Methylome-wide association study of early life stressors and adult mental health. *Human*
693 *Molecular Genetics* 31, 651–664. doi: 10.1093/hmg/ddab274.
- 694 Hu, Y., Li, M., Lu, Q., Weng, H., Wang, J., Zekavat, S. M., et al. (2019). A statistical framework
695 for cross-tissue transcriptome-wide association analysis. *Nat Genet* 51, 568–576. doi:
696 10.1038/s41588-019-0345-7.
- 697 Jaffe, A. E., Gao, Y., Deep-Soboslay, A., Tao, R., Hyde, T. M., Weinberger, D. R., et al. (2016).
698 Mapping DNA methylation across development, genotype and schizophrenia in the
699 human frontal cortex. *Nat Neurosci* 19, 40–47. doi: 10.1038/nn.4181.
- 700 Johnson, E. C., Demontis, D., Thorgeirsson, T. E., Walters, R. K., Polimanti, R., Hatoum, A. S.,
701 et al. (2020). A large-scale genome-wide association study meta-analysis of cannabis use
702 disorder. *The Lancet Psychiatry* 7, 1032–1045. doi: 10.1016/S2215-0366(20)30339-4.
- 703 Johnson, E. C., Kapoor, M., Hatoum, A. S., Zhou, H., Polimanti, R., Wendt, F. R., et al. (2021).
704 Investigation of convergent and divergent genetic influences underlying schizophrenia
705 and alcohol use disorder. *Psychological Medicine*, 1–9. doi:
706 10.1017/S003329172100266X.
- 707 Kapoor, M., Chao, M. J., Johnson, E. C., Novikova, G., Lai, D., Meyers, J. L., et al. (2021).
708 Multi-omics integration analysis identifies novel genes for alcoholism with potential
709 overlap with neurodegenerative diseases. *Nat Commun* 12, 5071. doi: 10.1038/s41467-
710 021-25392-y.
- 711 Kelley, K. W., Nakao-Inoue, H., Molofsky, A. V., and Oldham, M. C. (2018). Variation among
712 intact tissue samples reveals the core transcriptional features of human CNS cell classes.
713 *Nat Neurosci* 21, 1171–1184. doi: 10.1038/s41593-018-0216-z.
- 714 Kranzler, H. R., Zhou, H., Kember, R. L., Vickers Smith, R., Justice, A. C., Damrauer, S., et al.
715 (2019). Genome-wide association study of alcohol consumption and use disorder in
716 274,424 individuals from multiple populations. *Nat Commun* 10, 1499. doi:
717 10.1038/s41467-019-09480-8.
- 718 Lee, P. H., Anttila, V., Won, H., Feng, Y.-C. A., Rosenthal, J., Zhu, Z., et al. (2019). Genomic
719 Relationships, Novel Loci, and Pleiotropic Mechanisms across Eight Psychiatric
720 Disorders. *Cell* 179, 1469-1482.e11. doi: 10.1016/j.cell.2019.11.020.
- 721 Liao, C., Laporte, A. D., Spiegelman, D., Akçimen, F., Jooper, R., Dion, P. A., et al. (2019).
722 Transcriptome-wide association study of attention deficit hyperactivity disorder identifies
723 associated genes and phenotypes. *Nat Commun* 10, 4450. doi: 10.1038/s41467-019-
724 12450-9.
- 725 Liu, Y., Chen, S., Li, Z., Morrison, A. C., Boerwinkle, E., and Lin, X. (2019). ACAT: A Fast and
726 Powerful p Value Combination Method for Rare-Variant Analysis in Sequencing Studies.
727 *The American Journal of Human Genetics* 104, 410–421. doi:
728 10.1016/j.ajhg.2019.01.002.

- 729 Mancuso, N., Freund, M. K., Johnson, R., Shi, H., Kichaev, G., Gusev, A., et al. (2019).
730 Probabilistic fine-mapping of transcriptome-wide association studies. *Nat Genet* 51, 675–
731 682. doi: 10.1038/s41588-019-0367-1.
- 732 Marsh, W. K., Penny, J. L., and Rothschild, A. J. (2017). Vitamin D supplementation in bipolar
733 depression: A double blind placebo controlled trial. *Journal of Psychiatric Research* 95,
734 48–53. doi: 10.1016/j.jpsychires.2017.07.021.
- 735 Marstrand, T. T., and Storey, J. D. (2014). Identifying and mapping cell-type-specific chromatin
736 programming of gene expression. *Proceedings of the National Academy of Sciences* 111,
737 E645–E654. doi: 10.1073/pnas.1312523111.
- 738 McRae, A. F., Marioni, R. E., Shah, S., Yang, J., Powell, J. E., Harris, S. E., et al. (2018).
739 Identification of 55,000 Replicated DNA Methylation QTL. *Sci Rep* 8, 17605. doi:
740 10.1038/s41598-018-35871-w.
- 741 Mocking, R. J. T., Harmsen, I., Assies, J., Koeter, M. W. J., Ruhé, H. G., and Schene, A. H.
742 (2016). Meta-analysis and meta-regression of omega-3 polyunsaturated fatty acid
743 supplementation for major depressive disorder. *Transl Psychiatry* 6, e756–e756. doi:
744 10.1038/tp.2016.29.
- 745 Mullins, N., Forstner, A. J., O’Connell, K. S., Coombes, B., Coleman, J. R. I., Qiao, Z., et al.
746 (2021). Genome-wide association study of more than 40,000 bipolar disorder cases
747 provides new insights into the underlying biology. *Nat Genet* 53, 817–829. doi:
748 10.1038/s41588-021-00857-4.
- 749 Nagpal, S., Meng, X., Epstein, M. P., Tsoi, L. C., Patrick, M., Gibson, G., et al. (2019). TIGAR:
750 An Improved Bayesian Tool for Transcriptomic Data Imputation Enhances Gene
751 Mapping of Complex Traits. *The American Journal of Human Genetics* 105, 258–266.
752 doi: 10.1016/j.ajhg.2019.05.018.
- 753 Ng, B., White, C. C., Klein, H.-U., Sieberts, S. K., McCabe, C., Patrick, E., et al. (2017). An
754 xQTL map integrates the genetic architecture of the human brain’s transcriptome and
755 epigenome. *Nat Neurosci* 20, 1418–1426. doi: 10.1038/nn.4632.
- 756 Nievergelt, C. M., Maihofer, A. X., Klengel, T., Atkinson, E. G., Chen, C.-Y., Choi, K. W., et al.
757 (2019). International meta-analysis of PTSD genome-wide association studies identifies
758 sex- and ancestry-specific genetic risk loci. *Nat Commun* 10, 4558. doi: 10.1038/s41467-
759 019-12576-w.
- 760 Niu, H.-M., Yang, P., Chen, H.-H., Hao, R.-H., Dong, S.-S., Yao, S., et al. (2019).
761 Comprehensive functional annotation of susceptibility SNPs prioritized 10 genes for
762 schizophrenia. *Transl Psychiatry* 9, 1–12. doi: 10.1038/s41398-019-0398-5.
- 763 Okereke, O. I., Reynolds, C. F., III, Mischoulon, D., Chang, G., Vyas, C. M., Cook, N. R., et al.
764 (2020). Effect of Long-term Vitamin D3 Supplementation vs Placebo on Risk of
765 Depression or Clinically Relevant Depressive Symptoms and on Change in Mood Scores:
766 A Randomized Clinical Trial. *JAMA* 324, 471–480. doi: 10.1001/jama.2020.10224.

- 767 Ongen, H., Brown, A. A., Delaneau, O., Panousis, N. I., Nica, A. C., and Dermitzakis, E. T.
768 (2017). Estimating the causal tissues for complex traits and diseases. *Nat Genet* 49,
769 1676–1683. doi: 10.1038/ng.3981.
- 770 Owen, M. J., and Williams, N. M. (2021). Explaining the missing heritability of psychiatric
771 disorders. *World Psychiatry* 20, 294–295. doi: 10.1002/wps.20870.
- 772 Pardiñas, A. F., Holmans, P., Pocklington, A. J., Escott-Price, V., Ripke, S., Carrera, N., et al.
773 (2018). Common schizophrenia alleles are enriched in mutation-intolerant genes and in
774 regions under strong background selection. *Nat Genet* 50, 381–389. doi: 10.1038/s41588-
775 018-0059-2.
- 776 Pathak, G. A., Singh, K., Wendt, F. R., Fleming, T. W., Overstreet, C., Koller, D., et al. (2022).
777 Genetically regulated multi-omics study for symptom clusters of posttraumatic stress
778 disorder highlights pleiotropy with hematologic and cardio-metabolic traits. *Mol*
779 *Psychiatry* 27, 1394–1404. doi: 10.1038/s41380-022-01488-9.
- 780 Perzel Mandell, K. A., Eagles, N. J., Wilton, R., Price, A. J., Semick, S. A., Collado-Torres, L.,
781 et al. (2021). Genome-wide sequencing-based identification of methylation quantitative
782 trait loci and their role in schizophrenia risk. *Nat Commun* 12, 5251. doi:
783 10.1038/s41467-021-25517-3.
- 784 Plana-Ripoll, O., Pedersen, C. B., Holtz, Y., Benros, M. E., Dalsgaard, S., de Jonge, P., et al.
785 (2019). Exploring Comorbidity Within Mental Disorders Among a Danish National
786 Population. *JAMA Psychiatry* 76, 259–270. doi: 10.1001/jamapsychiatry.2018.3658.
- 787 Polimanti, R., Walters, R. K., Johnson, E. C., McClintick, J. N., Adkins, A. E., Adkins, D. E., et
788 al. (2020). Leveraging genome-wide data to investigate differences between opioid use
789 vs. opioid dependence in 41,176 individuals from the Psychiatric Genomics Consortium.
790 *Mol Psychiatry* 25, 1673–1687. doi: 10.1038/s41380-020-0677-9.
- 791 Qi, T., Wu, Y., Fang, H., Zhang, F., Liu, S., Zeng, J., et al. (2022). Genetic control of RNA
792 splicing and its distinct role in complex trait variation. *Nat Genet*, 1–9. doi:
793 10.1038/s41588-022-01154-4.
- 794 Qi, T., Wu, Y., Zeng, J., Zhang, F., Xue, A., Jiang, L., et al. (2018). Identifying gene targets for
795 brain-related traits using transcriptomic and methylomic data from blood. *Nat Commun* 9,
796 2282. doi: 10.1038/s41467-018-04558-1.
- 797 Reay, W. R., and Cairns, M. J. (2020). Pairwise common variant meta-analyses of schizophrenia
798 with other psychiatric disorders reveals shared and distinct gene and gene-set
799 associations. *Transl Psychiatry* 10, 134. doi: 10.1038/s41398-020-0817-7.
- 800 Robins, C., Liu, Y., Fan, W., Duong, D. M., Meigs, J., Harerimana, N. V., et al. (2021). Genetic
801 control of the human brain proteome. *The American Journal of Human Genetics* 108,
802 400–410. doi: 10.1016/j.ajhg.2021.01.012.

- 803 Sanchez-Priego, C., Hu, R., Boshans, L. L., Lalli, M., Janas, J. A., Williams, S. E., et al. (2022).
804 Mapping cis-regulatory elements in human neurons links psychiatric disease heritability
805 and activity-regulated transcriptional programs. *Cell Reports* 39, 110877. doi:
806 10.1016/j.celrep.2022.110877.
- 807 Sanchez-Roige, S., Palmer, A. A., Fontanillas, P., Elson, S. L., 23andMe Research Team, the
808 Substance Use Disorder Working Group of the Psychiatric Genomics Consortium,
809 Adams, M. J., et al. (2019). Genome-Wide Association Study Meta-Analysis of the
810 Alcohol Use Disorders Identification Test (AUDIT) in Two Population-Based Cohorts.
811 *Am J Psychiatry* 176, 107–118. doi: 10.1176/appi.ajp.2018.18040369.
- 812 Sarris, J., Murphy, J., Mischoulon, D., Papakostas, G. I., Fava, M., Berk, M., et al. (2016).
813 Adjunctive Nutraceuticals for Depression: A Systematic Review and Meta-Analyses. *AJP*
814 173, 575–587. doi: 10.1176/appi.ajp.2016.15091228.
- 815 Scarr, E., Udawela, M., and Dean, B. (2019). Changed cortical risk gene expression in major
816 depression and shared changes in cortical gene expression between major depression and
817 bipolar disorders. *Aust N Z J Psychiatry* 53, 1189–1198. doi:
818 10.1177/0004867419857808.
- 819 Schrode, N., Ho, S.-M., Yamamuro, K., Dobbyn, A., Huckins, L., Matos, M. R., et al. (2019).
820 Synergistic effects of common schizophrenia risk variants. *Nature Genetics* 51, 1475–
821 1485. doi: 10.1038/s41588-019-0497-5.
- 822 Sekar, A., Bialas, A. R., de Rivera, H., Davis, A., Hammond, T. R., Kamitaki, N., et al. (2016).
823 Schizophrenia risk from complex variation of complement component 4. *Nature* 530,
824 177–183. doi: 10.1038/nature16549.
- 825 Shen, X., Caramaschi, D., Adams, M. J., Walker, R. M., Min, J. L., Kwong, A., et al. (2022).
826 DNA methylome-wide association study of genetic risk for depression implicates antigen
827 processing and immune responses. *Genome Medicine* 14, 36. doi: 10.1186/s13073-022-
828 01039-5.
- 829 Spaethling, J. M., Na, Y.-J., Lee, J., Ulyanova, A. V., Baltuch, G. H., Bell, T. J., et al. (2017).
830 Primary Cell Culture of Live Neurosurgically Resected Aged Adult Human Brain Cells
831 and Single Cell Transcriptomics. *Cell Reports* 18, 791–803. doi:
832 10.1016/j.celrep.2016.12.066.
- 833 Stein, M. B., Chen, C.-Y., Jain, S., Jensen, K. P., He, F., Heeringa, S. G., et al. (2017). Genetic
834 risk variants for social anxiety. *American Journal of Medical Genetics Part B:*
835 *Neuropsychiatric Genetics* 174, 120–131. doi: 10.1002/ajmg.b.32520.
- 836 Sugawara, H., Murata, Y., Ikegame, T., Sawamura, R., Shimanaga, S., Takeoka, Y., et al. (2018).
837 DNA methylation analyses of the candidate genes identified by a methylome-wide
838 association study revealed common epigenetic alterations in schizophrenia and bipolar
839 disorder. *Psychiatry and Clinical Neurosciences* 72, 245–254. doi: 10.1111/pcn.12645.

- 840 Sun, B. B., Maranville, J. C., Peters, J. E., Stacey, D., Staley, J. R., Blackshaw, J., et al. (2018).
841 Genomic atlas of the human plasma proteome. *Nature* 558, 73–79. doi: 10.1038/s41586-
842 018-0175-2.
- 843 Taraszka, K., Zaitlen, N., and Eskin, E. (2022). Leveraging pleiotropy for joint analysis of
844 genome-wide association studies with per trait interpretations. *PLOS Genetics* 18,
845 e1010447. doi: 10.1371/journal.pgen.1010447.
- 846 THE BRAINSTORM CONSORTIUM, Anttila, V., Bulik-Sullivan, B., Finucane, H. K., Walters,
847 R. K., Bras, J., et al. (2018). Analysis of shared heritability in common disorders of the
848 brain. *Science* 360, eaap8757. doi: 10.1126/science.aap8757.
- 849 THE GTEX CONSORTIUM, Ardlie, K. G., Deluca, D. S., Segrè, A. V., Sullivan, T. J., Young,
850 T. R., et al. (2015). The Genotype-Tissue Expression (GTEx) pilot analysis: Multitissue
851 gene regulation in humans. *Science* 348, 648–660. doi: 10.1126/science.1262110.
- 852 Trubetsky, V., Pardiñas, A. F., Qi, T., Panagiotaropoulou, G., Awasthi, S., Bigdeli, T. B., et al.
853 (2022). Mapping genomic loci implicates genes and synaptic biology in schizophrenia.
854 *Nature* 604, 502–508. doi: 10.1038/s41586-022-04434-5.
- 855 Turley, P., Walters, R. K., Maghzian, O., Okbay, A., Lee, J. J., Fontana, M. A., et al. (2018).
856 Multi-trait analysis of genome-wide association summary statistics using MTAG. *Nat*
857 *Genet* 50, 229–237. doi: 10.1038/s41588-017-0009-4.
- 858 van der Wijst, M., de Vries, D., Groot, H., Trynka, G., Hon, C., Bonder, M., et al. (2020). The
859 single-cell eQTLGen consortium. *eLife* 9, e52155. doi: 10.7554/eLife.52155.
- 860 Vösa, U., Claringbould, A., Westra, H.-J., Bonder, M. J., Deelen, P., Zeng, B., et al. (2021).
861 Large-scale cis- and trans-eQTL analyses identify thousands of genetic loci and
862 polygenic scores that regulate blood gene expression. *Nat Genet* 53, 1300–1310. doi:
863 10.1038/s41588-021-00913-z.
- 864 Wainberg, M., Sinnott-Armstrong, N., Mancuso, N., Barbeira, A. N., Knowles, D. A., Golan, D.,
865 et al. (2019). Opportunities and challenges for transcriptome-wide association studies.
866 *Nat Genet* 51, 592–599. doi: 10.1038/s41588-019-0385-z.
- 867 Wang, D., Liu, S., Warrell, J., Won, H., Shi, X., Navarro, F. C. P., et al. (2018). Comprehensive
868 functional genomic resource and integrative model for the human brain. *Science* 362,
869 eaat8464. doi: 10.1126/science.aat8464.
- 870 Watanabe, K., Taskesen, E., van Bochoven, A., and Posthuma, D. (2017). Functional mapping
871 and annotation of genetic associations with FUMA. *Nat Commun* 8, 1826. doi:
872 10.1038/s41467-017-01261-5.
- 873 Watson, H. J., Yilmaz, Z., Thornton, L. M., Hübel, C., Coleman, J. R. I., Gaspar, H. A., et al.
874 (2019). Genome-wide association study identifies eight risk loci and implicates metabo-
875 psychiatric origins for anorexia nervosa. *Nat Genet* 51, 1207–1214. doi: 10.1038/s41588-
876 019-0439-2.

- 877 Wingo, T. S., Liu, Y., Gerasimov, E. S., Gockley, J., Logsdon, B. A., Duong, D. M., et al.
878 (2021). Brain proteome-wide association study implicates novel proteins in depression
879 pathogenesis. *Nat Neurosci* 24, 810–817. doi: 10.1038/s41593-021-00832-6.
- 880 Wingo, T. S., Liu, Y., Gerasimov, E. S., Vattathil, S. M., Wynne, M. E., Liu, J., et al. (2022).
881 Shared mechanisms across the major psychiatric and neurodegenerative diseases. *Nat*
882 *Commun* 13, 4314. doi: 10.1038/s41467-022-31873-5.
- 883 Wu, Y., Zeng, J., Zhang, F., Zhu, Z., Qi, T., Zheng, Z., et al. (2018). Integrative analysis of
884 omics summary data reveals putative mechanisms underlying complex traits. *Nat*
885 *Commun* 9, 918. doi: 10.1038/s41467-018-03371-0.
- 886 Yang, C., Farias, F. H. G., Ibanez, L., Suhy, A., Sadler, B., Fernandez, M. V., et al. (2021a).
887 Genomic atlas of the proteome from brain, CSF and plasma prioritizes proteins
888 implicated in neurological disorders. *Nat Neurosci* 24, 1302–1312. doi: 10.1038/s41593-
889 021-00886-6.
- 890 Yang, H., Liu, D., Zhao, C., Feng, B., Lu, W., Yang, X., et al. (2021b). Mendelian randomization
891 integrating GWAS and eQTL data revealed genes pleiotropically associated with major
892 depressive disorder. *Translational Psychiatry* 11, 225. doi: 10.1038/s41398-021-01348-0.
- 893 Yuan, Z., Zhu, H., Zeng, P., Yang, S., Sun, S., Yang, C., et al. (2020). Testing and controlling for
894 horizontal pleiotropy with probabilistic Mendelian randomization in transcriptome-wide
895 association studies. *Nat Commun* 11, 3861. doi: 10.1038/s41467-020-17668-6.
- 896 Zhang, J., Dutta, D., Köttgen, A., Tin, A., Schlosser, P., Grams, M. E., et al. (2021). Large Bi-
897 Ethnic Study of Plasma Proteome Leads to Comprehensive Mapping of cis-pQTL and
898 Models for Proteome-wide Association Studies. doi: 10.1101/2021.03.15.435533.
- 899 Zhang, S., Zhang, H., Zhou, Y., Qiao, M., Zhao, S., Kozlova, A., et al. (2020). Allele-specific
900 open chromatin in human iPSC neurons elucidates functional disease variants. *Science*
901 369, 561–565. doi: 10.1126/science.aay3983.
- 902 Zhou, D., Jiang, Y., Zhong, X., Cox, N. J., Liu, C., and Gamazon, E. R. (2020). A unified
903 framework for joint-tissue transcriptome-wide association and Mendelian randomization
904 analysis. *Nat Genet* 52, 1239–1246. doi: 10.1038/s41588-020-0706-2.
- 905 Zhu, Z., Zhang, F., Hu, H., Bakshi, A., Robinson, M. R., Powell, J. E., et al. (2016). Integration
906 of summary data from GWAS and eQTL studies predicts complex trait gene targets. *Nat*
907 *Genet* 48, 481–487. doi: 10.1038/ng.3538.

908
909
910
911
912
913