

1 **Association of serum platelet-to-lymphocyte ratio levels with the risk**  
2 **of stent thrombosis and long-term prognosis in patients undergoing**  
3 **percutaneous coronary intervention with and without type 2 diabetes**  
4 **mellitus: a large-scale prospective cohort study**

5

6 Yanjun Song<sup>a,b†</sup>, MD; Zhangyu Lin<sup>a,b†</sup>, MD; Jining He<sup>a,b†</sup>, MD; Kongyong Cui<sup>a,b</sup>, MD;  
7 Chenxi Song<sup>a,b</sup>, MD; Rui Zhang<sup>a,b</sup>, MD; Boqun Shi<sup>a,b</sup>, MD; Qiuting Dong<sup>a,b\*</sup>, MD,  
8 PhD; Kefei Dou<sup>a,b\*</sup>, MD, PhD

9

10 <sup>a</sup> State Key Laboratory of Cardiovascular Disease, Beijing, China.

11 <sup>b</sup> Cardiometabolic Medicine Center, Fuwai Hospital, National Center for Cardiovascular  
12 Diseases, Chinese Academy of Medical Sciences and Peking Union Medical College, 167A  
13 Beilishi Road, Xi Cheng District, Beijing 100037, China.

14

15 **Short Title:** Prognostic value of PLR

16

17 <sup>†</sup>Yanjun Song, Zhangyu Lin, and Jining He contributed equally to this article.

18 <sup>\*</sup>Kefei Dou and Qiuting Dong contributed equally as senior authors.

19

20 <sup>\*</sup> **Correspondence to:**

21 Kefei Dou, MD, PhD

1 Cardiometabolic Medicine Center, Department of Cardiology, Fuwai Hospital,  
2 National Center for Cardiovascular Diseases, State Key Laboratory of Cardiovascular  
3 Disease, Chinese Academy of Medical Sciences and Peking Union Medical College,  
4 No. 167, Beilishi Road, Xicheng District, Beijing 100037, China  
5 E-mail: drdoukefei@126.com

6 Tel: +86 01088396590

7 And

8 Qiuting Dong, MD, PhD

9 Cardiometabolic Medicine Center, Department of Cardiology, Fuwai Hospital,  
10 National Center for Cardiovascular Diseases, State Key Laboratory of Cardiovascular  
11 Disease, Chinese Academy of Medical Sciences and Peking Union Medical College,  
12 No. 167, Beilishi Road, Xicheng District, Beijing 100037, China  
13 E-mail: blue1005dqt@163.com

14 Tel: +86 01088396590

15

16

17 Word count (including Title Page, Abstract, Text, References, Tables and Figures

18 Legends): 7294

19

1 **Abstract**

2 **Background:** The platelet-to-lymphocyte ratio (PLR) is a promising inflammatory  
3 biomarker contributing to the development of atherosclerosis and type 2 diabetes  
4 mellitus (T2DM). Therefore, this study aims to document the value of PLR in  
5 predicting adverse events in patients undergoing percutaneous coronary intervention  
6 (PCI) with and without T2DM.

7 **Methods:** This study consecutively enrolled 8831 patients who received PCI, and we  
8 divided them into 4 groups according to the PLR level and glycemic metabolic  
9 statuses (PLR-low/high with non-T2DM, PLR-low/high with T2DM). The endpoints  
10 were major adverse cardiovascular and cerebrovascular events (MACCE) and stent  
11 thrombosis. Multivariate COX regression analysis was used to determine the  
12 association.

13 **Results:** During the 2.4-year follow-up, a total of 663 (7.5%) MACCE and 75 (0.85%)  
14 stent thrombosis were recorded. Results showed that patients with high PLR levels  
15 presented a significantly higher risk of MACCE (HR: 1.26, 95%CI: 1.07 to 1.47,  $P =$   
16 0.005) and stent thrombosis (HR: 2.29, 95%CI, 1.39 to 3.79,  $P = 0.001$ ) when  
17 compared with the PLR-low group. When focused on patients with T2DM, the  
18 PLR-high group showed a significantly higher risk of MACCE (HR: 1.53, 95%CI:  
19 1.17 to 2.00,  $P = 0.002$ ) and stent thrombosis (HR: 3.79, 95%CI, 1.62 to 8.86,  $P =$   
20 0.002). However, these associations were not significant in patients without T2DM.

1    **Conclusions:** For the first time, PLR is documented as a great predictor for the poor  
2    prognosis and high incidence of stent thrombosis in patients with CAD, especially in  
3    those with T2DM.

4

5    **Keywords:** Percutaneous coronary intervention; Coronary artery disease; Type 2  
6    diabetes mellitus; Platelet to lymphocyte ratio; Clinical outcomes

7

## 1 **CLINICAL PERSPECTIVE**

### 2 **What Is New?**

3 ● In patients undergoing percutaneous coronary intervention (PCI), high serum  
4 platelet-to-lymphocyte ratio (PLR) is associated with poor prognosis and a high  
5 risk of stent thrombosis.

6 ● When focusing on patients with different glycemia statuses, we found that the  
7 predictive value of PLR for poor prognosis and high risk of stent thrombosis was  
8 significant in patients with type 2 diabetes mellitus (T2DM), but not in patients  
9 without T2DM.

10 ● Among patients with different PLR levels and glycemia statuses, those combined  
11 with both high PLR levels and T2DM showed the highest risk of poor prognosis  
12 and stent thrombosis.

13 ● In stent thrombosis events, very late stent thrombosis is the most common type in  
14 patients with high PLR.

### 15 **What Are the Clinical Implications?**

16 ● Patients undergoing PCI with high PLR levels should be monitored closely.

17 ● Residual inflammation should be focused among patients with coronary heart  
18 disease after revascularization to improve the long-term prognosis.

19

## 1 **List of abbreviations**

2 ACS: acute coronary syndrome; AST: acute stent thrombosis; BMI: body mass index;  
3 CAD: coronary artery disease; CCS: Chronic coronary syndrome; CTO: chronic total  
4 occlusion; CI: confidence interval; CABG: coronary artery bypass grafting; CCC:  
5 coronary collateral circulation; DES: drug-eluting stents; DAPT: dual anti-platelet  
6 therapy; hsCRP: high-sensitivity C-reactive protein; HbA1c: glycosylated hemoglobin  
7 A1c; K-M: Kaplan-Meier; LDL-C: low-density lipoprotein cholesterol; LM: left main  
8 artery disease; LVEF: left ventricular ejection fraction; LST: late stent thrombosis; MI:  
9 myocardial infarction; MACCE: major adverse cardiovascular and cerebrovascular  
10 events; PCI: percutaneous coronary intervention; PLR: platelet-to-lymphocyte ratio;  
11 PAD: peripheral artery disease; STEMI: ST-elevation myocardial infarction; SD:  
12 standard deviation; SAST: subacute stent thrombosis; T2DM: type 2 diabetes mellitus;  
13 TC: total cholesterol; TG: triglyceride; TIMI: thrombolysis in myocardial infarction;  
14 VLST: very late stent thrombosis.

15

16

## 1 **1. Introduction**

2 High inflammatory state has been regarded as a key promotor in the pathogenesis  
3 of coronary artery disease (CAD) <sup>1</sup>. Rigorous studies have reported that diverse  
4 inflammatory actors modulated various pathologic roles, such as driving  
5 atheroprogession and inciting plaque destabilization, thereby contributing to the  
6 following clinical performances like angina pectoris or acute coronary syndrome <sup>2</sup>. As  
7 for patients undergoing percutaneous coronary intervention (PCI), the elevated  
8 inflammatory burden was suggested to be associated with aggravated endothelial  
9 dysfunction and microvascular obstruction, which finally contributed to PCI-related  
10 myocardial injury and high long-term all-cause mortality <sup>3,4</sup>. Therefore, precise  
11 indicators evaluating inflammatory burden and their predictive value for prognosis in  
12 patients with CAD hold great attention.

13 Platelet-to-lymphocyte ratio (PLR) was first described as a prognostic marker in  
14 periampullary cancer in 2008 <sup>5</sup> and demonstrated to reflect inflammation and  
15 thrombosis in various cancers in the following studies. Recently, PLR has shown its  
16 value in evaluating inflammatory burden and indicating poor prognosis in several  
17 cardiovascular diseases like ST-elevation myocardial infarction (STEMI) <sup>6,7</sup>, heart  
18 failure <sup>8</sup>, stable angina pectoris, chronic total occlusion <sup>9</sup> and in patients with an  
19 implantable cardioverter defibrillator <sup>10</sup>. Platelet-induced proinflammatory cytokines  
20 release and atherothrombotic progression might be the potential mechanisms  
21 illustrating its value of reflecting inflammatory state in cardiovascular diseases <sup>11</sup>.

1 Besides, the prognostic value of PLR in glyceimic metabolism disease has also been  
2 reported, as high PLR levels in patients with type 2 diabetes mellitus (T2DM) showed  
3 a high incidence of complications like diabetic nephropathy and cognitive decline  
4 <sup>12,13</sup>.

5 Therefore, the relationship between PLR and clinical outcomes in CAD patients  
6 with different glyceimic metabolism statuses after PCI, whose related research is still  
7 limited, raised interest. In this study, we prospectively enrolled 8831 patients  
8 undergoing PCI, and divided them into different groups according to their glyceimic  
9 statuses and PLR levels, aiming to document the predictive roles of PLR for the  
10 prognosis in these patients.

11  
12

## 13 **2. Methods**

### 14 **2.1. Study design and population**

15 In this prospective cohort study, 10724 patients who underwent PCI from  
16 January 2013 to December 2013 were consecutively screened. PCIs were all  
17 performed at Fuwai Hospital, Chinese Academy of Medical sciences. Adult patients  
18 (>18 years old) who were treated with drug-eluting stents (DES) implantation were  
19 eligible for this research. Exclusion criteria include a combination of hematological  
20 disorders, active tumors, infection, immune-suppressant or steroid drug application,  
21 and missing baseline data. After that, 8831 patients were ultimately enrolled in this



1 study (**Figure S1**). Platelet and lymphocyte counts were collected from one blood  
2 sample before the PCI procedural, and PLR was calculated using the formula of  
3 plasma platelet count ( $10^9/L$ ) to plasma lymphocyte count ( $10^9/L$ ) ratio<sup>11</sup>. To  
4 investigate the prognostic value of PLR in CAD under different glycemc states,  
5 enrolled patients were firstly divided into two groups: PLR-Low (n=4419) and  
6 PLR-High (n=4412), and further allocated into four groups: PLR-H-T2DM (n=1263),  
7 PLR-L-T2DM (n=1404), PLR-H-Non-T2DM (n=3149), PLR-L-Non-T2DM  
8 (n=3015). The optimal PLR cut-off was defined as the median of all participants  
9 (PLR=107, interquartile range: 84.7-135.5), and T2DM was defined as a history of  
10 T2DM from the on-admission medical record, receiving oral hypoglycemic agents or  
11 insulin, fasting glucose level  $\geq 126$  mg/dL, or hemoglobin A1c (HbA1c) level  $\geq 6.5\%$ .  
12 All patients received a clinical follow-up with a median time of 2.4 years after the  
13 operation. The clinical status was evaluated at 1, 6, and 12 months in the first year  
14 after discharge, and annually assessed in the following years by telephone interview.

15 The research process was following the Declaration of Helsinki and was  
16 approved by the Institutional Review Board of Fuwai Hospital, Chinese Academy of  
17 Medical sciences. All subjects provided informed written consent for long-term  
18 follow-up before intervention.

19

## 20 **2.2. Data collection and definitions**

1 Data on variables of interest were prospectively collected in all participants,  
2 which comprised demographic data (age, sex, BMI, comorbidities, past histories,  
3 smoking or not), on-admission diagnosis, physical/imaging/laboratory examination,  
4 target lesion/vessel information, PCI procedure and medicine therapy after PCI/at  
5 discharge. Comorbidities collected in this study included diabetes mellitus,  
6 hypertension (more than twice on different days by systolic blood pressure  $\geq 140$   
7 mmHg and/or diastolic blood pressure  $\geq 90$  mmHg during the baseline hospitalization  
8 or known hypertension with antihypertensive medication), and dyslipidemia (plasma  
9 total cholesterol [TC]  $\geq 5.2$  mmol/L, triglyceride [TG]  $\geq 1.7$  mmol/L, low-density  
10 lipoprotein cholesterol [LDL-C]  $\geq 3.4$  mmol/L, high-density lipoprotein cholesterol  
11 [HDL-C]  $< 1.0$  mmol/L, and/or known dyslipidemia receiving lipid-lowering therapy).  
12 Past histories included previous myocardial infarction (MI), revascularization  
13 (PCI/coronary artery bypass grafting [CABG]), peripheral artery disease (PAD), and  
14 stroke. Chronic coronary syndrome (CCS) or acute coronary syndrome (ACS) was  
15 diagnosed according to on-admission clinical presentation. As for coronary disease,  
16 left main artery disease (LM,  $\geq 50\%$  stenosis in LM coronary artery), three-vessel  
17 disease ( $\geq 50\%$  in all three main epicardial coronary arteries), and lesion  
18 characteristics (chronic total occlusion [100% occlusion of a native coronary artery  
19 for more than 3 months with thrombolysis in myocardial infarction (TIMI) flow grade  
20 of 0], bifurcation, calcification, and syntax score [estimated using an online calculator  
21 ([http:// www. syntaxscore. com/](http://www.syntaxscore.com/)))] were recorded by two independent interventionists

1 at Fuwai hospital. The number of the treated vessel and implanted DES during PCI  
2 and procedural success (the residual stenosis  $\leq 30\%$  and grade 3 TIMI flow without  
3 apparent dissection) or not were collected as procedural data. Medicine therapies after  
4 PCI include dual antiplatelet therapy (DAPT), GPIIb/IIIa receptor antagonists,  
5  $\beta$ -blocker, statins, and nitrate.

6

### 7 **2.3. Laboratory examination**

8 Blood samples were collected from patients before PCI and stored in  $-80\text{ }^{\circ}\text{C}$   
9 refrigerators until the test. The process of laboratory examination was performed at  
10 the core laboratory in Fuwai hospital, according to the standard operation guideline.  
11 In this study, routine blood tests (Hgb, white blood cells [WBC], lymphocyte,  
12 platelet), lipid profiles (TG, TC, HDL-C, and LDL-C), creatinine, high-sensitivity  
13 C-reactive protein (hs-CRP) and glycosylated hemoglobin A1c (HbA1c) were  
14 presented.

15

### 16 **2.4. Procedures**

17 PCIs were all performed by experienced interventionalists in Fuwai hospital.  
18 Before PCI, patients all received a loading dose of DAPT (300 mg of aspirin and 300  
19 mg of clopidogrel the day or ticagrelor 180 mg) and heparin treatment with an initial  
20 bolus of 70-100 IU/kg (before the procedure) with an additional dose of 1000 IU  
21 administered per hour (during the procedure). The access of intervention was radial or

1 femoral artery. Angiography was performed in all participants, and the application of  
2 adjunctive examinations (intravascular ultrasound and optical coherence tomography)  
3 and devices (balloon and stent) choice depended on the operators.

4

## 5 **2.5. Outcomes**

6 The primary endpoints of this study were major adverse cardiovascular and  
7 cerebrovascular events (MACCE, a composite of all-cause death, MI, stroke, and  
8 target vessel revascularization [TVR]). The secondary outcomes were the individual  
9 components of MACCE and stent thrombosis. MI was diagnosed according to the  
10 third universal definition of MI<sup>14</sup> and TVR referred to any repeat revascularizations  
11 of the treated vessel in PCI. Stroke was defined as cerebrovascular events (ischemic  
12 or hemorrhagic) confirmed by two neurologists and stent thrombosis was defined as a  
13 thrombotic occlusion of a coronary stent (defined according to Academic Research  
14 Consortium criteria)<sup>15</sup>. The time definitions of acute stent thrombosis (AST),  
15 subacute stent thrombosis (SAST), late stent thrombosis (LST), and very late stent  
16 thrombosis (VLST) were 0-24 hours, 24 hours to 30 days, 30 days to 1 year and  
17 longer than 1 year after stent implantation, respectively<sup>16</sup>. The events above were all  
18 confirmed by at least two independent specialists of cardiology, and the disagreement  
19 was resolved by consulting a third experienced cardiologist.

20

21

## 1    **2.6. Statistical analysis**

2            Categorical variables were presented as “number (%)”. Continuous variables  
3 were described as “mean  $\pm$  standard deviation (SD)” when they were normally  
4 distributed. Two-sample T-test was used to assess whether there was a statistical  
5 difference in continuous variables when they were normally distributed, otherwise,  
6 the Mann-Whitney U test was used.  $\chi^2$  test was applied to test the differences in  
7 categorical variables, although Fisher’s exact test was used for the small sample size.  
8 Kaplan-Meier (K-M) plots and Cox proportional hazards regression models were used  
9 for survival analysis, which was based on the time from operation to primary  
10 outcomes. KM plots for PLR-L vs. PLR-H, PLR-L/T2DM vs. PLR-H/T2DM, PLR-L/  
11 Non-T2DM vs. PLR-H/Non-T2DM and PLR-L/ Non-T2DM vs. PLR-H/Non-T2DM  
12 vs. PLR-L/T2DM vs. PLR-H/T2DM were presented, and Log-rank test was used to  
13 evaluate the statistical significance. When analyzing PLR as a continuous variable,  
14 the Log-transformation of PLR was performed (ln [platelet-to-lymphocyte ratio]).  
15 Restricted cubic spline (RCS) with 4 knots (5<sup>th</sup>, 35<sup>th</sup>, 65<sup>th</sup>, and 95<sup>th</sup> percentiles) in the  
16 fully adjusted model was used to estimate the dose-response relationship between  
17 PLR and the risk of outcomes. Nonlinearity was tested using the likelihood ratio test.

18            In the multi-COX regression model, PLR-L/Non-T2DM and PLR-L/ T2DM were  
19 referenced. Adjusted confounding factors include age, male sex, body mass index  
20 (BMI), hypertension, dyslipidemia, smoking history, previous MI, previous  
21 PCI/CABG, previous stroke, previous PAD, Acute coronary syndrome (ACS),

1 LM/three-vessel disease, chronic total occlusion (CTO), moderate to severe  
2 calcification, procedural success, number of treated vessels, number of stents, TC,  
3 LDL-C, hs-CRP, creatine, left ventricular ejection fraction (LVEF), DAPT,  $\beta$  blocker,  
4 and statins. The hazard ratio (HR) and 95% confidence interval (CI) were presented.  
5 Sub-group analysis was further performed in 6 different subsets (sex [male or female],  
6 age [ $< 65$  or  $\geq 65$  years], BMI [ $<25.0$  or  $\geq25.0$  kg/m<sup>2</sup>], smoking status [never or  
7 former and current], hypertension [yes or no], and ACS [yes or no]), which was  
8 presented with a forest plot. Sensitivity analyses excluding patients who presented  
9 MACCE within the first 30 days of follow-up, did not receive DAPT and did not receive  
10 successful PCI were progressively conducted based on the fully adjusted model.

11 Statistically, significance was determined when two-sided  $\alpha$  was less than 0.05.  
12 All the statistical analyses were done using the SPSS version 27.0 (IBM Corporation,  
13 Armonk, NY) and RStudio software (version 2021.09.0; [http:// www. rstudio. org/](http://www.rstudio.org/)).

14

15

## 16 **3. Results**

### 17 **3.1. Baseline characteristics**

18 Generally, 8831 consecutive CAD patients ( $58.39 \pm 10.27$  years, 77.0% male)  
19 who received PCI with DES implantation were included in this study. The baseline  
20 characteristics of four groups based on PLR levels and glycemc metabolism status  
21 were listed in **Table 1**. Compared with diabetic patients with a higher level of PLR,

1 those in the other three groups were older and more likely to be female, with a higher  
2 prevalence of hypertension, dyslipidemia, previous revascularization, previous stroke,  
3 and previous PAD. Laboratory test results including PLR and CK-MB were  
4 significantly higher in the PLR-H/T2DM. For coronary procedural characteristics,  
5 individuals in the PLR-H/T2DM group were more likely to have a higher SYNTAX  
6 score and LM/three-vessel disease when compared with those in the other 3 groups.  
7 Besides, the comparisons in baseline characteristics between the PLR-low and  
8 PLR-high groups were also performed and presented in **Table S1**.

9

### 10 **3.2. PLR levels and the risk of MACCE in the whole cohort**

11 During a median follow-up of 2.4 years (interquartile range: 2.2-2.6 years), 101  
12 (1.1%) all-cause deaths, 97 (1.1%) MI, 131 (1.5%) strokes, 414 (4.7%) TVR, and 663  
13 (7.5%) MACCEs were recorded. **Table 3** displayed the comparison of clinical  
14 outcomes risks between the PLR-H and PLR-L groups. In multivariable analysis after  
15 adjusting for confounding factors, the PLR-H group was at significantly higher risk of  
16 MACCE (HR: 1.26, 95%CI: 1.07 to 1.47,  $P = 0.005$ ), and all-cause death (HR: 1.87,  
17 95%CI: 1.21 to 2.89,  $P = 0.005$ ). Consistently, the K-M analysis curves also revealed  
18 a higher risk of MACCE in patients with PLR-H compared with those with PLR-L  
19 (log-rank  $P = 0.001$ , **Figure 1A**).

20 When analyzing PLR as a continuous variable, results showed that a per 1 unit  
21 increase in PLR-ln was associated with a 49% increase in the risk of MACCE (95%CI:

1 1.18 to 1.87,  $P = 0.001$ ) (**Table S2**). RCS analysis further determined a linear  
2 relationship between PLR and the risk of MACCE in the whole cohort ( $P$  for  
3 non-linearity = 0.071) (**Figure S2**).

4

### 5 **3.3. PLR levels and the risk of MACCE in patients with and without T2DM**

6 The incidence of MACCE in PLR-H with T2DM or non-T2DM and PLR-L with  
7 T2DM or non-T2DM group was 14.3% (178/1263), 10.6% (337/3149), 11.1%  
8 (158/1404), 10.6% (318/3015), respectively. Risks of MACCE were compared in four  
9 different risk groups by the Cox regression model, using the PLR-L-non-T2DM and  
10 PLR-L-DM groups as reference 1 and 2, respectively (**Table 3**). Compared with  
11 reference 1, patients in the PLR-H/non-T2DM were at significantly higher risk of  
12 all-cause mortality in univariable analysis (HR: 2.04, 95%CI: 1.20 to 3.47,  $P = 0.009$ ),  
13 while no significant difference was presented in multivariable analysis. When it came  
14 to referencing 2, patients with PLR-H/T2DM showed a significantly higher risk of  
15 MACCE (HR: 1.62, 95%CI: 1.25 to 2.10,  $P < 0.001$ ), all-cause mortality (HR: 2.56,  
16 95%CI: 1.32 to 5.12,  $P = 0.006$ ), stroke (HR: 1.90, 95%CI: 1.08 to 3.37,  $P = 0.027$ )  
17 and stent thrombosis (HR: 4.10, 95%CI: 1.77 to 9.47,  $P < 0.001$ ). In multivariable  
18 analysis after adjusting for confounding factors, increased risk of MACCE (HR: 1.53,  
19 95%CI: 1.17 to 2.00,  $P = 0.002$ ), all-cause mortality (HR: 2.18, 95%CI: 1.09 to 4.37,  
20  $P = 0.028$ ) and stent thrombosis (HR: 3.79, 95%CI, 1.62 to 8.86,  $P = 0.002$ ) were still  
21 significant in PLR-H/T2DM group. When it came to the continuous analysis, with



1 PLR-Ln increasing per 1 unit, the risk of MACCE and stent thrombosis increased by  
2 99% (95%CI: 1.37 to 2.89,  $P < 0.001$ ) in the T2DM cohort with great significance  
3 (Table S2). However, this significant association was not found in the non-T2DM  
4 cohort.

5

### 6 3.4. PLR levels and the risk of stent thrombosis

7 During the follow-up, there were 75 (0.85%) cases of stent thrombosis were  
8 recorded. In the whole cohort study, K-M plots showed that patients in the PLR-H  
9 group presented a significantly higher risk of stent thrombosis compared with patients  
10 in PLR-L (Figure 2A). This phenomenon was still significant in a patient with T2DM,  
11 but not remarkable in patients with non-T2DM (Figure 2B, C), and patients with both  
12 PLR-H and T2DM held the highest risk (Figure 2D). In Cox regression analyses, the  
13 risk of stent thrombosis was significantly higher in the PLR-High group when  
14 compared with the PLR-Low group in the T2DM cohort (Table 3). When it came to  
15 the continuous analysis, the risk of stent thrombosis increased significantly with the  
16 increase in PLR-Ln levels in the T2DM cohort (Table S2).

17 We further performed the adjusted Cox regression model for the subtypes of  
18 stent thrombosis in the whole cohort and DM cohort (Table S3). Results showed that  
19 VLST occupied the largest proportion (52%) and was the only subtype whose risk  
20 was significantly positively associated with the PLR-Ln levels in T2DM (HR 2.04,  
21 95%CI: 1.34 to 5.64,  $P = 0.008$ ).

1

### 2 **3.5. Subgroup and sensitivity analysis**

3 Subgroup analysis was performed to evaluate the association of risk groups and  
4 MACCE and stent thrombosis across different subgroups, including age, sex, BMI,  
5 hypertension, smoking status, and ACS (**Figure S3, Figure S4, and Table S4, S5**).

6 There was a significant interaction between risk groups and MACCE and stent  
7 thrombosis by age of 65 years (P for interaction = 0.002 and 0.031, respectively),  
8 whereas the consistent association of risk groups with MACCE risk was observed in  
9 patients with different sex, BMI, hypertension-status, smoking-status and clinical  
10 presentation (P for interaction > 0.05) after multiple adjustments. Sensitivity analysis  
11 for excluding patients who presented MACCE within the first 30 days of follow-up,  
12 received unsuccessful PCI, and did not receive DAPT was further performed with the  
13 outcomes of MACCE and stent thrombosis, and no change in conclusions was found  
14 in three cohorts (**Table S6**). Sensitivity analysis for individuals of MACCE was  
15 presented in **Table S7-S9**.

16

17

## 18 **4. Discussion**

19 In this real-world, large-scale, prospective, observational cohort study, the  
20 prognosis of diabetic and non-diabetic CAD patients undergoing PCI with different  
21 levels of PLR was investigated. The major findings of this study are as follows: (1)

1 high PLR level is significantly associated with the increased risk of MACCE in  
2 patients undergoing PCI with T2DM; (3) high PLR level is an independent predictor  
3 for stent thrombosis in patients with T2DM but not in those without DM, and the  
4 VLST is the main subtype; (4) the correlation between PLR-ln and the risk of  
5 MACCE is a positive linear type, and the risk of MACCE and stent thrombosis  
6 elevated significantly with per 1 unit increasing in PLR-ln in patients with CAD and  
7 T2DM; (5) patients combined with both T2DM and high PLR levels presented the  
8 worst prognosis and the highest risk of stent thrombosis. These results were not  
9 changed after performing subgroup and sensitivity analysis.

10 PLR is an easy-to-obtained inflammatory biomarker calculated as the ratio of the  
11 platelet to lymphocyte count. Previous studies had applied PLR in several  
12 inflammatory disorder conditions, including solid tumors <sup>17</sup>, arthritis <sup>18</sup>, and acute  
13 kidney injury <sup>19</sup>. These studies indicated PLR could be a useful biomarker to indicate  
14 the disease activity, treatment reaction, and prognosis. For cardiovascular disease,  
15 several studies have investigated the role of PLR in patients with ACS or CCS. Cetin  
16 et al.<sup>20</sup> recruited 1938 acute STEMI patients with primary PCI to investigate the  
17 prognostic value of PLR evaluated before PCI with the primary endpoint of MACE  
18 (stent thrombosis, nonfatal myocardial infarction, and cardiovascular mortality).  
19 Results showed that higher PLR was associated with increased risk of in-hospital  
20 MACCE (>143 vs. ≤143; HR: 2.434; 95%CI, 1.528 to 3.878) and long-term MACCE  
21 (>147 vs. ≤147; HR: 2.810, 95%CI: 2.014 to 3.920). Besides, Azab et al. investigated

1 the predictive value of PLR for 4-year mortality in 619 NSTEMI patients and found  
2 elevated admission PLR has associated with a higher risk of 4-year mortality ( $>176$  vs.  
3  $\leq 176$ ; HR: 1.62; 95%CI, 1.15 to 2.26)<sup>21</sup>. Meanwhile, Açar et al.<sup>9</sup> investigated the  
4 relationship between the PLR and coronary collateral circulation (CCC) in CCS  
5 patients. They found per an elevated 10-unit PLR was associated with poor CCC  
6 (odds ratio, 1.48; 95%CI, 1.33 to 1.65). These studies indicated PLR had well  
7 predictive ability in patients with CAD. Consistently, our research revealed that a high  
8 PLR level ( $>107.0$ ) held great predictive value for the poor prognosis in patients  
9 undergoing PCI. Further, unlike previous studies, we demonstrated a linear  
10 relationship between PLR level and MACCE risk for the first time and revealed that a  
11 per 1 unit increase in PLR-ln could bring a significant elevation in MACCE risk.

12 PLR-related prothrombotic status and high systemic inflammation were indicated  
13 as two main pathways conferring cardiotoxicity, as we found that the risk of stent  
14 thrombosis was significantly higher in PLR-H patients than those with PLR-L, and  
15 high levels of inflammatory biomarkers were presented in patients with high PLR. For  
16 the underlying mechanisms, a high level of platelets was associated with relative  
17 thrombocytosis and megakaryocytic proliferation which resulted in atherosclerosis  
18 and thrombotic events<sup>22,23</sup>. Besides, high PLR was also associated with increased  
19 release of pro-inflammatory cytokines, including interleukin-1, interleukin-6, and  
20 tumor necrotizing factor- $\alpha$ , which exacerbated inflammatory burden, and elevated  
21 myocardium damage and remodeling<sup>24,25</sup>. Last, decreased lymphocyte, which has

1 been indicated as a predictor for the poor prognosis in ST-segment elevated MI  
2 patients <sup>26</sup>, was shown to confer increasing cardiomyocyte apoptosis under the high  
3 inflammatory burden, which further exaggerated myocardial injury <sup>27</sup>.

4 The predictive value of high PLR with poor prognosis in CAD patients with  
5 T2DM was also determined for the first time. To our knowledge, high PLR was  
6 demonstrated as a predictor for poor prognosis in patients with T2DM, as previous  
7 research showed that high PLR was associated with the increased risk of several  
8 complications like diabetic nephropathy <sup>12</sup>, diabetic peripheral neuropathy <sup>28</sup>, diabetic  
9 neurogenic bladder <sup>29</sup>, cognitive decline <sup>13</sup> and carotid plaque <sup>30</sup>. Consistent with these  
10 studies, CAD patients in the T2DM-PLR-H group showed the highest risk of all  
11 clinical outcomes and the worst prognosis. For the mechanisms, it hypothesizes that  
12 the status of hyperglycemia further exacerbates the pro-inflammatory and  
13 pro-thrombotic roles of PLR we discussed above, as it has been widely revealed that  
14 elevated blood glucose upregulated the inflammatory burden and enhanced the  
15 activity of platelet <sup>31,32</sup>. Interestingly, high-PLR related poor prognosis was not  
16 significant in CAD patients with non-DM. This phenomenon might be attributed to  
17 the lack of potential cardiotoxic interactions between hyperglycemia and PLR, such as  
18 increased platelet activity induced by high glucose. However, there is no related  
19 investigations so far, and further studies are expected to focus on non-DM people and  
20 present potential explanations.

1 Another breakthrough in our study was the first to reveal that PLR was an  
2 independent risk factor for 2-year stent thrombosis after PCI in T2DM patients. Stent  
3 thrombosis was still a tough issue for patients who underwent PCI and was associated  
4 with mortality between 5% and 45%<sup>33</sup>. Known risk factors for stent thrombosis  
5 included premature discontinuation, genetic polymorphisms (for AST or SAST),  
6 peripheral arterial occlusive disease (for LST or VLST), DM, malignant disease,  
7 smoking (for all types)<sup>33,34</sup>. The association of high PLR levels with the risk of  
8 coronary stent thrombosis was first explored in our study, and the results presented a  
9 positive correlation. As for the underlying mechanism, high platelet levels-induced  
10 prothrombotic status, which is further exacerbated in hyperglycemia, is hypothesized  
11 as the main contributor. To be noticed, the majority of these stent-thrombosis cases  
12 showed as the type of VLST. For this phenomenon, we hypothesized that common  
13 treatment (97.7%) of 1-year DAPT in these patients was a potential reason, as a  
14 standard DAPT could attenuate the thrombotic status brought by high levels of  
15 platelet, which was largely reduced by the common shift from DAPT to aspirin alone  
16 after 1 year of implantation. Similar to MACCE, high PLR levels-related high risk of  
17 stent thrombosis was also only significant in patients with T2DM, but not remarkable  
18 in patients without DM. Since DM is a conventional risk factor for stent thrombosis,  
19 and increased platelet activity was demonstrated in high glucose conditions, it was  
20 believed that there was a co-joint effect of PLR and hyperglycemia contributing to  
21 stent thrombosis.

1           This study was the first prospective cohort study to investigate the interaction  
2   between high PLR levels with the risk of poor prognosis and stent thrombosis for  
3   CAD patients under different glyceic statuses. However, there still existed some  
4   limitations. First, even though the present study adjusted for a considerable number of  
5   potential confounding factors, it was hard to fully adjusted all confounding factors  
6   due to the limitation of data collection and the nature of the observational study  
7   design. Second, data regarding dynamic changes in PLR and the glyceic status  
8   during follow-up are unavailable. Thirdly, the ethnic composition of this study was  
9   single, in which only Chinese patients were included. It was still unclear whether the  
10   conclusion was suitable for other races. Future well-designed prospective studies and  
11   randomized control trials are warranted to confirm our findings.

12  
13

## 14   **5. Conclusions**

15           PLR is a novel inflammatory biomarker with great predictive values in the poor  
16   prognosis and incidence of stent thrombosis in CAD patients with T2DM. Therefore,  
17   patients undergoing PCI with high PLR levels should be closely monitored in clinics,  
18   especially those combined with T2DM

19  
20

## 21   **6. Acknowledgments**

1 The authors would like to thank all the participants of this study.

2

3

#### 4 **7. Sources of Funding**

5 This study is supported by the Chinese Academy of Medical Sciences Innovation

6 Fund for Medical Sciences (CIFMS) (2021-I2M-1-008).

7

8

#### 9 **8. Availability of data and materials**

10 The datasets used during the current study are available from the corresponding

11 author upon reasonable request.

12

13

#### 14 **9. Author contribution**

15 KFD, QTD, and YJS conceived the study. YJS, ZYL, and JNH conducted the

16 analyses. YJS, ZYL, JNH were responsible for the interpretation of the data. YJS,

17 ZYL, JNH, KYC, CXS, RZ, and BQS wrote the first draft of the manuscript. YG and

18 KFD revised it. All authors made substantial contributions to iterations and approved

19 the final version. KFD is responsible for the integrity of this work as a whole.

20

21



1    **10. Disclosures**

2           None

3

4

5    **11. Supplemental Material**

6           Tables S1-S9

7           Figure S1-S4

8

9    **12. References**

- 10    1.     Lawler PR, Bhatt DL, Godoy LC, Lüscher TF, Bonow RO, Verma S, Ridker  
11           PM. Targeting cardiovascular inflammation: next steps in clinical translation.  
12           *European heart journal*. 2021;42:113-131. doi: 10.1093/eurheartj/ehaa099
- 13    2.     Wolf D, Ley K. Immunity and Inflammation in Atherosclerosis. *Circulation*  
14           *research*. 2019;124:315-327. doi: 10.1161/circresaha.118.313591
- 15    3.     Walter DH, Fichtlscherer S, Sellwig M, Auch-Schwelk W, Schächinger V,  
16           Zeihler AM. Preprocedural C-reactive protein levels and cardiovascular events  
17           after coronary stent implantation. *Journal of the American College of*  
18           *Cardiology*. 2001;37:839-846. doi: 10.1016/s0735-1097(00)01193-1
- 19    4.     Shah B, Pillinger M, Zhong H, Cronstein B, Xia Y, Lorin JD, Smilowitz NR,  
20           Feit F, Ratnapala N, Keller NM, et al. Effects of Acute Colchicine  
21           Administration Prior to Percutaneous Coronary Intervention:

- 1 COLCHICINE-PCI Randomized Trial. *Circulation Cardiovascular*  
2 *interventions*. 2020;13:e008717. doi: 10.1161/circinterventions.119.008717
- 3 5. Smith RA, Bosonnet L, Ghaneh P, Sutton R, Evans J, Healey P, Garvey C,  
4 Hughes M, Raraty M, Campbell F, et al. The platelet-lymphocyte ratio  
5 improves the predictive value of serum CA19-9 levels in determining patient  
6 selection for staging laparoscopy in suspected periampullary cancer. *Surgery*.  
7 2008;143:658-666. doi: 10.1016/j.surg.2007.12.014
- 8 6. Velibey Y, Oz A, Tanik O, Guvenc TS, Kalenderoglu K, Gumusdag A,  
9 Akdeniz E, Bozbay M, Tekkesin AI, Guzelburc O, et al.  
10 Platelet-to-Lymphocyte Ratio Predicts Contrast-Induced Acute Kidney Injury  
11 in Patients With ST-Segment Elevation Myocardial Infarction Undergoing  
12 Primary Percutaneous Coronary Intervention. *Angiology*. 2017;68:419-427.  
13 doi: 10.1177/0003319716660244
- 14 7. Sun XP, Li J, Zhu WW, Li DB, Chen H, Li HW, Chen WM, Hua Q. Impact of  
15 Platelet-to-Lymphocyte Ratio on Clinical Outcomes in Patients With  
16 ST-Segment Elevation Myocardial Infarction. *Angiology*. 2017;68:346-353.  
17 doi: 10.1177/0003319716657258
- 18 8. Uçar FM, Açar B, Gul M, Özeke Ö, Aydogdu S. The Association between  
19 Platelet/Lymphocyte Ratio and Coronary Artery Disease Severity in  
20 Asymptomatic Low Ejection Fraction Patients. *Korean circulation journal*.  
21 2016;46:821-826. doi: 10.4070/kcj.2016.46.6.821

- 1 9. Açar G, Kalkan ME, Avci A, Alizade E, Tabakci MM, Toprak C, Özkan B,  
2 Alici G, Esen AM. The relation of platelet-lymphocyte ratio and coronary  
3 collateral circulation in patients with stable angina pectoris and chronic total  
4 occlusion. *Clinical and applied thrombosis/hemostasis : official journal of the*  
5 *International Academy of Clinical and Applied Thrombosis/Hemostasis.*  
6 2015;21:462-468. doi: 10.1177/1076029613508599
- 7 10. Balci KG, Balci MM, Arslan U, Açar B, Maden O, Selcuk H, Selcuk T.  
8 Increased Platelet-to-Lymphocyte Ratios and Low Relative Lymphocyte  
9 Counts Predict Appropriate Shocks in Heart Failure Patients with ICDs. *Acta*  
10 *Cardiologica Sinica.* 2016;32:542-549. doi: 10.6515/acs20151012b
- 11 11. Balta S, Ozturk C. The platelet-lymphocyte ratio: A simple, inexpensive and  
12 rapid prognostic marker for cardiovascular events. *Platelets.* 2015;26:680-681.  
13 doi: 10.3109/09537104.2014.979340
- 14 12. Jaaban M, Zetoune AB, Heselow S, Hessenow R. Neutrophil-lymphocyte  
15 ratio and platelet-lymphocyte ratio as novel risk markers for diabetic  
16 nephropathy in patients with type 2 diabetes. *Heliyon.* 2021;7:e07564. doi:  
17 10.1016/j.heliyon.2021.e07564
- 18 13. Du L, Hu X, Zhang B, Miao X, Wang J, Shen J, Ding K, Zeng T, Sun F, Yang  
19 H, et al. The relationship of platelet-to-lymphocyte ratio with cognitive decline  
20 in T2DM. *Diabetology & metabolic syndrome.* 2021;13:151. doi:  
21 10.1186/s13098-021-00772-y

- 1 14. Thygesen K, Alpert JS, Jaffe AS, Simoons ML, Chaitman BR, White HD,  
2 Thygesen K, Alpert JS, White HD, Jaffe AS, et al. Third universal definition  
3 of myocardial infarction. *Journal of the American College of Cardiology*.  
4 2012;60:1581-1598. doi: 10.1016/j.jacc.2012.08.001
- 5 15. Cutlip DE, Windecker S, Mehran R, Boam A, Cohen DJ, van Es GA, Steg PG,  
6 Morel MA, Mauri L, Vranckx P, et al. Clinical end points in coronary stent  
7 trials: a case for standardized definitions. *Circulation*. 2007;115:2344-2351.  
8 doi: 10.1161/circulationaha.106.685313
- 9 16. Khoso AA, Soomro GH, Mal SB, Malik R, Hanif B, Khan R. Frequency, Risk  
10 Factors, and Outcome of Definite Stent Thrombosis: A Single-Center  
11 Experience. *Cureus*. 2022;14:e27240. doi: 10.7759/cureus.27240
- 12 17. Templeton AJ, Ace O, McNamara MG, Al-Mubarak M, Vera-Badillo FE,  
13 Hermanns T, Seruga B, Ocana A, Tannock IF, Amir E. Prognostic role of  
14 platelet to lymphocyte ratio in solid tumors: a systematic review and  
15 meta-analysis. *Cancer Epidemiol Biomarkers Prev*. 2014;23:1204-1212. doi:  
16 10.1158/1055-9965.EPI-14-0146
- 17 18. Sen R, Kim E, Napier RJ, Cheng E, Fernandez A, Manning ES, Anderson ER,  
18 Maier KD, Hashim M, Kerr GS, et al. Neutrophil-lymphocyte ratio and  
19 platelet-lymphocyte ratio as biomarkers in axial spondyloarthritis:  
20 observational studies from the PULSAR registry. *Arthritis Rheumatol*. 2022.  
21 doi: 10.1002/art.42333

- 1 19. Zheng CF, Liu WY, Zeng FF, Zheng MH, Shi HY, Zhou Y, Pan JY.  
2 Prognostic value of platelet-to-lymphocyte ratios among critically ill patients  
3 with acute kidney injury. *Crit Care*. 2017;21:238. doi:  
4 10.1186/s13054-017-1821-z
- 5 20. Ozcan Cetin EH, Cetin MS, Aras D, Topaloglu S, Temizhan A, Kisacik HL,  
6 Aydogdu S. Platelet to Lymphocyte Ratio as a Prognostic Marker of  
7 In-Hospital and Long-Term Major Adverse Cardiovascular Events in  
8 ST-Segment Elevation Myocardial Infarction. *Angiology*. 2016;67:336-345.  
9 doi: 10.1177/0003319715591751
- 10 21. Azab B, Shah N, Akerman M, McGinn JT, Jr. Value of platelet/lymphocyte  
11 ratio as a predictor of all-cause mortality after non-ST-elevation myocardial  
12 infarction. *J Thromb Thrombolysis*. 2012;34:326-334. doi:  
13 10.1007/s11239-012-0718-6
- 14 22. Krečak I, Lucijanić M. Platelet-to-lymphocyte ratio and accelerated  
15 atherosclerosis in essential thrombocythemia and polycythemia vera. *Nutrition,*  
16 *metabolism, and cardiovascular diseases : NMCD*. 2022;32:2010-2011. doi:  
17 10.1016/j.numecd.2022.05.001
- 18 23. Fuentes QE, Fuentes QF, Andres V, Pello OM, Font de Mora J, Palomo GI.  
19 Role of platelets as mediators that link inflammation and thrombosis in  
20 atherosclerosis. *Platelets*. 2013;24:255-262. doi:  
21 10.3109/09537104.2012.690113

- 1 24. Prabhu SD. Cytokine-induced modulation of cardiac function. *Circ Res.*  
2 2004;95:1140-1153. doi: 10.1161/01.RES.0000150734.79804.92
- 3 25. Turkmen K, Erdur FM, Ozcicek F, Ozcicek A, Akbas EM, Ozbicer A,  
4 Demirtas L, Turk S, Tonbul HZ. Platelet-to-lymphocyte ratio better predicts  
5 inflammation than neutrophil-to-lymphocyte ratio in end-stage renal disease  
6 patients. *Hemodial Int.* 2013;17:391-396. doi: 10.1111/hdi.12040
- 7 26. Fiarresga AJ, Ferreira RC, Feliciano J, Timoteo AT, Pelicano N, de Sousa L,  
8 de Ferreira ML, Goncalves JM, Quininha J. Prognostic value of neutrophil  
9 response in the era of acute myocardial infarction mechanical reperfusion. *Rev*  
10 *Port Cardiol.* 2004;23:1387-1396.
- 11 27. Nunez J, Sanchis J, Bodi V, Nunez E, Mainar L, Heatta AM, Husser O,  
12 Minana G, Merlos P, Darmofal H, et al. Relationship between low lymphocyte  
13 count and major cardiac events in patients with acute chest pain, a  
14 non-diagnostic electrocardiogram and normal troponin levels. *Atherosclerosis.*  
15 2009;206:251-257. doi: 10.1016/j.atherosclerosis.2009.01.029
- 16 28. Chen M, Zhu Y, Wang J, Wang G, Wu Y. The Predictive Value of  
17 Neutrophil-to-Lymphocyte Ratio and Platelet-to-Lymphocyte Ratio Levels of  
18 Diabetic Peripheral Neuropathy. *Journal of pain research.* 2021;14:2049-2058.  
19 doi: 10.2147/jpr.S304595
- 20 29. Liu Y, Wang X, Wang L, Chen W, Liu W, Ye T, Hong J, Zhu H, Shen F.  
21 Platelet-to-Lymphocyte Ratio Predicts the Presence of Diabetic Neurogenic

- 1 Bladder. *Diabetes, metabolic syndrome and obesity : targets and therapy.*  
2 2022;15:7-13. doi: 10.2147/dmso.S335957
- 3 30. Wen H, Yu H. Correlation analysis of carotid plaque in young patients with  
4 newly diagnosed type 2 diabetes and platelet-to-lymphocyte ratio and  
5 neutrophil-lymphocyte ratio. *Vascular.* 2022;17085381211052362. doi:  
6 10.1177/17085381211052362
- 7 31. Ajjan RA, Kietsiroje N, Badimon L, Vilahur G, Gorog DA, Angiolillo DJ,  
8 Russell DA, Rocca B, Storey RF. Antithrombotic therapy in diabetes: which,  
9 when, and for how long? *Eur Heart J.* 2021;42:2235-2259. doi:  
10 10.1093/eurheartj/ehab128
- 11 32. Karam BS, Chavez-Moreno A, Koh W, Akar JG, Akar FG. Oxidative stress  
12 and inflammation as central mediators of atrial fibrillation in obesity and  
13 diabetes. *Cardiovascular diabetology.* 2017;16:120. doi:  
14 10.1186/s12933-017-0604-9
- 15 33. Ullrich H, Münzel T, Gori T. Coronary Stent Thrombosis- Predictors and  
16 Prevention. *Deutsches Arzteblatt international.* 2020;117:320-326. doi:  
17 10.3238/arztebl.2020.0320
- 18 34. Byrne RA, Joner M, Kastrati A. Stent thrombosis and restenosis: what have  
19 we learned and where are we going? The Andreas Grüntzig Lecture ESC 2014.  
20 *European heart journal.* 2015;36:3320-3331. doi: 10.1093/eurheartj/ehv511  
21





## 1 Tables

2 **Table 1** Baseline characteristics by different levels of PLR in patients with or without T2DM

| Variable                             | PLR-L-NT2D<br>M<br>(N =3015) | PLR-H-NT2D<br>M<br>(N =3149) | PLR-L-T2DM<br>(N =1404) | PLR-H-T2DM<br>(N =1263) | P value |
|--------------------------------------|------------------------------|------------------------------|-------------------------|-------------------------|---------|
| <b>Baseline characteristics</b>      |                              |                              |                         |                         |         |
| Age, years                           | 57.79 ± 10.28                | 58.54 ± 10.56                | 58.11 ± 9.70            | 59.71 ± 9.94            | < 0.001 |
| Male sex                             | 2468 (81.9)                  | 2230 (74.0)                  | 1090 (77.6)             | 909 (72.0)              | < 0.001 |
| BMI, kg/m <sup>2</sup>               | 26.19 ± 3.21                 | 25.35 ± 3.18                 | 26.56 ± 3.15            | 26.02 ± 3.37            | < 0.001 |
| Hypertension                         | 1834 (60.8)                  | 2009 (63.8)                  | 934 (66.5)              | 924 (73.2)              | < 0.001 |
| Dyslipidemia                         | 1988 (65.9)                  | 1942 (61.7)                  | 1018 (72.5)             | 959 (75.9)              | < 0.001 |
| Smoking history                      | 1883 (62.6)                  | 1667 (53.0)                  | 815 (58.1)              | 652 (51.7)              | < 0.001 |
| Previous MI                          | 615 (20.4)                   | 521 (16.5)                   | 292 (20.8)              | 232 (18.4)              | < 0.001 |
| Previous PCI/CABG                    | 709 (23.5)                   | 698 (22.2)                   | 385 (25.2)              | 355 (28.1)              | < 0.001 |
| Previous PAD                         | 209 (6.9)                    | 205 (6.5)                    | 124 (8.8)               | 138 (10.9)              | < 0.001 |
| Previous stroke                      | 275 (9.1)                    | 297 (9.4)                    | 169 (12.0)              | 175 (13.9)              | < 0.001 |
| LVEF                                 | 63.57 ± 6.87                 | 63.51 ± 6.79                 | 63.61 ± 6.30            | 62.90 ± 7.83            | 0.048   |
| <b>Clinical presentation</b>         |                              |                              |                         |                         |         |
| CCS                                  | 1300 (43.1)                  | 1185 (37.6)                  | 663 (47.2)              | 520 (41.2)              | < 0.001 |
| ACS                                  | 1715 (56.9)                  | 1964 (62.4)                  | 741 (52.8)              | 743 (58.8)              | < 0.001 |
| <b>Signs</b>                         |                              |                              |                         |                         |         |
| SBP                                  | 126.70 ± 17.03               | 126.69 ± 16.96               | 128.17 ± 16.89          | 128.69 ± 17.01          | < 0.001 |
| DBP                                  | 77.78 ± 10.63                | 77.94 ± 11.08                | 77.48 ± 10.04           | 77.03 ± 10.33           | 0.311   |
| <b>Laboratory tests</b>              |                              |                              |                         |                         |         |
| Hgb, g/L                             | 146.48 ± 14.65               | 143.11 ± 15.08               | 144.78 ± 14.36          | 140.53 ± 15.85          | < 0.001 |
| Platelet, 10 <sup>9</sup> /L         | 186.76 ± 44.92               | 227.29 ± 56.51               | 184.33 ± 41.58          | 225.44 ± 62.32          | < 0.001 |
| White blood cell, 10 <sup>9</sup> /L | 6.87 ± 1.58                  | 6.26 ± 1.58                  | 7.06 ± 1.42             | 6.47 ± 1.61             | < 0.001 |
| Lymphocyte, 10 <sup>9</sup> /L       | 2.23 ± 0.57                  | 1.59 ± 0.44                  | 2.30 ± 0.59             | 1.60 ± 0.45             | < 0.001 |
| CK-MB, IU/L                          | 11.82 ± 8.40                 | 11.35 ± 5.74                 | 11.55 ± 5.37            | 13.26 ± 21.11           | 0.044   |
| c-TnI, ng/ml                         | 0.09 ± 0.43                  | 0.15 ± 0.79                  | 0.06 ± 0.35             | 0.19 ± 1.10             | 0.093   |
| Lp(a), mg/dL                         | 27.94 ± 28.10                | 31.18 ± 29.94                | 25.01 ± 25.39           | 29.32 ± 29.09           | < 0.001 |
| TC, mmol/L                           | 4.23 ± 1.08                  | 4.30 ± 1.04                  | 4.07 ± 1.00             | 4.10 ± 1.08             | < 0.001 |
| HDL-C, mmol/L                        | 1.04 ± 0.27                  | 1.09 ± 0.30                  | 1.00 ± 0.28             | 1.02 ± 0.25             | < 0.001 |
| LDL-C, mmol/L                        | 2.54 ± 0.92                  | 2.60 ± 0.89                  | 2.37 ± 0.81             | 2.42 ± 0.90             | < 0.001 |
| HbA1c, %                             | 6.14 ± 0.74                  | 6.06 ± 0.54                  | 7.84 ± 1.40             | 7.77 ± 1.35             | < 0.001 |
| hs-CRP, mg/L                         | 2.67 ± 3.28                  | 3.02 ± 3.65                  | 2.57 ± 3.04             | 3.21 ± 3.92             | < 0.001 |
| Creatinine, umol/L                   | 76.11 ± 15.30                | 74.14 ± 14.44                | 73.30 ± 14.63           | 73.64 ± 16.02           | < 0.001 |
| <b>Medications</b>                   |                              |                              |                         |                         |         |
| DAPT                                 | 2939 (97.5)                  | 3066 (97.4)                  | 1378 (98.1)             | 1243 (98.4)             | 0.098   |
| Aspirin                              | 2978 (98.8)                  | 3110 (98.8)                  | 1396 (99.4)             | 1250 (99.0)             | 0.195   |

|                                  |              |              |              |              |         |
|----------------------------------|--------------|--------------|--------------|--------------|---------|
| Clopidogrel                      | 2974 (98.6)  | 3101 (98.5)  | 1385 (98.6)  | 1253 (99.2)  | 0.296   |
| GPIIb/IIIa receptor antagonists  | 489 (16.2)   | 542 (17.2)   | 223 (15.9)   | 207 (16.4)   | 0.634   |
| β-blocker                        | 2682 (89.0)  | 2811 (89.3)  | 1291 (92.0)  | 1164 (92.2)  | < 0.001 |
| Statins                          | 2902 (96.3)  | 3034 (96.3)  | 1343 (95.7)  | 1208 (95.6)  | 0.543   |
| Nitrate                          | 2960 (98.2)  | 3073 (97.6)  | 1372 (97.7)  | 1233 (97.6)  | 0.411   |
| <b>Coronary procedural data</b>  |              |              |              |              |         |
| SYNTAX Score                     | 11.87 ± 7.89 | 11.65 ± 7.69 | 12.57 ± 7.88 | 12.75 ± 8.28 |         |
| LM/three-vessel disease          | 1221 (40.5)  | 1308 (41.5)  | 692 (49.3)   | 677 (53.6)   | < 0.001 |
| Chronic total occlusion          | 490 (16.3)   | 481 (15.3)   | 210 (15.0)   | 194 (15.4)   | 0.633   |
| Bifurcation                      | 528 (17.5)   | 512 (16.3)   | 239 (17.0)   | 190 (15.0)   | 0.216   |
| Moderate to severe calcification | 422 (16.3)   | 458 (14.5)   | 232 (16.5)   | 226 (17.9)   | 0.004   |
| Number of treated vessels        | 1.41 ± 0.66  | 1.36 ± 0.59  | 1.45 ± 0.69  | 1.44 ± 0.67  | < 0.001 |
| Number of stents                 | 1.91 ± 1.05  | 1.80 ± 0.94  | 2.00 ± 1.06  | 1.95 ± 1.07  | < 0.001 |
| Procedural success               | 2973 (99.3)  | 3103 (99.4)  | 1385 (99.2)  | 1251 (99.5)  | 0.754   |

- 1 Values are mean ± standard deviation or n (%).
- 2 PLR, platelet-to-lymphocyte ratio; BMI, body mass index; MI, myocardial infarction; PCI,
- 3 percutaneous coronary intervention; CABG, coronary artery bypass grafting; PAD, peripheral
- 4 artery disease; CCS, chronic coronary syndrome; ACS, acute coronary syndrome; SBP,
- 5 systolic blood pressure; DBP, diastolic blood pressure; Lp(a), lipoprotein(a); TC, total
- 6 cholesterol; HDL-C, high-density lipoprotein cholesterol; LDL-C, low-density lipoprotein
- 7 cholesterol; HbA1c, glycosylated hemoglobin A1c; hsCRP, high-sensitivity C-reactive
- 8 protein; LVEF, left ventricular ejection fraction; DAPT, dual antiplatelet therapy; LM, left
- 9 main; DAPT, dual anti-platelet therapy; SYNTAX, synergy between PCI with taxus and
- 10 cardiac surgery.
- 11

1 **Table 2** Prognostic value of PLR for risk of MACCE, individual components and stent  
2 thrombosis

| Groups                     | Events (%) | Univariable      |         | Multivariable*   |         |
|----------------------------|------------|------------------|---------|------------------|---------|
|                            |            | HR (95%CI)       | P value | HR (95%CI)       | P value |
| <b>MACCEs</b>              |            |                  |         |                  |         |
| PLR-L                      | 293 (6.6)  | Ref              | -       | Ref              | -       |
| PLR-H                      | 370 (8.4)  | 1.29 (1.11-1.50) | 0.001   | 1.26 (1.07-1.47) | 0.005   |
| <b>All-cause mortality</b> |            |                  |         |                  |         |
| PLR-L                      | 32 (0.7)   | Ref              | -       | Ref              | -       |
| PLR-H                      | 69 (1.6)   | 2.20 (1.45-3.35) | < 0.001 | 1.87 (1.21-2.89) | 0.005   |
| <b>MI</b>                  |            |                  |         |                  |         |
| PLR-L                      | 40 (0.9)   | Ref              | -       | Ref              | -       |
| PLR-H                      | 57 (1.3)   | 1.46 (0.97-2.18) | 0.069   | 1.44 (0.95-2.18) | 0.090   |
| <b>TVR</b>                 |            |                  |         |                  |         |
| PLR-L                      | 192 (4.3)  | Ref              | -       | Ref              | -       |
| PLR-H                      | 222 (5.0)  | 1.18 (0.97-1.43) | 0.099   | 1.18 (0.97-1.45) | 0.098   |
| <b>Stroke</b>              |            |                  |         |                  |         |
| PLR-L                      | 58 (1.3)   | Ref              | -       | Ref              | -       |
| PLR-H                      | 73 (1.7)   | 1.30 (0.92-1.83) | 0.139   | 1.24 (0.87-1.77) | 0.241   |
| <b>Stent thrombosis</b>    |            |                  |         |                  |         |
| PLR-L                      | 23 (0.5)   | Ref              | -       | Ref              | -       |
| PLR-H                      | 52 (1.2)   | 2.31 (1.41-3.77) | < 0.001 | 2.29 (1.39-3.79) | 0.001   |

3 \*Adjusted for age, male sex, BMI, hypertension, dyslipidemia, smoking history, previous MI,  
4 previous PCI/CABG, previous stroke, previous PAD, ACS, SYNTAX score, LM/three-vessel  
5 disease, chronic total occlusion, moderate to severe calcification, procedural success, number  
6 of treated vessels, number of stents, TC, LDL-C, hsCRP, creatine, LVEF, DAPT,  $\beta$  blocker  
7 and statins.  
8 PLR, platelet-to-lymphocyte ratio; MACCEs, major adverse cardiac cerebral events; MI,  
9 myocardial infarction; TVR, target vessel revascularization; HR, hazard ratio; CI, confidence  
10 interval; Ref, reference.

1 **Table 3** Prognostic value of combined status of T2DM and PLR for risk of MACCEs,  
 2 individual components and stent thrombosis

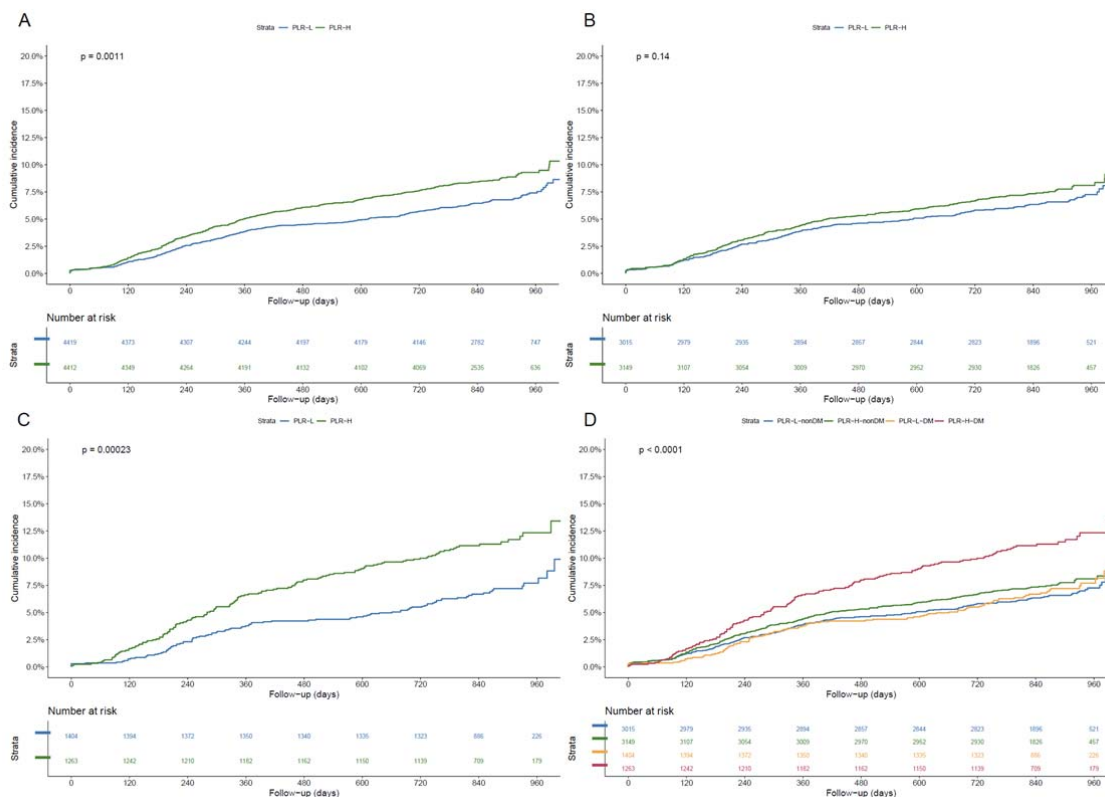
| Groups                     | Events (%) | Univariable      |         | Multivariable*   |         |
|----------------------------|------------|------------------|---------|------------------|---------|
|                            |            | HR (95%CI)       | P value | HR (95%CI)       | P value |
| <b>MACCE</b>               |            |                  |         |                  |         |
| PLR-L + non-T2DM           | 195 (6.5)  | Ref 1            | -       | Ref 1            | -       |
| PLR-H + non-T2DM           | 232 (7.4)  | 1.16 (0.96-1.40) | 0.138   | 1.13 (0.93-1.37) | 0.236   |
| PLR-L + T2DM               | 98 (7.0)   | Ref 2            | -       | Ref 2            | -       |
| PLR-H + T2DM               | 138 (10.9) | 1.62 (1.25-2.10) | < 0.001 | 1.53 (1.17-2.00) | 0.002   |
| <b>All-cause mortality</b> |            |                  |         |                  |         |
| PLR-L + non-T2DM           | 20 (0.7)   | Ref 1            | -       | Ref 1            | -       |
| PLR-H + non-T2DM           | 42 (1.3)   | 2.04 (1.20-3.47) | 0.009   | 1.72 (0.99-2.99) | 0.054   |
| PLR-L + T2DM               | 12 (0.9)   | Ref 2            | -       | Ref 2            | -       |
| PLR-H + T2DM               | 27 (2.1)   | 2.56 (1.32-5.12) | 0.006   | 2.18 (1.09-4.37) | 0.028   |
| <b>MI</b>                  |            |                  |         |                  |         |
| PLR-L + non-T2DM           | 27 (0.9)   | Ref 1            | -       | Ref 1            | -       |
| PLR-H + non-T2DM           | 36 (1.1)   | 1.30 (0.79-2.14) | 0.307   | 1.26 (0.75-2.13) | 0.381   |
| PLR-L + T2DM               | 13 (0.9)   | Ref 2            | -       | Ref 2            | -       |
| PLR-H + T2DM               | 21 (1.7)   | 1.85 (0.93-3.70) | 0.081   | 1.85 (0.92-3.75) | 0.087   |
| <b>TVR</b>                 |            |                  |         |                  |         |
| PLR-L + non-T2DM           | 130 (4.3)  | Ref 1            | -       | Ref 1            | -       |
| PLR-H + non-T2DM           | 147 (4.7)  | 1.10 (0.87-1.39) | 0.450   | 1.09 (0.85-1.39) | 0.510   |
| PLR-L + T2DM               | 62 (4.4)   | Ref 2            | -       | Ref 2            | -       |
| PLR-H + T2DM               | 75 (5.9)   | 1.38 (0.99-1.93) | 0.060   | 1.38 (0.97-1.95) | 0.071   |
| <b>Stroke</b>              |            |                  |         |                  |         |
| PLR-L + non-T2DM           | 39 (1.3)   | Ref 1            | -       | Ref 1            | -       |
| PLR-H + non-T2DM           | 42 (1.3)   | 1.05 (0.68-1.63) | 0.813   | 1.06 (0.67-1.66) | 0.810   |
| PLR-L + T2DM               | 19 (1.4)   | Ref 2            | -       | Ref 2            | -       |
| PLR-H + T2DM               | 31 (2.5)   | 1.90 (1.08-3.37) | 0.027   | 1.74 (0.95-3.16) | 0.071   |
| <b>Stent thrombosis</b>    |            |                  |         |                  |         |
| PLR-L + non-T2DM           | 16 (0.5)   | Ref 1            | -       | Ref 1            | -       |
| PLR-H + non-T2DM           | 27 (0.9)   | 1.64 (0.88-3.04) | 0.117   | 1.57 (0.82-3.00) | 0.175   |
| PLR-L + T2DM               | 7 (0.5)    | Ref 2            | -       | Ref 2            | -       |
| PLR-H + T2DM               | 25 (2.0)   | 4.10 (1.77-9.47) | < 0.001 | 3.79 (1.62-8.86) | 0.002   |

1 \*Adjusted for age, male sex, BMI, hypertension, dyslipidemia, smoking history, previous MI,  
2 previous PCI/CABG, previous stroke, previous PAD, ACS, LM/three-vessel disease,  
3 SYNTAX score, chronic total occlusion, moderate to severe calcification, procedural success,  
4 number of treated vessels, number of stents, TC, LDL-C, hsCRP, creatine, LVEF, DAPT,  $\beta$   
5 blocker and statins  
6 PLR, platelet-to-lymphocyte ratio; MACCE, major adverse cardiac cerebral events; MI,  
7 myocardial infarction; TVR, target vessel revascularization; HR, hazard ratio; CI, confidence  
8 interval; Ref, reference.  
9

1

2 **Figures**

3



4

5 **Figure 1. Kaplan–Meier curves for cumulative incidence of MACCE, according**

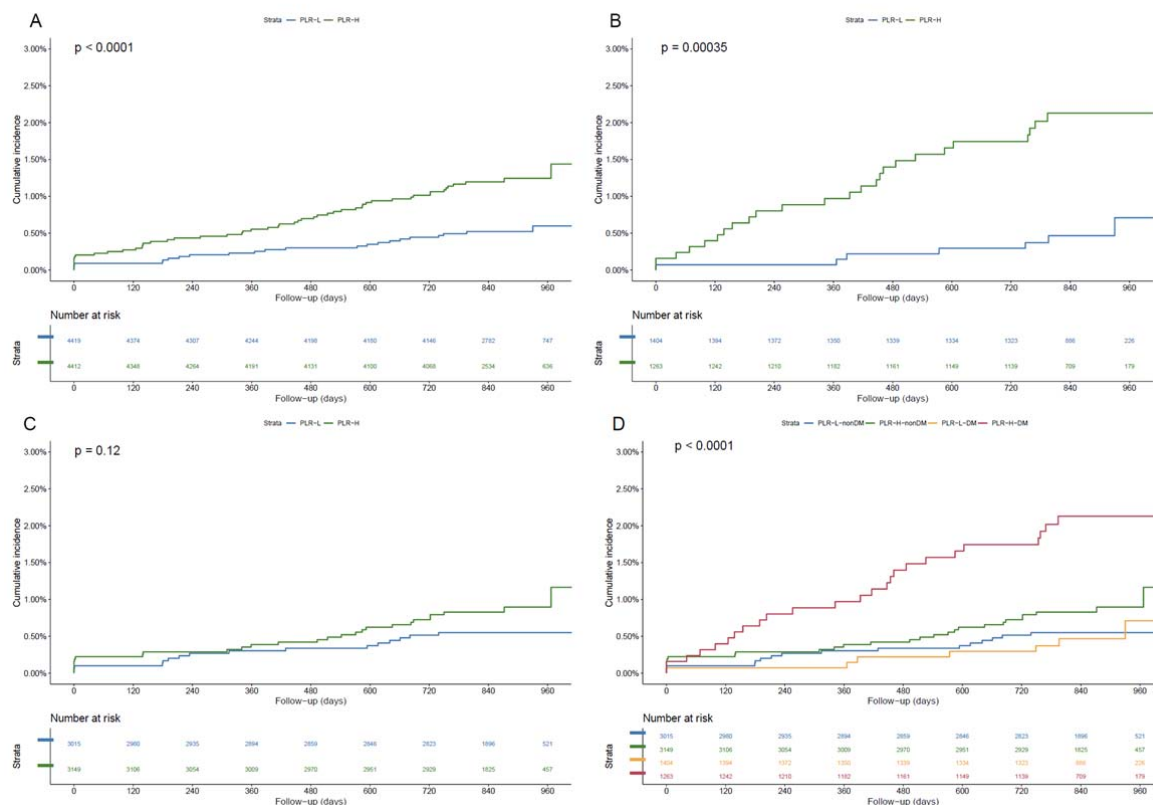
6 to different PLR levels (A), different PLR levels in non-T2DM patients (B) and

7 T2DM patients (C), and four risk groups (PLR-L/non-T2DM, PLR-H/non-T2DM,

8 PLR-L/T2DM and PLR-H/T2DM) (D).

9 PLR-L, low level of platelet to lymphocyte ratio (< 107.0); PLR-H, high level of

10 platelet to lymphocyte ratio (≥ 107.0); T2DM, type 2 diabetes mellitus.



1

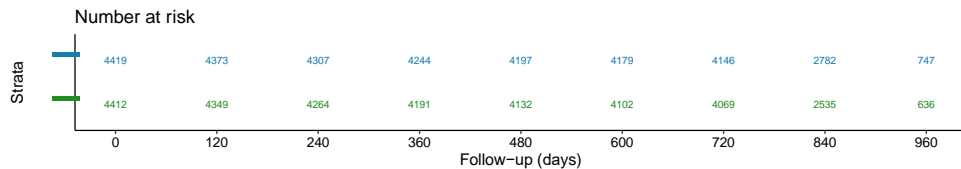
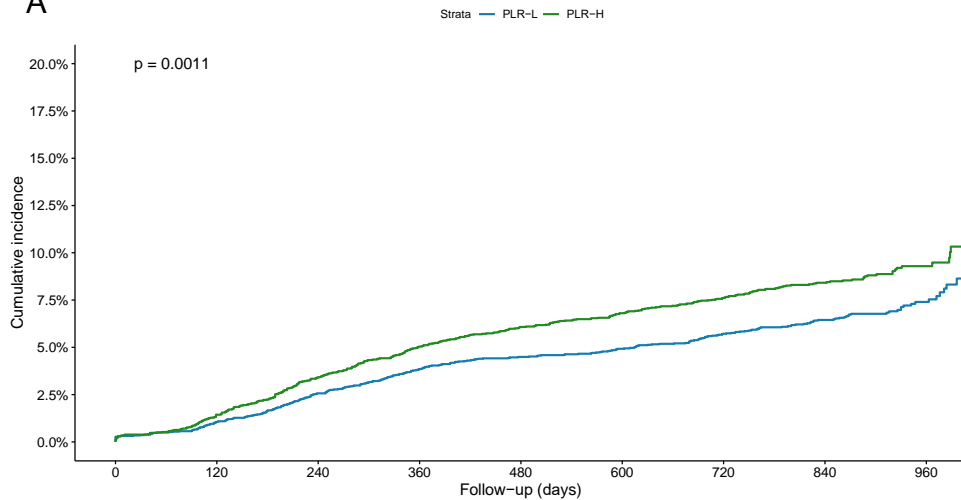
2 **Figure 2. Kaplan–Meier curves for cumulative incidence of stent thrombosis, according**  
 3 **to different PLR levels (A), and four risk groups (PLR-L/non-T2DM,**  
 4 **PLR-H/non-T2DM, PLR-L/T2DM and PLR-H/T2DM) (D).**

5 PLR-L, low level of platelet to lymphocyte ratio ( $< 107.0$ ); PLR-H, high level of platelet to  
 6 lymphocyte ratio ( $\geq 107.0$ ); T2DM, type 2 diabetes mellitus.

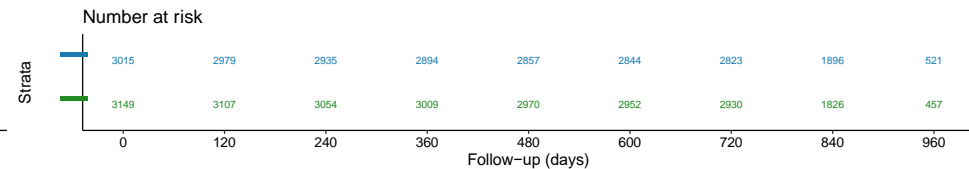
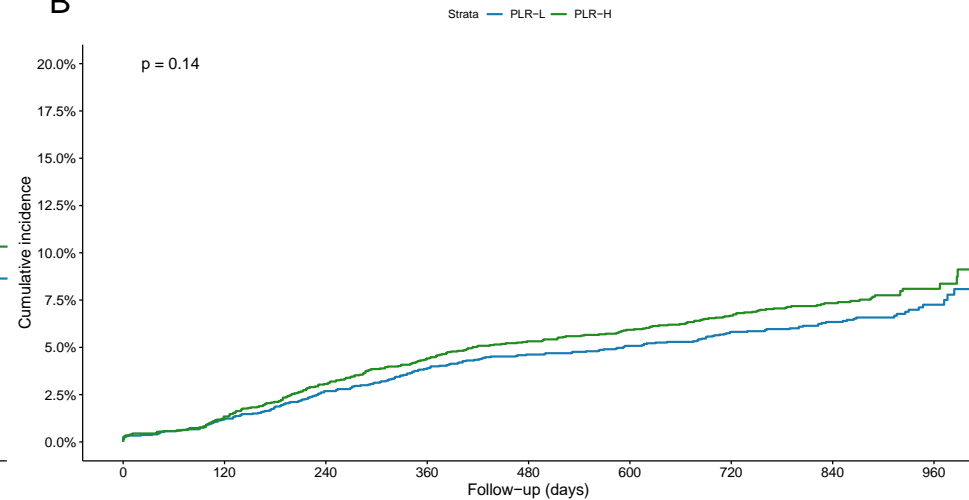
7

8

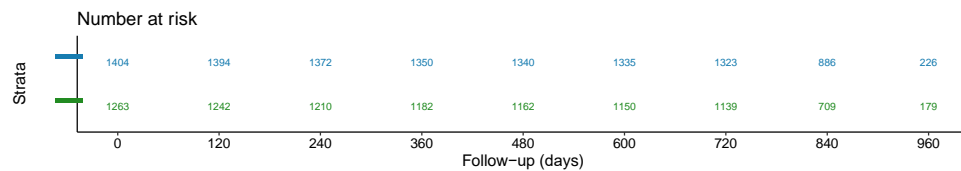
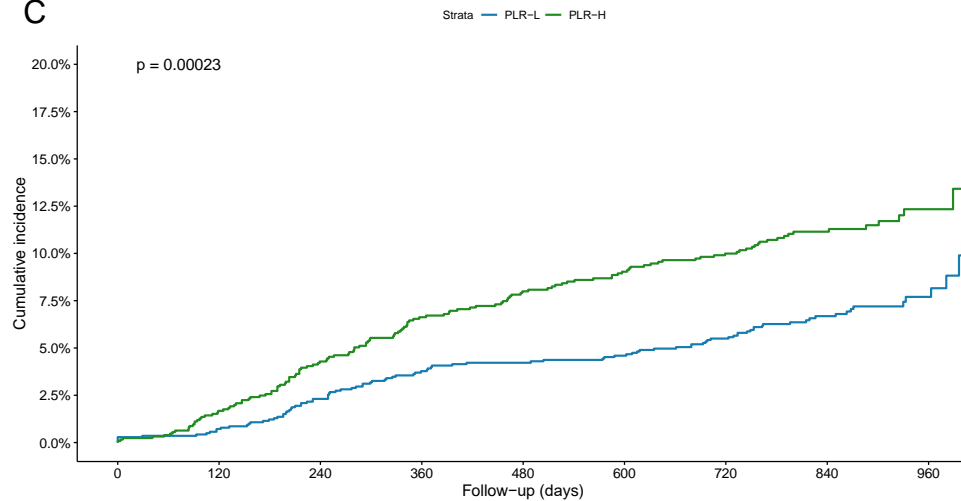
**A**



**B**



**C**



**D**

