

Title: Use of Personal Protective Equipment in General Practice and Ambulance settings: a rapid review

Authors: Antonia Needham¹, Tom Winfield¹, Lauren Elston¹, Jenni Washington¹, Ruth Lewis², Alison Cooper³, Adrian Edwards³

1. Health Technology Wales, UK
2. Wales COVID-19 Evidence Centre, Bangor University, UK
3. Wales COVID-19 Evidence Centre, Cardiff University, UK

Abstract: The use of personal protective equipment (PPE) is a cornerstone of infection prevention and control guidelines and was of increased importance during the COVID-19 pandemic. Adherence with prescribed guidelines for the use of PPE and their applicability to the working practices of staff in general practitioner (GP) and ambulance settings have been a growing concern. The aim of this rapid review was to assess the barriers, facilitators, and potential adverse outcomes of the use of PPE in these specific settings.

Included studies were published from 2020 to November 2022. We identified four systematic reviews, a rapid review, a retrospective chart review, and a prospective quantitative survey study. Outcome measures were broadly focused on physical adverse outcomes from the use of PPE, but also included barriers and facilitators to the use of PPE in varied healthcare settings. The five reviews covered a broad range of health and care settings, which included GP and ambulance settings, but not as a specific focus. Both the retrospective chart review and the prospective survey study took place in an ambulance or emergency response setting. Overall confidence in the body of evidence is low.

Extended use of PPE is associated with an increased occurrence of adverse physiological events, such as pressure ulcers and de novo headaches. Evidence indicates that adherence with PPE guidance is primarily influenced by organisational communication and workplace cultures. In ambulance settings, adherence may also be affected by dispatch codes and indicative symptoms reported during the initial call.

Policy implications: As there is evidence to suggest that usage of PPE increases risk of adverse effects in healthcare workers, this should be at the forefront of considerations when developing or reviewing new and existing infection prevention and control measures. If new policy regarding the use and implementation of PPE is to be developed, effective communication and dissemination should be a priority, as this was identified as a barrier to adherence. This review has identified a significant paucity of evidence in the settings of interest and is reliant on examining evidence that represents a large variety of health and care settings. It is important to acknowledge there may be some issues specific to Ambulance and GP settings that are not covered by this review. This does impact the validity of this reviews conclusions.

Further high-quality research must be undertaken in the settings of interest to inform and guide policy.

Funding statement: Health Technology Wales was funded for this work by the Wales Covid-19 Evidence Centre, itself funded by Health & Care Research Wales on behalf of Welsh Government.

NOTE: This preprint reports new research that has not been certified by peer review and should not be used to guide clinical practice.



Technoleg Iechyd Cymru
Health Technology Wales



Wales COVID-19 Evidence Centre (WCEC) Rapid Review

Use of Personal Protective Equipment (PPE) in General Practice and Ambulance settings: a rapid review Report number – RR00046 (February 2023)

Full Report

Rapid Review Details

Review conducted by:

Health Technology Wales (HTW)

Review Team:

- Antonia Needham, Health Technology Wales, antonia.needham@wales.nhs.uk
- Tom Winfield, Health Technology Wales, tom.winfield@wales.nhs.uk
- Lauren Elston, Health Technology Wales, lauren.elston@wales.nhs.uk
- Jenni Washington, Health Technology Wales, jenni.washington@wales.nhs.uk

Review submitted to the WCEC on: 10th February 2023

Stakeholder consultation meeting: 23rd January 2023
[day, month, year]

Rapid Review report issued by the WCEC: February 2023

WCEC Team: Adrian Edwards, Ruth Lewis, Alison Cooper and Micaela Gal were involved in drafting the Topline summary, review of the report and editing

This review should be cited as:

RR00046. Wales COVID-19 Evidence Centre. Use of Personal Protective Equipment (PPE) in General Practice and Ambulance settings: a rapid review. February 2023.

Disclaimer: The views expressed in this publication are those of the authors, not necessarily Health and Care Research Wales. The WCEC and authors of this work declare that they have no conflict of interest.

Use of Personal Protective Equipment (PPE) in General Practice and Ambulance settings: a rapid review

Report number – RR00046 (February 2023)

Full Report

TOPLINE SUMMARY

What is a Rapid Review?

Our rapid reviews (RR) use a variation of the systematic review approach, abbreviating or omitting some components to generate the evidence to inform stakeholders promptly whilst maintaining attention to bias. They follow the methodological recommendations and minimum standards for conducting and reporting rapid reviews, including a structured protocol, systematic search, screening, data extraction, critical appraisal, and evidence synthesis to answer a specific question and identify key research gaps. They take 1- 2 months, depending on the breadth and complexity of the research topic/ question(s), extent of the evidence base, and type of analysis required for synthesis.

Who is this summary for?

Wales Ambulance Service NHS Trust and the Royal College of General Practitioners Wales

Background / Aim of Rapid Review

The use of personal protective equipment (PPE) is a cornerstone of infection prevention and control guidelines and was of increased importance during the COVID-19 pandemic. Adherence with prescribed guidelines for the use of PPE and their applicability to the working practices of staff in general practitioner (GP) and ambulance settings have been a growing concern. This rapid review aims to assess the barriers, facilitators, and potential adverse outcomes of the use of PPE in these specific settings.

Key Findings

Extent of the evidence base

- We identified four systematic reviews (Galanis et al, 2021; Keng et al, 2021; Kunstler et al, 2022), one rapid review (Houghton et al, 2020), a retrospective chart review (McCann-Pineo et al 2022) and a prospective quantitative survey study (Gangaram et al 2022).
- Outcome measures were broadly focused on physical adverse outcomes from the use of PPE, but also included barriers and facilitators to the use of PPE in varied healthcare settings.
- In terms of setting, all five systematic and rapid reviews covered a broad range of health and care settings, all of which included GP and ambulance settings, but not as a specific focus – it was deemed that as these settings were included as part of data collection and analysis that the findings would be generalisable.
- Both the retrospective chart review (McCann-Pineo et al 2022) and the prospective survey study (Gangaram et al 2022) took place in an ambulance or emergency response setting.

Recency of the evidence base

- Studies included were published from 2020 up until November 2022.

Key Findings

- There is a significant lack of evidence in the settings of interest.
- Extended use of PPE is associated with an increased occurrence of adverse physiological events, such as pressure ulcers and de novo headaches.
- Evidence indicates that adherence with PPE guidance is primarily influenced by organisational communication and workplace cultures. In ambulance settings, adherence may also be affected by dispatch codes and indicative symptoms reported during the initial call.

Quality of the evidence

- Of the systematic reviews identified (Galanis et al, 2021; Keng at al, 2021; Kunstler et al, 2022) all are of poor quality, and were determined to have high risk of bias following formal assessment.
- The rapid review identified (Houghton et al, 2020) is of good quality, with a low risk of bias.
- Of the primary studies (McCann-Pineo et al, 2022; Gangaram et al, 2022) the retrospective chart review was deemed 'poor' quality with high risk of bias, and the prospective quantitative survey study deemed 'fair' quality, with undetermined risk of bias.
- Primary concerns around the evidence base relate to evidence identification, applicability of evidence and methodological limitations.

Policy Implications

- There is evidence to suggest that usage of PPE increases risk of adverse effects in healthcare workers, and this should be at the forefront of considerations when developing or reviewing new and existing infection prevention and control measures.
- If new policy regarding the use and implementation of PPE is to be developed, effective communication and dissemination should be a priority, as this was identified as a barrier to adherence.
- This review has identified a significant paucity of evidence in the settings of interest and is reliant on examining evidence that represents a large variety of health and care settings. It is important to acknowledge there may be some issues specific to Ambulance and GP settings that are not covered by this review. This does impact the validity of this review's conclusions.
- Further high-quality research must be undertaken in the settings of interest to inform and guide policy.

Strength of Evidence

Overall confidence in the body of evidence is low, and caution should be exercised when drawing conclusions based on this evidence.

TABLE OF CONTENTS

TABLE OF CONTENTS	5
1. BACKGROUND.....	7
1.1 Who is this review for?	7
1.2 Background and purpose of this review.....	7
2. RESULTS.....	7
2.1 Overview of the Evidence Base	7
2.2 Summary of the evidence.....	8
2.2.1 Systematic Reviews.....	8
2.2.2 Rapid Review	9
2.2.3 Primary Studies.....	9
2.2.3 Bottom line summary	9
Table 1: Summary of Systematic Reviews	11
Table 2: Summary of Primary Studies	15
3. DISCUSSION	16
3.1 Summary of the findings.....	16
3.1.1 Adverse outcomes of PPE.....	16
3.1.2 Barriers to PPE adherence.....	16
3.1.3 Facilitators to PPE adherence.....	17
3.2 Strengths and limitations of the available evidence	17
3.3 Implications for policy and practice	17
3.4 Strengths and limitations of this Rapid Review	17
4. REFERENCES.....	19
5. RAPID REVIEW METHODS.....	20
5.1 Eligibility criteria	20
5.2 Literature search.....	21
5.3 Study selection process.....	21
5.4 Data extraction.....	21
5.7 Quality appraisal	21
5.8 Synthesis.....	22
6. EVIDENCE	23
6.1 Study selection flow chart.....	23
6.3 Quality appraisal tables	24
6.2 Information available on request.....	24
7. ADDITIONAL INFORMATION.....	25

7.1 Conflicts of interest	25
7.2 Acknowledgements.....	25
8. ABOUT THE WALES COVID-19 EVIDENCE CENTRE (WCEC).....	26
9. APPENDIX	27
APPENDIX 1: Resources searched during Rapid Review Searching	27
APPENDIX 2: MEDLINE strategy	28

Abbreviations:

Acronym	Full Description
IPAC	Infection Prevention and Control
PPE	Personal Protective Equipment
EMS	Emergency Medical Services
GP	General Practice / Practitioner(s)
AGPs	Aerosol-Generating Procedures
HMCAS	Hamad Medical Corporation Ambulance Service
RCT	Randomised Controlled Trial
HCW	Healthcare Worker(s)
RoB	Risk of Bias
ROBIS	Risk of Bias in Systematic Reviews
MERS-CoV	Middle Eastern Respiratory Syndrome
SARS	Severe acute respiratory syndrome
H1N1	H1N1 strain of the flu (influenza A) virus

1. BACKGROUND

1.1 Who is this review for?

This rapid review was conducted as part of the Wales COVID-19 Evidence Centre (WCEC) Work Programme. The above question was suggested by both Wales Ambulance Service NHS Trust and the Royal College of General Practitioners. The research question was developed through collaboration with a range of stakeholders, including the WCEC Core Team, Health Technology Wales, Welsh Ambulance Services NHS Trust, Royal College of General Practitioners Wales, and public contributors.

1.2 Background and purpose of this review

During the COVID-19 pandemic, the transmission of SARS-CoV-2 in healthcare settings has been of great concern. This has resulted in the development of enhanced infection prevention and control (IPAC) guidelines, of which the use of personal protective equipment (PPE) forms a significant part. How these PPE guidelines were to be used, and how individual members of staff across various settings and roles adhere to them were of growing concern over the course of the pandemic due to a need to improve safety for healthcare workers and allied staff, as well as the patients in their care. Early IPAC guidelines and regulations were developed primarily with the hospital setting in mind, leading to uncertainty about their provision and use in other health and care settings. The purpose of this review is to evaluate the barriers, facilitators and adverse outcomes of the use of PPE in specific GP and ambulance settings.

Primary health care workers, such as those in the GP and ambulance environment, are at the forefront of infection management for all respiratory diseases, a responsibility that has increased dramatically during the COVID-19 pandemic. Staff in these settings are at an increased risk of infection and transmission due to their increased exposure to symptomatic and asymptomatic people and the number of aerosol-generation procedures that occur in the ambulance environment. In these settings, the level of coverage and specific type of PPE required is primarily determined by level of risk, measured by the number of Aerosol-Generating Procedures (AGPs) that occur. However, the primary types of PPE recommended in these settings are face coverings, gloves and gowns, and it is these categories that this review will consider.

2. RESULTS

2.1 Overview of the Evidence Base

We searched for published and pre-print articles where barriers, facilitators and adverse outcomes of PPE were discussed. As per the research protocol, systematic and rapid reviews were prioritised in order to conduct a 'review of reviews'. The search was not restricted to COVID-19, including other related respiratory viruses such as MERS-CoV and influenza and publication dates were limited between 2020-2022. We identified four systematic reviews and one rapid review. All five reviews reported on healthcare settings more generally, including the settings of interest for this review (GP and ambulance settings), but did not report evidence on these settings separately. We therefore searched and included any primary evidence that reported on GP or ambulance settings specifically.

Two primary studies were identified, both in the ambulance or emergency response setting. We did not identify any evidence that reported on GP settings specifically.

2.2 Summary of the evidence

2.2.1 Systematic Reviews

We identified four systematic reviews in this rapid review (Galanis et al 2021, Keng et al 2021, Kunstler et al 2022, and Tezcan et al 2022).

Galanis et al (2021) conducted a systematic review and meta-analysis on the impact of PPE in health care workers' physical health during the COVID-19 pandemic with an aim to identify factors that related to a greater risk of adverse physical health outcomes stemming from PPE use. A total of 14 studies were included in the review, with a total sample size of 11,746 health care workers from a variety of settings. Of the studies included, 11 investigated risk factors for adverse events, six used multivariable models to eliminate confounding factors and all studies bar one measured the occurrence of any adverse event as the dependent variable. The review found that prevalence of any adverse event ranged from 42.8% to 95.1% among individual studies and the most common adverse events reported were dry skin, pressure injuries, headache, and dermatitis. The overall pooled prevalence of adverse events was 78% (95% confidence interval [CI] 66.7% to 87.5%). The review also explored risk factors for adverse events that were reported by individual studies; certain demographic, clinical and job characteristics were related to increased risk of adverse outcome such as duration of shift wearing PPE, and use of higher grade PPE.

Keng, et al (2021) conducted a systematic review of occupational dermatoses related to PPE and their prevalence among health care workers. The objective of the review was to determine the most common types of PPE-related dermatoses, the affected body sites, and occupational risk factors for their development. Sixteen studies were included in this review, with a total sample size of 3,958 health care workers in diverse environments. The review found that the most prevalent adverse outcomes identified in the overall sample size (as opposed to most commonly reported within each study) were xerosis (27.6%), pressure-related erythema (22.1%) and irritant contact dermatitis (14.8%), with face and hands being the most commonly affected areas. The increased use of gloves and N95 masks were two of the most prevalent PPE measures implicated in the formation of these dermatoses (34.2% and 26.9%, respectively).

Kunstler, et al (2022) conducted a systematic review and meta-analysis on the effectiveness and adverse effects of P2/N95 respirators and surgical masks in the context of the COVID-19 pandemic. Twenty-one studies were included, with a total sample size of 11,744. The studies included were primarily observational studies, with one randomised controlled trial. The review found that in terms of adverse events, healthcare workers are significantly more likely to experience headache (odds ratio [OR] 2.62, 95% CI 1.18 to 5.81, 3 studies), respiratory distress or shortness of breath (OR 4.21, 95% CI 1.46 to 12.13, 3 studies), facial irritation (OR 1.80, 95% CI 1.03 to 3.14, 3 studies) and pressure related injuries (OR 4.39, 95% CI 2.37 to 8.15, 3 studies) when wearing respirators compared to surgical masks.

Tezcan, et al (2022) conducted a systematic review of PPE-related pressure ulcers in healthcare workers. Seventeen studies were included, for a total sample size of 24,889. The review identified that the rate of PPE-related pressure ulcers across the studies ranged between 30% and 92.8%. The most common sites for pressure ulcers were on the nose, ears, forehead, and cheeks. Similarly, while pressure ulcers reported varied in severity, grade one pressure ulcers, where the skin remains intact but non-blanchable redness occurs, was the most commonly reported type among those sampled.

2.2.2 Rapid Review

One rapid review was identified. Houghton et al (2020) performed a rapid qualitative evidence synthesis of the barriers and facilitators to healthcare workers' adherence to IPAC guidelines for respiratory infectious diseases. The review included 20 qualitative and mixed-methods studies that focused on healthcare workers' experiences and views of IPAC guidelines for SARS, H1N1, MERS, tuberculosis, and seasonal influenza. The study identified several barriers and facilitators that influence adherence to guidelines, primarily focused on clear communication about guidelines and clarity when local and national/international guidelines are conflicting. Similarly, availability and provision of PPE was identified as a significant barrier. In terms of facilitators, the review identifies the importance of workplace culture and notes that healthcare workers believed they followed guidance more closely when they were able to see its value in providing quality care to patients.

2.2.3 Primary Studies

Two primary studies were identified in this rapid review. One prospective quantitative survey study (Gangaram et al, 2022) and one retrospective chart review (McCann-Pineo et al, 2022) are included due to their specific focus on the ambulance or emergency medical services setting.

Gangaram et al (2022) performed a prospective quantitative survey study, collecting descriptive data from frontline paramedics employed by the Hamad Medical Corporation Ambulance Service in Qatar. One thousand paramedics were invited via email to complete an online survey, with a total response rate of 28.2% (282 paramedics). The study found that paramedics' attitudes toward PPE are primarily positive but identified some confusion over the process of donning and doffing PPE and how it integrates with standard practice. The study also noted the HMCAS standard operating procedure of supervised doffing of PPE, with 80.1% of respondents reporting they practice this.

McCann-Pineo et al (2022) performed a retrospective chart review of factors influencing the use of PPE among EMS responders during the COVID-19 pandemic in New York City. All adult emergency encounters with available prehospital data that occurred between March 16 and June 30th, 2020, were analysed via multinomial logistic regression. The study identified 28,693 eligible encounters and found that PPE was used in 92.8% of them, with 'full' PPE in 17.8%. Full PPE utilisation, defined by the study as donning gloves, eye protection, face mask and a gown, was largely dependent on the dispatch code communicated to EMS. The study identifies that codes that were indicative of breathing problems or respiratory arrest influenced decisions around full PPE use.

2.2.3 Bottom line summary

The evidence identified in this review suggests there are multiple adverse outcomes of PPE use, which are primarily physiological in nature. Outcomes such as pressure ulcers, de novo headache and dermatitis were commonly reported across multiple studies. One review identified the importance of workplace culture and values in facilitating the use of PPE, and how communication and clarity regarding perceived conflicts between local and international guidelines can affect adherence, becoming a barrier.

Across all studies identified in this review there is a clear paucity of evidence that is specific to the settings of interest. While generalisable themes have emerged from the reviews

included, and the settings of interest have been represented in part, further high quality evidence is required to inform any decision making in this area.

Table 1: Summary of Systematic Reviews

Citation (Country)	Review details	Included studies	Quality	Findings and observations/notes
<p>Galanis, et al., 2021 (USA)</p>	<p>Review Period: January-December 2020</p> <p>Review purpose: To assess the impact of PPE use on healthcare workers' physical health, and adverse events resulting from PPE use.</p> <p>Included study designs: No restrictions were made for specific study design. Preprints (medRxiv) were included.</p> <p>Included outcome measures: Prevalence of physical adverse effects.</p>	<p>Number of included studies: 14</p> <p>Key characteristics: A total of 11,746 total HCWs in various settings were included in this review. Numbers of HCWs in each study ranged from 40-4,306.</p> <p>The majority (n=10) of studies included were conducted in Asia, two in Europe, one in South America and one study sampled HCWs from 10 countries.</p> <p>All studies were cross-sectional. 13 used convenience sampling methods, and one study used a purposive sampling method.</p> <p>In 13 studies, adverse events were assessed by a questionnaire. In one study, a clinical diagnosis was performed.</p> <p>Quality assessment of individual studies was performed as part of the systematic review. 9 studies were identified as poor quality, and 5 as 'moderate'.</p>	<p>Quality rating: POOR</p>	<p>The authors find that the overall pooled prevalence of adverse events related to PPE use among HCWs was very high (78%; 95% CI 66.7% to 87.5%).</p> <p>The authors identify three main domains of increased risk:</p> <ul style="list-style-type: none"> • Job characteristics: duration of shifts wearing PPE and the number of consecutive shifts significantly increase the risk of adverse events • Sociodemographic characteristics: HCWs gender and age affect the likelihood of adverse effects, with women more likely to experience adverse effects. N.B: the authors recognise the potential for confounding on this point due to a high % population of female nurses. • Clinical characteristics: conditions such as diabetes mellitus, obesity, pre-existing headache and smoking significantly increase the risk of adverse events.

<p>Houghton, et al., 2020 (UK)</p>	<p>Review period: OVID MEDLINE was searched in March of 2020; no date limit was applied.</p> <p>Review purpose: To identify barriers and facilitators to healthcare workers' adherence to IPC guidelines for respiratory infectious diseases.</p> <p>Included study designs: qualitative and mixed-methods studies with an identifiable qualitative component were included.</p> <p>Included outcome measures: Any barriers and facilitators for adherence with IPAC measures.</p>	<p>Number of included studies: 20</p> <p>Key characteristics: The majority (n=10) of studies were from Asia, four from Africa, four from Central and North America and two from Australia.</p> <p>All studies were assessed for quality and methodological limitations. Half of the studies did not report, or did not report clearly, on sampling strategy, data analysis and ethical considerations. Six studies were identified as having major or moderate methodological limitations.</p> <p>Following GRADE-CERQual assessment for each review as part of the study, the authors rated the majority (n=18) of findings as moderate confidence.</p>	<p>Quality rating: GOOD</p> <p>Using the ROBIS tool to assess risk of bias in systematic reviews, no areas of particular concern were identified, resulting in overall LOW risk of bias.</p>	<p>Findings were groups into three broad domains, with subthemes.</p> <ul style="list-style-type: none"> • Organisational factors, covering the 'safety climate, communication of guidelines, and the availability of training programmes. • Environmental factors, covering the physical environment and availability of PPE • Individual factors, covering individual knowledge, attitudes, beliefs and the discomfort of PPE. <p>The communication of guidelines was identified as a major barrier to adherence in situations where local guidance differed from national or international guidance. The length and clarity/accessibility of those guidelines was also identified as a barrier.</p> <p>The study finds that adherence with IPC guidelines is more likely when healthcare workers can see its value – for example, by reducing the risk of infecting themselves and their families or protecting their patients. HCWs also stressed the importance of including all staff in IPC training, including porters and cleaners.</p>
<p>Keng, et al., 2021 (Singapore)</p>	<p>Review period: January 2020-2021.</p>	<p>Number of included studies: 16</p>	<p>Quality rating: POOR</p>	

	<p>Review purpose: To determine common PPE-related dermatoses and affected body sites in HCWs.</p> <p>Included study designs: Specific study designs are not described in the inclusion criteria, but records were excluded for not including 'original data'</p> <p>Outcome measures: Any dermatitis caused by PPE use</p>	<p>Key characteristics: The sixteen studies yielded a total of 3,958 participants and were largely of a cross-sectional design. Studies included were from China (5), Turkey (2), Iran (1), Ukraine (1), UK (3), Ireland (1), Germany (1), India (1) and The Netherlands (1).</p> <p>Risk of Bias was performed on all included studies but was not clearly reported or available to view.</p>		<p>Longer exposure to PPE showed a statistically significant positive association with adverse cutaneous reactions.</p> <p>The most commonly affected body sites included the face and hands. The torso and legs were the least affected. Xerosis (27.6%), pressure-related erythema (22.1%), and irritant contact dermatitis (14.8%) were the most common dermatoses reported.</p> <p>Moderating the duration of time in PPE and allowing sufficient skin rest are critical for reducing the incidence of occupational dermatoses. Associations between long working hours in PPE and adverse cutaneous reactions have been demonstrated in multiple studies (4 studies).</p> <p>HCWs wearing N95 masks / goggles in excess of 6 hours had significantly increased prevalence of skin damage on the cheeks and nasal bridge</p>
<p>Kunstler, et al., 2022 (Australia)</p>	<p>Review period: December 2020-June 2021, no date limit was applied on searches.</p> <p>Review purpose: To assess the effectiveness and possible adverse effects of P2/N95 respirators for HCWs.</p>	<p>Number of included studies: 21</p> <p>Key characteristics: Most studies were observational, with only one RCT. The studies had a mean age between 29 and 46 years, and in many cases had a majority female representation (from 39% to 90%). Most studies compared HCWs wearing surgical masks and N95</p>	<p>Quality rating: POOR</p>	<p>HCWs wearing respirators were significantly more likely to experience de novo headache, respiratory distress or shortness of breath, facial itching or irritation and pressure related injuries compared to surgical masks. At time of publication the study does not claim to answer any questions of effectiveness, nor should it be used to</p>

	<p>Included study designs: All pre-print or peer-reviewed comparative epidemiological studies.</p> <p>Included outcome measures: SARS-CoV-2 infection or Adverse effects (signs and symptoms of skin conditions)</p>	<p>respirators (n=16) and the remaining studies compares surgical masks to KF94 or KF95, FFP2 or other respirator types (n=5). The majority of studies took place in the USA (n=8).</p> <p>Risk of bias was performed as part of the systematic review process, and the majority of studies were deemed to be at high risk of bias (n = 18/21)</p>		<p>justify decisions for or against respirator use.</p>
<p>Tezcan, Eraydin and Karabacak, 2022 (Turkey)</p>	<p>Review period: February – December 2021</p> <p>Review purpose: To examine pressure ulcers in healthcare staff arising as a result of PPE use during the COVID-19 pandemic.</p> <p>Included study designs: Randomized controlled studies, meta-analyses, description and cross-sectional studies were identified in the inclusion criteria.</p> <p>Included outcome measures: Prevalence of pressure ulcers arising from PPE use</p>	<p>Number of included studies: 17</p> <p>Key characteristics: The majority of studies were published in 2021 (n=11), and the rest in 2020 (n=6). A variety of study designs are present in the sample, including 9 multi-center studies.</p>	<p>Quality rating: POOR</p>	<p>The review identifies that individual prevalence rates of PPE-related pressure ulcers are between 30%-92.8%, with Grade I ulcers being most common. The studies identified that the most common risk factors for developing a pressure ulcer as a result of PPE use are time spent in PPE, sweating, and lack of skin protection. Other risk factors are age, gender, length of working hours, type of PPE and pain during the use of PPE.</p>

Abbreviations: PPE – Personal protective equipment; HCWs – Healthcare workers; RCT – Randomised controlled trial; IPAC – Infection prevention and control

Table 2: Summary of Primary Studies

Citation (Country)	Study Details	Participants & setting	Key findings	Observations/notes
<p>Gangaram, Pillay and Alinier., 2022 (Qatar)</p>	<p>Study Design: Prospective quantitative cohort study.</p> <p>Type of intervention [exposure]: Use of PPE</p> <p>Data collection methods: Online survey</p> <p>Quality rating: FAIR</p>	<p>Sample size: 282</p> <p>Participants: Paramedics employed by the Hamad Medical Corporation Ambulance Service (HMCAS)</p> <p>Setting: Ambulance</p> <p>Dates of data collection: July 2020</p>	<p>Primary Findings: 98.2% of surveyed paramedics are knowledgeable about methods of transmission for COVID-19. Regular completion of PPE training was successful in embedding infection control attitudes.</p> <p>Additional Findings: 63% of surveyed paramedics agree the donning and doffing of PPE may be more effective when supervised.</p>	<p>Participant characteristics were not reported.</p> <p>The survey was stopped as soon as the sample size (determined by Slovin's formula) was reached.</p>
<p>McCann-Pinneo, Levinsky and Berkowitz. 2022. (USA)</p>	<p>Study Design: Medical record review.</p> <p>Type of intervention [exposure]: Use of PPE</p> <p>Data collection methods: Retrospective chart review among all EMS encounters for a New York health system.</p> <p>Quality rating: POOR</p>	<p>Sample size: 28,693 EMS encounters</p> <p>Participants: EMS responders affiliated with a large New York health system</p> <p>Setting: Emergency medical services / Ambulance</p> <p>Dates of data collection: March-June 2020</p>	<p>Primary Findings: Full PPE utilization was most strongly influenced by dispatch codes that were indicative of breathing problems and respiratory arrest, in addition to a patient's positive screening for COVID-19 on dispatch. Partial PPE use was documented in 92.8% of encounters, full use in 17.8%.</p>	<p>Retrospective study design and the use of chart reviews may mean results are reported inconsistently. Some EMS calls were excluded due to lack of data.</p>

Abbreviations: HMCAS – Hamad Medical Corporation Ambulance Service; EMS – Emergency medical services

3. DISCUSSION

3.1 Summary of the findings

In order to appropriately address the desired research questions the discussion of the evidence is split into three sections, covering adverse outcomes of PPE, barriers to PPE adherence, and facilitators to PPE adherence.

3.1.1 Adverse outcomes of PPE

The majority of adverse outcomes stemming from the use of PPE that have been identified in this rapid review are dermatological in nature. Reviews such as Galanis et al (2021) identify that skin reactions are the most frequent adverse outcome of PPE as reported by HCWs – the study identifies that while gloves, filtering face piece respirators and hand sanitization are ‘indispensable’ in the control of COVID-19, their routine use may lead to a removal of normal bacterial flora and disruption of the skin’s protective barrier, potentially worsening the frequency and severity of skin diseases. Keng et al (2021) echoes this, finding that pressure-related skin injuries are a frequent complication of N95 masks and goggles, especially when worn for long period, and the presence of skin maceration and abrasions caused by PPE have the potential to progress to fissures, erosions, blisters or ulcers – if these abrasions are situated on the nasal bridge and cheeks, two of the most susceptible locations, there is the potential for a compromised skin barrier and a secondary infection may manifest. Similarly, the evidence suggests the potential for face coverings to cause or worsen skin conditions in HCWs; for example, the excessive accumulation of sweat and sebum that occurs due to increased heat and humidity, combined with increased friction and pressure from donning and doffing PPE may result in the manifestation of acne (Keng et al, 2021; Tezcan et al, 2022). The evidence also suggests that the occurrence of dermatological adverse effects may be greater in HCWs who wear respirators as opposed to surgical masks, though the evidence for this is limited (Kunstler et al, 2022).

Another adverse outcome identified by the literature is the occurrence of de novo headache. While pre-existing headache conditions place HCWs at increased risk for experiencing this outcome (Galanis et al, 2021) the evidence suggests that headaches are common among HCWs who wear filtering face piece respirators. Occurrence of headaches in these cases are positively associated with the length of time the face piece is worn (Galanis et al, 2021; Kunstler et al, 2022). Breathing discomfort was also identified as an adverse outcome that is potentially exacerbated by respirator use, though the evidence for this is also limited (Galanis et al, 2021; Kunstler et al, 2022).

Finally, multiple reviews note the impact of these adverse outcomes on adherence to PPE guidance overall. Issues with discomfort and fit potentially increase the risk of infection, especially in cases where itching occurs as an adverse outcome as there is the potential that any adjustment of the respirator or face covering may compromise the seal (Kunstler, et al 2022) and result in increased risk of infection.

3.1.2 Barriers to PPE adherence

Evidence regarding the potential barriers to PPE use and adherence to guidelines is primarily explored in Houghton et al. (2020). The most commonly identified barrier across all literature included in Houghton et al. (2020) is ineffective or unclear communication in the workplace, especially where there are conflicting recommendations between local guidelines and national or international guidelines – this is reported in Houghton et al. (2020) and

Gangaram et al (2022). Similar to this, workplace culture was identified as both a barrier and a facilitator for adherence in McCann-Pineo (2022).

Another barrier identified in the literature centers around the provision and quality of PPE that is available to HCWs. Many HCWs identified supply chain issues of N95 masks prior to the COVID-19 pandemic, which only worsened as the length of time PPE was required increased (Houghton et al, 2020). Additional barriers were identified at a more granular level by Houghton et al (2020) but were not included in this synthesis as they were not reported by any other sources used in this review.

3.1.3 Facilitators to PPE adherence

Facilitators to PPE use were not explored in-depth in the literature. Houghton et al (2020) identified that a healthcare facility environment that had sufficient space for proper isolation of patients was regarded as a key facilitator for compliance with general IPAC guidelines, but this was specific to the hospital setting and is of limited relevance to this review. Individual beliefs and values were identified as a significant facilitator for adherence, being primarily centered on HCWs' fears of contracting SARS or MERS resulting in increased vigilance. Similarly, concerns around transmission to family and co-workers, as well as a desire to provide high-quality care resulted in a strong sense of value for individual HCWs when adhering to IPAC guidelines.

3.2 Strengths and limitations of the available evidence

All studies included in this rapid review were formally assessed for risk of bias, the full process for which is outlined in section 6 of this review.

Following risk of bias assessment, the majority of the evidence available for this rapid review is of 'Poor' quality (5 studies). Caution should therefore be taken when drawing conclusions from the evidence. It is also important to note that many of the studies included in this review reflect data captured in a wide variety of healthcare settings and are not limited to our settings of interest – this raises implications for the generalisability of this review's findings. We have mitigated this where possible by including only studies that have captured data from at least one of the settings of interest, but it is pertinent to note that the majority of the evidence is dominated by front-line hospital and nursing experiences.

3.3 Implications for policy and practice

This review has identified a paucity of evidence for the barriers, facilitators, and potential adverse effects of PPE usage in the settings of interest. While some of the findings from the literature included in this review may be generalizable to these settings, it is crucial that more high-quality research is undertaken in the areas of interest.

3.4 Strengths and limitations of this Rapid Review

All studies included in this rapid review were identified by systematically reviewing a range of carefully selected publication databases, as outlined in Appendix 1. The research question and study protocol were developed in collaboration with external shareholders and experts in the field. The abstract, full text screening and data extraction were performed by a single reviewer and checked for consistency by a second researcher. The methods used in this review have been robust and pragmatic, but due to the nature of rapid reviews there remains the possibility that additional eligible texts were not identified.

This rapid review is strictly limited to a select few studies that align with the research question and protocol. We are reliant on interpreting the results of studies that have several limitations and differing levels of quality, and this impacts the strength of our conclusions. We have summarised the primary limitations of studies included in this review, and each included study has been assessed for risk of bias.

4. REFERENCES

Galanis P, Vraka I, Fragkou D, et al. (2021). Impact of personal protective equipment use on health care workers' physical health during the COVID-19 pandemic: A systematic review and meta-analysis. *American Journal of Infection Control*. 49(10): 1305-15. doi: <https://doi.org/10.1016/j.ajic.2021.04.084>

Gangaram P, Pillay Y, Alinier G. (2022). Paramedics' knowledge, attitudes, and practices regarding the use of personal protective equipment against COVID-19. *Qatar Medical Journal*. 2022(4): 50. doi: <https://doi.org/10.5339/qmj.2022.50>

Houghton C, Meskell P, Delaney H, et al. (2020). Barriers and facilitators to healthcare workers' adherence with infection prevention and control (IPC) guidelines for respiratory infectious diseases: a rapid qualitative evidence synthesis. *Cochrane Database of Systematic Reviews*. 4: CD013582. doi: <https://doi.org/10.1002/14651858.CD013582>

Keng BMH, Gan WH, Tam YC, et al. (2021). Personal protective equipment-related occupational dermatoses during COVID-19 among health care workers: A worldwide systematic review. *JAAD International*. 5: 85-95. doi: <https://doi.org/10.1016/j.jdin.2021.08.004>

Kunstler B, Newton S, Hill H, et al. (2022). P2/N95 respirators & surgical masks to prevent SARS-CoV-2 infection: Effectiveness & adverse effects. *Infection, Disease & Health*. 27(2): 81-95. doi: <https://doi.org/10.1016/j.idh.2022.01.001>

McCann-Pineo M, Li T, Barbara P, et al. (2022). Factors Influencing Use of Personal Protective Equipment among Emergency Medical Services Responders During the COVID-19 Pandemic: A Retrospective Chart Review. *The Western Journal of Emergency Medicine*. 23(3): 396-407. doi: <https://doi.org/10.5811/westjem.2022.2.55217>

Tezcan B, Eraydin C, Karabacak BG. (2022). Protective equipment-related pressure ulcers in healthcare workers during COVID-19 pandemic: A systematic review. *Journal of Tissue Viability*. 31(2): 213-20. doi: <https://doi.org/10.1016/j.jtv.2022.02.004>

Whiting P, Savović J, Higgins JP, et al. (2016). ROBIS: a new tool to assess risk of bias in systematic reviews was developed. *Journal of Clinical Epidemiology*. 69: 225-34. doi: <https://doi.org/10.1016/j.jclinepi.2015.06.005>

5. RAPID REVIEW METHODS

5.1 Eligibility criteria

Table 3: Eligibility criteria

	Inclusion criteria	Exclusion criteria
Participants	All staff	
Settings	Emergency ambulance settings General practice, including district nurse care	Any other primary care or community care setting (e.g. Dental, Optometry, Domiciliary and Care Home, Pharmacy) Any secondary or tertiary settings
Intervention / exposure	Personal protective equipment (PPE) for COVID-19 and related respiratory viruses	Other infection prevention and control (IPAC) measures Other non-pharmaceutical interventions (NPIs)
Comparison	No PPE measures in place Other PPE measures	
Outcomes	<ul style="list-style-type: none"> User preference (factors affecting adherence, possible harms, barriers and facilitators for use) Quality of life impacts 	
Study design	We will search and include evidence in the following order <ul style="list-style-type: none"> Systematic reviews, rapid reviews Primary evidence and qualitative evidence 	
Countries	Any	
Language of publication	English	
Publication date	2020-2022	
Publication type	Published and preprint	
Reporting of data	We will consider other study designs where their findings may be useful for providing context to the review (e.g. narrative reviews)	

5.2 Literature search

The search strategy was developed by Health Technology Wales and shared with members of the WCEC. As the number of hits returned for this topic are large, various ways to conduct the search were investigated. It was decided to restrict the search to the population (COVID-19 and related respiratory viruses) and the intervention (personal protective equipment (PPE)).

No attempt was made to search by setting, due to the inconsistent way that setting is reported in the literature. The decision was taken, therefore, to separate the results into evidence 'layers' using study design filters. Each layer will be mutually exclusive:

- Secondary evidence
- Primary evidence
- Qualitative evidence
- Other (i.e. anything that did not fit into the first three layers)

Two versions of the PPE stem were developed in Medline; the second of which was a focussed version of the first. This aimed to reduce the number of hits and only retrieve those which pertained to PPE, as opposed to a passing reference in the abstract. Following a comparison of the two PPE stems when combined with the virus stem (the COVID-19 inbuilt filter within Medline and a stem for the other related respiratory viruses) it was decided to use of the focussed PPE stem for the search.

As the work includes respiratory viruses in addition to COVID-19, all COVID-19 specific databases were excluded from the search as all sources searched should include content pertaining to all viruses of interest, thereby ensuring no unfair weighting of the results. Also, the search methods employed to focus the PPE search make use of complex searching functionality which is not available in the COVID-19 specific resources (and some other resources). Searching these would then undo any benefits gained through the focussing of the PPE stem. Registers of clinical trials and systematic reviews were also searched.

The search strategy is available in Appendix 2.

5.3 Study selection process

Study screening and selection against the eligibility criteria was carried out by Antonia Needham, with selection decisions checked by Lauren Elston and any disagreements resolved by consensus amongst the researchers. After sifting of the first three evidence layers, it was decided by consensus that the fourth layer of evidence (detailed in 5.2) would not be used due to a sufficient amount of available evidence in the first three layers.

5.4 Data extraction

Data was extracted as documented in Tables 1 and 2 by Antonia Needham. Extraction was checked by Lauren Elston.

5.7 Quality appraisal

Formal quality assessments were completed depending on applicability and study design. All studies were formally assessed for their risk of bias. The five secondary sources were assessed using the Risk of Bias in Systematic Reviews (ROBIS) tool. Both primary studies were assessed using the NIH quality assessment tool for observational and cross-sectional studies. One study (Gangaram et al, 2022) was also assessed using the critical appraisal

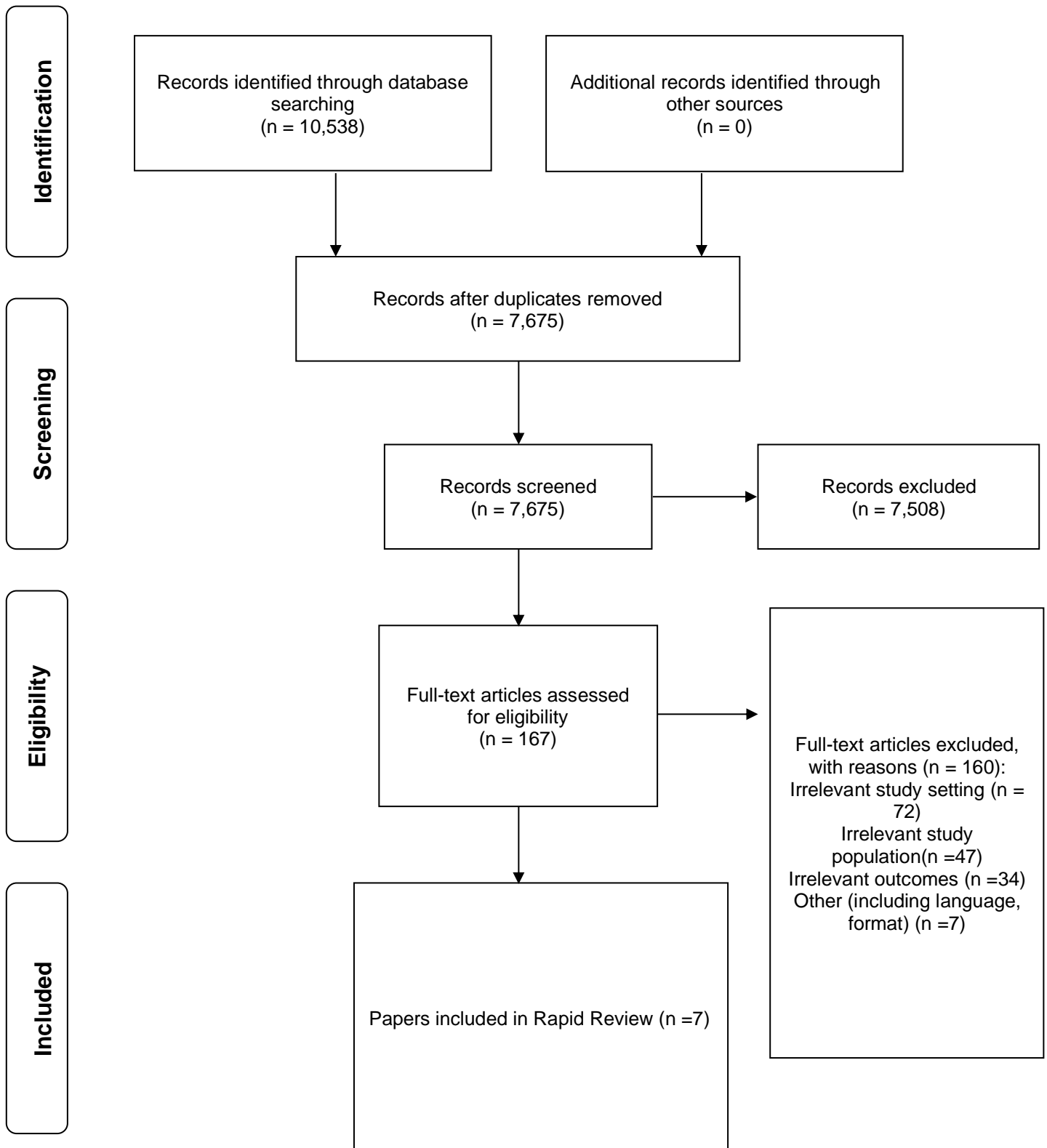
skills programme (CASP) checklist for qualitative research, due to difficulties finding an appropriate risk of bias assessment tool for the study design. For this study, only the NIH results are reported.

5.8 Synthesis

Quantitative analysis of relevant outcomes was not possible for this rapid review. As a result, evidence was synthesised narratively in relevant sections and individual outcome data are listed in relevant tables within this review.

6. EVIDENCE

6.1 Study selection flow chart



6.3 Quality appraisal tables

The risk of bias (RoB) tools used for this review are outlined in section 5.7. Risk of bias tools assess studies across different domains to ascertain whether there is a potential that the evidence is biased.

Reference	RoB tool used	Overall RoB	Comments
Galanis et al (2021)	ROBIS (Whiting et al. 2016)	HIGH	Reviewers did not address uncertainty around search strategy, characteristics that could influence outcomes.
Houghton et al (2020)	ROBIS (Whiting et al. 2016)	LOW	No major concerns identified, authors reflected on their role in analysis and limitations were discussed
Keng et al (2021)	ROBIS (Whiting et al. 2016)	HIGH	Serious omissions or limitations in the approach taken by the review. No discussion of limitations or reflection on validity of evidence. No statistical analysis
Kunstler et al (2022)	ROBIS (Whiting et al. 2016)	HIGH	Concerns relating to heterogeneity were not addressed by the authors, relevance was not discussed within the review.
Tezcan et al (2022)	ROBIS (Whiting et al. 2016)	HIGH	Limitations were not discussed within the review, concerns relating to formal risk of bias and search strategy.
Gangaram et al (2022)	NIH quality assessment tool for observational and cross-sectional studies	UNCLEAR	Primary concerns relate to participant identification and whether using power number as a stopping criteria was appropriate. NIH tool was also partially suitable for this study – CASP was also used to assess and is available upon request.
McCann-Pineo et al (2022)	NIH quality assessment tool for observational and cross-sectional studies	HIGH	Primary concerns centre around the retrospective study design and reliance of chart reviews, which are known for inconsistent reporting. Some EMS calls were excluded due to lack of data, and some characteristics not included in the regression without adequate explanation.

6.2 Information available on request

The study protocol, full search strategy and list of excluded studies are available upon request.

7. ADDITIONAL INFORMATION

7.1 Conflicts of interest

The authors declare they have no conflict of interest to report.

7.2 Acknowledgements

The authors would like to thank Rowena Christmas, Nigel Rees, Louise Colson, Nathan Davies, Sue Tranka, Helen Arthur, Rob Orford, Emma Coles and Chris Jones for their time, contributions and expertise during stakeholder meetings, in guiding the focus of the review and interpretation of findings, and for reviewing the report.

8. ABOUT THE WALES COVID-19 EVIDENCE CENTRE (WCEC)

The WCEC integrates with worldwide efforts to synthesise and mobilise knowledge from research.

We operate with a core team as part of [Health and Care Research Wales](#), are hosted in the [Wales Centre for Primary and Emergency Care Research \(PRIME\)](#), and are led by [Professor Adrian Edwards of Cardiff University](#).

The core team of the centre works closely with collaborating partners in [Health Technology Wales](#), [Wales Centre for Evidence-Based Care](#), [Specialist Unit for Review Evidence centre](#), [SAIL Databank](#), [Bangor Institute for Health & Medical Research/ Health and Care Economics Cymru](#), and the [Public Health Wales Observatory](#).

Together we aim to provide around 50 reviews per year, answering the priority questions for policy and practice in Wales as we meet the demands of the pandemic and its impacts.

Director:

Professor Adrian Edwards

Contact Email:

WC19EC@cardiff.ac.uk

Website:

<https://healthandcareresearchwales.org/about-research-community/wales-covid-19-evidence-centre>

9. APPENDIX

APPENDIX 1: Resources searched during Rapid Review Searching

Database Searched	Date Searched	Evidence layer	No of Hits Retrieved
Ovid Medline (ALL)	22/11/22	Secondary	652
		Primary	1414
		Qualitative	1241
		Other	3828
Ovid Embase	22/11/22	Secondary	940
		Primary	1235
		Qualitative	1457
		Other	3605
Cochrane Library	23/11/22	Secondary	14
		Primary	465
Epistemonikos	22/11/22	Secondary	81
		Primary	1802
Trip Pro	22/11/22	Secondary	130
		Primary	132
INAHTA HTA	24/11/22	Secondary	7
WHO ICTRP	02/11/22	ongoing studies	126
clinicaltrials.gov	01/12/22	ongoing studies	455
PROSPERO	02/12/22	ongoing studies	387

APPENDIX 2: MEDLINE strategy

Ovid MEDLINE(R) ALL <1946 to November 21, 2022>		
PPE & respiratory viruses		
1	*Personal Protective Equipment/	1583
2	exp *masks/	8138
3	exp *Gloves, Protective/	3194
4	exp *Respiratory Protective Devices/	1897
5	*Protective Clothing/	3139
6	((face or faces or facial or head or heads or hand or hands) adj2 (cover* or mask or masks or shield* or visor* or guard* or screen*1 or protect* or barrier*)).ti,kf.	3307
7	((face or faces or facial or head or heads or hand or hands) adj2 (cover* or mask or masks or shield* or visor* or guard* or screen*1 or protect* or barrier*)).ab. /freq=2	3065
8	(mask* adj wear*).ti,kf.	288
9	(mask* adj wear*).ab. /freq=2	409
10	(facemask* or facecover* or faceshield*).ti,kf.	748
11	(N95 or N97 or N99).ti,kf.	723
12	(FFP1 or FFP2 or FFP3).ti,kf.	103
13	(filter* adj2 (facepiece or face piece*)).ti,kf.	319
14	(glove or gloves).ti,kf.	3851
15	(apron or aprons).ti,kf.	238
16	(personal protect* equipment* or PPE).ti,kf.	3499
17	(personal protect* equipment* or PPE or glove or gloves or facemask* or facecover* or faceshield* or N95 or N97 or N99 or FFP1 or FFP2 or FFP3 or (filter* adj2 (facepiece or face piece*)) or glove or gloves or apron or aprons).ab. /freq=2	12310
18	or/1-17	32009
19	limit 18 to covid-19	7251
20	Influenza, Human/	56378
21	exp Orthomyxoviridae/	62877
22	Severe Acute Respiratory Syndrome/	5715
23	SARS Virus/	4133
24	Coronavirus Infections/	45714
25	Middle East Respiratory Syndrome Coronavirus/	1943
26	respiratory syncytial virus, human/	3606
27	respiratory syncytial viruses/	6256
28	Paramyxoviridae Infections/	3271
29	exp Paramyxoviridae/	37433
30	(influenza or flu).tw,kf.	122333
31	(severe acute respiratory syndrome or SARS).tw,kf.	121439
32	(middle east respiratory syndrome or MERS).tw,kf.	8457
33	(respiratory syncytial virus* or RSV).tw,kf.	20567
34	(parainfluenza or para-influenza or paramyxoviri?ae or paramyxoviri?ae).tw,kf.	6820
35	or/20-34	325665
36	18 and 35	3702

37	19 or 36	7758
38	limit 37 to (english language and yr="2020 -Current")	7135
HTW draft systematic review filter		
39	systematic review.pt.	212961
40	systematic reviews as topic/	9404
41	((systematic\$ or evidence\$) adj (review\$1 or overview\$1)).tw,kf,kw.	273053
42	meta-analysis.pt.	171285
43	exp meta-analysis as topic/	25983
44	(meta-analy\$ or metaanaly\$ or metanaly\$).tw,kf,kw.	254691
45	exp review literature as topic/	21113
46	or/39-45	445771
47	(medline or pubmed or medlars).ab.	296463
48	embase.ab.	140616
49	cochrane.ab,jw.	125210
50	(cinahl or cinhal).ab.	42083
51	(psychlit or psychlit or psychinfo or psycinfo).ab.	54796
52	science citation index.ab.	3633
53	cancerlit.ab.	639
54	british nursing index.ab.	411
55	hmic.ab.	344
56	current contents.ab.	1259
57	or/47-56	335746
58	reference list\$.ab.	21349
59	bibliograph\$.ab.	21603
60	(handsearch\$ or hand-search\$).ab.	10797
61	relevant journals.ab.	1319
62	manual search\$.ab.	5714
63	(search adj (strategy or criteria)).ab.	23456
64	(search\$ adj4 literature).ab.	91044
65	or/58-64	151744
66	review.pt.	3078166
67	((selection or inclusion or exclusion) adj criteria).ab.	178731
68	data extraction.ab.	29985
69	66 and (67 or 68)	71173
70	46 or 57 or 65 or 69	608349
71	comment.pt.	987044
72	letter.pt.	1199992
73	editorial.pt.	627407
74	or/71-73	2112163
75	70 not 74	588830
HTW draft Guidelines/HTA filter		
76	exp Evidence-Based Medicine/	76313
77	practice guideline/	30127
78	guideline/	16546
79	exp guidelines as topic/	172605
80	guideline\$.ti,kf.	102705
81	exp technology assessment, biomedical/	12038
82	((technology adj (apprais\$ or assess\$)) or HTA or HTAs).tw,kf,kw.	10920

83	rapid review*.ti,kf,kw.	1087
84	(evidence* adj2 (base* or synthes*)).ti,kf,kw.	44864
85	or/76-84	353489
Secondary evidence		
86	70 or 85	921823
PPE & respiratory viruses & secondary evidence		
87	38 and 86	652
SIGN RCT filter		
88	Randomized Controlled Trials as Topic/	158900
89	randomized controlled trial/	581362
90	Random Allocation/	106896
91	Double-Blind Method/	173680
92	Single-Blind Method/	32313
93	Clinical Trial/	536523
94	clinical trial, phase i.pt.	24387
95	clinical trial, phase ii.pt.	38899
96	clinical trial, phase iii.pt.	21119
97	clinical trial, phase iv.pt.	2368
98	controlled clinical trial.pt.	95109
99	randomized controlled trial.pt.	581362
100	multicenter study.pt.	327834
101	clinical trial.pt.	536523
102	exp Clinical Trials as Topic/	378541
103	or/88-102	1540008
104	(clinical adj trial\$.tw.	455441
105	((singl\$ or doubl\$ or treb\$ or tripl\$) adj (blind\$3 or mask\$3)).tw.	192837
106	PLACEBOS/	35924
107	placebo\$.tw.	241066
108	(random\$ adj allocat\$.tw.	37519
109	(allocat\$ adj2 random\$.tw.	41988
110	or/104-109	754852
111	103 or 110	1867647
112	case report.tw.	378162
113	letter/	1199992
114	historical article/	368893
115	or/112-114	1928716
116	111 not 115	1825773
SIGN Observational studies filter		
117	Epidemiologic Studies/	9195
118	exp Case-Control Studies/	1370890
119	exp Cohort Studies/	2418957
120	case control.tw.	148192
121	(cohort adj (study or studies)).tw.	292261
122	cohort analy\$.tw.	10963
123	(follow up adj (study or studies)).tw.	54820
124	(observational adj (study or studies)).tw.	149457
125	longitudinal.tw.	305754
126	retrospective.tw.	698796

127	cross sectional.tw.	478170
128	Cross-Sectional Studies/	447378
129	or/117-128	3647730
Primary evidence		
130	116 or 129	4986290
PPE & respiratory viruses & primary evidence		
131	38 and 130	1521
132	131 not 87	1414
Patient issues De Jean qualitative filter		
133	Qualitative Research/	77781
134	Interview/	30459
135	(theme\$ or thematic).mp.	155666
136	qualitative.af.	324048
137	Nursing Methodology Research/	16406
138	questionnaire\$.mp.	909798
139	ethnological research.mp.	8
140	ethnograph\$.mp.	13367
141	ethnonursing.af.	126
142	phenomenol\$.af.	32634
143	(grounded adj (theor\$ or study or studies or research or analys?s)).af.	14757
144	(life stor\$ or women* stor\$.mp.	1681
145	(emic or etic or hermeneutic\$ or heuristic\$ or semiotic\$.af. or (data adj1 saturat\$.tw. or participant observ\$.tw.	29108
146	(social construct\$ or (postmodern\$ or post-structural\$) or (post structural\$ or poststructural\$) or post modern\$ or post-modern\$ or feminis\$ or interpret\$.mp.	605431
147	(action research or cooperative inquir\$ or co operative inquir\$ or co-operative inquir\$.mp.	5421
148	(humanistic or existential or experiential or paradigm\$.mp.	185889
149	(field adj (study or studies or research)).tw.	19013
150	human science.tw.	259
151	biographical method.tw.	20
152	theoretical sampl\$.af.	877
153	((purpos\$ adj4 sampl\$) or (focus adj group\$)).af.	85107
154	(account or accounts or unstructured or openended or open ended or text\$ or narrative\$.mp.	782853
155	(life world or life-world or conversation analys?s or personal experience\$ or theoretical saturation).mp.	17346
156	((lived or life) adj experience\$.mp.	17261
157	cluster sampl\$.mp.	9094
158	observational method\$.af.	947
159	content analysis.af.	39821
160	(constant adj (comparative or comparison)).af.	5748
161	((discourse\$ or discurs\$) adj3 analys?s).tw.	2860
162	narrative analys?s.af.	1754
163	heidegger\$.tw.	744
164	colaizzi\$.tw.	1037
165	spiegelberg\$.tw.	82

166	(van adj manen\$.tw.	508
167	(van adj kaam\$.tw.	43
168	(merleau adj ponty\$.tw.	253
169	husserl\$.tw.	294
170	foucault\$.tw.	931
171	(corbin\$ adj2 strauss\$.tw.	419
172	glaser\$.tw.	1067
173	or/133-172	2787077
Patient aspects Selva Wessels filter		
174	Attitude to Health/	85383
175	Patient Preference/	10464
176	preference*.ti,ab.	181908
177	choice.ti.	36152
178	choices.ti.	7368
179	value*.ti.	186026
180	expectation*.ti,ab.	104339
181	attitude*.ti,ab.	179985
182	acceptab*.ti,ab.	217927
183	point of view.ti,ab.	48107
184	patient perspective.ti,ab.	2900
185	patients perspective.ti,ab.	5190
186	patients' perspective.ti,ab.	5190
187	patient's perspective.ti,ab.	5190
188	user perspective*.ti,ab.	685
189	users perspective*.ti,ab.	718
190	users' perspective*.ti,ab.	718
191	user's perspective*.ti,ab.	718
192	patient perce*.ti,ab.	6529
193	patients perce*.ti,ab.	11860
194	patients' perce*.ti,ab.	11860
195	patient's perce*.ti,ab.	11860
196	health perception*.ti,ab.	3148
197	user perce*.ti,ab.	556
198	users perce*.ti,ab.	1139
199	users' perce*.ti,ab.	1139
200	user's perce*.ti,ab.	1139
201	user view*.ti,ab.	129
202	users view*.ti,ab.	456
203	users' view*.ti,ab.	456
204	user's view*.ti,ab.	456
205	patient view*.ti,ab.	671
206	patients view*.ti,ab.	3167
207	patients' view*.ti,ab.	3167
208	patient's view*.ti,ab.	3167
209	((decision* and mak*).ti. or (decision mak* or decisions mak*).ti,ab.) and (patient* or user* or men or women).ti,ab.	102045
210	decision-support.ti,ab.	18812
211	decision tool*.ti,ab.	1148

212	decision aid*.ti,ab.	4012
213	or/174-212	1107927
214	"Patient Acceptance of Health Care"/	54036
215	*Consumer Behavior/	11542
216	health knowledge, attitudes, practice/	125096
217	*"Quality of Life"/	109147
218	"Quality of Life"/px	32704
219	Life Change Events/	23510
220	Attitude to Death/	16712
221	focus groups/	34923
222	narration/	9872
223	((patient or consumer*) adj3 (participat* or decisi* or decid*)).ti,ab.	18974
224	(patient adj3 (attitude? or preference)).ti,ab.	8813
225	"patient satisfaction".ti.	7252
226	coping.ti,ab.	66953
227	("self perception" or "self concept").ti,ab.	10423
228	("informed choice" or "shared decision making").ti,ab.	13380
229	empowerment.ti,ab.	15308
230	("focus group*" adj3 (patient* or parent* or famil* or spouse*)).ti,ab.	2965
231	(QoL or "Quality of life").ti.	85089
232	((patient* or consumer* or parent* or famil* or spouse*) adj (attitude* or involvement or desir* or perspective* or activation or view* or preference*)).ti,ab.	54704
233	"expert patient*".ti,ab.	295
234	"focus group*".ti,ab.	60094
235	qualitative.ti.	65090
236	(Stress, Psychological/ or Emotions/ or vignette*.ti,ab.) and (exp Patients/px or patient*.ti. or consumer*.ti.)	17665
237	or/214-236	629126
238	213 or 237	1559255
Qualitative evidence		
239	173 or 238	3776020
PPE & respiratory viruses & qualitative evidence		
240	38 and 239	2143
241	240 not (131 or 87)	1241
PPE & respiratory viruses – everything else/other		
242	38 not (87 or 131 or 240)	3828