

1 **Severe cognitive decline in long-term care is related to gut microbiome production of**
2 **metabolites involved in neurotransmission, immunomodulation, and autophagy**

3

4 Andrew P. Shoubridge^{1,2}, Lucy Carpenter^{1,2}, Erin Flynn¹, Lito E. Papanicolas^{1,2,3}, Josephine
5 Collins¹, David Gordon^{3,4}, David J. Lynn^{2,5}, Craig Whitehead^{6,7}, Lex E.X. Leong³, Monica
6 Cations^{7,8}, David P. De Souza⁹, Vinod K. Narayana⁹, Jocelyn M. Choo^{1,2}, Steve L.
7 Wesselingh^{1,2,7}, Maria Crotty^{6,7}, Maria C. Inacio^{7,10}, Kerry Ivey^{1,11}, Steven L. Taylor^{1,2#},
8 Geraint B. Rogers^{1,2##}

9

10 ¹ Microbiome and Host Health Program, South Australian Health and Medical Research
11 Institute, Adelaide, SA, Australia.

12 ² Infection and Immunity, Flinders Health and Medical Research Institute, College of
13 Medicine and Public Health, Flinders University, Bedford Park, SA, Australia.

14 ³ SA Pathology, Adelaide, SA, Australia.

15 ⁴ Department of Microbiology and Infectious Diseases, Flinders Medical Centre, Bedford
16 Park, SA, Australia.

17 ⁵ Computational & Systems Biology Program, South Australian Health and Medical Research
18 Institute, Adelaide, SA, Australia.

19 ⁶ Department of Rehabilitation, Aged and Palliative Care, Flinders Medical Centre, Flinders
20 University, Bedford Park, SA, Australia.

21 ⁷ Registry of Senior Australians, South Australian Health and Medical Research Institute,
22 Adelaide, SA, Australia.

23 ⁸ College of Education, Psychology and Social Work, Flinders University, Bedford Park, SA,
24 Australia

25 ⁹ Bio21 Institute and Department of Biochemistry and Molecular Biology, University of
26 Melbourne, Parkville, VIC, Australia.

NOTE: This preprint reports new research that has not been certified by peer review and should not be used to guide clinical practice.

27 ¹⁰ Allied Health and Human Performance, University of South Australia, Adelaide, SA,
28 Australia.

29 ¹¹ Department of Nutrition, Harvard University T.H. Chan School of Public Health, Boston,
30 MA, USA.

31

32 # These authors share senior authorship.

33 * Correspondence:

34 Professor Geraint B. Rogers

35 Director, Microbiome & Host Health, South Australian Health and Medical Research

36 Institute, North Terrace, Adelaide, SA 5001, Australia.

37 geraint.rogers@sahmri.com

38 +61 (0)403 558251

39 **Summary**

40 Ageing-associated cognitive decline affects more than half of those in long-term residential
41 aged care. Emerging evidence suggests that gut microbiome-host interactions influence the
42 effects of modifiable risk factors. We investigated the relationship between gut microbiome
43 characteristics and severity of cognitive impairment (CI) in 159 residents of long-term aged
44 care. Severe CI was associated with a significantly increased abundance of proinflammatory
45 bacterial species, including *Methanobrevibacter smithii* and *Alistipes finegoldii*, and decreased
46 relative abundance of beneficial bacterial clades. Severe CI was associated with increased
47 microbial capacity for methanogenesis, and reduced capacity for synthesis of short-chain fatty
48 acids, neurotransmitters glutamate and gamma-aminobutyric acid, and amino acids required
49 for neuro-protective lysosomal activity. These relationships were independent of age, sex,
50 antibiotic exposure, and diet. Our findings implicate multiple gut microbiome-brain pathways
51 in ageing-associated cognitive decline, including inflammation, neurotransmission, and
52 autophagy, and highlight the potential to predict and prevent cognitive decline through
53 microbiome-targeted strategies.

54

55 **Keywords**

56 Aged care, microbiome, cognitive impairment, microbiome-gut-brain axis.

57 **Introduction**

58 Progressive loss of cognitive function is a common feature of ageing and is not limited to those
59 with dementia (Albert et al., 1995; Comijs et al., 2004; Harada et al., 2013; Verdi et al., 2018).
60 Contributory pathologies, often occurring in combination, include ischaemic or haemorrhagic
61 infarcts within the brain (characteristic of vascular dementia) (Henon et al., 2001; Ye et al.,
62 2015), the accumulation of amyloid plaques and neurofibrillary tangles (characteristic of
63 Alzheimer's disease) (Bussian et al., 2018; Luo et al., 2020), and the development of abnormal
64 collections of alpha-synuclein protein within diseased brain neurons (characteristic of Lewy
65 body dementia) (Lin et al., 2017; Mattila et al., 2000). While these pathophysiological
66 processes are increasingly well-characterised, the factors that contribute to them and their
67 relationship to external risk exposures remain poorly understood.

68
69 In addition to genetic factors (Koistinaho et al., 2004; Lin et al., 2018; Liu et al., 2017; Parcon
70 et al., 2018; Shi et al., 2017; Ulrich et al., 2018), modifiable risk factors associated with
71 dementia have been identified. Modifiable risk factors include exposures (smoking, excessive
72 alcohol consumption, physical inactivity, air pollution, diet); health conditions (hypertension,
73 obesity, depression, diabetes, traumatic brain injury, hearing impairment), and social factors
74 (less education, and low social contact) (Livingston et al., 2020). Together, these modifiable
75 risk factors are estimated to account for 40% of dementia incidence (Livingston et al., 2020).
76 Identifying how such factors influence the pathophysiology of ageing-associated cognitive
77 impairment (CI) is essential to the development of effective prevention and treatment.

78
79 The gut microbiome influences neurophysiology, central nervous system, and cognitive
80 function through discrete bidirectional pathways, collectively termed the microbiome-gut-
81 brain axis (Cryan et al., 2019; Rogers et al., 2016; Sharon et al., 2016; Shoubridge et al., 2022).

82 These pathways include the microbial synthesis of neurotransmitters, such as gamma-
83 aminobutyric acid (GABA), noradrenaline, dopamine and serotonin (Valles-Colomer et al.,
84 2019; Yano et al., 2015), the modulation of systemic immunity (Correa-Oliveira et al., 2016;
85 Dalile et al., 2019), and metabolism of essential amino acids, such as tyramine and tryptophan
86 (Lai et al., 2021; Marx et al., 2021). They also involve production of immune and metabolically
87 active metabolites, such as short-chain fatty acids (SCFAs) and 4-ethylphenylsulfate, and
88 activation of nerve growth factor, glial-derived neurotrophic factor, and brain-derived
89 neurotrophic factor secretion (Bonfili et al., 2021; Soto et al., 2018). Such microbial traits have
90 the potential to contribute substantially to the development of neurological diseases, including
91 Alzheimer's (Kim et al., 2020; Vogt et al., 2017), Huntington's (Bjorkqvist et al., 2008; Du et
92 al., 2020; Wasser et al., 2020), and Parkinson's diseases (Sampson et al., 2016; Sun et al.,
93 2018).

94
95 Ageing-associated gut microbiome characteristics (Claesson et al., 2011; Meyer et al., 2022)
96 are linked to progressive frailty and cognitive decline (Komanduri et al., 2021; Manderino et
97 al., 2017; Meyer et al., 2022; Verdi et al., 2018). External exposures that disrupt the
98 microbiome, such as antibiotics, can further contribute to altered neurological homeostasis and
99 poorer cognitive outcomes (Desbonnet et al., 2015; Frohlich et al., 2016; Lynn et al., 2021). In
100 contrast, dietary interventions that alter the composition of the gut microbiome in a beneficial
101 manner can result in improvements in cognitive function (Ghosh et al., 2020). Such findings
102 suggest that the relationship between the gut microbiome and host neurophysiology may
103 provide a basis to predict and/or prevent the onset and progression of ageing-associated
104 cognitive decline. Potential causality in these relationships is suggested by studies that have
105 successfully recapitulated impairment of memory and synaptic plasticity following faecal
106 microbiota transplant from aged mice to younger mice (D'Amato et al., 2020).

107

108 Our aim was to explore whether the severity of CI experienced by residents of long-term aged
109 care facilities (sometimes referred to as nursing homes, care homes, or residential aged care
110 facilities) is associated with characteristics of the gut microbiome, and if so, whether such
111 relationships might provide mechanistic insight into CI pathogenesis.

112 **Materials and Methods**

113 **Study design, cohort and data collection**

114 The Generating evidence on Resistant bacteria in the Aged Care Environment (GRACE) study
115 (www.gracestudy.com.au) was a cohort study supported by the Australian Medical Research
116 Future Fund (Grant No. GNT1152268). Ethical approval for the study was obtained from the
117 Southern Adelaide Clinical Human Research Ethics Committee (HREC/18/SAC/244). The
118 GRACE study investigated the carriage and transfer of resistant bacteria in long-term aged care
119 facilities and was conducted between 2018 and 2020. GRACE enrolled 279 residents in five
120 long-term aged care facilities in metropolitan South Australia. Anonymised participant data,
121 including assessments of cognition and behaviour, were collected via an entry into care funding
122 assessment (Aged Care Funding Instrument [ACFI]), in addition to medications prescribed via
123 the Pharmaceutical Benefits Scheme (PBS) (Carpenter, 2021).

124

125 **Assessment of cognitive impairment**

126 The *Cognitive Skills* component of the ACFI was used as a basis for assessment of cognitive
127 impairment. This cognitive skills component assesses a person's cognitive abilities in everyday
128 activities, including memory, self-care, and orientation (AIHW, 2002; Department of Health
129 and Ageing, 2016), as defined via the Psychogeriatric Assessment Scales – Cognitive
130 Impairment Scales (PAS-CIS) method (Jorm et al., 1995). Where individuals were unable to
131 undertake the PAS-CIS test, for example, non-English speaking, sensory impairment, or severe
132 cognitive impairment beyond the scope of the instrument, the ACFI cognitive skills assessment
133 was based on a clinical report by a registered health professional (Department of Health and
134 Ageing, 2016). The ACFI cognitive skills component utilised the PAS-CIS and/or clinical
135 reports to rate an individual's level of cognitive impairment as none or minimal (PAS-CIS =
136 0-3), mild (4-9), moderate (10-15), or severe (16-21).

137

138 **Cognitive impairment cohort**

139 GRACE participants were categorised according to their cognitive skills rating, as defined in
140 the ACFI. Participants were excluded if: 1) their cognitive skills assessment was not completed
141 or missing, 2) the date of stool collection was not known, 3) the date of the cognitive assessment
142 was not known, 4) the participant was diagnosed with a developmental or intellectual disability,
143 or 5) the period between cognitive skills assessment and stool sample collection was not known
144 or was deemed an outlier (>1462 days as determined using the ROUT method of regression
145 and outlier removal (Motulsky & Brown, 2006)). A total of 45 participants were excluded
146 (detailed in **Supplementary Fig. 1**). Participants with dementia and a missing PAS-CIS rating
147 were imputed the median PAS-CIS value from their cognitive skills assessment group. Mental
148 and behavioural diagnoses of dementia, depression, and delirium were ascertained from the
149 ACFI, where a documented diagnosis from a medical practitioner was provided.

150

151 **Faecal collection, DNA extraction, metagenomic sequencing and bioinformatics**

152 Stool was collected and stored using Norgen Stool Nucleic Acid Collection and Preservation
153 Tubes (Norgen Biotek, ON, Canada) and microbial DNA extracted using the PowerLyzer
154 PowerSoil DNA Isolation Kit (Qiagen, Hilden, Germany) as described previously (Carpenter,
155 2021). Indexed, paired-end DNA libraries were prepared using the Nextera XT DNA Library
156 Prep Kit (Illumina, CA, USA), as per manufacturer's instructions. Samples were sequenced at
157 a depth of 5 Gb on an Illumina Novaseq platform with 150bp paired-end reads. Forward and
158 reverse sequences were quality-filtered using Trimmomatic (v0.39) and human reads were
159 removed with Bowtie (v2.3.5.1) against the NCBI human reference genome release GRCh38
160 (Bolger et al., 2014; Langmead & Salzberg, 2012). Taxonomic relative abundance was
161 assigned using MetaPhlAn (v3.0) (Beghini et al., 2021), while microbial metabolic pathway

162 abundance was assigned using HUMAnN (v3.0) against the MetaCyc database (Beghini et al.,
163 2021). Sequence data has been entered into the European Nucleotide Archive (ENA) at EMBL-
164 EBI under accession number PRJEB51408.

165

166 **Microbiome characterisation**

167 The taxonomic relative abundance at the species level was used to generate alpha diversity
168 (within-group) and beta diversity (between-group) measures. Alpha diversity measures
169 included Pielou's evenness (J' : a score between 0-1 where scores are influenced more by the
170 evenness of abundant species), the Shannon-Wiener diversity (H'): a score of the number and
171 equal representation of different types of species (Peet, 1974), and species richness (d : total
172 number of unique species identified per participant), and were generated using the 'vegan' R
173 package (Oksanen, 2022).

174

175 The Bray-Curtis index was calculated to compare microbiome similarity between groups (beta
176 diversity), using square-root transformed species relative abundance data (PRIMER 6
177 (v6.1.16)). For sensitivity analysis, weighted and unweighted UniFrac distance matrices
178 (Lozupone & Knight, 2005) were calculated using the "calculate_unifrac" MetaPhlAn R script
179 (Beghini et al., 2021). Non-metric multidimensional scaling (nMDS) plots for all beta diversity
180 measures were generated using the 'vegan' package in R and visualised using 'ggplot2'.

181

182 **Microbial functional profiling**

183 The functional capacity of the gut microbiota was defined by the genetically encoded functional
184 traits detected within the metagenome. These MetaCyc pathways from HUMAnN were filtered
185 to only analyse those present in >30% of participants. Two functional profiling analyses were
186 performed: an untargeted analysis of all filtered pathways (n=400), and a targeted analysis

187 based on pathways with a hypothesised functional role in cognitive impairment (n=70). These
188 included pathways involved in neurotransmitter biosynthesis (n=2), SCFA production (n=25),
189 and amino acid biosynthesis (n=43).

190

191 **Metabolite profiling**

192 As a confirmatory analysis of microbial functional capacity, the metabolomic profile of a
193 randomly selected subgroup of individuals (n=35; n=11-12/group) was established. Stool
194 metabolite analysis was performed on an Agilent 1200 series high-performance liquid
195 chromatography system (Agilent Technologies) (methods modified from (Gubert et al., 2022;
196 Kong et al., 2021) and detailed in **Supplementary Text 1**). Briefly, metabolite extraction and
197 analysis were performed separately for SCFAs and polar metabolites. SCFAs analysis was
198 performed using an Agilent 6490 series triple quadrupole mass spectrometer (Agilent
199 Technologies) while polar metabolites (a screen for 165 low molecular weight metabolites, e.g.
200 amino acids) were analysed using an Agilent 6545 series quadrupole time-of-flight mass
201 spectrometer (Agilent Technologies). Resultant data matrices were imported to the web-based
202 platform MetaboAnalyst (v5.0) for quality control checks. SCFA data were normalised to
203 internal standards, and polar metabolite data were log-transformed and median-normalised.

204

205 **Covariates**

206 Covariates were: days since cognitive assessment (below or equal/above the median), age (low,
207 medium or high tertile), sex (male or female), medication history (Pharmaceutical Benefits
208 Scheme (PBS) data available or unavailable), medications that affect gastrointestinal health
209 and are prevalent in aged care facilities: antibiotic use (yes or no); proton pump inhibitor use
210 (yes or no); opioid use (yes or no); laxative use (yes or no), meal texture at time of cognitive
211 assessment (regular or soft/smooth), and liquid texture at time of cognitive assessment

212 (normal/thin or thick). Medication use was defined as two or more supplies to a resident within
213 90 days prior to stool collection.

214

215 **Statistical analysis**

216 Both unadjusted and multivariate regression models were applied in all analyses. Multivariate
217 adjusted models accounted for time between cognitive assessment and stool collection, age,
218 sex, antibiotics, proton pump inhibitors, opioids, laxatives, meal texture, and liquid texture (as
219 detailed above).

220

221 Beta diversity analysis was performed using permutational multivariate analyses of variance
222 (PERMANOVA) on Bray-Curtis, weighted, and unweighted UniFrac distance matrices in an
223 unrestricted permutation of raw data. Only the Bray-Curtis metric was assessed with the
224 multivariate-adjusted model. PERMANOVA analyses were performed using PRIMER 6, with
225 9999 permutations.

226

227 Within-individual microbiome variables included alpha diversity, phyla-level relative
228 abundance (only those detected in >30% of participants), species-level relative abundance
229 (only those detected in >30% of participants), metabolic pathway abundance (only those
230 detected in >30% of participants), and metabolite intensities. All within-individual variables
231 were converted to groups consisting of: zero values, tertile 1, tertile 2, and tertile 3. Ordinal
232 logistic regression was performed to assess the effect of CI on microbiome variables using the
233 ‘MASS’ function in R. The odds ratios and 95% confidence intervals for the coefficients of the
234 regression models were calculated and tested for statistical significance ($p < 0.05$) as CI severity
235 increased, using the PAS-CIS score of cognitive impairment as the predictor variable. False
236 Discovery Rate (FDR) multiple hypothesis testing was conducted with the Benjamini and

237 Hochberg method across all profiles using the ‘p.adjust’ function in R, at a significant threshold
238 of 0.05. Correlations between microbial functional capacity and detected metabolites were
239 calculated by two-tailed Spearman correlations and tested for statistical significance ($p < 0.05$).

240 **Results**

241 The study group of 159 participants did not differ from the original GRACE cohort in any of
242 the assessed characteristics (**Supplementary Table 1**). CI was classified as mild in 46
243 individuals (28.9%) with a median PAS-CIS score of 6.6 (IQR=5.0-8.0), moderate in 58
244 (36.5%; PAS-CIS median=11.0; IQR=11.0-12.8), and severe in 55 (34.6%; PAS-CIS
245 median=18.0; IQR=17.0-18.8) (**Table 1; Supplementary Fig. 2A**). The median time from
246 assessment of cognitive skills to the subsequent collection of stool samples was 437 days (IQR:
247 185-741). Participant age, sex ratio, time since cognitive assessment, and use of antibiotics,
248 opioids, and laxatives, did not differ significantly between CI severity categories ($p>0.05$;
249 **Supplementary Fig. 2B-F**). However, the number of days that an individual had been residing
250 in long-term aged care was significantly higher for those in the severe CI group (median=939
251 days; IQR=219-854) compared to the mild CI group (median=500 days; IQR=130-627;
252 $p<0.05$). Proton pump inhibitor usage was significantly lower in the severe CI group ($p<0.05$).
253 Within the severe CI group, 53/55 (96.4%) had a concurrent diagnosis of dementia, 33/58
254 (56.9%) of moderate CI had a dementia diagnosis, and 4/46 (8.7%) of those with mild CI.

255

256 **Gut microbiome characteristics differ by CI severity**

257 Gut microbiome characterisation of long-term aged care residents with CI was determined by
258 metagenomic sequencing of collected stool samples (**Fig. 1A**). A total of 11 bacterial phyla
259 were detected across the 159 stool samples, consisting of 186 genera (586 species). The
260 composition and distribution of taxa was broadly similar with previous studies of aged
261 populations (Claesson et al., 2011; Jackson et al., 2016), with high representation of
262 *Eggerthella lenta*, *Escherichia coli*, *Faecalibacterium prausnitzii*, and *Clostridium* species
263 (**Fig. 1B**), and genera within the Bacteroidota (formerly Bacteroides) and Bacillota
264 (Firmicutes) phyla (**Fig. 1C**).

265

Demographic	Mild (n=46)	Moderate (n=58)	Severe (n=55)	Total (n=159)
Age (years): Median (IQR)	87.5 (81.3;93.6)	90.3 (83.7;95.0)	87.9 (82.0;93.0)	88.7(82.1; 93.5)
Sex: n (%)				
Female	27 (58.7)	42 (72.4)	40 (72.7)	109 (68.6)
Male	19 (41.3)	16 (27.6)	15 (27.3)	50 (31.4)
PAS-CIS: Median (IQR)	6.6 (5.0;8.0)	11.0 (11.0;12.8)	18.0 (17.0;18.8)	10.8 (7.0;18.0)
Time between CI assessment and stool collection (days): Median (IQR)	345.5 (148.5,654.5)	421.5 (182.3,734.3)	487.0 (252.0,909.0)	437.0 (185.0,741.0)
Time since entry to facility (days): Median (IQR)	500 (253.0,947.5)	704 (299.0,983.0)	962 (502.0,1198.0)	681 (360.0,1015.0)
Dementia diagnosis: % (n)[#]	8.7 (4)	56.9 (33)	96.4 (53)	56.6 (90)
Memory Support Unit[^]: n (%)	0 (0.0)	4 (6.9)	19 (34.5)	23 (14.5)
Meal texture: n (%)				
Regular	38 (82.6)	44 (75.9)	30 (54.5)	112 (70.4)
Soft/smooth	8 (17.4)	14 (24.1)	25 (45.5)	47 (29.6)
Liquid texture: n (%)				
Normal/thin	42 (91.3)	54 (93.1)	49 (89.1)	145 (91.2)
Thick	4 (8.7)	4 (6.9)	6 (10.9)	14 (8.8)
Antibiotics (at least 2 supplied[*]): n (%)	10 (21.7)	7 (12.1)	5 (9.1)	22 (13.8)
Proton pump inhibitors (at least 2 supplied[*]): n (%)	23 (50.0)	23 (39.7)	12 (21.8)	58 (36.5)
Opioids (at least 2 supplied[*]): n (%)	8 (17.4)	12 (20.7)	14 (25.5)	34 (21.4)
Laxatives (at least 2 supplied[*]): n (%)	6 (13.0)	6 (10.3)	9 (16.4)	21 (13.2)

266

267 **Table 1.** Study Cohort Characteristics by Severity of Cognitive Impairment.

268 [#]Extracted from Aged Care Funding Instrument data.

269 [^]Memory support units (also known as dementia units/wards, memory care, or special care

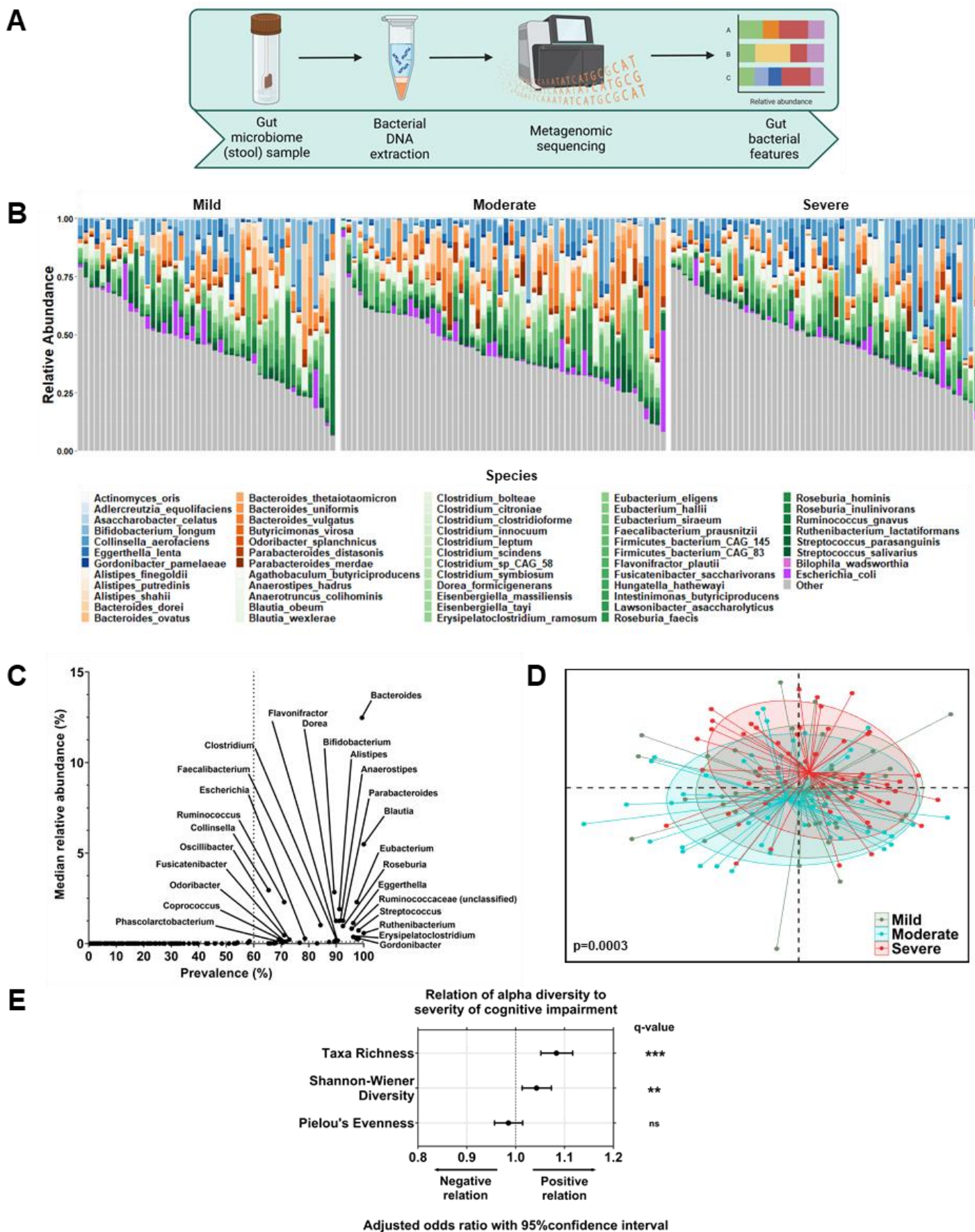
270 units) are secure areas within long-term care facilities specially designed to accommodate

271 residents with dementia.

272 ^{*}Medication use defined as two or more supplies of the same medication within 90 days prior

273 to stool collection.

274



276 **Figure 1. Gut microbiome of residents of long-term aged care facilities stratified by**
277 **cognitive impairment (CI).** **A)** Characterisation of the gut microbiome of long-term aged care
278 residents with cognitive impairment determined by metagenomic sequencing of collected stool
279 samples. **B)** Taxa bar plot of core species grouped by cognitive impairment severity (present
280 in >60% of participants). Species coloured by phyla: Actinomycetota = blues; Bacteroidota =
281 oranges; Bacillota = greens; Pseudomonadota = purples; non-core species (other) = grey. **C)**
282 The frequency of genera detected and their median relative abundances, labelled with core
283 genera. **D)** Non-metric multidimensional scaling plot of Bray-Curtis similarity matrix, grouped
284 by CI severity (mild, n=46; moderate, n=58; severe, n=55), showing significant divergence
285 between CI groups following multivariate analysis ($p(\text{perm})=0.0003$). **E)** Odds ratio and 95%
286 confidence interval of effect of CI severity on microbiome diversity (taxa richness, Shannon-
287 Wiener diversity, and Pielou's evenness), following multivariate analysis. Multivariate
288 analysis adjusted for time since CI assessment, age, sex, antibiotic use, proton pump inhibitor
289 use, opioid use, laxative use, recorded medical history, meal texture, and liquid texture. ns=not
290 significant; ** $q<0.01$; *** $q<0.001$ for adjusted p-values following FDR correction.

291 Following adjustment for time since cognitive assessment, age, sex, medication use, and diet,
292 the faecal microbiota composition differed significantly between mild, moderate, and severe
293 CI (p(permutation)=0.0003; $R^2=2.21\%$; **Fig. 1D**; **Table 2**). This difference was greatest between
294 severe CI and mild CI (p(permutation)=0.0023), and severe CI and moderate CI (p(permutation)=0.0003),
295 and consistent with the unadjusted model (**Table 2**). Repeated analysis using weighted and
296 unweighted UniFrac dissimilarity did not identify significant intergroup differences, apart from
297 between mild and moderate CI groups using weighted UniFrac dissimilarity (unadjusted
298 p(permutation)=0.037; **Supplementary Fig. 4**).

299
300 Analysis of microbiota diversity identified a positive association between CI severity and taxa
301 richness (odds ratio (OR): 1.08 [95% confidence interval 1.05, 1.12], $q<0.001$) and Shannon-
302 Wiener diversity (OR: 1.043 [1.013, 1.073], $q<0.05$; **Fig. 1E**). However, there was no
303 association between CI severity and Pielou's evenness (OR: 0.985 [0.957, 1.014], $q>0.05$; **Fig.**
304 **1E**).

305
306 To assess whether specific taxa differed with CI, phylum-level and species-level relative
307 abundances were assessed. Of the seven phyla present in at least 30% of participants, five
308 differed significantly with CI (**Fig. 2**). Pseudomonadota (Proteobacteria) (OR: 0.937 [0.909,
309 0.965], $q<0.001$) and Bacillota (OR: 0.943 [0.915, 0.971], $q<0.001$) were lower with increasing
310 CI severity (**Fig. 2**). In contrast, Euryarchaeota (OR: 1.097 [1.065, 1.131], $q<0.001$),
311 Actinomycetota (Actinobacteria) (OR: 1.066 [1.035, 1.099], $q<0.001$), and Synergistota
312 (Synergistetes) (OR: 1.043 [1.008, 1.079], $q<0.05$) were higher with increasing CI severity
313 (**Fig. 2**).

314

315

	Unadjusted Model			Multivariate-adjusted Model ^a		
Main Test	Pseudo- <i>F</i> Ratio	<i>R</i> ²	p(perm) [^]	Pseudo- <i>F</i> Ratio	<i>R</i> ²	p(perm) [^]
Cognitive Impairment*	1.9646	0.0246	0.0002	1.815	0.0221	0.0003
Pairwise Test	<i>t</i>		p(perm) [^]	<i>t</i>		p(perm) [^]
Mild v Moderate	1.0596		0.2583	1.1135		0.1478
Mild v Severe	1.4474		0.0017	1.4228		0.0023
Moderate v Severe	1.6304		0.0002	1.5265		0.0003

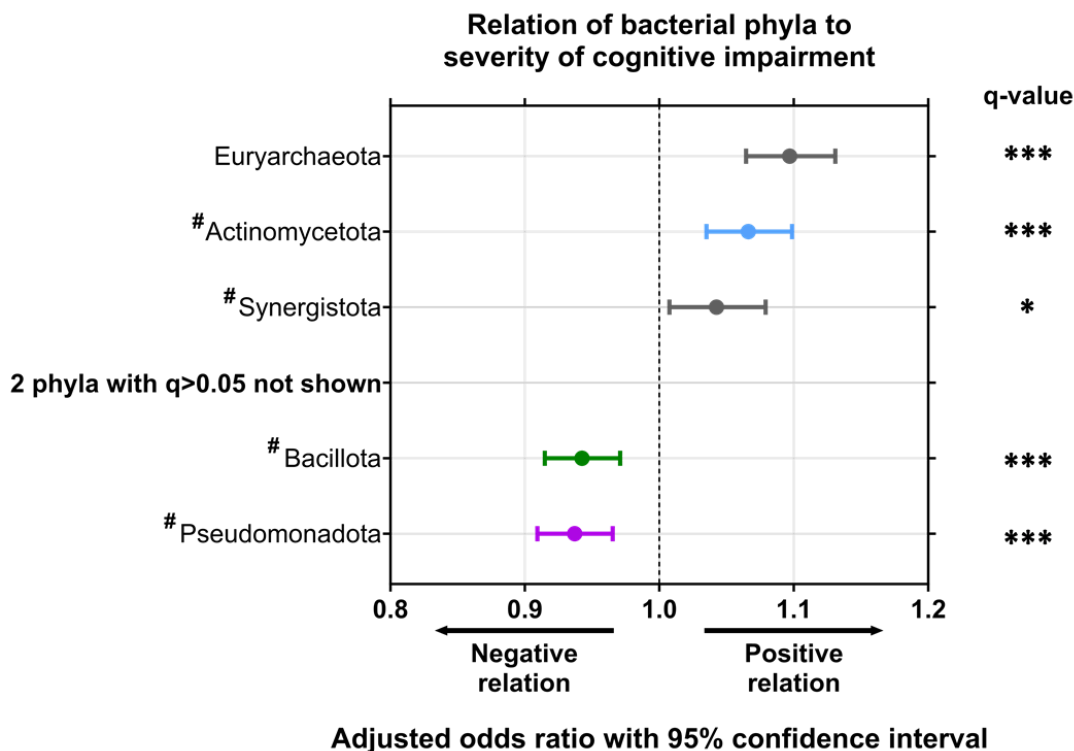
316

317 **Table 2.** Permutational ANOVA of the gut microbiome by severity of cognitive impairment.

318 ^aTime since cognitive impairment assessment + age + sex+ antibiotic use + proton pump
319 inhibitor use + opioid use + laxative use + recorded medication history + meal texture + liquid
320 texture.

321 [^]Permutation p-value generated with a PERMANOVA.

322 *Degrees of freedom = 2.



323

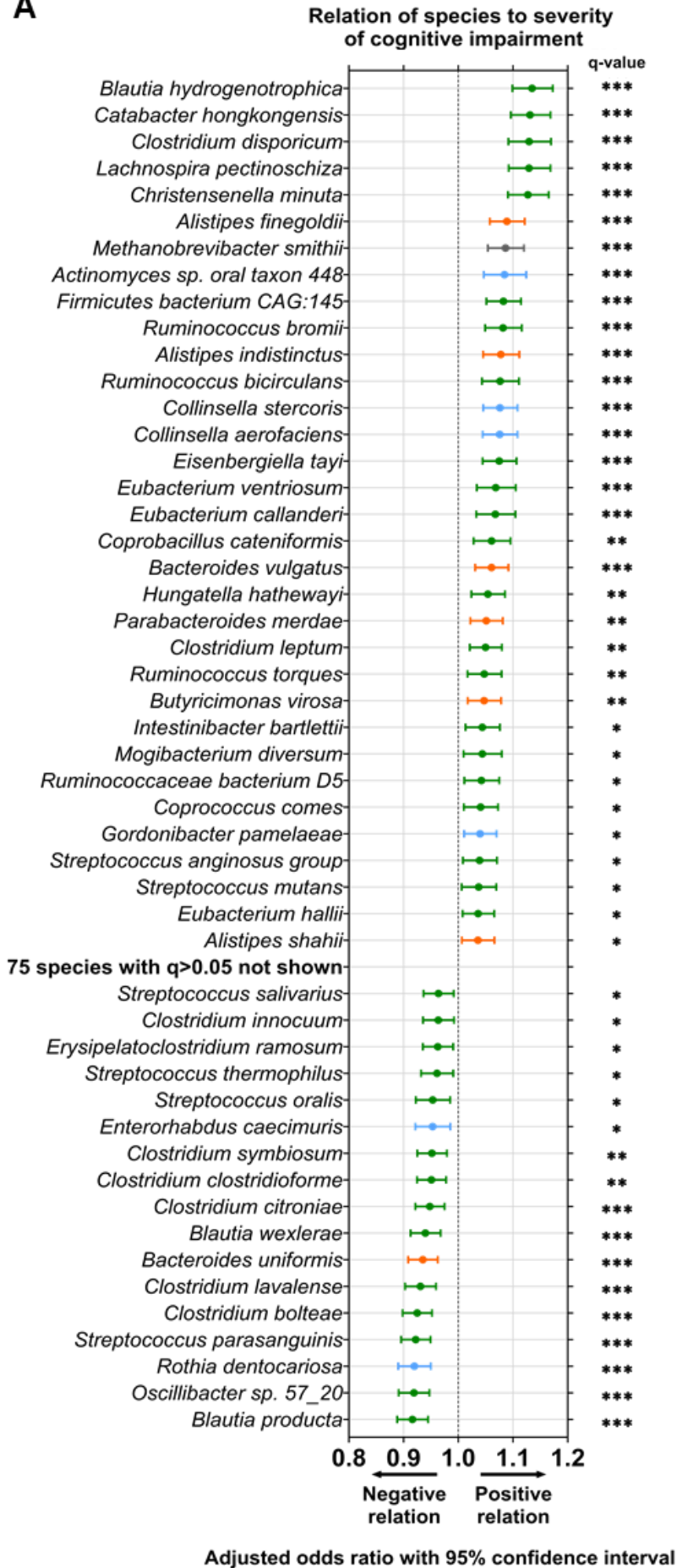
324 **Figure 2. Phyla-level differences in the gut microbiome of residents of long-term aged**
 325 **care by cognitive impairment.** Odds ratio and 95% confidence interval of effect of cognitive
 326 impairment severity on phyla relative abundance. Colours indicate bacterial phyla: blue =
 327 Actinomycetota; green = Bacillota; purple = Pseudomonadota; grey = non-core species.
 328 Performed by multivariate analysis, adjusting for time since cognitive impairment assessment,
 329 age, sex, antibiotic use, proton pump inhibitor use, opioid use, laxative use, recorded medical
 330 history, meal texture, and liquid texture. #Denotes phyla with recently amended names:
 331 Actinomycetota (Actinobacteria), Synergistota (Synergistetes), Bacillota (Firmicutes), and
 332 Pseudomonadota (Proteobacteria). * $q < 0.05$; *** $q < 0.001$ for adjusted p-values following FDR
 333 correction.

334 Bacterial species that were detected in at least 60% of participants, and with a relative
335 abundance of at least 0.1%, were denoted as “core” taxa (**Supplementary Table 2**). Of the 586
336 microbial species identified across the entire cohort, 30 were identified as core in mild CI
337 (**Supplementary Fig. 5A**), 31 in moderate CI (**Supplementary Fig. 5B**), and 29 in severe CI
338 (**Supplementary Fig. 5C**).

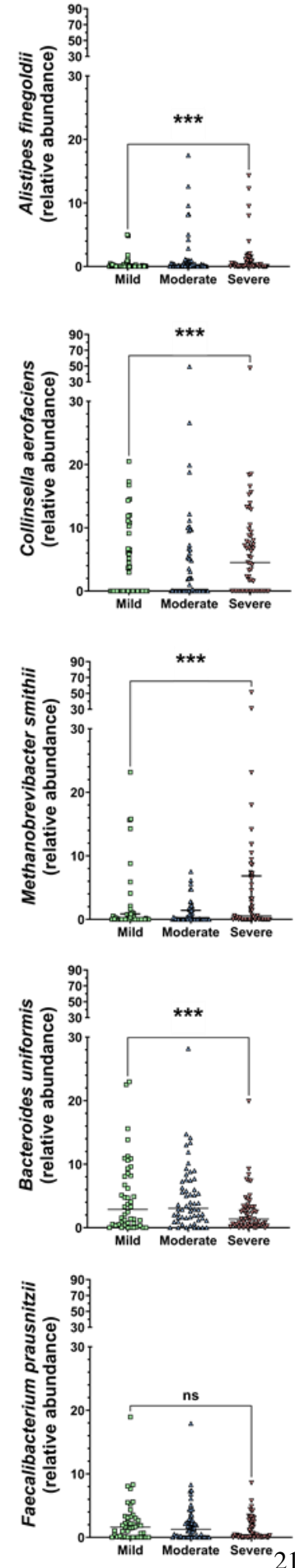
339
340 Comparison of species relative abundances identified 50 species that differed significantly with
341 CI severity (**Fig. 3A**). Notably, *Blautia hydrogentrophica* (OR: 1.135 [1.099, 1.173]),
342 *Catabacter hongkongensis* (OR: 1.131 [1.096, 1.168]), and *Alistipes finegoldii* (OR: 1.089
343 [1.058, 1.121]), had the strongest positive association with CI severity (all $q < 0.001$, **Fig. 3A**).
344 Further, *Collinsella aerofaciens* and *Methanobrevibacter smithii* were not only positively
345 associated with CI severity ($q < 0.001$, **Fig. 3A**), they were also core species in severe CI, but
346 not mild or moderate (**Fig. 3B, Supplementary Table 2, Supplementary Fig. 5**). In contrast,
347 *Bacteroides uniformis* (OR: 0.935 [0.908, 0.962]), *Blautia producta* (OR: 0.916 [0.888, 0.945])
348 and *Blautia wexlerae* (OR: 0.940 [0.913, 0.968]) were among those with the strongest inverse
349 association with CI severity (all $q < 0.001$, **Fig. 3A**). *Faecalibacterium prausnitzii*, a species
350 previously associated with health outcomes in ageing (Jackson et al., 2016), was also found to
351 trend lower in this cohort with increasing CI severity, but this did not achieve statistical
352 significance (OR: 0.986 [0.958, 1.014], $q = 0.421$, **Fig. 3A**; $p > 0.05$, **Fig. 3B**).

353

A



B



354 **Figure 3. Species-level differences in the gut microbiome of residents of long-term aged**
355 **care by cognitive impairment.** A) Odds ratio and 95% confidence interval of effect of
356 cognitive impairment severity on species relative abundance. Colours indicate bacterial phyla:
357 blue = Actinomycetota; orange = Bacteroidota; green = Bacillota = green; grey = other.
358 Performed by multivariate analysis, adjusting for time since cognitive impairment assessment,
359 age, sex, antibiotic use, proton pump inhibitor use, opioid use, laxative use, recorded medical
360 history, meal texture, and liquid texture. B) The relative abundance of bacterial species
361 associated with cognitive impairment severity and aging: *Alistipes fingoldii*, *Collinsella*
362 *aerofaciens*, *Methanobrevibacter smithii*, *Bacteroides uniformis*, and *Faecalibacterium*
363 *prausnitzii*. ns=not significant; * $q < 0.05$; ** $q < 0.01$; *** $q < 0.001$ for adjusted p-values
364 following FDR correction. Mild, n=46; moderate, n=58; severe, n=55.

365 **The functional capacity and output of the gut microbiota differs with CI severity**

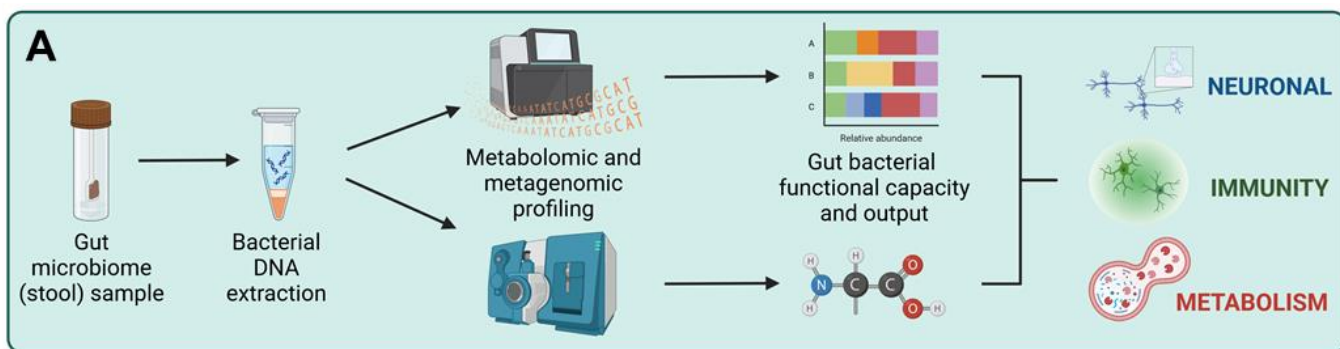
366 Differences in the functional capacity of the gut microbiota were identified with increasing CI
367 severity. Four hundred MetaCyc pathways were detected in >30% of participants, of which, 70
368 were selected based on their potential influence on CI, including via mechanisms relating to
369 neurotransmission, immunity, and metabolism. Metabolomic analysis of a subgroup of
370 individuals (n=35; n=11-12/group) confirmed these findings (**Fig. 4A**). A total of 165 polar
371 metabolites were detected in stool samples from these participants, including 33 metabolites
372 classed as amino acids, peptides, and analogues, 50 classed as lipids and lipid-like molecules,
373 18 classed as carbohydrates, and 64 classed within other categories (**Supplementary Fig. 6A**),
374 in addition to nine SCFAs (**Supplementary Fig. 6B**). Pathways inversely associated with CI
375 severity included PWY-5505, a pathway essential to the production of the primary excitatory
376 neurotransmitter glutamate (OR: 0.922 [0.895, 0.949], $q < 0.001$), and GLUDEG-I-PWY, a
377 pathway essential to the production of the primary inhibitory neurotransmitter GABA (OR:
378 0.962 [0.934, 0.990], $q < 0.05$, **Fig. 4B**). The metabolite and excitatory neurotransmitter
379 glutamate was present at lower levels in individuals with severe CI (**Fig. 4C**). Similarly,
380 pathways related to the production of immunomodulatory SCFAs, including acetate (P461-
381 PWY; OR: 0.877 [0.850, 0.904], $q < 0.001$), propionate (P108-PWY; OR: 0.939 [0.913, 0.966],
382 $q < 0.001$), and butyrate (PWY-5022; OR: 0.935 [0.908, 0.962], $q < 0.001$, **Fig. 4D**) were also
383 lower in relative abundance as CI severity increased. The decrease in immune functional
384 capacity corresponded with depleted levels of immunomodulating SCFA metabolites in
385 individuals with severe CI, including for butyrate ($q < 0.01$), propionate ($q < 0.01$), and acetate
386 ($q < 0.05$, **Fig. 4E**; **Supplementary Fig. 7**). Functional pathways related to the biosynthesis of
387 amino acids that regulate key metabolic processes, such as autophagy, included L-arginine
388 (PWY-5154; OR: 0.911 [0.884, 0.938], $q < 0.001$), L-lysine, L-threonine, and L-methionine
389 (P4-PWY; OR: 0.905 [0.878, 0.932], $q < 0.001$), and were among the most depleted at higher

390 CI severity (**Fig. 4F**). Production of amino acid polar metabolites also decreased with
391 increasing CI severity (**Fig. 4G; Supplementary Fig. 7**).

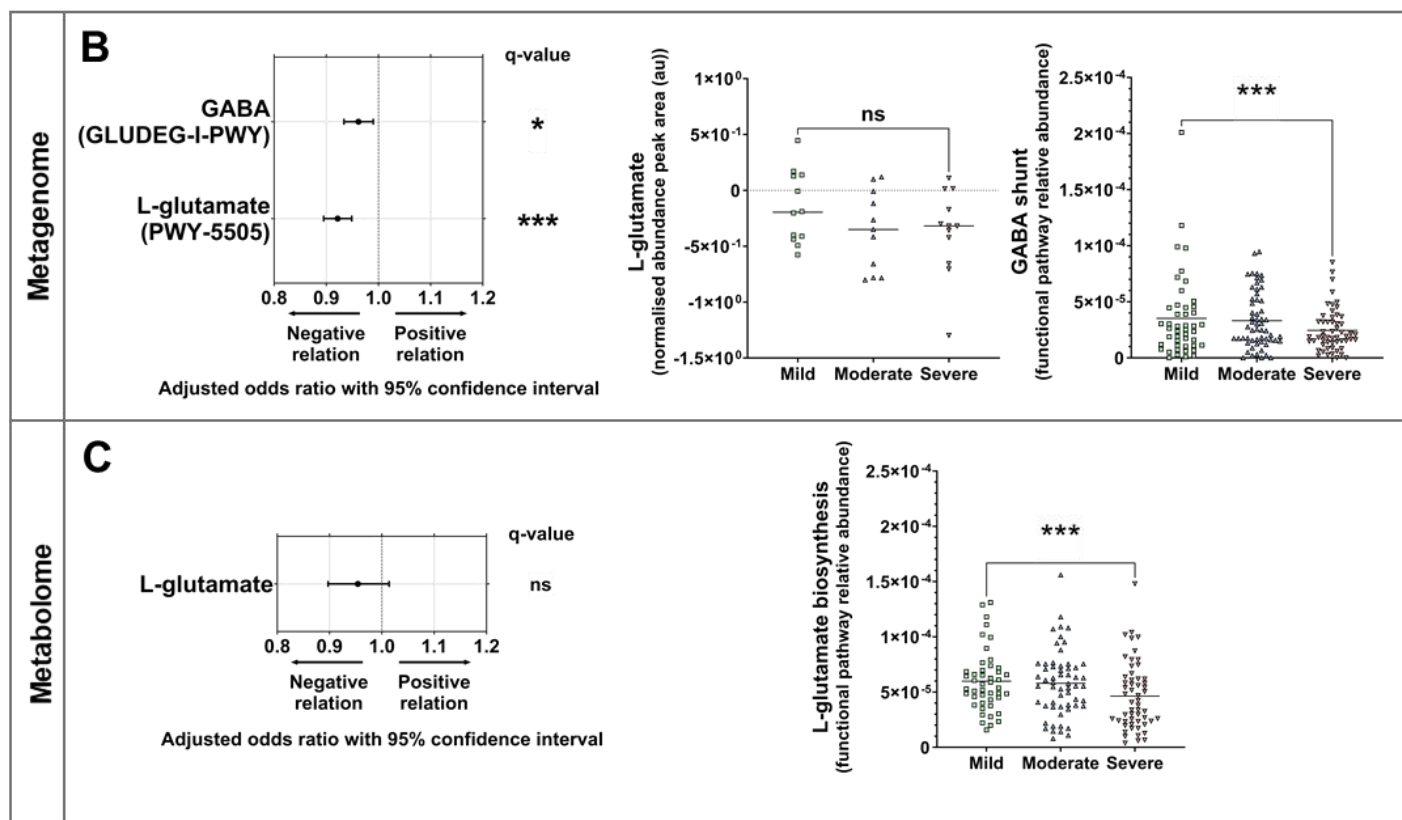
392

393 Further exploratory analysis across all functional pathways (n=400) identified 271 statistically
394 significantly altered pathways, with multiple pathways related to methanogenesis among those
395 of greatest significance and higher relative abundance ($p < 0.01$, **Fig. 4F**; $q < 0.001$,
396 **Supplementary Table 3**). The relative abundances of metagenomic pathways and the levels
397 of associated metabolites were also positively correlated (**Supplementary Fig. 8**).

398



Neurotransmission

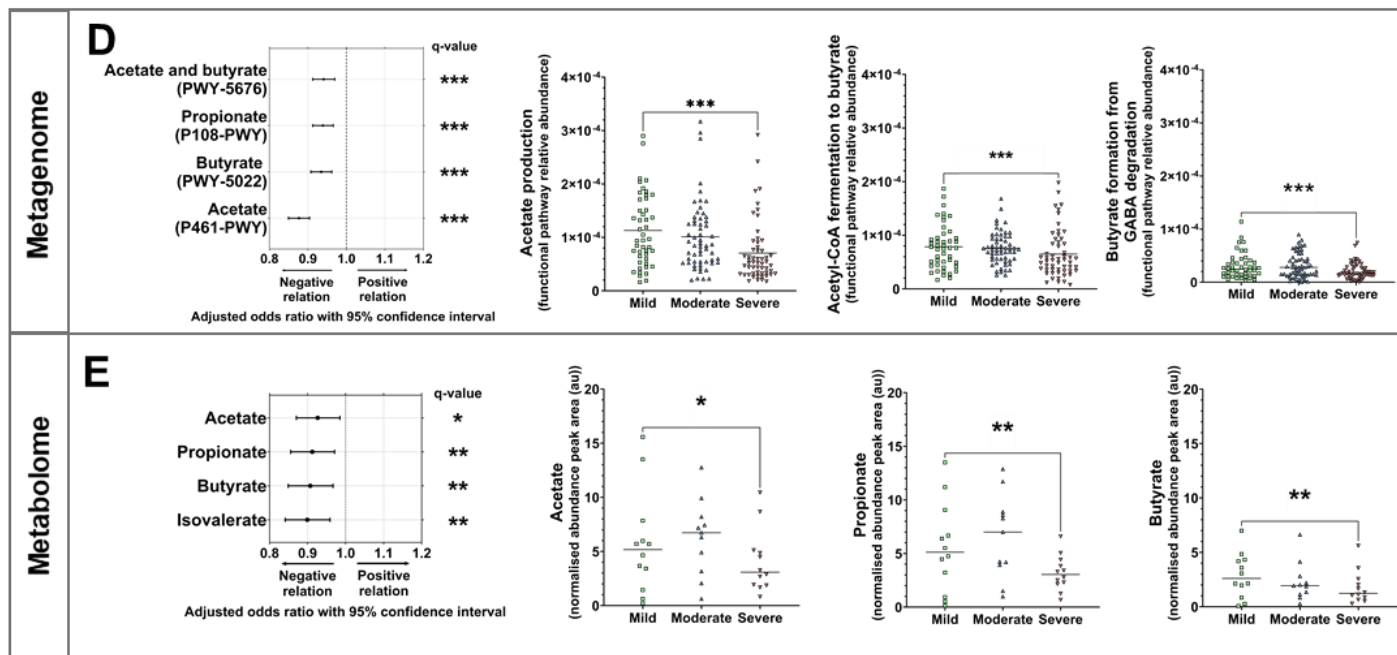


399

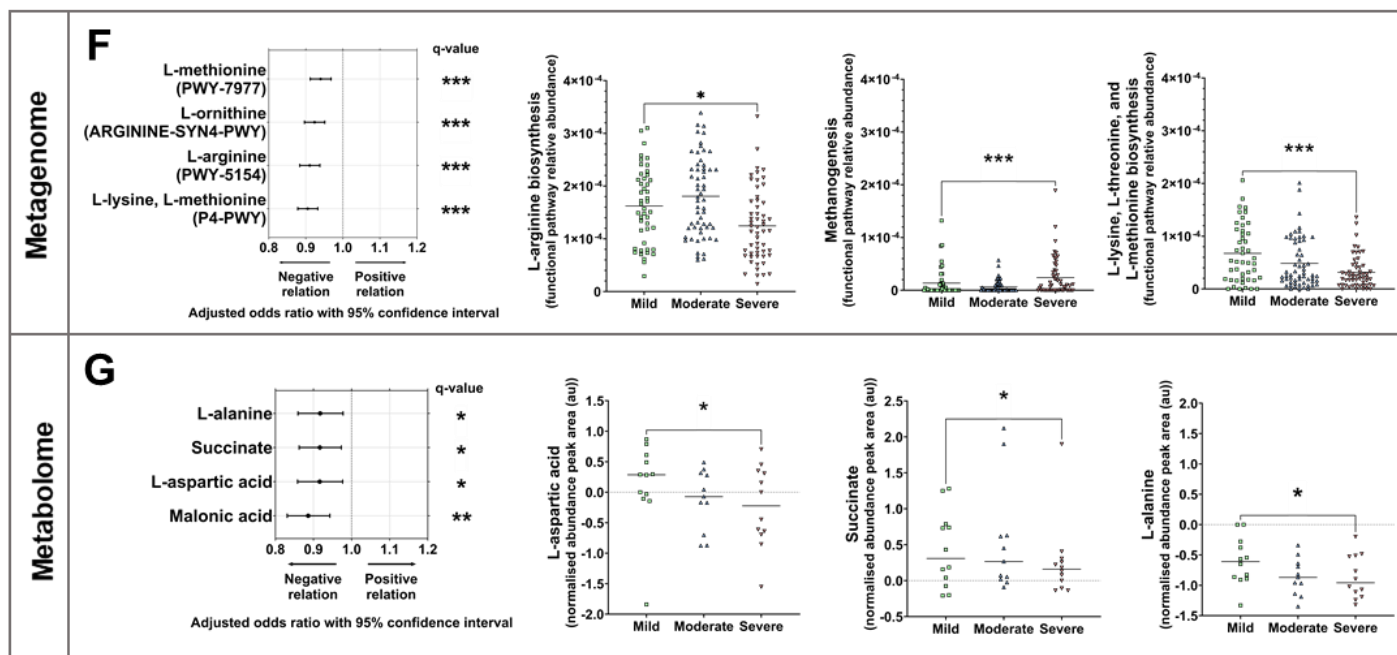
400

401

Immunity



Metabolism



402

403 **Figure 4. Specific functional differences relating to neurotransmission, immunity, and**
 404 **metabolism in the gut microbiome of residents of long-term aged care by cognitive**
 405 **impairment. A)** Metagenomic and metabolomic profiling of microbiome functional capacity
 406 and output for long-term aged care residents with cognitive impairment in relation to neuronal
 407 communication (B-C), immunity (D-E), and metabolism (F-G). Odds ratio and 95%
 408 confidence interval of effect of cognitive impairment severity on functional pathway relative

409 abundance and metabolite normalised abundance. Performed by multivariate analysis,
410 adjusting for time since cognitive impairment assessment, age, sex, antibiotic use, proton pump
411 inhibitor use, opioid use, laxative use, recorded medical history, meal texture, and liquid
412 texture. The abundance of key pathways and metabolites grouped by cognitive impairment
413 severity involved in neurotransmission, immunomodulation, and metabolism are shown.
414 ns=not significant; * $q < 0.05$; ** $q < 0.01$; *** $q < 0.001$ for adjusted p-values following FDR
415 correction. Pathways: mild, n=46; moderate, n=58; severe, n=55. Metabolites: mild, n=12;
416 moderate, n=11; severe, n=12.

417 **Discussion**

418 We report significant associations between characteristics of the faecal microbiome and the
419 severity of CI in residents of long-term aged care facilities. Microbiome CI severity-associated
420 traits were identified even after adjustment for age, sex, prior medication exposure, and diet.
421 Individuals with more severe CI exhibited a greater representation of the Actinomycetota
422 phylum and *Methanobrevibacter smithii*, and a lower prevalence of *Bacteroides uniformis*, a
423 reduced capacity for synthesis of SCFAs, neurotransmitters (glutamate and GABA), and amino
424 acids that are essential for autophagy, and an increased capacity for methanogenesis. These
425 findings identify microbial factors potentially influencing ageing-associated cognitive decline,
426 and present opportunities for prediction and treatment of CI.

427

428 Changes in intestinal microbiology can influence neuroplastic changes in the brain via a range
429 of mechanisms (Cryan et al., 2019; Rogers et al., 2016; Sharon et al., 2016; Shoubridge et al.,
430 2022). Many of these pathways relate to the production of specific factors by the gut
431 microbiota, including the biosynthesis of immunomodulatory metabolites and
432 neurotransmitters (Correa-Oliveira et al., 2016; Erny et al., 2015), amino acid metabolism
433 (Bellono et al., 2017; Ye et al., 2021), and the release of pro-inflammatory cytokines (Arentsen
434 et al., 2017; Erny et al., 2015; Kim et al., 2013).

435

436 We assessed the potential influence of the gut microbiome of participants to neurophysiology
437 through two complementary strategies. The first was the analysis of the metagenome,
438 representing the functional capacity of microbes within the gut to produce particular
439 metabolites. The second was a confirmatory analysis of the faecal metabolome, representing
440 the output of the combined metabolic activity of the gut microbiota. Each of these processes
441 identified factors that were significantly associated with CI severity, and notably, positive

442 correlations between metabolite levels and the prevalence of genes involved in their
443 biosynthesis was widespread.

444

445 A lower capacity for microbial biosynthesis of the neurotransmitters, glutamate and GABA,
446 was evident in those with more severe CI. Levels of both factors have been associated with CI
447 previously (Gueli & Taibi, 2013; Jimenez-Jimenez et al., 1998; Lin et al., 2019; Lin et al.,
448 2017; Murley et al., 2020). The gut microbiome mediates neurological homeostasis via
449 multiple key pathways, including through metabolism and production of neurotransmitters,
450 such as glutamate, GABA, dopamine, and serotonin. These neurotransmitters can then directly
451 innervate intestinal neural pathways or circulate peripherally to the brain (Kaelberer et al.,
452 2018; Shoubridge et al., 2022; Strandwitz, 2018).

453

454 Severe CI was also associated with reduced capacity for bacterial biosynthesis of the SCFAs
455 butyrate, acetate, and propionate. SCFA production is known to be important for normal
456 cognitive function and in preventing neuroinflammation (Arnoldussen et al., 2017; Byrne et
457 al., 2016; Erny et al., 2015). Previous studies have identified an association between a reduced
458 capacity for SCFA biosynthesis and the development of a chronic and systemic inflammatory
459 state, commonly referred to as “inflammaging”, involving increased circulation of IL-6, TNF-
460 α , and C-reactive protein (Franceschi & Campisi, 2014; Franceschi et al., 2018; Frasca &
461 Blomberg, 2016). Inflammaging, particularly in the brain, is associated with decreased
462 neuronal arborisation, numbers of neurons and synapses, and overall brain cortical volume
463 (Stephenson et al., 2018) and has been implicated in the acceleration of dementia onset (Grande
464 et al., 2021; Sankowski et al., 2015), and the rate of neurological deterioration (Eikelenboom
465 et al., 2012; Giunta et al., 2008).

466

467 In contrast to a decreased capacity for SCFA synthesis, we observed a greater capacity for
468 methanogenesis with increasing CI severity. This relationship was apparent from the
469 representation of methanogenic pathways within the metagenome, and from the increased
470 relative abundance of species, such as *Methanobrevibacter smithii*, in those with severe CI.
471 Increasing capacity for methanogenesis within the gut microbiome has been reported
472 previously in two cohorts of centenarians (Li et al., 2022; Wu et al., 2019), as well as in rodent
473 models of ageing (Maczulak et al., 1989). While the clinical consequences of increased
474 methane production in the gut are poorly understood, high levels are associated with functional
475 constipation (Chatterjee et al., 2007), diverticulosis (Weaver et al., 1986), and colon cancer
476 (Haines et al., 1977).

477

478 The gut microbiome in participants with more severe CI was found to be depleted in its capacity
479 to synthesise amino acids, particularly L-arginine. The availability of arginine is critical to the
480 regulation of autophagy (Poillet-Perez et al., 2018), the cellular process that involves the
481 recycling of nutrients from macromolecules in response to nutrient deficiency (Mizushima,
482 2004) and the removal of damaged material from the cellular environment (Lazarou et al.,
483 2015). Genetic polymorphisms in genes involved in the regulation of autophagy have been
484 linked to a number of neurodegenerative diseases, including Alzheimer's, Parkinson's,
485 Huntington's, and Lewy body diseases, frontotemporal dementia, and amyotrophic lateral
486 sclerosis (Fujikake et al., 2018; Gan et al., 2018; Gao et al., 2018; Nixon, 2013; Tsuang et al.,
487 2012). The conversion of arginine to putrescine, spermidine, and spermine by intestinal
488 microbes promotes autophagy (Eisenberg et al., 2009; Oliphant & Allen-Vercoe, 2019; Pugin
489 et al., 2017) and the significant reduction in arginine biosynthesis capacity is consistent with
490 the contribution of suppressed autophagy to the development and progression of age-related
491 disease. Severe CI was also associated with a reduced capacity for microbial production of the

492 essential amino acids, L-valine and L-lysine. Impaired L-valine production has been linked
493 with declining neurological health previously (Baranyi et al., 2016), and diet supplementation
494 with L-lysine and L-valine has been shown to improve cognitive and psychological function in
495 older adults (Suzuki et al., 2020).

496

497 Microbial functions, such as those associated with CI severity, can often be performed by many
498 different members of the gut microbiota. This phenomenon is referred to as functional
499 redundancy and can result in relationships between individual microbial species and host
500 measures of disease being less strong than those based on conserved microbial functional traits.
501 Despite this, we observed a number of discrete bacterial taxa that were significantly associated
502 with CI. In particular, *Methanobrevibacter smithii* and *Alistipes finegoldii* were more prevalent
503 in those with severe CI, while *Bacteroides uniformis* was less highly represented. As above,
504 *Methanobrevibacter smithii* is associated with higher methane production (Ghoshal et al.,
505 2016) and has been identified as an inflammatory and cardiometabolic biomarker (Fu et al.,
506 2020). Whilst the precise mechanisms of *Alistipes* species in health and disease are still unclear
507 (Parker et al., 2020), clinical studies of inflammatory diseases have shown *Alistipes finegoldii*
508 triggers intestinal inflammation and decreases SCFA-producing bacteria, potentially playing a
509 pathogenic role in chronic diseases (Kim et al., 2018; Parker et al., 2020; Rodriguez-Palacios
510 et al., 2019).

511

512 We also observed severe CI to be associated with a lower prevalence of bacterial taxa that are
513 considered broadly beneficial. These included *Bacteroides uniformis*, which is associated with
514 reduced risk of colorectal cancer (Wang et al., 2012) and inflammatory bowel disease
515 (Takahashi et al., 2016), and *Blautia* species, which have the potential to inhibit the growth of
516 pathogenic bacteria in the intestine and reduce inflammation (Hosomi et al., 2022; Liu et al.,

517 2021). Taxa that have been previously associated with aspects of cognition, such as *Collinsella*
518 *aerofaciens* (Ghosh et al., 2020), were more prevalent in those with severe CI. However, other
519 bacterial taxa associated with aspects of ageing, frailty, and cognitive decline in previous
520 studies, including *Faecalibacterium prausnitzii* (Jackson et al., 2016), *Eubacterium rectale*
521 (Ghosh et al., 2020; van Soest et al., 2020), and *Escherichia coli* (Barrientos et al., 2009;
522 d'Avila et al., 2018; Hoogland et al., 2018) were not associated with CI severity in our cohort.

523

524 In addition to the relative abundance of different bacterial species, analysis of the broad
525 structure of the gut microbiota can also be informative. We assessed three different alpha
526 diversity measures, Shannon-Wiener diversity, Pielou's evenness, and species richness, that
527 together provide an overview of microbiota structure. While evenness, which represents the
528 relative differences in the abundance of various species in the community, was not associated
529 significantly with CI severity, Shannon-Wiener diversity and species richness were both higher
530 in severe CI. Studies of the gut microbiota in ageing have previously reported reduced diversity
531 in older age. For example, Verdi and colleagues identified significantly lower faecal microbiota
532 diversity to be associated with longer reaction times (in cognitive assessments) in an
533 independently living aged cohort (Verdi et al., 2018). Similarly, Wasser and colleagues
534 reported reduced alpha diversity in those with Huntington's disease (Wasser et al., 2020), while
535 two other studies have reported no significant relationship between CI severity and alpha
536 diversity (Komanduri et al., 2021; Stadlbauer et al., 2020). In our analysis, where age was
537 adjusted for, a contrary effect was observed, consistent with an association between CI and
538 specific microbiome changes that is separate to wider microbial shifts that are typical in later
539 life.

540

541 Our study strengths and limitations include the use of entry into long term care facility
542 assessment tools ('ACFI') for CI ascertainment. While it has been employed by the Australian
543 Commonwealth Government as a basis for care funding for all residents of long term care
544 facilities across Australia since 2008, is completed by trained assessors, and includes the PAS-
545 CIS (a validated and consistently applied tool of CI in aged care), there are limitations to this
546 tool. For example, people may not be comprehensively assessed for CI if they have a
547 sensory/speech impairment, are non-English speaking, or have severe CI beyond the scope of
548 the instrument, which can include a concurrent diagnosis of dementia or mental disorder
549 (AIHW, 2002; Department of Health and Ageing, 2016). The ACFI is also designed for funding
550 purposes, not clinical care or epidemiological surveillance, which likely results in
551 underreporting of these chronic health conditions (Lind et al., 2020).

552
553 CI was measured on average 16 months prior to stool collection. There was no clinically
554 significant difference in mean time from assessment to stool collection between severity
555 groups, and the period of time between assessment and sample collection could not be reduced
556 further without substantial reduction in the cohort size. However, changes in cognition between
557 assessment and stool sample collection could confound the relationships that we report. Future
558 studies arising from our findings would benefit from a briefer and more consistent interval
559 between CI and microbiome assessment, and/or longitudinal analysis of associations.

560
561 Our study had other limitations that should be considered. First, we were able to relate changes
562 in intestinal microbiology to cognitive function, but not to specific aspects of host neurological
563 pathophysiology. Second, the relationships identified between taxonomic and functional
564 features of the intestinal microbiome and CI are associative and whether they contribute
565 directly to the development and progression of CI remains to be established. Third, the

566 possibility that CI severity drives alterations in microbiome composition, mediated by factors
567 such as dementia medications, changes in food preparation for those with dysphagia, and
568 isolation to locked wards for residents with severe behavioural care needs, cannot be excluded
569 based on the current analysis. Indeed, changes in behaviour associated with psychiatric
570 conditions in other contexts, particularly those relating to diet, have been shown to contribute
571 to disease-specific gut microbiome markers (Larroya et al., 2021).

572

573 While our analysis involved participants from five facilities in metropolitan South Australia,
574 the findings are likely to be representative of a wider phenomenon. Alignment of the GRACE
575 cohort to the comprehensive Registry of Senior Australians (ROSA) (Carpenter et al., 2023), a
576 cohort that includes over 2.8 million Australians (including those in long-term aged care)
577 supported the representative nature of our study cohort (Carpenter et al., 2023).

578

579 **Conclusions**

580 We report age-, sex-, antibiotic-, and diet-independent microbial markers of severe CI. Our
581 analysis implicates multiple gut microbiome-brain pathways in ageing-associated cognitive
582 decline, including those involved in inflammation, neurotransmission, and autophagy. These
583 findings raise the possibility of identifying cognitive decline and slowing its rate of progression
584 via microbiome-targeted therapeutic interventions.

585

586 **DECLARATIONS**

587 **Ethics approval and consent to participate**

588 Ethical approval for the study was obtained from the Southern Adelaide Clinical Human
589 Research Ethics Committee (HREC/18/SAC/244). Participants provided written informed

590 consent themselves or where third-party consent was required, a legal guardian or family
591 member with power of attorney provided consent on their behalf.

592

593 **Consent for publication**

594 Not applicable.

595

596 **Data availability statement**

597 The GRACE study data are available upon reasonable request. GRACE study data described
598 in this article are available to all interested researchers through collaboration. Please contact
599 GBR (geraint.rogers@sahmri.com). The metagenomic data for this study have been deposited
600 in the European Nucleotide Archive (ENA) at EMBL-EBI under accession number
601 PRJEB51408 (<https://www.ebi.ac.uk/ena/browser/view/PRJEB51408>). The metabolomic data
602 for this study is available at the NIH Common Fund's National Metabolomics Data Repository
603 (NMDR) website, the Metabolomics Workbench, <https://www.metabolomicsworkbench.org>
604 (Sud et al., 2016), where it has been assigned Project ID PR001631. The metabolomic data can
605 also be accessed directly via its Project DOI: <http://dx.doi.org/10.21228/M8W43G>. Regarding
606 the sharing of linked data from ROSA, due to data custodian restrictions, individual ROSA
607 data cannot be made publicly available to other researchers.

608

609 **Declaration of interests**

610 The authors declare that they have no competing interests, nor any financial or personal
611 relationships with other people or organisations that could bias this study.

612

613 **Funding**

614 This research was supported by an Australian Medical Research Future Fund (MRFF) grant
615 from the Australian Department of Health (GNT1152268). The Australian Department of
616 Health reviewed the study proposal, but did not play a role in study design, data collection,
617 analysis, interpretation, or manuscript writing. GBR is supported by a National Health and
618 Medical Research Council (NHMRC) Senior Research Fellowship (GNT1155179) and a
619 Matthew Flinders Professorial Fellowship. MCI is supported by The Hospital Research
620 Foundation Mid-Career Fellowship (MCF-27-2019) and NHMRC Investigator Grant
621 (GNT119378). DJL is supported by an EMBL Australia Group Leader Award. SLT is
622 supported by an NHMRC Emerging Leadership grant (GNT2008625).

623

624 **Authors' contributions**

625 APS, LC, EF, LEP, MaC, MCI, KI, SLT, and GBR conceived and designed the study. APS,
626 LC, EF, and JC acquired the clinical samples and clinical data. APS and LC acquired the
627 metagenomic data. APS, DPDS and VKN acquired the metabolomic data. APS, LC, EF, JMC,
628 KI, SLT, GBR analysed and interpreted the data. APS, LC, KI, SLT, and GBR drafted the
629 manuscript. All authors provided intellectual input to the manuscript and critically revised the
630 manuscript. All authors have read and approved the final version of the manuscript.

631

632 **Acknowledgments**

633 This project used NCRIS-enabled Metabolomics Australia infrastructure at the University of
634 Melbourne funded through BioPlatforms Australia. This project used the Metabolomics
635 Workbench/National Metabolomics Data Repository (NMDR) supported by the NIH (U2C-
636 DK119886) and Common Fund Data Ecosystem (CFDE) (3OT2OD030544).

637 References

- 638 Australian Institute of Health and Welfare (AIHW). (2002). *Aged care assessment program*
639 *data dictionary*. Canberra, Australia.
- 640 Albert, M. S., Jones, K., Savage, C. R., Berkman, L., Seeman, T., Blazer, D., & Rowe, J. W.
641 (1995). Predictors of cognitive change in older persons: MacArthur studies of
642 successful aging. *Psychol Aging*, *10*(4), 578-589. [https://doi.org/10.1037//0882-](https://doi.org/10.1037//0882-7974.10.4.578)
643 [7974.10.4.578](https://doi.org/10.1037//0882-7974.10.4.578)
- 644 Arentsen, T., Qian, Y., Gkotzis, S., Femenia, T., Wang, T., Udekwu, K., Forssberg, H., & Diaz
645 Heijtz, R. (2017). The bacterial peptidoglycan-sensing molecule Pglyrp2 modulates
646 brain development and behavior. *Mol Psychiatry*, *22*(2), 257-266.
647 <https://doi.org/10.1038/mp.2016.182>
- 648 Arnoldussen, I. A. C., Wiesmann, M., Pelgrim, C. E., Wielemaker, E. M., van Duyvenvoorde,
649 W., Amaral-Santos, P. L., Verschuren, L., Keijser, B. J. F., Heerschap, A., Kleemann,
650 R., Wielinga, P. Y., & Kiliaan, A. J. (2017). Butyrate restores HFD-induced adaptations
651 in brain function and metabolism in mid-adult obese mice. *Int J Obes (Lond)*, *41*(6),
652 935-944. <https://doi.org/10.1038/ijo.2017.52>
- 653 Baranyi, A., Amouzadeh-Ghadikolai, O., von Lewinski, D., Rothenhausler, H. B., Theokas, S.,
654 Robier, C., Mangge, H., Reicht, G., Hlade, P., & Meinitzer, A. (2016). Branched-Chain
655 Amino Acids as New Biomarkers of Major Depression - A Novel Neurobiology of
656 Mood Disorder. *PLoS One*, *11*(8), e0160542.
657 <https://doi.org/10.1371/journal.pone.0160542>
- 658 Barrientos, R. M., Watkins, L. R., Rudy, J. W., & Maier, S. F. (2009). Characterization of the
659 sickness response in young and aging rats following E. coli infection. *Brain Behav*
660 *Immun*, *23*(4), 450-454. <https://doi.org/10.1016/j.bbi.2009.01.016>
- 661 Beghini, F., McIver, L. J., Blanco-Miguez, A., Dubois, L., Asnicar, F., Maharjan, S., Mailyan,
662 A., Manghi, P., Scholz, M., Thomas, A. M., Valles-Colomer, M., Weingart, G., Zhang,
663 Y., Zolfo, M., Huttenhower, C., Franzosa, E. A., & Segata, N. (2021). Integrating
664 taxonomic, functional, and strain-level profiling of diverse microbial communities with
665 bioBakery 3. *Elife*, *10*. <https://doi.org/10.7554/eLife.65088>
- 666 Bellono, N. W., Bayrer, J. R., Leitch, D. B., Castro, J., Zhang, C., O'Donnell, T. A., Brierley,
667 S. M., Ingraham, H. A., & Julius, D. (2017). Enterochromaffin Cells Are Gut
668 Chemosensors that Couple to Sensory Neural Pathways. *Cell*, *170*(1), 185-198 e116.
669 <https://doi.org/10.1016/j.cell.2017.05.034>
- 670 Bjorkqvist, M., Wild, E. J., Thiele, J., Silvestroni, A., Andre, R., Lahiri, N., Raibon, E., Lee,
671 R. V., Benn, C. L., Soulet, D., Magnusson, A., Woodman, B., Landles, C., Pouladi, M.
672 A., Hayden, M. R., Khalili-Shirazi, A., Lowdell, M. W., Brundin, P., Bates, G. P.,
673 Leavitt, B. R., Moller, T., & Tabrizi, S. J. (2008). A novel pathogenic pathway of
674 immune activation detectable before clinical onset in Huntington's disease. *J Exp Med*,
675 *205*(8), 1869-1877. <https://doi.org/10.1084/jem.20080178>
- 676 Bolger, A. M., Lohse, M., & Usadel, B. (2014). Trimmomatic: a flexible trimmer for Illumina
677 sequence data. *Bioinformatics*, *30*(15), 2114-2120.
678 <https://doi.org/10.1093/bioinformatics/btu170>
- 679 Bonfili, L., Cecarini, V., Gogoi, O., Gong, C., Cuccioloni, M., Angeletti, M., Rossi, G., &
680 Eleuteri, A. M. (2021). Microbiota modulation as preventative and therapeutic
681 approach in Alzheimer's disease. *FEBS J*, *288*(9), 2836-2855.
682 <https://doi.org/10.1111/febs.15571>
- 683 Bussian, T. J., Aziz, A., Meyer, C. F., Swenson, B. L., van Deursen, J. M., & Baker, D. J.
684 (2018). Clearance of senescent glial cells prevents tau-dependent pathology and

- 685 cognitive decline. *Nature*, 562(7728), 578-582. [https://doi.org/10.1038/s41586-018-](https://doi.org/10.1038/s41586-018-0543-y)
686 [0543-y](https://doi.org/10.1038/s41586-018-0543-y)
- 687 Byrne, C. S., Chambers, E. S., Alhabeeb, H., Chhina, N., Morrison, D. J., Preston, T., Tedford,
688 C., Fitzpatrick, J., Irani, C., Busza, A., Garcia-Perez, I., Fountana, S., Holmes, E.,
689 Goldstone, A. P., & Frost, G. S. (2016). Increased colonic propionate reduces
690 anticipatory reward responses in the human striatum to high-energy foods. *Am J Clin*
691 *Nutr*, 104(1), 5-14. <https://doi.org/10.3945/ajcn.115.126706>
- 692 Carpenter, L., Shoubridge, A. P., Flynn, E., Lang, C., Taylor, S. L., Papanicolas, L. E., Collins,
693 J., Gordon, D., Lynn, D. J., Crotty, M., Whitehead, C., Leong, L. E. X., Wesselingh, S.
694 L., Ivey, K., Inacio, M. C., & Rogers, G. B. (2023). Cohort profile: GRACE - a
695 residential aged care cohort examining factors influencing antimicrobial resistance
696 carriage. *BMC Geriatr*, 23(1), 521. <https://doi.org/10.1186/s12877-023-04215-3>
- 697 Carpenter, L., Shoubridge, A., Flynn, E., Taylor, S. Ivey, K., Rogers, G. on behalf of the
698 GRACE Investigative Study Team. (2021). *Generating evidence on Resistant Bacteria*
699 *in the Aged Care Environment (GRACE) 2021 Report*. SAHMRI.
700 <https://www.gracestudy.com.au/post/grace-study-stage-2-report>
- 701 Chatterjee, S., Park, S., Low, K., Kong, Y., & Pimentel, M. (2007). The degree of breath
702 methane production in IBS correlates with the severity of constipation. *Am J*
703 *Gastroenterol*, 102(4), 837-841. <https://doi.org/10.1111/j.1572-0241.2007.01072.x>
- 704 Claesson, M. J., Cusack, S., O'Sullivan, O., Greene-Diniz, R., de Weerd, H., Flannery, E.,
705 Marchesi, J. R., Falush, D., Dinan, T., Fitzgerald, G., Stanton, C., van Sinderen, D.,
706 O'Connor, M., Harnedy, N., O'Connor, K., Henry, C., O'Mahony, D., Fitzgerald, A. P.,
707 Shanahan, F., Twomey, C., Hill, C., Ross, R. P., & O'Toole, P. W. (2011). Composition,
708 variability, and temporal stability of the intestinal microbiota of the elderly. *Proc Natl*
709 *Acad Sci U S A*, 108 Suppl 1, 4586-4591. <https://doi.org/10.1073/pnas.1000097107>
- 710 Comijs, H. C., Dik, M. G., Deeg, D. J., & Jonker, C. (2004). The course of cognitive decline
711 in older persons: results from the longitudinal aging study amsterdam. *Dement Geriatr*
712 *Cogn Disord*, 17(3), 136-142. <https://doi.org/10.1159/000076346>
- 713 Correa-Oliveira, R., Fachi, J. L., Vieira, A., Sato, F. T., & Vinolo, M. A. (2016). Regulation of
714 immune cell function by short-chain fatty acids. *Clin Transl Immunology*, 5(4), e73.
715 <https://doi.org/10.1038/cti.2016.17>
- 716 Cryan, J. F., O'Riordan, K. J., Cowan, C. S. M., Sandhu, K. V., Bastiaansen, T. F. S., Boehme,
717 M., Codagnone, M. G., Cussotto, S., Fulling, C., Golubeva, A. V., Guzzetta, K. E.,
718 Jaggar, M., Long-Smith, C. M., Lyte, J. M., Martin, J. A., Molinero-Perez, A.,
719 Moloney, G., Morelli, E., Morillas, E., O'Connor, R., Cruz-Pereira, J. S., Peterson, V.
720 L., Rea, K., Ritz, N. L., Sherwin, E., Spichak, S., Teichman, E. M., van de Wouw, M.,
721 Ventura-Silva, A. P., Wallace-Fitzsimons, S. E., Hyland, N., Clarke, G., & Dinan, T.
722 G. (2019). The Microbiota-Gut-Brain Axis. *Physiol Rev*, 99(4), 1877-2013.
723 <https://doi.org/10.1152/physrev.00018.2018>
- 724 D'Amato, A., Di Cesare Mannelli, L., Lucarini, E., Man, A. L., Le Gall, G., Branca, J. J. V.,
725 Ghelardini, C., Amedei, A., Bertelli, E., Regoli, M., Pacini, A., Luciani, G., Gallina, P.,
726 Altera, A., Narbad, A., Gulisano, M., Hoyles, L., Vauzour, D., & Nicoletti, C. (2020).
727 Faecal microbiota transplant from aged donor mice affects spatial learning and memory
728 via modulating hippocampal synaptic plasticity- and neurotransmission-related
729 proteins in young recipients. *Microbiome*, 8(1), 140. [https://doi.org/10.1186/s40168-](https://doi.org/10.1186/s40168-020-00914-w)
730 [020-00914-w](https://doi.org/10.1186/s40168-020-00914-w)
- 731 d'Avila, J. C., Siqueira, L. D., Mazerand, A., Azevedo, E. P., Foguel, D., Castro-Faria-Neto,
732 H. C., Sharshar, T., Chretien, F., & Bozza, F. A. (2018). Age-related cognitive
733 impairment is associated with long-term neuroinflammation and oxidative stress in a

- 734 mouse model of episodic systemic inflammation. *J Neuroinflammation*, *15*(1), 28.
735 <https://doi.org/10.1186/s12974-018-1059-y>
- 736 Dalile, B., Van Oudenhove, L., Vervliet, B., & Verbeke, K. (2019). The role of short-chain
737 fatty acids in microbiota-gut-brain communication. *Nat Rev Gastroenterol Hepatol*,
738 *16*(8), 461-478. <https://doi.org/10.1038/s41575-019-0157-3>
- 739 Department of Health and Ageing. (2016). *Aged care funding instrument (ACFI) user guide*.
740 Canberra, Australia.
- 741 Desbonnet, L., Clarke, G., Traplin, A., O'Sullivan, O., Crispie, F., Moloney, R. D., Cotter, P.
742 D., Dinan, T. G., & Cryan, J. F. (2015). Gut microbiota depletion from early
743 adolescence in mice: Implications for brain and behaviour. *Brain Behav Immun*, *48*,
744 165-173. <https://doi.org/10.1016/j.bbi.2015.04.004>
- 745 Du, G., Dong, W., Yang, Q., Yu, X., Ma, J., Gu, W., & Huang, Y. (2020). Altered Gut
746 Microbiota Related to Inflammatory Responses in Patients With Huntington's Disease.
747 *Front Immunol*, *11*, 603594. <https://doi.org/10.3389/fimmu.2020.603594>
- 748 Eikelenboom, P., Hoozemans, J. J., Veerhuis, R., van Exel, E., Rozemuller, A. J., & van Gool,
749 W. A. (2012). Whether, when and how chronic inflammation increases the risk of
750 developing late-onset Alzheimer's disease. *Alzheimers Res Ther*, *4*(3), 15.
751 <https://doi.org/10.1186/alzrt118>
- 752 Eisenberg, T., Knauer, H., Schauer, A., Buttner, S., Ruckstuhl, C., Carmona-Gutierrez, D.,
753 Ring, J., Schroeder, S., Magnes, C., Antonacci, L., Fussi, H., Deszcz, L., Hartl, R.,
754 Schraml, E., Criollo, A., Megalou, E., Weiskopf, D., Laun, P., Heeren, G., Breitenbach,
755 M., Grubeck-Loebenstien, B., Herker, E., Fahrenkrog, B., Frohlich, K. U., Sinner, F.,
756 Tavernarakis, N., Minois, N., Kroemer, G., & Madeo, F. (2009). Induction of
757 autophagy by spermidine promotes longevity. *Nat Cell Biol*, *11*(11), 1305-1314.
758 <https://doi.org/10.1038/ncb1975>
- 759 Erny, D., Hrabe de Angelis, A. L., Jaitin, D., Wieghofer, P., Staszewski, O., David, E., Keren-
760 Shaul, H., Mhlahkoiv, T., Jakobshagen, K., Buch, T., Schwierzeck, V., Utermohlen, O.,
761 Chun, E., Garrett, W. S., McCoy, K. D., Diefenbach, A., Staeheli, P., Stecher, B., Amit,
762 I., & Prinz, M. (2015). Host microbiota constantly control maturation and function of
763 microglia in the CNS. *Nat Neurosci*, *18*(7), 965-977. <https://doi.org/10.1038/nn.4030>
- 764 Franceschi, C., & Campisi, J. (2014). Chronic inflammation (inflammaging) and its potential
765 contribution to age-associated diseases. *J Gerontol A Biol Sci Med Sci*, *69 Suppl 1*, S4-
766 9. <https://doi.org/10.1093/gerona/glu057>
- 767 Franceschi, C., Garagnani, P., Parini, P., Giuliani, C., & Santoro, A. (2018). Inflammaging: a
768 new immune-metabolic viewpoint for age-related diseases. *Nat Rev Endocrinol*,
769 *14*(10), 576-590. <https://doi.org/10.1038/s41574-018-0059-4>
- 770 Frasca, D., & Blomberg, B. B. (2016). Inflammaging decreases adaptive and innate immune
771 responses in mice and humans. *Biogerontology*, *17*(1), 7-19.
772 <https://doi.org/10.1007/s10522-015-9578-8>
- 773 Frohlich, E. E., Farzi, A., Mayerhofer, R., Reichmann, F., Jacan, A., Wagner, B., Zinser, E.,
774 Bordag, N., Magnes, C., Frohlich, E., Kashofer, K., Gorkiewicz, G., & Holzer, P.
775 (2016). Cognitive impairment by antibiotic-induced gut dysbiosis: Analysis of gut
776 microbiota-brain communication. *Brain Behav Immun*, *56*, 140-155.
777 <https://doi.org/10.1016/j.bbi.2016.02.020>
- 778 Fu, B. C., Hullar, M. A. J., Randolph, T. W., Franke, A. A., Monroe, K. R., Cheng, I., Wilkens,
779 L. R., Shepherd, J. A., Madeleine, M. M., Le Marchand, L., Lim, U., & Lampe, J. W.
780 (2020). Associations of plasma trimethylamine N-oxide, choline, carnitine, and betaine
781 with inflammatory and cardiometabolic risk biomarkers and the fecal microbiome in
782 the Multiethnic Cohort Adiposity Phenotype Study. *Am J Clin Nutr*, *111*(6), 1226-1234.
783 <https://doi.org/10.1093/ajcn/nqaa015>

- 784 Fujikake, N., Shin, M., & Shimizu, S. (2018). Association Between Autophagy and
785 Neurodegenerative Diseases. *Front Neurosci*, *12*, 255.
786 <https://doi.org/10.3389/fnins.2018.00255>
- 787 Gan, L., Cookson, M. R., Petrucelli, L., & La Spada, A. R. (2018). Converging pathways in
788 neurodegeneration, from genetics to mechanisms. *Nat Neurosci*, *21*(10), 1300-1309.
789 <https://doi.org/10.1038/s41593-018-0237-7>
- 790 Gao, S., Casey, A. E., Sargeant, T. J., & Makinen, V. P. (2018). Genetic variation within
791 endolysosomal system is associated with late-onset Alzheimer's disease. *Brain*, *141*(9),
792 2711-2720. <https://doi.org/10.1093/brain/awy197>
- 793 Ghosh, T. S., Rampelli, S., Jeffery, I. B., Santoro, A., Neto, M., Capri, M., Giampieri, E.,
794 Jennings, A., Candela, M., Turroni, S., Zoetendal, E. G., Hermes, G. D. A., Elodie, C.,
795 Meunier, N., Brugere, C. M., Pujos-Guillot, E., Berendsen, A. M., De Groot, L.,
796 Feskens, E. J. M., Kaluza, J., Pietruszka, B., Bielak, M. J., Comte, B., Maijo-Ferre, M.,
797 Nicoletti, C., De Vos, W. M., Fairweather-Tait, S., Cassidy, A., Brigidi, P., Franceschi,
798 C., & O'Toole, P. W. (2020). Mediterranean diet intervention alters the gut microbiome
799 in older people reducing frailty and improving health status: the NU-AGE 1-year
800 dietary intervention across five European countries. *Gut*, *69*(7), 1218-1228.
801 <https://doi.org/10.1136/gutjnl-2019-319654>
- 802 Ghoshal, U., Shukla, R., Srivastava, D., & Ghoshal, U. C. (2016). Irritable Bowel Syndrome,
803 Particularly the Constipation-Predominant Form, Involves an Increase in
804 Methanobrevibacter smithii, Which Is Associated with Higher Methane Production.
805 *Gut Liver*, *10*(6), 932-938. <https://doi.org/10.5009/gnl15588>
- 806 Giunta, B., Fernandez, F., Nikolic, W. V., Obregon, D., Rrapo, E., Town, T., & Tan, J. (2008).
807 Inflammaging as a prodrome to Alzheimer's disease. *J Neuroinflammation*, *5*, 51.
808 <https://doi.org/10.1186/1742-2094-5-51>
- 809 Grande, G., Marengoni, A., Vetrano, D. L., Roso-Llorach, A., Rizzuto, D., Zucchelli, A., Qiu,
810 C., Fratiglioni, L., & Calderon-Larranaga, A. (2021). Multimorbidity burden and
811 dementia risk in older adults: The role of inflammation and genetics. *Alzheimers*
812 *Dement*, *17*(5), 768-776. <https://doi.org/10.1002/alz.12237>
- 813 Gubert, C., Choo, J. M., Love, C. J., Kodikara, S., Masson, B. A., Liew, J. J. M., Wang, Y.,
814 Kong, G., Narayana, V. K., Renoir, T., Le Cao, K. A., Rogers, G. B., & Hannan, A. J.
815 (2022). Faecal microbiota transplant ameliorates gut dysbiosis and cognitive deficits in
816 Huntington's disease mice. *Brain Commun*, *4*(4), fcac205.
817 <https://doi.org/10.1093/braincomms/fcac205>
- 818 Gueli, M. C., & Taibi, G. (2013). Alzheimer's disease: amino acid levels and brain metabolic
819 status. *Neurol Sci*, *34*(9), 1575-1579. <https://doi.org/10.1007/s10072-013-1289-9>
- 820 Haines, A., Metz, G., Dilawari, J., Blendis, L., & Wiggins, H. (1977). Breath-methane in
821 patients with cancer of the large bowel. *Lancet*, *2*(8036), 481-483.
822 [https://doi.org/10.1016/s0140-6736\(77\)91605-1](https://doi.org/10.1016/s0140-6736(77)91605-1)
- 823 Harada, C. N., Natelson Love, M. C., & Triebel, K. L. (2013). Normal cognitive aging. *Clin*
824 *Geriatr Med*, *29*(4), 737-752. <https://doi.org/10.1016/j.cger.2013.07.002>
- 825 Henon, H., Durieu, I., Guerouaou, D., Lebert, F., Pasquier, F., & Leys, D. (2001). Poststroke
826 dementia: incidence and relationship to prestroke cognitive decline. *Neurology*, *57*(7),
827 1216-1222. <https://doi.org/10.1212/wnl.57.7.1216>
- 828 Hoogland, I. C. M., Westhoff, D., Engelen-Lee, J. Y., Melief, J., Valls Seron, M., Houben-
829 Weerts, J., Huitinga, I., van Westerloo, D. J., van der Poll, T., van Gool, W. A., & van
830 de Beek, D. (2018). Microglial Activation After Systemic Stimulation With
831 Lipopolysaccharide and Escherichia coli. *Front Cell Neurosci*, *12*, 110.
832 <https://doi.org/10.3389/fncel.2018.00110>

- 833 Hosomi, K., Saito, M., Park, J., Murakami, H., Shibata, N., Ando, M., Nagatake, T., Konishi,
834 K., Ohno, H., Tanisawa, K., Mohsen, A., Chen, Y. A., Kawashima, H., Natsume-
835 Kitatani, Y., Oka, Y., Shimizu, H., Furuta, M., Tojima, Y., Sawane, K., Saika, A.,
836 Kondo, S., Yonejima, Y., Takeyama, H., Matsutani, A., Mizuguchi, K., Miyachi, M.,
837 & Kunisawa, J. (2022). Oral administration of *Blautia wexlerae* ameliorates obesity and
838 type 2 diabetes via metabolic remodeling of the gut microbiota. *Nat Commun*, *13*(1),
839 4477. <https://doi.org/10.1038/s41467-022-32015-7>
- 840 Jackson, M. A., Jeffery, I. B., Beaumont, M., Bell, J. T., Clark, A. G., Ley, R. E., O'Toole, P.
841 W., Spector, T. D., & Steves, C. J. (2016). Signatures of early frailty in the gut
842 microbiota. *Genome Med*, *8*(1), 8. <https://doi.org/10.1186/s13073-016-0262-7>
- 843 Jimenez-Jimenez, F. J., Molina, J. A., Gomez, P., Vargas, C., de Bustos, F., Benito-Leon, J.,
844 Tallon-Barranco, A., Orti-Pareja, M., Gasalla, T., & Arenas, J. (1998).
845 Neurotransmitter amino acids in cerebrospinal fluid of patients with Alzheimer's
846 disease. *J Neural Transm (Vienna)*, *105*(2-3), 269-277.
847 <https://doi.org/10.1007/s007020050056>
- 848 Jorm, A. F., Mackinnon, A. J., Henderson, A. S., Scott, R., Christensen, H., Korten, A. E.,
849 Cullen, J. S., & Mulligan, R. (1995). The Psychogeriatric Assessment Scales: a multi-
850 dimensional alternative to categorical diagnoses of dementia and depression in the
851 elderly. *Psychol Med*, *25*(3), 447-460. <https://doi.org/10.1017/s0033291700033377>
- 852 Kaelberer, M. M., Buchanan, K. L., Klein, M. E., Barth, B. B., Montoya, M. M., Shen, X., &
853 Bohorquez, D. V. (2018). A gut-brain neural circuit for nutrient sensory transduction.
854 *Science*, *361*(6408). <https://doi.org/10.1126/science.aat5236>
- 855 Kim, M. H., Kang, S. G., Park, J. H., Yanagisawa, M., & Kim, C. H. (2013). Short-chain fatty
856 acids activate GPR41 and GPR43 on intestinal epithelial cells to promote inflammatory
857 responses in mice. *Gastroenterology*, *145*(2), 396-406 e391-310.
858 <https://doi.org/10.1053/j.gastro.2013.04.056>
- 859 Kim, M. S., Kim, Y., Choi, H., Kim, W., Park, S., Lee, D., Kim, D. K., Kim, H. J., Choi, H.,
860 Hyun, D. W., Lee, J. Y., Choi, E. Y., Lee, D. S., Bae, J. W., & Mook-Jung, I. (2020).
861 Transfer of a healthy microbiota reduces amyloid and tau pathology in an Alzheimer's
862 disease animal model. *Gut*, *69*(2), 283-294. [https://doi.org/10.1136/gutjnl-2018-](https://doi.org/10.1136/gutjnl-2018-317431)
863 [317431](https://doi.org/10.1136/gutjnl-2018-317431)
- 864 Kim, S., Goel, R., Kumar, A., Qi, Y., Lobaton, G., Hosaka, K., Mohammed, M., Handberg, E.
865 M., Richards, E. M., Pepine, C. J., & Raizada, M. K. (2018). Imbalance of gut
866 microbiome and intestinal epithelial barrier dysfunction in patients with high blood
867 pressure. *Clin Sci (Lond)*, *132*(6), 701-718. <https://doi.org/10.1042/CS20180087>
- 868 Koistinaho, M., Lin, S., Wu, X., Esterman, M., Koger, D., Hanson, J., Higgs, R., Liu, F.,
869 Malkani, S., Bales, K. R., & Paul, S. M. (2004). Apolipoprotein E promotes astrocyte
870 colocalization and degradation of deposited amyloid-beta peptides. *Nat Med*, *10*(7),
871 719-726. <https://doi.org/10.1038/nm1058>
- 872 Komanduri, M., Savage, K., Lea, A., McPhee, G., Nolidin, K., Deleuil, S., Stough, C., &
873 Gondalia, S. (2021). The Relationship between Gut Microbiome and Cognition in Older
874 Australians. *Nutrients*, *14*(1). <https://doi.org/10.3390/nu14010064>
- 875 Kong, G., Ellul, S., Narayana, V. K., Kanojia, K., Ha, H. T. T., Li, S., Renoir, T., Cao, K. L.,
876 & Hannan, A. J. (2021). An integrated metagenomics and metabolomics approach
877 implicates the microbiota-gut-brain axis in the pathogenesis of Huntington's disease.
878 *Neurobiol Dis*, *148*, 105199. <https://doi.org/10.1016/j.nbd.2020.105199>
- 879 Lai, W. T., Zhao, J., Xu, S. X., Deng, W. F., Xu, D., Wang, M. B., He, F. S., Liu, Y. H., Guo,
880 Y. Y., Ye, S. W., Yang, Q. F., Zhang, Y. L., Wang, S., Li, M. Z., Yang, Y. J., Liu, T.
881 B., Tan, Z. M., Xie, X. H., & Rong, H. (2021). Shotgun metagenomics reveals both
882 taxonomic and tryptophan pathway differences of gut microbiota in bipolar disorder

- 883 with current major depressive episode patients. *J Affect Disord*, 278, 311-319.
884 <https://doi.org/10.1016/j.jad.2020.09.010>
- 885 Langmead, B., & Salzberg, S. L. (2012). Fast gapped-read alignment with Bowtie 2. *Nat*
886 *Methods*, 9(4), 357-359. <https://doi.org/10.1038/nmeth.1923>
- 887 Larroya, A., Pantoja, J., Codoner-Franch, P., & Cenit, M. C. (2021). Towards Tailored Gut
888 Microbiome-Based and Dietary Interventions for Promoting the Development and
889 Maintenance of a Healthy Brain. *Front Pediatr*, 9, 705859.
890 <https://doi.org/10.3389/fped.2021.705859>
- 891 Lazarou, M., Sliter, D. A., Kane, L. A., Sarraf, S. A., Wang, C., Burman, J. L., Sideris, D. P.,
892 Fogel, A. I., & Youle, R. J. (2015). The ubiquitin kinase PINK1 recruits autophagy
893 receptors to induce mitophagy. *Nature*, 524(7565), 309-314.
894 <https://doi.org/10.1038/nature14893>
- 895 Li, C., Luan, Z., Zhao, Y., Chen, J., Yang, Y., Wang, C., Jing, Y., Qi, S., Li, Z., Guo, H., Xu,
896 W., Zhao, B., Wu, C., Wang, S., Yang, Y., & Sun, G. (2022). Deep insights into the gut
897 microbial community of extreme longevity in south Chinese centenarians by ultra-deep
898 metagenomics and large-scale culturomics. *NPJ Biofilms Microbiomes*, 8(1), 28.
899 <https://doi.org/10.1038/s41522-022-00282-3>
- 900 Lin, C. H., Yang, H. T., & Lane, H. Y. (2019). D-glutamate, D-serine, and D-alanine differ in
901 their roles in cognitive decline in patients with Alzheimer's disease or mild cognitive
902 impairment. *Pharmacol Biochem Behav*, 185, 172760.
903 <https://doi.org/10.1016/j.pbb.2019.172760>
- 904 Lin, C. H., Yang, S. Y., Horng, H. E., Yang, C. C., Chieh, J. J., Chen, H. H., Liu, B. H., &
905 Chiu, M. J. (2017). Plasma alpha-synuclein predicts cognitive decline in Parkinson's
906 disease. *J Neurol Neurosurg Psychiatry*, 88(10), 818-824. [https://doi.org/10.1136/jnnp-](https://doi.org/10.1136/jnnp-2016-314857)
907 [2016-314857](https://doi.org/10.1136/jnnp-2016-314857)
- 908 Lin, Y. T., Seo, J., Gao, F., Feldman, H. M., Wen, H. L., Penney, J., Cam, H. P., Gjoneska, E.,
909 Raja, W. K., Cheng, J., Rueda, R., Kritskiy, O., Abdurrob, F., Peng, Z., Milo, B., Yu,
910 C. J., Elmsaouri, S., Dey, D., Ko, T., Yankner, B. A., & Tsai, L. H. (2018). APOE4
911 Causes Widespread Molecular and Cellular Alterations Associated with Alzheimer's
912 Disease Phenotypes in Human iPSC-Derived Brain Cell Types. *Neuron*, 98(6), 1141-
913 1154 e1147. <https://doi.org/10.1016/j.neuron.2018.05.008>
- 914 Lind, K. E., Raban, M. Z., Brett, L., Jorgensen, M. L., Georgiou, A., & Westbrook, J. I. (2020).
915 Measuring the prevalence of 60 health conditions in older Australians in residential
916 aged care with electronic health records: a retrospective dynamic cohort study. *Popul*
917 *Health Metr*, 18(1), 25. <https://doi.org/10.1186/s12963-020-00234-z>
- 918 Liu, C. C., Zhao, N., Fu, Y., Wang, N., Linares, C., Tsai, C. W., & Bu, G. (2017). ApoE4
919 Accelerates Early Seeding of Amyloid Pathology. *Neuron*, 96(5), 1024-1032 e1023.
920 <https://doi.org/10.1016/j.neuron.2017.11.013>
- 921 Liu, X., Mao, B., Gu, J., Wu, J., Cui, S., Wang, G., Zhao, J., Zhang, H., & Chen, W. (2021).
922 Blautia-a new functional genus with potential probiotic properties? *Gut Microbes*,
923 13(1), 1-21. <https://doi.org/10.1080/19490976.2021.1875796>
- 924 Livingston, G., Huntley, J., Sommerlad, A., Ames, D., Ballard, C., Banerjee, S., Brayne, C.,
925 Burns, A., Cohen-Mansfield, J., Cooper, C., Costafreda, S. G., Dias, A., Fox, N., Gitlin,
926 L. N., Howard, R., Kales, H. C., Kivimaki, M., Larson, E. B., Ogunniyi, A., Orgeta, V.,
927 Ritchie, K., Rockwood, K., Sampson, E. L., Samus, Q., Schneider, L. S., Selbaek, G.,
928 Teri, L., & Mukadam, N. (2020). Dementia prevention, intervention, and care: 2020
929 report of the Lancet Commission. *Lancet*, 396(10248), 413-446.
930 [https://doi.org/10.1016/S0140-6736\(20\)30367-6](https://doi.org/10.1016/S0140-6736(20)30367-6)

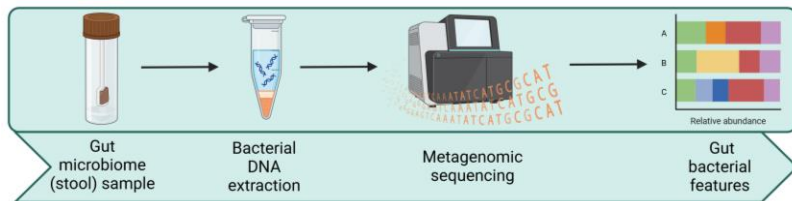
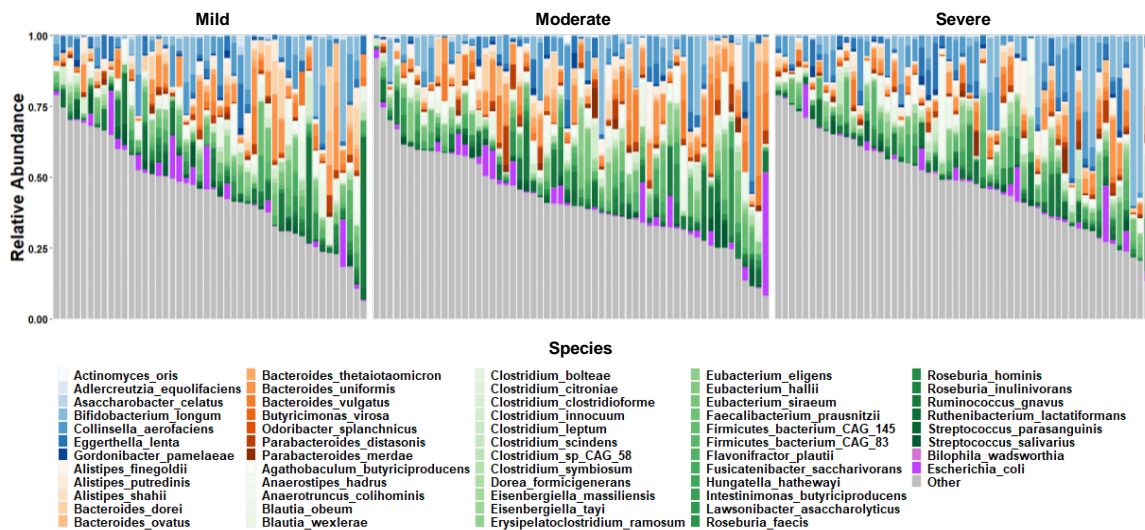
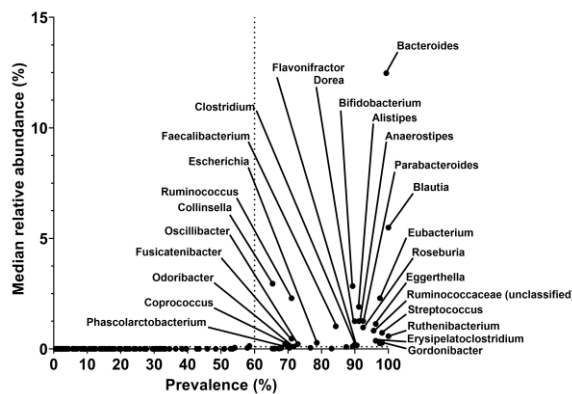
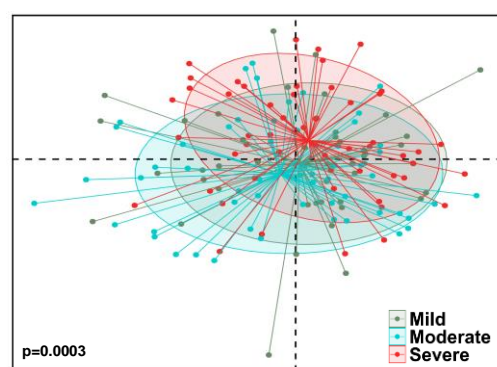
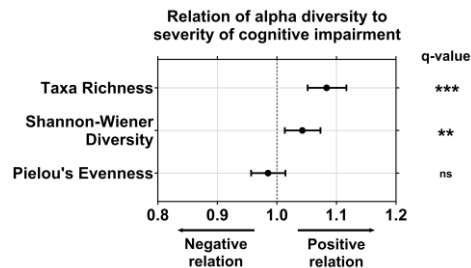
- 931 Lozupone, C., & Knight, R. (2005). UniFrac: a new phylogenetic method for comparing
932 microbial communities. *Appl Environ Microbiol*, 71(12), 8228-8235.
933 <https://doi.org/10.1128/AEM.71.12.8228-8235.2005>
- 934 Luo, R., Su, L. Y., Li, G., Yang, J., Liu, Q., Yang, L. X., Zhang, D. F., Zhou, H., Xu, M., Fan,
935 Y., Li, J., & Yao, Y. G. (2020). Activation of PPARA-mediated autophagy reduces
936 Alzheimer disease-like pathology and cognitive decline in a murine model. *Autophagy*,
937 16(1), 52-69. <https://doi.org/10.1080/15548627.2019.1596488>
- 938 Lynn, M. A., Eden, G., Ryan, F. J., Bensalem, J., Wang, X., Blake, S. J., Choo, J. M., Chern,
939 Y. T., Sribnaia, A., James, J., Benson, S. C., Sandeman, L., Xie, J., Hassiotis, S., Sun,
940 E. W., Martin, A. M., Keller, M. D., Keating, D. J., Sargeant, T. J., Proud, C. G.,
941 Wesselingh, S. L., Rogers, G. B., & Lynn, D. J. (2021). The composition of the gut
942 microbiota following early-life antibiotic exposure affects host health and longevity in
943 later life. *Cell Rep*, 36(8), 109564. <https://doi.org/10.1016/j.celrep.2021.109564>
- 944 Maczulak, A. E., Wolin, M. J., & Miller, T. L. (1989). Increase in colonic methanogens and
945 total anaerobes in aging rats. *Appl Environ Microbiol*, 55(10), 2468-2473.
946 <https://doi.org/10.1128/aem.55.10.2468-2473.1989>
- 947 Manderino, L., Carroll, I., Azcarate-Peril, M. A., Rochette, A., Heinberg, L., Peat, C., Steffen,
948 K., Mitchell, J., & Gunstad, J. (2017). Preliminary Evidence for an Association
949 Between the Composition of the Gut Microbiome and Cognitive Function in
950 Neurologically Healthy Older Adults. *J Int Neuropsychol Soc*, 23(8), 700-705.
951 <https://doi.org/10.1017/S1355617717000492>
- 952 Marx, W., McGuinness, A. J., Rocks, T., Ruusunen, A., Cleminson, J., Walker, A. J., Gomes-
953 da-Costa, S., Lane, M., Sanches, M., Diaz, A. P., Tseng, P. T., Lin, P. Y., Berk, M.,
954 Clarke, G., O'Neil, A., Jacka, F., Stubbs, B., Carvalho, A. F., Quevedo, J., Soares, J. C.,
955 & Fernandes, B. S. (2021). The kynurenine pathway in major depressive disorder,
956 bipolar disorder, and schizophrenia: a meta-analysis of 101 studies. *Mol Psychiatry*,
957 26(8), 4158-4178. <https://doi.org/10.1038/s41380-020-00951-9>
- 958 Mattila, P. M., Rinne, J. O., Helenius, H., Dickson, D. W., & Roytta, M. (2000). Alpha-
959 synuclein-immunoreactive cortical Lewy bodies are associated with cognitive
960 impairment in Parkinson's disease. *Acta Neuropathol*, 100(3), 285-290.
961 <https://doi.org/10.1007/s004019900168>
- 962 Meyer, K., Lulla, A., Debroy, K., Shikany, J. M., Yaffe, K., Meirelles, O., & Launer, L. J.
963 (2022). Association of the Gut Microbiota With Cognitive Function in Midlife. *JAMA*
964 *Netw Open*, 5(2), e2143941. <https://doi.org/10.1001/jamanetworkopen.2021.43941>
- 965 Mizushima, N. (2004). Methods for monitoring autophagy. *Int J Biochem Cell Biol*, 36(12),
966 2491-2502. <https://doi.org/10.1016/j.biocel.2004.02.005>
- 967 Motulsky, H. J., & Brown, R. E. (2006). Detecting outliers when fitting data with nonlinear
968 regression - a new method based on robust nonlinear regression and the false discovery
969 rate. *BMC Bioinformatics*, 7, 123. <https://doi.org/10.1186/1471-2105-7-123>
- 970 Murley, A. G., Rouse, M. A., Jones, P. S., Ye, R., Hezemans, F. H., O'Callaghan, C., Frangou,
971 P., Kourtzi, Z., Rua, C., Carpenter, T. A., Rodgers, C. T., & Rowe, J. B. (2020). GABA
972 and glutamate deficits from frontotemporal lobar degeneration are associated with
973 disinhibition. *Brain*, 143(11), 3449-3462. <https://doi.org/10.1093/brain/awaa305>
- 974 Nixon, R. A. (2013). The role of autophagy in neurodegenerative disease. *Nat Med*, 19(8), 983-
975 997. <https://doi.org/10.1038/nm.3232>
- 976 Oksanen, J., Simpson, G. L., Blanchet, F. G., Kindt, R., Legendre, P., Minchin, P. R., O'Hara,
977 R. B., Solymos, P., Stevens, M. H., Szoecs, E., Wagner, H., Barbour, M., Bedward, M.,
978 Bolker, B., Borcard, D., Carvalho, G., Chirico, M., De Caceres, M., Durand, S.,
979 Evangelista, H. B. A., FitzJohn, R., Friendly, M., Furneaux, B., Hannigan, G., Hill, M.
980 O., Lahti, L., McGlinn, D., Ouellette, M., Cunha, E. R., Smith, T., Stier, A., Ter Braak,

- 981 C. J. F., and Weedon J. (2022). *vegan: Community Ecology Package*. In R package
982 version 2.6-2. <https://CRAN.R-project.org/package=vegan>
- 983 Oliphant, K., & Allen-Vercoe, E. (2019). Macronutrient metabolism by the human gut
984 microbiome: major fermentation by-products and their impact on host health.
985 *Microbiome*, 7(1), 91. <https://doi.org/10.1186/s40168-019-0704-8>
- 986 Parcon, P. A., Balasubramaniam, M., Ayyadevara, S., Jones, R. A., Liu, L., Shmookler Reis,
987 R. J., Barger, S. W., Mrak, R. E., & Griffin, W. S. T. (2018). Apolipoprotein E4 inhibits
988 autophagy gene products through direct, specific binding to CLEAR motifs. *Alzheimers*
989 *Dement*, 14(2), 230-242. <https://doi.org/10.1016/j.jalz.2017.07.754>
- 990 Parker, B. J., Wearsch, P. A., Veloo, A. C. M., & Rodriguez-Palacios, A. (2020). The Genus
991 *Alistipes*: Gut Bacteria With Emerging Implications to Inflammation, Cancer, and
992 Mental Health. *Front Immunol*, 11, 906. <https://doi.org/10.3389/fimmu.2020.00906>
- 993 Peet, R. K. (1974). The Measurement of Species Diversity. *Annual Review of Ecology and*
994 *Systematics*, 5(1), 285-307. <https://doi.org/10.1146/annurev.es.05.110174.001441>
- 995 Poillet-Perez, L., Xie, X., Zhan, L., Yang, Y., Sharp, D. W., Hu, Z. S., Su, X., Maganti, A.,
996 Jiang, C., Lu, W., Zheng, H., Bosenberg, M. W., Mehnert, J. M., Guo, J. Y., Lattime,
997 E., Rabinowitz, J. D., & White, E. (2018). Autophagy maintains tumour growth through
998 circulating arginine. *Nature*, 563(7732), 569-573. [https://doi.org/10.1038/s41586-018-](https://doi.org/10.1038/s41586-018-0697-7)
999 [0697-7](https://doi.org/10.1038/s41586-018-0697-7)
- 1000 Pugin, B., Barcik, W., Westermann, P., Heider, A., Wawrzyniak, M., Hellings, P., Akdis, C.
1001 A., & O'Mahony, L. (2017). A wide diversity of bacteria from the human gut produces
1002 and degrades biogenic amines. *Microb Ecol Health Dis*, 28(1), 1353881.
1003 <https://doi.org/10.1080/16512235.2017.1353881>
- 1004 Rodriguez-Palacios, A., Conger, M., Hopperton, A., Ezeji, J. C., Erkkila, H. L., Fiocchi, C., &
1005 Cominelli, F. (2019). 25 IDENTIFICATION OF PATHOGENIC BACTERIA IN
1006 SEVERE CROHN'S DISEASE. *Inflammatory Bowel Diseases*, 25(Supplement_1),
1007 S70-S70. <https://doi.org/10.1093/ibd/izy393.175>
- 1008 Rogers, G. B., Keating, D. J., Young, R. L., Wong, M. L., Licinio, J., & Wesselingh, S. (2016).
1009 From gut dysbiosis to altered brain function and mental illness: mechanisms and
1010 pathways. *Mol Psychiatry*, 21(6), 738-748. <https://doi.org/10.1038/mp.2016.50>
- 1011 Sampson, T. R., Debelius, J. W., Thron, T., Janssen, S., Shastri, G. G., Ilhan, Z. E., Challis, C.,
1012 Schretter, C. E., Rocha, S., Gradinaru, V., Chesselet, M. F., Keshavarzian, A., Shannon,
1013 K. M., Krajmalnik-Brown, R., Wittung-Stafshede, P., Knight, R., & Mazmanian, S. K.
1014 (2016). Gut Microbiota Regulate Motor Deficits and Neuroinflammation in a Model of
1015 Parkinson's Disease. *Cell*, 167(6), 1469-1480 e1412.
1016 <https://doi.org/10.1016/j.cell.2016.11.018>
- 1017 Sankowski, R., Mader, S., & Valdes-Ferrer, S. I. (2015). Systemic inflammation and the brain:
1018 novel roles of genetic, molecular, and environmental cues as drivers of
1019 neurodegeneration. *Front Cell Neurosci*, 9, 28.
1020 <https://doi.org/10.3389/fncel.2015.00028>
- 1021 Sharon, G., Sampson, T. R., Geschwind, D. H., & Mazmanian, S. K. (2016). The Central
1022 Nervous System and the Gut Microbiome. *Cell*, 167(4), 915-932.
1023 <https://doi.org/10.1016/j.cell.2016.10.027>
- 1024 Shi, Y., Yamada, K., Liddelow, S. A., Smith, S. T., Zhao, L., Luo, W., Tsai, R. M., Spina, S.,
1025 Grinberg, L. T., Rojas, J. C., Gallardo, G., Wang, K., Roh, J., Robinson, G., Finn, M.
1026 B., Jiang, H., Sullivan, P. M., Baufeld, C., Wood, M. W., Sutphen, C., McCue, L.,
1027 Xiong, C., Del-Aguila, J. L., Morris, J. C., Cruchaga, C., Alzheimer's Disease
1028 Neuroimaging, I., Fagan, A. M., Miller, B. L., Boxer, A. L., Seeley, W. W., Butovsky,
1029 O., Barres, B. A., Paul, S. M., & Holtzman, D. M. (2017). ApoE4 markedly exacerbates

- 1030 tau-mediated neurodegeneration in a mouse model of tauopathy. *Nature*, 549(7673),
1031 523-527. <https://doi.org/10.1038/nature24016>
- 1032 Shoubridge, A. P., Choo, J. M., Martin, A. M., Keating, D. J., Wong, M. L., Licinio, J., &
1033 Rogers, G. B. (2022). The gut microbiome and mental health: advances in research and
1034 emerging priorities. *Mol Psychiatry*, 27(4), 1908-1919. [https://doi.org/10.1038/s41380-](https://doi.org/10.1038/s41380-022-01479-w)
1035 [022-01479-w](https://doi.org/10.1038/s41380-022-01479-w)
- 1036 Soto, M., Herzog, C., Pacheco, J. A., Fujisaka, S., Bullock, K., Clish, C. B., & Kahn, C. R.
1037 (2018). Gut microbiota modulate neurobehavior through changes in brain insulin
1038 sensitivity and metabolism. *Mol Psychiatry*, 23(12), 2287-2301.
1039 <https://doi.org/10.1038/s41380-018-0086-5>
- 1040 Stadlbauer, V., Engertsberger, L., Komarova, I., Feldbacher, N., Leber, B., Pichler, G., Fink,
1041 N., Scarpatetti, M., Schippinger, W., Schmidt, R., & Horvath, A. (2020). Dysbiosis, gut
1042 barrier dysfunction and inflammation in dementia: a pilot study. *BMC Geriatr*, 20(1),
1043 248. <https://doi.org/10.1186/s12877-020-01644-2>
- 1044 Stephenson, J., Nutma, E., van der Valk, P., & Amor, S. (2018). Inflammation in CNS
1045 neurodegenerative diseases. *Immunology*, 154(2), 204-219.
1046 <https://doi.org/10.1111/imm.12922>
- 1047 Strandwitz, P. (2018). Neurotransmitter modulation by the gut microbiota. *Brain Res*, 1693(Pt
1048 B), 128-133. <https://doi.org/10.1016/j.brainres.2018.03.015>
- 1049 Sud, M., Fahy, E., Cotter, D., Azam, K., Vadivelu, I., Burant, C., Edison, A., Fiehn, O.,
1050 Higashi, R., Nair, K. S., Sumner, S., & Subramaniam, S. (2016). Metabolomics
1051 Workbench: An international repository for metabolomics data and metadata,
1052 metabolite standards, protocols, tutorials and training, and analysis tools. *Nucleic Acids*
1053 *Res*, 44(D1), D463-470. <https://doi.org/10.1093/nar/gkv1042>
- 1054 Sun, M. F., Zhu, Y. L., Zhou, Z. L., Jia, X. B., Xu, Y. D., Yang, Q., Cui, C., & Shen, Y. Q.
1055 (2018). Neuroprotective effects of fecal microbiota transplantation on MPTP-induced
1056 Parkinson's disease mice: Gut microbiota, glial reaction and TLR4/TNF-alpha
1057 signaling pathway. *Brain Behav Immun*, 70, 48-60.
1058 <https://doi.org/10.1016/j.bbi.2018.02.005>
- 1059 Suzuki, H., Yamashiro, D., Ogawa, S., Kobayashi, M., Cho, D., Iizuka, A., Tsukamoto-Yasui,
1060 M., Takada, M., Isokawa, M., Nagao, K., & Fujiwara, Y. (2020). Intake of Seven
1061 Essential Amino Acids Improves Cognitive Function and Psychological and Social
1062 Function in Middle-Aged and Older Adults: A Double-Blind, Randomized, Placebo-
1063 Controlled Trial. *Front Nutr*, 7, 586166. <https://doi.org/10.3389/fnut.2020.586166>
- 1064 Takahashi, K., Nishida, A., Fujimoto, T., Fujii, M., Shioya, M., Imaeda, H., Inatomi, O.,
1065 Bamba, S., Sugimoto, M., & Andoh, A. (2016). Reduced Abundance of Butyrate-
1066 Producing Bacteria Species in the Fecal Microbial Community in Crohn's Disease.
1067 *Digestion*, 93(1), 59-65. <https://doi.org/10.1159/000441768>
- 1068 Tsuang, D., Leverenz, J. B., Lopez, O. L., Hamilton, R. L., Bennett, D. A., Schneider, J. A.,
1069 Buchman, A. S., Larson, E. B., Crane, P. K., Kaye, J. A., Kramer, P., Woltjer, R.,
1070 Kukull, W., Nelson, P. T., Jicha, G. A., Neltner, J. H., Galasko, D., Masliah, E.,
1071 Trojanowski, J. Q., Schellenberg, G. D., Yearout, D., Huston, H., Fritts-Penniman, A.,
1072 Mata, I. F., Wan, J. Y., Edwards, K. L., Montine, T. J., & Zabetian, C. P. (2012). GBA
1073 mutations increase risk for Lewy body disease with and without Alzheimer disease
1074 pathology. *Neurology*, 79(19), 1944-1950.
1075 <https://doi.org/10.1212/WNL.0b013e3182735e9a>
- 1076 Ulrich, J. D., Ulland, T. K., Mahan, T. E., Nystrom, S., Nilsson, K. P., Song, W. M., Zhou, Y.,
1077 Reinartz, M., Choi, S., Jiang, H., Stewart, F. R., Anderson, E., Wang, Y., Colonna, M.,
1078 & Holtzman, D. M. (2018). ApoE facilitates the microglial response to amyloid plaque
1079 pathology. *J Exp Med*, 215(4), 1047-1058. <https://doi.org/10.1084/jem.20171265>

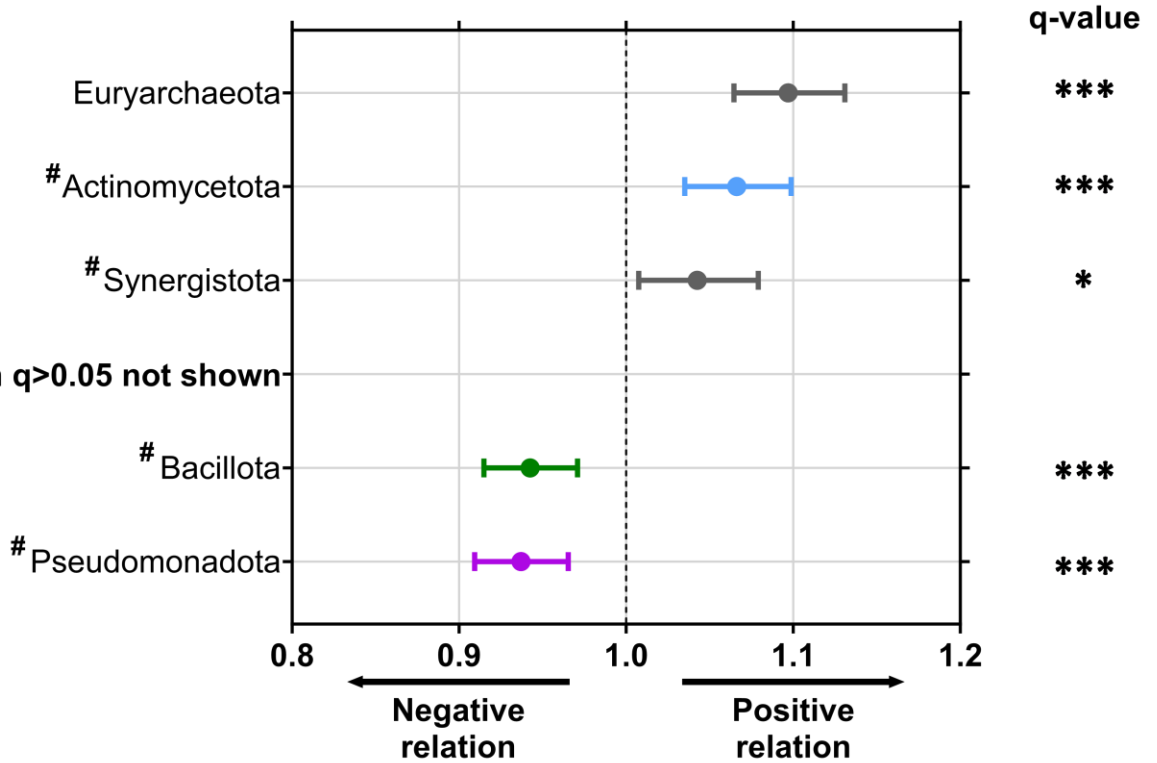
- 1080 Valles-Colomer, M., Falony, G., Darzi, Y., Tigchelaar, E. F., Wang, J., Tito, R. Y., Schiweck,
1081 C., Kurilshikov, A., Joossens, M., Wijmenga, C., Claes, S., Van Oudenhove, L.,
1082 Zhernakova, A., Vieira-Silva, S., & Raes, J. (2019). The neuroactive potential of the
1083 human gut microbiota in quality of life and depression. *Nat Microbiol*, 4(4), 623-632.
1084 <https://doi.org/10.1038/s41564-018-0337-x>
- 1085 van Soest, A. P. M., Hermes, G. D. A., Berendsen, A. A. M., van de Rest, O., Zoetendal, E. G.,
1086 Fuentes, S., Santoro, A., Franceschi, C., de Groot, L., & de Vos, W. M. (2020).
1087 Associations between Pro- and Anti-Inflammatory Gastro-Intestinal Microbiota, Diet,
1088 and Cognitive Functioning in Dutch Healthy Older Adults: The NU-AGE Study.
1089 *Nutrients*, 12(11). <https://doi.org/10.3390/nu12113471>
- 1090 Verdi, S., Jackson, M. A., Beaumont, M., Bowyer, R. C. E., Bell, J. T., Spector, T. D., & Steves,
1091 C. J. (2018). An Investigation Into Physical Frailty as a Link Between the Gut
1092 Microbiome and Cognitive Health. *Front Aging Neurosci*, 10, 398.
1093 <https://doi.org/10.3389/fnagi.2018.00398>
- 1094 Vogt, N. M., Kerby, R. L., Dill-McFarland, K. A., Harding, S. J., Merluzzi, A. P., Johnson, S.
1095 C., Carlsson, C. M., Asthana, S., Zetterberg, H., Blennow, K., Bendlin, B. B., & Rey,
1096 F. E. (2017). Gut microbiome alterations in Alzheimer's disease. *Sci Rep*, 7(1), 13537.
1097 <https://doi.org/10.1038/s41598-017-13601-y>
- 1098 Wang, T., Cai, G., Qiu, Y., Fei, N., Zhang, M., Pang, X., Jia, W., Cai, S., & Zhao, L. (2012).
1099 Structural segregation of gut microbiota between colorectal cancer patients and healthy
1100 volunteers. *ISME J*, 6(2), 320-329. <https://doi.org/10.1038/ismej.2011.109>
- 1101 Wasser, C. I., Mercieca, E. C., Kong, G., Hannan, A. J., McKeown, S. J., Glikmann-Johnston,
1102 Y., & Stout, J. C. (2020). Gut dysbiosis in Huntington's disease: associations among
1103 gut microbiota, cognitive performance and clinical outcomes. *Brain Commun*, 2(2),
1104 fcaa110. <https://doi.org/10.1093/braincomms/fcaa110>
- 1105 Weaver, G. A., Krause, J. A., Miller, T. L., & Wolin, M. J. (1986). Incidence of methanogenic
1106 bacteria in a sigmoidoscopy population: an association of methanogenic bacteria and
1107 diverticulosis. *Gut*, 27(6), 698-704. <https://doi.org/10.1136/gut.27.6.698>
- 1108 Wu, L., Zeng, T., Zinellu, A., Rubino, S., Kelvin, D. J., & Carru, C. (2019). A Cross-Sectional
1109 Study of Compositional and Functional Profiles of Gut Microbiota in Sardinian
1110 Centenarians. *mSystems*, 4(4). <https://doi.org/10.1128/mSystems.00325-19>
- 1111 Yano, J. M., Yu, K., Donaldson, G. P., Shastri, G. G., Ann, P., Ma, L., Nagler, C. R., Ismagilov,
1112 R. F., Mazmanian, S. K., & Hsiao, E. Y. (2015). Indigenous bacteria from the gut
1113 microbiota regulate host serotonin biosynthesis. *Cell*, 161(2), 264-276.
1114 <https://doi.org/10.1016/j.cell.2015.02.047>
- 1115 Ye, B. S., Seo, S. W., Kim, J. H., Kim, G. H., Cho, H., Noh, Y., Kim, H. J., Yoon, C. W., Woo,
1116 S. Y., Kim, S. H., Park, H. K., Kim, S. T., Choe, Y. S., Lee, K. H., Kim, J. S., Oh, S.
1117 J., Kim, C., Weiner, M., Lee, J. H., & Na, D. L. (2015). Effects of amyloid and vascular
1118 markers on cognitive decline in subcortical vascular dementia. *Neurology*, 85(19),
1119 1687-1693. <https://doi.org/10.1212/WNL.0000000000002097>
- 1120 Ye, L., Bae, M., Cassilly, C. D., Jabba, S. V., Thorpe, D. W., Martin, A. M., Lu, H. Y., Wang,
1121 J., Thompson, J. D., Lickwar, C. R., Poss, K. D., Keating, D. J., Jordt, S. E., Clardy, J.,
1122 Liddle, R. A., & Rawls, J. F. (2021). Enteroendocrine cells sense bacterial tryptophan
1123 catabolites to activate enteric and vagal neuronal pathways. *Cell Host Microbe*, 29(2),
1124 179-196 e179. <https://doi.org/10.1016/j.chom.2020.11.011>

1125

A**B****C****D****E**

Adjusted odds ratio with 95% confidence interval

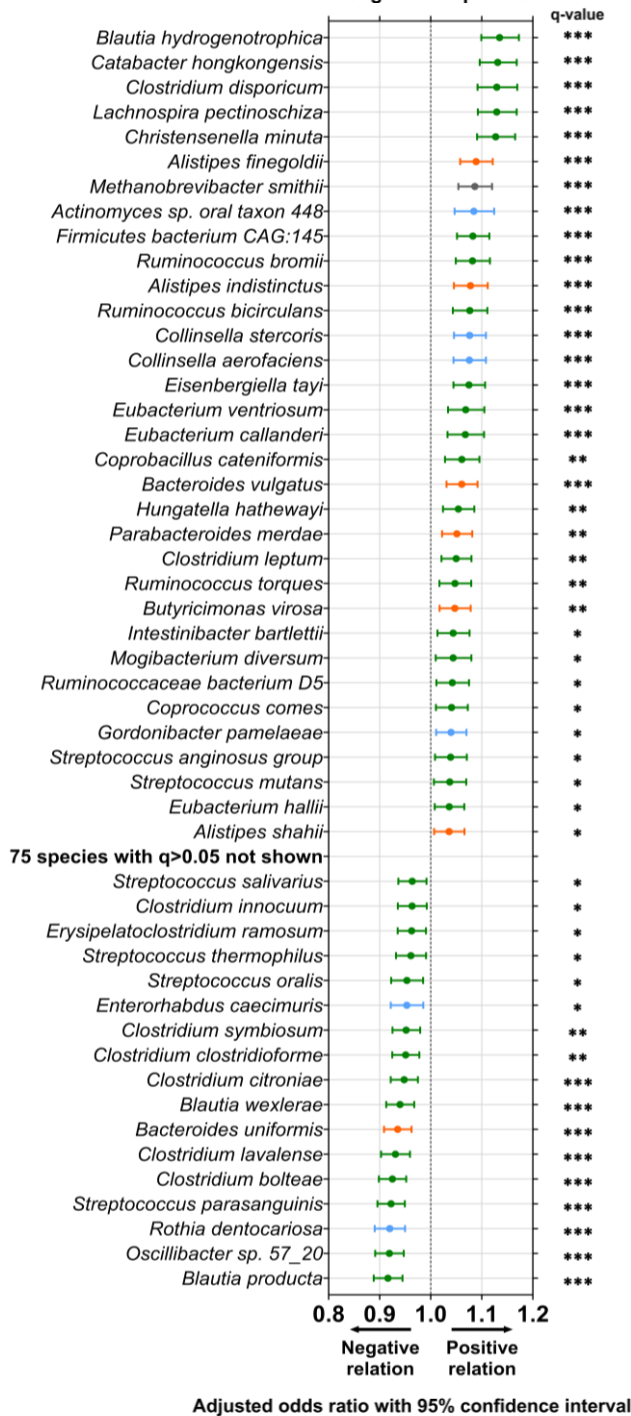
Relation of bacterial phyla to severity of cognitive impairment



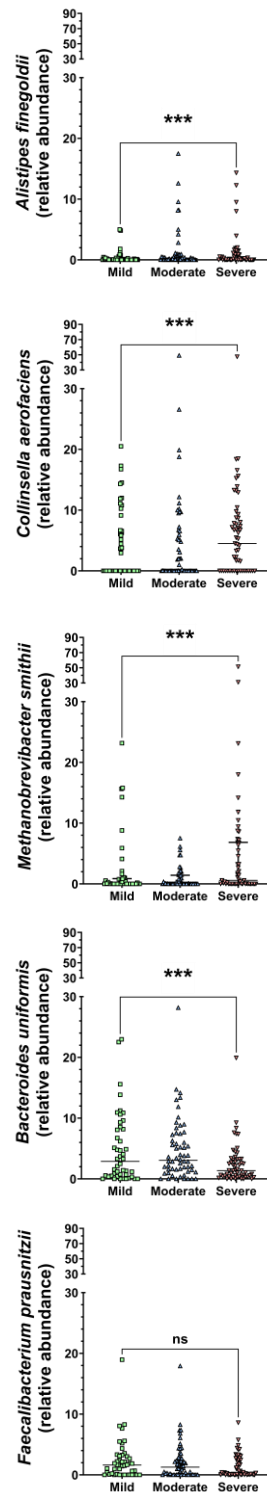
Adjusted odds ratio with 95% confidence interval

A

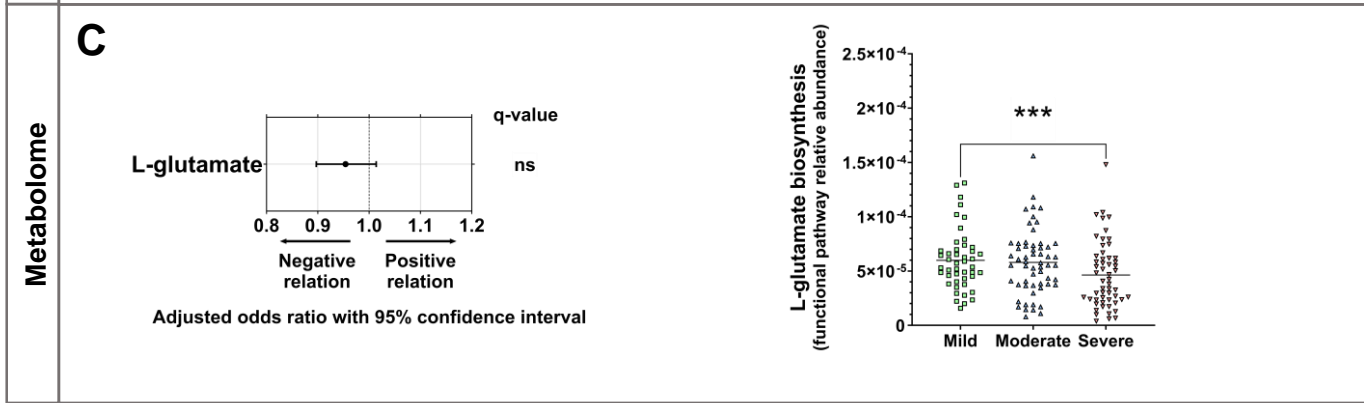
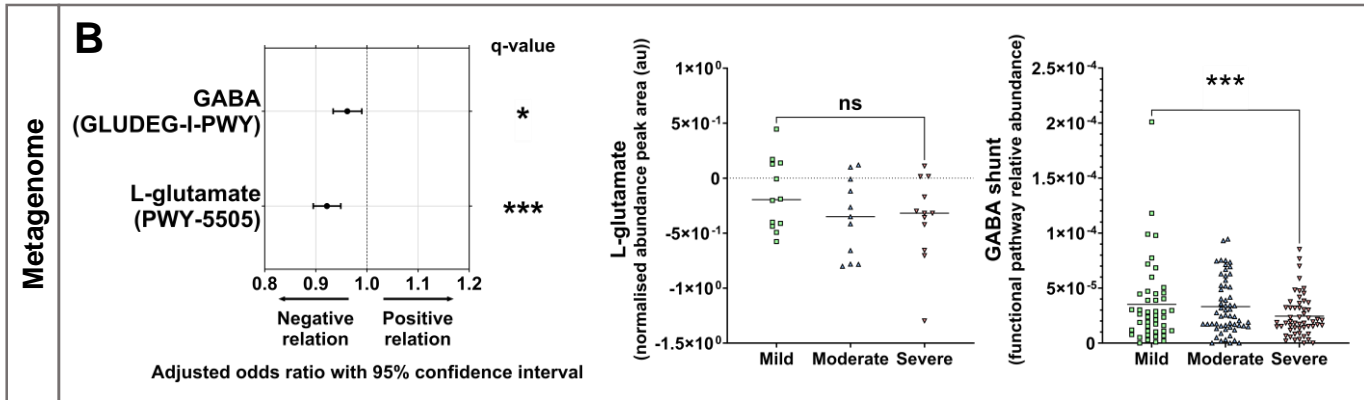
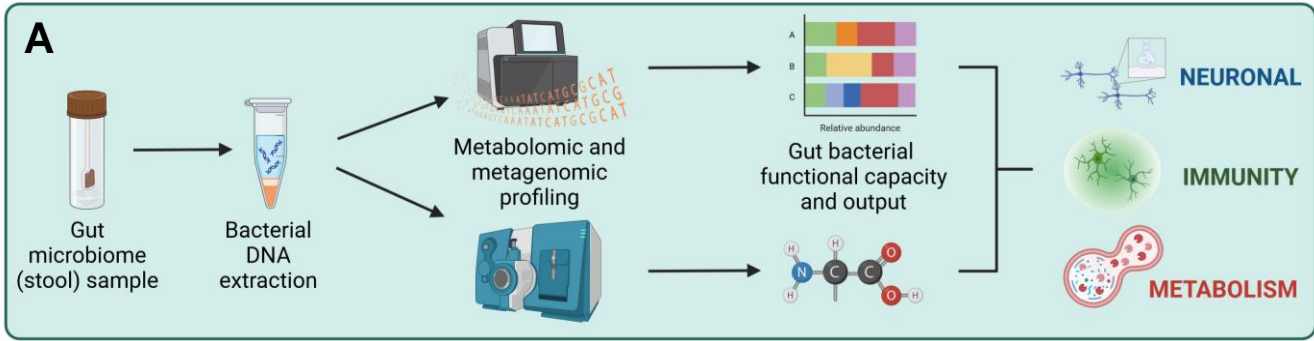
Relation of species to severity of cognitive impairment

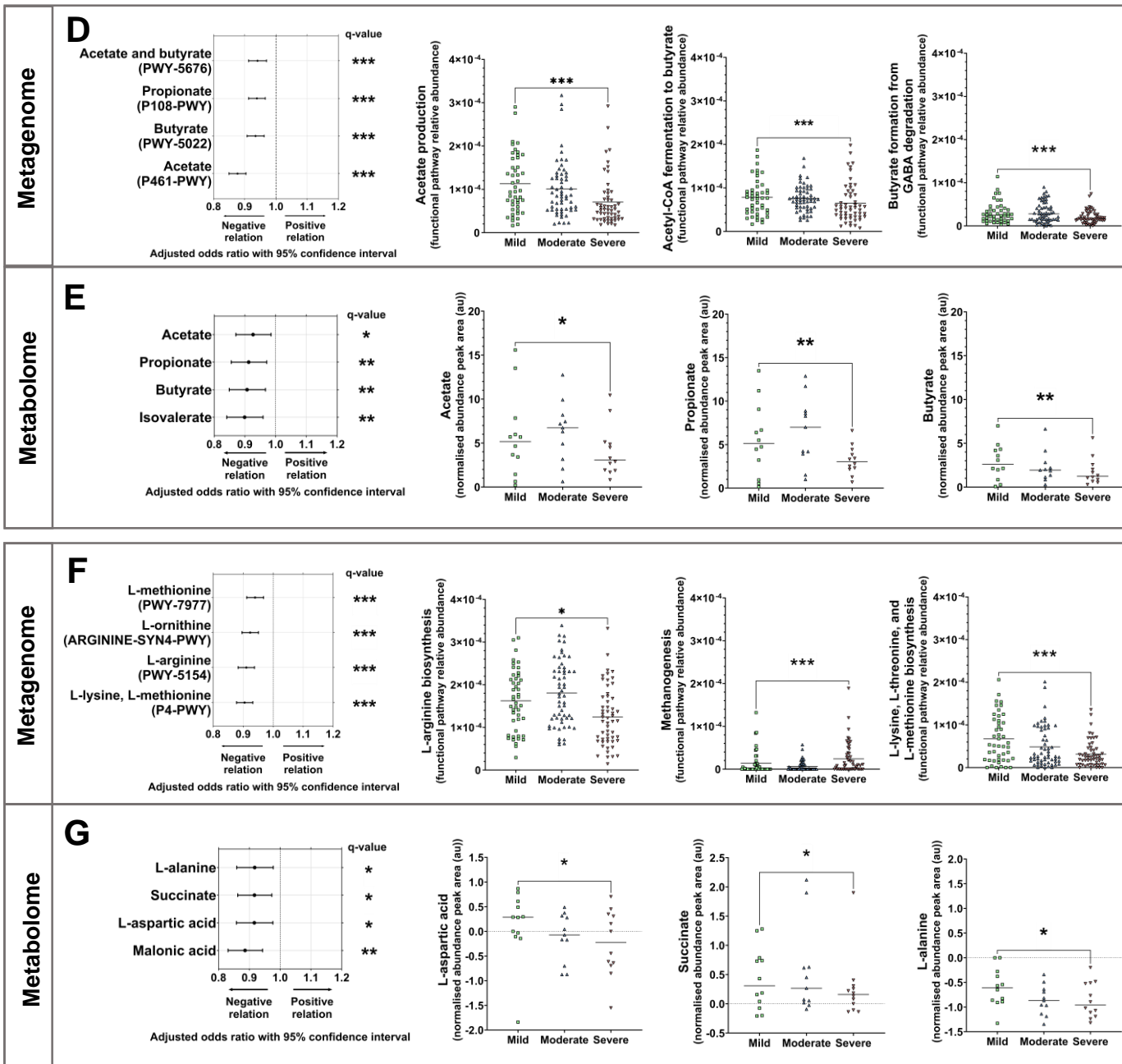


B



Neurotransmission





Figures and Tables

Table 1. Study Cohort Characteristics by Severity of Cognitive Impairment.

[#]Extracted from Aged Care Funding Instrument data.

[^]Memory support units (also known as dementia units/wards, memory care, or special care units) are secure areas within long-term care facilities specially designed to accommodate residents with dementia.

^{*}Medication use defined as two or more supplies of the same medication within 90 days prior to stool collection.

Demographic	Mild (n=46)	Moderate (n=58)	Severe (n=55)	Total (n=159)
Age (years): Median (IQR)	87.5 (81.3;93.6)	90.3 (83.7;95.0)	87.9 (82.0;93.0)	88.7(82.1; 93.5)
Sex: n (%)				
Female	27 (58.7)	42 (72.4)	40 (72.7)	109 (68.6)
Male	19 (41.3)	16 (27.6)	15 (27.3)	50 (31.4)
PAS-CIS: Median (IQR)	6.6 (5.0;8.0)	11.0 (11.0;12.8)	18.0 (17.0;18.8)	10.8 (7.0;18.0)
Time between CI assessment and stool collection (days): Median (IQR)	345.5 (148.5,654.5)	421.5 (182.3,734.3)	487.0 (252.0,909.0)	437.0 (185.0,741.0)
Time since entry to facility (days): Median (IQR)	500 (253.0,947.5)	704 (299.0,983.0)	962 (502.0,1198.0)	681 (360.0,1015.0)
Dementia diagnosis: % (n) [#]	8.7 (4)	56.9 (33)	96.4 (53)	56.6 (90)
Memory Support Unit[^]: n (%)	0 (0.0)	4 (6.9)	19 (34.5)	23 (14.5)
Meal texture: n (%)				
Regular	38 (82.6)	44 (75.9)	30 (54.5)	112 (70.4)
Soft/smooth	8 (17.4)	14 (24.1)	25 (45.5)	47 (29.6)
Liquid texture: n (%)				
Normal/thin	42 (91.3)	54 (93.1)	49 (89.1)	145 (91.2)
Thick	4 (8.7)	4 (6.9)	6 (10.9)	14 (8.8)
Antibiotics (at least 2 supplied[*]): n (%)	10 (21.7)	7 (12.1)	5 (9.1)	22 (13.8)
Proton pump inhibitors (at least 2 supplied[*]): n (%)	23 (50.0)	23 (39.7)	12 (21.8)	58 (36.5)
Opioids (at least 2 supplied[*]): n (%)	8 (17.4)	12 (20.7)	14 (25.5)	34 (21.4)
Laxatives (at least 2 supplied[*]): n (%)	6 (13.0)	6 (10.3)	9 (16.4)	21 (13.2)

Table 2. Permutational ANOVA of the gut microbiome by severity of cognitive impairment.

^aTime since cognitive impairment assessment + age + sex+ antibiotic use + proton pump inhibitor use + opioid use + laxative use + recorded medication history + meal texture + liquid texture.

[^]Permutation p-value generated with a PERMANOVA.

*Degrees of freedom = 2.

	Unadjusted Model			Multivariate-adjusted Model ^a		
Main Test	Pseudo- <i>F</i> Ratio	<i>R</i> ²	p(permutation) [^]	Pseudo- <i>F</i> Ratio	<i>R</i> ²	p(permutation) [^]
Cognitive Impairment*	1.9646	0.0246	0.0002	1.815	0.0221	0.0003
Pairwise Test	<i>t</i>		p(permutation) [^]	<i>t</i>		p(permutation) [^]
Mild v Moderate	1.0596		0.2583	1.1135		0.1478
Mild v Severe	1.4474		0.0017	1.4228		0.0023
Moderate v Severe	1.6304		0.0002	1.5265		0.0003