

Full title: Treatment seeking behaviours, antibiotic use and relationships to multi-drug resistance: A study of urinary tract infection patients in Kenya, Tanzania and Uganda

Short title: Treatment seeking, antibiotic use and multi-drug resistance

Sado, Keina¹; Keenan, Katherine^{1*}; Manataki, Areti¹; Kesby, Mike¹; Mushi, Martha F²; Mshana, Stephen E²; Mwanga, Joseph²; Neema, Stella³; Asiimwe, Benon³; Bazira, Joel⁴; Kiiru, John⁵; Green, Dominique L¹; Ke, Xuejia¹; Maldonado-Barragán, Antonio¹; Abed Al Ahad¹, Mary; Fredricks, Kathryn¹; Gillespie, Stephen H¹; Sabiiti, Wilber¹; Mmbaga, Blandina T⁶; Kibiki, Gibson⁷; Aanensen, David⁸; Smith, V Anne¹; Sandeman, Alison¹; Sloan, Derek J¹; Holden, Matthew TG¹ on behalf of HATUA Consortium¹

*Corresponding author

¹ University of St Andrews, St Andrews, UK

² Catholic University Of Health And Allied Sciences, Mwanza, Tanzania.

³ Makerere University, Kampala, Uganda.

⁴ Mbarara University of Science and Technology, Mbarara, Uganda.

⁵ Kenya Medical Research Institute, Nairobi, Kenya

⁶ Kilimanjaro Clinical Research Institute, Kilimanjaro Christian Medical Centre, Moshi, Tanzania;

Kilimanjaro Christian Medical University College, Moshi Tanzania

⁷ Africa Excellence Research Fund, London, UK

⁸ Oxford Big Data Institute, Oxford, UK.

⁹ London School of Hygiene and Tropical Medicine, London, UK

1 **Abstract**

2 Antibacterial resistance (ABR) is a major public health threat. An important accelerating
3 factor is treatment-seeking behaviours, including inappropriate antibiotic (AB) use. In many
4 low- and middle-income countries (LMICs) this includes taking ABs with and without
5 prescription sourced from various providers, including health facilities and community drug
6 sellers. However, investigations of complex treatment-seeking, AB use and drug resistance
7 in LMICs are scarce.

8 The Holistic Approach to Unravel Antibacterial Resistance in East Africa (HATUA) Consortium
9 collected questionnaire and microbiological data from 6,827 adult outpatients with urinary
10 tract infection (UTI)-like symptoms presenting at healthcare facilities in Kenya, Tanzania and
11 Uganda. Among 6,388 patients we analysed patterns of self-reported treatment seeking
12 behaviours ('patient pathways') using process mining and single-channel sequence analysis.
13 Of those with microbiologically confirmed UTI (n=1,946), we used logistic regression to
14 assessed the relationship between treatment seeking behaviour, AB use, and likelihood of
15 having a multi-drug resistant (MDR) UTI.

16 The most common treatment pathways for UTI-like symptoms included attending health
17 facilities, rather than other providers (e.g. drug sellers). Patients from the sites sampled in
18 Tanzania and Uganda, where prevalence of MDR UTI was over 50%, were more likely to
19 report treatment failures, and have repeated visits to clinics/other providers, than those
20 from Kenyan sites, where MDR UTI rates were lower (33%). There was no strong or
21 consistent relationship between individual AB use and risk of MDR UTI, after accounting for
22 country context.

23 The results highlight challenges East African patients face in accessing effective UTI
24 treatment. These challenges increase where rates of MDR UTI are higher, suggesting a
25 reinforcing circle of failed treatment attempts and sustained selection for drug resistance.
26 Whilst individual behaviours may contribute to the risk of MDR UTI, our data show that
27 factors related to context are stronger drivers of ABR.

28 **Key words:** healthcare use; antibiotic use; antibacterial resistance; Sub-Saharan Africa;
29 Urinary tract infection

30 **Introduction**

31 Antibacterial resistance (ABR) is a major global health challenge which compromises our
32 ability to treat infections with antibiotics (ABs)(1). ABR was associated with an estimated 5
33 million deaths globally in 2019, and the annual mortality rate from ABR is expected to
34 increase further by 2050(2,3). The burden is greatest in low- and middle-income countries
35 (LMICs)(2), which experience a higher prevalence of infectious diseases, and have fewer
36 technical and financial resources to deal with multi-drug resistant (MDR) pathogens. Whilst
37 the genetic mutations which make microbes resistant to ABs occur spontaneously(4),
38 overuse and misuse of ABs to treat human illness is a major driver of ABR in pathogens that
39 cause disease(5). Many studies have identified increased AB use, and prior AB use, as risk
40 factors for ABR infections, driving resistance through exerting bacterial selection pressures
41 within individuals and communities(6–9). Deeper understanding of the dynamics of
42 treatment-seeking, AB use and ABR in LMIC settings is therefore crucial to tackle the
43 problem. Untangling cause and effect between high AB use and ABR is challenging,
44 especially where ABR infections are more common, and repeat AB use may be a reaction to
45 treatment failure.

46 Healthcare and treatment landscapes in LMICs are sometimes described as ‘pluralistic’(10),
47 which typically means there are multiple sources of public and private clinics, alongside
48 pharmacists, drug sellers, and complementary and traditional/herbal medicine providers.
49 This multi-layered context of care provision overlaps with models of medical syncretism,
50 which describe how patients make treatment decisions drawing on hybrid logics(11),
51 composed of both biomedical understandings and local knowledge/beliefs present in
52 different contexts(11,12). Decision-making in LMICs is further influenced by a number of

53 individual and structural factors, including under-resourced public health provision, stock-
54 outs of medicines and multi-layered systems of healthcare insurance(13–15). This
55 potentially leads to great diversity in pathways to AB use among patients, something which
56 has been recently highlighted as a research gap(10).

57 Existing research suggests that AB self-medication from drug shops is very common in parts
58 of Asia and Sub-Saharan Africa(14–18). This is facilitated, in some areas, by the ease of
59 purchasing ABs without prescription at community pharmacies and drug shops(19), and the
60 possibility of buying partial courses which can result in sub-optimal treatment dosing.
61 Studies also suggest that consumption of leftover ABs (i.e. previously obtained but
62 unconsumed) is common(17). Thus far, there have been no studies investigating the
63 interrelationship between patient AB use and ABR in East Africa, a region with high levels of
64 ABR(2,20), high prevalence of non-prescription drug sales(21) and complex, hybrid
65 treatment landscapes.

66 In previous studies, AB use or ‘misuse’ has often been measured simply as, for example, a
67 binary indicator of any type of self-medication(16). However, situating treatment-seeking
68 behaviours in their appropriate social and temporal context is vital. AB self-medication may
69 occur as part of a longer sequence of treatment attempts(22), or in parallel to other
70 attempts, emphasising the importance of a longitudinal, pathway based approach(23).
71 Pathway analysis has been used to investigate care for tuberculosis,(24) abortion,(25) and
72 cancer(26) but has rarely been used to understand AB use (15). Appropriate data and
73 methods are needed to capture the behavioural nuance inherent in such patient pathways.
74 This study makes use of exceptionally detailed linked quantitative social and microbiological
75 data collected as part of the part of a multi-country interdisciplinary consortium “Holistic

76 Approach to Unravel Antibacterial Resistance in East Africa (HATUA)” which aimed to
77 delineate the drivers of antibiotic resistance in this community.(27). The study focused on
78 urinary tract infections (UTIs) as a lens for understanding treatment-seeking and ABR more
79 generally. UTIs are globally common bacterial illnesses which are usually treated with ABs,
80 but can cause threatening complications if ineffectively treated in vulnerable
81 patients(28,29).

82 In this study, we address two research questions: 1) What are the main characteristics of
83 treatment-seeking pathways among patients with UTI-like symptoms in Kenya, Tanzania,
84 and Uganda? and 2) How do treatment-seeking behaviours and AB use relate to the
85 likelihood of developing an UTI caused by a multi-drug resistant (MDR) pathogen (i.e.
86 resistant to at least 3 classes of antibiotic)?

87

88 **Materials and Methods**

89 ***Data and sample***

90 The original sample consisted of 6,827 adult outpatients with UTI-like symptoms (e.g.
91 burning when urinating, frequent urination, blood or pus in urine), aged 18 years and over ,
92 and pregnant adolescents aged 14-17 years, who were recruited from three sites in Kenya
93 (Makueni, Nairobi, and Nanyuki), Tanzania (Kilimanjaro, Mbeya, and Mwanza), and Uganda
94 (Mbarara, Nakapiripirit, and Nakasongola), between February 2019 and September 2020
95 (see Figure 1). We recruited patients at medical facilities that were predominantly
96 government-funded (see Appendix Table S1 for a full explanation). In all sites, less than 1%
97 of those approached declined to participate. Ethical approval was obtained from National
98 and Institutional Research Ethics Committees (see protocol(27)).

99 ***Microbiological identification of UTI and antibiotic sensitivity testing (AST)***

100 All patients provided a clean catch mid-stream urine sample, which underwent
101 microbiological culture, pathogen identification and AST. Urinary tract infection positive
102 samples (UTI+) were defined by the presence of $>10^4$ colony-forming units per millilitre
103 (CFU/mL) of one or two uropathogens. For UTI positive patients, susceptibility to the tested
104 antibiotics (see appendix Table S2 for a full list) was done by the disk diffusion method, and
105 determined using breakpoints (zone diameter interpretive criteria) indicated in the 2021
106 CLSI guidelines (M02 document) (30) Multidrug-resistant (MDR) bacteria were defined as
107 urinary isolates resistant to at least one agent in three or more categories of antimicrobial
108 agents, following the European Centre for Disease Prevention and Control (ECDC)
109 guidelines(31) with some modifications. Specifically, nitrofurantoin and trimethoprim, two

110 antibiotics routinely used for treating UTIs that are not included in the ECDC guidelines,
111 were also considered for estimating MDR. In addition, for those species/genera not
112 incorporated in the ECDC guidelines, i.e. *Salmonella*, *Shigella* and *Streptococcus*, the MDR
113 rates were calculated as above, but considering the resistance to a selected pool of tested
114 antibiotics (Table S2). Isolates that showed intermediate resistance to a given antibiotic
115 were considered resistant. .

116 ***Variables: treatment-seeking behaviours***

117 Patients answered a questionnaire on treatment-seeking for UTI symptoms, previous AB use
118 practices and attitudes, and sociodemographic characteristics. Figure 2 illustrates the
119 structured questionnaire used to collect treatment-seeking data, which identified the types
120 of providers consulted, treatments/ABs taken, and reasons for these choices prior to
121 attending the recruitment clinic. We derived a variable for the number of steps in the
122 pathway (1 step, i.e. came straight to recruitment clinic, 2 steps, i.e. took one additional
123 step before coming to recruitment clinic, and 3 or more steps i.e. took 2 or more steps
124 before being recruited). During the interview, patients self-reported the names of medicines
125 they had taken to treat their UTI-like symptoms, and were also prompted using a drug bag
126 or drug card developed specifically for each site(32). Subsequently, we assessed whether
127 the AB they reported was recommended for treating UTI in adult outpatients according to
128 National Treatment Guidelines (NTGs) for their country (see appendix Table S3).

129 ***Other variables***

130 We included patients' self-reported sex (male/female), age (categorised into <25; 25-34; 35-
131 44; 45-54; 55-64; 65+ years), and education level (none, primary, secondary, and tertiary).

132 We also included a binary variable measuring use of any other ABs (apart from those
133 reported in the pathway) in the previous 6 months.

134

135 **Analytical Approach**

136 ***Characterising treatment seeking behaviours***

137 We employed computational methods of process mining and sequence analysis that are
138 designed to detect patterns in process /flow data. The application of these methods to
139 clinical healthcare data in LMICs is novel. Process mining is typically used to analyse event
140 sequences automatically recorded in high-income settings, such as electronic inpatient
141 records(30). Sequence analysis is more commonly applied in biological genetics and
142 sociology(33), but use to analyse healthcare processes is being developed(34).

143 **Process mining.** Self-reported responses shown in Figure 2 were organised in a temporal
144 sequence for each patient, capturing delay (or not)-> step 1->treatment at step 1-> step 2-
145 >treatment at step 2->step 3. Patients who arrived at clinic at an earlier stage had shorter
146 sequences. We assigned timestamps that reflected temporal sequences of individual
147 patients. We also merged some categories of variables due to low frequency. For example,
148 for the question “How did you seek treatment?”, we merged responses “Visiting
149 government health facility” and “Visiting private health facility” into “Visiting health facility”.

150 We employed the Heuristic Miner using the PM4Py package in Python (35). The process is
151 visually described in Figure 3. The output of the heuristic miner is a process model that
152 captures the control-flow relations between tasks that are observed in the data, including
153 the number of patients that moved from one step to another. In our study, the process

154 model provides a general overview of all treatment seeking pathways. Subsequently, we
155 visualised the most common pathways by analysing traces (i.e. sequences of steps) with the
156 use of ProM(36) software.. We compared the numbers/proportions of patients taking
157 common trajectories and qualitatively compared the traces across countries.

158 Next, we used **single-channel sequence analysis** (WeightedCluster library in R(37)) to cluster
159 patients with similar treatment-seeking pathways. To derive the clusters, we used the
160 variables shown in Figure 2, subsequently recoded, as follows: (delay (yes/no), types of
161 provider at step 1 and 2 (health facility/drug outlet/self-treatment), treatment at step 1 and
162 2 (ABs from NTGs/ other ABs/ no ABs), and number of steps (1,2,3+). In the preliminary
163 stages of analysis, we noticed that the clustering was strongly driven by the number of
164 steps. Therefore, to allow us to investigate other aspects of treatment seeking, we repeated
165 the clustering exercise separately among those who took 1 step, 2 steps, and 3 or more
166 steps. Following others(38), we used the optimal matching algorithm to calculate
167 dissimilarity measures. Because all sequences in each subgroup have the same number of
168 steps, costs for insertion/deletion were not required. Substitution costs were set to a
169 constant value (the default). The optimal number of clusters were evaluated using two
170 cluster quality measures: Point Biserial Correlation (PBC), and Weighted Average Silhouette
171 width (ASWw)(37). We assessed the characteristics of cluster membership by conducting a
172 bivariate analysis assessing the associations between age, gender, education, country and
173 cluster membership, using chi square tests for difference.

174 ***Associations between social factors, behaviours and MDR status***

175 To investigate associations between treatment seeking and MDR, we used a subset of UTI
176 positive patients with valid, linked data on MDR, treatment-seeking and socio-demographic

177 characteristics (n=1,946). We first cross-tabulated separate facets of treatment-seeking
178 characteristics (delay, types of provider at every step, treatments at every step, number of
179 steps) and socio-demographics (age, gender, education, country) with MDR status, and
180 conducted chi-square tests for difference. Then, we assessed the association between
181 cluster membership (derived from the sequence analysis described above) and MDR status
182 using multivariable logistic regression, stratified by country.

183 **Results**

184 ***Sample description***

185 To analyse patterns in UTI-treatment-seeking pathways, we excluded 219 patients who
186 came to the recruitment clinic for non-UTI symptoms and had not attempted to treat their
187 symptoms, leaving n= 6,608 patients. After further exclusions for missing covariate data
188 (n=220), the remaining 6,388 patients were composed of 1,591 (24.9%), 3,046 (47.7%),
189 1,751 (27.4%) from Kenya, Tanzania and Uganda respectively (see Figure 1). Table S4 shows
190 the characteristics of patients included in the two different analysis samples (stratified by
191 country in Tables S5-7). Considering the sample used for pathway analysis (n=6,338), nearly
192 half of the patients were recruited in Tanzania (47.7%), most were female, and of
193 reproductive age (<44 years). Overall, most patients had either primary or secondary level
194 education, with much smaller proportions with no or higher education. In terms of
195 treatment seeking pathways, while many patients (45.1%) had come straight to the
196 recruitment clinic, the majority (54.9%) had taken at least one additional treatment step
197 prior to recruitment into the HATUA study. Approximately 30% of patients had already
198 taken ABs to treat their UTI-like symptoms, and over 60% reported having taken ABs in the
199 previous 6 months. Of the total patients, 34.3% of participants had a UTI pathogen
200 microbiologically confirmed, and of these, nearly half (47.9%) had an MDR pathogen
201 responsible for their infection.

202 To analyse associations with MDR (shaded green box in Figure 1), we further restricted the
203 sample to microbiologically confirmed UTI patients with AST data for the pathogen
204 identified. We excluded patients if the pathogen or causative bacteria was unknown, or

205 where a breakpoint for disk diffusion test was unavailable. This resulted in a sample of
206 n=1946 which had slightly different distributions to the sample of all patients (Table S4-S7).
207 For example, a higher proportion came from Kenya and fewer from Tanzania, and women
208 and older people made up a larger fraction of the sample. This is related to the higher rates
209 of confirmed UTI in those different subgroups influencing their eventual inclusion into the
210 sample with MDR data.

211 ***Characteristics of treatment-seeking pathways***

212 Figure 4 visualizes the treatment-seeking pathways derived from process mining for all
213 countries combined. The majority (72%) of our patients accessed care within 2 weeks of
214 recognizing their symptoms, while 28% waited longer than 2 weeks. The most common first
215 step was visiting one of the study recruitment clinics (46% of patients), and the second most
216 common was visiting other health facilities (41%), followed by visiting drug outlets (7%) and
217 self-treatment (7%). At every step, attending health facilities, either the recruitment clinic or
218 another government-funded facility, were the predominant steps (it is important to
219 emphasize that our clinic-based recruitment strategy has likely led to bias in this direction).
220 Finally, 644 (10% of all participants) tried three or more things before visiting the
221 recruitment clinic. Among patients who did something before visiting the recruitment clinic
222 (3,509 patients), at the first step, 39% took ABs recommended in the NTGs for UTI, 9% took
223 other ABs, and 52% took other medications or nothing at all. At the second step (n=1,674),
224 there were similar proportions (33% took ABs in NTGs, 8% took other ABs).
225 Using the Trace Explorer function, we detected 183 unique treatment seeking patterns.
226 Logically, shorter pathways were the most common because there was less opportunity for
227 variation. The most frequently taken pathways were visiting the recruitment clinic either

228 within 2 weeks of noticing symptoms (34% of patients), or after 2 weeks (11%). Visiting
229 other types of clinics (government or private) and taking no medication or ABs in NTGs
230 represented the third, fourth and fifth most-common pathways. It was only at the sixth
231 most common when non-healthcare facility based treatments emerged. The majority of
232 treatments taken were either ABs in NTGs, or other medicines (taking other ABs was the
233 least common type of treatment).

234

235 We considered country-level differences in the 10 most common pathways (see Figure 5)
236 and this showed that Kenyan patients were more likely to access care without delay and
237 directly at the recruitment clinic than those in Tanzania or Uganda (55% of Kenyan patients
238 compared with 24% in Tanzania and 33% in Uganda). On the other hand, Kenyan patients
239 who did not go straight to recruitment clinic were the most likely to try self-treatment (5%)
240 or visit a drug outlet (4%) first. Among Tanzanian patients, the most common trajectories all
241 featured healthcare facilities visits, but patients were more likely to have 2 and 3 step
242 pathways than other countries (>10% of all sequences). Ugandan patients had simpler and
243 more healthcare-dependent pathways than in Tanzania.

244

245 Figure 6 shows the total distribution of patients taking any AB courses during the pathway,
246 whether they were in the NTGs for UTI or not, and whether they were taken after a visit to
247 healthcare facilities, drug outlets, or other. Overall, taking any type of ABs was less likely to
248 occur in Kenya than in Tanzania or Uganda (a finding driven by the generally shorter
249 pathways Kenyan patients reported). However, Kenyan patients had the highest rate of
250 taking ABs not in the NTGs, and were more likely to access these from drug outlets, than in
251 the other countries. In all countries, taking ABs was most likely to happen after a visit to a

252 healthcare facility. Kenya patients were proportionally more likely to visit pharmacies/drug
 253 shops prior to taking ABs, than in Tanzania or Uganda. Patients with no microbiologically
 254 confirmed UTI were just as likely to have taken ABs to treat their UTI-like symptoms as those
 255 with a UTI confirmed (see Table 1). Of all the patients who took ABs, two thirds (66%) were
 256 patients with no confirmed UTI.

257 **Table S1: AB use and UTI status, across 3 countries**

	Kenya		Tanzania		Uganda		TOTAL	
	UTI status		UTI status		UTI status		UTI status	
	Neg	Pos	Neg	Pos	Neg	Pos	Neg	Pos
	row %	row%	row %	row%	row %	row%	row %	row%
ABs from NTGs	52.3	47.8	72.8	27.2	72.2	27.8	70.1	29.9
Other ABs	39.1	60.9	74.0	26.0	71.4	28.6	63.9	36.1
No ABs	44.5	55.5	72.5	27.5	72.3	27.8	64.4	35.7
TOTAL	45	55	72.7	27.3	72.2	27.8	65.7	34.4

258
 259

260 ***Clustering of treatment-seeking behaviours***

261 After dividing the data into three subgroups: 1-step, 2-step, and 3-step or longer (3+ steps)
 262 sequences, we conducted sequence analysis separately on each subgroup. The cluster
 263 quality measures are shown in Figures S1 and S2. Since no strong peaks were observed in
 264 these measures, the final number of clusters was chosen as a trade-off between having a
 265 reasonably low number to maximize sample size for the subsequent analysis, with
 266 reasonably high scores on quality measures. Using this approach 10 clusters were detected:
 267 2 clusters from the 1-step sequence subgroup, and 4 clusters each from the 2-steps and 3+
 268 steps subgroups. Figure 4 summarizes the distribution of behavioural characteristics of
 269 these clusters by country, gender, education, and age. The characteristics of the clusters are
 270 further visualized in Supplementary Material Figure S3.

271

272 As might be expected from the process mining analysis, Kenyan patients were less likely to
273 belong to more complex pathways than those from Tanzania or Uganda. They were also
274 proportionally more likely to belong to cluster F (associated with visiting drug outlets, and
275 taking ABs not in NTGs). Tanzanian patients were the most likely to take 3 or 3+ step
276 pathways. Higher proportions of males belonged to the clusters G-J, indicating they were
277 more likely to have complex pathways. The pathways showing the highest mean age were
278 also the longest (I & J). There did not seem to be a clear relationship between education and
279 cluster membership.

280

281 ***Associations between treatment-seeking, AB use and MDR***

282

283 The next stage of the analysis uses a smaller subset of patients with complete data on MDR
284 (n=1,946). Patients excluded due at this stage were more likely to be from Tanzania or
285 Uganda, to be older, male, and have primary education (Table S8). Table 2 shows bivariate
286 associations between patient characteristics and MDR status. Patients with higher levels of
287 MDR were more likely to be from Uganda and Tanzania than Kenya; to be male, older, and
288 have no studies or primary school education only. Patients with MDR infections are also
289 more likely to have reported delay in accessing care; 3+ treatment-seeking steps; accessed a
290 healthcare facility as their first step; and using ABs in their pathway. Notably, AB use in the
291 previous 6 months was not associated with higher MDR rates. We repeated the bivariate
292 analysis with MDR stratifying on country (see Table S9). Some relationships held across
293 settings, but others did not. For example, in Kenya and Tanzania, males have higher levels of
294 MDR, but the gender relationship was reversed in Uganda. Middle-aged individuals (either
295 45-54 or 55-64 years) had the highest levels of MDR across all 3 countries. There was no

296 consistent educational gradient. The association between delay in seeking treatment, higher
 297 treatment steps, more AB use, and MDR was more apparent in Tanzania and Uganda than
 298 Kenya.

299

300

301 **Table 2: Sociodemographic, contextual and behavioural factors and their bivariate**
 302 **association with MDR**

303

		MDR- n(%)	MDR+ n(%)	χ^2 , p value
Country	Kenya	553 (66.2)	282 (33.8)	
	Tanzania	272 (40.5)	400 (59.5)	117.6 (p<0.001)
	Uganda	189 (43.1)	250 (56.9)	
Gender	Male	115 (41.5)	162 (58.5)	14.0 (p<0.001)
	Female	899 (53.9)	770 (46.1)	
Age	<25	298 (56.7)	228 (43.3)	27.3 (p<0.001)
	25-34	372 (55.3)	301 (44.7)	
	35-44	152 (52.6)	137 (47.4)	
	45-54	77 (44.0)	98 (56.0)	
	55-64	33 (37.1)	56 (62.9)	
	65+	82 (42.3)	112 (57.7)	
Education	None	131 (46.5)	151 (53.5)	56.4 (p<0.001)
	Primary	280 (42.6)	378 (57.4)	
	Secondary	383 (57.7)	281 (42.3)	
	Higher	220 (64.3)	122 (35.7)	
Delay	Less than 2 weeks	817 (55.1)	666 (44.9)	21.7 (p<0.001)
	More than 2 weeks	197 (42.5)	266 (57.5)	
Treatment steps	1(straight to clinic)	557 (56.5)	428 (43.5)	27.9 (p<0.001)
	2	292 (52.3)	266 (47.7)	
	3+	165 (40.9)	238 (59.1)	
First care accessed	Recruitment clinic	557 (56.5)	428 (43.5)	20.1 (p<0.001)
	Clinic	309 (45.5)	370 (54.5)	
	Pharmacy/drug shop	79 (54.5)	66 (45.5)	
	Self-treatment	69 (50.4)	68 (49.6)	
Any AB use in pathway	No	781 (54.1)	663 (45.9)	8.5 (p=0.004)
	Yes	233 (46.4)	269 (53.6)	
Any AB use in past 6 months	No	425 (52.9)	379 (47.1)	0.3 (p=0.608)
	Yes	589 (51.6)	553 (48.4)	

304

305

306 Due to there being strong country differences in the distribution of independent and

307 dependent variables, we investigated the relationship between pathway clusters and MDR
308 using multivariate logistic regression in country-specific models (Table 3). In Kenya and
309 Tanzania there is no association between pathway clusters and risk of MDR. In Uganda,
310 clusters B, C, and I-J have significantly higher odds of MDR than those in cluster A. After
311 controlling for age, gender and education (model 2), those in clusters I-J (3-step pathways)
312 still had significantly higher odds of MDR. In models combining all three countries, there is
313 no association between treatment pathways, individual factors and MDR once country is
314 adjusted for.

315 **Table 3: Odds ratios for multi-drug resistant UTI pathogens according to treatment**
 316 **seeking, sociodemographic factors and country**

	Kenya (n=835)		Tanzania (n=672)		Uganda (n=439)	
	Model 1	Model 2	Model 1	Model 2	Model 1	Model 2
	OR (95% CI)	OR (95% CI)	OR (95% CI)	OR (95% CI)	OR (95% CI)	OR (95% CI)
Treatment						
sequence (ref:A)						
B	1.17(0.69-2.00)	1.09(0.63-1.87)	0.94(0.54-1.66)	0.87(0.49-1.56)	2.06(1.01-4.19)	1.66(0.79-3.51)
C	0.72(0.25-2.06)	0.73(0.25-2.09)	1.11(0.56-2.17)	1.07(0.54-2.14)	2.29(1.09-4.8)	1.72(0.78-3.8)
D	0.60(0.27-1.36)	0.5(0.21-1.16)	0.85(0.41-1.74)	0.8(0.38-1.7)	1.45(0.73-2.86)	1.27(0.63-2.57)
E	0.7(0.40-1.25)	0.64(0.36-1.15)	0.91(0.5-1.67)	0.86(0.46-1.59)	1.55(0.77-3.14)	1.31(0.62-2.76)
F	1.12(0.73-1.72)	1.12(0.72-1.74)	0.65(0.31-1.36)	0.59(0.28-1.25)	2.18(0.95-4.99)	2.06(0.88-4.79)
G	1.34(0.42-4.28)	1.23(0.37-4.04)	0.89(0.53-1.5)	0.83(0.48-1.41)	0.9(0.38-2.11)	0.64(0.25-1.6)
H	0.47(0.13-1.68)	0.45(0.12-1.66)	1.48(0.83-2.64)	1.45(0.8-2.65)	1.76(0.82-3.8)	1.3(0.56-2.99)
I + J combined	0.21(0.03-1.66)	0.16(0.02-1.32)	1.18(0.69-2.04)	1.05(0.59-1.88)	3.94(1.76-8.86)	2.86(1.2-6.83)
Gender						
(ref:Female)						
Male		0.87(0.5-1.53)		0.53(0.33-0.85)		1.44(0.77-2.67)
Age (ref:<25)						
25-34		1.29(0.91-1.83)		1.23(0.75-2)		1.14(0.7-1.85)
35-44		1.31(0.81-2.13)		0.73(0.43-1.26)		1.42(0.74-2.71)
45-54		2.24(1.09-4.6)		0.78(0.43-1.43)		1.36(0.7-2.66)
55-64		1.83(0.52-6.5)		1.2(0.62-2.29)		1.66(0.49-5.62)
65+		1.34(0.53-3.37)		0.83(0.46-1.49)		0.89(0.29-2.71)
Education						
(ref:Higher)						
None		1.09(0.28-4.23)		0.83(0.53-1.32)		1.75(1.03-2.99)
Primary		0.95(0.25-3.59)		0.84(0.48-1.5)		1.15(0.62-2.11)
Secondary+		0.76(0.2-2.91)		0.5(0.22-1.11)		1.63(0.75-3.56)

317 NB. Bold indicates estimates where 95% CIs do not cross 1.

318 Discussion

319

320 This study used process mining and sequence analysis to characterise patterns of treatment-
321 seeking behaviour among adult UTI outpatients in Kenya, Tanzania, and Uganda, and to
322 investigate correlations between those behavioural patterns and MDR UTIs. Consistent with
323 previous work (13), in all three countries behaviour was dominated by visits to healthcare
324 facilities. However, over half of patients had apparent treatment failures, leading to repeat
325 clinic visits within the same UTI episode. Repeat clinic visits were more common in Tanzania
326 and Uganda and were associated with higher rates of AB use (regardless of their suitability
327 to treat UTI). While Kenyan patients typically had simpler pathways, they were also more
328 likely to consult with pharmacists and drug sellers, and to take ABs not recommended for
329 UTI in the Kenyan National Treatment Guidelines. The relationship between health
330 behaviours and MDR rates depended on context. In Uganda, where over half of UTI patients
331 had MDR pathogens, those with longer sequences of treatment steps had higher rates of
332 MDR UTI, but this was not the case in Kenya (where MDR prevalence was lower, at 33%).
333 Thus, the main message is that individuals with complex treatment seeking pathways, and
334 repeat clinic visits, are also more likely to have had higher AB use. Past treatment
335 behaviours, however, are not consistently correlated with higher risk of MDR UTI at the
336 individual level, suggesting that other contextual factors contribute to MDR risk.

337 The previous (predominantly qualitative) literature on the African healthcare landscape and
338 patient pathways has emphasised the plurality of treatment seeking behaviours, high
339 prevalence of self-treatment, diversity of treatment providers and parallel systems of
340 allopathic and traditional/herbal medicine(11,39–41). Our study presents a different picture,

341 where the majority behaviour in all three countries was to seek help with formal medical
342 facilities. This is likely due to the sampling bias inherent in our study design. By recruiting
343 clinic attendees, we select those who are most likely to visit those facilities, and miss those
344 who seek self-treatment. Nevertheless, despite this acknowledged bias, we argue that the
345 results highlight an often overlooked truth about the drivers of ABR in LMICs. That is, that
346 one of the most important complexities experienced by patients in this healthcare
347 landscape arises from difficulties in getting effective care for infections within the formal
348 healthcare system. Thus, common infections are not necessarily simple to treat or easy to
349 resolve. This basic challenge may promote medical pluralism out of necessity, and results in
350 more costs for patients and the healthcare system, more medicines taken, and more
351 suffering. This challenge is undoubtedly exacerbated further still by the developing AMR
352 pandemic, which make those apparently 'simple' infections difficult to treat.

353

354 A further striking finding is the high proportion of patients who ostensibly take ABs to treat
355 UTI-like symptoms, but turn out to not have a UTI infection. Patients without a UTI pathogen
356 were equally likely to take ABs as those who had one, and given the UTI positivity rate in the
357 study, this means that two thirds of our recruited patients take ABs for a UTI infection, but it
358 is not microbiologically confirmed. It may be they have other infections which are treated by
359 the AB they consume, or that their prior AB use has suppressed pathogen growth to be under
360 the threshold for UTI identification. However, this underlines the need for greater
361 availability of accessible, rapid diagnostic tools(42), which could prevent inappropriate AB
362 use and help to slow growth of ABR more generally.

363

364 It is well established that excessive AB use is a core driver of ABR at individual and

365 community scales (8), and thus, we might expect to find a correlation between longer
366 pathways, higher levels of AB use, and higher rates of MDR in individual patients. However
367 untangling temporality or cause and effect between AB use and MDR infections is complex,
368 and where ABR is highly prevalent the two factors likely operate in a reinforcing cycle.
369 Associations between treatment complexity and MDR could be bi-directional or explained
370 by unmeasured factors (e.g. upstream drivers/risk factors for both complex treatment
371 seeking and ABR). In this study, the recent treatment seeking period might be a few days, or
372 weeks, which makes it less likely that that patient's recent AB use has directly influenced the
373 pathogen population that is responsible for the infection, or the carriage population of the
374 bacteria in the host that may be the source of the infection (i.e. faecal carriage to urinary
375 tract transmission). On the other hand, the MDR infection rate is relatively high (over 50% in
376 Tanzania and Uganda). Thus, any link we do observe between AB use and MDR UTI is more
377 likely to be explained by primary resistance: that is, a patient acquiring an MDR UTI at the
378 outset, and struggling to treat it, end up taking more treatment steps and more ABs. It is
379 also worth noting that we only observe a direct association between recent AB use and
380 MDR in Uganda, and not the other countries. However, given that the prevalence of MDR
381 UTI in Uganda sample was high (57%) this suggests that at least, in some settings, higher
382 MDR might be driving longer and more complex pathways, and thus higher costs and
383 suffering for healthcare systems and patients. We recommend further research on this
384 dynamic, that quantify the consequences of AMR for health systems and individual's
385 treatment seeking behaviour.

386

387 Our results also suggest the importance of considering contextual effects in unravelling the
388 social and behavioural drivers of ABR. Country-specific analyses suggest that treatment

389 seeking, MDR rates and the relationship between the two differ by place. Furthermore, the
390 inclusion of variables which proxy for context (e.g. country) account for more variation in
391 MDR than individual factors or behaviours. There are many reasons why geographic, social
392 and cultural context should be important (14). For example, the more complex pathways we
393 observe in Tanzania and Uganda may be a function of the shared structure of the healthcare
394 system in those countries, or related to geographic features of the sites, which affect
395 healthcare accessibility. The recruitment sites in Tanzania and Uganda were more rural,
396 whereas the majority of the Kenyan samples are from the capital Nairobi. Likewise, spatial
397 patterning of ABR is influenced by processes of bacterial evolution and transmission,
398 affected by shared structural drivers such as sanitation (43,44). It is relevant that we do not
399 observe consistent relationships between individual factors such as education and gender
400 and MDR across country settings. This raises the question of whether the AMR nexus, its
401 social patterning, and social inter-relations is contextually specific, or whether there are
402 generalizable relationships to identify. For example, whether there are measurable area-
403 factors which operate as upstream drivers of both treatment seeking and ABR, such as
404 poverty(45). Future studies using HATUA data will explore these issues.

405

406 This study is novel in bridging several methodological and disciplinary divides. We bring
407 together theoretically grounded understandings of patient behaviours in LMICs, generated
408 largely from qualitative work (15,24), combine these with empiric diagnostic data, and
409 analyse these using statistical and data-driven computer science techniques, typically used
410 to derive patient flows from electronic health records in high-income countries. Thus, this is
411 the first application of process mining to incorporate the breadth of formal and non-formal
412 providers in LMICs. The advantage of taking a data-driven approach to summarize

413 behavioral complexity is that it imposes minimal pre-conceived expectations, enables
414 engaging and detailed visualizations which allow analysts and policy makers to easily
415 identify important elements to concentrate on. We also applied sequence analysis to take
416 account of complex sequencing or different elements of pathways and cluster patients
417 together for further analysis. We were inevitably limited by the self-reported nature of the
418 data and the structure of the questionnaire used to collect them. One opportunity not
419 exploited here is the inclusion of time stamps in sequences (these were unavailable in the
420 HATUA dataset), thus we assumed all steps were equally spaced in time, which may hide
421 important aspects. Future studies in LMICs could try to draw on existing medical records
422 systems where available or use digital traces to construct an understanding of systems of
423 patient flow which take account of complexity and non-formal healthcare providers.

424

425 This study has some limitations. The linked quantitative patient sample was representative
426 of adults attending mainly public outpatient services with UTI-like symptoms. It is likely
427 those sampled comprised people more likely to attend clinics, thus use of other providers
428 may be underestimated. However, patient populations are an important subgroup for
429 possible interventions, and UTI is both prevalent and commonly treated with ABs in this
430 region. Other data collected by the HATUA Consortium used community focus groups, and
431 many of the same themes --of repeat clinic visits and challenges in obtaining appropriate
432 medications-- emerged there(12). There were also proportionally more respondents from
433 urban higher-level referral facilities in Kenya compared to the other countries. Finally, we
434 analysed a simple set of individual level predictors, with a focus on behavioural antecedents
435 of clinic attendance, but our own qualitative work (12,13) suggests that a richer set of
436 covariates at individual, household and community are necessary to understand the burden

437 of ABR, as well as longitudinal follow-up. This will be addressed in future HATUA studies
438 which take account of the inter-related and multi-scalar nature of ABR drivers.

439 **Conclusion**

440 This novel interdisciplinary mixed-methods study combining social science and
441 microbiological data highlights the complexities of treatment-seeking for UTI care in East
442 Africa, and the potential for higher rates of ABR to complicate patient treatment seeking. In
443 Tanzania and Uganda, where more than half of UTI patients surveyed have MDR UTIs and
444 overall prevalence of ABR is high(20), repeated treatment failures involving a plethora of
445 providers are an inevitable consequence of patients seeking to alleviate their symptoms.
446 Such frustrating and expensive cycles of treatment place a heavy burden on already
447 struggling individuals and healthcare structures, and feed into a vicious cycle of ineffective
448 AB use and further selection pressure for ABR in pathogen populations. Solutions for
449 arresting this cycle are likely multifaceted, including improving access to rapid diagnostic
450 and susceptibility testing for UTIs, appropriate AB treatment, effective AB stewardship, and
451 addressing the upstream drivers of infection, through behavioural factors like hygiene and
452 environmental determinants such as sanitation(43).

453

454

455 **Acknowledgements**

456 HATUA consortium includes all named authors plus: Elliott, Alison; Lynch; Andy; Stelling,
457 John; Maina, John; Kansiime; Catherine; Aduda, Annette

References

1. Holmes AH, Moore LSP, Sundsfjord A, Steinbakk M, Regmi S, Karkey A, et al. Understanding the mechanisms and drivers of antimicrobial resistance. *The Lancet*. 2016 Jan 9;387(10014):176–87.
2. Murray CJ, Ikuta KS, Sharara F, Swetschinski L, Robles Aguilar G, Gray A, et al. Global burden of bacterial antimicrobial resistance in 2019: a systematic analysis. *The Lancet*. 2022 Feb 12;399(10325):629–55.
3. O'Neill J. *Antimicrobial Resistance: Tackling a crisis for the health and wealth of nations*. 2014.
4. D'Costa VM, King CE, Kalan L, Morar M, Sung WWL, Schwarz C, et al. Antibiotic resistance is ancient. *Nature*. 2011 Sep;477(7365):457–61.
5. Davies J, Davies D. Origins and Evolution of Antibiotic Resistance. *Microbiol Mol Biol Rev*. 2010 Sep;74(3):417–33.
6. Goossens H, Ferech M, Vander Stichele R, Elseviers M. Outpatient antibiotic use in Europe and association with resistance: a cross-national database study. *The Lancet*. 2005 Feb 12;365(9459):579–87.
7. Austin DJ, Kristinsson KG, Anderson RM. The relationship between the volume of antimicrobial consumption in human communities and the frequency of resistance. *Proc Natl Acad Sci*. 1999 Feb 2;96(3):1152–6.
8. Bell BG, Schellevis F, Stobberingh E, Goossens H, Pringle M. A systematic review and meta-analysis of the effects of antibiotic consumption on antibiotic resistance. *BMC Infect Dis*. 2014 Jan 9;14(1):13.
9. Chatterjee A, Modarai M, Naylor NR, Boyd SE, Atun R, Barlow J, et al. Quantifying drivers of antibiotic resistance in humans: a systematic review. *Lancet Infect Dis*. 2018;18(12):e368–78.
10. Charani E, McKee M, Ahmad R, Balasegaram M, Bonaconsa C, Merrett GB, et al. Optimising antimicrobial use in humans – review of current evidence and an interdisciplinary consensus on key priorities for research. *Lancet Reg Health - Eur*. 2021 Aug 1;7:100161.
11. Muela SH, Ribera JM, Mushi AK, Tanner M. Medical syncretism with reference to malaria in a Tanzanian community. *Soc Sci Med* 1982. 2002 Aug;55(3):403–13.
12. Green DL, Keenan K, Fredricks KJ, Huque SI, Mushi MF, Kansime C, et al. The role of multidimensional poverty in antibiotic misuse: a mixed-methods study of self-medication and non-adherence in Kenya, Tanzania, and Uganda. *Lancet Glob Health*. 2023 Jan 1;11(1):e59–68.

13. Keenan K, Fredricks KJ, Ahad MAA, Neema S, Mwanga JR, Kesby M, et al. Unravelling patient pathways in the context of antibacterial resistance in East Africa [Internet]. In Review; 2022 Aug [cited 2022 Sep 9]. Available from: <https://www.researchsquare.com/article/rs-1933132/v1>
14. Do NTT, Vu HTL, Nguyen CTK, Punpuing S, Khan WA, Gyapong M, et al. Community-based antibiotic access and use in six low-income and middle-income countries: a mixed-method approach. *Lancet Glob Health* [Internet]. 2021 Mar 10 [cited 2021 Mar 18]; Available from: <https://linkinghub.elsevier.com/retrieve/pii/S2214109X21000243>
15. Lucas PJ, Uddin MR, Khisa N, Salim Akter SM, Unicomb L, Nahar P, et al. Pathways to antibiotics in Bangladesh: A qualitative study investigating how and when households access medicine including antibiotics for humans or animals when they are ill. *PLoS ONE*. 2019 Nov 1;14(11):e0225270.
16. Torres NF, Chibi B, Kuupiel D, Solomon VP, Mashamba-Thompson TP, Middleton LE. The use of non-prescribed antibiotics; prevalence estimates in low-and-middle-income countries. A systematic review and meta-analysis. *Arch Public Health*. 2021 Dec 1;79(1):1–15.
17. Ocan M, Obuku EA, Bwanga F, Akena D, Richard S, Ogwal-Okeng J, et al. Household antimicrobial self-medication: A systematic review and meta-analysis of the burden, risk factors and outcomes in developing countries. *BMC Public Health*. 2015 Aug 1;15(1):1–11.
18. Aslam A, Gajdács M, Zin CS, Rahman NSA, Ahmed SI, Zafar MZ, et al. Evidence of the practice of self-medication with antibiotics among the lay public in low-and middle-income countries: A scoping review. *Antibiotics*. 2020 Sep 1;9(9):1–17.
19. Global access to antibiotics without prescription in community pharmacies: A systematic review and meta-analysis - ScienceDirect [Internet]. [cited 2022 Sep 8]. Available from: https://www.sciencedirect.com/science/article/pii/S0163445318302123?casa_token=f-bOkqgbJZ4AAAAA:yorgRk2UGGmcuMS5EflzVrX6Tvv3TRWg16Sgl-POqc47eoW4ebUdeoFUUFInAe4G0C1zPDO0RQ
20. Leopold SJ, van Leth F, Tarekegn H, Schultsz C. Antimicrobial drug resistance among clinically relevant bacterial isolates in sub-Saharan Africa: A systematic review. *J Antimicrob Chemother*. 2014 Sep 1;69(9):2337–53.
21. Ndaki PM, Mushi MF, Mwanga JR, Konje ET, Ntinginya NE, Mmbaga BT, et al. Dispensing Antibiotics without Prescription at Community Pharmacies and Accredited Drug Dispensing Outlets in Tanzania: A Cross-Sectional Study. *Antibiot* 2021 Vol 10 Page 1025. 2021 Aug 23;10(8):1025.
22. Mburu CM, Bukachi SA, Shilabukha K, Tokpa KH, Ezekiel M, Fokou G, et al. Determinants of treatment-seeking behavior during self-reported febrile illness episodes using the socio-ecological model in Kilombero District, Tanzania. *BMC Public Health*. 2021 Dec 1;21(1):1–11.

23. Haenssgen MJ, Ariana P. Healthcare access: A sequence-sensitive approach. *SSM - Popul Health*. 2017 Dec 1;3:37–47.
24. Hanson CL, Osberg M, Brown J, Durham G, Chin DP. Conducting Patient-Pathway Analysis to Inform Programming of Tuberculosis Services: Methods. *J Infect Dis*. 2017 Nov 6;216(suppl_7):S679–85.
25. Coast E, Norris AH, Moore AM, Freeman E. Trajectories of women’s abortion-related care: A conceptual framework. *Soc Sci Med*. 2018 Mar 1;200:199–210.
26. Zøylner IA, Lomborg K, Christiansen PM, Kirkegaard P. Surgical breast cancer patient pathway: Experiences of patients and relatives and their unmet needs. *Health Expect*. 2019 Apr 1;22(2):262–72.
27. Asiiimwe BB, Kiiru J, Mshana SE, Neema S, Keenan K, Kesby M, et al. Protocol for an interdisciplinary cross-sectional study investigating the social, biological and community-level drivers of antimicrobial resistance (AMR): Holistic Approach to Unravel Antibacterial Resistance in East Africa (HATUA). *BMJ Open*. 2021 Mar;11(3):e041418.
28. Izett-Kay M, Barker KL, McNiven A, Toye F. Experiences of urinary tract infection: A systematic review and meta-ethnography. *Neurourol Urodyn [Internet]*. 2022 [cited 2022 Mar 23]; Available from: <https://onlinelibrary.wiley.com/doi/full/10.1002/nau.24884>
29. Ozturk R, Murt A. Epidemiology of urological infections: a global burden. *World J Urol*. 2020;38(11):2669–79.
30. Rojas E, Munoz-Gama J, Sepúlveda M, Capurro D. Process mining in healthcare: A literature review. *J Biomed Inform*. 2016 Jun 1;61:224–36.
31. Magiorakos AP, Srinivasan A, Carey RB, Carmeli Y, Falagas ME, Giske CG, et al. Multidrug-resistant, extensively drug-resistant and pandrug-resistant bacteria: an international expert proposal for interim standard definitions for acquired resistance. *Clin Microbiol Infect*. 2012 Mar 1;18(3):268–81.
32. Dixon J, MacPherson E, Manyau S, Nayiga S, Khine Zaw Y, Kayendeke M, et al. The ‘Drug Bag’ method: lessons from anthropological studies of antibiotic use in Africa and South-East Asia. *Glob Health Action*. 2019 Dec;12(sup1):1639388.
33. Aassve Francesco C, Billari AE, Raffaella Piccarreta AA, Aassve ISER A, Billari FC, Piccarreta IMQ R. Strings of Adulthood: A Sequence Analysis of Young British Women’s Work-Family Trajectories. *Parcours de la vie adulte*: Une analyse par séquence des trajectoires travail-famille des jeunes femmes britanniques. *Eur J Popul*. 2007;23:369–88.
34. Cezard G, Sullivan F, Keenan K. Understanding multimorbidity trajectories in Scotland using sequence analysis | *Scientific Reports*. *Sci Rep [Internet]*. 2022 Nov 1 [cited 2023 Jan 25];12(16485). Available from: <https://www.nature.com/articles/s41598-022-20546-4>

35. Berti, A., van Zelst, S.J, van der Aalst, W.M.P. Process Mining for Python (PM4Py): Bridging the Gap Between Process-and Data Science. In: Proceedings of the ICPM Demo Track 2019 [Internet]. Aachen, Germany; 2019. Available from: <http://ceur-ws.org/Vol-2374/>
36. Verbeek HMW, Buijs JCAM, van Dongen BF, van der Aalst WMP. XES, XESame, and ProM 6. In: Soffer P, Proper E, editors. Information Systems Evolution. Berlin, Heidelberg: Springer; 2011. p. 60–75. (Lecture Notes in Business Information Processing).
37. Studer M. WeightedCluster Library Manual: A practical guide to creating typologies of trajectories in the social sciences with R. 2013 [cited 2022 Sep 6]; Available from: <https://www.centre-lives.ch/fr/bibcite/reference/84>
38. Cornwell B. Social Sequence Analysis: Methods and Applications. Cambridge University Press; 2015. 339 p.
39. Sundararajan R, Mwanga-Amumpaire J, King R, Ware NC. Conceptual model for pluralistic healthcare behaviour: results from a qualitative study in southwestern Uganda. *BMJ Open*. 2020 Apr 1;10(4):e033410.
40. Towns AM, Eyi SM, Andel T van. Traditional Medicine and Childcare in Western Africa: Mothers' Knowledge, Folk Illnesses, and Patterns of Healthcare-Seeking Behavior. *PLOS ONE*. 2014 Aug 22;9(8):e105972.
41. Moshabela M, Bukonya D, Darong G, Wamoyi J, McLean E, Skovdal M, et al. Traditional healers, faith healers and medical practitioners: the contribution of medical pluralism to bottlenecks along the cascade of care for HIV/AIDS in Eastern and Southern Africa. *Sex Transm Infect* [Internet]. 2017 Jul 1 [cited 2023 Jan 25];93(Suppl 3). Available from: https://sti.bmj.com/content/93/Suppl_3/e052974
42. Fleming KA, Horton S, Wilson ML, Atun R, DeStigter K, Flanigan J, et al. The Lancet Commission on diagnostics: transforming access to diagnostics. *The Lancet*. 2021 Nov 27;398(10315):1997–2050.
43. Fletcher S. Understanding the contribution of environmental factors in the spread of antimicrobial resistance. *Environ Health Prev Med*. 2015 Jul 1;20(4):243–52.
44. Cocker D, Chidziwisano K, Mphasa M, Mwapasa T, Lewis JM, Rowlingson B, et al. Investigating risks for human colonisation with extended spectrum beta-lactamase producing *E. coli* and *K. pneumoniae* in Malawian households: a one health longitudinal cohort study [Internet]. *medRxiv*; 2022 [cited 2022 Nov 22]. p. 2022.08.16.22278508. Available from: <https://www.medrxiv.org/content/10.1101/2022.08.16.22278508v1>
45. Okeke IN. Poverty and root causes of resistance in developing countries. In: *Antimicrobial Resistance in Developing Countries* [Internet]. Springer New York; 2010 [cited 2021 Mar 18]. p. 27–35. Available from: https://link.springer.com/chapter/10.1007/978-0-387-89370-9_3

Ethics approval and consent to participate

The study received ethical approval from the University of St Andrews, UK (number MD14548, 10/09/19); National Institute for Medical Research, Tanzania (number 2831, updated 26/07/19); CUHAS/BMC Research Ethics and Review Committee (number CREC /266/2018, updated on 02/2019); Mbeya Medical Research and Ethics Committee (number SZEC-2439/R.A/V.1/303030); Kilimanjaro Christian Medical College, Tanzania (number 2293, updated 14/08/19); Uganda National Council for Science and Technology (number HS2406, 18/06/18); Makerere University, Uganda (number 514, 25/04/18); and Kenya Medical Research Institute (04/06/19, Scientific and Ethics Review Committee (SERU) number KEMRI/SERU/CMR/P00112/3865 V.1.2). For Uganda, administrative letters of support were obtained from the district health officers to allow the research to be conducted in the respective hospitals and health centres. All participants provided written informed consent to participate.

Availability of data and materials

The datasets generated and/or analysed during the current study are not publicly available due ethical and data access agreements with individual country ethical boards but are available from the corresponding author on reasonable request.

Conflict of Interest

None

Funding

The Holistic Approach to Unravel Antibacterial Resistance in East Africa is a Global Context Consortia Award (MR/S004785/1) funded by the National Institute for Health Research, Medical Research Council, and the Department of Health and Social Care. The funders had no role in study design, data collection and analysis, decision to publish or preparation of the manuscript. This work is supported in part by the Makerere University-Uganda Virus Research Institute Centre of Excellence for Infection and Immunity Research and Training (MUII). MUII is supported through the DELTAS Africa Initiative (grant number 107743). The DELTAS Africa Initiative is an independent funding scheme of the African Academy of Sciences and Alliance for Accelerating Excellence in Science in Africa and is supported by the New Partnership for Africa's Development Planning and Coordinating Agency with funding from the Wellcome Trust (grant number 107743) and the UK Government. A Scottish Funding Council GCRF Consolidator Award. Funders had no role in the study design, or analysis.

Author contributions

KS: Conceptualisation, data curation, formal analysis, investigation, visualisation, writing- original draft preparation

KK: conceptualisation, data curation, funding acquisition, methodology, supervision, writing- original draft preparation, review and editing

AM: conceptualisation, methodology, supervision, writing- review and editing

MK: conceptualisation, funding acquisition, supervision, writing- review and editing

MFM: data curation, methodology, resources, supervision, writing- review and editing

SEM data curation, funding acquisition, methodology, resources, supervision, writing- review and editing

JM data curation, funding acquisition, methodology, resources, supervision, writing- review and editing

SN data curation, funding acquisition, methodology, resources, supervision, writing- review and editing

BA data curation, funding acquisition, methodology, resources, supervision, writing- review and editing

JB data curation, methodology, resources, supervision, writing- review and editing

JK data curation, methodology, resources, supervision, writing- review and editing

DLG data curation, writing- review and editing

XK data curation, writing- review and editing

AMB data curation, writing- review and editing

MAAA data curation, writing- review and editing

KF review and editing

SHG funding acquisition, methodology, resources, writing- review and editing

BTM data curation, funding acquisition, methodology, resources, supervision, writing- review and editing

WS funding acquisition, writing- review and editing

GK funding acquisition, writing- review and editing

DA funding acquisition, writing- review and editing

VAS funding acquisition, writing- review and editing

AS Project administration, writing- review and editing

DJS funding acquisition, supervision, writing- review and editing

MTGH conceptualisation, methodology, resources, funding acquisition, supervision, writing- review and editing

Figure 1 Selection of the analysis samples

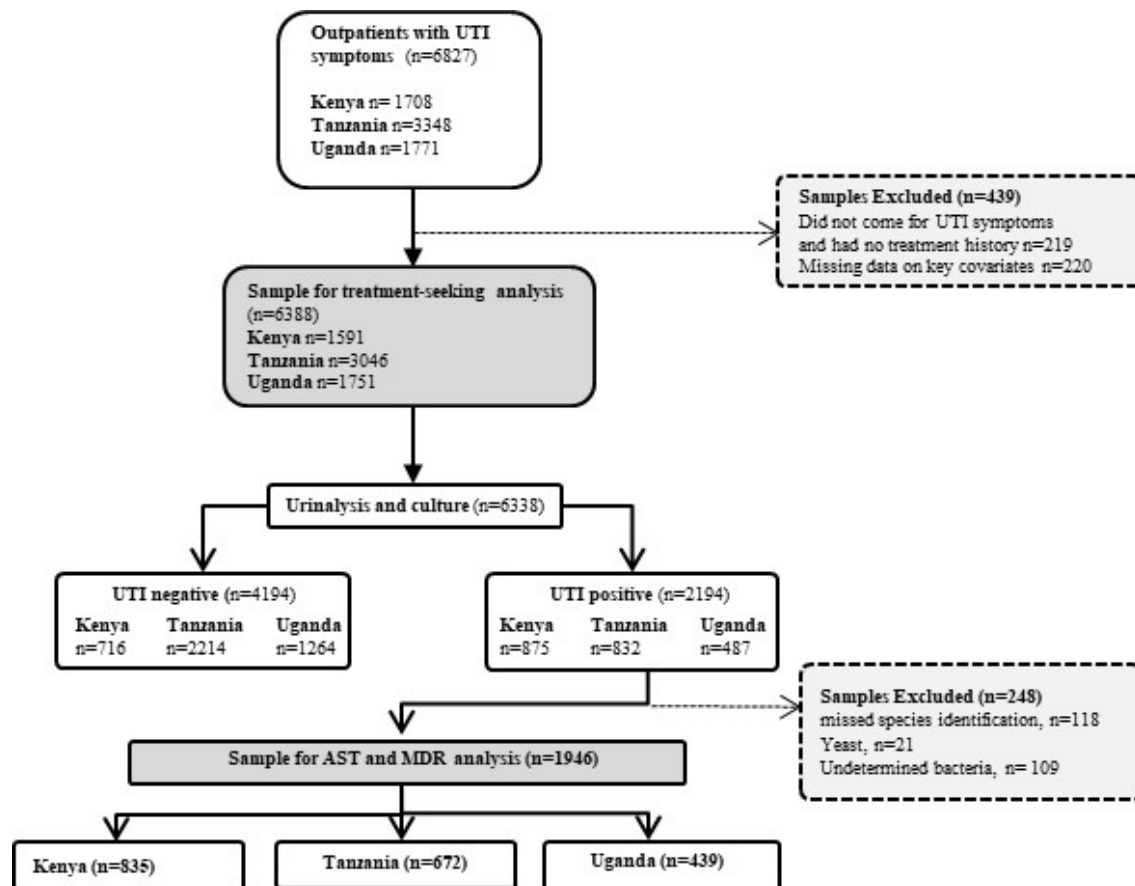


Figure 2: Treatment-seeking questions from the HATUA questionnaire and derived outcomes in this study

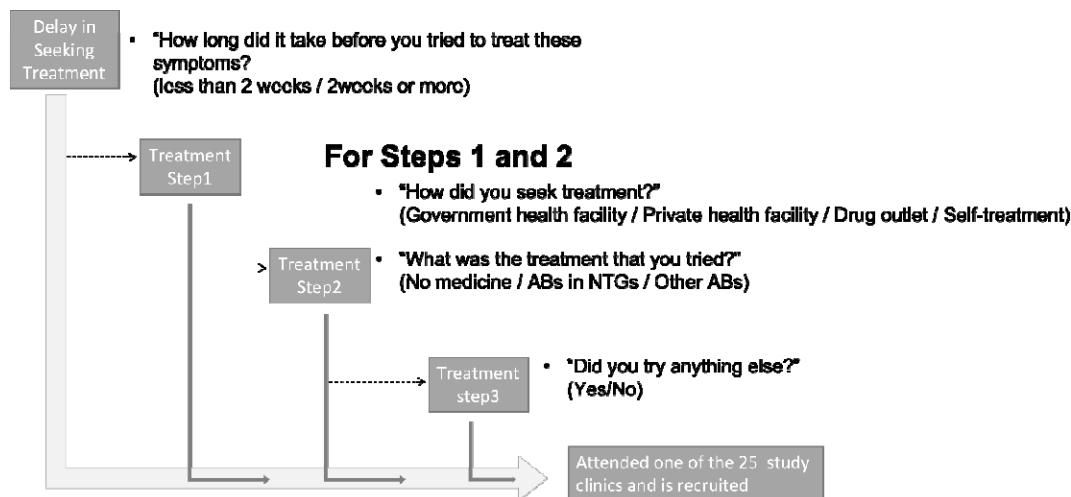


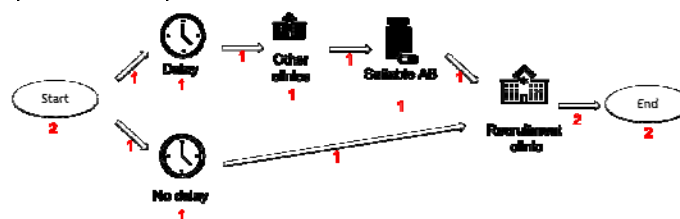
Figure 3 A-D: Stages in data management, analysis and visualization for process mining



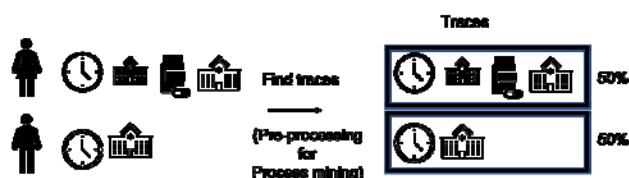
a. Examples of patient sequences of treatment-seeking behaviours.

Patient	Event		Patient	Event	Made up timestamp
A	delayed		A	delayed	01-Jan
A	Went to clinic first		A	Went to clinic first	02-Jan
A	Accessed suitable AB		A	Accessed suitable AB	03-Jan
A	Came to recruitment clinic		A	Came to recruitment clinic	04-Jan
B	No delay		B	No delay	01-Jan
B	Came to recruitment clinic		B	Came to recruitment clinic	02-Jan

b. The resulting dataset is a list of patient IDs and their treatment-seeking steps. Timestamps are added to the dataset.

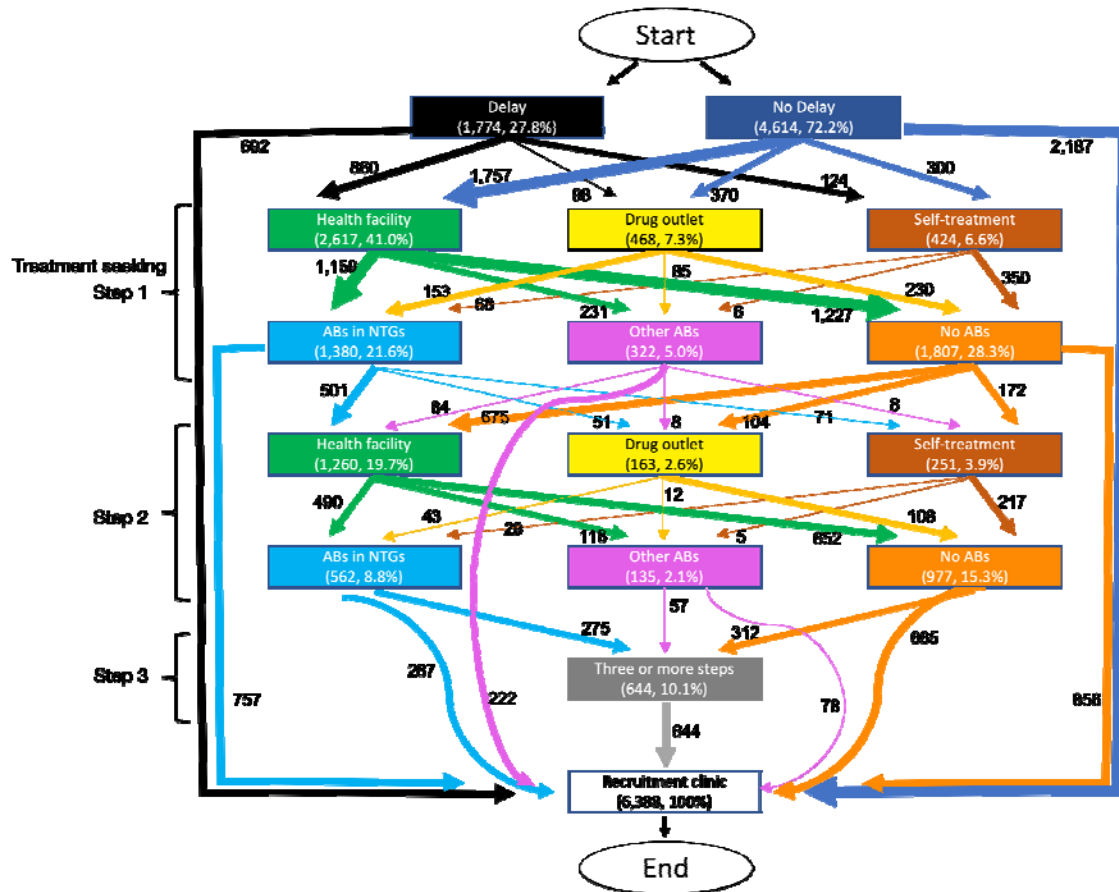


c. The Heuristic Miner generates a process model from the timestamped data. The numbers in red show the numbers of participants included in steps and edges. Edges represent flows from one step to another.



d. Traces are extracted to show the trajectories of steps, along with their frequencies.

Figure 4: Treatment seeking pathways visualized with heuristic miner among patients in Kenya, Tanzania and Uganda.



The numbers in boxes represent the numbers of participants who took that step, and how many people transition from that step to others. The thickness of the edges represent the number of participants taking that step (thickest- more than 1,000, next thickest, 500-1,000, next thickest 100-500, and thinnest, less than 100).

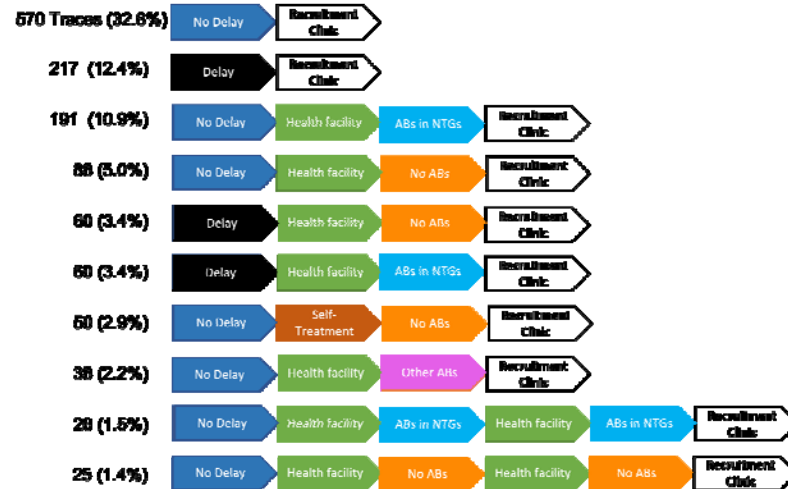
Figure 5: Ten most common treatment-seeking patterns visualized in Kenya (panel A), Tanzania (panel B) and Uganda (panel C).



A: Frequent treatment-seeking traces in Kenya



B: Frequent treatment-seeking traces in Tanzania



C: Frequent treatment-seeking traces in Uganda

Number on the left represents the number of participants who experienced the trace. The percentage shows the proportion of participants who experienced the trace compared to the total patients from that country.

Figure 6: Percentage of patients taking ABs for their UTI-like symptoms at any point prior to being recruited, by country and type of provider.

