

1 **Title: Virological evidence of the impact of non-pharmaceutical interventions**
2 **against COVID-19 in a resource-limited setting**

3 **Andres Moreira-Soto^{1,2}, Alfredo Bruno^{3,4}, Doménica de Mora³, Michelle Paez³, Jimmy**
4 **Garces³, Ben Wulf¹, Anna-Lena Sander¹, Maritza Olmedo³, Maria José Basantes Mantilla³,**
5 **Manuel Gonzalez^{3,5}, Alberto Orlando Nárvaez^{3,4}, Silvia Salgado³, Juan Carlos Zevallos^{6,7},**
6 **Jan Felix Drexler^{1,8*}**

7
8 **Affiliations:**

9 ¹Charité-Universitätsmedizin Berlin, corporate member of Freie Universität Berlin, Humboldt
10 Universität zu Berlin, Institute of Virology, Berlin, Germany.

11 ²CIET, Faculty of Microbiology, University of Costa Rica, San José, Costa Rica

12 ³National Institute of Public Health Research (INSPI), Guayaquil, Ecuador

13 ⁴Universidad Agraria del Ecuador, Guayaquil, Guayas, Ecuador

14 ⁵Guayaquil University, Guayaquil, Guayas, Ecuador

15 ⁶Health Science Faculty, Universidad Espíritu Santo, Guayaquil, Ecuador (UEES).

16 ⁷Alianza para la Investigación de Enfermedades Emergentes (AIE), Quito, Ecuador.

17 ⁸German Centre for Infection Research (DZIF), associated partner site Charité, Berlin, Germany

18

19 Correspondence:

20 *Jan Felix Drexler, ¹Charité-Universitätsmedizin Berlin, Institute of Virology, Charitéplatz 1,
21 10098 Berlin, Germany. Email: felix.drexler@charite.de

22

23 **Abstract:**

24 Ecuador was an early COVID-19 hotspot with substantial COVID-19-mortality. In developed
25 countries, low socioeconomic status is associated with COVID-19 infection and low compliance
26 with non-pharmaceutical interventions (NPIs). However, if NPI were successful in resource-
27 limited settings with high human mobility and informal labour is still unclear. We performed a
28 retrospective observational molecular and serological study of Ecuador's reference laboratory.
29 We tested 1,950 respiratory samples from COVID-19 surveillance for SARS-CoV-2 and 12

30 respiratory viruses using RT-PCR, characterized 642 SARS-CoV-2 genomes, and examined
31 SARS-CoV-2 seroprevalence in 1,967 samples from patients with fever in Ecuador's reference
32 laboratory during 2020-2021. Molecular and serological data were compared to NPI stringency
33 in Bayesian, maximum-likelihood and modelling frameworks.

34 SARS-CoV-2 (Pearson correlation test; $r=-0.74$; $p=0.01$) and other respiratory viruses ($r=-0.68$;
35 $p=0.02$) detection correlated negatively with NPI stringency. SARS-CoV-2 seroprevalence
36 increased from $<1\%$ during February-March 2020 to 50% within 6 weeks and plateaued after
37 NPI implementation. Decrease of effective reproduction number <1 and antibody reactivity over
38 time suggested intense SARS-CoV-2 transmission during pandemic onset, subsequently limited
39 by NPIs. Phylogeographic analyses revealed that travel restrictions were implemented late not
40 preventing 100 near-parallel SARS-CoV-2 introductions, and implementation of NPIs modified
41 SARS-CoV-2 geographic spread by restricting recreational activity. NPIs stringency correlated
42 negatively with the number of circulating SARS-CoV-2 lineages ($r=-0.69$; $p=0.02$). Virological
43 evidence supports NPIs restricting human movement as an effective public health tool to control
44 the spread of respiratory pathogens in resource-limited settings, providing a template for
45 emerging SARS-CoV-2 variants and future epidemics.

46

47 INTRODUCTION

48 Latin America is a COVID-19 hot spot, accumulating 20% of reported cases and 32% of deaths
49 worldwide in 2020¹, albeit hosting only 8% of the total world's population. Latin America
50 suffered substantial economic constrains due to the pandemic, exemplified by the decline of
51 9.4% in gross domestic product in 2020
52 (<https://www.imf.org/en/Publications/WEO/Issues/2020/06/24/WEOUpdateJune2020>). Most of
53 the economic constraints were associated with compulsory non-pharmaceutical interventions
54 (NPIs), i.e., policies that restrict human contact, movement, and shut down public and private
55 services to avoid SARS-CoV-2 transmission. However, resource-limited settings such as Latin
56 America have very high proportions of informal labour reaching more than 80% (International
57 Labour Organization; <https://ilostat.ilo.org/data/>), involving high human mobility that may put
58 the efficacy of NPIs at stake. Even in affluent settings, the efficacy of NPIs in containing
59 COVID-19 mortality and SARS-CoV-2 spread is debated. On the one hand, early research in
60 China and Brazil suggested that NPIs decreased SARS-CoV-2 transmission rates² and

61 reproduction number³, and a time series meta-analysis of 149 countries showed a decrease of
62 COVID-19 incidence rates by 13% after NPI implementation⁴. On the other hand, a modelling
63 study analysing European countries found no efficacy of relatively less stringent NPIs in
64 lowering SARS-CoV-2 transmission apart from a complete lockdown⁵, and another study in
65 Europe found that closure of businesses and stay-at-home orders were unlikely to lower COVID-
66 19 incidence⁶.

67 To date, analyses of the COVID-19 public health response relied predominantly on surveillance
68 data, leading to inevitable biases due to the limited diagnostic testing and underreporting in
69 resource-limited settings. These biases have been partially resolved using reported excess deaths,
70 but those data are not immediately available and depend on the quality of national data registers
71 ⁷. Within Latin America, Ecuador was one of the earliest epicentres of the pandemic, with one of
72 the highest COVID-19-associated mortality rates worldwide reaching 8.5% in late 2020⁷ and an
73 80% increase in excess deaths of baseline annual mortality⁷ despite strict and early NPI
74 implementation. Here, we use virological data to analyse the efficacy of NPIs in Ecuador, a
75 prototypic resource-limited setting in Latin America.

76

77 **MATERIALS AND METHODS**

78 **Study design:** Patient samples originated mainly from coastal Ecuador, separated from the rest
79 of the country by the Andean mountains and home to most of the Ecuadorian population (**Fig.**
80 **1A**) (further geographical data shown in **Fig. S1**). That region of Ecuador was chosen because it
81 was most affected by COVID-19 during the onset of the pandemic and because it harbours the
82 Ecuadorian SARS-CoV-2 reference laboratory the Instituto Nacional de Investigación en Salud
83 Pública Dr. Leopoldo Izquieta Pérez (INSPI). Other regions of Ecuador have separate and
84 smaller reference laboratories and samples from those laboratories were hardly available for this
85 study. We used two different subpopulations collected retrospectively from routine disease
86 surveillance from the Ecuadorian National surveillance system (**Fig. 1B** and **1C**). First, we
87 performed a molecular study using 1950 oro-nasopharyngeal swabs and sputum samples sent for
88 routine SARS-CoV-2 surveillance to INSPI during March 2020 to February 2021, corresponding
89 to 2.3% of all the samples analysed by the INSPI per week (**Fig. 1B**; further subsample data is
90 found in **Fig. S1, S2, S3** and **S4**, and in **Table S1**). Second, all available samples of fever of
91 unknown origin (FUO) sent to INSPI from January 2020 to February 2021 for medical

92 investigation were used to measure SARS-CoV-2 antibodies (**Fig. 1C**; sub-population
93 characteristics are shown in **Table S2** and **Fig. S5** and **S6**). Both subpopulations correspond to
94 longitudinal collections of diagnostic samples spanning comparable timeframes, number of
95 samples and geographical location (**Fig. 1D** and **1E**). Sample numbers per province were
96 comparable between both subpopulations, and only 12% (n=243/1967) of the FUO samples were
97 from provinces outside of coastal Ecuador from which no respiratory samples were available
98 (**Fig. 1D** and **1E**). Although the subpopulation with FUO was younger than the subpopulation
99 with respiratory illness, those samples are independently suitable to describe the sample
100 reception and surveillance performed in the national reference laboratory of Ecuador during the
101 onset of the pandemic (**Fig. S2** through **S6**).

102
103 **Laboratory analyses:** Molecular testing for SARS-CoV-2 and common respiratory viruses (four
104 endemic human coronaviruses (HCoV)-OC43, -NL63, -229E, -HKU1; Human adenoviruses,
105 metapneumovirus, parechovirus, influenza A/B virus, respiratory syncytial viruses A/B,
106 enteroviruses and parainfluenza viruses 1-4) was done using commercially available multiplex
107 real-time RT-PCR kits, SARS-CoV-2 whole-genome amplification and assembly using readily
108 available pipelines (https://gitlab.com/RKIBioinformaticsPipelines/ncov_minipipe) and
109 classification using (PANGOLIN) version 3.1.16⁸. Serological testing included a validated
110 SARS-CoV-2 testing algorithm based on a chemiluminescence immunoassay followed by a
111 highly specific SARS-CoV-2 surrogate virus neutralization test described before⁹.

112
113 **Evolutionary analyses:** We constructed an approximately-maximum likelihood (ML)
114 phylogeny encompassing all SARS-CoV-2 sequences from this study and all available GISAID
115 genomes until September 1, 2021 using the program fasttree 2.1.10¹⁰ with a GTR+CAT
116 substitution model. To explore the temporal signal of SARS-CoV-2, an ancestral state inference
117 in an ML framework was calculated in TreeTime 0.7.6¹¹. Phylogeographic inference was
118 calculated using the relaxed random walk (RRW) diffusion model run for 1×10^8 generations
119 implemented in BEAST v1.10.4.

120

121 **Statistical analyses and modelling:** Chi-square tests of proportions and Fisher's exact tests
122 were used to compare categorical variables, t-tests and Pearson correlation tests to compare
123 continuous variables using R (v. 4.0.3). Kernel density estimations (KDE), used to visualize the
124 distribution of continuous variables in time were performed in R (v. 4.0.3). KDE were calculated
125 using the smallest bandwidth possible due to our large sample size. COVID-19 outbreak
126 dynamics were analysed using a susceptible-exposed-infectious-recovered (SEIR) model
127 modified to fit COVID-19 estimates¹². Further details on materials and methods are found in the
128 **Supplementary text.**

129

130 **RESULTS**

131 **NPI implementation in Ecuador**

132 Ecuador's public health response to COVID-19 started immediately after declaration of the
133 pandemic by the WHO on March 11, 2020¹³. Ecuador's government implemented an emergency
134 state, handing pandemic response to the central government. The implemented NPIs increased in
135 severity and included closing of national borders on March 16, followed by banning social
136 gatherings, a curfew, closing of public spaces, commerce, schools, and stay-at-home orders by
137 March 23, corresponding to a high NPI stringency level of 93% according to the widely used
138 Oxford-based classification system¹⁴. The Stringency index is calculated as the mean score of
139 nine metrics: school closures; workplace closures; cancellation of public events; restrictions on
140 public gatherings; closures of public transport; stay-at-home requirements; public information
141 campaigns; restrictions on internal movements; and international travel controls. In Ecuador, the
142 NPI stringency index decreased 3-7% per month until mid-September 2020, time in which
143 Ecuador central government lifted stay-at-home orders, travel restrictions, permitted public
144 gatherings, and gave political power to local governments to decide on NPIs. Afterwards, the
145 stringency index was approximately 50% for the rest of the year (stringency of NPI over time is
146 shown in **Fig. S10**). Of note, the obligatory use of masks in indoor and outdoor spaces was
147 implemented on April 6, 2020 and lifted on April 2022.

148

149 **NPIs likely constrained circulation of SARS-CoV-2 and other respiratory viruses**

150 During the onset of the pandemic, Ecuador's laboratory testing capacity was below all other
151 South American countries, reaching 40 tests per 1000 inhabitants as of December, 2020¹, and

152 lack of reagents challenged homogenous testing over time (total number of tests shown in grey in
153 **Fig. 2A**) ([https://www.theguardian.com/world/live/2020/jun/12/coronavirus-live-news-markets-](https://www.theguardian.com/world/live/2020/jun/12/coronavirus-live-news-markets-fall-over-fears-of-long-us-recovery-as-brazil-cases-top-800000)
154 [fall-over-fears-of-long-us-recovery-as-brazil-cases-top-800000](https://www.theguardian.com/world/live/2020/jun/12/coronavirus-live-news-markets-fall-over-fears-of-long-us-recovery-as-brazil-cases-top-800000)). Therefore, we re-tested 1,950
155 samples stored at Ecuador's reference laboratory continuously during the first year of the
156 COVID-19 pandemic (mean, 47.8 samples per week (range: 27.5 to 60). In total, 52%
157 (1017/1950) of those samples were SARS-CoV-2 positive. The high RT-PCR detection rate is
158 consistent with the Ecuadorian testing algorithm focusing on symptomatic cases and contacts¹⁵.
159 The SARS-CoV-2 RT-PCR detection per month correlated significantly with lower stringency of
160 NPIs, implying increased virus circulation before NPIs were implemented and after NPIs were
161 relaxed (Pearson correlation test; $r=-0.74$; $p=0.01$) (**Fig. 2B**). The positivity rate decreased
162 slowly with time, from 40% in March 2020, when the more stringent NPIs were implemented,
163 until 20% in September 2020, were NPIs were the lowest, suggesting that NPIs were successful
164 in controlling virus spread. As soon as NPI stringency was lowered, the positivity rate got a steep
165 increase reaching close to 40% during late 2020, following the reported excess mortality increase
166 (**Fig. 2A**).

167 The overall detection rate of all other respiratory viruses was low at 4.7% (91/1950; CI: 3.9-5.8)
168 (**Fig. 2C**). Among common respiratory viruses, adenoviruses (Fisher's exact-test; $p=0.026$),
169 parainfluenzaviruses (Fisher's exact-test; $p=0.04$), enteroviruses (Fisher's exact-test; $p<0.0001$)
170 and metapneumoviruses (Fisher's exact-test; $p<0.0001$) occurred significantly more frequently
171 during months of non-stringent NPIs, being the odds of detecting respiratory viruses 2-23 times
172 higher in lower NPI as in stringent NPIs times (individual detection of respiratory viruses in
173 SARS-CoV-2-positive and -negative patients are shown in **Fig. S13**). Similar to SARS-CoV-2,
174 the detection of those common respiratory viruses significantly correlated with less stringent
175 NPIs (Pearson correlation test; $r=-0.68$; $p=0.02$) (**Fig. 2C**), reminiscent of the reduced circulation
176 of SARS-CoV-2 and suggesting modified respiratory virus circulation according to NPI
177 stringency. Therefore, there was reduced respiratory virus circulation in comparison to pre-
178 pandemic detection rates in Ecuador¹⁶. Co-infection between SARS-CoV-2 and other respiratory
179 viruses was detected in 4.4% of SARS-CoV-2 positive samples (44/1017; CI: 6.1-9.4), and only
180 in one other sample by non-SARS-CoV-2 respiratory viruses (**Fig. S13**). The detected rates of
181 co-infection were considerably lower than co-infection rates found in pre-pandemic studies from
182 tropical settings, reaching more than 10% using similar methodology¹⁷. Overall decreased virus

183 circulation was likely associated with stringent NPIs and included the complete absence of
184 influenza viruses, consistent with a study from the United Kingdom¹⁸. Finally, co-infections did
185 not affect COVID-19 severity or duration (data on disease outcome are found in **Fig. S14**).

186

187 **SARS-CoV-2 seroprevalence plateaued following the implementation of NPIs**

188 SARS-CoV-2-specific IgG antibodies were first detected during late March 2020 (**Fig. 3A**). IgG
189 seroconversion occurs in patients approximately after the third week of illness¹⁹. Therefore, the
190 serological data was in concordance with the first SARS-CoV-2 case detected in the country on
191 February 29th. One month later, during early May 2020, SARS-CoV-2 seroprevalence reached
192 50% and stagnated afterwards (**Fig. 3A**), compatible with intense SARS-CoV-2 transmission
193 during the onset of the pandemic mainly in coastal Ecuador, followed by limited onward
194 transmission due to NPIs (**Fig. S7, S8 and S9**). This interpretation was consistent with decreasing
195 levels of antibodies over time in our dataset (**Fig. 3B; Fig. S7**) and the modelled effective
196 reproduction number ($R_{\text{eff}} < 1$) using seroprevalence and incidence data, during stringent NPIs
197 (**Fig. 3C**), and reminiscent of an observational study showing decreased SARS-CoV-2
198 circulation due to implementation of NPIs in Hong Kong²⁰ and a modelled decrease of R_{eff}
199 estimates due to NPIs from São Paulo and Rio de Janeiro, Brazil during the onset of the
200 pandemic³. Given the relatively young age of patients in this subpopulation, the overall
201 seroprevalence in Ecuador may be under or overestimated. However, comparable seroprevalence
202 estimates in a population-based study from Peru showed an equal seroprevalence distribution
203 amongst age groups²¹. From September 2020 onwards, R_{eff} re-increased > 1 , and from December
204 2020 onwards, mean CLIA antibody reactivity levels re-increased, likely due to relaxed NPIs
205 leading to increased virus transmission (**Fig. 3C and Fig. S7**).

206

207 **Travel restrictions were implemented too late to prevent parallel SARS-CoV-2** 208 **introductions**

209 Since there is a lack of SARS-CoV-2 genomic data from the onset of the COVID-19 pandemic in
210 Ecuador²², we sequenced 63.1% (642/1017) of the SARS-CoV-2-positive samples.
211 Phylogenomic reconstructions combining our new data and all SARS-CoV-2 sequences from
212 Ecuador in GISAID until September 2021 revealed that SARS-CoV-2 was introduced into
213 Ecuador between February 17 to March 8, 2020 (**Fig. 4A**). The time of introduction was similar

214 to estimates from Brazil, the first country in Latin America detecting SARS-CoV-2³, and thus
215 compatible with early spread of COVID-19 in Ecuador and robustness of our data. That time
216 span also included the first reported case of SARS-CoV-2 infection from Ecuador and was in
217 concordance with our serological data, again suggesting robustness of our results. Close to 100
218 separate SARS-CoV-2 introduction events into Ecuador were suggested by the low average
219 genetic divergence, the similar detection time and the clustering of the early SARS-CoV-2
220 viruses in the time stamped tree in early SARS-CoV-2 sequences from Ecuador (**Fig. 4A**; see
221 divergence data in **Fig. S15** and **S16**). Although Ecuador was among the first Latin American
222 countries to implement travel restrictions by March 16, 2020, those NPIs were apparently
223 implemented too late to prevent multiple parallel introduction events. For comparison, similarly
224 high numbers of parallel SARS-CoV-2 introductions were reported during the onset of COVID-
225 19 in Brazil, again suggesting robustness and generalizability of our data³.

226

227 **NPI implementation slowed the emergence of new SARS-CoV-2 lineages**

228 The SARS-CoV-2 strains circulating in Ecuador during 2020 and 2021 were assigned to 66
229 different lineages (see distribution of Pango lineages over time in **Fig. S17** and **S18**). The early
230 phase of the pandemic in Ecuador was characterized by the predominance of lineages B.1, B.1.1
231 and its sub-lineages; B.1.1 representing 30% of the total genomic data. Both B.1 and B.1.1.
232 lineages were detected during February 2020 in Europe and to a lesser extent in North America
233 and Asia²³, and in Ecuador during March 2020, again compatible with travel-aided SARS-CoV-
234 2 introduction events into Ecuador. In our dataset, a mean of 7.6 (range: 4-13; CI: 4.4-10.8)
235 SARS-CoV-2 Pango lineages were detected during March to August 2020. Once NPIs were
236 relaxed from September to December 2020, almost twice as many lineages circulated despite the
237 shorter time span (mean, 16; range: 11-19; CI: 10.4-21.6) (**Fig. 4B**). Moreover, the number of
238 lineages was negatively correlated with the stringency of NPIs, suggesting accelerated viral
239 evolution due to increased transmission and introduction of previously non-endemic lineages
240 once NPIs were relaxed (**Fig. 4C**) (Pearson correlation test; $r=-0.69$; $p=0.02$).

241

242 **NPIs modified the dispersion of SARS-CoV-2**

243 Phylogeographic reconstructions of the regionally predominant SARS-CoV-2 lineage B.1.1
244 showed differential dispersion patterns during different phases of the pandemic. At the onset of

245 the pandemic, geographic transitions originated unidirectionally from coastal Ecuador to other
246 provinces (**Fig. 4D**), which was in concordance to our time-stamped analyses, and in
247 concordance to the natural progression of SARS-CoV-2 geographic spread. Two weeks after the
248 implementation of strict NPIs, a 54% decrease of geographic transitions entailed, followed by
249 continuously low numbers of geographic transitions (**Fig. 4D** and **4E**). Virus movements during
250 strict NPIs occurred multidirectionally over relatively larger distances (**Fig. 4D**), potentially due
251 to increased mobility associated with commercial reactivation during mid-2020 in all of South
252 America ²⁴, since travel restrictions and stay-at-home orders were still implemented. Once NPIs
253 were relaxed, transitions peaked again and occurred predominantly over shorter distances,
254 potentially associated with recreational activity, as a high number of transitions occurred to and
255 from coastal provinces (**Fig. 4D** and **4E**).

256

257 **DISCUSSION**

258 We gathered virological data describing the onset of the COVID-19 pandemic in a Latin
259 American COVID-19 epicentre to show that NPIs were a modifying and limiting factor of
260 SARS-CoV-2 transmission. NPIs are a well-known part of public health responses to epidemics
261 and have been used, among others, during the SARS-CoV epidemic in 2003 and the Spanish flu
262 in 1918. However, the success of NPIs in containing outbreaks varied depending on several
263 factors, including region, time of implementation, cultural background of the population, its prior
264 experience to epidemics and civil compliance to the imposed restrictions ^{25,26}. For SARS-CoV-2,
265 a comparative study analysing public health responses in developed and a limited number of
266 developing countries suggested that the success of NPIs depended on governmental monitoring
267 and early and stringent application of NPIs ²⁷, which are particularly difficult in resource-limited
268 settings such as Latin America due to several factors. First, testing of SARS-CoV-2 in Latin
269 America is insufficient and assessments of base mortality are often delayed ⁷. Second,
270 monitoring and implementation of NPIs is complicated in rural settings, in which circa 20% of
271 Latin American populations reside ⁹ and in which access to healthcare services is limited and
272 COVID-19 stigmatization, i.e. delay of seeking care due to negative economic or social
273 consequences, is frequent ^{9,28}. Third, compliance with NPIs by the population is affected by
274 socio-demographic characteristics such as poverty and ethnicity ²⁹ and Latin American societies
275 are prototypic examples of resource-limited multi-ethnic settings. Fourth and potentially most

276 importantly, informal labor reaches more than 60% of workforce in Ecuador and other parts of
277 Latin America ³⁰, and stay-at-home orders cannot be followed by persons relying on daily
278 informal income and lacking infrastructure to store food. Those factors may explain why despite
279 strict NPIs, the death toll continued to rise in Ecuador and other regions of Latin America, and
280 why Latin America is a priority region for rapid vaccination ³¹. Whether NPIs were thus a
281 meaningful tool to contain COVID-19 in Latin America and whether the socio-economic costs of
282 NPIs were justified thus remained unclear ³². In stark contrast, our data reveal an impact of NPIs
283 on all aspects of SARS-CoV-2 epidemiology and strongly suggest that without NPIs, the death
284 toll would have been much higher during the first year of the pandemic in Latin America,
285 reminiscent of a retrospective modelling study on NPI implementation in 2020 in India, which
286 projected a 60% reduction in deaths compared to non-implementation of NPIs ³³.

287

288 **Limitations**

289 Limitations of our study include the use of serum and respiratory samples that were not designed
290 to represent Ecuador's population and that we assume no reduction in compliance over time of
291 NPIs, which are less followed by persons with low socioeconomic status ³⁴. Additionally, the use
292 of the Oxford stringency index summarizing NPIs considers measures isolated from regional
293 contexts, such as informal labour proportion and the degree of enforcement of NPIs by regional
294 authorities. However, using policy response aggregates might be of use because individual
295 policies during the first pandemic year had limited variation across and within countries,
296 resulting in collinear relationships ¹⁴. Another limitation are the intrinsic biases of phylogenetic
297 analyses due to representability of spatiotemporal samples and the lack of a bigger genomic
298 dataset from Ecuador in comparison to other Latin American countries such as Brazil ³.
299 However, our samples are representative of the Ecuadorian national testing algorithm and taken
300 at even rates continuously across the first year of the COVID-19 pandemic and should thus allow
301 robust interpretations despite inevitable sample biases, consistent with similar detection patterns
302 of SARS-CoV-2 and other respiratory viruses. Phylogenomic analyses from an affluent setting
303 confirmed usability of genomic data to analyse NPI efficacy ³⁵. Additionally, acute febrile
304 disease from arbovirus infections or malaria is common in poorer population strata ¹² and those
305 sera should allow sensitive detection of past SARS-CoV-2 infection which is also common in
306 poorer population strata ³⁶.

307
308 Methodological strengths of our study include the use of exhaustive molecular, phylogenetic,
309 modelling and serological analyses whose results mutually confirmed each other and compensate
310 for the study's inherent limitations.

311 312 **Conclusion**

313 Our data support that stringent NPIs modifying human behaviour, e.g., limiting human
314 movement, social gatherings and increasing available information to the public were efficient
315 against COVID-19 in Ecuador, but intense SARS-CoV-2 spread occurred before their
316 implementation. Therefore, NPIs should be rapidly implemented and sustained in
317 immunologically naïve populations upon introduction of a highly transmissible pathogen such as
318 SARS-CoV-2. This interpretation is in concordance with studies showing increased mortality
319 when NPIs were introduced too late and lifted too early during the 1918 Spanish flu pandemic in
320 the U.S. ²⁶ and from early travel restrictions globally reducing case numbers during the onset of
321 the COVID-19 pandemic ³⁷. Finally, the emergence of antigenically distinct SARS-CoV-2
322 variants worldwide ³⁸ leading to decreased vaccine effectiveness ³⁹, together with the delayed
323 modification of vaccines worldwide has led countries such as China, Canada and Peru to
324 implement similarly stringent NPIs as in 2020, affecting hundreds of millions of people in 2022.
325 Overall, our analyses of virological data provide an evidence-based way to justify the
326 implementation of NPIs, providing data-driven support to stakeholders facing resurgence of SARS-
327 CoV-2 immune escape variants or future epidemics globally. Nonetheless, the virological benefit
328 of NPIs must be weighed against the capacities of public health systems in managing severe
329 COVID-19 cases, e.g. intensive care units, respirators, and oxygen, all limited in resource-
330 limited settings like Latin America ^{40,41} and the high societal ⁴² and economic costs associated
331 with NPIs.

332 333 **References**

- 334 1. Roser, M. Coronavirus Pandemic (COVID-19). *Our World in Data* (2020).
- 335 2. Hou, C., *et al.* The effectiveness of quarantine of Wuhan city against the Corona Virus
336 Disease 2019 (COVID-19): A well-mixed SEIR model analysis. *J Med Virol* **92**, 841-848
337 (2020).

- 338 3. Candido, D.S., *et al.* Evolution and epidemic spread of SARS-CoV-2 in Brazil. *Science*
339 **369**, 1255-1260 (2020).
- 340 4. Islam, N., *et al.* Physical distancing interventions and incidence of coronavirus disease
341 2019: natural experiment in 149 countries. *BMJ* **370**, m2743 (2020).
- 342 5. Flaxman, S., *et al.* Estimating the effects of non-pharmaceutical interventions on
343 COVID-19 in Europe. *Nature* **584**, 257-261 (2020).
- 344 6. Hunter, P.R., Colon-Gonzalez, F.J., Brainard, J. & Rushton, S. Impact of non-
345 pharmaceutical interventions against COVID-19 in Europe in 2020: a quasi-experimental
346 non-equivalent group and time series design study. *Euro Surveill* **26**(2021).
- 347 7. Cuellar, L., *et al.* Excess deaths reveal the true spatial, temporal and demographic impact
348 of COVID-19 on mortality in Ecuador. *International journal of epidemiology* (2021).
- 349 8. Rambaut, A., *et al.* A dynamic nomenclature proposal for SARS-CoV-2 lineages to assist
350 genomic epidemiology. *Nature Microbiology* **5**, 1403-1407 (2020).
- 351 9. Moreira-Soto, A., *et al.* High SARS-CoV-2 Seroprevalence in Rural Peru, 2021: a Cross-
352 Sectional Population-Based Study. *mSphere* **6**, e0068521 (2021).
- 353 10. Price, M.N., Dehal, P.S. & Arkin, A.P. FastTree 2--approximately maximum-likelihood
354 trees for large alignments. *PLoS One* **5**, e9490 (2010).
- 355 11. Sagulenko, P., Puller, V. & Neher, R.A. TreeTime: Maximum-likelihood phylodynamic
356 analysis. *Virus Evol* **4**, vex042 (2018).
- 357 12. Netto, E.M., *et al.* High Zika Virus Seroprevalence in Salvador, Northeastern Brazil
358 Limits the Potential for Further Outbreaks. *mBio* **8**(2017).
- 359 13. Garcia, P.J., *et al.* COVID-19 Response in Latin America. *Am J Trop Med Hyg* **103**,
360 1765-1772 (2020).
- 361 14. Hale, T., *et al.* A global panel database of pandemic policies (Oxford COVID-19
362 Government Response Tracker). *Nat Hum Behav* **5**, 529-538 (2021).
- 363 15. Cañizares Fuentes, R., Aroca, R. & Blasco Carlos, M. Evaluation of COVID-19
364 Surveillance Strategy in Ecuador. *Disaster Medicine and Public Health Preparedness*, 1-
365 4 (2020).
- 366 16. Caini, S., *et al.* The epidemiology and severity of respiratory viral infections in a tropical
367 country: Ecuador, 2009-2016. *J Infect Public Health* **12**, 357-363 (2019).
- 368 17. Góes, L.G.B., *et al.* Typical epidemiology of respiratory virus infections in a Brazilian
369 slum. *J Med Virol* **92**, 1316-1321 (2020).
- 370 18. Poole, S., Brendish, N.J. & Clark, T.W. SARS-CoV-2 has displaced other seasonal
371 respiratory viruses: Results from a prospective cohort study. *J Infect* **81**, 966-972 (2020).
- 372 19. To, K.K., *et al.* Temporal profiles of viral load in posterior oropharyngeal saliva samples
373 and serum antibody responses during infection by SARS-CoV-2: an observational cohort
374 study. *Lancet Infect Dis* **20**, 565-574 (2020).
- 375 20. Cowling, B.J., *et al.* Impact assessment of non-pharmaceutical interventions against
376 coronavirus disease 2019 and influenza in Hong Kong: an observational study. *Lancet*
377 *Public Health* **5**, e279-e288 (2020).
- 378 21. Reyes-Vega, M.F., *et al.* SARS-CoV-2 prevalence associated to low socioeconomic
379 status and overcrowding in an LMIC megacity: A population-based seroepidemiological
380 survey in Lima, Peru. *EClinicalMedicine* **34**, 100801 (2021).
- 381 22. Gutierrez, B., *et al.* Genomic epidemiology of SARS-CoV-2 transmission lineages in
382 Ecuador. *medRxiv* (2021).

- 383 23. Alteri, C., *et al.* Genomic epidemiology of SARS-CoV-2 reveals multiple lineages and
384 early spread of SARS-CoV-2 infections in Lombardy, Italy. *Nat Commun* **12**, 434 (2021).
- 385 24. van Ruitenbeek, R.E., Slik, J.S. & Bhulai, S. On the relation between COVID-19,
386 mobility, and the stock market. *PLoS One* **16**, e0261381 (2021).
- 387 25. Matthews Pillemer, F., Blendon, R.J., Zaslavsky, A.M. & Lee, B.Y. Predicting support
388 for non-pharmaceutical interventions during infectious outbreaks: a four region analysis.
389 *Disasters* **39**, 125-145 (2015).
- 390 26. Bootsma, M.C. & Ferguson, N.M. The effect of public health measures on the 1918
391 influenza pandemic in U.S. cities. *Proc Natl Acad Sci U S A* **104**, 7588-7593 (2007).
- 392 27. Xylogiannopoulos, K.F., Karampelas, P. & Alhaji, R. COVID-19 pandemic spread
393 against countries' non-pharmaceutical interventions responses: a data-mining driven
394 comparative study. *BMC Public Health* **21**, 1607 (2021).
- 395 28. McDermott, J.H. & Newman, W.G. Refusal of viral testing during the SARS-CoV-2
396 pandemic. *Clin Med (Lond)* **20**, e163-e164 (2020).
- 397 29. Pan, W.K., *et al.* Heterogeneity in the Effectiveness of Non-pharmaceutical Interventions
398 During the First SARS-CoV2 Wave in the United States. *Front Public Health* **9**, 754696
399 (2021).
- 400 30. Canelas, C. Informality and poverty in Ecuador. *Small Business Economics* **53**, 1097-
401 1115 (2019).
- 402 31. Bollyky, T.J., Murray, C.J.L. & Reiner, R.C., Jr. Epidemiology, not geopolitics, should
403 guide COVID-19 vaccine donations. *Lancet* **398**, 97-99 (2021).
- 404 32. Knaul, F.M., *et al.* Punt Politics as Failure of Health System Stewardship: Evidence from
405 the COVID-19 Pandemic Response in Brazil and Mexico. *Lancet Reg Health Am* **4**,
406 100086 (2021).
- 407 33. Salvatore, M., *et al.* Lessons from SARS-CoV-2 in India: A data-driven framework for
408 pandemic resilience. *Science Advances* **8**, eabp8621.
- 409 34. de Noronha, N., *et al.* Non-adherence to COVID-19 lockdown: who are they? A cross-
410 sectional study in Portugal. *Public Health* **211**, 5-13 (2022).
- 411 35. Nadeau, S.A., *et al.* Swiss public health measures associated with reduced SARS-CoV-2
412 transmission using genome data. *Sci Transl Med* **14**, eabn7979 (2022).
- 413 36. Reyes-Vega, M.F., *et al.* SARS-CoV-2 prevalence associated to low socioeconomic
414 status and overcrowding in an LMIC megacity: A population-based seroepidemiological
415 survey in Lima, Peru. *EClinicalMedicine* **34**, 100801 (2021).
- 416 37. Grépin, K.A., *et al.* Evidence of the effectiveness of travel-related measures during the
417 early phase of the COVID-19 pandemic: a rapid systematic review. *BMJ Global Health*
418 **6**, e004537 (2021).
- 419 38. Yewdell, J.W. Antigenic drift: Understanding COVID-19. *Immunity* **54**, 2681-2687
420 (2021).
- 421 39. Andrews, N., *et al.* Covid-19 Vaccine Effectiveness against the Omicron (B.1.1.529)
422 Variant. *N Engl J Med* **386**, 1532-1546 (2022).
- 423 40. Benítez, M.A., *et al.* Responses to COVID-19 in five Latin American countries. *Health*
424 *Policy and Technology* **9**, 525-559 (2020).
- 425 41. Reperant, L.A. & Osterhaus, A. COVID-19 vaccination and critical care capacity:
426 Perilous months ahead. *Vaccine* **39**, 2183-2186 (2021).

427 42. Lichand, G., Doria, C.A., Leal-Neto, O. & Fernandes, J.P.C. The impacts of remote
428 learning in secondary education during the pandemic in Brazil. *Nat Hum Behav* **6**, 1079-
429 1086 (2022).

430
431

432 **Acknowledgments:** We thank Arne Kühne for technical support. We thank Carlo Fischer for the
433 critical reading of the manuscript.

434 **Funding:** This work was supported German Federal Ministry for Economic Cooperation and
435 Development (BMZ) through the Deutsche Gesellschaft für Internationale Zusammenarbeit
436 (GIZ) to JFD (project number 81272349).

437

438 **Ethical statement:** All patient data were managed in anonymized databases by the INSPI.
439 Clinical symptoms were retrieved from medical charts. The study was approved by the
440 Ecuadorian Ministry of Health (MSP-MSP-2021-0006-O-FDQ) and the Ethics committee of the
441 Espiritu Santo University in Guayaquil, Ecuador (2022-002A).

442

443 **Author contributions:** Conceptualization (AM-S, JCZ, JFD), data curation (AB, DdM, MP,
444 JG, JG, BW, A-LS, MO, MJB, MG, AO, SS), formal analysis (AM-S, AB, DdM, MP, JG, BW,
445 A-LS, MO, MJB, MG, AO, SS, JCZ, JFD), funding acquisition (JFD), investigation (AM-S,
446 AB, DdM, MP, JG, BW, A-LS, MO, MJB, MG, AO, SS, JCZ, JFD), methodology (AM-S, AB,
447 DdM, MP, JG, BW, A-LS, MO, MJB, MG, AO, SS, JCZ, JFD), project administration (AM-S,
448 AO, JCZ, JFD), resources (AM-S, AB, DdM, MP, JG, BW, A-LS, MO, MJB, MG, AO, SS,
449 JCZ, JFD), software (AM-S, A-LS, BW), visualization (AM-S, BW, A-LS), writing – original
450 draft (AM-S, AB, DdM, MP, JG, BW, A-LS, MO, MJB, MG, AO, SS, JCZ, JFD), and writing –
451 review & editing (AM-S, JFD)

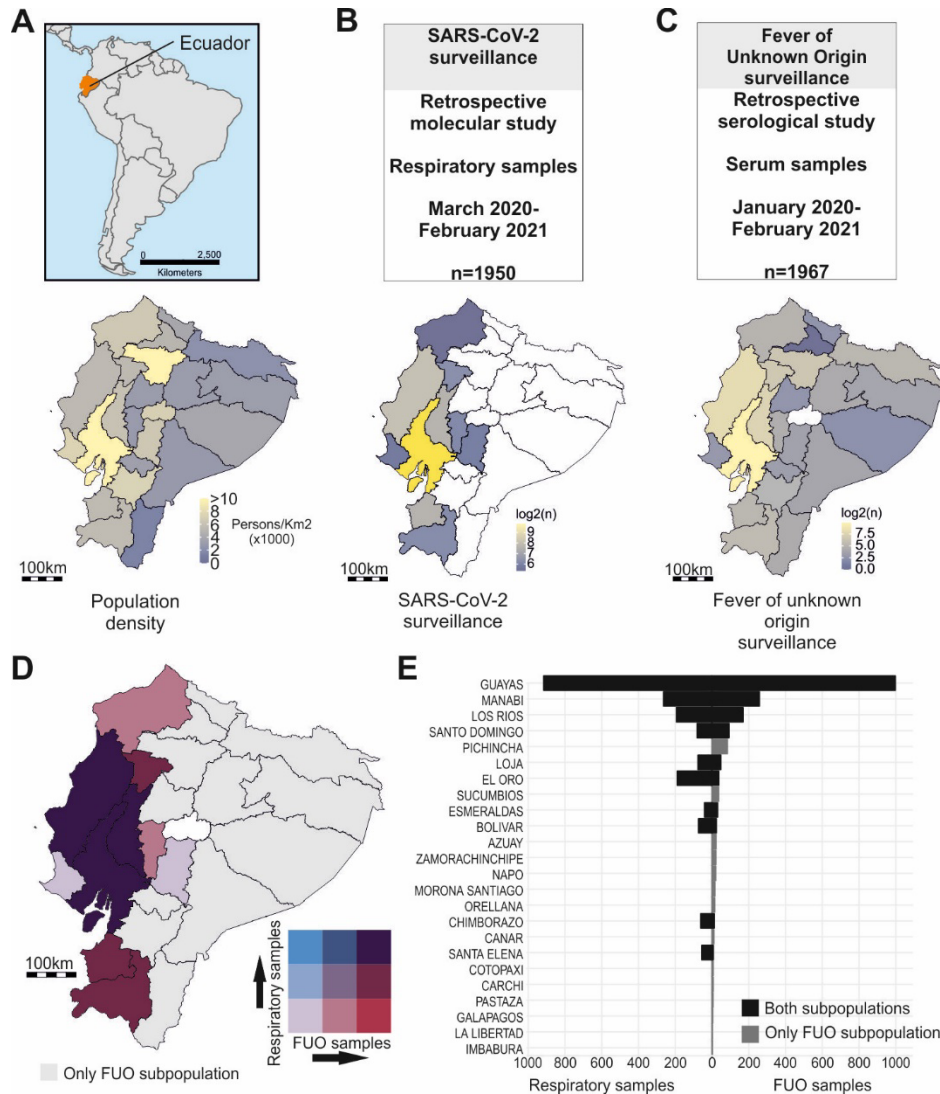
452

453 **Competing interests:** Authors declare that they have no competing interests.

454 **Data and materials availability:** All data needed to evaluate the conclusions in the paper are
455 present in the paper and/or the Supplementary materials. The data that is not patient associated
456 will be made available for research on reasonable request and with permission from the INSPI
457 and the Ecuadorian ministry of health. Newly generated SARS-CoV-2 sequences were uploaded

458 to GISAID (numbers: XXXXXXXXXXXX-XXXXXXXXXXXX). The SARS-CoV-2 sequence
459 assembly can be found in ebi.ac.uk under the accession: ERP145042. All the code to reproduce
460 the analyses can be found at: <https://github.com/Dokandres/EcuadorNPI>.

461 **Figures**

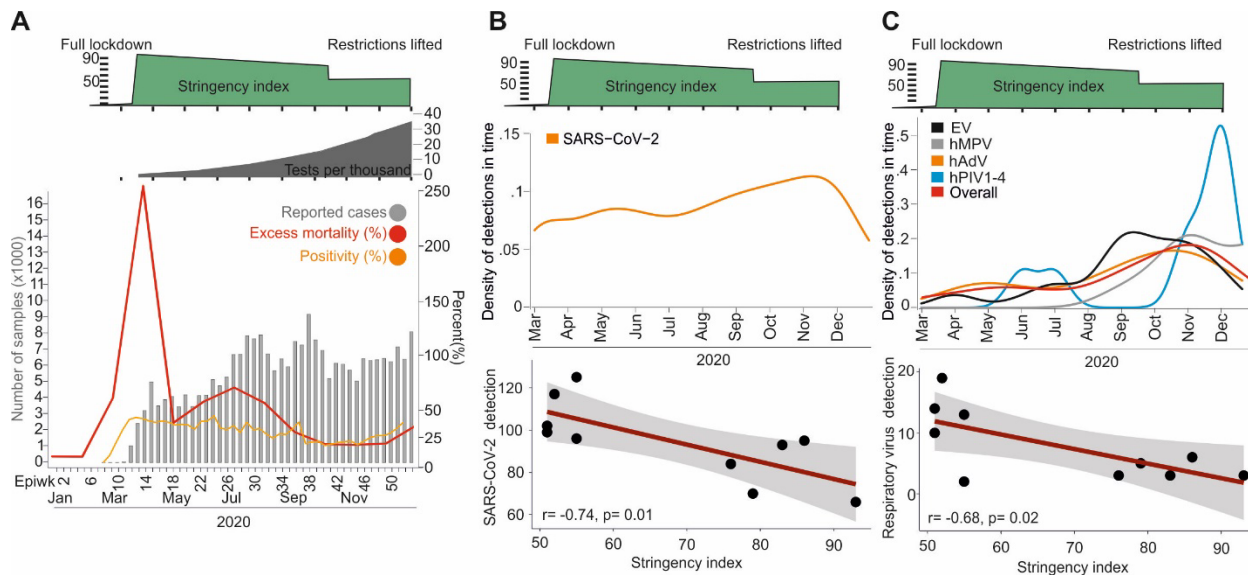


462

463

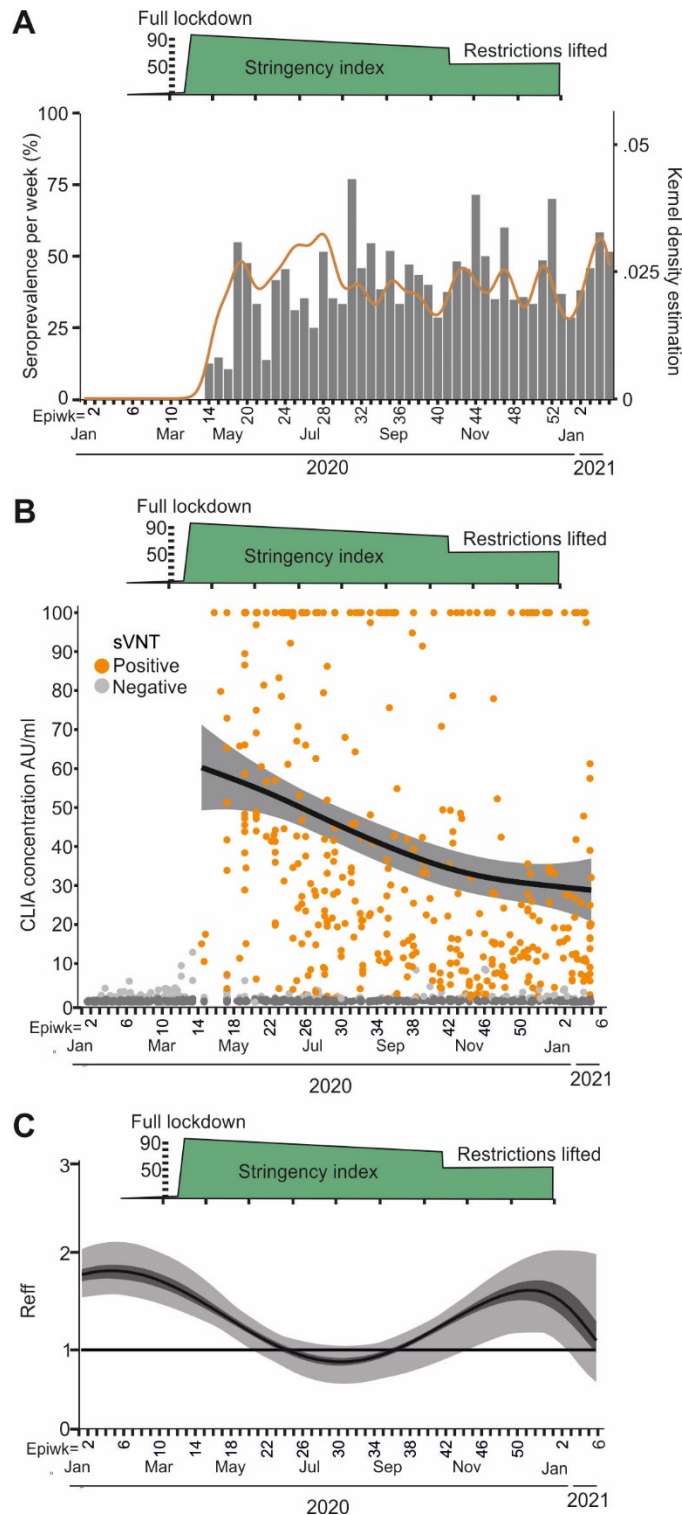
464 **Figure 1. Study sites and sample collection.** (A) Map of South America, Ecuador is shown in
 465 orange. Bottom: Population density map of Ecuador. (B) Subpopulation of SARS-CoV-2
 466 surveillance used for the molecular study in Ecuador, time span of sampling, and specimens per
 467 subpopulation. Bottom: Spatial distribution of samples. (C) Subpopulation of fever of unknown
 468 origin surveillance used for the serological study in Ecuador, time span of sampling, and
 469 specimens per subpopulation. Bottom: Spatial distribution of samples. Logarithmic scale was
 470 used in (B) and (C) for clarity of presentation. (D) Bivariate map of number of respiratory and
 471 fever of unknown origin (FUO) samples in Ecuador. (E) Bar chart showing the number of
 472 respiratory samples (left) and serum samples (right) per province. Black corresponds to

473 provinces were both subpopulations are represented. Gray corresponds to provinces where only
 474 FUIO samples were available. Ecuador's political division data (<https://www.diva-gis.org/gdata>;
 475 <https://gadm.org/>) and Ecuador's population data
 476 (<https://hub.worldpop.org/geodata/summary?id=46031>; WorldPop datasets DOI:
 477 10.5258/SOTON/WP00675) were gathered from freely available sources.
 478



479 **Figure 2. Circulation of SARS-CoV-2 and other respiratory viruses in Ecuador.** (A)
 480 Reported number of cases and all-cause excess mortality from the Ecuadorian Ministry of Health
 481 (www.salud.gob.ec) and positivity rate from Ecuador's reference Laboratory. Above: Total
 482 number of tests per thousand inhabitants (Our World in Data) and Oxford stringency index. (B)
 483 Kernel density estimations of SARS-CoV-2 detections. Below: Pearson correlation test of NPI
 484 stringency index versus number of SARS-CoV-2 detections per month. (C) Kernel density
 485 estimations of non-SARS-CoV-2 respiratory viruses. Below: Pearson correlation test of NPI
 486 stringency index versus number of respiratory virus detections per month. Viruses with less than
 487 two detections are not shown for graphical reasons. Human adenoviruses (hAdV),
 488 metapneumovirus (hMPV), enteroviruses (EV) and parainfluenza viruses 1-4 (hPIV 1-4). Epiwk:
 489 Epidemiological week.
 490

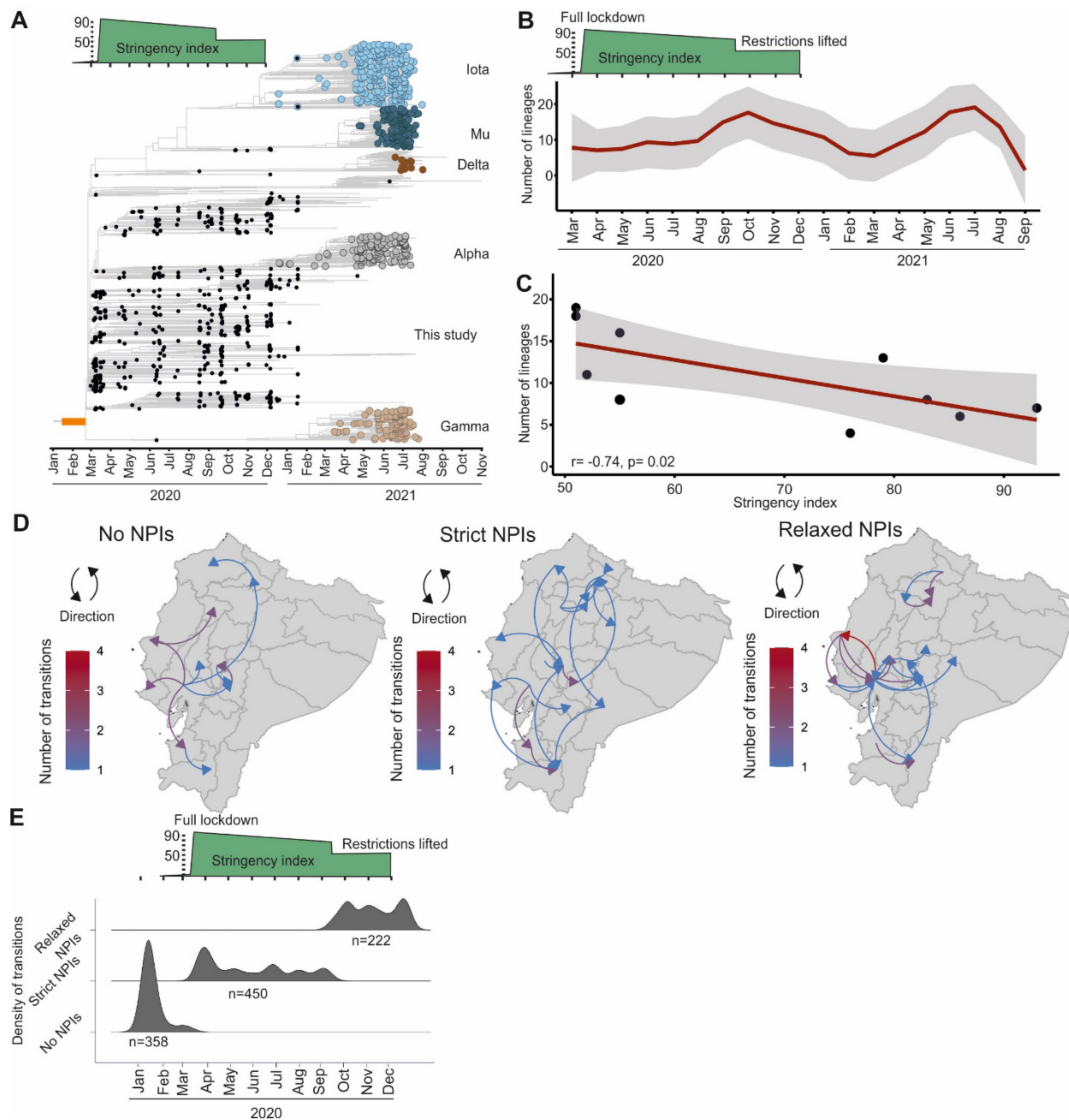
491
 492



493

494 **Figure 3. Seroprevalence and transmission of SARS-CoV-2 in Ecuador.** (A) Seroprevalence
 495 per epidemiological week. Right axis denotes kernel density estimation analyses of SARS-CoV-
 496 2-specific antibodies in Ecuador. (B) CLIA concentration across time in the tested samples. The

497 black line denotes the mean CLIA concentration per month. Gray lines denote the 95%
 498 confidence interval. AU/ml: absorbance units per millilitre. (C) Calculated effective reproduction
 499 number from seroprevalence estimates and reported cases over time. Epiwk: Epidemiological
 500 week.



501
 502
 503 **Figure 4. Evolution and spread of SARS-CoV-2 in Ecuador.** (A) Time-resolved maximum
 504 clade credibility phylogeny of SARS-CoV-2 in Ecuador. Sequences generated for this study in

505 black. Variants of concern or of interest are coloured. The time of SARS-CoV-2 introduction is
506 shown in an orange square at the root of the tree. (B) Number of distinct Pango lineages in time.
507 Gray zone represents 95% confidence intervals. (C) Pearson correlation test of stringency index
508 versus number of lineages per month. Gray zone represents 95% confidence intervals. (D)
509 Spatiotemporal reconstruction of the spread of SARS-CoV-2 in Ecuador during establishment of
510 non-pharmaceutical interventions (NPIs). NPI implementation time as in (D). (E) Density
511 estimations of SARS-CoV-2 transitions.
512