

# 1 Pharmacometric assessment of 2 primaquine induced haemolysis in 3 glucose-6-phosphate dehydrogenase 4 deficiency

5 Sasithon Pukrittayakamee<sup>1,2</sup>, Podjane Jittamala<sup>1,2</sup>, James A Watson<sup>3,4</sup>, Borimas  
6 Hanboonkunupakarn<sup>1,2</sup>, Pawanrat Leungsinsiri<sup>1</sup>, Kittiyod Poovorawan<sup>1,2</sup>, Kesinee  
7 Chotivanich<sup>1,2</sup>, Germana Bancone<sup>4,5</sup>, Cindy S Chu<sup>4,5</sup>, Mallika Imwong<sup>6</sup>, Nicholas PJ  
8 Day<sup>2,3</sup>, Walter RJ Taylor<sup>2,3†</sup>, Nicholas J White<sup>2,3†</sup>

\*For correspondence:

[nickw@tropmedres.ac](mailto:nickw@tropmedres.ac) (NJW)

†These authors contributed equally to this work

9 <sup>1</sup>Clinical Therapeutics Unit, Faculty of Tropical Medicine, Mahidol University, Bangkok,  
10 10400, Thailand; <sup>2</sup>Mahidol Oxford Tropical Medicine Research Unit, Faculty of Tropical  
11 Medicine, Mahidol University, Bangkok, 10400, Thailand; <sup>3</sup>Oxford University Clinical  
12 Research Unit, Hospital for Tropical Diseases, Ho Chi Minh City, Vietnam; <sup>4</sup>Centre for  
13 Tropical Medicine and Global Health, Nuffield Department of Medicine, University of  
14 Oxford, New Richards Building, Old Road Campus, Roosevelt Drive, Oxford, OX3 7LG,  
15 UK; <sup>5</sup>Shoklo Malaria Research Unit, Mahidol-Oxford Tropical Medicine Research Unit,  
16 Faculty of Tropical Medicine, Mahidol University, Mae Sot, Thailand; <sup>6</sup>Department of  
17 Molecular Tropical Medicine and Genetics, Faculty of Tropical Medicine, Mahidol  
18 University, Bangkok, Thailand

19  
20 **Abstract Background** Primaquine is an 8-aminoquinoline antimalarial. It is the only widely  
21 available treatment to prevent relapses of *Plasmodium vivax* malaria. The 8-aminoquinolines  
22 cause dose dependent haemolysis in glucose-6-phosphate dehydrogenase deficient (G6PDd)  
23 individuals. G6PDd is common in malaria endemic areas but testing is often not available. As a  
24 consequence primaquine is underused.

25 **Methods** We conducted a pharmacometric study to characterise the relationship between  
26 primaquine dose and haemolysis in G6PDd. The aim was to explore shorter and safer  
27 primaquine radical cure regimens compared to the currently recommended 8-weekly regimen  
28 (0.75 mg/kg once weekly), potentially obviating the need for G6PD testing. Hemizygous G6PDd  
29 healthy adult Thai and Burmese male volunteers were admitted to the Hospital for Tropical  
30 Diseases in Bangkok. In Part 1, volunteers were given ascending dose primaquine regimens  
31 whereby daily doses were increased from 7.5 mg up to 45 mg over 15 to 20 days. In Part 2, a  
32 single primaquine 45 mg dose was given.

33 **Results** 24 volunteers were enrolled in Part 1, and 16 in Part 2 (13 participated in both studies). In  
34 three volunteers, the ascending dose regimen was stopped because of haemolysis (n=1) and  
35 asymptomatic increases in transaminases (n=2; one was hepatitis E positive). Otherwise the  
36 ascending regimens were well tolerated with no drug-related serious adverse events. In Part 1,  
37 the median haemoglobin concentration decline was 3.7 g/dL (range: 2.1 to 5.9; relative decline of  
38 26% [range: 15 to 40%]). Primaquine doses up to 0.87 mg/kg/day were tolerated subsequently  
39 without clinically significant further falls in haemoglobin. In Part 2, the median haemoglobin  
40 concentration decline was 1.7 g/dL (range 0.9 to 4.1; relative fall of 12% [range: 7 to 30%

41 decrease]). The ascending dose primaquine regimens gave 7 times more drug but resulted in  
42 only double the haemoglobin decline.  
43 **Conclusions and Interpretation** In patients with Southeast Asian G6PDd variants full radical  
44 cure treatment can be given in under three weeks compared with the current 8 week regimen.

45

## 46 Introduction

47 Over the past 70 years primaquine has been the only drug widely available to prevent relapses of  
48 *Plasmodium vivax* and *P. ovale* malaria (radical cure). Primaquine has been given to hundreds of  
49 millions of patients in single doses to prevent *P. falciparum* transmission, in 5 to 14 day courses for  
50 radical cure of vivax and ovale malarias, and during mass treatments (Ashley et al., 2014). The main  
51 adverse effect of primaquine, and the other 8-aminoquinoline antimalarials, is dose-dependent ox-  
52 idant haemolysis in individuals with glucose-6-phosphate dehydrogenase (G6PD) deficiency (Luz-  
53 zatto et al., 2020; Recht et al., 2014). As G6PD deficiency is common in malaria endemic regions,  
54 primaquine is underused because reliable point-of-care testing for G6PD deficiency is usually not  
55 available (Recht et al., 2018) and prescribers are naturally reluctant to risk causing potentially se-  
56 vere, life threatening haemolysis (Yilma et al., 2023).

57 Outside sub-Saharan Africa *Plasmodium vivax* is the main cause of malaria in most endemic  
58 regions, and in these regions relapse is often the main cause of illness (Commons et al., 2020).  
59 Relapsing infections cause significant morbidity and, in higher transmission settings, mortality in  
60 young children, mediated mainly by chronic anaemia (Douglas et al., 2014; Commons et al., 2019).  
61 Relapses are also an important source of *P. vivax* transmission. The under use of primaquine there-  
62 fore contributes to substantial morbidity and mortality and to the failure to control and eliminate  
63 vivax malaria in endemic areas.

64 G6PD deficiency is the most common red blood cell enzyme deficiency of humans (Luzzatto  
65 et al., 2020). G6PD deficiency occurs mainly in malaria endemic or historically endemic regions  
66 (Howes et al., 2012). Mutations in the *G6PD* gene on the X chromosome confer reduced enzyme  
67 stability. This results in impaired erythrocyte defences against oxidant stresses and thereby in-  
68 creases the risk of haemolysis of older G6PD depleted erythrocytes. More severe G6PD deficiency  
69 variants are associated with greater drug induced haemolysis as a broader erythrocyte age range is  
70 G6PD depleted (Piomelli et al., 1968). The substantial haemolytic risk from 8-aminoquinoline anti-  
71 malarials means that the standard 7-14 day radical cure primaquine regimens are contraindicated  
72 in G6PD deficiency (World Health Organization, 2015)

73 Seminal clinical investigations were conducted over 50 years ago in adults with the African A-  
74 variant of G6PD deficiency. These showed that although oxidant haemolysis was inevitable, it af-  
75 fected predominantly the older erythrocytes. Continued primaquine administration to G6PD de-  
76 ficient subjects resulted in “resistance” to the haemolytic effect. The selective haemolysis of the  
77 older red cells resulted in a compensatory increase in the number of reticulocytes. Thus, the red  
78 cell population became progressively younger and increasingly resistant to oxidant stress, so over-  
79 all haemolysis decreased and a steady state was reached. This suggested a therapeutic strategy  
80 of controlled haemolysis which would limit the degree of anaemia by allowing time for the com-  
81 pensatory erythropoietic response (Alving et al., 1960; Kellermeyer et al., 1962). This mechanistic  
82 understanding provided the rationale for the once weekly primaquine regimen of 0.75 mg base/kg  
83 for 8 weeks, currently recommended by the World Health Organisation in patients with G6PD de-  
84 ficiency (World Health Organization, 2015). However, the safety of this regimen in more severe  
85 G6PD deficiency variants was never established. A small cohort study of the weekly primaquine  
86 regimen in 18 G6PD deficient (17 had the 871G>A [Viangchan] variant) and 57 G6PD normal adult  
87 vivax malaria patients in Cambodia suggested that single 45 mg doses may not be safe in the more  
88 severe G6PD deficiency variants (Kheng et al., 2015). A quarter of the G6PD deficient patients had a  
89 >25% fall in haemoglobin (compared to none in the G6PD normal group) and one patient required

It is made available under a [CC-BY 4.0 International license](#) .

90 a blood transfusion for a symptomatic fall in haemoglobin fall from 10 to 7.5 g/dL.

91 Over the past fifty years there has been substantial variation in national policies and practices.  
92 Some countries (e.g. Iran, Myanmar), which did not have G6PD testing available in endemic areas,  
93 have recommended the once weekly primaquine regimen as standard practice for all vivax malaria  
94 cases. Other countries have recommended giving the 14 day daily courses of primaquine without  
95 testing, although this recommendation is often not followed. To develop an alternative shorter  
96 and potentially safer approach to primaquine dosing in G6PD deficiency, we conducted a two part  
97 adaptive pharmacometric study in Thailand with the goal of characterising the dose-response re-  
98 lationship for primaquine induced haemolysis in healthy G6PD deficient volunteers.

## 99 Results

### 100 Study population

101 Of 215 potential subjects (either identified through hospital records or screened at the walk-in  
102 clinic for G6PD deficiency), 27 male hemizygote G6PD deficient volunteers were enrolled to the two  
103 studies between November 2018 and August 2022. In subjects who were interested in participating  
104 in the study, there were 2 screening failures (1 unidentified *G6PD* genotype and 1 elevated AST/ALT),  
105 see CONSORT diagrams in Appendix 1.

106 The COVID-19 pandemic interrupted the end of Part 1 and delayed finishing the study by two  
107 years, resulting in a substantially longer interval between test regimens than planned. After the  
108 lockdowns, fewer than anticipated Part 1 participants could be recontacted for Part 2, so three  
109 additional volunteers were recruited. The volunteer baseline summary characteristics are shown  
110 in Table 1. All volunteers had low to unmeasurable blood G6PD enzyme activity. The most common  
111 G6PD deficiency genetic variant was Viangchan (871G>A,  $n=12$ ), as it is in much of the eastern  
112 Greater Mekong subregion (*Bancone et al., 2019*). This was followed by Canton (1376G>T,  $n=5$ )  
113 and Mahidol (487G>A,  $n=4$ ). A large proportion of subjects had screening reticulocyte counts over  
114 2.5%, i.e. above the normal range (8/24 in Part 1 and 3/16 in Part 2). The intermediate *CYP2D6*  
115 metaboliser genotype (homozygous \*10) with an activity score of 0.5, was identified in 8/27 (30%)  
116 of the volunteers (*Caudle et al., 2020*).

### 117 Ascending dose primaquine (Part 1)

118 Of 24 volunteers assigned ascending dose primaquine regimens, 23 were included in the analysis  
119 (Appendix 1 figure 1). Volunteer number 18 was withdrawn from the study after 3 days of receiving  
120 10 mg of primaquine daily because of severe low back pain which resulted from a MRI confirmed  
121 prolapsed intervertebral disc that improved with symptomatic treatment. He was not followed up  
122 and did not participate in Part 2. As this was considered unrelated to drug administration and the  
123 total primaquine dose received was very low, his data were excluded from the primary outcome  
124 analysis. There were no changes in his haemoglobin over the three days of primaquine dosing.  
125 The remaining 23 subjects in the primary analysis population received ascending primaquine dose  
126 regimens of between 11 and 20 days duration.

### 127 Adverse events resulting in study withdrawal

128 Primaquine was generally well tolerated. There were no serious adverse events or complications.  
129 In three subjects (13%), the ascending dose primaquine regimen was stopped; one for excessive  
130 haemolysis and two because of abnormal liver function tests (elevated transaminases).

131 After receiving 11 doses of a 16-day regimen, subject 11 (*G6PD* Union) reached a fractional  
132 haemoglobin fall from baseline of 39.5% (8.9 g/dL vs. 14.7 g/dL at baseline), associated with marked  
133 fatigue. This decrease met the stopping rule for study withdrawal (dose limiting toxicity, see Ap-  
134 pendix 2). He developed a substantial compensatory reticulocytosis (15%). Over the next five days,  
135 his haemoglobin remained at ~ 9 g/dL (nadir observed haemoglobin was 8.8 g/dL corresponding  
136 to a 40% decrease from baseline) and rose thereafter to 13.0 g/dL (day 28) and 14.9 g/dL by day

	Part 1 - Ascending dose	Part 2 - Single 45 mg dose	Overall
<i>n</i>	24	16	27
Age (years)	32 (18 - 55)	34 (20-58)	32 (18-58)
Weight (kg)	64 (46 - 86)	64 (52-86)	64 (46-86)
<i>G6PD</i> genotype			
Viangchan (871G>A)	12	6	12
Mahidol (487G>A)	4	2	4
Canton (1376G>T)	4	3	5
Aures (143T>C)	1	1	1
Chinese-4 (392G>T) <sup>†</sup>	1	0	1
Orissa (131C>G)	1	1	1
Union (1360C>T)	1	2	2
Kaiping (1388G>A)	0	1	1
<i>G6PD</i> enzyme activity (U/g Hb)	0.15 (0-1.9)		
Haemoglobin (g/dL)	14.3 (11.8 - 15.8)	14.0 (12.3 - 15.9)	
Red cell count (x10 <sup>12</sup> per L)	4.9 (4.2-6.0)	5.1 (3.9-5.9)	
Reticulocyte count (%)	2.4 (1.1-4.0)	2.4 (1.0 - 2.9)	
Platelet count (x1000 per uL)	285 (190-424)	289 (174 - 412)	
Total white blood cell count (x1000 per uL)	6.6 (4.8-9.3)	6.6 (5.2-8.4)	
Methaemoglobin (%)	0.5 (0-1.5)	0.7 (0-1.4)	
AST (IU/L)	23 (15-60)	21 (14-36)	
ALT (IU/L)	26 (10-85)	22 (11-47)	
Creatinine (mg/dL)	0.9 (0.8-1.1)	1.0 (0.7-1.1)	
Total bilirubin (mg/dL)	0.6 (0.3-1.6)	0.7 (0.3-1.3)	
Haptoglobin (g/L)	1.1 (0.5-1.7)	1.1 (0.5-1.7)	
<i>CYP2D6</i> genotypes			
*10/*10	6	4	8
*2/*10	7	4	7
*1/*10	6	4	7
*1/*2	3	3	3
*1/*1	2	1	2
Haemoglobin E trait <sup>‡</sup>	7	4	7
Presumptive alpha-thalassaemia trait*	5	5	7

**Table 1.** Baseline characteristics of the healthy male volunteers. For the continuous variables we show the median (range). Of the 27 volunteers, 13 participated in both sub-studies. <sup>†</sup> also known as Qing Yan (*Minucci et al., 2012*).<sup>‡</sup> haemoglobin typing done by electrophoresis in part 1 only. \*see definition in Methods.



It is made available under a [CC-BY 4.0 International license](https://creativecommons.org/licenses/by/4.0/) .

137 49 (Appendix 5 figure 1). The haemoglobinuria Hillmen score peaked at 4 on day 10 and was 3 on  
138 day 12, dropping back to 1 on day 13 (Appendix 5 figure 2).

139 Volunteer 7, who was receiving a 20-day regimen, developed asymptomatic rises in ALT of 207  
140 U/L (>5 times ULN, grade 3) and AST of 89 U/L (>2 times ULN, grade 1) on day 16, associated  
141 with a raised LDH (512 IU/L) and a normal direct (0.3 mg/dL) and indirect (0.5 mg/dL) bilirubin. He  
142 was hepatitis B immune, hepatitis A IgM negative, but hepatitis E IgM positive with a borderline  
143 IgG result, consistent with early hepatitis E infection. A liver ultrasound showed slightly increased  
144 liver echogenicity consistent with a mild fatty liver and/or mild hepatic parenchymal disease. His  
145 primaquine dosing was stopped on Day 15. His increases in AST and ALT were considered most  
146 likely a result of asymptomatic hepatitis E and not primaquine. His haemoglobin was 11 g/dL at  
147 the time of withdrawal (baseline: 14.3 g/dL; 23% fall); he was subsequently lost to follow up.

148 Volunteer 14 (16-day regimen) also developed asymptomatic rises in ALT to reach plasma con-  
149 centrations of 423 U/L (>10 ULN, grade 3) and AST of 229 U/L (>5 times ULN, grade 3) on day 11,  
150 associated with a raised LDH (608 IU/L) mildly raised direct (0.4 mg/dL) but normal indirect (0.9  
151 mg/dL) bilirubin. He was also hepatitis B immune, and was hepatitis A and E antibody negative,  
152 but had a mild fatty liver on ultrasound. Primaquine dosing was stopped on Day 11. By Day 28, the  
153 ALT was 87 IU/L and the AST was 36 IU/L. As no other cause could be found, his increases in AST  
154 and ALT were considered to be probably related to primaquine. His day 11 haemoglobin was also  
155 11 g/dL (baseline: 13.9; 21% fall).

#### 156 Adverse events resulting in dose adjustments

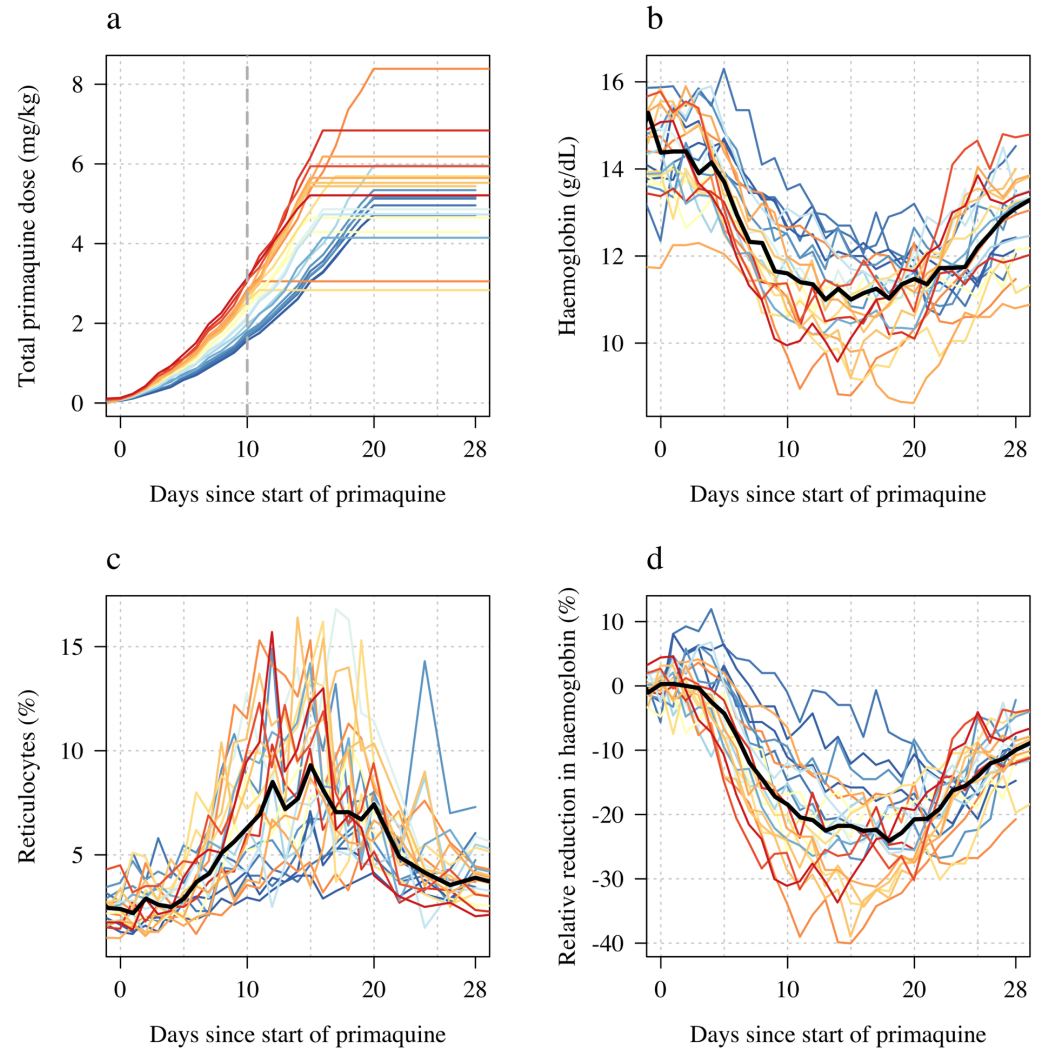
157 In a further three subjects, the intended ascending dose regimen was not completed as they had  
158 haemoglobin falls of 30 and 40% relative to baseline. Subject 13 (16 day regimen assigned) did not  
159 escalate from 30 mg to 45 mg on day 15 but stayed at 30 mg until day 16 (33 and 34% fall from  
160 baseline haemoglobin on days 15 and 16, respectively). Subject 23 (15 day regimen) was given an  
161 additional day at 30 mg on day 12 (day 11 haemoglobin fell 32% from baseline) and escalated to  
162 45 mg on day 14. Subject 24 (15 day regimen) remained at 22.5 mg per day from day 7 to day 15  
163 (instead of escalating to 30 and then 45 mg per day) as his haemoglobin reduction from baseline  
164 stayed between 30 and 33%.

#### 165 Haemolysis and reticulocyte response

166 The median absolute fall in haemoglobin from baseline was 3.7 g/dL (range: 2.1 to 5.9), correspond-  
167 ing to a median relative decrease of 26% (range: 15 to 40), Figure 1 panels b and d. The median  
168 day of haemoglobin nadir was 16 days after starting primaquine (range: 11 to 20). There was sub-  
169 stantial variation between individuals, including between those with the same *G6PD* genotype who  
170 received the same regimens. For example, volunteer 15 (*G6PD* Viangchan) received 6.8 mg/kg total  
171 dose of primaquine over 15 days and his haemoglobin dropped around 25% (baseline was 13.6  
172 g/dL; nadir of 10.1 g/dL was reached approximately by day 11) whereas volunteer 20 (also *G6PD*  
173 Viangchan) received 5.4 mg/kg over 15 days (slightly faster escalation using the same doses but he  
174 was 12 kg heavier), and his haemoglobin fell around 40% (baseline was 15.0 g/dL; nadir of 9.2 g/dL  
175 was reached by day 15), see Appendix 6. None of the subjects had a fall of haemoglobin below 8  
176 g/dL and none developed frank haemoglobinuria (Hillmen score  $\geq 6$ ). Peak reticulocytosis occurred  
177 at approximately the same time as the haemoglobin nadir (day 16; range: 11 to 20), with a median  
178 peak reticulocyte count of 10.3% (range: 4.2 to 16.8), Figure 1 panel c. It took approximately 2  
179 weeks for the reticulocyte counts to re-normalise.

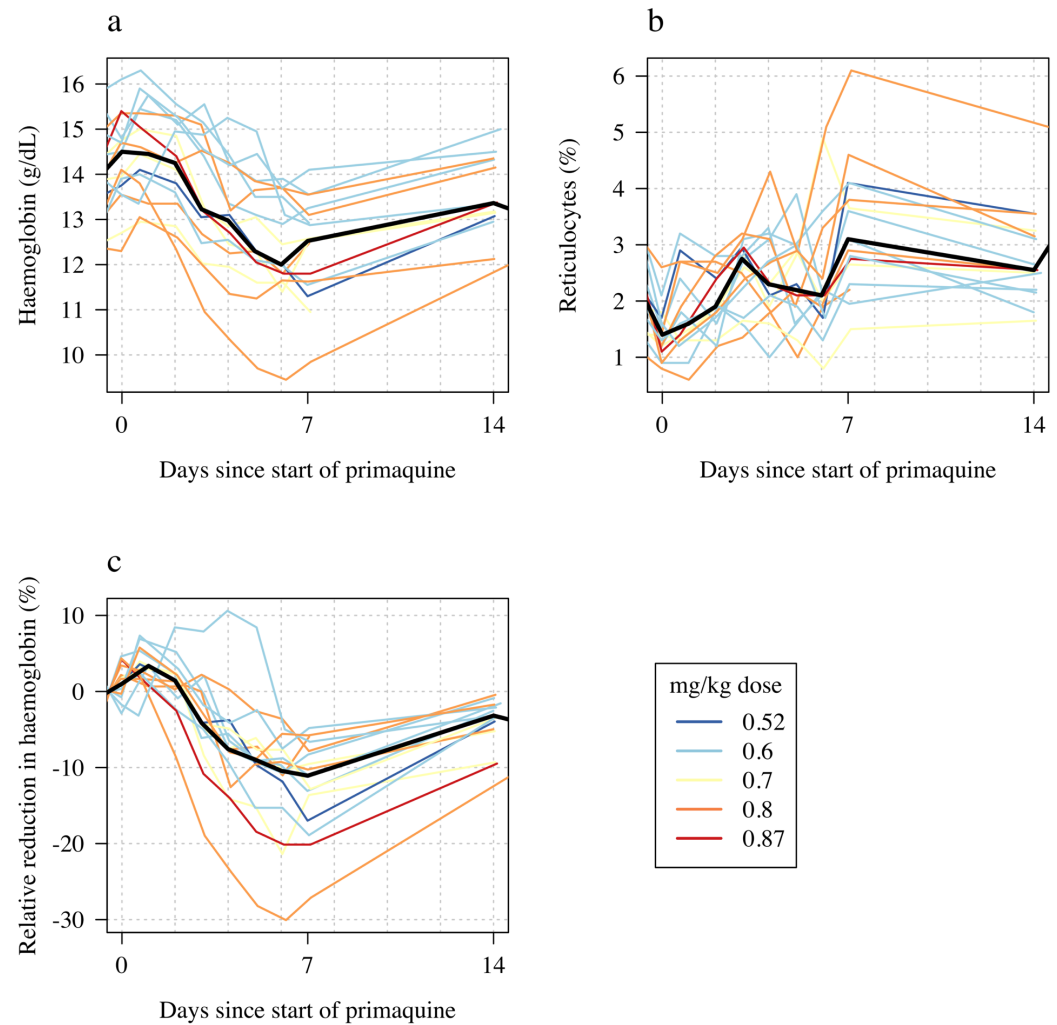
#### 180 **Part 2: single 45 mg primaquine dose**

181 Following a single 45 mg base equivalent dose of primaquine (mg base/kg doses ranged from 0.52  
182 to 0.87), there was a marked fall in haemoglobin concentrations reaching a median observed nadir  
183 on day 6 (range: day 4 to 7). The median fall from baseline was 1.7 g/dL (range: 0.9 to 4.1 g/dL  
184 decrease), corresponding to a median relative decrease of 12% (range: 7 to 30% decrease), see



**Figure 1.** Ascending dose study in 23 male hemizygot G6PD deficient healthy volunteers included in the primary analysis. Colours from blue to red are in order of increasing day 10 total cumulative primaquine dose as shown in panel a (cumulative primaquine doses over time). Panels b & c show the absolute haemoglobin values and reticulocyte counts over time; panel d shows the relative change from baseline in haemoglobin over time. The thick black lines in panels b-d show the daily median values.

It is made available under a [CC-BY 4.0 International license](https://creativecommons.org/licenses/by/4.0/).



**Figure 2.** Haemolytic effect of 45 mg single primaquine dose in 16 male hemizygote G6PD deficient healthy volunteers. Colours from blue to red are in order of increasing mg/kg dose. Panel a: absolute haemoglobin values; panel b: reticulocyte counts; panel c: relative change in haemoglobin from baseline. The thick black lines in panels a-c show the daily median values.

185 Figure 2. The largest daily falls in haemoglobin following the single dose were on day 3 (median  
186 fall in haemoglobin on day 3 was 0.73 g/dL, Figure 3).

187 The reticulocyte response was characterised by a gradual rise with most volunteers having  
188 their observed peak reticulocyte proportions on day 7 (range day 4 to 14). The largest fall in  
189 haemoglobin, and greatest rise in reticulocyte count occurred in subject 13 who was *G6PD* Can-  
190 ton (absolute fall of 4.1 g/dL: baseline haemoglobin was 13.6 g/dL, the nadir haemoglobin was 9.5  
191 g/dL on day 7; relative fall of 30%). He did not participate in Part 1 so there are no ascending dose  
192 data with which to compare.

### 193 **Comparison of ascending and single dose primaquine regimens**

194 Figure 3 shows the maximum observed absolute and relative falls in haemoglobin concentration  
195 as a function of the total primaquine dose received across the two studies. Overall, the median  
196 fall in the single dose cohort was nearly half that of the median fall in the ascending dose group,  
197 whereas the median total dose in the single dose cohort was only 14% of the median total dose

It is made available under a [CC-BY 4.0 International license](https://creativecommons.org/licenses/by/4.0/) .

198 in the ascending dose cohort. Although the subjects receiving a single 45 mg dose of primaquine  
199 had smaller absolute falls in haemoglobin, they experienced earlier and greater daily falls (bottom  
200 panels of Figure 3). The greatest median falls in haemoglobin in Part 1 were on days 6 and 7 (0.55  
201 and 0.57 g/dL reductions, respectively), whereas the median fall on day 3 (day with the largest  
202 median fall) in the single dose cohort was 0.73 g/dL. Two subjects receiving the 45 mg single dose  
203 had daily haemoglobin falls of nearly 2 g/dL.

#### 204 **Haemolysis dose-response relationship**

205 We summarised each ascending dose regimen in Part 1 by the cumulative dose of primaquine  
206 received by day 10. This summary exposure statistic was chosen following graphical visualisation  
207 of the haemoglobin data, which showed that the most substantial haemolysis had occurred by  
208 day 10 of the study (Figure 1b, note that the nadir haemoglobin was observed after day 10 in all  
209 volunteers). In the 23 volunteers, the day 10 cumulative dose varied from 1.7 mg/kg to 3.5 mg/kg,  
210 with a median value of 2.6 mg/kg.

211 The day 10 cumulative dose was predictive of both the maximum absolute fall in haemoglobin  
212 with respect to the baseline value (1.2 g/dL fall per mg/kg increase [95%CI: 0.5 to 1.8];  $p=0.001$ ,  
213  $r^2 = 0.40$ ), and the maximum relative fall in haemoglobin with respect to the baseline value (7.9%  
214 fall per mg/kg increase [95%CI: 4.4 to 11.3];  $p=0.0002$ ;  $r^2 = 0.49$ ), but not of the average daily fall over  
215 days 5 to 10 (0.06 g/dL per day [95%CI: 0.14 to -0.03]). Figure 4 panels a-c show the dose-response  
216 data coloured by G6PD variant. For Part 2 the mg/kg dose was not associated significantly with  
217 either the absolute, relative or the mean daily falls in haemoglobin, although for all three outcomes  
218 the point estimates were in the expected direction (greater mg/kg dose resulting in larger falls),  
219 Figure 2 panels d-f.

220 In an additional exploratory analysis, there was no evidence of substantial differences in haemol-  
221 ysis between the different *G6PD* variants (although the sample size is very small). There was some  
222 evidence that subjects with higher baseline haemoglobin concentrations had larger relative falls.  
223 There was no evidence for an association between the homozygous \*10 *CYP2D6* genotype associ-  
224 ated with reduced primaquine bioactivation and haemolysis (i.e. no evidence that these subjects  
225 haemolysed less than the other subjects).

#### 226 **Effect on total plasma bilirubin and LDH**

227 The falls in haemoglobin were associated with predictable biochemical changes indicative of haemol-  
228 ysis. There were rises in plasma concentrations of the intraerythrocytic enzyme LDH and in total  
229 bilirubin reflecting haem metabolism. The more rapid fall in haemoglobin associated with the sin-  
230 gle 45 mg primaquine dose was associated with larger normalised rises in total bilirubin consistent  
231 with greater haemolysis (Figure 5 and Appendix 7).

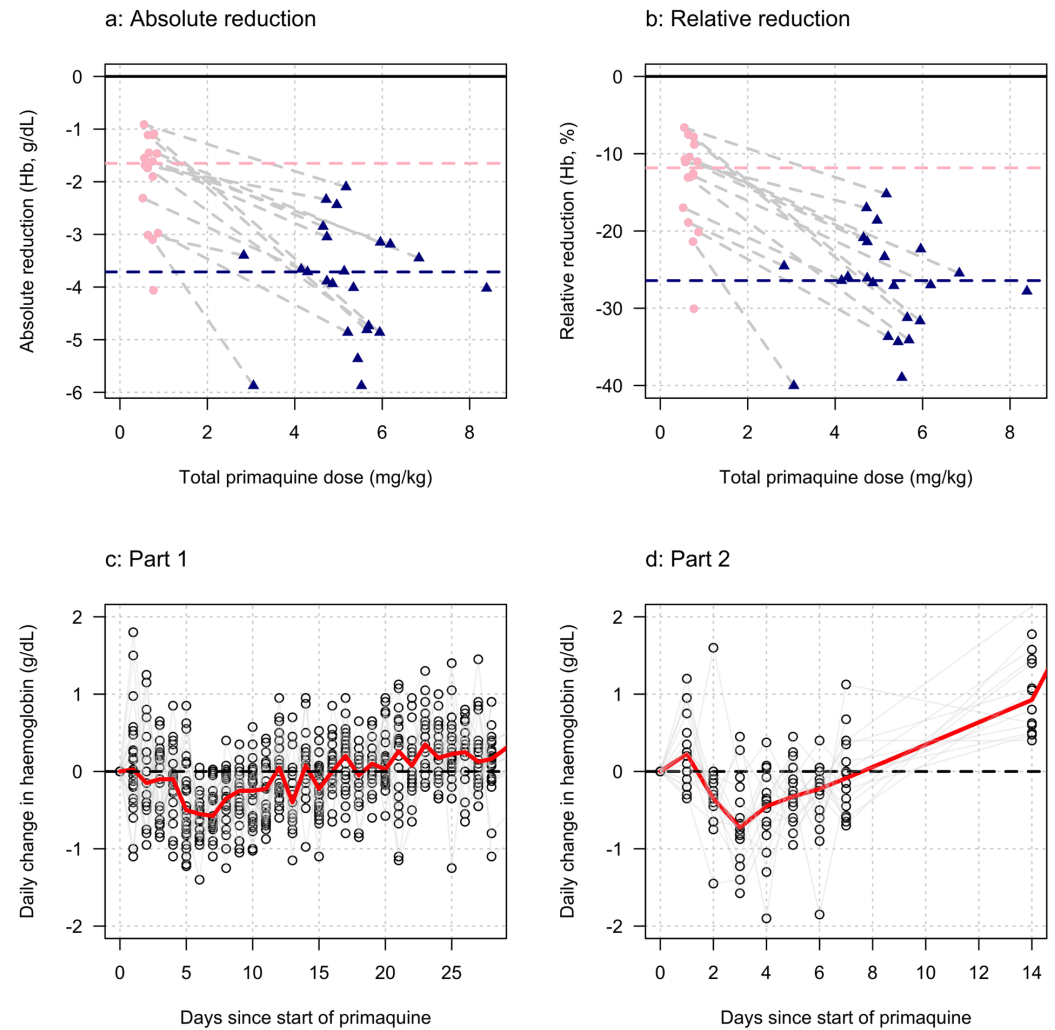
#### 232 **Liver transaminases, creatinine, haptoglobin, and methaemoglobin**

233 In both studies, there was no evidence for a relationship between primaquine dose (Part 1: cumu-  
234 lative day 10 total mg/kg dose; Part 2: single mg/kg dose) and maximum observed fold change  
235 in serum AST, ALT or plasma creatinine, or the maximum observed absolute decrease in plasma  
236 haptoglobin (Appendix 8). There were no clinically significant rises in blood methaemoglobin in  
237 any of the study participants (Figure 6 panels a-b). In part 1, the day 10 cumulative dose was nega-  
238 tively associated with the peak observed methaemoglobin concentration (Figure 6 panel c,  $p=0.02$ )  
239 with a similar negative trend was also observed in part 2 (Figure 6 panel d;  $p=0.06$ ). There was no  
240 association between having a poor metaboliser *CYP2D6* genotype (\*10 homozygous versus other  
241 genotypes) and peak blood methaemoglobin concentration.

#### 242 **Discussion**

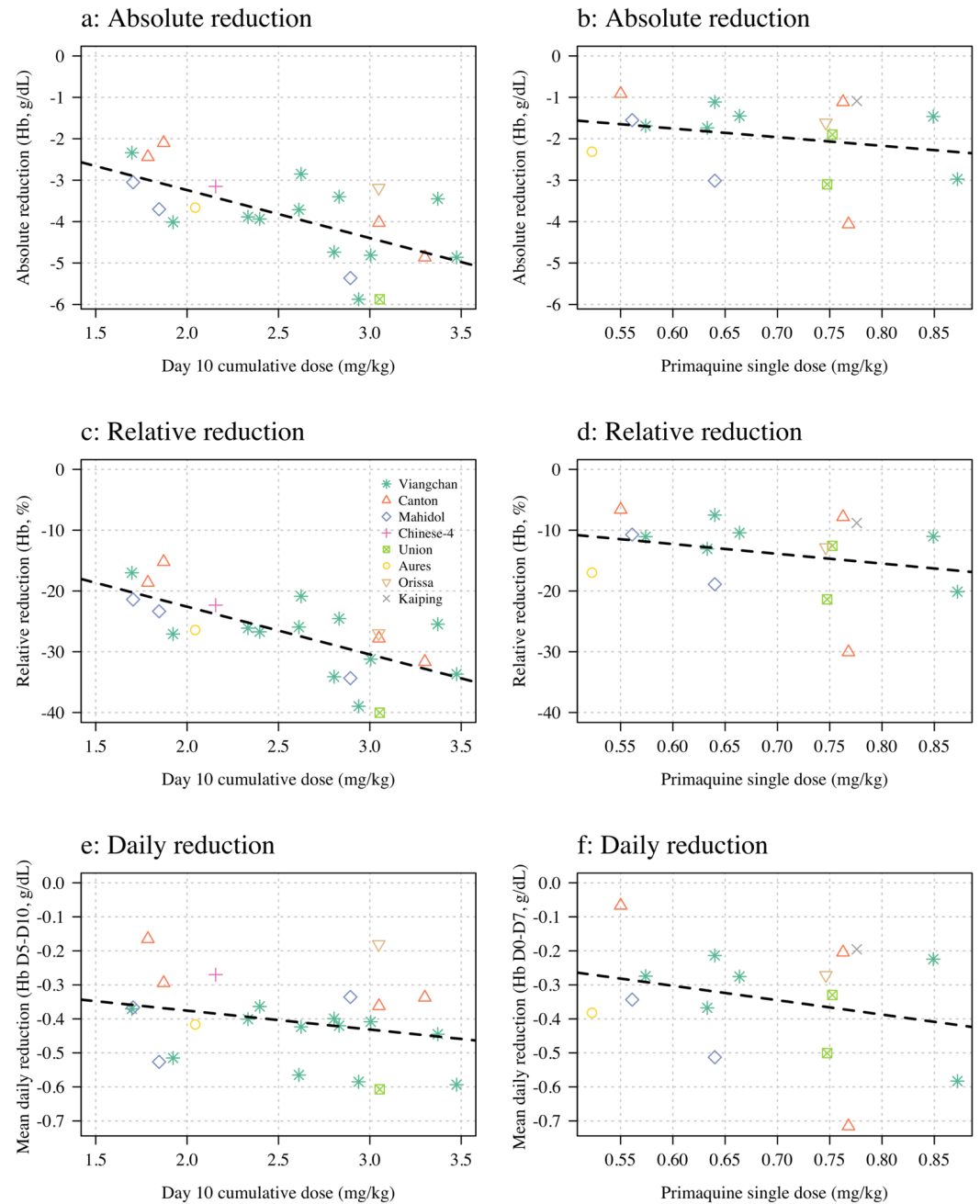
243 The 8-aminoquinoline antimalarials are the only drugs which prevent relapses of vivax or ovale  
244 malaria (radical cure). Significant haemolysis from radical cure regimens cannot be avoided in

It is made available under a [CC-BY 4.0 International license](https://creativecommons.org/licenses/by/4.0/).



**Figure 3.** Comparing the haemolytic effect of ascending dose primaquine regimens (dark blue triangles) and the single 45 mg primaquine dose (pink circles). The top panels show the relationship between the total cumulative dose of primaquine given to each subject in each study (x-axis) and the absolute fall in haemoglobin concentration (left panel) or the relative fall (right panel). Subjects who participated in both parts are joined by the light grey dashed lines. The horizontal dashed lines show the median falls by sub-study. The bottom panels show the daily observed changes in haemoglobin (left: Part 1; right: Part 2), the red line shows the daily median change.

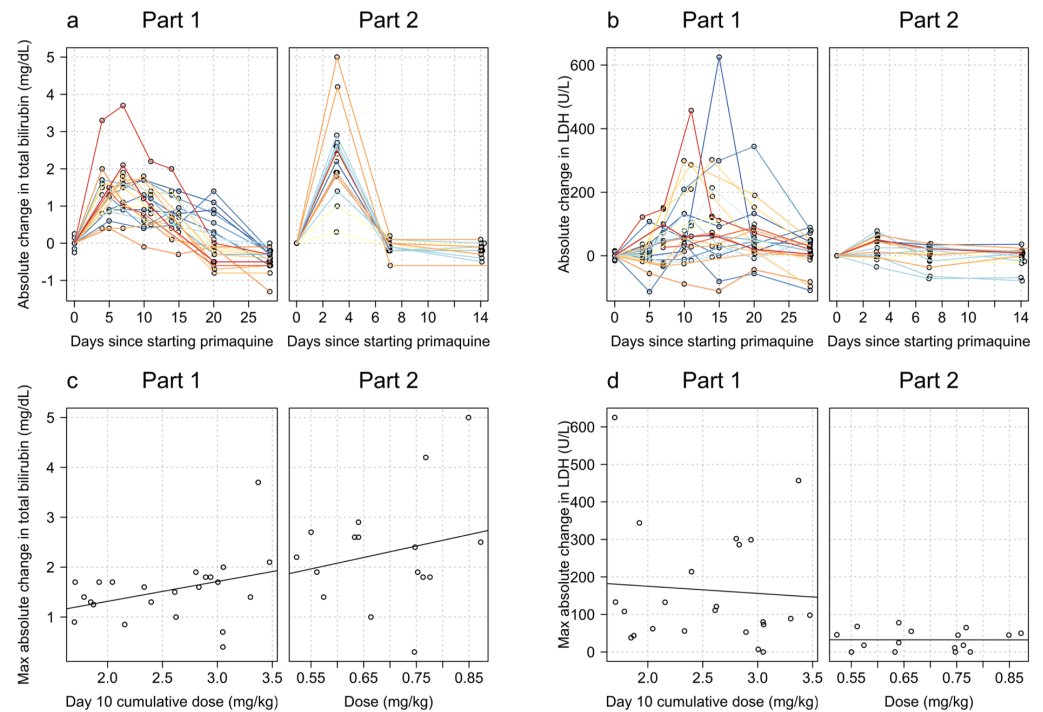
It is made available under a [CC-BY 4.0 International license](https://creativecommons.org/licenses/by/4.0/).



**Figure 4.** Haemolysis dose-response relationships (left column: Part 1; right column: Part 2). The dose exposure summary in Part 1 is the day 10 cumulative primaquine dose ( $n=23$ ); for Part 2 it is the mg/kg single dose ( $n=16$ ). Hb: haemoglobin.



It is made available under a [CC-BY 4.0 International license](https://creativecommons.org/licenses/by/4.0/).



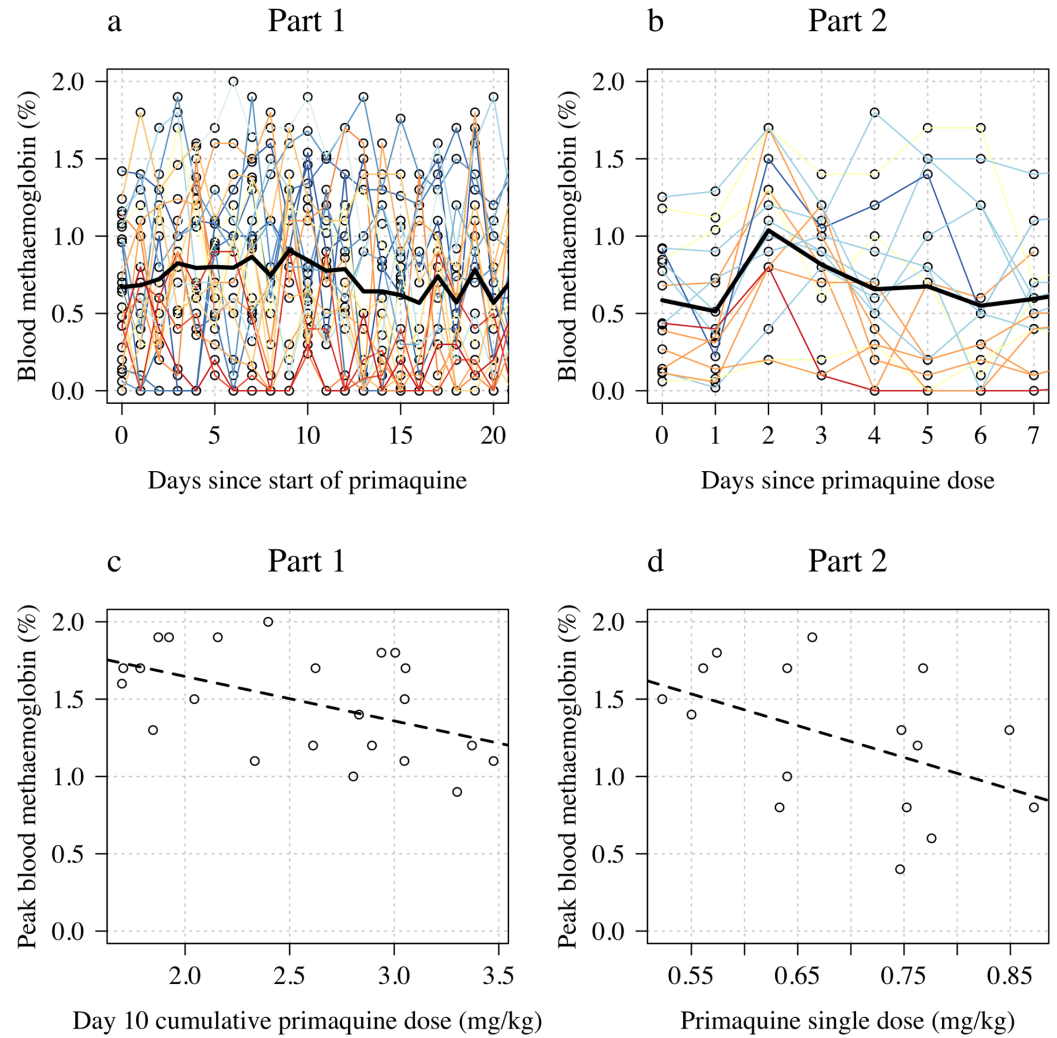
**Figure 5.** Relationship between primaquine dose (Part 1: day 10 cumulative mg/kg dose; Part 2: mg/kg single dose) and total plasma bilirubin (panels a and c) and LDH concentrations (panels b and d). The top row show the normalised data; the bottom row the dose-response relationship with the maximum normalised increases.

245 G6PD deficiency but, using the rapidly eliminated primaquine, it can be attenuated. Ascending  
246 dose primaquine regimens in G6PD deficient malaria patients exploit the same pharmacodynamic  
247 principle underlying the current once weekly treatment recommendation (*Alving et al., 1960*). They  
248 aim to provide controlled haemolysis while allowing for steady reconstitution of the red cell popu-  
249 lation with increasingly younger, and therefore “oxidant resistant” erythrocytes (*Kellermeyer et al.,*  
250 *1962*). As G6PD testing is usually unavailable in malaria endemic areas, the prescriber treating vi-  
251 vax or ovale malaria is currently faced with the therapeutic dilemma of either not giving the drug,  
252 and failing to prevent relapses with their attendant substantial morbidity, or giving it and causing  
253 iatrogenic haemolysis in G6PD deficient patients. The net result is that radical cure primaquine  
254 regimens are often not prescribed, even though they would be well tolerated and safe in the ma-  
255 jority of patients who are G6PD normal. Primaquine underuse is a major contributor to global vivax  
256 malaria morbidity.

257 The currently recommended 8 week radical cure regimen for G6PD deficient patients attenu-  
258 ates the fall in haemoglobin, but it still risks significant haemolysis, particularly with the first 0.75  
259 mg/kg dose (*Kheng et al., 2015*). This regimen has not been well evaluated in patients with severe  
260 G6PD deficiency variants who are at greatest risk, and it requires good adherence for 8 weeks. As  
261 much of the oxidant haemolysis occurs after the first doses, failure to complete the eight week  
262 course (which is likely to be common) therefore incurs most of the haemolytic risk without provid-  
263 ing the full benefit.

264 In this study the single 45 mg dose resulted in a median fall in haemoglobin concentration of 1.7  
265 g/dL, which was nearly half the median fall observed with the full ascending dose regimen. In com-  
266 parison, the ascending dose regimens gave a seven times higher total dose. These ascending dose  
267 primaquine regimens were relatively well tolerated in adult male volunteers with Southeast Asian  
268 variants of G6PD deficiency. Although these G6PD variants are generally regarded as moderate  
269 in severity, there is wide variation in the phenotype between variants and also between individ-

It is made available under a [CC-BY 4.0 International license](https://creativecommons.org/licenses/by/4.0/).



**Figure 6.** Changes in blood methaemoglobin concentration. Top row: individual data (left: Part 1; right: Part 2) with the daily mean value shown by the thick black line. Bottom row: relationship between dose (left: Part 1 summarised by the day 10 total dose; right: Part 2 summarised by the mg/kg dose) and peak observed blood methaemoglobin (%).

It is made available under a [CC-BY 4.0 International license](https://creativecommons.org/licenses/by/4.0/) .

270 uals with the same genotype. The ascending primaquine dose regimens are still associated with  
271 a significant haemolytic risk. Thus, in considering the radical cure treatment of vivax malaria, the  
272 risks of relapse, often on multiple occasions with consequent anaemia, must be balanced against  
273 the predictable haemolysis that will result from the oxidative effects of the 8-aminoquinoline rad-  
274 ical cure regimen (*Commons et al., 2020, 2019*). In the Southeast Asian region approximately half  
275 the vivax malaria cases will be followed by at least one relapse if radical curative treatment is not  
276 given. Many factors need to be incorporated in the assessment of both population and individual  
277 risk from haemolysis. Acute kidney injury only results from fulminant haemolysis. The main risk  
278 is dangerous anaemia. At a population level the overall risks are lower than predicted from gene  
279 frequencies because severe variants of G6PD deficiency protect against vivax malaria, although  
280 whether they affect the risk of relapse is not known (*Awab et al., 2021*). At an individual level the  
281 haemolytic risk depends on the G6PD genotype, the degree of exposure to the putative oxidative  
282 8-aminoquinoline metabolites, and also the degree of pre-existing anaemia. Vivax malaria causes  
283 anaemia, but as the haemolytic component of the malarial anaemia also results in loss of older,  
284 more deficient erythrocytes, so the fractional reduction in erythrocytes resulting from the oxidant  
285 drug in acute malaria is correspondingly less. Finally, chronic anaemias associated with haemoly-  
286 sis (e.g. hookworm, recurrent malaria) result in a younger red cell populations with right shifted  
287 oxygen dissociation curves and thus increased oxygen delivery. As a result, the pathological con-  
288 sequences of causing severe anaemia (haemoglobin concentration <5g/dL) depend whether the  
289 patient was already significantly anaemic and why they were anaemic.

290 In this exploratory study, in which there were cautious stopping rules, 3 out of 23 (13%) of the  
291 volunteers did not complete the regimen because of drug toxicity; one had significant haemolysis  
292 and two had asymptomatic hepatitis. Hepatitis is a rare adverse effect of primaquine (*Recht et al.,*  
293 *2014*). Asymptomatic hepatitis E is well documented and more common than symptomatic disease  
294 (*Kamar et al., 2012*). Three volunteers were not escalated to higher primaquine doses as intended  
295 because of significant falls in haemoglobin. Such falls in haemoglobin were expected by design  
296 in this exploratory adaptive study. In none of the volunteers did haemoglobin concentrations fall  
297 below 8 g/dL. The extent of haemolysis varied substantially between volunteers, even within the  
298 same genotype. Higher baseline haemoglobin values tended to be followed by greater falls. Taken  
299 together with the high baseline reticulocytosis, this suggests that subjects with G6PD deficiency  
300 have variably shortened red cell survival, and thus variably sized populations of erythrocytes vul-  
301 nerable to oxidant haemolysis.

302 One of the important advantages of primaquine (half-life approximately 5-7 hours) relative to  
303 its slowly eliminated analogue tafenoquine (half-life approximately 15 days) is that the treatment  
304 can be stopped as soon as there are signs or symptoms of haemolytic toxicity. Despite the use  
305 of primaquine for nearly 70 years and administration of hundreds of millions of treatments there  
306 have been very few reported deaths from haemolytic toxicity (*Recht et al., 2014; Yilma et al., 2023*).  
307 Very large mass treatments with primaquine have been used in malaria elimination campaigns in-  
308 volving millions of people in China, Nicaragua, Turkmenistan, Azerbaijan, Tajikistan, Afghanistan  
309 and North Korea (*Hsiang et al., 2013; Kondrashin et al., 2014*). In the latter four countries an in-  
310 terrupted regimen involved giving four days of primaquine, stopping for three days and then com-  
311 pleting a further ten days. Subjects with significant haemolysis could stop the drug at any time.  
312 Serious toxicity was very rare, despite the high prevalences of G6PD deficiency in some of the re-  
313 gions. In West and Central Asia the severe G6PD Mediterranean variant would have been the most  
314 prevalent genotype.

315 In G6PD deficient patients with acute malaria, the disease itself causes haemolytic anaemia  
316 (*White, 2018*), and the consequent preferential loss of older erythrocytes ameliorates the adverse  
317 impact of oxidant drugs. On the other hand, compensatory reticulocytosis might be inhibited but  
318 limited experience with weekly primaquine shows a robust reticulocyte response post treatment  
319 (*Kheng et al., 2015*). Differences in haemolytic response between healthy volunteers and malaria  
320 patients are likely to be small as the illness usually resolves within a few days with effective treat-

It is made available under a [CC-BY 4.0 International license](https://creativecommons.org/licenses/by/4.0/) .

321 ment, while the ascending dose regimen would still be using the lowest dose.

322 The main limitation of this therapeutic approach is its complexity. This could be addressed  
323 by preparation of blister packed primaquine allowing easy dose transition. The G6PD deficiency  
324 genotypes studied here are representative of those present in the Southeast Asian region, and can  
325 be regarded as of moderate severity, with the African A- genotype (in which the currently recom-  
326 mended once weekly dosing regimen was developed) being at the less severe end of the spectrum,  
327 and the common Mediterranean G6PD genotype being at the more severe end. The safety of this  
328 regimen in patients with severe G6PD deficiency cannot be predicted based on these data. From a  
329 therapeutic perspective, as G6PD testing is usually not available, the individual patient risk assess-  
330 ment must take into account the factors described earlier (i.e. the prevalence of G6PD deficiency  
331 and its likely severity, the sex of the patient, the degree of anaemia, and the probability of relapse),  
332 and also an assessment of the patients' understanding of the risks and when to stop treatment,  
333 and the likelihood and feasibility of accessing health care if there is severe haemolysis.

334 In summary, shorter course ascending dose vivax malaria radical cure regimens in G6PD defi-  
335 cient subjects offer the prospect of an effective treatment which does not incur prohibitive haemolytic  
336 toxicity and in some areas could obviate the need to test for G6PD deficiency.

## 337 **Methods and Materials**

### 338 **Trial design**

339 The overall objective of this study was to try and identify radical cure primaquine regimens that  
340 would be safer in G6PD deficiency. This required titration of the daily primaquine doses against  
341 haemolysis balancing the need to provide a radical curative dose of primaquine within a reasonable  
342 time-frame whilst minimising the inevitable haemolysis.

343 This was a two part study, conducted in the Hospital for Tropical Diseases in Bangkok, of pri-  
344 maquine in hemizygote G6PD deficient male healthy volunteers. Part 1 evaluated the tolerability,  
345 safety and haematological consequences of ascending doses of primaquine and was adaptive. The  
346 primaquine regimen was titrated based on the incremental haemoglobin changes observed in the  
347 previous participants, continuous safety evaluation by the investigators, and a set of guiding pre-  
348 specified rules. This iterative adaptive approach accumulated information to refine the successive  
349 regimens. The primary consideration throughout the trial was participant safety. In Part 2 of the  
350 study, after a wash-out period of at least 6 months, a single 45 mg (base equivalent) primaquine  
351 dose was given, and the volunteers were monitored as in Part 1.

### 352 **Ethics statement**

353 The two parts of this study were approved as separate studies. Both parts were approved by  
354 the Faculty of Tropical Medicine's Ethics Committee (MUTM 2017-036-01 and MUTM 2021-031-  
355 02) and the Oxford Tropical Research Ethics Committee (OxTREC, number 48-16). The study pro-  
356 tocols were registered on the Thai Clinical Trial Registry (TCTR, numbers TCTR20170830002 and  
357 TCTR20220317004).

### 358 **Study site and participants**

359 The study took place in the Clinical Therapeutics Unit volunteer ward in the Hospital for Tropical  
360 Diseases, Faculty of Tropical Medicine, Mahidol University, Bangkok, Thailand. The recruitment and  
361 follow up periods were from November 2018 to October 2020 (Part 1) and June to September 2022  
362 (Part 2). This coincided with and was disrupted by the COVID-19 pandemic. A COVID-19 mitigation  
363 plan was implemented when local lockdown was lifted.

364 Healthy male volunteers were recruited if they provided written informed consent, had a G6PD  
365 enzyme activity <30% of the population median value determined by a validated quantitative spec-  
366 trophotometric G6PD assay, a genotype confirmed G6PD variant (according to a previously pub-  
367 lished method (*Bancone et al., 2019*)), and were aged between 18 and 65 years with a screening  
368 haemoglobin concentration >11 g/dL. Detailed exclusion criteria are provided in Appendix 3.

## 369 **Trial procedures**

### 370 Enrolment and primaquine dosing

371 The risks and the rationale of the study were detailed to potential volunteers and it was explained  
372 that they could withdraw from the study at any time if they wished. Primaquine phosphate (Thai-  
373 land Government Pharmaceutical Organisation, Bangkok, Thailand) was provided as tablets con-  
374 taining either 5 or 15 mg primaquine base equivalent. A tablet cutter was used to split the tablets  
375 (smallest dose increment was 2.5 mg base equivalent). Primaquine was given orally following a  
376 standardised light snack and subjects were observed closely for the first 4 hours.

### 377 Part 1

378 We recruited in cohorts of five volunteers, with an interval of two weeks between cohorts to allow  
379 sufficient time to analyse the data and determine the next primaquine regimen. The overall goal  
380 was to increase the daily primaquine doses and cause gradual haemolysis which was offset by  
381 concomitant reticulocytosis. This would steadily reduce the age of the red cell population and  
382 thereby avoid precipitous symptomatic falls in the haemoglobin concentration (*Alving et al., 1960*;  
383 *Kellermeyer et al., 1962*). The cumulative total primaquine dose given needed to be sufficient to  
384 provide a radical curative effect in the treatment of vivax malaria (i.e. between 5 and 7 mg base/kg)  
385 (*Commons et al., 2023*).

386 Careful monitoring was done throughout to assess the degree of haemolysis and adjust or stop  
387 the dosing, as required. The dose regimens in this exploratory investigation (Part 1) were adapted  
388 as follows.

389 The primaquine regimen given to the first five volunteers consisted of four cycles of 5 days  
390 daily primaquine dosing (i.e. total 20 days). The ascending doses were 7.5, 15, 22.5 and 30 mg  
391 base equivalent, respectively. This initial dose regimen was chosen on the basis of a mathematical  
392 model of primaquine induced haemolysis in G6PD deficiency using earlier data from vivax malaria  
393 patients who had received single 45 mg primaquine doses (*Watson et al., 2017; Kheng et al., 2015*).  
394 Subjects proceeded to the next higher dose cycle if they satisfied several prospectively defined  
395 safety criteria (Appendix 2). In this first round the total primaquine dose was 375 mg base equiva-  
396 lent. The results of the first five volunteers were reviewed and the dosing regimens adjusted. This  
397 iterative process of review and adjustment continued thereafter. The once daily dosing in each  
398 cycle was increased in increments of 2.5 mg or 7.5 mg (not adjusted for body weight). Once it be-  
399 came clear this rate of dose increase was generally well tolerated, the number of days per cycle  
400 was reduced to 3 or 4 days in subsequent subjects to test regimens of shorter duration with faster  
401 dose escalation. Subjects were reviewed clinically before each dose increase.

### 402 Part 2

403 In Part 2, a single dose of 45 mg primaquine base equivalent was administered, with similar careful  
404 monitoring for one week.

### 405 Monitoring procedures/evaluations

406 In both studies, volunteers were observed closely. In Part 1, all volunteers were admitted to the  
407 ward for 28 days with a subsequent follow-up visit on day 49. For Part 2, at least 6 months later,  
408 volunteers were re-admitted for 24 hours on day 0, reviewed daily until day 7, and then again on  
409 day 14.

410 At enrolment all volunteers underwent a detailed clinical examination. Thereafter, at each as-  
411 sessment volunteers were asked how they felt, whether they had any adverse effects, had their vital  
412 signs measured, and two blood samples were taken for measurement of haemoglobin concentra-  
413 tion (HemoCue<sup>®</sup>, Ängelholm, Sweden). The average of the two results was recorded. Methaemoglobin  
414 (%) was measured non-invasively at least once daily using a Masimo Rad 57 oximeter<sup>®</sup>, and urine  
415 colour was recorded twice daily. Haemoglobinuria was assessed visually using a modified Hillmen  
416 score (*Hillmen et al., 2004*).



It is made available under a [CC-BY 4.0 International license](https://creativecommons.org/licenses/by/4.0/) .

417 Wright-Giemsa stained and new methylene blue stained blood films were prepared for red cell  
418 morphology, and manual reticulocyte and Heinz body counts, respectively. In Part 1 these were  
419 done daily from day 0 (day of first primaquine dose) until day 20, and then on days 22, 24, 26, and  
420 28, and finally on day 49. In Part 2 they were done at every visit. Other laboratory investigations  
421 included a full blood count (CBC) and reticulocyte count, routine biochemistry (including LDH and  
422 haptoglobin), plasma haemoglobin, and plasma primaquine and carboxyprimaquine concentra-  
423 tions. In Part 1 these were done at screening and then every 3-5 days (start of each new cycle, i.e.  
424 dosing increment); in Part 2 they were done at screening, and on days 3, 7 and 14.

425 The G6PD deficiency variants were genotyped as described previously (*Bancone et al., 2019*;  
426 *Boonyuen et al., 2021*). Haemoglobin electrophoresis and genotyping of the common cytochrome  
427 P450 2D6 (CYP2D6) genotypes found in SE Asia was also performed (*Puaprasert et al., 2018*). Pre-  
428 sumptive alpha-thalassaemia trait (which is very common in Thailand) was defined as a mean cell  
429 volume less than 80 fl or a mean cell haemoglobin < 27 pg, and HbA2  $\leq$ 4.4. Additional laboratory  
430 measurements were taken if unplanned dose adjustments were necessary, or there was a clinical  
431 indication.

### 432 Safety monitoring and stopping rules for Part 1

433 The pre-specified rules for adjusting primaquine dose regimens across cohorts in Part 1 are illus-  
434 trated in Appendix 2 figure 1, and the rules for increasing primaquine doses for each enrolled sub-  
435 ject are shown in Appendix 2 figure 2. The overall aim was to titrate dosing in order to obtain small  
436 daily falls in haemoglobin of between 0.1 and 0.2 g/dL. For a given subject, primaquine doses were  
437 increased only if the haemoglobin concentration was >9 g/dL, was greater than 70% of baseline,  
438 the urine Hillmen score was  $\leq$ 5, and the subject felt well and had no symptoms of anaemia.

439 We defined haemolysis which would result in stopping primaquine (study withdrawal), as any  
440 one of the following:

- 441 • >40% fall in haemoglobin from baseline;
- 442 • a haemoglobin below 8 g/dL (irrespective of symptoms);
- 443 • a fall in haemoglobin associated with clinically significant signs of haemolysis: jaundice, pass-  
444 ing dark urine (Hillmen score  $\geq$ 6), evidence of acute renal injury ( $\geq$ 2 fold increase in serum  
445 creatinine from baseline), or hyperkalaemia (serum potassium >5.2 mmol/L).

446 Any individual whose laboratory tests met these criteria remained in hospital and was moni-  
447 tored closely until resolution of signs and symptoms, and haemoglobin concentrations had reached  
448 at least 10 g/dL. Blood transfusion was available at any time if needed if volunteers had a symp-  
449 tomatic fall in haemoglobin to below 8g/dL.

450 An Independent Drug Safety Monitoring Board was established to review the data after each  
451 cohort had completed their follow up and gave feedback before the next cohort was allowed to  
452 proceed. For both studies, adverse events were recorded and graded using the Common Toxicity  
453 Criteria v 5.0 for grading adverse events.

### 454 Sample size

455 As this was an exploratory proof-of-concept, adaptive dose optimisation pharmacometric and safety  
456 study in healthy G6PD deficient males, there was no formal sample size calculation. We reasoned  
457 that if the tested primaquine regimens were well tolerated in 20 volunteers (i.e. 4 cohorts), this  
458 would provide preliminary evidence for the safety and the feasibility of this approach. In addition  
459 the rich longitudinal data could then be used to develop an intra-host model to design optimal  
460 ascending regimens (*Watson et al., 2017*).

### 461 Statistical analysis

462 All data analysis was done in R version 4.2.2. The baseline value for each continuous measurement  
463 was defined as the mean of the screening and day 0 measurement. Haemoglobin was measured



It is made available under a [CC-BY 4.0 International license](https://creativecommons.org/licenses/by/4.0/) .

464 using HemoCue® (daily, two samples) and using a laboratory processed complete blood count  
465 (CBC, every 4-5 days). The daily mean haemoglobin concentration was calculated as the mean  
466 of the HemoCue derived haemoglobin (the mean of the two samples) and the haemoglobin con-  
467 centration from the CBC (if no CBC was done then just the mean HemoCue value). The baseline  
468 haemoglobin was then calculated as the mean of the values at screening and on day 0. The dose-  
469 response models were linear models fit using maximum likelihood.

#### 470 **Data Sharing Statement**

471 All analysis code and data are available via an accompanying github repository: [https://github.com/](https://github.com/jwatowatson/Primaquine-Challenge)  
472 [jwatowatson/Primaquine-Challenge](https://github.com/jwatowatson/Primaquine-Challenge).

#### 473 **Acknowledgments**

474 We are very grateful to the volunteers who participated in this study. We thank the staff of the  
475 Clinical Therapeutics unit and the laboratories in the Hospital for Tropical Diseases, Bangkok, which  
476 provided essential monitoring. We thank the Independent Drug Safety Monitoring Board members:  
477 Professor Asim Beg (chair), Dr Bushra Moiz, and Professor Rajitha Wickremasinghe. This study  
478 was funded by the MRC “Assessing the tolerability of a potentially safer radical curative regimen of  
479 primaquine in healthy volunteers with glucose 6 phosphate dehydrogenase” (MR/R015252/1, grant  
480 held by WRT). NJW is a Principal Research Fellow funded by the Wellcome Trust (093956/Z/10/C).  
481 JAW is a Sir Henry Dale Fellow funded by the Wellcome Trust (223253/Z/21/Z).

482 This research was partly funded by Wellcome. A CC BY or equivalent licence is applied to the  
483 author accepted manuscript arising from this submission, in accordance with the grant’s open  
484 access conditions.

#### 485 **References**

- 486 **Alving AS**, Johnson CF, Tarlov AR, Brewer GJ, Kellermeyer RW, Carson PE. Mitigation of the haemolytic effect of  
487 primaquine and enhancement of its action against exoerythrocytic forms of the Chesson strain of *Plasmod-*  
488 *ium vivax* by intermittent regimens of drug administration: a preliminary report. Bulletin of the World Health  
489 Organization. 1960; 22(6):621–631.
- 490 **Ashley EA**, Recht J, White NJ. Primaquine: the risks and the benefits. Malaria Journal. 2014; 13(1):1–7.
- 491 **Awab GR**, Aaram F, Jamornthanyawat N, Suwannasin K, Pagornrat W, Watson JA, Woodrow CJ, Dondorp AM,  
492 Day NP, Imwong M, White NJ. Protective effect of Mediterranean-type glucose-6-phosphate dehydrogenase  
493 deficiency against *Plasmodium vivax* malaria. Elife. 2021 2; 10.
- 494 **Bancone G**, Menard D, Khim N, Kim S, Canier L, Nguong C, Phommasone K, Mayxay M, Dittrich S, Vongsouvath  
495 M, Fievet N, Hesran JYL, Briand V, Keomany S, Newton PN, Gorsawun G, Tardy K, Chu CS, Rattanapalroj O,  
496 Dong LT, et al. Molecular characterization and mapping of glucose-6-phosphate dehydrogenase (G6PD)  
497 mutations in the Greater Mekong Subregion. Malaria Journal. 2019 Jan; 18(1):20. [https://doi.org/10.1186/](https://doi.org/10.1186/s12936-019-2652-y)  
498 [s12936-019-2652-y](https://doi.org/10.1186/s12936-019-2652-y), doi: 10.1186/s12936-019-2652-y.
- 499 **Boonyuen U**, Songdej D, Tanyaratsrisakul S, Phuanukoannon S, Chamchoy K, Praoparotai A, Pakparnich P, Sud-  
500 sumrit S, Edwards T, Williams CT, Byrne RL, Adams ER, Imwong M. Glucose-6-phosphate dehydrogenase mu-  
501 tations in malaria endemic area of Thailand by multiplexed high-resolution melting curve analysis. Malaria  
502 Journal. 2021 Apr; 20(1):194. <https://doi.org/10.1186/s12936-021-03731-0>, doi: 10.1186/s12936-021-03731-0.
- 503 **Caudle KE**, Sangkuhl K, Whirl-Carrillo M, Swen JJ, Haidar CE, Klein TE, Gammal RS, Relling MV, Scott SA, Hertz  
504 DL, Guchelaar HJ, Gaedigk A. Standardizing CYP2D6 Genotype to Phenotype Translation: Consensus Recom-  
505 mendations from the Clinical Pharmacogenetics Implementation Consortium and Dutch Pharmacogenetics  
506 Working Group. Clinical and Translational Science. 2020; 13(1):116–124. [https://ascpt.onlinelibrary.wiley.com/](https://ascpt.onlinelibrary.wiley.com/doi/abs/10.1111/cts.12692)  
507 [doi/abs/10.1111/cts.12692](https://doi.org/10.1111/cts.12692), doi: <https://doi.org/10.1111/cts.12692>.
- 508 **Commons RJ**, Rajasekhar M, Edler P, Abreha T, Awab GR, Baird JK, Barber B, Chu CS, Cui L, Daher A, et al.  
509 Effect of Primaquine Dose on the Risk of Recurrence in Patients with Uncomplicated Plasmodium Vivax: A  
510 Systematic Review and Individual Patient Data Meta-Analysis. Lancet Infectious Diseases, in press. 2023; .

It is made available under a [CC-BY 4.0 International license](https://creativecommons.org/licenses/by/4.0/) .

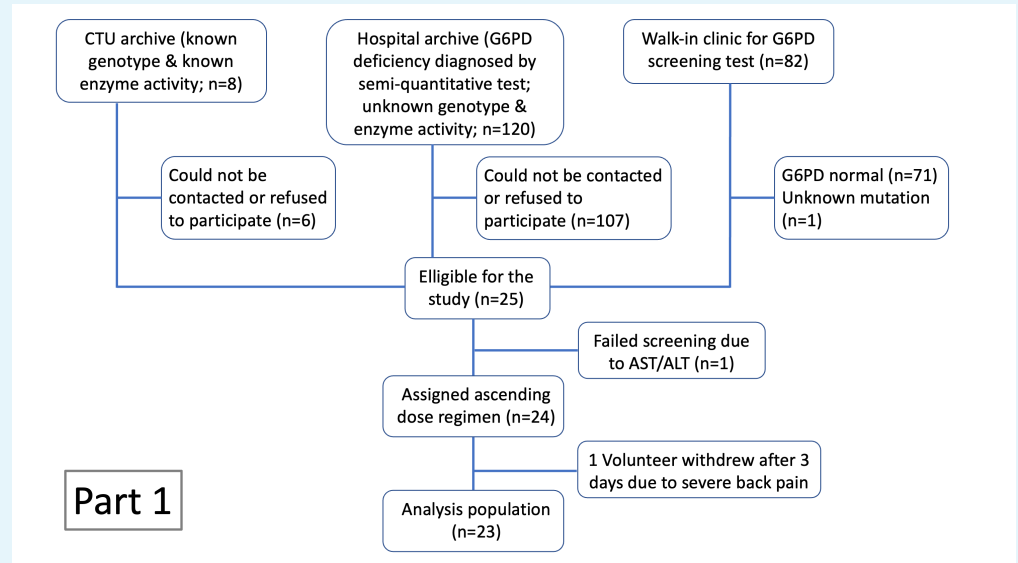
- 511 **Commons RJ**, Simpson JA, Thriemer K, Chu CS, Douglas NM, Abreha T, Alemu SG, Añez A, Anstey NM, Aseffa A,  
512 Assefa A, Awab GR, Baird JK, Barber BE, Borghini-Fuhrer I, D'Alessandro U, Dahal P, Daher A, de Vries PJ, Erhart  
513 A, et al. The haematological consequences of *Plasmodium vivax* malaria after chloroquine treatment with and  
514 without primaquine: a WorldWide Antimalarial Resistance Network systematic review and individual patient  
515 data meta-analysis. *BMC Medicine*. 2019 Aug; 17(1):151.
- 516 **Commons RJ**, Simpson JA, Watson J, White NJ, Price RN. Estimating the proportion of *Plasmodium vivax* recur-  
517 rences caused by relapse: A systematic review and meta-analysis. *Am J Trop Med Hyg*. 2020 11; 103(3):1094-  
518 1099.
- 519 **Douglas NM**, Pontororing GJ, Lampah DA, Yeo TW, Kenangalem E, Poespoprodjo JR, Ralph AP, Bangs MJ, Sug-  
520 iarto P, Anstey NM, Price RN. Mortality attributable to Plasmodium vivax malaria: a clinical audit from  
521 Papua, Indonesia. *BMC Medicine*. 2014 Nov; 12(1):217. <https://doi.org/10.1186/s12916-014-0217-z>, doi:  
522 10.1186/s12916-014-0217-z.
- 523 **Hillmen P**, Hall C, Marsh JCW, Elebute M, Bombara MP, Petro BE, Cullen MJ, Richards SJ, Rollins SA, Mojcik CF,  
524 Rother RP. Effect of Eculizumab on Hemolysis and Transfusion Requirements in Patients with Paroxysmal  
525 Nocturnal Hemoglobinuria. *New England Journal of Medicine*. 2004; 350(6):552-559. [https://doi.org/10.1056/](https://doi.org/10.1056/NEJMoa031688)  
526 [NEJMoa031688](https://doi.org/10.1056/NEJMoa031688).
- 527 **Howes RE**, Piel FB, Patil AP, Nyangiri OA, Gething PW, Dewi M, Hogg MM, Battle KE, Padilla CD, Baird JK, et al.  
528 G6PD deficiency prevalence and estimates of affected populations in malaria endemic countries: a geosta-  
529 tistical model-based map. *PLoS Med*. 2012; 9(11):e1001339.
- 530 **Hsiang MS**, Hwang J, Tao AR, Liu Y, Bennett A, Shanks GD, Cao J, Kachur SP, Feachem RGA, Gosling RD, Gao Q.  
531 Mass drug administration for the control and elimination of Plasmodium vivax malaria: an ecological study  
532 from Jiangsu province, China. *Malaria Journal*. 2013 11; 12(1):383.
- 533 **Kamar N**, Bendall R, Legrand-Abravanel F, Xia NS, Ijaz S, Izopet J, Dalton HR. Hepatitis E. *The Lancet*. 2012 Jun;  
534 379(9835):2477-2488.
- 535 **Kellermeyer RW**, Tarlov AR, Brewer GJ, Carson PE, Alving AS. Hemolytic effect of therapeutic drugs. Clinical  
536 considerations of the primaquine-type hemolysis. *JAMA*. 1962 May; 180:388-394.
- 537 **Kheng S**, Muth S, Taylor WR, Tops N, Kosal K, Sothea K, Souy P, Kim S, Char CM, Vanna C, et al. Tolerability and  
538 safety of weekly primaquine against relapse of *Plasmodium vivax* in Cambodians with glucose-6-phosphate  
539 dehydrogenase deficiency. *BMC Medicine*. 2015; 13(1):1-10.
- 540 **Kondrashin A**, Baranova AM, Ashley EA, Recht J, White NJ, Sergiev VP. Mass primaquine treatment to eliminate  
541 vivax malaria: lessons from the past. *Malar J*. 2014 Feb; 13:51.
- 542 **Levey AS**, Stevens LA, Schmid CH, Zhang YL, Castro AF, Feldman HI, Kusek JW, Eggers P, Lente FV, Greene  
543 T, and JC. A New Equation to Estimate Glomerular Filtration Rate. *Annals of Internal Medicine*. 2009  
544 May; 150(9):604. <https://doi.org/10.7326/0003-4819-150-9-200905050-00006>, doi: 10.7326/0003-4819-150-9-  
545 200905050-00006.
- 546 **Luzzatto L**, Ally M, Notaro R. Glucose-6-phosphate dehydrogenase deficiency. *Blood*. 2020; 136(11):1225-1240.
- 547 **Minucci A**, Moradkhani K, Hwang MJ, Zuppi C, Giardina B, Capoluongo E. Glucose-6-phosphate dehydrogenase  
548 (G6PD) mutations database: Review of the "old" and update of the new mutations. *Blood Cells, Molecules,*  
549 *and Diseases*. 2012; 48(3):154-165. <https://www.sciencedirect.com/science/article/pii/S1079979612000022>,  
550 doi: <https://doi.org/10.1016/j.bcmd.2012.01.001>.
- 551 **Piomelli S**, Corash LM, Davenport DD, Miraglia J, Amorosi EL. In vivo lability of glucose-6-phosphate dehydro-  
552 genase in GdA- and GdMediterranean deficiency. *J Clin Invest*. 1968 Apr; 47(4):940-948.
- 553 **Puaprasert K**, Chu C, Saralamba N, Day NPJ, Nosten F, White NJ, Dondorp AM, Imwong M. Real time PCR  
554 detection of common CYP2D6 genetic variants and its application in a Karen population study. *Malaria*  
555 *Journal*. 2018 Nov; 17(1):427.
- 556 **Recht J**, Ashley E, White N, Organization WH, Unit MOR. Safety of 8-aminoquinoline antimalarial medicines.  
557 World Health Organization; 2014.
- 558 **Recht J**, Ashley EA, White NJ. Use of primaquine and glucose-6-phosphate dehydrogenase deficiency test-  
559 ing: divergent policies and practices in malaria endemic countries. *PLoS Neglected Tropical Diseases*. 2018;  
560 12(4):e0006230.

It is made available under a [CC-BY 4.0 International license](#) .

- 561 **Watson J**, Taylor WR, Menard D, Kheng S, White NJ. Modelling primaquine-induced haemolysis in G6PD defi-  
562 ciency. *eLife*. 2017 2; 6:e23061. <https://doi.org/10.7554/eLife.23061>, doi: 10.7554/eLife.23061.
- 563 **White NJ**. Anaemia and malaria. *Malaria Journal*. 2018 Oct; 17(1):371.
- 564 **World Health Organization**. Guidelines for the treatment of malaria. 3rd ed. World Health Organization;  
565 2015.
- 566 **Yilma D**, Groves ES, Brito-Sousa JD, Monteiro WM, Chu C, Thriemer K, Commons RJ, Lacerda MVG, Price RN,  
567 Douglas NM. Severe Hemolysis during Primaquine Radical Cure of Plasmodium vivax Malaria: Two System-  
568 atic Reviews and Individual Patient Data Descriptive Analyses. *The American Journal of Tropical Medicine*  
569 *and Hygiene*. 2023 Aug; <https://doi.org/10.4269/ajtmh.23-0280>, doi: 10.4269/ajtmh.23-0280.

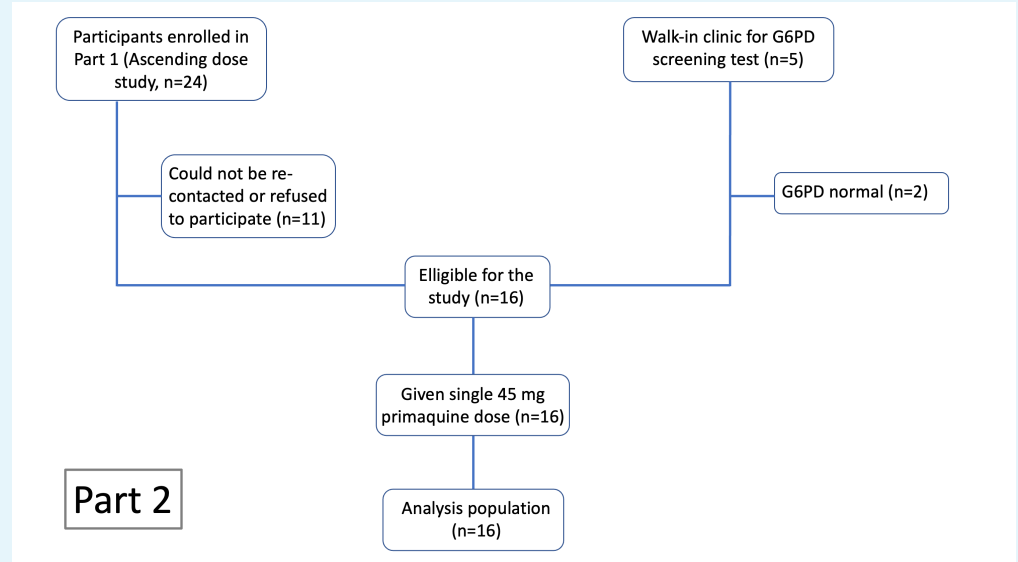
570 **Appendix 1**

571 **CONSORT diagrams**



572

573 **Appendix 1—figure 1.** CONSORT diagram for Part 1 of the study.



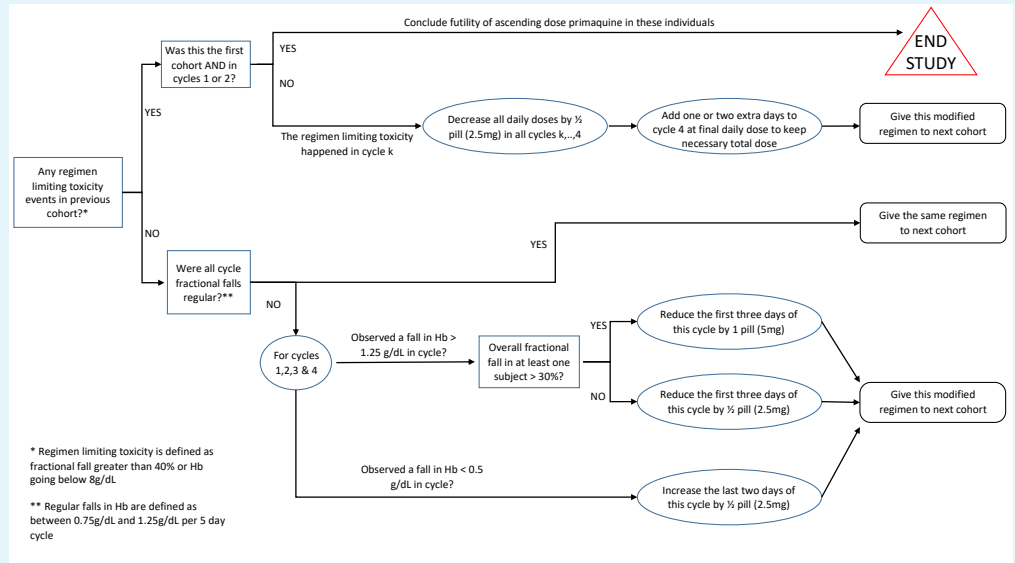
575

576 **Appendix 1—figure 2.** CONSORT diagram for Part 2 of the study.

578 **Appendix 2**

579

**Adaptive rules**



\* Regimen limiting toxicity is defined as fractional fall greater than 40% or Hb going below 8g/dL.  
 \*\* Regular falls in Hb are defined as between 0.75g/dL and 1.25g/dL per 5 day cycle

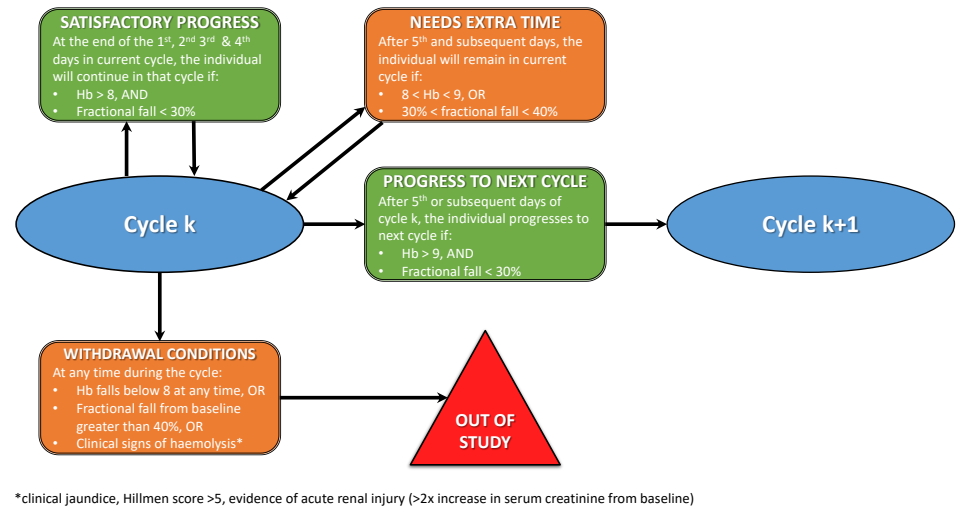
580

581

582

584

**Appendix 2—figure 1.** Rules for determining the primaquine regimen in the next cohort of 5 subjects. These pre-specified rules were for guidance only and were not binding as participant safety was the primary concern.



\*clinical jaundice, Hillmen score >5, evidence of acute renal injury (>2x increase in serum creatinine from baseline)

585

586

587

588

589

590

**Appendix 2—figure 2.** Rules for increasing primaquine dose for each subject. Each cycle was between 3 and 5 days, and doses were increased across the successive cycles. Each subject progressed to the next cycle (i.e. higher dose) only if they had a haemoglobin >70% of their baseline value (i.e. less than 30% relative decrease). Primaquine was stopped if the haemoglobin went under 40% of the baseline value.

## 592 Appendix 3

### 593 Exclusion criteria

594 Exclusion criteria were any one of the following:

- 595 1. body mass index  $\geq 35$ ;
- 596 2. G6PD<sup>Med</sup> variant (563C>T);
- 597 3. known to have, or discovered by the investigator to have any clinically significant dis-  
598 ease;
- 599 4. malaria or other febrile illness (e.g. viral hepatitis, typhoid fever) in the previous month;
- 600 5. a positive blood film for malaria (asexual or sexual parasites);
- 601 6. history of haemolysis unrelated to primaquine in the past 8 weeks;
- 602 7. blood group Rhesus negative (rare in Thai population and so these subjects were ex-  
603 cluded to avoid delays in finding matched blood if needed for transfusion);
- 604 8. received a blood transfusion in the past 3 month;
- 605 9. blood donation > 300 mL of whole blood previous 3 months;
- 606 10. taking or taken within the past 3 weeks any herbal medicine or any drug or foodstuff  
607 known to cause haemolysis in G6PD deficiency.
- 608 11. AST or ALT or LDH >1.5 times the upper limit of normal (ULN);
- 609 12. serum creatinine >ULN (1.2 mg/dL) and an eGFR <70 mL/min/1.73m<sup>2</sup> (Chronic Kidney  
610 Disease Epidemiology Collaboration (CKD-EPI) equation (*Levey et al., 2009*);
- 611 13. dipstick urine analysis showing microscopic haematuria ( $\geq 5$  RBCs) microscopic and/or  
612 microscopic proteinuria;
- 613 14. conjugated or unconjugated bilirubin >1.5 ULN;
- 614 15. methaemoglobin level >5% determined by oximetry (Masimo Rad 57®);
- 615 16. allergy to primaquine;
- 616 17. having taken part in research involving an investigational drug within the past 8 weeks;
- 617 18. potential non-compliance with the protocol by the volunteer (investigator opinion).



## 618 Appendix 4

### 619 Study endpoints

620 This trial was designed to characterise the dose-response relationship for primaquine in-  
621 duced haemolysis in healthy adult males with G6PD deficiency. The therapeutic aim was to  
622 develop a primaquine radical cure regimen that was safer in G6PD deficiency and shorter  
623 than the currently recommended once weekly 0.75 mg base/kg regimen given for 8 weeks.  
624 There was no formal hypothesis testing. The statistical analysis plan specified multiple end-  
625 points which summarise the overall safety of the ascending primaquine doses and allow  
626 comparison with the single dose study (in particular the haemolytic effects of each).

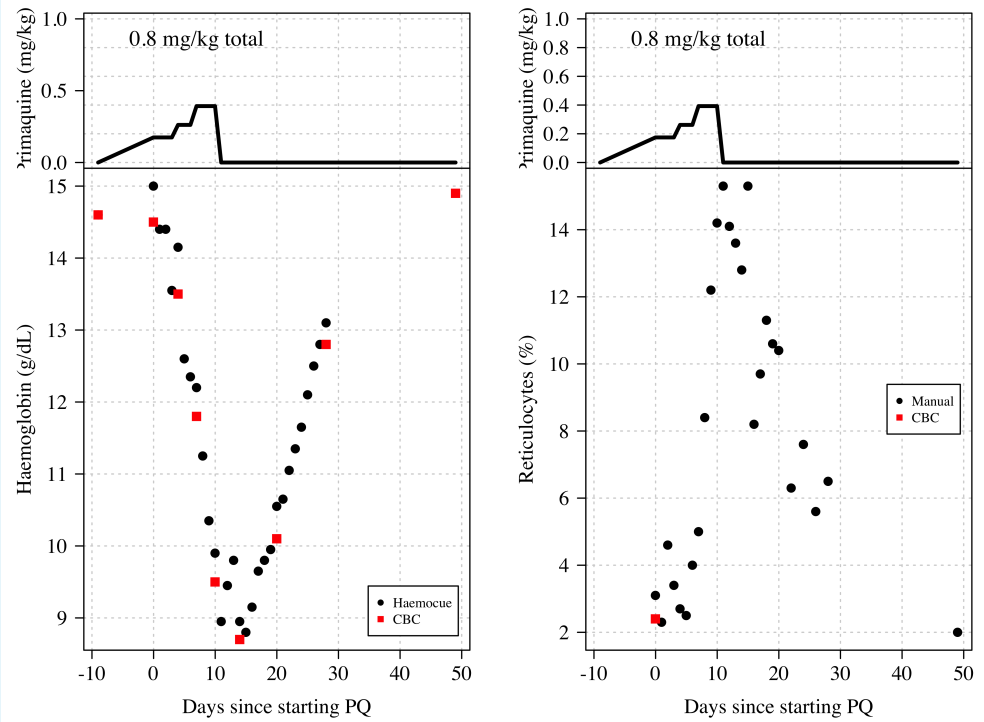
### 627 Primary outcomes

- 628 1. Maximum absolute fall in haemoglobin between day 0 and day 28 (absolute difference  
629 with respect to baseline haemoglobin);
- 630 2. Maximum relative fall in haemoglobin between day 0 and day 28 (relative change (%)  
631 with respect to baseline haemoglobin);
- 632 3. Maximum increase in total bilirubin between day 0 and day 28 (absolute difference  
633 with respect to baseline total bilirubin);
- 634 4. Maximum increase in lactate dehydrogenase (LDH) between day 0 and day 28 (abso-  
635 lute difference with respect to baseline LDH);
- 636 5. Mean decrease in haemoglobin per day (g/day) between days 5 and day 10 (Part 1  
637 only: estimated from a linear model fit to daily haemoglobin measurements);
- 638 6. Mean decrease in haemoglobin per day (g/day) between days 1 and day 7 (Part 2 only:  
639 estimated from a linear model fit to daily haemoglobin measurements).

### 640 Secondary outcomes

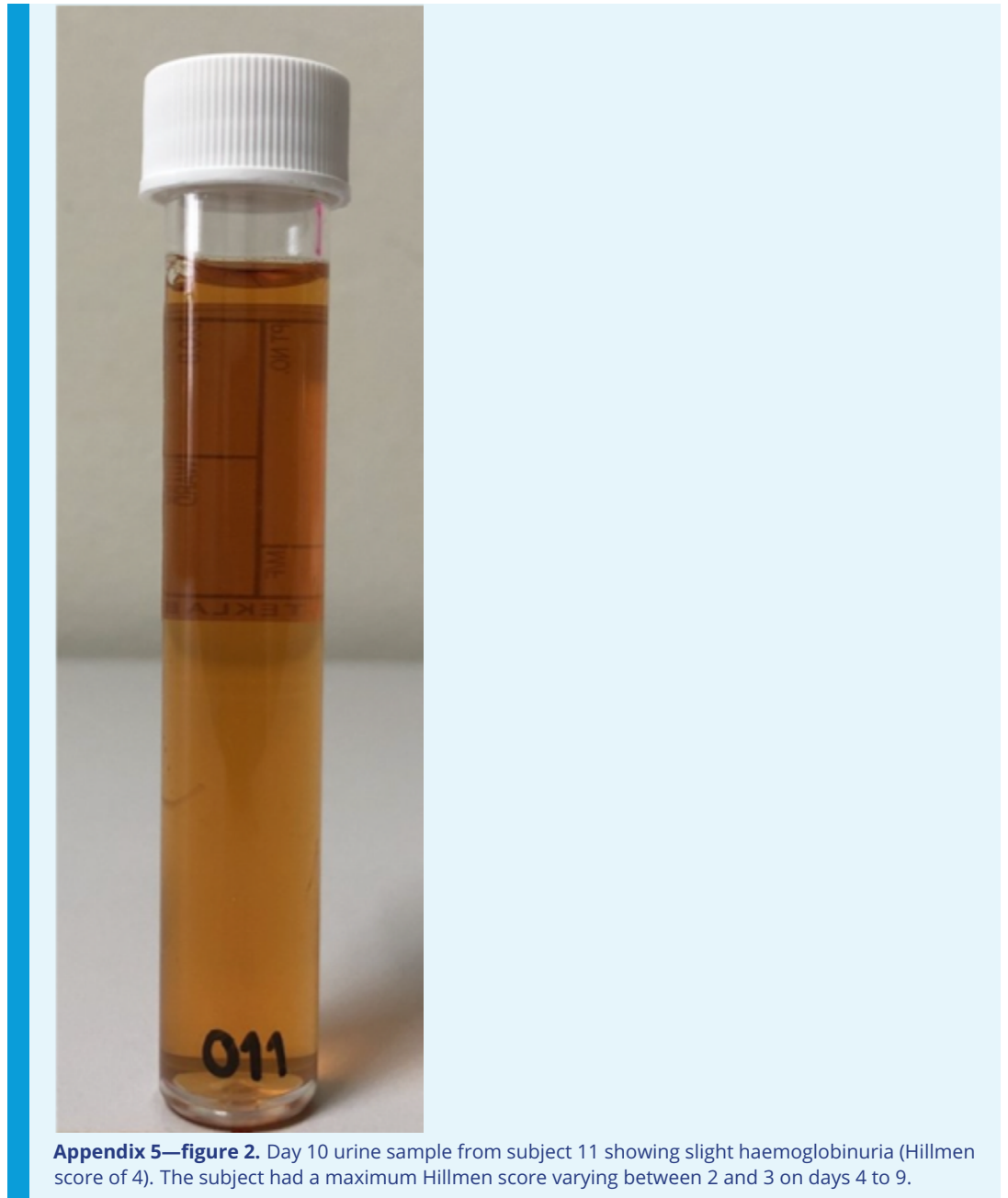
- 641 1. Maximum fold-change relative to baseline for serum AST, ALT and creatinine;
- 642 2. Maximum absolute change in serum haptoglobin;
- 643 3. Peak reticulocyte count;
- 644 4. Peak blood methaemoglobin percentage;
- 645 5. Clinically significant changes in the differential white blood cell count.

646 **Appendix 5**

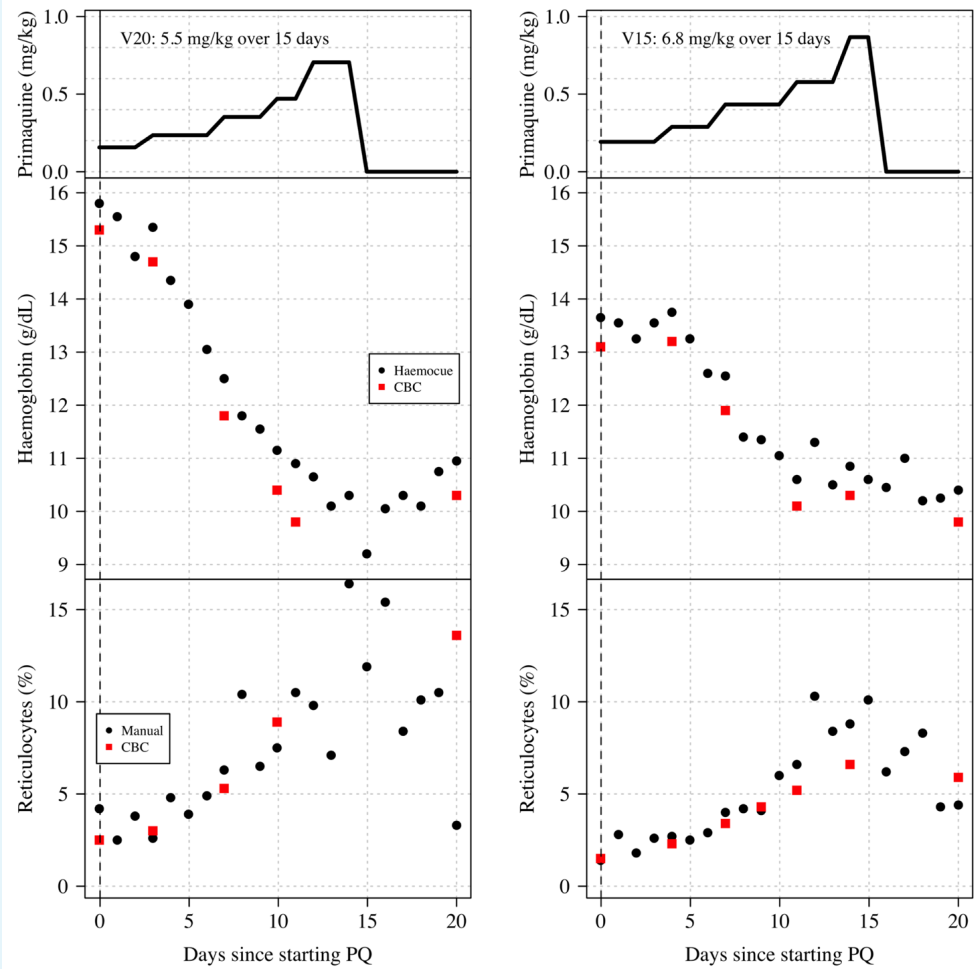


647  
648  
649  
650  
651  
652  
653

**Appendix 5—figure 1.** Haemoglobin and reticulocyte data from subject 11 who was stopped due to meeting the study withdrawal stopping rule. The top panels show the dose of primaquine given each day; the bottom panels show the observed haemoglobin measurements (left) and reticulocyte counts (right). Black circles: haemocue and manual reticulocyte counts; red squares: CBC haemoglobin and reticulocyte counts.



658 **Appendix 6**



659

660

661

662

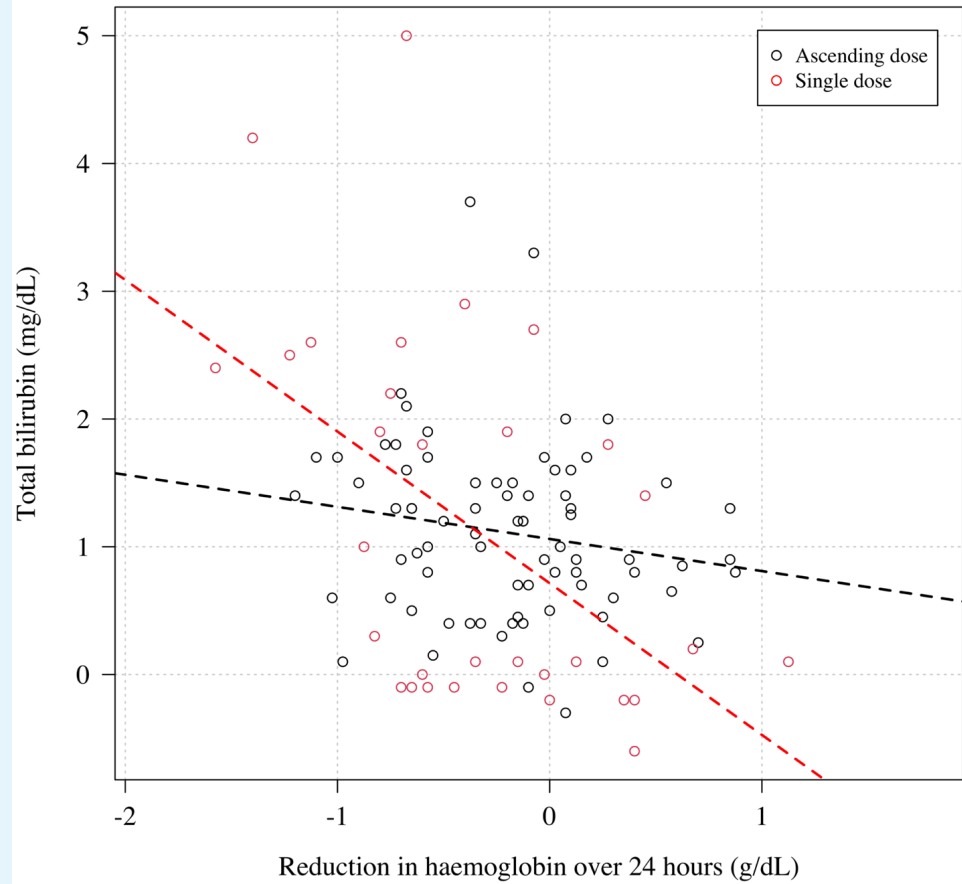
663

664

665

**Appendix 6—figure 1.** Haemoglobin and reticulocyte data from two subjects (left: V15; right: V20) who both had the Viangchan variant (871G>A). Both received very similar ascending dose regimens which are shown in the top panels (mg/kg primaquine daily dose); the middle panels show the observed haemoglobin measurements; the bottom panels show the reticulocyte counts. Black circles: haemocue and manual reticulocyte counts; red squares: CBC haemoglobin and reticulocyte counts.

666 **Appendix 7**



667

668

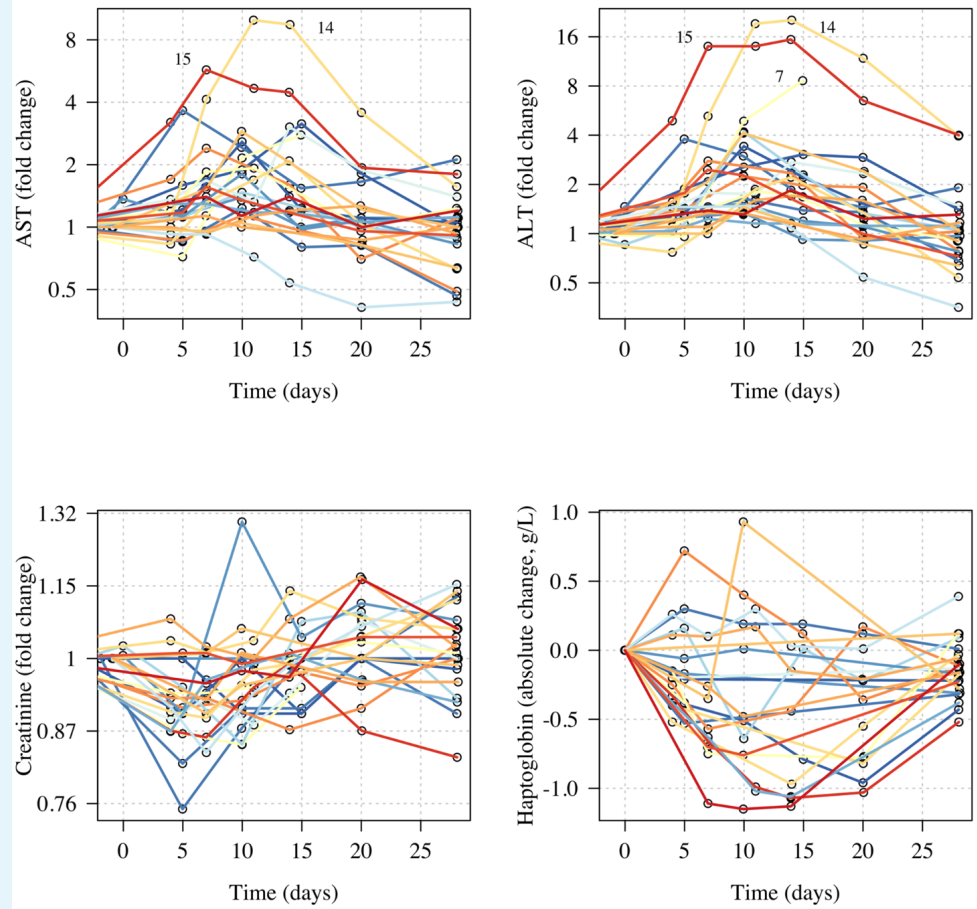
669

670

672

**Appendix 7—figure 1.** The relationship the reduction in haemoglobin from the previous day and the normalised absolute increase in total bilirubin. Black: Part 1; red: Part 2. Each subject has two datapoints corresponding to when the total bilirubin was measured (days 5 and 10 for Part 1; days 3 and 7 for Part 2). The relationship is significant for Part 2 ( $p=0.003$ ), not significant for Part 1 ( $p=0.2$ ).

673 **Appendix 8**



674

675

676

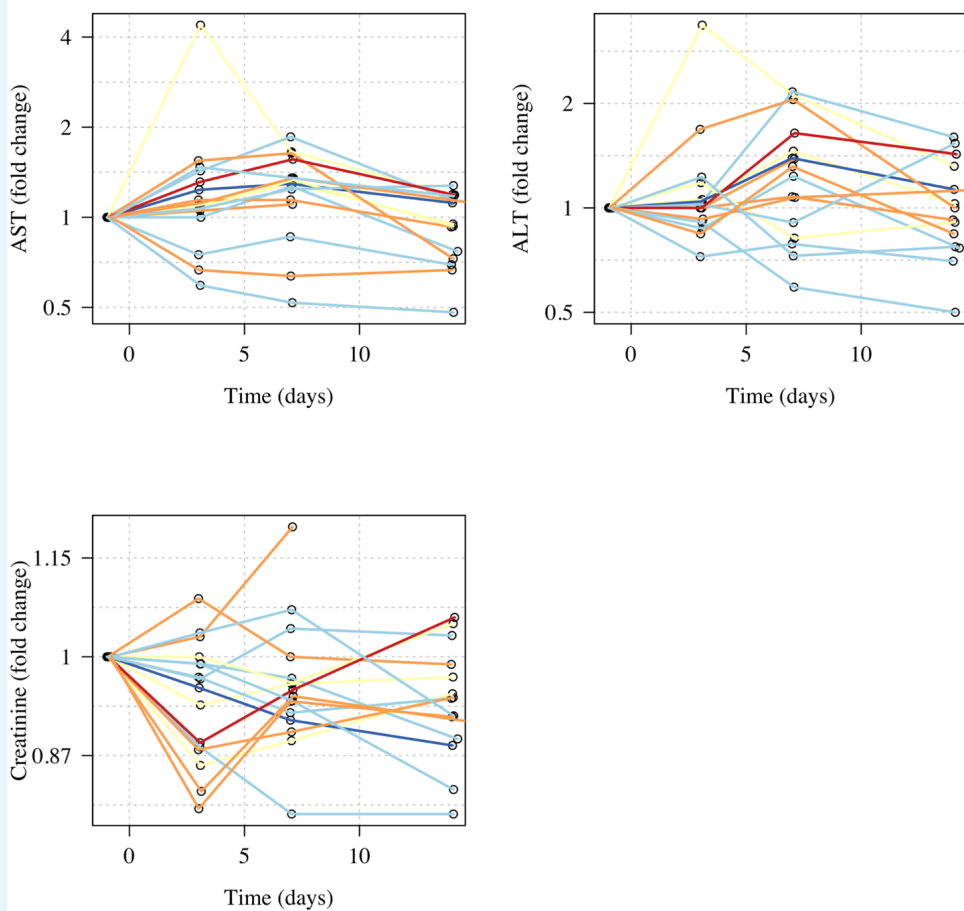
677

678

**Appendix 8—figure 1.** Normalised changes in the plasma concentrations of transaminases, haptoglobin, and creatinine during the ascending dose regimen. Colors correspond to the day 10 cumulative dose (as in Figure 1 in main text). The numbers in the top panels highlight the data from subjects 7, 11, and 14 who had substantial raises in AST and ALT.



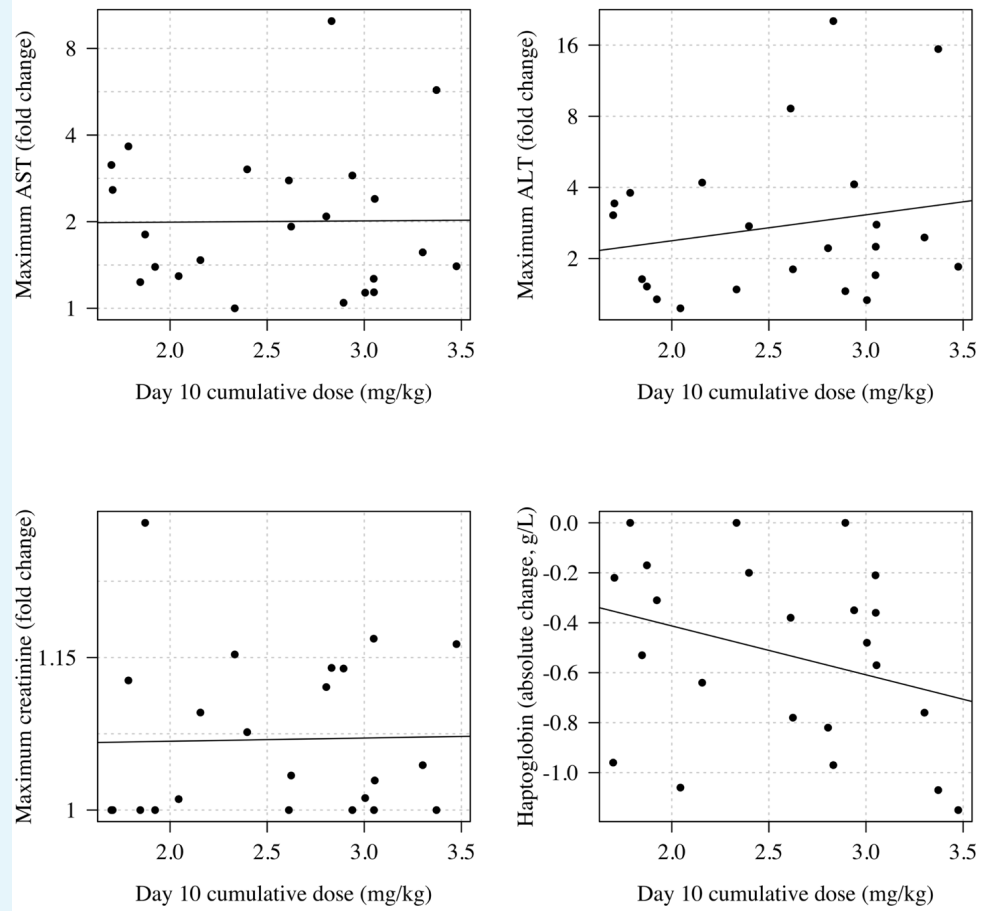
It is made available under a [CC-BY 4.0 International license](https://creativecommons.org/licenses/by/4.0/) .



680  
681  
682

**Appendix 8—figure 2.** Normalised changes in the plasma concentrations of transaminases, haptoglobin, and creatinine during the single dose primaquine 45 mg study.

It is made available under a [CC-BY 4.0 International license](https://creativecommons.org/licenses/by/4.0/) .



684

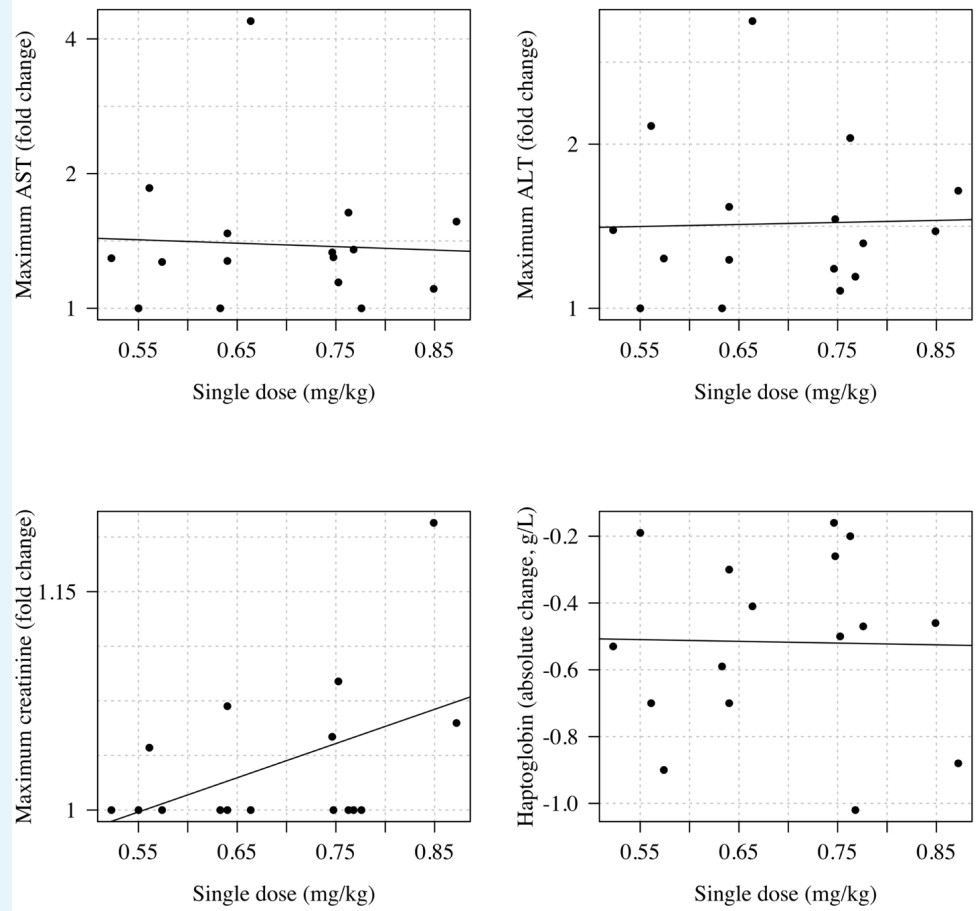
685

686

688

**Appendix 8—figure 3.** Relationship between the total cumulative dose of primaquine received by day 10 in the 23 volunteers who took ascending primaquine dose regimens and the maximum fold change increases in AST, ALT and creatinine and the maximum absolute decrease in haptoglobin.

It is made available under a [CC-BY 4.0 International license](https://creativecommons.org/licenses/by/4.0/) .



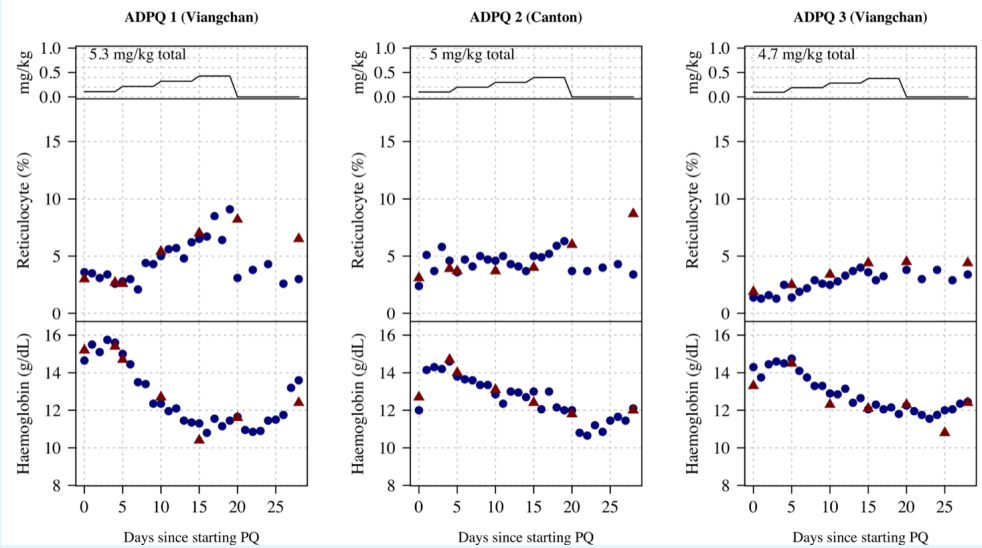
689  
690  
691  
692

**Appendix 8—figure 4.** Relationship between the mg/kg single dose of primaquine received by the 16 volunteers and the maximum fold change increases in AST, ALT and creatinine and the maximum absolute decrease in haptoglobin.

694 **Appendix 9**

695

**Part 1: Individual patient data**

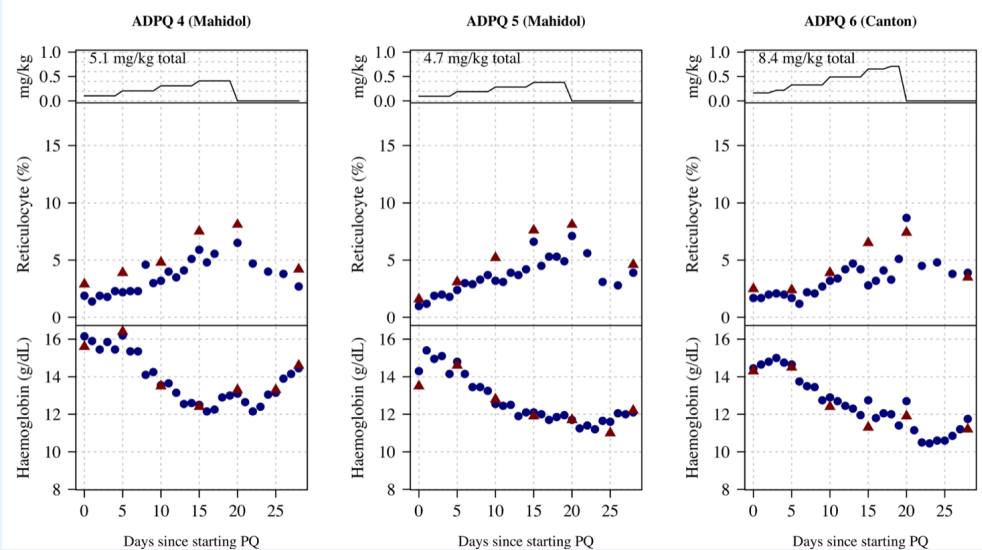


696

697

698

**Appendix 9—figure 1.** Ascending dose: haemoglobin and reticulocyte data over time for volunteers 1-3. Blue shows the manual reticulocyte readings and haemocue value; red shows the CBC values.



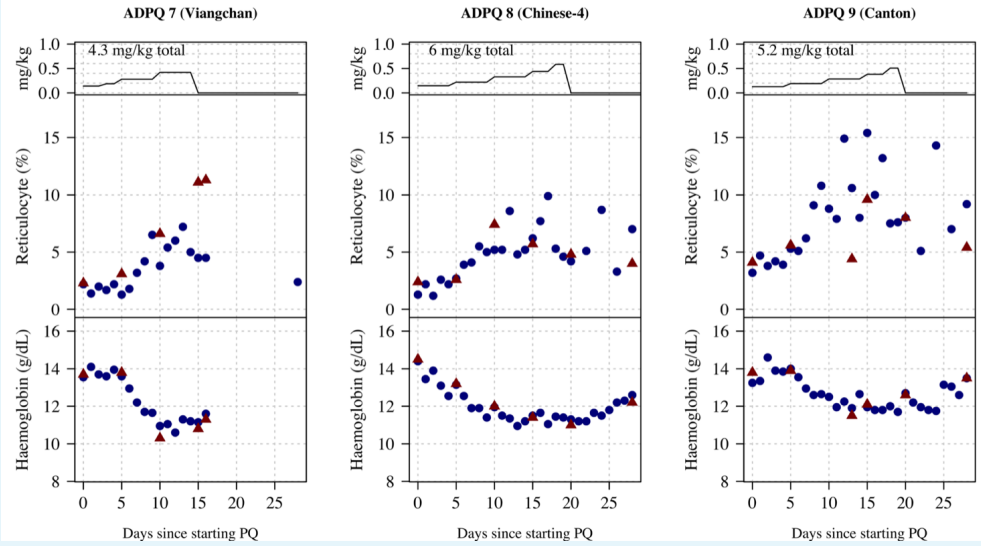
700

701

702

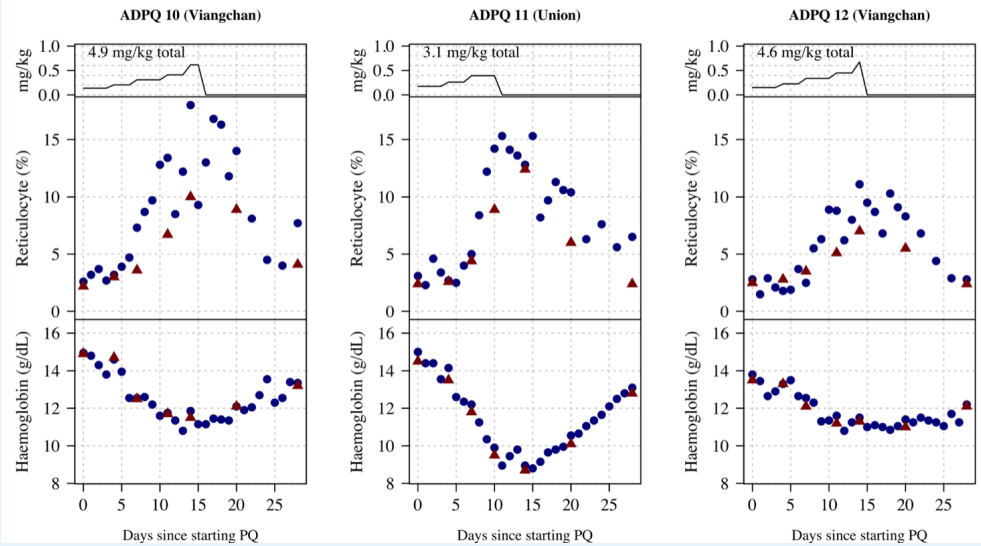
**Appendix 9—figure 2.** Ascending dose: haemoglobin and reticulocyte data over time for volunteers 4-6. Blue shows the manual reticulocyte readings and haemocue value; red shows the CBC values.

It is made available under a [CC-BY 4.0 International license](https://creativecommons.org/licenses/by/4.0/).



704  
705  
706

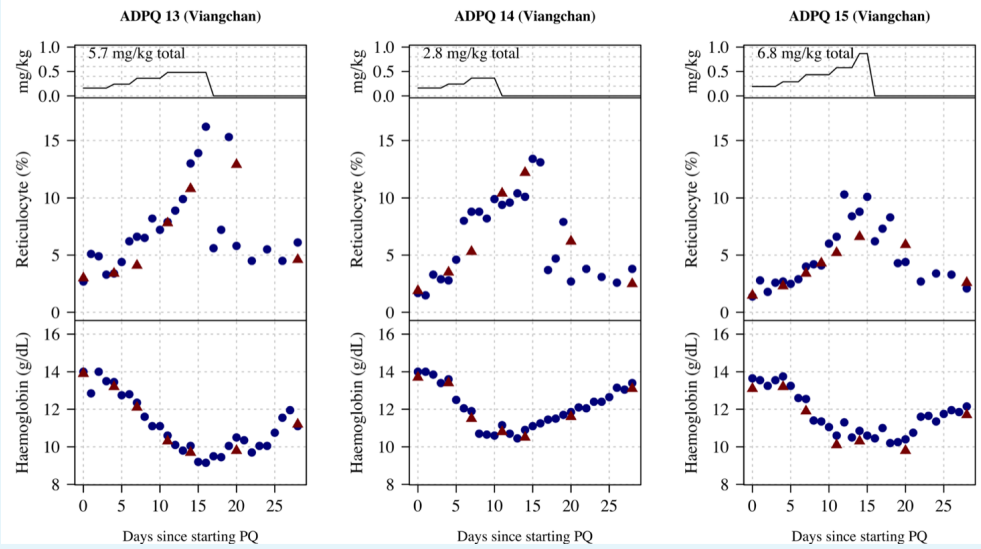
**Appendix 9—figure 3.** Ascending dose: haemoglobin and reticulocyte data over time for volunteers 7-9. Blue shows the manual reticulocyte readings and haemocue value; red shows the CBC values.



708  
709  
710

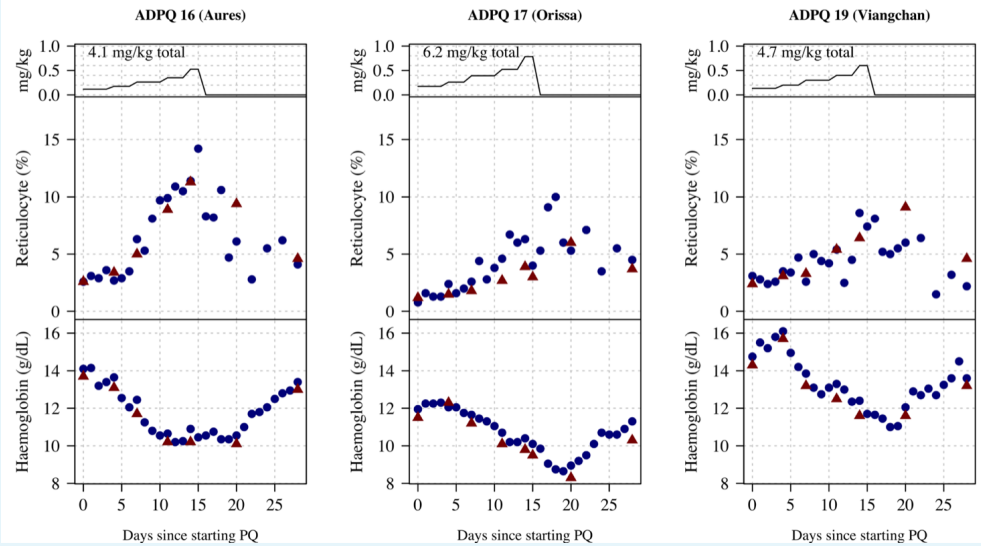
**Appendix 9—figure 4.** Ascending dose: haemoglobin and reticulocyte data over time for volunteers 10-12. Blue shows the manual reticulocyte readings and haemocue value; red shows the CBC values.

It is made available under a [CC-BY 4.0 International license](https://creativecommons.org/licenses/by/4.0/).



712  
713  
715

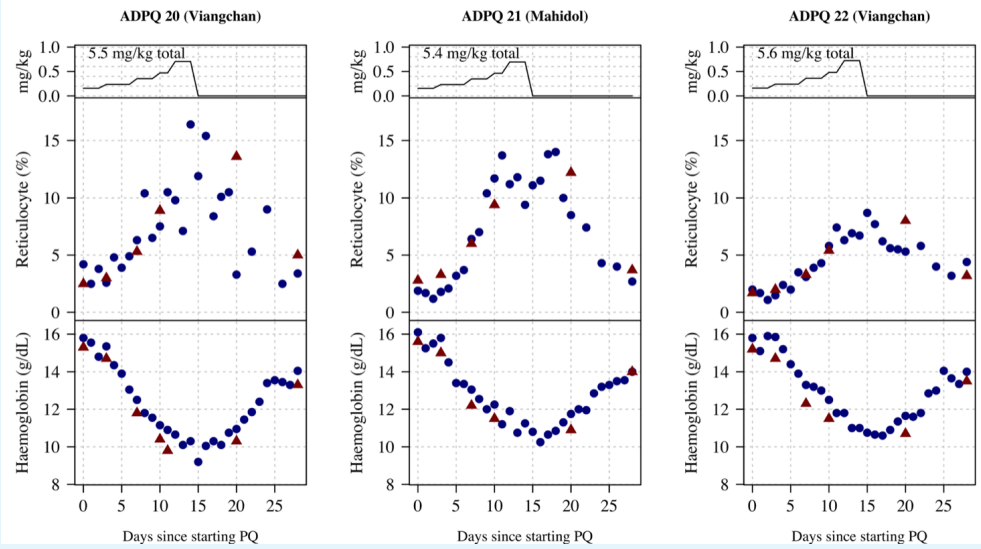
**Appendix 9—figure 5.** Ascending dose: haemoglobin and reticulocyte data over time for volunteers 13-15. Blue shows the manual reticulocyte readings and haemocue value; red shows the CBC values.



716  
717  
718  
720

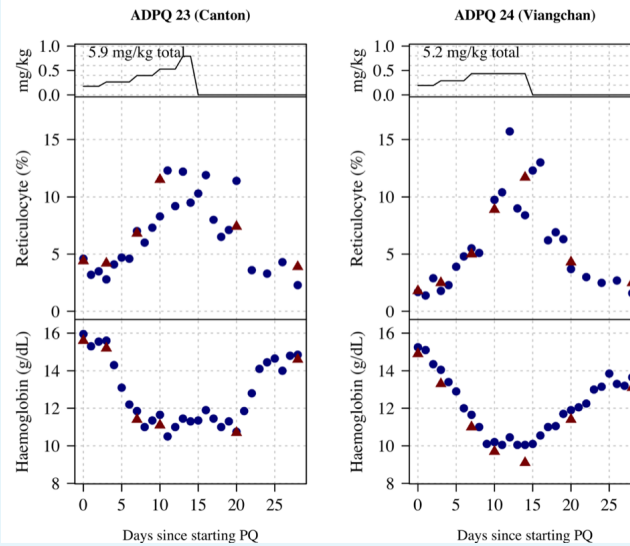
**Appendix 9—figure 6.** Ascending dose: haemoglobin and reticulocyte data over time for volunteers 16-17, 19. Blue shows the manual reticulocyte readings and haemocue value; red shows the CBC values.

It is made available under a [CC-BY 4.0 International license](https://creativecommons.org/licenses/by/4.0/).



721  
722  
724

**Appendix 9—figure 7.** Ascending dose: haemoglobin and reticulocyte data over time for volunteers 20-22. Blue shows the manual reticulocyte readings and haemoglobin value; red shows the CBC values.



725  
726  
727  
728

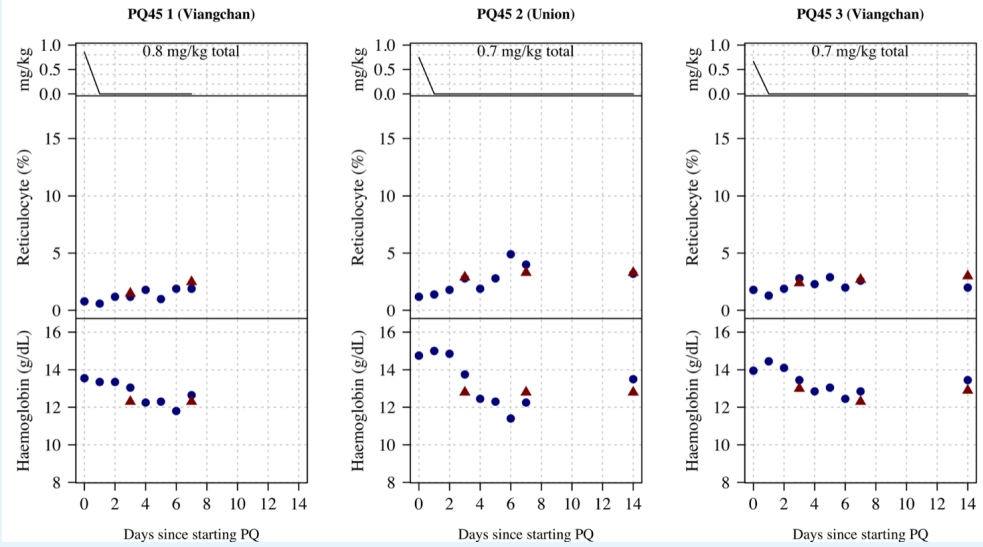
**Appendix 9—figure 8.** Ascending dose: haemoglobin and reticulocyte data over time for volunteers 23 and 24. Blue shows the manual reticulocyte readings and haemoglobin value; red shows the CBC values.



It is made available under a [CC-BY 4.0 International license](https://creativecommons.org/licenses/by/4.0/).

730

## Part 2: Individual patient data

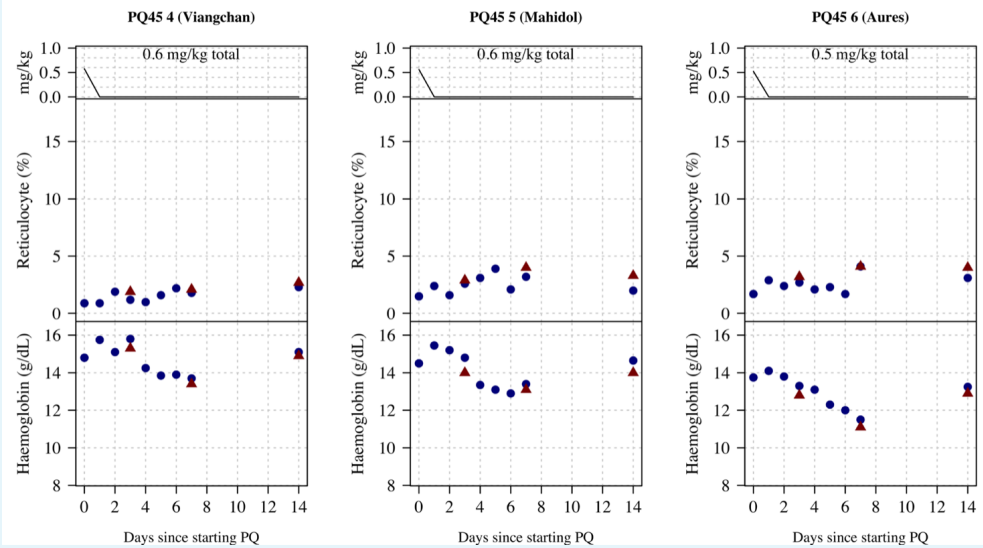


731

732

734

**Appendix 9—figure 9.** Ascending dose: haemoglobin and reticulocyte data over time for volunteer 1 to 3. Blue shows the manual reticulocyte readings and haemocue value; red shows the CBC values.



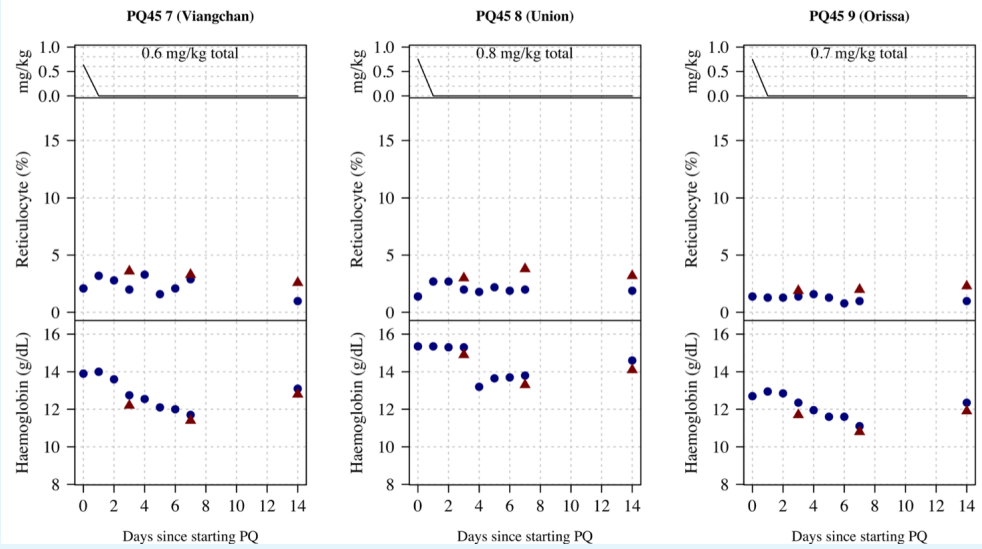
735

736

738

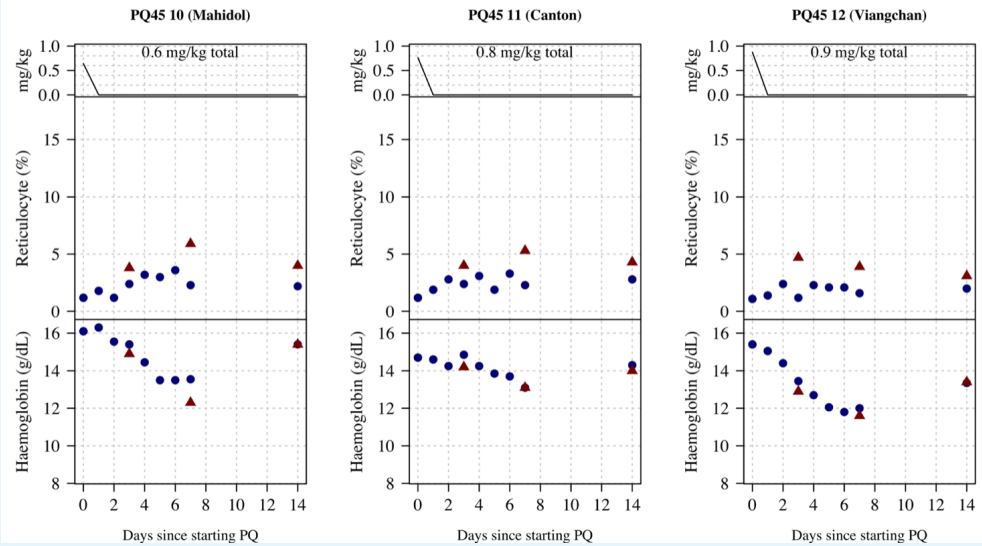
**Appendix 9—figure 10.** Ascending dose: haemoglobin and reticulocyte data over time for volunteer 4 to 6. Blue shows the manual reticulocyte readings and haemocue value; red shows the CBC values.

It is made available under a [CC-BY 4.0 International license](https://creativecommons.org/licenses/by/4.0/).



739  
740  
742

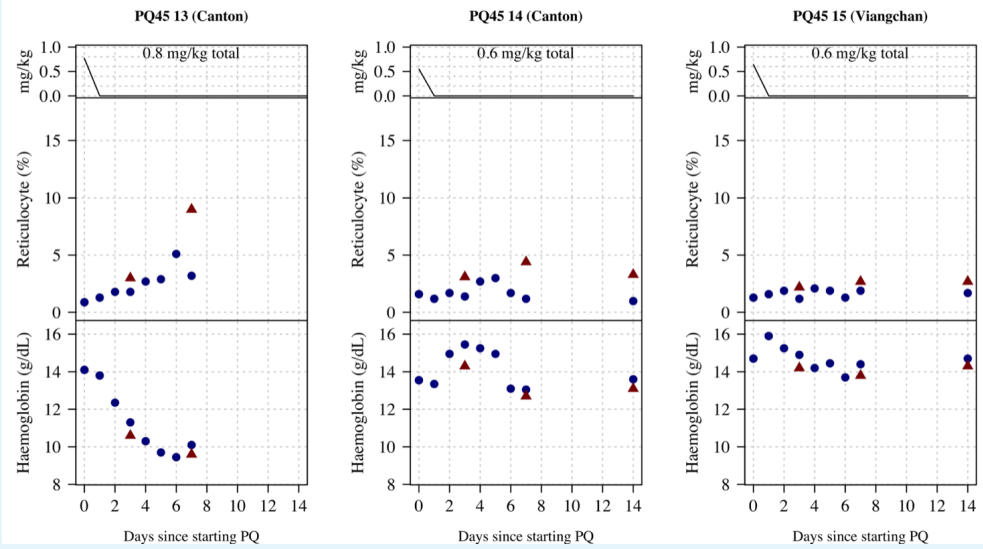
**Appendix 9—figure 11.** Ascending dose: haemoglobin and reticulocyte data over time for volunteer 7 to 9. Blue shows the manual reticulocyte readings and haemocue value; red shows the CBC values.



743  
744  
745  
747

**Appendix 9—figure 12.** Ascending dose: haemoglobin and reticulocyte data over time for volunteer 10 to 12. Blue shows the manual reticulocyte readings and haemocue value; red shows the CBC values.

It is made available under a [CC-BY 4.0 International license](https://creativecommons.org/licenses/by/4.0/).



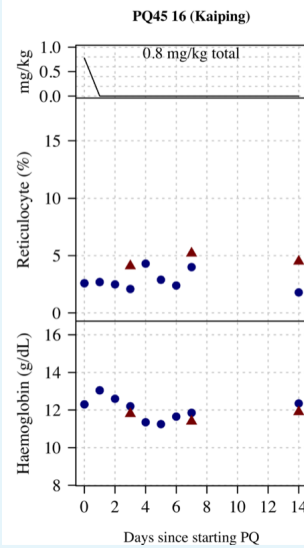
748

749

750

752

**Appendix 9—figure 13.** Ascending dose: haemoglobin and reticulocyte data over time for volunteer 13 to 15. Blue shows the manual reticulocyte readings and haemocue value; red shows the CBC values.



753

754

756

**Appendix 9—figure 14.** Ascending dose: haemoglobin and reticulocyte data over time for volunteer 16. Blue shows the manual reticulocyte readings and haemocue value; red shows the CBC values.

757 **Appendix 10**

758

### Comparison of CBC and Haemocue

Figure 1 compares haemoglobin values at timepoints where patients had both CBC and Haemocue measured. There is a systematic bias at lower haemoglobin values whereby the CBC gives lower recordings relative to the Haemocue. We did not adjust for this in the analysis specifically but report it for interest.

759

760

761

762

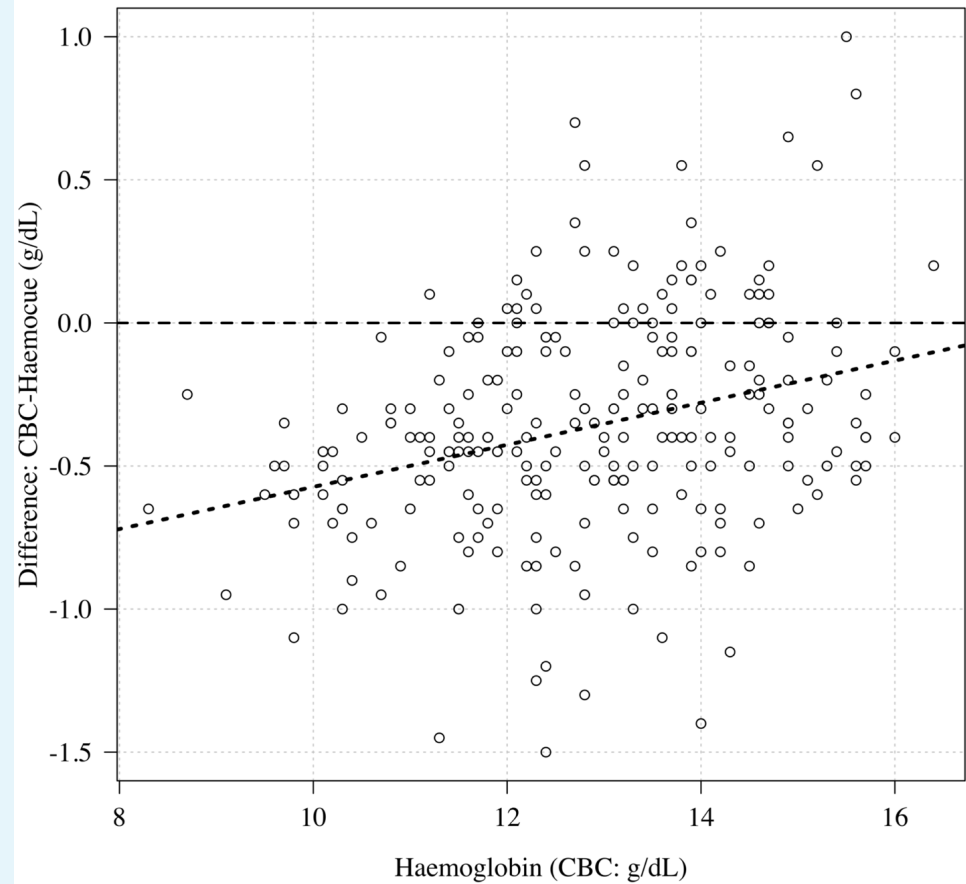
763

764

765

766

768



**Appendix 10—figure 1.** Comparison of haemoglobin as measured by CBC (x-axis) and haemocue (difference between CBC and haemocue shown on the y-axis). The haemocue gave systematically higher haemoglobin concentrations relative to the CBC for low haemoglobin concentrations (about 0.5 g/dL higher at a haemoglobin of 10 g/dL).