

1 Utility of non-invasive Saline Gargle SARS-CoV-2 genome 2 surveillance in post-pandemic scenario and limitations of wastewater 3 surveillance

4

5 Authors: Krishna Khairnar^{1,2*} and Siddharth Singh Tomar^{1,2}

6 Author Affiliation: ¹Environmental Virology Cell (EVC), Council of Scientific and Industrial
7 Research-National Environmental Engineering Research Institute (CSIR-NEERI), Nagpur, India.

8 &

9 ²Academy of Scientific and Innovative Research (AcSIR), Ghaziabad, UP, India.

10 *Corresponding author: Correspondence to Krishna Khairnar e-mail: k_khairnar@neeri.res.in

11

12

13 **ABSTRACT**

14 Wastewater surveillance is being hailed as an indirect and non-invasive method for SARS-CoV-
15 2 genome surveillance in post-pandemic scenarios, as it covers a large population and does not
16 require in-person sampling. However, considering the limitations of wastewater monitoring, the
17 situation warrants an alternative approach to ensure reliable genome surveillance in the post-
18 pandemic scenario that can be achieved by the voluntary participation of the public. Voluntary
19 participation of the public in disease surveillance can be encouraged by deploying user-friendly
20 sample collection processes that can minimise the discomfort to the participants. To increase
21 sample collection throughput and reduce patient discomfort, the Council of Scientific and
22 Industrial Research-National Environmental Engineering Research Institute (CSIR-NEERI)
23 developed a non-invasive, patient-friendly saline gargle sample collection method for detecting
24 the SARS-CoV-2 virus. This method can also be deployed for other respiratory viruses. This
25 study evaluated the suitability of saline gargle-based sample collection for genomic surveillance
26 of SARS-CoV-2. This study included 589 SARS-CoV-2 positive samples collected using the
27 Gargle-based sample collection method from Nagpur city in central India from March to
28 December 2021. The viral RNA was isolated from saline gargle samples using an RNA release
29 buffer followed by SARS-CoV-2 RT-PCR. The SARS-CoV-2 positive samples were subjected to
30 SARS-CoV-2 whole genome sequencing using the Oxford Nanopore Technologies (ONT) next-
31 generation sequencing platform. Out of 589 samples, 500 samples qualified for the SARS-CoV-
32 2 WGS, and the SARS-CoV-2 WGS results revealed 8 different clades of SARS-CoV-2

33 encompassing 37 different Pango-lineage types. Our findings indicate that non-invasive gargle-
34 based genomic surveillance is scalable and does not need significant changes to the existing
35 workflow post-sample collection. This makes it advantageous for underdeveloped or remote
36 areas as a reliable and high-throughput sample collection; and a technique of choice for
37 surveillance in post-pandemic scenarios, which can find more user acceptance than the
38 invasive swab-VTM sample collection method.

39

40 **1. INTRODUCTION**

41

42 Severe acute respiratory syndrome coronavirus 2 is an RNA virus that causes the coronavirus
43 disease of 2019 or COVID-19. The SARS-CoV-2 virus first appeared in Wuhan, China, in
44 December 2019, unleashing a pandemic that is still going strong today.[1,2] As of February 14,
45 2023, the number of people infected by the SARS-CoV-2 virus is more than 755 million, and the
46 total number of deaths is above 6.8 million [3]. These figures clearly show how harmful and
47 highly transmissible this virus is. The pathogenicity of the virus is significantly influenced by the
48 virus's genome. The SARS-CoV-2 genome is approximately 30 kb long and encodes 26
49 proteins [4]. Any changes in the nucleotide sequences in the genome can result in mutations
50 that can change the amino acid encoded and subsequently change the protein being produced.
51 This will result in the formation of new virus variants [5]. The significant variants of concern
52 identified till now are Alpha, Beta, Gamma, Delta, and Omicron [6] The rate of mutation affects
53 the transmissibility and infectivity of the virus considerably. These adaptive mutations of the
54 virus can lead to the formation of new variants which may be resistant to therapy and vaccines,
55 thus making the control of the pandemic difficult. Therefore, timely diagnosis and genomic
56 surveillance are essential to monitoring potentially harmful viral variants worldwide. Wastewater
57 surveillance is being hailed as an indirect and non-invasive method for SARS-CoV-2 genome
58 surveillance in post-pandemic scenarios, as it covers a large population and does not require in-
59 person sampling. Several reports showed that wastewater surveillance gives an early warning
60 of emerging cases in a given area [7,8,9]. Wastewater surveillance provides a preliminary
61 picture of the disease spread by estimating the presence or absence of the disease in a
62 particular area, but can not resolve the source from where the disease originated.

63 Wastewater surveillance may be useful, especially in many regions that lack sufficient resources
64 for deploying large-scale molecular testing platforms for public health monitoring. An emerging
65 viral transmission in the population may be indicated if a wastewater sample shows the SARS-

66 CoV-2 virus in a previously reported low-prevalence area. The authorities may use this
67 information to issue warnings or take administrative measures. Hence, knowing the viral
68 presence in wastewater can give indicative information about the location/site of an initial
69 circulation, which can be resolved further by directing the resources to the location/site to trace
70 infected cases. However, there are concerns about the sensitivity and reliability of wastewater
71 surveillance methods, as wastewater is a highly diluted and complex system. Seasonal
72 variations affect the composition and concentration of wastewater, making it a very inconsistent
73 system to work on. Detecting viruses in the wastewater system depends on several aspects like
74 the wastewater network, structure, capacity, virus-shedding profile, wastewater properties,
75 sampling strategy, methodologies, and detection limit [10]. As the virus is released into
76 wastewater, it travels through a long and complex wastewater network until it reaches the
77 location from where the sample is collected. In the underdeveloped and developing world, the
78 integrity of wastewater systems is questionable. The wastewater streams from industrial,
79 domestic, grey-water and stormwater drains are often mixed due to compromised channels that
80 are not well segregated [11]; such mixing may adversely affect the quality of viral detection. The
81 wastewater travel time is affected by various factors, including the branching and structure of
82 the wastewater network and the flow rate during the sampling period. Considering the limitations
83 of wastewater monitoring, the situation warrants an alternative approach to ensure reliable
84 genome surveillance in the post-pandemic scenario that can be achieved by the voluntary
85 participation of the public. The nasopharyngeal/oropharyngeal (NP/OP) swabs-based molecular
86 testing and genome surveillance is the existing gold standard but cause considerable discomfort
87 to persons due to invasive sample collection [12]; also, improper NP/OP sample collection due
88 to an unskilled technician can lead to misleading results [13], which poses a limitation in
89 promoting voluntary participation of the public. A non-invasive and patient-friendly sampling
90 method could find more acceptance amongst the public for voluntary participation during
91 monitoring. Non-invasive sampling methods such as saliva and gargling could be useful in post-
92 pandemic surveillance. It is also important to note that saliva and gargle-based sampling
93 methods can efficiently recover the virus from the oropharynx and buccal area, but the
94 nasopharynx site remains unsampled in these methods, which may be a limitation.
95 Nevertheless, such non-invasive sampling methods hold the potential for large-scale monitoring.

96 Therefore, to increase sample collection throughput and reduce patient discomfort, the Council
97 of Scientific and Industrial Research-National Environmental Engineering Research Institute
98 (CSIR-NEERI) developed a non-invasive, patient-friendly saline gargle sample collection

99 method for diagnosing SARS-CoV-2. This method can also be deployed for sample collection of
100 other respiratory viruses. The saline gargle sample collection method was approved to be used
101 in India by the Indian Council of Medical Research (ICMR) [14]. The Drugs Controller General of
102 India (DCGI) approved the Industrial scaleup and kit manufacturing of the saline gargle method
103 [15].

104
105 The saline gargle method has several advantages over conventional swab-based sample
106 collection methods. This method is ideal for self-collection as it is non-invasive and does not
107 require trained healthcare professionals for sample collection. The saline-gargle kit includes a
108 tube containing 5 ml of phosphate-buffered saline solution. The user must gargle with this
109 solution for 15 seconds followed by 15 seconds of rinsing in the mouth and then releasing the
110 wash in the tube with the help of a disposable collection funnel and sealing it with a screw
111 capped cap. The saline gargle effectively rinses and collects the virus from the buccal cavity
112 and the oropharynx. The sample collected through this method is relatively free from
113 polymerase chain reaction (PCR) inhibitors which is the case with viral transport medium (VTM)
114 swab-based sampling techniques. Nasopharyngeal / Oropharyngeal swabs (NPS / OPS) are
115 uncomfortable for patients; during the sample collection, the irritation may lead to sneezing and
116 coughing reflexes which may risk direct exposure to healthcare personnel and surrounding [12].

117
118 The saline gargle method also circumvents the need for the time-consuming and costly RNA
119 extraction procedure; the viral RNA from the sample can be isolated by using a one-step RNA
120 release buffer. The RNA release buffer is added to the collected saline gargle sample and
121 incubated at room temperature for 30 minutes followed by heat inactivation at 98 degrees
122 Celsius for 6 minutes to isolate an RNA suitable for further use as a template for PCR and
123 Whole Genome Sequencing (WGS).

124
125 Voluntary participation of the public in disease surveillance can be encouraged by deploying
126 user-friendly sample collection processes that minimise the discomfort to the participants. The
127 simplicity and scalability of Gargle-based sample collection also make it an ideal candidate
128 suitable for post-pandemic disease surveillance. Although the quantitative reverse transcriptase
129 real-time PCR (qRT-PCR) is the gold standard for SARS-CoV-2 detection, the qRT-PCR can
130 not resolve between the variants of SARS-CoV-2. Therefore, the WGS-based genome
131 surveillance of SARS-CoV-2 is required for variant-level identification. Setting up sequencing-
132 based genomic surveillance in low-income nations can aid in the collection of accurate

133 surveillance data as well as help in long-term outbreak management. However, it all boils down
134 to what is practically possible in that specific region or environment. For WGS the extracted
135 RNA is converted into cDNA and analysed using next-generation sequencing (NGS)
136 techniques. The yield and quality of extracted RNA are therefore crucial for getting quality
137 sequencing results. Our study evaluated the suitability of saline gargle-based sample collection
138 for genomic surveillance of SARS-CoV-2. This study included 589 SARS-CoV-2 positive
139 samples collected using the Gargle-based sample collection method from Nagpur city in central
140 India from March to December 2021. The study focused on the utility of a patient-friendly
141 sample collection method for remote, resource-poor, and undeveloped parts of the world to
142 perform genome surveillance of respiratory viruses like SARS-CoV-2. Also, the study gives
143 projections for the utility of deploying patient-friendly, fast, and economical sample collection
144 strategies such as saline gargle for post-pandemic surveillance.

145

146

147 **2. MATERIALS AND METHODS**

148 **2.1 Data collection**

149 The metadata of 589 SARS-CoV-2-positive patients from March to December 2021 was taken
150 from the Integrated Health Information Platform (IHIP) [16]. The metadata of SARS-CoV-2
151 positive cases includes patient details such as age, gender, qRT-PCR cycle threshold (Ct)
152 value, and SARS-CoV-2 variant information. The information on symptoms and vaccination
153 coverage of the patients was sought from the Indian council of medical research (ICMR)
154 COVID-19 data portal; 42.5% of patients reported being symptomatic, and 57.4% were found to
155 be asymptomatic. 13.4% of patients were vaccinated with Covaxin, 82.5% were vaccinated with
156 the Covishield vaccine, 0.7% with the Sputnik V vaccine and vaccine information was not known
157 for 3.1% of the patients.

158

159 **2.2 Materials**

160 The SARS-CoV-2 viral RNA was extracted using an RNA release buffer containing Tris-EDTA
161 and Proteinase K. Applied Biosystems QuantStudio 3 and StepOnePlus qRT-PCR machines
162 were utilised for qRT-PCR, cDNA synthesis, PCR tiling, and rapid barcoding. Qubit 4
163 Fluorometer by Thermo Fisher Scientific was used to quantify nucleic acids for quality control
164 (QC) of DNA libraries for Oxford Nanopore Technology (ONT)-based WGS. SARS-CoV-2 WGS
165 was done on an Mk1C 6.3.9 and Mk1B ONT MinION sequencing platform.

166

167 **2.3 Sample collection and RNA extraction**

168 The saline gargle samples were collected as a part of a novel genome surveillance initiative
169 launched by the Nagpur Municipal Corporation (NMC) in collaboration with CSIR-NEERI,
170 Nagpur for the city of Nagpur from March to December 2021. Nagpur is the third largest city in
171 the Indian state of Maharashtra and the fourteenth largest city in India by population [17]. 589
172 SARS-CoV-2 positive saline gargle samples were selected for the genome surveillance study.
173 Overall gender distribution in the sample set was 54.8% males and 45% females. In this study,
174 the percentage distribution of the cases within the age groups was 0.4% (0 to <2 years), 1.4%
175 (2 to <5 years), 4% (5 to <15 years), 59% (15 to <50 years), 23% (50 to <65 years), and 12% (\geq
176 65 years). The age distribution was according to the WHO Global Epidemiological Surveillance
177 Standards for Influenza [18]. The sample collection was carried out using a saline gargle
178 collection kit and the viral RNA was isolated using an RNA release buffer. The standard
179 operating procedure developed by CSIR-NEERI for Saline gargle-based sample collection and
180 one-step RNA isolation for SARS-CoV-2 detection by RTPCR and WGS is available [19]. A
181 documentary on CSIR-NEERI's Saline Gargle-based SARS-CoV-2 RT-PCR detection is also
182 available [20]. The isolated RNA samples were used immediately or stored at -80°C till further
183 use.

184

185 **2.4 RT-PCR for detecting SARS-CoV-2**

186 qRT-PCR was performed for quantitative detection of SARS-CoV-2 using MBPCR255 Hi-PCR
187 COVID-19 Triplex Probe PCR Kit (HIMEDIA) or Meril SARS-CoV-2 kit in each sample. The
188 primer-probe sets in the kits specifically detect viral RNA from SARS-CoV-2. The samples with
189 a Ct value of ≤ 38 were considered RT-PCR positive.

190

191 **2.5 SARS-CoV-2 whole genome sequencing**

192 The isolated RNA samples of 589 SARS-CoV-2 positive samples were selected for SARS-CoV-
193 2 WGS. The cDNA synthesis was carried out using the TAKARA Prime Script RT reagent kit
194 (RR037A) [21]. The sequencing libraries were constructed by multiplex PCR tiling according to
195 the protocol of ONT [22]. The prepared cDNA libraries were sequenced using MinION Mk1C or
196 MinION Mk1B.

197

198 **2.6 Bioinformatic analysis**

199 The live base-calling was performed using the Guppyv22.10.7 base-calling algorithm integrated
200 into the MinION Mk1C sequencer [23]. The processed FASTQ reads from the MinION

201 sequencer were analysed using the bioinformatics platform COMMANDER developed by
202 Genotypic Technology Pvt. Ltd [24]. COMMANDER is a graphical user interface software
203 developed to ease bioinformatic analysis post-sequencing. The FASTA sequence and the
204 variant call performed by the COMMANDER pipeline were further confirmed by the web-based
205 Pangolin COVID-19 Lineage Assigner [25]. The metadata, including the FASTA sequence, was
206 submitted to the Global initiative on sharing Avian Influenza Data (GISAID), and the Indian
207 biological data centre (IBDC).

208

209

210 3. RESULTS & DISCUSSION

211

212 This study has attempted to evaluate the utility of the gargle-based sample collection method for
213 SARS-CoV-2 genome surveillance. Ct values of qRT-PCR are inversely proportional to the viral
214 load in the sample. The Ct value range of samples analysed in this study was from 10 to 38
215 (**Fig.1**). The gargle-based sample collection was able to detect the virus by RT-PCR in cases
216 with lesser viral load; an earlier study with 250 paired samples of saline-gargle and VTM-swab
217 from patients revealed that gargle sample was able to detect the virus in samples with lesser
218 viral load (data unpublished). The gargle-based sample collection also enabled the successful
219 WGS of the positive samples with lesser viral loads. Generally, for a reasonably good WGS
220 read, the Ct value of the positive sample must be ≤ 25 . However, the gargle-based genome
221 surveillance has enabled the WGS of positive samples even with a Ct value above 35, which
222 has a lesser viral load.

223

224 Out of 589 samples, only 500 samples qualified for the SARS-CoV-2 WGS variant calling by
225 enforcing the criteria of $\geq 70\%$ genome coverage and sequencing coverage of $\geq 100X$. WGS
226 result of the SARS-CoV-2 positive samples revealed a diverse variant profile comprising 37
227 different Pango-lineage types categorised into 8 different clades of SARS-CoV-2 (**Fig 2**). The
228 SARS-CoV-2 variants which had a percentage share of $\geq 1\%$ in the study were AY.112 (38.8%),
229 B.1.617.2 (15.6%), B.1 (6.6%), AY.127(6.4%), B.1.617.1 (5.2%), AY.43 (5%), AY.122 (2.8%),
230 AY.100 (2.4%), AY.120 (2%), AY.112.2 (1.8%), AY.102 (1.8%), AY.75 (1.8%), AY.39 (1.4%),
231 AY.16 (1.2%), and AY.65 (1.2%). The 8 clades as per the next clade had a respective share of
232 21J (68.4%), 21A (17.2%), 20A (6.8%), 21B (5.2%), 21B (1.8%), 21K (0.20%), 20B (0.20%) and
233 20I (0.20%) (**Fig 2**). Overall variant percentage share among the samples and variants showing
234 $< 1\%$ percentage share is classified as other variants represented in supplementary **FigureS1**.

235 21J (Delta) is a variant of concern (VOC) Delta. This clade has spread in Europe, the Americas,
236 Africa, and Oceania. 21J(Delta) carries all mutations of 21A along with mutation at position
237 G215C. Additionally, other amino-acid mutations at ORF1a:A1306S, ORF1b:V2930L,
238 ORF1a:T3255I, ORF1a:T3646A, ORF1b:A1918V, and ORF7b:T40I were reported in 21J clade.
239 Clade 21A was first detected in India and had spike mutations L452R and P681 impacting
240 antibody binding. 21A has some additional mutations in spike protein at positions T19R, R158G,
241 T478K and D950N.

242
243 In this study, variant AY.112 appeared as an overall dominating variant. It was also noted that
244 AY.112 consistently appeared with a percentage share of at least >15% throughout the period
245 from March to December 2021. AY.112 showed a maximum prevalence (63.2%) in September.
246 An interesting trend was observed in this study concerning AY.112 which started emerging in
247 March and progressed to appear competitively till June with B.1.617.2 and completely replaced
248 B.1.617.2 in July. However, B.1.617.2 reemerged in August and continued to prevail till
249 December. Another variant, AY.127 which first emerged in August continued to increase from
250 October to December showing >27% percentage share in December. A detailed month-wise
251 variant distribution of variants and relative percentage share is summarised in **Figure 3a and**
252 **3b.**

253
254 Genomic surveillance for respiratory viruses should be a regular protocol for early detection of
255 any new outbreak, However, this is not the case; it can be observed that genomic surveillance
256 performed is concentrated in some parts of the world, while in other parts, no data is being
257 generated. Only 45 countries of the world, accounting for only 38%, perform high-quality
258 genomic surveillance, while 17 countries perform moderate levels of sequencing and 31
259 countries perform limited genomic surveillance. About 76 countries worldwide do not provide
260 any genomic sequencing data for surveillance [26,27]. In many underdeveloped or low-income
261 countries, the collection and transport of samples, lack of facilities, the overall cost of
262 sequencing, etc, can lead to such outcomes. To counter the emergence of novel viral variants
263 and proper outbreak surveillance, appropriate techniques for sample collection, sample
264 processing, and sequencing techniques suitable for undeveloped regions of the world are
265 required. Therefore, collecting, processing, and sequencing samples from even the most remote
266 geographic locations and rural communities are imperative. This study comprehensively
267 analyses alternate low-cost techniques for remote, resource-poor, undeveloped parts of the
268 world to perform genomic surveillance. Also, the study has projections for post-pandemic

269 surveillance by deploying patient-friendly, rapid, and economical sample collection strategies.
270 The type of sample used and the collection technique can also significantly impact the
271 sequencing results. The WHO lists NPS-OPS samples, bronchoalveolar lavage, sputum, saliva,
272 gargles, mouthwashes, etc., as samples that can have high viral RNA content and could
273 potentially be used for genomic surveillance [28]. Among these, NPS are the most commonly
274 used specimens for diagnosis and genomic surveillance; hence considered the gold standard
275 collection technique. After collection, these NPS-OPS swabs are placed in a VTM and sent for
276 RNA extraction, followed by screening RT-PCR. Collecting NPS-OPS samples requires
277 technical expertise, which may or may not be available in many places.

278 It is also not practical to deploy experts to remote locations because it would be technically
279 challenging to frequently collect sufficient samples for diagnosis and sequencing. Improper
280 sample collection is also a significant problem using NPS [13]. Patient non-cooperation due to
281 physical discomfort often makes it difficult for even experienced personnel to collect these
282 samples accurately. It is important to note that the primary function of VTM had been
283 transportation to ensure the viability and stability of the virus for the culture of viral samples.
284 However, we must consider the fact that very few VTM samples sent for testing and sequencing
285 are getting cultured. Thus, the question arises if VTM is necessary for testing and genome
286 sequencing. The ability of gargle-based genome surveillance to yield quality WGS even in lower
287 viral load samples could be due to a lack of PCR inhibitors in the gargle medium. The
288 phosphate-buffered saline (PBS) holds lesser interfering PCR inhibitors. On the other hand, the
289 routine VTM used in the OPS/NPS-based sample collection is reported to contain specific PCR
290 inhibitors [29]. The antibiotics present in the VTM to inhibit bacterial growth may degrade the
291 bacterial cells and release intracellular enzymes such as proteases and nucleases in the
292 medium; these enzymes could adversely impact PCR kinetics by compromising the nucleic acid
293 template if the cold chain is broken while transportation [30]. A study by Kirkland et. al (2020)
294 showed that commercially produced VTM solutions negatively influence the capacity to identify
295 SARS-CoV-2 and Influenza virus RNA. A study on the RNA extracted from samples collected
296 using commercial VTMs revealed that VTM components interfere with the PCR kinetics during
297 PCR while amplifying viral RNA in these samples. This study used Phosphate buffered saline
298 (PBS) added with 0.5% gelatin as a reference VTM and compared commercially available VTMs
299 with it; the findings showed that the RNA was stable in the PBS-Gelatin media for 48 hours at
300 room temperature, while no RNA was detectable in commercial VTMs after 48 hours at room
301 temperature [31]. The transport of naso-oropharyngeal swabs in VTM must be done under the

302 cold chain. There is a looming risk of RNA degradation due to a break in the cold chain, while it
303 is transported from resource-poor locations like remote or rural areas to distantly located testing
304 and sequencing facilities. The lack of infrastructure and technical expertise in the rural and
305 remote parts of the world can often lead to the loss of samples that could otherwise be used for
306 generating important surveillance data. Such shortfalls need to be addressed by exploring
307 alternatives.

308 The genomic surveillance process starts with sample collection and ensuring a good quality
309 sample is crucial for successful genomic surveillance. Conventional sample collection methods
310 for respiratory viruses such as NPS/OPS, Bronchoalveolar lavage, and anterior nares swabs
311 are invasive techniques and thus, discourage the voluntary participation of the public in genomic
312 surveillance. The saline gargle sample collection is non-invasive, and patient-friendly which will
313 be more acceptable to the public. Gargle-based sample collection is a self-collection method
314 and does not require any healthcare worker for sample collection; therefore, its scalability in
315 resource-poor settings is better than the conventional methods. For post-pandemic monitoring,
316 policymakers are focusing on employing waste-water genomic surveillance; however, for
317 monitoring the outbreaks in remote and rural areas, and the areas that are not connected to any
318 wastewater network it is not a feasible option for sustained genomic surveillance. The concept
319 of wastewater-based SARS-CoV-2 monitoring is highly biased towards an urban set-up, which
320 completely ignores the rural set-up. We believe that the non-invasive approaches like the saline
321 gargle method have an advantage over the wastewater surveillance method for post-pandemic
322 monitoring, especially in developing countries like India, where a very large proportion of
323 humanity (65%) still lives in rural areas [32] which are not connected to any wastewater system.
324 A large population in the urban area of India is also not connected to a wastewater system.
325 According to the 2011 Census of India, 38% of urban households, that is, 30 million homes, rely
326 on stand-alone septic tanks which are not connected to any wastewater network [33]. In a
327 situation like this, entirely relying on the wastewater-based surveillance technique may not be a
328 good proposition. It is important to reassess the utility of wastewater-based genome surveillance
329 and consider alternative approaches. Therefore, we propose that gargle-based genomic
330 surveillance is scalable and does not require significant deviations from the workflows post-
331 sample collection, making it suitable for post-pandemic surveillance applications. The
332 advantage of the saline gargle technique is the ease of sample collection and user-friendliness;
333 patients can collect the samples by themselves without requiring qualified technicians. The
334 mouth rinse or gargle-based sample collection method offers comparable results to the

335 commonly used swab-VTM-based sample collection method for SARS-CoV-2 detection
336 [34,35,36]. As SARS-CoV-2 is a respiratory virus, the gargle collection technique yields similar
337 results to a throat swab [37]. The gargle collection technique covers a larger surface in the
338 buccal area and the throat, offering a better sample consortium. This non-invasive sample
339 collection technique can be particularly advantageous for underdeveloped or remote areas as a
340 reliable sample collection technique for public surveillance in post-pandemic scenarios, which
341 can find more user acceptance than the invasive swab-VTM sample collection method.

342

343

344 **FIGURE LEGEND**

345

346 **Figure 1:** Monthly Ct values of the target gene of SARS-CoV-2 for Gargle-based genome
347 surveillance from March to December 2021

348 **Figure2:** Summary of variants and their corresponding clades found in the SARS-CoV-2 WGS
349 of saline gargle samples from March to December 2021

350 **Figure 3a:** Monthly occurrence of SARS-CoV-2 major variants in gargle-based genomic
351 surveillance from March to December 2021

352 **Figure 3b:** Percentage-wise monthly occurrence of SARS-CoV-2 major variants in gargle-
353 based genomic surveillance from March to December 2021

354 **FigureS1:** Overall share of SARS-CoV-2 variants identified by saline gargle-based WGS for
355 SARS-CoV-2

356

357

358 **CONFLICT OF INTERESTS**

359 The authors declare no conflicts of interest.

360

361 **ACKNOWLEDGMENTS**

362 This work was supported and funded by CSIR-NEERI, Nagpur. Some graphics in the graphical
363 abstract have been taken from Biorender. It is certified that the manuscript has been checked
364 for plagiarism by the institute knowledge resource centre through iThenticate (anti-plagiarism
365 software) KRC No. CSIR-NEERI/KRC/2023/FEB/EVC/2.

366

367 **AUTHOR DECLARATIONS**

368 I confirm all relevant ethical guidelines have been followed, and any necessary IRB and/or
369 ethics committee approvals have been obtained. The Institutional Ethics Committee (IEC) of
370 Council of Scientific and Industrial Research-National Environmental Engineering Research
371 Institute (CSIR-NEERI), Nagpur, India provided approval for the research. I confirm that all
372 necessary patient/participant consent has been obtained and the appropriate institutional forms
373 have been archived, and that any patient/participant/sample identifiers included were not known
374 to anyone (e.g., hospital staff, patients or participants themselves) outside the research group
375 so cannot be used to identify individuals.

376

377

378

379 REFERENCES

- 380 1. Zhu, N., Zhang, D., Wang, W., Li, X., Yang, B., Song, J., Zhao, X., Huang, B., Shi, W.,
381 Lu, R., Niu, P., Zhan, F., Ma, X., Wang, D., Xu, W., Wu, G., Gao, G. F., Tan, W., &
382 China Novel Coronavirus Investigating and Research Team (2020). A Novel Coronavirus
383 from Patients with Pneumonia in China, 2019. *The New England journal of medicine*,
384 382(8), 727–733. <https://doi.org/10.1056/NEJMoa2001017>
- 385 2. Cucinotta, D., & Vanelli, M. (2020). WHO Declares COVID-19 a Pandemic. *Acta Bio-*
386 *Medica □: Atenei Parmensis*, 91(1), 157–160. <https://doi.org/10.23750/abm.v91i1.9397>
- 387 3. WHO Coronavirus (COVID-19) Dashboard. (n.d.). With Vaccination Data. Retrieved
388 January 9, 2023, from <https://covid19.who.int/>
- 389 4. Naqvi, A. A. T., Fatima, K., Mohammad, T., Fatima, U., Singh, I. K., Singh, A., Atif, S. M.,
390 Hariprasad, G., Hasan, G. M., & Hassan, M. I. (2020). Insights into SARS-CoV-2
391 genome, structure, evolution, pathogenesis and therapies: Structural genomics
392 approach. *Biochimica Et Biophysica Acta (BBA) - Molecular Basis of Disease*, 1866(10),
393 165878.
- 394 5. Harvey, W. T., Carabelli, A. M., Jackson, B., Gupta, R. K., Thomson, E. C., Harrison, E.
395 M., Ludden, C., Reeve, R., Rambaut, A., Peacock, S. J., & Robertson, D. L. (2021).
396 SARS-CoV-2 variants, spike mutations, and immune escape. *Nature Reviews*
397 *Microbiology*, 19(7), 409–424.
- 398 6. Tracking SARS-CoV-2 variants. (2022, October 27).
399 <https://www.who.int/activities/tracking-SARS-CoV-2-variants>
- 400 7. G. La Rosa, M. Iaconelli, P. Mancini, G. Bonanno Ferraro, C. Veneri, L. Bonadonna, L.
401 Lucentini, E. Suffredini First detection of SARS-CoV-2 in untreated wastewater in Italy.

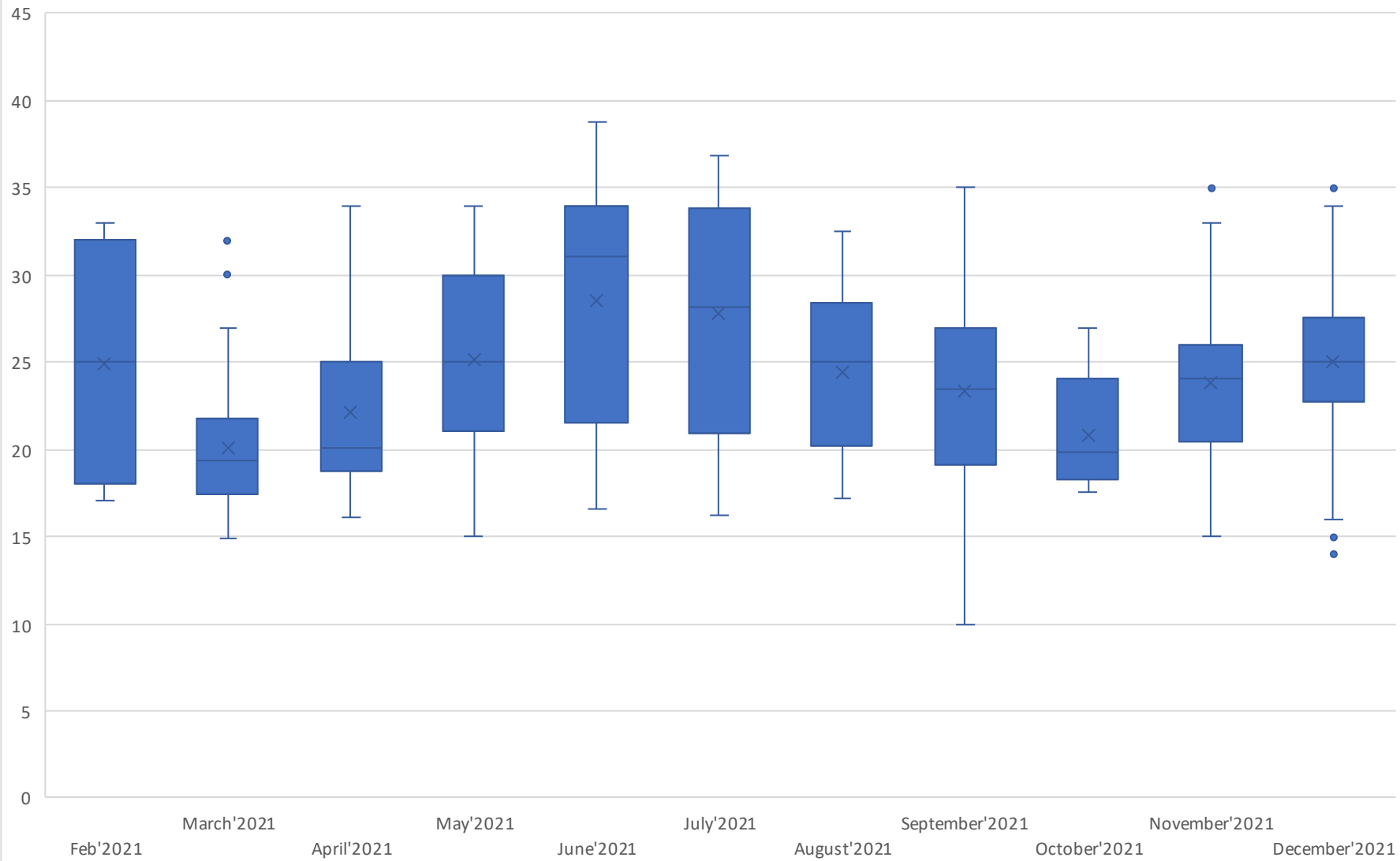
- 402 Sci. Total Environ., 736 (2020), p. 139652,
403 <https://doi.org/10.1016/j.scitotenv.2020.139652>
- 404 8. A. Hata, H. Hara-Yamamura, Y. Meuchi, S. Imai, R. Honda. Detection of SARS-CoV-2 in
405 wastewater in Japan during a COVID-19 outbreak. *Sci. Total Environ.* (2020), p. 143578,
406 <https://doi.org/10.1016/j.scitotenv.2020.143578>
- 407 9. A. Nemudryi, A. Nemudraia, T. Wiegand, K. Surya, M. Buyukyoruk, C. Cicha, K.K.
408 Vanderwood, R. Wilkinson, B. Wiedenheft Temporal detection and phylogenetic
409 assessment of SARS-CoV-2 in municipal wastewater *Cell Rep. Med.*, 1 (2020), p.
410 100098, <https://doi.org/10.1016/j.xcrm.2020.100098>
- 411 10. Yifan Zhu, Wakana Oishi, Chikako Maruo, Mayuko Saito, Rong Chen, Masaaki Kitajima,
412 Daisuke Sano, Early warning of COVID-19 via wastewater-based epidemiology:
413 potential and bottlenecks, *Science of The Total Environment*, Volume 767,2021,145124,
414 ISSN 0048-9697, <https://doi.org/10.1016/j.scitotenv.2021.145124>
- 415 11. Oleksandr Panasiuk, Annelie Hedström, Jiri Marsalek, Richard M. Ashley, Maria
416 Viklander, Contamination of stormwater by wastewater: A review of detection methods,
417 *Journal of Environmental Management*, Volume 152, 2015, Pages 241-250, ISSN 0301-
418 4797, <https://doi.org/10.1016/j.jenvman.2015.01.050>.
- 419 12. Wang, H., Liu, Q., Hu, J., Zhou, M., Yu, M. Q., Li, K. Y., Xu, D., Xiao, Y., Yang, J. Y., Lu,
420 Y. J., Wang, F., Yin, P., & Xu, S. Y. (2020). Nasopharyngeal Swabs Are More Sensitive
421 Than Oropharyngeal Swabs for COVID-19 Diagnosis and Monitoring the SARS-CoV-2
422 Load. *Frontiers in medicine*, 7, 334. <https://doi.org/10.3389/fmed.2020.00334>
- 423 13. Thomas S. Higgins, Arthur W. Wu, Jonathan Y. Ting, SARS-CoV-2 Nasopharyngeal
424 Swab Testing False-Negative Results From a Pervasive Anatomical Misconception,
425 *JAMA Otolaryngology-Head & Neck Surgery* November 2020 Volume 146; 993-994
- 426 14. Ministry of Science & Technology. *PressReleasePage @ pib.gov.in*. 2021.
427 <https://pib.gov.in/PressReleasePage.aspx?PRID=1722373> (accessed Oct 19, 2022)
- 428 15. Neeri's gargling test kit gets DCGI's nod. (2021, July 4). *Times of India*. Retrieved
429 February 14, 2023, from
430 [https://www.google.com/amp/s/m.timesofindia.com/city/nagpur/neeris-gargling-test-kit-](https://www.google.com/amp/s/m.timesofindia.com/city/nagpur/neeris-gargling-test-kit-gets-dcgi-nod/amp_articleshow/84103217.cms)
431 [gets-dcgi-nod/amp_articleshow/84103217.cms](https://www.google.com/amp/s/m.timesofindia.com/city/nagpur/neeris-gargling-test-kit-gets-dcgi-nod/amp_articleshow/84103217.cms)
- 432 16. IHIP. Integrated Health Information Platform Integrated Disease Surveillance
433 Programme Ministry of Health and Family Welfare, Government of India @
434 ihip.nhp.gov.in. <https://ihip.nhp.gov.in/idsp/#/>.

- 435 17. Provisional Population Totals, Census of India 2011 Cities Having Population 1 Lakh
436 and above Provisional Population Totals, Census of India 2011 Cities Having Population
437 1 Lakh and Above.; 2011.
- 438 18. WHO. Global Epidemiological Surveillance Standards for Influenza.; 2013.
439 <https://www.who.int/publications/i/item/9789241506601> Accessed on February 7, 2023
- 440 19. CSIR-NEERI_ SARS-CoV-2 RT-PCR testing and WGS Protocol and facilities available
441 for SARS-CoV-2.pdf.
442 https://drive.google.com/file/d/1pMS_XBUwQ7QjCjwYscw6e0Ctw3Jjvsr0/view
- 443 20. Director CSIR-NEERI. (2021b, August 9). Saline Gargle RT PCR Innovation by CSIR
444 NEERI [Video]. YouTube. <https://www.youtube.com/watch?v=1OPZFIF4GpQ>
- 445 21. Takara bio inc. RR037A For Research Use PrimeScript™ RT Reagent Kit (Perfect
446 Real Time) Product Manual.
447 https://www.takarabio.com/documents/UserManual/RR037A_e.v2008Da.pdf.
- 448 22. Oxford Nanopore Technologies. PCR Tiling of SARS-CoV-2 Virus with Rapid Barcoding
449 and Midnight RT PCR Expansion (SQK-RBK110.96 and EXPMRT001). Vol 3.; 2021.
450 <https://nanoporetech.com/resource-centre/knowledge> Accessed on February 7, 2023,
- 451 23. Wick RR, Judd LM, Holt KE. Performance of neural network base-calling tools for Oxford
452 Nanopore sequencing. *Genome Biol.* 2019;1-10. <https://doi.org/10.1186/s13059-019-1727-y>
- 453
- 454 24. Commander, a command line free GUI-based sequencing data analysis tool developed
455 by Genotypic Technology, Bangalore India <https://www.genotypic.co.in/commander/>.
456 Accessed on February 7, 2023,
- 457 25. Toole AO, Scher E, Underwood A, et al. Assignment of epidemiological lineages in an
458 emerging pandemic using the pangolin tool. 2021;7(2):1-9.
459 <https://doi.org/10.1093/ve/veab064>
- 460 26. Brito, A.F., Semenova, E., Dudas, G., et al. Global disparities in SARS-CoV-2 genomic
461 surveillance. *Nat Commun* 13, 7003 (2022). <https://doi.org/10.1038/s41467-022-33713-y>
- 462 27. Chen, Z., Azman, A.S., Chen, X. et al. Global landscape of SARS-CoV-2 genomic
463 surveillance and data sharing. *Nat Genet* 54, 499–507 (2022).
464 <https://doi.org/10.1038/s41588-022-01033-y>
- 465 28. Genomic sequencing of SARS-CoV-2: a guide to implementation for maximum impact
466 on public health. Geneva: World Health Organization; 2021. License: CC BY-NC-SA 3.0
467 IGO.

- 468 29. Schrader, C., Schielke, A., Ellerbroek, L., & Johne, R. (2012). PCR inhibitors -
469 occurrence, properties, and removal. *Journal of applied microbiology*, 113(5), 1014–
470 1026. <https://doi.org/10.1111/j.1365-2672.2012.05384.x>
- 471 30. Bickley, J., Short, J. K., McDowell, D. G., & Parkes, H. C. (1996). Polymerase chain
472 reaction (PCR) detection of *Listeria monocytogenes* in diluted milk and reversal of PCR
473 inhibition caused by calcium ions. *Letters in applied microbiology*, 22(2), 153–158.
474 <https://doi.org/10.1111/j.1472-765x.1996.tb01131.x>
- 475 31. Kirkland, P. D., & Frost, M. J. (2020). The impact of viral transport media on PCR assay
476 results for the detection of nucleic acid from SARS-CoV-2. *Pathology*, 52(7), 811–814.
477 <https://doi.org/10.1016/j.pathol.2020.09.013>
- 478 32. Rural population (% of total population) - India. data.worldbank.org. Retrieved
479 February28,2023,from
480 <https://data.worldbank.org/indicator/SP.RUR.TOTL.ZS?locations=IN>
- 481 33. Priyadarshini, S. (2021, May 21). India's sewage surveillance for SARS-CoV-2 going
482 down the drain. *Nature India; Nature Portfolio*. <https://doi.org/10.1038/nindia.2021.75>
- 483 34. Kandel, C. E., Young, M., Serbanescu, M. A., Powis, J. E., Bulir, D., Callahan, J., Katz,
484 K., McCready, J., Racher, H., Sheldrake, E., Quon, D., Vojdani, O. K., McGeer, A.,
485 Goneau, L. W., & Vermeiren, C. (2021). Detection of severe acute respiratory
486 coronavirus virus 2 (SARS-CoV-2) in outpatients: A multicenter comparison of self-
487 collected saline gargle, oral swab, and combined oral-anterior nasal swab to a provider
488 collected nasopharyngeal swab. *Infection control and hospital epidemiology*, 42(11),
489 1340–1344. <https://doi.org/10.1017/ice.2021.2>
- 490 35. Goldfarb, D. M., Tilley, P., Al-Rawahi, G. N., Srigley, J. A., Ford, G., Pedersen, H.,
491 Pabbi, A., Hannam-Clark, S., Charles, M., Dittrick, M., Gadkar, V. J., Pernica, J. M., &
492 Hoang, L. M. N. (2021). Self-Collected Saline Gargle Samples as an Alternative to
493 Health Care Worker-Collected Nasopharyngeal Swabs for COVID-19 Diagnosis in
494 Outpatients. *Journal of clinical microbiology*, 59(4), e02427-20.
495 <https://doi.org/10.1128/JCM.02427-20>
- 496 36. Saito, M., Adachi, E., Yamayoshi, S., Koga, M., Iwatsuki-Horimoto, K., Kawaoka, Y., &
497 Yotsuyanagi, H. (2020). Gargle Lavage as a Safe and Sensitive Alternative to Swab
498 Samples to Diagnose COVID-19: A Case Report in Japan. *Clinical infectious diseases: an official publication of the Infectious Diseases Society of America*, 71(15), 893–894.
499 <https://doi.org/10.1093/cid/ciaa377>
- 500

501 37. Bennett, S., Davidson, R. S., & Gunson, R. N. (2017). Comparison of gargle samples
502 and throat swab samples for the detection of respiratory pathogens. Journal of
503 virological methods, 248, 83–86. <https://doi.org/10.1016/j.jviromet.2017.06.010>
504
505

Monthwise Ct values of target gene of SARS-CoV-2 for Gargle based genome surveillance



Saline Gargle SARS-CoV-2 Genome Surveillance

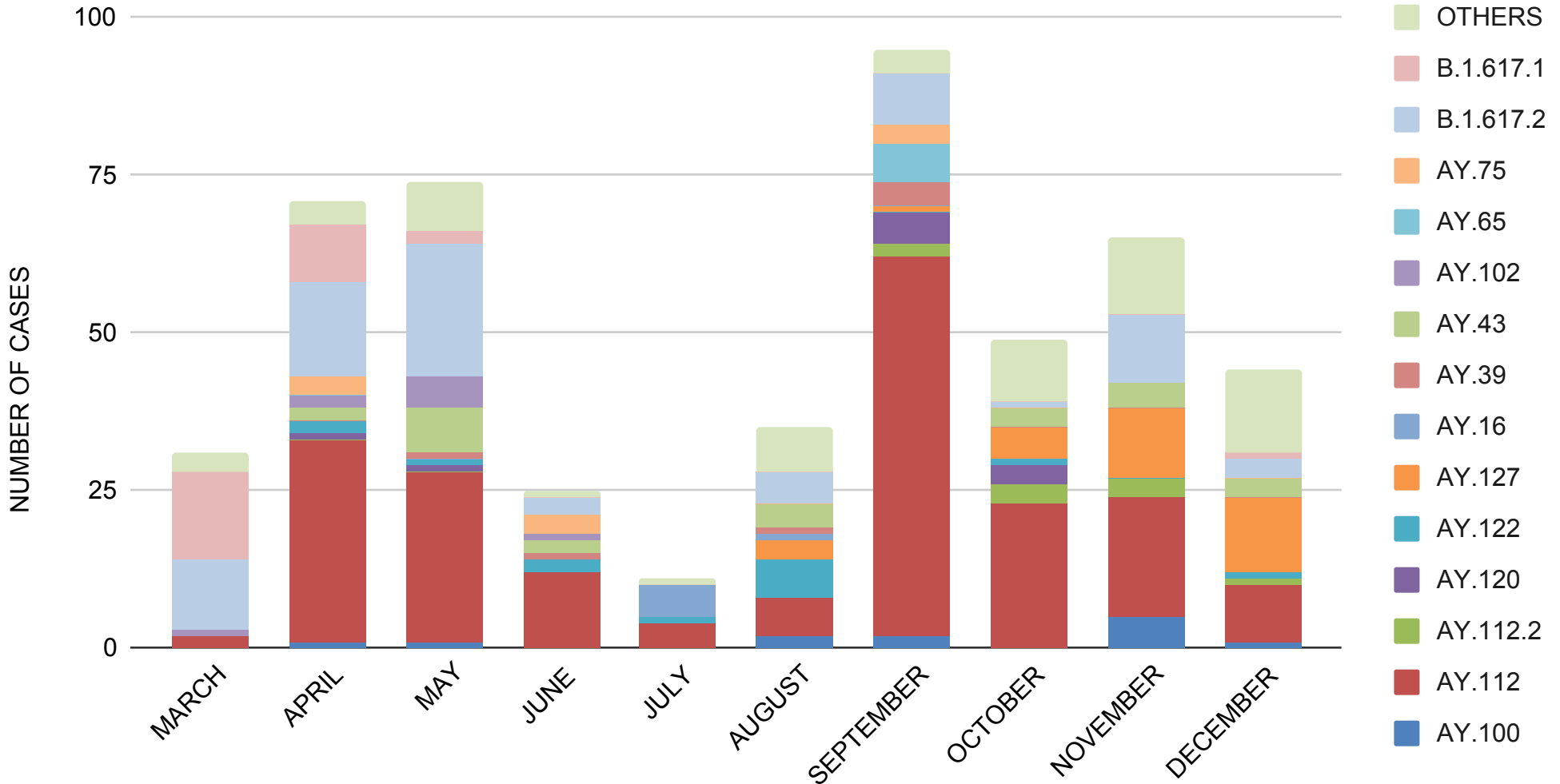
(March 2021 - December 2021)

Total SARS-CoV-2 WGS samples: 500

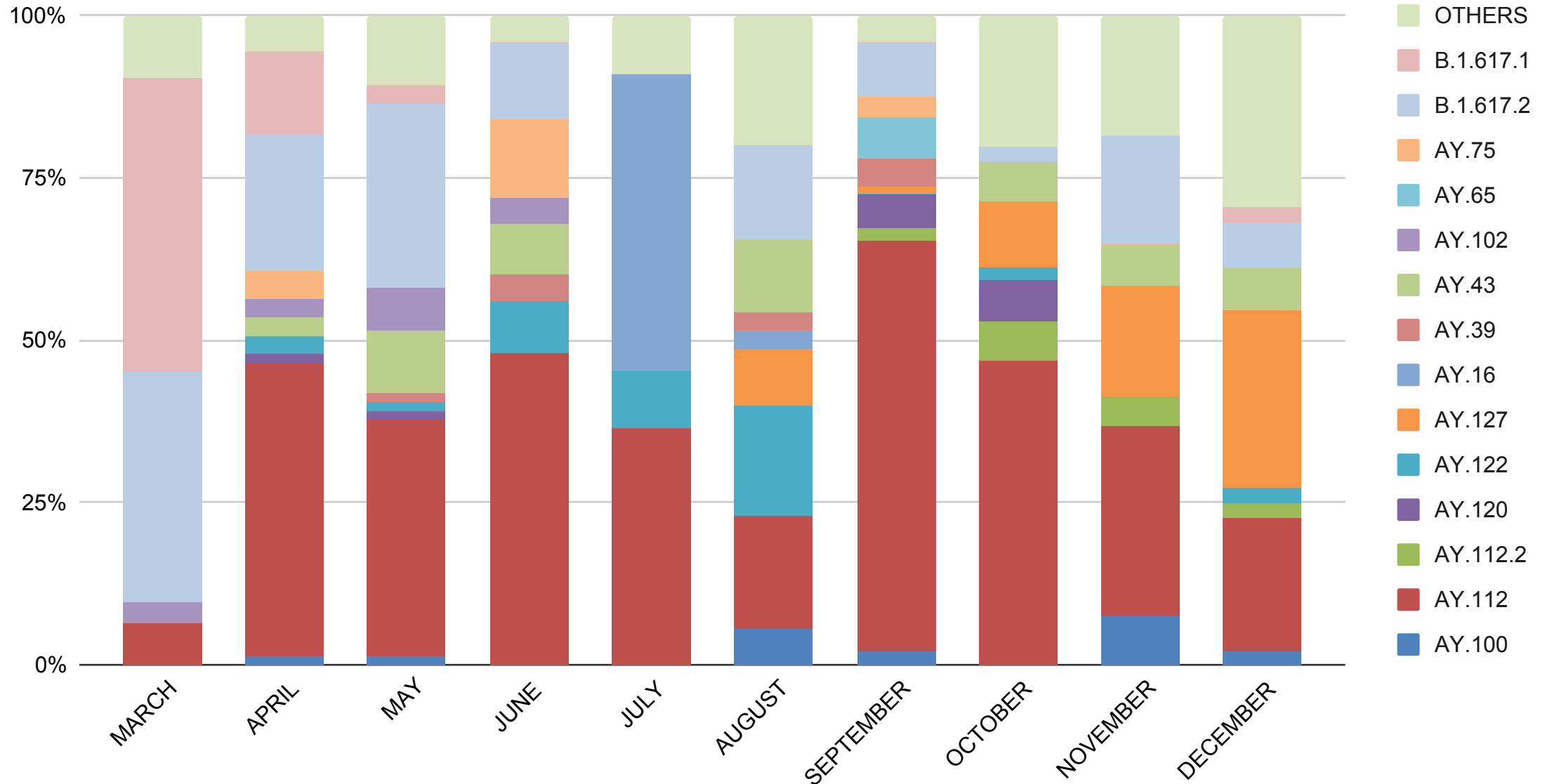
Pangolin- Lineage	Number of samples	Percentage share	Nextclade	WHO Comment
B.1.1.7	1	0.20	20I	Alpha
B.1.617.1	26	5.20	21B	Kappa
AY.100	12	2.40	21J	Delta
AY.101	2	0.40		
AY.102	9	1.80		
AY.105	1	0.20		
AY.107	1	0.20		
AY.111	2	0.40		
AY.112	194	38.80		
AY.112.2	9	1.80		
AY.120	10	2.00		
AY.122	14	2.80		
AY.126	1	0.20		
AY.127	32	6.40		
AY.129	3	0.60		
AY.29.1	1	0.20		
AY.33	1	0.20		
AY.36.1	1	0.20		
AY.39	7	1.40		
AY.39.1	1	0.20		
AY.4	1	0.20		
AY.43	25	5.00		
AY.44	3	0.60		
AY.45	1	0.20		
AY.65	6	1.20		
AY.88	1	0.20		
AY.98	1	0.20		
B	3	0.60		
AY.75	9	1.80	21I	
AY.54	1	0.20	21A	
AY.16	6	1.20		
AY.13	1	0.20		
B.1.617.2	78	15.60	20A	No Comments
B.1	33	6.60		
B.1.36	1	0.20		
B.1.1.354	1	0.20	20B	
BA.1	1	0.20	21K	Omicron
TOTAL	500	100		

medRxiv preprint doi: <https://doi.org/10.1101/2023.02.16.23286031>; this version posted March 7, 2023. The copyright holder for this preprint (which was not certified by peer review) is the author/funder, who has granted medRxiv a license to display the preprint in perpetuity. It is made available under a [CC-BY-ND 4.0 International license](https://creativecommons.org/licenses/by-nd/4.0/).

PERIODIC OCCURRENCE OF SARS-CoV-2 MAJOR VARIANTS IN GARGLE BASED GENOMIC SURVEILLANCE FROM MARCH - DECEMBER 2021



PERIODIC OCCURRENCE OF SARS-CoV-2 MAJOR VARIANTS IN GARGLE BASED GENOMIC SURVEILLANCE FROM MARCH - DECEMBER 2021 (PERCENT WISE)



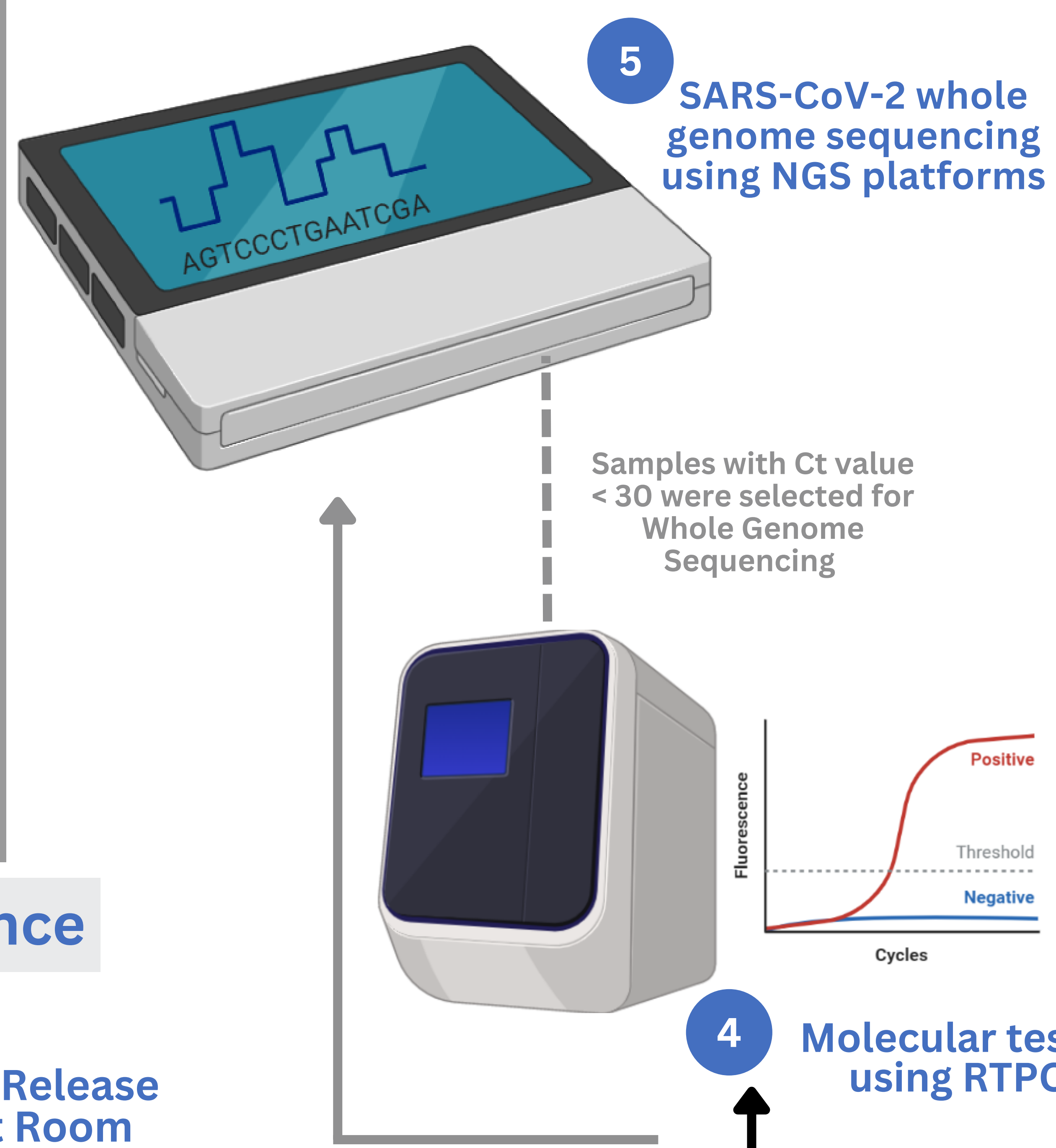
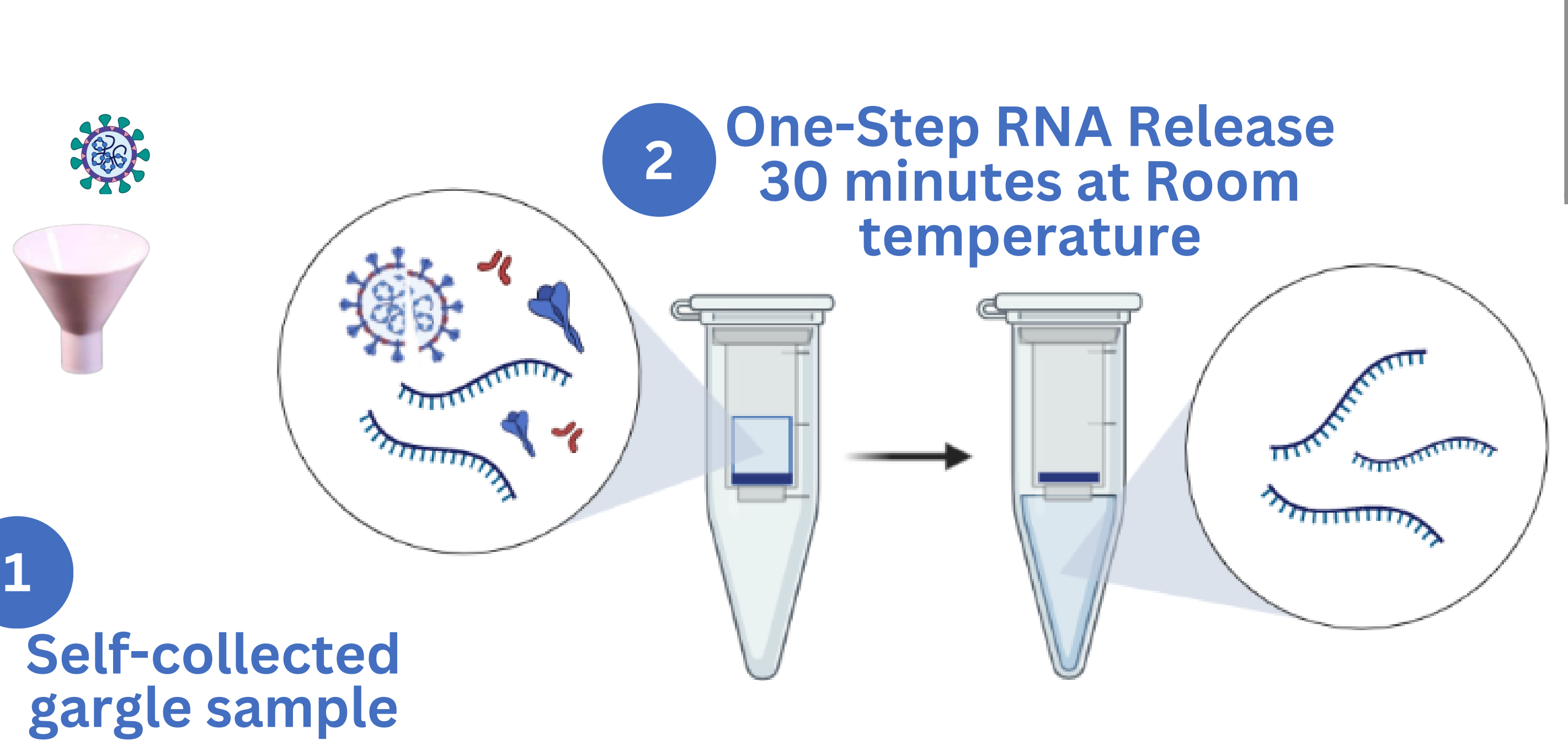
Wastewater SARS-CoV-2 Genomic Surveillance



- Highly diluted system
- Mixing of different wastewater streams
- Seasonal variations
- Backtracking to the patient is not possible
- No coverage in rural and resource-poor areas

medRxiv preprint doi: <https://doi.org/10.1101/2023.02.16.23286031>; this version posted March 1, 2023. The copyright holder for this preprint (which was not certified by peer review) is the author/funder, who has granted medRxiv a license to display the preprint in perpetuity. It is made available under a [CC-BY-ND 4.0 International license](https://creativecommons.org/licenses/by-nd/4.0/).

Saline Gargle Based SARS-CoV-2 Genomic Surveillance



6 Data Analysis and Reporting

