

1           **Old tools, new applications: use of environmental bacteriophages for typhoid surveillance**  
2           **and evaluating vaccine impact**

3

4 Yogesh Hooda<sup>1</sup>, Shuborno Islam<sup>1</sup>, Rathin Kabiraj<sup>1</sup>, Hafizur Rahman<sup>1</sup>, Kesia E. da Silva<sup>2</sup>, Rajan  
5 Saha Raju<sup>1</sup>, Stephen P Luby<sup>2</sup>, Jason R Andrews<sup>2</sup>, Samir K Saha<sup>1,3</sup>, Senjuti Saha<sup>1\*#</sup>

6

7 <sup>1</sup> Child Health Research Foundation, Dhaka, Bangladesh.

8 <sup>2</sup> Division of Infectious Diseases and Geographic Medicine, Stanford University School of  
9 Medicine, Stanford, California, USA.

10 <sup>3</sup> Department of Microbiology, Bangladesh Shishu Hospital and Institute, Dhaka, Bangladesh.

11

12

13 #Correspondence to

14 Senjuti Saha

15 Director & Scientist

16 Child Health Research Foundation

17 Dhaka, Bangladesh

18 [senjutisaha@chrfd.org](mailto:senjutisaha@chrfd.org)

19 **ABSTRACT**

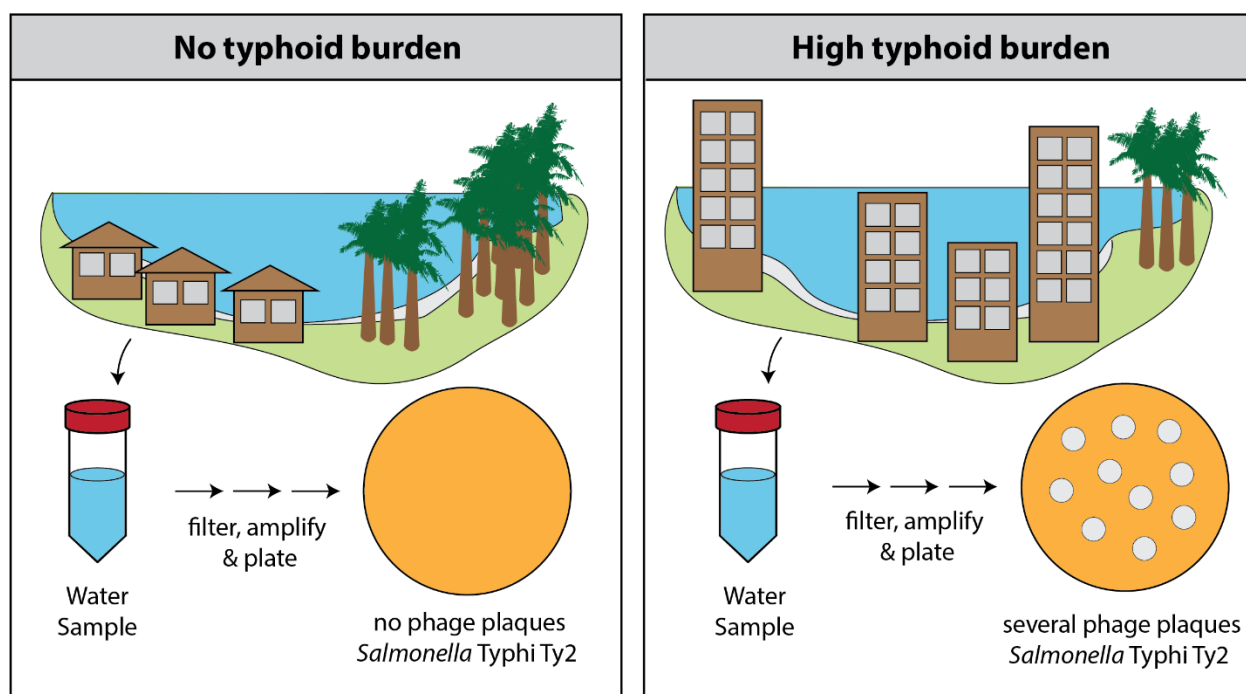
20 Typhoid-conjugate vaccines (TCVs) provide an opportunity to reduce the burden of typhoid  
21 fever, caused by *Salmonella* Typhi, in endemic areas. As policymakers design vaccination  
22 strategies, accurate and high-resolution data on disease burden is crucial. However, traditional  
23 blood culture-based surveillance is resource-extensive, prohibiting its large-scale and  
24 sustainable implementation. *Salmonella* Typhi is a water-borne pathogen, and here, we tested  
25 the potential of Typhi-specific bacteriophage surveillance in surface water bodies as a low-cost  
26 tool to identify where *Salmonella* Typhi circulates in the environment. In 2021, water samples  
27 were collected and tested for the presence of *Salmonella* Typhi bacteriophages at two sites in  
28 Bangladesh: urban capital city, Dhaka, and a rural district, Mirzapur. *Salmonella* Typhi-specific  
29 bacteriophages were detected in 66 of 211 (31%) environmental samples in Dhaka, in  
30 comparison to 3 of 92 (3%) environmental samples from Mirzapur. In the same year, 4,620  
31 blood cultures at the two largest pediatric hospitals of Dhaka yielded 215 (5%) culture-  
32 confirmed typhoid cases, and 3,788 blood cultures in the largest hospital of Mirzapur yielded 2  
33 (0.05%) cases. 75% (52/69) of positive phage samples were collected from sewage. All isolated  
34 phages were tested against a panel of isolates from different *Salmonella* Typhi genotypes  
35 circulating in Bangladesh and were found to exhibit a diverse killing spectrum, indicating  
36 diverse bacteriophages were isolated. These results suggest an association between the  
37 presence of Typhi-specific phages in the environment and the burden of typhoid fever, and the  
38 potential of utilizing environmental phage surveillance as a low-cost tool to assist policy  
39 decisions on typhoid control.

40 **Highlights:**

- 41 - Typhi-specific bacteriophages can be isolated from surface waters in endemic countries  
42 using low-cost methods  
43 - More Typhi-specific bacteriophages are obtained in areas with higher typhoid cases  
44 - Typhi-specific bacteriophages exhibit diverse activity spectrum against a panel of  
45 *Salmonella* Typhi isolates circulating in Bangladesh  
46 - Environmental surveillance can be used as a tool to predict typhoid burden  
47  
48  
49  
50  
51

52 **Graphical abstract:**

53



54

## 55 INTRODUCTION

56 Typhoid fever is a systemic infection caused by the water-borne pathogen *Salmonella enterica*  
57 serovar Typhi. This pathogen is common in many low- and middle-income countries (LMICs)  
58 causing an estimated 135 000 deaths and 14 million infections globally (Stanaway et al., 2019).  
59 The World Health Organization (WHO) recommended the use of typhoid conjugate vaccines in  
60 settings with high burden of typhoid fever (Andrews et al., 2018; Saha et al., 2021). Countries  
61 have begun implementing these suggestions, and several countries have performed large-scale  
62 clinical trials to demonstrate that these vaccines exhibit 80-85% efficacy in preventing  
63 infections (Patel et al., 2021; Qadri et al., 2021; Shakya et al., 2019). Typhoid-conjugate vaccines  
64 are currently being utilize to tackle an extensively-drug resistant (XDR) *Salmonella* Typhi  
65 outbreak in Hyderabad, Pakistan, where vaccine effectiveness has been demonstrated to be  
66 high (Batoool et al., 2021).

67  
68 Decisions are currently being made to roll out typhoid-conjugate vaccines in other endemic  
69 countries, however, accurate and high-resolution spatial data regarding the burden of typhoid  
70 is required for optimal use of the available vaccines. The current estimates of burden of typhoid  
71 fever in countries have primarily come from modelling studies based on limited surveillance  
72 data and do not provide the geographical and temporal resolution within local communities  
73 and countries to design effective preventive and treatment measures. The paucity of the data is  
74 in large part because traditional blood culture surveillance is resource extensive, requires  
75 clinical laboratory infrastructure and trained health and research professionals. Consequently,  
76 very few LMICs routinely conduct these studies and a few that do, tend to focus on high-risk  
77 urban settings, and are not able to sustain these studies as a regular part of health  
78 infrastructure. This has led to search for low-cost and sustainable methods to supplement  
79 traditional clinical surveillance systems (Andrews et al., 2020; Saha et al., 2019). To this end,  
80 environmental surveillance strategies that can identify *Salmonella* Typhi in different water  
81 supply have been proposed. In recent years, environmental wastewater surveillance has been  
82 used for early detection and monitoring the spread of SARS-CoV-2 (Karthikeyan et al., 2022,  
83 2021) and poliovirus (Asghar et al., 2014) among others.

84  
85 Previous studies have shown that high detectable levels of *Salmonella* Typhi in the water supply  
86 overlaps with areas of disease burden, suggesting sampling water could be utilized as a  
87 preliminary surveillance proxy (Andrews et al., 2020; Sikorski and Levine, 2020). While it has not  
88 been possible to reproducibly culture *Salmonella* Typhi directly from environmental water,  
89 quantitative polymerase chain reaction (qPCR) has been proposed to detect *Salmonella* Typhi  
90 DNA (Liu et al., 2021; Saha et al., 2019). However, qPCR-based methods cannot be replicated in  
91 most settings with typhoid burden, due to the lack of infrastructure (machines, molecular  
92 techniques etc.) and the high associated cost. To address this gap, we investigated if the  
93 presence of bacteriophages in the environmental water samples could be used as a proxy to  
94 estimate the prevalence of *Salmonella* Typhi in water bodies.

95  
96 Bacteriophages (or phages) are viruses that infect bacteria and bacterial abundance, phenotypic  
97 characteristics, and long-term evolutionary trajectory. Bacteriophages are very specific to their  
98 host bacterial species and often able to discriminate between different sub-populations based  
99 on minor genetic differences in host receptor and surface epitopes (De Smet et al., 2017).  
100 Bacteriophages against *Salmonella* Typhi (Typhi phages) were first reported in the 1940's (Felix,  
101 1955). Typhi phages were extensively used for bacterial typing in the 1940s-80s before the  
102 advent of molecular diagnostic methods such as PCR and genomic sequencing (Farmer et al.,  
103 1975). However, little has been done in the last 50 years and there is a lack of contemporary  
104 literature regarding Typhi phages from typhoid-endemic countries. This motivated us to initiate  
105 a pilot study to determine the feasibility of detecting *Salmonella* Typhi-specific phages in water  
106 bodies and typhoid burden at two geographic regions: Dhaka, a city of 9 million people with a  
107 high typhoid burden and Mirzapur, a rural district with 340,000 people that has low typhoid  
108 burden. Overall, our work provides a pilot study for testing if the prevalence of phages  
109 correlates with local typhoid burden.

110

## 111 **METHODS**

112 *Data from clinical surveillance and ethical considerations*

113 The clinical laboratories of Bangladesh Shishu Hospital and Institute [BSHI], Shishu Shasthya  
114 Foundation Hospital, [SSFH]) and Kumudini Women Medical College and Hospital [KMWCH] are  
115 part of the laboratory network of Child Health Research Foundation CHRF, where all data are  
116 stored electronically. These laboratories are part of the WHO-supported Invasive Bacterial  
117 Vaccine Preventable Surveillance conducted at the CHRF and has been described earlier (Saha  
118 et al., 2017). Data on blood culture surveillance was obtained from these electronic records.  
119 The protocols for data use were approved by the ethics review committees of the Bangladesh  
120 Institute of Child Health, BSHI. Blood samples were collected and received at the laboratories as  
121 part of routine clinical care.

122

### 123 Environmental sample collection and bacteriophage isolation

124 Water samples were collected from sewage drains, rivers, ponds, lakes, and stagnant water  
125 bodies selected based on accessibility. Stagnant waters are defined as temporary water bodies  
126 that form after flooding or rainfall that cannot be used for livestock or human use, often due to  
127 poor water quality. A sterile cup, attached to a rope, was used to collect >10 ml of water  
128 sample from each source. Maintaining sterile techniques, the sample was transferred into a  
129 sterile bottle for transportation. Ten ml of the sample was centrifuged at 10,000 rpm for 5  
130 minutes in a 15 mL conical tube to pellet debris and bacteria or larger microbes. The  
131 supernatant was passed through a 0.22 µm PES syringe filter into a new tube. The filtered  
132 sample was stored at 4°C up to 72 hours before use for further experiments.

133

134 A total of 500 µL of the filtered water sample was mixed with 450 µl of LB broth and 50 µl of  
135 overnight liquid Ty2 host culture in a 2 mL microcentrifuge tube. This mixture was incubated at  
136 37°C for 2 hours followed by the addition of 2-3 drops of chloroform to lyse and kill all bacteria  
137 in the mixture without affecting bacteriophages. The mixture was then centrifuged at 10,000  
138 rpm for 10 minutes and 750 µL of the supernatant potentially containing enriched *Salmonella*  
139 Typhi bacteriophages was transferred to a new tube.

140

### 141 Bacteriophage detection & propagation

142 For bacteriophage detection, the enriched sample was tested using the double-layer agar  
143 method described earlier (Kropinski et al., 2009). In brief, 100 µl of the sample was incubated  
144 with 200 µl of overnight culture host strain Ty2 for 20 minutes. The entire 300 µl and was mixed  
145 with 3 mL of molten soft agar (0.7% agar) and poured over solid hard agar plates (1.5% agar).  
146 These plates were incubated at 37°C for 14-16 hours and the appearance of plaques the next  
147 day indicated the presence of bacteriophages in the sample. For each plaque morphology, a  
148 plaque was picked using a 100 µl pipette tip and resuspended in 100 µl of tryptic soy broth. Two  
149 drops of chloroform were added to the resuspension followed by 10 minutes of incubation, and  
150 a final centrifugation at 10,000 rpm for 10 minutes. 70 µl of the supernatant was transferred to  
151 a new tube which contained a clone of phages of a single morphology.

152

### 153 Activity spectra of Typhi phages

154 To confirm that these phages are Typhi specific, 3 µl dilutions of isolated phages were spotted  
155 on strains of *Salmonella* enteric serovars Paratyphi A (E321: 1100582310), Paratyphi B (366817)  
156 and Typhimurium LT2, and Gram-negative bacteria *Escherichia coli* (ATCC: 25922), *Klebsiella*  
157 *pneumoniae* (ATCC: 700603 & ATCC: 9349) and *Pseudomonas aeruginosa* (ATCC: 27853) using  
158 the double layer methodology.

159

160 To test diversity of the phages, they were also spotted on 14 *Salmonella* Typhi isolates collected  
161 from blood culture belonging to different genotypes previously described to be present in  
162 Bangladesh (Tanmoy et al., 2018). The plates were incubated overnight at 37°C for 14-16 hours  
163 and the plates visualized for zones of clearing. The killing activities against the different  
164 genotypes were recorded and hierarchical clustering and heat map generation was made using  
165 the R package *heatmaply*.

166

## 167 **Results**

### 168 Clinical typhoid surveillance

169 Since 2012, we have been conducting surveillance to monitor enteric fever, pneumonia,  
170 meningitis, and sepsis (as part of the Invasive Bacterial Vaccine Preventable Disease

171 Surveillance of the WHO) in two hospitals in urban Dhaka (BSHI and SSFH), and in one hospital  
 172 in Mirzapur (KMWCH), a rural district approximately 60 km north of Dhaka (Saha et al., 2018,  
 173 2017). In 2021, we performed 4,620 blood cultures in BSHI & SSFH, of which 215 (4.7%) were  
 174 culture-confirmed for *Salmonella* Typhi. In contrast, at KMWCH, during the same period 3,788  
 175 blood cultures were performed and only 2 (0.05%) were culture-confirmed for *Salmonella* Typhi  
 176 (Table 1). The burden of culture-confirmed cases of typhoid fever in Mirzapur is 100-fold lower.

**Table 1. Blood culture positivity of *Salmonella* Typhi in clinical surveillance, and bacteriophage positivity in environmental water samples in Dhaka and Mirzapur in Bangladesh.**

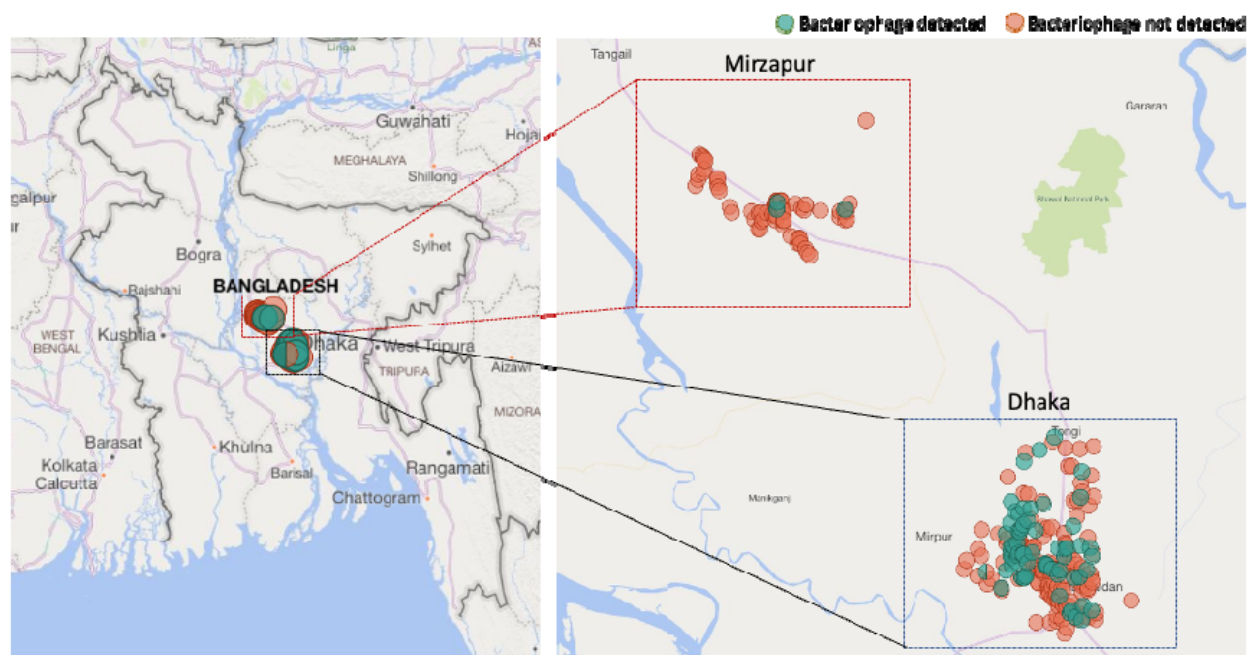
Study site in Bangladesh	Type of surveillance	Type of sample	Total no. of samples tested	No. of <i>Salmonella</i> Typhi/ phage positive sample	% Positive samples
Dhaka	Clinical surveillance	Blood	4620	215	5%
	Environmental surveillance	Sewage	168	51	30%
		Lake	18	10	56%
		Pond	15	2	13%
		River	5	2	40%
		Stagnant water	5	1	20%
Total	211	66	31%		
Mirzapur	Clinical surveillance	Blood	3788	2	0.05%
	Environmental surveillance	Sewage	3	1	33%
		Pond	48	0	0%
		River	4	0	0%
		Stagnant water	37	2	5%
Total	92	3	3%		

177

178 Environmental phage surveillance



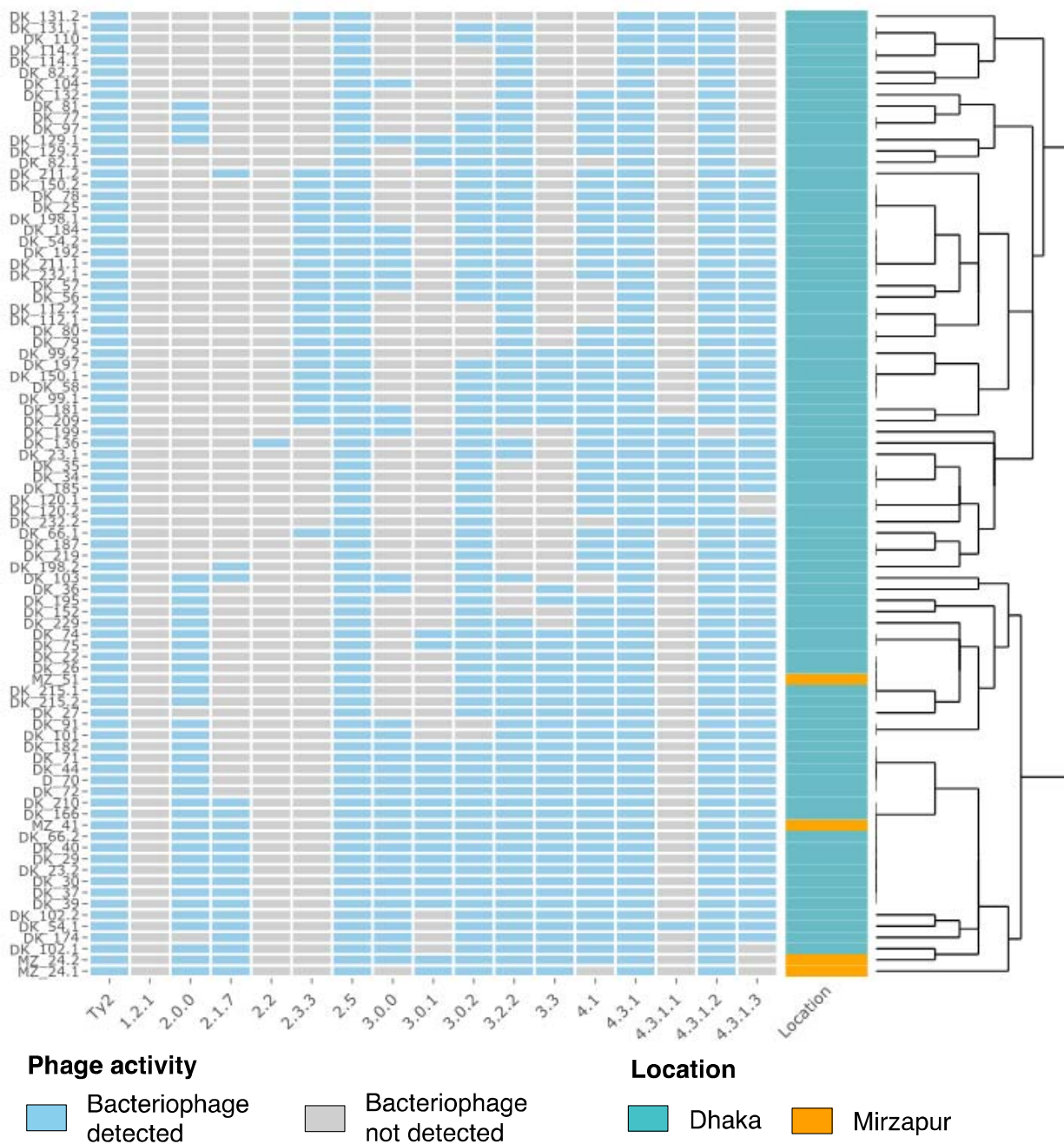
179 Between August 2021 and December 2021, we collected 211 environmental water samples in  
180 the Dhaka region. These samples constituted of sewage water (n = 168), lake (n = 18), pond (n =  
181 15), river (n = 5) and stagnant water (n = 5) from different sites across Dhaka (Figure 1A). Sixty-  
182 six of the 211 samples (31%) exhibited plaque formation, and in all cases, the plaques could be  
183 propagated confirming the presence of active bacteriophages. We observed at least two  
184 morphologies in 16 samples suggesting different phages in the same sample. Phages of  
185 different morphologies could be further purified during propagation bringing the total number  
186 isolated lytic phages to 82 from 211 samples in Dhaka. The distribution of positive and negative  
187 samples showed that Typhi phages were present in all types of water bodies tested (Table 1).



**Figure 1: Location of water sample collection and detection of *Salmonella* Typhi phages in water samples of urban Dhaka and rural Mirzapur, Bangladesh.**

188  
189 In contrast, a total of 92 environmental samples were collected during the same time from the  
190 Mirzapur region (Figure 1B). These samples constituted of sewage water (n = 3), pond (n = 48),  
191 river (n = 4), and stagnant water (n = 37). A total of 3 samples showed positive phage lytic  
192 activity in the 92 samples tested (3%), the details of which are provided in Table 1. Two  
193 different plaque morphologies were noted in one sample, bringing a total of 4 isolated phages  
194 from these 92 samples (Table S1). No phages were detected in ponds or river; one positive

195 sample was from sewage water (n=1, 33%) and two from stagnant water. Overall, phage  
196 prevalence in water bodies in Dhaka (31%) was 10-fold higher than water bodies in Mirzapur  
197 (3%), correlating with the culture-confirmed typhoid cases in the largest hospitals of the  
198 regions.



genotypes (X-axis) circulating in Bangladesh. Blue represents activity/plaque formation, white represents no activity/no plaque formation. The phages on the Y-axis are labelled based on the site of isolation. Phages from Mirzapur are labelled as MZ, and From Dhaka are labelled as DK. Multiple phages isolated from the sample are indicated with .1 and .2 at the end of the label. The heat map was made using the R package *heatmapply*.

199

### 200 Host range and diversity of Typhi phages

201 To test the specificity of phages isolated, we tested all 86 isolated phages against closely related  
202 *Salmonella* enteric serovars Typhimurium, Paratyphi A and Paratyphi B, and closely related  
203 *Enterobacteriaceae* species *Escherichia coli* and *Klebsiella pneumoniae*. Another gamma-  
204 proteobacterium *Pseudomonas aeruginosa* was also included. No cross activity was observed,  
205 depicting that these phages are highly specific to *Salmonella* Typhi.

206

207 Furthermore, to understand the diversity of the phages collected, we tested the killing  
208 spectrum of the 86 phages against a panel of 17 *Salmonella* Typhi strains each representing a  
209 different genotype circulating in Bangladesh (Tanmoy et al., 2018) (Figure 2). The phages  
210 showed a diverse killing spectrum and could be grouped into 48 clusters based on their killing  
211 activity. This demonstrated that the circulating *Salmonella* Typhi strains in Bangladesh are not  
212 equally susceptible to all environmental phages; some are more susceptible than others. In  
213 addition, phages with different plaque morphologies from the same samples often displayed  
214 (for example DK\_23.1 and DK\_23.2) different spectra, indicating that multiple phages can  
215 circulate in the same water body at the same time.

216

### 217 **Discussion**

218 Our pilot study shows that detection of bacteriophages specific to *Salmonella* Typhi may be a  
219 rapid environmental surveillance method to understand the presence of typhoid fever in the  
220 community. 33% of environmental samples collected in Dhaka contained phages, where blood  
221 culture positivity was 5%; by comparison, 3% of environmental samples collected in Mirzapur  
222 contained phages, where blood culture positivity was 0.05%. Of all the sources of water  
223 collected, 52/69 (75%) of samples were collected from sewage indicating that wastewater

224 surveillance is well-suited for monitoring typhoid fever. In Dhaka, a city with high burden of  
225 typhoid fever, high phage positivity was also seen in water samples collected from lakes (56%)  
226 and rivers (40%). Similar results were obtained from the related study from Nepal, another  
227 typhoid endemic country in South Asia.

228  
229 Given the minimal resources required for undertaking environmental phage surveillance, it can  
230 be readily rolled out in resource-constrained settings and can complement existing surveillance  
231 strategies. Sample processing required minimal resources, which primarily include collection  
232 bottles and/or tubes, syringes with 0.22 syringe filters, petri dishes, media for bacterial growth,  
233 an incubator, a centrifuge, pipettes, and the laboratory strain Ty2 of *Salmonella* Typhi (See  
234 Methods). The cost for consumables for each sample less than USD 10 in Bangladesh, this might  
235 vary slightly based on location. Such low costs of sample collection and easy processing means  
236 that phage surveillance is more scalable than PCR-based molecular methods, which are both  
237 resource and expertise intensive. Furthermore, the stability of phages (Jończyk et al., 2011) in  
238 water means that samples can be collected from all over the country and tested at any location  
239 with minimal fears of loss of quality of the results obtained. In contrast, environmental DNA  
240 degrades fast, and thus PCR based surveillance typically requires transport of refrigerated or  
241 frozen samples.

242  
243 Limited work has been done in investigating the role that phages play in the ecology of  
244 *Salmonella* Typhi. The abundance and diversity of Typhi phages in terms of the killing spectrum  
245 (seen in our study) and the genetic sequences (seen in related study from Nepal) highlight that  
246 Typhi bacteriophages are likely to play an important role in determining the spread and  
247 seasonality of *Salmonella* Typhi. Additionally, certain genotypes of *Salmonella* Typhi (such as  
248 1.2.1, 2.2 and 4.3.1.1) are more resistant to phages vs others (such as 4.3.1.2, 4.3.1 and 2.5).  
249 The molecular basis of the observed differences in phage resistance amongst different  
250 genotypes may be due to differences in receptor sequences and/or modifications, or presence  
251 of phage defense systems (such as CRISPR-Cas). Future studies addressing these questions may  
252 be helpful in determining the impact phages have on circulating *Salmonella* Typhi population

253 (Faruque et al., 2005; LeGault et al., 2021). Additionally, with rising antimicrobial drug  
254 resistance, renewed research on Typhi phages might provide alternate weapons for clinical  
255 development.

256  
257 The results in this study should be interpreted within the context of the following limitations.  
258 First, the number of samples obtained does not fully represent the number of water bodies  
259 present in Dhaka or Mirzapur. Second, no water sampling could be conducted from July-August  
260 during the study period due to monsoon-associated floods. Third, all phage amplification steps  
261 were done in *Salmonella* Typhi strain Ty2, and hence phages that do not infect this strain were  
262 missed. Fourth, sewage samples were underrepresented in Mirzapur due to lack of a sewage  
263 system in many parts of rural areas. Finally, comparison with the PCR-based assays will be  
264 required to identify the specificity and sensitivity of phage detection. Expansion of this study to  
265 other regions of Bangladesh where clinical data is available will help in resolving some of these  
266 limitations. It would also be helpful to examine temporal trends in phage positivity and how  
267 these trends correlate with the seasonality of typhoid fever.

268  
269 In summary, in this study, we propose a simple, cost-effective, and scalable method for  
270 conducting environmental surveillance for typhoid fever. The method uses standard  
271 microbiological laboratory infrastructure and techniques to detect Typhi-specific  
272 bacteriophages. Environmental phage surveillance can be used to estimate typhoid in other  
273 countries, including in Sub-Saharan Africa where limited epidemiological data on typhoid fever  
274 is available (Carey and Steele, 2019; Kim et al., 2022). Environmental phage surveillance may  
275 be also applied to map routes of disease transmission by focusing on wastewater/sewage  
276 facilities in the region. This tool, combined with traditional blood culture surveillance (Wang et  
277 al., 2020), can generate community-level data to evaluate the impact of interventions including  
278 the introduction of TCV, water improvement projects, and sanitation and hygiene systems.

279

## REFERENCES

- 280 Andrews, J.R., Qamar, F.N., Charles, R.S., Ryan, E.T., 2018. Extensively Drug-Resistant Typhoid  
281 — Are Conjugate Vaccines Arriving Just in Time? *N. Engl. J. Med.* 379, 1493–1495.
- 282 Andrews, J.R., Yu, A.T., Saha, Senjuti, Shakya, J., Aiemjoy, K., Horng, L., Qamar, F., Garrett, D.,  
283 Baker, S., Saha, Samir, Luby, S.P., 2020. Environmental Surveillance as a Tool for  
284 Identifying High-risk Settings for Typhoid Transmission. *Clin. Infect. Dis. Off. Publ. Infect.*  
285 *Dis. Soc. Am.* 71, S71–S78. <https://doi.org/10.1093/cid/ciaa513>
- 286 Asghar, H., Diop, O.M., Weldegebriel, G., Malik, F., Shetty, S., El Bassioni, L., Akande, A.O., Al  
287 Maamoun, E., Zaidi, S., Adeniji, A.J., Burns, C.C., Deshpande, J., Oberste, M.S., Lowther,  
288 S.A., 2014. Environmental Surveillance for Polioviruses in the Global Polio Eradication  
289 Initiative. *J. Infect. Dis.* 210, S294–S303. <https://doi.org/10.1093/infdis/jiu384>
- 290 Batool, R., Tahir Yousafzai, M., Qureshi, S., Ali, M., Sadaf, T., Mehmood, J., Ashorn, P., Naz  
291 Qamar, F., 2021. Effectiveness of typhoid conjugate vaccine against culture-confirmed  
292 typhoid in a peri-urban setting in Karachi: A case-control study. *Vaccine* 39, 5858–5865.  
293 <https://doi.org/10.1016/j.vaccine.2021.08.051>
- 294 Carey, M.E., Steele, A.D., 2019. The Severe Typhoid Fever in Africa Program Highlights the Need  
295 for Broad Deployment of Typhoid Conjugate Vaccines. *Clin. Infect. Dis.* 69, S413–S416.  
296 <https://doi.org/10.1093/cid/ciz637>
- 297 De Smet, J., Hendrix, H., Blasdel, B.G., Danis-Wlodarczyk, K., Lavigne, R., 2017. *Pseudomonas*  
298 predators: understanding and exploiting phage–host interactions. *Nat. Rev. Microbiol.*  
299 15, 517–530. <https://doi.org/10.1038/nrmicro.2017.61>
- 300 Farmer, J.J., Hickman, F.W., Sikes, J.V., 1975. Automation of *Salmonella typhi* phage typing.  
301 *Lancet Lond. Engl.* 2, 787–790. [https://doi.org/10.1016/s0140-6736\(75\)80004-3](https://doi.org/10.1016/s0140-6736(75)80004-3)
- 302 Faruque, S.M., Naser, I.B., Islam, M.J., Faruque, A.S.G., Ghosh, A.N., Nair, G.B., Sack, D.A.,  
303 Mekalanos, J.J., 2005. Seasonal epidemics of cholera inversely correlate with the  
304 prevalence of environmental cholera phages. *Proc. Natl. Acad. Sci. U. S. A.* 102, 1702–  
305 1707. <https://doi.org/10.1073/pnas.0408992102>
- 306 Felix, A., 1955. World survey of typhoid and paratyphoid-B phage types. *Bull. World Health*  
307 *Organ.* 13, 109–170.
- 308 Jończyk, E., Kłak, M., Międzybrodzki, R., Górski, A., 2011. The influence of external factors on  
309 bacteriophages—review. *Folia Microbiol. (Praha)* 56, 191–200.  
310 <https://doi.org/10.1007/s12223-011-0039-8>
- 311 Karthikeyan, S., Levy, J.I., De Hoff, P., Humphrey, G., Birmingham, A., Jepsen, K., Farmer, S.,  
312 Tubb, H.M., Valles, T., Tribelhorn, C.E., Tsai, R., Aigner, S., Sathe, S., Moshiri, N., Henson,  
313 B., Mark, A.M., Hakim, A., Baer, N.A., Barber, T., Belda-Ferre, P., Chacón, M., Cheung,  
314 W., Cresini, E.S., Eisner, E.R., Lastrella, A.L., Lawrence, E.S., Marotz, C.A., Ngo, T.T.,  
315 Ostrander, T., Plascencia, A., Salido, R.A., Seaver, P., Smoot, E.W., McDonald, D.,  
316 Neuhard, R.M., Scioscia, A.L., Satterlund, A.M., Simmons, E.H., Abelman, D.B., Brenner,  
317 D., Bruner, J.C., Buckley, A., Ellison, M., Gattas, J., Gonias, S.L., Hale, M., Hawkins, F.,  
318 Ikeda, L., Jhaveri, H., Johnson, T., Kellen, V., Kremer, B., Matthews, G., McLawhon, R.W.,  
319 Ouillet, P., Park, D., Pradenas, A., Reed, S., Riggs, L., Sanders, A., Sollenberger, B., Song,  
320 A., White, B., Winbush, T., Aceves, C.M., Anderson, Catelyn, Gangavarapu, K., Hufbauer,  
321 E., Kurzban, E., Lee, J., Matteson, N.L., Parker, E., Perkins, S.A., Ramesh, K.S., Robles-

- 322 Sikisaka, R., Schwab, M.A., Spencer, E., Wohl, S., Nicholson, L., McHardy, I.H., Dimmock,  
323 D.P., Hobbs, C.A., Bakhtar, O., Harding, A., Mendoza, A., Bolze, A., Becker, D., Cirulli, E.T.,  
324 Isaksson, M., Schiabor Barrett, K.M., Washington, N.L., Malone, J.D., Schafer, A.M.,  
325 Gurfield, N., Stous, S., Fielding-Miller, R., Garfein, R.S., Gaines, T., Anderson, Cheryl,  
326 Martin, N.K., Schooley, R., Austin, B., MacCannell, D.R., Kingsmore, S.F., Lee, W., Shah,  
327 S., McDonald, E., Yu, A.T., Zeller, M., Fisch, K.M., Longhurst, C., Maysent, P., Pride, D.,  
328 Khosla, P.K., Laurent, L.C., Yeo, G.W., Andersen, K.G., Knight, R., 2022. Wastewater  
329 sequencing reveals early cryptic SARS-CoV-2 variant transmission. *Nature* 609, 101–108.  
330 <https://doi.org/10.1038/s41586-022-05049-6>
- 331 Karthikeyan, S., Ronquillo, N., Belda-Ferre, P., Alvarado, D., Javidi, T., Longhurst, C.A., Knight, R.,  
332 2021. High-Throughput Wastewater SARS-CoV-2 Detection Enables Forecasting of  
333 Community Infection Dynamics in San Diego County. *mSystems* 6, e00045-21.  
334 <https://doi.org/10.1128/mSystems.00045-21>
- 335 Kim, C.L., Cruz Espinoza, L.M., Vannice, K.S., Tadesse, B.T., Owusu-Dabo, E.,  
336 Rakotozandrindrainy, R., Jani, I.V., Teferi, M., Bassiahi Soura, A., Lunguya, O., Steele,  
337 A.D., Marks, F., 2022. The Burden of Typhoid Fever in Sub-Saharan Africa: A Perspective.  
338 *Res. Rep. Trop. Med.* 13, 1–9. <https://doi.org/10.2147/RRTM.S282461>
- 339 Kropinski, A.M., Mazzocco, A., Waddell, T.E., Lingohr, E., Johnson, R.P., 2009. Enumeration of  
340 Bacteriophages by Double Agar Overlay Plaque Assay, in: Clokie, M.R.J., Kropinski, A.M.  
341 (Eds.), *Bacteriophages: Methods and Protocols, Volume 1: Isolation, Characterization,*  
342 *and Interactions, Methods in Molecular Biology™*. Humana Press, Totowa, NJ, pp. 69–  
343 76. [https://doi.org/10.1007/978-1-60327-164-6\\_7](https://doi.org/10.1007/978-1-60327-164-6_7)
- 344 LeGault, K.N., Hays, S.G., Angermeyer, A., McKitterick, A.C., Johura, F., Sultana, M., Ahmed, T.,  
345 Alam, M., Seed, K.D., n.d. Temporal shifts in antibiotic resistance elements govern  
346 phage-pathogen conflicts. *Science* 373, eabg2166.  
347 <https://doi.org/10.1126/science.abg2166>
- 348 Liu, P., Ibaraki, M., Kapoor, R., Amin, N., Das, A., Miah, R., Mukhopadhyay, A.K., Rahman, M.,  
349 Dutta, S., Moe, C.L., 2021. Development of Moore Swab and Ultrafiltration  
350 Concentration and Detection Methods for Salmonella Typhi and Salmonella Paratyphi A  
351 in Wastewater and Application in Kolkata, India and Dhaka, Bangladesh. *Front.*  
352 *Microbiol.* 12, 684094. <https://doi.org/10.3389/fmicb.2021.684094>
- 353 Patel, P.D., Patel, P., Liang, Y., Meiring, J.E., Misiri, T., Mwakiseghile, F., Tracy, J.K., Masesa, C.,  
354 Msuku, H., Banda, D., Mbewe, M., Henrion, M., Adetunji, F., Simiyu, K., Rotrosen, E.,  
355 Birkhold, M., Nampota, N., Nyirenda, O.M., Kotloff, K., Gmeiner, M., Dube, Q.,  
356 Kawalazira, G., Laurens, M.B., Heyderman, R.S., Gordon, M.A., Neuzil, K.M., 2021. Safety  
357 and Efficacy of a Typhoid Conjugate Vaccine in Malawian Children. *N. Engl. J. Med.* 385,  
358 1104–1115. <https://doi.org/10.1056/NEJMoa2035916>
- 359 Qadri, F., Khanam, F., Liu, X., Theiss-Nyland, K., Biswas, P.K., Bhuiyan, A.I., Ahmmed, F., Colin-  
360 Jones, R., Smith, N., Tonks, S., Voysey, M., Mujadidi, Y.F., Mazur, O., Rajib, N.H., Hossen,  
361 M.I., Ahmed, S.U., Khan, A., Rahman, N., Babu, G., Greenland, M., Kelly, S., Ireen, M.,  
362 Islam, K., O'Reilly, P., Scherrer, K.S., Pitzer, V.E., Neuzil, K.M., Zaman, K., Pollard, A.J.,  
363 Clemens, J.D., 2021. Protection by vaccination of children against typhoid fever with a  
364 Vi-tetanus toxoid conjugate vaccine in urban Bangladesh: a cluster-randomised trial. *The*  
365 *Lancet* 398, 675–684. [https://doi.org/10.1016/S0140-6736\(21\)01124-7](https://doi.org/10.1016/S0140-6736(21)01124-7)

- 366 Saha, S., Tanmoy, A.M., Andrews, J.R., Sajib, M.S.I., Yu, A.T., Baker, S., Luby, S.P., Saha, S.K.,  
367 2019. Evaluating PCR-Based Detection of Salmonella Typhi and Paratyphi A in the  
368 Environment as an Enteric Fever Surveillance Tool. *Am. J. Trop. Med. Hyg.* 100, 43–46.  
369 <https://doi.org/10.4269/ajtmh.18-0428>
- 370 Saha, Senjuti, Islam, M., Saha, Shampa, Uddin, M.J., Rahman, H., Das, R.C., Hasan, M., Amin,  
371 M.R., Hanif, M., Shahidullah, M., Hussain, M., Saha, S.K., 2018. Designing  
372 Comprehensive Public Health Surveillance for Enteric Fever in Endemic Countries:  
373 Importance of Including Different Healthcare Facilities. *J. Infect. Dis.* 218, S227–S231.  
374 <https://doi.org/10.1093/infdis/jiy191>
- 375 Saha, Senjuti, Islam, M., Uddin, M.J., Saha, Shampa, Das, R.C., Baqui, A.H., Santosham, M.,  
376 Black, R.E., Luby, S.P., Saha, S.K., 2017. Integration of enteric fever surveillance into the  
377 WHO-coordinated Invasive Bacterial-Vaccine Preventable Diseases (IB-VPD) platform: A  
378 low cost approach to track an increasingly important disease. *PLoS Negl. Trop. Dis.* 11,  
379 e0005999. <https://doi.org/10.1371/journal.pntd.0005999>
- 380 Saha, S.K., Tabassum, N., Saha, S., 2021. Typhoid Conjugate Vaccine: An Urgent Tool to Combat  
381 Typhoid and Tackle Antimicrobial Resistance. *J. Infect. Dis.* 224, S788–S791.  
382 <https://doi.org/10.1093/infdis/jiab443>
- 383 Shakya, M., Colin-Jones, R., Theiss-Nyland, K., Voysey, M., Pant, D., Smith, N., Liu, X., Tonks, S.,  
384 Mazur, O., Farooq, Y.G., Clarke, J., Hill, J., Adhikari, A., Dongol, S., Karkey, A.,  
385 Bajracharya, B., Kelly, S., Gurung, M., Baker, S., Neuzil, K.M., Shrestha, S., Basnyat, B.,  
386 Pollard, A.J., 2019. Phase 3 Efficacy Analysis of a Typhoid Conjugate Vaccine Trial in  
387 Nepal. *N. Engl. J. Med.* 381, 2209–2218. <https://doi.org/10.1056/NEJMoa1905047>
- 388 Sikorski, M.J., Levine, M.M., 2020. Reviving the “Moore Swab”: a Classic Environmental  
389 Surveillance Tool Involving Filtration of Flowing Surface Water and Sewage Water To  
390 Recover Typhoidal Salmonella Bacteria. *Appl. Environ. Microbiol.* 86, e00060-20.  
391 <https://doi.org/10.1128/AEM.00060-20>
- 392 Stanaway, J.D., Parisi, A., Sarkar, K., Blacker, B.F., Reiner, R.C., Hay, S.I., Nixon, M.R., Dolecek, C.,  
393 James, S.L., Mokdad, A.H., Abebe, G., Ahmadian, E., Alahdab, F., Alemnew, B.T.T.,  
394 Alipour, V., Bakeshei, F.A., Animut, M.D., Ansari, F., Arabloo, J., Asfaw, E.T.,  
395 Bagherzadeh, M., Bassat, Q., Belayneh, Y.M.M., Carvalho, F., Daryani, A., Demeke, F.M.,  
396 Demis, A.B.B., Dubey, M., Duken, E.E., Dunachie, S.J., Eftekhari, A., Fernandes, E., Fard,  
397 R.F., Gedefaw, G.A., Geta, B., Gibney, K.B., Hasanzadeh, A., Hoang, C.L., Kasaeian, A.,  
398 Khater, A., Kidanemariam, Z.T., Lakew, A.M., Malekzadeh, R., Melese, A., Mengistu, D.T.,  
399 Mestrovic, T., Miazgowski, B., Mohammad, K.A., Mohammadian, M., Mohammadian-  
400 Hafshejani, A., Nguyen, C.T., Nguyen, L.H., Nguyen, S.H., Nirayo, Y.L., Olagunju, A.T.,  
401 Olagunju, T.O., Pourjafar, H., Qorbani, M., Rabiee, M., Rabiee, N., Rafay, A., Rezapour,  
402 A., Samy, A.M., Sepanlou, S.G., Shaikh, M.A., Sharif, M., Shigematsu, M., Tessema, B.,  
403 Tran, B.X., Ullah, I., Yimer, E.M., Zaidi, Z., Murray, C.J.L., Crump, J.A., 2019. The global  
404 burden of non-typhoidal salmonella invasive disease: a systematic analysis for the  
405 Global Burden of Disease Study 2017. *Lancet Infect. Dis.* 19, 1312–1324.  
406 [https://doi.org/10.1016/S1473-3099\(19\)30418-9](https://doi.org/10.1016/S1473-3099(19)30418-9)
- 407 Tanmoy, A.M., Westeel, E., Bruyne, K.D., Goris, J., Rajoharison, A., Sajib, M.S.I., Belkum, A. van,  
408 Saha, S.K., Komurian-Pradel, F., Endtz, H.P., 2018. Salmonella enterica Serovar Typhi in



409 Bangladesh: Exploration of Genomic Diversity and Antimicrobial Resistance. *mBio* 9,  
410 e02112-18. <https://doi.org/10.1128/mBio.02112-18>  
411 Wang, Y., Moe, C.L., Dutta, S., Wadhwa, A., Kanungo, S., Mairinger, W., Zhao, Y., Jiang, Y.,  
412 Teunis, P.F.M., 2020. Designing a typhoid environmental surveillance study: A simulation  
413 model for optimum sampling site allocation. *Epidemics* 31, 100391.  
414 <https://doi.org/10.1016/j.epidem.2020.100391>