

1 **Detection of *Salmonella* Typhi bacteriophages in surface waters as a scalable approach to**
2 **environmental surveillance**

3

4 Sneha Shrestha^{a*}, Kesia Esther Da Silva^{b*}, Jivan Shakya^c, Alexander T. Yu^b, Nishan Katuwal^a,
5 Rajeev Shrestha^d, Mudita Shakya^a, Sabin Bikram Shahi^a, Shiva Ram Naga^a, Christopher LeBoa^e,
6 Kristen Aiemjoy^f, Isaac I. Bogoch^g, Senjuti Saha^h, Dipesh Tamrakar^{a†} Jason R. Andrews^{b†}

7

8 ^aResearch and Development Division, Dhulikhel Hospital, Kathmandu University Hospital,
9 Krave, Nepal.

10 ^bStanford University, Department of Medicine, Division of Infectious Diseases and Geographic
11 Medicine, Stanford, California.

12 ^cInstitute for Research in Science and Technology, Nepal.

13 ^dCenter for Infectious Diseases Research, Dhulikhel Hospital, Kathmandu University Hospital,
14 Krave, Nepal.

15 ^eUniversity of California Berkeley, Department of Environmental Health Sciences, Berkeley,
16 California.

17 ^fUniversity of California Davis, School of Medicine, Department of Public Health Sciences,
18 Davis, California.

19 ^gDepartment of Medicine, Division of Infectious Diseases, University of Toronto, Toronto,
20 Canada.

21 ^h Child Health Research Foundation, Dhaka, Bangladesh

22

23 *Contributed equally

24 †Contributed equally

25

26

27 **Word Count (intro, results, discussion): 3754**

28 **Abstract Word Count: 298**

29 **Figures: 3**

30 **Tables: 2**

31

32 **Correspondence:**

33 Kesia Esther da Silva
34 Division of Infectious Diseases and Geographic Medicine
35 Stanford University School of Medicine
36 Biomedical Innovations Building, Room 3600
37 Stanford, CA 94025, USA
38 Email: kesiaeds@stanford.edu
39 Phone: +1 650 660 3145

40

41

42

43

44

45

46

47

48

49

50

51 **Highlights**

52

53 • Typhoid phages are detectable in surface water using simple assays, in communities with
54 high typhoid burden.

55 • Bacteriophages are highly specific for *S. Typhi* and required Vi polysaccharide for
56 infection.

57 • *S. Typhi* phages have a broad lytic activity against the *S. Typhi* strains circulating in
58 Nepal.

59 • Phage plaque assay can be used as a low-cost tool to identify communities where typhoid
60 is endemic.

61 • The high abundance of phages in river water suggest that this could be an alternative to
62 molecular methods for environmental surveillance for typhoid.

63

64

65

66

67

68

69

70

71

72

73

74 **Abstract**

75 Environmental surveillance, using detection of *Salmonella* Typhi DNA, has emerged as a
76 potentially useful tool to identify typhoid-endemic settings; however, it is relatively costly and
77 requires molecular diagnostic capacity. We sought to determine whether *S. Typhi* bacteriophages
78 are abundant in water sources in a typhoid-endemic setting, using low-cost assays. We collected
79 drinking and surface water samples from urban, peri-urban and rural areas in 4 regions of Nepal.
80 We performed a double agar overlay with *S. Typhi* to assess the presence of bacteriophages. We
81 isolated and tested phages against multiple strains to assess their host range. We performed
82 whole genome sequencing of isolated phages, and generated phylogenies using conserved genes.
83 *S. Typhi*-specific bacteriophages were detected in 54.9% (198/361) of river water samples and
84 6.3% (1/16) drinking water samples from the Kathmandu Valley and Kavrepalanchok. Water
85 samples collected within or downstream of population-dense areas were more likely to be
86 positive (72.6%, 193/266) than those collected upstream from population centers (5.3%, 5/95)
87 ($p=0.005$). In urban Biratnagar and rural Dolakha, where typhoid incidence is low, only 6.7%
88 (1/15, Biratnagar) and 0% (0/16, Dolakha) samples contained phages. All *S. Typhi* phages were
89 unable to infect other *Salmonella* and non-*Salmonella* strains, nor a Vi-knockout *S. Typhi* strain.
90 Representative strains from *S. Typhi* lineages were variably susceptible to the isolated phages.
91 Phylogenetic analysis showed that *S. Typhi* phages belonged to two different viral families
92 (*Autographiviridae* and *Siphoviridae*) and clustered in three distinct groups. *S. Typhi*
93 bacteriophages were highly abundant in surface waters of typhoid-endemic communities but
94 rarely detected in low typhoid burden communities. Bacteriophages recovered were specific for
95 *S. Typhi* and required Vi polysaccharide for infection. Screening small volumes of water with

96 simple, low-cost plaque assays enables detection of *S. Typhi* phages and should be further
97 evaluated as a scalable tool for typhoid environmental surveillance.

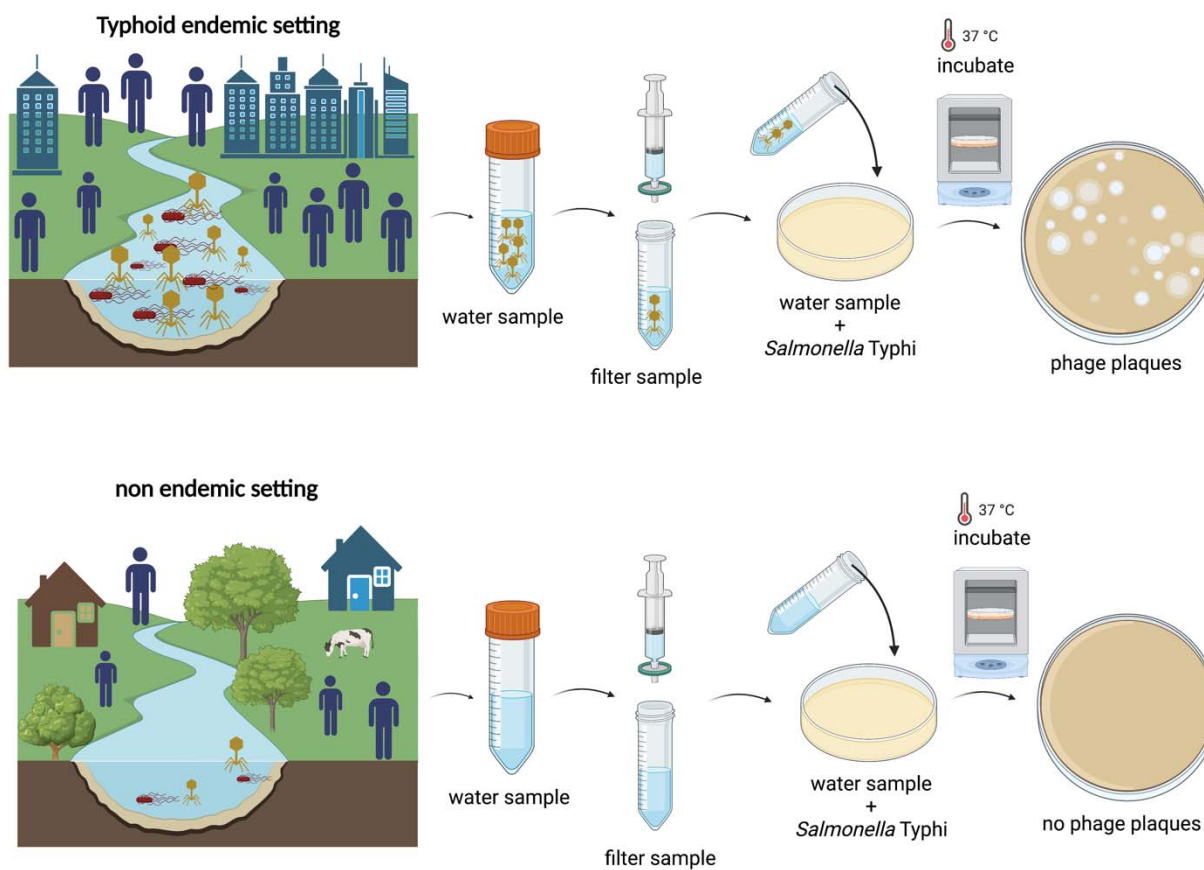
98

99 **Keywords:**

100 Typhoid fever; *Salmonella Typhi*; environmental surveillance; bacteriophages; low-cost assays.

101

102



103

104

105

106

107 **1. Introduction**

108 Typhoid fever is a bacterial infection caused by the Gram-negative bacterium *Salmonella*
109 *enterica* subspecies *enterica* serovar Typhi (*S. Typhi*) and is usually contracted by ingestion of
110 contaminated food or water (1). An estimated 11 million cases of typhoid fever occur annually
111 worldwide causing more than 100,000 deaths each year (2). The highest burden occurs in low-
112 and middle-income countries (LMICs) with poor access to improved water supply and sanitation
113 (3). Successful management of typhoid fever using antibiotics is becoming increasingly difficult
114 due to drug resistance (4). The continued emergence and rapid expansion of antimicrobial
115 resistance to *S. Typhi* have spurred accelerated efforts to roll out new conjugate vaccines for the
116 prevention of typhoid infection in high-risk populations (5).

117
118 Routine typhoid fever vaccination use has been very limited in the past, even in endemic areas.
119 Recently the World Health Organization (WHO) recommended the introduction of typhoid
120 conjugate vaccines (TCV) in countries with the highest burden of typhoid disease or a high
121 burden of antimicrobial-resistant *S. Typhi* (6). However, the scarcity of data on typhoid burden
122 in many at-risk countries poses a major hurdle to the adoption of TCV in national immunization
123 programs (7). Currently, the estimates of typhoid fever burden have been generated via short-
124 term population-based research studies, and these data are frequently geographically and
125 temporally limited (8). Given the current lack of data and the challenges faced in population-
126 based surveillance, environmental surveillance is emerging as an important tool in the fight
127 against typhoid fever (9).

128

129 Previous studies have shown environmental surveillance as a tool to identify high-risk settings
130 for enteric fever transmission (8–10). Despite the clear role of contaminated water in the
131 transmission of typhoid, detection of the organisms has proven challenging, with *S. Typhi*
132 difficult to isolate by culture methods from water and other environmental samples (8).
133 Molecular detection of *S. Typhi* DNA is now the primary method for detecting *S. Typhi* in the
134 environment, but requires molecular laboratory infrastructure and trained staff, and estimated
135 costs are hundreds of dollars per sample (11).

136
137 Bacteriophages (hereinafter referred to as phages) are viruses that infect bacteria. Their
138 abundance and host specificity make them a promising alternative or complimentary tool for the
139 environmental monitoring of pathogenic bacteria (12). *S. Typhi* phages have been characterized
140 for decades, comprised the major typing system for the bacteria (based on their susceptibility to
141 phage panels), and were used clinically as treatment prior to the discovery of chloramphenicol.
142 One study from 1930 found that *S. Typhi* phages were abundant and seasonal in surface waters
143 in Kolkata (13). However, few studies have characterized the distribution and abundance of *S.*
144 *Typhi* phages in typhoid-endemic settings or examined their genetic diversity.

145
146 In this study, we investigated the presence and abundance of typhoid phages in surface and
147 drinking water across diverse communities in Nepal with differing population density and
148 typhoid burden. We hypothesized that *S. Typhi* phages would be readily detectable, using
149 simple, low-cost assays, in communities with high typhoid burden and not frequently detected in
150 communities with lower typhoid burden.

151 **2. Methods**

152 **2.1. Bacterial strains, Vi phages and culture conditions**

153 A complete list of strains used in this study can be found in Table S1. The attenuated *Salmonella*
154 *enterica* serovar Typhi strain BRD948 was used for propagation. This strain is not only heavily
155 capsulated but is also attenuated and can be used in a containment level 2 environment (14).
156 Bacteria were cultured using Tryptic Soy Broth (TSB) (HiMedia Laboratories, USA), at 37 °C
157 with aeration, supplemented with agar as required. The optical density of liquid culture was
158 adjusted to a 0.5 McFarland standard. Phages used in this paper as a control for the experiments
159 were isolated from clinical samples and correspond to a *S. Typhi* Vi phage collection, designated
160 types II (*Siphoviridae*) and types III, IV, V, VI, VII (*Podoviridae*). Vi phages were obtained
161 from Cambridge University, Cambridge, United Kingdom, but the original sources of these
162 phages date from the 1930s through 1955 (15).

163

164 **2.2. Sampling sites**

165 Between November 2019 and May 2022, environmental water samples were collected from the
166 Kathmandu Valley and three other districts of Nepal (Kavrepalanchok, Dolakha and Morang).
167 We collected river water samples from 5 major rivers and a combined river segment in
168 Kathmandu Valley and Kavrepalanchok on a monthly basis from November 2019 to July 2021
169 (except in April and May 2020 due to government-imposed lockdown during the COVID-19
170 pandemic). A total of 19 different sites, 16 in Kathmandu valley and 3 in Kavrepalanchok, each
171 separated by approximately 5 km, located upstream and downstream from the river confluence
172 were sampled. This sampling strategy let us sample the upstream sites with relatively sparse

173 settlement, the densely populated central settlement area and also downstream sites mostly
174 located around agricultural areas. Within Kathmandu valley, the majority of the sites (10/16)
175 were either located in rivers inside, around or downstream to Kathmandu Metropolitan city, the
176 capital city of Nepal, with a population density of ~17,103 people per km². Unmanaged sewage,
177 waste disposal and lack of their proper regulation in this highly dense area has led to their direct
178 disposal into the river system in Kathmandu. We also sampled a river flowing through Banepa, a
179 peri-urban city in Kavrepalanchok district just outside the Kathmandu Valley, which similarly
180 has untreated waste and sewage disposal into the river system. Drinking water samples were
181 collected from both Kathmandu and Kavre, from tap (direct supply from municipal storage or
182 stored in tanks, bought from vendors outside Kathmandu) or ground-well of 16 different
183 households. Previous studies have demonstrated a very high incidence of typhoid in both
184 communities (7).

185 In Dolakha, sampling was performed in the month of October, 2021, in sparsely populated,
186 mostly rural village areas where the population density was significantly less and there was
187 minimal or no visible sewage contamination. All samples collected were from river water around
188 settlement areas, with only a few sites selected being farther from human settlement. A previous
189 study in Dolakha found typhoid to be an uncommon cause of acute febrile illness (16).

190 Biratnagar, in Morang district in Southeastern Nepal, is another metropolitan city in Nepal with a
191 population density of ~3200 per km². Samples were collected from river sites upstream, around,
192 and downstream of the settlement area, from man-made river canals which were originally
193 created for irrigation purposes and from tap or tube wells of households that used it for drinking
194 along with other purposes. Most of the tube well samples were collected from poor slum
195 communities. No studies of typhoid incidence or prevalence among febrile patients have been

196 reported from Biratnagar. In our review of blood culture results from three largest hospitals (one
197 government and two private hospitals) in the city, *S. Typhi* was very rarely recovered, and
198 clinicians reported that typhoid cases were relatively uncommon.

199

200 **2.3. Sample collection and filtrate preparation**

201 We collected 50 mL samples of water from the surface, against river current, in a sterile bottle
202 and placed them into separate bags on ice and transported them to the laboratory for further
203 processing. We performed a turbidity test using a densitometer (DEN-1, Grant Instruments Ltd.,
204 England), and samples were passed through a 0.22 µm syringe filter (Axiva, India) to obtain the
205 filtrate that was used for evaluating the presence of phages against *S. Typhi*. The filtered sample
206 was stored at 4°C until further use.

207 At each sampling site, team members collected information on abiotic factors that may affect
208 bacterial or viral survival, including presence of sewage pipes, open drain water carrying liquid
209 and solid waste, and potential fecal exposure. Water pH, temperature, and oxygen reduction
210 potential were also evaluated using Apera Instruments AI311. Team members also recorded
211 whether humans or animals were interacting with the water and the type of interaction that was
212 observed. All information was recorded in REDCap (v5.19.15).

213

214 **2.4. Bacteriophage isolation and amplification**

215 Phage screening was performed by a double agar overlay method (17). For each sample, 1 ml of
216 filtrate was added to 100 µl of overnight liquid bacterial culture and incubated at room
217 temperature for 10 min to allow phage absorption. Molten Tryptic Soy Agar (0.7% agar) (3 mL)

218 was added to the filtrate-bacteria mix and poured over solid hard nutrient agar base. Plates were
219 incubated at 37°C overnight and the presence of phages resulted in the production of visible
220 plaques (zones of lysis) in a confluent lawn of the host bacterium. Individual plaques were
221 selected from screening plates based on their morphology and size. Plaques were picked using
222 sterile tips and resuspended in 200 µl SM buffer. Soft agar overlay lawn culture of *S. Typhi* was
223 prepared and 10 µl of plaque-SM buffer solution was streaked across the *S. Typhi* lawn culture to
224 obtain isolated plaques. Only isolated plaques were processed further. To obtain high
225 concentration stocks of isolated phages, we performed propagation assays using the double agar
226 overlay method described above. Following overnight incubation clear zones were scraped and
227 immersed in a 5ml SM buffer and kept for one hour at 4°C. The solution was then centrifuged at
228 4,000 rpm for 20 min and the supernatant was passed through a 0.22 µm syringe filter to obtain a
229 sterile phage stock solution. Finally, the titer of stock solution was obtained by plating serial
230 dilutions of the stock in a confluent lawn of the host bacterium and counting visible plaques to
231 determine the approximate ratio of plaque-forming units per milliliter (PFU mL⁻¹).

232

233 **2.5. Determination of phage host range**

234 The lytic activity and specificity of phages was determined by screening each against different
235 host bacterium strains using the standard double agar overlay method previously described.
236 Serial dilutions of each phage stock were prepared and spotted on *S. Typhi* to obtain a
237 concentration where plaques could be observed. Dilutions where plaques could be distinguished
238 were used to spot phages on *S. Typhi* CT18, *S. Typhi* Ty2, *S. Typhi* Ty2 ΔVi (Vi capsule
239 knockout mutant Δ*tviB*), *S. Typhi* Δ*fliC* (flagellate knockout mutant), *Salmonella enterica*
240 serovar Paratyphi A (ATCC: 9150), *Salmonella Typhimurium* LT2, *Escherichia coli* (ATCC:

241 25922), *Pseudomonas aeruginosa* (ATCC: 27853), *Staphylococcus aureus* (ATCC: 25923) and
242 *Klebsiella pneumoniae* (clinical isolate). To test diversity and activity spectra of phages across
243 different *S. Typhi* lineages, phage stocks were also tested against 37 *S. Typhi* clinical isolates
244 obtained from a surveillance study comprising different genotypes circulating in Nepal.

245

246 **2.6. Whole-genome sequencing**

247 We randomly selected 27 phages from our collection to perform whole genome sequencing.
248 Bacteriophage DNA was extracted using the Phage DNA Isolation Kit (Norgen Biotek Corp.,
249 Thorold, ON, Canada) according to the manufacturer's instructions. The purity and concentration
250 of the DNA were determined using a Qubit 4 fluorometer (Invitrogen, Qubit). Whole genome
251 sequencing was performed using the Illumina Miseq platform (Illumina, San Diego, CA, USA)
252 to generate paired-end reads of 300 bp in length. Sequence data quality was checked using
253 FastQC v0.11.9 to remove low quality reads (18). We summarized all quality indicators using
254 MultiQC v1.7 (19). Species identification was confirmed with Kraken2 (20). Genome assembly
255 was performed using SPAdes Genome Assembler v.3.15.2 and assemblies that resolved as one
256 contig were included in the analysis. Finally, the genomes were annotated using the RAST server
257 (Rapid Annotation using Subsystem Technology) (<https://rast.nmpdr.org/rast.cgi>) with
258 subsequent manual curation.

259

260 **2.7. Phylogenetic analysis**

261 The annotation of complete phage genomes was also manually inspected using Geneious version
262 11.0.12 (Biomatters Ltd) to screen for the presence of phage-related regions containing structural
263 proteins. The complete sequences were analyzed adjusting the direction of nucleotide sequences.

264 Phylogenetic trees were generated using selected concatenated phage signature genes. All
265 genomes were screened for the presence of genes encoding terminase and tail fiber structures.
266 We constructed alignments using the program ClustalW version 2.1 with default parameters.
267 Phylogenetic tree was inferred using the Maximum Likelihood method with RAxML v8.2.10.
268 Bootstrapping was set to 100 replicates and the tree rooted. The resulting phylogenies were
269 visualized and annotated using the iTOL v5 online version (21). An additional 27 fiber tail
270 protein sequences and 27 terminase protein sequences from GenBank were included in the
271 phylogenetic analysis for comparison. We selected *Caudovirales* representative phage genomes
272 that were matched with our collection using IDseq (<https://czid.org/>). The genomes that matched
273 our sequences with average percent-identity higher than 90% were included in the analysis. The
274 additional 27 bacteriophage genomes selected for study were isolated from five different host
275 genus: *Citrobacter sp.*, *Escherichia sp.*, *Klebsiella sp.*, *Salmonella spp.*, and *Shigella sp.*, from
276 different geographical locations.

277

278 **2.8. Data availability**

279 Whole genome sequencing data was submitted to GenBank under BioProject accession number
280 PRJNA933946.

281

282 3. Results

283 3.1. Sampling and phage detection

284 A total of 428 environmental water samples were collected from four different regions in Nepal
285 (Table 1; Figure 1). Between November 2019 and October 2021, we collected 377 samples from
286 Kathmandu and Kavrepalanchok. These samples included river water (n = 361) from 19 sites and
287 drinking water (n = 16) from 16 households (Figure 1b). *S. Typhi* phages were present in 54.8%
288 (198/361) of the total river samples and 6.3% (1/16) of the drinking water samples. Most
289 samples (72.6%, 193/266) collected within or downstream of the densely populated parts of the
290 city contained *S. Typhi* phages, while only 5.3% (5/95) of samples from the sites upstream to the
291 population contained these phages. In addition, the upstream sites had lower concentrations of
292 phages than the downstream. No seasonal pattern was observed for phage detection (Figure S1).
293 In September 2021, a total of 16 river water samples were collected from Dolakha (Figure 1c),
294 and none contained *S. Typhi* phages. In May 2022, a total of 35 environmental water samples
295 were also collected from Biratnagar. These samples included river (n = 7), canal (n = 8), and
296 drinking water (n = 20). No *S. Typhi* phages were detected in river or drinking water; one sample
297 from canal water contained *S. Typhi* phages.

298

299

300

301

302

303

304

305 **Table 1.** *S. Typhi* phage isolation from environmental samples collected in Nepal.

306

Sampling Site	Type of sample	Sites (n)	Samples (n)	Phage positive samples	Positivity (%)	Dates of sampling
Kathmandu/ Krave	River water	19	361	198	54.8%	November 2019 –
	Drinking Water	16	16	1	6.3%	October 2021
Dolakha	River water	16	16	0	0%	October 2021
	River water	7	7	0	0%	
Biratnagar	River Canal	8	8	1	12.5%	May 2021
	Drinking Water	20	20	0	0%	

307

308 **3.2. Host range properties**

309 To evaluate the host range and specificity of *S. Typhi* phages isolated, we tested a total of 50
310 phages against a panel of relevant strains including additional *Salmonella enterica* serovars
311 (Paratyphi A and Typhimurium) and other bacteria such as *Pseudomonas aeruginosa*,
312 *Staphylococcus aureus* and *Klebsiella pneumoniae*. Host ranges were determined by spotting
313 phage solution onto bacterial lawns. The results show that all 50 phages tested were only capable
314 of infecting *S. Typhi* strains and could not infect other bacteria. Although a flagella knockout
315 strain (\DeltafliC) was susceptible to phage infection, no plaques were formed on the Ty2 isogenic
316 Vi-negative *S. Typhi* strain ($\Delta tviB$). Additionally, to understand the diversity of the phages
317 collected, we tested the host range activity of 10 phages against a panel of 37 *S. Typhi* strains
318 belonging to 14 different genotypes circulating in Nepal (Figure 2). The phages tested were
319 isolated from different sampling sites at different time points and were randomly selected, based

320 on different plaque morphologies. As expected, the results showed a broad lytic activity against
321 the *S. Typhi* strains tested. Interestingly, *S. Typhi* strains belonging to lineages 2.1.7, 3.3.1 and
322 3.3.2 were resistant to the majority of phages tested.

323

324 3.3. Characterization of phage genomes

325 The basic genome metrics of the 27 phage sequences included in this study (host, genome size,
326 GC content, number of predicted ORFs) are provided in Table 1. The analyzed *S. Typhi* phages
327 showed diversity of genome size from 37 to 47 kb, encoding 44 – 73 ORFs. No tRNAs were
328 predicted in the phage genomes.

329

330 **Table 2.** Genome characteristics of 27 *S. Typhi* phages sequenced in our study.

	Phage	Family	Genome size (bp)	GC %	CDS
1	ST1	<i>Autographiviridae</i>	38,461	50.9	49
2	ST3	<i>Autographiviridae</i>	38,461	50.9	48
3	ST10	<i>Autographiviridae</i>	38,059	51.1	53
4	ST11	<i>Autographiviridae</i>	38,664	51.1	52
5	ST15	<i>Autographiviridae</i>	38,351	50.9	49
6	ST16	<i>Autographiviridae</i>	38,234	50.9	51
7	ST17	<i>Autographiviridae</i>	38,668	50.9	52
8	ST20	<i>Autographiviridae</i>	37,644	51.0	44
9	ST21	<i>Autographiviridae</i>	38,416	51.0	48
10	ST29	<i>Autographiviridae</i>	39,065	51.0	49
11	ST34	<i>Autographiviridae</i>	38,880	51.0	48
12	ST35	<i>Autographiviridae</i>	38,880	51.0	48
13	ST37	<i>Autographiviridae</i>	38,880	51.0	48
14	ST38	<i>Autographiviridae</i>	37,743	50.9	48
15	ST43	<i>Siphoviridae</i>	45,854	46.2	72
16	ST44	<i>Siphoviridae</i>	45,854	46.2	73
17	ST45	<i>Autographiviridae</i>	38,351	50.9	50
18	ST46	<i>Siphoviridae</i>	47,596	46.1	76
19	ST53	<i>Autographiviridae</i>	39,134	50.9	52
20	ST55	<i>Autographiviridae</i>	39,134	50.9	52
21	ST56	<i>Autographiviridae</i>	37,877	51.0	50
22	ST57	<i>Autographiviridae</i>	37,407	51.0	47
23	ST59	<i>Autographiviridae</i>	39,134	50.9	52
24	ST63	<i>Autographiviridae</i>	39,134	50.9	52
25	ST64	<i>Autographiviridae</i>	39,133	50.9	52
26	ST65	<i>Siphoviridae</i>	45,855	46.2	73
27	ST66	<i>Autographiviridae</i>	39,118	50.9	53

331

332 The tail fiber and large terminase subunit protein sequences are commonly used markers for
333 understanding phage phylogeny. The phylogenetic relationship was established using the
334 identified terminase and tail fiber nucleotide sequences. All sequences were aligned, and
335 phylogenetic analysis showed that *S. Typhi* phages isolated in our study belong to two different
336 viral families (*Autographiviridae* and *Siphoviridae*) and form three distinct phylogenetic clusters,
337 with two subgroups for the *Autographiviridae* family were found (Figure 3). To better
338 understand the phylogenetic and evolutionary relationship of the phages from our collection, we
339 compared their genomes with previously sequenced phages deposited in GenBank. A total of 27
340 representative phage genomes belonging to five different families were included and our analysis
341 identified at least 9 distinct clusters. Our findings showed that phages from our collection did not
342 cluster closely with any other phage previously described.

343

344 **4. Discussion**

345 In typhoid-endemic communities in and around the Kathmandu Valley of Nepal, we found that
346 *S. Typhi*-specific bacteriophages were widely present in multiple rivers that were contaminated
347 with sewage and readily detectable by small-volume water sampling. By contrast, in a rural and
348 an urban community where typhoid is uncommon, and no visible waste contamination was
349 observed, *S. Typhi* bacteriophages were rarely detected. Taken together, these findings support
350 the premise of phage-based assays as a simple and low-cost tool for environmental surveillance
351 for typhoid, which could be useful for identifying settings to prioritize for vaccination and clean
352 water and sanitation interventions or monitoring their impact after introduction.

353

354 Although the detection of *S. Typhi* DNA in municipal drinking water in Kathmandu has been
355 previously reported (22), in our study *S. Typhi* phages were detected in only one drinking water
356 sample. These findings are consistent with our previous work conducted in Kathmandu and
357 Kavrepalanchok, Nepal. We collected drinking water samples and performed quantitative real-
358 time PCR to detected DNA sequences specific for *S. Typhi*. Three hundred and eighty water
359 samples were collected from a randomly selected subset of households and none of these
360 samples tested positive for *S. Typhi* (23).

361
362 Our pilot study aimed to generate an easily reproducible approach to be performed in other sites
363 to investigate the role of phages in shaping epidemiologic patterns of typhoid transmission. This
364 will provide an opportunity to elucidate potential differences and similarities in the distribution
365 and abundance of *S. Typhi* in different regions. Our results show that the detection of phages is a
366 cheaper and simpler process than the common methodologies used for detecting bacterial DNA
367 from water samples. Our simplified approach requires minimal supplies, including media for
368 bacterial growth, an incubator, a centrifuge, pipettes, petri dishes, tubes, syringes, and syringe
369 filters. The total cost is <\$2 for each sample and given the minimal resources required can be
370 done in labs with very basic infrastructure and equipment.

371
372 Our results showed that phages isolated in our study are highly specific to *S. Typhi* isolates. As
373 *Salmonella* consists of more than 2,500 serovars, infection efficacy and specificity are
374 indispensable requirements to the establishment of phage environmental surveillance as a marker
375 for typhoid burden. To further investigate patterns of host infectivity, we tested phages of our
376 collection against Vi capsule-negative and flagellum-negative *S. Typhi* strains. Phages isolated in

377 our study did not infect Vi-capsule mutant strain, demonstrating the requirement of Vi capsule
378 expression for infectivity, as characterized in earlier work (24). We also evaluated the ability of
379 phages to infect different *S. Typhi* genotypes. Interestingly, phages were not able to infect
380 lineages 3.3.1 and 3.3.2., suggesting that some *S. Typhi* lineages can develop phage defense
381 strategies to prevent phage infection and cell lysis. Bacteria can evade phage infection by several
382 mechanisms, including accumulating escape mutations in the receptor, acquiring phage
383 inhibitory proteins, or directly modifying the receptor and using CRISPR-Cas system as a phage
384 defense mechanism (25). Further studies are needed to elucidate the specific host defense
385 mechanisms that *S. Typhi* uses to protect against phage predation, and whether the acquisition of
386 these defense mechanisms drives selection for certain lineages containing them.

387
388 Phages from our collection were sequenced and analyzed on the base of genetic similarity to
389 each other and to other phage genomes previously described. Sequence comparison allowed for
390 clear discrimination of distinct clusters. In addition, phylogenetic analysis showed that phages
391 isolated from Nepal clustered independently from other phages included in our analysis;
392 however, a limited number of *S. Typhi*-specific phages have been sequenced and reported.
393 Further studies investigating *S. Typhi* phages in neighboring typhoid-endemic countries and in
394 other regions of the world could further the position of the phages we identified within the global
395 diversity of *S. Typhi* phages.

396
397 A series of studies from the cholera field revealed that *Vibrio cholerae* phages exhibit predator-
398 prey dynamics that shape cholera abundance in water, potentially altering seasonal disease
399 patterns (26). A study from Kolkata in 1930 found a similar inverse, seasonal relationship

400 between *S. Typhi* phage abundance and clinical cases, which could support a similar disease
401 dynamic. In our study, seasonal variation was not observed for phage detection. Further studies
402 are needed to understand the potential role of *S. Typhi* phages in shaping the ecology of endemic
403 typhoid transmission.

404

405 The results of this study should be interpreted within the context of several limitations. First, we
406 collected a limited number of drinking water samples, and although we observed a low positivity
407 rate, this doesn't mean that drinking water is not an important transmission route for typhoid in
408 this setting. It is possible that drinking water contamination is more sporadic and wasn't detected
409 in our limited sampling. Additionally, the scarcity of drinking water in the Kathmandu Valley
410 has led to increased reliance on drinking water that is brought in by large tanker trucks from
411 outside the valley, where typhoid incidence (and contamination risk) is likely lower. Second, the
412 presence of phages in river water reflects their presence in sewage, which is helpful for
413 monitoring burden in the population, but does not directly implicate river water in the
414 transmission pathway. Third, further studies are needed to validate our assay quantitatively in
415 order to specify a limit of detection and sensitivity against a gold standard, such as PCR-based
416 detection methods (9). Fourth, further studies are required correlating frequency, level,
417 geography, and timing of detections of different phages with estimates of disease burden.

418

419 Our study highlights the strength of a simplified phage plaque assay as a low-cost tool to identify
420 communities where typhoid is endemic. The high abundance of phages in river water suggest
421 that this could be a scalable and more sensitive alternative to molecular methods for
422 environmental surveillance for typhoid. The findings of our study will inform potential widely

423 implementation of phage environmental surveillance to generate data to support vaccine
424 introduction, monitor intervention strategies and improve understanding of the emergence and
425 transmission of *S. Typhi* in high-risk settings.

426

427 **Declaration of competing interest**

428 We declare that we have no potential conflicts of interest.

429

430

431 **Funding**

432 This work was supported by the Bill & Melinda Gates Foundation [grant number OPP1217093].

433

434 **References**

- 435 1. Kumar A, Kumar A. Antibiotic resistome of *Salmonella typhi*: molecular determinants for
436 the emergence of drug resistance. *Front Med [Internet]*. 2021;15(5):693–703. Available
437 from: <https://doi.org/10.1007/s11684-020-0777-6>
- 438 2. Stanaway JD, Reiner RC, Blacker BF, Goldberg EM, Khalil IA, Troeger CE, et al. The
439 global burden of typhoid and paratyphoid fevers: a systematic analysis for the Global
440 Burden of Disease Study 2017. *Lancet Infect Dis*. 2019;19(4):369–81.
- 441 3. Andrews JR, Barkume C, Yu AT, Saha SK, Qamar FN, Garrett D, et al. Integrating
442 Facility-Based Surveillance with Healthcare Utilization Surveys to Estimate Enteric Fever
443 Incidence: Methods and Challenges. *J Infect Dis*. 2018;218(Suppl 4):S268–76.
- 444 4. Qamar FN, Yousafzai MT, Dehraj IF, Shakoor S, Irfan S, Hotwani A, et al. Antimicrobial
445 Resistance in Typhoidal *Salmonella*: Surveillance for Enteric Fever in Asia Project, 2016–

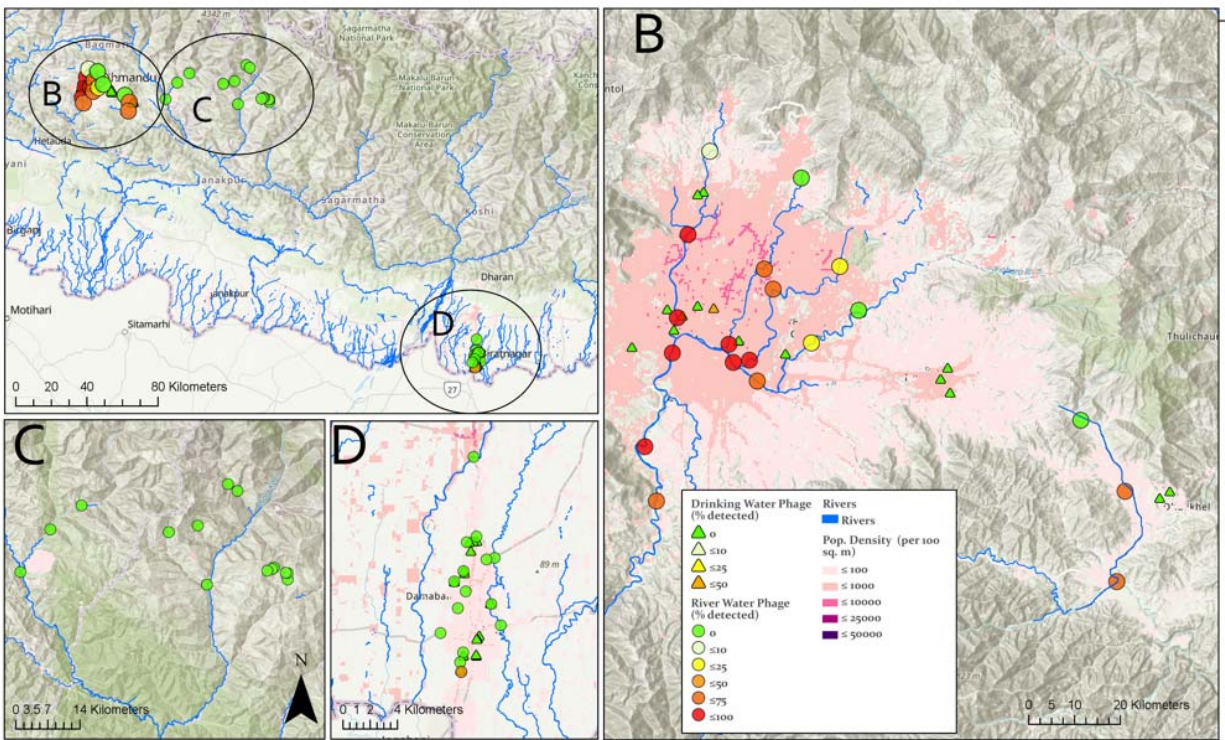
- 446 2019. Clin Infect Dis [Internet]. 2020 Nov 1;71(Supplement_3):S276–84. Available from:
447 <https://doi.org/10.1093/cid/ciaa1323>
- 448 5. Date K, Shimpi R, Luby S, N R, Haldar P, Katkar A, et al. Decision Making and
449 Implementation of the First Public Sector Introduction of Typhoid Conjugate Vaccine-
450 Navi Mumbai, India, 2018. Clin Infect Dis [Internet]. 2020 Jul 29;71(Suppl 2):S172–8.
451 Available from: <https://pubmed.ncbi.nlm.nih.gov/32725235>
- 452 6. World Health Organization. Typhoid vaccines: WHO position paper, March 2018 –
453 Recommendations. Vaccine [Internet]. 2019;37(2):214–6. Available from:
454 <https://www.sciencedirect.com/science/article/pii/S0264410X18304912>
- 455 7. Garrett DO, Longley AT, Aiemjoy K, Yousafzai MT, Hemlock C, Yu AT, et al. Incidence
456 of typhoid and paratyphoid fever in Bangladesh, Nepal, and Pakistan: results of the
457 Surveillance for Enteric Fever in Asia Project. Lancet Glob Heal [Internet]. 2022 Jul
458 1;10(7):e978–88. Available from: [https://doi.org/10.1016/S2214-109X\(22\)00119-X](https://doi.org/10.1016/S2214-109X(22)00119-X)
- 459 8. Andrews JR, Yu AT, Saha S, Shakya J, Aiemjoy K, Horng L, et al. Environmental
460 Surveillance as a Tool for Identifying High-risk Settings for Typhoid Transmission. Clin
461 Infect Dis [Internet]. 2020 Jul 29;71(Suppl 2):S71–8. Available from:
462 <https://pubmed.ncbi.nlm.nih.gov/32725227>
- 463 9. Matrajt G, Lillis L, Meschke JS. Review of Methods Suitable for Environmental
464 Surveillance of Salmonella Typhi and Paratyphi. Clin Infect Dis [Internet]. 2020 Jul
465 29;71(Supplement_2):S79–83. Available from: <https://doi.org/10.1093/cid/ciaa487>
- 466 10. Uzzell CB, Troman CM, Rigby J, Mohan VR, John J, Abraham D, et al. Environmental
467 surveillance for Salmonella Typhi as a tool to estimate the incidence of typhoid fever in
468 low-income populations. medRxiv [Internet]. 2021; Available from:

- 469 <https://www.medrxiv.org/content/early/2021/05/22/2021.05.21.21257547>
- 470 11. Hagedorn BL, Zhou NA, Fagnant-Sperati CS, Shirai JH, Gauld J, Wang Y, et al. The cost
471 of building an environmental surveillance system for typhoid. medRxiv [Internet]. 2021
472 Jan 1;2021.07.12.21260395. Available from:
473 <http://medrxiv.org/content/early/2021/07/16/2021.07.12.21260395.abstract>
- 474 12. Rogovski P, Cadamuro RD, da Silva R, de Souza EB, Bonatto C, Viancelli A, et al. Uses
475 of Bacteriophages as Bacterial Control Tools and Environmental Safety Indicators. Front
476 Microbiol [Internet]. 2021;12. Available from:
477 <https://www.frontiersin.org/article/10.3389/fmicb.2021.793135>
- 478 13. Pasricha CL, de Monte AJ, Gupta SK. Seasonal Variations of Typhoid Bacteriophage in
479 Natural Waters and in Man, in Calcutta during the Year 1930. Ind Med Gaz. 1931
480 Oct;66(10):549–50.
- 481 14. Tacket CO, Sztein MB, Losonsky GA, Wasserman SS, Nataro JP, Edelman R, et al.
482 Safety of live oral Salmonella typhi vaccine strains with deletions in htrA and aroC aroD
483 and immune response in humans. Infect Immun [Internet]. 1997 Feb 1;65(2):452–6.
484 Available from: <https://doi.org/10.1128/iai.65.2.452-456.1997>
- 485 15. Pickard D, Thomson NR, Baker S, Wain J, Pardo M, Goulding D, et al. Molecular
486 characterization of the Salmonella enterica serovar typhi Vi-typing bacteriophage E1. J
487 Bacteriol. 2008;190(7):2580–7.
- 488 16. Andrews JR, Vaidya K, Bern C, Tamrakar Di, Wen S, Madhup S, et al. High Rates of
489 Enteric Fever Diagnosis and Lower Burden of Culture-Confirmed Disease in Peri-urban
490 and Rural Nepal. J Infect Dis. 2018;
- 491 17. Kropinski AM, Mazzocco A, Waddell TE, Lingohr E, Johnson RP. Enumeration of

- 492 Bacteriophages by Double Agar Overlay Plaque Assay. In: Clokie MRJ, Kropinski AM,
493 editors. Bacteriophages: Methods and Protocols, Volume 1: Isolation, Characterization,
494 and Interactions [Internet]. Totowa, NJ: Humana Press; 2009. p. 69–76. Available from:
495 https://doi.org/10.1007/978-1-60327-164-6_7
- 496 18. Andrews S. Babraham Bioinformatics - FastQC A Quality Control tool for High
497 Throughput Sequence Data. Soil. 1973.
- 498 19. Ewels P, Magnusson M, Lundin S, Käller M. MultiQC: Summarize analysis results for
499 multiple tools and samples in a single report. Bioinformatics. 2016;
- 500 20. Wood DE, Lu J, Langmead B. Improved metagenomic analysis with Kraken 2. Genome
501 Biol. 2019;
- 502 21. Letunic I, Bork P. Interactive Tree Of Life (iTOL) v4: recent updates and new
503 developments. Nucleic Acids Res. 2019;
- 504 22. Karkey A, Jombart T, Walker AW, Thompson CN, Torres A, Dongol S, et al. The
505 Ecological Dynamics of Fecal Contamination and Salmonella Typhi and Salmonella
506 Paratyphi A in Municipal Kathmandu Drinking Water. PLoS Negl Trop Dis [Internet].
507 2016 Jan 6;10(1):e0004346. Available from: <https://doi.org/10.1371/journal.pntd.0004346>
- 508 23. LeBoa ,Christopher; Shrestha S. Environmental surveillance for typhoidal Salmonellas in
509 household and surface waters in Nepal identifies potential transmission pathways. In:
510 Coalition Against Typhoid Conference. 2021.
- 511 24. Derek P, Luisa TA, K. PN, Andries van T, Lu Y, David G, et al. A Conserved Acetyl
512 Esterase Domain Targets Diverse Bacteriophages to the Vi Capsular Receptor of
513 Salmonella enterica Serovar Typhi. J Bacteriol [Internet]. 2010 Nov 1;192(21):5746–54.
514 Available from: <https://doi.org/10.1128/JB.00659-10>.

- 515 25. Shabbir MAB, Hao H, Shabbir MZ, Wu Q, Sattar A, Yuan Z. Bacteria vs. Bacteriophages:
516 Parallel Evolution of Immune Arsenal. *Front Microbiol* [Internet]. 2016;7. Available
517 from: <https://www.frontiersin.org/articles/10.3389/fmicb.2016.01292>
- 518 26. Faruque SM, Naser I Bin, Islam MJ, Faruque ASG, Ghosh AN, Nair GB, et al. Seasonal
519 epidemics of cholera inversely correlate with the prevalence of environmental cholera
520 phages. *Proc Natl Acad Sci U S A*. 2005;102(5):1702–7.
- 521
- 522
- 523
- 524
- 525
- 526
- 527
- 528
- 529
- 530
- 531
- 532
- 533
- 534
- 535
- 536
- 537

538



539

540 **Figure 1.** (a) Sampling location and detection of *Salmonella* Typhi phages in Nepal.
541 Environmental water sample collection locations and percentage of samples collected with phage
542 detection performed in (b) Kathmandu Valley and neighboring Kavrepalanchok district, (c) rural
543 Dolakha and (d) urban Biratnagar. Topographic maps are overlaid with population density by
544 shades of red.

545

546

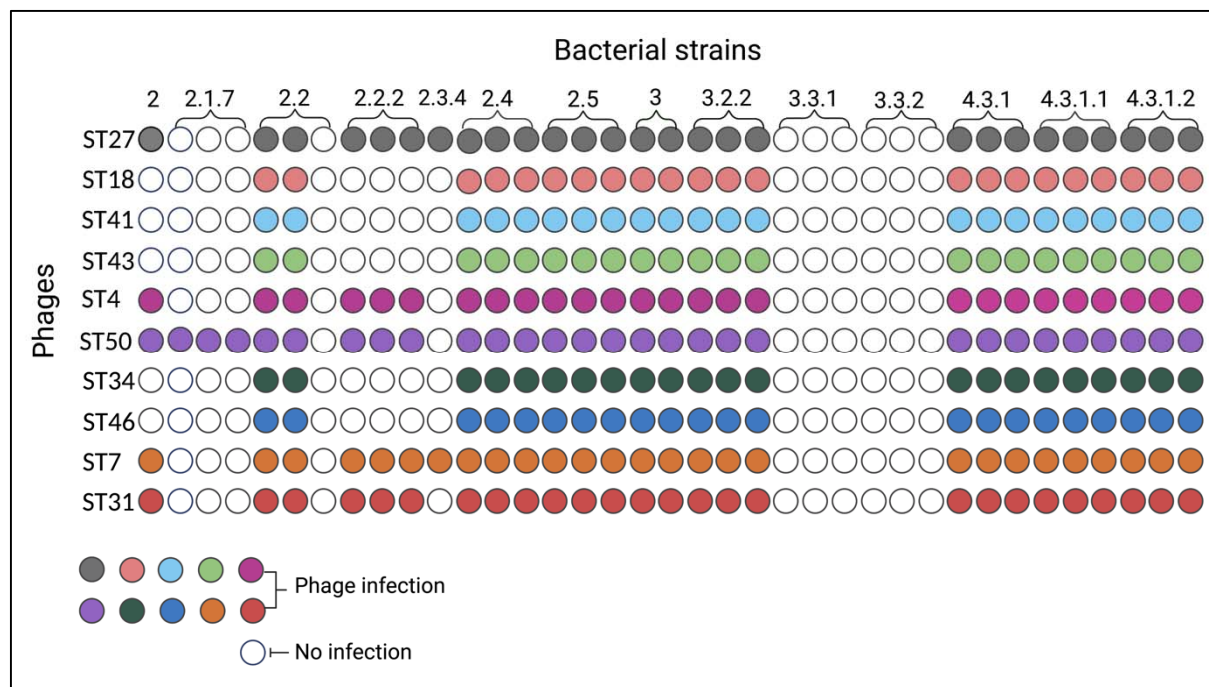
547

548

549

550

551



552

553 **Figure 2.** Host range activity of 10 *S. Typhi* phages isolated in our study. *S. Typhi* phages (y-
 554 axis) were spotted on *S. Typhi* isolates (x-axis) belonging to different genotypes. Colored circles
 555 represent lytic activity, white circles represent no lytic activity.

556

557

558

559

560

561

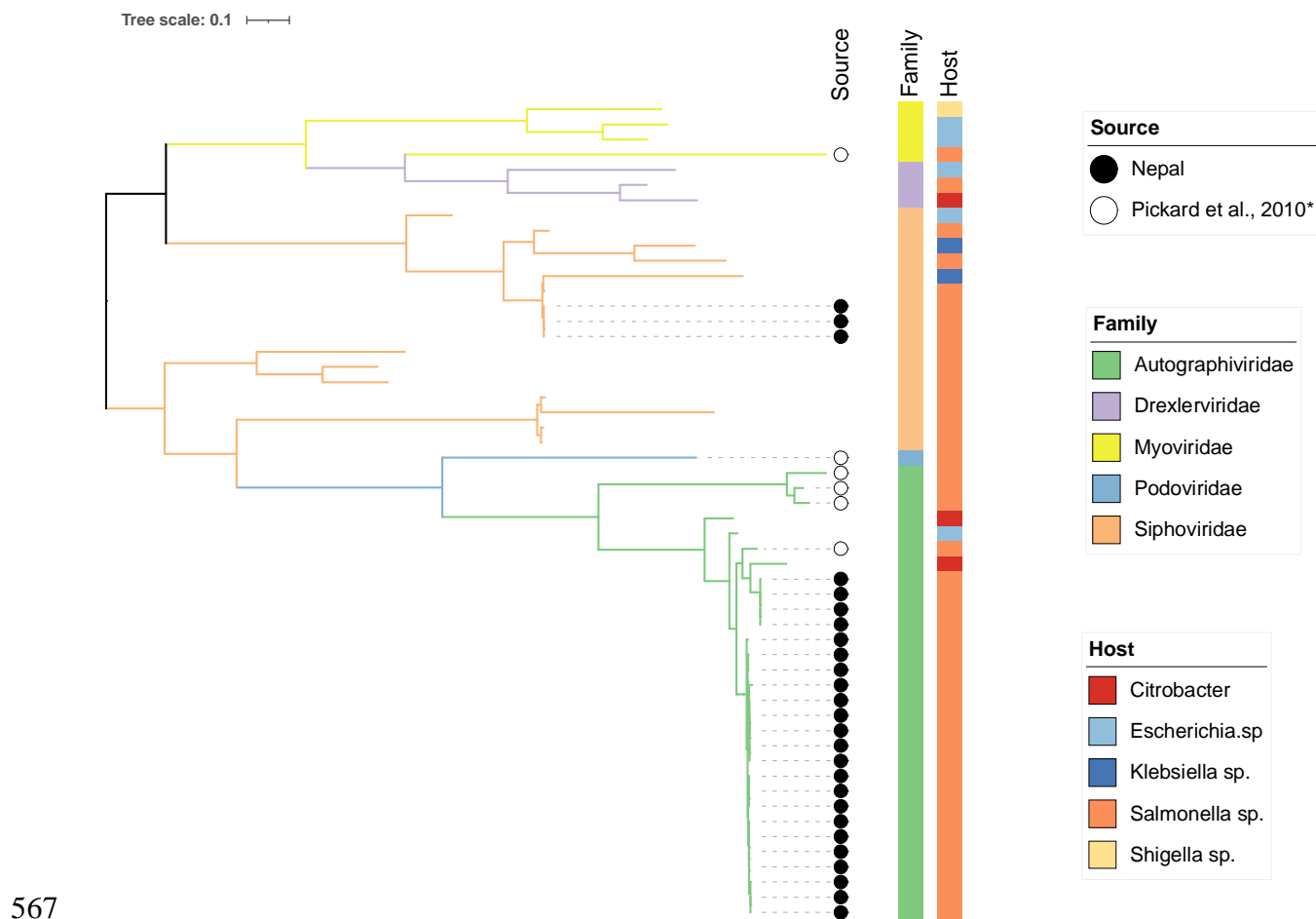
562

563

564

565

566



567

568

569 **Figure 3.** Phylogenetic tree of 27 *S. Typhi* phages isolated from Nepal and other 27 phages
570 based on two gene sequences (tail fiber and terminase). Tail fiber and terminase large subunit
571 sequences of related phages were downloaded from NCBI. Phages isolated in our study are
572 annotated with a black circle. Pickard et al., 2010* represents a *S. Typhi* Vi phage collection
573 obtained from Cambridge University, Cambridge, United Kingdom, and originally isolated
574 between the 1930 and 1955. These historical phages are annotated with white circles.

575

576