

# *Epidemiological drivers of transmissibility and severity of SARS-CoV-2 in England*

Pablo N Perez-Guzman<sup>1,\*</sup>, MD, MSc, Edward Knock<sup>1,\*</sup>, PhD, Natsuko Imai<sup>1</sup>, PhD, Thomas Rawson<sup>1</sup>, DPhil, Yasin Elmaci<sup>1</sup>, MSc, Joana Alcada<sup>2,3</sup>, MD, Lilith K Whittles<sup>1</sup>, PhD, Divya Thekke Kanapram<sup>1,4</sup>, PhD, Raphael Sonabend<sup>1</sup>, PhD, Katy AM Gaythorpe<sup>1</sup>, PhD, Wes Hinsley<sup>1</sup>, PhD, Richard G FitzJohn<sup>1</sup>, PhD, Erik Volz<sup>1</sup>, PhD, Robert Verity<sup>1</sup>, PhD, Neil M Ferguson<sup>1</sup>, DPhil, Anne Cori<sup>1</sup>, PhD, Marc Baguelin<sup>1,5,6</sup> PhD

1. MRC Centre for Global Infectious Disease Analysis and Abdul Latif Jameel Institute for Disease and Emergency Analytics (J-IDEA), School of Public Health, Imperial College London, United Kingdom
2. Adult Intensive Care Unit, Royal Brompton Hospital, London
3. Department of Surgery and Cancer, Faculty of Medicine, Imperial College London
4. Department of Engineering, Division of Electrical Engineering, University of Cambridge, United Kingdom
5. National Institute for Health Research (NIHR) Health Protection Research Unit (HPRU) in Modelling and Health Economics, London, United Kingdom
6. Centre for Mathematical Modelling of Infectious Diseases, Department of Infectious Disease Epidemiology, London School of Hygiene & Tropical Medicine, London, United Kingdom

**\*Contributed equally**

## **Corresponding Author:**

Dr Marc Baguelin, MRC Centre for Global Infectious Disease Analysis Department of Infectious Disease Epidemiology, Faculty of Medicine at St Mary's Campus, Imperial College London, W2 1PG. UK. Email: [m.baguelin@imperial.ac.uk](mailto:m.baguelin@imperial.ac.uk). Tel: 0044 20 7594 3290

**Abstract:** As the SARS-CoV-2 pandemic progressed, distinct variants emerged and dominated in England. These variants, Wildtype, Alpha, Delta, and Omicron were characterized by variations in transmissibility and severity. We used a robust mathematical model and Bayesian inference framework to analyse epidemiological surveillance data from England. We quantified the impact of non-pharmaceutical interventions (NPIs), therapeutics, and vaccination on virus transmission and severity. Each successive variant had a higher intrinsic transmissibility. Omicron (BA.1) had the highest basic reproduction number at 8.1 (95% credible interval (CrI) 6.8-9.3). Varying levels of NPIs were crucial in controlling virus transmission until population immunity accumulated. Immune escape properties of Omicron decreased effective levels of protection in the population by a third. Furthermore, in contrast to previous studies, we found Alpha had the highest basic infection fatality ratio (2.8%, 95% CrI 2.3-3.2), followed by Delta (2.0%, 95% CrI 1.5-2.4), Wildtype (1.2%, 95% CrI 1.0-1.3), and Omicron (0.6%, 95% CrI 0.4-0.8). Our findings highlight the importance of continued surveillance. Long-term strategies for monitoring and maintaining effective immunity against SARS-CoV-2 are critical to inform the role of NPIs to effectively manage future variants with potentially higher intrinsic transmissibility and severe outcomes.

## Main

The COVID-19 pandemic has driven unprecedented surges in excess mortality,<sup>1</sup> and caused severe disruptions to healthcare systems and economies globally.<sup>2,3</sup> The Omicron sub-variants are more transmissible and thus more difficult to control than ancestral lineages;<sup>4,5</sup> and their severity levels, although lower,<sup>4</sup> remain a threat to populations and health systems.<sup>6</sup>

The global public health response to the virus has included varying degrees of non-pharmaceutical interventions (NPIs), improvement of treatment, and vaccination.<sup>7</sup> The SARS-CoV-2 virus has evolved over time, with distinct variants of concern (VOCs) predominant during successive epidemic waves. Epidemiological studies have assessed changes in the transmissibility and severity of SARS-CoV-2 over these sequential waves of infections and the overall effectiveness of interventions.<sup>8-13</sup> However, integrated quantitative analyses of the relative effect of different interventions and a direct comparison of the transmissibility and severity of different variants have not been performed to date.

53 Here we expanded a validated dynamic transmission model using a Bayesian evidence synthesis framework,<sup>8-10</sup> and  
54 fitted it to comprehensive surveillance data by age and English National Health Service (NHS) regions. Data included  
55 the number of positive and negative PCR tests in the community, population-representative infection prevalence  
56 surveys, genetic characterisation of a sample of the PCR positive cases, seroprevalence from blood donor residual sera,  
57 hospital admissions and deaths, and community deaths (see Figure 1 A-B, methods and online Supplement). Leveraging  
58 these data, we estimated the absolute and relative levels of transmissibility and severity of the Wildtype, Alpha, Delta,  
59 and initial Omicron (BA.1) variants, and other key epidemiological parameters. We evaluated the relative effect of  
60 changes in contact rates due to NPIs, changes in healthcare provision and clinical practice and infection- or vaccine-  
61 derived population immunity on virus transmission and severity in England between March 16, 2020 and February 24,  
62 2022.

### 64 **Evolving SARS-CoV-2 transmissibility and population infection control strategies**

65 England experienced multiple COVID-19 waves, partly due to different SARS-CoV-2 variants over the study period  
66 (Figure 1A-B). The effective reproduction number,  $R_t^{eff}$ , quantifies viral transmissibility over time and represents the  
67 average number of secondary infections each primary infection generates at time  $t$ , with  $R_t^{eff} < 1$  indicating epidemic  
68 decline and  $R_t^{eff} > 1$  epidemic growth.<sup>14</sup>  $R_t^{eff}$  is determined by the inherent transmission potential of a variant and by  
69 contact patterns and immunity levels in the host population.<sup>14</sup> We estimated both  $R_t^{eff}$  and the time-varying reproduction  
70 number in the absence of population immunity,  $R_t$ . The latter allows us to disentangle the intrinsic and extrinsic factors  
71 that drive transmissibility, with the basic reproduction number,  $R_0$ , defined as  $R_{t=0}$ .

72  
73 Viral evolution tends to select for more transmissible lineages.<sup>15</sup> For the Alpha and Delta variants, mutations in the spike  
74 protein that conferred higher receptor affinity and faster fusion into host cells increased intrinsic transmissibility.<sup>16</sup> The  
75 later Omicron (BA.1) variant had further mutations allowing substantial immune escape.<sup>16</sup> The  $R_0$  of SARS-CoV-2  
76 variants in England sequentially increased from 2.5 (95% credible interval (CrI) 2.1 – 2.8) for the initial Wildtype virus,  
77 to 4.0 (95% CrI 3.5 – 4.5), 6.7 (95% CrI 5.7 – 7.7) and 8.1 (95% CrI 6.8 – 9.3), respectively, for the Alpha, Delta and  
78 Omicron (BA.1) variants (Figure 1D).

79

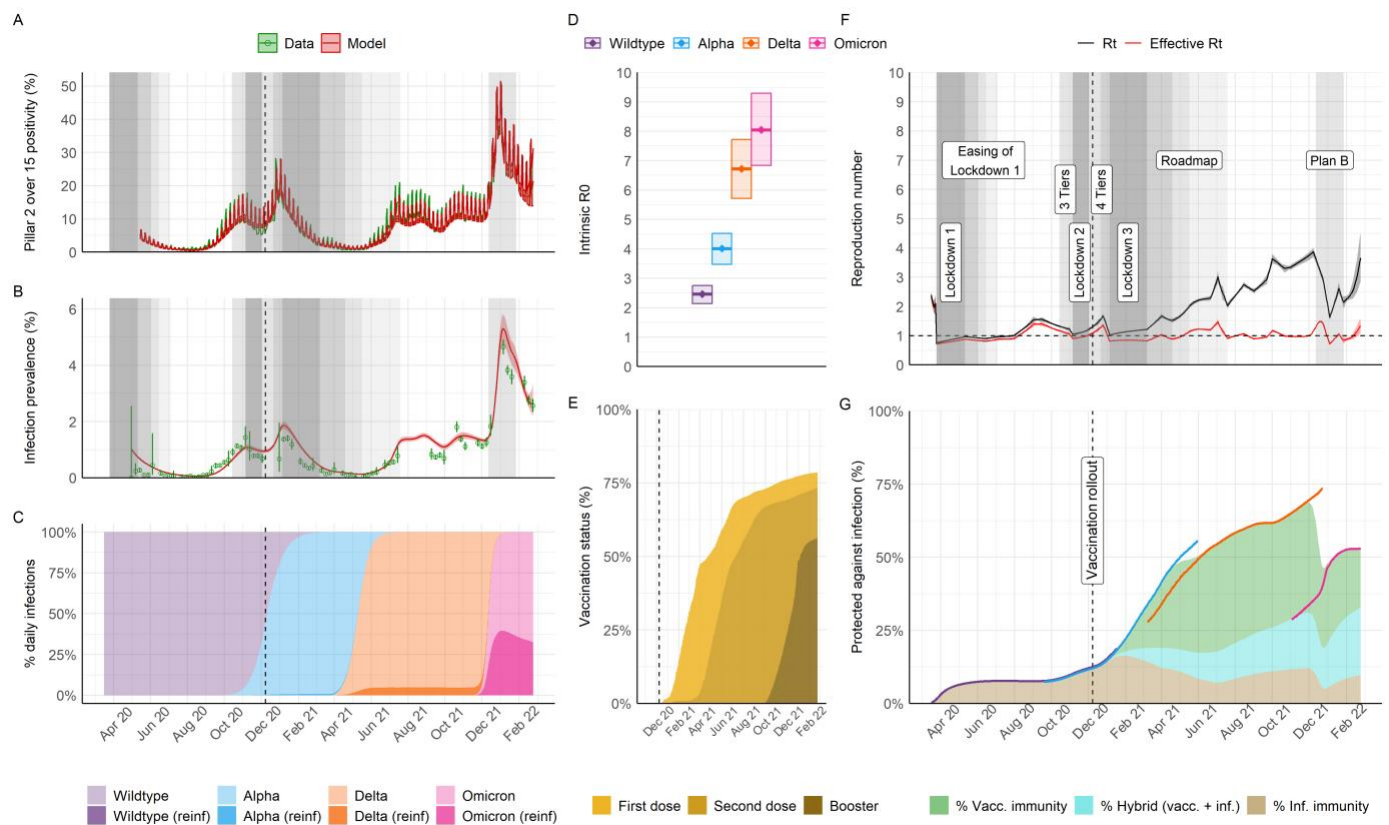
80 NPIs were first introduced in England in mid-March 2020, during the first epidemic wave, to reduce transmission  
81 through social distancing, and limit numbers of severe cases from overwhelming the health system.<sup>17</sup> These measures  
82 were lifted and re-implemented thereafter, at varying levels, through to late February 2022.<sup>7</sup>  $R_t$  varied as contact rates  
83 decreased or increased in response to NPIs (Figure 1F). Before the COVID-19 vaccination programme,  $R_t^{eff}$  was only  
84 slightly lower than  $R_t$ , indicating very low levels of accrued infection-induced immunity. We estimate that only 7.7%  
85 (95% CrI 7.2 – 8.3) of the population were immune by early September 2020, before the emergence of the Alpha variant  
86 (Figure 1G).

87  
88 The rollout and scale-up of the national vaccination programme, from December 2020 onwards, coincided with the  
89 dominance of more transmissible VOCs. Nevertheless, rapidly increasing immunity helped limit the spread of the Alpha  
90 and Delta variants (Figure 1E & G). **Error! Reference source not found.** Population-level protection against infection  
91 rapidly rose from 12.4% (95% CrI 11.8 – 13.0), purely from prior infections, on December 8, 2020, to 33.9% (95% CrI  
92 33.0 – 34.9) by the time Delta emerged in March 2021 due to a combination of infection- and vaccine-induced immunity.  
93 We estimate population-level immunity peaked at 67.8% (95% CrI 66.2 – 69.4) in late November 2021, with vaccination  
94 contributing the most to this immunity profile (Figure 1G). During this same period, in the summer of 2021, NPIs were  
95 progressively lifted with the national policy for a Roadmap out of lockdown.<sup>7,17</sup>  $R_t$  increased gradually as NPIs were  
96 lifted in the first half of 2021, leading to a sustained high level of Delta infections for 5 months (Figure 1A). During this  
97 period,  $R_t^{eff}$  estimates remained close to 1 (Figure 1F), suggesting increases in contact rates were balanced by increasing  
98 immunity for an extended period.

99  
100 In contrast, the emergence and dominance of the initial Omicron BA.1 variant marked a decline in population immunity  
101 (Figure 1G). The relative increase in Omicron's  $R_0$  compared with Delta was not as high compared to previous variant  
102 replacements (Figure 1D). Rather, the replacement of the Delta variant by Omicron was driven by the antigenic  
103 divergence and thus immune escape properties of Omicron relative to prior variants with population-level protection  
104 against infection decreasing by 31% of its late November peak value to reach 46.9% (95% CrI 45.6 – 48.0) in late  
105 December 2021 (Figure 1G). Infection levels rose to an all-time high over this period, with re-infections accounting for  
106 up to a third of daily new infections (Figure 1C). Reimplementation of some NPIs (work from home and wearing face  
107 masks and/or showing proof of negative COVID-19 tests in public venues)<sup>7,18</sup> introduced between December 12, 2021

108 and January 27, 2022, decreased  $R_t$  (Figure 1F). Nevertheless, we estimate that the combined effect of rapidly rolling  
109 out booster vaccinations and infection-induced immunity, increased population-level immunity and, consequently,  
110 decreased  $R_t^{eff}$  to around 1 (Figure 1F-G). By February 24, 2022, when all NPIs were lifted and large parts of routine  
111 surveillance were phased out,<sup>7</sup> population protection against infection was 53.0% (95% CrI 50.6 – 55.5), with 20.1%  
112 (95% CrI 19.7 – 20.6) resulting from vaccination, 9.7% (95% CrI 9.1 – 10.2) from prior infection, and 23.2% (95% CrI  
113 21.8 – 24.7) from a combination of both (Figure 1G).

114



115  
 116  
 117 **Figure 1** – Population-level transmission of SARS-CoV-2 between March 2020 and February 2022 in England. A) 118  
 Infection positivity measured amongst those aged over 15 years old in the community through the national 119  
 Government PCR testing programme (Pillar 2). B) Infection prevalence (PCR) in representative samples of 120  
 households from the REACT-1 study. In A and B, data is shown in green (lines and point, with binomial 95% 121  
 confidence intervals in error bars) and model trajectory in red (average and 95% credible interval (95% CrI)). Grey 122  
 shading indicates periods where specific non-pharmaceutical interventions (NPIs) of interest for the analysis were 123  
 implemented nationally; see legends in panel F and main manuscript for specific references. The shading level is not 124  
 correlated with quantitative stringency; for a complete list of modelled change points in contact rates including dates 125  
 and description see Supplement Table S11 and Figures S28 and S29. C) Model-inferred average frequency of daily 126  
 infections by variant and type of infection (either primary or re-infection following any prior infection, “reinf”). D) 127  
 Intrinsic R0 estimates by variant (mean and 95% CrI). E) Model trajectory of vaccine status of the national population 128  
 (all ages as denominator), as informed by official data of daily doses administered (see sources in Table S1). F) Model 129  
 trajectories of the instantaneous reproduction number in the absence of the effect of immunity (Rt) or accounting for 130  
 immunity (effective Rt). Legends and grey areas specify date and duration of official NPIs in England over the study 131  
 period. G) Inferred effective levels of protection in the population (all ages as denominator. Lines correspond to the

132 effective protection against specific variants, with colour scheme as in panels C & D, whereas areas indicate overall  
133 effective protection by type of immunity (vaccine derived, hybrid or natural from prior infection). During periods of  
134 variant replacement (e.g. Alpha to Delta) the effective protection transitions from the levels associated with the variant  
135 being replaced to the level of the variant that becomes dominant.

136

137

138

139

#### 140 **Epidemiological drivers of the severity of COVID-19 waves**

141 The severity of SARS-CoV-2 across multiple epidemic waves in England varied substantially over the study period  
142 (Figure 2A-C). Observable severity as traditionally measured from epidemiological surveillance, however, is subject to  
143 a range of biases, including case ascertainment, healthcare provision and population immunity.<sup>19</sup> Therefore, traditional  
144 surveillance cannot directly quantify the intrinsic severity of pathogens, nor disentangle the effects of underlying factors  
145 on severity.

146

147 Our model captures temporal changes in the infection hospitalisation ratio (IHR, probability of hospitalisation given  
148 infection), hospital fatality ratio (HFR, probability of death given hospitalisation for severe disease), and infection  
149 fatality ratio (IFR, probability of death given infection) by SARS-CoV-2 variant. During the time of the study, the virus  
150 ecosystem underwent many transformations, with changes taking place for example in the virus biology, the surveillance  
151 landscape and the healthcare system. To enable a like-for-like comparison of variant severity, we defined the variant-  
152 specific basic IHR, HFR and IFR as that observed in an entirely immunologically naïve population with the same age  
153 distribution of infections and healthcare provision that was seen after the peak of the first wave of the pandemic (see  
154 Supplement section 4.7). We also model changes in healthcare provision and changes in clinical practice throughout the  
155 duration in the study using a time varying piece-wise linear function (see Supplement Table S9). Despite the large  
156 amount of data used to inform the model, it can be challenging, if events happen simultaneously, to pinpoint which  
157 specific event affected changes in severity.

158

159 The basic IHR of SARS-CoV-2 increased from 2.2% (95% CrI 2.0 – 2.5) for Wildtype, to 3.5% (95% CrI 3.1 – 3.9) for  
160 Alpha, 4.4% (95% CrI 4.0 – 4.9) for Delta, but subsequently decreased to 3.5% (95% CrI 2.8 – 4.4) for Omicron (Figure  
161 2A). The overall risk of dying for hospitalised patients was highest for the Alpha variant, with a basic HFR of 47.8%  
162 (95% CrI 37.8 – 55.9), lower for Wildtype and Delta, at 33.0% (95% CrI 28.8 – 37.4) and 29.7% (95% CrI 21.8 – 38.2),  
163 respectively, and lowest for Omicron (BA.1), at 11.4% (95% CrI 7.3 – 16.3) (Figure 2B). The basic IFR was a function  
164 of the basic IHR and HFR, further accounting for COVID-19 deaths in the community (outside hospitals). The basic



165 IFR was highest for the Alpha variant at 2.8% (95% CrI 2.3 – 3.2), followed by Delta at 2.0% (95% CrI 1.5 – 2.4),  
166 Wildtype at 1.2% (95% CrI 1.0 – 1.3), and Omicron at 0.6% (95% CrI 0.4 – 0.8) (Figure 2C).

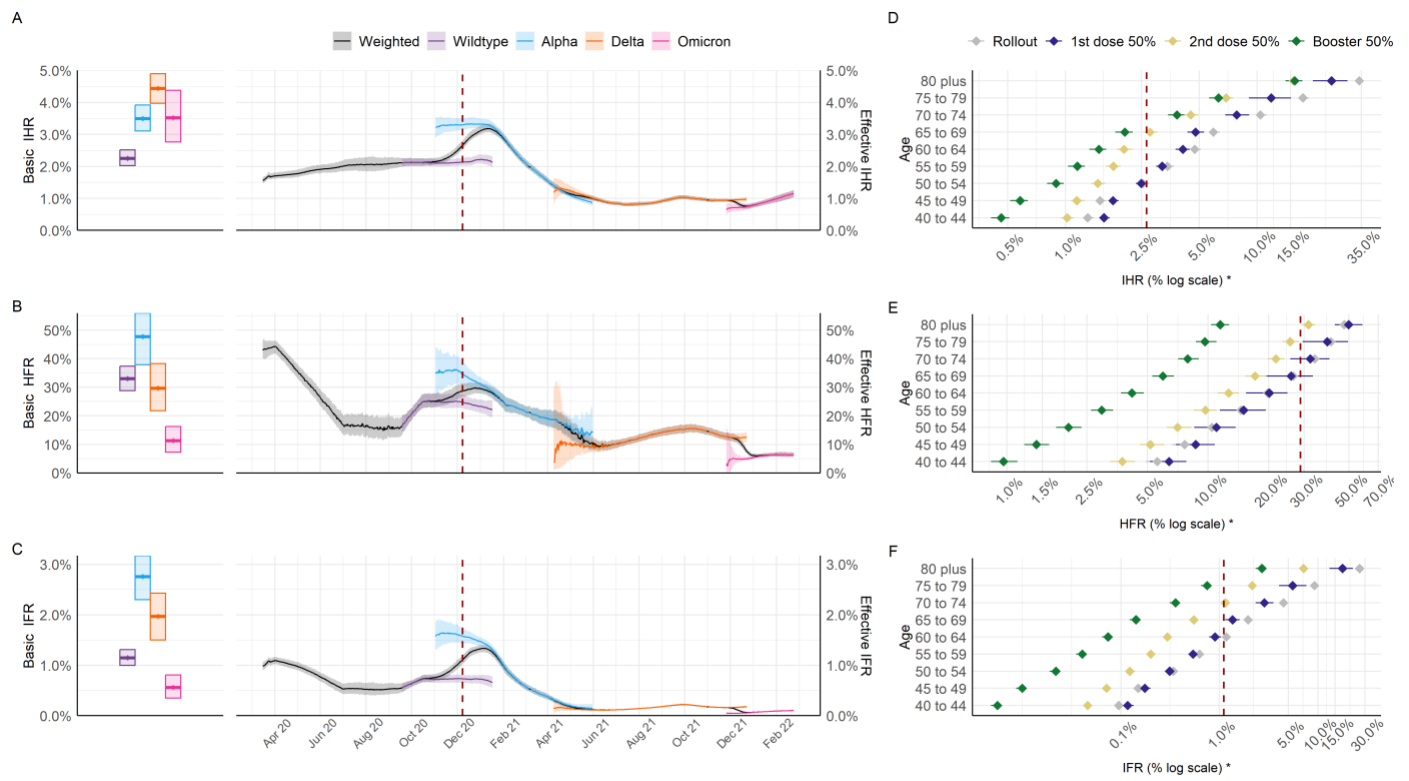
167

168 We also estimated the effective observable severity (given healthcare provision, immunity, and age-dependent mixing  
169 patterns) of the variants over time and estimated the effect of changes in healthcare practices and population immunity  
170 against severe outcomes. During the first epidemic wave, effective treatments, including remdesivir and dexamethasone,  
171 were approved and deployed,<sup>20,21</sup> and there was a major re-adaptation of hospital capacity to manage severe COVID-19  
172 cases.<sup>22</sup> We infer that such changes in healthcare reduced the effective HFR, in line with prior observational evidence,<sup>11</sup>  
173 and IFR below basic levels for the then-dominant Wildtype variant (Figure 2B & C).

174

175 Our findings also suggest that pressures on the healthcare system had a detrimental impact on the severity of the  
176 pandemic. Between October 2020 and January 2021, when a tiered geographically-localised system of NPIs in England  
177 was used<sup>17</sup>, infection incidence increased, associated with a sustained period when  $R_t^{eff} > 1$  (Figure 1A, B & F). There  
178 was a progressive increase in all effective severity metrics, particularly in HFR, (Figure 2A-C) as the model infers there  
179 was an overall higher risk of death in hospital, independently of the basic severity properties of the Alpha variant. It  
180 should be noted, no data was available on hospital admissions and deaths by variant to fit our model to and differentiate  
181 the specific contribution of variant and healthcare effects on the increased severity. However, in an additional statistical  
182 analysis using linked patient-level records, we observed that the increase in HFR during this period was positively  
183 correlated with daily critical care bed occupancy levels, with variation across English regions (see Supplement section  
184 6.1).

185



Red dashed lines: date of vaccination rollout in effective severity plots (A-C), and national effective severity (weighted) at vaccination rollout in severity by age plots (D-F).  
 \*Effective severity by age at the time vaccination dose coverage was 50% of the entire national population.

186

187

**Figure 2** – Inferred severity of SARS-CoV-2 variants in England between March 2020 and February 2022. A-C)

188

Inferred basic and effective infection hospitalisation ratio (IHR, A), hospital fatality ratio (HFR, B) and infection fatality

189

ratio (IFR, C). Boxplots to the left show the basic severity measure and trajectories to the right show severity measure

190

over time (mean and 95% credible interval, 95% CrI) for each variant, with black showing the weighted average across

191

co-circulating variants at any time. Basic severity is measured for each variant assuming healthcare characteristics of

192

the early epidemic, to allow a like-for-like comparison. Effective severity trajectories account for changing vaccine- and

193

infection-induced protection against severe disease, as well as underlying healthcare variations (see Table S8 for model

194

time-varying severity parameters).D-F) Age-specific (selected age groups) effective IHR (D), HFR (E) and IFR (F),

195

assessed at the date of key milestones of the national vaccination programme, “rollout” refers to the start of the

196

vaccination programme on 8th December 2020.

197

198

199

200

201

202

203

204

205

206

207

208

209

210

211

## Discussion

212

213

214

215

216

217

218

219

220

221

222

223

224

Vaccination decisively reduced the effective severity of COVID-19 in England. As age is a major predictor of COVID-19 severity,<sup>23</sup> the national vaccination strategy prioritised the elderly and clinically vulnerable.<sup>24</sup> Our model reproduces this prioritisation and complex observed dynamics of the age distribution of hospitalisations and deaths over time (see Supplement Figure S11). We were, thus, able to infer the age-specific severity profile (see Model parameters were estimated as in calibration or informed by the literature (see Supplement Table S11). We ran sensitivity analyses for parameters affecting the transmissibility of all the variants and, for the case of Omicron only, the cross-protection conferred from a prior infection by any variant and the vaccine effectiveness of booster doses (see Supplement section 5). We found that qualitatively our estimates were robust to assumptions about the serial interval and effectiveness of booster vaccines. Similarly, varying assumptions about the cross-protection that infection with previous variants provide against Omicron yielded very similar results to our main analysis.<sup>25</sup>

Many factors influence pathogen transmission and severity, including pathogen evolution,<sup>15</sup> intervention-based or self-adopted changes in behaviours,<sup>26</sup> and changing infection- and/or vaccine-induced protection.<sup>19</sup> Estimating the relative role of these factors in shaping an epidemic is difficult, as multiple complex interacting processes are involved, which are not directly measurable through surveillance.<sup>19</sup> By retrospectively fitting a dynamic transmission model to the uniquely rich COVID-19 epidemiological surveillance data from England<sup>27</sup> we provide the first quantitative estimates of the population-level drivers of SARS-CoV-2 transmission and severity. Although our study focuses on England, the results have implications for the effectiveness of control measures globally in this and future pandemics.

Prior to vaccinations when population immunity was low, only stringent levels of NPIs were effective in limiting virus transmission. The intrinsic transmission advantage of Alpha and Delta allowed them to become dominant, while Omicron's additional immune escape properties, which reduced population-level protection against infection by approximately a third, enabled it to become dominant from late 2021 despite the high population immunity at that time.

We find that the Alpha variant displayed the highest basic HFR and IFR, followed in decreasing order by the Delta, Wildtype and Omicron variants. A higher risk of hospitalisation and death has been estimated for the Delta variant compared to Alpha in a previous meta-analysis.<sup>28</sup> The strongest evidence for this comes from a cohort study which compared severity outcomes amongst individuals diagnosed in the community with a positive PCR test in England between late March and May, 2021.<sup>29</sup> Researchers from this study concluded that infections with the Delta variant carried a significantly higher risk of hospitalisation and death, adjusting for a number of sociodemographic variables, vaccination status and week of infection occurrence.<sup>29</sup> This and other studies,<sup>28,29</sup> however, were restricted to short time periods where both variants co-circulated and, hence, do not capture subsequent changes such as a reduction in severity later in the Delta period with the AY.4.2 sub-variant compared with the earlier non-AY.4.2 one.<sup>30</sup> Moreover, survival studies restricted to discrete periods are subject to biases inherent to health seeking and treatment practices. In this sense, estimates of the increase severity of Delta over Alpha from patients seeking a PCR test are constrained by test-seeking behaviours in the population during the early phase of Delta transmission. In contrast, we average variant specific estimates over a longer period, integrating them dynamically with other ecological factors, including infection prevalence, PCR cases positivity and variant frequency in the latter. Whilst we did not have data available to fit our model to hospital outcomes by variant, by integrating multiple data sources in a comprehensive evidence synthesis framework, we disentangle and reproduce the multiple drivers of severity and estimate that the IFR for Alpha was higher than for Delta. Indeed, future pandemic studies would benefit from additional surveillance data with distinction of hospitalisations and deaths by pathogen strain.

In line with prior evidence,<sup>11</sup> our results show that a rapid identification of effective pharmacological treatments<sup>20,21</sup> and re-adaptation of hospital capacity<sup>22</sup> were effective in countering the intrinsic severity of the Wildtype virus. However, we and other authors<sup>31,32</sup> also find strong evidence that improvements in clinical care can be nullified unless paired with effective and timely interventions to control infection rates in the population. We find that NPIs were not always effective or timely enough to control the virus. This led to a peak in hospitalisations over the winter of 2020/21 and, in turn, an increase in HFR which could not be explained solely by the severity characteristics of the Wildtype and Alpha variants, nor changes in the age distribution of hospital admissions. Lastly, we have demonstrated the critical role of risk-prioritised vaccination programmes<sup>24</sup> in reducing severity alongside transmission. Levels of protection from prior infection in England have remained low throughout. The combined proportion of those effectively protected by

253 infection-induced and combined infection- and vaccine-induced immunity has stayed under a third of the national  
254 population.

255  
256 Currently, the Omicron variant lineage dominates the pandemic landscape globally.<sup>25</sup> Our analysis robustly shows that  
257 the initial (BA.1) sub-variant of this lineage has basic severity properties comparable to Wildtype IHR, HFR and IFR.  
258 Recent analyses from China, where cumulative levels of protection against the virus in the population are considerably  
259 lower than in England, suggest that NPIs remain crucial public health interventions.<sup>6</sup> We have demonstrated that a  
260 failure to mitigate transmission early can lead to increased severity and pressure on health services. Further research is  
261 needed to quantify the impact of changes in healthcare pressure metrics such as staff-to-patient ratios, safe bed  
262 occupancy, and availability of key commodities, which could be monitored for real-time epidemic analyses and  
263 integrated in future pandemic disease models.

264  
265 Models can be used to systematically explore uncertainties around the target population and vaccination programmes  
266 for pandemic and seasonal respiratory pathogens.<sup>33–35</sup> Waning vaccine- and infection-induced immunity against  
267 Omicron subvariants is well established,<sup>4,12,36</sup> and recent studies suggest that hybrid immunity (from prior infection and  
268 vaccination) may be more effective than repetitive boosting through vaccination.<sup>37</sup> Yet, our analysis around the  
269 emergence of the Omicron variant demonstrates that boosting immunity by vaccination remains an important  
270 intervention to tackle potential changes in the transmissibility and severity of SARS-CoV-2 as it evolves. Despite recent  
271 optimism that COVID-19 is becoming endemic,<sup>38</sup> the risk of new SARS-CoV-2 variants emerging remains.<sup>2</sup> We have  
272 highlighted the public health implications of a higher viral transmissibility over time, which has resulted from both  
273 increased intrinsic transmissibility and increased immune escape properties. Even with similar severity properties to the  
274 current Omicron lineage, a variant with a higher intrinsic transmissibility will pose a significant public health threat.<sup>6</sup>

275  
276 As COVID-19 surveillance has been drastically scaled down,<sup>7</sup> detecting future changes in the characteristics of SARS-  
277 CoV-2 and performing robust epidemiological analyses will be challenging. Our study highlights the importance of  
278 comprehensive quantitative frameworks to integrate evidence from multiple data streams. We demonstrate how  
279 combining data from different sources can help to identify patterns that may not be apparent (or would be wrongly  
280 attributed), such as the higher IFR estimated for Alpha than Delta in contrast to previous studies, when using a reduced

281 number of data streams. This in turn provides important insights into the drivers of epidemic dynamics and informs  
282 options for future interventions. As the pandemic continues, optimising surveillance systems to detect significant  
283 changes in viral severity and transmissibility, trends in global case numbers, and the emergence of new VOCs is critical.

## 285 **Declaration of interests**

286  
287 PPG has consulted for Pfizer. AC has received payment from Pfizer for teaching of mathematical modelling of  
288 infectious diseases. RS and NI are currently employed by the Wellcome Trust, however the Wellcome Trust had no  
289 role in the study design, data collection, data analysis, data interpretation or writing of the manuscript. KAMG has  
290 received honoraria from Wellcome Genome Campus for lectures and salary support from the Bill & Melinda Gates  
291 Foundation and Gavi, the Vaccine Alliance, through Imperial College London for work outside this study. LKW has  
292 received consultancy payments from the Wellcome Trust. All other authors declare no competing interests. All other  
293 authors declare no competing interests.

## 295 **Acknowledgments**

296  
297 We thank all colleagues at PHE and front-line health professionals who have not only driven and continue to drive the  
298 daily response to the COVID-19 epidemic in England but also provided the necessary data to inform this study. This  
299 work would not have been possible without the dedication and expertise of said colleagues and professionals. The use  
300 of pillar-2 PCR testing data, vaccination data, and the variant and mutation data was made possible thanks to PHE  
301 colleagues, and we extend our thanks to N Gent and A Charlett for facilitation and insights into these data. The use of  
302 serological data was made possible by colleagues at PHE Porton Down, Colindale, and the NHS Blood Transfusion  
303 Service. We are particularly grateful to G Amirthalingam and N Andrews for helpful discussions around these data.  
304 We thank all the REal-time Assessment of Community Transmission (REACT) Study investigators for sharing PCR  
305 prevalence data. We also thank the entire Imperial College London COVID-19 response team for support and  
306 feedback throughout. The views expressed are those of the authors and not necessarily those of the UK Department of  
307 Health and Social Care, the NHS, the National Institute for Health Research (NIHR), PHE, UK Medical Research  
308 Council (MRC), UK Research and Innovation, or the EU.

309

310 **Funding**

311 This work was supported jointly by the Wellcome Trust and the Department for International Development (DFID;  
312 221350)]. We acknowledge joint Centre funding from the UK MRC and DFID (MR/R015600/1). This work was also  
313 supported by the NIHR Health Protection Research Unit in Modelling Methodology, a partnership between PHE,  
314 Imperial College London, and London School of Hygiene & Tropical Medicine (NIHR200908), the Abdul Latif  
315 Jameel Foundation, and the EDCTP2 programme supported by the EU. LKW is funded by the Wellcome Trust  
316 (grant number 218669/Z/19/Z).

317

## References

1. Office for National Statistics. *International comparisons of possible factors affecting excess mortality*. <https://www.ons.gov.uk/peoplepopulationandcommunity/healthandsocialcare/healthandwellbeing/articles/internationalcomparisonsofpossiblefactorsaffectingexcessmortality/2022-12-20> (2022).
2. Sachs, J. D. *et al.* The Lancet Commission on lessons for the future from the COVID-19 pandemic. *The Lancet* S0140673622015859 (2022) doi:10.1016/S0140-6736(22)01585-9.
3. Office for National Statistics. *Early insights into the impacts of the coronavirus (COVID-19) pandemic and EU exit on business supply chains in the UK*. <https://www.ons.gov.uk/businessindustryandtrade/internationaltrade/articles/earlyinsightsintotheimpactsofthecoronaviruspandemicandeuexitonbusinesssupplychainsintheuk/february2021tofebruary2022> (2022).
4. Fan, Y. *et al.* SARS-CoV-2 Omicron variant: recent progress and future perspectives. *Sig Transduct Target Ther* 7, 141 (2022).
5. Tan, S. T. *et al.* Infectiousness of SARS-CoV-2 breakthrough infections and reinfections during the Omicron wave. *Nat Med* (2023) doi:10.1038/s41591-022-02138-x.
6. Leung, K., Leung, G. M. & Wu, J. T. *Modelling the adjustment of COVID-19 response and exit from dynamic zero-COVID in China*. <http://medrxiv.org/lookup/doi/10.1101/2022.12.14.22283460> (2022) doi:10.1101/2022.12.14.22283460.
7. UK Government. *COVID-19 Response - Living with COVID-19*. [https://assets.publishing.service.gov.uk/government/uploads/system/uploads/attachment\\_data/file/1056229/COVID-19\\_Response\\_-\\_Living\\_with\\_COVID-19.pdf](https://assets.publishing.service.gov.uk/government/uploads/system/uploads/attachment_data/file/1056229/COVID-19_Response_-_Living_with_COVID-19.pdf) (2022).
8. Knock, E. S. *et al.* Key epidemiological drivers and impact of interventions in the 2020 SARS-CoV-2 epidemic in England. *Sci. Transl. Med.* eabg4262 (2021) doi:10.1126/scitranslmed.abg4262.
9. Sonabend, R. *et al.* Non-pharmaceutical interventions, vaccination, and the SARS-CoV-2 delta variant in England: a mathematical modelling study. *The Lancet* S0140673621022765 (2021) doi:10.1016/S0140-6736(21)02276-5.
10. Imai, N. *et al.* *Quantifying the impact of delaying the second COVID-19 vaccine dose in England: a mathematical modelling study*. <http://medrxiv.org/lookup/doi/10.1101/2022.08.08.22278528> (2022) doi:10.1101/2022.08.08.22278528.



- 346 11. Docherty, A. B. *et al.* Changes in in-hospital mortality in the first wave of COVID-19: a multicentre prospective  
347 observational cohort study using the WHO Clinical Characterisation Protocol UK. *The Lancet Respiratory*  
348 *Medicine* **9**, 773–785 (2021).
- 349 12. Nyberg, T. *et al.* Comparative analysis of the risks of hospitalisation and death associated with SARS-CoV-2  
350 omicron (B.1.1.529) and delta (B.1.617.2) variants in England: a cohort study. *The Lancet* **399**, 1303–1312  
351 (2022).
- 352 13. The COVID-19 Genomics UK (COG-UK) consortium *et al.* Assessing transmissibility of SARS-CoV-2 lineage  
353 B.1.1.7 in England. *Nature* **593**, 266–269 (2021).
- 354 14. Cori, A., Ferguson, N. M., Fraser, C. & Cauchemez, S. A New Framework and Software to Estimate Time-  
355 Varying Reproduction Numbers During Epidemics. *American Journal of Epidemiology* **178**, 1505–1512 (2013).
- 356 15. Moya, A., Holmes, E. C. & González-Candelas, F. The population genetics and evolutionary epidemiology of  
357 RNA viruses. *Nat Rev Microbiol* **2**, 279–288 (2004).
- 358 16. Mittal, A., Khattri, A. & Verma, V. Structural and antigenic variations in the spike protein of emerging SARS-  
359 CoV-2 variants. *PLoS Pathog* **18**, e1010260 (2022).
- 360 17. UK Department of Health & Social Care. Chapter 8: non-pharmaceutical interventions.  
361 [https://www.gov.uk/government/publications/technical-report-on-the-covid-19-pandemic-in-the-uk/chapter-8-](https://www.gov.uk/government/publications/technical-report-on-the-covid-19-pandemic-in-the-uk/chapter-8-non-pharmaceutical-interventions)  
362 [non-pharmaceutical-interventions](https://www.gov.uk/government/publications/technical-report-on-the-covid-19-pandemic-in-the-uk/chapter-8-non-pharmaceutical-interventions) (2023).
- 363 18. UK Government. Prime Minister confirms move to Plan B in England.  
364 <https://www.gov.uk/government/news/prime-minister-confirms-move-to-plan-b-in-england> (2021).
- 365 19. Bhattacharyya, R. P. & Hanage, W. P. Challenges in Inferring Intrinsic Severity of the SARS-CoV-2 Omicron  
366 Variant. *N Engl J Med* **386**, e14 (2022).
- 367 20. The RECOVERY Collaborative Group. Dexamethasone in Hospitalized Patients with Covid-19. *N Engl J Med*  
368 **384**, 693–704 (2021).
- 369 21. Beigel, J. H. *et al.* Remdesivir for the Treatment of Covid-19 — Final Report. *N Engl J Med* **383**, 1813–1826  
370 (2020).
- 371 22. The Hospital Doctor’s Union. *COVID-19: Learning from the First Wave. Lessons for the NHS in the next phase*  
372 *and beyond*. <https://www.hcsa.com/media/154216/HCSA-Report-Covid19-Learning-from-the-First-Wave.pdf>  
373 (2020).

- 374 23. Perez-Guzman, P. N. *et al.* Clinical characteristics and predictors of outcomes of hospitalized patients with  
375 COVID-19 in a multi-ethnic London NHS Trust: a retrospective cohort study. *Clinical Infectious Diseases*  
376 ciaa1091 (2020) doi:10.1093/cid/ciaa1091.
- 377 24. Joint Committee on Vaccination and Immunisation. *Joint Committee on Vaccination and Immunisation: advice*  
378 *on priority groups for COVID-19 vaccination*. 16  
379 [https://assets.publishing.service.gov.uk/government/uploads/system/uploads/attachment\\_data/file/950113/jcvi-](https://assets.publishing.service.gov.uk/government/uploads/system/uploads/attachment_data/file/950113/jcvi-advice-on-priority-groups-for-covid-19-vaccination-30-dec-2020-revised.pdf)  
380 [advice-on-priority-groups-for-covid-19-vaccination-30-dec-2020-revised.pdf](https://assets.publishing.service.gov.uk/government/uploads/system/uploads/attachment_data/file/950113/jcvi-advice-on-priority-groups-for-covid-19-vaccination-30-dec-2020-revised.pdf) (2020).
- 381 25. World Health Organization. Tracking SARS-CoV-2 variants. [https://www.who.int/activities/tracking-SARS-](https://www.who.int/activities/tracking-SARS-CoV-2-variants)  
382 [CoV-2-variants](https://www.who.int/activities/tracking-SARS-CoV-2-variants) (2023).
- 383 26. Imperial College COVID-19 Response Team *et al.* Estimating the effects of non-pharmaceutical interventions on  
384 COVID-19 in Europe. *Nature* (2020) doi:10.1038/s41586-020-2405-7.
- 385 27. Dean, N. Tracking COVID-19 infections: time for change. *Nature* (2022).
- 386 28. Lin, L., Liu, Y., Tang, X. & He, D. The Disease Severity and Clinical Outcomes of the SARS-CoV-2 Variants of  
387 Concern. *Front. Public Health* **9**, 775224 (2021).
- 388 29. Twohig, K. A. *et al.* Hospital admission and emergency care attendance risk for SARS-CoV-2 delta (B.1.617.2)  
389 compared with alpha (B.1.1.7) variants of concern: a cohort study. *The Lancet Infectious Diseases* **22**, 35–42  
390 (2022).
- 391 30. Nyberg, T. *et al.* Hospitalization and Mortality Risk for COVID-19 Cases With SARS-CoV-2 AY.4.2 (VUI-  
392 21OCT-01) Compared to Non-AY.4.2 Delta Variant Sublineages. *The Journal of Infectious Diseases* **226**, 808–  
393 811 (2022).
- 394 31. Kirwan, P. D. *et al.* Trends in risks of severe events and lengths of stay for COVID- 19 hospitalisations in  
395 England over the pre-vaccination era: results from the Public Health England SARI-Watch surveillance scheme.  
396 45 <https://arxiv.org/abs/2103.04867> (2021).
- 397 32. Brizzi, A. *et al.* Spatial and temporal fluctuations in COVID-19 fatality rates in Brazilian hospitals. *Nat Med*  
398 (2022) doi:10.1038/s41591-022-01807-1.
- 399 33. Baguelin, M. *et al.* Vaccination against pandemic influenza A/H1N1v in England: A real-time economic  
400 evaluation. *Vaccine* **28**, 2370–2384 (2010).

- 401 34. Baguelin, M., Jit, M., Miller, E. & Edmunds, W. J. Health and economic impact of the seasonal influenza  
402 vaccination programme in England. *Vaccine* **30**, 3459–3462 (2012).
- 403 35. Baguelin, M., Camacho, A., Flasche, S. & Edmunds, W. J. Extending the elderly- and risk-group programme of  
404 vaccination against seasonal influenza in England and Wales: a cost-effectiveness study. *BMC Med* **13**, 236  
405 (2015).
- 406 36. UK Government. *COVID-19 vaccine surveillance report: week 48*.  
407 [https://assets.publishing.service.gov.uk/government/uploads/system/uploads/attachment\\_data/file/1121345/vaccine-surveillance-report-week-48-2022.pdf](https://assets.publishing.service.gov.uk/government/uploads/system/uploads/attachment_data/file/1121345/vaccine-surveillance-report-week-48-2022.pdf) (2022).  
408
- 409 37. Bobrovitz, N. *et al.* Protective effectiveness of previous SARS-CoV-2 infection and hybrid immunity against the  
410 omicron variant and severe disease: a systematic review and meta-regression. *The Lancet Infectious Diseases*  
411 S1473309922008015 (2023) doi:10.1016/S1473-3099(22)00801-5.
- 412 38. Murray, C. J. L. COVID-19 will continue but the end of the pandemic is near. *The Lancet* **399**, 417–419 (2022).
- 413 39. Endo, A. Introduction to particle Markov-chain Monte Carlo for disease dynamics modellers. 13 (2019).
- 414 40. UK Government. Coronavirus (COVID-19) in the UK. <https://coronavirus.data.gov.uk> (2022).
- 415 41. Imperial College COVID-19 Response Team. The REACT-1 programme.  
416 <https://www.imperial.ac.uk/medicine/research-and-impact/groups/react-study/>.
- 417 42. Office for National Statistics. Coronavirus (COVID-19) Infection Survey, UK Statistical bulletins.  
418 <https://www.ons.gov.uk/peoplepopulationandcommunity/healthandsocialcare/conditionsanddiseases/bulletins/coronaviruscovid19infectionsurveypilot/previousReleases> (2023).  
419
- 420 43. Mossong, J. *et al.* Social Contacts and Mixing Patterns Relevant to the Spread of Infectious Diseases. *PLoS Med*  
421 **5**, e74 (2008).
- 422 44. UK Government. Variants: distribution of case data, 6 May 2022.  
423 <https://www.gov.uk/government/publications/covid-19-variants-genomically-confirmed-case-numbers/variants-distribution-of-case-data-6-may-2022>  
424 (2022).
- 425  
426

## 427 **Methods**

428 We expanded a previously described<sup>8-10</sup> stochastic compartmental SARS-CoV-2 mathematical model and Bayesian  
429 evidence synthesis framework, fitting to a range of epidemiological surveillance data streams using particle Markov  
430 Chain Monte Carlo,<sup>39</sup> Data range between March 16, 2020 and February 24, 2022 and are aggregated by England  
431 NHS (health administration) region. For a full description of the model structure, equations, parameters and fitted  
432 data, see online Supplement. Briefly, our model has an SEIR structure, stratified in 17 age classes (5-year bands from  
433 0 to 79 and 80+). We fitted to age-specific data on PCR case positivity from the community (national Pillar 2  
434 programme),<sup>40</sup> infection PCR-positive prevalence survey from the REal-time Assessment of Community Transmission  
435 (REACT) Study,<sup>41</sup> hospital admissions, and community and hospital deaths, and daily number of first, second, and  
436 booster vaccine doses,<sup>40</sup> and to regionally aggregated data on daily general and ICU bed occupancy,<sup>40</sup> and infection-  
437 PCR-positive prevalence from the Office for National Statistics.<sup>42</sup>

438  
439 To model heterogenous contact rates among age groups, we use the POLYMOD contact matrix for England.<sup>43</sup> We  
440 then fit a piecewise linear, time-varying multiplier,  $\beta$  to account for changes in transmission given NPIs or other  
441 official events, such as school holidays (Supplement Table S10). We use age-splines for the probabilities of severe  
442 disease (requiring hospitalisation) conditional on infection, need for ICU care given hospitalisation and death in  
443 hospital compartments (general bed, ICU, step-down care after ICU), as previously described.<sup>8</sup> To account for  
444 changes in healthcare characteristics, we further fit piecewise linear, time-varying modifiers of the probabilities of  
445 hospitalisation given severe disease, ICU admission given hospitalisation, death in hospital and death in the  
446 community, with dates defined either by official approval for key pharmacological treatments for COVID-19 in  
447 England or changes in healthcare seeking behaviours (Supplement Tables S8 and S10).

448  
449 Our model accommodates two circulating variants at a time over a sequence of three strain replacement phases;  
450 namely, Wildtype and Alpha, Alpha and Delta, and Delta and Omicron. Within the two-variant model phases, infected  
451 compartments are further stratified into four classes, accounting for both primary infections and reinfections by each  
452 of the circulating variants. Additionally, recovered compartments feature a fifth class, to account for those recovered  
453 from an infection from a historic variant (e.g. during the Alpha and Delta phase, those recovered from a Wildtype  
454 infection). A reinfection occurs when an individual in the recovered compartment is infected with a new variant. We

455 assume that an infection with a variant confers perfect immunity against that variant and variants that predate it (e.g.  
456 prior infection with Omicron confers perfect immunity against Delta and Omicron). However, to model imperfect  
457 protection from prior infection against emerging variants, we fix cross-immunity parameters as informed from the  
458 literature (Supplement Table S9). To ensure the robustness of results, we varied fixed cross-immunity parameters  
459 across a plausible range in sensitivity analyses (see Supplement section 5). We assume that individuals recovered from  
460 an infection can lose all their infection-induced immunity and return to the susceptible compartment and their next  
461 potential infection would be modelled as a new primary infection rather than a reinfection.

462  
463 We model vaccination in seven classes (unvaccinated, dose one-no effect, dose one-full effect, dose two, waned from  
464 dose two, booster dose, waned from booster) and we explicitly account for protection against infection, symptomatic  
465 (mild) disease, severe disease requiring hospitalisation, death, and onward transmission (infectiousness). We assume  
466 fixed degree-type protection from vaccine, informed by population-level English analyses by vaccine type and variant  
467 (Supplement Tables S3 and S4, and Figures S2-S5). To account for different vaccines used in England over the study  
468 period, we used a multiplicative VE weighting for AstraZeneca and Pfizer/Moderna (assuming same efficacy between  
469 the latter) uptake in the different age groups to daily data on first, second and booster doses administered by NHS  
470 England region.

471  
472 To robustly capture the variant-specific properties of transmissibility and severity, we fitted our model to regionally  
473 aggregated data of variant frequency from Pillar 2 cases<sup>44</sup> for each variant transition. To infer variant transmissibility,  
474 we fitted variant-specific parameters of their seeding date and transmission advantage relative to the variant being  
475 replaced. We assume a fixed seeding pattern for each variant and a gradual decrease in the serial interval over  
476 successive variants as informed by the literature (Supplement Table S2). This latter assumption was also tested in  
477 sensitivity analysis (Supplement section 5). For variant severity, we fitted variant-specific parameter multipliers of the  
478 age-splines of the probabilities of hospitalisation conditional on infection, of ICU admission given hospitalisation, and  
479 of death given infection. For each variant in succession, these multipliers were relative to the variant being replaced,  
480 independent of fitted time-varying healthcare severity parameters, and scaled (up or down) the age-specific severity  
481 splines as a whole (assuming no age-specific changes in severity due to the variant).

482

483 We estimated the intrinsic  $R_0$  and basic severity properties of the variants parametrically. For each NHS England  
484 region, the intrinsic  $R_0$  was the product of the instantaneous reproduction number at the start of the model,  $R_{t=0}$ , and  
485 the variant's transmission advantage relative to Wildtype. We fit the transmission advantage for each variant as a  
486 parameter relative to the variant it replaces (e.g. Delta relative to Alpha). Lastly, we defined the basic severity of the  
487 variants as what their infection hospitalisation (IHR), hospital fatality (HFR) and infection fatality ratios (IFR) would  
488 be in a population without any immunity (either from prior infections or vaccination) on the 16<sup>th</sup> of May 2020. Thus,  
489 these basic severity measures allow us to compare variant severity in the absence of changes in severity over time or  
490 in the age distribution of infections or hospitalisations, such as may be driven by vaccination or improvements in  
491 healthcare. Given the stratification of our model compartments by age, vaccine and variant classes, coupled to our  
492 fitted splines of baseline severity pathways as described above, we were able to parametrically calculate the variant  
493 specific IHR, HFR and IFR by age and vaccination class (see Supplement, section 4.3.4). We were then able to  
494 remove the effect of vaccine-derived immunity by assessing these metrics in the unvaccinated classes only. To  
495 account for the effect of the age distribution of infections or hospitalisation, we derived population-level basic IHR,  
496 IFR or HFR by weighting age specific estimates across age groups using the eigenvector corresponding to the leading  
497 eigenvalue of the next-generation matrix used for ascertaining  $R_t$ . Since basic severity values are calculated with the  
498 same scaling effects of the fitted time-varying severity modifiers for all variants, the effect of potential modifications  
499 is standardised across variants.

500