

## **Development of a Novel Score to Predict Urgent Mechanical Circulatory Support in Chronic Total Occlusion Percutaneous Coronary Intervention**

Judit Karacsonyi MD, PhD<sup>1</sup>; Larissa Stanberry, PhD<sup>1</sup>; Bahadir Simsek, MD<sup>1</sup>; Spyridon Kostantinis, MD<sup>1</sup>; Salman S. Allana, MD<sup>1</sup>, Athanasios Rempakos, MD<sup>1</sup>, Brynn Okeson, MS<sup>1</sup>; Khaldoon Alaswad, MD<sup>2</sup>; Mir B. Basir, DO<sup>2</sup>; Farouc Jaffer, MD, PhD<sup>3</sup>; Paul Poommipanit, MD<sup>4</sup>; Jaikirshan Khatri, MD<sup>5</sup>; Mitul Patel, MD<sup>6</sup>; Ehtisham Mahmud, MD<sup>6</sup>; Abdul Sheikh, MD<sup>7</sup>; Jason R. Wollmuth, MD<sup>8</sup>; Robert W Yeh, MD<sup>9</sup>; Raj H. Chandwaney, MD<sup>10</sup>; Ahmed M ElGuindy, MD<sup>11</sup>; Nidal AbiRafeh, MD<sup>12</sup>; Daniel R. Schimmel, MD<sup>13</sup>; Keith Benzuly, MD<sup>13</sup>; M. Nicholas Burke, MD<sup>1</sup>, Bavana V. Rangan, BDS, MPH<sup>1</sup>; Olga C. Mastrodemos, BA<sup>1</sup>; Yader Sandoval, MD<sup>1</sup>; Imre Ungi, MD, PhD<sup>14</sup>; Emmanouil S. Brilakis, MD, PhD<sup>1</sup>

<sup>1</sup> Minneapolis Heart Institute and Minneapolis Heart Institute Foundation, Abbott Northwestern Hospital, Minneapolis, MN, USA;

<sup>2</sup> Henry Ford Hospital, Detroit, MI, USA;

<sup>3</sup> Massachusetts General Hospital, Boston, MA, USA;

<sup>4</sup> University Hospitals, Case Western Reserve University, Cleveland, OH;

<sup>5</sup> Cleveland Clinic, Cleveland, OH, USA;

<sup>6</sup> VA San Diego Healthcare System and University of California San Diego, La Jolla, CA;

<sup>7</sup> Wellstar Health System, Marietta, GA;

<sup>8</sup> Providence Heart Institute, Portland, OR;

<sup>9</sup> Beth Israel Deaconess Medical Center, Boston, MA;

<sup>10</sup> Oklahoma Heart Institute, Tulsa, OK;

<sup>11</sup> Aswan Heart Centre, Magdi Yacoub Foundation, Aswan, Egypt;

<sup>12</sup> North Oaks Health System, Hammond, LA, USA;

<sup>13</sup> Northwestern University, Feinberg School of Medicine, Chicago, IL;

<sup>14</sup> Division of Invasive Cardiology, Department of Internal Medicine and Cardiology  
Center, University of Szeged, Szeged, Hungary

**Word count:** 3420 words

**Short title:** Urgent Mechanical Circulatory Support Score in CTO PCI

**Corresponding Author:**

Emmanouil S. Brilakis, MD, PhD

Minneapolis Heart Institute,

920 E 28th Street #300,

Minneapolis, Minnesota 55407

E-mail: [esbrilakis@gmail.com](mailto:esbrilakis@gmail.com). Telephone: 612-863-3900, Fax: F: 612-863-6441

## ABSTRACT

(234 words)

**Background:** Estimating the likelihood of urgent mechanical circulatory support (MCS) can facilitate procedural planning and clinical decision making in chronic total occlusion (CTO) percutaneous coronary intervention (PCI).

**Methods:** We analyzed 2,784 CTO PCIs performed between 2012 and 2021 at 12 centers. The variable importance was estimated by a bootstrap applying a random forest algorithm to a propensity-matched sample (a ratio of 1:5 matching cases with controls on center). The identified variables were used to predict the risk of urgent MCS. The performance of the risk model was assessed in-sample as well as on 2411 out-of-sample procedures who did not require urgent MCS.

**Results:** Urgent MCS was used in 62 (2.2%) of cases. Patients who required urgent MCS were older (70 [63, 77] vs. 66 [58, 73] years,  $p=0.003$ ) compared with those who did not require urgent MCS. Technical (68% vs. 87%,  $p<0.001$ ) and procedural successes (40% vs. 85%,  $p<0.001$ ) were lower in the urgent MCS group compared with no urgent MCS cases. The risk model for urgent MCS use included retrograde crossing strategy, left ventricular ejection fraction, and lesion length. The resulting model demonstrated good calibration and discriminatory capacity with AUC (95%CI) of 0.79 (0.73, 0.86) and specificity and sensitivity of 86% and 52%, respectively. On the out-of-sample set, the specificity of the model was 87%.

**Conclusion:** The PROGRESS CTO MCS score can help estimate the risk of urgent MCS use during CTO PCI.

**Key words:** chronic total occlusion, mechanical circulatory support, percutaneous coronary intervention, score

## **What Is Known?**

- Estimating the likelihood of urgent mechanical circulatory support (MCS) can facilitate procedural planning and clinical decision making in chronic total occlusion (CTO) percutaneous coronary intervention (PCI).

## **What the Study Adds?**

- We developed a risk model for urgent MCS use during CTO PCI using retrograde crossing strategy, left ventricular ejection fraction, and lesion length.
- Use of the PROGRESS CTO urgent MCS score may facilitate patient selection for prophylactic hemodynamic support optimizing the risk benefit ratio of the procedure.

## **INTRODUCTION**

Chronic total occlusion (CTO) percutaneous coronary interventions (PCI) can be complex procedures with approximately 85-90% technical success rates at experienced centers but also relatively high incidence of major adverse cardiac events (1-3%).<sup>1-4</sup> Urgent mechanical circulatory support (MCS) might be necessary in some complication cases. The use of mechanical circulatory devices to support high-risk elective PCI has become more common in part due to increasing number of patients considered inoperable or high risk for surgical revascularization.<sup>5</sup> Estimating the need for urgent MCS could facilitate clinical decision-making and procedural planning in CTO PCI. We developed a score to identify patients at increased risk for urgent MCS.

## **MATERIALS AND METHODS**

We analyzed 2,784 CTO PCIs performed between 2012 and 2021 at 12 centers in the PROGRESS-CTO Registry (Prospective Global Registry for the Study of Chronic Total Occlusion Intervention; Clinicaltrials.gov identifier: NCT02061436); only data from centers with at least 40 PCIs and those with urgent MCS were used. Study data were collected and managed using REDCap (Research Electronic Data Capture) electronic data capture tools hosted at the Minneapolis Heart Institute Foundation.<sup>6, 7</sup> The study was approved by the institutional review board of each site.

Coronary CTOs were defined as coronary lesions with Thrombolysis in Myocardial Infarction (TIMI) grade 0 flow of at least 3-month duration. Estimation of the duration of occlusion was clinical, based on the first onset of angina, prior history of myocardial infarction (MI) in the target vessel territory, or comparison with a prior

angiogram. Calcification was assessed by angiography as mild (spots), moderate (involving  $\leq 50\%$  of the reference lesion diameter), or severe (involving  $>50\%$  of the reference lesion diameter). Moderate proximal vessel tortuosity was defined as the presence of at least 2 bends  $>70^\circ$  or 1 bend  $>90^\circ$  and severe tortuosity as 2 bends  $>90^\circ$  or 1 bend  $>120^\circ$  in the CTO vessel. A retrograde procedure was an attempt to cross the lesion through a collateral vessel or bypass graft supplying the target vessel distal to the lesion; otherwise, the intervention was classified as an antegrade-only procedure. Antegrade dissection/re-entry was defined as antegrade PCI during which a guidewire was intentionally introduced into the extraplaque space proximal to the lesion, or re-entry into the distal true lumen was attempted after intentional or inadvertent extraplaque guidewire crossing. Technical success was defined as successful CTO revascularization with achievement of  $<30\%$  residual diameter stenosis within the treated segment and restoration of TIMI grade 3 antegrade flow.<sup>8</sup> Procedural success was defined as achievement of technical success without any in-hospital major adverse cardiac event (MACE), that were defined as any of the following events prior to hospital discharge: death, MI, recurrent symptoms requiring urgent repeat target-vessel revascularization (TVR) with PCI or coronary artery bypass graft (CABG) surgery, tamponade requiring either pericardiocentesis or surgery, and stroke. MI was defined using the Third Universal Definition of Myocardial Infarction (type 4a MI).<sup>9</sup> The PROGRESS-CTO score as described by Christopoulos et al<sup>10</sup> and PROGRESS MACE score was described by Simsek et al<sup>11</sup>. Urgent mechanical circulatory support was defined as use of MCS after the procedure started and not in a planned fashion.



## Statistical Analysis

Categorical variables were expressed as counts (%) and compared using the Pearson's chi-squared test or the Fisher's exact test, as appropriate. Continuous variables in the study were skewed and were summarized by medians (interquartile ranges [IQR]); the variables were compared between urgent MCS and non-urgent MCS patients using the Wilcoxon rank-sum test.

To develop a prediction model to identify procedures that may require urgent MCS, first, risk factors were selected, then three competing models were built and their performances were compared. Given the small number of urgent MCS cases and sample imbalance, we used a random forest (RF) algorithm with a bootstrap (B=1000) data to identify risk factors to include in the model. For that, based on clinical reasoning and existing literature, the following factors plausibly associated with the risk of UCS were identified: age, gender, BMI, left ventricular ejection fraction (LVEF), creatinine levels at baseline (log scale), retrograde approach, prior MI, prior CABG, prior heart failure, prior PAD, CVD, diabetes mellitus, vessel diameter, proximal cap ambiguity, lesion length, side branch at proximal cap, and blunt stump. The importance of each risk factor was estimated by applying an RF algorithm to a propensity-matched bootstrap sample (n=373, with a ratio of 1:5 matching UCS with non-UCS patients on center only). The prediction error and the node impurity were estimated for these variables on each of the bootstrap samples using accuracy and the Gini index, accordingly. The variables were ranked by their index medians and the top five factors for each of the two importance measures were selected: retrograde approach, LVEF, proximal cap ambiguity, lesion length, and creatinine were the most important based on model

accuracy and age, BMI, LVEF, creatinine, lesion length were the top for the Gini index of node impurities.

With risk factors identified, an independent matched sample (n=373) was drawn using the same criteria as above and two predictive models were built using a logistic regression approach for the two sets of variables; these models are referred to as  $M_1$  and  $M_2$  (for Gini and accuracy). A third joint model,  $M_3$ , was built by applying a logistic regression with a backward elimination to a joint factor set across the first two models, i.e. retrograde approach, LVEF, proximal cap ambiguity, lesion length, creatinine, age, BMI. The three risk models were validated using a bootstrap resampling; the estimated shrinkage parameters and bias-corrected performance indices are reported. The indices were based on the receiver operating characteristic (ROC) curves including area under the curve (AUC), specificity, and sensitivity. The performance of the models was also assessed on the remaining sample of patients with no urgent MCS (n=2,411).

The statistical analysis was performed in R 4.1.2 (R Core Team) in RStudio 2022.07.1 environment (RStudio, PBC).

## RESULTS

Urgent MCS was used in 62 (2.2%) of 2,722 CTO PCIs. The baseline clinical characteristics of the study patients classified according to urgent MCS use and their angiographic characteristics are shown in Table 1. Urgent MCS patients were older (70 [63, 77] vs. 66 [58, 73] years,  $p=0.003$ ) compared with patients who did not receive urgent MCS. Prior heart failure (34% vs. 28%,  $p=0.287$ ) and prior myocardial infarction (53% vs. 41%,  $p=0.075$ ) were similar between the two groups. Left ventricular ejection

fraction was lower in the urgent MCS group (45% [33, 55] vs. 55% [43, 60],  $p<0.001$ ). The CTO lesions in the urgent MCS group were more complex with higher prevalence of moderate/severe calcification (69% vs. 52%,  $p=0.007$ ), moderate/severe tortuosity (47% vs. 31%,  $p=0.008$ ) and proximal cap ambiguity (55% vs. 37%,  $p=0.006$ ). Use of the retrograde approach (77% vs. 36%,  $p<0.001$ ) was also more common in the urgent MCS group.

Procedural outcomes classified according to urgent MCS use are presented in Table 2. Technical (68% vs. 87%,  $p<0.001$ ) and procedural success (40% vs. 85%,  $p<0.001$ ) was lower and MACE was higher (31% vs. 2.1%,  $p<0.001$ ) in the urgent MCS group. Urgent MCS was associated with longer procedural (256 [193, 328] min vs. 140 [98, 196] min,  $p<0.001$ ) and fluoroscopy time 93 [60, 121] min vs. 51 [31, 79] min,  $p<0.001$ ) and higher air kerma radiation dose 3.39 [2.09,4.81] Gray vs. 1.99 [1.14, 3.30] Gray,  $p<0.001$ ) compared with no urgent MCS cases.

The baseline clinical and angiographic characteristics of the study patients included in the prediction model are shown in Table 3. The outcomes of the procedures included in the model are demonstrated in Table 4.

The final joint model, M3, included retrograde approach, LVEF, and lesion length. The three models M1-M3 demonstrated reasonable calibration and discriminatory capacity (Figure 1). The estimated AUC (95%CI) for these models were 0.77 (0.70, 0.84), 0.78 (0.72, 0.85), and 0.79 (0.73, 0.86) with the shrinkage factors of 0.85, 0.90, and 0.93, respectively. Adjusting for optimism, the corrected AUC were 0.75, 0.76, and 0.79.

For the joint model, a threshold of 0.27 corresponded to accuracy (95%CI) of 80.6% (76.0, 84.6) with specificity of 85.8% and sensitivity of 51.9%. In the out-of-sample set of patients with no urgent MCS (n=2,411), the estimated specificity of the joint model was 86.8%, consistent with the in-sample validation. (The baseline characteristics and outcomes of the validation dataset are presented in Supplementary Tables 1-2.

Based on the joint model, a nomogram in Figure 2. gives a simple bedside tool to estimate the risk of urgent MCS.

## **DISCUSSION**

We developed a novel score for estimating the risk of urgent MCS during CTO PCI. The score may be a useful aid to assist in procedure planning.

The 2021 American College of Cardiology/American Heart Association/Society for Cardiovascular Angiography and Interventions Guideline for Coronary Artery Revascularization guidelines support elective insertion of appropriate mechanical circulatory support in selected high-risk patients, as an adjunct to PCI to prevent hemodynamic compromise during PCI with class IIB, level of evidence B recommendation.<sup>12</sup> CTO PCI carries increased risk of complications compared with non-CTO PCI due to complex coronary anatomy (calcification, tortuosity, multivessel disease), difficulties with CTO crossing and comorbidities (left ventricular dysfunction, particularly in the donor vessel is being instrumented during retrograde procedures).<sup>1, 13-</sup>

<sup>15</sup> How can we identify patients who are more likely to need MCS? We recently developed risk scores for estimating the risk of periprocedural in-hospital major adverse

cardiovascular events (MACE), mortality, pericardiocentesis, and acute myocardial infarction (MI) in patients undergoing CTO PCI<sup>11</sup>, but there are currently no risk scores for assessing the need for urgent MCS in CTO PCI.

There is limited data regarding MCS in CTO PCI. In a prior publication of the PROGRESS CTO registry, MCS was used electively in 69 procedures (4%) and urgently in 22 procedures (1%).<sup>16</sup> In a retrospective cohort, elective MCS support with the Impella 2.5 or CP was used in 57 CTO PCIs (2%). Technical (87.7%) and procedural (75.4%) success were high, but so was the risk of periprocedural complications occurred: vascular injury (5.3%), all-cause death (5.3%), major bleeding (3.5%), stroke (1.8%), and coronary perforation resulting in tamponade (1.8%).<sup>17</sup> An analysis of the National Inpatient Sample (NIS) between 2008-2014 found that MCS was utilized in 2% of hospitalizations with CTO-PCI (n=93,109). MCS utilization, both elective and urgent, increased during the study period. While overall in-hospital mortality was 2%, it was 25.9% among MCS patients compared with 1.6% in patients who did not need MCS (p<0.0001). Patients requiring MCS have more comorbidities and more likely to be in cardiogenic shock, limiting their tolerance of procedural complications. An additional explanation could be the development of acute kidney injury during MCS hospitalizations, which was higher in patients who received MCS.<sup>18</sup> Azzalini et al. evaluated the early and one-year outcomes of 250 Impella-supported (Impella 2.5 or CP) high-risk nonemergent PCIs in a single-center retrospective study (15% of the lesion were CTOs). After propensity matching the incidence of MACE was higher in the MCS group (26.8% vs. 13.2%, p<0.001), as was the incidence of periprocedural MI (14.0% vs. 6.4%, p= 0.005), major bleeding (6.8% vs. 2.8%, p=0.04), and need for

blood transfusion (11.2% vs. 4.8%,  $p= 0.008$ ). In addition, in-hospital mortality trended numerically higher in the Impella-supported group (3.2% vs. 1.2%,  $p= 0.13$ ). There were no differences in the incidence of MACE (31.2% vs. 27.4%,  $p=0.78$ ) or any of its individual components between Impella-supported patients and controls at one-year follow-up.<sup>19</sup> A retrospective, observational, multi-center (10 hospital) registry included 157 patients who underwent high risk PCI with Impella support (14% CTOs). During 180-day follow-up, MACE occurred in 34 patients (23%), 27 patients (18%) died, 9 patients (6%) sustained a ST-elevation myocardial infarction, and 4 patients (3%) suffered a stroke.<sup>20</sup>

In a single-center study of 13 prophylactic Tandem Heart-supported CTO PCIs the most common reason for hemodynamic support was use of the retrograde approach in the setting of left ventricular dysfunction (38%). Technical success was high (92%) despite high lesion complexity. Procedural success was 77%, there were no major bleeding complications, but one patient developed an arteriovenous fistula at the arterial cannula insertion site, one patient had a coronary perforation with hemodynamic compromise requiring pericardiocentesis, and one patient died of cardiogenic shock, secondary to right ventricular wall hematoma.<sup>21</sup>

Use of the PROGRESS CTO urgent MCS score may facilitate patient selection for prophylactic hemodynamic support optimizing the risk benefit ratio of the procedure.

### **Study limitations**

The primary limitation of this study is the relatively small number of procedures requiring urgent MCS. These are rare events and given limited available data, we

tackled this issue using a bootstrap resampling to develop the least complex- most informative model. Furthermore, the out-of-sample validation was limited to CTO PCIs not requiring urgent MCS, so only model specificity could be estimated. Other limitations of our study include its observational design, lack of clinical event adjudication and core laboratory analyses, and using data from high-volume, experienced PCI centers with a record of performing urgent MCS, which limits the generalizability of our findings. The score performance will need to be re-evaluated as more data become available.

### **CONCLUSION**

In conclusion, use of the PROGRESS CTO urgent MCS score may facilitate patient selection for prophylactic MCS and optimize the risk benefit ratio of CTO PCI.

**Acknowledgments:** Study data were collected and managed using Research Electronic Data Capture (REDCap) electronic data capture tools hosted at the Minneapolis Heart Institute Foundation (MHIF), Minneapolis, Minnesota. REDCap is a secure, web-based application designed to support data capture for research studies, providing: (1) an intuitive interface for validated data entry; (2) audit trails for tracking data manipulation and export procedures; (3) automated export procedures for seamless data downloads to common statistical packages; and (4) procedures for importing data from external sources.

**Funding:** The authors are grateful for the generosity of our many philanthropy partners, including our anonymous donors, Drs. Mary Ann and Donald A. Sens, Ms. Dianne and Dr. Cline Hickok, Ms. Charlotte and Mr. Jerry Golinvaux Family Fund, the Roehl Family Foundation, and the Joseph Durda Foundation, Ms. Wilma and Mr. Dale Johnson, for making this work possible at the Minneapolis Heart Institute Foundation's Science Center for Coronary Artery Disease (CCAD).



## DISCLOSURES:

Dr. Karacsonyi: none

Dr. Stanberry: none

Dr. Simsek: none

Dr. Kostantinis: none

Dr. Allana: none

Dr. Rempakos: none

Ms Okeson: none

Dr. Alaswad: consultant and speaker for Boston Scientific, Abbott Cardiovascular, Teleflex, and CSI.

Dr. Basir: none

Dr. Jaffer: sponsored research from Canon U.S.A., Siemens, Shockwave, Teleflex; Institutional grants: Abbott vascular, Boston Scientific, CSI, Philips, Asahi Intecc, and Biotronik; Consultant for Boston Scientific, Siemens, Biotronik, Magenta Medical, IMDS, and Asahi Intecc; Equity interest, Intravascular Imaging Inc.; DurVena; Massachusetts General Hospital has a patent licensing arrangement with Terumo, Canon U.S.A., and Spectrawave; FAJ has the right to receive royalties.

Dr. Poommipanit: Asahi Intecc, Inc., Abbott, Vascular-Consultant.

Dr. Khatri: received honoraria from Asahi Intecc; and is a speaker and proctor for Abbott Vascular.

Dr. Patel: member of the Speakers Bureau for AstraZeneca.

Dr. Mahmud: none

Dr. Sheikh: none

Dr. Wollmuth: none

Dr. Yeh: grants and personal fees from Abbott Vascular, AstraZeneca, Medtronic, and Boston Scientific.

Dr. Chandwaney: none

Dr. ElGuindy: received consultancy and proctorship fees from Medtronic, Asahi Intecc, Boston Scientific, and Terumo.

Dr. Abi Rafeh: proctor and speaker honoraria from Boston Scientific and Abbott Vascular.

Dr. Schimmel: none

Dr. Benzuly: none

Dr. Burke: none

Dr. Rangan: none

Ms. Mastrodemos: none

Dr. Sandoval: none

Dr. Ungi: none

Dr. Brilakis: consulting/speaker honoraria from Abbott Vascular, American Heart Association (associate editor Circulation), Amgen, Asahi Intecc, Biotronik, Boston Scientific, Cardiovascular Innovations Foundation (Board of Directors), CSI, Elsevier, GE Healthcare, IMDS, Medtronic, Siemens, and Teleflex; research support: Boston Scientific, GE Healthcare; owner, Hippocrates LLC; shareholder: MHI Ventures, Cleerly Health, Stallion Medical.

## REFERENCES

1. Kostantinis S, Simsek B, Karacsonyi J, Alaswad K, Krestyaninov O, Khelinskii D, Karpaliotis D, Jaffer FA, Khatri JJ, Poommipanit P, et al. In-hospital outcomes and temporal trends of percutaneous coronary interventions for chronic total occlusion. *EuroIntervention*. 2022.
2. Suzuki Y, Tsuchikane E, Katoh O, Muramatsu T, Muto M, Kishi K, Hamazaki Y, Oikawa Y, Kawasaki T and Okamura A. Outcomes of Percutaneous Coronary Interventions for Chronic Total Occlusion Performed by Highly Experienced Japanese Specialists: The First Report From the Japanese CTO-PCI Expert Registry. *JACC Cardiovasc Interv*. 2017;10:2144-2154.
3. Konstantinidis NV, Werner GS, Deftereos S, Di Mario C, Galassi AR, Buettner JH, Avran A, Reifart N, Goktekin O, Garbo R, et al. Temporal Trends in Chronic Total Occlusion Interventions in Europe. *Circ Cardiovasc Interv*. 2018;11:e006229.
4. Quadros A, Belli KC, de Paula JET, de Magalhaes Campos CAH, da Silva ACB, Santiago R, Ribeiro MH, de Oliveira PP, Lamelas P, Abelin AP, et al. Chronic total occlusion percutaneous coronary intervention in Latin America. *Catheter Cardiovasc Interv*. 2020;96:1046-1055.
5. Kunkel KJ, Dabbagh MF, Zaidan M and Alaswad K. Mechanical Circulatory Support in High-Risk Percutaneous Coronary Intervention. *Interv Cardiol Clin*. 2021;10:207-219.
6. Harris PA, Taylor R, Minor BL, Elliott V, Fernandez M, O'Neal L, McLeod L, Delacqua G, Delacqua F, Kirby J, et al. The REDCap consortium: Building an international community of software platform partners. *J Biomed Inform*. 2019;95:103208.
7. Harris PA, Taylor R, Thielke R, Payne J, Gonzalez N and Conde JG. Research electronic data capture (REDCap)--a metadata-driven methodology and workflow process for providing translational research informatics support. *J Biomed Inform*. 2009;42:377-81.
8. Ybarra LF, Rinfret S, Brilakis ES, Karpaliotis D, Azzalini L, Grantham JA, Kandzari DE, Mashayekhi K, Spratt JC, Wijeyesundera HC, et al. Definitions and Clinical Trial Design Principles for Coronary Artery

Chronic Total Occlusion Therapies: CTO-ARC Consensus Recommendations. *Circulation*. 2021;143:479-500.

9. Thygesen K, Alpert JS, Jaffe AS, Simoons ML, Chaitman BR, White HD, Joint ESCAAHAWHFTFftUDoMI, Katus HA, Lindahl B, Morrow DA, et al. Third universal definition of myocardial infarction. *Circulation*. 2012;126:2020-35.

10. Christopoulos G, Kandzari DE, Yeh RW, Jaffer FA, Karpaliotis D, Wyman MR, Alaswad K, Lombardi W, Grantham JA, Moses J, et al. Development and Validation of a Novel Scoring System for Predicting Technical Success of Chronic Total Occlusion Percutaneous Coronary Interventions: The PROGRESS CTO (Prospective Global Registry for the Study of Chronic Total Occlusion Intervention) Score. *JACC Cardiovasc Interv*. 2016;9:1-9.

11. Simsek B, Kostantinis S, Karacsonyi J, Alaswad K, Krestyaninov O, Khelinskii D, Davies R, Rier J, Goktekin O, Gorgulu S, et al. Predicting Periprocedural Complications in Chronic Total Occlusion Percutaneous Coronary Intervention: The PROGRESS-CTO Complication Scores. *JACC Cardiovasc Interv*. 2022;15:1413-1422.

12. Lawton JS, Tamis-Holland JE, Bangalore S, Bates ER, Beckie TM, Bischoff JM, Bittl JA, Cohen MG, DiMaio JM, Don CW, et al. 2021 ACC/AHA/SCAI Guideline for Coronary Artery Revascularization: Executive Summary: A Report of the American College of Cardiology/American Heart Association Joint Committee on Clinical Practice Guidelines. *Circulation*. 2021:CIR0000000000001039.

13. Karacsonyi J, Vemmou E, Nikolakopoulos I, Ungi I, Abi Rafeh N, ElGuindy A, Azzalini L, Burke MN and Brilakis ES. Current challenges and prevention strategies for chronic total occlusion (CTO) complications. *Expert Rev Cardiovasc Ther*. 2021;19:337-347.

14. Brilakis ES. *Manual of Chronic Total Occlusion Interventions, A Step-by-Step Approach*. 2nd Edition ed. London: Elsevier; 2018.

15. Davila CD, Sharma S, Krishnamoorthy P, Rengifo-Moreno P, Palacios IF, O'Neill W, Kapur NK and Witzke CF. Prevalence and Clinical Correlates of Extended Mechanical Support in Patients Undergoing High-Risk Percutaneous Coronary Intervention in Current Clinical Practice: Insights from the cVAD Registry. *Cardiovasc Revasc Med*. 2020;21:342-347.
16. Danek BA, Basir MB, O'Neill WW, Alqarqaz M, Karatasakis A, Karpaliotis D, Jaffer FA, Yeh RW, Wyman M, Lombardi WL, et al. Mechanical Circulatory Support in Chronic Total Occlusion Percutaneous Coronary Intervention: Insights From a Multicenter U.S. Registry. *J Invasive Cardiol*. 2018;30:81-87.
17. Riley RF, McCabe JM, Kalra S, Lazkani M, Pershad A, Doshi D, Kirtane AJ, Nicholson W, Kearney K, Demartini T, et al. Impella-assisted chronic total occlusion percutaneous coronary interventions: A multicenter retrospective analysis. *Catheter Cardiovasc Interv*. 2018;92:1261-1267.
18. Patel K, Doshi R, Decter D, Shah J and Meraj P. Trends in the utilization and in-hospital outcomes when using mechanical circulatory support devices for stable chronic total occlusion treated with percutaneous coronary intervention. *Eur J Intern Med*. 2019;59:e11-e13.
19. Azzalini L, Johal GS, Baber U, Bander J, Moreno PR, Bazi L, Kapur V, Barman N, Kini AS and Sharma SK. Outcomes of Impella-supported high-risk nonemergent percutaneous coronary intervention in a large single-center registry. *Catheter Cardiovasc Interv*. 2021;97:E26-E33.
20. Baumann S, Werner N, Al-Rashid F, Schafer A, Bauer T, Sotoudeh R, Bojara W, Shamekhi J, Sinning JM, Becher T, et al. Six months follow-up of protected high-risk percutaneous coronary intervention with the microaxial Impella pump: results from the German Impella registry. *Coron Artery Dis*. 2020;31:237-242.
21. Neupane S, Basir M, Alqarqaz M, O'Neill W and Alaswad K. High-Risk Chronic Total Occlusion Percutaneous Coronary Interventions Assisted With TandemHeart. *J Invasive Cardiol*. 2020;32:94-97.

## FIGURE LEGENDS

### **Figure 1.**

**Panel A:** Urgent mechanical circulatory support (MCS) use and receiver operator characteristics analyses of the PROGRESS CTO MCS score for models based on Gini index (M1), classification accuracy (M2), and using a joint set of M1/M2 variables (M3)

**Panel B:** Calibration plots for M1-M3 models.

### **Figure 2. A nomogram of the PROGRESS CTO MCS score**

Example patient: Use of retrograde crossing strategy (45 points), LVEF<30% (70 points), lesion length> 60 mm (40 points), this means a total of 155 points which translates to 0.5 (50%) risk of using urgent MCS.

**Table 1.** Baseline clinical characteristics of study patients with and without urgent mechanical support.

Variable	No UMCS used <sup>1</sup> (n= 2,722 )	UMCS used <sup>1</sup> (n= 62)	P value <sup>2</sup>
Age (years)	66 (58, 73)	70 (63, 77)	0.003
BMI (kg/m <sup>2</sup> )	30 (27, 34)	30 (25, 33)	0.354
Man (%)	2,137 (79%)	50 (81%)	0.685
Diabetes Mellitus	1,178 (44%)	24 (41%)	0.647
Hypertension	2,455 (91%)	54 (89%)	0.552
Dyslipidemia	2,620 (97%)	59 (95%)	0.481
LVEF (%)	55 (43, 60)	45 (33, 55)	<0.001
Family History of CAD	780 (31%)	21 (40%)	0.144
Prior PAD	409 (15%)	17 (27%)	0.007
Congestive Heart Failure	762 (28%)	21 (34%)	0.287
Prior Myocardial Infarction	1,095 (41%)	31 (53%)	0.075
Prior CABG	894 (33%)	27 (44%)	0.080
Prior CVD	247 (9.1%)	9 (15%)	0.145
Baseline creatinine (mg/dL)	1.00 (0.86, 1.21)	1.11 (0.94, 1.42)	0.011
Target vessel			
LAD	683 (26%)	11 (18%)	
RCA	1,333 (51%)	35 (58%)	
LCX	532 (21%)	12 (20%)	0.284
Left Main	11 (0.4%)	1 (1.7%)	
SVG	3 (0.1%)	0 (0%)	
Other	31 (1.2%)	1 (1.7%)	
PROGRESS-CTO score	1.00 (1.00, 2.00)	2.00 (1.00, 2.50)	0.014
PROGRESS MACE score	4.00 (3.00, 5.00)	4.50 (4.00, 5.00)	<0.001
Moderate/severe calcification	1,419 (52%)	43 (69%)	0.007
Moderate/severe tortuosity	841 (31%)	29 (47%)	0.008
Proximal cap ambiguity	947 (37%)	32 (55%)	0.006
In-stent restenosis	443 (17%)	10 (18%)	0.981
Side branch at proximal cap	1,310 (52%)	32 (57%)	0.427



Blunt/no stump	1,512 (56%)	47 (76%)	0.001
Vessel diameter (mm)	3.00 (2.50, 3.00)	3.00 (2.50, 3.50)	0.025
Lesion length (mm)	25 (15, 40)	25 (15, 40)	<0.001
Number of stents	2.00 (2.00, 3.00)	3.00 (2.50, 4.00)	<0.001
First crossing strategy			
Antegrade wiring	2,285 (84%)	32 (52%)	
Retrograde	341 (13%)	25 (40%)	<0.001
Antegrade dissection and re-ent	92 (3.4%)	5 (8.1%)	
Successful crossing strategy			
Antegrade wiring	1,473 (54%)	13 (21%)	
Retrograde	613 (23%)	29 (47%)	<0.001
Antegrade dissection and re-ent	327 (12%)	11 (18%)	
None	307 (11%)	9 (15%)	
Retrograde crossing strategy	971 (36%)	48 (77%)	<0.001

(UMCS: Urgent Mechanical Circulatory Support, BMI: Body Mass Index, LVEF: Left Ventricular Ejection Fraction; CAD: Coronary Artery Disease; CABG: Coronary Artery Bypass Grafting; CTO: Chronic Total Occlusion; CVD: Cerebrovascular Disease; PAD: Peripheral Arterial Disease; PROGRESS: Prospective Global Registry for the Study of Chronic Total Occlusion Intervention)

<sup>1</sup>n (%); Median (IQR)

<sup>2</sup>Fisher's exact test; Pearson's Chi-squared test; Wilcoxon rank sum test

**Table 2.** Procedural characteristics and outcomes of study patients with and without urgent mechanical circulatory support (UMCS).

Variable	No UMCS used <sup>1</sup> (n= 2,722 )	UMCS used <sup>1</sup> (n= 62)	P value <sup>2</sup>
Technical Success	2,373 (87%)	42 (68%)	<0.001
Procedural Success	2,316 (85%)	25 (40%)	<0.001
Procedural time (min)	140 (98, 196)	256 (193, 328)	<0.001
Fluoroscopy time (min)	51 (31, 79)	93 (60, 121)	<0.001
Air kerma radiation dose (Gray)	1.99 (1.14, 3.30)	3.39 (2.09,4.81)	<0.001
MACE	57 (2.1%)	19 (31%)	<0.001
Death	5 (0.2%)	8 (13%)	<0.001
Acute MI	17 (0.6%)	7 (11%)	<0.001
Re-PCI	7 (0.3%)	2 (3.2%)	0.016
Stroke	6 (0.2%)	0 (0%)	>0.999
Emergency CABG	2 (<0.1%)	1 (1.6%)	0.065
Pericardiocentesis	28 (1.0%)	7 (11%)	<0.001
Perforation	139 (5.1%)	22 (35%)	<0.001
Tamponade	20 (0.7%)	5 (8.1%)	<0.001
Dissection/Thrombus of Donor Artery	22 (0.8%)	8 (13%)	<0.001
Vascular access site complication	41 (1.5%)	4 (6.5%)	0.017

(UMCS: Urgent Mechanical Circulatory Support; MACE: Major Adverse Cardiac Events;

MI: Myocardial Infarction; PCI: Percutaneous Coronary Intervention; CABG: Coronary Artery Bypass Grafting)

<sup>1</sup>n (%); Median (IQR)

<sup>2</sup>Pearson's Chi-squared test; Fisher's exact test, Wilcoxon rank sum test

**Table 3.** Baseline clinical and angiographic characteristics of study patients included in the model with and without urgent mechanical support.

<b>Variable</b>	<b>No UMCS used<sup>1</sup> (n= 311)</b>	<b>UMCS used<sup>1</sup> (n= 62)</b>	<b>P value<sup>2</sup></b>
Age (years)	65 (58, 74)	70 (63, 77)	0.007
BMI (kg/m <sup>2</sup> )	30 (26, 35)	30 (25, 33)	0.300
Man (%)	249 (80%)	50 (81%)	0.917
Diabetes Mellitus	137 (44%)	24 (41%)	0.618
Hypertension	281 (91%)	54 (89%)	0.609
Dyslipidemia	2,620 (97%)	59 (95%)	0.481
LVEF (%)	55 (43, 60)	45 (33, 55)	<0.001
Family History of CAD	92 (31%)	21 (40%)	0.203
Prior PAD	0 (0%)	0 (0%)	0.005
Congestive Heart Failure	89 (29%)	21 (34%)	0.380
Prior Myocardial Infarction	131 (43%)	31 (53%)	0.188
Prior CABG	101 (33%)	27 (44%)	0.097
Prior CVD	28 (9.0%)	9 (15%)	0.185
Baseline creatinine (mg/dL)	1.02 (0.88, 1.24)	1.11 (0.94, 1.42)	0.040
<b>Target vessel</b>			
LAD	67 (23%)	11 (18%)	0.633
RCA	167 (57%)	35 (58%)	
LCX	54 (18%)	12 (20%)	
Left Main	2 (0.7%)	1 (1.7%)	
SVG	0 (0%)	0 (0%)	
Other	3 (1.0%)	1 (1.7%)	
PROGRESS-CTO score	1.00 (1.00, 2.00)	2.00 (1.00, 2.50)	0.012
PROGRESS MACE score	4.00 (3.00, 5.00)	4.50 (4.00, 5.00)	<0.001
Moderate/severe calcification	153 (49%)	43 (69%)	0.004

Moderate/severe tortuosity	87 (28%)	29 (47%)	0.003
Proximal cap ambiguity	111 (39%)	32 (55%)	0.020
In-stent restenosis	45 (16%)	10 (18%)	0.710
Side branch at proximal cap	163 (56%)	32 (57%)	0.918
Blunt/no stump	179 (58%)	47 (76%)	0.007
Vessel diameter (mm)	3.00 (2.50, 3.00)	3.00 (2.50, 3.50)	0.102
Lesion length (mm)	25 (15, 40)	30 (25, 60)	<0.001
Number of stents	2.00 (2.00, 3.00)	3.00 (2.50, 4.00)	<0.001
First crossing strategy			
Antegrade wiring	262 (84%)	32 (52%)	
Retrograde	40 (13%)	25 (40%)	<0.001
Antegrade dissection and re-entry	9 (2.9%)	5 (8.1%)	
Successful crossing strategy			
Antegrade wiring	165 (53%)	13 (21%)	
Retrograde	79 (25%)	29 (47%)	
Antegrade dissection and re-entry	44 (14%)	11 (18%)	<0.001
None	23 (7.4%)	9 (15%)	
Retrograde crossing strategy used	117 (38%)	48 (77%)	<0.001

(UMCS: Urgent Mechanical Circulatory Support, BMI: Body Mass Index, LVEF: Left Ventricular Ejection Fraction; CAD: Coronary Artery Disease; CABG: Coronary Artery Bypass Grafting; CTO: Chronic Total Occlusion; CVD: Cerebrovascular Disease; MACE: Major Adverse Cardiac Events; PAD: Peripheral Arterial Disease; PROGRESS: Prospective Global Registry for the Study of Chronic Total Occlusion Intervention)

<sup>1</sup>n (%); Median (IQR)

<sup>2</sup>Pearson's Chi-squared test; Fisher's exact test, Wilcoxon rank sum test

**Table 4.** Procedural characteristics and outcomes of the cases included in the model with and without urgent mechanical support.

Variable	No UMCS used <sup>1</sup> (n= 311 )	UMCS used <sup>1</sup> (n= 62)	P value <sup>2</sup>
Technical Success	285 (92%)	42 (68%)	<0.001
Procedural Success	283 (91%)	25 (40%)	<0.001
Procedural time (min)	140 (98, 196)	256 (193, 328)	<0.001
Fluoroscopy time (min)	51 (31, 79)	93 (60, 121)	<0.001
Air kerma radiation dose (Gray)	1.99 (1.14, 3.30)	3.39 (2.09,4.81)	<0.001
MACE	4 (1.3%)	19 (31%)	<0.001
Death	0 (0%)	8 (13%)	<0.001
Acute MI	2 (0.6%)	7 (11%)	<0.001
Re-PCI	0 (0%)	2 (3.2%)	0.027
Stroke	0 (0%)	0 (0%)	>0.999
Emergency CABG	0 (0%)	1 (1.6%)	0.166
Pericardiocentesis	2 (0.6%)	7 (11%)	<0.001
Perforation	16 (5.1%)	22 (35%)	<0.001
Tamponade	2 (0.6%)	5 (8.1%)	0.002
Dissection/Thrombus of Donor Artery	2 (0.6%)	8 (13%)	<0.001
Vascular access site complication	6 (1.9%)	4 (6.5%)	0.066

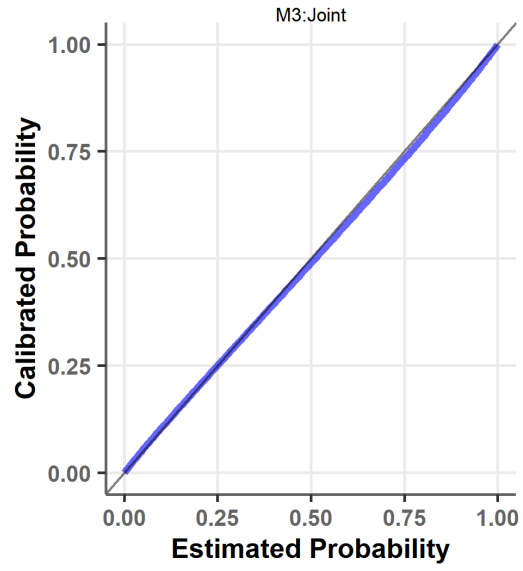
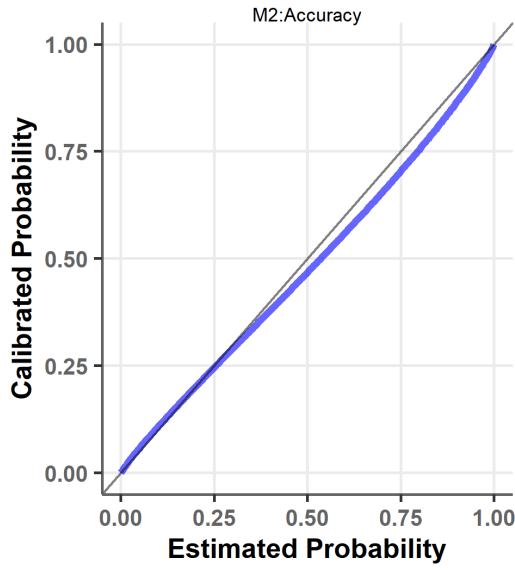
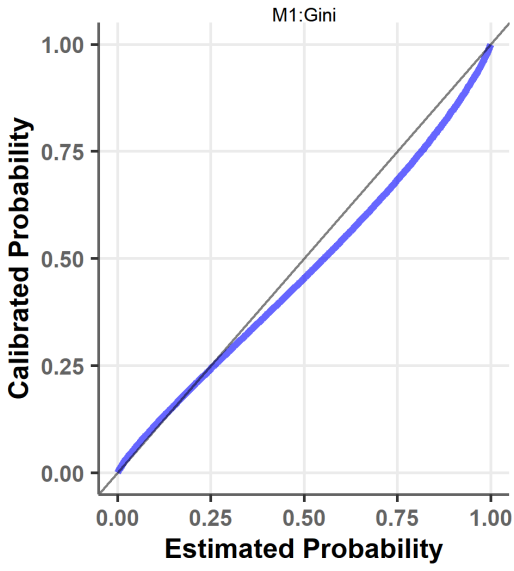
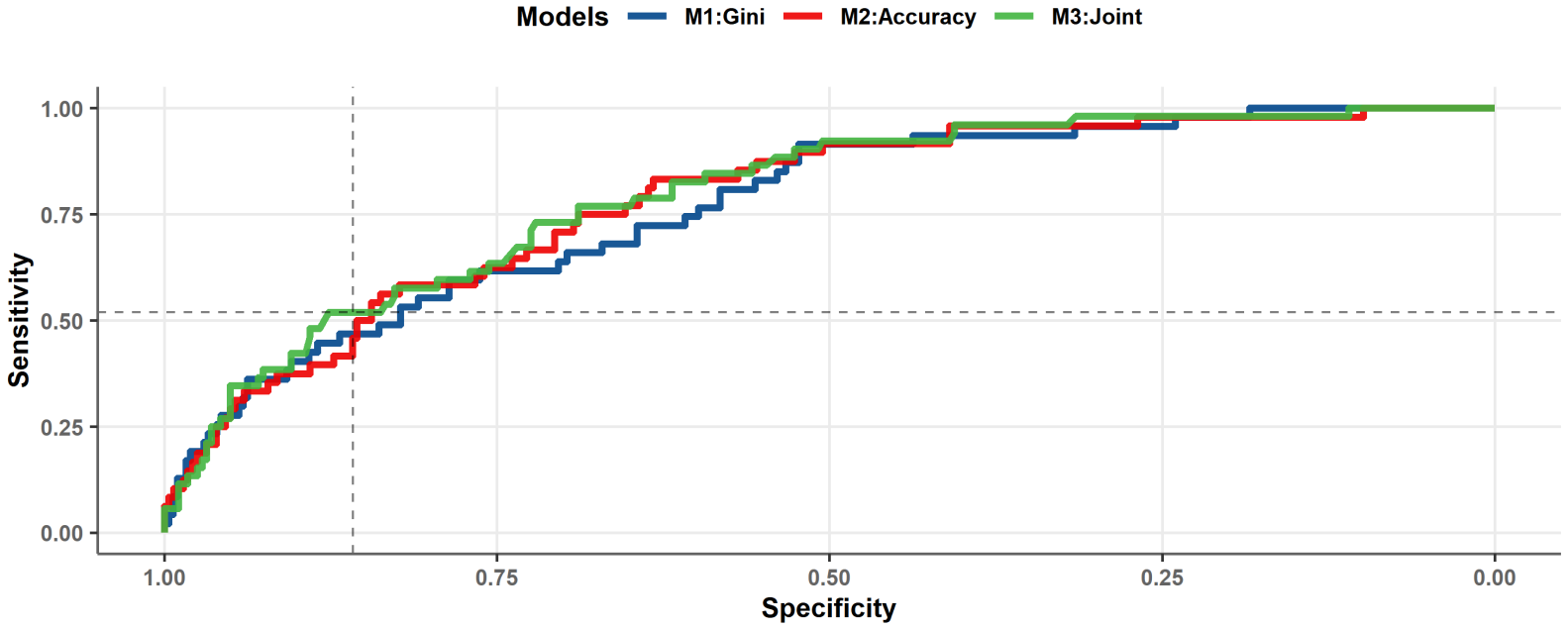
(UMCS: Urgent Mechanical Circulatory Support; MACE: Major Adverse Cardiac Events;

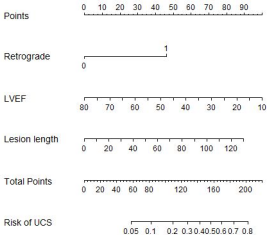
MI: Myocardial Infarction; PCI: Percutaneous Coronary Intervention; CABG: Coronary Artery Bypass Grafting)

†: median (interquartile ranges)

<sup>1</sup>n (%), Median (IQR)

<sup>2</sup>Pearson's Chi-squared test; Fisher's exact test, Wilcoxon rank sum test



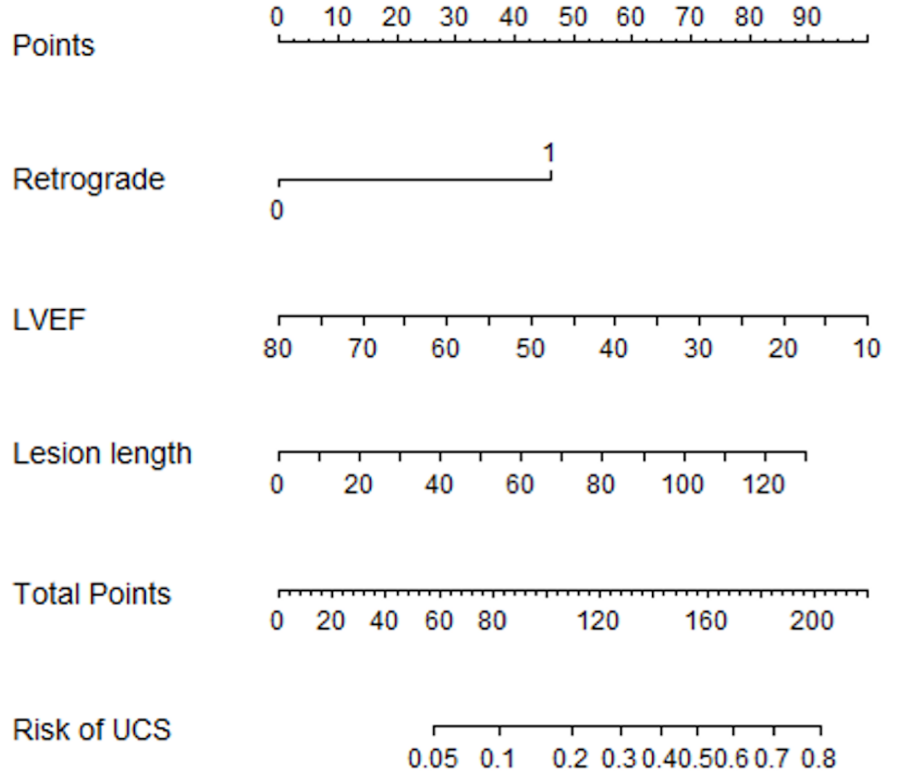
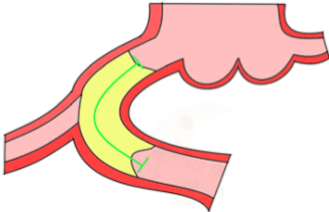
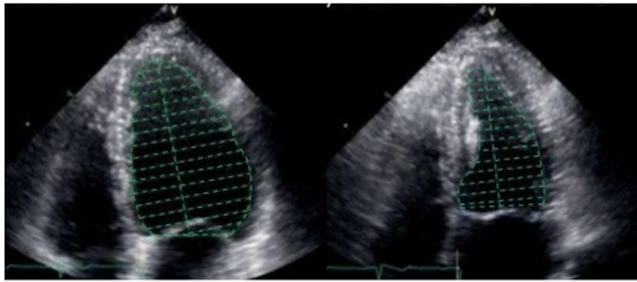
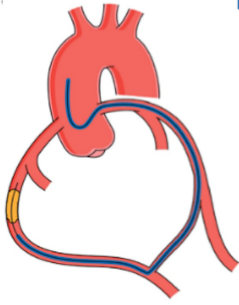




# PROGRESS CTO MCS score



A



B

