

1 **Original research**

2 **Associations of COVID-19 Symptoms with Omicron Subvariants BA.2 and BA.5, Host Status,**
3 **and Clinical Outcomes: A Registry-Based Observational Study in Sapporo, Japan**

4
5 Sho Nakakubo^{1*#}, M.D., Ph.D.; Naoki Kishida^{2*}, M.D., Ph.D.; Kenichi Okuda^{3*}, M.D., Ph.D.;
6 Keisuke Kamada^{1,4,5}, M.D., Ph.D.; Masami Iwama⁶; Masaru Suzuki¹, M.D., Ph.D.; Isao Yokota⁷,
7 Ph.D.; Yoichi M. Ito⁸, Ph.D.; Yasuyuki Nasuhara⁹, M.D., Ph.D.; Richard C. Boucher³, M.D.; Satoshi
8 Konno^{1,10}, M.D., Ph.D.

9 ¹Department of Respiratory Medicine, Faculty of Medicine, Hokkaido University, Sapporo, Japan

10 ²Emergency Management Bureau, City of Sapporo, Sapporo, Japan

11 ³Marsico Lung Institute/Cystic Fibrosis Research Center, University of North Carolina at Chapel
12 Hill, Chapel Hill, NC, United States

13 ⁴Department of Mycobacterium Reference and Research, The Research Institute of Tuberculosis,
14 Japan Anti-Tuberculosis Association, Tokyo, Japan

15 ⁵Department of Epidemiology and Clinical Research, The Research Institute of Tuberculosis, Japan
16 Anti-Tuberculosis Association, Tokyo, Japan

17 ⁶Management Section, Medical Management Office, Health and Welfare Bureau, City of Sapporo,
18 Sapporo, Japan

19 ⁷Department of Biostatistics, Graduate School of Medicine, Hokkaido University, Sapporo, Japan

20 ⁸ Data Science Center, Promotion Unit, Institute of Health Science Innovation for Medical Care,

21 Hokkaido University Hospital, Sapporo, Japan

22 ⁹ Division of Hospital Safety Management, Hokkaido University Hospital, Sapporo, Japan

23 ¹⁰ Hokkaido University, Institute for Vaccine Research and Development

24 (*These authors equally contributed to the work)

25

26 [#]Corresponding author:

27 Sho Nakakubo, MD, PhD

28 Department of Respiratory Medicine, Faculty of Medicine, Hokkaido University

29 North 15 West 7, Kita-ku, Sapporo 060-8638, Japan

30 E-mail: shonakakubo@pop.med.hokudai.ac.jp

31 Tel: +81-11-706-5911

32

33

34 **Abstract**

35 **Background:** Previous SARS-CoV-2 infection and vaccination, coupled to rapid evolution of
36 SARS-CoV-2 variants, have modified COVID-19 clinical manifestations. We characterized clinical
37 symptoms of COVID-19 individuals in omicron BA.2 and BA.5 Japanese pandemic periods to
38 identify omicron and subvariant associations between symptoms, immune status, and clinical
39 outcomes.

40 **Methods:** Individuals registered in Sapporo's web-based COVID-19 information system entered 12
41 pre-selected symptoms, days since symptom onset, vaccination history, SARS-CoV-2 infection
42 history, and background. Symptom frequencies, variables associated with symptoms, and symptoms
43 associated with progression to severe disease were analysed.

44 **Results:** For all omicron-infected individuals, cough was the most common symptom (62.7%),
45 followed by sore throat (60.7%), nasal discharge (44.3%), and fever (38.8%). Omicron BA.5
46 infection was associated with a higher symptom burden than BA.2 in vaccinated and unvaccinated
47 individuals. Omicron breakthrough-infected individuals with ≥ 3 vaccinations or previous infection
48 were less likely to exhibit systemic symptoms, but more likely to exhibit upper respiratory symptoms.
49 Infected elderly individuals had lower odds for all symptoms, but, when symptoms were manifest,
50 systemic symptoms were associated with an increased risk, whereas upper respiratory symptoms
51 with a decreased risk, of severe disease.

52 **Conclusion:** Host immunological status, omicron subvariant, and age were associated with a

53 spectrum of COVID-19 symptoms and outcomes. BA.5 produced a greater symptom burden than
54 BA.2. Vaccination and prior infection mitigated systemic symptoms and improved outcomes, but
55 increased upper respiratory tract symptom burden. Systemic, but not upper respiratory, symptoms in
56 the elderly heralded severe disease.

57

58 **Keywords:** COVID-19, Omicron subvariant, vaccination, upper respiratory symptoms, older age.

59

60

61 **Introduction**

62 The coronavirus disease 2019 (COVID-19) pandemic, caused by severe acute respiratory
63 syndrome 2 (SARS-CoV-2), has caused more than 657 million infections worldwide¹. Since early in
64 the pandemic, multifaceted host factors, e.g., age and underlying disease, have been reported to
65 impact the clinical course of individuals infected with SARS-CoV-2²⁻⁵. Associated with the
66 widespread implementation of SARS-CoV-2 vaccines and previous infections, the severity and
67 mortality rates of the COVID-19 syndrome have decreased⁵⁻⁷. The emergence of mutant strains may
68 have also modified the clinical manifestations of COVID-19^{8,9}. A challenge for healthcare
69 providers/public health officials is appropriately advising individuals with breakthrough infections
70 and implementing healthcare strategies in the current omicron pandemic period¹⁰⁻¹².

71 Patient clinical symptoms are the most accessible information describing the state of
72 individuals with infections in healthcare settings. However, data linking patient manifestations to
73 viral, host factor, and clinical outcomes must be continuously updated to maximize their utility and
74 guide appropriate healthcare strategies^{13,14}. Studies designed to compare the symptoms of alpha vs.
75 delta SARS-CoV-2 variants with those of the original Wuhan strain¹⁵, and the original omicron
76 variant compared to the delta variant, helped guide healthcare strategies⁸. However, no large-scale
77 epidemiological studies describing COVID-19 symptoms and outcomes as a function of host factors
78 across newer omicron subvariants are available.

79 Sapporo, a Japanese metropolitan city with 2 million people, launched a registration system

80 to automate the acquisition of self-entered personal information from individuals with COVID-19.
81 This unique system, in which individuals enter their current status via the internet, enables the
82 collection of timely data describing COVID-19 symptoms that can be linked to databases
83 representing individuals' backgrounds, vaccination and previous SARS-CoV-2 infection status, and
84 severity outcomes. Our objective was to update the characterization of COVID-19 clinical symptoms
85 during the omicron BA.2-BA.5 variant pandemic period and identify associations between clinical
86 symptoms, host factors, immune status, and clinical outcomes relevant to the patient and healthcare
87 communities.

88

89 **Methods**

90 **Study population and data sources**

91 This registry-based observational study was based on the Sapporo population. Data from
92 treatment decision sites (TDS) and registration centres for test-positive patients (RCPP) were utilized
93 for analyses (**Fig. S1**). The TDS is a system launched by the City of Sapporo to notify individuals
94 with a COVID-19 diagnosis of the need for hospitalization and clinical advice. Individuals eligible
95 for enrolment in the TDS were: 1) symptomatic individuals who visited a medical institution and
96 tested positive for SARS-CoV-2 (polymerase chain reaction or antigen test), and 2) individuals who
97 were not tested for SARS-CoV-2 but developed new symptoms after a household member tested
98 positive for SARS-CoV-2. Those diagnosed with COVID-19 were requested to immediately register

99 clinical information with the TDS through a web device, including the onset of any newly developed
100 symptoms and the presence/absence of 12 preselected specific symptoms. The RCPP is a registration
101 system operated by the City of Sapporo for symptomatic individuals who cannot visit a healthcare
102 provider. The RCPP sends SARS-CoV-2 antigen test kits to symptomatic individuals at home upon
103 request. A self-test is conducted, and information identical to that for the TDS is entered into the
104 RCPP system by test-positive individuals. Data from both systems are integrated and stored at the
105 Sapporo City Public Health Center. Because both systems share identification information assigned
106 to individuals with COVID-19, case duplication is not possible. Data describing previous
107 SARS-CoV-2 infection and progression to severe disease are collected from the Health Center
108 Real-time Information-sharing System on COVID-19 operated by the Ministry of Health, Labor, and
109 Welfare, as well as data linked to patient information in the TDS and RCPP. Vaccination history,
110 including the timeline of vaccination, was accessed from the Vaccination Record System operated by
111 the Japan Government Digital Agency (**Fig. S1**).

112 Individuals were excluded from the study if they: (1) entered the date of onset
113 inappropriately, (2) were registered > 5 days after symptom onset, or (3) were asymptomatic.

114 Detailed inclusion and exclusion criteria and the treatment of missing values are described in

115 **Supplementary methods.**

116

117 **Data collected**

118 The following data were extracted from the TDS and RCPP: 1) date of first symptom onset;
119 2) dietary intake; 3) presence of 12 predefined symptoms (fever, cough, sore throat, nasal discharge,
120 sputum, headache, joint or muscle pain, severe fatigue, dyspnoea, diarrhoea, and taste or smell
121 disorder) at registration; and 4) demographic information (age, sex, height, weight, and underlying
122 disease). Outcomes defining severe disease, i.e., requiring oxygenation, mechanical ventilation, or
123 death, were collected as above.

124

125 **Characterization of SARS-CoV-2 omicron subvariants**

126 Whole genome analysis was performed at the Sapporo City Institute of Public Health to
127 identify SARS-CoV-2 variants prevalent in Sapporo. Randomly collected specimens with positive
128 SARS-CoV-2 test results were analysed for approximately 50–80 cases per week, and the proportions
129 of omicron subvariants were calculated. In this study, omicron subvariant epidemic periods were
130 defined as when the percentage of the most predominant subvariants exceeded 80%.

131

132 **Statistical analysis**

133 Continuous and categorical data were expressed as median (interquartile range [IQR]) and
134 proportions, respectively. A 95% confidence interval (CI) was calculated for symptom frequency,
135 odds ratio (OR), and hazard ratio. Multivariate logistic regression analyses were performed, using
136 days from symptom onset, age, sex, body mass index (BMI), underlying diseases, omicron

137 subvariants, vaccination status, and previous SARS-CoV-2 infection as explanatory variables, with
138 the development of each symptom as the outcome. To estimate symptom time courses, frequencies of
139 the 12 predefined symptoms were calculated from individuals aligned by days from the first
140 symptom onset and plotted on a day 0-5 scale. Estimates of the relative rates of symptom
141 accumulation were analysed using a Cox regression model. Regarding logistic regression analysis for
142 progression to severe disease, all symptoms were incorporated in addition to the factors included in
143 the above-mentioned multivariable symptoms analysis. All statistical analyses were performed using
144 JMP® Pro Version 16.2.0 (SAS Institute Inc., Cary, NC, USA).

145

146 **Results**

147 **Study population**

148 Data collected from the TDS and RCPP systems were analysed between April 25, 2022, and
149 September 25, 2022. The epidemic period for the omicron subvariant BA.2 spanned April 25 to June
150 26, and that for BA.5 spanned July 18 to September 25 (**Fig. 1**). After individuals who met the
151 exclusion criteria were excluded (< 5-6%), a total of 157,861 symptomatic COVID-19 cases (34,336
152 and 123,525 for the BA.2 and BA.5 groups, respectively) were analysed (**Fig. 1**).

153 The median age of all individuals included in the study was 33 years (range 0–104) (**Table**
154 **1**). The most prevalent age group was the 30-year-old group, and those aged ≥ 65 years accounted for
155 9.3% of the total. Forty-eight percent were men, and the median BMI was 21.1 (IQR 18.6–24.0). The

156 proportion of patients with an underlying disease was highest for hypertension (5·6%), followed by
157 chronic respiratory (3·6%) and cardiovascular diseases (1·0%). SARS-CoV-2 vaccination status was:
158 38·0% unvaccinated, 0·7% one dose, 24·3% two doses, 33·8% three doses, and 3·2% four doses.
159 Additionally, 3·7% had a history of previous SARS-CoV-2 infection. Coughing was the most
160 prevalent symptom (62·7%), followed by sore throat (60·7%), nasal discharge (44·3%), headache
161 (42·1%), and fever (38·8%) (**Fig. 2A, Table S1**). A total of 142 individuals developed severe disease,
162 and four died within 30 days after onset. The risk of progression to severe disease was 0·02% for
163 individuals younger than 65 years of age and 1·01% for those at this age or over (**Table 1**).

164

165 **Clinical manifestations of individuals infected with omicron BA.2 or BA.5**

166 The clinical features of symptomatic individuals with BA.2 vs. BA.5 infections were also
167 compared (**Table 1**). The BA.2 group had a lower median age, BMI, history of cerebrovascular
168 disease, and a higher proportion of unvaccinated and ≤ 2 dose-vaccinated individuals. The BA.5
169 group exhibited higher proportions of other comorbidities, e.g., malignancy, immunodeficiency,
170 cardiovascular disease, hypertension, and diabetes, previous SARS-CoV-2 infection, and contained
171 all individuals with a fourth vaccine dose.

172 All 12 predefined symptoms, except for nasal discharge and phlegm, were more prevalent in
173 the BA.5 vs. BA.2 populations (**Fig. 2B, Table S1**), findings that were replicated in the unvaccinated
174 BA.5 vs. BA.2 subgroups (**Fig. S2, Table S2**). Multivariate analyses of the BA.5 and BA.2

175 population data identified associations that predicted an increased risk, for BA.5-infected populations,
176 of fever (adjusted OR [95% CI]: 2.18 [2.12–2.25]), decreased food intake (1.80 [1.75–1.86]), severe
177 fatigue (1.64 [1.59–1.69]), joint or muscle pain, smell or taste disorders, headache, dyspnoea,
178 diarrhoea, and sore throat, juxtaposed to a decreased risk of nasal discharge and phlegm (**Fig. 2C,**
179 **Table S3**). Logistic regression analysis demonstrated comparable odds for progression to severe
180 disease between the two subvariants (**Table S4**).

181

182 **Associations between vaccine status and COVID-19 symptoms**

183 Individuals were divided into two subgroups to determine the effects of the modification of
184 host immune status by vaccination on the prevalence of COVID-19 symptoms. The boundary
185 between the two subgroups was set at three vaccinations, a number clinically effective for omicron
186 variants¹⁶⁻¹⁸. The group with ≥ 3 vaccinations exhibited breakthrough infections, and a lower
187 frequency of fever, decreased food intake, severe fatigue, joint or muscle pain, and diarrhoea than the
188 group with ≤ 2 vaccinations (**Fig. 3A, Table S1**). In contrast, cough, sore throat, nasal discharge, and
189 phlegm were more common with breakthrough infections in the ≥ 3 vaccination group.

190 Logistic regression analysis demonstrated that individuals with breakthrough infections and
191 ≥ 3 vaccinations had a decreased risk of systemic symptoms, including fever (0.50 [0.49–0.51]),
192 decreased food intake (0.39 [0.37–0.40]), severe fatigue (0.59 [0.58–0.61]), joint or muscle pain,
193 headache, diarrhoea, smell or taste disorders, and dyspnoea, as compared to individuals with ≤ 2

194 vaccinations (**Fig. 3B, Table S3**). In contrast, the likelihood of upper airway symptoms, including
195 nasal discharge (1.84 [1.80–1.89]), cough (1.49 [1.45–1.52]), sore throat (1.33 [1.29–1.36]), and
196 phlegm, were higher in individuals who received ≥ 3 vaccinations than those who received ≤ 2
197 vaccinations. Similar analyses performed on the ≥ 3 vaccine dose group, incorporating the time
198 elapsed since the last vaccination date as a variable, revealed that longer periods from the last
199 vaccination date were associated with: 1) an increased risk of fever, headache, joint or muscle pain,
200 decreased food intake, and severe fatigue; and 2) a decreased risk of coughing, nasal discharge, sore
201 throat, and dyspnoea (**Table S5**).

202 The estimated temporal course of breakthrough omicron symptoms differed with
203 vaccination status for upper respiratory but not systemic symptoms (**Fig. 3C, S3, Table S6**). Cox
204 regression analyses, using the presence of symptoms as the occurrence of an event, revealed that the
205 appearance of coughing, sore throat, nasal discharge, and phlegm, but not systemic symptoms, were
206 significantly accelerated in the ≥ 3 vs. ≤ 2 vaccination groups (**Table S7**).

207 The study population was also divided into subgroups based on a history of previous
208 SARS-CoV-2 infection. The individuals with previous SARS-CoV-2 infection exhibited associations
209 similar to vaccination status, including a higher likelihood of upper respiratory symptoms and a
210 lower likelihood of systemic symptoms (**Fig. S4, Table S3, S6, S7**).

211

212 **Associations between COVID-19 symptoms and clinical outcomes in elderly individuals**

213 The frequency of each symptom by age group was calculated (**Fig. 4A, Table S8**). Fever
214 and decreased food intake were most frequent in individuals under 10 years of age and decreased
215 with age. Cough frequency exhibited bimodal peaks in the 20s and 70s age groups. Other symptoms
216 were most frequent in individuals in their 20s and 30s, with frequencies decreasing with increasing
217 age throughout the 70s. Consistent with these data, multivariate analysis identified advanced age (\geq
218 65 years) as an independent factor associated with a lower likelihood of development of any
219 symptom than younger ages (**Fig. 4B, Table S9**).

220 Multivariate analyses identified specific COVID-19 symptoms associated with adverse
221 clinical outcomes in elderly individuals. Dyspnoea, fever, decreased food intake, and severe fatigue
222 were associated with an increased risk of severe disease (3.01 [1.84–4.91], 2.91 [1.89–4.51], 2.41
223 [1.55–3.74], and 1.93 [1.22–3.07], respectively). The combination of these four symptoms was
224 associated with an increased risk of severe disease (adjusted OR [95% CI] for the number of
225 symptoms 1–4 with none as a reference: 2.98 [1.73–5.14], 7.46 [4.15–13.41], 14.38 [7.14–28.98],
226 and 40.72 [14.72–112.68], respectively) (**Fig. 4C, Table S10**). In contrast, sore throat and nasal
227 discharge were associated with a decreased risk of severe disease (0.39 [0.24–0.63] and 0.48
228 [0.28–0.82], respectively). The combination of these two upper airway symptoms was associated
229 with a decreased risk of severe disease (adjusted OR [95% CI] with no upper respiratory symptom as
230 a reference: 0.20 [0.09–0.46]) (**Fig. 4C, Table S10**).

231

232 **Discussion**

233 The registry-based self-entry COVID-19 symptom study was conducted over an interval
234 when two omicron subvariants were prevalent. Collectively, individuals with omicron infections
235 exhibited more commonly upper respiratory symptoms, e.g., cough, sore throat, and nasal discharge,
236 than systemic symptoms (**Fig. 2A**). The clinical features of individuals with omicron breakthrough
237 infections differed from those in the early Wuhan strain-dominated pandemic period, which was
238 characterized by a higher frequency of fever, cough, dyspnoea, and fatigue and a lower frequency of
239 upper airway symptoms¹⁹⁻²¹. The pattern of a higher incidence of upper respiratory symptoms and a
240 lower incidence of systemic symptoms was replicated in unvaccinated individuals with omicron
241 infections (**Fig. S2**), suggesting that the viral strain is a variable causing difference in clinical
242 manifestations between individuals with the Wuhan strain and omicron breakthrough infection.

243 The omicron subvariants themselves also differed concerning symptom frequencies.
244 Although emerging later in the pandemic, BA.5 was associated with a higher prevalence of
245 symptoms than BA.2 (**Fig. 2B**). The increased BA.5 symptom prevalence may reflect greater escape
246 from humoral immunity with increased upper airway viral loads as compared to BA.2^{22,23}. Notably,
247 the risk of progression to severe disease did not significantly differ between BA.2 vs. BA.5 (**Table**
248 **S4**).

249 Significant associations between vaccination status or previous COVID-19 infection and
250 specific symptoms following omicron breakthrough infection were also identified. For example, a

251 reduced risk of systemic symptoms, including fever, fatigue, and headache, was observed in
252 individuals with omicron infections and ≥ 3 vaccinations or a history of previous infection. In
253 contrast, a strong correlation was observed between a history of ≥ 3 vaccinations or previous
254 infection and increased upper airway symptom prevalence (**Fig. 3B, S4**). These contrasting
255 post-vaccination symptom-based observations may reflect: 1) vaccine-mediated reductions in viral
256 load, reduced cytokine release into the systemic circulation, and, hence, reduced systemic
257 symptoms²⁴⁻²⁶, and 2) vaccine-mediated amplification of local host antiviral responses to upper
258 respiratory tract SARS-CoV-2 infection, the consequences being increased symptom prevalence but
259 shorter symptom duration (**Fig. 3**)^{27,28}. The increased prevalence of post-breakthrough upper
260 respiratory symptoms after vaccinations likely accounts for the unexplained increase in total
261 symptom burden, but reduced systemic symptoms (fever and chills), recently reported in a cohort of
262 vaccinated United States Essential and Frontline workers after SARS-CoV-2 breakthrough
263 infections²⁴.

264 We observed a decreasing frequency of COVID-19 symptoms with age (**Fig. 4B**). These
265 findings are consistent with an earlier study showing that typical COVID-19 symptoms were less
266 commonly reported in adult groups with advanced age^{29,30}. Importantly, if systemic symptoms were
267 present in the elderly (≥ 65 -year-old group), strong associations with severe disease were observed
268 (**Fig. 4C**), consistent with reports on pre-vaccinated United States veterans³. Unexpectedly, our data
269 suggest that upper respiratory tract symptoms are associated with a reduced risk of severe disease in

270 the elderly.

271 Our study had several limitations, starting with symptom data being entered directly by
272 individuals without the assistance of healthcare providers. This is a significant limitation as
273 self-reported symptoms are inherently subjective, leading to increased variability. However, these
274 are the data frequently provided in clinical encounters. Second, since symptom data were analysed
275 for 12 predefined questions, COVID-19 symptoms other than the predefined items, including
276 neurological and psychological symptoms, were not evaluated. Third, the reporting of clinical
277 symptom intensity was not collected; thus, quantitative assessments of symptom intensity were not
278 performed. Fourth, asymptomatic individuals were not enrolled in the TDS or RCPP and were
279 excluded from the study. Thus, it is unknown how vaccination and previous infection may have
280 affected the presence of symptoms in the overall population. Fifth, our study was a retrospective
281 observational study and did not provide prospective information describing the duration of
282 COVID-19 symptoms. However, our system, entering symptoms singly at the time of diagnosis
283 with data describing the onset of symptoms, juxtaposed to the large sample size, allowed us to
284 estimate the dynamics of COVID-19 symptoms. Finally, the small number of individuals with
285 severe disease may have resulted in a statistically underpowered detection of factors potentially
286 associated with severe COVID-19 outcomes. Nevertheless, the significance of the specific
287 symptoms identified as independent factors associated with severe outcomes was statistically
288 robust.

289 In conclusion, our symptom-based description of the clinical manifestations of COVID-19
290 during the BA.2- and BA.5-dominated COVID-19 pandemic periods provides practical insights into
291 clinical features of the current COVID-19 pandemic. First, BA.5 infections were associated with
292 more prevalent symptoms than BA.2 infections in both vaccinated and unvaccinated individuals.
293 These data suggest that BA.5 emerged as a more troublesome variant than the BA.2 antecedent.
294 Second, an increased prevalence of local upper respiratory tract symptoms, but reduced systemic
295 symptom prevalence, was observed post-vaccination (or previous infection) following omicron
296 breakthrough infections. Thus, it might be appropriate to counsel individuals contemplating
297 vaccination that post-vaccination breakthrough COVID-19 infections may be associated with an
298 increased likelihood of upper airway symptoms, with offsetting benefits being a shorter symptom
299 interval and a reduced risk of severe outcomes. Third, individuals with advanced age experienced, on
300 average, fewer omicron-induced symptoms, but when present, systemic but not upper respiratory
301 symptoms heralded worsened outcomes. These observations may serve as a practical guide to utilize
302 COVID-19 symptoms to predict clinical outcomes for elderly patients with omicron infections.

303

304 **Acknowledgment**

305 The authors thank the Public Health Office, Health and Welfare Bureau, City of Sapporo, which has
306 long been involved in the identification of all infected populations in Sapporo since the beginning of
307 the COVID-19 epidemic and in the management and integration of the data. Additionally, we thank

308 the Sapporo City Institute of Public Health for providing genomic information on Sapporo's
309 prevalent SARS-CoV-2 mutant strains.

310

311 **Ethical Approval Statement**

312 The research protocol was approved by the Ethics Committee of Hokkaido University Hospital
313 (Research No. 022-0225). Analysis was performed using database in Sapporo city, with no additional
314 risks to the patients. Therefore, the requirement for informed consent from individual participants
315 was waived by the ethics committee. All methods were performed in accordance with the relevant
316 guidelines and regulations of the Ethics Committee of Hokkaido University Hospital. All patient data
317 were anonymized.

318

319 **Author contributions**

320 This study was designed by SN, NK, and KO. The underlying data were verified by SN, NK, MI,
321 and YI, and data analyses were performed by SN, YI, and IY. SN wrote the first draft of the
322 manuscript, which was revised by KO, KK, MS, RCB, and KS. All authors interpreted the data,
323 provided a critical review and revision of the text, and approved the final version of the manuscript.

324

325 **Declaration of interests**

326 IY reports grants from the Japan Agency for Medical Research and Development (AMED), as well

327 as Health, Labour and Welfare Policy Research Grants, and speaker fees from Chugai
328 Pharmaceutical Co., and AstraZeneca, outside the submitted work. The other authors declare that
329 they have no conflict of interest.

330

331 **Funding**

332 This project was supported in part by AMED under Grant JP223fa627005 and JP21zf0127004, the
333 National Institutes of Health, the National Institute of Diabetes and Digestive and Kidney Diseases
334 (P30 DK065988 to RCB), the Cystic Fibrosis Foundation (RDP BOUCHE15R0 to RCB;
335 BOUCHE19XX0 to RCB and KO; OKUDA20G0 to KO), and a research grant from the Cystic
336 Fibrosis Research Institute to KO. This project was also partially supported by the Rapidly Emerging
337 Antiviral Drug Development Initiative at the University of North Carolina at Chapel Hill, funded by
338 the North Carolina coronavirus state and local fiscal recovery funds program appropriated by the
339 North Carolina General Assembly, and by the project of junior scientist promotion at Hokkaido
340 University.

341

342 **References**

- 343 1. WHO COVID-19 Dashboard. Geneva: World Health Organization. Available online:
344 <https://covid19whoint/> (last cited: [Jan. 9th, 2023])
- 345 2. Terada M, Ohtsu H, Saito S, et al. Risk factors for severity on admission and the disease
346 progression during hospitalisation in a large cohort of patients with COVID-19 in Japan. *BMJ Open*

347 2021; **11**(6): e047007.

348 3. Ioannou GN, Locke E, Green P, et al. Risk Factors for Hospitalization, Mechanical
349 Ventilation, or Death Among 10 131 US Veterans With SARS-CoV-2 Infection. *JAMA Netw Open*
350 2020; **3**(9): e2022310.

351 4. O'Driscoll M, Ribeiro Dos Santos G, Wang L, et al. Age-specific mortality and immunity
352 patterns of SARS-CoV-2. *Nature* 2021; **590**(7844): 140-5.

353 5. Lacy J, Mensah A, Simmons R, et al. Protective effect of a first SARS-CoV-2 infection from
354 reinfection: a matched retrospective cohort study using PCR testing data in England. *Epidemiol*
355 *Infect* 2022; **150**: e109.

356 6. Lopez Bernal J, Andrews N, Gower C, et al. Effectiveness of the Pfizer-BioNTech and
357 Oxford-AstraZeneca vaccines on covid-19 related symptoms, hospital admissions, and mortality in
358 older adults in England: test negative case-control study. *BMJ* 2021; **373**: n1088.

359 7. Shrotri M, Krutikov M, Palmer T, et al. Vaccine effectiveness of the first dose of ChAdOx1
360 nCoV-19 and BNT162b2 against SARS-CoV-2 infection in residents of long-term care facilities in
361 England (VIVALDI): a prospective cohort study. *Lancet Infect Dis* 2021; **21**(11): 1529-38.

362 8. Menni C, Valdes AM, Polidori L, et al. Symptom prevalence, duration, and risk of hospital
363 admission in individuals infected with SARS-CoV-2 during periods of omicron and delta variant
364 dominance: a prospective observational study from the ZOE COVID Study. *Lancet* 2022;
365 **399**(10335): 1618-24.

366 9. Bager P, Wohlfahrt J, Bhatt S, et al. Risk of hospitalisation associated with infection with
367 SARS-CoV-2 omicron variant versus delta variant in Denmark: an observational cohort study. *The*
368 *Lancet Infect Dis* 2022; **22**(7): 967-76.

369 10. Dejnirattisai W, Huo J, Zhou D, et al. SARS-CoV-2 Omicron-B.1.1.529 leads to widespread
370 escape from neutralizing antibody responses. *Cell* 2022; **185**(3): 467-84.e15.

371 11. Martinuzzi E, Boutros J, Glaichenhaus N, Marquette CH, Hofman P, Benzaquen J. Escape

- 372 of SARS-CoV-2 Variant Omicron to Mucosal Immunity in Vaccinated Subjects. *Open Forum Infect*
373 *Dis* 2022; **9**(8): ofac362.
- 374 12. Kuhlmann C, Mayer CK, Claassen M, et al. Breakthrough infections with SARS-CoV-2
375 omicron despite mRNA vaccine booster dose. *Lancet* 2022; **399**(10325): 625-6.
- 376 13. Alizadehsani R, Alizadeh Sani Z, Behjati M, et al. Risk factors prediction, clinical outcomes,
377 and mortality in COVID-19 patients. *J Med Virol* 2021; **93**(4): 2307-20.
- 378 14. Jain V, Yuan JM. Predictive symptoms and comorbidities for severe COVID-19 and
379 intensive care unit admission: a systematic review and meta-analysis. *Int J Public Health* 2020;
380 **65**(5): 533-46.
- 381 15. Fernández-de-Las-Peñas C, Cancela-Cilleruelo I, Rodríguez-Jiménez J, et al.
382 Associated-Onset Symptoms and Post-COVID-19 Symptoms in Hospitalized COVID-19 Survivors
383 Infected with Wuhan, Alpha or Delta SARS-CoV-2 Variant. *Pathogens* 2022; **11**(7).
- 384 16. Nemet I, Kliker L, Lustig Y, et al. Third BNT162b2 Vaccination Neutralization of
385 SARS-CoV-2 Omicron Infection. *N Engl J Med* 2022; **386**(5): 492-4.
- 386 17. Accorsi EK, Britton A, Fleming-Dutra KE, et al. Association Between 3 Doses of mRNA
387 COVID-19 Vaccine and Symptomatic Infection Caused by the SARS-CoV-2 Omicron and Delta
388 Variants. *JAMA* 2022; **327**(7): 639-51.
- 389 18. Luring AS, Tenforde MW, Chappell JD, et al. Clinical severity of, and effectiveness of
390 mRNA vaccines against, covid-19 from omicron, delta, and alpha SARS-CoV-2 variants in the
391 United States: prospective observational study. *BMJ* 2022; **376**: e069761.
- 392 19. Komagamine J, Yabuki T. Initial symptoms of patients with coronavirus disease 2019 in
393 Japan: A descriptive study. *J Gen Fam Med* 2021; **22**(1): 61-4.
- 394 20. Guan WJ, Ni ZY, Hu Y, et al. Clinical Characteristics of Coronavirus Disease 2019 in China.
395 *N Engl J Med* 2020; **382**(18): 1708-20.
- 396 21. Mehta OP, Bhandari P, Raut A, Kacimi SEO, Huy NT. Coronavirus Disease (COVID-19):

- 397 Comprehensive Review of Clinical Presentation. *Front Public Health* 2020; **8**: 582932.
- 398 22. Tuekprakhon A, Nutalai R, Dijokaite-Guraliuc A, et al. Antibody escape of SARS-CoV-2
399 Omicron BA.4 and BA.5 from vaccine and BA.1 serum. *Cell* 2022; **185**(14): 2422-33.e13.
- 400 23. Cao Y, Yisimayi A, Jian F, et al. BA.2.12.1, BA.4 and BA.5 escape antibodies elicited by
401 Omicron infection. *Nature* 2022; **608**(7923): 593-602.
- 402 24. Network TH-R. Association of mRNA Vaccination With Clinical and Virologic Features of
403 COVID-19 Among US Essential and Frontline Workers. *JAMA* 2022; **328**(15): 1523-33.
- 404 25. Fan Q, Shi J, Yang Y, et al. Clinical characteristics and immune profile alterations in
405 vaccinated individuals with breakthrough Delta SARS-CoV-2 infections. *Nat Commun* 2022; **13**(1):
406 3979.
- 407 26. Mucosal IgA against SARS-CoV-2 Omicron Infection. *N Engl J Med* 2022; **387**(21): e55.
- 408 27. Ssemaganda A, Nguyen HM, Nuhu F, et al. Expansion of cytotoxic tissue-resident CD8+ T
409 cells and CCR6+CD161+ CD4+ T cells in the nasal mucosa following mRNA COVID-19
410 vaccination. *Nat Commun* 2022; **13**(1): 3357.
- 411 28. Lim JME, Tan AT, Le Bert N, Hang SK, Low JGH, Bertoletti A. SARS-CoV-2 breakthrough
412 infection in vaccinees induces virus-specific nasal-resident CD8+ and CD4+ T cells of broad
413 specificity. *J Exp Med* 2022; **219**(10).
- 414 29. Gómez-Belda AB, Fernández-Garcés M, Mateo-Sanchis E, et al. COVID-19 in older adults:
415 What are the differences with younger patients? *Geriatr Gerontol Int* 2021; **21**(1): 60-5.
- 416 30. Trevisan C, Noale M, Prinelli F, et al. Age-Related Changes in Clinical Presentation of
417 Covid-19: the EPICOVID19 Web-Based Survey. *Eur J Intern Med* 2021; **86**: 41-7.

418 **Figure legends**

419 **Figure 1. Schematic representations of the study period and eligibility determination.** The bars
420 indicate the number of persons with new infections per day in Sapporo. The stacked area graph
421 shows the detection rate of mutant strains in Sapporo. The BA.2 period was defined as when the
422 detection rate of omicron subvariant BA.2 exceeded 80%, and the BA.5 period was defined as when
423 the detection rate of BA.5 exceeded 80% and until the end of notifiable disease surveillance in
424 Sapporo.

425

426 **Figure 2. Association of COVID-19 symptoms with the omicron subvariants BA.2 and BA.5.**

427 **A.** Frequency of COVID-19 symptoms in the total study population. **B.** Frequency of COVID-19
428 symptoms in individuals with BA.2 and BA.5 infections. Error bars indicate 95% confidence
429 intervals (CIs). **C.** Associations between omicron subvariants and symptom likelihood. Multivariate
430 analysis used each symptom as an outcome and mutant strain, age, body mass index, underlying
431 disease, vaccination history, and history of spontaneous infection as explanatory variables. The type
432 of omicron subvariant (BA.5 or not) and the adjusted odds ratio (OR) for each symptom are arranged
433 from highest to lowest. Points indicate ORs, and bars indicate 95% CIs. The detailed results of the
434 multivariate analysis are presented in **Table S3**.

435

436 **Figure 3. Associations between vaccine status and COVID-19 symptoms.**

437 **A.** Symptom frequency is shown in two groups divided by vaccination status. **B.** Associations
438 between vaccination and symptom likelihood. Multivariate analysis used each symptom as an
439 outcome and mutant strain, age, body mass index, underlying disease, vaccination history, and
440 history of spontaneous infection as explanatory variables. The detailed results of the multivariate
441 analysis are presented in **Table S3**. Three or more vaccinations and the adjusted odds ratio (OR) for
442 each symptom are arranged from highest to lowest. Points indicate ORs, and bars indicate 95%
443 confidence intervals (CIs). **C.** Symptom frequency by day since symptom onset in the two groups
444 divided by vaccination status. Error bars indicate 95% CIs.

445

446 **Figure 4. Associations of COVID-19 symptoms with age and progression to severe disease.**

447 **A.** Frequency of COVID-19 symptoms according to age. The shade colour of the cells is linked to
448 the high and low percentage values. **B.** Associations between age and symptom likelihood.
449 Multivariate analysis used each symptom as an outcome and mutant strain, age (elderly or
450 non-elderly), body mass index, underlying disease, vaccination history, and history of spontaneous
451 infection as explanatory variables. Elderly individuals (age ≥ 65 years) and the adjusted odds ratio
452 (OR) for each symptom are arranged from highest to lowest. **C.** OR for COVID-19 symptoms and
453 progression to severe disease. Multivariate analysis was performed using progression to severe
454 disease as an outcome and mutant strain, age, body mass index, underlying disease, vaccination
455 history, history of previous infection, and all symptoms as explanatory variables. Symptoms are

456 sorted in descending order of OR for progression to severe disease. Points indicate ORs, and bars

457 indicate 95% confidence intervals. The detailed results of the multivariate analysis are presented in

458 **Table S4.**

459

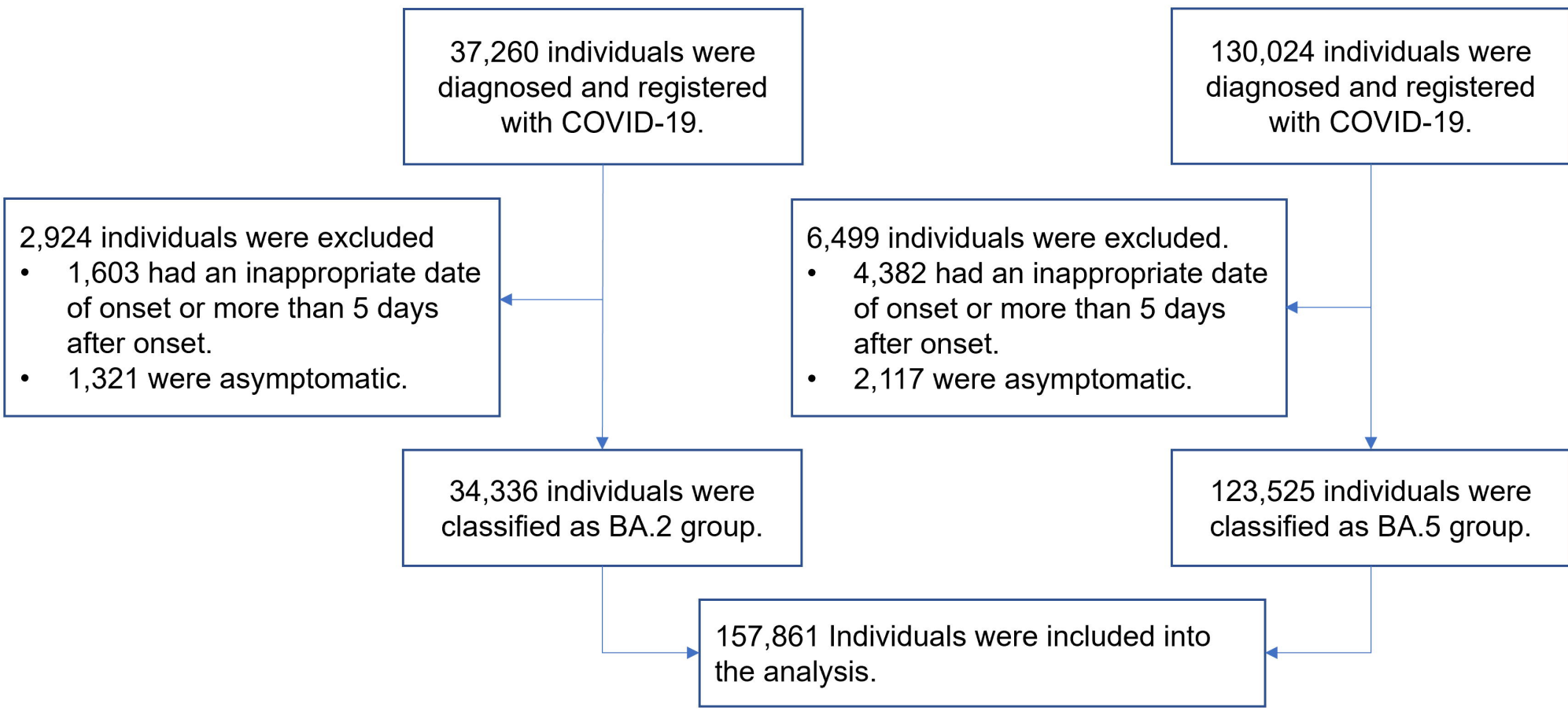
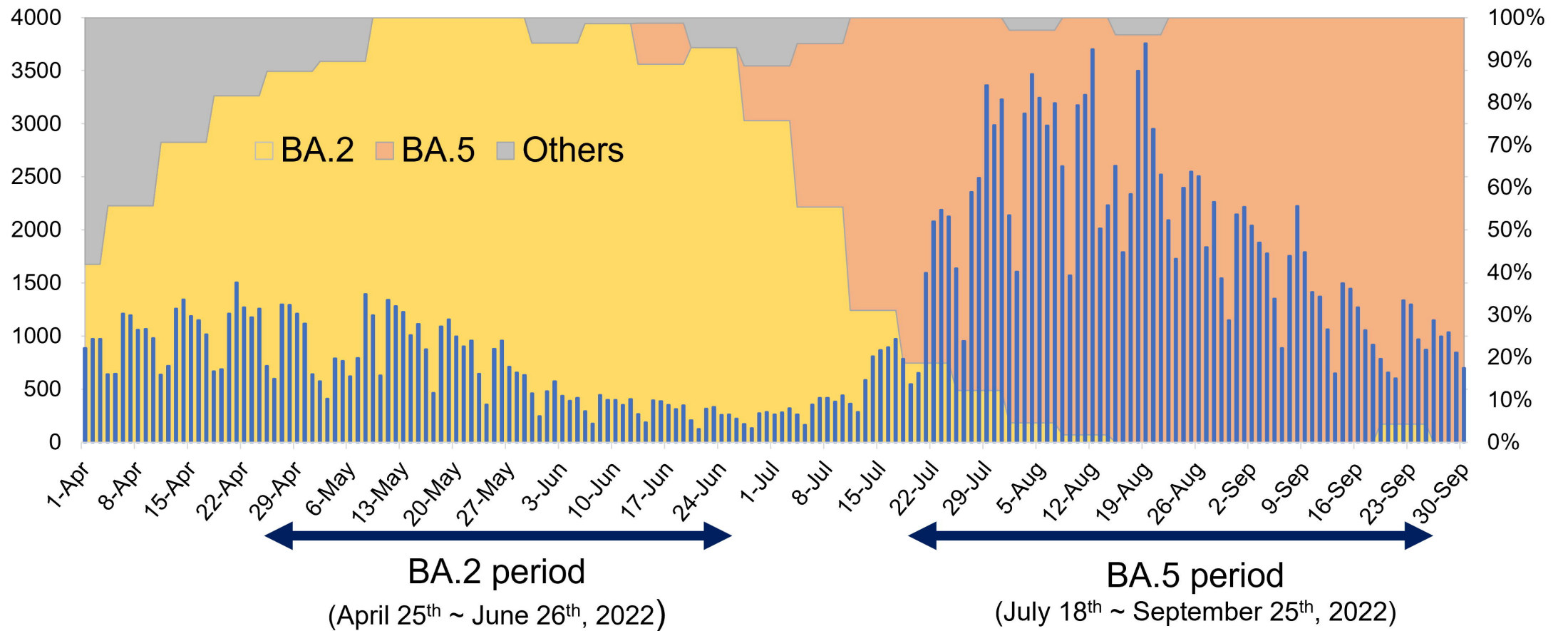
460 **Table 1. Clinical characteristics of the study population.**

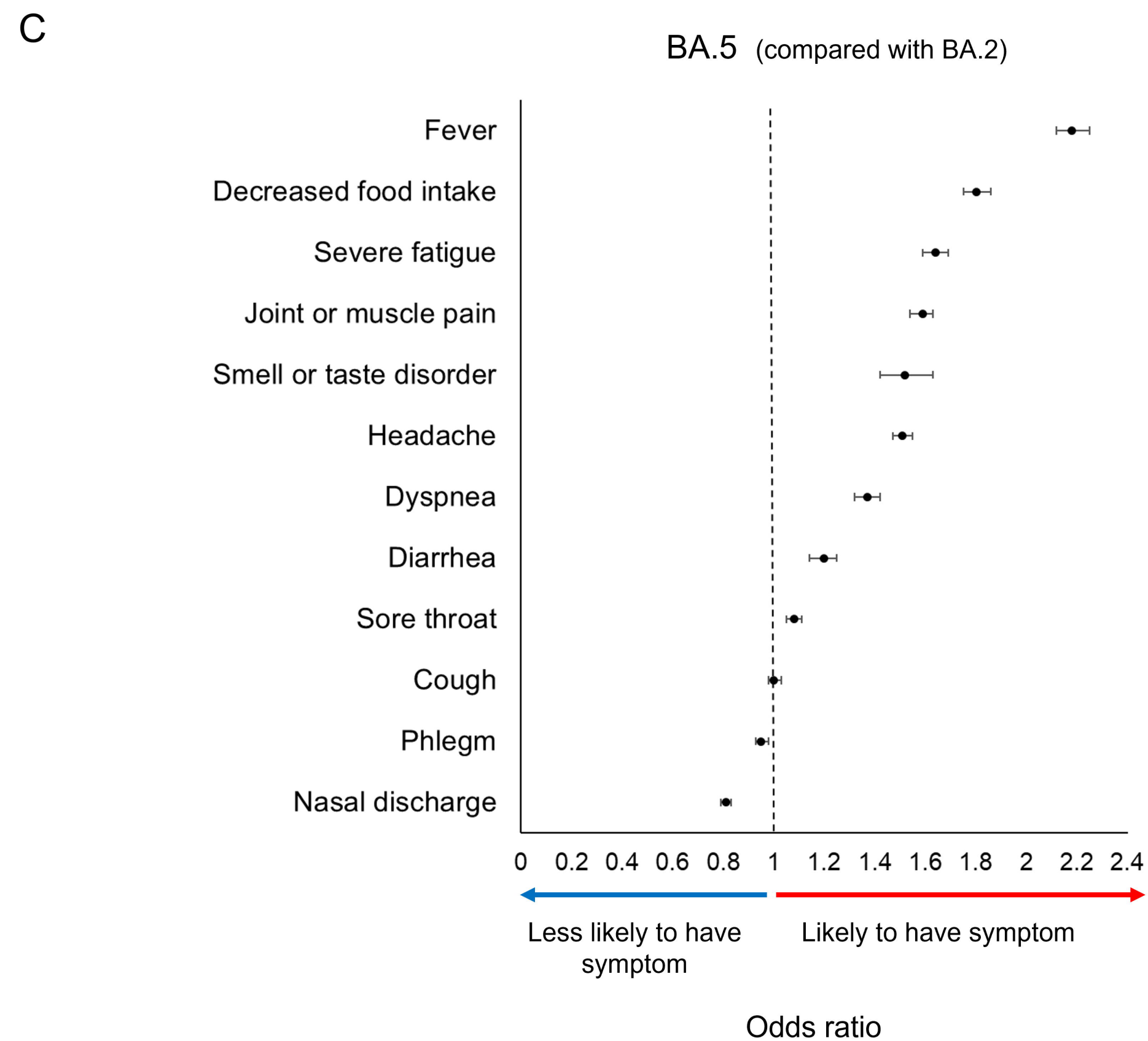
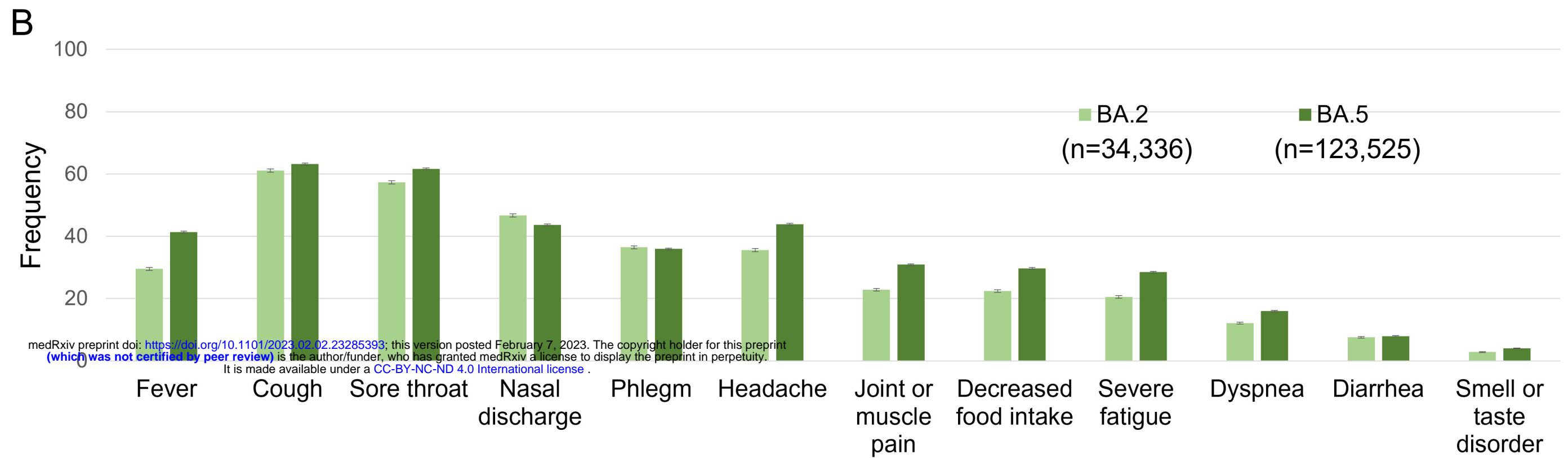
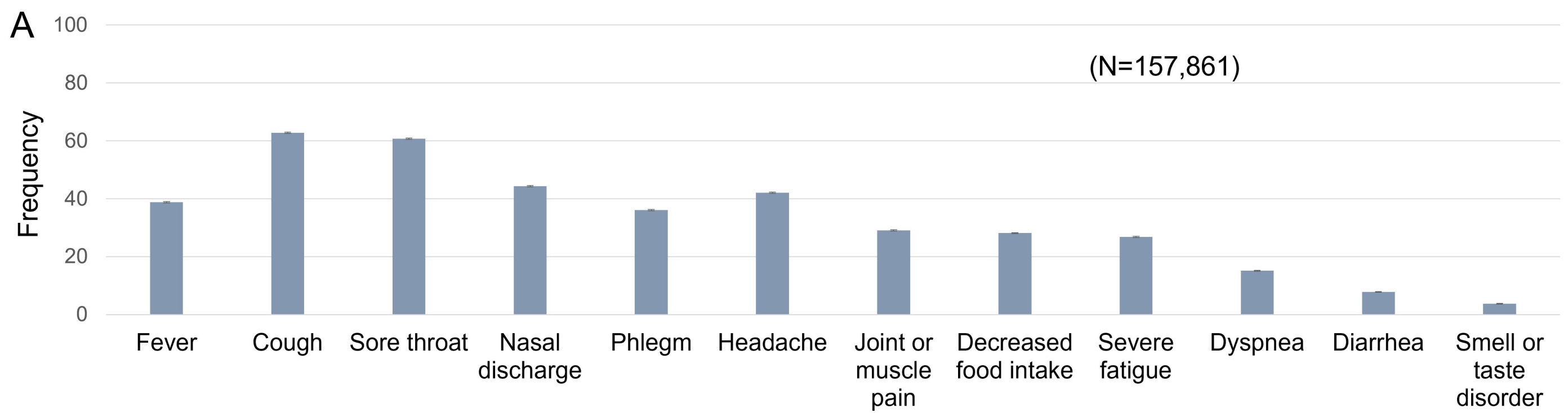
	Total (N=157,861)	BA.2 (n=34,336)	BA.5 (n=123,525)
Median age (range)-yr	33 (0-104)	28 (0-102)	34 (0-104)
Age * – no. (%)			
< 10	23,219 (14.7)	6,427 (18.8)	16,792 (13.6)
10s	21,165 (13.4)	6,012 (17.6)	15,153 (12.3)
20s	26,259 (16.7)	5,667 (16.6)	20,592 (16.7)
30s	27,665 (17.6)	6,093 (17.8)	21,572 (17.5)
40s	26,536 (16.8)	5,465 (16.0)	21,071 (17.1)
50s	16,629 (10.6)	2,434 (7.1)	14,195 (11.5)
60s	8,881 (5.6)	1,156 (3.4)	7,725 (6.3)
70s	4,839 (3.1)	647 (1.9)	4,192 (3.4)
≥ 80	2,359 (1.5)	310 (0.9)	2,049 (1.7)
Elderly (Age ≥ 65) – no. (%)	10,874 (9.3)	1,441 (9.6)	9,433 (7.6)
Sex ** – no. (%)			
Male	75,281 (47.7)	16,292 (47.5)	58,989 (47.8)
Female	82,468 (52.3)	18,012 (52.5)	64,456 (52.2)
Median BMI *** (IQR)	21.1 (18.6-24.0)	20.7 (18.1-23.5)	21.2 (18.7-24.1)
Obesity (BMI ≥ 30) – no. (%)	6,729 (4.3)	1,241 (3.6)	5,488 (4.4)
Comorbidities – no. (%)			
Malignancy	1,284 (0.8)	188 (0.5)	1,096 (0.9)
Immunocompromised	291 (0.2)	44 (0.1)	247 (0.2)
Chronic respiratory diseases	5,652 (3.6)	1,186 (3.5)	4,466 (3.6)
Chronic kidney diseases	88 (0.1)	15 (0.1)	73 (0.0)
Cardiovascular diseases	1,620 (1.0)	229 (0.7)	1,391 (1.1)
Cerebrovascular diseases	102 (0.1)	22 (0.1)	80 (0.1)
Hypertension	8,781 (5.6)	1,270 (3.7)	7,511 (6.1)
Diabetes	3,740 (2.4)	550 (1.6)	3,190 (2.6)
SARS-CoV-2 vaccination – no. (%)			
Unvaccinated	60,033 (38.0)	15,339 (44.7)	44,694 (36.2)
One dose	1,052 (0.7)	341 (1.0)	711 (0.6)
Two doses	38,304 (24.3)	11,232 (32.7)	27,072 (21.9)
Three doses	53,389 (33.8)	7,424 (21.6)	45,965 (37.2)
Four doses	5,083 (3.2)	0 (0.0)	5,083 (4.1)
Previous SARS-CoV-2 infection – no. (%)	5,767 (3.7)	732 (2.1)	5,035 (4.1)
Progression to severe disease – no. (%)	142 (0.1)	19 (0.1)	123 (0.1)
Among the elderly (Age ≥ 65 years)	110 (1.01)	12 (0.83)	98 (1.04)

Among individuals aged < 65 years	31 (0-02)	7 (0-02)	24 (0-02)
Death within 30 days – no.	4	2	2

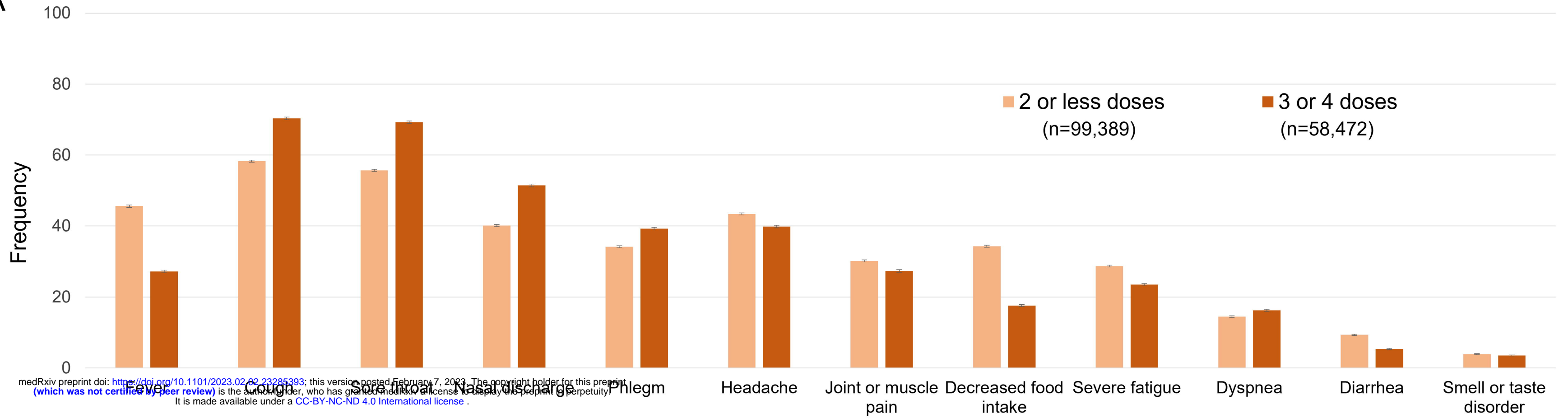
461 *N=157,552, **N=157,749, ***N=157,781.

462 BMI, body mass index; IQR, interquartile range; SARS-CoV-2, severe acute respiratory syndrome coronavirus 2.



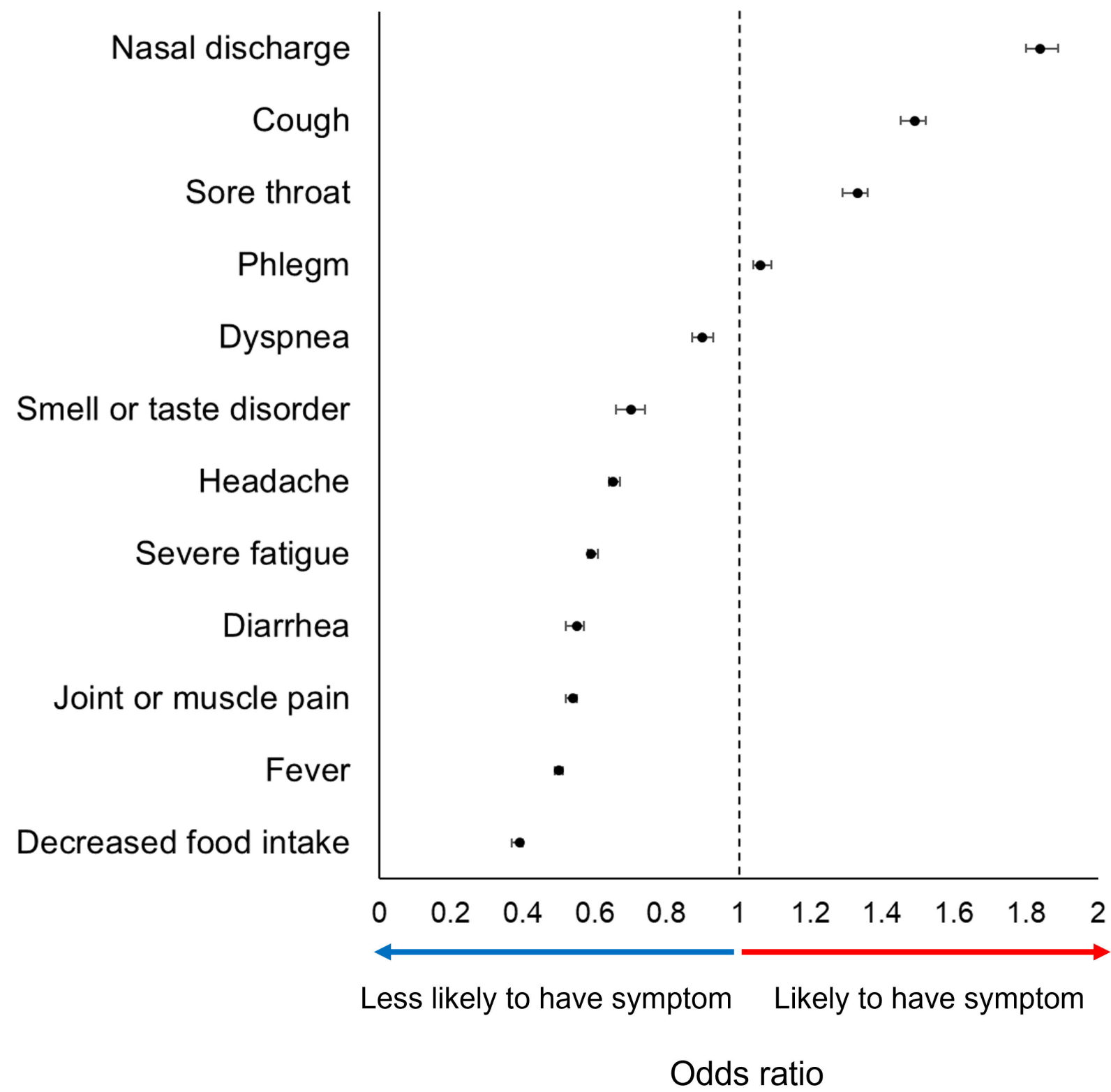


A

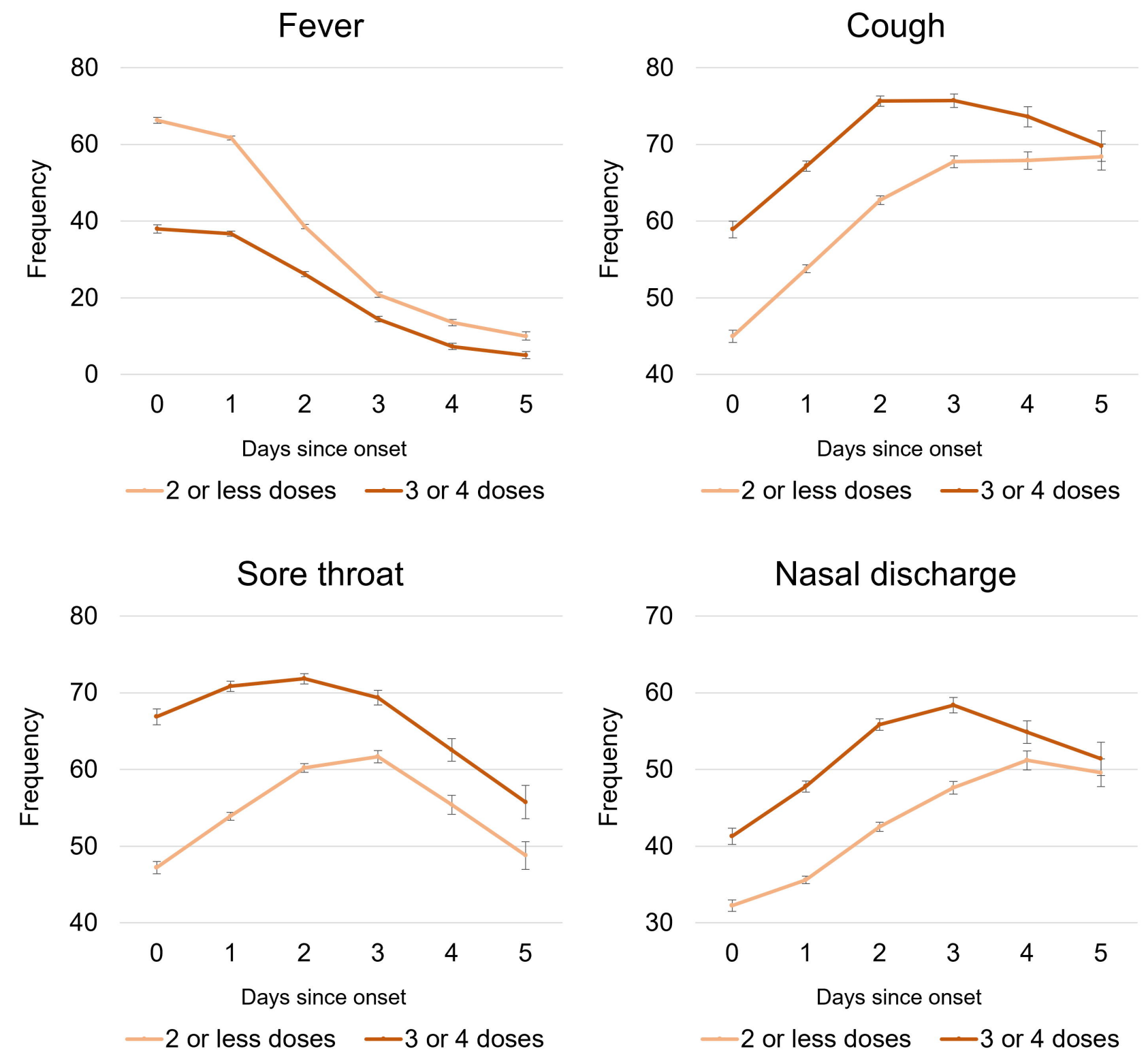


B

3 or 4 doses (compared with 2 or less doses)



C



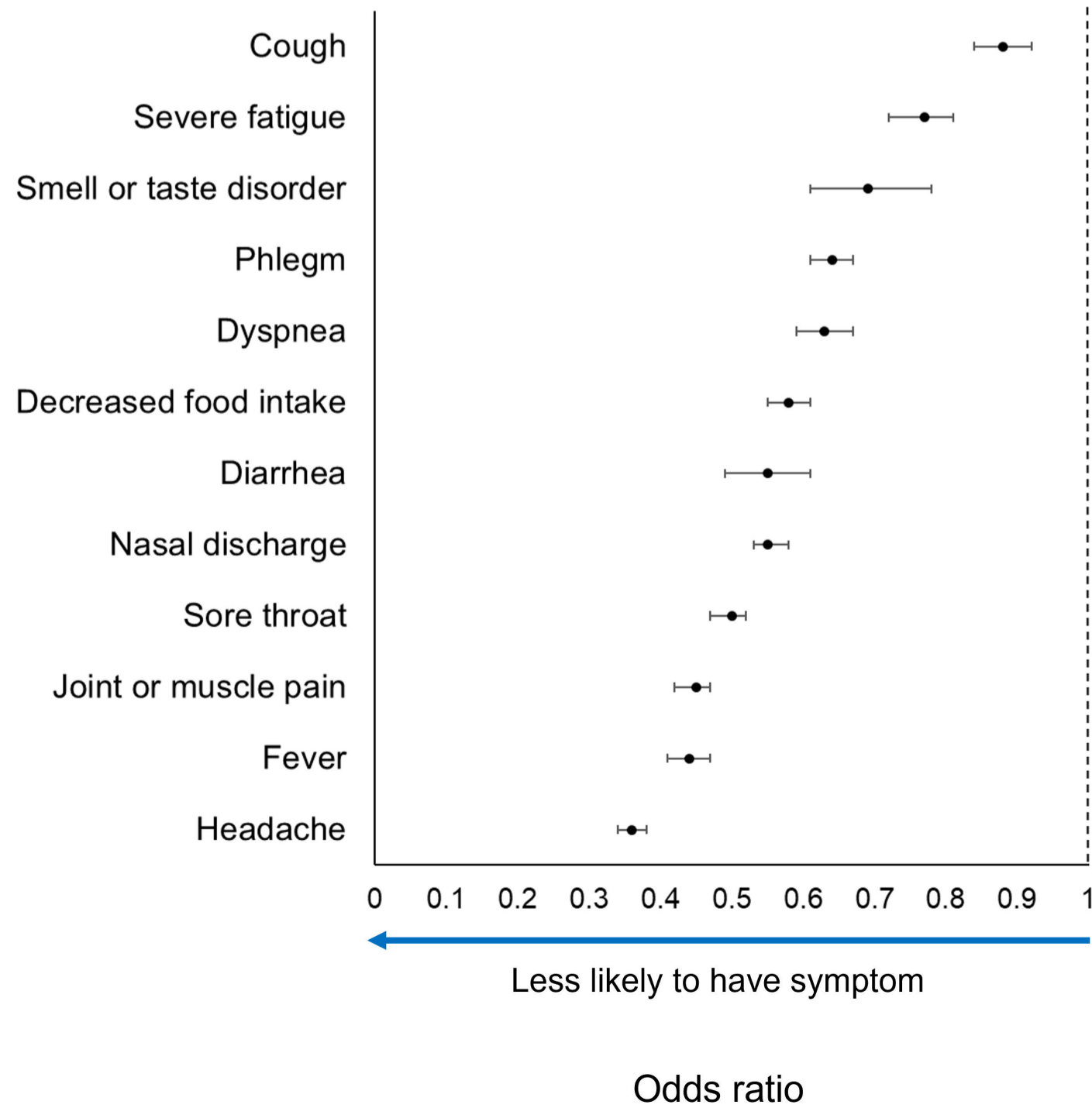
A

	<10 (n=23219)	10s (n=21165)	20s (n=26259)	30s (n=27665)	40s (n=26536)	50s (n=16629)	60s (n=8881)	70s (n=4839)	80 or over (n=2359)	Total (N=157552)
Fever	54.3%	48.2%	41.2%	38.3%	34.1%	29.5%	20.6%	14.5%	16.5%	38.8%
Cough	46.7%	59.5%	69.6%	65.0%	63.8%	67.5%	69.5%	69.5%	61.6%	62.7%
Sore throat	22.0%	65.3%	73.4%	69.1%	67.7%	67.6%	63.5%	54.6%	35.1%	60.7%
Nasal discharge	36.8%	42.6%	50.6%	48.1%	44.6%	44.5%	43.8%	38.1%	30.8%	44.3%
Phlegm	15.7%	34.1%	47.6%	43.0%	39.3%	36.2%	33.4%	31.2%	28.1%	36.1%
Headache	21.2%	44.4%	50.2%	51.9%	48.8%	44.6%	32.0%	20.5%	10.1%	42.1%
Joint or muscle pain	8.2%	21.0%	36.3%	40.3%	38.0%	33.8%	24.1%	16.1%	8.4%	29.1%
Decreased food intake	34.7%	35.1%	30.4%	26.6%	25.3%	24.5%	16.8%	15.0%	18.4%	28.1%
Severe fatigue	15.0%	25.5%	33.5%	34.4%	29.8%	25.8%	18.3%	15.6%	17.4%	26.8%
Dyspnea	4.7%	19.7%	29.9%	18.3%	16.4%	16.7%	13.4%	11.3%	14.0%	15.1%
Diarrhea	8.3%	7.7%	8.8%	8.9%	8.2%	7.1%	5.0%	3.6%	3.3%	7.8%
Smell or taste disorder	1.1%	3.2%	5.0%	4.8%	4.0%	4.3%	3.8%	3.0%	2.0%	3.7%

medRxiv preprint doi: <https://doi.org/10.1101/2023.02.02.23285393>; this version posted February 7, 2023. The copyright holder for this preprint (which was not certified by peer review) is the author/funder, who has granted medRxiv a license to display the preprint in perpetuity. It is made available under a [CC-BY-NC-ND 4.0 International license](https://creativecommons.org/licenses/by-nc-nd/4.0/).

B

Age ≥ 65 (compared with age < 65)



C

Progression to severe disease

