

Effect of high-intensity interval training on body composition and glucose control in type 2 diabetes: a systematic review and meta-analysis

Yidan Cai¹, Zhuan Long^{2*} and Zhicheng Guo^{3*}

¹Medical College, Hunan University of Chinese Medicine, Changsha 410208, Hunan, China; c1978477400@126.com

²College of Sports and Art, Hunan University of Chinese Medicine, Changsha 410208, Hunan, China;

³School of Physical Education, Hunan University of Science and Technology, Xiangtan 411201, China;

*These authors contributed equally to this work and should be considered co-corresponding authors.

longzhuan0303@163.com (Z.L.); 20011701014@mail.hnust.edu.cn (Z.G.)

Abstract: Background: Diabetes mellitus(DM) has become the third chronic noncommunicable disease worldwide, and is one of the most common chronic diseases in almost all countries. Type 2 diabetes(T2DM) is the most common group of DM, accounting for more than 90% of the DM population.

Objectives: This systematic review is conducted to compare the impact of HIIT and MICT on body composition and glucose control in T2DM, and to determine the suitable intervention for HIIT and the more effective forms of HIIT on T2DM.

Methods: Seven databases were searched from their inception to 21 November 2022 for randomized controlled trial(RCT) with HIIT and MICT intervention. The effect size was completed by using standardized mean difference (SMD) and standard deviation. Body mass(BM), body mass index (BMI), percent fat mass (PFM), fat mass (FM), fat-free mass (FFM), VO_{2peak} , HbA1c, fasting plasma glucose(FPG), and fasting plasma insulin(FPI) were included in the meta-analysis as outcomes.

Results: 15 RCTs with 371 T2DM were conducted in accordance with our inclusion criteria. The results of the meta-analysis revealed that compared to MICT, HIIT had significant effects on VO_{2peak} (SMD=0.4, 95%CI: 0.08 to 0.73, $p=0.02$) and HbA1c(SMD=-0.24, 95%CI: -0.48 to -0.01, $p=0.04$), while there were no significant differences in body composition, FPG, and FPI.

Conclusion: HIIT provides similar or more benefits on body composition, cardiorespiratory fitness(CRF), and glucose control relative to MICT, which might be influenced by duration, frequency, and HIIT interval. For people with T2DM, HIIT can achieve more improvement in CRF and glucose control than MICT and appear to be more

Citation: To be added by editorial staff during production.

Academic Editor: Firstname
Lastname

Received: date
Revised: date
Accepted: date
Published: date



Copyright: © 2023 by the authors. Submitted for possible open access publication under

NOTE: This preprint reports new research that has not been certified by peer review and should not be used to guide clinical practice.

Creative Commons Attribution (CC BY) license (<https://creativecommons.org/licenses/by/4.0/>).

Keywords: high-intensity interval training; moderate-intensity continuous training; body composition; glucose control; type 2 diabetes

1. Introduction

Diabetes mellitus(DM) is a metabolic disorder characterized by elevated blood glucose and uncontrollable disease. Polyuria, polydipsia, polyphagia and weight loss are common clinical manifestations of DM. Studies have found that, except for cardiovascular and cerebrovascular diseases and tumors, DM has become the third chronic noncommunicable disease worldwide, and is one of the most common chronic diseases in almost all countries^[1]. As economic development and urbanization leading to lifestyle changes characterized by

decreased physical activity and increased obesity, the number of patients with diabetes is increasing year by year^[2].

T2DM is the most common group of DM, accounting for more than 90% of the DM population^[3]. Due to uncontrollable blood glucose and high blood lipid, T2DM patients can induce cardiovascular disease and lead to cardiovascular deterioration, which seriously threatens the quality of life of T2DM patients^[4]. Moreover, the growing economy of treating T2DM has caused burdens on individuals, families and society, so effective and economic exercise intervention is particularly important^[5]. Exercise therapy, as one of the new "five carriages" for the treatment of T2DM, has already attracted wide attention. Adherence to regular aerobic exercise is considered an important tool for the prevention and management of T2DM and its complications, improving the insulin sensitivity of human body, and promote T2DM patients to better control blood sugar and blood fat, improve their cardiopulmonary endurance, and improve / slow down the emergence and development of long-term complications^[6].

Moderate-intensity continuous aerobic training (MICT) is a routine aerobic exercise method in patients with T2DM. However current exercise guidelines require T2DM to perform MICT for at least 150min per week, which is hard to adhere to^[7]. High-intensity interval training (HIIT) usually performs multiple short-time, high-intensity exercises, interspersed with intermittent, short-time, low-intensity or complete rest, periodic cycle of exercise. HIIT was found to be effective in improving blood glucose and body composition in patients with T2DM^[8]. HIIT can significantly reduce the duration of exercise by improving the intensity of exercise, that is, reduce the amount of exercise, and can effectively promote lactate clearance, relieve fatigue and discomfort of patients, and reduce the occurrence of adverse events of patients^[9]. Robinson^[10] et al. performed HIIT in T2DM patients with 1min85% -90% peak heart rate (HR_{peak}) intensity and intermittent 1min of low intensity exercise, and after 2 weeks of protocol intervention, the results found that both HIIT and MICT could improve glycemic fructosamine concentration and effectively control blood glucose increase. Ramos^[11] et al found that only HIIT reduced insulin levels in non-T2DM patients with metabolic syndrome, but not in fasting plasma proinsulin levels in T2DM patients before intervention. A recent systematic review also found that there were no significant differences in the HIIT group in total cholesterol (TC) and HDL cholesterol (HDL-C), fat mass(FM), waist circumference, and hemoglobin A1c (HbA1c)^[12]. In summary, It is still controversial whether HIIT intervention can improve body composition, insulin sensitivity, and HbA1c in T2DM patients compared with MICT.

Over the last decade, several studies took glucose control as the core subjects in exploring the effect of HIIT intervention, however, ignored the relation between body composition and glucose control. And as core measures of exercise effect, the improvement of body composition and cardiorespiratory fitness(CRF) are inseparable and need to be explored with glucose control together in people with T2DM. Despite clear evidence for the benefit following HIIT compared with MICT on body composition and CRF, there is no consensus on whether HIIT is similar or superior to MICT on body composition and glucose in people with T2DM. This systematic review was conducted to compare the impact of HIIT and MICT on body composition and glucose control in T2DM, and to determine the suitable intervention for HIIT and the more effective forms of HIIT on T2DM.

Method

This systematic review was registered in the International Prospective Register of Systematic Reviews(PROSPERO). The registration number was CRD42021285158.

Literature search strategy

The review was conducted following the guidelines of the PRISMA-P statement. A throughout search of the electronic literature was carried out up to 21 December 2022, including Pubmed, Embase, the Cochrane Library, Web of Science, CNKI, and Wanfang. The search criteria were developed through some similar systematic reviews, 'high-intensity interval training', 'type 2 diabetes, and so on were chosen as the key phrases. Searching

results were imported into a reference manager(Endnote 20). To make sure more relevant studies were included in the review, we also examined the references list of the eligible studies. The papers were appraised by two researchers independently. By thorough screening, the papers that fitted our criteria remained. Any disputes were solved by a third researcher through conversation.

Inclusion and Exclusion Criteria

The following PICOS criteria were used on the screen:

Participants

Patients who were diagnosed with type 2 diabetes or pre-diabetes were included in this study, and the mean age of the participants in eligible studies was not limited. The subjects were limited to human, animal-based and age-incompatible subjects were excluded. There was no restriction on participants with medical comorbidities in the review.

Intervention

The intervention of the participants was HIIT only. The intensity of HIIT was measured between 80-100% HR_{max} or VO_{2peak}, or at maximum effort, or a rating of perceived exertion(RPE) greater than 15. The duration of HIIT was a minimum of 2 weeks, and the passive recovery or low-intensity exercise in HIIT was between the 1min and 4min. The review did not limit the form of HIIT, but HIIT combined with other interventions(e.g., resistance training) was excluded.

Comparison

The included studies comprised a comparator group that undertook MICT. The training programs of MICT were at intensity 40 to 80% HR_{max} or VO_{2peak}, or an RPE between 12-15, and the duration was over 15 min. There was also no restriction on the form of MICT.

Outcomes

The primary data related to body composition(BM, body mass index (BMI), waist circumference (WC), fat mass (FM), fat-free mass (FFM), percent fat mass (PFM)), Glycosylated Hemoglobin, Type A1C(HbA_{1c}), fasting plasma glucose(FPG), fasting plasma insulin(FPI), and cardiorespiratory fitness(VO_{2peak}) were included. The outcomes were all directly reported in the studies, the recalculated values were excluded.

Study

Research involving randomized controlled trials (RCT) written in English and Chinese. Observational studies, reviews, and studies and abstracts without adequate data were excluded.

Data extraction

Two researchers extracted data independently, and the extracted results were checked by another two researchers. The basic characteristics of studies including age, sex ratio, the health status of participants, form of intervention, participants population, intervention characteristics(intensity, duration, and frequency of HIIT and MICT), and dropouts(both HIIT and MICT) were extracted. The mean \pm standard deviation values, mean difference(MD), and 95% confidence intervals(95%CI) of pre-intervention, post-intervention, and changes between pre and pro-intervention(if reported) were extracted. When the outcomes reported by studies were insufficient or hard to extract, we would contact the corresponding authors for the data needed in the meta-analysis.

Study quality assessment

The appraisal of the included studies was conducted by two reviewers. Considering HIIT and MICT are a form of physiotherapy, a Physiotherapy Evidence Database (PEDro) scale was used to assess the quality. The encompassing external validity (1 item), internal validity (8 items), and statistical reporting (2 items) of the eligible studies were checked to assess the quality. All items are rated yes or no according to whether the criterion is satisfied in the study.

Koh	57±7	Cycle	11	8	Exercise: 95% Wpeak for min Intermittent: 20% Wpeak for 1 min	20	3	8	50% Wpeak	50	3	BM; BMI ; FM; FF M; VO2 peak ; FPG ; FPI; HbA1c	N
Li	38.5±5.5	Cycle	12	13	Exercise 80-95% VO2peak for 8 mins Intermittent: 25% VO2peak for 7mins	15	5	12	50-70% VO2peak	30	5	BM; BMI ; VO2 peak ; FPG ; FPI; HbA1c	Y
Maillard	69.2±2.2	Cycle	16	8	Exercise: 80% HRpeak for 8s Intermittent: 60% HRpeak for 12s	20	2	8	55-60%THR	40	2	BM; BMI ; PF M; FM; FF M; FPG ; HbA1c	Y
Mitranun	61.5±10.3	Walking	12	14	Exercise 80-85% VO2peak for 1 min	20-30	3	14	60-65% VO2peak	20-30	3	BM; BMI ; PF M; FPG	Y

Mortensen	55±8	Cycle	11	11	Intermittent: 50-60% VO2peak for 4 mins Exercise 95% Wpeak for 1 min	20	3	10	50% Wpeak	40	3	BM; PF M; HbA1c	N
Ryckeghem	61±5	Walking	24	10	Intermittent: 80-85% VO2peak for 1 min	20-30	3	9	60-65% VO2peak	20-30	3	BM; BMI; PF M; FM; FF M; VO2peak; FPG; FPI; HbA1c	Y
Saanijoki	49±4	Cycle	2	11	Intermittent: all-out cycling for 30s passive recovery for 4mins	18-27	3	10	60% peak of workload	40-60	3	BM; BMI; PF M; FM; FF M; VO2peak	Y

Sabag	54.6 ±8.3	Cycle	12	12	Exercise: 90% VO2peak for 4 mins Intermittent: 50% VO2peak for 5 mins	19	3	12	60% VO2peak	40-55	3	BM; BMI ; VO2 peak ; FPG ; FPI; HbA 1c BM; BMI ; PF M; VO2 peak ; FPG ; HbA 1c BM; BMI ; VO2 peak ; FPG ; HbA 1c	Y
Terada	62.5 ±4	Cycle/ running	12	8	Exercise: 100% VO2R for 1 min Intermittent: 20% VO2R for 3 mins	45-60	5	7	40% VO2R	45-60	5	BM; BMI ; PF M; VO2 peak ; FPG ; HbA 1c BM; BMI ; VO2 peak ; FPG ; HbA 1c	Y
Way	55.1 ±1.4	Cycle	12	12	Exercise: 90% VO2peak for 4 mins Intermittent: 50% VO2peak for 5 mins	19	3	12	60% VO2peak	40-55	3	BM; BMI ; VO2 peak ; FPG ; FPI; HbA 1c	Y
Zadeh	52.5 ±4	Cycle	12	17	Exercise: 90-100% HHR for 1min Intermittent: 60-70% HHR	22-32	4	17	70-80% HHR	20-25	4	BM; BMI ; HbA 1c	N

for 2
mins

BM, body mass; BMI, body mass index; FM, fat mass; PFM, percent fat mass; FFM, fat-free mass; THR, target heart rate; WC, waist circumference; FPG, fasting plasma glucose; FPI, fasting plasma insulin; VO2R, oxygen consumption reserve; HHR, heart rate reserve

The duration of 7 studies was 12 weeks, only 2 studies adopted > 3 weeks intervention. Most interventions used HRmax, Wpeak or VO2peak to measure the intensity of exercise, 1 study used THR(target heart rate), 1 study VO2R and 1 study HHR(heart rate reserve). Only 1 HIIT intervention used passive recovery, the remaining used active recovery. The exercise time ranged from 15 to 60 mins for HIIT and 30 to 60 mins for MICT. 8 studies instructed participants to exercise 3 times/week, 5 studies instructed > 3 times/week, and 2 studies instructed 2 time/week. 7 studies had > 15% dropout rate. 3 training interventions were not supervised.

Quality assessment

As Table 2 presented, the quality of included studies was moderate(mean±SD = 5.07±1.06). All studies randomly allocated participants. 10 studies used concealed allocation. Only 1 study did not report and compare the baseline data of the participants. Because of the characteristic of exercise intervention, no studies blinded subjects or therapists. For assessors, most studies did not report the blind method or blind assessors, and only 2 studies blinded the assessors. 7 studies lost more than 15% of participants to follow-up. 8 studies reported adequate information on intention. All studies reported between-group statistics. 10 studies did not reported point measures.

Table 2 Quality assessment of study quality

Study	Years	Eligibility Criteria	Random Allocation	Concealed Allocation	Similar Baseline	Blinding Subjects	Blinding Therapists	Blinding Assessors	85% Dropout	Intention to Treat	Between-group Statistics	Point Measures	Total Score
Ghardashi-Afousi	2018	1	1	0	1	0	0	0	0	0	1	1	4
Gilbertson	2018	1	1	0	1	0	0	0	1	1	1	0	5
Hwang	2019	1	1	1	1	0	0	0	0	0	1	0	4
Karstoft	2017	1	1	1	0	0	0	0	1	1	1	0	5
Koh	2018	1	1	0	1	0	0	0	1	1	1	0	5
Li	2022	1	1	1	1	0	0	0	1	1	1	1	7
Maillard	2016	1	1	0	1	0	0	0	1	1	1	1	6
Mitranun	2014	1	1	1	1	0	0	0	0	0	1	0	4
Mortensen	2019	1	1	1	1	0	0	0	1	1	1	0	6
Ryckeghem	2022	1	1	1	1	0	0	0	0	0	1	0	4
Saanijoki	2017	1	1	0	1	0	0	1	0	0	1	0	4
Sabag	20	1	1	1	1	0	0	0	1	1	1	0	6

	22												
Terada	20	1	1	1	1	0	0	1	1	0	1	1	7
	13												
Way	20	1	1	1	1	0	0	0	0	0	1	1	5
	20												
zadeh	20	1	1	1	1	0	0	0	0	0	1	0	4
	22												

Meta-analysis

As summarized in figure 2, All studies reported pre- and post-intervention in BM, 13 studies reported BMI, 8 studies reported PFM, 5 studies reported FM, 7 studies reported FFM, 12 studies reported HbA1c, 12 studies reported FPG, and 9 studies reported FPI. For cardiorespiratory fitness 11 studies reported VO2peak. The analyses were completed by using the above data. The analyses of HIIT vs MICT on T2DM were presented in Figure 2. There were significant differences between HIIT and MICT in HbA1c (SMD=-0.24, 95%CI: -0.48 to -0.01, p=0.04), and VO2peak (SMD=0.4, 95%CI: 0.08 to 0.73, p=0.02). No statistical differences were found in BM (SMD=0.06, 95%CI: -0.21 to 0.33, p=0.65), BMI (SMD=0.05, 95%CI: -0.23 to 0.33, p=0.74), PFM (SMD=0.02, 95%CI: -0.27 to 0.32, p=0.87), FM (SMD=0.04, 95%CI: -0.33 to -0.4, p=0.85), FFM (SMD=-0.03, 95%CI: -0.33 to 0.28, p=0.86), FPG (SMD=0.05, 95%CI: -0.18 to 0.28, p=0.65), and FPI (SMD=-0.18, 95%CI: -0.47 to 0.11, p=0.23).

Subgroup analysis

As shown in the Table 3, according to the different characteristics of included studies, studies were divided into 6 subgroups. As the result showed, no matter duration, frequency, and HIIT interval, there was no statistical difference on BM, BMI, PFM, FM, FFM, FPG, and FPI. On HbA1c, a significant effect of duration(<3 months vs ≥3 months) was found in the subgroup analysis. Subgroup analysis of VO2peak identified a significant effect of frequency(≤3 times/week vs >3 times/week), and HIIT interval(1-3 mins vs ≥ 3 mins) between HIIT and MICT.

Table 3 Summary of HIIT vs MICT subgroup meta-analysis

Outcome	Studies(n)	SMD	(95%CI)	p	Heterogeneity	
					I2(%)	p
BM						
Duration:< 3 months	6	0.15	-0.32, 0.63	0.52	65%	0.003
Duration:≥ 3 months	9	-0.03	-0.35, 0.29	0.87	0%	1
Frequency:≤ 3 times/week	9	0.03	-0.25, 0.3	0.83	0%	1
Frequency:> 3 times/week	6	0.2	-0.5, 0.89	0.58	78%	0.0003
HIIT interval: 1-3mins	9	-0.09	-0.37, 0.18	0.51	0%	0.74
HIIT interval: ≥3mins	6	0.3	-0.28, 0.88	0.31	70%	0.005
BMI						
Duration:< 3 months	4	-0.02	-0.4, 0.37	0.94	0	1
Duration:≥ 3 months	9	0.1	-0.32, 0.51	0.65	56%	0.02
Frequency:≤ 3 times/week	8	-0.02	-0.31, 0.27	0.9	0%	0.96
Frequency:> 3 times/week	5	0.21	-0.5, 0.91	0.57	75%	0.003
HIIT interval: 1-3mins	8	-0.16	-0.45, 0.13	0.29	0%	0.83
HIIT interval: ≥3mins	5	0.35	-0.23, 0.94	0.23	64%	0.02
FAT%						
Duration:< 3 months	4	0.03	-0.35, 0.42	0.87	0%	1
Duration:≥ 3 months	4	0.02	-0.43, 0.46	0.95	0%	0.94
Frequency:≤ 3 times/week	5	0.04	-0.34, 0.43	0.82	0%	1
Frequency:> 3 times/week	3	0	-0.45, 0.45	0.99	0%	0.86
HIIT interval: 1-3mins	6	0.01	-0.35, 0.37	0.97	0%	1
HIIT interval: ≥3mins	2	0.06	-0.44, 0.56	0.82	0%	0.92
FM						
Duration:< 3 months	3	0.03	-0.41, 0.47	0.9	0%	0.98

Duration:≥ 3 months	2	0.05	-0.61, 0.72	0.88	0%	0.83
Frequency:≤ 3 times/week	3	0.06	-0.49, 0.61	0.82	0%	0.98
Frequency:> 3 times/week	2	0.02	-0.47, 0.5	0.95	0%	0.9
HIIT interval: 1-3mins	3	0.06	-0.49, 0.61	0.82	0%	0.98
HIIT interval: ≥3mins	2	0.02	-0.47, 0.5	0.95	0%	0.9
FFM						
Duration:< 3 months	5	-0.03	-0.37, 0.32	0.87	0%	0.99
Duration:≥ 3 months	2	-0.02	-0.69, 0.64	0.95	0%	0.78
Frequency:≤ 3 times/week	4	-0.05	-0.51, 0.41	0.84	0%	0.97
Frequency:> 3 times/week	3	-0.01	-0.42, 0.4	0.96	0%	0.98
HIIT interval: 1-3mins	4	-0.05	-0.51, 0.41	0.84	0%	0.97
HIIT interval: ≥3mins	3	-0.01	-0.42, 0.4	0.96	0%	0.98
HbA1c						
Duration:< 3 months	4	-0.15	-0.55, 0.24	0.45	0%	0.99
Duration:≥ 3 months	8	-0.29	-0.58, 0	0.05	0%	0.91
Frequency:≤ 3 times/week	9	-0.2	-0.47, 0.08	0.16	0%	1
Frequency:> 3 times/week	3	-0.38	-0.84, 0.09	0.11	0%	0.48
HIIT interval: 1-3mins	7	-0.29	-0.62, 0.03	0.08	0%	0.86
HIIT interval: ≥3mins	5	-0.19	-0.53, 0.15	0.27	0%	0.98
FPG						
Duration:< 3 months	4	0.16	-0.22, 0.54	0.41	0%	0.67
Duration:≥ 3 months	8	-0.01	-0.3, 0.28	0.95	0%	0.92
Frequency:≤ 3 times/week	7	-0.04	-0.35, 0.27	0.8	0%	0.97
Frequency:> 3 times/week	5	0.17	-0.18, 0.51	0.34	0%	0.63
HIIT interval: 1-3mins	7	0.02	-0.3, 0.34	0.89	0%	0.88
HIIT interval: ≥3mins	5	0.09	-0.25, 0.42	0.61	0%	0.7
FPI						
Duration:< 3 months	4	-0.16	-0.54, 0.22	0.41	0	0.63
Duration:≥ 3 months	5	-0.2	-0.71, 0.32	0.46	51%	0.09
Frequency:≤ 3 times/week	5	-0.09	-0.49, 0.31	0.65	13%	0.33
Frequency:> 3 times/week	4	-0.28	-0.75, 0.19	0.25	38%	0.18
HIIT interval: 1-3mins	3	-0.38	-0.86, 0.09	0.11	0%	0.67
HIIT interval: ≥3mins	6	-0.09	-0.48, 0.31	0.67	37%	0.16
VO2peak						
Duration:< 3 months	5	0.3	-0.06, 0.66	0.1	0%	0.97
Duration:≥ 3 months	6	0.5	-0.13, 1.13	0.12	69%	0.007
Frequency:≤ 3 times/week	7	0.32	0, 0.63	0.05	0%	0.46
Frequency:> 3 times/week	4	0.62	-0.17, 1.41	0.12	72%	0.01
HIIT interval: 1-3mins	6	0.48	0.13, 0.84	0.008	0%	0.95
HIIT interval: ≥3mins	5	0.38	-0.31, 1.07	0.28	74%	0.004

Bold indicates significant change ($p < 0.05$)

BM, body mass; BMI, body mass index; FM, fat mass; PFM, percent fat mass; FFM, fat-free mass; FPG, fasting plasma glucose; FPI, fasting plasma insulin.

Sensitivity analysis and publication bias

Heterogeneity was detected in BM($I^2=41\%$), BMI($I^2=35\%$), FPI($I^2=19\%$),and VO2peak ($I^2=41\%$). After performing a sensitivity analysis by removing each one of the eligible studies, we found the heterogeneity is due to

the special forms of HIIT in 1 study. The result of funnel plots and Egger's tests indicated no indication of publication bias.

Discussion

Diabetes mellitus is a group of diseases due to insufficient insulin secretion or altered islet function, usually manifested as elevated blood glucose, blood lipids, and a significant increase in BMI^[28]. Patients with T2DM also had a significantly increased cardiovascular disease risk, with risk factors including glucose metabolism, blood lipids, BMI, waist circumference, and FM^[29]. HIIT is increasingly valued as an emerging form of exercise intervention. Several researchers found that HIIT can promote mitochondrial biogenesis and glucose transport by upregulating peroxisome proliferator activating receptor-coactivator-1 α (PGC-1 α), glucose transporter 4 (GLUT4) and oxidative stress pathway gene expression, thereby improving oral glucose tolerance levels in patients with metabolic diseases^{[30][31]}. HIIT can also effectively improve endothelium-dependent relaxation as well as vasodilatory function^[32].

As the results showed, though, we did not find significant differences between HIIT and MICT on BM, BMI, PFM, FM, FFM, FPG, and FPI in people with T2DM, which was similar to the previous analysis^[33]. HIIT was found to be superior to MICT in improving HbA1c, and VO_{2peak}. As the subgroup analysis indicated, there were statistical differences between HIIT and MICT on HbA1c in long-term (≥ 3 months) intervention, while in the short-term (< 3 months) were not found. Given intervention characteristics, compared to MICT, < 3 times/week and 1-3 mins interval HIIT might bring more positive influences on CRF in T2DM respectively. No matter duration, frequency, and HIIT interval, there were no significant differences were found between HIIT and MICT on body composition in T2DM. These findings might be of great help in strategy designing to improve body composition, CRF, and glucose control in T2DM.

Relative to body composition, Improving body composition is closely related to controlling blood glucose and reducing blood lipid and blood pressure in patients with T2DM. Increased BMI can increase the risk of atherogenesis. A study indicated that for T2DM patients with BMI > 25 Kg/m², every 5 Kg/m² increase in BMI means a 40% increase in cardiovascular mortality^[34]. Although recent studies found that both HIIT and MICT can improve body composition significantly, there were no significant differences between HIIT and MICT on body composition^{[35][36][37]}, which is similar to our results. However, some studies suggest the opposite conclusion: Karstoft^[38] et al. found that HIIT is better than MICT in reducing BM, BMI and improving waist-to-hip ratio. The mechanism why HIIT improves body composition in patients with T2DM compared to MICT may be that: First, HIIT promotes energy consumption during or after exercise, and total energy expenditure plays a key role in improving body composition. Scribbans^[39] et al. proposed that the low-intensity interval training stage interspersed in HIIT belongs to aerobic training, which increases the ratio of fat decomposition, while the high-intensity exercise stage increases the fatigue resistance of muscles, thus prolonging the time of fat decomposition, and HIIT can cause changes in body function and then increase energy consumption and fat decomposition. Second, HIIT inhibits appetite. A recent study shown that HIIT may promote the central inhibition of the brain's desire to eat high-energy foods through high-intensity exercise, and is able to regulate the hormone levels related to feeding function, which can achieve rapid weight loss in a short period of time^[40]. Nevertheless, the effects of HIIT and MICT on body composition in patients with T2DM remains controversial. On the one hand, the improvement in body composition in patients with T2DM is influenced by diet and lifestyle. Wu^[41] et al. indicated that mere physical activity in the absence of calorie restriction does not lead to meaningful body composition improving. On the other hand, the differences in exercise intensity, exercise frequency, exercise style, and the studied population are the key factors affecting the body composition, although our subgroup analysis did not find duration, frequency, and HIIT interval can make HIIT bring more significant improvement than MICT on body composition in T2DM. For the same intervention period and exercise style, in terms of improving body composition, the time per exercise in the HIIT group was only half the time of a single exercise in the MICT group, which saved patients' time to some extent. HIIT is also proved to be a well-adapted exercise and HIIT stimulates the secretion of catecholamine lipids is more effective than MICT, the increase of hormone levels strengthened the fat oxidation, and greater fat oxidation may be indirectly associated with sympathetic nervous system activation, can promote the increase of circulating free fatty acid levels after exercise^[42]. Therefore, HIIT should be used to improve body composition for T2DM people with low sedentary time, overweight / obese and lack of time.

As an independent measure of exercise parameters, CRF is very important for human health. Improving physical activity can significantly enhance cardiopulmonary endurance. A high level of cardiopulmonary endurance can effectively reduce the risk of T2DM cardiovascular disease and improve the quality of life^[43]. Our results found that HIIT can bring more improvement on VO_{2peak} than HIIT in T2DM. Similar results were found in a recent study, both the HIIT and MICT could increase VO_{2peak}, and the HIIT was better to the MICT in improving cardiopulmonary endurance indicators³⁵. Støal^[44] et al found that after 12 weeks intervention a significant increase in HIIT VO_{2peak} and VO_{2peak} /kg, with no significant change in MICT group before and after intervention, and no significant difference in improving lactate threshold. However, a recent study found that there is no difference between the HIIT and MICT groups in the VO_{2peak} group with the same total control load^[45]. CRF is the main factor determining the strength of exercise capacity in T2DM, and although the current study cannot determine the physiological mechanism of HIIT improving CRF, it is speculated that the effects of HIIT may involve central and peripheral adaptations, including increased cardiac output, improved vascular / endothelial function, and increased muscle oxidation^{[46][47]}.

HbA1c is less affected by drugs and has high stability, so HbA1c can be used as a diagnostic index in the evaluation of blood glucose index in patients with T2DM. HbA1c Researchers proved that for each 11% decrease, the complication rate of T2DM decreased by 25%³⁵. Although our results showed that HIIT is superior than MICT in improving HbA1c, the effects of HIIT on glucose control in T2DM are debated. Winding³⁵ et al found that FPG and HbA1c decreased significantly after intervention, but the difference was not statistically significant compared with the MICT group, which showed similar results in this study, which is consistent with our results. This may be

because the intervention programs are different. In a recent study , patients took 85% -90% HRpeak in 1min and 1 min low intensity exercise for 4 weeks, and was found that HIIT was better than the MICT group in reducing blood glucose^[48]. Umpierre^[49] et al found that HIIT improves blood glucose control more than low intensity aerobic exercise, when controlling energy expenditure. There were no significant differences found in our results between HIIT and MICT on FPG and FPI in T2DM. However, HIIT was proved to be more strongly increased glucose transporter GLUT-4 expression in skeletal muscle, and transporter GLUT-4 expression accelerated the process of glucose metabolism⁹. Whether HIIT has more benefits on glucose control than other aerobic exercise in T2DM still need more evidence.

Although we conducted a comprehensive study on the effect of HIIT and MICT on body composition and glucose control in people with T2DM through meta-analysis and subgroup-analysis, this review still has several limitations. As a result of strict inclusion and exclusion criteria, the subjects of all the eligible studies were limited(<20). And it was unclear whether HIIT is finished by subjects without supervision. A recent study^[50] indicated that supervision of exercise can positively improve the effects of HIIT, while our study did not include it as a covariable. In addition, the dietary control of participants was misanalyzed in this study which might influence the outcomes, as several studies have proven that the combination of exercise and diet intervention brings more effects on body composition^{[51],[52]}. Finally, notwithstanding statistical differences found in this meta-analysis, relative to MICT, the improvement HIIT brings was so limited that whether HIIT has more clinical meanings on HbA1c and VO_{2peak} is hard to say. Future studies must pay more attention to the forms of HIIT and the combination with dietary intervention to expand the clinical significance of HIIT in T2DM. Studies with more sample size, longer intervention, and better assessment need to be conducted to provide more compelling evidence to elucidate the time-saving and efficiency of HIIT.

Conclusions

HIIT provides more benefits on VO_{2peak} and HbA1c relative to MICT, which might be influenced by many factors, including duration(≥ 3 months), frequency, and HIIT interval. For people with T2DM, HIIT can achieve more improvement in CRF and glucose control than MICT. In summary, compared to MICT, our study indicated that the advantages HIIT brings to T2DM on body composition and glucose control are limited, yet these benefits can be provoked in a more time-saving manner.

References

- [1] Bauer UE, Briss PA, Goodman RA, Bowman BA. Prevention of chronic disease in the 21st century: elimination of the leading preventable causes of premature death and disability in the USA. *Lancet*. 2014;384(9937):45-52. doi:10.1016/S0140-6736(14)60648-6
- [2] Blüher M. Obesity: global epidemiology and pathogenesis. *Nat Rev Endocrinol*. 2019;15(5):288-298. doi:10.1038/s41574-019-0176-8
- [3] Saedi P, Petersohn I, Salpea P, et al. Global and regional diabetes prevalence estimates for 2019 and projections for 2030 and 2045: Results from the International Diabetes Federation Diabetes Atlas, 9th edition. *Diabetes Res Clin Pract*. 2019;157:107843. doi:10.1016/j.diabres.2019.107843
- [4] Izzo A, Massimino E, Riccardi G, Della Pepa G. A Narrative Review on Sarcopenia in Type 2 Diabetes Mellitus: Prevalence and Associated Factors. *Nutrients*. 2021;13(1):183. Published 2021 Jan 9. doi:10.3390/nu13010183
- [5] Yun JS, Ko SH. Current trends in epidemiology of cardiovascular disease and cardiovascular risk management in type 2 diabetes. *Metabolism*. 2021;123:154838. doi:10.1016/j.metabol.2021.154838
- [6] Colberg SR, Sigal RJ, Yardley JE, et al. Physical Activity/Exercise and Diabetes: A Position Statement of the American Diabetes Association. *Diabetes Care*. 2016;39(11):2065-2079. doi:10.2337/dc16-1728
- [7] Jung ME, Bourne JE, Beauchamp MR, Robinson E, Little JP. High-intensity interval training as an efficacious alternative to moderate-intensity continuous training for adults with prediabetes. *J Diabetes Res*. 2015;2015:191595. doi:10.1155/2015/191595
- [8] Madsen SM, Thorup AC, Overgaard K, Jeppesen PB. High Intensity Interval Training Improves Glycaemic Control and Pancreatic β Cell Function of Type 2 Diabetes Patients. *PLoS One*. 2015;10(8):e0133286. Published 2015 Aug 10. doi:10.1371/journal.pone.0133286
- [9] Su L, Fu J, Sun S, et al. Effects of HIIT and MICT on cardiovascular risk factors in adults with overweight and/or obesity: A meta-analysis. *PLoS One*. 2019;14(1):e0210644. Published 2019 Jan 28. doi:10.1371/journal.pone.0210644
- [10] Robinson E, Durrer C, Simtchouk S, et al. Short-term high-intensity interval and moderate-intensity continuous training reduce leukocyte TLR4 in inactive adults at elevated risk of type 2 diabetes. *J Appl Physiol* (1985). 2015;119(5):508-516. doi:10.1152/jappphysiol.00334.2015
- [11] Ramos JS, Dalleck LC, Borrani F, et al. The effect of different volumes of high-intensity interval training on proinsulin in participants with the metabolic syndrome: a randomised trial. *Diabetologia*. 2016;59(11):2308-2320. doi:10.1007/s00125-016-4064-7
- [12] Liu JX, Zhu L, Li PJ, Li N, Xu YB. Effectiveness of high-intensity interval training on glycemic control and cardiorespiratory fitness in patients with type 2 diabetes: a systematic review and meta-analysis. *Aging Clin Exp Res*. 2019;31(5):575-593. doi:10.1007/s40520-018-1012-z
- [13] Ghardashi Afousi A, Izadi MR, Rakhshan K, Mafi F, Biglari S, Gandomkar Bagheri H. Improved brachial artery shear patterns and increased flow-mediated dilatation after low-volume high-intensity interval training in type 2 diabetes. *Exp Physiol*. 2018;103(9):1264-1276. doi:10.1113/EP087005

-
- [14] Gilbertson NM, Eichner NZM, Francois M, et al. Glucose Tolerance is Linked to Postprandial Fuel Use Independent of Exercise Dose. *Med Sci Sports Exerc.* 2018;50(10):2058-2066. doi:10.1249/MSS.0000000000001667
- [15] Hwang CL, Lim J, Yoo JK, et al. Effect of all-extremity high-intensity interval training vs. moderate-intensity continuous training on aerobic fitness in middle-aged and older adults with type 2 diabetes: A randomized controlled trial. *Exp Gerontol.* 2019;116:46-53. doi:10.1016/j.exger.2018.12.013
- [16] Karstoft K, Clark MA, Jakobsen I, et al. The effects of 2 weeks of interval vs continuous walking training on glycaemic control and whole-body oxidative stress in individuals with type 2 diabetes: a controlled, randomised, crossover trial. *Diabetologia.* 2017;60(3):508-517. doi:10.1007/s00125-016-4170-6
- [17] Koh HE, Ørtenblad N, Winding KM, Hellsten Y, Mortensen SP, Nielsen J. High-intensity interval, but not endurance, training induces muscle fiber type-specific subsarcolemmal lipid droplet size reduction in type 2 diabetic patients. *Am J Physiol Endocrinol Metab.* 2018;315(5):E872-E884. doi:10.1152/ajpendo.00161.2018
- [18] Li J, Cheng W, Ma H. A Comparative Study of Health Efficacy Indicators in Subjects with T2DM Applying Power Cycling to 12 Weeks of Low-Volume High-Intensity Interval Training and Moderate-Intensity Continuous Training. *J Diabetes Res.* 2022;2022:9273830. Published 2022 Jan 13. doi:10.1155/2022/9273830
- [19] Maillard F, Rousset S, Pereira B, et al. High-intensity interval training reduces abdominal fat mass in postmenopausal women with type 2 diabetes. *Diabetes Metab.* 2016;42(6):433-441. doi:10.1016/j.diabet.2016.07.031
- [20] Mitranun W, Deerochanawong C, Tanaka H, Suksum D. Continuous vs interval training on glycemic control and macro- and microvascular reactivity in type 2 diabetic patients. *Scand J Med Sci Sports.* 2014;24(2):e69-e76. doi:10.1111/sms.12112
- [21] Mortensen SP, Winding KM, Iepsen UW, et al. The effect of two exercise modalities on skeletal muscle capillary ultrastructure in individuals with type 2 diabetes. *Scand J Med Sci Sports.* 2019;29(3):360-368. doi:10.1111/sms.13348
- [22] Van Ryckeghem L, Keytsman C, De Brandt J, et al. Impact of continuous vs. interval training on oxygen extraction and cardiac function during exercise in type 2 diabetes mellitus. *Eur J Appl Physiol.* 2022;122(4):875-887. doi:10.1007/s00421-022-04884-9
- [23] Saanijoki T, Nummenmaa L, Koivumäki M, Löyttyniemi E, Kalliokoski KK, Hannukainen JC. Affective Adaptation to Repeated SIT and MICT Protocols in Insulin-Resistant Subjects. *Med Sci Sports Exerc.* 2018;50(1):18-27. doi:10.1249/MSS.0000000000001415
- [24] Sabag A, Way KL, Sultana RN, et al. The Effect of a Novel Low-Volume Aerobic Exercise Intervention on Liver Fat in Type 2 Diabetes: A Randomized Controlled Trial. *Diabetes Care.* 2020;43(10):2371-2378. doi:10.2337/dc19-2523
- [25] Terada T, Friesen A, Chahal BS, Bell GJ, McCargar LJ, Boulé NG. Feasibility and preliminary efficacy of high intensity interval training in type 2 diabetes. *Diabetes Res Clin Pract.* 2013;99(2):120-129. doi:10.1016/j.diabres.2012.10.019
- [26] Way KL, Sabag A, Sultana RN, et al. The effect of low-volume high-intensity interval training on cardiovascular health outcomes in type 2 diabetes: A randomised controlled trial. *Int J Cardiol.* 2020;320:148-154. doi:10.1016/j.ijcard.2020.06.019
- [27] Zadeh MAM, Afrasyabi S, Mohamadi ZA. The effects of exercise training induced calories expenditure on type 2 diabetes related cardio metabolic physiological parameters and adipocytokines. *J Diabetes Metab Disord.* 2022;21(2):1219-1231. Published 2022 Sep 3. doi:10.1007/s40200-021-00808-0
- [28] Hauk L. Preventing CVD in Adults with Type 2 Diabetes Mellitus: An Update from the AHA and ADA. *Am Fam Physician.* 2016;93(3):232-233.
- [29] Miele EM, Headley SAE. The Effects of Chronic Aerobic Exercise on Cardiovascular Risk Factors in Persons with Diabetes Mellitus. *Curr Diab Rep.* 2017;17(10):97. Published 2017 Sep 12. doi:10.1007/s11892-017-0927-7
- [30] Tjønnå AE, Stølen TO, Bye A, et al. Aerobic interval training reduces cardiovascular risk factors more than a multitreatment approach in overweight adolescents. *Clin Sci (Lond).* 2009;116(4):317-326. doi:10.1042/CS20080249
- [31] Trilk JL, Singhal A, Bigelman KA, Cureton KJ. Effect of sprint interval training on circulatory function during exercise in sedentary, overweight/obese women. *Eur J Appl Physiol.* 2011;111(8):1591-1597. doi:10.1007/s00421-010-1777-z
- [32] Dias KA, Ingul CB, Tjønnå AE, et al. Effect of High-Intensity Interval Training on Fitness, Fat Mass and Cardiometabolic Biomarkers in Children with Obesity: A Randomised Controlled Trial. *Sports Med.* 2018;48(3):733-746. doi:10.1007/s40279-017-0777-0
- [33] da Silva DE, Grande AJ, Roeber L, et al. High-Intensity Interval Training in Patients with Type 2 Diabetes Mellitus: a Systematic Review. *Curr Atheroscler Rep.* 2019;21(2):8. Published 2019 Feb 2. doi:10.1007/s11883-019-0767-9
- [34] Prospective Studies Collaboration, Whitlock G, Lewington S, et al. Body-mass index and cause-specific mortality in 900 000 adults: collaborative analyses of 57 prospective studies. *Lancet.* 2009;373(9669):1083-1096. doi:10.1016/S0140-6736(09)60318-4
- [35] Winding KM, Munch GW, Iepsen UW, Van Hall G, Pedersen BK, Mortensen SP. The effect on glycaemic control of low-volume high-intensity interval training versus endurance training in individuals with type 2 diabetes [published correction appears in *Diabetes Obes Metab.* 2019 Jan;21(1):202]. *Diabetes Obes Metab.* 2018;20(5):1131-1139. doi:10.1111/dom.13198

- [36] Ramos JS, Dalleck LC, Tjonna AE, Beetham KS, Coombes JS. The impact of high-intensity interval training versus moderate-intensity continuous training on vascular function: a systematic review and meta-analysis. *Sports Med.* 2015;45(5):679-692. doi: 10.1007/s40279-015-0321-z.
- [37] Wewege M, van den Berg R, Ward RE, Keech A. The effects of high-intensity interval training vs. moderate-intensity continuous training on body composition in overweight and obese adults: a systematic review and meta-analysis. *Obes Rev.* 2017;18(6):635-646. doi: 10.1111/obr.12532.
- [38] Karstoft K, Winding K, Knudsen SH, et al. The effects of free-living interval-walking training on glycemic control, body composition, and physical fitness in type 2 diabetic patients: a randomized, controlled trial. *Diabetes Care.* 2013;36(2):228-236. doi:10.2337/dc12-0658
- [39] Scribbans TD, Vecsey S, Hankinson PB, Foster WS, Gurd BJ. The Effect of Training Intensity on VO₂max in Young Healthy Adults: A Meta-Regression and Meta-Analysis. *Int J Exerc Sci.* 2016;9(2):230-247. Published 2016 Apr 1.
- [40] Gillen JB, Percival ME, Ludzki A, Tarnopolsky MA, Gibala MJ. Interval training in the fed or fasted state improves body composition and muscle oxidative capacity in overweight women. *Obesity (Silver Spring).* 2013 Nov;21(11):2249-55. doi: 10.1002/oby.20379. Epub 2013 May 31. PMID: 23723099.
- [41] Wu T, Gao X, Chen M, van Dam RM. Long-term effectiveness of diet-plus-exercise interventions vs. diet-only interventions for weight loss: a meta-analysis. *Obes Rev.* 2009 May;10(3):313-23. doi: 10.1111/j.1467-789X.2008.00547.x. Epub 2009 Jan 19. PMID: 19175510.
- [42] Wingfield HL, Smith-Ryan AE, Melvin MN, Roelofs EJ, Trexler ET, Hackney AC, Weaver MA, Ryan ED. The acute effect of exercise modality and nutrition manipulations on post-exercise resting energy expenditure and respiratory exchange ratio in women: a randomized trial. *Sports Med Open.* 2015 Dec;1(1):11. doi: 10.1186/s40798-015-0010-3. Epub 2015 Jun 5. PMID: 27747847.
- [43] Li X, Yu R, Wang P, Wang A, Huang H. Effects of Exercise Training on Cardiopulmonary Function and Quality of Life in Elderly Patients with Pulmonary Fibrosis: A Meta-Analysis. *Int J Environ Res Public Health.* 2021 Jul 18;18(14):7643. doi: 10.3390/ijerph18147643. PMID: 34300094; PMCID: PMC8306771.
- [44] Støa EM, Meling S, Nyhus LK, Glenn Strømstad, Mangerud KM, Helgerud J, Bratland-Sanda S, Støren Ø. High-intensity aerobic interval training improves aerobic fitness and HbA_{1c} among persons diagnosed with type 2 diabetes. *Eur J Appl Physiol.* 2017 Mar;117(3):455-467. doi: 10.1007/s00421-017-3540-1. Epub 2017 Feb 3. PMID: 28160083.
- [45] Scribbans TD, Vecsey S, Hankinson PB, Foster WS, Gurd BJ. The Effect of Training Intensity on VO₂max in Young Healthy Adults: A Meta-Regression and Meta-Analysis. *Int J Exerc Sci.* 2016 Apr 1;9(2):230-247. PMID: 27182424; PMCID: PMC4836566.
- [46] Wadley, G D et al. "Differential effects of exercise on insulin-signaling gene expression in human skeletal muscle." *Journal of applied physiology (Bethesda, Md. : 1985) vol. 90,2 (2001): 436-40.*
doi:10.1152/jappl.2001.90.2.436
- [47] Su, LiQiang et al. "Effects of HIIT and MICT on cardiovascular risk factors in adults with overweight and/or obesity: A meta-analysis." *PloS one vol. 14,1 e0210644. 28 Jan. 2019, doi:10.1371/journal.pone.0210644*
- [48] Robinson E, Durrer C, Simtchouk S, et al. Short-term high-intensity interval and moderate-intensity continuous training reduce leukocyte TLR4 in inactive adults at elevated risk of type 2 diabetes. *J Appl Physiol (1985).* 2015;119(5):508-516. doi:10.1152/jappphysiol.00334.2015
- [49] Umpierre D, Ribeiro PA, Schaan BD, Ribeiro JP. Volume of supervised exercise training impacts glycaemic control in patients with type 2 diabetes: a systematic review with meta-regression analysis. *Diabetologia.* 2013;56(2):242-251. doi:10.1007/s00125-012-2774-z
- [50] Viana RB, Naves JPA, Coswig VS, et al. Is interval training the magic bullet for fat loss? A systematic review and meta-analysis comparing moderate-intensity continuous training with high-intensity interval training (HIIT). *Br J Sports Med.* 2019;53(10):655-664. doi: 10.1136/bjsports-2018-099928.
- [51] Guo Z, Cai J, Wu Z, Gong W. Effect of High-Intensity Interval Training Combined with Fasting in the Treatment of Overweight and Obese Adults: A Systematic Review and Meta-Analysis. *Int J Environ Res Public Health.* 2022;19(8):4638. doi: 10.3390/ijerph19084638.
- [52] Brown JC, Sarwer DB, Troxel AB, et al. A randomized trial of exercise and diet on health-related quality of life in survivors of breast cancer with overweight or obesity. *Cancer.* 2021;127(20):3856-3864. doi: 10.1002/cncr.33752.

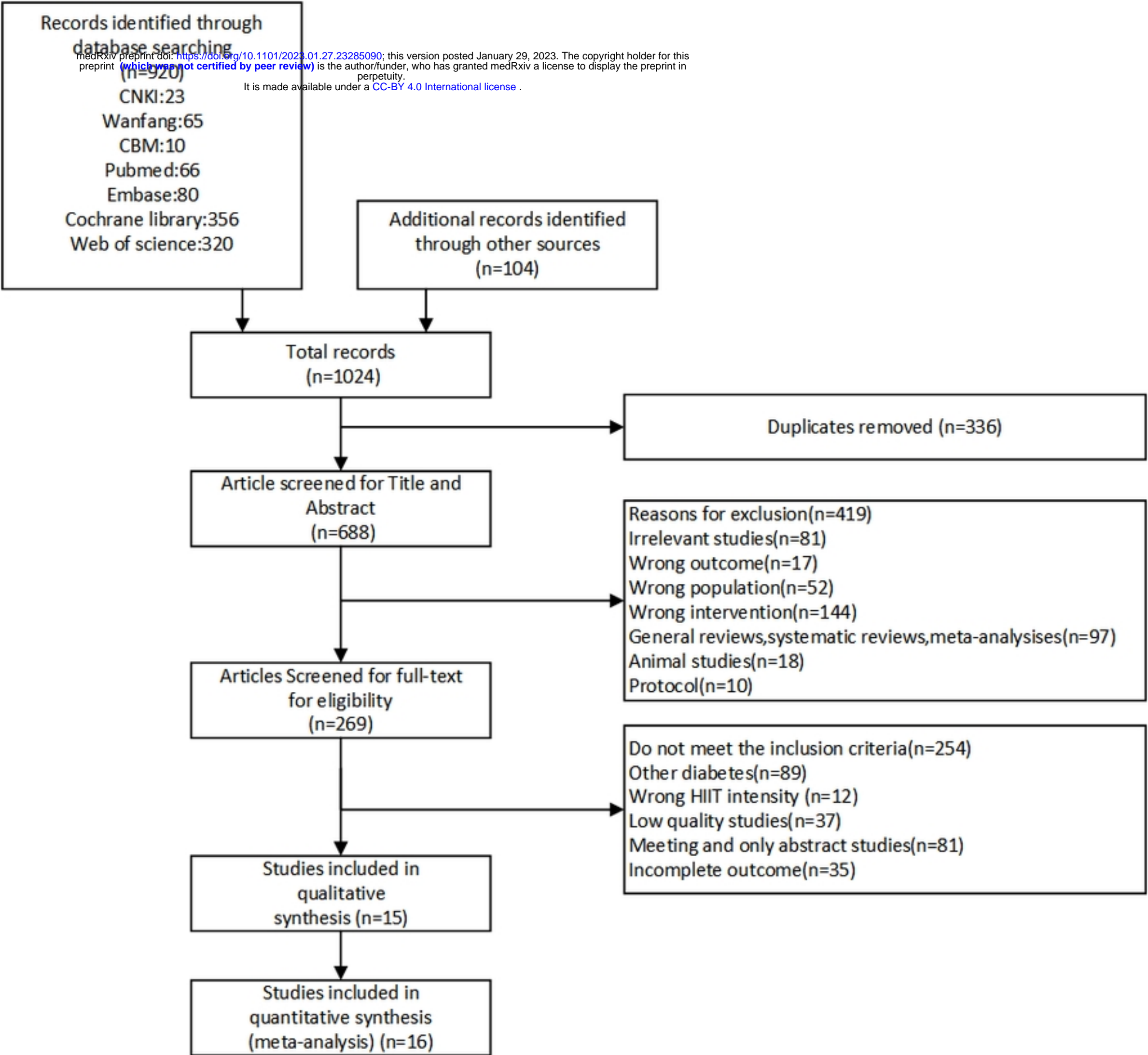


Figure 1. Literature search and study selection process

