

# 1 Validation of the ACMG/AMP guidelines-based seven-category variant 2 classification system

3  
4 **Jian-Min Chen<sup>1,\*</sup>, Emmanuelle Masson<sup>1,2</sup>, Wen-Bin Zou<sup>3,4</sup>, Zhuan Liao<sup>3,4</sup>, Emmanuelle Génin,<sup>1</sup>  
5 David N. Cooper<sup>5</sup> and Claude Férec<sup>1</sup>**

6  
7 <sup>1</sup>EFS, Univ Brest, Inserm, UMR 1078, GGB, F-29200 Brest, France. <sup>2</sup>Service de Génétique Médicale et  
8 de Biologie de la Reproduction, CHRU Brest, F-29200 Brest, France. <sup>3</sup>Department of Gastroenterology,  
9 Changhai Hospital, The Secondary Military Medical University, Shanghai, China. <sup>4</sup>Shanghai Institute of  
10 Pancreatic Diseases, Shanghai, China. <sup>5</sup>Institute of Medical Genetics, School of Medicine, Cardiff  
11 University, Cardiff, United Kingdom.

12  
13 **\*Correspondence:** Jian-Min Chen, MD, PhD, INSERM UMR1078 – EFS – UBO, 22 avenue Camille  
14 Desmoulins, 29238 BREST, France. Email: [jian-min.chen@univ-brest.fr](mailto:jian-min.chen@univ-brest.fr)

## 16 Abstract

17 **Background:** One shortcoming of employing the American College of Medical Genetics and  
18 Genomics/Association for Molecular Pathology (ACMG/AMP)-recommended five-category variant  
19 classification scheme (“pathogenic”, “likely pathogenic”, “uncertain significance”, “likely benign” and  
20 “benign”) in medical genetics lies in the scheme’s inherent inability to deal properly with variants that  
21 fall midway between “pathogenic” and “benign”. Employing chronic pancreatitis as a disease model,  
22 and focusing on the four most studied chronic pancreatitis-related genes, we recently expanded the  
23 five-category ACMG/AMP scheme into a seven-category variant classification system. With the  
24 addition of two new classificatory categories, “predisposing” and “likely predisposing”, our seven-  
25 category system promises to provide improved classification for the entire spectrum of variants in any  
26 disease-causing gene. The applicability and practical utility of our seven-category variant classification  
27 system however remains to be demonstrated in other disease/gene contexts, and this has been the  
28 aim of the current analysis.

29 **Results:** We have sought to demonstrate the potential universality of pathological variants that could  
30 be ascribed the new variant terminology (‘predisposing’) by trialing it across three Mendelian disease  
31 contexts (i.e., autosomal dominant, autosomal recessive and X-linked). To this end, we firstly employed  
32 illustrative genes/variants characteristic of these three contexts. On the basis of our own knowledge  
33 and expertise, we identified a series of variants that fitted well with our “predisposing” category,  
34 including “hypomorphic” variants in the *PKD1* gene and “variants of varying clinical consequence” in  
35 the *CFTR* gene. These examples, followed by reasonable extrapolations, enabled us to infer the  
36 widespread occurrence of “predisposing” variants in disease-causing genes. Such “predisposing”  
37 variants are likely to contribute significantly to the complexity of human genetic disease and may  
38 account not only for a considerable proportion of the unexplained cases of monogenic and oligogenic  
39 disease but also for much of the “missing heritability” characteristic of complex disease.

40 **Conclusion:** Employing an evidence-based approach together with reasonable extrapolations, we  
41 demonstrate both the applicability and utility of our seven-category variant classification system for  
42 disease-causing genes. The recognition of the new “predisposing” category not only has immediate  
43 implications for variant detection and interpretation but should also have important consequences for  
44 reproductive genetic counseling.

## 46 Keywords

47 ClinGen, Clinical genetic testing, ClinVar, Conflicting interpretations of pathogenicity, Disease allele  
48 frequency threshold, gnomAD, Haploinsufficiency, Incomplete penetrance, Variant reclassification,  
49 VUS

50 **NOTE:** This preprint reports new research that has not been certified by peer review and should not be used to guide clinical practice.

## 51 Background

52 In 2015, the American College of Medical Genetics and Genomics/Association for Molecular Pathology  
53 (ACMG/AMP) recommended a five-category scheme (namely, “pathogenic”, “likely pathogenic”,  
54 “uncertain significance”, “likely benign” and “benign”) for classifying variants found in genes  
55 underlying classical Mendelian disease entities [1]. This five-category scheme has since become widely  
56 used in medical genetics (cited 17904 times according to Google Scholar as of 18 January 2023) despite  
57 two fundamental limitations. First and foremost, this scheme was designed specifically to describe  
58 variants in genes that cause monogenic Mendelian disorders. In other words, it was never intended to  
59 be used to classify all variants in all disease-related genes. Moreover, even in the context of classical  
60 Mendelian disease genes, the five-category scheme is inadequate to the task of coping with variants  
61 that fall somewhere between “pathogenic” and “benign”. In this regard, it is worth making two points.  
62 First, the “likely pathogenic” and “likely benign” categories should not be interpreted as denoting all  
63 variants that fall somewhere between “pathogenic” and “benign”; rather, these two terms were  
64 proposed by ACMG/AMP to “mean greater than 90% certainty of a variant either being disease-causing  
65 or benign to provide laboratories with a common, albeit arbitrary, definition” [1]. Second,  
66 ACMG/AMP's “uncertain significance” category is defined as EITHER when (i) criteria for “pathogenic”,  
67 “likely pathogenic”, “benign” and “likely benign” are not met OR (ii) the criteria for benign and  
68 pathogenic are contradictory. This ambiguity frequently causes confusion among clinicians,  
69 researchers, genetic counselors and database curators alike.

70 The ACMG/AMP variant classification guidelines have been frequently adapted or refined to suit  
71 different contexts (e.g., [2-17]). However, all these adaptations and refinements were made with  
72 respect to the specific criteria or rules defining each of the five categories of the ACMG/AMP scheme.  
73 The stepwise “ABC system” [18] was considered by its proponents to be an add-on or alternative to  
74 the ACMG/AMP guidelines. However, one primary limitation of this system lies in its use of single letter  
75 codes (i.e., A through F) for variant classificatory categories, which has made direct comparison with  
76 the five-category ACMG/AMP scheme difficult and potentially rather confusing.

77 Employing chronic pancreatitis as a disease model and focusing on its four most studied genes, we  
78 recently extended the five-category ACMG/AMP scheme into a general variant classification  
79 framework [19]. In brief, we firstly divided the different genes into “disease-causing” and “disease-  
80 predisposing” based upon the integration of multiple layers of evidence with particular focus on their  
81 different roles in the pathophysiology of the exocrine pancreas. We then employed two new  
82 classificatory categories, “predisposing” and “likely predisposing”, to expand and/or adapt the five-  
83 category ACMG/AMP scheme for disease-causing genes and disease-predisposing genes, respectively,  
84 leading to the proposition of a two-branch general variant classification framework:

- 85 • A seven-category system (i.e., “pathogenic”, “likely pathogenic”, “predisposing”, “likely  
86 predisposing”, “uncertain significance”, “likely benign” and “benign”) for disease-causing  
87 genes.
- 88 • A five-category classification system (i.e., “predisposing”, “likely predisposing”, “uncertain  
89 significance”, “likely benign” and “benign”) for disease-predisposing genes.

90 Our two-branch general variant classification framework overcomes the limited scope of the five-  
91 category ACMG guidelines since it has the potential to span the entire spectrum of variants in any  
92 disease-associated gene. In addition, our general variant classificatory framework has one additional  
93 practical advantage: it retains the backbone of the five-category ACMG/AMP scheme, implying that  
94 many ACMG/AMP-established rules and criteria for defining the primary variant classificatory  
95 categories can be readily adapted or incorporated into our general framework.

96 The above notwithstanding, both the applicability and utility of our general variant classification  
97 framework remain to be demonstrated in other disease/gene contexts. As the first step of this  
98 endeavor, we explore herein the applicability and practical utility of the seven-category variant  
99 classification system branch by trialing it across three classical Mendelian disease contexts (i.e.,  
100 autosomal dominant, autosomal recessive and X-linked). Employing a range of illustrative

101 disease/gene/variant examples and reasonable extrapolations, we demonstrate that our seven-  
102 category variant classification system has the potential to be widely applicable.

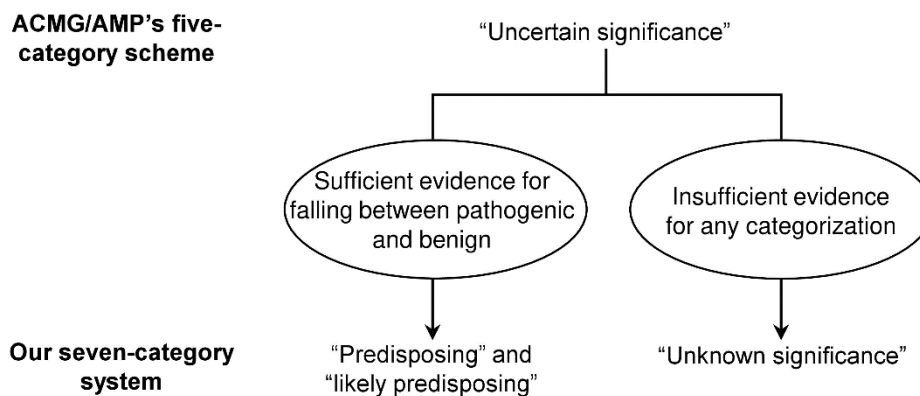
103

## 104 Results

### 105 Analytical rationale and strategy

106 Our seven-category variant classification system has two new categories, “predisposing” and “likely  
107 predisposing”, by comparison with the five-category ACMG/AMP guidelines [19]. With hindsight, these  
108 two new categories may be regarded as being separated from ACMG/AMP’s “uncertain significance”  
109 category which, in our view, actually includes two distinct types of variant (Figure 1). The first of these  
110 corresponds to those variants for which there is sufficient evidence to support their intermediate  
111 status somewhere between “pathogenic” and “benign”, corresponding to our defined *predisposing*  
112 category. The second refers to those variants for which there is insufficient evidence for any  
113 categorization, and which may be best described as being of “unknown significance”. In the light of  
114 this reflection, the “uncertain significance” category previously used in our general variant  
115 classification framework was revised here to “unknown significance”. In this regard, it is worth  
116 mentioning that both terms, “variant of unknown significance” and “variant of uncertain significance”,  
117 have been frequently used in the literature and both are abbreviated as “VUS”.

118



119

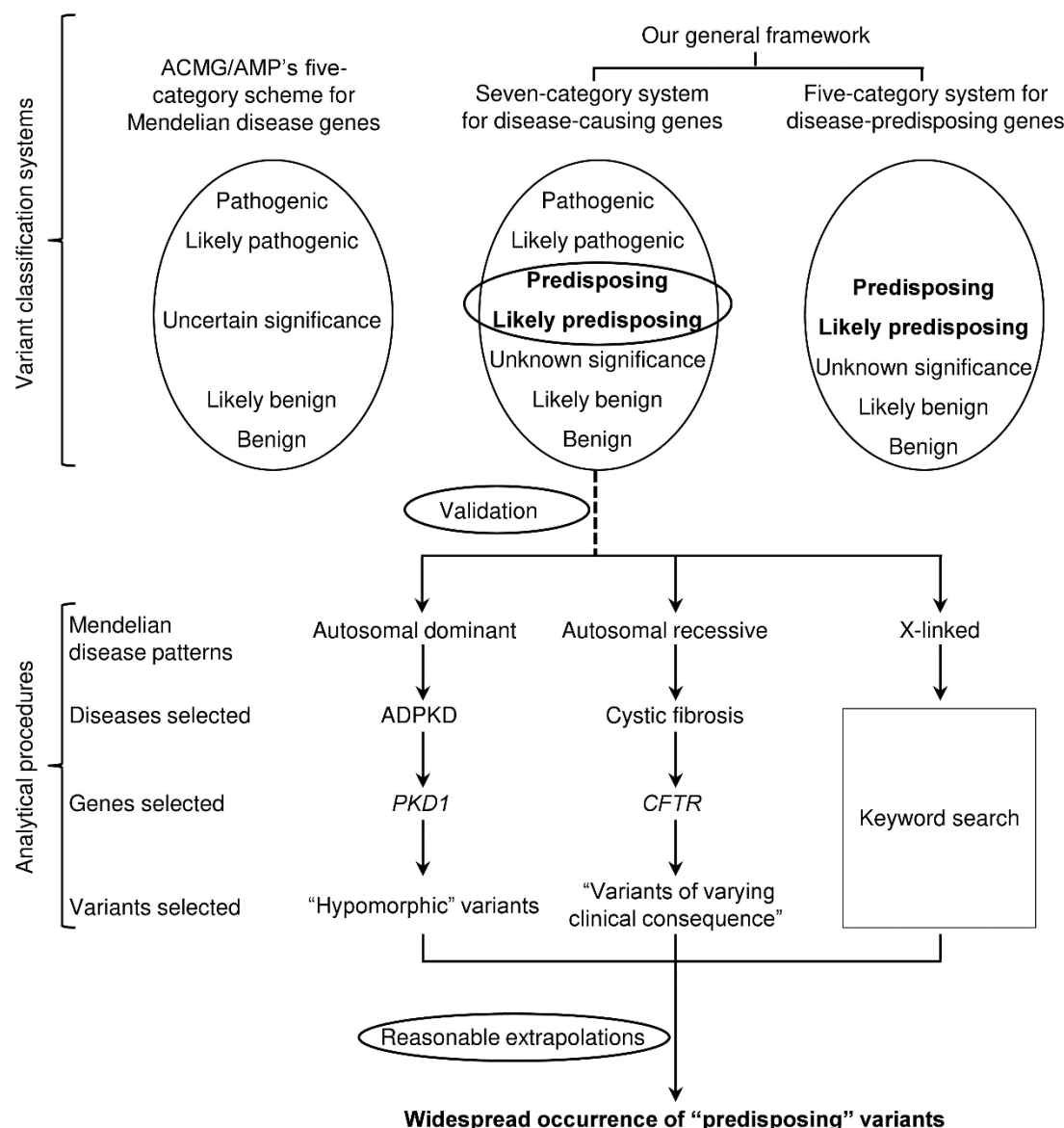
120 **Figure 1.** Key differences between our seven-category system and the ACMG/AMP’s five-category  
121 scheme. The two new classificatory categories (i.e., “predisposing” and “likely predisposing”) in our  
122 seven-category variant classification system were considered here to be separated or split from the  
123 ACMG/AMP’s “uncertain significance” category. The “uncertain significance” category previously used  
124 in our variant classification framework was also revised here to “unknown significance”.

125

126

127 A comparison of our revised two-branch general variant classification framework with  
128 ACMG/AMP’s five-category scheme is provided in Figure 2. The key to demonstrating the applicability  
129 and practical utility of our seven-category variant classification system is thus to demonstrate the  
130 general occurrence of pathological variants that can be unambiguously (or at least reasonably)  
131 allocated to one of the two new categories, “predisposing” and “likely predisposing”.

132



133

134 **Figure 2.** Illustration of the aims and analytical procedures adopted in this study. In the top panel, our  
 135 revised two-branch general variant classification framework is contrasted with ACMG/AMP's five-  
 136 category scheme, with the two new classificatory categories, "predisposing" and "likely predisposing",  
 137 being highlighted in bold. The branch validated in the present study, the seven-category variant  
 138 classification system for disease-causing genes, is connected to the analytical procedures by a dotted  
 139 line. The validation focuses upon on the two new classificatory categories, which are highlighted in  
 140 bold and circled by horizontal ovals. ACMG/AMP, the American College of Medical Genetics and  
 141 Genomics/Association for Molecular Pathology; ADPKD, autosomal dominant polycystic kidney disease.  
 142 *CFTR*, cystic fibrosis transmembrane conductance regulator; *PKD1*, polycystin-1.

143

144

145 The terms "predisposing" and "likely predisposing" were proposed by analogy to ACMG/AMP's  
 146 terms "pathogenic" and "likely pathogenic" as well as "benign" and "likely benign". As such, "likely  
 147 predisposing" should denote a greater than 90% certainty of a variant being predisposing. For the  
 148 purpose of establishing core principles, we shall not attempt to distinguish the two new categories,  
 149 "predisposing" and "likely predisposing", in the current analysis.

150 The "predisposing" category was only recently proposed by us [19]. No attempt had been made in  
 151 previous studies to allocate variants into a "predisposing" category although the descriptor

152 “predisposing” has been frequently (and generally rather loosely) used in the literature to describe  
153 pathologically significant variants. Faced with this situation, as well as the unrealistic prospect of being  
154 able to analyze all relevant variants in all disease genes, we opted to adopt a simple practical approach.  
155 As mentioned above, our proposed general variant classification framework was built upon sound data  
156 from a single model disease, chronic pancreatitis, and its four most extensively studied genes [19]. In  
157 similar vein, we shall herein attempt to build our case using illustrative genes/variants causing  
158 respectively autosomal dominant, autosomal recessive and X-linked diseases. Findings from these  
159 illustrative examples will finally be generalized so as to be applicable to all disease-causing genes.

160 Before delving into the details of our analysis (Figure 2), several points are worth noting. First, we  
161 initiated our analysis with variants in two genes underlying respectively an autosomal dominant  
162 disease and an autosomal recessive disease, in both of which we have expertise [20-25]. Findings from  
163 these examples were then used to inform keyword searches in the context of X-linked diseases. We  
164 would like to reiterate that these analytical procedures were intended to identify some but not all  
165 pertinent examples. Second, pathologically relevant variants in the primary chronic pancreatitis-  
166 causing gene, *PRSS1* (OMIM #276000; encoding cationic trypsinogen), which originally prompted us to  
167 propose the seven-category variant classification system, give rise to a gain of trypsin function or a  
168 gain of proteotoxicity [19]. By contrast, the pathologically relevant variants that will be discussed  
169 below lead to the functional loss of their affected genes/proteins. In these disease genes, predicted  
170 loss-of-function (i.e., nonsense, frameshift, large genomic deletion, and obligate splice site) variants  
171 have almost invariably been classified as “pathogenic” whereas variants in regulatory or deep intronic  
172 regions have often been classified as “benign” or “likely benign”. By contrast, it is often difficult to  
173 confidently classify missense variants appropriately without supporting functional data. Thus, not  
174 surprisingly, the “predisposing” variants to be described below involve predominantly missense  
175 variants. Third, “hypomorphic” (partial but not complete loss of function) variants in the genes to be  
176 discussed below may also be considered to be “predisposing”. However, “hypomorphic” variants in  
177 some other gene/disease contexts may either be “pathogenic” or “benign” (a simple analogy may be  
178 that while a complete loss-of-function variant in one gene may be harmless, in another gene it is  
179 disease-causing). Moreover, to the best of our knowledge, there is no consensus with respect to a  
180 threshold of partial functional loss as a means to define “hypomorphic”. Fourth, we have not  
181 performed any *in silico* predictions to assist the classification of missense variants owing to the  
182 relatively poor overall performance of existing prediction tools in relation to this type of variant [26].  
183 Moreover, the functional effects of “predisposing” missense variants are in principle more refractory  
184 to prediction than “pathogenic” missense variants (e.g., [27]). Lastly, selected variants will be  
185 evaluated with respect to their classifications in ClinVar [28] and respective authoritative  
186 disease/gene-specific databases, with a view to illustrating the dilemmas frequently encountered in  
187 classifying this type of variant.

188

### 189 **Autosomal dominant diseases**

190 We selected autosomal dominant polycystic kidney disease (ADPKD) as a model of an archetypal  
191 autosomal dominant disease. *PKD1* (OMIM #601313), which encodes a 4303 amino acid receptor-like  
192 transmembrane protein, polycystin-1, is the primary causative gene for ADPKD located on  
193 chromosome 16p13.3 [29, 30]. It has been subjected to extensive study since its identification nearly  
194 30 years ago [31], with 2322 different variants being listed in the ADPKD Variant Database [32]. Of  
195 particular relevance, all 815 truncating variants (i.e., frameshift, nonsense, obligate splice site and large  
196 rearrangements) were classified by the ADPKD Variant Database as “pathogenic”. By contrast, of the  
197 782 missense variants, 277 have been classified as “likely pathogenic”, 203 have been classified as  
198 “VUS” and 302 have been classified as “likely benign”. In other words, none of the 782 missense  
199 variants have been classified as either “pathogenic” or “benign”; a reflection of the dire state of affairs  
200 in which, as yet, no functional assay has been made available to ascertain the impact of *PKD1* missense  
201 variants.

202 Whilst *PKD1* haploinsufficiency due to rare heterozygous variants gives rise to ADPKD, the  
203 inheritance of two ADPKD-causing *PKD1* alleles is a cause of recurrent fetal loss [33, 34]. Consistent

204 with this latter observation, *Pkd1* knockout mice are not viable embryonically [35]. However, mice  
205 homozygous for specific “hypomorphic” *Pkd1* alleles developed polycystic kidney disease (PKD) and  
206 were viable [36, 37]. Interestingly, human “hypomorphic” *PKD1* variants have also been reported in  
207 the literature, in both a homozygous and compound heterozygous context. Such variants reported up  
208 until the middle of 2014 [38-42], which were previously reviewed by us [22], will be used here as  
209 illustrative examples (Table 1). Specifically, all three individuals homozygous for *PKD1* hypomorphic  
210 variants presented with PKD whereas the corresponding heterozygotes had no or only a few renal cysts.  
211 As far as the compound heterozygotes were concerned, two situations were evident. In the first, both  
212 variants were missense, with all single heterozygotes being unaffected whilst all compound  
213 heterozygotes presented with PKD. In the second situation, the compound heterozygotes comprised  
214 a missense variant and an unambiguous pathogenic variant; all missense variant heterozygotes were  
215 unaffected but all compound heterozygotes were characterized by severe PKD. Presumably, these  
216 “hypomorphic” missense variants caused a partial functional loss of the affected allele, albeit a loss  
217 that, in simple heterozygosity, did not result in the threshold of PKD causation being breached.  
218 However, these variants, when inherited either in the homozygous or compound heterozygous state,  
219 reduced *PKD1* function to a level below that of the disease-causing threshold. One such missense  
220 variant, p.Arg3277Cys (detected once as a homozygote and twice as a compound heterozygote (Table  
221 1)), was studied in a knock-in mouse model. The homozygous knock-in mice were estimated to exhibit  
222 ~40% of the *Pkd1* function of wild-type mice [43]. This suggests that a simple p.Arg3277Cys  
223 heterozygote (not PKD-causing) would be expected to retain 70% of normal *PKD1* function (i.e. 20%  
224 higher than the 50% *PKD1* function in heterozygotes carrying a typical “pathogenic” *PKD1* variant).

225 Keyword searches in PubMed using “*PKD1*” plus “homozygote”, “incomplete penetrant”,  
226 “hypomorphic”, “biallelic” or “trans heterozygous” identified further studies reporting *PKD1*  
227 “hypomorphic” variants [44-49]. Notably, the Durkie study reported a high prevalence of biallelic  
228 inherited “hypomorphic” *PKD1* variants in very early onset PKD [48]. Of particular relevance, Durkie  
229 and colleagues discussed the various difficulties encountered in classifying this particular type of *PKD1*  
230 variant. First, they considered that it was challenging to use the current ACMG/AMP variant  
231 classification guidelines to classify *PKD1* “hypomorphic” variants as these variants “do not function as  
232 classic loss-of-function variants causing autosomal dominant disease” [48]. Moreover, they also  
233 regarded the additional terms (i.e., “reduced penetrance” and “ultralow penetrance”) used in the  
234 literature to describe this kind of variant [50] as confusing. Further, they considered the ClinGen  
235 Consortium Low Penetrance/Risk Allele Working Group-recommended terminology for describing  
236 reduced penetrance variants, namely the use of the ACMG/AMP categories plus a quantitative  
237 descriptor (i.e., “likely pathogenic, low penetrance” or “likely pathogenic, reduced penetrance”), to be  
238 inappropriate for describing *PKD1* “hypomorphic” variants; “the scenario for *PKD1* hypomorphic  
239 variants that cause cysts only when inherited in *trans* with another pathogenic or hypomorphic variant  
240 does not fall under this definition” [48].

241 Facing the abovementioned difficulties, Durkie and colleagues opted to use “3H” (the 3 refers to  
242 ACMG/AMP’s “uncertain significance” category whilst H denotes “hypomorphic”) for the classification  
243 of the “hypomorphic” *PKD1* variants [48]. Finally, Durkie et al. noted that hypomorphic variants are  
244 not unique to *PKD1* and cited several additional disease/gene examples with this type of variant (viz.  
245 maturity-onset diabetes of the young (MODY)/*HNF1A* [51], *RFX6* [52] and *HNF4A* [53]; Parkinson’s  
246 disease/*VPS35* [54] and *LRRK2* [55]; retinal dystrophy/*ABCA4* [56]; and Joubert syndrome/*SUFU* [57]).

247 As shown in Table 1, the illustrative examples of “hypomorphic” *PKD1* variants were often classified  
248 as “VUS” in the ADPKD variant database [32] and as “VUS” or “conflicting interpretations of  
249 pathogenicity (CIP)” in ClinVar [28]. Our proposed “predisposing” category provides a perfect fit for  
250 the “hypomorphic” *PKD1* variants. Intuitively, findings from the “hypomorphic” *PKD1* variants can be  
251 generalized to all autosomal dominant diseases owing to haploinsufficiency (Figure 3).

252 **Table 1.** Illustrative examples of “hypomorphic” *PKD1* variants\*

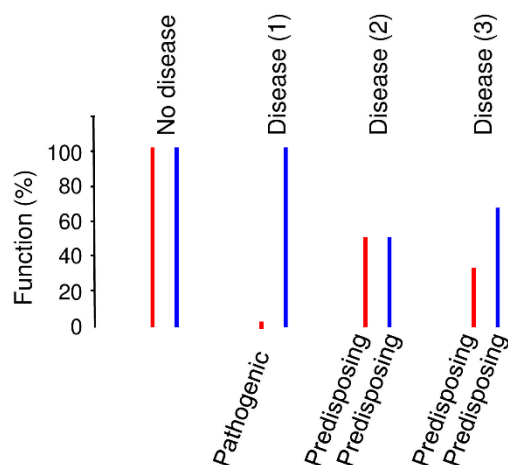
Variant(s) <sup>a</sup>	Reference	Classification	
		ADPKD variant database	ClinVar
<b>Homozygote</b>			
c.[3133G>A;4709C>T] (p.[Val1045Met;Thr1570Met])	[38]	p.Val1045Met, VUS; p.Thr1570Met, VUS	p.Val1045Met, NA; p.Thr1570Met, CIP (P × 1, VUS × 1)
c.9563A>G (p.Asn3188Ser)	[39]	p.Asn3188Ser, VUS	p.Asn3188Ser, NA
c.9829C>T (p.Arg3277Cys)	[39]	p.Arg3277Cys, VUS	p.Arg3277Cys, CIP (P × 4, LP × 2, VUS × 2)
<b>Compound heterozygote</b>			
c.[ <b>3312dupC</b> ];[6749C>T] (p.[ <b>Val1105fs</b> ];[Thr2250Met])	[40]	p.Thr2250Met, likely benign	p.Thr2250Met, CIP (VUS × 2, B × 1, LB × 1)
c.[3820G>A];[3820G>A;8716G>A] (p.[Val1274Met];[Val1274Met;Gly2906Ser])	[41]	p.Val1274Met, VUS; p.Gly2906Ser, likely benign	p.Val1274Met, NA; p.Gly2906Ser, VUS (single submitter)
c.[ <b>4199delT</b> ];[12413G>A] (p.[ <b>Leu1400fs</b> ];[Arg4138His])	[41]	p.Arg4138His, VUS	p.Arg4138His, NA
c.[ <b>6472C&gt;T</b> ];[9829C>T] (p.[ <b>Gln2158*</b> ];[Arg3277Cys])	[39]	p.Arg3277Cys, VUS	p.Arg3277Cys, CIP (P × 4, LP × 2, VUS × 2)
c.[6658C>T];[9829C>T] (p.[Arg2220Trp];[Arg3277Cys])	[38]	p.Arg2220Trp, VUS; p.Arg3277Cys, VUS	p.Arg2220Trp, VUS (single submitter) p.Arg3277Cys, CIP (P × 4, LP × 2, VUS × 2)
c.[ <b>7915_7916ins20</b> ];[8293C>T] (p.[ <b>Arg2639fs</b> ];[Arg2765Cys])	[39]	p.Arg2765Cys, VUS	p.Arg2765Cys, CIP (VUS × 3, B × 2, LB × 1)
c.[ <b>8259C&gt;G</b> ];[6763C>T] (p.[ <b>Tyr2753*</b> ];[Arg2255Cys])	[41]	p.Arg2255Cys, VUS	p.Arg2255Cys, NA
c.[8293C>T];[9313C>T] (p.[Arg2765Cys];[Arg3105Trp])	[39]	p.Arg2765Cys, VUS; p.Arg3105Trp, VUS	p.Arg2765Cys, CIP (VUS × 3, B × 2, LB × 1); p.Arg3105Trp, VUS (VUS × 2)
c.[ <b>8362_8363ins34</b> ];[5848G>A] (p.[ <b>Ser2788fs</b> ];[p.Val1950Met])	[42]	p.Val1950Met, VUS	p.Val1950Met, VUS (single submitter)
c.[ <b>11457C&gt;A</b> ];[8293C>T] (p.[ <b>Tyr3819*</b> ];[Arg2765Cys])	[39]	p.Arg2765Cys, VUS	p.Arg2765Cys, CIP (VUS × 3, B × 2, LB × 1)

253 ADPKD, autosomal dominant polycystic kidney disease; B, benign; CIP, conflicting interpretations of pathogenicity; LB, likely benign; LP, likely pathogenic;

254 NA, not available; P, pathogenic; VUS, variant of uncertain (unknown) significance.

255 \*Variants previously reviewed in [22].

256 <sup>a</sup>Definite pathogenic variants are highlighted in bold.



257

258 **Figure 3.** “Predisposing” variants in autosomal dominant diseases caused by haploinsufficiency. This  
259 model was generalized from the so-called “hypomorphic” *PKD1* variants. Disease (1), disease caused  
260 by a typical “pathogenic” variant leading to the complete or almost complete loss of the affected allele.  
261 Disease (2) and disease (3) represent two situations in which the disease is caused by a combination  
262 of two “predisposing” variants.

263

264

265 There is one final point to make. In classical Mendelian diseases, disease prevalence has been  
266 employed to estimate a maximum allele frequency threshold for a “pathogenic” variant (e.g., [58-62]).  
267 The prevalence of ADPKD in Europe and USA is no higher than 5 in 10,000 inhabitants [63, 64]. This  
268 means that a typical *PKD1* “pathogenic” variant (leading to the complete or almost complete loss of  
269 the affected allele) cannot exceed an allele frequency of 0.00025 in the corresponding normal  
270 population. However, a *PKD1* “hypomorphic” variant may exceed such a maximal allele frequency  
271 threshold owing to the absence of an associated clinical phenotype in the heterozygous state [48]. For  
272 example, the highest sub-population allele frequency (i.e., 0.0004532 [65]) of the aforementioned  
273 *PKD1* p.Arg3277Cys variant was found in the non-Finnish European population. This is ~1.8 fold higher  
274 than the estimated maximum allele frequency of 0.00025 for a typical *PKD1* “pathogenic” variant in  
275 Europeans. In short, some pathologically relevant “hypomorphic” variants are likely to have been  
276 inadvertently filtered out using the maximal allele frequency threshold established for a typical  
277 “pathogenic” variant.

278

### 279 **Autosomal recessive diseases**

280 We selected cystic fibrosis (CF) [66] as an archetypal autosomal recessive disease. *CFTR* (cystic fibrosis  
281 transmembrane conductance regulator; OMIM #602421) is the sole causative gene for CF [67]. The  
282 gene is located on chromosome 7q31.2, contains 27 exons and encodes a 1480 amino acid protein.  
283 Whereas the Cystic Fibrosis Mutation Database (CFTR1) [68] lists 2110 *CFTR* variants reported until Apr  
284 25, 2011, the Clinical and Functional TRanslation of *CFTR* (CFTR2) database lists 485 variants with  
285 detailed genotype-phenotype information gathered from CF patient registries around the world [69]  
286 (CFTR2 is led by a team of world-renowned researchers and clinicians, who are seeking to provide  
287 expert-reviewed functional and clinical information on *CFTR* mutations). These 485 variants were  
288 classified by CFTR2 into four categories, with the category definitions and number of variants in each  
289 category being provided in Table 2. CFTR2 uses the term “varying clinical consequence (VCC)” to  
290 describe 49 variants that were deemed not to correspond to any of the five ACMG/AMP-defined  
291 variant categories; “If CF is the defined phenotype for which ACMG-AMP guidelines are being applied,  
292 it might be difficult to assign these variants as pathogenic or likely pathogenic (without clear evidence  
293 of CF in some people), but the term VUS is not appropriate because, in many cases, clinical significance  
294 is not uncertain” [27].



295  
296

**Table 2.** Summary of the 485 CFTR2-annotated *CFTR* variants

Classification	Definition	Number of variants
CF-causing	The variant in question “causes CF when combined with another CF-causing variant”.	401
Varying clinical consequence	The variant in question “has varying consequences. Some patients with the variant, combined with another CF-causing variant, have CF. Other patients with the variant, combined with another CF causing variant, do not have CF”.	49
Non CF-causing	The variant in question “DOES NOT cause CF when combined with another CF-causing variant”.	24
Unknown significance	The variant in question “is still under evaluation. At this time, the CFTR2 team does not have enough information to determine whether or not it causes CF”.	11

297 CF, cystic fibrosis; *CFTR*, cystic fibrosis transmembrane conductance regulator; CFTR2, the Clinical and  
298 Functional TRanslation of CFTR database.

299  
300

301 Importantly, a comprehensive functional assay of 48 selected *CFTR* missense variants with  
302 variable expressivity of CF in a native isogenic context revealed that CF-causing (n = 24), VCC (n = 16)  
303 and non-CF-causing (n = 6) missense variants displayed <10%, 10-75% and >75% of wild-type *CFTR*  
304 function, respectively. The simplest biological mechanism responsible for the pathological impact of  
305 these VCC variants would involve a reduction in expression of the affected *CFTR* alleles so as to reach  
306 the CF-causing threshold level. This could come about if these variants (i) were combined with  
307 variants that served to reduce *CFTR* expression in modifier genes, (ii) interacted with environmental  
308 factors or (iii) were *in cis* with an as yet unidentified functional variant that served to further reduce  
309 *CFTR* expression [27, 70]. With regard to the latter, it is important to emphasize that even in the rare  
310 instances of reports describing “complete *CFTR* gene sequencing” [71, 72], variants identified in deep  
311 intronic and remote regulatory regions have not been subjected to thorough evaluation.

312 Of the 16 functionally characterized VCC variants, nine have been shown to retain 10% to 25% of  
313 wild-type *CFTR* function [27]. These nine variants are employed here as illustrative examples with  
314 respect to ClinVar classifications. All these variants, with the exception of p.Asp110Glu, were  
315 classified as having CIP (Table 3).

316 Again, our proposed “predisposing” category would offer a perfect fit for the CFTR2-defined VCC  
317 variants. Findings from the illustrative *CFTR*/CF studies were generalized into classical autosomal  
318 recessive diseases that were caused by loss-of-function variants (Figure 4).

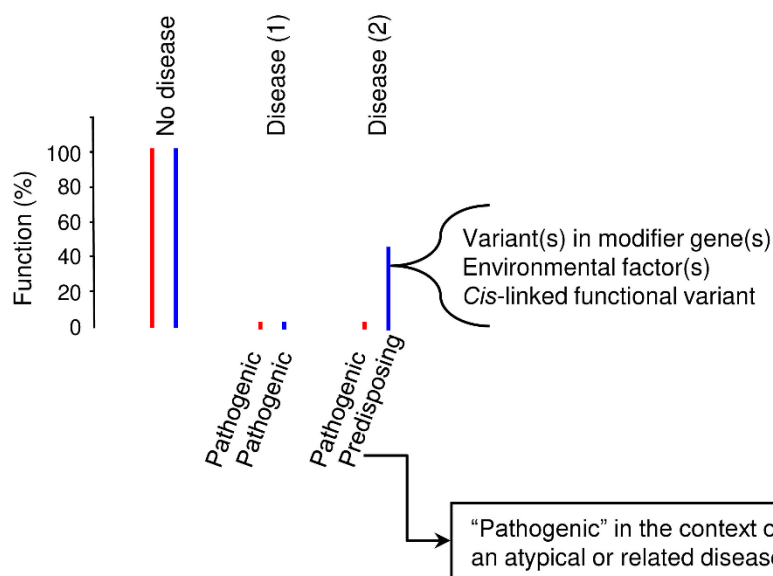
319

320 **Table 3.** Illustrative examples of CFTR2-annotated variants with “varying clinical consequence”\*

Variant		ClinVar classification
cDNA name	Protein name	
c.14C>T	p.Pro5Leu	CIP (P × 3; LP × 6; VUS × 2)
c.330C>A	p.Asp110Glu	Drug response (P × 5; LP × 2; VUS × 1; drug response × 1)
c.794T>G	p.Met265Arg	CIP (P × 1; LP × 3; VUS × 2)
c.1724T>A	p.Phe575Tyr	CIP (P × 1; LP × 1; VUS × 6)
c.1865G>A	p.Gly622Asp	CIP (P × 9; LP × 7; VUS × 2; B × 1)
c.3095A>G	p.Tyr1032Cys	CIP (P × 6; LP × 6; VUS × 1)
c.3297C>A	p.Phe1099Leu	CIP (P × 2); LP × 1; VUS × 6)
c.3458T>A	p.Val1153Glu	CIP (P × 1; VUS × 3)
c.3737C>T	p.Thr1246Ile	CIP (P × 5; LP × 2; VUS × 2)

321 B, benign; CIP, conflicting interpretations of pathogenicity; LP, likely pathogenic; P, pathogenic; VUS,  
322 variant of uncertain (unknown) significance.

323 \*These variants are characterized by >10% but <25% of wild-type CFTR function [27].  
324  
325



326  
327 **Figure 4.** “Predisposing” variants in autosomal recessive diseases caused by loss-of-function variants.  
328 This model was generalized from *CFTR* variants with “varying clinical consequence” related to  
329 autosomal recessive cystic fibrosis. In disease situation 1, the disease manifests as typical autosomal  
330 recessive inheritance. In disease situation 2, the “predisposing” variant must interact with additional  
331 variant(s) in modifier genes and/or with environmental factors in order for the disease to be expressed  
332 clinically. Alternatively, an as yet unidentified variant may exist in *cis* that serves to further reduce the  
333 function of the “predisposing” allele. The curved arrow points to a situation in which the “predisposing”  
334 variant can be “pathogenic” for an atypical or related milder disease.  
335  
336

337 The *CFTR* VCC variants that displayed 10-75% of wild-type CFTR function may be termed  
338 “hypomorphic” by comparison to the CF-causing and non-CF-causing variants. Whilst these VCC  
339 variants were “predisposing” with respect to CF, they may be “pathogenic” with respect to CFTR-  
340 related disorders (clinical entities with features of CF and evidence for the presence of CFTR  
341 dysfunction but not meeting the full criteria for diagnosis of CF) [73]; this may be one reason for the  
342 often encountered “conflicting interpretations of pathogenicity” in ClinVar with respect to the *CFTR*  
343 VCC variants. This possibility is also illustrated in [Figure 4](#).

#### 344 **X-linked diseases**

345 Whereas females have paired X chromosomes, males possess only a single X chromosome. Moreover,  
346 in females, the possession of two X chromosomes leads to a dosage issue which is compensated for by  
347 X-inactivation [74, 75]. These two unique properties often blur the standard definitions of dominance  
348 and recessiveness in X-linked diseases. Indeed, it has even been recommended that “use of the terms  
349 X-linked recessive and dominant be discontinued, and that all such disorders be simply described as  
350 following “X-linked” inheritance” [76].

351 Mindful of the difficulties encountered in analyzing X-linked genes/variants, we sought to use the  
352 findings from the abovementioned *PKD1* variants to guide our analysis in the context of X-linked  
353 dominant diseases. We began our analysis with X-linked dominant diseases in females, which can be  
354 analogous to autosomal dominant diseases. Given that the abovementioned “predisposing” *PKD1*  
355 variants were found in either a homozygous or compound heterozygous state, we postulated that  
356 homozygous or compound heterozygous variants found in females with a seemingly typical X-linked  
357 dominant disease have a high probability of falling into the “predisposing” category. More specifically,  
358 the vast majority of female patients with an X-linked dominant condition will be heterozygotes  
359 whereas homozygous or compound heterozygous individuals would generally be extremely rare.  
360 Therefore, when a homozygous or compound heterozygous individual is encountered, each allele is  
361 likely to be hypomorphic because on their own they are insufficient to result in a clinical phenotype.  
362 To identify such variants, we performed a keyword search in PubMed using “X-linked dominant” plus  
363 “homozygote”, “homozygous”, “hypomorphic”, “compound heterozygote” or “biallelic”. We identified  
364 a single candidate homozygous variant that was originally reported in a 30-month-old Indian girl with  
365 suspected Rett syndrome (RS) [77]), which will be discussed in detail below.

366 RS is a severe early onset neurological condition that occurs almost exclusively in females. It is  
367 usually inherited in an X-linked dominant manner and is primarily caused by *de novo* heterozygous  
368 mutations in the *MECP2* gene [78-80]. Males with RS-causing *MECP2* mutations have severe neonatal  
369 encephalopathy that is usually lethal whilst those with non-RS-causing *MECP2* mutations can  
370 demonstrate a wide variety of neurological disorders [81]. In the light of findings from the  
371 *PKD1/ADPKD* system, some of these non-RS-causing *MECP2* variants may be assumed to represent  
372 “hypomorphic” (partial but not complete functional loss) variants as compared to the typical RS-  
373 causing *MECP2* variants (complete or almost complete functional loss). Further, some “hypomorphic”  
374 variants may be clinically asymptomatic in heterozygous females but cause disease in the homozygous  
375 or compound heterozygous state.

376 The above-mentioned homozygous *MECP2* variant identified in a girl with suspected RS was  
377 c.1160C>T (p.Pro387Leu) according to NM\_004992.4 or c.1196C>T (p.Pro399Leu) according to  
378 NM\_001110792.2. Her mother did not carry this variant nor any other mutation in the *MECP2* gene.  
379 Her father, who carried the *MECP2* p.Pro399Leu variant, was reported not to exhibit any indication of  
380 intellectual disability [77]. The *MECP2* p.Pro399Leu variant had been reported in two studies prior to  
381 the Bhanushali report [77]. In the first, the variant was identified in a male patient with sporadic  
382 intellectual disability [82]. In the second study, the variant (zygosity not reported but presumably  
383 heterozygous) was identified in a female RS patient; it was however deemed to have no pathological  
384 relevance owing to its presence in the healthy father [83].

385 Herein, we further surveyed the *MECP2* p.Pro399Leu variant in ClinVar [28]. Only in one of the  
386 seven submissions of this variant was the affected status indicated as “yes” (accession  
387 SCV000187889.2). In this single “yes” case, the disorder of the corresponding male patient was  
388 diagnosed as “mental retardation, X-linked, syndromic 13” with the *MECP2* variant being of maternal  
389 origin. In short, of the aforementioned four male carriers of the *MECP2* p.Pro399Leu variant, two (50%)  
390 were reported to exhibit intellectual disability. These limited data may nevertheless be consistent with  
391 *MECP2* p.Pro399Leu being a pathologically relevant but “hypomorphic” variant, taking into account  
392 the observation that this variant (i) is very rare in the combined gnomAD (the Genome Aggregation  
393 Database) male subjects (carrier/allele frequency, 0.00009947 [65]) and (ii) was identified in a gene  
394 known to be responsible for various neurological conditions.

395 In ClinVar [28], the *MECP2* p.Pro399Leu variant was classified as “benign”, “likely benign” and  
396 “uncertain significance” by two, three and two submitters, respectively; collectively, it was classified  
397 as “benign”. Some submitters provided detailed evidence supporting their classification, with two  
398 examples being cited as below;

- 399 ➤ *Benign, accession SCV002047342.1*. “The allele frequency of the p.Pro387Leu  
400 (NM\_004992.3) variant in *MECP2* is 0.026% in South Asian sub-population in gnomAD,  
401 which is high enough to be classified as likely benign based on thresholds defined by the  
402 ClinGen Rett/Angelman-like Expert Panel for Rett/AS-like conditions (BS1)” — ClinGen Rett  
403 and Angelman-like Disorders Variant Curation Expert Panel.
- 404 ➤ *Likely benign, accession SCV000698534.2*. “This variant was found in 17/186675 control  
405 chromosomes (gnomAD) at a frequency of 0.0000911, which is approximately 11 times the  
406 estimated maximum expected allele frequency of a pathogenic *MECP2* variant (0.0000083),  
407 suggesting this variant is likely a benign polymorphism.” — Women's Health and  
408 Genetics/Laboratory Corporation of America, LabCorp.

409 The above two submitters classified the *MECP2* p.Pro399Leu variant as “benign” or “likely benign”  
410 based primarily upon the maximal disease allele frequency threshold that was estimated for a  
411 “pathogenic” *MECP2* variant with respect to typical RS. As with the case of the previously discussed  
412 “hypomorphic” *PKD1* p.Arg3277Cys variant, this practice was clearly inappropriate for classifying the  
413 “hypomorphic” *MECP2* p.Pro399Leu variant. To better understand this issue, we re-evaluated the  
414 prevalence of typical RS and the allele frequency of *MECP2* p.Pro399Leu in gnomAD populations. In  
415 this regard, it is important to emphasize that whereas hemizygous *MECP2* p.Pro399Leu males may  
416 exhibit intellectual disability, heterozygous *MECP2* p.Pro399Leu females appear almost invariably to  
417 be healthy. Thus, to be maximally relevant to our thesis, we re-evaluated these data only in the context  
418 of females. The prevalence of classical RS was, at most, one in 10,000 females [84], which corresponds  
419 to a maximum allele frequency of 0.00005 for a typical RS-causing *MECP2* variant. The allele frequency  
420 of *MECP2* p.Pro399Leu in gnomAD-analyzed females was 0.00006474 [65], which is ~1.3-fold higher  
421 than 0.00005 (it should be remembered that the corresponding ratio for the “hypomorphic” *PKD1*  
422 p.Arg3277Cys variant was ~1.8). Moreover, it should be emphasized that no *MECP2* p.Pro399Leu  
423 homozygotes were found in the 61,785 gnomAD-derived females [65].

424 Taken together, it is not unreasonable to conclude that *MECP2* p.Pro399Leu represents a  
425 “hypomorphic” variant that gives rise to intellectual disability in males (with 50% penetrance) in the  
426 hemizygous state whilst causing RS in females only in the homozygous state. Bearing this in mind, we  
427 may speculate that the previously reported female RS patient carrying a heterozygous *MECP2*  
428 p.Pro399Leu [83] may harbor an as yet unidentified “hypomorphic” or “predisposing” variant in the  
429 other *MECP2* allele.

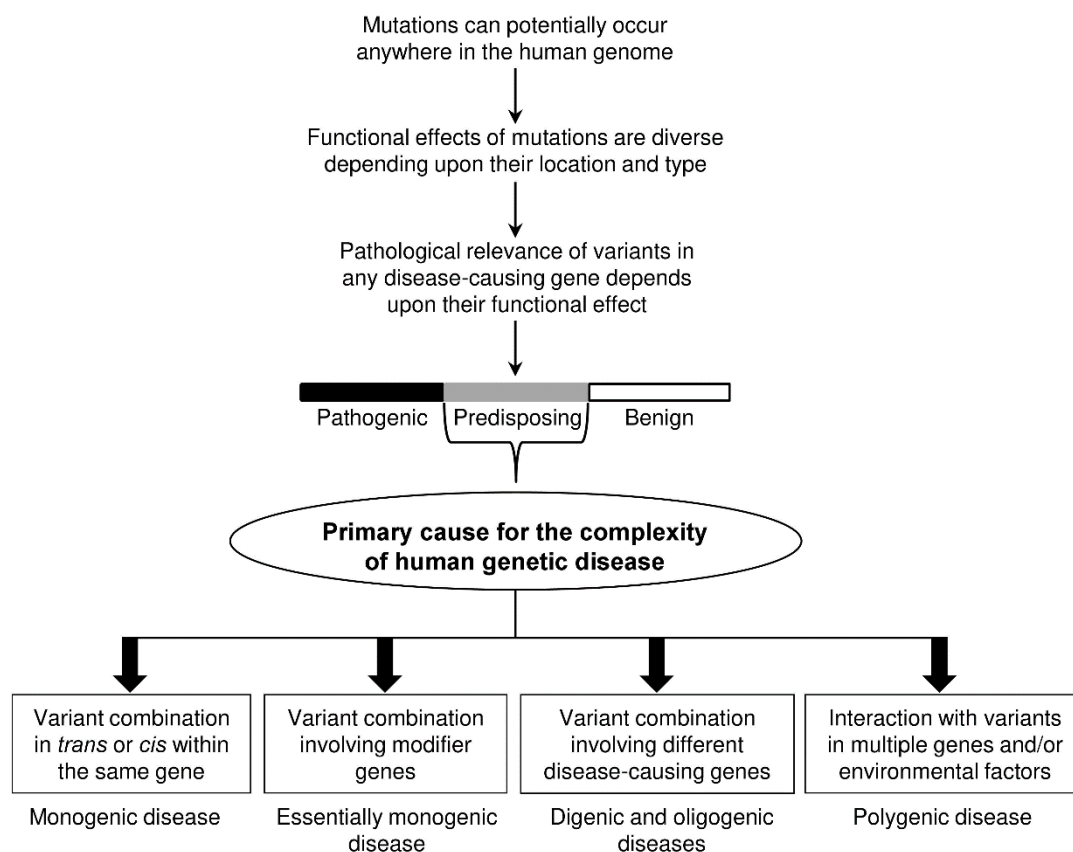
430 Examples of the RS-causing and non-RS-causing variants in the *MECP2* gene may logically imply  
431 similar situations in some other X-linked genes, in which heterozygous pathogenic variants (causing  
432 complete or almost complete functional loss of the affected allele) in females cause typical X-linked  
433 dominant diseases whilst hemizygous “hypomorphic” variants in males (complete or almost complete  
434 functional loss is lethal to males) cause a related phenotype; such “hypomorphic” variants may not be  
435 associated with a clinical phenotype when found in females in the heterozygous state but will cause  
436 disease in females when found in homozygosity or compound heterozygosity. We performed a  
437 keyword search in PubMed using “X-linked male female hypomorphic”, identifying multiple X-linked  
438 genes that appear to be compatible with the above situation (e.g., *EBP* [85], *NAA10* [86], *BCOR* [87],  
439 *NSDHL* [88], *IKBK* [89], *DDX3X* [90] and *CASK* [91]).

440

#### 441 **Widespread occurrence and clinical importance of disease “predisposing” variants**

442 The aforementioned examples of loss-of-function variants, together with our previously discussed  
443 gain-of-function and gain of proteotoxicity *PRSS1* variants in chronic pancreatitis [19], would logically  
444 imply the widespread occurrence of “predisposing” variants in most, if not all, disease-causing genes.  
445 Our argument presupposes that mutations can potentially occur anywhere in the human genome but  
446 also that the functional impact of variants is diverse depending upon their location and type. It follows

447 that the pathological relevance of variants in any disease-causing gene is dependent upon their  
448 functional effect. Thus, in disease-causing genes, three principal categories of variant, namely  
449 “pathogenic”, “predisposing” and “benign”, are likely to occur (Figure 5). To reinforce this concept, we  
450 cite two additional disease/gene examples. Huntington's disease is caused predominantly by an  
451 expansion of trinucleotide CAG repeats in the huntingtin gene (*HTT*; OMIM #613004) [92].  
452 Huntington's disease is a true autosomal dominant condition because the clinical phenotype of a  
453 homozygote is indistinguishable from that of a heterozygote [93]. Nonetheless, it is the number of CAG  
454 repeats that determines the age of onset of disease, as well as its progression and severity. Fewer than  
455 27 CAG repeats are asymptomatic whereas  $\geq 40$  CAG repeats invariably cause the disease [94]. Lying in  
456 between is an intermediate category comprising a series of CAG repeats of varying size, some of which  
457 may be classified as ‘predisposing’. The second example is the fragile X syndrome/*FMR1* CGG repeat  
458 expansion [95]. In unaffected individuals in the general population, the number of CGG repeats in the  
459 5'-untranslated region of *FMR1* is fewer than 55. In patients with fragile X syndrome, however, the  
460 number of CGG repeats invariably exceeds 200. Although individuals with 55-200 CGG repeats are  
461 clinically asymptomatic, these ‘premutation carrier’ individuals are predisposed to fragile X syndrome  
462 since CGG repeats in the range 55-200 are prone to expand into the pathological range [96].  
463  
464



465  
466 **Figure 5.** Widespread occurrence and clinical importance of “predisposing” variants. As for disease  
467 complexity, the illustrated situations should not be interpreted as representing all possible  
468 eventualities.  
469

470  
471 The importance of recognizing the new “predisposing” category, in both research and clinical  
472 contexts cannot be overstated, as “predisposing” variants are primarily responsible for the complexity  
473 of human genetic disease. In other words, the genetic basis of health and disease would be quite  
474 straightforward if all variants were either “pathogenic” or “benign”. It is difficult to list all possible

475 contributions of “predisposing” variants to human genetic disease complexity, but some are illustrated  
476 in [Figure 5](#). Thus, in the context of an autosomal dominant disease, the disease may appear earlier and  
477 be more severe if a “predisposing” variant occurs in *trans* or *cis* with a “pathogenic” variant in the same  
478 disease gene; further, the combination of two individually harmless “predisposing” alleles within the  
479 same gene may result in a typical or even a severe form of the disease. Moreover, a given disease may  
480 be regarded as essentially monogenic despite the involvement of modifier genes (one illustrative  
481 example might be a CF patient carrying a pathogenic *CFTR* allele, a “predisposing” *CFTR* allele and a  
482 variant in an unlinked modifier gene [97]). Further, two “predisposing” variants in independent but  
483 mechanistically linked disease-causing genes (e.g., ADPKD-causing *PKD1* and *PKD2* [48, 98]) may also  
484 be envisaged to cause a typical digenic disease. Finally, “predisposing” variants in a disease-causing  
485 gene may even contribute to disease under a polygenic inheritance or complex model (e.g., [99]).

486 The recognition of the new “predisposing” category will also have pivotal consequences for  
487 reproductive genetic counseling. For example, a couple each carrying a *bona fide* “predisposing”  
488 variant in an autosomal dominant disease-causing gene, could give birth to a clinically affected child.  
489 Litigation might ensue if such variants were to be inadequately and perfunctorily ascribed the  
490 descriptor “VUS” during antenatal genetic counselling.

491

## 492 Discussion

493 Both the “hypomorphic” *PKD1* variants and the *CFTR* variants of “varying clinical consequence” serve  
494 to illustrate our dilemma in classifying clinically detected variants using the ACMG/AMP-recommended  
495 five-category scheme. We propose that this dilemma may now be resolved by adopting a new  
496 classificatory scheme with a new variant term, “predisposing”.

497 Based upon existing knowledge and reasonable extrapolations, we infer the presence of  
498 “predisposing” variants in most, if not all, disease-causing genes. Although this analysis focused upon  
499 loss-of-function variants, “predisposing” variants can have other functional consequences, e.g. gain-  
500 of-function or gain of proteotoxicity, depending upon the gene responsible and the underlying disease  
501 mechanism. Here, it is worth reiterating that the study of gain-of-function and gain of proteotoxicity  
502 *PRSS1* variants contributed to the proposition of our general variant classification framework [19].

503 Various examples of “hypomorphic” *PKD1* variants were identified through the study of  
504 exceptional families on the one hand and the availability of renal cysts as a reliable and objective  
505 diagnostic criterion for PKD on the other. Examples of *CFTR* VCC variants were identified through the  
506 careful evaluation of CF patients worldwide by the CFTR2 International Initiative. Since “predisposing”  
507 variants have by definition less profound effects than standard “pathogenic” variants, we may infer  
508 that many “predisposing” variants are likely to have been overlooked in both a research and a clinical  
509 setting. In this regard, it is pertinent to cite the examples of the abovementioned *PKD1* p.Arg3277Cys  
510 and *MECP2* p.Pro399Leu variants, both of which should theoretically have been filtered out by  
511 reference to the maximum allele frequency expected for a typical pathogenic variant in these disorders.  
512 As such, “predisposing” variants, which can potentially include any type of variant (e.g., missense,  
513 intronic, regulatory), may not only account for a significant fraction of the unexplained cases of both  
514 monogenic and oligogenic disease [100-103] but may also be relevant to the “missing heritability”  
515 problem in complex disease [104, 105].

516 As illustrated in [Figure 1](#), our new classificatory categories could be considered to be separated or  
517 spit from ACMG/AMP’s “uncertain significance” category, further facilitating the practical application  
518 of our seven-category variant classification system. Specifically, variants falling into the “predisposing”  
519 category should be predominantly present within the variants of “uncertain significance” that were  
520 classified according to the ACMG/AMP’s five-category scheme. A variant can be classified as  
521 “predisposing” if and when there is sufficient genetic and/or functional evidence to support such a  
522 classification; otherwise, one can always retain the VUS classification.

523 The above notwithstanding, in practice, one often has to make fairly arbitrary decisions with regard  
524 to separating “predisposing” variants from “pathogenic” and “benign” variants. This is a difficult but  
525 unavoidable task, and generally involves making arbitrary decisions with respect to the definitions of

526 “likely pathogenic” and “likely benign” variants as well as the thresholds used for defining “high”,  
527 “moderate” or “low” penetrance. In this regard, it is pertinent to cite the “ABC” system, whose A, B  
528 and C categories all refer to “pathogenic” variants, albeit with differences in terms of their penetrance  
529 [18]. Moreover, the ClinGen Low-Penetrance/Risk Allele Working Group aims to develop a consensus  
530 with regard to the terminology required to categorize both risk alleles and low-penetrance Mendelian  
531 variants and to develop a standardized classification framework to evaluate these types of variant  
532 [106]. In our view, variants with a penetrance below a given threshold (e.g., 20%) may be more  
533 appropriately classified as “predisposing” rather than “pathogenic”. Nonetheless, given the intrinsic  
534 complexity of biology and disease, we would recommend that such decisions “need to be made on a  
535 gene-by-gene basis and would require close collaboration between researchers and clinicians with  
536 specific expertise in the diseases/genes in question” [19]. This need becomes even more pressing if we  
537 consider that (i) the same variant may be “predisposing” in the context of a typical disease but  
538 “pathogenic” in the context of a related atypical disease (e.g., *CFTR* VCC variants in CF and *CFTR*-related  
539 diseases) and (ii) variants in a given gene can potentially contribute to a disease that can manifest as  
540 monogenic, digenic/oligogenic or even multifactorial (e.g., chronic pancreatitis [19, 107]).

541 Over the past years, we have witnessed near continuous revolution in terms of the standards and  
542 rules governing how to weigh and combine evidence with a view to improving our classification of  
543 variants, as reflected by the abovementioned works that have attempted to adapt or refine the  
544 ACMG/AMP guidelines [2-17]. Directly or indirectly related to these adaptations or refinements,  
545 variant reclassifications (either upgrades or downgrades) have been a frequent occurrence in the  
546 literature (e.g., see recent reports [108-118]). It is our hope that our proposed general variant  
547 classification framework will stimulate discussion and debate and lead to further improvements in  
548 variant classification.

549

## 550 **Conclusions**

551 In this analysis, we present cogent arguments in support of the applicability and utility of our seven-  
552 category variant classification system for disease-causing genes. The recognition of the new  
553 “predisposing” category not only has important implications for variant detection and interpretation  
554 but should also have important consequences for reproductive genetic counseling.

555

## 556 **Competing interests**

557 The authors have no conflicts of interest to declare that are relevant to the content of this article.

558

## 559 **Funding**

560 This study did not receive any specific financial support.

561

## 562 **Authors' contributions**

563 J.M.C. conceived and designed the study, performed the literature search, prepared all tables and  
564 figures and drafted the manuscript. E.M., W.B.Z., Z.L., E.G., D.N.C. and C.F. contributed to the study  
565 design and critically revised the manuscript with important intellectual input. All authors approved the  
566 final manuscript submitted.

567

## 568 **Acknowledgements**

569 We are grateful to Peter C. Harris (Mayo Clinic and Foundation, Rochester, Minnesota) and Karen  
570 Raraigh (Johns Hopkins University, Baltimore, Maryland) for their prompt and positive replies to our  
571 inquiries about using data from the ADPKD variant database and the CFTR2 database, respectively.

572

## 573 References

- 574 1. Richards S, Aziz N, Bale S, Bick D, Das S, Gastier-Foster J, et al. Standards and guidelines for the interpretation  
575 of sequence variants: a joint consensus recommendation of the American College of Medical Genetics and  
576 Genomics and the Association for Molecular Pathology. *Genet Med*. 2015;17(5):405-24.
- 577 2. Johnston JJ, Brennan ML, Radenbaugh B, Yoo SJ, Hernandez SM, Core NRP, et al. The ACMG SF v3.0 gene  
578 list increases returnable variant detection by 22% when compared with v2.0 in the ClinSeq cohort. *Genet*  
579 *Med*. 2022;24(3):736-43.
- 580 3. Kelly MA, Caleshu C, Morales A, Buchan J, Wolf Z, Harrison SM, et al. Adaptation and validation of the  
581 ACMG/AMP variant classification framework for *MYH7*-associated inherited cardiomyopathies:  
582 recommendations by ClinGen's Inherited Cardiomyopathy Expert Panel. *Genet Med*. 2018;20(3):351-9.
- 583 4. Morales A, Kinnamon DD, Jordan E, Platt J, Vatta M, Dorschner MO, et al. Variant interpretation for dilated  
584 cardiomyopathy: refinement of the American College of Medical Genetics and Genomics/ClinGen  
585 Guidelines for the DCM Precision Medicine Study. *Circ Genom Precis Med*. 2020;13(2):e002480.
- 586 5. Kountouris P, Stephanou C, Lederer CW, Traeger-Synodinos J, Bento C, Hartevelde CL, et al. Adapting the  
587 ACMG/AMP variant classification framework: a perspective from the ClinGen Hemoglobinopathy Variant  
588 Curation Expert Panel. *Hum Mutat*. 2022;43(8):1089-96.
- 589 6. Fortuno C, Mester J, Pesaran T, Weitzel JN, Dolinsky J, Yussuf A, et al. Suggested application of HER2+ breast  
590 tumor phenotype for germline *TP53* variant classification within ACMG/AMP guidelines. *Hum Mutat*.  
591 2020;41(9):1555-62.
- 592 7. Lee K, Krempely K, Roberts ME, Anderson MJ, Carneiro F, Chao E, et al. Specifications of the ACMG/AMP  
593 variant curation guidelines for the analysis of germline *CDH1* sequence variants. *Hum Mutat*.  
594 2018;39(11):1553-68.
- 595 8. Mester JL, Ghosh R, Pesaran T, Huether R, Karam R, Hruska KS, et al. Gene-specific criteria for *PTEN* variant  
596 curation: Recommendations from the ClinGen PTEN Expert Panel. *Hum Mutat*. 2018;39(11):1581-92.
- 597 9. Oza AM, DiStefano MT, Hemphill SE, Cushman BJ, Grant AR, Siegert RK, et al. Expert specification of the  
598 ACMG/AMP variant interpretation guidelines for genetic hearing loss. *Hum Mutat*. 2018;39(11):1593-613.
- 599 10. Parsons MT, Tudini E, Li H, Hahnen E, Wappenschmidt B, Feliubadalo L, et al. Large scale multifactorial  
600 likelihood quantitative analysis of *BRCA1* and *BRCA2* variants: An ENIGMA resource to support clinical  
601 variant classification. *Hum Mutat*. 2019;40(9):1557-78.
- 602 11. Brandt T, Sack LM, Arjona D, Tan D, Mei H, Cui H, et al. Adapting ACMG/AMP sequence variant classification  
603 guidelines for single-gene copy number variants. *Genet Med*. 2020;22(2):336-44.
- 604 12. Nykamp K, Anderson M, Powers M, Garcia J, Herrera B, Ho YY, et al. Sherlock: a comprehensive refinement  
605 of the ACMG-AMP variant classification criteria. *Genet Med*. 2017;19(10):1105-17.
- 606 13. Zastrow DB, Baudet H, Shen W, Thomas A, Si Y, Weaver MA, et al. Unique aspects of sequence variant  
607 interpretation for inborn errors of metabolism (IEM): The ClinGen IEM Working Group and the  
608 Phenylalanine Hydroxylase Gene. *Hum Mutat*. 2018;39(11):1569-80.
- 609 14. McCormick EM, Lott MT, Dulik MC, Shen L, Attimonelli M, Vitale O, et al. Specifications of the ACMG/AMP  
610 standards and guidelines for mitochondrial DNA variant interpretation. *Hum Mutat*. 2020;41(12):2028-57.
- 611 15. Fortuno C, Lee K, Olivier M, Pesaran T, Mai PL, de Andrade KC, et al. Specifications of the ACMG/AMP variant  
612 interpretation guidelines for germline *TP53* variants. *Hum Mutat*. 2021;42(3):223-36.
- 613 16. Burdon KP, Graham P, Hadler J, Hulleman JD, Pasutto F, Boese EA, et al. Specifications of the ACMG/AMP  
614 variant curation guidelines for myocilin: Recommendations from the ClinGen glaucoma expert panel. *Hum*  
615 *Mutat*. 2022;43(12):2170-86.
- 616 17. Margraf RL, Alexander RZ, Fulmer ML, Miller CE, Coupal E, Mao R. Multiple endocrine neoplasia type 2  
617 (MEN2) and *RET* specific modifications of the ACMG/AMP variant classification guidelines and impact on  
618 the MEN2 *RET* database. *Hum Mutat*. 2022;43(12):1780-94.
- 619 18. Houge G, Laner A, Cirak S, de Leeuw N, Scheffer H, den Dunnen JT. Stepwise ABC system for classification  
620 of any type of genetic variant. *Eur J Hum Genet*. 2022;30(2):150-9.
- 621 19. Masson E, Zou WB, Génin E, Cooper DN, Le Gac G, Fichou Y, et al. Expanding ACMG variant classification  
622 guidelines into a general framework. *Hum Genomics*. 2022;16(1):31.
- 623 20. Audrézet MP, Cornec-Le Gall E, Chen JM, Redon S, Quéré I, Creff J, et al. Autosomal dominant polycystic  
624 kidney disease: comprehensive mutation analysis of *PKD1* and *PKD2* in 700 unrelated patients. *Hum Mutat*.  
625 2012;33(8):1239-50.
- 626 21. Cornec-Le Gall E, Audrézet MP, Chen JM, Hourmant M, Morin MP, Perrichot R, et al. Type of *PKD1* mutation  
627 influences renal outcome in ADPKD. *J Am Soc Nephrol*. 2013;24(6):1006-13.



- 628 22. Cornec-Le Gall E, Audrézet MP, Le Meur Y, Chen JM, Férec C. Genetics and pathogenesis of autosomal  
629 dominant polycystic kidney disease: 20 years on. *Hum Mutat.* 2014;35(12):1393-406.
- 630 23. Férec C, Audrezet MP, Mercier B, Guillermit H, Moullier P, Quere I, et al. Detection of over 98% cystic fibrosis  
631 mutations in a Celtic population. *Nat Genet.* 1992;1(3):188-91.
- 632 24. Férec C, Cutting GR. Assessing the disease-liability of mutations in *CFTR*. *Cold Spring Harb Perspect Med.*  
633 2012;2(12):a009480.
- 634 25. Scotet V, L'Hostis C, Férec C. The changing epidemiology of cystic fibrosis: Incidence, survival and impact of  
635 the *CFTR* gene discovery. *Genes (Basel).* 2020;11(6).
- 636 26. Qorri E, Takacs B, Graf A, Enyedi MZ, Pinter L, Kiss E, et al. A comprehensive evaluation of the performance  
637 of prediction algorithms on clinically relevant missense variants. *Int J Mol Sci.* 2022;23(14).
- 638 27. Raraigh KS, Han ST, Davis E, Evans TA, Pellicore MJ, McCague AF, et al. Functional assays are essential for  
639 interpretation of missense variants associated with variable expressivity. *Am J Hum Genet.*  
640 2018;102(6):1062-77.
- 641 28. ClinVar. <https://www.ncbi.nlm.nih.gov/clinvar/>. Accessed 28 December 2022.
- 642 29. Cornec-Le Gall E, Alam A, Perrone RD. Autosomal dominant polycystic kidney disease. *Lancet.*  
643 2019;393(10174):919-35.
- 644 30. Harris PC, Torres VE. Polycystic Kidney Disease, Autosomal Dominant.  
645 <https://www.ncbi.nlm.nih.gov/books/NBK1246/>. Accessed 28 December 2022.
- 646 31. The European Polycystic Kidney Disease Consortium. The polycystic kidney disease 1 gene encodes a 14 kb  
647 transcript and lies within a duplicated region on chromosome 16. *Cell.* 1994;77(6):881-94.
- 648 32. The ADPKD Variant Database. <https://pkdb.mayo.edu/>. Accessed 28 December 2022.
- 649 33. Paterson AD, Wang KR, Lupea D, St George-Hyslop P, Pei Y. Recurrent fetal loss associated with bilineal  
650 inheritance of type 1 autosomal dominant polycystic kidney disease. *Am J Kidney Dis.* 2002;40(1):16-20.
- 651 34. Peces R, Peces C, Coto E, Selgas R. Bilineal inheritance of type 1 autosomal dominant polycystic kidney  
652 disease (ADPKD) and recurrent fetal loss. *NDT Plus.* 2008;1(5):289-91.
- 653 35. Lu W, Peissel B, Babakhanlou H, Pavlova A, Geng L, Fan X, et al. Perinatal lethality with kidney and pancreas  
654 defects in mice with a targeted *Pkd1* mutation. *Nat Genet.* 1997;17(2):179-81.
- 655 36. Lantinga-van Leeuwen IS, Dauwerse JG, Baelde HJ, Leonhard WN, van de Wal A, Ward CJ, et al. Lowering of  
656 *Pkd1* expression is sufficient to cause polycystic kidney disease. *Hum Mol Genet.* 2004;13(24):3069-77.
- 657 37. Jiang ST, Chiou YY, Wang E, Lin HK, Lin YT, Chi YC, et al. Defining a link with autosomal-dominant polycystic  
658 kidney disease in mice with congenitally low expression of *Pkd1*. *Am J Pathol.* 2006;168(1):205-20.
- 659 38. Vujic M, Heyer CM, Ars E, Hopp K, Markoff A, Orndal C, et al. Incompletely penetrant *PKD1* alleles mimic  
660 the renal manifestations of ARPKD. *J Am Soc Nephrol.* 2010;21(7):1097-102.
- 661 39. Rossetti S, Kubly VJ, Consugar MB, Hopp K, Roy S, Horsley SW, et al. Incompletely penetrant *PKD1* alleles  
662 suggest a role for gene dosage in cyst initiation in polycystic kidney disease. *Kidney Int.* 2009;75(8):848-55.
- 663 40. Reiterova J, Stekrova J, Merta M, Kotlas J, Elisakova V, Lnenicka P, et al. Autosomal dominant polycystic  
664 kidney disease in a family with mosaicism and hypomorphic allele. *BMC Nephrol.* 2013;14:59.
- 665 41. Bergmann C, von Bothmer J, Ortiz Bruchle N, Venghaus A, Frank V, Fehrenbach H, et al. Mutations in  
666 multiple *PKD* genes may explain early and severe polycystic kidney disease. *J Am Soc Nephrol.*  
667 2011;22(11):2047-56.
- 668 42. Gilbert RD, Sukhtankar P, Lachlan K, Fowler DJ. Bilineal inheritance of *PKD1* abnormalities mimicking  
669 autosomal recessive polycystic disease. *Pediatr Nephrol.* 2013;28(11):2217-20.
- 670 43. Hopp K, Ward CJ, Hommerding CJ, Nasr SH, Tuan HF, Gainullin VG, et al. Functional polycystin-1 dosage  
671 governs autosomal dominant polycystic kidney disease severity. *J Clin Invest.* 2012;122(11):4257-73.
- 672 44. Ali H, Hussain N, Naim M, Zayed M, Al-Mulla F, Kehinde EO, et al. A novel *PKD1* variant demonstrates a  
673 disease-modifying role in trans with a truncating *PKD1* mutation in patients with autosomal dominant  
674 polycystic kidney disease. *BMC Nephrol.* 2015;16:26.
- 675 45. Pandita S, Khullar D, Saxena R, Verma IC. Autosomal dominant polycystic kidney disease: presence of  
676 hypomorphic alleles in *PKD1* gene. *Indian J Nephrol.* 2018;28(6):482-4.
- 677 46. Al-Hamed MH, Alsahan N, Rice SJ, Edwards N, Nooreddeen E, Alotaibi M, et al. Biallelic *PKD1* mutations  
678 underlie early-onset autosomal dominant polycystic kidney disease in Saudi Arabian families. *Pediatr*  
679 *Nephrol.* 2019;34(9):1615-23.
- 680 47. de Fallois J, Schonauer R, Munch J, Nagel M, Popp B, Halbritter J. Challenging disease ontology by instances  
681 of atypical *PKHD1* and *PKD1* genetics. *Front Genet.* 2021;12:682565.
- 682 48. Durkie M, Chong J, Valluru MK, Harris PC, Ong ACM. Biallelic inheritance of hypomorphic *PKD1* variants is  
683 highly prevalent in very early onset polycystic kidney disease. *Genet Med.* 2021;23(4):689-97.

- 684 49. Finnegan C, Murphy C, Breathnach F. Neonatal polycystic kidney disease: a novel variant. *BMJ Case Rep.* 2021;14(7).  
685
- 686 50. Cornec-Le Gall E, Torres VE, Harris PC. Genetic complexity of autosomal dominant polycystic kidney and  
687 liver diseases. *J Am Soc Nephrol.* 2018;29(1):13-23.
- 688 51. Misra S, Hassanali N, Bennett AJ, Juszcak A, Caswell R, Colclough K, et al. Homozygous hypomorphic *HNF1A*  
689 alleles are a novel cause of young-onset diabetes and result in sulfonylurea-sensitive diabetes. *Diabetes*  
690 *Care.* 2020;43(4):909-12.
- 691 52. Patel KA, Kettunen J, Laakso M, Stancakova A, Laver TW, Colclough K, et al. Heterozygous RFX6 protein  
692 truncating variants are associated with MODY with reduced penetrance. *Nat Commun.* 2017;8(1):888.
- 693 53. Laver TW, Colclough K, Shepherd M, Patel K, Houghton JA, Dusatkova P, et al. The common p.R114W *HNF4A*  
694 mutation causes a distinct clinical subtype of monogenic diabetes. *Diabetes.* 2016;65(10):3212-7.
- 695 54. Sharma M, Ioannidis JP, Aasly JO, Annesi G, Brice A, Bertram L, et al. A multi-centre clinico-genetic analysis  
696 of the *VPS35* gene in Parkinson disease indicates reduced penetrance for disease-associated variants. *J Med*  
697 *Genet.* 2012;49(11):721-6.
- 698 55. Sierra M, Gonzalez-Aramburu I, Sanchez-Juan P, Sanchez-Quintana C, Polo JM, Berciano J, et al. High  
699 frequency and reduced penetrance of *LRRK2* G2019S mutation among Parkinson's disease patients in  
700 Cantabria (Spain). *Mov Disord.* 2011;26(13):2343-6.
- 701 56. Bauwens M, Garanto A, Sangermano R, Naessens S, Weisschuh N, De Zaeytijd J, et al. *ABCA4*-associated  
702 disease as a model for missing heritability in autosomal recessive disorders: novel noncoding splice, *cis*-  
703 regulatory, structural, and recurrent hypomorphic variants. *Genet Med.* 2019;21(8):1761-71.
- 704 57. De Mori R, Romani M, D'Arrigo S, Zaki MS, Loreface E, Tardivo S, et al. Hypomorphic recessive variants in  
705 *SUFU* impair the sonic hedgehog pathway and cause Joubert syndrome with cranio-facial and skeletal  
706 defects. *Am J Hum Genet.* 2017;101(4):552-63.
- 707 58. Whiffin N, Minikel E, Walsh R, O'Donnell-Luria AH, Karczewski K, Ing AY, et al. Using high-resolution variant  
708 frequencies to empower clinical genome interpretation. *Genet Med.* 2017;19(10):1151-8.
- 709 59. Ragoussis V, Pagnamenta AT, Haines RL, Giacomuzzi E, McClatchey MA, Sampson JR, et al. Using data from  
710 the 100,000 Genomes Project to resolve conflicting interpretations of a recurrent *TUBB2A* mutation. *J Med*  
711 *Genet.* 2022;59(4):366-9.
- 712 60. Hanany M, Sharon D. Allele frequency analysis of variants reported to cause autosomal dominant inherited  
713 retinal diseases question the involvement of 19% of genes and 10% of reported pathogenic variants. *J Med*  
714 *Genet.* 2019;56(8):536-42.
- 715 61. Kobayashi Y, Yang S, Nykamp K, Garcia J, Lincoln SE, Topper SE. Pathogenic variant burden in the ExAC  
716 database: an empirical approach to evaluating population data for clinical variant interpretation. *Genome*  
717 *Med.* 2017;9(1):13.
- 718 62. Minikel EV, MacArthur DG. Publicly available data provide evidence against *NR1H3* R415Q causing multiple  
719 sclerosis. *Neuron.* 2016;92(2):336-8.
- 720 63. Solazzo A, Testa F, Giovanella S, Busutti M, Furci L, Carrera P, et al. The prevalence of autosomal dominant  
721 polycystic kidney disease (ADPKD): A meta-analysis of European literature and prevalence evaluation in the  
722 Italian province of Modena suggest that ADPKD is a rare and underdiagnosed condition. *PLoS One.*  
723 2018;13(1):e0190430.
- 724 64. Willey C, Kamat S, Stellhorn R, Blais J. Analysis of nationwide data to determine the incidence and diagnosed  
725 prevalence of autosomal dominant polycystic kidney disease in the USA: 2013-2015. *Kidney Dis (Basel).*  
726 2019;5(2):107-17.
- 727 65. gnomAD (Genome Aggregation Database). <https://gnomad.broadinstitute.org/>. Accessed 28 December  
728 2022.
- 729 66. Shteinberg M, Haq IJ, Polineni D, Davies JC. Cystic fibrosis. *Lancet.* 2021;397(10290):2195-211.
- 730 67. Kerem B, Rommens JM, Buchanan JA, Markiewicz D, Cox TK, Chakravarti A, et al. Identification of the cystic  
731 fibrosis gene: genetic analysis. *Science.* 1989;245(4922):1073-80.
- 732 68. The Cystic Fibrosis Mutation Database (CFTR1). <http://www.genet.sickkids.on.ca/>. Accessed 28 December  
733 2022.
- 734 69. The Clinical and Functional TRanslation of CFTR (CFTR2) databse. <https://cfr2.org/>. Accessed 28 December  
735 2022.
- 736 70. Knowles MR, Drumm M. The influence of genetics on cystic fibrosis phenotypes. *Cold Spring Harb Perspect*  
737 *Med.* 2012;2(12):a009548.
- 738 71. Raraigh KS, Aksit MA, Hetrick K, Pace RG, Ling H, O'Neal W, et al. Complete *CFTR* gene sequencing in 5,058  
739 individuals with cystic fibrosis informs variant-specific treatment. *J Cyst Fibros.* 2022;21(3):463-70.

- 740 72. Izquierdo ME, Marion CR, Moore WC, Raraigh KS, Taylor-Cousar JL, Cutting GR, et al. DNA sequencing  
741 analysis of cystic fibrosis transmembrane conductance regulator gene identifies cystic fibrosis-associated  
742 variants in the Severe Asthma Research Program. *Pediatr Pulmonol.* 2022;57(7):1782-8.
- 743 73. Sermet-Gaudelus I, Girodon E, Vermeulen F, Solomon GM, Melotti P, Graeber SY, et al. ECFS standards of  
744 care on CFTR-related disorders: Diagnostic criteria of CFTR dysfunction. *J Cyst Fibros.* 2022;21(6):922-36.
- 745 74. Lyon MF. Sex chromatin and gene action in the mammalian X-chromosome. *Am J Hum Genet.*  
746 1962;14(2):135-48.
- 747 75. Shvetsova E, Sofronova A, Monajemi R, Gagalova K, Draisma HHM, White SJ, et al. Skewed X-inactivation is  
748 common in the general female population. *Eur J Hum Genet.* 2019;27(3):455-65.
- 749 76. Dobyns WB, Filauro A, Tomson BN, Chan AS, Ho AW, Ting NT, et al. Inheritance of most X-linked traits is not  
750 dominant or recessive, just X-linked. *Am J Med Genet A.* 2004;129A(2):136-43.
- 751 77. Bhanushali AA, Mandsaurwala A, Das BR. Homozygous c.1160C>T (P38L) in the *MECP2* gene in a female  
752 Rett syndrome patient. *J Clin Neurosci.* 2016;25:127-9.
- 753 78. Amir RE, Van den Veyver IB, Wan M, Tran CQ, Francke U, Zoghbi HY. Rett syndrome is caused by mutations  
754 in X-linked *MECP2*, encoding methyl-CpG-binding protein 2. *Nat Genet.* 1999;23(2):185-8.
- 755 79. Philippe C, Villard L, De Roux N, Raynaud M, Bonnefond JP, Pasquier L, et al. Spectrum and distribution of  
756 *MECP2* mutations in 424 Rett syndrome patients: a molecular update. *Eur J Med Genet.* 2006;49(1):9-18.
- 757 80. The Genetic and Rare Diseases (GARD) Information Center Website: Rett syndrome.  
758 <https://rarediseases.info.nih.gov/diseases/5696/rett-syndrome>. Accessed 28 December 2022.
- 759 81. Villard L. *MECP2* mutations in males. *J Med Genet.* 2007;44(7):417-23.
- 760 82. Couvert P, Bienvenu T, Aquaviva C, Poirier K, Moraine C, Gendrot C, et al. *MECP2* is highly mutated in X-  
761 linked mental retardation. *Hum Mol Genet.* 2001;10(9):941-6.
- 762 83. Laccone F, Zoll B, Huppke P, Hanefeld F, Pepinski W, Trappe R. *MECP2* gene nucleotide changes and their  
763 pathogenicity in males: proceed with caution. *J Med Genet.* 2002;39(8):586-8.
- 764 84. Petriti U, Dudman DC, Scosyrev E, Lopez-Leon S. Global prevalence of Rett syndrome: systematic review  
765 and meta-analysis. *Syst Rev.* 2023;12(1):5.
- 766 85. Barboza-Cerda MC, Wong LJ, Martinez-de-Villarreal LE, Zhang VW, Dector MA. A novel *EBP* c.224T>A  
767 mutation supports the existence of a male-specific disorder independent of *CDPX2*. *Am J Med Genet A.*  
768 2014;164A(7):1642-7.
- 769 86. Popp B, Stove SI, Ende S, Myklebust LM, Hoyer J, Sticht H, et al. De novo missense mutations in the *NAA10*  
770 gene cause severe non-syndromic developmental delay in males and females. *Eur J Hum Genet.*  
771 2015;23(5):602-9.
- 772 87. Ragge N, Isidor B, Bitoun P, Odent S, Giurgea I, Cogne B, et al. Expanding the phenotype of the X-linked  
773 *BCOR* microphthalmia syndromes. *Hum Genet.* 2019;138(8-9):1051-69.
- 774 88. du Souich C, Raymond FL, Grzeschik KH, Boerkoel CF. *NSDHL*-Related Disorders.  
775 <https://pubmed.ncbi.nlm.nih.gov/21290788/>. Accessed 28 December 2022.
- 776 89. Boisson B, Honda Y, Ajiro M, Bustamante J, Bendavid M, Gennery AR, et al. Rescue of recurrent deep intronic  
777 mutation underlying cell type-dependent quantitative NEMO deficiency. *J Clin Invest.* 2019;129(2):583-97.
- 778 90. Nicola P, Blackburn PR, Rasmussen KJ, Bertsch NL, Klee EW, Hasadsri L, et al. *De novo* *DDX3X* missense  
779 variants in males appear viable and contribute to syndromic intellectual disability. *Am J Med Genet A.*  
780 2019;179(4):570-8.
- 781 91. Moog U, Kutsche K. *CASK* Disorders. <https://pubmed.ncbi.nlm.nih.gov/24278995/>. Accessed 28 December  
782 2022.
- 783 92. The Huntington's Disease Collaborative Research Group. A novel gene containing a trinucleotide repeat that  
784 is expanded and unstable on Huntington's disease chromosomes. *Cell.* 1993;72(6):971-83.
- 785 93. Cubo E, Martinez-Horta SI, Santalo FS, Descalls AM, Calvo S, Gil-Polo C, et al. Clinical manifestations of  
786 homozygote allele carriers in Huntington disease. *Neurology.* 2019;92(18):e2101-e8.
- 787 94. Walker FO. Huntington's disease. *Lancet.* 2007;369(9557):218-28.
- 788 95. Verkerk AJ, Pieretti M, Sutcliffe JS, Fu YH, Kuhl DP, Pizzuti A, et al. Identification of a gene (*FMR-1*) containing  
789 a CGG repeat coincident with a breakpoint cluster region exhibiting length variation in fragile X syndrome.  
790 *Cell.* 1991;65(5):905-14.
- 791 96. Willemsen R, Levenge J, Oostra BA. CGG repeat in the *FMR1* gene: size matters. *Clin Genet.* 2011;80(3):214-  
792 25.
- 793 97. Mesinele J, Ruffin M, Guillot L, Corvol H. Modifier factors of cystic fibrosis phenotypes: a focus on modifier  
794 genes. *Int J Mol Sci.* 2022;23(22).
- 795 98. Chang AR, Moore BS, Luo JZ, Sartori G, Fang B, Jacobs S, et al. Exome sequencing of a clinical population for  
796 autosomal dominant polycystic kidney disease. *JAMA.* 2022;328(24):2412-21.

- 797 99. Herzig AF, Genin E, Cooper DN, Masson E, Férec C, Chen JM. Role of the common *PRSS1-PRSS2* haplotype  
798 in alcoholic and non-alcoholic chronic pancreatitis: Meta- and re-analyses. *Genes (Basel)*. 2020;11(11):1349.  
799 100. Yao Q, Gorevic P, Shen B, Gibson G. Genetically transitional disease: a new concept in genomic medicine.  
800 *Trends Genet*. 2022.
- 801 101. Papadimitriou S, Gravel B, Nachtegael C, De Baere E, Loeys B, Vikkula M, et al. Toward reporting standards  
802 for the pathogenicity of variant combinations involved in multilocus/oligogenic diseases. *HGG Adv*.  
803 2023;4(1):100165.
- 804 102. Chakravarti A. Magnitude of Mendelian versus complex inheritance of rare disorders. *Am J Med Genet A*.  
805 2021;185(11):3287-93.
- 806 103. Pounraja VK, Girirajan S. A general framework for identifying oligogenic combinations of rare variants in  
807 complex disorders. *Genome Res*. 2022;32(5):904-15.
- 808 104. Manolio TA, Collins FS, Cox NJ, Goldstein DB, Hindorff LA, Hunter DJ, et al. Finding the missing heritability  
809 of complex diseases. *Nature*. 2009;461(7265):747-53.
- 810 105. Génin E. Missing heritability of complex diseases: case solved? *Hum Genet*. 2020;139(1):103-13.
- 811 106. ClinGen Low-Penetrance/Risk Allele Working Group. [https://clinicalgenome.org/working-groups/low-](https://clinicalgenome.org/working-groups/low-penetrance-risk-allele-working-group/)  
812 [penetrance-risk-allele-working-group/](https://clinicalgenome.org/working-groups/low-penetrance-risk-allele-working-group/). Accessed 28 December 2022.
- 813 107. Masson E, Chen JM, Audrézet MP, Cooper DN, Férec C. A conservative assessment of the major genetic  
814 causes of idiopathic chronic pancreatitis: data from a comprehensive analysis of *PRSS1*, *SPINK1*, *CTRC* and  
815 *CFTR* genes in 253 young French patients. *PLoS One*. 2013;8(8):e73522.
- 816 108. Hu C, Susswein LR, Roberts ME, Yang H, Marshall ML, Hiraki S, et al. Classification of *BRCA2* variants of  
817 uncertain significance (VUS) using an ACMG/AMP model incorporating a homology-directed repair (HDR)  
818 functional assay. *Clin Cancer Res*. 2022;28(17):3742-51.
- 819 109. Coursimault J, Goldenberg A, Nicolas G, Saugier-veber P, Coutant S, Vincent A, et al. Contribution of DNA  
820 methylation profiling to the reclassification of a variant of uncertain significance in the *KDM5C* gene. *Eur J*  
821 *Med Genet*. 2022;65(9):104556.
- 822 110. Bjelos M, Basic M, Curic A, Bosnar D, Saric B, Markovic L, et al. Pathogenicity reclassification of the *RPE65*  
823 c.1580A>G (p.His527Arg) - a case report. *Ophthalmic Genet*. 2022:1-5.
- 824 111. Micale L, Russo F, Mascaro M, Morlino S, Nardella G, Fusco C, et al. Opitz syndrome: improving clinical  
825 interpretation of intronic variants in *MID1* gene. *Pediatr Res*. 2022.
- 826 112. Kurolap A, Mory A, Simchoni S, Krajden Haratz K, Malinger G, Birnbaum R, et al. Upgrading an intronic  
827 *TMEM67* variant of unknown significance to likely pathogenic through RNA studies and community data  
828 sharing. *Prenat Diagn*. 2022;42(12):1484-7.
- 829 113. Copier JS, Bootsma M, Ng CA, Wilde AAM, Bertels RA, Bikker H, et al. Reclassification of a likely pathogenic  
830 Dutch founder variant in *KCNH2*; implications of reduced penetrance. *Hum Mol Genet*. 2022.
- 831 114. He W, Meng G, Hu X, Dai J, Liu J, Li X, et al. Reclassification of *DMD* duplications as benign: recommendations  
832 for cautious interpretation of variants identified in prenatal screening. *Genes (Basel)*. 2022;13(11).
- 833 115. Makhnoon S, Levin B, Ensinger M, Mattie K, Volk RJ, Zhao Z, et al. A multicenter study of clinical impact of  
834 variant of uncertain significance reclassification in breast, ovarian and colorectal cancer susceptibility genes.  
835 *Cancer Med*. 2022.
- 836 116. Scott A, Hernandez F, Chamberlin A, Smith C, Karam R, Kitzman JO. Saturation-scale functional evidence  
837 supports clinical variant interpretation in Lynch syndrome. *Genome Biol*. 2022;23(1):266.
- 838 117. Bang YJ, Kwon WK, Kim JW, Lee JE, Jung BY, Kim M, et al. Comprehensive clinical characterization of patients  
839 with *BRCA1*: c.5017\_5019del germline variant. *Ann Surg Treat Res*. 2022;103(6):323-30.
- 840 118. Dong Z, Wang Y, Zhang J, Zhu F, Liu Z, Kang Y, et al. Analyzing the effects of *BRCA1/2* variants on mRNA  
841 splicing by minigene assay. *J Hum Genet*. 2022.