

HLA allele-calling using whole-exome sequencing identifies 129 novel associations in 11 autoimmune diseases: a multi-ancestry analysis in the UK Biobank

Guillaume Butler-Laporte¹⁻³, Joseph Farjoun², Tomoko Nakanishi^{2,4-6}, Tianyuan Lu^{2,7}, Erik Abner⁸, Yiheng Chen², Michael Hultström^{1,2,9,10}, Andres Metspalu⁸, Lili Milani⁸, Reedik Mägi⁸, Mari Nelis⁸, Georgi Hudjashov⁸, Estonian Biobank Research Team, Satoshi Yoshiji^{2,4-6}, Yann Ilboudo², Kevin YH Liang², Chen-Yang Su², Julian DS Willet², Tõnu Esko⁸, Sirui Zhou⁵, Vincenzo Forgetta^{2,7}, Daniel Taliun⁵, J Brent Richards^{1,2,5,7,11,12}

Affiliations:

1. Department of Epidemiology, Biostatistics and Occupational Health, McGill University, Montréal, Québec, Canada.
2. Lady Davis Institute, Jewish General Hospital, McGill University, Montréal, Québec, Canada.
3. Wellcome Trust Centre for Human Genetics, University of Oxford, Oxford, United Kingdom.
4. Kyoto-McGill International Collaborative School in Genomic Medicine, Graduate School of Medicine, Kyoto University, Kyoto, Japan.
5. Department of Human Genetics, McGill University, Montréal, Québec, Canada.
6. Research Fellow, Japan Society for the Promotion of Science.
7. 5 Prime Sciences Inc, Montreal, Quebec, Canada.
8. Estonian Genome Center, Institute of Genomics, University of Tartu, Tartu, Estonia.
9. Integrative Physiology, Department of Medical Cell Biology, Uppsala University, Uppsala, Sweden.
10. Anaesthesiology and Intensive Care Medicine, Department of Surgical Sciences, Uppsala University, Uppsala, Sweden.
11. Department of Twin Research, King's College London, London, United Kingdom.
12. Infectious Diseases and Immunity in Global Health Program, Research Institute of the McGill University Health Centre, Montréal, Québec, Canada.

Corresponding author:

Guillaume Butler-Laporte
guillaume.butler-laporte@mail.mcgill.ca

Funding:

The Richards group is supported by the Canadian Institutes of Health Research (CIHR), the Lady Davis Institute of the Jewish General Hospital, the Canadian Foundation for Innovation, the NIH, Cancer Research UK, and FRQS. The Richards research group is supported by the Canadian Institutes of Health Research (CIHR: 365825; 409511, 100558, 169303), the McGill Interdisciplinary Initiative in Infection and Immunity (MI4), the Lady Davis Institute of the Jewish General Hospital, the Jewish General Hospital Foundation, the Canadian Foundation for Innovation, the NIH Foundation, Cancer Research UK, Genome Québec, the Public Health Agency of Canada, McGill University, Cancer Research UK [grant number C18281/A29019] and the Fonds de Recherche Québec Santé (FRQS). JBR is supported by an FRQS Mérite Clinical Research Scholarship. TwinsUK is funded by the Wellcome Trust, Medical Research Council, European Union, the National Institute for Health Research (NIHR)-funded BioResource, Clinical Research Facility and Biomedical Research Centre based at Guy's and St Thomas' NHS Foundation Trust in partnership with King's College London. GBL

received a scholarship from the FRQS and the CIHR. These funding agencies had no role in the design, implementation or interpretation of this study.

The work of the Estonian Genome Center, University of Tartu was funded by the European Union through Horizon 2020 research and innovation program under grants no. 810645 and 894987, through the European Regional Development Fund projects GENTRANSMED (2014-2020.4.01.15-0012), MOBEC008 and Estonian Research Council Grant PRG1291.

Competing interests:

JBR's institution has received investigator-initiated grant funding from Eli Lilly, GlaxoSmithKline and Biogen for projects unrelated to this research. He is the CEO of 5 Prime Sciences Inc (www.5primesciences.com). JF, TL, and VF are employees of 5 Prime Sciences Inc. TN has received speaking fee from Boehringer Ingelheim for talks unrelated to this research.

Abstract

The human leukocyte antigen (HLA) region on chromosome 6 is strongly associated with many immune-mediated and infection-related diseases. Due to its highly polymorphic nature and complex linkage disequilibrium patterns, traditional genetic association studies of single nucleotide polymorphisms (SNPs) do not perform well in this region. Instead, the field has adopted the assessment of the association of HLA alleles (i.e., entire HLA gene haplotypes) with disease. Often based on genotyping arrays, these association studies impute HLA alleles, decreasing accuracy and thus statistical power for rare alleles and in non-European ancestries. Here, we use whole-exome sequencing (WES) from 454,824 UK Biobank participants to directly call HLA alleles using the HLA-HD algorithm. We show this method is more accurate than imputing HLA alleles and harness the improved statistical power to identify 360 associations for 11 auto-immune phenotypes (at least 129 likely novel), leading to better insights into the specific coding polymorphisms that underlie these diseases. We show that HLA alleles with synonymous variants, often overlooked in HLA studies, can significantly influence these phenotypes. Lastly, we show that HLA sequencing may improve polygenic risk scores accuracy across ancestries. These findings allow better characterization of the role of the HLA region in human disease.

Introduction

The human leukocyte antigen¹ (HLA) gene complex is a highly polymorphic region of the human genome with a striking linkage disequilibrium (LD) pattern. While genetic variants in HLA are often strongly associated with multiple auto-immune and infectious diseases^{2,3}, genome-wide association studies (GWAS) cannot easily be fine-mapped to likely causal variants, and consequently specialized methods are required to improve statistical power and fine-mapping³. Hence, in most current genetic association studies of HLA, the unit of variation is not usually a single nucleotide polymorphism (SNP) but rather a whole HLA gene “version” or haplotype, known as an HLA allele.

By convention, HLA allele names start with the gene name, followed by up to four sets of digits (also called fields 1 to 4), each separated by a colon. From left to right, these digits provide information on the allele’s serological specificity, protein-altering variants, synonymous variants, and non-coding (i.e. intronic) variants. For example, *HLA-A*01:01:01:01* is one such allele for gene *HLA-A*. The use of HLA alleles in association tests, known as HLA fine-mapping, has higher statistical power than SNP-based approaches and allows for a better understanding of the role of the HLA region in a wide range of conditions^{2,4-7}. It can help identify targets for novel medicines and improve our ability to identify populations at risk for immune- and infection-mediated disease.

For the HLA fine-mapping to be possible, HLA alleles must be accurately assigned to study participants. The most common and cost-effective method is to impute HLA alleles from variants typed with genotyping arrays⁸⁻¹³. However, the imputation requires large and diverse HLA reference panels, access to which still needs to be improved, and is less accurate for individuals of underrepresented ancestries¹⁴ and rarer alleles¹⁵. Using sequencing data to *call* HLA alleles eliminates the need for such a reference panel and may provide better accuracy of individual-level HLA alleles, resulting in improved fine-mapping and statistical power.

In this study, we used the UK Biobank¹⁶ (UKB) release of 454,824 whole exome sequences¹⁷ (WES) to call each participant’s HLA alleles using the HLA-HD algorithm¹⁸. HLA-HD provides reliable HLA allele calling from short-read sequencing¹⁹ and is easily scalable on a cloud computing environment like DNAnexus (Palo Alto, California, USA). We then provide a comprehensive report on the HLA allele landscape in UKB participants of 5 ancestries (African [AFR], Admixed American [AMR], East Asian [EAS], European [EUR], South Asian [SAS]), and we compare our results to imputed HLA alleles currently available in UKB participants. We assessed the improvement in statistical power by performing HLA allele and amino acid association studies on 11 auto-immune traits across all genetic ancestries. Lastly, we built polygenic risk scores (PRS) incorporating HLA alleles for these traits. Our findings should allow for a better understanding of the role of HLA alleles in disease and better risk stratification.

Results

HLA allele calling from WES

HLA-HD was used to call HLA alleles for 454,824 participants at 3-field resolution (representing the allele’s serological specificity, protein-altering variants and synonymous variants). We used the UKB whole-genome genotyping (unavailable in 1,283 participants) projected on the 1000 Genome reference to estimate genetic ancestry. We found that this cohort included 8,725 participants of AFR genetic ancestry, 2,898 of AMR genetic ancestry, 2,647 of EAS genetic ancestry, 429,822 of EUR genetic ancestry, and 9,449 of SAS genetic ancestry (see [Methods](#)). The UKB WES target

regions provided reads at 31 HLA genes. These included 12 HLA Class I genes (6 protein-coding genes) and 19 HLA Class II genes (13 protein-coding). Class I genes were generally well covered (**ST1 and SF1**), with all participants having more than 20 reads aligning to *HLA-A*, *HLA-C*, *HLA-E*, *HLA-F*, and *HLA-G*, while only 109 of 454,814 (0.02%) participants had less than 20 reads at their *HLA-B* gene. Class II genes were also well covered, except for *HLA-DQA1*, for which 34.4% of participants had less than 20 reads per gene. While it is challenging to assess read coverage for *HLA-DRB3* to *HLA-DRB9* given that these genes are not carried by every individual, *HLA-DRB1* was well covered (0.23% of participants with less than 20 reads). All Class I genes were found in each ancestry. However, the EUR cohort was the only one for which all Class II genes were found, with *HLA-DPA2* and *HLA-DRB9* absent in all other ancestral cohorts and *HLA-DRB6* also missing in the AFR, AMR, and EAS cohorts.

As expected, the number of unique HLA alleles was the highest in the larger EUR cohort, at 5,295, and ranged from 985 (EAS) to 1,527 (SAS) in smaller cohorts of the other four ancestries (**Fig. 1A**). When adjusted by sample size, the AMR and EAS genetic ancestry participants had the largest number of alleles (0.432 and 0.372 alleles per participant, respectively), while the EUR cohort had the lowest (0.012) (**Fig. 1B**). The finding that the AMR participants have a larger number of HLA alleles is consistent with other studies and reference panels which showed that native American populations have a high number of HLA alleles absent in other populations^{20–22}. As expected, most of the HLA alleles were rare (minor allele frequency [MAF] < 1%) in all ancestries, with 166 out of 5,295 alleles with MAF > 1% in the EUR cohort and 209 out of 1,304 alleles with MAF > 1% in the AMR cohort (supplementary figure **SF2**). Similarly, the first 25 most common alleles in each ancestry account for >90% of total variation frequency. (**Fig. 1C**). Lastly, HLA Class I genes (including pseudogenes) showed the highest diversity, with an average of 586.0 alleles per gene compared to 194.4 for HLA Class II genes. The highest number of alleles was found in the EUR cohort, and the lowest in the EAS cohort (**Fig. 1D**), but once again, the observation was mirrored when accounting for sample size (**Fig. 1E**). A complete list of alleles and their frequencies at 3-field and 2-field resolution is available in the supplementary tables **ST2** and **ST3**.

Comparison to imputed alleles

The UKB provides HLA allele imputation using the HLA:IMP*2 software¹³ for 11 genes at 2-field resolution: *HLA-A*, *HLA-B*, *HLA-C*, *HLA-DQA1*, *HLA-DQB1*, *HLA-DPA1*, *HLA-DPB1*, *HLA-DRB1*, *HLA-DRB3*, *HLA-DRB4*, *HLA-DRB5*. We, therefore, compared concordance between the sequenced alleles at 2-field resolution and the previously imputed UKB alleles. It is crucial to note that there are currently no perfect reference standard against which to compare HLA calling or imputation methods, and that any comparison will suffer from considerable ambiguity.

Nevertheless, we set out to compare imputed and called alleles in the UKB. The complete set of imputed alleles included 196 in Class I and 136 in Class II genes. 10 out of these 332 alleles were absent among the sequenced HLA alleles. However, all 10 of these alleles had low frequency (MAF < 0.04%), suggesting that these may have been imputation mistakes because the imputation accuracy decreases with the allele frequency.

While allele concordance was excellent for HLA Class I genes (90.4% for *HLA-A*, 89.5% for *HLA-B*, and 91.1% for *HLA-C*) and *HLA-DPA1* (97% for *HLA-DPA1*), it dropped substantially for other genes (as low as 47.9% for *HLA-DQA1*) (supplementary tables

ST5-10). However, this concordance calculation did not account for the considerable increase in the number of discovered HLA alleles in recent years, which has more than doubled since the original publication of the HLA:IMP*2 software¹³. Hence, we also looked at an adjusted concordance rate by only looking at the concordance of called alleles that were present in the HLA:IMP*2 database. As expected, the adjusted concordance was much greater, with only three genes scoring less than 90%: *HLA-DQA1*, *HLA-DRB3*, and *HLA-DRB4* (**Fig. 2** and supplementary tables **ST5-10**). For the latter two genes, this was due HLA alleles that had not been imputed but were called in more than 95% of cases of discordance. This further highlights the increased power of HLA sequencing over imputation. For *HLA-DQA1*, we suspect that this is consistent with it having been the most poorly sequenced genes, as discussed above (supplementary figure **SF1**).

Of the participants whose alleles did not completely match, the mismatch was primarily due to HLA alleles of low allele frequencies (AF < 1%). The mean allele frequencies of those participants ranged from 1.16% for *HLA-DPA1* to 0.09% for *HLA-B* (supplementary table **ST4**). For all genes and ancestries, lower allele frequency was associated with a lower concordance rate (supplementary figure **SF3**). Moreover, there was a significant decrease in both allele concordance and adjusted concordance in participants of non-EUR ancestries (**Fig. 2** and supplementary tables **ST5-10**), for both classes of HLA genes. While the average allele concordance and adjusted concordance for HLA Class I genes in the EUR cohort was 91.0% and 96.8%, they dropped to 75.5% and 88.2% in AFR, to 81.1% and 89.8% in AMR, to 78.6% and 86.5% in EAS, and to 81.2% and 90% in SAS. Likewise, EUR participants' mean concordance and adjusted concordance for HLA Class II alleles was 71.0% and 90.1%, which decreased to 68.9% and 81.0% in AFR, to 71.1% and 82.1% in AMR, to 71.0% and 82.1% in EAS, and to 71.4% and 80% in SAS.

Hence, HLA sequencing improves accuracy compared to previously imputed alleles, this improvement is not fully explained by an increase in the number of known HLA alleles, and, as suspected, the non-EUR genetic ancestry individuals and those who carry rarer alleles suffer the most from the decrease in HLA allele imputation performance. This emphasizes the lack of diversity in the currently available imputation reference panels and significantly limits the application of imputation-based approaches.

HLA haplotypes LD

To further describe our results and confirm their concordance with previous literature on the HLA, we characterized the LD pattern in the UKB cohort's HLA locus. Since HLA genes are multiallelic, the usual biallelic LD metrics give an incomplete portrait of the LD between pairs of HLA genes, as these would only provide pairwise HLA allele LD. Hence, we used an extension of biallelic LD that averages conditional LD measurements over the distribution of HLA alleles between pairs of HLA genes (asymmetric LD²³). It has been used successfully in previous HLA studies and reduces to the standard R² measure of LD in cases where both variants (here HLA genes) are biallelic²³. For this analysis, we used the 2-field HLA allele resolution to mitigate the effect of rare alleles, which makes the asymmetric LD calculation unstable (see **Methods**). While there were some variations between genetic ancestries in HLA haplotype LD patterns (supplemental figure **SF4**), most haplotypes in high LD were located in physical proximity to each other, with the following groups being closely associated across all genetic ancestries: 1) *HLA-B* and *HLA-C*, 2) the Class I genes (excluding *HLA-B* and *HLA-C*), 3) the *HLA-DR*, and *HLA-DQ* genes, 4) *HLA-DPA1* and *HLA-DPB1*, and lastly,

5) *HLA-DMA* and *HLA-DMB*. Full asymmetric LD results per ancestry are provided in **ST11-16**.

Allele frequency comparison to reference panel

As the last quality check, we compared the allele frequencies obtained from WES HLA allele calling with those reported in the Allele Frequency Net Database (AFND)²⁴. The AFND aggregates allele frequencies from multiple large cohorts, which we matched to the UKB biobank cohort based on their reported ancestries and country of origin (see **Methods**). However, given the sparsity of high-quality data on non-classical HLA genes in the AFND, we restricted this comparison to classical HLA genes (*HLA-A*, *HLA-B*, *HLA-C*, *HLA-DPA1*, *HLA-DPA2*, *HLA-DQA1*, *HLA-DQB1*, *HLA-DRB1*). Correlation between allele frequencies in the UKB and allele frequencies in the selected reference cohorts was high, suggesting that WES HLA calling performed well (R^2 : 0.83; F-test p-value: 2.2×10^{-16} ; intercept: 0.001, 95% CI: 0.0008 – 0.002; slope: 0.99, 95% CI: 0.98 – 1.01; supplemental figure **SF5**).

HLA association studies in 11 auto-immune phenotypes

To demonstrate the power of WES-based HLA analysis, we performed allele association studies for 11 phenotypes known to be associated with HLA genes: ankylosing spondylitis²⁵, asthma²⁶, autoimmune thyroid disorders²⁷, coeliac disease²⁸, Crohn's disease²⁹, type I diabetes mellitus³⁰, multiple sclerosis and other demyelinating diseases (MS-Demyelinating)³¹, polymyalgia rheumatica or giant cell arteritis (PMR-GCA)³², psoriasis³³, rheumatoid arthritis³⁴, and ulcerative colitis³⁵ (supplementary table **ST17**). Analyses were performed with Regenie³⁶ (see **Methods**) for each ancestry separately if there were 50 or more cases using age, sex, and the first 10 genetic principal components (PCs) as covariates (supplementary table **ST18**). Ancestry-specific results were then meta-analyzed using fixed-effect meta-analysis with METAL³⁷ (see supplementary table **ST19** for full summary statistics).

Our meta-analyses yielded 360 HLA allele associations at 3-field resolution (**Table 1** and supplementary figure **SF6**), of which 118 were from HLA Class I genes. A pertinent positive control association is *HLA-B*27:05*, an allele used for diagnosis and prognostication in clinical medicine³⁸, and which was highly associated with ankylosing spondylitis (OR: 6.55, 95% CI: 5.97 – 7.18, p : 1.97×10^{-305} , effect allele frequency [EAF]: 3.9%). Crohn's disease was the phenotype with the least associations (1), but the other phenotypes averaged 35.9 associations at the 3-field resolution, with the highest number of associations in autoimmune thyroid disorders ($n = 69$), coeliac disease ($n = 63$), and psoriasis ($n = 62$). To test how many of these associations were novel, we used the HLA-SPREAD PubMed abstract natural language processing database³⁹. An association was considered previously reported if we could find it in the database. As an additional novelty check, we also repeated HLA association analyses using the imputed HLA alleles since these were already available and used in published association studies (even if they may not have been reported at all). Since most of the HLA literature restricts their analysis to 2-field precision, we used our 2-field association results and checked if these had been previously reported for their given phenotypes. The 2-field resolution analyses yielded 341 allele associations, of which 129 were likely novel. Of the rest, 44 were reported in the HLA-SPREAD database, while 168 could also be found using HLA allele association studies using the UKB imputed alleles (**Fig. 3** and supplementary table **ST20**).

Importantly, 103 of the 360 associations with 3-field resolution alleles were found in genes for which HLA imputation results were unavailable, suggesting that WES-based HLA allele calling could help discover many more HLA associations than previously possible. Moreover, many of these exhibited strong associations, both in terms of small p-values and large effect sizes, even in genes which were not previously known for a high degree of polymorphism. For example, *HLA-G*01:06:01* showed a strong association with psoriasis (OR: 1.80, 95% CI: 1.70 – 1.90, $p = 3.57 \times 10^{-100}$, EAF: 6.2%). We also found multiple associations in rare alleles (AF < 1%), including the novel *HLA-B*57:31:02* in psoriasis (OR = 4.61, 95% CI: 3.22 – 6.59, $p = 7.1 \times 10^{-17}$, EAF = 0.06%) and *HLA-C*02:178* in ankylosing spondylitis (OR = 5.33, 95% CI: 3.37 – 8.41, $p = 7.75 \times 10^{-13}$, EAF = 0.2%). While the *HLA-B*57* and *HLA-C*02* allele groups as a whole are already known to be associated with these diseases⁴⁰, this is, to our knowledge, the first time these specific alleles are reported. Given their high effect sizes, we believe that using WES for HLA allele calling in rare variants can allow us to better characterize the specific HLA variants and amino acid residues responsible for in risk of some diseases (here psoriasis and ankylosing spondylitis).

Many of these associations are unlikely to be observed due to HLA haplotype LD. In fact, of the 64,620 pairs of statistically significant 3-field resolution alleles ($360 \times 359/2$), only 123 show a (biallelic) LD R^2 of 0.2 or more (supplementary table **ST21**). More specifically, the *HLA-G*01:06:01* allele was only in mild LD with two other alleles associated with psoriasis: *HLA-A*01:01:01* ($R^2 = 0.21$) and *HLA-H*02:01:01* ($R^2 = 0.26$), which were both in high LD together ($R^2 = 0.71$) and less significantly associated with psoriasis than was *HLA-G*01:06:01* ($p = 1.77 \times 10^{-49}$ for *HLA-A*01:01:01*, and $p = 1.53 \times 10^{-49}$ for *HLA-H*02:01:01*). Hence, with respect to the other alleles included in this analysis, *HLA-G*01:06:01* was independently associated with psoriasis. While *HLA-G* has been linked with other skin diseases, to our knowledge, associations between skin or soft tissue phenotypes and the *HLA-G*01:06* haplotype have only been reported in squamous intraepithelial cancer and cervical cancer⁴¹.

Likewise, conditional analyses showed that 116 of the 129 novel allele associations were still significant after conditioning the most significant alleles of each phenotype (false discovery rate [FDR] < 5%). Further, we found an additional 366 significant novel variant associations (FDR < 5%) when conditioning on the most significant alleles for each phenotype, again suggesting that WES has increased power compared to imputation and supporting the validity of the likely novel allele associations found above. See supplementary table **ST22** for full conditional analyses results.

In summary, these findings suggest that WES-based HLA calling can identify many novel HLA-disease associations, possibly with large effects, compared to those identified through imputation-based approaches.

Replication analyses in the Estonian Biobank

We performed the same analyses with 2-field imputed HLA alleles from the Estonian Biobank (EstBB) (supplementary table **ST20**). Of the 341 allele associations found above, 196 were imputed and available for analyses. Of those 196 alleles, 123 were of the same effect direction and had a p-value less than the Bonferroni correction ($p < 0.05/196$) and another 25 had a p-value less than 0.05 (but above the Bonferroni correction). There was one additional allele with a p-value less than the Bonferroni correction and with an opposite effect direction. As suspected, of the potentially novel associations found above, only 8 were found in the list of imputed alleles, only 2 of which

had a p-value less than 0.05 in the EstBB results. This again supports that WES-based HLA calling provides reliable and more accurate results than imputation-based methods.

Effect of synonymous variants

Given the increased allele resolution provided by WES-based HLA calling, we examined the effect of the additional HLA field on phenotype associations (i.e., from 2-field to 3-field resolution, wherein 3-field resolution would capture synonymous variants). We would expect similar and same-direction effect sizes for all synonymous variants in the HLA allele if they did not impact the phenotype. For example, if *HLA-A*01:01* was associated with a given phenotype, we would expect *HLA-A*01:01:01* and *HLA-A*01:01:02* to show similar effects on the phenotype.

Specifically, we examined how synonymous variants in HLA alleles were associated with the 11 auto-immune phenotypes (Fig. 4). First, for any given phenotype, we found all 3-field resolution alleles that showed statistically significant association with a phenotype and compared their effect sizes with all other alleles of the same 2-field haplotype, hence directly isolating the effect of synonymous variants. We used Welch's t-test for unequal variances to compare effect size heterogeneity. We found 87 pairs of 3-field resolution alleles sharing the same 2-field haplotype, 54 of which showed a significantly different effect size ($p < 0.05/307$, see **Methods**). Of those, 11 were of opposite directions. For example, *HLA-DQB1*02:01:01* was associated with a 1.09-fold increase in odds of asthma (95% CI: 1.06 – 1.12, $p = 1.25 \times 10^{-10}$), *HLA-DQB1*02:01:08* was associated with a 0.90-fold decrease in risk (95% CI: 0.87 – 0.93, $p = 5.90 \times 10^{-11}$). There were an additional 42 pairs where one 3-field resolution allele was associated with the phenotype, but the remaining were not, and the heterogeneity was considered significant. For example, the *HLA-DQA1*01:02:01* allele was associated with a 0.94-fold decrease in odds of asthma (95% CI: 0.92 – 0.95, $p = 3.33 \times 10^{-16}$), but *HLA-DQA1*01:02:02* was not shown to be significantly associated (OR: 1.93, 95% CI: 0.99 – 1.06, $p = 0.01$). Lastly, 1 pair showed a difference in risk of disease in the same direction but with a different effect size: *HLA-DQB1*02:01:01* was associated with a 1.29-fold increase in the odds of coeliac disease (95% CI: 1.19 – 1.40, $p = 5.27 \times 10^{-10}$), but *HLA-DQB1*02:01:08* was associated with an even higher risk with an odds ratio of 2.60 (95% CI: 2.39 – 2.87, $p = 6.42 \times 10^{-110}$). Of note, both alleles had relatively similar frequencies (6.5% and 4.7%, respectively).

However, many of the comparisons of these allele pairs may have been underpowered due to low allele frequencies. Therefore, when there were more than two 3-field resolution alleles with no association evidence for a given 2-field haplotype, we collapsed them all into a single 3-field resolution allele. This is conceptually the same process as a burden test (also known as a collapsing test) used for rare variant analyses⁴². In doing so, we aggregated enough alleles without association evidence to perform 220 additional pairwise comparisons, of which 12 suggested that there was a difference between the lead 3-field resolution allele and the corresponding collapsed HLA alleles. This included two instances where the effect was in the opposite direction, suggesting that at least one of the constituent 3-field resolution alleles in the collapsed allele was in the opposite direction as the lead 3-field resolution allele. For example, *HLA-G*01:01:02* was associated with a 0.70-fold decrease in odds of coeliac disease (95% CI: 0.65 – 0.75, $p = 1.72 \times 10^{-20}$), while the burden test of its dummy 3-field allele showed an opposite direction (OR: 1.29, 95% CI: 1.21 – 1.39, $p = 7.98 \times 10^{-13}$). This suggests that at least one synonymous variant in *HLA-G*01:01* obviates the association of *HLA-G*01:01:02* with coeliac disease.

In conclusion, the observed heterogeneity in the effects of synonymous variants at HLA alleles suggests that this type of variants is likely to contribute to the risk of human immune-mediated diseases. To our best knowledge, most previous HLA fine-mapping studies were limited to 2-field resolution alleles and did not capture synonymous variants' effects. Specifically, we are not aware of studies of comparable size that studied the effect of synonymous HLA variants in a systematic way. See supplementary table **ST23** for the complete results of these analyses.

Imputed vs sequenced HLA alleles canonical correlation analysis (CCA) and PRSs

While our prior results supported the hypothesis that WES-based HLA allele calling would be more accurate than imputation, imputation may still be adequate for PRSs. To test this hypothesis, we first used CCA on the matrices of imputed and WES-based HLA alleles (using a 0, 1, and 2 encoding for absent, heterozygous, and homozygous for the allele). CCA performs linear transformations of both matrices to find the best linear approximation of one against the other. In other words, it assumes the existence of a set of variables that both HLA imputation and WES-based HLA calling approximate, allowing for the calculation of the amount of variation in WES-based HLA alleles that can be explained by imputed HLA alleles (also referred to as total canonical redundancies). If the variance explained by the imputed alleles is high, we would not expect a great increase in PRS predictive ability from using WES-based HLA alleles. Indeed, using CCA (supplementary table **ST24** and supplementary figure **SF7**) for WES-based HLA alleles with AF > 10%, we found that imputed HLA alleles can account for 85.1% of the variation in WES-based alleles. This increased to 88% with AF > 20%. This decreases when we lower the AF threshold (e.g. decreases to 77.5% for AF > 5%) or add the non-imputed genes because these are not captured well (or at all) by imputation. Additionally, as expected, the percentage of variation in WES-based alleles explained by imputed alleles was driven by the EUR ancestry cohort. These values varied in other genetic ancestries, with the percentage of variance explained in the AFR ancestry cohort consistently lower than in other cohorts (except for the analysis with AF > 0.01% and only using the imputed genes). However, the considerable differences in sample size make further comparisons between genetic ancestries difficult or even impossible (e.g. the analyses could not be performed in the EAS ancestry cohort).

We then used the LDpred software to compute PRSs from the seven phenotypes for which complete GWAS summary statistics were available in the GWAS Catalog. All GWASs contained only participants of EUR genetic ancestry, except for rheumatoid arthritis. Two LDpred scores were obtained for each phenotype and each participant: 1) a score from the summary statistics across the whole genome and 2) another after removing the HLA region variants. The LDpred scores were then used in an XGBoost binary classifier for each phenotype, along with age, sex, and the first 10 PCs. For the classifier using the LDpred scores without the HLA region, we also added either the imputed HLA alleles or the WES-based HLA alleles in the XGBoost algorithm. Hence, we performed three distinct XGBoost PRSs for each phenotype: 1) LDpred scores alone, 2) LDscores without the HLA region but with the imputed HLA alleles, and 3) LDpred scores without the HLA region but with the WES-based HLA alleles. HLA alleles improved all PRSs to varying degrees with an average absolute increase in area under the receiver operating characteristic curve (AUC) of 0.085 (for both alleles containing HLA alleles, see **Fig. 5** and supplementary table **ST25**). The largest increase was for coeliac disease: the AUC increased from 0.68 (95% CI: 0.66 – 0.70) to 0.84 (95% CI: 0.82 – 0.86) with WES-based HLA alleles (compared to not using HLA alleles).

However, the difference between AUC of the PRSs using imputed and WES-based alleles was always small (average of 0.002), with all 95% confidence intervals for the difference in AUC containing zero (supplementary table [ST25](#)). Hence, as expected, given our CCA results, HLA allele imputation explains enough of the variation in the UKB participants' HLA alleles to still be useful for PRS purposes. However, this may not hold for non-EUR genetic ancestry cohorts, given the limited diversity of available HLA imputation reference panels. Similar results were seen with precision-recall curves (supplementary figure [SF8](#)).

However, this PRS benefitted from HLA imputation using the same imprecise algorithm in both the training and the test set. In real-world applications, one would use a PRS developed with the HLA alleles from one imputation algorithm in a separate population, probably using a different HLA genotyping method (e.g. another imputation software). To mimic this scenario, we used the XGBoost weights from our PRS developed with imputed HLA alleles, and we used WES-based HLA alleles for the testing set's input features. This did not lead to large differences in AUC except for coeliac disease (AUC decreased from 0.84 to 0.81, absolute difference: -0.03, 95% CI: -0.06 to -0.0004). Hence, while HLA allele imputation may be useful for PRS, phenotypes that are more influenced by the HLA are more likely to benefit from this gain in precision. More generally, this means HLA allele imputation should be used carefully across cohorts that do not use the same HLA allele imputation algorithm.

Amino acid association studies

Using the 2-field allele calls, we performed amino acid residue fine-mapping at all protein-coding genes for all 11 phenotypes. The same analytic method was used as in the HLA allele association studies above. As expected, we found many more associations ($p < 5 \times 10^{-8}/11$) for amino acid residues than HLA alleles. We found 5,556 associations in our multi-ancestry meta-analyses, with 2,134 for autoimmune thyroid disease, coeliac disease, or psoriasis (supplementary table [S18](#)). However, the correlation structure of those residues is significantly more complicated than for HLA alleles LD, making causal inference even more complex. For example, while it is clear that residue 57 of the HLA-DQB1 protein is the main determinant of type 1 diabetes mellitus at this gene (as reported before⁴³⁻⁴⁵), with an odds ratio of 1.72 (96% CI: 1.64 – 1.80, $p=5.4 \times 10^{-116}$), it is not as clear which amino acid is the main driver at *HLA-DQA1* ([Fig. 6A](#)). Nevertheless, these amino acid association studies can still provide important insights into the genetic underpinnings of the HLA, especially when considering potential interactions between amino acids. Specifically, the HLA-DQA1 and HLA-DQB1 proteins form a heterodimer and should be analyzed together, and when performing normal mode analysis of this heterodimer (to see which amino acid “move together” in space, see [Fig. 6B](#)) or when looking at the distance between amino acid in 3-dimensional space ([Fig. 6C](#)), it becomes clear that residues 53-57 of HLA-DQB1 are in close contact with amino acids 60-80 of HLA-DQA1. Notably, residues 60 to 80 are part of a segment of the HLA-DQA1 proteins (residues 45-80) with nearly identical p-values (5.81×10^{-58}) and high LD. Indeed, these two segments are in close contact and are part of the ligand binding groove of the HLA-DQA1/HLA-DQB1 heterodimer ([Fig. 6D](#)). Hence, WES-based HLA allele calling and amino acid fine-mapping can provide additional biological evidence on the role of the HLA in human disease.

Discussion

Here we report an increased accuracy in WES-based HLA allele calling compared to imputation-based approaches. This gain in accuracy was greater for rare variants and

non-EUR genetic ancestry UKB participants. This improved accuracy allowed us to identify 360 allele associations at 3-field resolution for 11 auto-immune phenotypes. At 2-field resolution, we found 341 associations, of which 129 were likely novel. The increased resolution (from 2-field to 3-field) afforded by WES also allowed us to better characterize the association between synonymous variants in HLA alleles and human diseases. We found that for at least 25% of 2-field haplotypes exhibiting synonymous variants in the UKB, the resulting 3-field haplotypes showed statistically significant heterogeneous effect sizes. This observation and the fact that 2-field accuracy decreased the number of allele associations we found (from 360 at 3-field to 341 at 2-field) supports the hypothesis that the increase in accuracy also improved statistical power, as the collapse of multiple 3-field alleles into one 2-field allele would hide potential HLA allele disease associations. Given that previous HLA association studies usually do not consider the effect of synonymous variants, this represents an advance in our understanding of the HLA. Lastly, we showed that using HLA alleles from either imputation or sequencing may improve PRS accuracy, while WES-based HLA alleles may improve their external validity. More specifically, we showed that for some diseases, using a different method to assign alleles to participants in the training cohort than in the test cohort may decrease the accuracy of the PRS. This is likely even more important for non-EUR genetic ancestries, which are under-represented in HLA research. Hence, WES-based HLA allele calling provides additional insights into the complex role of the HLA in human diseases. These insights will likely be important for future translational research programs on the HLA and its application to therapeutic drug development. Importantly, these HLA allele calls for all UKB participants will be made available to the scientific community.

Our results highlight some limitations and areas for future research. First, the UKB WES program was not designed with the specific aim of HLA calling, and it uses a short read technology. It is known that HLA-specific assays with longer reads will perform better for this region, and an increased accuracy would be expected from such technology⁴⁶. Additionally, as the UKB will release whole-genome sequencing data for its entire cohort (still only available for around 150,000 participants at the time of writing this manuscript), a comparison between WES and WGS will be needed, as the optimal trade-off between better non-coding region coverage and depth of sequencing in the HLA is unclear. Second, newer imputation algorithms have been developed since the UKB first released their HLA imputation results, and these may fare better with rare alleles and non-EUR ancestry individuals than our current comparator. Nonetheless, the current best-performing algorithm from the Michigan Imputation Server had a lower concordance rate than HLA-HD when compared with the 1000G panel^{18,47} (e.g. 100% concordance at *HLA-DRB1* for HLA-HD, and between 90.9% to 96.9% for the Michigan Imputation Server, depending on ancestry, both at 2-field). This server also currently only provides imputation for 9 genes. Hence, using HLA sequencing when available appears preferable. Third, HLA-HD does not provide 4-field resolution, which would be necessary to study non-coding variants. Given our findings on the non-negligible role of synonymous HLA variants in human disease, we expect that non-coding variants would also be important to study more thoroughly. The upcoming release of the full UKB participant whole-genome sequencing data should shed light on this issue. However, this will need the development of an HLA calling algorithm capable of handling 4-field resolution while also being scalable on cloud computing architecture.

Fourth and most importantly, new and more accurate technology is only one piece of the puzzle to better understand the role of the HLA in diseases. There are still many

unresolved questions relating to haplotypes LD and HLA protein interactions (since HLA proteins form complexes) that remain to be solved. In the past, cross-ancestry comparative genetics has been used to better determine causal variants, and the study of the HLA would benefit from the sequencing of more non-EUR genetic ancestry individuals. Further, it was previously described that using HLA alleles instead of SNPs increases the yield of HLA genes in eQTL studies⁴⁸. Hence, a large-scale association study of HLA allele determinants of HLA gene expression, splicing, and protein level using genome/exome sequencing and HLA calling algorithm would shed much-needed light on how HLA polymorphisms affect diseases. Finally, the best way to incorporate HLA alleles in PRS also deserves further research. For example, by modelling HLA allele interactions, previous literature showed improved PRS performance compared to the method we used in this paper³⁰. It would be of interest to see how this translates using WES/WGS technology and HLA allele calling, especially in non-EUR ancestries.

In conclusion, using WES for HLA allele calling improves the accuracy of ascertainment and, therefore, statistical power to associate HLA alleles with diseases. This should help solve the problem of the HLA's highly polymorphic character and LD. Doing so is particularly important for genetic ancestries under-represented in research and for rare variants. This is important since, by increasing HLA typing accuracy, a better understanding of the genes responsible for diseases at HLA is possible, which could be translated into actionable therapies.

Methods

HLA allele sequencing

We used WES data from 454,824 individuals in the UKB to call HLA alleles. First, CRAM WES alignment files were converted to FASTA files using Picard tools⁴⁹ and the GRCh38 human reference genome⁵⁰. Second, HLA-HD¹⁸ (v1.4.0) was used to call all possible HLA alleles. For the allotted coverage in the WES data, this corresponded to the following 31 genes or pseudogenes (see resource 3803 of the UKB for target regions details): *HLA-A*, *HLA-B*, *HLA-C*, *HLA-E*, *HLA-F*, *HLA-G*, *HLA-H*, *HLA-J*, *HLA-K*, *HLA-L*, *HLA-V*, *HLA-Y*, *HLA-DMA*, *HLA-DMB*, *HLA-DOA*, *HLA-DOB*, *HLA-DPA1*, *HLA-DPA2*, *HLA-DPB1*, *HLA-DQA1*, *HLA-DQB1*, *HLA-DRA*, *HLA-DRB1*, *HLA-DRB2*, *HLA-DRB3*, *HLA-DRB4*, *HLA-DRB5*, *HLA-DRB6*, *HLA-DRB7*, *HLA-DRB8*, *HLA-DRB9*. HLA-HD uses Bowtie⁴⁷ to align WES data to the reference genome. Only segments of 50 base pairs or longer were used, as the Bowtie2 aligner documentation recommended. We used the IPD-IMGT/HLA release 3.45.0. The entire pipeline was implemented on DNAnexus (Palo Alto, California, USA) using the Workflow Description Language (WDL). Two separate Docker⁵¹ images were used in the workflow: 1) the broadinstitute/gatk⁵² image to convert CRAM files to FASTA, and 2) a Docker image containing HLA-HD and its dependencies for the HLA calling.

HLA allele calls processing

Final HLA allele calls were first transferred to our local computing cluster. While these files will be made available through the UKB return of data program, for the remainder of the analyses in this paper, we only used HLA calls with a total coverage of 20 reads at exon 2, except for *HLA-DRB2* and *HLA-DRB8*, where a total coverage of 20 reads at exon 3 was used since these two genes do not have a second exon.

We used an additional heuristic approach to assign alleles at the *HLA-DRB3*, *HLA-DRB4*, and *HLA-DRB5* genes. Like other HLA allele calling from sequencing technology algorithms, HLA-HD may provide calls for the *HLA-DRB3-4-5* genes if some reads

aligned to one of these genes, even if a participant may not truly carry a copy of them (in which case this alignment would be incorrect). This is because while everyone has two copies of the *HLA-DRB1* gene (maternal and paternal), each copy can sometimes (but not always) be inherited along with a copy of either *HLA-DRB3*, *HLA-DRB4*, or *HLA-DRB5*, for a total of 2 to 4 *HLA-DRB* genes: two *HLA-DRB1*, and a combination of zero to two of any of the other three genes. Hence, it is not sufficient to use the HLA-HD calls at these genes; one must also quantify the number of reads at these genes and compare them to a “reference” to decide which of these genes (if any, and how many) are carried by each individual. Here, a natural “reference” would be the quantity of *HLA-DRB1* measured in a participant since these genes are in high LD. Intuitively, a participant with a very low quantity of *HLA-DRB3-4-5* compared to *HLA-DRB1* should not carry any of the *HLA-DRB3-4-5* genes. On the other hand, if the quantity of *HLA-DRB3-4-5* is the same as that of *HLA-DRB1*, then the participant should have 2 of these genes (any combination of *HLA-DRB3*, 4, or 5). A similar logic applies to participants who carry only one copy of an *HLA-DRB3-4-5* gene, as they would be expected to have half as many reads at these genes than at *HLA-DRB1*. Hence, we compared the number of reads at exon 2 at the *HLA-DRB* genes to decide which one to assign and used this heuristics-based approach to assign alleles at *HLA-DRB3-4-5*. For every participant, if one of their *HLA-DRB3-4-5* allele calls had a total coverage of 60% of the *HLA-DRB1* coverage (and still more than 20), we used the two alleles for this gene as called by HLA-HD. For example, if a participant had a mean *HLA-DRB1* coverage of 100 and a mean *HLA-DRB4* coverage of 60, we assigned both *HLA-DRB4* alleles to this participant. Otherwise, if one or more of their alleles had a mean coverage of 30% or more of the *HLA-DRB1* coverage, we assigned them the first called allele by HLA-HD from the respective genes. For example, the same participant with an *HLA-DRB1* coverage of 100 having an *HLA-DRB4* coverage of 30 and an *HLA-DRB5* coverage of 30 would be assigned the first allele of each of these genes. If no alleles from *HLA-DRB3-4-5* fulfilled these conditions, the participant was assigned no alleles from those genes.

Using these allele calls, we also assigned amino acid polymorphisms at each position of the 19 protein-coding genes: *HLA-A*, *HLA-B*, *HLA-C*, *HLA-E*, *HLA-F*, *HLA-G*, *HLA-DMA*, *HLA-DMB*, *HLA-DOA*, *HLA-DOB*, *HLA-DPA1*, *HLA-DPB1*, *HLA-DQA1*, *HLA-DQB1*, *HLA-DRA*, *HLA-DRB1*, *HLA-DRB3*, *HLA-DRB4*, *HLA-DRB5*. We then converted these allele and amino acid calls into VCF⁵³ (with dummy positions) and PLINK⁵⁴ binary files for our analyses. For the 2-field HLA allele analyses, we trimmed the 3-field alleles to two fields by removing the 3rd field and the change in expression suffix (when present). All data processing was performed using R⁵⁵ (v4.1.0), BCFtools⁵⁶ (v1.11-1-g87d355e), and PLINK (v1.9).

Genetic ancestry assignment and principal components

We used the somatic chromosomes imputed genome-wide genotypes from the UKB to assign 1000 Genome continental genetic ancestry to every participant (AFR, AMR, EAS, EUR, and SAS). To do this, we first selected variants with minor allele frequency (MAF) > 10%, call rate > 95%, Hardy-Weinberg equilibrium (HWE) p-value > 10⁻¹⁰, and which are part of the 1000G reference panel. We trained a random forest classifier for genetic ancestries using the first 6 PCs of the 1000G reference. We then projected the pruned UKB genotypes on the 1000G reference PCs and assigned genetic ancestries using the majority call from our classifier.

To compute principal components (PCs) to use as covariates in our association tests, we split participants by their genetic ancestry group and kept only variants with MAF > 1%, minimum allele count (MAC) > 100, call rate > 95%, and HWE p-value > 10^{-10} . These were then LD pruned with the $r^2 < 0.2$ threshold, and the resulting variants were used to obtain PCs. For the European ancestry group, we used fast approximate PCs due to the large number of individuals, as implemented in PLINK⁵⁷ (v2.0).

All analyses and computations for this section were done using PLINK (v1.9 and v2.0), BCFtools, or R.

Comparisons with UK Biobank HLA allele imputation

HLA calls were compared to the available UKB imputed HLA alleles obtained with HLA:IMP*2¹³ (data field 22182) for the following genes: *HLA-A*, *HLA-B*, *HLA-C*, *HLA-DQA1*, *HLA-DQB1*, *HLA-DPA1*, *HLA-DPB1*, *HLA-DRB1*, *HLA-DRB3*, *HLA-DRB4*, *HLA-DRB5*. Alleles ending in 99:01 were considered unimputed, and alleles with imputation dosage less than 0.8 were set to 0 as per UKB documentation. The strategy and results of comparison between the imputed and sequenced alleles are presented in supplementary tables **ST5-10**. Individual-specific allele frequency was computed as the mean of the frequencies of the two corresponding alleles. For each gene, concordance was calculated by summing the number of matching alleles between imputed and called alleles across participants and dividing by twice the number of participants. Since this did not take changes in IMGT-HLA into account, we also calculated an adjusted concordance using only sequenced alleles that were also found in the imputation tool's reference database.

HLA allele LD

We computed multiallelic asymmetric LD²³ for each HLA gene. This was done for each ancestry separately as well as globally for the entire cohort. In each analysis, we assigned a dummy allele to unsequenced alleles and alleles with frequency < 1%. This analysis provides conditional LD for any pair of genes (e.g., LD of *HLA-A* conditional on *HLA-B*, and vice versa). We then took the average of the conditional LD pair to create a correlation heatmap clustered using the R hclust function with the “average” clustering method. The first 5 hclust clusters were highlighted by rectangles in the heatmaps. This section was done with R.

Allele frequency comparison to reference panel

To compare allele frequencies from WES HLA calling to reported reference frequencies, we used the AFND²⁴ to find cohorts with reported HLA allele frequencies and with genetic ancestries comparable to those in the UK Biobank. Specifically, for each 1000 Genome continental genetic ancestry (AFR, AMR, EAS, EUR, and SAS), we found a similar cohort in the AFND based on reported ancestry and country of origin. When multiple cohorts were available, we prioritized the one with the largest sample size. We only looked for cohorts with a sample size larger than 500 and reported as high quality (“gold population standard”). Additionally, we only used cohorts if the sum of all reported allele frequencies for each gene was 1. Lastly, we used allele frequencies reported at an accuracy of 2-field since the largest high-quality cohorts did not report frequencies at 3-field. Note that this analysis was restricted to classical HLA genes, given the sparsity of high-quality data on other genes in the AFND. A complete list of AFND cohorts used as comparators can be found in supplementary table **ST26**. Lastly, all allele frequency comparisons between the UKB WES HLA allele calls and the selected AFND reference cohort were made separately for each genetic ancestry.

Phenotypes classifications

We selected 11 phenotypes with known associations with HLA alleles to have multiple true positive and true negative results to check for in our association results. We used either ICD-10 codes from hospitalization electronic medical records data (data fields 41202 and 41204), disease-specific data fields (e.g., data field 6152, option 8, for asthma), or self-reports (data field 20002), depending on the disease. The choices of data fields and ICD-10 codes (supplementary table **ST17**) were based on previous studies^{26,27,58} validating their use and reviewed by a board-certified physician (GBL). These data fields were aggregated directly on the DNAnexus web service.

HLA allele and amino acid association studies

Regenie³⁶ (v2.2.4) was used for all association tests (2-field HLA alleles, 3-field HLA alleles, and amino acids). Regenie works in two steps. In the first one, a risk score for the given phenotype is assigned to each chromosome for each participant by ridge regression. In this step, we used the ancestry-specific pruned whole-genome genotyped data, the same as for the ancestry-specific PCs described previously. In the second step, each chromosome score is used as a covariate in the association model to adjust for kinship structure and polygenic background. To avoid proximal contamination, this association model does not use the score of the chromosome where the variant is located (so-called LOCO scheme) since this score may already include the effect of the given variant. Hence, in Regenie's second step, we used PLINK binary files with assigned chromosome 6 and a dummy chromosomal position for each HLA allele and amino acid. This ensured that kinship was accounted for without adjusting for the effect of variants on chromosome 6 in the null model. Our association model also included age, sex, and the first 10 PCs as covariates. The approximate Firth regression method was used for all association tests to provide unbiased effect estimates even for rarer alleles and amino acids while accounting for case-control imbalance. For amino acids, we used alignment provided by the IMGT-HLA⁵⁹ to determine residue positions, and we excluded indel sequences from the analysis (i.e. those that correspond to either an insertion of additional amino acid residues to the protein or to a deletion of residues from the same protein). Other specific Regenie parameters included a minimal case count of 50, a genotype size blocks of 1,000 in step 1 and 400 in step 2 (based on Regenie's UKB documentation), a Firth regression p-value threshold of 0.1 with back-corrected standard error (--firth-se), a minimum MAC of 1, and the --htp option. All analyses were done separately per ancestry, then meta-analyzed using fixed effect inverse variance weights in METAL³⁷. For the statistical significance threshold, we mimicked the common situation where a researcher performs the HLA association study following the result of a GWAS with a locus at the HLA. Hence, we used the usual 5×10^{-8} genome-wide significance threshold⁶⁰ divided by 11 (the number of phenotypes used).

Determining if a sequenced HLA allele association was novel

We used two sources to determine if an allele association was novel. We first used the HLA-SPREAD database³⁹, which used a natural language processing algorithm to scan 28 million PubMed abstracts for HLA allele associations. If an allele association was reported in the database, it was not deemed novel. For the remaining potentially novel associations, we performed the same HLA allele association analysis as above but used the imputed HLA alleles instead of the WES-based ones. If an allele was genome-wide significant in both ($p < 5 \times 10^{-8}/11$), the WES-based HLA allele association was considered potentially not novel, as it could have been reported in a previous study

using the UKB, though we recognize that we may still be the first to report it formally and that this is likely an overly conservative assessment of novelty.

Conditional analyses

To further confirm the novelty of the allele associations found above, we used GCTA-COJO⁶¹ to perform conditional analyses (--cojo-cond with --cojo-joint) on each significant phenotype-allele combinations found in the 2-field analysis.

Replication analyses in the Estonian Biobank

The Estonian Biobank is a population-based biobank with 212,955 participants in the current data freeze (2022v2). All biobank participants have signed a broad informed consent form and information on ICD codes is obtained via regular linking with the national Health Insurance Fund and other relevant databases, with majority of the electronic health records having been collected since 2004⁶². The diagnosis of autoimmune diseases were based on ICD-10 and ATC codes listed in supplementary table **ST17**. Analyses were restricted to individuals with European ancestry.

HLA imputation of the EstBB genotype data was performed at the Broad Institute using the SNP2HLA tool¹². The imputation was done for genotype data generated on the Global Screening Array v1. We performed separate additive logistic regression analysis with the imputed HLA alleles using SAIGE v1.0.7 with standard binary trait settings⁶³. Logistic regression was carried out with adjustment for current age, age², sex and 10 PCs as covariates, analyzing only variants with a minimum minor allele count of 2.

Synonymous variant association tests: comparisons of two field and 3 field HLA allele associations

We compared association results of 3-field HLA alleles belonging to the same 2-field class to check if adding synonymous variants would change association results. To do this, we limited our analyses to 2-field HLA alleles for which there was at least one statistically significant 3-field HLA allele for any given phenotype ($p < 5 \times 10^{-8}/11$). We then examined four scenarios:

- 1) In cases with more than one statistically significant 3-field allele, we compared beta estimates of all alleles to the one with the lowest p-value using the t-test for unequal variances in R (Welch's t-test using the beta and standard error from Regenie in the HLA association studies above).
- 2) In cases with only one statistically significant 3-field allele and one or more statistically non-significant 3-field alleles, we also directly compared the beta estimate of the significant 3-field allele to the beta estimate of each of the other alleles using Welch's t-test.
- 3) In cases with only one significant 3-field allele and multiple non-significant 3-field alleles, we collapsed all non-significant 3-field alleles into a single allele. We then performed an association test of carrying this collapsed allele using the same covariates as our association tests above and compared the beta from that collapsed allele to the beta from the significant 3-field allele using Welch's t-test. For example, if the *HLA-A*01:01:01* allele was significant for a phenotype, but the *HLA-A*01:01:02* and *HLA-A*01:01:03* were not. We collapsed the latter two alleles into one and obtained a score of 0, 1, or 2 for each participant if they had

none of these alleles, any one of the two, or any two of them, respectively. This score was then used as our regressor.

Note that this is equivalent to performing a gene-based burden test at any given HLA gene (here *HLA-A*), using only the count of statistically non-significant alleles (here *HLA-A*01:01:02* and *HLA-A*01:01:03*) as the burden measurement to use as a regressor. This is precisely the way it was coded in Regenie to perform the analyses across HLA genes (either “--build-mask sum” or “--build-mask comphet” options). These burden tests were performed again separately for each ancestry and meta-analyzed as above.

- 4) Lastly, if there were multiple statistically significant 3-field alleles, but there remained non-significant 3-field alleles too, we also compared the non-significant 3-field alleles to the most significant 3-field alleles as per situation 2 or 3 above, depending on how many non-significant 3-field alleles there were.

To determine if Welch’s t-test was statistically significant, we used a Bonferroni correction for the number of Welch’s t-tests divided by the number of tests performed in this section (i.e., $p < 0.05/307$).

Canonical correlation analysis

We used CCA⁶⁴ to find the total fraction of sequenced HLA alleles variance accounted for by the imputed HLA alleles. We assigned a value of 0, 1, or 2 to each allele (imputed and sequenced) based on whether it was absent, heterozygous, or homozygous, respectively. We then used the resulting two matrices as input to the yacca CCA R package⁶⁵, and obtained the total canonical redundancy⁶⁶ for sequenced HLA alleles (i.e. how much the imputed alleles were able to explain the sequenced alleles). This was done at multiple levels of sequenced allele frequencies: > 0.01%, > 0.1%, > 1%, > 5%, > 10%, and > 20%.

Polygenic risk score

We used polygenic risk scores to determine if the additional precision obtained from HLA sequencing at 3-field resolution would improve disease prediction performance. We first used the GWAS Catalog⁶⁷ to find GWAS summary statistics for our 11 phenotypes. We limited our search to studies with complete summary statistics, excluding those which only shared the most significant associations. We found complete summary statistics for 8 of those phenotypes: asthma²⁶, coeliac disease⁶⁸, type I diabetes mellitus⁶⁹, multiple sclerosis/demyelinating disease⁷⁰, psoriasis³³, rheumatoid arthritis⁷¹, and ulcerative colitis⁷². Unfortunately, all found GWAS were on participants of European genetic ancestry, except for rheumatoid arthritis, which also contained East Asian ancestry participants (34.5% of the 103,638 participants in the GWAS). However, we used the entire UKB cohort for our polygenic risk score training and testing (regardless of ancestry assignment).

We computed a polygenic score from those summary statistics using the LDpred software⁷³ with the European HapMap⁷⁴ pre-compiled reference panel obtained from the LDpred developers (i.e. 1,054,330 variants). We used LDpred’s genomic best linear unbiased predictor method (LDpred-inf, i.e. `snp_ldpred2_inf` in R). This was done in two ways: 1) using the GWAS summary statistics genome-wide, and 2) after removal of the chromosome 6 MHC region +/- 500kbp (i.e. GRCh37: 27,977,797 to 33,948,354;

GRCh38: 28,010,120 to 33,980,577). Two LDpred scores were then assigned to each participant in the UKB (with and without the HLA region).

We then randomly split the participant set into a training set and a testing set at an 80/20 ratio and trained an XGBoost⁷⁵ random forest binary classifier using age, sex, the first 10 PCs (those projected on the 1000G reference), and either of the following three sets of variables: 1) using only the LDpred score (with the HLA region), 2) using the LDpred score without the HLA region, and the imputed HLA alleles and 3) using the LDpred score without the HLA region, and the sequenced HLA alleles at the 3-field resolution. The HLA alleles were assigned a value of 0, 1, or 2, as described in the CCA section above. The log loss was used with 5-fold cross-validation on the training set. We used a Bayesian optimization algorithm to tune the following XGBoost hyperparameters: max_depth, min_child_weight, eta, gamma, subsample, colsample_bytree, and max_delta_step. After training, we tested our 3 risk scores in the testing set and compared them using the AUC of the receiver operator characteristic curve. XGboost model training and testing was done on R.

Protein normal mode analysis and contact map

To study the interaction between the HLA-DQA1 and HLA-DQB2 heterodimer, we used the PDB file from the 5KSV entry of the Protein Data Bank^{76,77}, which gives the crystal structure of the HLA-DQ2.5 heterodimer (proteins of the *HLA-DQA1*05:01* and *HLA-DQB1*02:01*, with part of its CD74 ligand). Normal mode analysis was done using the C-alpha model with default options with the bio3d package⁷⁸ (v2.3-0) on R. Contact map was also done using the bio3d package.

Code and data availability:

All code is available on https://github.com/DrGBL/HLA_UKB. The primary data used for all analyses (i.e. WES CRAM files) is available through the UK Biobank DNAnexus research analysis platform. All summary statistics can be found in the supplements.

Ethics

The UKB was approved by the Northwest Multi-centre Research Ethics (approval number: 11/NW/0382). The activities of the EstBB are regulated by the Human Genes Research Act, which was adopted in 2000 specifically for the operations of EstBB. Individual level data analysis in EstBB was carried out under ethical approval 1.1-12/624 from the Estonian Committee on Bioethics and Human Research (Estonian Ministry of Social Affairs), using data according to release application 6-7/GI/8592 from the Estonian Biobank. Informed consent was obtained from all participants.

Acknowledgements

We want to acknowledge the participants of the Estonian Biobank for their contributions. The Estonian Biobank analyses were partially carried in the High Performance Computing Center, University of Tartu.

Summary of supplementary files:

Tables:

ST1: HLA gene read coverage.

ST2: HLA allele frequencies (3-field)

ST3: HLA allele frequencies (2-field)

ST4: Mean allele frequencies of mismatched alleles between our HLA calls and the UK Biobank imputed alleles.

ST5: Full breakdown of imputed and sequenced alleles comparisons (all ancestries combined).

ST6: Full breakdown of imputed and sequenced alleles comparisons (AFR ancestry).

ST7: Full breakdown of imputed and sequenced alleles comparisons (AMR ancestry).

ST8: Full breakdown of imputed and sequenced alleles comparisons (EAS ancestry).

ST9: Full breakdown of imputed and sequenced alleles comparisons (EUR ancestry).

ST10: Full breakdown of imputed and sequenced alleles comparisons (SAS ancestry).

ST11: Asymmetric multiallelic LD between HLA alleles (all ancestries combined).

ST12: Asymmetric multiallelic LD between HLA alleles (AFR ancestry).

ST13: Asymmetric multiallelic LD between HLA alleles (AMR ancestry).

ST14: Asymmetric multiallelic LD between HLA alleles (EAS ancestry).

ST15: Asymmetric multiallelic LD between HLA alleles (EUR ancestry).

ST16: Asymmetric multiallelic LD between HLA alleles (SAS ancestry).

ST17: Codes used to assign each phenotype to participants.

ST18: Phenotypes analyzed for each genetic ancestry.

ST19: Full summary statistics.

ST20: Potentially novel alleles and comparisons with the EstBB imputed results.

ST21: Biallelic LD for the significant variants (only pairs of variants with $R^2 > 0.2$ are shown).

ST22: Conditional analyses.

ST23: Summary statistics of synonymous variants.

ST24: Canonical correlation analysis between imputed and sequenced alleles.

ST25: Summary of polygenic scores AUC

ST26: AFND cohorts used for reference allele frequencies.

Figures:

SF1: Histograms of average coverage per gene.

SF2: Number of alleles found per ancestry (MAF > 0.1%).

SF3: Association between allele frequency and concordance rate.

SF4: Asymmetric multiallelic linkage disequilibrium heatmaps.

SF5: Correlation between UKB WES HLA calling allele frequencies and AFND reference cohort HLA allele frequencies.

SF6: Summary plot of 3-field significant allele associations (including potential variant novelty).

SF7: Canonical correlation analysis between imputed and sequenced alleles.

SF8: Precision-recall PRS curves.

References

1. Janeway, C. *Immunobiology 5th: the immune system in health and disease*. (Garland Pub., 2001).
2. Butler-Laporte, G. *et al.* Genetic Determinants of Antibody-Mediated Immune Responses to Infectious Diseases Agents: A Genome-Wide and HLA Association Study. *Open forum Infect. Dis.* **7**, ofaa450 (2020).
3. Matzaraki, V., Kumar, V., Wijmenga, C. & Zernakova, A. The MHC locus and genetic susceptibility to autoimmune and infectious diseases. *Genome Biol.* **18**, 76 (2017).
4. Patsopoulos, N. A. *et al.* Fine-Mapping the Genetic Association of the Major Histocompatibility Complex in Multiple Sclerosis: HLA and Non-HLA Effects. *PLOS Genet.* **9**, e1003926 (2013).
5. Tian, C. *et al.* Genome-wide association and HLA region fine-mapping studies identify susceptibility loci for multiple common infections. *Nat. Commun.* **8**, 599

- (2017).
6. Waage, J. *et al.* Genome-wide association and HLA fine-mapping studies identify risk loci and genetic pathways underlying allergic rhinitis. *Nat. Genet.* **50**, 1072–1080 (2018).
 7. Yu, E. *et al.* Fine mapping of the HLA locus in Parkinson's disease in Europeans. *npj Park. Dis.* **7**, 84 (2021).
 8. Cook, S. *et al.* Accurate imputation of human leukocyte antigens with CookHLA. *Nat. Commun.* **12**, 1264 (2021).
 9. Naito, T. *et al.* A deep learning method for HLA imputation and trans-ethnic MHC fine-mapping of type 1 diabetes. *Nat. Commun.* **12**, 1639 (2021).
 10. Luo, Y. *et al.* A high-resolution HLA reference panel capturing global population diversity enables multi-ancestry fine-mapping in HIV host response. *Nat. Genet.* **53**, 1504–1516 (2021).
 11. Zheng, X. *et al.* HIBAG—HLA genotype imputation with attribute bagging. *Pharmacogenomics J.* **14**, 192–200 (2014).
 12. Jia, X. *et al.* Imputing Amino Acid Polymorphisms in Human Leukocyte Antigens. *PLoS One* **8**, e64683 (2013).
 13. Diltthey, A. *et al.* Multi-Population Classical HLA Type Imputation. *PLOS Comput. Biol.* **9**, e1002877 (2013).
 14. Naito, T. & Okada, Y. HLA imputation and its application to genetic and molecular fine-mapping of the MHC region in autoimmune diseases. *Semin. Immunopathol.* **44**, 15–28 (2022).
 15. Adams, S. D. *et al.* Ambiguous allele combinations in HLA Class I and Class II sequence-based typing: when precise nucleotide sequencing leads to imprecise allele identification. *J. Transl. Med.* **2**, 30 (2004).
 16. Bycroft, C. *et al.* The UK Biobank resource with deep phenotyping and genomic data. *Nature* **562**, 203–209 (2018).
 17. Backman, J. D. *et al.* Exome sequencing and analysis of 454,787 UK Biobank participants. *Nature* **599**, 628–634 (2021).
 18. Kawaguchi, S., Higasa, K., Shimizu, M., Yamada, R. & Matsuda, F. HLA-HD: An accurate HLA typing algorithm for next-generation sequencing data. *Hum. Mutat.* **38**, 788–797 (2017).
 19. Liu, P. *et al.* Benchmarking the Human Leukocyte Antigen Typing Performance of Three Assays and Seven Next-Generation Sequencing-Based Algorithms. *Frontiers in Immunology* vol. 12 (2021).
 20. Degenhardt, F. *et al.* Transethnic analysis of the human leukocyte antigen region for ulcerative colitis reveals not only shared but also ethnicity-specific disease associations. *Hum. Mol. Genet.* **30**, 356–369 (2021).
 21. Allele Frequency Net Database. <http://www.allelefrequencies.net/pop6003a.asp>.
 22. Single, R. M. *et al.* Demographic history and selection at HLA loci in Native Americans. *PLoS One* **15**, e0241282 (2020).
 23. Thomson, G. & Single, R. M. Conditional asymmetric linkage disequilibrium (ALD): extending the biallelic r^2 measure. *Genetics* **198**, 321–331 (2014).
 24. Gonzalez-Galarza, F. F. *et al.* Allele frequency net database (AFND) 2020 update: gold-standard data classification, open access genotype data and new query tools. *Nucleic Acids Res.* **48**, D783–D788 (2020).
 25. Reveille, J. D. *et al.* Genome-wide association study of ankylosing spondylitis identifies non-MHC susceptibility loci. *Nat. Genet.* **42**, 123–127 (2010).
 26. Han, Y. *et al.* Genome-wide analysis highlights contribution of immune system pathways to the genetic architecture of asthma. *Nat. Commun.* **11**, 1776 (2020).
 27. Saevardottir, S. *et al.* FLT3 stop mutation increases FLT3 ligand level and risk of

- autoimmune thyroid disease. *Nature* **584**, 619–623 (2020).
28. van Heel, D. A. *et al.* A genome-wide association study for celiac disease identifies risk variants in the region harboring IL2 and IL21. *Nat. Genet.* **39**, 827–829 (2007).
 29. Mahdi, B. M. Role of HLA typing on Crohn's disease pathogenesis. *Ann. Med. Surg.* **4**, 248–253 (2015).
 30. Sharp, S. A. *et al.* Development and Standardization of an Improved Type 1 Diabetes Genetic Risk Score for Use in Newborn Screening and Incident Diagnosis. *Diabetes Care* **42**, 200–207 (2019).
 31. Patsopoulos, N. A. *et al.* Multiple sclerosis genomic map implicates peripheral immune cells and microglia in susceptibility. *Science (80-.)*. **365**, eaav7188 (2019).
 32. Carmona, F. D. *et al.* A Genome-wide Association Study Identifies Risk Alleles in Plasminogen and P4HA2 Associated with Giant Cell Arteritis. *Am. J. Hum. Genet.* **100**, 64–74 (2017).
 33. Tsoi, L. C. *et al.* Identification of 15 new psoriasis susceptibility loci highlights the role of innate immunity. *Nat. Genet.* **44**, 1341–1348 (2012).
 34. Ishigaki, K. *et al.* Multi-ancestry genome-wide association analyses identify novel genetic mechanisms in rheumatoid arthritis. *Nat. Genet.* **54**, 1640–1651 (2022).
 35. McGovern, D. P. B. *et al.* Genome-wide association identifies multiple ulcerative colitis susceptibility loci. *Nat. Genet.* **42**, 332–337 (2010).
 36. Mbatchou, J. *et al.* Computationally efficient whole-genome regression for quantitative and binary traits. *Nat. Genet.* **53**, 1097–1103 (2021).
 37. Willer, C. J., Li, Y. & Abecasis, G. R. METAL: fast and efficient meta-analysis of genomewide association scans. *Bioinformatics* **26**, 2190–2191 (2010).
 38. Poddubnyy, D. Classification vs diagnostic criteria: the challenge of diagnosing axial spondyloarthritis. *Rheumatology* **59**, iv6–iv17 (2020).
 39. Dholakia, D., Kalra, A., Misir, B. R., Kanga, U. & Mukerji, M. HLA-SPREAD: a natural language processing based resource for curating HLA association from PubMed abstracts. *BMC Genomics* **23**, 10 (2022).
 40. Zhao, Y. E., Ma, J. X., Hu, L., Xiao, S. X. & Zhao, Y. L. Meta-analysis of the association between psoriasis and human leucocyte antigen-B. *Br. J. Dermatol.* **169**, 417–427 (2013).
 41. Rizzo, R., Bortolotti, D., Bolzani, S. & Fainardi, E. HLA-G Molecules in Autoimmune Diseases and Infections . *Frontiers in Immunology* vol. 5 (2014).
 42. Cirulli, E. T. The Increasing Importance of Gene-Based Analyses. *PLoS Genet.* **12**, e1005852 (2016).
 43. Gerasimou, P. *et al.* Combined effect of glutamine at position 70 of HLA-DRB1 and alanine at position 57 of HLA-DQB1 in type 1 diabetes: An epitope analysis. *PLoS One* **13**, e0193684 (2018).
 44. Rønningen, K. S., Iwe, T., Halstensen, T. S., Spurkland, A. & Thorsby, E. The amino acid at position 57 of the HLA-DQ beta chain and susceptibility to develop insulin-dependent diabetes mellitus. *Hum. Immunol.* **26**, 215–225 (1989).
 45. Kwok, W. W., Domeier, M. E., Johnson, M. L., Nepom, G. T. & Koelle, D. M. HLA-DQB1 codon 57 is critical for peptide binding and recognition. *J. Exp. Med.* **183**, 1253–1258 (1996).
 46. Liu, C. A long road/read to rapid high-resolution HLA typing: The nanopore perspective. *Hum. Immunol.* **82**, 488–495 (2021).
 47. Langmead, B. & Salzberg, S. L. Fast gapped-read alignment with Bowtie 2. *Nat. Methods* **9**, 357–359 (2012).
 48. D'Antonio, M. *et al.* Systematic genetic analysis of the MHC region reveals

- mechanistic underpinnings of HLA type associations with disease. *Elife* **8**, e48476 (2019).
49. Broad Institute. Picard Toolkit. *GitHub Repository* <https://github.com/broadinstitute/picard> (2019).
 50. GATK Team. Human genome reference builds - GRCh38 or hg38 - b37 - hg19. <https://gatk.broadinstitute.org/hc/en-us/articles/360035890951-Human-genome-reference-builds-GRCh38-or-hg38-b37-hg19>.
 51. Merkel, D. Docker: Lightweight Linux Containers for Consistent Development and Deployment. *Linux J.* **2014**, (2014).
 52. Broad Institute. Official release repository for GATK versions 4.x. <https://hub.docker.com/r/broadinstitute/gatk/>.
 53. Danecek, P. *et al.* The variant call format and VCFtools. *Bioinformatics* **27**, 2156–2158 (2011).
 54. Weeks, J. P. plink: An R Package for Linking Mixed-Format Tests Using IRT-Based Methods. *J. Stat. Softw.* **35**, 1–33 (2010).
 55. R Core Team. R: A Language and Environment for Statistical Computing. (2022).
 56. Danecek, P. *et al.* Twelve years of SAMtools and BCFtools. *Gigascience* **10**, (2021).
 57. Galinsky, K. J. *et al.* Fast Principal-Component Analysis Reveals Convergent Evolution of ADH1B in Europe and East Asia. *Am. J. Hum. Genet.* **98**, 456–472 (2016).
 58. Glanville, K. P., Coleman, J. R. I., O'Reilly, P. F., Galloway, J. & Lewis, C. M. Investigating Pleiotropy Between Depression and Autoimmune Diseases Using the UK Biobank. *Biol. Psychiatry Glob. Open Sci.* **1**, 48–58 (2021).
 59. Robinson, J. *et al.* IPD-IMGT/HLA Database. *Nucleic Acids Res.* **48**, D948–D955 (2020).
 60. Pe'er, I. *et al.* Estimation of the multiple testing burden for genomewide association studies of nearly all common variants. *Genet Epidemiol* (2008) doi:10.1002/gepi.20303.
 61. Yang, J. *et al.* Conditional and joint multiple-SNP analysis of GWAS summary statistics identifies additional variants influencing complex traits. *Nat. Publ. Gr.* **44**, 369–375 (2012).
 62. Leitsalu, L. *et al.* Cohort Profile: Estonian Biobank of the Estonian Genome Center, University of Tartu. *Int. J. Epidemiol.* **44**, 1137–1147 (2015).
 63. Zhou, W. *et al.* SAIGE-GENE+ improves the efficiency and accuracy of set-based rare variant association tests. *Nat. Genet.* **54**, 1466–1469 (2022).
 64. Canonical Correlation Analysis BT - Applied Multivariate Statistical Analysis. in (eds. Härdle, W. & Simar, L.) 321–330 (Springer Berlin Heidelberg, 2007). doi:10.1007/978-3-540-72244-1_14.
 65. Butts, C. T. yacca: Yet Another Canonical Correlation Analysis Package. (2022).
 66. Stewart, D. & Love, W. A general canonical correlation index. *Psychol. Bull.* **70**, 160–163 (1968).
 67. Buniello, A. *et al.* The NHGRI-EBI GWAS Catalog of published genome-wide association studies, targeted arrays and summary statistics 2019. *Nucleic Acids Res.* (2019) doi:10.1093/nar/gky1120.
 68. Dubois, P. C. A. *et al.* Multiple common variants for celiac disease influencing immune gene expression. *Nat. Genet.* **42**, 295–302 (2010).
 69. Chiou, J. *et al.* Interpreting type 1 diabetes risk with genetics and single-cell epigenomics. *Nature* **594**, 398–402 (2021).
 70. Beecham, A. H. *et al.* Analysis of immune-related loci identifies 48 new susceptibility variants for multiple sclerosis. *Nat. Genet.* **45**, 1353–1360 (2013).

71. Okada, Y. *et al.* Genetics of rheumatoid arthritis contributes to biology and drug discovery. *Nature* **506**, 376–381 (2014).
72. Liu, J. Z. *et al.* Association analyses identify 38 susceptibility loci for inflammatory bowel disease and highlight shared genetic risk across populations. *Nat. Genet.* **47**, 979–86 (2015).
73. Privé, F., Arbel, J. & Vilhjálmsson, B. J. LDpred2: better, faster, stronger. *Bioinformatics* **36**, 5424–5431 (2020).
74. Frazer, K. A. *et al.* A second generation human haplotype map of over 3.1 million SNPs. *Nature* **449**, 851–861 (2007).
75. Chen, T. & Guestrin, C. XGBoost: A scalable tree boosting system. in *Proceedings of the ACM SIGKDD International Conference on Knowledge Discovery and Data Mining* vols 13-17-Aug 785–794 (ACM Press, 2016).
76. Nguyen, T.-B. *et al.* Unraveling the structural basis for the unusually rich association of human leukocyte antigen DQ2.5 with class-II-associated invariant chain peptides. *J. Biol. Chem.* **292**, 9218–9228 (2017).
77. Nguyen, T.B., Jayaraman, P., Bergseng, E., Madhusudhan, M.S., Kim, C.-Y., Sollid, L. M. 5KSV. *Protein Data Bank* <https://www.rcsb.org/structure/5KSV> (2016).
78. Grant, B. J., Rodrigues, A. P. C., ElSawy, K. M., McCammon, J. A. & Caves, L. S. D. Bio3d: an R package for the comparative analysis of protein structures. *Bioinformatics* **22**, 2695–2696 (2006).

Marker	Beta (log-Odds Ratio)	Standard Error	P-value	Direction	AF
Ankylosing Spondylitis (EUR)					
<i>HLA-B*27:05:02</i>	1.88	0.05	5.86x10 ⁻³⁰⁵	+	0.04
<i>HLA-C*02:02:02</i>	1.31	0.06	2.76x10 ⁻⁹⁴	+	0.03
<i>HLA-C*01:02:01</i>	1.33	0.07	1.65x10 ⁻⁹²	+	0.03
<i>HLA-B*07:02:01</i>	-0.48	0.06	1.50x10 ⁻¹⁷	-	0.14
<i>HLA-DRB1*01:03:01</i>	0.81	0.10	4.81x10 ⁻¹⁵	+	0.02
Asthma (AFR, AMR, EAS, EUR, SAS)					
<i>HLA-DRB1*04:01:01</i>	0.20	0.01	1.69x10 ⁻⁹⁶	+++++	0.11
<i>HLA-DRB8*01:01</i>	0.09	0.005	7.79x10 ⁻⁷⁴	+++++	0.57
<i>HLA-DRB7*01:01:01</i>	0.08	0.005	5.75x10 ⁻⁶⁴	+++++	0.48
<i>HLA-DRA*01:01:01</i>	0.08	0.007	1.35x10 ⁻³⁰	+++++	0.57
<i>HLA-DRB1*13:01:01</i>	-0.17	0.01	1.38x10 ⁻³⁰	----	0.05
Auto-immune thyroid disorders (AFR, AMR, EAS, EUR, SAS)					
<i>HLA-DQA1*01:02:01</i>	-0.22	0.01	4.04x10 ⁻⁹⁰	++---	0.17
<i>HLA-DRB1*15:01:01</i>	-0.20	0.01	7.11x10 ⁻⁶⁰	+++++	0.14
<i>HLA-DRA*01:02:03</i>	-0.20	0.01	9.34x10 ⁻⁵⁹	++---	0.14
<i>HLA-DRA*01:01:01</i>	0.14	0.009	1.32x10 ⁻⁵³	+++++	0.57
<i>HLA-DRB1*04:01:01</i>	0.19	0.01	2.73x10 ⁻⁴⁹	++++-	0.11
Coeliac (EUR)					
<i>HLA-DQB1*02:01:08</i>	0.96	0.04	6.42x10 ⁻¹¹⁰	+	0.05
<i>HLA-DRB1*03:147</i>	0.70	0.03	2.40x10 ⁻⁹¹	+	0.10
<i>HLA-DRB7*01:01:02</i>	0.70	0.04	3.13x10 ⁻⁷⁷	+	0.09
<i>HLA-H*02:01:01</i>	-0.72	0.04	9.88x10 ⁻⁷³	-	0.21
<i>HLA-DQB1*02:80</i>	1.05	0.07	1.05x10 ⁻⁵⁵	+	0.02
Crohn's (EUR, SAS)					
<i>HLA-DRB1*01:03:01</i>	1.03	0.08	9.97x10 ⁻⁴¹	+-	0.016
Diabetes mellitus (type 1) (AFR, EUR, SAS)					
<i>HLA-DRB1*04:01:01</i>	0.72	0.03	1.53x10 ⁻¹¹⁹	++-	0.11
<i>HLA-DQB1*03:02:01</i>	0.77	0.03	1.69x10 ⁻¹¹⁷	+++	0.08
<i>HLA-DRB7*01:01:01</i>	0.30	0.02	2.27x10 ⁻⁷²	+++	0.48
<i>HLA-DRB8*01:01</i>	0.27	0.02	3.62x10 ⁻⁵⁶	+++	0.57
<i>HLA-DRB5*01:01:01</i>	-0.60	0.04	4.20x10 ⁻⁵⁴	---+	0.13
MS-Demyelinating (EUR)					
<i>HLA-DRB1*15:01:01</i>	0.78	0.04	1.05x10 ⁻¹⁰⁸	+	0.144
<i>HLA-DRA*01:02:03</i>	0.77	0.04	2.32x10 ⁻¹⁰⁵	+	0.146
<i>HLA-DRB5*01:01:01</i>	0.87	0.04	3.05x10 ⁻⁹⁸	+	0.134
<i>HLA-DQA1*01:02:01</i>	0.64	0.03	4.89x10 ⁻⁸²	+	0.167
<i>HLA-DRB5*01:100</i>	0.84	0.05	7.39x10 ⁻⁶²	+	0.063
PMR-GCA (EUR, SAS)					
<i>HLA-DRB1*04:04:01</i>	0.88	0.0409237	8.09x10 ⁻¹⁰²	++	0.04
<i>HLA-DRB7*01:01:01</i>	0.27	0.0164555	2.56x10 ⁻⁵⁹	++	0.49
<i>HLA-DQB1*03:02:01</i>	0.54	0.0338829	2.31x10 ⁻⁵⁷	++	0.08
<i>HLA-DRB8*01:01</i>	0.24	0.0170413	3.47x10 ⁻⁴⁴	++	0.57
<i>HLA-DRB1*04:01:01</i>	0.40	0.0312209	8.22x10 ⁻³⁷	++	0.11
Psoriasis (EUR, SAS)					
<i>HLA-C*06:02:01</i>	0.99	0.02	1.50x10 ⁻³⁰⁵	++	0.01
<i>HLA-B*57:01:01</i>	1.10	0.03	1.91x10 ⁻³⁰⁵	++	0.04

<i>HLA-DRA*01:01:02</i>	0.89	0.03	7.32×10^{-206}	++	0.04
<i>HLA-DOB*01:05</i>	0.78	0.03	7.73×10^{-127}	++	0.03
<i>HLA-G*01:06:01</i>	0.59	0.03	3.57×10^{-100}	++	0.06
Rheumatoid arthritis (AFR, AMR, EUR, SAS)					
<i>HLA-DRB1*04:01:01</i>	0.43	0.02	1.81×10^{-96}	++++	0.11
<i>HLA-DRA*01:01:01</i>	0.27	0.02	4.51×10^{-63}	+++	0.57
<i>HLA-DRB7*01:01:01</i>	0.17	0.01	8.58×10^{-57}	---+	0.48
<i>HLA-DRB4*01:03:01</i>	0.22	0.02	2.97×10^{-39}	---+	0.16
<i>HLA-DQB1*03:02:01</i>	0.31	0.02	1.27×10^{-38}	++++	0.08
Ulcerative colitis (AFR, EUR, SAS)					
<i>HLA-DRB1*01:03:01</i>	0.97	0.06	7.42×10^{-66}	+++	0.02
<i>HLA-DRB8*01:01</i>	-0.14	0.02	4.09×10^{-20}	---	0.57
<i>HLA-DRB7*01:01:01</i>	-0.13	0.02	4.57×10^{-17}	---	0.48
<i>HLA-DRB1*04:04:01</i>	-0.44	0.06	3.50×10^{-15}	--+	0.04
<i>HLA-DQB1*03:02:01</i>	-0.27	0.04	1.10×10^{-11}	---	0.08

Table 1: 3-field HLA allele association studies meta-analyses results. Only five most significant results for each phenotype are shown (if there were more than 5 with p -value $< 5 \times 10^{-8/11}$). Beta on logistic scale. Direction refers to effect direction for each ancestry in the meta-analyses (+ for positive, - for negative). The genetic ancestries used in each analysis are listed in parentheses after the phenotype name. Refer to supplementary table **ST19** for full summary statistics, including for 2-field accuracy, and by ancestry. AF: allele frequency.

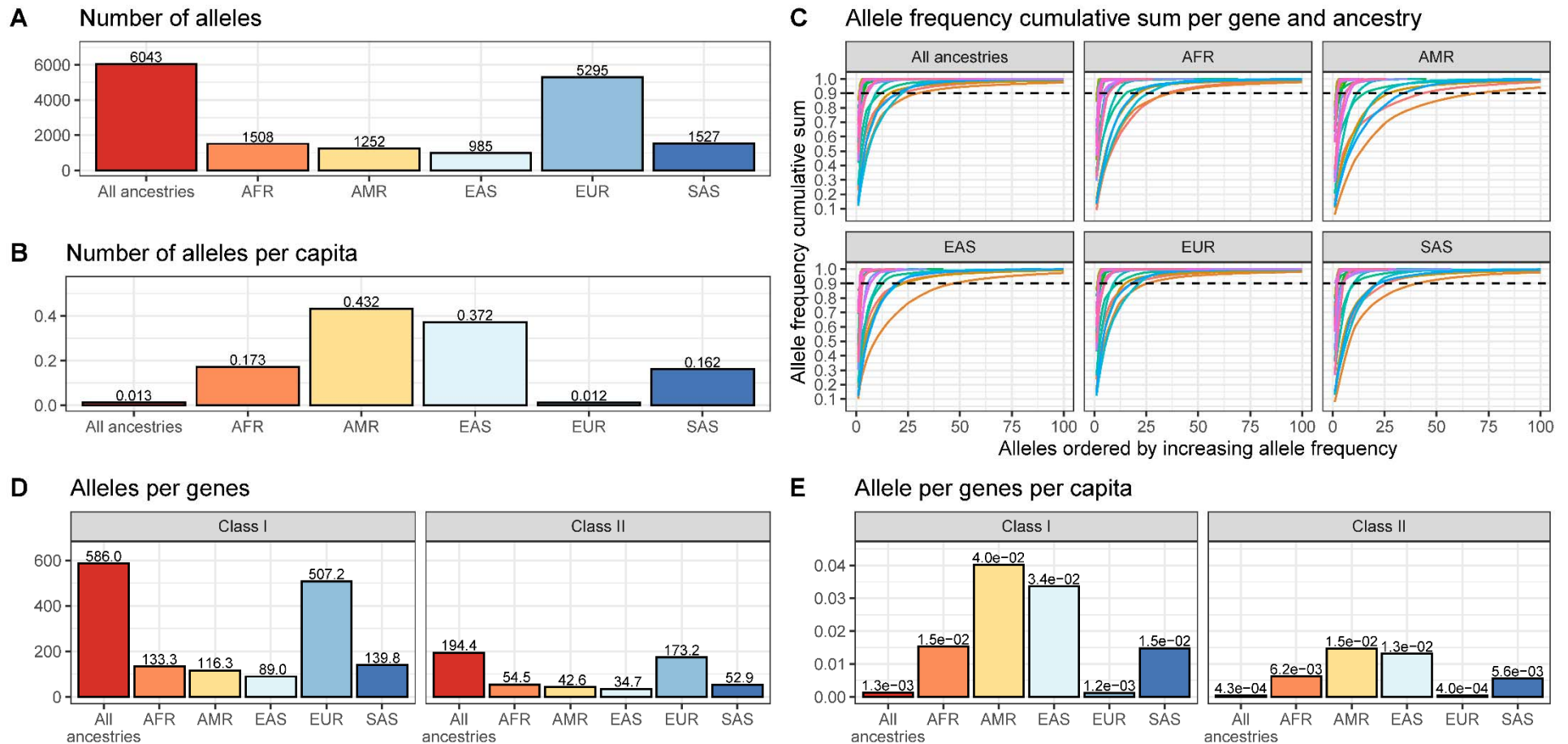


Fig. 1: **A)** Number of 3-field HLA alleles per continental genetic ancestry. **B)** Number of 3-field HLA alleles per genetic ancestry, divided by the number of participants in each ancestry. **C)** Cumulative 3-field allele frequency. Each line represents a different HLA gene. Dashed line at 90%. Note that some genes are not present in all participants (e.g. *HLA-DRB3*), and their true cumulative allele frequency sum would be less than 100%. Hence, frequencies are given as “allele count for allele” divided by “total number of alleles at that gene,” then added cumulatively starting with the alleles with the highest frequencies. **D)** The average number of alleles per gene stratified by HLA class. **E)** The average number of alleles per gene divided by the number of participants in each cohort stratified HLA class. All analyses in this figure were limited to the protein-coding genes.

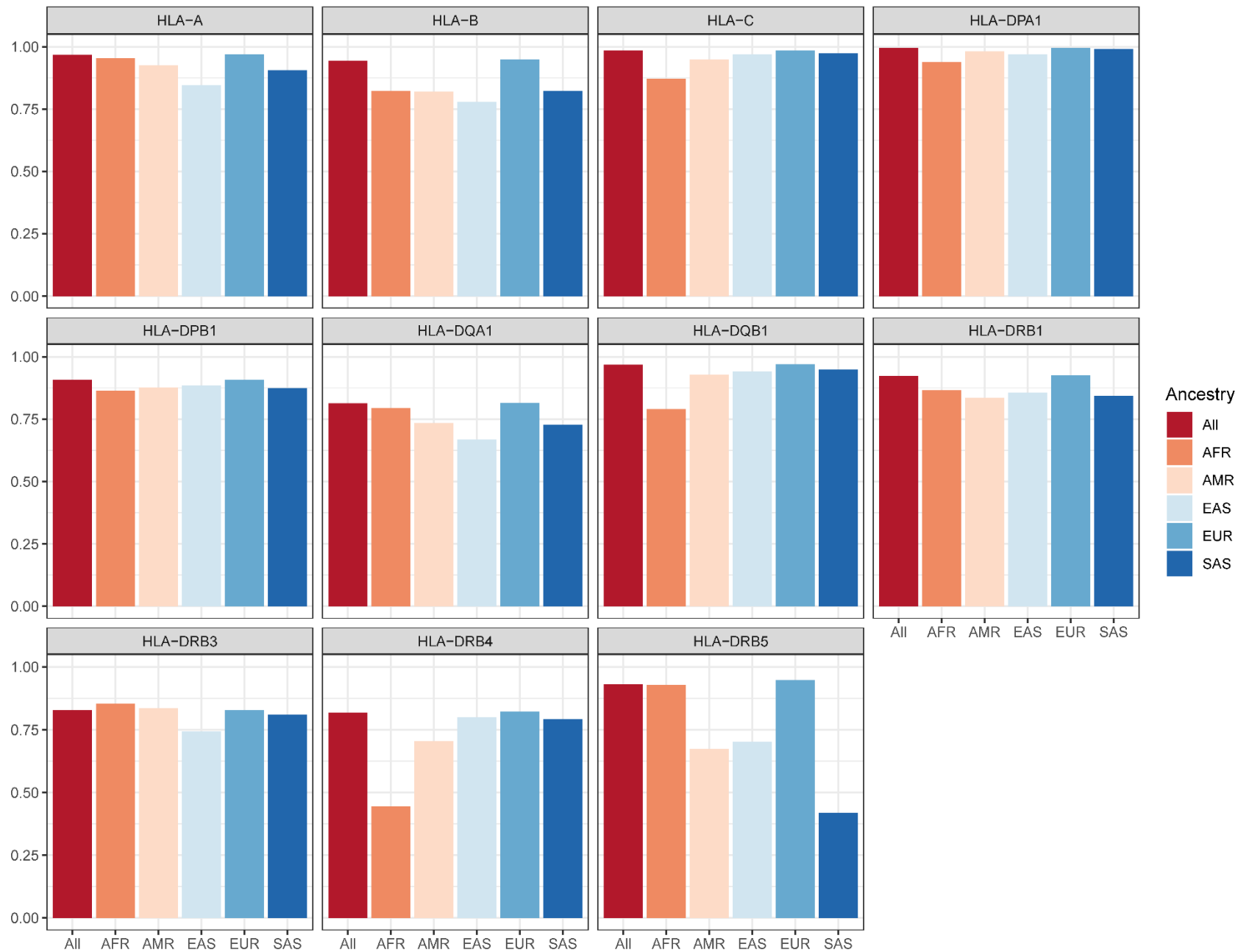
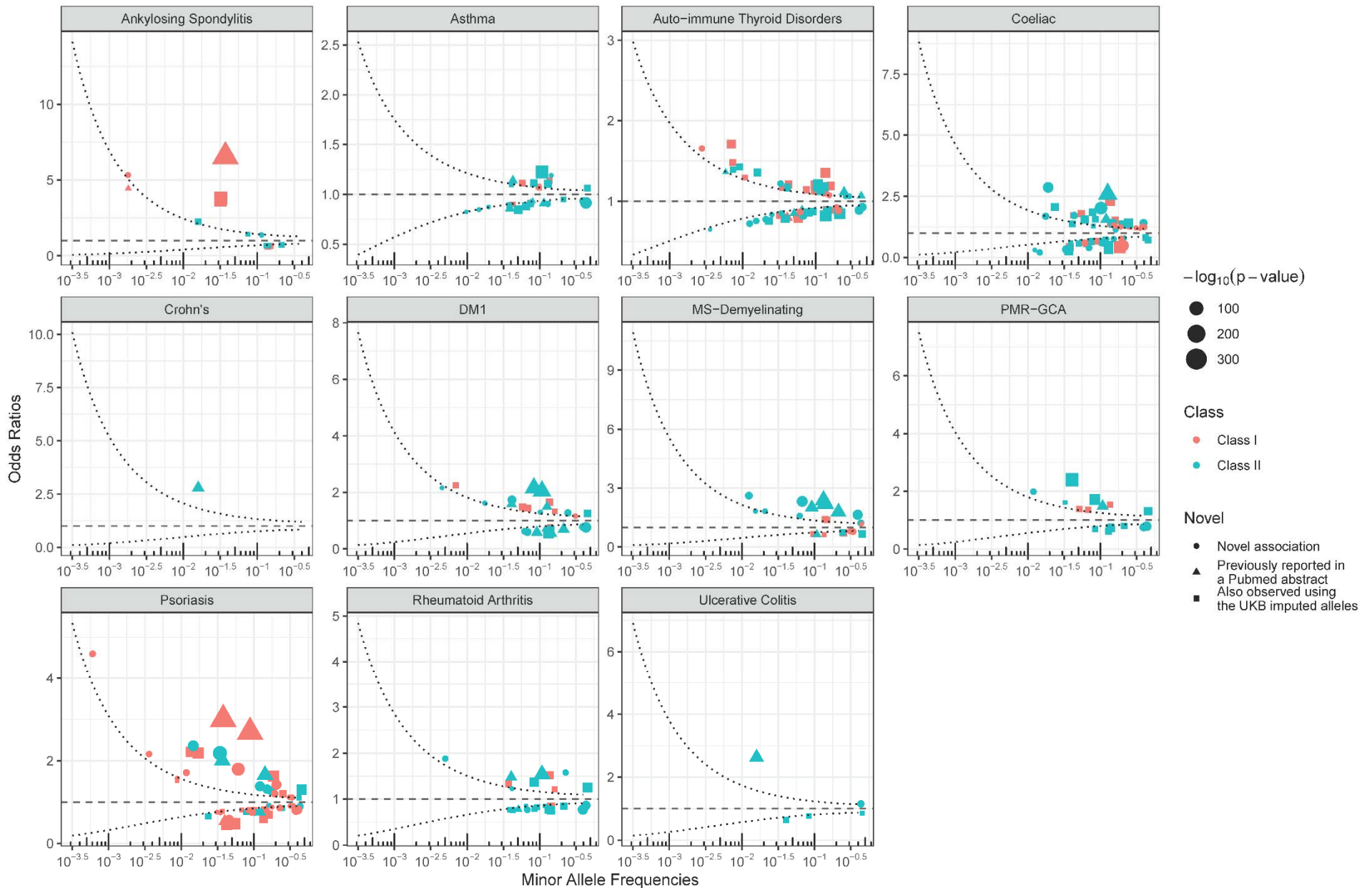


Fig. 2: Adjusted concordance (%) between sequenced and imputed HLA alleles stratified by HLA genes and genetic ancestry.



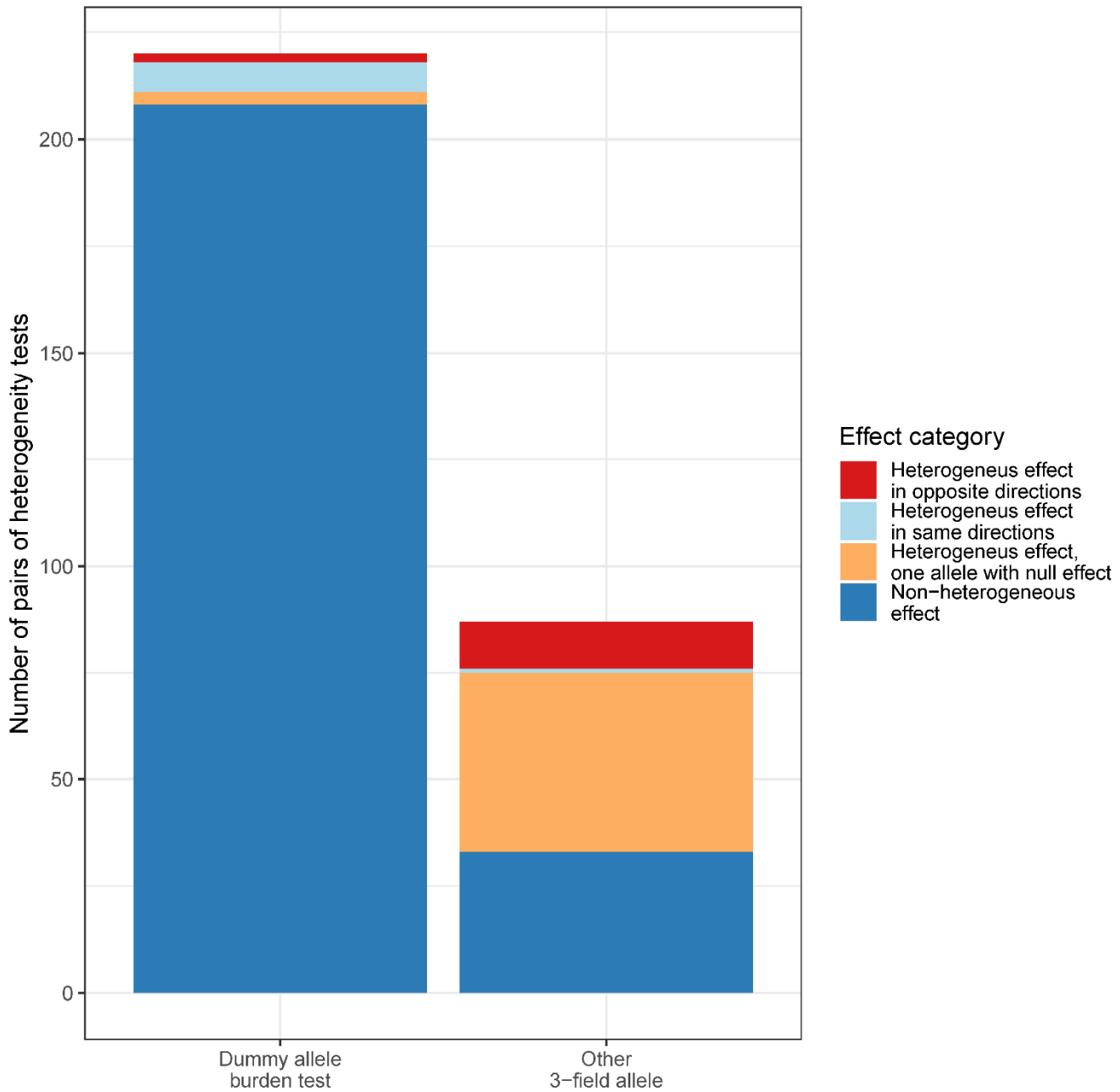


Fig. 4: Result of pairwise effect heterogeneity tests for a 3-field allele to test for the effect of synonymous variants on traits. We compared the effect size of all 3-field alleles associated with any of the 11 phenotypes, with any other available 3-field allele falling in the same 2-field HLA haplotype (e.g. *HLA-A*01:01:01* and *HLA-A*01:01:02*). Right column: direct effect heterogeneity tests between pairs of 3-field HLA alleles. Left column: effect heterogeneity tests between pairs of 3-field HLA allele and all other 3-field alleles at that 2-field haplotypes combined in a “dummy allele”. Colours represent if the heterogeneous effect is due to each pair having an opposite effect direction (red), the same effect direction (beige), or one of the allele pairs having a non-significant association with the given phenotype (light blue).

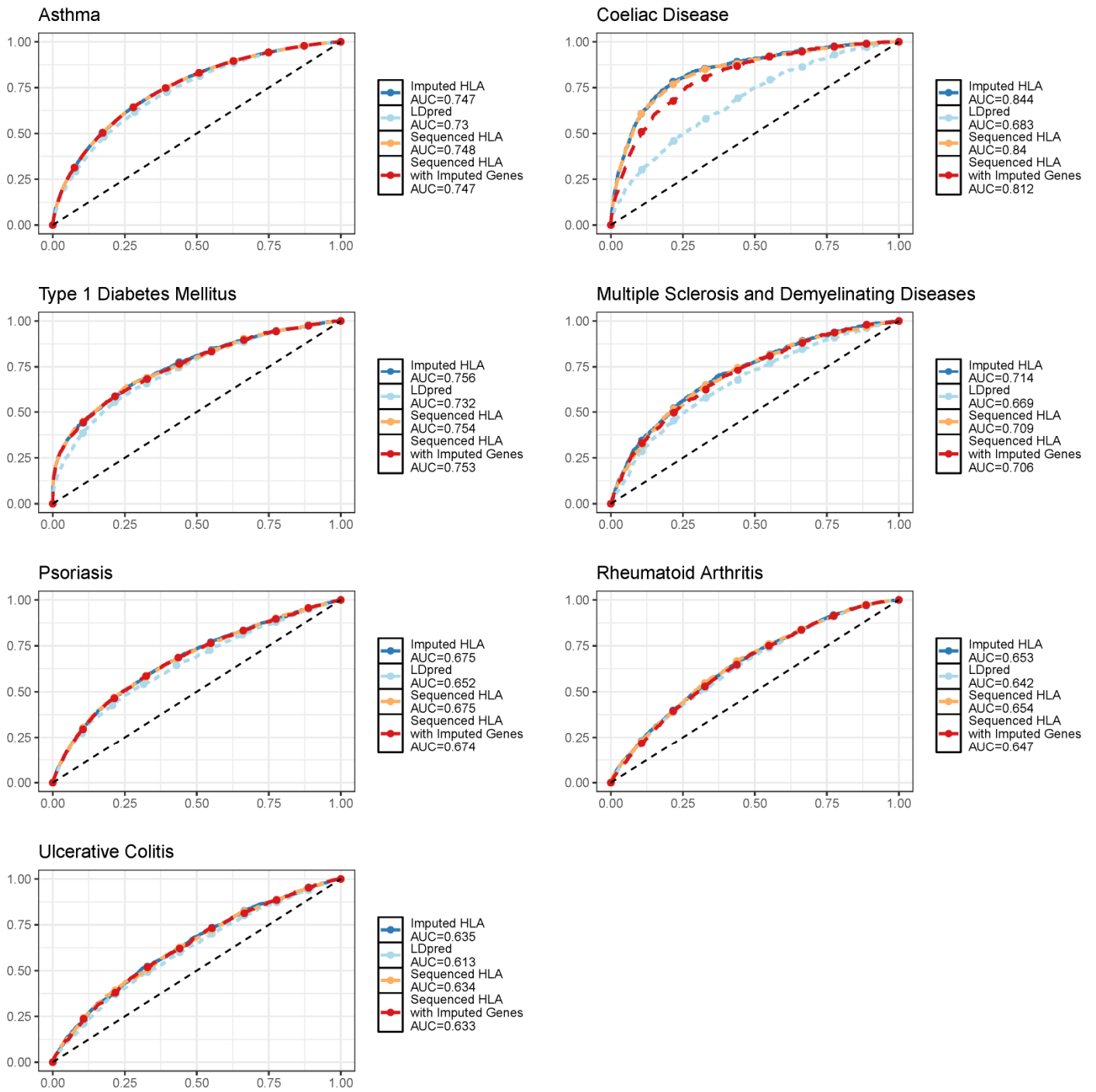


Fig. 5: PRS comparisons for seven traits. X-axis: false positive rate. Y-axis: true positive rate.

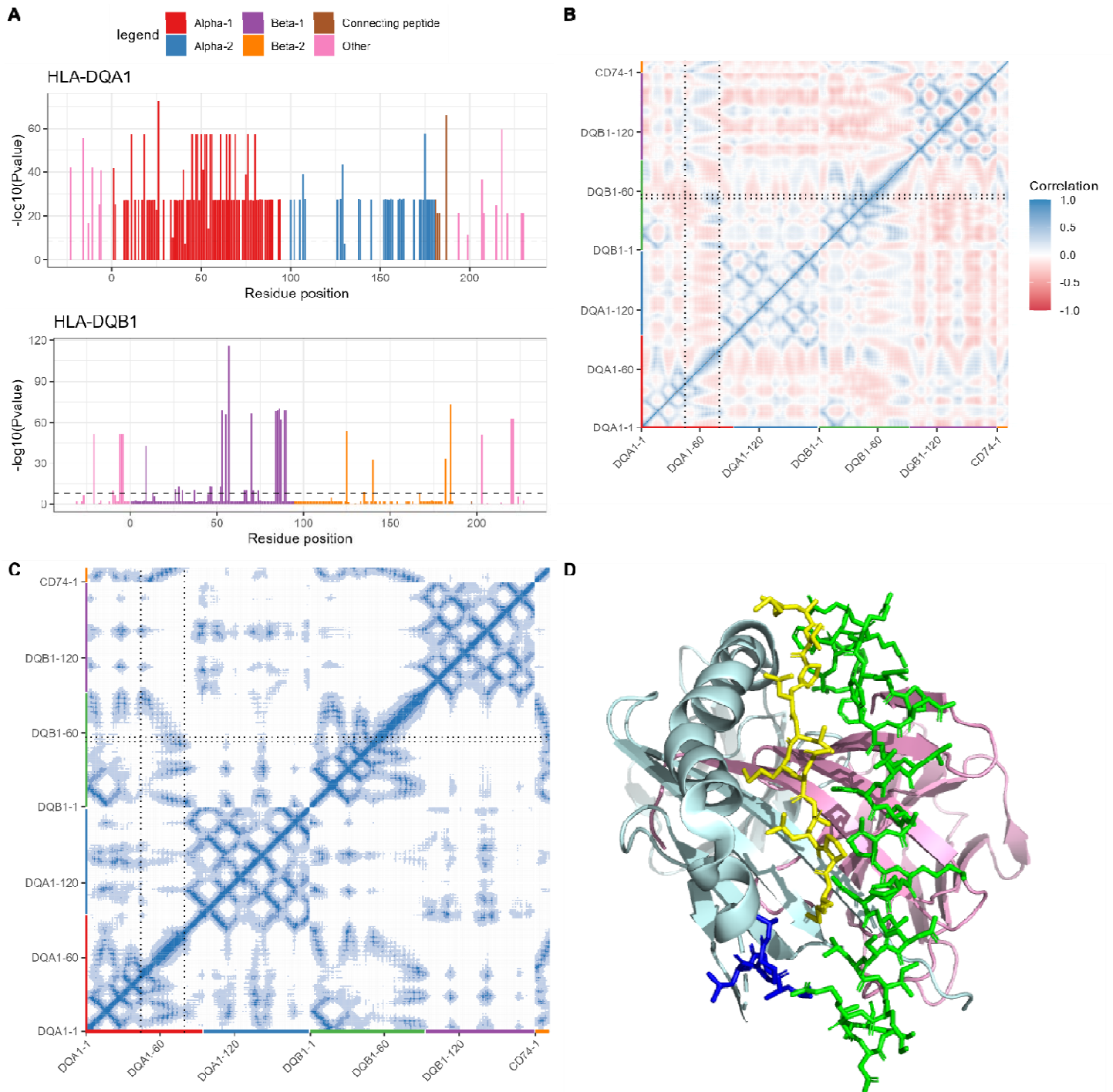
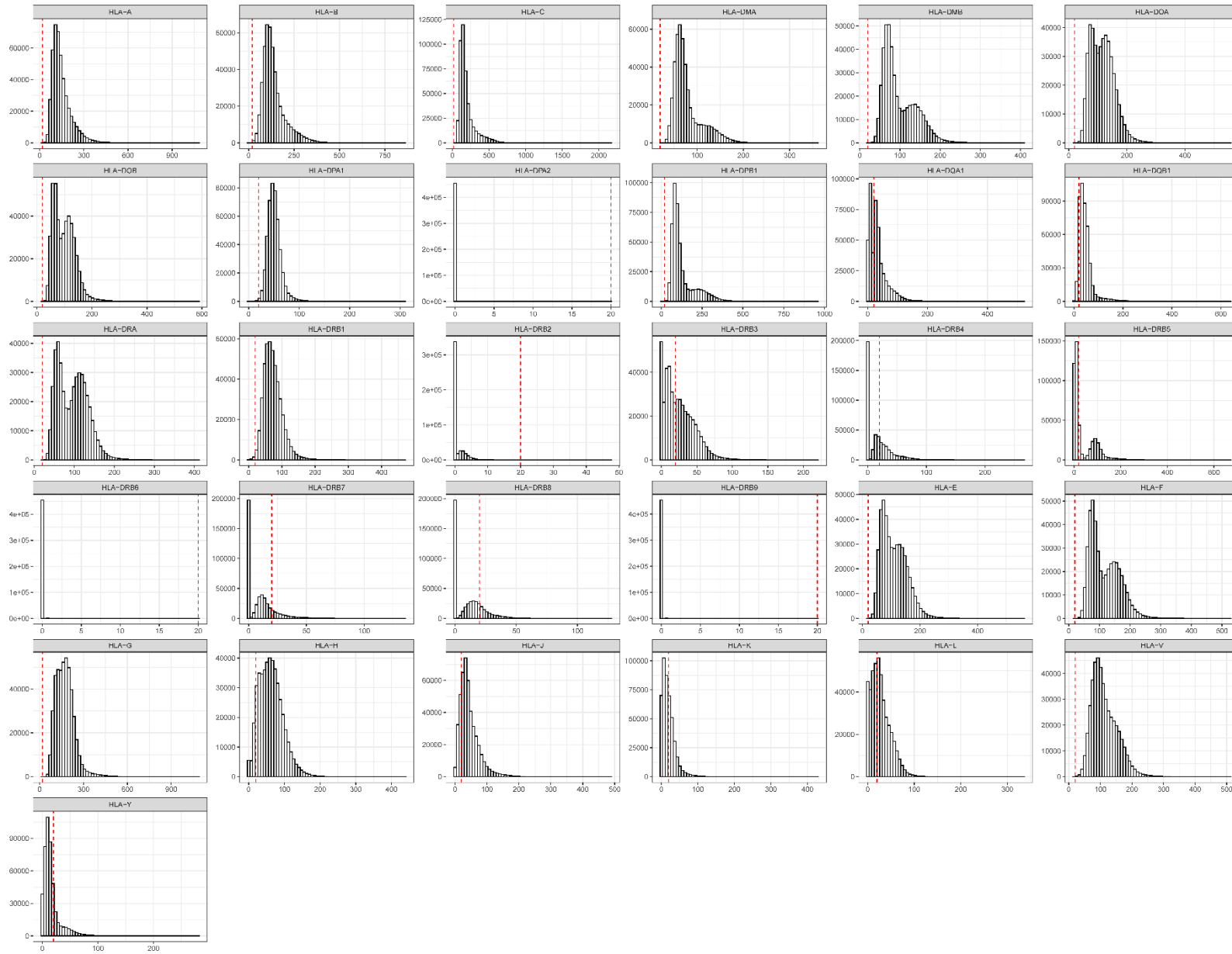


Fig. 6: HLA-DQ heterodimer is encoded by *HLA-DQA1* and *HLA-DQB1*, and their interaction needs to be accounted for when studying amino acid residue associations, such as here for type I diabetes mellitus. **A)** Summary of *HLA-DQA1* and *HLA-DQB1* type I diabetes mellitus association study. The X-axis represents residue positions, with colours corresponding to the chain they are a part of (e.g. alpha-1 chain of *HLA-DQA1*). The Y-axis represents the smallest p-value at each position (on the $-\log_{10}$ scale). Only residue positions with polymorphisms can be shown. As can be seen, the *HLA-DQA1* results likely suffers from the high correlation in amino acid residue inheritance as residues 45 to 80 all show a similar association with type I diabetes mellitus. This isn't affecting *HLA-DQB1*, where residue 57 (on the beta-1 chain) is the most significant. **B)** Normal mode analysis of the HLA-DQ heterodimer shows that residues 53-57 of *HLA-DQB1* interact with some residues of the 45-80 *HLA-DQA1* protein (the square formed by the 4 dotted lines), which is also observed in **C)** the contact map. Colours on the contact map show distances as follows: dark blue: 5Å or less, medium shade blue: 10Å or less, light blue: 20Å or less. **D)** a 3-dimensional view of the HLA-DQ heterodimer showing that residues 53-57 of *HLA-DQB1* likely interact with the more distal residues of the *HLA-DQA1* 45-80 segment, which directly interacts with the HLA-DQ ligand binding. The blue segment represents residues 53-57 of HLA-

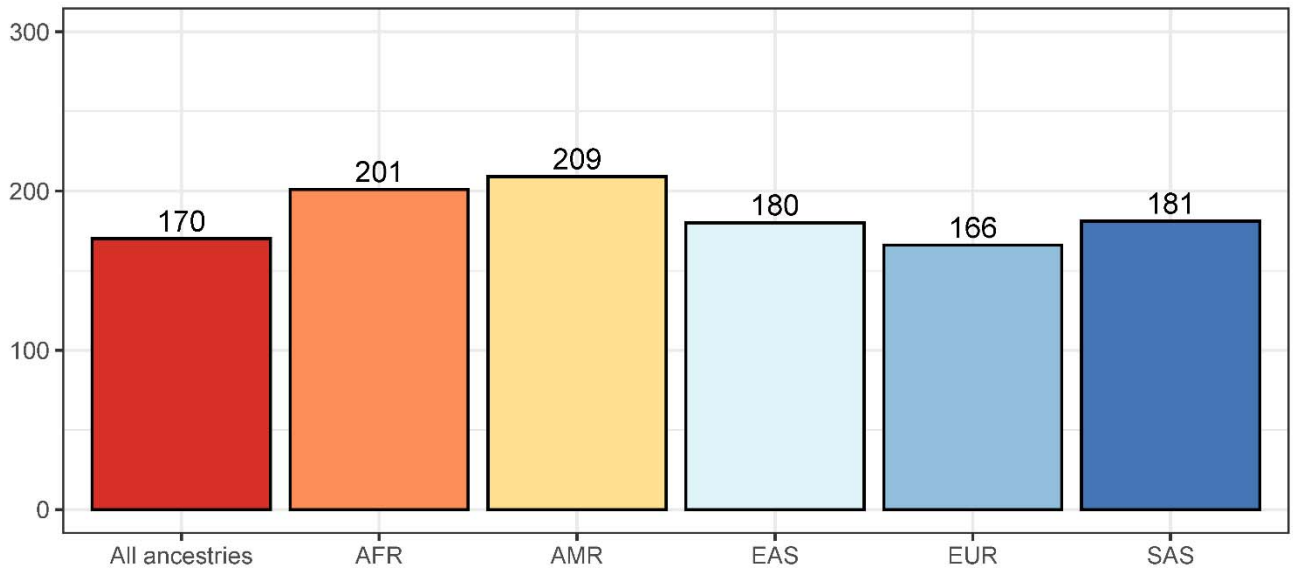
DQB1. The green segment represents residues 45-80 of HLA-DQA1. The yellow segment is a ligand binding the dimer (here CD74). Pale green and pink cartoon protein representations show the rest of HLA-DQB1 and HLA-DQA1, respectively.

Supplementary Figures Below:

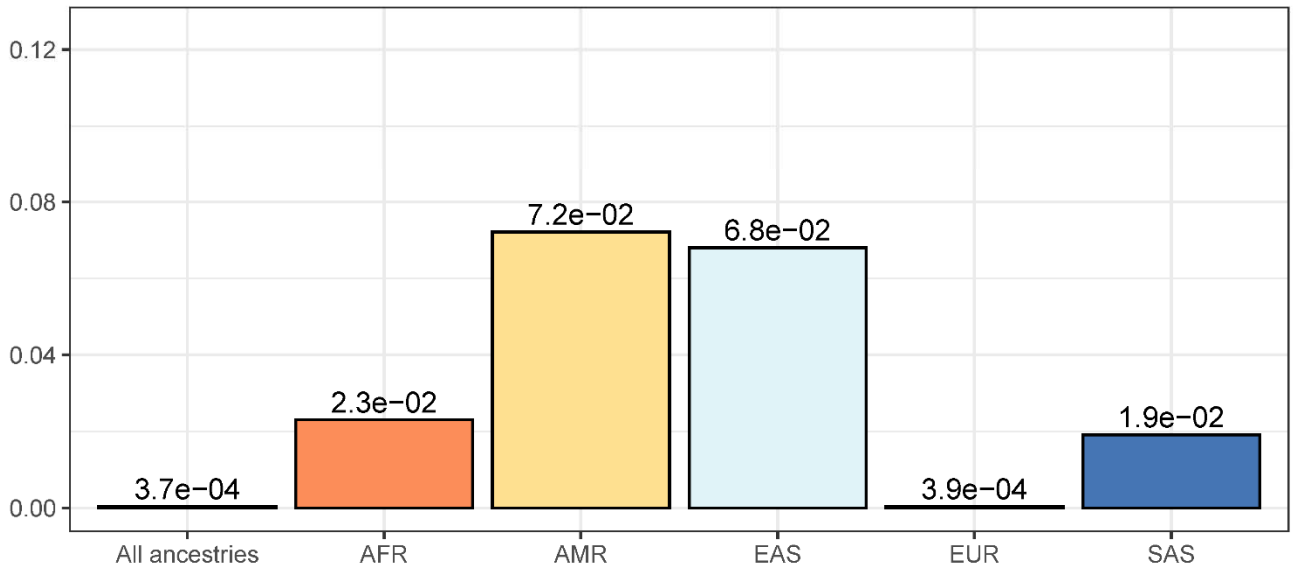


SF1: Histograms of the total number of reads for each gene for each participant. Vertical dashed line at 20.

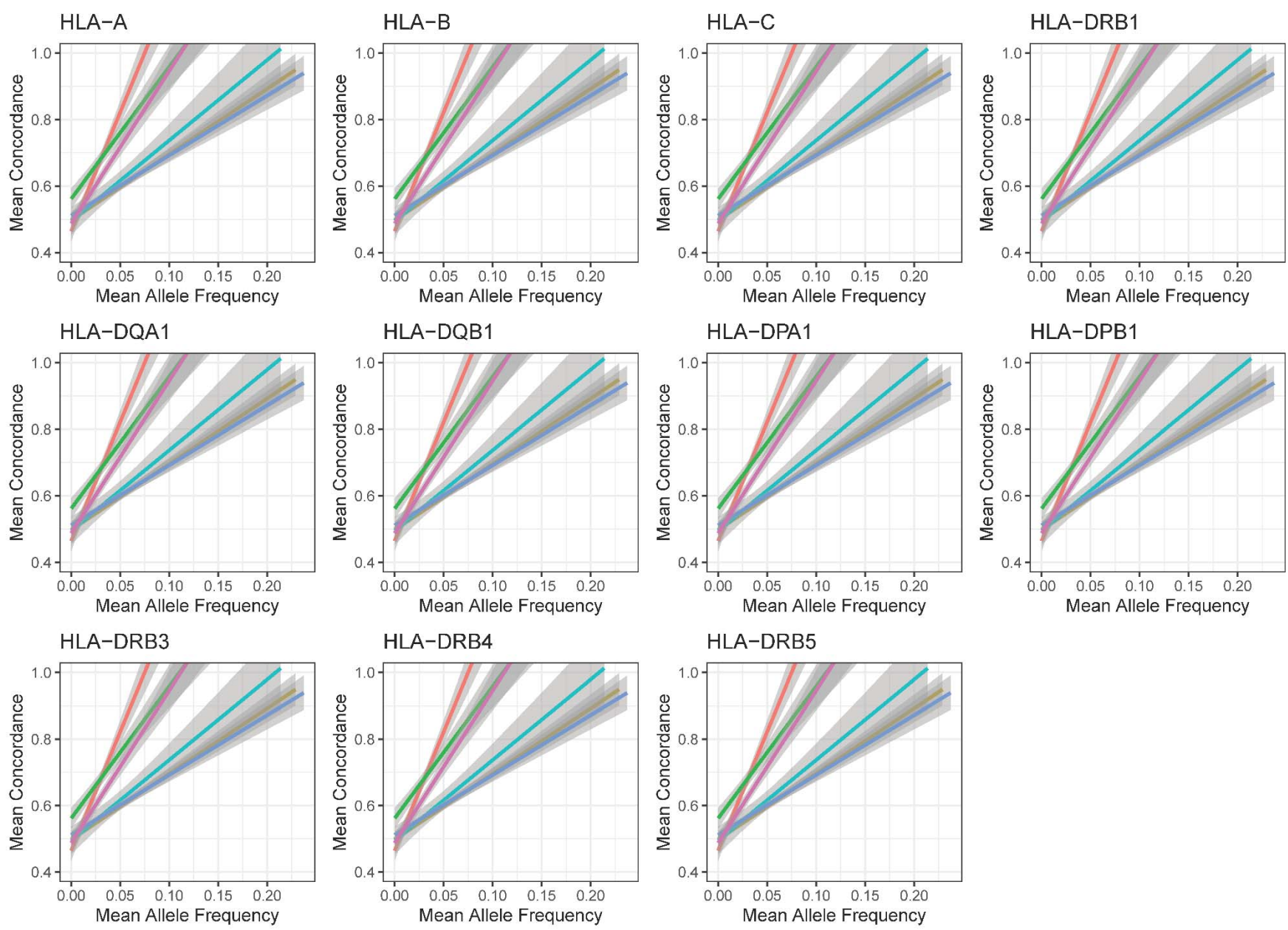
Number of alleles, MAF>0.1



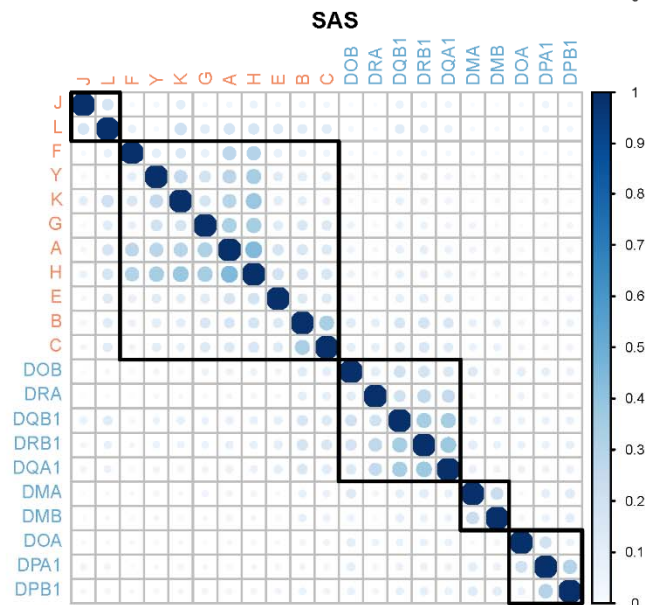
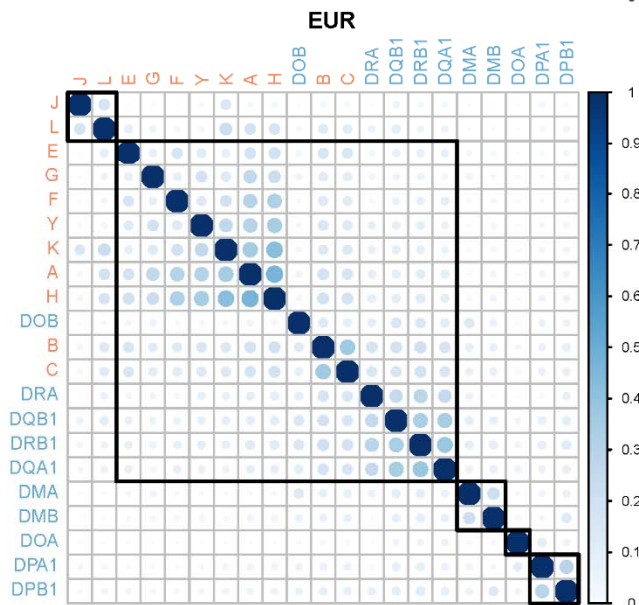
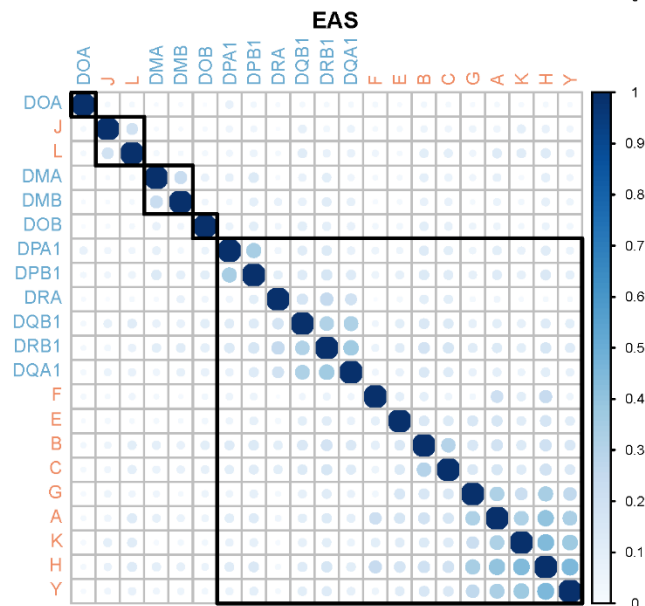
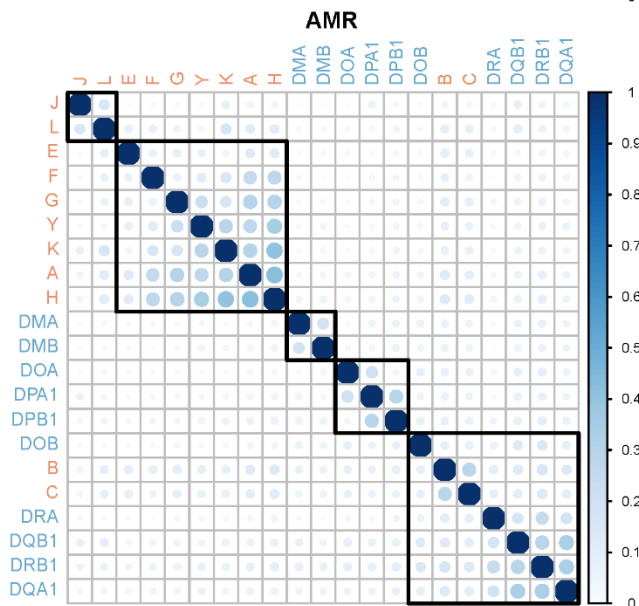
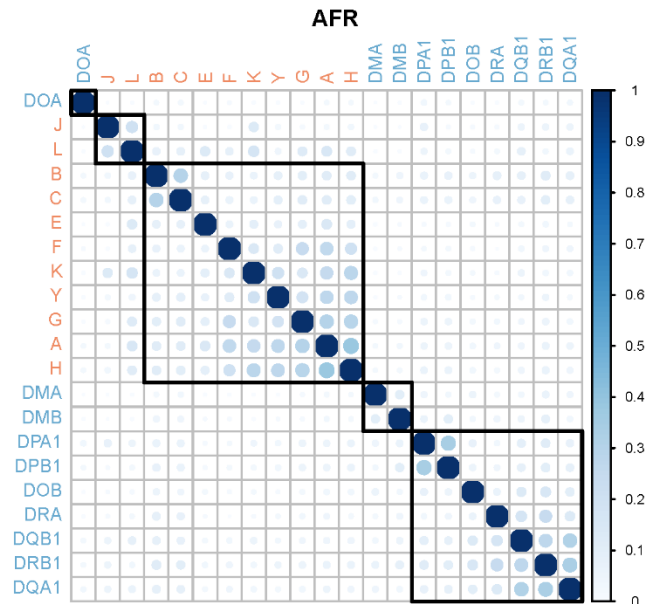
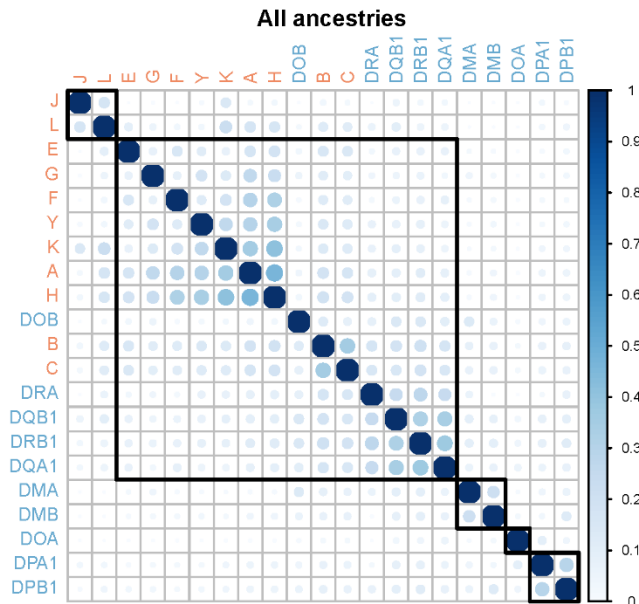
Number of alleles per capita, MAF>0.1



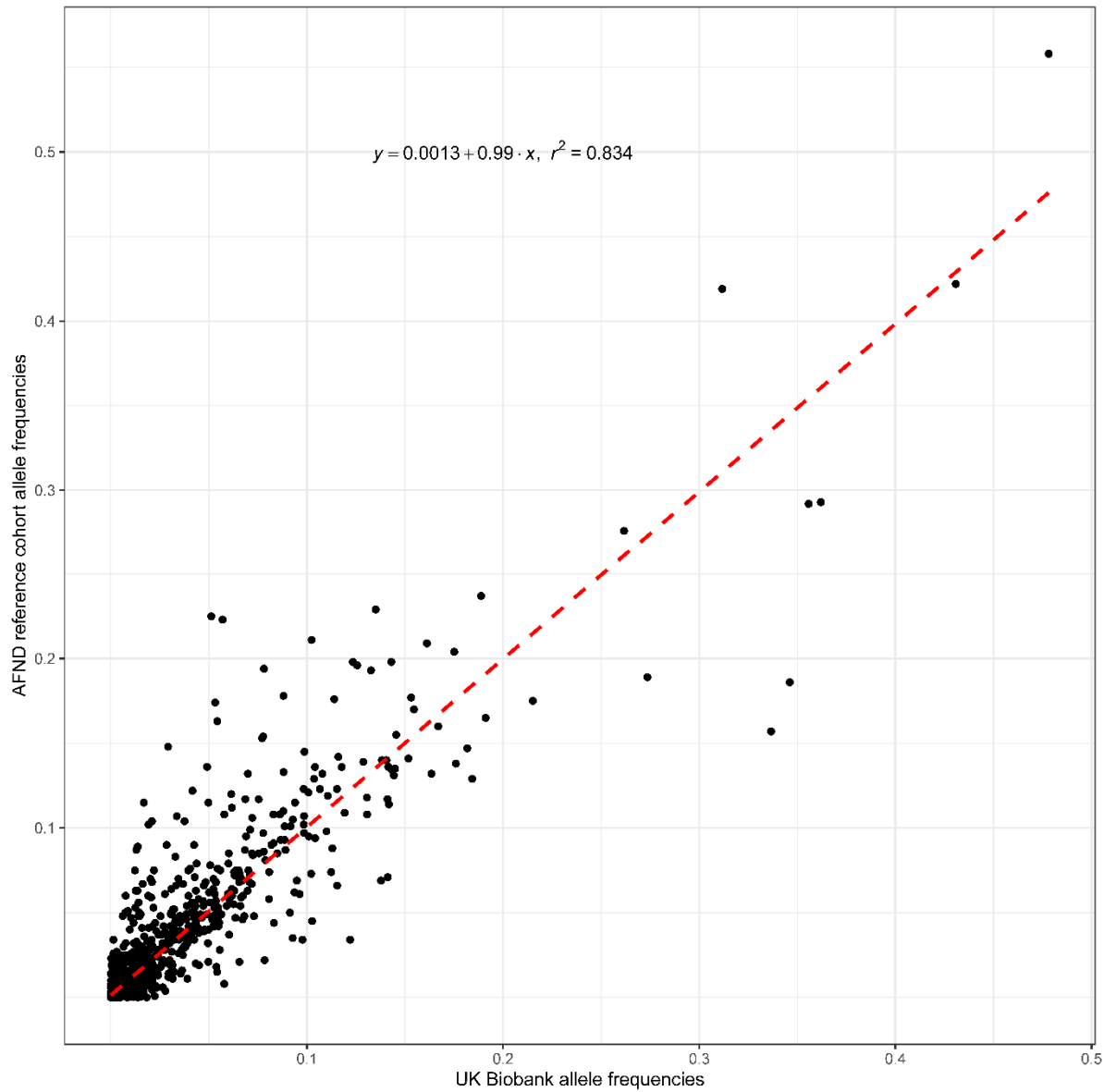
SF2: Number of 2-field HLA alleles of minor allele frequency (MAF) > 0.1% per continental genetic ancestry. The analysis is limited to the protein-coding genes.



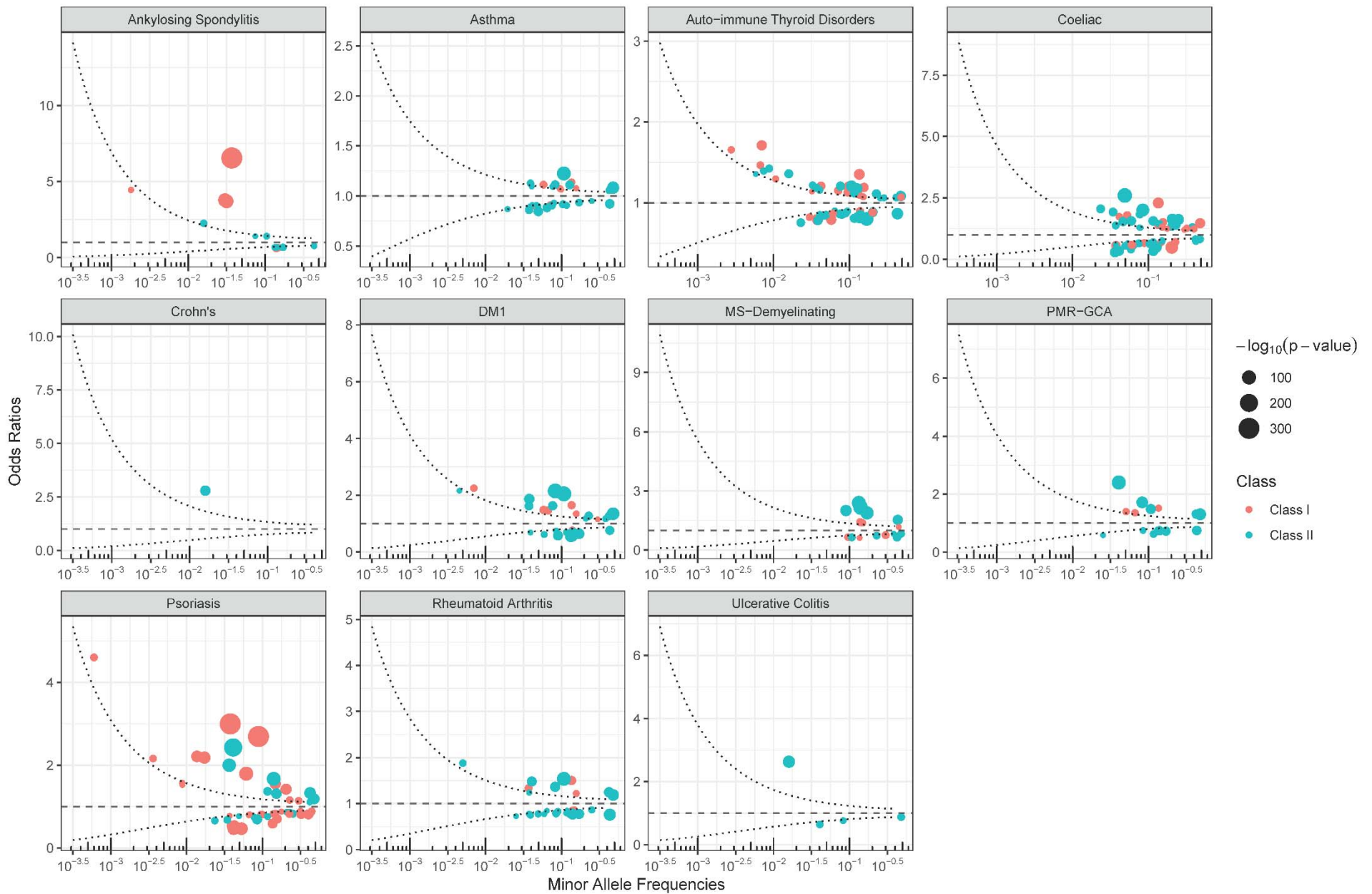
SF3: Association (and 95% confidence interval) between concordance and allele frequency.



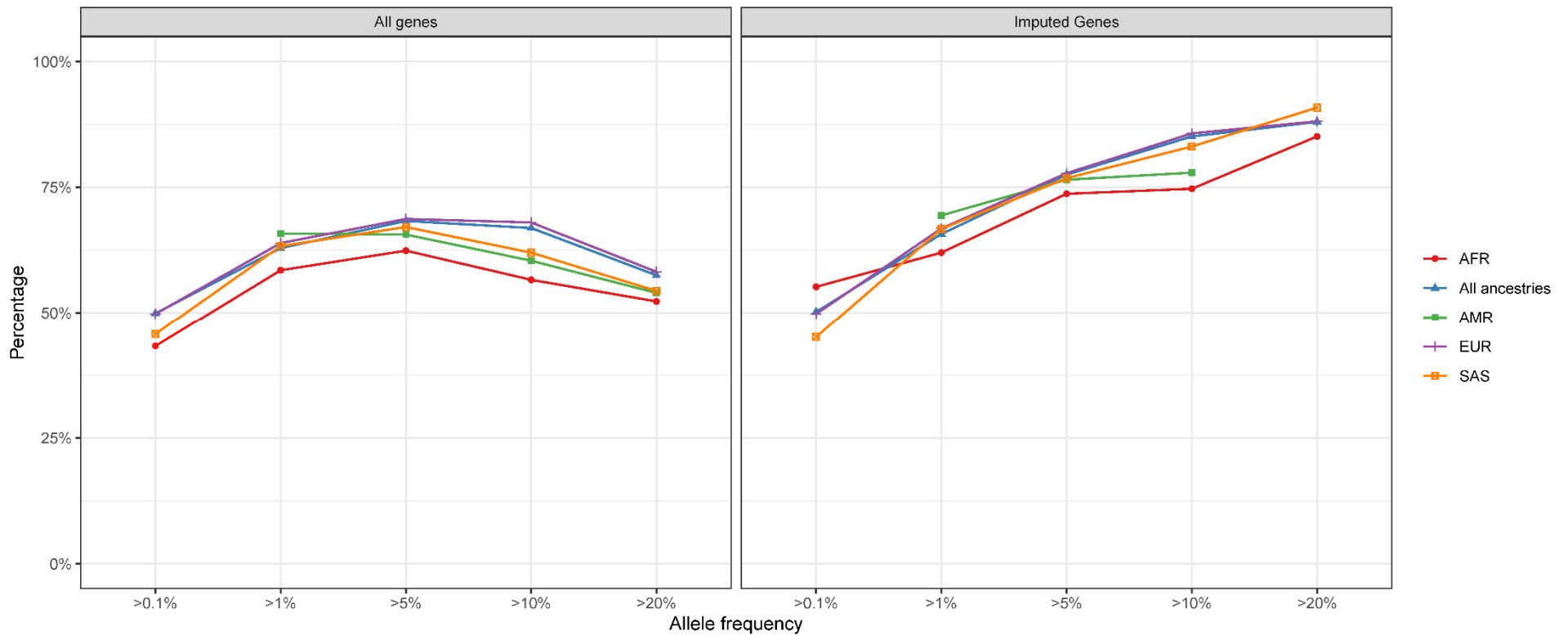
SF4: Mean asymmetric LD per ancestry and genes. Choices of squares were drawn using hierarchical clustering. Red: MHC Class I genes. Blue: MHC Class II genes.



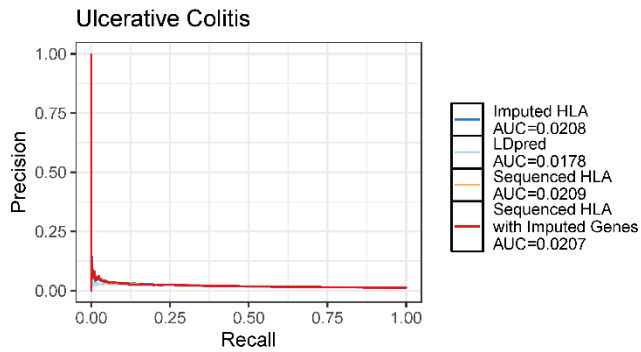
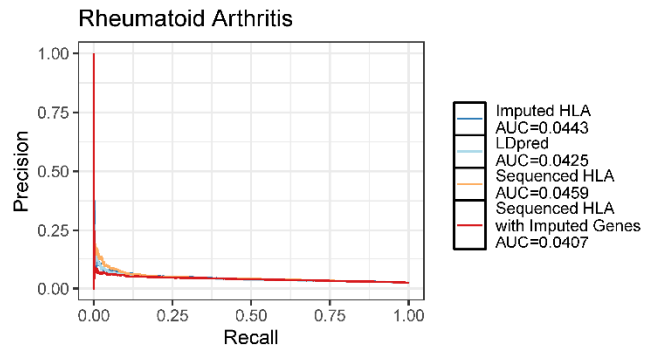
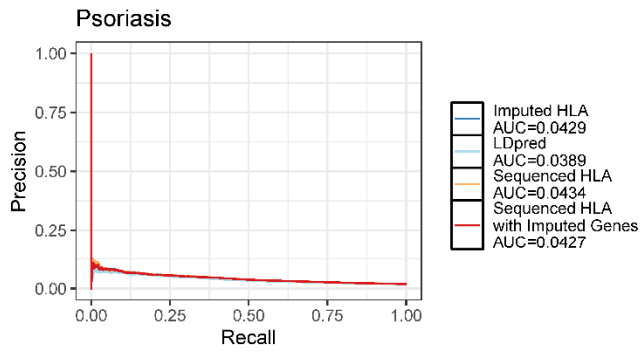
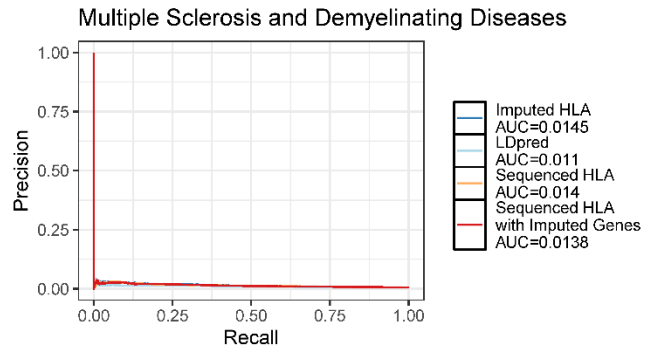
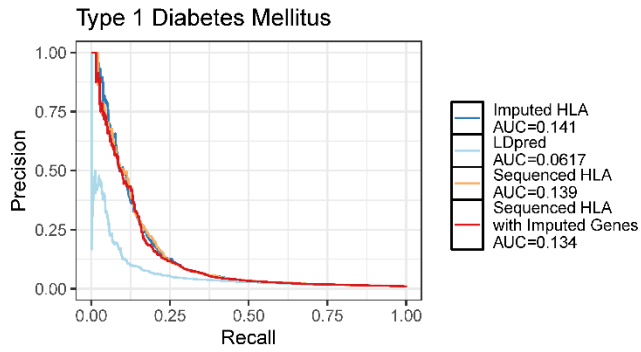
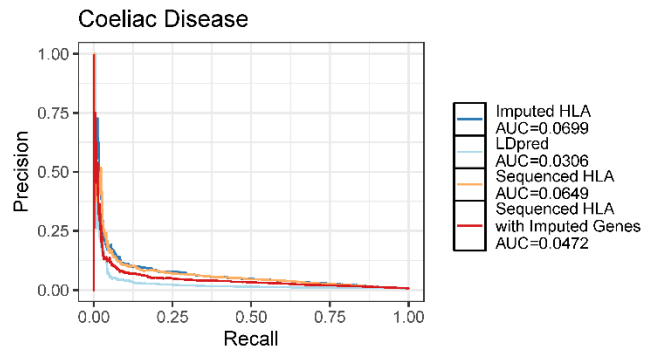
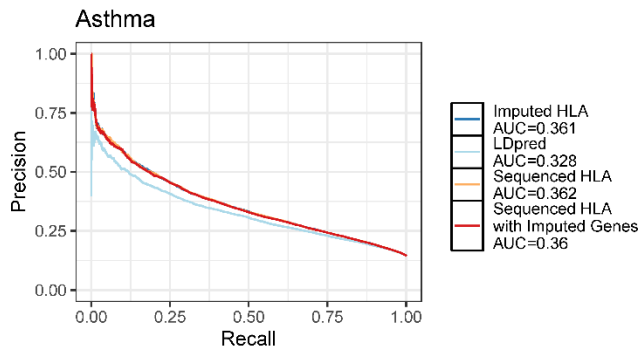
SF5: The correlation between UKB WES HLA calling allele frequencies (x-axis) and the selected AFND reference cohorts (y-axis). Comparisons are made separately for each genetic ancestry.



SF6: HLA association studies at 3-field resolution. Odds ratios are shown. The curved dashed lines represent a power of 80% to detect an association at a p-value of $(5 \times 10^{-8})/11$ or less.



SF7: Canonical correlation analysis results. The y-axis refers to the percentage of variance in WES HLA called alleles explained by imputed alleles. The x-axis is the allele frequency threshold in the WES HLA called alleles used for the analysis. Note that due to smaller sample sizes in certain genetic ancestries, CCA calculations were not always stable enough to be performed (e.g. the analysis was not done for AMR genetic ancestry at all). Also, refer to supplementary table [ST24](#).



SF8: Precision-recall curves for each PRS.