

Understanding the Biering-Sørensen test: contributors to extensor endurance in young adults
with and without low back pain

Jonathan Shaw, Jesse V. Jacobs, Linda R. Van Dillen, George J. Beneck, Jo Armour Smith*

*Corresponding author. Email: josmith@chapman.edu

This work was supported by the Eugene Kennedy Shriver National Institute of Child Health and Human Development under grant K01HD092612

The authors report that there are no competing interests to declare

1

2 Abstract

3 Impaired paraspinal muscle endurance may contribute to persistent low back pain (LBP) and is
4 frequently assessed using a single repetition of the Biering-Sørensen test. This study investigated
5 how Sørensen test duration, muscle activation, and muscle fatigability are affected by multiple
6 repetitions of the test, and determined predictors of Sørensen test duration in young, active adults
7 with and without a history of LBP. Sixty-four individuals with and without persistent LBP
8 performed 3 repetitions of the Sørensen test. Amplitude of activation and median frequency
9 slope (fatigability) were calculated for the lumbar and thoracic paraspinals and the hamstrings.
10 Duration of the test was significantly less for the 2nd and 3rd repetitions in individuals with LBP.
11 In individuals without LBP, fatigability of the lumbar paraspinals was the best predictor of test
12 duration. In individuals with LBP, Sørensen test duration was predicted by fatigability of the
13 hamstrings and amplitude of activation of the thoracic and lumbar paraspinals. Our findings
14 demonstrate that it is necessary to amplify the difficulty of the Sørensen test to elucidate
15 impairments in young, active adults with LBP. Training programs aiming to improve lumbar
16 paraspinal performance in individuals with LBP should monitor performance of other synergist
17 muscles during endurance exercise.

18

19

20 Keywords

21 Biering-Sørensen test, low back pain, endurance, paraspinal

22

23

24

25

26 Introduction

27 Most individuals with persistent low back pain (LBP) have their first episode of pain as an
28 adolescent or young adult.¹ As episodes of LBP become increasingly disabling with time it is
29 important to establish potential contributors to LBP early in the lifespan.² Impaired paraspinal
30 muscle endurance may contribute to persistent back pain via altered motor control and
31 maladaptive spinal loading.³⁻¹⁰

32 The Biering-Sørensen test is commonly used to assess endurance of the paraspinal musculature
33 using two metrics: test duration (the time that an individual maintains the Sørensen test position),
34 and rate of muscle fatigue (the rate at which the median frequency of the muscle
35 electromyography power spectrum declines over time).^{11,12} Increasing amplitude of muscle
36 activation during the Sørensen test is also an indication of fatigue.¹³ To date, results from
37 research using the Sørensen test to investigate the relationship between endurance and current or
38 future LBP have been mixed.^{3,12,14-19} The conflicting findings across studies may be due the
39 multiple person-specific biopsychosocial characteristics that influence Sørensen test duration and
40 rate of fatigue.¹⁹ One-such characteristic is level of physical activity. Typical physical activity
41 may influence both duration of the test and muscle fatigability due to deconditioning or muscle
42 disuse atrophy.^{16,19} Psychological factors that may influence test duration, but not EMG
43 measures of fatigability, include generalized fear of movement (fear avoidance²⁰), pain
44 catastrophizing,¹⁹ anxiety,²¹ motivation and fear during the test.^{16,22}

45 The Sørensen test is commonly used as test of the lumbar paraspinal muscles, but the thoracic
46 paraspinals and the hip extensors also contribute to maintenance of the test position.^{23,24} It is not
47 clear how thoracic paraspinal or hip extensor activation or fatigability influence the Sørensen
48 test, in individuals with and without LBP.^{5,18,23} Typically, only a single repetition of the Sørensen
49 test is used. However, in young, active adults, a single repetition may be insufficiently fatiguing
50 to identify muscle performance impairments related to LBP.⁵

51 The purpose of this study was to determine how Sørensen test duration, muscle activation and
52 fatigability of the lumbar and thoracic paraspinals and hip extensors are affected by multiple
53 repetitions of the Sørensen test in young, active adults with and without a history of LBP. The

54 second purpose of the study was to determine factors that predict the duration of the Sørensen
55 test after multiple fatiguing test repetitions have been performed in young adults with and
56 without a history of LBP.

57

58 Materials and Methods

59 Participants

60 Young adults between the ages of 18 and 35 years participated. Individuals in the LBP group had
61 a history of functionally limiting low back pain of at least one year's duration. They were in
62 symptom remission at the time of the data collection. The group without LBP included
63 individuals with no significant history of LBP. Exclusion criteria for both groups included
64 inflammatory or neuropathic disease, spinal stenosis, radiculopathy, spondylolisthesis, or
65 scoliosis. Participants gave written consent before participating. Chapman University's
66 Institutional Review Board approved the study.

67 Participants completed the Physical Activity Scale (PAS). This validated measure quantifies
68 physical activity over a typical 24-hour period, in metabolic equivalents (METS).^{25,26}

69 Participants with LBP also identified the duration and frequency of their symptoms and
70 completed measures of average pain intensity during symptomatic episodes (visual analogue
71 scale, 0 – 10), the Fear Avoidance Beliefs Questionnaire physical activity subscale (FABQ-P²⁷)
72 and the modified Oswestry Disability Index (ODI²⁸).

73 Instrumentation

74 Participants were instrumented with surface electromyography electrodes (interelectrode distance
75 20mm, Myotronics Inc, WA, USA). Following standard skin-preparation procedures,²⁹
76 electrodes were placed bilaterally on the lumbar erector spinae/multifidus (LES, 2cm lateral to
77 the L4/L5 interspace, thoracic erector spinae (longissimus thoracis pars thoracis, TES, lateral to
78 the spinous process of T10 on the muscle belly), and hamstrings (biceps femoris, HS, midway
79 between the ischial tuberosity and the lateral tibial epicondyle),²⁹⁻³¹ and attached to wireless
80 sensors digitally sampling at 1500Hz (Noraxon DTS sensors, Noraxon Inc, Scottsdale, USA).

81 Fatiguing exercise (Biering-Sørensen Test)

82 Participants performed three Sørensen tests. Between each test, participants performed repeated
83 sub-maximal movements involving either raising a leg in supine, raising an arm in standing, or
84 walking for approximately ten minutes. These tasks have been described elsewhere, and the
85 order in which they were completed was randomized.³²⁻³⁴ Because these tasks required different
86 postural orientations and did not involve the low back as the primary mover, we defined these
87 times of activity between Sørensen tests as active-rest periods.

88 For the Sørensen tests, participants lay on a Roman chair with their lower limbs stabilized and
89 their head, arms, and trunk unsupported (Figure 1). Participants were instructed to maintain a
90 horizontal body position for as long as possible. The correct test position was monitored visually
91 by observing the change in position of a plumb bob hung from the participants' necks.¹⁶
92 Participants were given standardized verbal encouragement. The end of the test occurred when
93 the participant could no longer maintain the horizontal test position or when the participant felt
94 unable to continue the test. After each repetition of the Sørensen test, any back pain/discomfort
95 in the low back area that persisted during the ten-minute active-rest period was quantified using a
96 visual analogue scale.

97 EMG Analysis

98 EMG data were band-passed filtered (30-450 Hz) and then notch-filtered to remove
99 environmental noise (MATLAB® version R2018B, The MathWorks, Natick, MA). The median
100 frequency of the power spectrum, in Hz, was calculated for every second of the entire Sørensen
101 test using a Fast Fourier transform. The slope of the median frequency values over time was
102 calculated using least squares linear regression.^{35,11,16,36} Median frequency slopes were
103 normalized to the initial median frequency to account for individual differences in subcutaneous
104 tissue depth.³⁷ Root mean square amplitude of activation was calculated for every second of the
105 each Sørensen test and then averaged for each repetition. Average amplitude during all three
106 repetitions was normalized to the root mean square average of the first ten seconds of the first
107 Sørensen test.

108 Statistical Analysis

109 Demographics and the Sorensen test characteristics were compared between groups with
110 independent t-tests or χ^2 tests. Normalized median frequency slope and amplitude were

111 analyzed with separate mixed-model ANOVA tests, testing for main effects of repetition and
112 group and repetition*group interactions. Post hoc comparisons were made with Bonferroni
113 correction (SPSS[®] Statistics Version 26, IBM[®], Armonk, USA).

114 Predictors of test performance were examined using the duration of the final, third Sørensen test.
115 We hypothesized that participants would be most fatigued during the third repetition, and that
116 therefore this repetition would be most sensitive to highlighting differences between groups.
117 Bivariate relationships between the duration of the third Sørensen test repetition, (Duration 3)
118 and potential explanatory variables were tested with Pearson correlation coefficients for each
119 group separately. Variables that were correlated with Duration 3 ($p < 0.05$) were then entered
120 into separate ordinary least squares regression models using a backward stepwise approach (α
121 enter $p = 0.05$ and α exit $p = 0.10$). Models were checked for influential outliers using Cook's
122 Distance.

123

124 Results

125 Participant demographics and Sørensen test characteristics are shown in Table 1. There was no
126 difference between the groups in age, distribution of sex, or total and vigorous physical activity.
127 Individuals with LBP had significantly higher BMI ($p = 0.004$). To control for the effect of this
128 group difference, BMI was mean-centered and entered as a covariate in the ANOVA models.

129 All experimental data from one participant without LBP were excluded because the participant
130 reported that the duration of their Sørensen test was limited by anterior thigh discomfort rather
131 than paraspinal or hip extensor fatigue. Two participants with LBP did not complete the third
132 repetition; one because of anxiety about exacerbating their symptoms, and one because of time
133 constraints. All other participants with LBP completed the full testing protocol without difficulty
134 and reported that Sørensen test duration was limited by fatigue rather than reproduction of their
135 symptoms. EMG sensor failure prevented collection of the third repetition from one participant.
136 Visual inspection of EMG signals by the first and senior authors revealed that two or three
137 individuals had EMG signal with periods of signal drop-out for each muscle due to loss of sensor
138 connectivity and these signals were excluded after a consensus decision was reached.

139 Group comparisons

140 Normalized median frequency slopes and normalized amplitude for the right and left sides of all
141 three muscles were significantly correlated ($p < 0.05$ for all muscles and all repetitions).
142 Therefore, the average of the slope and the average of the amplitude from both sides was
143 calculated for each repetition and these average variables were used in all further analyses
144 (thoracic erector spinae TES1, TES2, TES3; lumbar erector spinae LES1, LES2, LES3;
145 hamstrings HS1, HS2, HS3).

146 For TES, the normalized median frequency slope declined significantly across the test repetitions
147 (main effect of repetition $F = 4.932$, $p = 0.009$), indicating an increasing rate of fatigue. The rate
148 of fatigue was significantly greater for repetitions two and three than repetition one (Bonferroni
149 adjusted $p < 0.05$ for all comparisons, Figure 2a). For LES median frequency there was a
150 repetition*group interaction (interaction $F = 3.341$, $p = 0.049$). For the control group the rate of
151 fatigue increased at each repetition ($p < 0.05$ for all comparisons, Figure 2b). For the LBP group,
152 the rate of LES fatigue was not significantly different between repetitions 1 and 2 but was
153 significantly greater for repetition 3 ($p < 0.05$). For the HS, rate of fatigue was significantly
154 greater in the second and third repetitions compared with the first ($F = 12.343$, $p < 0.001$; $p =$
155 0.024 and $p < 0.001$ respectively, Figure 2c).

156 Normalized amplitude of TES increased significantly across repetitions ($F = 59.632$, $p < 0.001$).
157 TES amplitude increased at each repetition ($p < 0.001$ for all comparisons, Figure 3a). Similarly,
158 amplitude of LES activation increased across repetitions ($F = 57.382$, $p < 0.001$, all post-hoc
159 comparisons $p < 0.001$) but did not differ by group. Amplitude of HS activation also increased
160 across repetitions ($F = 26.789$, $p < 0.001$) but there was no effect of group or repetition*group
161 interaction. Normalized amplitude of HS activation increased at each repetition ($p < 0.02$ for all
162 comparisons).

163 Predictors of third test duration

164 Bivariate relationships between candidate explanatory variables and Duration 3 are shown in
165 Table 2 and Figure 4. In the group with LBP, greater age was associated with shorter Sørensen
166 test duration. The normalized slopes of TES1, LES1, HS1 and HS2 and the normalized
167 amplitude of TES2 and LES3 were also significantly associated with duration. Individuals in the
168 LBP group with faster rate of fatigue (steeper slope) and lower amplitude of activation had
169 shorter Duration 3. In the group without LBP, greater age, and greater rate of fatigue in LES1,

170 LES2, and LES3 were significantly correlated with shorter duration of the third Sørensen
171 repetition. There was no significant correlation between amplitude of activation and duration of
172 the Sørensen test in the group without LBP.

173 The explanatory variables with significant bivariate relationships were entered into the
174 multivariate linear regression models. For the group with LBP, duration of the third Sørensen
175 repetition was predicted in the final model by a combination of HS1 slope, TES2 amplitude and
176 LES3 amplitude ($R^2 = 0.424$, $F = 7.114$, $p = 0.001$, β HS1 slope 0.407, β TES2 amplitude 0.309,
177 β LES3 amplitude 0.312). For the group without LBP, Duration 3 was predicted solely by the
178 slope of LES3 ($R^2 = 0.652$, $F = 13.317$, $p = 0.002$, β LES3 = 0.652).

179

180 Discussion

181 In active young adults with a history of LBP, more than one repetition of the Sørensen test is
182 needed to identify impairment in paraspinal/hip extensor endurance. Despite being minimally
183 disabled by their symptoms, young adults with LBP had significantly poorer test endurance for
184 the second and third test repetitions than individuals with no history of LBP. Physical activity
185 and other person-specific characteristics did not significantly influence the duration of the third
186 repetition of the Sørensen test. In young adults without LBP, the fatigability of the lumbar
187 paraspinals was the most important influence on the duration of the third Sørensen test.
188 However, in individuals with a history of LBP, the duration of the final test was dependent upon
189 the fatigability of the hamstrings, and the extent to which participants activated the thoracic and
190 lumbar paraspinals.

191 We did not observe reduced test duration in the group with LBP for the first repetition of the
192 Sørensen test. This suggests that the first repetition of the test did not fatigue individuals
193 sufficiently to demonstrate group differences. During any fatiguing exercise test, muscle
194 performance is influenced by multiple mechanisms. These include peripheral muscle structure
195 and function, neural activation strategy, and sense of effort.³⁸ During the Sørensen test, the
196 submaximal nature of the test may result in the participant's perception of fatigue (sense of
197 effort) being the limiting factor rather than decreased ability to generate force.^{5,38} As a result, the
198 addition of multiple test repetitions or increased load may be necessary to ensure paraspinal and

199 hip extensor fatigue during the Sørensen test. The short rest period that we employed between
200 test repetitions likely resulted in cumulative and progressive muscle fatigue across test
201 repetitions.³⁹

202 We found that the lumbar paraspinals fatigued at a similar rate in the two groups. This supports
203 earlier studies investigating young, or minimally disabled individuals with LBP.^{16,18,40} Compared
204 with older, more disabled individuals, physical deconditioning and disuse atrophy are less likely
205 to have occurred in young adults and in our study total and vigorous physical activity was not
206 significantly different between the individuals with LBP and the back-healthy controls. The
207 shorter Sørensen test duration in the individuals with LBP was also not explained by elevated
208 fear avoidance beliefs. The lack of significant association between fear avoidance and test
209 duration in the present study may be due to the small range of FABQ scores observed in this
210 study. The average score in the physical domain (9.2) was below the threshold for clinically
211 relevant elevated fear avoidance.⁴¹ In addition, neither pain experienced following the Sørensen
212 test repetitions in either group, nor average pain reported during symptomatic episodes
213 influenced performance on the final repetition of the test. Although post-test pain differed
214 between the groups following the first and second Sørensen repetitions, this group difference was
215 smaller than the minimal detectable difference for visual analogue scales for back pain.⁴²

216 We found that the factors that predicted endurance in the third Sørensen test varied across
217 groups. In back-healthy individuals, lumbar paraspinal fatigability during the third test predicted
218 duration of that final test. This is consistent with previous work in healthy individuals
219 demonstrating a significant linear relationship between the median frequency slope of the lumbar
220 paraspinals and the duration of the Sørensen test.^{4,18,43} However, this relationship between
221 lumbar paraspinal fatigability and test duration was not evident in the young adults with LBP. In
222 the individuals with LBP, the only measure of muscle fatigability that significantly predicted
223 final test duration was the slope of the hamstrings during the first repetition of the test. Similarly,
224 in a sample of individuals with chronic and disabling LBP, Moffroid et al.,²¹ demonstrated a
225 significant correlation between the median frequency slope of the biceps femoris and Sørensen
226 test duration. Our study extends these previous findings to young adults who were minimally
227 disabled and asymptomatic at the time of testing. We speculate that in the individuals with LBP,
228 the fatigability of the hamstrings is more predictive of Sørensen test duration than the fatigability

229 of the lumbar paraspinals because these individuals avoid maximally fatiguing the lumbar
230 paraspinals in order to limit sense of effort in the symptomatic area. Pitcher et al.,⁵ have also
231 reported that fatigability of the biceps femoris during the Sørensen test differed significantly
232 between individuals with and without LBP but that this difference was only evident when
233 additional loading was added to the upper trunk. During sustained sub-maximal contractions
234 such as the Sørensen test, EMG amplitude of muscle activation increases over time as firing
235 frequency and number of recruited motor units increases to maintain force production.⁴⁴ In our
236 participants with a history of LBP, the extent to which they activated the lumbar and thoracic
237 paraspinals was more important than the fatigability of the paraspinal muscle groups in
238 predicting test duration.

239 Our findings challenge the usual interpretation of the Sørensen test as a measure of lumbar
240 paraspinal fatigability. In comparison with the pain-free group, our participants with a history of
241 LBP used a coordination strategy that was more dependent upon the thoracic and hip extensors.
242 As activation and fatigability of the lumbar paraspinals did not differ between groups, we
243 theorize that in individuals with LBP, greater than normal activation of the lumbar musculature
244 would be needed to compensate for the peripheral changes in lumbar paraspinal structure that are
245 associated with LBP⁴⁵, and that without this compensation endurance during the Sørensen test is
246 impaired. Our study also demonstrates that the difficulty of the Sørensen test must be increased,
247 via the addition of extra trunk loading or test repetitions, to fully identify impairments in young
248 adults with LBP.

249 We acknowledge some limitations to this study. The PAS is validated against other measures of
250 activity and cardiovascular fitness. However, like all subjective measures it may represent an
251 over-estimation of activity.⁴⁶ In addition, the use of surface electromyography did not enable this
252 study to differentiate between components of the paraspinal muscle group.^{16,47} The amount and
253 distribution of mass contained in the head, arms and trunk vary across individuals. Therefore, the
254 torque that individuals must exert to maintain a horizontal position will be greater in individuals
255 with larger mass in the trunk²³, which was not quantified or controlled for in this study.

256 However, we did not observe a significant relationship between duration of the third test and
257 BMI.

258

259 Conclusion

260 In young, active adults, more than one repetition of the Sørensen test is needed to adequately
261 assess paraspinal and hip extensor muscle endurance. Whereas in young adults without
262 symptoms, fatigability of the lumbar paraspinals contributes most to test duration, young adults
263 with LBP, even between symptomatic episodes, use a coordination strategy that involves greater
264 reliance on the thoracic paraspinals and hip extensors.

265

266

References

1. Hestbaek L, Leboeuf-Yde C, Kyvik KO. Is comorbidity in adolescence a predictor for adult low back pain? A prospective study of a young population. *BMC Musculoskelet Disord* 2006;**7**:29. <https://doi.org/10.1186/1471-2474-7-29>.
2. Smith JA, Russo L, Santayana N. Fear avoidance predicts persistent pain in young adults with low back pain: a prospective study. *J Orthop Sport Phys Ther* 2021;**51**:383–91. <https://doi.org/10.2519/jospt.2021.9828>.Fear.
3. Luoto S, Helijvaara M, Hurri H, Alaranta H. Static back endurance and the risk of low-back pain. *Clin Biomech (Bristol, Avon)* 1995;**10**:323–4.
4. Demoulin C, Vanderthommen M, Duysens C, Crielaard JM. Spinal muscle evaluation using the Sorensen test: A critical appraisal of the literature. *Jt Bone Spine* 2006;**73**:43–50. <https://doi.org/10.1016/j.jbspin.2004.08.002>.
5. Pitcher MJ, Behm DG, MacKinnon SN. Neuromuscular fatigue during a modified Biering-Sørensen test in subjects with and without low back pain. *J Sport Sci Med* 2007;**6**:549–59.
6. Evans K, Refshauge KM, Adams R, Aliprandi L. Predictors of low back pain in young elite golfers: A preliminary study. *Phys Ther Sport* 2005;**6**:122–30. <https://doi.org/10.1016/j.ptsp.2005.05.003>.
7. Jubany J, Danneels L, Angulo-Barroso R. The influence of fatigue and chronic low back pain on muscle recruitment patterns following an unexpected external perturbation. *BMC Musculoskelet Disord* 2017;**18**:1–10. <https://doi.org/10.1186/s12891-017-1523-3>.
8. Allison GT, Henry SM, Allison T, Henry M. The influence of fatigue on trunk muscle responses to sudden arm movements, a pilot study. *Exp Brain Res* 2002;**17**:414–7. [https://doi.org/10.1016/S0268-0033\(02\)00029-3](https://doi.org/10.1016/S0268-0033(02)00029-3).
9. Strang AJ, Berg WP, Hieronymus M. Fatigue-induced early onset of anticipatory postural adjustments in non-fatigued muscles: support for a centrally mediated adaptation. *Exp Brain Res* 2009;**197**:245–54. <https://doi.org/10.1007/s00221-009-1908-0>.
10. Tajali S, Roozbehfar N, Mehravar M, Goharpey S, Gayem K. Effects of back extensor and hip abductor fatigue on dynamic postural stability in patients with nonspecific chronic low back pain: A case-control study. *Physiother Theory Pract* 2021;**00**:1–9. <https://doi.org/10.1080/09593985.2021.1913775>.
11. Demoulin C, Boyer M, Duchateau J, Grosdent S, Jidovtseff B, Crielaard JM, et al. Is the Sorensen test valid to assess muscle fatigue of the trunk extensor muscles? *J Back Musculoskelet Rehabil* 2016;**29**:31–40. <https://doi.org/10.3233/BMR-150592>.
12. Biering-Sørensen F. Physical Measurements as Risk Indicators for Low-Back Trouble Over a One-Year Period. *Spine (Phila Pa 1976)* 1984;**9**:106–19. <https://doi.org/10.1007/978-1-4471-5451-8>.

13. Da Silva RA, Arsenault AB, Gravel D, Larivière C, De Oliveira E. Back muscle strength and fatigue in healthy and chronic low back pain subjects: A comparative study of 3 assessment protocols. *Arch Phys Med Rehabil* 2005;**86**:722–9. <https://doi.org/10.1016/j.apmr.2004.08.007>.
14. Rose-Dulcina K, Armand S, Dominguez DE, Genevay S, Vuillerme N. Asymmetry of lumbar muscles fatigability with non-specific chronic low back pain patients. *Eur Spine J* 2019;**28**:2526–34. <https://doi.org/10.1007/s00586-019-06140-9>.
15. Demoulin C, Crielaard JM, Vanderthommen M. Spinal muscle evaluation in healthy individuals and low-back-pain patients: a literature review. *Jt Bone Spine* 2007;**74**:9–13. <https://doi.org/10.1016/j.jbspin.2006.02.013>.
16. Beneck GJ, Baker LL, Kulig K. Spectral analysis of EMG using intramuscular electrodes reveals non-linear fatigability characteristics in persons with chronic low back pain. *J Electromyogr Kinesiol* 2013;**23**:70–7. <https://doi.org/10.1016/j.jelekin.2012.07.001>.
17. Perich D. Low back pain in schoolgirl rowers: Prevalence, bio-psycho-social factors and prevention [Internet]. 2010. Available from: <https://ro.ecu.edu.au/theses/589> https://doi.org/10.1057/978-1-349-96053-8_427.
18. Kankaanpää M, Laaksonen D, Taimela S, Kokko SM, Airaksinen O, Hänninen O. Age, sex, and body mass index as determinants of back and hip extensor fatigue in the isometric Sorensen back endurance test. *Arch Phys Med Rehabil* 1998;**79**:1069–75. [https://doi.org/10.1016/S0003-9993\(98\)90173-3](https://doi.org/10.1016/S0003-9993(98)90173-3).
19. Larivière C, Bilodeau M, Forget R, Vadeboncoeur R, Mecheri H. Poor back muscle endurance is related to pain catastrophizing in patients with chronic low back pain. *Spine (Phila Pa 1976)* 2010;**35**:1178–86. <https://doi.org/10.1097/BRS.0b013e3181e53334>.
20. Vlaeyen JWS, Crombez G, Linton SJ. The fear-avoidance model of pain. *Pain* 2016;**157**:1588–9. <https://doi.org/10.1097/j.pain.0000000000000574>.
21. Moffroid M, Reid S, Henry SM, Haugh LD, Ricamato A. Some endurance measures in persons with chronic low back pain. *J Orthop Sports Phys Ther* 1994;**20**:81–7. <https://doi.org/10.2519/jospt.1994.20.2.81>.
22. Ropponen A, Gibbons LE, Videman T, Battie MC. Isometric Back Extension Endurance Testing □: *J Orthop Sport Phys Ther* 2005;**35**:437–42.
23. Applegate ME, France CR, Russ DW, Leitkam ST, Thomas JS. Sørensen test performance is driven by different physiological and psychological variables in participants with and without recurrent low back pain. *J Electromyogr Kinesiol* 2019;**44**:1–7. <https://doi.org/10.1016/j.jelekin.2018.11.006>.
24. Champagne A, Descarreaux M, Lafond D. Back and hip extensor muscles fatigue in healthy subjects: Task-dependency effect of two variants of the Sorensen test. *Eur Spine J* 2008;**17**:1721–6. <https://doi.org/10.1007/s00586-008-0782-y>.
25. Aadahl M, Jorgensen T. Validation of a New Self-Report Instrument for Measuring Physical Activity. *Med Sci Sport Exerc* 2003;**35**:1196–202. <https://doi.org/10.1249/01.MSS.0000074446.02192.14>.

26. Aadahl M, Kjær M, Kristensen JH, Mollerup B, Jørgensen T. Self-reported physical activity compared with maximal oxygen uptake in adults. *Eur J Prev Cardiol* 2007;**14**:422–8. <https://doi.org/10.1097/HJR.0b013e3280128d00>.
27. George SZ, Valencia C, Beneciuk JM. A Psychometric Investigation of Fear-Avoidance Model Measures in Patients With Chronic Low Back Pain. *J Orthop Sport Phys Ther* 2010;**40**:197–205. <https://doi.org/10.2519/jospt.2010.3298>.
28. Fairbank JCT, Pynsent PB. The Oswestry Disability Index. *Spine (Phila Pa 1976)* 2000;**25**:2940–53. <https://doi.org/10.3171/2013.7.spine13288>.
29. Hermens HJ. Development of recommendations for SEMG sensors and sensor placement procedures. *J Electromyogr Kinesiol* 2000;**10**:361–74. [https://doi.org/10.1016/S1050-6411\(00\)00027-4](https://doi.org/10.1016/S1050-6411(00)00027-4).
30. Dankaerts W, O’Sullivan PB, Burnett AF, Straker LM, Danneels LA. Reliability of EMG measurements for trunk muscles during maximal and sub-maximal voluntary isometric contractions in healthy controls and CLBP patients. *J Electromyogr Kinesiol* 2004;**14**:333–42. <https://doi.org/10.1016/j.jelekin.2003.07.001>.
31. McGill SM. Electromyographic activity of the abdominal and low back musculature during the generation of isometric and dynamic axial trunk torque: Implications for lumbar mechanics. *J Orthop Res* 1991;**9**:91–103. <https://doi.org/10.1002/jor.1100090112>.
32. Lomond K V, Henry SM, Jacobs J V, Hitt JR, Horak FB, Cohen RG, et al. Protocol to assess the neurophysiology associated with multi-segmental postural coordination. *Physiol Meas* 2013;**34**. <https://doi.org/10.1088/0967-3334/34/10/N97>.
33. Smith JA, Kulig K. Trunk-pelvis coordination during turning: A cross sectional study of young adults with and without a history of low back pain. *Clin Biomech* 2016;**36**:58–64. <https://doi.org/10.1016/j.clinbiomech.2016.05.011>.
34. Smith JA, Ignasiak NK, Jacobs J V. Task-invariance and reliability of anticipatory postural adjustments in healthy young adults. *Gait Posture* 2020;**76**:396–402. <https://doi.org/10.1016/j.gaitpost.2020.01.003>.
35. Drake JDM, Callaghan JP. Elimination of electrocardiogram contamination from electromyogram signals: An evaluation of currently used removal techniques. *J Electromyogr Kinesiol* 2006;**16**:175–87. <https://doi.org/10.1016/j.jelekin.2005.07.003>.
36. Mannion AF, Dumas GA, Stevenson JM, Cooper RG. The influence of muscle fiber size and type distribution on electromyographic measures of back muscle fatigability. Vol. 23, *Spine*. 1998.p.576–84. <https://doi.org/10.1097/00007632-199803010-00010>.
37. Coorevits P, Danneels L, Cambier D, Ramon H, Vanderstraeten G. Assessment of the validity of the Biering-Sørensen test for measuring back muscle fatigue based on EMG median frequency characteristics of back and hip muscles. *J Electromyogr Kinesiol* 2008;**18**:997–1005. <https://doi.org/10.1016/j.jelekin.2007.10.012>.
38. Enoka RM, Stuart DG. Neurobiology of muscle fatigue. *J Appl Physiol* 1992;**72**:1631–48. <https://doi.org/10.1152/jappl.1992.72.5.1631>.

39. Wang-Price S, Almadan M, Stoddard C, Moore D. Recovery of Hip and Back Muscle Fatigue Following a Back Extension Endurance Test. *Int J Exerc Sci* ;**10**:213–24.
40. da Silva RA, Vieira ER, Cabrera M, Altimari LR, Aguiar AF, Nowotny AH, et al. Back muscle fatigue of younger and older adults with and without chronic low back pain using two protocols: A case-control study. *J Electromyogr Kinesiol* 2015;**25**:928–36. <https://doi.org/10.1016/j.jelekin.2015.10.003>.
41. George SZ, Stryker SE. Fear-avoidance beliefs and clinical outcomes for patients seeking outpatient physical therapy for musculoskeletal pain conditions. *J Orthop Sports Phys Ther* 2011;**41**:249–59. <https://doi.org/10.2519/jospt.2011.3488>.
42. Hägg O, Fritzell P, Nordwall A. The clinical importance of changes in outcome scores after treatment for chronic low back pain. *Eur Spine J* 2003;**12**:12–20. <https://doi.org/10.1007/s00586-002-0464-0>.
43. Mannion AF, Connolly B, Wood K, Dolan P. The use of surface EMG power spectral analysis in the evaluation of back muscle function. *J Rehabil Res Dev* 1997;**34**:427–39.
44. Ng JK, Richardson CA, Jull GA. Electromyographic amplitude and frequency changes in the iliocostalis lumborum during a trunk holding test. *Phys Ther* 1997;**77**: 954-961.
45. Noonan AM, Brown SHM. Paraspinal muscle pathophysiology associated with low back pain and spine degenerative disorders. *JOR Spine* 2021;**4**:1–12. <https://doi.org/10.1002/jsp2.1171>.
46. Troiano RP, Berrigan D, Dodd KW, Masse LC, Tilert T, McDowell M. Physical Activity in the United States Measured by Accelerometer. *Med Sci Sports Exerc* 2008;**40**:181–8. <https://doi.org/10.1249/mss.0b013e31815a51b3>.
47. Stokes IAF, Henry SM, Single RM. Surface EMG electrodes do not accurately record from lumbar multifidus muscles. *Clin Biomech* 2003;**18**:9–13. [https://doi.org/10.1016/S0268-0033\(02\)00140-7](https://doi.org/10.1016/S0268-0033(02)00140-7).

Table 1. Group demographics and Sørensen Test duration (means and standard deviations)

	With LBP (n = 41)	Without LBP (n = 23)
Age (years)	21.9 (3.1)	23.5 (3.6)
Sex		
Male	16	9
Female	24	14
Not specified	1	
BMI (kg/m ²)	24.3 (4.5)	21.8 (2.2)
PAS (METS)	46.9 (11.4)	45.1 (12.8)
PAS-VIG (METS)	10.1 (13.4)	7.8 (8.0)
Duration 1 (s)	99.2 (37.6)	112.5 (44.8)
Duration 2 (s)	89.3 (29.0)	109.8 (37.8)
Duration 3 (s)	80.2 (25.0)	101.2 (36.8)
Post-test pain 1 (VAS)	0.6 (0.7)	0.2 (0.4)
Post-test pain 2 (VAS)	0.7 (0.7)	0.3 (0.6)
Post-test pain 3 (VAS)	0.8 (0.8)	0.4 (0.8)
Typical pain	4.8 (2.2)	n/a
FABQ-P	9.2 (4.8)	n/a
ODI	16.0 (13.3)	n/a

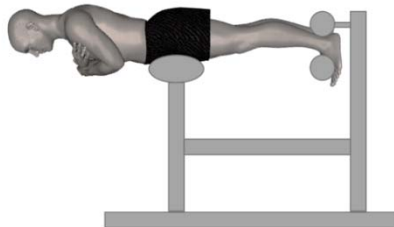
BMI – Body Mass Index. PAS – Physical Activity Scale. PAS-VIG – Physical Activity Scale, vigorous sub-scale, measured in metabolic equivalents (METS). VAS – Visual Analogue Scale for Pain, 0 – 10. FABQ-P – Fear Avoidance Beliefs Questionnaire, physical sub-scale. ODI – Modified Oswestry Disability Index. Typical pain is the average pain that participants reported they experienced during symptomatic episodes. Characteristics with significant differences between groups are shown in bold.

Table 2. Linear relationship between duration of the third Sørensen test, in seconds, and potential predictor variables. Note that, for median-frequency slopes, positive correlation indicates that a more negative slope (faster rate of fatigue) was associated with shorter duration of the third Sørensen repetition. For amplitude, positive correlation indicates that greater amplitude of activation was associated with longer duration of the third Sørensen repetition.

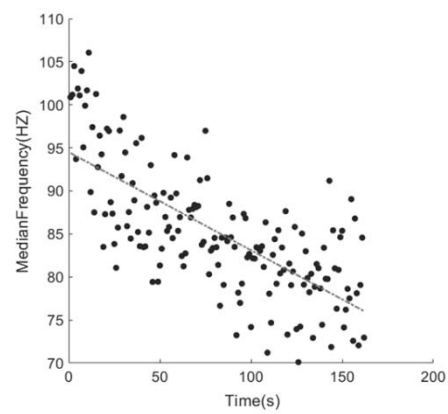
	LBP	Control
Age (years)	-0.318	-0.541
BMI ((kg/m ²))	-0.125	-0.269
PAS (METS)	0.154	-0.160
PAS-VIG (METS)	0.015	-0.260
TES1 (normalized slope)	0.453	-0.117
LES1(normalized slope)	0.412	0.471
HS1 (normalized slope)	0.422	0.306
TES2 (normalized slope)	0.263	0.134
LES2 (normalized slope)	0.197	0.512
HS2 (normalized slope)	0.327	0.319
TES3 (normalized slope)	0.104	0.436
LES3 (normalized slope)	0.246	0.649
HS3 (normalized slope)	0.207	0.413
TES1 (normalized amplitude)	0.149	-0.166
LES1(normalized amplitude)	-0.206	-0.176
HS1 (normalized amplitude)	0.064	-0.052
TES2 (normalized amplitude)	0.364	0.317
LES2 (normalized amplitude)	0.259	-0.255
HS2 (normalized amplitude)	0.163	-0.209
TES3 (normalized amplitude)	0.291	-0.096
LES3 (normalized amplitude)	0.370	-0.239
HS3 (normalized amplitude)	0.223	-0.055
Post-test pain 1 (VAS)	0.177	0.086
Post-test pain 2 (VAS)	-0.052	0.143
Post-test pain 3 (VAS)	0.065	0.154
Typical pain (VAS)	0.126	n/a
FABQ-P	0.127	n/a
ODI	-0.095	n/a

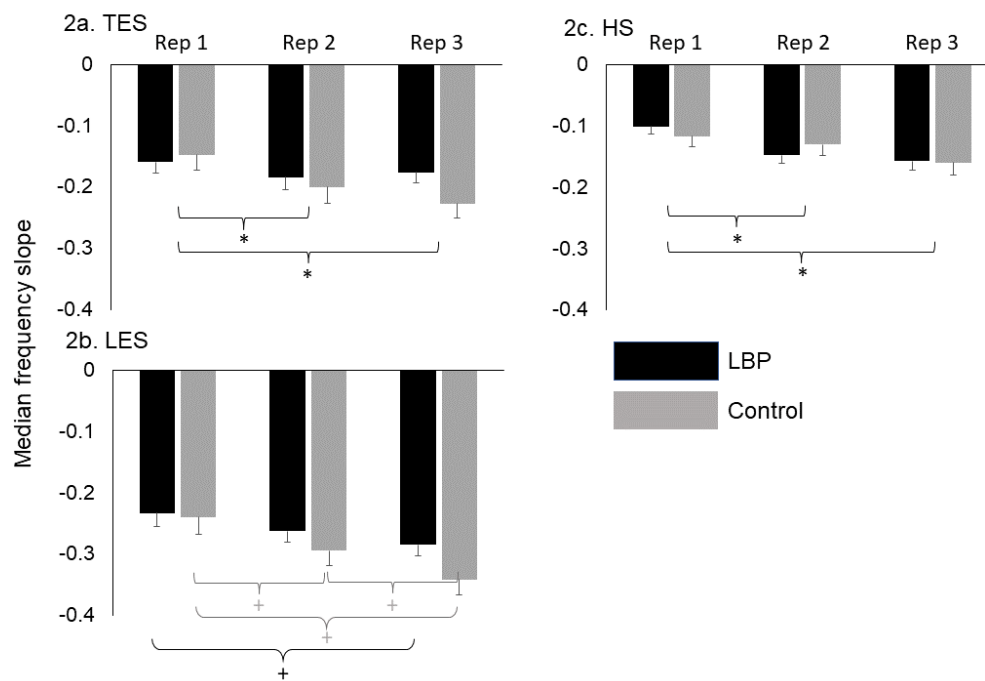
BMI – Body Mass Index. PAS – Physical Activity Scale. PAS-VIG – Physical Activity Scale, vigorous sub-scale. VAS – visual analogue scale for pain. FABQ-P – Fear Avoidance Beliefs Questionnaire, physical sub-scale. ODI – Modified Oswestry Disability Index. TES – Thoracic Erector Spinae. LES – Lumbar Erector Spinae. HS – Hamstring. Significant correlations ($p < 0.05$) are shown in bold.

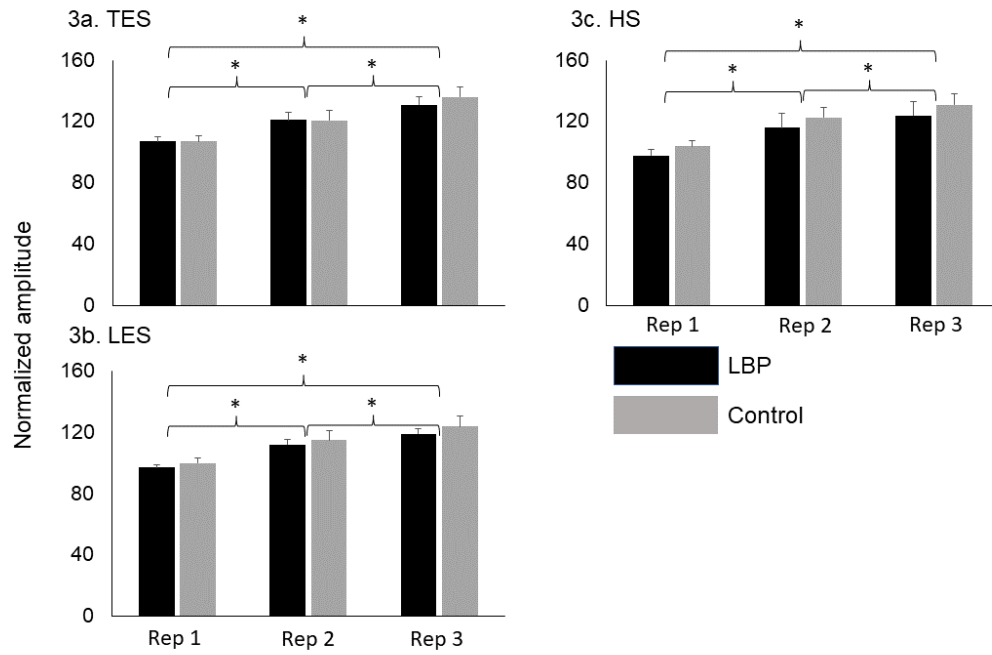
a



b







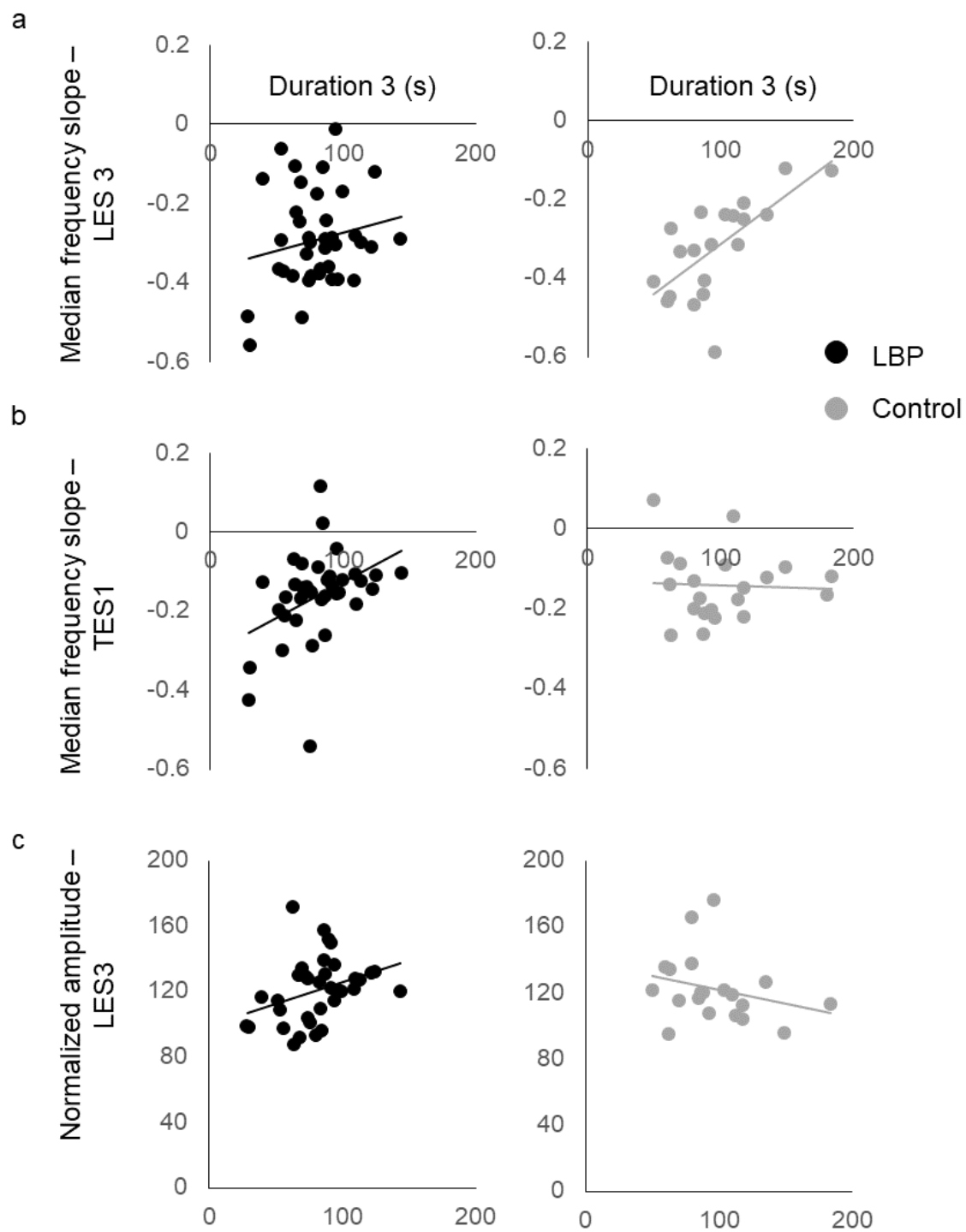


Figure 1. a) Testing position for the Biering-Sørensen test. b) Representative data from the lumbar paraspinal muscle from a single participant showing the decline in the median frequency of the electromyography signal over the duration of a test. Fatigability is quantified as the slope of the decline in median frequency, normalized to the initial median frequency.

Figure 2. Normalized median frequency slope for a) Thoracic Erector Spinae (TES), b) Lumbar Erector Spinae (LES), c) Hamstring (HS), with significant post-hoc comparisons for the main effect of repetition (Rep 1, 2, 3) indicated by *, and significant within-group post-hoc comparisons indicated by +. N = 37 in the group with LBP and 21 in the group without LBP. Values are marginal means after covarying for BMI and error bars are standard errors.

Figure 3. Normalized amplitude for a) Thoracic Erector Spinae (TES), b) Lumbar Erector Spinae (LES), c) Hamstring (HS), with significant post-hoc comparisons for the main effect of repetition (Rep 1, 2, 3) indicated by *. N = 37 in the group with LBP and 21 in the group without LBP. Values are marginal means after covarying for BMI and error bars are standard errors. Data were normalized to average amplitude of activation during the first ten seconds of the first repetition of the Sørensen test.

Figure 4. Scatterplots showing relationship between duration of the third Sørensen test in seconds and a) normalized median frequency slope of the lumbar paraspinals during the third test (LES3); b) normalized median frequency slope of the thoracic paraspinals during the first test (TES1); c) normalized amplitude of the lumbar paraspinals during the third test.