

October 29 2022

## Self-experience in MDMA assisted therapy of PTSD .

Bessel A. van der Kolk, M.D.,<sup>1</sup> Julie B. Wang, M.P.H, Ph.D.,<sup>2</sup> Rachel Yehuda, Ph.D.,<sup>3,4</sup> Leah Bedrosian, M.P.H.,<sup>2</sup> Allison Cooker, PhD<sup>6</sup>; Charlotte Harrison MA<sup>2</sup>, Michael Mithoefer, M.D.,<sup>2,5</sup> Berra Yazar-Klosinski, Ph.D.,<sup>7</sup> Amy Emerson,<sup>2</sup> Rick Doblin, Ph.D.<sup>7</sup>

<sup>1</sup> Trauma Research Foundation, Brookline, MA, USA.

<sup>2</sup> MAPS Public Benefit Corporation (MAPS PBC), San Jose, CA, USA.

<sup>3</sup> James J. Peters Veterans Affairs Medical Center, Bronx, NY USA.

<sup>4</sup> Center for Psychedelic Psychotherapy and Trauma Research, Icahn School of Medicine at Mount Sinai, New York, NY, USA.

<sup>5</sup> Department of Psychiatry and Behavioral Sciences, Medical University of South Carolina, Charleston, SC, USA.

<sup>6</sup> University of California, San Francisco, San Francisco, CA, USA.

<sup>7</sup> Multidisciplinary Association for Psychedelic Studies (MAPS), San Jose, CA, USA.

**Corresponding Author:** Bessel van der Kolk, MD; Orcid [bessel1@mac.com](https://orcid.org/0009-0001-9052-9052)

Email: [besselvanderkolk@gmail.com](mailto:besselvanderkolk@gmail.com); Phone:6174130794;

**Role of Funding Sources:** The clinical trial was sponsored by the Multidisciplinary Association for Psychedelic Studies (MAPS), a 501(c)(3) non-profit organization. MAPS provided the MDMA and fully funded this study from private donations. MAPS Public Benefit Corporation (MAPS PBC), wholly owned by MAPS, was the trial organizer.

**Contributors:** BvdK and RY conceived the study design; JW conducted the statistical analyses, BvdK, RY, JW, and LB drafted the manuscript. All authors contributed to the interpretation of the results, critical review and the final version of the manuscript.

**Conflict of Interest:** JW, LB, MM, and AE received salary support for full-time employment with MAPS PBC. BYK and RD received salary support for full-time employment with MAPS.

## Abstract

---

In recent years there has been a resurgence of interest in the therapeutic potential of psychedelic substances such as 3,4-methylenedioxymethamphetamine (MDMA). This renaissance of psychedelic studies opens the door for a new paradigm in psychiatric medicine:

October 29 2022

drug-facilitated psychotherapy. In this study we report the findings of a randomized, double-blind, placebo-controlled, multi-site Phase 3 clinical trial (NCT03537014) to test the effects of MDMA-assisted therapy (MDMA-AT) on patients with severe PTSD. The vast majority (85%) of individuals in this study reported having suffered early childhood trauma, which is strongly associated with deficits in emotional coping skills /altered self-capacities, which have been shown to constitute major obstacles to successful completion of currently available evidence-based treatments. Participants were randomized 1:1 to receive manualized therapy with either MDMA or placebo with three preparatory and nine integrative therapy sessions. Symptoms were measured at baseline and at 24 months after the last experimental session with the Clinician-Administered PTSD Scale for DSM-5, the Toronto Alexithymia Scale (TAS\_20), the Self Compassion Scale (SCS) and the Inventory of Altered Self-Capacities (IASC). MDMA-AT, compared with psychotherapy alone, significantly altered the domains of alexithymia, self-compassion, and altered self-capacities. These findings suggest that MDMA-AT can substantially improve transdiagnostic mental processes associated with poor treatment response.

## **Introduction**

In recent years there has been a resurgence of interest in the therapeutic potential of psychedelic substances such as tryptamines (e.g., psilocybin), ketamine and phenethylamines (e.g., 3,4-methylenedioxymethamphetamine (MDMA)<sup>1, 2</sup>. The renaissance of psychedelic studies opens the door for a new paradigm in psychiatric medicine: drug-facilitated psychotherapy.

A pooled analysis of six MDMA-assisted therapy Phase II trials showed that 54% of patients no longer met criteria for PTSD<sup>3</sup>. Based on its positive performance with significant and sustained reductions in PTSD symptoms and acceptable safety profiles the FDA has designated

October 29 2022

MDMA-assisted therapy (MDMA-AT) as a breakthrough therapy for PTSD<sup>4</sup>. Recently, results of a Phase 3 multisite study of MDMA assisted psychotherapy were published confirming the safety and efficacy of MDMA-AT in individuals with severe PTSD<sup>5</sup>. Compared with the placebo with therapy (P+Th) condition MDMA-AT was found to induce significant and robust attenuation in PTSD symptom severity score ( $P < 0.0001$ ,  $d = 0.91$ ), suggesting a strikingly greater therapeutic effect of MDMA-AT over protocolized therapy alone.

The protocol for MDMA-assisted therapy consists of a 3-month long treatment with 3 dosing and 3 preparation sessions, as well as 9 integration sessions. All study participants received an equal, substantial dose of manualized therapy in addition to receiving either the MDMA or placebo. This provides us with an opportunity to explore the differential effects of therapy alone vs psychedelic-assisted therapy to gain a deeper understanding of the psychological change processes induced by psychedelic therapies.

Trauma-focused psychotherapy is considered a first line treatment for PTSD<sup>6, 7</sup>. However, the overall success rate with psychotherapeutic treatments for PTSD has been relatively disappointing. At least one-quarter of patients drop out of trauma-focused psychotherapy, and up to one-half are left with significant lingering symptoms<sup>8, 9, 10</sup>. Even patients who are considered responders often remain challenged by difficulties in emotion regulation, impulse control and interpersonal functioning<sup>11, 12, 13</sup>, all of which seem to continue relatively independent from PTSD symptomatology<sup>14, 15</sup>.

Many trauma survivors, particularly those with histories of child abuse (developmental trauma) have been shown to experience significant defects in a variety of transdiagnostic mental processes, including a loss of sense of safety, trust and self-worth, being unable to notice internal states (alexithymia), lack of a coherent sense of self, inability to modulate or tolerate distress,

October 29 2022

difficulties negotiating interpersonal conflicts and negative self-appraisals, such as shame, self-blame and lack self-compassion. All of these have been shown to correlate with poor treatment outcome<sup>16, 17</sup>.

Multiple studies have shown that reduced self-capacities interfere with successful completion of psychotherapy for PTSD<sup>18, 19</sup>. Problems with emotion regulation interfere with being able to disengage from trauma-related stimuli, which increases the probability of drop out due to an inability to manage distress arising during treatment<sup>20</sup>. Alexithymia, deficits in being able to identify and describe emotions, is associated with posttraumatic pathology<sup>21, 22, 23</sup> and with a lack of habituation to emotionally distressing stimuli<sup>24</sup>. Persons with high alexithymia scores have been shown to display low autonomic activity in response to any task performance, regardless of the level of emotional demand, including processing traumatic maternal<sup>25</sup>.

Finally, self-compassion is a core component of overall mental health and well-being<sup>26</sup> often lacking in trauma survivors with PTSD who frequently experience self-loathing and self-blame<sup>27, 28</sup>. Low self-compassion scores are associated with anxiety, depression, narcissism, self-criticism, and with poor treatment responses<sup>29</sup>. Stabilizing self-experience that leads to higher levels of emotion-regulation and self-compassion has been shown to improve treatment results for a variety of psychological interventions<sup>30, 31</sup>.

In this paper, we report the results of three transdiagnostic outcome measures that were collected in tandem with the previously published PTSD changes in the MDMA-AT Phase 3 trial. This provides us with an opportunity to illuminate psychological processes that underpin the significant gains and sustained effects of MDMA-AT compared with therapy alone.

## **Methods**

### *Study Design*

October 29 2022

This paper assesses exploratory data from a randomized, double-blind, placebo-controlled study comparing safety and efficacy of MDMA-AT to inactive placebo with therapy (P+TH) in participants with severe PTSD<sup>5</sup>. Details such as recruitment and locations of the 15 sites are described in the previous paper. All participants, site staff, independent raters, and the sponsor were blind to participants group assignments until after database lock. All participants provided written informed consent at eligibility screening after ethics approval from local Institutional Review Boards.

*Participants* All 90 participants met DSM-5 criteria for current PTSD with a symptom duration of six months or greater and a CAPS-5 total severity score of 35 or greater at baseline. The vast majority of participants (85%) suffered from developmental trauma (childhood physical and/or sexual abuse) and 87% had experienced multiple traumas. Exclusion criteria included primary psychotic, bipolar I, dissociative identity, personality disorders, current alcohol and substance use disorders, and any medical condition for which an acute, transient increase in blood pressure or heart rate would pose a medical concern. Full eligibility criteria are described in the study protocol (<http://maps.org/mapp1>).

*Intervention*

October 29 2022

Participants underwent three 90-minute preparatory therapy sessions with a co-therapist dyad to establish therapeutic alliance and prepare for experimental sessions. The treatment period consisted of three 8-hour experimental sessions of either MDMA-AT or inactive placebo control with the same therapy, spaced approximately four weeks apart, also described previously<sup>6</sup>. In each experimental session, participants were given a divided-dose of MDMA or placebo, with an initial dose followed by a supplemental half-dose 1.5 to 2.5 hours later. In the first experimental session the dose was 80 mg + 40 mg MDMA HCl, and in second and third experimental sessions, the dose was escalated to 120 mg + 60 mg MDMA HCl. Manualized therapy was conducted in accordance with MAPS MDMA-AT treatment manual ([maps.org/treatment manual](https://maps.org/treatment-manual)). Following each experimental session, participants underwent three 90-minute integration sessions, scheduled one week apart, to provide them with the opportunity to process their experiences.

### *Demographic and Baseline Variables*

Age, gender, ethnicity, race, and education were compared between treatment groups. Other variables relevant to the transdiagnostic outcomes explored here, but not reported in this publication, included employment status, detailed trauma history, pre-study treatment, and baseline outcomes measures for the Adverse Childhood Experience Questionnaire (ACE)<sup>32</sup>, Beck Depression Inventory II (BDI-

October 29 2022

II)<sup>33</sup>, Clinician-Administered PTSD Scale for DSM-5 (CAPS-5) total severity score<sup>34</sup>, and lifetime suicidality assessment from the Columbia Suicide Severity Rating Scale (C-SSRS)<sup>35</sup>.

### *Self-experience Measures*

The Inventory of Altered Self Capacities (IASC), a 63-item self-report measure of difficulties with relationships, identity, and regulation, rated on a 5-point Likert scale ranging from 1 (“Never”) to 5 (“Very Often”). The IASC consists of the following subscales: Interpersonal Conflicts, Identity Impairment, Idealization Disillusionment, Abandonment Concerns, Susceptibility to Influence, Affect Dysregulation (with two subscales: Affect Skill Deficits and Affect Instability), and Tension Reduction Activities. Items for each subscale are summed to calculate subscale raw scores that range from 9 to 45<sup>36</sup>.

The Toronto Alexithymia Scale (TAS-20), a 20-item measure of self-reported difficulties with recognizing and verbalizing emotions. Responses are reported on a 5-point Likert scale ranging from 1 (“Strongly disagree”) to 5 (“Strongly agree”). The scale is comprised of three subscales: Difficulty Describing Feelings, Difficulty Identifying Feelings, and Externally-Oriented Thinking. Total scores diagnostically indicate no alexithymia ( $\geq 50$ ), border-line alexithymia (51-60), and alexithymia ( $\geq 61$ )<sup>37</sup>.

October 29 2022

The Self-Compassion Scale (SCS), a 26-item self-report measure of how respondents perceive their own failures, suffering, or inadequacies with kindness and compassion as a part of the common human experience. Respondents indicate how they often feel for each item on a 5-point Likert scale ranging from 1 (“Almost never”) to 5 (“Almost always”). The SCS consists of six subscales: Self-Kindness, Self-Judgement, Common Humanity, Isolation, Mindfulness, and Over-Identified. The mean of subscale scores serves as the total score<sup>38</sup>. A total score of 1-2.4 indicates “low,” 2.5-3.4 “moderate,” and 3.5-5.0 “high” SCS.

Independent raters conducted the PTSD primary outcome assessment, CAPS-5, prior to the first experimental session and at the primary endpoint Visit 19, approximately eight weeks after the final experimental session (18 weeks post-baseline). The SCS, IASC, and TAS-20 were self-reported at baseline, during the final preparatory session (Visit 4) and again approximately 18 weeks later at study termination (Visit 20).

### *Statistical Methods*

Descriptive analyses were performed on demographic, baseline, and outcome variables. Group means (SD) were compared using *t*-tests or ANOVA/ ANCOVA and proportions were compared using chi-square tests. Non-parametric tests were



October 29 2022

performed on samples with non-normal distributions. Pearson's correlations were conducted to examine linear relationships across variables.

In the primary analysis, separate two-way ANCOVA models, adjusting for baseline scores and CAPS-5 dissociative subtype (Yes=1 and No=0), compared treatment group differences in change scores for TAS-20, SCS, each IASC factor, and CAPS-5 (MDMA-AT vs. P+Th).

Separate analyses examined within-subjects differences at baseline and follow-up scores for MDMA-AT and P+Th groups. Sub-set analyses evaluated change scores stratified by baseline cutoff scores; specifically: (i) TAS-20 baseline measure of having no alexithymia ( $\leq 50$ ) and alexithymia ( $> 51$ ); (ii) SCS baseline measure of low (1-2.4) and moderate (2.5-3.4) or high (3.5-5.0) self-compassion; (iii) and for each IASC factor baseline scores for each factor above and below the sample median. For IASC factors, the sample median (vs. the mean) was used to account for any non-normal sample distributions and since the IASC lacks a validated composite score to define a clinical cutoff. Models tested the main effects and interaction terms between treatment group (MDMA-AT vs. P+Th) and baseline categories (low vs. high TAS-20, SCS, or IASC factor). All models adjusted for baseline scores and CAPS-5 dissociative subtype (Yes=1 and No=0). Tukey's HSD test corrected for multiple comparisons and tables reported Least Square Means (LSMEANS) which adjusted for unequal

October 29 2022

sample sizes across group comparisons. All analyses were performed using SAS Version 9.4 (SAS Institute, Cary, North Carolina).

## **Results**

### *Sample Characteristics*

The study sample consisted of 90 participants who were randomized and completed at least one experimental dosing session (MDMA=46, P+Th=44). Follow-up data for TAS-20, SCS, and IASC were missing for eight participants due to early study termination (discontinued due to COVID-19 = 4; declined further treatment = 2; restarted pre-study treatment = 1). All available data were used in the analysis. Participants were majority women (63.3%), White (78.4%), non-Hispanic or Latino (90.0%), college graduates (71.1%), and the mean (SD) age was 40.93 (11.95) years. 85% of participants had histories of childhood physical/sexual abuse (developmental trauma), and 87% had suffered multiple traumas. There were no statistically significant group differences between MDMA-AT and P+Th groups across demographic and baseline variables. Detailed sample characteristics have been described in the primary outcome paper<sup>7</sup>

**[Insert Table 1]**

**Table 1: Mean (SD) or LSM (SE) for Alexithymia (TAS-20), Self-Compassion (SCS), and Inventory of Altered Self-Capacities (IASC) Scores by Low/ High Baseline Scores**

	Placebo					MDMA					p-value <sup>6,7</sup>
	N	Baseline	N	Follow-up	Change <sup>4,5,7</sup>	N	Baseline	N	Follow-up	Change <sup>4,5,7</sup>	
Baseline TAS-20 <sup>1,2</sup> , mean (SD)	44	55.73 (10.64)	40	51.20 (11.47)	-3.39 (1.57)*	46	53.00 (13.75)	42	41.62 (11.71)	-12.06 (1.75)*	<.0001*
No alexithymia	18	45.56 (3.70)	17	43.41 (9.49)	-6.24 (2.76)*	19	39.84 (7.91)	17	35.12 (8.30)	-11.72 (3.22)*	0.35
Alexithymia	26	62.77 (7.71)	23	56.96 (9.29)	-1.51 (2.26)	27	62.26 (8.28)	25	46.04 (11.74)	-12.85 (2.43)*	<.0006*
Baseline SCS <sup>1,3</sup> , mean (SD)	44	2.18 (0.68)	40	2.51 (0.86)	0.24 (0.12)^	46	2.38 (0.83)	42	3.50 (0.81)	1.08 (0.13)*	<.0001*
Moderate or High	14	2.98 (0.45)	13	3.22 (0.84)	0.38 (0.23)	19	3.22 (0.54)	18	3.76 (0.62)	0.76 (0.23)*	.42
Low	30	1.80 (0.38)	27	2.16 (0.64)	0.23 (0.16)	27	1.79 (0.35)	24	3.30 (0.88)	1.36 (0.20)*	<.0001*
Baseline IASC <sup>1</sup>											
Interpersonal Conflicts	44	2.57 (0.93)	40	2.27 (0.84)	-0.25 (0.11)*	46	2.53 (0.99)	42	1.81 (0.58)	-0.69 (0.12)*	.0027*
≤ median 2.33	24	1.90 (0.33)	22	2.00 (0.64)	-0.29 (0.16)	23	1.74 (0.29)	21	1.55 (0.49)	-0.68 (0.17)*	.21
> median	20	3.36 (0.78)	18	2.61 (0.95)	-0.20 (0.19)	23	3.33 (0.77)	21	2.07 (0.55)	-0.72 (0.20)*	.08
Idealization-Disillusionment	44	2.25 (1.08)	40	1.86 (0.93)	-0.31 (0.11)*	46	2.02 (0.99)	42	1.39 (0.59)	-0.70 (0.12)*	.0095*
≤ median 1.84	19	1.29 (0.22)	17	1.35 (0.57)	-0.48 (0.19)*	26	1.29 (0.23)	24	1.12 (0.36)	-0.69 (0.18)*	.71
> median	25	2.98 (0.89)	23	2.23 (0.97)	-0.20 (0.17)	20	2.97 (0.76)	18	1.75 (0.65)	-0.75 (0.21)*	.05
Abandonment Concerns	44	2.57 (1.01)	40	2.22 (0.99)	-0.23 (0.13)	46	2.41 (1.14)	42	1.70 (0.80)	-0.62 (0.14)*	.0293*
≤ median 2.28	20	1.62 (0.34)	18	1.78 (0.87)	-0.21 (0.24)	25	1.50 (0.37)	24	1.32 (0.54)	-0.59 (0.24)*	.39
> median	24	3.37 (0.62)	22	2.59 (0.94)	-0.26 (0.22)	21	3.50 (0.70)	18	2.20 (0.84)	-0.64 (0.27)*	.43
Identity Impairment	44	5.50 (2.21)	40	4.70 (2.08)	-0.66 (0.23)*	46	5.00 (1.97)	42	3.72 (1.71)	-1.57 (0.25)*	.0036*
≤ median 4.83	20	3.52 (0.79)	19	3.54 (1.00)	-1.26 (0.41)	25	3.55 (0.91)	24	2.70 (0.75)	-2.11 (0.38)*	.1594
> median	24	7.15 (1.55)	21	5.59 (1.62)	-0.10 (0.38)	21	6.73 (1.42)	18	4.53 (1.81)	-1.09 (0.41)*	.1419
Self-Awareness	44	3.22 (1.19)	40	2.85 (1.03)	-0.29 (0.14)^	46	2.97 (1.12)	42	2.08 (0.98)	-0.96 (0.16)*	.0010*
≤ median 3.00	23	2.23 (0.60)	21	2.48 (0.91)	-0.01 (0.26)	23	2.01 (0.57)	20	1.65 (0.60)	-0.66 (0.29)*	.09
> median	21	4.30 (0.56)	19	3.25 (1.01)	-0.62 (0.28)*	23	3.93 (0.55)	22	2.46 (1.10)	-1.14 (0.25)*	.28
Identity Diffusion	44	2.28 (1.21)	40	1.78 (0.85)	-0.36 (0.10)*	46	2.03 (1.05)	42	1.40 (0.69)	-0.61 (0.12)*	.0757
≤ median 1.75	22	1.30 (0.31)	21	1.38 (0.55)	-0.36 (0.18)*	25	1.20 (0.27)	23	1.09 (0.21)	-0.60 (0.18)*	.58
> median	22	3.26 (0.93)	19	2.21 (0.92)	-0.36 (0.20)	21	3.02 (0.70)	19	1.79 (0.86)	-0.63 (0.20)*	.61
Susceptibility to Influence	44	2.04 (0.92)	40	1.76 (0.73)	-0.14 (0.09)	46	1.90 (0.86)	42	1.28 (0.41)	-0.55 (0.10)*	.0012*
≤ median 1.78	23	1.37 (0.26)	21	1.49 (0.56)	-0.29 (0.14)^	23	1.22 (0.22)	20	1.17 (0.42)	-0.58 (0.16)*	.33
> median	21	2.76 (0.83)	19	2.05 (0.80)	0.02 (0.15)	23	2.58 (0.69)	22	1.38 (0.37)	-0.56 (0.15)*	.0099*
Affect Dysregulation	44	5.85 (2.14)	40	4.70 (2.08)	-0.96 (0.27)*	46	5.48 (2.28)	42	3.72 (1.71)	-1.75 (0.30)*	.0349*
≤ median 5.80	22	4.1 (1.04)	21	3.74 (1.69)	-1.30 (0.44)*	23	3.46 (0.88)	21	2.85 (1.16)	-1.92 (0.53)*	.6381
> median	22	7.61 (1.35)	19	5.76 (1.97)	-0.54 (0.51)	23	7.49 (1.16)	21	4.59 (1.74)	-1.63 (0.50)*	.1763
Affect Instability	44	2.81 (1.10)	40	2.29 (0.99)	-0.40 (0.13)*	46	2.57 (1.23)	42	1.84 (0.84)	-0.76 (0.15)*	.0454*
≤ median 2.50	22	1.92 (0.48)	21	1.82 (0.67)	-0.55 (0.22)*	26	1.62 (0.46)	24	1.52 (0.68)	-0.73 (0.25)*	.88
> median	22	3.70 (0.76)	19	2.80 (1.04)	-0.24 (0.24)	20	3.81 (0.65)	18	2.26 (0.87)	-0.84 (0.26)*	.12
Affect Skill Deficit	44	3.04 (1.24)	40	2.41 (1.24)	-0.56 (0.15)*	46	2.90 (1.17)	42	1.88 (0.92)	-0.98 (0.17)*	.0424*
≤ median 3.00	22	1.99 (0.69)	20	1.60 (0.60)	-0.41 (0.57)*	24	1.97 (0.67)	22	1.50 (0.65)	-0.43 (0.83)*	1.0
> median	22	4.09 (0.60)	20	3.22 (1.19)	-0.84 (1.45)	22	3.93 (0.59)	20	2.29 (1.00)	-1.60 (0.92)*	.02*
Tension Reduction Activities	44	1.88 (0.57)	40	1.66 (0.48)	-0.19 (0.07)*	46	1.85 (0.71)	42	1.40 (0.45)	-0.42 (0.08)*	.0206*
≤ median 1.78	20	1.43 (0.20)	18	1.54 (0.43)	-0.13 (0.12)	26	1.34 (0.26)	24	1.26 (0.41)	-0.37 (0.12)*	.30

October 29 2022

> median                      24    2.25 (0.50)    22    1.75 (0.52)    -0.24 (0.10)\*    20    2.52 (0.53)    18    1.60 (0.44)    -0.47 (0.14)\*                      .36

---

<sup>1</sup> Abbreviations: TAS-20=Toronto Alexithymia Scale; SCS=Self-Compassion Scale; IASC=Inventory of Altered Self-Capacities; ASC=Altered Self-Capacities

<sup>2</sup> TAS-20 cutoff scores: no alexithymia  $\leq 50$ ; borderline alexithymia (51-60); alexithymia ( $\geq 61$ ) (Bagby et al. 1994)

<sup>3</sup> SCS cutoff scores: low (1-2.4); moderate (2.5-3.4); high (3.5-5.0) (Neff 2003)

<sup>4</sup> Change scores are Least Square Means (Standard Errors)

<sup>5</sup> (\*) = indicates a *p*-value of  $< .05$  for within-subjects comparison of baseline vs. follow-up scores

<sup>6</sup> (\*) indicates a *p*-value of  $< .05$  for between-group subjects' comparison of placebo change scores vs. MDMA change scores

<sup>7</sup> All models adjusted for baseline CAPS-5 Dissociative Subtype (Yes/ No), baseline TAS-20, SCS, or IASC scores, and accounted for multiple comparisons using Tukey's correction

October 29 2022

### *Treatment Effects on Self-experience Measures*

Most study participants had significant improvements in the measures of self-experience. Those with high baseline levels of alexithymia, low self-compassion, and/ or altered self-capacities had significant improvement at follow-up; and these improvements were more pronounced in the MDMA-AT (vs. P+Th) group (**Table 1**). MDMA-AT had a greater improvement than P+Th on alexithymia [-12.85 (2.43) vs. -1.51 (2.26);  $p < .0006$ ] (**figure 1**), self-compassion 1.36 (0.20) vs. 0.23 (0.16);  $p < .0001$ ] (**figure 2**), and IASC factors: “idealization disillusionment” [-0.75 (0.21) vs. -0.20 (0.17);  $p = .05$ ], “susceptibility to influence” [-0.56 (0.15) vs. 0.02 (0.15);  $p = .0099$ ], and “affect skill deficit” [-1.60 (0.92) vs. -0.84 (1.45);  $p = .02$ ] (**figure 3**). This suggests that MDMA has a strong effect of these measures of emotion regulation and self-experience, even after adjusting for potential covariates and conducting multiple comparisons.

[Insert Table 2]

October 29 2022

**Table 2: LSM (SE) CAPS-5 Total Severity Scores, Change Scores, and Difference in Change Scores by Low/ High TAS-20, SCS, and IASC Baseline Scores**

	Placebo			MDMA			N	Between-group difference in change scores	95% CI
	Baseline (n=44)	Visit 20 (n=40)	Change	Baseline (n=46)	Visit 20 (n=42)	Change			
Overall Sample	44.23 (6.15)	30.48 (12.56)	-13.32 (1.95)*	43.98 (6.01)	19.55 (13.50)	-24.65 (2.18)*	82	-11.33	-16.59, 6.08
Baseline TAS-20, mean (SD)^									
No alexithymia	45.19 (2.64)	24.61 (2.79)	-20.59 (3.75)*	42.38 (2.60)	17.96 (2.73)	-24.41 (3.64)*	33	-5.24	-15.44, 4.97
Borderline or Alexithymia	44.18 (2.14)	34.98 (2.23)	-9.19 (3.09)	46.23 (2.16)	21.77 (2.25)	-24.46 (3.03)*	49	-16.16	-28.80, -7.52*
Baseline SCS, mean (SD)									
Moderate or High	42.47 (2.97)	26.01 (3.07)	-16.46 (4.23)*	43.16 (2.56)	20.64 (2.62)	-22.52 (3.61)*	31	-7.48	-18.67, 3.70
Low	45.92 (2.02)	33.48 (2.13)	-12.43 (2.91)*	46.38 (2.21)	20.66 (2.35)	-25.72 (3.08)*	51	-13.85	-22.84, -4.86*
Baseline IASC									
Interpersonal Conflicts									
≤ median 2.33	45.00 (2.25)	31.73 (2.40)	-13.27 (3.25)*	43.43 (2.32)	18.09 (2.42)	-25.33 (3.29)*	42	-12.80	-22.38, -3.21*
> median	45.03 (2.44)	30.71 (2.51)	-14.32 (3.49)*	47.37 (2.35)	23.93 (2.47)	-23.44 (3.29)*	40	-9.72	-19.79, 0.35
Idealization-Disillusionment^									
≤ median 1.84	46.04 (2.52)	30.97 (2.72)	-15.07 (3.64)*	44.03 (2.15)	17.12 (2.25)	-26.91 (3.04)*	40	-12.80	-22.61, -2.98*
> median	44.33 (2.15)	31.51 (2.20)	-12.82 (3.07)*	47.40 (2.49)	26.43 (2.62)	20.96 (3.49)*	42	-8.54	-18.41, 1.34
Abandonment Concerns^									
≤ median 2.28	45.00 (2.47)	31.47 (2.66)	-13.54 (3.56)*	42.91 (2.23)	18.17 (2.28)	-24.72 (3.09)*	41	-12.29	-22.12, -2.46*
> median	44.87 (2.21)	30.94 (2.26)	-13.93 (3.15)*	48.04 (2.42)	24.45 (2.61)	-23.59 (3.47)*	41	-10.29	-20.34, -0.23*
Identity Impairment^									
≤ median 4.83	45.64 (2.43)	29.94 (2.49)	-15.70 (3.38)*	42.71 (2.17)	15.87 (2.21)	-26.84 (3.01)*	43	-11.87	-21.18, -2.56*
> median	44.49 (2.15)	32.43 (2.30)	-12.07 (3.15)*	48.61 (2.38)	27.88 (2.58)	-20.73 (3.39)*	39	-9.98	-20.41, 0.45
Self-Awareness									
≤ median 3.00	44.27 (2.35)	29.94 (2.39)	-14.33 (3.28)*	42.53 (2.36)	17.53 (2.52)	-24.99 (3.36)*	42	-11.05	-20.62, -1.48*
> median	45.45 (2.40)	32.44 (2.59)	-13.01 (3.53)*	47.61 (2.36)	23.53 (2.43)	-24.09 (3.28)*	40	-11.88	-22.21, -1.54*
Identity Diffusion^									
≤ median 1.75	47.00 (2.34)	32.06 (2.44)	-14.94 (3.31)*	43.73 (2.19)	17.19 (2.29)	-26.54 (3.10)*	43	-12.56	-21.92, -3.21*
> median	43.38 (2.29)	30.77 (2.40)	-12.61 (3.31)*	48.09 (2.44)	26.37 (2.55)	-21.71 (3.40)*	39	-9.57	-19.83, 0.69
Susceptibility to Influence^									
≤ median 1.78	44.76 (2.33)	31.25 (2.49)	-13.51 (3.34)*	43.76 (2.33)	17.13 (2.50)	-26.63 (3.34)*	40	-13.96	-23.68, -4.24*
> median	45.21 (2.39)	31.17 (2.45)	-14.05 (3.42)*	46.90 (2.37)	24.41 (2.41)	-22.50 (3.26)*	42	-8.78	-18.65, 1.09
Affect Dysregulation^									
≤ median 5.80	44.42 (2.34)	27.58 (2.45)	-16.83 (3.34)*	43.30 (2.34)	16.83 (2.44)	-26.47 (3.27)*	41	-10.81	-20.37, -1.24*
> median	45.07 (2.32)	34.38 (2.43)	-10.69 (3.34)	46.52 (2.31)	24.19 (2.42)	-22.33 (3.27)*	41	-12.07	-21.71, -2.44*
Affect Instability^									
≤ median 2.50	44.53 (2.41)	29.35 (2.52)	-15.18 (3.42)*	43.82 (2.27)	19.11 (2.35)	-24.71 (3.13)*	44	-10.66	-20.08, -1.25*
> median	45.01 (2.36)	32.67 (2.48)	-12.35 (3.42)*	46.45 (2.52)	22.50 (2.66)	-23.95 (3.60)*	38	-12.03	-22.28, -1.77*
Affect Skill Deficit									
≤ median 3.00	44.16 (2.32)	28.11 (2.37)	-16.06 (3.28)*	42.88 (2.28)	17.39 (2.37)	-25.50 (3.17)*	43	-10.18	-19.67, -0.70*
> median	45.40 (2.31)	34.24 (2.48)	-11.17 (3.37)	47.28 (2.34)	24.10 (2.46)	-23.17 (3.32)*	39	-12.70	-22.60, -2.79*
Tension Reduction Activities^									
≤ median 1.78	44.67 (2.48)	28.71 (2.67)	-15.96 (3.60)*	43.73 (2.22)	18.59 (2.30)	-25.14 (3.09)*	41	-10.20	-20.01, -0.39*

medRxiv preprint doi: <https://doi.org/10.1101/2023.01.03.23284143>; this version posted January 5, 2023. The copyright holder for this preprint (which was not certified by peer review) is the author/funder, who has granted medRxiv a license to display the preprint in perpetuity. It is made available under a [CC-BY-NC-ND 4.0 International license](#).

October 29 2022

> median	44.95 (2.23)	32.79 (2.29)	-12.16 (3.18)*	46.77 (2.49)	23.41 (2.64)	-23.36 (3.54)*	41	-11.82	-21.73, -1.91*
----------	--------------	--------------	----------------	--------------	--------------	----------------	----	--------	----------------

<sup>1</sup> Abbreviations: TAS-20=Toronto Alexithymia Scale; SCS=Self-Compassion Scale; IASC=Inventory of Altered Self-Capacities; ASC=Altered Self-Capacities

<sup>2</sup> TAS-20 cutoff scores: no alexithymia  $\leq 50$ ; borderline alexithymia (51-60); alexithymia ( $\geq 61$ ) (Bagby et al. 1994)

<sup>3</sup> SCS cutoff scores: low (1-2.4); moderate (2.5-3.4); high (3.5-5.0) (Neff 2003)

<sup>4</sup> Change scores are Least Square Means (Standard Errors)

<sup>5</sup> (\*) = indicates a  $p$ -value of  $< .05$  for within-subjects comparison of baseline vs. follow-up scores

<sup>6</sup> (\*) indicates a  $p$ -value of  $< .05$  for between-group subjects' comparison of placebo change scores vs. MDMA change scores

<sup>7</sup> All models adjusted for baseline CAPS-5 Dissociative Subtype (Yes/ No), baseline TAS-20, SCS, or IASC scores, change in TAS-20, SCS, or IASC scores, and accounted for multiple comparisons using Tukey's correction

<sup>8</sup> (^) Baseline levels predicted CAPS-5 change scores

**Fig 1. Alexithymia Change scores in MDMA-AT.** Least square means ((SE) change in Toronto Alexithymia Scale (TAS-20) score from baseline to follow up by treatment group: MDMA-AT = -12.85 (2.43) vs. P+Th = -1.51 (2.26),  $p < .0001$ .

**Fig 2. Self-compassion Change Scores in MDMA-AT.** Least square means (SE) change in Self-compassion Scale (SCS) from baseline to follow-up by treatment group: MDMA-AT = 1.35 (0.20) vs. P+Th = 0.23 (0.16),  $P < .0001$ .

**Fig 3. Inventory of Altered Self-capacities (IASC) Change Scores.** Least square means (SE) change from baseline to follow-up by treatment group: (a) 'Idealization Disillusionment' MDMA-AT = -0.75 (0.21) vs. Placebo+Th = -0.20 (0.17),  $p = .05$ ; (b) 'Susceptibility to Influence' MDMA-AT = -0.56 (0.15) vs. Placebo+Th = 0.02 (0.15),  $p = .0099$ ; and (c) 'Affect Skill Deficit' MDMA-AT = -1.60 (0.92) vs. Placebo+Th = -0.84 (1.45),  $p = .02$ .

October 30, 2022

### *Baseline self-capacity Measures & Treatment Effects on PTSD Symptoms*

Several baseline measures of self-experience predicted CAPS-5 change scores in the MDMA-AT group: those worse off at baseline had greater treatment effects than the placebo. Group (Table 2). There was a greater reduction in CAPS-5 scores in the MDMA-AT group for those who had begun the trial with greater baseline alexithymia (-16.16; 95% CI: -28.80, -7.52), and poorer SCS scores (-13.85; 95% CI: -22.84, -4.86\*), Participants who started with higher self-capacities on the IASC benefited more from MDMA, specifically in “idealization disillusionment” [-12.80; 95% CI: -22.61, -2.98], “identity impairment” [-11.87; 95% CI: -21.18, -2.56], “identity diffusion” [-12.56; 95% CI: -21.92, -3.21], and “susceptibility to influence” [-13.96; 95% CI: -23.68, -4.24].

## **Discussion**

This study of 90 participants with chronic PTSD demonstrated that, in addition to improving PTSD symptomatology, administration of MDMA in conjunction with therapy also significantly improved measures of self-experience, including affect dysregulation, negotiation of interpersonal conflicts, alexithymia and self-compassion, when compared to treatment with therapy plus placebo. The change scores in measures of self-experience were highly correlated with recovery from PTSD (e.g. the TAS-20 total change scores predicted CAPS-5 total severity change scores at the  $p < .0001$  level). Endpoint emotion regulation and self-capacities were critical factors predicting remission of PTSD. Treatment responders in both the MDMA-AT and the P+Th condition had a statistically significant difference in TAS-20, SCS and IASC change scores from CAPS-5 non-responders, confirming the notion that emotion regulation and self-capacities are critical elements in positive treatment outcome.



October 30, 2022

While both treatment conditions were associated with some improvement in self-experience, only MDMA-AT, and not psychotherapy alone, significantly altered these transdiagnostic measures, with significantly greater changes in the domains of alexithymia, self-compassion, emotion regulation, negotiating interpersonal conflicts, abandonment concerns, self-awareness, idealization/disillusionment, susceptibility to influence, and tension reduction activities.

The clinical relevance of these self-experience measures for treatment outcome is illustrated by the finding that among participants in the therapy/placebo group only those who started with adequate scores on the various self-experience scales had a significant improvement in their PTSD scores. In contrast, in participants with low self-capacity ratings at baseline only the MDMA-AT condition produced significant improvements in PTSD, in tandem with significant change scores in TAS-20, and SCS ratings, and in 8 of 9 IASC factors change scores, including interpersonal conflicts, lack of self-awareness and tension reduction activities (see Table 3 in the Appendix). Thus, MDMA-AT appears to substantially improve mental processes associated with resilience and positive response to treatment.

MDMA has been shown to promote a general sense of interpersonal “connectedness”<sup>39</sup>, and “openness”<sup>40</sup>, and to enhance positive appraisal of favorable memories, while reducing negative evaluations of painful memories<sup>41</sup>. It also has been shown to enhance extinction of fearful memories, modulate memory reconsolidation (possibly through an oxytocin-dependent mechanism), and to promote social behavior<sup>42</sup>. Moreover, MDMA inhibits habitual fear responses to emotional threats<sup>43</sup>. This is thought to facilitate being able to put the emotional sequelae of painful past experiences into a realistic perspective.

October 30, 2022

Most of the studies of mental changes secondary to the administration of MDMA have been conducted in normal populations who are less likely to suffer from major problems with self-experience. In this study, we examined the effects of MDMA on a group of individuals with major clinical deficits in domains that have previously been investigated mainly in non-clinical populations and that have been found to be associated with treatment resistance. Our findings suggest that the therapeutic benefits of MDMA may be most pertinent for persons with clinically significant impairment in emotion regulation and self-capacities.

The vast majority (85%) of traumatized individuals in this study reported having suffered early childhood trauma, i.e. physical or sexual abuse by their caregivers. Only 4 out of 90 subjects in this study had an Adverse Childhood Experience (ACE) score of 0. Histories of child maltreatment are associated with poorer responses to psychotherapy in individuals diagnosed with PTSD<sup>44, 45</sup>. Abuse at the hands of one's early caregivers has been shown to put individuals at risk for deficits in emotional coping skills /altered self-capacities, major obstacles to successful completion of currently available evidence-based treatments<sup>46, 47</sup>.

Being able to emotionally process traumatic experiences is an important element of successful treatment<sup>48, 49</sup>. Being able to identify feelings, describing them and recognizing their triggers allows an individual to reflect on the situation and to respond appropriately to the context, rather than acting solely on their emotional arousal<sup>50</sup>. For example, alexithymia, avoidance of distressing wishes, feelings or experiences, and trouble recalling distressing experiences, is associated with impaired affect regulation<sup>22, 23, 24</sup>.

Alexithymia has frequently been observed in the context of invalidating or abusive early environments where children learn that communicating emotional experiences is inappropriate, ineffective, or potentially dangerous<sup>51, 52</sup>. Unable to escape physically from chronic abuse,

October 30, 2022

alexithymic individuals are thought to have learned to disengage from both their external reality as well as their internal experiences<sup>53</sup>.

Even though the day-long MDMA-AT sessions often occurred in relative silence as participants focus largely on their inner experience, MDMA was associated with a significant improvement in emotional self-awareness and loss of alexithymia. This suggests that MDMA can facilitate accessing painful memories and experiences that under ordinary conditions are too overwhelming and terrifying to confront.

Adaptive emotion regulation is essential for effective treatment of PTSD. Trauma-focused treatments for PTSD require both activation and modification of fearful memories. This activation depends on two processes: physiological reactivity to trauma-related stimuli, and being able to tolerate the subjective distress generated by these traumatic memories<sup>54</sup>. Being able to tolerate physiological arousal to trauma-related stimuli predicts improvement in exposure treatment, supporting a gradual diminution in the distress experienced in response to trauma recall (habituation) within- and between-sessions<sup>55</sup>.

Emotion regulation (ER) deficits are major contributors to the development of a large variety of psychopathological conditions<sup>56</sup>, including interference with being able to resolve the impact of traumatizing experience(s)<sup>57, 58, 59, 60</sup>. Whereas healthy, flexible ER capacities are key factors underlying well-being, ER difficulties comprise a transdiagnostic risk factor for mental health problems in general, including the development and/or maintenance of symptoms of PTSD<sup>61</sup>, by interfering with being able to disengage from trauma-related stimuli and inhibiting maladaptive emotion regulation strategies<sup>62</sup>. Problems with emotion regulation influence both the development and the maintenance of PTSD symptoms after exposure to potentially

October 30, 2022

traumatizing experiences,<sup>63, 64, 65</sup>, and predict both functional impairment and symptom complexity<sup>66</sup>.

Self-compassion is another core component of overall mental health and well-being<sup>26</sup>. Individuals suffering from traumatic stress often suffer from shame, self-blame and self-loathing<sup>28, 29</sup>. Appraisals of mental defeat and permanent change have a profound and debilitating effect on an individual's identity and sense of self<sup>67</sup>. Low self compassion scores have consistently been associated with symptoms such as anxiety, depression, narcissism, self criticism and avoidance<sup>26, 29, 59</sup>. Being caring and kind to oneself, rather than critical, even under stress, can mitigate the negative effects of trauma exposure by increasing resilience and by decreasing avoidance-oriented coping<sup>68, 69</sup>. Self-compassion has been shown to boost the efficacy of cognitive reappraisals<sup>70</sup>.

Summary. Defective self-capacities seem to be major obstacles to successful completion of currently available evidence-based treatments of PTSD, making the development of innovative treatments that address those capacities a research priority. This study suggests that MDMA may be particularly effective for enhancing treatment efficacy by improving a range of problems with self-experience that are associated with treatment resistance. Assessment of self-capacities may be as relevant for treatment planning and outcome research as measuring PTSD severity, because, as this study suggests, psychotherapy alone may not sufficiently compensate for the debilitating effects of deficient self-experience on being able to confront traumatic material and thus, on treatment outcome.

### *Limitations*

This study sample was not focused on treatment resistant individuals and did not control for age and nature of trauma exposure. The striking lack of correlation between baseline ACE and TAS-

October 30, 2022

20, SCS, and IASC factors likely is due to lack of variability in the ACE measurement scale that ranged from 1-10 where the sample mean (SD) was 5.0 (2.8). In this study only 4 participants indicated an ACE score of 0. In this Phase 3 MDMA-AT trial there has not yet been a long term follow-up of the sustainability of treatment gains in this population More studies are needed to examine the capacity of MDMA to ameliorate post-traumatic symptomatology in a variety of trauma populations, including whether MDMA treatment is capable of permanently altering a host of psychological processes associated with having been traumatized, including shame, self-blame, the capacity for emotional intimacy, executive functioning and affect regulation.

**Acknowledgements:** The authors would like to thank Stephanie Kimble for her help in organizing this manuscript; and MPBC staff members Scott Hamilton, PhD (Director of Biostatistics) for statistical consultation; Glen Robinson (Clinical Data Assistant) and Chelsea Pamplin (TMF Associate) for conducting thorough quality checks on data entry in tables; Christina Faulk, MPH (Data Management Assistant) for creating figures; and Allison Coker, PhD for review of earlier manuscript drafts.

## Supporting Information

S1 Table. Mean (SD) Self-experience Scores among PTSD CAPS-5 Responders vs. Non-responders by Treatment Group.

## Bibliography.

1. Krystal, JH, Kelmendi, B, Petrakis, IL. Psychotherapy-supported MDMA treatment for PTSD. *Cell Rep Med.* 2021, Aug 17;2(8):100378. DOI: 10.1016/j.xcrm.2021.100378.
2. Oehen, P, Traber, R, Widmer, V, Schnyder, U. A randomized, controlled pilot study of MDMA ( $\pm$ 3,4- Methylendioxyamphetamine)-assisted psychotherapy for treatment of resistant, chronic Post-Traumatic Stress Disorder (PTSD). *J Psychopharmacol.* 2013 Jan;27(1): 40-52. DOI: 10.1177/0269881112464827.

<sup>3</sup> Jerome, L, Feduccia, AA, Wang, JB, Hamilton, S, Yazar-Klosinski, B, Emerson, A, et al. Long-term follow-up outcomes of MDMA-assisted psychotherapy for treatment of PTSD: a longitudinal pooled analysis of six phase 2 trials. *Psychopharmacology (Berl).* 2020 Aug;237(8):2485-97. DOI: 10.1007/s00213-020-05548-2.

October 30, 2022

<sup>4</sup> Mithoefer, MC, Wagner, MT, Mithoefer, A, Jerome, L, Martin, SF, Yazar-Klosinski, et al. Durability of improvement in post-traumatic stress disorder symptoms and absence of harmful effects or drug dependency after 3,4- methylenedioxymethamphetamine-assisted psychotherapy: a prospective long-term follow-up study. *J Psychopharmacol*. 2013 Jan;27(1):28-39. DOI: 10.1177/0269881112456611.

<sup>5</sup> Mitchell, JM, Bogenschutz, M, Lilienstein, A, Harrison, C, Kleiman, S, Parker-Guilbert, K, et al. MDMA-assisted therapy for severe PTSD: a randomized, double-blind, placebo-controlled phase 3 study. *Nat Med*. 2021 May 10; 27:1025-33. DOI: 10.1038/s41591-021-01336-3.

6. Steenkamp, MM, Litz, B, Marmar, CR. First-line psychotherapies for military-related PTSD. *JAMA*. 2020 Feb 18;323(7):656-7. DOI: 10.1001/jama.2019.20825.

<sup>7</sup> Bradley, R, Greene, J, Russ, E, Dutra, L, Westen, D. A multidimensional meta-analysis of psychotherapy for PTSD. *Am J Psychiatry*. 2005 Feb;162(2):214-27. DOI: 10.1176/appi.ajp.162.2.214.

<sup>8</sup> Powers, MB, Halpren, JM, Ferenschak, MP, Gillihan, SJ, Foa, EB. A meta-analytical review of prolonged exposure for posttraumatic stress disorder. *Clin Psychol Rev*. 2010 Aug;30(6):635-41. DOI: 10.1016/j.cpr.2010.04.007.

<sup>9</sup> McDonald, MW, van Rooij, SJH. Targeting PTSD. *Am J Psychiatry*. 2019 Nov 1;176(11):894-6. DOI: 10.1176/appi.ajp.2019.1908095.

<sup>10</sup> Schnurr, PP, Chard, KM, Ruzek, JI, Chow, BK, Resick, PA, Foa, EB, Marx, BP, et al. Comparison of prolonged exposure vs cognitive processing therapy for treatment of posttraumatic stress disorder among US veterans: a randomized clinical trial. *JAMA Netw Open*. 2022 Jan 4;5(1):e2136921. DOI: 10.1001/jamanetworkopen.2021.36921.

<sup>11</sup> Bardeen, JR, Daniel, TA, Gordon, RD, Hinnant, JB, Weathers, FW. Individual difference in attentional control explain the differential expression of threat-related attentional bias among those with posttraumatic stress symptomatology and predict symptom maintenance up to one year later. *Behav Res Ther*. 2020 Aug 10;133:103709. DOI: 10.1016/j.brat.2020.103709.

13. Conway, CC, Raposa, EB, Hammen, C, Brennan, PA. Transdiagnostic pathways from early social stress to psychopathology: a 20-year prospective study. *J Child Psychol Psychiatry*. 2018 Aug;59(8):855-62. DOI: 10.1111/jcpp.12862.

<sup>14</sup> McFarlane, AC. The long-term costs of traumatic stress: intertwined physical and psychological consequences. *World Psychiatry*. 2010 Feb;9(1):3-10. DOI: 10.1002/j.2051-5545.2010.tb00254.x.

<sup>15</sup> Koenen, KC, Ratanatharathorn, A, Ng, L, McLaughlin, KA, Bromet, EJ, Stein, DJ, et al. Posttraumatic stress disorder in the world mental health surveys. *Psychol Med*. 2017 Oct;47(13):2260-74. DOI: 10.1017/S0033291717000708.

<sup>16</sup> Lonergan, M. Cognitive behavioral therapy for PTSD: the role of complex PTSD on treatment outcome. *J Aggress Maltreat*. 2014 May 16;23(5):494-512. DOI: 10.1080/10926771.2014.904467.

17. Spinazzola, J, van der Kolk, B, Ford, JD. When nowhere is safe: interpersonal trauma and attachment adversity as antecedents of posttraumatic stress disorder and developmental trauma disorder. *J Trauma Stress*. 2018 Oct;31(5):631-42. DOI: 10.1002/jts.22320.

October 30, 2022

- <sup>18</sup> Ford, JD, Spinazzola, J, van der Kolk, B. Psychiatric comorbidity of developmental trauma disorder and posttraumatic stress disorder: findings from the DTD field trial replication (DTDFT-R). *Eur J Psychotraumatol*. 2021 Jun 28;12(1):1929028. DOI: 10.1080/20008198.2021.1929028.
- <sup>19</sup> DePrince, AP, Chu, AT, Pineda, AS. Links between specific posttrauma appraisals and three forms of trauma-related distress. *Psychol Trauma*. 2011 Dec 1; 3(4):430-41. DOI: 10.1037/a0021576.
- <sup>20</sup> Aupperle, RL, Melrose, AJ, Stein MB, Paulus, MP. Executive function and PTSD: disengaging from trauma. *Neuropharmacology*. 2012 Feb;62(2):686-694. DOI: 10.1016/j.neuropharm.2011.02.008.
- <sup>21</sup> Pineles, SL, Shipherd, JC, Mostoufi, SM, Abramovitz, SM, Yovel, I. Attentional biases in PTSD: more evidence for interference. *Behav Res Ther*. 2009 Dec;47(12):1050-1057. DOI: 10.1016/j.brat.2009.08.001.
- <sup>22</sup> Bagby, RM, Parker, JDA, Taylor, GJ. Twenty-five years with the 20-item Toronto Alexithymia Scale. *J Psychosom Res*. 2020 Jan 23;131:109940. DOI: 10.1016/j.jpsychores.2020.109940.
- <sup>23</sup> Frewen, PA, Dozois, DJA, Neufeld, RWJ, Lanius, RA. Meta-analysis of alexithymia in posttraumatic stress disorder. *J Trauma Stress*. 2008 Apr 10;21(2):243-6. DOI: 10.1002/jts.20320.
- <sup>24</sup> Reyno, SM, Simmons, M, Kinley, J. A meta-analytical study examining the relationship between alexithymia and dissociation in psychiatric and nonclinical populations. *Res Psychother*. 2020 May 20;23(1):99-107. DOI: 10.4081/ripppo.2020.439.
- <sup>25</sup> Gaher, RM, Hofman, NL, Simons, JS, Hunsaker R. Emotion regulation deficits as mediators between trauma exposure and borderline symptoms. *Cognit Ther Res*. 2013 Jan 8;37(3):466-75. DOI: 10.1007/s10608-012-9515y.
- <sup>26</sup> Eastabrook, JM, Lanteigne, DM, Hollenstein, T. Decoupling between physiological, self-reported, and expressed emotional response in alexithymia. *Pers Individ Differ*. 2013 Nov;55(8):978-82. DOI: 10.1016/j.paid.2013.08.001.
- <sup>27</sup> MacBeth, A, Gumley, A. Exploring compassion: a meta-analysis of the association between self-compassion and psychopathology. *Clin Psychol Rev*. 2012 Aug;32(6):544-52. DOI: 10.1016/j.cpr.2012.06.003.
- <sup>28</sup> Játiva, R, Cerezo, M. The mediating role of self-compassion in the relationship between victimization and psychological maladjustment in a sample of adolescents. *Child Abuse Negl*. 2014 Jul;38(7):1180-90. DOI: 10.1016/j.chiabu.2014.04.005.
- <sup>29</sup> Zeller, M, Yuval, K, Nitzan-Assayag, Y, Bernstein, A. Self-compassion in recovery following potentially traumatic stress: Longitudinal study of at-risk youth. *J Abnorm Child Psychol*. 2015 May;43(4):645-53. DOI: 10.1007/s10802-014-9937-y.
- <sup>30</sup> Tull, MT, Gratz, KL, Salters, K, Roemer, L. The role of experiential avoidance in posttraumatic stress symptoms and symptoms of depression, anxiety, and somatization. *J Nerv Ment Dis*. 2004 Nov;192(11):754-61. DOI: 10.1097/01.nmd.0000144694.30121.89.
- <sup>31</sup> Diedrich, A, Grant, M, Hofmann, SG, Hiller, W, Berking, M. Self-compassion as an emotion regulation strategy in major depressive disorder. *Behav Res Ther*. 2014 Jul;58:43-51. DOI: 10.1016/j.brat.2014.05.006.

October 30, 2022

- <sup>32</sup> Tracy, A, Jopling, E, LeMoult, J. The effects of inducing self-compassion on affective and physiological recovery from a psychosocial stressor in depression. *Behav Res Ther.* 2021 Nov;146:103965. DOI: 10.1016/j.brat.2021.103965.
- <sup>33</sup> Felitti, VJ, Anda, RF, Nordenberg, D, Williamson, DF, Spitz, AM, Edwards, V, et al. Relationship of childhood abuse and household dysfunction to many of the leading causes of death in adults. The Adverse Childhood Experiences (ACES) Study. *Am J Prev Med.* 1998 May;14(4):245-258. DOI: 10.1016/s0749-3797(98)00017-8.
34. Beck AT, Steer, RA, Brown GK. Manual for the Breck Depression Inventory-II. San Antonio, TX: Psychological Corporation. 1996.
- <sup>35</sup> Weather, FW, Bovin, MJ, Lee, DJ, Sloan, DM, Schnurr, PP, Kaloupek, DG, et al. The clinician-administered PTSD scale for DSM-5 (CAPS-5): development and initial psychometric evaluation in military veterans. *Psychol Assess.* 2018 Mar;30(3):383-95. DOI: 10.1037/pas0000486.
- <sup>36</sup> Posner, K, Oquendo, MA, Gould, M, Stanley, B, Davie, M. Columbia classification algorithm of suicide assessment (C-CASA) classification of suicidal events in the FDA's pediatric suicidal risk analysis of antidepressants. *Am J Psychiatry.* 2007 Jul;164(7):1035-43. DOI: 10.1176/appi.ajp.164.7.1035.
37. Briere, J, Runtz, M. The inventory of altered self-capacities (IASC): a standardized measure of identity, affect regulation, and relationship disturbance. *Assessment.* 2002 Sep;9(3):230-239. DOI: 10.1177/1073191102009003002.
38. Bagby, R. M., Parker, J. D., & Taylor, G. J. (2020). Twenty-five years with the 20-item Toronto Alexithymia Scale. *Journal of Psychosomatic Research, 131*, 109940.
39. Neff, KD. Self-compassion: theory, method, research, and intervention. *Annu Rev Psychol.* 2023 Jan;74:7.1-.26. DOI: 10.1146/annurev-psych-032420-031047.
40. Carhart-Harris, RL, Erritzoe, D, Haijen, E, Kaelen, M, Watts, R. Psychedelics and connectedness. *Psychopharmacology (Berl).* 2018 Feb;235(2):547-50. DOI: 10.1007/s00213-017-4701-y.
41. Brouwer, A, Carhart-Harris, RL. Pivotal mental states. *J Psychopharmacol.* 2021 Apr;35(4):319-52. DOI: 10.1177/0269881120959637.
- <sup>42</sup> Carhart-Harris, RL, Wall, MB, Erritzoe, D, Kaelen, M, Ferguson, B, De Meer, I, et al. The effect of acutely administered MDMA on subjective and BOLD-fMRI responses to favorite and worst autobiographical memories. *Int J Neuropsychopharmacol.* 2014 Apr;17(4):527-40. DOI: 10.1017/S1461145713001405.
- <sup>43</sup> Bedi, G, Hyman, D, de Wit, H. Is ecstasy and "empathogen"? Effects of  $\pm 3,4$ -methylenedioxymethamphetamine on prosocial feelings and identification of emotional states in others. *Biol Psychiatry.* 2010 Dec 15;68(12):1134-40. DOI: 10.1016/j.biopsych.2010.08.003.
44. Hysek, CM, Schmid, Y, Simmler, LD, Domes, G, Heinrichs, M, Eisenegger, C, et al. MDMA enhances emotional empathy and prosocial behavior. *Soc Cogn Affect Neurosci.* 2014 Nov;9(11):1645-52. DOI: 10.1093/scan/nst161.



October 30, 2022

45. Gillies, D, Maiocchi, L, Bhandari, AP, Taylor, F, Gray, C, O'Brien, L. Psychological therapies for children and adolescents exposed to trauma. *Cochrane Database Syst Rev.* 2016 Oct 11;10(10):CD012371. DOI: 10.1002/14651858.CD012371.

46. Nanni, V, Uher, R, Danese, A. Childhood maltreatment predicts unfavorable course of illness and treatment outcome in depression: a meta-analysis. *Am J Psychiatry.* 2012 Feb;169(2):141-51, DOI: 10.1176/appi.ajp.2011.11020335.

47. Russotti, J, Warmingham, JM, Duprey, EB, Handley, ED, Manly, JT, Rogosch, F, et al. Child maltreatment and the development of psychopathology: the role of developmental training and chronicity. *Child Abuse Negl.* 2021 Oct 1;120:105215. DOI: 10.1016/j.chiabu.2021.105215.

48. Teicher, MH, Gordon, JB, Nemeroff, CB. Recognizing the importance of childhood maltreatment as a critical factor in psychiatric diagnoses, treatment, research, prevention, and education. *Mol Psychiatry.* 2022 Mar;27:1331-8. DOI: 10.1038/s41380-021-01367-9

49. Arntz, A, Stupar-Rutenfrans, Bloo, J, van Dyck, R, Spinhoven, P. Prediction of treatment discontinuation and recovery from borderline personality disorder: recovery from RCT comparing schema therapy and transference focused psychotherapy. *Behav Res Ther.* 2015 Nov;74:60-71. DOI: 10.1016/j.brat.2015.09.002.

50. Groves, SJ, Douglas, KM, Porter, RJ. A systematic review of cognitive predictors of treatment outcome in major depression. *Front Psychiatry.* 2018 Aug 28;9:328. DOI: 10.3389/fp-syt.2018.00328.

51. Putica, A, O'Donnell, ML, Felmingham, KL, Van Dam, NT. Emotion response discordance among trauma-exposed adults: the impact of alexithymia. *Psychol Med.* 2022 Aug 17;1-7. DOI: 10.1017/S0033291722002586.

52. Aust, S, Härtwig, EA, Heuser, I, Bajbouj, M. The role of early emotional neglect in alexithymia. *Psychol Trauma.* 2013 May;(5)3:225-32. DOI: 10.1037/a0027314.

53. Kefeli, MC, Turow, RG, Yildirim, A, Boysan, M. Childhood maltreatment is associated with attachment insecurities, dissociation and alexithymia in bipolar disorder. *Psychiatry Res.* 2018 Feb;269:391-9. DOI: 10.1016/j.psychres.2017.026.

54. Putnam, FW, Trickett, PK. Psychobiological effects of sexual abuse. A longitudinal study. *Acad Sci.* 1997 Jun 21;821:150-9. DOI: 10.1111/j.1749-6632.1997.tb48276.x.

55. Jaycox, LH, Foa, EB, Morral, AR. Influence of emotional engagement and habituation on exposure therapy for PTSD. *J Consult Clin Psychol.* 1998 Feb;66(1):185-92. DOI: 10.1037//0022-006x.66.1.185.

56. Wangelin, BC, Tuerk, PW. Taking the pulse of prolonged exposure therapy: physiological reactivity to trauma imagery as an objective measure of treatment response. *Depress Anxiety.* 2015 Dec 7;32(12):927-34. DOI: 10.1002/da.22449.

57. Campbell-Sills, L, Barlow, DH, Brown, TA, Hofmann, SG. Effects of suppression and acceptance on emotional responses of individuals with anxiety and mood disorders. *Behav Res Ther.* 2006 Sep;44(9):1251-63. DOI: 10.1016/j.brat.10.001.

October 30, 2022

58. Bardeen, JR, Kumpula, MJ, Orcutt, HK. Emotion regulation difficulties as a prospective predictor of posttraumatic stress symptoms following a mass shooting. *J Anxiety Disord.* 2013 Mar;27(2):188-96. DOI: 10.1016/j.janxdis.2013.01.003.
59. Weiss, NH, Nelson, R, Contractor, AA, Sullivan, T. Emotion dysregulation and posttraumatic stress disorder. A test of the incremental role of difficulties regulating positive emotions. *Anxiety Stress Coping.* 2019 Jul 1;32(4):443-56. DOI: 10.1080/10615806.2019.1618842.
60. Fitzgerald, JM, Gorka, SM, Kujawa, A, DiGangi, JA, Proescher, E, Greenstein, JE, et al. Neural indices of emotional reactivity and regulation predict course of PTSD symptoms in combat-exposed veterans. *Prog Neuropsychopharmacol Biol Psychiatry.* 2018 Mar;82(2):255-62. DOI: 10.1016/j.pnpbp.2017.11.005.
61. Ehring, T., & Quack, D. (2010). Emotion regulation difficulties in trauma survivors: The role of trauma type and PTSD symptom severity. *Behavior therapy*, 41(4), 587-598.
62. Post, LM, Youngstrom, E, Connell, AM, Zoellner, LA, Feeny, NC. Transdiagnostic emotion regulation process explain how emotion-related factors affect co-occurring PTSD and MDD in relation to trauma. *J Anxiety Disord.* 2021 Mar;78:102367. DOI: 10.1016/j.janxdis.2021.102367.
63. Badour, CL, Feldner, MT. Trauma-related reactivity and regulation of emotion: associations with posttraumatic stress symptoms. *J Behav Ther Ex Psychiatry.* 2013 Mar; 44(1):69-76. DOI: 10.1016/j.jbtep.2012.07.007.
64. Powers, A, Cross, D, Fani, N, Bradley, B. PTSD, emotion dysregulation and dissociative symptoms in a highly traumatized sample. *J Psychiatr Res.* 2015 Feb;61:174-9. DOI: 10.1016/j.jpsychires.2014.12.011.
65. Raudales, AM, Weiss, NH, Schmidt, NB, Short, NA. The role of emotion dysregulation in negative affect reactivity to a trauma cue: differential associations through elicited posttraumatic stress disorder symptoms. *J Affect Disord.* 2020 Apr 15;267:203-10. DOI: 10.1016/j.jad.2020.02.028.
66. Gilmore, AK, Lopez, C, Muzzy, W, Wilson, JB, Grubaugh, A, Oesterle, DW, et al. Emotion dysregulation predicts dropout from prolonged exposure treatment among women veterans with military sexual trauma-related posttraumatic stress disorder. *Women's Health Issues.* 2020 Nov 1;30(6):462-9. DOI: 10.1016/j.whi.2020.07.004.
67. Andrews, B, Brewin, CR, Rose, S, Kirk, M. Predicting PTSD symptoms in victims of violent crime: the role of shame, anger, and childhood abuse. *J Abnorm Psychol.* 2000 Feb;109(1):69-72. DOI: 10.1037//0021-843x.109.1.69.
68. Ehlers, A., Maercker, A., & Boos, A. (2000). Posttraumatic stress disorder following political imprisonment: The role of mental defeat, alienation, and perceived permanent change. *Journal of abnormal psychology*, 109(1), 45.
69. Hiraoka, R, Meyer, EC, Kimbrel, NA, DeBeer, BB, Gulliver, SB, Morissette, SB. Self-compassion as a prospective predictor of PTSD symptom severity among trauma-exposed U.S. Iraq and Afghanistan war veterans. *J Trauma Stress.* 2015 Apr;28(2):127-33. DOI: 10.1002/jts.21995.
70. Krieger, T, Reber, F, von Glutz, B, Urech, A, Moser, CT, Schulz, A, et al. An internet-based compassion-focused intervention for increased self-criticism: a randomized controlled trial. *Behav Ther.* 2019 Mar;50(2):430-45. DOI: 10.1016/j.beth.2018.08.003.

October 30, 2022

71. Diedrich, A, Hofmann, SG, Cuijpers, P, Berking, M. Self-compassion enhances the efficacy of explicit cognitive reappraisal as an emotion regulation strategy in individuals with major depressive disorder. *Behav Res Ther.* 2016 Jul;82:1-10. DOI: 10.1016/j.brat.2016.04.003.

---

<sup>1</sup> Krystal, JH, Kelmendi, B, Petrakis, IL. Psychotherapy-supported MDMA treatment for PTSD. *Cell Rep Med.* 2021, Aug 17;2(8):100378. DOI: 10.1016/j.xcrm.2021.100378.

<sup>2</sup> Oehen, P, Traber, R, Widmer, V, Schnyder, U. A randomized, controlled pilot study of MDMA ( $\pm$ 3,4-Methylenedioxymethamphetamine)-assisted psychotherapy for treatment of resistant, chronic Post-Traumatic Stress Disorder (PTSD). *J Psychopharmacol.* 2013 Jan;27(1): 40-52. DOI: 10.1177/0269881112464827.

<sup>3</sup> Jerome, L, Feduccia, AA, Wang, JB, Hamilton, S, Yazar-Klosinski, B, Emerson, A, et al. Long-term follow-up outcomes of MDMA-assisted psychotherapy for treatment of PTSD: a longitudinal pooled analysis of six phase 2 trials. *Psychopharmacology (Berl).* 2020 Aug;237(8):2485-97. DOI: 10.1007/s00213-020-05548-2.

<sup>4</sup> Mithoefer, MC, Wagner, MT, Mithoefer, A, Jerome, L, Martin, SF, Yazar-Klosinski, et al. Durability of improvement in post-traumatic stress disorder symptoms and absence of harmful effects or drug dependency after 3,4- methylenedioxymethamphetamine-assisted psychotherapy: a prospective long-term follow-up study. *J Psychopharmacol.* 2013 Jan;27(1):28-39. DOI: 10.1177/0269881112456611.

<sup>5</sup> Mitchell, JM, Bogenschutz, M, Lilienstein, A, Harrison, C, Kleiman, S, Parker-Guilbert, K, et al. MDMA-assisted therapy for sever PTSD: a randomized, double-blind, placebo-controlled phase 3 study. *Nat Med.* 2021 May 10; 27:1025-33. DOI: 10.1038/s41591-021-01336-3.

<sup>6</sup> Steenkamp, MM, Litz, B, Marmar, CR. First-line psychotherapies for military-related PTSD. *JAMA.* 2020 Feb 18;323(7):656-7. DOI: 10.1001/jama.2019.20825.

<sup>7</sup> Bradley, R, Greene, J, Russ, E, Dutra, L, Westen, D. A multidimensional meta-analysis of psychotherapy for PTSD. *Am J Psychiatry.* 2005 Feb;162(2):214-27. DOI: 10.1176/appi.ajp.162.2.214.

<sup>8</sup> Powers, MB, Halpren, JM, Ferenschak, MP, Gillihan, SJ, Foa, EB. A meta-analytical review of prolonged exposure for posttraumatic stress disorder. *Clin Psychol Rev.* 2010 Aug;30(6):635-41. DOI: 10.1016/j.cpr.2010.04.007.

<sup>9</sup> McDonald, MW, van Rooij, SJH. Targeting PTSD. *Am J Psychiatry.* 2019 Nov 1;176(11):894-6. DOI: 10.1176/appi.ajp.2019.1908095.

<sup>10</sup> Schnurr, PP, Chard, KM, Ruzek, JI, Chow, BK, Resick, PA, Foa, EB, Marx, BP, et al. Comparison of prolonged exposure vs cognitive processing therapy for treatment of posttraumatic stress disorder among US veterans: a randomized clinical trial. *JAMA Netw Open.* 2022 Jan 4;5(1):e2136921. DOI: 10.1001/jamanetworkopen.2021.36921.

October 30, 2022

---

- <sup>11</sup> Bardeen, JR, Daniel, TA, Gordon, RD, Hinnant, JB, Weathers, FW. Individual difference in attentional control explain the differential expression of threat-related attentional bias among those with posttraumatic stress symptomatology and predict symptom maintenance up to one year later. *Behav Res Ther.* 2020 Aug 10;133:103709. DOI: 10.1016/j.brat.2020.103709.
- <sup>12</sup> Conway, CC, Raposa, EB, Hammen, C, Brennan, PA. Transdiagnostic pathways from early social stress to psychopathology: a 20-year prospective study. *J Child Psychol Psychiatry.* 2018 Aug;59(8):855-62. DOI: 10.1111/jcpp.12862.
- <sup>13</sup> McFarlane, AC. The long-term costs of traumatic stress: intertwined physical and psychological consequences. *World Psychiatry.* 2010 Feb;9(1):3-10. DOI: 10.1002/j.2051-5545.2010.tb00254.x.
- <sup>14</sup> Koenen, KC, Ratanatharathorn, A, Ng, L, McLaughlin, KA, Bromet, EJ, Stein, DJ, et al. Posttraumatic stress disorder in the world mental health surveys. *Psychol Med.* 2017 Oct;47(13):2260-74. DOI: 10.1017/S0033291717000708.
- <sup>15</sup> Lonergan, M. Cognitive behavioral therapy for PTSD: the role of complex PTSD on treatment outcome. *J Aggress Maltreat.* 2014 May 16;23(5):494-512. DOI: 10.1080/10926771.2014.904467.
- <sup>16</sup> Spinazzola, J, van der Kolk, B, Ford, JD. When nowhere is safe: interpersonal trauma and attachment adversity as antecedents of posttraumatic stress disorder and developmental trauma disorder. *J Trauma Stress.* 2018 Oct;31(5):631-42. DOI: 10.1002/jts.22320.
- <sup>17</sup> Ford, JD, Spinazzola, J, van der Kolk, B. Psychiatric comorbidity of developmental trauma disorder and posttraumatic stress disorder: findings from the DTD field trial replication (DTDFT-R). *Eur J Psychotraumatol.* 2021 Jun 28;12(1):1929028. DOI: 10.1080/20008198.2021.1929028.
- <sup>18</sup> DePrince, AP, Chu, AT, Pineda, AS. Links between specific posttrauma appraisals and three forms of trauma-related distress. *Psychol Trauma.* 2011 Dec 1; 3(4):430-41. DOI: 10.1037/a0021576.
- <sup>19</sup> Aupperle, RL, Melrose, AJ, Stein MB, Paulus, MP. Executive function and PTSD: disengaging from trauma. *Neuropharmacology.* 2012 Feb;62(2):686-694. DOI: 10.1016/j.neuropharm.2011.02.008.
- <sup>20</sup> Pineles, SL, Shipherd, JC, Mostoufi, SM, Abramovitz, SM, Yovel, I. Attentional biases in PTSD: more evidence for interference. *Behav Res Ther.* 2009 Dec;47(12):1050-1057. DOI: 10.1016/j.brat.2009.08.001.
- <sup>21</sup> Bagby, RM, Parker, JDA, Taylor, GJ. Twenty-five years with the 20-item Toronto Alexithymia Scale. *J Psychosom Res.* 2020 Jan 23;131:109940. DOI: 10.1016/j.jpsychores.2020.109940.
- <sup>22</sup> Frewen, PA, Dozois, DJA, Neufeld, RWJ, Lanius, RA. Meta-analysis of alexithymia in posttraumatic stress disorder. *J Trauma Stress.* 2008 Apr 10;21(2):243-6. DOI: 10.1002/jts.20320.
- <sup>23</sup> Reyno, SM, Simmons, M, Kinley, J. A meta-analytical study examining the relationship between alexithymia and dissociation in psychiatric and nonclinical populations. *Res Psychother.* 2020 May 20;23(1):99-107. DOI: 10.4081/ripppo.2020.439.

October 30, 2022

- 
- <sup>24</sup> Gaher, RM, Hofman, NL, Simons, JS, Hunsaker R. Emotion regulation deficits as mediators between trauma exposure and borderline symptoms. *Cognit Ther Res.* 2013 Jan 8;37(3):466-75. DOI: 10.1007/s10608-012-9515-y.
- <sup>25</sup> Eastabrook, JM, Lanteigne, DM, Hollenstein, T. Decoupling between physiological, self-reported, and expressed emotional response in alexithymia. *Pers Individ Differ.* 2013 Nov;55(8):978-82. DOI: 10.1016/j.paid.2013.08.001.
- <sup>26</sup> MacBeth, A, Gumley, A. Exploring compassion: a meta-analysis of the association between self-compassion and psychopathology. *Clin Psychol Rev.* 2012 Aug;32(6):544-52. DOI: 10.1016/j.cpr.2012.06.003.
- <sup>27</sup> Játiva, R, Cerezo, M. The mediating role of self-compassion in the relationship between victimization and psychological maladjustment in a sample of adolescents. *Child Abuse Negl.* 2014 Jul;38(7):1180-90. DOI: 10.1016/j.chiabu.2014.04.005.
- <sup>28</sup> Zeller, M, Yuval, K, Nitzan-Assayag, Y, Bernstein, A. Self-compassion in recovery following potentially traumatic stress: Longitudinal study of at-risk youth. *J Abnorm Child Psychol.* 2015 May;43(4):645-53. DOI: 10.1007/s10802-014-9937-y.
- <sup>29</sup> Tull, MT, Gratz, KL, Salters, K, Roemer, L. The role of experiential avoidance in posttraumatic stress symptoms and symptoms of depression, anxiety, and somatization. *J Nerv Ment Dis.* 2004 Nov;192(11):754-61. DOI: 10.1097/01.nmd.0000144694.30121.89.
- <sup>30</sup> Diedrich, A, Grant, M, Hofmann, SG, Hiller, W, Berking, M. Self-compassion as an emotion regulation strategy in major depressive disorder. *Behav Res Ther.* 2014 Jul;58:43-51. DOI: 10.1016/j.brat.2014.05.006.
- <sup>31</sup> Tracy, A, Jopling, E, LeMoult, J. The effects of inducing self-compassion on affective and physiological recovery from a psychosocial stressor in depression. *Behav Res Ther.* 2021 Nov;146:103965. DOI: 10.1016/j.brat.2021.103965.
- <sup>32</sup> Felitti, VJ, Anda, RF, Nordenberg, D, Williamson, DF, Spitz, AM, Edwards, V, et al. Relationship of childhood abuse and household dysfunction to many of the leading causes of death in adults. The Adverse Childhood Experiences (ACES) Study. *Am J Prev Med.* 1998 May;14(4):245-258. DOI: 10.1016/s0749-3797(98)00017-8.
- <sup>33</sup> Beck AT, Steer, RA, Brown GK. *Manual for the Breck Depression Inventory-II.* San Antonio, TX: Psychological Corporation. 1996.
- <sup>34</sup> Weather, FW, Bovin, MJ, Lee, DJ, Sloan, DM, Schnurr, PP, Kaloupek, DG, et al. The clinician-administered PTSD scale for DSM-5 (CAPS-5): development and initial psychometric evaluation in military veterans. *Psychol Assess.* 2018 Mar;30(3):383-95. DOI: 10.1037/pas0000486.
- <sup>35</sup> Posner, K, Oquendo, MA, Gould, M, Stanley, B, Davie, M. Columbia classification algorithm of suicide assessment (C-CASA) classification of suicidal events in the FDA's pediatric suicidal risk analysis of antidepressants. *Am J Psychiatry.* 2007 Jul;164(7):1035-43. DOI: 10.1176/appi.ajp.164.7.1035.

October 30, 2022

- 
- <sup>36</sup> Briere, J, Runtz, M. The inventory of altered self-capacities (IASC): a standardized measure of identity, affect regulation, and relationship disturbance. *Assessment*. 2002 Sep;9(3):230-239. DOI: 10.1177/1073191102009003002.
- <sup>37</sup> Bagby, R. M., Parker, J. D., & Taylor, G. J. (2020). Twenty-five years with the 20-item Toronto Alexithymia Scale. *Journal of Psychosomatic Research*, 131, 109940.
- <sup>38</sup> Neff, KD. Self-compassion: theory, method, research, and intervention. *Annu Rev Psychol*. 2023 Jan;74:7.1-.26. DOI: 10.1146/annurev-psych-032420-031047.
- <sup>39</sup> Carhart-Harris, RL, Erritzoe, D, Haijen, E, Kaelen, M, Watts, R. Psychedelics and connectedness. *Psychopharmacology (Berl)*. 2018 Feb;235(2):547-50. DOI: 10.1007/s00213-017-4701-y.
- <sup>40</sup> Brouwer, A, Carhart-Harris, RL. Pivotal mental states. *J Psychopharmacol*. 2021 Apr;35(4):319-52. DOI: 10.1177/0269881120959637.
- <sup>41</sup> Carhart-Harris, RL, Wall, MB, Erritzoe, D, Kaelen, M, Ferguson, B, De Meer, I, et al. The effect of acutely administered MDMA on subjective and BOLD-fMRI responses to favorite and worst autobiographical memories. *Int J Neuropsychopharmacol*. 2014 Apr;17(4):527-40. DOI: 10.1017/S1461145713001405.
- <sup>42</sup> Bedi, G, Hyman, D, de Wit, H. Is ecstasy and “empathogen”? Effects of  $\pm 3,4$ -methylenedioxymethamphetamine on prosocial feelings and identification of emotional states in others. *Biol Psychiatry*. 2010 Dec 15;68(12):1134-40. DOI: 10.1016/j.biopsych.2010.08.003.
- <sup>43</sup> Hysek, CM, Schmid, Y, Simmler, LD, Domes, G, Heinrichs, M, Eisenegger, C, et al. MDMA enhances emotional empathy and prosocial behavior. *Soc Cogn Affect Neurosci*. 2014 Nov;9(11):1645-52. DOI: 10.1093/scan/nst161.
- <sup>44</sup> Gillies, D, Maiocchi, L, Bhandari, AP, Taylor, F, Gray, C, O’Brien, L. Psychological therapies for children and adolescents exposed to trauma. *Cochrane Database Syst Rev*. 2016 Oct 11;10(10):CD012371. DOI: 10.1002/14651858.CD012371.
- <sup>45</sup> Nanni, V, Uher, R, Danese, A. Childhood maltreatment predicts unfavorable course of illness and treatment outcome in depression: a meta-analysis. *Am J Psychiatry*. 2012 Feb;169(2):141-51. DOI: 10.1176/appi.ajp.2011.11020335.
- <sup>46</sup> Russotti, J, Warmingham, JM, Duprey, EB, Handley, ED, Manly, JT, Rogosch, F, et al. Child maltreatment and the development of psychopathology: the role of developmental training and chronicity. *Child Abuse Negl*. 2021 Oct 1;120:105215. DOI: 10.1016/j.chiabu.2021.105215.
- <sup>47</sup> Teicher, MH, Gordon, JB, Nemeroff, CB. Recognizing the importance of childhood maltreatment as a critical factor in psychiatric diagnoses, treatment, research, prevention, and education. *Mol Psychiatry*. 2022 Mar;27:1331-8. DOI: 10.1038/s41380-021-01367-9
- <sup>48</sup> Arntz, A, Stupar-Rutenfrans, Bloo, J, van Dyck, R, Spinhoven, P. Prediction of treatment discontinuation and recovery from borderline personality disorder: recovery from RCT comparing schema therapy and transference focused psychotherapy. *Behav Res Ther*. 2015 Nov;74:60-71. DOI: 10.1016/j.brat.2015.09.002.

October 30, 2022

---

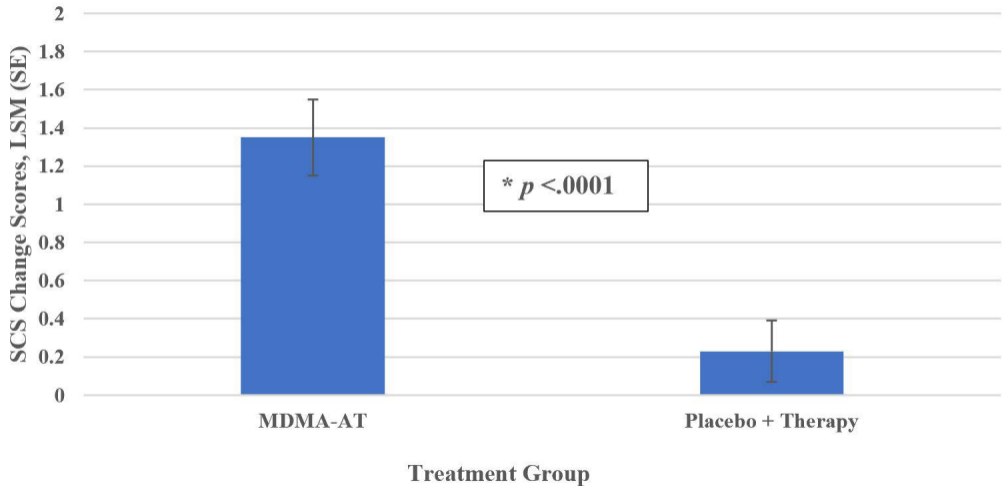
- <sup>49</sup> Groves, SJ, Douglas, KM, Porter, RJ. A systematic review of cognitive predictors of treatment outcome in major depression. *Front Psychiatry*. 2018 Aug 28;9:328. DOI: 10.3389/fp-syt.2018.00328.
- <sup>50</sup> Putica, A, O'Donnell, ML, Felmingham, KL, Van Dam, NT. Emotion response discordance among trauma-exposed adults: the impact of alexithymia. *Psychol Med*. 2022 Aug 17;1-7. DOI: 10.1017/S0033291722002586.
- <sup>51</sup> Aust, S, Härtwig, EA, Heuser, I, Bajbouj, M. The role of early emotional neglect in alexithymia. *Psychol Trauma*. 2013 May;(5)3:225-32. DOI: 10.1037/a0027314.
- <sup>52</sup> Kefeli, MC, Turow, RG, Yildirim, A, Boysan, M. Childhood maltreatment is associated with attachment insecurities, dissociation and alexithymia in bipolar disorder. *Psychiatry Res*. 2018 Feb;269:391-9. DOI: 10.1016/j.psychres.2017.026.
- <sup>53</sup> Putnam, FW, Trickett, PK. Psychobiological effects of sexual abuse. A longitudinal study. *Acad Sci*. 1997 Jun 21;821:150-9. DOI: 10.1111/j.1749-6632.1997.tb48276.x.
- <sup>54</sup> Jaycox, LH, Foa, EB, Morral, AR. Influence of emotional engagement and habituation on exposure therapy for PTSD. *J Consult Clin Psychol*. 1998 Feb;66(1):185-92. DOI: 10.1037//0022-006x.66.1.185.
- <sup>55</sup> Wangelin, BC, Tuerk, PW. Taking the pulse of prolonged exposure therapy: physiological reactivity to trauma imagery as an objective measure of treatment response. *Depress Anxiety*. 2015 Dec 7;32(12):927-34. DOI: 10.1002/da.22449.
- <sup>56</sup> Campbell-Sills, L, Barlow, DH, Brown, TA, Hofmann, SG. Effects of suppression and acceptance on emotional responses of individuals with anxiety and mood disorders. *Behav Res Ther*. 2006 Sep;44(9):1251-63. DOI: 10.1016/j.brat.10.001.
- <sup>57</sup> Bardeen, JR, Kumpula, MJ, Orcutt, HK. Emotion regulation difficulties as a prospective predictor of posttraumatic stress symptoms following a mass shooting. *J Anxiety Disord*. 2013 Mar;27(2):188-96. DOI: 10.1016/j.janxdis.2013.01.003.
- <sup>58</sup> Weiss, NH, Nelson, R, Contractor, AA, Sullivan, T. Emotion dysregulation and posttraumatic stress disorder. A test of the incremental role of difficulties regulating positive emotions. *Anxiety Stress Coping*. 2019 Jul 1;32(4):443-56. DOI: 10.1080/10615806.2019.1618842.
- <sup>59</sup> Fitzgerald, JM, Gorka, SM, Kujawa, A, DiGangi, JA, Proescher, E, Greenstein, JE, et al. Neural indices of emotional reactivity and regulation predict course of PTSD symptoms in combat-exposed veterans. *Prog Neuropsychopharmacol Biol Psychiatry*. 2018 Mar;82(2):255-62. DOI: 10.1016/j.pnpbp.2017.11.005.
- <sup>60</sup> Ehring, T., & Quack, D. (2010). Emotion regulation difficulties in trauma survivors: The role of trauma type and PTSD symptom severity. *Behavior therapy*, 41(4), 587-598.
- <sup>61</sup> Post, LM, Youngstrom, E, Connell, AM, Zoellner, LA, Feeny, NC. Transdiagnostic emotion regulation process explain how emotion-related factors affect co-occurring PTSD and MDD in relation to trauma. *J Anxiety Disord*. 2021 Mar;78:102367. DOI: 10.1016/j.janxdis.2021.102367.

October 30, 2022

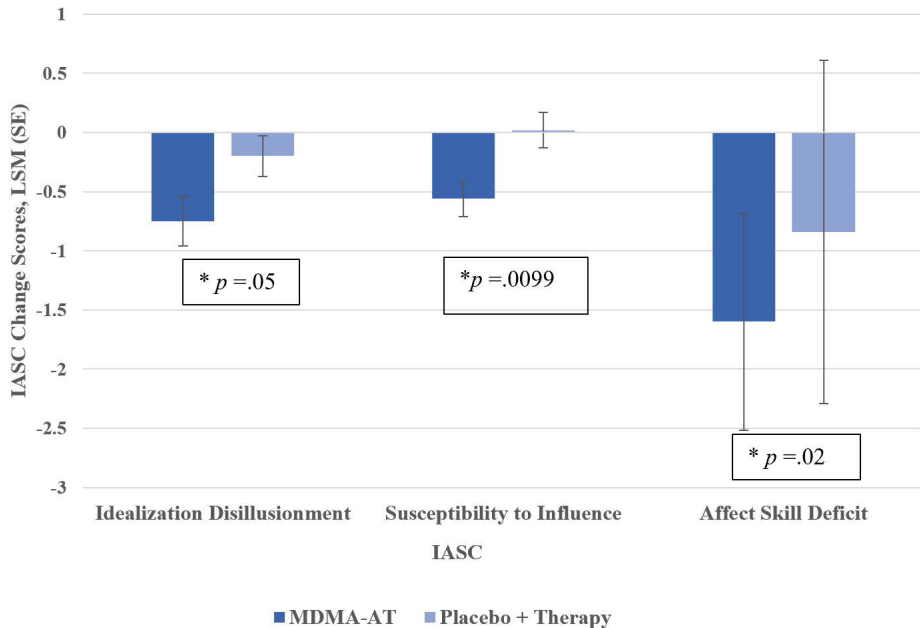
- 
- <sup>62</sup> Badour, CL, Feldner, MT. Trauma-related reactivity and regulation of emotion: associations with posttraumatic stress symptoms. *J Behav Ther Ex Psychiatry*. 2013 Mar; 44(1):69-76. DOI: 10.1016/j.jbtep.2012.07.007.
- <sup>63</sup> Powers, A, Cross, D, Fani, N, Bradley, B. PTSD, emotion dysregulation and dissociative symptoms in a highly traumatized sample. *J Psychiatr Res*. 2015 Feb;61:174-9. DOI: 10.1016/j.jpsychires.2014.12.011.
- <sup>64</sup> Raudales, AM, Weiss, NH, Schmidt, NB, Short, NA. The role of emotion dysregulation in negative affect reactivity to a trauma cue: differential associations through elicited posttraumatic stress disorder symptoms. *J Affect Disord*. 2020 Apr 15;267:203-10. DOI: 10.1016/j.jad.2020.02.028.
- <sup>65</sup> Gilmore, AK, Lopez, C, Muzzy, W, Wilson, JB, Grubaugh, A, Oesterle, DW, et al. Emotion dysregulation predicts dropout from prolonged exposure treatment among women veterans with military sexual trauma-related posttraumatic stress disorder. *Women's Health Issues*. 2020 Nov 1;30(6):462-9. DOI: 10.1016/j.whi.2020.07.004.
- <sup>66</sup> Andrews, B, Brewin, CR, Rose, S, Kirk, M. Predicting PTSD symptoms in victims of violent crime: the role of shame, anger, and childhood abuse. *J Abnorm Psychol*. 2000 Feb;109(1):69-72. DOI: 10.1037//0021-843x.109.1.69.
- <sup>67</sup> Ehlers, A., Maercker, A., & Boos, A. (2000). Posttraumatic stress disorder following political imprisonment: The role of mental defeat, alienation, and perceived permanent change. *Journal of abnormal psychology*, 109(1), 45.
- <sup>68</sup> Hiraoka, R, Meyer, EC, Kimbrel, NA, DeBeer, BB, Gulliver, SB, Morissette, SB. Self-compassion as a prospective predictor of PTSD symptom severity among trauma-exposed U.S. Iraq and Afghanistan war veterans. *J Trauma Stress*. 2015 Apr;28(2):127-33. DOI: 10.1002/jts.21995.
- <sup>69</sup> Krieger, T, Reber, F, von Glutz, B, Urech, A, Moser, CT, Schulz, A, et al. An internet-based compassion-focused intervention for increased self-criticism: a randomized controlled trial. *Behav Ther*. 2019 Mar;50(2):430-45. DOI: 10.1016/j.beth.2018.08.003.
- <sup>70</sup> Diedrich, A, Hofmann, SG, Cuijpers, P, Berking, M. Self-compassion enhances the efficacy of explicit cognitive reappraisal as an emotion regulation strategy in individuals with major depressive disorder. *Behav Res Ther*. 2016 Jul;82:1-10. DOI: 10.1016/j.brat.2016.04.003.



# Change in Self-Compassion by Treatment Group



## Change in IASC Factors by Treatment Group



# Change in Alexithymia by Treatment Group

