

## **Clinical Validation of Optical Genome Mapping for the Detection of Structural Variations in Hematological Malignancies**

Andy Wing Chun Pang<sup>1\*</sup>, Karena Kosco<sup>2\*</sup>, Nikhil Sahajpal<sup>3</sup>, Arthi Sridhar<sup>2</sup>, Jen Hauenstein<sup>1</sup>, Benjamin Clifford<sup>1</sup>, Joey Estabrook<sup>1</sup>, Alex Chitsazan<sup>1</sup>, Trilochan Sahoo<sup>2</sup>, Anwar Iqbal<sup>4</sup>, Ravindra Kolhe<sup>3</sup>, Gordana Raca<sup>5</sup>, Alex R. Hastie<sup>1†</sup>, Alka Chaubey<sup>1†</sup>

<sup>1</sup>Bionano Genomics, Inc., San Diego, California, USA

<sup>2</sup>Bionano Laboratories, San Diego, California, USA

<sup>3</sup>Department of Pathology, Medical College of Georgia, Augusta University, Augusta, GA, USA

<sup>4</sup>DNA Microarray CGH Laboratory, Department of Pathology, University of Rochester Medical Center, Rochester, NY, USA

<sup>5</sup>Department of Pathology and Laboratory Medicine, Children's Hospital of Los Angeles, Los Angeles, CA, USA

\*These authors contributed equally

†Co-corresponding authors

Corresponding Authors:

Alex Hastie, PhD

Vice President of Clinical and Scientific Affairs

Bionano Genomics

9540 Towne Centre Drive, San Diego, CA, 92121 USA

ahastie@bionanogenomics.com

Alka Chaubey, PhD, FACMG

Chief Medical Officer

Bionano Genomics

9540 Towne Centre Drive, San Diego, CA, 92121 USA

achaubey@bionanogenomics.com

## Abstract

Structural variations (SVs) play a key role in the pathogenicity of hematological malignancies. Standard-of-care (SOC) methods such as karyotyping and fluorescence *in situ* hybridization (FISH), employed globally for the past three decades have significant limitations in the resolution or the number of recurrent aberrations that can be simultaneously assessed, respectively. Next-generation sequencing (NGS) based technologies are now widely used to detect clinically significant sequence variants but are limited in their ability to accurately detect SVs. Optical genome mapping (OGM) is an emerging technology enabling the genome-wide detection of all classes of SVs at a significantly higher resolution than karyotyping and FISH. OGM neither requires cultured cells nor amplification of DNA and hence addresses the limitations of culture and amplification biases. This study reports the clinical validation of OGM as a laboratory developed test (LDT), according to CLIA guidelines, for genome-wide SV detection in different hematological malignancies. In total, 68 cases with hematological malignancies (of various subtypes), 27 controls and two cancer cell lines were used for this study. Ultra-high molecular weight DNA was extracted from the samples, fluorescently labeled, and run on the Bionano Genomics Saphyr system. A total of 207 datasets, including replicates, were generated and 100% could be analyzed successfully. Sample data were then analyzed using either disease specific or pan-cancer specific BED files to prioritize calls that are known to be diagnostically or prognostically relevant. Accuracy, precision, PPV and NPV were all 100% against standard of care results. Sensitivity, specificity, and reproducibility were 100%, 100% and 96%, respectively. Following the validation, 11 cases were run and analyzed using OGM at three additional sites. OGM found more clinically relevant SVs compared to SOC testing due to its ability to detect all classes of SVs at much higher resolution. The results of this validation study demonstrate OGM's superiority over traditional SOC methods for the detection of SVs for the accurate diagnosis of various hematological malignancies.

## Introduction

Hematological malignancies refer to a distinct group of neoplastic diseases of hematopoietic and lymphoid tissues, and are broadly divided into myeloproliferative neoplasms, myelodysplastic neoplasms, leukemias, lymphomas, and plasma cell neoplasms. Historically, these malignancies have been genetically characterized for diagnosis, classification, prognostication, and therapeutic decision-making<sup>1-3</sup>. In the recent decade, the genetic testing of these malignancies has dramatically evolved with the advancement of genomic technologies, particularly molecular characterization due to the advent of next-generation sequencing (NGS) technology<sup>4-6</sup>. Though there have been significant improvements in

molecular characterization of these blood tumors with NGS, the evolution of cytogenetic analysis has lagged comparatively, which still relies on traditional methods including karyotyping, Fluorescence in-situ hybridization (FISH), and chromosomal microarray (CMA).

Karyotyping (KT), currently the “gold standard” cytogenetic method for the detection of single-cell genome-wide structural variation (SV), suffers from several limitations: 1) limited resolution of aberration sizes (10-20 Mbp), 2) cryptic translocations that remain undetected, and 3) lack of metaphase cells in certain malignancies that result in failed KT (e.g., CD138+ cells in plasma cell myeloma, lymph node single cell suspension in lymphoma)<sup>7,8</sup>. FISH is a targeted assay often performed alongside KT or in isolation (for CD138+, lymph node single cell suspension or disease monitoring) to capture a limited number of SVs. CMA has seen limited adoption for hematological malignancies, despite it being ideal for copy number variation (CNV) detection, since it fails to detect insertions, balanced SVs (translocations, and inversions) or fusions<sup>9</sup>. The aforementioned limitations of these cytogenetic/cytogenomic methodologies necessitate the use of multiple assays to obtain a reasonable cytogenetic profile in majority of these cases<sup>3,10,11</sup>. Recently, NGS has been explored as a method to detect cytogenetic aberrations<sup>12</sup>, but the intrinsic limitation of poor sequencing around and within repetitive sequences of the genome result in limited resolution and inability to detect SVs<sup>13</sup>. NGS performs very well for the detection of sequence variants of clinical relevance but requires multiplexing, complex bioinformatics, high depth of coverage, and high costs associated with its implementation for the detection of cytogenetic aberrations. However, NGS is the perfect tool to complement OGM for a comprehensive genomic analysis<sup>17</sup>.

Recently, multiple studies have demonstrated that optical genome mapping (OGM) is a promising next-generation cytogenomic technology that provides a streamlined workflow at a high precision for the detection of all classes of SVs at a genome-wide level. These studies have shown ~100% concordance of OGM with classical cytogenetic methods (KT, FISH and CMA) in specific hematological malignancies<sup>14-18</sup>. In addition, OGM has demonstrated the ability to detect additional clinically relevant SVs missed by SOC owing to its significantly higher sensitivity and resolution (~10,000× compared to KT).

In this multi-site, IRB-approved OGM study on hematological malignancies, the clinical validation was conducted for the development of a laboratory developed test (LDT) in CLIA certified laboratories. The samples were evaluated for concordance, reproducibility, and assay robustness and protocols were established for the analysis and interpretation using guidelines-based targeted variant assessment in addition to a whole genome analysis. The unique ability of OGM to detect all classes of balanced and unbalanced SV at high resolution and increased sensitivity holds promise for its acceptance as a first tier cytogenomic test for all hematological malignancies. This is in line with multiple published

studies demonstrating the reproducibility and robustness of the OGM workflow as it simplifies the clinical testing laboratory operations.

## Methods

### *Cohort design*

Multiple U.S.-based laboratories contributed to this double-blinded observational study for sample recruitment, data collection, and variant analysis. The study protocol was approved through multiple Institutional Review Boards (IRBs) and included consent provided by individuals with newly collected samples or waived authorization for use of de-identified samples. All protected health information (PHI) was removed, and data were anonymized (coded and double-blinded) before accessioning for the study. Samples were given anonymous aliases used in this study (e.g.: BNGOHM-xxxxxxx). All clinical samples (peripheral blood or bone marrow aspirate, N=71) were referred for clinical cytogenetic testing due to a suspicion of a hematological malignancy and SOC test results including karyotyping, FISH, and/or CMA were available. Control specimens included either established cell lines, peripheral blood, and bone marrow samples from healthy adults. For the de-identified cases, clinical indications, genetic test results and additional demographic information, as available, were collected.

### *OGM Assay Workflow (DNA isolation, DNA Labeling, Chip loading and Data collection)*

Frozen aliquots of cells, bone marrow aspirate (BMA), and/or peripheral blood (PB) were subjected to DNA isolation using manufacturer's protocol (Bionano Genomics, Inc, USA). Briefly, frozen sample vials were thawed in a 37°C water bath, then counted for number of cells using the HemoCue WBC Analyzer (Fisher Scientific). A total of 1.5 million cells per sample was transferred to Protein Lo-Bind microfuge tubes for centrifugation. Cell pellets were resuspended and washed with stabilizing buffer. Washed cell suspensions were enzymatically digested and lysed, and isopropanol used to precipitate ultra-high molecular weight (UHMW) DNA in the presence of a nanobind disk. Long DNA strands bound to nanodisks were washed, transferred to clean tubes, and subsequently released from the nanodisk using elution buffer.

Approximately 500ng-750ng of solubilized UHMW DNA was labeled enzymatically, conjugating fluorophores to the target 6-mer *CTTAAG*. Long, labeled DNA strands were then counterstained with an intercalating dye, homogenized in buffer to allow flow through a nanochannel device, and then loaded into flowcells of Saphyr G2.3 chips. Chips were run in the Saphyr instrument to a target throughput of >1500 Gbp per sample.

### ***Assay QC***

The completed datasets were then assessed for the following analytical quality control metrics — >320X effective coverage of GRCh38, with  $\geq 70\%$  of molecules  $\geq 150$  kbp aligning (“map rate”) and at an N50 of  $\geq 230$  kbp. Additionally, the Bionano Access 1.7 EnFocus™ (Fragile X) pipeline was run for a subset of samples to assess post-analytical QC pass/fail metrics (CNV noise and stable region analysis) and to infer sex of the case.

### ***SV detection using rare variant pipeline***

The Bionano Solve 3.7 rare variant pipeline was used for genome-wide SV detection. The rare variant pipeline enables the detection of SVs occurring at low allelic fractions. Molecules were aligned to the GRCh38 reference, and clusters of molecules ( $\geq 3$ ) indicating SVs were used for local assembly. Local consensus assemblies have high accuracy and are used to make final SV calls by realignment to the reference genome. SV calls were finally compared against known genes and against SVs in an SV database with 179 population controls.

Separately, based on read depth, the analysis generates a copy number profile that can call gains and losses in an approach analogous to microarrays. Briefly, molecules were aligned to the GRCh38 reference to create a depth-of-coverage profile, which was then normalized based on OGM controls and scaled against a baseline defined at CN=2 in autosomes (X and Y have a sex chromosome-specific baseline). Putative copy changes were segmented, and calls were generated and similarly annotated with positional information from the original reference. Entire chromosomal aneusomies were likewise defined in the CN algorithm.

### ***Post-Analytical SV Curation and Classification***

A SV filtering and curation protocol was devised and implemented by analysts using Bionano Access v1.7.2. An overview of the subsequent curation and classification procedure is shown in Supplementary Figure 1. For the concordance part of the study, a set of filters was applied to include variants with a variant allele fraction (VAF) 0.02-1 and present in 0% controls of OGM control sample SV database. SVs meeting these criteria were then curated for manual review and classification. The analyst remained blinded until the concordance was performed. SVs were classified using a tiering system based on the ACMG guidelines adopted for OGM. Curation and classification were performed in four successively applied-then-removed filtering steps: disease subtype-specific classification (first, when applicable; most stringent filter), pan-hematological malignancy classification, pan-cancer classification, and remaining variants classification (last and most permissive filter) (Supplementary Figure 1).

Following validation, cases were run and analyzed according to SOP in an end-to-end exercise. In these cases, after variant analysis and preliminary classification, draft reports were reviewed by board certified pathologists or laboratory directors for final classification, interpretation, and readiness for future

reporting. Directors proceeded through classified variants in the curated list, upholding and/or revising analyst classification, as needed. Upon completing review of the curated/classified variant list, the directors finalized case summary statements regarding somatic variants and defined genome complexity status (defined as normal if no large ( $\geq 5$  Mbp) aberrations were detected, simple if fewer than 3 were detected, and complex for cases containing  $\geq 3$  aberrations).

### ***Concordance with SOC***

Concordance analysis was performed between SVs detected using SOC testing and OGM data. Most of the samples had KT or KT plus FISH SOC results, and a subset had CMA data. If the same SV was observed in more than one SOC method, they were considered a single SV for concordance purposes. A SV was scored as concordant if the chromosome and band matched. Any difference in size of breakpoints were attributed to technique differences and the higher resolution of OGM. Additionally, if multiple OGM calls supported one SOC variant, they were treated as one concordant event. In addition to the concordance assessment, each case was evaluated for additional pathogenic/likely pathogenic (tier 1 and 2) findings that were not detected by SOC. Orthogonal methods were used to confirm a subset of these additional SVs detected by OGM.

### ***Reproducibility***

UHMW DNA from four hematological malignancy BMA samples was labeled in different batches by different operators using multiple reagent lots and instruments. Reproducibility for each individual SV was calculated as the number of replicates where the SV was detected divided by the total number of replicates. Reproducibility for each SV type was calculated by taking the mean value across all variants for each type.

### ***Limit of detection***

The limit of detection (LOD) was determined using two acute myelogenous leukemia (AML) cell lines, KG-1 and MV4-11 (ATCC). Each cell line DNA was blended with GM12878 (normal control cell line, Coriell Institute) to create serial dilutions that ranged from undiluted down to 1:24 dilution. Combined samples were gently mixed over the course of one week to ensure uniform mixing of DNA molecules. Six replicates of each blend were run through OGM with a target of  $>1500$  Gbp of DNA and analyzed with the rare variant pipeline.

## Results

In this study, samples from 68 cases with hematological malignancies (with various heme subtypes), two cancer cell lines, and 27 controls were used (n=97, Table 1). From these clinical samples, cell lines, and controls, 207 datapoints were generated. Molecule N50, map rate, and effective coverage were recorded as analytical quality metrics, and they averaged 261 kbp, 87%, and 434×, respectively (Supplementary Figure 2).

Concordance with SOC testing results was conducted using 41 hematological malignancy cases (39 BMA and 2 blood, Figure 1), two hematologic malignancy cell lines and 27 normal healthy donor samples (3 BMA and 24 blood samples). Altogether, 148 SV calls by SOC testing were evaluated, and OGM demonstrated 100% concordance (Figures 2A and 2B). In addition, in 17/46 cases (37%) OGM identified additional novel Tier 1 and 2 variants not previously reported by SOC; a subset of these variants was subsequently confirmed by orthogonal methods (Supplementary Table 2). In one case of a myeloid neoplasm, BNGOHM-0000149, OGM was able to uniquely identify a mosaic deletion of 3q13.31 to 3q22.3 overlapping *GATA2*, a gene associated with myelogenous leukemia and an inclusion criterion for at least one clinical trial (NCT01861106), and complex rearrangements on 17p13, consisting of amplifications, and deletions that impacted *YWHAE*, *MNT*, *TP53* and *MAP2K4* (Figure 2A). In a second case of acute lymphocytic or myeloid leukemia, BNGOHM-0000335, OGM uniquely detected a translocation between chromosomes 16 and 12 [t(12;16)(p13;p13)] which results in the *CREBBP-ZNF384* fusion gene, an abnormality reported recurrently in ALL (Figure 2B).

All incidental SVs that were detected in 18 healthy donor blood samples were compared to both a list of 206 targets/types recommended for testing by medical associations (NCCN, WHO and NHS, Supplementary Table 3) and a comprehensive list of cancer genes. Overall, tier 1 or 2 heme-associated variants were only found in two of the healthy donor samples. A loss of Y was detected in BNGOHM-0000076 and a 71 kbp deletion in 9p24.1 impacting the *PDCDILG2* gene was identified in another donor (anonymized ID: 1000107245). Both variants were subsequently confirmed by CMA as true positive calls. In summary, based on this analysis there were no false negative SVs detected in the genomes of healthy donors, thus indicating 100% specificity (for tier 1 and 2 SVs).

Reproducibility was performed utilizing four cases, and the concordance for each SV was determined by calculating the fraction of replicates ( $N \geq 6$ ) in which each variant was accurately identified (Supplementary Table 4). Overall, the reproducibility assay included an aggregate of 227 SVs (14 aneusomies, 46 duplications, 33 insertions, 58 deletions, 12 inversions, 32 intra-chromosomal fusions, 32 inter-chromosomal translocations). In total, there was 96% reproducibility among replicates for all SVs,

CNVs and aneuploidies. A total of five variants were not detected across all replicates: two duplications, two inversions, and one insertion. The lack of detection was attributed to the SV having one of the following: in a region with segmental duplications, low variant confidence score, or high complexity in the region.

Two cell lines (KG-1 and MV4-11) were used to evaluate the limit of detection (LOD) of OGM. Two trisomies, three duplications, nine deletions, an inversion, and three translocations were assessed in the dilution series (Supplementary Table 5). In summary, at the current coverage of >1500 Gbp map-based SV calling can detect deletions at  $\geq 5.0\%$  VAF, inversions at  $\geq 4.1\%$  VAF, and translocations at  $\geq 4.8\%$  VAF. The read depth CNV calling algorithm showed LOD 10.5% VAF for gains, 15.9% VAF for losses, and 11.0% VAF for trisomies (Table 3).

## Discussion

Medical guidelines by professional societies such as the NCCN, WHO, NHS, etc recommend specific testing for SVs as part of the workup of suspected hematologic malignancies both, at diagnosis, and during follow-up testing (disease monitoring). Current laboratory practices rely on several complementary cytogenetic techniques to accomplish recommended testing, but these methods suffer from the limitation of low resolution, thereby potentially missing actionable SVs. Cytogenetic/cytogenomic testing laboratories often have customized testing algorithms depending on the disease diagnosis and stage, physician preferences and the institution's testing and reimbursement policies. These decades long disparities typically lead to different combination of FISH and/or KT testing depending on the laboratory infrastructure, instrumentation, and availability of trained cytogenetics laboratory professionals. There is a need for innovative technologies that can overcome the challenges of traditional SOC testing and introduce a comprehensive, uniform combination of tests being performed on a routine basis. This study demonstrates that OGM can be easily implemented in the clinical setting and can substantially reduce operational complexity and improve detection rate by providing a reproducible and robust alternative to the three predominant cytogenetic methods (KT, FISH, and CMA) in routine workup of most of the hematological malignancies.

A wide variety of hematologic malignancies were included during this LDT validation process and of the 148 reported SVs detected by SOC methods, OGM detected 100% of these variants. OGM was validated for different SV classes such as deletions, inversions, and translocations, all performing at or above 5% VAF threshold. Importantly, the detection of novel, actionable, clinically significant SVs solely by OGM in a significant fraction of cases (37% of study cases) adds substantial diagnostic benefits from OGM testing. One important feature of a robust assay is reproducibility and OGM detected over 96% of



variants across all replicates within and between runs. It is important to note that the legacy cytogenetic methods also suffer from significant subjectivity in SV classification since KT results are highly dependent on the quality of the metaphase band resolution (usually in the 300-500 band level range for heme).

Another unique feature of the OGM assay involves the uniform pre-analytical and analytical steps, irrespective of the disease subtype, which allows for the workflow standardization and scalability for single or multiple hematologic malignancy subtypes. The incorporation of guideline-driven, disease subtype-specific target variants into the analytical process allows for a semi-automated and easy classification and reporting of variants. Additionally, if there is ambiguity in the clinical symptoms of a heme malignancy sub-type at the time of the physician consult, a “pan-heme” genomic analysis can still be conducted simultaneously in a disease-agnostic fashion.

Multiple studies, including the present study, demonstrate that OGM overcomes multiple limitations of SOC testing<sup>11,17</sup>. In agreement with recent published studies, this study demonstrates increased detection of clinically relevant SV by OGM compared to SOC in 37% of cases (tier 1 or tier 2 SVs that were missed by SOC). Additionally, OGM provides a standardized data acquisition and analysis process with a software solution that allows the seamless and systematic implementation and adoption across multiple laboratories.

This clinical validation is the second published study in the USA according to CAP/CLIA guidelines<sup>18</sup>. After the validation was completed, a representative report template was created with Tier 1A variants highlighted on page 1 and Tier 1b/2 variants listed on page 2 (Figure 3). Section A is analogous to a FISH panel with present/absent indicated for each abnormality. Section B represents a whole genome analysis and displays the SVs detected on a chromosome-by-chromosome basis (analogous to a KT).

This sample-to-answer workflow established in a CLIA laboratory environment has been provided to three labs laboratories and data has been collected and analyzed according to the established standard operating procedures (data not shown). Results of the initial analysis demonstrate the potential of OGM to provide a more uniform and systematic approach to cytogenomics, which will be further evaluated in the ongoing larger multi-site clinical trial underway.

## Conclusions

OGM provides a solution that enables an alternative to multiple methods such as, KT, FISH, and CMA addressing several lacunae of the traditional methods. The OGM workflow provides an end-to-end

solution from DNA isolation to the downstream SV analysis and interpretation using an analysis software to facilitate adoption in a clinical laboratory. Since the OGM assay does not require culturing of the clinical specimens, the typically observed culture biases in a cytogenetic laboratory are eliminated. OGM also allows for a sample to answer to be obtained in 4-5 days, which is extremely beneficial for the management and treatment of these patients. OGM not only detects all classes of SVs but provides the highest resolution attainable till date, by any cytogenetic method in clinical use. The ability of OGM to detect both recurrent SVs and novel fusions positions it as a first-tier test for the detection of all classes of SVs in majority of the hematological malignancies.

## References

1. Taylor J, Xiao W, Abdel-Wahab O. (2017) Diagnosis and classification of hematologic malignancies on the basis of genetics. *Blood*. Jul 27;130(4):410-423.
2. Rack KA, van den Berg E, Haferlach C, Beverloo HB, Costa D, Espinet B, Foot N, Jeffries S, Martin K, O'Connor S, Schoumans J, Talley P, Telford N, Stioui S, Zemanova Z, Hastings RJ. (2019) European recommendations and quality assurance for cytogenomic analysis of haematological neoplasms. *Leukemia*. Aug;33(8):1851-1867.
3. National Comprehensive Cancer Network. NCCN clinical practice guidelines in oncology NCCN Guidelines®. Myelodysplastic syndromes. Version 3. 2021.
4. Ley TJ, Mardis ER, Ding L, Fulton B, McLellan MD, Chen K, Dooling D, Dunford-Shore BH, McGrath S, Hickenbotham M, Cook L, Abbott R, Larson DE, Koboldt DC, Pohl C, Smith S, Hawkins A, Abbott S, Locke D, Hillier LW, Miner T, Fulton L, Magrini V, Wylie T, Glasscock J, Conyers J, Sander N, Shi X, Osborne JR, Minx P, Gordon D, Chinwalla A, Zhao Y, Ries RE, Payton JE, Westervelt P, Tomasson MH, Watson M, Baty J, Ivanovich J, Heath S, Shannon WD, Nagarajan R, Walter MJ, Link DC, Graubert TA, DiPersio JF, Wilson RK. (2008) DNA sequencing of a cytogenetically normal acute myeloid leukaemia genome. *Nature*. Nov 6;456(7218):66-72.
5. Mardis ER, Ding L, Dooling DJ, Larson DE, McLellan MD, Chen K, Koboldt DC, Fulton RS, Delehaunty KD, McGrath SD, Fulton LA, Locke DP, Magrini VJ, Abbott RM, Vickery TL, Reed JS, Robinson JS, Wylie T, Smith SM, Carmichael L, Eldred JM, Harris CC, Walker J, Peck JB, Du F, Dukes AF, Sanderson GE, Brummett AM, Clark E, McMichael JF, Meyer RJ, Schindler JK, Pohl CS, Wallis JW, Shi X, Lin L, Schmidt H, Tang Y, Haipek C, Wiechert ME, Ivy JV, Kalicki J, Elliott G, Ries RE, Payton JE, Westervelt P, Tomasson MH, Watson MA, Baty J, Heath S, Shannon WD, Nagarajan R, Link DC, Walter MJ, Graubert TA, DiPersio JF, Wilson

- RK, Ley TJ. (2009) Recurring mutations found by sequencing an acute myeloid leukemia genome. *N Engl J Med*. Sep 10;361(11):1058-66.
6. Ramkissoon LA, Montgomery ND. (2021) Applications of next-generation sequencing in hematologic malignancies. *Hum Immunol*. Nov;82(11):859-870.
  7. Wan TS. (2014) Cancer cytogenetics: methodology revisited. *Ann Lab Med*. Nov;34(6):413-25.
  8. Cooley LD, Morton CC, Sanger WG, Saxe DF, Mikhail FM. (2016) Section E6.5-6.8 of the ACMG technical standards and guidelines: chromosome studies of lymph node and solid tumor-acquired chromosomal abnormalities. *Genet Med*. Jun;18(6):643-8.
  9. Waggoner D, Wain KE, Dubuc AM, Conlin L, Hickey SE, Lamb AN, Martin CL, Morton CC, Rasmussen K, Schuette JL, Schwartz S, Miller DT; (2018) ACMG Professional Practice and Guidelines Committee. Yield of additional genetic testing after chromosomal microarray for diagnosis of neurodevelopmental disability and congenital anomalies: a clinical practice resource of the American College of Medical Genetics and Genomics (ACMG). *Genet Med*. Oct;20(10):1105-1113.
  10. Kanagal-Shamanna R, Hodge JC, Tucker T, Shetty S, Yenamandra A, Dixon-McIver A, Bryke C, Huxley E, Lennon PA, Raca G, Xu X, Jeffries S, Quintero-Rivera F, Greipp PT, Slovak ML, Iqbal MA, Fang M. (2018) Assessing copy number aberrations and copy neutral loss of heterozygosity across the genome as best practice: An evidence based review of clinical utility from the cancer genomics consortium (CGC) working group for myelodysplastic syndrome, myelodysplastic/myeloproliferative and myeloproliferative neoplasms. *Cancer Genet*. Dec;228-229:197-217.
  11. Akkari YMN, Baughn LB, Dubuc AM, Smith AC, Mallo M, Dal Cin P, Diez Campelo M, Gallego MS, Granada Font I, Haase DT, Schlegelberger B, Slavutsky I, Mecucci C, Levine RL, Hasserjian RP, Solé F, Levy B, Xu X. (2022) Guiding the global evolution of cytogenetic testing for hematologic malignancies. *Blood*. Apr 14;139(15):2273-2284.
  12. Duncavage EJ, Schroeder MC, O'Laughlin M, Wilson R, MacMillan S, Bohannon A, Kruchowski S, Garza J, Du F, Hughes AEO, Robinson J, Hughes E, Heath SE, Baty JD, Neidich J, Christopher MJ, Jacoby MA, Uy GL, Fulton RS, Miller CA, Payton JE, Link DC, Walter MJ, Westervelt P, DiPersio JF, Ley TJ, Spencer DH. (2021) Genome Sequencing as an Alternative to Cytogenetic Analysis in Myeloid Cancers. *N Engl J Med*. Mar 11;384(10):924-935.
  13. Chaisson MJP, Sanders AD, Zhao X, Malhotra A, Porubsky D, Rausch T, Gardner EJ, Rodriguez OL, Guo L, Collins RL, Fan X, Wen J, Handsaker RE, Fairley S, Kronenberg ZN, Kong X, Hormozdiari F, Lee D, Wenger AM, Hastie AR, Antaki D, Anantharaman T, Audano PA, Brand H, Cantsilieris S, Cao H, Cerveira E, Chen C, Chen X, Chin CS, Chong Z, Chuang NT, Lambert

- CC, Church DM, Clarke L, Farrell A, Flores J, Galeev T, Gorkin DU, Gujral M, Guryev V, Heaton WH, Korlach J, Kumar S, Kwon JY, Lam ET, Lee JE, Lee J, Lee WP, Lee SP, Li S, Marks P, Viaud-Martinez K, Meiers S, Munson KM, Navarro FCP, Nelson BJ, Nodzak C, Noor A, Kyriazopoulou-Panagiotopoulou S, Pang AWC, Qiu Y, Rosanio G, Ryan M, Stütz A, Spierings DCJ, Ward A, Welch AE, Xiao M, Xu W, Zhang C, Zhu Q, Zheng-Bradley X, Lowy E, Yakneen S, McCarroll S, Jun G, Ding L, Koh CL, Ren B, Flicek P, Chen K, Gerstein MB, Kwok PY, Lansdorp PM, Marth GT, Sebat J, Shi X, Bashir A, Ye K, Devine SE, Talkowski ME, Mills RE, Marschall T, Korbelt JO, Eichler EE, Lee C. (2019) Multi-platform discovery of haplotype-resolved structural variation in human genomes. *Nat Commun.* Apr 16;10(1):1784.
14. Levy B, Baughn LB, Chartrand S, LaBarge B, Claxton D, Lennon A, Akkari Y, Cujar C, Kolhe R, Kroeger K, Pitel B, Sahajpal N, Sathanoori M, Vlad G, Zhang L, Fang M, Kanagal-Shamanna R, and Broach J. (2020) A National Multicenter Evaluation of the Clinical Utility of Optical Genome Mapping for Assessment of Genomic Aberrations in Acute Myeloid Leukemia. medRxiv. <https://doi.org/10.1101/2020.11.07.20227728>
15. Neveling K, Mantere T, Vermeulen S, Oorsprong M, van Beek R, Kater-Baats E, Pauper M, van der Zande G, Smeets D, Weghuis DO, Stevens-Kroef MJPL, Hoischen A. (2021) Next-generation cytogenetics: Comprehensive assessment of 52 hematological malignancy genomes by optical genome mapping. *Am J Hum Genet.* Aug 5;108(8):1423-1435.
16. Gerding WM, Tembrink M, Nilius-Eliliwi V, Mika T, Dimopoulos F, Ladigan-Badura S, Eckhardt M, Pohl M, Wünnenberg M, Farshi P, Reimer P, Schroers R, Nguyen HP, Vangala DB. (2022) Optical genome mapping reveals additional prognostic information compared to conventional cytogenetics in AML/MDS patients. *Int J Cancer.* Jun 15;150(12):1998-2011.
17. Yang H, Garcia-Manero G, Sasaki K, Montalban-Bravo G, Tang Z, Wei Y, Kadia T, Chien K, Rush D, Nguyen H, Kalia A, Nimmakayalu M, Bueso-Ramos C, Kantarjian H, Medeiros LJ, Luthra R, Kanagal-Shamanna R. (2022) High-resolution structural variant profiling of myelodysplastic syndromes by optical genome mapping uncovers cryptic aberrations of prognostic and therapeutic significance. *Leukemia.* Sep;36(9):2306-2316.
18. Sahajpal NS, Mondal AK, Tvrdik T, Hauenstein J, Shi H, Deeb KK, Saxe D, Hastie AR, Chaubey A, Savage NM, Kota V, Kolhe R. (2022) Clinical Validation and Diagnostic Utility of Optical Genome Mapping for Enhanced Cytogenomic Analysis of Hematological Neoplasms. *J Mol Diagn.* Dec;24(12):1279-1291.

## Data Availability

Data will be made available upon reasonable request and in accordance with IRB protocols.

IRB and consent IRB-20212956 – Bionano Genomics Inc., San Diego, CA, USA

IRB-00007527 – University of Rochester Medical Center Office for Human Subject Protection

IRB-A-#00000150 (HAC IRB # 611298) - Medical College of Georgia, Augusta University, Augusta, GA, USA

## Disclosures

AWCP, KK, AS, JH, BC, JE, AC, TS, AH, AC are all salaried employees of Bionano Genomics

RK has received honoraria, and/or travel funding, and/or research support from Illumina, Asuragen, QIAGEN, Perkin Elmer Inc, Bionano Genomics, Agena, Agendia, PGDx, Thermo Fisher Scientific, Cepheid, and BMS.

## Acknowledgements

Acknowledgements: The authors wish to acknowledge Bionano clinical team: Alvin Yee, Mike Gallagher, James Yu, Vruti Mehta, Kelsea Chang, Shuk Shukor, Alma Lastrella, Beth Matthews, Sean Guy, Anusha Mylavarapu, Julia Brushett, Evelyn Crescini, Sheng-Wei Chang for their support with data management, training, conducting validation experiments and analysis.

## Funding

This study was funded in part by Bionano Genomics, inc.

## Tables and Figures

Sample type	Collection tube	Count	Normal control or clinical sample	Sample description
BMA	Na-Heparin	3	Normal*	Frozen specimen taken through the entire wet lab process from extraction to OGM
		9	Clinical sample	
	EDTA	54	Clinical sample	
Blood	EDTA	24	Normal*	
	Na-Heparin	2	Clinical sample	
UHMW gDNA	N/A	3	Clinical sample	UHMW gDNA
ATCC cell line	N/A	2	Cell line from AML cases	UHMW gDNA
<b>TOTAL</b>		<b>97</b>		

Table 1. Summary of samples used for validation studies. \* Phenotypically healthy individuals



2A)

Sample Type	Total Samples Analyzed	Total Abnormal Events	Total Abnormal Concordant	Concordance
BMA	39	134	134	100%
WB	2	3	3	100%
Cell lines	2	11	11	100%

2B)

SV type by SOC testing	OGM SV			Percent Agreement
	TP	FN	Total	
Aneuploidies	61	0	61	100%
Gains	8	0	8	100%
Deletions/losses	51	0	51	100%
Translocations	20	0	20	100%
Inversion	1	0	1	100%
Add	4	0	4	100%
Isochromosome	1	0	1	100%
Dicentric	1	0	1	100%
Idic	1	0	1	100%
<b>Total</b>	<b>148</b>	<b>0</b>	<b>148</b>	<b>100%</b>

Table 2. Summary of concordance results. 2A) Concordance of hematological variants by sample type. 2B) Concordance by variant class.



<b>Variant type</b>	<b>LOD</b>
Deletion	5.0% VAF
Translocation	4.8% VAF
Inversion	4.1% VAF
CN loss	15.9% VAF
CN gain	10.5% VAF
Trisomy	11.0% VAF

Table 3. Limit of detection for different SV types.

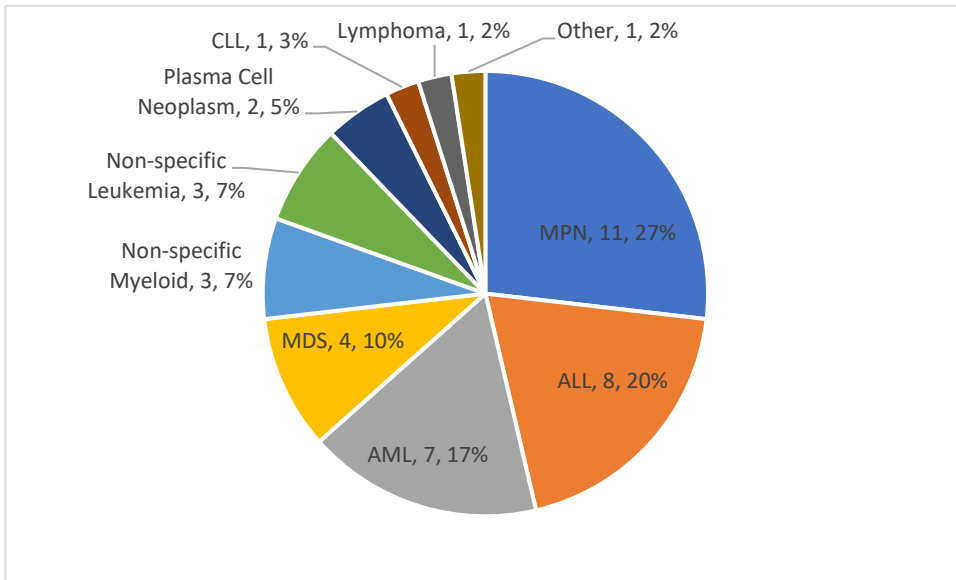
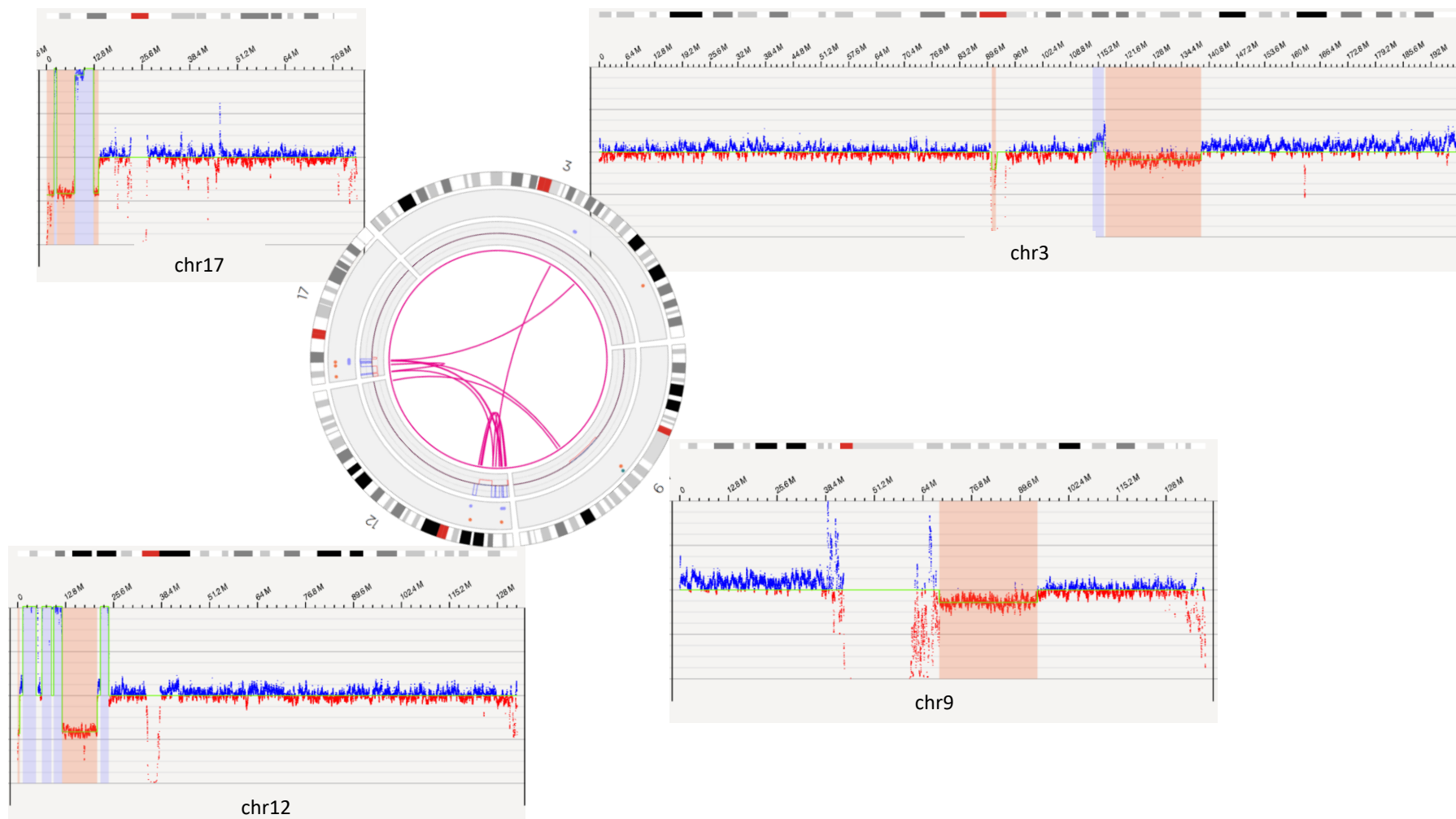
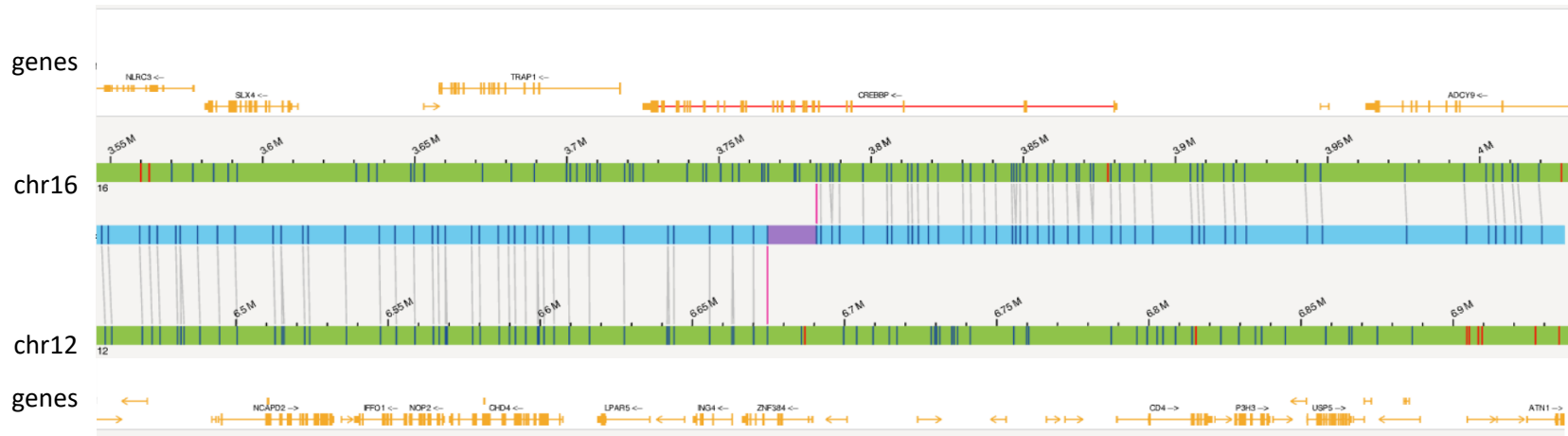


Figure 1. A breakdown of clinical indications of the cases used in validation for accuracy assessment (n=41, 2 cell lines not included).

2A)



2B Top)



2B Bottom)

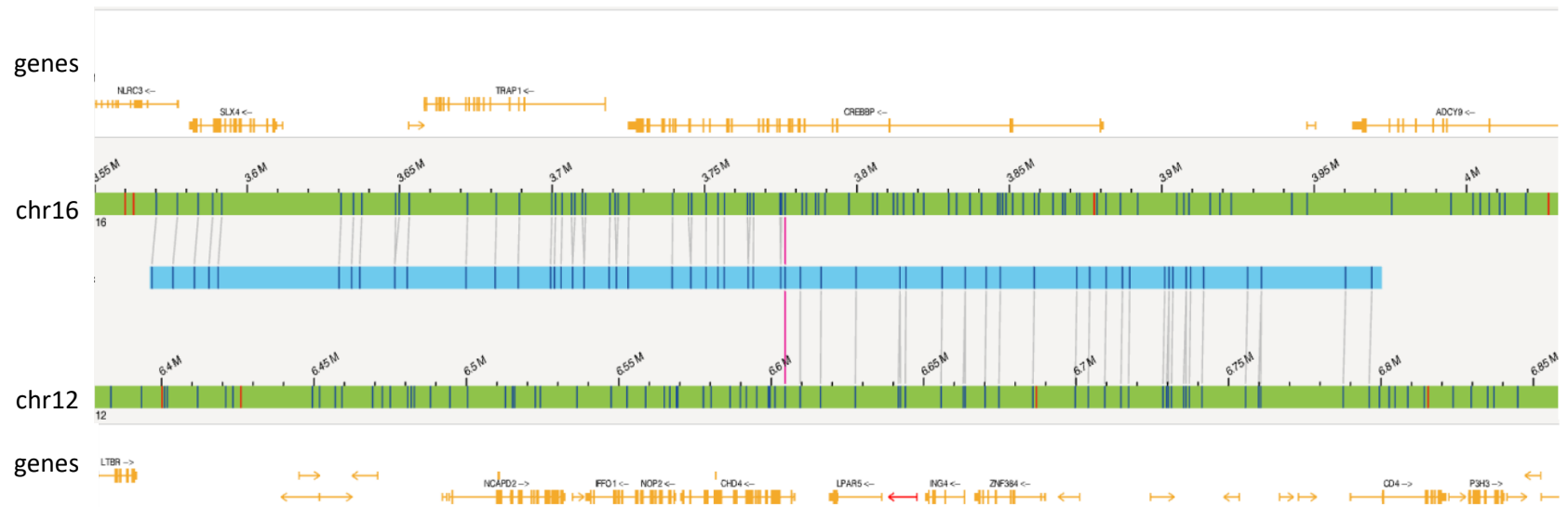


Figure 2. OGM captures additional novel Tier 1 or 2 findings not detected by SOC methods. 3A) Complex rearrangements that consist of a deletion of the *GATA2* gene on 3q13.31 to 3q22.3 and multiple variants on 17p13 seen in case BNGOHM-0000149. The circos plot and coverage profile of chromosomes 3, 9, 12 and 17 are shown, all of which are associated with the 17p rearrangements. 3B) The *CREBBP-ZNF384* fusion (Top) and its reciprocal translocation (Bottom) captured by OGM in case BNGOHM-0000335. The first picture shows the conjoining of chr16 with chr12 such that *CREBBP* would be fused with *ZNF384*, and second shows the reciprocal fusion point.



<b>Subject Name:</b>	<b>Provider Name:</b>	<b>Sample Type:</b> Bone Marrow Aspirate
<b>Subject Date of Birth:</b>	<b>Provider Phone:</b>	<b>Sample Collected:</b> 10/28/2022 10:38
<b>Subject Sex:</b> Male	<b>Provider Fax:</b>	<b>Sample Received:</b> 11/2/2022 13:34
<b>Accession Number:</b> 221028MK1	<b>Provider Institution:</b>	<b>Order Date:</b> 10/28/2022
<b>Testing Indication:</b> Chronic Basophilic Leukemia		<b>RUO Report Issued:</b> 11/18/2022

**Test Result Summary: Positive, Complex**

ISCN Nomenclature:  
ogm[GRCh38] (X)x1-2,inv(4)(q12q21.21)(54281141\_81170345),t(4;11)(q12;p15.4)(54269171;8150536),t(4;17)(q21.21;q22)(81167017;55043518),8p23.3q22.3(61805\_107404418)x2-3,t(8;11)(q23.1;p15.4)(107507607;8159472),t(8;17)(q23.1;q22)(107496941;55048499),t7q22q25.3(55115496\_83246392)x2-3,(x1)2x2-3

**Results Summary:**

Section A Guideline driven analysis of known Tier 1A pathogenic variants was **positive for a complex rearrangement including a PRKG2::PDGFRA fusion and a partial trisomy 8.**

Section B Whole genome analysis was positive for structural variants on chromosomes X, 4, 8, 17 and 21.

**Section A: Tier 1A Guideline Driven Variant Analysis For Myeloproliferative Neoplasms Results**

Variant	Detected	Not Detected	Variant	Detected	Not Detected
Chr3 MECOM (rearrangements)	<input type="checkbox"/>	<input checked="" type="checkbox"/>	Chr9 JAK2 (rearrangements)	<input type="checkbox"/>	<input checked="" type="checkbox"/>
Chr4 FIP1L1::PDGFRA (deletion)	<input type="checkbox"/>	<input checked="" type="checkbox"/>	Chr10 RET (rearrangements)	<input type="checkbox"/>	<input checked="" type="checkbox"/>
Chr4 PDGFRA (rearrangements)	<input checked="" type="checkbox"/>	<input type="checkbox"/>	Chr11 KMT2A (rearrangements)	<input type="checkbox"/>	<input checked="" type="checkbox"/>
Chr5 PDGFRB (rearrangements)	<input type="checkbox"/>	<input checked="" type="checkbox"/>	11q23 (rearrangements)	<input type="checkbox"/>	<input checked="" type="checkbox"/>
Chr5 monosomy	<input type="checkbox"/>	<input checked="" type="checkbox"/>	12p whole arm (deletion)	<input type="checkbox"/>	<input checked="" type="checkbox"/>
5q whole arm (deletion)	<input type="checkbox"/>	<input checked="" type="checkbox"/>	Chr13 FLT3 (rearrangements)	<input type="checkbox"/>	<input checked="" type="checkbox"/>
Chr7 monosomy	<input type="checkbox"/>	<input checked="" type="checkbox"/>	Chr15 NTRK3 (rearrangements)	<input type="checkbox"/>	<input checked="" type="checkbox"/>
Chr7 (rearrangements)	<input type="checkbox"/>	<input checked="" type="checkbox"/>	17q whole arm (duplication)	<input type="checkbox"/>	<input checked="" type="checkbox"/>
7q whole arm (deletion)	<input type="checkbox"/>	<input checked="" type="checkbox"/>	3q whole arm (translocation)	<input type="checkbox"/>	<input checked="" type="checkbox"/>
Chr8 FGFR1 (rearrangements)	<input type="checkbox"/>	<input checked="" type="checkbox"/>	t(5;12) PDGFRB::ETV6 (translocation)	<input type="checkbox"/>	<input checked="" type="checkbox"/>
Chr8 trisomy*	<input checked="" type="checkbox"/>	<input type="checkbox"/>	t(8;9) PCMF::JAK2 (translocation)	<input type="checkbox"/>	<input checked="" type="checkbox"/>
Chr9 ABL1 (rearrangements)	<input type="checkbox"/>	<input checked="" type="checkbox"/>	t(9;22) BCR::ABL1 (translocation)	<input type="checkbox"/>	<input checked="" type="checkbox"/>

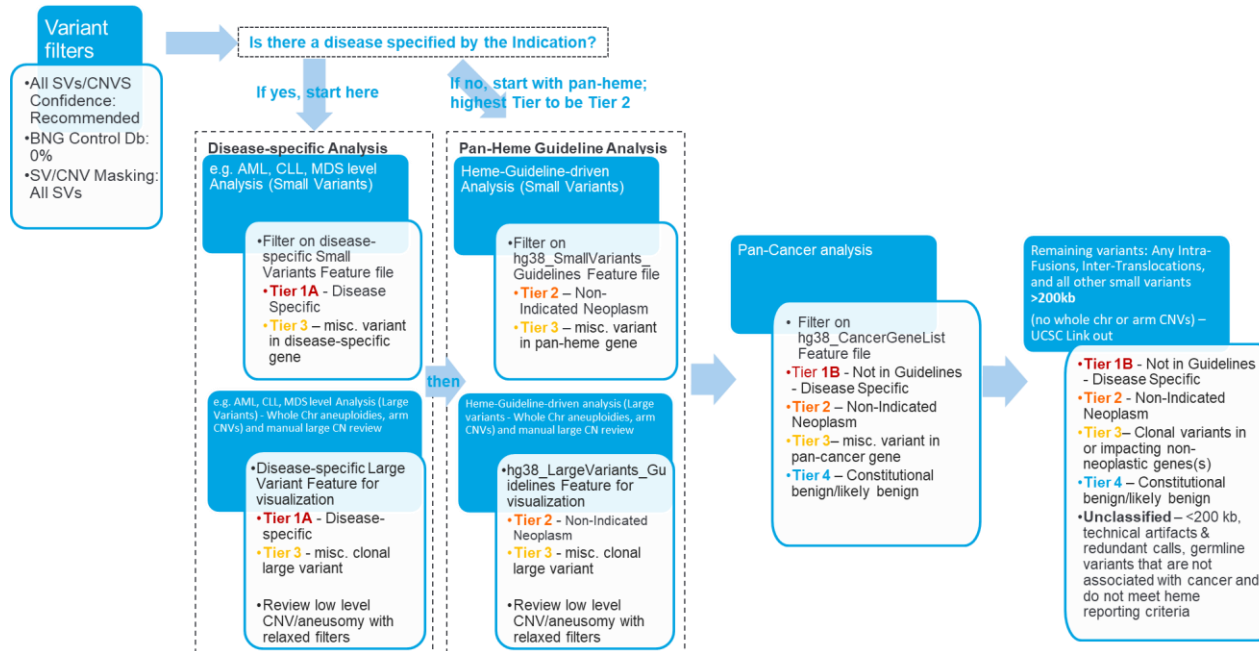
\* Partial trisomy 8 was observed. See interpretation below.

**Section B: Whole Genome Results - Tier 1 - Tier 3**

Chromosome	Finding	Tier
Chr1	None	
Chr2	None	
Chr3	None	
Chr4	inv(4)(q12q21.21)(54281141_81170345)	1A
	t(4;11)(q12;p15.4)(54269171;8150536)	1A
	t(4;17)(q21.21;q22)(81167017;55043518)	1B
Chr5	None	
Chr6	None	
Chr7	None	
Chr8	8p23.3q22.3(61805_107404418)x2~3	1A
	t(8;11)(q23.1;p15.4)(107507607;8159472)	3
	t(8;17)(q23.1;q22)(107496942;55048499)	2
Chr9	None	
Chr10	None	
Chr11	t(4;11)(q12;p15.4)(54269171;8150536)	1A
	t(8;11)(q23.1;p15.4)(107507607;8159472)	3
Chr12	None	
Chr13	None	
Chr14	None	
Chr15	None	
Chr16	None	
Chr17	t(4;17)(q21.21;q22)(81167017;55043518)	1B
	t(8;17)(q23.1;q22)(107496942;55048499)	2
	17q22q25.3(55115496_83246392)x2-3	2
Chr18	None	
Chr19	None	
Chr20	None	
Chr21	(21)x2-3	1B
Chr22	None	
X	(X)x1-2	2
Y	None	

Figure 3. Example of a representative clinical OGM report. After demographic information, test results summary tells if any variant has been detected (positive/negative) and if the genome is simple or complex. Section A shows the defined tier 1A abnormalities as a panel and section B shows the whole genome profile from chromosomes 1-22, X and Y.

## Supplementary Figures



Supplementary Figure 1. Overview of analysis and interpretation workflow. The curation and classification process consists of four steps: 1) disease- specific: Several organizations such as the World Health Organization (WHO), the National Health Service (NHS) and the National Comprehensive Cancer Network (NCCN) have published guidelines for assessing clinically relevant genomic regions for hematological malignancies. The analysts apply a filter to select for variants overlapping known loci associated with the disease of the sample (e.g. AML), and then classify the selected SVs as Tier 1A or 3; 2) Pan-hematological cancers: The analyst removes the first filter, and applies another filter to select for SVs seen in hematological cancers and classifies them as Tier 2 or 3; 3) Pan-cancer: SVs overlapping other cancer-associated genes are selected and classified as Tier 1B, 2, 3 or 4; and 4) Remaining variants: All remaining SVs that were fusions, or were >200 kbp are classified as Tier 1B, 2, 3 or 4.

Analytical Performance Metrics (N = 207 data points) *						
Molecule N50			Map rate		Effective coverage	
Average N50 (kbp)	>230 kbp	>200 kbp	Average Map Rate (%)	>70%	Average Effective Coverage (x)	> 320x
261.15 kbp	89%	100%	87.16%	99%	434.61x	98%

Supplementary Table 1. Summary of molecule quality statistics for 207 data points. \*Overall, 185 out of 207 data points passed the recommended molecule quality metrics.



Supplementary Table 2. OGM detects additional novel Tier 1 or 2 findings not seen in SOC platforms. This table contains a list of the disease-associated findings of karyotype, FISH, chromosomal microarray, and OGM. Novel OGM findings have been confirmed by orthogonal methods. The OGM circos plots show an overview of somatic SVs identified in the tumor genomes. Also, karyotyping variants annotated as “add” cannot be compared for concordance because of insufficient information. \*Any OGM ISCN entries with an appended asterisk indicate that a microarray was run for confirmation, and those OGM variants with asterisks were confirmed.

See file: Supplemental\_table\_2.xlsx

Chr	target	Rearr.	Del.	Dup.	Transl_intrachr	Transl_inter	Inversion	Trisomy	Monosomy	CNV
1	<i>ABL2</i>	X								
1	<i>BCL10</i>	X								
1	<i>CDKN2C</i>		X							
1	<i>CKS1B</i>			X						
1	<i>JAK1</i>	X								
1	<i>LMNA::NTRK1</i>				X					
1	<i>NTRK1</i>	X								
1	<i>TAL1</i>	X	X							
1	<i>TPR::NTRK1</i>				X					
1	whole arm, p		X							
1	whole arm, q			X						
1	1q21			X						
1;2	<i>TPM3::ALK</i>					X				
1;7	<i>RNF11::BRAF</i>					X				
1;7	<i>TRB::TAL1</i>					X				
1;7	<i>MIG1::BRAF</i>					X				
1;8	<i>ETV3::NCOA2</i>					X				
1;14	<i>BCL10::IGH</i>					X				
1;19	<i>PBX1::TCF3</i>					X				
1;22	<i>RBM15::MRTFA</i>					X				
2	<i>ALK</i>	X								
2	<i>EML4::ALK</i>				X					
2	<i>IGK</i>	X								
2	<i>REL</i>	X								
2;5	<i>NPM1::ALK</i>					X				
2;8	<i>IGK::MYC</i>					X				
2;10	<i>KIF5B::ALK</i>					X				
2;17	<i>CLTC::ALK</i>					X				
3	3q26.2	X								
3	<i>BCL6</i>	X								
3	<i>FOXP1</i>	X								
3	<i>GATA2::MECOM</i>				X					
3	<i>MECOM</i>	X					X			
3	<i>TP63</i>	X								
3	whole chrom							X		
3	whole arm, q	X			X					

Chr	target	Rearr.	Del.	Dup.	Transl_intrachr	Transl_inter	Inversion	Trisomy	Monosomy	CNV
3;5	<i>NPM1::MLF1</i>					X				
3;8	<i>MYC::BCL6</i>					X				
3;14	<i>FOXP1::IGH</i>					X				
4	<i>FIP1L1::PDGFRA</i>		X		X					
4	<i>PDGFRA</i>	X								
4	whole chrom							X		
4;11	<i>KMT2A::AFF1</i>					X				
4;14	<i>FGFR3::IGH</i>					X				
4;14	<i>IGH</i>					X				
4;14	<i>NSD2::IGH</i>					X				
5	<i>CSF1R</i>	X								
5	<i>EBF1</i>		X	X						
5	<i>PDGFRB</i>	X								
5	<i>TLX3</i>	X								
5	whole chrom							X	X	
5	whole arm, q		X							
5	5q31.2		X							
5;11	<i>NUP98::NSD1</i>					X				
5;12	<i>PDGFRB::ETV6</i>					X				
5;14	<i>BCL11B::TLX3</i>					X				
6	<i>CCND3</i>	X								
6	<i>DUSP22::IRF4</i>				X					
6	<i>DUSP22</i>	X								
6	<i>IRF4</i>	X								
6;7	p25.3;q32.3					X				
6;9	<i>DEK::NUP21</i>					X				
6;11	<i>KMT2A::AFDN</i>					X				
6;14	<i>IGH::CCND3</i>					X				
7	<i>BRAF</i>	X								
7	<i>EZH2</i>		X	X						
7	<i>IKZF1</i>	X	X	X						
7	<i>TRB</i>	X								
7	<i>TRG</i>	X								
7	whole chrom	X							X	
7	whole arm, q		X	X						
7	7q31.2		X							
7;10	<i>TRB::TLX1</i>					X				
7;11	<i>NUP98::HOXA13</i>					X				
7;12	<i>MNX1::ETV6</i>					X				

Chr	target	Rearr.	Del.	Dup.	Transl_intrachr	Transl_inter	Inversion	Trisomy	Monosomy	CNV
7;19	<i>CLIP3::BRAF</i>					X				
7;22	<i>PACSIN2::BRAF</i>					X				
8	<i>FGFR1</i>	X								
8	<i>LYN</i>	X								
8	<i>MYC</i>	X								
8	whole chrom	X						X		
8;9	<i>PCMI::JAK2</i>					X				
8;14	<i>IGH::MYC</i>					X				
8;18	<i>MYC::BCL2</i>					X				
8;21	<i>RUNX1::RUNX1T1</i>					X				
8;22	<i>IGL::MYC</i>					X				
9	<i>ABL_extraPh</i>			X						
9	<i>ABL1</i>	X		X						
9	<i>CD274</i>	X	X	X						
9	<i>CDKN2A</i>		X	X						
9	<i>CDKN2B</i>		X	X						
9	<i>JAK2</i>	X								
9	<i>NUP214::ABL1</i>				X					
9	<i>PAX5</i>		X	X						
9	<i>PDCD1LG2</i>	X	X	X						
9	whole chrom							X		
9	whole arm, q		X							
9;11	<i>KMT2A::MLLT3</i>					X				
9;22	<i>BCR::ABL1</i>					X				
10	<i>RET</i>	X								
10	<i>TLX1</i>	X								
10	whole chrom							X		
10;11	<i>KMT2A::MLLT10</i>					X				
10;14	<i>TLX1::TRD</i>					X				
11	whole arm, q		X	X						
11	<i>ATM</i>		X							
11	<i>CCND1</i>	X								
11	<i>KMT2A</i>	X								
11	<i>LMO2</i>	X								
11	<i>NUP98</i>	X								
11	11q23	X								
11;14	<i>11q13::IGH</i>					X				
11;14	<i>CCND1::IGH</i>					X				
11;14	<i>TRD::LMO1</i>					X				

Chr	target	Rearr.	Del.	Dup.	Transl_intrachr	Transl_inter	Inversion	Trisomy	Monosomy	CNV
11;18	<i>BIRC3::MALT1</i>					X				
11;19	<i>KMT2A::ELL</i>					X				
11;19	<i>KMT2A::MLLT1</i>					X				
12	<i>BTG1</i>		X	X						
12	<i>CCND2</i>	X								
12	<i>ETV6</i>		X	X						
12	whole chrom							X	X	
12	whole arm, p		X		X					
12;21	<i>ETV6::RUNX1</i>					X				
13	<i>DLEU2</i>		X							
13	<i>DLEU7</i>		X							
13	<i>FLT3</i>	X		X						
13	<i>RB1</i>		X	X						
13	whole chrom								X	
13	13q14		X							
14	<i>IGH</i>	X								
14	<i>TCL1A/B</i>	X								
14	<i>TRA</i>	X								
14	<i>TRA_TRD</i>	X								
14	<i>TRD</i>	X								
14	whole chrom								X	
14	14q32		X							
14;16	<i>16q23::IGH</i>					X				
14;16	<i>IGH::MAF</i>					X				
14;18	<i>IGH::BCL2</i>					X				
14;18	<i>IGH::MALT1</i>					X				
14;20	<i>IGH::MAFB</i>					X				
14;20	<i>IGH</i>					X				
14;20	<i>MAFB::IGH</i>					X				
15	<i>NTRK3</i>	X								
15	whole chrom							X		
15;17	<i>PML::RARA</i>					X				
16	<i>CBFA2T3::GLIS2</i>				X					
16	<i>CBFB::MYH11</i>				X					
17	<i>TP53</i>		X							
17	whole chrom							X	X	
17	whole arm, p		X		X					
17	whole arm, q			X						
17	iso17q_wholearm			X						

Chr	target	Rearr.	Del.	Dup.	Transl_intrachr	Transl_inter	Inversion	Trisomy	Monosomy	CNV
17;19	<i>TCF3::HLF</i>					X				
18	<i>BCL2</i>	X								
18	<i>MALT1</i>	X								
18	whole chrom							X		
19	<i>EPOR</i>	X								
19	<i>JAK3</i>	X								
19	<i>TYK2</i>	X								
19	whole chrom							X		
20	whole arm, q		X							
21	<i>RUNX1_amp</i>			X						
21	<i>RUNX1</i>									X
22	<i>BCR_extraPh</i>			X						
22	<i>IGL</i>	X								
22	whole chrom							X		
X	idic(X)_parm			X						
X	idic(X)_qarm		X							
X	<i>CFLR2</i>	X	X	X						
X	<i>CSF2RA</i>		X	X						
X	<i>IL3RA</i>		X	X						
Y	whole chrom		X							

Supplementary Table 3. List of unique NCCN, WHO and NHS structural variants across hematological malignancies that were assessed as part of the review process.

Sample	SV Type	Genomic region	Size (kbp)	Concordance
BNGOHM-0000178	CN Loss	4q22.2q28.1	35868	6/6
	Deletion	1q21.1	18	6/6
	Deletion	23q23	36	6/6
	Duplication	4q22.1	230	6/6
	Insertion	2p25.2	41	6/6*
	Interchr Transl.	t(7;12)(q21.12;p11.21)	--	6/6
	Interchr Transl.	t(13;17)(q14.3;p13.2)	--	6/6
	Intrachr Transl.	t(7;7)(q11.21;q32.2)	--	6/6
	Intrachr Transl.	t(20;20)(q11.21;q13.33)	--	6/6
BNGOHM-0000181	CN Gain	14q12q21.3	15162	6/6
	CN Loss	3p14.2	736	6/6
	Deletion	4p14	17	6/6
	Duplication	6p25.1	568	6/6
	Insertion	8q22.3	7	5/6
	Inversion	6q16.1	134	5/6
	Inversion	3q26.1	102	6/6
	Interchr Transl.	t(6;10)(q12;q24.2)	--	6/6
	Intrachr Transl.	t(6)(q12;q16.1)	--	6/6
BNGOHM-0000185	CN Loss	16q23.2q23.3	2840	7/7
	Deletion	17q24.2	130	7/7
	Duplication	10q11.22	707	2/7
	Duplication	22q11.22	278	6/7
	Insertion	12q22	16	6/7
	Interchr Transl.	t(1;22)(q21.2;q11.22)	--	7/7
BNGOHM-0000195	CN Gain	4q25q35.2	79440	7/7
	Aneuploidy/Gain	8	120787	7/7
	Aneuploidy/Gain	11	126084	7/7
	CN Loss	16q22.1	2046	7/7
	Deletion	14q13.2	23	7/7
	Duplication	9p23	449	7/7
	Insertion	4q24	152	7/7
	Insertion	7q11.21	56	7/7

It is made available under a [CC-BY-NC-ND 4.0 International license](#) .

	Interchr Transl.	t(2;4)(q37.3;q25)	--	7/7
	Intrachr Transl.	t(5;5)(q21.3;q33.1)	--	7/7
	Intrachr Transl.	t(7;7)(p12.1;q31.1)	--	7/7

Supplementary Table 4. Reproducibility by SV type.



Supplementary Table 5. Details of Limit of detection for different variant SV types.

See file: Supplemental\_table\_5.xlsx

