

1 **Efficacy of acupuncture for chronic prostatitis/chronic pelvic pain**
2 **syndromes on quality of life: study protocol for a randomized, sham**
3 **acupuncture-controlled trial**

4 Yu-Long Ding^{1*}, Huai-Yu Wang¹, Yuan Ji^{1,2}, Shuo Zhang¹, Peng-Fei
5 Yuan¹, Hong-Chao Zhao¹, Yan Guo¹, Xiao-Di Xie¹

6 ¹ Beijing Fengtai Hospital of Integrated Traditional and Western
7 Medicine

8 ² Beijing University of Chinese Medicine Third Affiliated Hospital

9
10 *Correspondence: Yu-Long Ding, MD, Department of Acupuncture and
11 Neurology, Beijing Fengtai Hospital of Integrated Traditional and
12 Western Medicine, Beijing, China, No.60 Sanlijia, Dongshan Slope,
13 Changxindian, Fengtai District, Beijing 100072, China. Email:
14 princezzbmw@163.com

15
16 **Short title: Acupuncture for QoL of CP/CPPS**

17 **Numbers of references:23**

18 **Tables:2**

19 **Figures:1**

20 **Total words:4606 words**

21 **Abstract**

22 **Background:** Chronic prostatitis/chronic pelvic pain syndromes (CP/CPPS) is a
23 common heterogeneous disease that seriously impacts patients' quality of life (QoL).
24 Acupuncture therapy has been widely used in China for various urinary diseases and
25 symptoms, including chronic prostatitis. The results of several randomized controlled
26 studies from different countries support that acupuncture can relieve the symptoms of
27 CP/CPPS. Still, most randomized controlled trial (RCT) trials focus on symptom
28 relief in patients, and the evidence on improving the QoL is insufficient. This study
29 aims to assess the near-term and long-term efficacy of acupuncture in improving QoL
30 in patients with CP/CPPS.

31 **Methods/Design:**

32 This is a double-arm, parallel, participant-blinded RCT. 70 male CP/CPPS subjects
33 aged 18-50 will be randomly allocated to either the acupuncture group or the sham
34 acupuncture group. Participants will receive acupuncture or sham acupuncture
35 treatment thrice a week over eight weeks for 24 sessions. The primary outcome will
36 be the change in the total score of QoL compared with the baseline after eight weeks
37 of treatment and 24 weeks of follow-up. The expectancy of acupuncture, blinding, and
38 safety will also be assessed. A two-sided test will perform all statistical analyses, and
39 a *p*-value of less than 0.05 will be considered statically significant.

40 **Discussion:** This study aims to provide quantitative clinical evidence of acupuncture
41 effectiveness and safety in improving the QoL in patients with CP/CPPS.

42 **Clinical Trial Registration:** This trial is registered at chictr.org.cn (Identifier:
43 ChiCTR2100051115)

44 **Keywords:** acupuncture; CP/CPPS; QoL; protocol; RCT

45 **Introduction**

46 CP/CPPS is a common genitourinary disease in the adult male population. This
47 disease is mainly manifested by repeated and long-term pain, discomfort in the pelvic
48 area, and different degrees of lower urinary tract symptoms. A substantial number of
49 patients experience mental symptoms and abnormalities in sexual function, which

50 adversely affect clinical efficacy and rehabilitation^[1].

51 According to the National Institutes of Health (NIH) classification, chronic CP/CPPS
52 belongs to type III prostatitis. Type III prostatitis includes two subtypes: type III A
53 (inflammatory CPPS) and type III B (non-inflammatory CP/CPPS). With the
54 deepening of the study of CP/CPPS, experts realize that the etiology of CP/CPPS is
55 complex, with different mechanisms, different clinical manifestations, different
56 disease processes, and different responses to treatment of heterogeneous clinical
57 syndrome, so curing CP/CPPS is not a realistic goal. At present, the clinical drug
58 treatment of the disease is mainly symptomatic treatment, such as antibiotic treatment,
59 beta-blockers, nonsteroidal anti-inflammatory drugs, anxiety medication and
60 antidepressants, and botanical agents are widely used in clinical practice. However,
61 the effect of the above treatment measures is not ideal, and there are specific adverse
62 reactions and long-term use of patients with poor compliance.

63 In recent years, more and more attention has been paid to the QoL of patients. QoL is
64 patients' sense of approval and satisfaction compared to their expected or reachable
65 functional state. It is a subjective feeling. In the clinical studies of different diseases, it
66 is found that doctors often pay more attention to the significance of changes in
67 objective indicators, and the understanding of the subjective state of patients is often
68 inaccurate or not completely accurate, but the most important thing for patients is
69 their subjective QoL. For example, the Atrial Fibrillation (AF) load, as a measurable
70 and objective indicator, is highly valued by clinicians. However, whether it has a
71 special significance for the patients is still being determined^[2]. Clinical observation
72 shows that some patients with persistent AF do not have any symptoms, while some
73 patients with paroxysmal AF may experience severe symptoms such as dyspnea
74 during the attack. The use of less toxic treatments than existing standard therapies to
75 improve the QoL of patients with advanced non-small cell lung cancer (NSCLC) has
76 not achieved the expected effect^[3]. Therefore, from the point of view of patients and
77 caregivers, it is more important to accurately assess the impact of the disease on the


78 overall health of patients rather than just focusing on objective indicators.
79 Acupuncture has been widely used in many urinary diseases and symptoms in China,
80 including chronic prostatitis^[4-6]. Several randomized controlled trials from different
81 countries show that acupuncture can relieve the symptoms of CP/CPPS^[5-8]. The results
82 of a multicenter large sample RCT trial published in ANN INTERN MED in 2021
83 showed that 8-week acupuncture could effectively improve the symptoms of patients
84 with moderate and severe chronic prostatitis / chronic pelvic floor pain syndrome
85 (CP/CPPS). The clinical effect lasted at least half a year without involving patients'
86 QoL^[9]. Most of the available data focus on symptom improvement in CP/CPPS
87 patients, as controlling symptoms is an ideal way and way to improve QoL. However,
88 symptoms and QoL cannot be equated, and the scores of QoL in patients with
89 CP/CPPS may change in different dimensions because of their various symptoms. The
90 evidence is insufficient on the efficacy of acupuncture studies in improving the QoL
91 in patients with CP/CPPS. Currently, we regard acupuncture as an effective TCM
92 rehabilitation method for treating CP/CPPS. Therefore, we assume that true
93 acupuncture will have better clinical efficacy than sham acupuncture in improving
94 QoL, symptom score, and long-term effectiveness.

95 **Methods and Analysis**

96 **Study Design**

97 A double-arm, parallel, participant-blinded randomized controlled trial (RCT) will be
98 conducted at the Beijing Fengtai Hospital of Integrated Traditional Chinese and
99 Western Medicine, a level A tertiary teaching hospital. The protocol has been
100 registered in the China Clinical trial Registry (Project No. ChiCTR2100051115), and
101 the study protocol has been approved by the Ethics Committee of Beijing Fengtai
102 Hospital of Integrated Traditional Chinese and Western Medicine (Project No.: 19-
103 Scientific Research-12-20). A total of 70 patients will be recruited, and all patients
104 enrolled in the trial will voluntarily sign the informed consent form. Patients were
105 randomly assigned to either the acupuncture treatment group (Acu Group) or the sham

106 needle control group (Sham Group). Assessors will evaluate efficacy indicators before
107 treatment, eight weeks after treatment, and 24 weeks after completion of therapy.
108 Beijing University of Chinese Medicine (BUCM) will be responsible for data
109 management and statistics. The flowchart of the trial is shown in Figure 1, and Table
110 2 shows the schedule of the measurements.

111 

112 **Participant Recruitment**

113 This project is expected to recruit 70 male patients between January and December
114 2022. A urologist will screen CP/CPSP patients through medical history, physical
115 examination, and laboratory examination. All participants will have to meet the
116 CP/CPSP diagnostic criteria agreed upon by the NIH: the discomfort or pain of the
117 pelvic area will last for at least three months in the past six months. The 2-glass test
118 and other examinations, including prostatic fluid cultures, prostate-specific antigen
119 evaluation, urine flow rate, and residual urine examination, will collect the prostatic
120 fluid/urine specimen microbiology. Patients aged 18 to 50 years with National
121 Institutes of Health Chronic Prostatitis Symptom Index (NIH-CPSI) total score ≥ 15
122 are eligible to participate. Participants will be screened if they agree to sign an
123 informed consent form. Research assistants will conduct recruitment.

124 **Inclusion Criteria**

125 The criteria for inclusion in this study are the following: (1) the clinical manifestations
126 were repeated and persistent prostate pain accompanied by abnormal urination and
127 mental and neurological symptoms in the last six months, and no infection or other
128 obvious pathological conditions were confirmed. The symptoms lasted for more than
129 three months. The main clinical manifestations are a pain in the surrounding tissue
130 radiated by the prostate as the center. Joint pain, distension, or discomfort in the
131 scrotum, testis, lower abdomen, perineum, lumbosacral, medial thigh, etc.: abnormal
132 urination is characterized by frequent urination, urgency, pain, burning of the urethra,
133 residual urine, or white discharge from the urethra when getting up in the morning,
134 end of urine or defecation. Mental and neurological symptoms include dizziness and

135 tinnitus, insomnia and dreaming, anxiety and depression, or even sexual dysfunction
136 such as impotence and premature ejaculation. (2) aged 18 to 50 years; (3) NIH-CPSI
137 total score ≥ 15 ; (4) Voluntarily participate in this experiment and sign the informed
138 consent form.

139 **Exclusion Criteria**

140 Potential participants will be excluded for any of the following: (1) bladder outlet
141 obstruction, bladder hyperactivity, neurogenic bladder, interstitial cystitis, cystitis
142 glandularis, sexually transmitted diseases, cancer in situ and other bladder tumors,
143 prostate cancer, urinary tract infection, other types of prostatitis, etc.; (2) residual
144 urine ≥ 100 ml by transabdominal ultrasonography, the maximum urinary flow rate is
145 < 15 ml/s; (3) use of drugs to relieve the symptoms of CP/CPPS or receiving non-drug
146 therapy for CP/CPPS (acupuncture, biofeedback, etc.) during the previous 1 month,
147 and taking drugs that affect the function of the lower urinary tract; (4) Symptomatic
148 urinary tract infection and urinary system organic diseases; (5) Diseases affecting the
149 function of lower urethra, such as multiple sclerosis, Alzheimer's disease, Parkinson's
150 disease, spinal cord injury, cauda equina injury, stroke and multiple system atrophy,
151 etc.; (6) Patients with severe heart, lung, brain, liver, kidney and hematopoietic system
152 diseases, mental illness and apparent cognitive impairment.

153 **Randomization and Blinding**

154 A randomized controlled design was adopted in this study. The random number of
155 this study will be generated and sealed by the network department of our hospital and
156 will be kept by the managers of the research group who do not participate in the
157 project. Depending on the information received from the envelope, consecutive
158 participants will be randomly assigned 1:1 to either the Acu group or the sham group.
159 The acupuncturist will be given to perform acupuncture treatment for two groups. The
160 study coordinator will not participate in the assessment or treatment. They will inform
161 patients that they may receive either "the less painful acupuncture arm specifically
162 developed for this study" (sham group) or the "traditional Chinese acupuncture arm"
163 (Acu group). Efficacy assessors, acupuncture operators, and statisticians will be

164 separated. Non-acupoint micro-acupuncture will allow the subjects to be blinded and
165 evaluated in a blinded way after the last treatment.

166 **Interventions**

167 Participants will receive acupuncture or sham acupuncture for 30 minutes in the
168 supine position thrice a week for eight weeks. In addition, each treatment form and
169 evaluation form will be completed and signed by patients and researchers. Two
170 acupuncturists each will be responsible for the two groups. Before treatment,
171 participants will be told they would receive traditional acupuncture with relatively
172 deep acupuncture or minimal acupuncture with relatively shallow acupuncture at non-
173 acupoints. Participants will receive treatment according to appointments to maintain
174 blindness and avoid communication. The acupoints used are located in the
175 lumbosacral region and the back of the tibia, which is difficult for participants to see
176 when they lie prone. Participants may feel the needle penetrate the skin, but they are
177 usually unable to judge the depth of the needle. To test the success of the blind
178 method, within five minutes of two treatments in the eighth week, participants were
179 asked if they had received traditional acupuncture in the previous weeks (yes, no, or
180 unclear).

181 The use of drugs or other therapies for CP/CPPS will be avoided during the study
182 unless participants' symptoms are intolerable. Other medicines for CP/CPPS
183 symptoms, such as α blockers, are not allowed in principle: all out-of-regimen
184 treatments should be carefully documented in the Case Report Form (CRF). Any
185 drugs affecting lower urinary tract function should also be recorded and statistically
186 analyzed. Participants will receive instructions on health care education and lifestyle
187 changes, including exercise, weight loss, smoking, etc.

188 **Acupuncture Group**

189 The development of the acupuncture protocol was based on the consensus of
190 acupuncturists from Guang' anmen Hospital. The locations of the acupoints (Table 1)
191 follow the World Health Organization (WHO) standard acupuncture point

192 locations^[10]. Bilateral Shenshu (BL23), Zhongliao (BL33), Huiyang (BL35), and
 193 Sanyinjiao (SP6)^[9] will be inserted using stainless steel disposable aseptic
 194 acupuncture needles (sizes 0.30×75 and 0.30×40 mm). Bilateral BL33 will be inserted
 195 to a depth of 50 to 60 mm with a 30° to 45° angle in an inferomedial direction using
 196 needles (0.30 mm in diameter, 75 mm in length). Bilateral BL35 will be inserted to a
 197 depth of 50 to 60 mm with a slightly superolateral direction using needles (0.30 mm
 198 in diameter, 75 mm in length). Bilateral BL23 and SP6 will be inserted vertically to a
 199 depth of 25 to 30 mm using needles (0.30 mm in diameter, 40 mm in length).
 200 Manipulation of the needles by lifting and thrusting combined with twirling and
 201 rotating evenly will be performed until *deqi* occurs, a sensation of soreness,
 202 numbness, heaviness, and ache. Manipulations will be applied every 10 minutes, and
 203 each session will last for 30 minutes.

204 Table 1. Locations of the selected acupoints for treating CP/CPPS

Acupoints	Real acupuncture location	Sham acupuncture location
Zhongliao (BL33)	In the sacral region, the third posterior sacral foramen	
Huiyang (BL35)	In the buttock region, 0.5 cun lateral to the extremity of the coccyx	Inserted at non-acupuncture points lateral to the corresponding acupoints (15 mm to BL23, BL33, and BL35; 10 mm to SP6) with depths of 2-3 mm without manipulation
Shenshu (BL23)	In the lumbar region, at the same level as the inferior border of the spinous process of the second lumbar vertebra (L2), 1.5 proportional bone (skeletal) cun lateral to the posterior median line.	
Sanyinjiao (SP6)	On the tibial aspect of the leg, posterior to the medial border of the tibia, 3 cun superior to the prominence of the medial malleolus	

205 Localization of these acupoints is based on the WHO Standard Acupuncture Point Locations in the Western Pacific
 206 Region.

207 Sham Acupuncture Group

208 Bilateral sham BL23, BL33, BL35 (15 mm to BL23, BL33, and BL35), and SP6 (10
 209 mm to SP6) will be inserted by needles (size 0.2×25 mm) to a depth of 2 to 3 mm

210 without manipulation and causing the feeling of *Deqi*.

211 **Outcome Measures**

212 **The Primary Outcome**

213 Main outcome measures: after eight weeks of treatment and 24 weeks of follow-up,
214 we will use the Chinese version of SF-36 (The MOS item short-form health survey) to
215 evaluate the short-term effect of acupuncture for eight weeks to improve the QoL of
216 patients with CP/CPPS, followed by 24 weeks of follow-up.

217 **Secondary Outcomes**

218 The secondary outcomes of this study include (a) a change in the International
219 Prostate Symptom Score (IPSS). IPSS is a valid, reliable, and sensitive measure for
220 patients with lower urinary tract symptoms (LUTS); it is widely used in clinical
221 practice and research to determine the severity of LUTS, including incomplete
222 bladder emptying, frequency of urination, intermittency, urgency, weak urine stream,
223 straining and nocturia^[11,12]; (b) change in the NIH-CPSI total score, the total score of
224 the Chinese version NIH-CPSI. As a validated, self-reported questionnaire, NIH-CPSI
225 is widely used to assess CP/CPPS symptoms^[13,14]; (c) change in the NIH-CPSI
226 subscales, including pain, urinary symptoms, and QoL impact. NIH-CPSI consists of
227 9 items divided into three discrete domains: pain (0-21 points), urinary symptoms (0-
228 10 points), and QoL (0-12 points), with a total score of 0-43 points (a higher score
229 indicates worse symptoms). A decline of at least 6 points in NIH-CPSI has been
230 identified as the minimal clinically significant difference (MCID)^[15] ; (d) changes in
231 the visual analog scale (VAS) of pelvic floor pain. Secondary Outcomes will be
232 assessed at the end of the 8th and 24th compared with baseline and the safety of
233 acupuncture.

234 Figure 2. Study schedule showing the time points for enrollment and assessment

235 ×, required; SF-36, The MOS item short-form health survey; IPSS, International Prostate Symptom Score; NIH-
236 CPSI, The National Institute of Health Chronic Prostatitis Symptom Index; VAS, Visual analog scale.

237 **Incidence of Adverse Events**

238 Patients will be asked to report any acupuncture-related adverse events (AEs)
239 voluntarily. The researchers will record and evaluate. Acupuncture-related adverse
240 reactions include bleeding, local infection, soreness, sweating, and so on.

241 **Sample Size Estimation**

242 Based on the previous pre-experimental study with a sample size of 20 people, 72% of
243 the patients in the acupuncture group had a total NIH-CPSI score of 6 points or lower
244 than the baseline at the 8th week of treatment, and 36% of the patients were sham
245 acupuncture. Take $\alpha=0.05$, $\beta=0.1$, Power=0.9. 70 samples will be needed for 35 cases
246 in each group.

247 **Data Collection and Management**

248 Collect data clearly and entirely in the CRF. All raw data sources will be retained,
249 including CRFs, informed consent, and inspection results. An independent data
250 administrator is responsible for completing the customer report format and will be
251 required to double-enter the data for proofreading. All trial-related data will be kept
252 for at least five years after publication. The reader can get the raw data by contacting
253 the corresponding author. Patient information, including name, age, and phone
254 number, will remain anonymous. An independent data and safety monitor board
255 (DSMB) was established to ensure the integrity of the study data. The DSMB will
256 review progress and decide whether premature closure is needed. Beijing Fengtai
257 Hospital of Integrated Traditional and Western Medicine will designate at least three
258 non-treatment practitioners to supervise the quality of the research

259 **Quality control**

260 All practitioners, including acupuncturists, research assistants, and statisticians, will
261 be required to attend training to ensure the quality of this trial. The acupuncture
262 operator must have the acupuncture doctor qualification certificate and independently
263 undertake the clinical treatment for more than two years. Interventions will be carried
264 out based on strict compliance with standardized operating procedures.

265 **Statistical Analysis**

266 Statistical analysis will be based on the principle of intention to treat, and third-party
267 statisticians are unaware of group allocation and intervention procedures. The missing
268 data will be estimated using the last observation carry-over method.
269 Normally distributed numerical data are presented as mean \pm standard deviation, and
270 non-normally distributed data are presented as medians with confidence intervals of
271 95%. For normally distributed data, repeated measures analysis of variance (ANOVA)
272 was used for within-group and between-group comparisons to assess changes in
273 continuous variables at different time points before and after the intervention; for non-
274 normally distributed data, nonparametric tests were used to compare within groups
275 and between groups. All data were analyzed using SPSS 22.0. All hypothesis tests
276 were two-sided, and p values < 0.05 were considered statistically significant.

277 **Discussion**

278 The incidence of CP/CPPS in men is high, and the cure rate is low. CP/CPPS is often
279 associated with lower urinary tract dysfunction and negative emotion, cognition,
280 and/or sexual dysfunction^[16]. It seriously affects the QoL and mental health of the
281 patients. In recent years, the pathogenesis of CP/CPPS has been the research focus.
282 Many factors, such as urinary reflux^[17], pathogen infection^[18], inflammation, and
283 oxidative stress^[19,20], may be involved in the pathogenesis of CP/CPPS. However, the
284 existing treatment methods are not ideal because of their complicated clinical
285 manifestations and lingering disease^[21]. Some patients with prostate inflammation
286 after the disappearance of pain still exist for a long time. Therefore, seeking an
287 effective and safe non-drug therapy to reduce the urinary tract symptoms associated
288 with patients, relieve pain, improve the QoL of patients with CP/CPPS, and reduce the
289 side effects and medical costs of drug therapy is the key to treating CP/CPPS.
290 Acupuncture has long been a non-pharmacological approach to pain treatment, with
291 lasting effects of more than 12 months. A growing number of trials have shown that

292 acupuncture may reduce symptoms compared with standard medical treatments^[22]. In
293 a Cochrane review of 20 non-pharmacological interventions evaluated for
294 CP/CPSP^[23], only acupuncture and extracorporeal shock wave therapy likely result in
295 symptom relief with reasonable safety. The study group found that 440 patients with
296 CP/CPSP were randomly divided into an acupuncture group and a sham-acupuncture
297 group. The two groups were treated with acupuncture and simulated acupuncture for
298 eight weeks and 20 times, respectively. The results showed that the improvement of
299 CP/CPSP symptoms in the acupuncture group was significantly better than in the
300 control group. The difference between the two groups was clinically significant. The
301 therapeutic effect could be maintained for half a year after stopping the treatment, and
302 adverse events seldom occurred during the treatment. This study confirmed the long-
303 term efficacy and safety of acupuncture in the treatment of CP/CPSP with high-
304 quality clinical evidence.

305 Compared with the depth of the study on the pathogenesis of CP/CPSP by mainstream
306 medicine in recent years, the study on the mechanism of the treatment of CP/CPSP by
307 acupuncture and moxibustion is still in the initial stage. CP/CPSP is a kind of
308 symptom-dependent disease. The most basic aim of treatment is to improve the
309 symptoms. The current research results can not clarify the pathogenesis and pathway
310 of the disease, so it is challenging to explore accurate treatment targets on this basis.

311 In recent years, with the continuous innovation of equipment and technology, neural
312 regulation has been increasingly used in treating CP/CPSP. Acupuncture therapy can
313 improve the symptoms by stimulating peripheral nerves, one of the modern nerve
314 regulation models. For example, Zhongliao (BL33) is at the beginning of the gluteus
315 maximus muscle, when the posterior branch of the lateral iliac artery and vein, and the
316 point is at the beginning of the gluteus maximus muscle, the posterior branches of the
317 second sacral nerve (S2) and the third sacral nerve (S3) pass through. The
318 acupuncture sensation mostly stays in the local area when the superficial layer is
319 punctured, which has a definite therapeutic effect on most of the local lumbosacral
320 lesions. It will produce the needle sensation radiating to the anterior vulva, lower

321 abdomen, and pelvic cavity, which has a better effect on the reproductive system,
322 urinary system diseases, and regulating the function of the bladder when the
323 acupuncture reaches a certain depth. Sanyinjiao (PC6) is a distal acupoint of the
324 limbs; deep needling can stimulate the main trunk of the tibial nerve, which is a
325 branch of the sciatic nerve and contains L4-S3 nerve fibers, stimulation of the tibial
326 nerve can effectively stimulate the approach targeting the sacral plexus to improve the
327 voiding symptoms in patients with CP/CPSP.

328 CP/CPSP is often associated with negative emotions, cognition, and/or sexual
329 dysfunction and is a typical psychosomatic disorder. Acupuncture treatment can
330 regulate peripheral nerves, inhibit pain signals from the pain conduction pathway to
331 produce an analgesic effect, and improve pain threshold perception by improving
332 pain-related emotion. But whether acupuncture can improve the QoL of patients with
333 CP/CPSP is still uncertain. In this trial, we will use sham acupuncture to assess
334 whether acupuncture improves the QoL and effectively relieves both short-and long-
335 term symptoms in patients with CP/CPSP. With a 24-week follow-up of patients and
336 strict quality control, our study will provide substantial evidence as to whether
337 acupuncture can improve QoL in patients with CP/CPSP.

338 **Conclusions:**

339 The clinician not only needs to evaluate the disease comprehensively and consider the
340 objective physiological indexes but also needs to understand the influence of the
341 disease on the patient's subjective feelings and functional status, as its physical,
342 psychological, and social life and other aspects of the impact of patients to guide the
343 rehabilitation and health decision-making. The current Randomized controlled trial
344 protocols aim to investigate the efficacy and safety of acupuncture in treating patients
345 with CP/CPSP. This trial is the first in the acupuncture field to use Randomized
346 controlled trial QoL as a primary outcome measure.

347 **Ethics Statement**

348 The Ethics Committee of the Beijing Fengtai District Integrated Chinese and Western
349 medicine hospital reviewed and approved these studies involving human participants.

350 Patients/participants provided their written informed consent to participate in the
351 study.

352 **Author Contributions**

353 The manuscript's content is accurate and represents the authors' work/opinions, not
354 those of the sponsoring agent(s). Yu-long Ding put forward the idea of performing
355 this review. Yu-long Ding wrote the initial paper. Yu-long Ding, Huai-Yu Wang, and
356 Yuan-Ji revised and edited the manuscript. Shuo Zhang and Peng-Fei Yue drew the
357 picture. Hong-Chao Zhao, Yan Guo, and Xiao-Di Xie summarized the tables. All
358 authors have approved the submitted version. The authors declare that they have no
359 conflict of interest.

360 **Funding**

361 This work was supported by Fengtai District Health System Research Project (No.
362 2019-90)

363 **Conflict of Interest**

364 The authors declare that the research was conducted without any commercial or
365 financial relationships that could be construed as a potential conflict of interest.

366 **Acknowledgments**

367 We want to thank professors Zhi-Shun Liu, Yu-Ying Cai, and Hong Zhao from Guang
368 'anmen Hospital of China Academy of Chinese Medical Sciences for their guidance in
369 the design and implementation of the project.

370 **Abbreviations**

371 CP/CPPS chronic prostatitis/chronic pelvic pain syndromes

372 QoL quality of life

373 RCT randomized controlled trial

374 NIH National Institutes of Health

375 AF atrial fibrillation

376 NSCLC non-small cell lung cancer

377 Acu Group acupuncture treatment group

378 Sham Group sham needle control group
379 BUCM Beijing University of Chinese Medicine
380 NIH-CPSI National Institutes of Health Chronic Prostatitis Symptom Index
381 CRF case report form
382 WHO World Health Organization
383 BL Bladder Meridian
384 SP Spleen Meridian
385 SF-36 the MOS item short-form health survey
386 IPSS international prostate symptom score
387 LUTS lower urinary tract symptoms
388 MCID minimal clinically important difference
389 VAS visual analog scale
390 AEs adverse events
391 DSMB the data and safety monitor board
392 ANOVA analysis of variance
393

394 **References**

395 1 Krieger JN, Nyberg L Jr, Nickel JC. NIH consensus definition and classification of prostatitis[J].
396 JAMA, 1999, 282(3):236-237.
397 2 Dorian P, Brijmohan H BSc A. The Role of Quality of Life Indices in Patient-Centred
398 Management of Arrhythmia[J]. Can J Cardiol, 2020, 36(7):1022-1031.
399 3 Di Maio M. Quality of life: an important element of treatment value[J]. Lancet Oncol, 2017,
400 18(12):1557-1558.
401 4 Wang Y, Liu B, Yu J, et al. Electroacupuncture for moderate and severe benign prostatic
402 hyperplasia: a randomized controlled trial[J]. Plos One, 2013, 8(4): e59449.
403 5 Lee S W H, Men L L, Yuen K H, et al. Acupuncture versus Sham Acupuncture for Chronic
404 Prostatitis/Chronic Pelvic Pain[J]. American Journal of Medicine, 2008, 121(1):1-7.
405 6 Sahin S, Bicer M, Eren G A, et al. Acupuncture relieves symptoms in chronic prostatitis/chronic
406 pelvic pain syndrome: a randomized, sham-controlled trial[J]. Prostate Cancer & Prostatic

- 407 Diseases, 2015, 18(3):249-254.
- 408 7 Lee S H, Lee B C. Use of Acupuncture as a Treatment Method for Chronic Prostatitis/Chronic
409 Pelvic Pain Syndromes[J]. Current Urology Reports, 2011, 12(4):288-296.
- 410 8 Küçük E V, Suçeken F Y, Bındaylı A, et al. Effectiveness of Acupuncture on Chronic
411 Prostatitis/Chronic Pelvic Pain Syndrome Category IIIB Patients: A Prospective, Randomized,
412 Nonblinded, Clinical Trial[J]. Urology, 2015, 85(3):636-640.
- 413 9 Sun Y, Liu Y, Liu B, et al. Efficacy of Acupuncture for Chronic Prostatitis/Chronic Pelvic Pain
414 Syndrome: A Randomized Trial[J]. Ann Intern Med, 2021, 174(10):1357-1366.
- 415 10 World Health Organization, WHO Standard Acupuncture Point Locations in the Western
416 Pacific Region, WHO Western Pacific Region, Geneva, Switzerland, 2008.
- 417 11 Edmond PH, Cindy LK, Weng YC. Validation of the international prostate symptom score in
418 Chinese males and females with lower urinary tract[J]. Health Qual Life Outcomes, 2014, 12:1-9.
- 419 12 Szeto PS. Application of the Chinese version of the international prostate symptom score for
420 the management of lower urinary tract symptoms in a primary health care setting[J]. Hong Kong
421 Med J, 2008,14(6):458-464.
- 422 13 Hong K, Xu QQ, Jiang H, et al. Chronic Prostatitis Symptom Index of Chinese[J]. Zhonghua
423 Nan Ke Xue, 2002,8(1):38-41.
- 424 14 Litwin MS. A review of the development and validation of the National Institutes of Health
425 Chronic Prostatitis Symptom Index[J]. Urology, 2002, 60(6 Suppl):14-18.
- 426 15 Propert KJ, Litwin MS, Wang Y, et al. Responsiveness of the National Institutes of Health
427 Chronic Prostatitis Symptom Index (NIH-CPSI) [J]. Qual Life Res, 2006, 15(2):299-305.
- 428 16 Fall M, Baranowski AP, Elneil S, et al. EAU guidelines on chronic pelvic pain[J]. European
429 Urology, 2010, 57(1): 35-48.
- 430 17 Persson BE, Ronquist G. Evidence for a mechanistic association between nonbacterial
431 prostatitis and levels of urate and creatinine in expressed prostatic secretion[J]. J Urol, 1996,
432 155(3):958-960.
- 433 18 Wu Y, Jiang H, Tan M, et al. Screening for chronic prostatitis pathogens using high-throughput
434 next-generation sequencing[J]. Prostate, 2020, 80(7):577-587.
- 435 19 Zhang M, Liu Y, Chen J, et al. Single-cell multi-omics analysis presents the landscape of
436 peripheral blood T-cell subsets in human chronic prostatitis/chronic pelvic pain syndrome[J]. J
437 Cell Mol Med, 2020, 24(23):14099-14109.

- 438 20 Hua X, Ge S, Zhang M, et al. Pathogenic roles of CXCL10 in experimental autoimmune
439 prostatitis by modulating macrophage chemotaxis and cytokine secretion[J]. Front Immunol, 2021,
440 12:706027.
- 441 21 Yu XJ, Gao QH. Guidelines for Multidisciplinary Diagnosis and Treatment of Chronic
442 Prostatitis with Integrated Traditional Chinese and Western Medicine[J]. National Journal of
443 Andrology, 2020, 26(04):369-376.
- 444 22 Franco JVA, Turk T, Jung JH, et al. Non-pharmacological interventions for treating chronic
445 prostatitis/chronic pelvic pain syndrome[J]. BJU Int, 2019, 124(2):197-208.
- 446 23 Franco JV, Turk T, Jung JH, et al. Non-pharmacological interventions for treating chronic
447 prostatitis/chronic pelvic pain syndrome[J]. Cochrane Database Syst Rev, 2018, 5(5): CD012551.
- 448
-

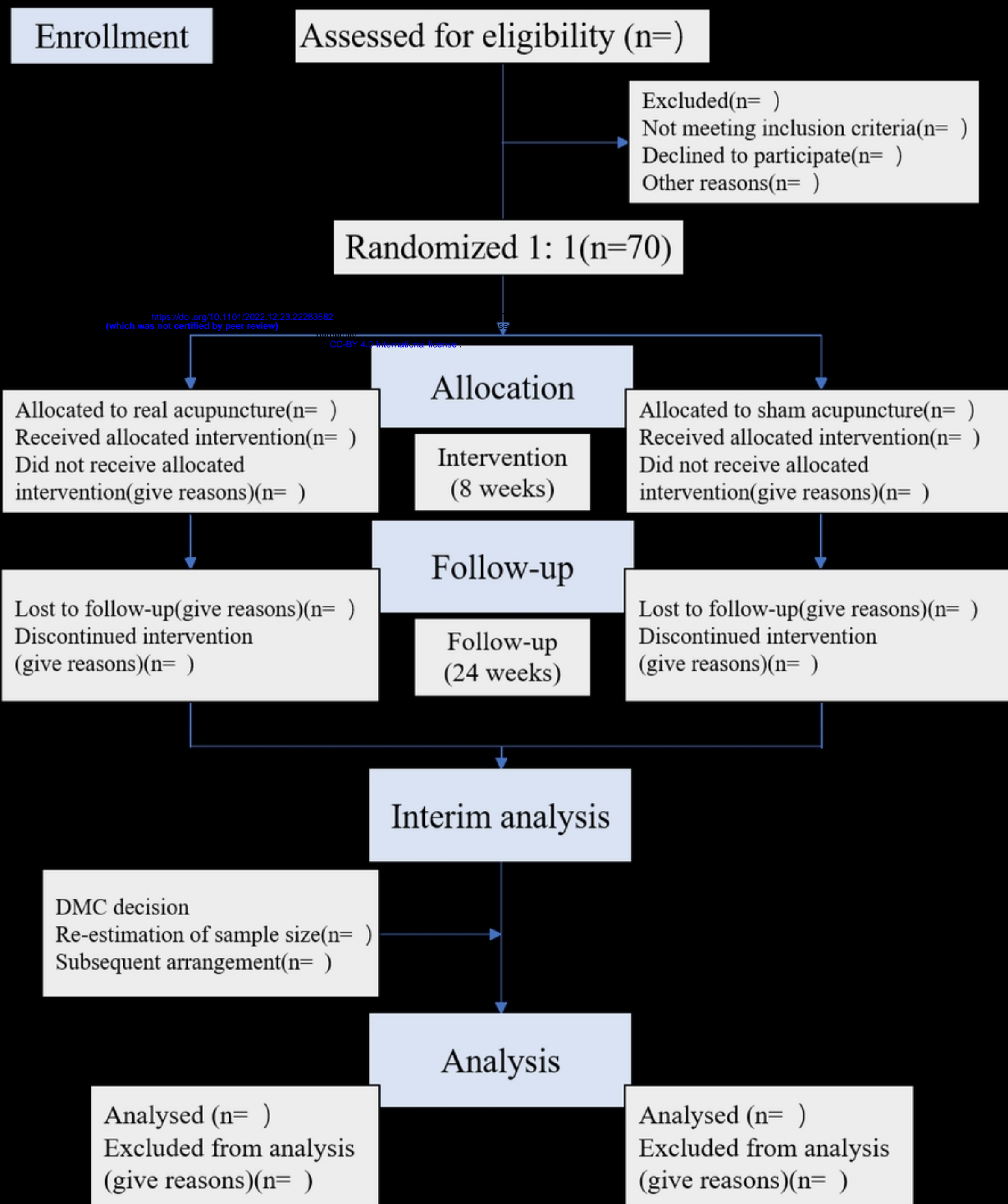


Figure 1

TIMEPOINT*

-2-0 day

0

8 weeks

32 weeks

X

Figure 2