

**Title: Systematic Review and Meta-analysis of Rate of Major Amputation
Following Endovascular Intervention in Chronic Limb-Threatening Ischaemia.**

Authors:

Henry I Bergman

BMBS, BMedSci, MRCS

Section of Vascular Surgery, Department of Surgery and Cancer, Imperial College
London

Hussein Elghazaly

MBBS, BSc (Hons)

Section of Vascular Surgery, Department of Surgery and Cancer, Imperial College
London, London UK

Ankur Thapar

FRCS, PhD, FHEA, PGCE, FEBVS

Centre for Circulatory Health, Medical Technology Research Centre, Anglia Ruskin
University, Chelmsford UK

Alun H. Davies

MA, DM, DSc, FRCS, FHEA, FEBVS, FACPh

Professor of Vascular Surgery, Department of Surgery and Cancer, Imperial College
London, London UK

Short Title: Amputations after CLTI Endovascular Interventions

Corresponding Author:

Hussein Elghazaly

MBBS, BSc (Hons)

Section of Vascular Surgery, Department of Surgery and Cancer, Imperial College

London, London UK

Hussein.elghazaly15@imperial.ac.uk

Address:

North Wing, Charring Cross Hospital,

Fulham Palace Road, London, United Kingdom

W6 8RF

Total Document Word Count: 5933

Abstract:

Background:

Despite significant improvements in endovascular technology and anaesthetic practice over the last 20 years, patients with CLTI remain at high risk of major limb amputation and overall mortality. The aim of this systematic review was to provide a contemporary review of the rate of major amputation and key clinical outcomes following all endovascular interventions in CLTI.

Methods:

A systematic review and meta-analysis of prospective studies from 2010-2020 reporting the risk of major lower limb amputation in patients with CLTI. MEDLINE, EMBASE, the Cochrane Database for Systematic Reviews and ClinicalTrials.gov were searched for relevant studies by 2 reviewers. The primary endpoint was rate of major limb amputation at 1 year and 2 years. Meta-analysis of proportions was employed using the random effects model. Studies were quality assessed using the ROBINS-I tool. To investigate factors associated with major limb amputations, subgroup analyses and meta-regression for clinical-demographic and lesion characteristics were employed.

Results:

A total of 28 studies, from 24 manuscripts were eligible for inclusion. These included a total of 49,756 patients. At one-year post-revascularisation, the pooled rate of major lower limb amputations at 1 year was 8.6% (95% CI 6.7% - 11.0%). At two years, the rate of major amputations was 11.1% (95% CI 7.6% - 16.0%). Subgroup analysis

showed that in studies that mandated stent deployment for all patients, there was a significantly lower rate of major amputations of 5.1% (95% CI 4.7% - 5.5%). Meta-regression showed that none of the clinical-demographic and lesion characteristics were associated with major lower limb amputations, and no volume-outcome relationship was observed.

Conclusions:

This review provides important benchmarking information on the outcomes of endovascular intervention in a frail CLTI cohort. This provides a realistic evaluation of risk to facilitate full informed consent and the setting of realistic expectations regarding the need for reintervention, major and minor amputation and overall mortality.

Abstract Word Count: 306

Manuscript:

Introduction

Critical limb-threatening ischaemia (CLTI) is the end stage of peripheral vascular disease, characterized by rest pain and/or tissue loss (Rutherford classification 4, 5 and 6)¹. The incidence of peripheral arterial disease (PAD), and therefore CLTI, are increasing within the UK – with an aging and increasingly diabetic population being large drivers of disease prevalence^{2,3,4}. These patients are well documented to have high peri-operative mortality, significant co-morbidity and disability¹. Broadly, first line treatment modalities include open revascularization (bypass or endarterectomy), endovascular revascularization (angioplasty, stenting, atherectomy or lithotripsy) or a hybrid procedure⁵. Despite significant improvements in endovascular technology and anaesthetic practice over the last 20 years⁵, patients with CLTI are perceived to be at high risk of major limb amputation and overall mortality¹.

In the UK, no NICE guidance exists for follow up after lower limb endovascular interventions^{6,7}. The European Society of Vascular Surgery (ESVS) and European society of Cardiology (ESC) proposes a formal Duplex Ultrasound surveillance program with the aim of detecting clinically significant re-stenoses and facilitating reintervention prior to occlusion⁸. There is currently limited evidence in the literature from two non-randomized retrospective cohort studies to support implementing this program within the UK, which appear to demonstrate a reduction in major amputation rate following formal duplex surveillance^{6,7}.

Regional clinical practice, utilization different endovascular technologies, surveillance strategies and patient selection for endovascular intervention vary significantly within the literature⁵. When considering these factors and the significant changes to practice over the last decade; to the best of the authors knowledge there is no clear consensus in the literature, or no contemporary review to delineate key outcomes following endovascular intervention. The aim of this systematic review was to provide a contemporary review of the rate of major amputation and key clinical outcomes following all endovascular interventions in CLTI.

Methods

Search Strategy

A comprehensive systematic literature search was conducted as per the Preferred Reporting Items for Systematic Reviews and Meta-Analyses (PRISMA) guidelines by two independent reviewers (HB and HE). Literature on the outcomes of patients with CLTI following any endovascular procedure from January 2010 to January 2020 were searched for in Medline, Embase, Cochrane database and ClinicalTrials.gov. The search terms included the key words “Endo” or “Angio” or “Stent” or “Atherectomy” or “Lithotripsy” and “Outcome” or “Amputation” or “Limb salvage”. As per the PRISMA guidelines additional studies were identified from the references of eligible literature.

Eligibility criteria

Two independent authors (H.B and H.E) screened all literature identified from the search, conflicts were resolved by a third experienced author (A.T). Inclusion criteria included all prospective studies, with procedures performed from January 2010

onwards, on greater than 100 CLTI patients (Defined as rest pain or tissue loss), with a minimum of 1-year follow-up data available for major amputation. Exclusion criteria included studies performed outside of the 2010-2020 window, retrospective study methodology, hybrid procedures (Open and endovascular intervention) and procedures performed for intermittent claudication or aneurysmal disease. Case reports, review articles, articles conducted during the COVID-19 pandemic and invited commentaries were also excluded.

Data extraction:

Two independent authors (H.B and H.E) performed data extraction following sequential screening of titles, abstracts, and full texts. Two papers were unable to be retrieved despite contacting the authors and were therefore excluded. Baseline study, cohort and co-morbidity characteristics were recorded – these are summarized in **Table 2.**

End points:

The primary end point was the rate of major lower limb amputation (defined as an above ankle amputation). Secondary end points were primary, primary assisted and secondary patency, all-cause mortality, revascularization rate, Major adverse cardiovascular and cerebrovascular event (MACCE) rate, Quality of Life (Assessed by either EQ-5D, VascuQoI-25 or VascuQoI-6 questionnaires) and Minor amputation rate. For studies reporting outcomes as limb salvage these were converted into major amputation rates. All outcomes were assessed at 12 months and where possible also recorded at 24-months. All end points and sub-group analyses were pre-specified in the review protocol.

Study quality

The methodology of eligible studies was evaluated using the ROBINS-I (Risk of Bias in Non-Randomized Studies of Interventions) tool to assess risk of bias in 7 key domains, and giving an overall score for quality (Critical, High, Moderate or Low risk of bias).

Statistical analysis

Analysis, meta-analysis and meta-regression were performed using R Version 4.0.5 and RStudio 2022.07.1+554 (R Foundation for statistical computing – Vienna, Austria), using a random-effects model to compensate for heterogeneity between studies. Heterogeneity was measured with I^2 values. The “*meta*” package was used to perform a meta-analysis of proportions for included studies. Pooled estimates were presented as percentage event rates for each pre-specified primary and secondary end point with 95% confidence intervals (CI).

Subgroup analysis was performed for below-knee interventions and primary stenting. In addition, where sub-group analysis was not possible, meta-regression was performed which to investigate any statistically significant effect of study characteristics, cohort demographics (specifically including number of patients treated, patient sex and proportion of patients with chronic total occlusion) or patient comorbidities on any of the specified end points.

Results

Database Search Results

Database searches identified a total of 4,065 results. A total of 28 studies, from 24 manuscripts were eligible for inclusion. These included a total of 49,756 patients.

Figure 1 outlines the PRISMA flowchart for study selection.

Summary of Included Studies

Table 1 summarises the characteristics for included studies. Briefly, all studies were prospective registries, prospective cohort studies or single arms of small randomised control trials (RCTs) were. The smallest study included 111 patients and the largest study followed up 11,295 patients. All studies followed patients up for at least 1 year; the longest follow-up period was 5 years, which occurred in 3 studies. Amongst included manuscripts, 10 were multicentre studies. All endovascular procedures were conducted between January 1st, 2010 and December 31st, 2019.

Table 1: Characteristics of Included Studies

Study	Number of Patients	Number of Limbs	Number of Centres	Year of Publication	Type of Endovascular Treatment	Target Lesion Anatomy	Follow-Up
Abualhin 2019 ⁹	211	211	NS	2019	POBA, DCB	Femoral, BTK	22 months
Ahn 2018 (POBA Cohort) ¹⁰	289	111	1	2018	POBA	NS	12 months
Ahn 2018 (Stent Cohort) ¹⁰	111	289	1	2018	BMS, DES	NS	24 months
Biasi 2016 ¹¹	201	201	1	2016	NS	NS	16 months
Bisdas 2016 ¹²	642	NS	27	2016	NS	NS	12 months
Bondarenko 2014 ¹³	164	193	1	2014	NS	NS	12 months
Brodmann 2020 ¹⁴	328	422	45	2020	POBA, DCB, Atherectomy	Femoral, BTK	24 months
Desai 2020 ¹⁵	186	186	1	2020	POBA, DES, Atherectomy	BTK Only	12 months
Elbadawy 2018 ¹⁶	117	117	1	2018	POBA	BTK Only	12 months
Garcia 2017 ¹⁷	201	201	47	2017	POBA, Atherectomy	Femoral, BTK	24 months
Geraghty 2020 ¹⁸	180	180	1	2020	POBA, BMS	Iliofemoral, BTK	36 months
Giannopoulos 2020 ¹⁹	1204	NS	52	2019-2021	POBA, BMS, DCB, DES, Atherectomy	Femoral, BTK	36 months
Giaquinta 2017 ²⁰	122	122	1	2017	POBA, DES	BTK Only	36 months
Hicks 2019 ²¹	142	142	1	2019	POBA, DCB, DES, Atherectomy	Femoral, BTK	48 months
Iida 2017 ²²	351	351	23	2017	BMS, DES	Femoral, BTK	36 months
Khan 2020 (ACEi Cohort) ²³	5558	5558	NS	2020	POBA, BMS, Atherectomy	Iliofemoral, BTK	60 months
Khan 2020 (Non-ACEi Cohort) ²³	5773	5773	NS	2020	POBA, BMS	Iliofemoral, BTK	60 months
Lee 2020 ²⁴	172	172	1	2020	POBA, BMS, DCB	NS	24 months
Mustapha 2017 ²⁵	328	328	3	2017	POBA, BMS, Atherectomy	Femoral, BTK	12 months

Mustapha 2019 (Atherectomy Cohort) ₂₆	4422	11295	NS	2019	BMS	NS	48 months
Mustapha 2019 (Stent Cohort) ²⁶	11295	4422	NS	2019	Atherectomy	NS	48 months
Mustapha 2019 (PTA Cohort) ²⁶	10904	10904	NS	2019	POBA	NS	48 months
Perlander 2020 ²⁷	117	117	3	2020	POBA, BMS	Femoral, BTK	24 months
Reijnen 2019 ²⁸	156	194	NS	2019	DCB	Femoral, BTK	12 months
Riambau 2020 ²⁹	148	148	10	2019	DCB	Femoral, BTK	12 months
Siracuse 2016 ³⁰	5387	5387	NS	2016	POBA, BMS, Atherectomy	Femoral	60 months
Teichgraber 2019 ³¹	164	NS	9	2019	DCB	BTK Only	12 months
Vierthaler 2015 ³²	883	883	23	2013	POBA, BMS, DCB, DES, Atherectomy	Iliofemoral, BTK	12 months

Key: POBA = Plain Old Balloon Angioplasty; DCB = Drug Coated Balloon; BMS = Bare Metal Stent; DES = Drug Eluting Stent; BTK = Below the Knee, NS=not stated.

Baseline Characteristics and Heterogeneity

A summary of baseline lesion and patient characteristics in included studies is illustrated in **Table 2**. As expected, due to the high-risk patient population, cardiometabolic risk factors were prevalent amongst participants in included studies. However, a high degree of clinical heterogeneity was also noteworthy. For instance, the anatomical location of the target lesion varied widely within the studies; 3 studies only included patients exclusively treated for infrapopliteal lesions (below the knee, BTK). Only four of the included studies included patients who received iliac artery interventions. In addition to anatomical differences, the type of endovascular procedure performed varied substantially between each study, and few studies reported outcomes for each device separately. Furthermore, although target lesion length was only reported in a minority of studies included in this review, there was a wide range (53mm – 152mm) in average target lesion length. Similarly, the proportion of chronic total occlusions (CTO, as opposed to stenoses) also showed noticeable heterogeneity (range 27% to 68%). Moreover, apart from hypertension, the prevalence of cardiovascular risk factors, ischaemic heart disease (IHD) and end-stage renal disease or dialysis (ESRD) was widely varied between the included studies.

Risk of Bias

Overall, there was a moderate risk of bias in included studies according to the ROBINS-I tool. A risk of bias summary table is presented in **Figure 2**. Notably, apart from 2 manuscripts (Giaquinta et al. and Reijnen et al.), there was a high risk of selection and allocation bias in the included studies. Moreover, there was a moderate-to-high risk of bias due to confounding in 13 of the included studies. Since major lower limb amputation is an objective endpoint, it was deemed a low risk of bias in the

‘measurement of outcome’ domain for all included studies. Similarly, all included studies were deemed low risk of bias with regards to deviation from protocol, since endovascular procedures are short, and do not require patient adherence or compliance with therapy. No studies reported the compliance with best medical therapy, therefore the confounding effect of this is unknown. Owing to the nature of study designs and consequent low attrition rates in included studies, we deemed a low risk of bias due to ‘missing data’ in most studies.

Table 2: Summary of Baseline Lesion Characteristics and Patient Demographics in Included Studies

Study	Lesion Length (mm)	Percentage of CTO (%)	Age (Years)	Smokers (%)	Female (%)	Diabetes (%)	Hypertension (%)	Dyslipidaemia (%)	IHD (%)	ESRD (%)
Abualhin 2019 ⁹	NS	NS	73	NS	28%	33%	NS	NS	48%	NS
Ahn 2018 (POBA Cohort) ¹⁰	NS	NS	NS	NS	NS	NS	NS	NS	NS	NS
Ahn 2018 (Stent Cohort) ¹⁰	NS	NS	NS	NS	NS	NS	NS	NS	NS	NS
Biasi 2016 ¹¹	NS	NS	73	NS	30%	64%	NS	NS	NS	NS
Bisdas 2016 ¹²	NS	NS	75	NS	37%	48%	NS	NS	46%	10%
Bondarenko 2014 ¹³	NS	NS	64	NS	54%	100%	NS	NS	15%	NS
Brodmann 2020 ¹⁴	82	27%	71	57%	39%	61%	87%	61%	44%	9%
Desai 2020 ¹⁵	NS	NS	72	62%	43%	66%	75%	62%	60%	16%
Elbadawy 2018 ¹⁶	NS	NS	67	76%	35%	90%	20%	39%	26%	12%
Garcia 2017 ¹⁷	72	30%	72	36%	50%	69%	92%	76%	32%	23%
Geraghty 2020 ¹⁸	NS	48%	74	62%	33%	66%	NS	78%	56%	25%
Giannopoulos 2020 ¹⁹	127	43%	61	64%	37%	71%	93%	84%	62%	NS
Giaquinta 2017 ²⁰	53	68%	71	66%	36%	53%	80%	NS	74%	33%
Hicks 2019 ²¹	NS	NS	65	57%	38%	100%	91%	71%	47%	15%
Iida 2017 ²²	NS	NS	74	15%	34%	74%	NS	NS	40%	55%
Khan 2020 (ACEi Cohort) ²³	NS	NS	NS	73%	43%	67%	94%	NS	31%	7%
Khan 2020 (Non-ACEi Cohort) ²³	NS	NS	NS	72%	44%	57%	84%	NS	27%	12%
Lee 2020 ²⁴	NS	NS	73	37%	35%	100%	84%	51%	36%	42%
Mustapha 2017 ²⁵	156	51%	70	71%	36%	64%	90%	91%	44%	7%
Mustapha 2019 (Atherectomy Cohort) ²⁶	NS	NS	74	21%	48%	61%	80%	30%	55%	34%

Mustapha 2019 (Stent Cohort) ²⁶	NS	NS	74	25%	50%	52%	74%	27%	48%	31%
Mustapha 2019 (PTA Cohort) ²⁷	NS	NS	74	16%	48%	63%	73%	27%	52%	40%
Perlander 2020 ²⁷	NS	65%	75	18%	46%	36%	NS	NS	32%	9%
Reijnen 2019 ²⁸	139	41%	72	NS	44%	55%	85%	62%	18%	20%
Riambau 2020 ²⁹	77	54%	73	54%	32%	72%	87%	57%	39%	NS
Siracuse 2016 ³⁰	NS	NS	67	84%	41%	47%	92%	NS	36%	5%
Teichgraber 2019 ³¹	71	43%	75	45%	34%	80%	90%	55%	35%	NS
Vierthaler 2015 ³²	NS	NS	NS	74%	42%	61%	90%	NS	35%	20%

Key: NS = Not Stated; CTO = Chronic Total Occlusion; IHD = Ischaemic Heart Disease; ESRD = End-Stage Renal Disease.

Meta-Analysis

A summary of the conducted meta-analyses is presented in **Table 3**.

Table 3: Summary of Meta-Analyses

	1 Year			2 Years		
	N	Effect Size Estimate (RE)	95% CI	N	Effect Size Estimate (RE)	95% CI
Major Lower Limb Amputations	23	8.6%	6.7% - 11.0%	10	11.1%	7.6% - 16.0%
Primary Patency	13	77.3%	71.1% - 82.5%	5	53.5%	32.9% - 73.0%
Primary Assisted Patency	4	80.5%	72.2% - 86.8%	2	63.8%	44.6% - 79.4%
Secondary Patency	8	82.5%	76.8% - 87.1%	4	73.5%	60.2% - 83.6%
All-Cause Mortality	16	12.5%	10.1% - 15.4%	8	25.2%	21.7% - 29.1%
Re-Intervention	10	10.2%	5.7% - 17.5%	3	19.4%	10.9% - 32.1%
Minor Amputation	8	16.7%	11.6% - 23.3%	2	23.5%	3.8% - 70.3%

Primary Outcome: Rate of Major Lower Limb Amputations

At one-year post-revascularisation, 23 studies with 37,888 patients reported the rate of major lower limb amputations. The pooled rate of major lower limb amputations at 1 year was 8.6% (95% CI 6.7% - 11.0%). There was significant statistical heterogeneity amongst included studies ($I^2 = 97%$, $p < 0.01$). The Forest plot for this analysis is shown in **Figure 3**. At two years, 10 studies with 29,126 patients reported the rate of major lower limb amputations. The pooled rate of major lower limb amputations was 11.1% (95% CI 7.6% - 16.0%). There was significant statistical heterogeneity amongst included studies ($I^2 = 98%$, $p < 0.01$). The Forest plot for this analysis is shown in **Figure 4**. There was no evidence of publication bias by visual inspection of the funnel plot or by Egger's test (**Supplemental Material S1**).

Subgroup Analysis

Three studies included 425 patients who were revascularised for exclusively infrapopliteal (BTK) lesions. A subgroup analysis of these patients showed that the pooled rate of major lower limb amputations at 1 year was 8.2% (95% CI 6.3% - 10.6%). There was significant statistical heterogeneity amongst included studies ($I^2 = 92\%$, $p < 0.01$). A Forest plot for this analysis is shown in **Figure 5**.

Furthermore, three of the included studies mandated stent deployment for all patients. These studies included a total of 11,528 patients. The anatomy of the target lesion was variable within this cohort; one study included only infrapopliteal lesions and the other two contained a combination of iliac, femoral and BTK lesions. A subgroup analysis of these 3 studies showed that the pooled rate of major lower limb amputations at 1 year was 5.1% (95% CI 4.7% - 5.5%). No statistical heterogeneity was noted amongst included studies ($I^2 = 0\%$, $p = 0.41$). A Forest plot for this analysis is shown in **Figure 6**.

Meta Regression

Results of the meta-regression on factors influencing the rate of major lower limb amputation at one year is summarised in **Table 4**.

Notably, there was no significant correlation between the number of patients in a study and risk of major lower limb amputation at one year (Estimate -0.0001 ± 0.0001 , $p = 0.1401$). A bubble plot of this analysis is shown in **Figure 7A**.

With regards to difference between males and females, no correlation was noted in the meta-regression of proportion of females and risk of major lower limb amputation at one year *Estimate -4.6269 ± 2.9099 , $p = 0.1283$). A bubble plot of this analysis is shown in **Figure 7B**.

Similarly, there was no relationship between the proportion of patients with chronic total occlusions (CTO) and risk of major lower limb amputation at one year (Estimate 4.1866 ± 2.242 , $p = 0.0988$). A bubble plot of this analysis is shown in **Figure 7C**.

None of the variables investigated in meta-regression showed a significant association with risk of major lower limb amputation at one year (**Table 4**).

Table 4: Results of Meta-Regression Analysis for Lower Major Limb Amputations at 1 year.

Variable	N	Estimate	SE	<i>p-value</i>
Number of Patients	23	-0.0001	0.0001	0.1401
Lesion Length	8	-0.0101	0.0083	0.2736
Proportion of CTO	10	4.1866	2.242	0.0988
Age	20	0.0403	0.0535	0.4604
Proportion of Smokers	18	-0.0455	0.8743	0.9592
Proportion of Females	21	-4.6269	2.9099	0.1283
Proportion of Diabetics	21	0.9178	1.2333	0.4659
Proportion of ESRD	17	-0.008	1.6431	0.9962

Secondary Endpoints:

Amongst included studies, there was insufficient data to perform meta-analysis for MACCE rate or quality of life outcomes. Meta-analysis was performed for one- and two-year outcomes for all remaining secondary endpoints. **Table 3** summarises the outcomes of these analyses. Forest plots for the analyses are included in the **Supplementary Material (S2-S13)**.

Discussion:

This study established the contemporary rate of major amputation following endovascular intervention for CLTI to be 9% and 11% at 1- and 2-years follow-up respectively. This is an important figure which is relevant to providing informed consent and facilitates international benchmarking for endovascular practitioners. In addition, it found a similar risk in below the knee interventions, which were previously thought of as high risk, possibly reflecting an improvement in the treatments available for this subgroup. Interestingly, patients undergoing primary stenting showed a significant reduction in major amputation rate to 5% at 1 year. This figure should be regarded as hypothesis generating, as there may be other differences (e.g. antiplatelet therapy and surveillance protocols) that may have biased this result. Reintervention rates were established at 10% and 25% at 1- and 2-years respectively. This high rate of reintervention does suggest patients should be followed up for 2 years if fit enough for a further procedure. It should be recognized that 25% of patients are dead at 2 years, and that this extremely frail group of patients may not be candidates for intensive ultrasound surveillance, unlike younger fitter patients. Finally, no volume-outcome relationship was observed, in contrast to aortic aneurysm³³ and carotid surgery³⁴ - to our knowledge this has not been previously observed in the literature.

Historical metaanalyses quote rates of up to 14% for 1-year amputation rate following endovascular intervention³⁵, indicating a possible change in superior technology, better medical therapy, or more intensive surveillance when compared with the contemporary outcomes elicited in this review. Further research to establish the temporal trends of these outcomes over the last decade would be needed to determine whether rates of amputation have changed significantly.

UK National Vascular Registry data reports 30-day post-interventional amputation rate as 1.2% and 9.5% for elective and emergency endovascular revascularization respectively (combined weighted average of 3.5%)³⁶. Indeed, 30-day outcomes from the American NSQUIP registry are similar – reported as 4.1%³⁷. Despite being very large data sets, the limited case ascertainment (Only 46% for NVR) make these difficult to compare to real world practice or to extrapolate to this review’s reported 1 and 2 year outcomes. These registries do demonstrate that at least half of limbs lost, occur in the first month after the procedure.

The strengths of this study were that included patients actually treated between January 2010 and January 2020 and therefore reflects recent international outcomes. It excluded patients managed during the COVID-19 pandemic, during which time the practice of many vascular units temporarily changed. The predominant study type included in the review were prospective registries, with few small randomized trials, therefore there was excellent classification, measurement and reporting of outcomes, with very little missing data at follow-up intervals.

The limitations of this study were that it could not perform individual patient data analyses on all informative subgroups. Instead exploratory meta-regression analyses were performed on several clinically relevant subgroups, e.g. gender, dialysis and chronic total occlusion. Of these only the last, showed a trend towards significance. It was not possible to extract atherectomy as an additional sub-group, which would have been informative. With the exception of two^{20,28}, all included studies suffered from selection bias, a limitation of the available data. It is likely that those that publish

data, achieve better outcomes, and hence the figures quoted represent what should be achievable, rather than what every practitioner is achieving. However, the higher 95% confidence intervals for amputation outcomes (11% at 1 year and 16% at 2 years) should provide a useful benchmark for practitioners and regulators in this field. Finally, there was significant clinical, methodological and statistical heterogeneity between the studies, consistent with real world practice.

This review provides important benchmarking information on the outcomes of endovascular intervention in a frail CLTI cohort. Crucially this provides a realistic evaluation of risk to facilitate full informed consent and the setting of realistic expectations regarding the need for reintervention, major and minor amputation and overall mortality. On the healthcare provision and governmental level this review provides important prognostic information regarding the rate of conversion of CLTI patients to major amputees. Evidence for duplex surveillance after endovascular therapy is limited to 2 comparative studies^{6,7}, therefore, another research priority should be the cost-effectiveness of routine duplex surveillance versus clinical surveillance after intervention.

Further research in this field would be valuable to patient centered outcomes following all lower limb interventions (open, hybrid, endovascular, primary amputation and conservative). In addition to conventionally reported endpoints (major amputation rate, patency and reintervention), patient reported outcomes such as Quality of life (QoL), illness perception, formal and informal carer requirement, and Barthel index of independence of activities of daily living, would be valuable to understand the wider impact of those undergoing surgical therapy for peripheral arterial disease.

Word Count = 3643

Acknowledgements: N/A

Sources of Funding: None

Disclosures: None

References:

1. Duff, S., Mafilios, M., Bhounsule, P. and Hasegawa, J., 2019. <p>The burden of critical limb ischemia: a review of recent literature</p>. *Vascular Health and Risk Management*, Volume 15, pp.187-208.
2. National Institute for Health and Care Excellence (2020) Peripheral Arterial Disease (NICE Guideline NG147). Available at: <https://www.nice.org.uk/guidance/cg147> [Accessed 02/12/2021].
3. National Institute for Health and Care Excellence (2021) Type 2 diabetes in adults (NICE Guideline NG28). Available at: <https://www.nice.org.uk/guidance/ng28> [Accessed 02/12/2021].
4. Ons.gov.uk. 2022. Living longer - Office for National Statistics. [online] Available at: <<https://www.ons.gov.uk/peoplepopulationandcommunity/birthsdeathsandmarriages/ageing/articles/livinglongerhowourpopulationischangingandwhyitmatters/2018-08-13>> [Accessed 02 December 2021].
5. Setacci C, de Donato G, Teraa M, Moll FL, Ricco JB, Becker F, Robert-Ebadi H, Cao P, Eckstein HH, De Rango P, Diehm N, Schmidli J, Dick F, Davies AH, Lepäntalo M, Apelqvist J. Chapter IV: Treatment of critical limb ischaemia. *Eur J Vasc Endovasc Surg*. 2011 Dec;42 Suppl 2:S43-59. doi: 10.1016/S1078-5884(11)60014-2. PMID: 22172473.
6. Draxler MS, Al-Adas Z, Abbas D, Kavousi Y, Kabbani LS, Lin JC, et al. Outcome benefit of arterial duplex stent imaging after superficial femoral artery stent implantation. In: *Journal of Vascular Surgery*. Mosby Inc.; 2021. p. 179–88.
7. Martínez-Rico C, Martí-Mestre X, Jiménez-Guiu X, Espinar-García E, Cervellera-Pérez D, Vila-Coll R. Ultrasound Surveillance in Endovascular Revascularization of Lower Limbs. *Ann Vasc Surg* [Internet]. 2019 Apr 1;56:274–9. Available from: <https://doi.org/10.1016/j.avsg.2018.08.079>
8. Dick F, Ricco JB, Davies AH, Cao P, Setacci C, de Donato G, Becker F, Robert-Ebadi H, Eckstein HH, De Rango P, Diehm N, Schmidli J, Teraa M, Moll FL, Lepäntalo M, Apelqvist J. Chapter VI: Follow-up after revascularisation. *Eur J Vasc Endovasc Surg*. 2011 Dec;42 Suppl 2:S75-90. doi: 10.1016/S1078-5884(11)60013-0. PMID: 22172475.
9. Abualhin M, Pini R, Angherà C, Sonetto A, Spath P, Faggioli GL, et al. Propensity score matched analysis indicated that insulin-dependent diabetic patients have more benefit of drug coated balloon angioplasty in the treatment of chronic limb threatening ischemia. *European Journal of Vascular and Endovascular Surgery*. 2019;58(6).
10. Ahn J, Rha S-W. TCTAP A-088 one-year follow-up of stenting versus standard balloon angioplasty for the below-knee arteries in Korean patients: A propensity score-matched analysis. *Journal of the American College of Cardiology*. 2018;71(16).
11. L Biasi, S Patel, I Paraskevopoulos, C Gordon, C Adkin, T Lea, T Donati, A Diamantopoulos, KN Katsanos, H Zayed Predictors of clinical outcome following endovascular treatment of infrapopliteal disease in patients with critical limb ischaemia (CIRSE 2016)
12. Stavroulakis K, Gkremoutis A, Borowski M, Torsello G, Böckler D, Zeller T, Steinbauer M, Tsilimparis N, Bisdas T; CRITISCH Collaborators. Bypass Grafting vs Endovascular Therapy

- in Patients With Non-Dialysis-Dependent Chronic Kidney Disease and Chronic Limb-Threatening Ischemia (CRITISCH Registry). *J Endovasc Ther.* 2020 Aug;27(4):599-607. doi: 10.1177/1526602820938465. Epub 2020 Jul 7. PMID: 32633651.
13. Bondarenko ON, Galstyan GR, Dedov II. The clinical course of critical limb ischaemia and the role of endovascular revascularisation in patients with diabetes. *Diabetes mellitus.* 2015 May 12;18(3):57-69.
 14. Brodmann M, Moscovic M, Wang JC, Nano G, Dahm J, Zeller T, Christensen JK, Keirse K, Ghotbi R, Corpataux JM, Tepe G. Real-world experience with a paclitaxel-coated balloon in critical limb ischemia: 24-month subgroup outcomes of BIOLUX P-III. *Cardiovascular Interventions.* 2020 Oct 12;13(19):2289-99.
 15. Desai SS, Baronofsky H, Shukla N, Rahimi F. One-year freedom from amputation, survival, and cost of care following tibial and pedal endovascular interventions for critical limb ischemia: The role of atherectomy and drug-eluting stents. *Annals of Vascular Surgery.* 2020;
 16. Elbadawy A, Ali H, Saleh M, Hasaballah A. A prospective study to evaluate complete wound healing and limb salvage rates after angiosome targeted infrapopliteal balloon angioplasty in patients with critical limb ischaemia. *Journal of Vascular Surgery.* 2018;67(4):1315.
 17. Garcia LA, Michael Jaff MD, Krishna Rocha-Singh MD, Thomas Zeller MD, James McKinsey MD. Acute Results of Directional Atherectomy for the Treatment of Claudication and Critical Limb Ischemia in the DEFINITIVE LE Study. *Vascular Disease Management.* 2017 Feb 8;14(2).
 18. Geraghty PJ, Adams GL, Schmidt A, Lichtenberg M, Wissgott C, Armstrong EJ, Hertting K; TOBA II BTK investigators. Twelve-Month Results of Tack-Optimized Balloon Angioplasty Using the Tack Endovascular System in Below-the-Knee Arteries (TOBA II BTK). *J Endovasc Ther.* 2020 Aug;27(4):626-636. doi: 10.1177/1526602820944402. PMID: 35156451; PMCID: PMC7491252.
 19. Giannopoulos S, Secemsky EA, Mustapha JA, Adams G, Beasley RE, Pliagas G, et al. Three-year outcomes of orbital atherectomy for the endovascular treatment of infrainguinal claudication or chronic limb-threatening ischemia. *Journal of Endovascular Therapy.* 2020;27(5):714-25.
 20. Giaquinta A, Vincenzo A, De Marco E, Veroux M, Veroux P. Everolimus-Eluting Stent for Patients With Critical Limb Ischemia and Infrapopliteal Arterial Occlusive Disease. *Vasc Endovascular Surg.* 2017 Feb;51(2):60-66. doi: 10.1177/1538574416689429. Epub 2017 Jan 18. PMID: 28100126.
 21. Hicks CW, Canner JK, Lum YW, Black JH 3rd, Abularrage CJ. Long-term Outcomes of an Endovascular-First Approach for Diabetic Patients With Predominantly Tibial Disease Treated in a Multidisciplinary Setting. *Ann Vasc Surg.* 2019 Oct;60:315-326.e2. doi: 10.1016/j.avsg.2019.04.001. Epub 2019 Jun 12. PMID: 31200047.
 22. Iida O, Takahara M, Soga Y, Kodama A, Terashi H, Azuma N; SPINACH Investigators. Three-Year Outcomes of Surgical Versus Endovascular Revascularization for Critical Limb Ischemia: The SPINACH Study (Surgical Reconstruction Versus Peripheral Intervention in Patients With Critical Limb Ischemia). *Circ Cardiovasc Interv.* 2017 Dec;10(12):e005531. doi: 10.1161/CIRCINTERVENTIONS.117.005531. PMID: 29246911; PMCID: PMC5753823.
 23. Khan SZ, O'Brien-Irr MS, Rivero M, Blochle R, Cherr GS, Dryjski ML, Dosluoglu HH, Lukan J, Rowe VL, Harris LM. Improved survival with angiotensin-converting enzyme inhibitors and angiotensin receptor blockers in chronic limb-threatening ischemia. *J Vasc Surg.* 2020 Dec;72(6):2130-2138. doi: 10.1016/j.jvs.2020.02.041. Epub 2020 Apr 8. PMID: 32276021.
 24. Lee CY, Wu TC, Lin SJ. Long-Term Cilostazol Treatment and Predictive Factors on Outcomes of Endovascular Intervention in Patients with Diabetes Mellitus and Critical Limb Ischemia. *Diabetes Ther.* 2020 Aug;11(8):1757-1773. doi: 10.1007/s13300-020-00860-8. Epub 2020 Jun 20. PMID: 32564334; PMCID: PMC7376806.
 25. Mustapha JA, Fadi Saab MD, Diaz-Sandoval LJ, Robert Beasley MD, McGoff TN, Sara Finton BS, Carmen Heaney BS, George Adams MD. The Peripheral Registry of Endovascular Clinical Outcomes (The PRIME Registry): Interim analysis of the first 328 subjects with critical limb ischemia. *Vascular Disease Management.* 2017 Mar 15;14(3).
 26. Mustapha J, Gray W, Martinsen BJ, Bolduan RW, Adams GL, Ansel G, Jaff MR. One-Year Results of the LIBERTY 360 Study: Evaluation of Acute and Midterm Clinical Outcomes of

- Peripheral Endovascular Device Interventions. *J Endovasc Ther.* 2019 Apr;26(2):143-154. doi: 10.1177/1526602819827295. Epub 2019 Feb 6. PMID: 30722718; PMCID: PMC6431778.
27. Perlander A, Jivegård L, Nordanstig J, Svensson M, Österberg K. Amputation-free survival, limb symptom alleviation, and reintervention rates after open and endovascular revascularization of femoropopliteal lesions in patients with chronic limb-threatening ischemia. *J Vasc Surg.* 2020 Dec;72(6):1987-1995. doi: 10.1016/j.jvs.2020.03.029. Epub 2020 Apr 8. PMID: 32276010.
 28. Reijnen MMPJ, van Wijck I, Zeller T, Micari A, Veroux P, Keirse K, Lee SW, Li P, Voulgaraki D, Holewijn S. Outcomes After Drug-Coated Balloon Treatment of Femoropopliteal Lesions in Patients With Critical Limb Ischemia: A Post Hoc Analysis From the IN.PACT Global Study. *J Endovasc Ther.* 2019 Jun;26(3):305-315. doi: 10.1177/1526602819839044. Epub 2019 Apr 1. PMID: 30931726; PMCID: PMC6628633.
 29. Rimbau V, Acín F, de Blas MJ, Alonso M, Giménez-Gaibar A; Luminor Collaborators. Drug-Coated Balloon Angioplasty in Clinical Practice for Below-the-Knee, Popliteal, and Crural Artery Lesions Causing Critical Limb Ischemia: 1-Year Results from the Spanish Luminor Registry. *Ann Vasc Surg.* 2020 Jan;62:387-396. doi: 10.1016/j.avsg.2019.06.035. Epub 2019 Aug 23. PMID: 31449955.
 30. Siracuse JJ, Van Orden K, Kalish JA, Eslami MH, Schermerhorn ML, Patel VI, Rybin D, Farber A; Vascular Quality Initiative. Endovascular treatment of the common femoral artery in the Vascular Quality Initiative. *J Vasc Surg.* 2017 Apr;65(4):1039-1046. doi: 10.1016/j.jvs.2016.10.078. Epub 2016 Dec 29. PMID: 28041804.
 31. Teichgräber U, Lehmann T, Thieme M, Wahl KU, Stelzner C, Bormann A, Götz L, Kroeßner T, Boden H, Maiwald L, Aschenbach R. Drug-Coated Balloon Angioplasty of Infrapopliteal Lesions in Patients with Critical Limb Ischaemia: 1-Year Results of the APOLLO Trial. *Cardiovasc Intervent Radiol.* 2019 Oct;42(10):1380-1390. doi: 10.1007/s00270-019-02279-6. Epub 2019 Jul 8. PMID: 31286197.
 32. Vierthaler L, Callas PW, Goodney PP, Schanzer A, Patel VI, Cronenwett J, Bertges DJ; Vascular Study Group of New England. Determinants of survival and major amputation after peripheral endovascular intervention for critical limb ischemia. *J Vasc Surg.* 2015 Sep;62(3):655-64.e8. doi: 10.1016/j.jvs.2015.04.391. Epub 2015 Jul 26. PMID: 26215708; PMCID: PMC5315445.
 33. Holt PJ, Poloniecki JD, Gerrard D, Loftus IM, Thompson MM. Meta-analysis and systematic review of the relationship between volume and outcome in abdominal aortic aneurysm surgery. *Br J Surg.* 2007 Apr;94(4):395-403. doi: 10.1002/bjs.5710. PMID: 17380547.
 34. Holt PJ, Poloniecki JD, Loftus IM, Thompson MM. Meta-analysis and systematic review of the relationship between hospital volume and outcome following carotid endarterectomy. *Eur J Vasc Endovasc Surg.* 2007 Jun;33(6):645-51. doi: 10.1016/j.ejvs.2007.01.014. Epub 2007 Mar 30. PMID: 17400005.
 35. Romiti M, Albers M, Brochado-Neto FC, Durazzo AE, Pereira CA, De Luccia N. Meta-analysis of infrapopliteal angioplasty for chronic critical limb ischemia. *J Vasc Surg.* 2008 May;47(5):975-981. doi: 10.1016/j.jvs.2008.01.005. Epub 2008 Apr 18. PMID: 18372148.
 36. Waton S, Johal A, Bimpili P, Li Q, Cromwell D, O'Neill R, Williams R, Pherwani A. National Vascular Registry: 2021 Annual Report. London: The Royal College of Surgeons of England, November 2021.
 37. Latz CA, Boitano L, Wang LJ, et al. Contemporary Endovascular 30-Day Outcomes for Critical Limb Threatening Ischemia Relative to Surgical Bypass Grafting. *Vascular and Endovascular Surgery.* 2021;55(5):441-447. doi:10.1177/1538574421989516

Figures:

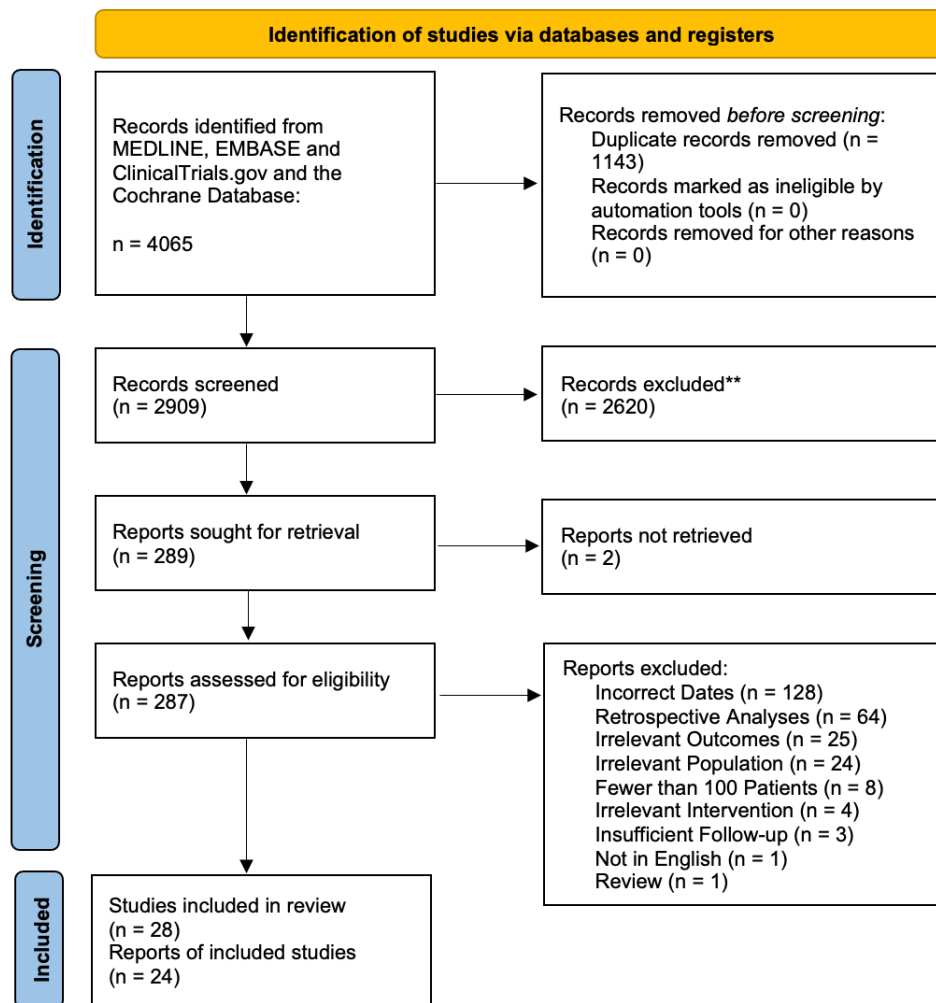


Figure 1: PRISMA Flowchart for Study Selection.

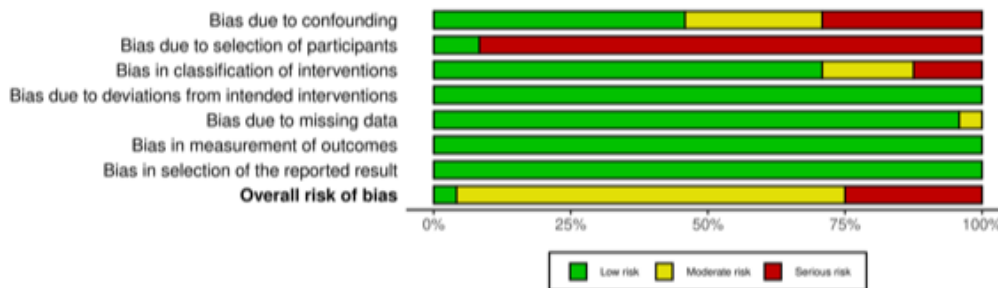


Figure 2: ROBINS-I. All bias domains were deemed as “Low Risk”, “Moderate Risk” or “Serious Risk” according to the ROBINS-I tool. Confounding bias refers to bias introduced due to imbalances of confounding variables including demographics, co-morbidities and lesion/procedural characteristics. Bias due to participant selection denotes allocation bias that is introduced when assigning participants to their respective study arms. Bias due to classification of intervention encompasses the definition of interventions received by participants and whether intervention status label could have been affected by knowledge of the outcome. Deviation from intended intervention denotes nonconformity of interventions received by patients to the study’s original protocol. Missing data investigates bias of outcomes due to unbalanced follow-up in each study arm and imbalances in patients lost to follow-up. Measurement of outcome investigates whether x knowledge of the intervention received may have influenced the outcome. Selection of reported results investigates bias investigates whether authors have reported results in a manner that biases the findings of the study. This includes reporting multiple outcome measurements within the outcome domain, reporting multiple analyses of the intervention-outcome relationship, and reporting different subgroups.

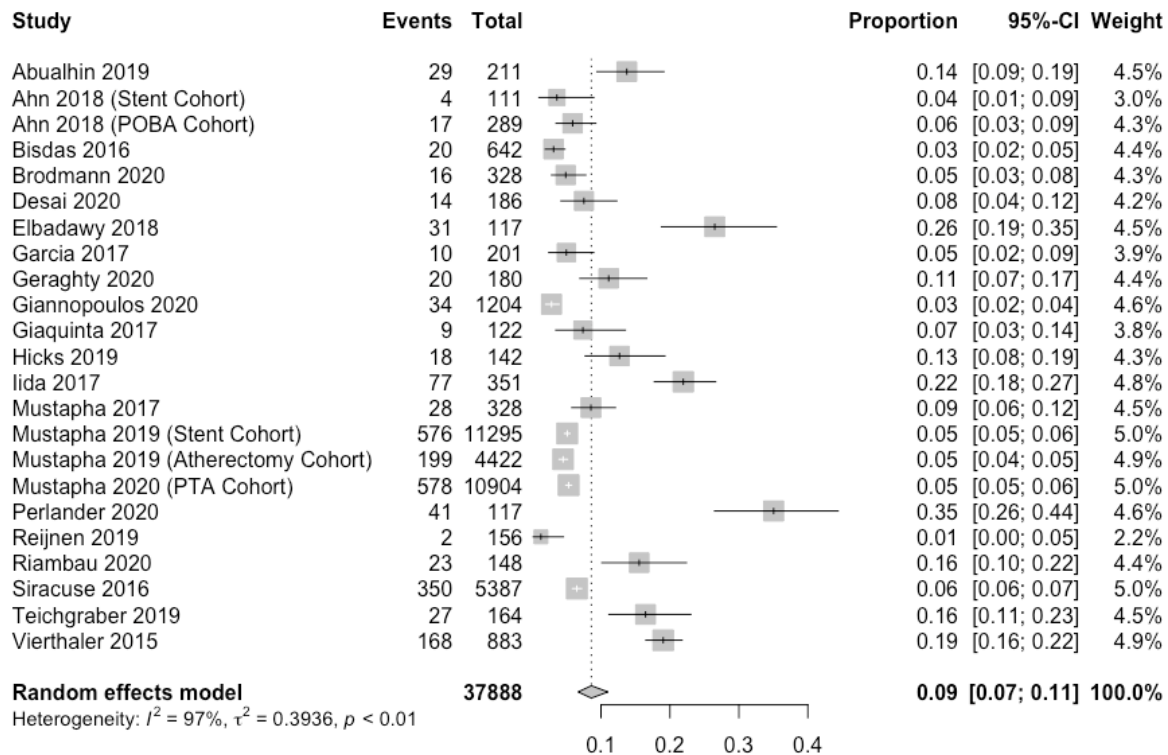


Figure 3: Forest Plot for Risk of Lower Limb Amputation at 1 Year.

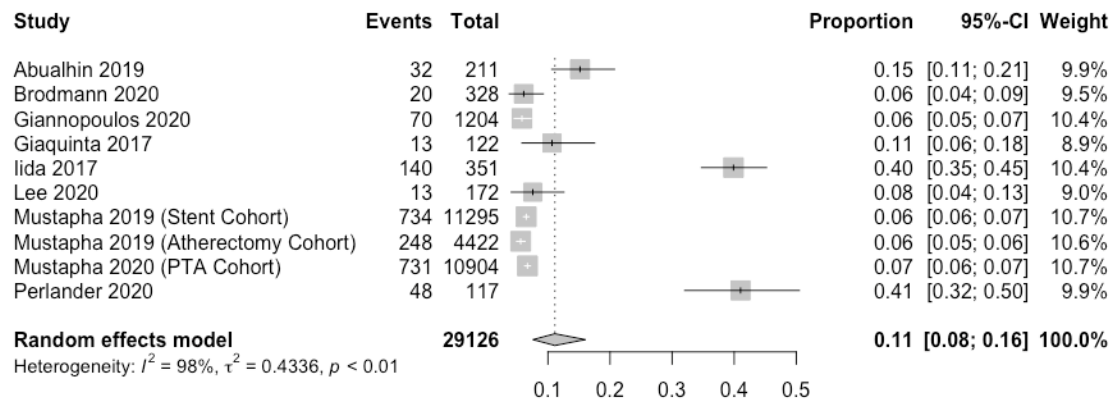


Figure 4: Forest Plot for Risk of Lower Limb Amputation at 2 Years.

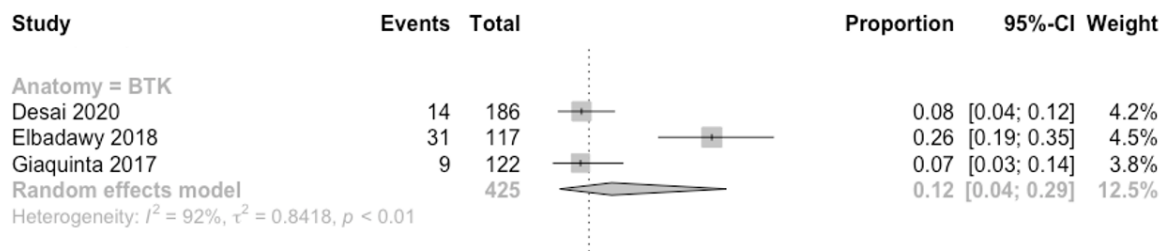


Figure 5: Forest plot for risk of lower limb amputation at 1 year in studies where all patients were revascularised for exclusively infrapopliteal (BTK) lesions.

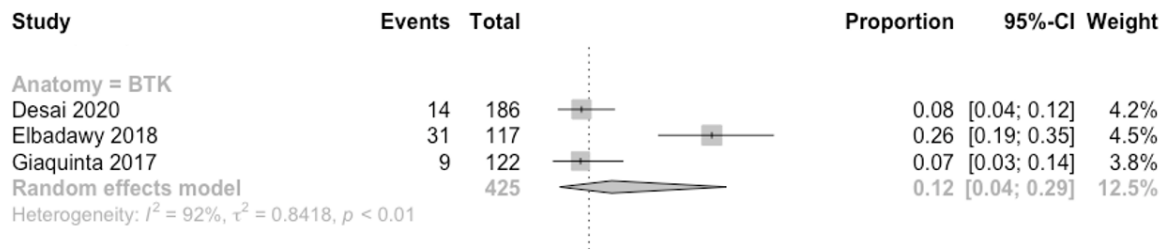


Figure 6 Forest plot for risk of lower limb amputation at 1 year in studies that mandated stent deployment for all patients.

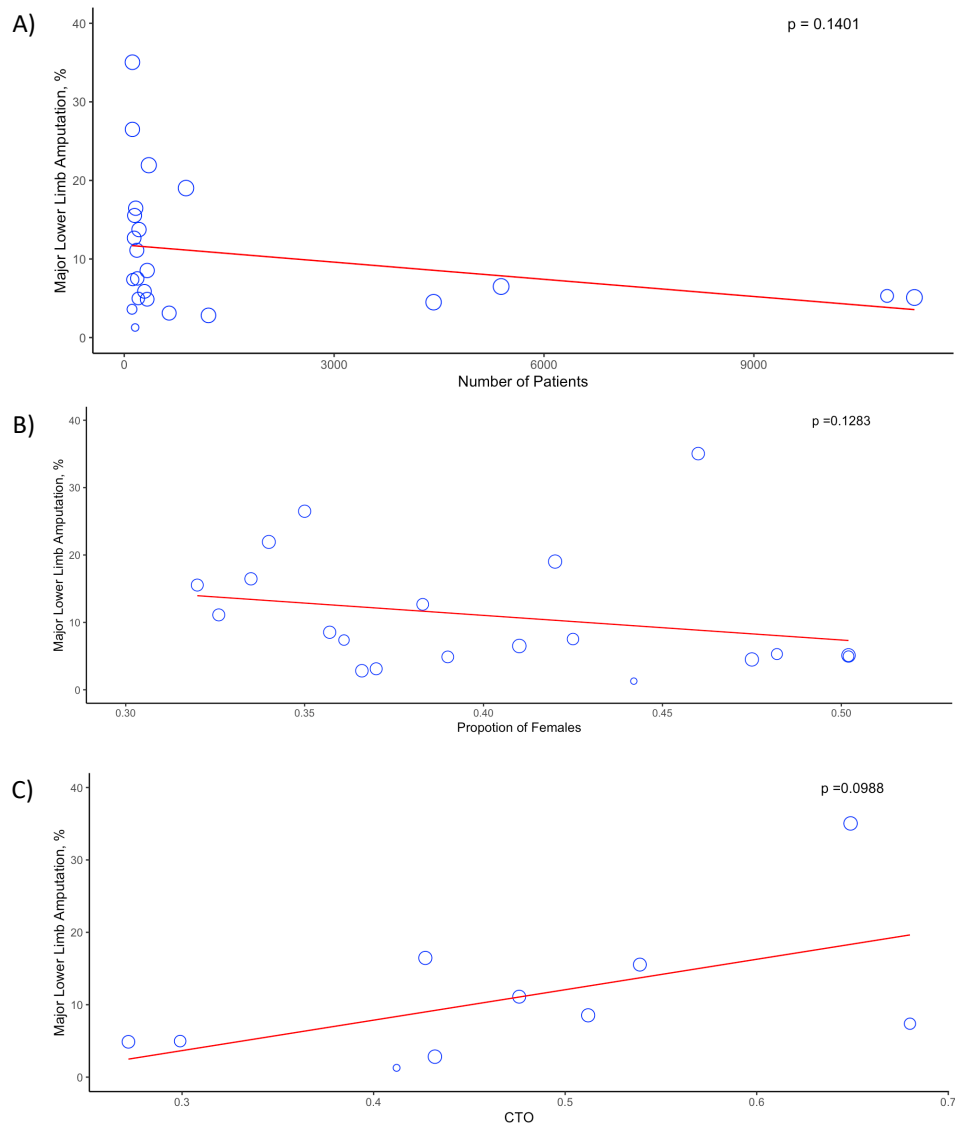


Figure 7: Bubble Plots for Meta-Regression Analyses for Major Lower Limb Amputation at 1 Year. A) Meta-regression for number of patients; B) Meta-regression for proportion of females; C) Meta-regression for proportion of patients with chronic total occlusion (CTO).