

Evaluation of bivalent Omicron BA.1 booster vaccination after different priming regimens in healthcare workers (SWITCH ON): a randomized controlled trial

Ngoc H. Tan^{†1}, MPharm., Daryl Geers^{†2}, M.Sc., Roos S.G. Sablerolles^{†1}, M.D., Wim J.R. Rietdijk¹, Ph.D., Abraham Goorhuis^{3,4}, M.D., Ph.D., Douwe F. Postma⁵, M.D., Ph.D., Leo G. Visser⁶, M.D., Ph.D., Susanne Bogers², M.Sc., Laura L.A. van Dijk², M.Sc., Lennert Gommers², B.Sc., Leanne P.M. van Leeuwen², M.D., Annemarie Boerma⁷, M.Sc., Sander H. Nijhof⁷, M.Sc, Karel A. van Dort⁸, M.Sc., Marion P.G. Koopmans², D.V.M., Ph.D., Virgil A.S.H. Dalm⁹, M.D., Ph.D., Melvin Lafeber¹⁰, M.D., Ph.D., Neeltje A. Kootstra⁸, Ph.D., Anke L.W. Huckriede⁷, Ph.D., Debbie van Baarle^{7,11}, Ph.D., Luca M. Zaeck², Ph.D., Corine H. GeurtsvanKessel^{†2}, M.D., Ph.D., Rory D. de Vries^{†2}, Ph.D., and P. Hugo M. van der Kuy^{†1}, Pharm.D., Ph.D. for the SWITCH Research Group*

† contributed equally

¹Department of Hospital Pharmacy, Erasmus Medical Center, Rotterdam, the Netherlands

²Department of Viroscience, Erasmus Medical Center, Rotterdam, the Netherlands

³Center of Tropical Medicine and Travel Medicine, Department of Infectious Diseases, Amsterdam University Medical Centers, Amsterdam, the Netherlands

⁴Infection & Immunity, Amsterdam Public Health, University of Amsterdam, Amsterdam, the Netherlands

⁵Department of Internal Medicine and Infectious Diseases, University Medical Center Groningen, Groningen, the Netherlands

⁶Department of Infectious Diseases, Leiden University Medical Center, Leiden, the Netherlands

⁷Department of Medical Microbiology and Infection Prevention, University Medical Center Groningen, University of Groningen, Groningen, the Netherlands

⁸Department of Experimental Immunology, Amsterdam University Medical Centers, Amsterdam Infection and Immunity Institute, University of Amsterdam, Amsterdam, the Netherlands

⁹Department of Internal Medicine, Division of Allergy & Clinical Immunology and Department of Immunology, Erasmus Medical Center, Rotterdam, the Netherlands

¹⁰Department of Internal Medicine, Erasmus Medical Center, Rotterdam, the Netherlands

¹¹Center for Infectious Disease Control, National Institute for Public Health and the Environment, Bilthoven, the Netherlands

ClinicalTrial.gov identifier: NCT05471440

Corresponding author: P.H.M. van der Kuy, Department of Hospital Pharmacy, Erasmus Medical Center, Rotterdam, 3015 GD, the Netherlands. E-mail: h.vanderkuy@erasmusmc.nl

Summary

Background Bivalent mRNA-based COVID-19 vaccines encoding the ancestral and Omicron spike protein were developed as a countermeasure against antigenically distinct SARS-CoV-2 variants. We compared the (variant-specific) immunogenicity and reactogenicity of mRNA-based bivalent Omicron BA.1 vaccines in individuals who were primed with adenovirus- or mRNA-based vaccines.

Methods In this open-label, multicenter, randomized, controlled trial, healthcare workers primed with Ad26.COVS.2 or mRNA-based vaccines were boosted with mRNA-1273.214 or BNT162b2 OMI BA.1. The primary endpoint was the fold change in S1-specific IgG antibodies pre- and 28 days after booster vaccination. Secondary outcomes were fast response, (antibody levels on day 7), reactogenicity, neutralization of circulating variants and (cross-reactive) SARS-CoV-2-specific T-cell responses.

Findings No effect of different priming regimens was observed on bivalent vaccination boosted S1-specific IgG antibodies. The largest increase in S1-specific IgG antibodies occurred between day 0 and 7 after bivalent booster. Neutralizing antibodies targeting the variants in the bivalent vaccine (ancestral SARS-CoV-2 and Omicron BA.1) were boosted. In addition, neutralizing antibodies against the circulating Omicron BA.5 variant increased after BA.1 bivalent booster. T-cell responses were boosted and retained reactivity with variants from the Omicron sub-lineage.

Interpretation Bivalent booster vaccination with mRNA-1273.214 or BNT162b2 OMI BA.1 resulted in a rapid recall of humoral and cellular immune responses independent of the initial priming regimen. Although no preferential boosting of variant-specific responses was observed, the induced antibodies and T-cells cross-reacted with Omicron BA.1 and BA.5. It remains crucial to monitor immunity at the population level, and simultaneously antigenic drift at the virus level, to determine the necessity (and timing) of COVID-19 booster vaccinations.

Funding The Netherlands Organization for Health Research and Development (ZonMw) grant agreement 10430072110001.

Research in context

Evidence before this study

Vaccination against coronavirus disease-2019 (COVID-19) initially provided high levels of protection from both infection and severe disease. However, the emergence of antigenically distinct variants resulted in frequent breakthrough infections, especially with the emergence of variants from the Omicron sub-lineages. The frequent mutations in the Spike protein, and specifically the receptor binding domain (RBD), resulted in the recommendation by the WHO advisory group to update vaccines with novel antigens. Bivalent mRNA-based vaccines, encoding the Spike protein from both the ancestral SARS-CoV-2 and Omicron BA.1 (and later on BA.5) were subsequently introduced. Initial small comparative studies have been released on the evaluation of these bivalent vaccines, but it is essential to evaluate the immunogenicity and reactogenicity of the vaccines against the background of different priming regimens.

Added value of this study

The SWITCH ON trial evaluated the bivalent booster vaccines BNT162b2 OMI BA.1 and mRNA-1273.214 vaccine in a cohort of Dutch healthcare workers. Study participants were primed with either Ad26.COV2.S, mRNA-1273, or BNT162b2. The study investigated three important topics: (1) immunogenicity of Omicron BA.1 bivalent vaccines after Ad26.COV2.S- or mRNA-based vaccine priming, (2) rapid immunological recall responses, indicative of preserved humoral and cellular immunological memory, and (3) cross-reactivity with relevant variants after booster vaccination.

Implication of all the available evidence

Vaccination with the bivalent booster mRNA-1273.214 or BNT162b2 OMI BA.1 resulted in a rapid recall of humoral and cellular immune responses independent of the initial priming regimen. The largest fraction of (neutralizing) antibodies and virus-specific T-cells was recalled within 7 days post booster vaccination. Although no preferential boosting of variant-specific responses was observed, the induced antibodies and T-cells cross-reacted with Omicron BA.1, which was included in the vaccine, but also the more antigenically distinct BA.5. It remains crucial to monitor immunity at the population level, and simultaneously antigenic drift at the virus level, to determine the necessity (and timing) of COVID-19 booster vaccinations.

Introduction

The ongoing spread of severe acute respiratory syndrome coronavirus-2 (SARS-CoV-2) remains a public health emergency of international concern. Although vaccination against coronavirus disease-2019 (COVID-19) initially provided high levels of protection from both infection and severe disease^{1,2}, emergence of variants has resulted in escape from protection against infection. Frequent breakthrough infections can be explained by a combination of waning antibodies in combination with (partial) evasion from neutralizing antibodies, especially since the emergence of the Omicron sublineages³⁻⁷. The shift in key epitopes, which were characteristic of Omicron variant viruses compared to ancestral viruses⁸, resulted in the recommendation by the WHO advisory group on vaccinations to update the vaccines⁹. This led to the introduction of bivalent spike (S) vaccines.

The first generation of licensed bivalent vaccines consisted of mRNAs encoding the S protein from both the ancestral SARS-CoV-2 and Omicron BA.1^{10,11}. A study with the bivalent mRNA-1273.214 vaccine induced higher levels of Omicron BA.1 neutralizing antibodies compared to the monovalent mRNA-1273 vaccine, when given as a second booster in adults who had previously received a primary vaccination series and first booster with the mRNA-1273 vaccine¹⁰. Partially based on this result, many countries introduced bivalent vaccines in their booster campaigns.

We have now entered a phase in the pandemic in which (1) repeated boosters are available for risk groups and the general population, (2) a relatively low number of severe COVID-19 cases and low mortality rate are observed, but (3) SARS-CoV-2 continues to display antigenic drift⁸. By the time updated bivalent vaccines were introduced, further diverged Omicron sub-lineages had become dominant. To ascertain the immunological benefit of additional (bivalent) booster vaccinations and provide scientific evidence for decision makers, in-depth evaluations of immunogenicity are important.

The SWITCH ON trial¹² aims to evaluate the bivalent booster vaccines BNT162b2 OMI BA.1 and mRNA-1273.214 vaccine in a cohort of Dutch healthcare workers. The study investigates three main topics: (1) immunogenicity of Omicron BA.1 bivalent vaccines after Ad26.COVS- or mRNA-based vaccine priming, (2) rapid immunological recall responses, indicative of preserved humoral and cellular immunological memory, and (3) cross-reactivity with relevant variants after booster vaccination. These data will aid in the discussion on the necessity of future booster vaccinations in the healthy general population and aim to

facilitate more personalized vaccination approaches in future public health interventions against COVID-19.

Methods

Trial oversight. The SWITCH ON study is an open-label, multicenter, randomized, controlled trial involving healthcare workers from four academic hospitals in the Netherlands¹². The trial protocol was approved by the medical ethics committee of Erasmus Medical Centre, the sponsor site, and the local review boards of the other participating centers. The study adheres to the principles of the Declaration of Helsinki. All eligible subjects provided written informed consent before their participation in the study.

Trial design. Healthcare workers were eligible to participate in the SWITCH ON study if they were between the age of 18 and 65, and completed a primary vaccination regimen with either Ad26.COVS.2.S (1 shot) or an mRNA-based (BNT162b2 or mRNA-1273, 2 shots) vaccine. All participants had also received at least one booster dose with an mRNA-based vaccine, given no later than three months before the start of the SWITCH ON study. Participants with severe comorbidities such as dialysis dependence, or participants with an immunodeficiency due to treatment with immunosuppressants or cancer therapy were excluded from the study. Participants with a known history of prior SARS-CoV-2 infection were eligible, unless the infection occurred less than three months before the start of the study (based on self-reporting). At baseline, SARS-CoV-2 nucleocapsid (N)-specific antibodies were measured to determine the distribution of infection history across groups. Participants with positive nucleocapsid test, who did not report having contracted SARS-CoV-2 less than three months before the start of the study, were included in the statistical analyses. The full list of in- and exclusion criteria was published previously¹². The representativeness of the study participants is described in **Table S1**.

Block randomization was used to randomize participants equally into a direct boost (DB) group or a postponed boost (PPB) group, with stratification for Ad26.COVS.2.S-priming or mRNA-based priming. Participants in the DB group received the Omicron BA.1 bivalent booster vaccine in October 2022, whereas participants in the PPB group will receive a bivalent booster vaccine in December 2022. Participants of 45 years of age or older were administered mRNA-1273.214 (50µg) and participants younger than 45 years of age received BNT162b2 OMI BA.1 (30µg), following the guidelines of the Dutch National Institute for Public Health and the Environment (RIVM)¹³. Based on their respective priming regimens, the participants of the DB group were further divided into four subgroups: (i) Ad26.COVS.2.S prime and mRNA-1273.214 boost (Ad/M), (ii) Ad26.COVS.2.S prime and BNT162b2 OMI BA.1 boost (Ad/P), (iii) mRNA-based prime and mRNA-1273.214 boost

(mRNA/M), and (iv) mRNA-based prime and BNT162b2 OMI BA.1 boost (mRNA/P). Blood samples were collected on the day of booster vaccination (day 0, study visit 1, SV1), and 7 (SV2) and 28 days (SV3) after booster (**Figure S1**). Additionally, 25% of the samples in each arm were randomly selected for in-depth immunological analyses.

Immunogenicity. SARS-CoV-2-specific antibodies and T-cell responses were measured in all participants at baseline, and 7 and 28 days after booster vaccination. Ancestral S1-specific IgG antibody levels were measured using the Liaison SARS-CoV-2 TrimericS IgG assay (DiaSorin) as previously described⁴. S-specific binding antibodies to the ancestral and Omicron BA.1 and BA.5 S proteins were assessed by ELISA as previously described^{14,15}. Neutralizing antibodies targeting the ancestral and Omicron sub-lineages (BA.1 and BA.5) were assessed by plaque reduction neutralization test (PRNT) as previously described^{14,16}. SARS-CoV-2-specific T-cell responses were measured by interferon- γ release assay (IGRA) using the QuantiFERON SARS-CoV-2 kit (QIAGEN)^{3,4}. Additionally, SARS-CoV-2-specific T-cells were phenotyped in an activation-induced marker (AIM) flow cytometry assay³. In these AIM assays, cross-reactive variant-specific T-cell responses targeting the ancestral, Omicron BA.1 and Omicron BA.5 variants were measured^{3,14,15}.

Reactogenicity. Participants received an electronic questionnaire on day 8 after booster, inquiring about the adverse reactions⁴. The severity of adverse reactions was described in accordance with the Toxicity Grading Scale for Healthy Adult and Adolescent Volunteers Enrolled in Preventive Vaccine Clinical Trials¹⁷. Any serious adverse reactions, both local and systemic, were additionally reported via email and phone calls.

Statistical analysis. We calculated that the study required 91 participants in each of four arms (Ad/M, Ad/P, mRNA/M, mRNA/P) to achieve 80% power at two-sided 5% significance level to detect a log₁₀ transform difference of 0.2 in fold change 28 days after booster vaccination. Considering a 10% loss-to-follow-up margin, we included 100 participants per arm, resulting in a total sample size of 400 participants. These consisted of 200 participants primed with Ad26.COVS and 200 participants primed with BNT162b2 or mRNA-1273, equally divided over the DB and PPB groups. During study recruitment, a new COVID-19 booster policy by the national government of the Netherlands¹³ was implemented with the introduction of different vaccine strategies for the 2 available vaccines according to age (above and below 45 years), which was not part of the initial power calculation.

Descriptive analysis was used to report baseline characteristics of participants. For continuous variables with normal distribution, median and interquartile range (IQR) were

reported. Categorical variables were presented as numbers (percentage). For the immunogenicity data we also present the geometric mean titer values (GMT).

For the primary outcome, the fold change antibody response (day 0 versus day 28) was compared between the Ad26.COV2.S-primed and mRNA-based-primed (Ad/P vs. mRNA/P and Ad/M vs. mRNA/M) using a Mann Whitney U test. The pre-specified secondary endpoints were fast response, levels of neutralizing antibodies, S-specific T-cell responses and reactogenicity. A fast response was defined as having reached an immune response on day 7 that is equal to or higher than 65% increase of the titer on day 28 post-vaccination. The fast response was reported per priming regimen and booster vaccination as percentage. We reported SARS-CoV-2-specific T-cell responses and neutralizing antibody titers using similar statistics as in analyses for the primary endpoint. Post-hoc analyses of S-specific binding antibodies measured by ELISA and S-specific cross-reactive T-cell responses measured by AIM provided an overview of the variant-specific immunogenicity following bivalent vaccination. We used $p < 0.01$ as the statistical significance threshold. We reported missing values when applicable (**Table S4**), and as number of missing values are low no imputation is used. All statistical analyses were conducted using GraphPad Prism software (version 9.4.1) and Rstudio (version 4.2.1). The study is registered with ClinicalTrials.gov, NCT05471440.

Role of the funding source. This study was funded by the Netherlands Organization for Health Research and Development (ZonMw) grant agreement 10430072110001. The funder had no role in the design, execution of the study, or in the analysis and interpretation of the data.

Results

Baseline characteristics of the participants

Of the 592 healthcare workers who were screened for eligibility, 434 were included into the SWITCH ON study. Excluded participants did not meet the inclusion criteria (N=62), withdrew before randomization (N=8) or were excluded for logistical reasons (N=88). 219 participants were randomized into the DB group for which the results will be discussed in this paper. Thirty-two participants were excluded from the intention-to-treat analysis because of withdrawal from the study, SARS-CoV-2 breakthrough infection in between study visits (SV), or missing blood samples across study visits (**Figure 1**). All included participants in the intention-to-treat analyses (N=187) adhered to the defined timing intervals in-between study visits. The median interval between SV1 and SV2 was 7.0 days (IQR, 7.0-7.0) and 28.0 days (IQR, 28.0-28.0) between SV1 and SV3. The median interval between the last vaccination and the bivalent booster vaccination was 298 days (IQR, 266.0-309.5). Notably, the distribution of sex was different between study groups with a higher number of female participants across all groups. Recent SARS-CoV-2 breakthrough infections were most frequently reported in the mRNA/M group, as assessed by N-specific antibody levels in serum at baseline. **Table 1** presents the complete baseline characteristics.

S1-specific binding antibodies after a bivalent booster

S1-specific binding antibody levels increased 7 days after bivalent booster and remained stable over 28 days in all four study groups (**Figure 2A**). No significant difference was observed between the Ad/P (2.9-fold) and mRNA/P (3.6-fold) groups ($p=0.12$), whereas a trend ($p=0.03$) towards increased fold changes after bivalent booster vaccination was observed for the mRNA/M (3.5-fold) and Ad/M (4.3-fold) groups. However, higher baseline levels of S1-specific binding IgG antibodies were detected in mRNA-primed individuals (geometric mean titer (GMT), mRNA/M 5,196 and mRNA/P 3,198 BAU/mL) than in Ad26.COVS.S-primed individuals (GMT, Ad/M 2,032 and Ad/P 1,959 BAU/mL) (**Figure 2A**). Similarly, S1-specific binding IgG antibody levels were higher in the mRNA/M (GMT, 18,329 BAU/mL) and mRNA/P (GMT, 11,643 BAU/mL) study groups compared to the Ad/M (GMT, 8,685 BAU/mL) and Ad/P (GMT, 5,740 BAU/mL) study groups 28 days after bivalent booster vaccination (**Figure 2A**).

Rapid recall of S1-specific antibodies after a bivalent booster

As a secondary outcome, the fast response of S1-specific antibodies following bivalent booster vaccine was calculated. The largest increase in S1-specific binding IgG antibodies

occurred between day 0 and day 7 after booster in all four study groups (**Figure 2C and 2D**). Notably, the proportion of fast responders for participants who received the BNT162b2 OMI BA.1 bivalent booster vaccination was higher (Ad/P: 98%; mRNA/P: 86%) in comparison with those having received the mRNA-1273.214 bivalent vaccine (Ad/M: 69%; mRNA/M: 64%) (**Figure 2D**). Two participants from the total of 187 were excluded from the analysis due to missing SV2 blood draw.

Variant-specific antibodies after a bivalent booster

To assess boosting of SARS-CoV-2-neutralizing antibodies after bivalent booster vaccination, plaque reduction neutralization tests (PRNT) using ancestral SARS-CoV-2, and the Omicron BA.1 and BA.5 variants were performed on a random selection of serum samples (**Figure 3, Figure S2**). Neutralizing antibody levels against ancestral SARS-CoV-2 were comparable at baseline across all four study groups, although participants in the mRNA/M group had higher neutralizing antibody titers (**Figure 3D**). Bivalent booster vaccination increased the neutralizing antibody titers against ancestral SARS-CoV-2 in all study groups at 7 and 28 days post-vaccination. Similar to the binding antibodies (**Figure 2**), the largest increase in neutralizing antibodies was observed between day 0 and day 7 (**Figure 3**). At baseline, the neutralizing antibody response of the participants against Omicron BA.1 and BA.5 variants was markedly lower compared to neutralizing antibody levels against ancestral SARS-CoV-2. Neutralizing antibody levels against BA.1 and BA.5 increased after bivalent booster vaccination with a similar pattern of increase compared to antibodies neutralizing the ancestral SARS-CoV-2; the magnitude of boosting was comparable between the different priming regimens and booster vaccinations at all three study visits.

A similar pattern was observed for S-specific binding antibody levels against ancestral SARS-CoV-2, and the Omicron BA.1 and BA.5 variants when measured by ELISA (**Figure S3**). S-specific binding antibody levels for ancestral SARS-CoV-2, and Omicron BA.1 and BA.5 variants were comparable at baseline, increased 7 days after bivalent booster vaccination and remained stable over 28 days for all four study groups. S-specific binding antibody titers against Omicron BA.1 and BA.5 were significantly lower than against ancestral SARS-CoV-2 in all four study groups at all the time points (**Figure S3**).

S-specific T-cell responses after a bivalent booster

SARS-CoV-2 S-specific T-cell responses were assessed by measuring IFN- γ levels after stimulating whole blood with S-specific peptide pools. T-cell responses increased directly after bivalent booster (day 7) and then decreased at day 28 post-booster vaccination for all

four study groups (**Figure 4A, 4B, and Figure S4**). T-cell responses were comparable at baseline and after bivalent booster for all four study groups (**Figure 4A**). No difference in fold change of IFN- γ levels was observed between the BNT162b2 OMI BA.1 boosted groups (Ad/P: 2.8-fold and mRNA/P: 2.1-fold), however, a higher fold change in IFN- γ levels was observed after bivalent booster vaccination with mRNA-1273.214 following Ad26.COV2.S priming (Ad/M: 4.3-fold) compared to mRNA priming (mRNA/M: 2.3-fold) (**Figure 4B**).

S-specific T-cell cross-reactivity to BA.1 and BA.5 was assessed by AIM flow cytometry assay, after stimulating peripheral blood mononuclear cells (PBMC) with overlapping S peptides. SARS-CoV-2 specific CD4+ T-cell responses were generally higher in mRNA-primed individuals than in Ad26.COV2.S-primed individuals at baseline (geometric mean (GM), mRNA prime: 0.48 and Ad26.COV2.S prime: 0.16), 7 days (GM, mRNA prime: 0.39 and Ad26.COV2.S prime: 0.25), and 28 days after bivalent booster vaccination (GM, mRNA prime: 0.41 and Ad26.COV2.S prime: 0.17) (**Figure 4C and 4D**). An increase in S-specific T-cells between 0 and 7 days post vaccination was observed in the Ad26.COV2.2-primed participants, but not in the mRNA-based primed participants. Notably, CD4+ T-cells were cross-reactive with the Omicron BA.1 and BA.5 variants in all study groups (**Figure 4C and 4D**). CD8+ T-cell responses followed similar kinetics as CD4+ T-cell responses for all study groups (**Figure S5**).

Reactogenicity

The reactogenicity data showed that pain at the injection site, muscle aches, headache or fatigue were the most reported side effects in all four study groups. All side effects were mild to moderate in severity (**Table S2**) and resolved within 48 hours (**Table S3**). The severity of side effects was similar between all groups, except for joint pain, which was experienced more frequently in mRNA-1273.214-boosted participants regardless of their priming regimen.

Discussion

This study reports the immunogenicity and reactogenicity of BA.1 bivalent COVID-19 booster vaccines in Dutch healthcare workers primed with Ad26.COV2.S, mRNA-1273, or BNT16b2 vaccines. Bivalent booster vaccination significantly increased binding and neutralizing antibody levels in all groups and no differences in 'boostability' were observed between Ad26.COV2.S- and mRNA-based vaccine primed individuals.

We observed a clinical significant fold change in antibody titers from day 0 to day 28 in the four groups, though no differences between various priming regimes. Further, the largest increase in antibody titers within the first 7 days after booster vaccination. This was most prominent in BNT162b2 OMI BA.1 boosted groups. As per Dutch policy, those under 45 years of age received BNT162b2 OMI BA.1, whereas participants above 45 years were boosted with mRNA-1273.214, making it likely that the lower age of these participants is responsible for this difference. A similar rapid recall was noticed for T-cell responses measured in whole blood, with kinetics slightly different from the antibody kinetics: after the rapid recall at day 7, IFN- γ responses in whole blood slightly decreased at day 28 after booster vaccination. The observation of combined rapid SARS-CoV-2-specific antibody and T-cell recall responses is indicative of efficient induction of immunological memory by previous vaccinations and/or infections.

The BA.1 bivalent booster vaccination boosted neutralizing antibodies targeting both BA.1 and BA.5 from the Omicron sub-lineage, however, these neutralizing antibody levels were generally lower than those against ancestral SARS-CoV-2. This is consistent with previous studies describing the immunogenicity of BA.1 bivalent booster vaccines^{10,18,19}. Although our data support the induction of cross-neutralizing antibodies by the BA.1 bivalent booster vaccines against emerging variants not contained in the vaccine (such as BA.5), we did not observe preferential boosting of BA.1 over BA.5 neutralizing antibodies. This is consistent with two recent studies that show that exposure to antigenically distinct Omicron variants⁸ by either vaccination or infection recalls pre-existing memory B-cells specific for epitopes shared by different SARS-CoV-2 variants^{20,21}. Real-world data exploring the effectiveness of this increased breadth of the immune response will be essential when evaluating the need for continuous updating of variant-specific booster vaccines.

Whereas we did not observe any effect of the respective priming regimen on (neutralizing) antibodies before or after bivalent booster vaccination, this was different for CD4+ T-cell responses measured by AIM assay. Activation of CD4+ T-cells after stimulation with

overlapping S peptide pools at any time point was considerably lower in Ad26.COV2.S-primed individuals compared to mRNA-primed individuals. This was similar to observations after primary vaccination^{3,14}. Although the levels of SARS-CoV-2-specific CD4+ T cell levels in peripheral blood were lower in Ad26.COV2.S-primed participants at baseline, the response was rapidly reactivated upon antigen exposure. In all groups, T-cell responses generally displayed cross-reactivity with the Omicron BA.1 and BA.5 variants^{3,14,22}, and no preferential induction of variant-specific T-cells was observed after booster vaccination.

Immunological memory is crucial in the prevention of severe COVID-19, as sterile immunity against SARS-CoV-2 infection cannot be achieved by vaccination or infection, which is illustrated by the low vaccine effectiveness against infection in HCW of 7-11%²³. Our data show that bivalent booster vaccination leads to a robust recall of memory B- and T-cell responses, and that the largest fraction of these responses occurs within the first 7 days after boost. A similar rapid recall of immune memory is to be expected in the case of a SARS-CoV-2 breakthrough infection. It is therefore not unreasonable to assume that the generally mild disease profile upon infection with variants from the Omicron sub-lineage is at least partly driven by a broad memory recall response, which could be predictive of mild clinical disease after re-infection with future variants as well. This calls for a re-evaluation of the necessity and frequency of future COVID-19 booster vaccinations in the general population and risk groups. For specific populations, clinical evaluations should include the monitoring of immunity and severity of clinical disease, against the background of antigenic drift at the virus level.

Author contributions. Conceptualization: P.H.M.v.d.K., C.G.v.K., R.D.d.V. Formal analysis: N.H.T., D.G., R.S.G.S., W.J.R.R., R.D.d.V. Funding acquisition: N.H.T., R.S.G.S, W.J.R.R., A.G., D.F.P., L.G.V., M.P.G.K., V.A.S.H.D., M.L., N.A.K., A.L.W.H., D.v.B., L.M.Z., C.G.v.K., R.D.d.V., P.H.M.v.d.K. Investigation: N.H.T., D.G., R.S.G.S, W.J.R.R., A.G., D.F.P., L.G.V., S.B., L.L.A.v.D., L.G., L.P.M.v.L., A.B., S.H.N., K.A.v.D., M.P.G.K., V.A.S.H.D., M.L., N.A.K., A.L.W.H., D.v.B., L.M.Z., C.G.v.K., R.D.d.V., P.H.M.v.d.K. Supervision: P.H.M.v.d.K., C.G.v.K., R.D.d.V. Visualization: D.G., L.M.Z., R.D.d.V. Writing-original draft: N.H.T., D.G., R.S.G.S., W.J.R.R., R.D.d.V., C.G.v.K., P.H.M.v.d.K. Writing: review and editing: all authors reviewed and edited the final version.

Conflict of interest. All authors declare that they have no competing interests.

Data sharing agreement. Anonymized individual participant data, analytics code, and other supporting documents will be made available when the study is complete, on reasonable requests made to the corresponding author.

Acknowledgements. We acknowledge QIAGEN for supporting the study by providing QuantiFERON SARS-CoV-2 RUO Starter and Extended Packs. QIAGEN had no role in study design, data acquisition and analysis. Assay methodology images were created with Biorender.

Reference

1. Watson OJ, Barnsley G, Toor J, Hogan AB, Winskill P, Ghani AC. Global impact of the first year of COVID-19 vaccination: a mathematical modelling study. *The Lancet Infectious Diseases* 2022; **22**(9): 1293-302.
2. Suthar AB, Wang J, Seffren V, Wiegand RE, Griffing S, Zell E. Public health impact of covid-19 vaccines in the US: observational study. *BMJ* 2022; **377**: e069317.
3. GeurtsvanKessel CH, Geers D, Schmitz KS, et al. Divergent SARS-CoV-2 Omicron reactive T and B cell responses in COVID-19 vaccine recipients. *Science Immunology* 2022; **7**(69): eabo2202.
4. Sablerolles RSG, Rietdijk WJR, Goorhuis A, et al. Immunogenicity and reactogenicity of vaccine boosters after Ad26. COV2. S priming. *New England Journal of Medicine* 2022; **386**(10): 951-63.
5. Andrews N, Stowe J, Kirsebom F, et al. Covid-19 Vaccine Effectiveness against the Omicron (B.1.1.529) Variant. *New England Journal of Medicine* 2022; **386**(16): 1532-46.
6. Malhotra S, Mani K, Lodha R, et al. COVID-19 infection, and reinfection, and vaccine effectiveness against symptomatic infection among health care workers in the setting of omicron variant transmission in New Delhi, India. *The Lancet Regional Health-Southeast Asia* 2022; **3**: 100023.
7. Patalon T, Saciuk Y, Peretz A, et al. Waning effectiveness of the third dose of the BNT162b2 mRNA COVID-19 vaccine. *Nature Communications* 2022; **13**(1): 1-7.
8. Mykytyn AZ, Rissmann M, Kok A, et al. Omicron BA.1 and BA.2 are antigenically distinct SARS-CoV-2 variants. *Preprint at BioRxiv* 2022.
9. Interim statement on the composition of current COVID-19 vaccines: World Health Organization (WHO).
10. Chalkias S, Harper C, Vrbicky K, et al. A bivalent omicron-containing booster vaccine against Covid-19. *New England Journal of Medicine* 2022; **387**(14): 1279-91.
11. BioNTech. Study to Describe the Safety, Tolerability, Immunogenicity, and Efficacy of RNA Vaccine Candidates Against COVID-19 in Healthy Individuals: Clinicaltrials.gov, 2022.
12. Tan NH, Sablerolles R, Rietdijk WJR, et al. Analyzing the immunogenicity of bivalent booster vaccinations in healthcare workers: The SWITCH ON trial protocol. *Frontiers in Immunology* 2022: 7277.
13. Dutch National Institute for Public Health and the Environment. COVID-19 vaccinatie uitvoeringsrichtlijn 2022. 17-10-2022.
14. Geers D, Shamier MC, Bogers S, et al. SARS-CoV-2 variants of concern partially escape humoral but not T cell responses in COVID-19 convalescent donors and vaccine recipients. *Science immunology* 2021; **6**(59): eabj1750.
15. Geers D, Sablerolles R, van Baarle D, et al. Ad26. COV2. S priming provides a solid immunological base for mRNA-based COVID-19 booster vaccination. *medRxiv* 2022.
16. Okba NMA, Muller MA, Li W, et al. Severe Acute Respiratory Syndrome Coronavirus 2-Specific Antibody Responses in Coronavirus Disease Patients. *Emerg Infect Dis* 2020; **26**(7): 1478-88.
17. Food and Drug Administration (FDA). Toxicity grading scale for healthy adults and adolescent volunteers enrolled in preventive vaccine clinical trials.
18. Chalkias S, Eder F, Essink B, et al. Safety, immunogenicity and antibody persistence of a bivalent beta-containing booster vaccine against COVID-19: a phase 2/3 trial. *Nature Medicine* 2022: 1-10.

19. Hachmann NP, Miller J, Collier A-rY, et al. Neutralization escape by SARS-CoV-2 Omicron subvariants BA. 2.12. 1, BA. 4, and BA. 5. *New England Journal of Medicine* 2022; **387**(1): 86-8.
20. Quandt J, Muik A, Salisch N, et al. Omicron BA. 1 breakthrough infection drives cross-variant neutralization and memory B cell formation against conserved epitopes. *Science Immunology* 2022: eabq2427.
21. Park Y-J, Pinto D, Walls AC, et al. Imprinted antibody responses against SARS-CoV-2 Omicron sublineages. *Science* 2022; **378**(6620): 619-27.
22. Tarke A, Coelho CH, Zhang Z, et al. SARS-CoV-2 vaccination induces immunological T cell memory able to cross-recognize variants from Alpha to Omicron. *Cell* 2022; **185**(5): 847-59. e11.
23. ECDC HCW VE cohort study group. Interim analysis of COVID-19 vaccine effectiveness in healthcare workers; an ECDC multi country study.

Evaluation of bivalent Omicron BA.1 booster vaccination after different priming regimens in healthcare workers (SWITCH ON): a randomized controlled trial

Ngoc H. Tan^{†1}, MPharm., Daryl Geers^{†2}, M.Sc., Roos S.G. Sablerolles^{†1}, M.D., Wim J.R. Rietdijk¹, Ph.D., Abraham Goorhuis^{3,4}, M.D., Ph.D., Douwe F. Postma⁵, M.D., Ph.D., Leo G. Visser⁶, M.D., Ph.D., Susanne Bogers², M.Sc., Laura L.A. van Dijk², M.Sc., Lennert Gommers², B.Sc., Leanne P.M. van Leeuwen², M.D., Annemarie Boerma⁷, M.Sc., Sander H. Nijhof⁷, M.Sc., Karel A. van Dort⁸, M.Sc., Marion P.G. Koopmans², D.V.M., Ph.D., Virgil A.S.H. Dalm⁹, M.D., Ph.D., Melvin Lafeber¹⁰, M.D., Ph.D., Neeltje A. Kootstra⁸, Ph.D., Anke L.W. Huckriede⁷, Ph.D., Debbie van Baarle^{7,11}, Ph.D., Luca M. Zaeck², Ph.D., Corine H. GeurtsvanKessel^{†2}, M.D., Ph.D., Rory D. de Vries^{†2}, Ph.D., and P. Hugo M. van der Kuy^{†1}, Pharm.D., Ph.D. for the SWITCH Research Group*

† contributed equally

¹Department of Hospital Pharmacy, Erasmus Medical Center, Rotterdam, the Netherlands

²Department of Viroscience, Erasmus Medical Center, Rotterdam, the Netherlands

³Center of Tropical Medicine and Travel Medicine, Department of Infectious Diseases, Amsterdam University Medical Centers, Amsterdam, the Netherlands

⁴Infection & Immunity, Amsterdam Public Health, University of Amsterdam, Amsterdam, the Netherlands

⁵Department of Internal Medicine and Infectious Diseases, University Medical Center Groningen, Groningen, the Netherlands

⁶Department of Infectious Diseases, Leiden University Medical Center, Leiden, the Netherlands

⁷Department of Medical Microbiology and Infection Prevention, University Medical Center Groningen, University of Groningen, Groningen, the Netherlands

⁸Department of Experimental Immunology, Amsterdam University Medical Centers, Amsterdam Infection and Immunity Institute, University of Amsterdam, Amsterdam, the Netherlands

⁹Department of Internal Medicine, Division of Allergy & Clinical Immunology and Department of Immunology, Erasmus Medical Center, Rotterdam, the Netherlands

¹⁰Department of Internal Medicine, Erasmus Medical Center, Rotterdam, the Netherlands

¹¹Center for Infectious Disease Control, National Institute for Public Health and the Environment, Bilthoven, the Netherlands

ClinicalTrial.gov identifier: NCT05471440

Corresponding author: P.H.M. van der Kuy, Department of Hospital Pharmacy, Erasmus Medical Center, Rotterdam, 3015 GD, the Netherlands. E-mail: h.vanderkuy@erasmusmc.nl

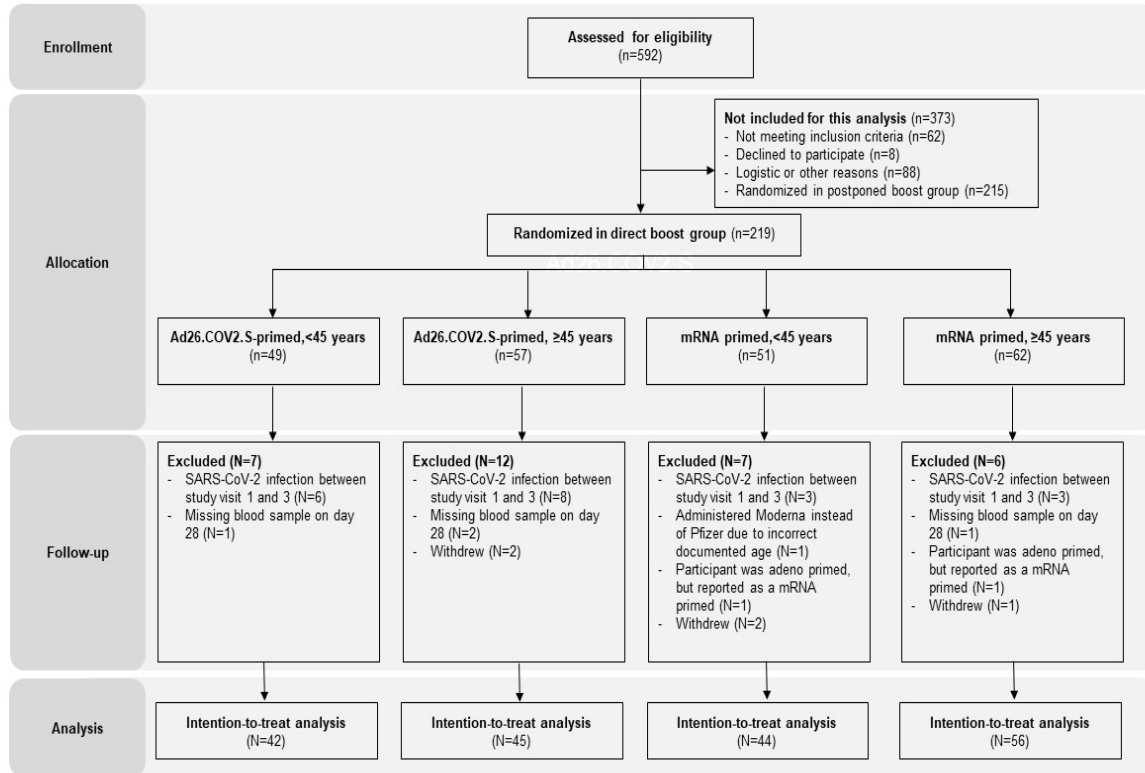


Figure 1. Participant screening, inclusion, exclusion, and analysis.

592 healthcare workers (HCW) were screened for eligibility, of whom 62 did not meet inclusion criteria, 8 withdrew from the study before randomization, and 88 were excluded for logistical reasons. Ultimately, 434 HCW were included into the study and randomized into a direct boost (DB; n=219) or postponed boost (PPB; n=215) group (further explained in **Figure S1**). Participants were allocated into 1 of 4 study arms. For final analysis, several participants were excluded because of SARS-CoV-2 breakthrough infection in between study visits, missing blood samples, or withdrawal from the study, leading to a final inclusion of n=187 participants in an intention-to-treat analysis.

Table 1. Baseline characteristics of trial participants

	Total N = 187	Ad26.COV2.S primed, <45 years (Ad/P) N = 42	mRNA primed, <45 years (mRNA/P) N = 44	Ad26.COV2.S primed, ≥45 years (Ad/M) N = 45	mRNA primed, ≥45 years (mRNA/M) N = 56	
Sex	Male	49 (26%)	15 (36%)	10 (23%)	17 (38%)	7 (13%)
	Female	138 (74%)	27 (64%)	34 (77%)	28 (62%)	49 (88%)
	Age (years)	47.0 (36.0 - 53.0)	32.0 (28.0-40.5)	35.0 (28.0-40.0)	52.0 (50.0 - 55.0)	53.0 (50.0 - 57.0)
	BMI (kg/m ²)	24.2 (22.5 - 27.0)	23.8 (22.2-24.8)	23.8 (21.7 - 26.3)	25.0 (23.0-27.5)	24.8 (23.0 - 27.7)
Ancestry	African	2 (1%)	0 (0%)	1 (2%)	1 (2%)	0 (0%)
	Asian	6 (3%)	0 (0%)	3 (7%)	0 (0%)	3 (5%)
	European	173 (93%)	40 (95%)	39 (89%)	44 (98%)	50 (89%)
	North American	1 (1%)	0 (0%)	1 (2%)	0 (0%)	0 (0%)
	South American	0 (0%)	0 (0%)	0 (0%)	0 (0%)	0 (0%)
	Other	5 (3%)	2 (5%)	0 (0%)	0 (0%)	3 (5%)
Occupation in hospital	Administrative/policy maker	27 (14%)	6 (14%)	3 (7%)	10 (22%)	8 (14%)
	Medical doctor	15 (8%)	2 (5%)	4 (9%)	0 (0%)	9 (16%)
	Facility services	3 (2%)	1 (2%)	1 (2%)	1 (2%)	0 (0%)
	Management	24 (13%)	5 (12%)	3 (7%)	9 (20%)	7 (13%)
	Supportive staff clinic/emergency department	2 (1%)	1 (2%)	0 (0%)	0 (0%)	1 (2%)
	Supportive staff outpatient clinic	1 (1%)	0 (0%)	0 (0%)	0 (0%)	1 (2%)
	Researcher	45 (24%)	17 (40%)	15 (34%)	5 (11%)	8 (14%)
	Nurse	11 (6%)	0 (0%)	4 (9%)	0 (0%)	7 (13%)
	Other	59 (32%)	10 (24%)	14 (32%)	20 (44%)	15 (27%)
	Comorbidities	Cardiovascular diseases	2 (1%)	0 (0%)	0 (0%)	0 (0%)
Pulmonary diseases		9 (5%)	1 (2%)	2 (5%)	2 (4%)	4 (7%)
Diabetes mellitus		3 (2%)	0 (0%)	1 (2%)	2 (4%)	0 (0%)
Liver diseases		2 (1%)	0 (0%)	0 (0%)	0 (0%)	2 (4%)
Kidney diseases		3 (2%)	1 (2%)	1 (2%)	0 (0%)	1 (2%)
S1-specific binding antibodies (LIAISON, BAU/ml)	Study visit 1	2660 (1530-6920)	1950 (1252.5-3422.5)	2725 (1560- 7927.5)	2130 (1210-4760)	5665 (2007.5-11050)
	Interferon gamma release assay (IGRA, IU/ml)	Study visit 1	0.36 (0.14-0.76)	0.47 (0.15-0.64)	0.53 (0.19-1.06)	0.19 (0.13-0.63)
Nucleocapsid	Negative	151 (81%)	33 (79%)	39 (89%)	41 (91%)	38 (68%)
	Positive	36 (19%)	9 (21%)	5 (11%)	4 (9%)	18 (32%)
Original center	Amsterdam University Medical Centers	22 (12%)	6 (14%)	8 (18%)	3 (7%)	5 (9%)

	Erasmus Medical Center, Rotterdam	130 (70%)	23 (55%)	34 (77%)	23 (51%)	50 (89%)
	Leiden University Medical Center	16 (9%)	9 (21%)	0 (0%)	7 (16%)	0 (0%)
	University Medical Center Groningen	19 (10%)	4 (10%)	2 (5%)	12 (27%)	1 (2%)
Median time	Between study 1 and 2 (day 0 and 7)	7.0 (7.0 - 7.0)	7.0 (7.0 - 7.0)	7.0 (7.0 - 7.0)	7.0 (7.0 - 7.0)	7.0 (7.0 - 7.0)
	Between study 1 and 3 (day 0 and 28)	28.0 (28.0 - 28.0)	28.0 (28.0 - 28.0)	28.0 (28.0 - 28.0)	28.0 (28.0 - 28.0)	28.0 (28.0 - 28.0)
	Between last booster and bivalent booster (in days)	298.0 (266.0-309.5)	266.5 (260.5-305.3)	303.0 (297.0-309.3)	266.0 (263.0-293.0)	307.0 (302.3-310.3)

Note: For categorical variables we present numbers (percentages), whereas continuous variables we present median (interquartile range).

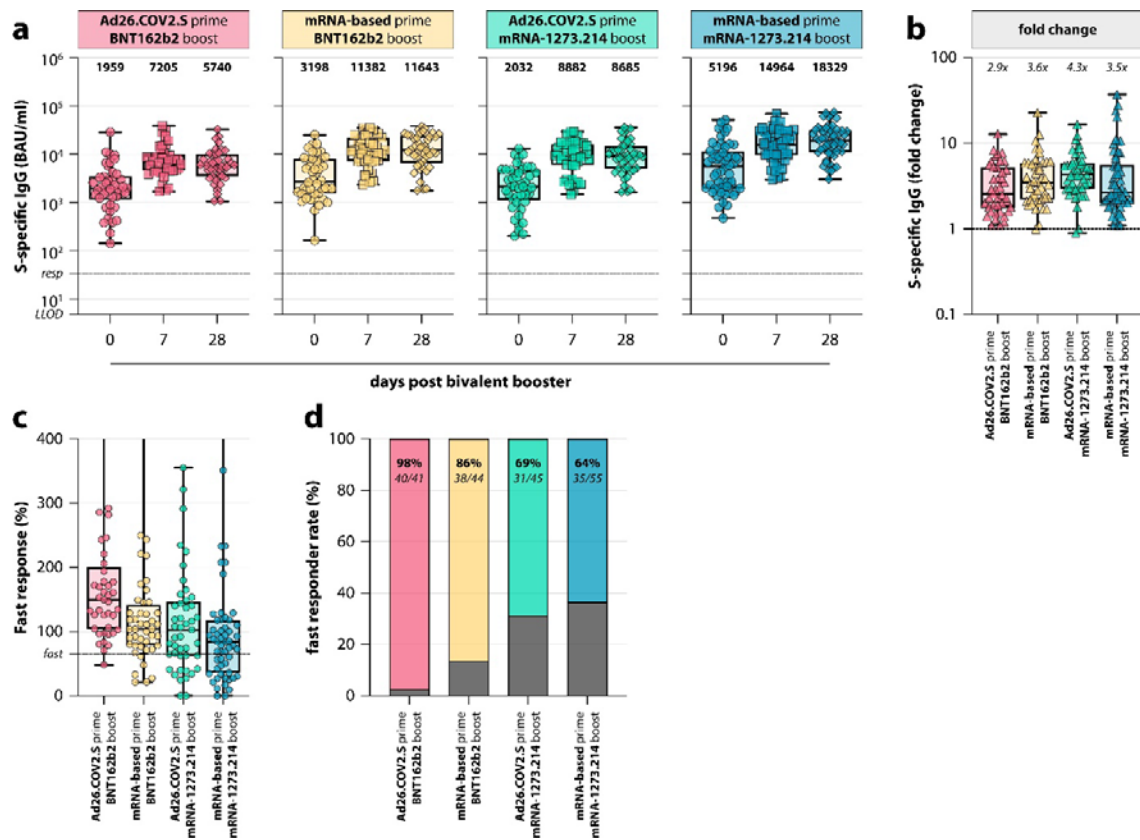


Figure 2. S-specific binding antibodies and fast response after bivalent booster vaccination.

(a) Detection of (ancestral) S1-specific binding IgG antibodies at baseline before bivalent booster (0 days; circles), and 7 days (squares) and 28 days (diamonds) after booster in the four study groups (Ad26.COVS.S prime / BNT162b2 OMI BA.1 boost, red, Ad/P; mRNA-based prime / BNT162b2 OMI BA.1 boost, yellow, mRNA/P; Ad26.COVS.S prime / mRNA-1273.214 boost, teal, Ad/M; mRNA-based prime / mRNA-1273.214 boost, blue, mRNA/M). The lower limit of detection (LLOD) was set at 4.81 binding antibody units per milliliter (BAU/mL). The cut-off responder value was set at 33.8 BAU/mL (horizontal dashed line). The bold numbers above the plots indicate the geometric mean titer (GMT) per time point. **(b)** Fold change of S-specific binding antibody levels between baseline and 28 days after bivalent booster vaccination in the four study groups. The horizontal dashed line indicates a fold change of 1, which corresponds to no increase or decrease in S1-specific binding antibody levels post-vaccination. Exact fold changes per study group are indicated above the respective plot. **(c)** Fast response based on S1-specific antibody levels in the four study groups. The horizontal dashed line indicates the fast responder cut-off, which was defined as having reached an antibody level on day 7 post-vaccination that is equal to or higher than 65% of the total S-specific binding antibody response on day 28. **(d)** Percentage of fast responders per study group.

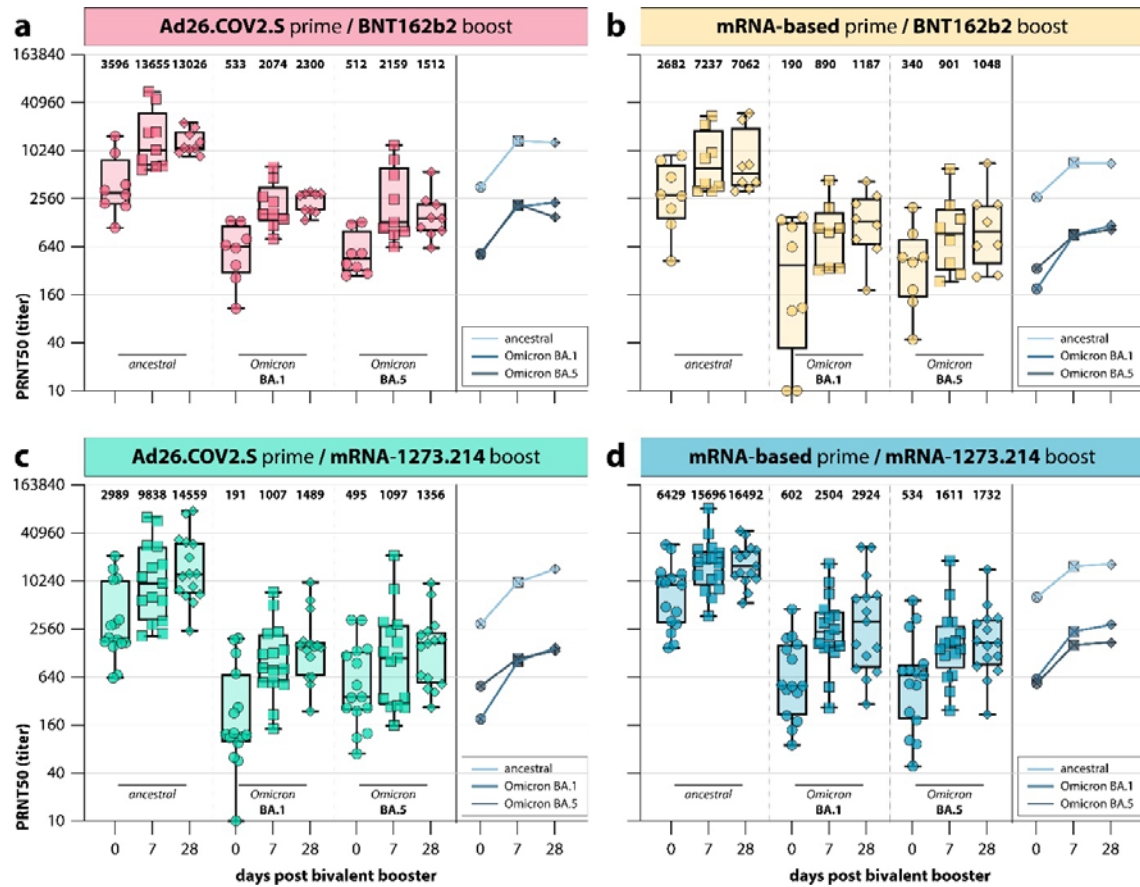


Figure 3. Variant-specific neutralization after bivalent booster vaccination.

(a-d) Detection of SARS-CoV-2-neutralizing antibodies targeting ancestral SARS-CoV-2 and Omicron variants BA.1 and BA.5 at baseline (0 days; circles), 7 days (squares), and 28 days (diamonds) after bivalent booster vaccination for (a) Ad26.COVS.2 prime / BNT162b2 OMI BA.1 boost (red; Ad/P), (b) mRNA-based prime / BNT162b2 OMI BA.1 boost (yellow; mRNA/P), (c) Ad26.COVS.2 prime / mRNA-1273.214 boost (teal; Ad/M), and (d) mRNA-based prime / mRNA-1273.214 boost (blue; mRNA/M). The bold numbers above the plots indicate the geometric mean titer (GMT) per time point and variant. The line graphs next to each panel represent the median neutralizing titer against ancestral SARS-CoV-2 and Omicron variants BA.1 and BA.5 at baseline (0 days), 7 days, and 28 days after bivalent booster vaccination. When no neutralization was observed, the PRNT50 was given a value of 10.

It is made available under a [CC-BY-NC-ND 4.0 International license](https://creativecommons.org/licenses/by-nc-nd/4.0/).

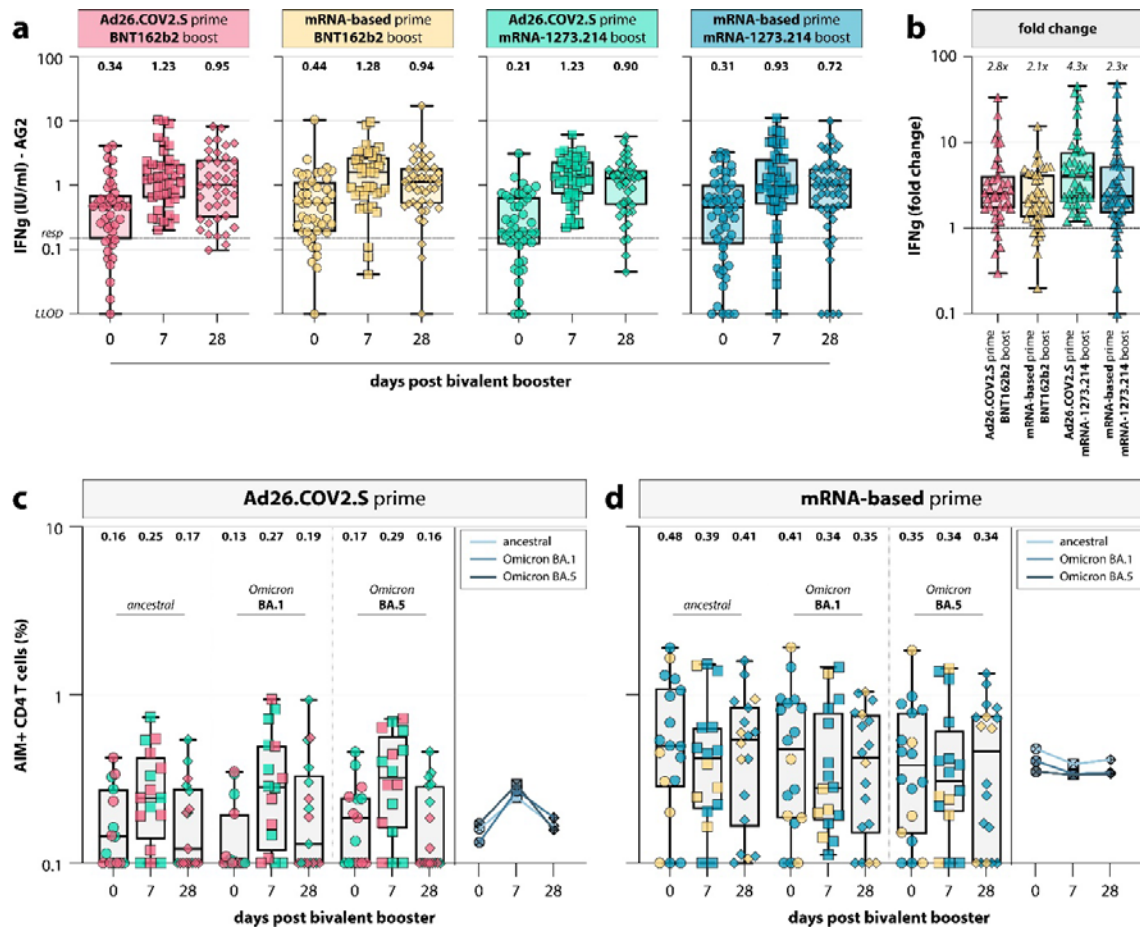


Figure 4. Variant-specific T-cell responses after bivalent booster vaccination.

(a) Detection of IFN- γ in international units per milliliter (IU/mL) following stimulation of whole blood with overlapping S peptide pools in coated QuantiFERON tubes at baseline (day 0; circles), 7 days (squares), and 28 days (diamonds) after bivalent booster vaccination in the four study groups (Ad26.COV2.S prime / BNT162b2 OMI BA.1 boost, red, Ad/P; mRNA-based prime / BNT162b2 OMI BA.1 boost, yellow, mRNA/P; Ad26.COV2.S prime / mRNA-1273.214 boost, teal, Ad/M; mRNA-based prime / mRNA-1273.214 boost, blue, mRNA/M). A lower limit of detection (LLOD) was set at 0.01 IU/mL as per manufacturer's instructions. The horizontal dotted line indicates a pre-defined responder cut-off of 0.15 IU/mL. The bold numbers above the plots indicate the geometric mean (GM) IFN- γ levels per timepoint. **(b)** Fold change of IFN- γ levels between baseline and 28 days after bivalent booster vaccination in the four study groups. The horizontal dashed line indicates a fold change of 1, which corresponds to no increase or decrease. Exact fold changes per study group are indicated above the respective plot. **(c, d)** Percentages of activation-induced marker (AIM)-positive CD4+ T-cells following *ex vivo* stimulation with an overlapping peptide pool spanning the full S protein of ancestral SARS-CoV-2 or the Omicron variants BA.1 and BA.5 in **(c)** Ad26.COV2.S primed or **(d)** mRNA primed individuals. The symbol colors refer to their respective study group. The bold

numbers above the plots indicate the geometric mean (GM) of the percentage of AIM-positive CD4+ T-cells per time point. The line graphs next to each panel represent the median percentage of AIM-positive CD4+ T-cells for ancestral SARS-CoV-2 and Omicron variants BA.1 and BA.5 at baseline (0 days), 7 days, and 28 days after bivalent booster vaccination.