

ReIGNITE RT Boost: An international study testing the accuracy and feasibility of using restriction spectrum imaging (RSI) MRI to guide intraprostatic tumor target volume for radiotherapy boost

Asona J. Lui, MD, PhD¹; Karoline Kallis, PhD¹; Allison Y. Zhong^{1,2}; Troy S. Hussain¹; Christopher Conlin, PhD¹; Leonardino A. Digma²; Nikki Phan¹; Ian T. Mathews, PhD^{1,2}; Deondre D. Do³; Mariluz Rojo³; Roshan Karunamuni, PhD¹; Joshua Kuperman, PhD⁴; Anders M. Dale, PhD^{4,5,6}; Rebecca Rakow-Penner, MD, PhD^{3,4}; Michael E. Hahn, MD, PhD⁴; Tyler M. Seibert, MD, PhD^{1,3,4}

¹Department of Radiation Medicine and Applied Sciences, UC San Diego School of Medicine, La Jolla, CA, USA

²UC San Diego School of Medicine, La Jolla, CA, USA

³Department of Bioengineering, UC San Diego Jacobs School of Engineering, La Jolla, CA, USA

⁴Department of Radiology, UC San Diego School of Medicine, La Jolla, CA, USA

⁵Department of Neurosciences, UC San Diego School of Medicine, La Jolla, CA, USA

⁶Halicioğlu Data Science Institute, UC San Diego School of Medicine, La Jolla, CA, USA

Corresponding Author:

Tyler M. Seibert, MD, PhD

Assistant Professor

Department of Radiation Medicine and Applied Sciences

Department of Radiology

Department of Bioengineering

Center for Multimodal Imaging and Genetics

University of California San Diego

9500 Gilman Dr. Mail Code 0861

La Jolla, CA 92093-0861

tseibert@ucsd.edu

T: 858-246-5988

F: 858-246-0501

Keywords: Prostate cancer; prostate radiotherapy, intraprostatic tumor, dominant intraprostatic lesion (tumor); magnetic resonance imaging; MRI; diffusion-weighted imaging; DWI; restriction spectrum imaging

COUNT: Abstract (195 words), Manuscript (996 words), References (9), Tables (1), Figures (1)

Abstract

In a phase III randomized trial, adding a radiation boost to visible tumor(s) on MRI improved prostate cancer disease-free and metastasis-free survival without additional toxicity. However, radiation oncologists' ability to identify prostate tumors is critical and represents a major barrier to widely adopting intraprostatic tumor radiotherapy boost for patients. We previously developed a quantitative diffusion MRI biomarker for prostate cancer, called the Restriction Spectrum Imaging restriction score (RSIrs), that has been shown to improve radiologist identification of clinically significant prostate cancer.

42 radiation oncologists (participants) from multiple, international institutions contoured prostate tumors on 40 patient cases using standard MRI with or without RSIrs map, producing 1646 target volumes. Use of RSIrs maps significantly improved all evaluated accuracy metrics, including participants' percent overlap with consensus expert target volume (73% vs. 42%, $p < 0.001$). A mixed effects model confirmed that RSIrs maps were the main variable driving the improvement in all metrics. System Usability Scores indicated RSIrs maps significantly improved the contouring experience (72 vs. 58, $p < 0.002$). The expert-defined tumor was completely missed 158 times on standard MRI alone and only 19 times with RSIrs maps. RSIrs maps improve the accuracy of target delineation for prostate tumor boost.

Patient Summary: Adding an extra boost of radiation to tumor(s) visible on MRI has been shown to prevent cancer recurrence and cancer spread beyond the prostate without adding additional side effects; however, drawing the prostate tumor on MRI is

difficult, and most radiation oncologists have not been trained to do this. We have developed an advanced MRI technique (RSIrs maps) that increases tumor visibility. We found that RSIrs maps improve radiation oncologists' accuracy in targeting prostate tumors.

Manuscript:

Standard radiation therapy for aggressive prostate cancer (PCa) treats the entire prostate gland with an equally distributed radiation dose of 70-80 Gy. In a recent phase III randomized controlled trial, addition of a focal radiotherapy boost to PCa lesions visible on MRI (hereafter called tumors) up to 95 Gy increased disease-free survival from 86% to 93% at 7 years when compared to standard dose delivery.¹ Both local control and regional/distant metastasis-free survival were also improved.² Remarkably, these patient benefits did not come at the cost of additional short- or long-term toxicity.^{2,3} However, radiation oncologists' ability to identify prostate tumors on MRI is critical to harnessing the benefits of radiotherapy boost for patients.

In the FLAME trial, expert radiologists assisted with target identification, but even subspecialty-trained, experienced radiologists show substantial variability in lesion identification.^{4,5} Tumor identification has not been part of most radiation oncology training and presents a major barrier to widely adopting intraprostatic tumor boost for prostate radiotherapy.

We previously developed a quantitative diffusion MRI biomarker for PCa, called the Restriction Spectrum Imaging restriction score (RSIrs), that significantly improves diagnostic utility over conventional MRI.^{6,7} RSI is a sophisticated but practical approach that models tissue microcompartments to highlight the restricted intracellular diffusion characteristic of higher-grade PCa.⁸ We hypothesized that using RSIrs maps would improve radiation oncologists' accuracy for PCa tumor delineation.

42 radiation oncologist participants with varied levels of experience were enrolled as participants in our study (**Supplemental Table 1**). Participants still in training were

required to have previously completed a prostate cancer radiation oncology clinical rotation. All study recruitment materials, communications, and procedures were approved by the UC San Diego Institutional Review Board (IRB).

Study participants were asked to contour tumors on 20 patient cases—half with conventional MRI alone and half with conventional MRI plus RSIs—in each of two sessions at least 1 month apart. Without informing the participants, 10 of the cases from the first session were interspersed within the second session but with RSIs either removed or added from the case. Conventional MRI included T_2 -weighted, ADC, and DWI ($b=0$ and $b=2000$ s/mm²). RSIs maps were displayed as an overlay on the anatomic T_2 -weighted images (**Supplemental Figure 1**). Participants contoured tumor volumes using the MIM Zero Footprint™ (ZFP) platform. They were also provided with basic clinical information for each case: patient age, PSA at time of MRI, Gleason score, number and location of positive cores, and the radiologist's description of the location and size of the lesion. Expert volumes were created by consensus interpretation by two board-certified, sub-specialist GU radiologists, R.R.P. (5 years' experience) and M.E.H. (7 years' experience), using conventional multiparametric MRI (including dynamic contrast enhanced images) and the clinical/pathologic information for each case. They were assisted by a radiation oncologist, A.J.L. (3 years' experience). All volumes were exported as binary masks and analyzed in MATLAB R2021b (Mathworks, Natick, MA).

1646 participant volumes were compared to the relevant consensus expert volumes using four metrics of accuracy: percent overlap with expert volume, Dice coefficient, conformal number, and maximum distance beyond expert volume (**Table 1 and Supplemental Figure 2**). The addition of RSIs maps to conventional MRI

significantly improved all accuracy metrics by at least 50%, including overlap with expert volume (37.8% vs. 73.2%, $p < 0.0001$) (**Table 1**). There were 158 complete misses with conventional MRI alone and only 19 complete misses with addition of RSIs maps. Improvement in accuracy and reduction of variability are illustrated in **Figure 1 and Supplemental Figure 1** for representative cases.

Mixed-effects models demonstrated that use of RSIs maps was the main driver of improvement in accuracy metrics in our study, not participants' experience with prostate tumor boost (**Supplemental Tables 2-5**). Use of RSIs maps was independently associated with improvement in all four accuracy metrics and was the only independent predictor of accuracy for three metrics (percent overlap, Dice coefficient, and conformal number).

After completing the volumes, participants were given a System Usability Scale (SUS) questionnaire adapted from the US Department of Health and Human Services.⁹ Responses to the SUS questionnaire (on a scale of 0 to 100, with >70 considered "acceptable" and ≤ 50 considered "poor" usability) were analyzed in the standard manner, interpreted to evaluate the relative difficulty and preference for contouring with and without RSIs maps. SUS score improved significantly with the use of RSIs maps (57 vs. 72, $p < 0.001$). Notably, target delineation on conventional MRI was rated poorly, with 36% of participants reporting an SUS score ≤ 50 and only 26% reporting SUS score >70 . With the addition of RSIs maps, the proportion of participants reporting a "poor" experience was reduced to 5% and the proportion reporting "acceptable" experience increased to 48% (**Supplemental Figure 3**). This result underscores the inherently

challenging nature of tumor contouring and highlights the need for new methods and training so that tumor radiotherapy boost can become standard for patients with PCa.

Limitations of this study include the use of images from a single scanner and a single institution. Ongoing studies are evaluating the quantitative reproducibility of RSIs maps across scanner platforms. This study used expert radiologist consensus volumes as the reference, in conjunction with the clinical and pathological (biopsy) information. We have previously demonstrated improved voxel-wise PCa detection with RSIs⁶ and are currently collecting data to compare RSIs to whole-mount histopathology to evaluate tumor extent. These efforts might yield improved accuracy even beyond the radiologist standard used in the present study and in the FLAME trial that established the benefit of focal tumor boost.

We report that RSIs maps significantly improve the accuracy and reduce the variability of target delineation for prostate tumor radiotherapy boost. RSIs maps can be generated from brief acquisitions on standard MRI scanners—approximately two minutes of additional scan time for the maps in this study. An implementation of RSI software is cleared by the FDA for prostate MRI and already commercially available on multiple scanner/vendor platforms. RSIs maps have the potential to increase the feasibility of widely implementing the benefits of focal tumor boost for patients undergoing prostate radiotherapy.

Take Home Message:

RSIs maps improve radiation oncologists' accuracy for target delineation for prostate tumor radiotherapy boost. RSIs maps have the potential to increase the

feasibility of widely implementing the benefits of focal tumor boost for patients undergoing prostate radiotherapy.

Competing Interests:

AJL reports consulting for MIM Software. MEH reports honoraria from Multimodal Imaging Services Corporation and research funding from GE Healthcare. AMD is a Founder of and holds equity in CorTechs Labs, Inc, and serves on its Scientific Advisory Board. He is a member of the Scientific Advisory Board of Human Longevity, Inc. and receives funding through research agreements with GE Healthcare. The terms of these arrangements have been reviewed and approved by the University of California San Diego in accordance with its conflict-of-interest policies. TMS reports honoraria from Multimodal Imaging Services Corporation, Varian Medical Systems, and WebMD; he has an equity interest in CorTechs Labs, Inc. and also serves on its Scientific Advisory Board; he has received in-kind research support from GE Healthcare via a research agreement with the University of California San Diego. These companies might potentially benefit from the research results. The terms of this arrangement have been reviewed and approved by the University of California San Diego in accordance with its conflict-of-interest policies.

Funding:

This work was supported, in part, by the National Institutes of Health (NIH/NIBIB K08 EB026503, NIH/NCI U54CA132384, U54CA132379, UL1TR001442), the American Society for Radiation Oncology (ASTRO), the Prostate Cancer Foundation, the

Radiological Society of North America (RSNA), the American College of Radiation Oncology (ACRO), and the Grillo-Marxuach Family Fellowship at the Moores Cancer Center of UC San Diego.



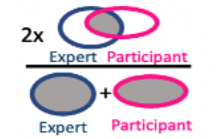


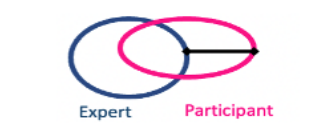
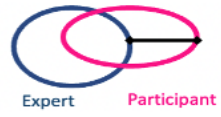

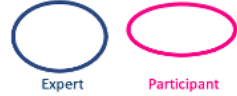
Data Availability Statement:

De-identified data are available to bona fide researchers for non-commercial use upon request.

References

1. Kerkmeijer LGW, Groen VH, Pos FJ, et al. The FLAME trial: benefit of a focal boost for prostate cancer on biochemical disease-free survival. *Radiotherapy and Oncology* 2020;152:Supplement 1:0360- 0361.
2. Groen VH, Haustermans K, Pos FJ, et al. Patterns of Failure Following External Beam Radiotherapy With or Without an Additional Focal Boost in the Randomized Controlled FLAME Trial for Localized Prostate Cancer. *Eur Urol* 2022;82(3):252-257. (In eng). DOI: 10.1016/j.eururo.2021.12.012.
3. Kerkmeijer L, Groen V, Pos FJ, et al. Five-Year Toxicity after EBRT for Localized Prostate Cancer with or without a Simultaneously Integrated Focal Boost up to 95Gy: Results of a Randomized Controlled Trial. *International Journal of Radiation Oncology, Biology, Physics* 2020;108(3):S61-S62. DOI: 10.1016/j.ijrobp.2020.07.2193.
4. Anwar M, Westphalen AC, Jung AJ, et al. Role of endorectal MR imaging and MR spectroscopic imaging in defining treatable intraprostatic tumor foci in prostate cancer: Quantitative analysis of imaging contour compared to whole-mount histopathology. *Radiotherapy and Oncology* 2014;110(2):303-308. DOI: <https://doi.org/10.1016/j.radonc.2013.12.003>.
5. Steenbergen P, Haustermans K, Lerut E, et al. Prostate tumor delineation using multiparametric magnetic resonance imaging: Inter-observer variability and pathology validation. *Radiotherapy and Oncology* 2015;115(2):186-190. DOI: <https://doi.org/10.1016/j.radonc.2015.04.012>.
6. Feng CA-O, Conlin CA-O, Batra K, et al. Voxel-level Classification of Prostate Cancer on Magnetic Resonance Imaging: Improving Accuracy Using Four-Compartment Restriction Spectrum Imaging. (1522-2586 (Electronic)) (In eng).
7. Zhong AY, Digma LA, Hussain T, et al. Patient-level detection of grade group ≥ 2 prostate cancer using quantitative diffusion MRI. *medRxiv* 2021:2021.05.24.21256461. DOI: 10.1101/2021.05.24.21256461.
8. Conlin CC, Feng CH, Rodriguez-Soto AE, et al. Improved Characterization of Diffusion in Normal and Cancerous Prostate Tissue Through Optimization of Multicompartmental Signal Models. *Journal of Magnetic Resonance Imaging*;n/a(n/a). DOI: <https://doi.org/10.1002/jmri.27393>.
9. System Usability Scale (SUS). US Dept of Health and Human Services. (<https://www.usability.gov/how-to-and-tools/methods/system-usability-scale.html>).

Table 1: Summary accuracy statistics comparing participant to expert

	Graphical Equation	Without RSIs	With RSIs
% Overlap with Expert		37.8 (32.5)	73.2 (14.5)
		33.8 (4.8-58.8)	73.7 (58.4-85.4)
Dice Coefficient		0.32 (0.22)	0.70 (0.07)
		0.41 (0.07-0.51)	0.70 (0.64-0.75)
Conformal Number		0.18 (0.14)	0.51 (0.09)
		0.20 (0.01-0.30)	0.50 (0.43-0.58)
Maximum Distance to Expert (mm)		20.6 (14.2)	9.9 (10.7)
		33.8 (4.8 -58.8)	73.7 (58.4-85.4)
Complete Misses (number)		158	19

Top number represents mean (SD) and bottom number represents median (IQR)

Supplemental Table 1: Participant Characteristics		
Characteristic	Description	N (% Total)
Country	United States	28 (67%)
	India	5 (12%)
	United Kingdom	2 (5%)
	Canada	2 (5%)
	Slovenia	1 (2%)
	Romania	1 (2%)
	Italy	1 (2%)
	Belgium	1 (2%)
	Singapore	1 (2%)
Training Level	Still in Residency	24 (57%)
	5-10 years in practice	11 (26%)
	>10 years in practice	7 (17%)
Number of intact prostate cases in last 12 months	≤12	13 (31%)
	13-24	14 (33%)
	25-50	7 (17%)
	≥50	8 (19%)
Frequency of using MRI for planning intact prostate cases	Not routinely	4 (10%)
	<25% of the time	7 (17%)
	25-50% of the time	11 (26%)
	>50% of the time	20 (48%)
Number DIL boost cases contoured in last 12 months	None	16 (38%)
	1 to 5	21 (50%)
	6 to 12	5 (12%)
	>12	0 (0%)
Had you heard about the FLAME trial results?	No	4 (10%)
	Yes	38 (90%)

Supplemental Table 2: Linear mixed effects model for Percent Overlap with Expert Volume

Fixed effects coefficients	β (95% CI)	SE	t stat	p-value
Intercept	34.59 (22.20-46.97)	6.32	5.48	5.00E-08
Use MRI < 25% of Cases	6.12 (-6.75-18.99)	6.56	0.93	0.35
Use MRI 25-50% of Cases	11.68 (0.25-23.11)	5.83	2.01	0.05
Use MRI > 50% of Cases	10.89 (0.34-21.44)	5.38	2.02	0.04
# Boost cases 1-5	5.15 (-2.15-12.46)	3.72	1.38	0.17
# Boost cases 6-12	-0.11 (-10.16-9.94)	5.12	-0.02	0.98
# Boost cases 13-25	18.91 (-0.66-38.48)	9.98	1.89	0.06
RSI _{rs} Map Included	16.92 (14.32-19.51)	1.32	12.79	9.13E-36
Session	-2.20 (-4.92 -0.51)	1.39	-1.59	0.11

Results of a linear mixed effects model for percent overlap with expert volume, with patient case and participant as random effects. Fixed effects included: how frequently participant typically uses MRI in prostate cancer radiotherapy planning (never, <25%, 25-50%, or >50% of their prostate cases, with never as reference); how many prostate patients the participant has treated with a tumor radiotherapy boost (0, 1-5, 6-12, or 13-25 cases, with 0 as reference); session number in which the case was contoured (with first session as reference); and whether RSI_{rs} maps were used in the contours. β : model coefficient. SE: standard error for β .

The only significant effect was for RSI_{rs} maps, which, on average, led to approximately 17% more of the expert volume covered by participants than when they did not have RSI_{rs} maps (after accounting for the other factors).

Supplemental Table 3: Linear mixed effects model for Dice Coefficient

Fixed effects coefficients	β (95% CI)	SE	t stat	p-value
Intercept	0.41 (0.31-0.51)	0.05	8.37	1.25E-16
Use MRI < 25% of Cases	0.07 (-0.04-0.17)	0.05	1.28	0.20
Use MRI 25-50% of Cases	0.07 (-0.02-0.16)	0.05	1.48	0.14
Use MRI > 50% of Cases	0.06 (-0.03-0.14)	0.04	1.37	0.17
# Boost cases 1-5	-0.02 (-0.07-0.04)	0.03	-0.57	0.57
# Boost cases 6-12	-0.02 (-0.10-0.06)	0.04	-0.56	0.58
# Boost cases 13-25	0.10 (-0.06-0.25)	0.08	1.22	0.22
RSI _{rs} Map Included	0.10 (0.08-0.13)	0.01	8.06	1.51E-15
Session	-0.02 (-0.055-0.01)	0.01	-1.52	0.13

Results of a linear mixed effects model for Dice coefficient, with patient case and participant as random effects. Fixed effects included: how frequently participant typically uses MRI in prostate cancer radiotherapy planning (never, <25%, 25-50%, or >50% of their prostate cases, with never as reference); how many prostate patients the participant has treated with a tumor radiotherapy boost (0, 1-5, 6-12, or 13-25 cases, with 0 as reference); session number in which the case was contoured (with first session as reference); and whether RSI_{rs} maps were used in the contours. β : model coefficient. SE: standard error for β .

The only significant effect was for RSI_{rs} maps, which, on average, led to an improvement in the Dice coefficient of 0.10.

Supplemental Table 4: Linear mixed effects model for Conformal Number

Fixed effects coefficients	β (95% CI)	SE	t stat	p-value
Intercept	0.25667 (0.18-0.34)	0.04	6.46	1.38E-10
Use MRI < 25% of Cases	0.062082 (-0.02-0.15)	0.04	1.48	0.14
Use MRI 25-50% of Cases	0.053633 (-0.02-0.13)	0.04	1.44	0.15
Use MRI > 50% of Cases	0.050366 (-0.02-0.12)	0.03	1.46	0.14
# Boost cases 1-5	-0.0098308 (-0.06-0.04)	0.02	-0.41	0.68
# Boost cases 6-12	-0.014149 (-0.08-0.05)	0.03	-0.43	0.67
# Boost cases 13-25	0.07996 (-0.05-0.21)	0.06	1.26	0.21
RSI _{rs} Map Included	0.096686 (0.08-0.12)	0.01	9.23	7.97E-20
Session	-0.012154 (-0.03-0.01)	0.01	-1.11	0.27

Results of a linear mixed effects model for conformal number, with patient case and participant as random effects. Fixed effects included: how frequently participant typically uses MRI in prostate cancer radiotherapy planning (never, <25%, 25-50%, or >50% of their prostate cases, with never as reference); how many prostate patients the participant has treated with a tumor radiotherapy boost (0, 1-5, 6-12, or 13-25 cases, with 0 as reference); session number in which the case was contoured (with first session as reference); and whether RSI_{rs} maps were used in the contours. β : model coefficient. SE: standard error for β .

The only significant effect was for RSI_{rs} maps, which, on average, led to an improvement in the conformal number of 0.10.

Supplemental Table 5: Linear mixed effects model for Maximum Distance beyond Expert Volume

Fixed effects coefficients	β (95% CI)	SE	t stat	p-value
Intercept	11.34 (8.72-13.97)	1.34	8.48	4.93E-17
Use MRI < 25% of Cases	-1.84 (-4.67-1.00)	1.44	-1.27	0.20
Use MRI 25-50% of Cases	-3.17 (-5.69-0.65)	1.28	-2.47	1.36E-02
Use MRI > 50% of Cases	-3.27 (-5.59-0.94)	1.18	-2.76	5.92E-03
# Boost cases 1-5	-0.46 (-2.07-1.15)	0.82	-0.56	0.58
# Boost cases 6-12	-0.97 (-1.25-3.19)	1.13	0.86	0.29
# Boost cases 13-25	-12.71 (-7.00-1.57)	2.19	-1.24	0.22
RSI _{rs} Map Included	-2.22 (-2.92-1.51)	0.36	-6.16	9.29E-10
Session	0.61 (-0.13 -1.35)	0.38	1.62	0.10

Results of a linear mixed effects model for maximum distance contoured beyond the expert volume (in mm), with patient case and participant as random effects. Fixed effects included: how frequently participant typically uses MRI in prostate cancer radiotherapy planning (never, <25%, 25-50%, or >50% of their prostate cases, with never as reference); how many prostate patients the participant has treated with a tumor radiotherapy boost (0, 1-5, 6-12, or 13-25 cases, with 0 as reference); session number in which the case was contoured (with first session as reference); and whether RSI_{rs} maps were used in the contours. β : model coefficient. SE: standard error for β .

The only significant effects were for more frequent use of MRI in prostate cancer radiotherapy planning and for RSI_{rs} maps. Participants who routinely use MRI ($\geq 25\%$ of their prostate cases) strayed, on average, 3 mm less far from the expert than those who never use MRI. After accounting for other factors, use of RSI_{rs} maps led to reduction of maximal error of 2 mm.

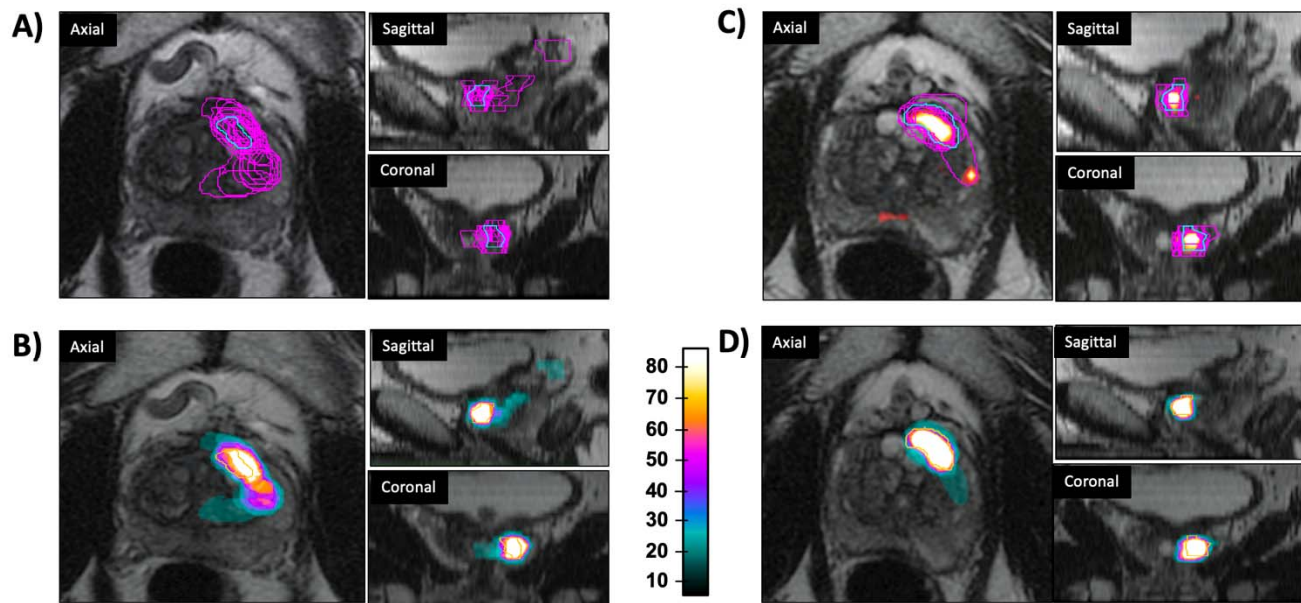
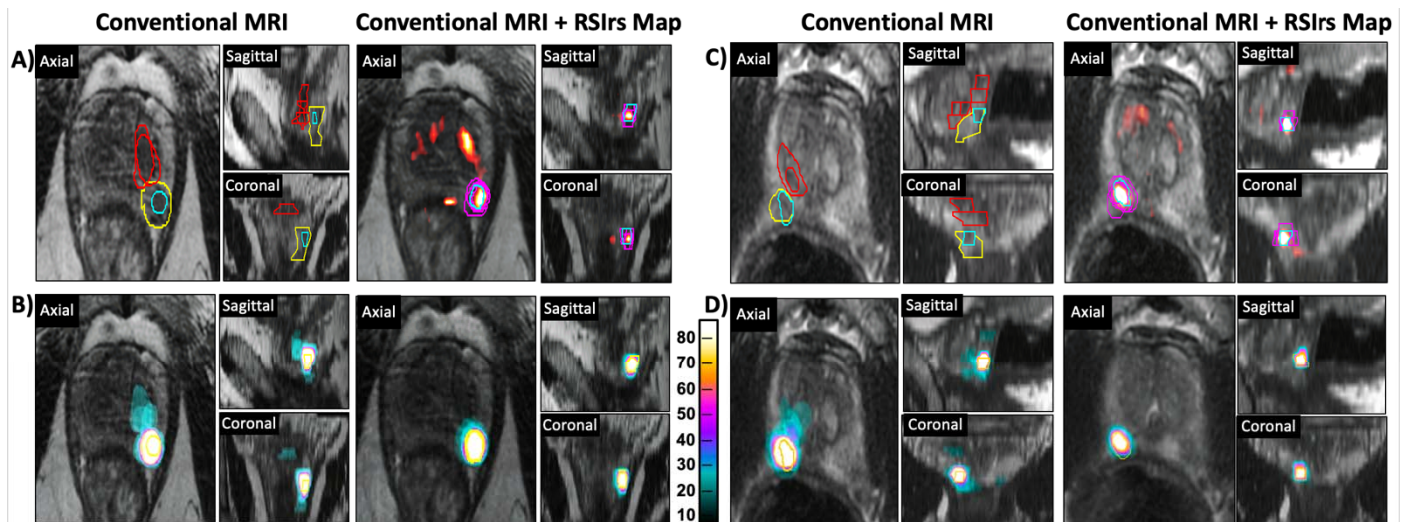
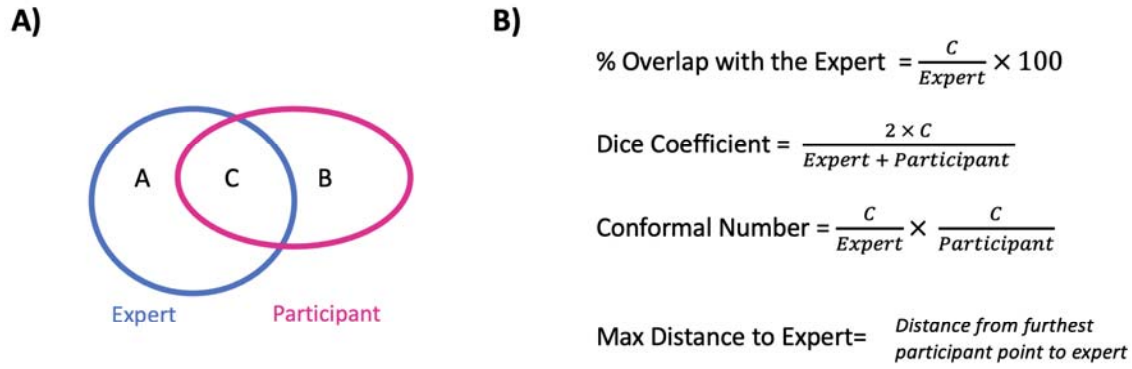


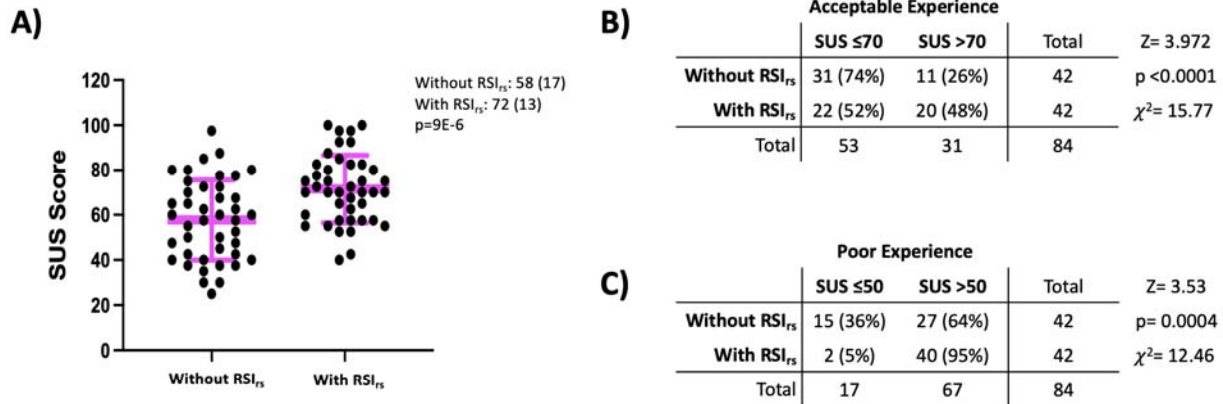
Figure 1: RSIs maps improve the accuracy of participant target volume. (A and C) A representative selection of participant volumes is overlaid with the expert. (A) with conventional MRI or (C) with conventional MRI with RSIs map (orange heatmap). (B and D) Heatmap displaying the variation of all participant volumes on a single case. Each color represents the given frequency of inclusion of that voxel in participant volumes and the expert is now highlighted in orange. (B) with standard MRI or (D) with standard MRI with RSIs map.



Supplemental Figure 1: RSIs maps improve the accuracy of participant target volumes. Example target volumes from two patient cases (A/B and C/D) where participants were provided Conventional MRI (T2-weighted, DWI, ADC)(left) images or conventional MRI with RSIs map (orange heatmap)(right). (A and C) Expert volumes are highlighted in Blue and participant volumes highlighted by category relative to the expert target: Red = Complete Miss, Yellow = large distance to expert, Pink = Overlapping. (B and D) Heatmap displaying the variation of all participant volumes on a single case. Each color represents the given frequency of inclusion of that voxel in participant volumes and the expert is now highlighted in orange.



Supplemental Figure 2: Accuracy metrics. A) Diagram representing overlapping “C” and non-overlapping “A” or “B” regions of expert and participant volumes used to calculate accuracy metrics. B) Equations for measures of accuracy used in data analysis.



Supplemental Figure 3: Summary of System Usability Survey results. A) Distribution of normalized SUS scores for all participants where figure legend and pink bars highlight Mean (SD). p-value is the result of a two-sided paired t-test. (B and C) 2x2 analysis of number of participants rating the contouring experience B) Acceptable (SUS > 70) and C) Poor (SUS ≤ 50). Percentages are percent of responses rating the contouring experience with RSI_{rs} (N=42) or Without RSI_{rs} (N=42).