

1 Seroprevalence of SARS-CoV-2 antibodies and retrospective mortality in two African settings:

2 Lubumbashi, Democratic Republic of the Congo and Abidjan, Côte d'Ivoire

3 Erica Simons^{1*}, Birgit Nikolay^{1*§}, Pascal Ouedraogo¹, Estelle Pasquier¹, Carlos Tiemeni³, Ismael Adjaho², Colette Badjo², Kaouther Chamman¹,

4 Mariam Diomandé², Mireille Dosso⁴, Moussa Doumbia⁴, Yves Asuni Izia³, Hugues Kakompe⁵, Anne Marie Katsomya³, Vicky Kij⁵, Viviane

5 Kouakou Akissi⁴, Christopher Mambula³, Placide Mbala-Kingebeni⁶, Jacques Muzinga⁷, Basile Ngoy⁵, Lou Penali⁴, Alessandro Pini¹, Klaudia

6 Porten¹, Halidou Salou¹, Daouda Sevede⁴, Francisco Luquero¹, Etienne Gignoux¹

7

8 *Affiliations*

9 ¹Epicentre, Paris, France

10 ²Médecins Sans Frontières, Abidjan, Cote d'Ivoire

11 ³Médecins Sans Frontières, Paris, France

12 ⁴Institut Pasteur Cote d'Ivoire, Abidjan, Cote d'Ivoire

13 ⁵Ministry of Health, Democratic Republic of the Congo

14 ⁶INRB, Democratic Republic of the Congo

15 ⁷Laboratoire National de Lubumbashi, Democratic Republic of the Congo

16

17

18 *These authors contributed equally to the study

19 [§]Corresponding author

20

21 **Abstract**

22 *Background*

23 Although seroprevalence studies have demonstrated the wide circulation of SARS-COV-2 in African

24 countries, the impact on population health in these settings is still poorly understood. Using

25 representative samples of the general population, we evaluated retrospective mortality and

26 seroprevalence of anti-SARS-CoV-2 antibodies in Lubumbashi and Abidjan.

27 *Methods*

28 The studies included retrospective mortality surveys and nested anti-SARS-CoV-2 antibody prevalence

29 surveys. In Lubumbashi the study took place during April-May 2021 and in Abidjan the survey was

NOTE: This preprint reports new research that has not been certified by peer review and should not be used to guide clinical practice.

30 implemented in two phases: July-August 2021 and October-November 2021. Crude mortality rates
31 were stratified between pre-pandemic and pandemic periods and further investigated by age group
32 and COVID waves. Anti-SARS-CoV-2 seroprevalence was quantified by rapid diagnostic testing (RDT)
33 and laboratory-based testing (ELISA in Lubumbashi and ECLIA in Abidjan).

34 *Results*

35 In Lubumbashi, the crude mortality rate (CMR) increased from 0.08 deaths per 10 000 persons per day
36 (pre-pandemic) to 0.20 deaths per 10 000 persons per day (pandemic period). Increases were
37 particularly pronounced among <5 years old. In Abidjan, no overall increase was observed during the
38 pandemic period (pre-pandemic: 0.05 deaths per 10 000 persons per day; pandemic: 0.07 deaths per
39 10 000 persons per day). However, an increase was observed during the third wave (0.11 deaths per
40 10 000 persons per day). The estimated seroprevalence in Lubumbashi was 15.7% (RDT) and 43.2%
41 (laboratory-based). In Abidjan, the estimated seroprevalence was 17.4% (RDT) and 72.9% (laboratory-
42 based) during the first phase of the survey and 38.8% (RDT) and 82.2% (laboratory-based) during the
43 second phase of the survey.

44 *Conclusion*

45 Although circulation of SARS-CoV-2 seems to have been extensive in both settings, the public health
46 impact varied. The increases, particularly among the youngest age group, suggest indirect impacts of
47 COVID and the pandemic on population health. The seroprevalence results confirmed substantial
48 underdetection of cases through the national surveillance systems.

49 **Introduction**

50 Official surveillance data from African countries suggest that the public health impact of the severe
51 acute respiratory syndrome coronavirus 2 (SARS-CoV-2) associated with coronavirus disease (COVID-
52 19) is less than that observed in Asia, America, and Europe [1]. Several factors, including the younger
53 population, early government actions, lower prevalence of comorbidities, cross-immunity,

54 environmental factors and surveillance, have been noted as possible explanations for the lower
55 mortality observed in most African countries [2]. While seroprevalence studies have been conducted
56 in several African countries indicating widespread circulation of the virus in contrast to often low
57 surveillance figures, few population-based mortality studies have been conducted to measure the
58 impact of this high virus circulation [3].

59 Here we studied the public health impact of SARS-CoV-2 in two African countries with low numbers of
60 reported COVID-19 associated deaths, the Democratic Republic of Congo (DRC) and Côte d'Ivoire. The
61 first COVID-19 cases were reported nearly simultaneously in the two countries, on 10 March 2020 in
62 the DRC and on the following day in Côte d'Ivoire. After the first wave, a seroprevalence of 16% among
63 the general population was observed in Kinshasa, the capital city of the DRC [4], and 25.1% among
64 gold mine workers in Côte d'Ivoire [5]. Côte d'Ivoire was among the first African countries to receive
65 COVID-19 vaccines with vaccination campaigns starting in March 2021. In the DRC, COVID vaccination
66 campaigns began in April 2021, but were temporarily suspended shortly afterwards. In Lubumbashi,
67 the studied area in the DRC, vaccinations began in May 2022. As of the start of the respective surveys
68 (12 April 2021 in DRC and 15 July 2021 in Côte d'Ivoire), 28,542 cases and 745 deaths had been
69 reported in the DRC and 48,999 cases and 319 deaths reported in Côte d'Ivoire [6].

70 To quantify the extent of SARS-COV-2 infections and to detect potential increases in the crude
71 mortality rate (CMR) during the SARS-COV-2 pandemic phase, we assessed seroprevalence of anti-
72 SARS-CoV-2 antibodies and retrospective mortality in a representative sample of the general
73 population in three health zones of Lubumbashi, DRC and two communes of Abidjan, Côte d'Ivoire
74 more than one year after the first confirmed cases of COVID-19 in these settings.

75 **Methods**

76 We conducted two cross-sectional household-based surveys in the cities of Lubumbashi (DRC) and
77 Abidjan (Côte d'Ivoire). The survey in Lubumbashi took place in the health zones Lubumbashi (stratum
78 1) and Kampemba/Tshamilemba (stratum 2), which were chosen based on COVID incidence in the

79 initial months and increased reporting of deaths through cemetery surveillance, respectively. In
80 Abidjan, the survey was implemented in the communes of Marcory (stratum 1) and Yopougon
81 (stratum 2). These urban areas were chosen because, while the prevalence of poverty is higher in
82 Yopougon than Marcory [7], Yopougon had a much lower COVID-19 attack rate than Marcory
83 according to available surveillance data [8].

84 The studies each included a retrospective mortality survey using a two-stage cluster sampling
85 methodology and a nested SARS-CoV-2 antibody prevalence survey. Briefly, 710 clusters (Lubumbashi)
86 and 640 clusters (Abidjan) were first randomly selected based on spatial sampling and subsequently 5
87 randomly selected households per cluster were included in the mortality survey and 1 household per
88 cluster in the seroprevalence survey. A detailed description of the study design and sampling
89 methodology is provided in the supplementary information. The mortality questionnaire consisted of
90 sections covering housing characteristics, demographic data, and information on deaths that occurred
91 during the recall period. For households included in the seroprevalence survey, individual
92 questionnaires were administered to each household member or their parent/guardian covering
93 socio-demographic information, medical history, potential SARS-CoV-2 exposures, history of any
94 possible COVID-related symptoms since 2020 and COVID-19 vaccination status.

95 All members of households included in the seroprevalence survey were asked to provide a blood
96 sample, either in the form of dried blood spots using finger or heel pricks (participants of all ages in
97 Lubumbashi and children less than 5 years old in Abidjan) or in the form of venous blood (participants
98 5 years and older in Abidjan). In both sites, serological testing was done using a rapid serological test
99 (BIOSYNEX® COVID-19 BSS (IgG/IgM) (Biosynex SA, Switzerland). The Biosynex test has shown good
100 performance (sensitivity: 95.8 % [95%CI 90.2–100.0], specificity: 98.1 % [95%CI 94.3- 100.0])) [9].
101 Additional laboratory-based testing was conducted using the EUROIMMUN Anti-SARS-CoV-2 enzyme-
102 linked immunosorbent assay (EUROIMMUN Medizinische Labor diagnostika AG, Lübeck, Germany) at
103 the INRB laboratory in Lubumbashi or the Roche Elecsys anti-SARS-CoV-2 S immunoassay (Roche

104 Diagnostics, Rotkreuz, Switzerland) at the Institut Pasteur Côte d'Ivoire in Abidjan. Initial laboratory
105 evaluations of the EUROIMMUN test showed a sensitivity of 90% [95%CI 74.4 - 96.5] and a specificity
106 of 100% [95%CI 95.4-100] [10]. Initial evaluation of the Roche assay found a sensitivity of 98.8 % (95 %
107 CI: 98.1 – 99.3 %) among patients for 14 days or later after diagnosis with PCR and a specificity of 100
108 % (95 % CI: 99.7 – 100 %) and was selected in part due to its strong performance detecting antibodies
109 even several months after infection [11], [12].

110 Crude mortality rates (CMR, expressed as deaths/10,000 people/day) and 95% confidence intervals
111 (95%CI) were calculated taking into account the study design using the survey package in R. The
112 analysis was stratified between pre-pandemic and pandemic time periods. In Lubumbashi the pre-
113 pandemic period was defined as 1 January 2020 – 12 April 2020 and the pandemic period as 13 April
114 2020 – date of survey. In Abidjan, the pre-pandemic period was defined as 1 January 2019 – 12 April
115 2020 and the pandemic period as 13 April 2020 – date of survey. 12 April 2020 was chosen as cut-off
116 date between the pre-pandemic and pandemic period as it was the Easter Sunday, a date easy to
117 recall for survey participants. Differences in mortality rates were further investigated by time periods
118 corresponding approximately to individual COVID-19 waves (Lubumbashi Wave 1: 13 April 2020 – 31
119 August 2020 and Wave 2: 1 November 2020 – date of survey; Abidjan Wave 1: 13 April 2020 – &
120 August 2020, Wave 2: 1 January 2021 – 30 June 2021 and Wave 3: 1 July 2021 – date of survey). To
121 quantify differences of the mortality rates between the pre-pandemic and pandemic periods, we
122 estimated rate ratios with 95%CI's using a Poisson generalized linear model (GLM) with log-
123 transformed follow-up time as offset in the survey package in R and tested for statistical significance
124 of differences using Wald-test.

125 For the estimation of seroprevalence, a positive rapid diagnostic test (RDT) result was defined as
126 positive IgM, positive IgG or positive IgM and IgG. A positive ELISA/ECLIA result was defined using the
127 manufacturer-specified cut-off value (Euroimmun ELISA: optical density ratio ≥ 1.1 ; Roche ECLIA:
128 titer ≥ 0.8 U/mL). Seroprevalence and 95% confidence intervals (95% CI) were estimated using the

129 survey package in R, weighting for demographic differences between the survey sample and the
130 general population and adjusting for the design effect. In Abidjan, seroprevalence estimates excluded
131 those who self-reported already having received at least one COVID-19 vaccine dose. Adults 18 years
132 and older were eligible for vaccination during study implementation. Vaccines became available in
133 Lubumbashi after the completion of the study. To compare seroprevalence among sub-groups (sex,
134 age groups, strata), we estimated odds ratios (OR) and 95% CIs and tested for statistical differences
135 using Wald test in a logistic regression model considering the study design using the survey package in
136 R.

137 The proportion of symptomatic and proportion of vaccinated individuals, together with 95% CIs, were
138 estimated using the same statistical procedure as for seroprevalence estimates. Differences in other
139 characteristics between time periods (symptoms, comorbidities – measured in proportions) were
140 evaluated based on Fisher's exact test.

141 We further investigated socioeconomic risk factors (household type, presence of latrines, and number
142 of people per room) for a household reporting a death using a GLM logistic regression model at the
143 household level. To investigate if seropositivity was associated with the presence of another
144 seropositive household member, we implemented a GLM logistic regression model at individual level
145 using the survey package taking the survey design into account.

146 **Ethics statement**

147 The study in Lubumbashi has been approved by the Comité d'Etique Medicale of the University of
148 Lubumbashi (ID UNILU/CEM/020/2020) and the study in Abidjan by the Comité National d'Etique des
149 Sciences de la Vie et de la Santé (ID 054-21/MSHP/CNESVS-km). Both studies have been approved by
150 the MSF ERB (ID 2089b, 2089d). Formal written consent was obtained from all participants 18 years or
151 older. For participants less than 18 years, written consent was obtained from the parent/guardian;

152 additional assent was obtained from participants aged 8-17 years in Lubumbashi and 9-17 years in
153 Abidjan.

154

155 Results

156 *Study population*

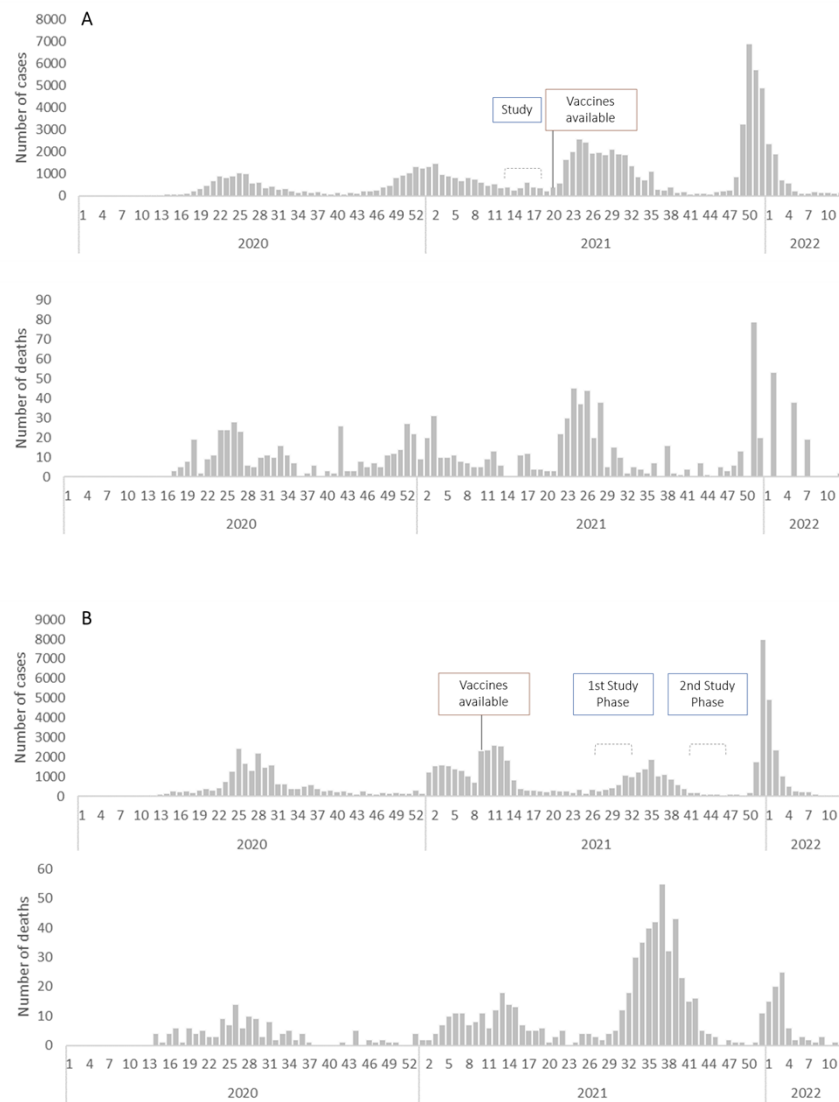
157 In Lubumbashi, the mortality and seroprevalence surveys took place concurrently 12 April – 18 March
158 2021, at the end of the second SARS-CoV-2 wave (Figure 1A). A total of 3,506 households, including
159 19,694 household members, participated in the mortality survey. The median age of participants was
160 18 years (interquartile range [IQR] 7- 32) and 49.6% were male. A total of 2,038 individuals from 650
161 households participated in the RDT-based serosurvey. Participants had a median age of 22 years (IQR
162 10-36) and 44.6% were male. Matched ELISA results were obtained from 1,897 individuals.

163 In Abidjan, the surveys took place during two phases due to extenuating circumstances during data
164 collection: 15 July – 14 August 2021 (after the second wave and during the beginning of the third
165 wave) & 20 October – 10 November 2021 (end of and after the third wave) (Figure 1B). A total of
166 3,180 households, including 15,454 household members, participated in the mortality survey. The
167 median age of participants was 25 years (IQR 13-39) and 44.3% were male. A total of 1,862 individuals
168 from 634 households participated in the RDT-based serosurvey. Participants had a median age of 32
169 years (IQR 19-44) and 36.6% were male. Matched ECLIA results were obtained from 1,800 individuals.

170 The proportion of visited households that did not participate in the mortality survey due to refusal or
171 absence of the household head was 11.7% in Lubumbashi and 21.6% in Abidjan. Non-participation of
172 households was much higher in the serosurvey (61.2% Lubumbashi, 61.7% Abidjan). Additionally,
173 individual refusals in households that participated in the serosurvey was high at 45% in both settings.

174

175 **Figure 1.** Timeline of Lubumbashi (A)* and Abidjan (B) surveys and vaccine availability compared to the
176 national progression of SARS-CoV-2 pandemic notified cases (upper curve) and deaths according to
177 national surveillance systems [1] (lower curve)



178

179

180 **Note: 209 deaths reported week 16, 2020 in DRC are not represented due to the likely aggregation of data*

181 **Mortality survey**

182 In Lubumbashi, 150 deaths were reported during the entire recall period (1 January 2020 – 18 May

183 2021), including 17 deaths during the pre-pandemic and 133 deaths during the pandemic period

184 (Figure 2A). In Abidjan, 83 deaths were reported during the recall period (1 January 2019 – 10

185 November 2021), including 29 deaths during the pre-pandemic and 54 during the pandemic period

186 (Figure 2B). The median age of reported deaths was 25 years (IQR 3-57) in Lubumbashi and 54 years
187 (IQR 30-70) in Abidjan; 52.0% and 65.1% were male, respectively.

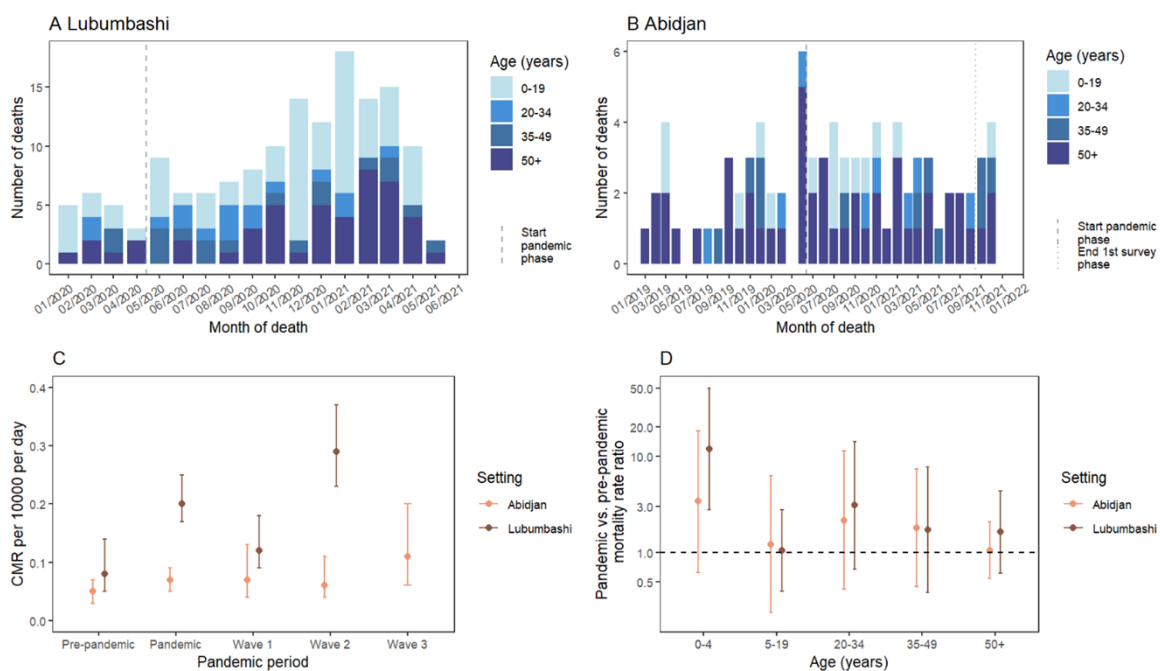
188 Fever/malaria was one of the main reported causes of death in both settings (Lubumbashi 34.0%,
189 Abidjan 24.1%); respiratory diseases other than COVID-19 were indicated as the cause for 6.7% of
190 deaths in Lubumbashi and 9.6% in Abidjan. Two deaths were attributed to COVID-19 in Lubumbashi,
191 however occurred in the pre-pandemic period and are likely misclassifications. In Abidjan no COVID-19
192 deaths were reported. The main reported causes of death did not change significantly between the
193 pre-pandemic and pandemic period in either of the settings (Supplementary tables 1 and 2).

194 In Lubumbashi the overall CMR increased significantly from a pre-pandemic rate of 0.08 deaths per 10
195 000 persons per day (95%CI 0.05-0.14) to a pandemic rate of 0.20 deaths per 10 000 persons per day
196 (95%CI 0.17-0.25) (Rate ratio [RR]=2.5 [95%CI 1.4-4.3]; p=0.001) (Figure 2C). The increase was
197 statistically significant only among under 5-year-olds, however not among the other age groups
198 (Figure 2D, Supplementary table 3). In Abidjan no significant increase in the CMR was observed overall
199 (pre-pandemic 0.05 deaths per 10 000 persons per day [95%CI 0.03-0.07], pandemic 0.07 deaths per
200 10 000 persons per day [95%CI 0.05-0.09]; RR 1.5 [95%CI 0.9-2.5], p=0.099) (Figure 2C) or by age
201 group (Figure 2D, Supplementary table 4). The increase in CMR varied by SARS-CoV2 waves. In
202 Lubumbashi, compared to the baseline period, the increase was statistically significant during the
203 second wave (CMR wave 2: 0.29 deaths per 10 000 persons per day [95%CI 0.23-0.37]; RR 3.5 [95%CI
204 2.0-6.1], p<0.001) but not during the first wave (CMR wave 1: 0.12 deaths per 10 000 persons per day
205 [95%CI 0.09-0.18]; RR 1.5 [95%CI 0.8-2.9], p=0.216) (Figure 2C, Supplementary table 5). In Abidjan, a
206 significant increase in CMR was observed only during the 3rd wave (CMR wave 3: 0.11 deaths per 10
207 000 persons per day [95%CI 0.06-0.20], RR 2.4 [95%CI 1.1-5.1]; p=0.024) (Figure 2C, Supplementary
208 table 6).

209 Geographical differences in CMR were observed in Lubumbashi, where the health zones of
210 Kampemba/Tshamilemba were more affected by the increase than the health zone of Lubumbashi

211 (Supplementary table 7). In Abidjan, the pattern was homogeneous across the two health zones
 212 (Supplementary table 8). The risk of reporting a death in a household was associated with crowded
 213 living conditions; after adjusting for household size, households with an average of more than 1-2
 214 household members per room (Lubumbashi OR 5.6 [95%CI 2.4-13.2]; Abidjan OR 8.1 [95%CI 1.1-61.0])
 215 and households with more than 2 household members per room (Lubumbashi OR 8.1 [95%CI 3.2-
 216 20.5]; Abidjan OR 7.6 [95%CI 1.0-58.2]) were more likely to report a death than households with ≤ 1
 217 household members per room. Moreover, in Abidjan the risk of reporting a death was higher among
 218 households living in a house with common courtyard than living in an individual house (OR 2.1 [95%CI
 219 1.2-3.8]) (Supplementary tables 9 and 10).

220 **Figure 2.** Number of reported deaths by age group over time in Lubumbashi (A) and Abidjan (B). CMR
 221 pre-pandemic and by pandemic periods (C). Pandemic vs. pre-pandemic mortality rate ratios by age
 222 group and setting (D).



223
 224 **Seroprevalence survey**

225 In Lubumbashi, 320/2038 participants were found seropositive by RDT, resulting in a weighted
 226 seroprevalence of 15.7% (95%CI 13.6-18.1) after the 2nd wave. In Abidjan, 445/1471 of unvaccinated

227 participants had a positive RDT result. The weighted seroprevalence among unvaccinated doubled
228 from 17.4% (95%CI 13.3-22.1) during phase 1 (after the 2nd wave) to 38.8% (95%CI 43.1-43.7) during
229 phase 2 of the survey (after the 3rd wave).

230 ELISA/ECLIA seroprevalence was 1.8-3.4 times higher than based on RDT, with a weighted
231 seroprevalence of 43.2% (95%CI 40.0-46.4) in Lubumbashi and 72.9% (95%CI 67.3-78.0) and 82.2%
232 (95%CI 78.0-85.9) in phase 1 and 2 in Abidjan, respectively. A detailed comparison of RDT and ELISA
233 results is provided in the Supplementary material (Supplementary table 11 and 12).

234 In Lubumbashi, seroprevalence was highest among 50+ year-olds (RDT: 26.6% [95%CI 19.5-34.6];
235 ELISA: 52.4% [95%CI 43.5-61.2]) and lowest among 20–34-year-olds (RDT: 13.1% [95%CI 9.6-17.2];
236 ELISA: 40.8% [95%CI 35.2-46.5]) (Figure 3). The age pattern followed a similar tendency in Abidjan
237 based on RDT for both phases of the survey, however the pattern was slightly different based on ECLIA
238 (Figure 3).

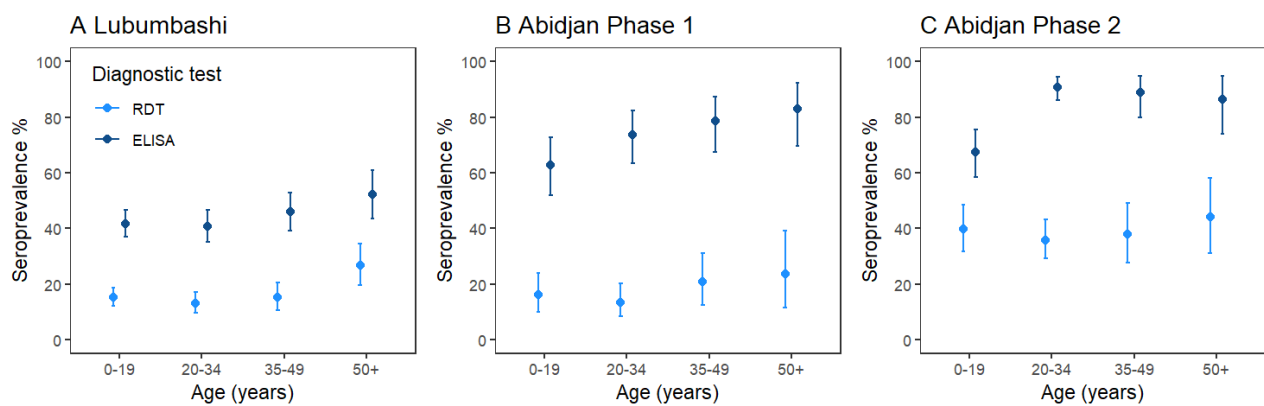
239 Geographic differences were found in Lubumbashi based on RDT results, where seroprevalence was
240 higher in Kampemba/Tshamilemba health zones than in Lubumbashi health zone; no difference was
241 however observed based on ELISA results (Supplementary table 13). In Abidjan, after considering the
242 phase of the survey, no significant differences were observed between strata based on RDT or ECLIA
243 results. The direction of differences between strata however varied by survey phase (Supplementary
244 table 14).

245 In both settings, and for both types of tests, the risk of being seropositive was higher in households
246 with at least one other seropositive member compared with households with no other seropositive
247 household member (Lubumbashi: OR 3.1 [95%CI 1.5-6.4]; Abidjan: OR 3.3 [95%CI 2.53-4.21]).
248 However, the risk of having a deceased household member was not higher in households with one or
249 more seropositive individuals (Lubumbashi OR 0.9 [95%CI 0.4-2.4]; Abidjan: OR 1.08 [95%CI 0.3-3.87]).

250 The weighted proportion reporting COVID-19 related symptoms among RDT positive individuals was
251 22.4% (95%CI 16.2-29.5) in Lubumbashi and 71.6% (95%CI 65.5-77.2) in Abidjan. This proportion was

252 similar among ELISA/ECLIA positive individuals (Lubumbashi 19.0% [95%CI 15.2-23.3]; Abidjan 71.8%
253 [95%CI 65.7-77.4]).

254 **Figure 3.** RDT and ELISA/ECLIA based seroprevalence by age group in Lubumbashi (A) and Abidjan for
255 phase 1 (B) and phase 2 (C) of the survey.



256

257 *COVID-19 vaccination*

258 In Lubumbashi, the survey took place before the roll-out of COVID-19 vaccination. In Abidjan, the
259 weighted proportion of vaccinated individuals nearly doubled from 9.0% (95%CI 6.5-11.9) during the
260 first phase of the survey to 16.8% (95%CI 13.8-20.2) during the second phase of the survey.

261 Vaccination rates increased with age; 31.7% (95%CI%: 25.1-38.8) of those aged 50+ years reported
262 having been vaccinated. While women (11.9% [95%CI%: 8.1-16.5]) had a higher vaccination rate than
263 men (5.6% [95%CI% 3.6-8.2]) in the first phase, no difference was observed in the second phase. Among
264 the vaccinated individuals, 89.3% had a positive RDT and 97.7% a positive ECLIA result.

265 Discussion

266 We present here two of the first COVID-19 studies that combine mortality and seroprevalence
267 surveys, providing mortality estimates and seroprevalence of anti-SARS-CoV-2 antibodies in a
268 representative sample of the general population after the second pandemic wave in Lubumbashi and
269 during and after the third pandemic wave in Abidjan. In Lubumbashi, the CMR overall doubled during
270 the pandemic period compared to the pre-pandemic period, with a more pronounced increase during

271 the second wave. Most affected were the <5 year-olds, suggesting that the increase in mortality may
272 have, in addition to the pandemic, been driven by factors indirectly impacted by the pandemic such as
273 delayed or decreased access to healthcare due to fear of contracting COVID-19, reduced health
274 system capacity, disruption in service provision, transport restrictions or economic challenges [13],
275 [14]. In Abidjan, there was no significant increase in crude mortality rates between the pre-pandemic
276 and pandemic phase. However, an increase was observed during the 3rd wave of COVID-19,
277 consistent with the increase in deaths reported by the official COVID-19 surveillance system compared
278 to previous waves. Overall, the increases in mortality observed in both studies were low, especially
279 when compared to the excess mortality observed in areas of Europe, Asia and the Americas [15]–[17].

280 Our results indicate that a large proportion, if not the majority, of the population has anti-SARS-CoV-2
281 antibodies in both settings. According to the laboratory-based results, more than 40% of the
282 population was infected with SARS-CoV-2 during the first two waves in Lubumbashi and more than
283 80% during the first 3 waves in Abidjan. Our findings are similar to more recent seroprevalence studies
284 in several African countries which indicate that, while heterogenous, the virus has circulated widely
285 [3]. We found that seroprevalence increased with age, contrary to observations in European countries
286 [18]–[20], but similar to other seroprevalence surveys in Africa [3]. The infection risk in the African
287 context thus appears to be higher in the elderly population, who also have a higher risk of severe
288 disease.

289 The estimated infection rates were tens (in Abidjan) to hundreds (Lubumbashi) times higher than
290 confirmed cases in the surveillance system of both countries. In Abidjan, based on the ECLIA results
291 from the 2nd phase, we estimated that the ratio of the number of infections to official notified cases
292 ranged from 31 in Marcory to 151 in Yopougon. In addition, our results show that the infection has
293 spread as much in Yopougon as in Marcory, in contrast to surveillance system figures which indicated
294 a much lower attack rate in Yopougon. In Lubumbashi, only 1 in 150 infections were reported in the
295 Lubumbashi health zone and only 1 in 700 infections were reported in Kampemba and Tshamilemba

296 health zones. These results are consistent with a previous seroprevalence study in Kinshasa (DRC),
297 which estimated after the 1st wave that only 1 in 300 infections were reported [4].

298 Our studies had several limitations. First the refusal rate was high in both contexts, particularly for the
299 seroprevalence survey, suggesting a risk of selection bias. The median age of participants was higher in
300 the seroprevalence than mortality survey, suggesting that young individuals may have been more
301 likely to refuse. The lengthy recall period may have biased the accuracy of the collected death
302 information, particularly for deaths that occurred earlier in the period, and in some cases, deaths may
303 have been missed or household members may have been omitted. COVID-related stigma may have
304 resulted in underreporting of COVID-related deaths, as no death was directly attributed to COVID-19
305 in either study. Moreover, we were not able to adjust for potential remaining confounding such as
306 seasonality.

307 The performance of ELISA/ECLIA and RDT are significantly different, with ELISA/ECLIA-based
308 seroprevalence estimates 3 times higher than those estimated by RDT. Similar disparities have been
309 observed in other seroprevalence studies [21], [22]. Test performance may vary with time since
310 infection and severity of infection, and RDT sensitivity may be lower to detect infections that occurred
311 early during the epidemic resulting in lower seroprevalence estimates [11], [23]. False-positive results
312 due to cross-reactivity cannot be entirely excluded [24]. Additionally, symptoms experienced more
313 than a year ago may be difficult to recall and are not specific, making accurate estimation of
314 symptomatic infections not possible. To limit bias, participants were asked about their symptoms
315 before they knew their RDT result.

316 In Abidjan, where COVID-19 vaccination campaigns had started at the time of survey, our testing
317 methodology did not distinguish between antibodies developed following vaccination and/or infection
318 and antibodies developed following infection only. Nevertheless, the seroprevalence is comparably
319 high among the non-vaccinated and total study population.

320 Lastly it is unclear to what extent SARS-CoV-2 cross-reactive antibodies provide protection against
321 future SARS-CoV-2 infection or disease progression, particularly in the event of new variants. The
322 results of this analysis predate the third wave of cases in Lubumbashi and subsequent waves in
323 Abidjan.

324 Despite these limitations, our study provides key results estimating the extent of SARS-CoV-2
325 infections in two urban African contexts and additionally the impact of infections on mortality.

326 **Conclusion**

327 Although circulation of SARS-CoV-2 seems to have been wide in both study settings, the public health
328 impact of COVID-19 varied by setting and seems to have been overall low compared to Europe, Asia or
329 the Americas. The results in Lubumbashi, with increases particularly among the youngest age group,
330 suggest indirect impacts of COVID and the pandemic on population health. The seroprevalence results
331 confirmed substantial underdetection of cases through the national surveillance systems and
332 demonstrated an increased risk of infection among the oldest age group, who are also at risk of more
333 severe disease progression. Lastly, due to the high overall spread of the virus, our results suggest that
334 targeted vaccination campaigns are appropriate to protect higher risk populations.

335 **Acknowledgements**

336 We thank the survey participants and the field study teams for their time and participation. We
337 further thank the community leaders of the health zones Lubumbashi, Kampemba, and Tshamilemba
338 and the communes of Marcory and Yopougon, as well as the Ministry of Health in the DRC and in Côte
339 d'Ivoire for their approval and support during the implementation of the survey.

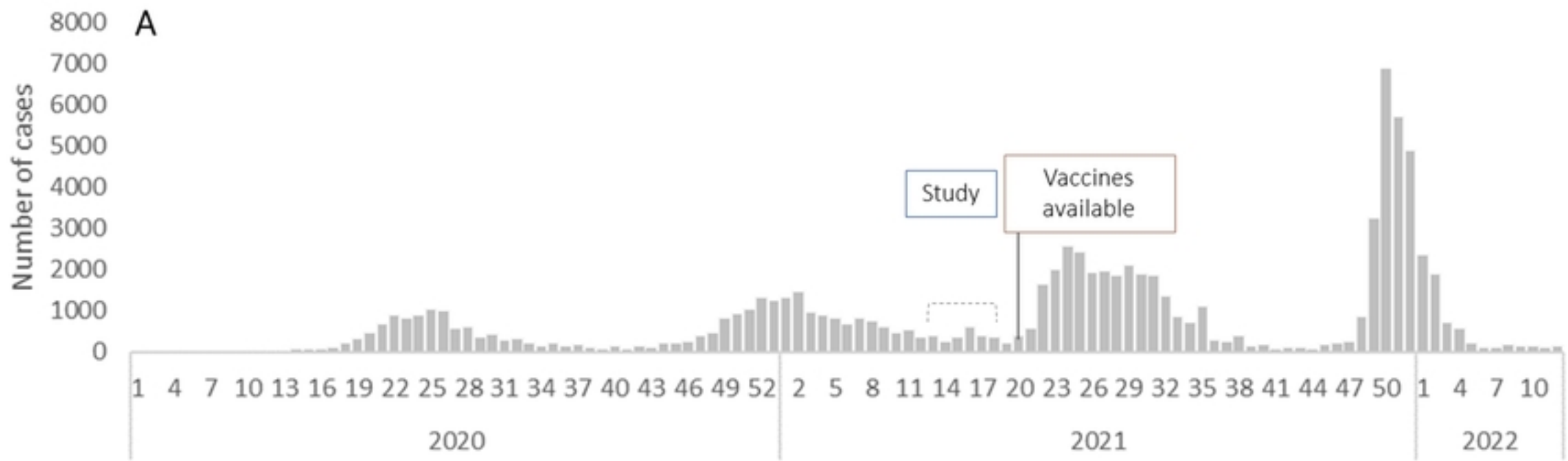
340 References

- 341 [1] “WHO Coronavirus (COVID-19) Dashboard | WHO Coronavirus (COVID-19) Dashboard With
342 Vaccination Data.” <https://covid19.who.int/> (accessed Aug. 24, 2022).
- 343 [2] H. H. Musa, T. H. Musa, I. H. Musa, I. H. Musa, A. Ranciaro, and M. C. Campbell, “Addressing
344 Africa’s pandemic puzzle: Perspectives on COVID-19 transmission and mortality in sub-Saharan
345 Africa,” *Int. J. Infect. Dis.*, vol. 102, p. 483, Jan. 2021, doi: 10.1016/J.IJID.2020.09.1456.
- 346 [3] H. C. Lewis *et al.*, “SARS-CoV-2 infection in Africa: a systematic review and meta-analysis of
347 standardised seroprevalence studies, from January 2020 to December 2021,” *BMJ Glob. Heal.*,
348 vol. 7, p. 8793, 2022, doi: 10.1136/bmjgh-2022-008793.
- 349 [4] A. N. Nkuba *et al.*, “High Prevalence of Anti–Severe Acute Respiratory Syndrome Coronavirus 2
350 (Anti–SARS-CoV-2) Antibodies After the First Wave of Coronavirus Disease 2019 (COVID-19) in
351 Kinshasa, Democratic Republic of the Congo: Results of a Cross-sectional Household-Based
352 Survey,” *Clin. Infect. Dis.*, Jun. 2021, doi: 10.1093/CID/CIAB515.
- 353 [5] J. M. Milleliri *et al.*, “SARS-CoV-2 infection in Ivory Coast: a serosurveillance survey among 2
354 gold mine workers 3 4”, doi: 10.1101/2021.01.27.21249186.
- 355 [6] H. Ritchie *et al.*, “Coronavirus Pandemic (COVID-19),” *Our World Data*, Mar. 2020, Accessed:
356 Sep. 24, 2022. [Online]. Available: <https://ourworldindata.org/coronavirus>
- 357 [7] A. D. Deza, *Cartographie de la pauvreté non financière dans le district d’Abidjan à partir du*
358 *recensement général de la population et de l’habitat 2014 de la Côte d’Ivoire*. Accessed: Dec.
359 15, 2020. [Online]. Available:
360 http://www.ins.ci/n/documents/Cartographie_de_la_pauvrete_non_financiere_Deza_Doria_O
361 [DSEF_2016.pdf](http://www.ins.ci/n/documents/Cartographie_de_la_pauvrete_non_financiere_Deza_Doria_O)
- 362 [8] I. Page and W. H. O. Cousp, “Réponse à l’ épidémie due à la maladie à coronavirus COVID-19
363 Sitrep N°215,” 2020.

- 364 [9] H. Péré, R. S. Mboumba Bouassa, S. Tonen-Wolyec, I. Podglajen, D. Veyer, and L. Bélec,
365 “Analytical performances of five SARS-CoV-2 whole-blood finger-stick IgG-IgM combined
366 antibody rapid tests,” *J. Virol. Methods*, vol. 290, p. 114067, Apr. 2021, doi:
367 10.1016/j.jviromet.2021.114067.
- 368 [10] “EUROIMMUN Anti-SARS-CoV-2 S1 Curve ELISA (IgG) - Instructions for Use”.
- 369 [11] A. G. L’Huillier *et al.*, “Antibody persistence in the first 6 months following SARS-CoV-2 infection
370 among hospital workers: a prospective longitudinal study,” *Clin. Microbiol. Infect.*, Jan. 2021,
371 doi: 10.1016/j.cmi.2021.01.005.
- 372 [12] “Elecsys® Anti-SARS-CoV-2 S.”
373 <https://diagnostics.roche.com/global/en/products/params/elecsys-anti-sars-cov-2-s.html>
374 (accessed Sep. 01, 2022).
- 375 [13] P. A. Adu, L. Stallwood, S. O. Adebola, T. Abah, and A. I. Okpani, “The direct and indirect impact
376 of COVID-19 pandemic on maternal and child health services in Africa: a scoping review,” *Glob.*
377 *Heal. Res. Policy*, vol. 7, no. 1, pp. 1–14, Dec. 2022, doi: 10.1186/S41256-022-00257-
378 Z/FIGURES/1.
- 379 [14] T. Ahmed *et al.*, “Healthcare utilization and maternal and child mortality during the COVID-19
380 pandemic in 18 low- and middle-income countries: An interrupted time-series analysis with
381 mathematical modeling of administrative data,” *PLoS Med.*, vol. 19, no. 8, Aug. 2022, doi:
382 10.1371/JOURNAL.PMED.1004070.
- 383 [15] G. Molenberghs *et al.*, “COVID-19 mortality, excess mortality, deaths per million and infection
384 fatality ratio, Belgium, 9 March 2020 to 28 June 2020,” *Eurosurveillance*, vol. 27, no. 7, p. 1,
385 2022, doi: 10.2807/1560-7917.ES.2022.27.7.2002060.
- 386 [16] L. M. Rossen *et al.*, “Excess all-cause mortality in the USA and Europe during the COVID-19
387 pandemic, 2020 and 2021,” *Sci. Reports* |, vol. 12, p. 18559, 123AD, doi: 10.1038/s41598-022-

- 388 21844-7.
- 389 [17] H. Wang *et al.*, “Estimating excess mortality due to the COVID-19 pandemic: a systematic
390 analysis of COVID-19-related mortality, 2020-21,” *Lancet (London, England)*, vol. 399, no.
391 10334, pp. 1513–1536, 2022, doi: 10.1016/S0140-6736(21)02796-3.
- 392 [18] F. Carrat *et al.*, “Antibody status and cumulative incidence of SARS-CoV-2 infection among
393 adults in three regions of France following the first lockdown and associated risk factors: a
394 multicohort study,” *Int. J. Epidemiol.*, vol. 50, no. 5, pp. 1458–1472, Nov. 2021, doi:
395 10.1093/IJE/DYAB110.
- 396 [19] S. Stringhini *et al.*, “Seroprevalence of anti-SARS-CoV-2 IgG antibodies in Geneva, Switzerland
397 (SEROCoV-POP): a population-based study,” *Lancet (London, England)*, vol. 396, no. 10247, p.
398 313, Aug. 2020, doi: 10.1016/S0140-6736(20)31304-0.
- 399 [20] M. Pollán *et al.*, “Prevalence of SARS-CoV-2 in Spain (ENE-COVID): a nationwide, population-
400 based seroepidemiological study,” *Lancet (London, England)*, vol. 396, no. 10250, p. 535, Aug.
401 2020, doi: 10.1016/S0140-6736(20)31483-5.
- 402 [21] R. Malaeb *et al.*, “High seroprevalence of antibodies against SARS-CoV-2 among healthcare
403 workers 8 months after the first wave in Aden, Yemen,” *PLOS Glob. Public Heal.*, vol. 2, no. 11,
404 p. e0000767, Nov. 2022, doi: 10.1371/journal.pgph.0000767.
- 405 [22] W. Moser *et al.*, “SARS-CoV-2 Antibody Prevalence and Population-Based Death Rates, Greater
406 Omdurman, Sudan,” *Emerg. Infect. Dis.*, vol. 28, no. 5, p. 1026, May 2022, doi:
407 10.3201/EID2805.211951.
- 408 [23] A. Nkuba Ndaye *et al.*, “Challenges in interpreting SARS-CoV-2 serological results in African
409 countries,” *Lancet Glob. Heal.*, vol. 9, no. 5, pp. e588–e589, May 2021, doi: 10.1016/S2214-
410 109X(21)00060-7.
- 411 [24] R. S. Mboumba Bouassa *et al.*, “Unexpected high frequency of unspecific reactivities by testing

412 pre-epidemic blood specimens from Europe and Africa with SARS-CoV-2 IgG–IgM antibody
413 rapid tests points to IgM as the Achilles heel,” *J. Med. Virol.*, vol. 93, no. 4, pp. 2196–2203, Apr.
414 2021, doi: 10.1002/JMV.26628.
415



medRxiv preprint doi: <https://doi.org/10.1101/2022.12.12.22283387>; this version posted December 13, 2022. The copyright holder for this preprint (which was not certified by peer review) is the author/funder, who has granted medRxiv a license to display the preprint in perpetuity. It is made available under a [CC-BY 4.0 International license](https://creativecommons.org/licenses/by/4.0/).

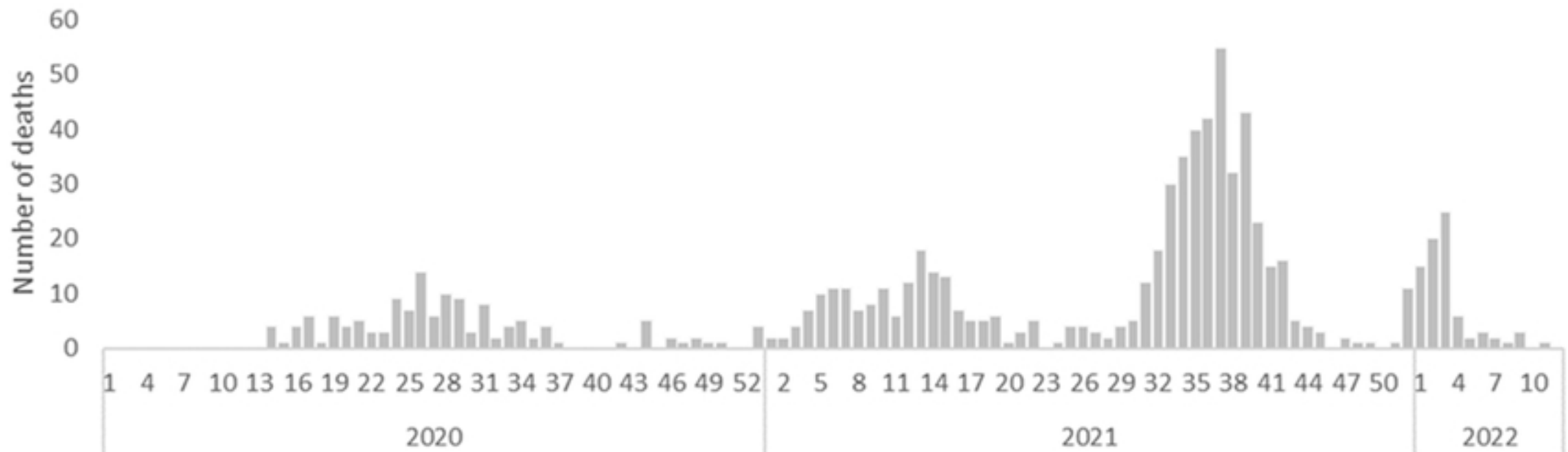
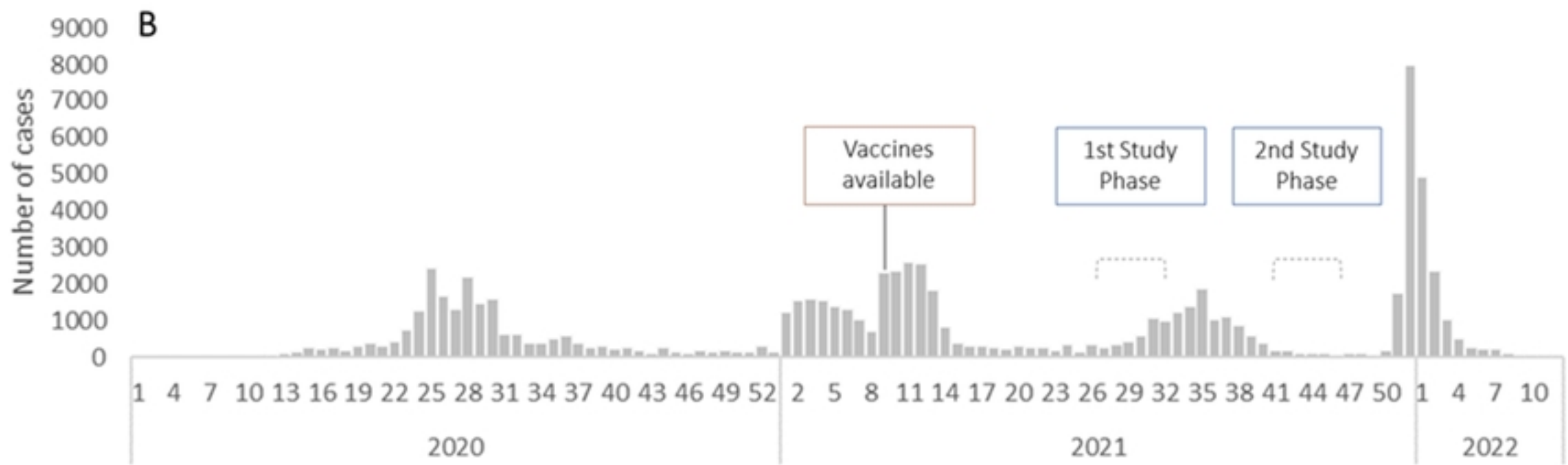
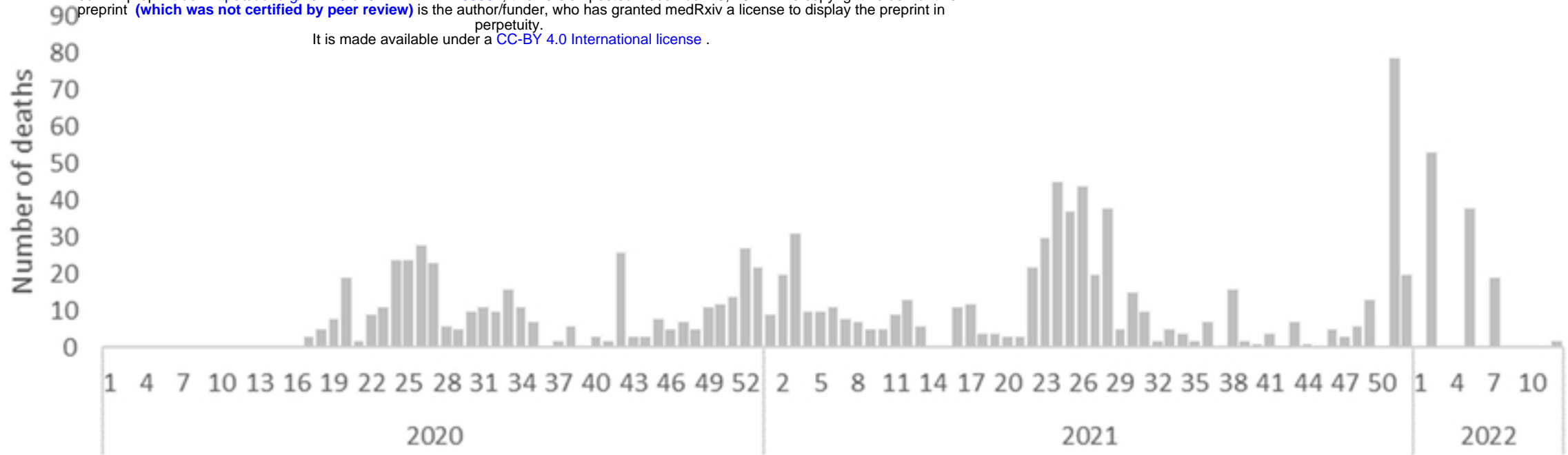
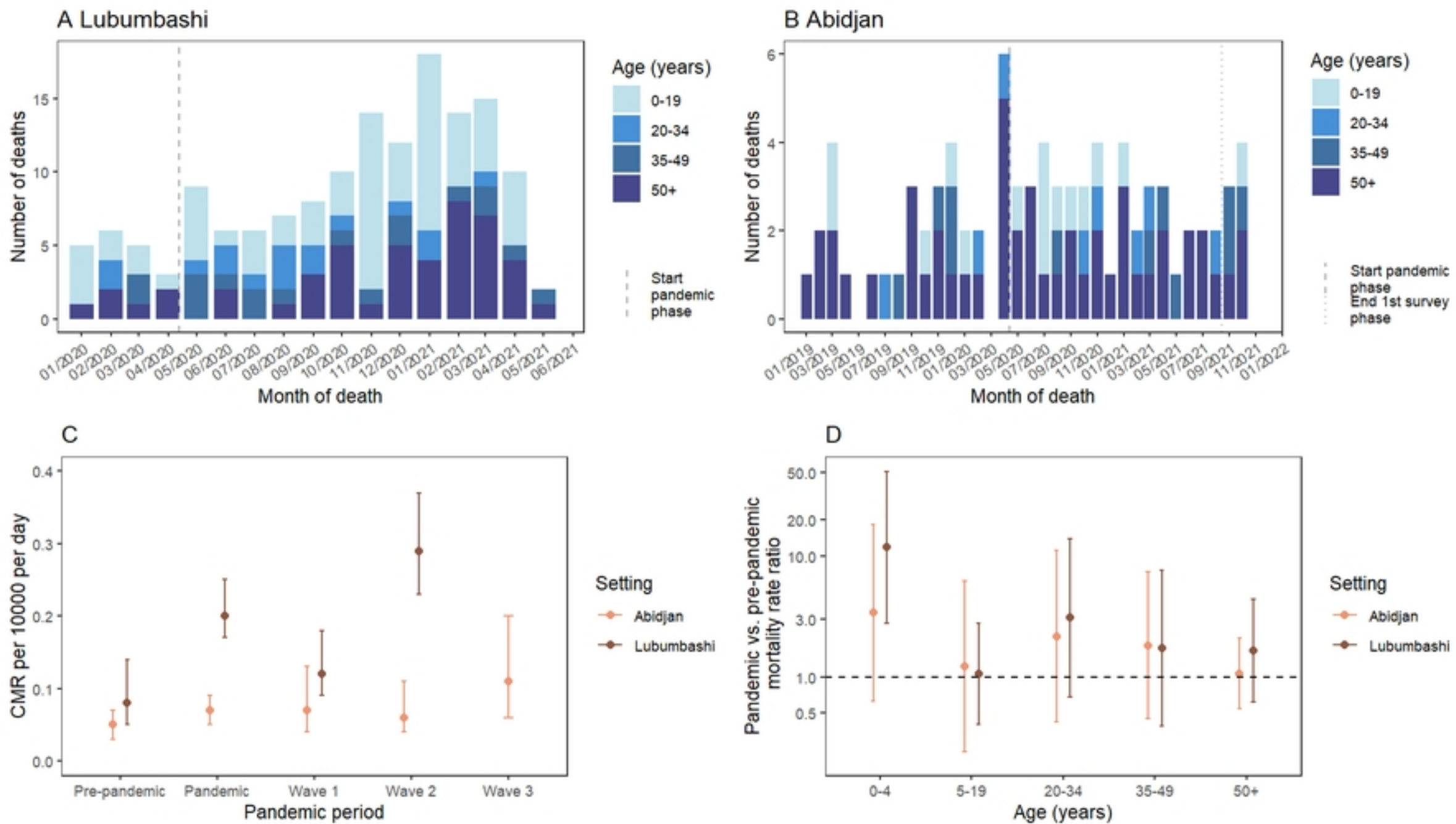
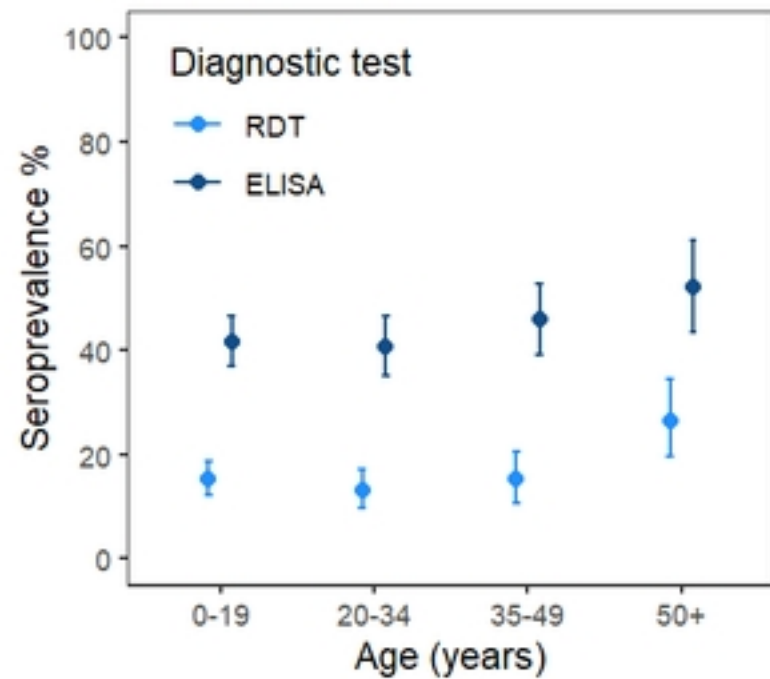
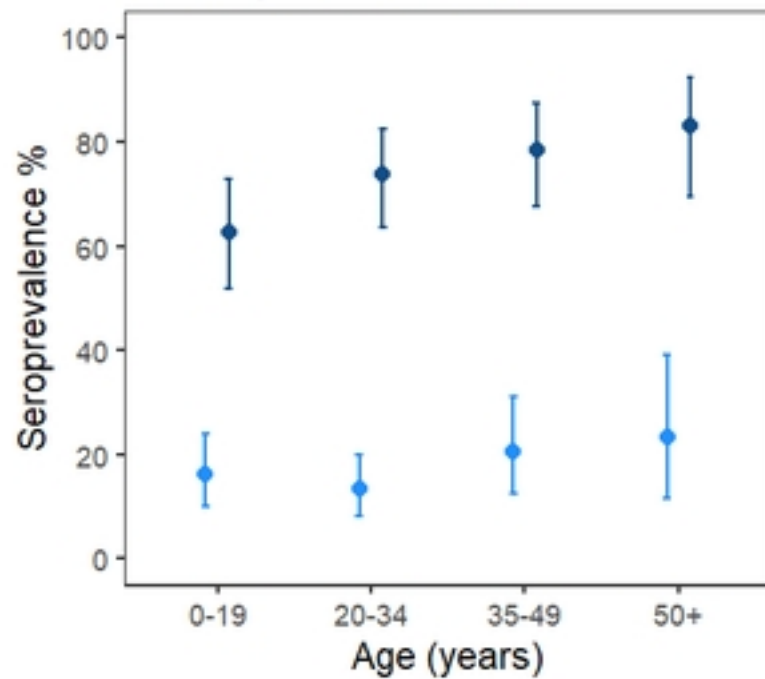
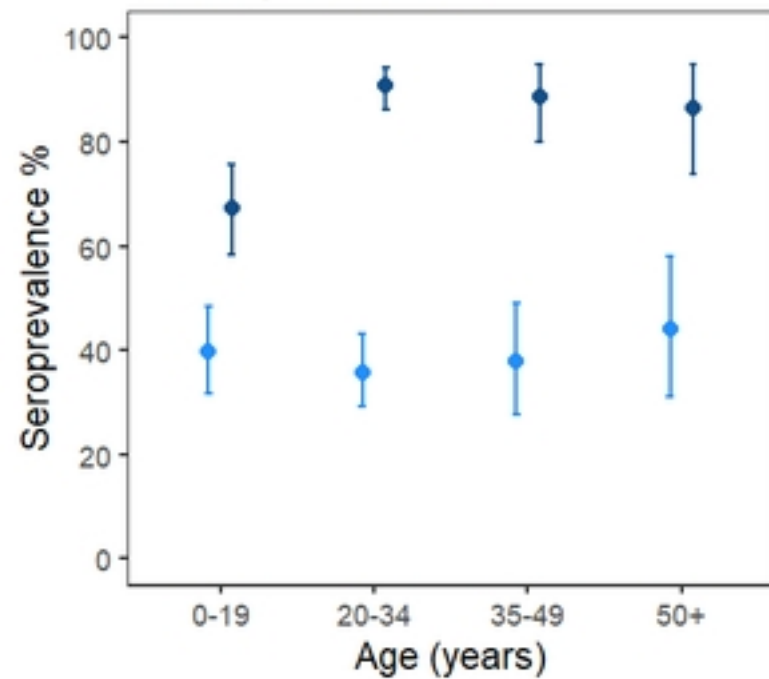


Figure 1



A Lubumbashi**B Abidjan Phase 1****C Abidjan Phase 2****Figure 3**