

34 deliveries. Finally, we document core health system strategies and practices adopted to maintain
35 EHS during the early phase of the pandemic.

36 **Methods**

37 This study used an explanatory sequential study design. First, we utilized data from routine health
38 management information systems to quantify the impact of the pandemic on the provision of EHS
39 using interrupted time series models. Second, we explored exemplary strategies and health system
40 initiatives that were adopted to prevent the spread of COVID-19 infections while maintaining the
41 provision of EHS using in-depth interviews with key informants including policymakers and
42 healthcare providers.

43 **Results**

44 The COVID-19 pandemic and the interventions that were implemented disrupted the provision of
45 EHS. In the first month of the COVID-19 pandemic, Oral Polio and pentavalent vaccination
46 coverage reduced by 15.2% [95% CI = -22.61, -7.87, $p < 0.001$] and 12.4% [95% CI = 17.68, -7.13;
47 $p < 0.001$] respectively. The exemplary strategies adopted in maintaining the provision of EHS
48 while also responding to the spread of infections include the development of new policy guidelines
49 that were disseminated with modified service delivery models, new treatment and prevention
50 guidelines, healthcare workforce capacity building on outbreak control strategies, the use of
51 telemedicine and medical drones to provide EHS and facilitate rapid testing of suspected cases.

52 **Conclusion**

53 The implementation of different NPIs during the peak phase of the pandemic disrupted the
54 provision of EHS. However, the Ministry of Health leveraged the resilient health system and
55 deployed efficient, all-inclusive, and integrated infectious disease management and infection

56 prevention control strategies to maintain the provision of EHS while responding to the spread of
57 infections.

58 **Introduction**

59 The severe acute respiratory syndrome coronavirus 2 (SARS-CoV-2), the coronavirus that causes
60 coronavirus disease 2019 (COVID-19) led to an unprecedented number of deaths and morbidities
61 across the globe [1]. Ghana recorded its index COVID-19 case on the 12th of March 2020 and as
62 of the 20th of October 2022, the country has recorded a total of 170321 cases and 1460 COVID-
63 19-induced deaths. Governments across the globe implemented several non-pharmaceutical
64 interventions (NPIs) and vaccination strategies to reduce the burden of the pandemic on health
65 systems and prevent new infections and deaths and increase access to essential health services
66 (EHS). EHS encompass services with high priority guided by a country's health system and burden
67 of disease aimed at preventing communicable diseases, reducing maternal mortality and child
68 morbidity, preventing acute chronic conditions, and managing emergency conditions. It focuses
69 on high-priority service delivery as listed in the WHO guidance and tools manual. It includes
70 prevention of communicable diseases, services related to reproductive health (care during
71 pregnancy and childbirth), and care of vulnerable populations such as infants and adults. The high-
72 priority service delivery also includes the provision of medications, continuity of critical inpatient
73 therapies, and auxiliary services such as laboratory services and blood bank services to patients.
74 These NPIs disrupted EHS and compounded the social-economic effects on the populace which
75 made them unsustainable in the long term [2]. As COVID-19 spread, the provision of EHS was
76 negatively affected due to weak health systems, limited-health service infrastructure and poor
77 health financing systems [3]. EHS are disrupted because of the unavailability of health workers,
78 infection of health workers and shortage of essential drugs [4, 5]. Other supply dynamics that

79 contribute to the decline in the use of EHS are lockdown policies and stay-at-home orders [6, 7].
80 The clients' fear of contracting the infectious disease results in a decrease in the use of EHS [8].
81 Understanding how a broader range of NPIs strategies have been instituted to mitigate against the
82 spread of COVID-19, as well as any unexpected adverse effects on EHS demand is essential for
83 future health system planning and pandemic preparedness. Few studies have investigated infection
84 prevention strategies, the impact of COVID-19 on EHS and exemplary interventions implemented
85 to improve the uptake of EHS during the peak phase of the pandemic. We provide evidence of the
86 effect of the pandemic, identify and highlight the best practices adopted by Ghana in maintaining
87 the provision of EHS while also responding to the COVID-19 pandemic using different infection
88 prevention control strategies. The present study is underpinned by the statistical and socio-
89 ecological models that evaluates health systems' resilience to fight the pandemic vis a vis the
90 implementation of policies to increase the use and delivery of EHS.

91 **Methods**

92 This study used an explanatory sequential design in which we collected and analyzed time series
93 data on EHS and then followed the results up with a qualitative phase of in-depth interviews with
94 key informants among healthcare workers and policymakers to explore mitigation strategies
95 adopted to curb the spread of infection and maintain the provision of EHS.

96 **Study sites**

97 The study was conducted across the 16 administrative regions of Ghana between March 2020 to
98 December 2021. However, the secondary data analysis of EHS started in January 2018 to
99 December 2021 for all health facilities that report monthly data to routine health management
100 information system.

101

102 Quantitative study design

103 Data source for interrupted time series analysis

104 This was a retrospective ecological time series study design using routine time series data on EHS
105 between January 2018 and December 2021. The EHS data was a continuous sequence of
106 observations at the district level taken repeatedly over equal monthly intervals. Interrupted Time
107 Series (ITS) is a quasi-experimental study design with a potentially high degree of internal validity
108 [9]. In this ITS study, a time series of the EHS outcomes of interest were used to establish an
109 underlying trend in EHS utilization, which was assumed to be interrupted by the COVID-19
110 pandemic on the 12th of March 2020. The ITS was used to model a hypothetical counterfactual
111 scenario under which we assume that had COVID-19 not taken place, the trend on the provision
112 and use of EHS would have continued unchanged (that is: the expected trend, in the absence of
113 COVID, given the pre-existing trend). This counterfactual scenario provides a comparison for the
114 evaluation of the impact of COVID-19 on EHS by examining any change occurring in the period
115 after the first cases of COVID-19 were recorded in Ghana on March 12, 2020. We hypothesized a
116 gradual effect of COVID-19 on EHS (that is, one month lag period before any observed effect).

117 Outcome measures

118 The study analyzed eight EHS indicators: Antenatal care attendance, facility delivery, post-natal
119 care attendance, oral polio vaccination, Bacille Calmette-Guerin (BCG) vaccination, Measles-
120 Rubella vaccination, and outpatients' visits per 1000 populations (Table 1).

121 Table 1: Outcome indicator definitions

Indicator	Definition	Numerator	Denominator	Source of denominator
BCG Coverage	The proportion of children under 1 year receiving BCG vaccine	Number of children under 1 year receiving the BCG vaccine in the period	Number of children under 1 year (estimated as 4% of the population)	Ghana Statistical Service from the 2010 Population and Housing Census
Oral Polio vaccination	The proportion of children under 1-year receiving oral polio (OPV1) vaccine	Number of children under 1 year receiving the OPV1 vaccine in the period	Number of children under 1 year (estimated as 4% of the population)	Ghana Statistical Service from the 2010 Population and Housing Census
Pentavalent vaccination	The proportion of children under 1 year receiving Pentavalent vaccine	Number of children under 1 year receiving the Pentavalent vaccine in the period	Number of children under 1 year (estimated as 4% of the population)	Ghana Statistical Service from the 2010 Population and Housing Census
Measles-Rubella Coverage	The proportion of children under 1 year receiving Measles-Rubella Vaccine	Number of children under 1 year receiving the Measles-Rubella vaccine in the period	Number of children under 1 year (estimated as 4% of the population)	Ghana Statistical Service from the 2010 Population and Housing Census

Antenatal Care Coverage	The proportion of pregnant women receiving antenatal care during pregnancy (at least once).	Total number of antenatal registrants in a specified period	Total number of expected pregnancies of the catchment area within the specified period	Ghana Statistical Service from the 2010 Population and Housing Census
Skilled delivery	Percentage of deliveries conducted by skilled attendants (nurses and doctors).	The number of deliveries supervised by doctors or nurses in the specified period.	Number of expected pregnancies (estimated as 4% of the population)	Ghana Statistical Service from the 2010 Population and Housing Census
Post-natal coverage	The proportion of PNC registrants seen after delivery	Number of PNC registrants (within 48 hours)	Number of expected pregnancies (estimated as 4% of the population)	Ghana Statistical Service from the 2010 Population and Housing Census
OPD attendance per 1000 population	The rate of facility visits per 1000 population	The number of OPD attendance per month for the index year	Total population per month for the index year	Ghana Statistical Service from the 2010 Population and Housing Census

122 Source: District Health Management Information System: Ghana Health Service

123

124 Statistical Analysis

125 Descriptive analysis using mean, standard deviation, minimum and maximum observations,
 126 median and interquartile range, and tools from time series were used to explore the distribution of
 127 the outcome measures and identified the underlying trend, seasonal patterns, and outliers in the
 128 EHS data. We tested the normality of all coverage indicators using the Jarque-Bera skewness-
 129 kurtosis test (Table 2).

130 Table 2: Skewness and kurtosis test of normality

	Skewness and kurtosis test of normality
Essential Health Services	χ^2 , p-value
Antenatal care attendance	2.09; 0.3516
Facility delivery	5.21; 0.0738
Post-natal care attendance	5.98; 0.0503
Oral polio-vaccination 1	2.99; 0.2247
Bacille Calmette-Guerin (BCG) vaccination	5.15; 0.0762
Pentavalent vaccine 1	1.03; 0.5970
Measles-Rubella-less than 1 month	2.73; 0.2556
Outpatients' visits per 1000 population	3.61; 0.1641

131

132 Our ITS analysis involved three different statistical models. These models were fitted to EHS data
 133 before and during COVID. We fitted ordinary least square regression models to quantify the
 134 impact of COVID-19 on the provision of EHS. We used the Fourier terms (pairs of sine and cosine
 135 functions) to adjust for seasonality and other long-term trends (Bhaskaran et al. 2013). The

136 following segmented harmonic ITS regression model with Newey West standard errors that adjusts
137 for seasonality in EHS time-series dependent outcomes with sine/cosine pair was used:

$$138 \quad Y_{ti} = \beta_0 + \beta_1 T + \beta_2 C + \beta_3 CT + \beta_4 \sin(2\pi\omega t_i) + \beta_5 \cos(2\pi\omega t_i) + \beta_6 (\text{lag} Y_{ti}) + \varepsilon_{ti}$$

139 Y_{ti} is the coverage of EHS in the t th month of the i th year; t values range from 1 to 12; i values
140 range from 1 to K , where K is the number of years under observation (2018-2021). C is a dummy
141 variable indicating observation collected before COVID ($C=0$) or after ($C=1$). T is a continuous
142 variable that indicates the time in months passed from the start of the observational period (2018-
143 2021).

144 β_0 represents the baseline level of EHS at $T = 0$, β_1 is interpreted as the change in EHS associated
145 with a unit increase in time and it represents the underlying pre-COVID-19 trend), β_2 is the level
146 change in EHS after the index case of COVID-19 was recorded on 12th March 2020 and β_3
147 indicates the slope change following the COVID-19 pandemic. ε_{ti} are independently and
148 identically distributed normal random variables with $E[\varepsilon_{ti}] = 0$ and $Var[\varepsilon_{ti}] = \sigma^2$. ω reflects the
149 period within a year timespan and in our case, $\omega = \frac{1}{12}$ to reflect monthly data. Our proposed model
150 describes the seasonal behaviour of EHS by both sine and cosine functions with symmetric rise
151 and fall over a period of a full year. For both the Generalized Poisson and the negative binomial
152 regression models, which are required for modeling under and over-dispersed EHS outcomes
153 respectively, we included total OPD cases as an offset variable to convert the EHS outcomes into
154 a rate and adjust for any potential changes in the OPD attendance over time. We estimated the
155 counterfactual by assuming that no COVID-19 case was recorded in Ghana and there was no
156 immediate nor sustained effect of the pandemic. We graphically assessed autocorrelation by
157 examining the plot of residuals and the partial autocorrelation function. This was followed by the

158 Cumby–Huizinga (Breusch-Godfrey) general test for autocorrelation [10]. We employed the
159 Newey-West method [11] to generate more robust standard errors that were valid even when there
160 is the presence of heteroscedasticity and autocorrelation.

161 **Data sources and Geospatial methods for regional distribution of cumulative confirmed** 162 **cases**

163 We obtained the number of cumulative confirmed COVID-19 cases from the Ghana Health Service
164 website (<https://www.ghs.gov.gh/covid19/archive.php>) for the period of 12th March 2020 to 31st
165 December 2021. The regional shapefile for Ghana was downloaded from GADM
166 (https://gadm.org/download_country.html). The *rgdal*, *leaflet* and *tmap* packages in *R* software
167 version 4.1.1 and RStudio were used for Geospatial data preparation [12].

168 **Qualitative Study Design**

169 We used the socio-ecological framework for understanding infection prevention control strategies
170 and measures adopted to maintain EHS and a phenomenological approach to guide this study. The
171 socio-ecological framework describes population-based interventions at individual, interpersonal,
172 institutional, community and public policy levels that influence sustaining essential health services
173 during Covid-19 in Ghana. The phenomenological approach to this study is based on the premise
174 that disrupted EHS, barriers and strategies to maintaining EHS and infection prevention control is
175 best understood from the experiences of frontline health workers, policymakers and implementers
176 of policies and programs. This descriptive exploratory study had a qualitative design using a semi-
177 structured interview guide. The study features Interpretative Phenomenological Analysis (IPA)
178 and narrative approaches. Frontline health workers shared their lived experiences with how they
179 controlled the spread of infections while providing EHS. On the other hand, implementers and
180 policymakers shared their experiences on policy initiatives and knowledge about how they reduce

181 the spread of infections while maintaining EHS using the narrative approach. A thematic analysis
182 was used as a tool to identify key themes emerging from the interviews. A deductive approach was
183 chosen to better focus on the experiences and perspectives of frontline healthcare providers and
184 policymakers.

185 **Participants recruitment**

186 Individuals were considered eligible if they were frontline health workers, implementers,
187 policymakers and stakeholders who worked during the COVID-19 pandemic in regions with high
188 recorded COVID-19 cases. Participants were recruited using purposive sampling based on the
189 responsibilities that were assigned to these individuals during the peak phase of the pandemic. The
190 study purposively selected healthcare providers, policymakers, stakeholders and program
191 implementers. For clarity, health workers who worked in health facilities during the early phase of
192 the COVID-19 pandemic were referred to as frontline health workers and were recruited.
193 Policymakers, implementers and stakeholders who were directly involved with decision-making
194 at the community, district, regional and national levels regarding COVID-19 were also recruited.
195 Recruitment took place between March and May in the Greater Accra Region of Ghana. Potential
196 participants were asked if interested in participating in the study before interviews were conducted.
197 Informed consent was obtained before the interview was conducted by the research assistants. A
198 total of 32 participants (20 frontline health workers and 12 policymakers, implementers, and
199 stakeholders) were involved in this study.

200 **Data Collection**

201 The purpose and significance of the study were communicated to the study participants and
202 interviews were scheduled at the convenience of the study participants. Frontline health workers
203 were recruited from primary, secondary, tertiary, and quaternary health facilities. Policymakers,

204 implementers, and stakeholders were also recruited from the national COVID-19 taskforce,
205 regional rapid response team, municipal/district rapid response team, Ghana Health Service,
206 Municipal health directorate and district health directorate. Two different interview guides were
207 prepared before conducting interviews: one each for frontline health workers and policymakers,
208 implementers and stakeholders. The interview guide for frontline health workers consists of
209 contents such as services disrupted, challenges to the utilization of EHS and facility strategies to
210 provide EHS. The interview guide for policymakers, implementers and stakeholders elicited
211 information on disruptions of EHS, challenges to maintaining/restarting EHS and health system
212 interventions to maintaining or restarting EHS. All the interview guides were in English. In
213 addition, all interviews were conducted in English with most of the interviews at the office of the
214 selected participants. Physical distance was maintained during face-to-face interviews while both
215 the research assistant and research participant wore a face mask. All interviews were done on a
216 face-to-face basis. Interviews lasted one hour to one hour and 30 minutes. After the interview,
217 research assistants provided key points of the interview to validate the data as a form of checking.
218 Research assistants wrote field notes on daily basis. Interviews were shared with authors to review
219 and provide feedback. The daily feedback was done until saturation was reached.

220

221

222

223

224 **Qualitative data analysis**

225 All interviews were audio-recorded, transcribed verbatim, exported to NVivo (Version 10) and
226 analyzed using the six steps of thematic analysis described by Braun & Clarke [13]. The six steps
227 of thematic analysis involve (1) data familiarization, (2) generating initial codes (3) identifying

228 preliminary themes (4) reviewing themes (5) defining and naming themes; (6) reporting. First, the
229 entire transcripts were read for an overall understanding of the data. Secondly, codes addressing
230 research questions were identified. Thirdly, the initial codes identified were synthesized into wider
231 themes. The themes from frontline health workers and policymakers and implementers were
232 reviewed and synthesized. In the fifth stage, we drew up figures for thematic analysis where data
233 for each theme were collected from all interview transcripts.

234

235 **Ethical considerations**

236 The study was approved by the Ghana Health Service Ethical Review Committee (GHS-ERC)
237 with a unique approval number GHS-ERC: 008/11/12.

238 **Results**

239 **Geospatial distribution of cumulative confirmed cases by region**

240 Our results indicate substantial regional variations in the number of cumulative confirmed cases
241 in the country from 12th March 2020 to 31st December 2021. The Greater Accra region recorded
242 the highest number of cases (81932) (Figure 1).

243

244 **Figure 1: Geospatial distribution of cumulative confirmed cases of COVID-19 by regions in**
245 **Ghana (12th March 2020 to 31st December 2021).**

246

247

248

249

250

251 **Impact of COVID-19 on essential health service delivery**

252 Table 3 shows the impact of COVID-19 on EHS delivery in Ghana. The pandemic had an
253 immediate effect on BCG, OPV, Measles and Pentavalent vaccination as the coverages of these
254 indicators declined within one month after Ghana recorded its first two index cases. However, it

255 was observed that the pandemic had an immediate negative effect on the provision of EHS (OPV
256 and Pentavalent vaccination coverages) as they declined within the first month of the pandemic.
257 However, the decline in the provision of EHS was not sustained as utilization of EHS began to
258 increase after the first few months of the pandemic. In the years prior to Ghana recording the first
259 two index cases (1st January 2018 to 11th March 2020), OPV coverage was estimated at 88.3%
260 [95% CI: 85.67, 91.26]. In the first month of the COVID-19 pandemic, OPV coverage decreased
261 by 15.2% [95% CI = -22.61, -7.87, $p < 0.001$] which corresponds to the immediate effect of the
262 pandemic. However, this decline was not sustained as the monthly trend of OPV coverage relative
263 to the pre-COVID trend increased by 1.04% on average per month [95% CI: 0.62, 1.46, $p < 0.001$].
264 Our results on the post-COVID trend analysis showed that after 12th March 2020, OPV coverage
265 increased monthly at a rate of 1.2% [95% CI: 0.80, 1.50; $p < 0.001$]. In the first month of the
266 COVID-19 pandemic, Pentavalent vaccination coverage decreased by 12.4% [95% CI = 17.68, -
267 7.13; $p < 0.001$] which corresponds to the immediate effect of the pandemic. Like OPV, this
268 reduction in coverage was not sustained as the monthly trend of Pentavalent vaccination coverage
269 increased thereafter relative to the pre-COVID trend by 0.9% on average per month [95% CI: 0.53,
270 1.22; $p < 0.001$]. Our results on the post-COVID trend analysis showed that after 12th March 2020,
271 Pentavalent vaccination coverage increased monthly at a rate of 1.0% [95% CI: 0.72, 1.21%;
272 $p < 0.001$]. PNC attendance decreased immediately after the country recorded the first two index
273 cases, but general OPD attendance has increased since the inception of COVID-19 in Ghana
274 (Figure 2).

275

276

277

278

279

280

281

282 Table 3: Impact of COVID-19 on essential health service delivery

	Baseline coverage	β_1 is the slope or trend of the outcome variable until COVID-19 was first recorded in Accra.	β_2 represents the change in the level of the outcome that occurs in the period immediately following Ghana recording the first two index cases of COVID	β_3 represents the difference between pre-COVID and post-COVID slopes of the outcome (effect of COVID-19 over time)	Post-COVID trend, $\beta_1 + \beta_3$	# of Lags
Service utilization	% [95% CI]	β_1 [95% CI]	β_2 [95% CI]	β_3 [95% CI]	$(\beta_1 + \beta_3)$ [95% CI]	
BCG	88.33 [85.67, 91.26]	-0.14 [-0.33, 0.05]	-2.23 [-6.91, 2.44]	0.53 [0.17, 0.89]**	0.39 [0.08, 0.70]*	0
OPV	86.51 [83.62, 89.39]	0.11 [-0.18, 0.40]	-15.24 [-22.61, -7.87]***	1.04 [0.62, 1.46]***	1.15 [0.80, 1.50]***	0
Measles	103.20 [93.70, 112.71]	0.03 [-0.53, 0.59]	-11.15 [-24.64, 2.35]	0.35 [-0.72, 1.41]	0.38 [-0.49, 1.24]	6
Pentavalent	86.87 [84.17, 89.59]	0.09 [-0.17, 0.35]	-12.40 [-17.68, -7.13]***	0.88 [0.53, 1.22]***	0.97 [0.72, 1.21]***	0
ANC	88.99 [85.52, 92.46]	-0.48 [-0.74, -0.23]***	3.19 [-5.20, 11.58]	0.58 [0.05, 1.12]*	0.10 [-0.43, 0.63]	2
Skilled delivery	61.88 [58.36, 65.39]	-0.15 [-0.38, 0.08]	-2.15 [-7.89, 3.60]	0.65 [0.29, 1.00]**	0.50 [0.13, 0.87]**	8
PNC	74.21 [73.46, 74.96]	0.46 [0.41, 0.50]***	-1.66 [-3.31, 0.00]	-0.16 [-0.28, -0.03]*	0.30 [0.18, 0.41]***	7
OPD attendance per 1000 population	114.23 [101.18, 127.29]	-2.08 [-3.17, -1.00]***	2.67 [-19.99, 25.34]	3.25 [2.13, 4.38]***	1.17 [0.52, 1.82]**	8

283 p-value notation: ***p<0.001, **p<0.01, *p<0.05

284

285

286

287

288

289

290 **Figure 2: Impact of COVID-19 pandemic on the provision of essential health services**

291

292 **COVID-19 Outbreak Control Strategies**

293 The results from the key informant interviews showed seven broad categories of strategies that

294 were adopted to mitigate the impact of COVID-19 in Ghana: (1) rapid response coordination with

295 preparedness & response plan leading to a reduced number of new cases and deaths: swift partial

296 lockdown in hardest-hit regions (Greater Accra and Kumasi in the Ashanti region), (2) the adoption

297 of pre-existing surveillance systems, leveraging previous experiences for managing epidemics;

298 supplemented by community serological surveys provided real-time data for decision-making, (3)

299 the implementation of 3T's strategy: test, trace, and treat; swift contact tracing & isolation
300 measures in early phases of the pandemic, ramp up testing through various strategies, leveraging
301 existing GeneXpert lab equipment, pooled testing, improved vaccination strategy, private sector
302 engagement, mass testing in hotspots, and early RDT adoption contributed to limiting the spread
303 of the disease and preventing deaths. (4) Sustained multisectoral coordination mechanisms with
304 political leadership commitment, including academia, donors, and private sector; mirrored at
305 regional and district level increased the production of PPEs and. (5) the adoption of innovative
306 technologies: use of drones to deliver COVID-19 lab samples; roll out of SORMAS for E-
307 surveillance & reporting and (6) the employment of effective media engagement protocols with
308 regular Presidential addresses, Ministerial press briefings, dedicated COVID-19 websites, and
309 through social and traditional media communications. We provide a brief explanation for each
310 exemplary practice as follows:

311 Theme 1: Government commitment and Rapid Response Coordination

312 Participants observed interventions such as private sector collaboration, legalization of non-
313 pharmaceutical interventions, training of health personnel about the COVID-19 disease, and
314 construction of laboratory sites.

315 *Sub-theme 1: Private sector collaboration*

316 A participant highlighted the role of private sector groups in the provision of hand sanitizers and
317 other essential services.

318 *“His Excellency the President met the various private sector groups, especially the private*
319 *pharmaceutical companies, [and] within a matter of 48 hours, about 37 different companies put*
320 *one of their lines to produce [hand] sanitizers. And you remember that [hand] sanitizer was a*
321 *very essential commodity. Within a matter of about 2 to 3 weeks, it became something everybody*
322 *could afford, and the price went down considerably.” (KII2)*

323

324 *Sub-theme 2: Establishment of new Laboratory Sites*

325 Some participants mentioned that the ability of the government to build more laboratory testing
326 sites helped in the fight against the COVID-19 pandemic in Ghana.

327 *“When we started, they were only two. [Things began to change] when the government then*
328 *allowed that the private sector and the rights protection join in this fight, and, within a matter of*
329 *months, we now had about 45 laboratory testing sites. More than half of them were private-*
330 *owned.” (KII2)*

331 *Sub-theme 3: Training on infection prevention control*

332 Participants were trained on infection, prevention, and control of the COVID-19 disease.

333 *“Staff commitment to training on IPC and their readiness to stick to infection*
334 *prevention control measures really helped us.” (IDI2)*

335 *That was when, you know, national training actually kicked started, even*
336 *though some prior stakeholder engagement had taken place, but it had to take*
337 *the announcement of those cases for case management training, contact*
338 *tracing, surveillance, in terms of their whole response. And national’s trainer*
339 *of training began after we had announced our cases. So, yes, it shook us, but*
340 *then, I think that we began responding in doing all the things that had to be*
341 *done (KII12)*

342 *Sub-theme 4: Non-pharmaceutical Interventions*

343 Participants agreed that government NPIs, backed by legal legislation, helped to control the
344 spread of COVID-19. One of such NPIs is the closure of land, air, and sea borders.

345
346 *“I think one important thing that we did that most countries didn’t do is the limitation of*
347 *the importation of business by closing all our borders. Luckily, we have only one*
348 *[international] airport, so [it was easy to see at first hand the cases that were being*
349 *imported].” (KII2)*

350
351
352 *Sub-theme 5: Adherence to COVID-19 Protocols*

353 Participants indicated adherence to COVID-19 protocols by both patients and healthcare providers.

354 *“At the height of the pandemic everyone was adherent to wearing masks, even though*
355 *people were wearing the wrong types of masks and were wearing them in various ways*
356 *when interacting with patients. But with regards to gowns, head gears, and others worn by*
357 *the team [while] interacting with the patients, those were strictly adhered to in my facility.”*
358 *(IDI3)*

359 **Theme 2: Improved Disease Surveillance System**

360 Participants explained surveillance systems such as DHIMS and SORMAS that were used for
361 gathering accurate data during the COVID-19 pandemic.

362 *“We have a platform where, on a weekly basis, all the district officers on the*
363 *platform share their planned activities for the week. At the regional level too, we*

364 *look at the data that we have on the DHIMS. So we identify the districts that have*
365 *some challenges or need assistance and assist them. We also look at the data for*
366 *priority diseases like epidemic-prone diseases [such as] yellow fever and measles.*
367 *We also download the data on the DHIMS and follow up on the cases reported to*
368 *verify the numbers.” (IDI2)*

369 Theme 3: Implementation of Testing Strategies

370 Testing strategies reflect different types of COVID-19 tests and preventive strategies employed by
371 the case management team. Three sub-themes were generated from this theme.

372 *Sub-theme 1: Covid-19 3T (Trace, Test and Treat) Strategy*

373 A participant noted that healthcare providers used the 3T strategy. This involved testing a patient
374 and when tested positive you do tracing of close relatives or neighbors while the Covid-19 patient
375 is isolated for treatment.

376 *“...[for] the testing strategy...you identify first, you test, [and] if it’s positive, you isolate. Then*
377 *you have to do contact tracing. But the basic idea was that the moment you hear of anybody having*
378 *the symptoms or anybody reporting [to have] symptoms, you quickly take their sample [and] test.*
379 *When it’s confirmed, you go back [and] do contact tracing while the [sick] person is isolated. That*
380 *was the strategy [that was] communicated to all the testing sites [and] disease control officers.”*
381 *(KII4)*

382

383 *Sub-theme 2: Pooling*

384 A participant observed that one of the unique testing strategies employed by Ghana’s COVID-19
385 data management team was pooling. By pooling, individual samples are tested to save time and
386 cost, as well as reduce the use of test kits.

387 *“The second one was the method we call pooling. The pooling [began] when we had so*
388 *many contact tracing samples. When somebody tested positive, we went and collected a*
389 *lot of samples around, and, instead of working on individual samples, we pooled samples*
390 *together—sometimes five samples in one or ten samples in one. So, if you have 100*
391 *samples, in the end you have only 10 to work with. So, on a daily basis, we were sometimes*
392 *able to process about 5,000 samples.” (KII10)*

393 *Sub-theme 3: Vaccination strategy*

394 Participants identified that the government’s initial approach to vaccination was legislation on
395 compulsory vaccination before immigrant enters the country. The policy on compulsory
396 vaccination was eased when infection rates declined in the country.

397 *“...when we started doing the vaccination, we also made sure that, if you are*
398 *fully vaccinated you are allowed in. If you are a Ghanaian or resident in Ghana*
399 *and you are not fully vaccinated, we give you the chance to vaccinate when you*
400 *reach the airport. These are some of the things, and when things went down,*
401 *we began to slowly ease the restrictions.” (KII2)*
402

403 Theme 4: Health System Preparedness

404 Participants explained the existing emergency preparedness plan used to counter any outbreak in
405 the various facilities.

406 *“The facility has an emergency preparedness plan for all eventualities and outbreaks. They have*
407 *a plan, so if there is an outbreak they use that plan, and if there are some changes, they*
408 *incorporate those changes.” (IDI8)*

409 A participant part of Ghana’s COVID-19 Taskforce explained how the government’s sustained
410 multisectoral coordination augments the fight against COVID-19.

411 *“The National Health System in place is a bit broad. At the Ministry of Health and Ghana Health*
412 *Service, we have facilities at the national, regional, and district levels. At each of these levels*
413 *there are facilities for prevention and case management to respond to public health emergencies.*
414 *Knowing that the health system and the determinants of health are very broad, the system does not*
415 *end only in the health sector. Various components and players and actors whose activities impact*
416 *on public health are considered as part of the National Health System”. (KII7)*

417 *“The Emergency Operation Center is part of the National Surveillance structure. There is now*
418 *version 3 of the Integrated Disease Surveillance Response (IDSR). With regards to Public Health*
419 *Emergency Management Systems, there were national-, regional- and district-level systems. At the*
420 *national level, we have the National Coordination Committee, which is multi-sectoral and*
421 *multidisciplinary supposed to be chaired by at least the Minister of Health and sometimes, the*
422 *interior minister. The technical part is managed by the National Technical Coordinating*
423 *Committee (NTCC). This is also multi-sectoral and multidisciplinary, but mostly technical in*
424 *bringing together all the players and actors whose activities impact the health emergency and*
425 *health sector.” (KII7).*

426 Theme 5: Public Engagement

427 *Sub-theme 1: Public Education*

428 A participant opined that the peak stage was characterized by intense public education on the
429 pandemic, as facilities were receiving more COVID-19 cases.

430 *“At the peak stage, [public] education [intensified]. So, people’s fear was not as bad as it used to*
431 *be, even though we were having a lot more cases in our facility.” (IDI18)*

432

433 **Strategies to maintain essential health services**

434

435 The following practices were adopted to provide EHS: Leadership & Governance (policy guidance
436 developed and disseminated with modified service delivery models, virtual meetings, training &
437 patient follow-up, non-closure of health facilities), Health Care Workforce (HCW) capacity
438 building around infection prevention control (IPC) practices for HCWs, and HCWs prioritized for

439 vaccination, special monthly allowance for frontline HCWs and lab technicians, the suspension of
440 service delivery for all elective medical procedures, use of an appointment system for MCNH
441 services at the facility, effective communication, PPE availability was ensured at facilities, timely
442 order of logistics to prevent stock out of essential supplies, medical drones were used to supply
443 vaccines, transport blood to advance labs for testing and other essential equipment for service
444 delivery in situations where transportation was not readily available.

445 *Sub-theme 1: Non-closure of facilities*

446 The health facilities were opened for 24 hours to allow patients to visit for any medical need at
447 their convenience time. In addition, the public was assured that the health facilities adhere to strict
448 screening to reduce the risk of getting infected at the health facility.

449 *“As I said, we didn’t close any health facility. They were running 24/7 as they used to, and*
450 *as part of the education that we gave the people, we told them that we were still working, so*
451 *anybody who had a challenge could still come to the hospital. We even showed them our workflow,*
452 *which included screening everyone entering the facility, to assure them that the risk of getting*
453 *infected at the health facility was low.” (KII1)*

454

455 *Sub-theme 2: Triage Station*

456 Facilities instituted a station where patients were screened for Covid-19 before entering the health
457 facilities. Establishing a triage station ensured that there was a designated physical area where
458 frontline health workers assessed and refer patients to reduce transmission of Covid-19 and also
459 ensured rational use of scarce resources.

460 *“But we quickly also got around that by introducing measures in terms of triaging,*
461 *screening patients” (KII5)*

462 *“There was a triaging system put in place where, for anyone who came in, you ensured*
463 *first of all that the person did not have COVID-19 before you proceeded to do anything*
464 *else. COVID-19 tests were the first things we did for patients who presented.” (IDI11)*

465 *Sub-theme 3: Patient Appointment*

466 One of the innovative strategies employed by health facilities is the appointment system. By
467 appointment strategy, healthcare professionals scheduled meeting times with patients. The

468 appointment strategy reduced the effects of the inadequate number of frontline health workers in
469 the facilities due to additional tasks and responsibilities resulting from COVID-19-related
470 activities.

471 *“The appointment system helped. It reduced patients’ wait time to see a doctor. COVID-*
472 *19 taught us to use such a system and reduce the number of trips chronic patients had to*
473 *make to the hospital for a refill of their medication. Our capacity in terms of testing for*
474 *COVID-19 was lacking, but the appointment system helped to regulate visits to testing*
475 *sites.” (KII12)*

476

477 *Sub-theme 4: Provision of PPEs*

478 Policymakers and implementers explained that PPEs such as face masks and goggles were
479 distributed across health facilities in Ghana. In addition, health care workers were educated to
480 always put on the right PPEs. This was, however, confirmed by the healthcare professionals.

481 *“And then every single person in the hospital, and of course, those going out had to be in*
482 *the right PPE, i.e., face mask, and where possible, goggles.” (KII11)*

483

484 *Sub-theme 5: Motivated Staff*

485 Policymakers and implementers explained that health personnel were encouraged to put in their
486 best in the dire moments when the government and the people of Ghana needed them most.

487 *“As leaders of the health system, we were taxed to motivate our staff to be at post,*
488 *because the risk was for all. As managers, we needed to motivate our people and*
489 *encourage them—not financially—whenever we could to let them know how important*
490 *their role was in the management of the COVID-19 outbreak, so we did that.” (KII11)*

491

492 *Sub-theme 6: Community engagements and home visits*

493 Participants observed that health workers were moving into the homes of patients to provide them
494 with health services. Home visits were a targeted approach to patients.

495 *“Within the period, antenatal services were not affected much because we used to go to*
496 *pregnant women in their homes.” (KII1)*

497 There were community engagements to encourage the local people to attend hospitals for their
498 good.

499 *“We engaged with the community to let them know that [people could come to the*
500 *hospital]. Initially, the communication was that if you were not sick, you should not come*
501 *to the hospital, so when things changed, we needed to go back to them to let them know*
502 *that all services were back and running, and they could come.” (KII8)*

503 *Sub-theme 7: Redistribution and rotation of staff*

504 In order not to be crowded at the health facility and increase the risk of infection, health facilities

505 were running a staff rotation (shift) system. The system allowed for few nurses in the facility at a
506 time.

507 *“I mean, we reset the minimum that was needed so that they came in batches, so that if a*
508 *cohort of a batch got infected, there would be other people to continue the work.” (KII5)*

509
510 *“As much as possible, instead of running three shifts, we decided to run two shifts: 8am*
511 *to 5pm and 5pm to 8am. This was to ensure that at any point in time, there was no*
512 *congestion in the hospitals.” (KII1)*

513 Units without adequate staff were provided with additional staff by units with more staff members.
514 Respondent: *One of them was the redistribution of some of the staff. We got staff from units*
515 *that had more staff. (IDI1)*

516
517 *Sub-theme 8: Public Education*

518 There was regular education by the media regarding the COVID-19 pandemic. Citizens were
519 assured that all precautionary measures were strictly adhered to in the health facilities, hence, an
520 assurance of minimal risk of infection.

521 *“With the information we heard on radio people began to understand that no matter how*
522 *we felt, we needed to report to a hospital for the hospital to decide whether it was*
523 *COVID-19 or not. [It was safe] to go to the health facilities because all the precautions*
524 *were observed there, and our chances of getting COVID from the health facility were*
525 *quite minimal.” (KII6)*

526 *Sub-theme 9: Transportation Support*

527 Some participants were supported with the provision of buses that took them to their workplace.
528 *“They made sure there was a driver and a vehicle. Any time we took a sample we called*
529 *the driver to make sure they got the sample to the reference lab.” (IDI7)*

530

531 *Sub-theme 10: Telemedicine and drone services*

532 Some facilities employed innovative ways of providing health services to their clients. One of such
533 innovative approaches was the use of telemedicine and drone services.

534
535 *“We had an app, COVID Connect, by which people we treated and discharged could keep*
536 *in contact with us, and people with symptoms could go into the app and indicate their*
537 *symptoms for some healthcare professionals from our facility to contact them.” (IDI11)*

538 *We made use of it [drones], it assisted us especially when we had very few testing centers. We were*
539 *able to use the Drones to gather all the samples to the Drones Distribution center and send them*
540 *to where we were having only two testing sites at Korle-Bu, Noguchi and ACCR to make use of the*

541 *Drone system. And during the time that we were also doing the vaccination, we also made use of*
542 *the Drone system because the Drone distribution center is like the Medical stores. (KII2)*
543

544 **Discussion**

545 In this study, we quantified the impact of COVID-19 on the delivery of EHS, explored practices
546 adopted to maintain the provision of EHS, and identified exemplary IPC strategies in Ghana. Our
547 results showed that the pandemic disrupted the provision of EHS especially immunization
548 coverage indicators within the first month of the pandemic similar to what has been reported
549 elsewhere [14, 15]. This study highlights that with the rapid spread of COVID-19, mothers avoided
550 taking their children to health facilities to seek child health services including immunization and
551 vaccinations. An in-depth analysis of the results showed that during the early phase of the
552 pandemic, there was fear of contracting COVID-19 at the health facilities, stigma, lack of
553 innovative approach to delivering EHS, inadequate logistics such as the supply of PPE waned
554 public trust in visiting health facilities under COVID-19 conditions, inadequate HCW for COVID-
555 19 surge capacity proved as a challenge to the utilization of essential health services, financial
556 challenges and low enthusiasm to work among healthcare workforce contributed to the initial
557 disruption of EHS. This could also be attributed to imposed travel restrictions by the government
558 of Ghana during the early days of the pandemic in March 2020 which affected the physical
559 accessibility of EHS facilities. Findings illustrated that fear and stigma influenced the reduced
560 health care in facilities. This aligns with the study by Al-Zaman (16) which indicated that fear and
561 anxiety about the pandemic among communities affected the utilization of EHS. The inadequate
562 health workforce for COVID-19 surge capacity demand proved as a challenge to the utilization of
563 EHS.

564 As mentioned earlier, although COVID-19 disrupted EHS during the early phase of the pandemic
565 especially OPV and Pentavalent vaccination among children under five, the impact was not long

566 felt due to the systems that were put in place to maintain the provision of EHS in Ghana. These
567 includes new policy guideline that were developed and disseminated with modified service
568 delivery models, non-closure of health facilities to allow access at all times, use of appointment
569 systems, provision of PPEs, staff motivation for frontline HCWs and lab technicians, home visit
570 to provide EHS, redistribution and staff rotation to allow few nurses at the facility aimed at
571 controlling infection and improving EHS delivery, intense public education geared towards
572 encouraging facility visits, use of telemedicine and drone services to supply essential medical
573 equipment's in situations where transportation was not readily available, capacity building around
574 IPC practices for HCWs and the prioritization of HCWs for early vaccination to reduce the fear of
575 patients getting infection at the facilities, service delivery suspended all elective medical
576 procedures to focus on providing other EHS and treatment of COVID-19 related cases, use of an
577 appointment system for MCNH services at the facility, effective government communication and
578 commitment to increase access to EHS during the peak phase of the pandemic that resulted in-
579 home visits, and the timely order of logistics to prevent stock out of essential supplies. Literature
580 highlights population-based intervention at interpersonal, institutional, community and public
581 policy levels to sustain the delivery of EHS. At the interpersonal level of intervention, positive
582 COVID-19 attitudes and perceptions were promoted through public education and routine home
583 visits.

584 As a form of institutional intervention, the study finds that health professionals were reassigned to
585 other units with inadequate staff. This inadvertently led to a reduction in the utilization of EHS
586 such as child health services as found in other studies [17]. With the upsurge of Covid-19, building
587 a resilient health system in SSA was a challenge. We found that one of the institutional
588 interventions implemented to reorganize and maintain access to safe and EHS was the screening

589 and establishment of triage in health facilities. The screening and creation of triage of suspected
590 COVID-19 patients reassured them of their safety in the health facilities when they visit. Another
591 institutional intervention used was telemedicine. Using telemedicine approaches such as COVID
592 Connect – an application that keeps patients and health workers in contact proved critical to
593 providing EHS. Among other benefits, this application identifies hotspots, manages and registers
594 attendance at events, tracks government updates and monitors symptoms. Other studies indicated
595 that telemedicine increases trust, and fosters feelings of intimacy and relief when health workers
596 and the patient already know each other [18, 19].

597 At the public policy level, the study found that the government of Ghana implemented different
598 intervention packages to motivate and protect frontline health workers at the forefront of the
599 pandemic fight. The packages include providing them with an allowance of 50% of their basic
600 salary and also making available free buses to and from work at specific routes. Other interventions
601 at the public level include non-closure of facilities and provision of PPEs in health facilities for
602 frontline health workers. This assured the public of availability and readiness to serve their health
603 needs. The government also distributed PPEs across the country to increase the safety of frontline
604 health workers and patients.

605 There is a correlation between IPC strategies and the provision of EHS. Adopting effective
606 prevention control measures reduces the burden of the pandemic on health systems paving the way
607 to provide EHS. The integrated interventions implemented by the Government of Ghana and other
608 stakeholders contributed significantly to the minimal impact of the pandemic on the health system
609 and this consequently increased the ability of the health system to provide EHS in the hardest hit
610 regions.

611 **Strengths and Limitations of the study**

612 This remains the only study that has simultaneously explored the complex interplay between the
613 infection outbreak control strategies, the impact of the pandemic on EHS and practices geared
614 towards maintaining the provision of EHS during the early phase of the pandemic. That
615 notwithstanding, the study has some limitations. The qualitative data may not be representative of
616 the target population as it largely reflects the opinion of the key informants that were interviewed.
617 That is, caution and contextual consideration must be applied when the intent is to directly transfer
618 the knowledge gained and entire results to other contexts and settings. Although more rigorous
619 statistical methods have been employed to quantify the impact of the pandemic on EHS delivery,
620 our study could suffer from potential selection bias due to the quasi-experimental design and
621 caution must be applied when the intention is to infer causality.

622 623 **Conclusion**

624 This study provides evidence of the impact of COVID-19 on the provision of EHS and exemplary
625 outbreak control strategies. Although EHS were disrupted during the early phase of the pandemic,
626 the complex integrated approach that includes infection prevention control strategies, resilient
627 health system, government commitment, private sector and stakeholder engagements contributed
628 significantly to the effective management of the pandemic and the provision of EHS.

629 630 **Acknowledgments**

631 We acknowledge all participants that willingly agreed and provided written or verbal consent to
632 be part of the study.

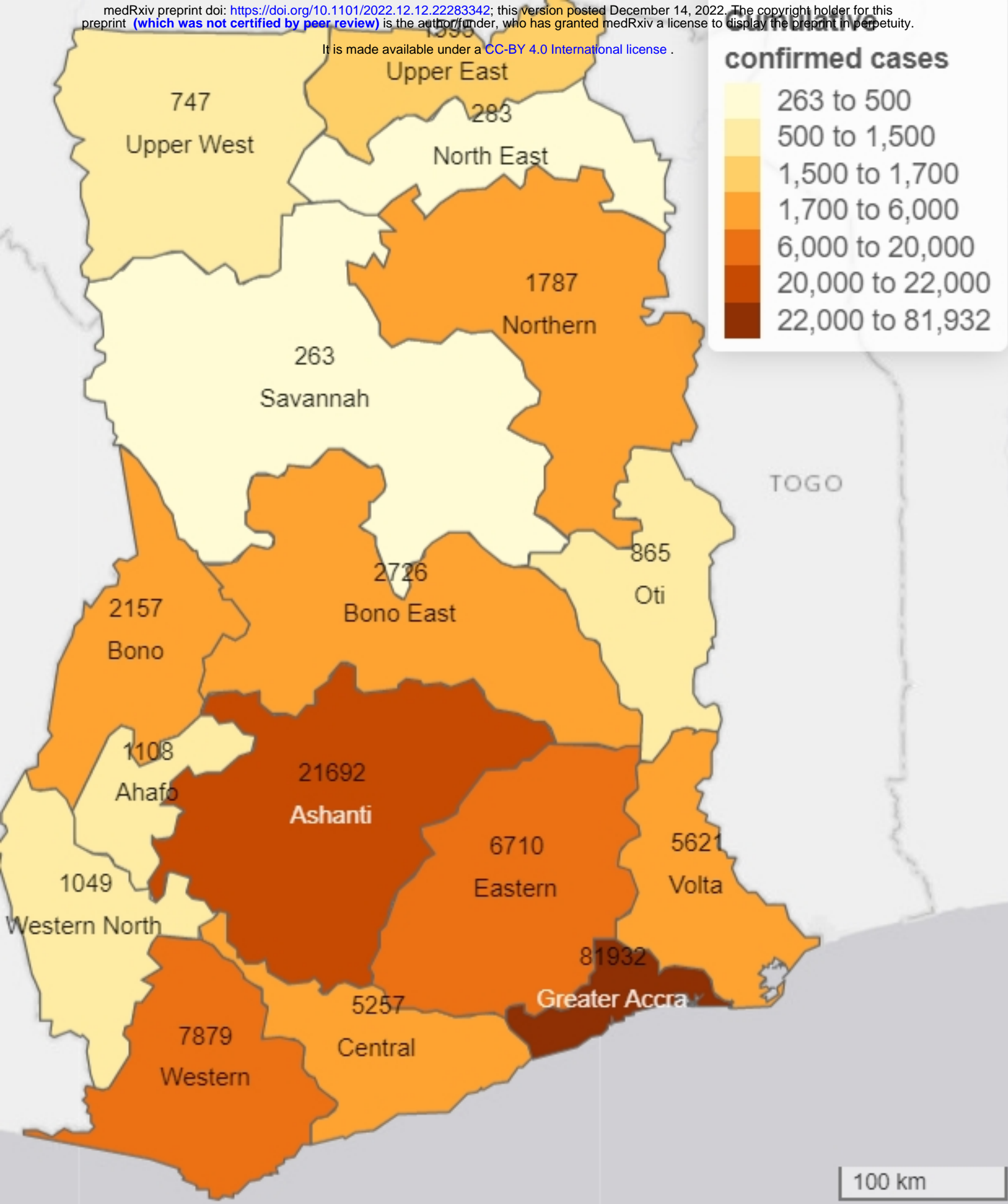
634 **References**

- 635 1. Salje H, Tran Kiem C, Lefrancq N, Courtejoie N, Bosetti P, Paireau J, et al. Estimating the
636 burden of SARS-CoV-2 in France. *Journal of Science*. 2020;369(6500):208-11.
- 637 2. Shattock AJ, Le Rutte EA, Dünner RP, Sen S, Kelly SL, Chitnis N, et al. Impact of vaccination
638 and non-pharmaceutical interventions on SARS-CoV-2 dynamics in Switzerland. *Epidemics*.
639 2022;38:100535.

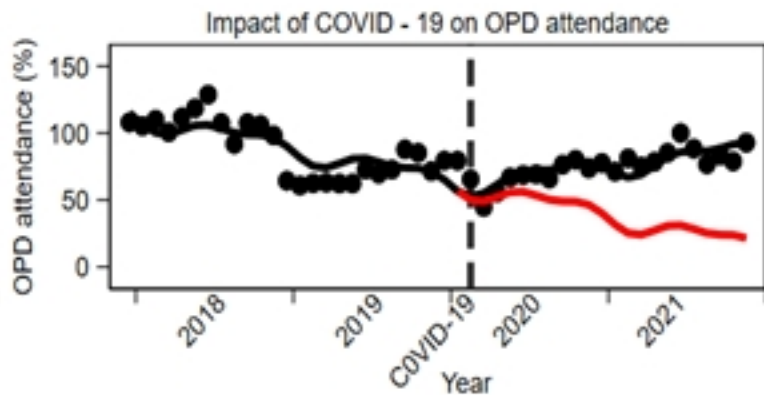
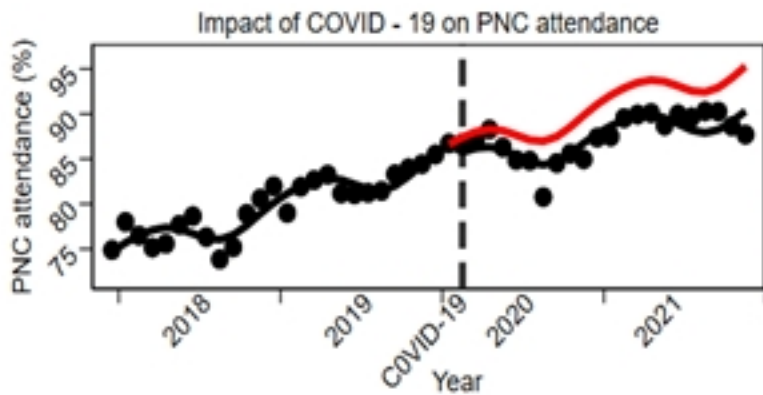
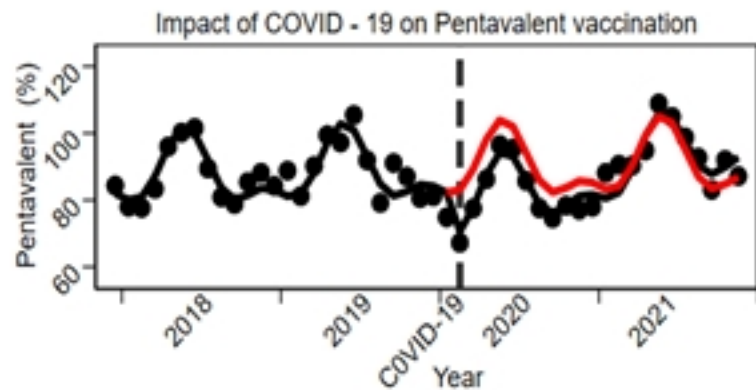
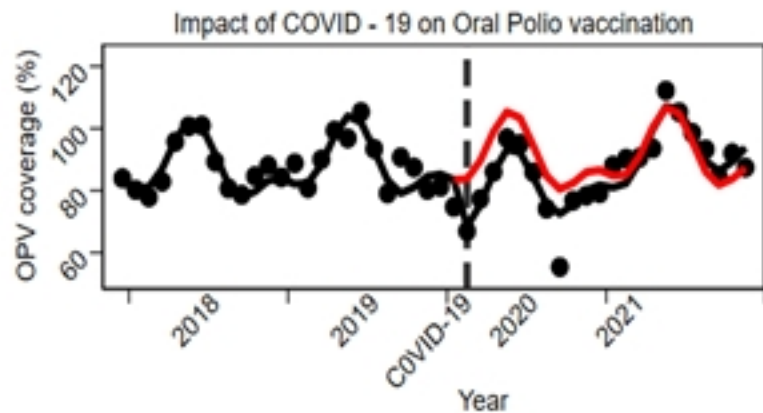
- 640 3. WHO. SHIFTS–The COVID-19 Pandemic: shifting the world and shaping its response.: World
641 Health Organization; 2020.
- 642 4. Nelson R. COVID-19 disrupts vaccine delivery. *The Lancet Infectious Diseases*. 2020;20(5):546.
- 643 5. Akseer N, Kandru G, Keats EC, Bhutta ZA. COVID-19 pandemic and mitigation strategies:
644 implications for maternal and child health and nutrition. *The American journal of clinical nutrition*.
645 2020;112(2):251-6.
- 646 6. Singh DR, Sunuwar DR, Shah SK, Karki K, Sah LK, Adhikari B, et al. Impact of COVID-19 on
647 health services utilization in Province-2 of Nepal: a qualitative study among community members and
648 stakeholders. *BMC health services research*. 2021;21(1):1-14.
- 649 7. Abbas K, Procter SR, Van Zandvoort K, Clark A, Funk S, Mengistu T, et al. Routine childhood
650 immunisation during the COVID-19 pandemic in Africa: a benefit–risk analysis of health benefits versus
651 excess risk of SARS-CoV-2 infection. *The Lancet Global Health*. 2020;8(10):e1264-e72.
- 652 8. Delamou A, Delvaux T, El Ayadi AM, Beavogui AH, Okumura J, Van Damme W, et al. Public
653 health impact of the 2014–2015 Ebola outbreak in West Africa: seizing opportunities for the future. *BMJ*
654 *global health*. 2017;2(2):e000202.
- 655 9. Campbell DT, Stanley JC. *Experimental and quasi-experimental designs for research: Ravenio*
656 *books*; 2015.
- 657 10. Cumby RE, Huizinga J. Testing the autocorrelation structure of disturbances in ordinary least
658 squares and instrumental variables regressions. *Econometrica*. 1990.
- 659 11. Burridge P. A Very Simple, Positive Semi-Definite, Heteroskedasticity and Autocorrelation
660 Consistent Covariance Matrix. *Econometrica* 1991.
- 661 12. Utazi CE, Wagai J, Pannell O, Cutts FT, Rhoda DA, Ferrari MJ, et al. Geospatial variation in
662 measles vaccine coverage through routine and campaign strategies in Nigeria: Analysis of recent
663 household surveys. *Journal of Vaccine*. 2020;38(14):3062-71.
- 664 13. Braun V, Clarke V. Using thematic analysis in psychology. *Qualitative research in psychology*.
665 2006;3(2):77-101.
- 666 14. Burt JF, Ouma J, Lubyayi L, Amone A, Aol L, Sekikubo M, et al. Indirect effects of COVID-19
667 on maternal, neonatal, child, sexual and reproductive health services in Kampala, Uganda. *BMJ global*
668 *health*. 2021;6(8):e006102.
- 669 15. Arsenault C, Gage A, Kim MK, Kapoor NR, Akweongo P, Amponsah F, et al. COVID-19 and
670 resilience of healthcare systems in ten countries. *Nature Medicine*. 2022:1-11.
- 671 16. Al-Zaman MS. Healthcare crisis in Bangladesh during the COVID-19 pandemic. *The American*
672 *journal of tropical medicine*. 2020;103(4):1357.
- 673 17. Cummins M. COVID-19: a catastrophe for children in Sub-Saharan Africa-Cash Transfers and a
674 Marshall Plan Can Help. United Nations Children's Fund (UNICEF) Regional Office for West and
675 Central Africa and Regional Office for Eastern and Southern Africa: UNICEF; 2020 November 26, 2020.
- 676 18. Shaw S, Wherton J, Vijayaraghavan S, Morris J, Bhattacharya S, Hanson P, et al. Advantages and
677 limitations of virtual online consultations in a NHS acute trust: the VOCAL mixed-methods study.
678 *Journal of Health services delivery research*. 2018;6(21).
- 679 19. van Gurp J, van Selm M, Vissers K, van Leeuwen E, Hasselaar J. How outpatient palliative care
680 teleconsultation facilitates empathic patient-professional relationships: a qualitative study. *PLoS One*.
681 2015;10(4):e0124387.

682

It is made available under a [CC-BY 4.0 International license](https://creativecommons.org/licenses/by/4.0/).



Figure



Figure