

Duration of viral shedding of the Omicron variant in asymptomatic and mild COVID-19 cases from Shanghai, China

1 **Weijie Sun¹, Naibin Yang², Yang Mao³, Danying Yan², Qifa Song^{4*}, Guoqing Qian^{2*}**

2 ¹Department of Clinical Laboratory, Ningbo First Hospital, University of Ningbo, Zhejiang Province,
3 China

4 ²Department of Infectious Diseases, Ningbo First Hospital, University of Ningbo, Zhejiang Province,
5 China

6 ³Ningbo Municipal Center for Disease Control and Prevention, Ningbo, China

7 ⁴Medical Data Centre, Ningbo First Hospital, University of Ningbo, Zhejiang Province, China

8

9 **#Corresponding authors;** Guoqing Qian, bill.qian@outlook.com, Qifa Song, qifasong@126.com

10

11 Abstract

12 **Background:** The Omicron variant of severe acute respiratory syndrome coronavirus 2 (SARS-CoV-
13 2), designated as a variant of concern by the World Health Organization, spreads globally and was
14 confirmed as the cause of the Omicron wave of the coronavirus disease 2019 (COVID-19) pandemic
15 in Shanghai, China. The viral shedding duration of Omicron variants needs to be determined.

16 **Methods:** We retrospectively analyzed 382 patients admitted to a shelter hospital for COVID-19. Of
17 the patients, 8 patients were referred to a designated hospital, 100 were infected asymptomatic
18 patients, and 274 patients had mild COVID-19.

19 **Results:** The vaccination rates (including fully and boosted) in the asymptomatic and mild COVID-
20 19 patients were 92.00% and 94.16%, respectively. Majority of the studied population showed a first
21 reverse transcription-polymerase chain reaction cycle threshold (Ct) value of 20. For 2565
22 nasopharyngeal swabs from close or sub-close contacts, the Ct value gradually increased to 35 for 8
23 days, and the median duration of viral shedding time was 10 days after the first positive detection of
24 the SARS-CoV-2 nuclei acid.

25 **Conclusions:** Quantitative viral RNA load assays in COVID-19 (BA.2.2.1) close or sub-closed
26 contacts could be used to prevent transmissions and control precautions.

27 Key words

28 Omicron; COVID-19; SARS-CoV-2; viral shedding time

29 Abbreviations

30 SARS-CoV-2: Severe Acute Respiratory Syndrome Coronavirus 2; COVID-19: Coronavirus disease
31 2019; RT-PCR: Reverse Transcription-Polymerase Chain Reaction; Ct; Cycle threshold; CDC:
32 Center for Disease Control and Prevention; CT: Computed Tomography; VOC: Variants of Concern.

33 **Introduction**

34 Omicron variants of severe acute respiratory syndrome coronavirus 2 (SARS-CoV-2) have spread
35 rapidly worldwide, causing outbreaks with 63,007 confirmed cases and 595 deaths in Shanghai,
36 China from March to June 2022 [1]. Studies have indicated lower virulence and lethality of Omicron
37 variants than of Delta variants. Along with pneumonia, runny nose, headache, and fatigue are the
38 most common symptoms of Omicron [2; 3]. However, the sequelae and long-term effects of this
39 variant remain unclear. Especially in China, although inactivated vaccines have been widely used,
40 Omicron variants may still be a huge public health concern in a country with the largest population
41 and highly aging rate [4].

42 The spread of Omicron variant in Shanghai communities has been well controlled. Even after this
43 wave in Shanghai, many challenges exist in terms of prevention and treatment of Omicron variants.
44 Measures such as isolation have proved effective in suppressing the spread of the Omicron variants in
45 China [5]. However, the economy, society, and medical staff have paid a huge price during lockdown
46 conditions. We need to constantly accumulate and update our knowledge about coronavirus disease
47 2019 (COVID-19), thereby improving our isolation measures and implementing the most suitable
48 treatment method to control the spread of the Omicron variant. Moreover, the Omicron variants
49 might dynamically be mutated during infection replications. A systemic and dynamic study of the
50 virology of Omicron variants, particularly in China, is lacking[6]. Therefore, to provide a real-world
51 data analysis for patient isolation, we here analyzed the duration of viral shedding of the Omicron
52 variants in infected asymptomatic and mild COVID-19 cases from Shanghai in a shelter hospital.

53 **Materials and Methods**

54 This retrospective study was conducted at the Cixi Dapengshan Shelter Hospital (managed by
55 Ningbo First Hospital, University of Ningbo) and was approved by the Ethics Commission of Ningbo
56 First Hospital (approval No. 2022RS065). Written informed consent was waived because of the
57 study's retrospective nature. Data of 382 consecutive asymptomatic or mild COVID-19 individuals
58 were investigated, and no patient was classified as severe or critical case at hospital admission. These
59 patients were from Shanghai City and were recruited from Cixi Dapengshan Shelter Hospital
60 between April 4 and April 28, 2022.

61 Methods for construction and determination of the whole genome library were as followed. Total
62 RNA was extracted from 200 μ L samples using a viral nucleic acid extraction Kit (Qiagen RNeasy
63 Mini Kit/74104); multiple amplification products were obtained by ultra-sensitive SARS-CoV-2
64 whole genome capture kit (Microfuture /V-090418); AMPure XP beads/A63880 were used to purify
65 the amplification products; Qubit dsDNA HS ASSAY Kit/1646715 was used for quantification; the
66 auxiliary library construction kit (Hangzhou Baiyi Technology Co., LTD. /BK-AUX024) was used
67 for library construction; the connector sequencing kit (Oxford Nanopore Technologies/SQK-
68 LSK110) was used for connection and on-machine preparation, and the sequencing chip (Oxford
69 Nanopore Technologies/ FLO-MIN106) was used for high-throughput sequencing. CLC was used to
70 concatenate the data and generate consensus sequences. The reference genome was Wuhan-1
71 (Genbank Accession No.NC045512.2). The sequences were typed using Pangolin typing (Pangolin
72 version: v2.3.1).

73 The first day of testing positive for the Omicron variant was defined as the diagnosis date from close
74 or sub-close contacts. The sample for reverse transcription-polymerase chain reaction (RT-PCR) was
75 collected using nasopharyngeal swabs before admission and during hospitalization in the shelter

76 hospital. These nasopharyngeal samples were collected from 382 patients confirmed with COVID-
77 19. Real-time RT-PCR was performed, and the presence of the SARS-CoV-2 nucleocapsid gene (N
78 and ORF genes) was confirmed [7]. This was the first RT-PCR was, using the following two types of
79 kits, according to the manufacturer's instructions: Shengxiang (Shengxiang Biotechnology, Hunan,
80 China) and Mingde (Wuhan Easy Diagnosis Biomedicine, Wuhan, China). As operation principle,
81 the multiplex PCR-fluorescent probe technology combined with one-step RT-PCR technology was
82 used in the Mingde test kit while paramagnetic particle sorting method without nucleic acid
83 extraction combined with one-step RT-PCR technology was used in the Shengxiang test kit. No
84 matter for Mingde or Shengxiang kit, the specific conserved sequence of SARS-CoV-2 virus ORF
85 1ab and encoding nucleocapsid protein N gene was used as the target region, and the two-target gene
86 detection primer probe was designed, and the RT-PCR reaction system was used for detection. After
87 the reaction, the threshold cycle number (Ct value) of each channel was analyzed. At the same time,
88 the human housekeeping gene RNaseP was designed as an internal standard to effectively prevent the
89 occurrence of false positives and false negatives to ensure the accuracy of the test results.

90 According to the national guidelines on COVID-19 diagnosis and treatment in China (Version No.9)
91 [8], cycle threshold (Ct) value of ≥ 35 must be obtained following two consecutive negative tests
92 (more than 24h) or obtained Ct > 40 (negative result, twice in > 24 h) cycles before being discharged
93 from the shelter hospital and monitored at home [8]. A lower Ct value indicates a higher viral load in
94 the samples and vice versa. Generally, a Ct value of 33 nearly equals 500 viral copies, and 3.3 cycles
95 equal a 10-fold change in viral copies [9].

96 Data analysis and visualization were performed by R version 4.1.1. The Mann-Whitney t-test by
97 SPSS (25.0) was used, and statistical significance was set at $p < 0.05$.

98

99 **Results**

100 **The results of whole genome sequencing of nasopharyngeal samples**

101 The Nanopore third-generation genome was sequenced to these nasopharyngeal samples, and the
102 genome coverage was 99.66%. A total of 74 base site mutations were detected, involving 53 amino
103 acid variations. The results showed the samples belonged to the BA.2.2.1 evolutionary branch
104 (GenBank accession number SUB11780514 NBCDC_20220315_HuYB ON955521).

105

106 **Demographic and clinical features of individuals infected by the Omicron variant**

107 All 382 individuals infected by the Omicron variant were from the designated isolation hotel, as
108 confirmed through a positive RT-PCR result and in accordance with the guidelines of the Center for
109 Disease Control and Prevention (CDC). Overall, 165 patients (43.19%) were men, and the patient
110 median age was 32 (26-38) years. Except 7 children and 1 pregnant patient, 374 patients underwent
111 chest computed tomography (CT) after admission. Overall, 100 patients were asymptomatic and 274
112 were diagnosed with mild COVID-19 (Figure 1). Eight infections were referred to as mild COVID-
113 19 with the emergence of new symptoms. Five patients were diagnosed with moderate COVID-19 on
114 the basis of results of chest CT scans, including 2 asymptomatic patients and 3 patients with mild
115 infections. Moderate COVID-19 was defined as the onset of fever and/or respiratory symptoms and
116 radiographic evidence of pneumonia [8]. Among the 382 patients, 1 patient was diagnosed with
117 pulmonary tuberculosis, 1 was diagnosed with acute coronary syndrome due to chest pain, and 1 was
118 diagnosed with the severe COVID-19 risk factor due to systemic lupus erythematosus and the long-
119 term use of corticosteroids. All these 3 patients and the aforementioned 5 individuals with moderate

120 pneumonia were transferred to the designated hospital after diagnosis was established and a risk
121 factor evaluation was completed (Figure 1).

122 According to Table 1, 92.00% patients in the asymptomatic group were fully vaccinated or had
123 received booster vaccinations. On the other hand, 41.24% and 51.92% patients in the mild COVID-
124 19 group were fully vaccinated or had received booster vaccinations, respectively. The median
125 duration of viral shedding for the asymptomatic and mild COVID-19 cases was 10 days, and no
126 difference was noted between the two clinical types.

127 **Ct value distribution of first positive RT-PCR**

128 All 382 patients were screened through RT-PCR in the designated isolation hotel or hospital.
129 According to Table 2, two types of kits, Mingde and Shengxiang, were used by the CDC laboratory
130 to detect and confirm SARS-CoV-2 expression. Figure 2 shows the distribution of the Ct value of
131 primary RT-PCR results. The Ct value of approximately 20 patients accounted for the main
132 proportion, with a high copy number of virus in these patients.

133 **Kinetic viral shedding in Omicron-infected cases with asymptomatic and mild COVID-19**

134 A total of 2565 nasopharyngeal swabs were collected from all recruited individuals from close
135 exposure or sub-close exposure to discharge from the hospital. As shown in Figure 3 and 4, the Ct
136 value decreased after admission for 1-2 days and then gradually increased to 35 by approximately
137 day 8. The median duration of viral shedding was 10 days after the first positive detection of SARS-
138 CoV-2. Furthermore, the viral loads soon decreased to the detection limit after day 8. Interestingly,
139 on day 1 of hospitalization, the Ct value in the age group of >50 years was significantly lower than
140 that in the younger age groups ($P < 0.05$). No significant difference in the viral loads was observed

141 across sex ($p=0.239$), asymptomatic or mild COVID-19 status($p=0.345$), and vaccination status
142 ($p=0.1$).

143 **Discussion**

144 The highly transmissible Omicron variant spreads earlier than other variants of concern of SARS-
145 CoV-2. Omicron has become the main variant causing infection globally [10]. China is continuing
146 with a dynamic zero-COVID-19 policy which is based on protecting the health of the people [1].The
147 viral shedding time directly determines the risk of COVID-19 transmission and determines the length
148 of isolation, which plays a key role in the non-drug policy. However, the viral shedding time of the
149 Omicron variants has not been clearly reported in China.

150 In 2020, our study reported the median duration of SARS-CoV-2 viral shedding to be 12.0 days in
151 Ningbo [11], 20.0 days in survivors in Wuhan [12]or longer term in Chongqing [7].In addition, He et
152 al. suggested that viral shedding may start 5-6 days before symptoms onset [13]. Furthermore, Wölfel
153 et al. reported that the severity of infection might decrease significantly 8 days after symptom onset;
154 however, they could not obtain swabs containing live virus from hospitalized COVID-19 patients
155 [14].van Kampen et al. obtained similar results[15]. However, the Omicron variant may have shorter
156 viral shedding durations than other variants after symptom onset or the initial positive test. According
157 to the result of the first study from Shanghai, the viral shedding time in non-severe Omicron-infected
158 patients infected by the Omicron variant was 6 days (IQR 3-8 days) [16].Similarly, another study on
159 the symptomatic Omicron variant reported a median viral shedding time of 6 days in infected
160 outpatients [17].

161 Recent studies have reported no difference in the viral kinetics between the infection caused by the
162 Omicron and Delta variants [17]. The Omicron variant was still associated with continuous
163 transmission after 8 days. SARS-CoV-2 could be detected in 50% of patients even at 5 days and in

164 25% patients at 8 days [17]. In addition, the Omicron variant could be detected 9 days after symptom
165 onset in China and not at 10 days in infected patients in Japan. Furthermore, the RNA of the Omicron
166 variant was detectable 10 days after symptom onset, while the virus could not be isolated [18]. The
167 median viral shedding time was 10 days in 374 patients of the present study. All the patients were
168 defined as close or sub-close contacts, and the SARS-CoV-2 nucleic acid tests were repeated, which
169 helped in detecting the infected cases earlier than symptom onset. Therefore, we conducted an
170 excellent real-world study by dynamically observing the viral shedding time surpass the symptom-
171 based findings as reported [16]. On the other hand, due to the large-scale outbreak, detection of the
172 viruses by using RT-PCR might be delayed, or the admission day may not be the first day of positive
173 SARS-CoV-2 nucleic acid tests, resulting in a shortened duration for calculating the viral shedding
174 time.

175 Interestingly, the viral load in the older group (>50 years) was significantly lower than that in the
176 younger patients, which is opposite with the results of a previous study that reported that older age
177 was correlated with a higher viral load [19]. Furthermore, infectiousness gradually declined within 8
178 days of detection of the Omicron variant detection in the present study. The aforementioned evidence
179 showed that patients infected with the Omicron variant could be managed on day 10 and the variant
180 could no longer be transmitted. This would be criteria for discharge from shelter hospitals to be
181 monitored at home. This would avoid placing any strain on healthcare systems during the large-scale
182 outbreak. In addition, RT-PCR screening in the close or sub-close contacts can effectively detect the
183 infections before symptom onset and help adopt non-drug measures, such as isolation and contact
184 tracing.

185 Our study had several limitations. First, we recruited all patients with asymptomatic and mild
186 COVID-19 from a shelter hospital but did not include moderate, severe, or critical cases. Patients
187 with severe or critical infections might shed SARS-CoV-2 for longer periods than those with mild

188 COVID-19 [15]. Second, the Omicron variant could not be isolated and cultured to confirm the
189 viability of SARS-CoV-2 due to bio-security, resulting in an extended period of viral shedding.
190 Finally, the incubation period of the Omicron variant could not be evaluated because of the large-
191 scale outbreak.

192 **Conclusion**

193 The viral shedding duration of vaccinated Omicron-infected patients with asymptomatic or mild
194 COVID-19 (BA.2.2.1) diagnosed at the first RT-PCR was nearly 10 days. This result could provide
195 strategies for the prevention and control of the Omicron variant-induced infection from the
196 perspective of clinical and public health.

197 **Acknowledgements**

198 The authors are thankful to study participants.

199 **Author contributions**

200 QS, and GQ conceived and designed the study. NY, DY and QS analyzed the data. YM and WS
201 contributed data/materials. GQ and NY prepared the manuscript. All authors revised the manuscript
202 and approved the final manuscript.

203 **Funding**

204 This research was funded by Zhejiang Provincial Natural Science Foundation of China (grant number
205 Y23H190011), the key Program of Natural Science Foundation of Ningbo (grant number
206 202003N4019), and Ningbo City COVID-19 Epidemic Prevention and Control Project (grant number
207 202002N7033).

208 **Availability of data and materials**

209 The dataset used and/or analyzed during the current study are available from the corresponding
210 author on reasonable request.

211 **Declarations**

212 **Ethics approval and consent to participate**

213 This retrospective study was conducted at the Cixi Dapengshan Shelter Hospital (managed by
214 Ningbo First Hospital, University of Ningbo), and this study was approved by the Ethics Committee
215 of Ningbo First Hospital (approval No. 2022RS065). Written informed consent from patients was
216 waived because this was a retrospective study.

217 **Consent for publication**

218 Not applicable.

219 **Competing interests**

220 All the authors declare no competing interests.

221 **References**

- 222 [1] X. Zhang, W. Zhang, and S. Chen, Shanghai's life-saving efforts against the current omicron
223 wave of the COVID-19 pandemic. *Lancet* 399 (2022) 2011-2.
- 224 [2] G. Iacobucci, Covid-19: Runny nose, headache, and fatigue are commonest symptoms of
225 omicron, early data show. *Bmj* 375 (2021) n3103.
- 226 [3] N. Yang, C. Wang, and J. Huang, Clinical and pulmonary CT characteristics of patients infected
227 with the SARS-CoV-2 Omicron variant compared with those of patients infected with the
228 original viral strain. *Frontiers in Public Health* (2022).
- 229 [4] U. Nations, *World Population Prospects 2019*. (2019).
- 230 [5] G. Pascarella, A. Strumia, C. Piliago, F. Bruno, R. Del Buono, F. Costa, S. Scarlata, and F.E.
231 Agrò, COVID-19 diagnosis and management: a comprehensive review. *J Intern Med* 288
232 (2020) 192-206.
- 233 [6] X. Wang, and C.A. Powell, How to translate the knowledge of COVID-19 into the prevention of
234 Omicron variants. *Clin Transl Med* 11 (2021) e680.

- 235 [7] W. Li, Y.Y. Su, S.S. Zhi, J. Huang, C.L. Zhuang, W.Z. Bai, Y. Wan, X.R. Meng, L. Zhang, Y.B.
236 Zhou, Y.Y. Luo, S.X. Ge, Y.K. Chen, and Y. Ma, Virus shedding dynamics in asymptomatic
237 and mildly symptomatic patients infected with SARS-CoV-2. *Clin Microbiol Infect* 26 (2020)
238 1556.e1-1556.e6.
- 239 [8] N.H.C.o.t.P.s.R.o. China, The notice of launching guideline on diagnosis and treatment of the
240 novel coronavirus pneumonia (5th edition). , 2022.
- 241 [9] M. Platten, D. Hoffmann, R. Grosser, F. Wisplinghoff, H. Wisplinghoff, G. Wiesmüller, O.
242 Schildgen, and V. Schildgen, SARS-CoV-2, CT-Values, and Infectivity-Conclusions to Be
243 Drawn from Side Observations. *Viruses* 13 (2021).
- 244 [10] J. Nealon, and B.J. Cowling, Omicron severity: milder but not mild. *Lancet* 399 (2022) 412-413.
- 245 [11] G.Q. Qian, X.Q. Chen, D.F. Lv, A.H.Y. Ma, L.P. Wang, N.B. Yang, and X.M. Chen, Duration
246 of SARS-CoV-2 viral shedding during COVID-19 infection. *Infectious diseases (London,
247 England)* 52 (2020) 511-512.
- 248 [12] F. Zhou, T. Yu, R. Du, G. Fan, Y. Liu, Z. Liu, J. Xiang, Y. Wang, B. Song, X. Gu, L. Guan, Y.
249 Wei, H. Li, X. Wu, J. Xu, S. Tu, Y. Zhang, H. Chen, and B. Cao, Clinical course and risk
250 factors for mortality of adult inpatients with COVID-19 in Wuhan, China: a retrospective
251 cohort study. *The Lancet* (2020).
- 252 [13] X. He, E.H.Y. Lau, P. Wu, X. Deng, J. Wang, X. Hao, Y.C. Lau, J.Y. Wong, Y. Guan, X. Tan,
253 X. Mo, Y. Chen, B. Liao, W. Chen, F. Hu, Q. Zhang, M. Zhong, Y. Wu, L. Zhao, F. Zhang,
254 B.J. Cowling, F. Li, and G.M. Leung, Temporal dynamics in viral shedding and
255 transmissibility of COVID-19. *Nat Med* 26 (2020) 672-675.
- 256 [14] R. Wölfel, V.M. Corman, W. Guggemos, M. Seilmaier, S. Zange, M.A. Müller, D. Niemeyer,
257 T.C. Jones, P. Vollmar, C. Rothe, M. Hoelscher, T. Bleicker, S. Brünink, J. Schneider, R.
258 Ehmann, K. Zwirgmaier, C. Drosten, and C. Wendtner, Virological assessment of
259 hospitalized patients with COVID-2019. *Nature* 581 (2020) 465-469.
- 260 [15] J.J.A. van Kampen, D. van de Vijver, P.L.A. Fraaij, B.L. Haagmans, M.M. Lamers, N. Okba,
261 J.P.C. van den Akker, H. Endeman, D. Gommers, J.J. Cornelissen, R.A.S. Hoek, M.M. van
262 der Eerden, D.A. Hesselink, H.J. Metselaar, A. Verbon, J.E.M. de Steenwinkel, G.I. Aron,
263 E.C.M. van Gorp, S. van Boheemen, J.C. Voermans, C.A.B. Boucher, R. Molenkamp, M.P.G.
264 Koopmans, C. Geurtsvankessel, and A.A. van der Eijk, Duration and key determinants of
265 infectious virus shedding in hospitalized patients with coronavirus disease-2019 (COVID-19).
266 *Nat Commun* 12 (2021) 267.
- 267 [16] X. Ma, J. Ai, and J. Cai, Dynamic Disease Manifestations Among Non-Severe COVID-19
268 Patients Without Unstable Medical Conditions: A Follow-Up Study — Shanghai
269 Municipality, China, March 22–May 03, 2022 – *China CDC Weekly*. *China CDC Weekly*
270 (2022) 1-7.
- 271 [17] J. Boucau, C. Marino, J. Regan, R. Uddin, M.C. Choudhary, J.P. Flynn, G. Chen, A.M.
272 Stuckwisch, J. Mathews, M.Y. Liew, A. Singh, T. Lipiner, A. Kittilson, M. Melberg, Y. Li,
273 R.F. Gilbert, Z. Reynolds, S.L. Iyer, G.C. Chamberlin, T.D. Vyas, M.B. Goldberg, J.M. Vyas,
274 J.Z. Li, J.E. Lemieux, M.J. Siedner, and A.K. Barczak, Duration of viable virus shedding in
275 SARS-CoV-2 omicron variant infection. *medRxiv* (2022).
- 276 [18] K. Takahashi, M. Ishikane, M. Ujiie, N. Iwamoto, N. Okumura, T. Sato, M. Nagashima, A.
277 Moriya, M. Suzuki, M. Hojo, T. Kanno, S. Saito, S. Miyamoto, A. Ainai, M. Tobiume, T.
278 Arashiro, T. Fujimoto, T. Saito, M. Yamato, T. Suzuki, and N. Ohmagari, Duration of

279 Infectious Virus Shedding by SARS-CoV-2 Omicron Variant-Infected Vaccinees. *Emerg*
 280 *Infect Dis* 28 (2022) 998-1001.

281 [19] K.K. To, O.T. Tsang, W.S. Leung, A.R. Tam, T.C. Wu, D.C. Lung, C.C. Yip, J.P. Cai, J.M.
 282 Chan, T.S. Chik, D.P. Lau, C.Y. Choi, L.L. Chen, W.M. Chan, K.H. Chan, J.D. Ip, A.C. Ng,
 283 R.W. Poon, C.T. Luo, V.C. Cheng, J.F. Chan, I.F. Hung, Z. Chen, H. Chen, and K.Y. Yuen,
 284 Temporal profiles of viral load in posterior oropharyngeal saliva samples and serum antibody
 285 responses during infection by SARS-CoV-2: an observational cohort study. *Lancet Infect Dis*
 286 20 (2020) 565-574.

287 **Table 1. Comparison of demographic, vaccination, and viral shedding time in patients with**
 288 **asymptomatic and mild COVID-19**

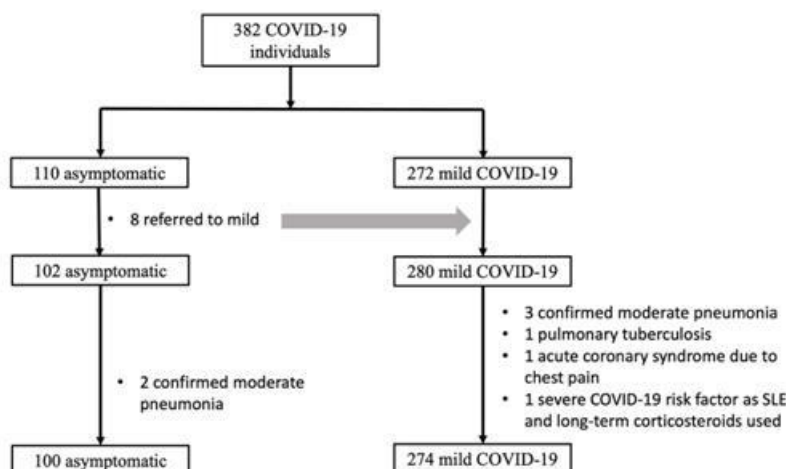
Variable	Asymptomatic	mild COVID-19	P-value
Age (years, median [Q1-Q3])	34[29-45]	31[26-37]	0.021
Age groups [n (%)]			0.268
<18	3 (3.00)	6 (2.19)	
18-39	80 (80.00)	216 (78.83)	
40-59	14 (14.00)	42 (15.33)	
≥60	3 (3.00)	10 (3.65)	
Gender [male, n (%)]	48(48.00)	112 (40.88)	0.239
Vaccination status [n (%)]			0.100
Not vaccinated	7 (7.00)	7 (2.55)	
Partially vaccinated	1 (1.00)	9 (3.28)	
Fully vaccinated	49 (49.00)	113 (41.24)	
Booster vaccinated	43 (43.00)	145 (52.92)	
Discharge [n (%)]			0.937
Ct value ≥35	53 (53.00)	145 (52.92)	
Ct value >40 (negative)	47 (47.00)	129 (47.08)	
Viral shedding days	10[9-11]	10[9-12]	0.345

289 Notes: The Mann-Whitney t-test was used to compare difference between asymptomatic patients
 290 group and mild COVID-19 patients. Statistical significance was set at $p < 0.05$. These continuous
 291 variables were not in accordance with normal distribution and expressed as median [quartile1-
 292 quartile 3]. Categorical variables were presented as n (%). Abbreviation: COVID-19, coronavirus
 293 disease 2019; Ct, cycle threshold.

294 **Table 2. The average CT values of patients at the time of first positive RT-PCR detection**

Kit Brands	Asymptomatic	mild COVID-19	P-value
Mingde (N)	24.68±5.46	25.07±6.59	0.762
Mingde (ORF1ab)	24.17±5.63	25.87±6.77	0.192
Shengxiang (N)	23.06±5.68	22.98±5.44	0.933
Shengxiang (ORF1ab)	24.38±4.99	24.42±5.19	0.957

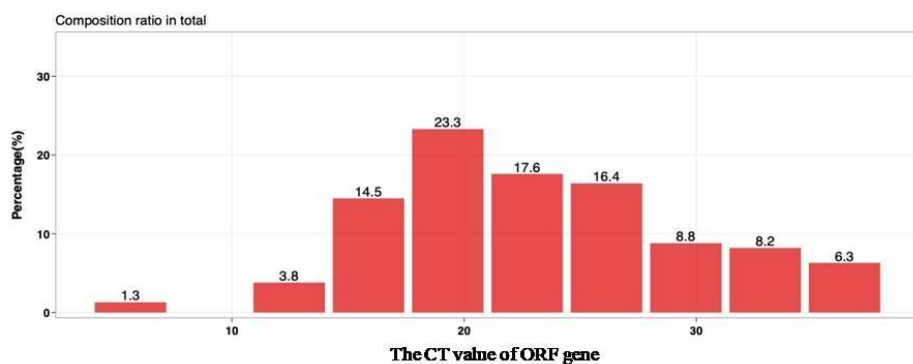
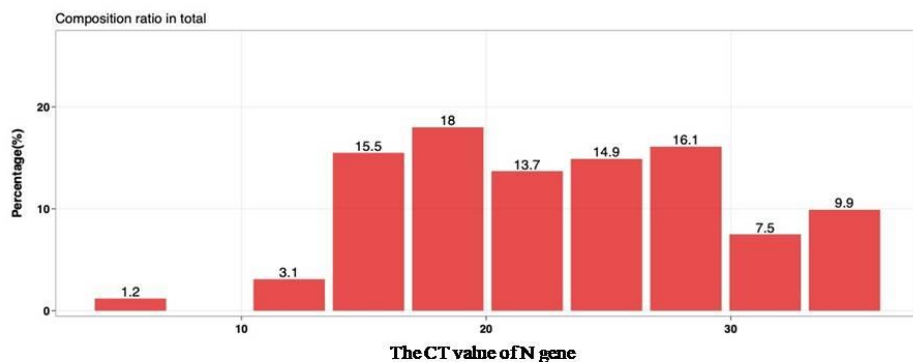
295 Note: The Mann-Whitney t-test was used to compare difference between asymptomatic patients
 296 group and mild COVID-19 patients. Statistical significance was set at $p < 0.05$. Two types of kits,
 297 Mingde and Shengxiang, were used to detect and confirm the expression of SARS-CoV-2 by CDC
 298 laboratory. All these continuous variables followed in accordance with normal distribution and
 299 expressed as Mean \pm SD.



300

301 Figure 1. Flowchart shows the enrolment of patients with COVID-19 for this study. Moderate
 302 COVID-19 was defined as the onset of fever and/or respiratory symptoms and radiographic evidence
 303 of pneumonia. No patients were diagnosed with severe or critical COVID-19 during hospitalization
 304 in the shelter hospital.

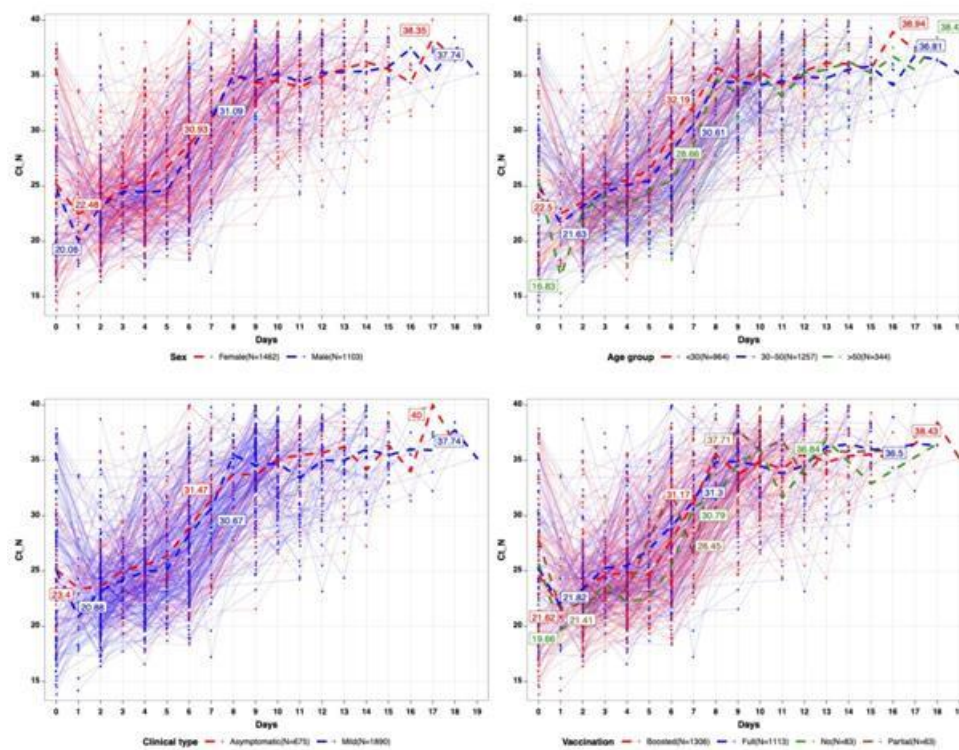
305



306

307 Figure 2. The distribution of the first Ct value for the diagnosis of COVID-19 before admission

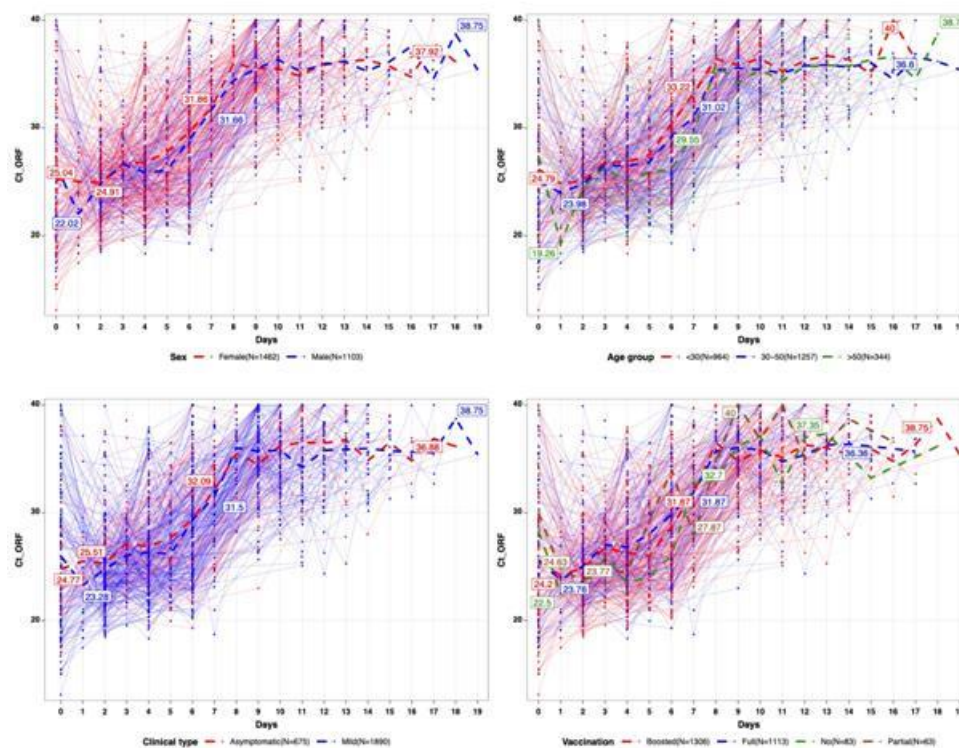
308 (Mingde kit: N gene and ORFgene).



309

310 Figure 3. Kinetic patterns of viral shedding in patients with COVID-19 (N gene). Viral load [cycle
311 threshold (Ct) values] detected through RT-PCR by using nasopharyngeal swabs of individuals with
312 asymptomatic or mild COVID-19 (n=374). The overall (A) and stratified by types of COVID-19 (B),
313 sex (C), age (D), and vaccination status (E). The detection limit was Ct =40, which suggests the
314 negative result of samples. Furthermore, patients with $Ct \geq 35$ could be discharged from the hospital
315 and monitored for 7 days at home according to the China National guideline [8].

316



317

318 Figure 4. Kinetic patterns of viral shedding in patients with COVID-19 (ORF1ab gene). Viral load
319 [cycle threshold (Ct) values] detected through RT-PCR by using nasopharyngeal swabs from
320 individuals with asymptomatic or mild COVID-19 (n=374).

321

322