

1 **Bi-directional Mendelian randomization and multi-phenotype GWAS show causality**  
2 **and shared pathophysiology between depression and type 2 diabetes**

3 Jared G Maina, MSc<sup>1,2\*</sup>, Zhanna Balkhiyarova, MD, PhD<sup>3,4,5\*</sup>, Arie Nouwen, PhD<sup>6</sup>, Igor  
4 Pupko<sup>3,4</sup>, Anna Ulrich, PhD<sup>4</sup>, Mathilde Boissel, MSc<sup>1,2</sup>, Amélie Bonnefond, PhD<sup>1,2,4</sup>, Philippe  
5 Froguel, MD PhD<sup>1,2,4</sup>, Amna Khamis, PhD<sup>1,2,4</sup>, Inga Prokopenko, PhD<sup>1,2,3,5\*</sup>, Marika  
6 Kaakinen, PhD<sup>3,4,5\*</sup>

- 7 1. INSERM UMR 1283, CNRS UMR 8199, European Genomic Institute for Diabetes  
8 (EGID), Institut Pasteur de Lille, F-59000 Lille, France  
9 2. University of Lille, Lille University Hospital, Lille, F-59000, France  
10 3. Department of Clinical & Experimental Medicine, University of Surrey, Guildford,  
11 United Kingdom  
12 4. Department of Metabolism, Digestion and Reproduction, Imperial College London,  
13 London, UK  
14 5. People-Centred Artificial Intelligence Institute, University of Surrey, Guildford, United  
15 Kingdom  
16 6. Department of Psychology, Middlesex University, London, UK

17  
18 \* These authors contributed equally to this research.

19  
20 Corresponding authors:

21  
22 Dr Marika Kaakinen,  
23 Section of Statistical Multi-Omics,  
24 Department of Clinical and Experimental Medicine, University of Surrey  
25 Leggett Building, Daphne Jackson Road, Manor Campus,  
26 Guildford, Surrey, UK, GU2 7WG  
27 Phone: +44(0)1483683365  
28 Email:m.kaakinen@surrey.ac.uk

29  
30 Prof. Inga Prokopenko  
31 Section of Statistical Multi-Omics,  
32 Department of Clinical and Experimental Medicine, University of Surrey  
33 Leggett Building, Daphne Jackson Road, Manor Campus,  
34 Guildford, Surrey, UK, GU2 7WG  
35 Phone: +44(0)1483684648  
36 Email:i.prokopenko@surrey.ac.uk

37  
38 Dr Amna Khamis  
39 European Genomic Institute for Diabetes - UMR 1283/8199  
40 Pôle Recherche - 1er étage Aile Ouest  
41 1, Place de Verdun, 59045 LILLE CEDEX  
42 Phone: +33(0)3 74 00 8135

- 43           Email:amna.khamis@cnrs.fr
- 44   Running title (Limit 47 characters including spaces): MR and Multi-trait GWAS of diabetes
- 45   and depression
- 46   Word count (4128/4000)
- 47   Number of tables and figures in main text (2 tables, 2 figures)

48 **Abstract (250/250 words)**

49 **OBJECTIVE.** Depression is a common co-morbidity of type 2 diabetes. However, the  
50 causality and underlying mechanisms remain unclear.

51 **RESEARCH DESIGN AND METHODS.** We applied bi-directional Mendelian  
52 randomization (MR) to assess causality between type 2 diabetes and self-reported depression.

53 Using the UK biobank, we performed 1) GWAS, separately, and 2) multi-phenotype GWAS  
54 (MP-GWAS) of type 2 diabetes (cases=19,344, controls=463,641) and depression, using two  
55 depression definitions—clinically diagnosed major depressive disorder (MDD, cases=5,262,  
56 controls=86,275) and self-reported depressive symptoms (PHQ-9, n=153,079). The FinnGen  
57 study was used for replication for MDD (n=23,424) and type 2 diabetes (n=32,469). Based on  
58 the results, we analyzed expression quantitative trait loci (eQTL) data from public databases  
59 to identify target genes in relevant tissues.

60 **RESULTS.** MR demonstrated a significant causal effect of depression on type 2 diabetes  
61 (OR=1.18[1.06-1.32], p=0.0024), but not in the reverse direction. GWAS of type 2 diabetes  
62 and depressive symptoms did not identify any shared loci between them, whereas MP-GWAS  
63 identified seven shared loci mapped to *TCF7L2*, *CDKALI*, *IGF2BP2*, *SPRY2*, *CCND2-AS1*,  
64 *IRS1*, *CDKN2B-AS1*. MDD did not yield genome-wide significant loci in either GWAS or  
65 MP-GWAS. We found that most MP-GWAS *loci* had an eQTL, including SNPs implicating  
66 the cell cycle gene *CCND2* in pancreatic islets and brain, and key insulin signaling gene *IRS1*  
67 in adipose tissue, suggesting a multi-tissue and pleiotropic underlying mechanism.

68 **CONCLUSION.** Our study reveals the complexity in the depression-diabetes relationship and  
69 our results have important implications for a more efficient prevention of type 2 diabetes  
70 from early adulthood when depressive symptoms usually occur.

## 71 INTRODUCTION

72 Type 2 diabetes is a disease characterized by chronic hyperglycemia and depression is a  
73 common co-morbidity, potentially due to common shared risk factors, such as lifestyle, early  
74 growth environment, psychotropic drugs, and neuro-endocrine dysfunction<sup>1</sup>. Whether the  
75 impact of type 2 diabetes on depression is stronger than the reverse remains to be defined. It  
76 has indeed been shown that depression, even at sub-clinical levels, increases the risk of  
77 incident type 2 diabetes by 25-60%<sup>2,3</sup>, whereas others have shown that type 2 diabetes  
78 increases the risk of depression by 40-60%<sup>4</sup>.

79 The causality of the associations from observational studies remains unclear due to  
80 unmeasured confounding and potential reverse causation. However, this could be  
81 circumvented in part through Mendelian randomization, an approach that assesses potential  
82 causality between phenotypes using genetic variants as instruments, since genes are allocated  
83 randomly at birth and are free of confounding<sup>5</sup>. To date, only one MR study from China has  
84 reported a possible causal link from type 2 diabetes to depression<sup>6</sup>, yet the reverse direction  
85 of causal link was not examined.

86 Recent large-scale genome-wide association studies (GWAS) for type 2 diabetes and  
87 depression have reported 403 and 102 associated genomic *loci* for these diseases,  
88 respectively<sup>7,8</sup>. Moreover, analyses based on the GWAS results support a positive genetic  
89 correlation ( $r_G$ ) between them<sup>7,8</sup>, suggesting shared genetic background. However, the  
90 majority of GWAS investigate each disease independently, without considering the genetic  
91 correlation between related phenotypes and their heritabilities.

92 Therefore, in this study, we addressed the causal relationship between depression and type 2  
93 diabetes by conducting an MR study using summary statistics from recent GWAS of  
94 depression<sup>8</sup> and type 2 diabetes<sup>7</sup>. Additionally, we used the UK biobank (UKBB) to perform  
95 a multi-phenotype GWAS (MP-GWAS) for type 2 diabetes and depression to identify shared

96 genetic *loci* between the two diseases. For depression, we compared two assessment  
97 approaches - clinically diagnosed major depressive disorder (MDD) and depressive  
98 symptoms based on self-report.

## 99 RESEARCH DESIGN AND METHODS

### 100 Mendelian randomization

#### 101 Summary statistics used

102 To test for causality between type 2 diabetes and depression, we performed a two-sample  
103 bidirectional MR, first using depression as a risk factor and type 2 diabetes as an outcome,  
104 then testing type 2 diabetes as a risk factor and depression as an outcome from two non-  
105 overlapping datasets (**Supplementary Figure 1**). The single nucleotide polymorphisms  
106 (SNPs) used as genetic instruments for type 2 diabetes and self-reported depression were  
107 from recent large-scale European GWAS meta-analyses of the two diseases<sup>7,8</sup>.

#### 108 Two-sample bidirectional MR

109 All MR analyses were conducted using the R software package *TwoSampleMR v0.5.4*<sup>9</sup>. In the  
110 type 2 diabetes GWAS summary statistics used, 95 single nucleotide polymorphisms (SNPs,  
111 inclusive of 6 proxy variants with a minimum  $r^2 \geq 0.8$ ) out of the 102 independent ( $r^2 < 0.01$ )  
112 depression SNPs were available. We excluded 7 palindromic SNPs (A/T or C/G) with  
113 intermediate allele frequencies (minor allele frequency,  $MAF > 45\%$ ) to ensure the effects of  
114 the SNPs for the two phenotypes were aligned to the same forward strand allele. The genetic  
115 instruments for type 2 diabetes included 403 genetic SNPs associated from a recent GWAS<sup>7</sup>.  
116 In the depression summary statistics, 358 (inclusive of 4 proxy variants with a minimum  
117  $r^2 \geq 0.8$ ) out of 403 independent ( $r^2 < 0.01$ ) type 2 diabetes SNPs were available for the analysis.  
118 To obtain the causal estimate, we applied the inverse variance weighted (IVW) method<sup>5</sup>. We  
119 performed sensitivity MR analysis using weighted median (WM)<sup>10</sup>, MR-Egger regression<sup>11</sup>,  
120 the simple mode<sup>12</sup>, and the weighted mode<sup>12</sup> methods to evaluate the potential violations of  
121 the MR assumptions (**Supplementary Methods**) and confirm the robustness of the two-  
122 sample MR results from the IVW approach. F-statistic was used to evaluate the instrument  
123 strength, where  $F > 10$  indicates the presence of a strong instrument. The F-statistics indicated

124 a good instrument strength for both type 2 diabetes (F-statistics = 61.26) and depression (F-  
125 statistics = 43). We assessed heterogeneity between the causal estimates from each SNP using  
126 Cochran's Q-test. The sensitivity of causal inference to any individual genetic variant was  
127 tested by leave-one-out analysis. We used the STROBE-MR reporting guideline for MR  
128 studies to facilitate the readers' evaluation of our results<sup>13</sup> (**Supplementary Table 1**).

129

## 130 **Genome-wide association studies (GWAS) and Multi-phenotype GWAS (MP-GWAS)**

### 131 **Cohorts used**

#### 132 **1) UK Biobank (UKBB)**

133 We used data from the UK Biobank (UKBB, [www.ukbiobank.ac.uk](http://www.ukbiobank.ac.uk)), which includes over  
134 500,000 individuals from 22 centers across the United Kingdom. Study participants were  
135 between 40 and 69 years at recruitment and provided information including body  
136 measurements, biological samples, brain imaging data, socio-demographic and lifestyle  
137 indicators. Genetic data was available for 488,377 individuals in the UKBB genotyped using  
138 the UKBB BiLEVE array (n = 49,979) and the UKBB Axiom Array (n = 438,398)<sup>14</sup>. The  
139 genetic data was imputed using the Haplotype Reference Consortium<sup>15</sup>, the UK10K<sup>16</sup> and  
140 1000 Genomes Phase 3<sup>17</sup>, resulting in approximately 90 million variants available for  
141 association testing. This research has been conducted under application number 35327 and all  
142 participants gave informed consent during enrolment.

#### 143 **2) FinnGen**

144 We utilized the FinnGen summary statistics for replication of our single- and multi-  
145 phenotype association results ([www.finnngen.fi/fi](http://www.finnngen.fi/fi)). The June 2020 data freeze used in our  
146 analysis comprised of 135,638 individuals. Summary statistics for 1,801 phenotypes are  
147 publicly available for analysis. FinnGen study participants were genotyped using the Illumina  
148 and Affymetrix chip arrays (Illumina Inc., San Diego, and Thermo Fisher Scientific, Santa

149 Clara, CA, USA, <https://www.thermofisher.com/>). The data was then imputed using the SISu  
150 v3 imputation panel (<http://sisuproject.fi>) resulting in 16,962,023 variants available for  
151 association analysis. FinnGen study participants were genotyped using the Illumina and  
152 Affymetrix chip arrays (Illumina Inc., San Diego, and Thermo Fisher Scientific, Santa Clara,  
153 CA, USA, <https://www.thermofisher.com/>). Summary statistics provided for the FinnGen  
154 data association analyses were generated using the SAIGE software<sup>18</sup>.

## 155 **Phenotype definition**

### 156 **Type 2 diabetes**

157 In the UKBB, type 2 diabetes cases were defined if individuals self-reported to have a  
158 diabetes diagnosis by a doctor, were on insulin medication one year after diagnosis, and were  
159 at least 40 years old at the time of diagnosis. Individuals not meeting these criteria were  
160 classified as controls. For both cases and controls, we excluded individuals with gestational  
161 diabetes (Field 4041, code = 1), those younger than 40 years at the time of diagnosis (Field  
162 2976) and individuals on insulin medication within the first year of diagnosis (Field 2986).  
163 Sex discordant individuals (genotype vs. reported sex) were also excluded from the analyses.  
164 We restricted our analyses to European individuals to limit confounding by ancestry. In total,  
165 19,344 cases and 463,641 controls were available (**Supplementary Table 2**).

166 The GWAS summary statistics in the FinnGen study were based on the ICD10-coded type 2  
167 diabetes (ICD code E11) on 32,469 individuals (case/control numbers not available).

### 168 **Depression**

169 We defined depression in two ways: ICD-10 coded major depressive disorder (MDD) based  
170 on linked data from hospital records and self-reported depressive symptoms using the Patient  
171 Health Questionnaire 9 (PHQ-9)<sup>19</sup>.



172 **ICD-coded MDD**

173 Individuals with a primary diagnosis of a depressive episode (ICD code F32) and recurrent  
174 depression (ICD code F33) were defined as ICD-coded MDD cases (hereinafter referred to as  
175 MDD). Individuals who answered “NO” to the questions "Have you ever seen a general  
176 practitioner (GP) for nerves, anxiety, tension or depression?" (Field 2090) and "Have you  
177 ever seen a psychiatrist for nerves, anxiety, tension or depression?" and “NO” to either  
178 “depressed/down for a whole week” (Field 4598) or “Ever unenthusiastic/disinterested for a  
179 whole week” were set as controls. Participants were excluded from the study if they had a  
180 diagnosis of bipolar disorder (ICD codes F30, F31), mixed and other personality disorder  
181 (F61) and schizophrenia (ICD code F20). Participants on antipsychotic medication (Field  
182 20003) for 58 drugs were also excluded. In total, 5,262 cases and 86,275 controls were used  
183 for the MDD phenotype (**Supplementary Table 1**). The proportion of MDD participants  
184 who had a type 2 diabetes diagnosis are shown in **Supplementary Table 3**.

185 FinnGen study data had the ICD-10 codes F32 and F33 available for MDD. The GWAS  
186 summary statistics on MDD were based on a total of 23,424 individuals (case/control  
187 numbers not available).

188 **Depressive symptoms**

189 In UKBB, self-reported depressive symptoms over the previous two weeks (from the time of  
190 study enrolment) were assessed using the (PHQ-9)<sup>19</sup> questionnaire (**Supplementary Table**  
191 **4**). It has been shown that the PHQ-9 questionnaire is invariant between people with and  
192 without diabetes<sup>20</sup> suggesting its interpretation is similar for both diabetes cases and controls.  
193 Individuals missing responses for more than three PHQ-9 items were excluded from the  
194 analysis. Missing PHQ-9 responses for the remaining individuals were imputed using the  
195 ImputeSCOPA software (<https://github.com/ImperialStatGen/imputeSCOPA>), which  
196 implements a random forest approach to impute missing items. The variables sex, age,

197 education qualification, body mass index (BMI), Townsend Deprivation Index<sup>21</sup> (an area-  
198 based measure of deprivation), genotyping array and eight principal components (PCs) were  
199 included in the imputation model to improve the predictive accuracy of the imputation  
200 (**Supplementary Table 5**). The sum of all nine PHQ-9 items after imputation for everyone  
201 was used for quantitative association analysis. PHQ-9 data were available for 153,079  
202 individuals (**Supplementary Table 1**). The proportion of individuals with PHQ-9 data and a  
203 type 2 diabetes diagnosis are shown in **Supplementary Tables 3 and 6**. Symptom-based  
204 depression phenotypes were unavailable in the FinnGen replication dataset.

205

## 206 **GWAS**

207 We performed separate GWAS for type 2 diabetes, MDD and PHQ-9 in UKBB data with  
208 BOLT-LMM using a linear mixed model<sup>22</sup>. We adjusted for age, sex, array, BMI and the first  
209 8 PCs. We analyzed common variants (MAF>5%), with imputation scores >0.4, Hardy-  
210 Weinberg Equilibrium (HWE)  $p\text{-value}>1\times 10^{-6}$  and per SNP variant missingness<0.015.  
211 Manhattan plots were constructed using the *ggplot2* R package<sup>23</sup>. All analyses were  
212 performed on Human genome build 37. The statistical threshold for genome-wide significant  
213 SNPs (signals) used was  $p<5\times 10^{-8}$ .

## 214 **Multi-phenotype GWAS**

215 We used MTAG (Multi-Trait Analysis of GWAS)<sup>24</sup>, which implements a generalized  
216 inverse-variance weighted meta-analysis, to increase the power for locus identification,  
217 improve SNP effect size estimates for type 2 diabetes and depressive phenotypes, and to  
218 identify potential multi-phenotype genetic variant effects. We used the summary statistics of  
219 the individual GWAS as inputs of MTAG. In UKBB, two MTAG models were tested - one  
220 with type 2 diabetes and MDD and another with type 2 diabetes and total PHQ-9 scores. This  
221 was to assess the consequence of using two different depression definition criteria (disease

222 diagnosis vs. disease symptoms) in an MP-GWAS approach. In FinnGen, only the first  
223 approach was applied due to data availability. For each MTAG model tested, MTAG outputs  
224 phenotype specific association statistics. To assess the robustness of MP-GWAS results,  
225 MTAG computes a maximum false discovery rate (maxFDR) statistic, a theoretical upper  
226 bound limit on the FDR for a GWAS<sup>24</sup>. Lower maxFDR values (maxFDR<5%) indicate  
227 robust results.

### 228 **Expression quantitative trait loci (eQTL) analyses**

229 To explore and identify target genes of the identified *loci*, we utilized several eQTL databases  
230 and datasets of relevant tissues. We extracted eQTL data from the GTEx Portal  
231 (<https://gtexportal.org>) for SNPs identified in our MP-GWAS, focusing on type 2 diabetes  
232 and depression relevant tissues (*i.e.*, brain, muscle, liver). In addition, as GTEx does not  
233 include data from pancreatic islets, a crucial tissue in type 2 diabetes pathogenicity, we  
234 utilized recent eQTL data from Tiger T2D Systems (<http://tiger.bsc.es>) obtained from > 500  
235 brain-dead organ donor islets<sup>25</sup>. We extracted data for the seven shared SNPs identified in our  
236 MP-GWAS from both eQTL studies (using nominal significance,  $p < 0.05$ ).

237 Furthermore, we also used GTEx Version 7 transcriptome data<sup>26</sup> from European individuals  
238 to identify eQTLs using our MP-GWAS summary statistics. We focused on relevant tissues  
239 in 1) type 2 diabetes, namely liver, whole pancreas, muscle, adipose subcutaneous, adrenal  
240 gland, whole blood, and 2) depression, including putamen basal ganglia, hippocampus,  
241 substantia nigra, frontal cortex, amygdala, anterior cingulate cortex. For each tissue, the  
242 predicted expression levels were then correlated with type 2 diabetes and PHQ-9 MTAG  
243 summary statistics. *P*-values were corrected for multiple testing using Bonferroni correction  
244 based on the number of genes tested per tissue (**Supplementary Table 7**). Genes where less  
245 than 80% of the SNPs used in the model were found in the GWAS summary statistics were  
246 excluded due to low reliability of association results. This analysis focused on type 2 diabetes

247 and PHQ-9 phenotypes only as the MDD phenotype was underpowered in both GWAS and  
248 MP-GWAS.

## 249 **RESULTS**

### 250 **Mendelian randomization**

251 Our MR analysis revealed that depression was causally and positively associated with type 2  
252 diabetes using the IVW method, with an OR of 1.18 (95%CI = 1.06-1.32;  $p = 0.0024$ ). This  
253 result was consistent with the WM sensitivity analyses, which showed an OR of 1.11 (95%CI  
254 = 1.00-1.23,  $p = 0.043$ ) (**Figure 1 and Supplementary Figure 2A, Supplementary Table**  
255 **8**). The MR-Egger test showed no evidence of directional pleiotropy ( $p = 0.51$ ), further  
256 confirming the validity of the results. Additionally, the leave-one-out analysis showed no  
257 outliers, suggesting that the observed association was not changed after removing any single  
258 variant (**Supplementary Figure 3**). The Cochran's Q statistic for heterogeneity was  
259 significant for the IVW method ( $Q=261.62$ ,  $p=1.26 \times 10^{-20}$ ).

260 We found no evidence of causality in the reverse direction between type 2 diabetes and  
261 depression, in the primary nor sensitivity analysis (IVW: OR = 0.999; CI = 0.99-1.01;  $p =$   
262  $0.843$ ) (**Supplementary Figure 2B, Supplementary Table 9**).

263

### 264 **Genome wide association study in type 2 diabetes and depression**

265 In order to identify whether type 2 diabetes and depression have a shared genetic etiology, we  
266 first performed a GWAS for both phenotypes, separately, using the UKBB. In total, for type  
267 2 diabetes, we used 482,958 individuals (19,344 cases; 463,641 controls), and for depression  
268 we used 91,537 (5,262 cases; 86,276 controls) for MDD and 153,079 for PHQ-9. For type 2  
269 diabetes, we identified 92 independent SNPs at 84 *loci*, of which 59 were replicated in the  
270 FinnGen with nominal significance ( $p < 0.05$ ) and consistent in direction of effect. For  
271 depression, we found three independent SNPs and *loci* for PHQ-9 and no SNPs associated

272 with the binary depression MDD trait in the UKBB. None of the GWAS SNPs identified in  
273 type 2 diabetes were shared with depression (**Supplementary Figure 4, Supplementary**  
274 **Tables 10-12**).

275

#### 276 **Multi-phenotype GWAS in UKBB**

277 To improve the power to identify shared genetic variants between the two phenotypes, we  
278 performed the largest-to-date MP-GWAS of type 2 diabetes and depressive phenotypes in the  
279 UKBB using the respective GWAS summary statistics.

280 The MP-GWAS model with type 2 diabetes and MDD did not identify any significant  
281 associations for the binary definition of depression (MDD). For type 2 diabetes, we identified  
282 71 independent signals at 66 *loci* (**Supplementary Figure 5 and 6, Supplementary Table**  
283 **10**). The maxFDR for the type 2 diabetes and MDD MP-GWAS results was 1.5% and 7.7%  
284 respectively (**Supplementary Table 13**), indicating that the MDD results were likely inflated  
285 by the higher powered type 2 diabetes GWAS<sup>24</sup>. In FinnGen, the maxFDR were 11.5% and  
286 25.5%, respectively, indicating highly inflated results for both traits.

287 In contrast, in the MP-GWAS model with type 2 diabetes and PHQ-9, we identified eight  
288 independent SNPs for PHQ-9 (compared to only three SNPs detected in GWAS) (**Figure 2,**  
289 **Supplementary Table 14**), suggesting greater power for SNP discovery. Only the  
290 *CACNA2D2* locus was reported in both GWAS and MP-GWAS analyses for PHQ-9,  
291 although with different, yet highly correlated lead SNPs (*CACNA2D2*, chromosome 2,  
292 SNP<sub>SP-GWAS</sub> rs35335661, SNP<sub>MP-GWAS</sub> rs1467916,  $r^2=0.99$ ). For type 2 diabetes, MP-GWAS  
293 identified 53 SNPs at 50 *loci* (compared to 92 identified in the single-phenotype GWAS), of  
294 which 24 *loci* were previously reported<sup>7</sup>. We replicated 37 type 2 diabetes signals in FinnGen  
295 cohort (**Supplementary Table 14**).

296 In total, we found seven SNPs shared between type 2 diabetes and PHQ-9: rs7903146  
297 (*TCF7L2*), rs7766070 (*CDKAL1*), rs1359790 (*SPRY2*), rs16860235 (*IGF2BP2*), rs76895963  
298 (*CCND2-AS1*), rs2972144 (*IRS1*) and rs10811662 (*CDKN2B-AS1*) (**Table 1, Figure 2**). The  
299 maxFDR for type 2 diabetes and PHQ-9 after MP-GWAS were 0.98% and 1.8% respectively  
300 (**Supplementary Table 13**), indicating the results are robust and not influenced by the  
301 sample sizes of either GWAS.

### 302 **eQTL analyses**

303 To explore whether the seven SNPs shared between type 2 diabetes and self-reported  
304 depression had a downstream functional impact, we first extracted eQTL data of the seven  
305 identified SNPs using the 1) GTEx Portal in relevant tissues, including muscle, liver and  
306 brain, and 2) the Tiger Portal for pancreatic islets. We found that of the seven shared SNPs  
307 between type 2 diabetes and depression, six SNPs were associated with the expression of  
308 nearby genes in relevant tissues (**Table 2**). This includes rs2972144-G risk allele associated  
309 with a decreased expression of *IRS1* and *RP11-395N3.2* in visceral and subcutaneous adipose  
310 and *RP11-395N3.1* in subcutaneous adipose tissue. Additionally, the rs76895963-T risk allele  
311 was associated with the decreased expression of *CCND2* in pancreatic islets, brain  
312 cerebellum, skeletal muscle and subcutaneous adipose tissue, the decreased expression of its  
313 antisense *CCND2-AS1* in pancreatic islets, brain cerebellum, basal ganglia and cortex, in  
314 addition to *CCND2-AS2* in the cerebellum. For pancreatic islets, we found an increased  
315 expression of *NDUFA9* (**Table 2**).

316 In addition, using our MP-GWAS summary statistics, we tested in GTEx whether type 2  
317 diabetes and PHQ-9 were associated with shared gene expression changes in several target  
318 tissues except for pancreatic islets as GTEx does not include data on that. This analysis  
319 identified additional target genes associated with both type 2 diabetes and PHQ-9 in eight  
320 tissues, consistent in direction of effect for both phenotypes: adipose subcutaneous (*IRS1*,

321 *NCR3LG1*, *RP11-395N3.2*), amygdala (*HSPA1B*), frontal cortex (*CDKALI*), hypothalamus  
322 (*EIF2S2P3*), skeletal muscle (*HLA-DRA*, *RP11-370C19.2*), substantia nigra (*BETL1*), and  
323 whole blood (*EIF2S2P3*, *HLA-DRB1*) (**Supplementary Figure 7, Supplementary Table 7**  
324 **and 15-17**). Altogether, our data demonstrates a functional impact of our *loci* in several  
325 related tissues.

## 326 CONCLUSIONS

327 We performed a large comprehensive study to investigate the relationship between type 2  
328 diabetes and depression and found evidence for a causal positive association from depression  
329 to type 2 diabetes. We also performed a multi-phenotype GWAS of the two diseases,  
330 highlighting seven shared *loci* that target nearby genes in several target tissues. Altogether,  
331 our study provides novel insight into the underlying mechanisms linking the two diseases.

332 Our MR analysis, based on recent large-scale GWAS, provides evidence for causality on the  
333 previously reported epidemiological associations from depression to type 2 diabetes<sup>3</sup>, but not  
334 in the reverse direction. These findings are consistent with the pathophysiology for these  
335 diseases, whereby: 1) depression starts in adolescence or early adulthood<sup>27</sup>, whereas type 2  
336 diabetes usually develops later<sup>28</sup>, 2) poor health habits among individuals with depression,  
337 including smoking, physical inactivity and increased caloric intake (and associated  
338 overweight), that are known to facilitate the development of type 2 diabetes<sup>3,29</sup>, 3)  
339 antidepressants frequently induce weight gain leading to type 2 diabetes<sup>29</sup>, and 4) the  
340 systemic inflammation associated to increased stress hormone levels such as cortisol in the  
341 context of depression also favors insulin resistance<sup>30</sup>.

342 While epidemiological studies also show increased risk of depression in people with type 2  
343 diabetes<sup>4</sup>, we did not find evidence for causality in this relationship. Our evaluation of  
344 instrument strength for the MR analysis suggests that the lack of this causal association is not  
345 simply an issue of statistical power. A likely hypothesis is that the epidemiologically  
346 observed association is confounded via other factors, which are not easily assessed in  
347 epidemiological studies, such as psychosocial factors related to the painful management of a  
348 middle-age chronic disease. Diabetes distress, the psychological burden caused by dealing  
349 with having diabetes and having to care for it, has indeed been linked to depression<sup>31</sup>.  
350 However, a large international longitudinal study of 14 countries has shown that only



351 depressive symptoms rather than MDD were predicted by diabetes distress one year after  
352 diagnosis<sup>32</sup>.

353 In addition, our multi-phenotype GWAS revealed seven shared SNPs between type 2 diabetes  
354 and self-reported depressive symptoms consistent in their directions of effect. It is interesting  
355 to note that we did not find any shared SNPs associated with the binary MDD clinical  
356 diagnosis and type 2 diabetes which we speculate could be due to several reasons: 1) that the  
357 association between type 2 diabetes and depression is due to the less strictly defined  
358 symptom-based depressive measures, and 2) the PHQ-9 is a continuous definition of  
359 depression, and likely improves power compared to the binary MDD definition. Indeed,  
360 previous studies showed that depression defined based on self-reported symptoms (minimal  
361 phenotyping) rather than strict diagnostic criteria enables greater power for locus discovery in  
362 GWAS<sup>33</sup>.

363 Our eQTL analysis provided some clues to the underlying mechanisms linking the two  
364 diseases. For instance, we found that the rs76895963-T risk allele was associated with the  
365 decreased expression of *CCND2* in the brain and pancreatic islets and insulin target tissues  
366 (adipose and skeletal muscle), suggesting a pleiotropic effect of this *locus*. *CCND2* encodes  
367 Cyclin D2, which is involved in cell cycle regulation and with a role in pancreatic beta cell  
368 proliferation and insulin secretion<sup>34</sup>, consistent with our eQTL data showing a decreased  
369 expression of the gene in pancreatic islets. Mutations in *CCND2* have been described in  
370 individuals with brain malformations<sup>35</sup>, confirming a role in maintaining brain growth, and  
371 mouse knockout models of *CCND2* have no brain neurogenesis and showed mild depression-  
372 like symptoms that were alleviated by anti-depressant chronic fluoxetine treatment<sup>36</sup>. In  
373 addition, a recent study showed that neurogenesis in the brain may prevent depressive  
374 symptoms. Indeed, these studies demonstrate a potential mechanism whereby *CCND2* down-  
375 regulation may halt this process<sup>37</sup>. In addition, the inhibition of *CCND2* in adipose tissue has

376 been shown to dysregulate adipocyte differentiation<sup>38</sup> and downregulated in obesity,  
377 suggesting a key role in maintaining adipocyte regeneration<sup>39</sup>. Therefore, we show that  
378 *CCND2* has a multi-system and pleiotropic effect and could potentially mediate this  
379 relationship between type 2 diabetes and depression.

380 In addition, we found that the rs2972144-G risk allele was associated with decreased  
381 expression of *IRS1*, which encodes insulin receptor substrate 1, in adipose tissue. *IRS1* is a  
382 key signaling molecule necessary for insulin response in insulin target tissues and has been  
383 shown to be associated with insulin resistance<sup>40</sup>, a condition linked to both the development  
384 of type 2 diabetes and depression<sup>41</sup>.

385 Also, our eQTL analyses revealed further insights into the potential mechanisms underlying  
386 the relationship between type 2 diabetes and depression. Lower expression of *CDKALI* in  
387 frontal cortex was associated both with type 2 diabetes and depressive symptoms. Although  
388 reported for bipolar disorder<sup>42,43</sup>, variation in *CDKALI* has been associated with depressive  
389 phenotypes only in one previous study<sup>44</sup>. In addition, although we did not find an eQTL for  
390 this *locus* in pancreatic islets in our study, variation at *CDKALI* has been implicated in type 2  
391 diabetes and shown to reduce insulin secretion<sup>45</sup>.

392 We also found two target genes implicating the HLA region (*HLA-DRA*, *HLA-DRBI*) in the  
393 shared pathogenesis of the two diseases, in blood and skeletal muscle. The role of depression  
394 treatments, targeting the immune system, is very active<sup>46</sup>. Type 2 diabetes is also known to  
395 have an impact on immune system with high blood glucose levels causing an inflammatory  
396 response<sup>47</sup>. While trying to underpin the molecular mechanisms within this potential shared  
397 pathway, further studies on the type 2 diabetes-depression comorbidity should account also  
398 for the role of obesity with its known links with inflammation<sup>48</sup>, type 2 diabetes<sup>49</sup> and  
399 suggested with depression<sup>50</sup>.

400 Our results highlight a shared genetic effect between the two phenotypes with plausible  
401 biological significance that explain how environmental factors (*i.e.*, stress, lifestyle habits and  
402 anti-depressant medication) could lead to the underlying co-morbidity. Therefore, we  
403 speculate that our results could hold some clinical significance. For instance, the choice of  
404 anti-depressant treatment offered to people with depression at risk of type 2 diabetes should  
405 favor those that provide better glycemic control such as selective serotonin reuptake  
406 inhibitors (SSRIs)<sup>51</sup>. Additionally, people with depression should be encouraged, as part of  
407 routine clinical care, to promote positive lifestyle habits such as increased physical activity,  
408 adequate sleep, and a proper dietary regime.

409 This study exhibits several strengths. We report the first study to investigate the causal  
410 relationship of type 2 diabetes and depression in both directions and performed the largest-to-  
411 date MP-GWAS for the two diseases. Our investigation highlights the ability of multi-  
412 phenotype approaches to reveal the shared associations in co-morbid diseases and further  
413 confirms the power of large-scale datasets to uncover phenotype associations, including self-  
414 reported and continuous measures of diseases and their symptoms. However, there are some  
415 limitations to be considered. Our main UKBB analyses on MDD did not yield any genome-  
416 wide significant signals in both GWAS and MP-GWAS and a validation in larger datasets is  
417 needed. In addition, to effectively probe the credibility of the MTAG MP-GWAS results,  
418 replication using another MP-GWAS method is needed as part of future analyses. Finally, we  
419 could only replicate the type 2 diabetes-MDD analyses due to unavailability of publicly  
420 available depressive symptoms GWAS and in the FinnGen cohort.

421 In conclusion, the shared *loci* between depressive symptoms and type 2 diabetes support a  
422 pleiotropic role in target tissues, providing insight into their pathophysiology and co-  
423 morbidity, boosting our understanding of the pathogenesis of these two diseases.  
424 Additionally, self-reported depression/depressive symptoms may offer more in deciphering

425 the underlying co-morbidity with type 2 diabetes compared to the strictly defined MDD. The  
426 causal effect of depression leading to the development of type 2 diabetes has important  
427 implications for a more efficient prevention of type 2 diabetes from early adulthood.

428 ACKNOWLEDGEMENTS

429 This research has been conducted using the UK Biobank Resource under Application  
430 Number 35327. This research was in part funded by the Diabetes UK (BDA number:  
431 20/0006307), the European Union’s Horizon 2020 research and innovation programme  
432 (LONGITOLS, H2020-SC1-2019-874739), Agence Nationale de la Recherche  
433 (PreciDIAB, ANR-18-IBHU-0001), by the European Union through the “Fonds européen de  
434 développement regional” (FEDER), by the “Conseil Régional des Hauts-de-France” (Hauts-  
435 de-France Regional Council) and by the “Métropole Européenne de Lille” (MEL, European  
436 Metropolis of Lille).

437 **REFERENCES**

- 438 1. Holt, R. I. G., Peveler, R. C. & Byrne, C. D. Schizophrenia, the metabolic syndrome  
439 and diabetes. *Diabetic Medicine* vol. 21 515–523 Preprint at  
440 <https://doi.org/10.1111/j.1464-5491.2004.01199.x> (2004).
- 441 2. Mezuk, B., Eaton, W. W., Albrecht, S. & Golden, S. H. Depression and Type 2  
442 Diabetes Over the Lifespan A meta-analysis. *Diabetes Care* **31**, 2383–2390 (2008).
- 443 3. Rotella, F. & Mannucci, E. Depression as a Risk Factor for Diabetes. *J Clin Psychiatry*  
444 **74**, 31–37 (2013).
- 445 4. Nouwen, A. *et al.* Type 2 diabetes mellitus as a risk factor for the onset of depression:  
446 a systematic review and meta-analysis. *Diabetologia* **53**, 2480–2486 (2010).
- 447 5. Lawlor, D. A., Harbord, R. M., Sterne, J. A. C., Timpson, N. & Smith, G. D.  
448 Mendelian randomization: Using genes as instruments for making causal inferences in  
449 epidemiology. *Stat Med* **27**, 1133–1163 (2008).
- 450 6. Xuan, L. *et al.* Type 2 diabetes is causally associated with depression: a Mendelian  
451 randomization analysis. *Front Med* **12**, 678–687 (2018).
- 452 7. Mahajan, A. *et al.* Fine-mapping type 2 diabetes loci to single-variant resolution using  
453 high-density imputation and islet-specific epigenome maps. *Nat Genet* **50**, 1505–1513  
454 (2018).
- 455 8. Howard, D. M. *et al.* Genome-wide meta-analysis of depression identifies 102  
456 independent variants and highlights the importance of the prefrontal brain regions. *Nat*  
457 *Neurosci* **22**, 343–352 (2019).
- 458 9. Hemani, G. *et al.* The MR-base platform supports systematic causal inference across  
459 the human phenome. *Elife* **7**, (2018).
- 460 10. Bowden, J., Davey Smith, G., Haycock, P. C. & Burgess, S. Consistent Estimation in  
461 Mendelian Randomization with Some Invalid Instruments Using a Weighted Median  
462 Estimator. *Genet Epidemiol* **40**, 304–314 (2016).
- 463 11. Bowden, J., Smith, G. D. & Burgess, S. Mendelian randomization with invalid  
464 instruments: effect estimation and bias detection through Egger regression. *Int J*  
465 *Epidemiol* **44**, 512–525 (2015).
- 466 12. Hartwig, F. P., Smith, G. D. & Bowden, J. Robust inference in summary data  
467 Mendelian randomization via the zero modal pleiotropy assumption. *Int J Epidemiol*  
468 **46**, 1985–1998 (2017).
- 469 13. Skrivankova, V. W. *et al.* Strengthening the reporting of observational studies in  
470 epidemiology using mendelian randomisation (STROBE-MR): explanation and  
471 elaboration. *BMJ* **375**, (2021).
- 472 14. Bycroft, C. *et al.* The UK Biobank resource with deep phenotyping and genomic data.  
473 *Nature* **562**, 203–209 (2018).
- 474 15. McCarthy, S. *et al.* A reference panel of 64,976 haplotypes for genotype imputation.  
475 *Nat Genet* **48**, 1279–1283 (2016).
- 476 16. Huang, J. *et al.* Improved imputation of low-frequency and rare variants using the  
477 UK10K haplotype reference panel. *Nat Commun* (2015) doi:10.1038/ncomms9111.
- 478 17. Auton, A. *et al.* A global reference for human genetic variation. *Nature* vol. 526 68–74  
479 Preprint at <https://doi.org/10.1038/nature15393> (2015).
- 480 18. Zhou, W. *et al.* Scalable generalized linear mixed model for region-based association  
481 tests in large biobanks and cohorts. *Nat Genet* **52**, 634–639 (2020).
- 482 19. Kroenke, K., Spitzer, R. L. & Williams, J. B. The PHQ-9: validity of a brief depression  
483 severity measure. *J Gen Intern Med* **16**, 606–13 (2001).
- 484 20. Nouwen, A. *et al.* Measurement invariance testing of the patient health questionnaire-9  
485 (PHQ-9) across people with and without diabetes mellitus from the NHANES, EMHS  
486 and UK Biobank datasets. *J Affect Disord* **292**, 311–318 (2021).

- 487 21. Townsend, P., Phillimore, P. & Beattie, Alastair. Health and deprivation: inequality  
488 and the North. 211 (1988).
- 489 22. Loh, P. R. *et al.* Efficient Bayesian mixed-model analysis increases association power in  
490 large cohorts. *Nat Genet* (2015) doi:10.1038/ng.3190.
- 491 23. Wickham, Hadley. *ggplot2: Elegant Graphics for Data Analysis*. (Springer-Verlag  
492 New York, 2016).
- 493 24. Turley, P. *et al.* Multi-trait analysis of genome-wide association summary statistics  
494 using MTAG. *Nat Genet* **50**, 229–237 (2018).
- 495 25. Alonso, L. *et al.* TIGER: The gene expression regulatory variation landscape of human  
496 pancreatic islets. *Cell Rep* **37**, (2021).
- 497 26. Lonsdale, J. *et al.* The Genotype-Tissue Expression (GTEx) project. *Nature Genetics*  
498 vol. 45 580–585 Preprint at <https://doi.org/10.1038/ng.2653> (2013).
- 499 27. Solmi, M. *et al.* Age at onset of mental disorders worldwide: large-scale meta-analysis  
500 of 192 epidemiological studies. *Molecular Psychiatry* **2021** 1–15 (2021)  
501 doi:10.1038/s41380-021-01161-7.
- 502 28. Bruce, D. G. *et al.* Lifetime depression history and depression risk in type 2 diabetes:  
503 A case-control study. *J Diabetes Complications* **30**, 38–42 (2016).
- 504 29. Strine, T. W. *et al.* The association of depression and anxiety with obesity and  
505 unhealthy behaviors among community-dwelling US adults. *Gen Hosp Psychiatry* **30**,  
506 127–137 (2008).
- 507 30. Golden, S. A review of the evidence for a neuroendocrine link between stress,  
508 depression and diabetes mellitus. *Curr Diabetes Rev* **3**, 252–259 (2007).
- 509 31. Fisher, L. *et al.* Clinical Depression Versus Distress Among Patients With Type 2  
510 Diabetes Not just a question of semantics. *Diabetes Care* **30**, 542–548 (2007).
- 511 32. Lloyd, C. E. *et al.* Factors associated with the onset of major depressive disorder in  
512 adults with type 2 diabetes living in 12 different countries: results from the  
513 INTERPRET-DD prospective study. *Epidemiol Psychiatr Sci* **29**, e134 (2020).
- 514 33. Cai, N. *et al.* Minimal phenotyping yields genome-wide association signals of low  
515 specificity for major depression. *Nat Genet* **52**, 437–447 (2020).
- 516 34. Stamateris, R. E. *et al.* Glucose Induces mouse  $\beta$ -cell proliferation via IRS2, MTOR,  
517 and cyclin D2 but Not the insulin receptor. *Diabetes* **65**, 981–995 (2016).
- 518 35. Pirozzi, F. *et al.* Proximal variants in CCND2 associated with microcephaly, short  
519 stature, and developmental delay: A case series and review of inverse brain growth  
520 phenotypes. *Am J Med Genet A* **185**, 2719–2738 (2021).
- 521 36. Jedynek, P., Kos, T., Sandi, C., Kaczmarek, L. & Filipkowski, R. K. Mice with ablated  
522 adult brain neurogenesis are not impaired in antidepressant response to chronic  
523 fluoxetine. *J Psychiatr Res* **56**, 106–111 (2014).
- 524 37. Svoboda, E. Brain-cell growth keeps mood disorders at bay. *Nature* **608**, S48–S49  
525 (2022).
- 526 38. Hishida, T., Naito, K., Osada, S., Nishizuka, M. & Imagawa, M. Crucial roles of D-  
527 type cyclins in the early stage of adipocyte differentiation. *Biochem Biophys Res*  
528 *Commun* **370**, 289–294 (2008).
- 529 39. Molina-Ayala, M. A. *et al.* Expression of obesity- and type-2 diabetes-associated  
530 genes in omental adipose tissue of individuals with obesity. *Gene* **815**, 146181 (2022).
- 531 40. DeFronzo, R. A. & Tripathy, D. Skeletal Muscle Insulin Resistance Is the Primary  
532 Defect in Type 2 Diabetes. *Diabetes Care* **32**, S157 (2009).
- 533 41. Lyra e Silva, N. de M. *et al.* Insulin resistance as a shared pathogenic mechanism  
534 between depression and type 2 diabetes. *Frontiers in Psychiatry* vol. 10 57 Preprint at  
535 <https://doi.org/10.3389/fpsyt.2019.00057> (2019).

- 536 42. Nurnberger, J. I. *et al.* Identification of pathways for bipolar disorder: A meta-analysis.  
537 *JAMA Psychiatry* **71**, 657–664 (2014).
- 538 43. Swaminathan, S. *et al.* Characteristics of Bipolar I patients grouped by externalizing  
539 disorders. *J Affect Disord* **178**, 206–214 (2015).
- 540 44. Haljas, K. *et al.* Bivariate Genome-Wide Association Study of Depressive Symptoms  
541 With Type 2 Diabetes and Quantitative Glycemic Traits. *Psychosom Med* **80**, 242–251  
542 (2018).
- 543 45. Kirchoff, K. *et al.* Polymorphisms in the TCF7L2, CDKAL1 and SLC30A8 genes are  
544 associated with impaired proinsulin conversion. *Diabetologia* **51**, 597–601 (2008).
- 545 46. Lee, C. H. & Giuliani, F. The Role of Inflammation in Depression and Fatigue. *Front*  
546 *Immunol* **10**, 1696 (2019).
- 547 47. Berbudi, A., Rahmadika, N., Tjahjadi, A. I. & Ruslami, R. Type 2 Diabetes and its  
548 Impact on the Immune System. *Curr Diabetes Rev* **16**, 442–449 (2019).
- 549 48. Ellulu, M. S., Patimah, I., Khaza' ai, H., Rahmat, A. & Abed, Y. Obesity and  
550 inflammation: the linking mechanism and the complications. *Archives of Medical*  
551 *Science* **13**, 851–863 (2017).
- 552 49. Al-Goblan, A. S., Al-Alfi, M. A. & Khan, M. Z. Mechanism linking diabetes mellitus  
553 and obesity. *Diabetes Metab Syndr Obes* **7**, 587–591 (2014).
- 554 50. Blasco, B. V., García-Jiménez, J., Bodoano, I. & Gutiérrez-Rojas, L. Obesity and  
555 Depression: Its Prevalence and Influence as a Prognostic Factor: A Systematic Review.  
556 *Psychiatry Investig* **17**, 715–724 (2020).
- 557 51. Deuschle, M. Effects of antidepressants on glucose metabolism and diabetes mellitus  
558 type 2 in adults. *Curr Opin Psychiatry* **26**, 60–65 (2013).
- 559  
560



**Table1. Summary statistics of the seven shared loci between type 2 diabetes and PHQ-9 after MP-GWAS**

CHR	SNP	BP	NEAREST GENE	EA	NEA	EAF	Type 2 diabetes			PHQ-9		
							BETA	SE	P	BETA	SE	P
2	rs2972144	227101411	<i>IRS1</i>	G	A	0.65	0.0031	0.00038	4.89x10 <sup>-16</sup>	0.065	0.012	1.80x10 <sup>-08</sup>
3	rs16860235	185512361	<i>IGF2BP2</i>	A	G	0.28	0.0046	0.00040	1.41x10 <sup>-30</sup>	0.103	0.012	4.19x10 <sup>-17</sup>
6	rs7766070	20686573	<i>CDKAL1</i> *	A	C	0.26	0.0046	0.00041	7.79x10 <sup>-29</sup>	0.103	0.014	1.24x10 <sup>-12</sup>
9	rs10811662	22134253	<i>CDKN2B-AS1</i>	G	A	0.83	0.0049	0.00048	7.88x10 <sup>-25</sup>	0.09	0.015	4.30x10 <sup>-09</sup>
10	rs7903146	114758349	<i>TCF7L2</i>	T	C	0.29	0.011	0.00040	6.88x10 <sup>-178</sup>	0.21	0.012	1.68x10 <sup>-64</sup>
12	rs76895963	4384844	<i>CCND2-AS1</i>	T	G	0.98	0.015	0.0014	3.08x10 <sup>-27</sup>	0.29	0.043	1.91x10 <sup>-11</sup>
13	rs1359790	80717156	<i>SPRY2</i>	G	A	0.72	0.0035	0.00040	8.54x10 <sup>-17</sup>	0.076	0.012	5.91x10 <sup>-10</sup>

\* Different SNP for PHQ-9 (rs2206734, Position-20694884, Effect Allele-G, Non-effect

Allele-C; In high LD with type 2 diabetes SNP=R2=0.544)

561 Legend: CHR=chromosome, BP=base pair position (genome build 37), EA=effect allele, NEA=non-effect

562 allele, EAF=effect allele frequency

563

564 **Table 2. Target genes of SNPs shared type 2 diabetes and depressive symptoms in relevant target tissues.**  
565

CHR	SNP	BP	Nearest gene	EA	NEA	Organ donors			
						Tissue	Effect direction	Gene target	P
2	rs2972144	227101411	<i>IRS1</i>	G	A	Adipose - Subcutaneous	Negative	<i>IRS1</i>	2.60x10 <sup>-16</sup>
						Adipose - Subcutaneous	Negative	<i>RP11-395N3.2</i>	5.70x10 <sup>-09</sup>
						Adipose - Subcutaneous	Negative	<i>RP11-395N3.1</i>	1.70x10 <sup>-07</sup>
						Adipose - Visceral	Negative	<i>IRS1</i>	2.80x10 <sup>-11</sup>
						Adipose - Visceral	Negative	<i>RP11-395N3.2</i>	1.6x10 <sup>-06</sup>
3	rs16860235	185512361	<i>IGF2BP2</i>	A	G	Pancreatic islets	Negative	<i>IGF2BP2</i>	3.94x10 <sup>-5</sup>
						Pancreatic islets	Negative	<i>C3orf70</i>	0.028
						Pancreatic islets	Positive	<i>EIF4A2</i>	0.045
6	rs7766070	20686573	<i>CDKALI</i>	A	C	Pancreatic islets	Positive	<i>LINC005811</i>	0.049
9	rs10811662	22134253	<i>CDKN2A-ASI</i>	G	A	Pancreatic islets	Positive	<i>MTAP</i>	0.038
						Pancreatic islets	Positive	<i>CDKN2A</i>	0.00099
						Pancreatic islets	Positive	<i>CDKN2B-ASI</i>	1.54x10 <sup>-7</sup>
10	rs7903146	114758349	<i>TCF7L2</i>	T	C	Pancreatic islets	Positive	<i>TCF7L2</i>	0.0029
12	rs76895963	4384844	<i>CCND2-ASI</i>	T	G	Pancreatic islets	Negative	<i>CCND2</i>	1.68 x 10 <sup>-6</sup>
						Pancreatic islets	Negative	<i>CCND2-ASI</i>	0.017
						Pancreatic islets	Positive	<i>NDUFA9</i>	0.039
						Brain - Cerebellum	Negative	<i>CCND2</i>	7.90x10 <sup>-22</sup>
						Brain - Cerebellum	Negative	<i>CCND2-ASI</i>	2.10x10 <sup>-16</sup>
						Brain - Cerebellum	Negative	<i>CCND2-AS2</i>	1.00x10 <sup>-08</sup>
						Brain - Nucleus accumbens (basal ganglia)	Negative	<i>CCND2-ASI</i>	2.70x10 <sup>-07</sup>
						Brain - Putamen (basal ganglia)	Negative	<i>CCND2-ASI</i>	0.000008
						Brain - Cortex	Negative	<i>CCND2-ASI</i>	0.000011
						Muscle - Skeletal	Negative	<i>CCND2</i>	9.30x10 <sup>-13</sup>
						Adipose - Subcutaneous	Negative	<i>CCND2</i>	2.70x10 <sup>-10</sup>
						13	rs1359790	80717156	<i>SPRY2</i>

566

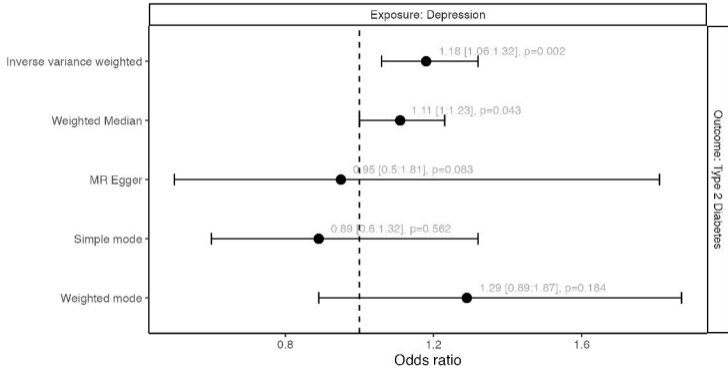
567 Legend: CHR=chromosome, BP=base pair position (genome build 37), EA=effect allele, NEA=non-effect

568 allele, EAF=effect allele frequency

569 Figure legends

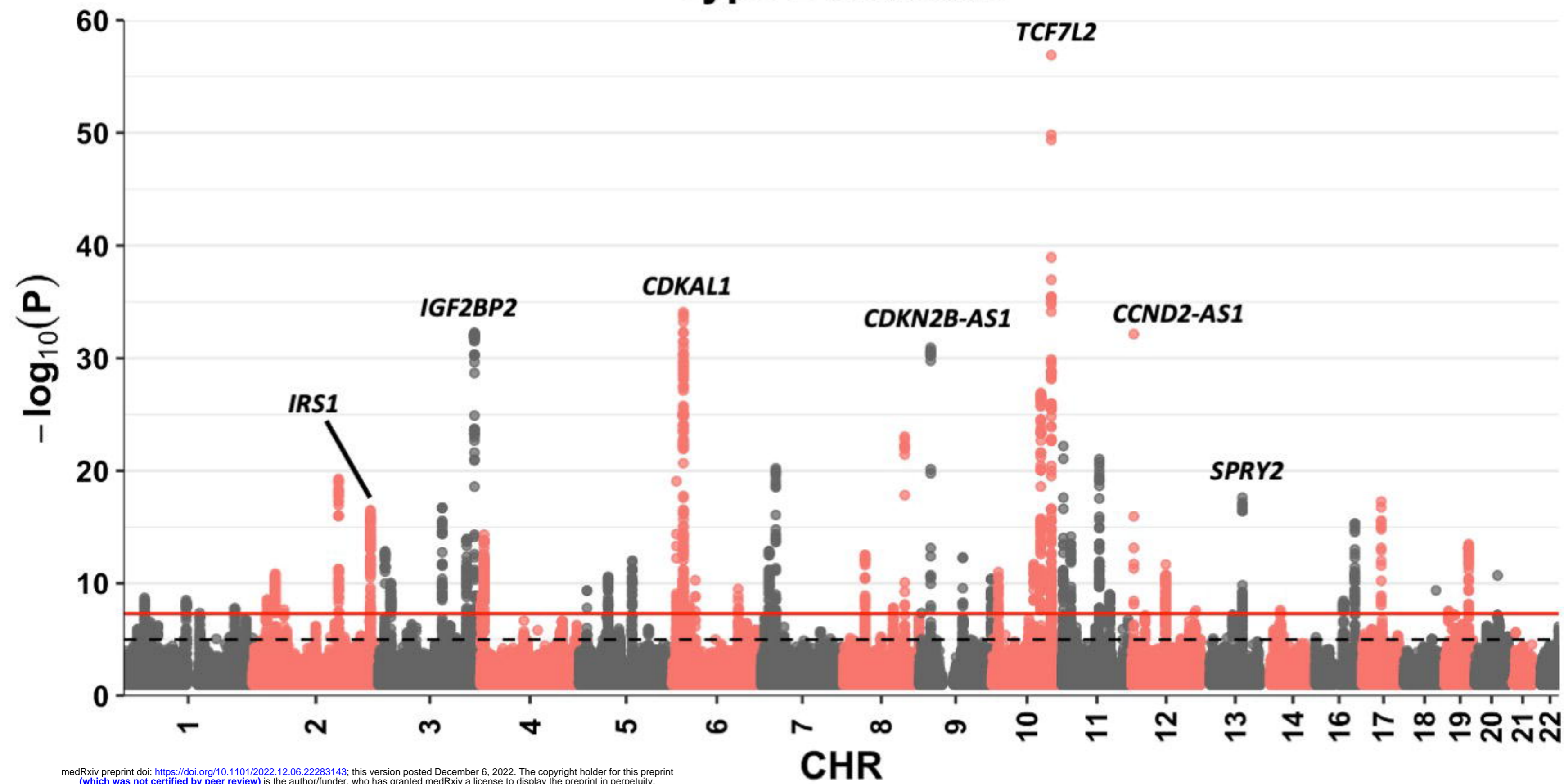
570 **Figure 1.** Forest plot showing the Mendelian randomization analysis results between  
571 depression (exposure) and type 2 diabetes (type 2 diabetes). The odds ratio (OR), their  
572 95% confidence intervals and *P*-values are shown.

573 **Figure 2.** Manhattan plots of type 2 diabetes (A) and PHQ-9 (B) after MP-GWAS in  
574 UK Biobank. The red horizontal line shows genome-wide significance threshold  
575 ( $P < 5 \times 10^{-8}$ ). Grey dashed horizontal lines show suggestive genome-wide significance  
576 threshold ( $P < 1 \times 10^{-5}$ ). The shared loci are annotated.



A

## Type 2 diabetes



medRxiv preprint doi: <https://doi.org/10.1101/2022.12.06.22283143>; this version posted December 6, 2022. The copyright holder for this preprint (which was not certified by peer review) is the author/funder, who has granted medRxiv a license to display the preprint in perpetuity. It is made available under a [CC-BY-NC-ND 4.0 International license](https://creativecommons.org/licenses/by-nc-nd/4.0/).

B

## PHQ9

