

1 **Disability disparities in STEM: Gaps in salaries and representation for**
2 **doctorate recipients with disabilities in the U.S., 2019**

3 Disparities impacting doctorate recipients with disabilities in the STEM workforce

4 **Authors:** Franz Castro¹, Elizabeth Stuart², Jennifer Deal^{3,4,5}, Varshini Varadaraj¹, Bonnielin K.

5 Swenor^{1,4*}

6 **Affiliations:**

7 ¹Johns Hopkins Disability Health Research Center, Johns Hopkins University, Baltimore, MD,
8 USA

9 ²Departments of Mental Health, Biostatistics, Health Policy and Management, Johns Hopkins
10 Bloomberg School of Public Health, Baltimore, MD, USA

11 ³Cochlear Center for Hearing and Public Health, Johns Hopkins Bloomberg School of Public
12 Health, Baltimore, Maryland

13 ⁴Department of Epidemiology, Johns Hopkins Bloomberg School of Public Health, Baltimore,
14 Maryland, USA

15 ⁵Department of Otolaryngology—Head and Neck Surgery, Johns Hopkins University School of
16 Medicine, Baltimore, Maryland, USA

17 *Corresponding author.

18 Email: bswenor@jhmi.edu.

19

1 **Abstract**

2 **Introduction.** There is paucity of data examining disparities in salary and representation for
3 disabled scientists, which is needed to advance inclusion and equity for people with disabilities
4 in Science, Technology, Engineering and Mathematics (STEM).

5 **Methods.** Analyses used cross-sectional data from the 2019 Survey of Doctorate Recipients. We
6 compared salaries between doctorate recipients with and without disabilities who were currently
7 employed in STEM (N = 704,013), but who were otherwise similar on socioeconomic, degree
8 and job-related characteristics, using propensity score weighting to carry out balanced
9 comparisons, and further examined these differences in salary in the subset of doctorate
10 recipients working in STEM at academic institutions (N = 219,413). In the subset of participants
11 working in academia, we examined whether the representation of people with disabilities
12 differed across categories of academic career milestones using chi-square tests ($\alpha = 0.05$).

13 **Results.** Doctorate recipients working in STEM with early onset disabilities (identified <25
14 years of age) earned \$10,580 less per year than non-disabled workers, and in the subset of
15 academic workers this difference was larger (-\$14,360). Salaries appeared lower for people with
16 late onset disabilities as compared to those without, although these differences did not reach
17 statistical significance. We observed an underrepresentation of academics with disabilities at
18 higher faculty ranks ($p < 0.0001$), among Deans/Presidents ($p < 0.0001$) and among those with
19 tenure ($p: 0.0004$).

20 **Conclusion.** These findings support a need to expand efforts to foster inclusion, provide equal
21 opportunities for career advancement, and improve working conditions for people with
22 disabilities in STEM.

1 **Introduction**

2 Although over a quarter of U.S. adults have a disability, people with disabilities account for only
3 10% of the science, technology, engineering, and mathematic (STEM) workforce.(1, 2)

4 Disability inclusion in STEM is critical to the diversification of sciences,(3) and a matter of both
5 economic development and equity. Engaging the full range of diverse talent in STEM leads to
6 gains for the country’s scientific landscape, as research and innovation are strengthened when
7 people with diverse life experiences and knowledge contribute to the solution of complex
8 problems.(4)

9 Salary is an important metric of equity in the workforce. Historical wage gaps by gender and
10 race have shed light on systematic biases impacting workers from marginalized groups.(5, 6)
11 Consequently, equal pay has been at the center of legislation and policy discussion for decades.
12 Previous reports have highlighted that in science and engineering fields, women and
13 underrepresented racial minorities earn on average \$25,000 and \$15,000 less per year as
14 compared to their male and White colleagues, respectively.(2) However, there is paucity of data
15 examining disparities in salary and representation for disabled scientists, which is needed to
16 advance inclusion and equity for people with disabilities in STEM. To fill these data gaps, we
17 used data from the 2019 Survey of Doctorate Recipients (SDR),(7) containing data on 80,882
18 participants, representing 1,148,817 U.S. research doctorate degree recipients with their STEM
19 degrees awarded between 1973 and 2017, regardless of whether they were still active in the
20 workforce or not.

21 This study aimed to compare salaries between doctorate recipients with and without disabilities
22 who were currently employed in STEM, but who were otherwise similar on socioeconomic,
23 degree and job-related characteristics, using propensity score weighting to carry out balanced

- 1 comparisons. We further examined these differences in salary in the subset of doctorate
- 2 recipients working in STEM at academic institutions. Our secondary objective was limited to the
- 3 subset of participants working in academia, and examined whether the representation of people
- 4 with disabilities differed across categories of academic career milestones.

1 **Materials and Methods**

2 Analyses used cross-sectional data from the 2019 Survey of Doctorate Recipients (SDR),(7) a
3 biennial survey conducted by the National Science Foundation (NSF) since 1973. The SDR 2019
4 collects demographic, educational, and career history information from individuals that obtained
5 a U.S. research doctorate degree between 1973 and 2017 in a science, engineering, or health
6 field. Research doctorate degrees are defined by the SDR as requiring completion of an original
7 intellectual contribution or a dissertation and are not primarily intended for the practice of a
8 profession. Therefore, recipients of professional doctorate degrees were not included in the
9 survey (e.g., MD, DPharm, PsyD, etc.). The NSF's definition of science, technology,
10 engineering, and mathematics (STEM) fields extends beyond natural sciences, mathematics,
11 engineering, computer and information sciences, and includes behavioral sciences such as
12 psychology, economics, sociology, and political science.(8)

13 The SDR relies on a fixed panel design, adding to the study a sample of 10,000 new graduates
14 every other year. Subjects who graduated between 1973 and 2017 were sampled from the
15 Doctorate Records File (DRF), a yearly census of all doctorate recipients in the U.S, regardless
16 of whether they had dropped out of the labor market or not. For the 2019 SDR, new graduates
17 had their degrees awarded between July 2015 and June 2017, for a total sample size of 120,000
18 participants, and 80,882 respondents (response rate: 69%). Excluded from the SDR were
19 participants that were 76 years of age or older, institutionalized, or terminally ill as of February
20 1st, 2019, resulting in a weighted total of 1,148,817 doctorate recipients. The SDR utilizes survey
21 weights that account for differential sampling rates, adjustments for nonresponse, unknown
22 eligibility, and for aligning the sample with the DRF distribution on gender, race/ethnicity,

1 location, degree field, and year. Prior publications have described the survey methodology in
2 greater detail.(7) There were no missing data for the variables used in the main analyses.
3 Our primary analyses were restricted to SDR participants from 2019 currently employed in a
4 STEM field, living in the U.S., and working for an employer based in the U.S. at the time of the
5 survey (N = 704,013). In secondary analyses, we further restricted the study population to
6 participants working at academic institutions (N = 219,413, 31.2% of the total study population),
7 defined as postsecondary educational institutions (4-year colleges or universities, medical
8 schools, university-affiliated research institutes) where the following were available: faculty
9 ranks, tenure, and academic positions (e.g. Deans or Presidents). There were no observations
10 with missing data for the variables used in the analyses.

11 *Definitions of salary and disability*

12 Participants were asked about their basic annual salaries on their principal job, before tax
13 deductions, and about the usual degree of difficulty (none, slight, moderate, severe, or unable to
14 do) they experienced in any of the following domains: 1) seeing words or letters in ordinary
15 newsprint, 2) hearing what is normally said in conversation with another person, 3) walking
16 without human or mechanical assistance or using stairs, 4) lifting or carrying something as heavy
17 as 10 pounds, or 5) concentrating, remembering, or making decisions because of a physical,
18 mental, or emotional condition. Those who responded “moderate”, “severe”, or “unable to do”
19 for any activity were classified as having a disability.

20 To better characterize the impact of age of disability onset on career outcomes, we used the
21 following disability categories: no disability, disability first identified at 25 years of age or later
22 (hereafter referred to as late onset disability), and disability first identified before 25 years of age
23 (hereafter referred to as early onset disability). Since 44.1% of all doctorate recipients earn their

1 degrees between 26 and 30 years of age, and 0.6% before 26 years of age,(9) we chose 25 years
2 as a threshold for early and late disability to allow all subjects to have a non-zero probability of
3 being in a given exposure group.

4 ***Socioeconomic, degree, job-related, and academic career covariates***

5 We examined the distribution of covariates of interest across groups, such as sex (male, female),
6 age (<35 35-44, 45-54, 55-64, ≥65 years), race/ethnicity (Non-Hispanic White, Hispanic, Black,
7 Asian, or Other [including multiracial]), marital status (never married, separated or divorced,
8 widowed, married or living in a marriage-like relationship), field of doctoral degree (biological,
9 agricultural, and environmental life sciences; computer and information sciences; mathematics
10 and statistics; physical sciences, geosciences, atmospheric, and ocean sciences; psychology;
11 social sciences; engineering; health), job field (computer and mathematical sciences; biological,
12 agricultural, and other life sciences; physical and related sciences; social and related sciences;
13 engineering; other occupations related to science and engineering), region of the U.S. where the
14 employer is located (West, Midwest, Northeast, South), having a full-time position throughout
15 the entire year (defined as working at least 36 hours per week and 52 weeks per year), and
16 working at an academic institution. The following covariates were further examined only for
17 participants working at academic institutions: faculty rank (Instructor or Lecturer, Assistant
18 Professor, Associate Professor, Professor), tenure status (not on tenure-track and not tenured, on
19 tenure-track, tenured), and being a Dean or a President at their institution.

20 ***Rationale for using propensity scores***

21 Propensity scores are commonly used in non-experimental studies of treatments, exposures, or
22 interventions to adjust for confounders by using the propensity score to match, weight, or
23 subclassify the groups and thus create covariate “balance” – similarity – across the exposure

1 groups.(10) In the propensity score adjusted samples (e.g., the matched or weighted samples), the
2 distribution of observed covariates should be similar between groups. In our application we are
3 using propensity score not for causal effect estimation, but rather for this covariate balancing
4 property, to create “balanced comparisons” in which we can compare salaries between doctorate
5 recipients with and without disabilities who were otherwise similar on socioeconomic, degree
6 field, and job-related characteristics.

7 ***Propensity score computation using generalized boosted models***

8 Propensity scores were computed using generalized boosted models (GBM), a machine learning
9 approach that predicts a dichotomous binary treatment indicator using many simple regression
10 trees iteratively combined to fit an overall piecewise constant function in a flexible way. In this
11 scenario of multiple exposure groups (no disability, late, and early onset disability), dummy
12 indicators for each of the disability groups are created and separate GBMs are fitted to each
13 dummy treatment indicator.(11) When computing the propensity scores, we included factors that
14 were relevant predictors of salary: race, sex, marital status, field of doctoral degree, job field,
15 region of the U.S. where the employer is located, receiving federal funding, and having a full-
16 time job. Propensity scores were computed across strata of age (≤ 34 years, 35-44 years, 45-54
17 years, 55-64 years, ≥ 65 years) to partially remove the effect of longevity in the workforce.

18 ***Inverse probability of treatment weighting (IPTW) and examination of covariate balance***

19 After the propensity scores were estimated using GBM they were used to create weights to
20 weight individuals with late, early onset, and without disabilities to be similar to one another. In
21 particular, Inverse Probability of Treatment Weighting (IPTW) was used. IPTW gives each
22 subject a weight based on the propensity score to create a synthetic sample in which the
23 distribution of observed covariates is independent of disability status (at least with respect to the

1 observed characteristics) and therefore similar between groups. A subject's weight is equal to the
2 inverse of the probability of being in their group (e.g., for individuals without disabilities, one
3 over their probability of not having a disability, as estimated from the propensity score model
4 given the observed covariates), and constitutes a form of model-based direct standardization.(10)
5 We assessed covariate balance using standardized mean differences, and values below 0.1 were
6 used to determine that a good covariate balance was achieved. IPTW weights were multiplied by
7 survey weights to account for the complex survey design.

8 ***Linear regression, association between disability and salary***

9 We conducted balanced comparisons on salaries between a) doctorate recipients without
10 disabilities and those with late onset disabilities, and b) between those without disabilities and
11 those with early onset disabilities. Using a doubly robust approach, the regression models
12 adjusted for the same set of covariates as used in the propensity score models.(12) By using
13 linear regression with sandwich variance estimators, we calculated beta coefficients (β) with
14 95% confidence intervals (CIs) for the associations between disability and salary. Besides
15 combining IPTW weights with survey weights when balancing groups, regression models
16 additionally accounted for survey weights.(13) A similar analysis was conducted for doctorate
17 recipients working in STEM at academic institutions, for which additional covariates were added
18 to the propensity score computation and outcome regression model: faculty rank, tenure status,
19 and whether the participant was a Dean or a President at their institution.

20 ***Representation of doctorate recipients with disabilities across categories of academic career*** 21 ***milestones***

22 We aimed at better understanding how people with disabilities are represented in different
23 categories of achievement of academic career milestones. In the subset of STEM workers at

1 academic institutions (N=219,413), we examined the proportions (survey-weighted and age-
2 standardized using the 2010 U.S. Census population) of participants without, with late and early
3 onset disabilities across the following categories:(14) 1) faculty rank (Instructor/Lecturer,
4 Assistant Professor, Associate Professor, Professor), 2) tenure status (not tenured, on tenure
5 track, tenured), 3) being a Dean/President (no, yes), 4) receiving federal funding for their
6 work/research (no, yes). For each category, we tested differences using chi-square tests ($\alpha =$
7 0.05). We conducted supplementary analyses showing the representation of people with
8 disabilities among workers who received federal funding (grants or contracts), by type of U.S.
9 agency.

10 SDR 2019 data is publicly available on the NSF's website
11 (<https://ncesdata.nsf.gov/datadownload/>), and Institutional Review Board approval was not
12 required since data were de-identified. All analyses were conducted using R Studio, version
13 2021.09.1. Documentation on the *weightit* and *cobalt* R packages used for propensity score
14 computation and assessment of covariate balance can be found at [https://cran.r-](https://cran.r-project.org/web/packages/cobalt/index.html)
15 [project.org/web/packages/cobalt/index.html](https://cran.r-project.org/web/packages/cobalt/index.html) and [https://cran.r-](https://cran.r-project.org/web/packages/WeightIt/index.html)
16 [project.org/web/packages/WeightIt/index.html](https://cran.r-project.org/web/packages/WeightIt/index.html)

1 Results

2 Out of the 704,013 doctorate recipients working in STEM, 646,652 (91.9%, 95% CI: 91.5%,
3 92.2%) did not report disabilities, 36,807 (5.2%, 95% CI: 5.0%, 5.5%) reported late onset
4 disabilities, and 20,554 (2.9%, 95% CI: 2.7%, 3.1%) reported early onset disabilities (**Fig 1, S1**
5 **Fig**). There was a lower proportion of female doctorate recipients as compared to males across
6 all three study groups. The highest representation of female STEM workers was observed in the
7 no disability group (35.6% [95% CI: 35.0%, 36.2%]), and the lowest in the late onset disability
8 group (29.5% [95% CI: 27.4%, 31.8%]). The age distributions were fairly similar between the no
9 disability and the early onset disability groups (mostly 35-39 years), whereas in the late onset
10 disability group more than half of the participants were 55 years of age and older. Although
11 participants in the early onset disability group were younger overall, the percentage of
12 participants aged 45-49 and 50-54 years was similar across the three study groups (**Table 1**).

13 The late onset disability group had the lowest representation of Hispanic and Black doctorate
14 recipients (4.3% [95% CI: 3.6%, 5.2%] and 2.9% [95% CI: 2.3%, 3.6%]), as compared to the
15 early onset disability group with 5.2% (95% CI: 4.2%, 6.3%) and 3.3% (95% CI: 2.3%, 4.5%),
16 respectively. Overall, the largest percentage of doctorate degrees were awarded in the field of
17 biological/agricultural/environmental life sciences, and the lowest percentage in the field of
18 computer/information sciences. For participants without disabilities, 22.0% (95% CI: 21.4%,
19 22.5%) of the degrees were awarded in the field of engineering, in comparison to 19.3% (95%
20 CI: 17.1%, 21.7%) in the late onset disability group, and 18.4% (95% CI: 15.6%, 21.5%) among
21 those with early disabilities. Conversely, participants with disabilities had a higher percentage of
22 degrees in the social sciences (13.8% [95% CI: 12.2%, 15.7%] and 11.8% [95% CI: 9.8%,
23 14.1%], respectively), as compared to those without disabilities (9.8% [95% CI: 9.5%, 10.2%]).

1 The proportion of full-time workers (versus part-time) was higher in the no disability group
2 (69.2% [95% CI: 68.6%, 69.7%]) than in the early (66.1% [95% CI: 62.7%, 69.4%]) and late
3 (57.1% [95% CI: 54.4%, 59.7%]) onset disabilities groups (**Table 1**). Among STEM workers
4 without disabilities, 27.9% (95% CI: 27.4%, 28.5%) reported receiving federal funding (e.g.
5 contracts, grants) to support their work, versus 26.3% (95% CI: 23.5%, 29.3%) in the early onset
6 disability group.

7 A total of 219,413 doctorate recipients were working at academic institutions, of whom 198,689
8 (90.6%, 95% CI: 89.9%, 91.0%) had no disabilities, and 13,929 (6.4%, 95% CI: 5.9%, 7.0%) and
9 6,794 (3.1%, 95% CI: 2.8%, 3.5%) had late and early onset disabilities, respectively. While most
10 participants without disabilities and with late onset disabilities reported being Professors (38.2%
11 [95% CI: 37.2%, 39.2%]) and 52.7% [95% CI: 48.7%, 56.6%]), the largest percentage of those
12 with early onset disabilities reported being Assistant Professors (33.7% [95% CI: 28.7%,
13 39.1%]). In fact, among those with early onset disabilities, only 27.3% (95% CI: 22.7%, 32.5%)
14 were Professors. The proportion of doctorate recipients reporting being Deans or Presidents was
15 highest among those with late onset disabilities (8.1% [95% CI: 6.4%, 10.2%]) and those without
16 disabilities (8.0% [95% CI: 7.5%, 8.5%]), and lowest for those with early onset disabilities (5.4%
17 [95% CI: 3.6%, 7.9%]). We observed similar results for tenure attainment: 73.3% (95% CI:
18 69.6%, 76.7%) of doctorate recipients with late onset disabilities and 59.2% (95% CI: 58.2%,
19 60.2%) of those without disabilities were tenured, as compared to 53.2% (95% CI: 47.4%,
20 58.8%) in the early onset disability group.

21 We used propensity score weighting to address covariate imbalance in the data. Propensity
22 scores represent the probability of being in an exposure group (no disability, late onset, and early
23 onset disability) given a set of covariates.⁽¹⁰⁾ Therefore, conditional on the propensity scores, the

1 distribution of observed covariates will be similar between groups. This approach applies a
2 calculated propensity score weight to each participant, equal to the inverse of their propensity
3 score, as a form of direct standardization. Additionally, we stratified by age (≤ 34 years, 35-44
4 years, 45-54 years, 55-64 years, ≥ 65 years) to account for the effect of longevity in the
5 workforce, and propensity score weights were multiplied by survey weights to account for the
6 survey design.

7 **Table 2** summarizes the results of the linear regression model for comparing salaries after using
8 propensity score weighting to balance groups on socioeconomic (sex, age, race/ethnicity, marital
9 status), degree field, and job-related characteristics (job field, region of the U.S. where the
10 employer is located, receiving federal funding, having a full-time job). For doctorate recipients
11 working in STEM, having a disability first identified before 25 years of age was associated with
12 a significantly lower annual salary in comparison to their non-disabled peers (β : $-\$10,580$, 95%
13 CI: $-\$13,661$, $-\$7,499$; p : <0.0001). These differences were larger in the subset of STEM workers
14 in academic institutions, with those with an early onset disability having a salary $\$14,360$ lower
15 than those without disabilities (β : $-\$14,360$; 95% CI: $-\$17,546$, $-\$11,175$; p : <0.0001) (**Table 3**).
16 Salaries appeared lower for people with late onset disabilities as compared to those without,
17 although these differences did not reach statistical significance for the overall STEM workforce
18 (β : $-\$7,577$; 95% CI: $-\$15,452$, $\$299$; p : 0.06), or for the subset of academic STEM workers (β : $-\$3,976$;
19 95% CI: $-\$11,607$, $\$3,656$; p : 0.31) (**Tables 2 and 3**). **S2 Fig** and **S3 Fig** show a
20 summary of the covariate balance for both samples (all STEM workers and STEM workers at
21 academic institutions).

22 In the subset of doctorate recipients working in academia, we investigated the representation of
23 people with disabilities in categories of academic career milestones (faculty rank, tenure status,

1 being a Dean/President, receiving federal funding for their work/research). When examining the
2 representation of people with disabilities among different categories of faculty rank, we observed
3 that among doctorate recipients with the rank of Professor, only 5.0% (95% CI: 4.5%, 5.6%) had
4 late onset and 1.5% (95% CI: 1.2%, 1.8%) early onset disabilities. Conversely, among
5 Instructors/Lecturers, the representation of people with late and early onset disabilities was 6.5%
6 (95% CI: 4.8%, 8.7%) and 2.1% (95% CI: 1.5%, 3.1%) ($p < 0.0001$, chi-square test). Among
7 tenured STEM professionals, the percentages of people with disabilities identified later and
8 earlier in life were 6.8% (95% CI: 6.1%, 7.4%) and 2.6%, (95% CI: 2.2%, 3.1%), as compared to
9 4.8% (95% CI: 3.8%, 6.0%) and 3.9% (95% CI: 2.4%, 6.2%) among those who were not tenured
10 ($p < 0.0001$). The percentage of participants with late and early onset disabilities among
11 Deans/Presidents was lower (4.1% [95% CI: 3.1%, 5.4%] and 1.8% [95% CI: 1.0%, 3.1%],
12 respectively) than among those who were not Deans/Presidents (5.3% [95% CI: 4.9%, 5.8%] and
13 4.4% [95% CI: 3.4%, 5.7%]) ($p: 0.0004$). We observed similar proportions of people with
14 disabilities among those who did and did not receive federal funding to support their
15 work/research ($p: 0.48$) (**Fig 1**). Among STEM workers receiving federal funding (**S4 Fig**), the
16 highest representation of people with late onset disabilities was observed among STEM workers
17 funded by the Department of Education (6.6% [95% CI: 3.8%, 11.1%]), and the lowest among
18 those funded by the National Aeronautics and Space Administration (NASA, 4.3% [95% CI:
19 2.8%, 6.5%]). Conversely, the highest representation of STEM workers with early onset
20 disabilities was among those supported by the Department of Defense (5.8% [95% CI: 2.6%,
21 12.3%]), and the lowest for those funded by NASA (1.9% [95% CI: 1.1%, 3.2%]).

22

1 **Discussion**

2 This study of 704,013 doctorate recipients in the U.S. highlights lower salaries for STEM
3 workers with disabilities and underrepresentation in academic leadership positions, both in the
4 overall STEM workforce and in the subset of those working at academic institutions. When
5 using propensity score weighting to compare groups by disability status but who were similar on
6 socioeconomic and job-related characteristics, we observed that doctorate recipients with early
7 onset disabilities had annual salaries that were on average \$10,580 lower than their non-disabled
8 counterparts, and that this difference was larger in the subset of STEM workers in academia (-
9 \$14,360, early onset versus no disability). Salaries appeared lower in the late onset disability
10 than in the no disability group, although these differences were not statistically significant. We
11 found an underrepresentation of doctorate recipients with disabilities among Professors, tenured
12 academics, and Deans/Presidents.

13 Prior to the propensity score weighting, the group of doctorate recipients with late onset
14 disabilities was older and had higher proportions of Professors and tenured workers when
15 compared to both the no disability and the early onset disability groups. Since more than half of
16 STEM workers with late onset disabilities were 55 years of age and older, it is possible that this
17 group was mostly comprised of workers with disabilities related to aging. Furthermore, three
18 quarters of participants in this group were tenured, and 54% reported being Professors, a
19 proportion twice as high as that observed for people with disabilities identified before 25 years of
20 age. These differences between groups based on age of disability onset might have been driven
21 by the fact that adults with disabilities acquired early in life face a unique set of challenges for
22 entering the STEM workforce, for earning equal wages, and for accessing equal career
23 advancement opportunities as compared to those with late onset disabilities or without

1 disabilities.(15) Regardless of when their disabilities were identified, the disability community
2 faces a two-sided attrition in their career trajectories in STEM: while younger individuals with
3 disabilities are impacted by structural barriers to ultimately securing STEM education and jobs,
4 older workers with disabilities face the pressures of retirement due to working conditions
5 characterized by lack of accessibility in the physical environment and institutional policies that
6 hinder the procurement of accommodations.(16)

7 Previous publications have shown that a household containing an adult with a disability requires
8 28% more income to obtain the same standard of living as a similar household without a member
9 with a disability.(17) Despite this, a report by the National Science Foundation shows that
10 scientists and engineers with at least one disability have an unemployment rate higher than that
11 for the overall U.S. labor force (5.3% versus 3.7%), and that doctorate recipients with any
12 disability working in STEM earn \$9,000 less per year than their non-disabled counterparts.(2)

13 Salary gaps for workers with disabilities emerge early in their careers,(15, 18) when entry-level
14 wages and work benefits are negotiated, and this might account for the wage gap of \$10,580
15 observed in our study when comparing workers with early onset disabilities to those without. It is
16 possible that the effort of discussing accommodations might compromise time directed toward
17 negotiating salaries or other sources of institutional support. Despite not finding statistical
18 significance, STEM workers with disabilities acquired later in life earned on average \$7,577 less
19 per year compared to people without disabilities. Even if we accounted for full-time employment
20 in our analysis, the fact that only 57.1% of this group reported having a full-time job suggests
21 that acquiring a disability related to aging might result in these workers having to take on part-
22 time positions or being unable to secure full-time jobs, ultimately leading to lower wages.

1 Disparities in salaries between STEM workers with early onset and without disabilities were
2 larger in the subset of those working at academic institutions than in the total sample of STEM
3 workers. It is possible that differential allocation of grant funding or other forms of
4 compensation could be an additional contributor to salary disparities throughout careers in
5 academia. Even if we did not find statistically significant differences in the representation of
6 people with disabilities across categories of receipt of federal funding, previous studies have
7 shown an imbalance in research grant success for investigators with disabilities.(3) Additionally,
8 advancing to higher faculty ranks are key opportunities for salary raises, and the lower observed
9 proportion of people with early onset disabilities in higher faculty ranks and leadership roles
10 might play an important role in explaining these wage gaps. Similarly, the lower representation
11 of workers with disabilities in the achievement of academic career milestones might be driven by
12 unequal access to research skill building tools, such as networking and collaboration
13 opportunities.(19)

14 The issue of underrepresentation of people with disabilities in the STEM workforce and in higher
15 academic positions should be examined taking into account that 27% of the U.S. population
16 reported having a disability in 2019.(1) This low representation could be the compounded result
17 of a series of systematic obstacles faced by this group throughout the entire STEM educational
18 pipeline: inadequate K-12 preparation, low expectations from teachers or faculty, insufficient
19 mentoring, lack of familiarity of STEM teachers with specialized accommodations, and
20 inaccessible institutions.(16, 18, 20) Consequently, students with disabilities have lower
21 enrollment rates in STEM majors at 4-year institutions,(20) and only 9.1% of all graduates
22 awarded doctorate degrees in 2019 reported having disabilities.(2)

1 Studies have highlighted that institutional environments that are inhospitable to people with
2 disabilities lead to the attrition of talented students and workers in STEM fields,(21, 22)
3 deepening the already existing representation gaps. Other authors have identified attitudinal and
4 institutional barriers surrounding the issue of accommodations in higher education and STEM
5 workplaces. On the one hand, the provision of accommodations strongly depends on the
6 willingness of faculty and employers to fulfill these requests,(22) and evidence has shown how
7 consistently fewer accommodations are offered in STEM fields in comparison to non-STEM
8 fields.(23) On the other hand, bureaucratic institutional environments hamper individuals'
9 productivity by requiring excessive amounts of paperwork to ultimately receive
10 accommodations, often deterring individuals from requesting services or even disclosing their
11 disabilities status.(24) Unnecessarily cumbersome processes for assessing reasonable
12 accommodations not only constitute an unfair burden to individuals with disabilities, but also
13 contradict the Americans with Disabilities Act's (ADA) purpose of embracing a social model of
14 disability.(25) Therefore, institutional-level policies regulating disability support services must
15 be strengthened beyond meeting the low bar of making accommodations available, the bare
16 minimum required for ADA compliance, and should aim at the effective and timely provision of
17 these services. Disability scholars have posited that the lack of accountability in the provision of
18 reasonable accommodations warrants a transition to models where requests are handled by
19 centralized institutional agencies formed by lawyers and advisors, as opposed to diffusing this
20 responsibility among multiple departments.(21)

21 Even if it is well-known that students and workers with identities at the intersection of disability,
22 race, and gender, are at a particular disadvantage for STEM opportunities,(5, 22, 26, 27)
23 disability inclusion is not consistently integrated in dialogues pertaining diversity in STEM.(24)

1 Evidence shows that efforts aimed at inclusion of women and underrepresented minorities in
2 higher education have had positive results over the decades, resulting in higher representation in
3 STEM.(2) Therefore, it is possible that systematically including disability issues in government-
4 led initiatives, consolidating efforts, and setting measurable outcomes for these programs could
5 result in reducing the representation and salary gaps for STEM workers with disabilities.
6 Increasing representation might result in an adequate supply of role models, career champions
7 and mentors that could help students and early career investigators with disabilities identify with
8 STEM and later advocate for equal working conditions.(18)

9 As a strength, our study relies on the largest survey of U.S. doctorate recipients. Although
10 doctorate recipients with early onset disabilities skewed younger, lower wages and
11 underrepresentation in academic leadership roles cannot be attributed to age or longevity in the
12 workforce. First, this group had a similar age distribution as compared to the no disability group
13 even prior to covariate balancing. Second, in all groups a quarter of doctorate recipients were 45-
14 54 years of age, which is likely an adequate age range to achieve full professional development.
15 Third, differences in salaries were ascertained after balancing groups by computing propensity
16 scores stratifying by age, and all percentages for representation in academic leadership roles
17 were age-standardized.

18 Our results should be interpreted in the context of limitations. The data did not allow for analyses
19 by disability type, and this survey uses a definition of disability developed by the Census Bureau
20 that does not include people with psychological disabilities or learning disabilities and behavioral
21 disorders.(28) This misclassification likely results in underestimates of the examined career and
22 salary outcomes. Additionally, we were not able to link data on individuals across cycles of the
23 SDR, which would have helped us shed light upon doctorate recipients' career trajectories from a

1 longitudinal angle. Since the SDR 2019 includes doctorate recipients that graduated between
2 1973 and 2017, our results are subject to period and cohort effects. Annual salaries reported by
3 participants did not include bonuses, which are important forms of compensation for academic
4 workers. While previous reports used working at least 30 hours per week as the threshold for
5 defining full-time jobs, the data only allowed us to use the cut point of working at least 36 hours
6 per week.(29). Lastly, our analysis is restricted to people who are still active in the STEM
7 workforce, excluding 36.7% of the total SDR 2019 sample (e.g. participants who dropped out of
8 the labor market) and introducing the potential for survivor bias.

9 We have documented lower wages and lower representation in STEM and academic leadership
10 roles for doctorate recipients with disabilities. To better understand these inequities, further
11 analyses are warranted disentangling the relationship between individual career pathways and
12 metrics of salary and representation. Institutional compliance with ADA regulations does not
13 translate into inclusion or equity for STEM doctorate workers with disabilities. Additional
14 measures are needed, ranging from targeted efforts to increase participation of people with
15 disabilities throughout STEM career pathways, to more effective provision of accommodations
16 in higher education and workplaces for faculty and staff. Structural transformations are required
17 to foster institutional environments where all stakeholders understand that disability services are
18 an issue of human rights, shifting the language from accommodations to inclusion. Regarding
19 scientific and technological development, people with disabilities are a national asset whose
20 potential cannot be underutilized. Lower representation and salaries for people with disabilities
21 are unjust and are not only the end result of societal structures but are also mechanisms that
22 further place people with disabilities at a disadvantage when it comes to achieving their full
23 professional potential, wellbeing, and participation in society.

1 **Acknowledgments:** We would like to thank the National Science Foundation for their support
2 with inquiries regarding SDR 2019 data.

3 **Funding:** This research received no specific grant from any agency in the public, commercial, or
4 not-for-profit sectors.

5 **Authors contributions:**

6 Conceptualization: FC, ES, BKS

7 Methodology: FC, ES, VV, BKS

8 Software: FC

9 Formal analysis: FC, ES, JD, VV, BKS

10 Data Curation: FC

11 Writing - Original Draft: FC

12 Writing - Review & Editing: ES, JD, VV, BKS

13 Visualization: FC, ES

14 Supervision: BKS

15 **Competing interests:** Authors declare that they have no competing interests

16 **Data and materials availability:** SDR 2019 public-use data are available at

17 <https://ncesdata.nsf.gov/datadownload/>.

18

1 **References**

- 2 1. Varadaraj V, Deal JA, Campanile J, Reed NS, Swenor BK. National Prevalence of
3 Disability and Disability Types Among Adults in the US, 2019. *JAMA Network Open*.
4 2021;4(10):e2130358-e.
- 5 2. National Science Foundation. Women, minorities, and persons with disabilities in science
6 and engineering: 2021.; 2021.
- 7 3. Swenor BK, Munoz B, Meeks LM. A decade of decline: Grant funding for researchers
8 with disabilities 2008 to 2018. *PloS one*. 2020;15(3):e0228686.
- 9 4. Bernard MA. *Advancing Disability Inclusion in the Scientific Workforce*. 2021.
- 10 5. Cech EA. The intersectional privilege of white able-bodied heterosexual men in STEM.
11 *Science Advances*. 2022;8(24):eabo1558.
- 12 6. Freund KM, Raj A, Kaplan SE, Terrin N, Breeze JL, Urech TH, et al. Inequities in
13 academic compensation by gender: a follow-up to the national faculty survey cohort study.
14 *Academic medicine: journal of the Association of American Medical Colleges*. 2016;91(8):1068.
- 15 7. National Science Foundation. *Survey of Doctorate Recipients, 2019*. 2021.
- 16 8. Hasanah U. Key definitions of STEM education: Literature review. *Interdisciplinary*
17 *Journal of Environmental and Science Education*. 2020;16(3):e2217.
- 18 9. National Science Foundation. *Survey of Earned Doctorates 2020. Median age and*
19 *distribution of doctorate recipients, by broad field of study, sex, citizenship status, ethnicity, and*
20 *race*. 2021.
- 21 10. Austin PC. An introduction to propensity score methods for reducing the effects of
22 confounding in observational studies. *Multivariate Behavioral Research*. 2011;46(3):399-424.

- 1 11. McCaffrey DF, Griffin BA, Almirall D, Slaughter ME, Ramchand R, Burgette LF. A
2 tutorial on propensity score estimation for multiple treatments using generalized boosted models.
3 *Statistics in medicine*. 2013;32(19):3388-414.
- 4 12. Funk MJ, Westreich D, Wiesen C, Stürmer T, Brookhart MA, Davidian M. Doubly
5 robust estimation of causal effects. *American journal of epidemiology*. 2011;173(7):761-7.
- 6 13. DuGoff EH, Schuler M, Stuart EA. Generalizing observational study results: applying
7 propensity score methods to complex surveys. *Health Services Research*. 2014;49(1):284-303.
- 8 14. U.S. Census Bureau. Age and sex composition in the United States: 2010. 2010.
- 9 15. Mann DR, Wittenburg DC. Starting behind: Wage and employment differentials between
10 young adults with and without disabilities. *Journal of Disability Policy Studies*. 2015;26(2):89-
11 99.
- 12 16. Campanile J, Cerilli C, Varadaraj V, Sweeney F, Smith J, Zhu J, et al. Accessibility and
13 Disability Inclusion Among Top-Funded US Undergraduate Institutions. *medRxiv*. 2022.
- 14 17. Goodman NM, Zachary; Morris, Michael; McGarity. The Extra Costs of Living with a
15 Disability in the U.S. - Resetting the Policy Table. National Disability Institute,; 2020.
- 16 18. Hawley CE, McMahon BT, Cardoso ED, Fogg NP, Harrington PE, Barbir LA. College
17 graduation to employment in STEM careers: the experience of new graduates at the intersection
18 of underrepresented racial/ethnic minority status and disability. *Rehabilitation Research, Policy,
19 and Education*. 2014;28(3):183-99.
- 20 19. Manyibe EO, Moore CL, Wang N, Davis D, Aref F, Washington AL, et al. Career
21 Development Factors for Minority Disability and Health Research Leaders: A Key Informant
22 Study. *Rehabilitation Research, Policy, and Education*. 2017;31(3):208-29.

- 1 20. Lee A. A comparison of postsecondary science, technology, engineering, and
2 mathematics (STEM) enrollment for students with and without disabilities. *Career Development*
3 for Exceptional Individuals. 2011;34(2):72-82.
- 4 21. Dali K. The right to be included: Ensuring the inclusive learning and work environment
5 for people with disabilities in academia. *Information and Learning Science*. 2018.
- 6 22. Peterson S, Saia T. Disability, Intersectionality, and the Experiences of Doctoral
7 Students. *Rehabilitation Counselors and Educators Journal*. 2022:31773.
- 8 23. Rao S, Gartin BC. Attitudes of university faculty toward accommodations to students
9 with disabilities. *Journal for Vocational Special Needs Education*. 2003;25:47-54.
- 10 24. Goodwin ME. Making the Invisible Visible: Let's Discuss Invisible Disabilities. *HAPS*
11 *Educator*. 2020.
- 12 25. Macfarlane KA. Disability Without Documentation. *Fordham Law Review*. 2021;90:59.
- 13 26. Balcazar FE, Taylor-Ritzler T, Dimpfl S, Portillo-Peña N, Guzman A, Schiff R, et al.
14 Improving the transition outcomes of low-income minority youth with disabilities.
15 *Exceptionality*. 2012;20(2):114-32.
- 16 27. da Silva Cardoso E, Dutta A, Chiu C-Y, Johnson ET, Kundu M, Chan FD. Social-
17 cognitive predictors of STEM career interests and goal persistence in college students with
18 disabilities from racial and ethnic minority backgrounds. *Rehabilitation Research, Policy, and*
19 *Education*. 2013;27(4):271-84.
- 20 28. National Science Foundation. National Science Foundation's Program for Persons with
21 Disabilities. 2002.
- 22 29. Van Bastelaer A, Lemaître G, Marianna P. The definition of part-time work for the
23 purpose of international comparisons. 1997.

1 **Table 1. Characteristics of doctorate recipients working in STEM, and covariate balance for propensity score weighting analysis.**

Variable	No disability, % (95% CI) (N = 646,652)	Late onset disability (first identified at 25 years of age or later), % (95% CI) (N = 36,807)	Early onset disability (first identified before 25 years of age), % (95% CI) (N = 20,554)	Covariate balance after propensity score weighting (sample: all STEM workers)		Covariate balance after propensity score weighting (sample: STEM workers at academic institutions)	
				SMD (No disability vs. Late onset disabilities) a,b	SMD (No disability vs. Early onset disabilities) a,b	SMD (No disability vs. Late onset disabilities) a,b	SMD (No disability vs. Early onset disabilities) a,b
Sex							
Female ^c	35.6 (35.0, 36.2)	29.5 (27.4, 31.8)	34.4 (31.3, 37.5)	-0.0078	0.0017	-0.008	0.027
Male	64.4 (63.8, 65)	70.5 (68.2, 72.6)	65.6 (62.5, 68.7)	0.0078	-0.0017	0.008	-0.027
Age (years)							
≤29 ^c	1.1 (1.0, 1.3)	0.1 (0.0, 0.2)	1.8 (1.2, 2.8)	-0.0065	0.0014	-0.005	-0.003
30-34	12.1 (11.7, 12.5)	2.5 (1.8, 3.5)	13.3 (11.3, 15.4)	-0.0093	0.0114	-0.062	-0.04
35-39	16.6 (16.2, 17.1)	5.8 (4.7, 7.1)	19.2 (16.5, 22.1)	-0.0055	0.0083	-0.048	0.014
40-44	14.7 (14.2, 15.1)	7.8 (6.4, 9.5)	14.5 (12.2, 17.2)	-0.0093	0.0061	-0.014	0.001
45-49	12.4 (12.0, 12.8)	12.6 (11.0, 14.5)	13.5 (11.2, 16.1)	0.0037	-0.0106	0.028	-0.003
50-54	11.1 (10.7, 11.5)	13.4 (11.7, 15.2)	10.0 (8.3, 12.1)	0.0003	-0.0043	0.029	0.042
55-59	11.1 (10.7, 11.5)	16.4 (14.6, 18.5)	10.3 (8.3, 12.7)	0.0073	-0.0039	0.025	0.003
60-64	9.7 (9.3, 10.1)	15.4 (13.5, 17.4)	7.7 (6.0, 9.7)	0.0068	-0.0036	0.021	0.001
65-69	7.2 (6.8, 7.5)	14.6 (12.9, 16.6)	5.3 (4.1, 6.8)	0.0072	-0.0048	0.017	-0.017
70-75	4.1 (3.8, 4.3)	11.4 (9.9, 13.2)	4.5 (3.1, 6.3)	0.0052	-0.0002	0.01	0.002
Race/ethnicity							
White only, NH ^c	64.2 (63.6, 64.8)	69.6 (67.1, 72.0)	67.9 (64.5, 71.1)	0.0185	0.0154	0.028	0.071
Hispanic	4.4 (4.2, 4.6)	4.3 (3.6, 5.2)	5.2 (4.2, 6.3)	0.0024	0.0069	-0.004	0.006
Black only, NH	3.3 (3.2, 3.5)	2.9 (2.3, 3.6)	3.3 (2.3, 4.5)	-0.0062	-0.001	-0.009	0.003
Asian only, NH	26.6 (26.0, 27.2)	21.1 (19.0, 23.5)	21.6 (18.6, 24.9)	-0.012	-0.0205	-0.016	-0.08
Other, including multiracial, NH	1.4 (1.3, 1.6)	2.1 (1.4, 3.0)	2.1 (1.3, 3.3)	-0.0027	-0.0008	0.001	-0.001
Marital status							
Never married ^c	9.7 (9.4, 10.1)	7.7 (6.4, 9.1)	14.5 (12.2, 17.2)	-0.0046	-0.0082	-0.01	-0.013
Separated, Divorced	5.8 (5.6, 6.2)	9.9 (8.5, 11.5)	7.2 (5.7, 9.0)	-0.0027	-0.0076	-0.006	-0.012
Widowed	0.8 (0.7, 0.9)	1.7 (1.2, 2.5)	0.7 (0.3, 1.6)	-0.0015	-0.0069	-0.001	-0.008
Married or living in a marriage-like relationship	83.6 (83.1, 84.1)	80.7 (78.6, 82.6)	77.6 (74.5, 80.3)	0.0087	0.0227	0.018	0.033
Degree field							

Biological, agricultural, and environmental life sciences ^c	26.1 (25.6, 26.7)	23.4 (21.4, 25.7)	26.8 (24, 29.9)	0.0129	0.0212	0.017	0.011
Computer and information sciences	3.9 (3.7, 4.2)	2.8 (2.1, 3.7)	3.9 (2.7, 5.7)	-0.0065	-0.0072	-0.004	0.0
Mathematics and statistics	4.6 (4.4, 4.8)	4.6 (3.7, 5.7)	4.5 (3.4, 6.1)	-0.0012	-0.0049	0.0	-0.012
Physical sciences, geosciences, atmospheric, and ocean sciences	16.2 (15.8, 16.7)	15.8 (14.0, 17.9)	16.2 (13.9, 18.8)	0.0033	-0.0089	-0.011	0.001
Psychology	12.8 (12.4, 13.2)	14.4 (12.7, 16.4)	13.5 (11.3, 16.1)	-0.0022	-0.0027	-0.013	-0.007
Social sciences	9.8 (9.5, 10.2)	13.8 (12.2, 15.7)	11.8 (9.8, 14.1)	-0.0004	0.0044	0.012	0.025
Engineering	22.0 (21.4, 22.5)	19.3 (17.1, 21.7)	18.4 (15.6, 21.5)	-0.0028	-0.0036	0.002	-0.022
Health	4.6 (4.3, 4.8)	5.8 (4.7, 7.1)	4.9 (3.8, 6.3)	-0.0031	0.0016	-0.005	0.004
Job field							
Computer and mathematical sciences ^c	15.0 (14.5, 15.4)	12.0 (10.4, 13.6)	14.7 (12.3, 17.4)	-0.0059	-0.0134	-0.001	-0.015
Biological, agricultural, and other life sciences	22.2 (21.7, 22.7)	20.6 (18.6, 22.7)	25.0 (22.3, 28.0)	0.0125	0.015	0.022	0.018
Physical and related sciences	11.9 (11.6, 12.3)	12.2 (10.6, 14.0)	12.6 (10.6, 14.9)	-0.0054	0.0032	-0.011	0.004
Social and related sciences	20.5 (20.0, 21.1)	25.4 (23.1, 27.7)	22.5 (19.7, 25.5)	0.003	0.0023	-0.001	0.009
Engineering	17.2 (16.7, 17.7)	16.3 (14.3, 18.6)	14.7 (12.3, 17.5)	0.0009	0.0024	0.003	-0.012
Other occupations related to science and engineering	13.1 (12.7, 13.5)	13.6 (11.9, 15.5)	10.5 (8.7, 12.6)	-0.0051	-0.0095	-0.012	-0.003
Region of the U.S. where employer is located							
West ^c	29.5 (29.0, 30.1)	26.1 (23.9, 28.5)	28.4 (25.4, 31.6)	-0.0036	0.0093	0.015	-0.006
Midwest	17.5 (17.0, 17.9)	16.9 (15.0, 18.9)	19.8 (17.1, 22.7)	0.0075	-0.0051	-0.007	-0.007
Northeast	22.6 (22.0, 23.1)	19.9 (17.9, 22.0)	23.0 (20.2, 26.0)	-0.0124	-0.0159	-0.006	0.01
South	30.4 (29.9, 31.0)	37.2 (34.6, 39.8)	28.9 (25.9, 32.0)	0.0085	0.0117	-0.002	0.003
Works full time							
No ^c	30.8 (30.3, 31.4)	42.9 (40.3, 45.6)	33.9 (30.6, 37.3)	0.0099	-0.0099	0.044	0.027

Yes	69.2 (68.6, 69.7)	57.1 (54.4, 59.7)	66.1 (62.7, 69.4)	-0.0099	0.0099	-0.044	-0.027
Receives federal funding							
No ^c	72.1 (71.5, 72.6)	72.9 (70.5, 75.2)	73.7 (70.7, 76.5)	-0.0072	0.01	-0.022	0.009
Yes	27.9 (27.4, 28.5)	27.1 (24.8, 29.5)	26.3 (23.5, 29.3)	0.0072	-0.01	0.022	-0.009
Works at an academic institution ^e							
No ^c	57.7 (57.1, 58.3)	51.6 (48.9, 54.2)	52.5 (49.1, 55.9)	-	-	-	-
Yes	42.3 (41.7, 42.9)	48.4 (45.8, 51.1)	47.5 (44.1, 50.9)	-	-	-	-
Faculty rank ^f							
Instructor/Lecturer ^c	7.7 (7.2, 8.3)	7.7 (5.8, 10.2)	7.0 (4.9, 9.9)	-	-	-0.014	-0.023
Assistant Professor	26.4 (25.5, 27.3)	14.8 (12.2, 17.8)	33.7 (28.7, 39.1)	-	-	-0.081	-0.017
Associate Professor	27.7 (26.8, 28.6)	24.8 (21.5, 28.5)	32.0 (26.7, 37.7)	-	-	0.016	0.03
Professor	38.2 (37.2, 39.2)	52.7 (48.7, 56.6)	27.3 (22.7, 32.5)	-	-	0.08	0.01
Tenure status ^f							
Not on tenure track ^c	20.0 (19.1, 20.8)	15.2 (12.5, 18.4)	19.8 (16.0, 24.3)	-	-	-0.031	-0.038
On tenure-track but not tenured	20.8 (20.0, 21.7)	11.5 (9.2, 14.1)	27.0 (22.3, 32.4)	-	-	-0.065	-0.006
Tenured	59.2 (58.2, 60.2)	73.3 (69.6, 76.7)	53.2 (47.4, 58.8)	-	-	0.096	0.044
Dean or President ^f							
No ^c	92.0 (91.5, 92.5)	91.9 (89.8, 93.6)	94.6 (92.1, 96.4)	-	-	0.003	0.005
Yes	8.0 (7.5, 8.5)	8.1 (6.4, 10.2)	5.4 (3.6, 7.9)	-	-	-0.003	-0.005

1 a The standardized differences in means between the no disability and each disability group were calculated as difference in means between groups divided by the SD of the
2 disability group for each of the factors included in the propensity score computation, expressed numerically.

3 b Propensity scores were computed stratifying across strata of age (≤ 34 years, 35-44 years, 45-54 years, 55-64 years, ≥ 65 years).

4 c This group was used as the reference group for the other levels of the same factor.

5 d Participants identified as “Other races including multiracial individuals, non-Hispanic”

6 e Not used in computation of propensity scores

7 f Only for those working in academic institutions

8 NH: Non-Hispanic.

9 SMD: Standardized mean difference

1 **Table 2. Association between disability and salary for doctorate recipients working in**
2 **STEM using propensity score weighting, linear regression**

Disability group	β (USD)	95% CIs	p-value
No disability	Reference	Reference	Reference
Disability, first identified at 25 years of age or later	-\$7,577	(-\$15,452, \$299)	0.06
Disability, first identified before 25 years of age	-\$10,580	(-\$13,661, -\$7,499)	<0.0001

3 Results were produced using linear regression, doubly robust estimation, and sandwich variance estimators.
4 Covariates included for propensity score balancing were: sex, age, race/ethnicity, marital status, degree field, job
5 field, working full-time, receiving federal funding to support their work, region of the U.S. where the employer is
6 located. Propensity scores were computed across strata of age (≤ 34 years, 35-44 years, 45-54 years, 55-64 years,
7 ≥ 65 years). Propensity score weights were multiplied by survey weights to account for the survey design.

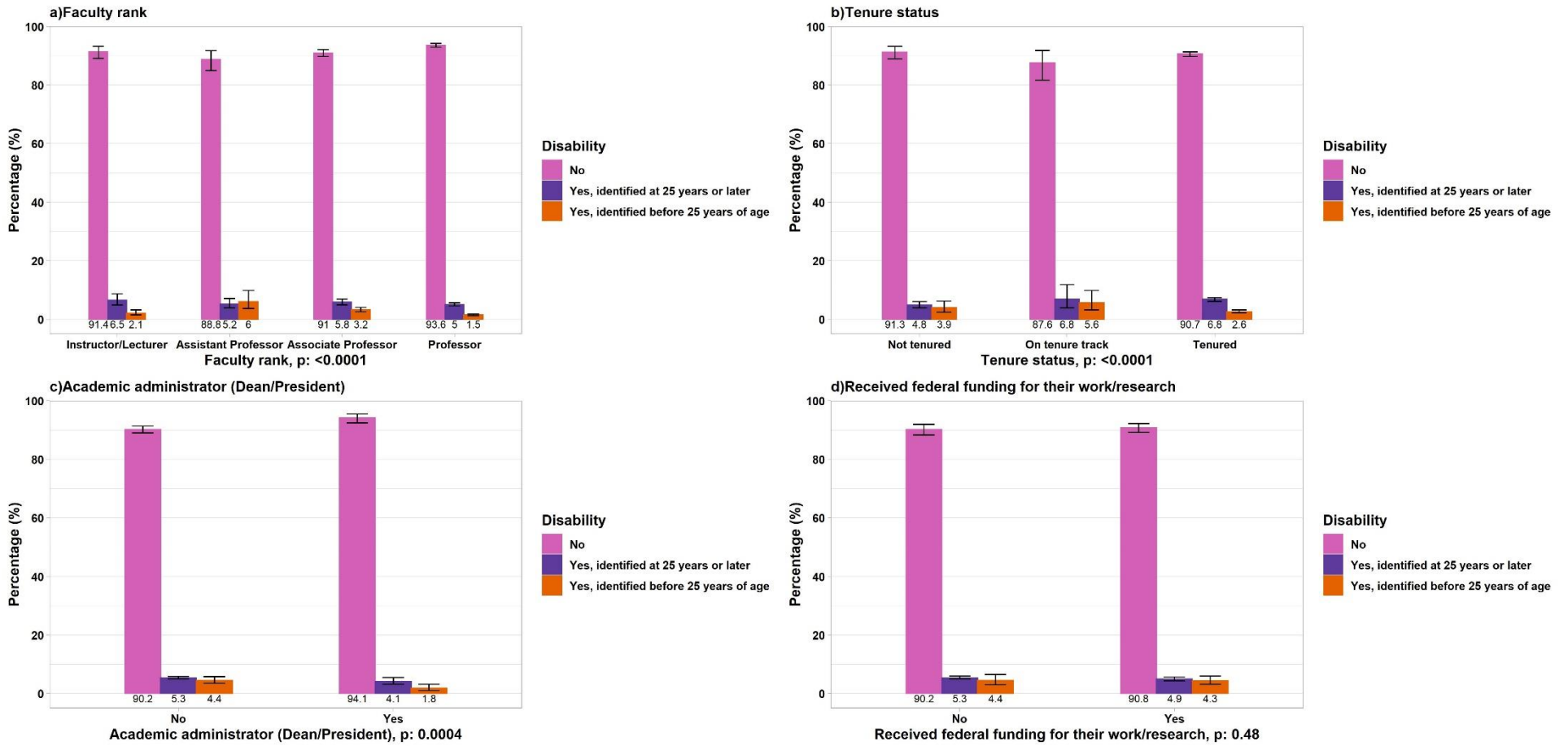
8
9

1 **Table 3. Association between disability and salary for doctorate recipients working in**
2 **STEM at academic institutions using propensity score weighting, linear regression**

Disability group	Coefficient (USD)	95% CIs	p-value
No disability	Reference	Reference	Reference
Disability, first identified at 25 years of age or later	-\$3,976	(-\$11,607, \$3,656)	0.31
Disability, first identified before 25 years of age	-\$14,360	(-\$17,546, -\$11,175)	<0.0001

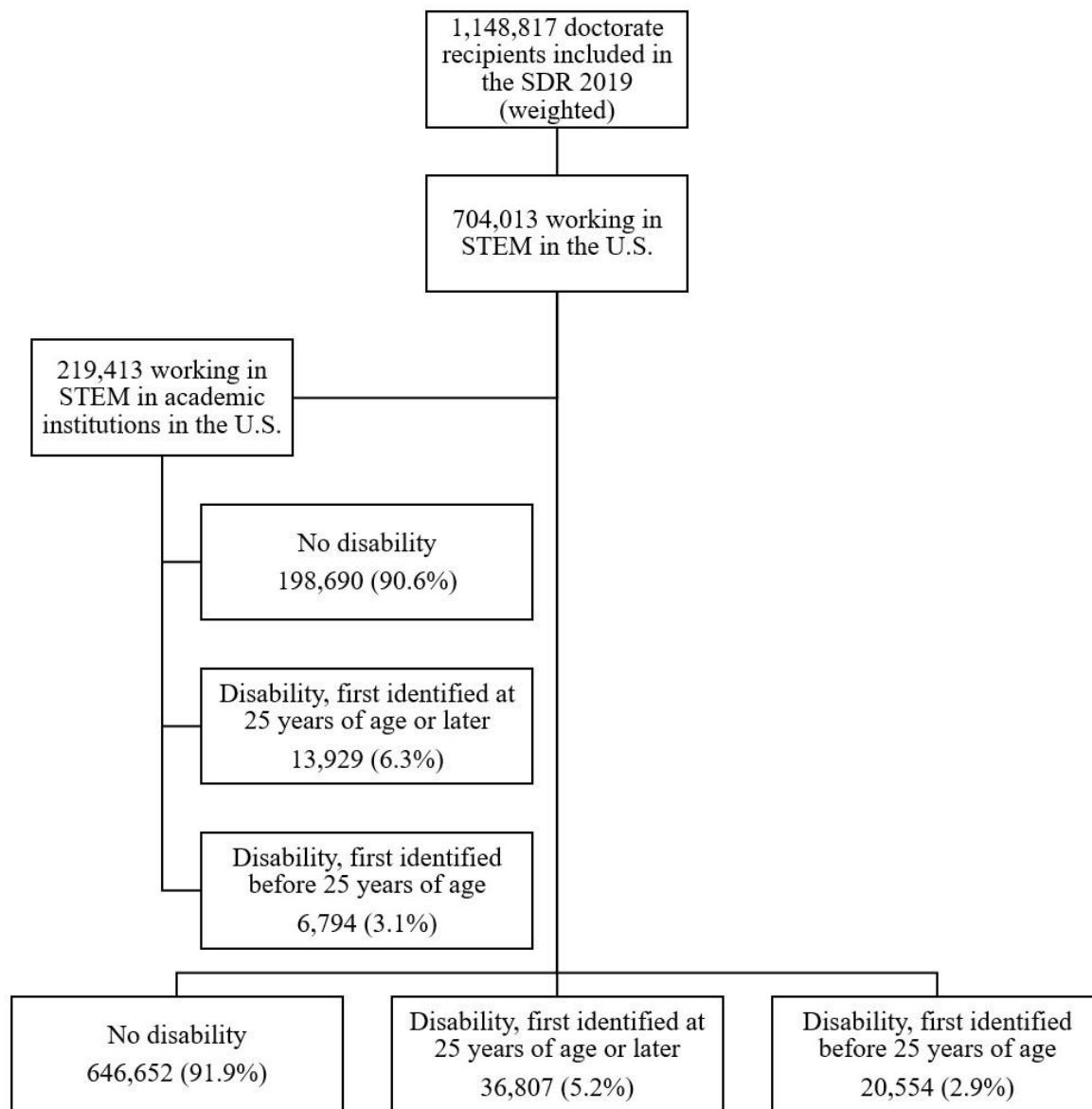
- 3 Results were produced using linear regression, doubly robust estimation, and sandwich variance estimators.
4 Covariates included for propensity score balancing were: sex, age, race/ethnicity, marital status, degree field, job
5 field, working full-time, receiving federal funding to support their work, region of the U.S. where the employer is
6 located, tenure status, faculty rank, being an academic administrator (Dean/President). Propensity scores were
7 computed across strata of age (≤ 34 years, 35-44 years, 45-54 years, 55-64 years, ≥ 65 years). Propensity score
8 weights were multiplied by survey weights to account for the survey design.

1 **Fig 1. Representation (survey-weighted, age-standardized proportions) of doctorate recipients with disabilities working in STEM across**
 2 **categories of academic career milestones.**



3
 4 a) Faculty rank, b) Tenure status, c) Academic administrator (Dean/President), d) Received federal funding for their work/research.
 5 Other: Participants identified as “Other races including multiracial individuals, non-Hispanic”. For each panel, the total denominator is the number of doctorate recipients working
 6 in STEM at academic institutions (N=219,413).

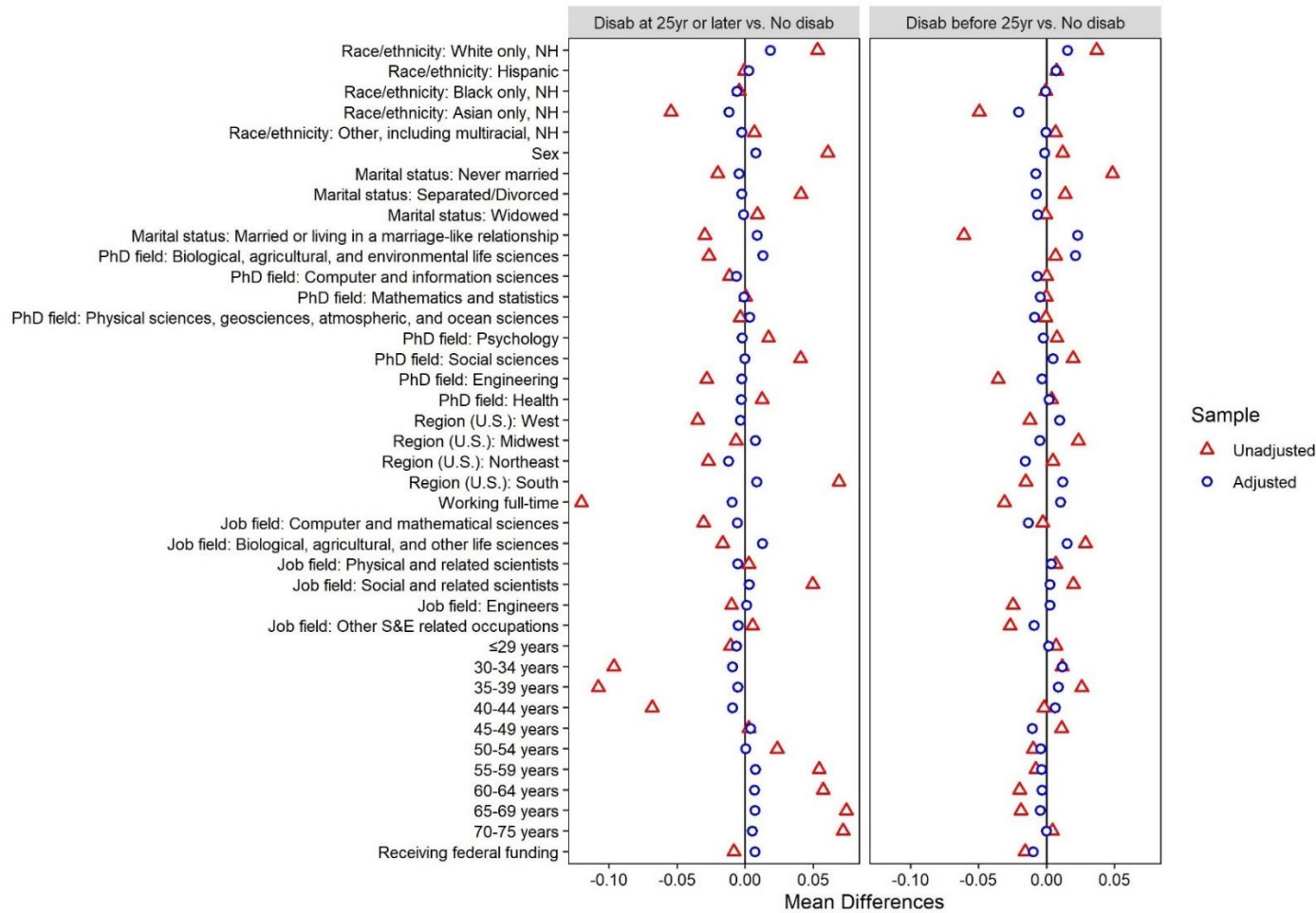
1 **S1 Fig. Flow diagram for study participants.**



2
3 Participants were currently employed in a STEM (science, technology, engineering, and mathematics) field, living
4 in the U.S., and working for an employer based in the U.S. Academic institutions were defined as postsecondary
5 educational institutions (4-year colleges or universities, medical schools, university-affiliated research institutes)
6 where the following were available: faculty ranks, tenure, and academic positions (e.g. Deans or Presidents).

1 **S2 Fig. Summary of covariate balance across pairwise comparisons (late onset vs. no disability, early onset vs. no disability) for all STEM**
 2 **workers.**

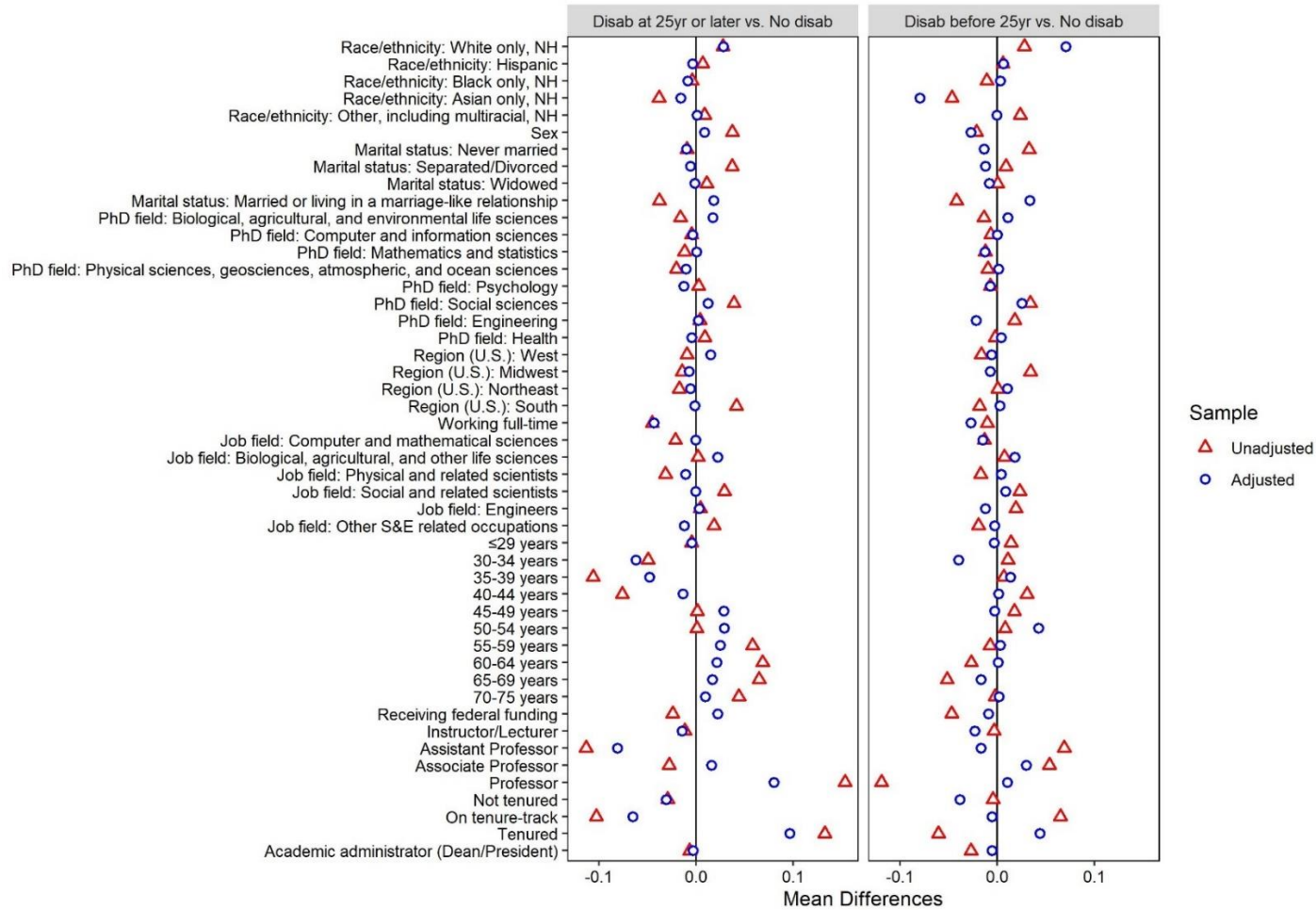
Covariate Balance



3
 4 Covariates included for propensity score balancing were: sex, age, race/ethnicity, marital status, degree field, job field, working full-time, receiving federal funding to support their
 5 work, region of the U.S. where the employer is located. Propensity scores were computed across strata of age (≤ 34 years, 35-44 years, 45-54 years, 55-64 years, ≥ 65 years).

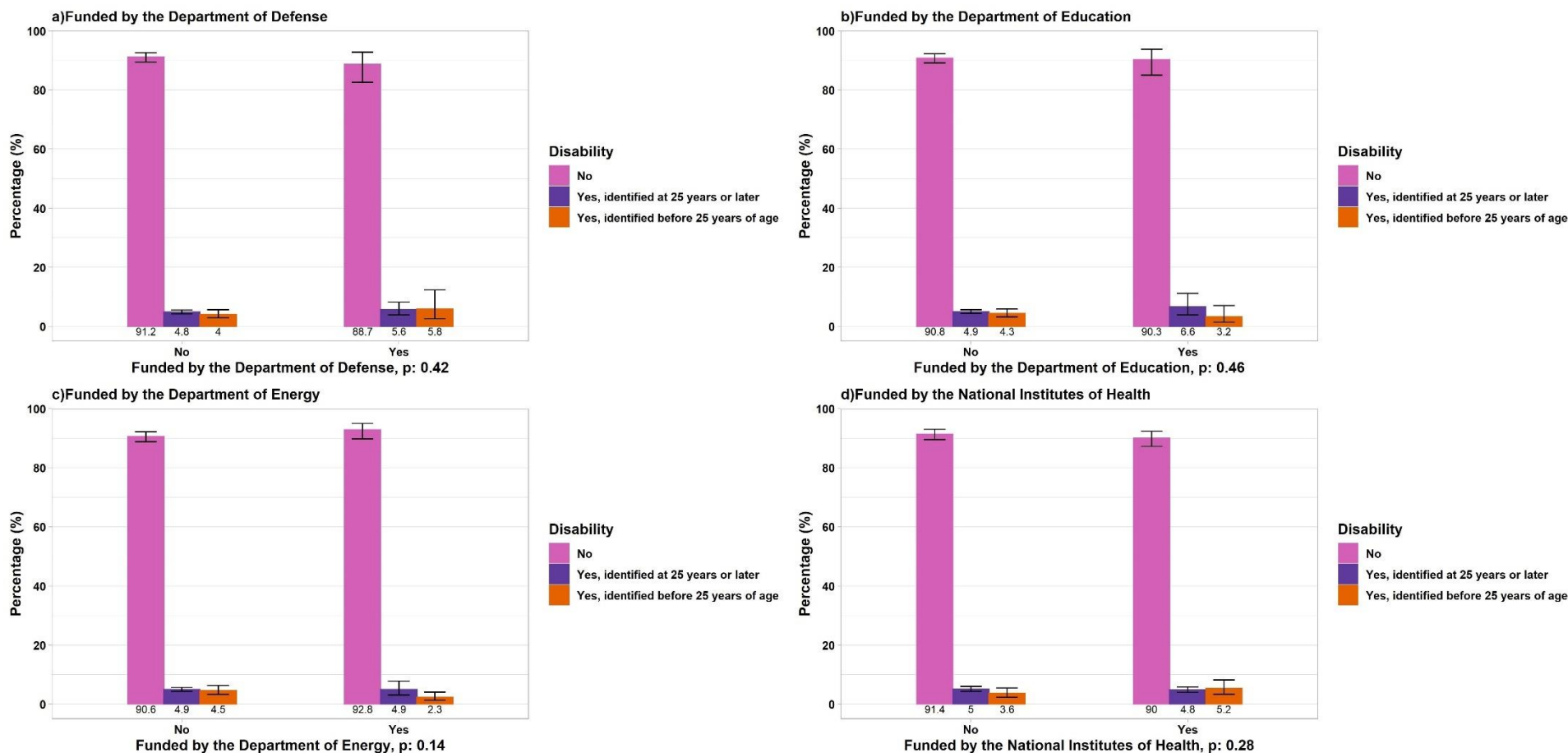
1 **S3 Fig. Summary of covariate balance across pairwise comparisons (late onset vs. no disability, early onset vs. no disability) in the subset of**
 2 **participants working in STEM at academic institutions.**

Covariate Balance



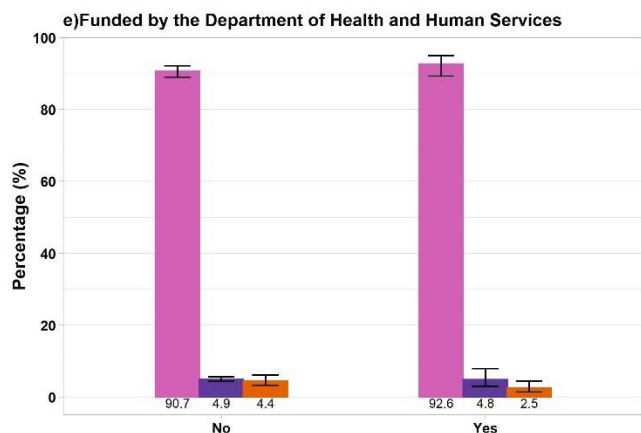
3
 4 Covariates included for propensity score balancing were: sex, age, race/ethnicity, marital status, degree field, job field, working full-time, receiving federal funding to support their
 5 work, region of the U.S. where the employer is located, tenure status, faculty rank, being an academic administrator (Dean/President). Propensity scores were computed across
 6 strata of age (≤ 34 years, 35-44 years, 45-54 years, 55-64 years, ≥ 65 years).

1 **S4 Fig. Representation (weighted, age-standardized proportions) of doctorate recipients with disabilities by type of U.S. government agency**
 2 **funding their work or research (grants or contracts).**

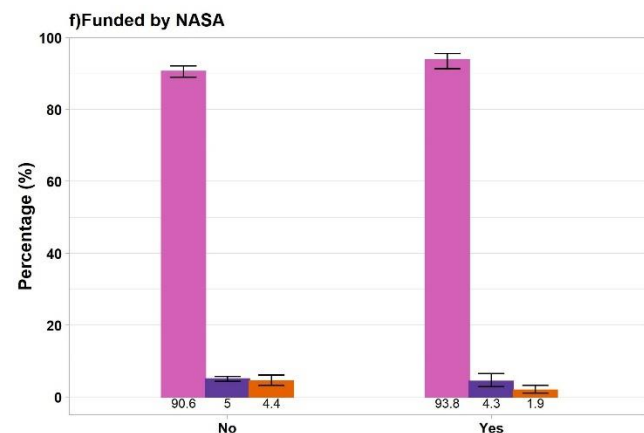


3
 4 a) Funded by the Department of Defense, b) Funded by the Department of Education, c) Funded by the Department of Energy, d) Funded by the National Institutes of Health, e)
 5 Funded by the Department of Health and Human Services, f) Funded by NASA, g) Funded by the National Science Foundation. Other: Participants identified as “Other races
 6 including multiracial individuals, non-Hispanic”
 7 For each panel, the total denominator is the number of doctorate recipients working in STEM at academic institutions (N=219,413).

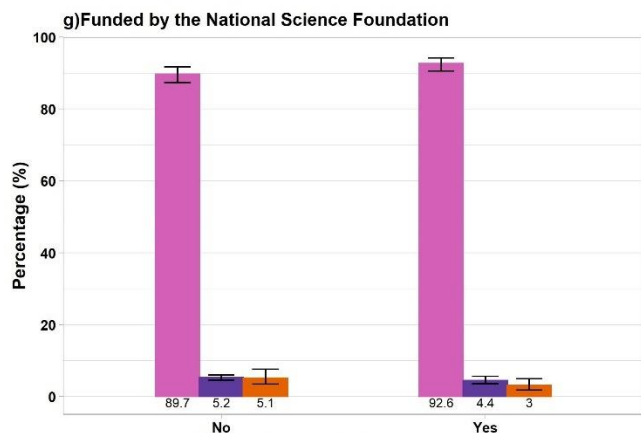
1 **S4 Fig. Representation (weighted, age-standardized proportions) of doctorate recipients with disabilities by type of U.S. government agency**
 2 **funding their work or research (grants or contracts) (*continued*).**



Funded by the Department of Health and Human Services, p: 0.29



Funded by NASA, p: 0.05



Funded by the National Science Foundation, p: 0.12

3

4 a) Funded by the Department of Defense, b) Funded by the Department of Education, c) Funded by the Department of Energy, d) Funded by the National Institutes of Health, e)
 5 Funded by the Department of Health and Human Services, f) Funded by NASA, g) Funded by the National Science Foundation. Other: Participants identified as “Other races
 6 including multiracial individuals, non-Hispanic”

7 For each panel, the total denominator is the number of doctorate recipients working in STEM at academic institutions (N=219,413).

8