

1 **Multicenter analysis of immunosuppressive medications on the subsequent risk**
2 **of malignancy in solid organ transplant recipients**

3
4 **Authors:**

5 Reid Shaw¹, Ali R. Haque¹, Jack Fitzsimons¹, Adam Hamidi¹, Timothy E. O'Connor¹,
6 Gregory W. Roloff², Bradford C. Bemiss⁴, Eric R. Kallwitz⁵, Patrick A. Hagen⁶, and
7 Stephanie Berg⁷

8
9 **Affiliations:**

10 ¹Department of Internal Medicine, Loyola University Medical Center, Maywood, IL

11 ²Section of Hematology and Oncology, The University of Chicago, Chicago, IL

12 ³Division of Pulmonary and Critical Care Medicine, Loyola University Medical Center,
13 Maywood, IL

14 ⁴Division of Hepatology, Loyola University Medical Center, Maywood, IL

15 ⁵Division of Hematology and Oncology, Loyola University Medical Center, Maywood, IL

16 ⁶Lank Center for Genitourinary Oncology, Dana-Farber Cancer Institute, Boston, MA

17
18 **Corresponding author email:**

19 reid.shaw@luhs.org

20
21 **Word Count:**

22 Abstract: 174

23 Main body: 2,174

24 Figures: 3

25 Supplementary figures: 5

26

27 **Abbreviations:**

28 SOT, solid organ transplant; EHR, electronic health record; ICD, international
29 classification of disease; HR, hazard ratio; CI, confidence interval; ML, machine learning;
30 mTOR, mammalian target of rapamycin.

31

32 **Abstract:**

33 Solid organ transplant is a curative treatment for end organ disease. However, the
34 immunosuppressive therapy required to prevent graft rejection increases the likelihood of
35 developing a subsequent malignancy. This retrospective cohort study from a multi-center
36 academic hospital system investigated solid organ transplantation, immunosuppression,
37 and the risk of subsequent malignancy. Of the 5,591 patients and 6,142 transplanted
38 organs studied, there were 517 subsequent malignancies identified. Skin cancer was the
39 most common type of malignancy to be diagnosed, whereas liver cancer was the first
40 malignancy to present at a median time of one-year post-transplant. Subsequent
41 malignancy was proportionally more often diagnosed in non-Hispanic White transplant
42 recipients compared to other racial groups. Heart and lung transplant recipients had
43 relatively higher rates of subsequent malignancy than liver and kidney transplant
44 recipients, but this finding was not significant upon adjusting for immunosuppressive
45 medications. Multivariate cox proportional hazard analysis and random forest variable
46 importance calculations identified statistically significant correlations with sirolimus and

47 azathioprine and high rates of malignancy after transplant, while tacrolimus was
48 associated with low rates of post-transplant neoplasia.

49

50 **1 Introduction**

51 Solid organ transplant (SOT) is a curative treatment option for many patients with end-
52 stage organ disease.¹ In 2021, there were more than 13,800 deceased and 6,500 living
53 donor transplants in the United States.² Although transplant-related outcomes have
54 significantly improved over time, rates of morbidity and mortality after successful
55 transplantation represent areas for clinical improvement.³ One major adverse outcome
56 after SOT is malignancy – with standardized incidence ratios of 2-4 times that of the
57 general public.^{4,5} This is due to a variety of patient,^{6,7} donor,⁸ transplant,⁹ and medication-
58 related factors.^{8,10}

59

60 Immunosuppressive therapy is considered to be a significant risk factor in the
61 development of a malignancy following SOT as it may lead to the activation of oncogenic
62 viruses¹¹, dysfunction of DNA repair¹², and other immune-mediated mechanisms.¹³ Prior
63 studies have assessed the risk of malignancy across different organ types of
64 transplantation, while others have investigated immunosuppressive regimens on the risk
65 of malignancy. However, no study has assessed the risk of malignancy across all organ
66 types with respect to immunosuppression. This study aims to identify potential risk factors
67 associated with developing malignancy across all SOT types. Understanding the
68 malignancy risks associated with immunosuppressive medications across all organ

69 transplant types may lead to better informed patients and clinicians, allowing for the
70 maintenance of graft function while limiting associated morbidity and mortality.

71

72 **2 Methods**

73 2.1 Study design and data collection

74 This is an IRB-approved, retrospective cohort study from three academic hospitals in the
75 greater Chicago area – Loyola University Medical Center, Gottlieb Memorial Hospital, and
76 MacNeal Hospital. The electronic health record (EHR) software (Epic Systems; Verona,
77 WI) was queried from January 1, 2000 to March 10, 2021. SOT and malignancies were
78 identified using a complete list of international classification of diseases (ICD) codes from
79 the 9th and 10th revision. The date of SOT and diagnosis of malignancy was defined as
80 the first instance an ICD code appeared in a patient’s medical record. To ease in
81 subsequent analysis, similar ICD-9 and ICD-10 diagnoses were grouped together into
82 nominal variables. The histological evaluation of each malignancy was not captured within
83 the ICD codes of this dataset. A complete list of medications and patient demographics,
84 including age, sex, race, ethnicity, zip-code, and preferred language were also queried
85 from the EHR. Patients under the age of 18 were not included in this study.

86

87 2.2 Statistics

88 A two-sided t-test was calculated to assess differences in numerical variables. Chi-
89 squared was used to assess differences in proportions. Pearson’s r was used to assess
90 for correlation between dichotomous variables. Loess smoothing was used to assess
91 trends overtime.¹⁴ For time-to-event analysis, patients were censored when diagnosed

92 with a malignancy, or the last time a medication was taken, representing the last time of
93 contact with the study center or death. For each patient, every transplant and new
94 malignancy diagnosis represented a new observation within the data frame. Gray's test
95 was used for the competing risk analysis.¹⁵ Immunosuppressive medications were
96 required to be taken for at least one day. Multivariable regression was performed using
97 Cox proportional hazard with time to malignancy as the dependent variable. Independent
98 variables included age at transplant, race, sex, immunosuppressive medications, and
99 transplanted organ. Statistical significance was defined as p-value < 0.05 and was
100 adjusted with a Bonferroni correction.¹⁶

101

102 2.3 Machine learning

103 Variable importance calculations were performed as previously described.¹⁷ Categorical
104 variables with a frequency of less than 10% were grouped into an “other” category.
105 Nominal variables were one-hot encoded and numerical variables were normalized to
106 have a standard deviation of one with a mean of zero. The complete dataset was then
107 bootstrap resampled 10 times and stratified by subsequent malignancy. A random forest
108 model was then fit across a variety of hyperparameters within a Latin hypercube of size
109 25.¹⁸ Gini impurity values were calculated to provide robust assessment of variable
110 importance.¹⁹

111

112 2.4 Analysis code

113 All analysis was performed with R programming language v.4.0.3.²⁰ using the
114 ‘tidyverse’,²¹ ‘tidymodels’,²² ‘lubridate’,²³ ‘funneljoin’,²⁴ ‘ggrridges’,²⁵ ‘surival’,²⁶ ‘janitor’,²⁷

115 'wesanderson',²⁸ 'ochRe',²⁹ 'scales',³⁰ 'vip',³¹ 'resample',³² 'corrplot',³³ and 'tidycmprsk'³⁴
116 packages.

117

118 **3 Results**

119 3.1 Transplant recipient descriptive statistics

120 Overall, there were 5,591 unique patients who received a SOT during the queried time
121 period, comprising six different organ types and 6,142 transplanted organs (**Figure 1A**).

122 Kidney transplants (n = 2,986) were the most common, followed by liver (n = 1,298), lung
123 (n = 1,024), heart (n = 723), pancreas (n = 106), and intestine (n = 5) (**Figure 1A**). The

124 median age of a transplant recipient was 54 years with a range of 18-91 years
125 (**Supplementary Figure 1A**). 5,093 people received one SOT, 448 received two organs,

126 47 received three organs, and three received four organs (**Supplementary Figure 1B**).

127 64% of individuals to receive a transplant self-identified as White, while the next most
128 common racial demographic was Black at 17% (**Supplementary Figure 1C**). White and

129 Asian transplant recipients were the oldest demographic to receive an organ at a median
130 age of 56 years (**Figure 1B**). These two groups were statistically older than other minority

131 groups, including Black (52 years), Hispanic (50 years), and multi-racial (40 years)

132 (**Figure 1B**). The median age of transplantation was highest in lung (58 years), heart (58
133 years), and liver (59 years) transplantation (**Figure 1C**). Overall, 39% of transplant

134 recipients were women. With the exception of intestine, SOT was more common in men
135 than in women (**Figure 1D**). Since the beginning of this study, the number of SOT across

136 time was increasing (**Figure 1E**). Loess smoothing showed a trend towards women
137 becoming less likely to receive SOT when compared to men (**Figure 1F**).

138

139 3.2 Subsequent malignancy descriptive statistics

140 Of those that received a SOT, there were 517 (8.25%) malignancies identified after
141 transplantation. Skin cancer was the predominant malignancy across SOT recipients (n
142 = 273), followed by lymphoma (n = 40), and kidney (n = 30) (**Figure 2A**). In liver and
143 kidney transplant recipients, subsequent liver and kidney malignancies represent the
144 largest proportional increase from baseline rates, respectively (**Figure 2A**). Liver cancer
145 was the earliest malignancy to present following SOT at an average of 351 days (**Figure**
146 **2B**). The median presentation of skin cancer was 1,073 days, breast cancer at 1,109
147 days, and lymphoma at 1,123 days (**Figure 2B**). Leukemia (n = 12) was the malignancy
148 with the longest post-transplant latency time to presentation at just under five years (1,735
149 days) (**Figure 2B**). 14% of White transplant recipients were diagnosed with a malignancy
150 after SOT; Hispanic and Black individuals were diagnosed at 9% and 7%, respectively
151 (**Figure 2C**) Of the 249 Asian patients who received SOT, only four (1.6%) developed a
152 subsequent malignancy (**Figure 2C**). Lung transplant recipients who developed a
153 subsequent malignancy were significantly younger than those who did not ($p = 0.048$)
154 (**Figure 2D**). No other SOT recipient group had a significant difference in subsequent
155 malignancies based on the age of transplantation (**Figure 2D**).

156

157 3.3 Immunosuppression and development of malignancy

158 The most common immunosuppressive medications used were mycophenolate, and
159 tacrolimus (**Supplementary Figure 2A**). The use of these medications increased
160 throughout the study duration (**Supplementary Figure 2B**). Cyclosporine and sirolimus

161 represent the largest proportion of immunosuppressive medications utilized in heart
162 transplant recipients, at 12% and 10%, respectively (**Figure 3A**). Azathioprine was most
163 commonly used in lung transplant recipients at 33% and 91% of liver transplant recipients
164 received tacrolimus (**Figure 3A**). Tacrolimus and mycophenolate (phi coefficient 0.36)
165 were the drugs most commonly used in the same patients, whereas tacrolimus and
166 cyclosporine (phi coefficient -0.36) were most rarely used together (**Supplementary**
167 **Figure 3**). Upon fitting a random forest machine learning (ML) model to assess variable
168 importance on the development of malignancy, age at transplantation was the most
169 predictive variable followed by the total number of immunosuppressive medications a
170 patient has received (**Figure 3B**). The immunosuppressive medication with the strongest
171 association with post-transplant malignancy was sirolimus, followed by azathioprine and
172 tacrolimus (**Figure 3B**).

173
174 Heart and lung transplant recipients have a high cumulative incidence of subsequent
175 malignancy in our study (**Figure 3C**). Within 30 months post-transplant, 8.5% of heart
176 and 8.7% of lung transplant recipients had a subsequent diagnosis of cancer
177 (**Supplementary Figure 4**). At five years, this number increased to 16% and 17% for
178 heart and lung transplant recipients, respectively (**Supplementary Figure 4**). Cumulative
179 incidence of subsequent malignancy was greatest in patients who received sirolimus,
180 azathioprine, and cyclosporine, whereas mycophenolate, and tacrolimus had a relatively
181 lower cumulative incidence (**Figure 3D**). Multivariate Cox proportional hazard analysis
182 demonstrated an increased risk of malignancy with azathioprine (HR 1.86, 95% CI 1.51
183 – 2.28, $p < 0.001$), and sirolimus (HR 2.07, 95% CI 1.71 – 2.52, $p < 0.001$), whereas

184 patients who receive tacrolimus (HR 0.48, 95% CI 0.39 – 0.59, $p < 0.001$) were less likely
185 to be diagnosed with a subsequent malignancy (**Figure 3E**). The differences seen in the
186 cumulative incidence analysis stratified by organ type did not persist when adjusted for
187 multiple variables, such as race and immunosuppressive medications (**Figure 3E**). There
188 was no significant difference in the risk of subsequent malignancy between men and
189 women or the age in which someone received a SOT (**Figure 3E**). Black (HR 0.55, 95%
190 CI 0.41 – 0.73, $p < 0.001$) and other non-White (HR 0.24, 95% CI 0.16 – 0.36, $p < 0.001$)
191 SOT recipients were less likely to develop a malignancy than White individuals (**Figure**
192 **3E**). However, there was no difference in the rates of non-cutaneous malignancies
193 between Black and White transplants recipients (**Supplementary Figure 5**).

194

195 **4 Discussion**

196 To our knowledge, this is the first study to investigate the role of immunosuppression in
197 the development of malignancy following transplantation across multiple organ types of
198 transplantation. Our data are consistent with other landmark studies. For example, skin
199 cancer was the most common malignancy diagnosed after SOT in our cohort, followed
200 by lymphoma and kidney cancer.³⁵ In concordance with the largest study of cancer risk
201 in SOT recipients, our data demonstrated that the majority of liver cancer diagnoses occur
202 within the first year of transplantation and kidney cancer incidence was highest in kidney
203 transplant recipients.⁵

204

205 A recent population-based cohort study in Finland found increased incidence of cancer
206 rates in heart and lung transplant recipients in comparison to kidney and liver transplant

207 recipients.³⁵ However, upon adjusting for immunosuppressive medications, we found no
208 difference in the rates of malignancy between SOT groups, indicating the increased risk
209 may be due to the medication. In liver transplant recipients, cumulative exposure to
210 tacrolimus increased the risk of cancer.³⁶ This finding was not unsurprising and not in
211 opposition to our data as we did not assess cumulative exposure to tacrolimus. However,
212 our data demonstrated a lower risk of cancer in individuals who receive tacrolimus
213 compared to other immunosuppressive medications.

214
215 In our study, azathioprine and sirolimus were associated with the highest risk of cancer
216 development. Azathioprine, an antagonist of purine metabolism, has long been
217 associated with the development of cancer in SOT, inflammatory bowel disease, multiple
218 sclerosis, and rheumatoid arthritis.^{37–41} However, the increased risk associated with
219 sirolimus was unexpected as prior studies have generally demonstrated decreased risk
220 of cancer with sirolimus use.^{42,43} In kidney and heart transplant recipients, the transition
221 from a calcineurin inhibitor to sirolimus was associated with a lower risk of malignancy,^{44–}
222 ⁴⁶ likely due in part to the role mTOR plays in cell proliferation.⁴⁷

223
224 ML algorithms are now being applied to a variety of SOT research questions.⁴⁸ To our
225 knowledge, our study represents the first time that a ML model has been used to assess
226 variable importance in determining which SOT recipients developed a malignancy.
227 Random forest classification, a form of decision trees, is a highly flexible, interpretable,
228 and accurate method of estimating non-linear relationships – an area where traditional
229 statistics struggle.⁴⁹ In contrast to traditional statistical methods used in this analysis, our

230 ML model identified age at transplant as a highly predictive marker of subsequent
231 malignancy diagnosis. However, not all results were dissimilar, as the ML model also
232 identified sirolimus, tacrolimus, azathioprine, and cyclosporine as highly predictive
233 variables.

234

235 There are a number of limitations to this study. First, there are likely discrepancies in data
236 entry, collection, and classification that may exist as this was a retrospective cohort study
237 based on ICD codes. The rates of malignancy are likely underestimated as we included
238 individuals who received transplants up to the study endpoint, and patients may be lost
239 to follow-up for a variety of reasons. In addition, the hospitals queried in this study are
240 located in the greater Chicago area, and thus may not represent results from distinct
241 geographical regions across the United States or in other countries. Furthermore, we did
242 not account for the dose of immunosuppression or blood plasma level of these
243 medications. We also did not control for any pre-transplant related criteria, including organ
244 ischemic time, viral studies, donor information, screening tests, or education level. This
245 may confound some of the findings that we attribute to sociodemographic factors and
246 immunosuppressive medications. Lastly, our findings do not establish causality. Further
247 work will be focused on parsing the complex relationship of concomitant
248 immunosuppression and medication changes that may affect risk of malignancy. With
249 greater numbers of SOT recipients, we may be able to associate subsequent malignancy
250 type with individual immunosuppressive regimens, allowing for personalized cancer
251 screening recommendations with the goal of improving overall survival.⁵⁰

252

253 **Acknowledgements:**

254 Many thanks to Susan Zelisko for querying the data from the EHR for subsequent
255 analysis.

256

257 **Funding:**

258 No funding sources were used for this research project.

259

260 **Disclosures:**

261 The authors of this manuscript have no conflicts of interest to disclose as described by
262 the *American Journal of Transplantation*.

263

264 **References:**

- 265 1. Rana A, Gruessner A, Agopian VG, et al. Survival benefit of solid-organ transplant
266 in the United States. *JAMA Surg*. 2015. doi:10.1001/jamasurg.2014.2038
- 267 2. The U.S. Organ Procurement and Transplantation Network and the Scientific
268 Registry of Transplant Recipients. 2021.
269 <https://optn.transplant.hrsa.gov/data/view-data-reports/national-data/>.
- 270 3. Ying T, Shi B, Kelly PJ, Pilmore H, Clayton PA, Chadban SJ. Death after kidney
271 transplantation: An analysis by era and time post-transplant. *J Am Soc Nephrol*.
272 2020. doi:10.1681/ASN.2020050566
- 273 4. Collett D, Mumford L, Banner NR, Neuberger J, Watson C. Comparison of the
274 incidence of malignancy in recipients of different types of organ: A UK registry
275 audit. *Am J Transplant*. 2010. doi:10.1111/j.1600-6143.2010.03181.x

- 276 5. Engels EA, Pfeiffer RM, Fraumeni JF, et al. Spectrum of cancer risk among US
277 solid organ transplant recipients. *JAMA*. 2011. doi:10.1001/jama.2011.1592
- 278 6. Faure S, Herrero A, Jung B, et al. Excessive alcohol consumption after liver
279 transplantation impacts on long-term survival, whatever the primary indication. *J*
280 *Hepatol*. 2012. doi:10.1016/j.jhep.2012.03.014
- 281 7. Hussain Z, Yu M, Wozniak A, et al. Impact of donor smoking history on post heart
282 transplant outcomes: A propensity-matched analysis of ISHLT registry. *Clin*
283 *Transplant*. 2021. doi:10.1111/ctr.14127
- 284 8. Penn I. Malignant melanoma in organ allograft recipients. *Transplantation*. 1996.
285 doi:10.1097/00007890-199601270-00019
- 286 9. Sprangers B, Nair V, Launay-Vacher V, Riella L V., Jhaveri KD. Risk factors
287 associated with post-kidney transplant malignancies: An article from the Cancer-
288 Kidney International Network. *Clin Kidney J*. 2018. doi:10.1093/ckj/sfx122
- 289 10. Stallone G, Infante B, Grandaliano G. Management and prevention of post-
290 transplant malignancies in kidney transplant recipients. *Clin Kidney J*. 2015.
291 doi:10.1093/ckj/sfv054
- 292 11. Grulich AE, van Leeuwen MT, Falster MO, Vajdic CM. Incidence of cancers in
293 people with HIV/AIDS compared with immunosuppressed transplant recipients: a
294 meta-analysis. *Lancet*. 2007. doi:10.1016/S0140-6736(07)61050-2
- 295 12. O'Donovan P, Perrett CM, Zhang X, et al. Medicine: Azathioprine and UVA light
296 generate mutagenic oxidative DNA damage. *Science (80-)*. 2005.
297 doi:10.1126/science.1114233
- 298 13. Lipson EJ, Bagnasco SM, Moore J, et al. Tumor Regression and Allograft

- 299 Rejection after Administration of Anti-PD-1. *N Engl J Med*. 2016.
300 doi:10.1056/nejmc1509268
- 301 14. Press WH, Teukolsky SA. Savitzky-Golay Smoothing Filters. *Comput Phys*. 1990.
302 doi:10.1063/1.4822961
- 303 15. Gray BJ. A class of K-sample tests for comparing the cumulative incidence of a
304 competing risk. *Ann Stat*. 1988.
- 305 16. Benjamini Y. Discovering the false discovery rate. *J R Stat Soc Ser B Stat*
306 *Methodol*. 2010. doi:10.1111/j.1467-9868.2010.00746.x
- 307 17. Shaw R, Lokshin AE, Miller MC, Messerlian-Lambert G, Moore RG. Stacking
308 Machine Learning Algorithms for Biomarker-Based Preoperative Diagnosis of a
309 Pelvic Mass. *Cancers (Basel)*. 2022. doi:10.3390/cancers14051291
- 310 18. McKay MD, Beckman RJ, Conover WJ. A Comparison of Three Methods for
311 Selecting Values of Input Variables in the Analysis of Output from a Computer
312 Code. *Technometrics*. 1979. doi:10.2307/1268522
- 313 19. Menze BH, Kelm BM, Masuch R, et al. A comparison of random forest and its Gini
314 importance with standard chemometric methods for the feature selection and
315 classification of spectral data. *BMC Bioinformatics*. 2009. doi:10.1186/1471-2105-
316 10-213
- 317 20. R Core Team. R: A language and environment for statistical computing. *R Found*
318 *Stat Comput*. 2019.
- 319 21. Wickham H, Averick M, Bryan J, et al. Welcome to the Tidyverse. *J Open Source*
320 *Softw*. 2019. doi:10.21105/joss.01686
- 321 22. Kuhn M. Package ‘tidymodels’: Easily Install and Load the “Tidymodels”

- 322 Packages. Cran.
- 323 23. Grolemund G, Wickham H. Dates and times made easy with lubridate. *J Stat*
324 *Softw.* 2011. doi:10.18637/jss.v040.i03
- 325 24. Robinson E, Baker A, and Robinson D. funneljoin: Time-Based Joins to Analyze
326 Sequence of Events. 2019. <https://cran.r-project.org/package=funneljoin>.
- 327 25. Wilke C. ggridges: Ridgeline Plots in “ggplot2.” 2020. [https://cran.r-](https://cran.r-project.org/package=ggridges)
328 [project.org/package=ggridges](https://cran.r-project.org/package=ggridges).
- 329 26. Therneau TM. A Package for Survival Analysis in R. 2022. [https://cran.r-](https://cran.r-project.org/package=survival)
330 [project.org/package=survival](https://cran.r-project.org/package=survival).
- 331 27. Firke S. janitor: Simple Tools for Examining and Cleaning Dirty Data. 2020.
332 <https://cran.r-project.org/package=janitor>.
- 333 28. Ram K, Wickham H. wesanderson: A Wes Anderson Palette Generator. 2018.
334 <https://cran.r-project.org/package=wesanderson>.
- 335 29. Allan A, Cook D, Gayler R, Kirk H, Peng R, Saber E. ochRe: Australia-Themed
336 Color Palettes. 2022.
- 337 30. Wickham H, Seidel D. scales: Scale Functions for Visualization. 2022.
- 338 31. Greenwell BM, Boehmke BC. Variable Importance Plots—An Introduction to the
339 vip Package. *R J.* 2020. doi:10.32614/rj-2020-013
- 340 32. Tim Hesterberg. resample: Resampling Functions. 2022. [https://cran.r-](https://cran.r-project.org/package=resample)
341 [project.org/package=resample](https://cran.r-project.org/package=resample).
- 342 33. Taiyun Wei, Simko V. R package “corrplot”: Visualization of a Correlation Matrix.
343 2017. <https://github.com/taiyun/corrplot>.
- 344 34. Sjoberg DD, Fei T. tidycmprsk: Competing Risks Estimation. 2022. [15](https://cran.r-</p></div><div data-bbox=)

- 345 project.org/package=tidycmprsk.
- 346 35. Friman TK, Jäämaa-Holmberg S, Åberg F, et al. Cancer risk and mortality after
347 solid organ transplantation: A population-based 30-year cohort study in Finland.
348 *Int J Cancer*. 2022. doi:10.1002/ijc.33934
- 349 36. Rodríguez-Perálvarez M, Colmenero J, González A, et al. Cumulative exposure to
350 tacrolimus and incidence of cancer after liver transplantation. *Am J Transplant*.
351 2022;22(6):1671-1682. doi:10.1111/ajt.17021
- 352 37. Jiyad Z, Olsen CM, Burke MT, Isbel NM, Green AC. Azathioprine and Risk of Skin
353 Cancer in Organ Transplant Recipients: Systematic Review and Meta-Analysis.
354 *Am J Transplant*. 2016. doi:10.1111/ajt.13863
- 355 38. Pasternak B, Svanström H, Schmiegelow K, Jess T, Hviid A. Use of azathioprine
356 and the risk of cancer in inflammatory bowel disease. *Am J Epidemiol*. 2013.
357 doi:10.1093/aje/kws375
- 358 39. Confavreux C, Saddier P, Grimaud J, Moreau T, Adeleine P, Aimard G. Risk of
359 cancer from azathioprine therapy in multiple sclerosis: A case-control study.
360 *Neurology*. 1996. doi:10.1212/WNL.46.6.1607
- 361 40. Connell WR, Kamm MA, Ritchie JK, Lennard-Jones JE, Dickson M, Balkwill AM.
362 Long-term neoplasia risk after azathioprine treatment in inflammatory bowel
363 disease. *Lancet*. 1994. doi:10.1016/S0140-6736(94)92150-4
- 364 41. Bernatsky S, Clarke AE, Suissa S. Hematologic malignant neoplasms after drug
365 exposure in rheumatoid arthritis. *Arch Intern Med*. 2008.
366 doi:10.1001/archinternmed.2007.107
- 367 42. Karia PS, Azzi JR, Heher EC, Hills VM, Schmults CD. Association of sirolimus

- 368 use with risk for skin cancer in a mixed-organ cohort of solid-organ transplant
369 recipients with a history of cancer. *JAMA Dermatology*. 2016.
370 doi:10.1001/jamadermatol.2015.5548
- 371 43. Knoll GA, Kokolo MB, Mallick R, et al. Effect of sirolimus on malignancy and
372 survival after kidney transplantation: Systematic review and meta-analysis of
373 individual patient data. *BMJ*. 2014. doi:10.1136/bmj.g6679
- 374 44. Stallone G, Schena A, Infante B, et al. Sirolimus for Kaposi's Sarcoma in Renal-
375 Transplant Recipients. *N Engl J Med*. 2005. doi:10.1056/nejmoa042831
- 376 45. Asleh R, Clavell AL, Pereira NL, et al. Incidence of Malignancies in Patients
377 Treated With Sirolimus Following Heart Transplantation. *J Am Coll Cardiol*. 2019.
378 doi:10.1016/j.jacc.2019.03.499
- 379 46. Euvrard S, Morelon E, Rostaing L, et al. Sirolimus and Secondary Skin-Cancer
380 Prevention in Kidney Transplantation. *N Engl J Med*. 2012.
381 doi:10.1056/nejmoa1204166
- 382 47. Ballou LM, Lin RZ. Rapamycin and mTOR kinase inhibitors. *J Chem Biol*. 2008.
383 doi:10.1007/s12154-008-0003-5
- 384 48. Gotlieb N, Azhie A, Sharma D, et al. The promise of machine learning
385 applications in solid organ transplantation. *npj Digit Med*. 2022;5(1).
386 doi:10.1038/s41746-022-00637-2
- 387 49. Couronné R, Probst P, Boulesteix AL. Random forest versus logistic regression: A
388 large-scale benchmark experiment. *BMC Bioinformatics*. 2018.
389 doi:10.1186/s12859-018-2264-5
- 390 50. Dharia A, Boulet J, Sridhar VS, Kitchlu A. Cancer Screening in Solid Organ

391 Transplant Recipients: A Focus on Screening Liver, Lung, and Kidney Recipients

392 for Cancers Related to the Transplanted Organ. *Transplantation*. 2022.

393 doi:10.1097/TP.0000000000003773

394

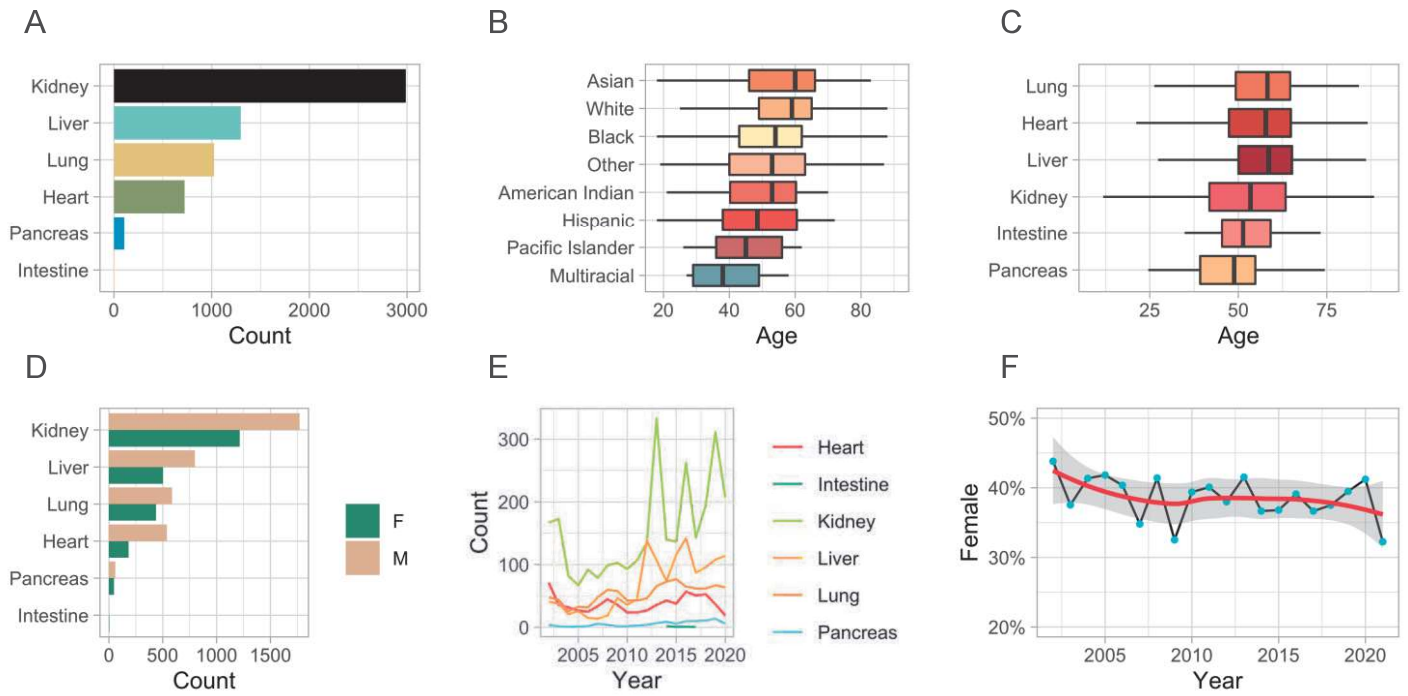


Figure 1.

A) Bar plot of the overall number of solid organ transplants stratified by organ type. B) Boxplots of the age of solid organ transplant recipients stratified by race. C) Boxplots of the age of solid organ transplant recipients grouped by organ type. D) Grouped bar plot of solid organ transplant types stratified by sex. Male is denoted by 'M' and Female is denoted by 'F.' E) Solid organ transplant recipients across time stratified by organ type. F) Dot plot showing the percent of women who received a solid organ transplant across the study time period. A loess smoothed line is overlaid.

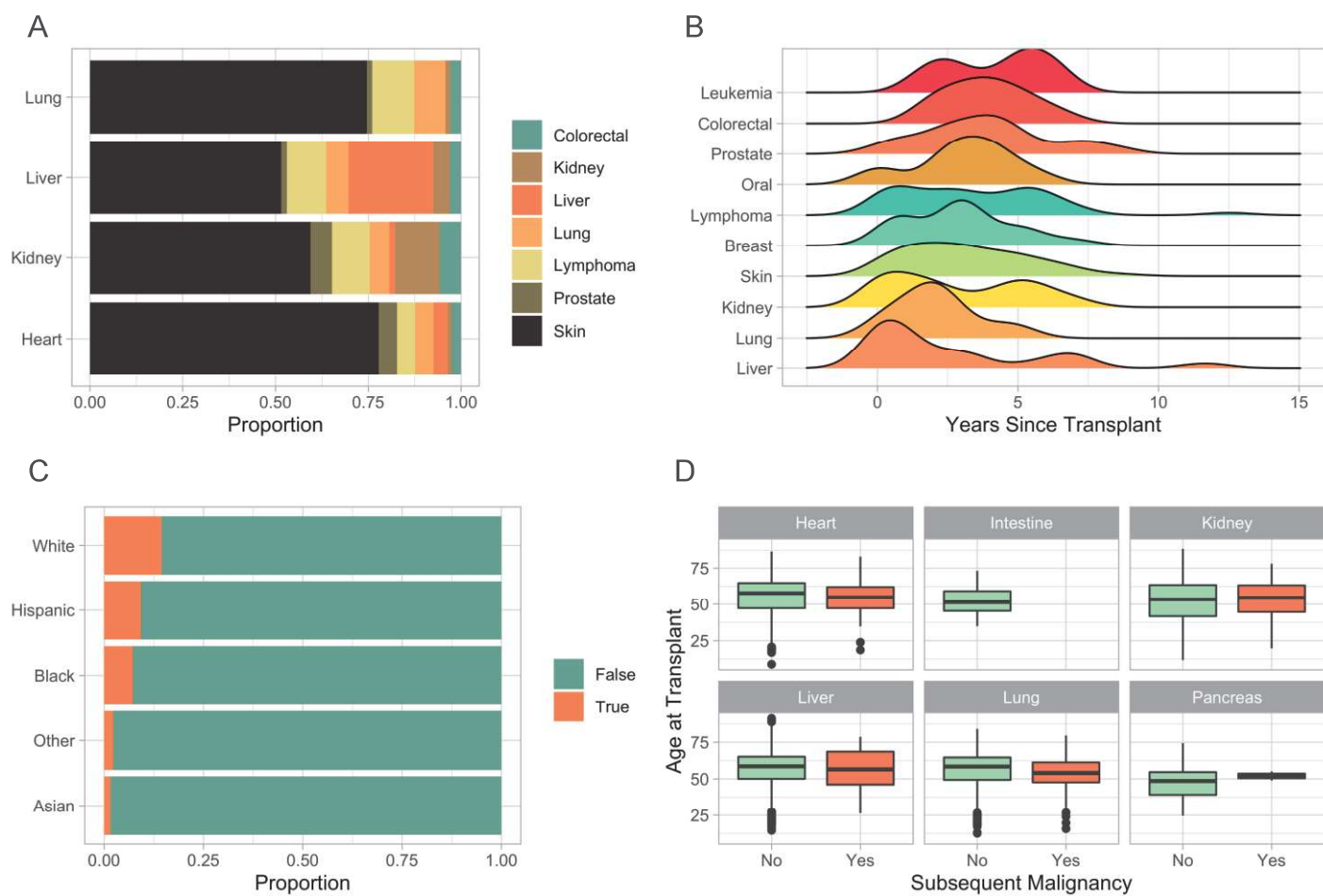


Figure 2.

A) Stacked bar plot of subsequent malignancies by solid organ transplant type. B) Ridge plot of subsequent malignancies from time of transplant. C) Stacked bar plot of the proportion of subsequent malignancies stratified by race. True indicates the development of a subsequent malignancy. D) Boxplots of subsequent malignancies by age at transplant stratified by organ type.

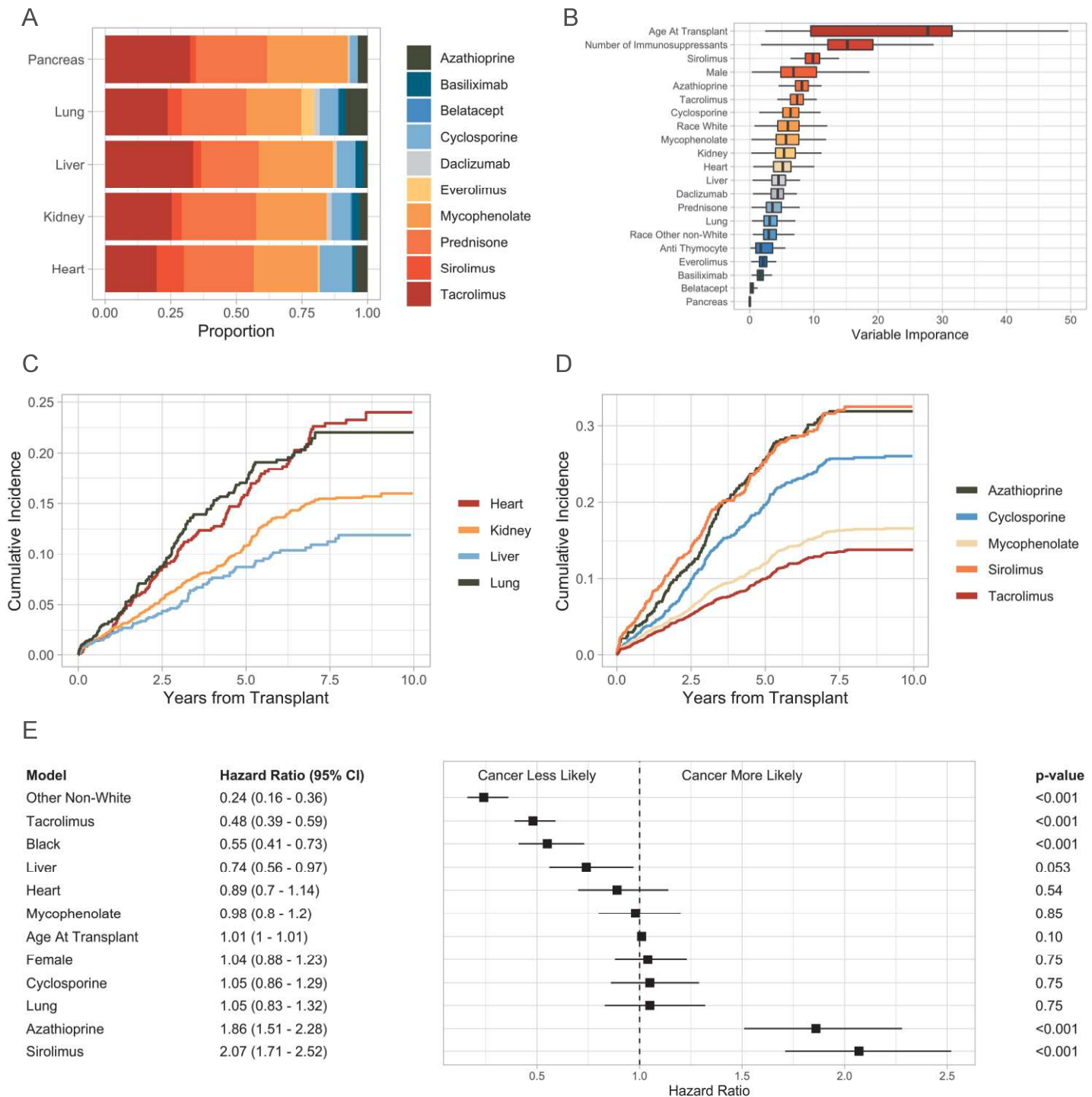


Figure 3.

A) Stacked bar plot of immunosuppressive medications stratified by organ type. B) Boxplots of random forest Gini impurity values indicating variable importance in predicting malignancy following solid organ transplant. C) Subsequent malignancy cumulative incidence plot stratified by organ type. D) Subsequent malignancy cumulative incidence plot stratified by immunosuppressive medication. E) Forest plot of the multivariate Cox proportional hazard ratios. Black and Other Non-White hazard ratios are in comparison to White. Heart, liver, and lung are in comparison to kidney transplant recipients. P-values are adjusted with a Bonferroni correction factor.