

1 **Circulation of Fluconazole-Resistant *C. albicans*, *C. auris* and *C.***
2 ***parapsilosis* Bloodstream Isolates Carrying Y132F, K143R or**
3 **T220L Erg11p Substitutions in Colombia.**

4 Andres Ceballos-Garzon ^{a, b*}, Ana Peñuela ^{a, c*}, Sandra Valderrama-Beltrán ^d, Yerly Vargas-
5 Casanova ^a, Beatriz Ariza ^c, Claudia M. Parra-Giraldo^{§ a, e}.

6 ^aUnidad de Proteomica y Micosis Humanas, Grupo de Investigación en Enfermedades
7 Infecciosas, Departamento de Microbiología, Pontificia Universidad Javeriana, Bogotá,
8 Colombia. c-ceballos@javeriana.edu.co (A.C-G.);

9 ^bUniversité Clermont Auvergne, INRAE, MEDiS, 63000 Clermont-Ferrand, France.

10 ^cLaboratorio clínico, Área de Microbiología, Hospital Universitario San Ignacio, Bogotá D.C,
11 Colombia.

12 ^dUnidad de Infectología, Departamento de Medicina Interna, Facultad de Medicina, Hospital
13 Universitario San Ignacio, Pontificia Universidad Javeriana. Bogotá D.C, Colombia.

14 ^eDepartamento de Microbiología y Parasitología, Facultad de Farmacia, Universidad
15 Complutense de Madrid, Madrid, Spain.

16 [§]Corresponding author at: Unidad de Proteomica y Micosis Humanas, Grupo de Investigación
17 de Enfermedades Infecciosas, Departamento de Microbiologia, Pontificia Universidad
18 Javeriana, Bogotá, Colombia Carrera 7 # 43-82 Lab 404 Edificio 52, Bogotá, Colombia. E-
19 mail address: claudia.parra@javeriana.edu.co (CP-G).

20 *These authors contributed equally to this work

27 **Abstract**

28 Although *Candida* spp., is a common cause of bloodstream infections and is often associated
29 with high mortality rates, its resistance to antifungal drugs, and the molecular mechanisms
30 involved have been poorly studied in Colombia. Here, 123 bloodstream isolates of *Candida*
31 spp. were collected. MALDI-TOF MS identification and fluconazole (FLC) susceptibility
32 patterns were assessed on all isolates. Subsequently, sequencing of *ERG11*, *TAC1* or *MRR1*,
33 and efflux pumps were performed for resistant isolates. Out of 123 clinical strains, *C. albicans*
34 accounted for 37.4%, followed by *C. tropicalis* 26.8%, *C. parapsilosis* 19.5%, *C. auris* 8.1%,
35 *C. glabrata* 4.1%, *C. krusei* 2.4% and *C. lusitaniae* 1.6%. Resistance to FLC reached 18%.
36 Erg11 amino acid substitutions associated with FLC-resistance (Y132F, K143R or T220L)
37 were found in 58% of 19 FLC-resistant isolates. Furthermore, novel mutations were found in
38 all genes studied. Regarding efflux pumps, 42% of 19 FLC-resistant *Candida* spp strains
39 showed significant efflux activity. Finally, six of the 19 FLC-resistant isolates neither
40 harbored resistance-associated mutations nor showed efflux pump activity. Although *C.*
41 *albicans* remain the most predominant species, non-*C. albicans* species comprise a high
42 proportion (62.6%). Among FLC-resistant species, *C. auris* (70%) and *C. parapsilosis* (25%)
43 displayed the highest percentages of resistance. In 68% of FLC-resistant isolates, a
44 mechanism that could explain their phenotype was found (e.g. mutations, flux pump activity
45 or both). We provide evidence that endemic isolates harbor amino acid substitutions related
46 with resistance to one of the most used molecules in the hospital setting, with Y132F being
47 the most frequently detected one.

48 **Key words:**

49 ***Candida* species, bloodstream infections, fluconazole resistance, *ERG11*, Y132F,**
50 **Colombia.**

51 **Introduction**

52 Invasive fungal infections (IFIs) due to *Candida* species are a frequent and life-threatening
53 condition in hospital settings worldwide, and are often associated with high morbidity and
54 mortality [1]. *Candida albicans* is the most isolated species, with close to a 30% mortality rate
55 in candidemia [2]. However, non-*albicans Candida* species (NACS) such as *C. glabrata* and
56 *C. parapsilosis* have emerged as a common cause, becoming the second or third most
57 frequent species depending on geography, patient underlying condition, and age. For these
58 species, the associated mortality rate is about 50% and 28%, respectively [3,4]. Another
59 important NACS causing candidemia is *C. auris*, whose mortality rate ranges from 40% to
60 60% according to some studies, despite the fact its prevalence is unclear [5].

61 While current therapeutic options for IFIs are limited to only three classes of drugs (i.e.,
62 polyenes, azoles and echinocandins), the emergence of resistant strains to some of these
63 molecules is even more concerning. For decades, azoles have been the most frequently used
64 antifungal for treating *Candida* infections [6,7]. Although treatment with azoles can be
65 effective, long-term use of fluconazole (FLC) has led to the emergence of *Candida* strains
66 with decreased susceptibility. In the case of *Candida* spp, the molecular mechanisms behind
67 FLC-resistance have been relatively well characterized [8,9].

68 Unlike *C. auris* which is often resistant to FLC, *C. albicans* and *C. parapsilosis* isolates were
69 thought to be universally susceptible to FLC, but recent studies show an increased resistance.
70 For example, a multicenter laboratory-based survey of candidemia conducted in South Africa
71 indicates that more than half of *C. parapsilosis* isolates 62% (332/531) are resistant to FLC
72 [10]. In addition, studies in Brazil, India, Kuwait, South Korea, Spain, Turkey, and the
73 United States, as well as a recent global study, confirmed the emergence of FLC-resistance in
74 *C. parapsilosis* [11–15]. Regarding *C. albicans*, this species exhibits lower levels of azole

75 resistance. However, resistant isolates have been reported from many countries around the
76 world, including Colombia [16–18].

77 The main FLC-resistance mechanisms are associated with *i*) up-regulation of drug
78 transporters, *ii*) alteration or up-regulation of the gene encoding the enzyme being targeted,
79 which decreases binding affinity for the drug and increases concentration of the enzyme
80 target, *iii*) alterations in the ergosterol synthetic pathway and *iv*) activation of pathways
81 involved in the stress response, such as the Ras/cAMP/PKA pathway, calmodulin/calcineurin
82 pathway (CaM/CaL), and mitogen-activated protein kinase (MAPK) signaling pathways
83 [19,20]. However, the most studied ones are described below.

84 The ATP-binding cassette (ABC) and the major facilitator superfamily (MFS) transporters are
85 responsible for lowering the accumulation of azoles inside the yeast cell by translocating
86 compounds actively across the cell membrane [21]. Overexpression of genes encoding drug
87 transporters, e.g., Cdr1/2-ABC and Mdr1/Flu1-MFS, among resistant isolates of *Candida*
88 species is predominantly due to gain-of-function (GOF) mutations in genes encoding zinc
89 cluster transcription factors, such as *TAC1* (transcriptional activator of CDR genes) and *MRR1*
90 (multidrug resistance regulator). For instance, GOFs in *TAC1* (T225A, R693K, A736V,
91 H741, N972D, G980E, N997D) and *MRR1* (I283R, R479K, G583R, V854A, K873N), lead to
92 overexpression of *CDR1* and *MDR1* in *C. albicans* and *C. parapsilosis*, respectively [22,23].

93 Overexpression of *ERG11*, the gene encoding lanosterol 14 α -demethylase, the azole target,
94 contributes directly to resistance as the increased abundance of the target requires higher drug
95 doses for inhibition. Activating mutations in the gene encoding the transcription factor Upc2,
96 which up-regulates most ergosterol biosynthesis genes, and the formation of an
97 isochromosome with two copies of the left arm of chromosome 5 [i(5L)], or by duplication of
98 the whole chromosome, on which *ERG11* resides, are responsible for *ERG11* overexpression
99 [24]. Furthermore, point mutations in the *ERG11* alter the 3D conformation of Erg11 and

100 reduce its affinity for FLC. Some of the most frequent amino acid substitutions reported are
101 Y132F and K143R substitutions, described in *C. albicans*, *C. parapsilosis* and *C. auris*
102 [15,25,26].

103 Although *Candida* isolates from individual institutions may not be representative of the data
104 of a country, such studies can provide a useful baseline snapshot of species distribution and
105 antifungal susceptibility for candidemia in resource-limited settings [10]. In Colombia, there
106 is a lack of data available about antifungal resistance and its molecular mechanisms in
107 *Candida* spp. Therefore, this study aimed to investigate the prevalence of resistance and to
108 describe the mechanisms behind FLC-resistance in a collection of bloodstream isolates.

109 **Materials and methods**

110 **Study design**

111 The study was a single-center retrospective analysis. One hundred twenty-three bloodstream
112 isolates of *Candida* spp. obtained from hospitalized patients (2016-2020) of the San Ignacio
113 Hospital in Bogota, Colombia were included. Prior to storage at -80°C , yeast from blood
114 cultures submitted for routine work-up to the Clinical Microbiology Laboratory were
115 primarily identified using MicroScan (MicroScan WalkAway-96 Plus, Siemens, Deerfield, IL,
116 USA) or VITEK 2 system (bioMérieux, Marcy-l'Etoile, France), and further characterized
117 (this study) using the MALDI-TOF Biotyper system (Bruker Daltonik, Bremen, Germany).

118 **2.2 MALDI-TOF MS**

119 Isolates were streaked from a glycerol stock onto Sabouraud dextrose agar (SDA) and grown
120 for 24–36 h at 35°C . Protein extraction was performed using formic acid/ethanol method,
121 according to the Bruker Daltonics' protocol. The protein mass spectra were analysed using the
122 Flex Control software and the MALDI Biotyper version 3.1 7311 reference spectra (main
123 spectra) (Bruker Daltonics, Bremen, Germany). MALDI-TOF MS results were obtained

124 according to the manufacturer's technical specifications, as follows: correct genus and species
125 identification (≥ 2.0), correct genus identification (1.7–2.0), and no reliable identification
126 (< 1.7). All clinical isolates had a score above 2.0 [27].

127 **2.3 Antifungal susceptibility testing**

128 Susceptibility to FLC (Sigma-Aldrich, St. Louis, MO, USA) was conducted using the Clinical
129 and Laboratory Standards Institute broth microdilution method (CLSI-BMD), following the
130 M27-A3 document [28]. Briefly, isolates were suspended in 1 mL phosphate buffered saline
131 (PBS) and diluted in liquid RPMI 1640 medium to 10^3 cells/mL in a 96-well plate, containing
132 a gradient of two-fold dilutions per step of antifungal, with the first well containing no drug.
133 Minimum inhibitory concentrations (MICs) were visually, and densitometry determined as the
134 lowest concentration of drug that caused a significant diminution (MIC/2 or $> 50\%$) compared
135 with that of the drug-free growth control after 24 h of incubation. Quality control was ensured
136 by testing the CLSI-recommended strains *C. parapsilosis* ATCC 22019 and *C. krusei* ATCC
137 6258. For NACS isolates the CLSI breakpoints were applied (resistance to FLC was set at *C.*
138 *albicans*, *C. tropicalis*, and *C. parapsilosis* $\geq 8\mu\text{g/mL}$ and *C. glabrata* $\geq 64\mu\text{g/mL}$) [29]. In the
139 case of *C. auris*, the FLC breakpoint recommended by the US Centers for Disease Control
140 and Prevention (CDC) was used ($\geq 32\mu\text{g/mL}$) [30]. The MIC data obtained under routine
141 conditions for amphotericin B (AMB), caspofungin (CAS), itraconazole (ITC), and
142 voriconazole (VRC) by Etest® (bioMérieux, Marcy-l'Étoile, France) and VITEK®2
143 (bioMérieux) are presented in **Table S1**.

144 **Sequencing analysis of Erg11, Tac1 and Mrr1-encoding genes**

145 All isolates displaying resistance to FLC, and one susceptible isolate of each species were
146 subjected to a single-tube PCR method to amplify and sequence the coding region of
147 the *ERG11*, *TAC1* or *MRR1* genes (both strands) using the primers indicated in **Table S2**. The

148 PCR products were purified and sequenced using a SeqStudio genetic analyzer capillary
149 sequencer (Applied Biosystems). The sequencing results were analyzed by BLAST and
150 compared with the published GenBank sequences: *C. albicans* AY856352.1 (*ERG11*),
151 DQ393587 (*TAC1*), and *C. parapsilosis* GQ302972 (*ERG11*), HE605205 (*MRR1*). For *C.*
152 *auris*, sequences download from the Candida genome database (candidagenome.org) were
153 used, i.e., B9J08_001448 (*C. auris* B8441, *ERG11*) and B9J08_004820 (*TAC1b*). All
154 sequences (FLC-susceptible and resistant clinical isolates plus reference strains) were aligned,
155 and the dataset was used to construct a Neighbor-Joining phylogenetic tree using Maximum
156 Composite Likelihood settings by using Molecular Evolutionary Genetics Analysis Version
157 11 (MEGA11) [31,32]. Codon positions included were 1st + 2nd + 3rd + Noncoding. All
158 positions containing gaps and missing data were eliminated. Evaluation of branch support was
159 performed by Bootstrap statistical analysis with 1000 replicates [31].

160 **Analysis of rhodamine 6G efflux**

161 ABC transporter-mediated efflux was determined using rhodamine 6G (Sigma-Aldrich,
162 USA) as previously described [33]. The fluorescence of the released R6G was measured at
163 530 nm, with an emission at 560 nm in an automated plate reader (Model 550 Microplate
164 Reader Bio-Rad, Milan, Italy). Measurements were made before (basal) and after the addition
165 of 20 mM glucose. Using a R6G calibration curve, the fluorescence intensity was converted
166 into concentration.

167 **Statistics**

168 Experiments were performed in triplicate, in three independent experimental sets. The results
169 were analyzed statistically by the Analysis of Variance One-Way ANOVA. All the analyses
170 were performed using GraphPad Prism version 9 software. In all analyses, p values of 0.05 or
171 less were considered statistically significant.

172 **Results**

173 **Identification and Antifungal susceptibility testing of clinical isolates**

174 The *Candida* species distribution from the 123 blood samples was as follows: *C. albicans*, 46
175 (37.4%); *C. tropicalis*, 33 (26.8%); *C. parapsilosis*, 24 (19.5%); *C. auris*, 10 (8.1%); *C.*
176 *glabrata*, 5 (4.1%); *C. krusei*, 3 (2.4%); and *C. lusitaniae*, 2 (1.6%). Although *C. albicans*
177 was the most prevalent species, accounting for 37.4%, the NACS group comprised 62.6% of
178 the isolates identified. Concerning susceptibility, when applying the CLSI and CDC
179 breakpoints, 22 out of 123 (18%) isolates displayed *in vitro* resistance to FLC, among them,
180 six of *C. albicans*, six of *C. parapsilosis* and seven of *C. auris* (19/23). Moreover, three
181 isolates of *C. krusei* -as *C. krusei* is assumed to be intrinsically resistant to FLC-, were not
182 included within the molecular study. In contrast, all isolates of *C. tropicalis*, *C. glabrata*, and
183 *C. lusitaniae* were FLC-susceptible **Figure 1**.

184 The MICs values obtained for FLC are shown in **Table 1**. The MIC₉₀ values (MICs at which
185 $\geq 90\%$ of strains are inhibited) for the four most frequent species found were: *C. albicans*
186 128 μ g/mL, *C. tropicalis* 2 μ g/mL, *C. parapsilosis* 32 μ g/mL and *C. auris* >128 μ g/mL. As
187 expected, *C. auris* presented the highest MIC₉₀ values. In addition, the range of FLC MICs
188 was narrower for *C. auris* and *C. glabrata* than for the other species. On the other hand, *C.*
189 *tropicalis* showed reduced susceptibility to FLC (MIC₉₀= 2 μ g/mL). Regarding VRC MICs
190 (data obtained by Etest), 10 out of 19 FLC-resistant isolates, excluding *C. krusei*, were VRC
191 cross-resistant. The highest MICs were observed for *C. albicans* (32 μ g/mL) **Table S3**.

192 **Detection of mutations in Erg11, Tac1 and Mrr1-encoding genes of 19 FLC-resistant** 193 **isolates.**

194 By comparing the *ERG11* coding region of *C. albicans* (CAAL, A-F), *C. auris* (CAAU, A-G)
195 and *C. parapsilosis* (CAPA, A-F) FLC-resistant isolates with that of our FLC-susceptible and

196 the published wild-type sequences, we identified 20, 16, and three mutations, respectively. As
197 expected, some silent mutations that do not change the protein sequence were identified (data
198 not shown). The remaining *ERG11* mutations which resulted in amino acid changes are
199 shown in **Figure 2, Table S4**. Among the nonsense mutations (*C. albicans* 6; *C. auris* 5; and
200 *C. parapsilosis* 2), three amino acid substitutions related with FLC-resistance (T220L,
201 Y132F, K143R) were found from which Y132F was the most detected. Additionally, five
202 amino acid substitutions previously described in FLC-susceptible isolates were observed
203 (D116E, K128T, K177R, N335S, E343D). To the best of our knowledge, four amino acid
204 substitutions (K22E, Q38T, F72V, Q77S) have not been previously reported. Overall, eight of
205 the 19 FLC-resistant isolates did not have resistance-associated substitutions.

206 On the other hand, except for isolate CAAL-A, which harbored a K128T substitution in only
207 one *ERG11* allele, other isolates were homozygous for mutations in the *ERG11* allele. In the
208 phylogenetic relationship among FLC-resistant, susceptible isolates and reference strains, a
209 cluster of isolates carrying the substitutions Y132F in *C. auris* was observed, as well as in the
210 FLC-resistant *C. albicans* isolates harboring K128T substitution. In addition, susceptible and
211 resistant isolates without resistance-associated *ERG11* mutations (i.e., T220L, Y132F) from
212 these species were clustered **Figure 2A-B**.

213 Concerning *TAC1* (*C. albicans* and *C. auris*) and *MRR1* (*C. parapsilosis*) genes, no mutations
214 previously associated with FLC-resistance were found. However, 17 Tac1 (*C. albicans*, n=7;
215 *C. auris*, n=10) and Mrr1 (*C. parapsilosis*, n=1) amino acid substitutions previously described
216 in FLC-susceptible isolates were found. Additionally, there were 37 unreported substitutions
217 in Tac1 (*C. albicans*, n=7; *C. auris*, n=26) and Mrr1 (*C. parapsilosis*, n=4) **Figure 2, Table**
218 **S3**.

219 **Efflux Pumps activity**

220 To gain further insights into the mechanisms of azole resistance in the clinical isolates the
221 activity of efflux pumps was evaluated using rhodamine 6G, which uses the same membrane
222 ABC transporters (Cdr1p and Cdr2p) as FLC in *Candida*. Among the 19 FLC-resistant
223 isolates, eight of them showed significant active efflux of rhodamine-6G after addition of
224 glucose: two of them belonging to *C. albicans* (CAAL-C and CAAL-E); four to *C. auris*
225 (CAAU-A, CAAU-B, CAAU-C and CAAU-G) and two to *C. parapsilosis* (CAPA-C, CAPA-
226 F) **Figure 3, Figure 1S**. Interestingly, no amino acid substitutions associated with FLC-
227 resistance were identified in both *C. albicans* isolates (CAAL-C, 128µg/mL), (CAAL-D,
228 128µg/mL). Regarding the remaining isolates that showed efflux pump activity, *C. auris*
229 (CAAU-A, CAAU-B, CAAU-C, CAAU-G) and *C. parapsilosis* (CAPA-C, CAPA-F)
230 harbored the Y132F substitution.

231 In summary, 11/19 resistant isolates harbored an amino acid substitution associated with
232 FLC-resistance; 8/19 displayed efflux pumps activity; 6/19 had both amino acid substitutions
233 and efflux pump activity; and 3/19 isolates did not exhibit any of the mechanisms that could
234 explain their resistant phenotype **Figure 4**.

235 **Discussion**

236 Our study agrees that the three species most found in bloodstream infections in Latin America
237 are *C. albicans*, *C. tropicalis* and *C. parapsilosis* [34,35]. However, the percentage of *C.*
238 *tropicalis* (26.8% vs. 13.6%) and *C. parapsilosis* (19.5% vs. 13.6%) found differs from that
239 observed in the first decade of the 2000s in Colombia [36]. Similar results were found for
240 species distribution in studies conducted at the same hospital between 2003 and 2014,
241 however, we observed a slight increase in NACS (62 ,6% vs. 58%) and the presence of *C.*
242 *auris*, which was not described in these studies [37,38]. In the region, a study that evaluated
243 susceptibility of the species identified in Colombia, Ecuador, and Venezuela, found a
244 percentage of resistance to FLC of 6.8% [39]. This shows that there is an important change in

245 the distribution and rate of resistance, which in our study reached 18%. Nevertheless, the
246 majority of *C. albicans* isolates were azole susceptible, thus the observed resistance
247 percentage is mainly attributed to the presence of *C. auris*, which agrees with previous studies
248 [35,40]. Furthermore, it is noteworthy that 25% of the *C. parapsilosis* isolates were resistant
249 to FLC, which confirms the increase of resistance in this species **Figure 5** [41]. High azole
250 resistance rates have been reported for this species in other single-center studies conducted in
251 Brazil (67.9%), Italy (33%), France (9.2%), Mexico (54%), Saudi Arabia (33%), Spain
252 (13.6%), South Africa (78%) or Turkey (26.4%) [11,13,42–46].

253 Overall, the global data indicate that *C. albicans* remains the predominant species identified in
254 Candida infections. Herein, *C. albicans* was the most predominant species, nevertheless,
255 NACS accounted for a high proportion (62.6%). Although reported resistance rates vary from
256 study to study, the surveillance data collected suggest that azole resistance rates for *C.*
257 *albicans* remain low [35,47]. Remarkably, in this study, the percentage of FLC resistance in
258 *C. albicans* was 15%, which is relatively high.

259 However, *C. albicans* infections in the bloodstream pose a considerable threat in
260 immunocompromised populations and the associated high mortality remains a major problem
261 in the clinical setting. Therefore, *C. albicans* should not be overlooked as a serious public
262 health threat.

263 The acquisition of azole resistance is a serious concern given the limited number of molecules
264 available for the treatment of IFIs. Moreover, this is much more worrying in resource-limited
265 regions where FLC is the only available therapy [48]. As previously described, azole
266 resistance is mainly conferred by mutations in the *ERG11* gene and by the activity of efflux
267 pumps. The *ERG11* gene is highly polymorphic and more than 140 amino acid substitutions
268 have been reported, indicating that this protein is very permissive to conformational changes.

269 Most substitutions occur in three amino acid hotspot regions (105-165, 266-287 and 405-488),
270 although mutations outside these regions can also be found [49,50].

271 In the present study, 11 of the 19 FLC-resistant isolates harbored mutations which have been
272 previously described in resistant isolates (T220L, Y132F, K143R) [11,51]. Notably, the
273 T220L substitution was observed in one *C. albicans* isolate. In *C. auris*, five isolates carried
274 the Y132F, and in the case of *C. parapsilosis* four isolates harbored the Y132F and one the
275 K143R substitution.

276 The substitution of lysine for threonine at position 128 (K128T) was found in CAAL-A,
277 CAAL-B and CAAL-D isolates, which is consistent with the findings of Cernicka *et al.*, and
278 Peron *et al.*, who identified this amino acid substitution in FLC-resistant strains [52,53].
279 However, several studies refute this association because K128T substitution has been found in
280 multiple FLC-susceptible isolates, hence, in this study, we do not consider it as a mutation
281 associated with resistance [25,54]. Nevertheless, it might influence translation efficiency,
282 leading to alterations in protein production as it occurs with nearby mutations such as G129R
283 and Y132F [55].

284 According to Chow and coworkers, mutations contributing to FLC resistance are clade-
285 specific in *C. auris*, being Y132F and K143R the most predominant in clade I, F126L in clade
286 III, and Y132F in clade IV. However, Y132F in Erg11 is the most prevalent one [26]. As
287 described for isolates of clade IV (South America), we found only one mutation: Y132F.
288 Concerning *C. parapsilosis*, high prevalence of the Y132F substitution was also noted in
289 previous studies [56,57]. In addition, the latter suggested that isolates harbouring this
290 mutation may have a higher propensity to cause clonal transmission and to persist in
291 nosocomial settings [58]. Regarding our isolates, the Y132F substitution was detected in four
292 out of six *C. parapsilosis* isolates. However, considering the dates of collection of the isolates,
293 It does not seem to be a clonal spread (**Table S3**).

294 Although previous studies indicate that the Mrr1 substitutions I283R, R479K, G583R,
295 A854V, K873N and L986P are associated with FLC and/or VRC resistance, none of our
296 isolates harbored them [59]. Similar to Tac1, residues located near the C terminus (760, 761,
297 803, 956, and 966) might contribute to azole resistance [47].

298 This study also illustrates that acquired azole resistance commonly relies on combined
299 molecular mechanisms in clinical isolates. In addition to amino acid substitutions in Erg11,
300 six of the 19 isolates also displayed active efflux activity. Interestingly, in two isolates lacking
301 resistance-related mutations, efflux pumps activity was observed. Considering that efflux
302 pumps play a key role in azole resistance, this might be the explanation for the observed
303 phenotype. However, a further study evaluating the expression of all genes involved in efflux
304 pump activity is required.

305 Regarding the isolates in which no mechanism for resistance was found, namely CAAL-A-E,
306 CAAU-D, CAAU-E and CAPA-A, six novel Tac1 or Mrr1 substitutions (G52R, V366del,
307 F682T, F683L, T695S and P229A) were identified in three of the five isolates. Moreover,
308 four novel Erg11 substitutions (K22E, Q38T, F72V, Q77S) in the FLC resistant *C. albicans*
309 (CAAL-B, CAAL-C) and *C. auris* (CAAU-B) were found. The putative role of these
310 substitutions remains to be investigated. In isolates CAAL-A-D and CAAU-E, a different
311 mechanism to those evaluated here should confer resistance; further analysis is ongoing.

312 Our study has some limitations. For instance, the AST data obtained for antifungals other than
313 FLC are not complete and were not performed by BMD. The molecular basis of FLC
314 resistance was investigated only by analysis of the *ERG11*, *TAC1*, and *MRR1* genes, while
315 other mechanisms conferring resistance, such as sterol composition and gene expression, were
316 not investigated due to lack of funds. Finally, the clinical description of the patients was
317 missing and will be reported alongside other patients infected by *Candida* antifungal resistant
318 strains elsewhere.

319 Recently, the WHO published a list of priority pathogenic fungi (FPP) which includes *C.*
320 *albicans*, *C auris* (Critical group), and *C. parapsilosis* (high group). The WHO describes that
321 to overcome the lack of knowledge on infections caused by these fungi, more data and
322 evidence on fungal infections and antifungal resistance to inform and improve response to
323 FPP is needed [60]. Although our study does not have a large number of isolates and does not
324 include other healthcare institutions, we provide evidence of endemic isolates harboring
325 resistance mutations to one of the most used molecules in the hospital setting.

326 In conclusion, we describe the presence of *Candida* spp isolates harboring Erg11 FLC
327 resistant-related substitutions (Y132F, K143R and T220L) in patients admitted to a
328 Colombian hospital. Although FLC-resistance rates differ significantly between countries and
329 individual health facilities, the resistance rate in our study is relatively high, emphasizing the
330 need for active surveillance to prevent further expansion of FLC-resistant *Candida* spp
331 isolates in the clinical setting.

332 **Funding**

333 The research office of Hospital Universitario San Ignacio and the Vice-Rectorry of research at
334 the Pontificia Universidad Javeriana in Bogotá, Colombia, supported the research (grants
335 no.2014-52 and 20454).

336 **Ethics approval and consent to participate**

337 The research and ethics committee of the Hospital Universitario San Ignacio (HUSI)
338 approved this study (no. FM-CIE-8053-14). All patients are anonymized and only the code of
339 isolates was transferred for this investigation. Therefore, no informed consent was required.

340 **Competing interests**

341 The authors declare that they have no competing interests.

342 **Author contributions:**

343 AP carried out the experiments; Y.V-C contributed to the development of efflux pumps
344 protocol; AC-G, and AP analyzed the data; AC-G wrote the main manuscript; AP, SV-B, BA,
345 and CP-G review and editing; and CP-G conceived the experiments and managed the
346 resources. All authors have read and agreed to the published version of the manuscript.

347 **References**

- 348 1 Koehler P, Stecher M, Cornely OA *et al.* Morbidity and mortality of candidaemia in
349 Europe: an epidemiologic meta-analysis. *Clin Microbiol Infect* 2019; **25**: 1200–1212.
- 350 2 Pappas PG, Lionakis MS, Arendrup MC, Ostrosky-Zeichner L, Kullberg BJ. Invasive
351 candidiasis. *Nat Rev Dis Prim* 2018; **4**: 1–20.
- 352 3 Pemán J, Cantón E, Gobernado M. Epidemiology and antifungal susceptibility of
353 *Candida* species isolated from blood: results of a 2-year multicentre study in Spain. *Eur*
354 *J Clin Microbiol Infect Dis* 2005; **24**: 23–30.
- 355 4 Lamoth F, Lockhart SR, Berkow EL, Calandra T. Changes in the epidemiological
356 landscape of invasive candidiasis. *J Antimicrob Chemother* 2018; **73**: i4–i13.
- 357 5 Chen J, Tian S, Han X *et al.* Is the superbug fungus really so scary? A systematic
358 review and meta-analysis of global epidemiology and mortality of *Candida auris*. *BMC*
359 *Infect Dis* 2020; **20**: 827.
- 360 6 Carradori S, Ammazalorso A, De Filippis B *et al.* Azole-Based Compounds That Are
361 Active against *Candida* Biofilm: In Vitro, In Vivo and In Silico Studies. *Antibiot* 2022,
362 *Vol 11, Page 1375* 2022; **11**: 1375.
- 363 7 Sheehan DJ, Hitchcock CA, Sibley CM. Current and emerging azole antifungal agents.
364 *Clin Microbiol Rev* 1999; **12**: 40–79.
- 365 8 Morio F, Jensen RH, Le Pape P, Arendrup MC. Molecular basis of antifungal drug

- 366 resistance in yeasts. *Int J Antimicrob Agents* 2017; **50**: 599–606.
- 367 9 Carolus H, Pierson S, Muñoz JF *et al.* Genome-wide analysis of experimentally
368 evolved candida auris reveals multiple novel mechanisms of multidrug resistance.
369 *MBio* 2021; **12**. doi:10.1128/mBio.03333-20.
- 370 10 Govender NP, group on behalf of the T-SA, Patel J *et al.* Emergence of azole-resistant
371 Candida parapsilosis causing bloodstream infection: results from laboratory-based
372 sentinel surveillance in South Africa. *J Antimicrob Chemother* 2016; **71**: 1994–2004.
- 373 11 Arastehfar A, Daneshnia F, Hilmioglu-Polat S *et al.* First report of candidemia clonal
374 outbreak caused by emerging fluconazole-resistant candida parapsilosis isolates
375 harboring Y132F and/or Y132F+K143R in Turkey. *Antimicrob Agents Chemother*
376 2020; **64**. doi:10.1128/AAC.01001-20/SUPPL_FILE/AAC.01001-20-S0001.PDF.
- 377 12 Castanheira M, Deshpande LM, Messer SA, Rhomberg PR, Pfaller MA. Analysis of
378 global antifungal surveillance results reveals predominance of Erg11 Y132F alteration
379 among azole-resistant Candida parapsilosis and Candida tropicalis and country-specific
380 isolate dissemination. *Int J Antimicrob Agents* 2020; **55**.
381 doi:10.1016/J.IJANTIMICAG.2019.09.003.
- 382 13 Díaz-García J, Gómez A, Alcalá L *et al.* Evidence of Fluconazole-Resistant Candida
383 parapsilosis Genotypes Spreading across Hospitals Located in Madrid, Spain and
384 Harboring the Y132F ERG11p Substitution. *Antimicrob Agents Chemother* 2022; **66**.
385 doi:10.1128/AAC.00710-22.
- 386 14 Asadzadeh M, Ahmad S, Al-Sweih N, Khan Z. Epidemiology and Molecular Basis of
387 Resistance to Fluconazole Among Clinical Candida parapsilosis Isolates in Kuwait.
388 *Microb Drug Resist* 2017; **23**: 966–972.

- 389 15 Berkow EL, Manigaba K, Parker JE, Barker KS, Kelly SL, Rogers PD. Multidrug
390 Transporters and Alterations in Sterol Biosynthesis Contribute to Azole Antifungal
391 Resistance in *Candida parapsilosis*. *Antimicrob Agents Chemother* 2015; **59**: 5942–
392 5950.
- 393 16 Ceballos-Garzon A, Wintaco-Martínez LM, Velez N *et al.* Persistence of clonal azole-
394 resistant isolates of *Candida albicans* from a patient with chronic mucocutaneous
395 candidiasis in Colombia. *J Glob Infect Dis* 2020; **12**: 16–20.
- 396 17 Costa-De-Oliveira S, Rodrigues AG. *Candida albicans* Antifungal Resistance and
397 Tolerance in Bloodstream Infections: The Triad Yeast-Host-Antifungal.
398 *microorganisms* 2020; **8**: 1–19.
- 399 18 Rojas AE, Pérez JE, Hernández JS *et al.* Análisis cuantitativo de la expresión de genes
400 de resistencia a fluconazol en cepas de *Candida albicans* aisladas al ingreso de adultos
401 mayores a una unidad de cuidados intensivos de Manizales, Colombia. *Biomédica*
402 2020; **40**: 153–165.
- 403 19 Pristov KE, Ghannoum MA. Resistance of *Candida* to azoles and echinocandins
404 worldwide. *Clin Microbiol Infect* 2019; **25**: 792–798.
- 405 20 Shapiro RS, Robbins N, Cowen LE. Regulatory Circuitry Governing Fungal
406 Development, Drug Resistance, and Disease. *Microbiol Mol Biol Rev* 2011; **75**: 213–
407 267.
- 408 21 Costa-de-oliveira S, Rodrigues AG. *Candida albicans* antifungal resistance and
409 tolerance in bloodstream infections: The triad yeast-host-antifungal. *Microorganisms*.
410 2020; **8**. doi:10.3390/microorganisms8020154.
- 411 22 Coste A, Turner V, Ischer F *et al.* A mutation in Tac1p, a transcription factor regulating

- 412 CDR1 and CDR2, is coupled with loss of heterozygosity at chromosome 5 to mediate
413 antifungal resistance in *Candida albicans*. *Genetics* 2006; **4**: 2139–56.
- 414 23 Liu J-Y, Wei B, Wang Y *et al*. The H741D mutation in Tac1p contributes to the
415 upregulation of CDR1 and CDR2 expression in *Candida albicans*. *Brazilian J*
416 *Microbiol* 2020; **51**: 1553–1561.
- 417 24 Cowen LE, Sanglard D, Howard SJ, Rogers PD, Perlin DS. Mechanisms of Antifungal
418 Drug Resistance. *Cold Spring Harb Perspect Med* 2014; **5**: 019752.
- 419 25 Flowers SA, Colón B, Whaley SG, Schuler MA, David Rogers P. Contribution of
420 clinically derived mutations in ERG11 to azole resistance in *Candida albicans*.
421 *Antimicrob Agents Chemother* 2015; **59**: 450–460.
- 422 26 Chow NA, Muñoz JF, Gade L *et al*. Tracing the evolutionary history and global
423 expansion of *Candida auris* using population genomic analyses. *MBio* 2020; **11**.
424 doi:10.1128/mBio.03364-19.
- 425 27 Ceballos-Garzon A, Amado D, Vélez N, Jiménez-A MJ, Rodríguez C, Parra-Giraldo
426 CM. Development and Validation of an in-House Library of Colombian *Candida auris*
427 Strains with MALDI-TOF MS to Improve Yeast Identification. *J Fungi* 2020; **6**: 1–9.
- 428 28 CLSI. M27-A3 Reference Method for Broth Dilution Antifungal Susceptibility Testing
429 of Yeasts—Third Edition. *Clin Lab Stand Inst* 2008; **37**: 1–2.
- 430 29 CLSI. M60ed1e: Performance Standards for Antifungal Susceptibility Testing of
431 Yeasts, 2nd ed.; Clinical and Laboratory Standards Institute: Wayne, PA, USA. 2018.
- 432 30 CDC. Centers for Disease Control and Prevention. Antifungal Susceptibility Testing
433 and Interpretation to Laboratorians and Health Professionals. Access date: 07-07-21.
434 <https://www.cdc.gov/fungal/candida-auris/c-auris-antifungal.html>.

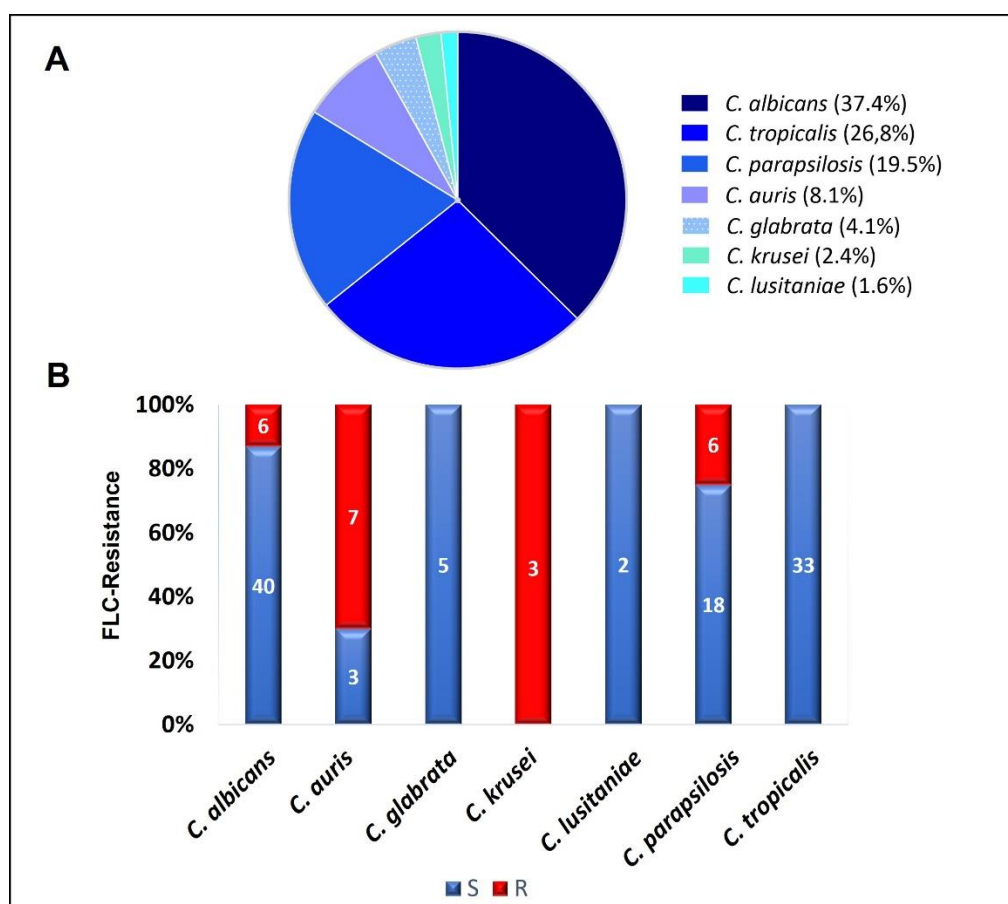
- 435 2020.<https://www.cdc.gov/fungal/candida-auris/> (accessed 10 Jul2021).
- 436 31 Tamura K, Stecher G, Kumar S. MEGA11: Molecular Evolutionary Genetics Analysis
437 Version 11. *Mol Biol Evol* 2021; **38**: 3022–3027.
- 438 32 Saitou N, Nei M. The neighbor-joining method: a new method for reconstructing
439 phylogenetic trees. *Mol Biol Evol* 1987; **4**: 406–425.
- 440 33 Gbelska Y, Toth Hervay N, Dzugasova V, Konecna A. Measurement of Energy-
441 dependent Rhodamine 6G Efflux in Yeast Species. *BIO-PROTOCOL* 2017; **7**: 1–5.
- 442 34 Nucci M, Queiroz-Telles F, Alvarado-Matute T *et al.* Epidemiology of Candidemia in
443 Latin America: A Laboratory-Based Survey. *PLoS One* 2013; **8**: e59373.
- 444 35 Pfaller MA, Diekema DJ, Turnidge JD, Castanheira M, Jones RN. Twenty years of the
445 SENTRY Antifungal Surveillance Program: Results for Candida species from 1997-
446 2016. *Open Forum Infect Dis* 2019; **6**: S79–S94.
- 447 36 Cortés JA, Reyes P, Gómez C, Buitrago G, Leal AL. Fungal bloodstream infections in
448 tertiary care hospitals in Colombia. *Rev Iberoam Micol* 2011; **28**: 74–78.
- 449 37 Torres D NA, Álvarez M CA, Rondón S MA. Evaluación mediante tres técnicas de
450 susceptibilidad a fluconazol en especies de Candida aisladas en pacientes con
451 infecciones invasoras: Bogotá - Colombia. *Rev Chil infectología* 2009; **26**: 135–143.
- 452 38 Barahona-Correa J, Calvo-Valderrama M, Romero-Alvernia D *et al.* Epidemiology of
453 Candidemia at a University Hospital in Colombia. *Univ Medica* 2019; **60**: 1–9.
- 454 39 De bedout C, Ayabaca J, Vega R *et al.* Evaluation of Candida species' susceptibility to
455 fluconazole with the disk diffusion method]. *Biomedica* 2003; **1**: 31–37.
- 456 40 Sathi FA, Paul SK, Ahmed S *et al.* Prevalence and Antifungal Susceptibility of

- 457 Clinically Relevant Candida Species, Identification of Candida auris and Kodamaea
458 ohmeri in Bangladesh. *Trop Med Infect Dis* 2022; **7**: 211.
- 459 41 Escribano P, Guinea J. Fluconazole-resistant Candida parapsilosis: A new emerging
460 threat in the fungi arena. *Front Fungal Biol* 2022; **0**: 69.
- 461 42 Fekkar A, Blaize M, Bouglé A *et al.* Hospital outbreak of fluconazole-resistant candida
462 parapsilosis: Arguments for clonal transmission and long-term persistence. *Antimicrob*
463 *Agents Chemother* 2021; **65**. doi:10.1128/AAC.02036-20/SUPPL_FILE/AAC.02036-
464 20-S000S1.PDF.
- 465 43 Mesini A, Mikulska M, Giacobbe DR *et al.* Changing epidemiology of candidaemia:
466 Increase in fluconazole-resistant Candida parapsilosis. *Mycoses* 2020; **63**: 361–368.
- 467 44 Corzo-Leon DE, Peacock M, Rodriguez-Zulueta P, Salazar-Tamayo GJ, MacCallum
468 DM. General hospital outbreak of invasive candidiasis due to azole-resistant Candida
469 parapsilosis associated with an Erg11 Y132F mutation. *Med Mycol* 2021; **59**: 664–671.
- 470 45 Thomaz DY, de Almeida JN, Sejas ONE *et al.* Environmental Clonal Spread of Azole-
471 Resistant Candida parapsilosis with Erg11-Y132F Mutation Causing a Large
472 Candidemia Outbreak in a Brazilian Cancer Referral Center. *J Fungi* 2021, Vol 7, Page
473 259 2021; **7**: 259.
- 474 46 Magobo RE, Lockhart SR, Govender NP. Fluconazole-resistant Candida parapsilosis
475 strains with a Y132F substitution in the ERG11 gene causing invasive infections in a
476 neonatal unit, South Africa. *Mycoses* 2020; **63**: 471–477.
- 477 47 Nishimoto AT, Sharma C, Rogers PD. Molecular and genetic basis of azole antifungal
478 resistance in the opportunistic pathogenic fungus Candida albicans. *J Antimicrob*
479 *Chemother* 2020; **75**: 257–270.

- 480 48 Kneale M, Bartholomew JS, Davies E, Denning DW. Global access to antifungal
481 therapy and its variable cost. *J Antimicrob Chemother* 2016; **71**: 3599–3606.
- 482 49 Oliveira-Carvalho V, Del Negro GMB. Is the S405F mutation in *Candida albicans*
483 ERG11 gene sufficient to confer resistance to fluconazole? *J Mycol Med* 2014; **24**:
484 241–242.
- 485 50 Debnath S, Addya S. Structural basis for heterogeneous phenotype of ERG11
486 dependent Azole resistance in *C. albicans* clinical isolates. *Springerplus* 2014; **3**.
487 doi:10.1186/2193-1801-3-660.
- 488 51 Healey KR, Kordalewska M, Ortigosa CJ *et al.* Limited ERG11 mutations identified in
489 isolates of *Candida auris* directly contribute to reduced azole susceptibility. *Antimicrob*
490 *Agents Chemother* 2018; **62**. doi:10.1128/AAC.01427-18.
- 491 52 Cernicka J, Subik J. Resistance mechanisms in fluconazole-resistant *Candida albicans*
492 isolates from vaginal candidiasis. *Int J Antimicrob Agents* 2006; **27**: 403–408.
- 493 53 Peron IH, Reichert-Lima F, Busso-Lopes AF *et al.* Resistance surveillance in *Candida*
494 *albicans*: A five-year antifungal susceptibility evaluation in a Brazilian University
495 Hospital. *PLoS One* 2016; **11**. doi:10.1371/journal.pone.0158126.
- 496 54 Morio F, Loge C, Besse B, Hennequin C, Le Pape P. Screening for amino acid
497 substitutions in the *Candida albicans* Erg11 protein of azole-susceptible and azole-
498 resistant clinical isolates: new substitutions and a review of the literature. *Diagn*
499 *Microbiol Infect Dis* 2010; **66**: 373–384.
- 500 55 Kumar A, Nair R, Kumar M *et al.* Assessment of antifungal resistance and associated
501 molecular mechanism in *Candida albicans* isolates from different cohorts of patients in
502 North Indian state of Haryana. *Folia Microbiol* 2020 654 2020; **65**: 747–754.

- 503 56 Grossman NT, Pham CD, Cleveland AA, Lockhart SR. Molecular mechanisms of
504 fluconazole resistance in *Candida parapsilosis* isolates from a U.S. surveillance system.
505 *Antimicrob Agents Chemother* 2015; **59**: 1030–7.
- 506 57 Choi YJ, Kim YJ, Yong D *et al.* Fluconazole-Resistant *Candida parapsilosis*
507 Bloodstream Isolates with Y132F Mutation in ERG11 Gene, South Korea. *Emerg*
508 *Infect Dis* 2018; **24**: 1768.
- 509 58 Thomaz DY, De Almeida JN, Lima GME *et al.* An azole-resistant *Candida parapsilosis*
510 outbreak: Clonal persistence in the intensive care unit of a Brazilian teaching hospital.
511 *Front Microbiol* 2018; **9**: 2997.
- 512 59 Branco J, Silva AP, Silva RM *et al.* Fluconazole and voriconazole resistance in
513 *Candida parapsilosis* is conferred by gain-of-function mutations in MRR1 transcription
514 factor gene. *Antimicrob Agents Chemother* 2015; **59**. doi:10.1128/AAC.00842-15.
- 515 60 World Health Organization (WHO). Fungal priority pathogens list to guide research,
516 development and public health action.
517 2022<https://www.who.int/publications/i/item/9789240060241> (accessed 3 Nov2022).
518
519
520
521
522
523
524

525
526
527
528
529
530
531



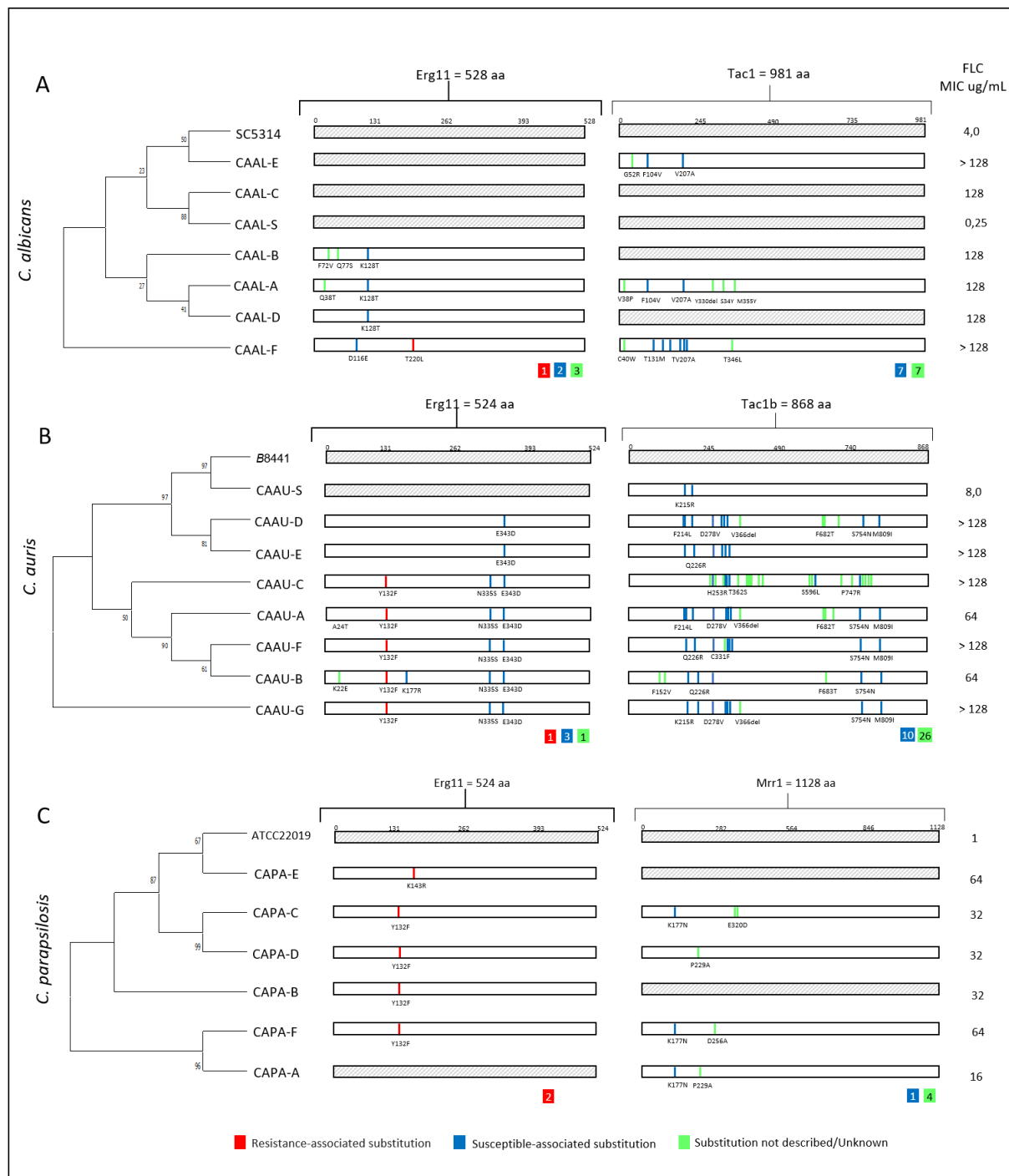
532

533 **Figure 1. Species distribution and overall fluconazole susceptibility results.**

534 **A)** Distribution of the 123 species identified. **B)** Percentage of fluconazole resistance. The
535 number of isolates is indicated inside the bars. Susceptible (S) isolates are depicted in blue
536 and resistant (R) isolates in red.

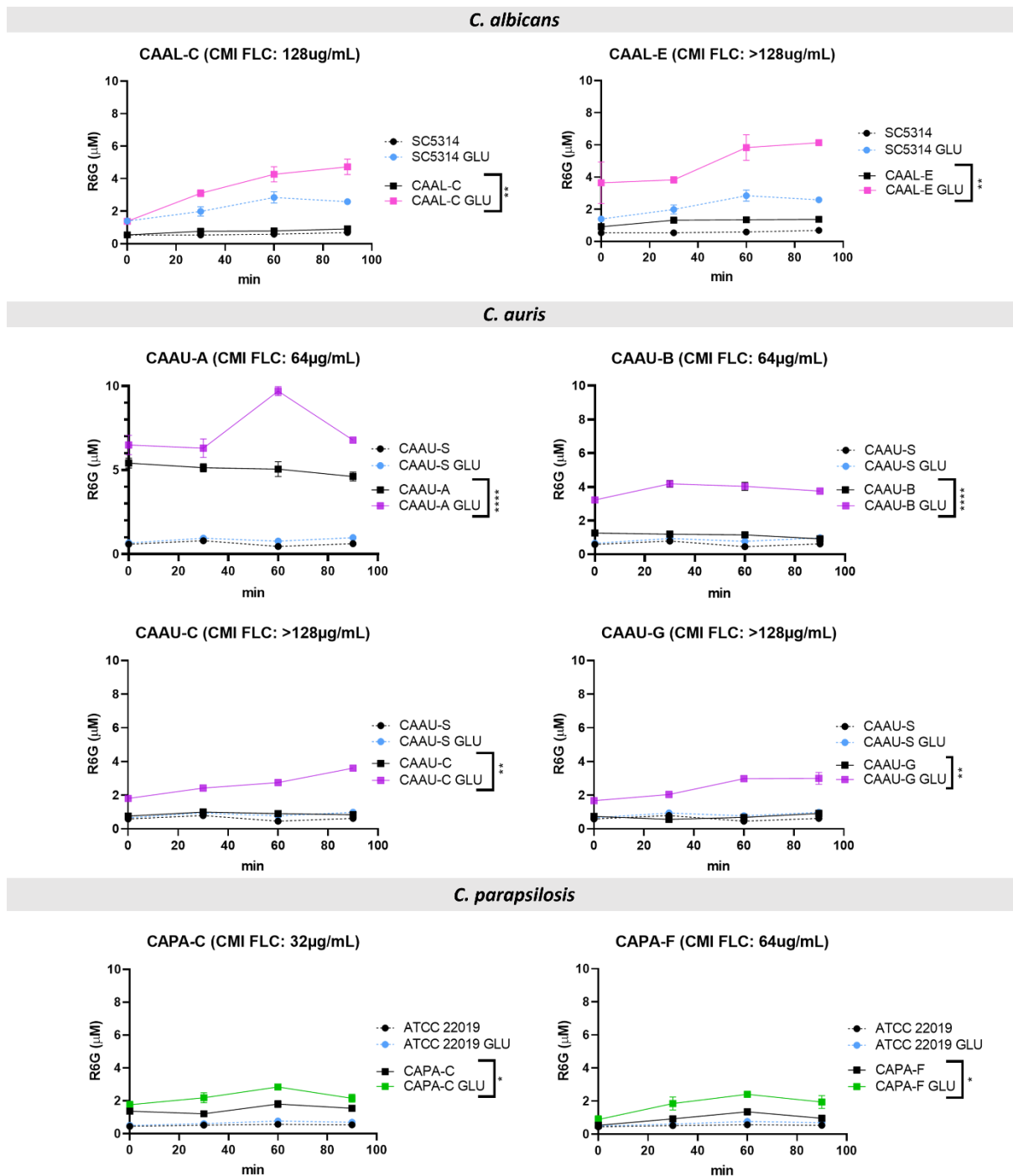
537

538
539
540



541
542
543
544
545
546

Figure 2. Phylogenetic tree and amino acid substitutions found in fluconazole-resistant isolates of **A)** *C. albicans* (CAAL), **B)** *C. auris* (CAAU) and **C)** *C. parapsilosis* (CAPA). aa., amino acids. FLC: fluconazole; MIC: minimal inhibitory concentration. CA-S., *Candida* FLC-susceptible. Inside the colored squares, the number of substitutions found is indicated.



547

548 **Figure 3.** Rhodamine 6G (R6G) efflux over time among fluconazole-resistant isolates.
 549 Colored lines indicate the concentration of R6G released after the addition of 20 mM glucose
 550 (GLU). Data are means \pm SD from three experiments. * $p < 0.05$, ** $p < 0.01$, *** $p < 0.001$.
 551 **** $p \leq 0.0001$. FLC: fluconazole; MIC: minimal inhibitory concentration.

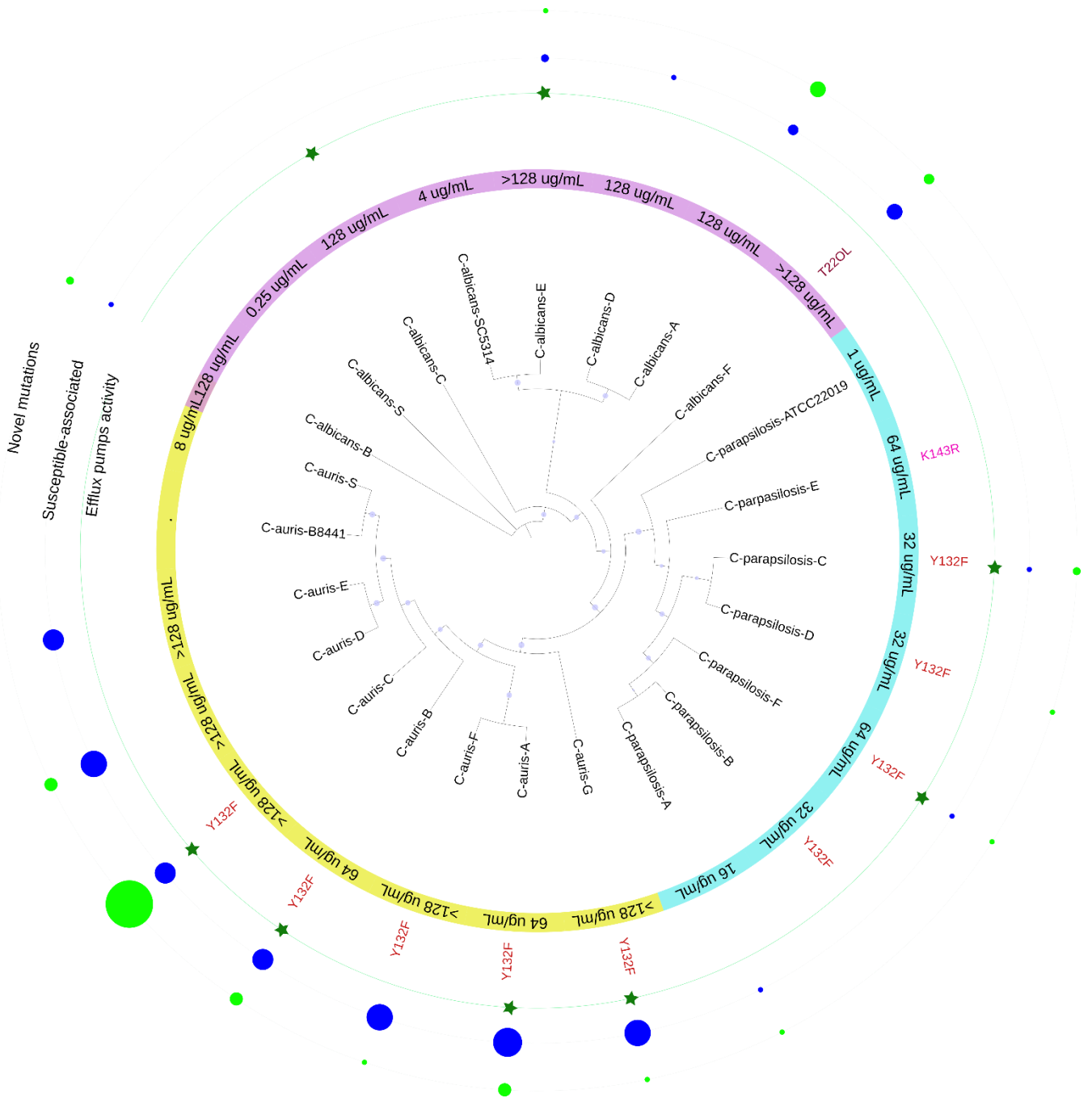
552

553

554

555

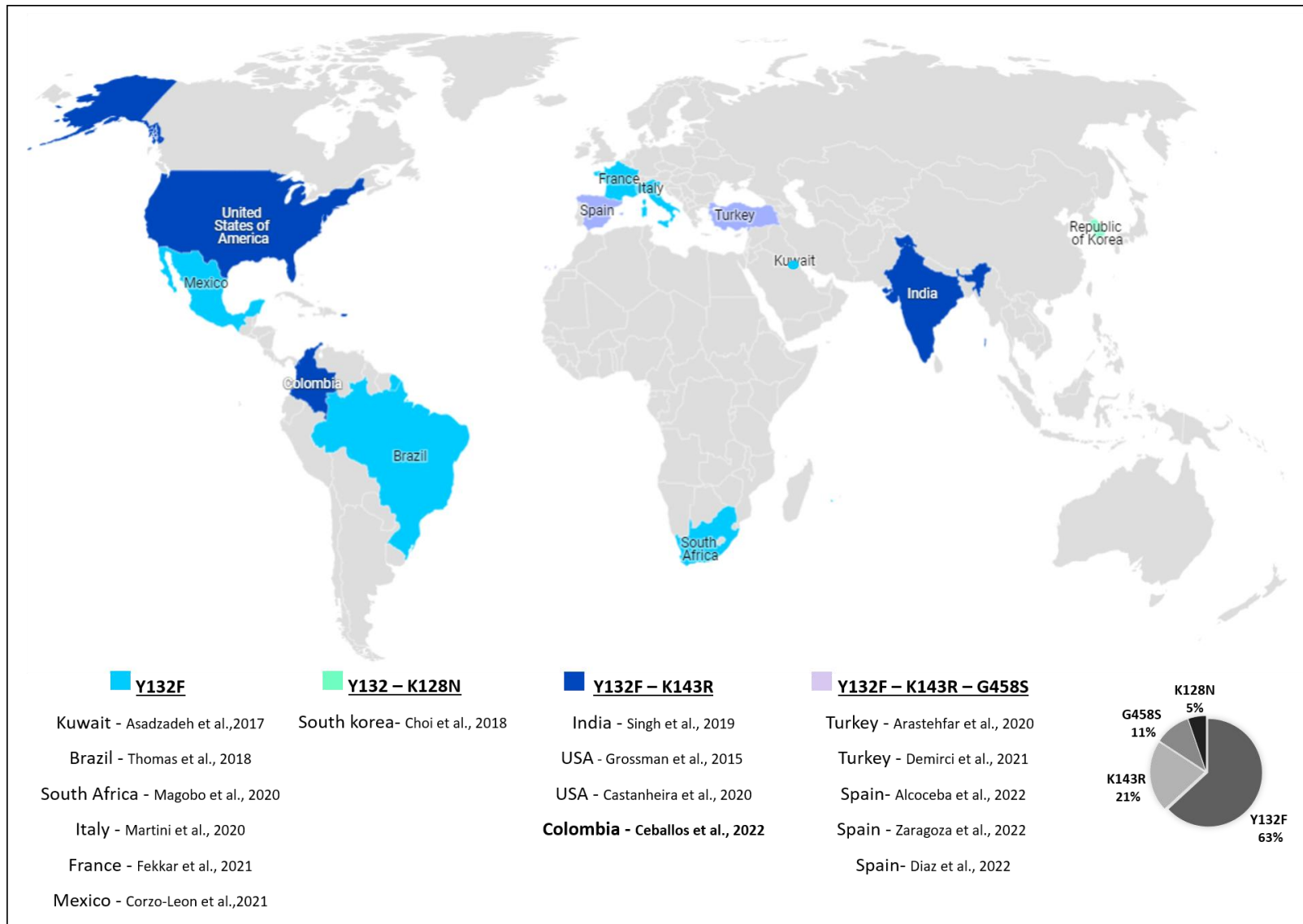
556



557

558 **Figure 4.** Schematic representation of the results obtained in this study for the 19 FLC-
 559 resistant isolates. In purple *C. albicans*, light blue *C. parapsilosis* and yellow *C. auris* isolates
 560 with their respective MICs against FLC. In red font, the mutations found. The green stars
 561 indicate isolates with significant efflux pump activity. The size of the circle reflects the
 562 number of mutations, those not associated with FLC resistance (blue) and the new mutations
 563 (light green).

564



565

566 **Figure 5. Countries reporting Erg11 substitutions in azole-resistant *C. parapsilosis*.**

567

568 **Table 1.** Antifungal activity of fluconazole drug against *Candida* spp (n = 123) performed by CLSI.

569

570

571 MIC₅₀ and MIC₉₀ values (MICs at which $\geq 50\%$ and $\geq 90\%$ of the strains are inhibited, respectively) are depicted in bold and underlined,

Species	Drug	Number (and cumulative percentage) of <i>Candida</i> spp strains with MIC $\mu\text{g/mL}$															Total	Range	
		≤ 0.015	0.03	0.06	0.125	0.25	0.50	1	2	4	8	16	32	64	128	>128			
<i>C. albicans</i>	FLC	4 (9)	1 (11)		1 (13)	19 (54)	9 (74)	3 (80)	1 (83)	2 (87)						<u>4 (96)</u>	2 (100)	46	≤ 0.015 ->128
<i>C. auris</i>	FLC								1 (10)			2 (30)		2 (50)		<u>5 (100)</u>		10	2->128
<i>C. glabrata</i>	FLC						1 (20)	1 (40)	2 (80)	<u>1 (100)</u>								5	1-8.
<i>C. krusei</i>	FLC										1 (33)		2 (100)					3	≤ 0.015 -4
<i>C. lusitanae</i>	FLC								2 (100)									2	2
<i>C. parapsilosis</i>	FLC	2 (8)			1 (13)		3 (25)	5 (46)	3 (58)	4 (75)		1 (79)	<u>3 (92)</u>	2 (100)				24	≤ 0.015 -64
<i>C. tropicalis</i>	FLC			4 (12)			6 (30)	10 (61)	3 (70)	<u>8 (94)</u>	2 (100)							33	0.06-4
Overall																	123		

572

respectively.

573

574

575

576

577