

13 **Abstract**

14 Background: Structural changes caused by spinal curvature may impact the organs
15 within the thoracic cage, including the heart. Cardiac abnormalities in idiopathic
16 scoliosis patients are often studied post-corrective surgery or secondary to diseases.
17 To investigate cardiac structure, function, and outcomes in participants with
18 scoliosis, phenotype and imaging data of the UK Biobank (UKB) adult population
19 cohort was analysed.

20 Methods: Hospital episode statistics of 502,324 adults were analysed to identify
21 participants with scoliosis. Summary 2D cardiac phenotypes from 39,559 cardiac
22 magnetic resonance imaging (CMR) scans were analysed alongside a 3D surface-
23 to-surface (S2S) analysis.

24 Results: A total of 4,095 (0.8%, 1 in 120) UKB participants were identified to have all-
25 cause scoliosis. These participants had increased lifetime risk of major adverse
26 cardiac events (MACE) (HR=1.45, $P<0.001$), driven by heart failure (HR=1.58,
27 $P<0.001$) and atrial fibrillation (HR=1.54, $P<0.001$). Increased radial and decreased
28 longitudinal peak diastolic strain rates were identified in participants with scoliosis
29 (+0.29, $P_{adj}<0.05$; -0.25, $P_{adj}<0.05$; respectively). Cardiac compression of the top and
30 bottom of the heart and decompression of the sides was observed through S2S
31 analysis. Additionally, associations between scoliosis and older age, female sex,
32 heart failure, valve disease, hypercholesterolemia, hypertension, and decreased
33 enrolment for CMR, were identified.

34 Conclusion: The spinal curvature observed in participants with scoliosis alters the
35 movement of the heart. The association with increased MACE may have clinical

36 implications for whether to undertake surgical correction. This work identifies, in an
37 adult population, evidence for altered cardiac function and increased lifetime risk of
38 MACE in participants with scoliosis. Future genetic analyses would aid to assess
39 causality.

40 **Keywords:** Scoliosis, heart, MACE, UK Biobank

41

42 **Introduction**

43 Scoliosis is the lateral curvature of the spine with a Cobb angle $>10^\circ$, primarily
44 diagnosed in adolescents[1]. There are multiple aetiologies of scoliosis including
45 neuromuscular, congenital, syndromic, or secondary to other diseases such as
46 muscular dystrophy or Friedreich's ataxia[2]. However, the most common type is
47 idiopathic scoliosis, with a prevalence of 8% in adults aged over 40 years old[3–5]. In
48 later life, scoliosis can result from skeletal muscle diseases such as sarcopenia.
49 Sarcopenia is the loss of muscle mass associated with age that may cause
50 imbalance and alteration on the supportive muscles of the spine, contributing to the
51 progression of degenerative scoliosis in elderly patients[6,7]. Degenerative scoliosis
52 is observed in 68% of adults aged over 60 years old, as the joints and disks of the
53 spine begin to deteriorate[7]. Osteopenia, loss of bone density, is more frequently
54 observed in females and contributes to the severity of the curvature of the spine[8].
55 Furthermore, the coexistence of congenital heart disease (CHD) and spinal
56 curvature is found in up to 12% of infant and juvenile scoliosis patients presenting
57 with CHD[9,10]. This is likely due to shared developmental aetiology, whereas
58 studies are lacking on the impact of age-related scoliosis on the functioning of a
59 developmentally normal heart.

60

61 In addition to impacting physical day-to-day activities, structural disruption of the
62 thoracic cage (pectus deformity) can influence the organs within, such as the
63 heart[11]. Pectus deformities lead to the displacement of the heart towards the left
64 side of the body which can result in right-sided spinal curvatures as the beating heart
65 pushes the thoracic vertebrae to the right[7,11]. Furthermore, the degree of
66 curvature of the spine can greatly increase the risk of restrictive lung disease, which

67 in conjunction with intrathoracic organ displacement, increases the risk of
68 comorbidities with high mortality rates, such as right heart failure[3,12].

69

70 The impact of scoliosis on adult cardiac function has not been extensively studied
71 and the relationship between scoliosis and non-congenital cardiac manifestations is
72 not well characterised. In the UK Biobank adult population cohort, we explored
73 whether all-cause scoliosis has an impact on or relationship with cardiac phenotypes
74 of the matured adult heart. We identify altered radial and longitudinal peak diastolic
75 strain rates and an increased lifetime risk of major adverse cardiovascular effects
76 (MACE) in participants with scoliosis in the UK Biobank. In addition, we observe
77 associations between scoliosis and older age, female sex, heart failure, valve
78 disease, hypercholesterolemia, diagnosis of hypertension, and decreased enrolment
79 for cardiac magnetic resonance imaging.

80 **Methods**

81 *The UK Biobank population cohort*

82 The UK Biobank (UKB) recruited over 500,000 participants aged 40-69 years across
83 the UK between 2006-2010 (National Research Ethics Service, 11/NW/0382,
84 21/NW/0157)[13]. This project was conducted under the UK Biobank applications
85 47602 and 40616. All participants provided written informed consent[14].

86

87 *UK Biobank codes for identification of scoliosis*

88 A diagnosis of scoliosis was identified for UKB participants through the first
89 occurrence of scoliosis trait (M41*), a composite trait of the first reported date
90 derived by the UKB that incorporates data from primary care, hospital inpatient
91 admissions, death records, and self-reported medical conditions (**Table 2**).

92

93 *Cardiac magnetic resonance imaging data*

94 Amongst all UKB participants, 39,559 participants had cardiac MRI (CMR) data
95 available[15]. Imaging was performed using a 1.5 Tesla machines (MAGNETOM
96 Aera, Siemens Healthcare)[15], and 2D summary CMR traits were analysed for an
97 association with scoliosis. This includes left ventricular ejection fraction (LVEF), left
98 ventricular end systolic volume (LVESV), left ventricular end diastolic volume
99 (LVEDV), and measures of cardiac strain: Eulerian radial strain (Err), Eulerian
100 longitudinal strain (E_{ll}), Eulerian circumferential strain (E_{cc}), radial peak diastolic
101 strain rate (PDSR_{rr}), and longitudinal peak diastolic strain rate (PDRS_{ll}). All CMR
102 traits were adjusted for age at the time of imaging, sex, White British ancestry,
103 systolic blood pressure (SBP), and body surface area (BSA).

104

105 *Surface to surface analysis*

106 A mass univariate regression was utilised to explore associations between the three-
107 dimensional (3D) mesh-derived phenotype and scoliosis[16–19]. The underlying
108 principle of this approach is the implementation of a linear regression at each vertex
109 of the 3D atlas to derive a regression coefficient associated with the variable of
110 interest, which results in a map of beta-coefficients showing the strength and
111 direction of these associations. The analysis was adjusted for age at the time of
112 imaging, sex, White British ancestry, BSA, diastolic blood pressure (DBP), and SBP.

113

114 *Lifetime risk and survival analyses*

115 Lifetime risk of disease, from birth month to January 2021, was assessed using the
116 first occurrence of scoliosis trait (M41*). The first occurrence of health outcomes
117 summary data in the UKB is reported using ICD10 codes[13]. The fields analysed for
118 the major adverse cardiovascular events (MACE) composite trait were as follows:
119 cardiac arrest, I46*; atrial fibrillation and flutter/arrhythmia: I48* and I49*; heart
120 failure, I50*; and stroke, I64*, as previously published[20]. The survival analysis was
121 conducted using MACE and death as the primary outcome. *Survival* and *survminer*
122 R packages were used to estimate hazard ratios (HR).

123

124 *Statistical analysis*

125 R programming language (version 3.6.0) and RStudio software (version 1.3.1073)
126 were used for analyses. Categorical variables were assessed using Chi-Squared
127 Test or Fisher's Exact Test and expressed as percentages. Continuous variables
128 were assessed using Student's t-test and expressed as mean \pm standard deviation

129 (SD). All P-values were adjusted using Bonferroni correction for multiple
130 comparisons where $P_{adj} < 0.05$ was deemed significant.

131 In the association of disease analysis, all variables were adjusted for age at
132 recruitment (UKB ID: 21022-0.0) and genetic data-derived sex (UKB ID:22001-0.0)
133 using a multiple linear regression model. A separate multiple linear regression model
134 for CMR traits was used to adjust for covariates at the time of imaging: age, sex,
135 White British ancestry, SBP, and BSA.

136 **Results**

137 *Prevalence of scoliosis in the UK Biobank*

138 The prevalence of all-cause scoliosis in 502,324 participants of the UKB was 1 in
139 120 (n=4,095; 0.8%). Of the 4,095 participants with scoliosis, 1,489 (37%) were
140 diagnosed with scoliosis prior recruitment. From the total participants with scoliosis,
141 10 (0.2%) reported congenital scoliosis, 23 (0.6%) reported childhood scoliosis
142 (infantile and juvenile) and the rest reported scoliosis due to other causes later in life.
143 The most common scoliosis subtype was unspecified scoliosis reported by 2,685
144 (65.6%) participants (**Table 2**).

145

146 Participants with scoliosis were significantly older than the rest of the population
147 (59.4 years old \pm 7.58; mean age 56.5 years old \pm 8.10; $P_{adj}<0.01$) and were more
148 female (69% female in scoliosis cohort; 55% female in the rest of the UKB
149 population; $P_{adj}<0.01$). Lifetime risk analysis showed that participants with scoliosis
150 had significantly longer lives when compared to the rest of the population, regardless
151 of sex (**Figure 1**).

152

153 We observed a significantly increased burden of heart failure (+4%, $P_{adj}<0.001$),
154 valve disease (+1%, $P_{adj}<0.001$), hypercholesterolemia (+7%, $P_{adj}<0.001$) and
155 diagnosis of hypertension (+13%, $P_{adj}<0.001$) in scoliosis participants, adjusted for
156 age and sex (**Table 2**). Although diagnosis of hypertension was significantly
157 increased, no significant differences were found with SBP or DBP, which may be due
158 to correction of diagnosed hypertension through medication. Additionally, the
159 proportion of scoliosis participants with CMR available was significantly decreased (-
160 3%, $P_{adj}<0.001$) compared to the rest of the population.

161

162 *CMR analysis of participants with scoliosis identifies altered cardiac diastolic strain*

163 2D summary CMR traits were available on 39,559 participants[15]. 224 participants
164 with scoliosis had CMR available and had significantly increased radial PDSR
165 ($P_{\text{adj}} < 0.05$) and decreased longitudinal PDSR ($P_{\text{adj}} < 0.05$) compared to participants
166 without a diagnosis of scoliosis (**Table 3**). Adequate diastolic function is essential
167 during ventricular filling and maintenance of optimum stroke volume. PDSR is a
168 diastolic function trait, that has been previously associated with major adverse
169 cardiovascular events, increased mortality, increased blood pressure and altered left
170 atrial function [21]. For example, decreased PDRS_{rr} corresponds to stiffer ventricle,
171 impairing its relaxation and increasing the risk of heart failure[21]. No additional
172 significant associations were found with the other CMR measures available for
173 analysis and no association was observed between scoliosis and diabetes (**Table 1**).

174

175 *Surface to surface analysis of participants with scoliosis shows increased cardiac*
176 *compression*

177 A 3D surface-to-surface analysis was performed on 21,088 participants of the cohort.
178 The three-dimensional cardiac modelling of scoliosis patients showed increased
179 strain at the top and bottom of the heart (**Figure 2**). Radial cardiac decompression
180 (sides of the heart) was also observed in participants with scoliosis. However, these
181 were not significant when adjusting for the number of comparisons and covariates.

182

183 *Lifetime risk of MACE is increased in participants with scoliosis*

184 A significantly increased lifetime risk of MACE was observed for UKB participants
185 with scoliosis (**Figure 3**; HR=1.45, $P < 0.001$), mainly driven by heart failure

186 (HR=1.58, P<0.001) and atrial fibrillation (HR=1.54, P<0.001). The probability of
187 MACE doubled in males into older age (from 60 years of age). This may be caused
188 through the altered cardiac diastolic strain rates observed in participants with
189 scoliosis. However, we emphasise caution regarding the causality of this association
190 of scoliosis and MACE at this stage.

191 **Discussion**

192 *Participants with scoliosis have increased lifetime risk of MACE*

193 To the best of our knowledge, this is the first study to identify an increased lifetime
194 risk of MACE, through atrial fibrillation and heart failure, in participants with scoliosis.
195 This may be through the identified, significantly increased PDSR_{rr} and decreased
196 PDSR_{ij}. The abnormal curvature of the spine can increase mechanical constraint on
197 the heart which may result in diastolic dysfunction[22] and the severity of the spinal
198 deformity has been shown to aggravate ventricular and right atrial pressure[3].

199

200 It is unlikely that the observed heart failure is due to blood pressure abnormalities as
201 no significant differences were found in measured SBP and DBP between
202 participants with scoliosis and the rest of the population. However, it is possible that
203 pulmonary dysfunction may be eliciting cardiac dysfunction alongside atrial
204 fibrillation, in patients with advanced scoliosis[3,11,23]. These findings suggest that
205 early medical intervention in patients with scoliosis through surgery, may decrease
206 the risk of a future MACE, however future validation of this finding would need to be
207 confirmed in a scoliosis case cohort. It may be possible that scoliosis develops
208 secondary to other diseases that could also increase the risk of MACE. Future
209 genetic analyses would be beneficial to assess causality through Mendelian
210 randomisation techniques. Likewise, studies are required to determine whether the
211 cardiovascular changes observed are reversible with scoliosis treatment surgery.

212

213 A previous study assessed 201 scoliosis patients for cardiopulmonary changes
214 following corrective scoliosis surgeries and suggested that untreated scoliosis can
215 result in pulmonary dysfunction and subsequently lead to right heart failure,

216 increasing mortality[3]. Postoperative normalisation of cardiac measures was
217 observed in this study, highlighting the potential benefits of surgical correction of
218 scoliosis on cardiac function[3]. Additionally, a long-term follow-up study showed
219 increased risk of pulmonary limitations such as shortness of breath in patients with
220 untreated scoliosis, aggravated by spinal curvature[24].

221

222 It is challenging to accurately assess the cardiac function of scoliosis patients, due to
223 the heart being displaced[22] and participants with scoliosis in the UKB had
224 significantly less CMR scans available, possibly due to lack of comfort for prolonged
225 periods of time in MRI machines. Adaptations may be required to allow patients with
226 scoliosis to undergo MRI scans more comfortably, to further assess any alteration in
227 cardiac function in scoliosis patients.

228

229 *Participants with scoliosis have altered cardiac diastolic strain rates*

230 In the UKB, participants with scoliosis showed increased pressure at the top and
231 bottom of the heart, as well as elongation of the sides of the heart. These results
232 concur with the 2D-derived CMR findings of significantly increased $PDSR_{rr}$ and
233 decreased $PDSR_{ll}$. A reduced $PDSR_{ll}$ has been previously associated with reduced
234 left atrial function[21]. No significant associations were found with the other studied
235 CMR traits, suggesting that this compression does not alter blood flow through the
236 heart. This altered cardiac strain may be explained by the deformity of the thoracic
237 cage in scoliosis limiting cardiac diastolic movement. The mechanical abnormalities
238 of the thoracic spine as well as the impact on the pulmonary system, may be the
239 primary cause of the heart involvement[25,26]. Secondary involvement via altered
240 pulmonary haemodynamics may be possible, where spinal curvature impacts

241 pulmonary pressures leading to pulmonary hypertension. Likewise, direct
242 compression of the myocardium could occur in conjunction to pulmonary
243 involvement. These events can contribute to the development of cardiac
244 consequences in scoliosis patients[27]. It would be beneficial to include cardiac
245 follow-ups in patients with scoliosis to observe any cardiac alterations as scoliosis
246 progresses, ensuring early intervention.

247

248 *Prevalence of scoliosis in the UK Biobank*

249 We report a prevalence of scoliosis of 0.8% in the UKB population cohort. Previous
250 literature has reported a scoliosis prevalence of 8% in adult volunteers aged over 40
251 years old[5]. Patients included in the previous clinical study were recruited on
252 evaluation of bone mineral density and thus were likely at increased risk of scoliosis.
253 Additionally, this discrepancy may be due to limitations of the UKB cohort (see
254 *Limitations*).

255

256 Participants with scoliosis in the UKB are more elderly compared to the rest of the
257 population, regardless of sex. Scoliosis occurs alongside other diseases such as
258 osteoporosis or degenerative spine disorders with increasing age[5].

259

260 In the UKB cohort, scoliosis is more commonly found in females than males (2.5:1),
261 which agrees with a previous scoliosis case cohort study of adolescents and adults
262 that reported a ratio of scoliosis in females to males as 2:1[28]. Although not fully
263 understood, there are different theories linking the higher prevalence of scoliosis in
264 females, including implication of the autonomic nervous system (ANS) in skeletal
265 growth and/or puberty through leptin hormone, which has been found decreased in

266 female patients with idiopathic scoliosis[1,29,30]. The role of leptin in scoliosis is not
267 fully understood, and analyses to determine causality would aid our current
268 understanding of the mechanisms behind scoliosis. Furthermore, it has been
269 reported that approximately 30% of females (n=324) suffer from systemic osteopenia
270 which strongly contributes to the progression of spinal curvature in adolescent
271 females following skeletal maturity[8].

272

273 *Limitations*

274 The participants in the UKB cohort were recruited at 40-69 years of age and most
275 participants are of European ancestry. Selection bias for inclusion in CMR sub cohort
276 may have excluded more severe scoliosis participants from study. In addition,
277 discrimination of scoliosis aetiology was mostly unspecified.

278

279 **Conclusions**

280 This work describes for the first time in an adult population, evidence for altered
281 cardiac function in adult participants with scoliosis. We identified altered diastolic
282 strain, increased lifetime risk of MACE driven by HF and atrial fibrillation and
283 observed cardiac compression in the UK Biobank participants with scoliosis. Further
284 research is required to follow up the role of scoliosis in cardiac manifestations in a
285 clinical setting.

286 **Data and code availability**

287 UK Biobank (<https://www.ukbiobank.ac.uk/>) population reference datasets are
288 publicly available. All analysis code will be available on GitHub
289 (<https://github.com/ImperialCardioGenetics/Scoliosis>)

290 **Competing interests**

291 J.S.W. has consulted for MyoKardia, Inc., Foresite Labs, and Pfizer. D.P.O. has
292 consulted for Bayer.

293 **Acknowledgements and funding sources**

294 This work was supported by the Wellcome Trust [107469/Z/15/Z; 200990/A/16/Z],
295 Medical Research Council (UK), British Heart Foundation [RG/19/6/34387,
296 RE/18/4/34215], and the NIHR Imperial College Biomedical Research Centre. The
297 views expressed in this work are those of the authors and not necessarily those of
298 the funders. For open access, the authors have applied a CC BY public copyright
299 license to any Author Accepted Manuscript version arising from this submission.

300 **CRedit statement**

301 Conceptualization: K.A.M.; Methodology: K.A.M, V.Q.S.; Formal Analysis: V.Q.S.,
302 A.C.; Resources: J.S.W., D.O'R.; Data curation: V.Q.S., K.A.M.; Writing – original
303 draft: V.Q.S.; Writing – review & editing: A.C., D.O'R., J.S.W., K.A.M.; Visualization:
304 V.Q.S.; Supervision: K.A.M., J.S.W.

305 **References**

- 306 1 Cheng JC, Castelein RM, Chu Winnie, *et al.* Adolescent idiopathic scoliosis.
307 *Nat Rev Dis Primers* 2015;**1**:15030. doi:10.1038/nrdp.2015.30
- 308 2 Rummey C, Flynn JM, Corben LA, *et al.* Scoliosis in Friedreich's ataxia:
309 longitudinal characterization in a large heterogeneous cohort. *Ann Clin Transl*
310 *Neurol* 2021;**8**:1239–50. doi:10.1002/acn3.51352
- 311 3 Sarwahi V, Galina J, Atlas A, *et al.* Scoliosis Surgery Normalizes Cardiac
312 Function in Adolescent Idiopathic Scoliosis Patients. *Spine (Phila Pa 1976)*
313 2021;**46**:E1161–7. doi:10.1097/BRS.0000000000004060
- 314 4 Trobisch P, Suess O, Schwab F. Idiopathic Scoliosis. *Dtsch Arztebl*
315 2010;**107**:875–84. doi:10.3238/arztebl.2010.0875
- 316 5 Kebaish KM, Neubauer PR, Voros GD, *et al.* Scoliosis in adults aged forty
317 years and older: Prevalence and relationship to age, race, and gender. *Spine*
318 *(Phila Pa 1976)* 2011;**36**:731–6. doi:10.1097/BRS.0b013e3181e9f120
- 319 6 Aftzoglou P. Sarcopenia and falls in patients with adult scoliosis. *J Frailty*
320 *Sarcopenia Falls* 2017;**02**:83–7. doi:10.22540/jfsf-02-083
- 321 7 Konieczny MR, Senyurt H, Krauspe R. Epidemiology of adolescent idiopathic
322 scoliosis. *J Child Orthop* 2013;**7**:3–9. doi:10.1007/s11832-012-0457-4
- 323 8 Hung VWY, Qin L, Cheung CSK, *et al.* Osteopenia: A new prognostic factor of
324 curve progression in adolescent idiopathic scoliosis. *Journal of Bone and Joint*
325 *Surgery* 2005;**87**:2709–16. doi:10.2106/JBJS.D.02782
- 326 9 Bülbül S, Benli İT, Güler M, *et al.* Scoliosis prevalence in congenital heart
327 disease patients. *Turkish Spine* 2013;**24**:3–12.
- 328 10 Kaito T, Shimada M, Ichikawa H, *et al.* Prevalence of and Predictive Factors
329 for Scoliosis After Surgery for Congenital Heart Disease in the First Year of
330 Life. *Journal of Bone and Joint Surgery* 2018;**3**:e0045.
331 doi:10.2106/JBJS.OA.17.00045
- 332 11 Wang Y, Chen G, Xie L, *et al.* Mechanical factors play an important role in
333 pectus excavatum with thoracic scoliosis. *J Cardiothorac Surg* 2012;**7**:2–4.
334 doi:10.1186/1749-8090-7-118
- 335 12 Swank SM, Winter RB, Moe JH. Scoliosis and Cor Pulmonale. *Spine (Phila Pa*
336 *1976)* 1982;**7**:343–54. doi:0.1097/00007632-198207000-00004
- 337 13 Sudlow C, Gallacher J, Allen N, *et al.* UK Biobank: An Open Access Resource
338 for Identifying the Causes of a Wide Range of Complex Diseases of Middle
339 and Old Age. *PLoS Med* 2015;**12**:1–10. doi:10.1371/journal.pmed.1001779
- 340 14 Szustakowski JD, Balasubramanian S, Sasson A, *et al.* Advancing Human
341 Genetics Research and Drug Discovery through Exome Sequencing of the UK
342 Biobank. *medRxiv* Published Online First: 2020.
343 doi:10.1101/2020.11.02.20222232
- 344 15 Bai W, Suzuki H, Huang J, *et al.* A population-based phenome-wide
345 association study of cardiac and aortic structure and function. *Nat Med*
346 2020;**26**:1654–62. doi:10.1038/s41591-020-1009-y

- 347 16 Schafer S, de Marvao A, Adami E, *et al.* Titin-truncating variants affect heart
348 function in disease cohorts and the general population. *Nat Genet* 2017;**49**:46–
349 53. doi:10.1038/ng.3719
- 350 17 Biffi C, de Marvao A, Attard MI, *et al.* Three-dimensional cardiovascular
351 imaging-genetics: A mass univariate framework. *Bioinformatics* 2018;**34**:97–
352 103. doi:10.1093/bioinformatics/btx552
- 353 18 Duan J, Ghalib B, Schlemper J, *et al.* Europe PMC Funders Group Automatic
354 3D bi-ventricular segmentation of cardiac images by a shape-refined multi-task
355 deep learning approach. 2019;**38**:2151–64.
356 doi:10.1109/TMI.2019.2894322. Automatic
- 357 19 Meyer H v, Dawes TJW, Serrani M, *et al.* Europe PMC Funders Group Genetic
358 and functional insights into the fractal structure of the heart. *Nature*
359 2021;**584**:589–94. doi:10.1038/s41586-020-2635-8. Genetic
- 360 20 McGurk KA, Zheng SL, Henry A, *et al.* Correspondence on “ACMG SF v3.0 list
361 for reporting of secondary findings in clinical exome and genome sequencing:
362 a policy statement of the American College of Medical Genetics and Genomics
363 (ACMG)” by Miller *et al.* *Genetics in Medicine* 2022;**24**:744–6.
364 doi:10.1016/j.gim.2021.10.020
- 365 21 Thanaj M, Mielke J, McGurk KA, *et al.* Genetic and environmental
366 determinants of diastolic heart function. *Nature Cardiovascular Research*
367 2022;**1**:361–71. doi:10.1038/s44161-022-00048-2
- 368 22 Li S, Yang J, Zhu L, *et al.* Ventricular and atrial mechanics and their interaction
369 in patients with congenital scoliosis without clinical heart failure. *Cardiol Young*
370 2014;**760**:976–83. doi:10.1017/S1047951114001504
- 371 23 Mauro A lo, Aliverti A. Physiology of respiratory disturbances in muscular
372 dystrophies. *Breathe* 2016;**12**:318–27. doi:10.1183/20734735.012716
- 373 24 Hawes MC, Weinstein SL. Health and Function of Patients with Untreated
374 Idiopathic Scoliosis. *J Am Med Assoc* 2003;**289**:2644–5.
375 doi:10.1001/jama.289.20.2644-a
- 376 25 Janicki JA, Frcsc BA. Scoliosis: Review of diagnosis and treatment. *Paediatric*
377 *Child Health* 2007;**12**:771–6.
- 378 26 Prof A. Pulmonary Functions in Patients With Idopathic Scoliosis.
379 2017;**90**:123–8.
- 380 27 Li Q, Zeng F, Chen T, *et al.* Management of Severe Scoliosis with Pulmonary
381 Arterial Hypertension: A Single-Center Retrospective Case Series Study.
382 *Geriatr Orthop Surg Rehabil* 2022;**13**:1–11. doi:10.1177/21514593221080279
- 383 28 Lang C, Wang R, Chen Z, *et al.* Incidence and Risk Factors of Cardiac
384 Abnormalities in Patients with Idiopathic Scoliosis. *World Neurosurg*
385 2019;**125**:e824–8. doi:10.1016/j.wneu.2019.01.177
- 386 29 Man GCW, Tam EMS, Wong YS, *et al.* Abnormal Osteoblastic Response to
387 Leptin in Patients with Adolescent Idiopathic Scoliosis. *Sci Rep* 2019;**9**:1–7.
388 doi:10.1038/s41598-019-53757-3

389 30 Wang Q, Wang C, Hu W, *et al.* Disordered leptin and ghrelin bioactivity in
390 adolescent idiopathic scoliosis (AIS): a systematic review and meta-analysis. *J*
391 *Orthop Surg Res* 2020;**15**:1–9. doi:10.1186/s13018-020-01988-w
392
393

394 **Tables**

395 **Table 1 Summary statistics of participants with scoliosis compared to the rest**
 396 **of the UK Biobank population cohort.**

397 Data is presented as mean ± SD or count (%); all the variables are adjusted for age
 398 and sex; BMI, body mass index; SBP, systolic blood pressure; DBP, diastolic blood
 399 pressure; CMR, cardiac magnetic resonance imaging; CM, cardiomyopathy. White
 400 British ancestry was genetically inferred. P_{adj}, P-value adjusted for multiple
 401 comparisons via Bonferroni correction; Significant, P_{adj}<0.05; NS, not significant,
 402 P_{adj}>0.05.

Characteristic	General population (n=502,324)	Scoliosis carriers (n=4,095)	P_{adj}
Age at recruitment	56.50 ± 8.10	59.40 ± 7.58	<0.001
White British	406,131 (81%)	3344 (82%)	NS
Sex, female	261,862 (55%)	2,845 (69%)	<0.001
BMI	27.40 ± 4.80	27.00 ± 5.16	NS
Auto SBP	140.00 ± 19.60	141.00 ± 20.00	NS
Auto DBP	82.20 ± 10.70	81.50 ± 10.80	NS
Diabetes	27,771 (5%)	212 (5%)	NS
Hypercholesterolaemia	92,824 (18%)	1,022 (25%)	<0.001
Hypertension	167,817 (33%)	1,902 (46%)	<0.001
Included in UKBB CMR cohort	39,319 (8%)	224 (5%)	<0.001
Heart failure	10,504 (2%)	237 (6%)	<0.001
Any CM	3,602 (0.7%)	49 (2%)	NS
Valve disease	5,145 (1%)	96 (2%)	<0.001

403

404 **Table 2: Codes used for identification of all-cause scoliosis.**

405 The HES data is coded using the International statistical Classification of Disease
 406 (ICD) codes, versions 9 and 10. The self-reported data (SR) has a UKB-specific
 407 coding system. SR, non-cancer illness code, self-reported data; ICD9, summary
 408 diagnoses (main and secondary); ICD10, underlying primary cause of death,
 409 contributory cause of death, and external cause of death, summary diagnoses (main
 410 and secondary); GP, general practitioner.

Disease/phenotype	Participants (n=4,095)	Coding system
Self-reported scoliosis	468 (11.4%)	SR: 1535
Kyphoscoliosis and scoliosis	5 (0.1%)	ICD9: 7373, 75420
Congenital postural scoliosis	0 (%)	
Congenital scoliosis	10 (0.2%)	ICD10: Q763, M965, M41, M410, M4100-109, M411, M4110-119, M412, M4120- 129, M413, M410-139, M414, M1410-149, M415, M1450- 159, M418, M4180-189, M419, M4190-199
Post-radiation scoliosis	10 (0.2%)	
Childhood scoliosis (infantile and juvenile)	23 (0.6%)	
Other idiopathic scoliosis	56 (1.4%)	
Thoracogenic scoliosis	24 (0.6%)	
Neuromuscular scoliosis	22 (0.6%)	
Secondary scoliosis	79 (2%)	
Other forms of scoliosis	226 (5.5%)	
Unspecified scoliosis	2685 (65.5%)	
Unspecified scoliosis	487 (11.9%)	GP-derived

411

412 **Table 3: Summary of the altered cardiac PDSR in participants of the UKB with**
 413 **scoliosis.**

414 Mean and standard deviation for adjusted PDSRs are described for the general UKB
 415 population and participants with all-cause scoliosis. The p-value was adjusted for
 416 multiple comparisons of CMR traits. WT, wall thickness; LVEDV, left ventricular end-
 417 diastolic volume; LVEF, left ventricular ejection fraction; LVM, left ventricular mass;
 418 Ecc, circumferential; Err, radial; Ell, longitudinal; PDSR_{ll}, longitudinal peak diastolic
 419 strain rate; PDSR_{rr}, radial peak diastolic strain rate.

420

CMR trait	General population (n=38,319)	Scoliosis (n=224)	P_{adj}
Maximum WT	9.40 ± 1.62	9.36 ± 1.70	NS
LVEDV	148.00 ± 33.90	136.00 ± 32.80	NS
LVEF	59.50 ± 6.16	59.80 ± 6.03	NS
LVM	86.0 ± 22.30	78.00 ± 20.70	NS
Ecc Global	(-22.33) ± 3.35	(-22.10) ± 3.77	NS
Err Global	45.00 ± 8.31	45.20 ± 8.73	NS
Ell Global	(-18.50) ± 2.76	(-17.90) ± 2.44	NS
PDSR_{ll}	1.66 ± 0.61	1.45 ± 0.58	<0.05
PDSR_{rr}	-5.64 ± 2.09	-5.08 ± 2.13	<0.05

421

422 **Figure legends**

423 **Figure 1: Scoliosis is associated with longer life compared to the rest of the**
424 **UKB cohort, adjusted for sex.**

425 Years of life is shown on the x-axis from date of birth. Counts of UKB participants are
426 shown in the box depicting number at risk. The median survival time (a survival
427 probability of 0.5) was significantly increased in participants with scoliosis, regardless
428 of sex. Median survival time for females with scoliosis vs females without scoliosis (2
429 years difference); median survival time for males with scoliosis vs males without
430 scoliosis (1.5 years difference).

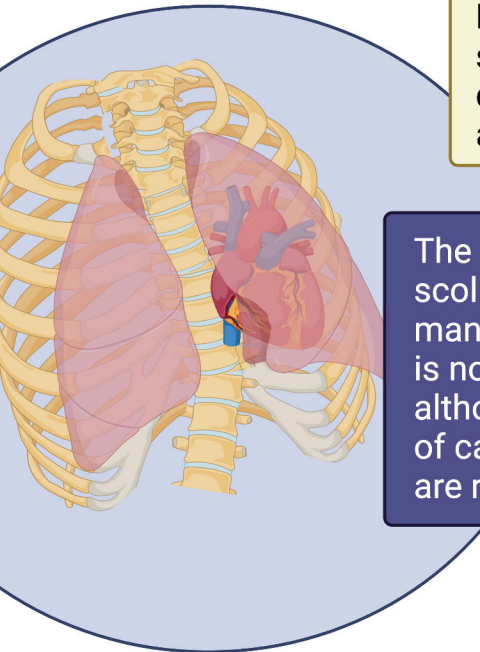
431 **Figure 2 Surface to surface analysis suggests a compressed heart in**
432 **participants with scoliosis.**

433 3D models of left ventricle geometry with standardized beta-coefficients which show
434 the association between scoliosis and regional surface-to-surface distance. Blue,
435 increased inward pressure; red, increased outwards pressure.

436
437 **Figure 3: Increased lifetime risk of MACE in UKB participants with scoliosis.**

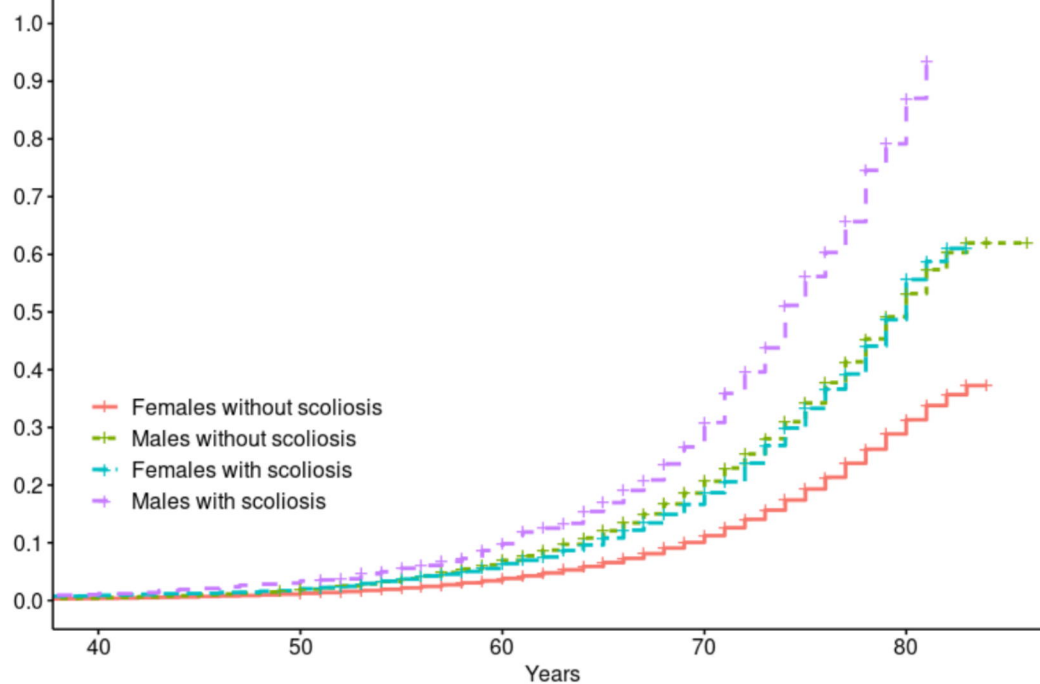
438 A, cumulative incidence curve depicts an increase in lifetime risk of MACE in
439 participants with scoliosis over time (HR=1.45, P<0.001). B, incidence curve
440 stratified by sex (HR=1.63, P<0.001).

Exploration of the impact of scoliosis on the heart in the UK Biobank



Pectus deformities in scoliosis can cause displacement of heart and lungs

The relationship between scoliosis and cardiac manifestations in adults is not well characterised, although a high incidence of cardiac abnormalities are reported.

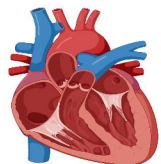


4,095 (1 in 120) participants have scoliosis in the UK Biobank with:
 Increased risk of major adverse cardiovascular events (HR=1.63)
 Mainly driven by heart failure (HR=1.58) and atrial fibrillation (HR=1.54)

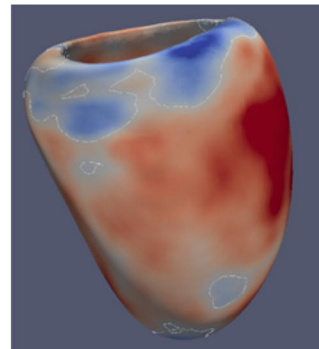
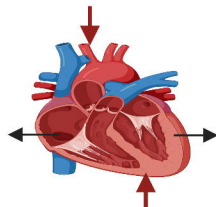
Cardiac magnetic resonance imaging

Diastole

No spinal curvature



Scoliosis

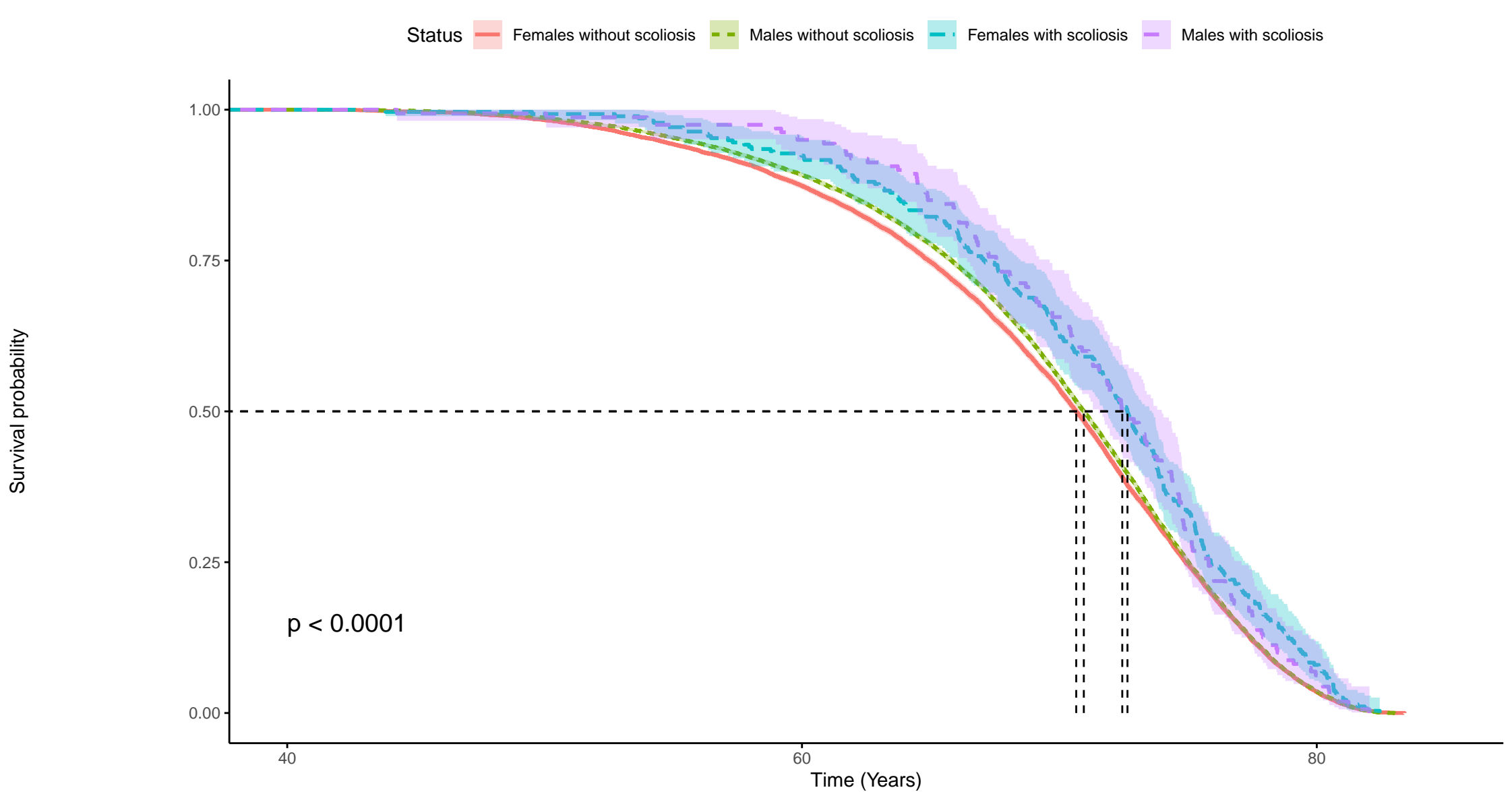


Surface to surface analysis

Identification of increased cardiac compression on the top and bottom of the heart, and radial cardiac decompression (sides of the heart) in scoliosis patients.

Conclusion:

This work identifies, in an adult population, the evidence for altered cardiac function and increased lifetime risk of MACE in participants with scoliosis.

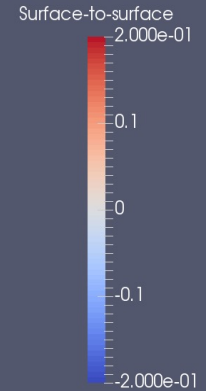
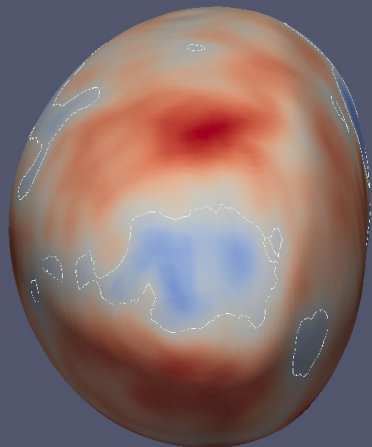


Number at risk

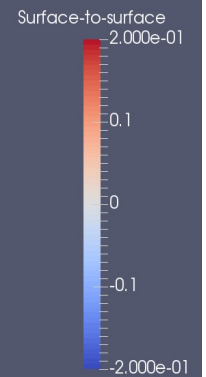
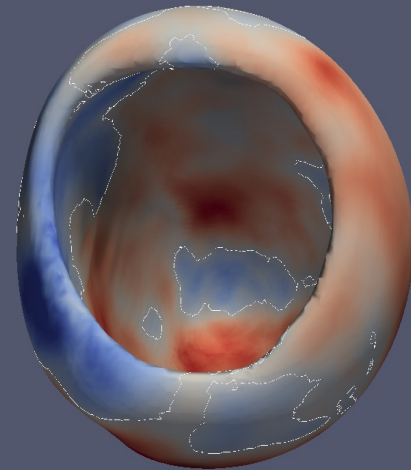
Status	40	50	60	70	80
Females without scoliosis	12723	12502	11116	6827	446
Males without scoliosis	18978	18720	16925	10540	686
Females with scoliosis	276	274	255	174	22
Males with scoliosis	160	159	152	105	10

Time (Years)

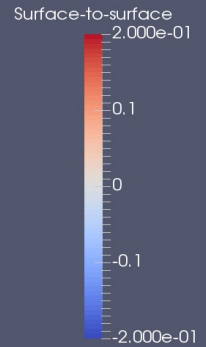
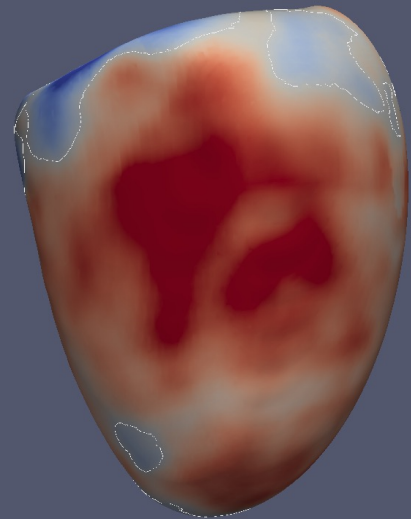
A



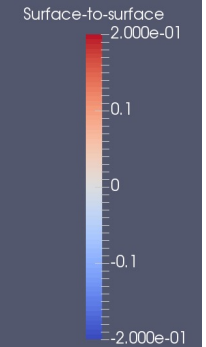
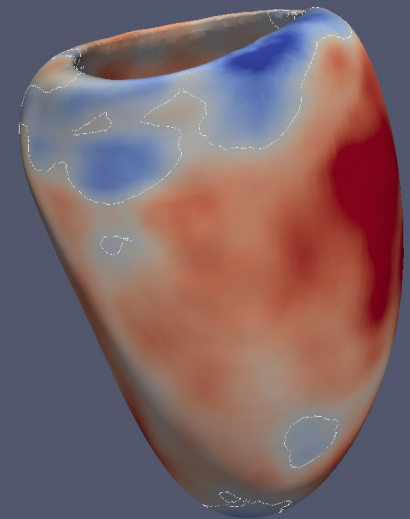
B



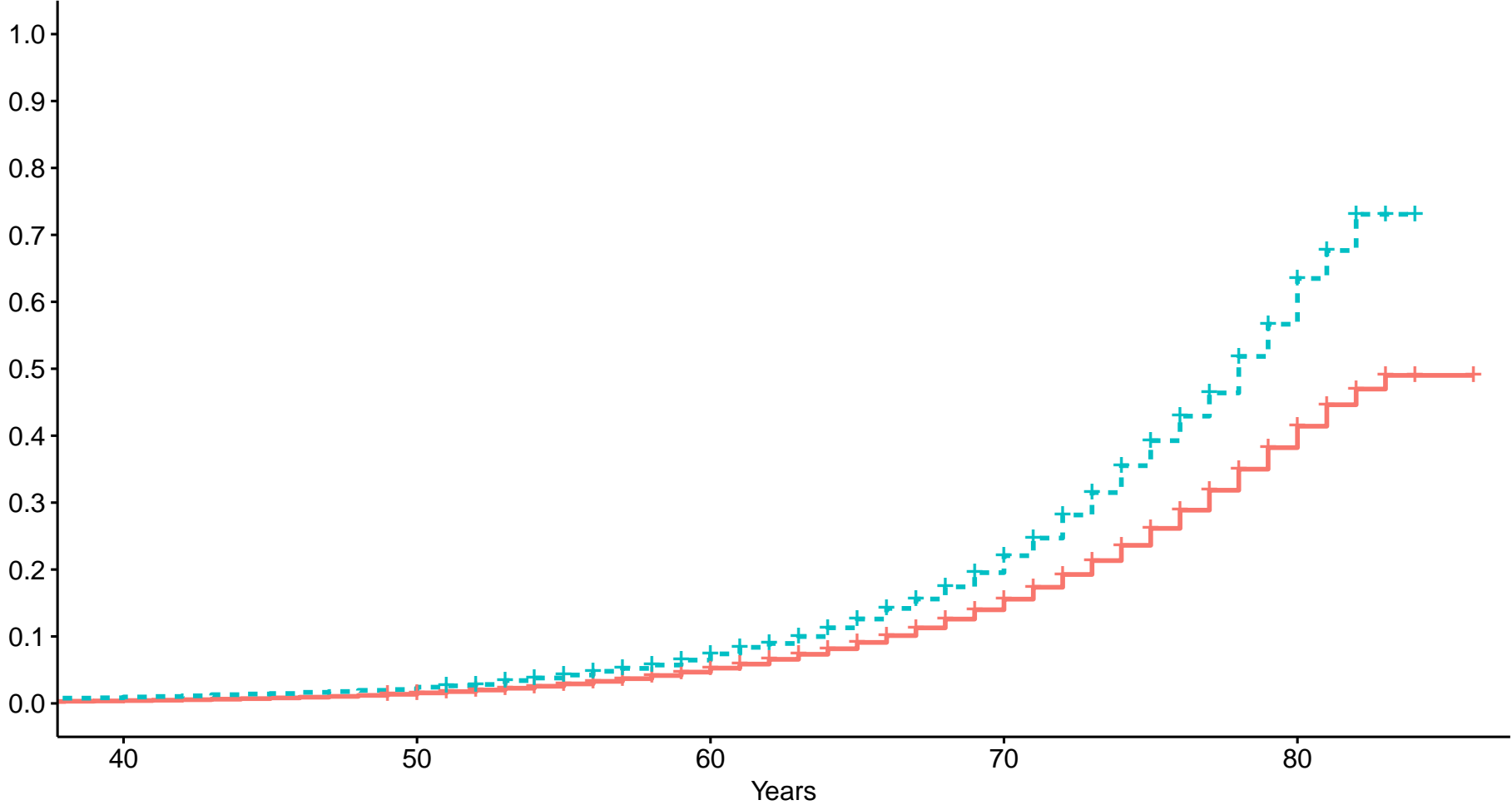
C



D



Probability freedom from events

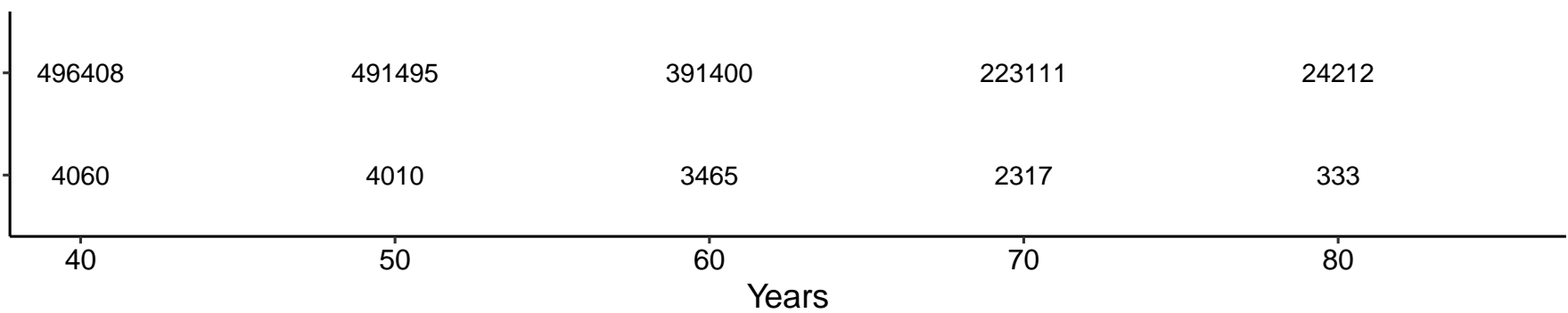


Number at risk

Status

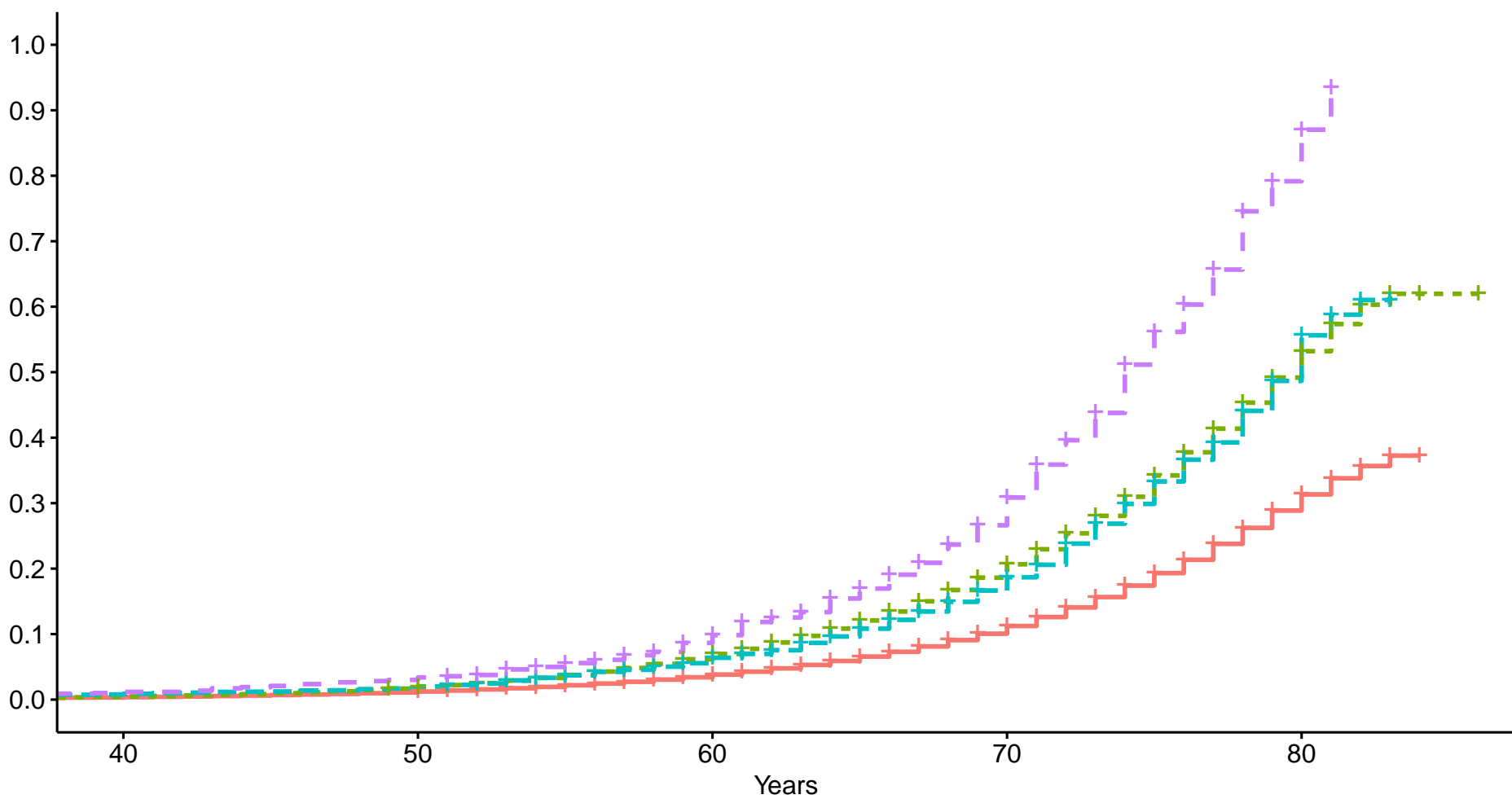
Participants without scoliosis

Participants with scoliosis



Status + Participants without scoliosis + Participants with scoliosis

Probability freedom from events



Number at risk

Status	40	50	60	70	80
Females without scoliosis	261001	259023	208016	119022	12880
Males without scoliosis	221368	218578	172305	97942	10537
Females with scoliosis	2823	2797	2422	1644	253
Males with scoliosis	1102	1080	933	603	66

Status + Females without scoliosis + Males without scoliosis + Females with scoliosis + Males with scoliosis