

1 **The effectiveness of grass, birch, and mugwort pollen allergen immunotherapy over 18 years:**
2 **A national cohort study in Denmark.**

3
4
5 Peter Bager¹, Gry Poulsen^{1,2}, Jan Wohlfahrt¹, Mads Melbye^{2,3,4,5,6}.

6
7 1 Department of Epidemiology Research, Statens Serum Institut, Copenhagen, Denmark

8 2 Aalborg University, Copenhagen, Denmark

9 3 Department of Clinical Medicine, University of Copenhagen, Copenhagen, Denmark

10 4 Danish Cancer Society Research Center, Copenhagen, Denmark

11 5 Department of Clinical Medicine, University of Copenhagen, Copenhagen, Denmark.

12 6 K.G. Jebsen Center for Genetic Epidemiology, Norwegian University of Science and Technology,
13 Trondheim, Norway

14 7 Department of Genetics, Stanford University School of Medicine, Stanford, California, USA.

15
16 **Corresponding author:** Peter Bager, Department of Epidemiology Research, Statens Serum
17 Institut, Artillerivej 5/Ørestads Boulevard 5, 2300 Copenhagen S, Denmark. E-mail: pbg@ssi.dk.

18 **Author Contributions:** Drs Bager and Poulsen had full access to all of the data in the study and
19 together with Dr Wohlfahrt take responsibility for the integrity of the data and the accuracy of the
20 data analysis. Study concept and design: All authors. Acquisition, analysis, and interpretation of
21 data: All authors. Drafting of the manuscript: Drs Bager and Poulsen. Critical revision of the
22 manuscript for important intellectual content: All authors. Statistical analysis: Drs Poulsen and
23 Wohlfahrt. Administrative, technical, or material support: All authors. Study supervision: All
24 authors.

NOTE: This preprint reports new research that has not been certified by peer review and should not be used to guide clinical practice.

25 **Manuscript word, table and figure counts:** 4762 words, 3 tables, 3 figures

26 **Data availability statement:** The data are available for research upon reasonable request to the
27 Danish Health and Medicines Authority, Statistics Denmark, and the Research services for the
28 Danish Health Data authority within the framework of the Danish data protection legislation and
29 any required permission from relevant authorities.

30 **Source of Funding:** This study was supported by grants from Aase og Ejnar Danielsens Fond (19-
31 10-0208), Dagmar Marshalls Fond, Fonden til Lægevidenskabens Fremme (A.P. Møller og Hustru
32 Chastine McKinney Møller; 18-L-0194), Hartmann Fonden (A33348), and Helsefonden (16-
33 B0320). Dr Bager was supported by a grant from Oak Foundation (OCAY-12-319). The funders
34 had no role in the study design, data collection and analysis, decision to publish, or preparation of
35 the manuscript.

36 **Abbreviations:** AIT, allergen immunotherapy; AR, allergic rhinitis; GBM, grass-birch-mugwort;
37 NS, nasal spray; INS, intranasal corticosteroid spray; GP, general practitioner .

38 **Keywords:** allergic rhinitis, immunotherapy, observational study, grass pollen, epidemiology, nasal
39 corticosteroids, anti-allergic medication.

40 **ABSTRACT**

41 **Background:** Long-term effectiveness of pollen allergen immune therapy (AIT) for allergic rhinitis
42 (AR) has been studied for different durations. We studied effectiveness over 18 years using
43 nationwide register-data for Denmark.

44 **Methods:** A register-based cohort study using data on filled prescriptions, 1995-2018, Denmark. In
45 a cohort of 1.1 million intranasal corticosteroid spray users (proxy for AR), we matched users
46 treated with grass, birch or mugwort (GBM) AIT 1:2 with non-treated users on baseline year and 24
47 characteristics in the 3 years prior to baseline. The primary outcome was the odds ratio (OR) of
48 using anti-allergic nasal spray during the pollen season in the treated vs. non-treated group
49 modelled in a logistic generalized estimating equations analysis using an autoregressive correlation
50 structure and adjusted for years since baseline (one year categories).

51 **Results:** Among 7,914 AR patients treated with GBM AIT, the OR of using nasal spray 0-5 years
52 after baseline was reduced when compared with 15,520 non-treated AR individuals (0-2 years, odds
53 ratio (OR) 0.81(0.76-0.85); 3-5 years, OR 0.82(0.77-0.87)), but was close to unity or higher
54 thereafter (6-9 years, OR 0.96(0.91-1.03); 10-18 years, OR 1.15(1.06-1.24). In post-hoc analyses,
55 results were more consistent for those who already had 3 of 3 baseline years of use (0-2 years, OR
56 0.59 (0.54-0.64); 3-5 years, OR 0.64 (0.59-0.71); 6-9 years, 0.82 (0.75-0.91); 10-18 years, 0.95
57 (0.84-1.08), and in patients using nasal spray in the last pollen season (0-2 years, OR 0.76 (0.72-
58 0.80); 3-5 years 0.84 (0.78-0.91); 6-9 years, OR 0.94 (0.86-1.03); 10-18 years, 0.90 (0.81-1.00)) as
59 opposed to patients who did not use nasal spray in the last pollen season. The post-hoc findings
60 were likewise more consistent for eye drop and oral antihistamine users (secondary outcomes).

61 **Conclusion:** Patients treated with GBM AIT in routine care to a higher degree stopped using anti-
62 allergic nasal spray 0-5 years after starting the standard three years of therapy. Post-hoc analyses
63 suggested results were more consistent among patients with persistent AR.

64 INTRODUCTION

65 Allergic rhinitis (AR) is a common chronic upper respiratory tract illness, characterized by running
66 nose, sneezing, nasal blockage, as well as itchy and watery eyes. In the majority, these symptoms
67 are caused by IgE-mediated hypersensitivity to plant pollen, and thus triggered in pollen seasons.
68 Allergen-immunotherapy (AIT) with sublingual or subcutaneous exposure to large amounts of the
69 offending pollen allergen is the only treatment with evidence of being disease-modifying,[1-5] and
70 having long-term effects.[3, 6-10] AIT may take months or years to act on symptoms and most AR
71 sufferers rely on faster acting medications such as oral antihistamines, eye drops, and intranasal
72 corticosteroid sprays (INS). Long term effects of AIT are therefore important to study. In clinical
73 trials, longer follow-up is restricted by resources and patient compliance,[11-14]
74 whereas longitudinal observational studies are more feasible and can therefore add unique and
75 valuable information about long term effects of AIT.[3, 6-10, 15-17] Follow-up times up to 15 years
76 after end of therapy have not been studied yet. Using prescription and register data since 1994 for
77 the entire country of Denmark, we therefore studied effectiveness on AR medication use up to 15
78 years after end of 3 years treatment (18 years of follow-up) in a large, unselected, national patient
79 population treated with GBM AIT, comparing with well-matched controls and also avoiding
80 exclusions e.g. of patients with certain comorbidities or low adherence to therapy.

81

82 METHODS

83 *Data sources*

84 The study was based on Danish national registers described elsewhere (see STable 1-5).
85 [18-23] Specifically, data was obtained from the Register of Medicinal Product Statistics, which
86 contains daily individual information about filled prescriptions at all pharmacies since 1994 (e.g.,
87 AR medication and AIT packages), including filling date, number of dispensed packages, unique

88 Danish product code for each medicine package type, and international Anatomic Therapeutic
89 Chemical (ATC) classification system code (www.medstat.dk/en).[19]

90

91 Ethics

92 The study was approved by the Danish Data Protection Agency (no. 15/09765). According to

93 Danish law, ethics approval is exempt for such research. Due to the nature of this research, there

94 was no involvement of patients or members of the public in the design or reporting of this study.

95 Direct dissemination to study participants is not possible. Permission from the Danish Health and

96 Medicines Authority has been granted (no. 15/09765).

97

98 *GBM AIT treatment*

99 In Denmark, primarily specialized physicians administer pollen AIT to eligible patients with

100 moderate-severe AR, after referral from their general practitioner. While these services are not

101 consistently registered as part of AIT, the AIT prescriptions are. Thus, the allergen extracts/tablets,

102 are prescribed to the patient, who then fills the prescription at a pharmacy (registration) and bring

103 the dispensed AIT packages for the treatment visit. AIT is only partly reimbursed by the otherwise

104 free public health system. Currently, the only three types of pollen AIT marketed in Denmark are

105 for grass (*Phleum pratense*), birch (*Betula verrucosa*), and mugwort (*Artemisia vulgaris*) allergens,

106 mainly prescribed as subcutaneous immunotherapy (SCIT; injections), but for grass also as

107 sublingual immunotherapy (SLIT; melting tablets) since 2007 (STable 1).

108

109 *Source population*

110 The combined pollen season for grass, birch, and mugwort (GBM) in Denmark ranged from April

111 until August in the study period.[24, 25] From the entire Danish population, we identified

112 individuals with GBM-induced AR (hereafter denoted “AR individuals” or “INS users”) as
113 individuals ≥ 5 years old living in Denmark between 1997 and 2013, who had filled a prescription
114 for intranasal corticosteroid spray (INS, ATC=R01AD) in the GBM pollen season, or two months
115 before, starting 1 February and ending 31 August (hereafter denoted “a pollen season”).

116

117 We included INS prescriptions as way to *define* AR individuals, because INS is the most common
118 recommended medication that is specific for AR, while other common AR medications are not
119 likewise specific in the Danish register-based context. For example, the majority of INS requires a
120 prescription from a doctor, while several oral antihistamines are sold over-the-counter and also used
121 for short-term treatment of common cold and influenza symptoms. A small validation study of
122 Danish register-data among children with allergic diseases suggested ≥ 1 or ≥ 2 INS prescriptions in
123 any year of childhood (mean age 15 years), respectively, has a relatively good sensitivity (84% and
124 86%) and specificity (66% and 80%), but a lower positive predictive value (PPV) (53% and 65%)
125 for a clinical diagnosis of AR.[26] INS is however also a first-line treatment for chronic
126 rhinosinusitis, perennial allergic rhinitis and non-allergic rhinitis. We conservatively chose to define
127 individuals with GMB-induced AR by INS use during the pollen season, regardless of any use or
128 not outside the pollen season.

129

130 *Identification of the GBM AIT treated group*

131 Individuals who were both GBM AIT treated (patients) and had AR (INS users) were identified. To
132 take into account that most patients started GBM AIT in the autumn before next year’s GBM pollen
133 season, we defined an uneven year unit, a baseline sampling year, starting 1 September and ending
134 31 August. For each baseline sampling year, we included patients with AR with at least one filled
135 prescription of INS in the 3 preceding pollen seasons, and then excluded those who in the 3

136 preceding sampling years had severe or perennial asthma (defined by hospitalisation/medication),
137 lived outside of Denmark, or had ever received other AITs. We did not exclude INS users if they
138 had INS use both in and outside the 3 preceding pollen seasons (See Figure 1 and in STable 2 a list
139 of the details of the inclusion and exclusion criteria).

140

141 *Identification of the non-treated group (no history of AIT)*

142 Individuals who had no history of receiving AIT and had AR (INS users) were identified for each
143 baseline sampling year according to the same in/exclusion criteria as for the GBM AIT treated
144 group (see STable 3). This was done to allow follow-up of treated and non-treated subjects through
145 the same pollen seasons since baseline.

146

147 *Matching*

148 To account for differences in baseline characteristics between GBM AIT treated and non-treated
149 individuals with AR, a propensity score was computed for each baseline sampling year based on
150 socio-demographic characteristics, detailed use of AR medication for the last 3 pollen seasons,
151 family history of asthma and AR, data on medication use and hospitalizations related to non-severe
152 asthma and atopic dermatitis, contacts to own doctor and number of medication groups used (ATC
153 main groups A to V).[27]Propensity scores were computed for a total of 24 characteristics (see
154 STable 4). Both total AR medication use in latest 3 pollen seasons and AR medication use in the
155 immediately preceding pollen season were included in the propensity score model because we after
156 first attempt at matching data found that the GBM AIT group was characterized by a particular high
157 proportion of users of medication in the last pollen season before study entry. Number of contacts to
158 own doctor and number of different ATC main groups of prescription medication used were
159 included with an interaction with age. For each baseline sampling year, each GBM AIT treated

160 patient with AR was matched to two non-treated individuals with AR using optimal matching on
161 the logit of the propensity score (see STable 3). The matched groups were considered well-balanced
162 if the standardized differences were below 10%. [28] The matched individuals were followed from
163 the date of the treated individual's/patient's first filled prescription of GBM AIT (date of baseline or
164 "index date") to 31 August 2016, death, or migration, whichever came first. Individuals from the
165 GBM AIT group were also eligible as non-treated individuals but only in the years before starting
166 on GBM AIT and were thus censored as non-treated individuals the day before they started on
167 GBM AIT on the index date (This was the case for 392 patients)

168

169 *Outcome (AR medication users)*

170 The primary outcome was use (vs no use) of at least one nasal spray in the pollen season, and
171 secondary outcomes were similarly defined for use of oral antihistamines (at least one package of
172 tablets) and anti-allergic eye drops (at least one container) (STable 5). There is only one nasal spray
173 or one eye drop container in a prescribed package.

174

175 **Statistical analysis**

176 Individuals contributed with information on AR medication for each pollen season during their
177 follow-up. Thus, to take the potential within-subject correlation into account, the odds of using AR
178 medication in GBM AIT treated versus non-treated were modelled as an odds ratio (OR) by a
179 logistic generalized estimating equations analysis using an autoregressive correlation structure and
180 adjusted for years since baseline (one year categories). The main analysis estimated the
181 effectiveness of GBM AIT on each of the three outcomes of AR medication use (with nasal spray
182 use being the primary outcome) within four time intervals since baseline: 0-2, 3-5, 6-9, and 10-18
183 years. The intervals were chosen because in the 0-2 years interval, up-dosing and maintenance

184 dosing takes place (see STable 1), in the 3-5 years interval a proportion of patients continue dose
185 maintenance, while the 6-9 and 10-18 years intervals would represent the long-term effectiveness of
186 interest, ie. continuing after end of therapy. The Main analysis was performed on the intention-to-
187 treat population, which we defined as all individuals starting treatment (or “exposed population”,
188 ie, those having at least one filled prescription for GBM AIT starting on the index date), and the
189 matched non-treated individuals. The main as well as several additional analysis were performed for
190 the primary outcome nasal spray users and then also for the secondary outcome eye drops and oral
191 antihistamine users. All the additional analysis were performed post-hoc (ie. they were planned
192 after the main analysis), and included effect modification by prebaseline AR medication (1 out of 2,
193 2 out of 2, and 3 out of 3 prebaseline years of use) and by type of AIT allergen (Grass, Birch,
194 Mugwort, Mixed), which we investigated by introducing interaction terms. Furthermore, another
195 additional analyses conditioned on the use of AR medication last pollen season (yes/no), and were
196 likewise investigated by introducing interaction terms. Lastly, we performed additional analyses
197 focusing on alternative outcomes. For example, to examine bias from different health seeking
198 behaviour by treatment group, we calculated and plotted over time the mean number of different
199 medication groups that individuals used (main ATC anatomical groups) and the mean number of
200 contacts to G.P, by treatment group. To look at use rather than users, we plotted over time the
201 amount of nasal sprays dispensed by treatment group. Finally, to look at asthma as outcome in a
202 final additional analysis, the main analysis was performed with asthma medication as outcome. All
203 analyses were performed with SAS version 9.4 (SAS Institute, Inc., Cary, North Carolina).

204

205 **RESULTS**

206 We identified 26,949 new GBM AIT treated patients aged ≥ 5 years in Denmark in the period
207 1.9.1997 to 31.8.2013, of which 19,042 had AR (INS users), and among these 7,760 were eligible

208 for inclusion in the study (4,373 grass, 1,374 birch, 60 mugwort, and 2134 a combination of the 3
209 AITs). Major reasons for exclusion were not being INS user in the last 3 pollen seasons (55% of all
210 new GBM AIT) or having severe or perennial asthma the last 3 years before baseline (20% of all
211 new GMB AIT) (Figure 1). Each GBM AIT treated individual was successfully matched to two
212 non-treated individuals resulting in a sample of 15,520 non-treated AR individuals. Before
213 matching, the GBM AIT treated group was substantially younger and had a higher use of all types
214 of AR prescription medication than other AR individuals (data not shown). After propensity score
215 matching, the treated and non-treated group were well balanced, with the standardized difference
216 well below 10% for all covariates (Table 1). Assuming one GBM AIT treatment package lasts 6
217 months, the cumulative percentages of patients ending their last treatment 4, 5, and 6 years after
218 first treatment was 70%, 87%, 94%, respectively (data not shown).

219

220 *Main result*

221 For the primary outcome of nasal spray users, Figure 2 shows the proportion who used nasal spray
222 in the GBM AIT treatment and the non-treatment group by year including the 3 years before
223 baseline. Overall, in both groups, the proportion of nasal spray users increased and peaked in the 3
224 years before baseline, and then dropped immediately after baseline. In the GBM AIT treated group,
225 the proportion of nasal spray users was lower 0-5 years after baseline, when compared with no
226 treatment (0-2 years, OR 0.84, 95% CI 0.81-0.88; 3-5 years, OR 0.88, 95% CI 0.84-0.92), but then
227 remained constant while the proportion in the non-treated group dropped, thereby yielding a relative
228 higher proportion of nasal spray users among treated in the later period (6-9 years, OR 1.03, 95% CI
229 0.97-1.08; 10-18 years, OR 1.18, 95% CI 1.11-1.26) (Figure 2 and Table 2).

230

231 For the secondary outcome of eye drop users, the results of the main analysis was similar (Table 2).
232 However, for secondary outcome of oral antihistamine users, the proportion of users was constantly
233 higher in the GBM AIT group, when compared with the non-treated group (0-2 years, OR 1.24,
234 95% CI 1.18-1.29; 3-5 years, OR 1.19, 95% CI 1.14-1.25), and even higher after 6 or more years (6-
235 9 years, OR 1.29, 95% CI 1.23-1.36; 10-18 years, OR 1.44, 95% CI 1.35-1.54), despite the two
236 groups being well-matched on prebaseline use (Table 1 and 2).

237

238 In an additional analysis, the main result were stratified on years of prebaseline AR medication (see
239 Figure 3 and STable 6). For individuals in the strata with 2 of 3 years prebaseline use of nasal spray
240 (30.5% of GBM AIT treated), the result (see Figure 3) was similar to the main result. For
241 individuals in the strata with 3 of 3 years prebaseline use of nasal spray however (24.5% of GBM
242 AIT treated), the proportion of nasal spray users in the treated group was lower 0-9 years after
243 baseline but then became equal to the proportion in the non-treated group (0-2 years, OR 0.59, 95%
244 CI 0.54-0.64; 3-5 years, OR 0.64, 95% CI 0.59-0.71; 6-9 years, OR 0.82, 95% CI 0.75-0.91; 10-18
245 years, OR 0.95, 95% CI 0.84-1.08) (Figure 3). For individuals in the strata with 1 of 3 years
246 prebaseline use of nasal spray (44.9% of GBM AIT treated), the proportion of nasal spray users
247 became higher in the GBM AIT treated group already 3 years after baseline. For use of eye drops
248 and oral antihistamine, stratification on prebaseline use yielded a compatible result pattern (STable
249 6).

250

251 Because our main analyses were based on yearly users of AR medication (and not each individual's
252 course of use over the years), we also performed an additional analyses, where we estimated the
253 effectiveness of GBM AIT on use of AR medication every follow-up year conditional on an
254 individual's use of AR medication in the last pollen season (yes/no). Regardless of years since

255 baseline, the proportion of nasal spray users was lower in the treated vs non-treated group within
256 patients who used nasal spray in the last pollen season (0-2 years, OR 0.76, 95% CI 0.72-0.79; 3-5
257 years 0.86, 95% CI 0.81-0.93; 6-9 years, OR 0.94, 95% CI 0.87-1.02; 10-18 years, 0.94, 95% CI
258 0.86-1.04), ie. these patients had a tendency to stop using nasal spray, whereas the proportion was
259 higher in the treated vs. non-treated group within patients who did not use nasal spray in the last
260 pollen season (0-2 years, OR 1.02, 95% CI 0.95-1.10; 3-5 years 1.11, 95% CI 1.04-1.19; 6-9 years,
261 OR 1.23, 95% CI 1.15-1.32; 10-18 years, 1.33, 95% CI 1.23-1.44), ie., such patients had a tendency
262 to start using nasal spray when not having used nasal spray in the last pollen season (Table 3). The
263 findings were similar for the proportion of eye drop users, and even for the proportion of oral
264 antihistamine users (Table 3), and even after stratification for prebaseline use (STable 7, shown for
265 nasal spray users only). In the latter analysis, however, every year those with the lowest prebaseline
266 use (1 of 3 years) had a tendency to start using nasal spray, whereas only some years this was case
267 for those with higher prebaseline uses (2 or 3, of 3 years) (Stable 7).

268

269 In an additional analyses focusing on each AIT allergen, we observed that the main result was
270 similar for patients treated with either grass, birch, or mugwort AIT (STable 8 and 9), or with the
271 recommended 3 years of treatment defined as at least 4 filled prescriptions of GBM AIT in the first
272 3 years (STable 10). For patients treated with multiple AITs, the proportion of nasal spray users was
273 lower in the first 10 years after baseline and then became equal to the proportion in the non-treated
274 group (STable 8 and 9).

275

276 In an alternative outcome analysis, we examined a concern that the GBM AIT might change
277 patients' general health seeking behaviour more than for the non-treated group, by using health
278 registrations in general as outcomes. We observed an almost equal use of the different ATC main

279 anatomical groups of medications (excluding AIT prescriptions) in the GMB AIT treated and non-
280 treated group every year (SFigure 1a). Furthermore, the long term the use of GP services were also
281 almost equal in the two comparison groups, except in the first 0-5 years after baseline when GP
282 services related to AIT however could not be excluded (SFigure 1b). In a final analysis, we depicted
283 number of prescribed AR medication packages as outcome, with the results shown in SFigure 2.
284 Among others, the figure shows that after baseline, less than 50% used at least one nasal spray, and
285 less than 20% used at least two nasal sprays, in a pollen season.

286

287 We did a different additional post-hoc analysis, and explored the effectiveness of pollen AIT on
288 “new” medication use for the outcome of severe or perennial asthma (see STable 11, 12, and 13).
289 Here, we assumed conservatively that any medication use for asthma would be “new” because
290 individuals with medication use for severe or perennial asthma three years prior to baseline were
291 already excluded from the study population. As in the main analysis with AR medication as
292 outcome, we also observed excesses of users for the asthma medication outcome in the treated vs
293 non-treated group over the 18 years (STable 12), and therefore we again stratified by recent use or
294 not: Thus, among patients who used asthma medication last year, the proportion was lower in the
295 treated group (0-2 years, OR 0.80, 95% CI 0.67-0.94; 3-5 years, OR 0.84, 95% CI 0.72-0.98; 6-9
296 years, OR 0.93, 95% CI 0.81-1.08; 10-18 years, OR 0.88, 95% CI 0.75-1.02), whereas it still higher
297 among patients who did not use asthma medication last year (STable 13).

298

299 **DISCUSSION**

300 This longitudinal study of routine care data showed that patients on GBM AIT to a higher degree
301 stopped using nasal spray in the first 0-5 years but not later. In post-hoc analyses, this finding was
302 more consistent among patients with persistent AR.

303

304 **Interpretation**

305 The observed effectiveness in reducing nasal spray users 0-5 years after starting pollen AIT is
306 compatible with findings in clinical trials with up to 5 years of follow-up (<300 pollen AIT
307 patients)[11-14] as well as multiple analyses of a regional German health insurance data with 6
308 years of follow-up (<9000 pollen AIT patients)[7-9] and more recently 9 years of follow-up.[3]

309

310 In post-hoc subgroup analysis, we observed GMB AIT effectiveness in the first 0-5 years was
311 greatest and most consistent in those with the most persistent AR medication use at baseline, going
312 back 3 years. This was true both for reductions in nasal sprays, eye drops, and oral antihistamines
313 users, and could suggest the best result of GBM AIT is achieved in patients with the most persistent
314 AR disease. For those with less persistent AR, we however observed a constant excess of users of
315 oral antihistamine, and after 6 years also an excess of nasal spray and eye drop users. These
316 surprising results suggested an additional effect where AR medication use in subgroups of patients
317 may change over the years clearly for other reasons than the immunological effect of GBM AIT. To
318 investigate this further, we performed another post-hoc analysis conditioning in each follow-up year
319 on use or no use in the last pollen season - thereby better capturing changes in use at the individual
320 level over the years. Here, we first observed that for each follow-up year there was a clear tendency
321 to stop nasal spray use but only after a pollen season *with use*. We interpret this as an
322 immunological effect of GBM AIT on AR among those with recent nasal spray use. Secondly we
323 also observed a tendency to start after a pollen season *with no use* - a tendency which in fact fully
324 described the additional effect. One explanation could be that those with no recent use are also
325 patients with less persistent AR at baseline. We therefore cross-tabulated effectiveness by
326 prebaseline use and recent use, and indeed observed the additional effect was largely, although not

327 entirely, restricted to the subgroup of patients with less persistent AR at baseline and a tendency not
328 to use nasal spray the latest pollen season during follow-up (STable 7). However, other explanations
329 may also exist.

330

331 The surprising drop in AR medication users immediately after baseline, regardless of pollen AIT,
332 was an unexpected observation. However, pollen AIT is often considered when AR has become
333 chronic, severe, and/or unresponsive to medication. Because this represents a peak in the course of
334 the disease, a subsequent drop in AR medication use would be expected, and also in the control
335 group because of the matching on a similar duration and severity of AR as in the pollen AIT group,
336 as approximated by the last 3 years of medication use.

337

338 Our results for pollen AIT effectiveness for 0-5 years are applicable to a selected group of
339 individuals with AR. For example, by our definition about 10% of individuals more than 5 years old
340 in Denmark had AR (ie. INS use in recent pollen seasons), a proportion somewhat lower than
341 reported for any use of INS.[29] Among the 10%, only 2.2% started on GBM AIT. However, the
342 proportion eligible for GBM AIT is likely larger. For example, 75-80% of AR patients are
343 estimated to have moderate-severe AR.[30] Further studies are warranted to estimate if a reduction
344 in disease burden and costs could be achieved by treating more AR patients with AIT.

345

346 **Strengths**

347 The study had several strengths. Foremost, the use of real-world data to address long-term
348 effectiveness of pollen AIT over 18 years. In addition, we included detailed individual level data 3
349 years before baseline. Among others, this allowed us to match pollen AIT patients to non-treated
350 individuals with a similar baseline level of AR medication and history of allergic diseases, thereby

351 strongly reducing potential confounding by a higher baseline severity and persistence of AR in the
352 pollen AIT group.[31]

353

354 We acknowledge that AR medication can only be used as proxy for severity and persistence of
355 symptoms. However, since the national register data presented 1.1 million AR individuals (INS
356 users) available for matching, we could match in detail for both number of packages used in the 3
357 pollen seasons before baseline (a proxy for severity or intensity of AR) and how many of the 3
358 pollen seasons the medication was used (a proxy for persistence of AR), and this was possible for
359 each specific AR medication. The two comparison groups were also matched on income and
360 educational level, because previous reports suggested AIT patients e.g. have a higher education
361 level.[32, 33] Such factors were not considered in previous real-world studies of AIT effectiveness,
362 all based on German claims databases.[3, 7-9] We chose a design where comparisons groups were
363 evaluated in the same pollen seasons over time, so that pollen exposure would be relatively equal.
364 We had data to perform several sensitivity analysis of the robustness of results. For example, the
365 main results for GBM AIT were robust for grass, birch, or mugwort AIT received alone or in
366 combinations, and even regardless of a higher number of administered GBM AIT packages.
367 Another sensitivity analysis showed that markers of the general health seeking behaviour, ie.
368 medication use and primary care, were at the same level for pollen AIT patients and non-treated
369 individuals during follow-up, except for an excess G.P. contacts the first 0-5 years. The last result is
370 likely related to GBM AIT referrals and prescribing, and is compatible with the German REACT-
371 study finding that subjects treated with AIT were seen more frequently by specialists during the first
372 3–5 follow-up years, than non-treated in the prescription database.[3, 15, 17]

373

374 **Limitations**

375 A limitation of the study was the lack of data on clinical diagnosis of AR and sensitisation status.
376 However, to identify those suffering from AR we restricted our analysis to individuals using INS,
377 which is the classic common effective and specific medication prescribed for AR. Furthermore, we
378 expected the pollen AIT group to have a diagnosis of AR with moderate-to-severe symptoms and
379 confirmed sensitisation status, because it is a prerequisite for the therapy. In the non-treated group,
380 we cannot outrule some misclassification of AR. However, we matched in detail their AR
381 medication use in the 3 prebaseline years (including INS), with that of the pollen AIT patients. This
382 algorithm is more valid than one used in the only Danish validation study so far, which differently
383 defined AR by one year of INS use only, and reported a positive predictive value of 53% for a
384 clinical AR diagnosis.[26]In addition, a bias from misclassification of AR in the non-treated group
385 would tend to overestimate effectiveness, because of less use in the non-treated group. In contrast,
386 we observed effectiveness was reversed or absent in strata with low prebaseline use, where such
387 bias would be largest, but we also observed that effectiveness was better in the strata with the
388 largest prebaseline use where such bias would be smallest (see STable 6). Thus, our results are not
389 consistent with a bias from misclassification of AR in the non-treated group.

390

391 Our main outcome measure was the proportion of users of AR medication. We considered this a
392 more appropriate outcome than number of packages used, because, although 100% used nasal
393 sprays before baseline, less than 50% were users in years after baseline (eFigure 2) – thus, use as
394 outcome would not apply to the entire study population, and it would be unclear what patient
395 settings the resulting findings might apply to. Another outcome we considered but did not analyse,
396 was the proportion of more severe users, ie. users of at least 2 packages of AR medication in the
397 pollen season. However, since they constituted less than 20% of the study population, and since
398 comparing them with those using one or no packages would not provide representative or

399 generalisable effects, we did not perform this analysis. A potential limitation was the lack of data on
400 sensitization status for GBM pollen allergens. This means that a grass-AIT patient could be
401 matched correctly to a grass-allergic patient but also incorrectly with a birch- or mugwort-allergic
402 patients, and so forth. However, because we combined the results of the GBM-AIT, and since the
403 choice of AR medication do not differ by type of pollen allergy, this is unlikely to bias the results.
404 In addition, we included only prescriptions filled close to or during Denmark's GBM pollen season
405 from April to August.[34]

406

407 A potential weakness was that filled prescriptions were a proxy for the actual intake of medication.
408 In addition, many antihistamine products in Denmark are not registered by individual as they are
409 sold over-the-counter (although individuals with chronic disease, e.g. AR, are obligated to
410 prescriptions, for reimbursement purposes). For example, for many antihistamine products, 30-40%
411 of users are over-the-counter users as identified purely from Danish sale registrations (without
412 personal identification) (www.medstat.dk/en). In both cases these weaknesses could potentially bias
413 use to be lower than the true use, but to bias our results the lower use needs to be differential
414 between comparison groups. Given the comparison groups were well matched, also on income and
415 educational level, and that we included only medication dispensed within pollen seasons and in the
416 same year in both groups, we considered this was less likely.

417

418 Because it has been discussed whether AIT could prevent asthma,[35]we performed a different
419 additional post-hoc analysis using asthma medication as outcome, keeping in mind that individuals
420 with initial severe or perennial asthma to a large degree were already excluded at baseline. As in the
421 previous main analysis with AR medication as outcome, we also observed, surprisingly, an excess
422 of users for the asthma medication outcome in the GBM AIT group over 18 years. However, again,

423 to interpret an immunological effect of GBM AIT in reducing asthma medication use, we stratified
424 by recent use or not, and then observed GBM AIT actually reduced asthma medication users in the
425 first 0-5 years but only in the strata of those with recent use. However, this post-hoc subgroup
426 analysis should be interpreted with caution as our study was not designed to prevention
427 effectiveness. For example, 25-35% of the study population already had used medication for
428 seasonal or mild asthma at inclusion, and the history of clinical asthma symptoms since birth cannot
429 be accounted for completely using register-based data alone, but require a closer clinical follow-up.

430

431 **Conclusion**

432 In conclusion, this longitudinal study over 18 years demonstrated that routine care patients who
433 received pollen AIT, compared to non-receivers, had a lower consumption of nasal spray
434 medication in the first 0-5 years after starting pollen AIT. Post-hoc analyses suggested results were
435 more consistent for patients with persistent AR.

436

437 **Figure legends**

438

439 **Figure 1.** Flow-chart for identification of the Grass-Birch-Mugwort (GBM) Allergen

440 Immunotherapy (AIT) treated group, Denmark 1994-2016 (total data period).

441

442 **Figure 2:** Proportion of users of nasal spray in the pollen season among 7760 GBM AIT treated vs

443 15520 matched not GBM AIT treated individuals with AR by year since baseline (dotted line),

444 including 3 years before baseline date, Denmark 1994-2016.

445

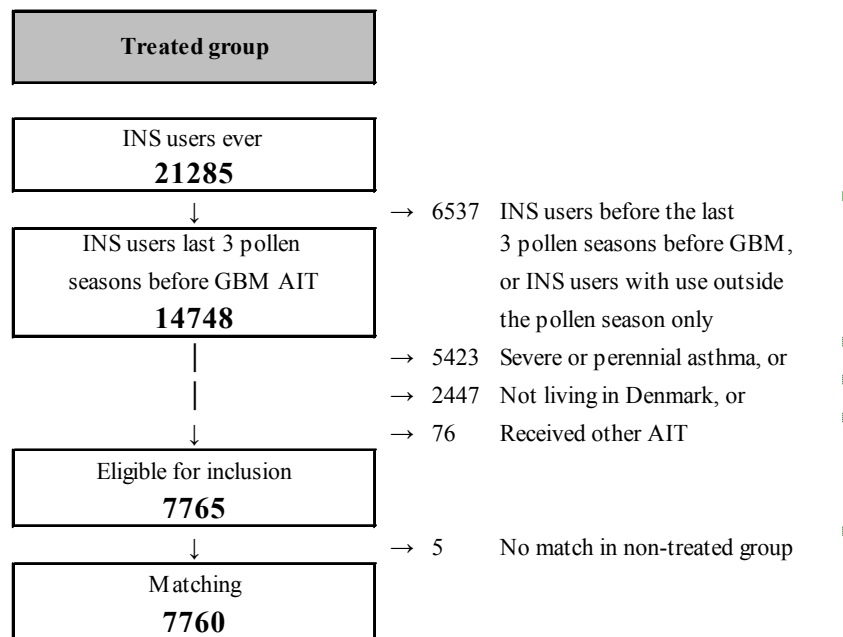
446 **Figure 3.** Proportion of users of nasal spray in the pollen season among 7760 GBM AIT treated

447 versus 15520 matched not GBM AIT treated individuals with AR by years since baseline (dotted

448 line) stratified by prebaseline nasal spray use (1, 2, 3 out of 3 years), Denmark 1994-2016

449

450 **Figure 1:** Flowchart for identification of the Grass-Birch-Mugwort (GBM) Allergen Immunotherapy (AIT) treated
451 group,
452 Denmark, 1994-2016 (total data period).
453



454
455
456
457

458 **Table 1:** Baseline characteristics in the propensity-score matched study population,
 459 Denmark 1994-2016. See full definitions of variables in STable 4.

Baseline characteristic	Propensity-score matched sample (1:2)			
	GBM AIT treated	Not treated	Std. diff.	
Total number of AR individuals	7760	15520		
Baseline sampling years (dates 1 September to 31 August each year)				
	1998-2001	20.8%	20.8%	0.00
	2002-2005	27.8%	27.8%	0.00
	2006-2009	22.2%	22.2%	0.00
	2010-2013	29.2%	29.2%	0.00
Demographic characteristics				
Women		43.9%	44.3%	-0.01
Age at 1 September in baseline sampling year	5-9 years	9.8%	9.1%	0.02
	10-14 years	17.9%	18.5%	-0.01
	15-24 years	20.2%	20.9%	-0.01
	25-34 years	22.3%	22.4%	-0.00
	35-44 years	18.2%	18.4%	-0.01
Time since first prescription of INS	45+ years	8.2%	8.0%	0.01
	0-1 years	32.5%	31.9%	0.01
	2-4 years	31.4%	31.7%	-0.01
	5-9 years	24.5%	24.5%	-0.00
	10+ years	11.6%	11.8%	-0.01
Use of AR medicine in last three pollen seasons (prebaseline use)				
Nasal spray, persistence	1 year out of 3	44.9%	45.3%	-0.01
	2 years out of 3	30.5%	30.5%	-0.00
	3 years out of 3	24.5%	24.1%	0.01
Nasal spray, number of packages in last three pollen seasons	0-1 pkgs.	34.6%	35.2%	-0.01
	2 pkgs.	24.3%	24.8%	-0.01
	3-4 pkgs.	24.4%	24.1%	0.00
	5+ pkgs.	16.6%	15.9%	0.02
Nasal spray, number of packages in last pollen season	0 pkgs.	26.8%	26.9%	-0.00
	1 pkg.	45.2%	46.0%	-0.01
	2-3 pkgs.	22.9%	22.1%	0.01
	4+ pkgs.	5.2%	5.0%	0.01

460
 461

462 (Table 1 continued)

		Propensity-score matched sample (1:1)		
		GBM AIT treated	Not treated	Std. diff.
Eye drops, number of last three pollen seasons where eye drops were used	0 years out of 3	24.2%	23.7%	0.01
	1 year out of 3	28.7%	30.0%	-0.02
	2 years out of 3	22.8%	22.8%	0.00
	3 years out of 3	24.3%	23.5%	0.02
Eye drops, number of packages in last three pollen seasons	0 pkgs.	24.2%	23.7%	0.01
	1 pkg.	22.7%	23.9%	-0.02
	2 pkgs.	16.3%	16.6%	-0.01
	3-4 pkgs.	19.1%	19.2%	-0.00
	5+ pkgs.	17.7%	16.6%	0.03
Eye drops, number of packages in last pollen season	0 pkgs.	42.7%	43.5%	-0.01
	1 pkg.	32.4%	32.6%	-0.00
	2 pkgs.	14.1%	14.1%	0.00
	3-4 pkgs.	10.8%	9.8%	0.03
Oral antihistamines, number of last three pollen seasons where oral antihistamines were used	0 years out of 3	18.5%	17.6%	0.02
	1 year out of 3	26.8%	27.5%	-0.01
	2 years out of 3	25.6%	26.0%	-0.01
	3 years out of 3	29.2%	28.8%	0.01
Oral antihistamines, number of packages in last three pollen seasons	0 pkgs.	18.5%	17.6%	0.02
	1 pkg.	16.6%	17.2%	-0.01
	2 pkgs.	15.5%	16.3%	-0.02
	3-4 pkgs.	23.5%	23.4%	0.00
	5+ pkgs.	26.0%	25.5%	0.01
Oral antihistamines, number of packages in last pollen seasons	0 pkgs.	34.6%	34.2%	0.01
	1 pkg.	29.4%	30.4%	-0.02
	2 pkgs.	18.8%	18.6%	0.00
	3-4 pkgs.	17.2%	16.8%	0.01
Mild/seasonal asthma^a, atopic dermatitis				
Mild/seasonal asthma medication, number of last three years where the asthma medication was used	0 years out of 3	69.8%	69.5%	0.01
	1 years out of 3	19.2%	19.1%	0.00
	2 years out of 3	7.4%	7.7%	-0.01
	3 years out of 3	3.6%	3.6%	-0.00

463

464

(Table 1 continued)

		Propensity-score matched sample (1:1)		Std. diff.
		GBM AIT treated	Not treated	
Mild/seasonal asthma medication, number of packages in the last three years pollen seasons	0 pkgs.	64.9%	64.9%	0.00
	1 pkg.	12.2%	11.9%	0.01
	2 pkgs.	7.6%	7.8%	-0.01
	3+ pkgs.	15.2%	15.4%	-0.00
Mild/seasonal asthma medication, number of packages in last pollen season	0 pkgs.	74.9%	74.8%	0.00
	1 pkg.	11.3%	11.6%	-0.01
	2+ pkgs.	13.8%	13.6%	0.00
Hospital diagnosis of allergic rhinitis		9.2%	8.0%	0.03
Atopic dermatitis (medication and/or hospital contact within last 3 years ^b)		5.5%	5.4%	0.00
Parent ^c with allergic rhinitis		56.9%	57.3%	-0.01
Parent ^c with asthma		36.5%	37.0%	-0.01
General health				
Ever admitted to hospital due to respiratory illness (excluding asthma)		28.1%	26.6%	0.03
Average number of different prescriptions drugs over last three years	0-1 ATC	13.5%	13.7%	-0.01
	2-3 ATC	40.8%	41.6%	-0.01
	4-5 ATC	28.4%	26.6%	0.03
	6+ ATC	17.4%	18.0%	-0.01
Average number of contacts to own doctor over last three years (in tertiles calculated in full sample)	Lowest	37.2%	38.0%	-0.01
		39.6%	38.9%	0.01
	Highest	23.2%	23.1%	0.00

465

(Table 1 continued)

		Propensity-score matched sample (1:1)		
		GBM AIT treated	Not treated	Std. diff.
Socio-economic characteristics				
Education ^d	Unknown	22.3%	22.0%	0.01
	Short	21.7%	21.9%	-0.00
	Intermediate	32.2%	32.7%	-0.01
	Long	23.8%	23.4%	0.01
Income (in quartiles calculated in full sample)	Lowest	11.7%	11.5%	0.01
		17.8%	18.0%	-0.01
		25.8%	25.9%	-0.00
	Highest	37.2%	37.2%	-0.00

466

GBM-AIT grass/birch/mugwort allergen immunotherapy.

467

^a Defined as those not using medication for severe asthma and not using perennial asthma medications, also see STable 4.

468

^b Using definition from Henriksen L et al. (J Allergy Clin Immunol. 2015;136(2):360-366).

469

^c Coding of parent is based on the national CPR registry, Adoption registry, and Medical Birth Registry, and determined in Statistic Denmark's table FTBARN, based on parent-child relation registered shortly after birth in most cases indicate biological parents (see <https://www.dst.dk/da/Statistik/dokumentation/Times/fertilitetsdatabasen/far-foed-adop>).

470

471

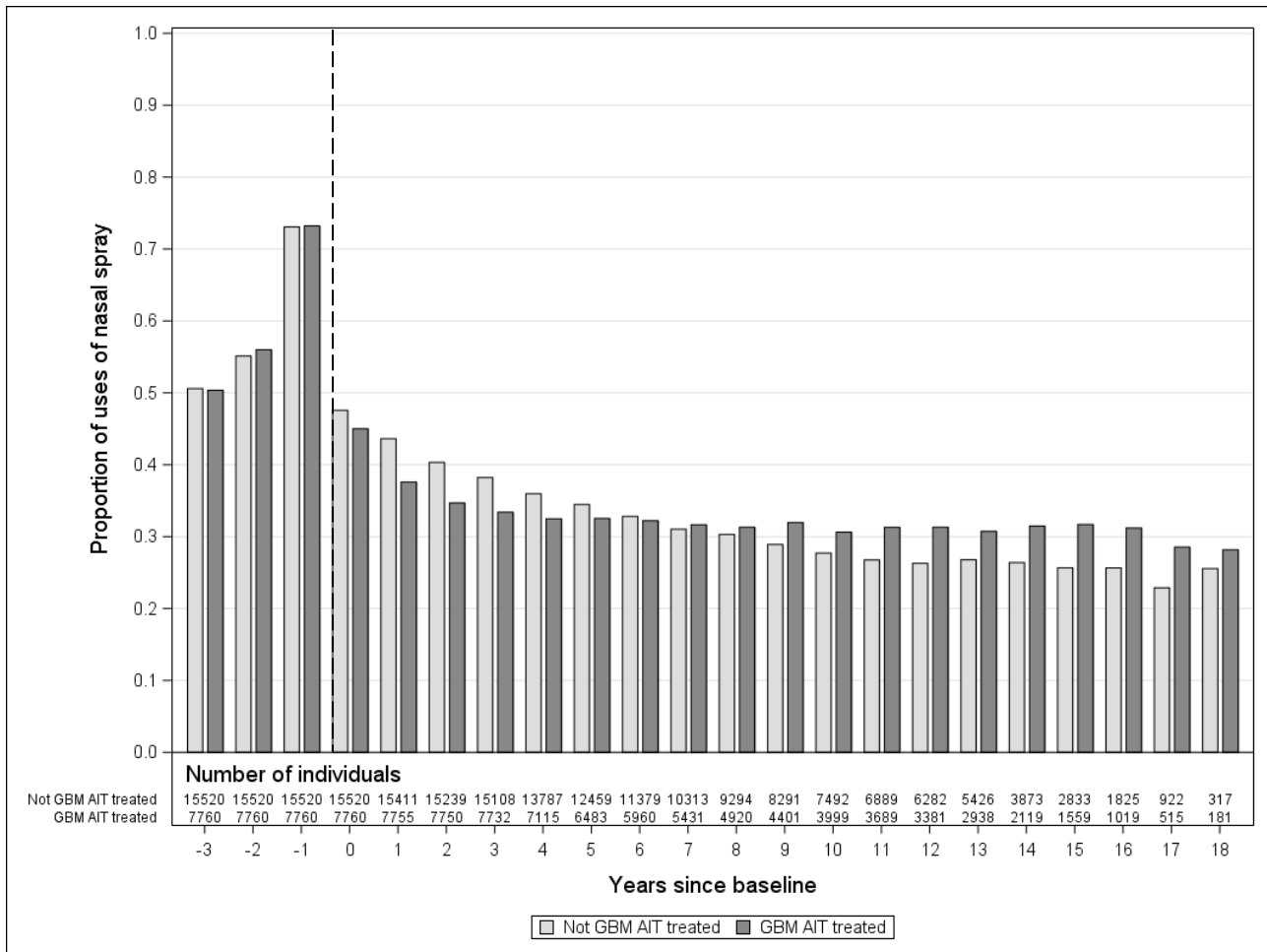
^d Coding of education: Short: Primary education or lower secondary; intermediate: Upper secondary, vocational training, some further education not equivalent of a bachelor's degree; long: Further education equivalent of a bachelor's degree or higher

472

473

474

475 **Figure 2:** Proportion of users of nasal spray in the pollen season among 7760 GBM AIT treated vs 15520 matched not
 476 GBM AIT treated individuals with AR by year since baseline (dotted line), including 3 years before baseline date,
 477 Denmark 1994-2016.
 478



479

480 **Table 2:** The OR of using AR medication in 7760 GBM AIT treated vs. 15520 matched not GBM AIT treated
481 individuals with AR by years since baseline and type of AR medication, Denmark, 1994-2016.

Type of AR medication	Years since baseline	GBM AIT treated		Not GBM AIT treated		OR for using AR medication ^b
		N ^a	%	N ^a	%	
Nasal spray	0-2	23265	39	46170	44	0.84 (0.81, 0.88)
	3-5	21330	33	41354	36	0.88 (0.84, 0.92)
	6-9	20712	32	39277	31	1.03 (0.97, 1.08)
	10-18	19400	31	35859	27	1.18 (1.11, 1.26)
Eye drops	0-2	23265	35	46170	37	0.93 (0.89, 0.98)
	3-5	21330	28	41354	30	0.94 (0.89, 0.98)
	6-9	20712	26	39277	24	1.12 (1.05, 1.18)
	10-18	19400	24	35859	19	1.27 (1.18, 1.36)
Oral antihistamine	0-2	23265	50	46170	45	1.24 (1.18, 1.29)
	3-5	21330	41	41354	37	1.19 (1.14, 1.25)
	6-9	20712	37	39277	31	1.29 (1.23, 1.36)
	10-18	19400	34	35859	26	1.44 (1.35, 1.54)

482 Abbreviations: GBM AIT grass/birch/mugwort allergen immunotherapy, AR allergic rhinitis, OR odds ratio.

483 ^a Number of observations in time intervals. Since each individual contribute with one observation for each year of follow-up, this
484 number is larger than the number of individuals included in the analysis.

485 ^b The OR for using AR medication is modelled by repeated measure logistic regression using GEE modelling of correlations.
486

487
488
489
490
491

Figure 3: Proportion of users of nasal spray in the pollen season among 7760 GBM AIT treated versus 15520 matched not GBM AIT treated individuals with AR by years since baseline (dotted line) stratified by prebaseline nasal spray use (1, 2, 3 out of 3 years), Denmark 1994-2016.

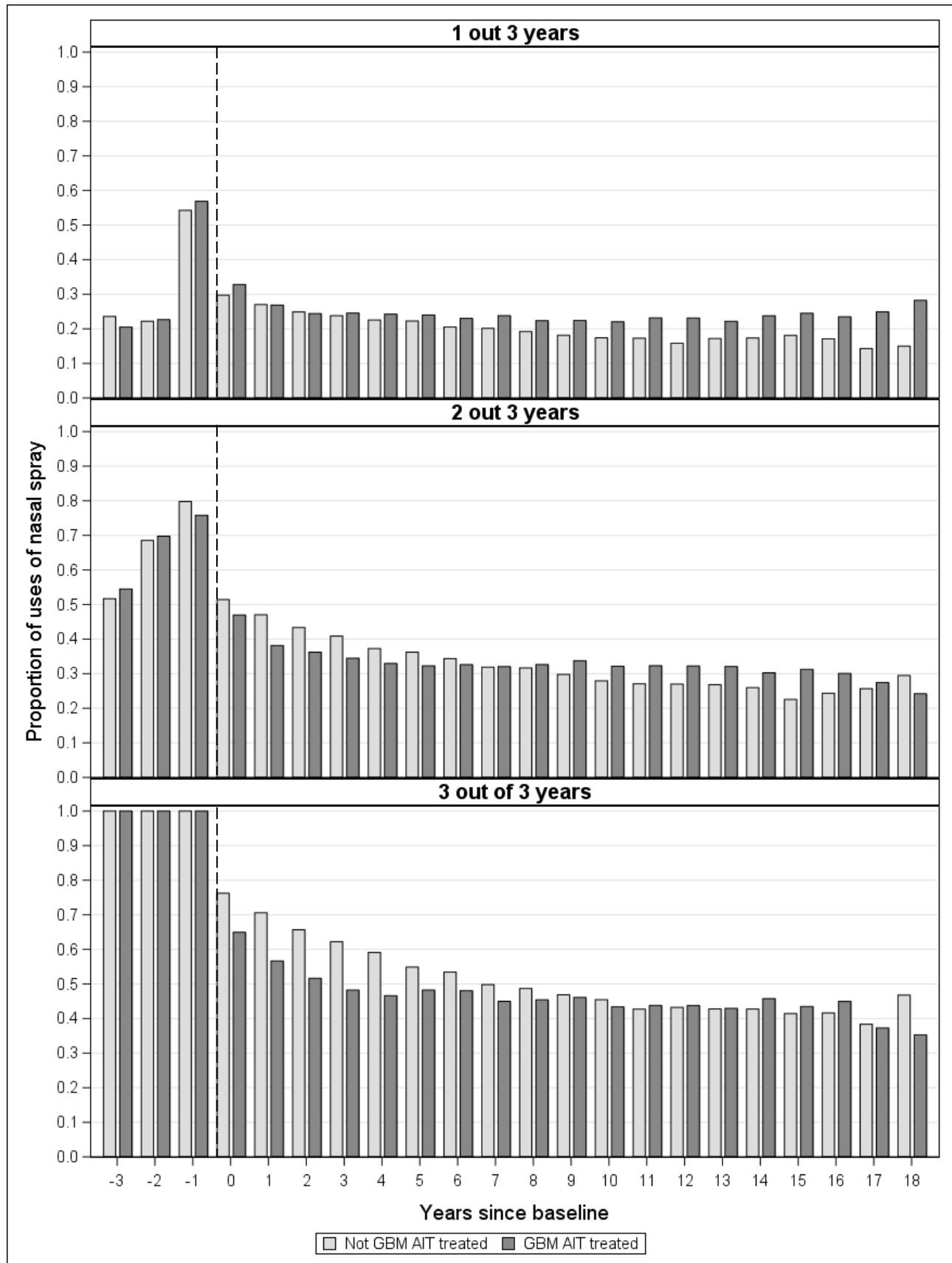


Table 3: The OR for using nasal spray, eye drops, and oral antihistamine in 7760 GBM AIT treated vs. 15520 matched not GBM AIT treated individuals with AR by years since baseline and use of the AR medication type in the latest pollen season (yes/no), Denmark, 1994-2016.

Use of the AR medication type in the latest pollen season											
Type of AR medication	Years since baseline	Yes				OR for using the AR medication	No				OR for using the AR medication
		GBM AIT treated		Not GBM AIT treated			GBM AIT treated		Not GBM AIT treated		
		N^a	%	N^a	%		N^a	%	N^a	%	
Nasal spray	0-2	12083	55	25280	62	0.76 (0.72, 0.79)	11182	22	20890	22	1.02 (0.95, 1.10)
	3-5	7110	62	15734	67	0.86 (0.81, 0.93)	14220	18	25620	18	1.11 (1.04, 1.19)
	6-9	6624	65	12654	66	0.94 (0.87, 1.02)	14088	16	26623	14	1.23 (1.15, 1.32)
	10-18	6007	68	9664	69	0.94 (0.86, 1.04)	13393	14	26195	11	1.33 (1.23, 1.44)
Eye drops	0-2	10139	58	20434	64	0.77 (0.73, 0.81)	13126	17	25736	15	1.10 (1.02, 1.18)
	3-5	6186	61	13044	65	0.89 (0.82, 0.96)	15144	14	28310	13	1.17 (1.09, 1.26)
	6-9	5544	64	9897	64	0.96 (0.88, 1.04)	15168	12	29380	10	1.28 (1.18, 1.38)
	10-18	4690	66	6997	65	0.92 (0.83, 1.02)	14710	10	28862	8	1.37 (1.26, 1.50)
Oral antihistamine	0-2	13143	66	24407	68	0.86 (0.82, 0.90)	10122	29	21763	19	1.72 (1.61, 1.84)
	3-5	9033	66	16098	69	0.83 (0.78, 0.89)	12297	22	25256	16	1.39 (1.30, 1.49)
	6-9	7909	68	12767	68	0.92 (0.85, 0.99)	12803	18	26510	13	1.46 (1.36, 1.57)
	10-18	6705	70	9477	69	0.92 (0.84, 1.01)	12695	15	26382	10	1.50 (1.38, 1.63)

Abbreviations: GBM AIT grass/birch/mugwort allergen immunotherapy, AR allergic rhinitis, OR odds ratio.

^a Number of observation in time intervals. Since each individual contribute with one observation for each year of follow-up, this number is larger than the number of individuals included in the analysis.

REFERENCES

1. Calderon MA, Alves B, Jacobson M, Hurwitz B, Sheikh A, Durham S. Allergen injection immunotherapy for seasonal allergic rhinitis. *Cochrane Database Syst Rev*. 2007;(1):CD001936. doi: 10.1002/14651858.CD001936.pub2 [doi].
2. Des Roches A, Paradis L, Menardo JL, Bouges S, Daures JP, Bousquet J. Immunotherapy with a standardized *Dermatophagoides pteronyssinus* extract. VI. Specific immunotherapy prevents the onset of new sensitizations in children. *J Allergy Clin Immunol*. 1997;99(4):450-3. doi: 10.1016/s0091-6749(97)70069-1. PubMed PMID: 9111487.
3. Fritzsching B, Contoli M, Porsbjerg C, Buchs S, Larsen JR, Elliott L, et al. Long-term real-world effectiveness of allergy immunotherapy in patients with allergic rhinitis and asthma: Results from the REACT study, a retrospective cohort study. *Lancet Reg Health Eur*. 2022;13:100275. Epub 20211130. doi: 10.1016/j.lanepe.2021.100275. PubMed PMID: 34901915; PubMed Central PMCID: PMC8640513.
4. Radulovic S, Jacobson MR, Durham SR, Nouri-Aria KT. Grass pollen immunotherapy induces Foxp3-expressing CD4⁺ CD25⁺ cells in the nasal mucosa
1. *J Allergy Clin Immunol*. 2008;121(6):1467-72, 72.
5. Zolkipli Z, Roberts G, Cornelius V, Clayton B, Pearson S, Michaelis L, et al. Randomized controlled trial of primary prevention of atopy using house dust mite allergen oral immunotherapy in early childhood. *J Allergy Clin Immunol*. 2015;136(6):1541-7 e11. Epub 20150612. doi: 10.1016/j.jaci.2015.04.045. PubMed PMID: 26073754.
6. Avorn J. In defense of pharmacoepidemiology--embracing the yin and yang of drug research. *N Engl J Med*. 2007;357(22):2219-21. doi: 10.1056/NEJMp0706892. PubMed PMID: 18046025.

7. Devillier P, Wahn U, Zielen S, Heinrich J. Grass pollen sublingual immunotherapy tablets provide long-term relief of grass pollen-associated allergic rhinitis and reduce the risk of asthma: findings from a retrospective, real-world database subanalysis. *Expert Rev Clin Immunol*. 2017;13(12):1199-206. Epub 20171106. doi: 10.1080/1744666X.2017.1398082. PubMed PMID: 29072507.
8. Wahn U, Bachert C, Heinrich J, Richter H, Zielen S. Real-world benefits of allergen immunotherapy for birch pollen-associated allergic rhinitis and asthma. *Allergy*. 2019;74(3):594-604. Epub 20181010. doi: 10.1111/all.13598. PubMed PMID: 30183091; PubMed Central PMCID: PMC6585786.
9. Zielen S, Devillier P, Heinrich J, Richter H, Wahn U. Sublingual immunotherapy provides long-term relief in allergic rhinitis and reduces the risk of asthma: A retrospective, real-world database analysis. *Allergy*. 2018;73(1):165-77. Epub 20170810. doi: 10.1111/all.13213. PubMed PMID: 28561266; PubMed Central PMCID: PMC5763412.
10. Aasbjerg K, Torp-Pedersen C, Backer V. Specific immunotherapy can greatly reduce the need for systemic steroids in allergic rhinitis. *Allergy*. 2012;67(11):1423-9. Epub 20120917. doi: 10.1111/all.12023. PubMed PMID: 22984787.
11. Durham SR, Walker SM, Varga EM, Jacobson MR, O'Brien F, Noble W, et al. Long-term clinical efficacy of grass-pollen immunotherapy. *N Engl J Med*. 1999;341(7):468-75. doi: 10.1056/NEJM199908123410702. PubMed PMID: 10441602.
12. Mosbech H, Osterballe O. Does the effect of immunotherapy last after termination of treatment? Follow-up study in patients with grass pollen rhinitis. *Allergy*. 1988;43(7):523-9. doi: 10.1111/j.1398-9995.1988.tb01631.x. PubMed PMID: 3148282.
13. Niggemann B, Jacobsen L, Dreborg S, Ferdousi HA, Halken S, Host A, et al. Five-year follow-up on the PAT study: specific immunotherapy and long-term prevention of asthma in

children. *Allergy*. 2006;61(7):855-9. doi: 10.1111/j.1398-9995.2006.01068.x. PubMed PMID: 16792584.

14. Valovirta E, Petersen TH, Piotrowska T, Laursen MK, Andersen JS, Sorensen HF, et al. Results from the 5-year SQ grass sublingual immunotherapy tablet asthma prevention (GAP) trial in children with grass pollen allergy. *J Allergy Clin Immunol*. 2018;141(2):529-38 e13. Epub 20170706. doi: 10.1016/j.jaci.2017.06.014. PubMed PMID: 28689794.

15. Fritzsching B, Contoli M, Porsbjerg C, Buchs S, Larsen JR, Elliott L, et al. Need for longitudinal studies to assess the real-world effectiveness of allergy immunotherapy in patients with allergic rhinitis and asthma - Authors reply. *Lancet Reg Health Eur*. 2022;17:100388. Epub 20220421. doi: 10.1016/j.lanep.2022.100388. PubMed PMID: 35494214; PubMed Central PMCID: PMC9046862.

16. Fritzsching B, Contoli M, Porsbjerg C, Buchs S, Larsen JR, Freemantle N. Real-world evidence: Methods for assessing long-term health and effectiveness of allergy immunotherapy. *J Allergy Clin Immunol*. 2022;149(3):881-3. Epub 20211230. doi: 10.1016/j.jaci.2021.12.781. PubMed PMID: 34973297.

17. Kamat S, Murdock D, Xia CS, Deshpande D. Need for longitudinal studies to assess the real-world effectiveness of allergy immunotherapy in patients with allergic rhinitis and asthma. *Lancet Reg Health Eur*. 2022;17:100382. Epub 20220421. doi: 10.1016/j.lanep.2022.100382. PubMed PMID: 35494216; PubMed Central PMCID: PMC9046877.

18. Andersen JS, Olivarius Nde F, Krasnik A. The Danish National Health Service Register. *Scand J Public Health*. 2011;39(7 Suppl):34-7. doi: 10.1177/1403494810394718. PubMed PMID: 21775348.

19. Kildemoes HW, Sorensen HT, Hallas J. The Danish National Prescription Registry. *Scand J Public Health*. 2011;39(7 Suppl):38-41. doi: 10.1177/1403494810394717. PubMed PMID: 21775349.
20. Linneberg A, Jacobsen RK, Jespersen L, Abildstrom SZ. Association of subcutaneous allergen-specific immunotherapy with incidence of autoimmune disease, ischemic heart disease, and mortality. *J Allergy Clin Immunol*. 2012;129(2):413-9. Epub 20111017. doi: 10.1016/j.jaci.2011.09.007. PubMed PMID: 22004944.
21. Pedersen CB. The Danish Civil Registration System. *Scand J Public Health*. 2011;39(7 Suppl):22-5. doi: 10.1177/1403494810387965. PubMed PMID: 21775345.
22. Schmidt M, Schmidt SA, Sandegaard JL, Ehrenstein V, Pedersen L, Sorensen HT. The Danish National Patient Registry: a review of content, data quality, and research potential. *Clin Epidemiol*. 2015;7:449-90. Epub 20151117. doi: 10.2147/CLEP.S91125. PubMed PMID: 26604824; PubMed Central PMCID: PMC4655913.
23. StatisticsDenmark. Statistics Denmark (www.dst.dk) is a state institution under the Ministry of Economic Affairs and the Interior, which, e.g., provide services to authorized research projects including access to register-based individual information on socioeconomic factors (income data since 1999, educational level data since 1981), and identification link to biological parents among Danish residents since 1976. . .
24. Astma-allergiDanmark. Patient Association that among others collects and provides national pollen data for research and surveillance A database was granted for the study that contains daily pollen and fungal sporecounts from sporetraps in east (Copenhagen) and west (Viborg) Denmark since 1990s Astma-Allergi Danmark www.astma-allergidk.dk.
25. Pfaar O, Bastl K, Berger U, Buters J, Calderon MA, Clot B, et al. Defining pollen exposure times for clinical trials of allergen immunotherapy for pollen-induced rhinoconjunctivitis - an

EAACI position paper. *Allergy*. 2017;72(5):713-22. Epub 20170127. doi: 10.1111/all.13092.

PubMed PMID: 27874202.

26. Stensballe LG, Klanso L, Jensen A, Haerskjold A, Thomsen SF, Simonsen J. The validity of register data to identify children with atopic dermatitis, asthma or allergic rhinoconjunctivitis.

Pediatr Allergy Immunol. 2017;28(6):535-42. Epub 20170727. doi: 10.1111/pai.12743. PubMed

PMID: 28632331.

27. Lu B. Propensity score matching with time-dependent covariates. *Biometrics*.

2005;61(3):721-8. doi: 10.1111/j.1541-0420.2005.00356.x. PubMed PMID: 16135023.

28. Austin PC. Balance diagnostics for comparing the distribution of baseline covariates

between treatment groups in propensity-score matched samples. *Stat Med*. 2009;28(25):3083-107.

doi: 10.1002/sim.3697. PubMed PMID: 19757444; PubMed Central PMCID: PMC3472075.

29. Henriksen L, Simonsen J, Haerskjold A, Linder M, Kieler H, Thomsen SF, et al. Incidence rates of atopic dermatitis, asthma, and allergic rhinoconjunctivitis in Danish and Swedish children. *J Allergy Clin Immunol*.

2015;136(2):360-6 e2. Epub 20150329. doi: 10.1016/j.jaci.2015.02.003.

PubMed PMID: 25828267.

30. Bachert C, van Cauwenberge P, Olbrecht J, van Schoor J. Prevalence, classification and

perception of allergic and nonallergic rhinitis in Belgium. *Allergy*. 2006;61(6):693-8. doi:

10.1111/j.1398-9995.2006.01054.x. PubMed PMID: 16677237.

31. Kyriacou DN, Lewis RJ. Confounding by Indication in Clinical Research. *JAMA*.

2016;316(17):1818-9. doi: 10.1001/jama.2016.16435. PubMed PMID: 27802529.

32. Petersen KD, Gyrd-Hansen D, Linneberg A, Dahl R, Larsen JN, Lowenstein H, et al.

Willingness to pay for allergy-vaccination among Danish patients with respiratory allergy. *Int J*

Technol Assess Health Care. 2010;26(1):20-9. doi: 10.1017/S026646230999081X. PubMed PMID:

20059777.

33. Petersen KD, Kronborg C, Gyrd-Hansen D, Dahl R, Larsen JN, Linneberg A.

Characteristics of patients receiving allergy vaccination: to which extent do socio-economic factors play a role? *Eur J Public Health*. 2011;21(3):323-8. Epub 20100519. doi: 10.1093/eurpub/ckq063.

PubMed PMID: 20484343; PubMed Central PMCID: PMCPMC3098894.

34. Sommer J, Plaschke P, Poulsen LK. [Allergic disease--pollen allergy and climate change].

Ugeskr Laeger. 2009;171(44):3184-7. PubMed PMID: 19857398.

35. Kristiansen M, Dhimi S, Netuveli G, Halken S, Muraro A, Roberts G, et al. Allergen

immunotherapy for the prevention of allergy: A systematic review and meta-analysis. *Pediatr*

Allergy Immunol. 2017;28(1):18-29. Epub 20161212. doi: 10.1111/pai.12661. PubMed PMID:

27653623.