

1 Foetal Allogeneic Intracerebroventricular Neural Stem Cell Transplantation in

2 People with Secondary Progressive Multiple Sclerosis: A phase I dose-

3 escalation clinical trial

4 Leone MA^{1*}, Gelati M^{1*}, Profico DC¹, Conti C², Spera C², Muzi G², Grespi V¹, Bicchi I¹, Ricciolini C¹, Ferrari D⁴,
 5 Zarrelli M¹, Amoruso L¹, Placentino G¹, Crociani P¹, Apollo F¹, Di Viesti P¹, Fogli D¹, Popolizio T¹, Colosimo C²,
 6 Frondizi D², Stipa G², Tinella E², Ciampini A², Sabatini S², Paci F², Silveri G¹, Gobbi C^{3,6}, Pravata E^{3,6,7}, Zecca E^{3,6},
 7 Balzano RF⁷, Kuhle J⁵, Copetti M¹, Fontana A¹, Carella M¹, D'Aloisio G¹, Abate L¹, Ventura Carmenate Y⁸,
 8 Pluchino S⁹, Peruzzotti-Jametti L⁹ and Vescovi AL^{1,4}

9 * The two Authors contributed equally to the manuscript

10

- 11 1. IRCCS Casa Sollievo della Sofferenza, Viale Cappuccini 1, 71013 San Giovanni Rotondo, Foggia, Italy
- 12 2. AOSP Santa Maria, via Tristano di Joannuccio 1, 05100, Terni, Italy
- 13 3. Multiple Sclerosis Centre (MSC), Department of Neurology, Neurocentre of Southern Switzerland, EOC,
- 14 6900 Lugano, Switzerland
- 15 4. BTBS Università Bicocca, piazza della Scienza 2, 20126, Milan, Italy
- 16 5. Department of Neurology, University Hospital Basel, and University of Basel/Switzerland
- 17 6. Faculty of biomedical Sciences, Università della Svizzera Italiana (USI), 6900 Lugano, Switzerland
- 18 7. Department of Neuroradiology, Neurocentre of Southern Switzerland, EOC, 6900 Lugano, Switzerland
- 19 8. Abu Dhabi Stem Cell Center, Abu Dhabi, United Arab Emirates
- 20 9. Department of Clinical Neurosciences and NIHR Biomedical Research Centre, University of Cambridge,
- 21 CB2 0QQ Cambridge, United Kingdom.

22

23 Corresponding Author: Prof. Angelo Luigi Vescovi. Email vescovia@gmail.com

24 IRCCS Casa Sollievo della Sofferenza, Viale Cappuccini 1, 71013 San Giovanni Rotondo, Foggia, Italy Tel
 25 +39 0882 416566

26

27 ABSTRACT

28 **Background:** Advanced cell therapeutics are emerging as potentially effective treatments for chronic
29 neurological diseases, including secondary progressive multiple sclerosis (SPMS). Here we report the
30 results of a phase I trial in which good manufacturing practice-grade foetal allogeneic human neural
31 stem cells (hNSCs) were implanted via intracerebroventricular (ICV) injection in 15 individuals with
32 active and non-active SPMS.

33 **Methods:** This is a phase I, open-label, multicentre, dose-escalation, international study. The primary
34 objective was to assess the feasibility, safety, and tolerability of ICV injections of allogeneic hNSCs in
35 patients affected by SPMS over a study follow up of 12 months. We also evaluated the number and
36 type of adverse events (AEs) leading to a maximum tolerated dose, the general health status, and
37 mortality. The secondary objectives were the therapeutic benefit of allogeneic hNSCs using
38 assessment scales, magnetic resonance imaging (MRI), and laboratory and neurophysiologic
39 parameters.

40 **Findings:** Fifteen unrelated SPMS patients were enrolled and treated between 2018 and 2020. The
41 participants had a median age of 49.8 years. Their mean extended disability status scale (EDSS) at
42 enrolment was 7.6, the mean disease duration was 22 years, and mean time from diagnosis to
43 progression was 10.1 years. Neither treatment-related deaths nor serious AEs were reported during
44 the study (1 year follow up after treatment). All the other AEs were classified as non-serious and
45 were associated to non-study concomitant therapy or other medical conditions not connected to the
46 experimental treatment. During the study, none of the participants worsened in the progression of
47 their SPMS as shown by the evaluation scales implemented to assess their progress. Laboratory and
48 neurophysiologic parameters showed no clinically significant variations. MRI follow-up showed non-
49 clinically significant type 1, 2, and 3 changes.

50 **Interpretation:** The intracerebroventricular injection of foetal allogeneic hNSCs in people with SPMS
51 is feasible, tolerated and safe. Study participants displayed a substantial clinical stability during the
52 12-month follow-up. The absence of relevant adverse reactions (Ars) arising from the
53 transplantation of hNSCs indicates a short-term neutral balance between benefits and risks and
54 suggests a concrete, though perspective therapeutic possibility for SPMS patients. Further studies
55 are needed to confirm and extend the findings herein and evaluate the actual therapeutic potential
56 of advanced cell therapeutics for a condition where the lack of effective disease modifying therapies
57 is a major unmet clinical need.

58

59 INTRODUCTION

60 Multiple sclerosis (MS) is the most common cause of non-traumatic disability in young adults, with
 61 over 2.5 million sufferers worldwide.¹ The last decade has seen a fast development of effective
 62 disease modifying treatments (DMTs) for patients with a relapsing remitting form of MS (RRMS).
 63 However, as the disease evolves into secondary progressive MS (SPMS), DMTs have limited efficacy.
 64 Thus, SPMS patients currently have a major unmet need.^{2,3} A solution to the current lack of effective
 65 treatments for SPMS may come from emerging cell therapy approaches, which have shown
 66 promising initial results in other central nervous system (CNS) diseases, such as amyotrophic lateral
 67 sclerosis (ALS) and Parkinson's disease.⁴

68 *In vivo* studies in rodent and non-human primate models of MS have shown that human neural stem
 69 cells (hNSCs)⁵⁻⁸ are an effective and safe tool to induce CNS functional recovery due to their tissue
 70 specificity and multiple mechanisms of action.^{9,10} hNSCs not only repair the damaged CNS by
 71 replacing cells lost to injury, but also exert immunomodulatory actions on both innate and adaptive
 72 immune responses via secretion of trophic factors, cross-correction of missing enzymatic activities,
 73 and metabolic reprogramming.¹¹⁻¹⁴ Additional data suggest that delivering these cells directly to the
 74 CNS via a single intracerebroventricular (ICV) injection allows maximising the number of cells that
 75 reach the CNS¹⁵⁻¹⁷ and may be key to target the intense compartmentalised inflammation that drives
 76 progression in SPMS.¹⁸ Indeed, following ICV injection, transplanted hNSCs spread throughout the
 77 ventricular and subarachnoid space,^{16,19} enabling their inflammation-guided migration into the CNS,
 78 where they may reach axons and myelinating cells directly without crossing the blood brain barrier.²⁰

79 The ICV cell injection is based on a widely used, technically simple, rapid, and standardised
 80 neurosurgical procedure with a minimal rate of complications (6.8%), mainly due to catheter
 81 malposition, haemorrhage, and infection (Morgenstern et al., 2016). ICV is also a relatively
 82 standardised experimental procedure, since it has already been used for the injection of growth
 83 factors in ALS patients²¹ and for chemotherapeutic agents in anti-tumour therapy.²²

84 Here, we report the results of the first phase I, open-label, multicentre, dose-escalation study in
85 which good manufacturing practice (GMP)-grade foetal allogeneic human neural stem cells (hNSCs)
86 were implanted via intracerebroventricular (ICV) injection in 15 individuals with SPMS. To the best of
87 our knowledge, this is also the largest phase I trial with hNSCs in people with SPMS conducted to
88 date.

89 **METHODS**

90 **Study design**

91 In this phase I, open-label, multicentre, international, dose-escalation study, the participating
92 patients were affected by SPMS with progressive accumulation of disability after an initial relapsing
93 course, with or without disease activity. Fifteen patients, between 18 and 60 years of age were
94 enrolled according to a “standard” dose-escalation phase I design following a modified Fibonacci
95 sequence (100%, 60% and 50% dose increments). After the initial screening, all screened patients
96 entered a 3-month run-in phase. After that, the patients were prospectively enrolled into four
97 cohorts receiving four different doses of allogenic hNSCs (5, 10, 16 and 24 million cells).

98 This study was performed in three participating centres located in Italy and Switzerland. The Italian
99 centres, the “IRCCS Casa Sollievo della Sofferenza” Research Hospital (Site 1) and the “Santa Maria di
100 Terni” Hospital (Site 2), recruited the patients. The MSC of the Neurocentre of Southern Switzerland
101 performed the magnetic resonance imaging (MRI) analysis, while ICV treatment was performed at
102 Site 2.

103 The study was approved by the Ethical Committee of the Istituto Tumori “Giovanni Paolo II” (Bari)
104 from the “Fondazione IRCCS Casa Sollievo della Sofferenza” Research Hospital (01PU/2016–21-01-
105 2016); the Ethical Committee of the “Aziende Sanitarie dell’Umbria” (2404/17); the Agenzia Italiana
106 del Farmaco (AIFA); the Istituto Superiore di Sanità (3090(16)-PRE21-1408–06-04-2016). The trial
107 was subsequently registered in the European Clinical Trials Database (EudraCT, 2015-004855-37),
108 and in ClinicalTrials.gov (NCT03282760).

109 **Participants**

110 Eligible patients were adults of either sex with a diagnosis of SPMS, with or without disease activity
 111 (Lublin 2014) with an Expanded Disability Status Score (EDSS)²³ ≥ 6.5 and ≤ 8 , showing a progressive
 112 accumulation of disability after initial relapsing course over the 2 years before recruitment (≥ 1.0
 113 point for patients with EDSS =6.5 at the time of inclusion, and ≥ 0.5 points for patients with EDSS $>$
 114 6.5 at the time of inclusion), and ineligibility to other therapeutic alternatives (as assessed by the
 115 treating neurologist). All patients signed a written informed consent to be enrolled in the study.

116 Exclusion criteria included: other neurologic conditions; psychiatric/personality disorders or severe
 117 cognitive decline; history of significant systemic, infectious, oncologic, or metabolic disorders; other
 118 autoimmune diseases; chronic infections (HBV, HCV, HIV, tuberculosis); inability to undergo MRI
 119 scans; inability to provide informed consent, received immunomodulant/immunosuppressive
 120 treatments <6 months before inclusion; participated in other research; any contra-indication to
 121 lumbar puncture; and were pregnant or breast feeding.

122 At the end of the run-in period, and if no serious co-morbidity nor health status changes occurred,
 123 patients were deemed eligible for the intervention. After eligibility assessment and provision of
 124 informed consent, each eligible patient was registered in the “Database for Clinical Studies with
 125 Gene and Somatic Therapy” of the “Istituto Superiore di Sanità” (ISS). Before registration, the ISS
 126 verified patient eligibility to ensure criteria were respected. Upon registration, the database
 127 assigned a unique identification number to each patient which was used for anonymisation
 128 purposes.

129 To establish baseline clinical features, a 3-month run-in period was started after the screening
 130 examination. All patients were evaluated at the onset and the end of the run-in period by
 131 investigating and performing physical and neurological examination, vital signs, pregnancy test in
 132 fertile women, haematological and urine tests, lumbar puncture for standard CSF examination and
 133 JC Virus test, serum and CSF collection (stored at minus 80 degrees), motor, sensory and visual
 134 evoked potentials, optical coherence tomography (OCT), EDSS, MFSC, RAO brief repeatable battery,

MS-QOL54 for the evaluation of quality of life (Solari et al. 1999), brain and spinal MRI. At the end of the run-in period, and if no serious co-morbidity nor health status changes occurred, patients were deemed eligible for the intervention. Around 50% of patients had at least one new or one enlarging T2-visible lesion, while 43% of patients had at least one lesion with contrast enhancement during the run-in period.

Study objectives and outcomes

The primary objective of the study was to assess the feasibility, safety, and tolerability of foetal allogeneic hNSCs delivered via ICV injection in people with active and non-active SPMS patients by evaluating the following outcomes: mortality, the number and type of adverse reactions (ARs) or events (AEs) leading to a maximum tolerated dose.

The secondary objectives were to evaluate the functional effects of hNSC therapeutics by monitoring the following outcomes of disease progression: functional disability via EDSS and Multiple Sclerosis Functional Composite (MSFC)²⁴; annualised relapse rate and time to confirmed relapse; cognitive function by Rao's brief repeatable battery [BRB] of neuropsychological tests; visual, sensory and motor functions via combination of electrophysiological measurements (visual, somato-sensory, motor evoked potentials [EP]); and optical coherence tomography (OCT). Brain MRI evaluations were performed to monitor structural changes related to both the intervention and disease activity. MRIs were acquired at the two recruiting centres, using a Philips Ingenia scanner (Philips Medical Systems, Best, The Netherlands) and a Siemens Verio scanner (Siemens, Erlangen, Germany). Sequences type and parameters were harmonised between the two vendors to improve reproducibility. The MRIs were performed at run-in onset (month -3), run-in end (month 0), and at months +1, +2, +3, +4, +5, +6, +9 and +12.

Potential effects of the treatment on biomarkers of neuronal loss and inflammation was also evaluated. Cerebrospinal fluid (CSF) and serum neurofilament (NfL) levels were used as markers of neurodegeneration/neuronal damage, while CHI3L1 (also known as YKL-40) as indicator of reactive astrocytes.²⁵ We also investigated serum and CSF levels of IL-17a, IL-2, IL-8, TNF- α , CCL2, CCL3,

161 CX3CL1, VEGF-a, OPN and GFAP as additional exploratory objectives. All the biomarkers were
162 evaluated in both CSF and serum collected before and after treatment (see table 1 for time points)

163 **Clinical evaluation**

164 After ICV injection, the participants were followed up for 12 months post-treatment (**Table 1**).
165 General health status and mortality evaluations were based on the occurrence of any serious co-
166 morbidities or changes in the general health of the participants post-intervention and the number of
167 deaths due to the treatment, or the procedure itself.

168

169 Table 1: Clinical trial study plan

| | Screening | Run in START | Run in END | Surgery | M1 | M2 | M3 | M4 | M5 | M6 | M7 | M8 | M9 | M10 | M11 | M12 |
|-------------------------------------|-----------|-----------------|---------------|---------|----|----|----|----|----|----|----|----|----|-----|-----|-----|
| Informed consent signature | x | x | | | | | | | | | | | | | | |
| Medical history | x | | | | | | | | | | | | | | | |
| Neurological history | x | | | | | | | | | | | | | | | |
| Physical examination | x | x | x | | | | | | | | | | | | | |
| Infectious screening | x | | | | | | | | | | | | | | | |
| Vital Signs | x | x | x | | x | | x | | | x | | | x | | | x |
| Pregnancy test for fertile women | x | x | x | | | | | | | | | | | | | |
| Hematological tests | x | x | x | | x | x | x | x | x | x | x | x | x | x | x | x |
| Electrocardiogram | x | | | | | | | | | | | | | | | |
| Chest X-ray | x | | | | | | | | | | | | | | | |
| standard urine test | x | x | x | | x | | x | | | x | | | x | | | x |
| Neurological examination | x | x | x | | x | x | x | x | x | x | x | x | x | x | x | x |
| VAS | | x | x | | x | x | x | x | x | x | x | x | x | x | x | x |
| EDSS | | x | x | | x | | x | | | x | | | x | | | x |
| MSFC | | x | x | | x | | x | | | x | | | x | | | x |
| Evoked potential test | | x | x | | x | | x | | | x | | | x | | | x |
| OCT | | x | x | | x | | x | | | x | | | x | | | x |
| Brain and spinal MRI | | x | x | x | x | x | x | x | x | x | | | x | | | x |
| RAO battery | | x | x | | x | | x | | | x | | | x | | | x |
| MS-QOL54 | | x | x | | x | | x | | | x | | | x | | | x |
| Conselling with psychologist | x | | | | x | | | | | | | | | | | |
| Serum collection for biomarkers | | x | x | | x | | x | | | x | | | x | | | x |
| CSF collection for biomarkers | | x | x | | x | | | | | x | | | | | | x |
| JC virus examination | | x | x | | x | | | | | x | | | | | | x |
| AE record | | | | x | | x | x | x | x | x | x | x | x | x | x | x |
| Thin slice cranial CT or MRI | | | | x | x | | | | | | | | | | | |

170

171 All AEs were recorded and evaluated for their relationship with the hNSCs or injection procedure.

172 Each AE was classified and categorised according to the International Conference on Harmonisation

173 guidance for Clinical Safety Data Management's Definitions and Standards for Expedited Reporting

174 E2A and the Common Terminology Criteria for Adverse Events (CTCAE). Clinical relapses were

175 defined as the appearance of a new neurologic deficit, or worsening of previously stable or

improving pre-existing neurologic deficit, separated by at least 30 days from the onset of a preceding clinical demyelinating event.²⁶ The neurologic deficit must have been present for at least 24 hours and occurred in the absence of fever (<37.5°C) or known infection.

hNSCs dosage and production

hNSCs were produced following a previously described method²⁷ and in full compliance with the conditions and practices required by GMP regulations. The hNSCs consisted of a highly enriched population of cells extracted from a single female foetal human donor (spontaneous miscarriage 16weeks after conception) under Ethics Committee approval, with the donors' parents' informed consent, and according to the Helsinki declaration. hNSCs were cultured for 10-17 passages *in vitro*.²⁷, the last passage was performed 24-96 hours before formulation of the final drug product.

On the day of treatment, hNSCs were collected from culture flasks, centrifuged counted and suspended in HBSS at a concentration of 50,000 cells/μl. After batch release, the cells were maintained at 4 +/-2 °C for up to 1.5 hours prior to implantation. See Profico et al 2022 for complete quality control strategy for batch release.

Intervention

Trial participants were admitted to the Neurosurgery Unit of the "Azienda Ospedaliera Santa Maria" (Terni, Italy) for the ICV injection of hNSCs. Before the intervention, they underwent thin-slice cranial CT or MRI scans to evaluate the ventricular system and plan the procedure. Image guidance was provided by the frameless stereotactic AxiEM system (Stealth station AxiEM electromagnetic tracking system, Medtronic navigation, Louisville, CO, USA) to perform the ventricular cannulation. The correct placement of the catheter was verified based on the egress of CSF. Then, a Rickham reservoir was connected to the ventricular catheter. The participants were then prospectively assigned to receive 5 (n=3), 10 (n=3), 16 (n=3), and 24 (n=6) x 10⁶ cells ICV. All the participants underwent a post-operative CT scan within 24 hours to evaluate any complications.

All the participants received methylprednisolone orally 125 mg 2 hours pre-intervention, and cefazolin 1g IV immediately before and after the hNSCs injection. The immunosuppressive treatment

also included oral prednisone with a 28-day taper (consisting of a dose change per week, from 60, 40, 20, to 10 mg q.d). The participants also received Tacrolimus (0.05 mg/kg, oral, b.i.d.), 12 hours after the intervention and then every 12 hours, for 6 months. This drug was titrated to maintain blood levels ranging 5–10 ng/ml.

Data management and study monitoring

All trial demographic and clinical data was collected by designated investigators at the screening, run-in, and follow-up visits using ad-hoc case report forms (CRFs). A clinical trial monitor periodically reviewed the CRFs with source data verification and requested corrections as needed. The data were then entered into a eCRF and underwent systematic quality control of the study manager prior to database locking. The database was periodically reviewed by an independent Data and Safety Monitoring Board (DSMB) to ensure protocol adherence and to monitor possible AEs. The DSMB made recommendations concerning the continuation, modification, or termination of the trial as needed.

Statistical Methods

Demographic, clinical, and laboratory patients' characteristics were reported as median and interquartile ranges (IQR) or as mean and standard deviation (SD), as appropriate, for continuous variables and as frequency and percentage for categorical variables. Normal distribution was checked using the Shapiro-Wilk test. Safety analyses were performed in all subjects receiving at least one injection of hNSCs. All AEs and severe AEs (SAEs) were recorded at follow-up visits and at the end of the study. Exploratory efficacy analyses were conducted in all subjects receiving at least one injection of hNSCs (here, FAS and ITT populations matched). Because of small sample size and of almost all variables having non-normal distributions, pre-post differences (12-month visit vs run-in end visit) were assessed via linear models using ranks. New or enlarging T2-visible lesions and lesions with contrast enhancement were analysed using negative binomial models with follow-up time as the offset and results reported as annualised rates.

227 A p-value <0.05 was considered statistically significant. All analyses have been performed using SAS

228 Release 9.4, SAS Institute, Cary, NC, USA.

229 **RESULTS**

230

231 **Clinical Results**

232 A total of 220 candidates applied to participate in this study between September 26, 2017, and
233 January 13, 2020. After undergoing the screening visit and completing the run-in period, fifteen
234 SPMS patients were enrolled in the study. The participants had a median age of 49.8 years (range:
235 37.8–56.6), eight of them were females and seven were males (1.14 : 1 ratio), and an almost equal
236 proportion was recruited at the two study sites. The mean EDSS was 7.6 (range 7–8), mean disease
237 duration was 22 years (range 16–29), and mean time from diagnosis to progression was 10.1 years
238 (range: 1–20). All the patients' detailed demographic and clinical characteristics are reported in
239 **Table 2.**

240 Table 2: Demographic data and group assignment.

| DOSE | Gender | EDSS | AGE AT TREATMENT (range) |
|--------------------|--------|------|--------------------------|
| 5*10 ⁶ | M | 7,5 | 55-59 |
| | M | 7 | 50-54 |
| | M | 8 | 50-54 |
| 10*10 ⁶ | M | 7,5 | 36-39 |
| | F | 7 | 50-54 |
| | F | 8 | 50-54 |
| 16*10 ⁶ | F | 7 | 50-54 |
| | F | 8 | 50-54 |
| | F | 8 | 45-49 |
| 24*10 ⁶ | F | 7,5 | 50-54 |
| | F | 8 | 45-49 |
| | M | 7 | 40-45 |
| | F | 7 | 55-59 |
| | M | 8 | 36-39 |
| | F | 8 | 50-54 |

241 No deaths nor serious ARs were reported during the study period. The AEs that occurred, including
 242 their severity, relationship to study and non-study therapies, actions taken, and outcomes are
 243 reported in **Table 3**.

244 Table 3: Adverse events

| Patient | Description of event | expected? | Severity | Relationship to study therapy | Action taken | If other, please specify | New treatment /therapy given/taken? | Outcome (at the end of the study) |
|---------|---|-----------|----------|-------------------------------|-----------------------------|----------------------------|-------------------------------------|-----------------------------------|
| #1 | Tremor | Yes | Mild | Unrelated | Tacrolimus dose changed | | No | Recovered |
| | Flu like syndrome | No | Mild | Unrelated | None | | Yes | Recovered |
| | Respiratory failure | Yes | Mild | Unrelated | Concomitant therapy changed | | Yes | Recovered |
| | Cataract (left eye; surgical procedure) | No | Mild | Unrelated | None | | No | Recovered |
| | Upper respiratory infection | No | Mild | Unrelated | Concomitant therapy changed | | Yes | Recovered |
| #2 | Hyperglycemia | Yes | Moderate | Unrelated | Concomitant therapy changed | | No | Recovered |
| | Urinary retention | Yes | Moderate | Unrelated | Other, specify | Catheterization | Yes | Recovering (improving) |
| | Back pain | No | Mild | Unrelated | Other, specify | New therapy given | Yes | Recovered |
| #4 | Seizure | Yes | Mild | Possible | Other, specify | Diazepam, levetiracetam | Yes | Recovered |
| #7 | Psychosis | No | Moderate | Unrelated | Concomitant therapy changed | | Yes | Recovered |
| #8 | Fracture (right femur) | No | Moderate | Unrelated | Other, specify | Follow-up 10 omitted | No | Recovered with sequelae |
| #9 | Leukoencephalopathy | No | Mild | Unrelated | Other, specify | MRI evaluations | No | Recovering (improving) |
| | Urinary tract infection | No | Mild | Unrelated | Other, specify | Drugs administration | Yes | Recovered |
| #12 | Depression | No | Moderate | Unrelated | None | | No | Unknown |
| #14 | Urinary tract infection | No | Mild | Unrelated | Other, specify | Antibiotics administration | Yes | Not recovered |

245 Among these, SAEs (defined as AEs requiring hospitalisation) occurred in 2 patients (2/15), but none
 246 of them were related to the hNSC injection: of these two, one patient developed a steroid-induced
 247 acute psychiatric disorder 1 month post-injection, but recovered completely within 1 month with the

248 administration of valproate, lorazepam, olanzapine, and psychotherapy; Another patient
249 experienced femur fracture during a physiotherapy session at 18 months post-injection.

250 Other AEs were classified as non-serious and only one was possibly related to the study. This was a
251 patient (1/15) who experienced a first-ever partial motor seizure at month 6 (expected, possibly
252 related to MS). As per the possible complications related to the long-term immunosuppressive
253 treatment, one patient (1/15) developed a tremor during treatment with Tacrolimus which
254 disappeared with dose-adjustment, one patient (1/15) developed respiratory failure, and infections
255 were detected in three patients (3/15) (1 upper respiratory tract, 2 urinary tract). All the other
256 reported AEs were related to non-study concomitant therapy or other medical conditions not
257 related to the experimental protocol. The immunosuppressive treatment was successfully
258 completed by patients. Tacrolimus was well tolerated by all patients except for the one already
259 mentioned. In all patients, Tacrolimus blood levels were within the therapeutic target range (below
260 20 ng/mL).

261 As per the secondary objectives of the study, no changes were measured in EDSS and MSFC for the
262 whole length of the study (Table 4).

263 Table 4. EDSS and MSFC evaluation

| 264 | hNSC | | Run-in Phase | Run-in Phase | 1 month | 3 months | 6 months | 9 months | 12 months | p |
|-----|----------|-------------|--------------|--------------|---------|----------|----------|----------|-----------|-------|
| 265 | Dose | | Onset (N=15) | End (N=15) | (N=15) | (N=15) | (N=15) | (N=15) | (N=15) | value |
| 266 | 5 | MSFC (Total | | | | | | | | 0.753 |
| 267 | millions | Score) | | | | | | | | |
| 268 | | Median | -5.5 | -5.5 | -5.6 | -5.4 | -5.6 | -5.6 | -5.3 | |
| 269 | | Nobs | 3 | 3 | 3 | 3 | 3 | 3 | 3 | |
| 270 | | EDSS | | | | | | | | 0.114 |
| 271 | | Median | 7.5 | 7.5 | 7.5 | 7.5 | 7.5 | 7.5 | 7.0 | |
| 272 | | Nobs | 3 | 3 | 3 | 3 | 3 | 3 | 3 | |
| 273 | 10 | MSFC (Total | | | | | | | | 0.150 |
| 274 | millions | Score) | | | | | | | | |
| 275 | | Median | -6.2 | -6.0 | -6.0 | -6.0 | -5.9 | -5.9 | -5.9 | |
| 276 | | Nobs | 3 | 3 | 3 | 3 | 3 | 3 | 3 | |
| 277 | | EDSS | | | | | | | | 1.000 |
| 278 | | Median | 7.5 | 7.5 | 7.5 | 7.5 | 7.5 | 7.5 | 7.5 | |
| 279 | | Nobs | 3 | 3 | 3 | 3 | 3 | 3 | 3 | |
| 280 | 16 | MSFC (Total | | | | | | | | 0.924 |
| 281 | millions | Score) | | | | | | | | |
| 282 | | Median | -6.0 | -5.7 | -6.2 | -6.1 | -5.8 | -5.8 | -5.6 | |
| 283 | | Nobs | 3 | 3 | 3 | 3 | 3 | 3 | 2 | |
| 284 | | EDSS | | | | | | | | 1.000 |
| 285 | | Median | 8.0 | 8.0 | 8.0 | 8.0 | 8.0 | 8.0 | 8.0 | |
| 286 | | Nobs | 3 | 3 | 3 | 3 | 3 | 3 | 3 | |
| 287 | 24 | MSFC (Total | | | | | | | | 0.772 |
| 288 | millions | Score) | | | | | | | | |
| 289 | | Median | -6.1 | -6.1 | -6.0 | -6.2 | -5.9 | -6.1 | -6.2 | |
| 290 | | Nobs | 6 | 6 | 6 | 5 | 3 | 4 | 4 | |
| 291 | | EDSS | | | | | | | | 0.831 |
| 292 | | Median | 7.8 | 7.8 | 7.8 | 7.8 | 7.8 | 7.8 | 7.8 | |
| 293 | | Nobs | 6 | 6 | 6 | 6 | 6 | 6 | 6 | |
| 294 | | | | | | | | | | |

295 EDSS: Expanded Disability Status Scale; MSFC: Multiple Sclerosis Functional Composite; Std.dev: Standard Deviation; IQR: Interquartile Range
 296 (i.e. first, third quartiles)

297 Test for linear trend from Run-In End to the end of the study: p-values from linear mixed-effects models

298

299 The median EDSS score did not change from the end of the run-in phase to the end of the study. Two
300 patients (2/15) had a change in the functional systems score of >1 point, both in the pyramidal area:
301 one decreased from 4.5 to 3.0 and another one increased from 0.0 to 2.0. The MSFC scores also did
302 not significantly change from the end of the run-in phase to the end of the study.

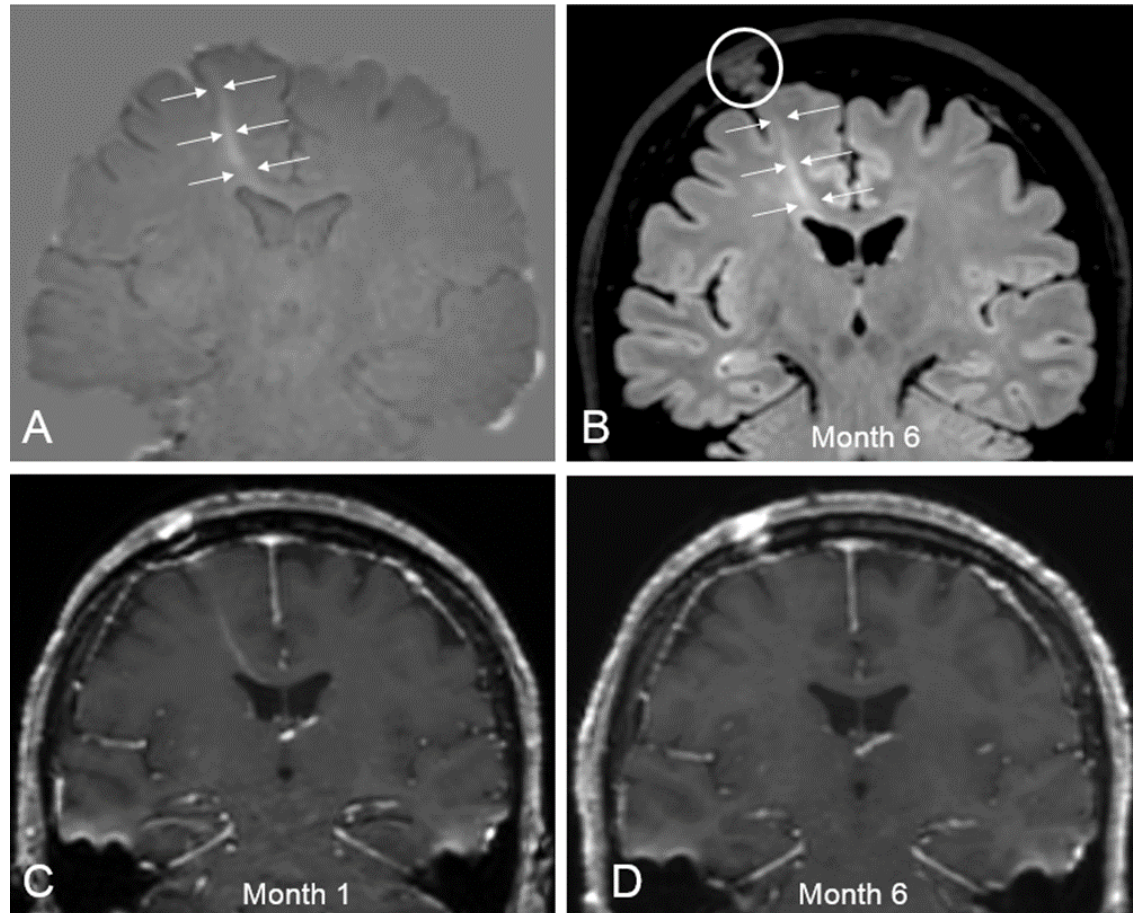
303 None of the patients reported symptoms indicative of clinically active disease and cognitive
304 functions, as measured by Rao's BRB, did not show significant changes during the study period for
305 any test. Neurophysiological parameters were monitored with EPs. Linear model analyses on ranks
306 did not show any variation trends throughout the study for any visual, somatosensory, and motor
307 EPs. We did not observe any changes on the OCT, except for one patient that showed an increase in
308 retinal nerve fibre layer's (RNFL) thickness in both eyes at month 6, which was interpreted as an
309 artefact.

310 As part of the secondary objectives, of the 40 scheduled MRIs for the 15 patients, 25 were
311 completed according to the study protocol and 15 were not performed (11 due to patient refusal,
312 two due to patient inability, two due to the COVID-19 pandemic). One patient did not have a
313 baseline MRI and post-Gadolinium images were not available for 8 MRIs due to exam interruption.

314 Brain changes on MRI were classified as type 1, 2, and 3 to facilitate comparison between time
315 points.

316 Type 1 changes were likely related to the surgical procedure. They included a linear T2-
317 hyperintensity in the parenchyma beneath the surgical right frontal cranial hole, passing through the
318 right frontal lobe white matter to the homolateral ventricle and corpus callosum (**Figure 1**).

Figure 1. Example of type 1 change, interpreted as parenchymal gliotic modifications following ventricular cannulation. Coronal-oblique 3D-T2-FLAIR subtraction map in A (Month 12 minus Run-in End) detected a linearly-shaped positive signal change, passing through the right frontal lobe to the homolateral ventricle. This change corresponded to a subtle contrast-enhancing tract which occurred at Month 1 (B, post-Gadolinium T1-weighted image) at the level of the surgical cranial hole (circle in B). Month 6 (C) and Month 12 (D) T2-FLAIR images demonstrated the persisting chronic changes (arrows).

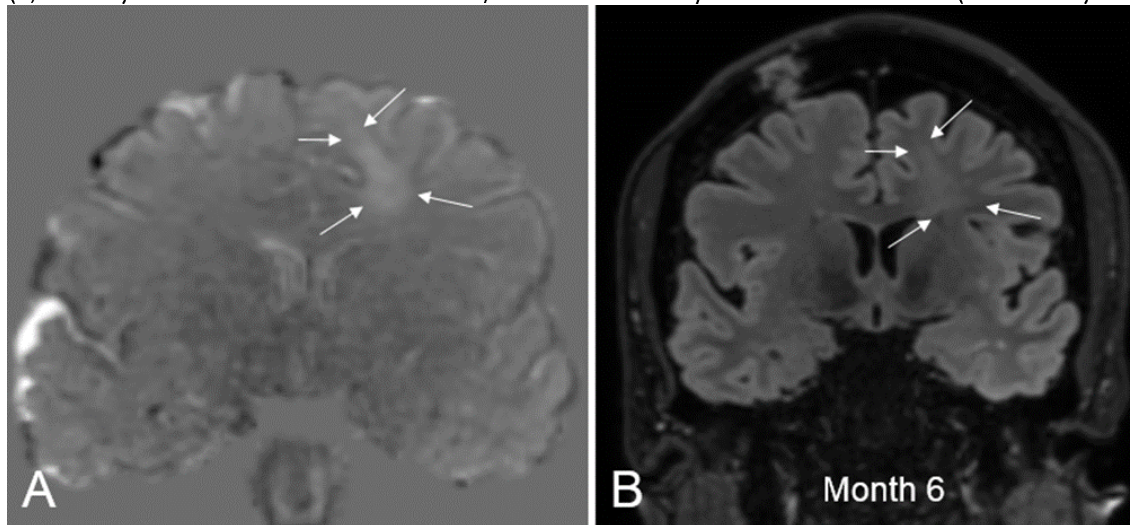


This was variable across all participants, ranging from a very subtle to a manifest signal change, and it was detectable in all patients on Month 1 images, together with a linear contrast enhancement on the corresponding post-Gadolinium T1-weighted images in most of cases.

Type 2 changes were MS-related and were used to compare the pre-transplantation with the post-transplantation period.

Type 3 changes were undetermined and detected in only one participant, where subtraction images highlighted a triangle-shaped, subtle T2-hyperintense signal change in the left frontal lobe white matter, without contrast enhancement or water diffusion restriction (**Figure 2**).

Figure 2– Type 3 changes. Coronal-oblique 3D-T2-FLAIR subtraction map (Month 6 minus Run-in-End) detects a triangle-shaped, positive signal change in the left frontal white matter (arrows). This corresponded to a subtle T2-FLAIR signal hyperintensity on the corresponding Month 6 source image (B, arrows). No contrast enhancement and/or water diffusivity restriction was noted (not shown).



This change remained stable at the subsequent follow-ups and was categorised as non-specific. This patient had additional MRI follow-up during which the lesion did not change.

Pre-transplantation (during the three-month run-in period), nine new-onset and two enlarging T2-visible lesions were detected in 7/14 patients (50% of patients, with an average of 1.3 and 0.3 of new and enlarging T2 lesions per patient) (Table 5).

Table 5 Summary of pre- and post-transplantation new-onset and enlarging T2-visible lesions obtained by using subtraction imaging (see main text for details). N/A = data not available *When the Month12 time-point data was not available, the last previous available data was employed for subtraction

349

| | <u>Pre-Transplantation</u> | | | <u>Post-Transplantation</u> | | |
|------------------|-----------------------------------|---|-------------------------------------|------------------------------------|---|-------------------------------------|
| Subject # | Compared Time Points | Number of New (Enlarging) T2-visible lesions | Monthly Lesion Activity Rate | Compared Time Points* | Number of New (Enlarging) T2-visible lesions | Monthly Lesion Activity Rate |
| #1 | Run In End – Run In Onset | 0 | 0.00 | Month12 – Run In End | 8 | 0.67 |
| #2 | | 0 | 0.00 | Month12 – Run In End | 1 | 0.08 |
| #3 | | 0 | 0.00 | Month12 – Run In End | 0 | 0.00 |
| #4 | | 2 | 0.67 | Month12 – Run In End | 6 | 0.50 |
| #5 | | 1 | 0.33 | Month12 – Run In End | 0 | 0.00 |
| #6 | | 0 | 0.00 | Month12 – Run In End | 1 | 0.08 |
| #7 | | 0 | 0.00 | Month12 – Run In End | 0 | 0.00 |
| #8 | | 0 | 0.00 | Month 6 – Run In End | 0 (1) | 0.17 |
| #9 | | 0 (2) | 0.67 | Month12 – Run In End | 8 | 0.67 |
| #10 | | 3 | 1 | Month12 – Run In End | 26 | 2.17 |
| #11 | | 1 | 0.33 | Month12 – Run In End | 3 | 0.25 |
| #12 | | 1 | 0.33 | Month 3 – Run In End | 0 | 0.00 |
| #13 | | 0 | 0.00 | Month 9 – Run In End | 0 | 0.00 |
| #14 | | N/A | N/A | Month12 – Run In End | 6 | 0.50 |
| #15 | | 1 | 0.33 | Month12 – Run In End | 5 (2) | 0.58 |
| Total | | 9 (2) | | | 64 (3) | |

350

After transplantation (during the 12-month follow-up period), 64 new-onset and three enlarging T2-visible lesions were detected in 10 out of 15 patients (66% of patients, with an average of 6.4 and 0.3 of new and enlarging T2 lesions per patient). The annualised pre-transplantation rate of new or enlarging T2-visible lesions was 3.30 (95% CI: 1.86–5.83), which was not statistically different (p-

value= 0.26) to the post-transplantation rate (4.72, 95% CI: 2.32–9.61). When the 12-month data was not available, the last previously available data was used to compare). Pre-transplantation, 10 lesions with contrast enhancement were detected in 6/14 patients (43%) (Table 6).

| Subject # | Number of lesions with contrast enhancement (Time point) | Number of lesions with contrast enhancement (Time point) |
|-----------|--|--|
| #1 | 0 | 1 (Month6) |
| #2 | 0 | 0 |
| #3 | 0 | 0 |
| #4 | 2 (Run in Onset) | 3 (Month3), 2 (Month6) |
| #5 | 1 (Run in End) | 0 |
| #6 | 0 | 0 |
| #7 | 0 | 0 |
| #8 | 0 | 1 (Month3) |
| #9 | 0 | 1 (Month6) |
| #10 | 1 (Run in Onset), 1 (Run in End) | 9 (Month3), 12 (Month 6), 4 (Month12) |
| #11 | 1 (Run in End) | 1 (Month9) |

Table 6 Summary of pre- and post-transplantation lesions showing contrast enhancement on T1-weighted images, detected upon visual inspection. N/A = data not available.

| | | |
|--------------|---|------------------------|
| #12 | 1 (Run in Onset), 1 (Run in End) | 0 |
| #13 | 0 | 0 |
| #14 | N/A | 1 (Month12), 1(Month6) |
| #15 | 1 (Run in Onset), 1 (Run in End) | 4 (Month3) |
| Total | 5 (Run in End), 5 (Run in Onset) | 40 |

362

363 After transplantation, 40 gadolinium enhancing lesions were detected in multiple scans from 8 out
 364 of 15 patients. The annualised pre-transplantation rate of lesions with contrast enhancement was
 365 2.86 (95% CI: 1.51–5.40) and it was not statistically different (p-value=0.98) to the post-
 366 transplantation values (2.83, 95% CI: 0.92–8.73).

367 Of note, 40% of the new-onset T2 lesions and the majority of gadolinium enhancing lesions
 368 happened in one single patient who had the highest disease activity in the run-in period.
 369 Additionally, one patient who showed one new T2 lesion and two lesions with contrast
 370 enhancement in the pre-transplantation period, had no new T2 or gadolinium enhancing lesions at
 371 follow-up.

372 Among the laboratory exams performed during the study, the only clinically significant variation was
 373 in the number of white blood cells that ranged from a mean of $7.4 \times 10^9/L$ at the end of the run-in
 374 period to a mean of $8.3 \times 10^9/L$ at the 12-month follow-up. The vital signs of the participants (blood
 375 pressure and temperature) were within the normal range and urine tests did not show clinically
 376 significant abnormalities. Biomarker analyses of NfL and CHI3L1/YKL-40 showed a statistically
 377 significant increase in the NfL concentration (pg/mL) at 1 month after intervention in both serum
 378 and CSF, followed by a gradual return to pre-intervention values (**Table 7**).

379 Table 7 Estimated marginal means, along with 95% confidence interval, from repeated measurements ANOVA models of serum neurofilament light
 380 concentrations (pg/mL) collected in NSC-SPMS patients at different groups and time points. P-values are referred to within-group and within-time
 381 comparisons and were derived from statistical contrasts defined into each model

| Biomarker | hNSC assigned dose groups | Run-In onset (RSTART) | Run-In end (REND) | 1 month (T1) | 3 months (T3) | 6 months (T6) | 9 months (T9) | 12 months (T12) | Within-group comparisons (p-values) | | | | | | |
|-----------|------------------------------------|--------------------------|---------------------------|---------------------------|---------------------------|---------------------------|---------------------------|---------------------------|-------------------------------------|-------------|-------------|-------------|-------------|--------------|-------------------|
| | | | | | | | | | RSTART vs. REND | T1 vs. REND | T3 vs. REND | T6 vs. REND | T9 vs. REND | T12 vs. REND | p-value for trend |
| NFL CRMs | 5 millions | 13.84 (7.85-24.39) | 11.33 (6.43-19.97) | 31.61 (17.94-55.70) | 29.87 (16.95-52.63) | 20.62 (11.70-36.33) | 12.93 (7.34-22.78) | 13.21 (7.50-23.28) | 0.552 | 0.003 | 0.005 | 0.079 | 0.695 | 0.648 | 0.664 |
| | 10 millions | 14.59 (8.28-25.71) | 16.91 (9.60-29.80) | 45.64 (25.90-80.43) | 21.78 (12.36-38.38) | 18.21 (10.33-32.08) | 17.17 (9.74-30.26) | 19.68 (11.17-34.68) | 0.660 | 0.004 | 0.452 | 0.826 | 0.964 | 0.652 | 0.825 |
| | 16 millions | 11.80 (6.70-20.79) | 12.33 (7.00-21.73) | 98.03 (50.35-190.86) | 27.94 (15.85-49.23) | 23.07 (13.09-40.65) | 14.33 (8.13-25.25) | 14.84 (7.62-28.90) | 0.896 | <0.001 | 0.018 | 0.066 | 0.654 | 0.626 | 0.491 |
| | 24 millions | 18.70 (12.53-27.91) | 14.90 (9.98-22.24) | 41.41 (27.74-61.81) | 26.05 (16.91-40.12) | 19.49 (11.41-33.29) | 16.18 (8.51-30.79) | 14.32 (8.91-23.00) | 0.340 | <0.001 | 0.030 | 0.370 | 0.814 | 0.882 | 0.540 |
| | Overall | 14.53 (11.15-18.94) | 13.70 (10.51-17.86) | 49.19 (37.21-65.03) | 26.23 (20.06-34.29) | 20.27 (15.33-26.80) | 15.06 (11.23-20.20) | 15.33 (11.52-20.41) | 0.708 | <0.001 | <0.001 | 0.019 | 0.576 | 0.499 | 0.078 |
| | Within-time comparisons (p-values) | 0.594 | 0.743 | 0.090 | 0.881 | 0.948 | 0.905 | 0.778 | | | | | | | |
| GFAP | 5 millions | 77.40 (45.16-132.65) | 64.20 (37.46-110.02) | 79.41 (46.33-136.08) | 96.66 (56.40-165.65) | 83.13 (48.51-142.47) | 71.45 (41.69-122.45) | 81.26 (47.41-139.26) | 0.259 | 0.200 | 0.016 | 0.121 | 0.516 | 0.156 | 0.846 |
| | 10 millions | 169.04 (98.64-289.70) | 144.04 (84.05-246.85) | 184.13 (107.44-315.55) | 144.11 (84.09-246.97) | 173.45 (101.21-297.26) | 191.89 (111.97-328.85) | 187.90 (109.64-322.01) | 0.333 | 0.140 | 0.998 | 0.262 | 0.086 | 0.111 | 0.469 |
| | 16 millions | 148.40 (86.59-254.32) | 179.56 (104.77-307.73) | 222.80 (126.50-392.41) | 204.55 (119.35-350.55) | 176.34 (102.89-302.20) | 197.01 (114.96-337.64) | 180.73 (102.61-318.32) | 0.250 | 0.252 | 0.430 | 0.912 | 0.574 | 0.972 | 0.957 |
| | 24 millions | 92.62 (63.28-135.57) | 97.47 (66.60-142.67) | 110.93 (75.79-162.36) | 124.85 (84.58-184.30) | 117.19 (77.00-178.37) | 110.82 (70.20-174.92) | 112.42 (75.25-167.96) | 0.661 | 0.269 | 0.049 | 0.215 | 0.461 | 0.287 | 0.301 |
| | Overall | 115.80 (90.01-148.99) | 112.79 (87.67-145.11) | 137.87 (106.77-178.04) | 137.34 (106.66-176.83) | 131.39 (101.73-169.68) | 131.53 (101.45-170.54) | 132.72 (102.57-171.71) | 0.732 | 0.015 | 0.014 | 0.061 | 0.070 | 0.051 | 0.056 |
| | Within-time comparisons (p-values) | 0.155 | 0.077 | 0.063 | 0.303 | 0.200 | 0.051 | 0.131 | | | | | | | |

382 The same pattern was evident across the four dose groups. These changes are likely due to post-procedure tissue damage that was detectable in all the
 383 participants on MRI imaging. On the contrary, GFAP concentration did not show any peculiar pattern and remained stable throughout the trial for all the
 384 dose groups (Table 7).

DISCUSSION

The ICV injection of hNSCs was safe and did not lead to clinically relevant AEs post-intervention. The only SAEs that occurred were not related to hNSCs or the intervention, and no withdrawals or deaths were registered. Importantly, none of the patients has shown either a clinical relapse or a progression of their condition during the study period. The follow-up disability evaluation scales and cognitive testing documented clinical stability of all the participants. The neurophysiologic parameters and OCT also showed no significant variations. The MRI disease activity, assessed by annualised rate of new or enlarging T2-visible lesions and lesions with contrast enhancement, was not affected by the treatment. Finally, despite an initial fluctuation of the levels of NfL and CHI3L1/YKL-40, these markers later returned to their baseline values.

Currently, there is a lack of treatment options for SPMS. Although another study using a similar NSC preparation and method of administration is underway in another Italian centre (NCT03269071), to our knowledge this manuscript represents the first report of the use of hNSCs in SPMS patients. In addition, this study utilises a cell line that has been already shown safe in a prior clinical trial on ALS (Mazzini et al., 2015, 2019).

This study has limitations inherent to its early phase, non-randomised design, and small sample. Also, the fact that some MRIs could not be performed could have weakened the imaging results. Nevertheless, this research provides novel information on the safety and potential effectiveness of this treatment modality for SPMS. It also describes a system by which, owed to the peculiar expansion technique adopted for cGMP expansion (vescovi et al, 1997), the very same hNSCs from a single donor used here, can be used in a broad number of future clinical trials, thereby obviating to the current outstanding issues of inter-trial variability of cell drug products.

It is worth noting that, unlike other clinical trials, the cells used in this study are hNSCs that grow as stable, reproducible unmodified cell lines (**Table 8**)

Table 8: Comparison between primary culture (2014) and final product release test (2018 – 2020). Data for final product are expressed as mean value of the release tests conducted on all the batches used for the clinical trial. See Profico et al 2022 for complete quality control strategy. IP: intermediate product, FP: final product, CE: Clonal Efficiency; N: Neurons; O: Oligodendrocytes; A: Astrocytes; GC: Growth Curve, expressed as the slope of the growth curve..

| | IP | FP |
|----|--------|--------|
| CE | 1,70% | 1,45% |
| N | 27,90% | 31,50% |
| A | 36,10% | 50,50% |
| O | 17,70% | 18,70% |
| GC | 0,076 | 0,057 |

This is crucial in view of the emerging concept that one key issue in cell therapy is the inter-trial standardization of the cell drug, which may be homogeneous within the same clinical protocol but does vary significantly between different trials, due to the scarcity of the donor cells. The approach used here provides the significant advantage that the very same cGMP hNSCs used here - with all the patients receiving the same cell drug - will also be available for a number of future trials both on SPMS and other disorders. To the best of our knowledge, this is the first report of such an approach being possible.

In conclusion, NSC transplantation via ICV injection appears to be a safe procedure with neither major nor short-term deleterious effects. The study participants experienced a substantial clinical stability during 12 months of follow-up. The considerable absence of risks for the patients indicates a short-term neutral balance between benefits and risks and a therapeutic possibility on the horizon for SPMS patients. Further studies are needed to confirm and extend the findings herein and evaluate the actual therapeutic potential of advanced cell therapeutics for a condition where the lack of effective disease modifying therapies is a major unmet clinical need.

432 **DECLARATION OF INTERESTS**

433 All of the authors declare no conflict of interest

434 **AUTHOR CONTRIBUTIONS**

435 All the authors reviewed and approved the final manuscript

| | |
|--|--|
| ML | Clinical coordinating investigator, Patients recruitment, data analysis, manuscript writing and approval |
| CS | Clinical investigator, Patients recruitment, data analysis |
| DCP | Clinical protocol design, regulatory affairs and administrative management of the study. Biological fluids collection and management, biomarkers analysis, manuscript writing. |
| MG | Clinical protocol design, regulatory affairs and administrative management of the study. Drug product release, data collection and analysis, manuscript writing. |
| CC, MZ, LA, GP, CP, FA, PDV, DF, GS, ET, AC, SS, FP, GS, RFB | Clinical data collection and analysis |
| CG, EP, EZ | Clinical protocol drafting, clinical data collection and analysis |
| SP, LP | Data analysis, manuscript writing |
| GM, VG, IB, CR, DF | Drug product production and release, data collection and evaluation |
| ALV | Non clinical testing, manuscript drafting and revision |
| MC, AF | Study coordinator, clinical protocol concept and writing, regulatory affair, provided funding and administrative support, manuscript writing and final approval |
| MC | Study design, data collection, statistical analysis, manuscript writing |
| JK, GD, LA | Study management, administrative and regulatory support |
| YVC | Biomarker analysis, data collection and evaluation |
| | Data analysis and results interpretation |

436

437 **DATA SHARING STATEMENT**

438 All relevant data are included in this manuscript. The data that support the findings of this study are
439 available from the corresponding authors upon reasonable request.

440

441 **ACKNOWLEDGEMENTS**

442 Writing assistance in the preparation of this article was provided by Maria Carolina Rojido (Medical
443 Writing Consultant). Proofreading and submission assistance was provided by Laura C Collada Ali
444 (Medical Writing Consultant).

445

446 **FUNDING**

447 Support for the clinical study, cell therapy production writing, proofreading and submission
448 assistance was funded by IRCCS Casa Sollievo della Sofferenza Research Hospital, Italy and
449 Fondazione Revert Onlus Italy.

450 REFERENCES

- 451 1. Browne P., Chandraratna D., Angood C., et al. Atlas of Multiple Sclerosis 2013: A growing global
452 problem with widespread inequity. *Neurology*. 2014;83(11):1022-4.
- 453 2. Comi G. Disease-modifying treatments for progressive multiple sclerosis. *Mult Scler*. 2013;19(11):1428-
454 36.
- 455 3. Giovannetti A.M., Pietrolongo E., Borreani C., et al. Conversion to secondary progressive multiple
456 sclerosis: Multistakeholder experiences and needs in Italy. *PLOS ONE*. 2020;15(2):e0228587.
- 457 4. Alessandrini M., Preynat-Seauve O., De Bruin K., Pepper M.S. Stem cell therapy for neurological
458 disorders. *S Afr Med J*. 2019;109(8b):70-7.
- 459 5. Lindvall O., Kokaia Z. Stem cells in human neurodegenerative disorders--time for clinical translation? *J*
460 *Clin Invest*. 2010;120(1):29-40.
- 461 6. Vescovi A.L., Parati E.A., Gritti A., et al. Isolation and cloning of multipotential stem cells from the
462 embryonic human CNS and establishment of transplantable human neural stem cell lines by epigenetic
463 stimulation. *Exp Neurol*. 1999;156(1):71-83.
- 464 7. Ferrari D., Zalfa C., Nodari L.R., et al. Differential pathotropism of non-immortalized and immortalized
465 human neural stem cell lines in a focal demyelination model. *Cell Mol Life Sci*. 2012;69(7):1193-210.
- 466 8. Rota Nodari L., Ferrari D., Giani F., et al. Long-term survival of human neural stem cells in the ischemic
467 rat brain upon transient immunosuppression. *PLoS One*. 2010;5(11):e14035.
- 468 9. Pluchino S., Quattrini A., Brambilla E., et al. Injection of adult neurospheres induces recovery in a
469 chronic model of multiple sclerosis. *Nature*. 2003;422(6933):688-94.
- 470 10. Pluchino S., Gritti A., Blezer E., et al. Human neural stem cells ameliorate autoimmune
471 encephalomyelitis in non-human primates. *Ann Neurol*. 2009;66(3):343-54.
- 472 11. Cossetti C., Alfaro-Cervello C., Donegà M., Tyzack G., Pluchino S. New perspectives of tissue remodelling
473 with neural stem and progenitor cell-based therapies. *Cell Tissue Res*. 2012;349(1):321-9.
- 474 12. Giusto E., Donegà M., Cossetti C., Pluchino S. Neuro-immune interactions of neural stem cell
475 transplants: from animal disease models to human trials. *Exp Neurol*. 2014;260:19-32.
- 476 13. Pluchino S., Cossetti C. How stem cells speak with host immune cells in inflammatory brain diseases.
477 *Glia*. 2013;61(9):1379-401.
- 478 14. Peruzzotti-Jametti L., Bernstock J.D., Vicario N., et al. Macrophage-Derived Extracellular Succinate
479 Licenses Neural Stem Cells to Suppress Chronic Neuroinflammation. *Cell Stem Cell*. 2018;22(3):355-68.e13.
- 480 15. Zhang C., Cao J., Li X., et al. Treatment of multiple sclerosis by transplantation of neural stem cells
481 derived from induced pluripotent stem cells. *Sci China Life Sci*. 2016;59(9):950-7.
- 482 16. Takahashi Y., Tsuji O., Kumagai G., et al. Comparative study of methods for administering neural
483 stem/progenitor cells to treat spinal cord injury in mice. *Cell Transplant*. 2011;20(5):727-39.
- 484 17. Ben-Hur T., Fainstein N., Nishri Y. Cell-based reparative therapies for multiple sclerosis. *Curr Neurol*
485 *Neurosci Rep*. 2013;13(11):397.
- 486 18. Peruzzotti-Jametti L., Pluchino S. Therapy with mesenchymal stem cell transplantation in multiple
487 sclerosis ready for prime time: Commentary. *Mult Scler*. 2022;28(9):1328-9.
- 488 19. Jin K., Sun Y., Xie L., et al. Comparison of ischemia-directed migration of neural precursor cells after
489 intraatrial, intraventricular, or intravenous transplantation in the rat. *Neurobiol Dis*. 2005;18(2):366-74.
- 490 20. Morgenstern P.F., Connors S., Reiner A.S., Greenfield J.P. Image Guidance for Placement of Ommaya
491 Reservoirs: Comparison of Fluoroscopy and Frameless Stereotactic Navigation in 145 Patients. *World*
492 *Neurosurg*. 2016;93:154-8.
- 493 21. Van Damme P., Robberecht W. Developments in treatments for amyotrophic lateral sclerosis via
494 intracerebroventricular or intrathecal delivery. *Expert Opin Investig Drugs*. 2014;23(7):955-63.
- 495 22. Xu X., Chen W., Zhu W., et al. Adeno-associated virus (AAV)-based gene therapy for glioblastoma.
496 *Cancer Cell Int*. 2021;21(1):76.
- 497 23. Kurtzke J.F. Rating neurologic impairment in multiple sclerosis: an expanded disability status scale
498 (EDSS). *Neurology*. 1983;33(11):1444-52.
- 499 24. Fisher D., Beutler L.E., Williams O.B. Making assessment relevant to treatment planning: the STS
500 Clinician Rating Form. *Systemic Treatment Selection*. *J Clin Psychol*. 1999;55(7):825-42.
- 501 25. Burman J., Raininko R., Blennow K., Zetterberg H., Axelsson M., Malmeström C. YKL-40 is a CSF
502 biomarker of intrathecal inflammation in secondary progressive multiple sclerosis. *J Neuroimmunol*.
503 2016;292:52-7.

504 26. McDonald W.L., Compston A., Edan G., et al. Recommended diagnostic criteria for multiple sclerosis:
505 guidelines from the International Panel on the diagnosis of multiple sclerosis. *Ann Neurol*. 2001;50(1):121-7.

506 27. Mazzini L., Gelati M., Profico D.C., et al. Human neural stem cell transplantation in ALS: initial results
507 from a phase I trial. *J Transl Med*. 2015;13:17.

508 Solari, A., G. Filippini, L. Mendozzi, A. Ghezzi, S. Cifani, E. Barbieri, S. Baldini, A. Salmaggi, L. L. Mantia, M.
509 Farinotti, D. Caputo and P. Mosconi (1999). "Validation of Italian multiple sclerosis quality of life 54
510 questionnaire." *J Neurol Neurosurg Psychiatry* 67(2): 158-162.

511 Profico, D.C.; Gelati, M.; Ferrari, D.; Sgaravizzi, G.; Ricciolini, C.; Progetti Pensi, M.; Muzi, G.; Cajola, L.; Copetti,
512 M.; Ciusani, E.; et al. Human Neural Stem Cell-Based Drug Product: Clinical and Nonclinical Characterization.
513 *Int. J. Mol. Sci.* 2022, 23, 13425. [https:// doi.org/10.3390/ijms232113425](https://doi.org/10.3390/ijms232113425)

514 Mazzini L, Gelati M, Profico DC, Sorarù G, Ferrari D, Copetti M, Muzi G, Ricciolini C, Carletti S, Giorgi C, Spera C,
515 Frondizi D, Masiero S, Stecco A, Cisari C, Bersano E, De Marchi F, Sarnelli MF, Querin G, Cantello R, Petruzzelli
516 F, Maglione A, Zalfa C, Binda E, Visioli A, Trombetta D, Torres B, Bernardini L, Gaiani A, Massara M, Paolucci S,
517 Boulis NM, Vescovi AL; ALS-NSCs Trial Study Group. Results from Phase I Clinical Trial with Intraspinal Injection
518 of Neural Stem Cells in Amyotrophic Lateral Sclerosis: A Long-Term Outcome. *Stem Cells Transl Med*. 2019
519 Sep;8(9):887-897. doi: 10.1002/sctm.18-0154. Epub 2019 May 18. PMID: 31104357; PMCID: PMC6708070.