

1 Evaluation and Clinical Validation of Monkeypox Virus Real-Time PCR Assays

2

3 Margaret G. Mills<sup>a</sup>, Kate B. Juergens<sup>a</sup>, Jolene Gov<sup>a</sup>, Carter McCormick<sup>a</sup>, Reigran Sampoleo<sup>a</sup>,

4 Alisa Kachikis<sup>b</sup>, John K. Amory<sup>c</sup>, Ferric C. Fang<sup>a,c</sup>, Ailyn C. Pérez-Osorio<sup>a</sup>, Nicole A. P.

5 Lieberman<sup>a</sup>, Alexander L. Greninger<sup>a,d#</sup>

6

7• <sup>a</sup>Department of Laboratory Medicine and Pathology, University of Washington School of  
8 Medicine, Seattle, WA, 98195, USA.

9 <sup>b</sup>Department of Obstetrics and Gynecology, University of Washington, Seattle, WA, 98195,  
10 USA.

11 <sup>c</sup>Department of Medicine, University of Washington, Seattle, WA, 98195, USA.

12• <sup>d</sup>Vaccine and Infectious Disease Division, Fred Hutchinson Cancer Research Center, Seattle,  
13 WA, 98109, USA.

14•

15 #Address correspondence to Alexander L. Greninger, [agrening@uw.edu](mailto:agrening@uw.edu)

16 \*Authors contributed equally to this work.

17

18 **Abstract**

19 **BACKGROUND:** In spring of 2022, an outbreak of monkeypox spread worldwide. Here, we  
20 describe performance characteristics of monkeypox virus (MPXV)-specific and pan-  
21 orthopoxvirus qPCR assays for clinical use.

22 **METHODS:** We validated probe-based qPCR assays targeting MPXV-specific loci F3L and  
23 G2R (genes MPXVgp052/OPG065 and MPXVgp002 and gp190/OPG002, respectively) and a

24 pan-orthopoxvirus assay targeting the E9L locus (MPXV<sub>gp057/OPG071</sub>). Clinical samples and  
25 synthetic controls were extracted using the Roche MP96 or Promega Maxwell 48 instrument.  
26 qPCR was performed on the AB7500 thermocycler. Synthetic control DNA and high  
27 concentration clinical samples were quantified by droplet PCR. Cross-reactivity was evaluated  
28 for camelpox and cowpox genomic DNA, vaccinia culture supernatant, and HSV- and VZV-  
29 positive clinical specimens. We also determined analytical performance of the F3L assay using  
30 dry swabs, Aptima vaginal and rectal swabs, nasopharyngeal, rectal, and oral swabs,  
31 cerebrospinal fluid, plasma, serum, whole blood, breastmilk, urine, saliva, and semen.

32 **RESULTS:** The MPXV-F3L assay is reproducible at a limit of detection (LoD) of 65.6  
33 copies/mL of viral DNA in VTM/UTM, or 3.3 copies/PCR reaction. No cross-reactivity with  
34 herpesviruses or other poxviruses was observed. MPXV-F3L detects MPXV DNA in alternative  
35 specimen types, with an LoD ranging between 260-1000 copies/mL, or 5.7-10 copies/PCR  
36 reaction. In clinical swab VTM specimens, MPXV-F3L and MPXV-G2R assays outperformed  
37 OPXV-E9L by an average of 2.4 and 2.8 Cts, respectively. MPXV-G2R outperformed MPXV-  
38 F3L by 0.4 Cts, consistent with presence of two copies of G2R present in labile inverted terminal  
39 repeats (ITRs) of MPXV genome.

40 **CONCLUSIONS:** MPXV is readily detected by qPCR using three clinically validated assays.

41 **Keywords**

42 Monkeypox virus, qPCR, orthopox, F3L, G2R, alternative specimen

## 43 **Introduction**

44 Since its discovery in the 1970s, human cases of monkeypox (MPX) have rarely been reported  
45 outside of countries in western and central Africa where the causative agent, monkeypox virus  
46 (MPXV), is endemic (1). MPX is a zoonotic disease, and frequently causes isolated human  
47 infections through spillover events (2). Despite evidence of increased human-to-human  
48 transmission and warnings of global spread, the disease was largely neglected until its recent  
49 emergence in an outbreak beginning in spring of 2022 (3–5). By November 2022, the epidemic  
50 had expanded to over 77,000 cases detected in more than 100 countries worldwide. In the United  
51 States, at time of writing, more than 28,000 cases have been reported, as well as several deaths  
52 (6). Worldwide, this outbreak of human monkeypox has disproportionately burdened men who  
53 have sex with men (7).

54 Individuals who contract MPXV may experience fever, lymphadenopathy, and a  
55 disseminated papillary rash that can lead to secondary bacterial infections (8, 9). Effects may  
56 include significant pain for weeks, as well as a wide range of complications including  
57 encephalitis, bronchopneumonia, and vision loss (10). Immunocompromised individuals,  
58 particularly those with AIDS, are at high risk of severe manifestations of MPXV, including death  
59 (11). Prophylactic vaccination with the JYNNEOS vaccinia virus vaccine and treatment with the  
60 antiviral tecovirimat (Tpoxx), both originally developed for variola (smallpox), are the major  
61 medical countermeasures available for MPXV. Because prevention of MPXV spread and  
62 effective treatment of MPXV infection inherently rely on rapid and early detection, development  
63 of clinical quantitative PCR (qPCR) assays is critical for patient care and to disrupt networks of  
64 transmission. In the context of a developing outbreak of an emerging virus that can be shed in

65 multiple body fluids, evaluation of assay performance in many alternative specimen types is also  
66 critical to preparedness efforts (12, 13).

67 MPXV is a member of the orthopoxvirus (OPXV) family of double-stranded DNA  
68 viruses. Although they are large (100-300 kb), OPXV genomes are highly conserved across  
69 species, making MPXV-specific qPCR assay design a challenge. We evaluated two MPXV-  
70 specific qPCR assays that target the F3L and G2R loci, and compared the sensitivity, specificity,  
71 and accuracy of these assays to the CDC pan-orthopoxvirus assay OPXV-E9L (14–16). We also  
72 assessed performance of all three assays in the presence of alphaherpesviruses. We found  
73 MPXV-F3L and MPXV-G2R assays to have equivalent analytical sensitivity, with 100%  
74 sensitivity at the limit of detection (LoD) of 65.6 copies/mL. OPXV-E9L had a sensitivity of  
75 95% at the same LoD. We demonstrated that the MPXV-F3L assay does not cross react with  
76 Camelpox virus (CMLV), Cowpox virus (CPXV) or Vaccinia virus (VACV) and detects MPXV  
77 DNA with adequate sensitivity in fourteen different specimen types.

78

## 79 **Materials and Methods**

### 80 *Ethics and regulatory approvals*

81 Use of excess clinical specimens was approved by the University of Washington Institutional  
82 Review Board with a consent waiver (STUDY00010205). Specifically, the use of excess breast  
83 milk and semen were approved as part of UW IRB-approved studies with informed consent  
84 (STUDY00000853, STUDY00001055, STUDY00008491).

85

### 86 *Primers and Probes*

87 Primers and probes targeting the loci for MPXV-F3L (15), MPXV-G2R (14), and OPXV-E9L  
88 (16) were synthesized by ThermoFisher. Sequences used were as follows: F3L forward 5'-  
89 CATCTATTATAGCATCAGCATCAGA-3' and reverse 5'-  
90 GATACTCCTCCTCGTTGGTCTAC -3', probe 5'-  
91 FAM/TGTAGGCCGTGTATCAGCATCCATT/BHQ1-3'. G2R forward 5'-  
92 GGAAAATGTAAAGACAACGAATACAG-3' and reverse 5'-  
93 GCTATCACATAATCTGGAAGCGTA-3', probe 5'-  
94 FAM/AAGCCGTAATCTATGTTGTCTATCGTGTCC/BHQ1-3'. E9L  
95 forward 5'-TCAACTGAAAAGGCCATCTATGA-3' and reverse 5'-  
96 GAGTATAGAGCACTATTTCTAAATCCCA-3', probe 5'-  
97 VIC/CCATGCAATATACGTACAAGATAGTAGCCAAC/QSY-3'.

98

#### 99 *MPXV DNA Absolute Quantification With ddPCR*

100 Absolute quantities of standards used to create contrived MPXV-positive samples were  
101 determined using droplet digital PCR (ddPCR). Each ddPCR reaction was performed in  
102 quadruplicate and included 1.25µL water, 12.5µL ddPCR Mastermix for Probes (Bio-Rad),  
103 1.25µL of 20x primer/probe mix (900 nM primers, 250 nM probe), and 10µL template DNA.  
104 Following droplet generation, amplification on the Bio-Rad C1000 Touch ddPCR system  
105 consisted of 10 min at 95°C; 40 cycles of 30 sec at 94°C, one min at 60°C; and 10 min at 98°C.  
106 Amplification was detected using QX200 Droplet Reader (Bio-Rad) and results analyzed with  
107 QuantaSoft Pro v1.0.596 software (Bio-Rad) (17).

108

#### 109 *Nucleic Acid Extraction*

110 All samples were handled in a biosafety cabinet prior to viral inactivation. DNA from breastmilk  
111 and semen specimens was extracted on the Promega Maxwell 48 with Maxwell RSC Viral Total  
112 Nucleic Acid Purification Kit. Breastmilk specimens were spun down for 10 minutes to separate  
113 the fat layer, and the liquid was used for extraction. Two hundred twenty microliters of sample  
114 were mixed with 200 $\mu$ L extraction mix (181.5 $\mu$ L lysis buffer, 18.2 $\mu$ L proteinase K, and 0.38 $\mu$ L  
115 EXOBS internal control). Samples were then incubated for 10 min at room temperature and 10  
116 min at 56°C, then extracted following manufacturer protocols and eluted in 100  $\mu$ L of Promega  
117 elution buffer.

118 DNA from all other specimen types was extracted on the MagNA Pure 96 with the DNA  
119 and Viral NA Small Volume Kit unless otherwise noted. Aptima collection tubes contain a  
120 reagent to inactivate MPXV, so 200 $\mu$ L from these tubes was extracted without additional lysis  
121 buffer. For lesion, nasopharyngeal, rectal, or oral swabs in viral transport media or universal  
122 transport media (VTM/UTM), cerebrospinal fluid (CSF), plasma, serum, whole blood, urine, or  
123 saliva, 100 $\mu$ L of sample was added to 100 $\mu$ L of buffer AL (Qiagen). Dry swabs were added to 1  
124 mL VTM/UTM, incubated for 1 min, vortexed for 10 seconds, and treated as above. All samples  
125 were eluted in 100 $\mu$ L Roche elution buffer.

126 Select specimens were extracted on the MagNA Pure 96 with the DNA and Viral NA  
127 Large Volume Kit, with 250 $\mu$ L of sample added to 250 $\mu$ L of buffer AL (Qiagen), then eluted in  
128 50 $\mu$ L Roche elution buffer.

129

### 130 *Qualitative PCR*

131 All F3L and G2R qPCR reactions contained 2.71 $\mu$ L water, 11.95 $\mu$ L No-ROX QuantiTect master  
132 mix (Qiagen), 0.55 $\mu$ L ROX QuantiTect master mix (Qiagen), 0.1 $\mu$ L each of 100 $\mu$ M assay-

133 specific forward and reverse primers, 0.05 $\mu$ L of 100 $\mu$ M assay-specific probe, 0.063 $\mu$ L EXOBS  
134 internal control primer/probe mix (18), 0.025 $\mu$ L of Uracil-N-Glycosylase (0.025 units, EpiCentre  
135 technologies), and 10 $\mu$ L of template DNA. All E9L qPCR reactions contained an additional  
136 0.063 $\mu$ L water in place of EXOBS primer/probe mix. Amplification on the 7500 Real-Time PCR  
137 System (Applied Biosystems) consisted of 2 min at 50°C; 15 min at 95°C; and 45 cycles of 1  
138 min at 94°C and 1 min at 60°C (17).

139

#### 140 *Accuracy*

141 Purified monkeypox DNA strain USA-2003 from BEI (NR-4928), and seven MPXV-positive  
142 remnant clinical specimens identified by Washington State Public Health Lab (WA PHL) using  
143 the OPXV-E9L primer/probe set, were used to establish accuracy (sensitivity) of the F3L and  
144 G2R assays. Remnant skin swab samples in VTM/UTM that tested negative using the OPXV-  
145 E9L assay were used to establish accuracy (specificity) of the F3L and G2R assays.

146

147 Synthetic MPXV DNA from ATCC (VR-3270SD) and high-titer MPXV-positive remnant  
148 clinical specimens identified by UWVL were used to spike into negative remnant clinical  
149 specimens, resulting in contrived positive specimens to confirm accuracy (sensitivity) of the F3L  
150 and G2R assays for all specimen types.

151

#### 152 *Cross-Reactivity and Interfering Substances Analysis*

153 To examine cross-reactivity of MPXV/OPXV assays with other orthopoxviruses, purified  
154 camelpox (CMLV) and cowpox (CPXV) viral genomic DNAs were obtained from BEI  
155 Resources (NR-50076 and NR-2641, respectively). Vaccinia virus culture supernatant (strain

156 NYCHB, a kind gift from Dr. David Koelle) was extracted as for swab specimens. All samples  
157 were then assayed using the F3L, G2R, and E9L assays as described.

158 To test cross-reactivity of MPXV/OPXV assays with herpesviruses, 18 VZV-positive, 11  
159 HSV1-positive, and four HSV2-positive skin swabs in VTM/UTM were selected from remnant  
160 clinical specimens. The HSV-positive specimens represented a range of HSV assay Cts (17.2-  
161 31.7). A subset of these VZV- and HSV-positive specimens were also spiked with VR-3270SD  
162 to create contrived double MPXV/VZV- or MPXV/HSV-positive specimens. All samples  
163 (MPXV-negative and -positive) were then assayed using the F3L, G2R, and E9L assays as  
164 described.

165

#### 166 *Analytical Sensitivity and Limits of Detection*

167 Limits of detection for F3L and G2R assays were determined for contrived positive specimens  
168 (synthetic DNA spiked into MPXV-negative remnant clinical specimens) in two stages. VR-  
169 3270SD was first serially diluted 10-fold in four pooled MPXV-negative skin swabs in VTM,  
170 with final concentrations of 3,300,000-33 copies/mL, and tested in 4 replicates per concentration.  
171 Twenty replicates were then each were tested at 330 and 33 copies/mL. Extractions and qPCR  
172 were performed as above.

173 Direct comparison of sensitivity/LoD for F3L, G2R, and E9L assays used a similar  
174 procedure, but with extractions utilizing the MP96 DNA/Viral NA Large Volume extraction kit:  
175 250 $\mu$ L of each sample were mixed with 250 $\mu$ L buffer AL, extracted, and eluted in 50  $\mu$ L elution  
176 buffer, representing a five-fold concentration. First, VR-3270SD was serially diluted in pooled  
177 MPXV-negative skin swabs in VTM, 10-fold dilutions from 33,000-33 copies/mL then finer  
178 dilutions between 330-33 copies/mL, and tested in 4 replicates per concentration. Second, 20



179 replicates each were tested at 330, 110, and 66 copies/mL. qPCR was performed as above with  
180 each assay.

181

### 182 *Analytical Sensitivity in Diverse Specimen Types*

183 To test the specificity of the F3L assay in a variety of matrices, we gathered a total of 17-  
184 24 remnant clinical samples per specimen type. Nasopharyngeal, oral, and rectal swabs in  
185 UTM/VTM, CSF, plasma, serum, whole blood, urine, and saliva, came from UW Virology  
186 remnant clinical specimens. Semen and breastmilk were obtained from remnant clinical trial  
187 specimens from the UW Medical Center. Vaginal and rectal swabs in Aptima multitest tubes  
188 were obtained from Harborview Medical Center. All MPXV-negative specimens were extracted  
189 and PCR-amplified with F3L as described above.

190 To test the analytical sensitivity in these specimen types and establish a rough LoD in  
191 each, synthetic or viral MPXV DNA was spiked into n=20-24 samples per specimen type. VR-  
192 3270SD was spiked into CSF, plasma, serum, whole blood, nasopharyngeal swabs in  
193 VTM/UTM, breastmilk, and urine to a final concentration of 1,000 copies/mL. Once MPXV-  
194 positive specimens were available, a high-titer clinical specimen was spiked into specimens: into  
195 semen to a final concentration of 260 copies/mL; and into saliva, and oral and rectal swabs in  
196 VTM/UTM to a final concentration of 780 copies/mL. All contrived positive specimens were  
197 extracted and qPCR-amplified with F3L as described above.

198 Contrived positive dry swabs were made by diluting high-titer clinical specimen into  
199 pooled negative swab specimens in VTM/UTM, adding 50 $\mu$ L to each swab, and air-drying for  
200 10 min. Once the swabs were dry, each was added to 1mL VTM, incubated for 10 min, and  
201 vortexed for 10 seconds. To establish an LoD for dry swabs, contrived positive samples were

202 made and tested in two stages. First, the high-titer clinical specimen was serially diluted 10-fold  
203 to final concentrations of 5,300,000 - 530 copies/mL then finer dilutions between 5,300 - 530  
204 copies/mL, and tested in 4 replicates per concentration. Second, 20 replicates each were tested at  
205 1,600, 800, and 530 copies/mL (810, 400, and 270 copies/swab respectively). Dry swabs were  
206 processed, extracted, and qPCR-amplified with F3L as described above.

207

## 208 **Results**

### 209 *Absolute quantification of synthetic control and high viral load clinical sample*

210 Because MPXV genomic DNA and clinical samples were in short supply in spring 2022,  
211 we first validated synthetic DNA purchased from ATCC (VR-3270SD). This template contains  
212 primer and probe binding sites for several previously-developed assays, including F3L, G2R, and  
213 E9L, and has a copy number of  $1 \times 10^8$ - $1 \times 10^9$  copies/mL DNA estimated by the manufacturer (14–  
214 16). We determined the precise number of copies of this standard using ten-fold serial dilutions  
215 tested in quadruplicate by ddPCR (Figure S1A-C). Measurements of VR-3270SD lot 70053297  
216 yielded  $3.28 \times 10^8$  copies/mL DNA for F3L; measurements of VR-3270SD lot 70053666 resulted  
217 in equivalent concentrations for all three loci:  $1.28 \times 10^8$  copies/mL for MPXV-F3L,  $1.30 \times 10^8$   
218 copies/mL for MPXV-G2R, and  $1.29 \times 10^8$  copies/mL for OPXV-E9L. In addition, a high viral  
219 load remnant clinical specimen (F3L Ct ~16) used for downstream validation studies was  
220 quantified by ddPCR as  $5.34 \times 10^8$ ,  $8.78 \times 10^8$ , and  $4.78 \times 10^8$  copies/mL for F3L, G2R, and E9L  
221 respectively. These data are consistent with equal copy numbers of loci present in the ATCC  
222 DNA standard and an extra copy of G2R present in MPXV genomes.

223

224 *MPXV-F3L and MPXV-G2R assays are highly specific for MPXV DNA*

225 To determine specificity, we first tested 15 HSV-positive, 17 VZV-positive, and 52  
226 known HSV/VZV-negative clinical remnant skin swabs in VTM/UTM using the CDC OPXV-  
227 E9L assay and confirmed that they were negative for MPXV. We verified that the F3L assay did  
228 not detect MPXV DNA in any of these specimens. The G2R assay similarly did not detect  
229 MPXV DNA in the negative or HSV-positive swabs, or in 16 out of 17 VZV-positive swabs; one  
230 VZV-positive specimen tested positive for G2R (Ct 39.8) and was negative on repeat (Table 1).  
231 Overall, the F3L assay had a negative percent agreement of 100% and the G2R assay had a  
232 negative percent agreement of 98.8% over 84 samples.

233 Camelpox virus (CMLV), Cowpox virus (CPXV) and Vaccinia virus (VACV) are the  
234 nearest phylogenetic relatives to MPXV based on DNA sequence similarity of conserved OPXV  
235 genes (16, 19). Accordingly, we tested VACV viral culture and purified CMLV and CPXV  
236 DNAs to assess cross-reactivity with MPXV-F3L and MPXV-G2R. The OPXV-E9L PCR assay  
237 served as a positive control for the other OPXV. VACV, CPXV, and CMLV were not detected  
238 by either the MPXV-F3L or MPXV-G2R assays, while the OPXV-E9L assay returned average  
239 Cts of 23.8, 25.8, and 19.8, respectively (Figure 1A).

240

241 **Table 1: MPXV-F3L, MPXV-G2R, and OPXV-E9L Sensitivity and Specificity**

F3L	Known (Contrived) Positive	Known Negative
Assay Positive	31	0
Assay Negative	1	84

242

G2R	Known (Contrived) Positive	Known Negative
Assay Positive	32	1

Assay Negative	0	83
----------------	---	----

243

E9L	Known (Contrived) Positive	Known Negative
Assay Positive	32	0
Assay Negative	0	84

244

245

246 *MPXV-F3L, MPXV-G2R, and OPXV-E9L assays are > 96.8% sensitive for MPXV DNA*

247 All three assays were tested for their ability to detect MPXV DNA using contrived  
248 positives consisting of a range of dilutions of VR-3270SD spiked into negative skin swabs in  
249 VTM (eight replicates at 330,000 copies/mL, 16 at 33,000 copies/mL, and eight at 3,300  
250 copies/mL, based on ddPCR). G2R and E9L assays had 100% positive percent agreement, while  
251 a single replicate at 3,300 copies/mL was negative in the F3L assay (G2R Ct = 36.6), resulting in  
252 a positive percent agreement of 96.9%. Upon quadruplicate repeat testing, the failed sample had  
253 F3L Cts of 32.2, 33.4, 32.9, and 33.0. Overall percent agreement for the three assays were 99.1%  
254 for both G2R and F3L, and 100% for E9L.

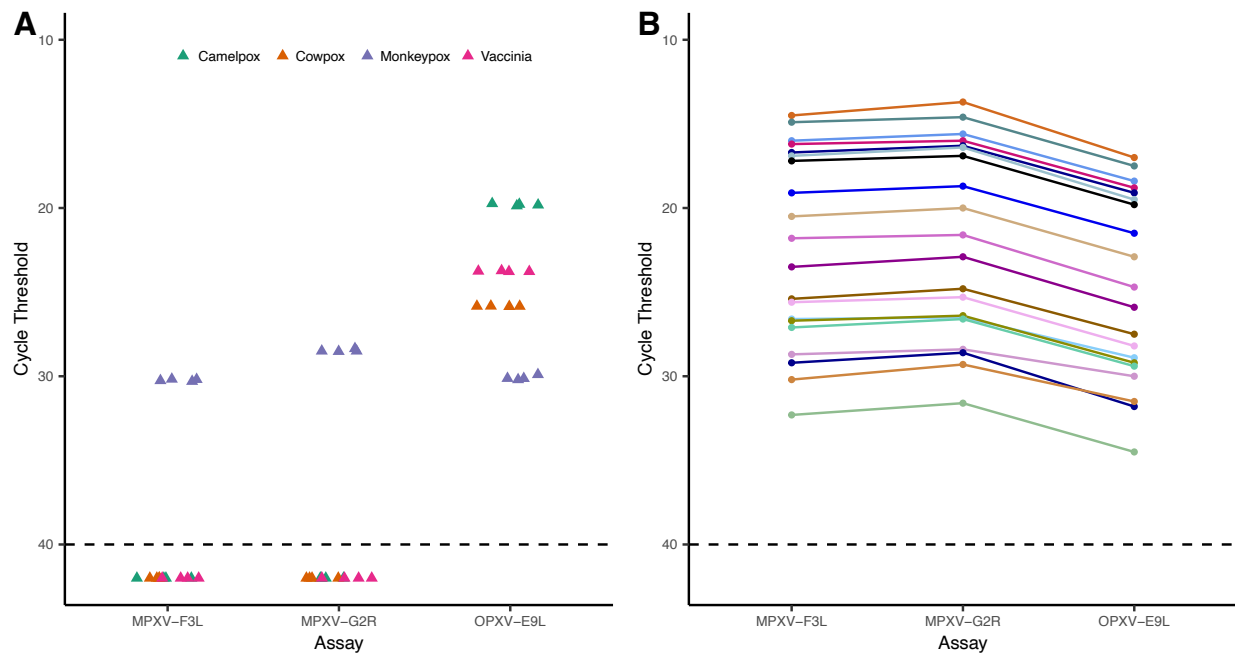
255

256 *MPXV-F3L and MPXV-G2R assays detect MPXV viral DNA*

257 Next, we confirmed that the F3L and G2R assays would accurately identify samples  
258 containing MPXV. Due to the short supply of MPXV-positive samples and genomic DNA early  
259 in the 2022 MPXV pandemic, we were only able to secure MPXV genomic DNA from BEI  
260 Resources, as well as seven MPXV-positive skin swabs in VTM from the WA State Public  
261 Health Laboratory (PHL). All known positive samples tested positive for MPXV by both F3L

262 and G2R assays. Because of volume constraints, the PHL samples were diluted at least 1:40 prior  
263 to extraction at our lab, resulting in later Ct values for F3L and G2R assays than the Ct values for  
264 OPXV-E9L assay used by PHL, and complicating quantitative comparison of the assays. The  
265 qualitative interpretation was 100% concordant.

266 In order to quantitatively compare the ability of the three assays to detect MPXV DNA,  
267 we took 20 MPXV-positive clinical swab specimens in VTM (as detected by MPXV-F3L assay)  
268 and performed concomitant MPXV-G2R and OPXV-E9L testing on them. In every specimen,  
269 the MPXV-specific primers gave lower Ct values with averaging Ct differences of 2.4 (range,  
270 1.3-2.9) and 2.8 (1.6-3.2) lower than OPXV-E9L for MPXV-F3L and MPXV-G2R assays,  
271 respectively. In addition, the MPXV-G2R gave a lower Ct value than MPXV-F3L in every  
272 specimen, averaging 0.4 Ct difference (0.1-0.9) (Figure 1B, Supplemental Table 1). This is  
273 consistent with two copies of G2R being present in the MPXV genome.



274

275 **Figure 1. Specificity of MPXV-F3L and MPXV-G2R assays.** (A) OPXV cross reactivity

276 analysis of MPXV specific assays by testing MXPV, CPXV, CMLV, and VACV samples, with

277 OPXV-E9L used as a positive control. Samples with no detectable MPXV are plotted at Ct of 42.

278 (B). Specificity of all three assays with 20 clinical specimens initially positive by MPXV-F3L,

279 followed by concomitant testing with MPXV-G2R and MPXV-E9L.

280

281

282 *MPXV-F3L, MPXV-G2R and OPXV-E9L assays are not affected by alphaherpesviruses*

283 Co-infections of MPXV and HSV and VZV have been reported previously (7, 20).

284 Therefore, we tested if the presence of HSV or VZV interfered with the detection of MPXV. We

285 spiked VR-3270SD into HSV1-, HSV2-, or VZV-positive VTM specimens to a final

286 concentration range of 330,000-3,300 MPXV copies/mL (n= 12 herpesvirus positive samples

287 total). Contrived MPXV-positive controls with no herpesviruses (n=32) resulted in Cts with no

288 significant difference from those MPXV/herpesviruses double positives for all three assays

289 (Supplemental Figure 2, Supplemental Table 2,  $p>0.05$ , T test).

290

291 *MPXV-F3L, MPXV-G2R, and OPXV-E9L Assays Have Analytic Sensitivity of 3.3 copies per*

292 *PCR reaction*

293 We performed an initial LoD for MPXV-F3L, MPXV-G2R, and OPXV-E9L assays

294 using contrived positive specimens containing VR-3270SD at a range of concentrations (33,000-

295 33 copies/mL VTM) tested in quadruplicate. For both assays, all four replicates were detected at

296 33,000, 3,300, and 330 copies/mL, while only 2/4 and 3/4 of replicates amplified at 33

297 copies/mL with F3L and G2R, respectively. Throughout this range, linearity was excellent

298 among positive samples (Supplemental Figure 3), with  $R^2$  values of 0.9990, 0.9986, and 0.9974

299 for F3L, G2R, and E9L assays, respectively.

300           Based on these results, we tested twenty additional replicates of contrived positive  
301 samples at both 330 copies/mL and 33 copies/mL with F3L and G2R assays. At 330 copies/mL,  
302 corresponding to 3.3 copies per PCR reaction, 19/20 and 20/20 replicates were detected for F3L  
303 and G2R respectively, with mean Ct values of 34.5 and 36.6 respectively. At 33 copies/mL,  
304 corresponding to only 0.3 copies per reaction, 4/20 and 3/20 replicates were detected for F3L and  
305 G2R respectively. Therefore, the limit of detection of both F3L and G2R assays is 330  
306 copies/mL using standard extraction methods, or 3.3 copies per reaction.

307           To maximize our ability to distinguish between the three assays, an additional LoD study  
308 was performed using large volume extraction methods that provided a theoretical 5x  
309 concentration of DNA over the standard extraction methods (Supplemental Table 4). This study  
310 used both synthetic DNA (VR-3270SD, with equal concentration of all three targets) and high-  
311 titer clinical specimen diluted in negative clinical specimens. Similar to the previous LoD study,  
312 this was conducted in two stages. First, VR-3270SD was diluted 10-fold in MPXV-negative  
313 specimen VTM to final concentrations of 3,300,000-33 copies/mL as well as finer dilutions  
314 between 330 and 33 copies/mL, and was tested in quadruplicate. For all three assays, 4/4  
315 replicates were detected at 3,300,000-330 and 110 copies/mL dilutions, while only 3/4, 3/4, or  
316 1/4 replicate(s) amplified at 66 copies/mL with F3L, G2R, and E9L assays respectively. Second,  
317 20 replicates each of both VR-3270SD and the high viral load clinical specimen were tested at  
318 330, 110, and 66 copies/mL (copies of F3L for the clinical specimen). For VR-3270SD dilutions,  
319 20/20 replicates amplified at 330 copies/mL with all assays; 19/20, 19/20, and 16/20 replicates  
320 amplified at 1.1e2 copies/mL with F3L, G2R, and E9L assays respectively; and 12/20, 11/20,  
321 and 13/20 replicates amplified at 66 copies/mL with F3L, G2R, and E9L assays respectively. For  
322 clinical specimen dilutions at 66 F3L copies/mL by ddPCR and a theoretical 3.3 copies/rxn,

323 20/20, 20/20, and 19/20 replicates amplified with F3L, G2R, and E9L assays respectively, with  
324 mean Ct values of 35.0, 33.9, and 36.6 respectively. Therefore, the LoD for each assay using the  
325 higher input volume was 110 copies/mL for the F3L and G2R assays and 330 copies/mL VTM  
326 for the OPXV-E9L assay based on the ATCC DNA material and 66 copies/mL VTM for each  
327 assay based on ddPCR-determined copy number of a viral positive.

328

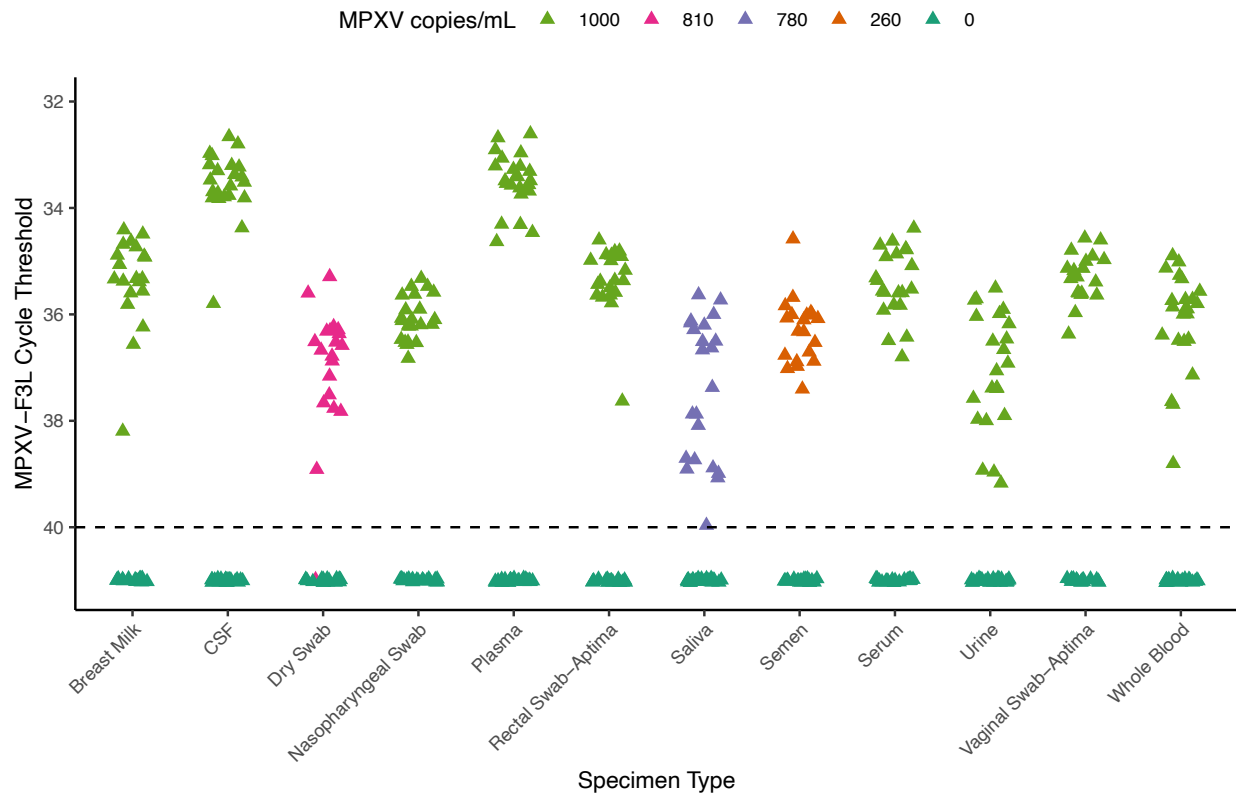
329 *MPXV DNA is detected in diverse specimen types with an LoD of 1000 copies per mL or lower*

330         Given the need for testing for MPXV in alternative specimen types in select clinical cases  
331 outside of diagnosing monkeypox infection, the UW Virology laboratory also validated the F3L  
332 assay in multiple other specimen types. Due to the rarity of many specimen types, we combined  
333 our sensitivity and specificity studies with LoD determination, using between 17-24 unique  
334 specimens of each type. Presumptive MPXV-negative cerebrospinal fluid, plasma, serum, urine,  
335 breastmilk, whole blood, nasopharyngeal/rectal/oral swabs in VTM/UTM, and vaginal/rectal  
336 swabs in Aptima tubes, were spiked to a concentration of 1000 copies/mL of VR-3270SD,  
337 followed by extraction and qPCR on both spiked and negative samples. The negative percent  
338 agreement for all specimen types was 100%. The positive percent agreement for Aptima vaginal  
339 and rectal swabs, nasopharyngeal, cerebrospinal fluid, plasma, breastmilk, and whole blood was  
340 100%. The F3L assay was positive in 22/23 urine specimens and 21/22 serum specimens, for a  
341 positive percent agreement of 95.7% and 95.5% respectively (Figure 2, Supplemental Table 3).  
342 Therefore, the F3L LoD for these samples was determined to be 1000 copies/mL.

343         Once MPXV-positive specimens were available, and specifically for specimen types in  
344 which DNA degradation might be a concern (specifically dry swabs, semen, and saliva), we  
345 performed our validation using diluted MPXV clinical specimen rather than synthetic DNA. The



346 high viral load clinical specimen was spiked into semen at 260 copies/mL, and into saliva and  
347 oral and rectal swabs at 780 copies/mL. Dry swabs were spiked with 810 copies per swab.  
348 Negative percent agreement of the F3L assay of semen, saliva, rectal, oral, and dry swabs was  
349 100%. Positive percent agreement was 100% for semen, saliva, and rectal swabs, and 95%  
350 (19/20) for oral and dry swabs. Therefore, the F3L LoD for semen is 260 copies/mL (5.7 copies  
351 per PCR reaction), 780 copies/mL (7.8 copies per PCR reaction) for saliva, oral, and rectal  
352 swabs, and 810 copies/swab (8.1 copies per PCR reaction) for dry swabs.



353  
354 **Figure 2. Sensitivity of MPXV-F3L With Diverse Specimens.**  
355 MPXV-F3L Ct values of contrived MPXV positive breastmilk, CSF, dry swabs, nasopharyngeal  
356 swabs (NP), plasma, rectal swabs, saliva, semen, urine, vaginal swabs, and whole blood samples  
357 (n=17-24). Samples with no detectable MPXV are plotted at Ct of 41.

358

## 359 Discussion

360 Here, we evaluated the sensitivity and specificity of two MPXV-specific primer and  
361 probe sets in parallel with an orthopoxvirus assay during the ongoing 2022 MPXV pandemic. By  
362 extracting from up to 250  $\mu$ L of specimen, we determined the LoD for MPXV-F3L, MPXV-  
363 G2R, and OPXV-E9L assays to be as low as 66 copies/mL, or 3.3 copies per PCR reaction. Our  
364 analytical sensitivity compares favorably with a recent evaluation of the PKamp Monkeypox  
365 Virus RT-PCR assay, which also uses the F3L gene as its target (21). Furthermore, all three  
366 assays did not cross react with HSV or VZV, demonstrating that both assays are highly specific  
367 to MPXV even in mixed samples with high HSV/VZV viral titer. We also evaluated the effect of  
368 sample matrix on the analytical sensitivity of the MPXV-F3L assay, finding that the assay was  
369 robust in fourteen different specimen types.

370  
371 Although overall both MPXV-specific assays had very similar performance characteristics, F3L  
372 had a slightly lower Ct on average on synthetic positive control material and was present in a  
373 core genomic region, leading us to use it as our primary clinical assay for high-volume testing of  
374 swabs in VTM (17). In clinical samples, G2R detection was associated with slightly lower Ct  
375 values than F3L, likely due to the presence of two copies of the gene in the MPXV ITR regions.  
376 However, ITR regions of poxviruses are often subject to genomic rearrangements, especially as  
377 they spread to new hosts (22, 23). Reports of rare deletions in the G2R target that affected  
378 detection of MPXV DNA led the CDC to issue an advisory on September 2<sup>nd</sup>, 2022, urging  
379 caution in the interpretation of negative results returned from the G2R assay if clinical suspicion  
380 for MPXV was high (24). To date, no reports of deletions in F3L in MPXV have occurred.

381

382 Altogether, we found very similar performance characteristics for the MPXV-F3L, MPXV-G2R,  
383 and OPXV-E9L assays for the detection of MPXV. Each assay was highly sensitive for MPXV  
384 DNA, with an LoD around 3 copies per reaction, near the limit of stochasticity. The F3L assay is  
385 specific for MPXV DNA, and does not cross-react with herpesviruses or other orthopoxviruses.  
386 This diagnostic will be an important defense for reducing transmission of MPXV during the  
387 ongoing outbreak.

388

### 389 *Acknowledgements*

390 The authors thank our study participants for their time and effort to donate specimens to the  
391 University of Washington Medical Center. AK is supported by NIH K23 AI153390-01.

392 **References**

393

394 1. Ladnyj ID, Ziegler P, Kima E. 1972. A human infection caused by monkeypox virus in  
395 Basankusu Territory, Democratic Republic of the Congo. *Bull World Health Organ* 46:593–  
396 597.

397 2. Berthet N, Descorps-Declère S, Besombes C, Curaudeau M, Nkili Meyong AA, Selekon B,  
398 Labouba I, Gonofio EC, Ouilibona RS, Simo Tchegnana HD, Feher M, Fontanet A, Kazanji  
399 M, Manuguerra J-C, Hassanin A, Gessain A, Nakoune E. 2021. Genomic history of human  
400 monkey pox infections in the Central African Republic between 2001 and 2018. 1. *Sci Rep*  
401 11:13085.

402 3. Thomassen HA, Fuller T, Asefi-Najafabady S, Shiplacoff JAG, Mulembakani PM, Blumberg  
403 S, Johnston SC, Kisalu NK, Kinkela TL, Fair JN, Wolfe ND, Shongo RL, LeBreton M,  
404 Meyer H, Wright LL, Muyembe J-J, Buermann W, Okitolonda E, Hensley LE, Lloyd-Smith  
405 JO, Smith TB, Rimoin AW. 2013. Pathogen-Host Associations and Predicted Range Shifts  
406 of Human Monkeypox in Response to Climate Change in Central Africa. *PLoS ONE*  
407 8:e66071.

408 4. Silva NIO, de Oliveira JS, Kroon EG, Trindade G de S, Drumond BP. 2021. Here, There,  
409 and Everywhere: The Wide Host Range and Geographic Distribution of Zoonotic  
410 Orthopoxviruses. 1. *Viruses* 13:43.

411 5. Nolen LD, Osadebe L, Katomba J, Likofata J, Mukadi D, Monroe B, Doty J, Hughes CM,  
412 Kabamba J, Malekani J, Bomponda PL, Lokota JI, Balilo MP, Likafi T, Lushima RS, Ilunga  
413 BK, Nkawa F, Pukuta E, Karhemere S, Tamfum J-JM, Nguete B, Wemakoy EO, McCollum

- 414 AM, Reynolds MG. 2016. Extended Human-to-Human Transmission during a Monkeypox  
415 Outbreak in the Democratic Republic of the Congo. *Emerg Infect Dis* 22:1014–1021.
- 416 6. CDC. 2022. Monkeypox in the U.S. *Cent Dis Control Prev*.  
417 <https://www.cdc.gov/poxvirus/monkeypox/response/2022/world-map.html>. Retrieved 17  
418 August 2022.
- 419 7. Thornhill JP, Barkati S, Walmsley S, Rockstroh J, Antinori A, Harrison LB, Palich R, Nori  
420 A, Reeves I, Habibi MS, Apea V, Boesecke C, Vandekerckhove L, Yakubovsky M,  
421 Sendagorta E, Blanco JL, Florence E, Moschese D, Maltez FM, Goorhuis A, Pourcher V,  
422 Migaud P, Noe S, Pintado C, Maggi F, Hansen A-BE, Hoffmann C, Lezama JI, Mussini C,  
423 Cattelan A, Makofane K, Tan D, Nozza S, Nemeth J, Klein MB, Orkin CM. 2022.  
424 Monkeypox Virus Infection in Humans across 16 Countries — April–June 2022. *N Engl J*  
425 *Med* 0:null.
- 426 8. McCollum AM, Damon IK. 2014. Human monkeypox. *Clin Infect Dis Off Publ Infect Dis*  
427 *Soc Am* 58:260–267.
- 428 9. Ježek Z, Szczeniowski M, Paluku KM, Mutombo M. 1987. Human Monkeypox: Clinical  
429 Features of 282 Patients. *J Infect Dis* 156:293–298.
- 430 10. Monkeypox. <https://www.who.int/news-room/fact-sheets/detail/monkeypox>. Retrieved 18  
431 August 2022.
- 432 11. Miller MJ. 2022. Severe Monkeypox in Hospitalized Patients — United States, August 10–  
433 October 10, 2022. *MMWR Morb Mortal Wkly Rep* 71.

- 434 12. Perchetti GA, Nalla AK, Huang M-L, Zhu H, Wei Y, Stensland L, Loprieno MA, Jerome  
435 KR, Greninger AL. 2020. Validation of SARS-CoV-2 detection across multiple specimen  
436 types. *J Clin Virol Off Publ Pan Am Soc Clin Virol* 128:104438.
- 437 13. Veintimilla C, Catalán P, Alonso R, de Viedma DG, Pérez-Lago L, Palomo M, Cobos A,  
438 Aldamiz-Echevarria T, Muñoz P. 2022. The relevance of multiple clinical specimens in the  
439 diagnosis of monkeypox virus, Spain, June 2022. *Euro Surveill Bull Eur Sur Mal Transm*  
440 *Eur Commun Dis Bull* 27.
- 441 14. Li Y, Zhao H, Wilkins K, Hughes C, Damon IK. 2010. Real-time PCR assays for the specific  
442 detection of monkeypox virus West African and Congo Basin strain DNA. *J Virol Methods*  
443 169:223–227.
- 444 15. Maksyutov RA, Gavrilova EV, Shchelkunov SN. 2016. Species-specific differentiation of  
445 variola, monkeypox, and varicella-zoster viruses by multiplex real-time PCR assay. *J Virol*  
446 *Methods* 236:215–220.
- 447 16. Li Y, Olson VA, Laue T, Laker MT, Damon IK. 2006. Detection of monkeypox virus with  
448 real-time PCR assays. *J Clin Virol Off Publ Pan Am Soc Clin Virol* 36:194–203.
- 449 17. Lieberman NAP, Mathias PC, Bradley BT, Greninger AL. 2022. Clinical Performance and  
450 Trends During the First Two Months of Monkeypox Virus PCR Testing at Two United  
451 States Reference Labs. preprint. *Infectious Diseases (except HIV/AIDS)*.
- 452 18. Allele-Specific PCR for Determination of IL28B Genotype | *Journal of Clinical*  
453 *Microbiology*. [https://journals.asm.org/doi/10.1128/JCM.02084-12?url\\_ver=Z39.88-](https://journals.asm.org/doi/10.1128/JCM.02084-12?url_ver=Z39.88-)

- 454 2003&rfr\_id=ori:rid:crossref.org&rfr\_dat=cr\_pub%20%20pubmed. Retrieved 4 October  
455 2022.
- 456 19. Emerson GL, Li Y, Frace MA, Olsen-Rasmussen MA, Khristova ML, Govil D, Sammons  
457 SA, Regnery RL, Karem KL, Damon IK, Carroll DS. 2009. The Phylogenetics and Ecology  
458 of the Orthopoxviruses Endemic to North America. PLoS ONE 4:e7666.
- 459 20. Hughes CM, Liu L, Davidson WB, Radford KW, Wilkins K, Monroe B, Metcalfe MG,  
460 Likafi T, Lushima RS, Kabamba J, Nguete B, Malekani J, Pukuta E, Karhemere S,  
461 Muyembe Tamfum J-J, Okitolonda Wemakoy E, Reynolds MG, Schmid DS, McCollum  
462 AM. 2021. A Tale of Two Viruses: Coinfections of Monkeypox and Varicella Zoster Virus  
463 in the Democratic Republic of Congo. Am J Trop Med Hyg 104:604–611.
- 464 21. Mondolfi AP, Guerra S, Muñoz M, Luna N, Hernandez MM, Patino LH, Reidy J, Banu R,  
465 Shrestha P, Liggayu B, Umeaku A, Chen F, Cao L, Patel A, Hanna A, Li S, Look A, Pagani  
466 N, Albrecht R, Pearl R, Garcia-Sastre A, Bogunovic D, Palacios G, Bonnier L, Cera F,  
467 Lopez H, Calderon Y, Eiting E, Mullen K, Shin SJ, Lugo LA, Urbina AE, Starks C, Koo T,  
468 Uychiat P, Look A, van Bakel H, Gonzalez-Reiche A, Betancourt AF, Reich D, Cordon-  
469 Cardo C, Simon V, Sordillo EM, Ramírez JD. 2022. Evaluation and validation of an RT-  
470 PCR assay for specific detection of Monkeypox virus (MPXV). J Med Virol  
471 <https://doi.org/10.1002/jmv.28247>.
- 472 22. Elde NC, Child SJ, Eickbush MT, Kitzman JO, Rogers KS, Shendure J, Geballe AP, Malik  
473 HS. 2012. Poxviruses Deploy Genomic Accordions to Adapt Rapidly against Host Antiviral  
474 Defenses. Cell 150:831–841.

- 475 23. Sereewit J, Lieberman NAP, Xie H, Bakhash SAKM, Nunley BE, Chung B, Mills MG,  
476 Roychoudhury P, Greninger AL. 2022. ORF-Interrupting Mutations in Monkeypox Virus  
477 Genomes from Washington and Ohio, 2022. 11. *Viruses* 14:2393.
- 478 24. 2022. Lab Alert: MPXV TNF Receptor Gene Deletion May Lead to False Negative Results  
479 with Some MPXV Specific LDTs. [https://www.cdc.gov/locs/2022/09-02-2022-lab-alert-](https://www.cdc.gov/locs/2022/09-02-2022-lab-alert-MPXV_TNF_Receptor_Gene_Deletion_May_Lead_False_Negative_Results_Some_MPXV_Specific_LDTs.html)  
480 [MPXV\\_TNF\\_Receptor\\_Gene\\_Deletion\\_May\\_Lead\\_False\\_Negative\\_Results\\_Some\\_MPXV](https://www.cdc.gov/locs/2022/09-02-2022-lab-alert-MPXV_TNF_Receptor_Gene_Deletion_May_Lead_False_Negative_Results_Some_MPXV_Specific_LDTs.html)  
481 [\\_Specific\\_LDTs.html](https://www.cdc.gov/locs/2022/09-02-2022-lab-alert-MPXV_TNF_Receptor_Gene_Deletion_May_Lead_False_Negative_Results_Some_MPXV_Specific_LDTs.html). Retrieved 21 October 2022.
- 482