

Variation in *ERAP2* has opposing effects on severe respiratory infection and autoimmune disease

Fergus Hamilton^{1,2}, Alexander Mentzer⁴, Tom Parks^{4,5}, J Kenneth Baillie⁶, George Davey Smith¹, Peter Ghazal⁷, Nicholas J Timpson^{1,3}

1. MRC Integrative Epidemiology Unit, University of Bristol
2. Infection Science, North Bristol NHS Trust
3. Population Health Sciences, Bristol Medical School, University of Bristol
4. Wellcome Centre For Human Genetics, University of Oxford
5. Department of Infectious Disease, Imperial College London
6. Roslin Institute, University of Edinburgh
7. Project Sepsis, Cardiff University

Introduction:

ERAP2 is an aminopeptidase involved in immunological antigen presentation. Genotype data in human samples from before and after the Black Death, an epidemic due to *Yersinia pestis*, have marked changes in population allele frequency of the common single nucleotide polymorphism (SNP) rs2549794. This SNP is in strong linkage disequilibrium with a key splicing SNP in *ERAP2* (rs2248374) and this suggests that variation at *ERAP2* may be relevant for protection from infection. rs2549794 is also associated with Crohn's disease and findings imply balancing selection between infection and autoimmune disease at this locus. There have been no large-scale prospective case-control studies of variation at *ERAP2* and infection.

Methods:

This study aimed to explore the association between variation at *ERAP2* and a) infection, b) autoimmune disease, and c) parental longevity as a proxy for lifespan. Genome Wide Association Studies (GWAS) of these outcomes were identified in contemporary cohorts (UK Biobank, FinnGen, and GenOMICC). Effect estimates were extracted for rs2549794 and rs2248374. Additionally, *cis* expression and protein quantitative trait loci (QTLs) for *ERAP2* were used in Mendelian randomisation analyses.

Results:

Across all cohorts, the T allele (minor allele frequency of 0.4-0.5) of rs2549794 showed evidence of association with respiratory infection (odds ratio; OR for pneumonia 1.03; 95% CI 1.01-1.05; $p = 0.014$). Effect estimates were larger in bacterial rather than viral infection and larger for more severe phenotypes (OR for critical care admission with pneumonia 1.08; 95% CI 1.02-1.14, $p = 0.008$, OR for death from pneumonia 1.07; 95% CI 1.01-1.12; $p = 0.014$). In contrast, opposing effects were identified for Crohn's disease (OR 0.86; 95% CI 0.82-0.90, $p = 8.6 \times 10^{-9}$) and type 1 diabetes (OR 0.95; 95% CI 0.90-0.99, $p = 0.02$). No strong evidence for association was identified for sepsis. Carriage of the T allele was associated with increased age of parental death (beta in Z-scored years across both parents age at death 0.01, 95% CI 0.004- 0.017, $p = 0.002$). Similar results were identified for rs2248374.

In Mendelian randomisation analyses, increasing transcription or protein levels of *ERAP2* were strongly associated with protection from respiratory infection, with opposing effects identified on Crohn's disease and type 1 diabetes. Increased expression of *ERAP2* was associated with reduced parental longevity.

Conclusions:

Variation at *ERAP2* is associated with severe respiratory infection in modern societies, with an opposing association with Crohn's disease and type 1 diabetes. These data support the hypothesis that changes in allele frequencies in *ERAP2* observed at the time of the Black Death reflect protection from infection, and suggest ongoing balancing selection at this locus driven by autoimmune and infectious disease

Introduction:

ERAP1 and *ERAP2* both code for aminopeptidases that are critical in presentation of antigen by professional antigen presenting cells and are linked with the Human Leukocyte Antigen (HLA) response to infection.¹⁻⁴ Variation at these genes has been associated with both infection and autoimmune disease, with the most compelling association reported between variation at *ERAP2* and inflammatory bowel disease (particularly Crohn's disease), and *ERAP1* with ankylosing spondylitis. Other studies have suggested a role for an association with *ERAP2* and infection, although studies have been small. Additionally, it is thought that these genes are under balancing selection, with *ERAP2* having two, almost equally common haplotypes worldwide (Haplotype A and Haplotype B).⁵⁻⁷ Haplotype A encodes the full *ERAP2* protein, whereas Haplotype B has a premature stop codon leading to nonsense mediated decay, and reduced levels of *ERAP2* protein.⁸

A recent analysis by Klunk et al of human genomes from before, during, and after the Black Death in Europe, an epidemic caused by *Yersinia pestis*, identified a large change in allele frequency over this period in a common SNP (rs2549794-T) in *ERAP2*.⁸ This SNP is in linkage disequilibrium with the known splicing variant (rs2248374-G) that leads to transcription of the specific haplotype (Haplotype B), that is associated with production of a truncated *ERAP2* protein which undergoes nonsense mediated decay and appears to affect antigen presentation.⁵ The new work has suggested that rs2549794 is associated with the immune response, with carriers of the putative protective (C) allele having a five-fold higher *ERAP2* expression in both unstimulated and *Y.pestis* challenged macrophages, altered gene expression patterns in multiple other immune cells, and increased production of the full length *ERAP2* protein in macrophages. Additionally, the rs2549794-C allele has been associated with increased odds of Crohn's disease in other studies.⁹ Therefore, the study concludes that variation at *ERAP2* (in particular, the C allele at rs2549794) is probably associated with protection from *Y.pestis* and suggest that the balancing selection at this locus is likely driven by a balance between autoimmune disease (or other negative consequences of this SNP) and protection from severe infection.

This conclusion remains a hypothesis and there is little data on whether variation at *ERAP2* (and at this specific SNP) associates with severe infection and other autoimmune diseases outside Crohn's in contemporary datasets.^{10,11} In this study, we aim to test this hypothesis by identifying whether variation at *ERAP2* is associated with serious infection (sepsis and respiratory infection, autoimmune disease and age at parental death (as a proxy for potential effects on longevity) using both the SNP identified by Klunk et al⁸, and by using expression^{12,13} and protein¹⁴ quantitative trait loci for *ERAP2*.

Results

We identified Genome-wide association study (GWAS) summary statistics for 7 respiratory infection outcomes, 5 sepsis outcomes, 4 autoimmune disease outcomes, and 3 (mother, father, both) parental longevity-related outcomes. **Table 1** lists details of each study, with descriptions of the cohorts in the methods.

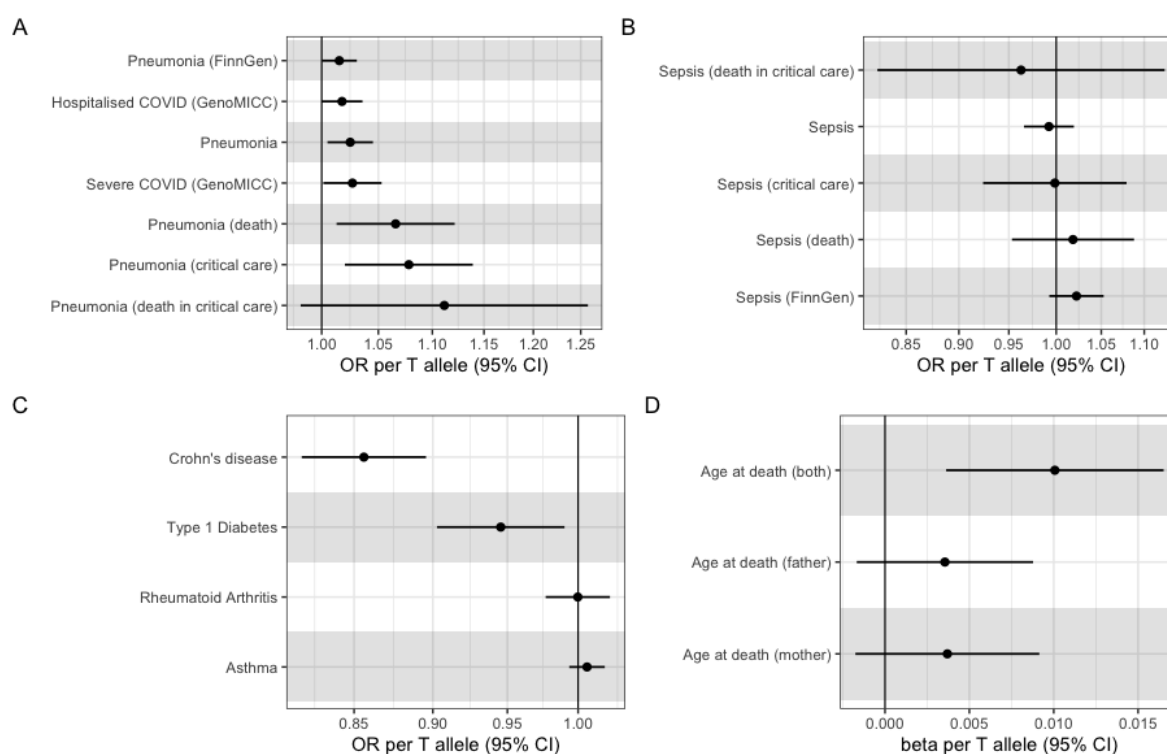
Table 1: Studies included in this analysis

Outcome	Author	Cases	Controls	Cohort	Case definition
Respiratory infection					
Pneumonia	Hamilton et al ¹⁵	22567	463917	UK Biobank	ICD-10 coded pneumonia
Pneumonia (critical care)	Hamilton et al ¹⁵	2758	428607	UK Biobank	ICD-10 coded pneumonia and critical care admission
Pneumonia (death)	Hamilton et al ¹⁵	3185	430820	UK Biobank	ICD-10 coded pneumonia and death within 28 days
Pneumonia (death in critical care)	Hamilton et al ¹⁵	545	430820	UK Biobank	ICD-10 coded pneumonia, critical care admission, and death within 28 days
Pneumonia (FinnGen)	FinnGen consortium ¹⁶	38999	282303	FinnGen	
Severe COVID	GenOMICC consortium ¹⁷	13327	1745220	Meta-analysis	Very severe respiratory COVID-19
Hospitalised COVID	GenOMICC consortium ¹⁷	43308	2918102	Meta-analysis	Hospitalised with COVID-19
Sepsis					
Sepsis (death in critical care)	Hamilton et al ¹⁵	347	431018	UK Biobank	ICD-10 coded sepsis
Sepsis	Hamilton et al ¹⁵	11643	474841	UK Biobank	ICD-10 coded sepsis and critical care admission
Sepsis (critical care)	Hamilton et al ¹⁵	1380	429985	UK Biobank	ICD-10 coded sepsis and death within 28 days
Sepsis (death)	Hamilton et al ¹⁵	1896	484588	UK Biobank	ICD-10 coded sepsis, critical care admission, and death within 28 days
Sepsis (FinnGen)	FinnGen consortium ¹⁶	10337	310965	FinnGen	
Autoimmune disease					
Crohn's disease	Liu et al, IIBDGC ⁹	5956	14927	Meta-analysis	Histologically and endoscopically confirmed
Type 1 Diabetes	Forgetta et al ¹⁸	4329	9543	Meta-analysis	Cohort specific
Asthma	Valette et al ¹⁹	56167	352255	UK Biobank	ICD coded and self-reported
Rheumatoid Arthritis	Ha et al ²⁰	14361	43923	Meta-analysis	Cohort specific
Parental longevity					
Age at death (father)	Pilling et al ²¹	317652	NA	UK Biobank	Age at death of father
Age at death (mother)	Pilling et al ²¹	246941	NA	UK Biobank	Age at death of mother
Age at death (both)	Pilling et al ²¹	389166	NA	UK Biobank	summed Z-score for age of death and mother

Associations at individual SNPs

In our initial analysis in UK Biobank, we focussed on rs2549794. This SNP has a minor allele frequency of between 0.4-0.5 in modern European cohorts. The T allele of rs2549794 was found to be associated with increased odds of respiratory infection (**Figure 1**), but not sepsis. Effect sizes increased with severity of disease, with the largest effects for death from critical care pneumonia (OR 1.11; 95% CI 0.98 – 1.26, $p = 0.094$), and for critical care admission with pneumonia (OR 1.09; 95% CI 1.02 – 1.14, $p = 0.008$).

Figure 1: Associations between rs2549794 and outcomes in each GWAS dataset. Odds ratio for each outcome presented, with 95% confidence intervals, except for parental longevity, where the beta is presented with a 95% confidence interval. A) respiratory infection B) sepsis, C) Autoimmune disease D) parental longevity



The effect size on likely bacterial respiratory infection was larger than that on viral infection (COVID-19 in GenoMICC)¹⁷, although all effects were modest in size (OR < 1.15). As expected, this allele was associated with protection from Crohn's disease (OR 0.86; 95% CI 0.82 – 0.90, $p = 8.6 \times 10^{-9}$) and we identified a protective association with type 1 diabetes (OR 0.95; 95% CI 0.90-0.99, $p = 0.02$, all studies in **Table 1**). In existing data, we were unable to resolve any association with asthma or rheumatoid arthritis. There was evidence of an association with parental longevity, with each additional T allele being associated with increased age at parental death (beta 0.01 on Z-scored combined age of death of parents, 95% CI 0.004- 0.017, $p = 0.002$), with no difference between maternal and paternal estimates. **Table 2** show results of this analysis. Associations at rs2248374, the splicing variant in linkage disequilibrium with the above SNP, were very similar as would be expected given the LD in European populations (**Supplementary Figure 1, Supplementary Table 1**).

Table 2: Associations between rs2549794 T allele and outcomes in each GWAS dataset. Odds ratio for each outcome presented, with 95% confidence intervals, except for parental longevity, where the raw beta is presented with a 95% confidence interval. NR = not reported. EAF = Effect allele frequency

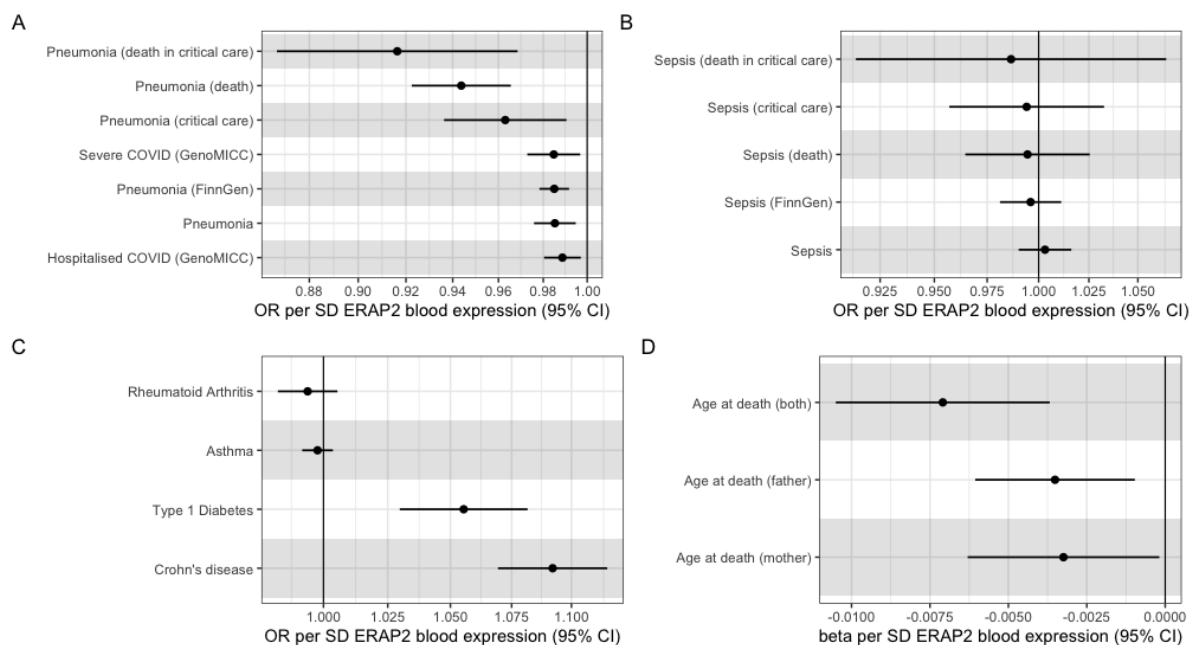
Outcome	OR/beta	Lower 95% CI	Upper 95% CI	P value	EAF
Respiratory Infection (OR reported)					
Pneumonia	1.025	1.005	1.045	0.014	0.565
Pneumonia (critical care)	1.078	1.020	1.139	0.008	0.567
Pneumonia (death)	1.066	1.013	1.121	0.014	0.565
Pneumonia (death in critical care)	1.111	0.982	1.258	0.094	0.567
Pneumonia (FinnGen)	1.015	1.000	1.031	0.048	0.621
Severe COVID (GenoMICC)	1.027	1.001	1.053	0.038	NR
Hospitalised COVID (GenoMICC)	1.018	1.000	1.036	0.053	NR
Sepsis (OR reported)					
Sepsis (death in critical care)	0.963	0.824	1.125	0.631	0.567
Sepsis	0.992	0.966	1.019	0.567	0.565
Sepsis (critical care)	0.999	0.924	1.079	0.970	0.567
Sepsis (FinnGen)	1.022	0.993	1.053	0.144	0.622
Sepsis (death)	1.018	0.953	1.088	0.590	0.565
Autoimmune disease (OR reported)					
Asthma	1.001	0.999	1.002	0.253	0.562
Type 1 Diabetes	0.945	0.903	0.990	0.017	0.570
Rheumatoid Arthritis	0.990	0.968	1.012	0.380	NA
Crohn's disease	0.856	0.818	0.896	0.000	0.588
Age at death (beta reported)					
Age at death (father)	0.004	-0.002	0.009	0.170	0.567
Age at death (mother)	0.004	-0.002	0.009	0.190	0.567
Age at death (both)	0.010	0.004	0.0017	0.002	0.567

Mendelian randomisation

Previous work has suggested that important variation (such as at rs2248374) at *ERAP2* acts via alternative splicing leading to altered RNA and protein levels.^{1,5,8,22} We therefore went on to perform Mendelian randomisation using expression and protein quantitative trait loci (QTL) *cis* for *ERAP2*, to identify if altered levels of *ERAP2* transcripts or protein altered the odds of each outcome. We identified independent ($r^2 > 0.1$, in the European population of 1000 Genomes Project²³) SNPs that were associated ($p < 5 \times 10^{-8}$) with either a) whole blood RNA expression, b) lung tissue RNA expression, or plasma protein levels of *ERAP2*. Details on derivation of these are in the methods, with a list of all included SNPs in **Supplementary Table S2**.

In inverse variance weighted meta-analysis, increased whole blood *ERAP2* expression was associated with protection from respiratory infection (**Figure 2**). Again, this effect was most pronounced for the most severe infection, with the largest effect estimates for patients who died or were critically unwell with pneumonia: OR for death from pneumonia 0.94; 95% CI 0.92 – 0.96, $p = 4 \times 10^{-7}$; OR for pneumonia 0.98; 95% CI 0.98-0.99, $p = 7 \times 10^{-4}$). Effect sizes were much larger in pneumonia (largely bacterial) than in COVID-19. As in the individual SNP analyses no effect was identified on sepsis related outcomes, and opposing effects were identified on type 1 diabetes (OR 1.05; 95% CI 1.03-1.08, $p = 3 \times 10^{-5}$) and Crohn's disease (OR 1.09, 95% CI 1.07-1.11; $p = 2.7 \times 10^{-16}$). Increased *ERAP2* expression was associated with increase age at death in both men and women, with a combined estimate of 0.007; 95% CI 0.003 - 0.010; $p = 3.8 \times 10^{-5}$).

Figure 2: Inverse variance weighted MR estimates for the effect of *ERAP2* whole blood expression on outcomes. Effect estimates are on the scale of normalised gene expression. Results for A) respiratory infection B) sepsis, C) Autoimmune disease D) parental longevity



Using lung tissue specific eQTLs, effect sizes were similar, although the strength of the association was weaker, reflecting in part the fewer number of SNPs in these analyses (**Supplementary Figure 2**). Analyses using protein quantitative trait loci were again similar (**Supplementary Figure 3**), although associations with COVID were null, and other associations are weaker. All QTL results are reported in **Supplementary Tables 3-5**, while **Supplementary Data 1** reports weighted median and MR Egger results for each analysis. These results were similar, but more imprecise than our primary analysis. As a final sensitivity analysis, we repeated all analyses using a more stringent independence cut off ($r^2 < 0.01$). These results were similar, with inverse variance weighted MR analyses for whole blood *ERAP2* expression reported in **Supplementary Figure 4**, and full results in **Supplementary Data 1**.

Discussion:

In this study, we show that variation at *ERAP2* is associated with susceptibility to respiratory infection in the present day. In line with a recent study using ancient DNA⁸, we show evidence suggesting that the C allele of rs2549794 is protective against respiratory infection, with evidence of increasing protection against severe disease. Although the effect size of the T allele on respiratory infection is modest (OR 1.05-1.1), this plausibly represents a large attenuation of the “wild type” effect of this locus, given modern treatments for respiratory infection (e.g. antimicrobials) and other public health measures that are likely to blunt the genetic effects. In contrast, we identified an opposing effect on Crohn’s disease and type 1 diabetes, providing some support for the hypothesis of balancing selection at this locus.⁵⁻⁸ Using parental death data from UK Biobank, we identified evidence of reduced parental lifespan with carriage of the C allele at rs2549794.

ERAP2 is characterised by two Haplotypes (A + B), with Haplotype B leading to reduced expression of *ERAP2* and low amounts of truncated *ERAP2* protein.^{5,8} This reduced amount and function of *ERAP2* alters the diversity of antigens presented by HLA, and is plausibly likely to reduce the quality of immune response to certain pathogens.^{4,24} Haplotype B is characterised by the presence of

rs2248374-G. Therefore, we would expect that reduced expression and translation of *ERAP2* would have similar effects to rs2248374-G.

Given that, our Mendelian randomisation analyses using expression and protein quantitative trait loci at *ERAP2* are highly concordant with the individual SNP data and underlying biology, showing evidence of reduced odds of severe respiratory infection with increasing levels of *ERAP2* expression or protein. The same inverse association with Crohn's disease and type 1 diabetes was identified. The evidence of association was strongest with whole blood eQTL data, although we saw effects using all three of our instruments (whole blood and lung eQTL, plasma pQTL).

We saw no strong evidence for association with data based on sepsis related clinical coding. This is interesting, as most data point to the bubonic form of *Y.pestis* as the predominant feature of the Black Death, although the speed of travel of the epidemic has made some consider whether pneumonic plague was a more plausible candidate.⁸ It is also important to recognise that sepsis represents a dysregulated response to infection²⁵, and is highly heterogenous over even the last 50 years, perhaps explaining the lack of association.²⁶ We did, however, see an association with reduced parental longevity with the C allele and with increased *ERAP2* expression. It is possible to speculate about the cause of this, and whether this is entirely represented by an increased rate of Crohn's disease and Type 1 diabetes. As both Crohn's disease and Type 1 diabetes are known to reduce fertility, it may be that some balancing selection is driven by this reduced fertility, although this requires further investigation.²⁷⁻²⁹

Although it has been long suspected that *ERAP2* has a role in protection from infection (reviewed recently²), with known roles in both antigen presentation and shaping the cytokine response³⁰ there are no studies as far as we are aware there are that have robustly identified genetic associations on the population level. There are, however, some candidate gene studies reported, although given the small sample sizes their relevance to our analyses is unclear.^{1,2,6,11,31}

The major limitation of this work – in line with other genetic association studies in infection – is the challenge in defining cases of infection, which differ between and across studies. Additionally, there are assumptions and challenges of interpreting MR which are discussed extensively elsewhere,^{22,32} but are more challenging at a locus such as *ERAP2* which has complex biology and a complex genetic background.⁵

There are three clear implications of the. Firstly, this data confirms the hypotheses raised by other studies:⁵⁻⁸ there is likely a balancing effect at *ERAP2* driven by protection from infection with increased risk of Crohn's disease and type 1 diabetes. Secondly, therapeutics to target *ERAP1* and *ERAP2* are in development (to target Crohn's disease and cancer³³). These data suggest targeting *ERAP2* may lead to increased rates of respiratory infection; and trials should measure and quantify infection outcomes. Finally, these findings show the potential opportunities in contemporary infection genetics: identifying and prioritising potential gene targets using DNA from samples that are centuries old, quantifying associations in modern datasets, and identifying potential off-target effects.

Conclusion:

Variation in *ERAP2* is associated with respiratory infection. In particular, the C allele of rs2549794 appears to be protective, with increasing effect estimates with increasing severity of infection. This is consistent with the protective effect identified in analyses of genomes around the time of the Black Death. In supporting Mendelian randomisation analyses, increased expression of *ERAP2* is protective for respiratory infection, but increase the odds of some autoimmune diseases and are associated with

reduced parental longevity. These results suggest ongoing balancing selection at this locus driven by autoimmune and infectious disease.

Materials and methods:

Study design

For this study, we aimed to assess whether variation at *ERAP2* was associated with severe infection, autoimmune disease, and parental longevity, as a proxy for an effect on lifespan.

Infection outcomes

For our pneumonia and sepsis outcomes we utilised our previously performed case-control GWAS of sepsis and pneumonia from UK Biobank.¹⁵ UK Biobank is a large (n ~ 500,000) cohort of older (>50) UK residents who were recruited between 2002 and 2009, and who have linked electronic health record and mortality data. Details of the cohort are available elsewhere.³⁴

For this study we included data on both incidence outcomes (presence of disease), mortality outcomes (death within 28 days of disease), and critical care related outcomes (critical care admission with the disease).

Cases were identified by the presence of ICD-10 coding in linked hospital data, and deaths from nationally linked mortality data.³⁴ Comparisons were performed against all other participants in UK Biobank (e.g. death within 28 days of pneumonia vs all other participants in UK Biobank). All analyses were performed in participants of European ancestry (N ~ 350,000). Further details on case definition, analysis approach, and GWAS methodology are with the original publication¹⁵ and elsewhere³⁵, while GWAS are available at the MRC-IEU GWAS database.³⁶

Additionally, we identified matching GWAS for disease incidence from the FinnGen Round 7.¹⁶ FinnGen is a similar, large, population cohort in Finland, with linked genetic and health outcome data. Case-control GWAS have been performed for ICD-10 coded hospital admission, with details available at the FinnGen website.¹⁶

Finally, we identified COVID-19 outcomes from the GenoMICC¹⁷ (Round 3) consortium. GenoMICC is an open-source international study recruiting critically ill patients starting in 2015, with this analysis focussing on the comparison between hospitalised patients with COVID-19 and the general population (Hospitalised COVID-19), and comparisons between severely unwell patients with COVID-19 and the general population (Severe COVID-19).

Autoimmune disease outcomes

We focussed on four common autoimmune diseases which have existing GWAS summary statistics available: Type 1 diabetes, asthma, Crohn's disease, and rheumatoid arthritis. For type 1 diabetes, we utilised summary statistics from a recent meta-analysis of 12 European cohorts.¹⁸ For asthma, we utilised a recent GWAS in UK Biobank using a broad definition of Asthma.¹⁹ For Crohn's disease we utilised a GWAS meta-analysis performed in a European population from the International Inflammatory Bowel Disease Genetics Consortium.⁹ Finally, for rheumatoid arthritis, we utilised summary statistics from a recent meta-analysis of rheumatoid arthritis.²⁰

Parental longevity outcomes

Parental longevity was chosen as a proxy measurement to identify potential effects of exposures on lifespan. For this analysis, we utilised GWAS summary data from a recent GWAS by Pilling et al in UK

Biobank.²¹ On recruitment to UK Biobank, participants were asked what age both parents had died at, and this data was used to generate age at death GWAS. Exclusion criteria were applied to exclude extremely early death, with details in the manuscript. To generate the combined across parents age at death data, each age was converted into a Z-score, and then this was summed to generate a combined phenotype.

Analytic approach

We had two analytic approaches. Firstly, we focussed on the SNP identified by Klunk et al⁸ (rs2549794), and the linked splicing variant (rs2248374), and performed association analyses for the presence of these SNP in each outcome dataset.

Secondly, we performed Mendelian randomisation²² using expression and protein quantitative trait loci (QTLs) *cis* to *ERAP2*. Mendelian randomisation uses SNPs as instrumental variables to explore the association between an exposure (e.g. *ERAP2* expression) and an outcome (e.g. pneumonia).²² Mendelian randomisation is a form of instrumental variable analysis, that under certain assumptions can provide causal estimates of the effect of an exposure on an outcome. These assumptions are that the genetic instruments are associated with the risk factor of interest, were independent of potential confounders, and could only affect the outcome through the risk factor and not through alternative pathways (that is, through pleiotropy).²² In this study, our instruments were all *cis* acting QTLs. We identified expression QTLs from whole blood (from eQTLGen³⁷), and eQTLs from lung tissue from the GTEx consortium¹². Protein QTLs were identified from GWAS performed by the DECODE consortium.

For all of these exposures, SNPs robustly ($p < 5 \times 10^{-8}$) associated with the exposure (expression or protein levels) within 300kb of *ERAP2* were extracted. SNPs were pruned to ensure independence ($r^2 = 0.1$). Effect alleles were harmonised with the outcome datasets. MR was then performed for each SNP individually and results meta-analysed via inverse variance weighting. Other meta-analytical methods are reported as sensitivity analyses. As a final sensitivity analyses, we pruned the SNP's further using a r^2 threshold of 0.01, and re-ran analyses.

Software

Analysis was performed using R v 4.0.4 (R Foundation for Statistical Computing, Vienna). Data wrangling was performed using the tidyverse, and plotting using ggplot2.³⁸ Two Sample Mendelian randomisation was performed using the TwoSampleMR package in R.³⁶

Data availability

All data available to replicate this analysis is publicly available. For ease, curated data is available at the authors GitHub (<https://github.com/gushamilton/ERAP2>) allowing ease of replication.

Guidelines

This study is reported in line with the STROBE-MR guidance.³⁹ (Supplement S1)

Conflict of interest

No authors declare any conflicts of interest.

Funding

FH's time was funded by the GW4-CAT Wellcome Doctoral Fellowship Scheme. UK Biobank was funded by the Wellcome Trust, the Medical Research Council, the NIHR, and a variety of other charities (<https://www.ukbiobank.ac.uk/learn-more-about-uk-biobank/about-us/our-funding>). FinnGen is a public-private partnership (https://www.finnngen.fi/en/access_results) funded by multiple institutions across Finland. The authors want to acknowledge the participants and investigators of the FinnGen study. AJM is a NIHR Academic Clinical Lecturer and supported by the Oxford Biomedical Research Centre (BRC). JKB gratefully acknowledges funding support from a Wellcome Trust Senior Research Fellowship (223164/Z/21/Z), UKRI grants MC_PC_20004, MC_PC_19025, MC_PC_1905, MRNO2995X/1, and MC_PC_20029, Sepsis Research (Fiona Elizabeth Agnew Trust), a BBSRC Institute Strategic Programme Grant to the Roslin Institute (BB/P013732/1, BB/P013759/1), and the UK Intensive Care Society. We gratefully acknowledge the support of Baillie Gifford and the Baillie Gifford Science Pandemic Hub at the University of Edinburgh. PGs time was funded by the Ser Cymru programme, the Welsh Government, and the EU-ERDF. NJT is a Wellcome Trust Investigator (202802/Z/16/Z), is the PI of the Avon Longitudinal Study of Parents and Children (MRC & WT 217065/Z/19/Z), is supported by the University of Bristol NIHR Biomedical Research Centre (BRC-1215-2001), the MRC Integrative Epidemiology Unit (MC_UU_00011/1) and works within the CRUK Integrative Cancer Epidemiology Programme (C18281/A29019). TP was funded by the Wellcome Trust Clinical Career Development Fellowship (222098/Z/20/Z).

This research was funded in whole, or in part, by the Wellcome Trust [222894/Z/21/Z]. For the purpose of Open Access, the author has applied a CC BY public copyright licence to any Author Accepted Manuscript version arising from this submission.

References:

1. Yao Y, Liu N, Zhou Z, Shi L. Influence of ERAP1 and ERAP2 gene polymorphisms on disease susceptibility in different populations. *Hum Immunol* [Internet] 2019;80(5):325–34. Available from: <http://dx.doi.org/10.1016/j.humimm.2019.02.011>
2. Saulle I, Vicentini C, Clerici M, Biasin M. An Overview on ERAP Roles in Infectious Diseases. *Cells* [Internet] 2020;9(3). Available from: <http://dx.doi.org/10.3390/cells9030720>
3. Kim S, Lee S, Shin J, et al. Human cytomegalovirus microRNA miR-US4-1 inhibits CD8(+) T cell responses by targeting the aminopeptidase ERAP1. *Nat Immunol* [Internet] 2011;12(10):984–91. Available from: <http://dx.doi.org/10.1038/ni.2097>
4. Lorente E, Fontela MG, Barnea E, et al. Modulation of Natural HLA-B*27:05 Ligandome by Ankylosing Spondylitis-associated Endoplasmic Reticulum Aminopeptidase 2 (ERAP2). *Mol Cell Proteomics* [Internet] 2020;19(6):994–1004. Available from: <http://dx.doi.org/10.1074/mcp.RA120.002014>
5. Andrés AM, Dennis MY, Kretzschmar WW, et al. Balancing selection maintains a form of ERAP2 that undergoes nonsense-mediated decay and affects antigen presentation. *PLoS Genet* [Internet] 2010;6(10):e1001157. Available from: <http://dx.doi.org/10.1371/journal.pgen.1001157>
6. Cagliani R, Riva S, Biasin M, et al. Genetic diversity at endoplasmic reticulum aminopeptidases is maintained by balancing selection and is associated with natural resistance to HIV-1 infection. *Hum Mol Genet* [Internet] 2010;19(23):4705–14. Available from: <http://dx.doi.org/10.1093/hmg/ddq401>
7. Ye CJ, Chen J, Villani A-C, et al. Genetic analysis of isoform usage in the human anti-viral response reveals influenza-specific regulation of ERAP2 transcripts under balancing selection. *Genome Res* [Internet] 2018;28(12):1812–25. Available from: <http://dx.doi.org/10.1101/gr.240390.118>
8. Klunk J, Vilgalys TP, Demeure CE, et al. Evolution of immune genes is associated with the Black Death. *Nature* [Internet] 2022 [cited 2022 Oct 20];1–8. Available from: <https://www.nature.com/articles/s41586-022-05349-x>
9. Liu JZ, van Sommeren S, Huang H, et al. Association analyses identify 38 susceptibility loci for inflammatory bowel disease and highlight shared genetic risk across populations. *Nat Genet* [Internet] 2015;47(9):979–86. Available from: <http://dx.doi.org/10.1038/ng.3359>
10. Zhang S, Liu S, Liu N, et al. Polymorphisms in ERAP1 and ERAP2 Genes Are Associated With Tuberculosis in the Han Chinese. *Front Genet* [Internet] 2020;11:566190. Available from: <http://dx.doi.org/10.3389/fgene.2020.566190>
11. Biasin M, Sironi M, Saulle I, et al. Endoplasmic reticulum aminopeptidase 2 haplotypes play a role in modulating susceptibility to HIV infection. *AIDS* [Internet] 2013;27(11):1697–706. Available from: <http://dx.doi.org/10.1097/QAD.0b013e3283601cee>
12. GTEx Consortium. The GTEx Consortium atlas of genetic regulatory effects across human tissues. *Science* [Internet] 2020;369(6509):1318–30. Available from: <http://dx.doi.org/10.1126/science.aaz1776>

13. Võsa U, Claringbould A, Westra H-J, et al. Unraveling the polygenic architecture of complex traits using blood eQTL metaanalysis [Internet]. bioRxiv. 2018 [cited 2022 Oct 25];447367. Available from: <https://www.biorxiv.org/content/10.1101/447367v1>
14. Ferkingstad E, Sulem P, Atlason BA, et al. Large-scale integration of the plasma proteome with genetics and disease. *Nat Genet* [Internet] 2021;53(12):1712–21. Available from: <http://dx.doi.org/10.1038/s41588-021-00978-w>
15. Hamilton F, Thomas M, Arnold D, et al. Therapeutic potential of IL6R blockade for the treatment of sepsis and sepsis-related death: Findings from a Mendelian randomisation study [Internet]. bioRxiv. 2022; Available from: <https://www.medrxiv.org/content/10.1101/2022.07.14.22277638v1.abstract>
16. Kurki MI, Karjalainen J, Palta P, et al. FinnGen: Unique genetic insights from combining isolated population and national health register data [Internet]. bioRxiv. 2022 [cited 2022 Apr 7];2022.03.03.22271360. Available from: <https://www.medrxiv.org/content/10.1101/2022.03.03.22271360v1.abstract>
17. Pairo-Castineira E, Clohisey S, Klaric L, et al. Genetic mechanisms of critical illness in COVID-19. *Nature* [Internet] 2021;591(7848):92–8. Available from: <http://dx.doi.org/10.1038/s41586-020-03065-y>
18. Forgetta V, Manousaki D, Istomine R, et al. Rare Genetic Variants of Large Effect Influence Risk of Type 1 Diabetes. *Diabetes* [Internet] 2020;69(4):784–95. Available from: <http://dx.doi.org/10.2337/db19-0831>
19. Valette K, Li Z, Bon-Baret V, et al. Prioritization of candidate causal genes for asthma in susceptibility loci derived from UK Biobank. *Commun Biol* [Internet] 2021;4(1):700. Available from: <http://dx.doi.org/10.1038/s42003-021-02227-6>
20. Ha E, Bae S-C, Kim K. Large-scale meta-analysis across East Asian and European populations updated genetic architecture and variant-driven biology of rheumatoid arthritis, identifying 11 novel susceptibility loci. *Ann Rheum Dis* [Internet] 2021;80(5):558–65. Available from: <http://dx.doi.org/10.1136/annrheumdis-2020-219065>
21. Pilling LC, Kuo C-L, Sicinski K, et al. Human longevity: 25 genetic loci associated in 389,166 UK biobank participants. *Aging* [Internet] 2017;9(12):2504–20. Available from: <http://dx.doi.org/10.18632/aging.101334>
22. Sanderson E, Glymour MM, Holmes MV, et al. Mendelian randomization. *Nature Reviews Methods Primers* [Internet] 2022 [cited 2022 Oct 14];2(1):1–21. Available from: <https://www.nature.com/articles/s43586-021-00092-5>
23. 1000 Genomes Project Consortium, Auton A, Brooks LD, et al. A global reference for human genetic variation. *Nature* [Internet] 2015;526(7571):68–74. Available from: <http://dx.doi.org/10.1038/nature15393>
24. Tedeschi V, Paldino G, Paladini F, et al. The Impact of the “Mis-Peptidome” on HLA Class I-Mediated Diseases: Contribution of ERAP1 and ERAP2 and Effects on the Immune Response. *Int J Mol Sci* [Internet] 2020;21(24). Available from: <http://dx.doi.org/10.3390/ijms21249608>
25. Singer M, Deutschman CS, Seymour CW, et al. The Third International Consensus Definitions for Sepsis and Septic Shock (Sepsis-3). *JAMA* [Internet] 2016;315(8):801–10. Available from: <http://dx.doi.org/10.1001/jama.2016.0287>

26. van der Poll T, Shankar-Hari M, Wiersinga WJ. The immunology of sepsis. *Immunity* [Internet] 2021;54(11):2450–64. Available from: <http://dx.doi.org/10.1016/j.immuni.2021.10.012>
27. Druvefors E, Landerholm K, Hammar U, Myrelid P, Andersson RE. Impaired Fertility in Women With Inflammatory Bowel Disease: A National Cohort Study From Sweden. *J Crohns Colitis* [Internet] 2021;15(3):383–90. Available from: <http://dx.doi.org/10.1093/ecco-jcc/jjaa191>
28. Alstead E. Fertility and pregnancy in inflammatory bowel disease. *World J Gastroenterol* [Internet] 2001;7(4):455–9. Available from: <http://dx.doi.org/10.3748/wjg.v7.i4.455>
29. Lin Y-H, Chen K-J, Peng Y-S, Chen P-C, Yang Y-H. Type 1 diabetes impairs female fertility even before it is diagnosed. *Diabetes Res Clin Pract* [Internet] 2018;143:151–8. Available from: <http://dx.doi.org/10.1016/j.diabres.2018.07.010>
30. Vitulano C, Tedeschi V, Paladini F, Sorrentino R, Fiorillo MT. The interplay between HLA-B27 and ERAP1/ERAP2 aminopeptidases: from anti-viral protection to spondyloarthritis. *Clin Exp Immunol* [Internet] 2017;190(3):281–90. Available from: <http://dx.doi.org/10.1111/cei.13020>
31. Liu S, Cao D, Shen Y, et al. The ERAP gene is associated with HCV chronic infection in a Chinese Han population. *Hum Immunol* [Internet] 2017;78(11–12):731–8. Available from: <http://dx.doi.org/10.1016/j.humimm.2017.10.005>
32. Gkatzionis A, Burgess S, Newcombe PJ. Statistical methods for cis-Mendelian randomization with two-sample summary-level data. *Genet Epidemiol* [Internet] 2022; Available from: <http://dx.doi.org/10.1002/gepi.22506>
33. Leishman A, Paes W, Coulson R, et al. Abstract 2065: A small molecule approach to drive novel neoantigen generation: First-in-class inhibitors of ERAP1 generate novel neoantigens driving anti-tumor effects. *Cancer Res* [Internet] 2022 [cited 2022 Oct 25];82(12_Supplement):2065–2065. Available from: https://aacrjournals.org/cancerres/article/82/12_Supplement/2065/704047
34. Bycroft C, Freeman C, Petkova D, et al. The UK Biobank resource with deep phenotyping and genomic data. *Nature* [Internet] 2018;562(7726):203–9. Available from: <http://dx.doi.org/10.1038/s41586-018-0579-z>
35. Mitchell R, Hemani G, Dudding T, Corbin L, Harrison S, Paternoster L. UK Biobank genetic data: MRC-IEU quality control, version 2 [Internet]. 2019 [cited 2021 Dec 21]; Available from: <https://data.bris.ac.uk/data/dataset/1ovaau5sxunp2cv8rcy88688v>
36. Hemani G, Zheng J, Elsworth B, et al. The MR-Base platform supports systematic causal inference across the human phenome. *Elife* [Internet] 2018;7. Available from: <http://dx.doi.org/10.7554/eLife.34408>
37. Vösa U, Claringbould A, Westra H-J, et al. Large-scale cis- and trans-eQTL analyses identify thousands of genetic loci and polygenic scores that regulate blood gene expression. *Nat Genet* [Internet] 2021;53(9):1300–10. Available from: <http://dx.doi.org/10.1038/s41588-021-00913-z>
38. Wickham H, Averick M, Bryan J, et al. Welcome to the tidyverse. *J Open Source Softw* [Internet] 2019;4(43):1686. Available from: <https://joss.theoj.org/papers/10.21105/joss.01686>
39. Skrivankova VW, Richmond RC, Woolf BAR, et al. Strengthening the reporting of observational studies in epidemiology using mendelian randomisation (STROBE-MR): explanation and elaboration. *BMJ* [Internet] 2021;375:n2233. Available from: <http://dx.doi.org/10.1136/bmj.n2233>

