

1
2
3
4
5
6
7
8
9
10
11
12
13
14
15
16
17
18

The potential of resilience indicators to signal the risk of disease outbreaks, a systematic review and guide

Clara Delecroix^{1*}, Egbert H. van Nes¹, Ingrid van de Leemput¹, Marten Scheffer¹, Quirine ten Bosch^{2*}

¹Aquatic Ecology and Water Quality Management, Wageningen University, The Netherlands

²Quantitative Veterinary Epidemiology, Wageningen University, The Netherlands

* Corresponding authors

E-mail: clara.delecroix@wur.nl

quirine.tenbosch@wur.nl

19 Abstract

20 To reduce the consequences of infectious disease outbreaks, the timely implementation of public health
21 measures is crucial. Currently used early-warning systems are highly context-dependent and require a long
22 phase of model building. A proposed solution to anticipate the onset or termination of an outbreak is the use
23 of so-called resilience indicators. These indicators are based on the generic theory of critical slowing down and
24 require only incidence time series. Here we assess the potential for this approach to contribute to outbreak
25 anticipation. We systematically reviewed studies that used resilience indicators to predict outbreaks or
26 terminations of epidemics. We identified 37 studies meeting the inclusion criteria: 21 using simulated data and
27 16 real-world data. 36 out of 37 studies detected significant signs of critical slowing down before a critical
28 transition (i.e., the onset or end of an outbreak), with a sensitivity (i.e., the proportion of true positive outbreak
29 warnings) ranging from 0.67 to 1 and a lead time ranging from 10 days to 68 months. Challenges include low
30 resolution and limited length of time series, a too rapid increase in cases, and strong seasonal patterns, and
31 may hamper the sensitivity of resilience indicators. Alternative types of data, such as Google searches or social
32 media data, have the potential to improve predictions in some cases. Resilience indicators may be useful when
33 the risk of disease outbreaks is changing gradually. This may happen, for instance, when pathogens become
34 increasingly adapted to an environment or evolve gradually to escape immunity. High-resolution monitoring is
35 needed to reach sufficient sensitivity. If those conditions are met, resilience indicators could help improve the
36 current practice of prediction, facilitating timely outbreak response. We provide a step-by-step guide on the
37 use of resilience indicators in infectious disease epidemiology, and guidance on the relevant situations to use
38 this approach.

39

40 Introduction

41 Infectious disease outbreaks are a leading cause of mortality worldwide, especially in low-income countries
42 and for children (1), with substantial economic and psychological repercussions. Prevention measures such as
43 vaccination and non-pharmaceutical interventions can reduce the consequences of epidemics, and even
44 eliminate some diseases (2). Measures are most effective if executed before cases start increasing
45 exponentially. However, as outbreaks are hard to anticipate, control efforts often start too late.

46 Early warning systems have been developed to predict when and where outbreaks will start (3). These typically
47 depend on the statistical association between the risk of an outbreak and predictive variables. The development

48 of such methods requires having access to various data sources, testing associations and building statistical
49 models (4). Diverse factors can be used as predictors, such as climate, geographical settings, population, or
50 socioeconomic data. The use of early warning systems to anticipate outbreaks and predict their consequences
51 have shown to be effective in some cases, for instance in the anticipation of malaria as well as influenza
52 outbreaks (5)(6). Other early-warning systems, such as Google Flu Trends, yielded more modest and variable
53 performance and showed rather low associations between the predictors and the risk of an outbreak (7).

54 Early-warning systems are highly context-dependent, and no standard protocol to build and evaluate them has
55 been proposed (8). They require consistent parametrization and model fitting. Moreover, complex interactions
56 between the variables, as well as confounding effects, are hard to capture. Developing such models is a long
57 and fastidious process and requires a long cycle of evaluations and adaptations. Further, previously effective
58 early-warning systems might become outdated due to changing conditions and have to be updated (9). As
59 such, early-warning systems require regular rounds of re-evaluation. A generic, model-free approach would
60 be valuable to improve and complement outbreak anticipation. The use of resilience indicators could be such
61 a generic approach, and was shown to be effective in detecting critical transitions in other complex systems
62 (10).

63 The start of an outbreak can be defined as a critical transition, a phenomenon observed in many complex
64 systems. Complex systems are defined as systems involving many components interacting with one another
65 and thus leading to non-linear behaviors that are hard to predict. Examples of complex systems are financial
66 markets, ecosystems, the climate and, indeed, infectious diseases in populations. In complex systems, a critical
67 transition occurs when a small change in an underlying condition brings the system across a critical threshold
68 beyond which change becomes self-propelling, driving the system towards a new state. Many complex systems
69 may undergo critical transitions. For instance, financial markets may collapse (11), vegetated ecosystems may
70 shift to a barren state (12), and coral reefs may be overgrown by macroalgae (13). Being able to anticipate
71 such shifts could enable to prevent their consequences.

72 Mathematically it can be shown that systems become slow close to a critical transition. This phenomenon is
73 known as critical slowing down (10). It implies that approaching a critical transition, systems are expected to
74 lose their resilience, i.e., the ability to maintain their normal stabilizing dynamics (e.g., a disease-free state)
75 when subjected to disturbances (14). In such situations, they are found to recover more slowly from external
76 perturbations. It is usually not possible to directly measure the recovery rate of a system. Therefore, statistical
77 indicators of critical slowing down (e.g., variance, autocorrelation) are computed from representative time

78 series to estimate how close the system may be to undergoing a critical transition (15). We will refer to these
79 metrics as resilience indicators. Some more background is provided in Box 1.

80 Pathogen transmission is a complex dynamic process too, as it involves many individuals interacting with one
81 another. When an epidemic starts, the system undergoes a critical transition from a disease-free state to
82 disease emergence. This happens when the effective reproduction number R , i.e., the number of secondary
83 cases arising from an average infected individual in a population, exceeds one. This can be due to a gradual
84 change in conditions, such as a decrease in vaccination rates or improving climatic conditions for the pathogen.
85 Critical slowing down is expected in epidemiological systems prior to R crossing one (16). Therefore, resilience
86 indicators could theoretically be used to anticipate epidemiological critical transitions based only on incidence
87 time series, allowing to improve timely decision-making. However, the method raises challenges regarding the
88 quality of data required, the processing of the data, and the data interpretation.

89 This review summarizes the latest findings on the application of resilience indicators to anticipate disease
90 outbreaks based on simulated and real-world data. We address the types of disease, data types and types of
91 transition suitable to be anticipated using resilience indicators. We review the sensitivity of resilience indicators
92 in public health contexts and discuss their limitations.

93

94 **Box 1: Critical slowing down to anticipate sharp changes**

95 When conditions change, some complex systems can approach a critical transition, which is a threshold
96 where they lose their stability. Before the threshold is reached, they lose their resilience which is reflected in
97 the intrinsic properties of the system. In particular, the recovery from perturbations becomes slower; a
98 phenomenon called critical slowing down.

99 As the slower recovery of the system pushed by external perturbations can often not be measured directly,
100 statistical metrics are used as a proxy. They are referred to as resilience indicators. This loss of resilience can
101 be observed in the time series of the system. Since most systems are constantly affected by external
102 perturbations, the increasing time to return to equilibrium is visible in the autocorrelation structure of the
103 time series (15). When looking at this structure, significant trends are displayed as the system approaches
104 the transition. A rolling window is used to measure these trends: indicators are calculated repeatedly in
105 overlapping subsets of the data to reveal their evolution over time (17).

106 Similarly, indicators of complexity can be used to anticipate a critical transition. These indicators measure the
107 complexity of a system, defined as its level of disorder. Similar to resilience indicators, complexity indicators
108 are expected to display trends prior to a critical transition, as the complexity of a system is expected to change
109 when approaching a sharp change. However, complexity measures as an indicator of an upcoming critical
110 transition yielded contrasting results in previous studies in other fields (18,19).

111 In general, the critical transition in models of infectious diseases is mathematically a transcritical bifurcation.
112 This means that below the critical threshold $R=1$, the system represented by the number of cases is
113 stabilized at a disease-free state, where only a few cases are observed. Once the threshold $R=1$ is crossed,
114 the disease-free state becomes unstable as the disease emerges, and major outbreaks can take place. As
115 the critical threshold $R=1$ is approached, the system's recovery time increases. This means that, when for
116 instance perturbed by the introduction of infected individuals, the number of cases will take longer to vanish
117 (Fig 1B). When the threshold of $R=1$ is crossed, the disease-free equilibrium becomes unstable (Fig 1C): any
118 perturbation, i.e., the introduction of an infected individual, can result in a major outbreak.

119

120 **Fig 1. Illustration of resilience indicators based on simulated data using an SIR model.** In the
121 model, the transmission rate increases linearly over time, resulting in a critical transition when R
122 crosses one. **A**, **B**, and **C** are potential landscapes, showing the energy of the system for different
123 states. The ball represents the state of the system. **A** R is relatively far from the threshold: the system
124 will recover easily from an external perturbation. **B** R is close to the critical threshold: the potential to
125 recover from external perturbation is low, and the system undergoes critical slowing down. **C** The
126 threshold is crossed: the system will stabilize at a state for which the disease is endemic. **D** incidence
127 time series generated using a SIR model. The system is undergoing a critical transition: R increases
128 linearly over time until it crosses one (shaded area). **E** and **F** are associated resilience indicators
129 calculated in the simulated time series (daily resolution) using a rolling window. We observe a
130 significant increase of the autocorrelation and variance prior to the outbreak

131 Material and methods

132 We performed a comprehensive literature review to evaluate the current knowledge of resilience indicators to
133 anticipate infectious disease critical transitions. An information retrieval process was performed to review the
134 state of the art of these indicators applied to infectious disease epidemiology. Targeted studies were peer-
135 reviewed research publications using resilience indicators as early warning signals to anticipate infectious
136 disease transitions. The review protocol was not registered.

137

138 Search strategy

139 This review focuses on resilience indicators based on the theory of critical slowing down. Two high-impact
140 papers published in Nature and Science, cited 2,431 and 1,191 times respectively, are the main references
141 regarding the theory of critical slowing down (10,20). We assumed that any study using this theory would cite
142 one of these papers. We carried out a forward citation search intersected with a thematic search to avoid
143 retrieving too many irrelevant results. The search was carried out on September 1st 2022 using Scopus.

144 Among the studies citing one of these two papers, a thematic search was performed to only retrieve studies
145 aiming at anticipating critical transitions related to infectious disease outbreaks. The keywords used for the
146 thematic search were *outbreak, epidemic, disease, infecti*, ill*, epidemiolog*, pest, virus, pandemic, bacteria,*
147 *pathogen, parasite*. To ascertain that the keywords were relevant, we also checked if adding the name of the
148 top 20 infectious diseases according to WHO in the search keywords would yield new results. This did not result
149 in additional results.

150 A specific search in the main databases was also used to prevent missing key studies. This additional search
151 also prevented us from missing studies that did not cite one of the two key studies mentioned above. Scopus,
152 Web of Science and PubMed were used for the database search. The search was performed using all keywords
153 of the thematic search described heretofore combined with the term "*early-warning signals*" using "*AND*". The
154 search was purposely kept specific to avoid retrieving too many irrelevant results.

155

156 Selection

157 The selection was then performed (Fig 2). Pathogens affecting humans or animals were the point of focus.
158 Vegetal or crop pathogens were excluded. Indicators based on the theory of critical slowing down were the

159 point of focus; other methods to anticipate outbreaks were excluded. Only primary publications were
160 considered. The first selection was made based on the title and abstract. We retrieved 71 publications in this
161 round. The second round of selection was based on full-text, using the selection criteria (Table 1), retrieving
162 a final 37 publications (Fig 2, S3 Table).

163

164 **Fig 2. PRISMA flowchart.** PRISMA flowchart of the literature search process.

165

166 **Table 1: Inclusion and exclusion criteria**

| Inclusion criteria | Exclusion criteria |
|--|---|
| <ol style="list-style-type: none"> 1. The study is about the use of resilience indicators 2. The study investigates critical slowing down 3. Resilience indicators are used to forecast a disease critical transition 4. The outbreak is caused by an infectious disease affecting humans or other mammals | <ol style="list-style-type: none"> 1. The study does not use resilience indicators based on the theory of critical slowing down to anticipate the critical transition 2. The critical transition is not related to infectious disease outbreaks 3. The pathogen does not affect humans or other mammals 4. The study does not look at population-level transmission dynamics 5. The outcome is not reported 6. The text is not available in English or French 7. Not the primary description of the study. |

167

168 Classification

169 We classified the included studies based on the following criteria (S2 Table):

- 170 ▪ The type of disease studied: generic disease, seasonal disease, vector-borne disease, or COVID-19.
- 171 ▪ Identified best performing indicator: the indicator yielding the best performance to anticipate disease
- 172 transition.
- 173 ▪ The type of data used: simulated using mechanistic models or real-world data.
- 174 ▪ The type of transition anticipated: onset of an outbreak or termination/elimination.
- 175 ▪ Additional complexities and imperfections in the data which could affect the performance.

176

177 Results

178 Among the retrieved studies, 37 met the inclusion criteria. Included studies were published between 2013 and
 179 2022. There has been an increasing interest in resilience indicators to anticipate disease outbreaks, and an
 180 increasing number of studies have been published on that topic, especially since 2020 when COVID-19 data
 181 became publicly available (

182 Fig 3A). Many of the studies (n=15, 42%) did not focus on a specific disease and used generic models of
183 infectious diseases to investigate critical slowing down. In the studies investigating specific diseases (n=22,
184 58%), 12 different diseases were studied, the main one being COVID-19 (n=9, 24%). A total of 20 indicators
185 were investigated, the most popular being variance, autocorrelation, and mean. These indicators were reported
186 to be among the best-performing ones, respectively in 54% (n=20), 32% (n=12), and 22% (n=8) of the
187 studies. Most of the time, resilience indicators were calculated in simulated data only to anticipate factitious
188 critical transitions (n=21, 57%). However, the performance of resilience indicators was also investigated on
189 real-world data in a few studies (n=16, 43%) (

190 Fig 3B). The onset of outbreaks was most often examined (n=31, 84%). The termination of outbreaks was
191 investigated in a few studies (n=11, 30%) (

192 Fig 3C). When quantified, the performance was typically calculated using the area under the ROC curve (AUC).
193 We will further refer to the AUC by (prediction) performance, unless specified otherwise.

194

195 **Fig 3. Overview of the 37 papers included in this review. A** Number of included papers per year.
196 The number of studies on resilience indicators to anticipate epidemics has shown an increasing trend in
197 the last few years. Since 2020, more studies have been published as data on the COVID-19 pandemic
198 became publicly available. **B** Included papers classified according to the type of study into three
199 categories: case studies, simulation studies, and simulation studies supported by case studies. **C**
200 Included papers classified according to the type of transition, into three categories: the onset of an
201 outbreak, disease elimination, and both.

202 Indicators of resilience and complexity

203 A large variety of indicators can be used to monitor resilience. In the included studies, 20 different indicators
204 were investigated in total (S1 Table). In n=23 studies (62%), the reported best-performing indicators were
205 autocorrelation, variance, or mean. Other well-performing indicators were the coefficient of variation, the
206 logarithmic distance, and composite indicators. The best-performing indicator may vary by disease system (S1
207 Table). For example, wavelet reddening provided the best performance with periodic data (21), whereas the
208 coefficient of variation outperformed other indicators in anticipating immune-waning induced re-emergence of
209 a disease (22). Here, we describe the use of variance and autocorrelation as well as alternative indicators such
210 as combinations of indicators, dynamical network markers, and deep learning algorithms.

211 Variance was reported to be one of the best indicators in 19 studies (51%), yielding a prediction performance
212 between 0.52 and 0.99. However, it is not robust to all types of transition and stochasticity. Supporting Dakos
213 et al.'s findings (23), O'Regan et al. found that variance displays a different trend depending on the type of
214 data, the type of transition and the type of stochasticity (24). O'Regan et al. showed that specific types of
215 noise could alter the trend in variance: a decrease or no trend at all was sometimes observed, making variance
216 an unreliable indicator in those cases (24).

217 Autocorrelation, coefficient of variation, and power spectrum are more robust to the type of stochasticity
218 compared to variance: an increase is expected prior to a critical transition. Additionally, autocorrelation is
219 reported to be the best-performing indicator in n=11 (29.7%) studies, is robust to data imperfections (section
220 "Data imperfections"), and yielded a performance ranging from 0.48 to 0.99.

221 Combinations of indicators have also been studied to anticipate disease emergence. Brett et al. used a
222 supervised learning algorithm to establish an optimal weighted combination of indicators, including mainly
223 skewness, kurtosis, and coefficient of variation (25). The performance of this combination of indicators was
224 investigated in simulated as well as real-world data. The authors yielded a prediction performance between
225 0.7 and 0.85 in anticipating several diseases' re-emergence, such as mumps and pertussis, with a lead time
226 between 2 and 4 years. Similarly, O'Brien et al. could anticipate 2 of the 3 COVID-19 waves in the UK with a
227 lead time ranging from 3 to 48 days using a composite of variance, autocorrelation and skewness (26).

228 When case reports are discriminated between locations, dynamical network markers (DNM) can be used to
229 anticipate disease (re-)emergence. These indicators were investigated in 5 studies (27–31). Locations were
230 integrated into a weighted network structure using information on transport between these regions, traffic
231 conditions and population. The correlation of the number of cases between the locations was used to calculate

232 the landscape network entropy index (27,30,31), or the minimum spanning tree (28,29). The sensitivity of
233 this method ranged from 0.825 to 0.9, with a lead time between 10 days to 2 months (27–31).

234 Apart from resilience indicators, some studies investigated the performance of indicators of complexity to
235 anticipate critical transitions (32–34). In the included studies, six indicators of complexity were investigated:
236 Fisher information (32), Kolmogorov complexity and Shannon entropy (34), mutual information, joint counts,
237 and Geary's C coefficient (33) (S1 Table). In accordance with previous studies, complexity indicators had a
238 lower performance than resilience indicators (18,19), and failed to identify a transition in one study (32).

239 Lastly, Bury et al. compared the performance of resilience indicators such as variance and autocorrelation to
240 a deep learning algorithm (35). They found that resilience indicators slightly outperformed their deep learning
241 algorithm in predicting the onset of an outbreak in simulated data (performance of 0.54 for the deep learning
242 algorithm, and 0.55-0.57 for resilience indicators), a result consistent with other included studies (27–29).

243

244 **Simulated data**

245 In total, 25 studies used simulated data (68%) to test whether epidemiological systems display signs of critical
246 slowing down, including 21 relying on simulated data only without accompanying a case study (57%). The
247 data were simulated using compartmental SIR-type models. In such models, the population is divided into
248 categories such as susceptible (S), infected (I), or recovered (R) based on their epidemiological status.
249 Individuals transition from one compartment to another. Such models can be kept purposefully generic or be
250 parametrized for a specific disease. Generic models were investigated in 16 studies as a proof of principle for
251 resilience indicators applied to epidemiological systems as well as to investigate additional complexities (further
252 discussed in the section "Dealing with complexities") (16,21,24,33–45). O'Regan et al. were the first to
253 demonstrate that critical slowing down arises when an epidemic threshold is being approached (46). These
254 findings were confirmed in more complex epidemiological systems by including vaccination (47), seasonality
255 (21), age structure (34), or social behavior (43). Eight simulation studies used compartmental models
256 parametrized for a specific disease, including COVID-19 (48), measles (22,49–52), pertussis (51), and
257 smallpox (50). Various mechanisms of (re-)emergence were studied within these studies, such as annual
258 seasonal outbreaks (49), or re-emergence because of decreasing vaccine uptake (22,51). In all studies, signs
259 of critical slowing down were displayed before a critical transition, and they could signal an upcoming outbreak
260 with a performance between 0.55 and 0.99. These studies were used to investigate additional complexities

261 arising in epidemiological systems (further discussed in the section “Dealing with complexities”), or to support
262 a case study and confirm findings from real-world data (22,25,49,53).

263

264 Real-world data

265 In total, 16 studies used real-world data to study the performance of resilience indicators. Nine diseases were
266 studied: measles (22,49), mumps (25), pertussis (25,54), lymphatic filariasis (a parasitic worm disease) (55),
267 plague (25), dengue (25), malaria (56), influenza (27,29), and COVID-19 (26,28,30–32,53,57,58). We
268 distinguish three different categories of diseases studied: (i) seasonal diseases with R fluctuating around one,
269 (ii) vector-borne diseases, and (iii) COVID-19.

270 Seasonal diseases

271 Despite the particularly complex dynamical patterns of seasonal diseases, signs of critical slowing down were
272 detected in six case studies on measles (22,49), mumps (25), pertussis (25,54) and influenza outbreaks
273 (27,29). In these studies, case reports were used to (i) anticipate long-term re-emergence because of a decline
274 in vaccination or an increase in the infection probability (22,25), (ii) discriminate locations where epidemics
275 would take place or not (25,54), and (iii) anticipate annual emergence because of seasonal variations
276 (27,29,49). First, Brett et al. used a combination of indicators to anticipate long-term re-emergence of mumps
277 and pertussis up to several years in advance (25). Specifically, a combination of resilience indicators could
278 have anticipated the 2004 national mumps outbreak in England with a lead time of four years (25). Second,
279 they were able to discriminate localities where an outbreak would occur and localities with low levels of
280 transmission based on local case reports. The authors anticipated pertussis outbreaks in nearly all 37 states
281 that experienced one. However, 30 to 50% of the 12 states that did not experience an outbreak raised a false
282 alarm. Third, Chen et al. and Yang et al. were able to anticipate annual influenza outbreaks in Japan in several
283 areas using case reports per location and a weighted network of the locations to compute dynamical network
284 markers (27,29). They yielded a performance between 0.74 and 0.9 with a lead time between 3 and 9 weeks.

285 Vector-borne diseases

286 The anticipation of vector-borne disease transitions using resilience indicators was shown in three studies
287 investigating dengue (25), plague (25), and malaria re-emergence (56), and lymphatic filariasis elimination
288 (55). In these studies, re-emergence was a slow process due to respectively the sequential introduction of
289 serotypes, change of transmission route, or decline in treatment efficacy, and elimination was due to mass
290 drug administration. Brett et al. showed that the outbreaks of DENV-2 and DENV-3 in Puerto Rico could have

291 been anticipated with respective lead times of 18 months and 6 months using a combination of indicators
292 (25). Further, they illustrated the potential anticipation of the 2017 plague outbreak in Madagascar 30 days
293 before its onset using reports of suspected cases (25). A recent study suggests that these suspected case
294 reports poorly represented the true extent and temporal evolution of the outbreak (59). While it is not clear
295 how this has affected the results in (25), it highlights the importance of assuring that data used with
296 resilience indicators are a good representation of the underlying disease dynamics to avoid misleading
297 results. Harris et al. showed that the re-emergence of malaria in Kenya could have been anticipated 65
298 months prior to the critical transition using resilience indicators calculated over the hospital case counts (56).
299 Lastly, signs of critical slowing down were displayed prior to the elimination of lymphatic filariasis, as
300 demonstrated by Michael and Madon (55). The autocorrelation decreased and served to anticipate the
301 elimination of the disease. Although vector-borne diseases display complex dynamics due to the vector-host
302 interactions, their re-emergence and elimination can be anticipated using resilience indicators calculated in
303 case reports or hospital counts.

304 COVID-19

305 Three studies attempted to anticipate the first wave of COVID-19, despite the sparse data, and yielded
306 contrasting results (26,32,57). Ma et al. used the Fisher information as a critical slowing down indicator using
307 incidence time series from March 2019 in various countries (32). The author failed to detect critical slowing
308 down. However, Fisher information is generally considered an indicator of complexity. Complexity measures
309 as an indicator of an upcoming critical transition yielded contrasting results in previous studies, possibly
310 explaining why they failed to anticipate the COVID-19 outbreak (18,19). Similarly, O'Brien et al. showed an
311 especially high false-positive rate (0.62) for the first wave due to the short time series and high variability of
312 the data, as well as a high false-negative rate (ranging from 0.46 to 0.88) consistent with previous results
313 (25,26,32). Only one study by Kaur et al. (57) succeeded at anticipating the emergence of COVID-19 in 7 out
314 of the 9 countries studied, but with no mention of the lead time and false-positive rate.

315 During the subsequent COVID-19 waves, consistent testing became the norm in most western European
316 countries, creating a context of high-quality monitoring ideal for the use of resilience indicators, although still
317 yielding contrasting results. Additionally, information on the geographic location of the cases was available.
318 Six studies investigated the use of resilience indicators to anticipate the waves of COVID-19
319 (26,28,30,31,53,58), including three using dynamical network markers (28,30,31). Overall, signs of critical
320 slowing down were detected with a lead time ranging from 10 days to 2 months, and a performance ranging
321 from 0 to 0.95. Dynamical network markers yielded the highest performance, ranging from 0.83 to 0.95, but

322 they require location data and the implementation of a location network structure. Additionally, using a
323 composite of resilience indicators (skewness and variance), O'Brien et al. were the only authors to estimate a
324 false positive rate ranging from 0.22-0.62 (26). However, Dablander et al. found that fast successions of
325 elimination and re-emergence hampered the performance of resilience indicators as indicators were sometimes
326 still picking signals of disease elimination before a new wave of COVID-19 (53). They detected signs of critical
327 slowing down in only 16 out of the 27 countries studied, with some countries raising an alarm for only one of
328 the 10 waves studied.

329

330 **Dealing with complexities**

331 Eleven publications discussed the prerequisites for resilience indicators to anticipate accurately critical
332 transitions in infectious diseases (16,21,22,24,36,37,39,47,51,53,58). These will be discussed in detail in the
333 following.

334 **Data types**

335 Most studies discussed up to now have used incidence time series to calculate resilience indicators. These data
336 can be obtained from case reports or hospital case counts. Other data types were also explored and compared:
337 prevalence, rate of incidence as well as alternative sources of data such as Google Trends and Twitter data.
338 By reproducing different types of data using mechanistic models combined with an observation process, O'Dea
339 et al. (37), Brett et al. (36), and Southall et al. (47) showed that prevalence and incidence data portray similar
340 trends in resilience indicators prior to disease emergence. Thereby, a prediction performance around 1 using
341 variance was observed prior to disease emergence in prevalence as well as incidence time series (47). Similar
342 trends in the variance, as well as a similar prediction performance, were observed in rate of incidence data
343 prior to disease emergence. However, variance can display different trends depending on the data type, making
344 it an unreliable indicator (47). Additionally, alternative sources of data giving an indirect measure of
345 transmission were also investigated: social media data and google trend data (22). Pananos et al. looked at
346 the evolution of the amount of pro-vaccine and anti-vaccine tweets and generated time series to anticipate
347 measles re-emergence (22). This showed a significant trend in the indicators several years in advance, prior
348 to the re-emergence of measles due to a rising anti-vaccine sentiment.

349 **Resolution of the data**

350 The number of data points and the temporal resolution of the time series strongly affect the prediction
351 performance. In case studies, the amount of available data ranged from 10 to 30 years of monthly case reports,

352 being around 120 to 360 data points. O'Dea et al. used simulated datasets to investigate the relationship
353 between data quantity and prediction performance (39). They showed that the observation period should be
354 much greater than the oscillation period of a seasonal pattern. For instance, for an annual seasonal disease,
355 several years of observation should be available. Moreover, the resolution of the data affects the prediction
356 performance of autocorrelation: equidistant data are necessary for a good estimation of autocorrelation, and
357 the collection interval should be smaller than the infectious period (39).

358 **Data imperfections**

359 Epidemiological data is subject to imperfect observations due to misreporting and underreporting, data
360 aggregation and reporting delay making it difficult to report cases accurately. Brett et al. examined the impact
361 of overdispersion, underreporting and aggregation into periodic reports on the prediction performance using
362 simulated time series (36). Mean and variance were found to be the least impacted indicators by underreporting
363 and aggregation. Strikingly, their predictive powers were unaffected if the data were not highly overdispersed,
364 meaning displaying a high variability, and if the aggregation period was shorter than the infectious period.
365 Other usually top-performing indicators, such as autocorrelation, performed well for aggregated data but were
366 affected by overdispersion and low reporting probability (36). Additionally, when reporting rate is increasing
367 together with a varying transmission probability, indicators can struggle to distinguish an increase in
368 transmission probability, leading to an outbreak, from an increase in reporting rate. O'Dea showed that using
369 multiple time series can help confirm that the signal in resilience indicators is the result of an upcoming
370 outbreak and not just a change in transmission probability, and that the second factorial moment is an indicator
371 insensitive to the variation of the reporting probability (37).

372 **Seasonality**

373 Another common characteristic of infectious diseases reflected in epidemiological data is seasonality. Miller et
374 al. simulated time series of infectious diseases subject to seasonal patterns by varying the transmission rate
375 periodically with different levels of amplitude. They found that seasonality does not highly affect the
376 performance of the indicators, as for time series with the highest amplitude of seasonal transmission the
377 performance decreased by 0.02 to 0.07 compared to a sensitivity of 0.85 for non-seasonal simulations.
378 Seasonal detrending did not significantly improve the performance, especially in datasets with low amounts of
379 seasonal fluctuations (21). Dessavre et al. found that detrending can help improve the accuracy of prediction
380 for some indicators in the case of disease elimination in multiple subpopulations for instance, an argument
381 supported by O'Dea et al. (16,37).

382 Speed of change of R

383 The theory of critical slowing down and the use of resilience indicators to anticipate critical transitions are
384 exclusively dedicated to critical transitions caused by a slow change in an underlying condition. This assumption
385 applies to the anticipation of epidemics transitions as well, as shown by Dablander et al. (53). The authors
386 showed that overall, the performance of resilience indicators decreases as the speed of change of R increases,
387 meaning that resilience indicators fail at anticipating epidemics emerging too fast. Using simulated data of
388 several waves of COVID-19, they found a performance of variance dropping from around 0.99 to 0.6 as the
389 speed of change increases. Proverbio et al. proposed a method to verify the assumption of a slow increase in
390 R (58). By using a Bayesian approach, they compute the R over time and measure its speed of change. They
391 consider the assumption to be verified if R reaches one in a period much longer than the serial interval of the
392 disease. Additionally, in the case of multi-wave diseases such as COVID-19, the stabilization time between two
393 waves should be long enough for the epidemics to stabilize in a non-endemic state. Dablander et al. showed
394 that when the time between two waves is too short, resilience indicators fail to anticipate the new outbreak
395 and might pick up signals from the elimination of the previous wave instead (53).

396

397 Discussion – Guidelines on how to use resilience indicators in 398 epidemiology

399 The advantage of resilience indicators lies in the fact that it is a data-driven, generic method applicable
400 to a wide range of epidemiological systems without the need for frequent recalibration. Simulation
401 studies supported by real-world case studies showed that critical slowing down can indeed be detected
402 prior to disease outbreaks or eliminations, using good quality incidence time series. The 37 studies we
403 reviewed suggest that resilience indicators have the potential to anticipate outbreaks but yielded a
404 highly variable sensitivity. The false positive rate was poorly documented (only reported in two
405 studies). As false positives can result in the implementation of unnecessary interventions or even
406 precipitated halt of disease elimination strategies, it is important to get a better understanding of how
407 the specificity of resilience indicators is affected by complexities in the data and the disease system.
408 Similarly, lead time was not always quantified in the studies (only reported in eight studies), even
409 though this is a key aspect of disease anticipation. Additionally, our information retrieval is likely
410 subject to publication bias, which may result in an overestimation of the performance of these tools.

411 To bridge the gap between theory and practice, it is necessary to get a better understanding of the
412 factors affecting the performance of resilience indicators as well as the suite of disease and monitoring
413 systems that are best suited for the use of resilience indicators. Here, we present a step-by-step
414 approach to assess whether a disease and its monitoring system are suitable for the use of resilience
415 indicators. We also suggest how such an early warning system may be set up for the system at hand
416 (Fig 4).

417 **Fig 4. Decision tree.** Step-by-step approach to use resilience indicators in epidemiology

418

419 **Prior considerations**

420 Although resilience indicators can help anticipate critical transitions, this may only be expected to work in
421 specific contexts. First, we cannot expect signals of critical slowing down prior to a transition in all situations.
422 At least two requirements must be fulfilled to use resilience indicators: suitable data should be available and
423 external conditions should change slowly (15,53). We can distinguish several reasons for a new outbreak. A
424 common mechanism is the emergence of a new unknown pathogen due to spillover from wild animals, for
425 example. In this case, no suitable data will be available to observe critical slowing down. Another possibility is
426 a pathogen remaining close to endemicity as their R fluctuates around 1, and that is subject to seasonal
427 variations leading to sudden outbreaks. Under those circumstances, the seasonal change in conditions is likely
428 too fast to detect critical slowing down. By contrast, when the risk for a pathogen to cause an outbreak rises
429 gradually due to changing conditions, the outbreak might be anticipated using critical slowing down. Examples
430 could include changes that may bring the R gradually closer to 1, such as a decline in vaccine uptake, mutation
431 of the pathogen inducing immunity escape, and change in the immunity profile of a population due to waning
432 immunity. Statistical tests have been proposed to check the assumption of slow change (60).

433 Second, the type of transition can affect the trend in some of the indicators. Disease outbreaks as well as
434 disease elimination can be anticipated using resilience indicators. Prior to both transitions, critical slowing down
435 is displayed in the system, as was shown in simulation studies as well as case studies. However, depending on
436 the type of data, variance might not increase before the elimination of a disease (44). Thus, autocorrelation
437 should always be the first choice as it displays consistent trends, insensitive to the data types.

438 Finally, enough data points should be available, with a sufficient resolution to capture slowing down in order
439 to anticipate disease critical transitions. The collection interval should be smaller than the infectious period

440 (36) with a reasonable number of data points, meaning that the duration of observation is at least as long as
441 the period of any oscillation in the data (39). For instance, if the disease is a seasonal disease coming back
442 every winter, at least a year of observations should be available. As a comparison, the included case studies
443 based their analyses on around a decade of monthly case reports. Data should be equidistant for a good
444 estimation of autocorrelation. Additionally, when case reports are discriminated per location, dynamical
445 network markers seem to yield higher performance. However, only five studies were published using these
446 types of indicators. Thus, further investigation is required.

447 Alternatively, substitute types of more accessible time series representing the state of an epidemic indirectly
448 could be considered. Critical slowing down in Google trends or social media data was investigated, and
449 significant trends were displayed prior to a measles outbreak (22). Other types of alternative data could also
450 be envisioned, such as excess mortality data (61), news feed (62) or wastewater surveillance data (63).
451 Wastewater surveillance, in which biomarkers related to a specific disease are quantified in untreated sewage
452 data, provides real-time data and allows monitoring the state of the epidemic with less effort than by counting
453 the new cases. However, investigations would be required to make sure that critical slowing down is also
454 displayed in this type of data.

455

456 Data processing

457 Once we know the disease transition is relevant with regard to resilience indicators, pre-processing of the data
458 should be conducted prior to the analysis. Detrending of the data series is usually necessary to avoid spurious
459 trends in the indicators due to slow changes in the mean (17). This is essential, especially for seasonal data.
460 Seasonality affects the spread of a number of diseases, creating periodic fluctuations in the data. These
461 fluctuations have an effect both on variance and autocorrelation, introducing misleading results. When studying
462 a disease subject to periodicity, the number of data points should be much higher than the period. In other
463 terms, if the disease has waves every winter, one should have data over several years. This helps assess if
464 the trend in the indicators is truly due to long-term re-emergence and not to seasonal fluctuations.

465 Several types of data can represent the state of the system. Incidence time series represent the count of new
466 cases, while prevalence time series count the number of infected individuals at different time points. The rate
467 of incidence is the rate at which newly infected cases occur in a population. The rate of incidence can be
468 estimated from incidence time series using a rolling window approach (47). Critical slowing down is displayed
469 prior to a transition in all these types of data. However, when using variance as an indicator of resilience, the

470 type of data can affect the trend prior to a transition. Moreover, although the rate of incidence requires
471 additional computations to be obtained, it displayed a more significant trend prior to disease elimination in one
472 study (47). If dynamical network markers are to be used, it is necessary to build a location network using
473 population data, using the information on transport between these regions, traffic conditions and population.

474 As monitoring is never perfect, epidemiological data are subject to imperfections. The data are aggregated into
475 weekly or monthly case reports. Underreporting is often observed as a result of asymptomatic cases as well
476 as poor access to health facilities. Moreover, various types of stochasticity are inherent to the data. Again,
477 these characteristics can affect the trend in variance. Furthermore, when combined, imperfections can be
478 detrimental to the performance of resilience indicators. Imperfections likely to be encountered in the data
479 should be clearly stated in order to select relevant indicators. Variance and mean perform poorly when data
480 are highly overdispersed, meaning that data show great variability. Similarly, autocorrelation performs poorly
481 when the reporting rate is highly overdispersed or when the aggregation period is too high. If the reporting
482 rate is expected to change, the second-order moment could be used as it is insensitive to variations in the
483 reporting rate (37).

484

485 Computing

486 After preprocessing the data, the resilience indicators can be computed using packages, for instance, in R or
487 Matlab (64,65).

488 The indicators should be picked carefully based on the prior reflection presented above. Variance was the top-
489 performing indicator in a majority of studies and least impacted by underreporting and aggregation. However,
490 when choosing variance, the trend can be inverted. Autocorrelation was among the best-performing indicators
491 in a majority of studies, and its trend is not affected by the type of transition. However, the performance of
492 autocorrelation is impacted in the case of low reporting probability and highly overdispersed data, and equally
493 spaced data are necessary to calculate autocorrelation. A variety of indicators can be used for specific situations
494 (S1 Table). Combinations of indicators yielded the best performance (25). However, the best combinations
495 were determined using an optimization algorithm trained on a large dataset of simulated time series, and their
496 performance remained to be proved in other contexts.

497 The size of the rolling window should be picked carefully to observe a trend at a consistent scale. An arbitrary
498 value is to take 50% of the size of the dataset as a window size (17). However, if several transitions occur,

499 then a smaller rolling window size should be picked to be able to observe a trend before each transition. In
500 addition, enough data points should be present in the window in order to accurately estimate the
501 autocorrelation; however, a too-large window will reduce the absolute increase (60). It is good practice to
502 check the effect of the window size and detrending in a sensitivity analysis (17).

503 When a trend is observed, its significance needs to be assessed. Due to the sliding window approach, standard
504 statistical tests are not applicable as the observations are not independent. A proposed approach to assess the
505 significance of the trend is to produce surrogate datasets to compare the trend estimates (17). Several
506 methods to produce consistent surrogate datasets have been proposed and implemented in the resilience
507 indicators packages (64,65). The choice of the threshold should be calibrated based on previous data, as a
508 poorly calibrated threshold can induce misleading results (53).

509

510 Conclusion and future directions

511 To conclude, resilience indicators have the potential to help public health organizations anticipate infectious
512 disease transitions, as they constitute a generic, data-driven method. Real-time calculation of resilience
513 indicators could be put into practice to monitor the risk of an upcoming outbreak, provided sufficient, good-
514 quality case reports are available. However, further investigations are required to strike the right balance
515 between false negative and false positive rates and lead time. This will differ by setting, disease system, and
516 data availability and quality. To overcome the data and model limitations, a combination with other early-
517 warning systems, as well as other sources of data, might help improve early detection. The potential of such
518 combined approaches remains to be explored. Moving forward, a close collaboration between experts in
519 resilience indicators and public health practitioners is needed to bridge the gap between theory and practice,
520 and determine how and when resilience indicators could contribute to more timely outbreak response.

521

522 References

- 523 1. Becker K, Hu Y, Biller-Andorno N. Infectious diseases - A global challenge. Vol. 296, International Journal of
524 Medical Microbiology. Elsevier GmbH; 2006. p. 179-85.
- 525 2. Pinheiro P, Mathers CD, Krämer A. The Global Burden of infectious diseases. In: Modern Infectious Disease
526 Epidemiology: Concepts, Methods, Mathematical Models, and Public Health. 2009.

- 527 3. Morin CW, Semenza JC, Trtanj JM, Glass GE, Boyer C, Ebi KL. Unexplored Opportunities: Use of Climate-
528 and Weather-Driven Early Warning Systems to Reduce the Burden of Infectious Diseases. [cited 2021 Sep
529 22]; Available from: <https://doi.org/10.1007/s40572-018-0221-0>
- 530 4. Racloz V, Ramsey R, Tong S, Hu W. Surveillance of Dengue Fever Virus: A Review of Epidemiological Models
531 and Early Warning Systems. Anyamba A, editor. PLoS Negl Trop Dis [Internet]. 2012 May 22 [cited 2021
532 Apr 26];6(5):e1648. Available from: <https://dx.plos.org/10.1371/journal.pntd.0001648>
- 533 5. Thomson MC, Connor SJ. The development of Malaria Early Warning Systems for Africa. Trends Parasitol.
534 2001 September 1st;17(9):438–45.
- 535 6. Vega T, Lozano JE, Meerhoff T, Snacken R, Mott J, Ortiz de Lejarazu R, et al. Influenza surveillance in
536 Europe: establishing epidemic thresholds by the Moving Epidemic Method. Influenza Other Respi Viruses
537 [Internet]. 2013 Jul 1 [cited 2022 Jan 26];7(4):546–58. Available from:
538 <https://onlinelibrary.wiley.com/doi/full/10.1111/j.1750-2659.2012.00422.x>
- 539 7. Santillana M, Zhang DW, Althouse BM, Ayers JW. What Can Digital Disease Detection Learn from (an
540 External Revision to) Google Flu Trends? Am J Prev Med. 2014 Sep 1;47(3):341–7.
- 541 8. Chaves LF, Pascual M. Comparing Models for Early Warning Systems of Neglected Tropical Diseases.
542 Utzinger J, editor. PLoS Negl Trop Dis [Internet]. 2007 Oct 22 [cited 2021 May 4];1(1):e33. Available from:
543 <https://dx.plos.org/10.1371/journal.pntd.0000033>
- 544 9. Liang S, Yang C, Zhong B, Guo J, Li H, Carlton EJ, et al. Surveillance systems for neglected tropical
545 diseases: Global lessons from China's evolving schistosomiasis reporting systems, 1949-2014. Vol. 11,
546 Emerging Themes in Epidemiology. BioMed Central Ltd.; 2014.
- 547 10. Scheffer M, Carpenter SR, Lenton TM, Bascompte J, Brock W, Dakos V, et al. Anticipating critical transitions.
548 Science (80-). 2012;338(6105):344–8.
- 549 11. Diks C, Hommes C, Wang J. Critical slowing down as an early warning signal for financial crises? Empir Econ
550 [Internet]. 2019 Oct 1 [cited 2022 Jan 25];57(4):1201–28. Available from:
551 <https://link.springer.com/article/10.1007/s00181-018-1527-3>
- 552 12. Dakos V, Kéfi S, Rietkerk M, van Nes EH, Scheffer M. Slowing down in spatially patterned ecosystems at the
553 brink of collapse. Am Nat [Internet]. 2011 June 17th [cited 2022 June 24th];177(6). Available from:
554 <https://www.journals.uchicago.edu/doi/10.1086/659945>
- 555 13. van de Leemput IA, Hughes TP, van Nes EH, Scheffer M. Multiple feedbacks and the prevalence of alternate

- 556 stable states on coral reefs. *Coral Reefs*. 2016 September 1st;35(3):857–65.
- 557 14. Holling CS. Resilience and Stability of Ecological Systems. *Annu Rev Ecol Syst*. 1973;4:1–23.
- 558 15. Dakos V, Carpenter SR, van Nes EH, Scheffer M. Resilience indicators: Prospects and limitations for early
559 warnings of regime shifts. *Philos Trans R Soc B Biol Sci*. 2015 Jan 5;370(1659):1–10.
- 560 16. Gama Dessavre A, Southall E, Tildesley MJ, Dyson L. The problem of detrending when analyzing potential
561 indicators of disease elimination. *J Theor Biol [Internet]*. 2019;481:183–93. Available from:
562 [https://www.scopus.com/inward/record.uri?eid=2-s2.0-](https://www.scopus.com/inward/record.uri?eid=2-s2.0-85064516831&doi=10.1016%2Fj.jtbi.2019.04.011&partnerID=40&md5=32a11771ab5531ee46b3e2f7652994b9)
563 [85064516831&doi=10.1016%2Fj.jtbi.2019.04.011&partnerID=40&md5=32a11771ab5531ee46b3e2f76529](https://www.scopus.com/inward/record.uri?eid=2-s2.0-85064516831&doi=10.1016%2Fj.jtbi.2019.04.011&partnerID=40&md5=32a11771ab5531ee46b3e2f7652994b9)
564 [94b9](https://www.scopus.com/inward/record.uri?eid=2-s2.0-85064516831&doi=10.1016%2Fj.jtbi.2019.04.011&partnerID=40&md5=32a11771ab5531ee46b3e2f7652994b9)
- 565 17. Dakos V, Carpenter SR, Brock WA, Ellison AM, Guttal V, Ives AR, et al. Methods for detecting early warnings
566 of critical transitions in time series illustrated using simulated ecological data. *PLoS One*. 2012;7(7).
- 567 18. Rector JL, Gijzel SMW, van de Leemput IA, van Meulen FB, Olde Rikkert MGM, Melis RJF. Dynamical
568 indicators of resilience from physiological time series in geriatric inpatients: Lessons learned. *Exp Gerontol*.
569 2021 July 1st;149:111341.
- 570 19. Dakos V, Soler-Toscano F. Measuring complexity to infer changes in the dynamics of ecological systems
571 under stress. *Ecol Complex*. 2017 December 1st;32:144–55.
- 572 20. Scheffer M, Bascompte J, Brock WA, Brovkin V, Carpenter SR, Dakos V, et al. Early-warning signals for
573 critical transitions. *Nature [Internet]*. 2009;461(7260):53–9. Available from:
574 <http://dx.doi.org/10.1038/nature08227>
- 575 21. Miller PB, O'Dea EB, Rohani P, Drake JM. Forecasting infectious disease emergence subject to seasonal
576 forcing. *Theor Biol Med Model [Internet]*. 2017;14(1). Available from: [internal-pdf://236.4.215.153/Miller-](internal-pdf://236.4.215.153/Miller-2017-Forecasting%20infectious%20disease%20eme.pdf)
577 [2017-Forecasting infectious disease eme.pdf](internal-pdf://236.4.215.153/Miller-2017-Forecasting%20infectious%20disease%20eme.pdf)
- 578 22. Pananos AD, Bury TM, Wang C, Schonfeld J, Mohanty SP, Nyhan B, et al. Critical dynamics in population
579 vaccinating behavior. *Proc Natl Acad Sci U S A [Internet]*. 2017;114(52):13762–7. Available from: [internal-](internal-pdf://101.154.212.42/Pananos-2017-Critical%20dynamics%20in%20population%20v.pdf)
580 [pdf://101.154.212.42/Pananos-2017-Critical dynamics in population v.pdf](internal-pdf://101.154.212.42/Pananos-2017-Critical%20dynamics%20in%20population%20v.pdf)
- 581 23. Dakos V, Van Nes EH, D'Odorico P, Scheffer M. Robustness of variance and autocorrelation as indicators of
582 critical slowing down. *Ecology [Internet]*. 2012 February 1st [cited 2022 July 6th];93(2):264–71. Available
583 from: <https://onlinelibrary.wiley.com/doi/full/10.1890/11-0889.1>
- 584 24. O'Regan SM, Burton DL. How Stochasticity Influences Leading Indicators of Critical Transitions. *Bull Math*

- 585 Biol [Internet]. 2018;80(6):1630–54. Available from: <https://doi.org/10.1007/s11538-018-0429-z>
- 586 25. Brett TS, Rohani P. Dynamical footprints enable detection of disease emergence. *PLoS Biol* [Internet].
587 2020;18(5). Available from: [internal-pdf://0263989289/Brett-2020-Dynamical footprints enable detecti.pdf](internal-pdf://0263989289/Brett-2020-Dynamical%20footprints%20enable%20detecti.pdf)
- 588 26. O'Brien DA, Clements CF. Early warning signal reliability varies with COVID-19 waves. *Biol Lett*.
589 2021;17(12):20210487.
- 590 27. Chen P, Chen E, Chen L, Zhou XJ, Liu R. Detecting early-warning signals of influenza outbreak based on
591 dynamic network marker. *J Cell Mol Med*. 2019;23(1):395–404.
- 592 28. Dong M, Zhang X, Yang K, Liu R, Chen P. Forecasting the COVID-19 transmission in Italy based on the
593 minimum spanning tree of dynamic region network. *PeerJ*. 2021;9(February 2020):1–17.
- 594 29. Yang K, Xie J, Xie R, Pan Y, Liu R, Chen P. Real-Time Forecast of Influenza Outbreak Using Dynamic
595 Network Marker Based on Minimum Spanning Tree. *Biomed Res Int*. 2020;2020.
- 596 30. Liu R, Zhong J, Hong R, Chen E, Aihara K, Chen P, et al. Predicting local COVID-19 outbreaks and infectious
597 disease epidemics based on landscape network entropy. *Sci Bull* [Internet]. 2021;66(22):2265–70.
598 Available from: <https://doi.org/10.1016/j.scib.2021.03.022>
- 599 31. Li M. A Novel Method to Detect the Early Warning Signal of Covid-19 Transmission. 2022;2019.
- 600 32. Ma Z. Predicting the Outbreak Risks and Inflection Points of COVID-19 Pandemic with Classic Ecological
601 Theories. *Adv Sci* [Internet]. 2020;7(21). Available from: [internal-pdf://155.197.235.2/Ma-2020-Predicting
602 the Outbreak Risks and Infl.pdf](internal-pdf://155.197.235.2/Ma-2020-Predicting%20the%20Outbreak%20Risks%20and%20Infl.pdf)
- 603 33. Phillips B, Anand M, Bauch CT. Spatial early warning signals of social and epidemiological tipping points in a
604 coupled behaviour-disease network. *Sci Rep* [Internet]. 2020;10(1). Available from: [internal-
605 pdf://165.229.168.71/Phillips-2020-Spatial early warning signals of.pdf](internal-pdf://165.229.168.71/Phillips-2020-Spatial%20early%20warning%20signals%20of.pdf)
- 606 34. Brett T, Ajelli M, Liu QH, Krauland MG, Grefenstette JJ, Van Panhuis WG, et al. Detecting critical slowing
607 down in highdimensional epidemiological systems. *PLoS Comput Biol* [Internet]. 2020;16(3):1–19. Available
608 from: <http://dx.doi.org/10.1371/journal.pcbi.1007679>
- 609 35. Bury TM, Sujith RI, Pavithran I, Scheffer M, Lenton TM, Anand M, et al. Deep learning for early warning
610 signals of tipping points. *Proc Natl Acad Sci U S A* [Internet]. 2021 [cited 2021 Sep 27];118(39). Available
611 from: <https://doi.org/10.1073/pnas.2106140118>
- 612 36. Brett TS, O'Dea EB, Marty É, Miller PB, Park AW, Drake JM, et al. Anticipating epidemic transitions with

- 613 imperfect data. PLoS Comput Biol [Internet]. 2018;14(6). Available from: internal-
614 pdf://195.177.19.26/Brett-2018-Anticipating epidemic transitions w.pdf
- 615 37. O'Dea EB, Drake JM. Disentangling reporting and disease transmission. *Theor Ecol*. 2019 March
616 1st;12(1):89–98.
- 617 38. Southall E, Tildesley MJ, Dyson L. Prospects for detecting early warning signals in discrete event sequence
618 data: Application to epidemiological incidence data. PLoS Comput Biol [Internet]. 2020;16(9). Available
619 from: internal-pdf://89.137.35.36/Southall-2020-Prospects for detecting early wa.pdf
- 620 39. O'Dea EB, Park AW, Drake JM. Estimating the distance to an epidemic threshold. *J R Soc Interface*
621 [Internet]. 2018;15(143). Available from: [https://www.scopus.com/inward/record.uri?eid=2-s2.0-
622 85049646187&doi=10.1098%2Frsif.2018.0034&partnerID=40&md5=c6aff92ffb917802b024fff330c2ef4](https://www.scopus.com/inward/record.uri?eid=2-s2.0-85049646187&doi=10.1098%2Frsif.2018.0034&partnerID=40&md5=c6aff92ffb917802b024fff330c2ef4)
- 623 40. Drake JM, Brett TS, Chen S, Epureanu BI, Ferrari MJ, Marty É, et al. The statistics of epidemic transitions.
624 PLoS Comput Biol [Internet]. 2019;15(5). Available from: internal-pdf://180.231.176.116/Drake-2019-The
625 statistics of epidemic transiti.pdf
- 626 41. Kuehn C. A mathematical framework for critical transitions: Normal forms, variance and applications. *J*
627 *Nonlinear Sci* [Internet]. 2013;23(3):457–510. Available from:
628 [https://www.scopus.com/inward/record.uri?eid=2-s2.0-84878539033&doi=10.1007%2F00332-012-9158-
629 x&partnerID=40&md5=48083253ed5105728fc23821b1c277e7](https://www.scopus.com/inward/record.uri?eid=2-s2.0-84878539033&doi=10.1007%2F00332-012-9158-x&partnerID=40&md5=48083253ed5105728fc23821b1c277e7)
630 <https://link.springer.com/article/10.1007%2F00332-012-9158-x>
- 631 42. Ullon W, Forgoston E. Controlling epidemic extinction using early warning signals. *Int J Dyn Control*
632 [Internet]. 2022;(July). Available from: <https://doi.org/10.1007/s40435-022-00998-2>
- 633 43. Jentsch PC, Anand M, Bauch CT. Spatial correlation as an early warning signal of regime shifts in a multiplex
634 disease-behaviour network. *J Theor Biol* [Internet]. 2018;448:17–25. Available from:
635 [https://www.scopus.com/inward/record.uri?eid=2-s2.0-
636 85045198771&doi=10.1016%2Fj.jtbi.2018.03.032&partnerID=40&md5=cef2fc7646dc0d97d3a82377ce763
637 eb6](https://www.scopus.com/inward/record.uri?eid=2-s2.0-85045198771&doi=10.1016%2Fj.jtbi.2018.03.032&partnerID=40&md5=cef2fc7646dc0d97d3a82377ce763eb6)
- 638 44. O'Regan SM, Drake JM. Theory of early warning signals of disease emergence and leading indicators of
639 elimination. *Theor Ecol*. 2013;6(3):333–57.
- 640 45. Brett TS, Drake JM, Rohani P. Anticipating the emergence of infectious diseases. *J R Soc Interface*
641 [Internet]. 2017;14(132). Available from: [https://www.scopus.com/inward/record.uri?eid=2-s2.0-
642 85026767663&doi=10.1098%2Frsif.2017.0115&partnerID=40&md5=a3fe642cffb85eae3e1d34a94ba24dbc](https://www.scopus.com/inward/record.uri?eid=2-s2.0-85026767663&doi=10.1098%2Frsif.2017.0115&partnerID=40&md5=a3fe642cffb85eae3e1d34a94ba24dbc)

- 643 46. O'Regan SM, Drake JM. Theory of early warning signals of disease emergence and leading indicators of
644 elimination. *Theor Ecol* [Internet]. 2013;6(3):333–57. Available from: internal-
645 pdf://236.198.132.178/O'Regan-2013-Theory of early warning signals o.pdf
- 646 47. Southall E, Tildesley M, Dyson L. Prospects for detecting early warning signals in discrete event sequence
647 data: application to epidemiological incidence data. 2020;
- 648 48. Nazarimehr F, Pham VT, Kapitaniak T. Prediction of bifurcations by varying critical parameters of COVID-19.
649 *Nonlinear Dyn* [Internet]. 2020;101(3):1681–92. Available from: internal-
650 pdf://254.224.33.178/Nazarimehr-2020-Prediction of bifurcations by.pdf
- 651 49. Kuehn C, Zschaler G, Gross T. Early warning signs for saddle-escape transitions in complex networks. *Sci*
652 *Rep* [Internet]. 2015;5. Available from: internal-pdf://109.187.46.27/Kuehn-2015-Early warning signs for
653 saddle-esca.pdf
- 654 50. Drake JM, Hay SI. Monitoring the path to the elimination of infectious diseases. Vol. 2, *Tropical Medicine*
655 *and Infectious Disease*. MDPI AG; 2017.
- 656 51. O'Regan SM, O'Dea EB, Rohani P, Drake JM. Transient indicators of tipping points in infectious diseases. *J R*
657 *Soc Interface*. 2020 September 1st;17(170).
- 658 52. Tredennick AT, O'Dea EB, Ferrari MJ, Park AW, Rohani P, Drake JM. Anticipating infectious disease re-
659 emergence and elimination: a test of early warning signals using empirically based models. *J R Soc*
660 *Interface*. 2022;19(193).
- 661 53. Dablander F, Heesterbeek H, Borsboom D, Drake JM. Overlapping timescales obscure early warning signals
662 of the second COVID-19 wave. *Proc R Soc B Biol Sci*. 2022;289(1968).
- 663 54. Southall E, Brett TS, Tildesley MJ, Dyson L. Early warning signals of infectious disease transitions: A review.
664 *J R Soc Interface*. 2021;18(182).
- 665 55. Michael E, Madon S. Socio-ecological dynamics and challenges to the governance of Neglected Tropical
666 Disease control. *Infect Dis Poverty* [Internet]. 2017;6(1). Available from: internal-
667 pdf://192.249.170.205/Michael-2017-Socio-ecological dynamics and cha.pdf
- 668 56. Harris MJ, Hay SI, Drake JM. Early warning signals of malaria resurgence in Kericho, Kenya. *Biol Lett*. 2020
669 March 1st;16(3).
- 670 57. Kaur T, Sarkar S, Chowdhury S, Sinha SK, Jolly MK, Dutta PS. Anticipating the Novel Coronavirus Disease
671 (COVID-19) Pandemic. *Front Public Heal* [Internet]. 2020;8. Available from: internal-

672 pdf://73.106.247.122/Kaur-2020-Anticipating the Novel Coronavirus D.pdf

673 58. Proverbio D, Kemp F, Magni S, Gonçalves J. Performance of early warning signals for disease re-
674 emergence: A case study on COVID-19 data. *PLoS Comput Biol.* 2022;18(3):1–22.

675 59. Ten Bosch Q, Andrianaivoarimanana V, Ramasindrazana B, Mikaty G, Rakotonanahary RJL, Nikolay B, et al.
676 Analytical framework to evaluate and optimize the use of imperfect diagnostics to inform outbreak
677 response: Application to the 2017 plague epidemic in Madagascar. *PLOS Biol* [Internet]. 2022 Aug 1 [cited
678 2022 Oct 17];20(8):e3001736. Available from:
679 <https://journals.plos.org/plosbiology/article?id=10.1371/journal.pbio.3001736>

680 60. Proverbio D, Kemp F, Magni S, Gonçalves J. Performance of early warning signals for disease emergence: a
681 case study on COVID-19 data. 2021 [cited 2021 Sep 3]; Available from:
682 <https://doi.org/10.1101/2021.03.30.21254631>

683 61. Mazick A, Europe on behalf of the participants of a workshop on mortality monitoring in. Monitoring excess
684 mortality for public health action: potential for a future European network. *Wkly releases* [Internet]. 2007
685 Jan 4 [cited 2021 Nov 2];12(1):3107. Available from:
686 <https://www.eurosurveillance.org/content/10.2807/esw.12.01.03107-en>

687 62. Keller M, Blench M, Tolentino H, Freifeld CC, Mandl KD, Mawudeku A, et al. Use of Unstructured Event-
688 Based Reports for Global Infectious Disease Surveillance. *Emerg Infect Dis* [Internet]. 2009 May [cited 2021
689 Nov 2];15(5):689. Available from: [/pmc/articles/PMC2687026/](https://pubmed.ncbi.nlm.nih.gov/192687026/)

690 63. Mao K, Zhang K, Du W, Ali W, Feng X, Zhang H. The potential of wastewater-based epidemiology as
691 surveillance and early warning of infectious disease outbreaks. Vol. 17, *Current Opinion in Environmental*
692 *Science and Health.* Elsevier; 2020. p. 1–7.

693 64. Dakos V. *Earlywarnings in R.* 2015.

694 65. Van Nes EH. *Grind for Matlab.* 2017.

695

696 **Supporting information**

697 **S1 Table. Summary of the indicators and their usage.** Original references refer to primary studies
698 not included in that review that studied the use of the indicators. Mathematical derivation of the
699 indicators is given in (54).

700 **S2 Table. Summary of the included studies.** Summary of the included studies and their
701 classification.

702 **S3 Table. Summary of the publications retrieved during database search, and the**
703 **inclusion/exclusion decisions.**

704 **S4 Table. PRISMA Checklist.**

705

706

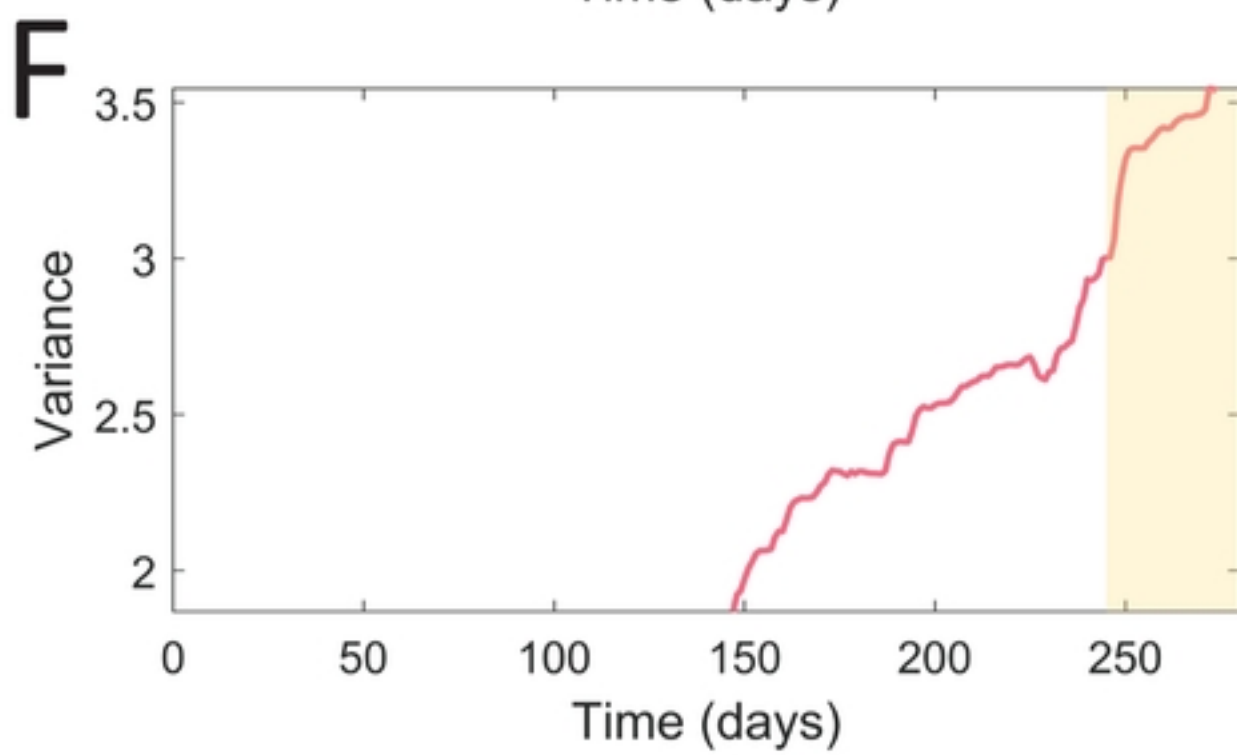
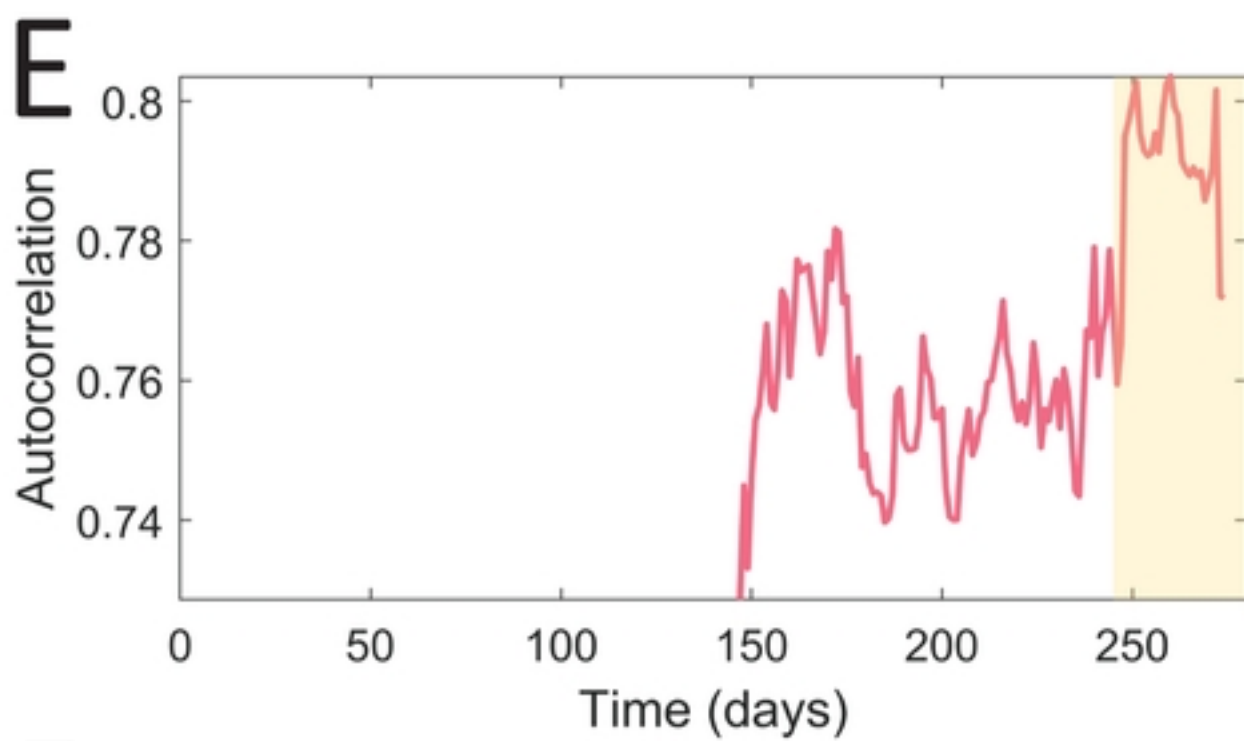
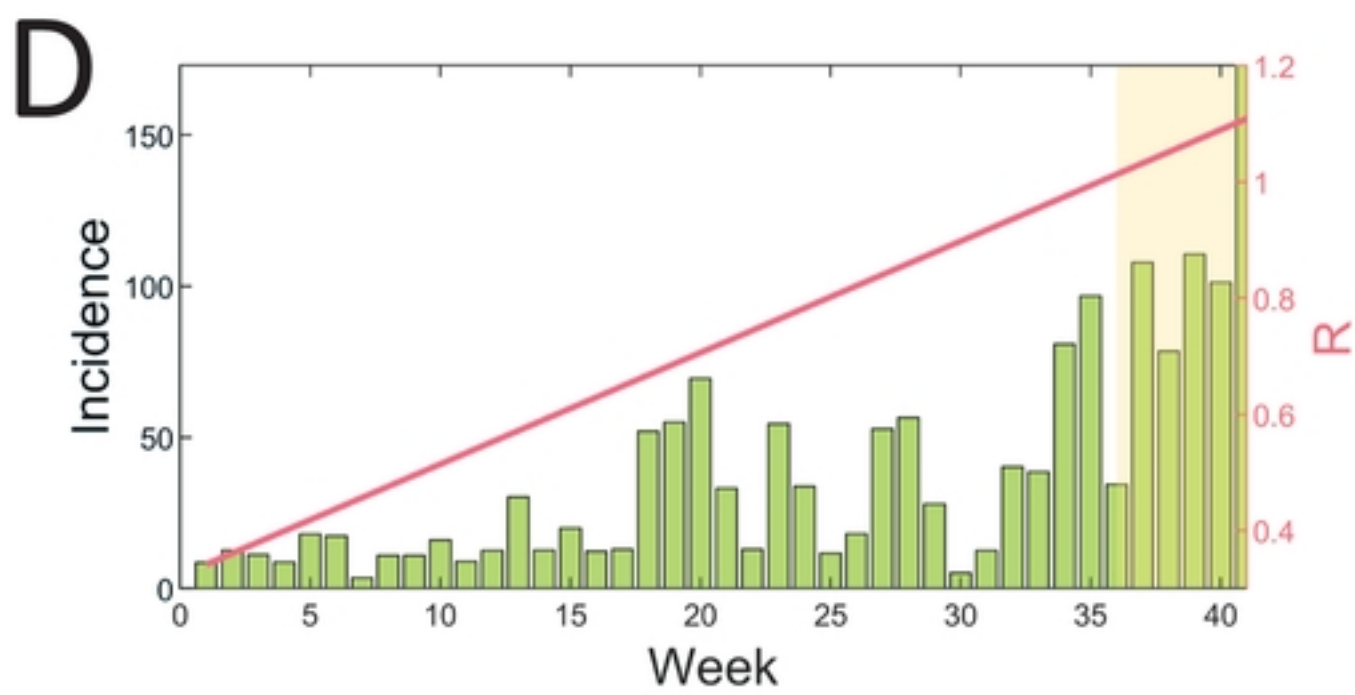
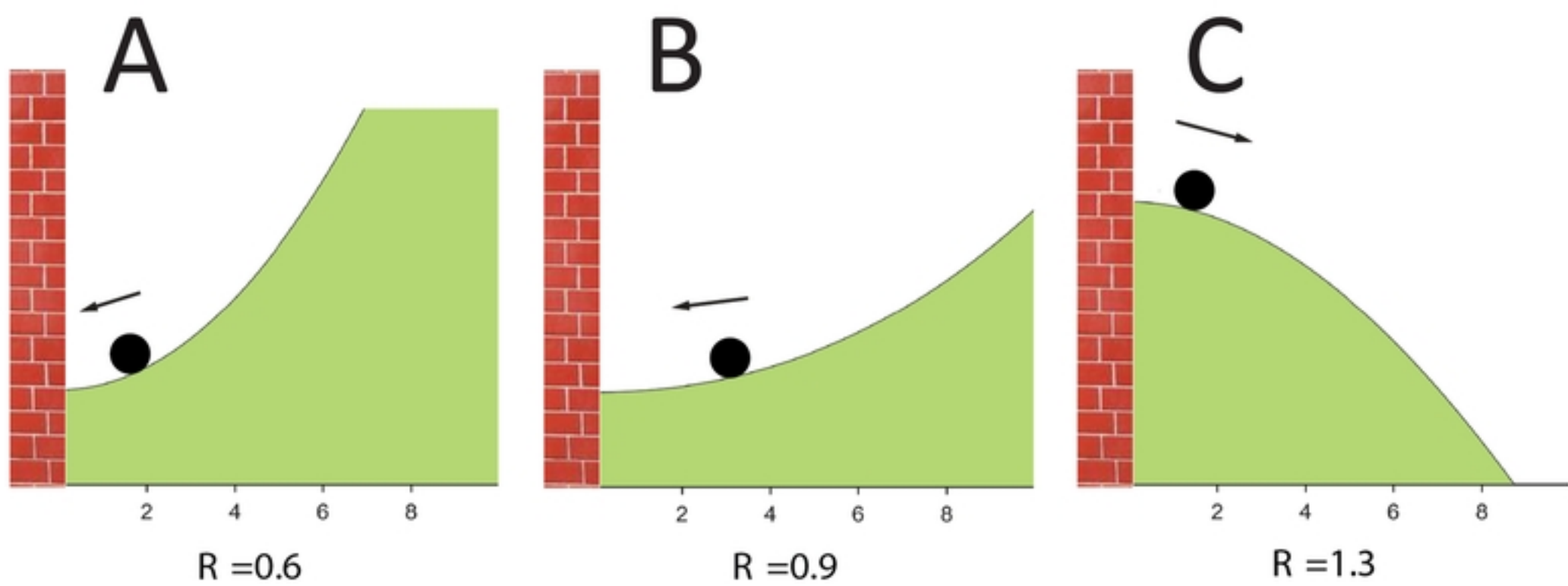


Fig 1

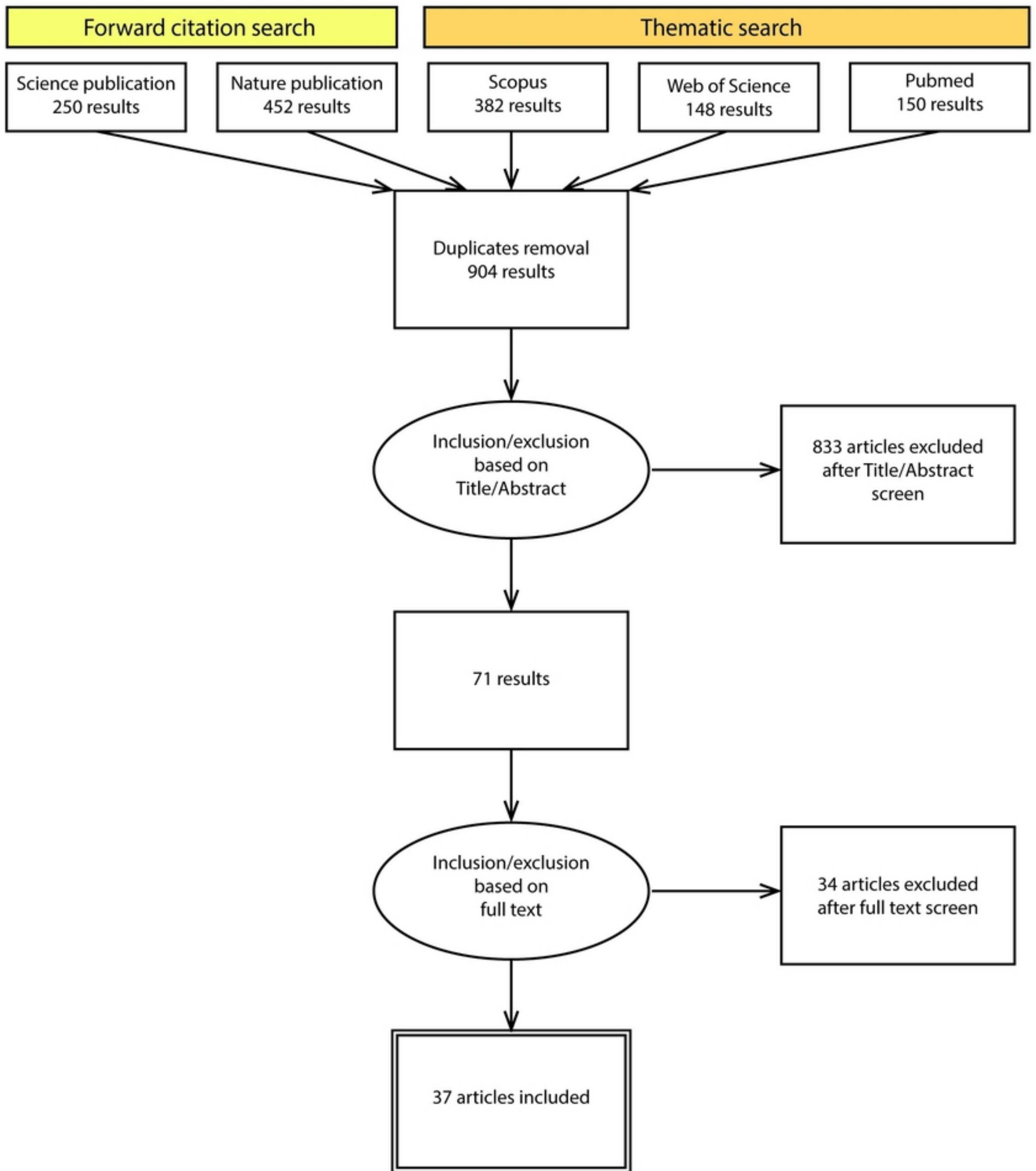


Fig 2

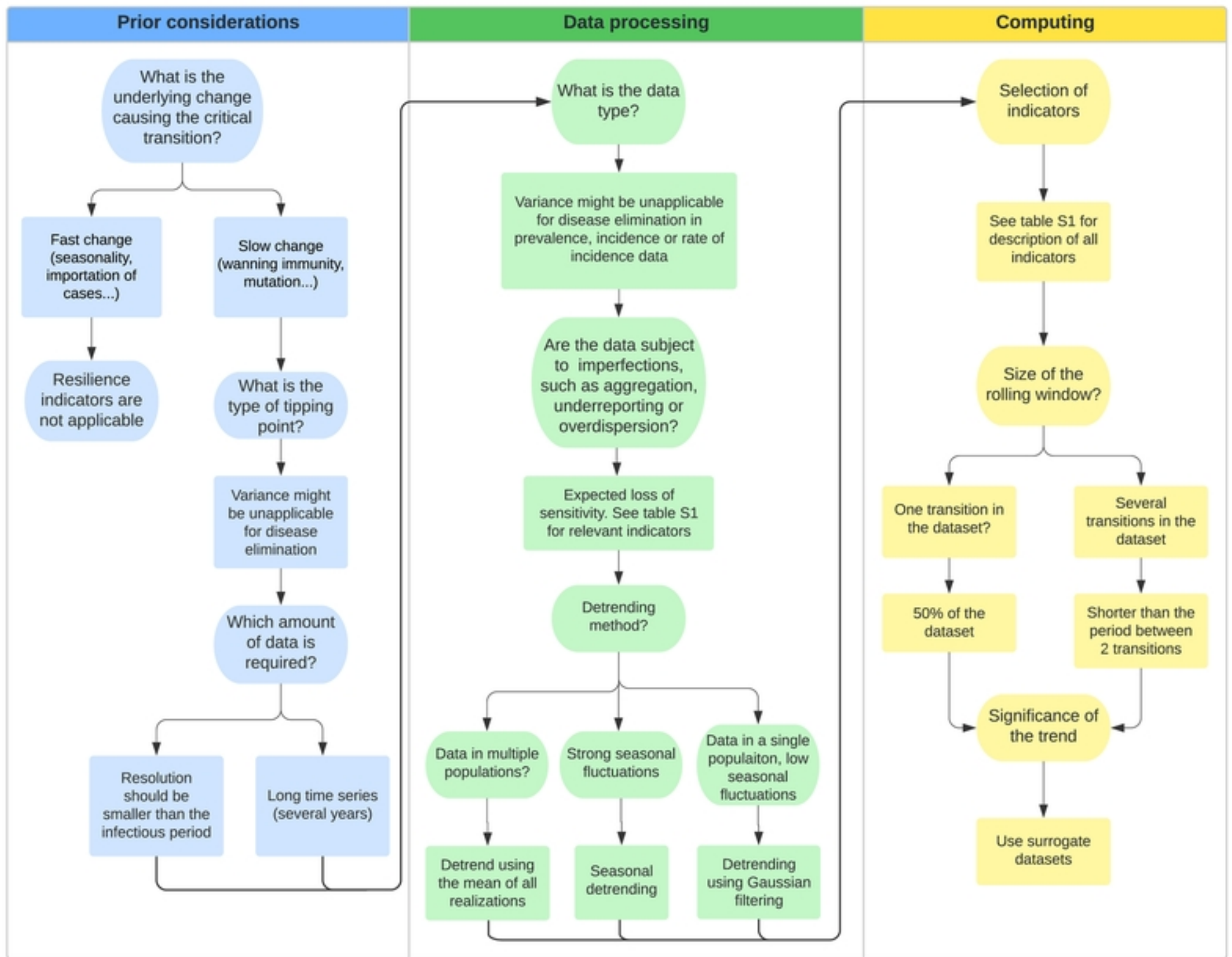
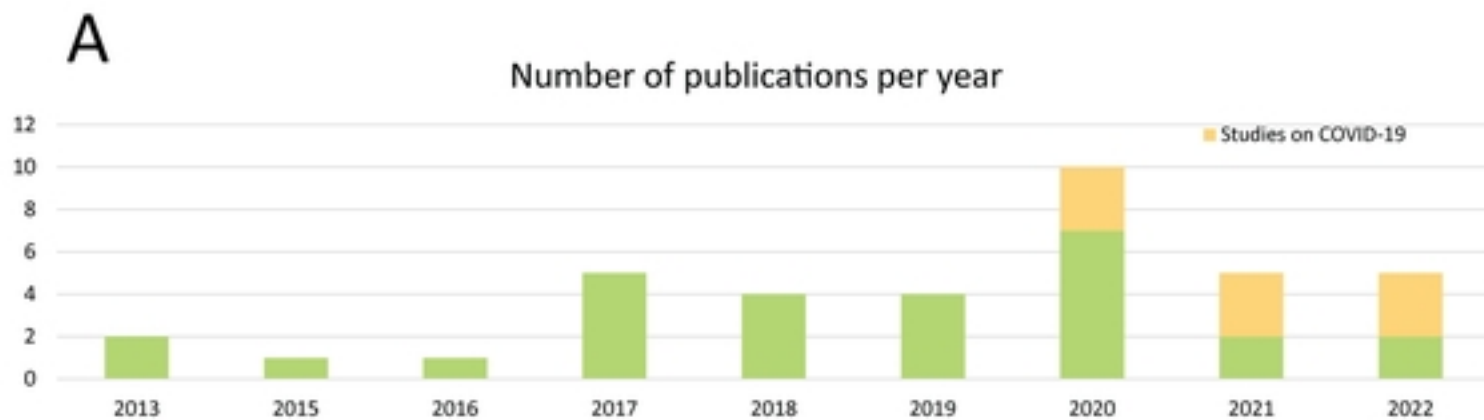
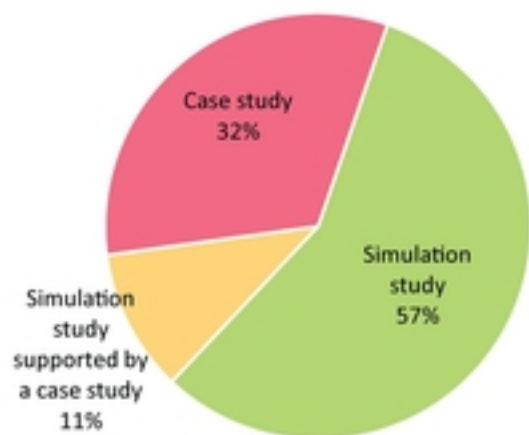


Fig 4



B Type of studies



C Type of transition

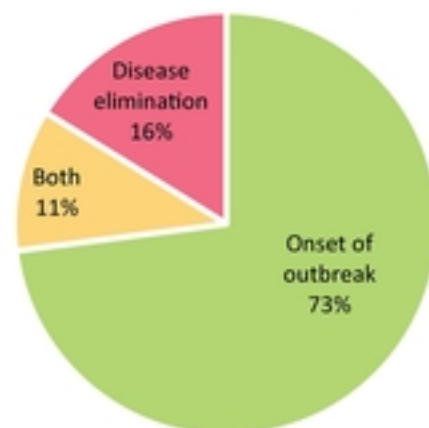


Fig 3