

1 **Clinical criteria for genetic testing in pediatric oncology show a**  
2 **low specificity and miss every 4<sup>th</sup> child carrying a cancer**  
3 **predisposition**

4 Ulrike Anne Friedrich<sup>1</sup>, Marc Bienias<sup>2</sup>, Claudia Zinke<sup>1</sup>, Maria Prazenicova<sup>1</sup>,  
5 Judith Lohse<sup>1</sup>, Arne Jahn<sup>3</sup>, Maria Menzel<sup>1</sup>, Jonas Langanke<sup>1</sup>, Carolin Walter<sup>4</sup>,  
6 Rabea Wagener<sup>5</sup>, Triantafyllia Brozou<sup>5</sup>, Julian Varghese<sup>4</sup>, Martin Dugas<sup>4,6</sup>,  
7 Evelin Schröck<sup>3,7</sup>, Meinolf Suttorp<sup>8</sup>, Arndt Borkhardt<sup>5</sup>, Julia Hauer<sup>2\*</sup>, Franziska  
8 Auer<sup>2\*</sup>

9 \*shared contribution

10 <sup>1</sup>Pediatric Hematology and Oncology, Department of Pediatrics, University Hospital "Carl  
11 Gustav Carus", TU Dresden, 01307 Dresden, Germany

12 <sup>2</sup>Technical University of Munich, Germany; School of Medicine; Department of Pediatrics,  
13 80804 Munich, Germany

14 <sup>3</sup>Institute for Clinical Genetics, University Hospital Carl Gustav Carus at the Technische  
15 Universität Dresden, Dresden, Germany, ERN GENTURIS, Hereditary Cancer Syndrome  
16 Center Dresden, Germany; National Center for Tumor Diseases Dresden (NCT/UCC),  
17 Germany: German Cancer Research Center (DKFZ), Heidelberg, Germany; Faculty of Medicine  
18 and University Hospital Carl Gustav Carus, Technische Universität Dresden, Dresden,  
19 Germany; Helmholtz-Zentrum Dresden-Rossendorf (HZDR), Dresden, Germany; German  
20 Cancer Consortium (DKTK), Dresden, Germany; German Cancer Research Center (DKFZ),  
21 Heidelberg, Germany

22 <sup>4</sup>Institute of Medical Informatics, University of Muenster, 48149 Muenster, Germany

23 <sup>5</sup>Department of Pediatric Oncology, Hematology and Clinical Immunology, Heinrich-Heine  
24 University Duesseldorf, Medical Faculty, Duesseldorf, Germany

25 <sup>6</sup>Institute of Medical Informatics, Heidelberg University Hospital, 69120 Heidelberg, Germany

26 <sup>7</sup>Max Planck Institute of Molecular Cell Biology and Genetics, Dresden; Germany

27 <sup>8</sup>Pediatric Hematology and Oncology, Faculty of Medicine Carl Gustav Carus, Technical  
28 University Dresden, 01307 Dresden, Germany

29

30 **Contact information:**

31 Correspondence and requests: [julia.hauer@mri.tum.de](mailto:julia.hauer@mri.tum.de); [f.auer@tum.de](mailto:f.auer@tum.de)

32

33 **Keywords:**

34 Pediatric cancer, Trio-Sequencing, germline cancer predisposition, genetic testing,  
35 clinical checklists

36 **Abstract:**

37 Clinical checklists are the current gold standard to determine whether a child  
38 with cancer shows indications for genetic testing. Nevertheless, the efficacy of  
39 these tests to reliably detect genetic cancer predisposition in children with  
40 cancer is still insufficiently investigated. Here, we assessed the validity of  
41 clinically recognizable signs to identify cancer predisposition by correlating a  
42 state-of-the-art clinical checklist to the corresponding whole exome sequencing  
43 analysis in an unselected single-center cohort of 139 child-parent datasets. We  
44 applied a strict testing to only include autosomal dominant or compound  
45 heterozygous cancer-related variants.

46 Our study reflects a high consent rate for genetic testing (>90%). In total, 1/3<sup>rd</sup>  
47 of patients had a clinical indication for genetic testing according to current  
48 recommendations and 10.8% (n=15/139) of children harbored a proven cancer  
49 predisposition based on exome sequencing. Out of these only 73.3% (n=11/15)  
50 were identified through the clinical checklist. In addition, >2 clinical findings in  
51 the applied checklist increased the likelihood to identifying genetic  
52 predisposition from 15% to 50%. While our data revealed a high rate of genetic  
53 predisposition (50%, n=5/10) in Myelodysplastic Syndrome (MDS) cases, no  
54 cancer predisposition variants were identified in the sarcoma and lymphoma  
55 group.

56 In summary, our data showed a low checklist specificity of 68.5%, and missed  
57 every 4<sup>th</sup> child with genetic predisposition. This highlights the drawbacks of sole  
58 clinical evaluation to accurately identify all children at risk and underlines the  
59 need for routine germline sequencing of pediatric cancers.

## 60 **Introduction:**

61 Genetic predisposition to pediatric cancer has gained interest and attention over  
62 the last decade. What was previously attributed to “chance” or “bad-luck” has  
63 now been proven to root in *de novo* occurring, or inherited cancer  
64 predispositions in a substantial number of cases. While monogenetic germline  
65 variants are currently implicated in the development of up to 10% of all  
66 childhood tumors (1-3), the overall impact of genetic predispositions is believed  
67 to be much higher, with most yet to be discovered.

68 The identification of a susceptibility to childhood cancer is highly relevant for the  
69 patient, since it may lead to his inclusion in personalized surveillance programs,  
70 targeted therapies as well as the option of reproductive counseling and prenatal  
71 diagnosis (4). Furthermore, siblings and relatives at risk can subsequently be  
72 tested and might benefit from early detection and surveillance opportunities for  
73 themselves.

74 The majority of the currently known classical pediatric cancer predispositions  
75 often correlate to a specific clinical phenotype, disease entity, or they occur in a  
76 family with a history of cancer (5). This allows the selection of children at high  
77 risk who harbor a cancer predisposition, as well as defines which patients  
78 should be referred to a human geneticist for further genetic testing (6). Even  
79 though some classical cancer predisposition syndromes are easily recognizable  
80 (7), others might have an incomplete penetrance or lead to mild phenotypes,  
81 which can easily be missed in a daily clinical routine (8). It has already been  
82 shown that single clinical indicators, such as the family history are not sufficient  
83 to stringently identify patients at risk (9). Therefore, checklists, that combine a  
84 multitude of different potential factors, are the current gold standard to judge

85 whether genetic testing in a patient is recommended. These selection tools  
86 typically incorporate data concerning family history, type and number of  
87 malignancies, as well as specific clinical/physiological features and treatment  
88 toxicities (5, 6, 10). Nevertheless, germline genetics is fickle, with many  
89 unknowns and blanks that still need to be elucidated. Thus, novel and so far,  
90 undiscovered predisposition scenarios, like multigenic susceptibilities that are  
91 inherited from healthy parents but synergize in the patient to form a cancer  
92 predisposition, might not be recognizable by the phenotypic and clinical data  
93 alone (11).

94 To evaluate the overlap between predisposition selection checklists and  
95 detection of cancer predispositions by genetic testing, we correlated both  
96 datasets in an unselected cohort of 139 families with pediatric cancer. Here, we  
97 show that while the majority of patients harboring a pathogenic or likely  
98 pathogenic germline variant are identified by the employed checklist, it occurs at  
99 the costs of a high rate of potentially false positives as well as a not negligible  
100 percentage of patients that still go unrecognized.

101 **Results:**

102 **Evaluation of 139 children with cancer using a predefined checklist shows**  
103 **a high frequency of indications for genetic testing**

104 The here analyzed cohort consists of 139 families with a child affected from  
105 cancer. The cohort includes all cancer entities and was chosen unselected from  
106 children treated at the pediatric oncology department at the University Hospital  
107 “Carl Gustav Carus” Dresden (Germany) between 2019 and 2021. The  
108 recorded data was composed of a detailed clinical and family history of each  
109 patient as well as a whole-exome sequencing (WES) analysis of control/healthy  
110 tissue of every child as well as (if applicable both of) its parents (**Figure 1A**).

111 The study recruitment showed an overwhelming acceptance rate of around 90%  
112 of families consenting to participation. Only a minor fraction of parents (9.2%,  
113 n=14/153) refused due to various reasons, including opposition to science, fear,  
114 or time restraints (**Figure S1A**). Leukemias and brain tumors comprised the two  
115 main subgroups (**Figure 1B, Table 1**). The 33 leukemias could further be  
116 subclassified in 22 B-cell acute lymphoblastic leukemias (B-ALL), five T-ALLs  
117 and six acute myeloid leukemias (AML) (**Figure S1B**). While the frequency of all  
118 included tumor entities reflects the disease distribution within the general  
119 pediatric population, the cohort showed an unexpectedly high number of cases  
120 with Myelodysplastic Syndrome (MDS) (7.2%, n=10) (**Figure 1B**). Nevertheless,  
121 the age at disease onset clustered according to the diagnosis (mean age 7.6  
122 yrs, range 0-18), and the cohort consisted of an equal rate of male and female  
123 participants (51.1% vs. 48.9%) (**Figure 1C, Figure S1C-D, Table 1**).

124 To obtain the overall percentage of pediatric patients with indications for genetic  
125 testing, a checklist generated by the German Cancer Society (DKG) and

126 Association for Paediatric Oncology and Haematology (GPOH) (adapted from  
127 (5, 6)) was retrospectively applied to evaluate whether a child should be  
128 referred for genetic counselling due to the potential of the presence of a  
129 pathogenic germline alteration (**Figure S2A**). Subsequently, five main criteria  
130 were assessed: type of diagnosis, family history (3-generation pedigree),  
131 phenotypic anomalies, total number of malignancies and predisposition  
132 indication based on the tumor analysis. The additional criterion of “excessive  
133 treatment toxicity” was not considered, as there are no available defined toxicity  
134 scoring approaches for pediatric patients across multiple organ systems.  
135 According to the checklist, genetic testing for the family should be  
136 recommended, as soon as one of the listed identifiers applies. Overall, in our  
137 cohort 36% (n=50/139) of children tested positive for an indicative referral to a  
138 human geneticist (**Figure 1D**). Most children (n=40/50) were positive for only  
139 one criterion and 10 children met two or more criteria. An additional analysis of  
140 the most prevalent categories that were marked, showed that the most frequent  
141 indicators were the cancer diagnosis (50%) or the additional physical/clinical  
142 features (38%) (**Figure 1D**). Particularly for the phenotype, a variety of different  
143 anomalies were recorded, with congenital and skin changes being the most  
144 frequent (**Figure 1E**). In our cohort, the diagnosis criterion was mainly met  
145 through the high amount of MDS patients (40%, n=10/25), while the remaining  
146 non-diagnosis-criteria related tumor entities showed a tendency of leukemias  
147 and sarcomas towards scoring preferably checklist negative (Fisher’s exact test;  
148 27 vs. 6, p=0.0213; 14 vs. 4, p=0.2924, respectively) (**Figure S2B-C**). A positive  
149 family history of cancer was only observed in 22% (**Figure 1D**).

150 Taken together, the analysis of 139 families with children with cancer through  
151 the genetic predisposition checklist evaluated indications for genetic testing in  
152 more than 1/3<sup>rd</sup> of participants (n=50/139), which was mostly based on tumor  
153 diagnosis and phenotypic features.

154

### 155 **Exome sequencing shows pathogenic or likely pathogenic variants in** 156 **10.8% of the patients**

157 Next, the genetic assessment of cancer predispositions was carried out through  
158 a Trio-exome sequencing approach, which comprises WES of the affected child  
159 as well as its parents. Altogether, 139 child-parent datasets were analyzed,  
160 including 122 Trios (father, mother and child) and 17 Duos (father or mother  
161 and child) (**Figure S3**). To objectively screen the pathogenicity of all identified  
162 variants, the Cancer Predisposition Sequencing Reporter (CPSR) tool (12),  
163 which allows the interpretation of germline variants in the context of cancer  
164 predisposition, was used.

165 Overall, the CPSR analysis yielded a total of 31 pathogenic, 18 likely  
166 pathogenic and 1,164 variants of uncertain significance (VUS) within 433 genes  
167 across the complete cohort (**Figure 2A, Figure S4A**). While the majority of  
168 prioritized pathogenic and likely pathogenic variants were nonsense variants  
169 (e.g. splice site, frameshift, stop gained), VUS were mainly comprised of  
170 missense variants (**Figure S4B**). However, taking inheritance patterns into  
171 account, 21 pathogenic and 11 likely pathogenic variants were excluded from  
172 the final results due to known autosomal recessive inheritance (AR) and the  
173 lack of compound heterozygosity (**Supplementary Table 1**). Furthermore, 7  
174 variants detected in genes *LEMD3*, *MLH1*, *PTPN13*, *MSH2*, *COL7A1*, *EZH2*



175 and *PAX6* were filtered out due a general lack of data regarding the genes'  
176 involvement in cancer predisposition or due to no associations to the specific  
177 tumor type presented in the respective child (**Supplementary Table 1**). Lastly,  
178 the remaining CPSR classified variants were manually assessed by human  
179 geneticists and 10 variants were evaluated as (likely) pathogenic according to  
180 ACMG guidelines and further specifications (**Figure 2A**) (13, 14). The data was  
181 further complemented with five patients harboring pathogenic variants in  
182 autosomal dominant genes *CHEK2*, *TRNT1*, *MECOM*, and the autosomal  
183 recessive genes *WRAP53* (compound heterozygous) and *ERCC6L2* (biallelic),  
184 which were identified apart from the CPSR algorithm during the clinical workup  
185 (**Figure 2A**). Thus, the WES analysis within our cohort yielded a total of 15  
186 (likely) pathogenic germline variants in 15 patients (**Figure 2B**). Most of the  
187 variants were found in DNA-damage repair pathway related genes, including  
188 *BRCA2*, *ATM*, *TP53* and *BARD1* or genes involved in proliferative signaling  
189 pathways (*NF1* and *TSC1*) (**Figure 2B**). Interestingly, both frameshift variants in  
190 *BARD1* were detected in neuroblastoma patients (n=2/9). Also, *POT1* stop  
191 variants, one of which was identified in one of the AML patients (15), have  
192 recently been linked to myeloid neoplasms (16). Overall, 4 out of 15 variants  
193 appeared *de-novo*, while the remaining 11 were inherited from at least one of  
194 the parents (**Figure 2B**). Taken together, our analysis yielded a total number of  
195 15 patients with (likely) pathogenic variants connected to cancer predisposition.  
196 These were predominantly identified in hematopoietic malignancies (n=8/43) as  
197 well as brain tumors (n=5/41) and neuroblastomas (n=2/9), while none were  
198 found in lymphomas, sarcomas and the “others” subtype (**Figure 2B**).

199

200 **The genetic predisposition checklist shows a high rate of false positives**  
201 **and misses every 4<sup>th</sup> child carrying a known cancer-causing variant**

202 To address the concordance between the checklist and the detected genomic  
203 alterations, both datasets were compared case-by-case. In total, out of 15  
204 patients harboring (likely) pathogenic cancer-related variants, 11 (73.3%) were  
205 checklist positive, while four (26.7%) were checklist negative (**Figure 3A,**  
206 **Supplementary Table 2**). There was a higher likelihood to identify a pathogenic  
207 variant in patients scoring in multiple criteria, with n=5/10 patients checking  
208 multiple criteria and displaying a cancer predisposing variant vs. n=6/40  
209 patients with only one positive criteria, respectively (Fisher's exact test,  
210 p=0.0299; **Figure S5**).

211 Children that were both checklist positive and harbored a (likely) pathogenic  
212 variant were almost equally selected via the diagnosis and phenotype criteria,  
213 followed by family history (**Figure 3B**). However, both the diagnosis and  
214 phenotype criterion scored similarly high in patients with pathogenic germline  
215 variants and patients without (**Figure 3B**). Interestingly, 50% of all analyzed  
216 MDS patients (n=5/10) carried a pathogenic variant, rendering the diagnosis  
217 criterion highly relevant for this specific subtype (**Figure 3C**). By correlating both  
218 checklist and genomic data, the clinical evaluation of an underlying cancer  
219 predisposition based on state-of-the-art knowledge about genetic predisposition  
220 and based on all assessed checklist criteria showed a sensitivity of 73.3%  
221 (n=11/15) and specificity of 68.5 % (n=85/124). Taking together, we utilized a  
222 very strict analytical approach, focusing on autosomal dominant and compound  
223 heterozygous/biallelic cancer-related pathogenic germline variant, which

224 detected a genetic predisposition in every 10-11<sup>th</sup> child. Out of these, every 4<sup>th</sup>  
225 child would have been missed by clinical selection criteria alone.

226 **Discussion:**

227 Diagnosing germline predisposition in pediatric cancer is essential, as it can  
228 convey implications for health care management, treatment and prevention (5).  
229 Another aspect is the scientifically often overlooked parent perspective, who  
230 might thrive to understand the question as to “why did our child develop  
231 cancer?”. Accordingly, our study reports exceedingly high acceptance rates,  
232 where 9 out of 10 families willingly participate in germline sequencing. This is  
233 also in line with recent meta-studies showing that parents report largely positive  
234 attitudes toward childhood genetic testing, appreciating it as beneficial rather  
235 than threatening (17). An extended study further confirms that children and  
236 young adults (ages 6-21 years) have a basic understanding of inherited disease  
237 predisposition within families and that they express an interest to undertake  
238 personal genetic testing (18). These analyses also underline the importance of  
239 structured, transparent and well-communicated approaches towards genetic  
240 testing, paired with a developmentally-sensitive genetic counselling, education  
241 and support for the complete family to avoid misinformation and  
242 misinterpretation.

243 As indications for genetic testing in daily practice are easily missed in children  
244 (19), user friendly selection tools are useful for pediatric oncologist to identify  
245 patients at risk for genetic susceptibilities (6). Nevertheless, the application of  
246 the respective checklists in pediatric cancer cohorts shows indications for  
247 referral to a clinical geneticist in around every 3<sup>rd</sup> case, while genetically verified  
248 cancer predispositions are only found in up to 15% (9, 20). Here, our data  
249 confirm a positive checklist in 36% of all patients within our cohort (n=50/139)

250 and an actual rate of tumor predisposition of 10.8% (n=15/139), out of which  
251 2.9% (n=4/139) scored checklist negative.

252 While the general frequency per cancer entity in our cohort corresponds to a  
253 normal disease distribution, our cohort shows an unusually high rate of MDS  
254 patients (7.2%) compared to the expected frequency monitored through the  
255 German Childhood Cancer Registry (2.5%) (21). Since MDS is automatically  
256 marked as positive for genetic testing in our checklist, this leads to a small bias  
257 towards checklist positive cases via the diagnosis criterion in our analysis.  
258 Nevertheless, diagnosis still ranks as one of the most applicable categories  
259 within our cohort, even after exclusion of surplus MDS cases. Interestingly,  
260 overall, an underlying genetic cancer predisposition could be verified in half  
261 (n=5) of all analyzed MDS patients, out of which two presented with silent  
262 phenotypes. Therefore, our results highlight an exceedingly high rate of genetic  
263 predisposition in children with MDS (50%).

264 Apart from its upsides in referring patients with MDS for genetic testing, the  
265 applied checklist only reached a specificity of 68.5%. Thus, based on our  
266 current knowledge about cancer predisposition, the majority of checklist positive  
267 cases (n=39/50) were categorized as false positives. Nevertheless, the  
268 presence of so far unknown cancer related susceptibilities, or of pathogenic  
269 variants, which were missed by our analysis, in these patients cannot be ruled  
270 out. With new approaches to detect cancer predisposition, like digenic  
271 predisposition scenarios or the relevance of structural alterations still being in its  
272 infancy (11, 23), the true checklist specificity might indeed be much higher.  
273 Also, the high occurrence of VUS in our cohort suggests additional potentially  
274 predisposing variants, with novel so far unrecognized cancer susceptibilities

275 and emphasizes the rising need for validated functional testing strategies. This  
276 would also explain why some cancer subtypes within our cohort (lymphoma,  
277 sarcoma or “others”) showed no pathogenic cancer-related variants. For  
278 lymphomas the absence of identified pathogenic variants could be rooted in the  
279 application of the utilized CPSR gene list, which might miss immune-deficiency-  
280 related genetic predisposition. Also, the sarcoma group includes almost 40% of  
281 *EWS-FLI1* driven Ewing Sarcomas. Thus, similar to adult Ewing sarcomas,  
282 there might be no additional genetic predisposition relevant (22), or it would only  
283 be low penetrant and therefore not detected by our algorithm.

284 Nevertheless, every 4<sup>th</sup> patient within our cohort harboring a cancer  
285 predisposition would have gone unrecognized by just applying the clinical  
286 criteria, which only translates to a checklist sensitivity of 73.3%. While other  
287 studies showed higher sensitivity rates of 90-100%, this is mostly attributed to  
288 how strictly the respective cancer predisposition is defined (20, 24). Hence, as  
289 soon as the search field is broadened outside of the top 5-10% of the classical  
290 known cancer predispositions, the sensitivity of clinically implemented checklists  
291 drops drastically (9). However, not recognizing a cancer predisposition might be  
292 fatal, since its knowledge not only allows surveillance to detect early signs of  
293 disease progression but is also crucial to promptly offer hematopoietic stem cell  
294 transplantation (HSCT) and choose the right donors, as asymptomatic carriers  
295 can occur within a family (25).

296 Taken together, while our data show that clinical checklists can be helpful to  
297 detect genetic predisposition in children with cancer, particular in the context of  
298 certain disease entities like MDS, we highlight that a high amount of genetically  
299 predisposed children are currently missed. This emphasizes the need for

300 routine clinical germline sequencing in pediatric oncology as an essential  
301 necessity to detect currently known predispositions.

## 302 **Materials and Methods**

### 303 **Patient enrollment and data/sample collection**

304 Patients <19 years of age were recruited unselectively at the Pediatric  
305 Oncology Department, Dresden (years 2019 until 2021). Consent of the families  
306 was obtained according to the Ethical Vote EK 181042019 (Dresden) and in line  
307 with the Declaration of Helsinki. The informed consent was obtained by a  
308 neutral pediatric oncologist trained in genetic counseling, explaining both  
309 benefits and drawbacks of the study. All patients and families were aware that  
310 they can retract their consent at any time. After agreeing to participate, the  
311 clinical data collection was carried out as described in **Figure 1A**. A checklist  
312 provided by the Deutsche Krebsgesellschaft (DKG) and Gesellschaft für  
313 pädiatrische Onkologie und Hämatologie (GPOH) Version “checkliste\_kio-  
314 A1\_170509” (2019) was used to evaluate indications for genetic testing. If  
315 applicable, DNA of the patient was extracted from cultured skin fibroblasts.  
316 Therefore, the skin piece removed during implantation of the central venous  
317 catheter, which normally goes to waste, was utilized. For the remaining patients  
318 and the parents, peripheral blood (PB) was used.

### 319 **Cell culture**

320 Primary fibroblasts were cultured in BIO-AMF™-2 Medium (Biological-  
321 Industries, Kibbutz Beit Haemek, Israel) up to 5 passages.

### 322 **Sample preparation and analysis pipeline**

323 DNA was extracted from the patient's fibroblasts using the AllPrep DNA/RNA  
324 Mini Kit (Qiagen, Venlo, Netherlands) and from PB of the parents and the  
325 remaining patient's using the QIAamp DNA Blood Mini Kit (Qiagen). Next-



326 generation sequencing libraries for WES were generated using the SureSelect  
327 Human All Exon V7 kit (Agilent Technologies, Santa Clara, California, USA).  
328 The libraries were sequenced on a NovaSeq 6000 platform (Illumina, San  
329 Diego, CA 92122, USA) in paired-end mode (2 x 150bp) and with a final on-  
330 target coverage of >100x. Processing of the WES data was carried out as  
331 previously described (20) with the following settings: Read files in the fastq  
332 format were generated with bcl2fastq v2.19.0, and trimmomatic v0.39 was used  
333 to remove adapter and low-quality sequences (26). The alignment to the human  
334 reference genome GRCh38 was performed using BWA-MEM v0.7.17 (27) and  
335 Samtools v1.2 (28). The tool Peddy 0.4.8 (29) performed gender and  
336 relatedness analyses to validate the correct sample assignment and the  
337 expected relationship of the patient's data with the corresponding parents' data.  
338 Single nucleotide variants (SNVs) and insertion/deletions (indels) were called  
339 using GATK v4.1.4.1 and VarScan2 v2.3.9 (30), applying the trio mode.  
340 Additionally, platypus v0.8.1 (31) was used to call indels (default filter setting).  
341 Initial variant interpretation was carried out with the Cancer Predisposition  
342 Sequencing Reporter (CPSR, v.1.0.1) (12), which classified the variants as  
343 pathogenic, likely pathogenic, variant of uncertain significance (VUS), likely  
344 benign or benign. Subsequent genetic assessment according to ACMG and  
345 further specifications (see comment above)

### 346 **Sanger Sequencing**

347 Validation of the identified pathogenic germline variants was carried out using  
348 PCR-based Sanger Sequencing utilizing the following primer pairs:

<b>Gene</b>	<b>Primer name</b>	<b>Sequence 5'--&gt;3'</b>
<i>ATM</i>	ATM_p.Thr1029AsnfsTer19_F	TAGCCATTCTATGGTAGCCC

	ATM_p.Thr1029AsnfsTer19_R	TGCGAACTTGGTGATGATTGT
<i>BARD1</i>	BARD1_p.Asn318GlufsTer22_F	GTCTCTTTACCATTGGCTGAGCA
	BARD1_p.Asn318GlufsTer22_R	CGTTTGCATGAAGGTGGTGAA
	BARD1_p.Cys645Ter_F	TAGGAAGCGCTGTTGAACCC
	BARD1_p.Cys645Ter_R	ACTTCCGTATGCTCGTTGGAA
<i>BRCA2</i>	BRCA2_p.Met1?_F	GAATGCATCCCTGTGTAAGTGC
	BRCA2_p.Met1?_R	GGTTCTAAGCAACACTGTGACG
	BRCA2_p.His2090Ter_F	CGAACATTCAGACCAGCTCAC
	BRCA2_p.His2090Ter_R	CACAGTGCTCTGGGTTTCTCT
	BRCA2_p.Asn1405ArgfsTer7_F	GGAAGTTGCGAAAGCTCAAGAA
	BRCA2_p.Asn1405ArgfsTer7_R	TTCATCACGTTTCGGGTTGTCC
<i>CHEK2</i>	CHEK2_p.Thr410MetfsTer15_F	TGCCTTTCCCTGTTTCTCAAGT
	CHEK2_p.Thr410MetfsTer15_R	AAACTCCCACCACAGCACAT
<i>ERCC6L2</i>	ERCC6L2_p.Arg655Ter_F	TACCTCTTCAACCCAAAGTTGCT
	ERCC6L2_p.Arg655Ter_R	AAGATCCCTTGGTAATTCGCATGT
<i>MECOM</i>	MECOM_p.Cys831Ser_F	GCTACTGTTCCCTCAATGTGCTT
	MECOM_p.Cys831Ser_R	ACCGGACATGTTCCCATTCT
<i>NF1</i>	NF1_c.2991-1G>A_F	GGGTGCACTTACTCTGTGTGTTTA
	NF1_c.2991-1G>A_R	CAACTTCTGGCTACCTTACTGTC
<i>POT1</i>	POT1_p.Gln199Ter_F	ACTCTACTCTCTTATGGCAGGT
	POT1_p.Gln199Ter_R	CATCACCTTCAGAGATCTTGCC
<i>TP53</i>	TP53_p.Gln167Ter_F	GGAGGTGCTTACGCATGTTTG
	TP53_p.Gln167Ter_R	CACACGCAAATTCCTTCCA
<i>TRNT1</i>	TRNT1_p.Ser418fs_F	AGCAGTGGTCCATTCCCTCCAT
	TRNT1_p.Ser418fs_R	GTTGTTCTACAGAGGTCCCCTA
<i>TSC1</i>	TSC1_p.Gln655Ter_F	TGCCAAAGACAGCCCATCAT
	TSC1_p.Gln655Ter_R	CACAGAAGAGAGTGCCCCAG
<i>WRAP53</i>	WRAP53_p.Arg398Trp_F	GCAAGACCTGTTTTAGCCC
	WRAP53_p.Arg398Trp_R	CTCCCTTGGAGGCACAGATG

349

### 350 **Data availability statement**

351 (Likely) Pathogenic variant identified in the study were submitted to ClinVar  
 352 (<https://www.ncbi.nlm.nih.gov/clinvar/>). The raw datasets generated during  
 353 and/or analyzed during the current study are not publicly available due to  
 354 personal data restrictions but are available from the corresponding authors on  
 355 reasonable request.

356

### 357 **Acknowledgements**

358 The authors would like to thank all members of our groups for useful  
359 discussions and for their critical reading of the manuscript. Special thanks go to  
360 Carolin Melzig, Anne Schedel, Pia Michler, Rajanya Ghosh and Mina Morcos  
361 for sample preparation and documentation.

362

### 363 **Disclosure of Potential Conflicts of Interest**

364 The authors declare no potential conflicts of interest.

365

### 366 **Grant Support**

367 J.H. is supported by ERC Stg 85222 “PreventALL”, ERA Per Med.JTC 2018  
368 “GEPARD”, Deutsche Kinderkrebshilfe (DHK) Exzellenz Förderprogramm für  
369 etablierte Wissenschaftlerinnen und Wissenschaftler 70114539, and  
370 Sonnenstrahl e.V. Dresden – Förderkreis für krebserkrankte Kinder und  
371 Jugendliche.

## 372 References

- 373 1. Parsons DW, Roy A, Yang Y, Wang T, Scollon S, Bergstrom K, et al. Diagnostic  
374 Yield of Clinical Tumor and Germline Whole-Exome Sequencing for Children With Solid  
375 Tumors. *JAMA Oncol.* 2016;2(5):616-24.
- 376 2. Zhang J, Walsh MF, Wu G, Edmonson MN, Gruber TA, Easton J, et al.  
377 Germline Mutations in Predisposition Genes in Pediatric Cancer. *N Engl J Med.*  
378 2015;373(24):2336-46.
- 379 3. Narod SA, Stiller C, Lenoir GM. An estimate of the heritable fraction of  
380 childhood cancer. *Br J Cancer.* 1991;63(6):993-9.
- 381 4. Brodeur GM, Nichols KE, Plon SE, Schiffman JD, Malkin D. Pediatric Cancer  
382 Predisposition and Surveillance: An Overview, and a Tribute to Alfred G. Knudson Jr.  
383 *Clin Cancer Res.* 2017;23(11):e1-e5.
- 384 5. Ripperger T, Bielack SS, Borkhardt A, Brecht IB, Burkhardt B, Calaminus G, et  
385 al. Childhood cancer predisposition syndromes-A concise review and  
386 recommendations by the Cancer Predisposition Working Group of the Society for  
387 Pediatric Oncology and Hematology. *Am J Med Genet A.* 2017;173(4):1017-37.
- 388 6. Jongmans MC, Loeffen JL, Waanders E, Hoogerbrugge PM, Ligtenberg MJ,  
389 Kuiper RP, et al. Recognition of genetic predisposition in pediatric cancer patients: An  
390 easy-to-use selection tool. *Eur J Med Genet.* 2016;59(3):116-25.
- 391 7. Kuhlen M, Borkhardt A. Cancer susceptibility syndromes in children in the area  
392 of broad clinical use of massive parallel sequencing. *Eur J Pediatr.* 2015;174(8):987-  
393 97.
- 394 8. Knapke S, Nagarajan R, Correll J, Kent D, Burns K. Hereditary cancer risk  
395 assessment in a pediatric oncology follow-up clinic. *Pediatr Blood Cancer.*  
396 2012;58(1):85-9.
- 397 9. Byrjalsen A, Hansen TVO, Stoltze UK, Mehrjouy MM, Barnkob NM, Hjalgrim LL,  
398 et al. Nationwide germline whole genome sequencing of 198 consecutive pediatric  
399 cancer patients reveals a high incidence of cancer prone syndromes. *PLoS Genet.*  
400 2020;16(12):e1009231.
- 401 10. Druker H, Zellek K, McGee RB, Scollon SR, Kohlmann WK, Schneider KA, et  
402 al. Genetic Counselor Recommendations for Cancer Predisposition Evaluation and  
403 Surveillance in the Pediatric Oncology Patient. *Clin Cancer Res.* 2017;23(13):e91-e7.
- 404 11. Lin M, Nebral K, Gertzen CGW, Ganmore I, Haas OA, Bhatia S, et al. JAK2  
405 p.G571S in B-cell precursor acute lymphoblastic leukemia: a synergizing germline  
406 susceptibility. *Leukemia.* 2019;33(9):2331-5.
- 407 12. Nakken S, Saveliev V, Hofmann O, Moller P, Myklebost O, Hovig E. Cancer  
408 Predisposition Sequencing Reporter (CPSR): A flexible variant report engine for high-  
409 throughput germline screening in cancer. *Int J Cancer.* 2021;149(11):1955-60.
- 410 13. Rehm HL, Berg JS, Brooks LD, Bustamante CD, Evans JP, Landrum MJ, et al.  
411 ClinGen--the Clinical Genome Resource. *N Engl J Med.* 2015;372(23):2235-42.
- 412 14. Richards S, Aziz N, Bale S, Bick D, Das S, Gastier-Foster J, et al. Standards  
413 and guidelines for the interpretation of sequence variants: a joint consensus  
414 recommendation of the American College of Medical Genetics and Genomics and the  
415 Association for Molecular Pathology. *Genet Med.* 2015;17(5):405-24.
- 416 15. Michler P, Schedel A, Witschas M, Friedrich UA, Wagener R, Mehtonen J, et al.  
417 Germline POT1 Dereglulation Can Predispose to Myeloid Malignancies in Childhood.  
418 *Int J Mol Sci.* 2021;22(21).
- 419 16. Lim TL, Lieberman DB, Davis AR, Loren AW, Hausler R, Bigdeli A, et al.  
420 Germline POT1 variants can predispose to myeloid and lymphoid neoplasms.  
421 *Leukemia.* 2022;36(1):283-7.
- 422 17. Lim Q, McGill BC, Quinn VF, Tucker KM, Mizrahi D, Patenaude AF, et al.  
423 Parents' attitudes toward genetic testing of children for health conditions: A systematic  
424 review. *Clin Genet.* 2017;92(6):569-78.

- 425 18. McGill BC, Wakefield CE, Vetsch J, Barlow-Stewart K, Kasparian NA,  
426 Patenaude AF, et al. Children and young people's understanding of inherited  
427 conditions and their attitudes towards genetic testing: A systematic review. *Clin Genet.*  
428 2019;95(1):10-22.
- 429 19. Merks JH, Caron HN, Hennekam RC. High incidence of malformation  
430 syndromes in a series of 1,073 children with cancer. *Am J Med Genet A.*  
431 2005;134A(2):132-43.
- 432 20. Wagener R, Taeubner J, Walter C, Yasin L, Alzoubi D, Bartenhagen C, et al.  
433 Comprehensive germline-genomic and clinical profiling in 160 unselected children and  
434 adolescents with cancer. *Eur J Hum Genet.* 2021;29(8):1301-11.
- 435 21. Erdmann F, Kaatsch P, Grabow D, Spix C. German Childhood Cancer Registry  
436 - Annual Report 2019 (1980-2018). Institute of Medical Biostatistics, Epidemiology and  
437 Informatics (IMBEI) at the University Medical Center of the Johannes Gutenberg  
438 University Mainz; 2020.
- 439 22. Jahn A, Rump A, Widmann TJ, Heining C, Horak P, Hutter B, et al.  
440 Comprehensive cancer predisposition testing within the prospective MASTER trial  
441 identifies hereditary cancer patients and supports treatment decisions for rare cancers.  
442 *Ann Oncol.* 2022.
- 443 23. Sabatella M, Mantere T, Waanders E, Neveling K, Mensenkamp AR, van Dijk F,  
444 et al. Optical genome mapping identifies a germline retrotransposon insertion in  
445 SMARCB1 in two siblings with atypical teratoid rhabdoid tumors. *J Pathol.*  
446 2021;255(2):202-11.
- 447 24. Chan SH, Chew W, Ishak NDB, Lim WK, Li ST, Tan SH, et al. Clinical  
448 relevance of screening checklists for detecting cancer predisposition syndromes in  
449 Asian childhood tumours. *NPJ Genom Med.* 2018;3:30.
- 450 25. Kennedy AL, Shimamura A. Genetic predisposition to MDS: clinical features  
451 and clonal evolution. *Blood.* 2019;133(10):1071-85.
- 452 26. Bolger AM, Lohse M, Usadel B. Trimmomatic: a flexible trimmer for Illumina  
453 sequence data. *Bioinformatics.* 2014;30(15):2114-20.
- 454 27. Li H, Durbin R. Fast and accurate long-read alignment with Burrows-Wheeler  
455 transform. *Bioinformatics.* 2010;26(5):589-95.
- 456 28. Li H, Handsaker B, Wysoker A, Fennell T, Ruan J, Homer N, et al. The  
457 Sequence Alignment/Map format and SAMtools. *Bioinformatics.* 2009;25(16):2078-9.
- 458 29. Pedersen BS, Quinlan AR. Who's Who? Detecting and Resolving Sample  
459 Anomalies in Human DNA Sequencing Studies with Peddy. *Am J Hum Genet.*  
460 2017;100(3):406-13.
- 461 30. Koboldt DC, Zhang Q, Larson DE, Shen D, McLellan MD, Lin L, et al. VarScan  
462 2: somatic mutation and copy number alteration discovery in cancer by exome  
463 sequencing. *Genome Res.* 2012;22(3):568-76.
- 464 31. Rimmer A, Phan H, Mathieson I, Iqbal Z, Twigg SRF, Consortium WGS, et al.  
465 Integrating mapping-, assembly- and haplotype-based approaches for calling variants  
466 in clinical sequencing applications. *Nat Genet.* 2014;46(8):912-8.

467

468 **Figure and Table legends**

469

470 **Table 1:**

471 Detailed clinical characteristics of the analyzed cohort (n=139)

472

473 **Figure 1:**

474 (A) Study workflow comprising the following steps: (1) families are informed  
475 and provided with all required information about the study, before (2)  
476 signing the study consent. (3) Clinical data, including a three-generation  
477 pedigree is collected together with (4) a blood or fibroblast sample. (5)  
478 Whole exome sequencing is performed and (6) analyzed to identify all  
479 germline variants in the patient.

480 (B) Distribution of tumor entities within the study cohort. Abbreviations: MDS  
481 – Myelodysplastic Syndrome, NB – Neuroblastoma.

482 (C) Age distribution of the patients at diagnosis according to disease entity.

483 (D) Patients were examined with respect to the 5 categories of the applied  
484 checklist. As soon as one category was positive, the whole questionnaire  
485 was considered as positive. Multiple positive categories were possible.

486 (E) Detailed representation of the noted phenotypes within the study cohort.  
487 VSD - Ventricular septal defect.

488

489 **Figure 2:**

490 (A) Left: Likely pathogenic and pathogenic variants, as well as variants of  
491 uncertain significance (VUS) identified by CPSR within the complete

492 cohort. Right: variants selected for autosomal dominant inheritance and a  
493 direct cancer relevance in the respective child are highlighted in darker  
494 colouring. Variants displayed in purple represent cancer predispositions,  
495 which were detected outside of the CPSR algorithm during clinical  
496 workup.

497 (B) List and distribution of selected cancer predisposing variants among  
498 different entities in the study cohort; a: the child inherited both variants  
499 from the heterozygotic parents and is homozygotic for this variant  
500 (biallelic expression); the *CHEK2* variant listed in the leukemia group was  
501 found in a patient with transient myeloproliferative disease (TMD). MDS –  
502 Myelodysplastic Syndrome, NB – Neuroblastoma, Inher. – Inheritance

503

504 **Figure 3:**

505 (A) Upper: Distribution of cancer predisposing variants among checklist  
506 positive and negative patients. Lower: Patients with predisposing variants  
507 grouped for checklist outcome.

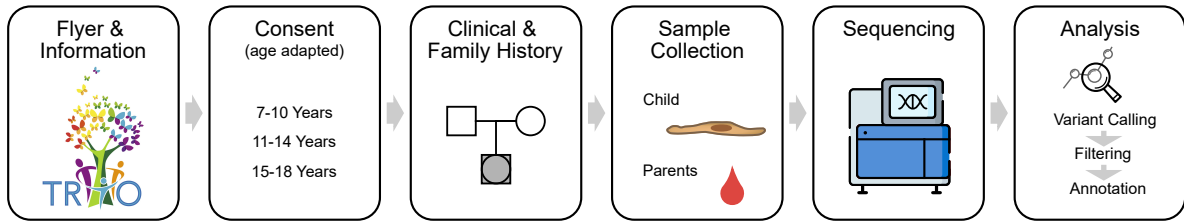
508 (B) Checklist positive patients are separated into patients with (top) and  
509 without (bottom) cancer predisposing variants. The noted checklist  
510 categories are shown for each group individually. Multiple positive  
511 categories are possible.

512 (C) Patients which scored checklist positive through the diagnosis criteria.  
513 Patients with a proven cancer predisposition are marked accordingly.

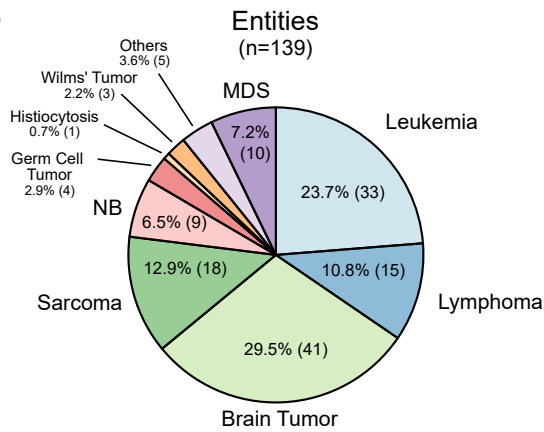
<b>Sex:</b>	
Male	71 (51.1%)
Female	68 (48.9%)
<b>Age at Diagnosis:</b>	
0-5 yrs	61 (43.9%)
6-10 yrs	26 (18.7%)
11-15 yrs	40 (28.8%)
16-18 yrs	12 (8.6%)
<b>Diagnosis:</b>	
<b>Leukemia</b>	33 (23.7%)
Acute myeloid leukemia	6
B-cell acute lymphoblastic leukemia	22
T-cell acute lymphoblastic leukemia	5
<b>Brain Tumor</b>	41 (29.5%)
Astrocytoma	11
Atypical teratoid/rhabdoid tumor	2
Ependymoma	3
Ganglioglioma	4
Glioblastoma	1
Glioma	8
Medulloblastoma	7
Other	5
<b>Sarcoma</b>	18 (12.9%)
Ewing Sarcoma	7
Osteosarcoma	5
Rhabdomyosarcoma	4
Soft-tissue sarcoma	2
<b>Lymphoma</b>	15 (10.8%)
Anaplastic large cell lymphoma (ALCL)	2
Burkitt Lymphoma	2
Diffuse large B-cell lymphoma (DLBCL)	1
Hodgkin Lymphoma	7
precursor B-cell lymphoblastic lymphoma (pB-LBL)	2
T-cell lymphoma	1
<b>Neuroblastoma</b>	9 (6.5%)
<b>Others</b>	23 (16.5%)
Desmoid-Tumor	1
Germ cell tumor	4
Histiocytosis	1
Melanocytic tumors of uncertain malignant potential (MELTUMP)	1
Melanoma	1
Myelodysplastic syndrome (MDS)	10
Neuroendocrine tumor	2
Wilms' Tumor	3



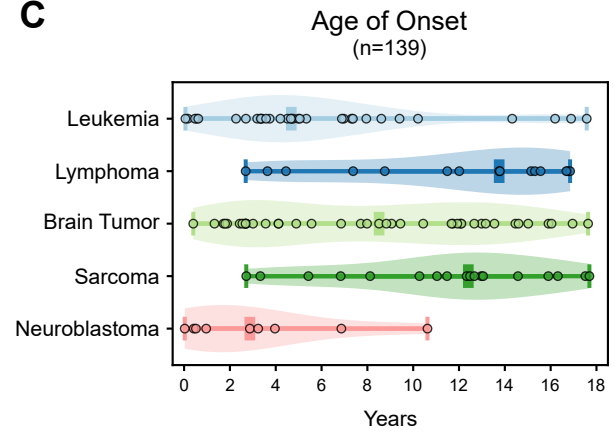
**A**



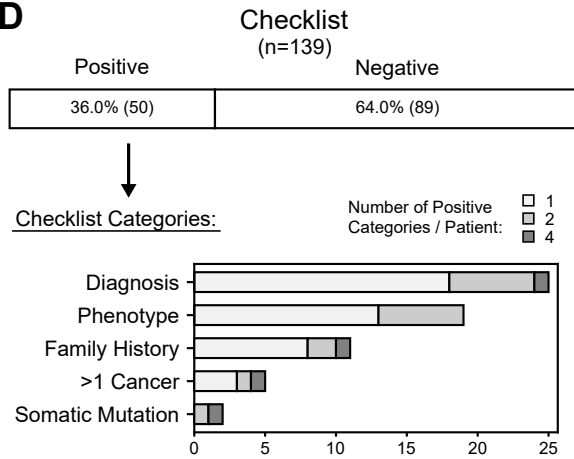
**B**



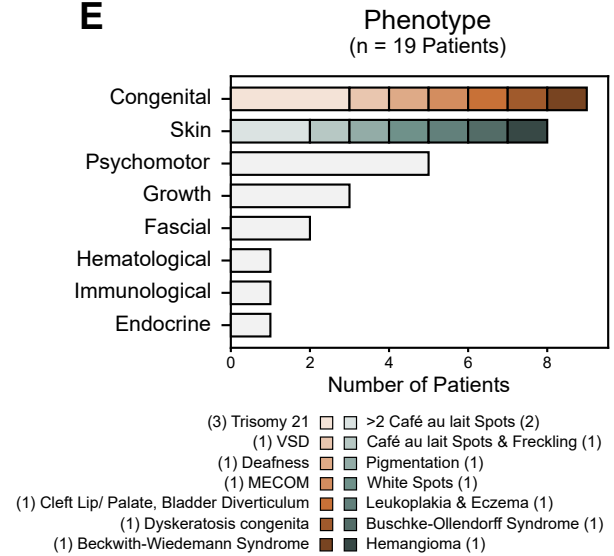
**C**



**D**

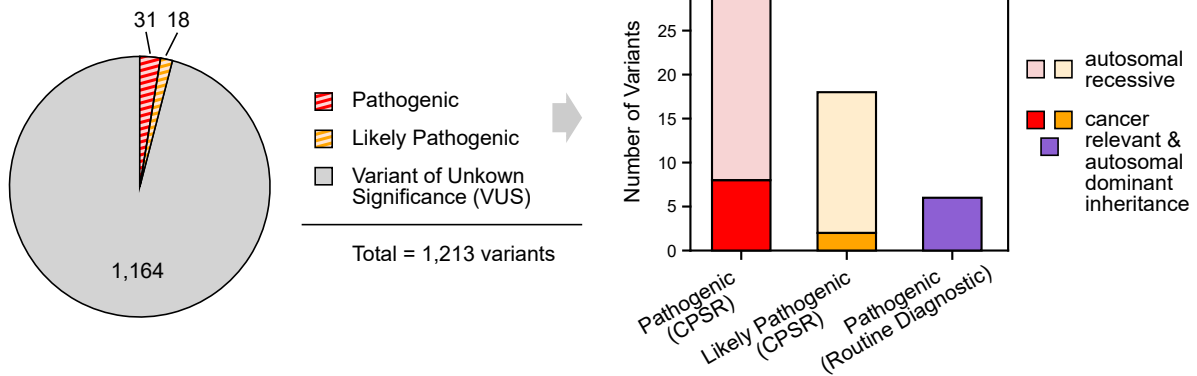


**E**



**Figure 1**

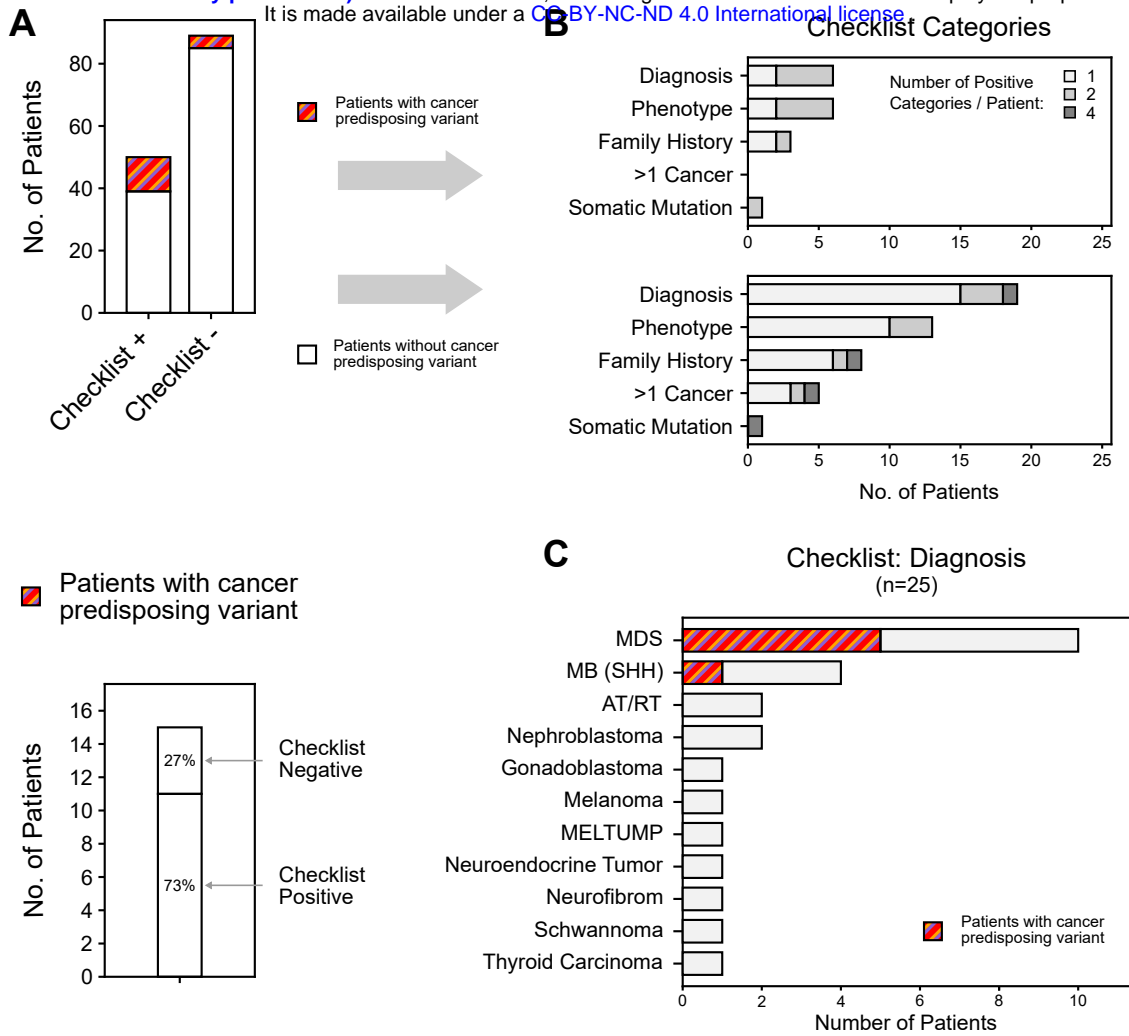
**A** CPSR Results  
(n = 139 Patients)



**B**

	Gene	Variant	Effect	Inher.	Distribution	n
MDS	BRCA2	p.H2090Lfs*29	frameshift	father		10
	WRAP53	p.R398W	missense	mother		
	WRAP53	p.V302F	missense	father		
	ERCC6L2	p.R655*	stop_gained	both <sup>a</sup>		
	TRNT1	p.S418Kfs*9	frameshift	father		
	MECOM	p.C831S	missense	<i>de novo</i>		
NB	BARD1	p.N318Efs*22	frameshift	father		9
	BARD1	p.C645*	frameshift	mother		
Brain Tumor	TSC1	p.Q655*	stop_gained	father		41
	NF1		splice_acceptor	<i>de novo</i>		
	BRCA2	p.N1405Rfs*7	frameshift	father		
	ATM	p.T1029Nfs*19	frameshift	father		
	TP53	p.Q167*	stop_gained	<i>de novo</i>		
Leukemia	POT1	p.Q199*	stop_gained	<i>de novo</i>		33
	BRCA2	p.M1?	start_lost	mother		
	CHEK2	p.T410Mfs*15	frameshift	father		
Lymphoma						15
Sarcoma						18
Others						13

**Figure 2**



**Figure 3**