

Application of a multispecies probiotic reduces gastro-intestinal discomfort and induces microbial changes after colonoscopy

1 **J. Labenz^{1*}, D. P. Borkenstein¹, F. J. Heil², A. Madisch³, U. Tappe⁴, H. Schmidt⁵, B. Terjung⁶, I.**
2 **Klymiuk⁷, A. Horvath^{8,9}, M. Gross¹⁰, V. Stadlbauer^{8,9}**

3 ¹Department of Internal Medicine, Diakonie Klinikum Jung-Stilling, Siegen, Germany.

4 ²Praxis Dr. Heil und Dr. Müller, Andernach, Germany.

5 ³Department of Internal medicine I, Hospital Clinic Siloah, Hanover, Germany

6 ⁴Gastropraxis an der St. Barbara Klinik, Hamm, Germany.

7 ⁵Praxis für Innere Medizin und Gastroenterologie Dr. H. Schmidt, Berlin, Germany.

8 ⁶St.-Josef-Hospital Bonn Beuel, Bonn, Germany.

9 ⁷Division of Cell Biology, Histology and Embryology, Gottfried Schatz Research Center, Medical
10 University of Graz, Graz, Austria.

11 ⁸Division for Gastroenterology and Hepatology, Department of Internal Medicine, Medical
12 University of Graz, Graz, Austria.

13 ⁹Center for Biomarker Research in Medicine (CBmed), Graz, Austria.

14 ¹⁰Department of Internal medicine, Internistisches Klinikum München Süd, Munich, Germany.

15

16 * **Correspondence to** info@joachim-labenz.de

17

18 **Keywords:** adverse events, colonization, colonoscopy, colorectal cancer, multispecies probiotic,
19 prevention.

20 **Running title:** Multispecies probiotic after colonoscopy.

21

22 **Abstract**

23 Even after decades of research and pharmaceutical development, cancer is still one of the most
24 common causes of death in the western population and the management of cancer will remain a
25 major challenge of medical research. One of the most common types of cancer is colorectal cancer
26 (CRC). Prevention by detection of early-stage precursors is the most reliable method to prevent CRC
27 development. In dependence of age, familial predisposition, and other risk factors the preventative
28 routine screening for CRC by colonoscopy should be performed at least twice in intervals of about
29 ten years. Although colonoscopy is a life-saving clinical examination reducing both incidence and
30 mortality of CRC significantly, it has still a bad reputation in the population as an uncomfortable
31 procedure with unpleasant side effects lasting sometimes over days to weeks. These effects are most
32 likely caused by the bowel preparation before colonoscopy, which is crucial for a successful
33 colonoscopy with high quality. Beside pain, bleeding and other rare but severe complications of

34 colonoscopy, cleaning of the intestinal mucosa alters the gut microbiome significantly and
35 consistently. Abdominal pain, cramps, diarrhea, nausea, bloating, and constipation are common
36 adverse events which can continue to affect patients for days or even weeks after the procedure. In
37 this multicenter, placebo controlled, double blind clinical trial, we investigated the effect of an
38 intervention with a multispecies probiotic formulation for 30 days on the adverse events due to bowel
39 preparation. We show that the treatment of participants with the multispecies probiotic formulation
40 decreases the number of days with constipation significantly, and reduced pain, bloating, diarrhea,
41 and general discomfort. 16S based amplicon analyses reveal recovery of administered probiotic
42 strains from stool samples and differences in alpha diversity dynamics with higher variability in the
43 probiotic group compared to the placebo group. In conclusion, the probiotic ameliorates the side
44 effects after colonoscopy and might be an important supplement to increase acceptance of this life-
45 saving preventative examination. Further, we present here for the first time that probiotic intervention
46 of only 30 days affects alpha diversity parameters in stool samples.

47 **1 Introduction**

48 Global cancer statistics exhibit cancer still as the leading cause of death worldwide (1). Tumor
49 entities with the highest prevalence in world population are lung, liver, breast, stomach, and colon
50 cancer (1) with increasing incidences in western populations due to various risk factors like live style,
51 genetic factors, or nutritional habits (2). Colorectal cancer (CRC), if not diagnosed at early stages, is
52 associated with a poor prognosis. Moreover, the incidence of early onset of this tumor form (below
53 the age of 50 years) is increasing during the last 30 years (3). Today, CRC is a global health burden
54 and although therapeutic treatment approaches are improving and five-years survival rates are
55 increasing, a preventive medical examination is still the best way to avoid the development of CRC.
56 The gold standard for CRC-prevention by removal of benign polyps and by early CRC-detection is
57 colonoscopy in asymptomatic individuals (4). Most European countries and a multiplicity of
58 countries worldwide developed preventive programs from age of 50 with ten years of screening
59 intervals (5–7). Colonoscopy is a generally safe and well-tolerated method to visualize the distal
60 terminal ileum and the entire colon (8,9). Importantly, the quality of this clinical investigation
61 depends largely on an adequate bowel preparation prior to the examination to remove residual fecal
62 content (10,11). Clinical research aims to improve the methods of bowel preparation with respect to
63 cleansing effect and tolerability (12–14).

64 Despite all efforts, bowel preparation by colonic lavage is an exhausting procedure for many patients.
65 Standards in bowel preparation define the consumption of oral sulfate solution (OSS) or polyethylene
66 glycol with ascorbic acid (PEG + ASC) (15). During the process of bowel preparation, water passes
67 from the tissue into the lumen of the intestine, thereby flushing fecal content. As side effect of this
68 procedure, the microbial homeostasis might be disturbed and increasing evidence suggests that these
69 preparations have significant impact on the diversity and the composition of the fecal microbiota
70 (16–19). While some studies report short term alterations of the intestinal microbiome (20–22),
71 Drago et al. (18) demonstrated significant and persisting changes regarding the abundance of
72 different bacterial phyla after bowel preparation followed by colonoscopy. The bowel preparation
73 decreased the abundance of *Firmicutes*, especially *Lactobacilli* which have a health-promoting effect,
74 whereas *Proteobacteria* abundance is increased (18,23,24). In addition to the luminal microbiome, it
75 has been shown that standard bowel cleansing adversely affects the mucosa-associated microbiota
76 (25).

77 Changes in the intestinal microbiome following bowel lavage and colonoscopy may also contribute
78 to abdominal symptoms including bloating, abdominal pain or altered bowel function (26). Even

79 more severe side-effects of the colonoscopy like appendicitis have been reported (27,28). According
80 to these findings, bowel preparation may induce short-term or even persisting side effects thereby
81 affecting the patient's wellbeing. A potential therapeutic strategy to restore a balanced composition
82 of the intestinal microbiome after colonoscopy is the use of probiotics – live microorganisms that
83 confer a health benefit on the host when administered in adequate amounts (29). To date, only few
84 studies have evaluated the effect of probiotics on gastrointestinal symptoms and microbiome
85 modulations in patients undergoing colonoscopy and healthy volunteers (30,31). The administration
86 of probiotic bacteria ameliorates or shortens the days of abdominal pain especially in patients with
87 pain before colon lavage and colonoscopy (30). In a study by Deng et al., the researchers focused on
88 the fecal microbiome showing that bacterial phyla are affected during and after bowel preparation
89 (31). Probiotics administered directly after colon lavage for five to seven days exhibited positive
90 effects on the microbial composition by increasing the abundance of bacterial genera including
91 *Bacteroides* and *Faecalibacterium* and by decreasing the abundance of taxa like *Acinetobacter* and
92 *Streptococcus* (31). These preliminary studies indicated that probiotics may both alleviate side effects
93 arising from bowel preparation followed by colonoscopy and improve intestinal dysbiosis.

94 In this prospective, double-blind and placebo-controlled study we tested the hypotheses that a
95 multispecies probiotic applied for 30 days immediately after colon lavage followed by a preventive
96 colonoscopy ameliorates duration and intensity of abdominal symptoms and improves the restoration
97 of the intestinal microbiome as assessed by 16S rRNA analysis from of DNA isolated from stool
98 samples.

99 **2 Material and Methods**

100 **2.1 Study overview and design**

101 For this prospective, multicenter, randomized, double-blind and placebo-controlled clinical trial
102 asymptomatic participants undergoing routine colonoscopy for preventative examination were
103 recruited at nine different centers for gastroenterology in Germany. Inclusion criteria for participating
104 were a good health status without diagnosed bowel disease, an age of 50 - 80 years as well as the
105 written consent for participation to the study. Exclusion criteria for participation were diagnosed
106 bowel disease, application of probiotic supplementation in the last four weeks before onset of the
107 study or the use of additional probiotics rather than the study medication. Further, the use of
108 antibiotic therapy in the last four weeks before the colonoscopy or during the 30 days of observation
109 period, immunosuppressive therapy, the use of proton pump inhibitors, an age younger than 50 years
110 or older than 80 years as well as the lack of written, informed consent to participate in the study. We
111 hypothesize in this study that the administration of a special formulated multispecies probiotic
112 rebuilds a reduced intestinal microbiome faster after colonoscopy than administration of a placebo.
113 Strains for the probiotic were selected based on their properties for resistance to acids and pancreatin,
114 adherence to intestinal cells, pathogen inhibition (growth inhibition tests), inhibition of *Clostridioides*
115 *difficile* growth (toxin production), barrier function (transepithelial electrical resistance test), mast
116 cell inhibition, induction of T-cell differentiation and effect on cytokine production. Further, we
117 hypothesize that the number of days with gastrointestinal complaints are reduced in the group of
118 patients that receives the probiotic formulation compared to the placebo group. To test this
119 hypothesis the primary aim of the study was to examine the influence of a probiotic intervention on
120 the (re-)colonization of the gut microbiome after bowel preparation for colonoscopy. Secondary aims
121 were to determine the number of days with general gastrointestinal complaints (abdominal pain,
122 bloating, heartburn, nausea, vomiting, diarrhea, constipation) the probands reported as well as to the
123 stool characteristics reported from the probands during days after bowel preparation and colonoscopy

124 according to the Bristol Stool scale (BSS) (32). For sample size calculation the ClinCalc samples size
125 calculator was used (<https://clincalc.com/Stats/SampleSize.aspx>; last accessed September 2022). An
126 anticipated incidence of changes in the intestinal microbial diversity in the probiotic group of 70%
127 and in the placebo group of 35% with a type I error (alpha) of 0.05, and a power of 85% as well as a
128 dropout rate of 15% was estimated. The calculation resulted in a required number of participants of at
129 least 88 probands randomized in a 1:1 ratio to the two intervention groups. The trial was conducted
130 according to the declaration of Helsinki (version 2013). Informed, written consent was obtained from
131 all participants and the study was approved by the responsible ethics committee of the University of
132 Münster (votum number: 2019-201-f-S). All procedures were performed in accordance with the
133 Declaration of Helsinki. The study was registered as clinical trial at the German Register of Clinical
134 Trials (DRKS00018115; https://www.drks.de/drks_web/; accessed 07/2022).

135 **2.2 Bowel preparation and colonoscopy**

136 Bowel preparation was performed as split lavage with either Moviprep[®] or Plenvu[®] (both Norgine,
137 Amsterdam, The Netherlands) or Eziclen[®] (Ipsen Pharma GmbH, Germany) according to the
138 manufacturers' instructions. The choice of the product was up to the discretion of the clinician
139 performing the examination. The colonoscopy was performed according to the German quality
140 standards by experienced endoscopists (33). Colonoscopies were performed with CO₂ in all cases.
141 Sedation was performed according to the German guidelines for sedation in endoscopy (33). The
142 choice of the sedation drug was up to the discretion of the investigator.

143 **2.3 Participants, multispecies probiotic and placebo formulation**

144 Participants were randomized and allocated to each group with the software Research Randomizer[®]
145 (Urbaniak, G. C., & Plous, S., Version 4.0, retrieved on June 22, 2013, from
146 <http://www.randomizer.org/>; last access June 2022). The allocation was performed by block
147 randomization at each study center. The probiotic group received the multispecies probiotic
148 formulation containing 3g of *Bifidobacterium bifidum* W23, *Bifidobacterium lactis* W51,
149 *Enterococcus faecium* W54, *Lactobacillus acidophilus* W37, *Lactobacillus rhamnosus* WGG,
150 *Lactococcus lactis* W19 at a concentration of 1x10⁹ cfu/g in a matrix of rice starch, maltodextrin,
151 hydrolyzed rice protein, potassium chloride, manganese sulfate and magnesium sulfate (OMNi
152 BiOTiC[®] Colonize) twice daily over 30 days. The placebo group received a similar looking,
153 smelling, and tasting powder containing rice starch, maltodextrin, potassium chloride, manganese
154 sulfate and magnesium sulfate. All strains present in the probiotic product have the Qualified
155 Presumption of Safety (QPS) status defined by the European Food Safety Authority (EFSA) (34).
156 Study product packages (probiotic and placebo) were provided with consecutive participant numbers
157 and were blinded to the assignment of the intervention. The randomization code was revealed at the
158 end of the study when all laboratory analyses were completed. During the study, stool samples were
159 collected from the probands at two timepoints. One specimen was taken immediately before
160 colonoscopy related bowel preparation was performed (T1) and the second stool sample 30 days after
161 colonoscopy and treatment with the multispecies probiotic or the placebo (T2).

162 **2.4 Sample collection, storage and questionnaires**

163 Stool samples were collected before colonoscopy related bowel preparation and after 30 days of
164 treatment using the Invitek Molecular stool collection tubes with DNA stabilizer (Berlin, Germany)
165 and stored at 4-8°C until nucleic acid extraction and purification according to manufacturer's
166 recommendations. Total DNA was isolated at the Institute of Clinical Molecular Biology, Christian-
167 Albrechts-University Kiel, Rosalind-Franklin-Str. 12, 24105 Kiel, Germany according to published

168 procedures (35). Briefly, the QIAamp DNA fast stool mini kit automated on the QIAcube (Qiagen,
169 Hilden, Germany) was used for DNA extraction according to manufacturer's instructions. For
170 mechanic lysis, sample were bead beating using the 0.70 mm Garnet Bead tubes (Dianova, Hamburg,
171 Germany) filled with 1.1 ml InhibitEx lysis buffer in a SpeedMill PLUS (Analytik Jena, Jena,
172 Germany) for 45s at 50Hz according to manufacturer's instructions and as published (35). Isolated
173 nucleic acids were stored at -20°C until further processing.

174 **2.5 Questionnaire**

175 Participants performed a daily questionnaire regarding the occurrence of abdominal pain, bloating,
176 heart burn, nausea, gas, vomiting, diarrhea and constipation for 28 days after colonoscopy. Further,
177 probands provided information on consistency and frequency of their bowel movements based on the
178 BSS (32). Possible frequencies ranked from no stool at all to three times or more often daily. Possible
179 values for stool nature ranked from type 1 (single, solid beads) throughout type 7 (liquid with hardly
180 solid components).

181 **2.6 16S based microbiome analysis**

182 Paired-end sequencing data were received as FASTQ files from the microbiome lab at the Christian-
183 Albrechts-University Kiel according to published procedures (36). Briefly, amplification of the 16S
184 rRNA gene was performed, targeting the hypervariable regions V1-V2 with the target specific
185 primers 27F (5'-AGA GTT TGA TCC TGG CTC AG-3') and 338R (5'-GCT GCC TCC CGT AGG
186 AGT-3'). Sequencing was executed using the Illumina MiSeq desktop sequencer with 600 cycles
187 version 3 chemistry in 2 x 300bp read mode (Illumina Inc., San Diego, CA, USA). FASTQ raw reads
188 were used for subsequent downstream processing of sequencing data and analysis. Raw reads were
189 uploaded to the European Nucleotide Archive ENA and can be accessed via the project-ID
190 PRJEB56238 (<https://www.ebi.ac.uk/ena/submit/webin/>; last accessed 09/2022).

191 **2.7 Next generation sequencing (NGS) data analysis**

192 FASTQ raw reads were used for data analysis. Subsequent downstream processing of sequencing
193 data was performed using the DADA2 package (<https://benjjneb.github.io/dada2/index.html>, 1.10)
194 for R (v3.6), adapted to V1-V2 amplicon reads by adjusting the filterAndTrim () paramters:
195 truncLen=c(230,180), trimLeft=c(5,5), truncQ=5, rm.phix=T. Number of bases for error inference
196 were set to 10⁹. Resulting amplicons sequence variants (ASVs) were taxonomically annotated using
197 the Genome Taxonomy Database (GTDB; <https://gtdb.ecogenomic.org/>) release 202 reference files
198 using the Bayesian classifier of the DADA2 package (assignTaxonomy()). Sequence data were
199 rarefied to 9,000 per sample and ASVs collapsed into genus-level taxonomic bins based on the
200 taxonomic annotation. ASVs not annotated at genus level were collapsed into respective higher order
201 taxonomic bins.

202 Alpha diversity measures Shannon diversity (vegan::diversity()), Chao1 (vegan::estimateR()) and
203 richness were calculated on the rarefied genus level count abundance tables. Group-wise comparisons
204 in alpha diversity were performed using Wilcoxon rank sum test and Wilcoxon signed rank test for
205 independent and repeated measurements, respectively.

206 Bray-Curtis dissimilarity was calculated to assess beta diversity. Differences in community
207 composition and dispersion were assessed by permutational multivariate analysis of variance
208 (vegan::adonis()) with 10,000 permutations performed to assess significance.

209 Analysis of taxon-specific abundance differences between treatment groups and timepoints were
210 based on CLR-transformed count data to account for the compositional nature of microbiome data
211 with pseudocount=1 added to each respective count. CLR-transformed values < 0 were set to 0. For
212 between group comparisons, linear models were used to assess differences in the zero-truncated
213 CLR-transformed abundances. For comparisons between sampling time points, linear mixed models
214 (nlme::lme()) were used with individuals as random effects variables. Individuals were included in
215 the analysis of a taxonomic group if the respective clade was present in the samples of that individual
216 at least in one timepoint.

217 Multivariable associations were examined using MaAsLin2, a method based on Compound Poisson
218 Linear Models (CPLM) specialized for compositional, zero-inflated data sets. Within this method the
219 unmodified feature table was subjected to trimmed mean of M-values (TMM) normalization. A
220 combination of treatment and timepoint was used as fixed effect (37).

221 Additionally, analysis on beta diversity and probiotic strain recovery were performed after initial
222 quality check, primer removal and truncation of reads at 250 bases (forward) and 200 (reverse) reads,
223 respectively. Maximum expected error was set to 2 for both, forward and reverse reads. Error rates
224 were modelled based on 451457 reads from 14 samples for the forward reads and 576611 reads from
225 18 samples for reverse reads. Data were de-replicated and introduced to the dada2 inference
226 algorithm. ASVs were merged and filtered for chimera and ultra-low abundant sequence variants. A
227 naïve Bayesian classifier, Ribosomal Database Project (RDP) classifier, implemented in the dada2
228 assignTaxonomy function was used to classify the sequence variants into higher-order taxonomy
229 based on the SILVA V132 database (38). Species annotation was allowed at 100% identity. The web-
230 based application OmicsNet 2.0 (<https://www.omicsnet.ca/>; accessed 07/2022) was used to extract
231 possible metabolite networks around the features of interest (39). The potential score which indicates
232 the probability that a given taxon produces a metabolite was set to 90%, current, universal and
233 metabolites without pathway annotation, were excluded from analysis.

234

235 **2.8 Gastrointestinal symptoms data analysis**

236 All statistics were done using R version 4.1.3 (2022-03-10) (40) as well as GraphPad Prism version
237 9.3.1 for Windows (GraphPad Software, La Jolla California USA, www.graphpad.com). The number
238 of days with intestinal symptoms were compared between groups using Mann-Whitney-u-tests and
239 unpaired samples t-test, the proportion of patients reporting symptoms within the groups were
240 compared using chi-square tests. Distance-based redundancy analysis (dbRDA) was performed to
241 assess the association between the gastrointestinal symptoms and the change in the microbiome
242 composition in both groups. An OTU table was prepared and centered log ratio-transformed using
243 `pldist::data_prep()` with the argument `paired=TRUE` and `pldist::pltransform()`, respectively. Gower's
244 distance was calculated using `pldist()` and distance based redundancy analysis was performed with
245 `vegan::dbrda()`. GraphPad Prism version 9.3.1 for Windows (GraphPad Software, La Jolla California
246 USA, www.graphpad.com) was used for data visualization according to manufacturer's instructions.

247

248 **3 Results**

249 All participants included into the study were enrolled between September 2019 and July 2021. In
250 total 91 participants were included to the study and randomized to probiotic and placebo intervention

251 groups with a dropout of four patients who did not keep the appointment for colonoscopy or
252 withdrew their informed consent (Figure 1). Out of the remaining 87 patients, age (average age=59.5
253 years), sex (52% male, 48% female) and body mass index (BMI) (average BMI=26.61 kg/m²) (Table
254 1) matched probands who underwent colonoscopy, 45 participants were allocated to the probiotic
255 group and 42 to the placebo group as shown in Figure 1. From the remaining 87 patients in total 76
256 (n=39 for probiotic and n=37 for placebo) provided stool samples at both time points (T1 just before
257 colonoscopy and T2 after 30 days of treatment intervention with the placebo and the probiotic). 36
258 probands in the probiotic group and 35 probands in the placebo group completed the questionnaire on
259 gastrointestinal discomfort and were included to the statistical analysis. In addition to information on
260 abdominal pain, bloating, heartburn, nausea, vomiting, diarrhea, and constipation the subjects
261 provided information about the nature and frequency of their bowel movements according to BSS.

262 3.1 Microbiome analysis – primary aim

263 16S rRNA gene-based microbiome analysis was performed from 39 participants that received the
264 multispecies probiotic and from 37 participants that received placebo after colonoscopy, respectively.
265 Before the start of bowel cleansing, there was no statistically significant differences in Shannon alpha
266 diversity index calculation at genus level of stool samples between the two randomized groups
267 (probiotic and placebo) (Figure 2A). Spearman's rank correlation analysis revealed no statistically
268 significant relation between Shannon diversity index at genus level and the body mass index (BMI)
269 (Figure 2B). Nevertheless, there was a significant correlation (p-value=0.042, rho=-0.232) of reduced
270 Shannon diversity index at genus level with increasing age (Figure 4C). Before start of the treatment
271 in all baseline samples analyzed (T1) the five most abundant genera were *Faecalibacterium*,
272 *Bacteroides*, *Prevotella*, *Phocaeicola* and *Alistipes* (Supplementary Table 1). All normalized read
273 counts of bacterial taxa at T1 and T2 from phylum to genus level analysis for all samples are shown
274 in supplementary table 1.

275 After baseline characterization of the samples that ensured the equality of the study groups, alpha and
276 beta diversity calculations were performed for both proband groups (probiotic and placebo) between
277 T1 and T2. Alpha diversity metrics including Shannon diversity index, Chao1 and richness and did
278 not reveal statistically significant differences before and after 30 days of treatment with either the
279 placebo or the probiotic (p>0.05) (Figure 3A-C). The effective number of species detected in the
280 samples was calculated with Shannon number equivalent (Figure 3D). Although, the Shannon
281 number equivalent did not change significantly neither in the probiotic nor in the placebo group
282 between the two timepoints T1 and T2 tested (Figure 3D), the delta of this value changed
283 significantly between the probiotic and the placebo group after four weeks of treatment (p=0.036)
284 (Figure 3E) suggesting that absolute changes in alpha diversity between timepoints are possibly
285 larger in the probiotic group.
286

287 Metric multidimensional scaling (MDS) analysis using Bray-Curtis dissimilarity as beta diversity
288 metric was performed for the placebo and the probiotic group before (T1) and after (T2) 30 days of
289 treatment. No statistically significant differences were found between the comparisons analyzed
290 (p>0.05) (Supplementary Figure 1A). Further, the comparison between T1 and T2 for the placebo and
291 the probiotic group separately, did not result in statistically significant regulations, either
292 (Supplementary Figure 1B and C). Additionally, the community level changes calculated as the delta
293 of Bray-Curtis dissimilarity values between the two time points did not alter significantly between the
294 two treatment groups (p=0.27; data not shown).

295 3.1.1 Differential taxa abundance

296 Finally, we performed mixed-effects model of centered and log-ratio transformed (CLR) abundances
297 analysis of all taxa that occurred in at least 10 samples with a relative abundance of at least 0.5%
298 across all samples between timepoints and groups. Abundance of the genus *Clostridioides sp.*
299 CAG:417 decreased in the placebo group between T1 and T2 ($p < 0.05$) but increased in the probiotic
300 group from T1 to T2 ($p < 0.05$) (Figure 4A). The taxon Bacillales bacterium UBA660 decreased in the
301 probiotic group between T1 and T2 significantly ($p < 0.05$), without significant changes in the placebo
302 group ($p > 0.05$) (Figure 4B). Further taxa that exhibited significant changes were *Mesosutterella* and
303 CAG.354 that increased in T2 in the probiotic as well as in the placebo group compared to T1
304 ($p < 0.05$, data not shown) and an uncultured Firmicutes UMGS1491 (*Oscillospiraceae*) ($p < 0.05$, data
305 not shown) that was more abundant in the probiotic group at both time points compared to the
306 placebo group. The genera *Duodenibacillus*, *Ruminiclostridium* and an uncultured *Clostridioides sp.*
307 (Firmicutes) UMGS1663 were decreased in their relative abundance in the probiotic group
308 independent of treatment and time point ($p > 0.05$, data not shown). No taxonomic groups were
309 significantly associated with any of the variables (group, timepoint) after correction for multiple
310 testing.

311 At T2 no statistically significant correlations were found with Spearman's rank correlation between
312 the time points and the parameters age and body mass index ($p > 0.05$).

313 3.1.2 Probiotic recovery and prediction analysis on metabolomic pathways

314 The bacterial strains in the multispecies probiotic formulation were *Bifidobacterium bifidum* W23,
315 *Bifidobacterium lactis* W51, *Enterococcus faecium* W54, *Lactobacillus acidophilus* W37,
316 *Lactobacillus rhamnosus* WGG, *Lactococcus lactis* W19 in equimolar ratios. The 16S rRNA based
317 analyses revealed recovery of reads derived from nucleic acids corresponding to the applied probiotic
318 strains according to table 2. In the probiotic group all applied strains were recovered from the stool
319 analysis in at least one sample with at least one copy (table 2). Further, MaAsLin2 analysis revealed
320 *Enterococcus faecium* to be significantly associated with probiotic treatment at T2 ($p < 0.05$, relative
321 abundance) (Figure 4C). One *Bacteroides* species increased in the probiotic group ($p < 0.05$, relative
322 abundance). Based on these two species (*Enterococcus faecium* and *Bacteroides ovatus*) we
323 performed predicted metabolomics analysis and drew a knowledge-based metabolite network. The
324 resulting network had 17 nodes (i.e. metabolites) and 27 edges (i.e. connections between the nodes)
325 (Supplementary Figure 2). Based on the likely metabolites of the input bacteria, the functions
326 phenylalanine-, tyrosine- and tryptophan biosynthesis were significantly associated with these
327 bacteria, with four metabolites shared between them (2-Dehydro-3-deoxy-D-arabino-heptonate 7-
328 phosphate, 3-Dehydroshikimate, Shikimate and 5-O-(1-Carboxyvinyl)-3-phosphoshikimate). All four
329 metabolites were located in the early stages of the pathway, also called 'Shikimate-pathway'
330 (Supplementary Figure 2).

331 3.2 Gastrointestinal symptoms – secondary aim

332 The average data from questionnaires of the probands and their adverse events reported after
333 colonoscopy are provided in Table 1. Common adverse events of the participants of this study after
334 colonoscopy were abdominal pain, bloating, heartburn, nausea, gas, vomiting, diarrhea and
335 constipation.

336 We observed a significant reduction of the number of days with constipation in the probiotic group
337 compared to the placebo group ($p = 0.044$) (Figure 5A). Days with general intestinal complaints
338 revealed a non-significant trend ($p > 0.05$) towards a decreased number (Figure 5B) and the number of

339 days with bloating were also reduced (Figure 5C) ($p>0.05$). In total, out of the 72 probands that
340 completed the questionnaires, 69 patients experienced days with symptoms during an observational
341 period of 30 days. The change in overall days of symptoms however did not reach statistical
342 significance between groups ($p=0.1$) (Figure 3).

343 Distance-based redundancy analysis (dbRDA) revealed no statistically significant association of the
344 self-reported gastrointestinal symptoms with changes in the 16S based bacterial microbiome during
345 the intervention period for any further gastrointestinal complaints analyzed (abdominal pain,
346 heartburn, nausea, vomiting, diarrhea) (data not shown).

347 **4 Discussion**

348 During this clinical trial the primary aim was to compare the intestinal microbiome immediately
349 before a colonoscopy and the microbiome after 30 days of administration of the multispecies
350 probiotic OMNi-BiOTiC® Colonize. We hypothesized that the intestinal microbiome detected by
351 16S analyses from stool samples will change by application of the multistrain probiotic compared to
352 a placebo. Our results clearly show a higher delta in the Shannon number equivalent in the probiotic
353 group compared to the placebo indicating more alterations in the expected number of species
354 calculated by this value between T1 and T2 in the probiotic compared to the placebo group.
355 Therefore, the primary aim of the study defined as the characterization of the changes in stool
356 microbial pattern was reached.

357 The secondary aims of this clinical trial were the analysis of abdominal complaints between the
358 experimental groups and the classification of the stool. We hypothesized less abdominal complaints
359 and less constipation or diarrhea in the probiotic compared to the placebo group. The secondary aim
360 was reached with a significant reduction in the number of days with constipation according to the
361 BSS and a non-significant trend of less abdominal complaints in the probiotic group compared to the
362 placebo group.

363 In a prospective, double blind, placebo controlled and randomized interventional study we could
364 therefore show for the first time that a multispecies probiotic formulation has a positive impact on
365 side effects occurring after screening colonoscopy and its related bowel preparation and on procedure
366 induced disturbances of the intestinal microbiome in healthy probands.

367 Post-colonoscopy induced symptoms are often abdominal pain, bloating, diarrhea, or constipation
368 ((7,26,41). A recent publication reports bloating in 25% of the analyzed patients as well as abdominal
369 pain and discomfort in 5%-11% of the analyzed cases, as the most common adverse effects after
370 colonoscopy (41). A prospective cohort study with a total of 502 patients reported minor
371 complications in 34% of probands. Most common adverse effects were bloating with 25% and
372 abdominal pain with 11% (42) corroborating the findings from other studies (43). In our study
373 cohort, 80% of the patients without abdominal symptoms before the procedure claimed abdominal
374 symptoms at any of the 30 days after the colonoscopy. Flushing of the intestine is on the one hand a
375 strong mechanical load for the gut and the intestinal mucus. On the other hand, the beneficial
376 microbiota becomes imbalanced by this massive intervention in the intestinal community (21,24).
377 Although, minor and interim side effects of colonoscopy are often of little medical interest, we argue
378 that the good tolerability of colonoscopy is an important prerequisite to convince as many people as
379 possible from the important and lifesaving screening colonoscopy (26,44).

380 In the study presented here, we could show a significant reduction in days with constipation and a
381 trend towards reduced days with bloating and diarrhea after colonoscopy in the probiotic treated

382 group. This is in concordance with previous studies on the effect of probiotics on colonoscopy related
383 side effects (30,31,45). Earlier studies analyzed the effect of single strain formulations only. This is
384 the first time a multispecies probiotic formulation with six selected strains was tested to prevent
385 gastro-intestinal complaints after colonoscopy. Based on the data derived from our study, a sample
386 size calculation is possible to confirm our clinical concept of reduction of post-colonoscopy GI
387 complaints by a multispecies probiotic.

388 We know from previous studies that the intestinal microbiome is reduced massively upon
389 colonoscopy preparation and these alterations in the bacterial community might be an important
390 factor for the occurrence of adverse events after the treatment (21,24). Although other alpha diversity
391 calculations did not reveal statistical significance in our study, the delta of Shannon number
392 equivalent changed significantly between the two sample groups. The Shannon number equivalent
393 gives the number of equally likely states needed to produce the given Shannon diversity index, so
394 this is the effective number of elements and minimizes the risk of missing changes in the diversity.
395 Our results indicate an increased variation of expected microbial alpha diversity in the probiotic
396 group comparing the sample before colonoscopy and after 30 days of intervention. The biological
397 meaning of this finding needs to be further explored in the future. A weakness of the study is that no
398 intermediate points were taken for microbiome analyses to characterize the time course of microbial
399 changes compared between the interventional groups.

400 Analyzing the recovery rates of the used bacterial strains we found all the species from the probiotic
401 formulation in the stool samples of participants in the probiotic group, however, a large proportion of
402 patients showed no recovery of probiotic strains at all. Considering that 50% of the human stool is
403 suspected to be microbiota (46), we hypothesize that the bacterial load of the stool samples was too
404 high, and the coverage used during 16S based next generation sequencing analysis too low to recover
405 the probiotic strains from all the patients' samples, that received the probiotic formulation. We can
406 also not fully exclude non-compliance with the study product although this was part of the
407 questionnaire (Table 1). Especially, the significantly higher abundance of *Enterococcus faecium* in
408 stool samples of the second time point in the probiotic group suggests that the supplemented
409 probiotic strains not only survive the gastric passage but also shows proliferation. Although we are
410 not able to differentiate between live and dead microorganism with the used method, we hypothesize
411 that the supplemented cell number would be far too low for detection in stool biomass. The low
412 recovery rate of the probiotic strains of the genus *Bifidobacterium sp.* might result from the used
413 primers for target amplification, as 27F and 338R primers are known to lack the detection of
414 *Bifidobacterium sp.* (47). Further clinical studies with increased numbers of participants and primers
415 for target specific 16S rRNA amplification might probably improve the significance of the results.

416 A weakness of the study is that we observed a dropout rate of about 20% of probands who did not
417 complete the daily stool questionnaire. As we calculated with a dropout rate of 15% we have not
418 reached the desired number of evaluable questionnaires (n=88). Subjects did not explain their
419 dropout, but we hypothesize that the burden of the detailed questionnaires was too much for them.
420 Therefore, higher dropout rates especially for long-term microbiome studies with assessment of
421 patient reported outcomes need to be considered.

422 In conclusion we demonstrated in a randomized, placebo controlled, double-blind study conducted in
423 a homogenous population undergoing screening colonoscopy that the application of a multispecies
424 probiotic at a concentration of 2×10^9 cfu/g with 6 g per day starting right after colonoscopy,
425 ameliorates side effects of colonoscopy induced constipation significantly. Moreover, we observed a
426 trend towards a lower load of other gastrointestinal symptoms and we found changes in the gut

427 microbiome composition that may be associated with health (48). These clinically relevant findings
428 should be confirmed in a large-scale randomized trial.

429 **5 Figures**

430 **Figure 1:** Study design: Enrollment, allocation and analysis of proband questionnaires data and stool
431 samples of the study. The intervention was performed for 30 days after colonoscopy, the
432 questionnaires was performed for 28 days.

433 **Figure 2:** Baseline characteristics of the two proband groups. (A) Box blot analysis of Shannon
434 diversity index for alpha diversity calculation at genus level at baseline before start of bowel
435 preparation and treatment. Spearman’s rank correlation test on the effect of (B) BMI and (C) Age on
436 alpha diversity.

437
438 **Figure 3:** Alpha diversity calculations. (A) Shannon diversity index, (B) Chao1 and (C) richness
439 between T1 and T2 of the placebo and the probiotic group. Additionally, the (D) Shannon number
440 equivalent and the (E) delta of the Shannon number equivalent are calculated. T1...timepoint 1,
441 T2...timepoint 2.

442
443 **Figure 4:** (A-B) Box plot analysis of mixed model analysis of centred and log-ratio transformed
444 (CLR) abundances. Taxa with relative abundances of at least >0.5% in at least 10 samples across all
445 timepoints were included. * $p < 0.05$ in the mixed model analysis. (C) Differential abundance in
446 percent of *Enterococcus faecium* determined by MaAsLin2 between the two time points for the
447 probiotic and the placebo group.

448
449 **Figure 5:** Questionnaire for gastrointestinal symptoms after colonoscopy. Days spent with
450 gastrointestinal symptoms for placebo and probiotic group. (A) Number of days self-reported with
451 constipation according to Bristol stool scale. (B) Number of days self-reported with intestinal
452 complaints. (C) Number of days self-reported with bloating. The intestinal complaints include all
453 recorded adverse events for all days of observation. ns...not statistically significant.

454
455 **Figure 6:** Density plot analysis of general intestinal symptoms (abdominal pain, bloating, heartburn,
456 nausea, vomiting, diarrhea, constipation) ($p=0.1$).

458 **6 Tables**

459 **Table 1:** Patient characteristics: Baseline characteristics and after 30 days of treatment and 28 days
460 of questionnaire. At baseline the probiotic and placebo groups do not differ in any parameter
461 analyzed. ns...not significant.

parameters (general)	Probiotic (n= 45)	Placebo (n= 42)	significance (pvalue)
age (years) mean; range	59.3; 40-75	59.9; 34-81	ns (>0.05)
female, n (%)	18 (20.6)	23 (26.4)	ns (>0.05)
BMI (kg/m ²) mean; range	25.9; 14-48	27.5; 21-39	ns (>0.05)
compliance	0.98	0.97	ns (>0.05)
Alpha diversity metrics (baseline, mean (SD))			
Shannon Index <i>Probiotic vs Placebo</i>	4.29 (0.32)	4.24 (0.34)	ns (>0.05)

Multispecies probiotic after colonoscopy

Richness <i>Probiotic vs Placebo</i>	199 (49)	191 (40)	ns (>0.05)
Chao1 <i>Probiotic vs Placebo</i>	206 (52)	197 (42)	ns (>0.05)
self-reported number of probands with adverse effects (within 28 days)			
abdominal pain, n (%)	10 (27.8)	10 (28.6)	ns (>0.05)
bloating, n (%)	7 (19.4)	8 (22.9)	ns (>0.05)
heartburn, n (%)	5 (13.9)	6 (17.1)	ns (>0.05)
nausea, n (%)	1 (2.8)	3 (8.6)	ns (>0.05)
gas, n (%)	17 (47.2)	18 (51.4)	ns (>0.05)
vomiting, n (%)	0 (0)	0 (0)	ns (>0.05)
diarrhea, n (%)	10 (27.8)	12 (34.3)	ns (>0.05)
constipation, n (%)	3 (8.3)	3 (8.6)	ns (>0.05)
overall number of probands with any symptoms, n (%)	29 (80.5)	26(74.2)	ns (>0.05)
self-reported number of days with adverse effects (28 days, all probands)			
abdominal pain, n (%)	21 (2.1)	29 (4.1)	ns (>0.05)
bloating, n (%)	23 (2.3)	12 (1.7)	ns (>0.05)
heartburn, n (%)	8 (0.8)	20 (2.9)	ns (>0.05)
nausea, n (%)	3 (0.3)	4 (0.6)	ns (>0.05)
gas, n (%)	86 (8.5)	101 (14.4)	ns (>0.05)
vomiting, n (%)	0 (0)	0 (0)	ns (>0.05)
diarrhea, n (%)	20 (2.0)	33 (4.7)	ns (>0.05)
constipation, n (%)	7 (0.7)	8 (1.1)	ns (>0.05)
overall number of days with symptoms	137(2)	194 (5)	ns (p=0.1) trend
Bristol Stool Scale (28 days)			
average days BSS 1/2, mean (SD)	3,8 (5.81)	7,1 (7.5)	0.0440*
number of probands with at least 1-day BSS 1/2, n (%)	25 (69.4)	29 (82.9)	ns (>0.05)
average days BSS 6/7, mean (SD)	4 (6.3)	4 (5.8)	ns (>0.05)
number of probands with at least 1-day BSS 6/7, n (%)	28 (77.7)	28 (80)	ns (>0.05)
Alpha diversity metrics (after 30 days, mean (SD))			
Shannon Index <i>Probiotic vs Placebo</i>	4.23 (0.50)	4.26 (0.33)	ns (>0.05)
Richness <i>Probiotic vs Placebo</i>	193 (56)	194 (43)	ns (>0.05)
Chao1 <i>Probiotic vs Placebo</i>	198 (59)	200 (45)	ns (>0.05)
Alpha diversity metrics, mean (SD)			
Shannon <i>Probiotic T1 vs T2</i>	-0.057 (0.44)	0.023 (0.21)	ns (>0.05)
Richness <i>Probiotic T1 vs T2</i>	-6.43 (43)	2.41 (26)	ns (>0.05)
Shannon <i>Probiotic T1 vs T2</i>	-7.38 (46)	2.98 (29)	ns (>0.05)

462

463 **Table 2:** Probiotic recovery in all groups and timepoints. Data are given as number (percentage) of
464 samples with at least one copy of the respective sequence. Number of samples (percentage of
465 samples).

466	Probiotic strain	Placebo T1	PlaceboT2	Probiotic T1	Probiotic T2
467	E. faecium W54	1 (3%)	2 (5%)	4 (10%)	15 (38%)
468	Lc. lactis W19	4 (11%)	5 (14%)	5 (13%)	15 (38%)
469	B. lactis W5	1 0 (0%)	1 (3%)	1 (3%)	5 (13%)
470	B. bifidum W23	0 (0%)	0 (0%)	4 (10%)	1 (3%)
471	L. acidophilus W37	2 (5%)	1 (3%)	1 (3%)	1 (3%)

472

473 **7 Conflict of Interest**

474 The authors declare that the research was conducted in the absence of any commercial or financial
475 relationships that could be construed as a potential conflict of interest. The study product and parts of
476 the analysis were funded by Institut AllergoSan, Pharmazeutische Produkte Forschungs- und
477 Vertriebs GmbH, Gmeinstraße 13, 8055 Graz, Austria.

478

479 **8 Author Contributions**

480 JL, DPB, FJH, AM, UT, HS, BT, IK, AH, MG, VS designed and performed the experiments,
481 analyzed the data, and wrote the manuscript.

482 JL, DPB, FJH, AM, UT, HS, BT, IK, AH, MG, VS analyzed data, contributed materials and
483 reviewed the manuscript.

484 JL, DPB, FJH, AM, UT, HS, BT, IK, AH, MG, VS provided expertise and feedback and wrote and
485 reviewed the manuscript.

486 **9 Funding**

487 The study was funded by Institut AllergoSan, Pharmazeutische Produkte Forschungs- und Vertriebs
488 GmbH, Gmeinstraße 13, 8055 Graz, Austria.

489 **10 Acknowledgments**

490 We thank the probands for their participation to this study.

491 **11 References**

- 492 1. Cao W, Chen H da, Yu YW, Li N, Chen WQ. Changing profiles of cancer burden worldwide
493 and in China: a secondary analysis of the global cancer statistics 2020. *Chin Med J (Engl)*
494 (2021) 134:783–791. doi: 10.1097/CM9.0000000000001474
- 495 2. Lu B, Li N, Luo CY, Cai J, Lu M, Zhang YH, Chen H da, Dai M. Colorectal cancer incidence
496 and mortality: the current status, temporal trends and their attributable risk factors in 60
497 countries in 2000–2019. *Chin Med J (Engl)* (2021) 134:1941. doi:
498 10.1097/CM9.0000000000001619
- 499 3. Nfonsam V, Wusterbarth E, Gong A, Vij P. Early-Onset Colorectal Cancer. *Surg Oncol Clin N*
500 *Am* (2022) 31:143–155. doi: 10.1016/J.SOC.2021.11.001
- 501 4. Navarro M, Nicolas A, Ferrandez A, Lanas A. Colorectal cancer population screening
502 programs worldwide in 2016: An update. *World J Gastroenterol* (2017) 23:3632. doi:
503 10.3748/WJG.V23.I20.3632
- 504 5. Hossain MS, Karuniawati H, Jairoun AA, Urbi Z, Ooi DJ, John A, Lim YC, Kaderi Kibria
505 KM, Mohiuddin AKM, Ming LC, et al. Colorectal Cancer: A Review of Carcinogenesis,
506 Global Epidemiology, Current Challenges, Risk Factors, Preventive and Treatment Strategies.
507 *Cancers 2022, Vol 14, Page 1732* (2022) 14:1732. doi: 10.3390/CANCERS14071732
- 508 6. Duvvuri A, Chandrasekar VT, Srinivasan S, Narimiti A, Dasari CS, Nutalapati V, Kennedy
509 KF, Spadaccini M, Antonelli G, Desai M, et al. Risk of Colorectal Cancer and Cancer Related
510 Mortality After Detection of Low-risk or High-risk Adenomas, Compared With No Adenoma,
511 at Index Colonoscopy: A Systematic Review and Meta-analysis. *Gastroenterology* (2021)
512 160:1986-1996.e3. doi: 10.1053/J.GASTRO.2021.01.214
- 513 7. Kobe EA, Sullivan BA, Qin X, Redding TS, Hauser ER, Madison AN, Miller C, Efird JT,
514 Gellad ZF, Weiss D, et al. Longitudinal assessment of colonoscopy adverse events in the
515 prospective Cooperative Studies Program no. 380 colorectal cancer screening and surveillance
516 cohort. *Gastrointest Endosc* (2022) doi: 10.1016/J.GIE.2022.04.1343
- 517 8. Rex DK, Adler SN, Aisenberg J, Burch WC, Carretero C, Chowders Y, Fein SA, Fern SE,
518 Fernandez-Urien Sainz I, Fich A, et al. Accuracy of Capsule Colonoscopy in Detecting
519 Colorectal Polyps in a Screening Population. *Gastroenterology* (2015) 148:948-957.e2. doi:
520 10.1053/J.GASTRO.2015.01.025
- 521 9. Rex DK, Schoenfeld PS, Cohen J, Pike IM, Adler DG, Fennerty MB, Lieb JG, Park WG, Rizk
522 MK, Sawhney MS, et al. Quality indicators for colonoscopy. *Gastrointest Endosc* (2015)
523 81:31–53. doi: 10.1016/J.GIE.2014.07.058
- 524 10. Hassan C, East J, Radaelli F, Spada C, Benamouzig R, Bisschops R, Bretthauer M, Dekker E,
525 Dinis-Ribeiro M, Ferlitsch M, et al. Bowel preparation for colonoscopy: European society of
526 gastrointestinal endoscopy (esge) guideline-update 2019. *Endoscopy* (2019) 51:775–794. doi:
527 10.1055/A-0959-0505/ID/JR18063-9
- 528 11. Jue TL, Storm AC, Naveed M, Fishman DS, Qumseya BJ, McRee AJ, Truty MJ, Khashab
529 MA, Agrawal D, Al-Haddad M, et al. ASGE guideline on the role of endoscopy in the
530 management of benign and malignant gastroduodenal obstruction. *Gastrointest Endosc* (2021)
531 93:309-322.e4. doi: 10.1016/J.GIE.2020.07.063

- 532 12. Gandhi K, Tofani C, Sokach C, Patel D, Kastenber D, Daskalakis C. Patient Characteristics
533 Associated With Quality of Colonoscopy Preparation: A Systematic Review and Meta-
534 analysis. *Clinical Gastroenterology and Hepatology* (2018) 16:357-369.e10. doi:
535 10.1016/J.CGH.2017.08.016
- 536 13. Kastenber D, Bertiger G, Brogadir S. Bowel preparation quality scales for colonoscopy.
537 *World J Gastroenterol* (2018) 24:2833. doi: 10.3748/WJG.V24.I26.2833
- 538 14. Chiu H-M. Quality Assurance in Colorectal Cancer Screening Program. *Colorectal Cancer*
539 *Screening* (2021)75–88. doi: 10.1007/978-981-15-7482-5_7
- 540 15. Chen C, Shi M, Liao Z, Chen W, Wu Y, Tian X. Oral sulfate solution benefits polyp and
541 adenoma detection during colonoscopy: Meta-analysis of randomized controlled trials.
542 *Digestive Endoscopy* (2022) doi: 10.1111/DEN.14299
- 543 16. Drago L, Toscano M, de Grandi R, Casini V, Pace F. Persisting changes of intestinal
544 microbiota after bowel lavage and colonoscopy. *Eur J Gastroenterol Hepatol* (2016) 28:532–
545 537. doi: 10.1097/MEG.0000000000000581
- 546 17. Gorkiewicz G, Thallinger GG, Trajanoski S, Lackner S, Stocker G, Hinterleitner T, Gully C,
547 Högenauer C. Alterations in the colonic microbiota in response to osmotic diarrhea. *PLoS One*
548 (2013) 8: doi: 10.1371/JOURNAL.PONE.0055817
- 549 18. Drago L, Toscano M, de Grandi R, Casini V, Pace F. Persisting changes of intestinal
550 microbiota after bowel lavage and colonoscopy. *Eur J Gastroenterol Hepatol* (2016) 28:532–
551 537. doi: 10.1097/MEG.0000000000000581
- 552 19. Bacterial network community in fecal and endoluminal Microbiota after colonoscopy -
553 PubMed. <https://pubmed.ncbi.nlm.nih.gov/32118281/> [Accessed July 5, 2022]
- 554 20. O'Brien CL, Allison GE, Grimpen F, Pavli P. Impact of Colonoscopy Bowel Preparation on
555 Intestinal Microbiota. *PLoS One* (2013) 8:e62815. doi: 10.1371/JOURNAL.PONE.0062815
- 556 21. Nagata N, Tohya M, Fukuda S, Suda W, Nishijima S, Takeuchi F, Ohsugi M, Tsujimoto T,
557 Nakamura T, Shimomura A, et al. Effects of bowel preparation on the human gut microbiome
558 and metabolome. *Scientific Reports 2019 9:1* (2019) 9:1–8. doi: 10.1038/s41598-019-40182-9
- 559 22. Jalanka J, Salonen A, Salojärvi J, Ritari J, Immonen O, Marciani L, Gowland P, Hoad C,
560 Garsed K, Lam C, et al. Effects of bowel cleansing on the intestinal microbiota. *Gut* (2015)
561 64:1562–1568. doi: 10.1136/GUTJNL-2014-307240
- 562 23. Nalluri-Butz H, Bobel MC, Nugent J, Boatman S, Emanuelson R, Melton-Meaux G, Madoff
563 RD, Jahansouz C, Staley C, Gaertner WB. A pilot study demonstrating the impact of surgical
564 bowel preparation on intestinal microbiota composition following colon and rectal surgery. *Sci*
565 *Rep* (2022) 12: doi: 10.1038/S41598-022-14819-1
- 566 24. Powles STR, Gallagher KI, Chong LWL, Alexander JL, Mullish BH, Hicks LC, McDonald
567 JAK, Marchesi JR, Williams HRT, Orchard TR. Effects of bowel preparation on intestinal
568 bacterial associated urine and faecal metabolites and the associated faecal microbiome. *BMC*
569 *Gastroenterol* (2022) 22:240. doi: 10.1186/S12876-022-02301-1

- 570 25. Harrell L, Wang Y, Antonopoulos D, Young V, Lichtenstein L, Huang Y, Hanauer S, Chang
571 E. Standard Colonic Lavage Alters the Natural State of Mucosal-Associated Microbiota in the
572 Human Colon. *PLoS One* (2012) 7:e32545. doi: 10.1371/JOURNAL.PONE.0032545
- 573 26. Steffenssen MW, Al-Najami I, Baatrup G. Patient-reported minor adverse events after
574 colonoscopy: a systematic review. <https://doi.org/10.1080/0284186X20191574979> (2019)
575 58:S22–S28. doi: 10.1080/0284186X.2019.1574979
- 576 27. Ng ZQ, Elsabagh A, Wijesuriya R. Post-colonoscopy appendicitis: Systematic review of
577 current evidence. *J Gastroenterol Hepatol* (2020) 35:2032–2040. doi: 10.1111/JGH.15130
- 578 28. Rodriguez-Silva JA, Maykel JA. Postcolonoscopy Complications. *Dis Colon Rectum* (2022)
579 65:622–626. doi: 10.1097/DCR.0000000000002429
- 580 29. Net MESM, Hill C, Guarner F, Reid G, Gibson GR, Merenstein DJ, Pot B, Morelli L, Canani
581 RB, Flint HJ, et al. Expert consensus document: The International Scientific Association for
582 Probiotics and Prebiotics consensus statement on the scope and appropriate use of the term
583 probiotic. *Nature Publishing Group* (2014) 11:506–514. doi: 10.1038/nrgastro.2014.66
- 584 30. D’Souza B, Slack T, Wong SW, Lam F, Muhlmann M, Koestenbauer J, Dark J, Newstead G.
585 Randomized controlled trial of probiotics after colonoscopy. *ANZ J Surg* (2017) 87:E65–E69.
586 doi: 10.1111/ANS.13225
- 587 31. Deng X, Tian H, Yang R, Han Y, Wei K, Zheng C, Liu Z, Chen T. Oral Probiotics Alleviate
588 Intestinal Dysbacteriosis for People Receiving Bowel Preparation. *Front Med (Lausanne)*
589 (2020) 7: doi: 10.3389/FMED.2020.00073
- 590 32. Lewis SJ, Heaton KW. Stool form scale as a useful guide to intestinal transit time. *Scand J*
591 *Gastroenterol* (1997) 32:920–924. doi: 10.3109/00365529709011203
- 592 33. der Smitten IS, M LM, Jansen LP, Hanau K, Klinik Barmbek A, med Ulrike Denzer P-D. S2k
593 Leitlinie Qualitätsanforderungen in der gastrointestinalen Endoskopie.
- 594 34. EFSA Panel on Biological Hazards (BIOHAZ), Koutsoumanis K, Allende A, Alvarez-
595 Ordóñez A, Bolton D, Bover-Cid S, Chemaly M, Davies R, de Cesare A, Hilbert F, et al.
596 Update of the list of QPS-recommended biological agents intentionally added to food or feed
597 as notified to EFSA 14: suitability of taxonomic units notified to EFSA until March 2021.
598 *EFSA J* (2021) 19:e06689. doi: 10.2903/j.efsa.2021.6689
- 599 35. Thingholm LB, Bang C, Rühlemann MC, Starke A, Sicks F, Kaspari V, Jandowsky A, Frölich
600 K, Ismer G, Bernhard A, et al. Ecology impacts the decrease of Spirochaetes and Prevotella in
601 the fecal gut microbiota of urban humans. *BMC Microbiol* (2021) 21: doi: 10.1186/S12866-
602 021-02337-5
- 603 36. Thingholm LB, Bang C, Rühlemann MC, Starke A, Sicks F, Kaspari V, Jandowsky A, Frölich
604 K, Ismer G, Bernhard A, et al. Ecology impacts the decrease of Spirochaetes and Prevotella in
605 the fecal gut microbiota of urban humans. *BMC Microbiol* (2021) 21: doi: 10.1186/S12866-
606 021-02337-5

- 607 37. Rajagopala S v., Singh H, Yu Y, Zabokrtsky KB, Torralba MG, Moncera KJ, Frank B, Pieper
608 R, Sender L, Nelson KE. Persistent Gut Microbial Dysbiosis in Children with Acute
609 Lymphoblastic Leukemia (ALL) During Chemotherapy. *Microb Ecol* (2020) 79:1034–1043.
610 doi: 10.1007/S00248-019-01448-X
- 611 38. Quast C, Pruesse E, Yilmaz P, Gerken J, Schweer T, Yarza P, Peplies J, Glöckner FO. The
612 SILVA ribosomal RNA gene database project: improved data processing and web-based tools.
613 *Nucleic Acids Res* (2013) 41: doi: 10.1093/NAR/GKS1219
- 614 39. Zhou G, Pang Z, Lu Y, Ewald J, Xia J. OmicsNet 2.0: a web-based platform for multi-omics
615 integration and network visual analytics. *Nucleic Acids Res* (2022) 50: doi:
616 10.1093/NAR/GKAC376
- 617 40. R: The R Project for Statistical Computing. <https://www.r-project.org/> [Accessed September
618 20, 2022]
- 619 41. Levy I, Gralnek IM. Complications of diagnostic colonoscopy, upper endoscopy, and
620 enteroscopy. *Best Pract Res Clin Gastroenterol* (2016) 30:705–718. doi:
621 10.1016/J.BPG.2016.09.005
- 622 42. Ko CW, Riffle S, Shapiro JA, Saunders MD, Lee SD, Tung BY, Kuver R, Larson AM,
623 Kowdley K v., Kimmey MB. Incidence of minor complications and time lost from normal
624 activities after screening or surveillance colonoscopy. *Gastrointest Endosc* (2007) 65:648–
625 656. doi: 10.1016/J.GIE.2006.06.020
- 626 43. Zubarik R, Fleischer DE, Mastropietro C, Lopez J, Carroll J, Benjamin S, Eisen G.
627 Prospective analysis of complications 30 days after outpatient colonoscopy. *Gastrointest*
628 *Endosc* (1999) 50:322–328. doi: 10.1053/GE.1999.V50.97111
- 629 44. Kothari ST, Huang RJ, Shaikat A, Agrawal D, Buxbaum JL, Abbas Fehmi SM, Fishman DS,
630 Gurudu SR, Khashab MA, Jamil LH, et al. ASGE review of adverse events in colonoscopy.
631 *Gastrointest Endosc* (2019) 90:863-876.e33. doi: 10.1016/J.GIE.2019.07.033
- 632 45. Kudou K, Kimura K, Tsutsumi R, Hashimoto N, Wada H, Ikeda T. Use of Insoluble Dietary
633 Fiber and Probiotics for Bowel Preparation Before Colonoscopy: A Prospective Study. *Surg*
634 *Laparosc Endosc Percutan Tech* (2022) 32:153–158. doi: 10.1097/SLE.0000000000000995
- 635 46. Vandeputte D, Falony G, Vieira-Silva S, Tito RY, Joossens M, Raes J. Stool consistency is
636 strongly associated with gut microbiota richness and composition, enterotypes and bacterial
637 growth rates. *Gut* (2016) 65:57–62. doi: 10.1136/GUTJNL-2015-309618
- 638 47. Walker AW, Martin JC, Scott P, Parkhill J, Flint HJ, Scott KP. 16S rRNA gene-based
639 profiling of the human infant gut microbiota is strongly influenced by sample processing and
640 PCR primer choice. *Microbiome* (2015) 3:1–11. doi: 10.1186/S40168-015-0087-
641 4/FIGURES/3
- 642 48. Moeller AH. The shrinking human gut microbiome. *Curr Opin Microbiol* (2017) 38:30–35.
643 doi: 10.1016/J.MIB.2017.04.002

644

645 **12 Supplementary Material**

646 **Supplementary Table 1:** Rarefied read numbers of microbial taxa from phylum to genus level of
647 stool samples before colonoscopy and after 30 days of application of a multispecies probiotic or a
648 placebo.

649 **Supplementary Figure 1:** Bray-Curtis dissimilarity plot for Beta diversity analysis of both groups
650 and all time points (A) and for the placebo group and the probiotic group between T1 and T2,
651 respectively. Data points are colored by intervention group and shapes indicate timepoints (circle: T1,
652 square: T2). MDS...metric multidimensional scaling.

653 **Supplementary Figure 2:** Knowledge-based metabolite networks based on *Enterococcus faecium*
654 and *Bacteroides ovatus*.

655

656 **13 Data Availability Statement**

657 Raw reads were uploaded to the European Nucleotide Archive ENA and can be accessed via the
658 project-ID PRJEB56238 (<https://www.ebi.ac.uk/ena/submit/webin/>; last accessed 09/2022).

Figure 1: Study design: Enrollment, allocation and analysis of proband questionnaires data and stool samples of the study. The intervention was performed for 30 days after colonoscopy, the questionnaires was performed for 28 days.

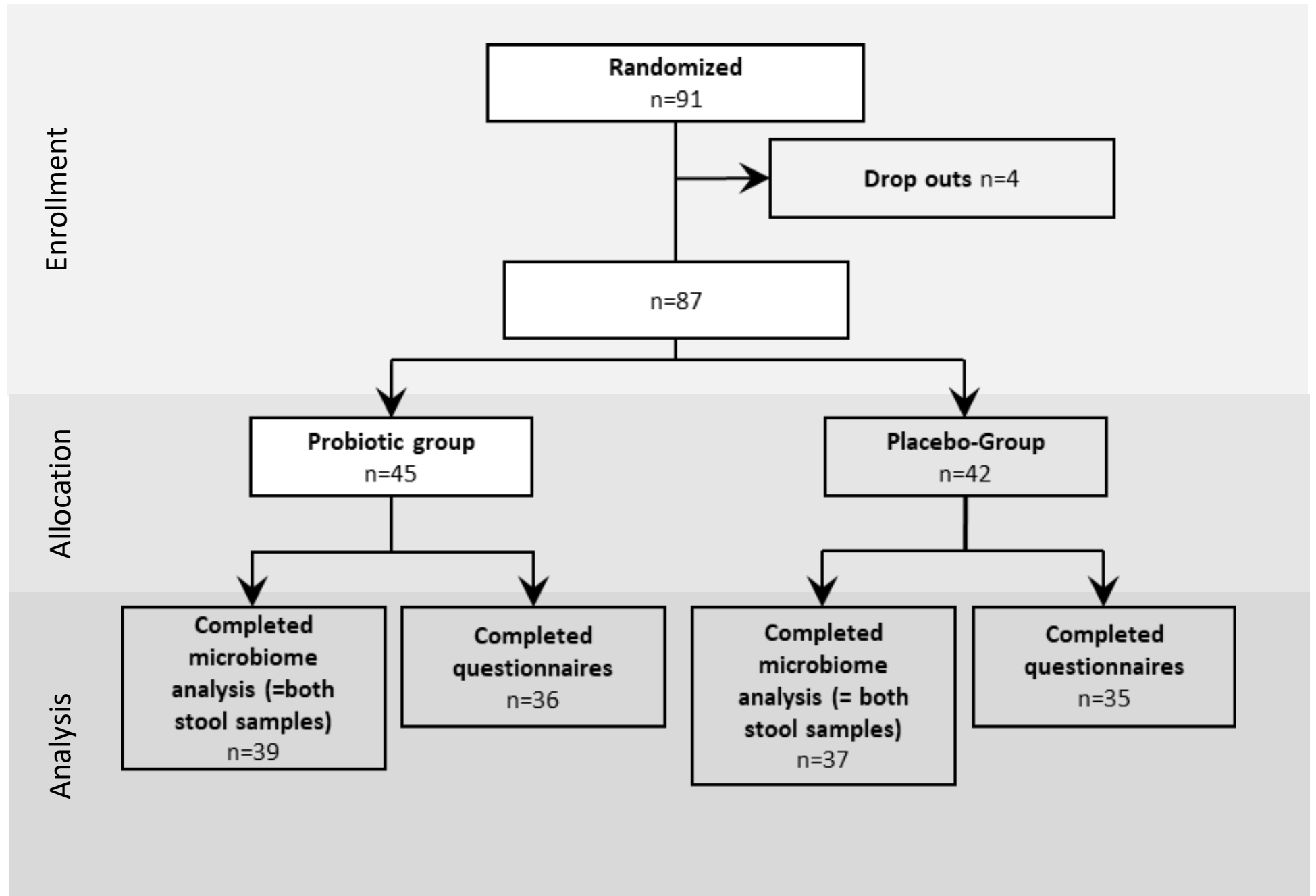
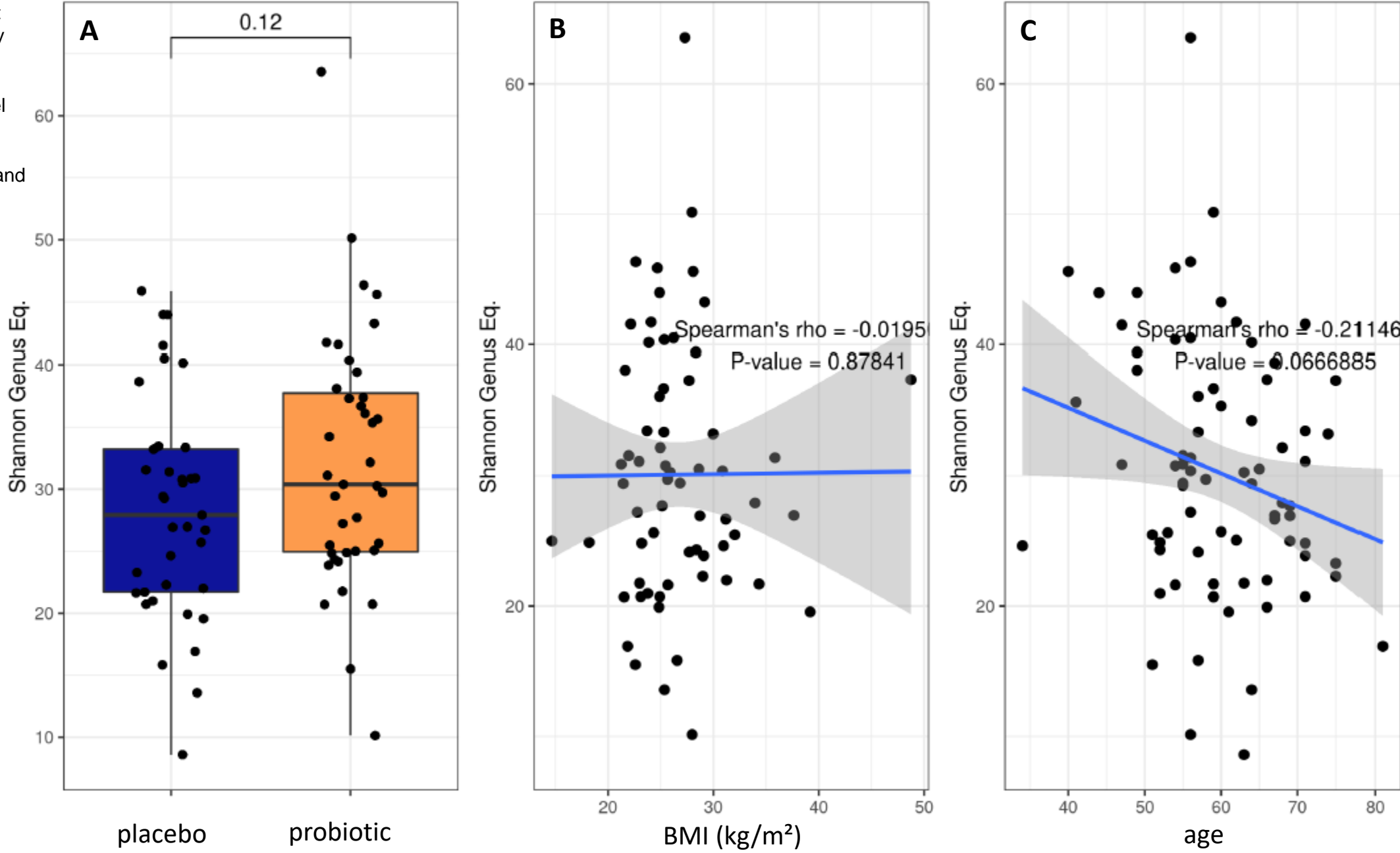


Figure 2: Baseline characteristics of the two proband groups. (A) Box blot analysis of Shannon diversity index for alpha diversity calculation at genus level at baseline before start of bowel preparation and treatment. Spearman's rank correlation test on the effect of (B) BMI and (C) Age on alpha diversity.



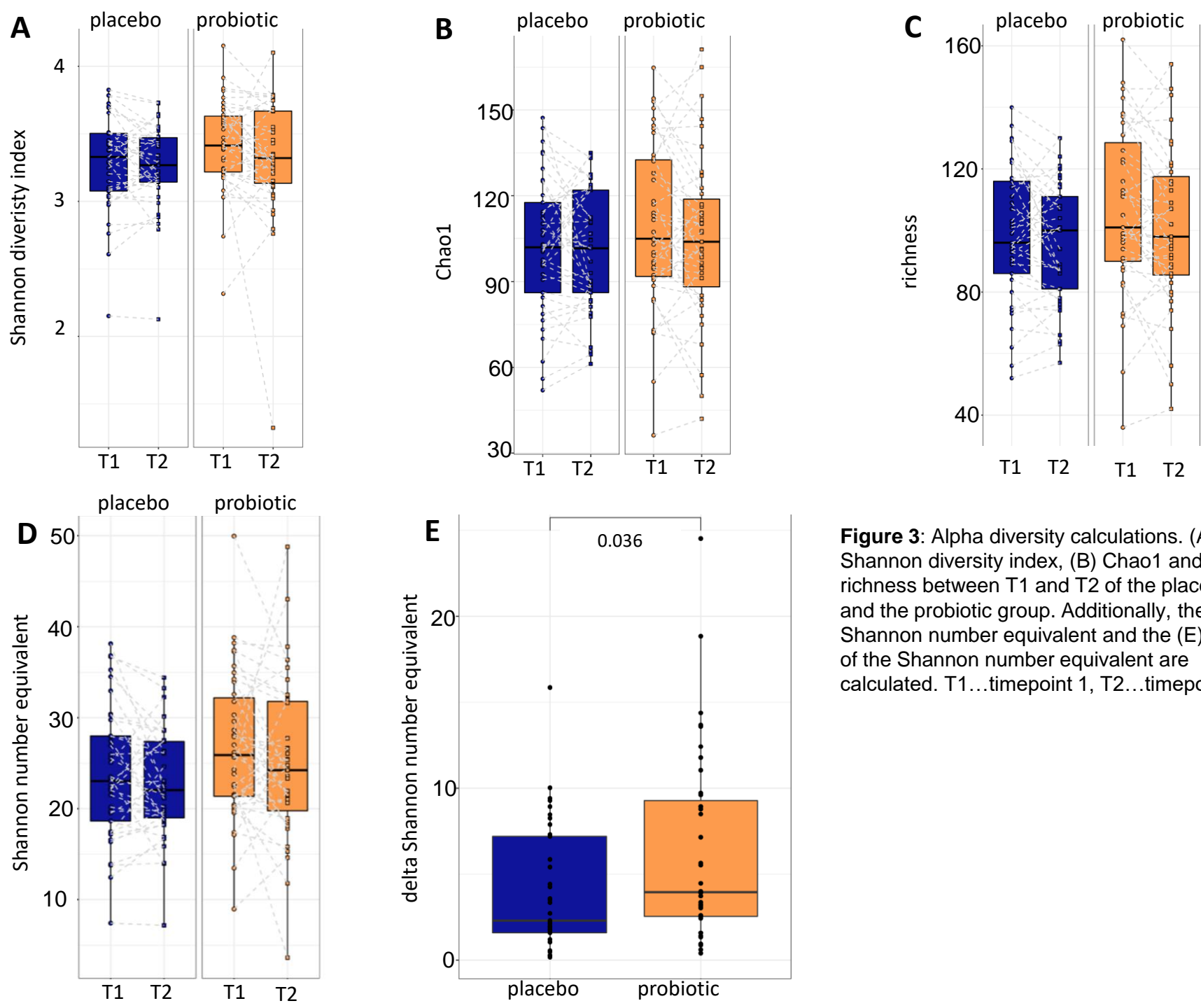
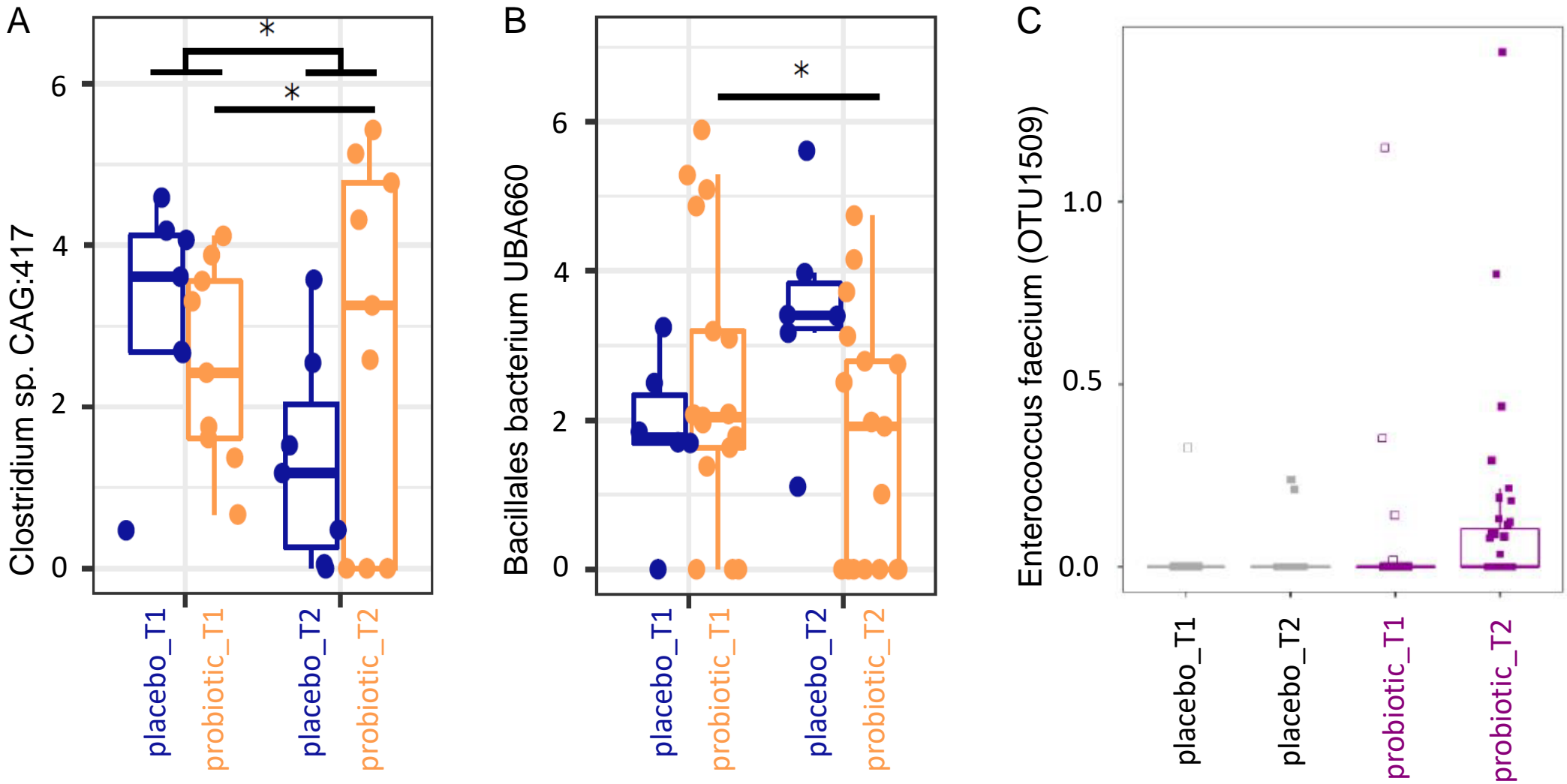


Figure 3: Alpha diversity calculations. (A) Shannon diversity index, (B) Chao1 and (C) richness between T1 and T2 of the placebo and the probiotic group. Additionally, the (D) Shannon number equivalent and the (E) delta of the Shannon number equivalent are calculated. T1...timepoint 1, T2...timepoint 2.

Figure 4: (A-B) Box plot analysis of mixed model analysis of centred and log-ratio transformed (CLR) abundances. Taxa with relative abundances of at least >0.5% in at least 10 samples across all timepoints were included. *p<0.05 in the mixed model analysis. (C) Differential abundance in percent of *Enterococcus faecium* determined by MaAsLin2 between the two time points for the probiotic and the placebo group.



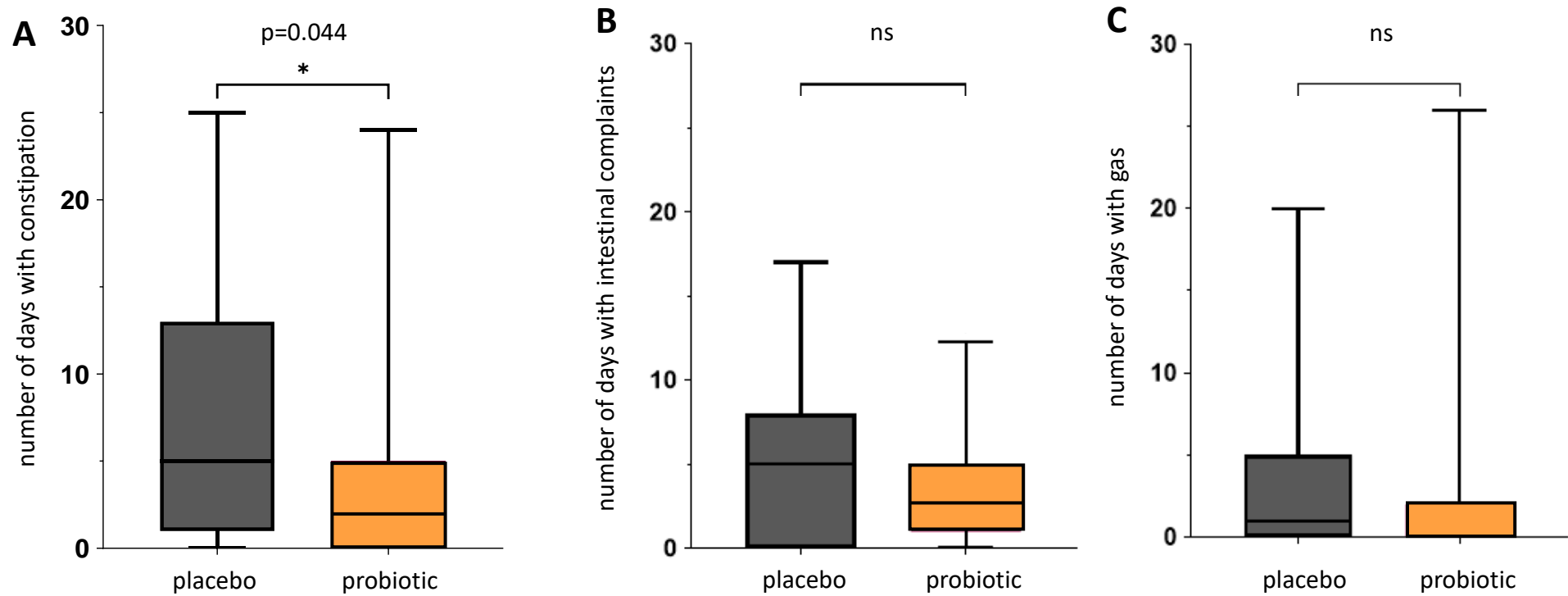


Figure 5: Questionnaire for gastrointestinal symptoms after colonoscopy. Days spent with gastrointestinal symptoms for placebo and probiotic group. (A) Number of days self-reported with constipation according to Bristol stool scale. (B) Number of days self-reported with intestinal complaints. (C) Number of days self-reported with bloating. The intestinal complaints include all recorded adverse events for all days of observation. ns...not statistically significant.

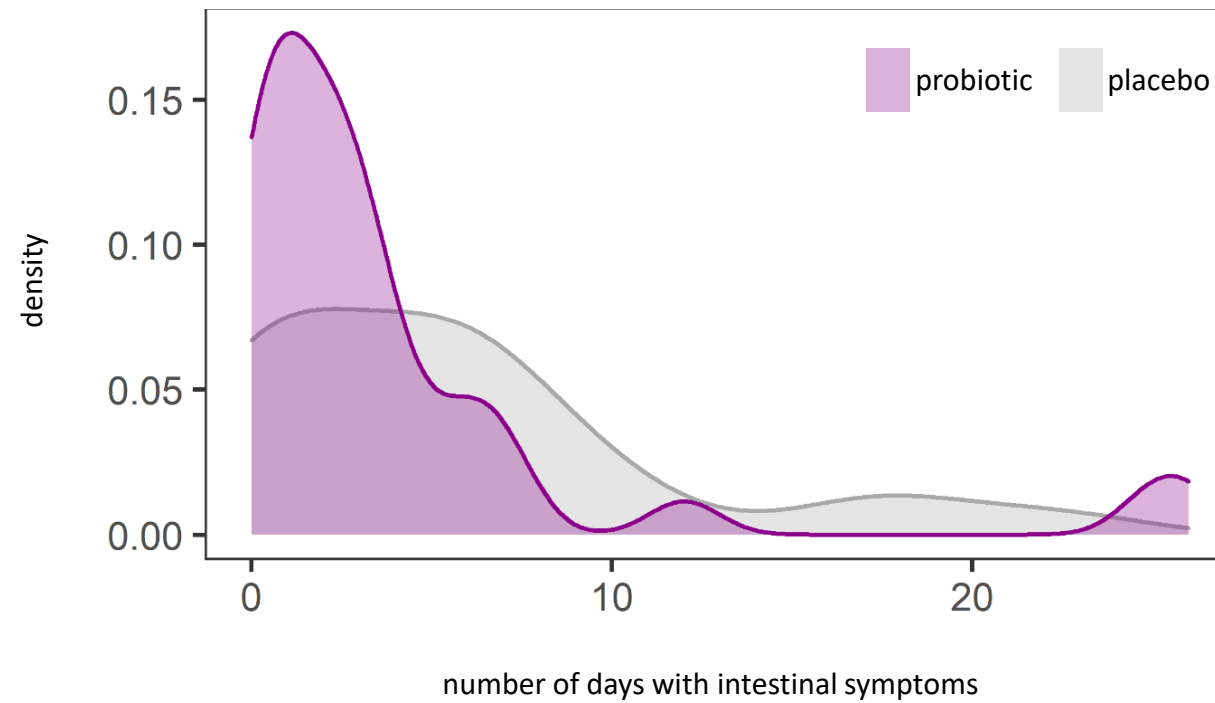
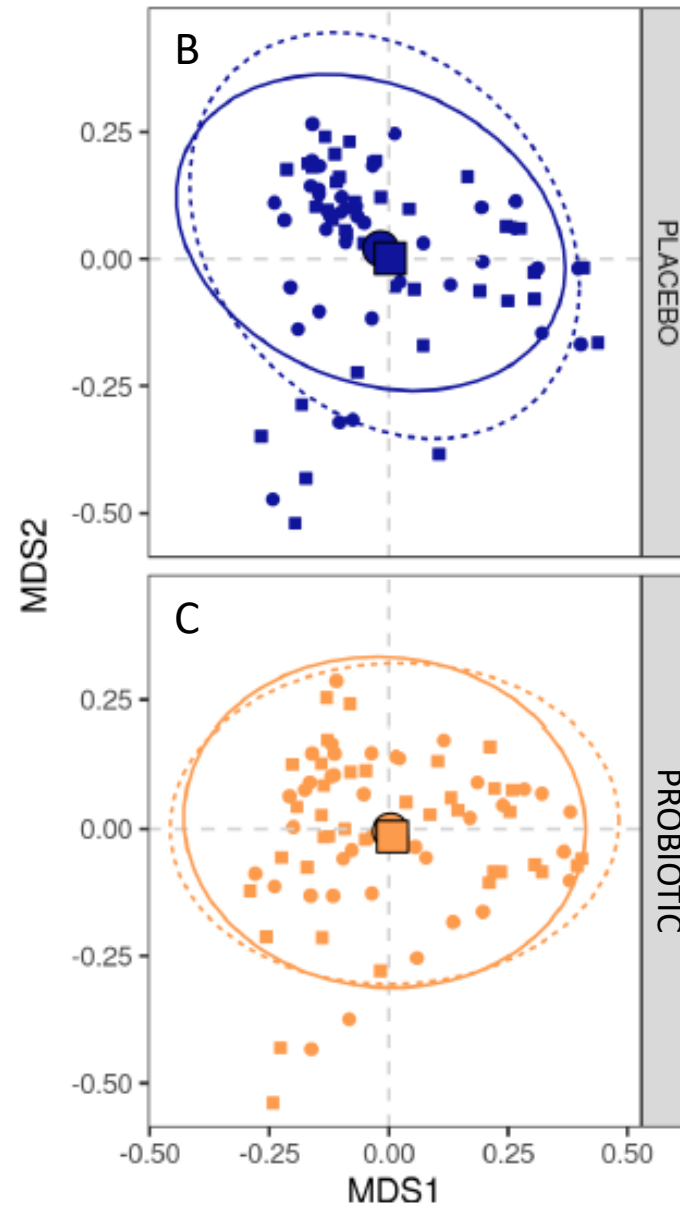
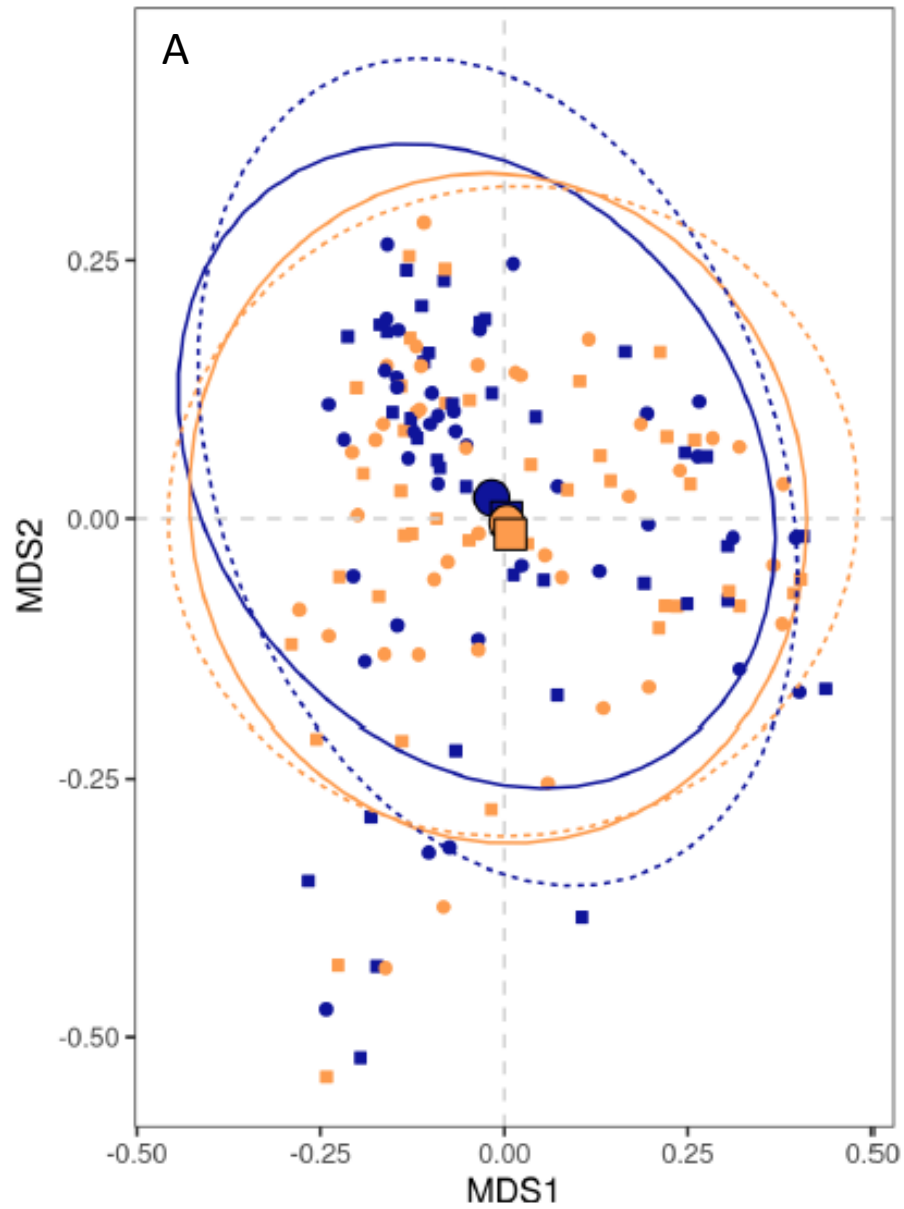


Figure 6: Density plot analysis of general intestinal symptoms (abdominal pain, bloating, heartburn, nausea, vomiting, diarrhea, constipation) ($p=0.1$).

T1 ○
T2 □
placebo
probiotic



Supplementary Figure 1: Bray-Curtis dissimilarity plot for Beta diversity analysis of both groups and all time points (A) and for the placebo group and the probiotic group between T1 and T2, respectively. Data points are colored by intervention group and shapes indicate timepoints (circle: T1, square: T2). MDS...metric multidimensional scaling.

Supplementary Figure 2:
 Knowledge-based metabolite
 networks based on *Enterococcus*
faecium and *Bacteroides ovatus*.

